

AWM4
Australian Imperial Force unit war diaries,
1914-18 War

Infantry

Item number: 23/4/36 PART 2

Title: 4th Infantry Brigade

September 1918 Appendices 25-40



AWM4-23/4/36PART2

SECRET.FOURTH AUSTRALIAN INFANTRY BRIGADE.Disposition of units as at 6 a.m. 19/9/1918.Reference sheet 62.C. and B. 1/40,000.

Brigade Headquarters R.2.c.35.15.
 " " (Rear) Q.28.d.10.50.

FRONT LINE.

14th Battalion H.Qrs. L.30.a.2.2.
 R.A.P. L.30.a.2.2.
 1 Company in trench from G.20.b.3.6. to G.21.c.1.7.
 1 " " " " G.21.c.1.7. to G.21.c.6.2.
 1 " " " " G.21.c.6.2. to G.27.b.10.55.
 1 " " " " G.27.a.95.60. to G.27.a.90.05.
 1 " (15th Bn.) in trench from G.27.a.45.90. to G.20.d.8.4.

SUPPORT BATTALIONS.

Right Bn. (13th Bn.) H.Qrs. L.35.c.45.80.
 R.A.P. L.35.c.45.80.
 1 Company in trench from G.25.d.5.1. to G.25.d.50.45.
 1 " " " " G.25.d.5.5. to G.25.d.4.8.
 1 " " " " G.25.d.4.8. to G.25.b.3.2.
 1 " " " " G.25.b.30.25. to G.25.b.20.45.

Left Bn. (15th Bn.) H.Qrs. L.29.b.1.7.
 R.A.P. L.29.b.1.7.
 Company H.Qrs. L.24.a.6.3.
 3 Platoons in trench from L.24.a.6.7. to L.24.c.7.7.
 Company H.Qrs. L.24.c.25.75.
 2 Platoons in trench from L.24.c.2.8. to L.24.c.3.7.
 1 " " " " L.24.c.7.5. to L.24.c.6.4.
 Company H.Qrs. L.24.c.5.2.
 3 Platoons in Trench from L.24.c.5.2. to L.30.a.5.8.

RESERVE BATTALION.

16th Battalion H.Qrs. L.34.a.85.85.
 R.A.P. L.34.c.8.7.
 Company H.Qrs. L.34.b.6.9.
 Company from L.34.b.8.9. to L.34.b.7.8.
 Company H.Qrs. L.34.b.4.8.
 Company from L.34.b.6.8. to L.34.b.4.7.
 Company H.Qrs. L.34.b.20.75.
 Company from L.34.b.3.7. to L.34.b.1.5.
 Company H.Qrs. L.34.d.3.9.
 Company from L.34.d.6.9. to L.34.d.5.7. to L.34.d.7.5.

4th A.L.T.M. Battery H.Qrs. L.29.c.10.65.

B. A. Atkinson

Captain.
 Asst/Brigade-Major.
 4th Aust. Inf. Brigade.

CONFIDENTIAL.

FOURTH AUSTRALIAN INFANTRY BRIGADE INTELLIGENCE SUMMARY.
From 6.a.m. 19/9/18 to 6.a.m. 20/9/18.

THIS SUMMARY IS NOT TO BE TAKEN INTO THE FRONT TRENCHES.

OUR OPERATIONS.

ARTILLERY. Active at intervals during the day and night. Harrassing and destructive shoots were carried out in accordance with programme. Line Battalion reports excellent opportunity targets for our artillery.

TRENCH MORTARS. 3 inch stokes Mortars fired 25 rounds on Saps and supposed M.G. positions.

MACHINE GUNS. During the day our machine guns both Vickers and Lewis carried out some excellent long range shooting. On frequent occasions parties of enemy troops were dispersed and casualties inflicted.

AIRCRAFT. Very active during the day making both high and low reconnaissances of enemy positions.

PRISONERS AND IDENTIFICATION. 1 prisoner 8th Company 251 R.I.R., 75th Reserve Division.

PATROLS. Standing patrols were pushed forward 250 yards in advance of present front line. Nothing of interest was reported. Liaison was maintained with units on both flanks.

ENEMY OPERATIONS.

ARTILLERY. A battery of 77's. situated G.17.a.2.6. proved very troublesome. Scattered fire on both forward and support positions was maintained throughout the period. Particular attention was paid to ASCENSION VALLEY. A Gun was observed firing from the vicinity of G.34.b.

TRENCH MORTARS. Nil.

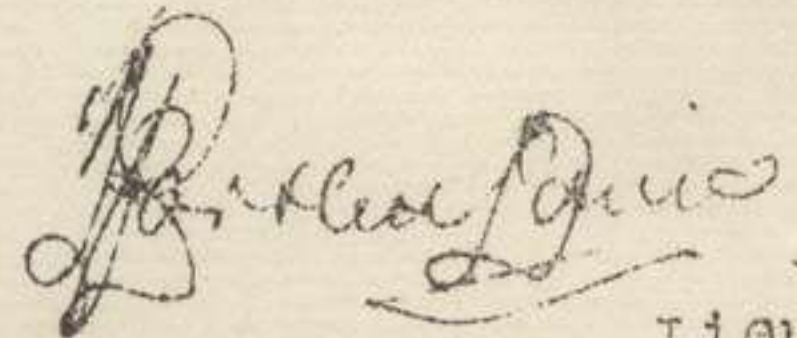
MACHINE GUNS. Very active both with direct and indirect fire.

AIRCRAFT. At 3.p.m. 4 E.A. shot down one of our patrol machines which fell south of our sector. Enemy aircraft generally inactive during the day.

PATROLS. No enemy patrols were encountered.

FLARES AND SIGNALS. At intervals during the night two Red lamps were observed sending signals from the direction BELLENGLISE.

MOVEMENT. Considerable movement was observed East of the Canal. Troops were observed moving along trenches in G.28.b. and also in trenches G.23.c., G.29.a. and G.29.b. Groups of 20 to 50 men were occasionally observed moving along the ridge East of the Canal.



Lieut.
for Brigade-Major.
4th Aust. Inf. Brigade.

SECRET.

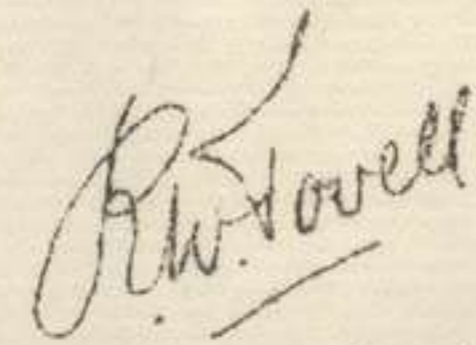
FOURTH AUSTRALIAN INFANTRY BRIGADE ORDER NO. 35

Reference sheets G.C. & D. 1/40,000.Headquarters,
20th Sept., 1918.

1. 4th Aust. Inf. Brigade Order No. 34 is hereby cancelled.
2. Reliefs in the Brigade sector will take place to-night as follows :-

Unit.	Relieves.	Frontage.
13th Bn.	Portion of 14th Bn.	Brigade Southern boundary to East West Road in G.20.4. (exclusive).
15th Bn.	ditto.	Above mentioned road (inclusive) to Brigade Northern boundary.

3. New Inter-Battalion boundary is shown on attached tracing. 15th Battalion will place 2 Companies in the Front Line and 2 in Support in RED LINE. The Company of 15th Battalion at present attached to 14th Battalion will revert to 15th Battalion on relief. Upon relief 14th Battalion will move into support taking over the Support Line from 13th Battalion and 2 Right Companies of 15th Battalion.
4. All details of relief will be arranged mutually between Commanding Officers concerned.
5. Disposition reports will be forwarded to Brigade Headquarters as early as possible.
6. Completion of relief will be notified to Brigade Headquarters by Code Message "B.M. 35 Noted".
7. ACKNOWLEDGE.



Major.
Brigade-Major.
4th Aust. Inf. Brigade.

Issued at 3.p.m. through Signals.

Distribution -

Extra copies to -

3rd Aust. Inf. Brigade.

- Tracing Issued with 4th Aust. Inf Bde Order No 35 -

20:9:18

- Ref. Sheets -

62^c N.E.
62^c S.E.
62^B N.W.
62^B S.W. } 1/20,000

3rd Aust. Inf. Bde.

North Divnl. Bdy.
24 19

Inter-Battn. Bdy.

4th Bde.
30 25

Inter-Bde. Bdy.

12th Aust. Inf Bde. 33

L G

R M

6 1

21

21

33

27

3

3

63

63

20/9/18

20/9/18

CONFIDENTIAL.

APPENDIX
29

FOURTH AUSTRALIAN INFANTRY BRIGADE INTELLIGENCE SUMMARY.
From 6.a.m. 20/9/18 to 6.a.m. 21/9/1918.

THIS SUMMARY IS NOT TO BE TAKEN INTO THE FRONT TRENCHES.

OUR OPERATIONS.

RELIEF. Inter-Battalion reliefs were carried out during the night 20th/21st September. 13th Bn. relieved right half 14th Bn. 15th Bn. relieved left half 14th Bn. All reliefs complete by 12 midnight.

ARTILLERY. Harassing and destructive fire was maintained throughout the day and night.

SPECIAL OPERATION. During the night two Line Battalions pushed forward with a view to commanding all crossings over the Canal opposite Brigade Sector. The Right Battalion met with severe opposition in the form of Machine Gun fire and ultimately constructed a strong outpost line 350 yards in advance of the previous front line. The left Battalion established an outpost line 500 yards in advance of their previous front line. The Left Battalion encountered opposition in G.21.b. The new positions are being held as strong outpost line.

TRENCH MORTARS. Nil.

MACHINE GUNS. Active with indirect fire during the night. Throughout the day many targets were engaged both with direct and indirect fire.

AIRCRAFT. Active both by day and night.

PATROLS. Strong fighting patrols were pushed out at 12.30.a.m. and opposition was met with in G.28.a. where trench was strongly held. Opposition was met in G.21.d. chiefly from PIKE WOOD. Left Battalion patrols met with much opposition from G.21.b.

PRISONERS AND IDENTIFICATIONS. Nil.

ENEMY OPERATIONS.

ARTILLERY. Inactive during the morning. Very active during the evening and throughout the night. Special attention was paid to G.28.a.2.B., ASCENSION VALLEY, L.29 and L.35.

TRENCH MORTARS. Nil.

MACHINE GUNS. Enemy machine guns were very active throughout the night and patrols reported flashes from 8 machine guns in PIKE WOOD. Machine Guns were also located at G.28.a.2.6., G.28.a.0.1.

AIRCRAFT. Throughout the day enemy aeroplanes were generally inactive. Towards evening small formations reconnoitred our forward area. During the night 1 enemy bombing plane was brought down in flames by one of our machines.

FLARES AND SIGNALS. A signal lamp was again observed in BELLENGLISE.

BALLOONS. Two balloons were up opposite our Sector during the day.

MOVEMENT. Movement was consistent East of the Canal.

[Handwritten Signature]
Lieut.
for Brigade-Major.
4th Aust. Inf. Brigade.

SECRET.

APPENDIX 30

Copy No.....

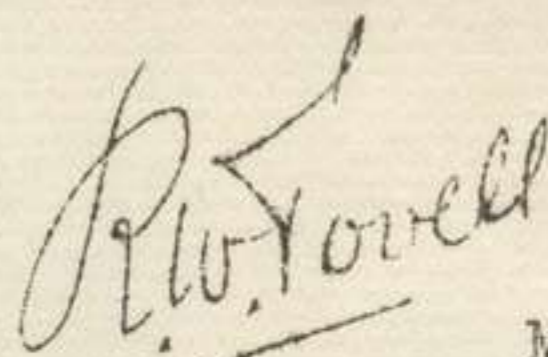
FOURTH AUSTRALIAN INFANTRY BRIGADE.Headquarters,
20th Sept., 1918.INSTRUCTIONS NO. 5 ISSUED WITH BRIGADE ORDER NO. 32.

Following on verbal instructions already issued by
Brigadier -

1. Battalions in Line will thoroughly consolidate their positions and wire them. The outpost line will push forward strong patrols to points of vantage thus gaining depth for the line and close observation of the hostile lines, these should be in the nature of standing patrols and should have amongst them intelligent observers, and snipers.
2. Close touch will be maintained with the enemy.
3. The ground in advance of the old British Front (i.e. Old Bosch Front Line) will be treated as an Outpost Zone to be strongly defended by its garrison. The old British Front Line will be the "line of resistance" and will be strengthened and improved accordingly, should any portion of it be lost it will be regained by counter-attack by Brigade Reserves. Machine Guns will be distributed in depth.

8 guns - Outpost Zone.
16 guns - Main Line of Resistance.
8 guns in 3rd or Reserve Line.

4. ACKNOWLEDGE.



Major.
Brigade-Major.
4th Aust. Inf. Brigade.

Issued at 11.30.a.m. through signals.

Distribution -

Extra Copies to -
3rd Aust. Inf. Brigade.

SECRET.

APPENDIX 31

Copy No.....

FOURTH AUSTRALIAN INFANTRY BRIGADE.Headquarters,
20/9/1918.INSTRUCTIONS NO. 5 ISSUED WITH BRIGADE ORDER NO. 32.

1. The following has been received from 4th Aust. Division :-

" Information from a French Corporal who escaped into our lines this morning, and from other reliable sources, is to the effect that the enemy is rather disorganised and has few troops or machine guns on or near the East side of the Canal between BELLENGLISE and Sqrs. G.22. and 23.

" Brigades in line will therefore push forward patrols tonight so as to establish an outpost line well forward of our present front line in such positions as will bring accurate rifle and Lewis Gun fire to bear on the crossings and deny the enemy any room to manoeuvre on the West side of the Canal between Sqrs. G.34. and G.22.

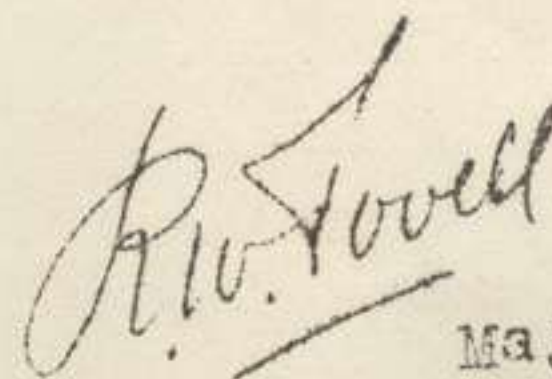
" All Artillery fire required by Brigadiers to cover their infantry action will be placed at their disposal, and will be arranged direct with C.R.A., 4th Aust. Division, through "liaison officers".

2. Commanding Officers 13th and 15th Battalions upon completion of relief will push out strong fighting patrols to comply with the above and to ascertain the whereabouts and strength of the enemy.

Reports on the results of these patrols will be forwarded by wire to Brigade Headquarters as soon as available.

Battalions will also advise Brigade of times of departure of patrols and points reached so that Artillery may be co-ordinated. All shooting West of the grid line G.22.central - G.28.central will be cancelled after 9.p.m. (except in answer to S.O.S. call) unless otherwise requested by you.

3. ACKNOWLEDGE.



Major.
Brigade-Major.
4th Aust. Inf. Brigade.

Issued at 8.p.m. through Signals.

Distribution -

Extra copies to -

3rd Aust. Inf. Brigade.

FOURTH AUSTRALIAN INFANTRY BRIGADE ORDER NO. 36

Headquarters,
20th Sept., 1918.

Reference VILLERET 1/20,000.

4th Aust. Infantry Brigade less 1 Battalion will be relieved in the Front Line on night 21st/22nd September, 1918, by 138th Infantry Brigade as per table hereunder :-

Date.	Unit.	Location.	Relieved by.	On relief move to.	Remarks.
1918. 1/22nd Sept.	13th Bn.	Front Line(right)	4th Leicesters	Rendezvous	
"	14th Bn.	Support.	Portion of 5th Leicesters	in TIN- COURT AREA.	
"	15th Bn.	Front Line(left)	----	Definite	Pass under command of G.O.C. 3rd Bn. Areas
"	16th Bn.	Reserve	----	later.	A.I.Bde. at 10p.m. 21st inst.
"	4th T.M.Bty.	Front Line.	138th L.T.M. Battery.		Guide to meet incoming Unit at L.34. a.9.8. (Sunken Road) at 3.p.m on 21st inst.
"	4th Bde.H.Q.	R.2.c.35.15.	138th Inf. Bde. H.Q.		

Prior to the relief Commanding Officer, 13th Battalion, will arrange to take over the Front Line as far South as road G.27. d.4.7. from 46th Battalion. This point will be the relieving Battalion right boundary.

At 10.p.m. on 21st instant 15th Battalion will pass to the command of G.O.C. 3rd Aust. Inf. Brigade.

2. Commanding Officers, 13th and 14th Battalions will arrange for guides to meet incoming units at road bridge R.8.a.5.8. at 7.p.m. on 21st instant.

3. Except as provided in this order details of relief will be arranged mutually between Commanding Officers concerned.

4. Receipts in duplicate for all trench stores &c. handed over will be forwarded to Brigade Headquarters as soon as possible after relief.

5. Advanced parties from 4th Leicesters (front line) and 5th Leicesters (Support) will proceed to their respective positions on night 20th/21st September.

6. Completion of relief will be notified to Brigade Headquarters by Code Message "B.M.36 Noted".

7. ACKNOWLEDGE.

Issued at 8.p.m. through Signals.

Distribution -

Extra copies to -

3rd Aust. Inf. Brigade.
138th Infantry Brigade.

R.W. Powell
Major.
Brigade-Major.
4th Aust. Inf. Brigade.

SECRET.

APPENDIX 33

Copy No.

FOURTH AUSTRALIAN INFANTRY BRIGADE ORDER NO. 37

Reference Sheet 62.C. 1/40,000.Headquarters,
22nd Sept., 1918.

1. 4th Aust. Inf. Brigade will move this afternoon to areas South of the Railway as follows :-

16th Bn. to Squares J.24.a., J.30.b4, K.19., K.25.a. and b.

14th Bn. " " K.23.a., a. and d.,

13th Bn. " " K.23.b., 21 and 27.a.

Moves to be complete by 4.p.m.

4th A.I. Brigade Headquarters and 4th A.L.T.K. Battery will remain at present location.

Disposition Reports will be forwarded to Brigade Headquarters as soon as possible.

(Sgd) R.W. TOVELL Major.
Brigade-Major.
4th Aust. Inf. Brigade.

Issued at 1.30.p.m. through Signals.

Distribution -
Brigade units.

SECRET.

Copy No.....

FOURTH AUSTRALIAN INFANTRY BRIGADE ORDER NO. 38

Reference Sheet 62.C. 1/40,000.
AMIENS 1/100,000ZHeadquarters,
22nd Sept., 1918.

1. The 4th Aust. Infantry Brigade less 15th Battalion will move to the HERBECOURT Area by march route on 23rd instant in accordance with table "A" overleaf.
2. Units will be embussed from HERBECOURT Area to PICQUIGNY Area on 24th instant under arrangements to be notified later.
3. Transport will move with units on 23rd instant to HERBECOURT Area and will proceed by road to PICQUIGNY Area on 24th & 25th instant under Capt. W.JACKA, 14th Battalion, staging for night 24th/25th in vicinity of DAOURS in accordance with Table "B" overleaf.
4. ACKNOWLEDGE.

Issued at 3.30.p.m. through signals.

Distribution -
Normal.B.S. Atherton
Captain.
Asst/Brigade-Major.
4th Aust. Inf. Brigade.

198
24 SEP 1918
ABBENIN 399A

T A B L E "A".

Serial No.	Date.	Unit.	Starting point.	Time of passing S.P.	Route.	Destination.	Remarks.
1.	23rd Sep.	4th Bde.H.Q.	X Roads J.18. c.5.2.	9.a.m.	MOULIN ROUGE -	H.24.	Distances will be maintained as follows :- Between Companies 200 yds. Between Unit and Transport 200 yards. Between Battalions 500 yds.
2.	"	4th T.M.Bty.	ditto.	9.5.a.m.	Fbg. de BRETAGNE -	South of	
3.	"	16th Bn.	Railway Crossing J.24.central	9.15.a.m.	HALLE - Bridge in	River.	
4.	"	14th Bn.	ditto.	9.35.a.m.			
5.	"	13th Bn.	ditto,	9.55.a.m.	H.24.b. and d.		

T A B L E "B" (Transport).

6.	24th Sep.	4th Bde.H.Q. and 4th T.M.Bty.	X Roads H.29. d.2.9.	9.a.m.	HERBECOURT - CAPPY - BRAY-sur-SOMME -	DAOURS.	Distances of 500 yards will be maintained between Transport of units.
7.	"	16th Bn.	ditto.	9.6.a.m.			
8.	"	14th Bn.	ditto,	9.17.a.m.	CORBIE - FOUILLOY -		
9.	"	13th Bn.	ditto.	9.28.a.m.	DAOURS (stage night		
10.	"	4th F.Ambce.	ditto.	9.39.a.m.	24th/25th instant).		

25th Sep. In above order. As arranged by Capt. W.JACKA, 14th Bn. 9.a.m. RIVERY - LONGPRE - ARGOEUVES - ST. SAUVEUR - LA CHAUSSEE - PICQUIGNY PICQUIGNY Attention is drawn to 4th Army Routine Order 2039 of 15.5.18 "March Discipline".

198

SECRET.

Fourth Australian Infantry Brigade.

HEADQUARTERS.

22nd Sept., 1918.

APPENDIX 35

71

C. O.,

Reference move to-morrow.1. TRENCH SHELTERS.

Owing to scarcity of accommodation in new area trench shelters will be taken, and will be collected and returned from there under Brigade arrangements.

2. 1 Officer from each Unit to meet Asst/Staff-Captain at H.24.d.95.40. at 9⁵⁰ a.m. to-morrow when sites for bivouac night 23rd/24th instant will be allotted.

3. 2 ambulances will move with column to-morrow and will follow 16th and 13th Battalions respectively. 13th and 16th Battalions will detail a guide to report at Brigade Headquarters at 7.45.a.m. to-morrow. *Aboriginal*

4. Nucleus will rejoin their Units in HERBECOURT Area. Necessary transport for their gear and baggage to be detailed by Units concerned.

5. Packs will be drawn by Units from Brigade Dump BIACHES on arrival.

6. Embussing point will be on main BIACHES - HERBECOURT - DOMPIERRE Road on afternoon of 24th instant.

7. Units to move with Mobile Echelon complete.

8. REMARKS. Safe Custody Compound. Units will remove under guard all men of their Units held in custody at the Corps Safe Custody Compound at Peronne Citadel on the day they proceed to the HERBECOURT Area.

[Signature]
Lieut.
Asst/Staff-Captain.
4th Aust. Inf. Brigade.

Issued at 8.p.m. through signals.

Fourth Australian Infantry Brigade.
HEADQUARTERS.
23rd Septr., 1918.

Headquarters,
4th AUSTRALIAN DIVISION.

Herewith Disposition of Units of this Brigade as at
6.p.m. 23rd September, 1918 :-

Brigade Headquarters	H. 24. d. 6. 4.
13th Battalion	H. 24. a. 55. 45.
14th "	H. 16. c. 1. 9.
16th "	H. 23. b. 7. 7.
4th T.M. Battery	H. 24. d. 6. 6.

Reference Sheet 62.C. 1/40,000.

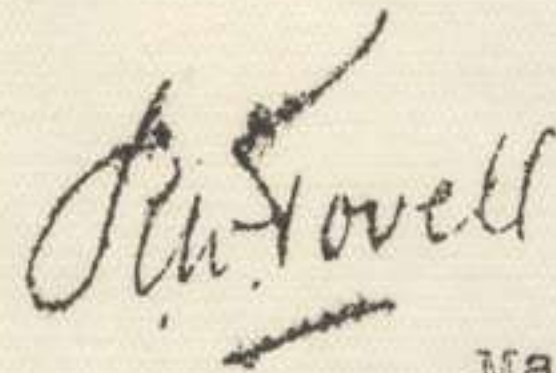
Brig-General.
Comdg. 4th Aust. Inf. Brigade.

SECRET.

Copy No.....

FOURTH AUSTRALIAN INFANTRY BRIGADE.INSTRUCTIONS NO. 1 ISSUED WITH BRIGADE ORDER NO. 38.Headquarters,
23rd Sept., 1918.

1. Embussment will take place at 7.a.m. to-morrow 24th instant on the BIACHES - HERBECOURT Road with head of Column at H.33.b.8.5.
2. Units will embuss in the following order :-
 - 14th Battalion.
 - 16th "
 - 4th A.I. Brigade H.Qrs.
 - 4th A.L.T.M. Battery.
 - 13th Battalion.
 - 4th Field Ambce.
 - 15th Battalion Nucleus.
3. Embussing Officers will meet the Brigade Major at the Embussing point at 6.30.a.m., bringing with them Notice Boards, Embussing state and one Runner with bicycle.
4. Debussing point PICQUIGNY.

Major.
Brigade-Major.
4th Aust. Inf. Brigade.

FOURTH AUSTRALIAN INFANTRY BRIGADE.

APPENDIX 38

Administrative instructions issued in connection with
Brigade Order No. 38.

Headquarters,
23rd Sept., 1918.

1. In CAVILLON Area troops will be quartered in billets in PICQUIGNY Sub-Area.
2. Transport Lines will be selected in vicinity of Units, and location advised to this Office as soon as possible.
3. Supplies. 24th Sept. - personnel moving by bus will carry unconsumed portion of rations for 24th instant. Supplies for consumption 25th instant will be delivered to Units in CAVILLON Area. Supply Dump - PICQUIGNY (on road to SOUES). Q.M's. to report at Dump immediately on arrival in new Area to take over lorries and convey same to Q.M.Stores. First Line Transport will move with unconsumed portion of rations for 24th instant and will be issued at Staging Area on afternoon of 24th instant with rations for consumption 25th instant. Commencing 25th instant first line transport will draw rations from Refilling point. Q.M's. to ascertain from Supply Officer hour of drawing.
4. Units will move with mobile Echelons full. Requisitions for requirements for training purposes to reach this Office by Noon 25th instant.
5. All Trench Shelters in possession of units will be returned to Brigade Q.M.S. at Brigade Headquarters (H.24.d.6.4.) at 6a.m. tomorrow 24th instant and receipt obtained.
6. As far as can be ascertained, following motor lorries will be available to move spare kits, etc. to CAVILLON Area :-

1 1/2	lorry	to each Battalion.
1 1/2	"	" 4th Field Ambee.
1 1/2	"	" Brigade H.Q. and Signals.
1 1/2	"	" 4th A.L.T.M.Battery.

All kits etc. for removal by Motor Lorries will be dumped at H.29.d.25.90. by 6.a.m. tomorrow 24th instant. Guard of 2 men only from each unit to be left in charge of each dump.
7. 2nd Line Transport. All Baggage, Supply Wagons, and Transport Personnel of Div. Train will be withdrawn from units temporarily on morning of 24th instant and will return to lines to be selected by C.O., Train, who will work under Aust. Corps Orders.
8. D.A.D.O.S. will be at CAVILLON.
9. 4th Mobile Veterinary Section will be at PICQUIGNY.
10. 4th Aust. Div. Reinforcement Wing will be at AILLY-sur-SOMME on 25th instant.
11. Water supply in new Area will be drawn from wells and stand pipes in vicinity of billets. Units will be responsible for picketing water points where necessary to prevent waste. Watering of horses to be carried out by use of troughs and buckets.
12. One set of Baths will be established in Brigade Area. Location will be notified later.
13. Personnel proceeding on English Leave from CAVILLON Area will depart AILLY-sur-SOMME at 10.a.m. daily. Personnel proceeding on leave in France from AMIENS Station.
14. Commanding Officers will afford facilities for R.M.O's. to lecture to the personnel of their units on the incidence, Risk of Infection, prophylaxis, and treatment of V.D.

W. de
Lieut.
Asst/Staff-Captain.
4th Aust. Inf. Brigade.

Issued at 5.30.p.m. through signals.

APPENDIX
39
Reference General Staff Circular No. 87.

Personnel will be attached to American Units as under :-

H.Q. 27th American Division.
"G" Staff
"Q" Staff
Signal Officer
Brig-General C.H.BRAND, C.B., C.M.G., D.S.O.
Major R.H.NORMAN, M.C. 12th A.I.Bde.
Capt. G. BARTLETT, 4th Aust. Division.
4th Aust. Div. Signal Coy.

H.Q. 63rd American Brigade.
Battalion Commander
Signal Officer
M.G. Battalion.
Lieut -Col. H.A.CROWTHER, D.S.O., 14th Bn.
Lieut. G.F.FALKNER, M.M., 13th Bn.
4th A.M.G. Bn.

H.Q. 54th American Brigade.
Battalion Commander
Signal Officer.
M.G. Battalion.
Lieut-Col. SALISBURY, D.S.O., 50th Bn.
Lieut. C.W.STOERKEL, M.C., 12th A.I.Bde.
4th A.M.G. Bn.

H.Q. 105th American Regt.
Brigade-Major
Staff-Captain
Transport Officer.
Quartermaster.
Senior Sig. N.C.O.
M.G. Company.
T.M. Platoon.
Major W.R.WADWORTH, M.C., 4th A.I.Bde.
Lieut. W.R.WATSON, 12th A.I.Bde.
A.A.S.C.
Capt. T.HAMMOND, 12th A.I.Bde.
4th Aust. Div. Sig. Coy.
4th A.M.G. Bn.
Cpl. MURFEY, 4th A.L.T.M. Battery.

H.Q. 106th American Regt.
Brigade-Major.
Staff Captain.
Transport Officer.
Quartermaster.
Senior Sig. N.C.O.
M.G. Battalion.
T.M. Platoon.
Capt. B.S. ATKINSON, M.C., 4th A.I.Bde.
Lieut. L.TWEEDIE, 4th A.I.Bde.
A.A.S.C.
Capt. E.E. PLUCKNETT, 4th A.I.Bde.
4th Aust. Div. Sig. Coy.
4th A.M.G. Bn.
4591. Sgt. A.T. SHARPE, M.M. 12th A.L.T.M. Batty

H.Q. 107th American Regt.
Brigade Major
Staff-Captain.
Transport Officer.
Quartermaster.
Senior Sig. N.C.O.
M.G. Company.
T.M. Platoon.
Capt. D.A. TWINING, M.M. 12th A.I.Bde.
Lieut. H.DOWNES, M.M. 12th A.I.Bde.
4th A.M.G. Bn.
Lieut. R.BOWDEN, 12th A.I.Bde.
4th Aust. Div. Sig. Coy.
4th A.M.G. Bn.
2234. Sgt. C. THOMPSON, M.M., 13th A.L.T.M. B.

H.Q. 108th American Regt.
Brigade Major.
Staff Captain
Transport Officer.
Quartermaster.
Senior Sig. N.C.O.
M.G. Company.
T.M. Platoon.
Capt. M.P. OWEN, M.C., 13th A.I.Bde.
Capt. R.L. BENNETT, 13th A.I.Bde.
Lieut. C.F. McDOUGALL, 13th A.I.Bde.
Lieut. J.R.C.B. CHANTER, 13th A.I.Bde.
2757. Sgt. H.B. NEWMAN, 13th A.I.Bde.
4th A.M.G. Bn.
3489. Cpl. J.C. BITLOW, 13th A.L.T.M. B.

(sd) C.H. BRAND,
Brigadier-General,

105th American Regt.

Intelligence Officer, 1st Bn. Lieut. W.C. HELDON, 12th A.I. Bde.

2nd Bn. Lieut. F.A. PATERSON, do

3rd Bn. Lieut. L.C. COULSON do

Senior N.C.Os.

1st Bn. 2829. RQMS. K.B. GOODWIN, 45th Bn.

4776. CQMS. N.B. FREE "

2331. CQMS. V.D. BECK, M.M. "

4190. S/Sgt. W. GILES "

2nd Bn. 2582. Cpl. H.S. DUNLOP "

2014. Sgt. H.W. DINNING 48th Bn.

3295. Sgt. G. FITZGERALD "

3300. Cpl. T.A. PRICE "

3rd Bn. 3196. CQMS. C. PITT "

1706. Sgt. C.E. DENNIS "

1304. Cpl. A. McLEOD "

4265. Sgt. A.M. PITTARD 46th Bn.

106th American Regt.

Intelligence Officer, 1st Bn. Lieut. J.H. EAST, 4th A.I. Bde.

2nd Bn. Lieut. T.M. GRANT, M.C. "

3rd Bn. Lieut. R.E.D. PALMER, 12th A.I. Bde.

Senior N.C.Os.

1st Bn. 3858. Cpl. A. EMBREY, 13th Bn.

2542. Cpl. H.C.B. WILLIAMS "

6713. Sgt. L. CLIMPSON "

4290. Cpl. E.B. RYAN "

2nd Bn. 7048. Sgt. A.L. McDONALD, 14th Bn.

3511. Cpl. H. TRAVIS "

3352. Cpl. C.D. BOOKER "

5774. Cpl. E. OXLEY "

3rd Bn. 558. Sgt. W.H. POLLOCK 46th Bn.

2406. CQMS. J. LIVINGSTONE "

4041. Sgt. J.W. WESTWOOD "

3967. Cpl. H.F. WILSON "

107th American Regt.

Intelligence Officer, 1st Bn. Lieut. H.B. DAVIS, 4th A.I. Bde.

2nd Bn. Lieut. V. KETTERER, "

3rd Bn. Lieut. J.H. HILL 13th A.I. Bde.

Senior N.C.Os.

1st Bn. 2583. Cpl. V.G. GROUTCH, 13th Bn.

3328. Cpl. J. GRIEVES 14th Bn.

6949. Sgt. W. MARSHALL MM 16th Bn.

1060. CQMS. J.W. INGHAM 4th A.I. Bde.

2nd Bn. 5791. Sgt. P.G. TROTTER 16th Bn.

1352. CQMS. F.R. BULLEN "

3556. CQMS. D. SMITH "

6213. Cpl. C.G. LATHAM "

3rd Bn. 2377a. CQMS. W.J. NOLAN 13th A.I. Bde.

2579. CQMS. H. FAIRCHILD "

3417. Sgt. D. McLEOD "

3406. Sgt. McGILCRIST "

108th American Regt.

Intelligence Officer, 1st Bn. Lieut. W.L. POTT 13th A.I. Bde.

2nd Bn. Lieut. A.S. HAWKER "

3rd Bn. Lieut. F.R. BROWN "

Senior N.C.Os.

1st Bn. 4977. Sgt. H. DUTNEY "

3594. Sgt. A.M. WALTERS "

2217. CQMS. R. SANDERCOCK "

2600. A/CQMS. J. MURPHY "

2nd Bn. 6602. Sgt. F.W. McDONALD "

3696. Sgt. BOURNE "

2200. Sgt. W.J. MULRONEY "

2426. RQMS. J.C. McRAE "

3rd Bn. 1826. CQMS. M.A. DUNKIN "

3482. Sgt. R.E. HALLIDAY "

82a. Sgt. C.E.R. BURT "

1967. Sgt. G.A. KEELEY "

CASUALTIES AND SICK EVACUATIONS.

Date.	13th Bn.			14th Bn.			15th Bn.			16th Bn.			4th T.M.Bty.			Bde.H.Qrs.			TOTAL.	
	K.	W.	S.	K.	W.	S.	K.	W.	S.	K.	W.	S.	K.	W.	S.	K.	W.	S.	W.	S.
Sept. 1st/24	-	-	-	-	-	-	-	6	-	-	-	1	-	-	-	-	-	-	6	1
" 2nd/3rd	-	-	-	-	-	-	-	-	1	-	-	-	-	1	-	-	-	-	1	1
" 3rd/4th	-	-	-	-	-	2	-	-	1	-	-	1	-	-	-	-	-	-	-	4
" 4th/5th	-	-	-	-	-	1	-	-	-	-	-	2	-	-	-	-	-	-	-	3
" 5th/6th	-	-	-	-	-	1	-	-	1	-	-	1	-	-	-	-	-	-	-	3
" 6th/7th	-	-	-	-	-	-	-	1	1	-	-	4	-	-	-	-	-	-	1	5
" 7th/8th	-	-	-	-	-	-	-	-	-	-	-	-	-	-	-	-	-	-	-	-
" 8th/9th	-	-	-	-	-	-	-	-	-	-	-	-	-	-	-	-	-	-	-	-
" 9th/10th	-	-	-	-	-	-	-	-	-	-	1	2	-	-	-	-	-	-	1	2
" 10th/11th	-	-	-	-	-	-	-	-	-	-	-	-	-	-	-	-	-	-	-	-
" 11th/12th	-	-	1	-	-	7	-	3	-	-	-	-	-	-	-	-	-	-	3	8
" 12th/13th	-	-	-	-	-	1	-	-	1	-	-	1	-	-	1	-	-	-	-	4
" 13th/14th	-	-	-	-	-	-	-	-	-	-	-	-	-	-	-	-	-	-	-	-
" 14th/15th	-	-	-	-	-	-	-	-	-	-	-	-	-	-	-	-	-	-	-	-
" 15th/16th	-	-	-	-	-	2	-	-	1	-	-	-	-	-	-	-	-	-	2	3
" 16th/17th	-	-	-	-	-	-	-	-	-	-	-	-	-	-	-	-	-	-	-	-
" 17th/18th	4	81	-	10	45	-	7	39	-	3	17	-	-	-	7	-	-	-	24	189
" 18th/19th	-	2	1	-	-	1	-	1	-	2	-	-	-	-	-	-	-	-	2	3

1918

APPENDIX

760

Date.	13th Bn.			14th Bn.			15th Bn.			16th Bn.			4th T.M.Bty.			Bde.H.Qrs.			TOTAL.		S.
	K.	W.	S.	K.	W.	S.	K.	W.	S.	K.	W.	S.	K.	W.	S.	K.	W.	S.	K.	W.	
Sept. 10th/30	1	10	-	3	13	1	-	8	-	-	-	-	-	-	1	-	-	-	4	31	2
" 20th/21	4	4	-	2	3	2	-	1	-	-	3	3	-	-	-	-	-	-	6	11	5
" 21st/22	-	-	-	-	-	-	-	-	-	-	-	-	-	-	-	-	-	-	-	-	-
" 22nd/23	-	-	-	-	-	-	-	8	-	-	-	-	-	-	-	-	-	-	-	8	-
" 23rd/24	-	-	-	-	-	-	-	4	-	-	-	-	-	-	-	-	-	-	-	4	-
" 24th/25	-	-	-	-	4	-	-	1	1	-	-	-	-	-	-	-	-	-	1	-	5
" 25th/26	-	-	1	-	-	1	-	-	-	-	-	-	-	-	-	-	-	-	-	-	2
" 26th/27	-	-	-	-	-	1	-	-	-	-	4	-	-	-	-	-	-	-	-	-	5
" 27th/28	-	-	2	-	-	-	-	-	-	-	-	-	-	-	-	-	-	-	-	-	2
" 28th/29	-	-	-	-	-	-	-	-	-	-	-	-	-	-	-	-	-	-	-	-	-
" 29th/30	-	-	-	-	-	-	-	-	-	-	-	-	-	-	-	-	-	-	-	-	-
" 30th	-	-	-	-	-	-	-	-	-	-	-	-	-	-	-	-	-	-	-	-	-
TOTALS.	9	97	5	15	61	24	7	65	7	6	21	19	-	8	2	-	-	-	37	252	59

198

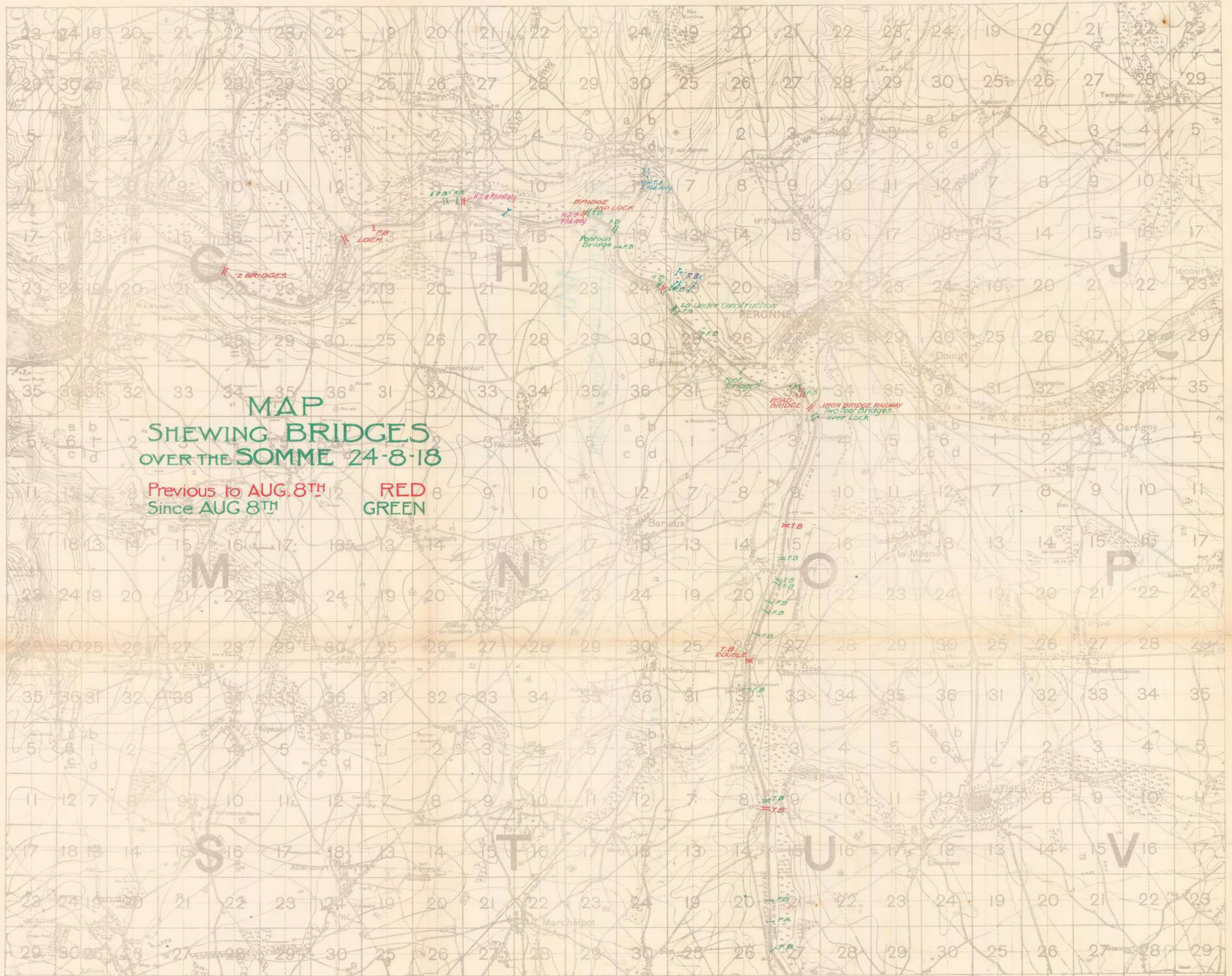
22

194

198

SCALE 1:40,000.

DOMPIERRE



MAP
SHOWING BRIDGES
OVER THE SOMME 24-8-18

Previous to AUG. 8TH RED
 Since AUG 8TH GREEN

198-

198

OVER THE SOMME 24 8 18
SHOWING BRIDGES
M.V.P.

- MAP -

Showing Bridges over Somme 24 8 18.

24/8/18
24/8/18

194

80 194

80

1:20,000

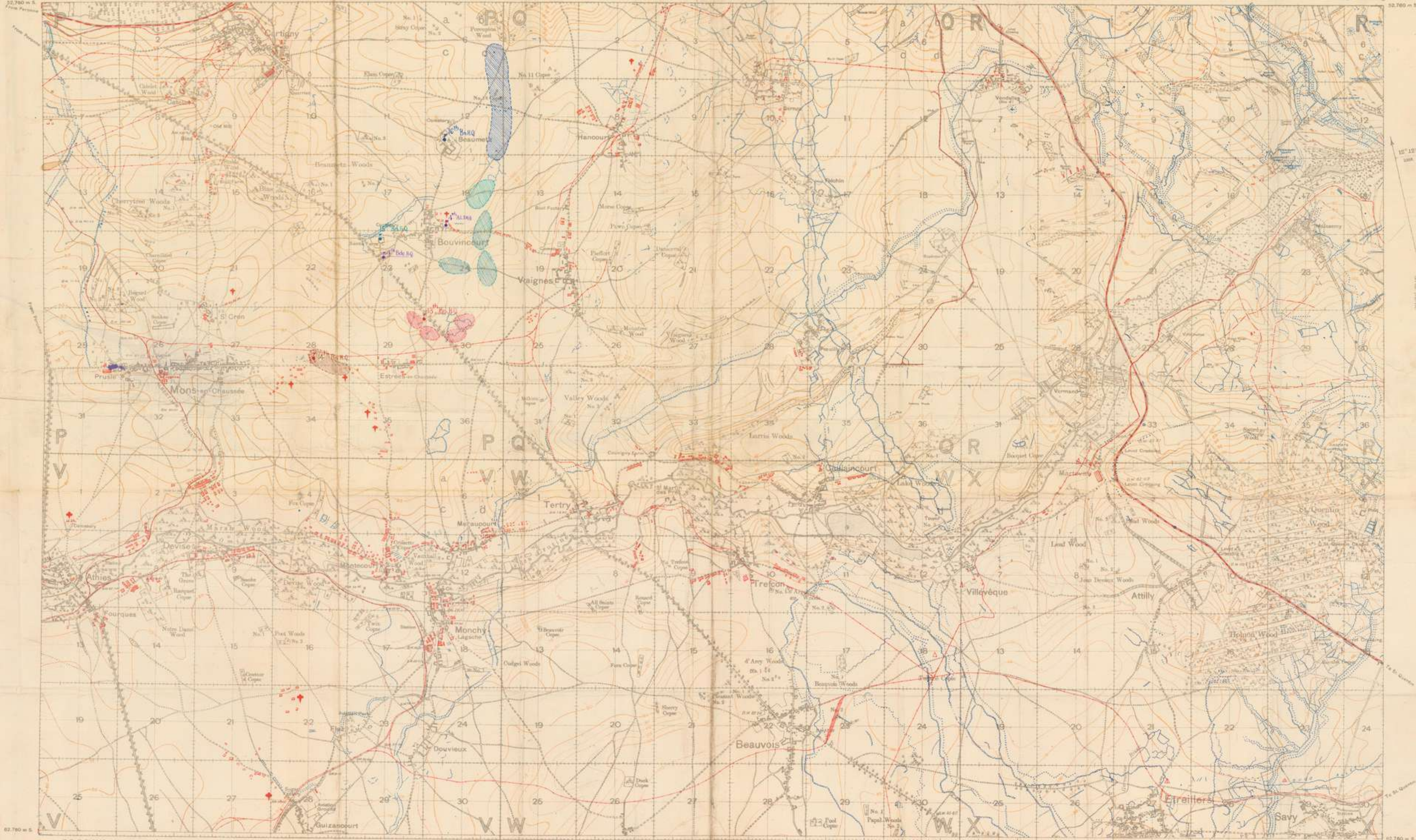
NOTE CHANGE OF COLOUR.
Enemy Trenches in Blue.
Organisation in Red.

TRENCHES CORRECTED FROM INFORMATION
RECEIVED UP TO 17-7-18

FRANCE

EDITION 4.B (Local.)

SHEET 62° S.E.



80

80

Scale 1:20,000

80

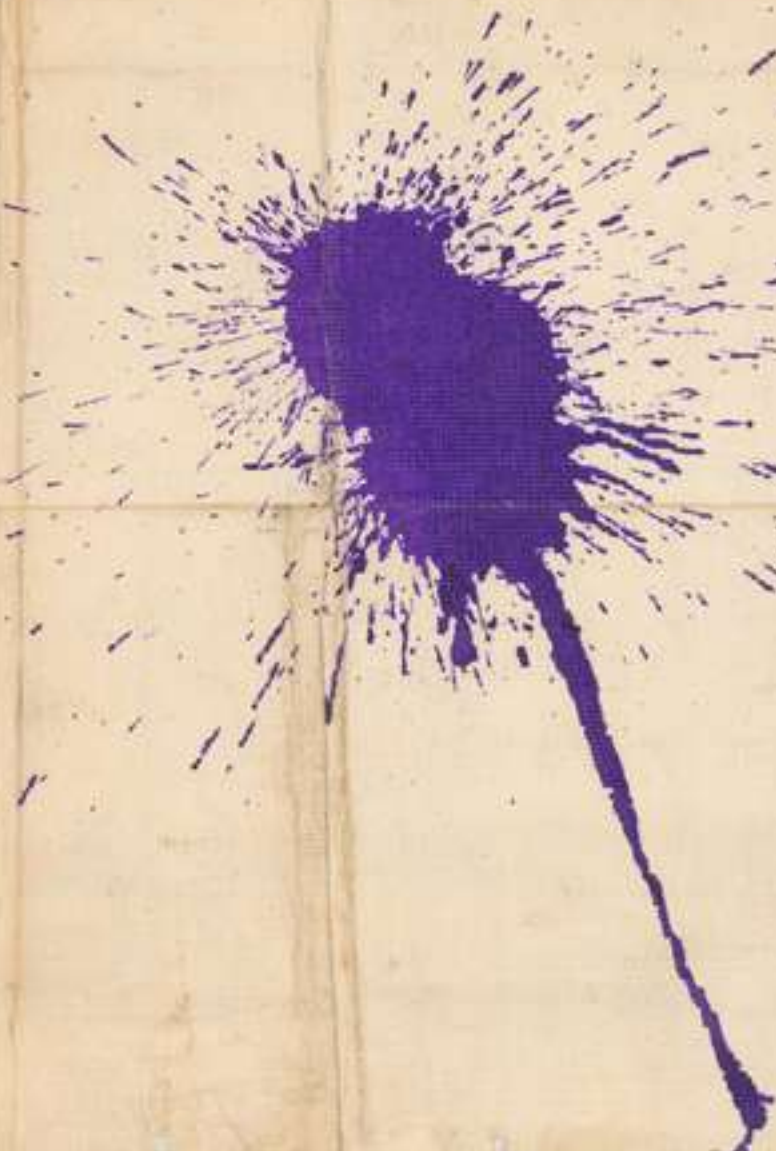
198

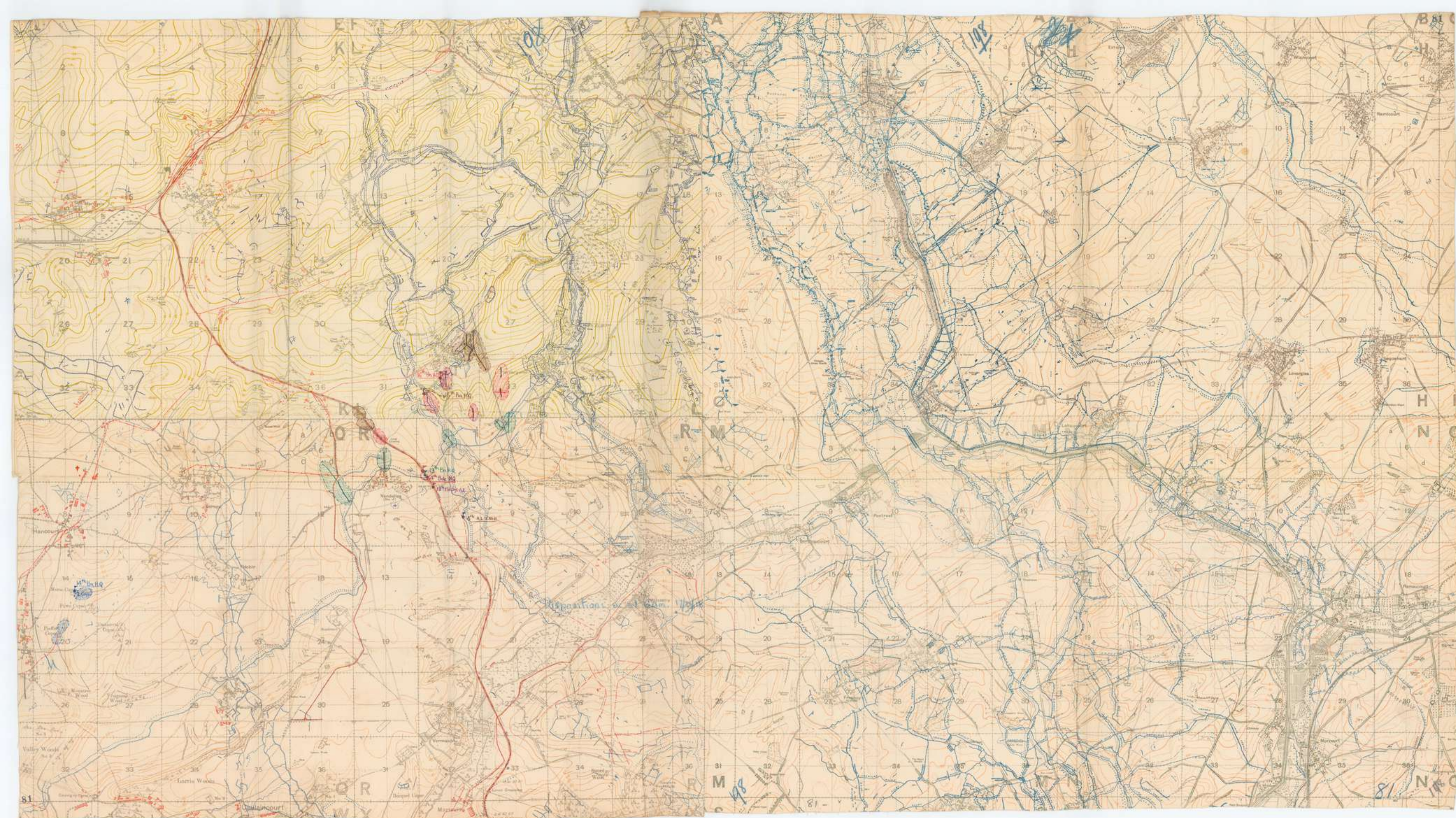
16/17

*William
Hap [unclear]*

*Disposition of 4th A.I. Bde from
Sept 12th to night of Sept 16/17
1918*

11

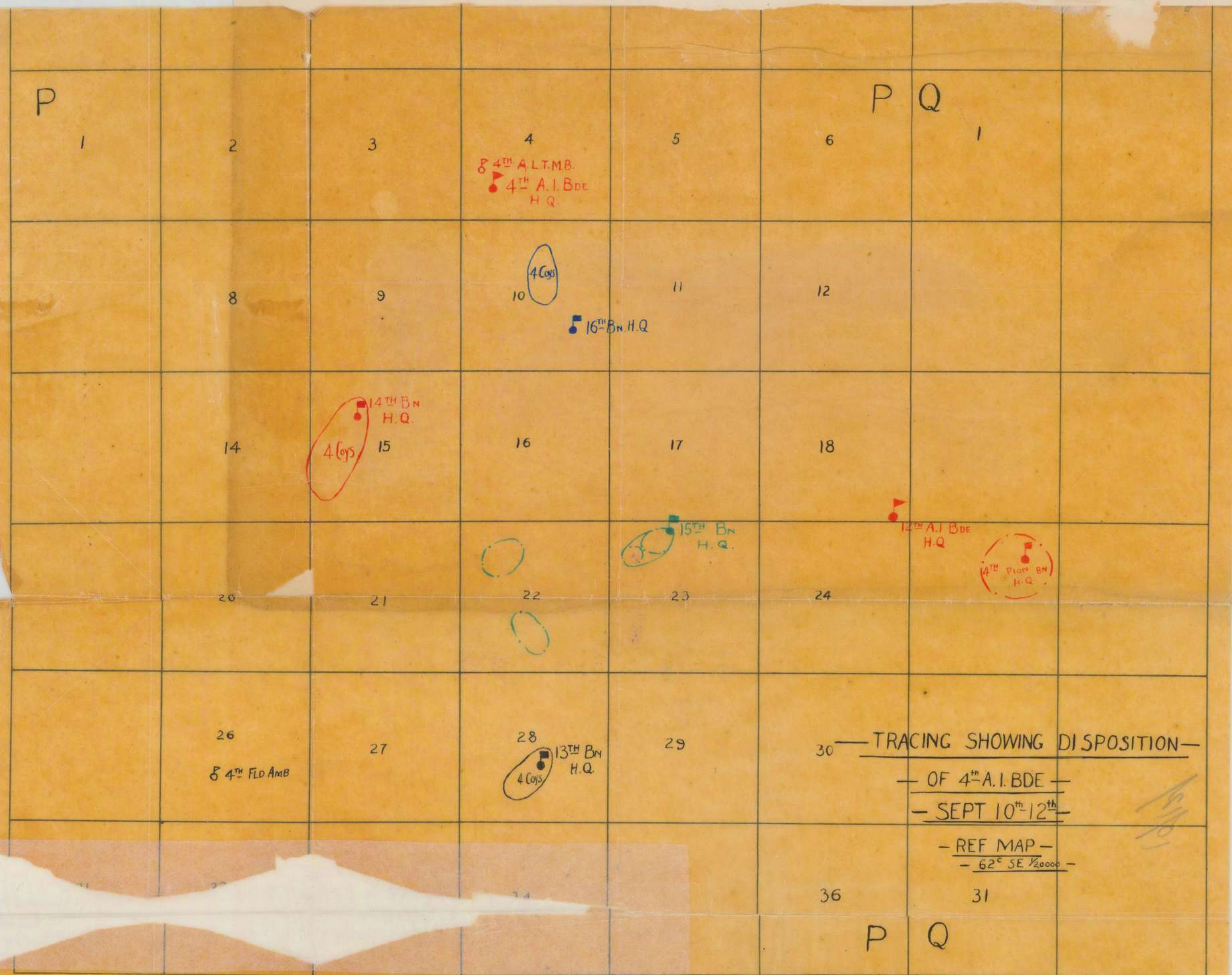




21/8/18

APPENDIX

- MAP -
Showing Disposition of 4th Aust Inf Bde
as at 6AM 17th Sept 1918.



NOTE.—(1). These traces are intended to facilitate the communication of information as to the position of targets, which have been located on a squared map.
 (2). The squares on this trace are 500 yards in length on the 1/10,000 scale, 1,000 yards in length on the 1/20,000 scale, and 2,000 yards in length on the 1/40,000 scale.
 (3). The squares on the trace are fitted to the squares of the map showing the targets, which are then drawn on the trace. Sufficient letters and numbers must also be added to enable the recipient to place the trace in the correct position on his own map. A little detail may also be traced, but this is not essential. The name and scale of the map to which the trace refers must be always given. The trace can be used for the 1/10,000, 1/20,000, or 1/40,000 scale.

G.S.G.S. 5025.

Tracing taken from Sheet.....

of the 1:..... map of.....

Signature..... Date.....

99

83

138

1:20,000

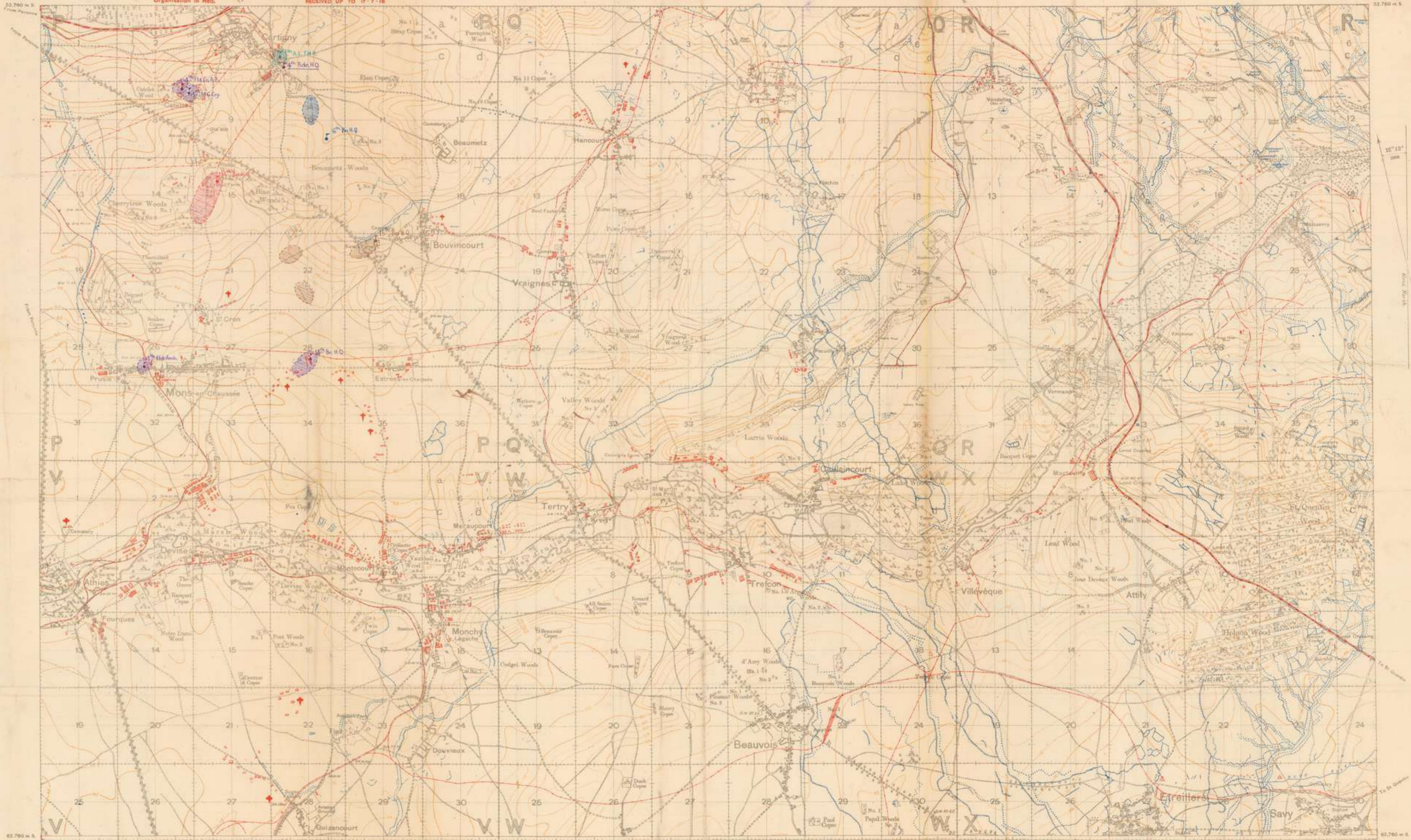
NOTE CHANGE OF COLOUR.
Enemy Trenches in Blue.
Organisation in Red.

TRENCHES CORRECTED FROM INFORMATION
RECEIVED UP TO 17-2-18

FRANCE

EDITION 4.B (Locl.)

SHEET 62^c S.E.



G.S.G.S. 2742

Scale 1:20,000

Ordinary Survey, March 1918
This Sheet of S.E. Issue of 1918

99

Return to Camp

62° S.E.

1/20000

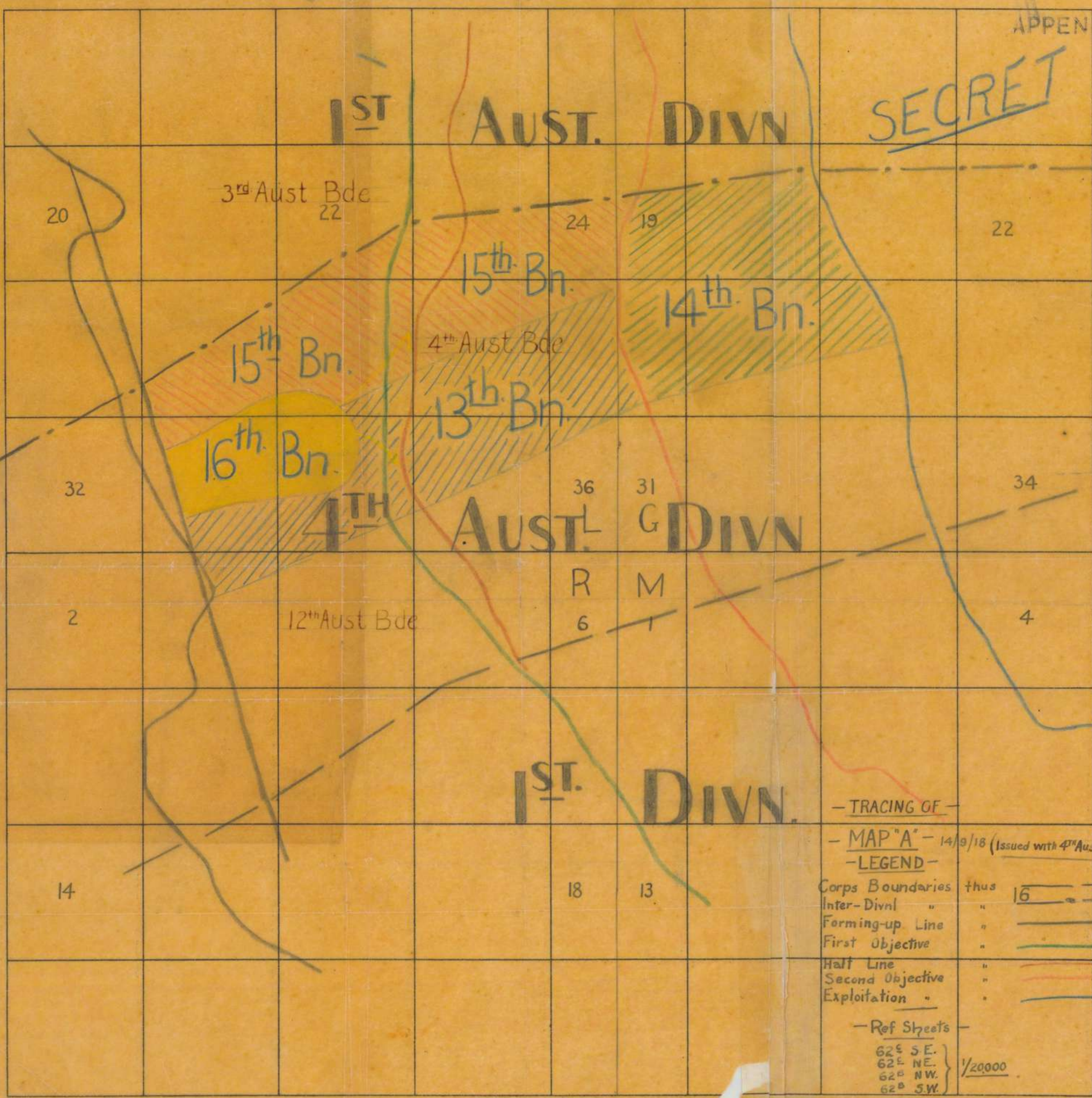
4th A.I. Bde

1912

— Dispositions of 4th A.I. Bde. — Sept 10th - 12th 1918

APPENDIX

SECRET



Identification Trace for use with Artillery Maps.

NOTE.—(1). These traces are intended to facilitate the communication of information as to the position of targets, which have been located on a squared map.
 (2). The squares on this trace are 500 yards in length on the 1/10,000 scale, 1,000 yards in length on the 1/20,000 scale, and 2,000 yards in length on the 1/40,000 scale.
 (3). The squares on the trace are fitted to the position of targets, which are then drawn on the trace. Sufficient letters and numbers must also be added to enable the recipient to place the trace in the correct position on his own map. A little detail may also be traced, but this is not essential. The name and scale of the map to which the trace refers must be always given. The trace can be used for the 1/10,000, 1/20,000, or 1/40,000 scale.

G.S.G.S. 3025.

— TRACING OF —
 — MAP "A" — 14/9/18 (Issued with 4th Aust Inf Bde Order No 32)
 — LEGEND —

Corps Boundaries	thus	16
Inter-Divnl	"	— — — — —
Forming-up Line	"	— — — — —
First Objective	"	— — — — —
Half Line	"	— — — — —
Second Objective	"	— — — — —
Exploitation	"	— — — — —

— Ref Sheets —
 62⁵ S.E. }
 62⁶ N.E. } 1/20,000
 62⁷ N.W. }
 62⁸ S.W. }

Tracing taken from Sheet.....

of the 1..... map of.....

Signature.....

Date.....

140

140