

**AWM4**  
**Australian Imperial Force unit war diaries,**  
**1914-18 War**

Engineers

**Item number:** 14/22/48

**Title:** 3rd Field Company, Australian  
Engineers

July 1918



AWM4-14/22/48

**CONFIDENTIAL.**

ORIGINAL.  
DUPLICATE.  
TRIPLICATE.

Australian Imperial Force.

**WAR DIARY**

OF

3RD. FIELD COMPANY AUST. ENGINEERS

FOR

J U L Y

1918

Signature of Officer compiling

*P. J. Savage* Captain

Signature of Officer Commanding

*P. J. Savage* Major

WAR DIARY

or

~~INTELLIGENCE SUMMARY~~

(Erase heading not required.)

3<sup>rd</sup> Fld Coy Eng Army Form C. 2118.

Original July 1915

Instructions regarding War Diaries and Intelligence Summaries are contained in F. S. Regs., Part II. and the Staff Manual respectively. Title pages will be prepared in manuscript.

Place	Date	Hour	Summary of Events and Information	Remarks and references to Appendices
Transport at V.9.b.05 Sappers at Borre (W.19.d.08)	1st.		<p>The transport Lines are in a field at V.9.b.05 while the Sappers are billeted in houses in Borre. The Company was working with the 3rd. Brigade in the Right Brigade Sub-Sector with boundaries as follows:- On the right, from Plate Becque Rau to E.12.c.0720, thence along water course to E.11.d.00, thence south of Moleghein Farm to where ditch meets Support Line, <del>at</del> at E.9.d.4085 along North side of hedge E.9.a.8525 to E.2.d.8500, thence along East-West grid to Railway bridge over canal at D.5.C.00. On the Left from E.6.b.87 to W.29.b.83 to W.23.C.43 to W.21.a.32 to W.19.b.72 to V.23.b.Cent.</p> <p>We are responsible for the following works in the Brigade Sub-Sector; Forward Zone consisting of Front and Support Lines and communications; 2nd. Zone consisting "B", "C", &amp; "D" Lines, Borre Switch and Road Mines at the following locations:- W.29.C.33, W.29.a.57, W.23.C.32, E.3.d.27, W.29.d.08, W.29.a.1550. Road bridge at V.24.C.39 and D.6.C.91. Trestle bridge at W.30.C.77, W.24.C.04, V.24.C.27; Railway bridge at V.30.C.82, V.30.C.93, V.30.a.18, V.30.C.25, V.29.b.63, V.29.C.45.</p> <p>During the day work was done on the Support Line enlarging the trench for revetment; owing to direct observation the men were obliged to work in very small parties; shelters were constructed in short saps off the parados. Knife rests were made for blocking roads where they crossed belts of wire in front of the Support Line. A dugout was under construction at W.26.b.81. The following were strengthened;- R.A.P. at E.4.d.40; Brigade H.Q. at W.25.a.48; A.D.S. in Borre. At night in the Support Line the trench was enlarged and revetted where most needed, short accommodation trenches were dug, positions excavated and cupola shelters constructed. The work on Strazeele Stn. Defences consisted of digging new trench and throwing up bullet proof parapet also erecting Double apron wire fence. Merris Street C.T. was deepened and R.A.P. at W.29.C.43 was under construction. R.E. Stores were salvaged from Strazeele Dump.</p>	
	2nd.		<p>The work done was very similar to that done on the previous day.</p>	
	3rd.		<p>The construction of a dugout for the Y.M.C.A. was commenced at W.27.b.9045, otherwise the work was very similar to that of the previous day.</p>	

WAR DIARY

Army Form C. 2118.

Instructions regarding War Diaries and Intelligence Summaries are contained in F. S. Regs., Part II, and the Staff Manual respectively. Title pages will be prepared in manuscript.

~~INTELLIGENCE SUMMARY~~

(Erase heading not required.)

21

Place	Date	Hour	Summary of Events and Information	Remarks and references to Appendices
Transport at V.9.b.05 Sappers at Borre (W.19.d.08)	4th.		Daywork was done on the Support Line firestepping trench and constructing shelters. R.A.P. at E.4.d.40 was strengthened. The Y.M.C.A. Dugout having been covered by a camouflage screen work was continued, Brigade H.Q. at W.25.a.48 and A.D.S. Borre were both strengthened. At night owing to enemy activity now work could be done in the forward area. 2nd.Lieut. Bleechnore joined the Company.	
	5th.		During the day work was done as shown above At 3.PM, after handing over all work to the 1st. Field Coy. the 3rd. Field Coy. moved back to the Reserve Area, occupying camp at U.18.b.32	Appendix I
	6th.		One Section was employed on the construction of a tramway from the broad gauge railway into the Divisional Ammunition Dump at U.6.d. (Sheet 27). The remainder of the Company received training in the morning while the afternoon was devoted to recreation.	
	7th.		Same as above	
	8th.		One Section was employed on construction of tramway at U.6.d.; another section was employed constructing entrance road and lorry stand for 3rd. Field Ambulance at V.9.b.15; and a party of 5 was strengthening the Field Punishment Compound at Ebbingham (T.24.d.89) and improving camp at V.19.C.37. The remainder of the Company received training and recreation.	
	9th.		Same as above	
	10th.		Same as above	



# WAR DIARY

Army Form C. 2118.

Instructions regarding War Diaries and Intelligence Summaries are contained in F. S. Regs., Part II, and the Staff Manual respectively. Title pages will be prepared in manuscript.

## ~~INTELLIGENCE SUMMARY~~

(Erase heading not required.)

21

Place	Date	Hour	Summary of Events and Information	Remarks and references to Appendices
Transport at V.9.b.05 Sappers at W.13.b.44	15th.		<p>During the day work was continued on the water point at V.18.c.28</p> <p>At Night, in the Support Line, wire was erected and the trench revetted where most needed. In Rouge Croix and Courte Croix Switches shelters were constructed. An R.A.P. was under construction at W.24.d.07; Support Bn.H.Q. at W.22.d.98 was strengthened.</p> <p>On account of the Right Brigade being relieved by the 119th. Brigade the Inter-Brigade Boundary was amended to run as follows:- From V.29.b.36 to Ukley Farm to Basra Farm (Both inclusive to right Brigade) to W.28.a.40; along Strazeele Avenue and Merris Street to E.6.a.00 to E.6.b.50 to E.7.b.09.</p>	
	16th.		<p>Daywork was done as follows:- At Brigade H.Q. at W.8.a.80 a burster course was being laid on the ceiling. Construction of water point at V.18.C.28 was continued.</p> <p>At night in the Support Line wire was erected and trench revetment continued. Shelters were constructed in Courte Croix and Rouge Croix Switches, and progress made with dugout for R.A.P. at X.19.a.48</p>	
	17th.		<p>During the Day work was done on the strengthening of Support Bn.H.Q. at W.22.d.98 also R.A.P. at W.24.C.96. and Brigade H.Q. at W.8.a.80. The Water point at V.18.C.28 was completed.</p> <p>Positions for drains were selected in the Support Line and marked out and the digging of them was commenced at night and the wiring and the trench revetment continued also the accomodation in Rouge Croix and Courte Croix Switches. The R.A.P. at X.19.a.48 was strengthened.</p>	
	18th.		<p>During the day work was commenced on a dugout for Left Bn.H.Q. at W.24.C.96. Brigade H.Q. was improved and a roadway constructed to water point at V.18.C.28.</p> <p>At night the wiring and revetting of the Support Line was continued also the accomodation in Courte Croix and Rouge Croix Switches. Nord Street was widened and drained work being commenced on the part immediately in front of Strazeele. On account of the amount of material being used in the forward areas and the total absence of light railways, it was found that the Company's transport could not carry forward all that was required and four G.S.Wagons were daily requisitioned from the Div. Train for this work.</p> <p>A Plan was submitted to C.R.E. of proposed new Fire &amp; Communication Trench; this was approved.</p> <p>The new trench was to cover the low ground off the Left of the Div. Sector.</p>	

A5945 Wt. W11422/M1160 350,000 12/16 D.D. & L. Forms/C. 2118/14.

WAR DIARY

Army Form C. 2118.

Instructions regarding War Diaries and Intelligence Summaries are contained in F. S. Regs., Part II, and the Staff Manual respectively. Title pages will be prepared in manuscript.

~~INTELLIGENCE SUMMARY~~

(Erase heading not required.)

Place	Date	Hour	Summary of Events and Information	Remarks and references to Appendices
Transport at V.9.b.05	19th.		The work done was very similar to that done on the previous day.	J.F.
Sappers at W.13.b.44	20th.		Daywork was done as follows:- R.A.P. at W.16.d.83 was strengthened with sandbag revetment. Bn.H.Q. at W.22.a.99 and at W.8.C.13. were being constructed and Brigade H.Q. at W.8.a.80 was strengthened. At night the work done was similar to that of the previous night.	J.F.
	21st.		On C.R.E. forming a composite section to guard and maintain all road mines and bridges for demolition in the Divisional Sector, one N.C.O. and 5 men were detached for duty with it. The whole Company is now available for work in the forward areas. The work done was very similar to that done on the previous day. Four Lewis Guns were added to the establishment, with Four thousand rounds per gun. This added an extra ton to be carried by the Company's Transport and as no extra wagon was provided it was decided that the guns should be carried on the Section Limbers and the ammunition on the Toolcarts. As the Transport was barely sufficient to carry the original equipment this additional weight had to be distributed over already fully loaded vehicles.	J.F.
	22nd.		During the day work was done as on previous day. At 6.PM under instructions from C.R.E. we took over all work in the Forward Zone on the Divisional Front. (119th.Inf.Bde. on the Right; 3rd.Aust.Inf.Bde. on the Left) Our Left Boundary remains unaltered, while on the Right it runs from Plate Becque Rau to E.12.C.0720 thence along watercourse to E.11.d.00, thence along grid to E.11.c.00, thence South of Moleghain Farm to where ditch meets Support Line at E.9.d.4085, along North side of hedge E.9.a.8525 to E.2.d.8500 thence along East and West Grid to railway bridge over canal at D.5.C.00. We are responsible for the Support Line and all works forward of it. At night work was done on the Support Line, erecting wire and enlarging and revetting trench. Nord Street C.T. was enlarged.	J.F.

WAR DIARY

Army Form C. 2118.

Instructions regarding War Diaries and Intelligence Summaries are contained in F. S. Regs., Part II, and the Staff Manual respectively. Title pages will be prepared in manuscript.

~~INTELLIGENCE SUMMARY~~

(Erase heading not required.)

21

Place	Date	Hour	Summary of Events and Information	Remarks and references to Appendices
Transport at V.9.b.05 Sappers at W.13.b.44	23rd.		The strengthening of Bn.H.Q. at W.21.C.19 and at W.24.d.98 was pushed on during the day At night work was continued on the Support Line and Nord Street C.T. Work was commenced on Strazeele Station Defences, Excavating positions for cupola shelters in shortz T head Saps off the Parados of the Fire Trench, also Double apron wire was erected.	JF
	24th.		The work done was very similar to that done on the previous day.	JF
	25th.		The work was similar to that of previous day ,also barbed concertina wire for the rapid wiring of outposts was made in the Company's dump at W.13.a.80. In accordance with E.S.467 from C.R.E. a new Support Line was marked out where shewn on sketch attached.	Appendix 4 JF
	26th.		During the day small parties worked on the revetting of the Support Line. Bn.H.Q. at W.22.C.19 and Brigade H.Q. at W.8.a.80 were strengthened. At night work was commenced on the new Support Line. On account of Int <del>er</del> -Battn. reliefs no work could be done on Strazeele Stn. Defences.	JF
	27th.		Daywork was similar to above. During the night work on the New Support Line was pushed forward. On Strazeele Stn. Defences, double apron <sup>WIFE</sup> was erected.	JF
	28th.		Bn.H.Q. at E.11.a.09 and W.22.C.19 and Brigade H.Q. at W.8.a.80 were strengthened during the day The digging and wiring of the New Support Line was continued at night. The strengthening of Bn.H.Q. at E.11.a.09 was continued. R.A.P. at X.19.d.18 was also strengthened. As the amount of material required in the Forward areas decreased considerably we were able to dispense with the wagons from the Div. Train. Lieut. Rogerson was transferred to the Engr. Tng. Depot Brightlingsea.	JF



WAR DIARY

Army Form C. 2118.

21

Instructions regarding War Diaries and Intelligence Summaries are contained in F. S. Regs., Part II, and the Staff Manual respectively. Title pages will be prepared in manuscript.

~~INTELLIGENCE~~ SUMMARY.

(Erase heading not required.)

Place	Date	Hour	Summary of Events and Information	Remarks and references to Appendices
Transport at V.9.b.05 Sappers at W.13.b.44	29th.		Daywork was done as on previous day. At night, owing to a minor operation, no parties were allowed in the forward areas, so prior to Zero hour small parties collected the tools on the different jobs preparatory to handing over to the relieving Field Company.	J.P.
Sappers at Berre (W.19.d.08)	30th.		All works were handed over to the 2nd. Field Coy. A.E. At 10.AM the Company moved to billets in Berre (W.19.d.08) At night a Nissen Bow hut was salvaged from Strazeele Station and carted to Brigade H.Q. at V.10.a.06. Merris Street was revetted where most needed. On account of reliefs very little assistance could be given by the Infantry. We are now responsible for the old Support Line and Defences in rear of it in both Line Brigade Sub-Sectors. The boundaries remain unaltered.	Appendix 5 J.P.
	31st.		During the day small parties worked on the old Support Line revetting the Fire trench. R.A.P. at W.16.d.83 was strengthened. The revetment of Merris Street was continued at night.	J.P.

## WAR DIARY

APPENDIX

OF

3RD. FIELD COMPANY AUST. ENGINEERS.

FOR

J U L Y 1918

## LIST OF APPENDICES.

No.	Subject.
1	Handing over report to 1st. Field Coy. A.E. of works in Right Brigade Sub-Sector 5/7/18
2	Handing over report to 2nd. Field Coy. A.E. of works in Reserve Area. 13/7/18
3	Trench accomodation table of Left Brigade Sub-Sector
4	C.R.E's "E.S.476" Reference New Support Line.
5	Handing over report received from 1st. Field Coy. A.E. when taking over from them on 30/7/18.
6	List of material salvaged from Strazeeke R.E. Dump.
7	Graph shewing Company strength.
8	List of R.E. material used by the Company from 16th. to 28th. July

Copy 2

HANDING OVER REPORT

from

3RD. FIELD COMPANY AUST. ENGRS.

to

1ST. FIELD COMPANY AUST. ENGRS.

of

----- WORKS IN RIGHT BRIGADE SUB-SECTOR -----

5 ; 7: 18

With all plans; aerial phographs  
etc; concerning the Sub-sector

*R. Savery major  
3rd. Field Coy*

DISTRIBUTION OF COMPANY ON WORKSNo.1 Section

Salvaging Material from Strazeele Dump .  
Guarding and maintaining Mines.

No.2 Section

Left Battalion Section.

No.3 Section

Marris Street Comm. Trench.  
Y.M.C.A. Shelter at W.27.b.9045  
Shelters at Brigade Hd. Qrs.  
Strengthening A.D.S. Borra.  
2nd. Zone Defences.

No.4 Section

Right Battalion Section.

RIGHT BN. SECTIONI Strazeele Sta. Defences

These defences consist of a series of posts running from Merris St. Support Line Junction (E.5.a.1535) to E.5.d.13, thence along original Front Line posts to Northern end of outpost at E.11.a.54. From this point there are two alternatives.

- (1) A series of posts, crossing Strazeele-Vieux Berquin Rd. at E.11.a.34 and running behind Becque to join Support Line at E.10.a.65.
- (2) Continue round existing posts to E.11.C.17. thence a series of posts to connect with defences of Moleghen Farm at E.10.C.95.

Posts at E.5.C.58; E.5.C.76 and E.5.d.13 are complete, a new post at E.5.d.05 20% Complete. Outposts to E.11.C.75 have been improved. No work has been done on right flank.

Wire

Wire is Complete from E.11.C.95 to E.5.C.4595 with double upon fence and additional row of long pickets placed centrally and cross braced with barbed wire. 200 Yards of wire to be run from E.5.d.24 to E.5.C.97 and is 50% Complete.

Tools

40 Shovels and 20 Picks are dumped in incomplete post at E.5.d.05.

Dump

Wiring stores have been dumped at Railway crossing at E.5.C.30 but all available wire and pickets at that dump have been used.

Working Parties

Work has been done by 3rd. Bde. Mining Coy. approx. strength 100. under Engineer supervision.

II MOLEGHEN FARM DEFENCES

It is proposed to make the farm a defended locality, stationing 2 Platoons there for that purpose. One post 25 Yards long 3' wide by 4' Deep exists at E.10.C.48. New posts have been dug at E.10.C.95, E.10.C.4535, E.10.C.2525, E.10.C.05. the posts at E.10.C.95 and E.10.C.45 being the larger. (about 50 Yards, trenches each 2' x 2') To complete defences all posts require improving by deepening and widening, Farm defences to be wired. All work has been camouflaged. Crops Eastward of post at E.10.C.95 and E.10.C.45 require cutting.

Tools

40 Shovels and 10 picks are dumped in entrance to farm building at E.10.C.1555.

Working Parties

Have been supplied from Companies occupying Support Line., working under Engineer Supervision.

III SUPPORT LINE

The support Line is continuous from E.4.b.51 to Becque at E.9.d.3005.

Revetment

revetment with revetment panels is complete on Front face from E.4.b.51 to E.4.C.86. Revetment of rear face has been commenced at E.4.d.09 and E.4.C.86 about 40 Yds. being complete at each point Front face from E.10.a.4575 to E.4.C.65 revetted with corr. Iron.

Accommodation

Complete from E.4.b.51 to E.10.a.47. Cupola shelters are being constructed from E.10.a.47 to E.9.b.3005. 4 Excavations at E.10.a.1570 and 2 at

21 E.9.b.9567, being ready for construction of dugout.

Wire

3 belts complete from E.4.b.51 to E.10.a.47. Thence 2 belts to E.9.b.3005 including knife rests and Barbed wire concertina crossing roads and railway tracks.

Dumps.

- (1) At Left Support Coy. H.Q. E.4.C.88..
  - 42 revetting frames, 120 med. Angle iron pickets.
  - 160 long Angle iron pickets, 500 sandbags 400' 6"x 1" timber, and in trench forward of E.4.C.88; 96 Shovels 20 Picks, and 20 Spare pick heads.
- (2) Behind Support Line at E.9.b.65
  - 40 Shovels 27 Picks with 25 Spare pick heads
  - 50 Long and 20 med. Angle iron Pickets.

Wagons can be brought to both above dumps at night.

Reservoirs

For work on Left portion E.4.C.88  
 " " " Right " E.3.d.11

Working Parties

Night, Generally 100 to 150 men from Reserve Bn.  
 Day. Generally 60 men from Support Coys. in Support Line.

IV R.A.P. AT E.4.d.40

Sandbagging 90% Complete, One Wall <sup>and</sup> ~~is~~ roof requires finishing.  
 Gas-proof doors require Union cloth.

Working parties

- 2 Sappers and 8 men by day?
- 2 Sappers and 15 men by night.

V ROADWAY TO MOLEGHIAN FARM

From E.9.a.55 . this has been reconnoitred but not commenced.  
 One Artillery bridge over Becque and clearing of crops only required.



SALVING MATERIAL FROM STRAZEELE DUMP

Company wagons report at Berre at 9.PM where they load R.E. Material for forward works, and take this material to forward dumps. They then proceed to Strazeele Dump and load salvaged material.  
 G.S. Wagons from Div. Train also report at Company H.Q. at Berre, at 9.PM for this work.  
 A party of 20 Infantry meets Engineer N.C.O. at E.4.C.88 at 9.45PM for loading at the Dump, and a party of 5 reports at Berre for unloading waggons.

Work in hand

- (1) Two dugouts at E.5.b.74 both 90% complete. Inside work (Sappers) only) cross-bracing the frame, fitting doors and painting. Material (no tools) on job. 24ft. Union cloth required for 3 doors.  
Extra filling is advised for rear&sidesof dugout; R.S. Joists on job, Brocks from Smyrna Farm.
- (2) Dugout R.A.P. at W.29.C.43 with splinter proof shelter alongside. Dugout 80% Complete. Shelter, excavation only. Material required;- 70 Concrete bursters, 16' Union cloth for two doors.  
Picks & Shovels on work for party of 20  
Rendesvous for Infantry working party at W.28.d.72
- (3) Dugout in out building W.26.b.81 Sappers only working day-work. Requires further overhead cover, Four men should complete in four hours.
- (4) Support Line, Knife Rests to span five roads, crossing Support Line wire system.  
Knife rests to be 3 deep, Roads at E.5.a.43 complete  
Usual Infantry working party, 12; Rendesvous W.28.d.72
- (5) Support Line Improving, (ie) Deepening, widening, and putting in accomodation at the following points, E.4.b.94, E.4.b.62, E.5.b.39, E.4.b.83; between Right Bdy. (E.4.b.51) and W.29.d.31.  
Tools for 80 Men at W.29.C.43.  
Usual Infantry working parties, 2 of 30 each, 1 of 80  
Rendesvous, W.28.d.72.

COMMUNIDATION TRENCH

Merris Street running from SupportLine to Front Line  
Widening and deepening.  
It is dug from 3' wide 3' deep to 4' wide & 5' deep, 3' at bottom  
Job complete from E.5.b.13 to E.6.a.82.  
Tools Dump situated at White, house E.5.b.6525 and contains  
20 Picks 200 Shovels  
Note, Picks are urgently required.  
Parties Four parties, 30 men in each, meeting at 10.PM  
Rendesvous W.28.d.96.

- (1) Shelter for Y.M.C.A. at W.27.b.9045  
 Excavation complete, 15' x 8' x 6' (deep)  
 Timber for framework is prepared and in course of erection  
 It is proposed to use corrugated iron on sides and back,  
 entrance to be on left side and a counter in front.  
 the whole to be camouflaged to edge of road with camouflage  
 a little higher than a mans head.  
 Splinter proof head cover to be used.  
 Drainage is necessary.
- (2) Making shell proof shelters at Brigade H.Q.  
 Two shelters are complete. More protection is required at  
 rear and on top of centre shelter.  
 Timber prepared for 3rd. shelter between Pill Box and wall  
 of barn, 30 R.S. Joists on job.  
 Protection afforded by 3' depth of earth and 3" of bricks  
 on top and sides.  
 Revetting in front of entrance to shelters 75% Complete.  
 A party of 20 Infantry have been used here daily for  
 filling and carrying sandbags.
- (3) A.D.S. Borre.  
 It is intended to make it shell proof.  
 The interior is already propped and 3' of bricks are to be  
 laid on ceiling, this is 20% Complete.  
 Outside protection. A revetment is to run on street and  
 enemy sides of building, 4' wide and of sufficient height  
 to protect the ceiling.  
 A party of 20 Men have been used here to fill sandbags.  
 Bricks have been carted from ruined houses in Borre and  
 Pradelles.

#### 2nd. Zone Defences

##### "B", "C", and "D" Lines

The work consisted of, constructing parados, improving  
 trench, and constructing shelters.

##### Borre Switch

Work consists of revetting and constructing parados.

This job has had to give way to Front Line work, and is  
 only worked on when no parties are available for the  
 Forward areas.



Orders for blowing

- (1) O.C. Strazeele Defences, living at W.22.d.20 will give orders for the blowing of road mines at W.23.C.42, W.29.A.76, and W.29.a.15.

The Sapper responsible for the blowing of these mines lives in brewery cellar in Strazeele (W.29.a.65).

O.C. Left Bn. (E.3.C.08) will give orders for blowing road mine at W.29.C.53.

The Sapper responsible lives at Battalion H.Q.

O.C. Right Bn. (E.3.C.08) will give orders for blowing road mine at E.3.d.27.

The Sapper responsible lives at house at E.3.d.27.

- (2) Under C.R.E's. E.S.401 of 14/6/18 Railway Bridges will be demolished on receipt of instructions from Division.

It is presumed that Brigade will order the demolition of Artillery and Berre-Hazebrouck Bgidges.

- (3) Extract from D.H.Q. S/8846 14/6/18.

"Should the necessity arise orders will be given for the blowing of the charges placed under Railway Bridges in the Divisional Area. Please arrange to have an officer stationed at a pre-arranged place as soon as a hostile attack commences so that on receipt of an order from you he could proceed to the charges and personally order the demolition. You will be advised from this office when these demolitions have been decided upon?"

Extract from C.R.E's E.S. 401 14/6/18.

"Please forward the name of the Officer detailed for the above and the orders for demolition will be issued to you at the Command Post of your garrison in "D"Line!"

Particulars of mines are attached.

RAILWAY BRIDGES PREPARED FOR DEMOLITION IN RIGHT BRIGADE SUB-SECTOR

Location	Type of Bridge	Type of demolition	Amount of Charge	Location of charge	Description of fuse	Location of fuse	Quantity
No.18 (a) V.29.C.45	Railway Bridge Brick arch	350 lbs. guncotton placed on brick arch along the crown. Inspection box at each end. Proposed to fire electrically simultaneously with girder bridge alongside.	382 lbs. Guncotton	On site	Electrical	On site	Nil
(b)	Railway Bridge Girder bridge, carries 1 set of rails. 2 I iron girders 18"x 6" (central) laced by 5 12"x 4" girders. On each side a 9"x 2" girder laced to main girder 5, 3"x 3" double angle irons.	14 slabs guncotton placed on each central girder and 2 slabs on each outside girder ( 32 slabs in all) Proposed to fire electrically simultaneously with brick arch alongside					

APPENDIX

RAILWAY BRIDGES IN RIGHT BRIGADE SUB-SECTOR

Location	Type of bridge	Type of demolition	Amount of charge	Location of charge	Description of fuse	Location of fuse	Guard
No.7 V.30.C.93	Railway Bridge Masonry Arch	Cut through arch at one launch	250? Slabs guncotton are laid in a trough above arch but buried in sleepers in the ballast & has an inspection box at each end. Inspection boxes each have a slab of guncotton ready to receive det. & Primer.	On site	2 Primers are provided & 2 detonators joined by instant. fuse to pieces of safety fuse	Sapper living at bridge has fuse	1 N.C.O. 3.C.Ranks
No.8 V.30.C.82	Railway Bridge 12"x 12" & 16"x 8" Timber Piles. 3 Spans of 10'	Demolish timber piers tarred superstructure and propose to burn. 3 "P" bombs on site.	50 slabs in 5 charges on beams in centre span of bridge. Brushwood, timber etc. piled up under bridge to facilitate burning it.	On site	Electric	With Sapper Living at bridge	
No.9 V.29.b.63	Railway Bridge Carries 2 Lines over road at 12' centres Span 14' clear, 12' clearance over roadway. Brick abutments 8, I irons carrying rails over gap.	Bridge is charged so as to cut through girders in centre of span.	Each beam has at its centre on one side of web only, 7 slabs guncotton well fixed & ready for firing. A light beam 10"x4" x 1/2" at each side for hand-rail has 2 plugs attached to each for demolition.	On site	Instant. joined to safety. Has 10 detonators fixed. Dry primer in tin with fuse	On site	Nil
No.10 V.30.a.17	Railway Bridge Brick abutments. 20' span 8 Girders		12 to 15 slabs of guncotton on each of 8 girders & 4 slabs on each handrail.	On site	Electric	On site	Nil
No.15 V.30.C.0025	Railway Embankment	Mine placed under railway embankment	1600 lbs. Ammonal	On site	Safety Fuse	On site	Nil
No. D.6.C.91	Bridge across canal Brick span reinforced with steel girders. Brick abutments. 8"x 4" girders central, with 8"x 2" girder on each side.	33 lbs. guncotton placed across span near abutment, with inspection box on each side. Proposed to break the span at abutment at one launch	33 lbs. guncotton	On site	66' Instant. fuse with detonator at each end. A piece of safety fuse 2' long connected	with Sapper detailed for blowing	Nil

APPENDIX

BRIDGES PREPARED FOR DEMOLITION IN RIGHT BRIGADE SUB-SECTOR

Location	Type of bridge	Type of demolition proposed	Amount of charge	Description of Fuse	Location of charge	Location of fuse	Guard
No. 3 V.23.C.39 24	Plate girders brick arched decking. Brick abutments	2 Shafts dug 8' Deep 6' from Abutment face. Proposal is to blow on enemy side Electrically. Additional gunotton charges to be placed in steel girders 2 recesses from shaft for charges. Shafts timbered & covered.	100 lbs. Ammonal in each shaft. 200 lbs. in all	Electric	in North bank just W of bridge	House. V.23.d.77	Nil 21
No. 4 V.24.c.27	Timber bridge 2 Trestles.	Demolish timber piers. Tarred superstructure and Propose to provide petrol to burn same. 3 "P" bombs under bridge.	3 Tins, each 25 lbs. of ammonal are fastened to 3 piers	3 primers used 5 detonators connected by Instant- aneous fuse to piece of safety fuse	On site	In box under bridge	Nil
No. 5 V.24.C.04	Timber bridge One trestle	do	3 25 lb/ tins Sabulite are fast- ened to 3 piers.	3 Detonators are connected by pieces of instant. fuse to piece of safety fuse.	On site	In box under bridge	Nil
No. 6 V.30.C.77	Timber bridge double trestle	do	4, 25 lbs. tins of Sabulite are fastened to 4 piles. 3 slabs of gunotton disposed of as per sketch.	10 Detonators are connected up by instant. fuse to piece of safety fuse. 6 primers are used for gunotton.	On site	do	Nil

APPENDIX

ROAD MINES IN RIGHT BRIGADE SUB-SECTOR

Location	If charge is		Location of charge	If primer, detonator, & fuse is provided.	Amount of charge	Depth of shaft	State of Shaft	If Inf. guard is provided.
	Laid	Stamped						
No.1 E23.d.27	No.	No.	On Site	Yes. 2 Detonators, 2 primers & Safety fuse	125 lbs. Sabulite	1 Hole 7' Deep	Dry & Timbered	Yes
No.2 W.19.d.08	No.	No.	On Site	Yes	do	do	Timbered. Baled out twice daily as shaft is left for baling	No.
No.12 W.29.C.53	No.	No.	On Site	Yes. Instantaneous fuse on site	100 lbs. & 50 lbs. Sabulite	6' Deep, 2 Shafts & Recesses for charges.	Recesses timbered still needs baling	Yes
No.13 W.29.a.76	No.	No.	On Site	Yes	125 lbs. Sabulite	6' Deep with 3' recesses	Recesses Timbered	Yes
No.14 W.23.C.42	No.	No.	On Site	Yes	do	do	do	Yes
No.16 W.29.a.15	No.	No.	On Site	Yes	do	1 shaft 6'6" Deep with recess for charge	Requires a little baling	Yes

APP-NDIX

5/7/18

Major  
O.C. 3rd. Field Coy. A.E.

19

# REQUISITION FOR WORKING PARTIES.

FROM 3RD. FIELD COY. A.E.

TO 3RD. AUST. INF. BDE.

Date 4/7/18

21

Party No.	NUMBER REQUIRED.		TO REPORT.			Nature of Work.	Tools to be brought by Working party.	Whether <del>TOOLS</del> are to be <del>BRUGHT</del> . Engr. Off.	Locality of Work.	Time at which Work will probably Cease.	REMARKS.
	O.	O.R.	When.	Where.	To whom.						
1		50	9.30PM	E.4.C.88	Cpl. Jones	<u>RIGHT BN. SECTION</u> Improving Trench	Nil	Lt. Price	Supports		
1		20	9.45PM	W.28.d.72	Cpl. Cox	<u>LEFT BN. SECTION</u> Constructing Shelters	Nil	Lt. Robb	Supports		
2		30	9.50PM	"	Cpl. Groth	" "	"	"	"		
3		30	9.55PM	"	Sap. Reid	" "	"	"	"		
4		20	10.PM	"	Cpl. Linton	" R.A.P.	"	"	"		
5		30	10PM	W.28.d.85	Cpl. Leonard	Improving C.T.	"	Lt. Avery	Merris St.		
6		30	10.5PM	"	Cpl. Carrick	" "	"	"	"		
7		30	10.10PM	"	Cpl. Wallace	" "	"	"	"		
8		30	10.15PM	"	Sap. Wilson	" "	"	"	"		
9		12	10.5PM	W.28.d.72	Sap. Sparks	Making Knife rests	"	Lt. Robb	Supports		
1		20	9.45PM	E.4.C.88	Cpl. Gibbs	<u>SALVING MATERIAL ETC.</u> Loading Material	Nil	Lt. Tuck	Strazeele Dump		
2		5	9.PM	W.19.d.08	Spr. Greeness	Unloading "	"	"	Borre		
3		20	5/7/18								
4		10	8.30AM	W.19.d.08	Sgt. Dase	Constructing Shelters	"	Lt. Avery	Brigade H.Q.		
			"	"	"	Strengthening A.D.S.	"	"	Borre		

APPENDIX

✓

Nearest equivalent unit to be sent.

Time, name of place and map reference to be given.

Name and Unit of Officer or N.C.O. to be given.

Only those tools to be named which Infantry are to bring with them to "Rendezvous."

Signature of Requisitioning Officer

20

HANDING OVER REPORTFrom 3rd; Field Coy. A.E. to 2nd. Field Coy. A.E.RESERVE AREA13/7/18Field Punishment Compound Ebbingham

on the overhang to strengthen it.

Additional wire is required

This is now 35% Complete.

Sentry Box is being constructed and is complete except for malthoid on sides.

<u>Material on Job.</u>	Barbed wire , coils	10
	Malthoid, rolls	2
	Timber, 12"x 1", length	4

The key of the compound is in the possession of the Sgt. Major of the Reinforcement Camp.

Decauville Track at U.6.d.

This track runs alongside the Military loop on the Cassell - Hasebreuck Line and turns into the 1st. Aust. Div. Ammun. Col. Dump. with a loop for standing trucks at the end of Dump.

The work remaining to be done consists of:-

50 Yds. of track to be laid including Loop.

50 Yds. of ballasting (Line already laid)

30 Yds. to be spiked and intermediate sleepers 10"x 5" to be substituted for 6"x 2".

At the present level crossing into Dump heavy line has to be substituted for the existing Decauville.

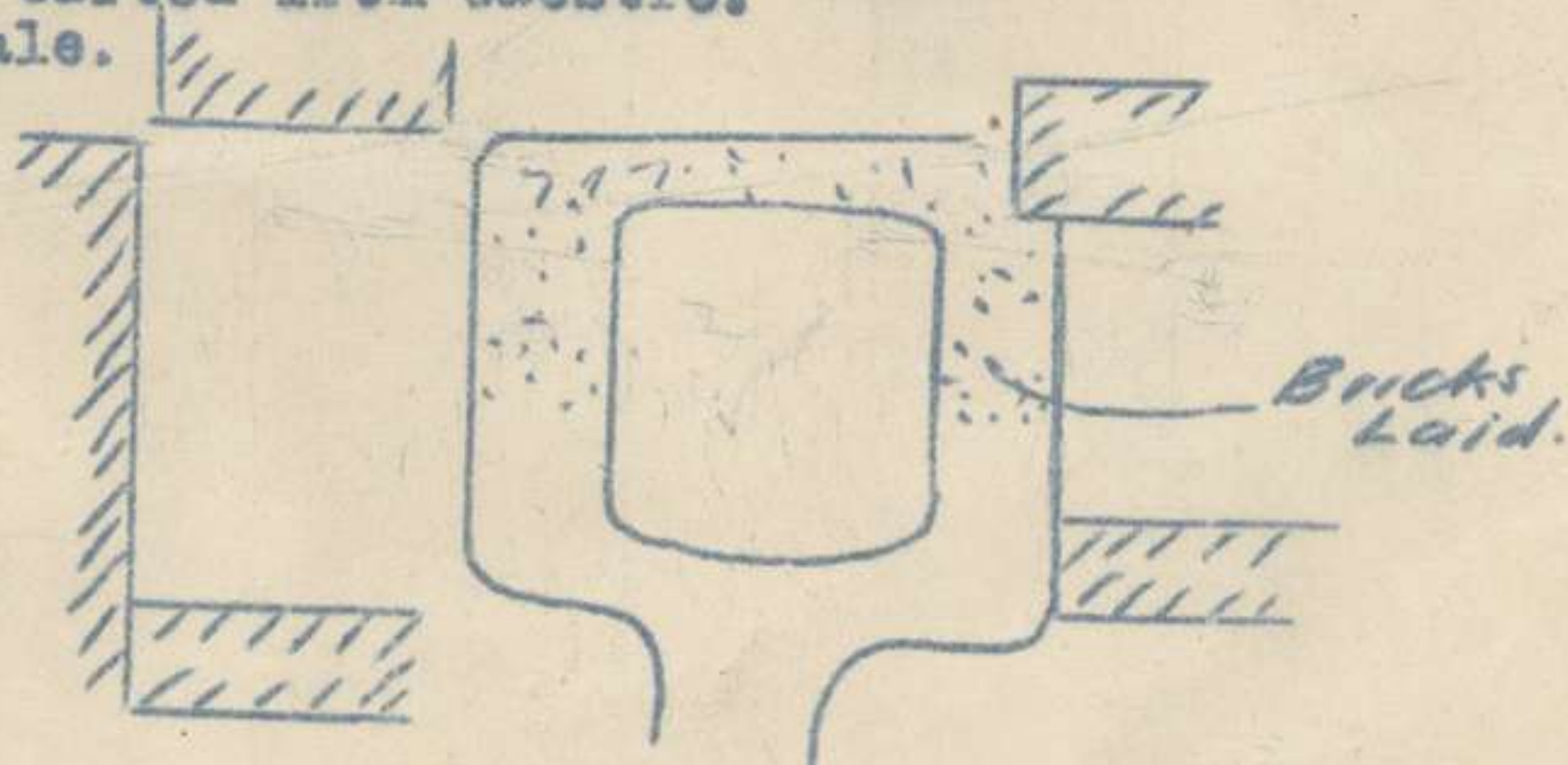
Material in hand:-

Decauville Rails,	300 Ft.
Left hand switch	1
Sleepers, 9'x 10"x 5"	20
" 3'6"x 6"x 2"	250
Railway spikes, bags	20

Material in hand is sufficient for completion.3rd. Field Amb. at V.19.C.15

Laying roadway and stand for cars and lorries. Bricks are laid flat with broken bricks on top. Bricks have been carted from Gaestre.

Sketch not to scale.



One load of water has to be supplied to Martyn Dump daily

*J. Lavag*  
Major

O.C. 3rd. Field Coy. A.E.

TRENCH ACCOMODATION TABLE. (p)Left Brigade Sub-sector22/7/18.

Map Location.	Shelters		Temporary 1 man	Accom- odation Totals.	Cupola shelters under con- struction (§)
	Cupola 2 men	Flat roof (C.I. etc ) 2 men			
<u>SUPPORT LINE.</u>					
X.13.d.	4	-	-	8	2
X.19.b.	4	-	19	27	1
X.19.a.	16	2	15	51	-
X.19.c.	2	-	-	4	-
W.24.d.	20	1	11	53	2
W.24.c.	9	-	-	18	22
W.30.a.	44	12	4	116	27
W.29.d.	1	26	4	58	1
E. 5.b.	5	88	-	26	-
E. 5.a.	9	14	-	46	-
Totals	114	63	53	407	55
<u>NORD STREET.</u>					
W.23.d.					
W.29.b.					
W.30.a.					
Totals					
<u>COURTE CROIX SWITCH.</u>					
W.18.b.	37	12	-	98	6
W.18.d.	24	16	9	89	2
W.18;c.	6	1	-	14	-
W.24.a.	35	2	-	74	5
W.24.c.	10	-	-	20	-
W.24.d.	14	-	1	29	2
Totals	126	31	10	324	15
<u>ROUGE CROIX SWITCH.</u>					
W.16.b.	2	3	-	10	-
W.17.a.	-	-	-	-	-
W.17.c.	11	11	-	44	4
W.23.a.	14	2	2	34	-
W.23.b.	8	-	1	17	-
W.23.d.	-	-	-	-	-
Totals	35	16	3	105	4
<u>KLITE LOOP.</u>					
W.17.c.	-	-	-	-	1
W.23.b.	-	-	-	-	1
Totals	-	-	-	-	2

(p) Only the accomodation actually on the lines of defence - and accomodation loops- are tabulated; e.g. accomodation along hedges (unless part of trench system) is omitted.

(§) Nothing less than completed excavations are tabulated under this heading; In addition to new excavations, those remaining where the flat roof has been removed are included.



Map Location.	Shelters			Accommodation Totals.	Cupola shelters under construction
	Cupola 2 men	Flat roof (C.I. etc) 2 men	Temporary 1 man		
<u>RESERVE LINE.</u>					
W.12;c.	-	9	-	18	1
W.11.d.	-	-	-	-	-
W.11.c.	11	-	-	22	-
W.16.b.	26	23	-	98	4
W.16.a.	2	5	-	14	6
W.16.c.	24	26	1	101	8
W.21.b.	115	37	9	113	11
W.21.d.	-	27	20	74	1
W.27.b.	-	12	7	31	-
W.27.a.	-	1	-	8	-
Totals	78	143	37	479	31
<u>"B" LINE.</u>					
W. 9.d.	-	-	-	-	-
W. 9.c.	10	44	5	113	-
W. 8.d.	-	2	-	4	-
W.14.b.	23	5	5	61	-
W.14.a.	15	-	-	30	-
W.14.c.	33	3	-	72	4
W.20.b.	26	16	-	84	-
Totals	107	70	10	364	4
<u>"C" LINE.</u>					
W. 8.c.	2	32	3	71	-
W.14.a;	-	16	-	32	-
W.13.b.	27	17	1	89	-
W.13.d.	20	-	-	40	-
W.13.c.	28	-	-	56	-
W.13;d;(2)	-	-	-	-	-
W.13.c;(2)	10	-	-	20	-
W.19.a.	20	-	-	40	-
V.24.b.	11	-	-	22	-
Totals	118	65	4	370	-

TRENCH ACCOMODATION SUMMARY.Left Brigade Sub-sector, 22/7/18.

Line of Defence	Shelters			Accommodation Totals	Cupola shelters under construction.
	Cupola 2 men	Flat roof (C.I. etc) 2 men	Temporary 1 man		
Support Line	114	63	53	407	55
Nord Street	-	-	-	-	-
Courte Croix Sw;	126	31	10	324	15
Rouge Croix Sw.	35	16	3	105	4
Klite Loop	-	-	-	-	2
Reserve Line	78	143	37	479	31
"B" Line	107	70	10	364	4
"C" Line	118	65	4	370	-
Grand totals					

N.B. Vide foot-notes last page.

*P. P. Favre's map*

21

H.Q. Divisional Engineers,  
1st. Australian Division.  
25th. July 1918.

1st. Pioneer Battalion.  
1st. Field Company, )  
2nd. Field Company, ) For information.  
3rd. Field Company, )

-----  
Extracts from Divisional Order S 19357 dated 25th. Inst.

- i.
1. A new system of defence will be constructed on the general line. E.6. Central - MONT DE MERRIS - F.1.A. - X.25.D. thence passing S. of BRAHMIN BRIDGE.
    - ii. Forward to this system two C.T's. will be dug -
      - (a) From MERRIS STR. in E.5.D. thence to E.6.C. Central - joining the new system at E.6.B.3.2.
      - (b) From X.19.C. Central - well clear of WORD HELP to X.25.D. These two C.T's. will form switches for the defence of the low ground S.E. of STRAZEELE, and the MOULENACKER VALLEY respectively.
    2. ii.C.R.E. will arrange for Pioneers to work on the two C.T's.
      - iii. Work will commence on the night 26/27th. July, and parties will be furnished at the same rate nightly until further orders.
  3. Reconnaissance, laying out, will be carried out on night 25/26th. July under instructions from C.R.E.

- 
1. Attached plan shows the proposed new line in Red which follows the approximate line of the Old front line posts several of which have been absorbed into the new line. This line will be dug by Infantry under Sappers.
    - (b) The two Communications shown in Blue will be sited according to requirements of ground and dug by Pioneer Battalion.
  2. C.O. Pioneer Battalion will arrange for the two Companies working at present on MERRIS ST. Communication and the Support Line to carry out this work and if possible complete in two nights.
  3. Both Communication Trenches will be developed as Fire Trenches and to fire outwards.
  4. When these Communication Trenches are dug through, Pioneers will carry on with work on Support Line etc. at present in hand.

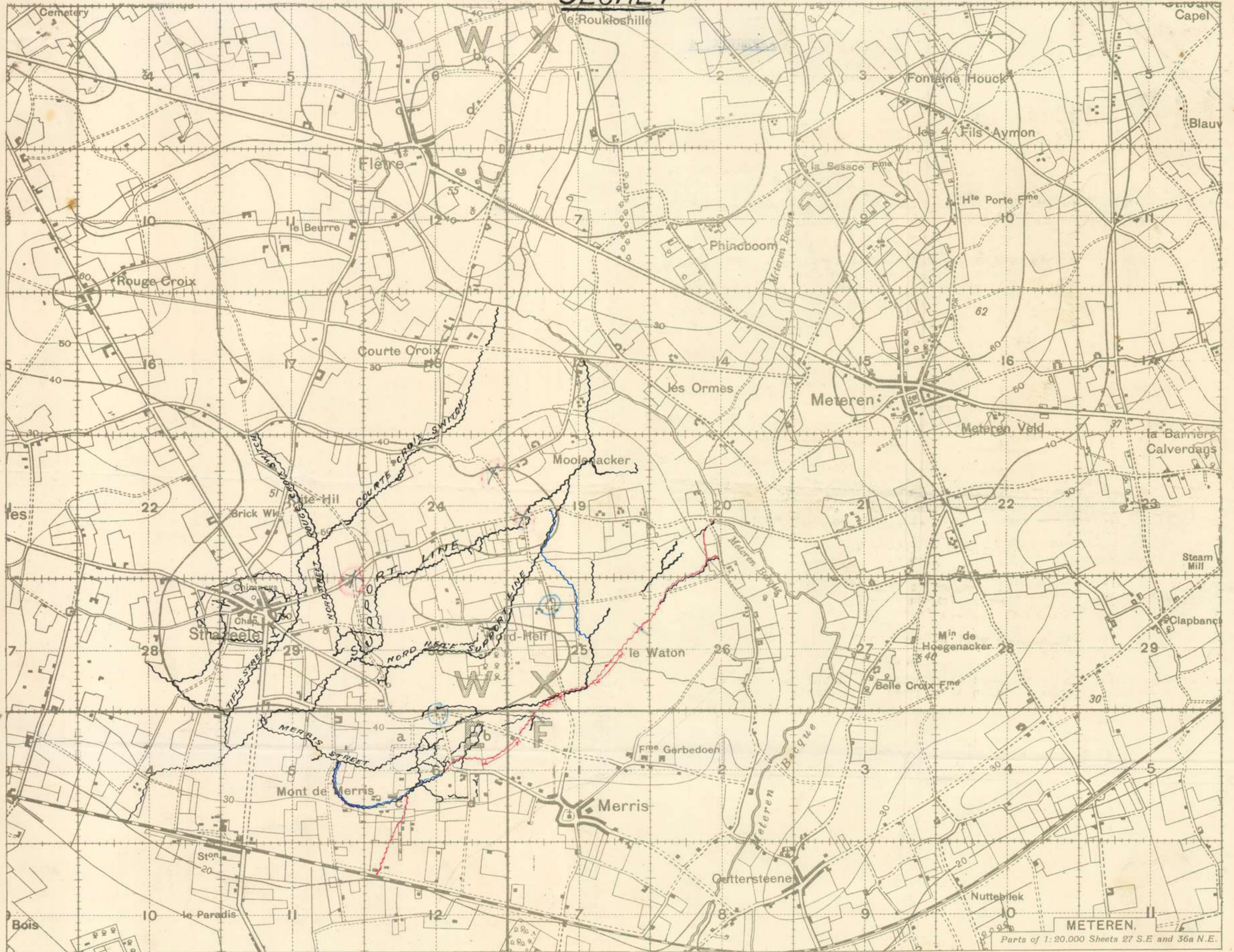
*W.A. Henderson*


Lieut. Colonel.  
C.R.E. 1st. Australian Division.

H. Q.
1ST AUSTRALIAN
D.V.L. ENGINEERS.
L.S. 476
25. 7. 18.
Date



-SECRET-21



**NOTE** Existing work shown Black  
 Work to be done by Pioneers shown in BLUE  
 " " " " " Infantry " " " " " on night of 26/27 shown thus: 

METEREN.  
 Parts of 1:20,000 Sheets 27 S.E and 36a N.E.  
 Ordnance Survey. (O.B.) April, 1918.

BRG. 25/7/18

1st. Field Company Engineers.  
30th. July 1918.

O.C.,  
3rd. Field Company.

The following is the work on which this Company is employed:-

No. 1 Section ( LT. WRIGHT ).

Salvage from STRAZEELE DUMP STATION DUMP.

Working parties from Rt Bde.

20 O.R. report STRAZEELE DUMP at 8.45 p.m. for loading.

10 O.R. report Coy. H.Q. BORRE at 9.30 p.m. for unloading.

The unloading party is employed tidying up the BORRE DUMP and making room for new material nightly, while waiting for the waggons.

TRANSPORT. From 4 to 6 G.S.Waggons are available from 1st. Div. Train to report at BORRE at 9 p.m. and proceed to STRAZEELE, doing two trips, if possible, nightly, from there to BORRE. ( These waggons are a standing detail from 1st. Div. Train ). One Pontoon and G.S.Wagon from Fld. Coy. are also employed, doing two trips as a rule.

The following material is to be salvaged if available:-

- 4" or other water pipes.
- Corrugated Iron.
- Bolts, nails, spikes etc.
- Trench Bridges.
- Any material useful for revetting purposes.
- Portable machinery etc.
- Timber suitable for Decauville Sleepers.
- Pit Props.
- Any other useful R.E. Stores.

A Canadian Railway Company is engaged in salvaging BROAD Gauge material by Motor Trolley on the railway.

The Pioneers are also salvaging Corrugated Iron etc. and the 1st. Div. Salvage are also working nightly at the DUMP.

No. 2 Section ( LT. KERSLAKE ).

REVETTING OF SUPPORT LINE.

Work is in progress N.E. from road at W.24.d.15.30. At about 40 yards S.W. of this road, a good portion of the trench has collapsed and requires urgent attention.

\*Revetting of NORD ST. ( See page 3 at end.)

R.A.P. at W.16.d.4.4.

Work required to complete:-

- Earth packing on roof and Burster Course on top.
- Sandbag revetment against Eastern Wall of dugout and revetment on Southern and Northern sides to be continued to height required, sleeper bearers to be laid on same to carry projecting ends of R.S.J's.

/ Gas Proof

( 2 )

Gas Proof Doors ( Double ) at East and West ends to be completed and also window on North side; sleepers to span over same to carry the overhead protection.

It is proposed to line the main entrance with Anti-Gas Cloth and also to whitewash the corrugated iron lining of the Dugout and inside of window.

WORKING PARTIES from Left Bde.

15 O.R. for NORD STREET meet at Dump at W.29.b.6.8. at 10.30 p.m.

20 O.R. for Support Line meet at Dump at W.24.d.0.6. at 10.30 pm

15 O.R. for R.A.P. meet on job at W.16.d.4.4. at 9.30 p.m.

MATERIAL.

Sufficient revetting material has been left at the above dumps for one nights work, but not many duckwalks.

No. 3 Section. ( Lt. MOFFITT. )

SUPPORT LINE.

Work on Support Line

between X.19.b.2.8. and X.13.d.1.4. Putting in Cupola Dugouts in rear of trench and laying duckwalks in the revetted portions.

WORKING PARTIES from Left Bde

1 Off. 50 O.R. meet at X.19.a.3.8. at 10.30 p.m. Small parties could be worked in daylight.

MATERIAL.

The following have been left at Dump at X.19.a.3.8.:-

- 50 A.Frames.
- 30 Revetting Panels.
- 50 A.I.Pickets (long)
- 30 A.I.Pickets ( short ).

No. 4. Section. ( LT. PETERSON )

SUPPORT LINE.

Revetting of Support Line between E.5.a.13.35 ( Junction of MERRIS ST ) and E.4.b.5.1. ( Junction of road ) working N.E. from the latter. 'A' Frames and Corrugated Iron have been put in for about 200 yards.

Revetting of MERRIS ST working west from W.29.c.1.0. ( Junction of TIFLIS ST ) . The trench requires widening and deepening before re-  
vetting.

WORKING PARTIES ( from Rt. Bde. )

- 1 Off. 50 O.R. for Support Line meet on job at 5.30 p.m.
- 1 Off 40 O.R. meet on the job at 5.30 p.m.
- 8 Sappers have also been employed revetting on both jobs by day.

( 3 ).

OTHER WORK.

Instruction in wiring has been given during the last few days to 16 men of the Reserve Battalion of the Right Brigade, at the request of the Brigade Major.

\*REVETTING OF NORD ST. TRENCH.

Work has been commenced within 15 yards of the road at W.29.b.6.8. working South, and trench graded to connect with revetting already done.

*A. E. Emerson* Capt.

Major, A.E.  
O.O. 1st Field Coy. Engineers.

S E C R E T.

FIRST AUSTRALIAN DIVISION.

EXTRACTS FROM DIVISIONAL ORDER NO. 112.

Divisional Headquarters,  
27th. July, 1918.

1. The 121st. Inf. Brigade, 40th. Division, will relieve the 119th. Brigade, 40th. Division, in the Right sub-sector of the 1st. Aust. Div. front between the 30th. July and 1st. August.

3. (i) The G.O.C. 119th. Infantry Brigade will be in command of all relieving troops until 10 a.m. 1st. August.

(ii) Command of the sub-sector and of relieving troops will pass to G.O.C. 121st. Inf. Brigade at 10 a.m. 1st. August.

(Sgd.) Alec. M. Forbes, Major,  
for Lieut. Colonel,  
General Staff,  
1st. Australian Division.

*Alec. M. Forbes*



WAR DIARY  
 or  
 INTELLIGENCE SUMMARY.  
 (Erase heading not required.)

Instructions regarding War Diaries and Intelligence Summaries are contained in F. S. Regs., Part II, and the Staff Manual respectively. Title pages will be prepared in manuscript.

Place	Date	Hour	Summary of Events and Information	Remarks and references to Appendices
			<u>MATERIAL SALVAGED FROM STRAZEELE R.L.E. DUMP DURING MONTH OF JULY</u>	
			Dogs, mining, 12" . . . . .	160
			Iron, corrugated, sheets . . . . .	30
			Joists, R.S. 5" 15' lengths . . . . .	98
			" " " 9' " . . . . .	120
			Nails, cwts. . . . .	98
			Paint, blue, dry, kegs . . . . .	3
			" assd. 56 lb. tins . . . . .	209
			" " 28 lb. " . . . . .	116
			Pumps, trench <del>22</del> . . . . .	59
			" Lift & Force . . . . .	12
			Staples, 14", cases . . . . .	114
			Sleepers, Rly. 9' . . . . .	295
			Spun Yarn, coils . . . . .	24
			Spanners for hose . . . . .	10
			Spikes, cases of 300 . . . . .	5
			Tacks, steel, cases . . . . .	15
				.

*[Handwritten initials]*

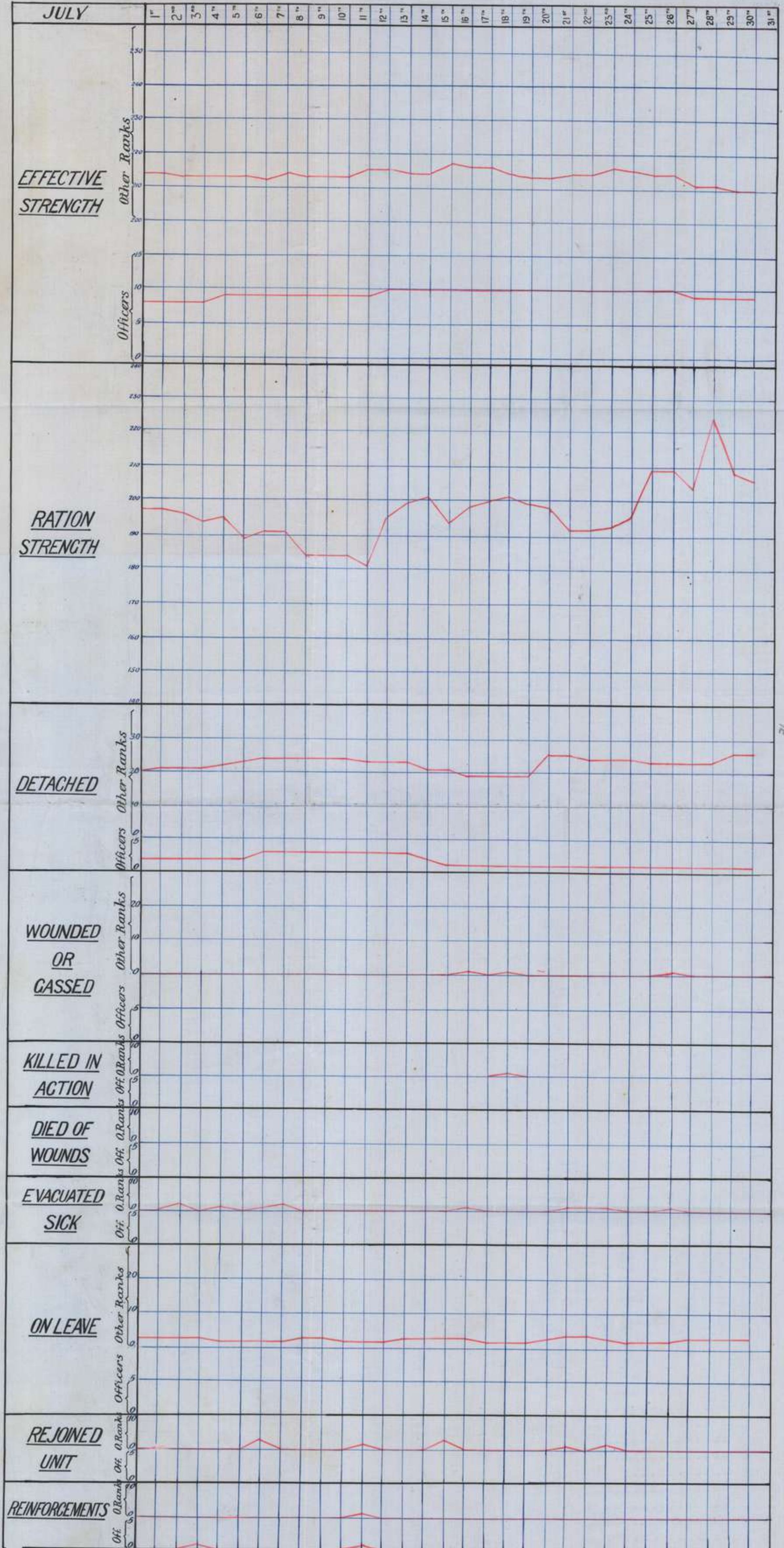
*[Signature]*  
 Captain  
 Officer Compiling

APPENDIX

6

30

STRENGTH GRAPH



1 Officer and 1 Other Rank were transferred to Engr. Inq. Depot on 28/7/18.

WAR DIARY

or

~~INTELLIGENCE SUMMARY~~

(Erase heading not required.)

Instructions regarding War Diaries and Intelligence Summaries are contained in F. S. Regs., Part II, and the Staff Manual respectively. Title pages will be prepared in manuscript.

Place	Date	Hour	Summary of Events and Information	Remarks and references to Appendices
			<u>LIST OF R.E. MATERIAL USED BY 3RD. FIELD COY. A.E. FROM 16TH- 28TH JULY '18</u>	
			"A" Frames, small 450	
			"A" Panels 287	
			Bridge, Artillery 1	
			Cupolas, English, Large 421	
			" " Small 12	
			Camouflage, Yards 895	
			Duckboards 180	
			Hessian, Rolls 2	
			Iron, Corrugated, Sheets 775	
			Pickets, Angle Iron, Long 1375	
			" " " Short 1270	
			" Screw, Long 2350	
			" " Medium 500	
			" " Short 2970	
			" Wooden Long 54	
			" " Short 1060	
			Sandbags 30500	
			Tapes, Tracing, Yards 1800	
			Union Cloth, Yards. 80	
			Wire, Barbed, Coils 1227	
			" Plain, " 34	
			" Netting " 2	
			" French concertina, bundles 12	
			" Barbed Concertina, coils 60	
			Joists, R.S. 109	
			Mauls & Helves 30	
			carted	
			The above material was, by the Company's transport plus the wagons requisitioned from the Div. Train from the Divisional R.E. Dump to the Company's Dump at W.13.a.80 where a small stock was kept for the purpose of making up any deficiencies. From here it was taken to the jobs when possible and in other cases to small dumps in rear of the Support Line.	
			There were no casualties to the Company's horses during the Month; their health being generally very good.	

APPENDIX

22