

AWM4
**Australian Imperial Force unit war diaries,
1914-18 War**

Formation Headquarters

Item number: 1/35/11 Part 3

Title: General Staff, Headquarters
Australian Corps

November 1918



AWM4-1/35/11PART3

W. Blamey

APPENDIX 31

SECRET.

Copy No. 56

AUSTRALIAN CORPS.

ADVANCE TO THE RHINE.

S/5244/14.

INSTRUCTIONS NO. 14.

Headquarters,
26th November, 1918.

1. With reference to Australian Corps Instructions No. 1, dated 14th November, 1918 -- Advance to the RHINE -- the Allied Forces will cross the German Frontier in accordance with the terms of the Armistice and will occupy the German territory east of the RHINE and establish bridgeheads on the bank of that river at MAYENCE, COBLENZ and COLOGNE.

2. British troops are to hold the COLOGNE bridgehead. The American Army will hold the territory on our right and the Belgian Army the territory on our left.

The British sector of the German territory will be occupied by the British Second Army consisting of 4 Corps (11 divisions) and 1 Cavalry Division.

3. The sector between the German frontier and the line AVESNES - MAUBEUGE - CHARLEROI - BRUSSELS will be occupied by the Fourth British Army consisting of 3 Corps (14 divisions) and Cavalry Corps (less 1 Cavalry Division).

Order of Battle will be issued later.

4. The Australian Corps, for the present, will occupy the southwestern portion of the Fourth Army area. The Corps will relieve the Canadian Corps in the occupied territory at a later period.

A map is attached showing the distribution of divisional areas of the Australian Corps. This map is subject to modification after reconnaissance has been completed.

5. Divisions will arrange to reconnoitre their areas as soon as possible. They should submit any proposed alterations as to divisional boundaries, and the proposed location of divisional and brigade headquarters to reach Corps Headquarters on the evening of 28th instant.

List "A", attached, gives billeting accommodation in the various areas.

List "B", attached, gives special reservations, which have been asked for.

6. The date when the eastward movement into the area shown on the attached map will be continued has not yet been determined. It is not likely to be earlier than the 4th December.

Orders for the continuation of the movement eastward will be issued later.

ACKNOWLEDGE.

W. Blamey

Brigadier-General,
General Staff,
Australian Corps.

DISTRIBUTION.

- @ 1 - 2. Fourth Army.
 3. XIII Corps.
 4. IX Corps.
 5. IV Corps.
 6. VI Corps.
 @ 7. 1st Australian Division.
 @ 8. 2nd Australian Division.
 @ 9. 3rd Australian Division.
 @ 10. 4th Australian Division.
 @ 11. 5th Australian Division.
 12. 15th Wing, R.A.F.
 13. 3rd Squadron, A.F.C.
 14. Corps Mounted Troops.
 15. 13th A.L.H. Regiment.
 16. Corps Cyclist Battalion.
 @ 17 - 26. G.O.C., R.A.
 @ 27. B.G.H.A.
 @ 28. A.Q.
 29. A.
 30. Q.
 @ 31. C.E.
 32. C.R.E., Corps Troops.
 @ 33. D.D.M.S.
 34. S.M.T.O.
 35. Australian Corps M.T. Column.
 36. A.D. Signals.
 37. Corps Signal Company.
 38. Ig.
 39. Branch Intelligence Section.
 40. G.O.C.
 41. Corps Topo Section.
 42. Australian Corps School.
 43. C.A.
 44. A.P.M.
 45. A.D.O.S.
 46. Camp Commandant.
 47. Corps Reinforcement Camp.
 48. "F" A.A. Battery.
 49. Captain GOTCH, No. 7 A.A. Searchlight Section.
 50. A.D.V.S.
 51. III Army.
 52. A.A.D.C.
 53. Assistant Inspector of Searchlights.
 54. 50th Field Searchlight Company.
 55. File.
 56 - 58. War Diary.
 59 - 68. Retained.

© Map attached.

TABLE 'A' - issued with Instructions No. 14.

Approximate billeting capacity of Belgian Towns and villages in the proposed Corps Area taken from figures compiled by Belgian Military Authorities before the war.

A R E A . To be occupied by.	T O W N .	Approx: capacity.	Remarks.
'A' Division.	4th Aust. Division.	MESNIL St.BLAISE.	No Stat:
		BLAIMONT.	"
		HASTIERE	"
		FALMIGNOUL.	"
		FALMAGNE.	"
		ANSEREMME.	650
		DREHANCE.	300
		DINANT.	5,000
		BOUVIGNES.	1,500
		SOMMIERE.	600
		WEILLEN.	500
		GERIN.	320
		ONHAYE.	425
		HERMETON.	No Stat:
		SOULME.	"
		GOCHENEE.	"
		AGIMONT.	"
		SOSOYE.	250
		FALLEN.	800
		SERVILLE.	150
		ANTHEE.	700
		MORVILLE.	800
		DENEE.	1,000
		FURNAUX.	1,000
		ERMETON.	800
		BIESMEREE.	600
		CORENNE.	550
		FLAVION.	1,700
		ROSEE.	800
		OMEZEE.	325
		SURICE.	1,400
		STAVE.	1,100
		MORIALME.	1,700
	FLORENNES.	2,050	
	St.AUBIN.	950	
	HEMPTINNE.	570	
	JAMAGNE.	450	
	PHILIPPEVILLE.	2,000	
	VODESEE.	500	
	VILLERS LE GAMBON.	750	
	FRANCHIMONT.	375	

293

APPENDIX 31

TABLE "A". (Continued). 2.

Area.	Occupied by.	Town.	Capacity.	Remarks.
"B". Div.	1st. Aust. Div.	METTET.	3250.	
		GRAUXY.	900.	
		ORET.	750.	
		BIESME.	1150.	
		SART EVSTACHE.	300.	
		LE ROUX.	450.	
		VITRIVAL.	780.	
		FOSSE.	2250.	
		AISEMONT.	475.	
		AISEAU.	1550.	
		FALISOLLE.	275.	
		ROSELIES.	700.	
		PONT DE LOUP.	No Stats.	
		CHATELET.	No Stats.	
		BOUFFIOUL.	No Stats.	
		COUILLET.	1600.	
		PRESLES.	600.	
		LOVERVAL.	No Stats.	
		JONGRET.	400.	
		AOZ.	550.	
		VILLERS POTERIE.	130.	
		GOUGNIES.	No Stats.	
		GERPINNES.	2500.	
		TARLINNE.	300.	
		HANZINNE.	1350.	
		HANZINELLE.	1100.	
		THY-le-BAUDUIN.	350.	
"C". Div.	2nd Aust. Div.	MARCHIENNE		
		AU PONT.	4000.	
		MARCINELLE.	3000.	
		(MONT SUR		} No Stats.
		(MARCHIENNE		
		(MONUGNIES le		
		(TIFFUEL.		
		JAMIOULX.	800.	
		THUIN.	4250.	
		GOZEE.	2000.	
		BIESMES SOUS		
		THUIN.	500.	
		NALINNES.	3500.	
		BERZEE.	900.	
		GOURDINNE.	1350.	
THY le CHATEAU.	1350.			
ROGNEE.	700.			
PHY.	400.			
CHASTRES.	570.			
SOLZEE.	600.			
LANEFEE.	550.			

(Table "A" continued).

3

A R E A.	To be occupied by.	T O W N.	Capacity.	Remarks.
"C" Div.	2nd Aust. Divn.	FRAIRE.	1,100	
		WALCOURT.	1,850	
		FONTENELLE.	300	
		VOGENEE.	300	
		CHEZEE.	325	
		SILENRIENX.	2,750	
		DAUSSOIS.	700	
		JAMOILLE.	250	
		SOUMOY.	720	
		VILLERS.	350	
		SENZEILLE.	1,200	
		CERFON TAINÉ.	1,700	
"D" Div.	Corps Troops.	ERQUILENNES.	500	
		SOLRE SUR SAMBRE.	3,000	
		HANTES-WIHERIES.	975	
		LEERS ET POSTEAUX.	425	
		MONTIGNIES St.)		
		CHRISTOPHE)	500	
		THIRIMONT.	1,100	
		STREE.	1,850	
		RAGNIES.	700	
		BIERCEE.	1,600	
		FONTAINE VALMOUT.	1,100	
		CASTILLON.	1,000	
		BEAUMONT.	2,500	
		BARBENCON.	1,400	
		SOLRY St. GERY.	1,600	
		BOUSSU LEZ WALCOURT.	1,300	
		ERPION.	500	
		VERGNIES.	550	
RENLIÉS.	900			
RANCE.	800			
FROIDCHAPELLE.	3,500.			

Official figures for remainder (French portion) of Corps Area are not available. The Area is being reconnoitred and on completion of this survey the figures will be published.

TABLE "B". Issued with INSTRUCTIONS No 14.

The following places it is proposed to reserve for purposes set out:-

Area.	Place.	Accommodation Reserved and purpose.
B. Div.	GERPINNES.	Chateau and accommodation for 10 Officers and 80 as in village for H.Q. 15 Wing.
	LES FLACHES.	Accommodation for 100 Officers and 400 Other ranks. 12 and 59 Sqdns. R.A.F.
	TARCIENNE.	Accommodation for 150 Officers and 500 Other ranks. 3 A.F.C. and 9 and 53 Sqds R.A.F.
C. Div.	MARBAIX) and HAM) BERZEE.	in both All Billeting/villages for Army H. Q. (later Corps H. Q.) Chateau and accommodation in village for 10 Officers and 95 Other ranks. H.Q. 5 Bde. R.A.F.
D. Div.	THULLIES.	50 Officers 350 Other ranks. 80 and 84 Sqds. R.A.F.
	OSSOGNE.	85 Officers 380 Other ranks. H.Q. 22 Wing and 23 and 92 Sqds. R.A.F.
	DOTSTIENNES.	100 Officers and 500 Other ranks. 101 and 202 Sqds. and O. Flight R.A.F.
	CLERMONT.	150 Officers and 50 Other ranks. 20 and 211 Sqds. R.A.F.
	BEAUMONT.	Corps Headquarters.

293

ADDENDUM to Table "A" issued with Instructions No.14.

Approximate billeting capacity of French towns and villages in the proposed Corps Area obtained from MAIRES, during the last two weeks.

Area.	To be Occupied by.	T O W N .	Capacity.	Remarks.
"D"	Corps Troops.	BEAUMONT.	80. 3000,	200
		BCUSIGNIES.	60. 1600.	120
		BERSILLIES 1'		
		ABBAYE.	40. 1000.	500
"E"	3rd Aus.Divn.	COUSOLRE.	120. 3500.	200
		BERELLES.	20. 400.	200
		ECCLLES.		No Stats.
		AIBES.		No Stats.
		COLLERET.	30. 1200.	600
		JEUMONT.	50. 500.	200
		MARPANT.	60. 1000.	200
		ELESMES.		No Stats.
		BOUSSOIS.	25. 400.	150
		ASSEVENT.		No Stats.
		REQUIGNIES.	20. 400	400
		ROUBIES.	30. 800.	200
		CERFONTAINE.	25. 1000.	250
		FERRIERE 1e Gd.	300. 5000.	1100
		FERRIERE 1e Pt.	30. 600.	300
		QUIVELON.	}	No Stats.
		DAMOISIES.		
		OBRECHIES.		
		CHOISIES.		
		SOLRINNES.	30. 500.	200
		WATTIGNIES.	30. 300.	500
		DIMECHAUX.	45. 1000.	700
		DIMONT.	30. 600.	300
		FELIGNIES.		No Stats.
		LOUVROI.	300. 5000.	1200
		MAUBERGE.	200. 10000.	-
		HAUTMONT.	300. 10000.	2000
		St.REMIMAL BATI.	}	No Stats.
BEAUFORT.				
FONTAINE.				
LUMONT.				
ECLAIBES.				
ECUELIN.				
"F"	3rd Aus.Divn.	LEUGHIES.	25. 1000.	150
		GRANDRIEUX.	80. 2000	-
		HESTRUD.	40. 900.	300
		SIVRY.	60. 4000.	500
		BEAURIEUX.	40. 800.	250
		SOLRE 1e Chateau.	250. 8000.	500
		CLAIRFAYTS.	25. 700.	500
		WILLIES.	60. 1500.	50
		LIESSIES.	30. 500.	600
		LES FONTAIRES.	30. 700.	200
		SARS POTERIES.	175. 4000.	300
		BEUGNIES.	50. 2500.	350
		FELLERIES.	60. 2000.	250
		SEMERIES.	20. 700.	400

RAMOUSIES./....

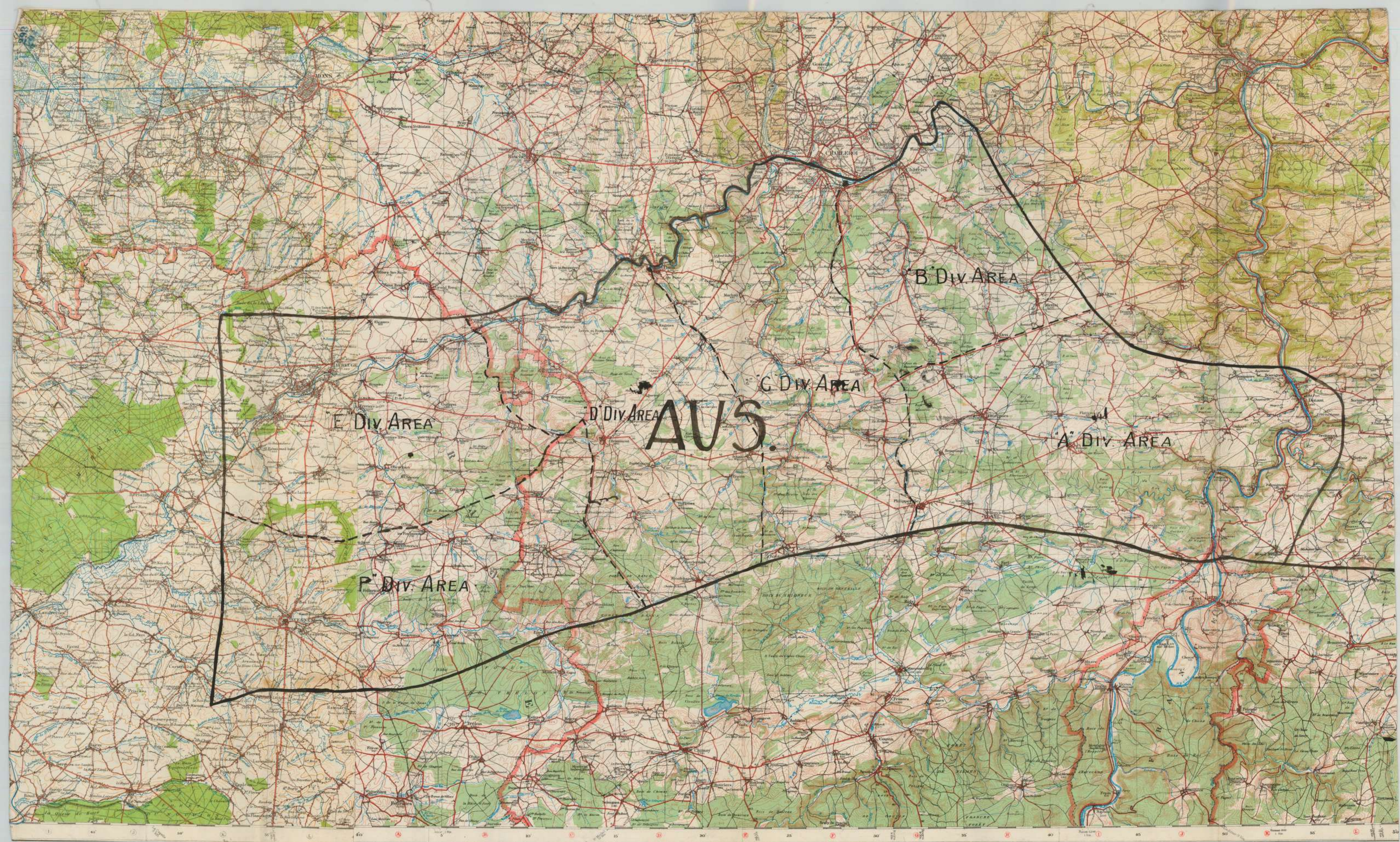
293

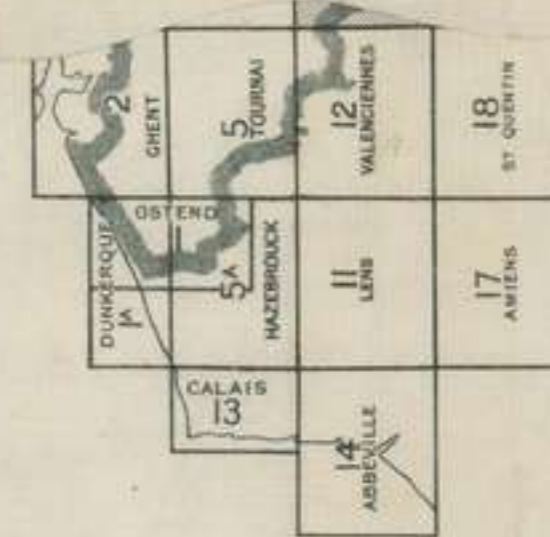
APPENDIX 31

Area.	To be Occupied by.	TOWN.	Capacity.	Remarks.	
"F".	3rd Aust Divn.	RAMOUSIES.	30	600	1000
		SAINS.	120	7000	-
		SEMOSIES.		No Stats.	
		DOURLERS.		No Stats.	
		ST AUBIN.		No Stats.	
		ST. REMY.		No Stats.	
		ST. HILAIRE.		No Stats.	
		FLAUMONT.	30	1000	400
		AVESNELLES.	70	2000	500
		HAUT LIEU.	30	1000	700

Figures stand for approximate accommodation for Officers, men, horses respectively, and have been obtained from the MAIRES in each case. Places with "No Stats." against them have not been reconnoitred.

[Faint, mostly illegible text, likely bleed-through from the reverse side of the page.]





War Diary
293

HEADQUARTERS,
AUSTRALIAN
CORPS.
No 9352
Date

APPENDIX 32

S E C R E T.

Australian Corps.
26th November, 1918.

DISPOSITIONS - HEADQUARTERS OF FORMATIONS.
as at 6 a.m. 27th November, 1918.

Australian Corps.	LE CATEAU.
B. G. H. A.	BUSIGNY.
3rd Squadron, A.F.C.	PREMONT.
1st Aust. Division.	SOLRE LE CHATEAU.
1st Aust. Inf. Bde.	SOLRE LE CHATEAU
2nd " " "	SARS POTERIES
3rd " " "	BEUGNIES.
2nd Aust. Division.	CARTIGNIES.
5th Aust. Inf. Bde.	FRISCHES.
6th " " "	ST. SOUPLLET.
7th " " "	MAZINGHIEN.
3rd Aust. Division.	KALLENCOURT
9th Aust. Inf. Bde.	YONVILLE.
10th " " "	ERONDELLE
11th " " "	HEUCOURT.
4th Aust. Division.	SAINS
4th Aust. Inf. Bde.	SAINS.
12th " " "	Gd. FAYT.
13th " " "	SIVRY.
5th Aust. Division.	OISLMONTE
8th Aust. Inf. Bde.	RAMBURES - moving to BUSIGNY by rail.
14th " " "	BUSIGNY.
15th " " "	HUPPY.

J. Rosehouse Capt
Brigadier-General.
General Staff.
Australian Corps.

SECRET

AUSTRALIAN CORPS
ADVANCE TO THE RHINE
INSTRUCTIONS No. 15



Australian Corps.
 27th November, 1918.

The following Corps Troops on arrival in Australian Corps Area will be disposed and rationed as under :-

(a) 1st Australian Army Troops Company and 2nd Australian Tunnelling Company will detrain at BERTRY on 29th Novr. 1918 and march to BUSIGNY under the orders of 5th Aust. Division. On arrival at BUSIGNY they will come under the orders of the C.R.E. Australian Corps Troops.

Rations for consumption on the 1st Decr. will be drawn on 30th Novr. 1918 from No. 6 Aust. M.T. Coy, BUSIGNY.

(b) 13th Australian Light Horse Regiment (less one Squadron) will move to BOUSIGNIES under orders of IX Corps.

The Squadron with VI Corps will rejoin its regiment at BOUSIGNIES under orders of VI Corps.

On arrival at BOUSIGNIES, 13th Australian Light Horse Regiment will be temporarily rationed by 1st Aust. Division. IX and VI Corps respectively are to inform the Australian Corps by wire, repeating to 1st Australian Division, the date of arrival at BOUSIGNIES, ration strength, and date of consumption of last issue.

The command of the 13th Australian Light Horse Regiment will pass to Australian Corps at 2359, 28th November.

(c) 1st Australian Tunnelling Company will move to MARBAIX under orders of IX Corps. On arrival at MARBAIX the 1st Australian Tunnelling Company will be rationed temporarily by 1st Australian Division.

The IX Corps is to inform the Australian Corps by wire, repeating to 1st Australian Division, the date of arrival in new area, ration strength and date of consumption of last issue.

The command of the 1st Australian Tunnelling Company will pass from IX Corps to the Australian Corps at 2359, 28th Novr.

P.T.O.

293

ATTACHMENT

33

(c) Continued.

The 1st Australian Tunnelling Company will be required for
under C.E. Fourth Army for removing mines from railways. They
will receive orders direct from the Controller of Mines.

(d) 1st Australian Veterinary Evacuation Station will detrain
BERTRY on 29th Novr. 1918 and march to ST SCUPLLET on 30th Novr.
1918, staging night 29/30th at BUSIGNY under the orders of
5th Australian Division.

On arrival at ST SCUPLLET command of the 1st Australian
Veterinary Evacuation Station will pass to Australian Co
Rations commencing 30th Novr. 1918 for consumption 1st
will be drawn from No. 6 Aust. M.T. Company, BUSIGNY.

(e) Australian Corps Salvage Section will detrain at BERT
on 29th Novr. 1918 and march to VAUX ANDIGNY on 30th Novr. 19
staging night 29/30th at BUSIGNY, under the orders of 5th
Division.

On arrival at VAUX ANDIGNY, the Australian Corps Salva
Section will report to Officer-in-Charge, P.O.W. Reception C
Rations will be drawn from No. 6 Aust. M.T. Company, on
30th Novr. for consumption 1st Decr.

J. Roadhouse Cap
for
Brigadier-General
General Staff.
Australian Corps.

DISTRIBUTION

P.T. O.

DISTRIBUTION.

1	1st Aust. Division
2	2nd Aust. Division
3	3rd Aust. Division
4	4th Aust. Division
5	5th Aust. Division
6-7	Fourth Army.
8	XIII Corps.
9	IX Corps.
10	IV Corps.
11	VI Corps.
12	G.O.C.R.A.
13	B.G.H.A.
14	G.O.C.
15	AQ
16	A
17	Q
18	Ig.
19	Brch Intell. Section.
20	15th Wing R.A.F.
21	3rd Squadron A.F.C.
22	Corps Mounted Troops.
23	13th A.L.H. Regt.
24	Corps Cyclist Bn
25	C.E.
26	C.R.E Corps Troops.
27	D.D.M.S.
28	S.M.T.O.
29	Aust. Corps M.T. Col.
30	A.D. Signals.
31	Corps Signal Coy.
32	Corps Topo Section.
33	C.A.
34	A.P.M.
35	A.D.O.S.
36	A.D.V.S.
37	Camp Commandant.
38	Corps Reinft Camp.
39	"F" A.A. Battery
40	Capt. McFarlane.
41	File
42-44	War Diary
45-55	Retained.
56	No. 6 Aust. M.T. Coy.
57	Returned P.O.W. Reception Camp, VAUX ANDIGNY.

593

Was Dean

APPENDIX

HEADQUARTERS,
 AUSTRALIAN CORPS.
 Copy No. 38
 Date 1/15/18

SECRET

AUSTRALIAN CORPS.

ADVANCE TO THE RHINE.

INSTRUCTIONS No. 16.

Australian Corps.
29th November, 1918

1. The Australian Corps Cyclist Battalion will move from LE CATEAU to rejoin Australian Corps Mounted Troops at BOUSIGNIES in accordance with the following march table :-

Date	From	To	Route	Remarks.
30th Novr.	LE CATEAU	AVESNES	CATILLON - PRISCHES	Billets from Area Comdt. AVESNES. LE CATEAU to be clear by 1200 hours.
1st Decr.	AVESNES.	BOUSIGNIES	BEUGNIES - COUSOLNE	

2. Duties. On arrival at BOUSIGNIES, the Officer Commanding Australian Corps Cyclist Battalion will proceed to take over the following duties reporting completion by wire to Australian Corps. These guards will be inspected at least weekly and a report forwarded to Corps Headquarters.

(a) Relieve the following guards of VI Corps over captured material.

CHARLEROI SUD	2	N.C.Os.	6	O.Rs.
HANZINNE (NAMUR G.3)	1	"	3	"
METTET (NAMUR H.1.3)	1	"	3	"
Position two miles from BIOUL on the BIOUL-MORIALME Road (Namur I.J.3)	1	"	3	"
LOBBES (NAMUR D.2)	1	"	3	"
LOBBES-THUIN Railway	1	"	3	"

(b) Place guards over German ammunition trains at :

MARCHIENNE AU PONT EST (NAMUR E.2)	2	N.C.Os	6	O.Rs.
MARGINELLE (NAMUR F.2)	2	"	6	"
WALCOURT (Namur F.3)	2	"	6	"

(c) Place guard over works of SCUTEFUR & BOCKERDY North of MAUBLUGE on MAUBLUGE-BAVAI Road.

	2	"	6	"
--	---	---	---	---

3. Rations will be drawn from 1st Australian Division commencing December 2nd for consumption December 3rd. Australian Corps Cyclist Battalion will wire 1st Australian Division ration strength forthwith.

APPENDIX 34

Guards over captured material and German ammunition trains will continue to be rationed by Australian Corps Cyclist Battalion, the attached lorry being used for this purpose.

ACKNOWLEDGE.

J. Raymond Capt
101 Brigadier-General.
General Staff.
Australian Corps.

DISTRIBUTION.

- | | | | |
|-----|--------------------------|-------|--------------------------|
| 1. | 1st Australian Division. | 20 | Corps Mounted Troops |
| 2. | 2nd Australian Division. | 21 | 13th A.L.H. Regiment. |
| 3. | 3rd Australian Division. | 22 | Corps Cyclist Battalion. |
| 4. | 4th Australian Division. | 23 | C.E. |
| 5. | 5th Australian Division. | 24 | C.R.E. Corps Troops. |
| 6-7 | Fourth Army. | 25 | D.D.M.S. |
| 8 | XIII Corps. | 26 | S.M.T.O. |
| 9 | IX Corps | 27 | Aust. Corps M.T. Column. |
| 10 | IV Corps. | 28 | A.D. Signals. |
| 11 | VI Corps. | 29 | Corps Signal Co. |
| 12 | G.O.C., R.A. | 30 | C.A. |
| 13 | B.G.H.A. | 31 | A.P.M. |
| 14 | G.O.C. | 32 | A.D.O.S. |
| 15 | A.Q. | 33 | Camp Commandant. |
| 16 | A. | 34 | Corps Rcft. Camp. |
| 17 | Q | 35 | No.6 Aust. M.T. Company. |
| 18 | Ig. | 36 | Area Commandant AVESNES. |
| 19 | 3rd Squadron, A.F.C. | 37 | File. |
| | | 38-40 | War Diary. |
| | | 41-51 | Retained. |

293

War Diary

35

SECRET

AUSTRALIAN CORPS

ADVANCE TO THE RHINE

INSTRUCTIONS No. 17

HEADQUARTERS,
 AUSTRALIAN CORPS.
 Copy No. 68
 S/ 5244/17
 Date
 Australian Corps.
 29th Novr. 1918.

Australian Corps Headquarters will move from LE CATEAU to AVESNES as follows :-

December 1st
 Close at LE CATEAU at 1200 and open at the same hour at AVESNES.

- G.O.C.
- General Staff.
- D.A.S.C.M.G. with "A" and "Q" offices.
- G.O.C., R.A.
- D.D.M.S.
- A.D. Signals
- A.P.M.
- Staff Captain. A.I.F.
- Camp Commandant.

December 3rd
 Close at LE CATEAU at 1200 and open at the same hour at AVESNES.

- Chief Engineer.
- A.D.O.S.
- A.D.V.S.
- Paymaster
- P.&R.T.
- French Mission
- Belgian Mission.

Thurilligan Lt Col
for

Brigadier-General
 General Staff,
 Australian Corps.

DISTRIBUTION

P.T.O.

AUSTRALIAN CORPS.

Hedquarters,
29th November, 1918.

AUSTRALIAN CORPS ORDER NO. 186.

1. His Majesty the King will visit the Australian Corps area on the 1st December.
 2. The King will arrive at AVESNES at 12.30 p.m. He will enter the town by the MAUBEUGE - AVESNES Road.
 - (a) Troops of the 1st Australian Division will line the road north of CENSE-a-LONGE. For movement to their forming up positions the 1st Australian Division will use the BEUGNIES - CENSE-a-LONGE Road and the roads north of it.
 - (b) The 4th Australian Division will line the road between CENSE-a-LONGE and AVESNES using roads south and exclusive of the BEUGNIES - CENSE-a-LONGE road.
 - (c) Only such troops will line the roads as can reach there and return without excessive marching.
 - (d) G.O's.C. of the 1st and 4th Australian Divisions and the Brigade Commanders of the Brigades which line the roads described above, will assemble at the road junction at CENSE-a-LONGE where the King will descend from his car, and Divisional Commanders will present Brigade Commanders to him.
 - (e) Troops will be formed up by 12 noon.
3. His Majesty will leave AVESNES by the LANDRECIES road.
 - (a) Troops of the 4th Australian Division, who are conveniently situated, will line the road west of AVESNES and clear of the town.
 - (b) These troops will be formed up by 1.15 p.m.
 - (c) The Brigade Commander will meet His Majesty at the road junction west of AVESNES and a quarter of a mile north of the Y in CEMY.
 - (d) The King's party will leave AVESNES at 1.45 p.m.
4. The party will travel via MAROILLES and LANDRECIES.
 - (a) Troops of the 2nd Australian Division will line the road east and west of MAROILLES, as may be convenient. The town will be left clear.
 - (b) The G.O.C., 2nd Australian Division and Brigade Commanders will await the arrival of the party at the cross roads one mile west of MARBAIX.
 - (c) The party is due to arrive at MARBAIX at 2.30 p.m. and LANDRECIES at 3 p.m.

P. T. O.

5. From LANDREGIES the party will proceed to CATILLON.
- (a) Troops of the 5th Australian Division will line the road as may be convenient between CATILLON and LANDREGIES.
 - (b) The G.O.C. and Brigade Commanders of the 5th Australian Division will meet the King at the cross roads on the north eastern corner of LA GROISE.
 - (c) The party is timed to arrive at CATILLON at 3.30 p.m.
6. No equipment will be worn by the troops lining the roads beyond belts and sidearms.

Rifles will not be carried.

Greatcoats will be taken at the discretion of Divisional Commanders.

There will be no ceremony beyond that laid down above.

No troops will participate where excessive marching is necessitated.

The route to be followed by the Royal Party will not be followed by marching troops.

Troops participating will be in position half an hour before time at which His Majesty is due to arrive.

Brigade Commanders whose commands do not participate will not attend.

Sturgeson
for

Brigadier-General,
General Staff,
Australian Corps.

DISTRIBUTION.

1. 1st Australian Division.
2. 2nd Australian Division.
3. 3rd Australian Division.
4. 4th Australian Division.
5. 5th Australian Division.
6. Fourth Army.
7. XIII Corps.
8. G.O.C., R.A.
9. G.O.C.
10. A.Q.,
11. A.
12. I.C.
13. C.E.
14. S.M.T.O.
15. A.D. Signals.
16. A.P.M.
17. Camp Commandant.
18. File.
- 19 - 21. War Diary.

93
Diary

37

APPENDIX
HEADQUARTERS,
AUSTRALIAN
CORPS.
37
Australian Corps
29th November, 1918

SECRET.

DISPOSITIONS - HEADQUARTERS OF FORMATIONS,
as at 6 a.m. 30th November, 1918.

Australian Corps.	LE CATEAU,
B. G. H. A.	BUSIGNY.
3rd Squadron. A.F.C.	TARCIENNE
1st Australian Division.	SOLRE LE CHATEAU
1st Aust. Inf. Bde	SOIRE LE CHATEAU
2nd " " "	SARS POTERIES
3rd " " "	BEUGNIES.
2nd Australian Division.	CARTIGNIES
5th Aust. Inf. Bde.	PRISCHES
6th " " "	CARTIGNIES
7th " " "	Gd. FAYT.
3rd Australian Division.	HALLENCOURT
9th Aust. Inf. Bde	YONVILLE
10th " " "	ERONDELLE
11th " " "	HEUCOURT.
4th Australian Division.	SAINS.
4th Aust. Inf. Bde.	SAINS.
12th " " "	FLAUMONT.
13th " " "	SIVRY.
5th Australian Division.	FAVRIL
8th Aust. Inf. Bde	MAZINGHIEN
14th " " "	LA GROISE
15th " " "	FAVRIL.

J. R. R. House Capt
Brigadier-General.
General Staff.
Australian Corps.

293

War Diary

38

19

S E C R E T

105/29

Copy No.

Australian Corps.
30th Novr. 1918.

1st. AMENDMENT TO AUSTRALIAN CORPS ORDER No.186.

Para 2 (a)

Troops of 1st. Australian Division will line road North of CENSE-a-LONGE.
No troops will be further North than River des MARQUETTES.

Para 3 (c) is cancelled

The Brigade Commandor will meet His Majesty with the Divisional Commander as described in Para 2 (d).
Traffic on the route from the River des MARQUETTES to MARBAIX (exclusive), and from LANDRECIES to CATILLON (both exclusive) will be controlled under arrangements to be made by Australian Corps "A"

Shinnigan Lt Col

for Brigadier-General
General Staff.
Australian Corps.

DISTRIBUTION

As for Aust. Corps
Order No. 186.