

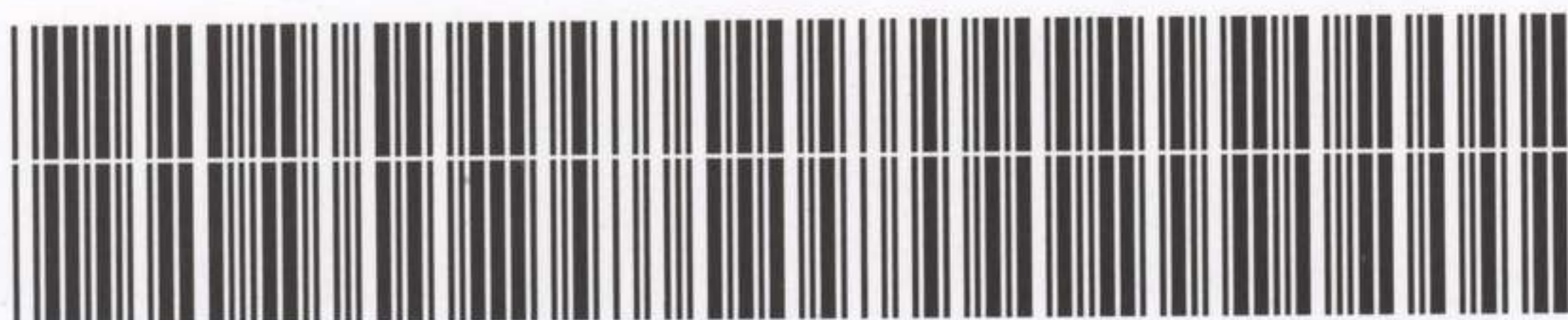
AWM4
Australian Imperial Force unit war diaries,
1914-18 War

Formation Headquarters

Item number: 1/42/19 Part 2

Title: General Staff, Headquarters 1st
Australian Division

August 1916



AWM4-1/42/19PART2

866

W A R D I A R Y

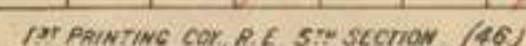
General Staff 1st. Australian Division. AUGUST. 1916.

O P E R A T I O N S

- 16th. to 19th. AUGUST 1916.
both inclusive.

• • • • •

R



Scale 1:5,000.

24TH JULY, 1916.

8/68

Operations
1st Aus Div

from 17/8/16 to 19/8/16 both inclusive

Orders only

Appendix

Appendix No. 6 72

8.69



SECRET.

1st. A. & N.Z.A.C.

15-8-1916.

1st. Australian Division.

1. As far as can be foreseen at present the 1st. Aust. Div. will be in the line until the 22nd. or 23rd. instant; it may be required to entrain on or about the 25th instant for the north where it will relieve the 3rd. Canadian Division.

2. During the time the division will be in the line about POZIERES it is hoped to be able to effect two operations:

On 18th Inst will be carried out
Operation "A" :- The capture of the line about MOUQUET FARM from R.28.c.95, 66, 36, 03, R.27.d.94, 73, 42, R.33.b.59, 48, 27, R.33.a.77, 54 inclusive.

Operation "B" :- The capture of the German trenches in R.35.d. and X.6.a. from R.35.d.46 to MUNSTER ALLEY.

In addition it is desired generally to adjust the front so as to make our position on the plateau as strong as possible.

3. As regards Operation "A", the following considerations are brought to your notice :-

- (i) The occupation of a line so far north as R.28.c.95 - 36 "stretches" your eastern flank, and special protective measures will in consequence be necessary on this flank.
- (ii) The right portion of the northern objective is distant some 400 yds. from the line you now hold, and it appears desirable therefore, as a preliminary measure, to advance the present line as far as the road - R.28.c.21, 92.
- (iii) This advanced line will require continuation towards the west so that the objective in R.27.d. may be within more easy distance.
- (iv) MOUQUET FARM is slightly down in the "dip" and is likely in any case to be a "shell trap". Your attention is therefore drawn to the desirability of covering this farm by a series of posts. The places indicated as suitable for such posts are R.27.d.42, 12, and probably R.33.b.29.

(v)

870

(v) On the left, the line of trench running from R.33.b.27 to R.33.a.54 has been a good deal damaged. That just north of it, running through point 77, appears to be more useful and should therefore be your objective on this flank. It will be necessary to make a communication from Pt. 77 to Pt. 54.

(vi) The whole question of the advance on this flank must be largely affected by the action of the corps on our left. If they are unable to advance from their present line to the trench running from R.33.a.54 to R.32.d.2.3. at the same time as we undertake our operation, then it will be necessary for you to refuse your left from say R.33.b.48 to R.33.a.81; and this would seem to be practicable.

4. As regards Operation "B", the following points require consideration :-

(i) The division on your right now hold MUNSTER ALLEY right up to and including the SWITCH LINE southwards. Between the head of MUNSTER ALLEY and the BAPAUME ROAD about R.35.d.46 there are a number of German trenches, and these are said to be occupied. Reconnaissances towards Pt. R.35.d.46 however have not discovered the sunken road to be held, although it was reported that patrols were fired on from the BAPAUME ROAD. The remnants of the communication trench running from R.35.c.74 to d.46 might be capable of being turned to some use in this locality.

(ii) We have a number of T-heads running out from the extreme right of our line on this flank. Our aim, during the period of preparation, should be to advance these, and others north of the BAPAUME ROAD, as far as possible.

5. As regards the general adjustment of our front, it appears to be desirable after the completion of operations "A" & "B" to increase and strengthen the lines which are tactically most suitable for defence and to establish in front thereof patrol and observation posts; these latter might in the north portion of the east front, conveniently follow the 150 contour line. From R.35.c.4.8. a line of posts should be run to R.35.d.46.

The new line will be some 3500 yds. in length, and the strength of your brigades is now somewhat reduced. By well selected strong points, a careful distribution of Lewis guns and good arrangements for artillery barrage, you may be able so to dispose your troops as to enable the retention of one brigade in reserve.

6. There are good reasons why it would be an advantage to you to effect your operations on the 18th instant. The date will however, be determined by you according to the state of your preparations, which the Corps Commander is quite sure you will press forward. The II Corps will improbably be ready for any move on your left flank before the 22nd. instant, but you will be informed more definitely on this point later on.

In your operations on the right flank, close co-operation with the 15th Division will be necessary and you will please place yourself in communication with your neighbouring divisional commander.

7. The G.O.C. R.A. of the Corps will arrange preliminary bombardments of your objectives, and in consultation with you will draw up artillery barrages to suit your plan of operations.

8. The southern boundary of the divisional area remains unchanged. Changes are in process in the northern boundary, to give to us 1st. AVENUE. The exact limits of the new boundary will be communicated to you later. In the meantime I am to ask you to consider the advisability of giving a line of communications north of the BAPAUME ROAD to your left brigade.

9. At your earliest convenience please submit to this office a sketch plan showing in detail the line upon which your troops are disposed, together with indications of the works in hand and proposed.

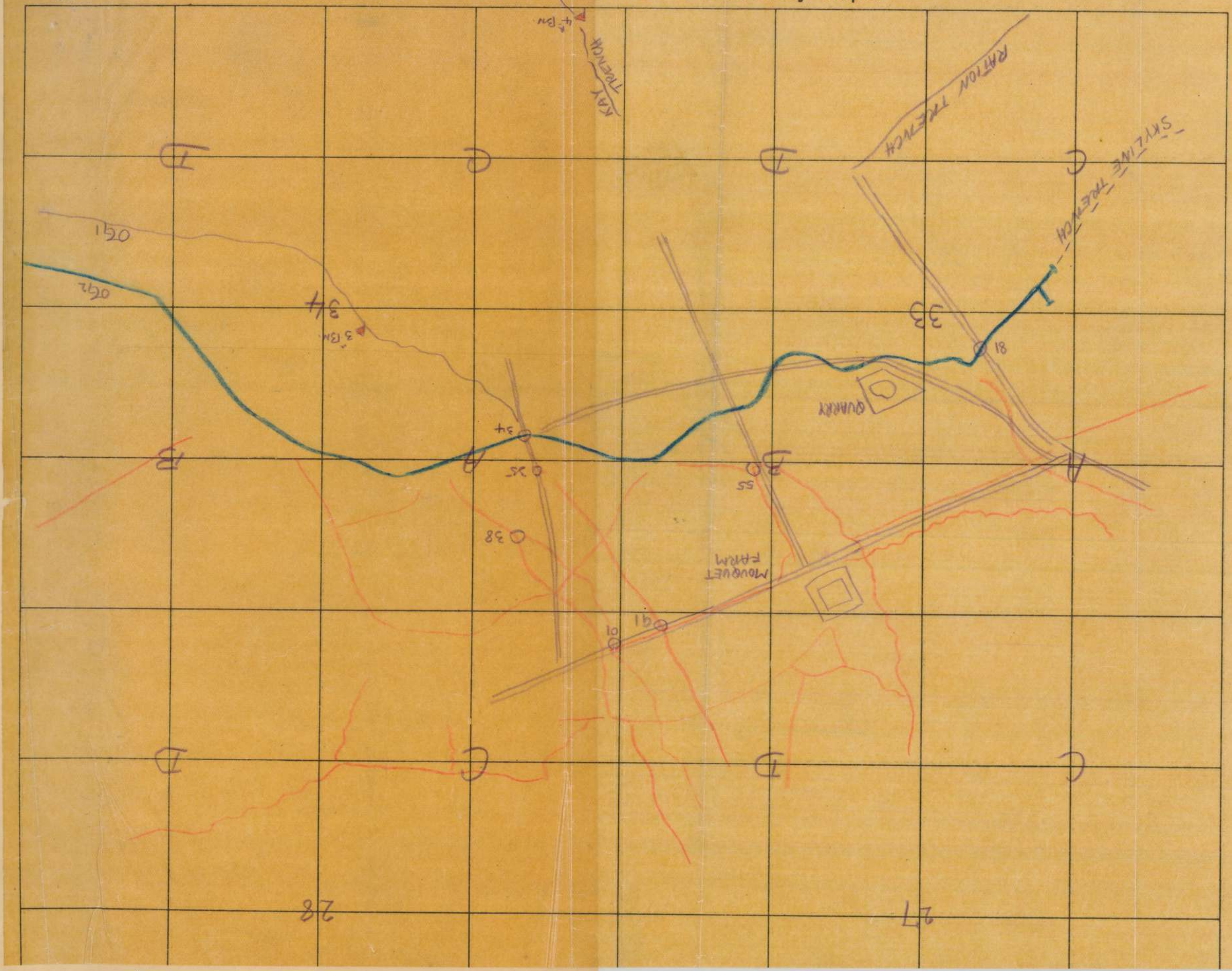
CBTB White

Brigadier-General,
General Staff,

1st. A. & N.Z. Army Corps.

872

Identification Trace for use with Artillery Maps.



Headquarters.
17th. August 1916.



Headquarters,

1st. A. & N. Z. Army Corps.

1. With reference to your S.671 dated 15th. August, I beg to submit the following.
2. The operation on the right flank, viz. the capture of the German trenches in R.35.d. and X.6.a. from R.35.d.4.6. to MUNSTER ALLEY constitutes a portion of the larger operation on the 4th. Army front, and should take place simultaneously with that operation and preparations will be sufficiently advanced by the 18th. inst. to permit of this being done.
3. The operation on the northern flank against MOUQUET FARM is on a different front and is not necessarily part of the same operation.

As regards this front, the line actually held by this division is shown in blue of the attached sketch. This was the line handed over from the 4th. Australian Division but the exact situation of this line was only ascertained by a personal reconnaissance by Brigadier-General N.M.SMYTH, Commanding 1st. Infantry Brigade, this morning. The modified position effects the preparedness of the 1st. Brigade to undertake the full operation laid down in your above quoted memo on the 18th. inst. Moreover owing to counter-attacks and barrage fire no work could be undertaken last night to further the situation.

I would therefore represent that the operation for the 18th. should be confined to making good the grounds and those points which were to have been occupied by the afternoon of the 18th. and to have formed the base for the main operation (ordered under your above quoted memo) which, if due preparedness is to be permitted should now be postponed till or after the 20th. inst.

In this connection I would point out that this point of the line constitutes a wedge driven along the

8-74

main ridge and as it advances is susceptible to enfilade fire from both flanks and that the co-operation of the 48th. Division on the left flank would materially assist. If the foregoing modifications in the orders contained in your memo are assented to and the co-operation of the 48th. Division agreed to I will issue the necessary orders.

To carry out the final operation I should propose to utilize a fresh Brigade.

Major-General.

Commanding 1st. Australian Division.

Appendix No. 6.

8-75

Appendix No. 6

My dear General.

The annexed are
 extracts from some
 notes by a French SS
 Officer wh. I was
 allowed to see today

They are interesting.

Yours sincerely

AB B White

16/8

876

Extracts

" The base & departure of part of the line was only conquered yesterday; yet it will be sufficiently organized to attack from in the late afternoon today.

The French troops will have as much as 800 metres to cross in the open. This is consid^d perfectly feasible as they are to advance first behind their baggage wh. will move forward by bounds of 25 metres.

In fact once again siege methods are being abandoned -- & the Command means to take advantage of the obvious disorganization of the enemy."

Again. " Then began operations of detail, costly and small in result -- The hunt for a base of departure had begun & is still going on. Every line has a better basis of departure just ahead of it & this units work their way up to -- only to find another just ahead -- Fraternities fight little battles of their own dictating line & place to the Army wh. watches them with anxious interest."

S E C R E T

S.G. 16/

(1st. Anzac. S.655).



O.C.

8th Cav. Bde. Machine Gun Squadron.

1. It is intended that the Machine Guns of the 8th Cavalry Brigade Machine Gun Squadron under your command shall be employed for special purposes under the orders of Reserve Army Headquarters.
2. The work required of them will largely take the form of fire at long range on to enemy's communication trenches and tracks which he is known to use, enfilade, oblique and even reverse fire on to fire trenches, fire on to trench junctions and probable positions of assembly for counter-attack, and on to places which the enemy is known to frequent for purposes of drawing rations etc.
3. In short, your role is specially that of harassing the enemy continually by fire, either direct or indirect, and you are not charged with assisting in the defence of the front on which you may be located, though you will lose no opportunity of co-operating in this way should the opportunity occur.
4. Further, you will assist the operations of neighbouring formations whenever possible.
5. The action to date of the Cavalry Machine Guns located in the LEIPZIG Salient is exactly typical of what is required of you.
6. You will proceed to reconnoitre thoroughly the 1st A.&N.Z.A. Corps and II Corps fronts and the XIV Corps front immediately north of the ANCRE with a view to selecting suitable positions to carry out the above role and will submit proposals for the establishment in position of your remaining guns, showing what can be effected from positions proposed.
7. You will report daily to General Staff, Reserve Army, to receive orders as to action required under para.4, and will make a daily combined report of the action of your detachments.
8. Sections or double sections in any area will be attached for administration and discipline to the local unit in garrison, and the O.C. will keep in close touch with the local commander. He will repeat to the local commander the daily report made to you.

(Sd.) C.N. Macmullen. Lt-Col.
for Major General
General Staff

Hd. Qrs Reserve Army.
14 - 8 - 16.

Copy to II Corps.
XIV Corps.
1st Anzac. Corps.

-2-

1st Aust. Div.

Forwarded.
The necessary space and administrative facilities will be afforded this unit.

17-8-16.

H. Ch. de Crespigny Capt
for

Brigadier-General.
General Staff.
1st A. & N.Z.A.C.

Appendix No. 6

HEADQUARTERS,
1st ANZAC.

167/63

G.

1st. A.&.N.Z.A.C.

17-8-16

878

1st. Aust. Div. ✓
2nd. Aust. Div.
4th Aust. Div.

The Corps Commander directs attention to the need of a more effective traffic control in the forward area and the front line system. Notice boards are not sufficiently used. Despite the difficulties, which are realised, the defects in the present arrangements must be remedied and all routes and communication trenches must be clearly marked.

2. In the Canadian Divisions a brigade "wiring party" has been found the most effective organisation to secure proper attention to defensive entanglement. Each battalion has a wiring party whose duty is maintenance under the battalion commander. The Brigade wiring party does new work. It is stated that this is a satisfactory plan and the Corps Commander thinks it might well be tried. Wiring parties are an essential part of the organisation of our forces in the present offensive.

C.B.B. White

Brigadier-General.
General Staff

1st A.&.N.Z.A. CORPS.

L.B. 178.

SECRET.



1st. A. & N.Z.A.C. ORDER No. 29

By
Lieut.-General Sir W.R.BIRDWOOD, KHC.S.I., K.C.M.G., C.B., C.I.E., D.S.O.

17-8-1916.

1. The 1st. Aust. Div. will carry out the following operations at 8.0 p.m. on the 18th instant.

- (i) Operation "A". - The establishment of the left Bde. on the line R.28.c.9.1., R.34.a.85.25. to 05. 80. to R.33.b.55 to R.33.a.81; and the construction of a strong defensive flank in R.34.b. connecting with the post at R.34.b.24.
- (ii) Operation "B". - The capture by the right brigade of the German trenches between the head of MUNSTER ALLEY and the sunken road at R.35.d.46; and the construction of posts from the last named point to R.35.c.48.

2. Both operations will be immediately preceded by a bombardment with heavy guns.

Programme of bombardment and time table of artillery barrages will be issued separately.

Barrages will begin 50 yds. forward of our "starting line" and will lift 50 yds. at a time. In the case of Operation "B" barrages will begin 50 yds. in advance of a line joining R.35.c.68 and our new T-heads south of the railway line. No troops will be in advance of this line at the time of attack. Assaulting troops will follow barrages closely.

3. The routes for communication trenches to the new lines will be determined beforehand and special working parties will be told off for the construction of these trenches.

4. When captured ground is entered by enemy trenches strong blocks will be constructed. In this work special parties will be told off beforehand and provided with the necessary stores. Bombers will be specially told off for the protection of all such "blocks".

5. Flares will be shown in both new lines at 7.30 a.m. and 10.30 a.m. on the 19th instant, when R.F.C. contact patrols will be in the air.

6. Intelligence officers will be specially told off to locate ground gained and to furnish topographical information as to crests, view and position of new line in relation to enemy works.

7. Acknowledge by wire.

ackd. RAS

C.B. White
Brigadier-General,
General Staff,

1st. A. & N.Z. Army Corps.

ADVANCE COPY to 1st. Aust. Div.

8.80

SECRET.

S/681.

Copy No...../.....

1st. A. & N.Z.A.C. ORDER No. 29.

By

Lieut.-General Sir W.R.BIRDWOOD, K.C.S.I., K.C.M.G., C.B., C.I.E., D.S.O.

17-8-1916.

1. The 1st. Aust. Div. will carry out the following operation at 8.0 p.m. on the 18th. instant.-

(i) Operation "A".- The establishment of the left brigade on the line R.28.c.9.1., R.34.a.85.25. to 05.80. to R.33.b.55 to R.33.a.81; and the construction of a strong defensive flank in R.34.b. connecting with the post at R.34.b.24.

(ii) Operation "B".- The capture by the right brigade of the German trenches between the head of MUNSTER ALLEY and the sunken road at R.35.d.46; and the construction of posts from the last named point to R.35.c.48.

2. Both operations will be immediately preceded by a bombardment with heavy guns.

Programme of bombardment and time table of artillery barrages will be issued separately.

Barrages will begin 50 yds. forward of our "starting line" and will lift 50 yds. at a time. In the case of Operation "B" barrages will begin 50 yds. in advance of a line joining R.35.c.68 and our new T-heads south of the railway line. No troops will be in advance of this line at the time of attack. Assaulting troops will follow barrages closely.

3. The routes for communication trenches to the new lines will be determined beforehand and special working parties will be told off for the construction of these trenches.

4. Where captured ground is entered by enemy trenches strong blocks will be constructed. For this work special parties will be told off beforehand and provided with the necessary stores. Bombers will be specially told off for the protection of all such "blocks".

5. Flares will be shown in both new lines at 7.30 a.m. and 10.30 a.m. on the 19th instant, when R.F.C. contact patrols will be in the air.

6. Intelligence officers will be specially told off to locate ground gained and to furnish topographical information as to crests, view and position of new line in relation to enemy works.

7. Acknowledge by wire.

ackd. RM

1st. A. & N.Z. Army Corps.

C.R. White
Brigadier-General,
General Staff,

Issued by D.R. at 5.15. p.m.

P.T.O.

(2)

Distribution.-Copy No.To

- | | |
|--------|--------------------------------|
| 1-2. | 1st. Aust. Div. |
| 3-4. | Reserve Army. |
| 5. | Artillery Reserve Army. |
| 6. | 2nd. Corps. |
| 7. | 3rd. Corps. |
| 8. | 2nd. Aust. Div. |
| 9. | 4th. Aust. Div. |
| 10. | 7th. Sqn., R.F.C. |
| 11. | 13th. Kite Balloon Sec. R.F.C. |
| 12. | G.O.C. |
| 13. | Q. |
| 14. | G.O.C. R.A. |
| 15. | B.G., H.A. |
| 16. | C.E. |
| 17. | A.D.A.S. |
| 18. | D.D.M.S. |
| 19. | File. |
| 20. | War Diary. |
| 21-25. | Spare. |

Appendix No. 6.

8.87.

"C" Form (Duplicate).
MESSAGES AND SIGNALS.

Appendix No. 6
Form C. 2123.
(In blocks of 50's in duplicate.)

No. of Message 16.

Charges to Pay Office Stamp.
£ s. TELEGRAPHS

Service Instructions.

Handed in at 18th Office 11 m. Received 16.30 m.

TO

Sender's Number

Day of Month

In reply to Number

A A A

Reference 18th August 1916
R. 34. A. 185.25
aaa

Angae order no
1 (i) R. 34. A. 25.85
Read

167

FROM

PLACE & TIME

18th August
10.40

Appendix No. 6

Army Form C. 2123.
(In books of 50' (duplicate).)

"C" Form (Duplicate)
MESSAGES AND SIGNALS.

No. of Message.....

Service Instructions. <div style="text-align: center; font-size: 1.5em; font-family: cursive;">Priority</div>	<div style="display: flex; justify-content: space-between;"><div>Charges to Pay. £ s. d.</div><div>Office Stamp. <div style="border: 1px solid black; border-radius: 50%; padding: 10px; text-align: center; width: 100px; margin: 0 auto;">AYA 18.VIII.16. TELEGRAPHS</div></div></div>
--	--

Handed in at.....	Office.....	Received.....
-------------------	-------------	---------------

TO	<div style="font-size: 1.5em; font-family: cursive;">181 Amazac Aus Div 169</div>
----	--

Sender's Number <div style="font-size: 1.5em; font-family: cursive;">5420</div>	Day of Month <div style="font-size: 1.5em; font-family: cursive;">18</div>	In reply to Number	AAA
--	---	--------------------	------------

Reference ANZAC Order no 29
of 17th Para one Zero
will now be one hour
later aaa added, all concerned
aaa acknowledged

ack'd. RMS

FROM	<div style="font-size: 1.5em; font-family: cursive;">1st Amazac</div>
PLACE & TIME	<div style="font-size: 1.5em; font-family: cursive;">3 p.m.</div>

82

Wt. 432-M437 500,000 Pad. H W V 5/16 Forms C. 2123.

8-84

FIRST AUSTRALIAN DIVISION.Divisional Headquarters.
17th. August. 1916.

1st. Inf. Bde.
2nd. Inf. Bde.
3rd. Inf. Bde.
- - - - -

The Divisional Commander is of opinion that the best use is not being made of in all cases of battalion and brigade Intelligence Officers.

There is not, sufficient intelligence work to require that these officers should remain at their headquarters. They should be used out of doors to supplement reports and check our own positions continually.

The Divisional Commander feels sure that if full use is made of these officers services as directed, much of the vagueness from which we now suffer both as to our own and hostile positions, would soon disappear.

The tendency to employ these officers in 'odd jobs' at headquarters must not be entertained. In order to assist the Divisional Commander in judging the work of these officers reports of any special interest sent in by them should be forwarded to Divisional Headquarters.

During the forthcoming operations Intelligence Officers will be specially told off to locate ground gained and to furnish topographical information as to hills, slopes, crests, view, position of new line in relation to enemy's works etc.

*Their reports will be forwarded to
Div Hdqrs through Bde Hdqrs*

Sgd T A Blaney.

Lieut Colonel, General Staff.
1st. Australian Division.

*LB
Ig* *Rak* *7/8/16* *WHL*

War Diary.

S E C R E T.

Copy No. 3.....

FIRST AUSTRALIAN DIVISION ORDER No. 47.DIVISIONAL HEADQUARTERS,
18th AUGUST, 1916.

1. Information as regards our own Forces. - On the 18th August the 4th Army is attacking the German Intermediate Line south of MARTINPUICH at 2.45 p.m. The 15th Division on our right is cooperating with this attack by discharging smoke. The 48th Division on our left is attacking the enemy positions in Square X.2. at 4 p.m.
2. Action by the Division. -
 - (A) 1st Aust. Inf. Bde will seize and occupy the line of trench running from R.34.A.9.7 - R.28.C.6 $\frac{1}{2}$.1 $\frac{1}{2}$ - R.34.A.2 $\frac{1}{2}$.8 $\frac{1}{2}$ - R.33.B.5.5. - QUARRY - R.33.A.8.1 and will construct a strong defensive flank in R.34.B connecting with the post at R.34.B.2.4.
 - Strong points will be established at -
 - (i) R.28.C.8.1.
 - (ii) At sunken road in R.28.C.
 - (iii) R.33.B.5.5.
 - (B) 2nd Aust. Inf. Bde will attack the enemy from the left of the 15th Division at X.6.A.2 $\frac{1}{2}$.6 $\frac{1}{2}$ to R.35.D.4.6. and will join this point to the present line at about R.35.C.4.8.
 - Strong points will be established -
 - (i) Near the tramway X.6.A.
 - (ii) R.35.D.4.7.
3. Artillery. - The operations will be immediately preceded by a bombardment with heavy guns.
Programme of bombardment and time table of Artillery barrages will be issued separately.
Barrages will begin 50 yards forward of our "starting line" and will lift 50 yards at a time. In the case of Operation "B" barrages will begin 50 yards in advance of a line joining R. 35C.6.8. and our new T-heads south of the tramway line. No troops will be in advance of this line at the time of the attack. Assaulting troops will follow barrages closely.
4. Engineers. - Engineers will be detailed by C.R.E. for work on the strong points. They will be sent forward under the orders of the Infantry Brigade Commanders.
5. Reserve. The 3rd Aust. Inf. Bde will be the Divisional Reserve. Two Battalions will move to the area between a line X.14.D.2.9 - X.15.c.3.4. - X.15 Central and TARA HILL, inclusive, during the day of 18th instant.
6. Aircraft. - Contact aeroplanes will fly over the line at 7.30 a.m. and 10 a.m. on 19th instant when flares will be lit.
7. Time. - Zero hour will be 8 p.m. Watches will be synchronised with the Div. Signal Company at 12 noon and 5 p.m.
8. Consolidation. - Routes for communication trenches to the new line will be selected by Infantry Brigadiers in conjunction with C.R.E. beforehand. O.C. 1st Aust. Pioneer Bn will detail parties to construct these trenches.
Patrols and posts with Lewis Guns will be pushed out in advance of the Line when established.
When captured ground is entered by enemy trenches, strong blocks will be constructed. For this work special parties will be told off beforehand and provided with the necessary stores. Bombers will be specially told off for the protection of all such blocks.

P. T.O.

2.

Bombing parties will be detailed to push along the enemy trenches leading forward from the captured line.

9. A C K N O W L E D G E.

W. Blamey
Lieut-Colonel,

General Staff,
1st Australian Division.

Copy No.	To whom	Time	Method.
1 - 5	D.H.Q.	6 a.m.	Orderly.
6 - 11	Div. Art.	"	D. R.
12	Div. Engineers.	"	"
13	Div. Sig. Co.	"	"
14	1st Aust. Inf. Bde.	"	"
15	2nd " " "	"	"
16	3rd " " "	"	"
17	Div. Train	"	"
18	A. D. M. S.	"	"
19	D. A. D. O. S.	"	"
20	Pioneer Bn.	"	"
21	Mob. Vet. Section.	"	"
22	A. D. V. S.	"	"
23	1st ANZAC "G"	"	"
24	1st ANZAC "Q"	"	"
25	A. P. M.	"	"
26	2nd Aust. Div.	"	"
27	4th Aust. Div.	"	"
28	15th Division.	"	"
29	48th Division.	"	"
30	Salvage Coy.	"	"
31	Corps Park.	"	"
32	Reserve Army.	"	"
33	Camp Comdt D.H.Q.	"	"
34- 39	Lahore Artillery	"	"
40- 45	Anzac Heavy Artillery.	"	"
46	7th Squadron R.F.C.	"	"

Appendix No. 6

SECRET

Copy No.

FIRST AUSTRALIAN DIVISION ORDER No. 48.

Headquarters.
18th. August 1916.

In continuation of Divisional Order No. 47.

1. Zero hour for the operations on night 18th. inst. will be 9 p.m.
2. The 1st. Inf. Brigade holds the line R.34.B.6.0.-2.4.-A.9.9½.-R.28.C.6.0½.-R.34.A.2½.9½.-1½.6½.-R.33.B.4.2.-R.33.A.8.1.
3. It will advance this line at Zero tonight to the line R.28.C.8½.3.-5½.3½.-2.2.-0.1.-R.27.D.9.1.-R.33.B.5.7.-R.33.B.5.5. and will consolidate this line under cover of the artillery barrage. Strong points will be established at 28.C.8½.3., 28.C.2.2., 28.C.0.1 27.D.9.1., and 33.B.5.7.

A strong defensive flank will be constructed from R.34.A.9.9½ to about R.28.D.1.3.

This is substituted for the action described in para 2 (a) Divn. Order No. 47 of today's date.

2. ACKNOWLEDGE.

T. Blamey

Lieut-Colonel. General Staff.
1st. Australian Division.

Copy No	To Whom	Time	Method
1 - 5	D. H. Q.	2.45 p.m.	Orderly
6 - 11	Div Art	"	D. R.
12	Div. Engrs	"	"
13	Div Sig Co	"	"
14	1st. Inf. Bde	"	"
15	2nd. Inf. Bde	"	"
16	3rd. Inf. Bde	"	"
17	Div. Train	"	"
18	A.D.M.S.	"	"
19	D.A.D.O.S.	"	"
20	Pioneer Bn	"	"
21	Mob. Vet. Sec	"	"
22	A.D.V.S.	"	"
23	1st. ANZAC "G"	"	"
24	1st. ANZAC "Q"	"	"
25	A.P.M.	"	"
26	2nd. Aus. Div.	"	"
27	4th. Aus. Div.	"	"
28	15th. Division	"	"
29	48th. Division	"	"
30	Salvage Co	"	"
31	Corps Park	"	"
32	Reserve Army	"	"
33	Camp Comdt. D.H.Q."	"	"
34 - 39	Lahore Artillery	"	"
40 - 45	Anzac Heavy Art."	"	"
46	7th. Squadron. R.F.C.	"	"

8-88



G.

1st. A. & N. Z. A. C.

.....18.....August, 1916.

.....¹⁰¹.....Australian Division.

Forwarded herewith is the artillery
programme for *..tonight... (Artillery 0.0.7)*

2. Your C.R.A. has been informed direct by
the Corps *G.C.* R.A.

A. Ch. de la Chapelle Capt
for
Brigadier-General.
General Staff.
1st. A & N. Z. A. C.

8.89

SECRET.

Copy No.

ARTILLERY ORDER No.7
by
G.O.C.R.A. 1st ANZAC.

18th August 1916.

1. The 1st Australian Division is carrying out two operations on the evening of the 18th instant.
(1) Operation "A" which will have as its objective the line R.28.c.95 to 36 to 03 to R.33.b.59 to 49 to R.33.a.81 and the establishment of a defensive flank in R.28.d. and R.34.b.
(2) Operation "B" the objective of which will be the capture of the trench from the junction of MUNSTER ALLEY and the SWITCH LINE at X.6.a.5.7 to R.35.d.35 and on to R.35.d.46 from which point posts will be established joining up with the O.G.2 line at R.35.c.49.
2. The trenches from R.28.c.95 to R.27.d.12 to R.33.b.27 to R.33.a.47 and the trench from X.6.a.57 to R.35.d.46 are being steadily bombarded during the day.
3. Tables of bombardments and barrages are attached.
4. During the bombardment from -1 hour to 0, II Corps is co-operating by bombarding from R.33.a.47 to R.33.b.27 to R.27.d.12 with heavy howitzers, and from 0 to 1 hour they will continue, but will lift off the portion from R.33.b.29 to 27 to 07.
5. During the bombardment from -1 hour to 0, III Corps is bombarding the portion of the trench from junction with MUNSTER ALLEY to R.36.b.00, and from 0 to 1 hour will lift on to the factory and the BAPAUME Road in R.36.a. Central.
6. The hour of assault will be zero hour which is ~~8.0 p.m.~~ 9 p.m.
7. Flares are being shown by the Infantry in both new lines at 7.30 a.m. and at 10.30 a.m. on the 19th.
8. Acknowledge by wire please.

Captain R.A.
Staff Officer R.A. 1st Anzac.

Issued as under :-

Copy No.1	File.	Copy No.15	
2	1st Anzac.	16	1st Aust.D.A.
3		17	
4		18	
		19	
5	B.G.H.A.	20	II Corps R.A.
6		21	III Corps R.A.
7		22	R.A. Reserve Army.
8		23	No.7 Sqn. R.F.C.
		24	13th K.B. Section.
9	Lahore D.A.		
10			
11			
12			
13			
14			

TIME TABLE FOR ATTACK ON NIGHT OF 18th AUGUST.

	Time.	Objective.	Rate of fire.	Remarks.
"A" Operation. (a) 18-prs.	0. to 0.1	Intense fire on the line R.28.d.03 to R.28.c.22 to R.34.a.09 to R.33.a.7.3	Quickest rate possible.	RED Line.
	0.1 to 0.2	Intense fire on the line R.28.d.03 to R.28.c.22 to R.27.d.91 to R.33.a.73.	do.	BLUE Line.
	0.2 to 0.10	Intense fire on the line R.28.c.95 to 36 to 03 to R.27.d.73 to 31 to R.33.a.73.	do.	YELLOW Line.
	0.10 to 0.30	Same line.	2 rounds per gun per min.	do.
	0.30 to 1 hour.	Same line.	1 round per gun per min.	do.
	1 hour on	As required.	Usual nightly rate.	
(b) 18-prs.	0 to 0.10	Intense fire R.28.d.03 to R.34.b.63.	Quickest rate possible.	
	0.10 to 1 hour.	Same line.	1 round per gun per min.	
	1 hour on	Same line.	Usual nightly rate.	
(c) 4.5" Hws.	0. to 1 hour.	R.28.c.95 to R.28.d.40.75 and down the new trench to R.34.b.68 and on R.27.d.42 to R.27.d.12		
(d) Heavy and Medium Hws.	-1 hour to 0.	On the line R.28.c.95 to 36 to 03 to R.27.d.73 to 42 to 31.	Heavy Hws. 40 rds. a gun. Medium do. 60 do.	
	0 to 1 hour.	On the points R.27.d.05.50 R.27.d.69 R.27.d.79 R.28.c.39.	1 round per point per min.	
e/ 60-prs.	0. to 1 hour.	On the approaches from COURCELETTE and from the North.	100 rounds.	

Appendix No. 6

Appendix No. 6 93

TIME TABLE FOR ATTACK ON NIGHT OF 18th AUGUST 1916.

	TIME	OBJECTIVE.	RATE OF FIRE	REMARKS.
"B" Operation. (a) 18-prs.	0. to 0.1	Intense fire on the line X.6.a.05.75 to R.35.d.25.45 to R.35.c.75.85.	Quickest rate possible.	RED Line.
	0.1 to 0.2	Intense fire on the line of the new trench from X.6.a.15.85 to R.35.d.35.55 and on to R.35.c.75.85.	do.	BLUE Line.
	0.2 to 0.3	Intense fire on the line R.36.c.3.0 to R.35.d.35.70 to R.35.c.89	do.	YELLOW Line.
	0.3 to 0.10	Intense fire on the line R.36.c.6.0 to R.35.b.35.00	do.	GREEN Line.
	0.10 to 0.30	Same line.	2 rounds per gun per min.	do.
	0.30 to 1 hr.	Same line.	1 round per gun per min.	do.
	1 hour on	Same line.	As required.	
(b) 18-prs.	0. to 0.2	R.35.c.75.85 to R.34.b.6.4	1 round per gun per min.	
	0.2 to 0.3	R.35.c.8.9 to R.34.b.6.4	do.	
	0.3 to 1 hr.	R.35.b.35.00 to R.34.b.6.4	do.	
	1 hour on	Same line.	As required.	
(c) 4.5" Hws.	0. to 1 hour.	On the road R.35.b.35.00 to 35.50 and on the trench R.35.a.36 to R.35.b.75.00	1 round per gun per min.	
(d) Heavy and Medium Hws.	-1 hour to 0.	On the trench from R.35.d.75.20 to R.35.d.35.55 and on to 35.70.	Heavy Hws. 40 rounds per gun per hour. Medium Hws. 60 rounds per gun per hour.	
	0. to 1 hour.	On points in COURCELETTE.	40 rounds.	
(e) 60-prs.	0. to 1 hour.	On approaches from COURCELETTE.	50 rounds.	

Appendix No. 6

Appendix No.

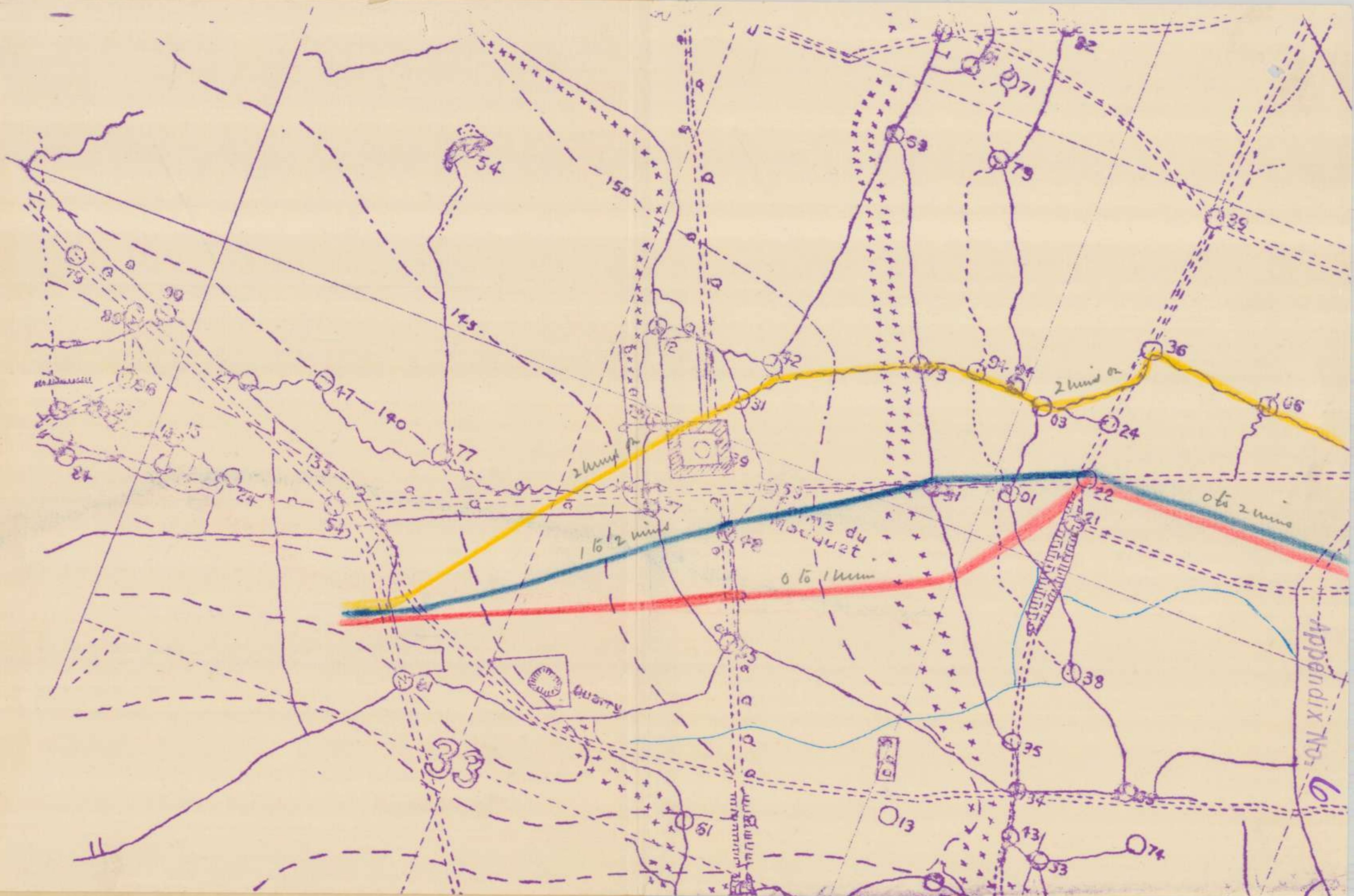
6

94

8.92

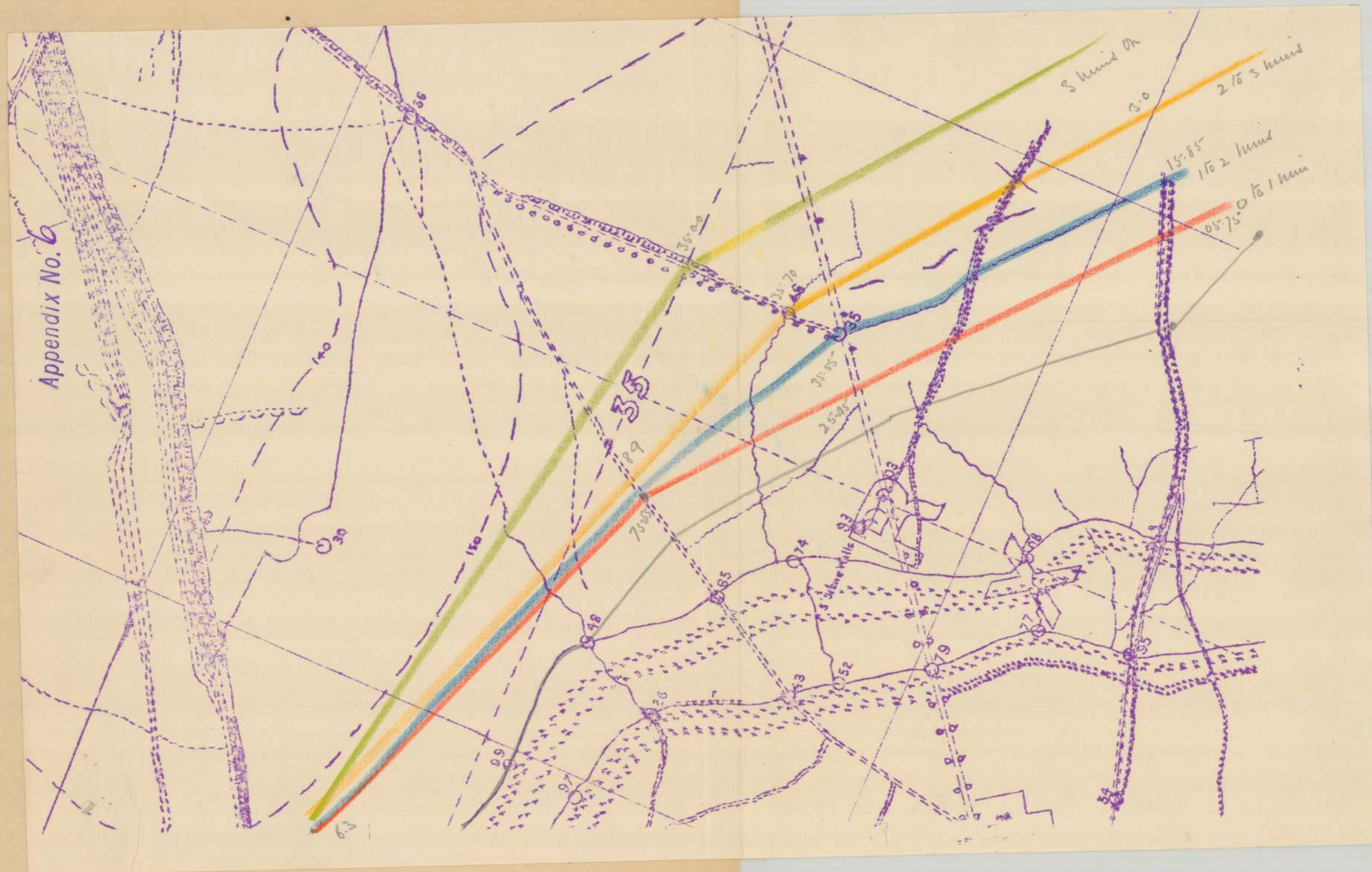
Appendix No. 6.

95



Appendix No. 6.

8.93



SECRET.

FIRST AUSTRALIAN DIVISION

First Australian Divisional Artillery Order No 44.

August 18th 1916

- 8.94
1. The grouping of the artillery and boundaries of groups as laid down in Div: Art., Order No 43 are cancelled as from 4 pm.18.8.16.
 2. The 1st Australian Divisional Artillery (Right Group Artillery) will be responsible for covering the front held by the Right Brigade (2nd Inf.Bde) from X 6 A 1.4½ to R 34 B 6.0
The Boundaries will be as follows.
(a) On Left between 1st Aust Div.Art and Lahore ~~Artillery~~ Div.Art Line from R 34 B 6.0 to R 35 A 2.9 thence along road to COURCELETTE.
(b) On the Right between 1st Aust.Div.Art and 34th Div. Art line from X 6 A 1.4½ to M 31 A 0.0
 3. The following will be the zones covered by the Brigades
2nd F.A.Brigade X 6 A 1.4½ to ~~X 6 A 6.9~~ X 5 B 6.9
3rd F.A.Brigade ~~X 5 B 6.9~~ X 6 A 6.9 to R 35 D 1.3½
21st F.A.Brigade R 35 D 1.3½ to R 35 C 4.8
1st F.A.Brigade R 35 C 4.8 to R 34 B 6.0
 4. The D.C., 21st F.A.Brigade will resume control of the batteries of the 21st F.A.Brigade from 4 pm 18.8.16
 5. (a) Liaison The Liaison Officer at present with the Right Brigade Headquarters will remain there.
(b) Each Brigade will send a Liaison officer to the Battalion it is covering, i.e. 2nd and 3rd F.A.Bdes to Right Battalion, 21st and 1st Bdes to Left Battalion.
 6. Acknowledge.

C.G.N.MILES Major.

Bde Major 1st Aust. Div. Art.

CGM

Copy No 1	1st Aust.Div.
2.	R.A., 1st ANZAC
3	1st Aust.Div.Art.
4	Lahore Div.Art.
5	34th Div.Art.
6	1st F.A.Bde
7	2nd F.A.Bde
8	3rd F.A.Bde
9	21st F.A.Bde
10	1st Aust.Inf.Bde
11	2nd Aust.Inr.Bde
12/3	War Diary

SECRET

FIRST AUSTRALIAN DIVISION

Appendix 1 698

Copy No 1

First Australian Divisional Artillery Order No 45

August 18th 1916.

Reference Map Trench Map 1:5000

1. The 2nd Aust. Inf. Bde will attack the enemy from the left of the 15th Division at X 6 A 2½.6½. to R 35 D 4.6 and will join this point to the present line at about R 35 C 4.8.
2. The 8th and 7th Battalions will attack the enemy line between MUNSTER ALLEY (X 6 A 2½.6½) to and inclusive of BAPAUME Road, the 8th Battalion on the right and the 7th battalion on the left.
3. The action of the 1st Aust. Div. Artillery will be in accordance with the Artillery Tasks attached.
- 3.4. Time. Zero hour will be 9 pm 18.8.16.
- 4.5. ACKNOWLEDGE.

C.G.N. MILES Major.
Bde Major 1st Aust. Div. Artillery

Copy No 1 1st Aust. Div.
2 R.A., 1st ANZAC
3 1st Aust. Div. Art.
4 Lahore Div. Art.
5 34th Div. Art.
6 1st F.A. Brigade
7 2nd F.A. Brigade
8 3rd F.A. Brigade
9 21st F.A. Brigade
10 1st Aust. D.A.C.
11 2nd Aust. Inf. Bde
12/3 War Diary.
14. 15th Division

TABLE OF ARTILLERY TASKS.

18 pr batteries. First Barrage

Unit	Time	Target	Rate of fire	Remarks
2nd F.A.Bde	0.0 to 0.1	X 6 A 05.75 to R 35 D 7.1	Quickest rate possible	
3rd F.A.Bde	"	R 35 D 7.1 to R 35 D 25.45	" " "	
21st F.A.Bde	"	R 35 D 25.45 to R 35 C 75.85	" " "	
1st F.A.Bde	"	R 35 C 75.85 to R 34 B 6.4	One round per gun per min	

Second Barrage

2nd F.A.Bde	0.1 to 0.2	X 6 A 15.85 to R 35 D 7.2	Quickest rate possible	
3rd F.A.Bde	"	R 35 D 7.2 to R 35 D 35.55	" " "	
21st F.A.Bde	"	R 35 D 35.55 to R 35 C 75.85	" " "	
1st F.A.Bde	"	R 35 C 75.85 to R 34 B 6.4	One round per gun per min.	

Third Barrage

2nd F.A.Bde	0.2 to 0.3	R 37 36 C 3.0 to R 35 D 80.35	Quickest rate possible	
3rd F.A.Bde	"	R 35 D 80.35 to R 35 D 35.70	" " "	
21st F.A.Bde	"	R 35 D 35.70 to R 35 C 8.9	" " "	
1st F.A.Bde	"	R 35 C 8.9 to R 34 B 6.4	One round per gun per min.	

Fourth Barrage.

Appendix No. 6

Unit	Time	Target	Rate of fire	Remarks
2nd F.A.Bde	0.3 onwards till ordered to CEASE FIRING	R 36 C 6.0 to R 36 C 0.5) From 0.3 to 0.10, quickest rate possible.	
3rd F.A.Bde		R 36 C 0.5 to R 35 B 35.00) From 0.10 to 0.30 2 rds per gun per min.	
) From 0.30 onwards 1 rd per gun per min.	
21st F.A.Bde	do do	R 35 B 35.00 to R 35 A 60.15	One round per gun per min.	
1st F.A.Bde	do do	R 35 A 60.15 to R 34 B 6.4	One round per gun per min.	

Table of Artillery Tasks-

4.5" Howitzers.

103rd Battery	0.0 to 1 hour	Sunken road R 35 B 35.00 to R 35 B 35.50	One round per gun per min
101st Battery	do	Trench R 35 A 3.6 to R 35 B 75.00	One round per gun per min

898
S E C R E T.

Appendix No. 6
101
1st Anzac H.A.
No. 9/70
18th August, 1916.

OPERATIONS ORDERS No.8
by
Brigadier General L.D.Fraser, C.M.G.
Commanding 1st Anzac Heavy Arty.

Copy No. 4

Reference:

$\frac{1}{20,000}$ Area of
MARTINPUICH.

$\frac{1}{5,000}$ FERME DU MOUQUET.

1. The 1st Australian Division is carrying out two operations on the evening of the 18th.
(1) Operation A. which will have as its objective the line R.28c. 8 $\frac{1}{2}$.3 - 5 $\frac{1}{2}$.3 $\frac{1}{2}$ - 2.2 - 0.1 - R.27d.9.1 - R.33b.5.7 - R.33b.5.5 and the establishment of a defensive flank in R.28d. and R.34b.
(2) Operation B. the objective of which will be the capture of the trench from the junction of MUNSTER ALLEY and the SWITCH LINE at X.6a.5.7 to R.35d.35 and on to R.35d.46 from which point posts will be established joining up with the O.G.2 line at R.35c.48.
2. The trenches from R.28c.95 to R.27d.1.2 to R.33b.2.7 to R.33a.4.7 and the trench X.6a.5.7 to R.35d.4.6 will have been steadily bombarded throughout the day.
3. From -1 hour to zero the 36th, 54th and 108th Siege Batteries will bombard the line
R.28c.9.5 - 3.6 - 0.3 - R.27d.7.3 - 4.2 - 3.1.
The 55th Siege Battery will bombard the line
R.35d.7 $\frac{1}{2}$.2 - 3 $\frac{1}{2}$.5 $\frac{1}{2}$ - 3 $\frac{1}{2}$.7.
4. During this period 40 rounds per howitzer will be fired by 8" and 9.2" Howitzer Batteries and 60 rounds per howitzer by 6" Howitzer Batteries.
5. From 0 to 1 hour the 36th, 54th and 108th Siege Batteries will bombard points
R.27d.05.50
R.27d.6.9
R.27d.7.9
R.28c.3.9
6. During this period fire will be at the rate of 1 round per point per minute.
7. From 0 to 1 hour the 55th Siege Battery will bombard street junctions in COURCELETTE as under-
R.30a.9.6
R.30a.2.5
8. During this period the Battery will fire 40 rounds.
9. From 0 to 1 hour the 60-pounder guns of the 55th H.A.Group will bombard as under-
One Battery. Road from R.29d.7 $\frac{1}{2}$.5 $\frac{1}{2}$ to R.35b.4.6
One Battery. The tracks West of COURCELETTE in R.29c.
One Battery. The cross roads at R.22d.7.0 and cutting in R.29a, this Battery to search East along road to about R.29b.4.8 and West along road to about R.22d.1.3.
One Battery. (a) One Section the road junction at R.27b.0.9 and hollow ground in vicinity.
(b) One Section the road junction at R.22c.2.1 and the hollow ground in the vicinity.
10. During this period 150 rounds will be fired. H.E. and Shrapnel in the proportion of 2 to 1.

8.99
2.

11. At 1 hour all Batteries will lay on night lines as detailed in 1st Anzac H.A.No.9/66 (to 55th H.A.G.) and 9/67 (to 45th H.A.G.) both dated 14th August, 1916.
12. During the bombardment from -1 hour to 0, II Corps is co-operating by bombarding from R.33a.47 to R.33b.27 to R.27d.12 with heavy howitzers, and from 0 to 1 hour they will continue, but will lift off the portion from R.33b.29 to 27 to 07.
13. During the bombardment from -1 hour to 0, III Corps is bombarding the portion of the trench from junction with MUNSTER ALLEY to R.36b.00, and from 0 to 1 hour will lift on to the factory and the BAPAUME Road in R.36a.Central.
14. The hour of assault will be zero hour which is 9 p.m.
15. Flares are being shewn by the Infantry in both new lines at 7.30 a.m. and at 10.30 a.m. on the 19th.
16. Please acknowledge by wire.

L. Fraser

Captain, R.A.

Brigade Major, 1st Anzac Heavy Arty.

Issued at 7.15 p.m.

Copy No. 1 to B.G.R.A. 1st ANZAC. (for information).
2 to 45th H.A.Group.
3 to 55th H.A.Group.
4.to 1st Australian Division. } For information.
5 to 1st Aus. Divisional Arty. }
6 File.
7 Spare.
8 Spare.

8.100
S E C R E T.

LAHORE ARTILLERY.

OPERATION ORDER NO. 89.

18th August, 1916.

1. The 1st Australian Inf.Bde. will advance its line to-night to R.28.c.8 $\frac{1}{2}$.3.-5 $\frac{1}{2}$.3 $\frac{1}{2}$.-2.2.-0.1.-R.27.d.9.1.-R.33.b.5.7.-R.33.b.5.5. and will consolidate this line under cover of the artillery barrage. Strong points will be established at R.28.c.8 $\frac{1}{2}$.3., R.28.c.2.2., R.28.c.0.1., R.27.d.9.1. and R.33.b.5.7.
A strong defensive flank will be constructed from R.34.a.9.9 $\frac{1}{2}$. to about R.28.d.1.3.
2. The 2nd Australian Inf.Bde. will attack the enemy from the left of the 15th Divn. at X.6.a.2 $\frac{1}{2}$.3 $\frac{1}{2}$. to R.35.d.4.3. and will join this point to the present line at/ about R.35.c.4.8.
Strong points will be established
(i) Near the tramway X.3.a.
(ii) R.35.d.4.7.
3. The action of the Lahore Artillery and attached Bdes. will be as detailed in attached task tables and barrage maps.
4. Zero hour will be 9.00 p.m.
5. Flares will be shewn by the infantry in both new lines at 7.50 a.m. and at 10.30 a.m. on the 19th inst.
6. Time will be checked at 7 p.m.
7. ACKNOWLEDGE.

Issued at 6.15 p.m.

- | | | |
|-------|----|------------------|
| 1 | to | R.A. 1st Anzac. |
| 2 | | 1st Aus.Div. |
| 3 | | 1st Aus.Div.Art. |
| 4 | | 25th Div.Art. |
| 5 | | 48th Div.Art. |
| 6 | | Anzac H.A. |
| 7-11 | | 5th Bde.R.F.A. |
| 12-13 | | 11th Bde.R.F.A. |
| 17-20 | | 18th Bde.R.F.A. |
| 21-25 | | 5th Bde.A.F.A. |
| 26-30 | | 6th Bde. A.F.A. |
| 31 | | L.D.A.C. |

G. P. St Clair
Captain, R.A.,
Brigade Major, Lahore Artillery

TASK TABLE FOR OPERATIONS, NIGHT OF 18th AUGUST, 1916.

<u>Time.</u>	<u>Unit.-</u>	<u>Objective.</u>	<u>Remarks.</u>	<u>Rate of fire.</u>
18-prs. 0 to 0.1	5th Bde.R.F.A.	R.28.d.0.3.-R.28.c.2.2.	Red Line.	Quickest rate possible.
" 0.1-0.2.	"	- 1.1/3.	Blue Line.	-Do.-
" 0.2-0.10	"	R.28.d.0.3.-R.28.c.2.2.	Yellow Line.	-Do.-
" 0.10-0.30	"	- 0.1.	Yellow Line.	2 rounds per gun per minute.
" 0.30 to 1 hour.	"	R.28.c.9.5.-6.6.-3.6.	Yellow Line.	1 round per gun per minute.
" 1 hour onwards.	"	- 0.3.	-Do.-	Usual nightly rates.
4.5" Hows. 0 to 1 hour.	"	As required		
		R.28.c.9.5. to R.28.d.40.75. thence along new trench to road at R.28.d.4.5.		0 - 0.5, two rounds a gun a minute. 0.5 - 1 hour, one round a gun a minute.

Appendix No. 6

Appendix No. 6

TASK TABLE FOR ATTACK ON NIGHT 18th AUGUST, 1916.

Nature of gun.	Time.	Unit.	Objective.	Remarks.	Rate of fire.
18-prs.	0 - 0.1.	11th Bde.R.F.A.	R.28.c.1. $\frac{1}{2}$ to R.33.	Red Line.	Quickest rate possible.
"	0.1 - 0.2.	(Lahore).	b.4.7.-R.33.b.3.3.	Blue Line.	-Do.-
"	0.2 - 0.10.	"	R.28.c.0.1. to R.27.	Yellow Line.	-Do.-
"	0.10-0.30.	"	d.9.1. to R.33.b.4.8.		
"	0.30-1 hour.	"	to R.33.b.2 $\frac{1}{2}$.7.		
"	1 hour on.	"	R.28.c.0.3. to R.27.		
			d.7.3. to 5.1. to		
			R.33.b.2.9.		
			-Do.-	-Do.-	3 rounds a gun a minute.
			-Do.-	-Do.-	1 round a gun a minute.
			As required.		Usual night ^{ly} /rate.
4.5" Hows.	0 to 1 hour.	"	R.27 d.4.2. to 2 $\frac{1}{2}$.2.		0 - 0.5, two rounds a gun a minute. 0.5 to 0.10, 1 round a gun a minute. 0.10 to 1 hour, 1 round a gun every two minutes.

P.T.O.

10524
4/10/16

TASK TABLE FOR ATTACK ON NIGHT 18th AUGUST, 1916.

Nature of gun.	Time.	Unit.	Objective.	Remarks.	Rate of fire.
18-prs.	0 - 0.1.	18th Bde.R.F.A.	R.33.b.3.3. to R.33.a.7.3.	Red Line.	Quickest rate possible.
"	0.1 to 0.2.	"	R.33.b.2 $\frac{1}{2}$.7. to R.33.a.7.3.	Blue Line.	-Do.-
"	0.2 to 0.10.	"	R.33.b.2.9. to R.33.a.7.3.	Yellow Line.	-Do.-
"	0.10-0.30.	"	-Do.-	-Do.-	2 rds. a gun a minute.
"	0.30-1 hour.	"	-Do.-	-Do.-	1 rd. a gun a minute.
"	1 hour on-wards.	"	As required.		Usual nightly rates.
4.5" Hows.	0 to 1 hour.	"	R.27.d.1.2. to 2 $\frac{1}{2}$.2.		0 - 0.5, two rounds a gun a minute. 0.5 - 0.10, one rd. a gun a minute. 0.10 - 1 hour, 1 rd. a gun every 2 minutes.

P. T. O.

TASK TABLE FOR ATTACK ON NIGHT 18th AUGUST, 1916.

Gun.	Time.	Unit.	Objective.	Remarks.	Rate of fire.
18-pr.	0 to 0.2.	3th Bde.A.F.A.	R.28.d.0.5.-R.34.b.4.9.	Flank barrage.	Quickest rate possible
"	0.2 to 0.10.	"	R.28.c.9.5.-R.34.b.4.9.	"	-Do.-
"	0.10-1 hour.	"	-Do.-	"	1 round per gun per minute.
"	1 hour on.	"	-Do.-	"	Usual nightly rate.
4.5" Howa.	0 to 1 hour.	"	New trench from R.28.d.4.5. to 5.1.		0 to 0.5, 3 rds. a gun a min- ute. 0.5 to 1 hour, one rd. a gun a minute.
18-prs.	0 to 0.10.	5th Bde.A.F.A.	R.34.b.4.9.-R.34.b.6.3.	Flank barrage.	Quickest rate possible.
"	0.10-1 hour.	"	-Do.-	"	1 rd. per gun per minute.
"	1 hour on.	"	-Do.-	"	Usual nightly rate.
4.5" Howa.	0 to 1 hour.	"	New trench from R.28.d.5.1. to R.34.b.3.8.		0 to 0.5, 3 rds. a gun a min- ute. 0.5 to 1 hour, 1 rd. a gun a minute.

Appendix No. 6

107 101 8

SECRET.

1st. AUST. INF. BRIGADE.

5/16/1825 Appendix No. 108
18816



BRIGADE HEADQUARTERS,

18/8/16.

PROVISIONAL ORDERS FOR OPERATION TO
TAKE PLACE THIS EVENING 18th. Aug. 1916.

Reference Map: FERME DE MOUQUET 1:5000

1. The position of the 1st. Aust. Inf. Brigade is as follows:-
1st. Battalion. 34 D.6.9. along firing line to 28.C.9.0 facing North East and forming a defensive flank with Machine Gun fire bearing on enemy trenches about R.28.D.3.7. to 5.6. to 5.5 and about 5.1. Two companies 1st Battalion in reserve at area X.4.A. and R.34.C.
3rd. Battalion. R.28.D.1.2 to C.7.1. to road at 34.A.2.9
4th. Battalion. Thence to R.33.B.3.5. to 5.5. to the South of quarry to R.33.A.8.1. joining up with 145th. Inf. Brigade on its left.
2. Enemy trenches which are recently made extend from R.34.B.3.7. to R.28.C.9.3. where there is a strong point thence Westwards in the direction of 28.C.2.1. and 2.2.
A new trench runs from 28.C.0.1. Southwards to the trench from 34.A.3.5. to 27.D.9.1. The High trench 28.C.9.5 to 6.6. to 3.6. is the enemy's main line of defence. FERME DE MOUQUET and trenches South West and North East of it are occupied by the enemy.
3. An artillery barrage is to be placed on the enemy's trenches at Zero time before dark.
3rd. Battalion - As the barrage lifts strong patrols with bombers will push up and occupy the following points :- R.28.C.9.2, R.28.C.9.3., (strong point), R.28.D.0.2., R.28.C.2.1., and 2.2. As soon as the patrols have occupied these points they will be followed by parties to clear intermediate trenches to occupy them and to consolidate.
- 4th. Battalion.- Will seize and consolidate the following points :- R.28.C.0.1., R.27.D.9.1., trench from 28.C.0.1., to 34.A.0.9. to present line of trenches to QUARRY.
4. 2nd. Battalion will continue the service of supply, one company in support of 4th. Battalion R.34.C. One company near CHALK PIT, two companies and Headquarters WIRE TRENCH.
5. Brigade Headquarters will open at Advanced Report Centre C.E.R. at 1800.

Major,

Brigade Major, 1st. Aust. Inf. Brigade.

1st. AUST. INF. BRIGADE ORDER NO. 29

BRIGADE HEADQUARTERS,

18/8/16.

Reference Map: FERME DE MCUQUET 1:5000.

1. INFORMATION AS REGARDS OUR OWN FORCES. On the 18th. August the 4th. Army is attacking the German Intermediate Line South of MARTINPUICH at 1445. The 15th. Division on our right is co-operating with this attack by discharging smoke. The 48th. Division on our left is attacking the enemy positions in Square X.2 at 1600.
2. ACTION BY THE BRIGADE. 3rd. Battalion will seize and occupy dug-outs at R.28.C.9.1, the strong point at R.28.C.9.3. and the trench to the West of the strong point and the points R.28.C.2.1 and R.28.C.2.2.
- 4th. Battalion will seize and occupy the points R.28.C.0.1 and the new trench junction at R.34.A.0.8 $\frac{1}{2}$. and R.33.B.5.5. and will continue to hold line from there to QUARRY at R.33.A.8.1.
3. STRONG POINTS. will be established at
 (I) R.28.C.8.1.
 (II) At sunken road in R.28.C.
 (III) R.33.B.5.5.
4. ARTILLERY. The trench at R.28.C.9.5. to 3.6. to 0.3. to R.27.D.7.3. to 4.2. to 1.2. will be kept under steady fire during the day with observation if possible. There will be an intense bombardment for 1 hour before Zero time.
5. ENGINEERS. 1 section of Engineers has been detailed for each strong point and each section will be assisted by a carrying and working party of 1 Officer and 40 other ranks from the 2nd. Battalion. These parties will report at CHALK PIT at 1800. Each man to carry a pick and a shovel, a rifle and 100 S.A.A.
6. AIRCRAFT. Contact aeroplanes will fly over the line at 0730 and 1000 on 19th. instant when flares will be lit.
7. TIME. Zero hour will be 2100. Watches will be synchronised with Brigade Advanced Report Centre C.E.R. at 1600 and 1800.
8. DUMPS Forward dumps for Engineer and other stores will be established as far forward as possible.
9. BOMBING PARTIES. will be detailed to push along the enemy trenches leading forward from the captured line.
10. BRIGADE HEADQUARTERS. will open at Advanced Report Centre (station call C.E.R.) at ~~1800~~ 1900.
11. Patrols and posts with Lewis Guns will be pushed out in advance of the line when established.
- When captured ground is entered by enemy trenches, strong blocks will be constructed. For this work special parties will be told off beforehand and provided with the necessary stores. Bombers will be specially told off for the protection of all such blocks.
- Machine Gun Company will act in accordance with instructions already issued.

A C K N O W L E D G E.

J. L. Milligan Major,
 Brigade Major, 1st. Aust. Inf. Brigade.

Distribution of Copies.

<u>Copy No.</u>	<u>To whom.</u>	<u>Time</u>	<u>Method.</u>
No. 1	File	-	-
2.	War Diary	-	-
3.	1st. Bn	1700	Orderly
4.	2nd. Bn	"	"
5.	3rd. Bn	"	"
6.	4th. Bn	"	"
7.	1st. Aust. M.G. Coy	"	"
8.	1st. A.L.T.M. Battery	"	"
9.	1st. Aust. Division.	"	D.R.
10.	2nd. Aust. Inf. Bde.	"	Orderly
11.	3rd. Aust. Inf. Bde.	"	D.R.
12.	145th. Inf. Brigade	"	"
13.	1st. Aust. Divl. Artillery	"	"
14.	1st. Aust. F. Arty. Bde.	"	Orderly
15.	Lahore divl. Artillery	"	D.R.
16.	1st. Aust. Field Coy Engrs.	"	Orderly
17.	Staff Captain	"	"
18.	Bde. Signal Officer	"	"
19-24	Spare	-	-

8108
2nd AUST. INF. BDE. ORDER. NO 39.Headquarters.
2nd Aust. Inf. Bde.
18th August 1916.

1. 2nd Aust. Inf. Bde, will attack the enemy from the left of the 15th Division X.6.A.2 $\frac{1}{2}$ to R.35.D.4.6. and will join this point to the present line at about R.35.C.4.8.

Strong points will be established -

- (1) Near the tramway X.6.A.
- (11) R.35.D.47.

2. Artillery. The operations will be immediately preceded by a bombardment of heavy guns.

Programme of bombardment and time table of Artillery barrages will be issued separately. Barrage will begin 50 yards forward of our newly constructed starting line running from X.6.A.24 to R.35.C.48.

No troops will be in advance of this line at the time of attack. Assaulting troops will follow barrages closely.

3. Engineers. Engineers will be detailed by C.R.E. for work on the strong points. They will be sent forward under the orders of the Inf. Bde. Commanders.

4. Dispositions. (a) The 8th and 7th Bns, will attack the enemy line between MUNSTER ALLEY (X.6.A.2 $\frac{1}{2}$ to R.35.D.4.6.) to and inclusive of BAPAUME ROAD the 8th Bn on the right and the 7th Bn on the left.

Dividing line between Bns, will be Communication Trench "C" from O.G.2. to new forward line. This Trench is the one nearest the Tramway on Northern side of Tramway it will be solely at the disposal of 7th Bn, for feeding up into position prior to the attack.

7th Bn, will be responsible for seizing enemy strong point at R.35.D.46. and establishing strong point as per para 1 (11).

8th Bn, will be responsible for strong point near Tramway X.6.A. Battalions will form for attack each with 2 Coys in line in the front on half Coy frontage with 1 Coy in Support and 1 Coy in Reserve.

(b) 8th Bn, will move forward and complete the line from the 7th Bn, to point about R.35.C.48. connecting the right of their present newly made forward line with the left of the 7th Bn at R.35.D.46.

(c) Medium Trench Mortars. 2 Guns will co-operate from left flank of 44th Inf. Bde., 15th Division operating on enemy strong point on left of enemy line to be attacked.

(d) L.T. Mortars will also operate from same point on same objective as medium T. Mortars.

(e) 2nd M.G. Coy, (6 Guns) will co-operate from North of CHALK PIT with indirect fire on to all roads in rear of enemy position. M.Guns of 44th Bde, will co-operate from same vicinity as Trench Mortars firing along the rear of enemy trench and on to BAPAUME ROAD,

5. Aircraft. Contact aeroplane will fly over the line at 7.30 a.m. and 10 a.m. on 19th inst when flares will be lit.

6. Time. Zero hour will be 9 p.m. Watches will be synchronised with the Bde. Sig. Coy, at 12 noon and 5 p.m.

7. Consolidation. Patrols and posts with Lewis Guns will be pushed out in advance of the line when established.

When captured ground is entered by enemy trenches strong blocks will be constructed. For this work special parties will be told off beforehand and provided with the necessary stores.

Bombers will be specially told off for the protection of all such blocks. Bombing parties will be detailed to push along the enemy trenches leading forward from the captured line.

8. Two days rations and full waterbottles to be carried by all ranks.

9. Acknowledge.

J. H. Birch
Major.
Bde Major. 2nd Aust Inf. Bde.

P.T.O.

Copy No.	To Whom.	Time.	Method.
1	File.	1:30 p.m.	
2	War Diary.	"	"
3	1st Aust Divn.	"	"
4	1st Aust Inf Bde.	"	"
5	44th Inf Bde.	"	"
6	1st Aust Divn. Artillery	"	"
7	34th Heavy Arty Group	"	"
8	160th R.F.A. Bde.	"	"
9	C.R.E. 1st Aust Divn.	"	"
10	5th Battalion.	"	"
11	6th Battalion.	"	"
12	7th Battalion.	"	"
13	8th Battalion.	"	"
14	No 2 M.G. Coy.	"	"
15	2A L.T.M. Battery.	"	"
16	3rd Aust Inf Bde.	"	"

3. Engineers. Engineers will be detailed by G.R.E. for work on the strong points. They will be sent forward under the orders of the Inf. Bde. Commanders.

4. Dispositions. (a) The 8th and 7th Bns. will attack the enemy line between MURTER ALLEY (X.5.4.2.8) to and inclusive of RAPAHU ROAD. The 8th Bn on the right and the 7th Bn on the left. Dividing line between Bns. will be Communication Trench "C" from O.P. 8. to new forward line. This Trench is the one nearest the turn-way on Northern side of Trway. It will be solely at the disposal of 7th Bn. for feeding up into position prior to the attack.

7th Bn. will be responsible for seizing enemy strong point at R. 55. D. 45. and establishing strong point as per para 1 (ii). 8th Bn. will be responsible for strong point near Trway X. 5. 4. A. Battalions will form for attack each with 2 Coy in line in the front on half Coy frontage with 1 Coy in support and 1 Coy in Reserve. (b) 8th Bn. will move forward and complete the line to from the 7th Bn. to point about R. 55. 5. 45. connecting the right of their present newly made forward line with the left of the 7th Bn. at R. 55. D. 45. (c) Medium Trench Mortars 8 Guns will co-operate from left flank of 8th Inf. Bde. 15th Division operating on enemy strong point on left of enemy line to be attacked.

(d) L.T. Mortars will also operate from same point on same objective as medium T. Mortars. (e) 2nd M.G. Coy. (6 Guns) will co-operate from North of GRAVE PIT with indirect fire on to all roads in rear of enemy position. M.G. 8th Bde. will co-operate from same vicinity as Trench Mortars firing along the rear of enemy trench and on to RAPAHU ROAD.

5. Aircraft. Contact aeroplanes will fly over the line at 7.30 a.m. and 10 a.m. on 15th last when flares will be lit.

6. Time. Zero hour will be 9 p.m. Wetness will be synchronized with the 8th Bde. Coy. at 12 noon and 3 p.m.

7. Consolidation. Patrols and posts with Lewis Guns will be pushed out in advance of the line when established. When captured ground is entered by enemy trenches strong blocks will be constructed. For this work special parties will be held off beforehand and provided with the necessary stores. Bombers will be specially held off for the protection of all such blocks. Bombing parties will be detailed to push along the enemy trenches leading forward from the captured line.

8. Two days rations and full waterbottles to be carried by all tanks.

9. Acknowledgement.

Major.
Bde Major. 1st Aust Inf. Bde.

8/110

Operations
1st Aus Div

from 17.8.16 to 19.8.16 both inclusive

Reports and messages

8/11/2

SECRET

Headquarters.
19th. August 1916.



Headquarters,

1st. A. & N. Z. Army Corps.

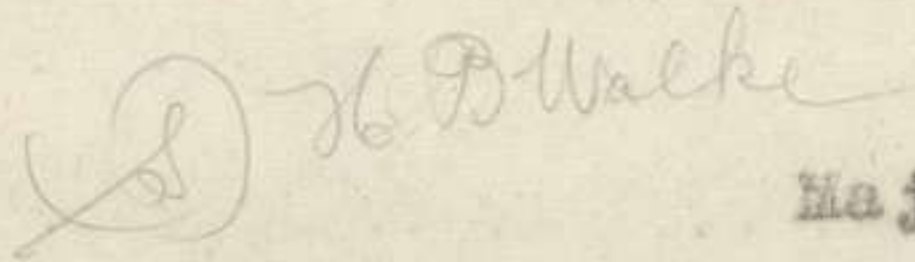
Summary of operations of 1st. Australian Division for period ending 6 p.m. Friday 18th. August 1916.

1. The Command of the divisional front passed from G.O.C., 4th. Australian Division to 1st. Australian Division at 5 p.m. 16th. August. At this time the 2nd. Australian Infantry Brigade was on the right and the 1st. Brigade on the left, each with 2 Battalions in line. The whole of the 1st. Division Artillery and the Lahore Divisional Artillery was also in line.
2. The exact position of the front line North of POZIERES at the time of taking over was in considerable doubt but is now ^{established} ~~believed~~ to have been as follows:- From the junction of TORR trench and O.G.2 at X.5.B.2½.4. along O.G.2 to 34.B.1.2.- 28.C.8½.0.-7.1.- 4½.0.- R.34.A.2½.9½.- 1½.6½.- 33.B.6½.3½.- 4½.1½.- 3.2.- 2.2.- with a gap to 33.A.8.1.
3. On the night of the 16th./17th. August the enemy made several counter attacks on our left Brigade (1st.Aust.Inf.Bde) in one of which 6 lines of infantry came forward. All of these attacks were beaten off with heavy loss to the enemy. The attacks were made on a narrow front and were caught by enfilade fire from the right Battalion of the Brigade and by machine gun rifle and bomb fire from the front.
4. Much digging was done by the right Brigade on night 16th/17th. and continued on 17th/18th. in sapping forward from O.G.2 between MUNSTER ALLEY and BAPAUME Road and in connecting 'T' heads therefrom into a continuous line to form a starting point for the attack of 18th/19th.

Work of a similar nature in the left Brigade was retarded on 16th/17th. by the counter attacks mentioned above but was continued vigorously up till time of report.

8.113

5. Throughout the period there has been constant bomb fighting in the left Brigade in which our object has been to push forward to a suitable line from which to deliver our next attack.
6. On 17th. an enemy aeroplane was brought down in flames behind our lines in POZIERES by one of our own planes. Both occupants were killed and we recovered the M.G. from the machine.
7. There has been heavy enemy shelling of the whole front line and constant barrages have been placed across our communications.
8. Two prisoners have been taken and much material of all kinds has been salvaged from the battlefield.
9. Our casualties for the period were approximately 23 officers and 630 other ranks.



Major-General.

Commanding 1st. Australian Division.

Appendix No. 6.

8-114

“A” Form.

Army Form C. 2121

MESSAGES AND SIGNALS.

No. of Message.....

Prefix	Code	m.	Words	Charge	This message is sent by	Date
Office of Origin and Service Instructions.			Sent			
			At	m.	Service.	From
			To			
			By		(Signature of “Franking Officer.”)	By

TO { G for Infantry

Sender's Number.	Day of Month.	In reply to Number.	AAA
------------------	---------------	---------------------	-----

Total ESTIMATED Casualties

(i.e. Killed, waa., missing) to 5pm 16/5

8 pm 18/8/16

	may	Capt	Lieuts	OR
1st Bde	1	2	10	291
2nd Bde	-	2	6	297
3rd Bde	not in action			
Pioneers				21
How Art		1	-	3
How Engrs			1	17
Lahore Art				1
Total	1	5	17	630

From		CH Form 14a
Place		
Time		

The above may be forwarded as now corrected.

(Z)

Censor.

Signature of Addressor or person authorised to telegraph in his name.

* This line should be erased if not required.

225,000 W 14042—M 44. H. W. & V., Ltd. 12/15

Headquarters.
19th. August 1916.

Headquarters,

1st. A. & N. Z. Army Corps.

I have been up to both 1st. and 2nd. Infantry Brigade Headquarters this morning and have elucidated the situation which is as follows:-

"A" Operation. 1st. Brigade holds the line from R.34.B.6.0. to R.28.C.8 $\frac{1}{2}$.0. They include the old gun pits at R.34.B.2.5. thence along the former line to Sunken Road at R.34.A.9 $\frac{1}{2}$.2 and thence to R.33.B.5.5. and thence to R.33.A.8.1. There is a post at 28.C.8 $\frac{1}{2}$.3. or 8.2. the exact location is uncertain.

Failure to attain the whole objective was chiefly due to intensive artillery fire of which a portion is alleged to have been from our own heavies and 18 pdrs. When this was reported last night it appeared improbable but it is expected that proof will be forthcoming in the shape of shells which have been sent for.

The enemy's front was very strongly held by fresh and very superior troops. There are strong points at R.28.C.0.1 and R.27.D.9.1. which appear to have been untouched by our artillery fire. These are strongly garrisoned with infantry and machine guns and are wired. These two points broke up the attack of the 4th. Battalion.

Orders have been issued to the 1st. Brigade to reorganise, consolidate and to repair the front line trench which was practically demolished and to be prepared to reassume the offensive this afternoon. Casualties are however reported to be severe and it is doubtful if this brigade will be fit to assume any but a very minor offensive.

As regards Operation "B" by 2nd. Infantry Brigade, the line now runs as follows:- Along our prepared 'Starting off' trench from MUNSTER ALLEY to R.35.D.2 $\frac{1}{2}$.1 $\frac{1}{2}$. thence by a newly dug trench to German trench at 3 $\frac{1}{2}$.4. to 3.5. to 4.6. and back to

our original line at R.35.C.4.8.

The failure to carry the whole objective may be attributed to incomplete destruction of enemy's M.G. positions south-east of Bapaume Road and north-east of the objective, and to intense hostile artillery fire.

I have given orders (i) to establish a strong post R.35.D.2.6., 3.5., 4.6..

(ii) to clear the hostile trench by bombing attack from 3.5. towards 6.2½. where a block is to be established. Further operations to complete the seizure of this trench are being considered.

Battalions are not yet sufficiently reorganised for any operation.

Touch was lost with one company of the 7th. Battalion and this has not yet been traced. It is believed that it is broken up and mingled with other companies.

In addition to heavy rifle and M.G. fire in this sector hostile artillery fire was extremely heavy. MUNSTER ALLEY was blown in and the troops of the 44th. Brigade on our right in this part suffered heavy casualties.

Further operation tonight or 20th. inst on an extensive scale in continuation of either operation "A" or "B" would render advisable the relief of the brigade engaged last night. As I have only one brigade in reserve, I propose to use it in that sector where the more extensive operation is to be carried out, under existing arrangements this is "A" sector. Unless the G.O.C., Army Corps directs to the contrary I propose to relieve the 1st. Brigade by 3rd. Brigade tonight.

(sd) H B Walker

Major-General.

Commanding 1st. Australian Division.

Report on work and operations in 1st. Battalion sector since taking over till 0800.

1. Communicating trench very much deepened R.34.D.4.7. to R.34.D.5 $\frac{1}{2}$.9. and R.34.B.2.2. to R.34.B.3.3. to R.34.A.9 $\frac{1}{2}$.7. This latter has been deepened some five feet as it ran down the slope of the hill facing the ridge held by the Huns.
2. Fire trenches improved all along.
3. x (a) Saps continued out from R.34.D.8.7. to 9.9 $\frac{1}{2}$
 (b) do do do do R.34.D.7.7. to 7.9 $\frac{1}{2}$
 (c) do do do do R.34.D.6.0. to R.34.B.6.1.
 (d) do do approx. do R.34.B.4 $\frac{1}{2}$. $\frac{1}{2}$ to R.34.B.5.1 $\frac{1}{2}$.
 (e) do do approx. do R.34.B.2 $\frac{1}{2}$.1. to R.34.B.2.4. in a curve.
 (f) do do do do R.34.A.9 $\frac{1}{2}$.7. to R.34.B.2.8 in a curve. This goes past present 3rd.Bn.H.Q. and then is very shallow.
4. A new trench from 2 to 3 feet deep from R.34.B.2.8. was made from R.34.B.2.8. to R.28.D.2. $\frac{1}{2}$.
- x. All the Saps had been worked on before but were considerably improved and lengthened by, in some cases 70 yards - both (a) and (b) were run into O.B.2 behind German wire. This O.B.2 is almost knocked out of existence. Col. WEIR and I walked across the sap heads in it this morning.
5. The line was held by 6 patrols 3 of which had Lewis M.Gs with them, in front of all working parties.
6. All men were employed most of the night.
7. 0300 - 6 18 pdr. shells fell approx. R.34.D.5.8. 5 of them were duds. These were fired close together and no other shots as far as I know dropped short. Artillery officer sent back word direct to artillery Brigade.
8. Most of casualties occurred in Fatigue parties - D.Coy - bringing rations, and in 2 shells which got some 5.B's and M.Gs.
9. A.B.C.Coys occupy the line with 1 platoon in support in a rear trench - the length of line- the amount of work and the weak Coys required this, D. in reserve at X.4.A. and B.

(Sgd) JAMES HEANE Lt.Col.

19/8/16

Commanding 1st. Battalion A.I.F.



1st and 2nd Div

Forwarded plan

J. Heane
for G.O.C. 1st and 2nd Div

19-8-16

gll
Tg

19-8-16

8/11/17

Dear General,

I have been up myself to see Jess & Coulter & Bernaistre.

With reference to the correct position of the right of 6th Bn & the left of 7th.

I spoke to Capt. Oates who was at the position last night and this morning. He is a reliable man. He assured me that the left of the 7th was on the Bapume road South of the junction of this road and the Smitten road, at about R 35 D 3½ 5. He says he could distinctly see the enemy trench where it comes on to the Bapume Road about 50 or 75 yards further up the road away from our lines. You remember that the 6th contended that their right was at R 35 D 46. Oates said he was positive that this was not correct as he was close in touch with the right of the 7th and that there were none of the 7th further North on the Bapume Road, for he could see plainly. I am now in receipt of a report from the 6th that it has been definitely fixed that their right is at R 35 D 25. This information was obtained by Capt Daly accompanied by scouts who went specially to the point for the purpose of deciding the position of the point. This coincides with Oates

8/11/18 Statement, so there now appears to be no doubt that the point is identified.

Our casualties, ^{since we came in to the line} so far as can be obtained and as careful a record as was possible was obtained this morning amount to 31 officers & ~~775~~⁸¹⁵ Other ranks.

The 6th has been in the line since the night of the 15th and are very tired.

The 5th went in on the 15th & came out yesterday morning - ~~when the~~ but 150 of them were engaged digging & carrying last night & one Coy went in to support the 7th. I propose to pull the 6th out tomorrow morning, but my line is about 1500 yards long - a long one for two Bns 7th & 8th - you will remember our line was extended by 500 yards since we came in.

Yours sincerely,

J. R. Forsyth

wounded in front

8.111

1st AUST. PIONEER BATTALION.

Appendix No. 6

SUMMARY OF OPERATIONS.

122

For week ending 6 p.m., 18/8/16.

LOCATION OF BATTALION HEADQUARTERS. AVOCA VALLEY.

FIGHTING STRENGTH OF BATTALION (noon ¹⁸8/8/16) 28 Officers 766 Other ranks

AUGUST 15th. Battalion relieved 4th PIONEER BATTALION. Parties carried on road construction in SAUSAGE VALLEY, LA BOISELLE, SUNKEN ROAD, and AVOCA VALLEY. Further parties engaged clearing parts of CENTREWAY and TOMS CUT.

AUGUST 16th. Road construction continued in SUNKEN VALLEY, SAUSAGE VALLEY, and LA BOISELLE. Party commenced construction of Dugouts for D.H.Q. at TARA HILL, CENTREWAY, and FIRST AID TRENCH cleared. At night large party cleared about 380x KAY TRENCH to depth of 6'. LEWIS GUN DETACHMENT placed at disposal of G.O.C. 2nd Inf. Brigade.

AUGUST 17th. Parties engaged clearing and improving following trenches:- FIRST AID, EMU, TRAMWAY, CENTREWAY, and FIRST AVENUE. At night constructed and extended RATION TRENCH from R.33.d.7.8. to R.33.d.2.5. and forming new communication trench from latter position to road R.33.b.4.2. Trench average 5'6" including parapet. 4th AVENUE extended 160x in direction of 1st AVENUE. 1st AVENUE widened and deepened from 4th AVENUE to 6th AVENUE, and 4th AVENUE to WIRE TRENCH. Deepening of CENTREWAY through POZIERES danger zone.

AUGUST 18th. Improving and constructing 1st AVENUE into 4th AVENUE and improving KAYS TRENCH so that it may be used as a main Communication trench. CENTREWAY being improved and constructed into TRAMWAY TRENCH. WALKERS AVENUE and right portion of O.G.1 being improved. LEWIS GUNS being used by 2nd Infantry Brigade, 4 guns left sector, 4 guns right sector.

CASUALTIES FOR PERIOD.

Other ranks.

Killed.	7
Wounded.	29.

Included in above figures 2 Killed and 12 wounded from LEWIS GUN DETACHMENT.



Lieut-Col.
Frank A. Ayrx.

G.O.C. 1st Aust. Pioneer Battalion.

8-125

SECRET

4th Army Operations

16/8/16 to 19/8/16 both inclusive

Orders only

Copy No. 6

15th. Division Operation Order No. 75.

Reference :
 Sheets 57^D SE & 57^D SW.
 -----1/20,000.-----

Headquarters,
 15th. Division.
 15th. August 1916.

1. On the 18th. instant the Right Division is attacking among other objectives the INTERMEDIATE LINE from the road in S.2.d. to S.2.c.7.4.

Certain steps in preparation for the above have been ordered in 15th. Division No.100(1)/4 G.a. dated 13th. August 1916.

2. The 15th. Division will co-operate on the 18th. instant by the discharge of smoke on the front S.2.c.3.7. to MUNSTER ALLEY for twenty minutes.

The discharge will be at the rate of :-
 one P bomb for 25 yds per two minutes.
 four candles for 25 yds per one minute.

4" Stokes mortars will also assist.

One Section of the 4th. company 5th. Battalion Special Brigade R.E. will be placed at the disposal of each Brigade in line to assist in arranging the smoke barrage.

3. In preparation for the above operation :-

(a). There will be a deliberate bombardment of the objective commencing at 5 p.m. August 16th. and continuing till Zero on the 18th.

(b). Special bombardments of the objective and of the SWITCH LINE will take place :-

August 16th.	...	5 p.m. to 8 p.m.
August 17th.)	...	10 a.m to 2 p.m.
August 18th.)		

Details will be issued later.

During these special bombardments all trenches and saps within 200 yds of the target will be cleared and re-occupied immediately after the bombardment is over, viz:- at 8 p.m. and 2 p.m. respectively.

The front to be covered by machine guns.

(c). "Chinese" (see below) attacks will be made .. during above periods; Zero times as follows :-

August 16th.	...	7.30 p.m.
August 17th.)	...	1.30 p.m.
August 18th.)		

There will be five minutes intense fire from minus 5 minutes to Zero. At Zero the fire will lift. It will jump back suddenly at Zero plus 90 seconds.

Dummies, bayonets etc. etc. will be exposed to lead the enemy to expect an attack when the barrage lifts and so induce him to line his parapets before the barrage drops back.

The line to be lightly held during these special bombardments to avoid loss from the enemy counter-barrage which may be expected during the last portion of each period.

8-127.

4. Signal time will be distributed by an Officer of the Corps Staff at Brigade Headquarters, SHELTER WOOD, at 2 p.m. on 16th. and 7 a.m. on 17th. and 18th. Representatives of Artillery and Infantry Brigades to be present.

J. H. Knox

Lieut. Colonel.

General Staff, 15th. Division.



Issued at 9 p.m.
to :-

III Corps.	...	Copies Nos. 1&2.	
III Corps Artillery.	Copy	No.	3.
III Corps H. Arty.	..		4.
1st. Division.	5.
4th. Australian Div.	..		6.
44th. Inf. Bde.	7.
45th. Inf. Bde.	8.
46th. Inf. Bde.	9.
9th. Gordons.	10.
15th. Signals.	11.
15th. Div. Arty.	12.
34th. Div. Arty.	13.
47th. Div. Arty.	14.
C.R.E.	15.
A.D.M.S.	16.
A.P.M.	17.
"A" & "Q".	18.
War Diary.	19.
File.	20.

*Acknowledged GA 710
HPL
16/8*

Copy No. 6

8-128.

--- Addendum No.1 to 15th. Division Operation Order No.75. ---

Headquarters,
15th. Division.
17th. August 1916.

Reference paragraph 2 of 15th. Division Operation Order No.75 :-

The 15th. Division will co-operate as below in the operations which are being undertaken on the 18th. instant by the Division on our right.

Zero hour will be 2.45 p.m.

(a). There is to be no action which might cause the enemy to be specially alert between the conclusion of the "Chinese" attack and Zero. Normal activity will continue.

(b). At Zero hour the Left Group Divisional Artillery will conform with the bombardment being carried out by the Division on our right by bombarding portions of the SWITCH LINE still in enemy hands.

Timings.:-

Zero. ... 30 yds in front of objective.

0.30 minutes. ... Lift on to SWITCH LINE and remain there.

(c). Smoke discharge will commence at Zero along the whole front of the Division. Rate of discharge as detailed in paragraph 2 of 15th. Division Operation Order No. 75 of 15th. instant. It will continue till zero + 20 minutes.

During the discharge of smoke the line is to be thinly held. Lewis and machine guns to be active.

An Officer of the 4th. Company 5th. Battalion Special Brigade Royal Engineers will be present at the Headquarters of each Infantry Brigade from - 2 hours onwards to advise Brigades as to whether the wind is suitable or otherwise for the discharge of smoke.

(d). The Brigadier General Commanding 46th. Infantry Brigade will arrange to fire the pipes driven from LANCS SAP at an hour which he will arrange with the Left Brigade Right Division. The 46th. Infantry Brigade is to work in close co-operation with the Left Brigade of the Right Division and is to assist with machine gun and trench mortar fire.

(e)

8-129

Copy No.

(e). The correct signal time will be distributed by an Officer of the Corps Staff to representatives of Artillery and Infantry Brigades at Brigade Headquarters SHELTER WOOD at 12 noon on the 18th. instant.

(f). Zero time for this operation is not to be telephoned or wired.

Lieut. Colonel.

General Staff, 15th. Division.

Issued at 2 p.m.
to :-


	Copies Nos. 1 & 2.
III Corps.	3
III Corps Arty.	4
III Corps H.A.	5
1st. Division.	6
1st. Australian Div.	7
44th. Inf. Bde.	8
45th. Inf. Bde.	9
46th. Inf. Bde.	10.
9th. Gordons.	11
15th. Signals.	12
15th. Div. Arty.	13
34th. Div. Arty.	14
47th. Div. Arty.	15
C.R.E.	16
A.D.M.S.	17
A.P.M.	18
"A" and "Q"	19
War Diary.	20
File.	21
4th. Co. 5th. Bn. Spec. Bde. R.E.	

8.131

Appendix No. 6

"C" Form (Duplicate).
MESSAGES AND SIGNALS

Army Form C. 2123.
(In books of 50 in duplicate.)

Service Instructions.		Charges to Pay.		Office Stamp.	
1044444		£ s			
Handed in at		Office		Received	
Q B		627		627	
TO		18th Aus Div			
Sender's Number	Day of Month	In reply to Number		A A A	
127	17				
Ref	addendum no	1		to	
15th	Div	00		75	
(B)	For	"Minutes"		read "Seconds"	
aaa	added all	concerned			
FROM		Q B			
PLACE & TIME		6.10 pm			

8-130.
 --- Addendum No.2 to 15th. Division Operation Order No.75. ---

Headquarters,
 15th. Division.
17th. August 1916.

 Reference paragraph 3 of 15th. Division Operation Order No.75.

1. The special bombardment of the INTERMEDIATE and SWITCH LINES on the 18th. will take place from 8.a.m. to 10 a.m., instead of 10 a.m. to 2 p.m.

2. Zero for the 5 minutes intense bombardment will be 9.30 a.m. not 1.30 p.m.

There will be 5 minutes intense fire from minus 5 minutes to Zero. At Zero the fire will lift; it will jump back suddenly at Zero + 90 seconds.

3. No attempt is to be made by the Infantry to induce the enemy to expect an attack at 9.30 a.m. Everything is to be normal until 2.45 p.m. (vide Addendum No.1.)

4. No heavy Artillery will fire on the German SWITCH LINE during the special bombardment but 18 prs and 4.5" howitzers will bombard that line east of S.l.d.5.8. All trenches and saps within 200 yards of the INTERMEDIATE LINE will be vacated between 8 a.m. and 10 a.m.

The front to be covered by machine gun and Lewis gun fire.

5. Signal time will not now be distributed at 7 a.m. as was ordered in paragraph 4 of Operation Order No.75.

J. H. Knox

Lieut. Colonel.

General Staff, 15th. Division.

Issued at 4.40 p.m.
 to :-

III Corps.	Copies Nos.1 & 2.	15th. Div. Arty.	Copy No.12.
III Corps Arty..	Copy No.	3. 34th. Div. Arty. 13.
III Corps H.A....	..	4. 47th. Div. Arty. 14.
1st. Division....	..	5. C.R.E. 15.
1st. Aust.Div....	..	6. A.D.M.S. 16.
44th. Inf. Bde..	..	7. A.P.M. 17.
45th. Inf. Bde..	..	8. "A" & "Q". 18.
46th. Inf. Bde..	..	9. War Diary. 19.
9th. Gordons.	10. File. 20.
15th. Signals...	..	11. 4th.Co.5th.Bn.Spec	
		Bde. R.E.....	.. 21.

1944	1945	1946	1947	1948	1949	1950	1951	1952	1953	1954	1955	1956	1957	1958	1959	1960	1961	1962	1963	1964	1965	1966	1967	1968	1969	1970	1971	1972	1973	1974	1975	1976	1977	1978	1979	1980	1981	1982	1983	1984	1985	1986	1987	1988	1989	1990	1991	1992	1993	1994	1995	1996	1997	1998	1999	2000	2001	2002	2003	2004	2005	2006	2007	2008	2009	2010	2011	2012	2013	2014	2015	2016	2017	2018	2019	2020	2021	2022	2023	2024	2025	2026	2027	2028	2029	2030	2031	2032	2033	2034	2035	2036	2037	2038	2039	2040	2041	2042	2043	2044	2045	2046	2047	2048	2049	2050	2051	2052	2053	2054	2055	2056	2057	2058	2059	2060	2061	2062	2063	2064	2065	2066	2067	2068	2069	2070	2071	2072	2073	2074	2075	2076	2077	2078	2079	2080	2081	2082	2083	2084	2085	2086	2087	2088	2089	2090	2091	2092	2093	2094	2095	2096	2097	2098	2099	2100
------	------	------	------	------	------	------	------	------	------	------	------	------	------	------	------	------	------	------	------	------	------	------	------	------	------	------	------	------	------	------	------	------	------	------	------	------	------	------	------	------	------	------	------	------	------	------	------	------	------	------	------	------	------	------	------	------	------	------	------	------	------	------	------	------	------	------	------	------	------	------	------	------	------	------	------	------	------	------	------	------	------	------	------	------	------	------	------	------	------	------	------	------	------	------	------	------	------	------	------	------	------	------	------	------	------	------	------	------	------	------	------	------	------	------	------	------	------	------	------	------	------	------	------	------	------	------	------	------	------	------	------	------	------	------	------	------	------	------	------	------	------	------	------	------	------	------	------	------	------	------	------	------	------	------	------	------

Handwritten signature

X6a 9 1/2 3

9

8-132

Appendix No. 6. 130

"C" Form (Duplicate).
MESSAGES AND SIGNALS.

Army Form C. 2123.
(In books of 50's in duplicate)

No. of Message

Charges to Pay
£ s.

Office Stamp.

TELEGRAPHS

Service Instructions.

Appendix No. 6

Handed in at

Office

m.

Received

m.

TO

Sender's Number

Day of Month

In reply to Number

AAA

Have you received addendum
7. and 2 To 00 75
Both of today date

No trace in Register

H. Bush

160

FROM

PLACE & TIME

15th Div

9.50 pm

Wt. 432-M437 500,000 Pad. H W V 5/16 Forms C. 2123.

Reserve Army.

S.G. 46/0

(1st Anzac. S.665.)



8-133
1st. A.&.N.Z.A.C.

1. The fourth Army are attacking along the whole of their front as far to the left as S.2.c. on August 18th. Time of attack will be notified later.

2. Objectives of III Corps on your right are approximately S.3.b.8.2., 6.0, d.5.8, 0.9, c.9.9, 6.5, and S.2.d.4.5. c.8.5, 8.7. There will be a smoke discharge from about S.2.c.2.6. to X.6.a.5.5. if the wind is suitable.

Hd.Qrs.
Res.Army.
15-8-16.

(Sgd) C.N. Macmullen. Lt-Col.
for Major-General G.S.

-2-

1st.Aust.Div.

Forwarded for information.

16-8-16

Clark
for Brigadier-General.
General Staff.
1st. A.&.N.Z.A.C.



Reserve Army.

S.G. 45/0

(last Amasc. 2.6.66.)

last. A.S.N.S.A.C.

1. The fourth Army are attacking along the whole of their front as far to the left as S.S.C. on August 18th. Time of attack will be notified later.

2. Objectives of III Corps on your right are approximately S.S.C. 8.2., 6.0., 6.5.8., 0.9., 0.9.9., 0.5., and S.S.4.4.5. c.8.5., 8.7. There will be a smoke discharge from about S.S.C.2.5. to X.6.4.5.8. if the wind is suitable.

(Sgt) C.H. McMillan. Lt-Col. for Major-General G.S.

Res. Army. 15-8-16.

-S-

1st. Aust. Div.

Forwarded for information.

12th Feb

for Brigadier-General General Staff. last. A.S.N.S.A.C.

P. 10.16

46 strong point.

35

100 men 7 Pde at Cannaples

8-134

SECRET.15th. Division
No.100/4 G.a.

III Corps.	C.R.E.	
III Corps Arty.	9th. Gordons.	
III Corps H.A.	44th. Inf. Bde.)	Reference 15th.Div.
34th. Div. Arty.	45th. Inf. Bde.)	No.100/4 G.a. dated
47th. Div. Arty.	46th. Inf. Bde.)	15th. August 1916.
1st. Division.		
1st. Australian Div.		

1. On the 17th. instant the 44th. Infantry Brigade is attacking the German SWITCH LINE from the ELBOW (S.l.d.4.8) westwards.

(a). At zero hour a barrage will be placed 20 yards in front of the German SWITCH LINE from S.2.a.9.4 to X.6.a.9.3.

(b). At zero hour Artillery will also open on suspected machine guns in the Area S.l.d.5.7 to S.l.d.4.7.

(c). At zero + 1 the barrage in (a) above westward of S.l.d.5.8 will lift 120 yards.


(d). At zero + 2 minutes the Artillery firing on area in (b) above will lift.

(e). Heavy Artillery are co-operating on various points in rear.

2. It has been arranged with the III Corps that on the 17th. during the bombardment which commences at 10 a.m (15th. Div. O.O. 75 and III Corps O.O.110 Addendum No.1) no heavy Artillery is to fire on the SWITCH LINE west of S.l.d.8.9 but Heavy Artillery will fire after 10 a.m on the SWITCH LINE east of S.l.d.8.9.

3. Zero hour for the operation mentioned in paragraph 1 above will be 8.55 a.m. 17th. August.
Watches of Infantry Brigades and 34th. Div. Artillery will be synchronized at 44th. Infantry Brigade Headquarters CONTALMAISON at 6 a.m. on August 17th.

4 p.m.
16th. August 1916.


Lieut. Colonel.
General Staff, 15th. Division.

8/135

SECRET.

15th. Div.
No. 100/5 G.a.

44th. Inf. Bde.
34th. Div. Arty.

1. The 1st. Australian Division will be attacking tonight the enemy line from MUNSTER ALLEY X.6.a. 2.5 northwards. Time will be notified to you.

2. The General Officer Commanding has arranged that the 44th. Inf. Bde. is to vacate the block at the southern end of the enemy trench, and the 1st. Australian Division will order that their barrage is maintained not less than 150 yards from our trenches in X.6.a., heavy Artillery 200 yards.

The 44th. Infantry Brigade will assist in every possible way.

The 34th. Divisional Artillery will assist by firing on the area about X.6.a.5.8.

H. Knox

Lieut. Colonel.

3.30 p.m.
18th. August 1916.

General Staff, 15th. Division.

Copy to :-

III Corps.
1st. Australian Division. ✓

*Seen
8.9.16
C.R.A. 1.12.16
1.12.16*

ANZAC Heavy art^y informed by phone 5 pm.
R.B.S.

8-120.

Operations 48th Div

from 17/8/16 to 19/8/16 both inclusive

Orders only

SECRET

Appendix No. 6

Copy No. 12

135

48th DIVISION ORDER No. 108.

17th AUGUST, 1916.

- 8.121
1. Reference Instructions for Reconnaissance and Preparations (C.1 of 16th), the 143rd Brigade will attack to-morrow at probably 4 p.m.
1st Objective: X.2.b.5.5 - 4.4 - 6.2 - 2.0 - 0.3.,
X.2.a.9.1 - 8.1.
X.2.o.3.9.
2nd Objective, in which 145th Brigade will co-operate from Point 99, will be Points X.2.b.5.9 - 4.8., X.2.a.9.6 - 7.6 - 5.6 - 4.3 - 2.2.
 2. Reserves to be held ready by 144th and 145th Brigades to take advantage of any marked success and to sweep the enemy entirely off S.W. slopes of Spur X2a.
Preparations will also be made by both Brigades and R.A. to catch any enemy moving in the NAB - MOUQUET Farm Valley with Shrapnel, Trench Mortars and Machine Gun fire.
 3. Corps Heavy Artillery and other Artillery continue constant bombardment to:
 - (a) Obliterate QUADRILATERAL X.2.b.0.3 - X.2.a.9.6 - 6.5 - 8.1., paying special attention to Strong Point X.2.a.7.6 - 6.5 - 6.4.
 - (b) To prepare for first Infantry Assault by obliterating line of 1st objective.
 - (c) To lift to 2nd line of Objectives when Shrapnel barrage opens on first ^{line} prior to assault.
 4. The Shrapnel and Trench Mortar Barrage will be for five minutes to cover the assault, under which the Infantry will move forward close up to the objectives, and enter them almost in the barrage.
 5. Machine Gun covering fire and snipers' fire will assist the Infantry advance from positions in our own line and get on to any Germans that show.
 6. The Infantry advance will be in usual waves, the first wave capturing, consolidating and reforming on the line of first objective, whilst the second and succeeding waves push on to the further objectives, the Artillery barrage moving on in front of the second wave as it approaches.
 7. The C.R.E. will assist the 143rd Brigade Working Parties in preparing for the attack, and, after the attack, in consolidating the objectives won with R.E. and 5th R. Sussex.
 8. Smoke will be used on Left of Line up the MOUQUET Valley during the assault.

Acknowledge.

add RMB 7/8/16
Issued at 2.15 p.m.

[Signature]
Lieut.-Colonel,
General Staff.

Appendix No. 6

8-122

S E C R E T

Appendix No. 6
48th Div. No. G.779.S.AMENDMENT No. 1 to PRELIMINARY DEFENCE OPERATION
ORDER No. F.11, dated 19th JULY, 1916.

Delete Paragraph 2 and substitute the following:-

2. The Lines of Resistance will be prepared and organised as follows:-

Front Line: From X.33.a.8.1 (where we connect with 1st Aus. Div.) - X.2.b.9.9 - X.2.b.9.0 - X.2.d.4.7-2.8 - X.2.c.88-66-37 - The NAB to AINTREE STREET (exclusive) - X.1.b.2.3.Second and Main Line: From R.34.c.2.2 - X.3.b.8.9., a.9.5., c.7.9-0.2 - X.8.b.7.8 - X.2.c.9.2. & 7.1., 1.1 - thence along DOBBIN and BAMBERBRIDGE STREET to WOOD POST.Third Line: Strong Point in OVILLERS.

Dividing Line between Brigades will be X.2.b.7.8 - X.2.b.9.0 - thence to tramway to X.8.b.7.8 - and thence by main road through OVILLERS (to Left Brigade).

Left Brigade will be responsible for defence of OVILLERS KEEP.

17th August 1916.

Havenham L.H.
for
Major-General,
Commanding 48th Divn.

8-123

Appendix No. 6
SECRET

137

G.

1st A.&.N.Z.A.C.

18-8-16



1st. Aust Div.
1st. Anzac Heavy Artillery.
G.O.C; R.A.

Forwarded herewith for your information is
copy of II Corps order No. 8. dated 16th instant.

for Clarke
Brigadier-General.
General Staff

1st A.&.N.Z.A.C.

lin

II Corps Operation Order No. 8.

Copy No. 8.

- 8-124
1. General plan, as before.
Isolation of the German defences in X.2.a. to continue by blocking points mentioned in operation order No 7.
 2. In the next series of operations:-
1st objectives will be points X.2.b. 55-44-62-20-03-X.2.a.91.-81 - X.2.c.39.
2nd objectives points X.2.b.59-48- X.2.a.96-76-56-43-22
Reserves will be held ready to take advantage of any marked success and to sweep the enemy entirely off the S.W. slopes of the spur in X.2.a.
Preparations also to be made to catch the retreating enemy with shrapnel and machine gun fire in the Nab-MOUQUET FARM VALLEY.
 3. Corps Heavy Artillery will ^othoroughly prepare for the infantry attack on the following general lines:-
(a) by consistent bombardment, to obliterate the quadrilateral X.2.b.0.3. - X.2.a.96-65-81, paying special attention to the strong point X.2.a.76-65-64.
(b) to prepare for the first infantry assault by obliterating the line of the first objectives.
(c) As soon as the shrapnel barrage opens upon these, prior to the infantry assault, to lift to the line of the second objectives.
(d) to lift, finally, upon the enemy's lines of retreat.
 4. The assault by the 48th Division will take place on the afternoon of the 18th instant at an hour to be notified later.
 5. 48th Divisional Commander will submit early his plan of attack; and ask for any modifications he may require in the heavy artillery programme outlined above; also for such co-operation as may be possible by the 49th Division.
 6. Acknowledge.

(Sgd) J.Howell.
B.G.G.S.Issued at 9.25.p.m.

Copies to

- 1 to B.G.G.S.
- 2 48th Div.
3. 49th Div.
- 4 II Corps.H.A.
5. 25th Div.Art.
6. B.G.R.A.
7. ReserveArmy.
8. 1/Anzac
9. 5/Corps.
- 10
- 11
12. O.O.File.
13. Corres.File.
14. War Diary.