

AWM4
Australian Imperial Force unit war diaries,
1914-18 War

Engineers

Item number: 14/10/29 Part 1

Title: Headquarters 4th Australian
Divisional Engineers

1 - 11 June 1918



AWM4-14/10/29PART1

WAR DIARY

Army Form C. 2118.

Instructions regarding War Diaries and Intelligence Summaries are contained in F. S. Regs., Part II. and the Staff Manual respectively. Title pages will be prepared in manuscript.

or
INTELLIGENCE-SUMMARY.

(Erase heading not required.)

Place	Date	Hour	Summary of Events and Information	Remarks and references to Appendices
ALLONVILLE	1st		<p><u>Map Reference Sheet 62D.</u></p> <p>The three Field Companies moved into new Divisional Sector in relief of the 5th Aust. Division preliminary visits having taken place the previous day.</p> <p>The 4th Field Coy relieved the 14th Field Coy working with the Right Brigade, and took over camp for Coy Headquarters and three Sections on North side of railway embankment at approximately O.3.a.central. The transport and rear section settled at H.30.central</p> <p>The 12th Field Coy moved to O.3.a.central, adjacent to 4th Field Coy, in relief of the 8th Field Coy, and commenced to work of Left Brigade Sector. The Transport lines were situated at H.28.b.3.8.</p> <p>The 13th Field Coy, took over from the 15th Field Coy billets in Woolen Mills at O.1.a.2.6. and acted normally as reserve Coy. Transport at H.36.a.2.7. They were responsible for works from AUBIGNY Line inclusive towards rear, and other general works not in the two forward Brigade Sectors.</p> <p>The Front taken over by the 4th Aust. Division extends from P.20.a.0.0. in the South to J.23.d.4.0. on the North, a trench length of 9,000 yards. The area held by the Division is the Battle-field on which the German Offensive of March and April 1918 was halted and is in process of being developed. The area is marked by distinct tactical features and has great defensive qualities of commanding observation. The country is undulating and quite open except for few isolated woods. The river valleys and numerous other valleys and depressions form tactical features which can all be woven into a scheme of defence.</p> <p>The Brigade boundaries are marked on Appendix No.1.</p>	
BUSSY	2nd		<p>Engineer Headquarters moved to BUSSY, all reliefs being completed by 10.a.m.</p> <p>R.E.Dumps taken over were situated as follows:-</p> <ul style="list-style-type: none"> O.9.a.9.4. - AUBIGNY Main Divisional Dump O.10.b.5.6.- FOUILLOY 4th Field Company Dump I.34.c.2.8.- 12th Field Coy.Dump. O.1.a.2.6. - DAOURS, 13th Field Coy Dump. <p>Lieut.LEESING and a number of the 12th Field Coy Sappers were attached to Artillery Right Group, and Lieut.McKAY with one Section of the 13th Field Coy were sent to Artillery Left Group., for technical and assistance to the gunners in the Divisional Artillery. The work consisted chiefly of providing accommodation in the shape of mined dug-outs and cupola shelters for personnel Headquarters and the various Batteries and construction of the Battery Command and Observation Posts.</p>	

WAR DIARY

Army Form C. 2118.

Instructions regarding War Diaries and Intelligence Summaries are contained in F. S. Regs., Part II, and the Staff Manual respectively. Title pages will be prepared in manuscript.

or
~~INTELLIGENCE SUMMARY.~~

(Erase heading not required.)

June 1918.

193

Place	Date	Hour	Summary of Events and Information	Remarks and references to Appendices
BUSSY	2nd		<p>Owing to the gigantic works programme which may be judged from the work actually done in the area and shown in the various appendices with this month's diary it was found necessary to make several additions to the C.R.E.'s staff. An extra clerk and draughtsman have been attached for duty, also an officer to co-ordinate with the technical side of the divisional work. Lieut. E. Bate of 13th Field Company was attached to Engineer H.Q. and his duties consisted checking, piecing together and compilation of the various works reports and surveys which are sent in by the three Field Companies, Pioneer Battalion and Tunnelling Companies working in the area under divisional arrangements. The work covered by these reports was very varied in nature comprising the control and supervision of infantry working parties on trench digging and wire entanglements, the technical assistance on construction of mined dugouts for Brigade and Battalion headquarters, Machine Gun emplacements, Regimental Aid Posts, Advanced Dressing Stations and Relay Posts for stretcher bearers, and living accommodation for personnel of field batteries and heavy artillery as well as forward observation posts, in addition to the preparation of demolitions on all road, railway and river bridges over the rivers Somme, Hallue and Ancre, with a view of denying the use of them to the enemy in case of a successful advance on his part.</p> <p>The system for keeping in touch with all works in the area and the progress made on each and every job adopted was to obtain bi-weekly reports from all units concerned in supervision of work. These reports contained a list of all works actually in hand and the progress during the period. All surveys were checked by aeroplane photos, and then charted on to a Master Map (Appendix 1), a tracing of which was kept up-to-date and heliographic prints sent to division, brigades, battalions, Field Companies and Pioneers, so that they were always in possession of correct and up-to-date progress of the work. A tracing was made of every mined dugout in the sector. There were 172 in all, constructed or under construction and the progress of each was kept up-to-date, so that it was possible to see at any moment the map location, the unit employed in construction, the state and rate of progress, and the approximate date of completion in addition to the amount of R.E. material used and the quantity required to complete.</p> <p>Lieut. BATE co-ordinated all this work, and made daily visits to the jobs to keep in touch with all that was going on. He continued until the 15th inst. when he was transferred to the "G" Staff of 4th Australian Division. The transfer of a Sapper Officer to a divisional appointment is almost unprecedented in the A.I.F. and it is hoped advantages of having a technical officer in these circles will be amply recognized.</p>	<p>Appendix No 16</p>
A6945 Wt. W11422/M1160 350,000 12/16 D. D. & L. Forms/C./2118/14.				

1.25

2

WAR DIARY

Army Form C. 2118.

Instructions regarding War Diaries and Intelligence Summaries are contained in F. S. Regs., Part II, and the Staff Manual respectively. Title pages will be prepared in manuscript.

INTELLIGENCE SUMMARY

(Erase heading not required.)

JUNE 1918.

193

Place	Date	Hour	Summary of Events and Information	Remarks and references to Appendices
BUSSY	2nd		Lieut. V.L.MOLLOY, 13th Field Coy took over "Intelligence" duties after the departure of Lieut. BATE.	
	5th		<p>Until 5th June the responsibility of guarding and patrolling bridges and road craters in the divisional area rested with the 2nd Australian Tunnelling Company and the 6th Regiment of UNITED STATES Engineers, each being allotted different groups. Australian Corps Instructions for the Defensive No. 46, of 4/6/1918 arranged for the withdrawal of these units and vested the responsibility in the Division. The 12th Field Coy was detailed to take over the preparation of guarding, patrolling and preparing demolitions of all bridges in the area, and maintaining and picketting foot bridges forward of CORBIE. It was a large responsibility, extensive in scope, entailing the employment of all the Sappers in the Company. Many interesting difficulties were encountered which will be only dealt with lightly in this diary as a detailed report has been forwarded, and included in the Diary of 12th Field Company for the month of June 1918. The 12th Field Company has had scope for a great lot of interesting and new work, and quite a change to the ordinary routine of a field company in the line, and much appreciated by all concerned. Generally speaking, the schemes that previously existed were crude and inefficient. On examination many of the charges were found to be wrongly placed, the explosives used deteriorated to such a degree that it was thought advisable to adopt an entirely new scheme. All charges were renewed and packed in specially made receptacles first for protection from the weather, and secondly being made mobile, and kept in a safe place close to the bridge to obviate all risks of premature explosion being caused by shell fire, heat or other causes. Fuzes were found perished from exposure to weather, and in some cases were not of sufficient length to reach the charge to be exploded. Another important point which had been sadly neglected and that was no alternate method of exploding charges had been arranged for, in case of failure. The foregoing remarks are not made with the view of casting reflection on units previously connected with the work as most of it was prepared under stress of unfavourable circumstances where the time factor did not allow of better arrangements, and subsequently the frequent changes of responsibility did not allow the units concerned the opportunities of repairing the defects. The 12th Field Company were glad of the experience of putting their schemes into operation, testing exploders and charges, and in the end being satisfied that jobs stood the test. Several tons of Ammonal Blastine and Gun Cotton were used in addition to a couple of miles of Electric leads and instantaneous fuze.</p> <p>As a precautionary measure DORMANT BRIDGES were installed in two positions between CORBIE</p>	<p>Appendix No 6</p>

A6945 Wt. W11422/M1160 350,000 12/16 D. D. & L. Forms/C./2118/14.

I.F.S.

ew

WAR DIARY

Army Form C. 2118.

193

Instructions regarding War Diaries and Intelligence Summaries are contained in F. S. Regs., Part II, and the Staff Manual respectively. Title pages will be prepared in manuscript.

or INTELLIGENCE SUMMARY

JUNE 1918

(Erase heading not required.)

Place	Date	Hour	Summary of Events and Information	Remarks and references to Appendices
BUSSY	5th		<p>and DAOURS. (See Appendix No.1, locations 0.2.a.8.5. and 0.4.a.7.1.). These consisted of necessary pontoon equipment to bridge the river at these points carefully protected, camouflaged and guarded, and a bridging section specially trained to form bridge at very short notice in case of an enemy advance, and damage being done to permanent crossings in the vicinity.</p> <p>In consequence of 12th Field Company being withdrawn from the left Brigade Sector for the above work, the 13th Field Coy. the Reserve company, filled the breach, and moved Company headquarters and three sections forward to J.19.c.5.5., leaving one section in rear at Woollen Mills, DAOURS, to cope as best it could with the general jobs left to the Reserve company.</p>	
	6th		C.R.E. attended a conference with G.O.C. to discuss change in defence policy.	
	8th		<p>A vexed question that is always cropping up and never definitely settled is whether the Artillery has the privilege of usurping positions previously occupied by the Sappers. On two occasions during the present tour of duty in the line have instances occurred bearing on this point. First in reference to AUBIGNY R.E. dump. A well chosen, suitable, and convenient site established a month previously had to be abandoned on the 8th inst. because an 8" howitzer battery took up its position within the precincts of the dump which had to bear the brunt of the counter battery "strafe", the gunners adding an insult to injury by blaming the transport which was necessary for drawing and replenishing supplies, for drawing fire. The second incident was the case of a battery which took up its position alongside a dummy bridge erected months previously at a carefully selected spot with the sole object of drawing fire from other bridges actually in use. The gunners dismantled this dummy without reference to any authority thereby "giving away" the system of "bluff" which had been practised on the enemy.</p> <p>Shortage of R.E. material is a matter which has to be met in every area and dealt with in such manner as circumstances permit. This month screw pickets, long and short, were not available, and the method adopted and explained in last month's diary of manufacturing them from the medium size was carried out in a much more extensive scale. The 13th Field Company kept 4 Sappers busy the whole month, whilst the 4th Field Company requisitioned a dozen blacksmiths from the infantry employed solely on the manufacture of long and short screw pickets.</p> <p>The supply of all timber required for mining operations, such as mining sets, lagging and pitprops was normally to be drawn from the 254 Tunnelling Coy. working with the division, but</p>	

A6945 Wt. W11422/M1160 350,000 12/16 D. D. & L. Forms/C.2118/14.

I.P.S.P.

4

WAR DIARY

Army Form C. 2118.

Instructions regarding War Diaries and Intelligence
Summaries are contained in F. S. Regs., Part II,
and the Staff Manual respectively. Title pages
will be prepared in manuscript.

JUNE 1918

INTELLIGENCE SUMMARY.

(Erase heading not required.)

193

Place	Date	Hour	Summary of Events and Information	Remarks and references to Appendices
BUSSY	8th		<p>for the great number of mining jobs in hand this was totally inadequate, and means were sought to supplement it. Accordingly a Sawmill was started in an old French Woollen mill situated on the bank of the River SOMME near DAOURS 0.1.a.2.4.</p> <p>This mill fortunately contained two saw benches each having a sliding table on one side of the saw only, making it a difficult operation (as was afterwards found) to cut large sizes owing to the friction caused by a heavy log having to be forced along a rigid table on the other side of the saw. A party of about 20, in charge of Lieut. CARTER, M.C., from the 4th Pioneer Bn. was detailed to get the mill in going order, and commenced work on June 7th. The plant was in rather a bad state of repair, bearings were found to be worn, shafting bent, slack and broken belts, slipping pulleys, and many other faults, and two buckled circular saws were all that were available. Repairs were difficult owing to the fact that suitable tools were not available. However, by means of diligent searching the machinery was gradually got together and in good working order. The power was obtained from the River SOMME and consisted of a FOURNEYRON water turbine. The water was shut off by a weir gate, but the weir had been badly damaged, and cut away in the middle, thereby allowing a large quantity of water to pass through after the gate was shut. Combined with this leakage of water the damage to the leather flaps covering the vanes in the wheel made it a tedious operation to stop the mill requiring the services of 7 men on a lever to bring it to a standstill. This was indeed a serious source of danger, but the demand for timber was so urgent that repairs had to be postponed. On 16th inst. the mill was closed down to effect necessary repairs. The machinery was tested and tuned up, the weir concreted, and a new flap fitted to the wheel, and hereafter the mill ran smoothly without a hitch.</p> <p>The supply of logs from which the timber was cut was arranged by a party of 20 from the 4th Pioneer Bn. who hauled them by horses to the river bank $2\frac{1}{2}$ miles up-stream, thence floated them down to a mill, where a boom was stretched across the channel. It was then a simple matter to skid the logs into the yard and down an inclined plane to the saw benches.</p> <p>Between 50 and 60 logs of about 2 feet diameter were cut per day by the two 7 hour shifts employed at the mill. Standard mining sets were cut out of 9" x $2\frac{1}{2}$" timber, styles 6'6", sills 3'3". About 50 complete sets were turned out daily in addition to about 3,000 running feet of lagging $1\frac{1}{4}$" thick and varying from 3" to 8" in width.</p> <p>A band saw was salvaged in CORBIE, repaired, altered, and erected at the mill, and put into commission, and proved invaluable for breaking down the big logs and cross cutting the ends of the mining sets and generally in economising manual labour.</p>	<p>Appendix No 11</p>

I.F.S.P.

er

WAR DIARY

Army Form C. 2118.

Instructions regarding War Diaries and Intelligence
Summaries are contained in F. S. Regs., Part II,
and the Staff Manual respectively. Title pages
will be prepared in manuscript. JUNE 1918

INTELLIGENCE SUMMARY.

(Erase heading not required.)

193

Place	Date	Hour	Summary of Events and Information	Remarks and references to Appendices
BUSSY	8th		<p>One of the greatest troubles experienced was the quantity of shrapnel in the logs supplied, which did a lot of damage to the saws, entailing constant attention of one man to keep them sharp.</p> <p>Another matter that required constant attention was water level in the River SOMME, which was controlled by sluice gates at CORBIE Lock and DAOURS Lock. From a tactical point of view it was considered inadvisable to carry too big a head of water in case of enemy shelling interfering with the sluice gates and liberating the water, and run the risk of damaging the barrel pier foot bridges over the river. At the same time a sufficient supply of water had to be maintained to keep the mill working. A river patrol was supplied by the 13th Field Coy. whose duty was to regulate the water level. Appendix No. 2 shows the record of daily reports, the sudden drop indicating the lowering of the water to permit repairs being effected at the Mill.</p> <p>A large number of pit props was required for chambers in mined dugouts, and in order to save transport a party consisting of one officer and about 30 other ranks was detailed to cut pitprops and supply logs for Sawmill from wood between railway embankment and river approximately 0.3.a. and 0.3.c. The pitprops were dumped at 0.3.a.2.9. and a constant supply of 150 per day was maintained, length being 6'6" and average diameter varying from 8" to 4".</p>	Appendix No. 2
	16th		<p>On night of 15/16 June a raid on the enemy trenches was undertaken by 4th Australian Inf. Brigade in vicinity of VAIRE WOOD. Sapper assistance was requisitioned to make gaps in the enemy wire entanglement. Bangalore Torpedoes were used, exhaustive trials were made beforehand. The operation was a success and the gallantry of two members of 4th Field Company 18267 Sapper ALBERT JOHN THOMPSON and No. 15258 Sapper WILLIAM GEORGE ROSS undoubtedly contributed largely to it. The role of these sappers was to ignite the torpedoes which had to be carried a distance of 350 yards through NO MAN'S LAND. This itself was a good feat, as it entailed crawling most of the way. Whilst adjusting the torpedoes in the enemy wire, the party was observed by one of the enemy garrison who crawled out of the trench and threw a bomb which landed in the wire between the two torpedoes, and although these sappers realized the great personal risk they ran, not only from the enemy bomb, but also from the likely explosion of the torpedoes which might have been detonated by it, they remained absolutely cool and quiet, although Sapper THOMPSON had received fatal wounds from which he died next day. The torpedoes were ignited according to the time laid down. Both these sappers were recommended for D.C.M..</p>	
<p>A6945 Wt. W11422/M1160 350,000 12/16 D. D. & L. Forms/C.2118/14.</p>				

I.P.S.

WAR DIARY

Army Form C. 2118.

Instructions regarding War Diaries and Intelligence Summaries are contained in F. S. Regs., Part II, and the Staff Manual respectively. Title pages will be prepared in manuscript.

or
~~INTELLIGENCE~~ SUMMARY.

JUNE 1918

(Erase heading not required.)

193

Place	Date	Hour	Summary of Events and Information	Remarks and references to Appendices
BUSSY	16th		S/Lieutenant D.R. WALKER reported from Cadet School and posted to 4th Field Coy.	
	17th		C.R.E. and Major TOLLEY attended a conference at Chief Australian Engineer's office, when several matters were discussed including promotion of Engineer officers and appointment of the Officer Commanding 1st Army Troops Company.	
	17th-26th		Routine Work.	
	27th		Advance confidential information received in reference to a projected "stunt" to be undertaken by the 4th AUSTRALIAN DIVISION. The object of the offensive aimed at was the capture of territory between the our present front line, roughly indicated P.20.c., J.32.d., J.34.d., J.29.d., and a position which could be approximately defined by a straight line joining P.20.c. to J.34.d. (Vide Appendix No.1), the advance to include also the village of HAMEL and the woods known as VAIRE WOOD and HAMEL WOOD.	Appendix No. 17
			Preparatory arrangements were at once put in hand to push up as far forward as possible large quantities of R.E. Stores, consisting chiefly of wire entanglement material, barbed wire and screw pickets, sandbags, picks and shovels, made up in "man-loads". The Dumps were established at :-	
			P.13.d.35.35. P.14.a.05.90. P.2.d.1.7. P.8.b.0.4. J.33.d.1.5.,	
			Transport of Field Companies and 4th Div. Pack Mule Troop being used for this purpose. Experiments were also made with the Gun-carrying tanks, which are to be used to transport R.E. stores during the "Stunt". It was found that the capacity of these tanks if carefully loaded could carry the equivalent of 450 to 500 "one man loads" of wiring stores, and if even to obviate the risk of casualty in so large a party, the experiment was worth while.	
			Sixteen brigades of artillery are to operate in the area and large quantities of shelter and accommodation are being issued. The aggregate largest daily output from the dumps reached 107 tons weight of Stores on 29th inst.	Appendix No. 9
			Camouflage required to conceal this artillery put a heavy strain on the resources of the	

I.P.S.

WAR DIARY

Army Form C. 2118.

Instructions regarding War Diaries and Intelligence Summaries are contained in F. S. Regs., Part II, and the Staff Manual respectively. Title pages will be prepared in manuscript.

or ~~INTELLIGENCE~~ SUMMARY.

JUNE 1918.

(Erase heading not required.)

1918

Place	Date	Hour	Summary of Events and Information	Remarks and references to Appendices
BUSSY	27th		<p>"Camo" dump, and a party of 12 men was employed to supplement the supply by manufacturing screening material</p>	
			<p>The month closed with all concerned very busy preparing for the forthcoming offensive.</p>	

I. F. J. Waldson

Lieut. & Adjt.
for C.R.E. 4th AUSTRALIAN DIVISION.

193

18,000-12/17-8723.

APPENDIX

9

WAR DIARY

OF

HEADQUARTERS 4th AUSTRALIAN DIV. ENGINEERS.

FOR

JUNE

1918.

LIST OF APPENDICES.

- | No. | Subject. |
|-----|--|
| 1. | Master Map, charted to 30th June 1918. |
| 2. | Handing over papers from 5th Australian Division. |
| 3. | Various instructions issued to units, reference to works. |
| 4. | R. M. O's. report. |
| 5. | List of Officers. |
| 6. | Print of Demolition Charges. |
| 7. | Chart showing periods of Field Coys. in Front line, in Forward Area, and in Back Area. |
| 8. | Chart showing Effective Strengths, etc.. |
| 9. | Chart showing daily issues of R.E. Stores. |
| 10. | Cost of R.E. Stores. |
| 11. | Daily works report showing output of Sawmill. |
| 12. | Chart showing river levels of River SOMME. |
| 13. | Record of Weather. |
| 14. | Works reports. |
| 15. | List of Deep Dugouts. |
| 16. | Plans of Dugouts (11 sheets). |
| 17. | Extracts from Divisional Order 128, reference forthcoming offensive. |
| 18. | Casualties. |

MASTER MAP 193

(SHEET No 1)

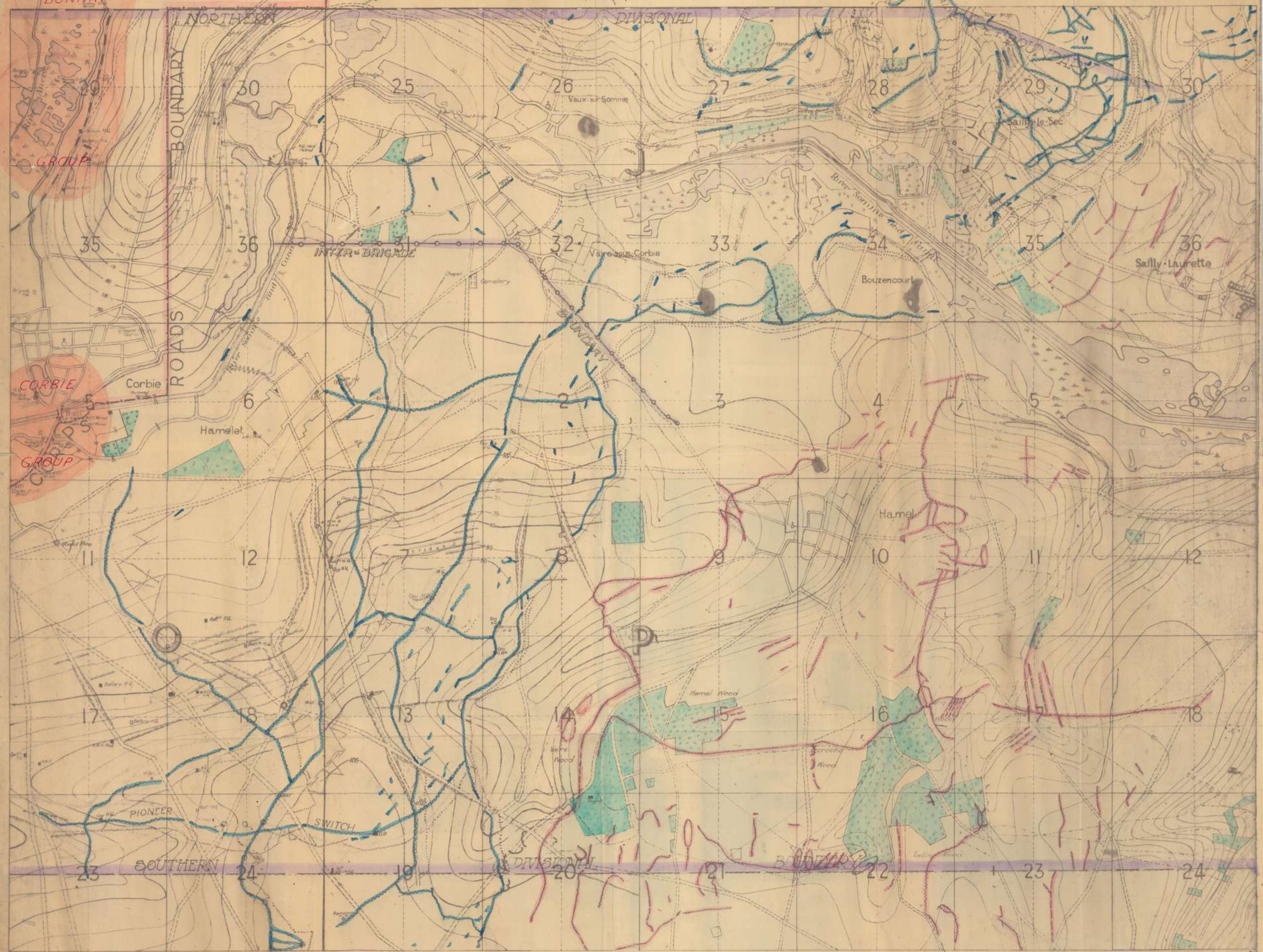
4th Aust. Divn. (Corbie) Sector

Enlarged from Sheets 62D N.W.N.E.S.W.S.E.

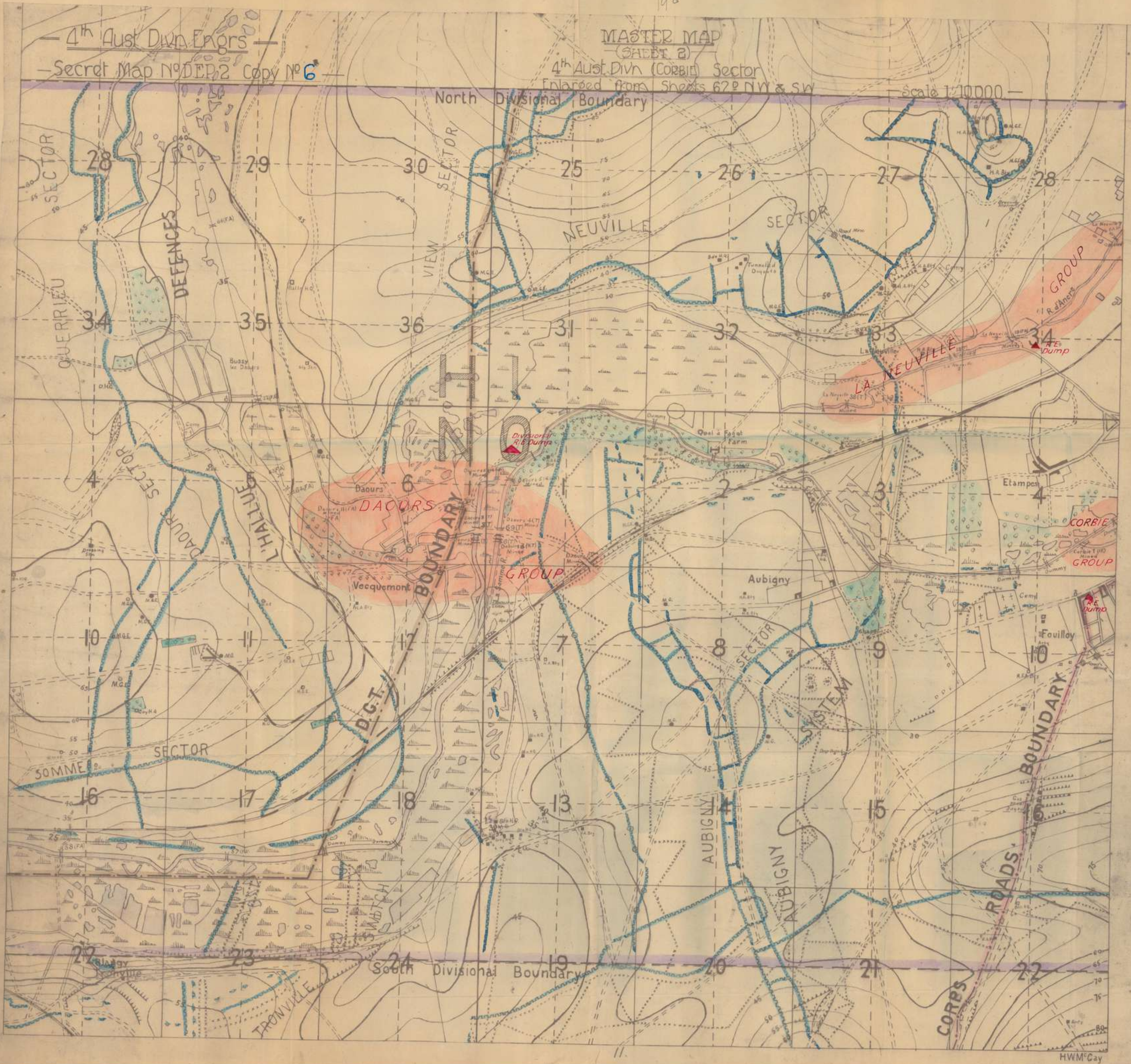
Scale 1:10,000 193

4th Aust. Divn. Engrs.

Secret Map No DEPI Copy No 21



193



193/1/1

Appendix 193

193

Appendix N° 1

APPENDIX 2

1. DISPOSITION OF FIELD COYS. & PIONEERS.

8th. Field Co. at O.3.a.5.5., working in Left Bde. Area (Advanced party living in J.28.a.)
14th. Field Co. at O.3.a.7.7., working in Right Bde. Area.
15th. Field Co. at O.1.a.3.5., " " Rear of Reserve Line.
5th. Aust. Pioneer Bn. at H.35.c.7.3., working in Divl. Area.

2. RESPONSIBILITY FOR WORK.

C.R.E. has been responsible for all Engineer work in Area except Corps & Army Defence Lines; although during the period in the Line a large amount of work was supervised by C.R.E. in AUBIGNY ZONE, simply because the Reserve Brigade was living in the locality and was available for the work. No work has been done on general Water Supply which is in the hands of Corps, except improvement of existing Wells and erection of some horsetroughs. The roads for which Division has been responsible are shewn on map issued by Corps to all Divisional C.R.Es.

3. DEFENCES.

There are three lines of Defence for which the Division is responsible:-

- (a) Front Line of Posts.
- (b) Support Line.
- (c) Reserve Line with a Rear Switch.

The two forward Field Coys. carry out work on these Lines, in their respective Brigade Areas.

At present the work on (a), is mostly carried out by the garrisons, but sufficient Sapper assistance is provided to organize the work.

(b) & (c) are more directly under Sapper supervision. Both of these lines are now continuous, from the Southern Boundary of the Division to the River SOMME. The work of organizing these three distinct lines, is now in hand from the SOMME to the Northern Boundary.

4. NATURE OF WORK ON DEFENCE LINES.

On (a). It is aimed at completing a continuous Front Line, by linking up existing posts, and, in some localities, by digging a new trench just in rear of Forward Posts; the extent to which this has been done is shewn on Works Map handed over. Further work is being done in regulating the parapets, improving wire, and providing shelters for troops.

On (b). Work now being done on this line, is improvement of wire & provision of Shelters for troops. The wire is, however, just about completed and is rather good.

On (c). Work on this line consists of provision of shelter accommodation for troops,

The Reserve Line consists of a bifurcated line, the forward portion of which runs N & S in front of HAMELET, the rear portion running from O.18. central, in a N.W. direction towards CORBIE, striking the Canal Spillway at O.5.d.4.3.. The wiring is good on both these lines. The portion of Reserve Line N of River Somme, is represented by the trench in J.28.a.& d.; this portion is yet to be wired.

5. SWITCH TRENCHES.

A Switch Trench known as "PIONEER SWITCH", has been dug from AUBIGNY Zone at O.20.a.6.3., right up - (in an easterly direction) - into the Front Line at P.13.d.9.2.. This trench is prepared for fire in a Southerly direction, so as to form a Defensive Flank should the Division on our Right be thrust back. This line is both defensively

SWITCH TRENCHES (Continued).

and tactically wired throughout its length.

A Switch off this line runs from 0.23.b.0.9., to join Reserve line at 0.18.central, and is prolonged through to 0.18.b.7.6.. The purpose of this Switch is to offer further resistance to the capture of ~~the~~ the important high ground in 0.18.c.& d., if the forward portion of Pioneer Switch were to fall. This Switch is wired throughout. Pioneer Switch has been extended West to N.24.d.8.4 by the Reserve Brigade; but as stated before, the Division is not truly responsible for carrying out work on second zone defences.

A New Switch is being dug from Divisional Reserve Line at Pia.8.0 to Support Line At ~~Pia.8.0~~ P.28.65 This will act as an excellent communication as well. It has been dug first as a line of Posts facing south, and is now being linked up to form a continuous trench. At time of handing over, there is yet 250^x to be dug. Wiring is 50 % complete, as shewn on Works Map.

6. COMMUNICATION TRENCHES.

The only purely C.Ts. in the area, are on the N side of the River SOMMI where a continuous trench traverses the high ground, separating the valleys in J.27.a. and J.28.a.. This trench is also prepared for fire in a southerly direction.

The other main C.Ts. are:-

(1) "ADELAIDE STREET", which runs from J.22.b.6.3., to the old front line at J.29.d.9.5..

(2) Trench from J.29.c.5.7. to the old front line at J.35.b.2.9..

Other C.Ts. are required, and have been started only, to connect back the Posts in J.30.b.& c., to the old Front Line, as shewn on Map.

Now that the three lines of the Forward Zone Defences are so well defined, more communications could, with great advantage, be constructed from Reserve Line to the Support and Front Lines. Work on main communication has been done chiefly by Pioneers.

In general these trenches are good, but in places would stand deepening

7. ROADS.

The map issued by Corps shews Divisional responsibility in the matter of Road maintenance. So far, the roads have necessitated very little work, beyond filling of shell-holes, forward. The road ~~*****~~ CORBIE - VAUX requires special attention, as motor ambulances are used up to VAUX. So far, no metal supply has been available to Division beyond what can be salvaged alongside roads, where it had been dumped for repairs before the German Advance here. Broken brick is also being used. The road FOUILLOY - HAMELET needs maintenance for use of motor ambulances also; chiefly filling of shellholes.

8. GAS PROOF DOORS.

Tunnelling Coys. and Field Coys. working on deep dugouts, are responsible for fitting Gas Proof Doors on all these dugouts.

9. DEEP DUGOUTS.

The principle has been observed in the Division, that deep dugouts should be provided for the following:-

Brigade H.Qrs. (Infantry & Artillery).

Battalion H.Qrs.

Batteries where practicable.

The Divisional Policy has been against Deep Dugouts as accommodation for large numbers of troops in Forward Areas, but in favour of constructing as much splinter proof shelter as possible for forward Reserves. Where it is feasible to increase splinter proof to 4.2" proof (without being necessarily proof against direct hits by heavy shells) this has been aimed at.

List of Deep Dugouts with location and purpose, together with key-plan and detailed plans of each, up to date, is handed over.

Arrangements were being made for the 254th. Tunnelling Coy. R.E., (which is employed on D.D.Os. in this area), to construct accommodation

D.D.Os. (Continued).

for "G" and "B" Sound Ranging Sections, as per attached copy of instructions, handed to O.C., 254th. Tunnelling Coy. R.E..

The intention is, that Pioneers should supplement the Tunnelling Coy. party at H.35.d., and Infantry at the site next Brigade H.Qrs. (in N.21.b.). The 254th. Tunnelling Coy. now has full information about these jobs.

This Division has not considered M.G. Deep Dugouts necessary in forward zone.

10. WIRE.

The wire of the front line is complete across whole front, and is good; in places as much as three belts of D.A. Fence being complete. Nowhere is there less than one D.A. Fence.

On the Support line the wire is complete.

On the Reserve line, there is both tactical and defensive wire across the whole front S of the River, on both the forward and rear Switch of Reserve Line.

Pioneer Switch has a combination of both tactical and defensive wire throughout its length, complete. The whole of the wiring is accurately shewn, up to date, (31/5/18), on Works Map handed over.

11. ARTILLERY WORK.

An Engineer Officer has been attached to each of the two Flank Brigades of Field Artillery, (i.e. the 13th. and the 150th. Brigades), to act as advisor on all Engineer work, and check supply of R.E. Material to Artillery. A large number of splinter and 4.2" proof shelters have been erected, (Pioneers supplying assistance in labour), and deep dugouts ~~have~~ being dug for Brigades and Batteries.

12. SUPPLY AND TRANSPORT OF R.E. STORES.

40% of stores received at QUERRIEU R.E. Dump are available for this Division. These stores are sent to Company and Divisional Dumps by horse transport.

4 G.S. Waggon are attached from Aust. Corps and 4 G.S. Waggon from 5th Aust. Div. Train for transporting above mentioned R.E. material.

This transport is supplemented by transport from Brigades and pontoon waggon from Field Companies.

$2\frac{1}{2}\%$ of barb wire received at Aust. Corps R.E. Dump (POULAINVILLE) is delivered by Corps to AUBIGNY R.E. Dump.

Lieut-Col. A.E.

C.R.E.

5th Australian Division.

SECRET.

Headquarters 5th. Australian Divisional Engineers.

5TH. AUSTRALIAN DIVISIONAL ENGINEER INSTRUCTION No 6.

-----ccccccgccc-----

1. In the event of a general withdrawal of the Division taking place in face of enemy attack, the 2nd. in Command of each Field Company with two Sections complete with transport, will move with affiliated Brigade.
2. The Engineers will not be involved in fighting if avoidable.
3. These two Sections will carry out any Engineer work essential to the withdrawal of the Brigade.
4. The two Section Officers detailed should now make thorough reconnaissance of the area (as per attached sketch) over which the Brigade would retire, and study all the Engineer problems likely to arise.
5. The remainder of each Field Coy., under the O.C. would withdraw (on receipt of C.R.E. orders) to the hollow about H.20.c.S.2., and report to C.R.E., arrival and location. C.R.E. would then be at D.R.Q. at VAUX en AMIENOIS, and would possibly be accessible by 'phone from Brigade Headquarters near H.20.c.S.2..
If no telephone is available, two cyclist runners must be sent by each Field Coy. to report to C.R.E..
6. The dormant bridges built by the 8th. and 16th. Field Coys. would be destroyed by them on orders from their respective Brigadiers (when the Brigade had no further use for them).

Lieut-Col. A.E.
C.R.E.

16th. MAY 1918.

5th. Australian Division ..

Copies to :-
 8th. Field Co.
 14th. Field Co.
 16th. Field Co.
 War Diary.
 File.

Headquarters 5th. Australian Divisional Engineers.

O.C.,
254th. Tunnelling Coy. R.E.

58/40/53.

1. There is a Deep Dugout alongside the Brigade Headquarters D.Os. at N.21.b.2.2., which consists of simply two entrances and a connecting gallery.

It has been found desirable that the "G" Sound-ranging Section should have a separate dugout from Brigade Headquarters. The two entrances and connecting gallery will be used for this purpose. They require 4 chambers, namely, one 8'x 20', and 3, each 8'x 12'.

2. "B" Sound-ranging Section also require exactly the same accommodation to be built. There is a good site in H.35. the exact site will be pointed out by this office.

3. An O.P. or Advanced Station also is required at O.10.c.5.6.. There is no bank here, so entrance will have to start from a trench or pit.

One entrance and chamber only is required.

Please say when you can carry out these works, what labour you can obtain yourself, and what supplement you will require from this Division.

Lieut-Col. A.E.
 C.R.E.
 5th. Australian Division...

30/5/18.

16

1933

Stock-Sheet for 1/6/18.

AUBIGNY R.E.DUMP. (O.F.a.9.4.)

2 17

APPENDIX

Material	Received	Issued	Balance.
Wire Barbed Coils.			725
" French Rolls.			108
" Plain Coils.			63
" Netting Rolls.			31
Pickets Angle Long.			535
" " Medium.			1232
" Screw "			1800
" Wood Long.			1170
" " Short.			5100
Sand-Bags.			24850
Cupola Sheets "C" Type.			3
" " "B" "			-
Pick-Heads.			151
" Helves.			161
Shovels.			502
Cement. (Casks.)	L	L	1
Hose (Delivery) Lengths.	I	I	3
" Suction. "	N	N	2
Wire-Cutters.			1
X.P.M. Sheets.			71
Girders.			63
Pit-Props.			-
Lagging.			-
Mining-Sets. 2'9" x 6'3"			120
Nails 3" lbs.			124
Malthoid. Rolls.			37

DEMOLITIONS.

Blastine. Cases.			29
Gun-Cotton. "			13
Ammonal "			13
Primers. G.S.Dry.			390
Fuse-Lighters.			24
Detonators. No.8 Mk.V11			690
" " (With 2 Safety -Fuze)r			120
" Elec.No.13 Mk.4			34
Fuze Safety Tins.			170
" Inst. Yds.			30
Tape Rubber. "			1
Solution. Lbs.			$\frac{1}{2}$

all being transferred to DAOUAS

Handing-Over Sheet.
Divisional R, E, Dump. Aubigny.



S T O C K S H E E T F o r 1/6/18

"La Neuville R.E.Dump(I.34.c.2.8.)"

Material	Received	Issued	Balance
Angle Iron Pickets Medium			805
" " Large			242
Corrugated Iron(Sheets)			-
Concertina Wire(Bundles)			168
Clamps			20
Cupola Sheets			-
Duckwalks			115
Exploders			1
Gas-Blanketting			1
Girders(i.e."R.S.Joints)			15
Hessian. (Rolls)			-
Leads			400
Lagging(1½" or 2"x 8")Feet			1370
Malthoid. (Rolls)			-
Mining-Sets (2'9" x 6'3")			53
Mallets			5
Nails 1½"			224
" 2"			246
" 3"			88
" 4"			15
Picks(Complete)	N I L		18
Pickheads		N I L	77
Pickets Screw Long			-
" " Medium			1250
" " Wood Long			974
" " Short			-
Pit-Props			94
Sand-Bags			14500
Shovels			440
Tracing-Tapes			-
Timber 3 x 2			1200
Wire-netting			1
" Barbed (Coils)			242
" Plain (Rolls)			9

Handing over sheet
From 8th Field Coy.

193

Material	Received	Issued	Balance.
Blanketting (Gas) Yds.			77
Cupola Sheets "B" Type			10
" " "C" "			7
Cement Bags			2
Duck-Walks.			138
Dug-Outs. (Timber & Iron Construction)			2
Flares.			37
Frame Sets (Nissen Hut)			40
Iron Corrugated. 5'6" sheets			60
" " Slips.			200
Iron Bows (Nissen Hut)			74
Latches			6
Malthoid. Rolls			9
Mauls			4
Mining-Sets. 2'9" x 6'3"			13
Nails. 1" Lbs.			10
" 1½"			3
" 2"			-
" 2½"			220
" 3"			180
" 5"			140
" 6"			7
Pickets Wood. Long.			910
" " Short.			1439
" Screw. Long.			102
" " Medium.			1820
" Angle. Long.			880
" " Med.			465
Pit-Props.	L	L	30
Picks.			29
" (Mining)	I	I	-
Rolled Steel Joists. 9'	N	N	20
Shoes for same.			40
Shovels Small			400
" Large.			105
Saws.			1
Timber. 6 x 6 (Feet)			80
" 4 x 3 (also 150 feet 5x5)			12
" 2½ x 2½			400
Lagging. 1½" "			740
" 2"			460
Wire Barbed Coils. (.Large-)			30
" " " (med.)			31
" " " (small)			210
" Plain "			14
" Netting Rolls			-
Wire -Cutters.			-

Handing -Over Sheet
From 14th Field Co.

STOCK SHEET.

FOR Q JUNE Q

DAOURS R.E. Dump. (O.1.a.3.5) 2.6.

APPENDIX

193

Material	Received	Issued	Balance.
Axes.			:40
Adzes.			4
Hammers. Claw			3
" Large.			2
Corrugated Iron Sheets.			150
Galvd. Iron " (plain)			2
Mining- Sets. 2'9" x 6'3"			12
" Set-Legs 9' Long.			4
Pickets. Wood. Long.			935
" " Short.			600
Picks.			10
Shovels.			30
Saws Hand.			1
" Large.			2
Wire Barbed Coils.			485
" French Rolls.			8
White Lead (lbs)			74
Gas-Blankets.			90
" Blanketting (Yds-)			91
Pit-Props.			10
Lagging (feet)			-
H" Iron Girders.			70
Cupola Sheets. "C" Type			42
" " "b" "			-
Paint White Ebs			28
" Brown "			98
" Red "			28
" Black "			28
Nails. 2 1/2" "			692
1" "			112
3" "			600
4" "			112
Timber. 3 x3 (Feet)			-
3 x1 1/2 "			150
6 x 2 "			100
Malthoid. Rolls.			6
Girder Shoes.			-
Wire Netting Rolls.			22
Sand-Bags.			10000
Barrows.			4
Poles 10'			80
Screws. 2" (doz.)			12
Camouflage Rolls.			6

T I N

T I N

Handing-Over Sheet.
From 15th Field Co.

* Corbie

Timber

Quantity

Size

condition

Kind of

+ location owners name + address

for CE

12th + 13th Coy to park french vehicles
+ hand chit to French mission

9th 19th 29th to CE

works on 2nd Zone or
in rear

Stock list of log dumps to be sent in
daily

193

APPENDIX

103²²

Headquarters.
4th Aust. Div. Engrs.
2nd June 1918.

C.O. 4th Pioneer Bn.

Works Reports and Surveys of Works to reach this office bi-weekly, Wednesdays and Sundays by 10 a.m.

(Signed) R. John DYER.
Lieut. Colonel.
C.R.E. 4th AUSTRALIAN DIVISION.

3
1

Headquarters.

4th Aust. Div. Engrs.

2nd June 1918.

O.C., 4th, 12th, and 13th Field Coys A.E.

Reference Survey of New Works. Companies will be responsible for furnishing to this office Surveys of all New Work done in Divisional Area, the following Areas being covered by the respective Companies.

Reserve Company.	All Area West of Grid Line through 0.17.central.
Right	" Right Brigade Area East of Line through 0.17.central.
Left	" Left " " " " " " " " 0.17.central.

Works Reports and Surveys to reach this office bi-weekly,
(Wednesdays and Sundays by 10 a.m.)

(Signed) R. John DYER. Lieut. Colonel.
C.R.E. 4th AUSTRALIAN DIVISION.

193

APPENDIX

24
3
1

Headquarters.
4th Aust. Div. Engrs.
2nd June 1918.

O.C., 13th Field Coy A.E.

Please arrange to take over from 4th Pioneer Bn. the maintenance of all foot bridges, Field Artillery, and Bummy Bridges in the Divisional Area - with the exception of the Dormant Bridge allotted to 4th Field Coy - from the front line as far West as the Grid Line running North and South through O.3.a.O.O.

Arrangements will be made for their demolition, should the necessity arise, by explosives, fire, or destruction by axes.

(Signed) R. John DYER. Lieut. Col.
C.R.E. 4th AUSTRALIAN DIVISION.

Copy to 4th Field Coy
13th Field Coy.
4th Pioneer Bn.

Headquarters.
4th Aust. Div. Engrs.
3rd June 1918.

O.C., 13th Field Coy A.E.

I spoke to the 12th Brigade this morning about improvements to AUBIGNY System when they have men available for work - extra C.T's, wiring etc.

Please get in touch with Brigade Commander and give any necessary supervision and assistance in laying out new work.


Lieut. Colonel.
C.R.E. 4th AUSTRALIAN DIVISION.

Headquarters.
4th Aust. Div. Engrs.
3rd June 1918.

O.C., 13th Field Coy A.E.

Please arrange to take over the maintenance of Foot Bridge in O.1.a. and dummy bridges in O.2.a. and N.18.c.(2). Also arrange for the destruction of the foot bridge should the necessity arise.

(Signed) R. John DYER. Lieut. Colonel.
C.R.E. 4th AUSTRALIAN DIVISION



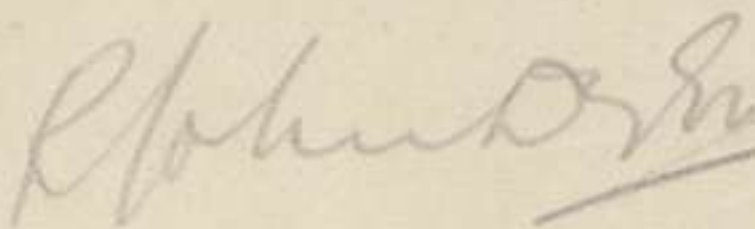
Headquarters.
4th Aust. Div. Engrs.
3rd June 1918.

O.C., 13th Field Coy A.E.

Please arrange to (a) clear wire and place artillery bridges at I.25.a.O.O. and H.30.b.8.2. Knife rests to be constructed to fill the gaps so formed in the wire.

(b) To reconnoitre Divisional Area and effect any other necessary crossings and gaps for Artillery.

Please notify this office when (a) is completed.



Lieut. Colonel.
C.R.E. 4th AUSTRALIAN DIVISION.



Left Company Dig outs

- | | | | |
|------------------|-----------|-------------|---|
| I 17. b. 8. 2. | 119 | Emplacement | * |
| I 18. a. 1. 7. | " | " | * |
| I 23. d. 7. 2 | AFA. | Bde. H.Q. | |
| I 24. b. 3. 2 | Battery | H.Q. | |
| I 25. b. 5. 4 | Battery | H.Q. | |
| I 29. d. 0. 1. | Artillery | O.P. | |
| I 29. d. 0. 5. | AFA. | Gun crews | |
| I 30. a. 7. 0. | | O.P. | |
| I 30. c. 1. 0 | Artillery | O.P. | |
| I 36. a. 3. 8 | " | " | |
| | | | |
| J. 14. a. 8. 2. | Army | Bde. RFA. | |
| J. 14. c. 8. 5 | " | " | |
| J. 15. a. 9. 6 | " | " | |
| J. 14. d. 6. 4 | " | " | |
| J. 19. c. 7. 6. | Bn. | H.Q. | |
| J. 22. d. 30. 25 | | R.A.P. | * |
| J. 28. a. 4. 7. | 150 RFA. | Bde. | |
| J. 28. a. 7. 8. | Bn. | H.Q. | |

D.Os shown thus * are complete

To: G.C. 12th 7.P.
12th F.C.

Left.
At Coy's
Herewith list of Dig outs in ~~area~~ area. When furnishing reports on progress of D.Os. will you please attach a sketch showing section of D.O., ~~approximate~~ and amount of excavation completed. Particulars of approximate head cover, and anticipated accommodation should be given, also the date when it is anticipated that D.Os will be completed. ~~It is noted that~~ Bunking in Deep D.Os will be carried out by F.Coy. when the excavation & timbering has been completed by Turnley Coy.

C.R.F.



Right Company Area D.O.s.

O.12.c.5.2.	Bn. H.Q.	*
O.13.a.6.8.	"	
O.13.a.5.6.	"	
O.17.b.18.40.	Battery H.Q.	
O.17.d.56.92.	"	*
O.18.a.4.3.	M.G. H.Q.	*
O.24.a.4.8.	Bn. H.Q.	*
P.7.a.1.0.	Bn. H.Q.	*
P.13.a.6.3.	O.P.	*
P.19.a.1.0.	M.G. Coy. TOP	*

D.O.s shown thus * are completed.

LEFT COMPANY DUGOUTS.

I.17.b.8.2.	M.G. Emplacement.	*	I.36.a.3.8.	Artillery O.P.
I.18.a.1.7.	"	*	J.14.a.8.2.	Army Bde. R.F.A.
I.23.d.7.2.	A.F.A. Bde. H.Q.		J.14.c.8.5.	Army Bde. R.F.A.
I.24.b.3.2.	Battery H.Q.		J.15.a.9.6.	Army Bde. R.F.A.
I.24.b.5.4.	Battery H.Q.		J.14.d.6.4.	"
I.29.d.0.1.	Artillery O.P.		J.19.c.7.6.	Bn. H.Q.
I.29.d.0.5.	A.F.A. Gun Crews.		J.22.d.30.25.	R.A.P.
I.30.a.7.0.	O.P.		J.28.a.4.7.	150 R.F.A. Bde.
I.30.c.1.0.	Artillery O.P.		J.28.a.7.8.	Bn. H.Q.

Dugouts shown thus * are completed.

RIGHT COMPANY AREA DUGOUTS.

O.12.c.5.2.	Bn. H.Q.	*
O.17.b.18.40.	Battery H.Q.	
O.17.d.56.92.	"	*
O.18.a.4.3.	M.G. H.Q.	*
O.24.a.4.8.	Bn. H.Q.	*
P.7.a.1.0.	Bn. H.Q.	*
P.13.a.6.3.	O.P.	*
P.19.a.1.0.	M.G. Coy and O.P.	*

Dugouts shown thus * are completed.

Headquarters.
4th Aust. Div. Engrs.
6th June 1918.

C.O., 4th Pioneer Bn.

Reference telephone conversation this afternoon re dugouts for the protection of M.G's and crews.

These are required approximately at,-

O.24.b.40.90.	for	1	crew.
O.18.b.90.20.	"	1	"
P.7.d.35.70.	"	2	crews.
P.1.c.50.50.	"	1	crew.

It is desired to make use of these dugouts for the protection of Infantry as well as M.G's - the standard type of dugout with two entrances 40' apart connected by a 9' cross cut would suit this purpose.

As the protection of M.G's is the first consideration, and to enable work on remainder of dugout to continue without interference on either part, an 8' chamber should be driven off one entrance before commencing to join up the entrances - as per sketch attached.

If an emplacement can be made directly off the dugout in any of the above cases - e.g. breaking out into the side of a bank etc. - it should be put in.

Where possible work continuous shifts, in other cases, at night only, until sufficient cover is given to work continuous shifts.

20' cover will be given.

In all cases work must be very carefully camouflaged.

I have arranged with G.O.C. 4th Brigade that the party working in C.T. in P.I. will be withdrawn after to-night's work. Please arrange to commence work in M.G. dugouts to-morrow night. The M.G. Coy Commander is at O.18.S.3.2. and will show your representative the proposed sites.

Lieut. Colonel.
C.R.E. 4th AUSTRALIAN DIVISION.

Appendix No

DEMOLITION.*Watkins*DEMOLITION INSTRUCTION NO. 1.

1. i. The 12th Field Coy A.E. will be responsible for the guarding and demolition of the Bridges and Road Mines in "B" Divisional Area detailed in the attached tables. (Instructions for the Defensive No.46)

ii. Responsibility for Orders for Demolition. Special orders will be issued in regard to the responsibility of Division, Brigades, etc. for giving orders for demolition. It is quite possible, when the time comes, that conditions may prevent these orders from being issued, therefore the following instruction must be adhered to and action taken accordingly.

"In the event of the enemy appearing at close quarters before the orders for demolition are received the Officer, N.C.O., or Sapper in charge will destroy the bridge on his ^{own} discretion."

2. ABUTMENTS.- One abutment of each bridge will be mined.

3. SHELTERS.- 2 shelters each to hold 2 men will be built near every bridge site.

4. NOTICE BOARDS.- All bridges prepared for demolition will have a notice board at the site of the bridge, with the serial number on it.

5. ARMS.- Every Officer and O.R. will carry a rifle and at least 100 rounds of ammunition.

6. RATIONS.- Each demolition party will have rations and water for 3 days.

7. INFORMATION.- No information is to be given to any but duly authorised persons. The Field Engineer for demolitions for the Australian Corps is Lieut. BOLTON A.E., any every facility will be given him to keep in touch with the work and general arrangements.

8. REPORTS.- In every case of actual demolition a report will be forwarded to Headquarters as to the result of such demolition.

HEADQUARTERS 4th AUS.
DIVN. ENGRS.
No. <i>DC. 2280.</i>
DATE <i>7/6/18</i>

R. John Dyer

Lieut. Colonel.

C.R.E. 4th AUSTRALIAN DIVISION.

MEDICAL OFFICERS REPORT.

MONTH OF JUNE 1918.

ACTIVE OPERATIONS.

- (1) The Area was examined and a suitable place chosen central to Companies. The out-going M.O. had established no forward R.A.P.
- (2) The R.A.P. was used for Sick parades and as a station for medical personnel; visits being made daily to detached parties which were located variously from SAILLY-le-Sec to DAOURS.
- (3) No fixed carry could be arranged but wounded were taken to nearest bearer post or ambulance route. The use of a repaired wheeled stretcher made the long carry possible without detaching large squads from working parties.
- (4) No casualties occurred among personnel.
- (5) About 15 minutes elapsed after receipt of wound before patient was attended to.
- (6) About 6 wounded were treated at R.A.P. and altogether about 10 of this Unit were wounded.
- (7) The conditions were more difficult than usual on account of the distance from nearest Ambulance Post (3000 yards in one case); the shortage of medical personnel; the heavy sick rate and the scattered *condition* of the Unit. As many as nine posts had to be visited, six of which were visited daily. This also caused difficulties in collecting indents and distributing supplies especially as the Ambulance required its requisitions for doings etc. to be sent in before a certain day in the week.

ROUTINE WORK.

- (1) Number of Sick attended 277, Evacuated 6 (to 26th of Month)
- (2) P.U.O. very prevalent.
- (3) Apart from the large number affected with pyrexia the health was very good.
- (4) Pit and bucket latrines and small incinerator for rubbish where possible.
- (5) Bathing irregular but possible as each Section came out to rest (every nine days) Others stationed near baths bathed more often.
- (6) Food plentiful and good.
- (7) Reinforcements of good quality.
- (8) The Mobilization equipment is not found very servicable. The haversacks and companion being much more useful. Some salvaged stores enabled us to fit up small haversacks for the Companies' use. A wheeled stretcher salvaged at EDGEHILL was repaired and has been very useful as our Unit has no stretcher bearers.
- (9) During rest period the billets were the best yet occupied. The rest billet is a large machinery hall in excellent condition.

R. M. O.

Major.
R.M.O., 4th AUST. DIV. ENGRS.

W.D Appendix No 4

4th AUSTRALIAN DIVISIONAL ENGINEERS.List of Officers.HEADQUARTERS.

Lieut-Colonel. DYER. R.J., D.S.O.
 Lieutenant. DONALDSON. G.F.S.

4th FIELD COMPANY.

Major. TOLLEY. H.G. D.S.O.
 Captain. DOW. A.H. M.C.
 Lieutenant. MINTON. J.P. M.C.
 " MACLEAN. A.G. M.C.
 " LEWIS. H.C.A.
 2/Lieutenant. BUCKLER. A.J. M.C.
 " WALKER. D.R.
 Lieutenant CARRICK. R.S.

12th FIELD COMPANY.

Major. RIDDELL. C.C. D.S.O.
 Captain. NORMAN. E.P. M.C.
 Lieutenant. KEESING. G.S.
 " FRASER. K.A.
 " BALDWIN. D.E.
 " McINTYRE. A.L.
 " COOPER. N.H.
 2/Lieutenant. WIGHT. A.R.
 " HUNT. R.A.

13th FIELD COMPANY.

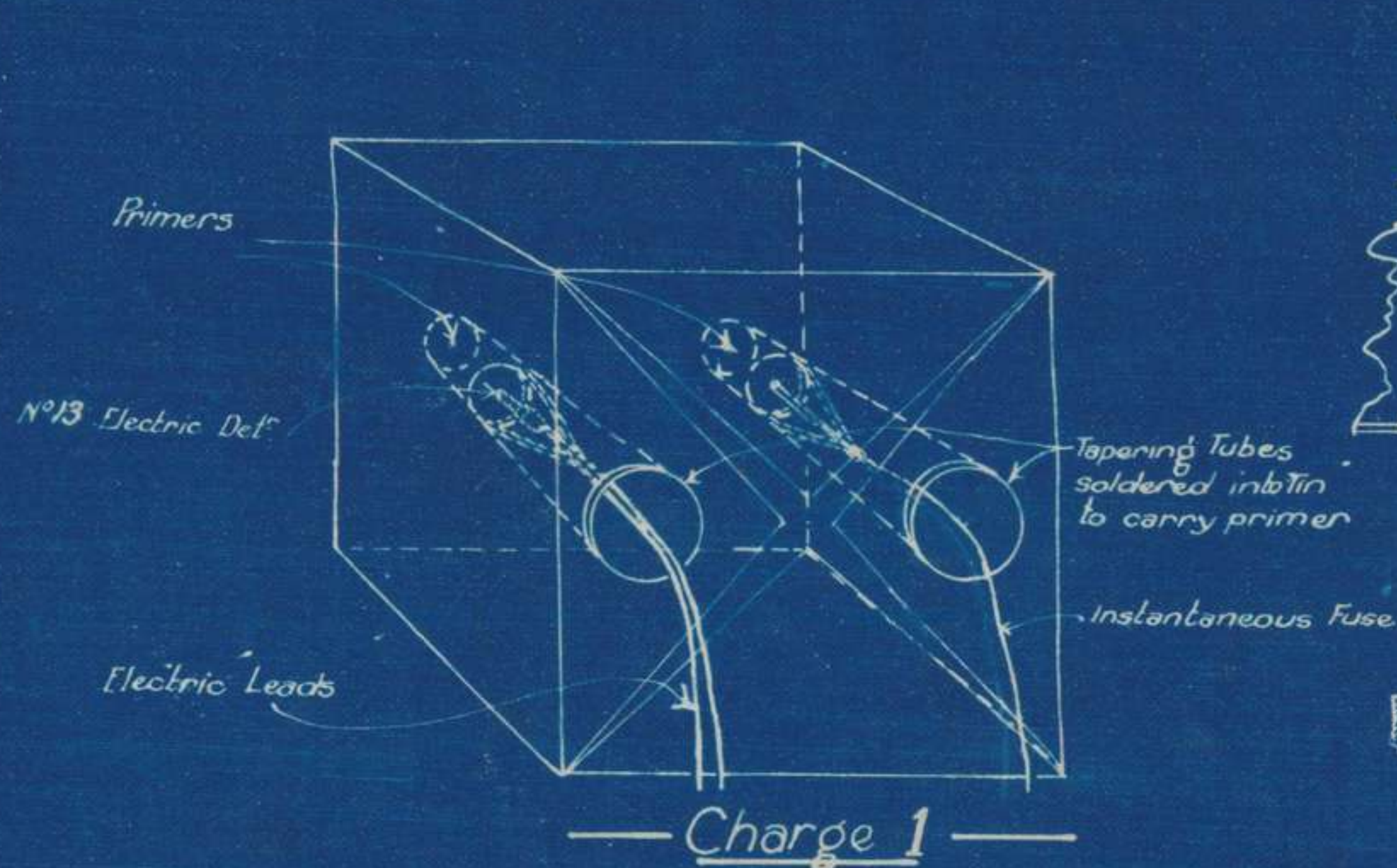
Major. CARR. R.B.
 Captain. FARR. T.A.L.
 Lieutenant. MOLLOY. V.L.
 " BATE. E. M.C.
 " BEST. J.F.C.
 " McKAY. R.J.
 " MORRISON. W.
 2/Lieutenant. HAY. J.A.
 " MERROTSY. A.L. M.M.
 Lieutenant BELL. J.W.

Appendix No 5

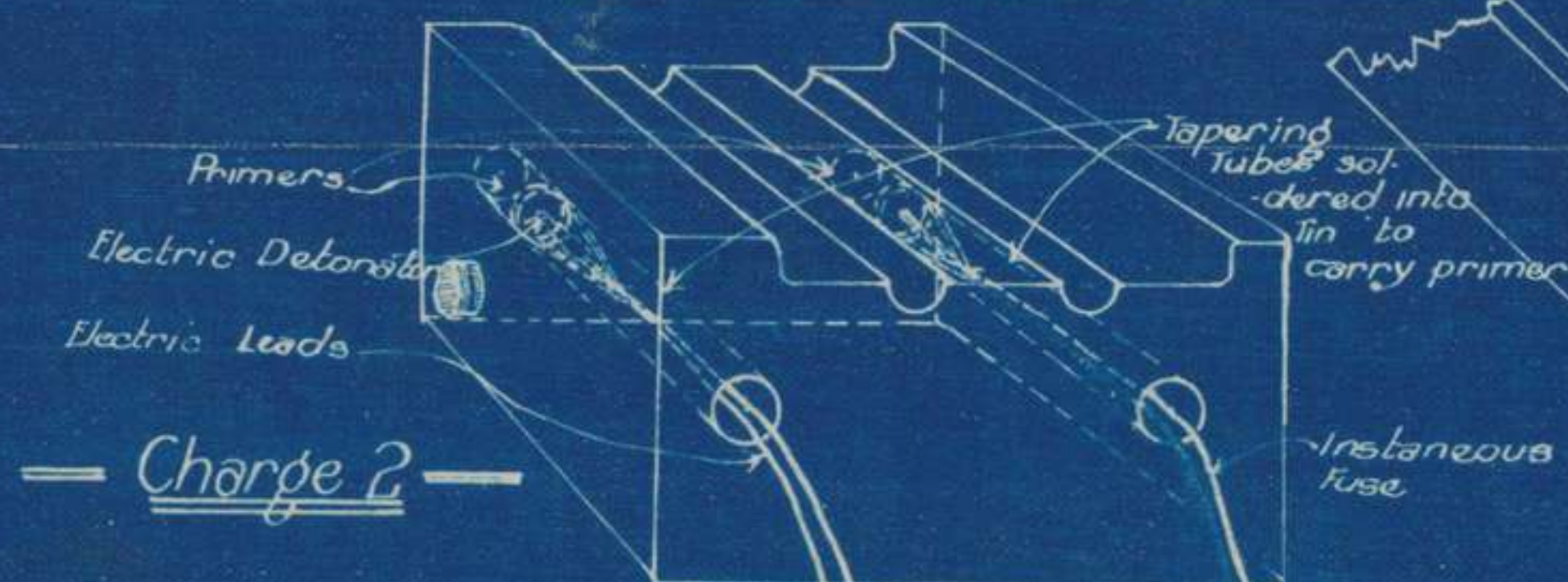
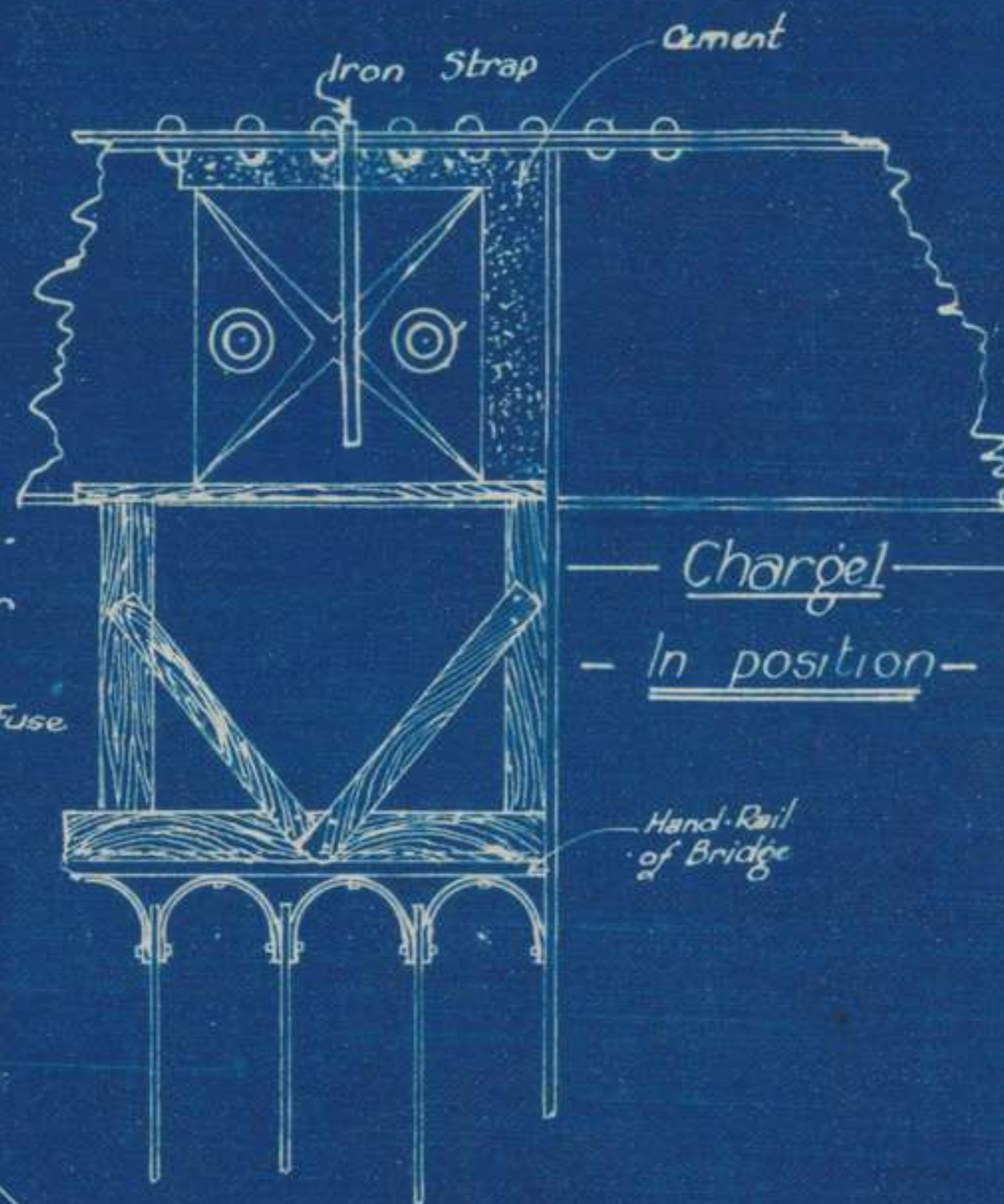
30th June 1918.

I.P.S. Paraldon
 Lieut. & Adjt.
 for C.R.E. 4th AUSTRALIAN DIVISION.

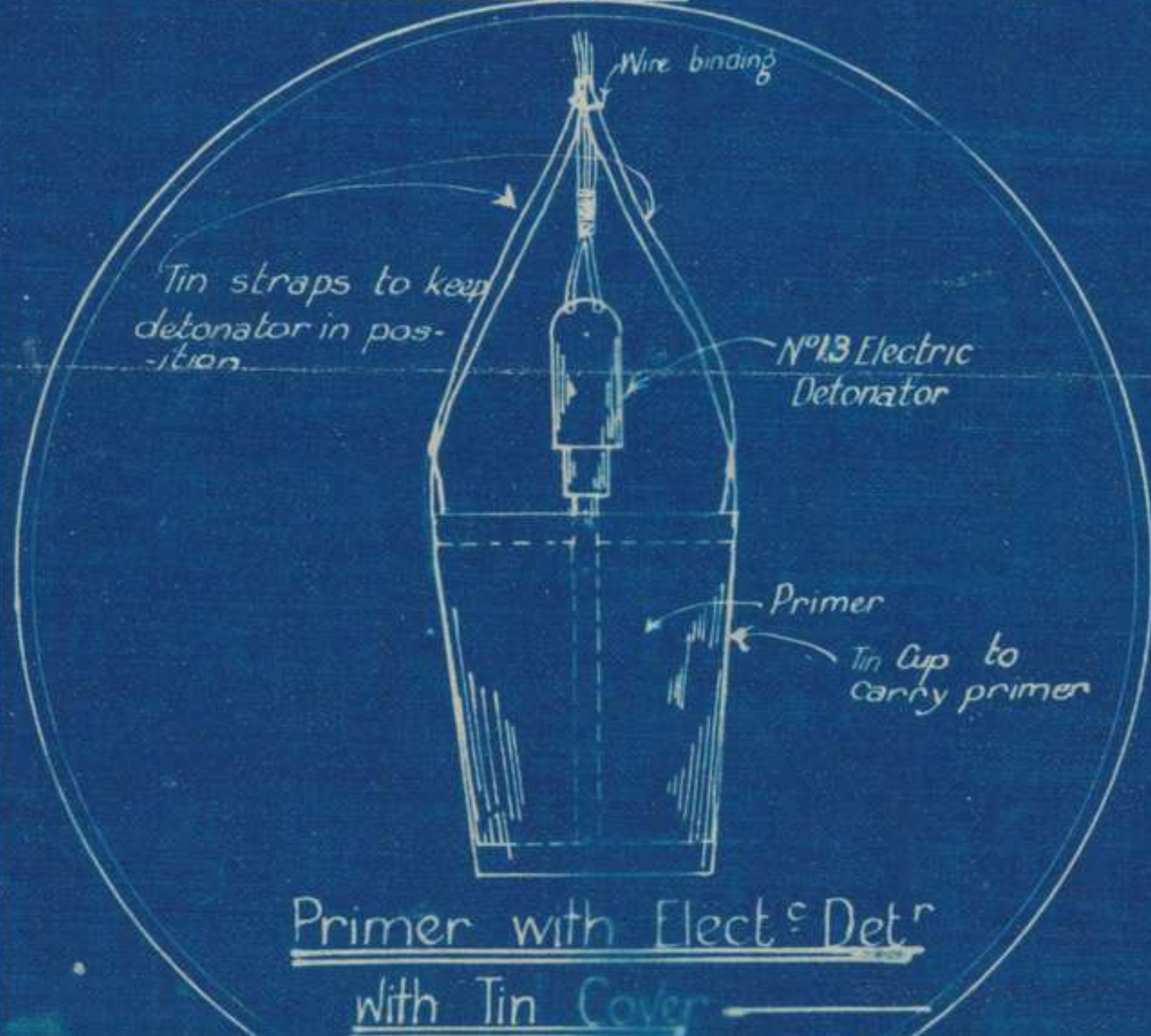
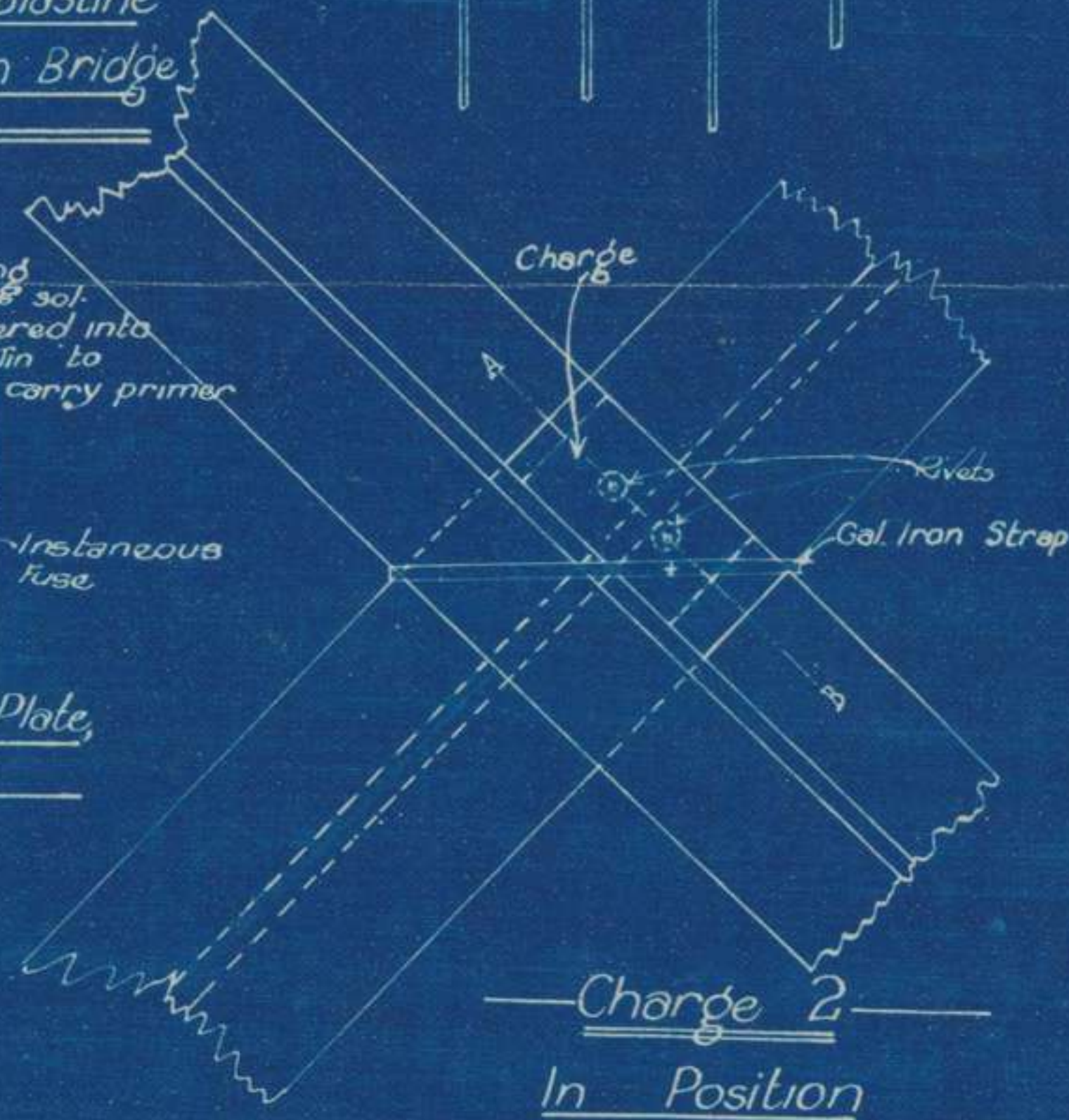
Sketch Plans of Mobile Demolition Charges and Covered Primer



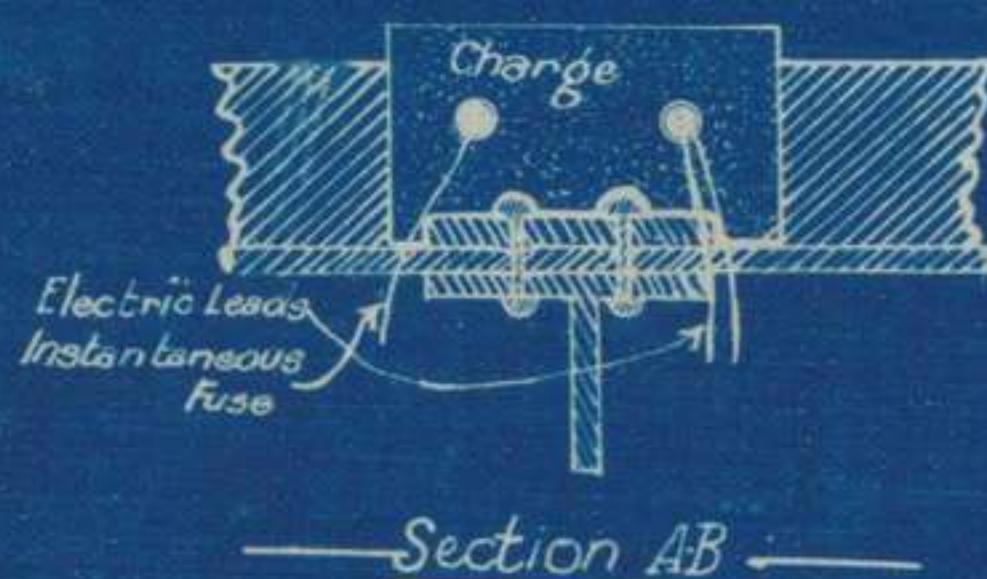
— Charge 1 —
Blastine Tin filled with Blastine
Ready to be placed on Bridge



— Charge 2 —
Petrol tin, constructed to fit over Rivetted Plate,
filled with Blastine



Primer with Elect^r Det^r
with Tin Cover



193

APPENDIX

6

33

193

CHART

— SHOWING —

PERIODS SPENT BY FIELD COYS
IN FRONT LINE, IN FORWARD AREA, IN BACK AREA

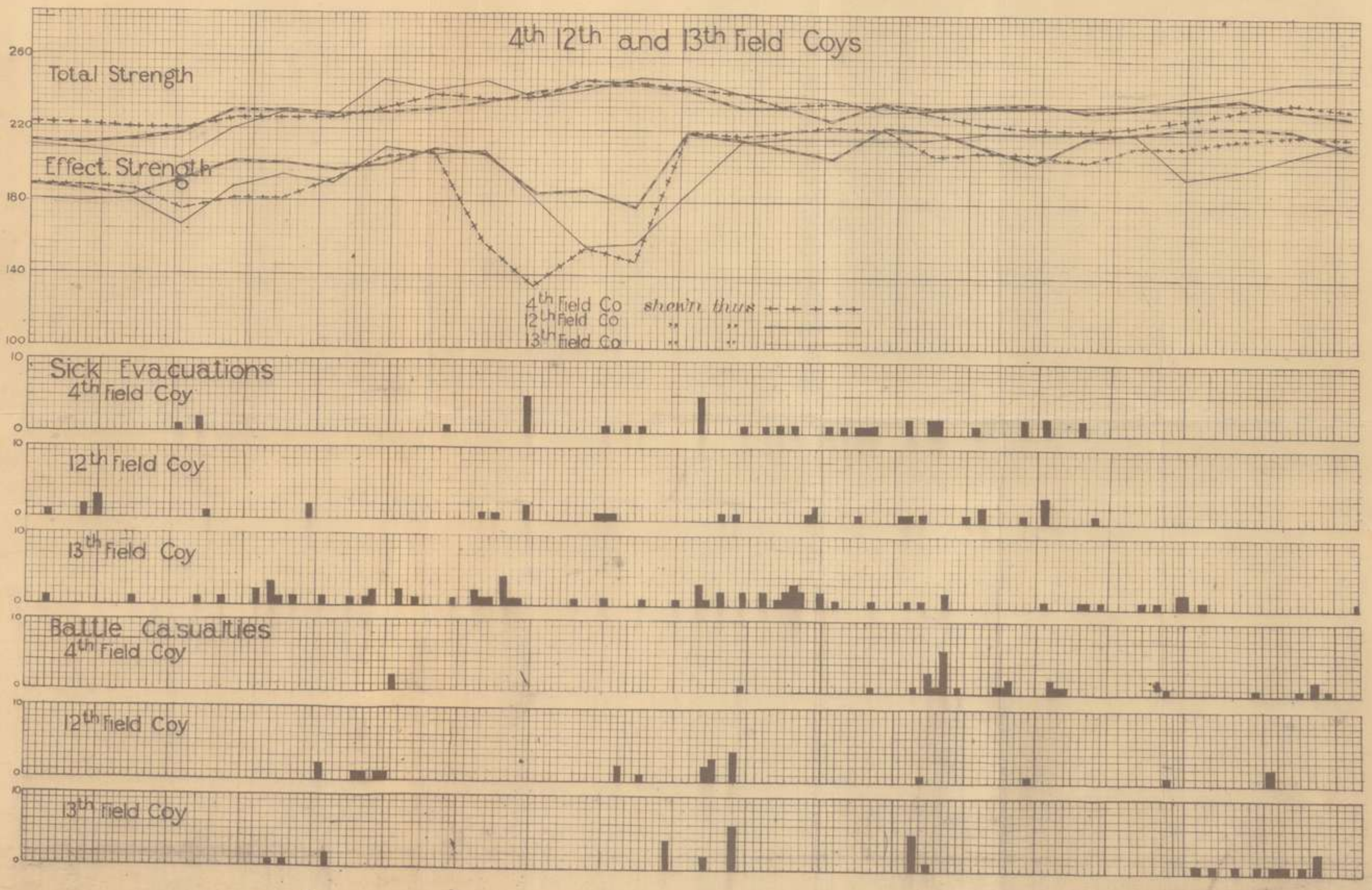
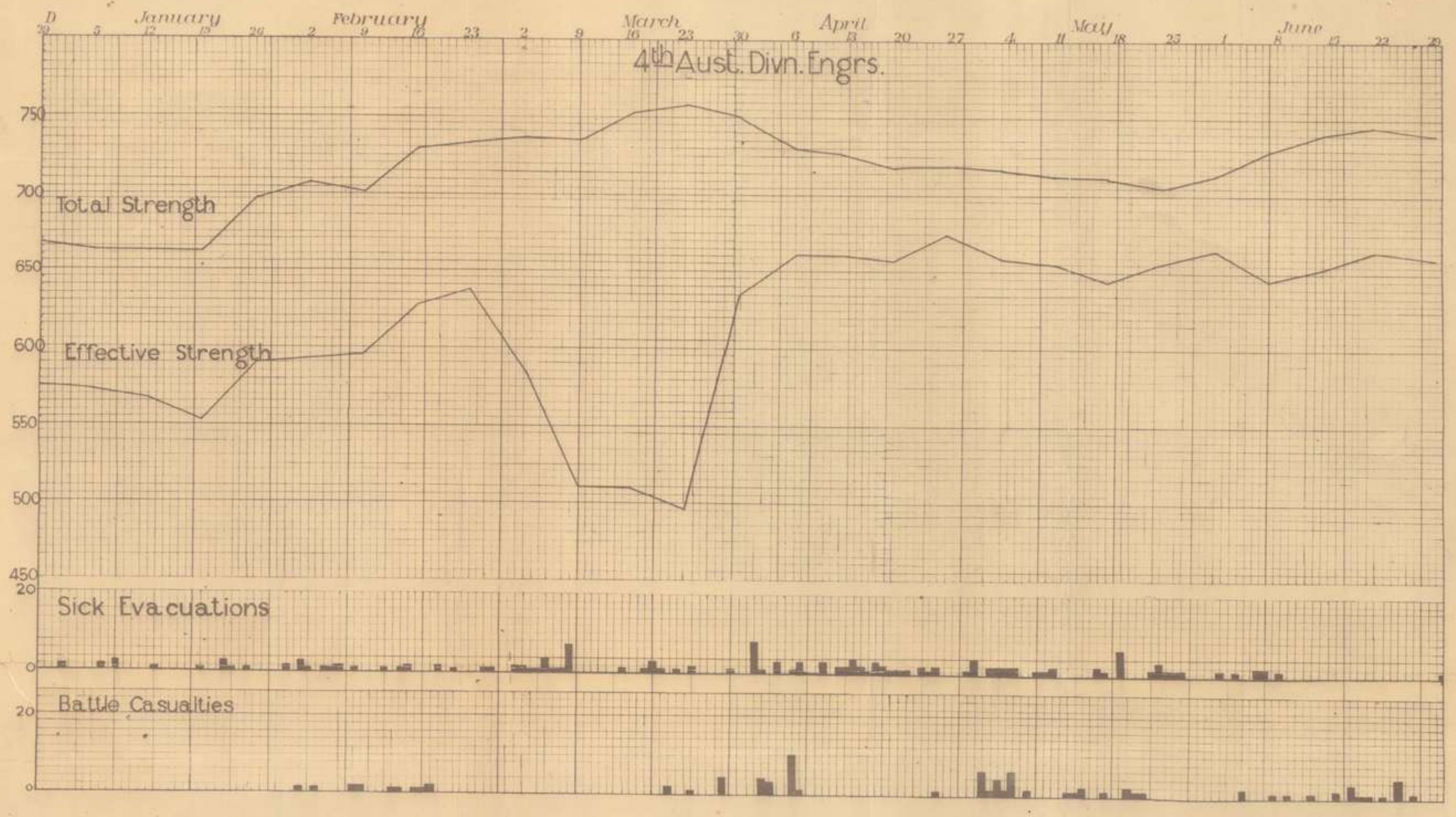
4 TH Aust Div — Engrs —	How EMPLOYED	January				February				March				April				May				June				July				August				September				October				November				December											
		Weeks				Weeks				Weeks				Weeks				Weeks				Weeks				Weeks				Weeks				Weeks				Weeks				Weeks															
		1	2	3	4	1	2	3	4	1	2	3	4	1	2	3	4	1	2	3	4	1	2	3	4	1	2	3	4	1	2	3	4	1	2	3	4	1	2	3	4	1	2	3	4	1	2	3	4	1	2	3	4				
4 TH FIELD Co	IN FRONT LINE												1					7	7	7		5	7	7	9																																
	FORWARD AREA	5		7	10	7	7	7	7	7	7	7	4	7	7	7	8								10																																
	BACK AREA		2	4									1																																												
12 TH FIELD Co	IN FRONT LINE			4	7	10	7	7	7	7				3	7							5	7	7	9																																
	FORWARD AREA	7	3							7	7	7	7					6	7	9	7	7	7	10	8																																
	BACK AREA																																																								
13 TH FIELD Co	IN FRONT LINE			2	7	10	7	7	7	7				5	7			3	7	7	7					2	7	7	9																												
	FORWARD AREA	7	5							7	7	7	5					7	7	8						10	5																														
	BACK AREA																																																								

193

4th Aust. Divn. Engrs.

CHARTS

showing
Total Strengths Effective Strengths
Battle Casualties and Sick Evacuations



193

193

4th Aust Divn Engrs

APPENDIX

936

CHART

showing

Quantity of R.E. Stores issued

at

Divisional Dumps

June 1918



Appendix No 9

193

36

CIRCULAR BY BRANDBUM NO.31, by CHIEF ENGINEER, AUSTRALIAN CORPS.

COST OF MATERIALS.

I wish to bring to the notice of all C.R.Es. the attached list showing the cost of some of the more common Engineer Stores, in order that the Officers, N.C.Os. and Sappers using these Stores may realise that unnecessary expense is caused by careless use, or waste, of these Stores.

It is not my wish or intention to restrict the legitimate use of any of these Stores; I merely wish that all should realise that, as everyone will have to pay his share of the cost of this War, it is up to everyone to use Stores of all sorts - not only the items named - as sparingly as is consistent with efficiency.

And the actual money cost is not all. Everyone must remember that there is the transport problem. Railways & Roads, M.T. and Horse Transport, are all being fully employed and even if 1000 Sandbags cost only 44 pence instead of nearly £44, it would still be criminal to waste them, as the Transport of them from the Base has to be considered.

Put this before your Officers, N.C.Os and Sappers, please, and ask them to think it over.

(sd) C.H. FOOT.

Brigadier-General.

Chief Engineer, AUSTRALIAN CORPS.

PRICES OF R.E. STORES.

Cement.	barrels	11/6 including cask 4/6
French Wire entanglement.		5/8 per roll.
Corrugated Iron		£1-14s. per bundle.
Roofing felt		6/3 per roll.
Joists 9' x 5" x 3"		14/6 each.
Screw posts long		1/6 1/2 each
" " medium		1/1 1/2 each.
" " short		8 1/2 each.
Wire netting		21/2 per roll.
Villesden Canvas		1/2 3/4 per sq. yard.
Steel Shelters, large		£17/6/3d each.
" " small		£5.18/9d each.
N.P.M. large mesh		1/8 1/2 per sq. yard.
Coir Lewing or Jute Bagging		1/1 per lin. yd. 6ft wide.
Trench Pumps, Superior		£4/6/- each
" " Inferior		£3/10/- each.
Hose, Armoured delivery		£1/11/3 per 30' length
Hose, suction		£1/12/6 per 15' length.
Hose, Canvas		£1/4/- per 30' length.
Sandbags		10 1/2 each.
Oiled linen for Glazing		£3/8/9 per Roll of 50 yds x 1 yard.
Stoves, with piping (Queen pattern)		9/- each.
" Canadian large		17/6 each.
" " small		13/6 each.
Tar		15/6 per barrel.
200 gall. tank, circular		£2/3/6 each.
400 " " "		£8.14.0 each.
Barbed wire		8/- per small coil.
Hessian R.P.		£4 per roll of 100 yards.
" plain		3d per yard.
Plain wire		7/7 per coil.

The C.R.E., 4th Aust. Div. writes re Sandbags:-

"Each time the Division goes into the line there is a large demand, especially from Infantry Units, for Sandbags to carry rations forward.

The question raised with a view of checking waste both in trans-

P. T. O.

Appendix No 10

2.

transport and issue of R.E. material is what becomes of these sandbags after the rationing delivered.

I would ask that greatest economy be exercised by reusing bags from forward area and using them over and over again, and when they have become unserviceable for this purpose they be delivered to the Salvage Company, which requires large quantities of bags for despatch of shell cases, etc., to the Base."

Headquarters,
4th AUSTRALIAN DIVISION,
8th June, 1918.

Q.28/200.

- 4th Aust. Div. Arty.
- C.R.E.
- 4th Aust. Div. Signal Coy.
- 4th Aust. Inf. Bde.
- 12th Aust. Inf. Bde.
- 13th Aust. Inf. Bde.
- 4th Aust. M.G. Battalion.
- 4th Aust. Pioneer Battalion.
- 4th Aust. Div. Train.
- 4th Aust. Mobile Vet. Section.
- A.D.M.S.
- A.P.M.
- D.A.D.O.S.
- 4th Aust. Div. Salvage Coy.
- Camp Commandant.

The above is issued for the guidance of all units.

The Divisional Commander desires that the closest attention and fullest promulgation be given these matters by C.Os. of all formations.

Lieut. Colonel,
A.A. & Q.M.G.,
4th AUSTRALIAN DIVISION.

4th Pioneers8-6-1918Work's Report

The following material cut today.

Size of pieces	Running feet
9" x 3" 39	6 feet 6 inches } For
9" x 3" 30	3 feet 3 inches } Mining
6" x 1" L -	250 feet
3" x 1" -	350 feet
Total of Running feet 1270 970	

Please submit proforma of Work's Report if above is unsatisfactory

U. G. Sawmill

Shew completed
Mining Sets

[Faint handwritten notes on lined paper, including names and dates]

[Signature]
9th Aust Div

193

APPENDIX

39

4th Pioneers
A.I.F.

9/6/1918

Works Report

The following material has been cut today:

Size	No of pieces	Lengths	Running feet
9x3"	28	6'6"	202 feet
9x3"	26	3'3"	84 "
6"x1 1/4"	I. —	Various	150 feet
3"x1 1/4"	—	do.	300 feet
12"x4"	18	13' to 17'	258 ft } Corps 246 ft } Work.
8"x4"	24	10'6"	

Total running feet cut = 1240 feet

Complete running sets on hand to date = 28 sets
Unfinished 11 stiles

W. Bartlett

O.C.

Saw mill
Dawson

Ref

4th Pioneers -- 10-6-1918 -Work's Report -

The following material cut today:-

Size	No of pieces	lengths	Running Feet
9" x 3"	42	6' 6"	273 feet
9" x 3"	46	3' 3"	150 feet
9" x 1 1/4"	-	Various	15 feet
6" x 1 1/4" Tr.	-	do	330 feet
3" x 1 1/4"	-	do	500 feet

Total Running Feet cut = 1268 feet

Abining sets completed today

23 sets

6 stiles incomplete

Complete sets in stock 57

W. Charles Lt.

O. C.

Sawmill

Daours

126

4th Div Sawmill - 11-6-1918
 4th Pioneer Works Report

The following material was cut into sizes shown below today.

Size	cts of pieces	Lengths	Running feet	Remarks
8'x4"	3	7'	21 feet	Direction of Band saw
9" x 3"	42	6'6"	373 feet	Skinning sets
9" x 3"	29	3'3"	94 feet	
9" x 3"	8	2'	16 feet	Ends
9" x 1 1/4"	-	Various	22 feet	Lagging
8" x 1 1/4"	-	"	58 "	
6" x 1 1/4"	-	"	385 "	
5" x 1 1/4"	-	"	59 "	
4" x 1 1/4"	-	"	114 "	
3" x 1 1/4"	-	"	172 "	
			<u>810</u>	

Total running feet cut - 1314 feet.
 Sets completed today 14 sets
 with 1 head & 20 stiles incomplete
 Complete sets in stock 25

Quantity of firewood and sawdust also available

W. Bartles Lt.

Officer in charge
 Sawmill

[Handwritten signature]

4th Div Sawmill - -12-6-1918
 4th Div Pioneers
 - Woods Report -

The following material was cut
 into the sizes stated below :-

Size	No Pieces	Lengths	Running feet	Remarks
9x3"	45	6'6"	293 feet	} Mining sets
9x3"	66	3'3"	215 "	
8x1 1/4"	-	6'	6 feet	} Lagging
7x"	-	Various	27 "	
6x"	-	"	446 "	
5x"	-	"	33 "	
4x"	-	"	314 "	
3x"	-	"	74 "	
			1408	

Total running feet cut today - 1408 feet.
 Sets completed today - 33
 Complete sets in stock - 28.
 No lagging in stock.

W. Baerter Lt.
 Officer in charge
 Sawmill

1918

4th Div. Sawmill ————— 13-6-1918 —————
 4th Pioneer's Work's Report —————

The following material was cut into the sizes shown below:-

Size	No of pieces	Lengths	Running feet	Remarks
9" x 3"	11	6'6"	72 feet	} Chaining sets
9" x 3"	34	3'3"	111 feet	
8" x 1 1/4"	—	Various	18 feet	} Lagging
7" x "	—	"	74 feet	
6" x "	—	"	1744 feet	
5" x "	—	"	492 feet	
4" x "	—	"	257 feet	
3" x "	—	"	119 feet	
3" x 2"	5	6'	30 feet	Special

2654

Total running feet cut 2867 feet
 Chaining sets completed today 5 sets
 Complete sets in stock 5

Lagging in stock
1300 feet

W. Bartlett
 Officer in charge
 Sawmill

4th Div Sawmill 14-6-1918
4th Pioneer Works Report

The following was cut into the sizes shown below :-

Size	Running feet	Remarks
7x1 1/4	152 feet	} Lagging
6x"	2330 "	
5x"	352 "	
4x"	417 "	
3x"	106 "	
	<u>3357</u>	

Total running feet cut 3357 feet.
 Lagging in stock 3407 feet
 Chaining sets do. 5 sets
 (complete)

W. Bartlett.
 Officer in charge
 Sawmill

4th Div. Sawmill
4th Pioneers

15-6-1918

Works Report

The following material was cut into sizes shown below:-

Size	No of pieces	Lengths	Running feet	Remarks
9x2 1/2"	59	6'6"	384 feet	Chaining sets
9x2 1/2"	49	3'3"	159 "	
8x1 1/4"	-	Various	29 feet	Lagging
7" "	-	"	218 "	
6" "	-	"	1338 "	
5" "	-	"	146 "	
4" "	-	-	167 "	
3" "	-	-	102 "	
			<u>2000.</u>	

Total running feet cut - 2543 feet
Chaining sets completed today 25
Lagging in stock 3650 feet

W. B. B. H.

Officer in charge
Sawmill

1918

4th Div Sawmill - -17-6-1918-
4th Pioneers Works Report -

The following material was cut into the sizes shown below:-

Size	No of pieces	Lengths	Running feet	Remarks
9" x 2 1/2"	64	6'6"	416 feet	} Skoring sets
9" x 2 1/2"	49	3'3"	159 "	
8" x 1 1/4"	-	Various	26 "	} Lagging
7" x "	-	"	189 "	
6" x "	-	"	822 "	
5" x "	-	"	352 "	
4" x "	-	"	121 "	
3" x "	-	"	74 "	
			1584.	

Total running feet cut today 2159 feet
 Sets completed = 310 sets
 Lagging in stock 900 feet
 Sets " " 131 sets.

Yesterday Sunday 16-6-18, the mill was closed down and repairs made to turbine and weir.

W. B. Carter
 Officer in charge
 Sawmill

193

17-6-1918

To
C. R. C.
4th Aust Division

Please supply 12 sawyers & 5 labourers
to enable working of second shift.
Men to carry 2 1/2 hours rations

Pulley required to fit 2 3/8"
shafting

Steel split pulley 15" to 17" in diameter
2 3/8" bore and 8" to 12" face
with crown if possible.

Saw files urgently required.

W. Beckett.

Officer
in charge
Sawmill

APPENDIX II

[Faded handwritten text on a lined paper insert, possibly a list or account. The text is mostly illegible due to fading.]

[A large, dark, illegible scribble or signature is present in the center of the insert.]

1961

4th Div Sawmill = - 18-6-1918 =
4th Pioneer's Works Report

The following material was cut into the sizes shown below:-

Size	No of pieces	Lengths	Running feet	Remarks
9" x 2 1/2"	42	6'6"	273 feet	} Mining sets
do	22	3'3"	72 "	
8" x 1 1/4"	-	Various	29 "	} Lagging
7" do	-	"	100 "	
6" do	-	"	1260 "	
5" do	-	"	473 "	
4" do	-	"	126 "	
3" do	-	"	96 "	
3" x 2"	-	"	50 "	
6" x 1"	-	"	30 "	

Total running feet cut 2509 feet.
 Mining sets completed today 21 sets.

Lagging in stock 2000 feet
 Sets in stock 1 set.

W. J. Carter Lt.
 Officer in charge
 Sawmill

4th Div Sawmill -
4th Pioneers

6am to 1pm
19-6-1918

Works Report

The following material was cut in the sizes shown below:-

Size	No of pieces	Lengths	Running feet	Remarks
9x2 1/2"	66	6'6"	429 feet	} Chaining sets
do.	38	3'3"	123 "	
7"x1 1/4"	-	Various	236 "	} Lagging
6" do	-	"	1103 "	
5" do	-	"	376 "	
4" do	-	"	38 "	
3" do	-	"	130 "	
			<u>2883.</u>	

Total running feet cut today = 2435 ft.
Chaining sets completed " 21

Lagging in stock at 6pm = 2500 feet
Chaining sets do " = 17 sets

No. 2210 Pte Thompson D. B. evacuated to hospital - please supply sawyer to replace this man, who is from C. Company.

W. B. Bartlett St.
Officer in charge
Sawmill

Hth Div Sawmill

19-20/6/1918

Hth PioneerWorks Report

The following material was cut into sizes shown below:-

Size	No of pieces	Lengths	Running feet	Remarks
9" x 2 1/2"	85	6'6"	553 feet	Chaining sets
9" x 3 1/2"	93	3'3"	302 "	
8" x 1 1/4"	-	Various	98 "	Lagging
7" do	-	"	180 "	
6" do	-	"	1862 "	
5" do	-	"	557 "	
4" do	-	"	191 "	
3" do	-	"	58 2946	
6" x 2"	-	"	200 "	Special

Total running feet cut 4001 feet
 Chaining sets completed 43

Chaining sets in stock at 6 pm. 38.

Lagging in stock do. 2100 feet

R. Cantwell

Officer in charge
 Savi

4th Div Sawmill20-21/6/187th PioneerWorks Report

The following material was cut into sizes shown below.

Size	No of pieces	Lengths	Running ft	Remarks
9" x 2 1/2"	10 5	6'6"	682 feet	} Mining Sets
do	10 2	3'3"	332 "	
8" x 1 1/4"	1	6"	6 "	} Logging
7" do	-	Various	220 "	
6" do	-	"	1462 "	
5" do	-	"	536 "	
4" do	-	"	152 "	
3" do	-	"	59 "	
			<u>3449</u>	

Total running feet cut 3449 feet
 Mining Sets completed. 51 sets

Mining Sets in Stock at 6 p.m.

50

C. B. Carter Lt.

Officer in charge
Sawmill

193

APPENDIX

4th Div Sawmill - 21-22-6-1918
 4th Pioneers - Works Report -

The following material was cut into sizes shown below:-

Size	No of pieces	Lengths	Running feet	Remarks
9x2 1/2	110	6'6"	715 feet	} Chaining sets
do	106	3'3"	344 "	
7x1 1/4	-	Various	146 "	} Logging
6" do	-	"	1601 "	
5" do	-	"	728 "	
4" do	-	"	205 "	
			<u>2680</u>	

Total running feet cut 3739 feet
 Chaining belts completed 53 belts
 Logging cut 2680 feet
 Logging used for sets. 355 feet

W. L. ...
 Officer in charge
 Sawmill

4th Div Sawmill

22-23/6/1918

4th Div Pioneers

Works Report

The following material was cut into the sizes shown below:-

Size	No of pieces	Lengths	Running feet	Remarks
9" x 2 1/2"	145	6'6"	943 feet	} Skinning sets
do	137	3'3"	445 "	
8" x 1 1/4"	-	Various	41 "	} Lagging
7" do	-	"	100 "	
6" do	-	"	1650 "	
5" do	-	"	746 "	
4" do	-	"	262 "	
3" do	-	"	34 "	

Total running feet cut 4221 feet

Lagging do. 2833 feet

Skinning sets completed 68 sets

Lagging in stock at 1 p.m. 2200 feet

Skinning sets do 67 sets

Blentworth

Officer in charge
Sawmill

4th Div Sawmill 23-24-6-1918
 4th Pioneers
Works Report

The mill was stopped between 1 pm and 8 pm 23-6-1918 and repairs to plant were effected between those hours. The following material was cut into sizes as shown below

Size	No of pieces	Lengths	Running ft.	Remarks
9" x 2 1/2"	68	6'6"	442 ft	} Chiming sets
do	63	3'3"	205 ft	
8" x 1 1/4"	-	Various	63 ft	} Lagging
7" do	-	"	67 ft	
6" do	-	"	542 ft	
5" do	-	"	198 ft	
4" do	-	"	124 ft	
3" do	-	"	91 ft	

Total running feet cut 1732 feet
 Lagging cut 1085 feet
 Chiming sets completed 37 sets

Please supply AB152 for use - paper sent in lieu book of no use for our purpose

W. Stent
 Officer in charge
 Sawmill.

A. K. Pioneer Sawmill 23-24-6-1918
Pioneer
Works Report

The mill was stopped between 1 pm and 8 pm 23-6-1918 and repairs to plant were effected between those hours. The following material was cut into sizes as shown below

Size	No of pieces	Length	Running ft	Remarks
9 x 2 1/2"	68	6'6"	442 ft	Chaining
do	63	3'3"	205 ft	
8 x 1 1/4"	-	Various	63 ft	Lagging
7 do	-	..	67 ft	
6 do	-	..	542 ft	
5 do	-	..	198 ft	
4 do	-	..	124 ft	
3 do	-	..	91 ft	

Total running feet cut 1732 feet
 Lagging cut 1000 feet
 Chaining sets completed 32 sets

Please supply A.B.152
 for use in paper sent
 in blue book of no use
 for our purpose

W. J. ...
 Officer in charge
 Sawmill

4th Div Sawmill

24-25/6/1918

Pioneer Works Report

The undermentioned timber was cut,
in sizes shown below: -

Size	No of pieces	Lengths	Running feet	Remarks
9" x 2 1/2"	142	6'6"	923 feet	} Skinning sets
do	185	3'3"	602 "	
8" x 1 1/4"	-	Various	218 "	
7" do	-	"	194 "	} Lagging
6" do	-	"	1041 "	
5" do	-	"	641 "	
4" do	-	"	261 "	
3" do	-	"	56 "	

Total running feet cut 4036 feet
Lagging do 2511 feet
Skinning sets completed 87 sets

W. Campbell Spl.
For Officer in charge
Sawmill

4th Div Sawmill4th PioneerWorks Report25-26/6/1918

The undermentioned material was cut in sizes shown below: -

Size	No of pieces	Lengths	Running Feet	Remarks
9x2 1/2"	49	6'6"	319 feet	} Skinning sets
do	30	3'3"	97 "	
8x1 1/4"	-	Various	92 "	} Lagging
7" do	-	"	143 "	
6" do	-	"	3655 "	
5" do	-	"	818 "	
4" do	-	"	444 "	
3" do	-	"	155 "	
4x3"	1	9 feet	9 "	Special

Total running feet cut 5732 feet

Lagging cut 5307 feet

skinning sets completed 19 sets

G. Campbell Spl.
For Officer in charge
Sawmill.

4th Div Sawmill - 26-27-6-1918
 4th Pioneer Works Report

The undermentioned was cut in sizes shown below

Size	No of pieces	Lengths	Running feet	Remarks
8" X 1 1/4"	2	10'	20 feet	} Logging
7" do	-	Various	428 "	
6" do	-	"	4650 "	
5" do	-	"	715 "	
4" do	-	"	335 "	
3" do	-	"	63 "	

Total logging cut 6211 feet.

A. Blunt
 Officer in charge
 Sawmill.

4th Div Sawmill - - 27-28-6-1918
 4th Pioneer Works Report -

Size	No of pieces	Lengths	Running feet	Remarks
9" x 2 1/2"	91	6'6"	592 feet	} Skinning sets
do	70	3'3"	228 ft	
7" x 1 1/4"	-	Various	141 "	} Lagging
6" do	-	"	3501 "	
5" do	-	"	948 "	
4" do	-	"	491 "	
3" do	-	"	214 "	

Total running feet cut 6115 feet
 Lagging cut 5295 feet
 Skinning sets completed 35 sets

R. Bartlett.

Officer in Charge
 Sawmill

1918

4th Div Sawmill

- 28-29-6-1918 -

4th Pioneer

Works Report

Size of Proffices	Lengths	Running feet	Remarks
9" x 2 1/2"	156	6'6"	3617 feet } Chaining
" "	31	3'3"	101 " } sets
6" x 1 1/4"	-	various	2806
5" do	-	"	713
4" "	-	"	547
3" "	-	"	85

Total running feet cut 4616 feet

Lagging cut 4157 feet

Chaining sets completed 15 sets

W. Bartlett.

Officer in charge
Sawmill

29-30/6/1918

4th Div Sawmill
4th Pioneer Works Report

Size	No of pieces	Lengths	Running feet	Remarks
24" X 6"	1	4 feet	4 feet	Special Order
22" X 6"	1	6 "	6 "	
9" X 4"	22	12 "	264 "	Special Order
9" X 4"	2	10'6"	21 "	
9" X 2 1/2"	42	6'6"	273 "	Chaming sets
do	43	3'3"	140 "	
8" X 1 1/4"	-	Various	50 "	Lagging
7 do	-	"	10 "	
6 "	-	"	1421 "	
5 "	-	"	774 "	
4 "	-	"	200 "	
3 "	-	"	194 "	
Total running feet cut			3357 feet	
Lagging cut			2649 feet	
Chaming sets completed			21 sets	
				W. Beattie Lt Officer in charge Sawmill.



#1st Div Sawmill -
- H. R. Pioneers -

30-1/6-7/1918

Work Report

Size	No of pieces	Lengths	Running feet	Remarks
9" X 2 1/2"	711	6' 6"	462 feet	} skining sets
do	57	3' 3"	185 "	
9" X 1 1/4"	-	Various	80 "	} Lagging
7"	-	-	20 "	
6"	-	-	1686 "	
5"	-	-	600 "	
4"	-	-	380 "	
3"	-	-	150 "	

Total running feet cut 3563 feet
 Lagging cut 2916 "
 Skining sets completed 28

Advantage of the mill being stopped from 1 pm yesterday, was taken to effect many minor repairs to plant.

W. Hartst
 Officer in charge
 Sawmill



4th Div Sawmill
4th Pioneers

1-2/7/1918

Work Report

Size	No of pieces	Lengths	Running feet	Remarks
9" x 2 1/2"	87	6'6"	565 feet	} Skinning sets
do	7 1/4	3'3"	241 "	
7" x 1 1/4"	-	Various	52 "	
6" do	-	"	2678 "	} Lagging
5" do	-	"	827 "	
4" do	-	"	269 "	
3" do	-	"	160 "	

Total running feet cut 4792 feet
Lagging cut 3986

Skinning sets completed 37 sets

W. Leach
Officer in charge
Sawmill

4th Div Sawmill -

- 23/7/1918 -

4th Pioneers

Works Report

Sizes	No of pieces	Lengths	Running feet	Remarks
9x2 1/2"	67	6'6"	435 feet	} Chining sets
do	61	3'3"	198	
6x1 1/4"	-	Various	2738	} Lagging
5" do	-	"	494	
4" do	-	"	355	
3" do	-	"	134	
4x1"	-	"	350	Lagging for heads of chining sets

Total running feet cut 4704 feet

Lagging cut 4071 feet

Chining sets completed 31 sets

W B Carter Lt.
Officer in charge
Sawmill

4th Div. Sawmill -
4th Pioneer

3-7-1918

1 pm to 8 pm

Works Report

Size	No of pieces	Lengths	Running feet	Remarks
9" x 2 1/2"	27	6'6"	176 feet	} Skinning sets
do	18	3'3"	58 "	
6" x 1 1/4"	-	Various	988 "	} Lagging
5" do	-	"	229 "	
4" do	-	"	167 "	
3" do	-	"	144 "	

Total running feet cut 1762 ft.
Lagging do 1528 "
Skinning sets completed 9 sets

In stock at 8 a.m. 4-7-1918

Skinning sets completed 282 sets
Skiles without heads 69
Lagging 20,500 feet

Blair

Officer in charge
Sawmill.

4th Div Sawmill
4th Pioneer - Work's Report

Size	No of pieces	Lengths	Running
21" X 6"	1	4' 2"	4
9" X 2 1/2"	29	6' 6"	188
do	29	3' 3"	94
6" X 1 1/4"	-	Various	1140
5" do	-	"	310
4" do	-	"	620
4" X 1"	5	6'	30

Total running feet cut 23
 Lagging cut 20
 Skinning sets completed

From 6am to 9.30am. The level
 water in the canal was not
 enough for requirements but
 after mentioning same to P.E.

W. St.
 Officer in
 Charge

4th Div Sawmill
4th Pioneer - Work's Report 5-6/7/1918

193

Size	Lengths	No of pieces	Running feet	Remarks
21" X 6"	6' 6"	1	6 feet	Special
9" X 2 1/2"	6' 6"	37	241	} Skinning sets
do	3' 3"	24	78	
6" X 1 1/4"	-	-	844	} Lagging
5" do	-	-	140	
4" do	-	-	370	
3" do	-	-	136	
3" X 2"	-	-	2287	Special

Total cut 4-102 feet
 Lagging cut 1490 feet.
 Skinning sets completed 12 sets.

W. St.
 Officer in charge
 Sawmill

APPENDIX 11 66

4th Div Sawmill
4th Pioneers

6-7-7-1918

Works Report

Size	No of pieces	Lengths	Running feet	Remarks
9"x2 1/2"	73	6'6"	474 feet	Chaining sets
do	48	3'3"	156 "	
1" x 1 1/4"	-	-	352 "	Lagging
5" do	-	-	102 "	
4" do	-	-	36 "	
3" do	-	-	802 "	Special
3" do	-	-	2172 "	

Lagging cut 1292 feet

Total cut 4094 feet

Chaining sets completed 24

W. L. ...
Officer in charge
Sawmill

4th Div Sawmill
4th Pioneers

8-7-1918

Works Report

193

Working 1 shift of 8 hours duration

Size	No of pieces	Lengths	Running feet	Remarks
9"x2 1/2"	4	6'6"	26 feet	Chaining sets
do	4	3'3"	13 "	
6" x 1 1/4"	-	-	1401 "	Lagging
5" do	-	-	461 "	
4" do	-	-	1294 "	
3" do	-	-	275 "	

Total running feet cut 3470 feet

Lagging cut 3431 feet

Chaining sets completed 2 sets

L. Whitehead Lt
Officer in charge
Sawmill

APPENDIX 11 67

4th Div Sawmill
4th Pioneer

9-7-1918

Work Report

Size	No of pieces	Lengths	Running feet	Remarks
9" x 2 1/2"	48	6'6"	312 feet	} Skinning Sets
do	40	3'3"	130	
6" x 1 1/4"	-	-	477	} Lagging
5" do	-	-	536	
4" do	-	-	696	
3" do	-	-	231	

Total running feet cut 2382 feet
 Lagging do 1940 feet
 Skinning sets completed 20 sets

Whithead Lt
 Officer in charge
 Sawmill

4th Div Sawmill 01224
~~4th Pioneer~~

11-7-1918

193

Stock List

The following is in stock at Sawmill 01224

Complete Skinning Sets	Stiles	Threads	Lagging
239 sets	76	-	7400 feet

also 2300 feet of 3" x 2" and

60 logs in mill yard.

Whithead Lt
 Officer in charge
 Sawmill

APPENDIX

11

89