

AWM4

**Australian Imperial Force unit war diaries,
1914-18 War**

Engineers

Item number: 14/21/17

Title: 2nd Field Company, Australian
Engineers

May 1916



AWM4-14/21/17

WAR DIARY

or

INTELLIGENCE SUMMARY.

(Erase heading not required).

Army Form C. 2118.

393

2nd Field Coy Engineers
1st A.I.F.

Instructions regarding War Diaries and Intelligence Summaries are contained in F.S. Regs., Part II, and the Staff Manual respectively. Title pages will be prepared in manuscript.

Hour, Date, Place.	Summary of Events and Information.	Remarks and references to Appendices.
<p>MAY 1916 FLEURBAIX</p>	<p>During the month the various sections of the Company have been employed in the area occupied by the 2nd INF. BDE. A.I.F. as follows.</p> <p>NO 1 Section has the following works in hand. In CONVENT AVENUE huddling and earthing up has progressed and a large number of defective duckboards have been repaired & raised or lowered as was necessary. DEVON AVENUE. Huddling and earthing up is progressing well, several dangerous points that had no cover at all, have been earthed and huddled and are now safe from M.G. fire. Two culverts have been put in to assist in drainage. BOUTILLERIE AVENUE - A great amount of huddling, wirenetting & sandbag revetting has been done, all the old huddling being taken down & replaced with higher and newer sets. The duckboards have been lowered and a quantity of expanded metal put down, which makes walking very much easier on wet days. FIRING LINE - Thickening of PARAPETS, building of new PARADOES, and new DUGOUTS placed in rear of latter. The general scheme is to hurdle the front face of PARAPET and with earth filling and a topping of sandbags. The TRAVERSES have been made much thicker and stronger in the same manner. PARADOES have been formed by huddling, earthing up, & the placing of as many 2 men dugouts in rear as possible. DUGOUTS have been made of proper frames where procurable but otherwise of heavy timbers. Two SIGNAL OFFICE DUGOUTS with anti-gas doors have been completed & a reinforced concrete machine gun shelter (see appendix I) is under construction.</p>	<p></p>

WAR DIARY

or

INTELLIGENCE SUMMARY.

(Erase heading not required).

Army Form C. 2118.

393

2nd Field Coy Engineers
1st A.I.F.

Instructions regarding War Diaries and Intelligence Summaries are contained in F.S. Regs., Part II, and the Staff Manual respectively. Title pages will be prepared in manuscript.

Hour, Date, Place.	Summary of Events and Information.	Remarks and references to Appendices.
<p>MAY 1916 FLEURBAIX</p>	<p>N^o 2 SECTION have accomplished a great amount of work in the FIRING LINE, comprising improvements, repairs and maintainance, thickening of PARAPETS and TRAVERSES, demolishing old PARAPETS and rebuilding stronger ones provided with dugouts. A H.Q. SHELTER at CHAPEL FARM is being strengthened and a DRESSING STATION at JAY POST is under construction. In TIN BARN AVENUE and ABBOTTS LANE a large amount of revetting with netting and small stakes, and earthing up has been completed. Two M.G. SHELTER DUGOUTS have been commenced but are being held back thro. a shortage of materials.</p> <p>N^o 3 SECTION. DEVON AVENUE new shelter recesses have been excavated and the old ones properly huddled and earthed up. DEAD DOG AVENUE This has been properly drained and reclaimed and duck boards laid. CONVENT AVENUE Revetting, huddling and earthing up, shelter recesses cut and revetted and duckboards raised or lowered as was necessary. BOUTILLERIE AVENUE has been revetted + re-huddled + made much safer by the lowering of the duckboards and sandbagging. The duckboards were raised and repaired, the trench cleaned out + drained and the boards re-laid. In several places damage by hostile shell fire has been repaired. TIN BARN AV. Here much the same work has been completed 765' of revetting having been done. GUNNERS WALK 5 shelters have been excavated and are just about complete whilst damage by shell fire has also been repaired a DRESSING STATION at BARRIER FARM has been excavated and is now almost finished. In WATLING STREET cleaning</p>	<p>SEE appendix I</p>

WAR DIARY

Army Form C. 2118.

Instructions regarding War Diaries and Intelligence Summaries are contained in F.S. Regs., Part II, and the Staff Manual respectively. Title pages will be prepared in manuscript.

or

INTELLIGENCE SUMMARY.

(Erase heading not required).

2nd Field Coy Engineers
1st A.I.F.

Hour, Date, Place.	Summary of Events and Information.	Remarks and references to Appendices.
<p>MAY 1916 FLEURBAIX</p>	<p>revetting and trench improvements have been carried out and a bridge which had been destroyed by shell fire was replaced DEAD DOG AV. 306' of duckboarding has been laid, 240' of revetting done and 126' of reclaiming and draining accomplished and in addition various saps leading off this avenue have been cleared out and floored.</p> <p>NO 4 SECTION has been mainly employed in the RESERVE LINE both right and left sectors. LEFT SECTOR RES. LINE, draining widening where necessary, raising of parapet and reclaiming same have been carried out also the erection & raising of fire steps, with the result that drainage is now satisfactory, a great deal of widening has been completed, the excavated earth being bagged ready for use on parapets, & on the other works sufficient progress has been made to enable flooring to be laid.</p> <p>RIGHT SECTOR RES. LINE was in a very bad state the parapets in places being only waist high. In addition to the works similar to those carried out in the left Sector this has been remedied & duck boards have been laid in places. A DRESSING STATION behind CONVENT WALL is under construction and a BATTN. H.Q. SIGNAL and DRESSING STATIONS are being built in rear of JAY POST.</p> <p>In addition to the above a party of 11 men have been employed at the R.E. YARD BAC. ST. MAUR making hurdles and various constructing the various articles for use on the front.</p>	

WAR DIARY

Army Form 2118.

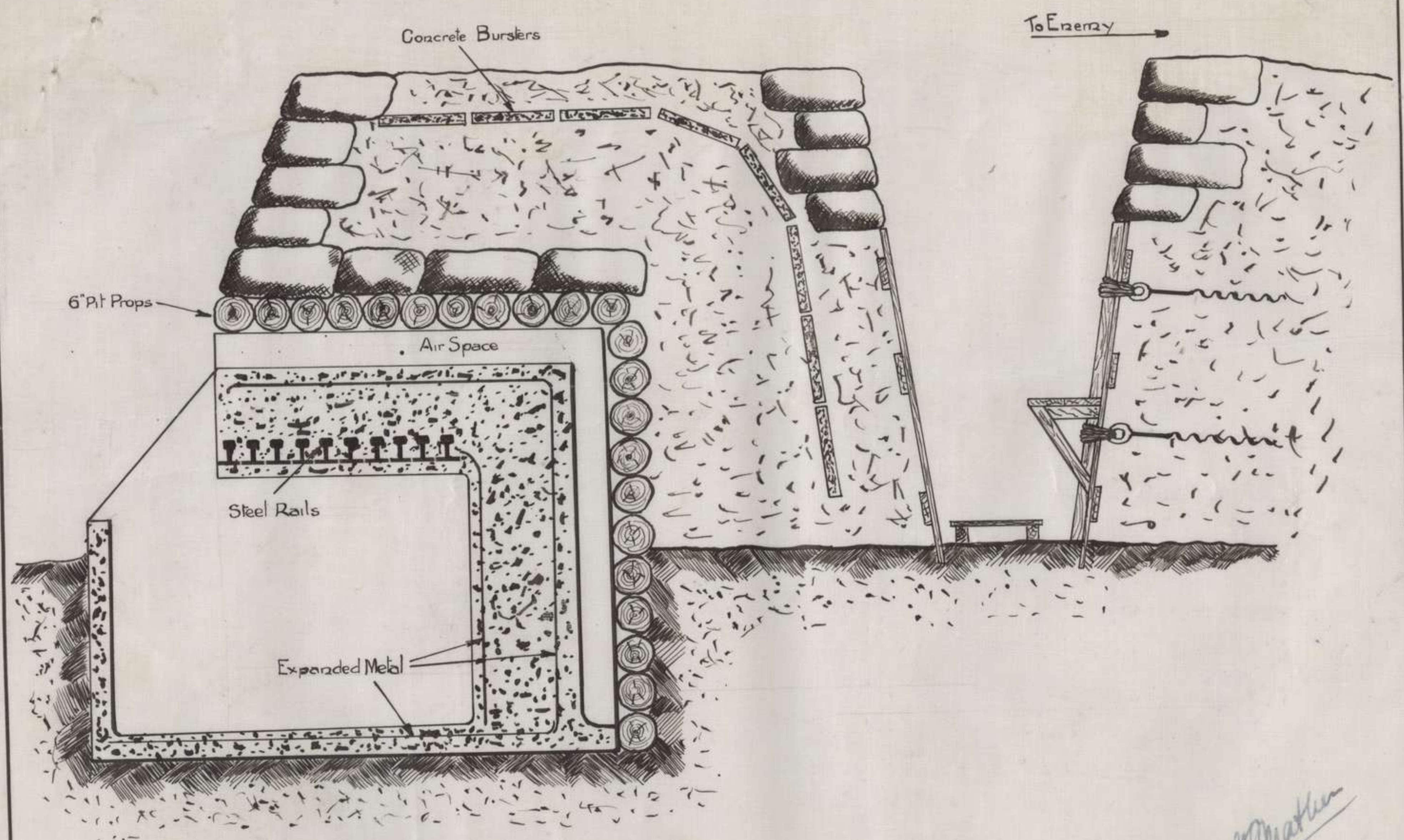
Instructions regarding War Diaries and Intelligence Summaries are contained in F. S. Regs., Part II. and the Staff Manual respectively. Title pages will be prepared in manuscript.

OR
INTELLIGENCE SUMMARY.

(Erase heading not required.)

2nd Field Coy Engineers
1st A.I.F.

Place	Date	Hour	Summary of Events and Information	Remarks and references to Appendices
FLEURBAIX	MAY	1916	<p>With the assistance of Infantry working parties under Engineer supervision a system of drainage has been carried out and roughly about 20 miles of drains have been cleaned out and properly graded. There are 2 petrol driven pumps on the area and 20 hand driven pumps in the area and the result is that 12 of these hand pumps can now be done without, whilst it is anticipated, that when the scheme now on hand is complete, the whole of the 20 pumps will no longer be required. During the month that the Coy. has been here, this draining, coupled with the work that has been accomplished in other portions of the area, & the improvement in the weather has resulted in trenches which were in places little more than quagmires or ditches and very dangerous thro. the lowness and lack of protection afforded by the parapets, being placed in a satisfactory and safe condition.</p> <p>The Coy. Surveyors have made a complete and accurate survey of the Brigade area, and maps, scale 1/1000, have been prepared, showing all ditches, fences and trees etc. as far back as the RESERVE LINE.</p> <p>The progress of work was hindered at times through the lack of tools and material. principally BURSTERS, HURDLES, and TIMBER of various kinds. In the former case where BURSTERS were unobtainable, owing to ARTILLERY wants being supplied first, broken BRICKS were used.</p> <p>The M.G. SHELTER (APPENDIX I) and M.G. EMPLACEMENTS (APPENDIX II) will be placed under construction as materials for same are obtainable. These SHELTERS and EMPLACEMENTS were designed by MAJOR MATHER O.C. Coy.</p>	<p>Major Mather O.C. 2nd Field Coy. Engrs. A.I.F.</p> <p>APPENDICES I & II</p>



— BOMBARDMENT DUGOUT —
 — FOR MACHINE GUN AND CREW —
 — SCALE: 1/2" = 1' —

W. Martin

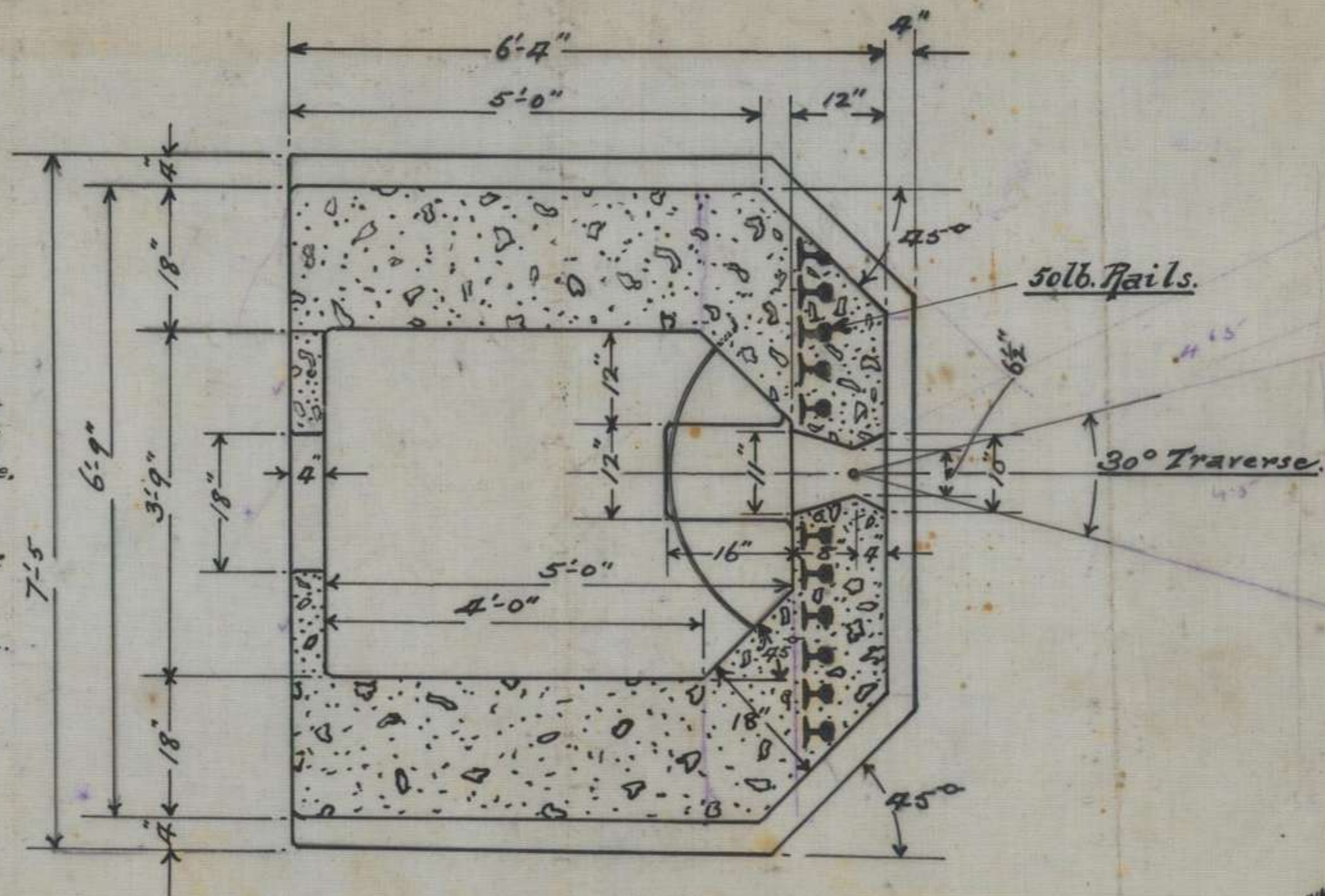
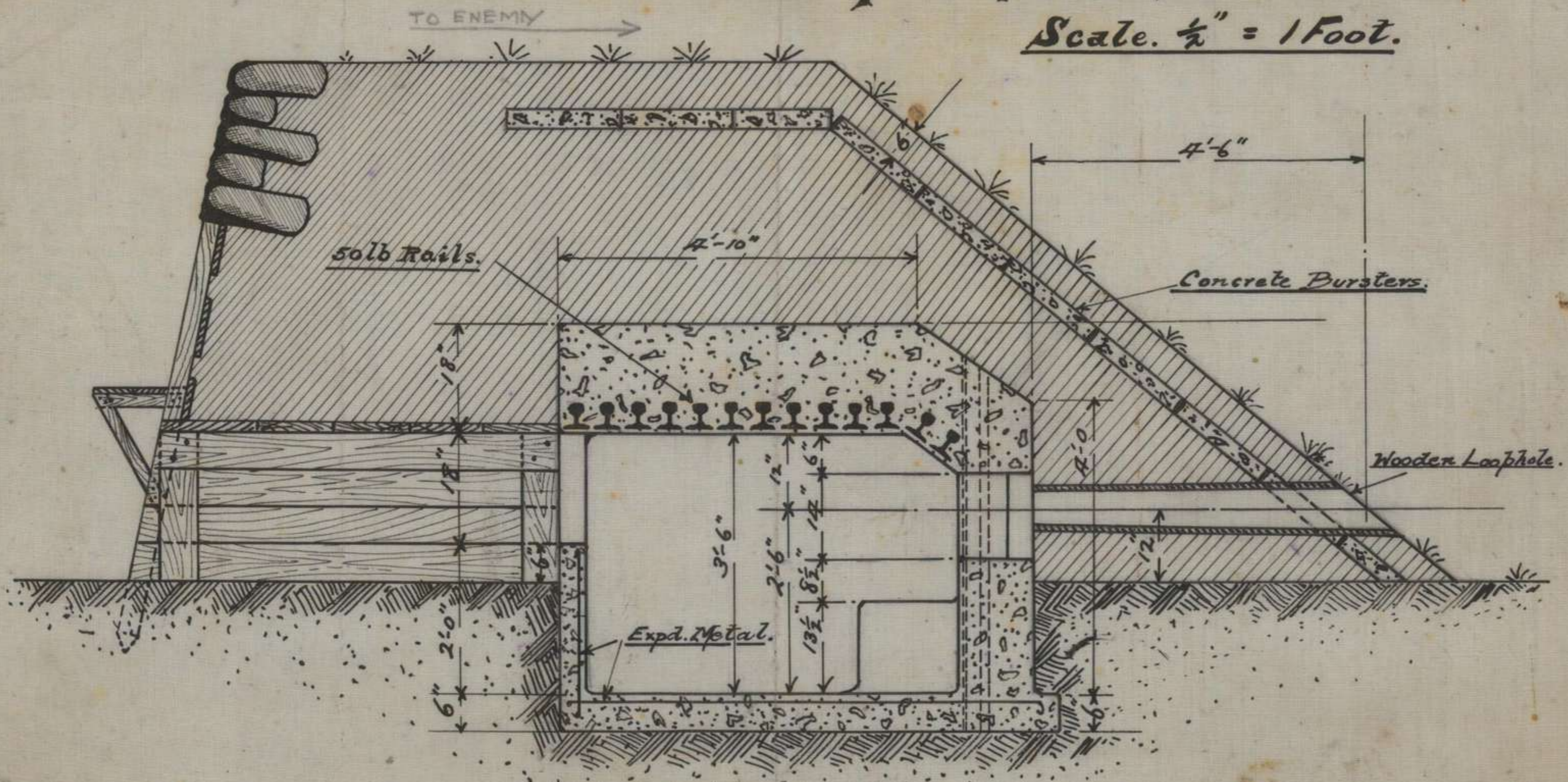
2nd Field Coy Engineers
 1st A.I.F.

APPENDIX I

Appendix No. 1

PROPOSED CONCRETE M.G. EMPLACEMENT.

Scale. $\frac{1}{2}$ " = 1 Foot.



NOTE.
 This type of Loophole and pedestal is designed to suit a special quadrant mounting for M.G., available at R.E. Store.
 In this particular job the traverse of Gun is 30° so the whole Emplacement would have to be "oriented" in the parapet when building, so as to give the field of fire in required position.

*W. J. Mathew, Major.
 2nd Coy. Engrs. AIF.
 23/5/16.*

Appendix No. 1