

AWM4
Australian Imperial Force unit war diaries,
1914-18 War

Engineers

Item number: 14/21/18

Title: 2nd Field Company, Australian
Engineers

June 1916



AWM4-14/21/18

WAR DIARY

Army Form C. 2118.

Instructions regarding War Diaries and Intelligence Summaries are contained in F. S. Regs., Part II. and the Staff Manual respectively. Title pages will be prepared in manuscript.

or
INTELLIGENCE SUMMARY.

(Erase heading not required.)

2nd Field Coy Engineers
1st A.I.F.

5051

Place	Date	Hour	Summary of Events and Information	Remarks and references to Appendices
FLEURBAIX	JUNE 1916		<p>a great deal by the heavy hostile shelling that it has been subjected to. In each of these communications ² bombing positions similar to those put in the F.L. have been completed.</p> <p>No 2 SECTION under Lieut. STEVENSON have during the month, constructed 7 Bombing Positions similar to those shown in Appendix III and have 2 others at present in hand. In each case where these have been put in the parapet has been thickened from 3 to 5 feet. A snipers Loophole plate see appendix IV was constructed and placed in position. This was reported favourably upon by the sniper using it, but upon another Battalion taking over the apparatus was removed. 60 dugouts (see Appendix I) have been constructed during the month, whilst a signal office with anti-gas doors and a H.Q. dugout have been erected for each Company. Towards the end of the month orders were received to prepare certain "bays" for the installation of "RODGERS". In all 40 boxes boxes were placed in position each containing 4 "RODGERS". This work all had to be done during the few hours of darkness</p>	

WAR DIARY

Army Form C. 2118.

Instructions regarding War Diaries and Intelligence Summaries are contained in F. S. Regs., Part II. and the Staff Manual respectively. Title pages will be prepared in manuscript.

INTELLIGENCE SUMMARY.

(Erase heading not required.)

2nd Field Coy Engineers
1st A.I.F.

5557 ✓

Place	Date	Hour	Summary of Events and Information	Remarks and references to Appendices
FLEURBAIX	JUNE 1916		<p>NO SAPPER labour only being employed. In every case the parapet had to be thickened up and revetted and the parapets cut back and revetted again to allow room to manipulate the "RODGERS" After installation the positions were protected by three layers of sandbags. The work was executed during a severe rainstorm which made the digging & moving about extremely heavy & disagreeable. As the work was extremely urgent the parties worked continuously for 18 hours by which the time the job had been completed.</p> <p>N^o 4 SECTION under Lieut. REID has, during the month been employed upon the following works. In the left sector of RESERVE LINE two cupola dugouts have been completed, one for use as a dressing station & the other as an advanced Batta. H.Q. The former is 18' long & 6'2" high & has an anti gas door at each end, one with two curtains & the other with three, whilst a porch of sufficient length to accommodate a stretcher & bearers is provided. Concrete BURSTERS were not available for use on these dugouts, owing to ARTILLERY having ^{first} claim upon those made, so stone PAVING SETS</p>	

WAR DIARY

Army Form C. 2118.

Instructions regarding War Diaries and Intelligence Summaries are contained in F. S. Regs., Part II. and the Staff Manual respectively. Title pages will be prepared in manuscript.

or
INTELLIGENCE SUMMARY.

(Erase heading not required.)

2nd Field Coy Engineer's
1st A.I.F.

555

Place	Date	Hour	Summary of Events and Information	Remarks and references to Appendices
FLEURBAIX	JUNE 1916		<p>7" x 7" were used. In the right sector of RESERVE LINE between TIN BARN TRAM & BOUTILLERIE POST, many necessary improvements have been carried out in the erection of FIRE STEPS, repairs to DUCK BOARDS, draining considerable thickening of PARAPET and the line is now in a good state generally. Between BOUTILLERIE POST & the left end of CONVENT WALL a new RESERVE TRENCH has been excavated and the work of earthing up & reetting is proceeding, about 30% being already completed. In front of CONVENT WALL the erection of ENTANGLEMENTS has been carried out, about 300 yards 4' high & 24' wide having been completed. In rear of CONVENT WALL a dressing station has been constructed (see appendix VI) This dugout was struck fairly by a 4.2" shell at the point A. The crown of the arch of one segment of cupola was depressed 1 1/4" at point B, but no other damage was apparent. 5 dugouts have also been completed, each to hold 5 men belonging to the T.M. BATTERIES. & another BATTN. HQ. & Signaller's dugouts are under construction.</p>	Trench Mortar

WAR DIARY

Army Form C. 2118.

Instructions regarding War Diaries and Intelligence Summaries are contained in F. S. Regs., Part II. and the Staff Manual respectively. Title pages will be prepared in manuscript.

or
INTELLIGENCE SUMMARY.

2nd Field Coy Engineers
1st A.I.F.

(Erase heading not required.)

1555

Place	Date	Hour	Summary of Events and Information	Remarks and references to Appendices
FLEURBAIX	JUNE 1916		<p>During the early portion of the month MAJ. MATHER O.C. Coy was acting C.R.E. for 1st AUST. DIVN. Casualties during the month have been slight the total number altogether being 11. 4 wounded and 7* to Hospital. Three sappers accompanied a raiding party to the ENEMY TRENCHES. Nothing was found that required special demolition, but they succeeded in destroying 2 dugouts and bombing a number of others. The Cpl. PENNINGTON who was in charge of this ENGINEER PARTY was slightly wounded in the foot by a bomb. The work generally during the month has been hindered by increased artillery activity, gas alarms, & unfavourable weather making earthwork and transport heavy and difficult.</p> <p>In continuance of the drainage scheme, 4 miles of drains have been dug during the month in the RIGHT SECTOR. This enables the HAND PUMPS in the following communications to be entirely dispensed with in the following DEVON, DEAD DOG & CONVENT AVENUES, WATLING STREET & BOUTILLERIE AVENUE</p>	* Sickness

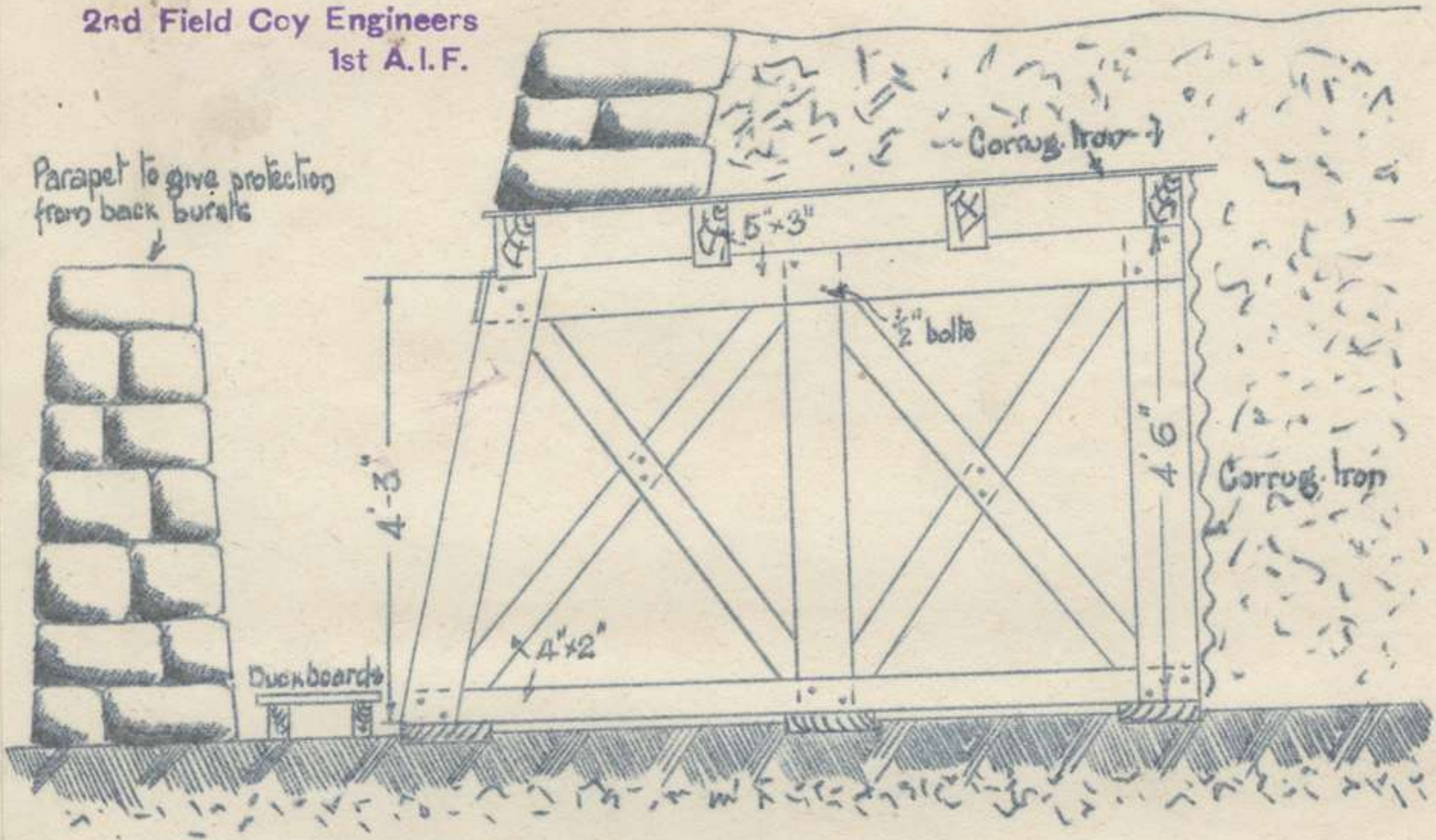
J. Mather
Major
O.C. 2nd Field Coy. Engrs. A.I.F.

555

Appendix No. I

Appendix I

2nd Field Coy Engineers
1st A.I.F.



Sectional Side Elevation
 — Splinter Proof Dugout —
 each 4' wide to accommodate 2 men
 & built in series of whatever number
 the conditions permit.

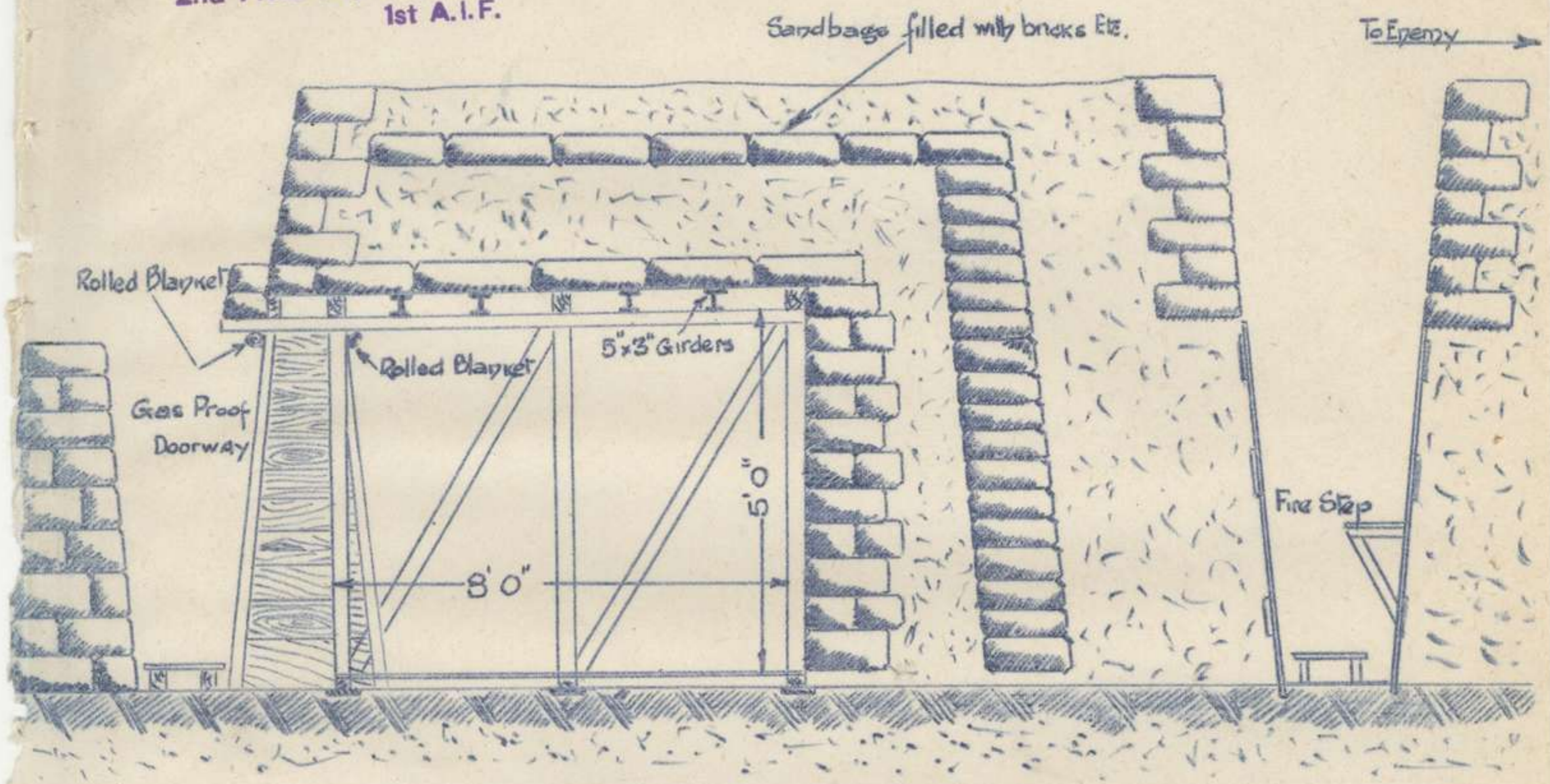
555

7

Appendix No. II

Appendix II

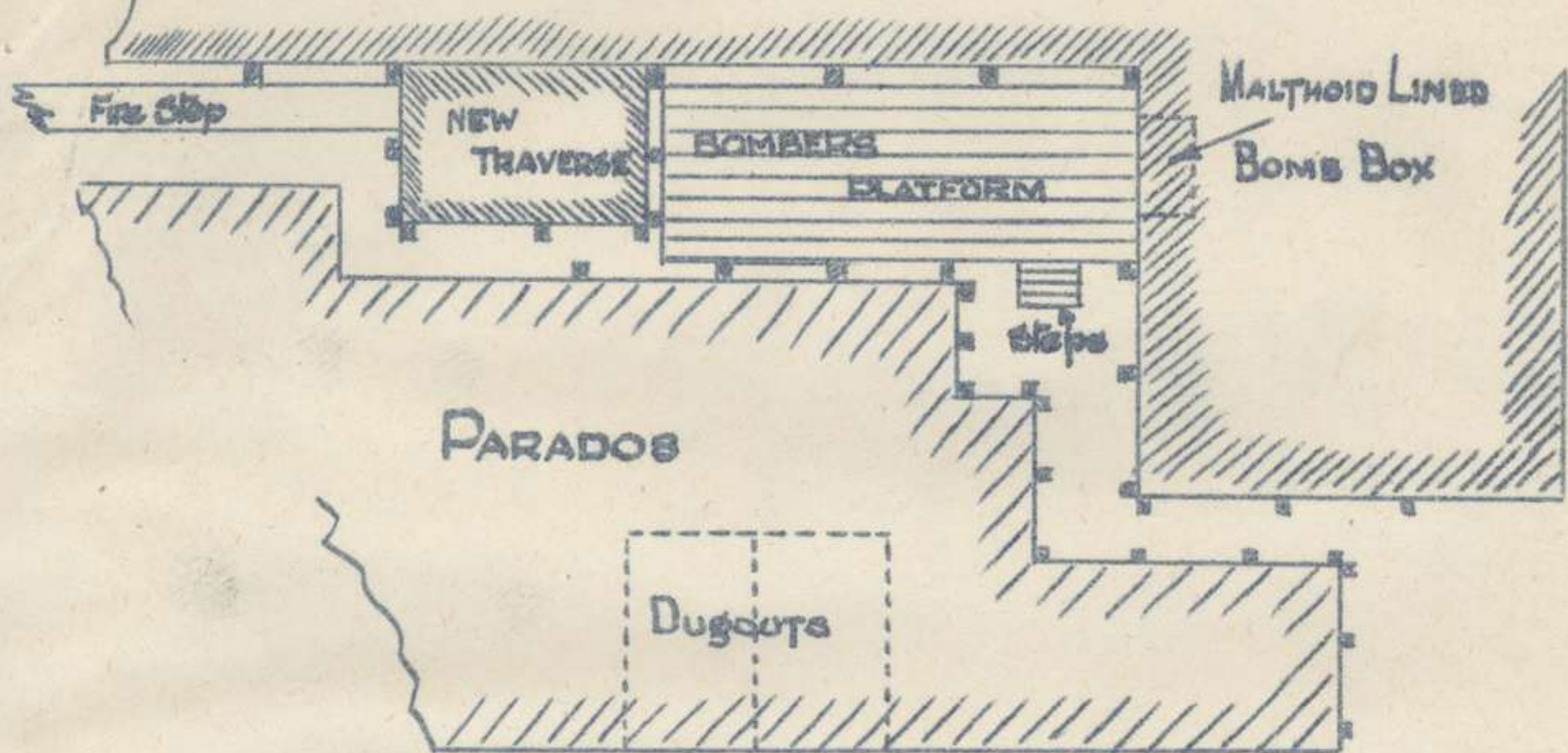
2nd Field Coy Engineers
1st A.I.F.



— OFFICERS DUGOUT & OFFICE —

APPENDIX III

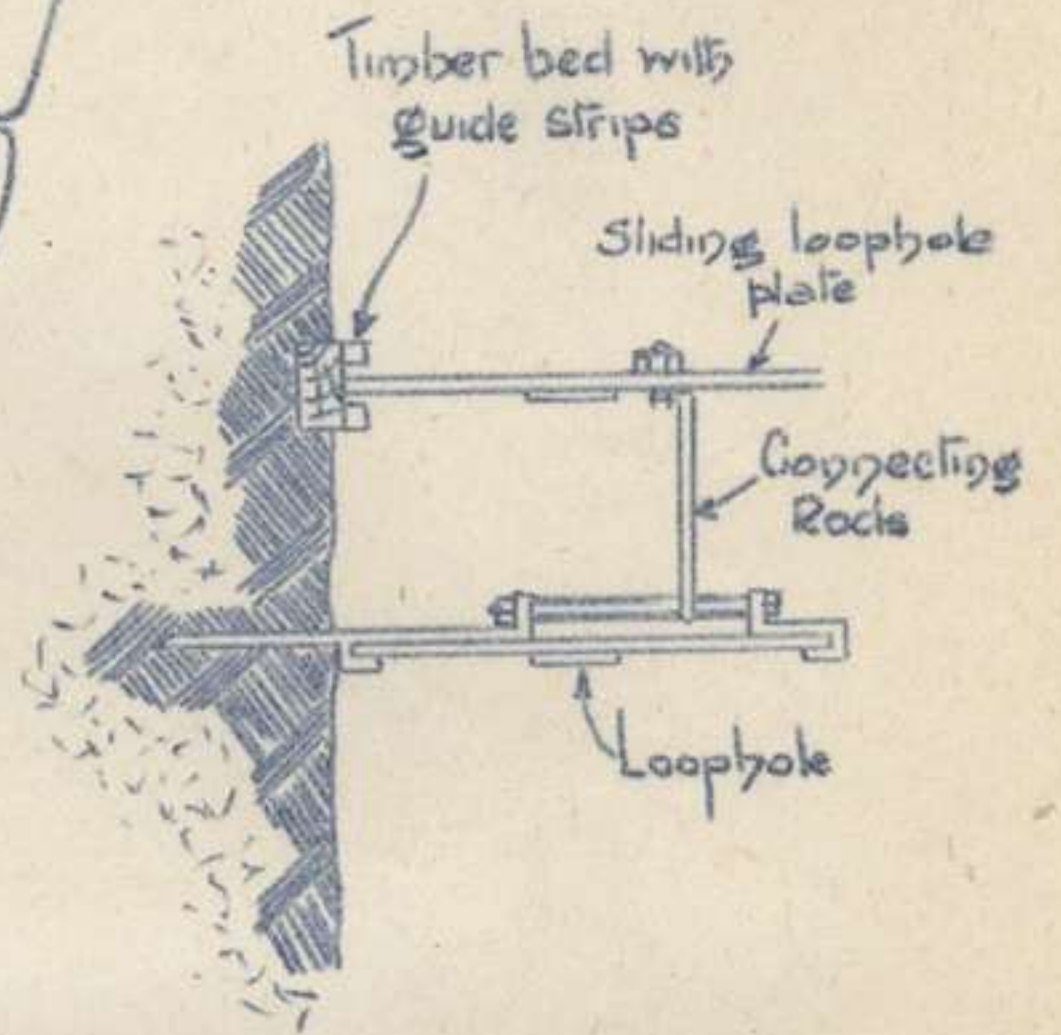
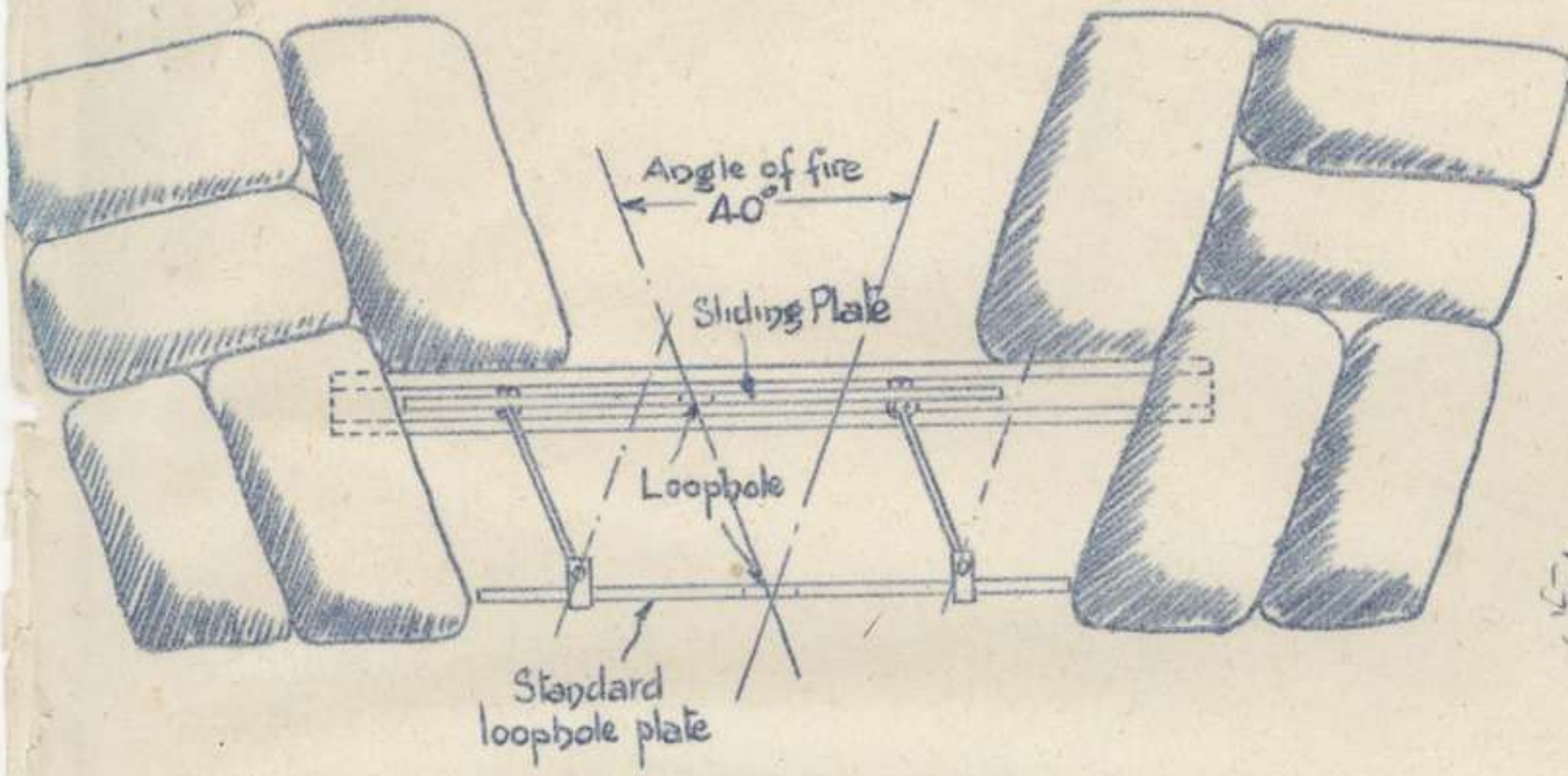
2nd Field Coy Engineers
1st A.I.F.



— BOMBERS POSITION —
for FIRING LINE

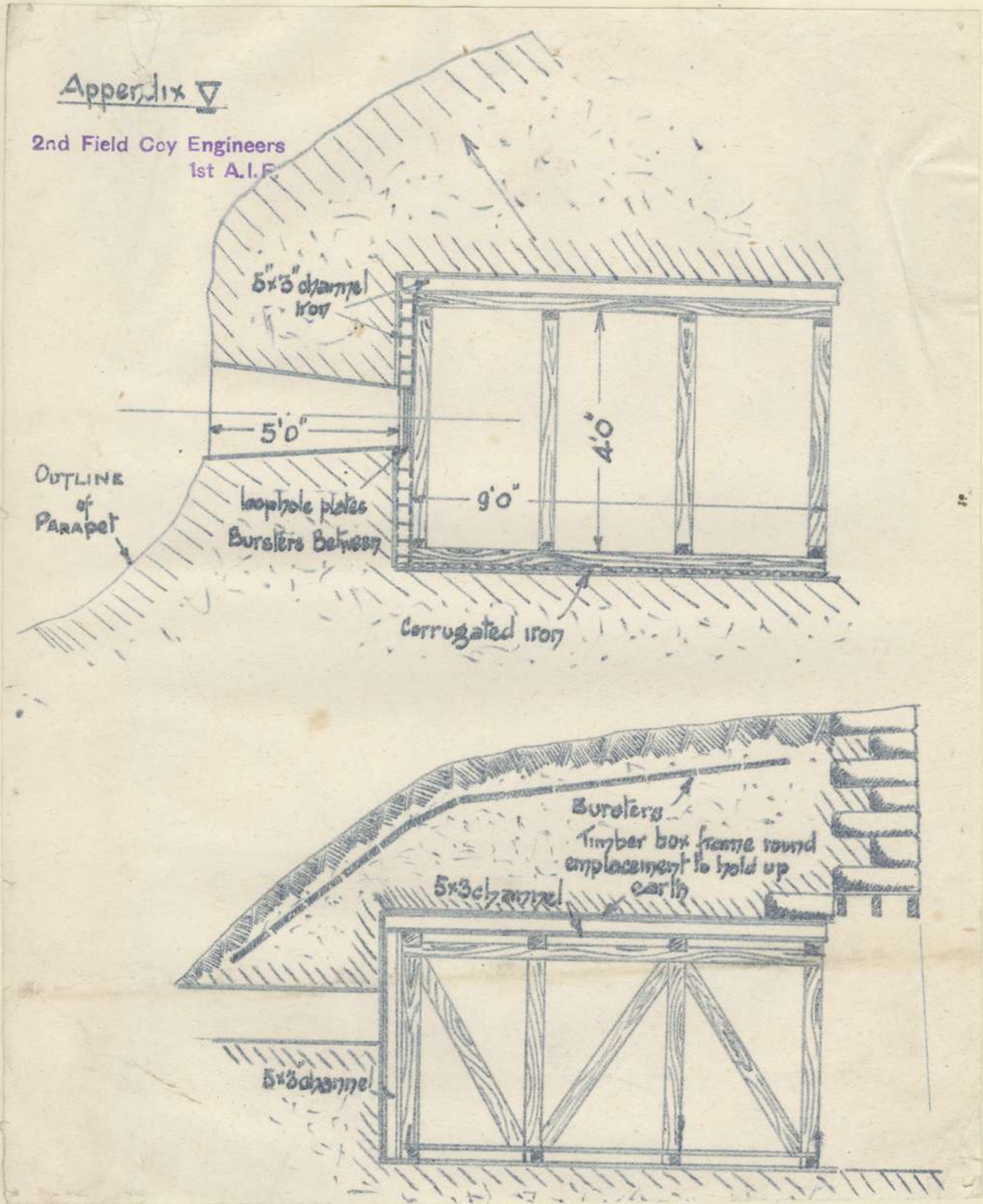
APPENDIX IV

2nd Field Coy Engineers
1st A.I.F.



SNIPING LOOPHOLE PLATES

2nd Field Coy Engineers
1st A.I.F.



555

Appendix No. VI

APPENDIX VI

2nd Field Coy Engineers
1st A.I.F.

