

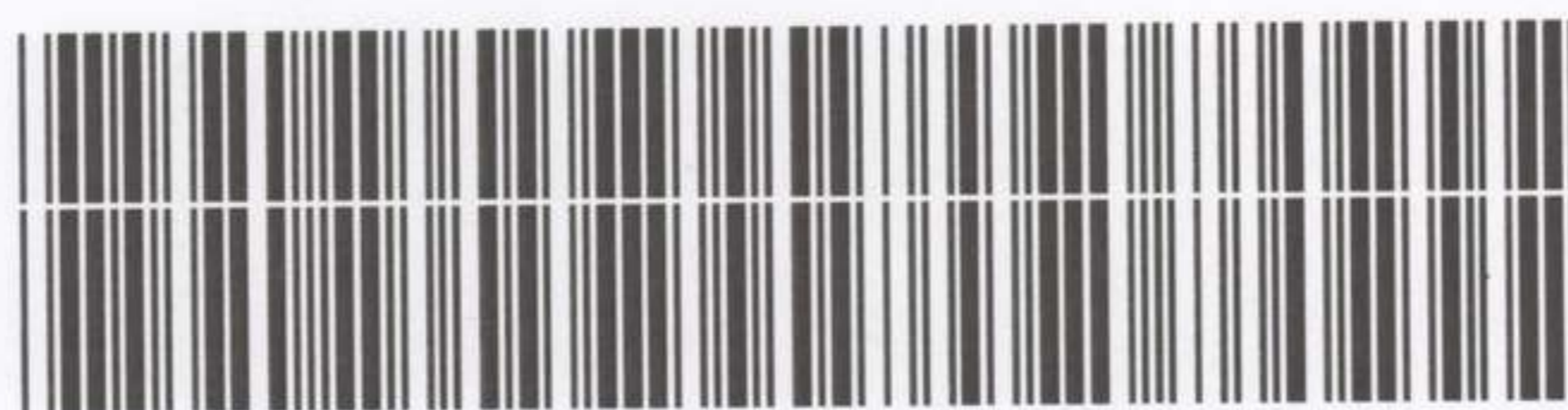
AWM4
Australian Imperial Force unit war diaries,
1914-18 War

Engineers

Item number: 14/13/28

Title: 1st Australian Pioneer Battalion

June 1918



AWM4-14/13/28

CONFIDENTIAL.

ORIGINAL.
~~DUPLICATE.~~
~~TRIPLICATE.~~

43
43

Australian Imperial Force.

WAR DIARY

^{1ST} OF
1st Aust. Pioneer Bn

FOR

June 1918

23c

Signature of Officer compiling

[Handwritten signature]

Signature of Officer Commanding

[Handwritten signature]

103

WAR DIARY

Army Form C. 2118.

INTELLIGENCE SUMMARY.

(Erase heading not required.)

1st Pioneer Bn
June Brig

Instructions regarding War Diaries and Intelligence Summaries are contained in F. S. Regs., Part II, and the Staff Manual respectively. Title pages will be prepared in manuscript.

Place	Date	Hour	Summary of Events and Information	Remarks and references to Appendices
SHEET 24 V12 6.99	June 1		Battu HQs V12 6.99. A+C Corps located at V12 6.99. B Coy W13C4555 D Coy V24. 2. 4. 6. D Coy reserve B Coy in Reserve. COURTE CROIX SWITCH F Coy Construction of concrete dugouts. construction of O.P. W16a. 4. 8. Road maintenance STRAZEELE-COURTE CROIX-ROUGE CROIX Roads. Bagging concrete material loading and unloading concrete material. B Coy trench construction, wire entanglements Reconstructing cellars for fortifications. C Coy wire entanglements sapping stakes. Improving cellar. Sapping material STRAZEELE STATION Making dugouts for artillery. Lewis Gunners on anti-aircraft. CASUALTIES 2 OR. Gassed	Weather Fine
V12 6.99	2		A Coy Construction of concrete dugouts at W13 d 6. 3. 25 tons concrete mixed + thrown Construction of concrete dugouts at W. 25 a. 4. 8. 20 tons concrete mixed + thrown. Construction of O.P. at W16 a. 4. 8. Road maintenance STRAZEELE-COURTE CROIX-ROUGE CROIX roads B Coy trench construction at KLITE AVENUE wire entanglements W18 b and COURTE CROIX SWITCH. Reconstruction of cellars for fortifications at STRAZEELE. C Coy wire entanglements at STRAZEELE AVENUE. Sapping material at STRAZEELE STATION Strengthening and re-lining cellar for 64" Bga Art. Construction of dugouts for 1st Bn Art. Lewis Gunners on anti-aircraft.	Weather Fine
V12 6.99	3		A Coy Construction of concrete dugouts at W13 d 6. 3 20 tons concrete mixed and thrown. 20 casks cement, 450 bags gravel 240 bags sand used. Concrete dugout at W25 a 4. 8. 13 tons concrete mixed and thrown reinforcing bars placed in position unloading. Construction of O.P. Ladder erected O.P. completed at W. 16 a. 4. 8. Road maintenance STRAZEELE-COURTE CROIX + ROUGE CROIX roads 5 shell holes filled in and General repairs Bagging concrete material loading and unloading concrete material. At 11 PM. C Coy assistance in operation against MONT DE MERRIS move to and bivouac in the vicinity of STRAZEELE AVENUE between W25 d 5. 4 and W26 6. 90 from 1 AM until further order. OC to keep in touch with CO Battalion at E4. 6. 99 and if necessity arose to garrison the defences of STRAZEELE. D Coy stand to from 1 AM with instructions to keep in touch with nearest Battalion HQs. Lewis Gunners engaged on anti-aircraft.	Weather Fine

D. D. & L., London, E.C.
(A7883) Wt. W809/M1672 350,000 4/17 Sch. 52a Forms/C/2118/14

WAR DIARY

Army Form C. 2118.

Instructions regarding War Diaries and Intelligence Summaries are contained in F. S. Regs., Part II, and the Staff Manual respectively. Title pages will be prepared in manuscript.

INTELLIGENCE SUMMARY.

(Erase heading not required.)

Place	Date	Hour	Summary of Events and Information	Remarks and references to Appendices
V12 699.	June 4		<p>H Coy Construction of concrete dug out at W 13 a. 63 18 tons concrete mixed and thrown 18 casks cement, 432 bags gravel, 216 bags sand W 25 a. 48. Construction of concrete dug out 20 tons concrete mixed and thrown 20 casks cement, 480 bags gravel and 240 bags sand. Road maintenance STRALEELE - COURTE CROIX - ROUGE CROIX Roads 3 shell holes filled in, 5 shell holes refilled and general repairs to roads. 1400 bags gravel and 600 bags sand bagged at BORRE NORTH SIDING. C Coy Digging communication trench E 5 a. 66 to E 5 b. 33 460 yds 3' 3" x 3' 3" dug improvements to dug outs at V 30 a. 22 for 64th BDE ARTY. B Coy digging communication trench from E 3 a to E 6 a 450 yds of trench completed. D Coy digging communication trench at W 23 a. 44 90 yards completed. W 29 a 65. 45 M.G. put up in cellar. filling flaying 200 sand bags. W 29 b 25 to W 29 b. 3. 2 Repairing & strengthening parapet and parallels 200 yards Deepening trench 30 yards repairing damaged trench Lewis gunners on anti aircraft. Casualties: 1 OR killed 3 OR wounded</p>	Weather Fine
V12 699.	5		<p>H Coy Construction of concrete dug out at W 13 d. 6. 3-24 tons concrete mixed and thrown. 24 casks cement, 576 bags gravel and 288 bags sand, concrete dug out at W 25 a 48. 26 tons concrete thrown unbraking material at BORRE and carrying to job 26 casks cement 624 bags gravel, 312 bags sand. Road maintenance STRALEELE - COURTE CROIX - ROUGE CROIX roads Bagging concrete material. C Coy Digging trench, STRALEELE AVENUE W 29 a. 12. to W 29 a. 14. Improving trench E 5 a. 66 to E 5 b. 2. 500 yards improved salvaging material at STRALEELE STATION. D Coy wire entanglements trench construction erection of notice boards in support line from METELEN BECQUE to STRALEELE STATION strengthening and sand bagging cellar W 22 a 0. 8 for communication trench B Coy resting. Lewis gunners on anti aircraft Casualties: 1 OR killed 1 OR wounded</p>	Weather Fine
V12 699.	6		<p>D Coy Construction of communication trench W 29 b. 64 to ROUGE CROIX SWISS WIRE entanglements from COURTE CROIX switch and over STRALEELE dipole from W 29 b 38 Strengthening and sand bagging cellar and repairing trench. C Coy Improving trenches E 5 b 43 to E 6 a 13 and E 3 a 1. 4 to E 3 a 1. 5 wire entanglements at STRALEELE AVENUE. Construction of dug outs for 64th BODE and 28th BODE artillery. H Coy Construction of concrete dug outs Road maintenance STRALEELE - COURTE CROIX - ROUGE CROIX - CAESTRE tracks. B Coy resting. Lewis gunners on anti-aircraft. 1 casualty 1 O.R. wounded</p>	Weather Fine

WAR DIARY

Instructions regarding War Diaries and Intelligence Summaries are contained in F. S. Regs., Part II. and the Staff Manual respectively. Title pages will be prepared in manuscript.

INTELLIGENCE SUMMARY.

(Erase heading not required.)

Place	Date	Hour	Summary of Events and Information	Remarks and references to Appendices
V12.6.99	June 4		H Coy construction of concrete dugouts at W13 d 63 and W25 a. 4.8. 63 tons concrete mixed and thrown 15 casks cement 360 bags stone 180 bags sand used. Road maintenance STRALEELE - COURTE CROIX - ROUGE CROIX and CAESTRE ROADS. Bagging concrete material trading and unloading concrete materials. C Coy wire entanglements. D Coy trench construction preparing cellar for defence. Flour Mill STRALEELE M.G. positions and preparation of cellar for B Coy resting. Lewis gunners on anti aircraft. 10 R. wounded.	Weather Fine
V12.6.99.	8		H Coy construction of concrete dugouts stripping boxing and cleaning up jobs. Road maintenance STRALEELE - COURTE CROIX - ROUGE CROIX roads - 33 shell holes filled in and general repairs. C Coy trench improvement in MERRIS STREET salting material at STRALEELE station construction of artillery dugouts for 64" and 28" gades. D Coy strengthening + sandbagging cellar M.G. emplacements, deepening and repairing COURTE CROIX SWITCH. Wire entanglements outer STRALEELE defences 53 yards of communication trench and cleaning up cellar at W29 a 5.7. Lewis gunners on anti aircraft. Casualties: 1 other ranks wounded. B Coy resting.	Weather Fine
V12.6.99.	9		D Coy W29 a. 3.6. trench construction 80 yds communication trench between outer and inner STRALEELE defences repairing trenches excavating 320 yards communication trench 140 yds widened and deepened. Courte Croix switch repairs to switch. F Coy construction of concrete dugouts stripping boxing and cleaning up jobs. Road maintenance STRALEELE - COURTE CROIX - ROUGE CROIX roads. 31 shell holes filled in and general repairs to roads. C Coy occupy support position at W14 c 3.8. B Coy resting. Lewis gunners on anti aircraft.	Weather Showery
V12.6.99	10		B Coy resume work. Trench construction at ROUGE CROIX W16 a. Improvements to STRALEELE AVENUE + MERRIS ST. Improving BORRE defences and playing trench holes + S14. C Coy Digging trench W29 C 14 to W29 C 15 60. Shifting debris for gallery at STRALEELE FLOUR MILL. Wire entanglements repairs to trenches. D Coy excavation of trenches and wire entanglements for TRADELLES Defences. Maintenance of roads. 31 of 41 OR of H Coy unloading concrete material at CAESTRE Sid. remainder of Coy resting. Lewis gunners on anti aircraft.	Weather Rainy

43

WAR DIARY

Army Form C. 2118.

Instructions regarding War Diaries and Intelligence Summaries are contained in F. S. Regs., Part II, and the Staff Manual respectively. Title pages will be prepared in manuscript.

or INTELLIGENCE SUMMARY.

(Erase heading not required.)

Place	Date	Hour	Summary of Events and Information	Remarks and references to Appendices
V12.899	June 11	3	Companies continue on works. French improvements and wire entanglements BORRE defences wire entanglements and French improvements PRADELLES defences. Wire entanglements in front of MERRIS St. French construction ROUGE CROIX defences. Strengthening cellar at W29 a.6.8 French construction at W29 a.05.40. Laying R.E. material at STRAZEELE STATION. Patrolling and maintaining roads. one Company resting Lewis Gunners on anti-aircraft	Weather Fine
V12.899	12.		B Coy French construction at ROUGE CROIX W10., wire entanglements W28 + E5 in front of MERRIS street. French construction in MERRIS street. Laying R.E. material at STRAZEELE STATION. French construction at STRAZEELE avenue. D Coy French construction and wire entanglements BORRE defences wire entanglements PRADELLES defences. C Coy French construction and wire entanglements drawing H Coy resting. Lewis Gunners on anti-aircraft	Weather Fine
V12.899.	13		B Coy. 650 yards double apron wire entanglements in front of MERRIS STREET. Digging and improving trenches ROUGE CROIX defences, drawing deepening widening Hitting parallels at E5 MERRIS STREET. Laying R.E. material at STRAZEELE. C Coy French repairs ROUGE CROIX SWITCH from W14C.5.10 to W29 a.8.9 (10 shell traps repaired) W29 a.6.5 to W29 a.85.25 French improvement 300 yards trench improved to 3' by 3'6" part attached to 64" BDE ARTY 28" BDE ARTY + 2" BDE ARTY. D Coy French construction at BORRE defences wire entanglements 1150 yds double apron wire 24 coils wire 1120 stakes used. French construction at PRADELLES Defences 440 yds trench excavated average depth 3'6" construction of dugouts at PRADELLES DEFENCES 4 dugouts completed. 500 sand bags and 30 sheets cupola iron used. Patrolling roads in Dugout Area. A Company resting Lewis Gunners engaged on anti-aircraft work. Transport section engaged in carting material.	Weather Fine

4

WAR DIARY

Army Form C. 2118.

Instructions regarding War Diaries and Intelligence Summaries are contained in F. S. Regs., Part II. and the Staff Manual respectively. Title pages will be prepared in manuscript.

or INTELLIGENCE SUMMARY.

(Erase heading not required.)

Place	Date	Hour	Summary of Events and Information	Remarks and references to Appendices
Head Quarters V12699.	June 14		<p>B Coy trench construction W10 ROUGE CROIX 250 yards new trench 3' x 3'6" 50 yards parapet wire entanglements at W28 in front of STRAZEELE AVENUE 600 yards double apron wire 600 stakes and 168 coils of wire used. Trench work and construction of dumps at ES MERRIS STREET</p> <p>Sawing motor engine and R.E. Material at STRAZEELE Coy trench construction at W29a 6.9. W16 a 5.6. W29b 0.7 to W29a 8.4. M.G. position at W29a 6.4. Draining at W15 b 4.5. Clearing crop at W23 b 4.3. parties on structural work with 64" 25" and 2nd Pde Artillery</p> <p>D Coy trench construction at BORRE defences 30 yds trench excavated. 145 yds trench parapets & parapet trimmed and drained wire entanglements 225 yards, double apron wire completed 166 stakes & 32 coils wire used. Excavating 220 yds fire trench TRADELLES</p> <p>Dugout construction at TRADELLES defences wire entanglements 50 coils wire 1300 pickets</p> <p>Patrols roads in Div Area A Coy resting Lewis gunners enjoyed anti-aircraft</p>	Weather Fine
V12699	15		<p>An enemy attack anticipated Battalion adopts precautionary stage</p> <p>Companies move and take up their defensive positions as follows</p> <p>A Coy the defended locality of ROUGE CROIX</p> <p>B Coy the defended locality of BORRE</p> <p>C Coy the defended localities of COURTE CROIX and KLITE HILL</p> <p>D Coy the defended locality of TRADELLES</p> <p>Battalion head quarters remain at V12699</p> <p>Reinements completed and all troops in position by 9 P.M.</p>	Weather Fine
V12699.	16		Companies occupying defensive positions as on	Fine
V12699.	17		15 th June. —	No obs
V12699.	18		dw dw dw dw	Fine
V12699.	19		B Coy take over the defences of COURTE CROIX and KLITE HILL from C Coy.	Fine

WAR DIARY

Army Form C. 2118.

Instructions regarding War Diaries and Intelligence Summaries are contained in F. S. Regs., Part II, and the Staff Manual respectively. Title pages will be prepared in manuscript.

or INTELLIGENCE SUMMARY.

(Erase heading not required.)

Place	Date	Hour	Summary of Events and Information	Remarks and references to Appendices
V12699	June 20		<p>A Coy (3 platoons) on the construction of concrete M.G positions in Right Bgds Sector. Dismanling of barns at present covering all boxes. 1 platoon as nucleus garrison for ROUGE CROIX defences and maintenance of present entanglements, also protection of double apron fence between outer and inner lines of defence at ROUGE CROIX. B Coy to maintain COURTE CROIX switch. KLITE HILL LOOP Repair and maintenance of telegraph in STRALEE. French patrole for all communication trenches in left Bgds area. C Coy 2 platoons resting 1 platoon nucleus garrison BORRE. D Coy Maintenance of STRALEE AVENUE from TRADELLES to W29 A.D. 5. Maintenance of STRALEE OUTER LINE from W29 a 1.2 to W29 b 1.8 approx. French patrole on MERRIE STREET and communication trenches in RIGHT BODE SECTOR Road maintenance. Lewis Gunners on anti aircraft.</p>	Weather Fine
V12699	21		<p>French construction STRALEE AVENUE wire entanglements TRADELLES Defences Roads patrole on Our Area Patrolling and repairing NORTH STREET outer TRADELLES defences. Nucleus garrison BORRE defences. Constructional work 64th + 2nd BODES Artillery. Sabotaging STRALEE STATION. A Coy Construction of concrete M.G positions preparing trenching and transporting material from CAESTRE. Maintaining and improving defences positions W16 a 3 7 to W10 c 50. W16 a 37 to W15 b 65.60. W19 d 90.55 to W15 b 65.60. W19 d 95.25 to W10 c 40. Wire entanglements at COURTEX SWITCH W18 d W24 a. French construction COURTE CROIX SWITCH W24 a. Sabotaging timber for fortified MG position W23 d.</p>	Weather Fine
V12699	22		<p>Construction of concrete nucleus Gun positions. preparing trenching reinforcing iron missing material (dry). Transporting material from CAESTRE. Maintenance improvements of Defences positions ROUGE CROIX defences. Wire entanglements and trench construction at W16 COURTE CROIX SWITCH. Fortifying M.G position at STRALEE. Nucleus garrison maintaining repairing trenches of BORRE defences. Wire entanglements and trench construction at STRALEE AVENUE. 2 platoons resting Lewis Gunners on anti aircraft.</p>	Weather Showery
V12699	23		<p>French construction COURTE CROIX switch wire entanglements KLITE LOOP W14 + W23 Fortifying M.G position. Building deep dugouts. Preparation of trench for reacting tanks. D.A fence and entanglements repaired existing fences. MERRIE street patrolled and repaired. Nucleus Garrison maintaining and repairing trenches BORRE defences Constructional work at 64th and 2nd Bgds Artillery. Construction of concrete M.G positions. preparing trenching and reinforcing iron. Missing material (dry) transporting material from CAESTRE. Maintenance and improvement of Defences positions ROUGE CROIX defences. 2 platoons resting Lewis Gunners on anti aircraft.</p>	Weather Fine

D. D. & L., London, E.C. (A7883) Wt. W809/M1672 350,000 4/17 Sch. 52a Forms/C/2118/14

WAR DIARY

Army Form C. 2118.

Instructions regarding War Diaries and Intelligence Summaries are contained in F. S. Regs., Part II, and the Staff Manual respectively. Title pages will be prepared in manuscript.

INTELLIGENCE SUMMARY.

(Erase heading not required.)

Place	Date	Hour	Summary of Events and Information	Remarks and references to Appendices
V12699	June 24		Construction of M.G. Positions at W24a 5.4, V3b.3.6, V26d.2.6 excavation and boxing completed. Reinforcing bars completed. Loading material at CAESTRE SIDING. Improving and strengthening ROUGE CROIX defences. Par. by supervising construction of artillery dugouts. 400 yds trench widened and drained. COURTE CROIX SWITCH. Wire entanglements. KLITE LOOP W14C. Building deep dugout for M.G. position STRALEELE. Nucleus garrison BORRE defences palisade timber, maintaining and repairing trenches. Construction of trench W29c.2.1 to 29a.4.2 approx 590 yards communication trench completed average depth 3'6". Roads patrolled and maintained. 2 platoons resting Lewis Gunners on anti aircraft	Weather Fine
V12699	25		350 yards double apron wire entanglements at NORD ST. W23. Trench construction COURTE CROIX SWITCH W23 + W24. Building deep dugout for M.G. position at STRALEELE. Loading and dumping wiring material at STRALEELE STATION. Nucleus garrison flooring dugout + palisade timber at BORRE defences. Constructing 90 yards communication trench 3'6" deep from OUTER STRALEELE to MERRIS STREET. Construction of M.G. position (concrete) at W24a 5.4. 10 tons concrete thrown. Reinforcing wire (cutting) completed. 10 barrels cement 120 bags sand 240 bags stone used. Construction of concrete M.G. position at V3b.3.6. Excavation completed. Boxing completed but not erected. Reinforcing wire cut complete. Construction of concrete M.G. position at W26d.2.6. 8 tons concrete thrown boxing completed but not erected. Loading and unloading material at CAESTRE SIDING. Maintenance and improvements of ROUGE CROIX defences. Supervision of construction of artillery dugouts. Lewis gunners on anti aircraft	Weather Fine
V12699	26		Construction of communication trench from outer STRALEELE to MERRIS STREET. 120 yds completed 3'6" deep. Repairing support line between W29d.4.0 to W30a.1.0. Patrolling 7th division W area. Nucleus garrison BORRE defences flooring dugouts and trench improvements. Construction of concrete M.G. positions at V24a 5.4, V3b.3.6, W26d.2.6. 20 barrels cement 240 bags sand. 480 bags of gravel used. 20 tons concrete thrown. Loading and unloading CAESTRE SIDING. Maintenance and improvements of defensive positions ROUGE CROIX defences. Supervision of construction of artillery dugouts. Trench construction SUPPORTLINE W30a. 254 yards new trench, 3'6" by 3'6" excavated. 234 yds existing trench widened. Retitting and putting up cellar at STRALEELE. Lewis Gunners on anti aircraft. 4 OR repair unit from detachment at Harfield. Hospital as road makers	Weather Fine

D. D. & L., London, E.C. (A7883) Wt. W809/M1672 350,000 4/17 Sch. 52a Forms/C/2118/14

WAR DIARY

Army Form C. 2118.

Instructions regarding War Diaries and Intelligence Summaries are contained in F. S. Regs., Part II, and the Staff Manual respectively. Title pages will be prepared in manuscript.

INTELLIGENCE SUMMARY.

(Erase heading not required.)

Place	Date	Hour	Summary of Events and Information	Remarks and references to Appendices
V12699	June 27		Erecting shelters support line, trench construction outer STRALEELE to MERRIS STREET. 100 yds working communication trench. Roads patrolled in Durswal area. Construction of concrete M.G position W27a 5.4. 4 tons concrete thrown. V3t 3.6. 6 tons concrete thrown. W26d 2.6 5 tons concrete thrown. Maintenance and improvement of defensive positions of ROUGE CROIX defences. Supervision of construction of artillery dugouts. Nucleus garrison at BORRE improving defences. Flooding dugouts. W19a 3.6. Patrolling timber for bunkers. Maintenance and repairing trenches clearing crop. Thinning hedged BORRE defences. Coy's new trench constructed SUPPORT LINE W30a. Fortifying M.G position at STRALEELE. Lewis gunners engaged on anti aircraft.	Weather fine
V12699	28		Erecting shelters and trench construction support line 8 shelters complete. Trench construction outer STRALEELE to MERRIS STREET. Road patrol Durswal area. Nucleus garrison. Maintenance and repairing trenches BORRE DEFENCES. Construction of concrete M.G positions at W27a 5.4. V3t 3.6. W26d 2.6. 14 barrels cement, 204 bags sand, 408 bags gravel used. Maintenance and improvement of defensive positions at ROUGE CROIX defences. Supervision and construction of artillery dugouts. 75 yds new trench constructed SUPPORT LINE W30A. Fortifying M.G position STRALEELE. Lewis gunners on anti aircraft.	Weather Raining
V12699	29		Patrolling stone for concrete M.G positions at W27a 5.4. V3t 3.6. W26d 2.6. Maintenance and improvement of ROUGE CROIX defences. Supervision of artillery dugouts. Construction Coy returns. B gun nucleus garrison of BORRE defences. Trench construction W30a 3.3. 55 yds improved. W30a 3.3 support line. 50 yds trench improved. W30a 2.5. 10 40 yds improved. 50 yds parapet of fire trench repaired. Support line excavation of communication trench from STRALEELE Outer to MERRIS ST. Road patrol in Dur Area. Lewis gunners on anti aircraft. I.O.R. Killed.	Weather Fine Dull
V12699	30		Trench construction at W29. Trench construction SUPPORT LINE W29a 50 yds trench widened and improved. Building deep dugouts at TRABELLES W21C. Cutting crops BORRE defences. Patrolling R.E. Material at STRALEELE Station. Construction of Machine Gun positions (concrete) at W27a 5.4. V3t 3.6. W26d 2.6. 9 tons concrete thrown. Stone salvaged. Maintenance and improvement of ROUGE CROIX defences. Supervision of artillery dugouts for 1st and 2nd Artillery Batches. Trench construction W30a 2.4 to W30a 3.3. Support line W30a 2.7. Excavation dugouts (two completed). Trench construction W30a 2.2 to W30a 2.0. Repairing M.G position at W29a 5.4. Excavating dugouts at W30a 3.9. Trench construction support line W30a 3.9. Coy patrolling and maintaining roads in Durswal area. Lewis gunners engaged on anti aircraft.	Weather Fine

WAR DIARY

Army Form C. 2118.

Instructions regarding War Diaries and Intelligence Summaries are contained in F. S. Regs., Part II, and the Staff Manual respectively. Title pages will be prepared in manuscript.

or INTELLIGENCE SUMMARY.

(Erase heading not required.)

Place	Date	Hour	Summary of Events and Information	Remarks and references to Appendices
			<p align="center">— Honors + Awards —</p> <p align="center">for</p> <p align="center">Month of June 1918 —</p> <p align="center">— MILITARY CROSS —</p> <p align="center">Capt J. G. Rolton</p> <p align="center">Lieut ^{Col} R. Miller</p> <p align="center">— DISTINGUISHED CONDUCT MEDAL —</p> <p align="center">3rd Lt Leigh BUCHANAN L</p> <p align="center">28th 5th CPL LORD H.A.</p> <p align="center">— MERITORIOUS SERVICE MEDAL —</p> <p align="center">4th 4th SERGT CARTLEDGE H.W.</p> <p align="center">Mentioned in Sir Douglas Haig's Despatches</p> <p align="center">MAJOR C. SPECKMAN M.C.</p> <p align="center">CAPT C. J. DAVIS</p> <p align="center">4134 SERGT BARNETT M.M.</p>	

43

WAR DIARY

Army Form C. 2118.

Instructions regarding War Diaries and Intelligence Summaries are contained in F. S. Regs., Part II, and the Staff Manual respectively. Title pages will be prepared in manuscript.

or INTELLIGENCE SUMMARY.

(Erase heading not required.)

48

Place	Date	Hour	Summary of Events and Information	Remarks and references to Appendices
			Location viz. 899 Street 2nd	
			MONTH OF JUNE 1918	
			Strength as at 1/6/18 43 officers 1299 other ranks	
			Strength as at 30/6/18 43 officers 1246 other ranks	
			Killed in action 4 other ranks	
			Evacuated Wounded 1 officer 10 other ranks	
			Wounded but remain at Duty 2 other ranks	
			Evacuated to Hospital (Sick) 1 officer 98 other ranks	
			Died of Wounds 1 other ranks	
			Wakened on Strength of Unit 1 officer 6 other ranks	
			Rejoined from Hospital 1 officer 88 other ranks	

10

2

PLAN
SHEWING WORK CARRIED OUT BY
1ST PIONEER BATTALION A.I.F.
FOR MONTH ENDING 31ST MAY 1918 *Shewn Blue* 54

2

54

SCALE 1:20000



43

PLAN 43
SHEWING WORK CARRIED OUT BY
1ST PIONEER BATTALION A.I.F.
FOR MONTH ENDING 30TH JUNE 1918 *Shewn Blue*

SCALE 1:20000



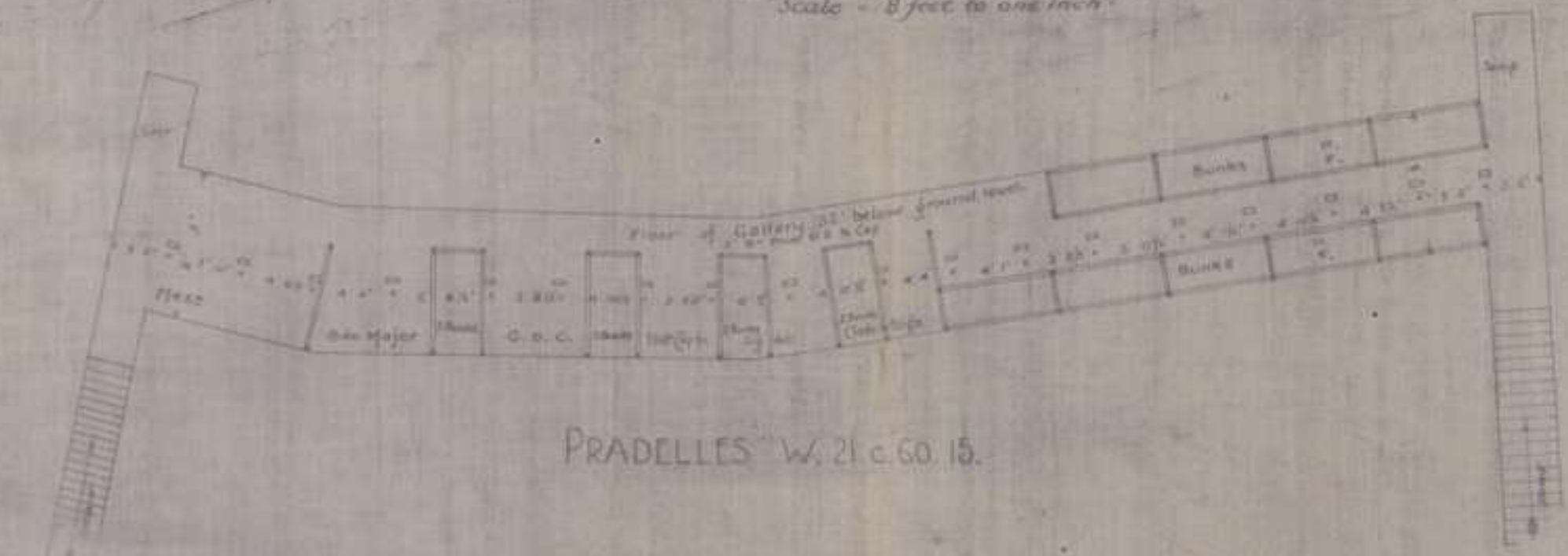
PI
43
1

PROPOSED LIVING ACCOMODATION IN EXISTING DUGOUTS

at *Pradelles and Borre*

Scale - 8 feet to one inch

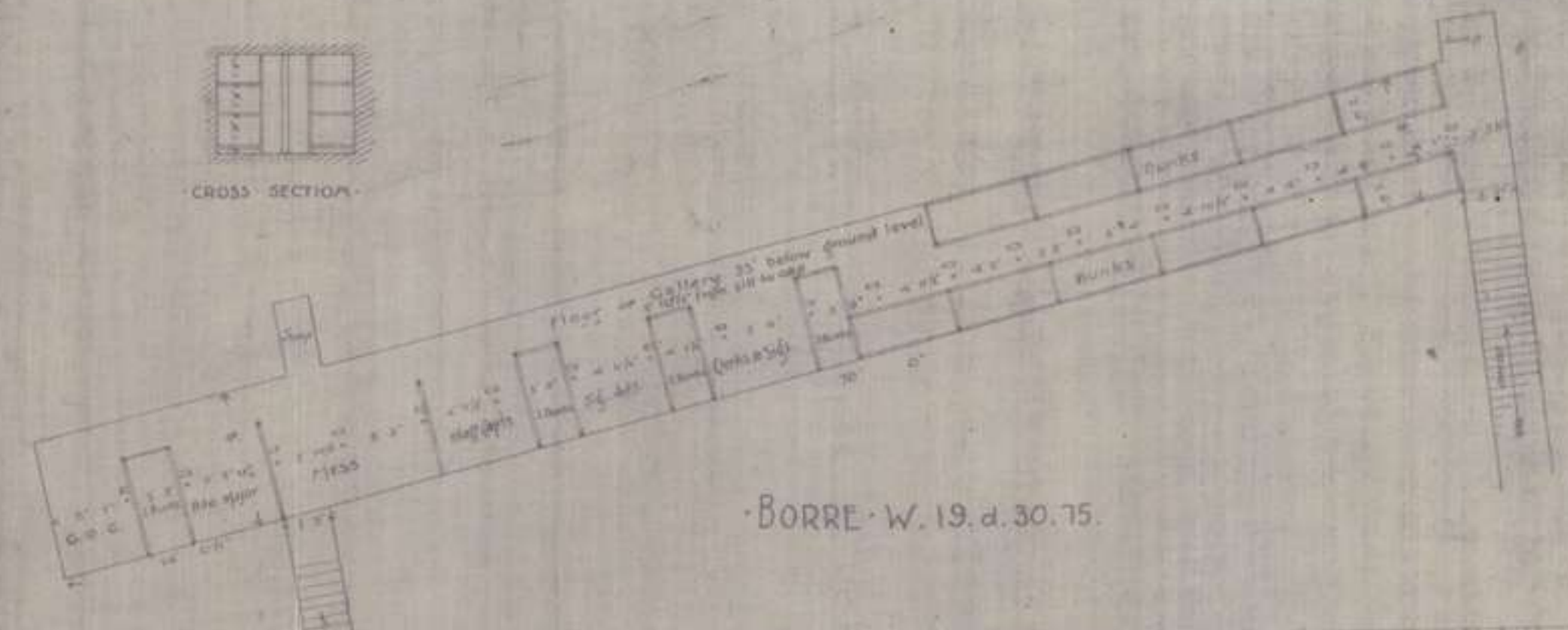
43



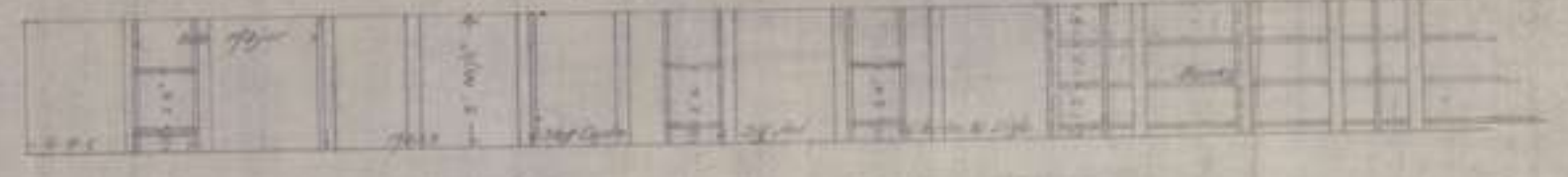
PRADELLES W. 21 d. 60. 15.



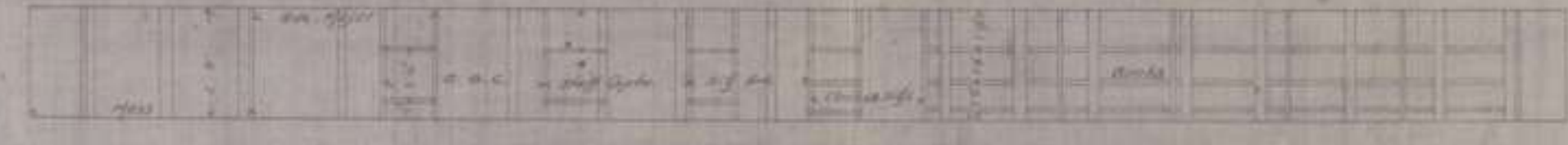
CROSS SECTION



BORRE W. 19 d. 30. 75.



LONGITUDINAL SECTION



LONGITUDINAL SECTION

Army Office 100 Piccadilly, London, W. 1

56

43

48

APPENDIX

5 57

P1

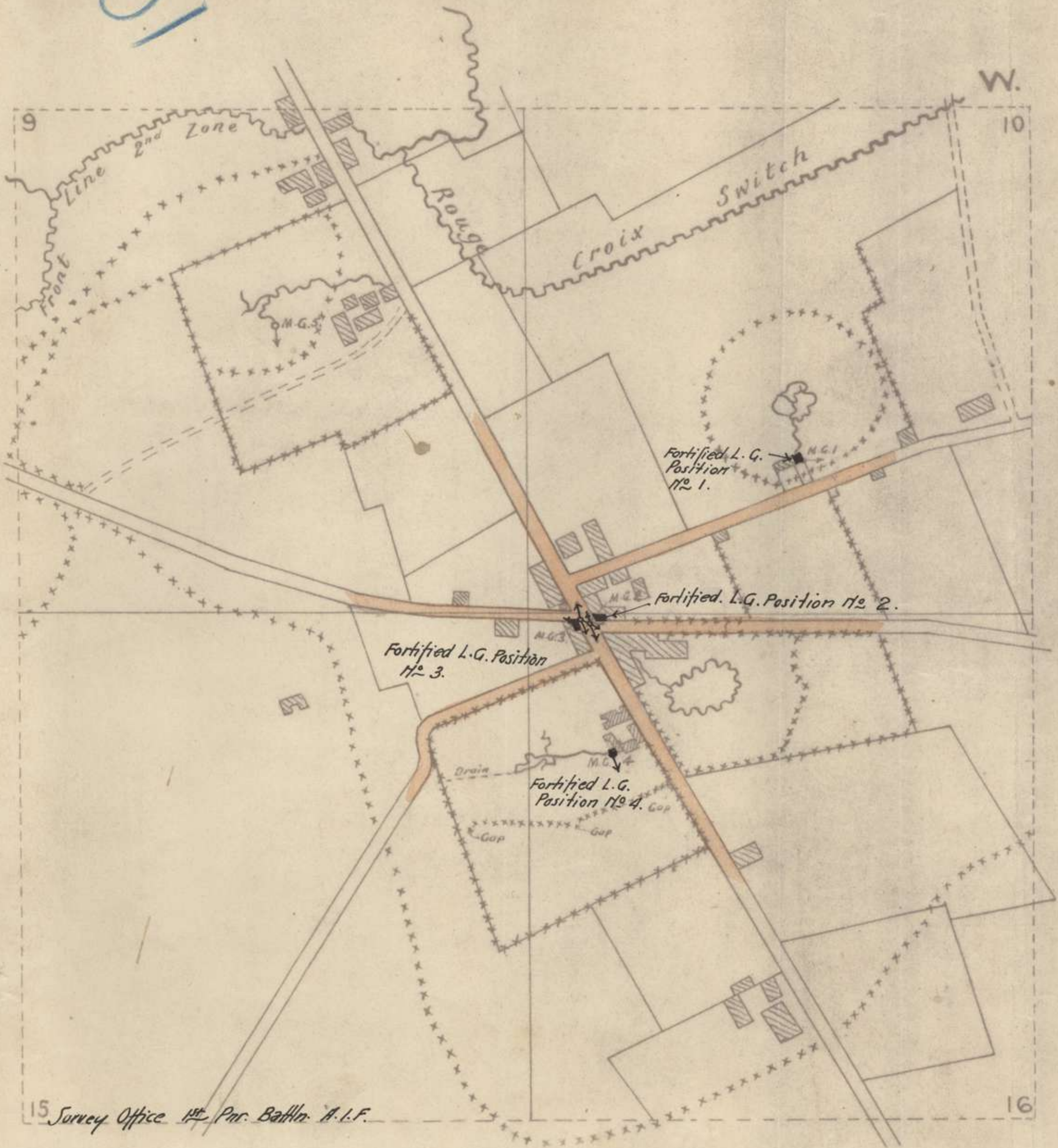
450

51

Rouge Croix APPENDIX 5

Scale 1:5000

57



15 Survey Office 1st Pwr. Batta. A.I.F.

16

X³

43

APPENDIX

5 58

P1

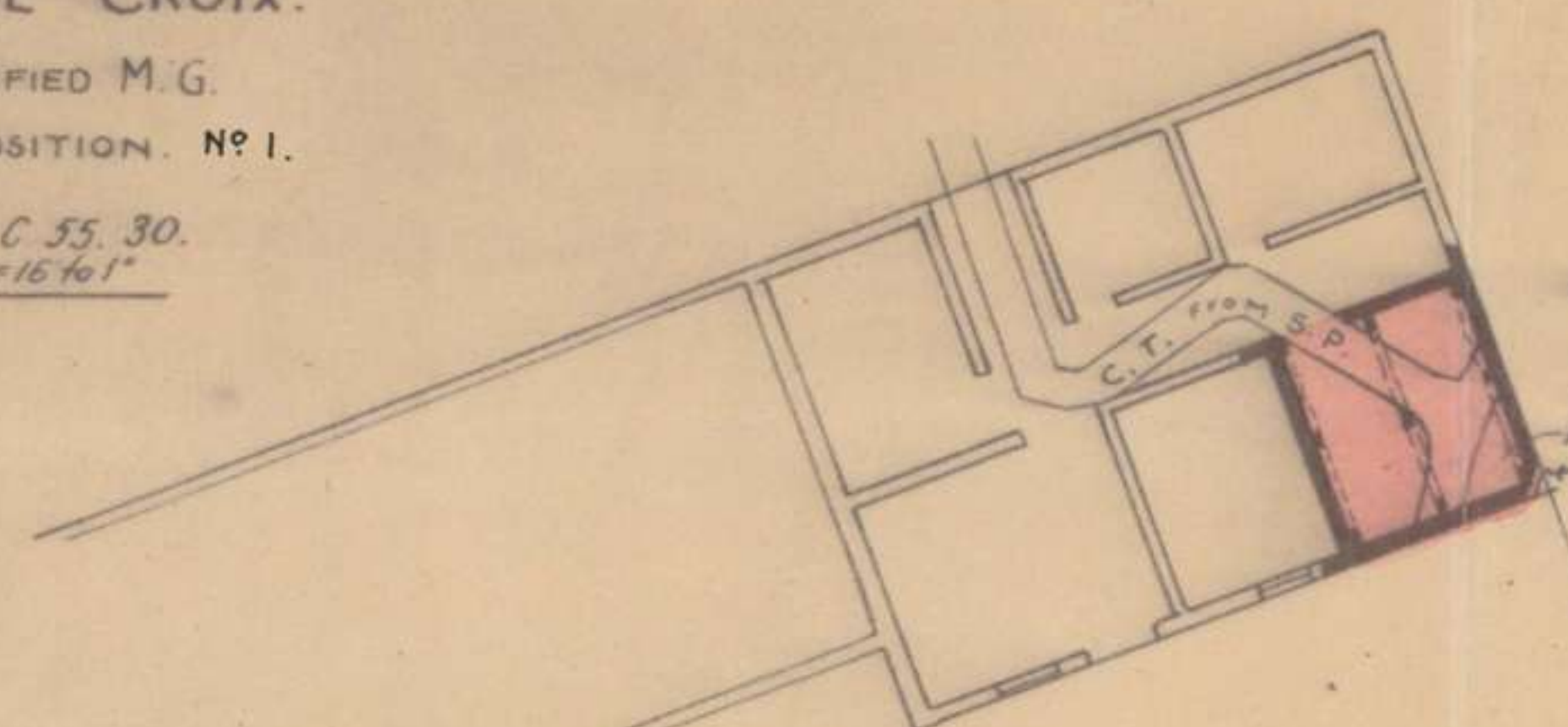
APPENDIX 58 58

73

ROUGE CROIX.

FORTIFIED M.G.
POSITION. NO 1.

W. 10. C. 55. 30.
Scale = 16 to 1"



Roof formed of Timber & Bricks about 2' 0" thick &
5' 9" above floor of C.T.
6" x 6" Studs
6" x 6" Beams 12" x 3" planking
M.G.
Loop hole formed in quoin 1' 3" x 6"

Grid North.

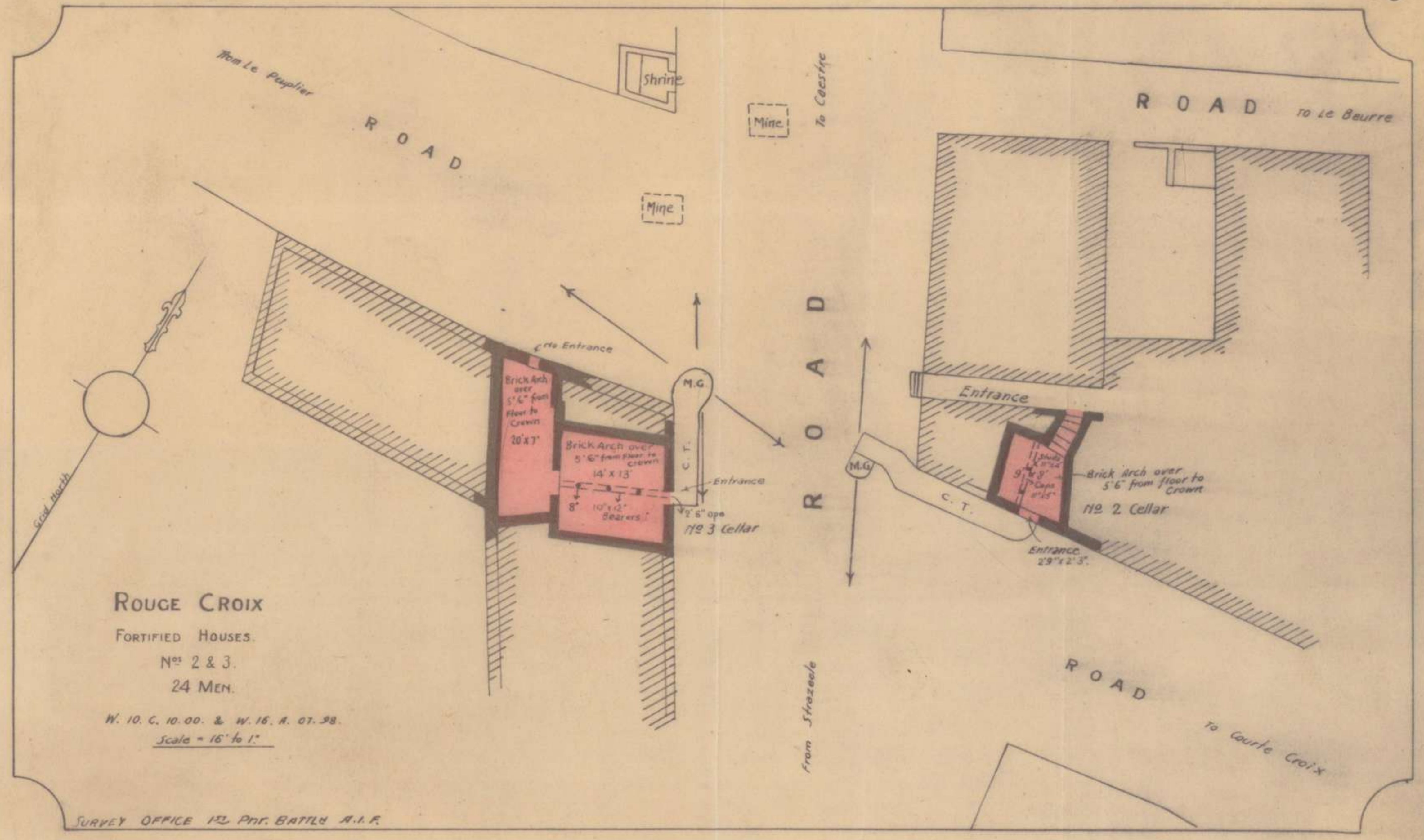
ROAD
TO LE BEURRE

Survey Office 1st. Par. Battln. A. I. F.

43

48

PI



ROUGE CROIX

FORTIFIED HOUSES.

No. 2 & 3.

24 MEN.

W. 10. C. 10. 00. & W. 16. A. 07. 98.

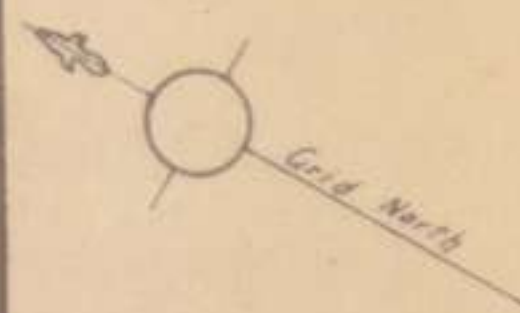
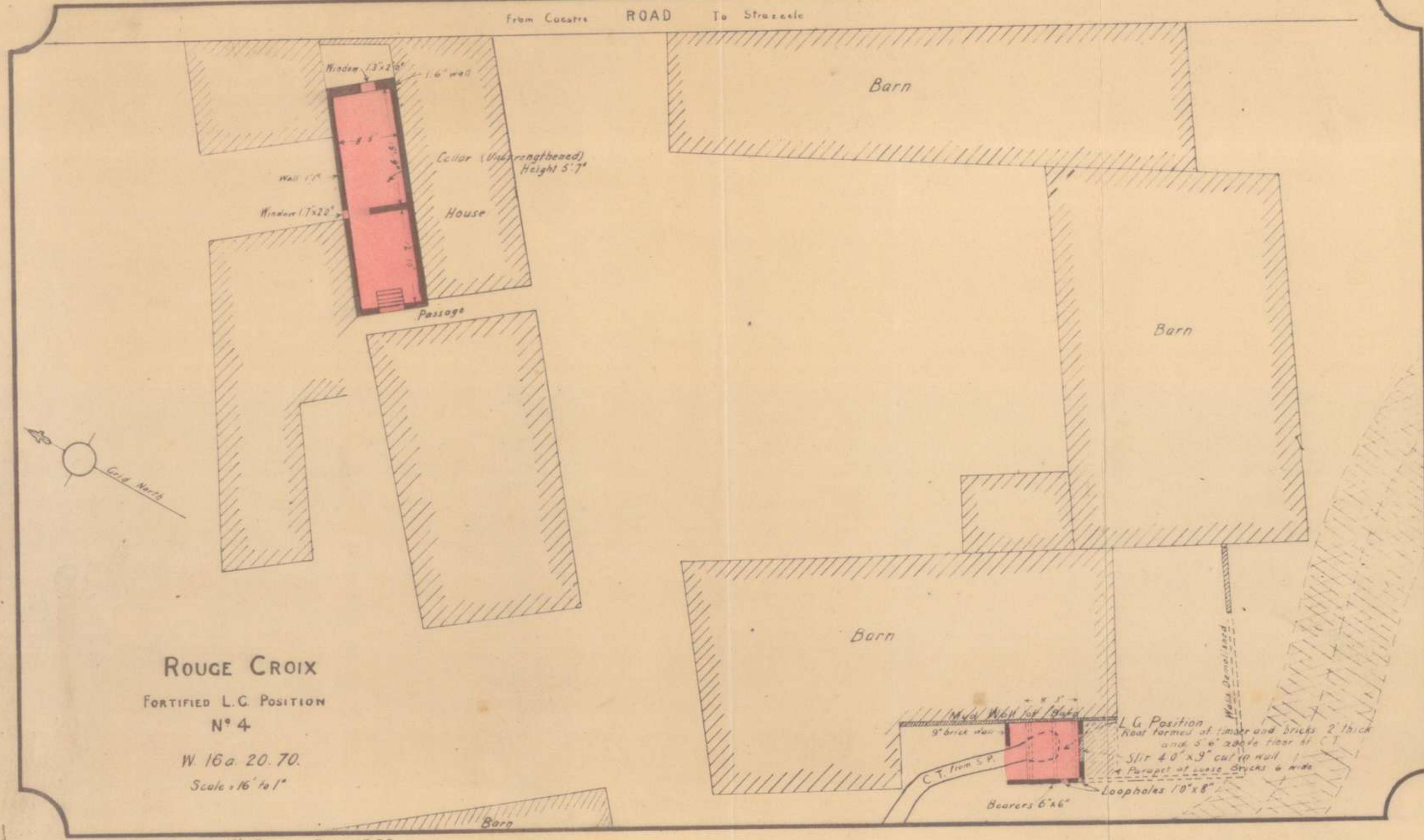
Scale = 16" to 1".

SURVEY OFFICE 152 PNT. BATTLD A.I.F.

W 3

43

P1



ROUGE CROIX
 FORTIFIED L.C. POSITION
 N° 4
 W 16a 20. 70.
 Scale = 16" to 1"

Survey Office 1st Pioneer Battⁿ A.I.F.

43

APPENDIX

5 61

48

P₁

43

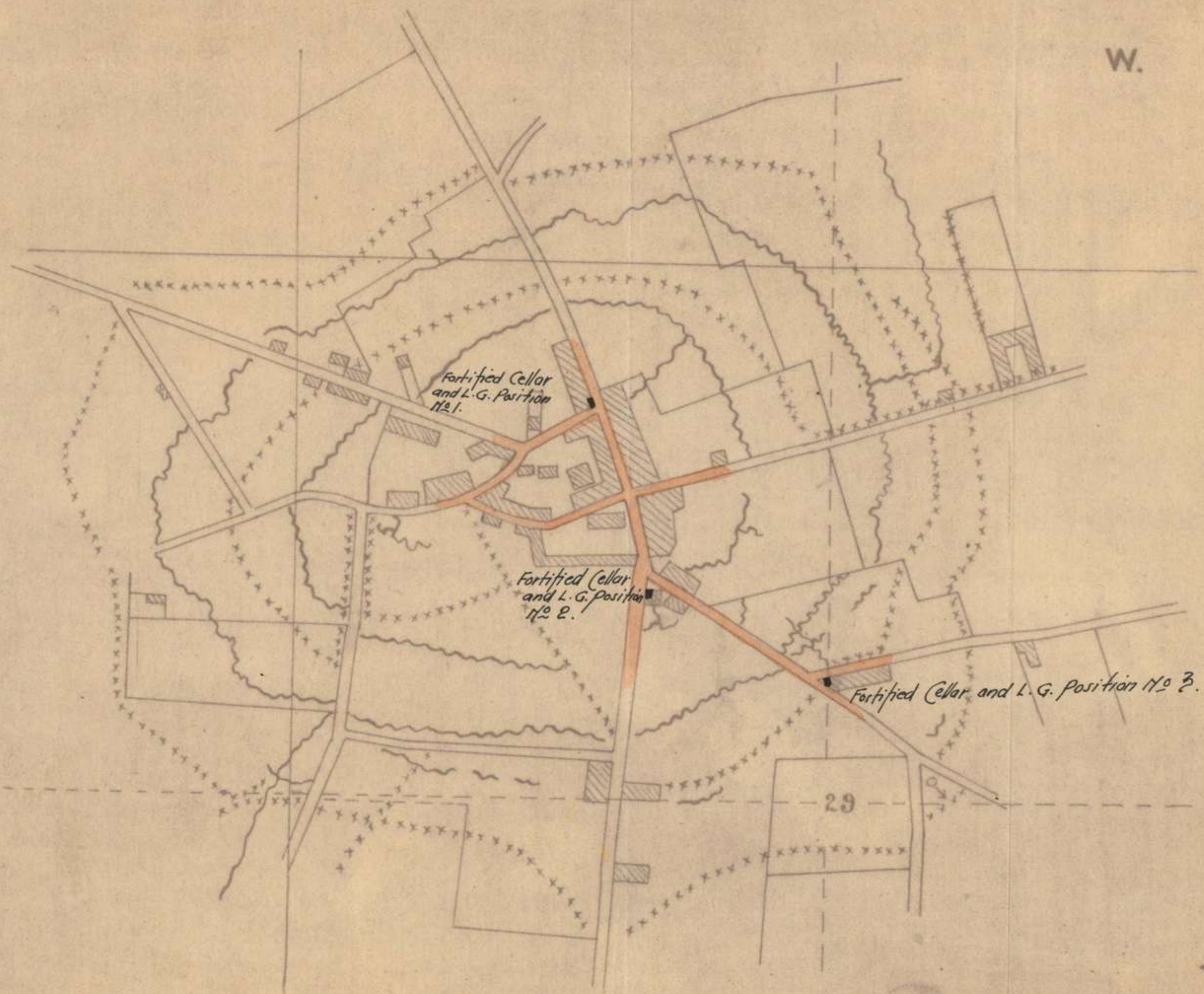
APPENDIX 5

61

Strazeele

Scale 1:5000

W.



29

P1

3

43

STRAZEELE

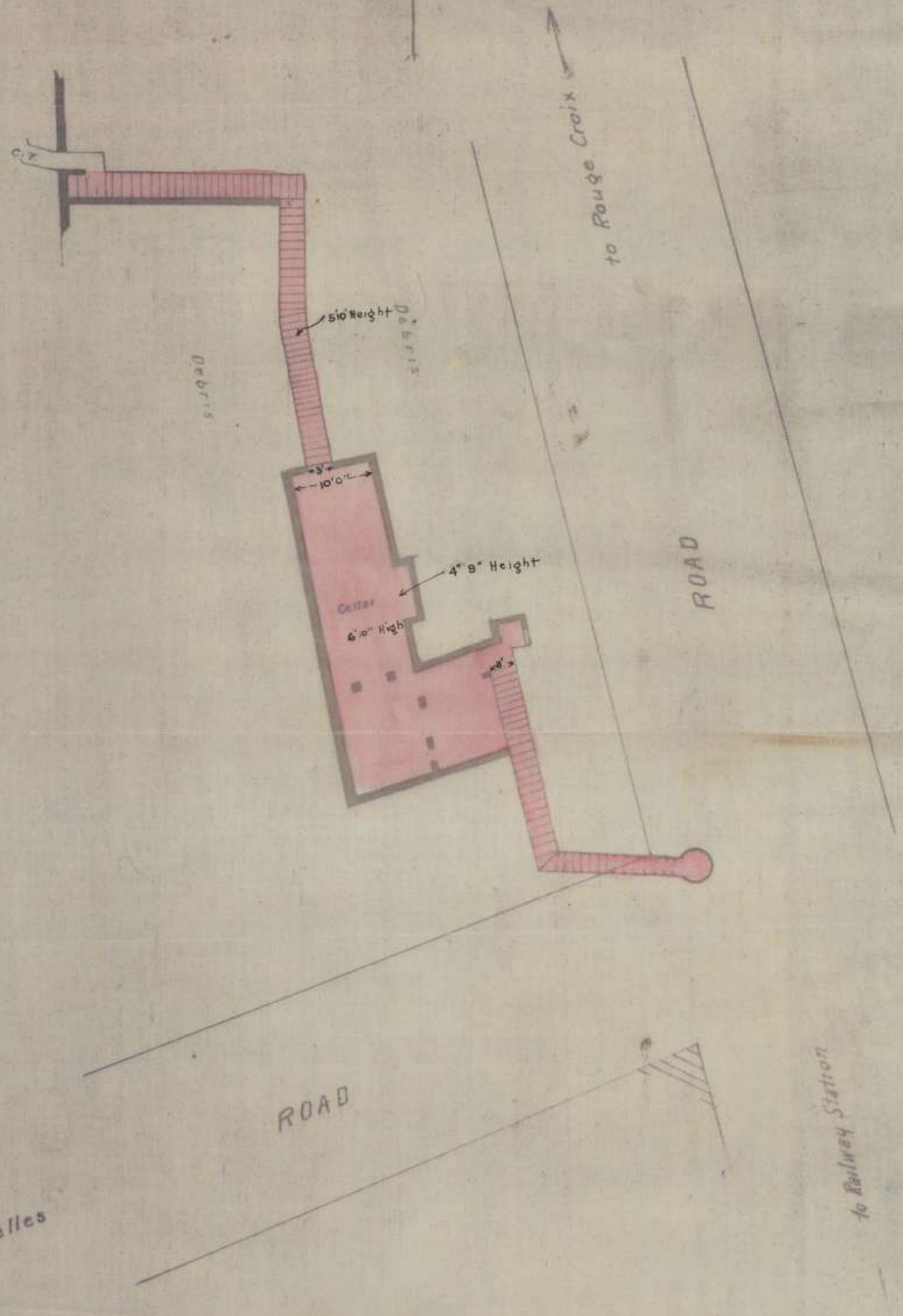
Fortified Cellar No 1 W 29 a 35.73
40 Men
Scale 16' to 1 in

21

APPENDIX

5

62



APPENDIX

5

62

P1

43

43

STRAZEELE

FORTIFIED CELLAR.

Nº 2.

10 MEN.

W. 29. a. 65. 40.

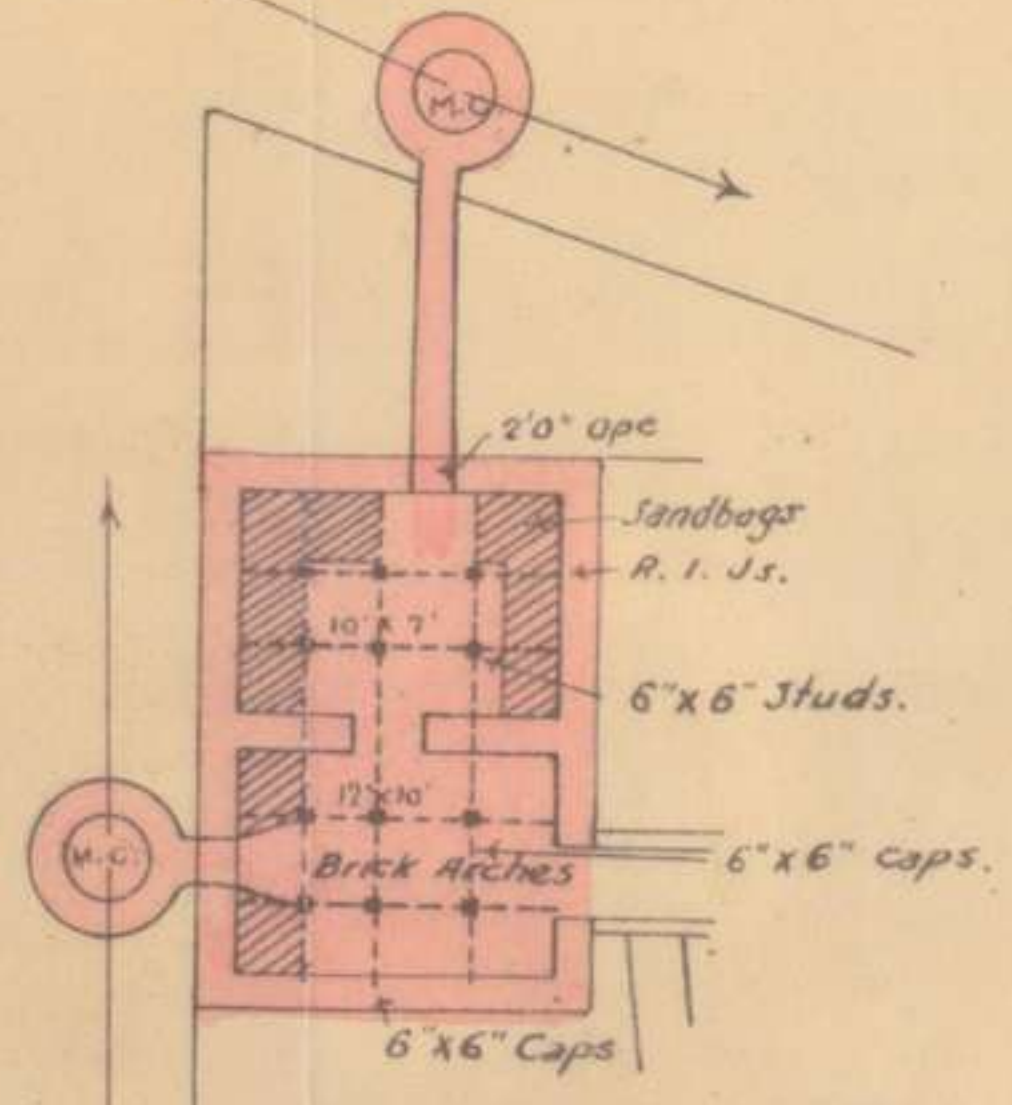
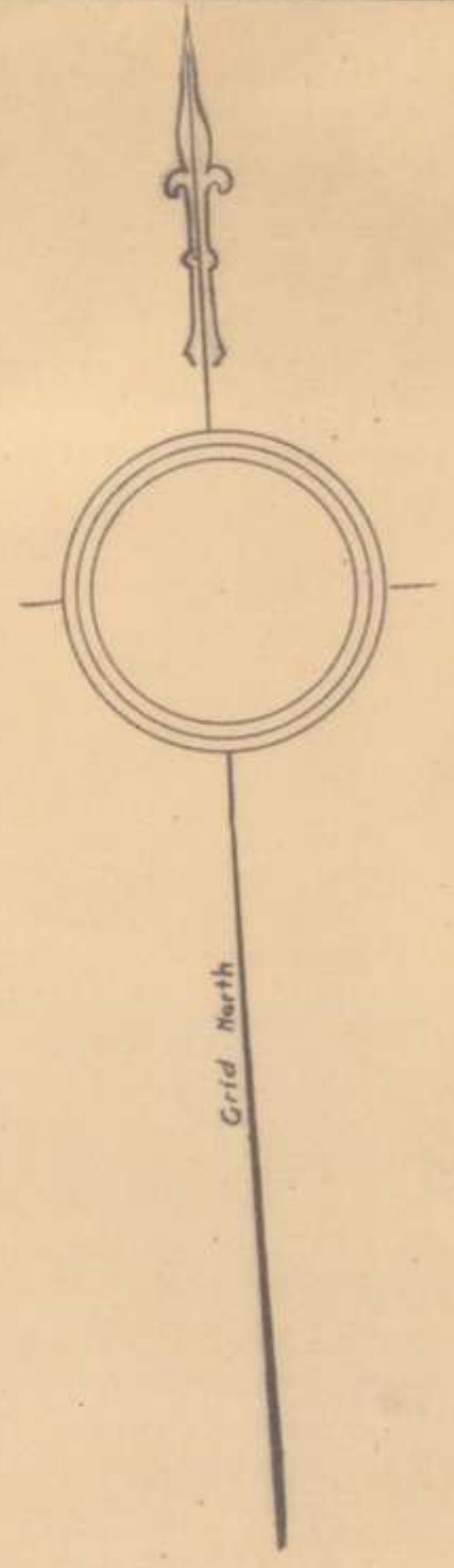
Scale = 16' to 1"

From Strazeele

R O A D

To Merris

R O A D
From Railway Station



SURVEY OFFICE 12 PMA, BATH, A.I.F.

W3

APPENDIX

5

64

48

P1

43

APPENDIX 5

64

STRAZEELE

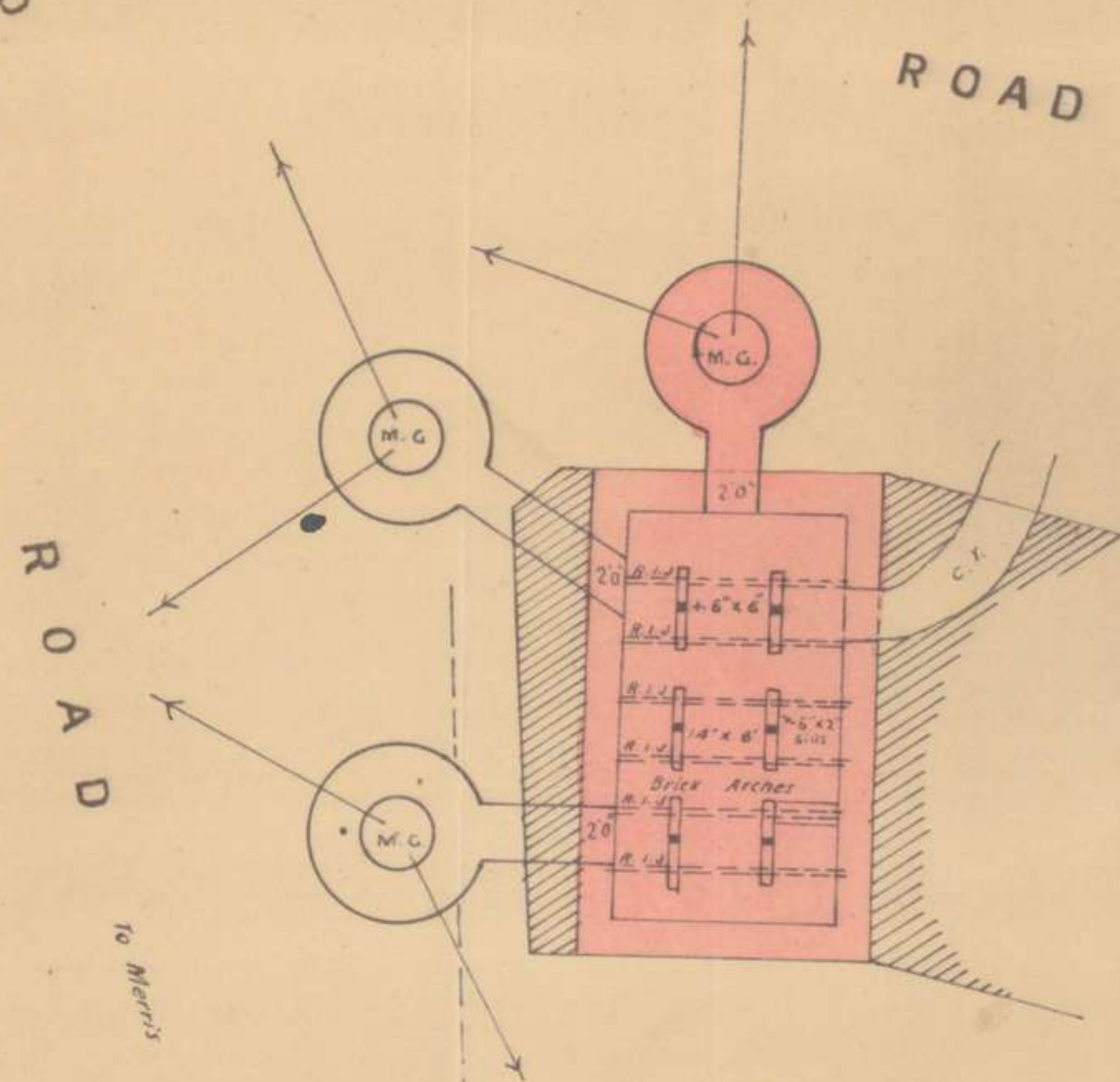
FORTIFIED CELLAR.

Nº 3.

20. MEN.

W. 29. b. 00. 25.

Scale - 8' to 1"



Survey Office 143 Pnc. Batta. A.I.F.

Fortified
Houses
Strazeele &
Rouge Croix.

APPENDIX

Ad

2

19

12

43

APPENDIX

65

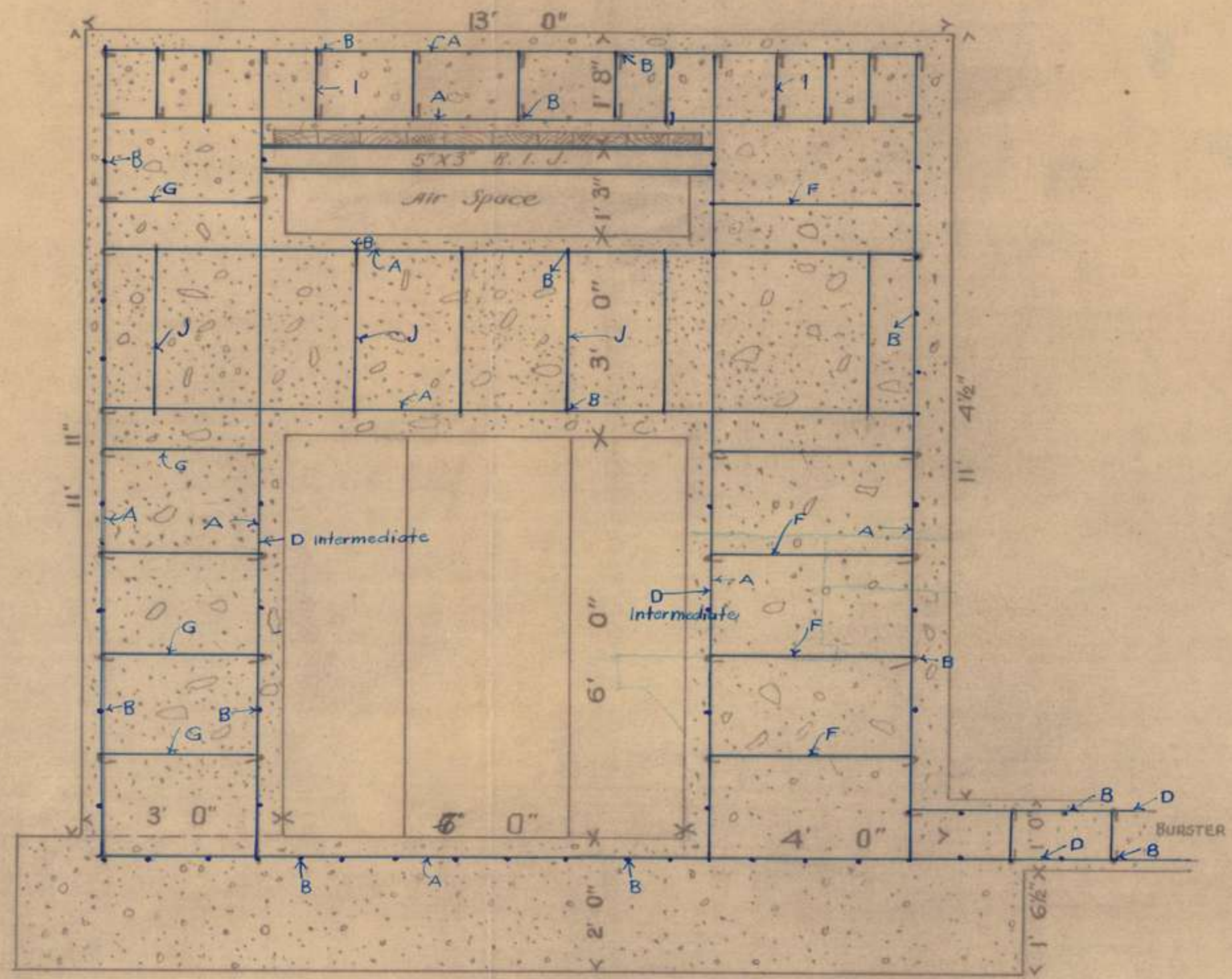
PI

48

L3

APPENDIX 6

65



TRANSVERSE SECTION.
C. D.

Scale 2' = 1"

SURVEY OFFICE, 1st PIONEER BATTALION, A.I.F.
11514 [Signature] 19/5/18

REINFORCED CONC.
DUGOUTS.

|||

1-10/3.9

3.9
1.10/3.9
3

3.9
1.10/3.9
3

4.6
1.10/3.9
3

4.6
1.10/3.9
3

7/2
3 3/4

1414
3
2.828

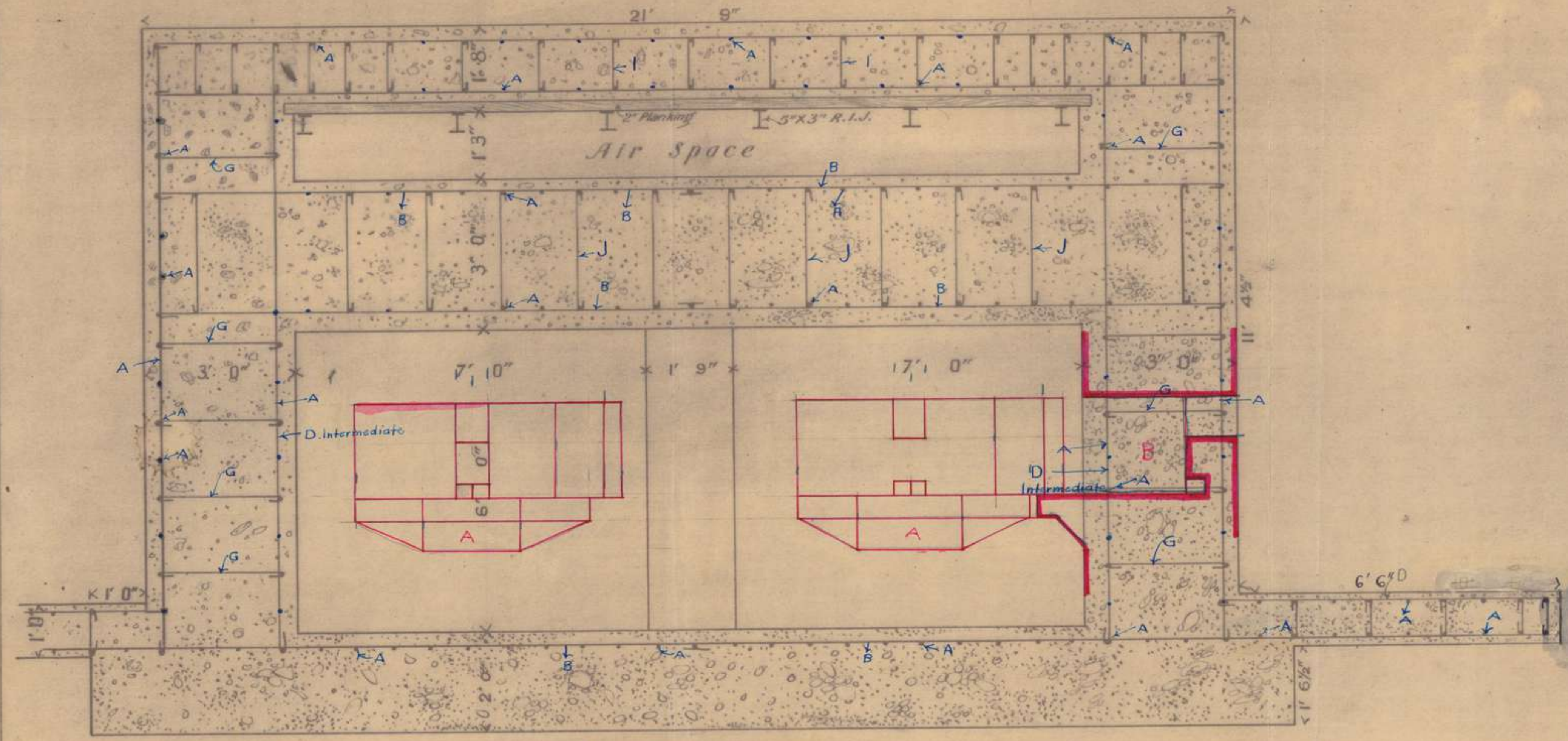
82
12
210

82
12
210

43

P1

43



LONGITUDINAL SECTION.
A. B.

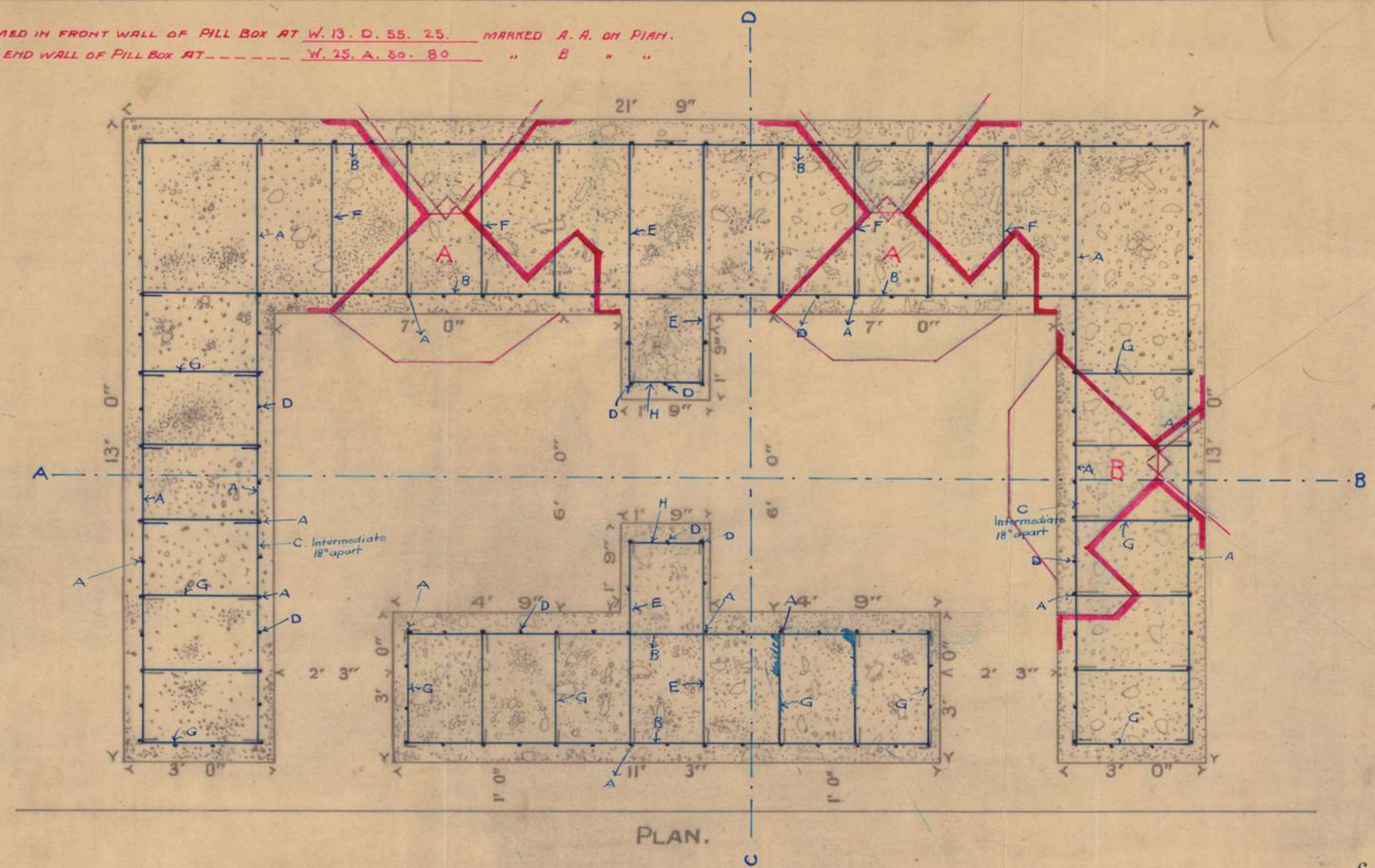
Scale 2"=1"

SURVEY OFFICE, 1st PIONEER BATTALION, A.I.F.
11/5/18
W. B. ... 19/5/18

X³ P1

43

TWO LOOPHOLES TO BE FORMED IN FRONT WALL OF PILL BOX AT W. 13. D. 55. 25. MARKED A. A. ON PLAN.
ONE ONLY TO BE FORMED IN END WALL OF PILL BOX AT W. 25. A. 50. 80 " B " "



SURVEY OFFICE, 13th PIONEER BATTALION, A.I.F.
17/5/18 *Anderson* Captain. 19/5/18

Scale 2' = 1"

LIST OF QUANTITIES OF MATERIALS USED IN THE CONSTRUCTION OF CHURCH PILL BOX

Item.	Class.	Dimensions	Lengths of Rod.	Where used.
29	A	12'0"	12'9"	Hor. rods forming grid in floor from front to rear.
58	A	12'0"	12'9"	Hor. rods forming grid in main roof top and bottom from front to rear.
42	A	12'0"	12'9"	Hor. rods forming grid in bursting course, top and bottom from front to rear.
34	A	12'0"	12'9"	Hor. rods forming grid on outer surfaces of both flank walls from front to rear.
8	A	12'0"	12'9"	Hor. rods forming grid on inner surface of both flank walls from front to rear, spaced 18" apart and acting as stirrups in front wall.
2	A	12'0"	12'9"	Hor. rods from front to rear each end of air space, over main roof.
36	A	12'0"	12'9"	Hor. rods forming grid top and bottom of ground bursting course, both flanks included.
34	A	12'0"	12'9"	Vert. rods forming grid on outer surfaces of both flank walls.
27	A	12'0"	12'9"	Vert. rods forming grid on outer surfaces of front wall.
21	A	12'0"	12'9"	Vert. rods forming grid on outer surface of back wall and ends of flanks.
50	A	12'0"	12'9"	Vert. rods forming grid on inside surfaces of front, back and flank walls, spaced 18" apart and forming stirrups through main roof and bursting course.
34	B	10'6"	11'3"	Hor. rods forming grid in floor, from left to right.
68	B	10'6"	11'3"	Hor. rods forming grid to ceiling and top surface of main roof.
68	B	10'6"	11'3"	Hor. rods forming grid to top and bottom of bursting course.
12	B	10'6"	11'3"	Hor. rods forming grid on outer surface of back wall between door openings.
8	B	10'6"	11'3"	Hor. rods forming grid on inner surface of back wall between door openings.
16	B	10'6"	11'3"	Hor. rods forming grid on inner surface of front wall.
24	B	10'6"	11'3"	Hor. rods forming grid on outer surface of front wall.
36	B	10'6"	11'3"	Hor. rods forming grid top and bottom of ground bursting course in front of pill box.
8	C	9'0"	9'0"	Hor. grid (intermediate) on inside of flank walls from front to rear.
34	D	6'6"	7'3"	Hor. grid forming left flank of ground bursting course.
34	D	6'6"	7'3"	Hor. grid forming right flank of ground bursting course.
94	D	6'6"	7'3"	Hor. grid of ground bursting course in front of pill box.
36	D	6'6"	7'3"	Hor. grid covering corners of ground bursting course.
48	D	6'6"	7'3"	Vert. grid on inside of chambers including piers to door openings between same.
32	E	4'6"	5'3"	Hor. rods forming stirrups in front and back walls and grid enclosing piers of door opening.
40	F	3'0"	3'9"	Hor. rods as stirrups through front wall.

43

46

(2)

APPENDIX

69

Item	Class.	Dimensions.	Length of rods.	Where used.
50	G	2'3"	3'0"	Hor. rods as stirrups through both flank walls and air space over main roof.
16	G	2'3"	3'0"	Hor. grid on back ends of flank walls.
16	G	2'3"	3'0"	Hor. grid forming jambs to door openings in back wall.
16	G	2'3"	3'0"	Hor. rods as stirrups through back wall.
10	G	2'3"	3'0"	Hor. rods as stirrups through back wall in air space over main roof.
16	H	1'3"	2'0"	Hor. grid to piers of door opening between chambers.
160	I	1'0"	1'9"	Vert. rods as stirrups to main bursting course.
170	I	1'0"	1'9"	Vert. rods as stirrups to ground bursting course.
72	J	2'6"	3'3"	Vert. rods as stirrups to main roof.

215 barrels of Portland Cement,
 62 cub. yards sand,
 124 cub. yards aggte.
 13 lengths 6" x 2" planking 16'0" long.
 6 lengths 5" x 3" R.I.J. 7'0" long.
 8 lengths 2" iron water piping for vents.

A. W. Bardon Capt.

43
SECRET.

43

8
70
APPENDIX
Copy No.

1st AUST. PIONEER BATTALION OPERATION ORDER NO. 11.

Map Reference-
Sheet 27, S.E.
1/20,000.

Battalion Headquarters,

2nd June, 1918.

1. Intention. The 3rd Australian Infantry Brigade will carry out an operation against MONT de MERRIS on the morning of 3rd June, 1918, at the time already notified.

2. "G" company of this Battalion will move to and bivouac in the vicinity of STRASSELE AVENUE between W.28.d.5.4. and W.28.b.9.C. from 1 a.m., 3rd June, until further orders. The C.O., of this company will keep in close touch with the C.O., Battalion at E.4.b.9.9. and if the necessity arises garrison the defences of STRASSELE.

"J" company will stand to from 1 a.m. and keep in touch through the nearest Battalion Headquarters.

All ranks will wear fighting order with the haversack on the back, 200 rounds S.A.A., filled water-bottles, 24 hours rations (iron) 50% shovels.

3. ACKNOWLEDGE.

Capt & Adjutant,
for C.O.

1st Aust. Pioneer Battalion.

Distribution:-

- No. 1 - A Coy.
- No. 2 - B Coy.
- No. 3 - C Coy.
- No. 4 - D Coy.
- No. 5 - L.G.O.
- No. 6 - War diary.
- No. 7 - File.
- No. 8 - Spare.

SECRET.

9
Copy No. 6

SECOND AMENDMENT TO DEFENCE SCHEME No. 5.

1st Aust. Pioneer Battalion,
2nd June, 1918.

paragraph 2 of Defence Scheme No. 5 is amended to read as follows:-

B COMPANY. will form the nucleus garrison of Reserve Line (3 platoons) from W. 21. b. 7.5. to railway at R. 3. d. 3. 8. and the nucleus garrison of KLITE HIL (1 platoon).

D COMPANY - COURTE CROIX switch.

Note. Reserve ammunition and rations will be placed at Forward Company Headquarters by all companies and a guard mounted on same.

Capt & Adjutant,
for C.O.,
1st Aust. Pioneer Battalion.

Distribution:-

- No. 1 - A Coy.
- No. 2 - B Coy.
- No. 3 - C Coy.
- No. 4 - D Coy.
- No. 5 - L.C.O.
- ✓ No. 6 - War Diary.
- No. 7 - File.
- No. 8 - Spare.

APPENDIX

9 71

Reference -
sheet 27, S. E.
1/20,000.

Battalion Headquarters,
5th June, 1918.

1. Defence Scheme No. 5 dated 10th May, 1918, will be cancelled as from night 7th/8th June and the following substituted.
2. In the event of an attack the Battalion will be called upon to garrison the following:-
 - A COMPANY the defended locality of BORRE.
 - B COMPANY the defended locality of PRADELLES.
 - C COMPANY the defended locality of ROUGE CROIX.
 - D COMPANY the defended localities of COURTE CROIX and KLITE HIL (3 platoons COURTE CROIX; 1 platoon KLITE HIL).

These defended localities will be occupied by posts which will not be less than one (1) section of riflemen and one (1) Lewis Gun section, or two (2) sections of riflemen.
3. In the event of an alarm the following message will be sent to Companies - "TAKE UP DEFENSIVE POSITIONS". On receipt of this order companies will move at once to defensive positions. Dress - Fighting Order, water bottles filled, 220 rounds of S.A.A. per man. On arriving at positions Companies will immediately get in touch with units on flanks.
4. The Reserve S.A.A. and Rations in Reserve Line will be carefully checked and a state prepared for handing over to "C" Battalion of the line Brigades. Copies of handing over receipts will be forwarded to B.H.Q.
5. (a) should indications point to the enemy making a general attack within 48 hours a "precautionary stage" will be ordered. The message from Battalion Headquarters to Companies will be - "ADOPT PRECAUTIONARY STAGE."
(b) On receipt of the message from Battalion Headquarters the following action will be taken forthwith:-
The Companies will occupy the trenches and posts to which they have been detailed as nucleus garrisons.
(c) Completion of any part of the action ordered under para. (b) will be reported to Battalion Headquarters.
(d) Iron rations to be issued to the troops if not already done.
6. Practice manning will be carried out by each company at the earliest opportunity.
7. special attention will be paid to signal communications by all concerned.
8. Working parties will always carry their arms with them. Officers and N.C.Os in charge of working parties will always have written instructions as to what to do in case of attack.
9. (a) Gas shell or projector attacks are the most likely forms of attack.
(b) Appliances such as shell cases are to be installed for the purpose of spreading alarm (at once).
(c) Gas sentries must be posted in all posts or billets and the most rigid gas discipline insisted upon. For full details see "standing orders for defence against Gas."
(d) Cellars and dugouts unprotected are to be evacuated during a gas shell bombardment and will not be re-entered except on the direct order of an Officer.
10. All strong points, Machine Gun positions, works, trenches and Headquarters must be clearly marked by notice boards.
11. Twenty-four (24) hours reserve rations of food and water will be held in defences as under:-
For the nucleus garrison, calculated on a basis of the present

strength of each company. If already in position a detailed state will be forwarded to B.H.Q. for information.

Reserves will be placed in position and a permanent trench guard posted by Companies.

Reserves will normally be held at company or Battalion Battle Headquarters.

12. In the event of any unusual activity being displayed by the enemy which may denote the beginning of an attack, the Senior Officer in charge of working parties will get into touch by telephone with Battalion Headquarters or Brigade Headquarters of the Line Brigade and ask for instructions.

Should any undue delay occur in getting instructions by telephone, parties will be marched to their positions as laid down above.

A reconnaissance should therefore be made to find out where the nearest telephone line is.

13. A sketch of the distribution of each company, showing strength and location of each post (Lewis Gun positions to be specially noted), will be forwarded to B.H.Q. by 10 a.m., 8/6/18.

14. Company commanders are invited to study Divisional system of Defence which can be seen at Battalion Headquarters.

Capt & Adjutant,
for C.C.,

1st Aust. Pioneer Battalion.

DISTRIBUTION:-

- No. 1 - A Coy.
- No. 2 - B Coy.
- No. 3 - C Coy.
- No. 4 - D Coy.
- No. 5 - B.G.O.
- No. 6 - War Diary.
- No. 7 - File.
- No. 8 - Spare.

Battalion Headquarters,
1st Aust. Pioneer Batta.,
15th June, 1918.

GENERAL INSTRUCTIONS.

1. From information received, it is believed that the enemy intends to attack on the Corps front on the morning of the 16th instant. All troops must be informed of this and told how much depends on their personal courage and determination to maintain the defences of the forward zone.
2. An intense bombardment with H.A. and Gas and probably a heavy smoke screen may be expected along the whole front. As S.C.S. signals may not be seen, short blasts of Strombus horns lasting ten (10) seconds will be used as a supplementary S.C.S. signal. These horns will be installed in the front line forthwith. All ranks will be warned that this signal will differ from the Gas alarm, in that the signal will not be continuous, but in short blasts.
3. While it is not to be anticipated that during heavy bombardment any locality will be absolutely free from shells, subordinate Commander's should move garrisons to the least shelled parts of trenches. Further, in order to avoid casualties subordinate Commanders should, if necessary, move garrison out of trench forward or to a flank. In such cases men are not to scatter but will be held together in platoons and Companies ready to fight should the enemy appear. Lewis Gun Magazines and ample S.A.A. must be carried.
4. It should be understood by all ranks that in the country we now hold a formed body of men can fight just as well behind ditches, hedges, in crops and shell holes, etc., as in a trench and if the latter is destroyed by the bombardment full use must be made of all natural cover. Opportunities for skillful use of Lewis Guns will be frequent.
5. On the order to stand to arms horses will be harnessed but not hitched into limbers. Wagons will be loaded.



Capt & Adjutant,
for C.O.,
1st Aust. Pioneer Battalion.

DISTRIBUTION:-

- No. 1 - A Coy.
- No. 2 - B Coy.
- No. 3 - C Coy.
- No. 4 - D Coy.
- No. 5 - L.S.C.
- No. 6 - T.O.
- No. 7 - War Diary.
- No. 8 - File.

43
48
Secret.

12 1st Aust. Pioneer Battalion,
15th June, 1918.

Company Commanders,
A, B, C and D Companies.

Reference Battalion Defence Scheme No. 6,
paragraph 5.

(ADOPT PRECAUTIONARY STAGE.)

Owing to aerial observation every endeavour must be made to get troops into position without being seen. Not more than one section to move along roads or trenches at the same time.

To be completed by 9 p.m. stating exact numbers. Every available man must be sent forward.

Report completion to Brigade and Battalion Headquarters.

Battalion Headquarters will remain at present location.

Regimental Aid Posts will be as follows:-

LEFT BRIGADE.

1st Battalion (Left), W.18.d.1.5.
4th Battalion (Right), W.22.d.9.8.
3rd Battalion (support), W.8.c.1.3.
2nd Battalion (Reserve), V.17.c.9.1.

RIGHT BRIGADE.

5th Battalion (Right), E.3.c.0.8.
6th Battalion (support), W.21.c.1.7.
7th Battalion (Reserve), V.24.d.5.7.
8th Battalion (Left), E.4.b.9.9.

Capt & Adjutant,
for C.O.

13

Copy No. 6

~~SECRET.~~

3rd AMENDMENT TO 1st AUST. PIONEER BATTALION
DEFENCE SCHEME No. 6.

Battalion Headquarters,
27th June, 1918.

Reference paragraph 2.

In the event of an attack the Battalion will be called upon to garrison the undermentioned localities; to take effect from M 12 midnight 28th/29th June, 1918.

- "A" COMPANY the defended locality of HOUSE CROIX.
- "B" COMPANY the defended locality of BOHRE.
- "C" COMPANY the defended locality of ELITE HILL and the COURTE CRUX SWITCH from W.23.d.4.6. to W.18.d.0.0. (3 Platoons)
- "D" COMPANY the defended locality of PRABELLES.

- Distribution:-
- No. 1 - A Coy.
 - No. 2 - B Coy.
 - No. 3 - C Coy.
 - No. 4 - D Coy.
 - No. 5 - L.G.O.
 - No. 6 - War Diary. ✓
 - No. 7 - File.
 - No. 8 - Spare.

E. Speckmann
Major,
for G.O.,
1st Aust. Pioneer Battalion.

APPENDIX

13
76

DETAIL SURVEY

SHOWING

2ND ZONE DEFENCE AND COMMUNICATIONS.

Scale = 1-5000.

Light Railways. shown thus	Reference shown thus	Broad Gauge	PH Boxes that could be occupied
Duckwalks	"	"	"
Strong points	"	"	"
M.G.s.	"	"	"
Wire	"	"	"
Trenches	"	"	"

