

**AWM4**  
**Australian Imperial Force unit war diaries,**  
**1914-18 War**

Engineers

**Item number:** 14/25/30

**Title:** 6th Field Company, Australian  
Engineers

April 1918



AWM4-14/25/30



**CONFIDENTIAL.**

**ORIGINAL.**

**DUPLICATE.**

**[REDACTED]**

Australian Imperial Force.

**WAR DIARY**

OF

6th. FIELD Co A.F.

FOR

APRIL 1918

Signature of Officer compiling

*McHarris Major*

Signature of Officer Commanding

*McHarris Major*



# WAR DIARY

Army Form C. 2118.

Instructions regarding War Diaries and Intelligence  
Summaries are contained in F. S. Regs., Part II.  
and the Staff Manual respectively. Title pages  
will be prepared in manuscript.

## ~~INTELLIGENCE SUMMARY~~

(Erase heading not required.)

Place	Date	Hour	Summary of Events and Information	Remarks and references to Appendices
WARNETON Sector	1. 4. 18.		Officers of the 130th Field Coy. R.E. (25th. Imperial Division) arrived to take over after a busy week in the retreat on the SOMME. As it was comparatively late in the day, arrangements were at once made for two of their sections to move to CATACOMBS at 7.30 p.m.	Appendix I (Daily Works Reports).
GODEWAERSVELDE	2. 4. 18		Company moved by Bus from NEUVE EGLISE to GODEWAERSVELDE. Major HARRIS and Lieuts. CARLETON, HILL and SEXTON remaining behind for half a day to complete the hand over. Hand over notes attached. In leaving the sector, it was felt a smaller proportion of labour should now be employed on the front 300 yards of the defences. It is not believed however that the policy could have been altered earlier owing to the dilapidated condition in which many important trenches had been found. The accommodation work was also very necessary but, the whole garrison being provided for, this labour could now be diverted on to more rearward defences.	Appendix II
	3. 4. 18.		Whole Company on parade for the first time in 1918. Advantage was taken of the opportunity to repeat to all ranks the lessons learned by the 130th Field Coy R.E. during recent enemy attacks.	
	4. 4. 18.		Company left billets about 3 p.m., entrained in good time and left GODEWAERSVELDE about 6.40 p.m., 25 minutes ahead of schedule. During the night a slight collision occurred near BOULOGNE as a result of which Sapper EARLY was injured and had to be put off at ETAPLES.	
AUX-en-Amienois	5. 4. 18.		Much to our surprise the train reached ST. ROCH about 3 p.m. but it took two Staff Officers and over two hours to get the trucks placed alongside a loading platform. In the meantime Nos 1 and 4 sections were sent on to VAUX-en-Amienois where we were to billet for the night, and the remainder detrained the animals and all but three of the vehicles. Remainder of Company reached VAUX before dark and found a hot meal ready for them and billets secured by advance party under Lieut RENSHAW.	

(A7092). Wt. W12839/M1293. 75 .0 0. 1/17. D. D. & L., Ltd. Forms/C.2118/14.



## WAR DIARY

Army Form C. 2118.

Instructions regarding War Diaries and Intelligence  
Summaries are contained in F. S. Regs., Part II.  
and the Staff Manual respectively. Title pages  
will be prepared in manuscript.

~~INTELLIGENCE SUMMARY~~

(Erase heading not required.)

Ref. map:- Sheet 62d.

Place	Date	Hour	Summary of Events and Information	Remarks and references to Appendices
VAUX-en-Amienois	5.4.18 (Cont)		<p>Men were warned to make the most of the opportunity for sleep as the 7th. Field Company had been turned out the previous morning on very short notice.</p> <p>Instructions were received to get in touch with C.R.E. 35th. Div. before 9.a.m. the following morning at PONT NOYELLES., to collect information as to what his Companies had been doing.</p>	
LAHOUSSEYE	6.4.18		<p>Company marched out at 8.a.m. and transport followed at 9.30.a.m. O/C. went ahead with cyclists to select horse lines and visit C.R.E., 35th. Division and Lieut GILLESPIE went on ahead as billeting officer. to LAHOUSSEYE.</p> <p>35th. Division were not moving and no useful information could be obtained from their C.R.E. Field Companies had held part of the line for a day near BRAY but had done nothing for nearly a week.</p> <p>Transport lines were selected at H.6.c.4.0. Sheet.62d. near high banks just east of R.HALLUE, and the whole Company was in billets at LAHOUSSEYE by 5.p.m.</p>	
	7.6.18.		<p>Instructions received /to take over from 12th. Field Company A.E. on 8th. inst. O.C. with Lieuts DAVIES, ELSUM and CARLETON immediately visited their headquarters and found that they had only two sections employed (both under Brigade orders) Lieut DAVIES looked over forward area and Lieut CARLETON the remainder.</p> <p>Owing to QUERRIEU being the source of all R.E. Supplies, it was decided not to move the transport lines, but a request was made to C.R.E. to establish a Divisional R.E. Dump near FRANVILLERS with Divisional <del>xxxxxx</del> vehicles so that the Company could undertake more transport work.</p> <p>The dispositions of 12th. Field Coy. appeared sound except as regards one section living behind HENENCOURT WOOD and working on a deep dug-out near LAVIEVILLE. It was decided that section relieving the latter should live on its job but otherwise existing dispositions were adopted.</p> <p>12th. Field Coy. dumps were well forward and were adopted.</p>	



## WAR DIARY

Instructions regarding War Diaries and Intelligence Summaries are contained in F. S. Regs., Part II. and the Staff Manual respectively. Title pages will be prepared in manuscript.

~~INTELLIGENCE SUMMARY~~

(Erase heading not required.) Ref. Maps: Sheets 570 & 620.

Place	Date	Hour	Summary of Events and Information	Remarks and references to Appendices
BAIZIEUX	8.4.18.		<p>Company moved at 8.a.m., as follows:-            No.3. Section to D.5.d.7.4. (Sheet 62d)            No.4. Section to V.26.b.3.9. (Temporarily)            H.Q. and Nos.1 &amp; 2. Sections to C.5.b.4.6.</p> <p>Existing defences were rudimentary in the extreme, 4th. Aust. Div., having been fighting hard and one Brigade being detached (as was the case also with this Division) The only existing trenches were PIONEER TRENCH (about half dug and not well sited.) An old French closed work in D.12.c. and an old trench facing N.E. in D.6.c. Forward of LAVIEVILLE there was only one other trench of any kind: a series of pot-holes and small works afterwards improved and called VILLA RESERVE LINE.</p> <p>There were no shelters of any kind in the area except a few sheets of iron at each Battalion H.Q. and R.A.P.'s</p> <p>C.R.E. was arranging for Pioneers to dig some intermediate defence lines, and infantry commenced vigorously on improvement of PIONEER TRENCH. so this Company concentrated at once on accommodation work. An immediate start was made with 4.2" proof shelters for each Battalion H.Q., R.A.P. and Signal Office.</p> <p>Owing to the shortage of ordinary R.E. Stores, Lieut ELSUM with Company surveyors were at once sent out on Engineer reconnaissance, chiefly for sawn timber and corrugated iron. Very useful timber was found in LAVIEVILLE, and both timber and iron at an abandoned aerodrome near the same village; the latter comprising over 20,000 lineal feet of timber from 6"x2" to 9"x3", and over 2,000 sheets of corrugated iron.</p> <p>No.2. Section under Lieut ELSUM was made responsible for salvage of all R.E. materials required for forward work and commenced at once with corrugated iron for improvised weather-proof trench shelters.</p> <p>One of our greatest difficulties arose from the shortage of nails which literally had to be salvaged in twos and threes from the villages.</p> <p>As the AMIENS-ALBERT Road was still in excellent condition, 6th Bde asked for some trees to be felled across it as an obstacle to armoured cars Lieut HILL accordingly went forward with 2/Cpl. PAINE and 12 Sappers of Nos 1.&amp;2. Sections after dark and felled four trees just behind the crest in E.7.d.</p>	



## WAR DIARY

Instructions regarding War Diaries and Intelligence  
Summaries are contained in F. S. Regs., Part II.  
and the Staff Manual respectively. Title pages  
will be prepared in manuscript.

~~INTELLIGENCE SUMMARY.~~

(Erase heading not required.) Ref. Map: Sheet 020.

Place	Date	Hour	Summary of Events and Information	Remarks and references to Appendices
MILLENCOURT Sector	8.4.18 (Cont.)		<p>No.3. Section commenced at once on excavation of new head quarters for 22nd. and 23rd. Battalions, but half the Section had to work on their own accommodation which was very poor.</p> <p>No.4. Section commenced at once to dismantle the accommodation they had taken over as a preliminary to moving forward to D.4.c.1.3. where the whole section was to be employed.</p> <p>Transport became fully employed at once, and remainder of No.1. Section commenced increasing accommodation near Company H.Q. to enable portion of transport to be kept nearer its work.</p> <p>Arrangements made with 24th. Battalion to put 40 men on salvage of timber in MILLENCOURT.</p>	
	9.4.18		<p>Early in the morning the forward section (No.3.) was fairly heavily shelled, Sappers TOWNSEND and QUINE being fatally wounded and 4 others evacuated wounded or gassed. The worst gas case (Sapper FERNLEY) resulted from a gas shell penetrating the shelter in which he was sleeping and bursting inside.</p> <p>24th. Battalion afterwards did us a good turn., Seeing No.3. Section re-building their camp, they sent ten men over to help.</p> <p>No.4. Section less guard on old camp moved to D.4.c.1.3. and immediately pushed on with both faces of dug-out for Brigade H.Q.</p> <p>Lieut SEXTON with L/Cpl. AITKEN located ten new posts in D.5.d., D.6.c., D.12.b. and c., and D.18.a. dug by 2nd Pioneers on the previous night.</p> <p>No.1. Section commenced making Barbed Wire Concertinas with wire salvaged from an old P.O.W. Compound near BAIZIEUX., 50 were made and delivered to Battalion H.Q. Dump in the evening.</p>	



## WAR DIARY

Army Form C. 2118.

Instructions regarding War Diaries and Intelligence Summaries are contained in F. S. Regs., Part II. and the Staff Manual respectively. Title pages will be prepared in manuscript.

~~INTELLIGENCE SUMMARY~~

(Erase heading not required.) Ref. Map - Sheet 620.

Place	Date	Hour	Summary of Events and Information	Remarks and references to Appendices
MILLEN COURT Sector	10.4.18		<p>Survey of existing defences carried on by Lieuts SEXTON and HILL and everything behind PIONEER TRENCH definitely located.</p> <p>PIONEER TRENCH being the only one handed over by 4th. Division, was assumed correct on their map.</p> <p>Arrangements made to start a deep dug-out under AMIENS-ALBERT Road for Right Battalion H.Q. at about D.12.d.5.6. (Plan attached)</p> <p>4.2" proof shelters having been completed for both Battalion H.Q.'rs, arrangements were made to put in smaller shelters for all Coy. H.Q.'rs infantry to dig the holes and carry up the materials which we would then construct.</p>	Appendix III
	11.4.18		<p>No.1. Section relieved No.3. at 8.a.m. without affecting continuity of either forward or back work.</p> <p>Infantry were at this time employed in improving PIONEER TRENCH and pushing out a new line of posts on both flanks. PIONEER TRENCH was very unsatisfactory as a defence line, being on forward slope north of the AMIENS-ALBERT Road and unable to see the crest south of the road. A much better line south of the road and about 300 yards further forward was selected by us and the Right Battalion had plenty to do in digging, connecting up and wiring these posts. A number of these posts were marked out by Lieut ELSUM. At the same time as this was being done, the 7th. Brigade dug a long trench in prolongation to the right of PIONEER TRENCH. This also was unable to see the crest and was never occupied, as the Brigade shortly afterwards <del>reoccupied</del> dug a line further forward to conform to our posts. (EMMA LINE)</p> <p>Concertinas were exclusively used for Front Line wiring.</p> <p>From this date onwards from 6 to 8 Sappers were employed daily in strutting and gasproofing cellars in LAVIEVILLE and MILLEN COURT and in building Company headquarters for the Support and Reserve Battalions. The bulk of this work was supervised by Lieut SEXTON.</p>	



## WAR DIARY

#

Instructions regarding War Diaries and Intelligence Summaries are contained in F. S. Regs., Part II. and the Staff Manual respectively. Title pages will be prepared in manuscript.

~~INTELLIGENCE SUMMARY.~~

(Erase heading not required.)

Ref. Map: Sheet 1620.

Place	Date	Hour	Summary of Events and Information	Remarks and references to Appendices
MILLENCOURT Sector	12.4.18		<p>The whole of No.4. Section was now at D.4.c.1.3. and arrangements were made to augment the party by 1.N.C.O. and 12. Infantry to enable 4 Shifts to keep going.</p> <p>Divisional R.E. Dump was now established at FRANVILLERS, this Company supplying 3 Sappers to help work it.</p> <p>Arrangements were now made to move all transport to just behind Company H.Q. leaving only a guard on pontoon stores at old horse-lines.</p> <p>Guard of 3 Sappers placed on Aerodrome at D.16.a.7.4. to control distribution of stores therefrom.</p>	
	13.4.18.		<p>Three small posts for two support platoons were sited about E.2.c.3.8. in rear of left of PIONEER TRENCH and work on these was started by all available men (about 20) of 24th. Battalion.</p> <p>Lieut HILL moved to D.4.c.1.3. to organise wiring parties from Support and Reserve Battalions on lines in rear of PIONEER TRENCH. Great difficulty was experienced in getting pickets of suitable length for this work. Thousands of pickets 3ft. to 4ft. long were available but the resulting entanglement was almost no obstacle. By careful selection of pickets from QUERRIEU Dump however, the best entanglement under the circumstances was constructed.</p> <p>O.C. strongly recommended a C.T. on left of Brigade Area sited for flank defence in event of enemy advance along the ALBERT-MILLENCOURT valley, and also a switch line from VILLA RESERVE about U.11.c.3.7. towards U.16. central and thence along spur meeting ANCRE valley just forward of RIBEMONT.</p>	
	16.4.18.		<p>No.2. Section relieved No.1. on forward work.</p> <p>All line companies now had 4.2" proof headquarters, and a start was made on similar structures for all machine gunners. Terms of construction were as before: i.e., Machine Gunners dug the holes to our specification and carried up the materials which we supplied and assembled.</p>	



## WAR DIARY

Instructions regarding War Diaries and Intelligence Summaries are contained in F. S. Regs., Part II. and the Staff Manual respectively. Title pages will be prepared in manuscript.

~~INTELLIGENCE SUMMARY.~~

(Erase heading not required.)

Ref. Map: Sheet 620

Place	Date	Hour	Summary of Events and Information	Remarks and references to Appendices
MILLENCOURT Sector	17.4.18		3 Companies of 2nd. Pioneers dug the front 1000 yards of Flank Defence C.T. referred to on 16th. Trench being marked out and parties guided to job by Lieut ELSUM assisted by Lieut VEALE who was temporarily attached to the Company.	
	21.4.18.		No. 3. Section relieved No. 2. on forward work. A new H.Q. for Left Battalion was started at E.1.c.30.35., as the existing site was receiving too much enemy attention to be comfortable. Lieut DAVIES sited a new line of posts for 24th. Battalion North of AMIENS-ALBERT Road. About this time, two Sappers were supplied nightly to supervise infantry parties wiring their posts. The practice was not found to have any great advantage and was discontinued after about a week.	
	22.4.18.		17th. Battalion moved up near Company H.Q. and no time was lost in getting from them a party of 50 for cutting 6ft. pickets for wiring. This practically saved the situation on wiring rear lines as no angle pickets had yet come up.	
	23.4.18.		Captain COGHLAN took in hand the improvement of Defence Line just in front of LAVIEVILLE (VILLA RESERVE), and was considerably helped by C.O. 22nd. Battalion. The most difficult part of the job was to get <del>rock</del> mens' shelters out of the trench to permit of traffic along the Line.	
	24.4.18.		All troops ordered out of LAVIEVILLE and MILLENCOURT. Support and Reserve Battalion headquarters were those chiefly affected, and new sites were selected at D.5.d.1.2. and V.23.c.4.7. for Deep Dug-outs.	



# WAR DIARY

8TH FIELD COMPANY ENGINEERS A.I.F.

Army Form C. 2118.

Instructions regarding War Diaries and Intelligence  
Summaries are contained in F. S. Regs., Part II.  
and the Staff Manual respectively. Title pages  
will be prepared in manuscript.

## ~~INTELLIGENCE SUMMARY~~

(Erase heading not required.)

Ref. Map: Sheet 620.

Place	Date	Hour	Summary of Events and Information	Remarks and references to Appendices
MILLEN COURT Sector.	25.4.18.		An important C.T. was dug by 21st. Battalion from PIONEER TRENCH to MMA LINE near Southern Brigade Boundary. Work marked out by Lieut. DAVIES and supervised by Lieut. VEALE.	
	26.4.18		No. 1. Section relieved No. 3. on Forward work. Owing to Brigade sector moving North, a new lot of shelters for Company Headquarters and Machine Gunners became desirable and a start was made immediately on the former. Dug-out at D.4.c.1.3. completed except for steps, gasproofing, and a little lagging. Arrangements made to move <sup>our attached</sup> infantry to Company H.Q. to take over concertina work. Proposals submitted to C.R.E. after concurrence of Brigade for Battalion H.Q. Dug-outs to be constructed at E.1.c.25.30., D.5.d.1.1., V.23.c.4.7., and V.30.d.2.8. (Plan attached)	Appendix IV (Plan of Dug Out at D.4.c.1.3.)  Appendix V
	27.4.18.		21st. Battalion Headquarters moved into Deep Dug-out at D.12.d.5.6., one entrance and two cubicles being completed, and Sappers concentrated on driving a second entrance. Dug-out for "D" Battalion H.Q. commenced at V.23.c.4.7. 23rd. Battalion fully occupied in digging connections in various lines North of old Brigade Boundary. 55 men of 24th. Battalion similarly employed on third line of Front System on trenches marked out by Major HARRIS.	



# WAR DIARY

Army Form C. 2118.

Instructions regarding War Diaries and Intelligence  
Summaries are contained in F. S. Regs., Part II.  
and the Staff Manual respectively. Title pages  
will be prepared in manuscript.

## INTELLIGENCE SUMMARY

(Erase heading not required.)

Ref. Map: - Sheet 02 D.

Place	Date	Hour	Summary of Events and Information	Remarks and references to Appendices
MILLENCOURT Sector	28.4.18.		<p>No.3.Section relieved No.4.at Dug-out and shelters at D.4.c.1.3.,for the purpose of constructing two new Dug-outs at V.23.c.4.7.,and D.5.d.1.2., and started on latter at 2.p.m.,the former being already under weigh.</p> <p>Lieut RENSHAW was very fully occupied with connections of PIONEER TRENCH in MILLENCOURT VALLEY, connecting up line of posts forward of PIONEER TRENCH and, digging a C.T. from PIONEER TRENCH to line of posts and putting out front line wire in MILLENCOURT VALLEY, all done by 23rd.Battalion under his general supervision.</p> <p>Lieut. CARLETON marked out and supervised further work by 24th.Bn.on third line of front system.</p>	Appendix VI (Trench map)
	29th & 30.4.18.		<p>Relief orders received.</p> <p>No new work undertaken, but endeavours made to finish what was in hand.</p> <p>Notice Boards prepared for all trenches, and gap indicators placed at all gaps in wire entanglements.</p> <p>During the month, the Company had been almost exclusively employed on engineer work; and constructed four Battalion Headquarters and shelters for all Company Headquarters and for nearly every Machine-gun crew in the Sector. In addition, every man in four Battalions had weatherproof accommodation.</p> <p>Defences of the sector were very considerably improved and two and a half miles of substantial wire entanglement were erected, and all this in spite of the most depressing lack of the commonest R.E.Stores-particularly nails.</p>	



## WAR DIARY

Army Form C. 2118.

Instructions regarding War Diaries and Intelligence  
Summaries are contained in F. S. Regs., Part II.  
and the Staff Manual respectively. Title pages  
will be prepared in manuscript.

~~INTELLIGENCE SUMMARY.~~

(Erase heading not required.)

Place	Date	Hour	Summary of Events and Information	Remarks and references to Appendices
	April		<p>During the month of APRIL :-</p> <p>4.0ther Ranks were evacuated sick.</p> <p>9.0thersRanks were evacuated wounded(Three of whom subsequently Died.)</p> <p>1.0ther Rank was Killed in Action.</p> <p>3 0ther Ranks were wounded and remained at duty.</p> <p>3.0ther Ranks rejoined from hospital.</p> <p>1.0ther Rank was transferred from another unit.</p> <p>2/Lieut.E.C.WHITE joined from Engr.Reinforcements on 18/4/18.</p> <p>1.0ther Rank joined from Engr.Reinforcements.</p> <p>2/Lieut.W.C.D.VEALE was attached from 7th.Field Co. from 1st.to 26th/4/18.</p> <p>Strength of Company on 30/4/18.:- 10.Officers.,231.0ther Ranks.</p>	

D. D. & L., London, E.C.  
(A8001) Wt. W1771/M2031 750,000 5/17 Sch. 52 Forms/C2118/14

McHarris  
Or. 6th Field Coy AE



## WAR DIARY

OF

6th FIELD C. A. F.

FOR

APRIL 1918

## LIST OF APPENDICES.

No.	Subject.
I	Daily Works Reports.
II	Hand-over notes to 130th. Field C. RE.
III	Plan of Deep dug-out at D.12.d.5.6, (620)
IV	" " " D.4.c.1.3, "
V	Plan of Battalion H.Qrs. D.O's.
VI	Trench map.



# 5th FIELD CO. AUSTRALIAN ENGINEERS. Works Report for 24 hours ending 6 p.m. 1/4/1918

Appendix I

Location	Work	Person in work	No. of men employed		Particulars	Remarks.
			Eng.	Inf.		
	Transporting R.E. Stores.	SGT COHEN.	3	80	Transporting material forward RIGHT SECTOR - 10 Trucks. LEFT	
FRONT LINE	Fire steps construction	LT CARLETON	4	26	11 new firesteps completed + 10 ammunition shelters erected. Old N°5 post (T head) reclaimed providing accommodation for 2 rifles.	
"	Berming	"	9	36	about 160 yds of trench bermed + floor cleaned to duckboard level, ready for draining	
RIVER LANE	Shelters construction	"	6	10	Bunking + completing shelters. 9 small shelters + 2 large, now complete giving accommodation for 6 officers + 27 ORs.	
WALLY Support	Draining	"	3	23	90 yds of trench cleaned + drained + duckboards replaced.	
U.10 a. 2.6	R.A.P.	"	1	12	25 additional bursters carried + placed.	
U.17 d. 4.9.	Bunking in La BASSE VILLE	LT HILL	5	9	N°4 2 new bunks complete + 2 bunks wired. N°8 8 new bunks complete. Carrying material	Total N° of bunks - 89 Back entrance to N°8 can now be used.
RED LODGE	Gas proofing dugouts.	LT SEXTON	2	-	2 entrances + 2 flues made gas proof Total since 29.3.18. 2 dugouts (50 men each) complete 1 " (M.G. H.Q. officers) " 2 " (50 men each) 60%	
WARNETON-YANCOUVER TRACK	Maintenance	LT GILLESPIE	2	2	Patrol of tracks + making necessary repairs	Lines O.K.
U.17 a. 15.50.	UNEVEN Support	LT. RENSHAW	2	35	Heightening upper switch trench parapet 2 low places in parapet	
U.11 c. 55. to U.11 c. 60.15.		"	-	15	Filling in behind parapet revetment + forming good parapet 70 yds carrying material.	
		"	1	42	Cleaning underneath duckboards (200 yds) in various parts of trench.	
U.11 c. 65.55.		"	5	3	Revetted 30 yds parapet, thus completing whole trench.	
U.17 a. 2.7.	UNITY. S.P.	"	4	-	Sandbagged 3 shelters.	
U.17 a. 2.5.		"	8	-	Revetted 25 yds trench leading to S.P.	
	ULTIMO AVENUE	"	1	6	Cleaning smashed in portions of trench.	
VIC. WAY.	Building breastwork	LT. ELSUM	4	105	150 yds VIC WAY 50% completely built up.	
U.17 b. 16 to U.17 b. 2530.	Wire in front of TROIS TILLEULS Farm	"	5	25	220 yds wire belt completed.	

Appendix I



6th FIELD CO. AUSTRALIAN ENGINEERS.  
Works Report for 24 hours ending 6 p.m. — 8/4/1918. —

Location	Work	Person in work	No. of men employed		Particulars	Remarks.
			Eng.	Inf.		
LAVIEVILLE	Salvage of timber for forward work	LT ELSUM	19	.	88'-6"x3" 90'-6"x4" 24'-6"x6" 96'-7"x4" } Salvaged & dumped 27'-9"x3" 24' 4"x4" 97'-6"x2" 36'-6"x1" } at D. 10. b 5.9. 180'-2 1/2"x2 1/2" 93'-2"x2"	Boys Transport fully employed carrying two pontoon wagon loads from QUERREY to advanced dumps & pushing forward salvaged materials, rations etc.
E 7. c 39.	Obstructing AMIENS-ALBERT Road	LT HILL	14	.	4 trees felled across road at request of 6th Brigade.	
D 5 d. 7. 4	Accommodation	LT DAVIES	14	-	2 shelters complete. 1 Shelter 50% complete.	
D. 12 b. 8. 0. (about)	"	"	14	-	Excavations for 23rd Bn. H.Q. & 22nd Bn R.A.P. & Sig Office about 30% complete.	
V 26. b. 39 + D. 4 c. 15.	"	LT CARLETON	24	-	Dismantling shelters in former location & moving materials to alternative Bde H.Q. at D 4 c. 15. where deep dugout for Bde H.Q. is being continued.	
Boy H.Q.	"	LT RENSHAW	12	-	Improving accommodation 2 huts salvaged & erected to accommodate about 26 men.	

Appendix 1.



6th FIELD CO. AUSTRALIAN ENGINEERS.  
Works Report for 24 hours ending 6 p.m. --- 9/4/1918.

82

Location	Work	Person in charge work	No. of men employed		Particulars	Remarks.
			Eng.	Inf.		
	Salvage and delivery of material to forward dump	LT ELSUM	19	-	1. Pontoon wagon load of timber loaded at LAVIEVILLE & delivered at D12 d 79. 1 Pontoon wagon load (60 sheets 7') Cor Iron salvaged at Aerodrome at D16261 & delivered to D12 d 79. 1 G S timber load of timber suitable for mining sets salvaged at LAVIEVILLE & delivered to Quarry at D4 c 2035.	Coy transport delivered 21 sheets large English shelters to D5 d 74 & 10 sheets small English shelters to D12 d 55 in addition to work under Lieut ELSUM & ration delivery.
D4 c 13	Deep dugout	LT CARLETON	28	-	No 1 entrance (6' x 3' clear) 9' driven forward. 3 new sets and Cor Iron lagging placed. No 2 entrance (do) 6' 6" driven forward. 1 new set + lagging placed. Material for 6 sets salvaged.	
D5 d 74	Accommodation	LT DAVIES	16	10	Splinter proof accommodation for forward section completed.	
D12 b 80 (about)	"	"	3	14	2 3rd Bn HQ & R.A.P. excavations completed. Sig office excavation 75% complete.	
			2	6	2 2nd Bn R.A.P. excavation complete + sig office excavation 75% complete.	
Coy HQ	Making B.W. concertinas.	LT RENSHAW	15	0	60 concertinas completed.	
	Accommodation	"	7	+	Shelters for forward horse lines 75% complete.	
	Reconnaissance	LT SEXTON	2	-	Line of Posts dug by 2nd Pioneers located + report submitted herewith.	

Appendix 1



# 6th. FIELD CO AUSTRALIAN ENGINEERS.

## WORKS Report for 24 hours ending 6 P.M. 10/4/18

Location	Work	Person in charge	No. of men employed		Particulars	% of work done	Remarks.
			Eng	Inf.			
D 4 c 13	Deep dugout	LT CARLETON	28	-	Nº 1 drive 4'6" new drive 2 Sets put in. Nº 2 " 5'6" " " 3 " " "		
D. 12 d 8 9	Accommodation	LT DAVIES	8	15	H.Q. Shelter 80% complete } R.A.P. 75% " } 23rd Bttn. Sig. office 100% "		
"	"	"	8	10	H.Q. shelter 100% complete } R.A.P. 75% " } for 22nd Bn. Sig. office 75% "		
D 6 c 0.7	"	"	9	-	11 Shelters complete. Accommodation for 35 men will be complete by tomorrow night.		
LAVIEVILLE MILLENCOURT Aerodrome at D 16 a 6.1.	Salving + delivery material to forward dump	LT. ELSUM	25	-	1 Pontoon wagon load of heavy timber carted from MILLENCOURT to dump at D 12 d 7 9. 1 Pontoon wagon load for Iron salvaged from Aerodrome at D 15 a 6.1. delivered to dump at D 12 d 7 9. (80.7' sheets) 450' timber (6"x3" + 7"x3") salvaged from Aerodrome + dumped at D 10. b 5 9. 38 concertinas delivered from D 6 d 5 9. to dump at D 12 d 7 9.		
I 27 d 48	Gasproofing Bde H.Q. at CHATEAU.	LT. SEXTON	3	-	2 large + 3 small holes gascurtained. Front of entrance 30% complete. Timber + nails salvaged.		
	Surveying forward Area	LT. HILL	2	-	Trenches on left half of Bde Area surveyed.		

Appendix 1



6th. FIELD CO AUSTRALIAN ENGINEERS.  
WORKS Report for 24 hours ending 6 P.M. 11/4/1918.

Location	Work	Person 1/2 work	No. of men employed		Particulars	% of work done	Remarks.
			Eng	Inf.			
D. 4 C. 1.3.	Deep dugout	LT CARLETON	28	.	No 1 - 3'9" new work. 1 Set (6'x3' entrance) No 2 - 4'0" " " 2 Sets		
D 12 b 5.0.	Right Bn HQ.	LT RENSHAW.	1	6	Deepening portion of existing dugout with view of extending same.		
"	Rt. Bn. Sig Dugout.	"	3	4	Trimmed up excavation + timber work 50% complete.		
"	Rt. Bn. R.A.P.	"	3	4	" " " " 50% "		
"	Lt. Bn. HQ	"	5	4	Dugout built + completed, except for filling in on 95% top + gas proofing.		
"	Lt. Bn. R.A.P.	"	3	4	Sides + cupola roof completed.		
D 12 d. 5.6.	New Lt. Bn. HQ D.O.	"	1	8	Digging excavation for Lt. Bn. HQ. personnel (cupola shelter)		
	Accommodation at Section CAMP	"	4		cutting ramp + squaring up + deepening shaft.		
		"	3		2 Shelters completed.		
	Salving + delivering materials to forward dump.	LT. ELSUM	18		2 excavations taken out.		
					150 sheets bar iron salvaged from Aerodrome at D. 16 a. 6.1 + delivered to dump at D. 12 d. 7.9.		
					400, 6"x3" salvaged from Aerodrome at D 16 a. 6.1. + delivered to QUARRY at D. 4 C. 1.3.		
					22 concertinas delivered from C. 6 d. 5.9. to dump at D. 12 d. 7.9.		
					2 G.S. timber loads 6"x2 1/2" delivered from D 10 b 5.9. to QUARRY at D. 4 C. 1.3.		
	Coy HQ.	C.S.M.	16		2 Shelters constructed for 8 men.		
	Accommodation for drivers.	BROWNLEE	4		Salving materials for above.		
	Drying Room	"	4		Excavation complete.		
Forward Area	Trench survey	LT. HILL H/cpl. AITKEN	4		Survey complete for works forward of LAVIEVILLE - MILLENCOURT line except new trench dug by Pioneers on night 10/11 April.		

Appendix 1



# 6th. FIELD CO AUSTRALIAN ENGINEERS.

## WORKS Report for 24 hours ending 6 P.M. 12 / 4 / 1918.

Location	Work	Person in work	No. of men employed		Particulars	o/o of work done	Remarks.
			Eng	Inf.			
D 4 C 1 3.	Deep dugout	LT. CARLETON	28	-	No 4 face 5'6" new work + 2 sets placed No 5 " 5'0" " 2 " Nos 4 & 5 faces are at opposite ends of gallery connecting entrances		
V 27 d 6. 8 MILLEN COURT.	Gasproofing at Bde H.Q.	LT. SEXTON	3	-	Main entrance gas proofed. Bde H.Q. now complete.	100%	
V. 27 d 6 5	Blocking up church vault	"	2		Hole blocked up.	100%	
D 10 d 3 3 LAVIEVILLE	Gasproofing cellars	"	2	4	Timber salvaged & one frame cut for Batten H.Q.	10%	
	LT. Bn. R. A. P.	LT. RENSHAW	3	-	Job completed except for gasproofing.	100%	
	Rt Bn R. A. P.	"	3	-	" " "	100%	
	Rt Bn Sq.	"	3	-	" " "	100%	
	Rt. Bn H.Q.	"	3		Substituted short posts for longer ones owing to deepening dugout Putting in box iron to retain chalk when deepened.		
E 7. C. 4. 9.	Tree cutting	"	4	-	4 trees felled across road. Salvaging timber from MILLEN COURT.		
	Camp work	"	2	-	Building 1 dugout.		
	"	"	4	-	Guard & camp work + timber salvage.		
	Salvaging and delivering material to forward dump	LT. ELSUM.	23	-	1 Pontoon wagon load heavy timber from MILLEN COURT dumped at D 12. d 7 9. 1 Pontoon wagon load mixed 6" x 8" x 3" from aerodrome at D 16 a. 6. 1. to dump at D 12. d. 7 9. 42 large English shelters from MILLEN COURT to dump at D 12 d 7 9. 208. 7' sleep cov iron from Aerodrome at D 16 a. 6. 1 to dump at D 12 d. 7 9. 1 timber load 6" x 3" to Quarry at D. 4 C. 1. 3. 1 " " { 26 sleep iron 6" x 2" for tramway to Quarry at D. 4 C. 1. 3.		
	Surveying.	LT. SEXTON Hep AITKEN	4	-	New trench dug by Pioneers in D. 5 11 4 17 and LAVIEVILLE - MILLEN COURT line surveyed.		

Appendix 1



# 6th FIELD CO AUSTRALIAN ENGINEERS.

Work report for 24 hrs ending 6 PM.

13/4/1918.

Location	Work	Person in work	No. of men employed		Particulars	Remarks
			Eng	Inf		
D. 12 d 5 6	Deep dugout for Bn. H.Q.	Lt. RENSHAW	5	12	Entrance timbered & revetted & first set in position & anchored back. Making 7 mining sets complete but odd timbers for entrance.	
	Left Bn. Co. H.Q.	"	2		Made 3 frameworks complete ready for carrying up & putting in position. These are being carried up & erected tonight.	
	"	"	9		Salvaged timber from MILLENCOURT. Some for this job & some for gasproofing.	
	"	"	3	30	Digging excavations for HQ boys in Pioneer trench completed.	
	Right Bn. H.Q.	"	2	-	Deepening existing shaft & erecting 2 bunks. complete.	
	Camp	"	4		Guard.	
D. 4 c. 1. 3	Deep dugout	Lt. CARLETON	31	-	N° 2 face 2'0" + 1 set. } of new driving. N° 3 " 2'6" } N° 4 " 5'6" + 2 sets } N° 5 " 4'6" + 1 set }	
	Salvage of timber & cor iron & delivery to forward dumps.	Lt. ELSUM	11	-	1 Pontoon load heavy timber from LAVIEVILLE to dump at D. 12 d. 7.9. 1 " " { for iron 6" x 1" 8" x 3.	
					50 concertinas from C 6 d 5.9. to dump at D. 12 d. 7.9.	
C. 6 d 5.9	Making b.w. concertinas	CSM BROWNLEE	14	-	50 concertinas completed.	
D. 12 c. 6 2 to D. 12 c. 7.4	Wiring.	Lt. HILL	1	40	About 80 yds complete high wire entanglement.	
V. 27. d. 5.8.	Gasproofing.	Hq. HAMMOND	2	-	One double door & 4 vents completed.	
D. 12. b. 2. 2.	"	Lt. SEXTON	2	4	One cellar completed.	



Work report for 24 hrs ending 6 PM.

14-4-1918.

Location	Work	Person for work	No. of men employed		Particulars	Remarks
			Eng	Int		
C 5 d 6 9.	Making b.w concertinas	CSM BROWNLEE	4	-	50 concertinas completed.	
D 4 c 1 3.	Deep dugout.	LT. CARLETON	33	6	Nº 3 face 2'9" + 2 sets Nº 4 " 3'6" + 2 " Nº 5 " 3'0" + 1 " Nº 6 " 2'6" — Nº 1 stairway 75% lagged. 23 pbs cut ready for use & stacked. Truck built. Check survey made.	
D 10 b 2 2.	Gasproofing	LT. SEXTON	2	3	1 cellar completed. 1 " half "	
	Salving & delivering R.E. Stores.	LT. DAVIES	2	-	Barling concertinas from P.O.W. Bage to D 12 d 8 6 (50 small)	
			6	-	Barling R.E. materials from D 16 a 8 5 to D 4 c 2 4. 600' - 9" x 3" 200' - 4" x 2", 30 sheets C. iron.	
			5	-	Barling R.E. materials from D 10 b 6 4 to D 12 d 8 6. 300' - 6" x 4" to 6" x 6" varying. 250' - 4" x 2", 200' 8" x 1".	
			6	-	Loading party.	
Approx E 8 a 1 9.	LT. Bn Co. H.Q.	LT. RENSHAW.	-	20	Carried frame work complete of shelter from Bn. H.Q. to job.	
" "	"	"	3	-	Completed erection of shelter.	
Approx E 2 c 6 7.	"	"	-	20	Carried framework complete of shelter from Bn HQ to job.	
			3	-	Excavating & shelter erected complete.	
E 7 a 2 9.			-	20	Carrying framework complete from Bn. HQ to job.	
			3	-	Excavating & shelter erected complete.	
	Right Bn. Co. H.Q.	"	3	-	Made framework complete for 2 H.Q.	
D 12 d 5 6.	Deep dugout.	"	5	4	Worked 2 shifts from 8 AM to 2 PM & 2 PM to 8 PM. 3 sets installed by each shift.	
"	"	"	2	-	Making mining sets.	
	Camp work	"	3	-	Made 1- 3 man dugout	
			4	-	Guard	

Appendix 1



# 6th FIELD CO AUSTRALIAN ENGINEERS.

Work report for 24 hrs ending 6 PM.

15-4-1918.

Location	Work	Person or for work	No. of men employed		Particulars	Remarks
			Eng.	Int.		
E 2 C 5.6	Lt Bn Coy H.Q.	Lt RENSHAW	3		Left Co. H.Q. completed.	
E 2 C. 1.8 (about)	3 posts. close support for 2 platoons	"	3	50	Post now stand 2'6" deep + 2'6" wide. Total length about 100 yds.	
	Gasproofing entrances	"	5	-	Lt. + Rt. Battr. R.A.P. entrances gas proofed + front sandbagged.	
	Rt. Bn Co H.Q.	"	3	-	Replacing portion of shelters taken by infantry.	
E 7 d 5.0	Erecting Rt. Bn. Co H.Q.	"	5	-	Erected complete. Right Co. HQ + left Co. HQ 22nd. Bn.	
E 7 d 6.2						
D 12 d. 5.6	Deep dugout	"	8	12	12 sets put in.	
	Camp	"	4	-	Guard + camp improvements.	
	Salvaging & delivering materials to forward dumps.	Lt. DAVIES	8	-	Carted from D.16.2.7.4 to D.12 d. 7.7. 400' - 9"x3" timber, 250' - 6"x2". 30 sheets cor. iron 6' lengths.	
			7		Carted from D.16.2.7.4. to D.4 c. 2.4. 250' - 9"x3" timber, 150' - 6"x2". 30 sheets cor. iron 6' + 4' lengths.	
			4	-	Loading Party.	
D 12 C. 4.5 to D 12 C. 6.7	Wiring	Lt. HILL	2	40	150 yds. high wire entanglement.	
D.4 C. 1.3.	Deep dugout.	Lt. CARLETON	33	13	Nº3 face 3' + 1 set. Nº4 " 1'6" 2" Nº5 " 6" 1" Nº6 " 3'9" 2" Nº7. 2'0" - 5 sets put in. Nº1 stairs (for strengthening entrance) Timber & iron started & stacked. Railway laid + 1 truck built.	
C 6 d 5.9.	Making. b.w. concertinas	C.S.M BROWNLEE	14	-	50 concertinas completed.	
V.27 d. 5.8.	6th Field. Amb.	Lt. SEXTON	3	-	Strutting roof of cellar.	
D.10. b. 2.2.	Gasproofing cellar	"	2	1	Two cellars completed.	

Appendix



# 6th FIELD CO AUSTRALIAN ENGINEERS.

Work report for 24 hrs ending 6 PM.

16-4-1918.

Location	Work	Person or 2 for work	No. of men employed		Particulars	Remarks
			Eng	Int		
C.6.d.5.9.	Making B.W. concertinas	C.S.M. BROWNLEE	94		40 concertinas completed	
D.12.d.5.6	Deep dugout	LT. ELSUM	5	6	3.9" sets put in & excavation complete for 4th.	
"	Cutting sets for dugouts.	"	4	-	13 complete sets prepared.	
"	M.G. crews dugout.	"	2	-	1 dugout frame ready for erection M. Gunners are preparing excavations.	
V.27.d.5.8.	6th Field Ambulance	LT. SEXTON	5	-	Strutting of roof & doorway completed.	
D.10.b.2.2.	Gas proofing.	"	2	-	2 bellars completed.	
D.12.c.9.6 to D.12.d.1.9	Wiring	LT. HILL	1	37	200 yds high wire entanglement material carried.	
D.4.c.1.3	Deep dug out.	LT. CARLETON	31	13	Nº 3 face 5'6" + 2 set. Nº 4 " 4'5" + 2" Nº 5 " 3'3" + 3" Nº 6 " 5'2" + 2"	
		"	1	20	Excavation for Artillery Shelter " " additional engineers shelter. Pulling down & erecting shed for Artillery. Filling in dirt over old Artillery position.	
	Salving & delivering R.E. material.	LT. DAVIES	1	-	Carted 40 concertinas from PRISON cage to D.12.d.7.7.	
		"	5	-	Carted from D.16a.8.4. to D.12.d.7.7 - 400' - 9" x 3", 250' - 6" x 2" 50 sheet. cor. iron.	
		"	5	-	Carted from D.16a.8.4. to D.4.c.2.4. - 400' - 9" x 3", 100' - 6" x 2".	
		"	4	-	Loading party.	
E.1.c. & d. E.2.c	Locating proposed C.T. & flanking Fire trench.	Major HARRIS	4		Location pegged out ready for taping.	
	Surveying	Hqpl. AITKEN	2	-	New work behind PIONEER TRENCH surveyed & plotted.	



# 6th FIELD CO AUSTRALIAN ENGINEERS.

Work report for 24 hrs ending 6 PM.

17. 4 1918.

Location	Work	Person or % work	No. of men employed		Particulars	Remarks
			Eng	Int.		
C. 5. 5. 7. 0	Various.	C. S. M. BROWNLEE	7	-	50 concertinas completed.	
C. 6. 6. 8. 3	"	"	1	-	Repairs to service pump.	
D. 12. d. 15. 90 to abt. D. 12. 6. 0. 4	Mining.	LT. HILL.	1	35	300 yds high wire entanglement.	
D. 4. C. 1. 3	Deep dugout.	LT. CARLETON	33	13	Nº 11 face 1 ft. Nº 6 " 2' 7" 1 set. Nº 5 " 7' 3" 2 " Nº 4 " 3' 7" 2 " Nº 3 " 1 " 22 Sheet lagging. Filling behind same + blocking sets. 400' 9" x 3" timber unbolted + prepared for sets. 10' x 6' shed 70% complete.	
D. 10. 6. 2. 2. LAVIEVILLE	Gasproofing cellar.	LT. SEXTON	2	-	1 Cellar completed.	
D. 5. 6. 1. 8. MILLENCOURT.	Bn. H. Q.	"	3	10	Timber salvaged + 25% strutting erected.	
V. 27. d. 5. 8. HENENCOURT.	6th Field Ambulance	"			New opening gasproofed.	
D. 12. d. 5. 6	Deep dugout.	LT. ELSUM	9	12	7' inclined gallery cut + sets completed.	
	Cutting frames + erecting M.G. dugouts.	"	6	-	1 frame cut + built up ready for placing in excavation. " " + 50% complete 2 dugouts completely built up + set in excavation. These are now 4 1/2" proof.	
	Making windlass	"	2	-	windlass complete + set on job.	
E. 1. C. 1. 1. to PIONEER trench.	Pegging out + locating C.T.	"	4	-	Job complete + pioneers guided to work.	
D. 12. 3. 3. 9	Locating L.G. Post.	"	1	-	Located + pegged out.	
	Salvaging + delivering R.E. material.	LT. DAVIES	1	-	50 concertinas carted from concertina dump to D. 12. d. 7. 7	
			9	-	Carted from D. 16. 3. 7. 4 to D. 12. d. 7. 7. 300 ft - 9" x 3". 250' 5" x 2". 100' - 6" x 2". 150 sheets. Cor. iron 6'. 50 sheets. Cor. iron 3'.	
			5	-	Carted from D. 10. 6. 7. 7. to D. 12. d. 7. 7. 200' - 7" x 2 1/2".	
			4	-	loading party.	

Appendix 1



# 6th FIELD CO AUSTRALIAN ENGINEERS.

Work report for 24 hrs ending 6 PM.

18.4.1918.

82

Location	Work	Person or for work	No. of men employed		Particulars	Remarks
			Eng	Inf		
D12 d 5.6	Deep dugout.	LT. ELSUM	9	12	7' excavated & sets complete.	
	M.G. crew dugout frames	"	4	-	4 dugout frames complete.	
D 6 d. 6.2.	Erecting M.G. dugouts	"	2	-	Erected & made 4' 2" proof.	
Support Co H.Q. to Pioneer trench	Taping out C.T.	"	3	-	Forward 1000 yds taped with dogslegs & traverses complete.	
do	Survey of C.T.	"	2	-	1000 yds surveyed & plotted.	
D.5 b.1.8.	Strengthening left rear Bath H.Q.	LT. SEXTON	3	-	Half framing & lagging completed.	
D.4 c.8.2.	Brigade battle station D.O.	"	1	12	Excavation 10' x 8' x 8' deep dug.	
	Salvaging & delivering R.E. material	LT. DAVIES	1	-	60 concertinas carted from Concertina dump to D.12 d.7.7.	
			6	-	Carted from D.16 a.7.4 to D.12 d.7.7. - 200' - 9" x 3". 250' - 6" x 3". + 100 sheets 6' cor. iron.	
			8	-	Carted from D.16 a.7.4 to D.4 c.24. - 200' - 9" x 3". 250' - 6" x 1". 50 sheets 6' cor iron.	
			4	-	Loading party.	
D.4 c.1.3.	Deep dugout	LT. CARLETON	33	13	Nº 4 face 2' 0" & 1 set. Nº 7 " 1' 0" - Nº 5 " 2' 9" & 1 set Nº 2 " 9" Nº 11 " 1' 0" & 1 set Nº 12 " 3' 0" & 1 set. Nº 1 Stairway windlass & rails complete. Nº 2 " " reset for new drum. Completing 2 trucks. Making accommodation for 14 men complete. Salvaging timber from LAVIEVILLE.	
D.12 b. D.4 to D.12 a.9.9.	Wiring.	LT. HILL	1	38	300 yds high wire entanglement - carrying stores	
abt. D.6 c.39. to abt. D.6 c.5.6.	"	"	1	34	200 yds " " " "	
C.5. c.7.0.	Making concertinas	SGT. CONNELL	10	.	Made 30 barbed wire concertinas.	
C.6. d.5.9	"	"	10	.	" 30 " " " "	
	Surveying	MCpl AITKEN	2	.	Checking Pioneer's continuous trench - our location agreed on as correct. Locating new wire on line of posts behind Bn. H.Q.	

Appendix 1

23



# 6th FIELD CO AUSTRALIAN ENGINEERS.

Work report for 24 hrs ending 6 PM.

19. 4. 1918.

Location	Work	Person or % work	No. of men employed		Particulars	Remarks
			Eng	Inf		
D. 12 d 5.6.	Deep dugout	LT. ELSUM	9	12	6'6" excavation and pits complete.	
"	Cutting & building dug out frames	"	3	.	3 dugout frames built up.	
E. 7. d 4. 1. and E 7. d. 6. 2.	M.G. crew dugouts.	"	5	.	2 dugouts complete.	
D 6 d 7.2	"	"	2	.	1 dugout complete.	
	Taping rear end of C.T.	"	1	.	Remaining 280 yds taped out.	
D. 5. b. 1. 8.	Strengthening left rear Battn. H.Q.	LT. SEXTON	2	6	Strutting & packing of roof completed.	
D 4. C. 8. 2.	Bde Battle station dugout	"	4	9	Shelter built complete & excavation filled in.	
	Salving & delivering R.E materials.	LT. DAVIES.	1	.	50 concertinas carted from Coy Transport Lines to D. 12 d 7.9.	
			8	.	Carted from D. 16 a. 7. 4 to D 12 d 4. 7. — 200' 9"x3", 100' - 6"x3" 250' - 6"x4"	
			6	.	Carted from D. 16 a. 7. 4 to D 4. C. 2. 4. — 300' of 9"x3", 200' - 6"x1"	
			4	.	Loading party.	
D. 4. C. 1. 3.	Deep dug out	LT. CARLETON	33	25	No 4 face 2'9" + 1 set " 5 " 4'3" + 2" " 7 " 2'3" + 2" " 10 " 3'9" + 2" " 11 " 2'6" + 3" " 12 " 4'0" + 4"	
D 12 a 9.9. to D 6. c. 9. 1.	Wiring.	LT. HILL.	1	50	Erected 100 yds entanglement and carried stores. Moved dump of about 120 coils wire from D. 12 central to about D 6. c. 3. 9.	
C. 5. c. 7. 0	Concertinas.	CSM BROWNLEE	17	-	Made 50 barbed wire concertinas.	

Appendix 1



# 6th FIELD CO AUSTRALIAN ENGINEERS.

Work report for 24 hrs ending 6 PM.

20.4.1918.

Location	Work	Person or for work	No. of men employed		Particulars	Remarks
			Eng	Inf.		
D.12.d.5.6.	Deep dugout	Lt. ELSUM	9	12	4. 6'x3' excavation + close timbering complete. 1 set 6'3" + 6' set. Excavation for another set complete.	
	M.G. crew dugouts + mining sets.	"	3	-	Mining sets for 24 hrs ahead cut. 4 M.G. Dugout frames built.	
E.7d.5.1.4 E.7.d.7.2.	M.G. dugouts.	"	5	-	2 M.G. dugout set + covered.	
D.12.d.6.6.	"	"	3	-	2 " " " "	
EMMA LINE.	Taping out EMMA LINE	"	1	-	Line taped along Rt. Battalion sector.	
E.13a.5.6. to E.2a.3.7.	Survey of PIONEER TRENCH	"	1	-	Pioneer trench re-located + plotted.	
D.4.C.1.3.	Deep dugout	Lt. CARLETON	33	25	Nº 4 face 4'3" " 5 " 2'0" " 7 " 2'9" " 10 " 9" " 11 " 3'4" " 12 " 3'0" " 9 " 1'0" <u>17'1"</u> + 10 seb. + 5 sheets lagging.	
abt. D.6.c.8.2. to abt. D.6.c.5.6.	Wiring.	Lt. HILL	1	45.	280 yds high wire entanglement. Stores carried	
Approx. D.11a.5.3. to D.11.c.6.8.	"	"	1	40	310 yds high wire entanglement + carrying stores.	
	Timber salvage	Lt. RENSHAW	1	-	Barked 50 concertinas from dump to Battalion dump. " 300 lin ft. 9"x3" timber } " 200 " 6"x3" " } To deep dugout job at D.12.d.5.6. " 200 " 6"x1" " } from Aerodrome " 100 sheets corr. iron	
			1	-	Barked 800 lin ft 9"x3" timber } from Aerodrome " 200 " 6"x1" " } to deep dugout job at D.4.C.1.3. " 50 sheets corr. iron	
			14	-	Salvaging above materials.	
			3	-	Permanent guard on Aerodrome.	
C.5.C.7.0	Making concertinas	C.S.M. BROWNLEE	15	-	Made 50 concertinas.	



# 6th. FIELD CO AUSTRALIAN ENGINEERS.

Work report for 24 hrs ending 6 PM.

21-4-1918.

Location	Work	Person for work	No. of men employed		Particulars	Remarks
			Eng	Int		
	Timber Salvage	LT. RENSHAW	4	-	Barked 50 concertinas to Battalion Dump. " 350 lin ft 9"x3" timber } to Deep dugout " 210 " 6"x1" " } at D. 12. d. 5. 6. Barked 1000 lin ft 9"x3" timber } to D. 4. C. 1. 3. " 200 " 6"x1" " } Barked 200 lin ft 6"x2" timber Sawn to length for left battalion H.Q. to forward section billets. Also 25 sheets corr iron & 1 coil corr matting.	
			1	-	Sawing above timber.	
			20	-	Salvaging above material	
			3	-	Permanent guard on aerodrome.	
V 28 d. 9. 1.	Coy. H.Q. dugouts. Lt. Rear. Bn.	LT. SEXTON	3	-	Constructing framework for one dugout.	
D 5. b. 1. 8.	Gasproofing Lt. Rear. Bn. H.Q.	"	1	-	2 windows completed.	
D 10. b. 9. 8 LAVIEVILLE	Strutting Co. H.Q. Rt. Rear Bn.	"	1	-	Strutting completed.	
D. 12 d. 5. 6.	Deep dugout.	LT. DAVIES	5	6	Progress of driving on 7'x6' face = 18" & 2 seb.	
"	Constructing mining sets	"	5	-	6 constructed.	
"	M.G. dugout shelters	"	1	-	2 constructed.	
D. 12 d 60. 65.	M.G. D.O. type shelter	"		3	1 erected. For use as Rt. Bn. Sig Office.	
D. 4. C. 1. 3.	Deep dugout.	LT. CARLETON	33	25	No 4 face 2'3" 5 " 5'0" 7 " 2'8" 10 " 1'0" 11 " 1'8" 12 " complete Lagging & packing 10 sheets iron.	
C. 6 b. 8. 2.	Making B.W. concertinas	CSM BROWNLEE	19	-	Made 50 concertinas.	
E 1. C. 2. 0 to E 1. C. 4. 4.	Deepening new. C.T.	LT. VEALE	2	60	300 yds. C.T. deepened. 1 foot.	
E 1. C. 30. 35.	New left. Bn. H.Q.	"	3	10	Excavation completed, material carried to job, structure erected & covered up.	

Appendix 1



# 6th. FIELD CO AUSTRALIAN ENGINEERS.

Work report for 24 hrs ending 6 PM.

22-4-1918.

Location	Work	Person or % work	No. of men employed		Particulars	Remarks
			Eng	Inf.		
	Timber salvage	LT. RENSHAW	1	-	50 concertinas carted to Battalion dump. 180 lin ft. 9"x3" 270 " " 6"x2" 300 " " 6"x3/4" } Carted to Deep dugout at D.12 d.5.6. 20 sheets C.iron 800 lin ft. 9"x3" carted to D.4 c.1.3. 200 lin ft. 6"x2" } carted to Forward section camp. 55 sheets C.iron	
			21		Salvaging above materials.	
			3		Permanent guard on Aerodrome.	
V. 29 c. 25.30.	"D" Co. H.Q. Dugout. Lt. Rear. Bn.	LT. SEXTON	2	2	Framework completed & erected.	
D. 5 a. 25.60	"B" Co. H.Q. Dugout.	"	1	1	Framework 30% constructed.	
D. 5. b. 1.8.	Gasproofing Lt. Rear. Bn. H.Q.	"	1	1	Completed.	
D. 4 c. 1.3.	Deep dug out.	LT. CARLETON	33	25	Nº 7 face 3'2" & 2 sets. " 8 " 3'1" " 9 " 2'9" " 10 " 3'6" & 1 set. " 11 " backed up 2 sets. " 12 " " 5'2" 5" 8 sheets lagging.	
C. 5 d.	Cutting 6' pickets	2/Lt WHITE	-	48	400 cut & pointed & dumped in piles of 100.	
E7b.45.25, E.7.b.45, D6d73	M.G. crews dugouts	LT. ELSUM	6	-	2 Dugouts set & built in.	
D.12 d.5.6	Cutting & building up M.G. Dugout frames	"	3	-	4 Dugout frames built up.	
D.12 d.5.6.	Deep dugout	"	5	6	6' face excavated & set complete (1st cubicle broken into)	
E1 d.75.15. to E1 d.5.3.	Deepening. C.T.	"	1	40	Front 150 yds deepened.	
D.12 d.5.6	Deep dugout.	LT. DAVIES	8	12	Total drive for 48 hours on 7'x6' face = 4'6" - West chamber complete. Drive for Eastern chamber started & 1 set in.	
D.12 d.5.6.	M.G. crews dugouts	"	4	-	10 mining set complete.	
E7. d.8.3.	Placing concertinas.	"	2	-	20 placed by 21st Battalion party.	
E.7. c.7.6.	M.G. Shelter	"	1	.	Setting in shelter.	
E2. c.2.5.	"	"	1	.	" "	
E1. c.30.35.	LT Bn. H.Q.	"	2	10	Excavation complete. Fixed site for outpost system from Nº14 to Nº8 post.	
C.5. b.5.3.	Various	C.S.M. BROWNLEE	4	"	Made & painted 100 gap indicators.	
C.6. b.8.2.	"	"	18	.	Made 50 B.V. Concertinas	
E1. d.6.2 to E1. d.8.1.	Deepening. new. C.T.	LT. VEALE	1	50	150 yds C.T. deepened 1 ft.	

Appendix 1



# ENGINEERS WORKS REPORT for 24 hours ending 6PM 23.4.1918.

LOCATION	WORK	PERSON i/c WORK	NO. OF MEN EMPLOYED		PARTICULARS	REMARKS
			ENG.	INF.		
V.29.c.25.30.	D Co. H.Q. } Left.	LT. SEXTON	1	6	Top + back Sandbagged + filled in.	
D.5.a.25.60	B. Co. H.Q. } rear.	"	1	2	Framework completed. (not erected.)	
V.29.c.25.25.	A. Co. H.Q. } Bn.	"	2	2	" 80% "	
D.12.d.5.6.	Deep dugout	LT. DAVIES.	9.	12.	Progress for 24 hours = 7' of 6'x3' drive.	
"	M.G. Shelters.	"	8	.	4 constructed, 20 mining Sets Completed.	
D.7.b.4.2.	"	"	1	.	1 erected.	
D.4.c.1.3.	Deep dugouts	LT. CARLETON	34	25	Nº7 face 2'9" 2 sets. Nº8 " 4'3" 3 " Nº9 " 2'6" 3 " Nº10 " 1'6" 1 " Nºs 11 + 12 now complete except for bunking. 36 sheets lagging.	
Approx. D.6.c.39.to D.6.a.3.4.	Wiring	LT. HILL	1	38.	290 yds double apron entanglement.	
E1.C.30.35.	Bn. H.Q.	2/LT. VEALE	2	5	Building complete.	
	H.Q. Sig. Office	"	7	6	Excavation 30% complete.	
	H.Q. runners' Accom?	"	.	6	" 80% "	
	Deepening trench	"	.	3	Deepening trench in front H.Q. Depth 2'. distance 9 yds.	
E1.C.45.45. to E1.C.45.46	Deepening C.T.	"	.	6	Depth 4'. 24 yds complete.	
C.5.d.	Cutting 6' pickets	2/LT. WHITE	.	21.	450 pickets cut + packed.	
C.5.c.7.0.	Making concertinas	CSM. BROWNLEE	18	.	Made 50 complete.	
D.10.c.5.9.	Gas proofing dugouts	"	2	.	1 dugout complete.	
	Timber Salvage	LT. RENSHAW	1	.	Carted 50 concertinas to Battin Dump. " 250 lin ft. 9"x3". " 200 " 6"x2". " 200 " 6"x3/4". 50 sheets cor iron } To D.12.d.5.6. " 500 lin ft 9"x3" 300 " 3"x2" } To D.4.c.1.3.	
			23	.	Salvaging above materials.	
			3	.	Permanent guard.	
	Improvements to LAVIEVILLE Defence line.	Capt. COGHILLAN	-	100	250 yds of trench deepened, widened and accommodation rearranged for garrison.	

Appendix.



# OTH. FIELD & AUSTRALIAN ENGINEERS WORKS REPORT for 24 hours ending 6 P.M. 24.4.1918.

LOCATION	WORK	PERSON IN CHARGE	NO. OF MEN EMPLOYED		PARTICULARS	REMARKS
			ENG.	INF.		
	Timber salvage	LT RENSLOW	1		Carted 50 concertinas to Battrn. dump. " 200 Sheets Cor. iron to D.II. b 5.5. from AERODROME " 12 " " " to Church MILLENCOURT " 100 lin. ft. 9"x3" timber } to D 4. c. 1.3. " 300 " 3"x2" " } " 100 Sheets Cor. iron " about 60 lin. ft. 6"x3" + 6"x2" } to D 12 d. 8.3.	
			20		Salvaging materials.	
D. 4 c. 1.3.	Deep dugout.	LT CARLETON	34	25	Nº 7 face 2'3" + 3 sets. " 8 " 3'3" + 3 " " 9 " 3'9" + 2 " " 10 complete except for bunking. Large amount of lagging put in.	
V. 29. c. 25. 25.	A coy H.Q. } left	LT SEXTON	2	4	Frame erected. Front sandbagged + 80% filling completed.	
D. 5. a. 25. 60	B " " } rear Bn.	"	2	4	Frame completed + erected. Front sandbagged + 80% "	
D. 11. a. 5. 9. 6 D. 11. a. 5. 4.	Wiring	LT. HILL	1	50	300 yds. high wire entanglement.	
C. 5. c. 7. 0	Making concertinas	CSM BROWNLEE	17		50 completed.	
D. 10. C. 5. 9.	Gasproofing dugouts	SPR WARD	2		1 dugout complete (Artillery work.)	
D. 12. d. 5. 6.	Deep dugout.	LT DAVIES	9	12	Drive eastward completed to N.E. corner of Eastern chamber Drive southward into eastern chamber = 2 sets. 18"	
E. 1. d. 8. 3 D. 6. c. 2. 7	M.G. Dugouts.	"	5		M.G. dugouts set. 2 shelters completed.	
E. 1. C. 5. 4. to E. 1. C. 8. 5.	C. Trench.	"	1	40	C.T. deepened to 4' for 200 yds.	
E. 1. C. 30. 35.	Battrn H.Q.	"	2	5	Bn. H.Q. shelter completed.	
	B. Wire belt.	"	1		B.W.E. gap discs set in position from MILLENCOURT - ALBERT Rd. to AMIENS - ALBERT Rd. Nº of gaps. 22.	
	Mining Sets	"	4		15 mining sets constructed.	
		LT VEALE	2		Cutting salvaged timber for shelters in new areas.	
	Surveying	MCPL AITKEN	2		New wire on defence lines located.	

Appendix.



# OTH. FIELD OF AUSTRALIAN ENGINEERS WORKS REPORT for 24 hours ending 6 P.M. 25.4.1918.

LOCATION	WORK	PERSON 1/2 WORK	NO. OF MEN EMPLOYED		PARTICULARS	REMARKS
			ENG.	INF.		
D.10.b, D.6d, & D.12d.	Salvage in LAVIEVILLE & delivery to Forward DUMPS.	LT. ELSUM	19		450' mixed 6"x2" & 6"x2 1/2" Salved & delivered to D.6.d.5.4. 200' " 6"x8"x3" " " to D.12.d.5.6.	
	Deep dugout	LT. DAVIES	13	18	All sets complete in Eastern chamber	
	M.G. Shelter	"	4		Construction of 4 completed. 1 set at D.6.c.3.7.	
	R. A. P.	"	2	10	R.A.P. for new left sector Bn. Excavation complete & timber cut for building.	
	Mining sets.	"	3		15 Sets cut.	
	C. Trench	"	2	200	C.T. from E.7.d.0.6. to E.7.d.5.3. 450 yards complete.	
D.4.c.1.3.	Deep dugout.	LT. CARLETON	32	24.	No. 7 face 1' " 8 " 4 struts & 2 plates " 9 " backed up 5 sets, 4 struts & 2 plates. " 10 " 4 struts 2 plates. Lagging 9 sheets No. 2 stairway 5 sets. Clearing, levelling & banking above ground.	
D.11.a.5.9. to D.5.c.5.1.	Wiring	LT. HILL	1	40	About 90 yards high entanglement.	
V.29.b.84.50	Bde. O.P. Shelter	2/LT. VEALE	2	20	Shelter 7' long & 5' wide x 5' high Excavated depth 6'6" cover 3'6" complete.	
C.6.b.8.2.	Making concertinas	CS.M. BROWNLEE	17		Made 50 concertinas.	
	Surveying.	4/CPL. HITTEN	2		Location of defence lines behind LAVIEVILLE - MILLENCOURT Line	



# OTH FIELD & AUSTRALIAN ENGINEERS WORKS REPORT for 24 hours ending 6 PM 26.4.1918.

LOCATION	WORK	PERSON i/c WORK	NO. OF MEN EMPLOYED		PARTICULARS	REMARKS
			ENG.	INF.		
D. 12. d. 5. 6.	Deep dugout.	LT RENSCHAW	4	6	First shift completed 2nd chamber & strutted same. Second " 3 sets = 2'3". Mining Sets.	
V. 30. d. 3. 5.	New left Bn R.A.P.	"	3	.	Finished off all except filling in on top & gasproofing.	
V. 30. b. 2. 1.	New left. Bn. H.Q.	"	1	12	Excavating for same	
D. 6. d. 5. 4.	Co. H.Q. dugouts for new left sector.	"	3	.	Salvaging & carrying timber for H.Q. from MILLENCOURT.	
D. 6. c. 0. 8.	M. G. dugouts	"	6	.	Made parts complete ready for installing when excavation is ready.	
LAVIEVILLE.	Salvaging timber & delivery to forward dumps.	LT. ELSUM.	19	.	150' 6" x 2" } Salved & delivered to D. 4. c. 1. 3 200' 2 1/2" x 2" } 250' 6" x 1" } 150' 6" x 2 1/2" } " " D. 6. d. 5. 4. 300' 7 1/2" x 2" } 300' mixed 6" to 9" x 3" to dump at. D. 12. d. 5. 6.	
D. 10. b. 9. 7.	Co. H.Q. in LAVIEVILLE trenches.	2/LT. WHITE.	4	2	All timber work completed ready for erection of 2 dugouts.	
D. 4. c. 1. 3.	Deep dugout.	LT CARLETON	32	24.	Nº 2 face. 8 sets of timber 10 " 2 bunks completed 9 " 2 " " 8 " 2 " " 11 " 3 " " 12 " 2 " " 7 " 2'9" & 2 sets. Main drive. All cleaned out. Clearing dirt on top.	
C. 5. b. 8. 2.	Making concertinas	CS M. BROWNLEE	18	.	Made 25 concertinas.	
	Surveying.	Lt. AITKEN.	2	-	Locating new. C.T. in. E. 7. d.	



# OTH. FIELD CO AUSTRALIAN ENGINEERS

## WORKS REPORT for 24 hours ending O.P.M. 27.4.1918.

LOCATION	WORK	PERSON I/C WORK	NO. OF MEN EMPLOYED		PARTICULARS	REMARKS
			ENG.	INF.		
D.12.d.5.6.	Deep dugout	Lt RENSCHAW	8	12.	Put in 7 sets complete. This finished the drive. Dugout thoroughly cleaned up.	
			2	-	Sinking shaft for 2nd Entrance - finished.	
V.30.b.2.1.	New Bn. H.Q.	"	3	-	Made framework complete	
D.6.d.3.5.	Coy. H.Q.	"	3	-	Made framework for post Co. H.Q. Rr. Bn.	
D.6.d.3.5.	Coy. H.Q.	"	3	-	Made framework for Support. Co. H.Q. Lt. Bn.	
D.6.c.0.8	M.G. H.Q.	"	"	"	" " " M.G. H.Q.	
D.6.d.7.2.	M.G. shelters	"	2	-	Strengthening existing M.G. shelters - 3 done.	
D.12.d.5.6	"	"	2	-	" " " " 4 done	
D.12.d.5.6	"	"	2	-	Making mining sets, etc.	
V.23.c.4.7	Deep dugout	Lt. DAVIES	8	16	Dugout commenced. Two cuttings thro' scarp slope of 13' each complete. First vertical set complete.	
			4	-	Collecting timber & cutting sets. 4 sets cut.	
D.4.c.1.3.	Deep dugout	Lt. CARLETON	32		Stairways completed except for hanging of gas curtains. 2 sets put in No. 7 face. Backing & lagging completed. Water drips fixed in Nos 7, 8 & 10. Iron ceiling in No. 12. " partitions to Nos 8, 9 & 10. 12 bunks in No. 7. General cleaning up & grading above ground.	
Approx. D.5.c.55.10 to D.5.d.2.4.	Wiring.	Lt. HILL	1	60	400 yds high entanglement.	
C.6.b.8.2.	Making Concertinas	CSM BROWNLEE	5	15	Made 50 concertinas.	
V.30.W.25. D.6.E.1.4.0.5.	Surveying.	Hq. PL. AITKEN	2	-	Locating trenches & wire in new area.	
LAVIEVILLE	Salvaging of materials & delivery to forward Dumps.	Lt. ELSUM	21	-	200' mixed 6" to 9" x 3" } to dump at D.12.d.5.6. 100' 2 1/2" x 2" } 500' mixed 6" x 8" x 2 1/2" to " " D.6.c.0.7. 200' 9" x 3" to dump at V.23.c.4.7.	
D.11.a.6.8.	Coy. H.Q. dugouts	2/Lt. WHITE	4	16	{ Dug out put in and sheeted.	
D.11.c.6.8.	" " "	"	"	"	{ " " " "	
W.25.c.1.4. to W.25.c.30.75.	Digging connections to reserve line of Posts.	Major HARRIS	2	55	100 yds trench dug 3' 6" deep x 2 feet wide average.	

Appendix 1



# 6TH. FIELD CO AUSTRALIAN ENGINEERS

## WORKS REPORT for 24 hours ending 6 P.M. 28.4.1918.

LOCATION	WORK	PERSON 1/c WORK	NO. OF MEN EMPLOYED		PARTICULARS	REMARKS
			ENG.	INF.		
D.12.d.5.6.	Deep dugout.	LT. RENSHAW	8	12	Worked on 2nd entrance connecting trench between two entrances dug. 4 sets on 2nd entrance completed.	
			2	-	Mining sets etc.	
			2	-	Installing 6 bunks in rooms.	
V.30.b.2.1.	New Bn. H.Q.	"	3	-	Finished construction	
	Right Bn. post Co. H.Q.	"	3	15	Carried parts of dugout to job.	
W.25.central (Approx)	LT. Bn. Sup't Co. H.Q.	"	3	15	Carried parts of dugout & installed same. Job finished.	
D.5.d.05.10.	M.G. H.Q.	"	3	8	Carried framework & installed same. Job finished.	
D.6.d.0.8.	Res. Co. H.Q. Lt. Bn.	"	3	-	Made framework complete.	
D.6.d.0.8.	M.G. Shelters.	"	2	-	Made 1 complete.	
E.2 a 10.05. to E.2.c.10.85.	Front Line	"	2	75.	Taped out & dug about 2' deep.	
23rd. Bn.	Wiring	"	1	-	25 concertinas placed forward of PIONEER TRENCH.	
		"	4	-	Guard.	
LAVIEVILLE	Salvage of timber & delivery to forward dumps.	LT. ELSUM.	12	-	450' 6" x 8" x 2" to D.6.c.0.7. 300' 9" x 3" to dump at D.12.d.5.6.	
V.23.C.4.7.	Deep dugout.	LT. DAVIES	10	16	3 sets complete in EAST & WEST drives. 10 sets constructed.	
			3	-		
D.5.d.1.2.	Deep dugout	"	3	6	8ft of cutting to entrance of E. & W. drives completed.	
			3	8	6 sets constructed.	
					200' of mining timber salvaged & prepared for cutting.	
			1	-	Guide line laid from QUARRY to V.22.d.9.5.	
C.5.b.8.2.	Making Concertinas	C.S.M. BROWNLEE	5.	15.	Made 50 concertinas.	
D.11.d.90.85 to D.12 a 00.15	Wiring.	2/LT. WHITE	2	50	240 yds wire completed.	
D.5, D.6, & D.12	Surveying.	W/CL. AITKEN	3	-	Location of wire & trenches - & checking deep dugout.	
D.5.c.7.1 to D.5.d.2.6.	Wiring.	LT. HILL	2	60	350 yds constructed complete.	

Appendix 1



# 6TH. FIELD CO AUSTRALIAN ENGINEERS.

## WORKS REPORT FOR 24 HOURS ENDING 6 A.M. 29.4.1918.

LOCATION	WORK	PERSON 1/2 WORK	NO OF MEN EMPLOYED		PARTICULARS	REMARKS
			ENG.	INF.		
D 12 d 5.6	Deep dugout.	LT RENSHAW	8	12	Installed 4 set (on 2nd Entrance)	
			2	-	Mining sets etc.	
V. 30 b 2.1	New Bn. H.Q.	"	1	-	Strutted side and strengthened roof.	
	Rt Bn. Post. Co. H.Q.	"	3	-	Erected complete.	
W. 25 c 2.8.	Lt. Bn. Reserve. Co. H.Q.	"	3	-		
D. 6 d 0.8.	Lt. Bn. Lt. Co. H.Q.	"	2	-	Framework of dugout complete.	
D. 6 d 0.8.	M.G. Shelters	"	3	-	3 shelters completed.	
	Wiring.	"	1	-	250 yds. completed.	
E 2. c 10.85 to E 2. c 0.8.	C.T.	"	1	30	Trench dug about 2'6" deep.	
E 2. a 1.1. to E 2. c 10.95.	Front Line	"	-	40	Deepened trench dug previous night. (about 60 yds done).	
V. 23. c 4.7.	Deep dugout.	LT DAVIES.	8	16	10 Sets put in each drive.	
			2	-	20 Sets constructed.	
D 5 d 1.2.	Deep dugout	"	8	16	5 Sets put in each drive.	
			3	8.	20 sets constructed.	
V. 23. c 3.2.	D.O. shelter.	"	2	-	Shelter for Rear Coy H.Q. completed	
V. 23. c 2.2.	"	"	3	-	" " "	
D. 4 c 1.3.	Gasproofing dugout	"	3	-	50% completed.	
		LT. CARLETON	2	47	100 yds trench dug average 3' x 3'6" on right of MILLENCOURT - ALBERT Rd.	
D. 12. a 0.2.	Wiring.	2/LT. WHITE	3	50	240 yds wire entanglement erected.	
LAVIEVILLE	Salvage of timber and delivery to forward dumps.	LT. ELSUM	20	-	500' mixed timber 6" x 2" & 6" x 1 1/2" for stepping inclined gallery. Salved & delivered to dump at D 12 d 5.6.	
					100' of 2 1/2" x 2" delivered to D. 6 c 0.7.	
					300' of 6" x 2" " " "	
					250' of 9" x 3" dumped at. D. 10. b 9.8.	
C. 5. b. 5.3.	Various	CSM BROWNLEE	2	-	Made & painted 14 Area Notice boards. 18" x 2".	
		"	1	-	Sign writing 26 Notice boards (10 complete).	
C. 5. c 7.0	"	"	5	15	Made 50 concertinas.	
D. 10. b 2.3.	"	"	2	-	Made 4 frames for gas proof doors.	
W 25, W26, E1, E2 E 7, D5, D12.	Surveying	4/cpl. AITKEN	4	-	Locating trenches & wire.	
D. 5 d 8.9. to D. 6 a 0.1 (Approx)	Wiring.	LT. HILL	1	50.	180 yds (abt.) entanglement erected.	

Appendix



# WORKS REPORT FOR 24 HOURS ENDING 6 P.M. 30.4.1918.

LOCATION	WORK	PERSON 1/2 WORK	NO OF MEN EMPLOYED		PARTICULARS	REMARKS
			ENG.	INF.		
D.12 d.5.6	Deep dugout.	LT. RENSCHAW	3 2	12	Completed 90% of 2nd incline. Mining Sets etc.	
V.25. c.2.8.	LT. Bn Res. Coy. HQ	"	3	.	Framework carted to site & job finished.	
W.25. d.9.2.	LT. Bn. Lt. Coy. HQ	"	3	.	Framework carted & carried to site & job finished.	
D.6. d.0.8.	M.G. Shelters.	"	3	.	Made 3 complete M.G. Gunners installed during night.	
D.12 d.5.6.	Stepping & gas proofing deep dugout.	"	4	.	Completed.	
V.30 b.2.1.	Artillery liaison Sig. Stn. with LT Bn.	"	1	2	Completed Small English Cupola Shelter	
	Wiring F. L.	"	1	30	Put out 250 yds. concertinas.	
E2. c.10.9.5b E2. c.0.8.	Front line & Small C.T.	"	1	50	Deepened these trenches making complete connection right throughout.	
			4	.	Guard.	
	Signal dugout R.A.P.	LT. SEXTON	5	.	Timber salvaged & job completed.	
V.23. c.4.7.	Deep dugout.	LT. DAVIES	9	24	25 Sets completed in each of 2 drives. Total entrance 15' in each drive.	
	Deep dugout	"	4	.	30 mining sets constructed.	
D.5. d.1.2.	Deep dugout.	"	9 4	24 8	19 sets complete in each of 2 drives. Total entrance 13' in each drive. 36 mining sets constructed.	
D.4. c.1.3.	D.O. gasproofing	"	2	.	Gasproofing 75% complete. Single proofing over each of 2 entrances complete.	
C.5. b.5.3.	various	CSM. BROWNLEE	2	-	Sign writing 26 notice boards complete.	
C.5. c.7.0.	"	"	5	15	Made 50 concertinas.	
D.10. b.2.3.		"	2	.	Made one frame for gas proof doorway & completed gasproofing 3 cellars.	
D.12 d.5.6	Stepping staircase deep dugout	SGT. BENNETT	5	.	50% complete. Completion reported above.	
D.12. a.0.2 to D.6. c.0.1.	Wiring.	2/LT WHITE	2	50	170 yds wire completed.	
LAVIEVILLE	Salvage of material & delivery to forward dumps.	LT. ELSUM	8	.	300' 3"x2", 100' 2"x2 1/2" & 200' 6"x2 1/2" delivered to D.12. d.5.6.	
LAVIEVILLE Defence line.	Marking wire gaps in LAVIEVILLE line.	"	4	.	40 gap indicators placed in position.	
	Surveying	Wcpl AITKEN	2	.	Surveying work in Area & getting map up to date.	

Appendix



## Appendix II

OC 13th Field Co RE

1-4-40

Until a few days ago the area allotted to this company has been the front system between the Brigade Boundary marked on white print herewith and the DOUVE RIVER.

One company of Pioneers was allotted to the Brigade and has been responsible for maintenance of ULTIMO AVENUE, ULTIMO LAKE and DOUVE WALK, plus men being employed on improvement of front line in the LA BASSE VILLE Sector.

In addition, the Pioneers have been responsible for maintenance of train lines (VANCOUVER TRACK and WARNETON TRACK) and for repairs to trucks.

Now mentioned Pioneer responsibilities have been handed over to me in the last few days, and will presumably be

carried on by you until other arrangements are made.

The Field Company employed on the Second Zone was withdrawn about five days ago, and this area was allotted to me also. The principal outstanding job in this zone is the improvement of its front system on the left, which is at present simply an accommodation area for supports of the forward zone. Possibly the simplest way of doing this is to dig a new fire trench in front of existing works which could remain as traffic and accommodation trenches.

A blue print showing works in the second zone, is handed over to you herewith.

The following is a summary of the work on which this company has been chiefly employed :-

1. LA BASSE VILLE

- (a) Improving accommodation - there is now ample for about six platoons.



(b) Connecting up posts 3 to 7.  
This work requires a good deal of maintenance.

(c) Construction of VIC WAY, and  
VIC SUPPORT (about 40% complete)

## 2. UNEVEN SUPPORT.

This trench covers the swampy gap between LA BASSE VILLE and the posts on the extreme left of the divisional sector. Its reconstruction is now complete but the drains will certainly require some maintenance.

There are no shelters in this trench, which is only garrisoned by a platoon at night. We have been employing this platoon on maintenance of wire in front of the trench.

## 3. LEFT BATTALION SECTOR.

(a) Accommodation - this work is now complete for our present garrison, but requires maintenance as

there is very little cover over shelters.

(b) Front Line Drainage - This is fairly good to the left of No 3 post if the duckboards are cleared about once a week, and the drain on the extreme left maintained. To the right of No 3 post there is no get away and the trench is cleared by the garrison with three pumps which we have been maintaining.

To the right of UGLY LANE there is only one night post and no effort has been made to drain the front line between the two.

We had intended digging a new front line from UGLY LANE to No 1 post just behind the existing trench, which would be a low breastwork.

Additional firesteps, berms and ammunition shelters are required.

## COMMUNICATIONS

(a) UGLY LANE is a badly sited



5  
and badly constructed C.T. with very low cover, which cannot easily be raised owing to borrow pits close to the trench. we have raised the parapet about a foot and this could be increased in places.

(b) RIVER LANE

This is a useful C.T. but requires more cover at the front end.

SUPPORTS etc.

WALLY SUPPORT requires some maintenance to drain it and make it defensible.

BILLY CUT is a new accommodation trench and requires berming

USEFUL SUPPORT and USEFUL LANE

They really form a C.T. and I have arranged only for duckboard maintenance here.

6  
RESERVE SYSTEM - FORWARD ZONE

This consists of TROIS TILLEULS FARM, WOWSER POST (U16.b.9.3) UNITY POST (U17.a.1.6.) VICTORY POST (U10.d.3.4) and WATCHFUL POST (U10.b.1.7.)

A rear entrance has just been completed to the pill box at TROIS TILLEULS FARM but a crossing over the swamp in rear is still required. This pill box when pumped out takes almost a week to refill and will accommodate a Lewis Gun section easily. It has a good field of fire in all directions from loopholes and is very strong and difficult of access. WOWSER POST is completed and there is good accommodation just in rear of it.

UNITY POST now has accommodation for a platoon and is worth making more defensible.

VICTORY POST has hardly been started and will not be strong, but one can hardly avoid holding a post in the vicinity. The garrison could live at FUZE COTTAGE which has been pumped out and takes four days to refill. WATCHFUL POST requires about 3 more shelters (in the C.T.) to accommodate



1  
a platoon, and the CT might be  
revetted.

In connection with the reserve  
system, we have cleared out LA POTTERIE  
FARM pill box which now accommodates  
a Coy H.Q. and a Lewis Gun crew and  
we have put some more shelters in  
UNTIDY POST but the latter work  
is not complete.

### MISCELLANEOUS

Extension to R.A.P. at U16 at 7.3.  
Excavation complete but work is held  
up for elephant cupolas which will  
probably not be available for another  
ten days.

It is considered that more wire  
might with advantage be laid out  
in the low ground south of ULTIMO  
AVENUE. Also that the pill boxes about  
U.21.6.9.7. might be improved and  
garrisoned.

### RACINE DUMP:—

2  
This is the main RE dump in  
the sector and is the place where  
RE stores are transhipped from  
light railways to push trucks.

Light Railways will also deliver  
when desired to DEAD HORSE CORNER  
(U21a.10.95.) and TOR SIDING (near HYDE  
PARK CORNER)

A list of RE stores at DEAD HORSE  
CORNER and at salvage dumps is  
attached. Issues of push trucks  
have been controlled by PIONEERS  
living at RACINE DUMP until yesterday,  
when we took this over.

I have had 5 Sappers and 15 infantry  
living at RACINE DUMP for off loading,  
loading and checking stores and  
guiding pushing parties. The 15 infantry  
have been very useful on occasion  
as an emergency pushing party  
and for mending breaks in the  
track.

### GASPROOFING DUG OUTS.

I have had four sappers employed  
at the CATACOMBS and RED LODGE for



2 2  
about a week. This work is not finished but your Brigade Gas Officer will probably advise you of any further requirements.

### VENTILATION of CATACOMBS.

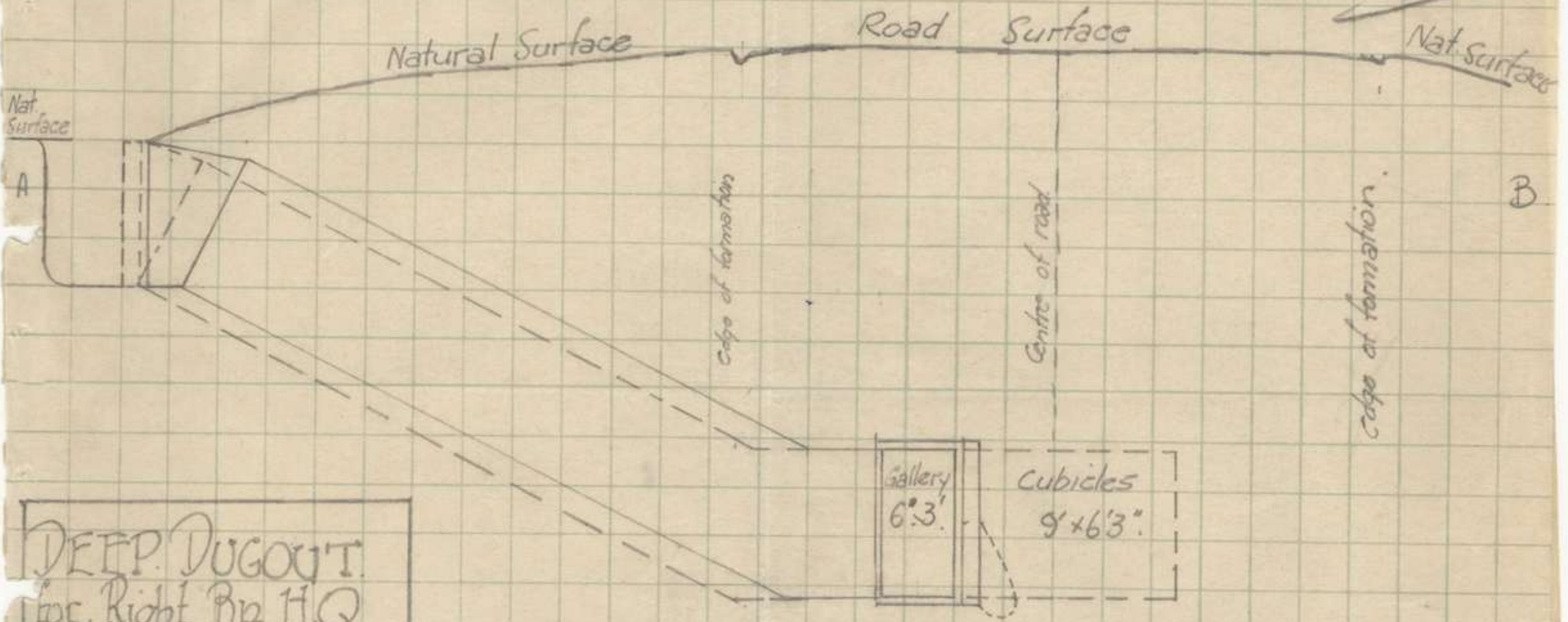
New scheme for ventilating CATACOMBS is handed over to you herewith. I have asked for details of filter but these have not yet come to hand.

The amount of air which will be provided by existing plant will obviously be insufficient when there are 1200 men in the dug outs.

Major



8TH FIELD COMPANY ENGINEERS A.I.F.



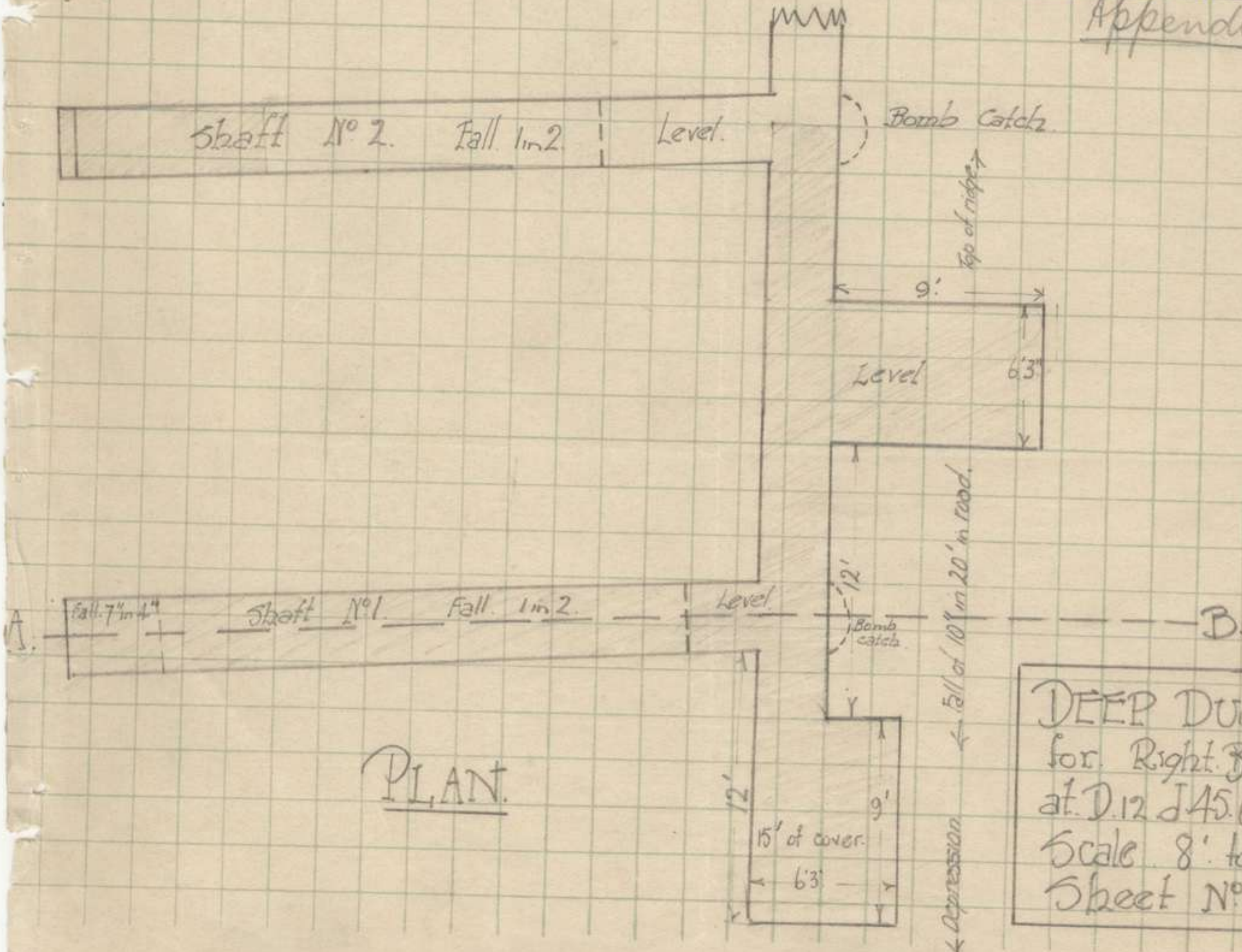
DEEP DUGOUT  
for Right Bn. H.Q.  
at D.12d45.60 (Sh 620)  
Scale-8ft to 1 inch.

SECTION A-B

No 2 shaft shown in dotted line.

Sheet I.

8TH FIELD COMPANY ENGINEERS A.I.F.



PLAN.

DEEP DUGOUT  
for Right Bn. H.Q.  
at D.12d45.60 (Sh 620)  
Scale 8' to 1"  
Sheet No 2.

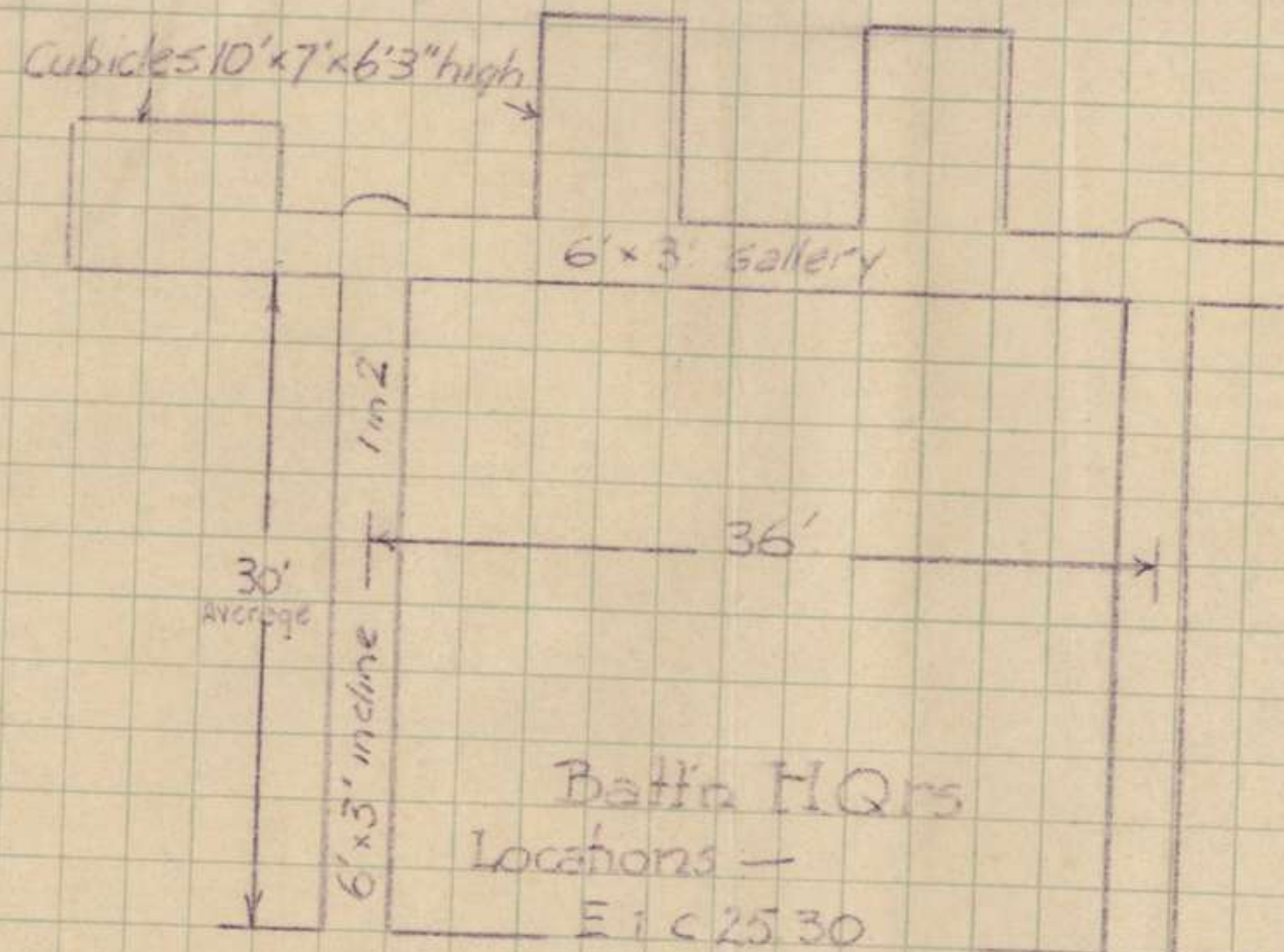


6th. FIELD CO. AUST. ENGRS.



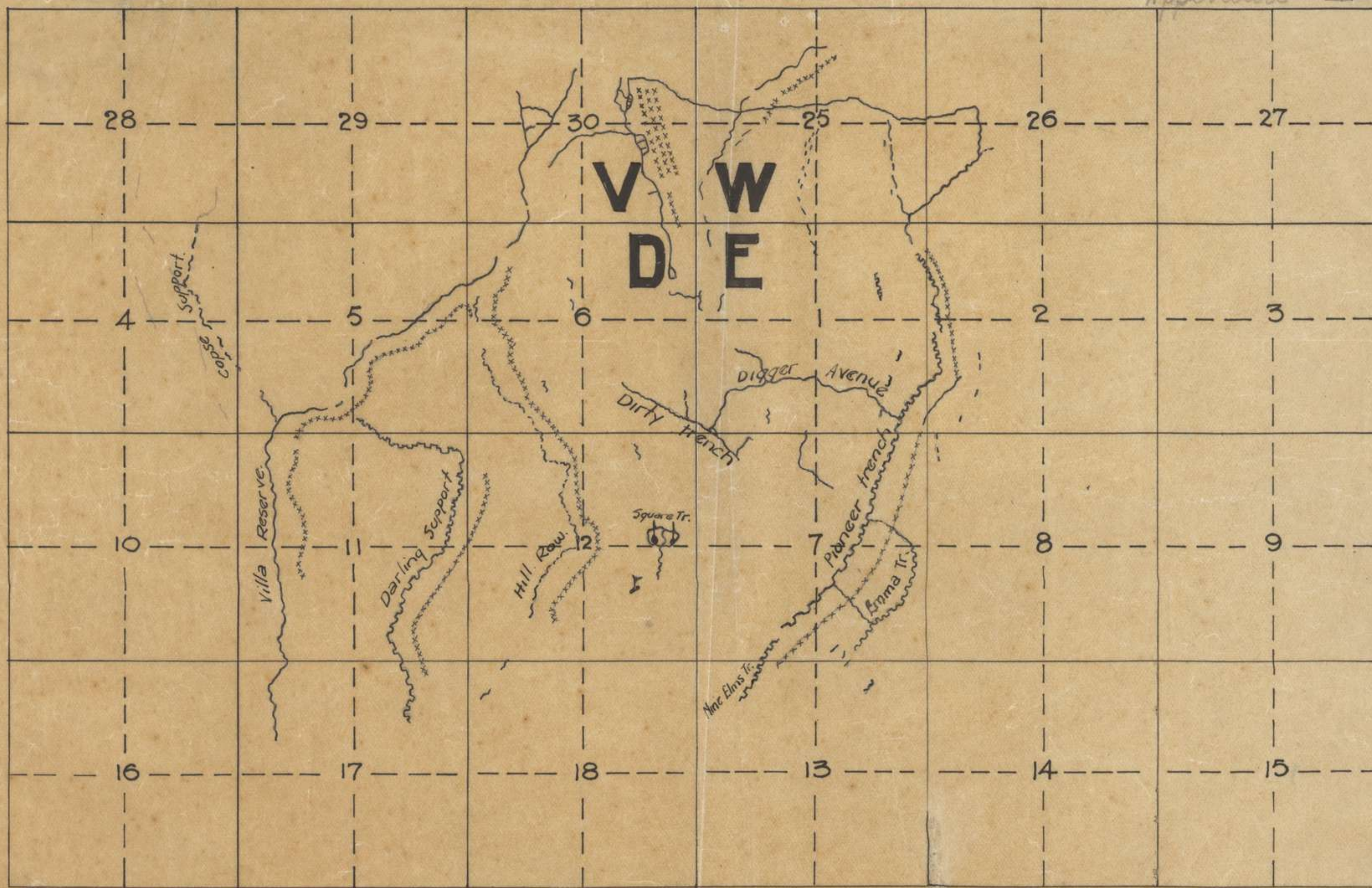
8TH FIELD COMPANY ENGINEERS A.I.F.

Appendix V



Appendix V





Parts of SHEET 62D NE & 57D SE. 1:20,000.

Appendix VI