

**AWM4**  
**Australian Imperial Force unit war diaries,**  
**1914-18 War**

Engineers

**Item number:** 14/25/31

**Title:** 6th Field Company, Australian  
Engineers

May 1918



AWM4-14/25/31

**CONFIDENTIAL.**

**ORIGINAL.**

**[REDACTED]**

**[REDACTED]**

**Australian Imperial Force.**

**WAR DIARY**

OF

*6th. FIELD Co A.E.*

FOR

**MAY**

*1918*

Signature of Officer compiling

*McHarrigan Major*

Signature of Officer Commanding

*McHarrigan Major*

WAR DIARY

Instructions regarding War Diaries and Intelligence  
Summaries are contained in F. S. Regs., Part II.  
and the Staff Manual respectively. Title pages  
will be prepared in manuscript.

~~INTELLIGENCE SUMMARY~~

(Erase heading not required.)

Ref. Map: - Sheet 620.

Place	Date	Hour	Summary of Events and Information	Remarks and references to Appendices
MILLEN COURT Sector	1.5.18.		<p>Company relieved by 517th Field Company R.E. of 47th British Division. All dug-out work carried on by us until 6.p.m. and all trenches were notice-boarded during the day. Relief complete 8.30.p.m.</p> <p>During the afternoon Company assembled in camp beside Coy.H.Q. which had just been vacated by 4th. Field Company A.E., instead of moving for the night to WARLOY.</p>	Appendix I (Daily Works Reports). Appendix II (Hand over notes to 517th F. Co. R.E.)
PONT NOYELLES	2.5.18.		<p>O.C. met Chief Engineer at 9.30.a.m. for reconnaissance of new work near PONT NOYELLES, to which town the company moved during the afternoon, transport returning to old lines at H.6.a.3.2.</p>	
	3.5.18.		<p>Tactical exercises for Officers in siting defences for improved QUERRIEU Bridgehead south of AMIENS-ALBERT Road, and also for South Eastern end of a STGRATIEN-QUERRIEU switch to link the latter with the LAHOUSSEYE System.</p>	
	4.5.18.		<p>Work commenced on above defences with assistance of a Labour Company. No.3. Section commenced construction of three Artillery Bridges over the HALLU River, Bridges to be strong enough to carry 5 ton axle load which, owing to long and swampy approaches was the heaviest load likely to get to the bridge.</p>	
	5th to 9.5.18.		<p>Work carried on as above. Labour Company were very useful on the whole while on task work and were employed not only on digging trenches but also on carrying and driving stakes for wire entanglements, making fascines, and handling bridging materials.</p> <p>Sappers did all wiring, sodding of parapets, and bridge construction in addition to supervising labour.</p>	

## WAR DIARY

Instructions regarding War Diaries and Intelligence  
Summaries are contained in F. S. Regs., Part II.  
and the Staff Manual respectively. Title pages  
will be prepared in manuscript.

~~INTELLIGENCE SUMMARY.~~

(Erase heading not required.)

Ref. Map: Sheet 62D.

Place.	Date	Hour	Summary of Events and Information	Remarks and references to Appendices
PONT NOYELLES.	5th. to 9.5.18 (cont'd)		<p>During this period, 1½ miles of wiring (Triple Fence and Double Apron) and 3 Artillery Bridges (Trestle) were constructed with three single-span approach bridges and a considerable amount of trench was dug in the form of posts with spitlocked connections.</p> <p>On 9th May, Major HARRIS and Lieut ELSUM commenced to take over from 10th Field Company A.E.-then working in front zone astride the ANCRE, where the 3rd.Division had stopped portion of the German advance in April. It was found that 3rd.Division had no Divisional R.E.Dump, and that Field Companies were carting <del>to</del> FRANVILLERS whence all forward carting was done by Infantry Transport. A request was at once sent to C.R.E.for the formation of a Divisional Dump near FRANVILLERS on the Divisional relief being completed, and arrangements were made accordingly.</p> <p>On the same date the first cases occurred in the Company of an epidemic of P.U.O.</p> <p>Captain COGHLAN transferred to 5th Div.Engineers to command 14th Field Company A.E.</p>	Appendix III (Map of QUERRIEU BRIDGEHEAD DEFENCES)
VILLE-SUR-ANCRE Sector.	10.5.18.		<p>Relief of 10th Field Company A.E.completed about mid-day. Dispositions were considerably altered, partly to keep sections together and partly to accommodate men nearer their work.</p> <p>No.2.Section moved into cellars near RIBEMONT station and took over all right sector work.behind the outpost line, Lieut GILLESPIE (living at Company H.Q.in HEILLY) being responsible for organising infantry work on the posts.</p> <p>Nos.1 &amp; 4 Sections took over 10th Field Coy.accommodation north of HEILLY, No.3. and Mounted Sections going to FRANVILLERS, the job taken over by No.3. being a Rear Brigade H.Q. This however was not started, as it was of doubtful value and No.3.Section were at once employed in digging accommodation for Nos.1.&amp; 4. about two miles further forward than that taken over.</p>	

## WAR DIARY

Instructions regarding War Diaries and Intelligence  
Summaries are contained in F. S. Regs., Part II.  
and the Staff Manual respectively. Title pages  
will be prepared in manuscript.

~~INTELLIGENCE SUMMARY.~~

(Erase heading not required.)

Ref. Map: Sheet 020.

Place	Date	Hour	Summary of Events and Information	Remarks and references to Appendices
VILLE-SUR-ANCRE Sector	10.5.18 (Cont'd)		<p>The principal work in hand by 10th Field Company was dug-outs, none of which were designed in accordance with standard instructions. Three of these were abandoned at once, but an endeavour was made to carry on the others as started.</p> <p>There being no wire in front of the posts, an immediate start was made with the construction of Concertinas, Battalion Bands being allotted in rotation for this work.</p> <p>Arrangements were also made to work out existing dumps and establish new ones about half a mile further forward.</p> <p>Spare men of No.2. Section were employed on salvage of sawn timber from demolished houses in MERICOURT, as the Company was allotted only 25 Mining Sets per day, and there was no other source of suitable timber for Trench Shelters.</p>	
	11th. to 13.5.18.		<p>Lieut GILLESPIE sited eight new posts and organised infantry work on construction of same. This resulted in considerable improvement and strengthening of the outpost line in front of MARRETT WOOD.</p> <p>No.4. Section chiefly employed on construction of two tunnels under railway embankment to improve communication to the posts along North bank of the ANCRE, and also on a Company H.Q. dug-out at D.30.a.9.1. - all timber for these jobs being salvaged and cut into sets by Sappers in BUIRE.</p> <p>No.2. Section used what labour was available on improvement of defences immediately behind MARRETT WOOD, and No.1. Section pushed on with two deep dug-outs for Reserve Battalion H.Q. and two of their Company H.Q.'rs, using all available mining timber daily on the entrances.</p>	
	13.5.18.		<p>Preparatory to proposed attack on VILLE-sur-ANCRE, Lieut CARLETON measured the width of the stream at a number of points and No.3. Section commenced construction of four light infantry bridges with 30.ft. span. Each bridge was made of 6 Chesses bound together and trussed- Sketch attached.</p>	Appendix IV

## WAR DIARY

Instructions regarding War Diaries and Intelligence  
Summaries are contained in F. S. Regs., Part II.  
and the Staff Manual respectively. Title pages  
will be prepared in manuscript.

~~INTELLIGENCE SUMMARY~~

(Erase heading not required.)

Ref. Map: Sheet 620.

Place	Date	Hour	Summary of Events and Information	Remarks and references to Appendices
VILLE-sur-ANCRE Sector	14.5.18.		<p>For the same purpose, 160 Infantry, assisted by Lieut GILLESPIE commenced a C.T. from the front edge of TREUX to a post at J.6.b.4.4. and good progress was made.</p> <p>It was further decided to construct a supporting switch line facing North East in the Left Sector in case the high ground on our left should be lost. This trench would also be useful as alternative accommodation for supporting troops who were then leading a precarious existence in the Ravine- a borrow pit alongside the BUIRE-ALBERT railway line. The Brigade on our left agreed to co-ordinate with any work done on this line, but although the line was jointly sited, the promise was never carried out.</p> <p>At this time, the probable date of our attack on VILLE-sur-ANCRE was the night 15/16th May. Arrangements were accordingly made to throw the first two foot-bridges across the ANCRE on night 14/15th at E.25.a.10.45. and E.25.d.25.50. with the co-operation of 24th. Battalion who were being relieved the same night by 23rd. Battalion.</p> <p>The two bridges were carted along the BUIRE-ALBERT road to within 300 yards of first site, and carried by Sappers of No.3. Section to the railway borrow pit. Covering parties were in position by 11.p.m. but owing to moonlight the first bridge was not carried out to the river until nearly mid-night. Lieut DAVIES and Sappers were just about to launch it when word came that the operation was postponed, and a very disappointed party then carried back the bridge to the railway and camouflaged it with leaves and grass.</p>	

## WAR DIARY

Army Form C. 2118.

Instructions regarding War Diaries and Intelligence  
Summaries are contained in F. S. Regs., Part II.  
and the Staff Manual respectively. Title pages  
will be prepared in manuscript.

~~INTELLIGENCE SUMMARY~~

(Erase heading not required.)

Ref. Map: Sheet 620

Place	Date	Hour	Summary of Events and Information	Remarks and references to Appendices
VILLE-sur-ANCRE Sector	15.5.18		<p>Lieut SEXTON with 4 Sappers commenced construction of a 9'x7' 4.2" shell-proof shelter for 22nd. Battalion Battle H.Q. for forthcoming operations.</p> <p>Lieut GILLESPIE with 120 Infantry completed C.T. from TREUX to outpost line, and Lieut CARLETON with 100 Infantry dug the first 180 yards of new supporting switch line on left.</p> <p>The working efficiency of the Company was at this period greatly reduced by an epidemic of P.U.O. Many of the men in the three forward sections living forward of HEILLY who were affected merely laid up for a day or two and then carried on although quite unfit to do so, particularly No.2. Section who were then living in MERICOURT- having been shelled out of their previous billets. Throughout this period, none of the three forward sections received a visit from the R.M.O.</p>	
	16.5.18		<p>Battle</p> <p>Right Battalion H.Q. completed and 4.2" shell-proof R.A.P. commenced alongside it. No.2. Section commenced with salvaged timber to extend existing Right Battalion H.Q. Dug-out with a view to accommodating H.Q. in extension and making remainder available for an Advanced Dressing Station for which it was more suitable.</p> <p>Lieut CARLETON with 130 Infantry extended new support line about 200 yards.</p>	

# WAR DIARY

Instructions regarding War Diaries and Intelligence  
Summaries are contained in F. S. Regs., Part II.  
and the Staff Manual respectively. Title pages  
will be prepared in manuscript.

## ~~INTELLIGENCE SUMMARY~~

(Erase heading not required.)

Ref. Map:- Sheet 620.

Place	Date	Hour	Summary of Events and Information	Remarks and references to Appendices
VILLE-sur-ANCRE Sector	17.5.18.		<p>Lieut SEXTON completed Right Battalion R.A.P. and commenced 4.2" shell-proof Signal Office alongside Battalion Battle H.Q.</p> <p>Lieut CARLETON with 80 Infantry, dug a further 140 yards of supporting switch line into which Vickers Guns were now placed on account of the excellent field combined with concealment from ground observation.</p> <p>Lieut DAVIES with eight Sappers of No.3. Section and a picked covering party of 23rd. Battalion placed two infantry bridges over the ANCRE at E.25.a.10.45. and E.25.d.25.50. All arrangements were carried out like clockwork and posts were established across each bridge immediately after it was placed. The co-operation of the infantry Lewis Gunners was excellent and not only discouraged enemy flare-throwers, but silenced their Machine Guns. Owing to the rapidity with which the operation was carried out, a reconnoitring patrol was able to cross the first bridge and obtain information as to state of ground which proved invaluable in the attack on VILLE-sur-ANCRE. The whole operation was completed by an hour before dawn.</p>	

WAR DIARY

INTELLIGENCE SUMMARY

(Erase heading not required.)

Ref. Map:- Sheet 620.

Instructions regarding War Diaries and Intelligence Summaries are contained in F. S. Regs., Part II. and the Staff Manual respectively. Title pages will be prepared in manuscript.

Summary of Events and Information			Remarks and references to Appendices
Place	Date	Hour	
VILLE-sur-ANCRE Sector	18.5.18		<p>The tunnel under railway embankment at E.25.a.4.7. was completed just in time to be very useful during the fight for VILLE-sur-ANCRE.</p> <p>Lieut GILLESPIE laid about 1200 yards of jumping-off tape for 22nd.Battalion attack.</p> <p>Lieut DAVIES with No.3.Section and co-operation of 23rd.Battalion attempted to place two additional infantry bridges across the ANCRE. Unfortunately, the infantry asked for an alteration in intended sites during the afternoon and Brigade Orders for covering arrangements were consequently issued late. In addition, 23rd.Battalion were busily occupied with preparations for their portion of the attack.Moreover, the enemy was aware that preparations were in progress for an attack and his Machins Guns and flare-throwers were active. It was found afterwards, that our Lewis Gunners did not know where the bridging was being done, so their co-operation was much less effective than on the previous night. Apparently the covering parties were late throughout owing to late orders, so, after waiting as long as he dared, Lieut DAVIES sent L/Cpl.J.H.HAMMOND and Sapper H.S.RANDALL over by one of the previous night's bridges to work around the opposite bank and help pull the bridge across, as well as to partly cover the operation. This party met a German Patrol and were both wounded by bombs. L/Cpl.HAMMOND brought Sapper RANDALL back to the nearest stretcher bearer post and then although wounded, attempted to work around by himself. He was again attacked and wounded, and being almost surrounded, swam across the river and rejoined the bridging party in time to report what had happened. Lieut DAVIES then decided to go ahead, and the Sappers launched the bridge. He immediately crossed it and covered the remainder of the work himself.</p> <p>After completing this bridge, the party returned for the fourth one, and Lieut DAVIES attempted to collect a covering party, as trouble was anticipated in launching this. Arrangements were made for a party, but time was short and there was delay in getting them ready so Lieut DAVIES took Corporal LEATHBRIDGE to the position to act as guide, and then returned to start carrying the bridge. The improvised covering party was still not quite ready but Lieut DAVIES dared not wait as the barrage was due to open in less than half an hour. He put the situation to the Sappers who all agreed that they should go ahead.</p>

## WAR DIARY

Instructions regarding War Diaries and Intelligence  
Summaries are contained in F. S. Regs., Part II.  
and the Staff Manual respectively. Title pages  
will be prepared in manuscript.

~~INTELLIGENCE SUMMARY.~~

(Erase heading not required.)

Ref. Map: Sheet 620.

Place	Date	Hour	Summary of Events and Information	Remarks and references to Appendices
VILLE-sur-ANCRE Sector	18.5.18 (Contd)		<p>When about 300 Yards from the proposed site, the party was picked up by an enemy flare and came under very heavy machine-gun fire, sustaining two serious casualties. As soon as possible, the reduced party started off again but the time and numbers were now both very short so Lieut DAVIES decided to place the bridge at E.25.a.8.4., sent back the wounded and warned the attacking companies of 24th Battalion where the bridge was before the barrage opened. Both the wounded men, Sappers H.C.WALKER and C.R.WASHINGTON died before reaching the C.C.S.</p> <p>In addition to those already mentioned, the following formed the bridging party:- Sergeant J.BOWERS., Sapper C.W.L.HARTLEY., A.KELLY., M.SPALDING., C.T.STEWART., T.H.TOMBS., J.N.ALIOM.</p> <p>No.2 Section vacated quarters in MERICOURT and camped temporarily alongside 1 and 4.</p>	
	19.5.18		<p>After the successful operation at VILLE-sur-ANCRE, the following arrangements were made for preliminary consolidation:-</p> <p>21st and 24th Battalions to establish a line of posts in the ANCRE valley astride the river and 28th Battalion assisted by Lieut GILLESPIE and Lieut SEXTON to dig a line of 6 Posts on 22nd Battalion sector about 150 yards in advance of final objective.</p> <p>In addition, two companies of 2nd Pioneers were allotted to dig a C.T. from 22nd Battalion line of posts towards head of C.T. just completed by Lieut GILLESPIE;</p> <p>All these operations were satisfactorily carried out in spite of heavy shelling especially on right (22nd Battalion) sector.</p>	

## WAR DIARY

Instructions regarding War Diaries and Intelligence Summaries are contained in F. S. Regs., Part II. and the Staff Manual respectively. Title pages will be prepared in manuscript.

~~INTELLIGENCE SUMMARY~~

(Erase heading not required.)

Ref-Map:- Sheet 020.

Place	Date	Hour	Summary of Events and Information	Remarks and references to Appendices
VILLE-Sur. ANCRE Sector	20.5.18.		<p>Company relieved by 7th Field Company A.E. Relief completed by 8.30.p.m. including inter-change of quarters except as regards horse lines - both of which were in FRANVILLERS.</p> <p>Company less transport was now concentrated at I.6.c.5.8.(near HEILLY) and it was decided to move transport to same location as soon as possible.</p> <p>Work taken over was chiefly dug-out construction, but included also the operation of a small saw mill at BONNAY. and wiring the Bridgehead line, a line running South from HEILLY Station. and covering a number of crossings over the SOMME and ANCRE rivers.</p>	<p>Appendix V (Dugout plans)</p> <p>Appendix VI (Works map)</p>
	21st + 22.5.18.		<p>Company rested and bathed, and prepared to start on Reserve Company works as soon as infantry should become available.</p> <p>Lieut ELSUM was detached to H.Q.D.E. to act as Assistant Adjutant while the unit was out of the line.</p>	
	23rd + 30.5.18		<p>Company fully employed on dug-outs Bridgehead line (Sketches attached) and on BONNAY Saw Mill employing about 200 infantry daily.</p> <p>Good progress was made on all jobs. About this time, C.R.E. commenced tabulating weekly progress by different units on dug-out work, embodying much useful information as to unit costs. The first return which came as a surprise showed this unit well ahead in the matter of cubic footage per man per shift.</p>	<p>Appendix VII (Dugout plans)</p> <p>Appendix VIII (BRIDGEHEAD defences).</p>
	31.5.18.		<p>Company relieved 7th Field Company A.E. on our old sector and adopted their dispositions, except that our horse lines at I.6.c.5.9.were retained.</p> <p>The consolidation of the ground captured on May 19th.had been well advanced, but there was of course still plenty of scope for useful work.</p>	

## WAR DIARY

Instructions regarding War Diaries and Intelligence  
Summaries are contained in F. S. Regs., Part II.  
and the Staff Manual respectively. Title pages  
will be prepared in manuscript.

~~INTELLIGENCE SUMMARY~~

(Erase heading not required.)

Place	Date	Hour	Summary of Events and Information	Remarks and references to Appendices
	MAY 1918.		<p>During the month of MAY 1918.:-</p> <p>Captain J. COGHLAN, M.C. and 3.0 other Ranks were transferred to other units. Lieut H.C. RENSCHAW and 36.0 other Ranks were evacuated to hospital sick. 2/Lieut. E.C. WHITE. was transferred to 1st. Aust. Div. Engineers. 7.0 other Ranks were evacuated to hospital Wounded. (2 of whom subsequently Died of Wounds.)</p> <p>1.0 other Rank was transferred from 46th Battalion. 20.0 other Ranks rejoined from Hospital. Lieut H.W. HESTERLY and 2.N.C.O's were attached from 6th Regt. U.S. Engineers for two weeks.</p> <p>Strength of Company on 31st May 1918.:- 7.0 Officers and 205.0 other Ranks.</p> <p>The award was announced of the MILITARY MEDAL to :- No. 771. Lance Corporal. W. WORLAND;.</p>	

AC Harris Major  
OC. 6th Field Coy AE

10

D. D. & L., London, E.C.  
(A8001) Wt. W1771/M2031 750,000 5/17 Sch. 52 Forms/C2118/14

## WAR DIARY

OF

6th. FIELD C<sup>o</sup> A.E.

FOR

MAY 1918

## LIST OF APPENDICES.

No.	Subject.
I	Daily Works Reports.
II	Hand-over notes to 517th. F.C <sup>o</sup> R.E.
III	Plan of QUERRIEU BRIDGEHEAD DEFENCES.
IV	Sketch of Bridge.
V	Dugout progress plans.
VI	Works map.
VII	Dugout progress plans.
VIII	BRIDGEHEAD DEFENCES.

# 6TH. FIELD CO AUSTRALIAN ENGINEERS.

## Works Report for 24 hours ending 6 A.M. 1-5-1918

Appendix I

Location	Works	Person in charge work	No. of men employed		Particulars	Remarks
			Eng	Inf		
D 12 d 5 6	Deep dugout	LT RENS HAW	11 2 4 6 4	- - - - -	Completed 8'6" of 2nd entrance Making sets Putting out notice boards Finishing steps + gasproofing deep dugouts Guard.	
V 23 c 4 7	Deep dugout	LT DAVIES	9 3	24	11 Sets complete in each drive - 6'. Excavated for 3 spaced sets. Total drive 18'. 10 sets constructed.	
D 12 d 5 6	"	"	9 4	24 8	10 Sets complete in each drive. 5' excavated for 2 spaced sets. Total drive 14'. 10 sets constructed.	
D 10 a 20 30		CSM. BROWNLEE	2	-	Completed gasproofing one shaft to dugout, double curtain.	
	Putting up notice boards	SGT. COHEN	5	-	26 notice boards put out to mark trenches in Front zone of 6th Bde. Area.	
	Wiring	2/LT WHITE	3	30	170 yds. completed in front of DARLING Support line.	
			11	-	Handing over works, guides etc. to relieving Field Co. Relief complete 8.30 p.m. 1/5/18.	

APPENDIX.

22

6TH. FIELD CO AUSTRALIAN ENGINEERS.  
Works Report for 24 hours ending 6<sup>P.</sup>M. 4-5-1918.

Location	Work	Person i/c work	No. of men employed		Particulars	Remarks.
			Eng	Inf.		
H. 17. d. 6. 0 to H. 18. c. 20. 15.	Barbed wire entanglement	LT. ELSUM	28		435 yds complete. All pickets used up.	
B. 24. c. 7. 8.	Artillery bridge	LT. DAVIES	8	-	Cross section of stream taken & spars for centre trestle cut.	
B. 30. a. 0. 2.	" "	"	8	-	" " " " Trestle 75% complete	
H. 23. a. 7. 0.	" "	"	8	-	" " " " " " " "	
H. 18. c. 10. 05 to I. 19. a. 65. 25	Trench location	LT. HILL	3	-	Siting, marking out, and locating trench, 1500 yds.	
H. 18. d. 35. 60 to H. 12. d. 8. 6.	Line of posts for QUERRIEU BRIDGEHEAD	LT. CARLETON	34	195 lab Co.	12 posts dug 2'6" deep x 5' wide at top to 4' at bottom Total length dug about 350 yds. Location of wire for this line pegged out.	

APPENDIX.

22

APPENDIX. 1 -14

Q2.

6TH. FIELD CO AUSTRALIAN ENGINEERS.  
Works Report for 24 hours ending 6 A.M. 6-5-1918.

Location	Works	Person i/c work	No. of men employed		Particulars	Remarks.
			Eng	Inf.		
H.18.c.to. H.7.c.	QUERRIEU Bridgehead Outpost line.	LT. CARLETON	24.	150	180yds. trench deepened from 2'6" to 4'. 250 " " Spitlocked 5'x6" deep. 600 " wiring sited and portion of centre posts driven. Camouflaging to present posts.	
H.24.a.7.9to H.19.a.7.2	Spitlocking	LT. HILL	3	150	Spit-locked 1500yds trench 5' wide 6" deep.	
H.18.c.8.4 to H.18.b.24.	Wiring.	LT. RENSHAW	28	-	500yds wire entanglement erected.	
H.18 central b H.18.b.3.7.	"	"	-	24	Driving in pickets - 410 yds completed.	
B.24.d.1.7.	Bridging.	LT. ELSUM	14	15.	{ Piles and shore transoms set in bank and timber for road bearers cut ready for use. Piles set in one bank and timber prepared for roadbearers.	
B.24.c.8.7	"	"				
H.23.c.7.4	"	"	14	15	{ Shore transoms and piles set in banks Road bearers prepared ready for use. 24 fascines made and placed on roadway.	
	Making and placing fascines	"				

# 6TH FIELD CO AUSTRALIAN ENGINEERS

## WORKS REPORT for 24 hours ending O.P.M 7/5/1918

22

LOCATION	WORK	PERSON i/c WORK	NO. OF MEN EMPLOYED		PARTICULARS	REMARKS
			ENG.	INF.		
H23.C.7.4.	Bridging + fascine making	Lt ELSUM	14	15	Road bearers + decking erected + temporarily spiked. Posts for handrails erected 26 fascines made + placed on <del>handrails</del> roadway.	
B24.d.1.7. B24.C.8.7.	Bridging	"	14	15	Road bearers + decking erected + temp. spiked. Shore transoms placed on piles for roadway 30% comp.	
B.24.C.7.8.	Artillery Bridge	Lt DAVIES	8		Construction of bridge completed + same set in position. Bridge 60% comp.	
B.30a.0.2	"	"	7		" " " " " " " " " " " "	" 60% "
B.23a.7.0.	"	"	8		{ " " " " " " " " " " }	" 70% "
I13a.3.9 - I13a.3.5.	Wiring.	Lt SEXTON	1	6	210 yds of pickets soiled + driven ready for wire.	
I13a.1.7 - I1a.2.3	Entrenching	"	1	100	150 yds of trench deepened from 6" to 3'6" + parapet partly camouflaged.	
I18.d.3.7.	Filling	"	1	12	48 yds of old trench filled to 6" from top.	
I18d.2.5 to I18d 12.	Spitlocking Dummy Trench	"	<del>20</del>	20	200 yds dug 6" deep + 5' wide	
			10		Sodding + sheading parapet in various places.	
H18.b.05.50 to. H12 d 7.0.	Wiring.	Lt RENSHAW.	27		400 yds wiring	
H7.C.25.00 to H13.a.2.8	"	"	1		100 yds wiring + cutting gaps.	

APPENDIX

I 16

22

APPENDIX. I/11

Q2

APPENDIX. 718

# OTH FIELD CO AUSTRALIAN ENGINEERS

## WORKS REPORT for 24 hours ending 6.P.M 11/5/1918

22

LOCATION	WORK	PERSON I/C WORK	NO. OF MEN EMPLOYED		PARTICULARS	REMARKS
			ENG.	INF.		
C.28.b.9.3.	B.W. Concertinas.	C.S.M. BROWNLEE	2	30	60 concertinas completed	
J.6.d.9.1.	Posts.	Lt GILLESPIE.	-	40	3 posts dug, each about 18 yards long + 4 feet deep.	
J.6.d.7.4						
J.6.d.6.7						
D.26.b.1.8.	Forward shelters for company.	Lt DAVIES.	25	-	7 excavations 80% complete - 4 excavations 60% complete.	
C.21.C.39.13.	Brigade Dug-Out	"	14	-	1 cook-house 75% complete - 4 shelter excavations complete. 1 cubicle of deep dugout ready for occupation.	
J.3.d.6.1.	23 <sup>rd</sup> B <sup>n</sup> . H.Q.	Lt ELSUM.	7	6	C.O's and Adjutants room strutted.	
Mericourt + Ribemont.	Salvaging Timber.	"	13	-	600' 6x2 1/2 250' 9x2 700' of mixed sizes } Stacked ready for carting.	
D27a.2.4 .	Dug-out.	Lt HILL	4	12	No1 Drive:- Removing pitprops + substituting mining sets 6 feet lagged - 3 sets in position. No2 Drive:- Old "pitprop" sets adjusted - 4 ft new excavation	
D27.d.4.7.	do.	"	4	6	Strutting existing D.O. and building splinter-proof shelter	
D.26.b.1.8.	Accommodation	"	5	-	5 D.O. positions 40% evacuated 6' wide.	
D30.d.9.1	B.Co. H.Q. DUG OUT.	Lt CARLETON	10	-	Survey made - Cleaning out old spoil - Excavating for, salvaging + erecting 2 sets	
D30.b.6.4	Tunnel under Railway Embankment.	"	3	-	Excavating 1 foot and altering existing sets.	
E.25a.30.75	do.	"	2	-	Excavating + preparing for new entrances - Ready for 2 sets.	
			-	12	Carrying 3 sets from dump D.29.d.3.9 to E25.d.30.75	

APPENDIX. 119

# OTH FIELD CO AUSTRALIAN ENGINEERS

## WORKS REPORT for 24 hours ending O.P.M 12.5-18

LOCATION	WORK	PERSON I/C WORK	NO. OF MEN EMPLOYED		PARTICULARS	REMARKS
			ENG.	INF.		
C. 28. b. 9.3	B.W. Concertinas	C.S.M. BROWNLEE	2	25	60 concertinas completed + carted to D30. a. 7.2.	
Ib. b. 4.6	Posts	L <sup>T</sup> GILLESPIE	-	25	Two new posts dug about 15 yds long and 4 feet deep.	
Ib. d. 6.9.						
D. 26. b. 1.8.	Forward. Shelters	L <sup>T</sup> DAVIES.	21	-	8 shelter positions 20% excavated 7 30% excavated Present State: 8 excavations completed - 7 excavations 90% comp	
MERICOURT.	Salvage of Timber.	L <sup>T</sup> ELSUM	7	-	700' of 6x2 1/2 } 80' " mixed } salved + dumped ready for carting.	
T10. b. 4.5.	Coy. H.Q.	"	4	-	D.O. built + set in position - Front built up with sandbags	
J. 3. d. 6.1	23 <sup>rd</sup> B <sup>n</sup> H.Q. (cellar.)	"	7	6	Strutting of officers room completed	
	Surveying	"	2	-	Trench + wire running N. from Ribemont - MERICOURT Station located - Longitudinal section through 22 <sup>nd</sup> B <sup>n</sup> H.Q. taken	
D27. a. 2.4	Coy + B <sup>n</sup> H.Q.	L <sup>T</sup> HILL	15	12	Coy H.Q. No1 Drive: - 2' 2" close timbered No2 " " - 6' 3 1/2 " " in lieu of pit. props. Commenced timbering runners shelter. Bn. H.Q. - No1 Drive: - 1' 6" close set. No2 " " - 4' 7" close timbered.	
D30. b. 0.1.	Coy. H.Q. D.O.	L <sup>T</sup> CARLETON.	10	-	3 sets salved made + erected + old sets removed. Excavation for No.2 (new entrance) 90% complete and 110' x 4' set made for same	
E. 25. a. 4.7.	Tunnel thro' Rail. Embank.	"	5	-	3 sets put in.	
E. 19c. 9.0.	"	"	2	-	2' excavation + 2 sets.	
				20	salving material for sets.	
					Carrying 4 sets + lagging to E19. c. 9.0.	
	Reconnaissance of existing emergency artillery routes across. ANCRE. RIVER.	L <sup>T</sup> SEXTON	1	-	Reconnaissance complete + report submitted separately.	

22

APPENDIX I 21

# OTH. FIELD CO AUSTRALIAN ENGINEERS

## WORKS REPORT for 24 hours ending 6.P.M 14/5/18.

Q2

LOCATION	WORK	PERSON I/C WORK	NO. OF MEN EMPLOYED		PARTICULARS	REMARKS
			ENG.	INF.		
C.28.b.9.3.	B.W. Concertinas	Csm BROWNLEE	2	22	60 concertinas completed + 50 delivered to Pine Dump. (J.5d.2.8)	
J.6a.8.3 to J.6b.4.4.	Commucation Trench.	Lt GILLESPIE	2	160	320 yds trench dug about 4' deep by about 3'6" wide.	
D26.b.1.8.	Forward Shelters.	Lt DAVIES	8	15	4 excavations complete - 4 excavations 50% complete 4 shelters built + erected	
Frankvillers R.E. Dump	Building Bridges.	"	8	-	2 30' span foot. bridges constructed	
J.3.d.8.2.	Cutting Mining Sets	Lt ELSUM	6	-	20 sets cut with cleats complete.	
J.3.d.7.1	23rd Bn H.Q. (Cellar)	"	5	6	4th room completely strutted - 2 feet bursters (buck etc) placed over ground floor of 1 room.	
J.5.c.6.2-J.5.c.3.2	Digging Trench.	"	3	60	120 yds "Switch" line dug.	
J.11.a.5.9	EXTN. to D.O.	"	8	12	New entrance commenced - Breaking away in Northern Gallery.	
D27.a.2.4.	Coy + Bn H.Qrs.	Lt HILL	12	12	Coy H.Q. No1 Drive: Altering grade to 1/1 - Lagging entrance No2 " : 2'3" close timbered. Bn H.Q. No1 Drive: 2'3" close set. No2 " : 3' close set + lagging of entrance + stairway	
D28.b.2.2.	Coy H.Q. for Support Bn.	Lt SEXTON	2	-	Framing completed and erected.	
D30.a.9.1	Coy H.Q. Dug-out.	Lt CARLETON	12	4	Excavation to stairway 5' and 6 sets.	
E25.a.4.7 to E19.c.9.1.	Tunnels under RLY Embankment.	"	8	4	Excavation 4' and 6 sets	
BUIRE.	Salving Min. Timber.	"	2	-		
	Carrying Party.	"		70	Carrying material forward from BUIRE	
E.25a.7.5. E.25a.2.5. E.30.b.8.0.	Reconnaissance.		2		Reconnaissance of three sites for bridges	

APPENDIX 22

# OTH. FIELD CO AUSTRALIAN ENGINEERS

## WORKS REPORT for 24 hours ending 6 P.M 15-5-18.

42

LOCATION	WORK	PERSON 1/C WORK	NO. OF MEN EMPLOYED		PARTICULARS	REMARKS
			ENG.	INF.		
C.28.b.9.3.	B.W. Concertinas.	CSM BROWNLEE	2	21	60 concertinas completed + 50 delivered to PINE DUMP.	
J6a.85.35-J6.b.4.4.	Comm. Trench	LT GILLESPIE	1	120	Communication trench completed	
D26.b.1.8.	Forward Shelters	LT DAVIES	14	15	3 shelters compl. - 7 excavations 75% comp. - 5 excavations 50% comp.	
Tranvillers R.E. Dump	Bridging	"	9	"	Extras to complete 2 30' span bridges 2 30' span bridges 50% completed	
J11a.5.9	Deep. Dug. out.	LT ELSUM.	12	18	9 sets in new entrance - 2 sets in new gallery.	
Mericourt.	Salvage of Timber.	"	5	-	230' of 6x2 1/2 } salvaged 130' " 6x2 180 " mixed	
D27a.2.4	Coy + Bn H.Q.	LT HILL	19	-	Bn H.Q. No.1 Drive: 3' 1" driven " 2 " " 4' 7 1/2 "	
		do			Coy. H.Q. No.1 Drive: 4' 8" driven. Lagging sides + roof. No.2 " " 4' 11" " Fitting intermediate set + first set normal to slope!	
J5.d.9.5.	Bn H.Q. + Sig. Office (Bn H.Q. H.Q.)	LT SEXTON	4	1	Frames completed but not erected	
D30.a.9.2	Coy H.Q. Dug. out.	LT CARLETON	12	7	2' excavations + 2 sets - also clearing away fall of earth.	
E25a.4.7 + E19c.9.1	Tunnel under RLY Embankment.	"	12	7	8' excavation + 5 sets + lagging 9' " + 7 " "	
BUIRE.	Salvage Timber.	"	2	-		
	Carrying Party.	"		60	Moving material forward from BUIRE	
E25a.1.9 to E19c.0.9	New Trench	"	2	100	180 yds new trench taped out + dug - average 3' deep and 3' wide at top to 1' 3" wide at bottom	

APPENDIX.

123

# OTH. FIELD CO AUSTRALIAN ENGINEERS

## WORKS REPORT for 24 hours ending 6 P.M. 16/5/18

82

LOCATION	WORK	PERSON I/C WORK	NO. OF MEN EMPLOYED		PARTICULARS	REMARKS
			ENG.	INF.		
C.28.b.9.3.	B.W. concertinas	CSM BROWNLEE	2	22	60 concertinas completed + 50 delivered to BUIRE.	
	Notice Boards	"	2	-	making + signwriting 4 N.B.s for Y.M.C.A.	
D26.b.1.8.	Forward Shelters.	LT DAVIES	14	24	3 shelters completed - 5 excavations completed	
Franvillers RE Dump	Building Bridges.	"	8	-	2 30' span bridges 50% complete - 2nd + 3rd bridges complete.	
J11a.5.9.	Deep. Dig-out	LT ELSUM.	15	24	9 sets in new entrance - 6 sets in new gallery	
MERICOURT	Salvage Timber and Cutting Sets	"	6	-	230' of 6" x 2 1/2" 300' " 6" x 1" 50' " 3" x 3" 17 Mining sets cut.	
D27a.2.4	Coy + Bn H.Q.	LT HILL	19	15	Bn HQ No1 Drive: 3' driven No2 " - 3'6" " - windlass salvaged + rigged 1 truck made Coy HQ No1 Drive: 5'2" driven No2 " - 3'6" new drive	
D28a.4.6.	Accommodation				Marked out 10 sites for shelters with trench	
J5a.8.5	Bat. H.Q. + R.A.P.	LT SEXTON	2	6	frame erected + top filled frame commenced	
E25a.4.7. + E. 19.c.9.1	Tunnels under RLY Embankment.	LT CARLETON	24	24	No1 excavation 19'6" + 5 sets. Lagging to top. No2 " 15'6" + 5 " " " "	
D30a.9.2	Coy H.Q.	"			Excavation 2' 2 sets.	
BUIRE	Salvage Material	"	2			
	Carrying	"	1	60	carrying forward from BUIRE.	
E25a.1.9 to E.25a.3.8	New Trench	"	2	130	New trench 4' deep x 3' x 18" x 200 yds long commencing at existing work at E.25a.1.9 extending in a N.E. direction close to N. side of road and bending to within 40 yds of ravine at E.25a.3.8	

APPENDIX I

24

# 6TH. FIELD CO AUSTRALIAN ENGINEERS

## WORKS REPORT for 24 hours ending 6 AM 18/5/18

LOCATION	WORK	PERSON I/C WORK	NO. OF MEN EMPLOYED		PARTICULARS	REMARKS
			ENG.	INF.		
C. 28. b. 9. 3	B.W. Concertinas	C.S.M. BROWNLEE	2	21	60 concertinas completed	
D26. b. 1. 8.	Forward Shelters	Lt DAVIES.	14	-	3 Shelters complete - 5 excavations 50% complete	
E 25a.	Bridging	"	8	-	2 Foot bridges constructed across ANCRE R. at E25a. 10.45 + E25a. 25.50	
J11a. 5. 9	Deep. D.O.	Lt ELSUM	11	24	12 sets in new entrance - 10 sets in new gallery.	
J12a. 4. 3 - J12a. 45. 75	EXTN. Support Line	"	2	100	150 yds trench dug.	
MERICOURT.	Salvage of Timber and COILING sets	"	5	-	300' of 6" x 2 1/2" } salvaged. 150' " 6" x 1" } 20 Mining Sets cut and delivered to job	
D27a. 2. 4	Bn. Coy. H.Q.	Lt HILL.	19	64	Bn. H.Q. - Tunnel driven 7' in No1 Tunnel No2 Tunnel to right driven 6' 3" timbered (close) for 3' Coy H.Q. - No1 tunnel driven 7' 6" No2 " " 1' 4"	
	Accommodation in Ribemont - Laueville Line	"		56	Digging 10 excavations 8' x 8' x 4' with connecting trench 5' x 4' x 3' (70% comp.)	
J5d. 8. 5	Shelters for Stretcher bearers	Lt SEXTON.	1	16	Making frames for shelters (20 made) Salvaging timber Shelters 50% complete.	
	R.A.P.	"	2	6	Excavation completed + frame erected	
	Bat. H.Q.	"	-	2	Earth filling on top.	
	Sig. D.O.	"	1	9	Frame erected complete - filling on top.	
D30a. 9. 1.	Coy H.Q. D.O.	Lt CARLETON.		12	No1 face: 3' 6" driven + 3 sets. No2 " : 5' 6" " + 5 "	
E25a. 4. 7 and E19c. 9. 1.	Tunnels under RLY Embankment	"	13	12	24' driven + 8 sets + partly lagged.	
	Salving Carrying	"	14	12	22' " " 8 " + " "	
	New Trench	"	2	-		
		"		40		
		"	2	78	Digging 140 yds of new support line - Now connected from rail line at E25a. 4. 7 to about E24. d. 8. 3. Trench 3' 9" x 3" x 1.3"	

# 6TH. FIELD CO AUSTRALIAN ENGINEERS

## WORKS REPORT for 24 hours ending 6 A.M. 19-5-18

LOCATION	WORK	PERSON 1/C WORK	NO. OF MEN EMPLOYED		PARTICULARS	REMARKS
			ENG.	INF.		
C.28. b.9.3.	B.W. Concertinas	C.S.M. BROWNLEE	2	24	60 Concertinas made	
J11a.5.9.	Deep. D.O.	LI ELSUM.	8	12	7 sets in new entrance - 5 sets in new gallery.	
MERICOURT	Salving Timber and Cutting sets	"	4	-	500' of 6x2 1/2" salved. 22 mining sets cut.	
C.21. c.4.3.	Shelters near site of Deep. D.O.	LT DAVIES	8	-	3 shelters completed.	
E25a.	Bridging ANCRE R.	"	12	-	2 30' span foot-bridges constructed across ANCRE R. at E25a.75.45 + E.25a.84.	
D27. a.2.4.	Bn + Coy H.Q.	LT HILL.	19	-	Bn H.Q. No1 Drive extended 2'. Making trolley + track. No2 " Right branch (No3 face) 2' 9" Left " (No5 " ) 3' 4" Coy H.Q. No1 drive 2 ft No2 " 3 ft.	
D30a.9.1	Coy H.Q. Dug-out.	LT CARLETON.	-	6	6' excavation + 6 sets.	
E25a.4.7 and E19c.9.1.	Tunnels under RLY Embankment	"	12	12	20' excavation + 6 sets - Portion lagged. Tunnel now broken through + fit to be used.	
			13	12	14' excavation + 4 sets. 20' lagged 10' remains to be done before breaking through.	
	Salving + carrying	"	2	50		
	New Trench	"		75	Digging new support line - now extends to D24.d.83.	
J5. d.8.5.	Shelters for Stretcher bearers	LT SEXTON.	-	26	8 shelters now complete - to accomodate 16 men.	
"	R.A.P.	"	2	20	Sandbagged + covered (now complete).	
"	Battle H.Q. B.H.Q. and Sig. D.O.	"		10	Entrances cut + filling on top of D.O. (complete).	
J.6.b.7.0 to J12. b.7.0.	Jumping-off Tape	LI GILLESPIE.	2		Line reconnoitred, pegged, tapes laid and direction tapes also laid.	

# OTH. FIELD CO AUSTRALIAN ENGINEERS

## WORKS REPORT for 24 hours ending 6.A.M. 20-5-18

LOCATION	WORK	PERSON I/C WORK	NO. OF MEN EMPLOYED		PARTICULARS	REMARKS
			ENG.	INF.		
C.28. b.9.3	B.W. Concertinas	CSM BROWNLEE	2	23	60 concertinas made.	
C.21. C.4.2.	Officers. Shelters	LT DAVIES.	12	-	2 shelters completed 4 small (2 man) shelters 50% complete.	
E25 b.1.2.	Bridging ANCRE. R.	"	2	6	Footbridge re-erected from E.25a.8.4.	
D27.a.2.4.	Bn. Cor H.Q.	LT HILL.	19	-	Bn H.Q. No1 drive 3'7" No2 " Right branch 1'2" gallery 4'7"	
					Coy H.Q. No1 Drive 8' driven No2 " 8' " - 2 sets.	
E25.a.4.7 and E19.c.9.1	Tunnels thro. RLY Embankments	LT CARLETON.	14	12	30' lagging put in. also 3 sets at S. exit. 35' floor cleared. Trench at S. Exit improved. 10' Excavation + 2 sets - Exit trench on south side completed 15' lagging done - 7 sets + quantity of lagging salvaged.	
Kid. 6.4.	Post No 7.	LT SEXTON.		30	New post about 25 yds dug.	
Kid. 6.7.	" " 8.	"			" " " " " "	
Kid. 7.8.	" " 9.	"			" " " " " "	
Kib. 7.0	Post No 10.	"	1	40	New post about 30 yds dug.	
Kib. 6.3	" " 11.	"			" " " " " "	
Kib. 6.5	" " 12	"			" " " " " "	
Kid. 5.2 to K.7d.1.9.	Consolidation of Posts.	LT GILLESPIE.	1	70	Linking up and improving posts between references given. About 150 yds of file - trench dug.	
		LT ELSUM.			Work report not yet to hand.	

6th. FIELD CO AUSTRALIAN ENGINEERS.  
 Works Report for 24 hours ending O.A.M. 21-5-1918.

Location	Work	Person in work	No. of men employed		Particulars	Remarks
			Eng.	Inf.		
D. 27. a. 24.	Bn + Co. H.Q.	LT. HILL	19	-	Bn H.Q. No. 1. Drive = 1'7" No. 2 Gallery = 8" and fixing intermediate set. Right Branch = Making new trench. Coy H.Q. No. 1 drive = 1'7" No. 2 = 1'6". All faces cleaned up.	
E. 25. a. 4.7.	Tunnel thro' Railway embankment	LT. CARLETON	14	18	30' lagging, cleaning 1' surplus earth from floor Improving South exit. Fixing 2 sets.	Both tunnels now opened throughout but require side lagging & more sets.
E. 19. c. 9.1.	"	"			9' Excavation. Trench for exit 4'x4'x17' stepped. Fixed 3 sets and 10' lagging 4 sets and lagging salvaged from rest station.	
D. 30. a. 9.1.	Coy. H.Q. dugout	"			4 sets and 3'6" excavation.	
FRANVILLERS	Constructing foot-bridges.	LT. DAVIES	8	-	2-30' span foot bridges constructed.	
C. 21. c. 4.2.	Rear. B.H.Q. D.O.	"	10	-	3 (2 men) Shelters constructed.	
J. 11. a. 5.9.	Deep dugout	LT. ELSUM	9	-	2 sets and excavated for 2 more. Steps evened-up.	
					Work on Left Brigade Sector handed over to 7th Field Co. A.E.	



# 6th FIELD CO AUSTRALIAN ENGINEERS.

## Works Report for 24 hours ending O.A.M. 24-5-1918.

Location	Work	Person in charge work	No. of men employed		Particulars	Remarks
			Eng.	Inf.		
I. 4. a. 4. 4.	Accommodation	Lt. HILL	2	-	Erected shelter 9'x7' of pit props with c.i. walls for Bn H.Q.	
I. 11. b. 1. 3.	Deep dugout.	"	4	12	Drove 6' of 6x3' gallery - putting in temp. struts - building windlass, truck & wheel guides.	
J. 7. c. 0. 0.	Emergency Road	Lt. GILLESPIE	2	20	24 fascines made 42 split trunks collected & stacked About 250 ft of drains cut from 1' to 2' deep.	
BONNAT Sawmill		"	19	20	Materials cut & Supplied: 300' 1 1/2" lagging. 100' 3" x 1" 110' halved pit props. 65' 9" x 3" 100' 4" x 1 1/2". 100' 9" x 3" 100' of 1" lagging. 100' of 2" lagging. 100' 3" x 1". 17 fascines made. 70 pickets cut.	
J. 13. c. 0. 6.	Bn H.Q. Deep dugout	Lt. SEXTON	8	31	4'6" driven & timbered on N°1 face. 4'6" " " 2 "	
J. 14. a.	Winning bridgehead line.	"	1	50	300 yds. completed.	
J. 1. c. 6. 4.	Brigade H.Q. Dug out.	Lt. CARLETON	21	44	Completed breaking out for new face (N°2) & lagging 9' sq. of drive Excavating 5' on N°2 face & 2 sets with lagging complete " 3' " N°1 " 2 " " " " trench 4'x2'x1'9" deep & 50' for drainage of N°2 entrance.	

22

# 6th FIELD CO AUSTRALIAN ENGINEERS

## Works Report for 24 hours ending O.A.M. 25-5-1918.

Location	Work	Person in work	No. of men employed		Particulars	Remarks
			Eng.	Inf.		
I. 11. b 1.3	Deep dugout.	LT. HILL	8	24	N <sup>o</sup> 1 drive - 5' face advanced 9" - 6' of a 6'x2' drive - False setting. N <sup>o</sup> 2 drive - 2'7" close set - 3' drive extended about 5'6" with false sets put in.	
D. 15. b 2.4.	Gasproofing.	2/CPL GODWIN	2	-	3 dugouts gasproofed complete.	
J. 7 c 0.0.	Emergency Road.	LT. GILLESPIE	2	20	Timber for culvert collected and placed. 32 fascines. 12yds of road laid. Drains deepened.	
BONNAY Sawmill		"	17	30	90 8' Logs cut and floated to mill 135 5'6" pickets " " " 15/12' fascines made " " " Material cut & supplied. 300' of 1 1/2" lagging, 100' of 3"x1" (5th Field Co) 110 halved pit props, 70' of 9"x3" (7th " " 200' 1 1/2" lagging, 200' 2" lagging (6th " " 150' 1" lagging, 150' of 6"x1" "	
J. 14a + c.	Wiring BRIDGEHEAD line	LT. SEXTON	1	50	400yds completed.	
J. 13. c 0.6.	Bn. H.Q. Deep dugout.	"	8	32	N. entrance 5'6" driven & timbered. S " 5' " & "	
J. 1 c 6.4.	Brigade H.Q. dugout	LT. CARLETON	21	44	N <sup>o</sup> 1 face - Excavated 3'9" Erected 2 sets & lagging complete. N <sup>o</sup> 2 " " 3'3" " 1 " " N <sup>o</sup> 3 " (New D.O. at end of N <sup>o</sup> 1 entrance) Excavated 4'. Erected 4 temporary sets. Making ready for breaking out new 9' face.	
	Salvage	"	4	-	Salvaging heavy bolts for T.M. platforms from conveyor.	

# 6th FIELD CO AUSTRALIAN ENGINEERS.

## Works Report for 24 hours ending OAM 26-5-1918.

Location	Work	Person in charge	No. of men employed		Particulars	Remarks
			Eng.	Inf.		
I. 11. b. 1. 2.	Deep dugout	LT HILL	10	24	2" face extended 6' - 3' face extended 3'3" - false sets put in. 3 I beams in position - pulling out temp. sets + lagging.	
D. 21. a. 5. 5. D. 15. b. 2. 4.	Gasproofing	"	2	-	1 Dugout gas proofed with double curtain. 4 gas proof curtains installed.	
J. 7. c. 0. 0.	Emergency Road	LT GILLESPIE	2	20	23 yards of roadway made with fascines + split planks also 6' culvert completed, 20 fascines made + 29 split planks cut.	
BONNAY Mill		"	18	30	Roofing of Div. Baths completed also 50% of footbridge for same. 300 - 5'6" pickets cut + collected. 90 - 4' pit props cut + collected. 20 fascines made. Following timber cut:- 100' - 3"x1", 70' - 1 1/2" lagging (5th F. Co.) 116 halved pit props. (7th F. Co.) 230' 4"x2", 90' 9"x3", 200' 2 1/2" lagging (6th F. Co.)	
J. 13. c. 0. 6.	Bn. H.Q. deep dugout	LT. SEXTON	10	32	N. entrance 7' driven + temporarily strutted. S " 5'6" " + timbered.	
J. 14. c.	Wiring bridgehead line	"	2	50	380 yds wire completed.	
J. 1. c. 6. 4	Bde. H.Q. Dugout.	LT. CARLETON	21	44	Nº 1 face - Excavation complete (total 12') Face requires to be lagged. Nº 2 " " " (total 10') " " " " Nº 3 " Excavated 2'6" - Erected 2 sets + lagged same. Eased + reversed 5 sets in main gallery near Nº 3 entrance drive. Built 1 movable bunk in G.O.C's cubicle + roofed same with cor iron.	

APPENDIX.

I

# 6th. FIELD CO AUSTRALIAN ENGINEERS.

Ref. Map. 620.

Works Report for 24 hours ending OAM 27.5.1918.

Location	Work	Person in work	No. of men employed		Particulars	Remarks
			Eng.	Inf.		
I.11.b.1.3.	Deep dugout.	LT. HILL	10	24	9' gallery extended 4'6". - Lagging - Making new body for trucks.	4 6 hour shifts worked.
D.21.d.7.6.	Gas-proofing.	SPR. FOSTER	2	-	Installed 2 single gas proof curtains - Salvaging timber.	
J.13. c.0.6.	Battn. H.Q. Deep dugout.	LT. SEXTON	10	31	North face :- Temporary strutting removed, + 3' run of 9'x6'6" gallery timbered. South face :- 2'6" driven + timbered - 3' driven + temporarily strutted.	4. 6hr shifts worked on each face.
J.14. a.	Wiring of BRIDGEHEAD line.	"	2	50	400 yds completed.	
J.1.c.45.05 (corrected Map. ref.) of Bde H.Q.	Bde. H.Q. Dugout.	LT. CARLETON	21	44	Nº1 face :- Lagged at back and noggining fixed. - Now complete Nº2 " " " " 90% and noggining and old lagging separated Nº3 " " " " Excavation 4' and 2 sets and lagging. Nº4 " " " " (Driving to meet Nº1 entrance) Breaking thro' + 1 set. Main drive :- 10 sets reversed and separated. Berming and trenching outside Nºs 2 + 3 entrances for drainage	4-6hr shifts worked.
J7 c 0 0	Emergency Road	LT. GILLESPIE	2	20	5 yds. of road fascined and finished. 24 " " " " decked with earth. 21 Split slabs and 12 fascines made. Drain deepened to 4'x2'6" for 30' and culvert made for same	
BONNAY Saw mill		"	17	30	300 pickets 5'6" long cut and collected. 20 fascines 12' " made " " 80 pit props 4' " cut " " 430' 1 1/2" lagging cut. 50' 6' split props " 100' 3"x2" Timber " 50' 4"x2" " " 185' 9"x3" " " 100' 6"x2" " " Bridge near baths completed.	

APPENDIX

33

OTH. FIELD CO AUSTRALIAN ENGINEERS.  
Works Report for 24 hours ending 6 A.M. 28.5.1918

Location	Work	Person 1/2 Work	No of men employed		Particulars	Remarks
			Eng	Inf.		
I 11. b. 10. 15.	Deep dugout.	LT. HILL	10	24	9' face driven, timbered and lagged 1' 6". Face 7' x 9' 3".	4-6hr shifts of 2 sprs + 6 inf per shift.
D. 21. b. 7. 6 D. 21. b. 2. 9.	Gas proofing	2/CPL. GODWIN	2	-	1 Single curtain installed 2 " " "	
I. 18. d. 8. 5. (corrected Reference)	Battn H.Q. Deep dugout.	LT. SEXTON	12	40	N. Face :- 9' 6" x 7' 3" drive = 3' completed.  S. Face :- 7' x 3' 3" drive = 4' 6" driven + temporarily strutted. Two men building trucks and windlass.	9' x 6' 6" face = 4. 6hr shifts of 1 spr + 6 inf per shift. 4. 6hr shifts of 1 spr + 5 inf per shift.
J. 1. c. 45. 05.	Bde. H.Q. dugout	LT. CARLETON	20	44	Nº 3 Face :- Excavation 3' 6" + 2 sets with lagging and nogginq. Nº 4 " " " 11' 0" + 11" Main drive :- 3 sets reversed + separated. Nº 2 Face :- lagging completed + cor. iron fixed on ceiling. 1 double bunk built and fixed.	Face 9' 3" x 7' 6". 4-6hr shifts of 6 sprs and 11 inf. per shift. Face 9' 3" x 7' 6".
				30	Shifted about 1200 cub. feet of earth to make room for new building between Nºs 2 + 3 entrance.	
BONNAY Saw mill.		LT. GILLESPIE	16	29	300 - 5' 6" pickets cut and collected. 20 - 12' fascines made " " 40 - 8' logs cut " " Improvements to bathing place and cleaning stream of branches + snags. 20 fascines carried to Emergency Road. 600' 1 1/2" lagging cut. 100' 3" x 1" timber " 70' 3" x 2" " " 100' 6" x 2" " " 150' 9" x 3" " " 12. 8' pit props.	
I 5. d. 9. 7.	Making box for 6th. A.I. Brigade	C.S.M. BROWNLEE	1	-	Box 2' 9" x 9" x 6" completed.  No parties available for work on wiring of BRIDGEHEAD. line or Emergency Rd. at J. 7 C.O.O. owing to cable burying.	

8

# OTH. FIELD CO AUSTRALIAN ENGINEERS.

## WORKS REPORT FOR 24 HOURS ENDING 6 A.M. 29. 5. 1918.

LOCATION	WORK	PERSON 1/2 WORK	NO OF MEN EMPLOYED		PARTICULARS	REMARKS
			ENG.	INF.		
I. 11. b. 10. 15.	Deep dugout	Lt. HILL	10	24	Face extended 4'6" - timbered & lagged - Face 7' x 9'3"	4 shifts of 6 hours 2 sprs. 6 inf per shift
D. 21. b. 7. 6	Gas proofing	2/cpl GOODWIN	2	-	1 single gas curtain completed.	
D. 15. a. 0. 3.	"	"			1 single curtain installed - dugout made gasproof.	
J. 14 c	Wiring of BRIDGEHEAD line	Lt. SEXTON	1	50	350 yds. completed.	
I. 18. d. 8. 5.	Battn. H.Q. deep dugout	"	10	40	N. face (9'6" x 7'3") - 3' driven & timbered. S. face (7' x 3'3") - 2' driven & temporarily strutted - 1 frame erected.	4 6hr shifts of 1 spr + 5 inf. per face.
			3		Making axles and woodwork for trucks and windlass	
I. 18. b.	23rd Bn. Aquatic Sports.	"	2		Building springboards etc.	
J. 1. c. 45. 05.	Bde. H.Q. dugout	Lt. CARLETON	18	33	No. 4 face (7' x 3'3") 9 sets - 9' excavation - connected up & completed. No. 3 face (9'3" x 7'6") 1 set - 1' excavated - back & 2' of sides lagged up. Noggining & corrugated iron ceiling fixed.	3 6hr. shifts of 6 sprs. 4 11. inf per Shift.
"	"	"	2	16 (5th Bde H.Q.)	Dismantling & removing building from J. 1. d. 1. 0 to J. 1. c. 45. 05.	
			1		Putting in stumps for above building.	
J. 7. c. 0. 0.	Emergency Road	Lt. GILLESPIE	2	20	Covered 13 yds of road with soil. - laid fascines and covered with earth 13 yds. 7 fascines made - 8 slaps split - Drain deepened at culverts.	
BONNAT Sawmill		"	17	25	20 fascines made & collected. 300 5'6" pickets cut & collected. 30 yds of emergency road fascined & completed at I. 18. c. 1. 5. Staging at baths 50% complete 8 / 8' logs cut & collected. 250' 3" x 2" timber cut. 40' 9" x 3" " "	Mill laid up for part of day for repairs.
I. 5 d. 9. 7.	Making notice boards writing " "	CSM. BROWNLEE	1	-	4 notice boards 2' x 2' made and painted white 3 " " 18" x 12" for Deep dugouts (Map Ref) written.	

# 6TH. FIELD CO AUSTRALIAN ENGINEERS

## WORKS REPORT FOR 24 HOURS ENDING 6 A.M. 30.5.1918.

LOCATION	WORK	PERSON 1/2 WORK	NO OF MEN EMPLOYED		PARTICULARS	REMARKS
			ENG.	INF.		
I.11.b.10.15.	Deep dugout.	Lt. HILL	10	24	9'3" x 7' face extended 2' - 3' x 7' face extended 2'6" with false sets 6' face lagged temporarily.	4. 6hr. shifts of 2 sprs + 6 inf. per shift.
D.14 b. 9. 3.	Gas proofing.	Spr. FOSTER	2	-	Installed 2 single gas proof curtains	
J. 14 c.	Wiring of BRIDGEHEAD Line.	Lt. SEXTON.	1	40	260 yds completed.	
I 18 d. 8. 5.	Bn. H. Q. deep dugout	"	10	38	N. face (9'6" x 7'3") 3' driven + timbered. S Face (7'0" x 3'3") 9'6" temporary tunnel timbered to make 3' of 9' x 6'6" " " (9' x 6'6") 2' driven and timbered.	4. 6hr. shifts of 1 spr. and 5 inf. per face per shift.
			3		Fixed 1. windlass and truck. Cutting axle for second truck.	
I 18. c.	23rd Bn. Aquatic Sports	"	2	-	Fixing Springboards etc.	
J. 1. c. 45. 05.	Bde. H. Q. dug out.	Lt CARLETON	3	-	1 cubicle bunked complete (4 bunks)	Engrs worked 4 shifts
			2	-	1 " " 75%	Inf. " 3 "
			8	-	Altering + spreading sets and lagging in old work 60'.	
			2	-	Trimming + widening N°2 entrance + deepening trench outside for drainage	No face work
			3	-	Erection of Hut 30' x 9' 40% complete.	
			2	-	Salvaging material	
			-	33	Building stone retaining wall to spoil dump Cleaning and scraping floors and assisting sappers	
J. 7. c. 0.0	Emergency Rd.	Lt GILLESPIE	3	20	14 yds. of road made with fascines. 5 yds. of which is also laid with slabs. Culvert N°3 excavated and 50% constructed. 45. slabs split + 47 fascines made and carted to job.	
Bonnav Mill		"	18	30	20 fascines made and collected. 300 9'6" pickets cut " 17 yds. of emergency Rd. at I. 18. c. 1.5. fascined and completed. Staging at baths 75% completed. 400' 1 1/2" Lagging cut. 250' 3" x 2" Timber " 30' 4" x 2" " " 200' 6" x 2" " " 40' 9" x 3" " "	
I 5. d. 9. 7.	Sign writing	C.S.M. BROWNLEE	1	-	3 Notice boards 2' x 2' for HEILLY Avoiding track completed.	

APPENDIX

# OTH. FIELD CO AUSTRALIAN ENGINEERS

## WORKS REPORT FOR 24 HOURS ENDING 6 A.M. 31-5-1918.

LOCATION	WORK	PERSON 1/2 WORK	NO OF MEN EMPLOYED		PARTICULARS	REMARKS
			ENG.	INF.		
I. 11 b 10. 15.	Deep dugout.	LT. HILL	10.	24.	3'x7'. Face extended 5' timbered (false sets) and lagged.	4. 6hr shifts of 2 Sps and 6 inf per shift [one shift of Inf. for 3hrs only].
D. 14. b. 9. 3.	Gas proofing.	2/col GODWIN	2	-	3. Single Gas curtains installed.	
J. 20 a.	Winning of BRIDGEHEAD line	LT. SEXTON.	2.	35.	210 yds. completed.	
I. 18. d. 8 5.	Bn. H.Q. Deep dugout.	"	10	38	N. face (9'6" x 7'3") excavated and timbered 3'. S. face (9' x 6'6") 2'6" " " "	3. 6hr. shifts of 1 Sp & 5 inf. per shift 12 men to 6AM shift withdrawn at 1.30. A.M.
			2	-	Making truck	
J. 1. c. 45. 05.	Bde. H.Q. Dug out.	LT. CARLETON	21	33.	Reversing & spacing sets and lagging 60'. Erection of shed 75% complete - fixing frames for gas curtain to No 2 entrance. Building retaining walls to spoil heaps and carting stone for same. Finishing drainage trench from No 2 entrance. General cleaning up and scraping of floors	
J. 7 c 0.0.	Emergency Road.	LT. GILLESPIE	3	20	Cut 50 slabs and made 36 fascines - 40 yds of road relaid with earth where necessary. Culvert No 3 about 50% complete. Drain No 3 deepened to 6' wide x 2'6" deep	
BONNAY Sawmill		"	18	30	20 fascines made and collected. 210 - 5'6" pickets cut and collected. 12 yds emergency Road at I. 18. C. 1. 5. fascined and completed. Staging at baths completed. 250' of 3"x2" timber cut. 100' " 4"x2" " " 200' " 6"x2" " " 200' " 2" lagging "	
I. 5. d. 9. 7.	Sign writing	CSM. BROWNLEE	1	-	1 Notice board. 2'x2' for HEILLY Avoiding track completed.	

APPENDIX

I

37

#### 4. MAPS &c

A list of Maps and Air Photographs handed over is attached.

#### 5. WORK IN HAND.

Completion of second entrance to D.D.O. at Rt. Bn H.Q. (Plan herewith). The main gallery must be extended about 4 feet eastwards to connect with this entrance.

Company H.Q. for Left Bn — one still to be built for reserve company.

Shelters for M.G. crews — all north of old brigade boundary marked on hand over maps and still to be done.

Completion of Front Line (EMMA TRENCH, PIONEER TRENCH and connected line of posts forward of the latter in E.2.). Completion of two C.T.'s from PIONEER TRENCH to above mentioned connected line — the left one to serve also as a fire trench shooting to the left.

Connecting Support and Reserve Company Posts in Left Battalion area.

Working Front Line and outposts (I am supplying only one or two sappers per battalion to assist in putting out concertinas properly).

Appendix II

Hand Over Notes. 6th Field Coy RE 1.5.18.

Ref. Maps. 57.D. SE and 62.D. NE.

#### 1. DISPOSITIONS:-

Forward Section:-	D.6.c.0.7
Middle " (with supernumerary officer)	D.4.c.1.3
Coys H.Q.	
2 Rear Sections:-	C.5.a.8.7
Horse Lines:-	about U.29 C.O.O.

#### 2. R.E. DUMPS:-

CORPS:-	QUERRIEU
DIVISIONAL:-	BAIZIEUX (C.12.a.8.7)
Forward:-	D.12.d.5.6.
	D.6.c.0.7.
	V.30.d.7.4.

List of materials on company dump is attached.

#### 3. DETACHED DETAILS:-

3 men on Pumping Station WARLOY  
 3 " " Divisional RE DUMP BAIZIEUX  
 2 " " Div Artillery works under  
 Capt WAGSTAFF (Engineer Officer attached  
 D.A. and living at 4th Aust. F.A. Bde. H.Q.  
 C.12.b.9.6.)

WORK IN HAND (contd)

(3)

Wiring line immediately forward of MILLENCOURT.

Deep dug outs for C & D Battalion HQ's at D.5.C.11. and V.23.C.4.7. (This work is a result of Div. instructions that no troops were to be quartered in LAVIEVILLE or MILLENCOURT.)

Connecting Posts in VILLA RESERVE and COPSE SUPPORT lines.

6. WORK PROPOSED

Connecting and wiring line of Posts in W25.C.

Improved HQ for 1st Battalion - present structure is very weak.

Wiring COPSE SUPPORT line.

Additional entrance to extended gallery of dug out at D.12. d 5.6. brought out on south side of AMIENS - ALBERT road for MG covering valley towards BUIRE.

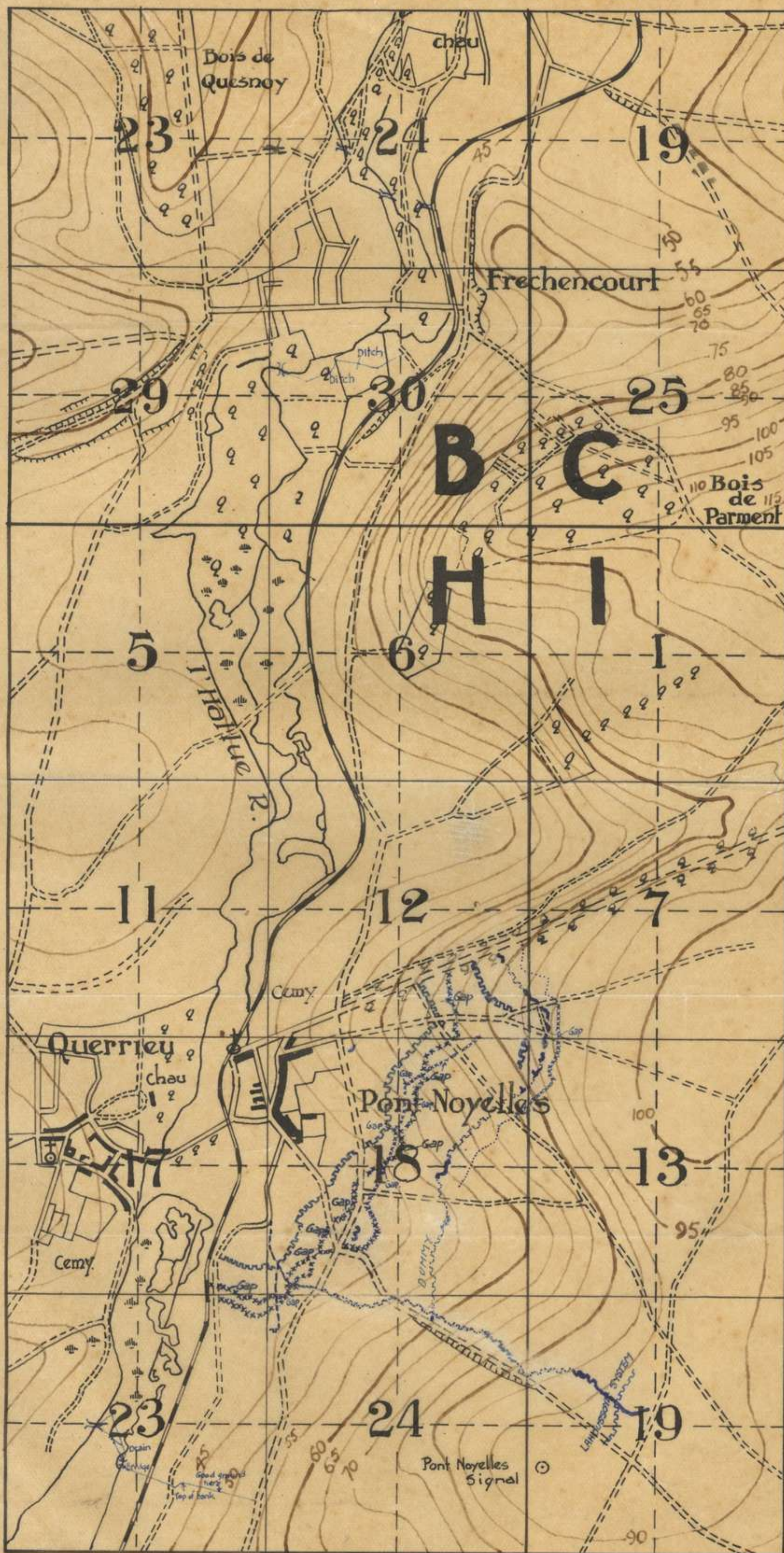
M. H. H. Major  
OC. 6th Field Co RE

82

## QUERRIEU BRIDGEHEAD DEFENCES.

APPENDIX III

40



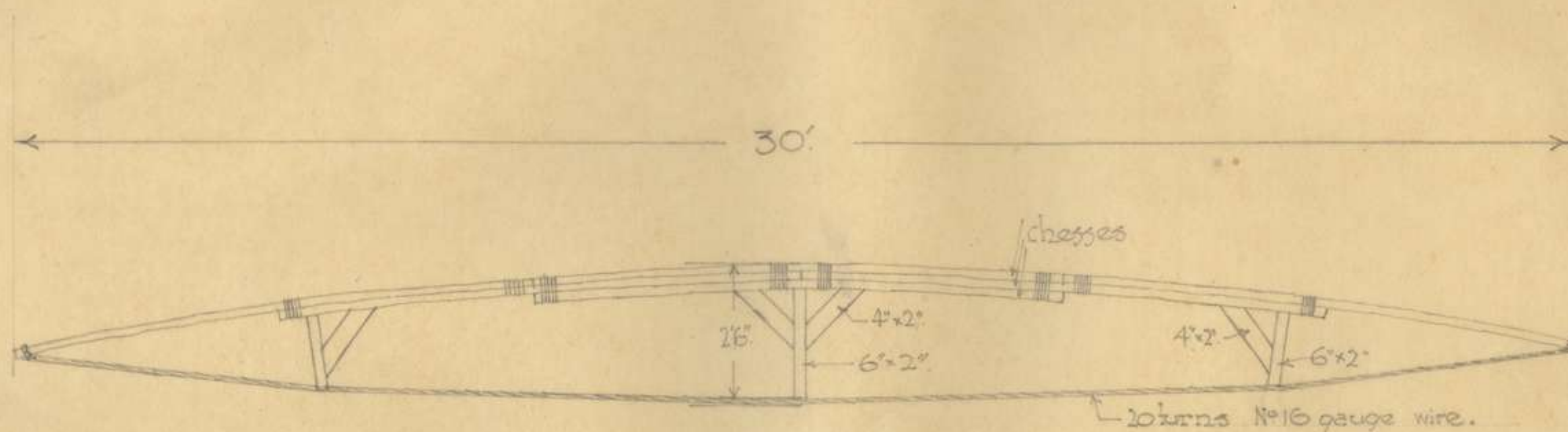
Part of Sheet 62 D N.W.

1:20,000.

6th. Field Co. A.E.  
May 1918.

Appendix IV

2



LIGHT INFANTRY BRIDGE 30 ft. SPAN —

Placed across River ANCRE at several points  
during VILLE - Sur - ANCRE operation 18/19. - 5.1918

6th FIELD CO AUSTR. ENGRS.

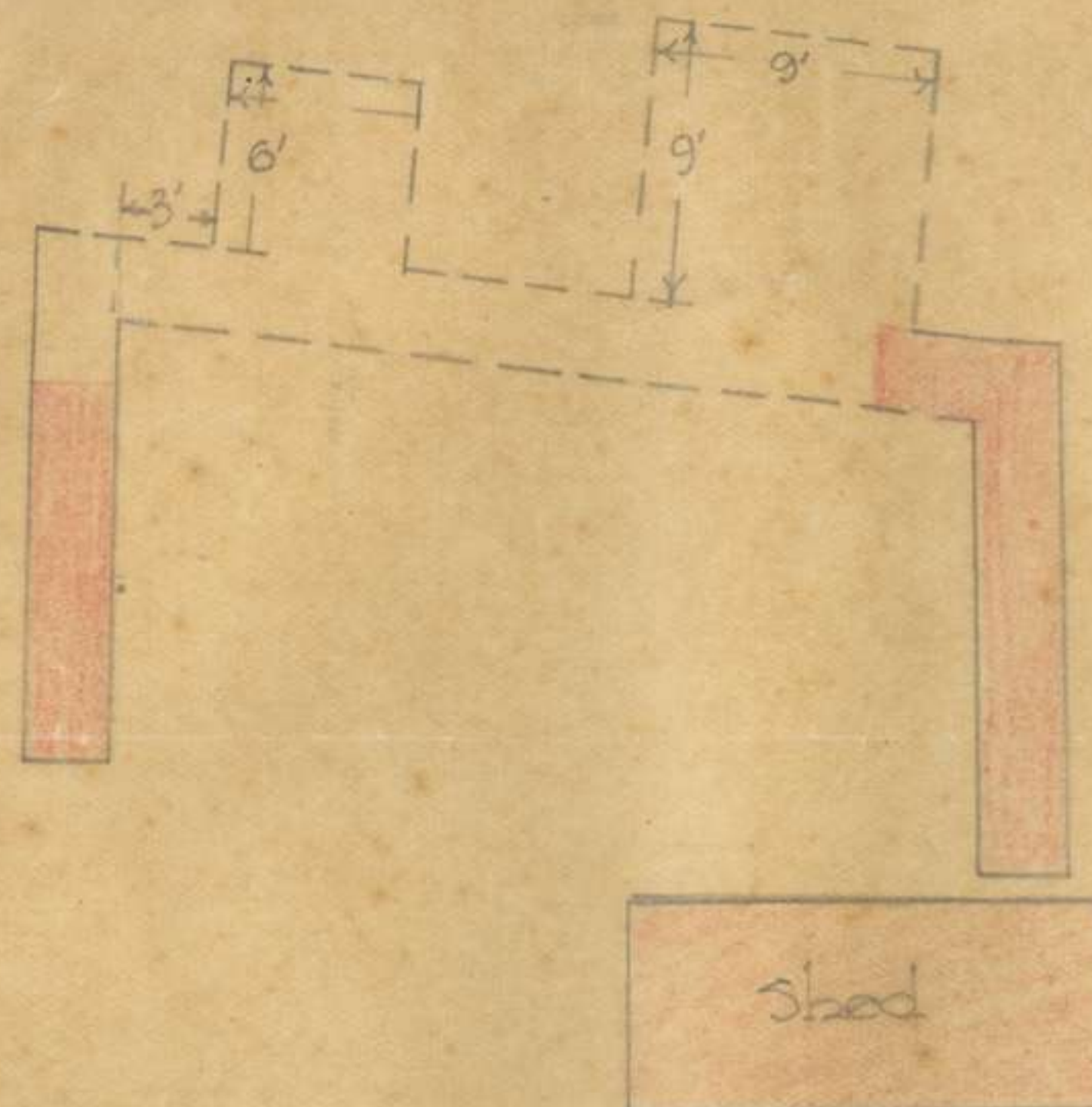
SCALE: 4 feet to 1 inch —

41

APPENDIX. IV

41

Appendix V



PROPOSED DUGOUT  
for COMPANY H.Q. at D.30.2.9.1.

SCALE 10' to 1"

Work done shown red. Correct to 20.5.18.

APPENDIX.

V

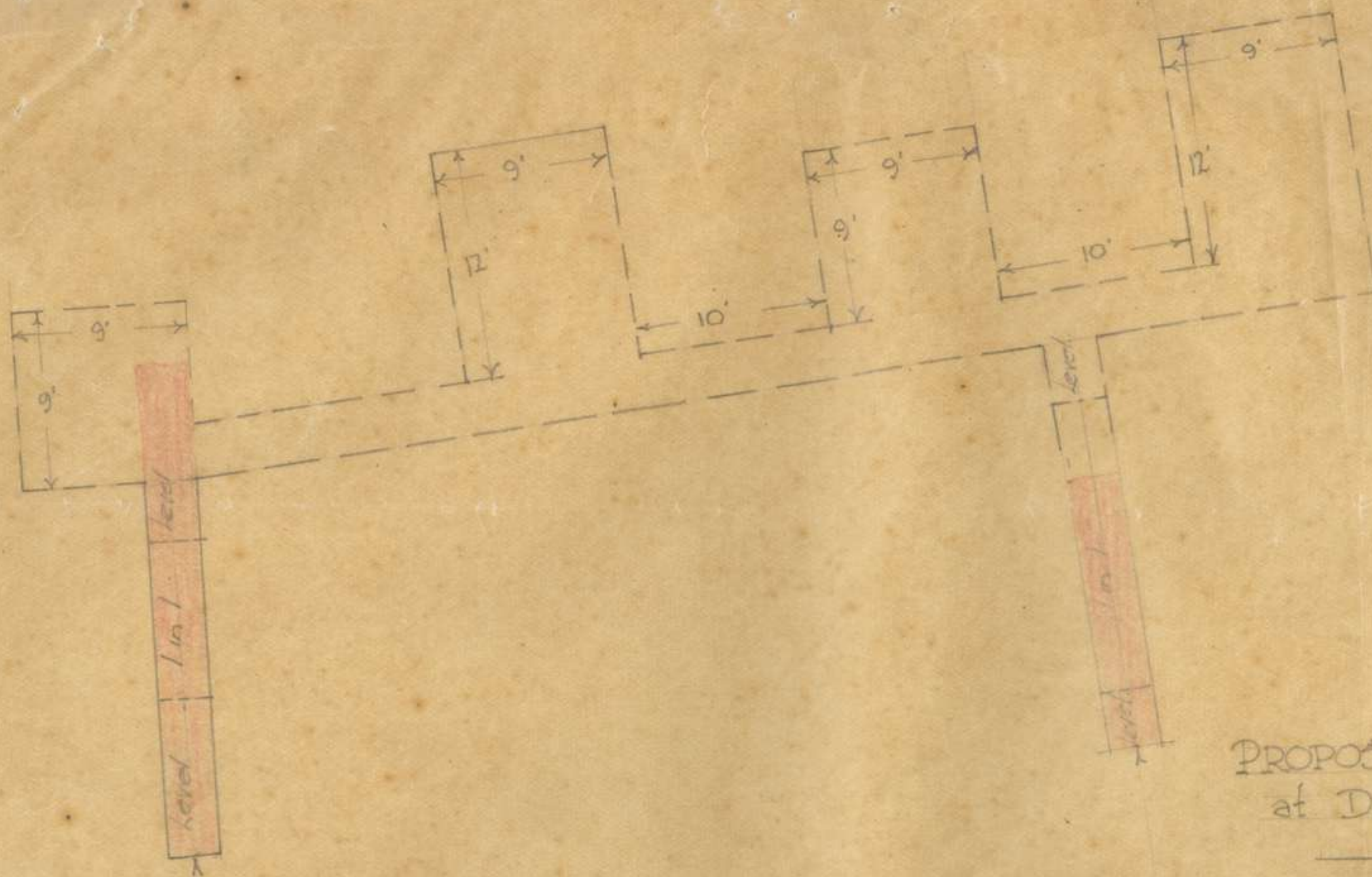
42

42

42

42





PROPOSED DOUBLE CO H.Q.  
at D. 27 a. 1. 4 (62D)

SCALE: 10 ft to 1 inch

22' 10 1/2"

92° 1'

51' 2 1/2"

27' 9"

82° 47'

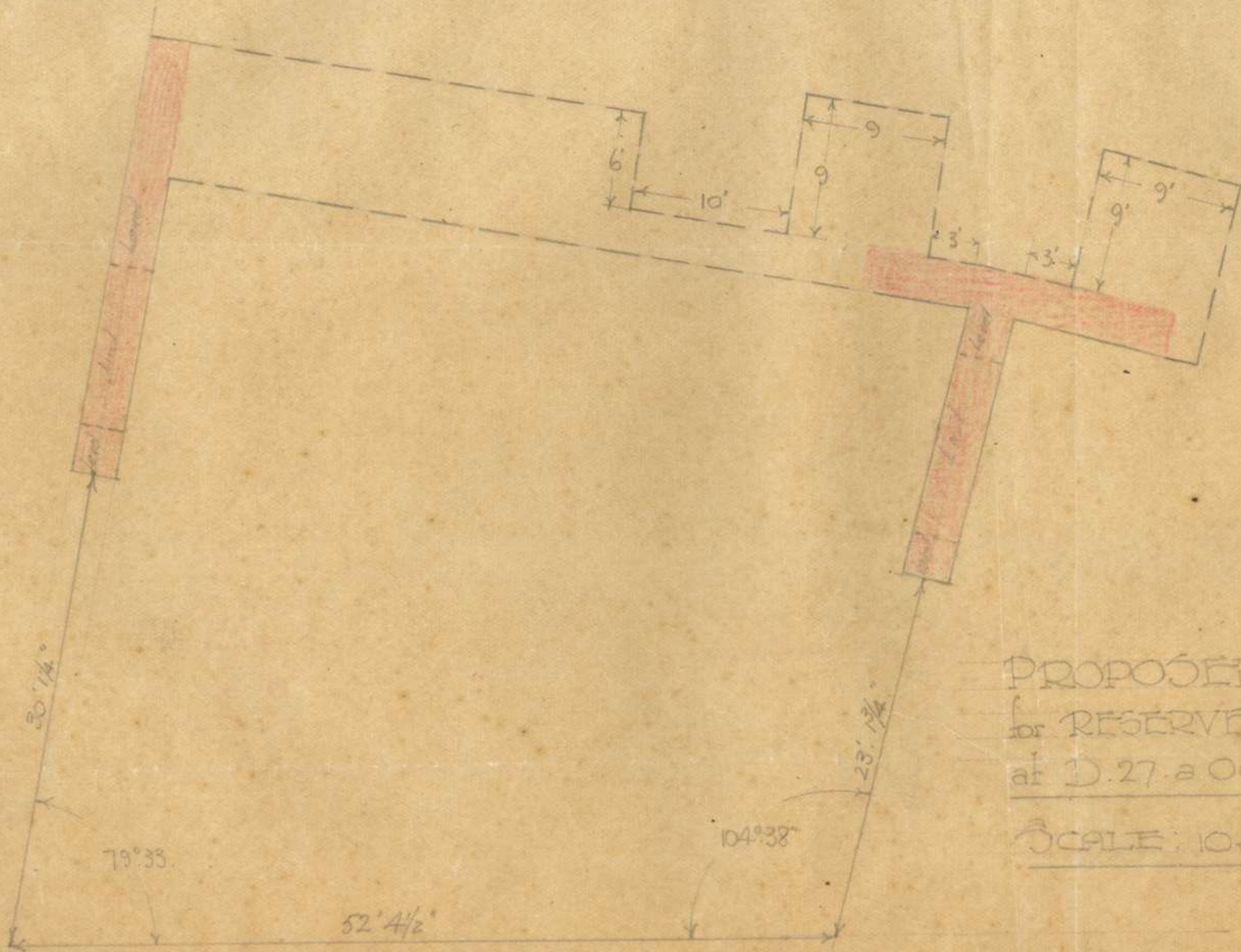
43

APPENDIX. I

413

82

4D

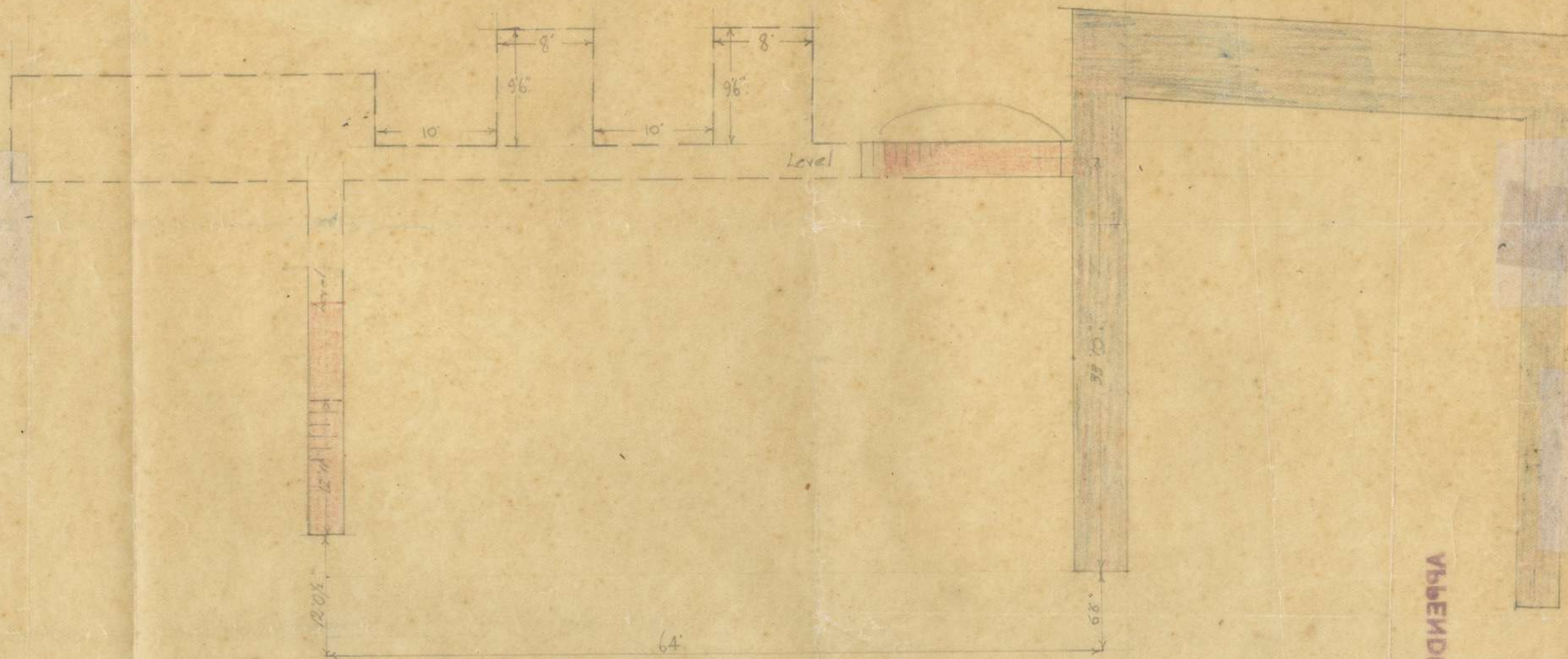


PROPOSED H.Q.  
for RESERVE BATTALION  
at D.27.200.35 (620.)

SCALE: 10ft to 1 inch.

Work done shows red up to 20.5.18

APPENDIX I 44



PROPOSED EXTENSION  
 of DEEP DUGOUT  
 for RIGHT BATTALION HEADQUARTERS  
 at J.H. 59. (620)

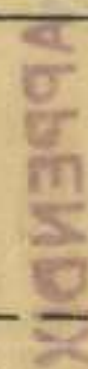
SCALE: 10 feet to 1 inch.  
 Work done shown red. Up to 20.5.18.

APPENDIX

45



Appendix VI



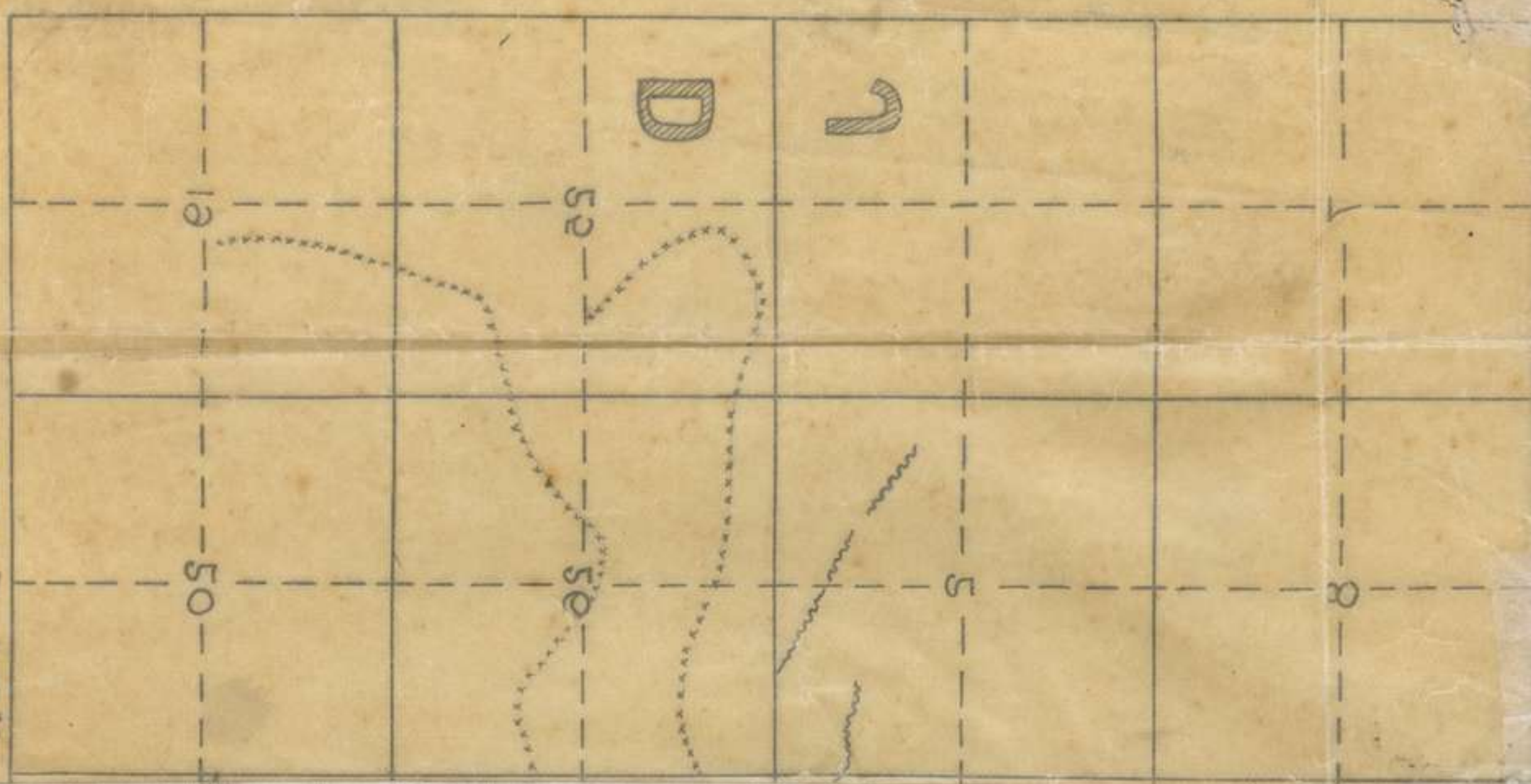
20,000.

Red shows work done by 6th Field Co A.E.

To 20.5.18

Part of Sheet 05

WORKS MAP



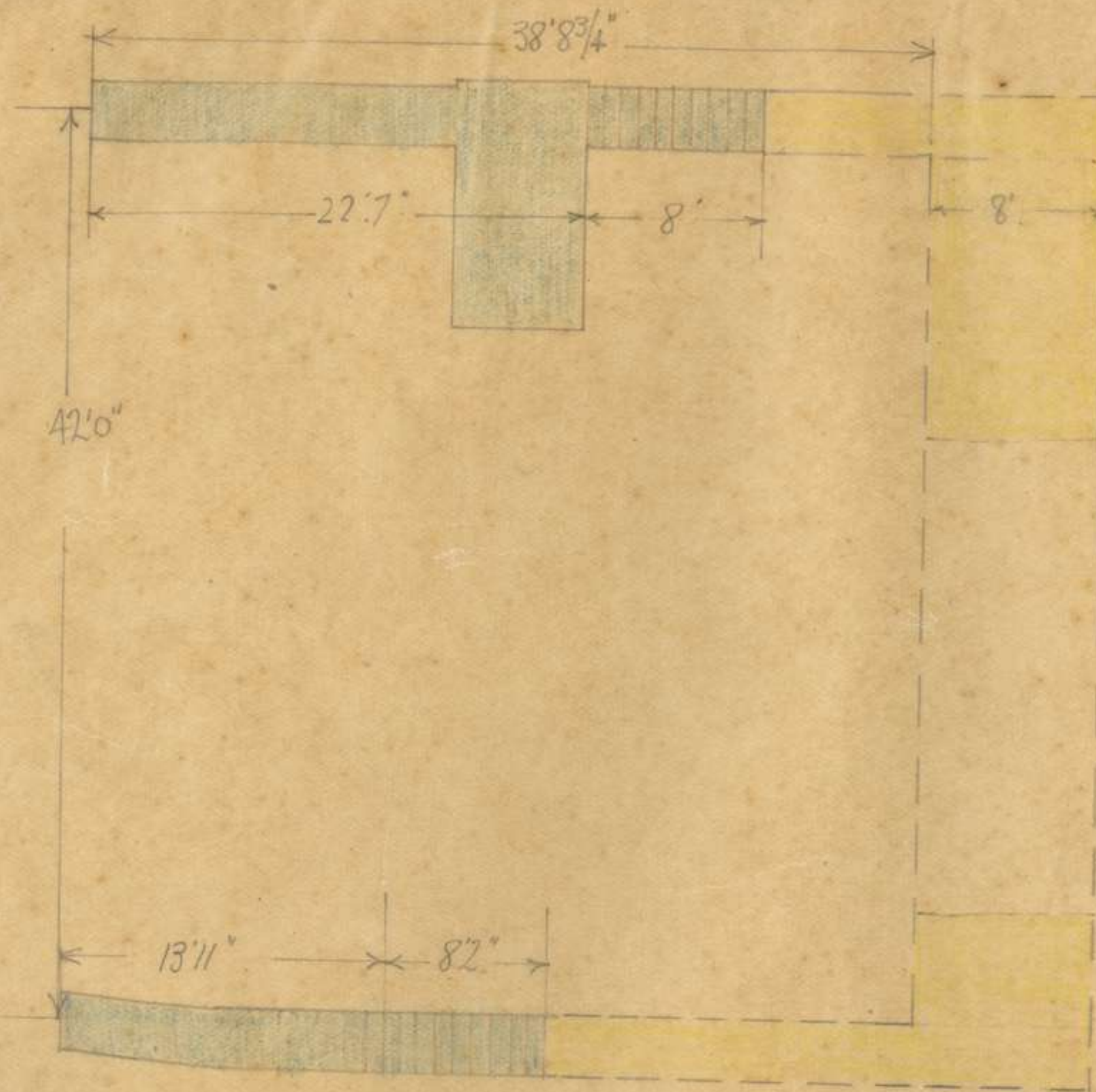
1:50,000



APPENDIX

Appendix II

Appendix VII <sup>82</sup>



Work handed over by 7th F.C. AE  
on 20 5-18 shown blue

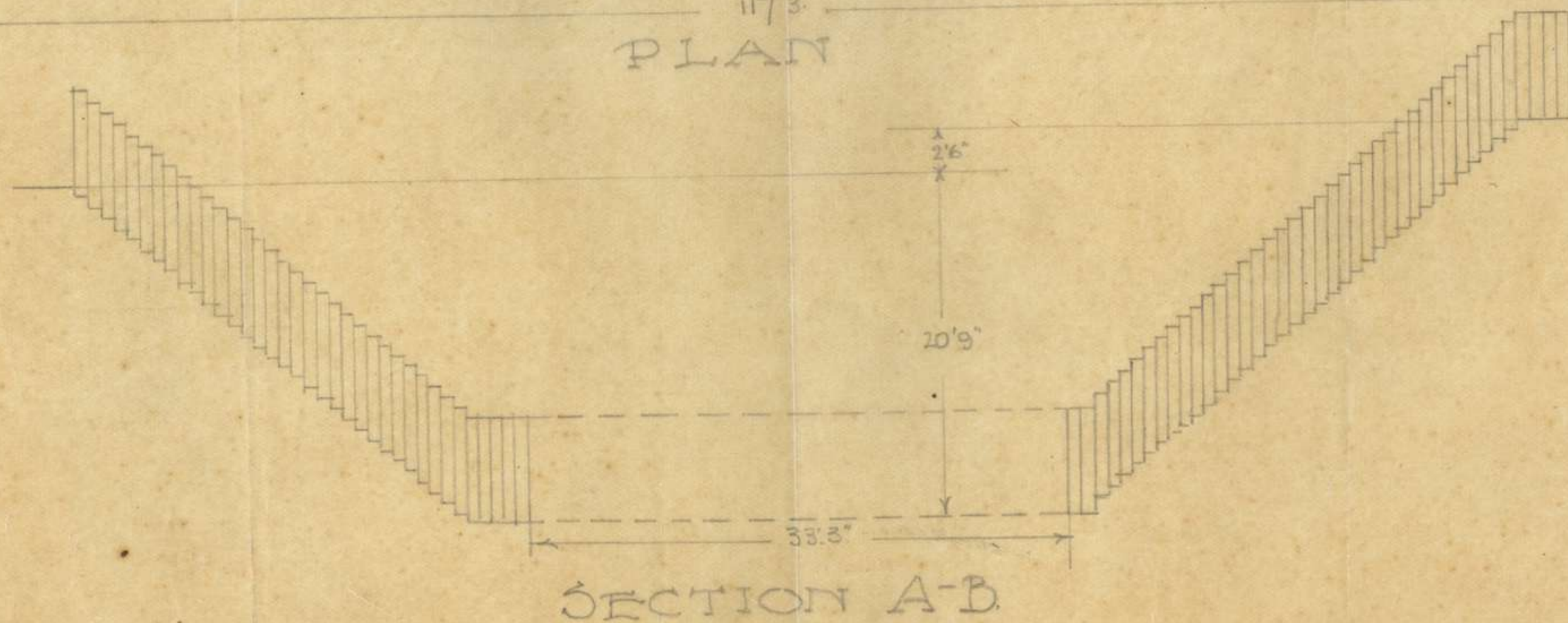
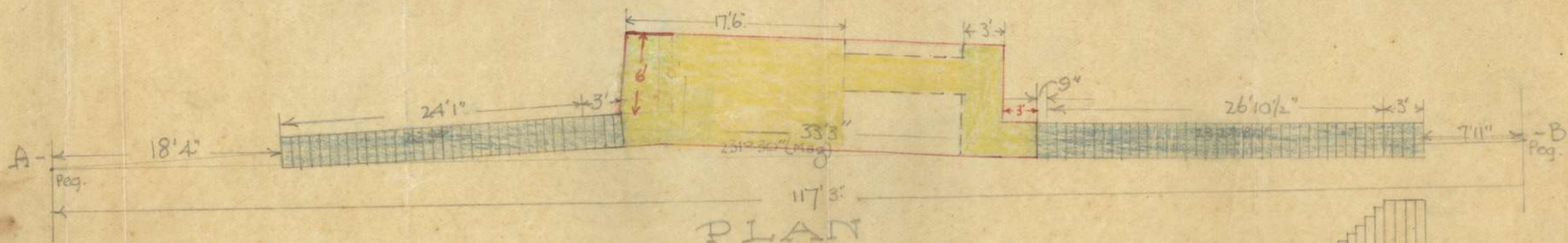
Work done by 6th F.C. AE  
to 31 5 1918 shown yellow

DUGOUT for Bn H.Q. at I 18 d 8.5. (620)  
SCALE. 10ft to 1 inch.

47

APPENDIX.

VII 47



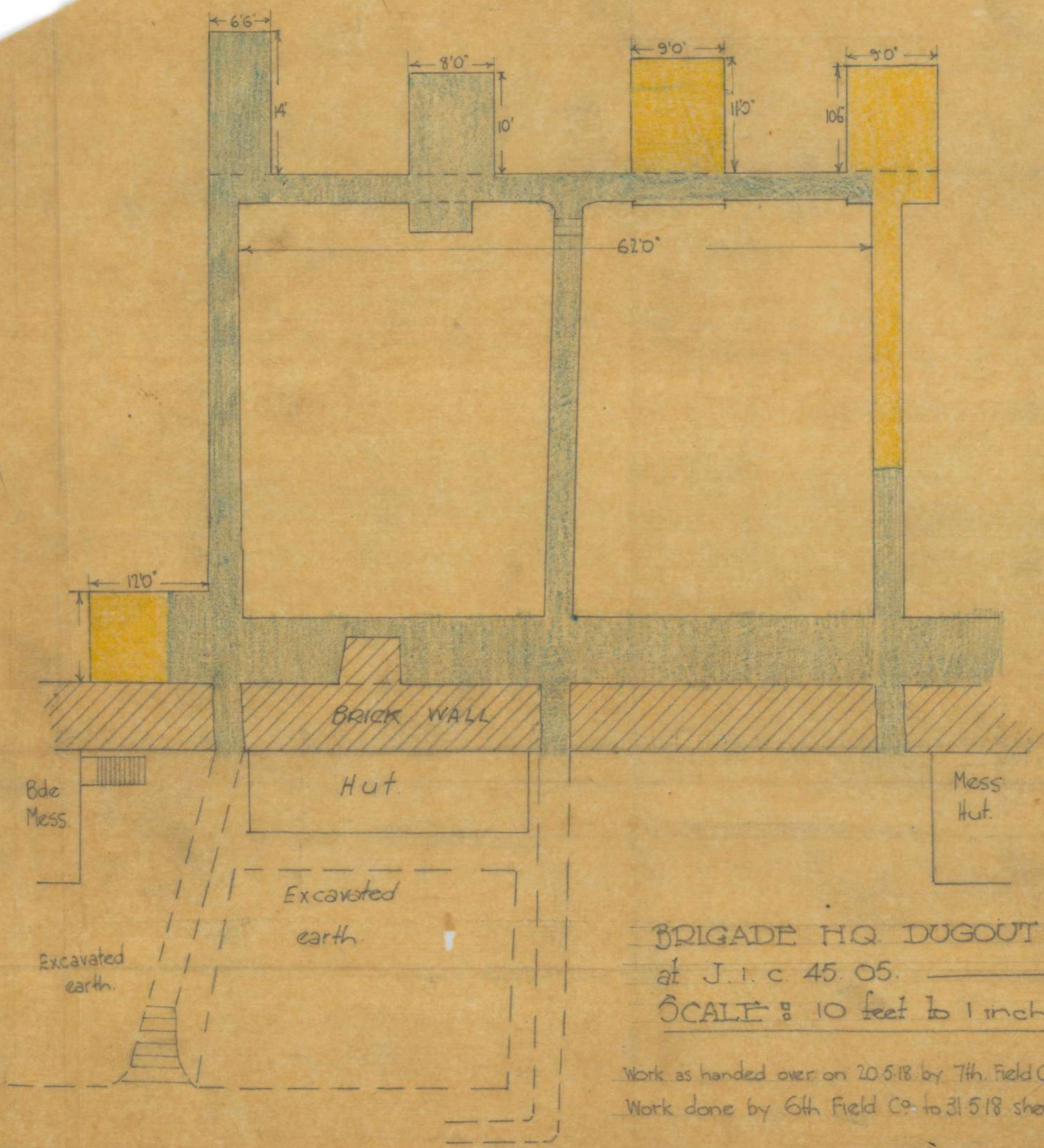
DEEP DUGOUT in course of  
construction at I.I.I.B.I.3.

Work handed over by 7th Field Co A.E.  
on 20.5.18 shown blue  
Work done by 6th Field Co A.E.  
to 31.5.18 shown yellow.

SCALE: 10 ft to 1 inch

APPENDIX.

48



BRIGADE HQ DUGOUT  
at J. I. C. 45. 05.  
SCALE : 10 feet to 1 inch.

Work as handed over on 20.5.18 by 7th. Field Co. shown blue  
Work done by 6th Field Co. to 31.5.18 shown yellow.

11/11/18

APPENDIX

24

APPENDIX

49  
1111

58

Build mounds 20 blsf. Alt. rd 81.2.05 no 7500 bsdone 26 show  
molly mounds 81.2.15 of 20 blsf Alt. rd 2000 show

TOOON OH 4CADIQ  
20 34 2 1 L 16  
QCATL 8 10 test 01 8 7.11.00

