

**AWM4**  
**Australian Imperial Force unit war diaries,**  
**1914-18 War**

Engineers

**Item number:** 14/21/45

**Title:** 2nd Field Company, Australian  
Engineers

September 1918



AWM4-14/21/45



**CONFIDENTIAL.**

ORIGINAL. ✓ *Original*  
DUPLICATE.  
TRIPLICATE.

20

Australian Imperial Force.

# WAR DIARY

OF

2nd FIELD COMPANY ENGINEERS. A. I. F.

FOR

SEPTEMBER

1918.

Signature of Officer compiling

*G. H. Clark M.*

Signature of Officer Commanding

*G. H. Clark M.*

APPENDIX



# WAR DIARY

Army Form C. 2118.

Instructions regarding War Diaries and Intelligence Summaries are contained in F. S. Regs., Part II. and the Staff Manual respectively. Title pages will be prepared in manuscript.

## INTELLIGENCE SUMMARY.

2nd Field Co. Engrs. A.I.F.  
September 1918

(Erase heading not required.)

Place	Date	Hour	Summary of Events and Information	Remarks and references to Appendices
GAILLY.	1.9.18		<p><u>LOCATION of COMPANY.</u> - GAILLY (sur Somme) Sheet 62D. P.12.b.9.9.</p> <p><u>DISPOSITION of COMPANY.</u> - With Unit. 6 Officers. 171 O.R.  Attached from 1st. Aust. Tun. Co. 1 Officer.  Detached Div. Engrs. 1st Aust. Div. 3 O.R.  D.H.Q. 1st. Aust. Div. 1 "  R.E. School, Rouen 1 2  Aust. Corps R.E. Yard. 11 "  Town Major. Corbie, 4 "  Furlough, Paris, 1 "  " England. 1 Off.- 15 "</p> <p><u>STRENGTH of COMPANY</u> - 7 Officers. 210 O.R. 54 Horses. 15 Mules.</p> <p>9. to 9.30 a.m. Company parade. Rifle, equipment and Gas mask inspection.  9.30 to 11.30 a.m. No. 1 Sec. on Bridging, Lecture on Map reading and reconnaissance.  No. 2 Section on Guards and sentry. No. 3 Section on Lewis Gun. No. 4 Section on Section drill and lecture on advantage of taking cover  Afternoon being devoted to Recreational Training i.e. Swimming and Football Match.  6 O.R. proceeded on furlough. Weather.- Fine.</p>	
	2.9.18		<p>Parade 9.30 to 9.30 a.m. for Rifle inspection and Gas drill. No. 1 Section on Section drill &amp; Lecture on the advantage of taking cover, No. 2 Sec. on Bridging and Lecture on Map reading &amp; reconnaissance, No. 3 Sec. on Guards and Sentry, No. 4 Sec. on Lewis Gun. from 9.30 a.m. to 11.30 a.m. Recreational training carried out during the afternoon.  2 O.R. from Hospital. 2 O.R. from Wounded. Weather.- Fine.</p>	
	3.9.18.		<p>Party of Coy. Officers &amp; Senior N.C.O.'s under Major Croker "MC" and Capt. Clinton "MC" proceeded by Motor Lobry to Peronne which had recently being captured from the enemy, and an inspection of the area was carried out, the notable work being reconnaissance of area and inspection of the area.</p>	

Remarks and references to Appendices

APPENDIX

File

File

File



# WAR DIARY

Army Form C. 2118.

Instructions regarding War Diaries and Intelligence Summaries are contained in F. S. Regs., Part II. and the Staff Manual respectively. Title pages will be prepared in manuscript.

## INTELLIGENCE SUMMARY.

(Erase heading not required.)

2nd Field Co. Engrs. A.I.F.  
September 1918

20

Place	Date	Hour	No.2.	Summary of Events and Information	Remarks and references to Appendices
GAILLY.	3.9.18			Remainder of Company was employed as per Syllabus of Training (Appendix No. ) Rifle, equipment and Gas inspection at 9 a.m. parade and then on Pontoon Bridging Map reading and reconnaissance and Lewis Gun Instruction. One section acting as duty section supplying guards and all fatigues Parties were also employed on making crosses for the 6th & 10th. Infantry Battalions. Weather.- Fine. Afternoon spent in recreational Training.	Appendix GAILLY
	4.9.18.			Major G.N. Croker "MC" proceeded on Furlough to England. Capt. R.A. Clinton "MC" in charge on Company. Company employed as per Syllabus of Training. 4 O.R. to Hospital. 1 O.R. Transferred to 3rd Div. Sig. Co., Weather. Fine.	do GAILLY
	5.9.18			Syllabus of Training proceeded with during the day. Coy. Tailor employed cleaning and blocking felt hats. Weather.- Fine. Capt. F. S. Davidson, from furlough	do GAILLY
	6.9.18.			Usual Coy. parade at 9.30 a.m. after which sections carried on independently as per Syllabus. 6 O.R. from furlough. 2 O.R. to Hospital. Weather Fine.	do GAILLY
	7.9.18			Company parade at 9 a.m. At 9.30 a.m. Nos. 1 & 3 Sections carried on with Section Drill, No. 2 Section on Lewis Gun instruction and practice, No. 4 Section employed as Duty Section. At 12.45 p.m. entire Company paraded and were march off to Divisional Baths for Hot Bath and clean change of underclothing. 4 O.R. rejoined unit from works at Town Major's Office, Corbie. 3 O.R. from Hospital. 1 N.C.O. to R.E. Training School, Rouen. Weather Fine.	do GAILLY
	8.9.18.			Under instructions from 2nd Inf. Bde. the following move was carried out.- Reveille, 6 a.m. Breakfast, 6.30 a.m. Company paraded at 9 a.m. and moved off to embussing point on the CORBIE - CERISY Road, reaching there at 9.45 a.m. At 10.30 a.m. embussing was commenced and at 11 a.m. Bus column moved off through Cerisy, Bray and Ham to Halle (Sheet 62C, I.14.e.) where Coy. debussed at 1.30 p.m. and moved on to bivouac at Mont. St Quentin. Sheet 62C, I.14.e. Company Transport left lines at Gailly at 8 a.m. and joined	GAILLY

Abg 45 Wk. Wm 42/1160 355,000 12/16. D. D. & L. Forms C. 2118/14

APPENDIX



# WAR DIARY

Army Form C. 2118.

Instructions regarding War Diaries and Intelligence  
Summaries are contained in F. S. Regs., Part II.  
and the Staff Manual respectively. Title pages  
will be prepared in manuscript.

## INTELLIGENCE SUMMARY.

(Erase heading not required.)

2nd Field Co. Engrs.  
September 1918.

Place	Date	Hour	No. 3.	Summary of Events and Information	Remarks and references to Appendices
GAILLEY to MONT ST QUENTIN.	8.9.18			Brigade column at MORGOURT at 9 a.m. moving with the column to Coy. bivouac at Mont. St. Quentin which was reached at 9.30 p.m. Weather.- Fine in Morning :- Showery in Afternoon & evening. 6 O.R. proceeded on furlough.-	G.H.H.
MONT ST. QUENTIN I.16.a.Cent	9.9.18.			Sections employed in forming Transport Lines, erecting bivouacs, cleaning up Coy. Lines, Salvage of Material both British and German, burial of bodies and Horses. Lieut. White proceeded on furlough. Weather Cold & Showery.	G.H.H.
	10.9.18			9 a.m. Rifle, equipment and Gas helmet inspection, after which Kit inspection was held and the Company was divided into parties for Salvage, burials and cleaning up. 1 O.R. on Furlough, 1 O.R. to Field Amb. 4 O.R. from Hospital. Weather, Cold and Wet.	G.H.H.
	11.9.18			Reveille, 5 a.m. Breakfast. 6 a.m. Entire Company Paraded at 7.45 a.m. and Company moved from billets through DOINGT and CARTIGNY to old stables at Sheet 62c. I.34.c.8.5. reaching there at midday. During the afternoon sections were employed building humpies. Rain fell heavily during the latter portion of the march but cleared off shortly before reaching billets. 1 O.R. to 4th Army Cookery School, 1 O.R. furlough Paris, 1 O.R. furlough England. 1 O.R. from furlough and 1 O.R. from Hospital.	G.H.H.
I.34.c.8.5.	12.9.18			Duty Section No. 1. Sec. on Camp fatigues, fixing pumps and loading material on to Waggon, also supplied guard. No. 2 Section on reconnaissance of Water Supply in Squares J. 24, 28, 32, 33, and P. 3. Remainder of Coy. on parade at 9 a.m. for rifle and Gas mask inspection, after which they were employed on the construction of Bomb proof protecting walls. Weather. Cold and showery. Transport employed on Carting R.E. Material.	G.H.H.
do.	13.9.18.			No. 1 Sec. constructing foot bridge across the Cologne River for the use of the 2nd. Inf Bde. No. 2 Sec. employed on improving water points reconnoitred yesterday. No. 3 Section erected Marquee for Advanced Dressing Station at Marquais but owing to consistent shelling position was evacuated and Station was erected at Tincourt. Balance of Company paraded at 9 a.m. for equipment and Gas mask inspection, after which they cleaned up Camp lines and continued with the construction of bomb proof walls. 3 O.R. from Furlough. Weather. Fine.	G.H.H.

A6945 Wt. W11422/M1160 350,000 12/16 D. D. & L. Forms/C./2118/14.

APPENDIX



# WAR DIARY

Army Form C. 2118.

Instructions regarding War Diaries and Intelligence Summaries are contained in F. S. Regs., Part II. and the Staff Manual respectively. Title pages will be prepared in manuscript.

## INTELLIGENCE SUMMARY.

(Erase heading not required.)

2nd Field Co. Engrs.  
September 1918

20

No. 4.

Summary of Events and Information

Remarks and references to Appendices

I.34.c.8.14.9.18 8.5. to ROISEL			No. 3 Section as duty Section. No. 3 Sec. supplied party for building orderly room and improving Camp. No. 1 Section improving water points and Nos. 2 & 4 Section improving wells in Area. At 4 p.m. Orders were received from the C.R.B. for this unit to relieve the 1st Field Co. stationed at ROISEL, and at 6 p.m. dismounted portion of the Company moved out of billets in I.34.c. and reached ROISEL at 8.30 p.m., taking over billets from the 1st Field Co. Engrs. who were occupying the Support Brigade Area of Left Divisional Area, Australian Corps, the relieved Coy. moved into billets vacated by this unit in the Reserve Area, Left Division Aust. Corps. Lieut COLLINS, "MC" proceeded to Aust. Corps Troops as Adjutant. 4 O.R. to Australia on furlough. 3 O.R. on furlough Nice-England. 1 O.R. furlough, France.	
ROISEL. 15.9.18. K.23.a.5.1. Transport Lines. TINCOURT.			During the morning Company Transport moved to lines occupied by 1st Field Co. Engrs. at TINCOURT 1st Field Co., taking over the lines vacated by this unit. Company employed on erecting Notice boards on wells and reconnaissance of Roads and Water supply in the Support Brigade Area. During the day Company billets were heavily shelled. In the afternoon the Orderly room was blown in and later on a shell burst in the Officers Mess killing Capt. F.S. Davidson and 2 O.R. belonging to this unit, and Lieut. Kerslake of the 1st Field Co. Capt R.A. Clinton "MC" Acting O.C. Coy. being buried and wounded. Lieut Clark took over command of Coy. and Coy. H.Q. was moved to the Eastern outskirts of ROISEL in the evening. 1 O.R. was wounded during the morning. Weather.- Fine.	APPENDIX
ROISEL to. K.26b.4.2	16.9.18.		At 6.30 a.m. Company moved from billets on outskirts of ROISEL and took up position in shelters at K.26.b.4.1. The morning was spent erecting and improving shelters and general reconnaissance of forward area was effected during the afternoon. Weather Fine Transport Lines are still stationed at TINCOURT.	
Transport. TINCOURT.	17.9.18.		In addition to general reconnaissance, the salving of material and the erection of Gas proof doors at 5th, 7th, & 8th Battalion H.Q. was proceeded with. At 2nd Inf. Bde. H.Q. Sappers were employed making table and forms. Water points in area are being repaired and where possible horse troughing erected and connected to water supply by means of chutes. Weather.- Fine.	

A6945 Wt. W11422/M1160 350,000 12/16 D. D. & L. Forms/C.2118/14.



## 02

20

~~INTELLIGENCE SUMMARY.~~

(Erase heading not required.)

57



# WAR DIARY

Army Form C. 2118.

Instructions regarding War Diaries and Intelligence  
Summaries are contained in F. S. Regs., Part II.  
and the Staff Manual respectively. Title pages  
will be prepared in manuscript.

## INTELLIGENCE SUMMARY.

(Erase heading not required.)

2nd Field Co. Engrs.  
September 1918.

20

Place	Date	Hour	No. 6.	Summary of Events and Information	Remarks and references to Appendices
L.10.a.Cent. 219.18 H.Q. Nos. 1,3,4, Tincourt. Transport & Nos 2 Section.				During the day the Company was employed in salving tapes from J.O.P., Reconnaissance, erecting Gas proof doors, cleaning and renovating dugouts. 8 Tank mines were discovered. Parties were also employed on Water supply, erecting & repairing where necessary. 8 O.R. from furlough. 3 O.R. from Hospital 1 O.R. to Hospital Weather Fine.	Full
	22.9.18.			Company employed putting wells into working order, erecting gas-proof doors, repairing dug-outs and reconnaissance for Land and Tank mines. Several mines were located, some being destroyed and the remainder rendered useless by having their plugs <del>out-in</del> screwed in. 9 O.R. to Australia on furlough and struck off strength. 3 O.R. to England on furlough Weather. Wet.	Full
	23.9.18.			Renovating of dugouts with salvaged material, preparation of accommodation at Sugar Mill, Erection of windlass and general improvements to water supply was carried out during the day. In accordance with instruction re relief of the 1st Australian Division by the 30th American Division. Lieut. Hill & 2 N.C.O's to 1st Field Co. with "Handing-Over Report" for incoming American Engineers. Nos. 1, 3 & 4 Sec. & H.Q. left deep dugouts at L.10.a.Central and proceeded to Company Transport Lines at TINCOURT. After about 1 hours marching arrangements were made by O.C. for Sapper to proceed the remainder of the journey by Motor Busses and transport lines were reached at 10.30 p.m. Prior to leaving dugouts at L.10.a.enemy heavily shelled the locality. Weather.- Fine.	APPENDIX Full
TINCOURT J.24.cent	24.9.18.			Under orders from C.R.M. pontoons were collected, duty Section being No. 2 Sec. During the morning, Rifle, equipment and gas mask inspection was carried and the remainder of the day was spent in general fatigues. At 11.30 p.m. orders were received for transport to proceed to Rest Area. 1 O.R. from Pottoon Park. Weather Fine.	Full
	25.9.18.			Company Transport, less 1 Limber and water cart, was loaded and ready to move out at 7 a.m. & at 7.30 a.m. move commenced. Advance party under Lieut. Rosman, together with remaining limber proceeded to LA CHAPELLETTTE. Staging for night of 25/26th for Transport was CERISY.	Full 6

A6945 Wt. W11422/M1160 350,000 12/16 D. D. & L. Forms/C.2118/14.



# WAR DIARY

Army Form C. 2118.

Instructions regarding War Diaries and Intelligence Summaries are contained in F. S. Regs., Part II. and the Staff Manual respectively. Title pages will be prepared in manuscript.

## INTELLIGENCE SUMMARY.

(Erase heading not required.)

2nd Field Co. Engrs.  
September 1918.

20

Place	Date	Hour	No. 7.	Summary of Events and Information	Remarks and references to Appendices
TINCOURT	25.9.18			During the day remainder of Company stood by awaiting orders from the 2nd. Aust. Inf. Bde. regarding the entrainment for REST AREA. 1 O.R. from R.E. Schhol. 1 O.R. Reinf. 3 O.R. from Hosptl. Weather. Dull & Cold.	
	26.9.18.			Advance party under Lieut. Rosman reached LONG REST AREA and arrangements were made for the Company to be billeted at YAUCOURT-BUSSUS. Transport moved from CERISY and proceeded to VAUX-EN-AMIENOIS where halt was made for the night. Major. G.N. Croker "MC" and Lieut. White rejoined unit from Furlough. Major G.N. Croker "MC" took over command of Coy. from Lieut. G.C.L. Clark who had been performing duties of O.C. Company since 15.9.18. 9 a.m. Rifle and Gas helmet inspection. 1.30 p.m. Remainder of Company billeted at Tincourt left camp and proceed to TINCOURT railway siding, where entraining was commenced and by 4 p.m. all personnel had entrained. 1 O.R. from furlough. Weather, Dull cold & showery.	
YAUCOURT - BUSSUS.	27.9.18.			Transport moved from VAUX-EN-AMIENOIS to billets at YAUCOURT-BUSSUS. Personnel who entrained at TINCOURT yesterday reached LONGPONS sur Somme at 3 a.m. and immediately upon detraining moved from siding via LONG, ALLY LA HAUT CLOCHER to YAUCOURT which was reached at 7 a.m. Morning meal was prepared and Coy. rested. During the afternoon general fatigues were carried out. Weather. Dull cold & showery.	
do.	28.9.18			Rifle and equipment inspections. Guards and Sentry. General fatigues. 3 O.R. from Furlough Lieut. Hill & party rejoined from 1st Field Co. Engrs. Weather- Fine.	
do.	29.9.18.			9 a.m. Rifle, equipment & gas mask inspection. Remainder of morning Medical inspection. General Fatigues carried out. Afternoon.- Recreational Training. Lieut. Rosman & 3 O.R. on furlough. 1 O.R. to Field Amb. 1 O.R. to Perm. Cadre. Engrs. T.D. Weather.- Wet.	
do.	30.9.18			9 a.m. Company parade. Rifle, equipment & gas helmet inspection. Guards and sentries. General fatigues. During the afternoon Coy. attended Lecture on Education held at LONG. 2 O.R. from Furlough. Weather Wet.-	
				<p><i>W. H. Black</i> O.C. 2nd Field Co. Engrs.</p>	

A6945 Wt. W11422/M1160 350,000 12/16 D. D. & L. Forms/C. 2118/14.

APPENDIX

1



## WAR DIARY

OF

2nd Field Company Engineers A.I.F.

191

September 1918.

## LIST OF APPENDICES.

No.	Subject.
1.	O.C's Report.
2.	Transport Officer's Report.
3.	Q.M's Report.
4.	C.R.E.Orders re reliefs &c
5.	Company Orders re moves, and reliefs.
6.	Engineer Battle Instructions.
7.	Syllabus of Training.
8.	Graph shewing weekly state of Clothing issue,
9.	Graph shewing effective strength & No. actually with unit.
10.	Graph shewing Daily Sick parade.
11.	Graph shewing tonnage transported and kilo - metres transported by Company transport.
12.	Handing over Report to 1st Field Co. Engrs.
13.	do. do. 30th American Division.
14.	Proformas used for various works reports.
15.	Plan of HARGICOURT area shewing work done by the Company.
16.	Plan of ROISEL area shewing work done by by the Company.



## WAR DIARY

or

## INTELLIGENCE SUMMARY.

(Erase heading not required.)

Instructions regarding War Diaries and Intelligence Summaries are contained in F. S. Regs., Part II, and the Staff Manual respectively. Title pages will be prepared in manuscript.

Place	Date	Hour	Summary of Events and Information	Remarks and references to Appendices
			<u>O.C.'s REPORT.</u>	
<u>DISCIPLINE.</u>			Discipline throughout the month has been good. No orderly room cases occurred in the Unit.	
<u>MORAL.</u>			The moral throughout the month has been good.	
<u>HEALTH.</u>			In the early part of the month there were a number of men suffering from the effects of gas sustained during the operations of 23rd August 1918 and after. The rest in the early part of the month had an excellent effect on all ranks. From about 5th September onwards the health was good.	
<u>SCHOOLS ATTENDED.</u>			During the month the following schools were attended. 2 O.R. R.E. Training School ROUEN and 1 O.R. 4th Army Cookery School. Progress reports of men at R.E. School Rouen being Good, and that from the 4th Army Cookery School, Excellent.	
<u>STRENGTH.</u>			The Effective Strength at the beginning of the month was 217 and the ration strength 177. The difference is due mainly to men detached at Corps Wards, leave &c who are borne on Company strength. The strength fell slightly about 14/15 th September owing to casualties and men being sent to Australia on 1914 furlough. The total number of men struck off for the month was:- 2 Off 31 O.R. and the total number joined up for the month was :- 1 Off 13 O.R.	
<u>FURLOUGH.</u>			The Company had a good leave allotment for the month. 2 Off 21 O.R. proceeded on leave to England, and 1 O.R. to Paris and 1 O.R. to Nice.	
<u>DISPOSITION OF INFANTRY IN THE LINE.</u>			The 1st Australian Division took over the line from the 3rd Australian Division on the night of 10/11th September. 1st Aus. Inf. Brigade were in the line. 3rd Aus. Inf. Brigade were in Support & 2nd Aus. Inf. Brigade were in Reserve. On the night 14/15th September the 2nd Aus. Inf. Bde relieved the 1st Aus. Inf. Bde in the line. On the morning of September 18th the 1st & 3rd Aus. Inf. Bdes leapfrogged through the 2nd Aus. Inf. Bde to attack enemy positions in front of the Hindenburg line, the 1st Brigade being on the left, and the 3rd Brigade on the right, with the 2nd Brigade in Reserve.	



# WAR DIARY

Army Form C. 2118.

Instructions regarding War Diaries and Intelligence Summaries are contained in F. S. Regs., Part II, and the Staff Manual respectively. Title pages will be prepared in manuscript.

## INTELLIGENCE SUMMARY.

(Erase heading not required.)

Place	Date	Hour	Summary of Events and Information	Remarks and references to Appendices
			<u>O.C.'s REPORT</u> (continued)	
			On the night 20/21st September the 2nd Aus. Inf. Bde relieved the 1st Aus. Inf. Bde on the left of the Divisional Sector, the disposition of the Battalions being as follows:-	
			5th Battalion in the line on the left.	
			6th do. do. do. right.	
			7th do. in Support on the left.	
			8th do. do. do. right.	
			The 1st Australian Division was relieved in the line by the 30th American Division on the night 23/24th September, and moved back to the TINCOURT area to await entraining to rest areas.	
			<u>DISPOSITION OF FIELD COMPANY.</u>	
GAILLY	1.9.18.		With Unit	
			Attached from 1st Tunneling Company	
			<u>DETACHED.</u> Div. Engrs 1st Aus. Div.	
			D.H.Q.	
			R.E.School Rouen.	
			Aus. Corps R.E.Yards	
			Town Major Corbie.	
			Furlough England.	
			Furlough Paris	
			O. 6	O.R. 171
			1	3
				1
				1
				11
				4
			1	15
				1
8.9.18.			The company moved to bivouacs on Mont. St. QUENTIN. The dismounted personnel moving by bus and the Transport by march route.	
11.9.18			Company moved to I.34.c.8.5. Sheet 62C, by route march, and remained in reserve.	
14.9.18.			In the evening the dismounted portion of Company relieved the 1st Field Company in the line at ROISEL.	
15.9.18			The Transport moved to TINCOURT and took over billets from the 1st Field Company.	
16.9.18			The dismounted portion of Company moved to shelters at K.26.b.4.1. Sheet 62C owing to heavy enemy shelling of ROISEL.	
18.9.18.			The company again became Reserve Company.	
20.9.18.			In accordance with Brigade Relief Table, Nos. 1, 3 & 4 Sections took over line works from 1st Field Co.	
			No. 2 Section was in reserve at Transport lines at TINCOURT.	
23/24.9.18.			In accordance with inter Division relief, the forward Sections moved back to Transport lines at TINCOURT.	
25.9.18.			The Transport moved by march route to YAUCOURT-BUSSUS, staying on night 25/26th at CERISY, and 26/27th at VAUX-en-AMIENOIS.	

APPENDIX



# WAR DIARY

Army Form C. 2118.

Instructions regarding War Diaries and Intelligence Summaries are contained in F. S. Regs., Part II, and the Staff Manual respectively. Title pages will be prepared in manuscript.

## OR INTELLIGENCE SUMMARY.

(Erase heading not required.)

Place	Date	Hour	Summary of Events and Information	Remarks and references to Appendices
			O.C.'s REPORT (continued)	
	26.9.18.		Dismounted personnel entrained for LONG area, at TINCOURT, and on	
	27.9.18		Detrained at LONGPRE, and marched to YAUCOURT-BUSSUS, where the Company remained in rest.	
<u>INFANTRY PARTIES.</u>			No infantry parties were employed during the month.	
<u>TYPES OF WORK.</u>			No works of any size were commenced until 15.9.18. From then onwards the work consisted of	
			1 Reconnaissance of area for water, roads, stores &c.	
			2. Repairing and testing water points, in area, and erecting notice boards at same.	
			3. Placing gas-proof doors in dug outs.	
			Under (1) above, Sections were detailed to definite area, and reports were forwarded on definite pro formas supplied by C.R.E.	
			Under (2) above, Work was concentrated on two main water points, one on the left and one on the right of the Divisional area. At these points pumps, horse troughs, and facilities for filling water carts were erected. A considerable amount of work was done in making horse standings in front of troughs and roads to same. The village wells were also employed as far as possible. A number of small horse troughs were erected at these places. It was however, only possible to obtain limited quantities of water from these points, as all water had to be lifted by windlass and bucket.	
			In addition to the above, from the 20.9.18 onwards, additional works as under were carried out:-	
			(a) Locating and destroying tank traps and land mines.	
			(b) Constructing dug outs for incoming American troops.	
			(c) Salvaging.	
			<i>[Signature]</i>	
			Lieut.	
			Actg. O.C 2nd Field Co. Engrs A.I.F.	

APPENDIX



# WAR DIARY

Army Form C. 2118.

Appendix No. 2.

Instructions regarding War Diaries and Intelligence Summaries are contained in F. S. Regs., Part II, and the Staff Manual respectively. Title pages will be prepared in manuscript.

## INTELLIGENCE SUMMARY.

(Erase heading not required.)

Place	Date	Hour	Summary of Events and Information	Remarks and references to Appendices
			<u>TRANSPORT OFFICER'S REPORT. for September 1918.</u>	
<u>ANIMALS HEALTH.</u>			The health of the Horses and mules on the whole has been good. We have had two horses off Duty through sickness. One a L.D. with strangles and a hack with sore eyes. Four animals have had minor complaints, such as kicks and bruises and slightly scalded heels but not enough to warrant them being off Duty.	
<u>LINES.</u>			We are using open lines at present which are very poor, although the lines are shifted as much as possible. With very little rain they become very muddy and sloppy. Every effort is made to keep the lines in a clean and sanitary condition.	
<u>FODDER.</u>			The fodder has been good but very light, the oats averaging about 8lbs per horse per day. Hay issue has been the usual issue.	
<u>GROOMING &amp; FEEDING.</u>			Grooming and feeding has been carried out at regular intervals throughout the month.	
<u>CONDITION.</u>			The animals have gone back a little on account of the cold nights and the long pull from the front area to the lines; also the light issue of fodder. However a couple of hours grazing daily would soon bring them back to their old condition.	
<u>SHOEING.</u>			Particular attention has been paid to shoeing, and every animal has been carefully seen to.	
<u>REMARKS.</u>			The strength at the beginning of the month was :- <div style="display: flex; justify-content: space-around;"> <span>Officers</span> <span>Chargers.</span> <span>Riding.</span> <span>L.D.Horses.</span> <span>Mules.</span> </div> <div style="display: flex; justify-content: space-around;"> <span>6</span> <span>7</span> <span>41</span> <span>15</span> </div> <div style="display: flex; justify-content: space-around;"> <span>6</span> <span>8</span> <span>40</span> <span>16</span> </div> at the end of the month During the month 2 Mules were received from D.A.C. and 1 Riding Horse. 1 L.D.Horse and 1 Mule being evacuated.	
<u>HARNESS.</u>			Particular attention has been paid to harness, the steel parts being kept polished and free from rust. The leather is soft and pliable and all necessary repairs have been attended to by the Company Saddler.	
<u>WAGONS.</u>			The wagons are in good order. The axles having been greased frequently and the woodwork washed and given a coat of oil to preserve the woodwork.	
<u>INSPECTION.</u>			Periodical inspections have been made by the O.C.	
<u>CARTAGE, LOADING &amp;c.</u>			A considerable amount of loading was done during the month by the Company Sappers, and a good distance was travelled by the Company Transport. The total weight transported for the month being - 211 tons and The total distance travelled 997 kilometres.	
			Lieut.	
			Actg. O.C. 2nd Field Co. Engrs.	

APPENDIX

12/12



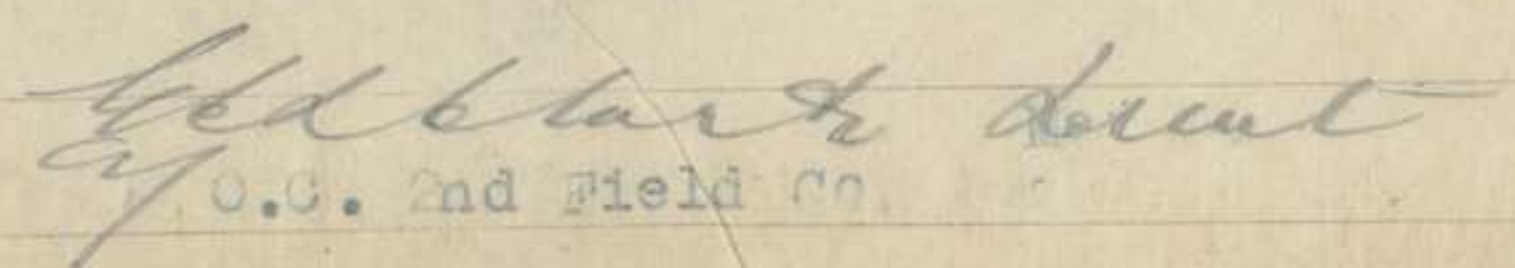
# INTELLIGENCE SUMMARY.

Army Form C. 2118.

2nd Field Co. Engrs.  
September 1918.

(Erase heading not required.)

20

Place	Date	Hour	Summary of Events and Information	Remarks and references to Appendices
			<u>QUARTER MASTER'S REPORT.</u>	
<u>RATIONS.</u>			During the month rations have been up to ration scale. The ration of bread has been very good on nine days, 100% being drawn. On the 23rd inst. an amend ent to ration ppamphlet S.S. 571 took effect, and the reduced ration of Jam, tea, sugar and bacon has been greatly felt.	
<u>FORAGE.</u>			The ration of forage has been quite up to the standard and only a small percentage of straw has been issued in lieu of hay. Linseed and salt has been drawn and has been of great benefit.	
<u>CLOTHING</u>			Service Dress has been drawn to equip requirements. The demand for the month has been small.	
<u>BOOTS.</u>			For the month of September very few new boots have been drawn. The weather for the latter half of the month has been bad and the bootmaker has been hard pressed to cope with the number of repairs. Boots that appeared good went to pieces as soon as the wet weather set in. 85 pairs of boots were repaired for the month.	
<u>RETURNS.</u>			Returns of unserviceable has been good. One article has been repaired for one drawn. Owigg to frequent and sudden moves the returns of empties to A.S.C. refilling point have not quite been up to the usual standard, a certain number of boxes had to be left behind in evacuated areas for salvage by units taking over. For the month 5 gallons of fat was returned. No solder plant has been erected in the areas occup id by this unit, therefore no tins have been returned.	
<u>TRANSPORT.</u>			Requirements for horses, waggon sand harness have been demanded and supplied. A good supply of soft soap and oils have been kept for the preservation of harness. Service paint and wood preserving oil has been drawn for painting and oiling waggons.	
			 G.D. Clark O.C. 2nd Field Co.	APPENDIX
			A6945 Wt. W11422/M1160 350,000 12/16 D. D. & L. Forms/C./2118/14.	101 15

APPENDIX

13



20  
✓ ORDER RE RELIEF 10/11th  
SEPTEMBER 1918

APPENDIX

14  
H. Q. Divisional Engineers.  
1st Aust. Division.  
9th September 1918.

1st AUSTRALIAN DIVISIONAL ENGINEER INSTRUCTIONS.

Reference Map. 62C.  
-----

1. The 1st Australian Division will relieve the 3rd Australian Division in the Line on the night 10/11th September 1918 on a Brigade Front. The 1st. Aust. Inf. Bde in the line & the 3rd Aust. Inf. Bde. in supports, the 2nd Aust. Inf Bde being in Reserve.
2. Relief to be completed by 6 a.m. on the 11th inst.
3. In connection with operations Field Companies will work with their respective Brigade, and sections detailed to work as arranged with Brigadier and O.C. Coy., but the following works must be carried out and returns furnished daily to C.R.E.'s Office  
Reconnaissance of Area  
Water supply  
Accommodation and works carried out in area
4. (a) The 1st Field Co. will be responsible for area Forward of Grid Line K.11.a.o.o. to Q.5.a.o.o.  
(b) The Field Co., will be responsible for work at present being carried out in area to the West of grid line K.11.a.o.o. to Q.5.a.o.o. and will take over the following works from 3rd Aust. Div. Engrs.  
  
From 10th Field Co. H.Q. J.12.d.2.9.  
K.16.b.15.10, K.16.b.3.4. K.16.d.4.5.70 K.10.d.0.3.  
K.22.b.9.9, K.12.a.2.1., K.16.b.15.25. K.15.a.7.7.  
K.15.d.7.8., K.14.d.9.5.  
  
From 11th Field Co. H.Q. J.30.a.5.8.  
Repairing wells at Q.1.b.5.9. and K.34.a.1.1.  
  
(c) The 2nd Field Co. Will be in Reserve and carry out any work in the area required by Brigade, and when Support Field Co., move forward to pass through Line Co. will take over any work that Support Field Co. has in hand.
5. Field Companies will not take over Camps of the 3rd Divisional Engineers.
6. Pontoons will be dumped at J.16.c.8.6. approx. A Sapper will be detailed as guard by each Company and will be rationed up to and including the 12th inst., after which they will be rationed by C.R.E.
7. Div. R.E. Dump will be established at K.13.a.cent. on the 10th inst
8. Div. H.Q. will be established at 10 a.m. on the 11th inst., at J.16.a.5.2.

(sgt) W.A. Henderson,  
Lieut. Col.  
C.R.E. 1st Australian Division.



15  
20  
ORDERS REE RELIEF 20/21st SEPTEMBER 1918

APPENDIX

H. Q. Divisional Engineers.  
1st Aust. Division.  
19th September 1918.

2nd Field Co. Engrs.  
-----

The following extracts from DIVISIONAL ORDER No. 127 of 19/9/1918 is forwarded for your information.-

1. (i) 2nd. Aust. Inf. Bde. will relieve the 1st. Aust. Inf. Bde. in the present left sub-sector on the night 20/21st September.  
(ii) Command will pass on completion of relief which will be wired to D.H.Q.
2. On completion of relief, the 1st. Aust. Inf. Bde. will take over camps and areas at present occupied by the 2nd. Aust. Inf. Bde.

In accordance with DIVISIONAL ORDER No. 127 of 19/9/1918.

1. 1st Field Company and 2nd Field Company will change over billets (horse lines excepted), relief to be completed by 9 p.m. on the 20th inst.  
Details of relief to be arranged by O.S's. concerned.
2. 2nd Field Company on completion of relief will be responsible for continuation of reconnaissance work in Left Brigade area.
3. All information, maps, Aeroplane photos etc, to be handed over on relief

(sgd) W.A. Henderson, Lieut. Col.  
C.R.E. 1st. Australian Division.



H.Q. Divisional Engineers.  
1st Aust. Division.  
22nd September 1918.

2nd Field Co. Engrs.

EXTRACTS FROM BATTLE INSTRUCTIONS SERIES "E" No. 1.

1. INFORMATION.

- (ii) 30th American Division (less Artillery) arrives in Aust. Corps Area by bus on nights 22/23rd and 23/24th September and will be accommodated in the TINCOURT area, prior to taking over the sector now held by the 1st Australian Division. Advanced D.H.Q. 30th. American Division will be established with 1st. Australian Divisional Headquarters.

2. RELIEF.

- (i) 1st. Aust. Division, (less Artillery) will be relieved by 30th American Division (less Artillery) in the line on 23rd. and night 23/24th inst. Relief will be completed and command passed to G.O.C. 30th. American Division at 10 a.m. on the 24th September.
- (vi) On relief, 1st Aust. Division will be disposed in Brigade Groups in the TINCOURT AREA prior to moving to YUEX or LONG Area.

23rd September 1918.

2nd Field Co. Engrs

In accordance with 1st. Aust. Div. Battle Instructions Series "E" No. 1 of 22nd September, necessary extracts of which have been forwarded to Field Companies.

The 2nd Field Co. and the 3rd Field. will move under orders from their respective Brigades.

O.C. 2nd Field Co., and O.C. 3rd Field Co., will each arrange for one Officer and 2 N.C.O.'s to remain behind and be available for handing over any useful information etc., in their respective Areas to incoming Engineer units

When their respective Companies move out of TINCOURT area this personnel will report to O.C. 1st Field Co. Engrs., and remain with that unit until orders are issued for them to rejoin their Companies.

(sgd) W.A. Henderson, Lieut. Col.  
C. R. E. 1st Australian Division.



17 20

X

V 20

**APPENDIX**  
ORDERS ISSUED BY O.C. 2nd FIELD CO. ENGRS. in CONNECTION  
WITH RELIEF 23rd September 1918.

---

2nd Aust. Inf. Bde. will be relieved on the night 23/24th Sept. 1918

2nd Field Co. Engrs. will move back to Company's Transport Lines at 7.45 p.m. on the night 23/24th Sept. 1918

Transport. 1 G.S. Waggon, 2 Limbers and Officers Mess Cart will report to Coy. H.Q. by 7.30 p.m. They will come up via TEMPLEUX.

Nos. 1 Section Limber will carry Nos. 1 & 3 Sections Cook's gear and Lewis Gun and H.Q. Gear.

No. 4 Section Limber will carry No. 4 Sections Cook's gear and Lewis Gun and Head Quarters Gear.

G.S. Waggon will carry Orderly Room gear and Officer's Kits.

HANDING OVER. Lieut Hill and 2 M.C.O's with 48 hours rations will report to 1st Field Co. Engrs with "Handing over report" and hand over to incoming American Engineers.

Officers Mess Cart will carry Officers cook's gear and Lieut. Hills' kit.

(sgd) G.C.L. Clark, Lieut.  
Acting O.C. 2nd Field Co. Engrs. A.I.F.

---



Orders RE COMPANY MOVE of 8.9.18.  
by Capt .A. Clinton, "MC"  
Acting O.C. 2nd Field Co. Engrs. A.I.F.

Reveille. - 6 a.m.

Breakfast. 6.30 a.m.

Orderly Officer, Lieut. Rosman Duty Section. No. 1 Section.

All sections will have their Lewis Guns, Cookhouse Gear etc., loaded on G.S. Limbers by 7.45 a.m. Officers Mess cart will report to Officers Cookhouse by 7.30 a.m.  
Orderly Room, A.M.C. Gear on No. 2 Sec. Limber (Half Limber) Bicycle Cpl's kit, Painters Kit and Canteen stores to be loaded on half No. 4 Sec. Limber.

No. 1. Sec. Limber will take No. 2 Sec. Lewis Gun and accessories  
3. do 4 do.

Duty section will be responsible for loading Trench Shelters on Limber and returning same to Area Commandant by 7 a.m. also for leaving Camp site in a clean and sanitary condition.

Officer in Charge Transport will supply 1 G.S. Limber at 6.50 a.m. for return of Trench shelters, to report to Orderly Officer.

Each section will park their own trench shelters at Orderly Room by 6.50 a.m.

All packs will be parked at Orderly Room by sections and loaded by duty Section on to German waggon by 7.30 a.m.

PARADE. - Company parade at 9 a.m. and march to embussing point at 9.30  
DRESS. - "Battle order", also carrying Waterproof sheet and one blanket  
Water bottle filled and unexpended portion of day's rations  
TRANSPORT. - Will be loaded and ready to march out by 8 a.m.

Four G.S. Limbers report to Section cookhouses at 7 a.m.  
German Limber to report to Orderly room for packs at 7 a.m.

BICY/CLE PERSONNEL will travel with transport.

Section cooks will march with sections and sections will carry two dixies tea and sugar.

Water cart will travel full

Lieut Collins and 1 N.C.O. will report to Lieut. Andrewartha with embussing state at 9.30 a.m. at embussing point P.11.b.7.9., (N.C.O. from No. 3 Sec.)

Guard will dismount at 6.30 a.m.

(sgd) R.A. Clinton, Capt.  
Acting O.C. 2nd Field Co. Engrs.  
A. I. F.



ORDER RE. RELIEF ON 20th September 1918.

issued by Lieut G.C.L. Clark,  
Acting O.C. 2nd Field Co. Engrs.  
20th September 1918.

2nd. Aust. Inf. Bde. will take over left Brigade of Divisional  
Front from 1st. Aust. Inf. Bde on the night of 20/21st Sept. 1918.

2nd Field Co. Engrs. will take over works from 1st Field Co. Engrs  
on the night of 20/21st Sept. 1918. Relief to be completed by 9 p.m.

No. 2 Section will be Reserve Section and will proceed to waggon lines  
when transport return. They will act as loading party of surplus  
gear. They will be available for cleaning horse lines & wagon lines.

Advance Guard of 2 men from Nos. 1, 3 & 4 Sections will proceed to  
1st Field Co., billets at L.L.O.A. and take over billets.

Transport. 2 Limber and german Waggon, 1 Water cart (filled) will be  
at Coy H.Q. at 2.30 p.m.

No. 1 Section Limber will carry Nos. 1 & 3 ~~blankets~~ Sections cooks gear  
and Lewis Guns.

No. 4 Section Limber will carry Nos. 4 Sections cooks gear and Lewis Gun  
also Head Quarters Gear.

German Waggon will carry Orderly Room, Officers Mess and Officers Kits

1 Four Horse Team will parade at Coy. H.Q. at 2.30 p.m. and return  
tool cart to Horse Lines

transport on return journey will take back surplus gear.

Dress:- "Full marching order" less packs.

Bicycles, less runners bicycles will be returned to Horse Lines.

Surplus gear will be dumped at Coy. Orderly Room.

The following O.C. will return to Horse Lines and report to Sergt.  
Wallage No. 143 Cpl. Bruce, No. 1127 T.2/Cpl. H.D. Green.

Lieut.  
Acting O.C. 2nd Field Co. Engrs.



## ENGINEER BATTLE INSTRUCTIONS.

Series 2 F.E. No. 2.To be read in conjunction with 2nd. Aust. Inf. Bde. Order No. 12817th September 1918.

MAP REFERENCE. Sheet 62C, N.E.

1. INFORMATION. The 1st. Aust. Div. will attack from taped Line (Blue line on attached map)
2. INTENTION. 2nd Field Co. Engrs. will.-
  - (a) On "Y" day will sample, report and repair wells EAST of Red Line up to Green Line.
  - (b) On "Z" day will sample, report and repair wells East of GREEN line up to BLUE Line.
 Where possible Horse Troughs will be erected.
3. ORGANISATION. Nos. 2 & 4 Sections will repair wells NORTH of dotted Blue Line (see attached list)  
 Nos. 2 & 4 Sections will prepare 2 windlasses, rope and bucket complete and one horse trough at Coy. H.Q. on "Y" day. They will be taken to forward wells by Transport on "Z" day.  
 Nos. 1 & 3 Sections will repair wells South of dotted Blue line (see attached list)  
 Nos. 1 & 3 Sections will prepare two windlasses, rope and bucket complete at Coy. H.Q. on "Y" Day, also two horse water troughs. They will be taken to forward wells on "Z" day.
4. TRANSPORT. To be notified later
5. DUMPS. Timber at K.30.b.7.6. 1600' 6" x 2" available.
6. RECONNAISSANCE. Reconnaissance reports will be sent to Coy. G.Q. at K.26.b.2.6. every three hours. Proforma supplied by Office shall be used.  
 Samples of water will be sent to Advanced Dressing Station at Marquais after 12 noon of the 17th. inst. for testing. Section Officers will arrange to post the results of testing at wells.  
 Special attention to be paid to Booby traps as directed by General Staff.

(sgd) G.C.L. Clark, Lieut.  
 Acting O.C. 2nd Field Co. Engrs.

Distribution.-

No.	To whom.	Time.	Method.
1	File		
2/4	War Diary		
5.	Nos. 1 & 3 Sect.		Hand.
6	Nos. 2 & 4 Sec.		"
7.	O.C.		"
8	Runner.		Runner.



SYLLABUS OF TRAINING

Date.	Section.	Parade. 9 to 9.30 a.m.	Training. 9.30 a.m. to 11 a.m.	Recreation. 2 p.m. to 4 p.m.
3 9.18.	1.	Rifle, equipment & Gas mask inspection.-	Pontoon & Trestle Bridging.	Cricket, football, swimming & Tug-of-War.
	2.	do.	Map reading & reconnaissance.	do.
	3.	do.	Lewis gun instruction & practice.	do.
	4.	do.	Duty Section	do.
4.9.18	1.	do.	Duty Section	do.
	2.	do.	Pontoon and Trestle Bridging	do.
	3.	do.	Map reading and reconnaissance	do.
	4.	do.	Lewis Gun instruction and practice	do.
5.9.18.	1.	do.	Lewis Gun instruction and Practice	do.
	2.	do.	Duty Section	do.
	3.	do.	Pontoon and Trestle Bridging	do.
	4.	do.	Map reading and reconnaissance	do.
6.9.18.	1.	do.	Map reading and reconnaissance	do.
	2.	do.	Lewis Gun instruction and Practice	do.
	3.	do.	Duty section	do.
	4.	do.	Pontoon and Trestle Bridging	do.
7.9.18.	1.	do.	Section drill	do.
	2.	do.	do.	do.
	3.	do.	do.	do.
	4.	do.	do.	do.
8.9.18.	Coy.	do.	Company Drill.	do.
9.9.18.	do	do.	O's C. Inspection and Company Drill.	do.

*G. C. Clark* Major.  
O.C. 2nd Field Co. Engrs.-

APPENDIX  
17  
21



GRAPH SHOWING WEEKLY STATE OF CLOTHING ISSUE.  
for September 1918.

Appendix

20



APPENDIX

8

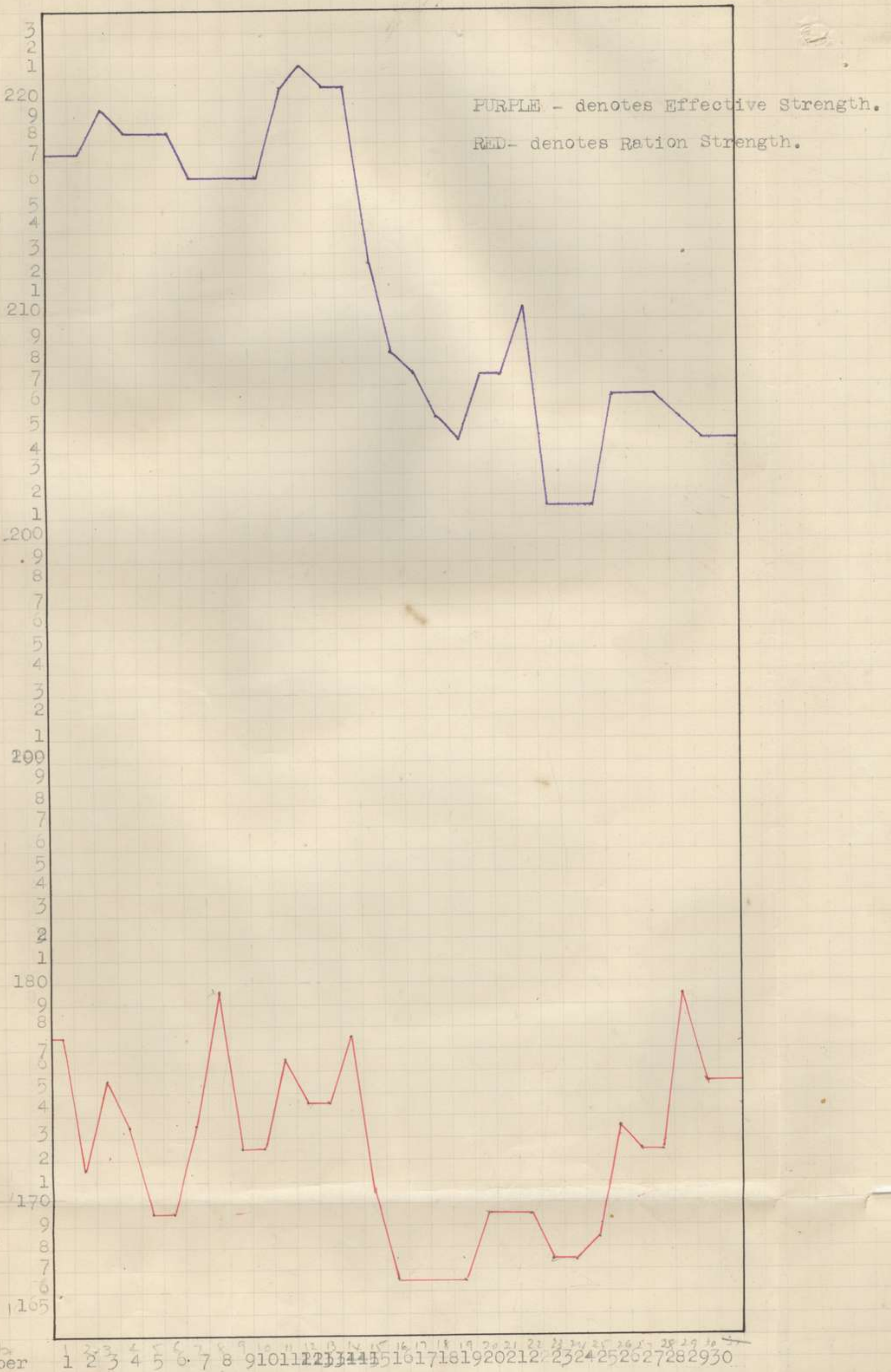
22

22



GRAPH  
SHOWING STRENGTH FOR SEPTEMBER 1918.

Appendix No. 9



September

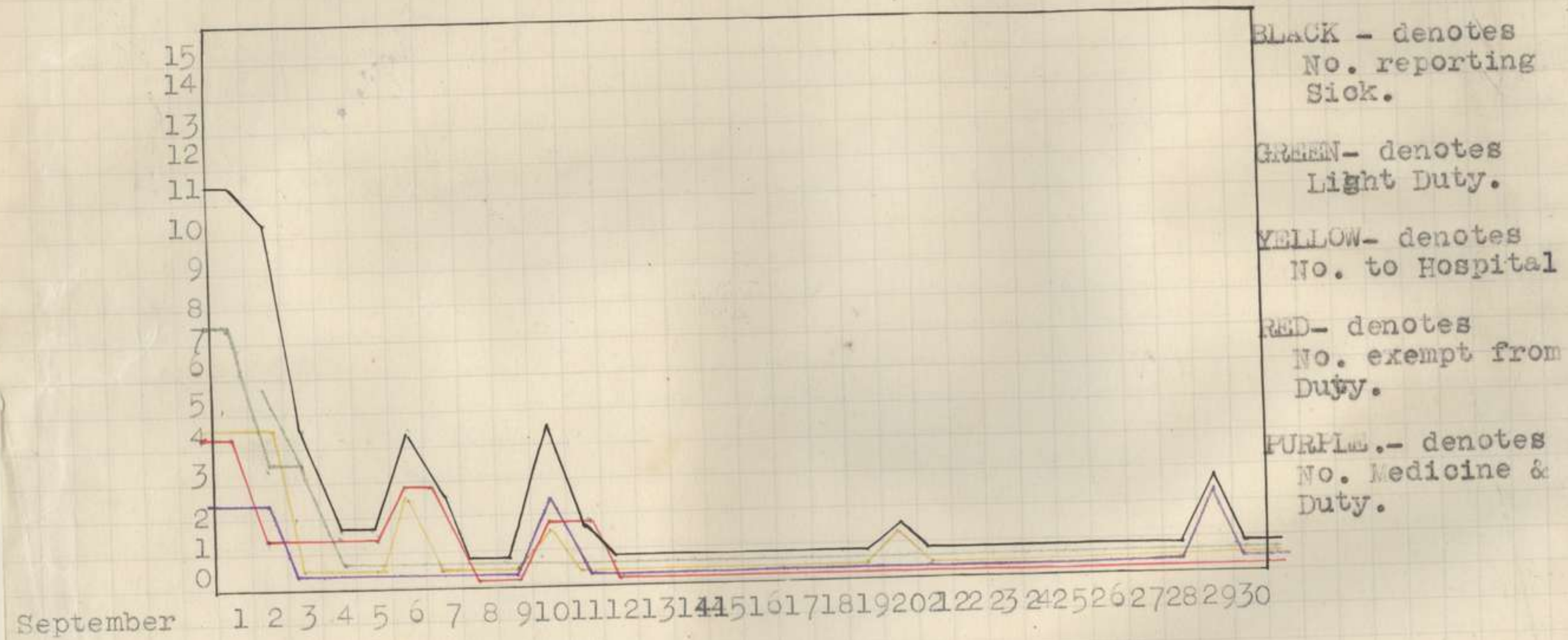
1 2 3 4 5 6 7 8 9 10 11 12 13 14 15 16 17 18 19 20 21 22 23 24 25 26 27 28 29 30



DAILY SICK PARADES.

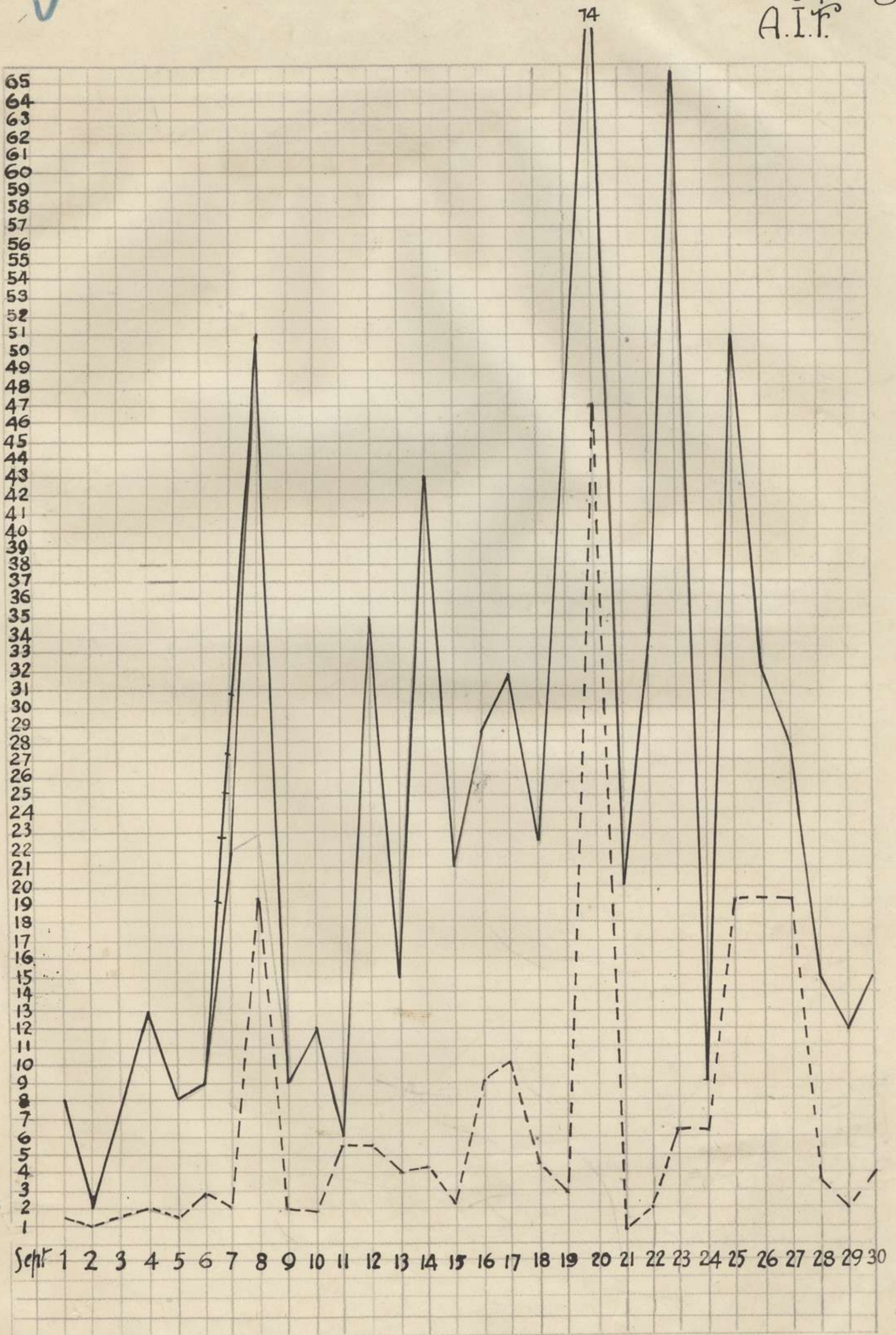
for

SEPTEMBER 1918.





Graph shewing weight transported and distance travelled. Sept. 1918  
 2<sup>nd</sup> Field Coy. Engrs.  
 A.I.F.



Tons transported shewn —————  
 Kilometres travelled —————



20

H A N D I N G      O V E R      R E P O R T .

R E S E R V E      B R I G A D E      A R E A

1st Australian Division.

To.- 1st Field Co. Engrs. A.I.F.

from

2nd Field Co. Engrs A.I.F.

*G. H. Clark* Lieut.  
Acting O.C. 2nd Field Co. Engrs. A.I.F.

20th September 1918.

N O T I C E      B O A R D S .

20. 9. 18.

Notice boards have been erected to the following locations.-

L.13.o.3.3.	Well
L.13.o.75.00	Well dry
L.13.o.55.15	do
L.13.o.5.2.	do
L.13.o.25.35	do
K.24.o.0.9.	do
K.24.o.50.45	do
K.23.d.9.4.	do
K.23.d.75.25	do
K.23.d.6.2.	Well
K.23.a.2.6.	Well dry
K.24.o.2.3.	do
K.23.a.1.9.	Well.

-----



13

27

HANDING OVER REPORT.

LINE BRIGADE AREA.

1st. AUSTRALIAN DIVISION.

To.-

30th AMERICAN DIVISION ENGINEERS.

from

2nd FIELD COMPANY ENGINEERS. A. I. F.

*G. B. Clark* LIEUT.  
ACTING O.C. 2nd. FIELD CO. ENG S. A.I.F.

23rd September 1918.

ACCOMMODATION.

FOR

COMPANY.

L.I.O.a. Central.

Accommodation for 4 Officers and 40 Other  
Ranks in Deep Dug-out.

There are dug-outs available in the vicinity  
to accommodate 200 men.



# Accommodation.

20th September 1918.

Location.	Description	Dimensions.	Accommodation	Cover.	If occupied By whom	Remarks.
L.7.c.4.3.	3 cor.iron huts.	30' x 30'			No.	Bunks along one side, Remainders used as shelters
L.7.b.5.6.	2 deep dugouts 3 cupola " G.E. " "		20 men 18 " 6 men	3' earth do	No. "	
L.7.b.3.1.	3 G.E. Cupola dugouts 1 cupola hut		18 men		"	No splinter proof walls
L.7.d.5.5.	15 G.E. Cupola dugouts 1 cor.iron stable 5 cor.iron shelters 3 G.E. Dugouts		6 men each 2 horses 2 men each 5 " "	5' earth & sandbags None. 3' earth & R.S. Joists	"	
L.7.b.3.6.	3 G.E. Dugouts 1 cor.iron stable		4 men each 2 horses	3' sandbags	"	
L.7.c.6.6.	4 cor iron huts	14' x 14'			"	With splinter proof walls 3' high
L.7.c.5.5.	1 G.E. Cupola hut	18' long			"	do.
L.7.c.2.7.	1 cor.iron hut	12' x 12'			"	
L.7.c.4.4.	2 do. Cupola dugout	"	5 men	4' earth 3' sandbags	"	
L.7.c.4.3.	Cupola dugout		10 "	1' sandbags	"	
L.20.c.6.1.	Deep dugcut	66' x 6'	25 men	24' cover	Yes	"B" Co. 2 Entrances 20 yds apart 8th Batt.
L.26.c.6.5.	Shelter	12' x 6'	3 men	6" cover	No.	

APPENDIX

20

28



# ACCOMMODATION

Location.	Description	Dimension	Accomm odation	Cover.	If occupied	By whom	Remarks
K.11.a.3.0.	2 Elephant cup. dugouts		6 men each	10' to 20'	No		In Railway embankment
	Mostly small dugouts for 1 or 2 men		16 men	do.	"		do.
K.11.a.5.1.	Splinter proof shelters	16' x 10' 8' x 8'	15 men	Elephant iron & 1' earth	"		In sunken road
K.12.d.3.1.	2 deep dugouts				Yes	1st Bde H.Q.	
K.23.d.9.5.	Bow huts	27' x 15'		No cover	No.		3 in good order.
K.23.c.0.6.	"	"		"	"		3 huts, 2 in good order
K.24.d.6.0.	8 cupola dugouts	10' x 6'	48	"	"		Slightly damaged
K.35.d.5.1.	12 Bow huts Good trench outside huts 100 yds long made splinter proof	27' x 18' Trenches 5' deep			Occupied		Good cover in deep gully. Half occupied Huts in good order. Well screened by trees Earth revetment around huts
L.13.c.	No. of dugouts in yards of houses 12' x 7'		100 men	10'.	No.		Will probably be used by Artillery
L.19.a.7.9.	2 deep dugouts	5' x 16'	20	16'	Yes	7th Bat.	In good order.
	Surface dugouts	10' x 16' 10' x 10' 8' x 10'	20 men. 6 bunks	Splinter proof	"	"	do.



No. 3  
Water supply and wells.

Location	Depth to Water	Depth of Water	Estimated Quantity	If pump or windlass in position	Recently in use	Necessary Repairs.	Remarks.
L.13.c.6.0.							Tank 500 galls. Has been supplied with water from main. Not in use. Stand erected for large overhead tank
L.26.a.8.2.							No signs of any well
L.26.c.7.3.	80'	10'	1500 gal	Yes. Windlass	-		22' troughing and chutes to same in position Screening erected
L.26.c.9.3.				Windlass to one well	No.		Both wells dry
L.26.c.6.6.	80'	10'		Windlass & bucket	Yes		22' horse trough & chute in position Water tested. Water fairly clear but tastes of tar. Well should be pumped out before it is fit for drinking Screening erected.
L.26.d.4.2.	50'				No.		Dry. Dia. of well 5'.
L.26.c.1.5.				No.	No.		Dry
L.26.c.8.2.	30'						Too little water to bother about
L.32.a.5.7.	45'	20'		Old broken pump	Yes	Windlass & bucket. Timber top. Remove old pump & debris.	Dia of well 5'. Platform about 40' down well needs removing. Has an iron tank, supplying a pipe and a number of taps. Taps have been removed and tank is useless Water tested 1 meas. B.P.
L.26.a.4.0.				No.	No.		Dia. of well 5'. Well has been blown in. Would take a lot of cleaning out. Cannot tell if it has had water.

APPENDIX 1/14

09-14



# A c c o m m o d a t i o n

20th September 1918.

Location.	Description.	Dimensions.	Accomm- odation.	Cover.	If occupied	By whom	Remarks.
L.17.b.6.4.	2 deep dugouts				No.		
L.26.a.0.9.	Cupola dugouts	12' x 24'	20 men	1' cover	Yes	1st Div M. G.	
L.26.c.6.9.	Deep dugout	30' x 6'	12 men	20' "	"	1st Div. Sigs 3rd Bde H.Q.	2 entrances. Single Gas proof door at each entrance.
L.26.c.sant.	Dugout	20' x 12'	14 men	24'	"	3rd Bde Sigs	
L.26.d.8.8. To L.26.d.3.1.	Shelters of elephant iron cupolas covered with two layers sandbags	12' x 20'	12 bunks each	1' cover	2 occupied	Survey Co.	There are 16 of these.
L.32.a.5.6.	Cellar.	20' x 9'	12 men	6'	No.		Stairway needs repair
L.32.a.6.8.	Nissen Bow Huts		16 each	-	No.		There are 14 of these.

APPENDIX

14-31



WATER SUPPLY AND WELLS.

Location. Sheet 62C.	No. of Billet.	Depth. to Water.	Depth. of Water.	Estimated. Quantity.	Windlass or pump in position	Recently Necessary in use. repairs.	Remarks.
L.10.a.6.4.	Old sugar mill.	107'	27'	1,600 galls	Windlass	Yes	In working order. Water tested and Fit for Drinking.
L.4.d.25.25.	Hargicourt.	15'	6"	Nil	No.	No.	Contains debris. Does not seem worth cleaning out as there are wells in village with water in them.
L.4.d.4.6.	18.	50'	6'	400 galls	Windlass		Access not too good. Sample of water has been sent for testing. Windlass, rope, & bucket complete.
L.4.d.8.9.	Hargicourt	12'	6"	Nil.	No.	No.	Contains debris. Does not seem worth cleaning out. Only a house well.
L.4.d.90.45.	"	90'	5'	300 galls	Windlass	Yes.	Good access for water carts. Water tested and "Fit for Drinking." Winflask, rope, & bucket complete.
L.2.d.10.95.	Templeux.						Is being fixed up by 5th Field Co. R.E. 74th Divn. B.E.F. Out of our area.

20

1432.



# Water supply & wells.

Location	Depth to Water	Depth of Water	Estimated quantity	If pump or windlass in position	Recently in use	Necessary repairs.	Remarks.
K.23.d.90.45	408	14'	1200 gal.	Wind lass & bucket in position	Yes.		Sample taken Horse trough 21 ft long. fixed near well so that it can be filled from well bucket via a chute which is in position.
K.23.d.6.1.	40'	7'	250 gal	Bucket & rope at well	No		It is an old well and seems to be soakage water only from recent rain as it has a notice board "Well dry" Do not think it warrants a windlass.
K.23.a.7.9.	Three wells						Dry & partly destroyed.
K.24.a.21.							No well can be found at this locality
K.24.c.0.3.	30'			No.	No.		2 wells both dry Small sump tak which is empty has been connected to a pipe line that comes from somewhere away from town.
K.24.c.0.9.				Old pumping plant parts of 2 Hornsby Engines there No pumps.			
K.36.d.0.6				Pump & hose in position	Yes.		At Sgar Sugar mill. Well all timbered in. Quantity appears good Sample taken Horse trough alongside. Suitable for Water Barts. 40' troughs in position
L.12.a.50.95	River Cologne is dry.						
L.13.a.2.4.							Well is not soakage but relies on catchment from houses in area but all houses are demolished.
L.13.c.3.3.			Dry	No.			
L.13.c.2.8.			"	"			
L.13.c.2.5.	2 wells		"	"			



✓ 20  
K.10.d.1.8

K.10.d.2.7.

K.12.a.5.9.

K.16.a.15.05 15' 3'

K.16.b.15.25 50' 5'

K.10.d.1.8.

K.16.b.3.4. 52' 9'

K.16.a.15.05

K.23.d.7.5

K.13.b.25.15. 25' 12'

K.23.a.1.7. 50' 6'

K.11.c.45.70

K.11.c.5.6.

Bore. Pump in good condition Yes

Pump damaged beyond repair

Windlass fixed with bucket & rope Yes

do. "

No.

Windlass complete In use

do. "

Well apparently under construction when enemy evacuated

Water tested. Drinking water. 1 meas. B. P.

No well can be found anywhere near this locality

Requires bucket & rope. Well narrow 18" dia. Water tested 1 meas B.P.

Dia. of well 4'. Notice fixed. Required 1 meas. B.P.

Unfit for Troops. Notice fixed.

Position is suitable for Horse Troughs. 24' of horse troughing fixed. Water not tested.

Mouth of well built over with bricks leaving only space for Suction Hose. It is not suitable for bucket and windlass until well has been opened.

No well could be found at this location

Sample taken

Not for drinking

No water. 2,500 gall. tank on stand. No supply of water. Tanks in good order.

No water supply appears not to have been completed or used.



# ACCOMMODATION.

Location.	Description.	Dimensions.	Accommodation.	Cover.	If Occupied.	By Whom.	Remarks.
L.14.a.7.7.	Splinter proof	4 Elephant Iron Dug-outs 108 X 14'	28	2 layers sandbags.	No.		In sunken Road.
L.14.b.3.2.	" "	2 Cupoal Dug-outs 8' X 8'	8	9' earth	No		" "
L.15.a.7.2.	" "	( various )	30	1' to 4' earth.	No		" "
" "	Cup. Dug-out	18' x 10'	9	3' earth	No		" "
" "	Deep dug-out	Drive 60'x4' 6' high.	?	20' to 30'	No		2 entrances.
L.15.a.9.6.	Splinter proof	30' x 12'	20	6' earth	No		Bunked,
L.7.d.8.7.	Deep dug-out	45' x 5'	20	30' "	No		Very dirty
" "	Splinter proof	Various	180	9' "	Yes		" "
L.10.a.1.5.	" "	8' x 8'	4	9'	No		" "
L.10.a.3.3.	" "	10' x 10'	6	12' "	Yes		" "
" "	" "	10' x 10'	14	12' "	No		" "
" "	" "	18' x 12'	18	18' "	Yes		" "
" "	" "	18' x 12'	18	18' "	No		" "
L.10.a.4.5.	Deep dug-out	Drive 30' x 3' 6' high.	20	15' "	No		4 rooms.
" "	" "	100. 10'x5'	20	15' "	No		" "
L.10.a.4.4.	" "	Drive 50'x4' Height 6'	12	30' "	Yes		2 entrances.
L.10.a.4.3.	Splinter proof.	12' x 12'	7	3' "	No		" "

20

35



# ACCOMMODATION.

Location.	Description.	Dimension.	Accommodation.	Cover.	If Occupied.	Remarks.
L.10.a.5.3.	Splinter proof.	12' x 12'	10	6" earth	No	
L.10.a.3.4.	Deep Dug-out.	Drive 60x9'	120	30' "	Yes.	4 entrances.
L.8.a.9.5.	" "	40'x10'x7'	40	35' "	Yes	2 "
L.8.b.6.5.	Splinter proof		15	1' "	Yes	
L.8.b.7.5.	" "		8	1' "	Yes.	
L.4.c.2.2.	Tunnel	24' x 12'	25	30' "	Yes.	
		12' x 10'	6	" "	"	
		12' x 10'	6	" "	"	
		8' x 6'	4	" "	"	
L.4.c.8.1.	Deep dug-out		60	50' "	Yes.	
L.4.b.0.5.	" "	2 chambers 10' x 20'	24	25'	Yes.	
L.4.b.0.4.	" "	No Gallery	-	50' "		Shelters 8 men.
L.5.c.6.0.	Dugout"	12' x 10'	8	4' "	Yes	
L.9.c.4.9.	Deep dug-out		30	15' "	Yes.	
L.19.a.5.0.	" "		30	30' "	Yes	
L.19.a.4.0.	2 dug-outs splinter proof	8' x 7'	6	1' "	Yes.	
L.10.c.35.15.	Splinter proofs. (various.)		24	9" to 3' chalk.	No.	
" "	Deep dug-out	3 rooms 9'x10'	27	20' to 308	No.	
L.10.c.7.4.	Cup. dug-outs Splinter proof.		50	6" chalk.	Yes.	



# ACCOMMODATION.

Location.	Description.	Dimensions.	Accommodation.	Cover.	If Occupied.	Remarks.
L.10.c.7.4.	Deep dug-out	15' x 9'		20' chalk.	Yes.	
L.11.a.3.3.	Weather proof Cup. dug-outs.	(various)	25		Yes.	
L.11.b.0.5.	Deep dug-out.	25' x 10') 14' x 4')	25	25' "	No.	Bobby farm. Bunked.
L.11.b.3.9.	Drive	44' x 9'	28 ( If Bunked)	5' "	Yes.	In Railway Embankment.
L.11.b.35.20.	Deep dug-out	11 compart- ments 7'x5½'	22	20' "	Yes.	
L.11.b.7.5.	" "	Small Compts. 7' x 5'6"	20	20' "	Yes.	In Quarry. 3 entrances. " 2 "
" "	" "	" "	20	20' "	Yes.	
" "	Splinter"proofs.	various. "	30	20' 9" "	Yes.	
" "	R. A. P.					
L.11.b.3.8.	Splinter proofs.	various.	50.	9" earth	Yes.	
L.6.a.4.4.	" " } Elephant. Cup.	8' x 12'	8	2' "	Yes.	
" "	" " }	9' x 6'	5	2' "	Yes.	
" "	3 Weather proof Eleph. Cup. }	6' x 8'	3		Yes.	
" "	Deep dug out.	Drive 708x3'	42 42	30' "	Yes.	9 rooms 8'x4'. Bunked. 3 entrances.
L.6.a.0.3.	" "	100' x 3'.	28	30' "	Yes.	8 rooms 4' x 7' and on e 208 x 6'.
L.6.c.40.85.	" "	10' x 70'	40	30' "	Yes.	
L.6.a.0.3.	Weather proof. Eleph. Cup.	16' x 8'	6	2' "	No.	

20

14  
34



## ROADS AND TRACKS.

Location. From To.		Type.	Condition.	Traffic Double or Single	Horse or Motor	Necessary Repairs and Location of same.	Remarks.
L.14.a.7.4.	L.8.c.8.0.			S.	Horse		
L.14.a.Cent	L.15.b.0.3.	Earth.	Good.	S.	"		Obstructed by dug-outs and trench
L.15.a.6.8.	L.15.b.0.3.	"	"	S.	"		
L.14.b.2.0.	L.9.d.5.5.	"	Fair.	S.	"		
L.16.a.0.8.	L.10.a.0.0.	Met.	Bad.	D.	Motor.		Bad state of repair.
L.8.a.0.7.	L.2.d.2.0.	Grass.	Fair.	S.	Horse.		
L.2.c.8.0.	L.8.a.9.0.	Met.	Fair.	S.	"		
L.8.b.7.4.	L.2.d.6.1.	"	Good.	S.	"		
L.8.b.6.4.	L.3.c.5.3.	Earth	Poor.	S.	"		
L.2.b.7.1.	L.3.c.5.3.	"	"	S.	"		
L.3.d.1.6.	L.4.d.1.2.	Met.	Good.	D.	Motor.		Crossed at L.4.c.4.4. & L.4.c.9.3 by trenches Spanned by Plank Bridge for Horse Transport.
L.10.a.4.7.	L.4.d.0.3.	Sunken <del>Met.</del>	Fair.	D.	Motor.		
L.4.c.8.4.	L.4.b.0.5.	Sunken Road.	Bad				Too narrow for vehicle s
L.8.b.7.6.	L.15.a.7.8.	Metal	Fair.	S.	Motor.	General repairs at L.15.a.7.8.	
L.15.a.7.8.	L.10.a.3.8.	"	Bad.	S.	Horse.	General Repairs.	
L.4.d.0.3.	L.4.d.95.55.	"	Good.	D.	Motor.	Shell holes require filling.	
L.4.d.95.55.	L.11.a.6.9.	"	"	D.	"	"	
L.5.d.0.7.	L.5.d.6.6.	"	"	D.	"	"	
L.11.a.4.8.	L.10.d.8.5.	Earth.	Fair.	S.	Horse.		Dry weather track.
L.11.a.6.9.	L.11.b.4.0.	Met.	"	D.	Motor.		



In submitting reconnaissance reports the following information is to be shewn.-

WATER SUPPLY AND WELLS.

20

Location.	No. of billet If any.	Depth to Water.	Depth of Water.	Estimated quantity of water.	If pump or windlass in position.	If recently in use.	Necessary repairs.	Remarks.
-----------	-----------------------------	-----------------------	-----------------------	------------------------------------	--	---------------------------	-----------------------	----------

No. of billet will be of assistance in locating and identifying wells in towns and villages.  
Remarks. to include.- Condition of water and well, particulars as to samples taken, general.

ROADS AND TRACKS.

Location From to.	Type.	Condition	Traffic Double or Single	Horse or Motor	Necessary repairs Location of same.	Remarks.
----------------------	-------	-----------	--------------------------------	-------------------	--	----------

Type. Metalled, earth track, plank, etc.  
Traffic - In stating nature of traffic, the weather condition must be taken into account.  
Remarks - To include location and description of Bridges, culverts etc., on the road.

ACCOMMODATION.

Location	Description.	Dimensions.	Accommodation	Cover.	If occupied	By whom	Remarks.
----------	--------------	-------------	---------------	--------	-------------	---------	----------

Description - Deep dugout, concrete pill box, shell proof, splinter proof, weather proof.

APPENDIX

39



# Reconnaissance (cont)

## RAILWAYS.

Location.	Type.	Condition.	Necessary repairs	Rolling stock if any.	Remarks.
-----------	-------	------------	-------------------	-----------------------	----------

Type Standard gauge, metre gauge, decauville. Single or double track  
 Remarks - To include location and description of any bridges the track may cross

## BRIDGES.

Location.	Type.	Description. & Dimensions	Estimated Safe Load.	Condition.	Necessary repairs.	Remarks.
-----------	-------	---------------------------------	----------------------------	------------	--------------------	----------

## MATERIAL.

General reports will be forwarded to C.R.E., shewing location, description and estimated quantity of :-

- (i) R. E. material, such as enemy dumps etc.
- (ii) General material worth salvaging.

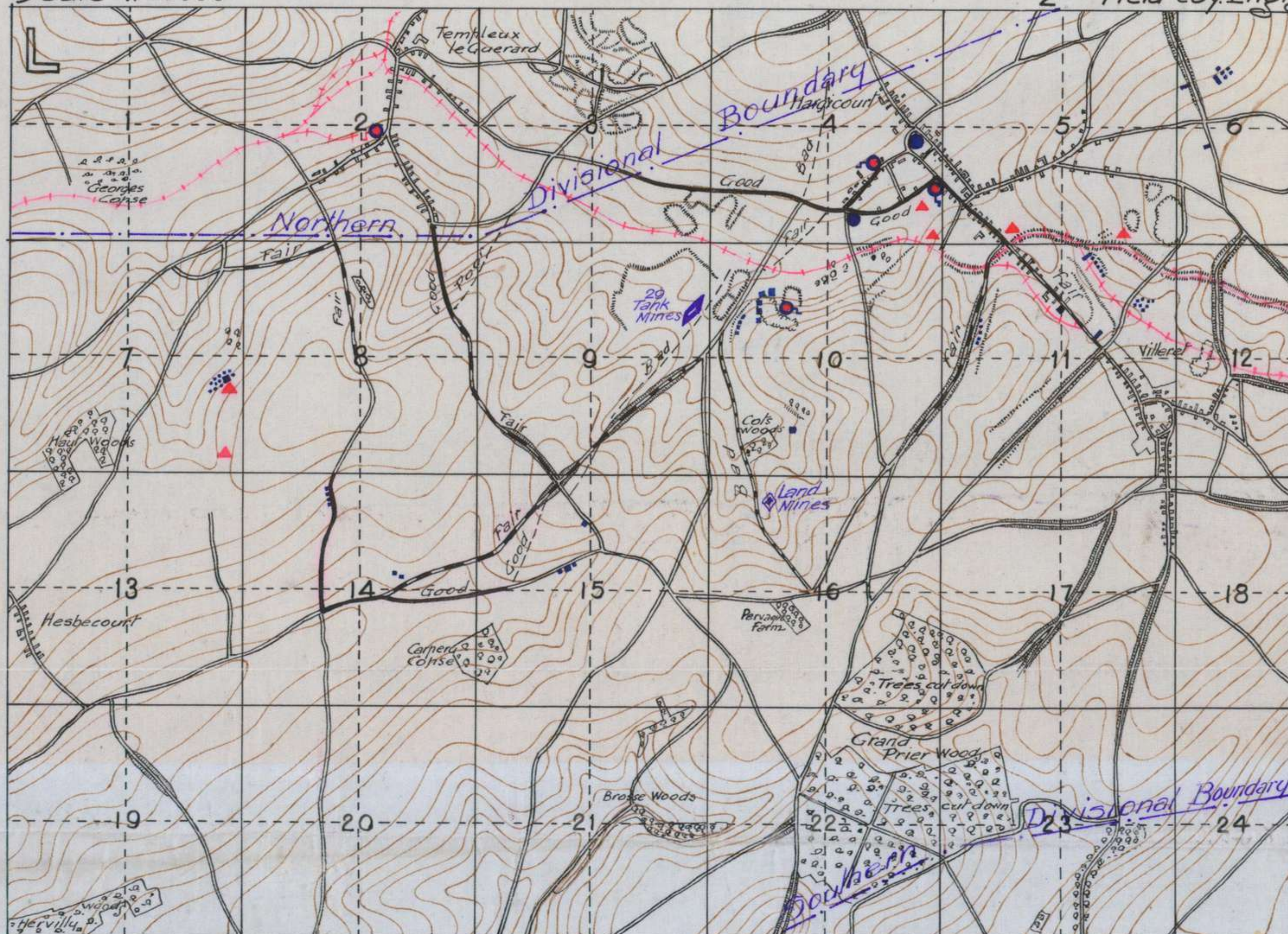
NOTE. ALL REPORTS TO SHEW DATE AND TIME.



Scale 1:20000

# RECONNAISSANCE

2nd Field Coy. Engrs



**REFERENCE**  
 Wells water fit for drinking  
 " with windlass or pump  
 Dumps Tank Mines  
 Land Mines Dugouts  
 Roads in good order  
 " " fair  
 " " bad



### -Water and Accommodation

ॐ

Sheet 62° N.E.

Reference

Well      dry      Nuts  
  " with water unfit for use      Dugouts  
  "         " fit      "  
  " with windlass or pump  
Troughs horse



# TANK MINES AND TRAPS, and LAND MINES.

Location. L.16.a.5.7.

An 80 yard line of Pits each containing 2 large Minewerfer shells unfused discovered at this point. 3 have been destroyed and the remainder left with their plugs screwed in.

L.9.b.25.20.

to

L.10.a.0.6.

29 Tank Mines discovered at this point and destroyed.

## R.E. MATERIAL.

Location.

Material.

L.4.d.8.3.

30 picks.  
15 Shovels.  
100 Signboards 10"x8"  
50 Electric Detonators.

L.4.d.9.1.

1000 Shovels.  
300 Picks.

L.5.d.6.0.

300 Screw Pickets ( Medium and Long.)

L.5.c.5.0.

200 A. Frames. (British)

L.10.c.2.1.

40 Coils Barb. Wire.

L.7.d.8.8.

21 Lengths R.S.Joists 6x4"

L.7.d.8.7.

30 Sets Light Decaville Railway.  
400 Sleepers.

Many small dumps scattered through area containing Picks. Shovels & Barb Wire.