

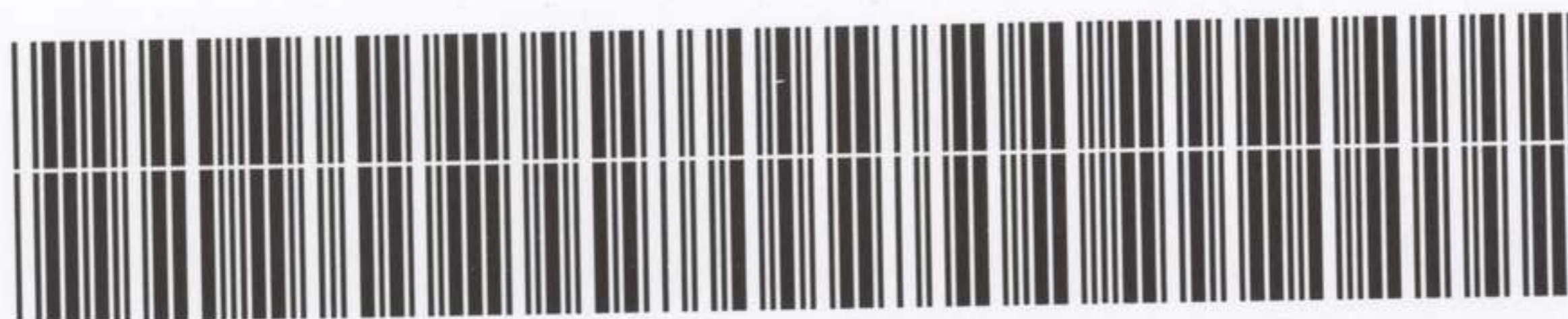
AWM4
Australian Imperial Force unit war diaries,
1914-18 War

Engineers

Item number: 14/27/33 Part 1

Title: 8th Field Company, Australian
Engineers

May 1918



AWM4-14/27/33PART1

18,000-12/1 -8723

CONFIDENTIAL.

ORIGINAL.

~~DUPLICATE.~~

TRIPPLICATE.

207

8 TH AUSTRALIAN FIELD COMPANY.	
No.
Date

Australian Imperial Force.

WAR DIARY

OF

8TH FIELD COY. AUSTR. ENGRS.

FOR

MAY (1-31) 1918

(VOL 24)

Signature of Officer compiling

W. Stradwick Capt

Signature of Officer Commanding

H. G. Langbein Major

Reference Map 62^D

Scale $\frac{1}{40,000}$

Instructions regarding War Diaries and Intelligence Summaries are contained in F. S. Regs., Par. II, and the Staff Manual respectively. Title pages will be prepared in manuscript.

WAR DIARY

INTELLIGENCE SUMMARY.

(Erase heading not required.)

Brig

8TH AUSTRALIAN C. 2118. FIELD COMPANY.
No.
Date

Sheet (1)

8th Field Coy A.E.

Summary of Events and Information

Remarks and references to Appendices

La NEUVILLE

1-5-18

Location

13C.57.

H.Q. and Dismounted personnel at La NEUVILLE 13C.57.*

* APPENDIX
No. 1.

Company Transport Lines at DAOURS N12.6.3.4.

Company Strength

Disposition	Off	D.R.
Actually with unit	9	207
Sick in Area	-	-
On Command	-	10
Total Effective Strength	9	227

" 1-5-18

This Company relieved The 15th Field Coy A.E. on The 1-5-18 and took over all work in The forward area.

Boundaries

Divisional boundaries are as follows. Right boundary grid line running East through P.19 central + P.20 central, left Divisional

Reference Map 62^D
Scale 40,000

Instructions regarding War Diaries and Intelligence Summaries are contained in F. S. Regs. Par. II. and the Staff Manual respectively. Title pages will be prepared in manuscript.

Sheet (2)

WAR DIARY

INTELLIGENCE SUMMARY.

(Erase heading not required.)

8th Field Coy A.E.

8th
AUSTRALIAN C. 2118.
FIELD COMPANY.

No.
Date

Remarks and references to Appendices

Place	Date	Hour	Summary of Events and Information
LO NEUVILLE	1-5-18		<p>boundary, line running East through along grid line at J 22 C 00. Left Brigade boundary line running East along grid line at J 22 C 00. Thence in a Southern direction to a line running East through P 8.6.2520. Right Brigade boundary running from P 8.6.2520. to line running East through P 19 central. Left Brigade inter Battalion boundaries are as follows. Right Battalion front. Right boundary P 8.6.2520. left boundary line running South East through P. 2 central. Centre Battalion front extending from line running South East through P. 2 central to SOME Canal. Left Battalion front extending from SOME Canal on the right to line running East along grid line at J 22 C 00. on the left. See appendix (1) The following work in the Brigade area was taken over from the 15th Field Coy A.E. in various stages of completion. (1)</p>
I. 3 C. 5. 7.			

(1) Strong Throwing + Gas proofing Cellars for Right + Centre Battalion H.Q.

W.S.

Reference Map 6R^d
Scale 40,000

WAR DIARY.

251

8TH AUSTRALIAN FIELD COMPANY. 2118.
No.
Date.

Instructions regarding War Diaries and Intelligence Summaries are contained in F. S. Regs., Par. II. and the Staff Manual respectively. Title pages will be prepared in manuscript.

INTELLIGENCE SUMMARY.

(Erase heading not required.)

8th Field Coy AE

Sheet (3)

Place	Date	Hour	Summary of Events and Information	Remarks and references to Appendices
LO NEUVILLE	1-5-18		(2) Construction of deep dug out for left + Reserve Battalion H.Q. and Regimental Aid post dug out in left forward sector.	
Z.3.C.5.7			(3) Construction of Cupola Shelter in Reserve line.	
			(4) Improvements to front line wire + defences	
			(5) Construction of deep dug out for 8 th Brigade H.Q.	
			(6) Making of warm food containers, Gas proof Door, Salving etc.	
			<u>Defence System</u>	
			The Defence system consists of Three lines of defence in front line Support + Reserve line. The two former consisting of Isolated Strong posts covered by a defensive wire obstacle extending along the whole front of medium high open fences of varying depth. The Reserve line being a continuous trench throughout, protected by a high wire double open fence.	DAS

Reference Map 62^D
Scale 1/40000

Instructions regarding War Diaries and Intelligence Summaries are contained in F. S. Regs., Par. II, and the Staff Manual respectively. Title pages will be prepared in manuscript.

Sheet (4)

WAR DIARY
OR
INTELLIGENCE SUMMARY.

(Erase heading not required.)

8th Field Coy A.E.

251

8 TH ARMY AUSTRALIAN FIELD COMPANY.	
No.....	
Date.....	Remarks and references to Appendices

Place	Date	Hour	Summary of Events and Information	Remarks and references to Appendices
La NEUVILLE 13.C.57.	1-5-18		Supplies of B.E. material are drawn from Aust Corp Dump at QUERRIEU H 16d + 5 th Aust Div Dump at ABIGNY D 9 a 7.4 and transported to 8 th Field Coy Dump at La NEUVILLE 134. C 45.85. by Coy + 8 th Brigade Transport, forward supplies being taken forward by Battalion Transport to local dumps in the forward area.	
	1-5-18		Work in the forward area has been continued in accordance with policy laid down + the following work has been carried out for the period 1-5-18 to 4-5-18	
Dug Out wiring Trenches	To		Deep Dug Outs at 8 th Bde H.Q. at J. 35 C 3.4. Batt H.Q. at J 28 a 77 Batt H.Q. at J 19. C 7.6 + Regimental Aid Post has been continued and good progress made. 540 yds of double apron fence has been erected + 620 yds existing wire improved in front line 250 yds of C.T. has been completed in U.27. + 225 yds of Reserve trench deepened & widened.	
Shelters	4-5-18		4. 7-6 x 6-0 Cupola Shelters have been put in in the Support line.	

Reference Map 62^d
Scale 40000

251

Instructions regarding War Diaries and Intelligence Summaries are contained in F. S. Regs., Par. II, and the Staff Manual respectively. Title pages will be prepared in manuscript.

Sheet (5)

WAR DIARY
OF
INTELLIGENCE SUMMARY.

(Erase heading not required.)

8th Field Coy A.E.

Army Form C. 2118.	
8 th AUSTRALIAN FIELD COMPANY.	
No.
Date.....	Remarks and references to Appendices

Summary of Events and Information

Place	Date	Hour	Summary of Events and Information	Remarks and references to Appendices
LO NEUVILLE			<u>Roads</u>	
I 30.5.7.	1-5-18		300 yds of Road from O 4. a 2.2 to Bridge Site at O 4. c 5.0. has been improved with Cinders + broken bricks and 15' bridge constructed.	
	To		Gravel has been carted + work commenced repairing Tow path North of CORBIE	
			<u>Gas Doors</u>	
			Gas doors have been put in at RAP at J. 22. d 30. 25. Right Batt H.Q. Centre Batt H.Q. + 114 th Battery A.F.A.	
			<u>Rafts</u>	
			3 Barrel pier rafts have been constructed at J 25. a 5.0. for the use of Reserve Batt in case of emergency.	
			<u>Div Baths</u>	
			2 Rooms each 12' x 12' have been made + clothing racks erected + minor improvements made at Div Baths CORBIE.	
	4-5-18		A Road reconnaissance was made + report forwarded of roads North of CORBIE on West Side of SOMME Canal *	

W.S.
* APPENDIX
No. 2.

Reference Map 62^d
Scale 1/40000

251

WAR DIARY

OR
INTELLIGENCE SUMMARY.

(Erase heading not required.)

8th Field Coy A.E.

8TH AUSTRALIAN ARMY FORM C. 2118. FIELD COMPANY.

No
Date

Instructions regarding War Diaries and Intelligence Summaries are contained in F. S. Regs., Par. II. and the Staff Manual respectively. Title pages will be prepared in manuscript.

Sheet (6)

Remarks and references to Appendices

Place	Date	Hour	Summary of Events and Information
La Neuville I.3C.57.	1-5-18		Various other work has been carried out during this period such as making hot food containers, barbed wire concertina obstacles, trench shelter frames, making mining sets and the sacking of R.E. material. See weekly work report. *
	To		Lieut Barker U.S.A. Engineer reported on the 1-5-18 and was attached for experience.
	4-5-18		Weather conditions have been fair with slight rain during night, and ground mist in morning.
La Neuville I.3C.57.	5-5-18		<u>DEEP DUG OUTS</u> Work has been continued on deep dug out at left Batt H.Q. J.28.d.7.7 and Reserve Batt H.Q. at J.19.c.7.6. and good progress made. R.A.P. at J.22.d.3.5 has been completed & occupied. 8 th Brigade H.Q. dug out at I.35.C.3.4. has been pushed forward, Entrances have been sand bagged, Duck walk

APPENDIX
17^b

Class

9

Reference map 62^d
Scale 4000

Instructions regarding War Diaries and Intelligence Summaries are contained in F. S. Regs., Par. II, and the Staff Manual respectively. Title pages will be prepared in manuscript.

WAR DIARY
OR
INTELLIGENCE SUMMARY.

(Erase heading not required.)

8th Field Coy A.E.

Army Form C. 2118. AUSTRALIAN FIELD COMPANY.	
No.	Remarks and references to Appendices
Date	

Sheet (7)

Summary of Events and Information

Place	Date	Hour	Summary of Events and Information	Remarks and references to Appendices
La NEUVILLE	5-5-18		laid to entrance. Vertical vent sunk to Sig office. Chamber improved. and drives continued.	
13C.57			<u>Frost line Wiring</u> Right Batt Sector 845 yds new apron fence created and 1850 yds existing wire thickened with barb concertinas.	
To			Centre Batt Sector 1475 yds new apron fence created and 1380 yds existing wire improved.	
			Left Batt Sector 200 yds new wire created.	
			<u>Trenches</u> Reserve line. 320 yds Reserve line trench has been deepened & widened in J 31.C. & P.1.A. 350 yds C.T. in J 27 has been dug, & 260 yds excavated to half depth at J.30 to C.T. to connect Support & Front line at J 33.C.01. Has been dug 90 yds, and another 100 yds excavated at P.2072.	
	11-5-18		Baths work has been continued at Div Baths. CORBIE	Thos

Reference Map 62^d
Scale 40,000

Instructions regarding War Diaries and Intelligence Summaries are contained in F. S. Regs., Par. II, and the Staff Manual respectively. Title pages will be prepared in manuscript.

Sheet (8)

WAR DIARY
OR
INTELLIGENCE SUMMARY.
(Erase heading not required.)

8th Field Coy A.E.

251

611
AUSTRALIAN
Army Form C. 2118.
FIELD COMPANY.

No.
Date

Place	Date	Hour	Summary of Events and Information	Remarks and references to Appendices
La NEUVILLE	5-5-18		making improvements and carrying out repairs.	
I 3. C. 5. 7			<u>Gas Doors</u>	
			Gas Door + windows have been put in at Batt H.Q. J. 25.d.	
			Batt H.Q. O. 6. 6. Batt. H.Q. at J. 19. c. 7. 6. Coy H.Q. at J. 32. d. 1. 8. and RAPS	
			at O. 6. 6. + J. 32. d. 1. 8. Batt H.Q. at J. 28. a. 7. 7. Coy H.Q. at SAILLY Le Sec.	
			Coy H.Q. at J. 29. c. 55 ^m + 114 ^m Batteries H.F.H. + 150 ^m Bde H.Q. R.F.A.	
			making a Total of 14 Double + 21 Single doors + 17 windows	
			completed during this period.	
			<u>Roads</u>	
			80 wagon loads of broken bricks and Cinders have been	
			laid on road running from O. 4. a. 2. 2. to Bridge Site	
			at O. 4. c. 5. 0. and 138 L.G.S. loads of Gravel Carted and	
			spread in repairing Canal Tow path North of CORBIE	
			<u>Accommodation</u>	
			Large Cella occupied by Centre Batt H.Q. at J. 25. d. has been	
			strengthened with R.S.Js + Heavy Timber and a four foot	

115

Reference Map 62^d
Scale 1/40000

Instructions regarding War Diaries and Intelligence Summaries are contained in F. S. Regs., Par. II, and the Staff Manual respectively. Title pages will be prepared in manuscript.

Sheet (9)

WAR DIARY

OR
INTELLIGENCE SUMMARY.

(Erase heading not required.)

8TH
AUSTRALIAN
ARMY FIELD COMPANY 18.

No.
Date.....

8th Field Coy F.E.

Place	Date	Hour	Summary of Events and Information	Remarks and references to Appendices
La Neuville	5-5-18		burst in course built in Room above. Additional entrance	
I 34.5.7.			has been constructed to cellar occupied by Right Batt H.Q. at O.B. + cellar strengthened.	
		to	4 Cupola Trench Shelters have been put in the Reserve + front line and a 7-6 x 6-0 shelter constructed at	
			I. 34. C.O.O. as emergency Coy H.Q.	
			<u>Miscellaneous</u>	
			3 Barrel pier rfts have been constructed for Reserve Batt,	
			25 Hot Food Containers, 203 Bank wire Conventinas + 8 Trench shelter frames made.	
			A level Crossing at I 24. a.o.o. has been started and 50% completed. various surface works have been	
	11-5-18		painted + Survey work carried out. *	* APPENDIX H. 4.
			Lieut Barker U.S.A Engineer, attached for experience, rejoined his unit 6-5-18.	DWS

Reference Map 62^D
 Scale 40000

Instructions regarding War Diaries and Intelligence
 Summaries are contained in F. S. Regs. Par. II.
 and the Staff Manual respectively. Title pages
 will be prepared in manuscript.

Sheet (10)

WAR DIARY
 OR
 INTELLIGENCE SUMMARY.

(Erase heading not required.)

8th Field Coy A.E.

251

8 TH AUSTRALIAN FIELD COMPANY.	
No.	2118.
Date	

Place	Date	Hour	Summary of Events and Information	Remarks and references to Appendices
La Neuville 13.5-7	5-5-15		<p>On The night of 7-5-15 - 8-5-15 a minor operation was carried out by The Left Battalion acting in conjunction The Division on their left. Lieut Brain + 4 O.R. of this unit were attached to give technical assistance. operation was successful and S.P. line dug + wire erected in front of posts during night.</p> <p>During the expected enemy attack The Coy stood to at 10.46 P.M. 7-5-15, no attack took place and Coy stood down at 1 a.m. 8-5-15.</p> <p>Lieut Durr left to attend Host Corp Lewis Gun school 8-5-15</p>	
	11-5-15		<p>Weather conditions for this period have been good, except for 5th + 6th when fairly heavy showers fell.</p>	
				DWS

Reference Map 62^d

Scale 40000

Instructions regarding War Diaries and Intelligence Summaries are contained in F. S. Regs., Par. II. and the Staff Manual respectively. Title pages will be prepared in manuscript.

Sheet (11)

WAR DIARY

OR

INTELLIGENCE SUMMARY.

(Erase heading not required.)

8th Field Coy A.E.

251

8TH Army AUSTRALIAN 2118. FIELD COMPANY.	
No	
Date	

Place	Date	Hour	Summary of Events and Information	Remarks and references to Appendices
La Neuville	12-5-18		Work on Deep Dig Out at J. 28 a 7.7. J. 19. C 7.6. + I 35. C 34.	
			has been continued and good progress made during this period	
			<u>Trenches</u>	
		To	360 yds of new front trench has been dug & complete front line taped out on Right Bath front from P 8.6 to P 2.6. 290 yds new front line dug on Centre Bath front & 1300 yds taped out. P 2.6 to J 34.6. and 320 yds	
		18-5-18	trench dug in J. 3.0 to North Bath front.	
			<u>Wiring</u>	
			Right Bath front 1250 yds apron fence erected and 120 yds existing fence thickened	
			Centre Bath front 550 yds apron fence erected and 1000 yds existing wire thickened	
			North Bath 600 yds new apron fence erected	
			<u>Reserve Line</u> 120 yds trench deepened & widened J 31 C + P 19.	

Has

11

Reference Map 62^d
Scale 40,000

251

8TH AUSTRALIAN ARMY FIELD COMPANY 2118.	
No.	Date.

WAR DIARY

OR
INTELLIGENCE SUMMARY.

(Erase heading not required.)

8th Field Coy F.E.

Instructions regarding War Diaries and Intelligence Summaries are contained in F. S. Regs., Par. II. and the Staff Manual respectively. Title pages will be prepared in manuscript.

Sheet (12)

Place	Date	Hour	Summary of Events and Information	Remarks and references to Appendices
La Neuville			<u>Accommodations</u>	
I 3.C. 57	12-5-15		Cells occupied by Coy H. 9. at I. 32 d. o. d. has been strengthened & bunker course constructed above. Two 7' 0" x 6' 0" Cupola Shelters have been put in front line.	
			3 double huts & 3 single huts have been dismounted at I 34 C. 66	
			* re-erected at I 33. central as Brigade H. 9.	
			Shelter to accommodate this unit has transport personnel have been erected at O. 3. 2 central. & shelter erected at N. 11 C. 8. 0.	
			for mounted personnel.	
			<u>Roads</u>	
			40 loads of metal. Have been carted & used in repairing Canal Low path North of CORBIE	
			<u>Gas Doors</u>	
			25 Gas doors have been fitted during this period at Forward Coy H. 9s. Bde H. 9. 55" + 114" Bottom AFA & 77" Bit RFA.	
	18-5-15			TWS

Reference Map 62^D

Scale 40,000

Instructions regarding War Diaries and Intelligence Summaries are contained in F. S. Regs., Par. II. and the Staff Manual respectively. Title pages will be prepared in manuscript.

Sheet (13)

WAR DIARY

OR

INTELLIGENCE SUMMARY.

(Erase heading not required.)

8th Field Coy A.E.

8 TH ARMY AUSTRALIAN C. 2118. FIELD COMPANY.	
No.	Date

851

Place	Date	Hour	Summary of Events and Information	Remarks and references to Appendices
La NEUVILLE	12-5-18		A level crossing at 124.000. has been completed and six tank traps in front area enlarged to 8'-0" wide by 4'-0" deep. * Dummy Bridges North of COBBIE have been kept in repair and two permanent timber trestles constructed and placed in position as Bridge	
	13-5-18		to Head for document, Bridge at 0.4.c.50 parties have been engaged in making tank wire	* APPENDIX No 5
	13-5-18		Concertina obstacles + in preparing swimming sets	* APPENDIX No 6
			Company stood to at 4 a.m. 13-5-18 and moved out of La NEUVILLE billets into the open on account of Hostile Shelling (Gas + H.E.) returning to billets some hours later	
			Company stood to at 3.0 a.m. 15-5-18 and moved out of La NEUVILLE into the open on account of enemy Shelling Gas + H.E. + later proceeded to erect shelters for new Coy Camps at 0.3.a central. Company	TWS

Reference Map 62^D

Scale 40000

Instructions regarding War Diaries and Intelligence Summaries are contained in F. S. Regs., Par. II, and the Staff Manual respectively. Title pages will be prepared in manuscript.

Sheet (14)

WAR DIARY

or

INTELLIGENCE SUMMARY.

(Erase heading not required.)

8th Field Coy P.E.

Army Form C. 2118.
AUSTRALIAN
FIELD COMPANY.

No.....

Date.....

Remarks and references to Appendices

Place Date Hour

Summary of Events and Information

030 Central 15-5-18

H.Q. + dismounted personnel moving into new Camp at 8am same day.*

* APPENDIX N-1.

15-5-18

Due to hostile shelling in the vicinity of transport lines (Dagours N 12.6.34) Transport + mounted personnel moved out to new lines at N.11.C.8.0 + proceeded to erect shelter etc (Both Dagours + La Neuville were subjected to fairly heavy hostile shelling during the night of 15-5-18 & 19-5-18.)

15-5-18

Company Location

H.Q. + Dismounted personnel 030 Central
M^d personnel + Transport lines N.11.C.8.0

15-5-18

Coy Strength

Disposition	Off	O.R.
Actually with Unit	8	177
Sick in Area	-	-
On Command	1	23
Total Effective Strength	9	200

111

Reference map 62^d
Scale 40,000

WAR DIARY

INTELLIGENCE SUMMARY.

(Erase heading not required.)

8th Field Coy A.E.

8TH
Army AUSTRALIAN 2118.
FIELD COMPANY.

Instructions regarding War Diaries and Intelligence
Summaries are contained in F. S. Regs., Par. II,
and the Staff Manual respectively. Title pages
will be prepared in manuscript.

Sheet (15)

Place	Date	Hour	Summary of Events and Information	Remarks and references to Appendices
La NEUVILLE	14-5-18		14 CO's Gas Casualties 2 NCO's + 6 OR were evacuated on the 14-5-18, + 6 OR on the 15-5-18 as Gas Casualties. These men had been engaged in effecting repair to 8 th Brigade H.Q. dug out entrance + Gas door which had been badly damaged by hostile shell fire.	
			<u>Adjustment of Boundaries</u> On the night of 16-5-18 + 17-5-18 The 14 th Aust Infantry Brigade on our right, took ^{over} the right Battalion front extending from P 86.25.20 northly to VAIRE-SOUS-CORBIE - HAMEL ROAD, The 14 th Field Coy A.E. taking over all work in this area from this unit.	
	18-5-18		Lieut Hopton temporarily attached to 13 th Aust Field Artillery Brigade. Weather conditions have been fine with warm clear day.	
				Loss

1951
15

Reference Map 62^D

Scale 40,000

Instructions regarding War Diaries and Intelligence Summaries are contained in F. S. Regs., Par. II, and the Staff Manual respectively. Title pages will be prepared in manuscript.

WAR DIARY

or

INTELLIGENCE SUMMARY.

(Erase heading not required.)

8TH AUSTRALIAN C. 2118. FIELD COMPANY.
No.
Date

8th Field Coy A.E.

Sheet (16)

Place	Date	Hour	Summary of Events and Information	Remarks and references to Appendices
0.3 a Central	19.5.18		Work in the forward area has been continued. Deep dug outs at J.25 a 7.7 & J.19. c 7.6 have made good progress. The latter being completed with Gas door. * occupied on B th H. 9.	
	To		WIRING 2500 yds single apron, & 1250 yds double apron, ^{have} been erected on the Brigade front during this period, and another 1150 yds of existing wire thickened.	
	25-5-18		TRENCHES On the Right B th Section 660 yds of Fire Trench as been dug and 560 yds Fire Trench & defensive C.T. excavated on left B th front. in addition to 300 yds of defensive C.T. dug by 5 th Pioneer in in J.27 a. Bomb proofing of Hut erected at J.33 central have been partially completed. 10 shelter of various sizes & mess room have been	Vars

251

16

Reference Map 62^D
Scale 1/40000

251

WAR DIARY

OR
INTELLIGENCE SUMMARY.

(Erase heading not required.)

8th Field Coy A.E.

Army Form C. 2118.
AUSTRALIAN
FIELD COMPANY.

Instructions regarding War Diaries and Intelligence Summaries are contained in F. S. Regs., Par. II, and the Staff Manual respectively. Title pages will be prepared in manuscript.

Sheet (17)

Place	Date	Hour	Summary of Events and Information	Remarks and references to Appendices
O. 3 a. Central	19-5-18		<p>erected & made splinter proof at I 32 b and occupied by 8th Bde H.Q. Emergency exit from Cellar has been made at Coy H.Q. at I 32 d 0 8. and Q.M.S. store erected at Coy transport lines at H. 11. C. 8-0.</p> <p>Roads. 36 loads of Cinders & broken bricks have been sorted and spread on road leading to northern approach of Bridge at O. 4. c. 50 and repairs carried out to main sheet in La NEVILLE caused by shell fire.</p> <p>GAS DOORS 23 single and 2 double gas doors have been completed at various locations during this period and others are in hand.</p> <p>A well 5' x 3' has been sunk to a depth of 24' 0"</p>	
	25-5-18		<p>timbered at I 19 c 4 2.</p> <p>Repairs have been carried out to trestle bridge damaged by shell fire at I. 29 c 9.9. and Dummy Bridges North of CORBIE kept in repair.</p>	This

Reference Map 62^D
 Scale 40,000

Instructions regarding War Diaries and Intelligence Summaries are contained in F. S. Regs., Par. II, and the Staff Manual respectively. Title pages will be prepared in manuscript.

Sheet (18)

WAR DIARY
 OR
 INTELLIGENCE SUMMARY.

(Erase heading not required.)

8th Field Coy A.E.

Army Form C. 2118.
 AUSTRALIAN
 FIELD COMPANY.

No.
 Date.....
 Remarks and references to Appendices

Place	Date	Hour	Summary of Events and Information	Remarks and references to Appendices
0.3a. canal	19-5-18		A small foot bridge to carry Infantry in single file has been constructed over the ANCRE at 1.33. c 22. and an Aerial Rope way constructed over the SOMME canal for emergency purposes at 0.4. c 5.0.	
To			Various materials have been salvaged during this period including 1200 ft. 1" Steel wire Rope + fittings for Aerial Rope ways *	* APPENDIX No 7
	25-5-18		290 Concertina Barb wire obstacles have been made at Coy. Dump. and various Carpentry jobs carried out. *	* APPENDIX No 8
	21-5-18		Lieut Isaacs evacuated to D.R.S 21-5-18	
			<u>Reinforcements</u>	
			14 O.P. reported from A.G.B.D. and taken on Strength.	
			<u>Attached</u>	
			2 N.C.O's U.S.A Engineers reported and attached for experience	
			To ^{this} unit 24. 5-18.	Lios

251

81

Reference Map 624

Scale 40,000

WAR DIARY

INTELLIGENCE SUMMARY.

(Erase heading not required.)

8th Field Coy AE

Army Form 8th C. 2118. AUSTRALIAN FIELD COMPANY.

Instructions regarding War Diaries and Intelligence Summaries are contained in F. S. Regs., Par. II. and the Staff Manual respectively. Title pages will be prepared in manuscript.

Sheet (19)

Place	Date	Hour	Summary of Events and Information	Remarks and references to Appendices
O.3.2 Central	21-5-18		N ^{os} 2 & 3 Section Transport less one limbed G.S. wagon moved up & picketed at I 32 a 5-8 for tactical reason on 21-5-18.	
	25/5/18	24.5.18	Weather condition clear & warm until night of 25-5-18 when cool change set in with light rain.	
"	26-5-18		Work for the period 26-5-18 to 31-5-18 was carried out on the same lines as for preceding periods. Deep Dug Out at I 28 a 7-7 was pushed forward, 14'-0" & 6 Drive, and 20'-0" 6x3 machine & left being excavated.	
	31-5-18		<u>Wiring</u> 1400 yds of new apron fence ^{erected} + 930 yds of existing fence has been improved on Right B ⁿ Section	FWS

A6945 Wt. W11422/M1160 350,000 12/16 D. D. & L. Forms/C. 2118/14.

251

61

Reference Map
62nd Scale 40,000

WAR DIARY

INTELLIGENCE SUMMARY.

(Erase heading not required.)

8th Field Coy A.E.

8TH
AUSTRALIAN
ARMY FORM C 2118.
FIELD COMPANY.
No.....
Date.....

Instructions regarding War Diaries and Intelligence Summaries are contained in F. S. Regs., Par. II, and the Staff Manual respectively. Title pages will be prepared in manuscript.

Sheet (20)

Place	Date	Hour	Summary of Events and Information	Remarks and references to Appendices
0.3 a central	26-5-15		1230 yds of apron fence has been erected on Centre B ⁿ Section, and 1100 yds old wire thickened on Left B ⁿ Front.	
			<u>TRENCHES etc</u> . New Trenches have been dug and old trenches improved at various locations as follows. I.25.d. 30 yds C.T. I.31.b. 200 yds Fire Trench improved I.32.a.9.5. 40 yds Breastwork constructed. I.30.b. 90 yds C.T. and 380 yds Fire Trench dug in connection defence scheme at SAILLY le SEC. and two M.G. positions dug at I.31.b.	
			<u>Accommodation</u> Shelters have been erected, and various other work carried out in the area to increase & improve existing accommodation at Bde H.Q.	
	31-5-15		I.32.b. 2.5. I.33 central. Coy H.Q. I.32.d.0.8. B ⁿ H.Q. I.19. c.7.6. Coy H.Q. I.29.6.1.5. Reserve line I.31.b, H.25.6.3.2 (Coy Transport lines)	Done

251
20

Reference Map 62^D

Scale $\frac{1}{40,000}$

Instructions regarding War Diaries and Intelligence Summaries are contained in F. S. Regs. Par. II. and the Staff Manual respectively. Title pages will be prepared in manuscript.

Sheet (21)

WAR DIARY

OR

INTELLIGENCE SUMMARY.

(Erase heading not required.)

8th Field Coy A.E.

251

8 TH ARMY AUSTRALIAN C. 2118. FIELD COMPANY.	
No.....	Remarks and references to Appendices
Date.....	

Summary of Events and Information

Place	Date	Hour	Summary of Events and Information	Remarks and references to Appendices
O 3 a. Central	26-5-18		and at Coy Camp O.3 a central for particular see weekly works report.*	* APPENDIX H29.
			Weldon Trestle Bridge at I 29.c.9.9. Has been removed + permanent local timber bridge constructed* to replace it. + Artillery track leading to Bridge repaired.	* APPENDIX H210
			GAS DOORS, Gas doors have been completed at 298 Bde R.F.A. I 25.6.2.9. (11) 29 th BN H.Q. J 25.a.7.7. (1). Coy H.Q. J. 32.d.0.8. (1). + Coy H.Q. J 29.6.1.5 (2) total 15	
			Well at I 19.c.4.2. has been sunk a further 16'-6" making a total depth of 40'-6"	
			A 3x2 ventilator has been constructed at R.A.P. at J. 25.d.7.0. and culvert constructed at bridge approach O.4.c.5.0.	
			Coy Dump La NEUVILLE 290 barb wire concertinas have been constructed. + 50 trench shelter frames made.	

Reference Map 62^D
Scale 40,000

Instructions regarding War Diaries and Intelligence Summaries are contained in F. S. Regs., Par. II, and the Staff Manual respectively. Title pages will be prepared in manuscript.

Sheet (22)

WAR DIARY
OR
INTELLIGENCE SUMMARY.

(Erase heading not required.)

8th Field Coy A.E.

8th AUSTRALIAN C. 2118.
FIELD COMPANY.

No
Date

Place	Date	Hour	Summary of Events and Information	Remarks and references to Appendices
O.3. a Central	31-5-18		<p><u>WORKING PARTIES</u></p> <p>3 officers + 112 O.R.'s from 8th Aust Infantry Bde have been permanently attached to this unit for work in the area other than front line work. parties for front line work being drawn from Bⁿ in the line + Reserve Bⁿ working under sapper supervision. * Sappers being attached to forward Bⁿ for this purpose.</p>	* APPENDIX H211
	27-5-18		Coy Transport moved by road from N.11.6.8.0 to H.28.6.5.3.	
	29 th 5.18		Lieut Isaacs reported in from Hospital	
			6 O.R.'s reported in from G.B.D. and taken on strength	
			1 O.R. reported in on transfer from 3 rd Aust Terr. Coy. and taken on strength	
	31-5-18		Lieut Isaacs + 11 th 2 Section complete with Section Transport moved out to B 23 Central + took over work in back area from 12 th Field Coy A.E. preparatory to Coy relief	Two

251

22

Reference Map 62^D
 Scale $\frac{1}{40,000}$

Instructions regarding War Diaries and Intelligence Summaries are contained in F. S. Regs., Par. II, and the Staff Manual respectively. Title pages will be prepared in manuscript.

Sheet: (23)

WAR DIARY
 or
 INTELLIGENCE SUMMARY.

(Erase heading not required.)

8th Field Coy AE

251

Army 8 th AUSTRALIAN C. 2118.	
FIELD COMPANY.	
No.	Remarks and references to Appendices
Date.....	

Summary of Events and Information

Place	Date	Hour	Summary of Events and Information	Remarks and references to Appendices
O. 3. a. Central	31-5-18		Company Disposition H.Q. + 3 Sections O. 3. a. Central " " " B. 23. Central Coy Transport H. 28. 6 5-3.	
	31-5-18		Company Strength	
			Disposition	Off OR
			Actually with unit	7 185
			Sick in Area	- -
			On Command	2 31
			Total Effective Strength	9 216
	31-5-18		Transport During the month Coy Transport has been mainly occupied in forward transportation of P.E. material + Coy Stores Rations etc. on the 15-5-18 Transport moved from N. 12 6. 5. 4 to open field at N. 11. 6. 8. 0.	

Reference Map
Scale 1/40,000

Instructions regarding War Diaries and Intelligence Summaries are contained in F. S. Regs., Par. II, and the Staff Manual respectively. Title pages will be prepared in manuscript.

Sheet (24)

WAR DIARY
OR
INTELLIGENCE SUMMARY.
(Erase heading not required.)

8th Field Coy A.E.

251
8TH
ARMY AUSTRALIAN 2118.
FIELD COMPANY.

No.
Date. Remarks and references to Appendices

Summary of Events and Information

O.39 Contd

31-5-15

Horses were picketed on open lines and personnel dug in. Splinter proof barricades were constructed 3'-6" high to protect animals. This site was claimed by Heavy Artillery on the 26-5-15 & was vacated on 27-5-15. (Aust Conty 1st Aust Corps.) & Transport moved to H 28. 6 50. 25. Horses being picketed on open lines, personnel bivouacking. See Transport report. The following work has been carried out during the month.

Vehicle	Trips	Time
PonToon wagons	54	180
G.S. "	22	75
L.G.S. "	69	158
Mess Cart	33	41
Water Cart	50	79
Packs	8	16
Total	236	549 hrs

Das

48

Reference Map 62^d
Scale 40000

Instructions regarding War Diaries and Intelligence
Summaries are contained in F. S. Regs., Par. II.
and the Staff Manual respectively. Title pages
will be prepared in manuscript.

Sheet (25)

WAR DIARY

or

INTELLIGENCE SUMMARY.

(Erase heading not required.)

8th Field Coy F.E

8TH
Army AUSTRALIAN 2118.
FIELD COMPANY.

No.....

Date.....
Remarks and
references to
Appendices

Place	Date	Hour	Summary of Events and Information	Remarks and references to Appendices
O.3.a Central	31-5-45		<p><u>Animals</u> All animals are in very good condition and there is no sickness, or skin disease prevalent on the lines, grazing has been carried out as much as possible. The present site offering excellent opportunities.</p> <p><u>Animal Strength</u> Rides 14, Packs 4, Mules 7, L.D's 45, Total 70</p> <p>During the month one Ride was destroyed owing to injuries to leg, + one Ride died from ruptured intestines.</p> <p><u>Fodder</u> The issue of fodder continues to be up to standard.</p> <p><u>Vehicles</u> All vehicles are in fair working order all wood work having received a dressing of wood oil. 2 pontoon wagons + mess cart have been repainted + minor repair carried out.</p> <p>Vehicles are up to Establishment.</p>	This

291

25

Reference Map 62^D
Scale 40000

Instructions regarding War Diaries and Intelligence
Summaries are contained in F. S. Regs., Par. II,
and the Staff Manual respectively. Title pages
will be prepared in manuscript.

Sheet (26)

WAR DIARY

OR
INTELLIGENCE SUMMARY.

(Erase heading not required.)

8th Field Coy F.E.

8TH
AUSTRALIAN
ARMY FIELD COMPANY 2118.

No.....
Date.....

251

Place	Date	Hour	Summary of Events and Information	Remarks and references to Appendices								
O. 3.9 Contd	31-5-15		<p><u>Harness</u>, All harness is in good condition & every attention has been given during the month to the cleanliness & preservation of same. *</p>	* APPENDIX N212								
			<p><u>Q. M. Report</u> *</p>	* APPENDIX N213								
			<p>Rations have maintained a high standard during the month, the Bread & meat ration being especially good. Rum was drawn occasionally & distributed. <u>The issue is now stopped.</u> By products returned to A.S.C. have been good and are as follows:</p>									
			<table border="0"> <tr> <td>FAT Class "A"</td> <td>200 lbs</td> <td>paper</td> <td>10 lbs</td> </tr> <tr> <td>Card board</td> <td>40 lbs</td> <td>Jam</td> <td>Cartoon 70</td> </tr> </table>	FAT Class "A"	200 lbs	paper	10 lbs	Card board	40 lbs	Jam	Cartoon 70	
FAT Class "A"	200 lbs	paper	10 lbs									
Card board	40 lbs	Jam	Cartoon 70									
			<p>Incidents on Ordnance have received early attention, & issues have been made promptly. Tools & necessaries drawn, or returned are as follows.</p>	LWS								

26

Reference Map 62nd

Scale $\frac{1}{40,000}$

Instructions regarding War Diaries and Intelligence Summaries are contained in F. S. Regs., Par. II, and the Staff Manual respectively. Title pages will be prepared in manuscript.

Sheet (27)

WAR DIARY

or

INTELLIGENCE SUMMARY.

(Erase heading not required.)

8th Field Coy F.E.

8TH AUSTRALIAN ARMY FIELD COMPANY. 2118.

No.

Date..... Remarks and references to Appendices

Place	Date	Hour	Summary of Events and Information		Tools & Necessaries		Red	Rtd	Remarks and references to Appendices	
			Tools & Necessaries	Red	Rtd	Tools & Necessaries				Red
O. 3 a Contal	1-5-15		Axes Felling, Heads + Helres	20		Shaffs, Cart matters	1			
			Bicycles	2	1	Sigbs Elliptical complete	1			
			Buckets Canvas G.S.	2		Soles to billed size 8 per	25			
			Bicycle parts	Various		Shack ground			3	
			Bags Hose	50		Traces, wire long	2			
			Bayonets		1	Timber oak 4x4	24			
			Cutters wire folding per	11		Torches Electric hand	4			
			Cloth collar chuk yds	3		Nets Hay	70			
			Covers Tool F.E.	8	6	Breaches M.S.	8		12	
			do 6x6 G.S.	1		do D.S.	6			
			Clippers Horse	1		Braces	12			
			Cardage	various		Blankets G.S.			183	
			Containers		1	Boots F.S.	12			3
			Equipment web complete		1	Cheerons 3 bar	6			
			Gloves Hedging per	10		do 2 "	6			
			Handles x cut Saw H	8		Coats Great M.S.				4
			Lashings tarred 20' x 1"	3		do do Sheepskin				1
			Oilstones Carpenter	2		Drawers woolen per				118
			Poles draught H ^o 17	2		do cotton long	50			
			Paint lbs	14		do linen short	110			
padlocks iron 2"	4		jackets S.D.	13			4			
Packs web		3	Jerkins leather				1			
Reins, bit	3		puttees per	39			14			
Rods measuring 6"-0"	3									
Rugs Horse							58			
Rifles S.M. LE							2			
Respirators S.B.							7			
Shops securing 22' x 7'	16									
Surcingle leather	1									
Sewing needles H ^o 11	3									
Soap yellow bars	50									
Soft Soap lbs	56									

251

WAS

27

51

28

18,000-12/17 8723

WAR DIARY

8TH AUSTRALIAN FIELD COMPANY.	
No.....
Date.....

OF

8TH FIELD COY. AUSTR. ENGRS.

FOR

MAY (1-31) 1918

LIST OF APPENDICES.

No.	Subject.
1	MAP of Area
2	Report on Roads
3	Weekly Works Report
4	Weekly Works Report
5	Tank Traps - position of -
6	Weekly Works Report
7	Instructions re "Flying Foxes"
8	Weekly Works Report
9	Weekly Works Report.
10	Sketch round timber bridge
11	GRAPH - Infantry & Sapper Supervision
12	Transport Report
13	Q.M.S. Report
14	GRAPH. - Disposition of Coy
15	Summary - material issued for week ending 7/5/18
16	Summary - material issued for week ending 14/5/18.
17	Summary - material issued for week ending 21/5/18
18	Summary - material issued for week period ending 31/5/18.
19	DIAGRAM. - Showing material issued for MAY '18.

2641

8TH AUSTRALIAN FIELD COMPANY.
No.
Date:

Appendix No. 1. SHEET 62° S.W.

29

1: 20,000.



— LEGEND —

- | | | | | | |
|-------------------|--|---|--|---|--|
| COY. HEADQUARTERS | | A | | B | |
| BTLH | | C | | D | |
| TRENCHES | | E | | F | |
| BUGLE ALARM POSTS | | G | | | |

— WIRING —

29

To Ofc
8th Field Coy. A.E.
From Capt F.W. Stradwick

8TH
AUSTRALIAN
FIELD COMPANY.
No. 4.5.18.
Date

In accordance with your instructions I inspected roads forward of CORBIE & NORTH of THE SOMME. within the Divisional Boundary, and beg to report as follows.

Road running from CORBIE to SAILLY le SEC is badly out of repair in places, especially between I.36.464. & I.26.404. and would be extremely dangerous to motor traffic at night if not repaired, especially in the vicinity of I.36.2. This also applies to eastern end of road running from I.35.6.5.0. to I.36.26.6.

A fallen tree partly removed is lying across the road at I.36.25.9. which might be dangerous to vehicles after dark.

A quantity of debris is also obstructing the road in VAUX-SUR-SOMME at I.26.4.3.7.

A number of shell holes also require filling at I.36.20.5. Road running from I.35.25.20 to I.36.25.6. is in a very bad condition, being practically an earth road from I.35.23.5. to I.35.24.7.

Other roads can be taken as shown except the interior roads of CORBIE itself.

Very little road metal is available except about 20 tons of unbroken metal along side of road between O.6.20.5. & I.36.26.6. and small quantities of small metal along side of road going north from I.35.24.35.30.

I would like to recommend that the question of drainage be gone into in connection with the CORBIE - SAILLY le SEC Road, as this road has practically no crown, and consequently allows the water to collect in the centre of road.

F.W. Stradwick Capt
8th Field Coy A.E.
4.5.18

APPENDIX 2

251

Copy for War Diary APPENDIX 2, 31

8 TH
AUSTRALIAN
FIELD COMPANY
No.
Date

C. R. E. 5th Aust. Div.
 16/128/15
 3.5.18

O.C. 8th Field Coy A.E.

Please have reconnaissance made and report on condition of forward roads from CORBIE on north side of SOMME.

A tracing showing condition by colouring as follows should be sent with report, which should reach this office at earliest possible moment.

- Dull brown line = Dit for Motor Traffic
 - Brown line in dashes --- = Horse Transport
 - Brown line in dots = Pack "
 - Green line = Urgently requires repairs.
 - Red " = Requires repairs, not urgent
- (signed) L. Mather Lt Col.
C. R. E. 5. A. D.

G.O. 8th Aust. Field Ambulance May 1st 1918.

The road from CORBIE (I 35. b.) to the Loading Post (I. 30. b.) is now in a very bad state for motor Ambulance Cars, and if left much longer without attention, it will become almost impossible to use it for motor Ambulance Cars. The parts at present requiring immediate attention are in (I. 36. a) from the cemetery to the Loading Post in (I. 30. b). I strongly recommend that immediate steps be taken to put it in a state of repair.

I would also recommend the formation of a Ford Car Loading Post at (J. 26. Central), near the Relay Post at present in use. The establishment of this Loading Post would not only expedite the delivery of wounded, but it would save personnel, as one squad (1 H.C.O. & 3 men) would then be sufficient for its purpose. The Ford Car would deliver its cases at the Loading Post (I. 30. b). In order to establish this Post it would be necessary to effect slight repairs to the road traversing (I. 30. b), (J. 25. a), (J. 25. b), (J. 26. a), and (J. 26. c).

Sd. R. Whiston Walsh,
Major A.A.M.C.,
A.D.S. LA NEUVILLE

8 F.Co.
Please report on this specially. L. M. Lt Col.
3/5/18. C.R.E.

SUBJECT	LOCATION	PROGRESS OF WORK	STATE OF COMPLETION	REMARKS
<u>WORK IN REAR AREA.</u> Div. Reserve Line.	North of River.	Trenches dug - 30 yds. Double Apron fence erected - 1345 yds.	Front line complete.	Materials Used - Barbed wire - 270 coils Long pickets - 400 Short pickets - 800.
Bn. H.Q. Dugouts.	O. 17. d. 7. 9.	Face of quarry squared up and 8 ft of 6x3 tunnel driven and timbered.	Commenced July.	Handed over.
	O. 13. a. 5. 8. } O. 7. c. 5. 0. 3.	Face of bank squared up for four entrances and 394 ft tunnel driven and timbered.	do.	do.
Water Supply.	Bussy.	Timber stand cut and squared. Lark erected. 6 inch hoses brought to make and taken to site, all piping collected and trenching for them completed. Tricomas for road collected and transported to site.	75%	Work being up awaiting pipe fittings. Handed over.
Div. Batts.	DAOURS.	Internal fittings completed & Batts taken over by Div. Batts officers.	Completed.	Large baskets replaced the two sets of Basin Douches.
Road Repairs.	TRONVILLE CHATEAU To N° 14 BRIDGE.	Plant road was repaired throughout where damaged by tanks and rebands replaced.	do	-
Bridge Head Defences.	LAMOTTE TO CERBIÈ	Plans were cited and laid out by Lt. Holmes, plans prepared and all work completed. This handed over to Div. Field Engineer.	-	-
Road Traps.	O. 36. b. 25. 20. P. 25. b. 0. 9. O. 30. d. 9. 2.	Trenches 3 ft wide & 4 ft deep were dug across roads at these points. Pit at O. 30. d. 9. 2, was not quite finished when relief took place.	-	-
Miscellaneous.	DAOURS.	Parbier & Coy. transport were engaged in salvaging timber and iron for mining sets and horse troughs.	-	-

No.	8TH AUSTRALIAN FIELD COMPANY.
Date	

Appendix No. 3.

SUBJECT	LOCATION	PROGRESS OF WORK	STATE OF COMPLETION	REMARKS
<u>Dugouts.</u> -	J. 28. a. 7. 7.	32 ft. have been driven and timbered during period. Splinter proof approach has been made over south entrance; windlass and skids in incline.	50%.	See Tracing.
	J. 19. c. 7. 6.	37'6" driven and timbered.	70%.	Very bad ground met with See Tracing.
	J. 35. c. 3. 4.	75 ft and 80 ft. of large and small size drives driven and timbered for period. 30 heavy sets have been put in to strengthen light sets. One chamber has been floored & lined. Small vent has been sunk from surface to Sig. Office. Bde. Mess has been sand bagged up and roofed over. Duckboard tracks laid and sand bagging up of tunnel entrances commenced.	70%.	Ground settling heavily on timbers. See Tracing.
	R.A.P. J. 22. d. 3. 5.	Approach to this has been timbered, roofed and made splinter proof. Total of 224'6" of driving completed during period.	Complete.	Occupied.
<u>Wiring.</u> -	Front Line. Right Bn. Sector.	245 yds. new apron fence erected. 1850 yds. old wire thickened up with barb concertina		Wire along Bde. front, excepting new line on left, is now in good condition and is a very efficient obstacle.
	Centre Bn. Sector.	1475 yds. new apron fence erected. 1380 yds. old wire thickened.		
	Left. Bn. Sector.	200 yds. new wire erected.		
<u>C. Ts.</u> -	J. 27. J. 33. c. 0. 1. P. 2. a. 7. 2. J. 30. b.	350 yds. dug. - portion of this yet to be deepened. 90 yds. dug. } to connect support & front line. 100 yds. dug. } 260 yds. dug to half depth.	-	-
<u>Reserve Line.</u> -	J. 31. c and. P. 1. a.	320 yds. have been deepened and widened.	-	-

Appendix N-1



APPENDIX

48

SUBJECT	LOCATION	PROGRESS OF WORK	STATE OF COMPLETION	REMARKS
<u>Accommodation.</u>	Centre Bn. H.Q. J.25.d. Right Bn. H.Q. O.6.b. Reserve + Truck Lines.	Large cellar has been strengthened with R.S.J. and heavy 8"x8" timber and a 4th. bursting course placed above it. Additional bit four cellars constructed + shifts put on. 4- 7'6"x6" bench shelters put on. 1- do do as emergency Coy. H.Q. at I.34.C.O.O.	-	-
<u>Roads.</u>	O.H.A. 2.2. 15 bridge site at O.H.C. 5.A General low paths north of Corbie.	80 wagon loads broken brick and cinder laid and road completed. 138 loads gravel carted for repair of wheel ruts and shell holes.	-	Low paths still require a good deal of repair work.
<u>Gas doors.</u>	Bn. H.Q. J.25.d. Bn. H.Q. O.6.b. RAF. O.6.b. RAF. J.32.a.1.4 Coy H.Q. J.32.d.1.8. Bn. H.Q. J.19.c.7.6.	1 double, 3 single and 12 single for windows of cellars. 3 doors. } double Bn. H.Q. J.28.a.77. 2 doors (double). 3 doors. } single Coy. H.Q. Saitley Sec. 1 door. 1 door Coy. H.Q. J.29.c. 2 doors (double). 1 door. 114 th + 55 th Bat. 13 doors - 5 panels. 3 doors (double) 150 th Bde R.F.A. 2 doors. Total - doors double 14 " single 21. Windows " 17.	-	-
<u>Baths.</u>	Corbie.	Carpenters have been employed making clothing racks, tables, cabinets, repairing walls, roof + flooring	-	-
<u>Miscellaneous.</u>	Corbie.	3 barrel pier rafts had been made for Reserve Bn. Hot Food Containers made - 25. Bark Concentric coils " - 203. Bench shelter frames - " 8. All timber used for mining during period has been collected by Coy. transport + sets prepared + cut at Coy. dump. Heavy crossing at I.24.a.o.o is 50% completed. Saw benches dismantled + loads into Corbie. sign writing + survey work.	-	-



*W. H. Fargher Majr
oc. 8. in Field Coy A.I.E.
11/5/18*

APPENDIX 35

R.E. MATERIAL USED FOR PERIOD.

5-5-18
To
11-5-18.

- Barbed Wire - Coils 1380.
- " Concertina " 207.
- Screen Pickets - 2500
- W^d " - 1200.
- Sand bags - 5500
- Cor. Iron Sheets 100.
- Shelters. 24
- Nails. - lbs. 340
- Duckmarks - 60.
- Tracing tape yds. 800
- Cloth Lining. yds. 140.
- Malthoid - rolls 2.
- Hessian - yds 50.
- Timber (approx) tons 40.



APPENDIX H

W. G. Ferguson Major
O.C. 8th F. Coy A.E.

11-5-18.

Headquarters 5th. Australian Divisional Engineers.

O.O. 8th. Field Co.
14th. Field Co.

W.P.S.

C.R.E.	SECRET.
DIVISION.	8TH
14/56/20	AUSTRALIAN FIELD COMPANY.

Please arrange to widen to 8 feet wide by 4 feet deep all block-trenches which have already been dug across roads in the front line. Report completion to this office and treat as urgent.

11.5.18.

J. Mathew Lieut-Col. A.E.,
C.R.E., 5th. Australian Division.

251

Headquarters 5th. Australian Divisional Engineers.

8th. Field Co.
14th. Field Co.

Appendix N° 5

C.R.E.
AUSTRALIAN
DIVISION.
14/26/20.

Please forward as soon as possible to this office, locations of all block trenches which have been widened to 8' by you.

Completed with

W. G. ...

22/5/18.

8th
AUSTRALIAN DIV
FIELD COMPANY.
No. *3/25*
Date.....

Lieut-Col. A.E.
C.R.E.
5th. Australian Division.

251

APPENDIX 5

39

"A" FORM
MESSAGES AND SIGNALS.

Army Form C.2121
(in pads of 100).
No. of Message

Prefix	Code	m.	Words	Charge	This message is on a/c of:	Recd. at	m.
Office of Origin and Service Instructions.						Service.	Date
			Sent			From	5
			At	m.	(Signature of "Franking Officer.")	By	
			To				
			By				

TO { C.P.E.

Sender's Number.	Day of Month.	In reply to Number.	AAA
* 0.314	23	14/36/30	

Block trenches widened
to 8' at J. 34. d. 35. 85.
J. 33. d. 2. 0. P. 2. b. 7. 5.
P. 3. C. 0. 2. P. 8. b. 2. 1.
J. 29. C. 75. 00.

8TH
AUSTRALIAN
FIELD COMPANY.

No.
Date.

From 8th Field Coy A.C.

Place

Time

The above may be forwarded as now corrected.

(Z) [Signature]

Censor. Signature of Addressor or person authorised to telegraph in his name.

* This line should be erased if not required.
750,000. W 2186-M509. H. W. & V., Ltd. 5/16.

Reference Sheet 62⁹

Subject	LOCATION	PROGRESS OF WORK	STATE OF COMPLETION	REMARKS
<u>Dugouts.</u> —	J. 28 a 77. J. 19 c 76. I. 35 c 34.	31 ft have been driven and timbered during period Second incline shaft has been commenced 81 ft further up valley. 186 driven and timbered. 39 ft driven and timbered. Entrances to tunnels have been riveted up and driven duck boarded. Splinter proof cover was constructed over mess Total of 886 of driving completed during period	— 90% — —	Ice tracing. Small footage owing to bad state of ground passed through. Work on this has ceased since gas born over mess. Work has not been continued during period on dugouts.
<u>Wiring</u> —	Right BN Front P 8 b 15 P 2 b. Centre BN Front P 2 b 15 J 34 b North BN Front J 30.	1350 yds additional apron fence erected and 130 yds existing were thickened to 550 yds new wire erected and 1000 yds existing thickened up. 600 yds new wire erected.	—	Got J 30 b. has still to be wired and a double fence erected.
<u>Trenches.</u> —	Right BN Front P 8 b 15 P 2 b. Centre BN Front P 2 b 15 J 34 b North BN Front J 30.	360 yds front line trench has been dug and complete front line taped out. 290 yds front line trench dug and 1300 yds wired out. 320 yds dug including C.D. to bunker road.	—	
do	Reserve line J 31 c & P 1 c.	120 yds have been deepened and widened.	—	
<u>Accommodation</u> —	Coy HQ J 32 d o e. Front line Bde HQ I 33 central 8 th Coy Camp O. 3 a.	bunker has been strengthened from below and bursting course constructed above it. Two 7' x 6' trench dugouts have been constructed. 3 double beds 4' x 10' and 3 single beds ^{23 x 10} were dismantled at I 34 c 6 b and reerected at Bde HQ at I 33 central. Excavations 16' out for mess below ground level. Shelters for 4 sections have been erected also latrines and orderly room and officers quarters.	Complete. — 75% Complete.	Require sandbagging up and other improvements.



Appendix No 6

110

Reference Sheet 62^d

Subject	LOCATION	PROGRESS OF WORK	STATE OF COMPLETION	REMARKS
<u>Roads.</u>	Canal Tow P215.	A total of 42 loads of metal have been worked fast repair of wheel hubs and shell holes.	-	Work has been being done good deal on occasional gas on Corbie.
<u>Gas Doors.</u>	Coy. H ⁵ O ¹ Co North Bn. Factor	12 double doors have been put. 55" and 114" Batt. - 4 doors. 77" R.F.A. - 4 doors. Bde HQ. - 5 doors. Total - 25 doors.	-	All timber required for doors salvaged in area.
<u>Miscellaneous.</u>	I. 24 a. o. o Front Area.	Level crossing completed. 6 timber piles have been blown and excavation enlarged to 8' x 4' cross made.		
	River Somme.	All dummy bridges work of Corbie have been repaired and are now in good condition.		
	O. 4. c. 5. 0	Two timber trestles have been placed in position and 35' A. decking laid, as bridge head for permanent pontoon bridge.		
	Corbie.	Parties have been employed making barbed wire concertina coils and cutting and preparing masonry etc. Coy transport has been engaged in moving R.E. Stores to Coy dump at Neuville. Coy vehicles are being overhauled and painted as opportunity occurs.		



*W. H. Ferguson
oc 8th Dec 18
18/5/18*

18/5/18

APPENDIX. 9050

R. E. MATERIAL USED FOR PERIOD

12. 27. 18.
15
18. 5. 18.

Barbed Wire Coils -	730.
" Concertina "	86.
Screen Pickets	4000.
W ^d do	1100.
Sandbags	11000.
Cor Iron Sheets	260.
Shutters	103.
Duckwalks	61.
Tracing Tapes	3500 yds.
Cloth Union	122 yds.
Malthoid rolls	20
Hessian yds	160.
Nails lbs	200.
Pit Props	100
Pickets 4 iron	100
Lagging - 1/2" x 4"	500
Timber lbs	5.
Wire Plain Coils	2.

No.
Date
8TH AUSTRALIAN FIELD COMPANY.

H. G. Farquhar
oc. 5th Feb by AE.
 10

251

APPENDIX *M*

43

Headquarters 5th. Australian Divisional Engineers.

3th. Field Co. ✓
~~4th. Field Co.~~
~~15th. Field Co.~~

Appendix W-7.

C.R.E.
5TH AUSTRALIAN
DIVISION.
15/200/8
Date

Please reconnoitre villages, factories, etc. in your neighbourhood to see if much wire rope could be salvaged. The reason is that in view of possibility of many bridges being destroyed, it might be very useful to have "Flying Foxes" erected in anticipation. The trees along the canal and river ~~bank~~ would lend themselves admirably to this purpose. Please report as to availability of cable, and also as to your views on this subject.

A. M. Parker

Lieut-Col. A.E.
C.R.E.

5th. Australian Division.

10/5/18.

W. G. J.

*Answered.
D/950.*

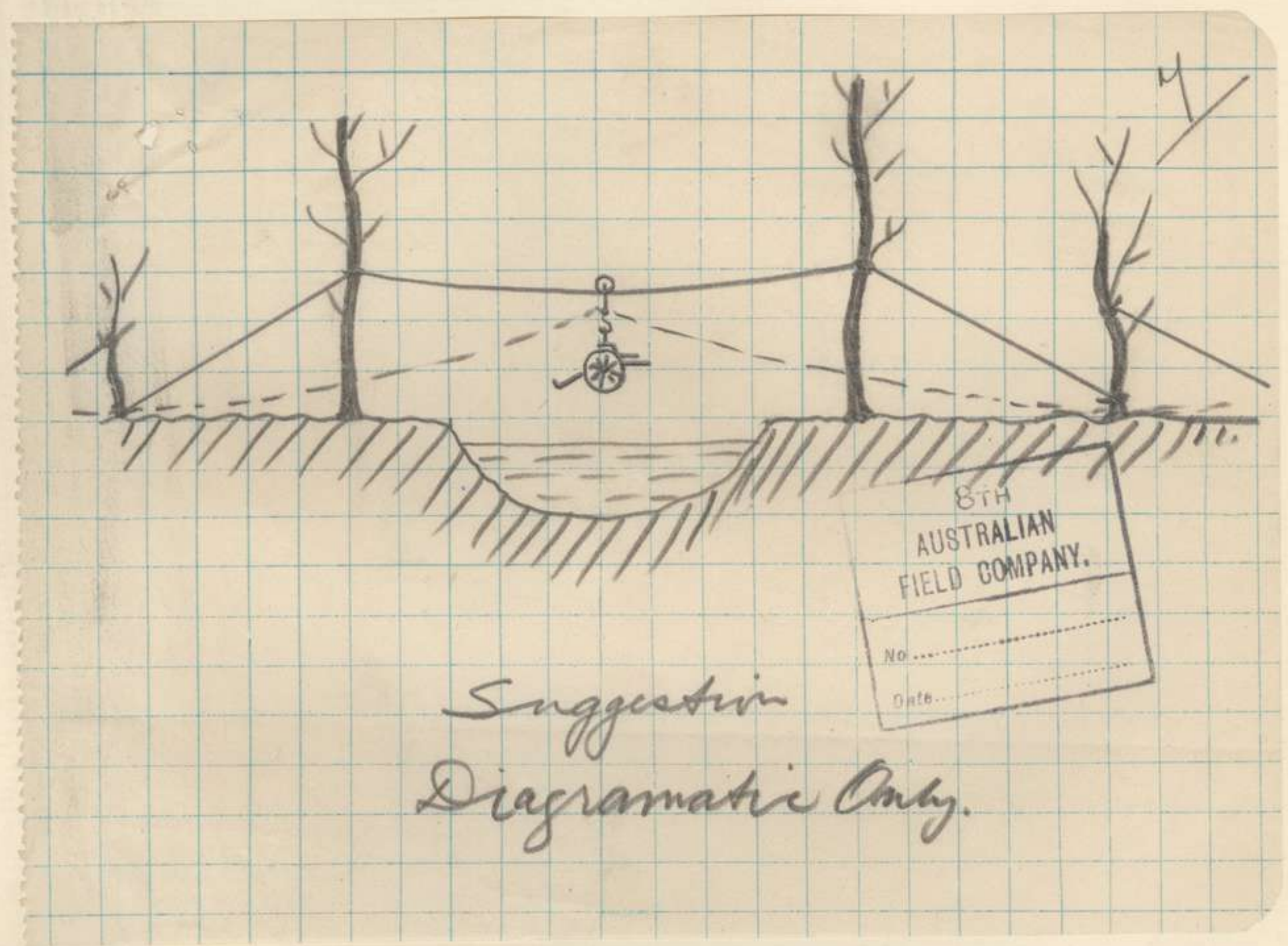
8TH
AUSTRALIAN
FIELD COMPANY.
No.....
Date.....

251

APPENDIX.

M

HH



*Suggestion
Diagrammatic Only.*

8th
AUSTRALIAN
FIELD COMPANY.
No.
Date.

Reference Sheet 62

WORKS REPORT

SUBJECT	LOCATION	PROGRESS OF WORK	STATE OF COMPLETION	REMARKS
<u>Dugouts</u> -	J. 28.a. 7.7. J. 19.c. 7.6.	Large drives - 11 6" drives and timbered. Small drives - 21.0 do. do. Incline shaft - 11 6" do. do. Large drive - 6 6" do. do.	Completed.	See Irid attached. Location of N° 3 entrance has been altered to 404 north of N° 2. Gas proofing completed.
<u>Wiring</u> -	Right Box Front. P. 2 b. 6 J. 31 b. Left Box Front. J. 30. Canal Defence J. 25.c and J. 31.a.	1920 yds. additional single apron fence has been erected and 950 yds. existing wire thickened up. 500 yds. new apron fence erected and 500 yds of the old wire thickened with concertina. 400 yds. double apron fence also erected in J. 23.c and J. 29.a. 800 yds. double apron fence erected.	/	Totals - Single apron - 2500 yds. Double apron - 1200 yds. Thickened - 1150 yds.
<u>Trenches</u> -	Right Box Section - Left Box Section -	480 yds. fire trenches dug in J. 31 b and J. 25.d. 150 yds. dug in front line system. 200 yds. fire trenches dug 360 yds. B. J. a fire trenches combined, dug.	-	Totals - 1220 1150 yds. dug. In addition 300 yds. dug by pioneers in J. 27.a.
<u>Accommodation</u> -	Bde. HQ: I 33 central. Bde HQ: I 32 b. 8th Coy. barracks. Coy. HQ. J. 32.d.o. 8.	Bomb proofing of huts erected was 60% completed. Following shelters have been erected and made splinter proof - 6 each 9' x 9' } made of B type English shelter 2 " 20' x 9' } on timber frame work. 2 " 6' x 9' } 1 " 4' x 4' (mess room). One hut 14' x 8' constructed for Q.M.S. N.C.O. Additional accommodation for 12 men constructed. Emergency exit from cellars has been constructed.		<div data-bbox="2371 1411 2695 1753" style="border: 1px solid black; padding: 5px; width: fit-content;"> <p style="text-align: center;">8TH AUSTRALIAN FIELD COMPANY.</p> <p>No. Date</p> </div> <div data-bbox="2849 1360 3003 1844" style="writing-mode: vertical-rl; transform: rotate(180deg);"> <p>Appendix No. 8</p> </div>

WORKS REPORT Page 2.

FOR PERIOD 19/5/18 TO 25/5/18

Reference Sheet 62F

SUBJECT	LOCATION	PROGRESS OF WORK	STATE OF COMPLETION	REMARKS
<u>Roads</u> -	Bridge Head. O. & C. S.O. LA NEUVILLE.	36 loads of cinders and broken bricks have been carted and spread to form approach on northern bank of stream. Large shell hole crater in main street was filled in and road repaired in other places.	-	-
<u>Gas Doors</u> -	Left BH. below - Buzand. J. H. C. 7. 6. Right BH. H. R. 55 th BH. M. G. Duguid I 33. a. b. c.	1st single gas door. bay H ¹ etc. T.H.B. H ¹ etc. 2 double gas doors. 2 single doors. 3 do 4 do. Total - 27 doors.	-	-
<u>Miscellaneous</u> -	J 19 c. 4020. Rue Somme. I 29 c. 9. 9. I 33 c. 2. 2. J 13 a. O. & C. S. O. Cay Dumps La Neuville.	Well 5' x 3' has been sunk to depth of 24 ft and timbered. Dummy Bridges north of Corbie have been overhauled and repaired during the period. Repairs were carried out to Insterle Bridge near AMRE which has been damaged by shell fire. Small footbridge (single file) has been constructed near AMRE. 1200 ft. 1" steel rope and fittings for overhead rope way were saved from here & brought to Cay Dumps. Steel rope way over Canal (Flying Jaws) has been constructed here and bracket attachment fixed for final purpose. 290 barbed wire concertinas have been made during period, and small carpentry jobs carried out. Boy transport has been engaged in transporting R.E. stores Laminating and overhauling of bay vehicles proceeding.	-	-

W. G. Farquhar
oc. 8th Feb 18

8TH AUSTRALIAN FIELD COMPANY.

No.
Date

APPENDIX 8

416

Material Used for Period 19/5/18 to 25/5/18.

=	
Barbed Wire	Coils - 1100.
" Concertina	65
Screw Pickets	3300
Pickets Wooden	460.
" Angle Iron	150.
Sandbags	14850
Cor. Iron	Sheets - 280
Shelters. (B+C)	132.
Duckmarks	20
Tracing Tapes	yds. 1300
Cloth Union	yds. 125.
Mattroid	rolls. 2
Hessian	yds. 120.
Nails.	lbs. 350.
Pit Props.	109
Wire Netting	rolls. 7.
Lagging	H. 320.
Mining Sets.	30.
Steel Bricks.	6.
Timber	# 600
Wire Plying	coils. 5.



W. G. Farquhar
of 5th Field Coy. A.C.

30
20
68

68
500
568

25/5/18.

(6)

SUBJECT.	LOCATION	PROGRESS OF WORK	STATE OF COMPLETION	REMARKS
<u>Dugouts</u> —	<u>J. 28. a. 7. 7.</u>	Large drives 14 ft. driven and timbered. Incline shaft. 20 ft. do.	—	White Paint attached.
<u>Wiring.</u> —	<u>Right Bn. Front.</u>	1400 yds. additional double ^{and single} apron fence has been erected.	—	Totals. —
	<u>Centre Bn. — SAILLY.</u>	930 yds. existing wire has been thickened with barbed concertina.	—	Single apron — 600 yds.
	<u>Left Bn. Front.</u>	1230 yds. double apron fence erected.	—	Double apron — 2030 yds.
		1100 yds. existing fence has been thickened with barbed concertina + barbed wire.		Thickened — 2030 yds.
<u>Trenches.</u> —	<u>Right Bn. Sector.</u>	30 yds. C.I. dug J. 25. d. 200 yds. fire trench in J. 31. h. has been deepened and generally improved.	—	Totals. —
	<u>Centre Bn. Sector.</u>	2 m. g. positions dug J. 31. h 40 yds. breastwork constructed J. 32. a. 9. 5.	—	500 yds. trench dug. 400 yds. deepened & improved 40 yds. breast work.
	<u>Left Bn. Sector.</u>	380 yds fire trench has been dug on SAILLY LE SEC defense scheme. 90 yds. C.I. has been dug in J. 30. c. and a good deal of improvement work. to posts on this front.		
<u>Accommodation.</u> —	<u>Bde H.Q. I. 32. b. 2. 8.</u>	5 small 'C' type shelters erected & made splinter proof.	—	Other minor improvements carried out at Bde H.Q.
	<u>Hutting I. 33. central</u>	Bomb proofing of huts completed — 70 yds.		
	<u>Coy. H.Q. I. 32 d. 0. 8.</u>	Emergency exit completed and timbered.		
	<u>Bn. H.Q. allas J. 19. c. 7. 6.</u>	bellows strengthened with heavy timber struts.		
	<u>Coy. H.Q. Dugout J. 29. b. 1. 5.</u>	Connection of 5 ft. made between dugout galleries & timbered.		
	<u>Reverse Line J. 31. b.</u>	15 - 4 man shelters have been put in fire trenches		
	<u>Coy. Camp D. 3. a. central.</u>	mess hut 10' x 12' erected.		

Appendix N-9.

Date	No.	8TH AUSTRALIAN FIELD COMPANY.
Date	No.	

WORKS REPORT

FOR PERIOD 26/5/18 TO 31/5/18

SUBJECT	LOCATION	PROGRESS OF WORK	STATE OF COMPLETION	REMARKS
Accommodation Contd. -	H. 28. b. 5. 3.	Shelters for bay, mounted personnel moved from old transport lines & erected, also Q.M.S. Store.	-	-
Roads. -	I. 29. a.	Repairs carried out to artillery track from bridge where it has been damaged by shell fire.	-	-
Gas Doors. -	298 R.F.A. I. 28. b. 29. 29 th Bn. H.Q. I. 28. a. 7. 7. Cty. H.Q. I. 32. d. 0. 8. Cty. H.Q. I. 29. b. 1. 5.	11 gas doors put in dugouts & shelters. 1 " " 1 " " 2 " " Total. - 15 doors.	-	all timber salvaged.
Miscellaneous. -	J. 19. c. H. 2. ANCRE I. 29. c. 9. 9. D. 4. c. 5. 0. R.A.P. J. 25. d. 7. 0. Cty. Dumpto LA NEUVILLE.	Well 5' x 3' sunk 16.6" Total depth 40.6" Welded bush bridge removed & permanent timber bridge constructed Bulwark has been constructed at approach to bridge. Ventilator 3' x 2' has been constructed for dugout. 290 bat wire concertinas have been made 50 frames for trench dugouts made Small carpentry jobs carried out for Rde. Bay. transport has been engaged on carting R.E. stores from Div & Corps Dump. All timber salvaged during period (about 6,100 lin ft. assorted sizes) has been obtained from military sheds at VAIRIE.	Completed. do. do. do.	all timber cut on site. " " APPENDIX. 49

8TH AUSTRALIAN FIELD COMPANY.
 Date:
 No.
 J. G. ...
 J. G. ...
 J. G. ...

MATERIAL USED FOR PERIOD. 26th to 31st/5/18.

Barbed Wire - Coils	600.
" Concertina	200.
Wire Plain "	6.
" Netting rolls	2.
Pickets Screw. long.	550
" " med.	900
" W.d	260.
Sandbags.	5000
Shelters. (B+C)	60.
Cloth Union	yds. 105.
R. S. J.	10.
Nails.	lbs. 200.
Pit props	30.
Tracing tape	yds. 2000
Mining Sets.	30.
Lagging.	ft. 680
Timber. Various.	ft. 5000.

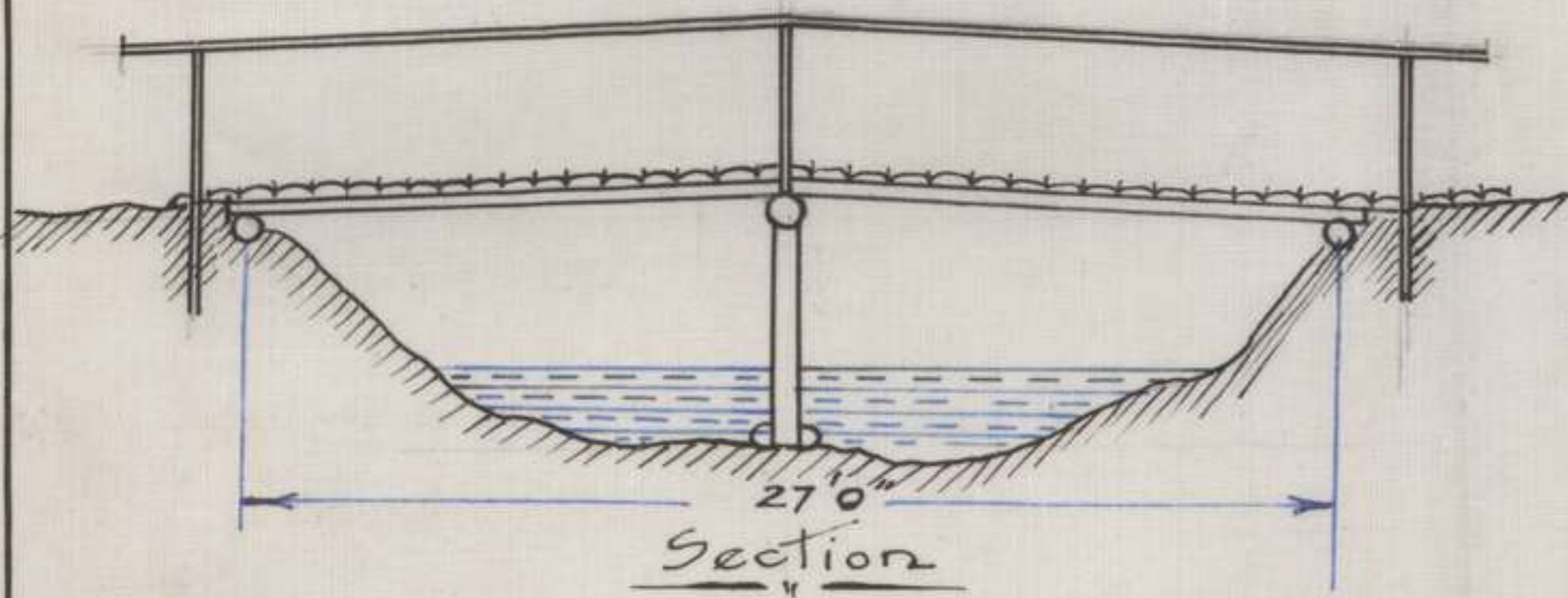
No.	BTH AUSTRALIAN FIELD COMPANY.
Date	

W. G. Ferguson
 or. 8th Aust Coy AB.



Pl.

Sketch of Round Timber
BRIDGE
Scale: $\frac{1}{8}$ " to 1 ft.

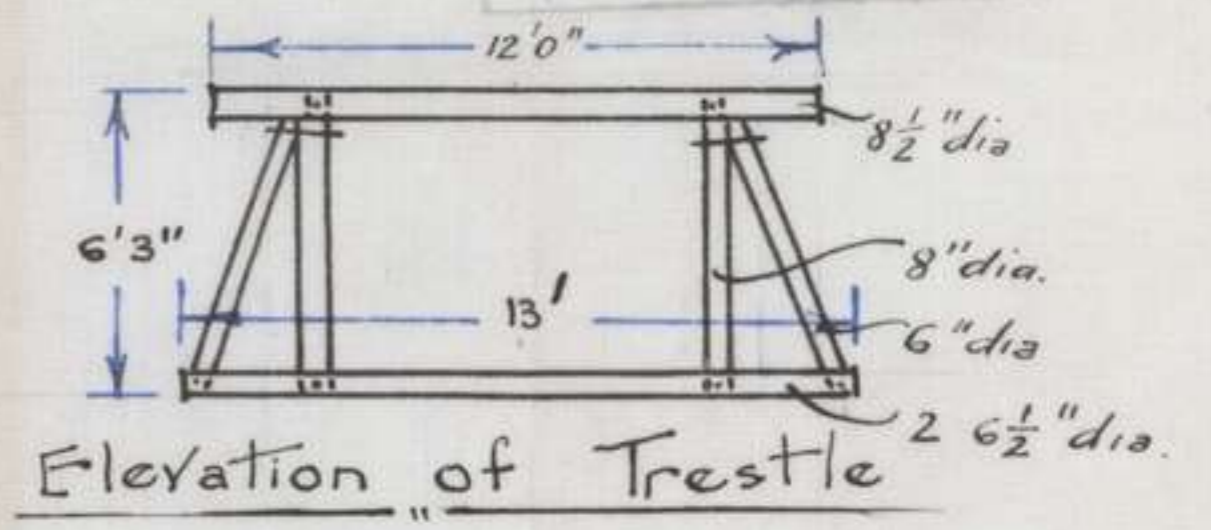


Appendix No 10.

8TH
AUSTRALIAN
FIELD COMPANY.

No.

Date.



8TH AE.



251

P1

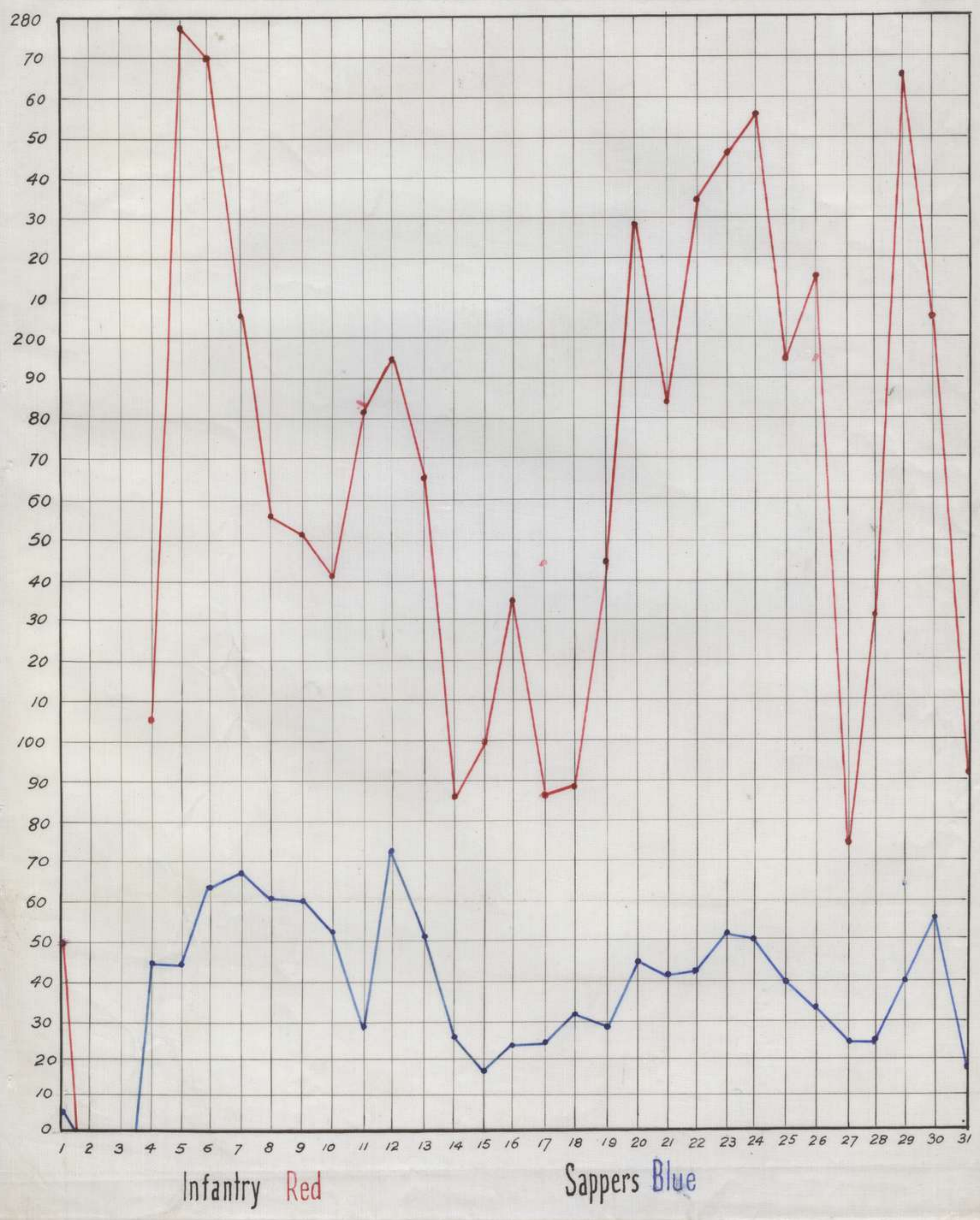
52

8TH
 AUSTRALIAN
 FIELD COMPANY

No.
 Date.

GRAPH

Shewing Infantry Working Parties & Sapper Supervision.



Appendix No 12

TRANSPORT REPORT

8TH AUSTRALIAN FIELD COMPANY.

8th F. Coy. A.E.

Month ending 31.5.18

WORK - During the month Coy Transport has been mainly occupied in the forward transportation of:-

- (1) R.E. material -
- (2) Coy Stores and Rations -

MOVES:- on the 15th Inst. Transport moved out of VECQUEMONT into the open field at N. H. b. 8.0. Then dug in and horses were picketed on open lines, the animals being protected by beam splinter proof earth-barricades erected 13-6" high. This site was claimed on the 26th Inst by Heavy Arty and was vacated on the 27th Inst on authority from 1st Aust Corps. A new camp was prepared at H. 28. b. 50. 25. and

occupied on the evening of 27th Inst. 20th Inst No 2413 sect. bivouaced in forward area. The following work has been carried out during the month.

Vehicle.	No of Trips	Time in Hrs
Pontoon Wag.	54	180
G. S. Wag.	22	75
G. S. Limb.	69	158
Mess Cart.	33	41
Water Cart.	50	79
Packs.	8	16
<u>Total</u>	<u>236</u>	<u>549</u>

ANIMALS:- All animals are in very good condition and there is no sickness nor skin disease prevalent on the lines. Grazing has carried out as far as possible, the present site being excellent for this purpose.

Present strength:-

14. Riders 4 Pack H. 7 Mules 45 L. D.

Wastage:-

1. L. D. stolen from Stables 12-5-18

1. R. B. died on Lines. Ruptured ^{intestines}

1. R. H. destroyed " Open joint off H. Hook.

The issue of fodder continues Ok.

31/ Vehicles:- All vehicles are in fair working order. All wood-work has received a dressing of wood-oil and 2 Pontoon wagons and Mess-Car's have been re-painted, and sundry repairs carried out. Vehicles are up to R.E. Establishment.

Harness:- The harness is in good clean condition and every attention has been paid during the month towards keeping it clean.

Personnel:- Present strength:-
 With Transport - 10 off 50. OR
 detached 8 OR
 Total 10 off 59 OR

Q.M.S.'s Report attached

In the Field
31-5-18

Hobbs
Lt
O/C Transport.



Report on Q branch 8th Field Co. A.E. ⁽¹³⁾
 For May 1918 Appendix No 13.

Pat Returned 200 lbs. "A" Class
 Paper returned to A.H. Co. 10
 Cardboard do do " 40
 Jam cartons do do 70

Rations generally throughout the month maintained a high standard. Bread & meat especially being very good. A few issues of rum were distributed also, though this liquor ^{issue} has since been stopped.

Orders on Ordnance were invariably received promptly.



31/5/18

May 1918 ⁽¹³⁾

Tools necessary Received Articles	Returned		REMARKS
	REC ^d	RET ^d	
Axes, felling, head helms.	20		
Bicycles	2	1	
Burlap, canvas etc.	2		
Recycle parts	various		
Bags, nose	50		
Bayonets		1	
Cables, wire folding	11		
Gloves, collar, check	3		Saddles
Covers, tool, etc.	8	6	
do 6x6 etc.	1		
blipper, horse	1		
Cordage	various		used on bridges
Containers		1	
Equipment, web, complete set	*	1	
Gloves, hedging	10		
Handles, saws, cross cut II	8		
Lashings, lashed 20x1 inch	3		used on bridges
Outstrokes, carpenter's	2		
Holes, draught, No. 17	2		
Paint	14		
Saddles, 2" iron	4		for tool carts
Sacks, web.		3	
Reins, bit	3		
Rods, measuring, 6 ft. common	3		
Rugs, horse		58	called on

APPENDIX 13

May 1918

(13)

Tools Necessaries Received Returned (Cont)

Articles	REC ^d	RET ^d	REMARKS
Rifle Sn. Co.		2	
Respirator Lt.		7	
Straps securing rrx1 (Special)	16		
Swingles, leather	1		
Swinglets No. 11	3		
Soap, yellow	bars 50		
Soap, soap	lb 56		
Shafts, cast, Maltese off	1		
Light Elliptical, complete	1		
Wheels, 1/2 belted size 8	Pair 25		Boat Maker
Sheets, ground		3	
Traces, wire, long	Pair 2		
Timber, Oak 4x4	ft. 24		
Torches, electric, hand	4		
Nets, bay	70		

Watfield Cont
8th June 1918

31/5/18

May 1918

(13)

Clothing Necessaries Received Returned

Articles	REC ^d	RET ^d	REMARKS
Breeches, mt.	Pair 8	12	
Do " "	6	-	
Do " "	12	-	
Braces		183	called in
Blankets, 41		3	
Boots, 41	Pair		Promotion
Chivons, 3 Bar	6		
Do " "	6		
Coats, great, mt		4	
Do do sheepskin		1	
Drawers, woollen, Pair		118	called in
Do cotton, long	50		Den
Do linen, short	110		Baths
Jackets, Lt.	13	4	
Jerkins, leather		1	
Kitties	Pair 89	14	

Watfield Cont
8th June 1918

31/5/18

251

P.L.

57

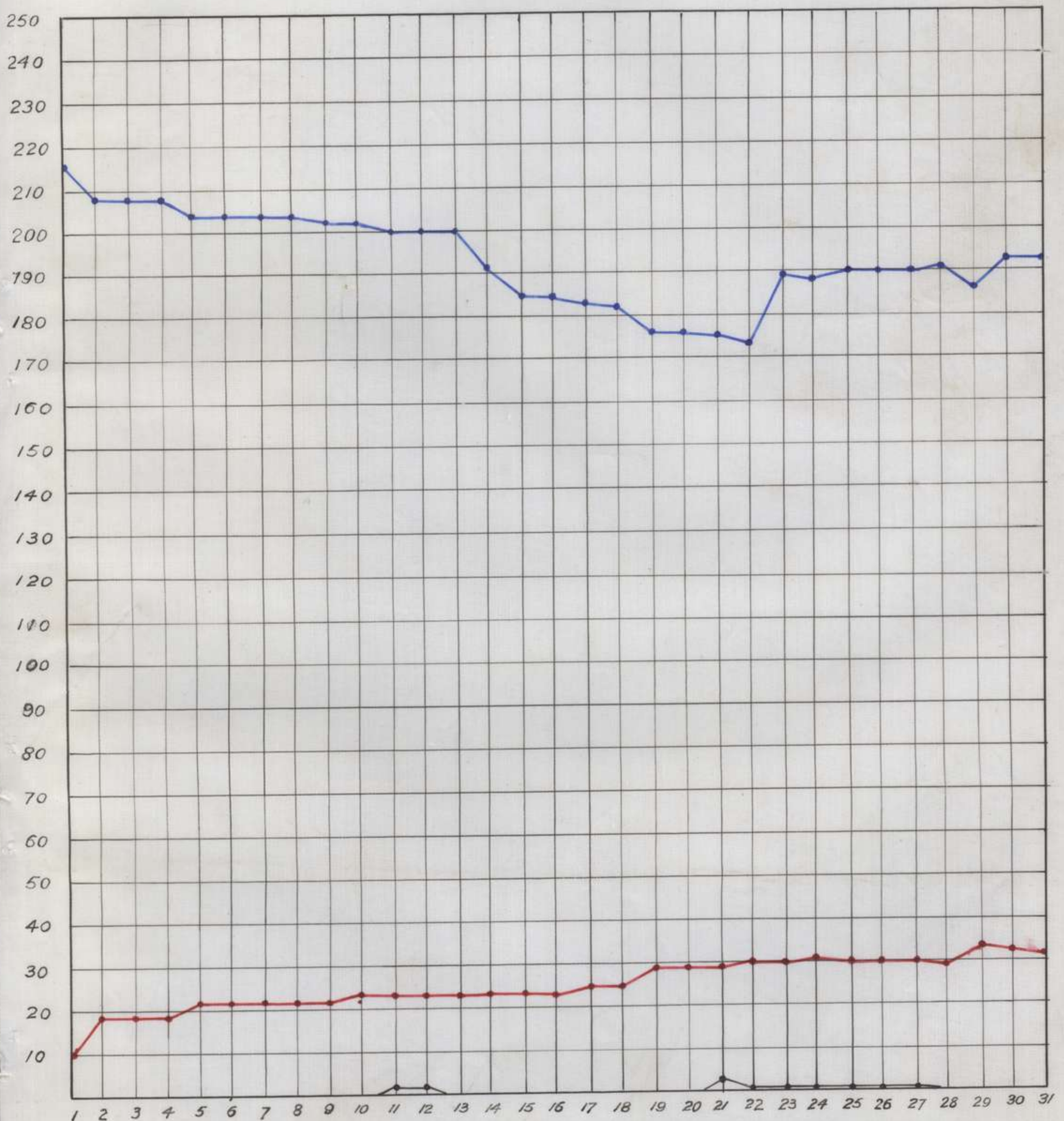
8TH
AUSTRALIAN
FIELD COMPANY.

No.

Date.

GRAPH

Shewing Disposition of Company for May 1918.



Actually with Unit. Blue On Command. Red In Hospital. Black.
 (Div. Area)

for May { Casualties. 15.
 Reinforcements. 22.

— 8th A. E. —

251

p1.

APPENDIX N^o 15.

58

Summary of Materials Issued for Week ending 7.5.18.

MATERIAL	N ^o	WEIGHT (in Tons)
Angle-Iron Pickets 4'0"		
" " 6'0"	16	.1
Camouflage	—	
Corrugated Iron	110	.8
Cupola "	22	.5
Duckboards	—	
Gas Blanketting	154 yds.	.15
Girders	—	
Hessian	64 yds.	.03
Lagging	—	
Malthoid	6	.3
Mining Sets	—	
Nails	170	.08
Pitprops	—	
Pickets, Screw, Long.	1655	5.16
" " , Medium	270	.6
Pickets, Wood, Long	58	.26
" " , Short.	606	1.0
Sandbags	2500	.42
Timber ft. super	—	
Wire barbed	1045	13.5
" plain	11	.42
" concertina	123	1.6
" -Netting	—	
	Total Weight.	24.92

8TH
AUSTRALIAN
FIELD COMPANY.
No.
Date

251

P.L.

8TH
AUSTRALIAN
FIELD COMPANY.

59

Appendix N^o 16.Summary of Materials Issued for Week ending 14.5.18

Material	N ^o	Weight in Tons.
Angle-Iron Pickets 4'0"	10	.03
Angle-Iron Pickets 6'0"	78	.43
Camouflage		
Corrugated Iron	84	1.80
Cupola	78	1.95
Duckboards	91	1.35
Gas-blanketting	72*	.08
Girders R.S.J.		
Hessian	38*	.02
Lagging		
Malthoid	7	.35
Mining Sets		
Nails	158	1.07
Pitprops		
Pickets Screw Medium	4415	13.8
" " Short.		
Pickets Wood Long	700	3.15
" " Short.	600	1.21
Sandbags	6200	1.06
Timber feet super		
Wire barbed	1269	17.00
" plain	16	.62
" concertina	176	2.75
" Netting	1	.04
Total		45.71

8TH A.E.

251

8TH
AUSTRALIAN
FIELD COMPANY.APPENDIX N^o 17.

60

Summary of Materials Issued for Week ending 21.5.18

MATERIAL	N ^o	WEIGHT IN TONS
Angle Iron Pickets 4'0"	95	.34
Angle Iron Pickets 6'0"	120	.71
Camouflage	6	.28
Corrugated Iron	70	.50
Cupola Iron	64	1.48
Duckboards	30	.40
Gas-blanketting	165	.18
Girders R.S.W.		
Hessian	185	.08
Lagging ft. run	170	.26
Malthoid	17	.85
Mining Sets	24	.86
Nails	257	.12
Pitprops	62	2.77
Pickets, Screw, Medium.	1900	5.98
" " Short.		
Pickets, Wood, Long.	1024	4.61
" " Short.	20	
Sandbags	19550	3.32
Timber ft. super.	646	1.03
Wire, barbed	997	13.35
" , plain	5	.18
" concertina		
Wire-Netting	8	.28
		37.58 Total

8TH A.E.
5 '18.

251

P.1.

Appendix No 18. 61

Summary of Materials Issued for period ending 31.5.18

Material	No	Weight in Tons
Angle-Iron-Pickets 6'0"	—	
" " " 4'0"	—	
Camouflage	—	
Corrugated Iron	—	
Cupola	101	2.50
Duckboards	21	.28
Gas-blanketting	112	.13
Girders R.S.J.	14	.50
Hessian	—	
Lagging ft. run	1120	3.33
Malthoid	—	
Mining Sets	52	1.86
Nails, lbs.	210	.09
Pitprops	47	2.14
Pickets, Screw, Long.	900	4.02
" " Medium.	2930	9.60
Pickets, Wood, Long.	—	
" " , Short.	430	.91
Sandbags	20500	1.79
Timber, feet super.	120	.18
Wire, barbed	1582	21.16
" , plain	10	.39
" , concertina	432	5.79
" , - Netting	2	.08
		Total 54.74

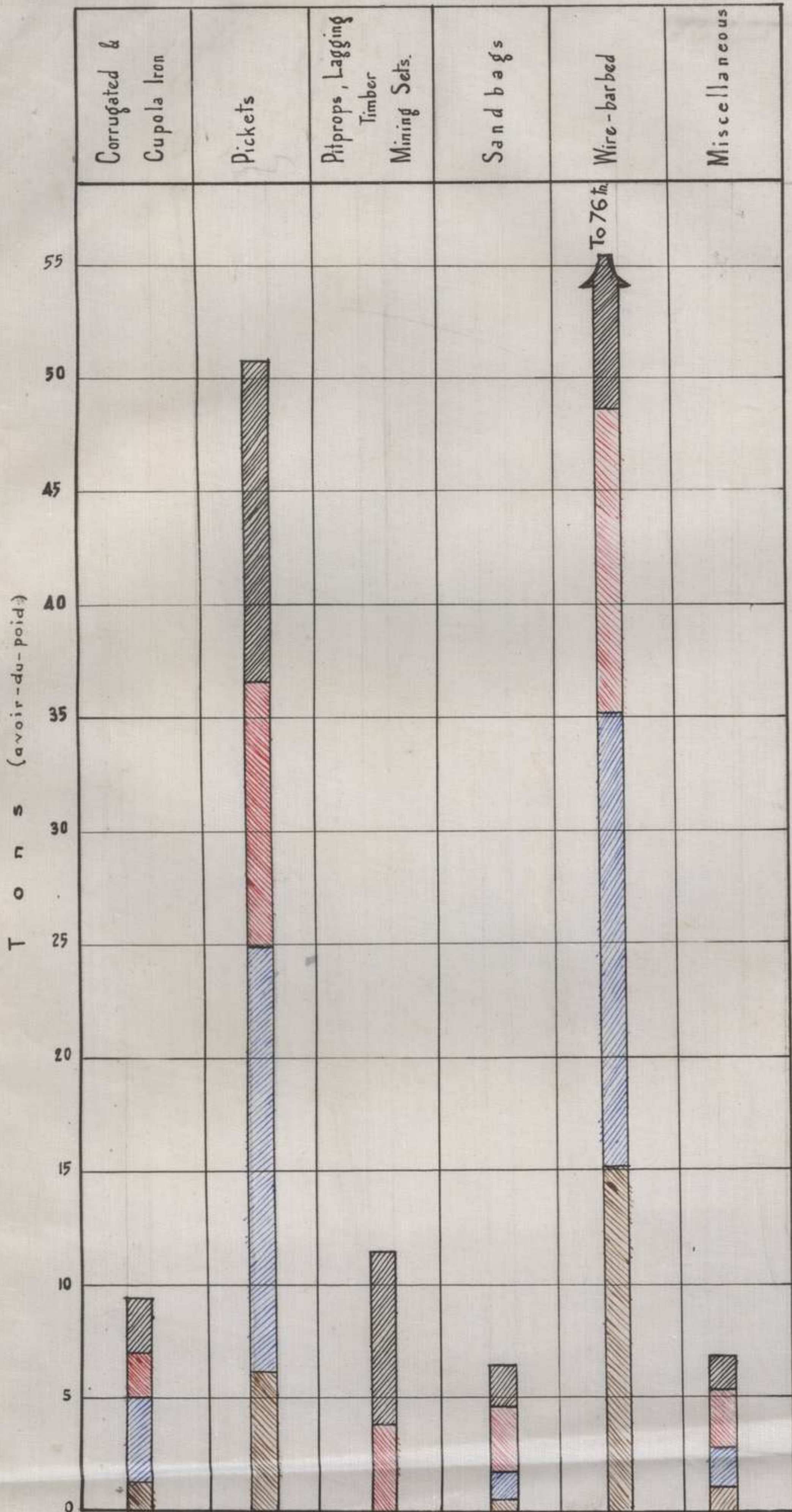
8TH AE '18

DIAGRAM

Shewing Materials Issued for

MAY 1918

8TH AUSTRALIAN FIELD COMPANY.
 No.
 Date



1st Week - Brown
 2nd Week - Blue
 3rd Week - Red
 4th Week - Black

Report on Sites for Bridges over Somme R.

To. O.C. 8th Field Coy AE

In accordance with your Instr^{ns} having reference to C.R.E's wire dated 19/4/18 N^o LM. 25. I made a reconnaissance of the most suitable sites for Pontoon Bridges over Somme River on 19th April 1918 and have prepared a tracing, enlarged from map-sheet 62^o, showing the bridge sites and approaches alluded to in this report by red color. Roads are shown by brown color and Rivers and Lakes or Lagoons by blue color.

Generally the land adjacent to and on both sides of the Canal is low lying with numerous lagoons and swamps which renders access for heavy traffic in most cases impracticable.

- ① A good site for bridge was found at O.2.b.0.5. about 350 yds down stream from the Railway Bridge and immediately opposite the Farm House on north side of River. From this house a gravelled road runs north-easterly and joins the main road from Daours to "la Neuville" at 1.32.b.9.0. On south side the ground is slightly sloping and traffic can reach the bridge site (through

(2)

through open field and by road & earth track passing under Railway bridge from "Aubigny". It would be advisable to make a level crossing over the Railway line at or near the point marked red on tracing.

② No. 2 site is at O.4.c.4.0. From this site an earth track runs northerly 600 yds and meets a metalled road running easterly at O.4.d.2.2. or traffic may follow track made of cinders, northerly past Factory thence north-easterly to Corbie Railway Station. The earth track referred to will require metalling if the road it has to carry much heavy traffic. Several hundreds^{of} loads of cinders can be obtained at the Factory at O.4.d.1.7. with which a very fair road could be made by using it on the worst places.

Traffic from the south side can reach the bridge site by following the roadway through the Convent ground & thence through open field for about 150 yds.

A Barril Pier Foot Bridge suitable for Infantry in file has been constructed at O.4.c.2.0.

③ The approaches to the third site at 1.36.0.0. are bad & would entail heavy road formation and the construction of several minor bridges. On the north west side of Canal there is a choice of two routes. One (leaving

(3.)

leaving the road from Corbie to Vaux sur Somme at 1.36 c.40 follows along a gravelled road 150 yds to a bridge which will carry field guns thence north easterly 250 yds over rather soft soil to narrow neck in lagoon at 1.36 c.95.05 where a bridge abt 25 feet span would have to be built.

The second & shorter route leaves the main road at 1.36 c.60.25 but this would require two additional bridges - one with a span of 14 feet and the other about 50 feet.

On South east side the access to bridge site passes over a drain abt 10 ft wide and abt 230 yds of soft wet flat to a bridge over creek at N.W. end of metalled road in Hamelit at 0.6 b.5.7.

④ The fourth site is situated at 1.36 b.5.8 and access to it is difficult.

On eastern side of Canal traffic would have to pass over cultivated land and rather low lying flat. On western side two bridges would have to be built with spans of about 15 ft in each case and about 180 yds of road formed. Timber for Corduroying would have to be brought from eastern side of Canal. There is a bridge (15 ft span) at 1.36 b.1.9. which although old, will in my opinion carry
(a)

(4)

a load equal to a field gun.

⑤ Site No 5 is at J.25.2.3.1. and the same difficulties exist as to access as No. 4 site - On the south side of Canal the land is very soft & parts swampy. On the north side the land is firmer & drier but would not carry much traffic except in dry weather. There is a bridge at J.25.2.1.9. which will carry field guns -

The ditch 6 yds wide at J.25.2.3.3. can be filled in with logs but a bridge with span of 12 or 14 feet is necessary over drain at J.25.2.3.2.

⑥ No 6 site at J.26 c.0.3. is a good position having metalled roads from Vaire and Vaux leading to it from Vaire and Vaux but being so close up to the front line is liable to be shelled.

Rd Holmes Lieut
8th Field Coy A.E.
21st April 1918

Excerpt

To O.C. 8th Field Coy A.E.

In accordance with Instructions from the C.R.E dated 29th April 1918 No. 83/21/56 I have this day made an examination of all Dummy Bridges and their immediate neighbourhood to ascertain the approximate number and calibre of shells apparently fired at the several sites. I have also checked the map locations.

At the Dummy Bridge situated at N18.c.0.4 I found 8 shell holes of small and medium size from 50 to 150 yds radius of the site & chiefly to the south east.

The Dummy Bridge ~~is~~ at N18.d.0.6 has been blown down or purposely removed.

Only one wire now spans the river from opposite trees and no Hessian could be found.

There are only one or two shell holes in this vicinity.

The third Dummy Bridge is at O2.2.2.8 This appears off the River by the map but the river is incorrectly shown on map. (There

(2)

There are two large shell holes within 100 yds of this site, probably made by 10" or 12" shells. About 15 or 16 similar shell-holes were found from 150 to 400 yds down stream & on both sides of Canal. Most of these are about 400 yds from the site but apparently the Dummy Bridge was the target.

The fourth Dummy Bridge site is at O.4.d.0.2 and is incorrectly shown on attached map. Within 100 yds of this site I found 6 medium sized shell holes and two or three buildings have been hit in the vicinity - probably all were intended for the Village of Touilly.

The fifth Dummy Bridge is at O.5.d.8.9. Within 100 yds of this site there are about 10 small shell holes & probably other shells have fallen in the Canal and adjacent lagoons but there is nothing to indicate that the Dummy Bridge was the target aimed at.

The sixth Dummy Bridge is at 1.36.b.6.0. About 7 or 8 small shell holes and 2 or 3 smaller holes made by gas shells were found within 100 yds radius of this site.

The seventh Dummy Bridge is at

APPENDIX.

(3.)

at J 32.2.8.7. where there are abt
18 or 20 small and medium sized shell
holes within 150 yards radius.
There is nothing to show that all these
were aimed at the Dummy Bridge
as there are many shell holes over
the surrounding country.

R. Holmes Lieut.
8th Field Coy A.E.

30/4/18.



Report on Deep Dugouts
within Divisional Area

To O.C. 8th Field Coy A.E.

In accordance with your verbal instructions to inspect and report on Deep Dugouts within the Divisional Area I beg to report that I made necessary inspection and rough surveys of the Dugouts found, on 5th May 1918 at or near the map locations supplied to me.

No Deep Dugout could be found at or near I.23.d.6.2 but work was commenced on 3rd inst by the 14th Field Coy A.E. on a shaft for a proposed Deep Dugout at I.23.d.5.0.

A tracing is furnished herewith showing dimensions of a Deep Dugout commenced at the Brick Works at I.29.d.0.1. At this place a tunnel 6'x3' has been driven in at the bottom of a vertical bank or face of clay pit for a distance of 25'-7" with a porch 4'x3'-6" at entrance. At the end of tunnel, a cross drive has been made 6 ft wide and 19 ft long. Sets of round timber have been placed abt 2'-6" apart with (some

(2.)

Some weak lagging (salved timber) on roof. At present work ~~is~~ being carried on by extending the drive westerly, by a few sappers from No 2 Coy Austr. Tunnelling Coy, working under the O.C. 114th How Battery and who are engaged on guard over Bridges over the River Ance. Work on the Dugout is done in their spare time, which is intended for them to live in and as a "funk-hole" for the Battery Crews in case of heavy shelling.

The Dugout is in firm red clay & has 20'-6" of Overhead cover.

The ground surface rises on a grade of 1 in 11 towards the east and by extending the drive in that direction on present level a greater depth of overhead cover will be obtained.

At I.24.b.5.2, only two small "pot holes" were found 90 ft apart on a bank abt 4 ft high. I was informed by an Officer of the 54th Battery that a start on a deep dugout was made by an R.E. Tunnelling Coy but was abandoned after one days work.

No signs of a deep dugout could be found at or near the location supplied of No 9 - J.27.37.0.

(at

(3.)

At 1.30.2.7.0. a deep dugout has been started and work is now being carried on by 11th Field Coy A.E.

A tracing showing the extent of the work so far completed is furnished herewith. This dugout is situated at a Chalk Quarry & Lime Kiln. The buildings at this place are used as an Advanced Dressing Station.

A hole has been made in a brick retaining wall and a tunnel 6'x3' has been driven through chalk for a distance of 15 feet and a splinter-proof porch made at entrance.

At the entrance ~~only~~ there is only 5' of over head cover and at the end of tunnel there is a depth of 10 feet.

If the tunnel is extended in the same direction and on present level over head cover to a depth of 18 feet will be obtained at a distance of 25 feet from the entrance and at 37 feet about 27 feet of over head cover will be obtained.

R.A. Holmes Lieut.
8th Field Coy A.E.

5th May 1918.



Report on Bridges within Divisional Area

To O.C. 8th Field Coy A.E.

In accordance with your instructions I have this day inspected and made necessary survey to fix the position of the several Bridges referred to in the C.R.E's Memo N^o 83/21/60 dated 7th May 1918.

A tracing is furnished herewith showing the Bridges by red color - the description and map locations of which are as follow:-

Description	Map Location
Steel & Concrete Bridge at	O. 5. c. 5.5.
Steel (Emergency Bridge)	O. 5. c. 46.50
Steel & Concrete Bridge	O. 5. c. 4.4.
do do	O. 5. c. 2.1.
do do	O. 5. c. 0.0.
do do (on Tow path)	O. 4. d. 6.4.
Rough Timber Culvert	23 c. 2.6
Forest Timber Trestle Bridge (3 Bays)	23 c. 3.6
do do (2 Bays)	29 b. 2.8.
do do (3 Bays)	29 a. 3.3
Forest Timber Culvert	29 a. 5.2
Service Trestle Bridge (2 Bays)	29. c. 9.9.

(2)

Description of Bridge	Map Location
Timber Trestle (4 Bays)	1.29. c. 0.3.
Rough Timber Culvert	1.29. c. 0.2.
Timber Trestle (4 Bays)	1.35. a. 4.9.

Only three Bridges were found on the most northern route but some Corduroying over a small drain situated at 1.23. c. 9.3. may have been classed as a bridge -

It is pointed out that the canal or creek running through 1.29 c. and 1.35 a. is shown incorrectly on Map sheet 62^o NW and I have therefore shown its correct position relative to bridge at 1.35. a. 4.9.

R.A. Holmes. Lieut
8th Field Coy A.E.

7th May 1918.

Further Report on Bridges

Lo, O.C. 8th Field Coy A.E.

With reference to the C.P.F.'s Memo N° 83/21/60 dated 7th May '18 I have to report further in reference to Bridges inspected by me this day, being in addition to those reported on by my memo of 7th inst -

A tracing is furnished herewith showing the positions of the several bridges by red color.

At 1.33 c.7.3. a steel girder bridge crosses the River Ancre which all ordinary traffic.

At 1.33 d.1.2. a steel & timber girder bridge crosses a creek or deep drain. The timber girders of this bridge have been cut and the decking raised, but the 4 steel girders are sufficient to carry ordinary traffic.

The road from la Nouville to Querrieu passes over a steel girder & concrete bridge at 1.33 d.8.7. which will carry all traffic.

At 1.34.2.5.0. there are three brick arch bridges at a Factory. (The

(2.)

The bridge on east side of Factory is wide enough to carry vehicular traffic but it only leads on to an island formed by the River Ancre and a spillway running round the northern side of the Factory -

The two bridges on western side of Factory - one crossing the Ancre and the other crossing the spillway are wide enough only for foot or horse traffic.

R.H. Holmes, Lieut
8th Field Coy A.E.

8th May 1918.

Report on Cellars & Underground Passages in CORBIE and la NEUVILLE

To the O.C. 8th Field Coy A.E.

In accordance with your Instructions of 11th May '18 I have investigated the Cellars referred to in list accompanying memo from Australian Corps dated 10th May '18 & now beg to report - I have endeavoured to locate all the Cellars referred to in list but several of the map references given and the small scale map at my disposal are not sufficiently accurate to enable me to identify all the places referred to.

A tracing is furnished herewith showing by red circles and numbers the positions of the Cellars which have been inspected. The map locations and descriptions of which are given in tabulated form hereunder -

No on Tracing	Map Reference	Description of Cellar
1	1.35 d.o.o.	1 Brick Cellar under Hotel de Ville 18'x15', good head cover, entrance within building - Occupied by A.P.M.
2	1.35.d.o.1.	At Chateau - 2 Brick Cellars each abt 18'x15' and joining - fair cover - entrance inside house - 1 Stone Cellar 20'x12' good cover, entrance inside building
3	0.5.b.25.90	At residence of Woollen Mill - 2 brick Cellars 16'x15' each, very fair cover, entrance inside building, Occupied by Town Major

(Sheet. 2.)

No on Tracing	Map Reference	Description of Cellar
4	0.5.b.05.70.	Under shop partly wrecked by shell. No name visible - probably N ^o 4 on list (Mme Carre). Large basement room full of lumber. Pool head cover - entrance near back door of shop - south east corner -
5	0.5.b.o.5.	At Chateau - 2 Stone cellars 50'x10' and 24'x10' adjoining - very fair head cover but entrance exposed to Enemy fire and facing east - also 2 brick arch cellars under brick stables or out-building - one at each end - size 15'x14' - very fair cover entrances inside building
6	0.5.a.8.7.	At Hospice there are three stone arch roof, earth floor cellars with good cover one of these has three compartments of a total size of 45'x20' & has two entrances, viz: one inside building & one from south side of courtyard - The second cellar has one entrance inside building & near N.E. Corner of courtyard - The third cellar has one entrance facing west, on east side of a yard lying west of main courtyard. Size of cellar = 30'x15'.
7	0.5.a.75.20.	At Butchers Shop 1 brick cellar 18'x15' and space 10'x8' at bottom of steps at entrance which is from back yard & faces west. very fair head cover -
8	0.5.d.1.8.	At Woollen Factory - 1 brick cellar under office building at rear of factory, has abt 18" of water in it and poor head cover entrance from west side of building -
	0.5.d.3.8.	1 brick Cellar 25'x14' under ruins of a building at rear of ruins of factory - poor head cover, entrance inside ruins of building.
9	1.34d.7.3	Woollen Factory - None on list - No useful cellar could be found at this factory -
10	1.34.d.6.4.	Under residence - 3 large cellars or basement rooms but over head cover is weak.
11	1.34.d.5.5.	Under residence 54 Rue de la Gare there are three brick Cellars adjoining 25'x14', 18'x9' and 14'x14', one entrance inside building & one from back yard - facing north.
"	do do	At 56 Rue de la Gare are two cellars of brick 25'x14' connected with one 9'x9' - entrance from inside building - Over head cover is weak.

(Sheet. 3.)

No on Tracing	Map Reference	Description of Cellar.
12	1.34.c.8.2.	At Chemical Manure Factory there is one cellar at 14x10' with entrance inside building and has very fair head cover -
13	1.35.d.6.9.	At Brewery there are large Cellars, but over head cover is weak and the cellars are very damp & dirty & half full of empty Casks -
14	1.34.d.2.7.	At Photographer's residence (Davis) in La Neuville there are 4 or 5 basement rooms under dwelling but these are not shell proof.

In nearly all cases the Cellars have only one entrance inside the building which is liable to be blocked up if house is wrecked by shells -

Usually cellars at Breweries are dirty and smell of sour beer & unfit for occupation -

I was unable to find the underground passage referred to as leading from the Hospice at 0.5.2.8.7. to School at 0.5.2.8.8. -

Most of the Shops & residences in Corbie have one or more cellars but I have here dealt with chiefly those referred to in list -

Owing to enemy gas bombardments on 13th and 15th inst I was unable to further investigate the cellars that exist round the Square but these can be dealt with in a further report if required -

R. H. Holmes. Lieut
15th May 1918. - 8th Field Coy A.E.



Report on Dugouts & O.P.s

To O.C. 8th Field Coy. A.E.

In accordance with your verbal instructions of 17th May 18, I have this day inspected three Observation Posts and one deep Dugout within Divisional Area and now beg to report:-

The O.P. on top of what is locally known as Hill 60 consists of an excavation 5' x 4' and 6' deep timbered & roofed with slabs & a few inches of soil and sods. A Communication Trench abt 55' long has been dug abt 5'-6" deep & 2' wide leading from the O.P. to the rear. This trench has ~~been~~ also been covered over with slabs and earth & camouflaged with grass sods. The work was carried out by 13th Bde A.F.A. under supervision of Lt Col Bell of this Coy - The Map location of this O.P. is 1.28 2.25 -

At 1.29 d.o.s. the 55th Battery A.F.A. is constructing a deep dugout for the Gun crews. A vertical shaft has been sunk at the foot of a low embankment to a depth of 14' (not yet timbered) - from the bottom of this shaft a horizontal & timbered drive 6' x 3' has been put in abt 20 feet
(and

(2)

and a cross drive started (abt 5' done) which has about 10 feet of overhead cover of soil and soft chalk -

I understand the 15th Field Coy A.E. are supplying this Battery with necessary material for the work -

At 1.30 c.i.o work was started by 13th Bde A.F.A. and now being carried on by A Battery 298 Bde R.F.A. under supervision of Sapper Washbourne of this Coy, on an O.P. A horizontal drive 6' x 3' has been dug (& roughly timbered) in the very steep slope of a hill, on side facing the enemy & about 20 feet below top level -

The drive runs horizontally for a distance of abt 24 ft then rises at a slope of abt 2 in 3 for a distance of abt 12 ft - The intention is to continue the drive on the upward grade until the surface level of top of hill is reached, where a chamber abt 6' x 4' is to be made for an O.P.

At 1.36 d.o.s. similar work to the last described was started by 13th A.F.A. Bde and a horizontal shaft has been driven in a distance of abt 30 ft. The work was done by 113th How Battery under supervision of Sapper Warren of this Coy but is not now being continued -

R. H. Holmes Lieut.
17th May 1918. 8th Field Coy A.E.

Further Report on Under ground
Passages at CORBIE

To O.C. 8th Field Coy AE.

In accordance with your instructions of 22nd inst in reference to the C.R.E.'s memo N^o 38/40/34 I have made a further search for the under-ground passages referred to in Corbie and now beg to report:—
N^o 1, in the Chateau at O.5.6.0.5. The entrance to the stone Cellars mentioned in my report of 15th May agrees with that described in attached letter from A. Dachs but I was unable to find any passage leading from these Cellars or any other entrance.

Regarding N^o 2 at house in Place de la Republique said to be owned by Monsieur Codereille I made inquiries through a French Interpreter but no one of that name is known.

N^o 3, at the Mayor's residence N^o 10 Rue Gambetta at 1.35 d. 35.05 there are two stone Cellars 35' x 15' and 15' x 12' adjoining with good overhead cover & entrance is
(inside)

(2)
inside the house. These Cellars are actually under the street. At the NW Corner of the smaller cellar a few stones have been removed from the wall giving access to an underground stone passage leading from the house (N^o 12) adjoining the Mayor's house to N^o 11 on opposite side of street. This passage built of stone (chalk) is abt. 8 or 9 feet wide but is mostly silted up with soil and only one part, a chamber 20' x 10' is fit for occupation. There are two smaller passages leading off this main passage, practically filled up to the roof with dirt.

N^o 4 at Cafe Dufrancatel O.5.2.45.95 A small stone arch cellar of very old construction was found under this house & apparently it originally formed part of the Abbey. The Cellar is actually part of one end of an underground passage which continues south easterly under the street but the roof has fallen in and the passage blocked partly by earth & partly by stone work. The latter forms the wall of one side of the cellar. There is no doubt that there are
(many)

many of these old underground passages but judging from what I have seen they are mostly silted up with dirt and some or most of the entrances have been purposely blocked up and a thorough investigation is impossible without heavy work in removing the dirt which has accumulated in the passages which has been either washed there by flood water or fallen in through breaks in the roof -

R. H. Lucas Lieut
8th Field Coy A.E.
27th May 1918.



251

MESSAGES AND SIGNALS.

Army Form (in pads of 100). No. of Message

Prefix	Code	m.	Words	Charge	This message is on a/c of:	Recd. at.....m.
Office of Origin and Service Instructions.			Sent		Service.
.....			At.....m.		(Signature of "Franking Officer.")	From.....
.....			To.....			By.....
.....			By.....			

TO { *L.R. 12.*

Sender's Number	Day of Month.	In reply to Number.	AAA
* <i>0326</i>	<i>28.</i>		

*Further report on Airline Cellars
by Lt. R.A. Holmes forwarded to
you please see the amount of accommodation
which would be gained after cleaning out
& timbering up these old passages, in my
opinion does not warrant the large
amount of labour & material required.*

From *S. J. Coy A.R.*

Place

Time

The above may be forwarded as now corrected. (Z) *A. G. Tarquhar*

Censor. Signature of Addressor or person authorised to telegraph in his name.

* This line should be erased if not required.



To C.R.E. 5th Austⁿ Divⁿ

Sketches of Bridge Head
Defences (charted up to date)
are returned herewith
together with tracing showing
proposed defences of Bridges
at O.C. 2.0 and O.C. 5.0.

Also tracing to scale of
200 feet to an inch, showing
proposed Inner Defences of
Village of Lamotte Bebiere

Can you please return
tracings & sketches after
necessary copies have been
made

R.A. Holmes Lt.
for O.C. 3rd Field Coy A.C.

O.C.
 8th Field Coy.
 Attached sketches
 returned herewith, please.
 4. 5. 18. *W. H. [Signature]*

Copy 20

251

N

LAMOTTE

14

15

Railway Station

M.G. and 48 yds Trenches on lower bank above road

M.G. & 50 yds Trench

76 yds Trench

M.G. & 48 yds Trench

Post 56 yds Trench

M.G. & 46 yds Trench

M.G. & 100 yds Trench

Post 50 yds

M.G. 6 MG

Ry. Bridge

Bridge No. 14

Bridge No. 14A

Bridge No. 31

Bridge No. 32

Bridge No. 30

Open Forest Flat

Swampy in places

Forest

Lagoons

Lagoons

RAILWAY

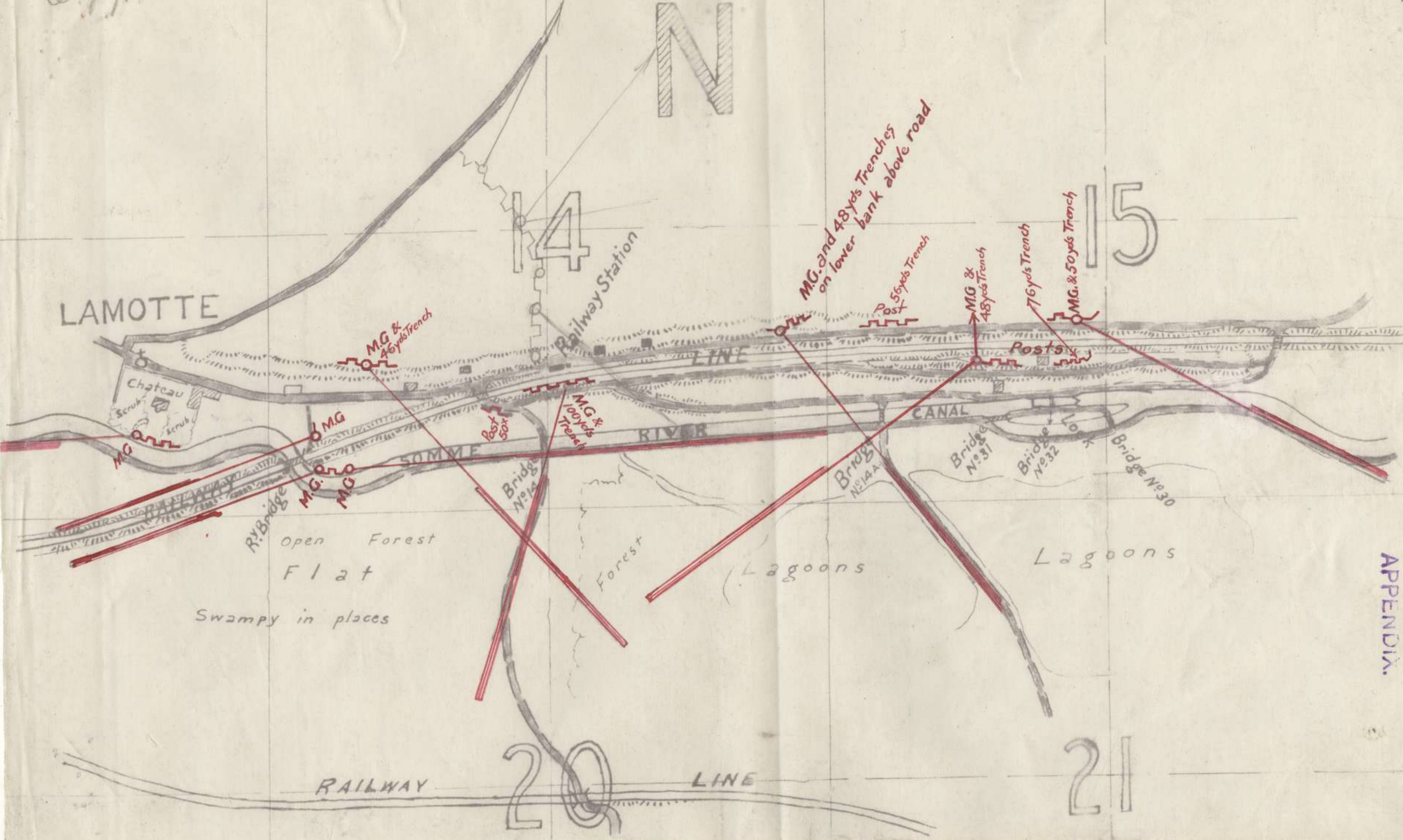
20

LINE

21

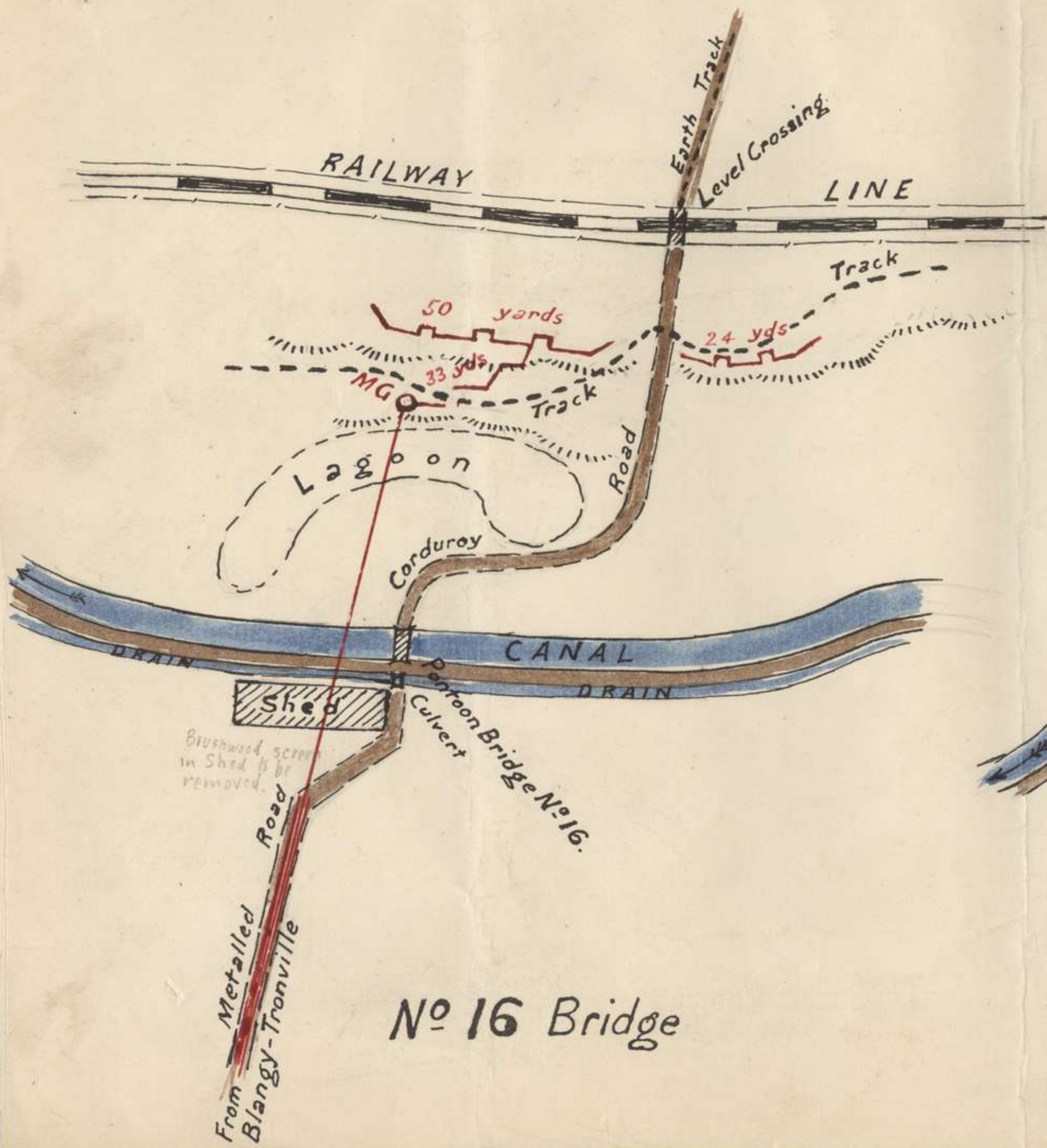
APPENDIX.

79

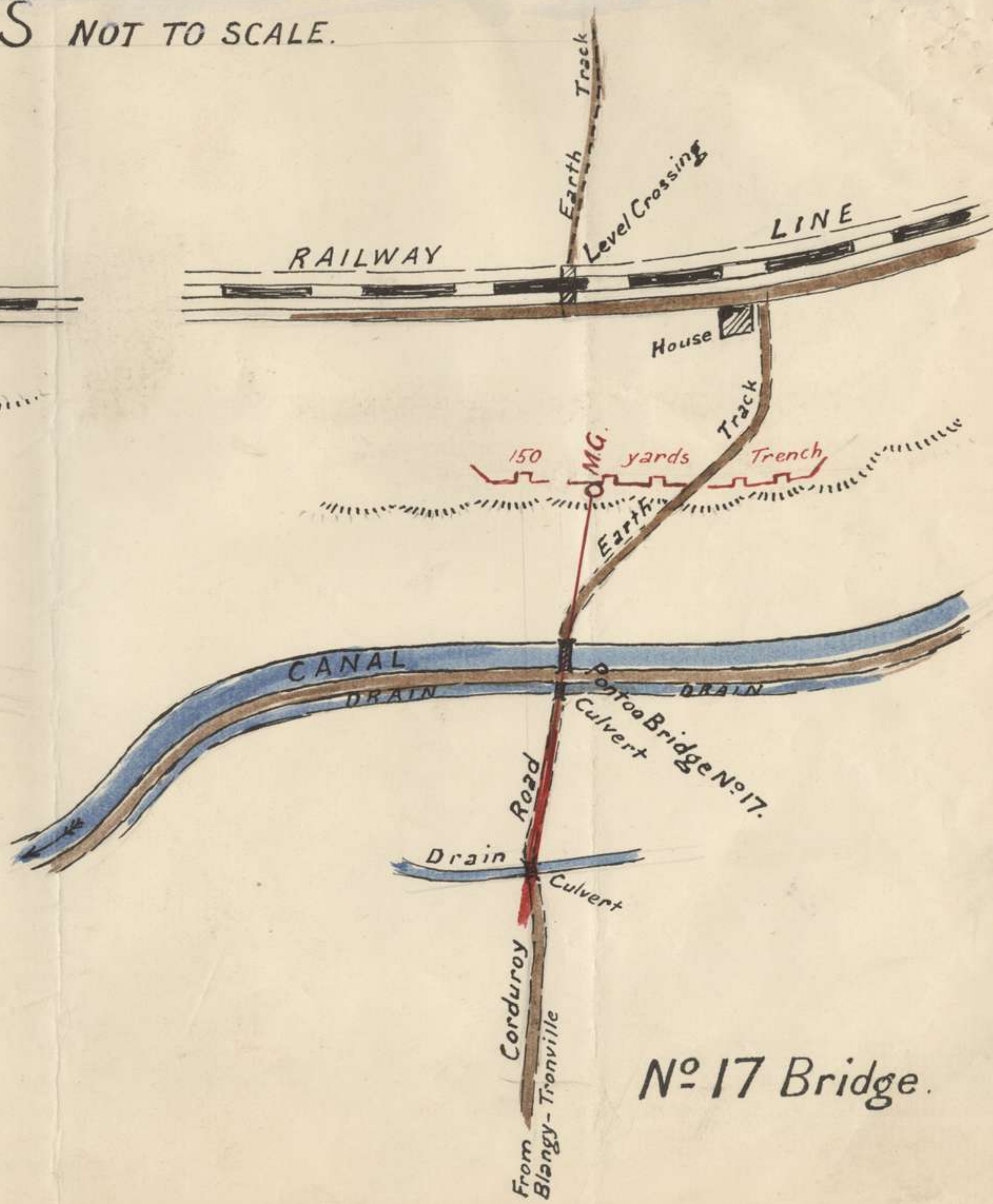


SKETCHES NOT TO SCALE.

251



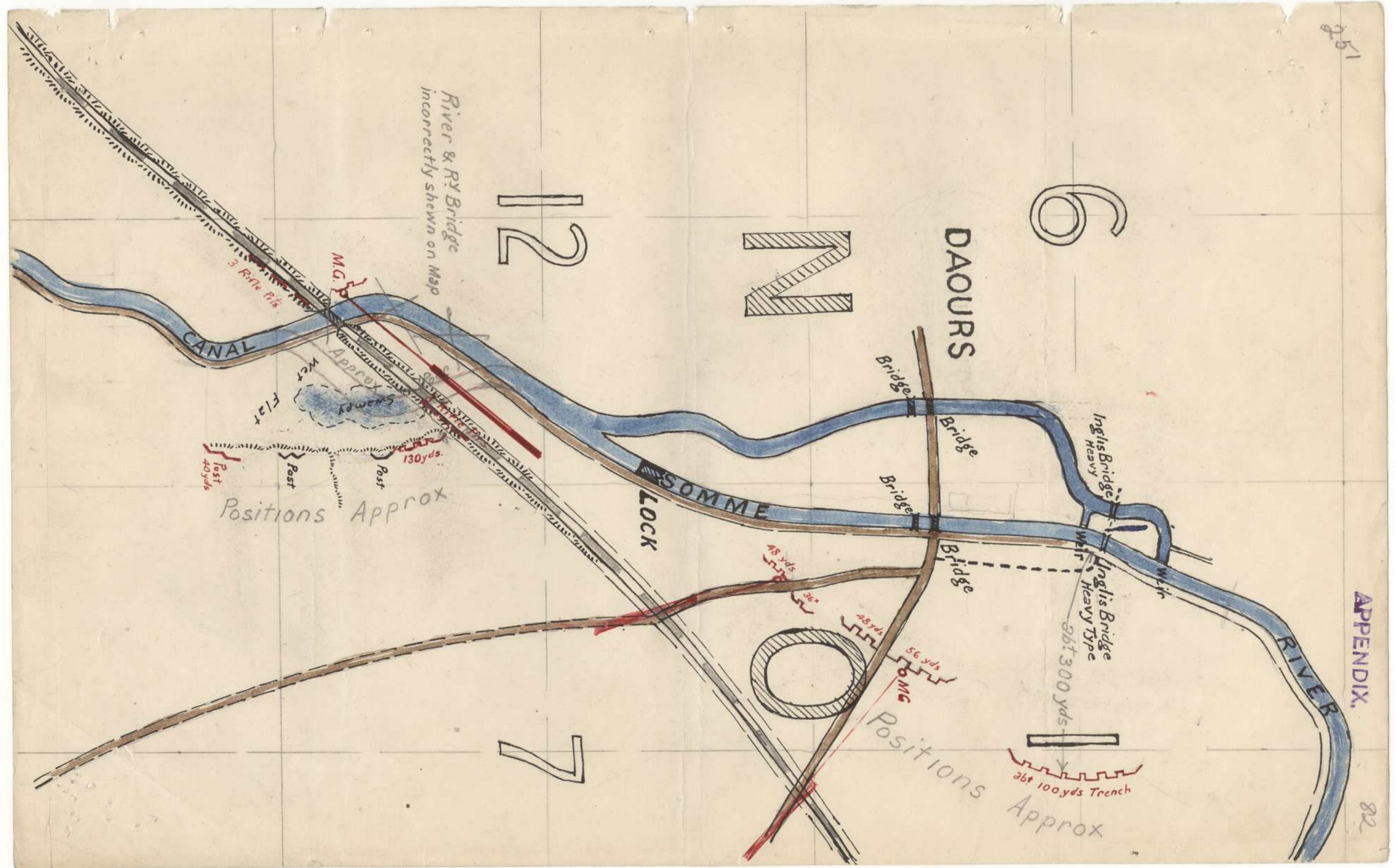
No. 16 Bridge



No. 17 Bridge.

APPENDIX.

80

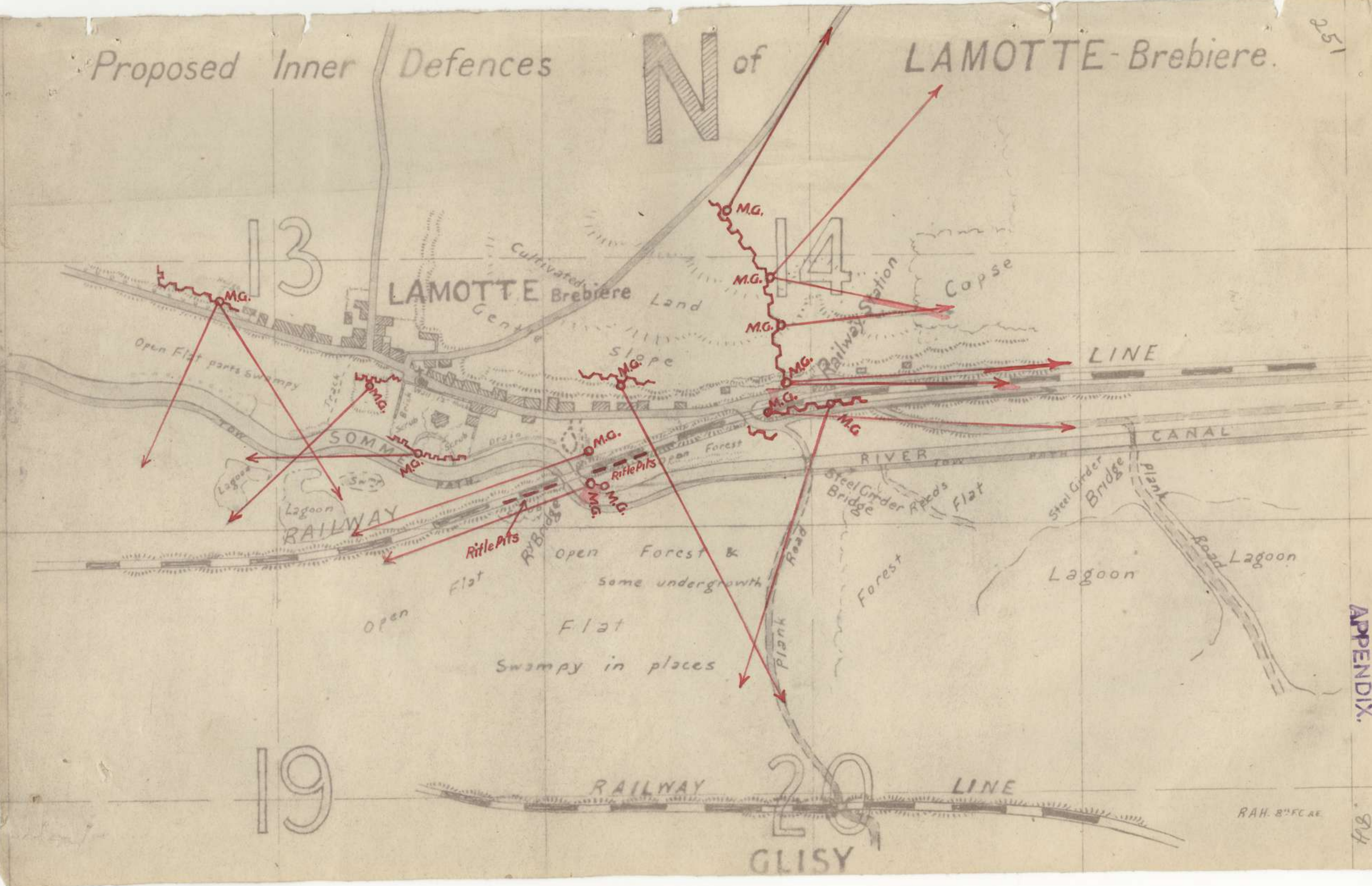


Proposed Inner Defences

N of

LAMOTTE-Brebiere.

251



APPENDIX.

84

RAH. 8th FC AE