

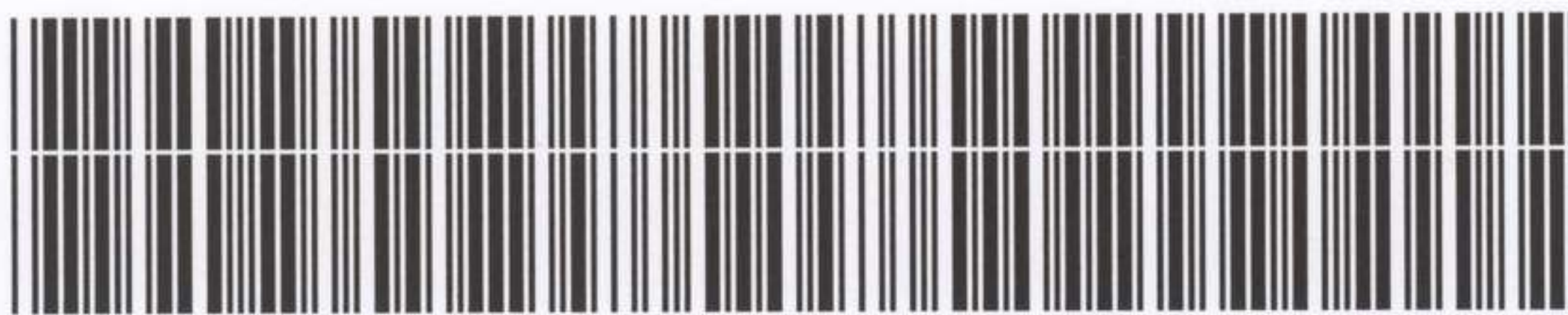
AWM4
Australian Imperial Force unit war diaries,
1914-18 War

Formation Headquarters

Item number: 1/42/42 Part 5

Title: General Staff, Headquarters 1st
Australian Division

July 1918



AWM4-1/42/42PART5

SECRET.FIRST AUSTRALIAN DIVISION.

Divisional Headquarters.
28th. July. 1918.

XV Corps.
Right Division.
Left Division.
1st. Aust. Inf. Bde.
2nd. Aust. Inf. Bde.
3rd. Aust. Inf. Bde.
O.R.A. 1st. Aust. Div.
O.R.E. 1st. Aust. Div.
1st. Aust. M.G. Bn.
1st. Aust. Pioneer Bn.
1st. Aust. Div. Sig. Coy.

~~119th. Inf. Brigade~~ (to be handed over on relief)

1. Herewith No.... Copy of revised Provisional Defence Scheme - Centre Division XV Corps.
Maps brought up to date will follow.
2. Provisional Defence Scheme forwarded under this Office S/8649 will be destroyed.
Recipients of Maps will keep maps up to date until such time as revised maps are issued.
3. Copy issued to 119th. Inf. Bde will be handed over on relief to each successive Brigade of the 40th Division.
4. ACKNOWLEDGE.

Am. Pass

Lieut-Colonel.
General Staff.
1st Australian Division.

SECRET.FIRST AUSTRALIAN DIVISION.

COPY NO.....

PROVISIONAL DEFENCE SCHEME.CENTRE DIVISION - XV CORPS.CONTENTS.

- ✓ Section. I. Organisation of defence.
- ✓ Section. II. General Principles of defence.
- Section. III. Allocation of troops.
- Section. IV. Action in case of attack.
- Section. V. Communications.
- ✓ Section. VI. Works Policy.
- Section. VII. Administrative Scheme.

APPENDICES.

- Appendix. I. Not issued.
- " 2. Action of Posorvo Brigade.
- " 3. Action of Machine Guns.
- " 4. Action of Artillery.
- " 5. Defence of Defended localities.
- " 6. Demolitions.
- " 7. Action during "Precautionary Stage".

MAPS.

- Map. A. Divisional boundaries and defences.
- Map. B. Location of Headquarters and battle-dispositions of troops.
- Map. C. Distribution of Machine Guns and tasks.
- Map. D. Distribution of Artillery and tasks.
- Map. E. Assembly positions and routes.
- Map. F. Communications.

DISTRIBUTION.

- | | |
|----------------------------|-------------------------------|
| 1) | 10. "A.Q." |
| 2) XV Corps. | 11. 1st. Aust. M.G. Bn. |
| 3 Division on right flank. | 12. 1st. Aust. Pioneer Bn. |
| 4 Division on left flank. | 13. 1st. Aust. Div. Sig. Coy. |
| 5 1st. Aust. Inf. Bde. | 14.) |
| 6 2nd. Aust. Inf. Bde. | 15.) |
| 7 3rd. Aust. Inf. Bde. | 16.) War Diary. |
| 8 C.R.A. 1st. Aust. Div. | 17.) |
| 9 C.R.E. 1st. Aust. Div. | 18.) File. |

July. 28th. 1918.

SECTION. I.ORGANISATION OF DEFENCES.

1. The Divisional Sector is known as the STRAZEELE SECTOR. The defensive organisation of the Sector hinges on the high ground about STRAZEELE.
2. The approximate trench length of the front line is 4,000 yards.
3. The defences are organised as follows:-
 - A. FORWARD ZONE. Organised in three systems of defence, i.e., Firing Line System, Support System, and Reserve System. In addition there are four defended localities. - STRAZEELE - COURTE CROIX - ROUGE CROIX - PRADELLES. There are two main switches in this Zone. Valley.
 - (a) COURTE CROIX SWITCH - for the defence of the METEREN BECQUE.
 - (b) ROUGE CROIX SWITCH for the defence of the STRAZEELE - ROUGE CROIX ridge pivoting on STRAZEELE; STRAZEELE AVENUE forms in itself a switch for the defence of STRAZEELE against penetration from the South and South East.
 - B. SECOND ZONE. Organised in three systems known as the "B" "C" and "D" lines respectively. BORRE is a defended locality.
4. The boundaries of the Divisional area and the various defensive systems and localities are shown in Map. A.

SECTION. II.PRINCIPLES OF DEFENCE.1. GENERAL.

- (i) The defence is to be active. Any breach of any portion of the defences is to be promptly dealt with by counter-attack initiated by the Commander on the spot. Brigades in the line have a proportion of the garrison ready and organised for immediate counter-attack.
- No post or trench is to be given up to the enemy, and there is to be no retrograde movement whatsoever.
- (ii) The arrangements for defence are to include plans for dealing with a break through by the enemy of the flanking area of each unit and brigade. These are to be arranged in conjunction with the Commanders on the flanks.
- (iii) Complete mastery of No Mans Land is to be maintained.
- (iv) Accommodation is to be provided in or close in rear of each system for its own garrison.
- (v) There is no MAIN LINE of Resistance, all lines are such.

2. THE FORWARD ZONE.

(i) The Firing Line System is organised as a line of mutually supporting posts. Its function is to hold up the enemys attack, or, by resisting to the last, delay it so that the troops of the Support System and Reserve units may have time to deal with it effectively. No picquet will be of less strength than one platoon, either in one post, or in mutually supporting posts. The gaps between posts will be strongly wired.

(ii) The Support System is organised as a continuous fire trench, combined with a protected M.G. defence and tactical wiring. This system is called Z Line and will be strongly garrisoned.

(iii) The Reserve System is a continuous fire trench and is protected by wire, which already forms an effective obstacle.

(iv) The COURTE CROIX and ROUGE CROIX SWITCH lines are continuous trenches protected by wire.

(v) The DEFENDED Localities of STRAZEELE, KLITE HIL, ROUGE CROIX, COURTE CROIX and PRADELLES consist of a series of strong points and trenches dug on the perimeter of the villages, with a central keep. Protective wire has been erected around each locality.

(vi) No System in this zone is at any time without a Garrison either complete or nucleus.

3. SECOND ZONE. The "B" Line is well duckboarded, continuous and well wired.
The "C" and "D" Lines have been dug and wire has been erected.

NOTE. A new System of linked up posts is in process of construction E. of the line MONT DE MERRIS - NORD HELF. This System will be known for the present as the CLOSE SUPPORT LINE.

SECTION III.ALLOCATION OF TROOPS.

1. The troops available for the defence are -

1. Division.
2. Army Brigades R.F.A.

2. (a) Infantry.

There are two Brigades in line. The Left Brigade on a two battalion front with two battalions in Support, the Right Brigade on a one Battalion front with one Battalion in Support and one Battalion in Reserve. The Forward Zone is held by these two Brigades, plus 3 Companies of Pioneers. One Battalion of the Reserve Brigade is available for counter-attack in the forward Zone.

The Support System is strongly garrisoned, and the troops in this System will not be used for counter attack.

(b) Pioneers. The Divisional Pioneer Battalion provides garrisons for the defended localities of KLITE HIL, ROUGE CROIX, COURTE CROIX, and PRADELLES in the FORWARD ZONE and BORRE in the 2nd Zone.

(c) NUCLEUS BATTALIONS. Nucleus Battalions of the Brigades in line will provide Nucleus Garrisons for "C" Line Vide Appendix 5.

(d) RESERVE. 1. One Brigade (less 1 Battalion) is in reserve in LA KREULE Area and is available for counter-attack, vide Appendix 2. or for garrison of the 2nd Zone. This Brigade is not to be employed forward of "B" Line without reference to Corps H.Qrs.

ii. 1 Battalion of the Reserve Brigade is placed at the tactical disposal of G.O.C. Left Brigade Sub-Sector.

(e) ENGINEERS. Engineer Field Coys provide nucleus garrisons for the "D" Line Vide Appendix 5.

(f) MACHINE GUNS. Machine Guns are allotted as follows:-

- (a) 2 Coys plus 2 Sections to the Forward Zone.
- (b) 1 Coy less 2 Sections to the 2nd Zone.
- (c) 1 Coy with the Brigade in Corps Reserve.

(g) ARTILLERY. The action of Artillery is given in Appendix 4.

3. MAPS.

Map B Shows battle dispositions and headquarters.

Map C shows distribution of Machine Guns and tasks.

Map D shows distribution of Artillery and tasks.

SECTION. IV.ACTION IN CASE OF ATTACK.1. Probable forms of attack.

Three forms of attack may be anticipated -

- (i) A Minor attack in the form of a raid to secure identifications or to seize a locality.
- (ii) (a) A deliberate prepared attack with Artillery bombardment.
(b) An attack without preparatory bombardment.

2. Minor Attack.

The methods of dealing with this form of attack are well understood by all concerned.

3. General Attack.

- i. The STRAZELLE MERRIS SPUR is the most likely objectives for enemy attack in the Sector. The attack would probably take the form of an enveloping movement from the S. or S.E.
- ii. When there are indications of an impending attack a precautionary stage will be initiated (vide Appendix 7.)
- iii. The G.O.C. Brigades in the line are responsible that the FORWARD ZONE of the defences is maintained intact.
- iv. The method of employing the Reserve Brigade separately, or in conjunction with a Brigade allotted from Corps Reserves is given in Appendix 2.
- v. The Plans for the defence of defended localities are given in Appendix 5.

4. WORKING PARTIES.

- i. Working Parties will always carry their arms with them.
- ii. In case of sudden attack working parties in the FORWARD ZONE will act as ordered by the G.O.C. the Brigades in the line.
- iii. Officers and N.C.Os in charge of working parties in the SECOND ZONE will always have written instructions as to what to do in case of attack.
- iv. As a general principle, in default of orders, detached parties will occupy the nearest defences and will report to and act under the orders of the nearest Company, Battalion, or Brigade Commander in order to repel any sudden attack.

5. Action of Engineers.

- i. Engineers working forward of the SECOND ZONE will remain with the parties whose work they are supervising, until they are formally withdrawn by orders of the C.R.E.
- ii. Engineers working in the SECOND ZONE will withdraw to their company grounds and await orders of C.R.E.

6. Gas Attack.

- i. Gas shell or projector attacks are the most probable forms of gas attack.
- ii. Appliances, such as shell cases, are to be installed for the

(2)

for the purpose of spreading alarms. Gas sentries must be posted at all posts or billets and the most rigid gas discipline insisted on.

iii. Full details regarding the action to be taken in the event of a gas attack are given in "Standing Orders for Defence against Gas".

iv. Cellars and dug-outs unprotected by gas-proof curtains are to be evacuated during a gas-shell bombardment of the locality and will not be re-entered except on the direct order of an officer.

7. Demolitions.

Are dealt with in Appendix 6.

SECTION. V.SIGNAL COMMUNICATIONS.

The means of Signal Communication in the Divisional Sector are as follows;-

- (a) Ground lines for telephonic communication.
- (b) Visual Signalling. Lucas Lamp.
- (c) Dispatch Rider.
- (d) Wireless.
- (e) Power Buzzer and Amplifier.
- (f) Pigeon Service.
- (g) Message Rockets.
- (h) Buried Cable route.

A. Ground lines are all metallic circuits and in forward areas these are all laddered to minimise difficulties in maintaining their repair.

B. Visual signalling is by Lucas Lamp and all stations shown on the accompanying diagram.

C. A Dispatch Rider Service on regular time table is run to Brigades and Corps.

D. & E. Wireless. from Division to Brigade H.Qrs. Locations of Stations as follows;-

D.H.Q. Wilson Set.	Sheet 27.	P.28.B.2.3.
Bde.H.Qrs. in line Trench sets at	" "	{ W.25.A.5.8.
Support Bde. Trench Set.	" "	{ W.8.C.7.9.
Reserve Bde. Trench Set.	" "	{ V.10.A.6.0.
Loop Sets at (Battalion H.Qrs.	" 36.A.	{ B.14.C.1.0.
(Company H.Qrs.	" 27.	{ W.22.D.9.9.
Combined Power Buzzer & Amplifiers.	" 36.A.	{ E.5.B.6.8.
Amplifier.	" 36.A.	{ E.3.C.0.8.
Power Buzzer.	" 27.	{ E.4.D.4.0.
	" 27.	{ W.22.D.9.4.
		{ X.19.A.2.9.

The Trench and Wilson Sets are worked for practice purposes, in order to see that they are ready for tactical purposes, by sending over them 10 messages per day. This ensures their being in constant touch and ready for instant use.

F. Pigeon Service The birds are delivered at D.H.Q. at 7.p.m. and are then sent out to Bdes and Artillery for Dispatch to Battalion and Battery H.Qrs. who then send them out to posts and F.O.Os. as required. 8 pairs of birds are received every 24 hours, but, in the event of an operation, these can be increased to 30 pairs.

G. Message Rockets are used from posts in front to receiving stations at Company or Battalion H.Qrs. as required. Demands for these rockets are supplied by Army when available.

H. Buried Cable Routes.

The buried cable routes in this area are a continuation of the Corps Buried System and are shown on the accompanying diagram in two colours; being those finished and those projected, the work on which is well in hand. Those shown in purple are finished and those in green are projected.

The main route to the cable head at the BRICKWORKS is a 47

(2)

pair route, 46 pair for general purposes and one pair for a pilot line.

The laterals are 31 pair routes, 30 pair for general working and one pair for pilot line.

They are composed of 7 pair lead covered 7 pair brass sheathed quad armoured and twin armoured or brass sheathed.

The quad pairs being 20 lbs conductor and used for long distance speaking and the remainder 10 lbs conductor for short circuits.

The principal test boxes are at;-

Sheet 27. W.19.D.4.6. Sheet 27.W.21.C.6.2. Sheet 36.A. E.4.B.9.9.
Sheet 27. W.22.D.9.9. Sheet 36.A. E.3.C.1.8.

Intermediate test boxes at;-

Sheet 27. W.20.C.9.4. Sheet 27. W.22.C.1.6. Sheet 27. W.23.B.1.8.
" " W.28.B.8.5. " " W.27.C.5.8. " " W.15.C.9.0.
" " W.9.C.5.5. " " W.10.A.7.2.

The following test boxes;- Sheet 27. W.19.D.4.6., W.21.C.6.2. W.22.D.9.9. and W.15.B.5.9., are manned.

The intermediate ones are not manned but simply used as junction points.

The whole route in the area is of an average depth of 7 feet.

SECTION. VI.WORKS POLICY.1. RESPONSIBILITY.

(1) The Division is responsible for the organisation and for the preparation of the

- (a) FORWARD ZONE.
- (b) SECOND ZONE.

(11) (a) The Brigades in the line are responsible for the construction and maintenance of the defences within their respective sections in both the FORWARD and SECOND ZONES.

(b) The C.R.E. will arrange for engineer field companies to be available for technical assistance and supervision as follows;- 1 Coy forward of Support System (inc) in Forward Zone, 1 Coy to the Reserve Line (inc) and ROUGE CROIX and COURTE CROIX Switches. These will be known as the Forward Zone Field Coy and the 2nd Zone Field Coy respectively.

(c) The C.R.E. will allot tasks to the Pioneer Battalion.

(d) The Pioneer Nucleus garrisons will develop the defences of the localities which they are detailed to defend. If considered necessary the C.R.E. will arrange for the extra working parties.

2. WORKING PARTIES.

(1) Working parties as a general rule will be detailed by platoons or companies whose officers will invariably accompany them. To avoid waste of personnel and work time it is essential that tasks are laid out on the ground before the parties arrive.

All work will be allotted as piece work.

Rendezvous must be clearly indicated to every party and arrangements made to ensure that when parties arrive they are promptly distributed to their tasks.

(11) PROGRAMMES OF WORK. In order to ensure continuity of policy programmes of work will invariably be handed over to relieving troops. Details of hours, routes, hostile shelling should also be handed over.

(111) Before relief Infantry Commanders are responsible for showing relieving Officers over the works for which they are providing working parties.

3. ORDER OF WORK. The order of importance of work on all systems is as follows:-

- i. (a) Siting and Construction of M.G. Positions in the Forward Zone.
- (b) Tactical wire for the above.

ii. Provision of splinter proof accommodation for Infantry and M.G. garrisons on fixed defensive systems. Systems are based on M.G. defence.

iii. Construction of C.T's.

4. NOTICE BOARDS.

i. All strong points, M.G. positions, Works, trenches and Headquarters ~~will~~ be clearly marked.

ii. Direction and name boards will be placed at the inter-section of the routes and trenches and at the junction of trench lines.

SECTION VII. - ADMINISTRATIVE ARRANGEMENTS.

1. AREA ORGANISATION.

The Area occupied by the 1st Australian Division is known as the Centre Divisional Area of the XV Corps Area. Its extent and boundaries as well as its relation to the other Areas of the XV Corps are shown on the attached map : (Appendix A *do follow*)

It is administered by an Area Commandant appointed by XV Corps. He is located at Sheet 27 - U.17.a.05.05. All applications for billeting accommodation, camping grounds, etc. should be made to him. Units will notify him direct 24 hours before vacating any billets, camps or bivouacs, in order that arrangements may be made for taking over the accommodation being vacated.

The troops occupying the Divisional Area are disposed tactically as under :-

(a). Two Infantry Brigades with their con-comitant technical supporting troops are located in the Forward Area.

(b). One Infantry Brigade with its technical supporting troops is held in Reserve in the Area between the HAZEBROUCK-CAESTRE Railway and the HAZEBROUCK-HONDEGHEM Road.

The horse lines of Infantry Battalions and of the Divisional Train are situated west of the HAZEBROUCK-St. SYLVESTRE CAPPEL Road.

2. ACCOMMODATION.

At present owing to the uncertainty of the situation, the policy of XV Corps is opposed to the erection of hatted camps until the situation stabilizes; consequently all accommodation in the Area, other than billets, is composed of tents, trench shelters or shallow dug-outs in trench systems. A number of small cupolas have been erected in trenches both in the Forward Areas and also in the Reserve Brigade Area. This class of accommodation is very suitable as it affords good protection against hostile bombing, etc.

Two deep dug-outs have been constructed, one at BRADELLES, (W.21.c.7.2.) and one at BORRE (W.19.d.2.8.), but the nature of the country in the Divisional Area is only suitable in a few localities for the construction of this class of accommodation.

Each of these dug-outs is maintained by a permanent working party of an N.C.O. and three men who are responsible for the maintenance, sanitation and pumping of the dug-out system.

The map location of all camp at present occupied by troops of the Division (other than Artillery units) is given in table No. 1, Appendix B.

The location of artillery units, including attached Army Brigades, is given in Table 2, Appendix C.

3. SUPPLIES.RAILHEAD - EBBLINGHEM.

Supplies are drawn from Railhead by Divisional Train Transport and conveyed to the undermentioned Refilling Points which are situated at or near the Divisional Train Transport Lines :-

REFILLING POINTS.

Divisional Troops	-	U.17.d.9.8.
Right Brigade in Line	-	U.17.d.1.7.
Left Brigade in Line	-	U.18.a.9.6.
Support Brigade	-	U.18.a.1.9.

From these Refilling Points rations are conveyed by Divisional Train Wagons to Quartermasters' Stores, which are normally situated at the units' 1st Line Transport Lines.

The rations for the Battalions in the line are cooked at the Battalion Transport Lines where the Company Cookers are situated. The cooked rations are taken forward at night in hot food containers which are carried in limbered G.S. Wagons to selected points where the ration carrying parties meet them. The cookers of the Support and Reserve Battalions of the Brigades in the line as well as those of the Reserve Brigade are situated at the respective Company Headquarters.

RESERVE RATIONS.

5,000 rations of preserved meat and biscuit are stored in the trench systems in the Forward Area. The distribution of these rations is given below :-

RESERVE RATIONS.

W.18.d.1.5.	..	500	rations.
W.22.a.9.8.	..	500	"
W.8.c.80.95	..	200	"
W.9.d.65.60.	..	250	"
W.19.d.2.8.	..	200	"
W.21.a.35.07	..	250	"
E.17.c.15.50	..	250	"
V.17.a.8.4.	..	100	"
V.23.c.8.1.	..	100	"
D.6.a.3.3.	..	100	"
W.16.d.20.05.	..	30	"
W.24.a.4.6.	..	25	"
W.24.c.60.55	..	25	"
W.17.d.40.85	..	25	"
W.11.c.65.60	..	25	"
E.3.b.25.45.	..	20	"
E.3.d.95.10.	..	25	"
W.27.a.2.4.	..	25	"
E.4.a.2.9.	..	25	"
W.28.a.2.7.	..	25	"
W.21.c.9.1.	..	300	"
E.5.a.0.8.	..	1000	"
E.3.c.1.8.	..	1000	"

Total 5000 rations.

4. WATER SUPPLY.(A). FOR TROOPS.

The position as regards water supply in the Divisional Area is not good at present; but steps are being taken to put it on a more satisfactory basis.

The main sources of supply now in use are divided into three categories -

- (a). Tanks and Shallow Wells in farm-houses.
- (b). Water points which have been erected along the BORRE BECQUE.
- (c). Temporary water points erected near large ponds, etc.

The former source of supply is not satisfactory as a number of the wells are unsuitable for drinking purposes, both on account of the polluted nature of the water which is usually more or less contaminated by drainage from neighbouring middens, but also because the supply in most cases is very limited and liable to become exhausted in dry weather.

The BORRE BECQUE supply is adequate for the needs of this Division provided the periods of dry weather are not too prolonged; but this means of supply should be supplemented as early as possible by the sinking of bores and the installation of the necessary pumping plants and water points at suitable localities.

The third source of supply, viz., water points erected near large ponds, moats, etc can only be relied upon for a limited period and should be looked on as a temporary measure only, pending the provision of a permanent supply from bores.

The permanent water points at present in use in or adjoining the Divisional Area are as shown below :-

CAESTRE	Q.33.f.4.0.	1	Water Cart filling point.
BORRE BECQUE East	V.4.c.3.0.	3	" " " "
Ø BORRE BECQUE Central	V.7.d.6.1.	3	" " " "
BORRE BECQUE West	U.17.a.0.0.	3	" " " "
NORD BECQUE	V.16.c.2.8.	2	" " " "
WALLON CAPPEL	U.28.b.8.7.	4	" " " "

Ø A deep Bore is being sunk at this point to supplement the supply from the BECQUE.

The tested wells are shown in Appendix D .

SCHEMES UNDER CONSTRUCTION OR PROPOSED.

1. Bore in HAZEBROUCK Station, V.28.b.5.4.

This Bore which about 750 feet deep had formerly a very large output, which used to supplement the HAZEBROUCK town supply as well as cater for the needs of the troops billeted in the locality.

An engine is being installed and protected by a reinforced concrete engine house, to encase both engine and pumping plant.

From this Bore a pipe line leads to a water point which has been erected at V.22.a.9.1. and at which 4 Water carts will be able to fill at once.

(b). Bore at Le PEUPLIER Railway Yards, W.7.b.3.6.

Owing to heavy enemy shelling during April, the engine and pumping plant at this point were removed. Now that shelling has decreased considerably owing to the fact that the enemy has been pushed back, it is considered that this source of supply should be again opened up. All that is required is the installation of an engine and pumping plant and the erection of tanks etc. at W.1.d.6.2, where a water point formerly existed.

RESERVE WATER STORED IN FORWARD AREAS.

Water sufficient for 24 hours for the garrisons of all trench systems forward of (and including) the reserve line, is stored in petrol tins in selected points in such trenches.

This supply, which is calculated at the rate of one quart per man per day, is changed under Brigade arrangements once a week.

In addition the following stores of water in petrol tins are maintained at the undermentioned map locations :-

E.3.c.1.7.	100 gallons.
E.4.b.9.9.	100 gallons.
W.22. d.9.9.	100 gallons.
W.18.d.1.5.	100 gallons.

(B). FOR ANIMALS.

Water for horses is obtainable in the vicinity of all transport lines from ponds, etc., but this source of supply is not unlimited and has to be carefully guarded to prevent waste and pollution.

Troops should be prevented from using these ponds as washing and bathing places, as they are the only sources of supply for the use of animals.

The moat at RYCH HOUTCASTEL (U.18.b.6.4.) is not very suitable for drinking purposes, and will be available for horses as soon as the HAZEBROUCK-bore is completed, when the present temporary water point for troops can be dispensed with.

AMMUNITION SUPPLY. (S.A.A., GRENADES, 3" STOKES MORTARS, &c.)

RAILHEAD - EBBLINGHEM.

DIVISIONAL REFILLING POINT - V.1.7.7.4. (Les Ciseux).

Ammunition is brought to the Divisional Refilling Point by :-

- (a). Broade guage Railway trucks.
- (b). Motor Lorries.

The latter method is only used to supplement the former when there is a shortage of railway trucks.

A light Tramway Siding runs from alongside the broad guage line to the Ammunition Dump.

RESERVES IN FORWARD AREA.

The system of supply in the Forward Area is based on the principle that all ammunition must be kept on wheels for the sake of mobility.

Locations of the Brigade and Forward Battalion Reserves are as under :-

Right Brigade Reserve	-	V.19.d.1.9.
Left " "	-	W.8.c.7.9.
Right Battalion Reserve	-	E.4.b.7.7.
Centre " "	-	W.22.d.9.9.
Left " "	-	W.8.d.2.5.

In addition to the Mobile Echelons of units, the following quantities of ammunition, bombs, flares, etc. are kept at the S.A.A. Section Wagon Lines under each Brigade Reserve. This ammunition is kept as a working basis, in order that echelons may be kept full and ready for use in case of an emergency :-

	<u>S.A.A. Section.</u>	<u>Brigade Reserve.</u>
<u>Grenades -</u>		
No. 23	3000	1000
No. 34	2000	1000
No. 36	3000	2000
<u>S.O.S. Signals -</u>	50	20
<u>Flares, Ground -</u>		
Red	1000	500
Green	1000	500
White	1000	500
<u>Very Lights -</u>		
Red 1"	1000	500
Green 1"	1000	500
White 1"	1000	500
<u>S.A.A. -</u>		
Rifle	100000	20000
M.G.	200000	10000
<u>STOKES AMMUNITION -</u>		
Stokes Always Fuze	3000	2000
Green Cartridges	3000	2000
Ring Charges, white	3000	2000
<u>MISCELLANEOUS-</u>		
Webley Pistol Ammunition	4000	1000

-2-

AMMUNITION RESERVES IN TRENCHES -

All posts forward of (and including the Reserve Line) are stocked with Ammunition at the rate of 100 rounds per member of the garrison detailed to occupy such trenches in case of attack.

The distribution of this ammunition in detail is shown in Appendix .

6. R.E. MATERIAL SUPPLY.

SUPPLY -

The main source of supply is from XV Corps yard at RENESCURE. C.R.E. requisitions on Stores Officer, R.E., XV Corps daily for the next day's estimated requirements of general R.E. Material.

The estimate is based on experience and the particular nature of the work in hand in the Divisional Area, also the requirements of any special job. Such requisitions are wired daily to arrive at Corps before midday for the next day's requirements.

The Stores Officer replies by wire what he is actually forwarding as Corps cannot always supply all demands.

The Corps provides transport from and loads up at the Corps Yards and the material is forwarded either by lorry, in which case it is delivered right at the Divisional R.E. Dump (MARTYN DUMP) or by train and then it is sidetracked for offloading at HONDEGHEM Siding. The Staff at MARTYN Dump do the offloading and transport the material to their dump.

SPECIAL CASES.

Certain material is obtained through other channels.

CAMOUFLAGE.

Requisitions are forwarded from C.R.E. to the Corps Camouflage Officer and if he can supply he replies by wire to that effect and C.R.E. arrange to collect from the camouflage shop at AIRE.

CEMENT, SAND & GRAVEL.

For concrete work. Estimates are forwarded to Corps two weeks ahead for the ensuing month's supply. Acting on these estimates Corps requisitions on Army and the material is then forwarded by train to CAESTRE STONE SIDING and consigned to C.E. XV Corps. Then on arrangements with Corps the respective Divisions offload the material and collect their requirements. Small amounts of cement are sometimes forwarded by lorry from Corps Yard to keep the job continuous.

REINFORCING IRON.

Requisitions are forwarded to C.E. XV Corps and C.R.E. arranges to select the material at Corps Yard at RENESCURE. Corps provides transport to the Divisional Area.

ROAD METAL.

Estimates of requirements for work ahead of the G.T. Line are forwarded to C.E. XV Corps two weeks ahead for the ensuing month. This material is forwarded by train to CAESTRE SIDING and C.R.E. arranges through Roads Officer, XV Corps to collect there.

ISSUE OF R.E. MATERIAL. MARTYN DUMP.

MARTYN DUMP is the main Divisional R.E. Dump, and on orders from C.E. Corps only one day's supply of material may be held there.

Material is issued to Field Companies and Pioneer Battalion on requisitions signed by an Engineer Officer, C.O., 2nd in C., or Adjutant of the Pioneer Battalion.

For convenience these technical units have forward sub-dumps established in their respective Areas and they arrange their own transport from MARTYN DUMP to keep these stocked for immediate requirements only.

-2-

Other Units requiring material must obtain the signature of an Engineer officer, either a Field Company Officer or an Officer at Divisional Engineer H.Q. before the Dump will issue.

A Stock Sheet as per attached pro forma is kept by the Warrant Officer in charge of the Dump who forwards a copy daily to C.R.E. correct to midnight previous day. There are several items not mentioned on the pro forma but the dump clerk fills in the blank spaces as required.

UNION CLOTH (Anti-Gas.)

Requisitions for this material from units other than Field Companies require the signature of the Divisional Gas Officer.

NOTICE BOARDS.

These are requisitioned through C.R.E.'s office and the orders forwarded to MARTYN DUMP. All notice boards are made there and when orders are completed units concerned are notified to collect.

CAMOUFLAGE.

A further supply of camouflage is made at MARTYN DUMP for issue to Units. It is made out of salvaged material, namely, wire-netting, green hessian and paint salvaged from STRAZEELE.

This forms by far the greater supply of camouflage to the Divisional Units.

apth vi

7. MEDICAL ARRANGEMENTS.

ADVANCED DRESSING STATION - BORRE (Brasserie).

MAIN DRESSING STATION - V.9.b.1.5.

DIVISIONAL REST STATION - V.5.a.9.5.

<u>R.A.Ps.</u>		<u>Bearer Relay Posts</u>		<u>Motor Ambulance Posts.</u>
<u>Right Battalion -</u>				
E.4.d.3.1.	E.3.d.1.7.	}	
<u>Centre Battalion -</u>			}	... W.28.a.2.7.
W.28.c.4.4.	W.28.b.1.2.	}	
<u>Left Battalion -</u>				
X.19.d.6.9.	W.24.b.9.5.		... W.24.a.5.7.

METHOD OF EVACUATION.

Hand, or wheeled stretcher to motor ambulance posts, thence by Divl. Ambulance cars to A.D.S.

From A.D.S. to M.D.S.	by Divl. Motor Ambulance Cars.
From M.D.S. to D.R.S.	by " " " "
From M.D.S. to C.C.S.	by No. 14 M.A.C. Cars.

CASUALTY CLEARING STATIONS - 1st & 2nd Aust. C.C.S. BLENDECQUES.

DISPOSITION OF DENTAL UNITS

No. 3 Dental Unit.	No. 5 Dental Unit.	No. 37 Dental Unit.
D.R.S. U.5.a.9.5.	M.D.S. V.9.b.1.5.	V.6.c.4.1.

-----O-----

8. TRAFFIC CONTROL.

The Centre Divisional A.P.M. is responsible for the traffic control of the whole Divisional Area, except that of the town of HAZEBROUCK, which is controlled by the Town Major.

No headlights on vehicles are allowed east of HAZEBROUCK-STEENVOORDE ROAD.

Location and Strength of Control Posts.

<u>Location.</u>	<u>Strength.</u>		<u>Hours of Duty.</u>	<u>Billets.</u>
	N.C.O.	O.R.		
P.27.d.1.4.		(2	7 a.m. to 9 p.m.	On post.
V.11.c.1.4.	1	(3	6 a.m. to 12 p.m.	V.16.b.8.4.
V.16.b.8.4.		(3	6 a.m. to 12 p.m.	V.16.b.8.4.
V.22.b.0.1.	1	3	Continuous	On post.
V.7.d.7.1.		3	6 a.m. to 12 p.m.	V.14.c.3.5.

9. STRAGGLER POSTS.

Right Divl. Stragglers' Collecting Station - Sheet 36a, D.10.b.6.6.
 Centre " " " " - Sheet 27, V.14.c.3.5.
 Left " " " " - Sheet 27, W.8.d.5.9.

<u>Location.</u>	<u>Strength.</u>		<u>Hours of duty.</u>	<u>Billets.</u>
	N.C.Os.	O.R.		
W.13.d.0.3.	1	4	Continuous	On post.
W.19.c.9.7.	1	4	"	" "
V.30.c.8.4.	1	4	"	V.30.c.central.
D.6.a.3.3.		(4	"	On post.
D.5.d.0.1.	1	(4	"	" "

The personnel employed at the Stragglers' Posts perform the triple duties of -

- (a). Collection of Stragglers.
- (b). Traffic Control.
- (c). Control of vehicular movements in forward Area in daylight.

In addition to the posts mentioned above the following posts manned by Infantry personnel are employed in preventing civilians from proceeding east of the HAZEBROUCK-CAESTRE Railway Line. In the event of active operations, a M.M.P. N.C.O. will be attached to each of these posts, and they will also then perform the duties of straggler posts. -

<u>Location.</u>	<u>Strength.</u>		<u>Hours of Duty.</u>	<u>Billets.</u>
	N.C.Os.	O.R.		
W.13.a.1.9.		(3	Continuous	On Post.
V.18.d.5.6.		(3	"	" "
V.24.d.9.1.		(3	"	" "
V.30.a.0.6.	2	(3	"	" "
V.29.b.5.3.		(3	"	" "
V.29.a.0.0.		(3	"	" "
D.5.c.5.7.		(3	"	" "

-2-

The A.D.M.S. has arranged for the delivery to the Straggler Post at W.19.c.9.7. supplies of the following, which will be obtained by him from the Dressing Stations. These will be used for re-equipping stragglers. The A.P.M. is responsible for the distribution of the articles of equipment to the remainder of the straggler posts in the Divisional Area.

(a).	Field Dressings.	
(b).	Box Respirators.	
(c).	Rifles.) From wounded men.
(d).	Ammunition.	
(e).	Equipment.	

10. PRISONERS OF WAR.

Corps Prisoners of War Cage - BLARINGHEM.
 Divl. Prisoners of War Collecting Cage - V.14.c.3.5.

All prisoners of war are taken over by A.P.M. at Brigade Headquarters, and sent to the Divisional Prisoners of War Collecting Station under M.M.P. escorts.

From Divisional Prisoners of War Collecting Cage prisoners of war are sent to Corps Prisoners of War Cage under escort supplied on demand to A.P.M. Corps.

11. REPAIR OF ROADS DAMAGED BY SHELL FIRE.

Roads west of D.G.T. line (which runs as follows) Sheet 36 a, D.27.central - D.17.d.1.2. - to Sheet 27, W.25.b.2.1. - W.14.c.1.3. - W.1. d.4.1. - Q.32.d.3.1. - then east of Road to BECKE Q.20.d.2.0. that are damaged by shell fire will be repaired under arrangements made by D.A.D. Roads.

Signal messages giving map references of shell holes should be sent addressed as follows -

(a). In the case of roads north of ST. OMER-BAILLEUL railway to Detachment 304 Roads Construct. Coy. HONDEGHEM.

(b). In the case of roads damaged south of St. OMER-BAILLEUL Railway to H.Q. 304 Road Construct. Coy, care of Area Commandant, SERCUS.

A.P.Ms. and traffic personnel are primarily responsible for sending information of damages needing considerable repairs, but all officers will also report damages.

In all cases messages should be repeated to D.A.D. Roads, XV Corps.

Roads east of the D.G.T. Line will be repaired by C.R.E. of Division.

TABLE No. 1.

APPENDIX B .

CENTRE DIVISIONAL AREA: XV CORPS.LOCATION STATEMENT OF CAMPS, BILLETTS, etc.Reference Sheets
27 and 36 A.

UNIT.	HEADQUARTERS.	WAGON LINES.
-------	---------------	--------------

(a). Divisional Headquarters and Attached Units.

Advanced Headquarters	P.28.b.2.3.	
Rear "	EBBLINGHEM.	
D.A.D.O.S.	EBBLINGHEM.	
A.P.M.	V.14.c.3.5.	
A.D.M.S.	P.28.b.2.3.	
C.R.E.	P.28.b.6.4.	
D.A.D.V.S.	P.28.b.2.3.	
C.R.A.	P.28.a.1.1.	
PAYMASTER	EBBLINGHEM.	
Divl. Burial Officer	V.12.b.9.0.	
Divl. F.P. Compound and P. of W. cage	V.14.c.3.5.	
Divl. Surplus Kit store	EBBLINGHEM.	
Divl. Pack Store	EBBLINGHEM.	
Divl. Laundry Officer	EBBLINGHEM.	
Divl. Foodon Lorry	EBBLINGHEM.	
Area Comdt. Centre Divn.	U.17.a.05.05.	
Divl. Reinfet. Wing	U.19.c. cent.	

(b). INFANTRY BRICADES.

"A" Line Brigade Right		V.14.c.5.0.
Brigade Headquarters	W.25.a.5.6.	do.
"A" Battalion - line	E.4.b.9.9.	do.
"B" Battalion - support	E.3.c.1.7.	do.
"C" Battalion - reserve	V.21.d.5.6.	do.
L.T.M. Battery	W.28.a.3.7.	

"B" Line Brigade Left		V.21.b.
Brigade Headquarters	W.8.c.7.0.	do.
"A" Batta - Line Right	E.5.b.7.4.	do.
"B" Batta - Line Left	W.18.d.1.5.	do.
"C" Bn. - Support Right	W.20.b.6.0.	do.
"D" Bn. - Support Left	W.8.c.1.3.	do.
L.T.M. Battery	W.16.c.2.0.	

"C" Reserve Brigade.		V.21.b.
Brigade Headquarters	V.10.a.6.0.	do.
"A" Bn. - Close Reserve	W.8.c.1.3.	do.
"B" Battalion	V.23.a.1.6.	do.
"C" Battalion	V.17.c.0.1.	do.
"D" Battalion	V.15.b.8.2.	do.
L.T.M. Battery	V.20.a.8.3.	do.

(c). DIVISIONAL TROOPS.

Machine Gun Battalion.		
Battalion Headqrs.	V.22.a.9.2.	V.22.d.8.5.
"A" Coy. H.Q.	V.23.c.1.3.	V.17.d.1.1.
"B" Coy. H.Q.	V.17.d.1.1.	V.16.c.4.9.
"C" Coy. H.Q.	W.16.d.2.1.	
"D" Coy. H.Q.	E.3.b.4.4.	

-2-

LOCATION STATEMENT OF CAMPS, etc. (Cont'd.)

UNIT.	HEADQUARTERS.	WAGON LINES.
(c). <u>Divisional Troops (Contd.)</u>		
Pioneer Bn.	V.12.b.9.9.	V.11.c.3.6.
1st Field Ambce. A.D.S. BORRE	V.17.c.3.7.	V.17.c.3.7.
2nd Field Ambce. D.R.S.	U.5.a.9.3.	U.5.a.9.3.
3rd Field Ambce. M.D.S.	V.9.b.1.5.	V.9.b.1.5.
1st Field Coy. Engrs.	W.19.d.0.8.	V.20.a.8.4.
2nd Field Coy. Engrs.	U.18.b.2.2.	V.15.d.9.9.
3rd Field Coy. Engrs.	W.13.b.5.5.	V.20.d.3.3.
Divl. Train H.Q.	U.18.b.1.5.	
S.S.O.	U.18.b.1.5.	With Coy. H.Q.
1st Coy. A.S.C.	U.17.d.9.8.	" " "
2nd Coy. A.S.C.	U.18.a.1.9.	" " "
3rd Coy. A.S.C.	U.18.c.8.9.	" " "
4th Coy. A.S.C.	U.17.d.1.7.	
Sanitary Section	V.21.b. central	
Divl. Salvage Coy.	V.22.d.2.1.	
Mobile Vet. Sect.	V.9.b.6.1.	
Medium T.M. Bty. H.Q.	V.1.c.6.1.	
M.T. Coy. H.Q.	B.13.d.7.2. (RACQUINGHEM).	
H.T. Coy. Workshops	T.9. central	
Div. Artillery H.Q.	P.28.a.1.1.	
1st R.F.A. Brigade	V.24.a.6.8.	
2nd R.F.A. Brigade	W.1.b.5.7.	
1st Army Brigade R.F.A.	W.13.d.9.3.	
2nd Army Brigade R.F.A.	V.30.d.2.2.	
D.A.C.	V.1.c.7.4.	
No. 1 Section.	V.1.c.2.4.	
No. 2 Section	U.5.d.9.3.	
S.A.A. Section		

TABLE No. 2.

APPENDIX C.

LOCATION STATEMENT OF DIVISIONAL ARTILLERY.

Div. Artillery H.Q. P.28.a.1.1.
 Reference Map - Sheet 36A - 1:40,000
 Sheet 27 do.

Brigade.	Battery.	Position.	Wagon Lines.
1st R.F.A. Brigade	Headquarters	V.24.a.60.80	V.12.a.35.70
	"A" Bty. 6 guns	W.15.c.70.35	V.15.a.8.2.
	"B" Bty. 4 "	W.22.c.60.60	
	2 "	W.22.d.20.35	V.11.a.8.8.
	"C" Bty. 6 "	W.21.d.25.25	V.5.d.9.1.
	How. Bty. 6 hows.	W.21.c.40.05	V.14.b.5.7.
	Anti-tank gun	W.29.d.20.90	
	Wireless mast	V.24.a.65.95	
		& W.21.c.40.06	
2nd R.F.A. Brigade	Headquarters	W.1.b.60.60	P.36.d.60.25
	"A" Bty. 6 guns	W.16.c.45.17	W.1.a.20.80
	"B" Bty. 2 "	W.16.d.58.70	
	2 "	W.16.d.62.73	
	2 "	W.16.d.70.72	W.1.a.20.80
	"C" Bty. 3 "	W.10.a.90.45	
	3 "	W.10.c.90.75	V.10.a.50.50.
	"D" Bty. 3 "	W.10.a.85.40	
	3 "	W.10.c.85.95	V.9.b.50.30.
	Anti-tank gun	X.19.c.30.50	
1st Army Brigade, R.F.A.	Wireless Mast	W.1.b.50.40.	
	Headquarters	W.13.d.90.30	U.17.c.0.8.
	"A" Bty. 2 guns	W.21.b.72.78	
	2 guns	W.21.b.38.97	
	2 guns	W.21.b.83.92	U.17.b.7.7.
	"B" Bty. 4 guns	W.20.a.78.80	
	2 guns	W.14.d.13.47.	V.14.c.3.8.
	"C" Bty. 1 gun	W.22.c.25.32	
	1 gun	W.22.c.25.75	
	1 gun	W.22.c.27.65	
	1 gun	W.21.d.98.85	
	1 gun	W.21.d.90.08	U.18.a. central.
	How. Bty. 6 hows.	W.28.a.00.72	U.27.a.0.1.
	B.A.C.		U.17.d.5.3.
	Anti-tank gun	W.23.b.30.20	
2nd Army Brigade R.F.A.	Wireless Mast	W.22.c.30.30	
	Headquarters.	V.30.d.25.25.	D.2.a.00.75
	"A" Bty. 2 guns	E.2.d.70.90.	
	4 guns	E.2.b.09.08	D.8.a.25.90
	"B" Bty. 2 guns	W.20.c.75.45	
	4 guns	W.20.d.40.15	V.25.d.20.90
	"C" Bty. 4 guns	W.26.b.85.10	
	2 guns	W.26.d.85.65	V.26.v.40.50
	How. Bty. 3 hows	W.27.d.70.93	
	3 hows	W.27.d.60.65	D.2.a.40.00
	Anti-tank gun	E.4.d.00.90	
	Wireless Mast	V.30.d.25.25	
	B.A.C.		V.25.c.00.30
	D.A.C. H.Q.	V.1.c.70.40	
		No. 1 Sec.)	
		No. 2 Sec.	V.1.c.20.40
		S.A.A. Sec.	U.6.d.95.35
		D.T.M.C.	V.1.c.80.80

Appendix E.

DISTRIBUTION OF AMMUNITION IN POSTS & TRENCHES.

RIGHT BRIGADE SECTOR.

Right Battalion.

In each Post.

S.A.A. 7000.

In Old Front Line.

S.A.A. 103,000
Grenades. 2,076

In Support Line.

S.A.A. 200,000
Grenades. 4,284

In Reserve Line.

S.A.A. 120,000
Grenades. 756

LEFT BRIGADE SECTOR.

Centro Battalion.

In each Post.

S.A.A. 4,000
Grenades. 144

In Old Front Line.

S.A.A. 64,000
Grenades. 1,860

In Support Line.

S.A.A. 332,000
Grenades. 4,572

Left Battalion.

In each Post.

S.A.A. 3000
Grenades. 120

In Old Front Line.

S.A.A. 134,000
Grenades. 1,336

In Support Line.

S.A.A. 55,000
Grenades. 340

LEFT BRIGADE RESERVES IN TRENCHES.

	<u>S.A.A.</u>	<u>Grenades.</u>
Reserve Line.	113,000	900
STRAZELLE Switch.	317,000	912
OOURTE CROIX Switch.	77,000	1,372

APPENDIX. 2.ACTION OF RESERVE BRIGADE and attached MACHINE GUN COMPANY.

1. The Reserve Brigade (at present 3 Bns.) is quartered in the vicinity of LA KREULE.
2. The Reserve Brigade may be required to counter-attack separately or in conjunction with a Brigade of another Division.
3. The Reserve Brigade may be required to undertake any of the following operations, viz:-
 - (a) Counter attack on any portion of the Divisional front.
 - (b) Counter-attack in the sectors held by the Divisions on the flanks.
 - (c) Counter-attack on the flanks of the CORPS.
 - (d) Garrison the SECOND ZONE and Reserve line of the FORWARD ZONE.
 - (e) Garrison the EAST HAZEBROUCK Line.Reconnaissances will be carried out to enable any of these operations being undertaken at very short notice.
4. It is anticipated that hostile attacks would be made
 - (a) Along the low ground SOUTH of STRAZEELE station.
 - (b) In the direction of STRAZEELE - KLITE HILL.
 - (c) Along the METTERIN BECQUE, towards FLETRE.
5. Suitable assembly places for counter-attack are as follows:-
 - No. 1. STRAZEELE Reserve trench or the Reserve Line in W.16.c. and W.21.a.
 - No. 2. In V.18.
 - No. 3. Behind the "B" Line in V.30.These will be used according to the tactical situation and visibility. Routes to and forward of the Assembly places should be reconnoitred by all Officers and N.C.Os. Map E shows the assembly places and routes thereto.
6. The jumping off line for counter-attacks will be the "B" Line or the Reserve line. Movement to these lines will be carried out in artillery formations prior to Zero. Advanced Brigade H.Q. would be established at the Headquarters of either the Right or Left Brigade which ever is considered most convenient.
7. As it is impossible to foretell the number of batteries remaining in action when the counter-attack is launched the details of artillery co-operation can be decided on only at the last moment.
The C.R.A. will be prepared to co-operate at short notice.
8. The Reserve Brigade if required for operations outside the Divisional Area will be accompanied by the attached Machine Gun Company, S.A.A.Sect of D.A.C. and Field Ambulance and Supply Section A.S.C.
9. The A.D.M.S. will arrange to attach one complete section plus one bearers sub-division, and one FORD Ambulance car to the Reserve Brigade in the event of it being ordered to operate outside the Divisional sector.
10. The Reserve Brigade may be ordered to garrison the SECOND ZONE in the event of counter-attacks having failed to restore the situation, or, owing to enemy penetration of ground on our flanks, a withdrawal has been ordered by higher authority. Brigade H.Q. in this case will be established at V.10.a.7.0.

APPENDIX. 3.ORGANISATION OF M.G. DEFENCES.1. Principles of defence.

The defence of both Forward and Second Zones is effected by direct fire from guns emplaced in depth between 500 yards forward of Support Line and Reserve Line. In the Forward Zone certain of the guns are allotted barrage tasks to supplement the Artillery S.O.S. barrage but not more than 20% of the ammunition is to be used for that purpose.

2. Siting of Guns.

Guns are sited in depth and are so placed that rear guns afford continuity of support to forward guns.

Guns in the FORWARD ZONE are sited especially with a view to the defence of the STRAZEELE Ridge, the approaches to which they sweep from the flanks and in front.

Certain guns have also been sited to sweep the crest of the ridge and the place Becquo Rau.

3. Allotment of Companies.

(a) The forward zone is divided into 2 Sections by a line E.6.B.8.5. to W.30.A.0.4. - W.29.A.9.9. - W.22.C.1.6. W.20.Central.

One Coy plus 1 Section of 4 guns is allotted to the left sector and 1 Coy plus 1 sub-section to the right sector. The guns are under the tactical command of the Brigade Commander in whose sector they are emplaced.

(b) One Coy less 6 Guns accommodated in the Second Zone is allotted as under -

(1) One Section as nucleus garrison of the Second Zone.

(2) Two guns allotted to the defence of ROUGE CROIX and two guns allotted to the defence of the HAZEBROUCK - STRAZEELE Railway.

(3) 2 Guns as Mobile Reserve Coy H.Qrs V.17.D.2.1.

(c) One Coy in Reserve Billets in V.23.C.15.35. This Coy is available to assist Counter Attacks or to garrison the second zone as occasion demands.

(d) One Coy undergoing intensive training in BLARINGHEM Area. This Coy is under the tactical Command of the G.O.C. Brigade in rest.

4. Accommodation and Gun Positions.

(a) Gun teams are for the most part provided with weather shelter only, but most Section and Company Headquarters are sited in strengthened houses and cellars, and where accommodation is available for spare numbers. Alternative positions have been constructed in the Forward Zone for each gun, certain of which contain trench mountings, and in addition M.G. emplacements are being constructed in selected buildings.

(b) A total of 14,000 rounds S.A.A. is maintained at each gun in the Forward Zone, i.e., 4,000 rounds in belts and 8,000 rounds in bulk 10,000 rounds in bulk at each gun position in the Second Zone.

(c) The following is kept in each gun position in the Forward Zone:-

(i) 8 Gallons of water in tins.

(ii) Range Cards and Visibility Charts.

(iii) Order Boards (A.F.W.3678) giving particulars of alternative positions and locations of neighbouring guns, and of Section and Company H.Q., and in case of S.O.S. guns, their Barrage Orders.

(iv) Two belts of A.P. S.A.A. are kept at each gun position in the Forward Zone for defence against enemy tanks. The belt boxes containing the S.A.A. are clearly marked and there are written orders as to its use at all positions.

- 2 -

(d) Reserve Rations are held at Forward Company and Section H.Q. as follows:-

Left Coy.H.Q.	30 Rations.
Each Section H.Q.	25 Rations.

Right Coy.H.Q.	20 Rations.
Each Section.H.Q.	25 Rations.

(e) (i) Gun positions in the Forward Zone are marked by a Rectangular Notice Board, shewing the number of the Gun position and its location.

(ii) Gun positions in the Second Zone are marked by a Rectangular Notice Board, shewing the lines in which they are sited, number of gun position and location.

5. Concrete emplacements. Shown on attached Map.

6. Indirect harassing fire.

O.Cs. Coys select daily harassing fire programmes and after having same checked at M.G. Bn. H.Qrs notify Battalion H.Qrs and Brigade H.Qrs in whose sector Coys are in action.

7. Gun positions. Shown on attached Map.

8. Numbering of gun positions and locations are given in Appendix.3.A

9. Garrison. In order to avoid undue losses as a result of hostile bombardment (particularly gas) not more than three men at a time are to be in the gun position. The remainder of the detachment is to be sheltered in the vicinity and will be available to supply reliefs.

APPENDIX. 3.A.GUN POSITIONS AND NUMBERS.

(a) Gun positions in the Forward Zone are allotted numbers as follows;-

RIGHT COMPANY.No. LOCATION.

1. E.10.C.85.40.
 2. E.10.C.70.75.
 3. E.10.B.20.40.
 4. E.10.B.60.40.
 5. E.11.C.80.60.
 6. E.11.A.60.00.
 7. E.5.D.25.10.
 8. E.5.D.55.60.
 9. E.6.C.10.50.
 10. E.6.C.30.70.
 11. E.3.B.40.65.
 12. W.28.C.55.65.
 13. W.29.C.15.55.
 14. W.29.C.85.05.
 15. W.29.D.90.85.
 16. W.30.A.80.40.

Additional to Coy.

37. W.26.D.30.58.
 38. W.27.A.8.4.

LEFT COMPANY.No. LOCATION.

17. W.23.D.3.7.
 18. W.23.D.4.9.
 19. W.24.C.60.15.
 20. W.30.A.3.9.
 21. X.19.C.4.4.
 22. X.19.C.35.80.
 23. X.19.A.75.25.
 24. X.19.B.15.99.
 25. W.24.A.30.25.
 26. W.18.D.15.15.
 27. W.18.D.75.95.
 28. W.18.B.95.35.
 29. W.16.B.2.1.
 30. W.16.B.99.40.
 31. W.17.A.3.9.
 32. W.11.C.35.25.

Additional to Coy.

33. W.22.B.05.55.
 34. W.22.A.85.80.
 35. W.16.D.8.2.
 36. W.16.D.85.15.

(b) The following positions of primary importance in the Second Zone are occupied continuously.

W.10.C.35.45. W.14.A.85.15. W.16.B.17.48. W.14.C.95.55.
 E.2.A.15.45. W.20.C.5.5. E.2.A.3.2. W.20.A.7.0.

(c) The following A.A. Guns are manned continuously.

A.A. 1. W.26.D.20.55.
 A.A. 2. W.27.A.80.45.

(d) Alternative positions are not numbered but are shown on Attached Map.

(e) Position selected for close defence of ROUGE CROIX Area. -

W.10.C.30.45.

APPENDIX.4.ACTION OF ARTILLERY.1. Artillery covering the Divisional Front.

(a) Field Artillery. One Divisional Artillery and two Army Field Artillery Brigades.

(b) Heavy Artillery. The following brigades of Heavy Artillery are at present, affiliated to the 1st. Aust. Div.:-

36th. Brigade R.G.A.

45th. Brigade R.G.A.

2. Field Artillery Dispositions.

(a) The Field Artillery is disposed in depth, each Brigade having, as far as possible, two batteries at ranges of between 3,000 and 4,500 yards and two at ranges of between 4,500 and 6,000 yards.

(b) In addition positions have been selected to cover:-

(1) The Reserve Line, Forward Zone.

(2) The "B" Line, Second Zone.

(3) The Army Line.

Routes to these positions have been allotted to Brigades and reconnoitred by all Officers and a proportion of N.C.Os.

(c) Each Battery has a "Battle Position" into which it will be ordered to move when it appears certain that an enemy attack is impending.

These positions are not normally fired from and 400 rounds per 18-pdr. and 300 rounds per 4.5. How. is kept stored in these positions.

3. Medium Trench Mortars.

(a) Six 6" Newton Mortars are in positions covering the Front Line and carry out daily tasks and harassing fire.

(b) Six "6" Newton Mortars are in position covering the B Line

4. Anti-Tank Guns.

(a) Three 15 pdr. B.L.C. guns are emplaced as Anti-Tank guns at the following positions:-

W.4.D.00.80.

W.23.B.30.20.

X.19.C.20.50.

(b) These guns are continually manned and an Officer is in charge of each gun.

(c) 250 rounds of 15 pdr. H.E. ammunition is kept at each of these guns.

5. S.O.S.

(a) Each Brigade is allotted a zone for S.O.S. purposes and the S.O.S. line is adjusted as circumstances require, in close consultation with Infantry Brigadiers.

(b) Each Brigade is prepared to fire on the front of any other Brigade if required.

(c) Every effort should be made by the Infantry to localize the

(2)

hostile attack as quickly as possible so that the greatest possible concentration of artillery may be placed there in the shortest possible time.

(d) Rates of Fire for S.O.S. are;-

18-pdrs.	First	3 minutes	-	5 rds.	p.g.p.m.
	Next,	5 "	-	4 "	" "
	"	10 "	-	3 "	" "
	"	5 "	-	4 "	" "

Theroafter 2 rounds p.g.p.m. in accordance with the situation.
4.5. Hows. Half above rates.
This barrago may be stopped at any time at the request of the Infantry.

(e) Mutual Support arrangements have been made with the Divisional Artillories on either flank.

(f) Heavy Artillery has S.O.S. Zones allotted by Corps.
The S.O.S. is put down in the form of a continuous barrago, 500 yards from our front line. Special targets are allotted to heavy guns and super-heavy Hows.

6. Counter-preparation.

(a) Counter preparation will normally be ordered by Corps or Divisional Headquarters. Artillery Brigade Commanders may, however, put down counter-preparation on their own initiative in reply to a heavy hostile bombardment.

(b) Field Artillery carry out counter-preparation in the zone within 1500 yards of our front line, Heavy Artillery from 1500 yards onwards.

(c) Each Field Artillery Brigade is allotted a definite counter-preparation zone.

(d) During Counter-Preparation each Field Artillery Brigade sweeps and searches all roads, tracks, hedges, buildings and likely places of assembly in its own zone.

(e) If weather conditions are favourable a proportion of gas shall be used during counter-preparation.

(f) The expenditure of ammunition during Counter-Preparation is at the rate of 60 rounds per gun and Howitzer per hour.

(g) All counter-preparation schemes are frequently changed in order that the enemy may not become accustomed to a stereotyped form.

7. Harassing Fire.

(a) An active policy of harassing fire is adopted both by day and night.

(b) By day much observed firing is carried out and full advantage taken by all movements seen.

(c) By night all roads, tracks, occupied areas and known centres of activity are fired on in accordance with continually changing programmes. Short Shell-Storms of from 2 to 3 minutes duration are put down on specially selected points.

8. Liaison.

(a) A Field Officer of Artillery carries out the duties of Liaison Officer with each Infantry Brigade in the Line.

(b) An Artillery Subaltern carries out the duties of Liaison Officer with each Battalion in the line.

(c) Tours of duty for both Brigade and Battalion Liaison are 5 days. Reliefs of Artillery Liaison Officers are adjusted so as not to clash with Infantry Brigade reliefs.

(d) A Heavy Artillery Officer also acts as Liaison Officer with each Infantry Brigade in the line.

APPENDIX. 5.A.DEFENDED LOCALITY OF STRAZEELE.

1. Object. The defended locality forms a strong point which supports the SUPPORT SYSTEM.
2. Works have been constructed to provide for all round defence.
3. The garrison consists of One Company of Infantry from 'C' Battalion of the left Brigade in line.
No Vickers Machine Guns are located inside the defences but the guns allotted to the defence of the FORWARD ZONE give adequate support.
4. The defence of STRAZEELE falls within the tactical responsibility of the G.O.C. the left Brigade in line who will issue the necessary detailed instructions.
5. Preliminary arrangements.
 - (a) The garrison will be quartered in the close vicinity of the defences.
 - (b) 300 rounds S.A.A. per rifle, 10 No. 23 Grenades per man, 15 No. 36 Rifle Grenades per Cup discharger, and 5,000 rounds per Lewis Gun will be maintained in the defences.
 - (c) 24 hours reserve ration of food and water will be maintained.
6. Action. When attack is clearly indicated the garrison will occupy the defences. In the event of a gas bombardment the direction of the wind should be noted and the garrison moved accordingly.
7. Medical and Communication requirements will be provided for in the general defensive Scheme of the Brigade concerned.

STRAZEELE DEFENDED AREA

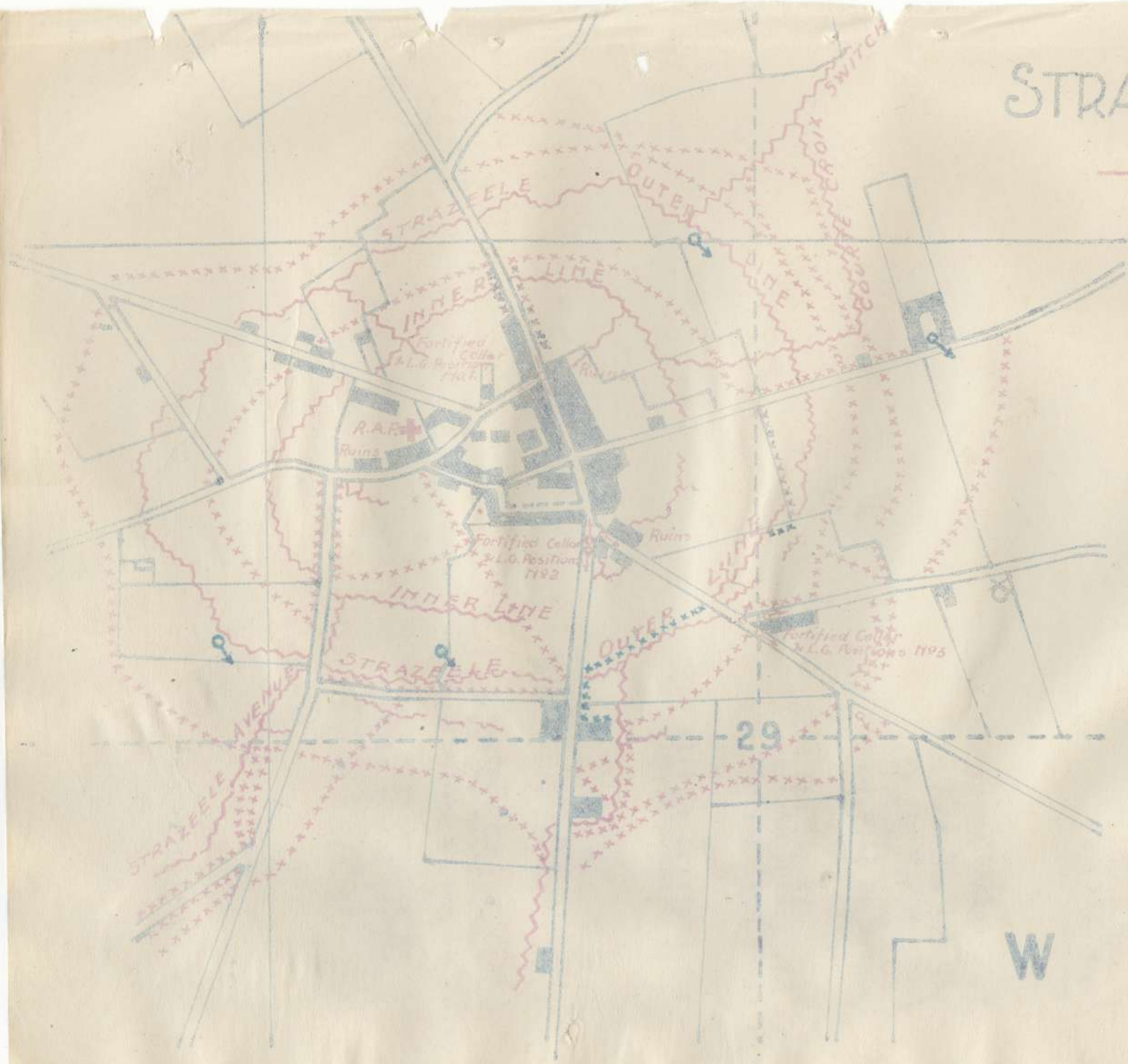
SECRET

DIV.T.S.No 52

Copy No

Corrected to 10-7-18.

— Legend —
 M.G's — 
 " proposed 
 Wire — 

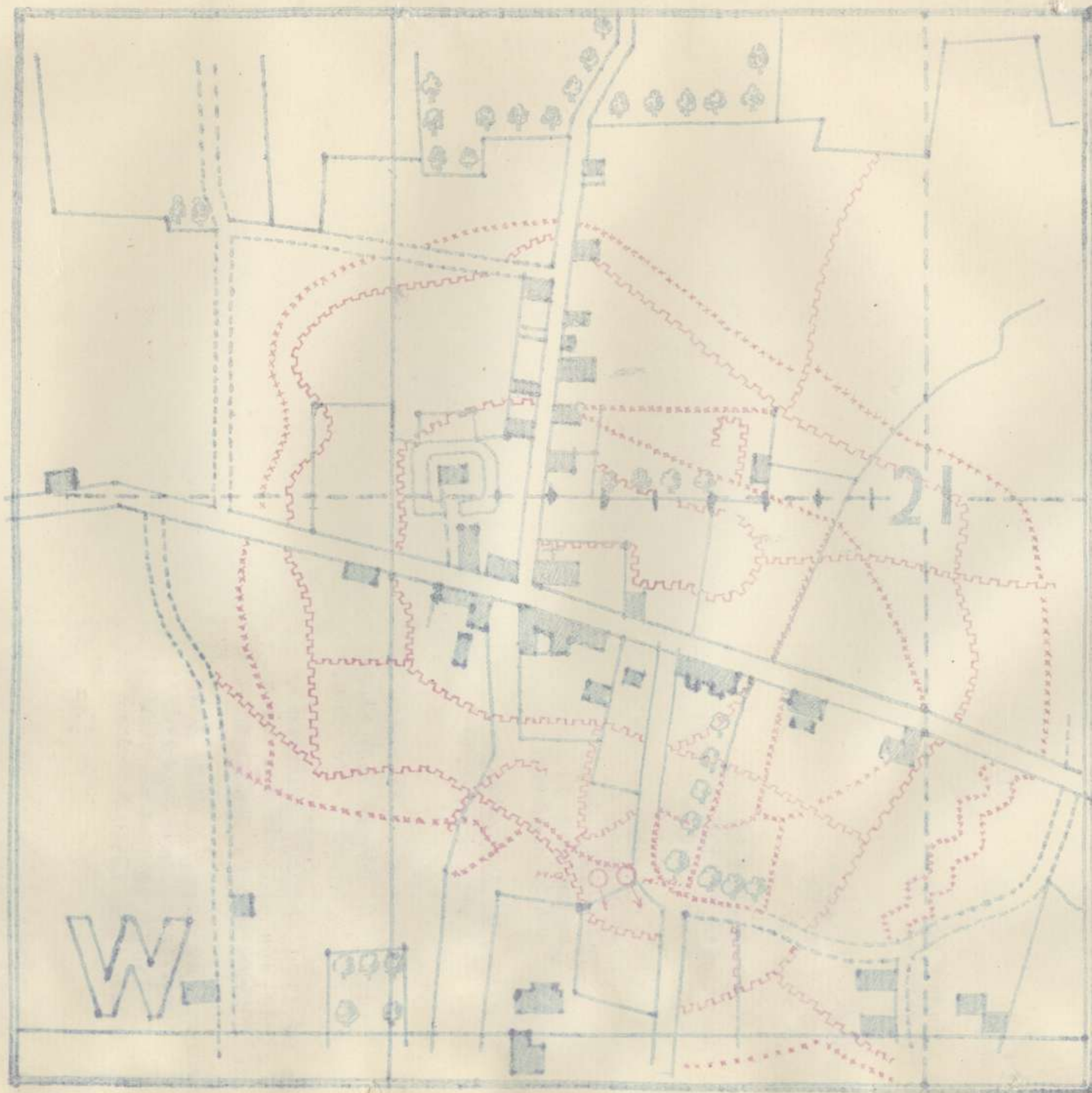


APPENDIX

1189

APPENDIX. 5.B.DEFENCE OF PRADELLES. (W.21.)

1. Object. A strong point has been established at PRADELLES, whose object is to deny a hostile advance, or to form a pivot for our troops if required.
2. The village is virtually in the Reserve Line, Forward Zone.
3. Works have been constructed to meet attack from -
 - (a) STRAZEELE village, along the STRAZEELE-PRADELLES Road.
 - (b) The S.E. if an enemy advance breaks our line in the vicinity of the MONT de MERRIS, and an advance takes place astride the railway.
 - (c) The N.E. from the STRAZEELE-ROUGE CROIX ridge. These works are shown on attached plan.
4. The Garrison consists of one company of the Divisional Pioneer Battalion. A skeleton garrison of 1 platoon will be maintained at all times in this strong point. Improvements and repairs will be carried out by this skeleton garrison, supplemented by working parties when necessary. The skeleton garrison will be relieved periodically by other platoons of the company, thus ensuring that all are conversant with the locality and its work.
5. Command of this strong point is vested in the G.O.C. left line Brigade. Local command will be exercised by the officer commanding the Pioneer Company. His command post will be at W.21.A.1.1.
6. Preliminary arrangements. (a) All officers and N.C.Os of the company detailed to PRADELLES S.P. will reconnoitre the routes from bivouac to trenches and will make themselves acquainted with the trenches they are to occupy when ordered.
 (b) 300 rounds S.A.A. per rifle, 10. No.23. bombs per man and 15 No.36 Rifle Bombs per Cup Discharger will be maintained in the trenches, in addition to 5,000 rounds per Lewis Gun.
 (c) Sufficient S.A.A. to fill each man up to 200 rounds and No. 23 bombs to issue two per man will be maintained under Pioneer Battalion arrangements.
 (d) A.D.M.S. will allot a Medical Officer, who will in consultation with O.C. PRADELLES Defences arrange a R.A.P. and stretcher bearers.
7. (a) On receipt of the order "Adopt Precautionary Stage" the garrison will complete up to 200 rounds S.A.A. and 2 Mills Bombs from stocks at Battalion Headquarters. In addition 1 days iron rations will be carried.
 200 gallons of water and 200 meat and biscuit rations will be drawn and stored where most likely to escape hostile shelling. This garrison will proceed to man the trenches in the PRADELLES Defences.
 (b) Signal communications will be opened with Brigade Headquarters
 (c) A regimental Aid Post will be established and stretcher bearers allotted. M.O. in 8 (d) will take charge of this.
 (d) When all troops are in position, inform G.O.C. left line brigade to that effect.
 (e) Straggler Posts will be established.
8. Action. When the direction of attack is clearly indicated dispositions will be amended suitably. Until this is the case the company will occupy the trenches on both sides of the road with patrols towards STRAZEELE and towards the railway about E.3.D. Liaison patrols will link the Reserve Line to PRADELLES Defences. Without written orders from the G.O.C. left line Brigade no withdrawal from PRADELLES Defences is to take place.
 towards the Col between STRAZEELE and ROUGE CROIX.



PRADELLES

DEFENDED LOCALITY

SECRET

DIV T.S. N° 48

COPY N°

SCALE 1,5000

Corrected to 3:7:18.

APPENDIX

191

APPENDIX. 5.C.DEFENCE OF BORRE. (W.19.)

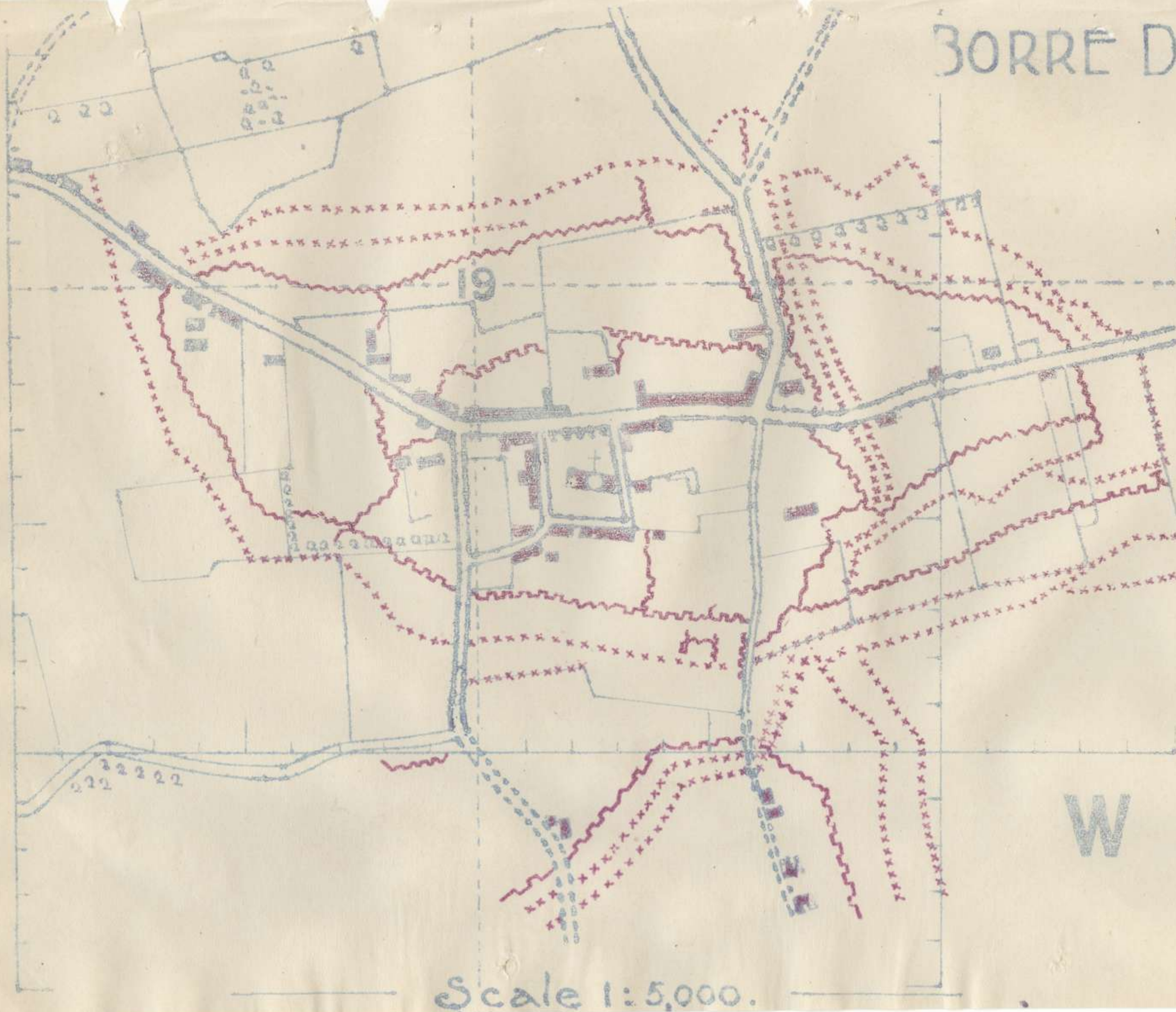
Object. A strong point has been established at BORRE, whose object is to deny a hostile advance, and to form a pivot and delaying point.

2. The village covers the approach to HAZEBROUCK, by the STRAZEELE, PRADELLES Road. It is sited on a slight eminence which falls away to the S. and S.E. and overlooks a large area, as far as the Railway. On the N. the ground is flat and covered with crops. The Forward Zone and "B" line of the Second Zone cover the village.
3. Works have been constructed as shown in attached diagram.
4. The fighting garrison will be one company of the Divisional Pioneer Battalion.
A skeleton garrison of 1 Platoon will be maintained at all times in this strong point. Improvements and repairs will be carried out by this garrison, supplemented by working parties from the Pioneer Battalion when necessary.
5. Command. The Commander of the garrison company will command the BORRE defences directly under the orders of Divisional H.Q. until such time as BORRE is included in the area of tactical responsibility of the G.O.C. left line brigade.
Command post will be at BRASSERIE (W.19.C.8.8.)
6. Preliminary arrangements - (a) All Officers and N.C.Os of the company detailed to BORRE defences will reconnoitre the routes from bivouac to trenches and will make themselves acquainted with the trenches and surroundings.
(b) 300 rounds S.A.A. per man, 15 No. 36 Rifle Bombs per Cup Discharger, 10.No.23 Bombs per man and 3,000 rounds S.A.A. per Lewis Gun will be maintained in the trenches.
(c) Sufficient S.A.A. to fill each man up to 200 rounds and No. 23 Bombs to issue 2 per man will be maintained under Pioneer Battalion arrangements.
(d) A.D.M.S. will allot a Medical Officer, who in consultation with O.C. BORRE Defences, will arrange a R.A.P. and Stretcher Bearers.
7. (a) On receipt of the order "Adopt Precautionary Stage" the garrison will complete up to 200 rounds S.A.A. and 2 Mills Bombs from Stocks. In addition 1 days Iron Rations will be carried. This garrison will proceed to man the BORRE Defences.
(b) Signal Communication will be opened with Headquarters left line Brigade.
(c) A Regimental Aid Post will be established and stretcher bearers allotted. M.O. in 6 (d) will take charge of this.
(d) When all troops are in position, inform Headquarters left line Brigade.
(e) Straggler Posts will be established.
8. Action. When the direction of attack is clearly indicated dispositions will be amended suitably. Until the direction of attack is clear the garrison will occupy the trenches N and S of the PRADELLES-HAZEBROUCK Road.
Liaison patrols will maintain touch with PRADELLES garrison and the troops occupying the "B" Line, second Zone defences. Without orders from Divisional or Brigade Headquarters, no withdrawal from BORRE Defences is to take place.

BORRE DEFENDED AREA

— Corrected to —
— 9-7-15 —

SECRET
DIV.T.S. №49
Copy №

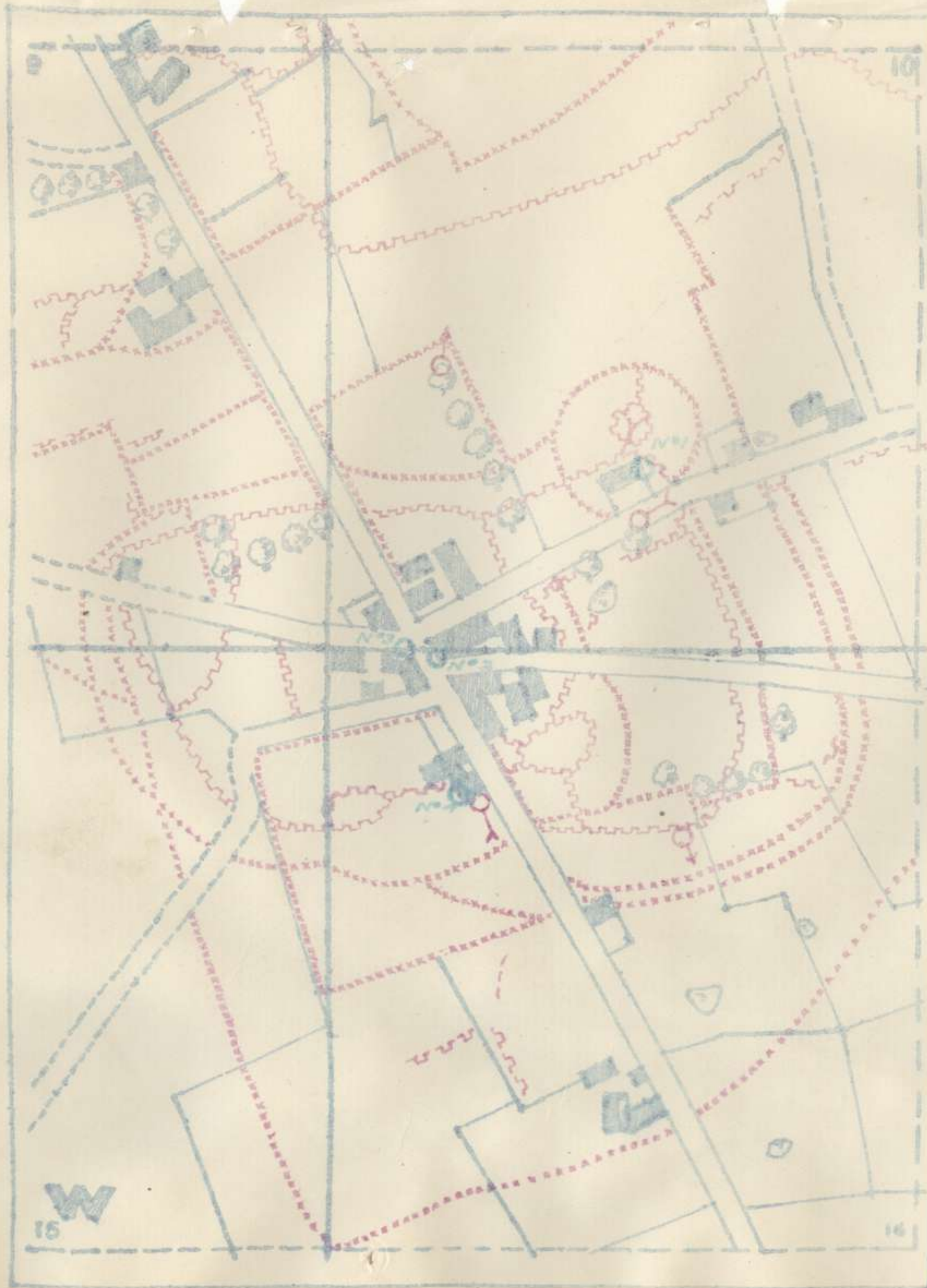


APPENDIX

193

APPENDIX. 5. (d)DEFENCE OF ROUGE CROIX. {W.10. }
{W.16. }

1. Object. The defended locality forms a strong point, which with FLETRE, supports the Reserve Line.
2. Works. have been constructed to provide for all round defence.
3. The Garrison consists of a skeleton force of Pioneers (platoon) up to the Precautionary Stage (after which it is increased to 1 Company) and 2 machine guns of the 1st.M.G.Battalion.
4. Command of ROUGE CROIX defences will pass to Commander of the Company detailed by the Divisional Pioneer Battalion when the Precautionary Stage is adopted. His command post will be W.10.C.95.35.
5. Preliminary arrangements (a) All Officers and N.C.Os of the company detailed in para 3. will reconnoitre the routes from assembly position to trenches, and will make themselves acquainted with the trenches they are to occupy when ordered. (b) 300 rounds S.A.A. per rifle, 10.No.23 Bombs per man, and 15.No.36.Rifle Bombs, per Cup Discharger, will be maintained in the trenches in addition to 5,000 rounds per Lewis Gun (30,000 rounds). O.C. 1st.Pioneer Battalion will arrange this for the complete garrison. (c) Sufficient S.A.A. to fill each man up to 200 rounds and No. 23 Bombs to issue 2 per man will be maintained under Pioneer Battalion arrangements.
6. (a) On receipt of the order "Adopt Precautionary Stage" the Company detailed will complete up to scale in para 5 (c) above and will carry 1 days Iron Rations. They will then proceed to man their trenches in the ROUGE CROIX defences. Command will pass to O.C. Company. (b) Communication will be opened with Support Battalion Headquarters, left Brigade. (c) Straggler Posts will be established. (d) When all troops are in position, inform left line Brigade H.Q. who will pass the information to D.H.Q.
7. Action. When the direction of attack is clearly indicated dispositions will be amended suitably. Until this is the case, the garrison will occupy the trenches to the N.E. and E. of ROUGE CROIX. Liaison patrols will work to FLETRE and to the col between ROUGE CROIX and STRAZEELE. Without written orders from the G.O.C. left line Brigade no withdrawal from the ROUGE CROIX defences is to take place.



ROUGE CROIX DEFENDED LOCALITY

SECRET

DIV T.S. No 50
COPY No

Corrected To 9/7/18
Scale 1:5000

Lewis guns.
Vickers M.G.
Fortified L.G. position.



APPENDIX. 5. (E)COURTE CROIX DEFENDED LOCALITY.

1. Object. The defended locality forms a strong point which forms the northern eminence of the line STRAZELLE AVENUE - STRAZELLE COURTE CROIX SWITCH - COURTE CROIX. It denies a hostile advance from a North Easterly direction.
2. Works. Have been constructed to provide for all round defence.
3. Garrison. The garrison consists of three platoons of Pioneers. There are no Vickers guns actually in the defended locality but guns sited in close vicinity give adequate support.
4. The defence of COURTE CROIX falls within the tactical responsibility of the G.O.C. left Brigade in line who will issue the necessary detailed instructions.
5. Preliminary arrangements.
 - (a) The garrison will be quartered in the close vicinity of the defences.
 - (b) 300 rounds S.A.A. per rifle, 10.No.23 bombs per man, 15.No.36. Rifle bombs per cup discharger and 5,000 rounds per Lewis Gun will be maintained in the defences.
 - (c) 24 hours reserve ration of food and water will be maintained.
6. When an attack is imminent the garrison will man the defences. In the event of gas bombardment the direction of the wind will be noted and the garrison moved accordingly.
7. Medical and Communication requirements will be provided for in the general defensive scheme of the brigade concerned.
8. Without written orders from G.O.C. Left Brigade Sub-Sector no withdrawal is to take place from these defences.



COURTE CROIX
DEFENDED AREA
 Div TS No 47.
 COPY No

Corrected to 9.7.18.

SECRET

Legend:-

- Trenches. completed.
- Wire
- Trenches. proposed
- Wire
- M.G. positions. ○→

APPENDIX

197

APPENDIX. 5.F.ALLOTMENT OF NUCLEUS GARRISONS1. GENERAL PRINCIPLES.

(a) The Brigades in the line will provide the fighting garrisons for the Firing Line and Support Systems of the FORWARD ZONE for the defended locality of STRAZELLE and nucleus garrisons for the Reserve System when necessary.

(b) Nucleus garrisons will be found from sources outside of the Brigades in the line for such of the defences as are considered likely to become involved in the fighting at an early stage of the enemy's attack.

(c) Nucleus garrisons will on no account advance from their allotted positions for the purpose of counter-attack. Commanders of nucleus garrisons will take under their command any stragglers or troops driven out of positions further forward, and will defend their own positions on the lines laid down for the garrison of a front line trench.

2. DETAILS OF NUCLEUS GARRISONS.

(a) Defences for which nucleus garrisons are detailed and the units furnishing them, are as follows:-

- | | | |
|--|-----|---|
| I. COURTE CROIX SWITCH. | - | One Company 1st. Aust. PIONEER Bn
(less 1 Platoon.) |
| II. ROUGE CROIX SWITCH.
(KLITE HIL) | - | One platoon 1st. AUST. PIONEER
BATTALION. |
| III. ROUGE CROIX locality. | - | 1 Platoon 1st. AUST. PIONEER
BATTALION. |
| IV. PRADELLES locality. | - | 1 platoon 1st. AUST. PIONEER
BATTALION. |
| V. BORRE locality. | - | 1 platoon 1st. AUST. PIONEER
BATTALION. |
| VI. "B" Line. | - | 8 Vickers Machine Guns of
"C" M.G. Coy. |
| VII. "C" Line. | - | Nucleus Battalions of Brigades
in the line within their own
Brigade Sections. |
| VIII. D. Line. | (a) | Forward Zone Field Coy astride
the railway. |
| | (b) | Reserve Field Coy. R.E. from
V.23.D.6.3. to V.17.D.3.0. |
| | (c) | 2nd. Zone. Field. Coy from V.17.D.3.0.
to V.17.A. Central. |

3. In the case of VII the nucleus garrisons will not be ordered to their positions until the "Precautionary Stage" is ordered and in the case of VIII units will not take up their positions until in receipt of an order from C.R.E.

4. Commanders of nucleus garrisons will allot their Commands by platoons or sections (Engineers only) to points of greatest tactical advantage in the defences for which they are responsible. they must bear in mind that for brief period, during which reinforcing or broken troops are being organised, the Nucleus garrisons may have to bear the whole pressure of the hostile attack and their plans should provide for action accordingly.

5. Units supplying Nucleus garrisons are responsible for procuring and placing in the defences the authorised reserves of S.A.A. grenades, and 24 hours rations of food and water.

6. The names of Commanders of Nucleus garrisons, or of the Company sectors allotted, will be notified to D.H.Q. by the H.Q. of the formation or unit concerned. This applies also to subsequent changes.

APPENDIX. 6.DEMOLITIONS.

1. 1. The following Road Mines are prepared.

- No.1. E.3.D.3.7.
- 2. W.29.C.5.3.
- 3. W.29.A.4.7.
- 4. W.29.A.1.5.
- 5. W.23.C.3.2.
- 6. W.17.D.1.3.
- 7. W.17.B.5.6.
- 8. W.11.D.9.5.
- 9. W.18.D.1.4.
- 10. W.10.C.1.0.
- 11. W.19.D.0.8.
- 12. W.13.D.0.3.

ii. Railway and Road Bridges are prepared for Demolition as follows. -

Railway Bridges.

- No.2. V.30.C.3.4.
- 3. V.30.C.8.5.
- 5. V.29.C.3.4.
- 6. V.30.C.0.6. (embankment)
- 7. V.29.B.6.3.
- 8. V.30.A.1.7.

Road Bridges.

- No.1. D.3.C.9.1.
- 11. V.24.C.5.9.
- 4. V.30.C.7.8. (Trestle)
- 9. V.24.C.0.5.
- 10. V.24.C.2.7.
- 13. V.18.C.2.8.
- 16. V.17.B.7.9.
- 12. V.18.C.8.7.
- 15. V.18.A.2.6.
- 17. V.11.C.7.2.
- 14. V.18.C.2.8.

2. 1. Sapper personnel is placed at each Mine and Guards are provided by Brigades within their respective areas.
- ii. The order for demolition of road mines and road bridges is under the responsibility of the G.O.C. of the Brigade in whose area the mines are located.
- iii. Actual demolition will be carried out by Sapper personnel -
 - (a) On receipt of written instructions from the Brigade Commander. or -
 - (b) In cases where no instructions are received and the locality is in immediate danger of falling into the hands of the enemy.
- iv. The orders for demolition of Railway Bridges will be sent from D.H.C. to the C.R.E. who has made special arrangements for this.
- v. The Sapper personnel allotted to Demolitions is a Composite Section under Lieut. S. McCONNEL 1st. Field. Coy. A.E.
- vi. In the event of mine and bridge charges being fired, personnel of the Composite Section will then report to their respective units for duty.

APPENDIX. 7.ACTION DURING "PRECAUTIONARY STAGE."

1. Should indications point to the enemy making a general attack within 48 hours a "Precautionary Stage" will be ordered. The message from D.H.Q. to formations and units concerned will be "ADOPT PRECAUTIONARY STAGE."
2. On receipt of the message from D.H.Q. the following action will be taken forthwith.

BRIGADES IN THE LINE.

will

- (i) Assume command over all the defences in advance of the "B" Line and any nucleus garrisons posted therein.
- (ii) Issue instructions to the nucleus battalions to move to and man the B and C Lines.
- (iii) Move troops to battle positions if not already there.

RESERVE BRIGADE.

The G.O.C. will

- (i) Order a one-hour state of readiness.
- (ii) Issue instructions to reform the nucleus battalion.

1ST. AUST. M.G. BATTALION. Order Reserve Company to adopt a one hour state of readiness.

1st. AUST. PIONEER BATTALION.

The companies will occupy the trenches and posts to which they have been detailed as garrisons.

3. Iron rations to be issued to the troops if not already done.
4. Completion of any part of the action ordered under para. 2 will be reported by wire to Divisional Headquarters.

APPENDIX. 7.A.

(TEMPORARY MEASURES)

1. Regarding present disposition of troops, the Brigade of the 40th Division in the right Sub-Sector will be withdrawn and will rejoin its Division on receipt of the order "ADOPT PRECAUTIONARY STAGE".
2. This Brigade will be replaced in line by the Australian Brigade in the LA KREULE Area (less 1 Battalion at tactical disposal of G.O.C. Left Sub-Sector).
3. The Australian Brigade at RACQUINGHEM will be brought up to LA KREULE Area and will be in Corps Reserve.
4. The Reserve Battalion of the Brigade in line in the right sub-sector will not be used forward of "B" Line without reference to D.H.Q.

1✓
202

SECRET.

FIRST AUSTRALIAN DIVISION.

Headquarters.
9th. July. 1918.

PROVISIONAL DEFENCE SCHEME.

CENTRE DIVISION - XV CORPS.

Horowith Maps A. B. & C. amended to date.

ACKNOWLEDGE.

Geo. F. Wick

Lieut-Colonel.
General Staff.
1st Australian Division.