

AWM4
**Australian Imperial Force unit war diaries,
1914-18 War**

Formation Headquarters

Item number: 1/50/27 Part 19

Title: General Staff, Headquarters 5th
Australian Division

May 1918



AWM4-1/50/27PART19

Prefix *m* Code *99* Words *93* Received *awo* Sent, or sent out. Office Stamp.
 From *awo* At *13 5.10* m.
 Charges to Collect By *awo* To *13 5.10* m.
 Service Instructions By *awo*
 Handed in at *SA* Office *7.30* m. Received *28.4* m.

TO *5 Aust Div*

*Sender's Number *9792* Day of Month *13* In reply to Number *-* AAA

Situation Generally quiet. *aaa*
4 - *I am* / *SALLY-LE-SEC*
 and Batteries in *Somme*
 Valley heavily shelled *aaa*
 some shelling of *BAIZEUX*
 and front system of
 left Corps in reply
 to our harassing fire
aaa *MILLECOURT* shells
 continuously during night *aaa*
 gas projectors successfully
 discharged by us S. of
ALBERT-AMIENS Road *aaa*
RAF dropped *3* *230-lb*
30 *112-lb* and *112*
108-lb bombs on *CHAULNES*

FROM
 TIME & PLACE

*This line should be erased if not required
 C. & R. 7830. Wt. W14832/M1522 100,000. 2/17. (E980). Forms C/2122

Prefix *awo* Code *99* Words *93* Received *awo* Sent, or sent out. Office Stamp.
 From *awo* At *13 5.10* m.
 Charges to Collect By *awo* To *13 5.10* m.
 Service Instructions By *awo*
 Handed in at *SA* Office *7.30* m. Received *28.4* m.

TO *(2)*

*Sender's Number *9792* Day of Month *13* In reply to Number *-* AAA

ROSIERES and other targets
aaa *EA* active bombing
 forward area left Corps
 dusk and dawn *aaa*
 addressed *(GHQ)* repeated all
 concerned

FROM *Fourth Army*
 TIME & PLACE *6.15 am*

*This line should be erased if not required
 C. & R. 7800. Wt. W14832/M1522 100,000. 2/17. (E930). Forms C/2122

APPENDIX, 32.

587

Prefix.....Code.....Words.....
 Received.....
 Sent, or sent out..... Office Stamp.....
 From..... At..... m.
 Charges to Collect..... By.....
 Service Instructions..... To.....
 By.....

Handed in at..... Office..... m. Received..... m.

TO Sans Div 426/1406
13/5/18

*Sender's Number 9794 Day of Month 13 In reply to Number 1-2 AAA

Following from G.Hq. 9.45am aaaa
 hostile arty active during night
 on SAILLY-LE-SEC Btys in Somme
 Valley and Millencourt and
 fairly active between ALBERT &
 BEAUMONT HAMEL aaaa MESNIL gas
 shelled aad enemys arty
 also active between LOCON and
 RIEZ DU VIKAGE and E of FORET
 DE NIEPPE aaaa we successfully
 discharged gas between HULLUCH
 and HOHENZOLLERIE. no doubt
 and projected gas S of ALBERT
 -AMIENS Road S of CITE STELIE
 NW of LOCON. and near LE-CORNET
 MALO aaaa added all concerned

FROM Fourth Army
 TIME & PLACE

*This line should be erased if not required

C. & R. 7830. Wt. W14882/M/1528 100,000. 8/17. (E980). Forms C/2123

Prefix.....Code.....Words.....
 Received.....
 Sent, or sent out..... Office Stamp.....
 From..... At..... m.
 Charges to Collect..... By.....
 Service Instructions..... To.....
 By.....

Handed in at..... Office..... m. Received..... m.

TO Sans Div

*Sender's Number 9797 Day of Month 13 In reply to Number AAA

Hostile arty showed increased
 activity during day aaaa LAVIEVILLE
 shelled with 15 cm and 21 cm aaaa
 heavy shelling of trench system near
 LAVIEVILLE at intervals aaaa vicinity
 MERICOURT HEILLY RIBEMONT and BRETONNEUX
 also shelled aaaa 4 am - 6 am several
 thousand gas shells mostly yellow
 X with some green and blue on
 HAMELET CORBIE FOUILLOY and valley
 NW of BRETONNEUX aaaa long range HV
 quiet on BEAUCOURT and BAVELING
 aaaa gas dropped several bombs on
 HEILLY aaaa prisoners 10K aaaa
 added G.Hq reports all
 concerned.

FROM Fourth Army
 TIME & PLACE 6:30 pm 6:50 pm

*This line should be erased if not required

C. & R. 7830. Wt. W14882/M/1528 100,000. 8/17. (E980). Forms C/2123

APPENDIX.

33

32

585

Prefix... Code... Words... received... sent, or sent out... Office Stamp.
 From... At... m.
 By... To... m.
 By...
 Handed in at... Office... m. Received... m.

TO 5 Aus Div

*Sender's Number Day of Month In reply to Number AAA
 B 1474 13

Lawn reconnaissance area
 visibility good but no movement
 observed area enemy arty
 active on right bank
 Corps front area

FROM Branch Intelligence
 TIME & PLACE

*This line should be erased if not required

C. & R. 7580. Wa. W14832/M/1523 100,000. 2/17. (E980). Forms G/2122

Prefix... Code... Words... sent out... Office Stamp.
 From... At... m.
 By... To... m.
 By...
 Handed in at... Office... m. Received... m.

TO 5 Aus Div

*Sender's Number Day of Month In reply to Number AAA
 B 148A 13

Reports till 10.30 am AAA no
 movement observed in forward
 areas AAA 6.70 am train going
 south R32 6.20 am and
 7.5 am trains entering Bray from
 north 6.45 am train going W
 entering WIENCOURT train going
 east towards GILLACOURT 7.15
 am train on ROZIERES - CHAULNES
 line 7 am and 7.30 am smoke
 apparently train CHAULNES
 PERONNE line AAA new trench
 from K 7C 00.30 to K 13 B 15.80 AAA
 work apparently strong point
 at P14 D 64 AAA sea direct
 active 7 formations seen AAA
 6 balloons up on Corps

FROM
 TIME & PLACE

*This line should be erased if not required

C. & R. 7580. Wa. W14832/M/1523 100,000. 2/17. (E980). Forms G/2122

AUSTRALIAN DIVISION
 8/32/1404
 13/5/18
 12.35 pm

APPENDIX 322

586

Prefix.....Code.....Words..... Received Sent, or sent out. Office Stamp.
 From..... At.....m.
 Charges to Collect By..... To.....
 Service Instructions By.....

Handed in at..... Office..... m. Received..... m.

TO (Sheet 2)

*Sender's Number Day of Month In reply to Number
 BPS 148A 13 AAA

front	AAA	6.40	am
Balloon hauled down			Q26C41
approx	AAA	AA	normal
AAA	que	7.55	am
MEAUITE	que	E16	Central
Steel snowdering	AAA	Visib	
good	AAA	Clouds	4000
feet	AAA		

FROM Branch Intel
 TIME & PLACE

*This line should be erased if not required
 C. & R. 7230. Wt. W14822/M/1522 100,000. 2/17. (E980). Forms C/2122

Prefix.....Code.....Words..... Received Sent, or sent out. Office Stamp.
 From..... At.....m.
 Charges to Collect By..... To.....
 Service Instructions By.....

Handed in at..... Office..... m. Received..... m.

TO 5th Aust Div

*Sender's Number Day of Month In reply to Number
 BPS 149a 13 AAA

war flying impossible
 since 11.0am
 reference BPS 148a for
 K7C0030 read K7D0030



File 43

FROM Branch I.
 TIME & PLACE

*This line should be erased if not required.
 C. & R. 7230. Wt. W14822/M/1522 100,000. 2/17. (E980). Forms C/2122

APPENDIX 321

584

Prefix.....Code.....Words.....
 Received..... Sent, or sent out..... Office Stamp.
 From..... At..... m.
 Charges to Collect
 Service Instructions
 By.....
 Handed in at..... Office..... m. Received..... m.

TO 5 Austn Divn

*Sender's Number 4297 Day of Month 13 In reply to Number AAA

Morning report aaa At
 4 am left Bde
 area and blys centre
 divn heavily shelled aaa
 otherwise enemy activity normal
 aaa situation generally quiet
 aaa 1 prisoner captured
 by night Divn aaa
 addressed fourth army reptd
 all concerned

FROM Austn Corps
 TIME & PLACE

*This line should be erased if not required
 C. & R. 7230. Wt. W14882/M/1522 100,000. 2/17. (E980). Forms C/2122

Prefix.....Code.....Words.....
 Received..... Sent, or sent out..... Office Stamp.
 From..... At..... m.
 Charges to Collect
 Service Instructions
 By.....
 Handed in at..... Office..... m. Received..... m.

TO 5th Aust Divn

*Sender's Number 4428 Day of Month 13 In reply to Number AAA

evening report. aaa increased
 hostile shelling during day
 forward areas of left
 hand night divns being
 shelled abnd vicinity MERICOURT
 HEILLY RIBEMONT and VILLERS
 BRETONNEUX also shelled aaa
 vicinity D.7 shelled HE
 and gas 30 rds
 Yellow Cross gas also
 in night 1st night
 div sent qaa ha
 dropped several Bombs on
 HEILLY at 10 am
 aaa prisoner 1 OK
 aaa added 4th army
 reptd all concerned

FROM Austn Corps
 TIME & PLACE

*This line should be erased if not required
 C. & R. 7230. Wt. W14882/M/1522 100,000. 2/17. (E980). Forms C/2122

APPENDIX. 321.

588

Prefix.....Code.....Words.....
 £ s d
 From.....
 At.....m.
 By.....
 To.....
 By.....
 Handed in at.....Office.....m. Received.....m.

Charges to Collect
 Service Instructions. *Priority*
 Handed in at.....Office.....m. Received.....m.

TO *5th Aust Div.*
 *Sender's Number *9414* Day of Month *13* In reply to Number *AAA*

<i>Morning report</i>	<i>aaa</i>	<i>Enemy</i>
<i>Artillery moderately active during</i>		
<i>night</i>	<i>20</i>	<i>gas shells</i>
<i>in</i>	<i>J 23 B</i>	<i>Bursts of</i>
<i>10.5</i>	<i>cm</i>	<i>NE</i>
<i>gas</i>	<i>in</i>	<i>B 29 A</i>
<i>gas shells</i>	<i>J 5 C</i>	<i>aaa</i>
<i>Enemy mqs</i>	<i>active</i>	<i>in</i>
<i>bursts</i>	<i>both</i>	<i>bde</i>
<i>during</i>	<i>night</i>	<i>aaa</i>
<i>deal</i>	<i>at night</i>	<i>also active</i>
<i>front</i>	<i>aaa</i>	<i>adst</i>
<i>corps</i>	<i>repts</i>	<i>all</i>
		<i>concerned</i>

FROM *2nd Aust Div*
 TIME & PLACE *4.55 Am*

*This line should be erased if not required
 C. & R. 7800. Wt. W14832/M1523 100,000. 3/17. (E930) Forms C/2123

Prefix.....Code.....Words.....
 £ s d
 From.....
 At.....m.
 By.....
 To.....
 By.....
 Handed in at.....Office.....m. Received.....m.

Charges to Collect
 Service Instructions. *Priority*
 Handed in at.....Office.....m. Received.....m.

TO *5th Aust Div*
 *Sender's Number *9420* Day of Month *13* In reply to Number *AAA*

<i>Evening</i>	<i>report</i>	<i>aaa</i>	<i>Situation</i>
<i>Quiet</i>	<i>on</i>	<i>Div</i>	<i>front</i>
<i>4.30</i>	<i>pm</i>	<i>aaa</i>	<i>Hostile</i>
<i>Arty</i>	<i>active</i>	<i>during</i>	<i>day</i>
<i>aaa</i>	<i>MERICOURT AND</i>	<i>HEILLY</i>	
<i>intermittently</i>	<i>shelled</i>	<i>from</i>	<i>8.30</i>
<i>Am</i>	<i>to</i>	<i>11</i>	<i>am</i>
<i>with</i>	<i>15</i>	<i>CM</i>	<i>aaa</i>
<i>J 8 B</i>	<i>shelled</i>	<i>from</i>	<i>9.40</i>
<i>am</i>	<i>to</i>	<i>3</i>	<i>pm</i>
<i>with</i>	<i>15</i>	<i>CM</i>	<i>aaa</i>
<i>Cross</i>	<i>Roads</i>	<i>D 27 B</i>	<i>heavily</i>
<i>shelled</i>	<i>with</i>	<i>15</i>	<i>CM</i>
<i>between</i>	<i>11.20</i>	<i>AM</i>	<i>and</i>
<i>12.30</i>	<i>PM</i>	<i>aaa</i>	<i>Road</i>
<i>junction</i>	<i>* J 17 II</i>	<i>Received</i>	<i>150</i>
<i>rounds</i>	<i>10.5</i>	<i>CM</i>	<i>and</i>

FROM **J 17 II*
 TIME & PLACE

*This line should be erased if not required
 C. & R. 7800. Wt. W14832/M1523 100,000. 3/17. (E930) Forms C/2123

APPENDIX 321

589

Prefix *M* Code *02-4-35* Words *34*
 Received. Sent, or sent out. Office Stamp.
 From *YOK* At *3.45* m.
 Charges to Collect By *YOK*
 Service Instructions To *34*
 By *YOK*

Handed in at *5.40* m. Office *USA* Received *5.53* m.

TO *II sheet (5th Aus Div)*

*Sender's Number Day of Month In reply to Number
77 *MM* *HE* **AAA**

gas and shrapnel 2.20 Pm
to 3 Pm aaa
Following areas also received
attention J17B J18A J6 Central
K19A and C aaa
Suspected TANK Stationary at
K11D 05.55 aaa EA dropped
several bombs on HEILLY
at 10 am aaa
added Aust Corps reptd
all concd

FROM *2nd Aus Div*
 TIME & PLACE *5.25 PM*

*This line should be erased if not required

Prefix *M* Code *02-4-35* Words *34*
 Received. Sent, or sent out. Office Stamp.
 From *YOK* At *3.45* m.
 Charges to Collect By *YOK*
 Service Instructions To *34*
 By *YOK*

Handed in at *4.57* m. Office *USA* Received *5.44* m.

TO *5th Aus Div*

*Sender's Number Day of Month In reply to Number
29806 *13* **AAA**

Prisoner captured U.S.B fought
belongs 20 Res JAGER
BN JAGER IIIV aaa
Normal aaa added Aus
Corps reptd 5 Aus
Div 37th French Div

J.J.

3

FROM *4th Aus Div*
 TIME & PLACE *1.35 AM*

*This line should be erased if not required

APPENDIX. 321

590

Prefix *00* Code *00* Words *00* Received. Sent, or sent out. Office Stamp.
 From *US* At *AYE* - 13 V. 18.
 Charges to Collect By *53*
 Service Instructions.
 Handed in at *5:08* Office *5:08* m. Received *5:26* m.

TO *5 Aust Div*

*Sender's Number *59804* Day of Month *13* In reply to Number *AAA*

<i>morning report</i>	<i>aaa</i>	<i>Situation</i>
<i>quiet</i>	<i>aaa</i>	<i>enemy artillery</i>
<i>shelled</i>	<i>left</i>	<i>front</i>
<i>and</i>	<i>support</i>	<i>systems lightly</i>
<i>during</i>	<i>night</i>	<i>aaa</i>
<i>aircraft</i>	<i>very</i>	<i>active flying</i>
<i>low</i>	<i>over</i>	<i>front support</i>
<i>and</i>	<i>rescue</i>	<i>areas aaa</i>
<i>one</i>	<i>prisoner</i>	<i>captured US B</i>
<i>during</i>	<i>night</i>	<i>belongs 20</i>
<i>des</i>	<i>Jager</i>	<i>Bn Jager</i>
<i>ADW</i>	<i>aaa</i>	<i>added Aust</i>
<i>Corps</i>	<i>repto</i>	<i>5 Aust</i>
<i>3</i>	<i>34</i>	<i>French Div</i>
	<i>ant</i>	<i>Div</i>

FROM *4 Aust Div*
 TIME & PLACE *5.5 am*

*This line should be erased if not required

C. & B. 7880. Wt. W14832/M1528 100,000. 3/17. (E990). Forms C/2128

Prefix *00* Code *00* Words *00* Received. Sent, or sent out. Office Stamp.
 From *US* At *AYE* - 13 V. 18.
 Charges to Collect By *53*
 Service Instructions.
 Handed in at *5:08* Office *5:08* m. Received *5:27* m.

TO *5 Aust Div*

*Sender's Number *59214* Day of Month *13* In reply to Number *AAA*

<i>Evening report</i>	<i>aaa</i>	<i>Hostile</i>
<i>arty</i>	<i>more</i>	<i>active than</i>
<i>usual</i>	<i>intermittently</i>	<i>shelling</i>
<i>forward</i>	<i>and support</i>	<i>lines also</i>
<i>VILLERS</i>	<i>BRETONEUX</i>	<i>aaa 30</i>
<i>yellow</i>	<i>cross</i>	<i>gas shells</i>
<i>used</i>	<i>against</i>	<i>right of</i>
<i>front</i>	<i>line</i>	<i>aaa added</i>
<i>1 Aust</i>	<i>Corps</i>	<i>repto 3rd</i>
<i>5th</i>	<i>Aust</i>	<i>Divs and</i>
<i>37</i>	<i>French</i>	<i>Div</i>

FROM *4th Aust Div*
 TIME & PLACE *5.5 pm*

*This line should be erased if not required

C. & B. 7880. Wt. W14832/M1528 100,000. 3/17. (E990). Forms C/2128

APPENDIX 320

591

Prex. Code. m. Words Charge
 Office of Origin and Service Instructions. This message is on a/c of: Recd. at m.
 Sent Date
 At m. Service.
 To From
 By (Signature of "Franking Officer.") By

TO { Aust. Corps. Div. Arty.
 2nd Aust. Div. 3rd Aust. Div. (DRLS).
 4th Aust. Div.

* Sender's Number. Day of Month. In reply to Number. AAA
 10.4132 13th

Morning report aaa Situation quiet aaa
 enemy inactive aaa at 4 am
 enemy heavily shelled with gas
 and HE left Brigade HQ's area
 and Batteries in valley aaa
 shelling of back areas NIL aaa
 ground dry aaa weather fine
 visibility good aaa

8

Addsd Aust. Corps. reotd all concerned.

From 5th AUST. DIV.
 Place
 Time 5 10 AM

The above may be forwarded as now corrected. (Z) John Bhangapt
 Censor. Signature of Addressor or person authorised to telegraph in his name.

* This line should be erased if not required.

100,000 Pads. W. 12093. M1217. M.C. & Co., Ltd. 1/17. (E. 764). Forms C/2121/11.

Prex. Code. m. Words Charge
 Office of Origin and Service Instructions. This message is on a/c of: Recd. at m.
 Sent Date
 At m. Service.
 To From
 By (Signature of "Franking Officer.") By

TO { Aus Corps. Div Arty.
 2nd Aust. Div. 3rd Aust. Div. (DRLS)
 4th Aust. Div.

* Sender's Number. Day of Month. In reply to Number. AAA
 10.4198 13

Evening Report aaa
 Heavy enemy shelling including
 gas on 0.17 from 5.30am
 to 8 am aaa same area again
 shelled with 4.2 and 5.9 at
 2.45 pm aaa Prisoners and
 material captured during 24
 hours nil aaa Addsd Aus
 Corps rep'd all concerned aaa

From 5th Aust. Div.
 Place
 Time 5.0 pm

The above may be forwarded as now corrected. (Z) R. Murray
 Censor. Signature of Addressor or person authorised to telegraph in his name

* This line should be erased if not required.

Wt. W492/M1647 100,000 pads. 4/17. W. & Co., Ltd. (E. 1187.)

APPENDIX

592

Prefix Code m Words Charge
Office of Origin and Service Instructions. This message is on a/c of: Recd. at m

Sent Date
At m Service
To
By (Signature of "Franking Officer.") From

TO { 8th Inf Bde Div. Art
14th Inf Bde 2nd Aust. Div.
15th Inf Bde 4th Aust. Div.

Sender's Number. Day of Month. In reply to Number. A A A
* 9225 13

Artillery programme night 13th/14th aaa 9.33 pm
xx 5 minutes on FAMEL aaa 11 pm 5 minutes two
brigades on P20a85 two brigades on C.P. north of
River heavies on valley in K31 aae 1.33 am 5 minutes
area shoot P15c, heavies P22a aaa 2.7 am 5 minutes
trench system P4b and d, and P10b and d aaa 3 am
C. Battery work on P16a, P10c heavies on area rear
aaa 5.45 am 5 minutes various barrage lines from
S.O.S. plus 50 to S.O.S. plus 325. aaa Added. Inf.
Bdes. reptd. all concd.

From 5th Aust. Div.
Place
Time 6.15 pm

The above may be forwarded as now corrected. (Z)
Censor. Signature of Addressor or person authorised to telegraph in his name.

* This line should be erased if not required.
100,000 Pads. W. 12093. M1217. McC. & Co., Ltd. 1/17. (E. 764). Forms C/2121/11.

Prefix Code m Words Charge
Office of Origin and Service Instructions. This message is on a/c of: Recd. at m

Sent Date
At m Service
To
By (Signature of "Franking Officer.") From

TO { G.S.O.I.

Sender's Number. Day of Month. In reply to Number. A A A
* A 4225 13

Approximate	Trench	Strength	on 13th May	
	in Officers and Other Ranks.		29th Bn.	25 and
535.	30th Bn. 26 and 505.		31st Bn.	27 and
609.	32nd Bn. 22 and 413.		53rd Bn.	18 and
371.	54th Bn. 18 and 395.		55th Bn.	18 and
482.	56th Bn. 18 and 434.		57th Bn.	25 and
529.	58th Bn. 29 and 540.		59th Bn.	25 and
498.	60th Bn. 21 and 419.		8th M.G. Coy.	11
	and 160. 14th M.G. Coy. 11 and 172.		15th M.G.	
	Coy. 11 and 170. 25th M.G. Coy. 10 and 169.			
	8th Fld. Coy. A.E. 8 and 150.		14th Fld. Coy. A.E.	
	8 and 146. 15th Fld. Coy. A.E. 8 and 157.			
	5th Pioneer Bn. 31 and 870.			

From 5th Aust. Divn.
Place
Time

The above may be forwarded as now corrected. (Z)
Censor. Signature of Addressor or person authorised to telegraph in his name.

* This line should be erased if not required.
100,000 Pads. W. 12093. M1217. McC. & Co., Ltd. 1/17. (E. 764). Forms C/2121/11.

APPENDIX. 3/21.

593.

Prefix.....Code.....Words.....
 Charges to Collect
 Service Instructions
 From *ago*
 By *Mat*
 Office Stamp: *ATE-13 V. 18.*

Handed in at *ago* Office.....m. Received.....m.
 TO *5th Aus Div*

*Sender's Number *Bm 670* Day of Month *13* In reply to Number *AAA*

Situation report *aaa* enemy
 shelling *nil* *aga* enemy
 aircraft *active* between *H*
am and *5 am*
no bombing reported *this*
area

AN AUSTRALIAN DIVISION
 N. 2726/1435
 13/5/18
 5 pm

FROM *15th AG Bde*
 TIME & PLACE *4.25 pm*

*This line should be erased if not required.
 C. & B. 7380. Wt. W14332/M1523 100,000. 2/17. (E990). Forms O/2122.

Prefix.....Code.....Words.....
 Charges to Collect
 Service Instructions
 From *ago*
 By *Mat*
 Office Stamp: *ATE-13 V. 18.*

Handed in at.....Office.....m. Received.....m.
 TO *5th Aus Div*

*Sender's Number *Bm 235* Day of Month *13* In reply to Number *AAA*

Locations unchanged

AN AUSTRALIAN DIVISION
 N. 2726/1435
 13-5-18
 5 pm

FROM *5th Am G Bde*
 TIME & PLACE *5.20*

*This line should be erased if not required.
 C. & B. 7380. Wt. W14332/M1523 100,000. 2/17. (E990). Forms O/2122.

APPENDIX. 321. 594

From *Alon* At *Alon* m.
 By *Alon* To *Alon*
 Handed in at *Alon* Office *Alon* m. Received *Alon* m.

TO *5 ans DW*

*Sender's Number	Day of Month	In reply to Number	AAA
<i>Forecast</i>	<i>wind</i>	<i>S</i>	<i>or SW</i>
<i>25'</i>	<i>to</i>	<i>35'</i>	<i>mph</i>
<i>veering</i>	<i>to</i>	<i>west</i>	<i>and</i>
<i>perhaps</i>	<i>to</i>	<i>NW</i>	<i>and</i>
<i>decreasing</i>	<i>AMH</i>	<i>Rain</i>	
<i>today</i>	<i>AMH</i>	<i>equally</i>	<i>showers</i>
<i>and</i>	<i>brief</i>	<i>intervals</i>	
<i>late</i>	<i>AMH</i>	<i>moderate</i>	
<i>Temp</i>	<i>fair</i>	<i>visit</i>	

FROM *Alon*
 TIME & PLACE

*This line should be erased if not required
 C. & R. 7230. Wa. W14832/M/1523 100,000. 2/17. (E980). Forms G/2122

From *Alon* At *Alon* m.
 By *Alon* To *Alon*
 Handed in at *Alon* Office *Alon* m. Received *Alon* m.

TO *5 ans DW*

*Sender's Number	Day of Month	In reply to Number	AAA
<i>forecast</i>	<i>wind</i>	<i>South</i>	<i>25</i>
<i>to</i>	<i>35</i>	<i>mph</i>	<i>veering</i>
<i>soon</i>	<i>to</i>	<i>west</i>	<i>and</i>
<i>perhaps</i>	<i>to</i>	<i>the</i>	<i>and</i>
<i>decreasing</i>	<i>dull</i>	<i>with</i>	<i>rain</i>
<i>at</i>	<i>first</i>	<i>aaa</i>	<i>perhaps</i>
<i>clearing</i>	<i>though</i>	<i>but</i>	<i>even</i>
<i>then</i>	<i>showers</i>	<i>likely</i>	<i>aaa</i>
<i>visib</i>	<i>fair</i>	<i>becoming</i>	<i>indifferent</i>
<i>wind</i>	<i>7</i>	<i>pm</i>	<i>South</i>
<i>18</i>	<i>mph</i>	<i>midnight</i>	<i>doubtful</i>
<i>probably</i>	<i>W SW</i>	<i>8</i>	<i>4</i>
<i>am</i>	<i>WNW</i>	<i>14</i>	<i>mph</i>

FROM *Alon*
 TIME & PLACE *Me too 2-3 pm*

*This line should be erased if not required
 C. & R. 7230. Wa. W14832/M/1523 100,000. 2/17. (E980). Forms G/2122

200

APPENDIX. *723*

595

Prefix.....Code.....Words.....
 £ s. d. From..... At..... m.
 Charges to Collect By..... To.....
 Service Instructions. By.....
 Handed in at..... Office..... m. Received 10.58 m.

TO 5 ans Suva

*Sender's Number 5 Day of Month 13 In reply to Number AAA

Forecast wind west 5
 to 10 mph increasing
 to 15 mph
 Rain at first
 then showers with fair
 intervals and probably
 generally fair later
 visib poor early fair
 later moderate Temp
 wind midnight and 4 am
 probably West 4 mph

FROM The Sec 9.48 pm
 TIME & PLACE

*This line should be erased if not required
 G. & R. 7230. Wt. W14882/M/1625 100,000. 2/17. (E930). Forms C/2128

Prefix.....Code.....Words.....
 £ s. d. From..... At..... m.
 Charges to Collect By..... To.....
 Service Instructions. By.....
 Handed in at A 20 Office 4.50 m. Received 11.22 m.

TO Lools

*Sender's Number LC241 Day of Month 13 In reply to Number AAA

Situation report aaaa Enemy
 Shelling nil aaaa Enemy
 aerial activity nil
 aaaa Shelling of back
 areas nil

FROM Book
 TIME & PLACE

*This line should be erased if not required
 G. & R. 7230. Wt. W14882/M/1625 100,000. 2/17. (E930). Forms C/2128

230
 APPENDIX. 321.596

Prefix.....Code.....Words.....
 Charges to Collect
 Service Instructions.
 From *ASG* At.....m.
 By *ASG* To.....
 By.....

Handed in at.....Office.....m. Received.....m.

TO *Tools*

*Sender's Number *R955* Day of Month *13* In reply to Number *AAA*

Situation quiet and enemy inactive and ground dry and weather fine and clear and add Tools reptd Flank Bdos

(4)

FROM *Block*
 TIME & PLACE *4:10 am*

*This line should be erased if not required
 C. & R. 7880. Wt. W14882/M1528 100,000. 8/17. (E980). Forms C/2128.

Prefix.....Code.....Words.....
 Charges to Collect
 Service Instructions.
 From *ASG* At.....m.
 By *ASG* To.....
 By.....

Handed in at.....Office.....m. Received.....m.

TO *Tools*

*Sender's Number *1057* Day of Month *13th* In reply to Number *AAA*

Situation report and heavy enemy shelling on area 017 V around 5.30 to 18 am 017 including gas and same area Japan shells with 4.2 am 5.9 at 2.45 pm add Tools reptd Flank Bdos

AUSTRALIAN DIVISION
 No *126/14314*
 Date *13/5/18*
4-50/2

FROM *Block*
 TIME & PLACE

*This line should be erased if not required
 C. & R. 7880. Wt. W14882/M1528 100,000. 8/17. (E980). Forms C/2128.

APPENDIX, 321

594

Prefix Code Words
 Charges to Collect
 Service Instructions
 Handed in at Office Received

TO
 Tools

Sender's Number Day of Month In reply to Number
 SC 202 12 AAA

Patrol wire area whole
 front actively patrolled no
 movement heard except at
 enemy post at P8D46
 area addressed tools rept to
 flank Brigades

FROM
 TIME & PLACE
 Block
 6 45pm

*This line should be erased if not required
 C. & R. 7830. Ws. W14882/M/1528 100,000. 2/17. (E980). Forms G/2122

Prefix Code Words
 Charges to Collect
 Service Instructions
 Handed in at Office Received

TO
 Tools

Sender's Number Day of Month In reply to Number
 SC 148 12 AAA

Situation report front areas
 situation normal area at
 4 am Enemy heavily
 shelled with gas and
 NE side HQ area
 and Batteries in valley
 area wind light weather
 fine visibility good address
 tools reptd flank Podes

FROM
 TIME & PLACE
 Acid

*This line should be erased if not required
 C. & R. 7830. Ws. W14882/M/1528 100,000. 2/17. (E980). Forms G/2122

APPENDIX

598

Prefix.....Code.....Words.....
 Received..... Sent, or sent out..... Office Stamp.
 From..... At.....m.
 Charges to Collect By..... To.....
 Service Instructions By.....
 Handed in at..... Office.....m. Received.....m.

TO Gas Officer [unclear]

*Sender's Number 10119 Day of Month 13 In reply to Number AAA

enemy shelled CORBIE from
 4 am to 6
 am with blue brass
 green brass and yellow
 across Gas shells aaa
 same also fought shells
 with same Gas shells
 aaa chiefly green brass
 aaa passage through CORBIE
 will be dangerous
 aaa

AUSTRIAN DIVISION
 34/1334
 13.5.18
 9.30 AM

FROM [unclear]
 TIME & PLACE [unclear]

*This line should be erased if not required.

C. & B. 7250. Wt. W14882/M/1523 100,000. 2/17. (E980). Forms C/2122.

Charges to Collect From..... At.....m.
 Service Instructions By..... To.....
 Handed in at..... Office.....m. Received.....m.

TO [unclear]

*Sender's Number 10150 Day of Month 13 In reply to Number AAA

from 4 am to
 6 am enemy shelled
 CORBIE with 5.91 4.2
 and 77s HE &
 Gas aaa principally
 H.2 Gas green brass
 aaa

AUSTRIAN DIVISION
 34/1334
 13.5.18
 9.30 AM

FROM [unclear]
 TIME & PLACE [unclear]

*This line should be erased if not required.

C. & B. 7250. Wt. W14882/M/1523 100,000. 2/17. (E980). Forms C/2122.


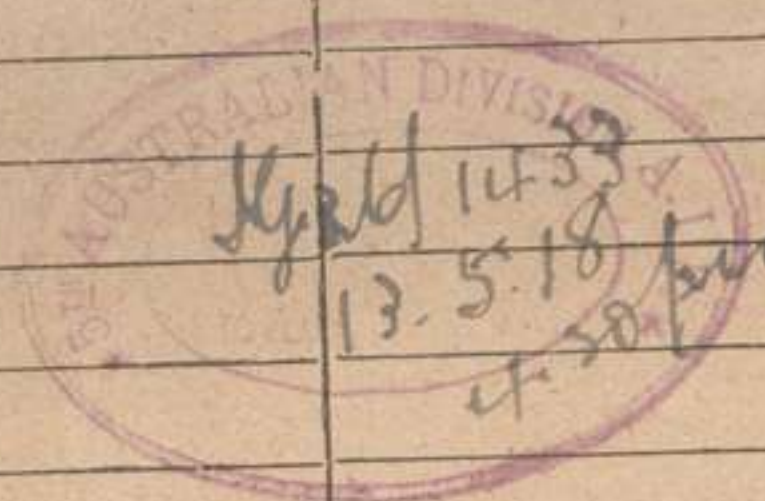
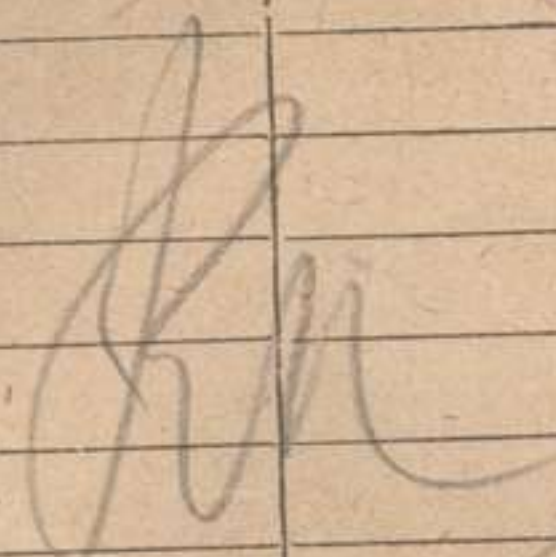
APPENDIX. 272.

599.

733

600

APPENDIX 321

Prefix.....	Code.....	Words.....	Received.	Sent, or sent out.	Office Stamp.
			From <i>agh</i>	At.....m.	
Charges to Collect			By <i>Mar</i>	To.....	
Service Instructions.			By <i>Shy</i>	By.....	
Handed in at..... <i>agh</i>			Office.....	m.	Received.....m.
TO <i>Tools</i>					
*Sender's Number		Day of Month	In reply to Number		AAA
<i>90154</i>		<i>13</i>			
<i>Situation quiet all</i> <i>artillery practice</i> <i>visit from all</i> <i>showers all day wind</i> <i>moderate south all</i>					
					
					
FROM			<i>agh</i>		
TIME & PLACE					
*This line should be erased if not required					
G. & B. 7880. Wt. W14332/M1523 100,000. 8/17. (E990). Forms C/2122.					

Prefix.....Code.....Words.....
 Received..... Sent, or sent out..... Office Stamp.....
 From..... At.....m.....
 By..... To.....
 By.....

Charges to Collect.....
 Service Instructions.....
 Handed in at..... Office.....m..... Received.....m.....

TO.....
 5th Trust Div

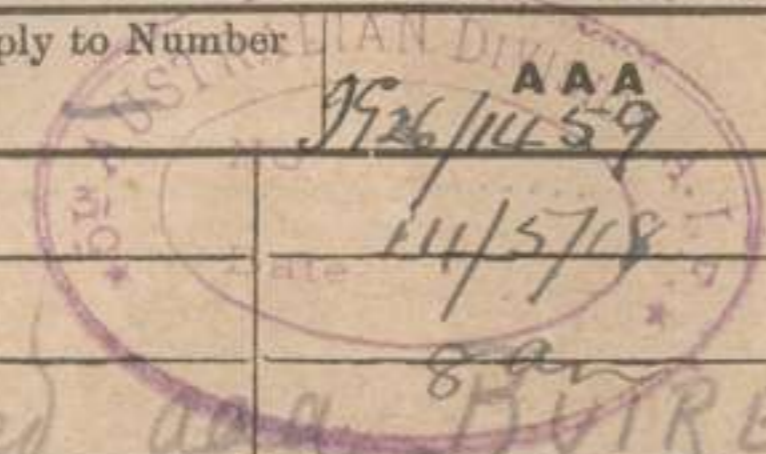
*Sender's Number..... Day of Month..... In reply to Number.....
 9498..... 14.....

Situation unchanged AAA BUIRE
 HEILLY RIBEMONT forward area
 near BRETTONNEUX and support
 area N of BUIRE
 shelled AAA otherwise quiet
 night AAA address HQ
 repeated all concerned

FROM.....
 TIME & PLACE.....
 4th Army
 6:30 AM

*This line should be erased if not required

G. & R. 7330. Wt. W14882/M1523 100,000. 2/17. (E980). Forms C/2123



Prefix.....Code.....Words.....
 Received..... Sent, or sent out..... Office Stamp.....
 From..... At.....m.....
 By..... To.....
 By.....

Charges to Collect.....
 Service Instructions.....
 Handed in at..... Office.....m..... Received.....m.....

TO.....
 5th Trust Div

*Sender's Number..... Day of Month..... In reply to Number.....
 9806..... 14..... AAA

About 3:40 am after
 arty preparation enemy
 attacked on front of 2300
 yds SW of MORLANCOURT
 penetrating line about K19A81
 AAA subsequent counter attack
 completely restored line AAA
 enemy losses reported heavy
 AAA 52 prisoners taken by
 us AAA our casualties very
 slight AAA hostile arty
 still active in BRETTONNEUX
 CORBIE and VAUX SUR SOMME
 areas AAA Left Corps reports
 MILLEN COURT LAVIEVILLE
 shelled during day also neigh-
 borhood of BUIRE and

FROM.....
 TIME & PLACE.....
 flh

*This line should be erased if not required

G. & R. 7330. Wt. W14882/M1523 100,000. 2/17. (E980). Forms C/2123

APPENDIX. 321.

601

Prefix... Code... Words...
 £ s d. From... At... m.
 Charges to Collect By... To...
 Service Instructions. By...

Handed in at... Office... m. Received... m.

TO (Sheet 2)

*Sender's Number Day of Month In reply to Number AAA

WOLLENS AU BOIS AAA
 some gas shelling of
 RIBEMONT MERICOURT and
 W of MORLANCOURT AAA
 captures last 24 hours
 52 ORs AAA added
 4249 reptd all concerned

9926/1603
 14/5/18
 8.7 pm

FROM
 TIME & PLACE

South Army
 6.35 pm

*This line should be erased if not required

G. & B. 7880. Wt. W14332/M1523 100,000. 2/17. (E990). Forms C/2122.

Prefix... Code... Words...
 £ s d. From... At... m.
 Charges to Collect By... To...
 Service Instructions. By...

Handed in at... Office... m. Received... m.

TO 5 ams bw

*Sender's Number Day of Month In reply to Number AAA

Dawn reconnaissance to
 movement observed in forward
 areas aaaa 6.20 am
 what apparently was
 smoke from steam transport
 seen in K 33C 6.20 am
 train going S PRUYART-
 ROSIERES line aaaa aa
 quiet AAA. Ea Very inactive
 weather fair visibility at
 500 feet good Clouds
 700 aaaa ends aaaa

FROM
 TIME & PLACE

Branch I.

*This line should be erased if not required

G. & B. 7880. Wt. W14332/M1523 100,000. 2/17. (E990). Forms C/2122.

APPENDIX. 320.

662

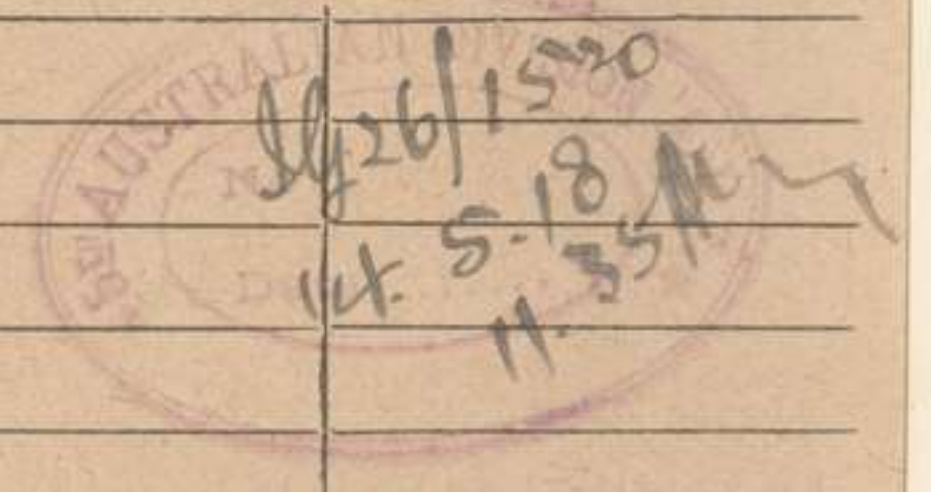
Charges to Collect
 Service Instructions
 Handed in at... Office... m. Received... m.



TO: *5 Aust Div*

*Sender's Number: *BSS 151a* Day of Month: *14* In reply to Number: *AAA*

Summary reports 11am no movement observed forward areas
 aaa 6.35 am 1 train going W Rear FRICOURT. aaa Sa inactive
 aaa balloons up at 211 W 15 W 20 approx -aaa
 aa slightly active aaa visibility at front good but later in different
 aaa clouds low 700/900 feet aaa



FROM: *Branch Intelligence*
 TIME & PLACE

*This line should be erased if not required

C. & R. 7380. Wt. W14822/M1523 100,000. 3/17. (E990). Forms O/2122

Charges to Collect
 Service Instructions
 Handed in at... Office... m. Received... m.



TO: *5 Aust Div*

*Sender's Number: *BSS 152A* Day of Month: *14* In reply to Number: *AAA*

Summary reports to 5 pm
 AAA no movement seen
 AAA observed reports trenches K7B26 to be occupied AAA
 Dugouts from K2C0595 to K2C1560 apparently occupied
 AAA Tm positions at P14C4025 and P14C4017 AAA enemy
 aircraft active AAA AA
 no more AAA 7 balloons along corps front AAA 12.35
 pm fire MEAUTLE AAA 1.34 pm 2 large explosions
 ETIWE HEM AAA 3.10 small explosion HAMEL AAA weather fine AAA visit fair to good AAA

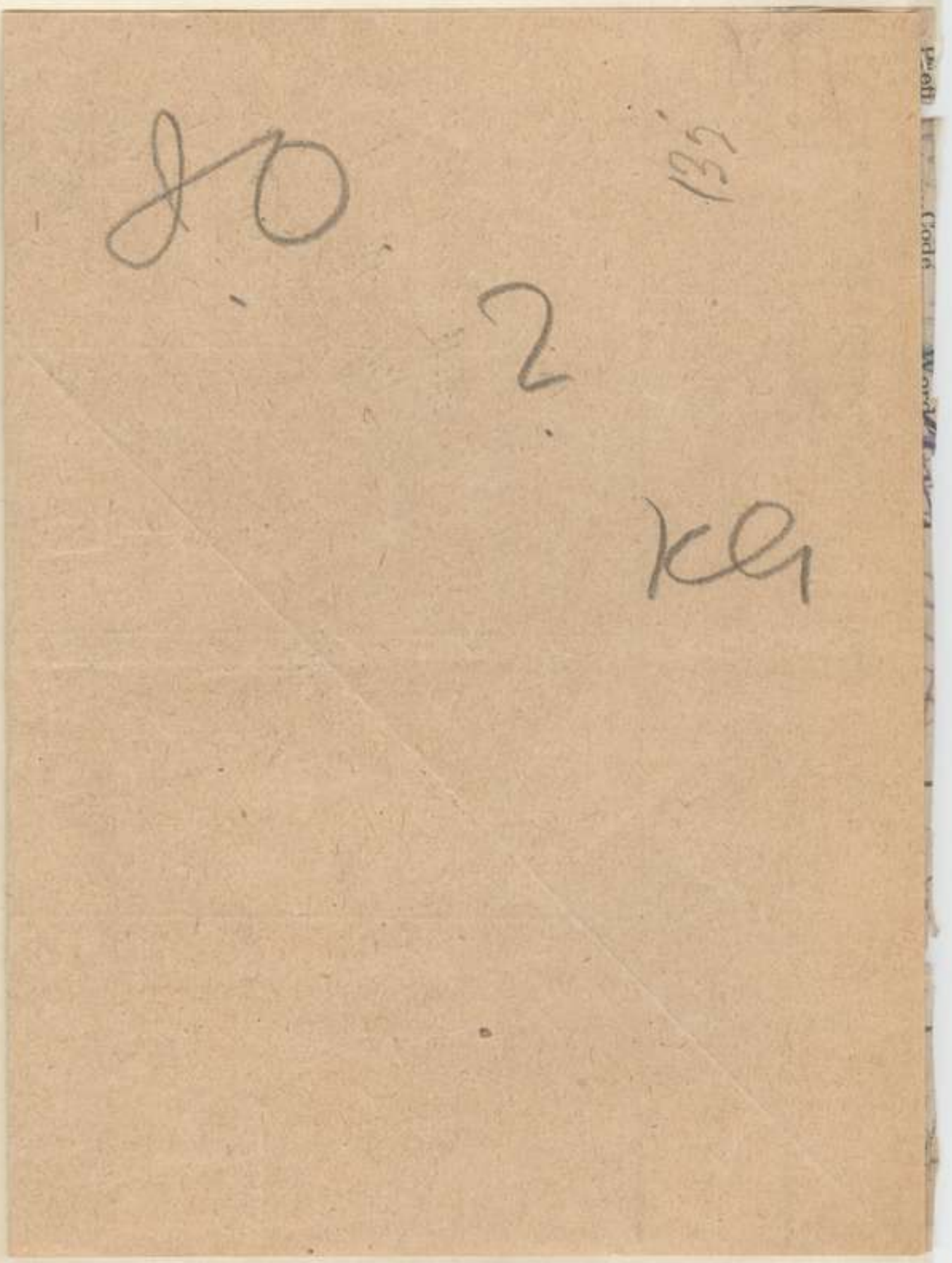
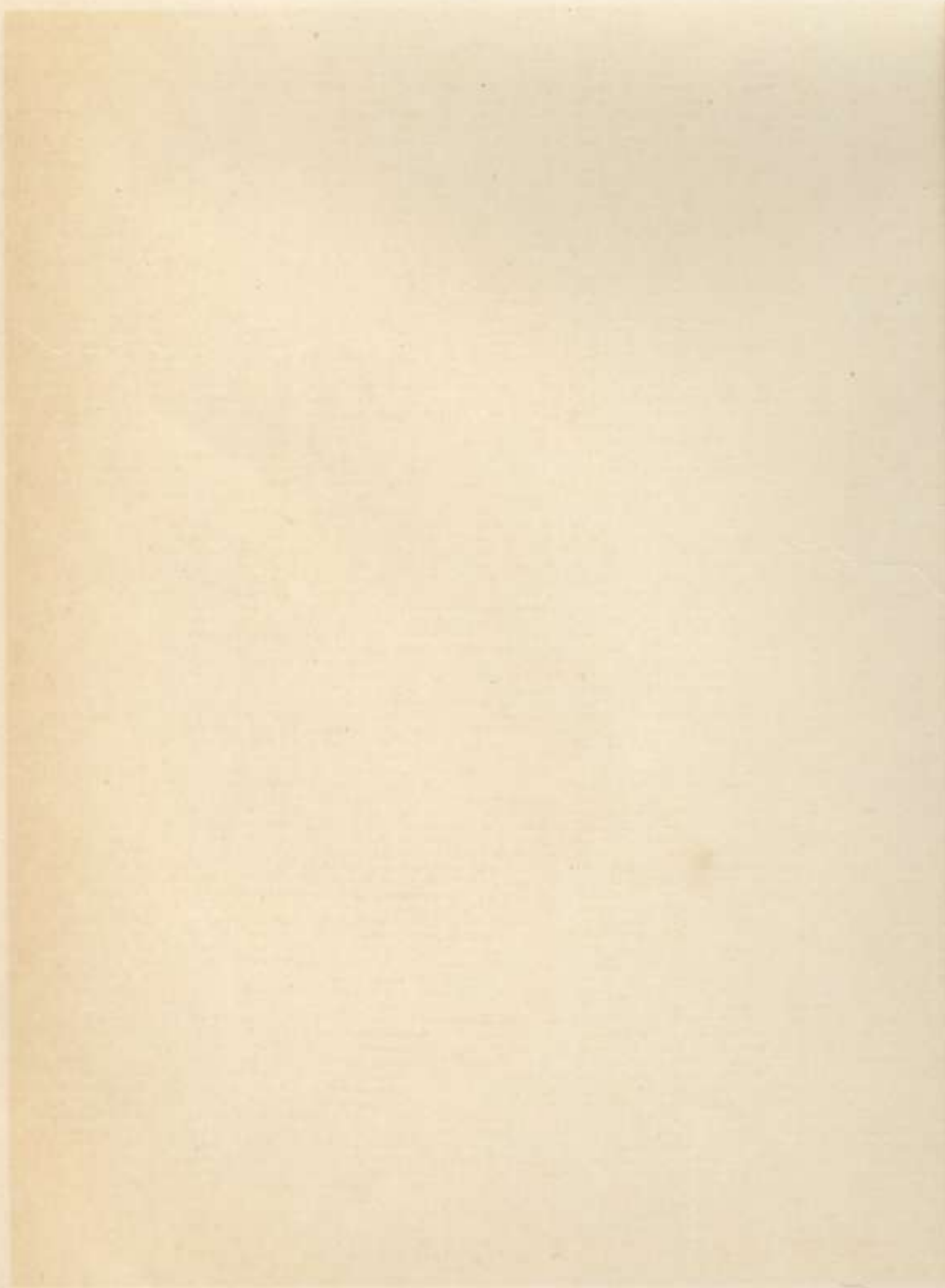
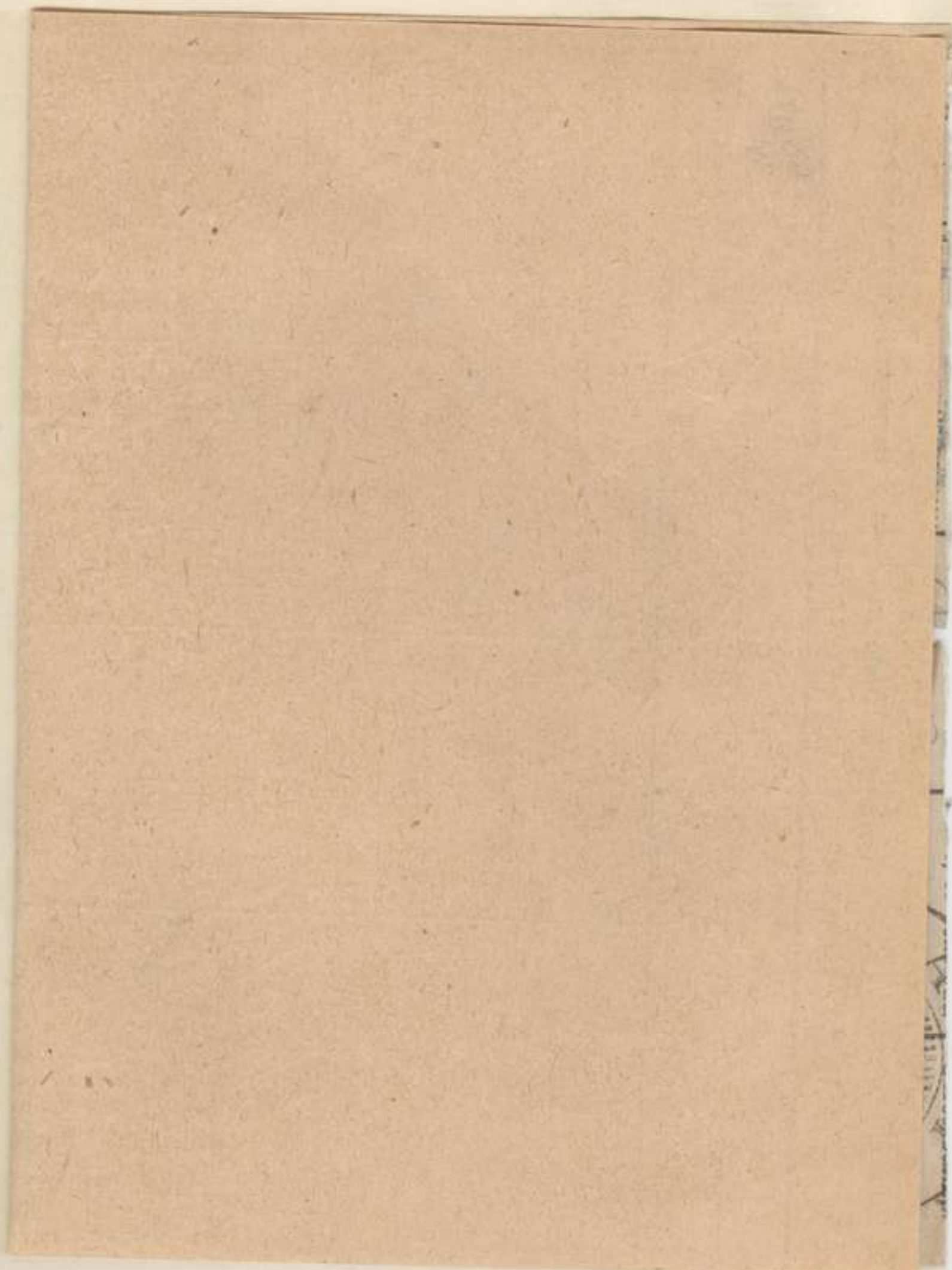
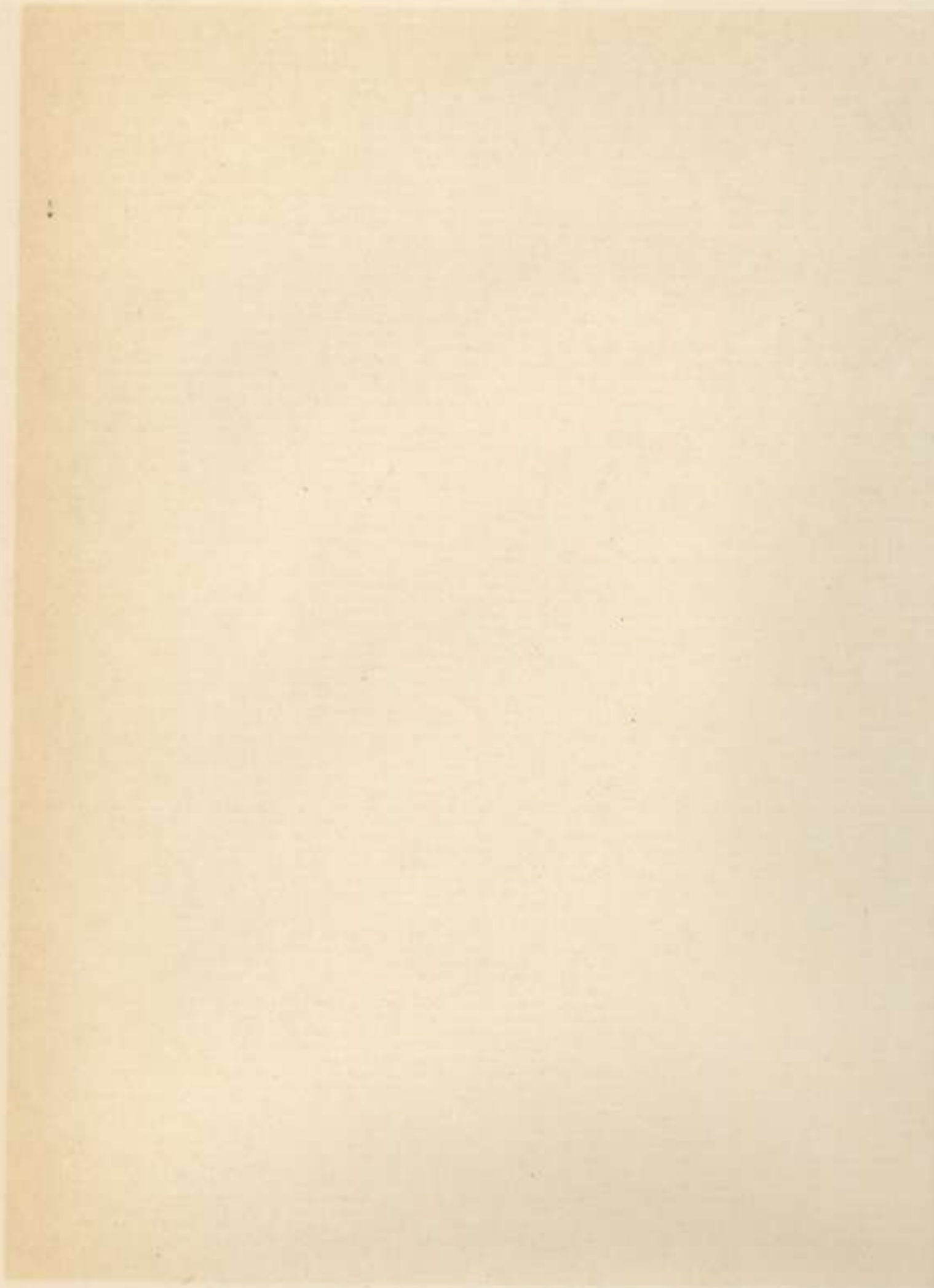
FROM: *Branch Intelligence*
 TIME & PLACE

*This line should be erased if not required

C. & R. 7380. Wt. W14822/M1523 100,000. 3/17. (E990). Forms O/2122

APPENDIX. 32

663

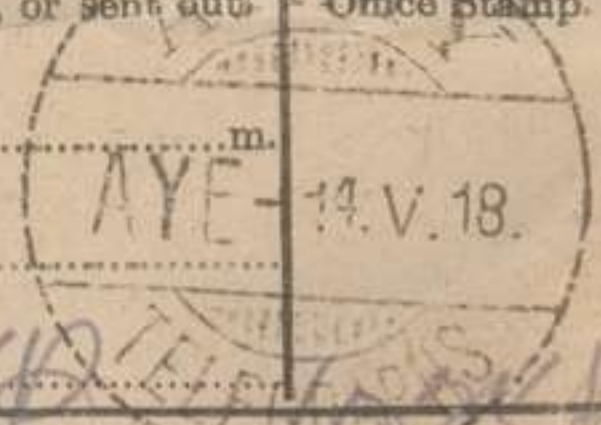


APPENDIX. 32

663.

33

P. Prefix.....Code.....Words.....
 Received. Sent, or sent out. Office Stamp.
 From *AWO* At.....m.
 Charges to Collect *43* By.....
 Service Instructions.
 Handed in at.....Office.....m. Received.....m.



TO *5 aus 2 Div*

*Sender's Number *B 92 183A* Day of Month *14* In reply to Number *AAA*

5.0 pm tree dusk no movement observed in forward area AAA 7.0 pm train Q36D73 moving S. AAA 7.10 pm heavy m4 fire encountered from VA IRE WOOD AAA observer reports trench reported BIS 148A has been extended N. from K7D0030 to K7C7565 AAA a line of rifle pits then continued to K7A7865 AAA 8.30 train going S. R37 AAA weather fine AAA visit fair AAA ends

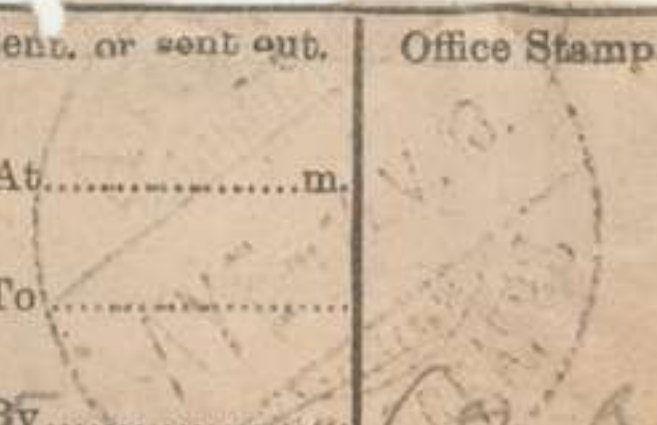


FROM *Granch In tele*
 TIME & PLACE

*This line should be erased if not required

C. & R. 7880. Wt. W14822/M1523 100,000. 2/17. (E990). Forms C/2122

Prefix.....Code.....Words.....
 Received. Sent, or sent out. Office Stamp.
 From *AWO* At.....m.
 Charges to Collect *43* By.....
 Service Instructions.
 Handed in at.....Office.....m. Received.....m.



TO *5 aus 2 Div*

*Sender's Number *9442* Day of Month *14/5* In reply to Number *AAA*

Morning report aaa enemy curby active left down front BUIRE HEILLY aus RIBEMONT shelled aaa slight shelling forward area right sector right Div about aaa oac prisoner captured by left Div aaa dddsd 4th army Reprd all concerned

FROM *Australian Corps*
 TIME & PLACE

*This line should be erased if not required

C. & R. 7880. Wt. W14822/M1523 100,000. 2/17. (E920). Forms C/2122

APPENDIX. 322.

604

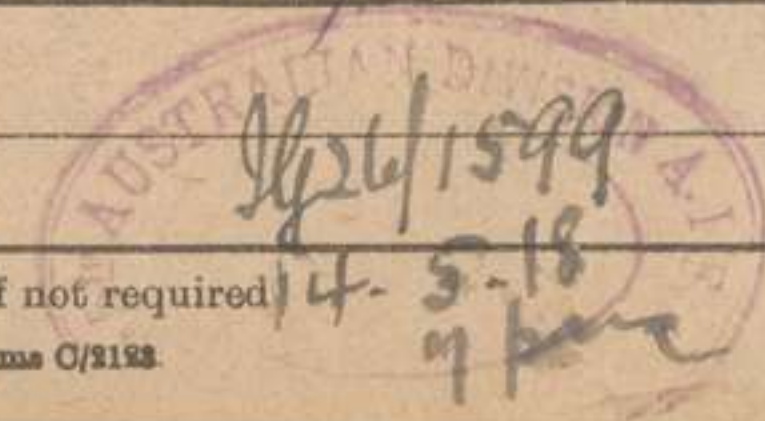
Charges to Collect
 Service Instructions
 Handed in at Office m. Received m.



TO *5 ans Dew*

*Sender's Number	Day of Month	In reply to Number	AAA
<i>4497</i>	<i>14/5</i>		
<i>Evening report AAA since</i>			
<i>operation this morning</i>			
<i>hostile arty has been</i>			
<i>active shelling T12 15</i>			
<i>and 71 also T19B</i>			
<i>AAA increased enemy arty</i>			
<i>activity forward area centre</i>			
<i>Dew 017 935 and</i>			
<i>T27 being shelled AAA</i>			
<i>enemy Railway gun fired</i>			
<i>from WY 157 between 12</i>			
<i>noon and 1pm AAA</i>			
<i>considerable train movement</i>			
<i>on BRAY-PROYART line</i>			
<i>both directions AAA Much</i>			
<i>movement to transport dismounted</i>			
<i>troops in R9 moving north</i>			

FROM
 TIME & PLACE



*This line should be erased if not required

C. & R. 7880. Wt. W14932/M1523 100,000. 8/17. (E990). Forms C/3122

Charges to Collect
 Service Instructions
 Handed in at Office m. Received m.

TO *(Sheet 2)*

*Sender's Number	Day of Month	In reply to Number	AAA
<i>4497</i>			
<i>AAA Co active AAA during</i>			
<i>County attack this morning</i>			
<i>enemy post at K19C98</i>			
<i>was rushed and 3</i>			
<i>prisoners taken remainder</i>			
<i>of garrison killed AAA</i>			
<i>prisoners last 24 hours</i>			
<i>57 ops AAA added</i>			
<i>4th Army reptd all</i>			
<i>conceded</i>			

FROM *Anti Corps*
 TIME & PLACE

*This line should be erased if not required

C. & R. 7880. Wt. W14932/M1523 100,000. 8/17. (E990). Forms C/3122

APPENDIX 320

605

Prefix.....Code.....Words.....
 Received..... Sent, or sent out..... Office Stamp.....
 £ s. d. From..... At..... m.
 Charges to Collect By..... To.....
 Service Instructions. By.....
 Handed in at..... Office..... m. Received..... m.

TO 5 Aus. Div

Sender's Number	Day of Month	In reply to Number	AAA
423	14		AAA
Situation	met	aaa	enemy
only active		on	BUIRE
and D29		till	midnight
105	cm	and	15
cm	at	intervals	aaa
Intermittent shelling of HEILLY			
aaa	a	few	gas
shells	an	RIBEMONT	aaa
sharp bombardment		12A at	
4	am	aaa	prisoner
captured by night		path	
night	Det	237	RIR
identification		normal	aaa
my	and	TM	inactive
aaa	addsd	aus	corp
repts	all	concerned	

FROM 2nd Aus Div
 TIME & PLACE 5 am

*This line should be erased if not required

C. & B. 7880. Wt. W14832/M1523 100,000. 2/17. (E990). Forms O/2123

From..... At..... m.
 Charges to Collect By..... To.....
 Service Instructions. By.....
 Handed in at..... Office..... m. Received..... m.



TO (2)

Sender's Number	Day of Month	In reply to Number	AAA
429	14		AAA
K7D15.35	K7D3.0	Cross roads	
K13B	K13B15.30	K13D6.5	thence
observed	aaa	artillery engaged	
this	area	aaa	Montell
only	fire	barrier	
aaa	added	aus	corp
repts	all	concerned	

FROM 2nd Aus Div
 TIME & PLACE 1.15 PM

*This line should be erased if not required

C. & B. 7880. Wt. W14832/M1523 100,000. 2/17. (E990). Forms O/2123

133

APPENDIX 232

606

Pre. Code. Words. Received. Sent. or sent out. Office Stamp.
 From: *Aris* At: *7. m.* Office Stamp: *4. V. 18.*
 Charges to Collect By: *[Signature]*
 Service Instructions To: *[Signature]*
 Handed in at: *[Signature]* Office: *[Signature]* m. Received: *[Signature]* m.

TO *2nd Aust Div*

*Sender's Number: *9430* Day of Month: *14* In reply to Number: *14-518*
AAA

evening report aaa since front
 this morning hostile arty
 has been active shelling 12a
 and C. 121B 115a and
 B and 119b area at 1-30pm
 a very active over our
 lines driven off by aa
 fire during our counter
 attack this morning enemy
 post at R19C9.8 was rushed
 and 3 prisoners taken remain
 garrison killed aaa
 prisoners last 24 hours
 52 other ranks aaa
 added aust corps
 rept all concerned

FROM *2nd Aust Div*
 TIME & PLACE *5 pm.*

*This line should be erased if not required.

C. & B. 7880. Wt. W14332/M1523 100,000. 2/17. (E980). Forms O/2122.

Pre. Code. Words. Received. Sent. or sent out. Office Stamp.
 From: *478* At: *[Signature]* Office Stamp: *55a*
 Charges to Collect By: *[Signature]*
 Service Instructions To: *[Signature]*
 Handed in at: *[Signature]* Office: *[Signature]* m. Received: *[Signature]* m.

TO *5 Aust Div*

*Sender's Number: *9124* Day of Month: *14* In reply to Number: *[Signature]*
AAA

morning report aaa slight
 evening shelling on left
 on left of Bie front
 and support area aaa
 enemy mess fairly active
 aaa rifle Grenade fire
 on both sides aaa
 very quiet on right
 Bie area added Austn
 Corps rept 3rd 5th
 Austn Div 37th French
 Lier

FROM *4 Aust Div*
 TIME & PLACE *[Signature]*

*This line should be erased if not required.

C. & B. 7880. Wt. W14332/M1523 100,000. 2/17. (E980). Forms O/2122.

APPENDIX. 32.

607.

Prefix Code m. Words Charge
 Office of Origin and Service Instructions.
 This message is on a/c of: Recd. at m.
 Sent Service. Date
 At m. From
 To
 By (Signature of "Franking Officer.") By

TO {
 5th Bde 5th Div
 4th Bde 4th Aust Div
 15th Bde 2nd Aust Div

Sender's Number. Day of Month. In reply to Number. A A A
 * 14397. 14th -

Artillery programme night 14/15th Oct
 10.30pm five minutes 2 groups P20a
 8.5 two groups Pwd Heaviside BMS
 de VAIRE and 2 am 5 minutes trench
 P9a 45.00 P9b 0.8 Heaviside HAMEL
 and 2.30 am 2 Bdes work west of
 BMS de VAIRE 2 Bdes P20a 8.5 and
 3.10 am 5 minutes 3 groups
 roads P4c 1 group road K.26 d
 Heaviside P4b d and 3.40 am
 5 minutes counter preparation targets
 and addressed all concerned

From
 Place 5th Aust Div
 Time

The above may be forwarded as now corrected. (Z)
 Censor. Signature of Addressor or person authorised to telegraph in his name.

* This line should be erased if not required.
 750,000. W 2186-M509. H. W. & V., Ltd. 6/16.

Office of Origin and Service Instructions. Charge
 This message is on a/c of: Recd. at m.
 Sent Service. Date
 At m. From
 To
 By (Signature of "Franking Officer.") By

TO {
 Aust. Corps 4th Aust. Div.
 2nd Aust. Div. Div. Art.
 5th Aust. Div.

Sender's Number. Day of Month. In reply to Number. A A A
 * 4316 14

EVENING REPORT and increased enemy artillery
 activity on forward areas during day and 017 heavily
 shelled with 5.9 during morning and 135 and J27 also
 shelled during day with 5.9 and 4.2 and no shelling
 of back areas and twelve B.A. flying over right brigade
 sector during afternoon and considerable train
 movement on BAY PROYAT line both directions and
 much movement transport and dismounted troops in R9
 moving N. and prisoners nil and Adcd. Aust. Corps
 rptd. all coned.

From
 Place 5th Aust. Div.
 Time

The above may be forwarded as now corrected. (Z)
 Censor. Signature of Addressor or person authorised to telegraph in his name.

* This line should be erased if not required.
 100,000 Pads. W. 12093. M1217. M.C. & Co., Ltd. 1/17. (E. 764). Forms C/2121/11.

APPENDIX 23

608

At To By	Service.	Date
8th Inf. Bde. 14th Inf. Bde. 15th Inf. Bde.	5th Div. Art. 4th Aust. Div. 2nd Aust. Div.	
Sender's Number. * G 4371	Day of Month. 14th	In reply to Number. AAA

Following on **G4297** aaa 4.15 am 5 minutes counter preparation targets aaa Addsd all concerned.

From	5th AUST. DIV.
Place	
Time	
The above may be forwarded as now corrected.	
Censor.	(Z) <i>Goodland</i>
Signature of Addressor or person authorised to telegraph in his name.	

100,000 Pads. W. 12093. M1217. McC. & Co., Ltd. 1/17. (E. 764). Forms C/2121/11.

Office of Origin and Service Instructions.	Code	Words	Charge	This message is on a/c of:	Recd. at
PRIORITY					
Sent				Service.	Date
At				From	
To				By	
By				(Signature of "Franking Officer.")	
TO	Aust. Corps.	3rd Aust. Div.			
	2nd Aust. Div.	5th Div. Arty.			
	4th Aust. Div.				
Sender's Number.	Day of Month.	In reply to Number.		AAA	
* Ig 4254	14				

Morning report AAA Situation quiet
Enemy artillery inactive ground
aaa well

Addsd Aust. Corps reptd all concerned	
From	5th AUST DIV
Place	
Time	
The above may be forwarded as now corrected.	
Censor.	(Z) <i>Halmesbatt</i>
Signature of Addressor or person authorised to telegraph in his name.	

100,000 Pads. W. 12093. M1217. McC. & Co., Ltd. 1/17. (E. 764). Forms C/2121/11.

APPENDIX.

609

Office of origin and Service Instructions. *File*
 This message is on a/c of: Recd. at m.
 Sent Date
 At m. Service.
 To From
 By (Signature of "Franking Officer.") By

TO Aust Corps. Div. Art.
 3rd Aust. Div. 14th Inf. Bde.
 4th Aust. Div. 15th Inf. Bde.

Sender's Number. Day of Month. In reply to Number. AAA
 * Ig. 4278 14th

Following from our left bn aas 9.45 pm 13th large party of enemy seen advancing in K25a in artillery formation groups of 8 men at 50 yards intervals about 6 groups engaging engaged by our Lewis guns and rifles and scattered aas enemy disappeared into trenches in vicinity many casualties claimed AAA.

Added Aust Corps reptd all concerned.

From 5th AUST. DIV.
 Place
 Time
 The above may be forwarded as now corrected. (Z) *Goodland Taps*
 Censor. Signature of Addressor or person authorised to telegraph in his name.

* This line should be erased if not required.
 100,000 Pads. W. 12093. M1217. M.C. & Co., Ltd. 1/17. (E. 764). Forms C/2121/11.

153

Office of origin and Service Instructions. Code. m. Words. Charge.
 This message is on a/c of Recd. at m.
 Sent Date
 At m. Service.
 To From
 By (Signature of "Franking Officer.") By

TO Aust Corps 2nd Aust Div 2 DEBS.
 4th Aust Div 5

Sender's Number. Day of Month. In reply to Number. AAA
 * Ig. 4313 14

Wounded prisoner captured by 2nd Aust Div examined at 114 Field Ambulance states his company 4/31 I.R. came from reserve position in valley K28 early this morning to retake trenches previously lost. They were to remain all day & then return as many casualties suffered from our M.G. fire and no knowledge of intentions general attack was 2nd & 3rd Btn of 31st I.R. in line, 114 I.R. on left and prisoner is an old soldier & fairly intelligent and is willing to talk and evacuates through 20 C.O.S. signposts. odd.

From Aust Corp. Rept. Frank. Messons.
 Place D 5 Aust Div
 Time
 The above may be forwarded as now corrected. (Z) *R. Murray*
 Censor. Signature of Addressor or person authorised to telegraph in his name.

* This line should be erased if not required.
 Wt. W492/M1647 100,000 pads. 4/17. W. & Co., Ltd. (E. 1187.)

APPENDIX. 3/21.

810

recd. at m.
 Date
 From
 By
 Sent
 At m.
 To
 By
 (Signature of "Franking Officer.")

TO Aust. Corps. Div. Arty.
 2nd Aust. Div.
 4th Aust. Div.

Sender's Number. Day of Month. In reply to Number. A A A
 * IG 4360 16th

Right Bde. report aas 05c and d and 011a and b
 shelled with 5.9 at rate of 6 per minute from
 3.45 pm to 6 pm aas Shelling of 017c with 5.9
 hows has also been going on since 6.10 pm aas
 Reserve Bde. report timed 9.25 AUBIGNY system in
 being heavily shelled with H.V. 5.9 and 4.2 fr
 from direction WARFUSEE ABANCOURT aas Adasd Aust.
 Corps reptd flank divs and Div. Art.

x 0 20 f

From 5th AUST. DIV.
 Place
 Time
 The above may be forwarded as now corrected.
 (Z) *Goodland*
 Censor. Signature of Addressor or person authorised to telegraph in his name.

* This line should be erased if not required.
 100,000 Pads. W. 12093. M1217. M.C. & Co., Ltd. 1/17. (E. 764). Forms C/2121/11.

No of Message
 Code m
 Office of Origin and Service Instructions. Words Charge
 This message is on a/c of:
 Sent
 At m.
 To
 By
 (Signature of "Franking Officer.")

TO Aust. Corps.

Sender's Number. Day of Month. In reply to Number. A A A
 * IG 4372 14

Following lamp signalling observed from P13a21
 on T.B.80 at 7.27 pm aas begins aas A aas 4 aas
 WMAGER aas FLRHFTTT aas SJEN aas QT aas HIER aas
 ANH aas SORORT aas ALLES aas PACKEN aas CRINGT aas
 DIE aas DEKEN aas TELL aas MIT aas VIEL aas GL/4
 letters missing) RK aas TTT aas NR aas WIKB aas
 JABLGIQMGG aas ABL aas ANTIST aas SOONHIER aas
 TEVREA aas LOIYNG aas IST aas EDTN aas VIER aas
 WEG aas MRQT aas MAOTEU (4 missing) RER aas ends

From
 Place 5th Aust Div
 Time
 The above may be forwarded as now corrected.
 (Z) *Goodland*
 Censor. Signature of Addressor or person authorised to telegraph in his name.

* This line should be erased if not required.
 100,000 Pads. W. 12093. M1217. M.C. & Co., Ltd. 1/17. (E. 764). Forms C/2121/11.



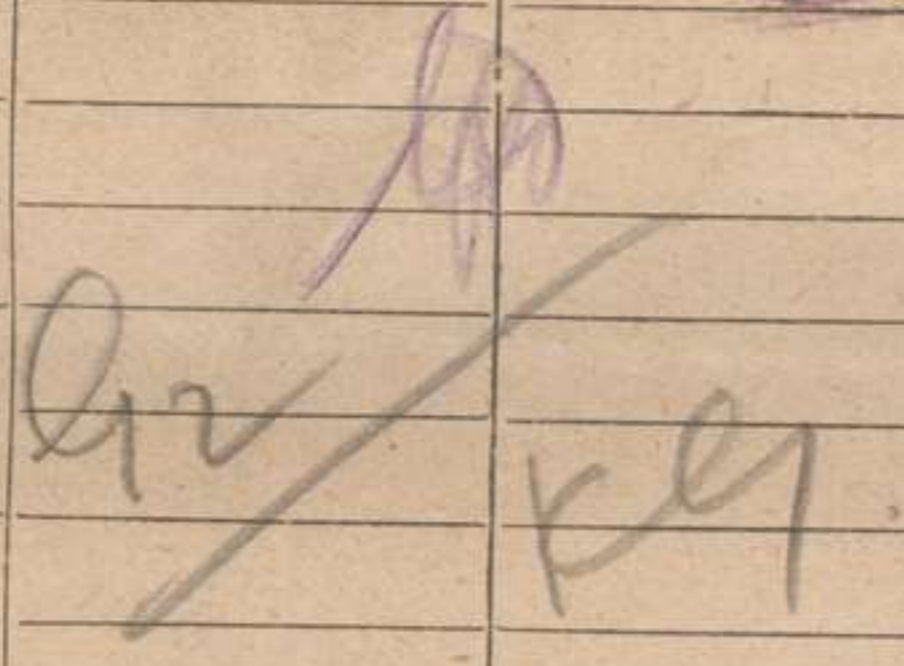
APPENDIX. 322

119

233

612

APPENDIX 32

Prefix.....	Code.....	Words.....	Received.	Sent, or sent out.	Office stamp
£ s d.			From.....	At.....	
Charges to Collect			By.....	To.....	
Service Instructions.			By.....		
Handed in at.....		Office.....	Received.....		
TO	5 Aus Div				
*Sender's Number	Day of Month	In reply to Number		AAA	
Bm 682	14				
Situation report	aaa	Enemy			
shelling	mil	Enemy			
air raid	activity	aaa			
					
					
FROM	15 a + RAG				
TIME & PLACE	4.20 pm				
*This line should be erased if not required.					
G. & B. 7280. Wt. W14322/M1523 100,000. 3/17. (E990). Form C/2122.					

33

613

APPENDIX 32

Prefix	Code	m	Words	Charge	No of Message	
Office of Origin and Service Instructions.			Sent		This message is on a/c of:	
			At m.		Recd. at	
			To		Date	
			By		From	
			(Sl. nature of "Franking Officer.")		By	
TO			G.S.O.I.			
Sender's Number.		Day of Month.		In reply to Number.		
* A 4330		14		AAA		
Approximate		Trench Strength		on 14th Inst		
in Officers and Other Ranks.				29th Bn. 25 and		
531. 30th Bn. 26 and 497.				31st Bn. 27		
and 605. 32nd Bn. 23 and				410. 53rd Bn. 18		
and 370. 54th Bn. 18 and 392.				55th Bn. 18		
and 475. 55th Bn. 18 and				431. 57th Bn.		
25 and 533. 58th Bn. 29 and				542. 59th Bn.		
26 and 499. 60th Bn. 21 and				408. 8th M.G.		
Coy. 11 and 163. 14th M.G. Coy. 11 and				175.		
15th M.G. Coy. 12 and 177.				25th M.G. Coy.		
10 and 175. 5th Pioneer Bn. 32 and				870.		
8th Fld. Coy. A.E. 8 and 141.				14th Fld. Coy. A.E.		
8 and 144. 15th Fld. Coy. A.E. 8 and				157.		
From		5th Aust. Divn.		E. R. [Signature]		
Place						
Time						
The above may be forwarded as now corrected.		(Z)				
Censor.		Signature of Addressor or person authorised to telegraph in his name				
* This line should be erased if not required.						
100,000 Pads. W. 12093. M1217. M.C. & Co., Ltd. 1/17. (E. 764). Forms C/2121/11.						

Prefix *54* Code *54* Words *54* Received *two* Sent, or sent out *two* Office Stamp *ARMY*
 From *two* At *6* m
 Charges to Collect *Text* By *6*
 Service Instructions
 Handed in at *5:50* Office *5:50* m Received *6:00* m

TO *5 Aus Gen*

*Sender's Number Day of Month In reply to Number AAA
14

Forecast wind SW 10 to 15 MPH probably changing temporarily to South fair at first probably becoming temporarily overcast with some showers or drizzle
 visib good becoming temporarily indifferent or poor
 moderate Temp wind
 7 pm west SW
 8 MPH midnight and
 4 am 55W 5 MPH

FROM *Meteor*
 TIME & PLACE *57 pm*

*This line should be erased if not required
 C. & R. 7380. Wt. W14332/M1523 100,000. 2/17. (E930). Forms O/2122

Prefix *47* Code *47* Words *47* Received *two* Sent, or sent out *two* Office Stamp *AVE - A.V. 10*
 From *two* At *mat* m
 Charges to Collect *mat* By *mat*
 Service Instructions
 Handed in at *5:50* Office *5:50* m Received *11:15* m

TO *5 Aus Gen*

*Sender's Number Day of Month In reply to Number AAA
14

Forecast wind SW 10 to 15 mph increasing to 15 mph mainly fair through cloudy at times and perhaps a shower or two
 visib likely than fair
 moderate wind midnight and
 4 am light

FROM *Meteor*
 TIME & PLACE *9:50 pm*

*This line should be erased if not required
 C. & R. 7380. Wt. W14332/M1523 100,000. 2/17. (E930). Forms O/2122

APPENDIX 3/2

615

From *agn* Ab. *AVE*
 By *Mat* To *ARMT*
 Charges to Collect
 Service Instructions *3 adds*
 Handed in at *agn* Office *1456* m. Received *6:45* m.

TO *Tools*
 *Sender's Number *502* Day of Month *14* In reply to Number *AAA*

<i>Shelling of</i>	<i>05c</i>	<i>and</i>
<i>D and</i>	<i>011A</i>	<i>and</i>
<i>B with</i>	<i>5.9s</i>	<i>at</i>
<i>rate of</i>	<i>6</i>	<i>per</i>
<i>minute commenced</i>	<i>3.45</i>	<i>pm</i>
<i>and stopped</i>	<i>6</i>	<i>pm</i>

AG 34/1000
14.5.18
4-15

Corp
Flank
RA Key

FROM *Black*
 TIME & PLACE

*This line should be erased if not required
 C. & B. 7880. Wt. W14832/M1523 100,000. 8/17. (E980). Forms C/8123.

Prefix *W* Code *W* Words *W* Received *W*
 From *J* Ab. *AVE*
 By *J* To *ARMT*
 Charges to Collect
 Service Instructions *3 adds*
 Handed in at *agn* Office *9/1* m. Received *9:30* m.

TO *Tools.*
 *Sender's Number *504* Day of Month *14th* In reply to Number *AAA*

<i>Heavy shelling of</i>	<i>right</i>
<i>reserve</i>	<i>in</i>
<i>Quarry at</i>	<i>017 C 25 commenced</i>
<i>again at</i>	<i>8.10 pm</i>
<i>from</i>	<i>8.45 pm</i>
<i>TB 99 from</i>	<i>017 C 30.15</i>
<i>with</i>	<i>5.9 hours</i>
<i>Two direct hits</i>	<i>in</i>
<i>quarry concrete</i>	<i>work</i>
<i>securely</i>	

Corp
Flank
RA Key

AG 34/1013
14.5.18
9.25 pm

FROM *Black*
 TIME & PLACE

*This line should be erased if not required
 C. & B. 7880. Wt. W14832/M1523 100,000. 8/17. (E980). Forms C/8123.

APPENDIX 32

614

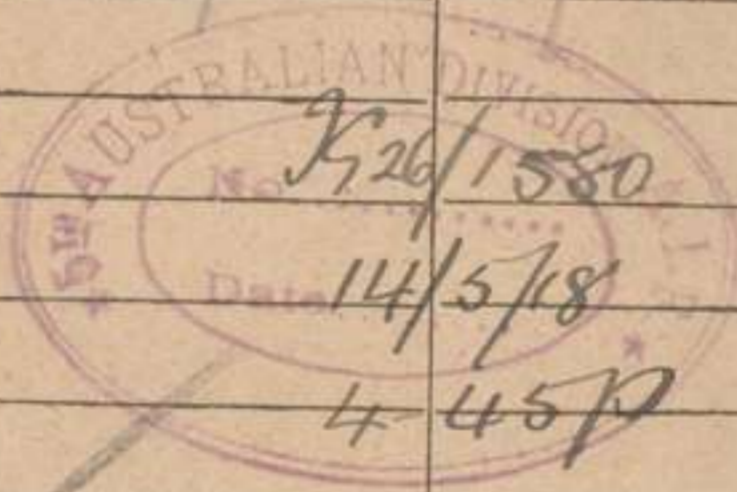
Prefix... Code... Words... Received... Sent. or sent out... Office Stamp
 From... At... To... By...
 Charges to Collect...
 Service Instructions...
 Handed in at... Office... m. Received... m.



TO Tools

*Sender's Number 2061 Day of Month 14 In reply to Number AAA

Situation	report	aaa	ea
active	flying	low	over
front	areas	aaa	much
Main	movement	in	back
areas	aaa	017	heavily
shelled	during	morning	aaa
added	Tools	report	flank
Bases			



FROM Block
 TIME & PLACE

*This line should be erased if not required
 C. & R. 7880. Wt. W14832/M1523 100,000. 8/17. (E980). Forms C/2123.

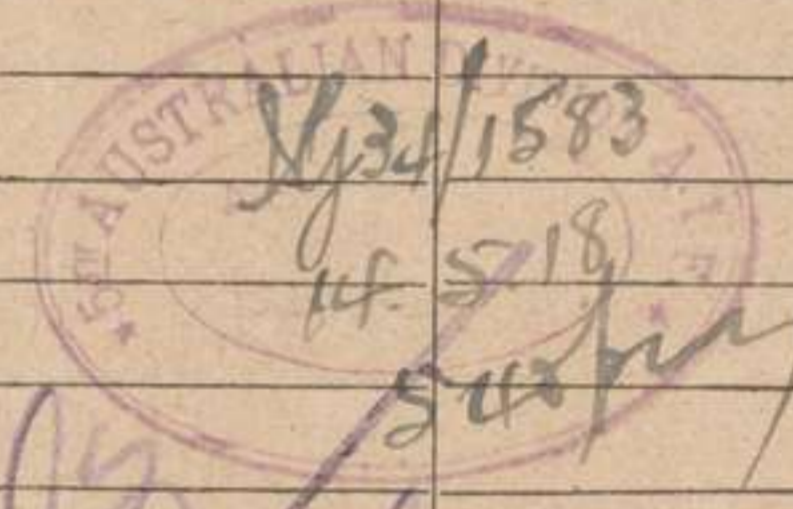
Prefix... Code... Words... Received... Sent. or sent out... Office Stamp
 From... At... To... By...
 Charges to Collect...
 Service Instructions...
 Handed in at... Office... m. Received... m.



TO Tools

*Sender's Number 2062 Day of Month 14 In reply to Number AAA

Heavy shelling with	5.9s		
on	05c	land	D
and	011A	and	B
aaa	has	now	continued
one	hour		



FROM Block
 TIME & PLACE

*This line should be erased if not required
 C. & R. 7880. Wt. W14832/M1523 100,000. 8/17. (E980). Forms C/2123.

APPENDIX. 352

618

Received. Sent, or sent out. Office Stamp.

Prefix.....Code.....Words.....
 £ s d. From.....
 Charges to Collect By.....
 Service Instructions. To.....
 By.....

Handed in at.....Office.....m. Received.....m.

TO *TOOLS*

*Sender's Number *Sc 204* Day of Month *14* In reply to Number *AAA*

*morning report aaa situation
 quiet aaa ground wet and
 slippery aaa address Toolscriptd
 flank Pres.*

FROM *Block*
 TIME & PLACE *7 14 am*

*This line should be erased if not required
 G. & B. 7880. Wt. W14832/M1523 100,000. 3/17. (E990). Form C/3123.

MESSAGES AND SIGNALS. No. of Message.....

Received. Sent, or sent out. Office Stamp.

Prefix.....Code.....Words.....
 £ s d. From.....
 Charges to Collect By.....
 Service Instructions. To.....
 By.....

Handed in at.....Office.....m. Received.....m.

TO *tools*

*Sender's Number *Sc 205* Day of Month *14* In reply to Number *AAA*

*patrol wire aaa light
 bn heard movement in
 Bois be rare and
 encountered enemy sniper
 in Chalk pit at
 P20A 2.5 who causes two
 casualties to our patrol
 aaa left bn patrolled
 Copse in P14C central
 movement heard and flares
 fired from rear of
 Copse aaa address Tools
 rptd flank Pres.*

FROM *Block*
 TIME & PLACE *6.21 Am*

*This line should be erased if not required
 G. & B. 7880. Wt. W14832/M1523 100,000. 3/17. (E990). Form C/3123.

APPENDIX. 3/21

619

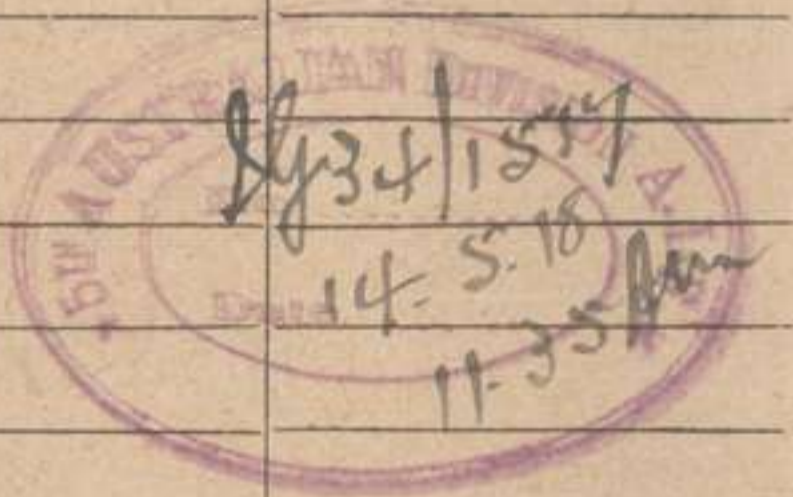
Prefix *W* Code *10* Words *16* Received
 Sent, or sent out Office Stamp
 From *W* At *10.57 a.m.* Office Stamp
 Charges to Collect By *2* To
 Service Instructions By
 Handed in at *W* Office *10.57 a.m.* Received *10.57 a.m.*



TO *Tools*

*Sender's Number *Bm 22* Day of Month *14* In reply to Number *AAA*

incoming shelling 016 D and 017 C
with 15 rounds 5.9
per minute aca TB 103
degrees from 017 C 3.3



FROM *Block*

TIME & PLACE

*This line should be erased if not required
 C. & R. 7380. Wt. W14522/M1523 100,000. 2/17. (E930). Forms C/2123.

Prefix *W* Code *10* Words *16* Received
 Sent, or sent out Office Stamp
 From *W* At *10.57 a.m.* Office Stamp
 Charges to Collect By *2* To
 Service Instructions By
 Handed in at *W* Office *10.57 a.m.* Received *10.57 a.m.*



TO *Tools*

*Sender's Number *70 153* Day of Month *14* In reply to Number *AAA*

situation quiet aca enemy
arty inactive aca cloudy
aca wind slight south

FROM *Acid*

TIME & PLACE

*This line should be erased if not required
 C. & R. 7380. Wt. W14522/M1523 100,000. 2/17. (E930). Forms C/2123.

APPENDIX. 32

620

Prefix *10* Code *156* Words *10015* Received. Sent, or sent out. Office Stamp.
 From *10015* At *10* m.
 Charges to Collect By *10015* To *10015*
 Service Instructions. By *10015*
 Handed in at *10015* Office *10015* m. Received *10015* m.

TO *10015*

Sender's Number *10156* Day of Month *14* In reply to Number *AAA*

*Patrol wire seen all
 Patrols report nothing seen
 or heard of the
 enemy seen in gaps located
 from p9 B26 and
 p3 c 65 approx*



RM

FROM *acw*
 TIME & PLACE

*This line should be erased if not required
 G. & R. 7380. Wt. W14332/M1523 100,000. 3/17. (E990). Forms C/2123

Prefix *10* Code *157* Words *10015* Received. Sent, or sent out. Office Stamp.
 From *10015* At *10* m.
 Charges to Collect By *10015* To *10015*
 Service Instructions. By *10015*
 Handed in at *10015* Office *10015* m. Received *10015* m.

TO *10015*

Sender's Number *10157* Day of Month *14* In reply to Number *AAA*

*Following from our left
 on 10015 Bn on
 left report 200 enemy
 entered gap in their
 Centre and are now
 between front and support
 lines K19 A. aaa Front
 Coys intact aaa our
 front quiet aaa*



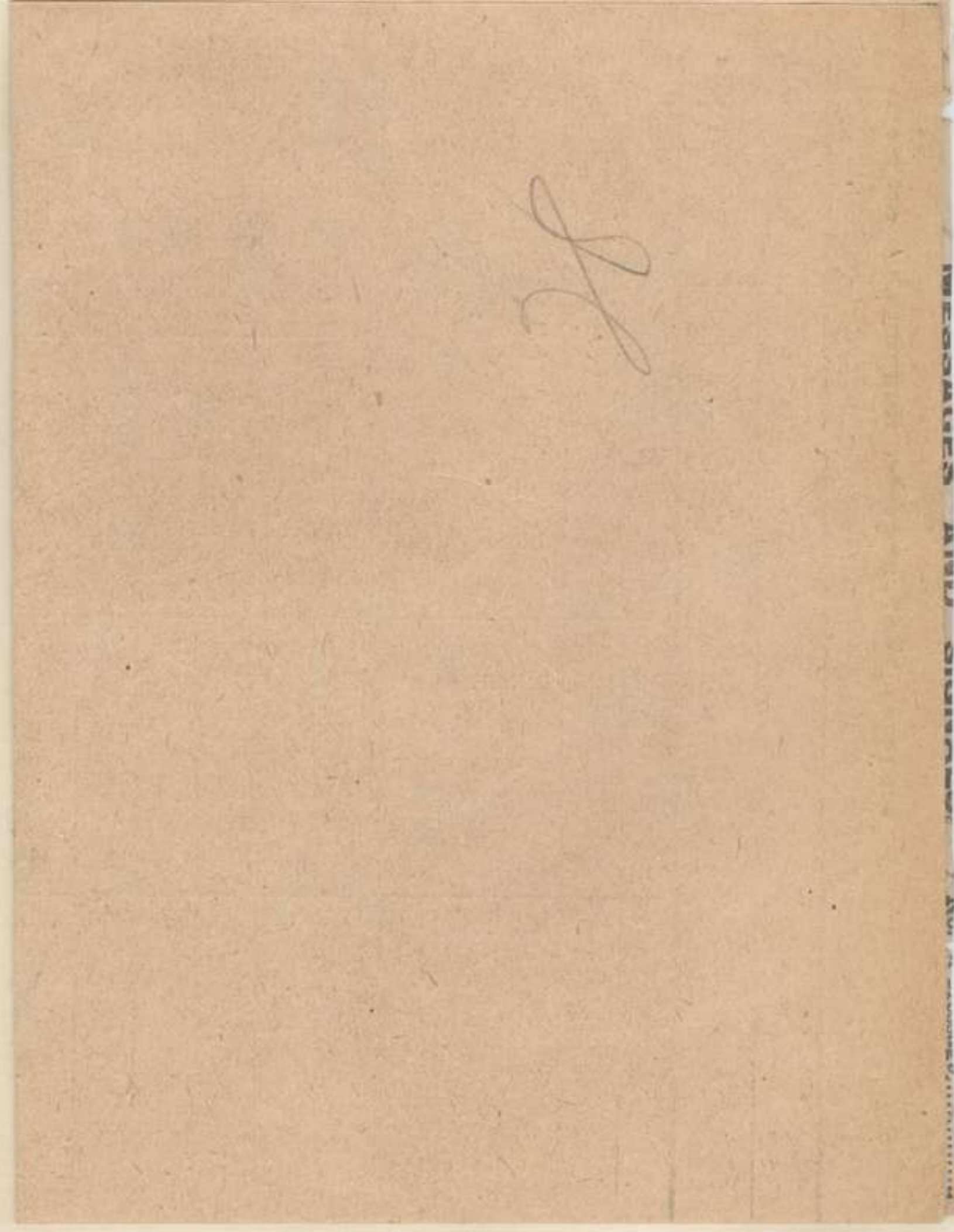
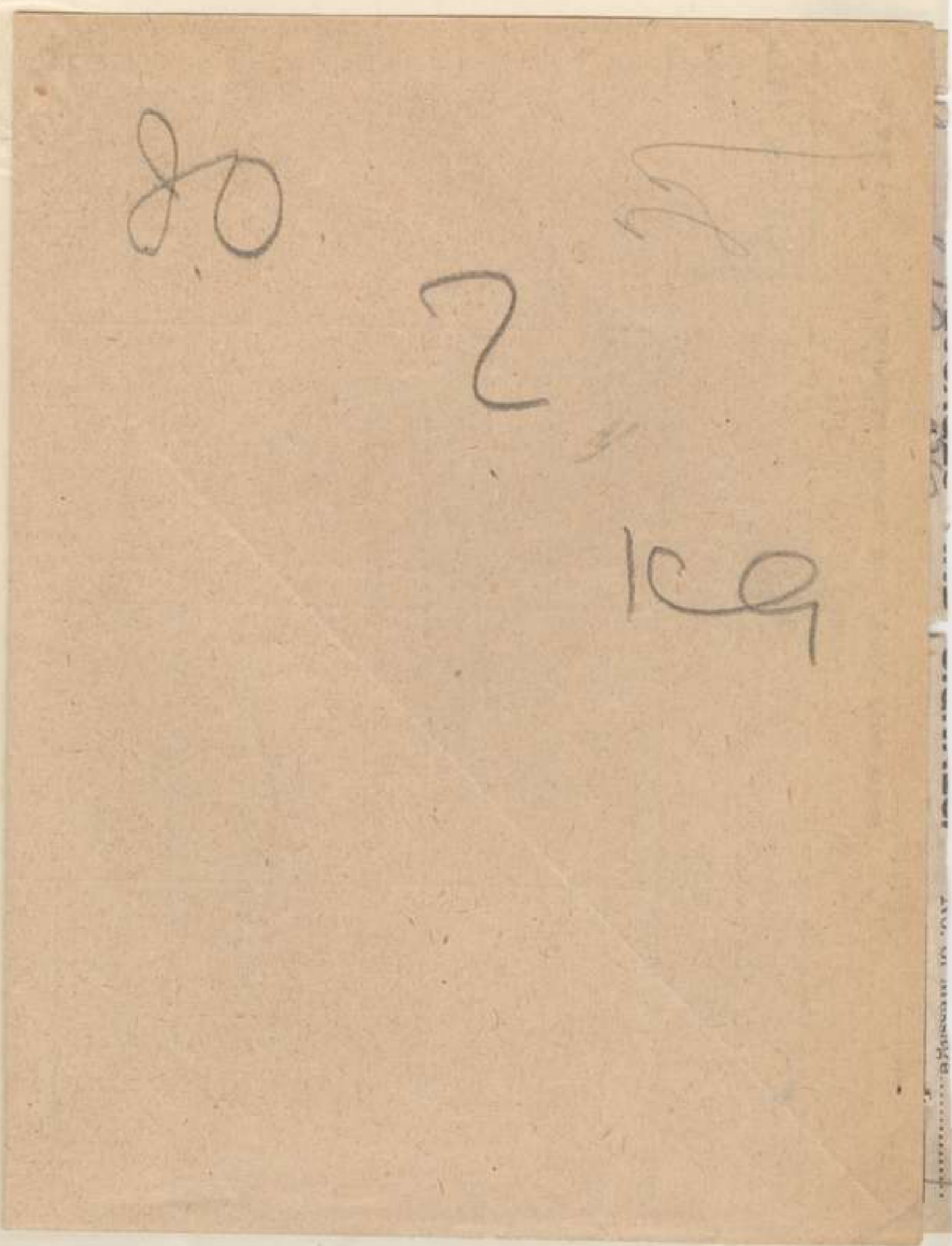
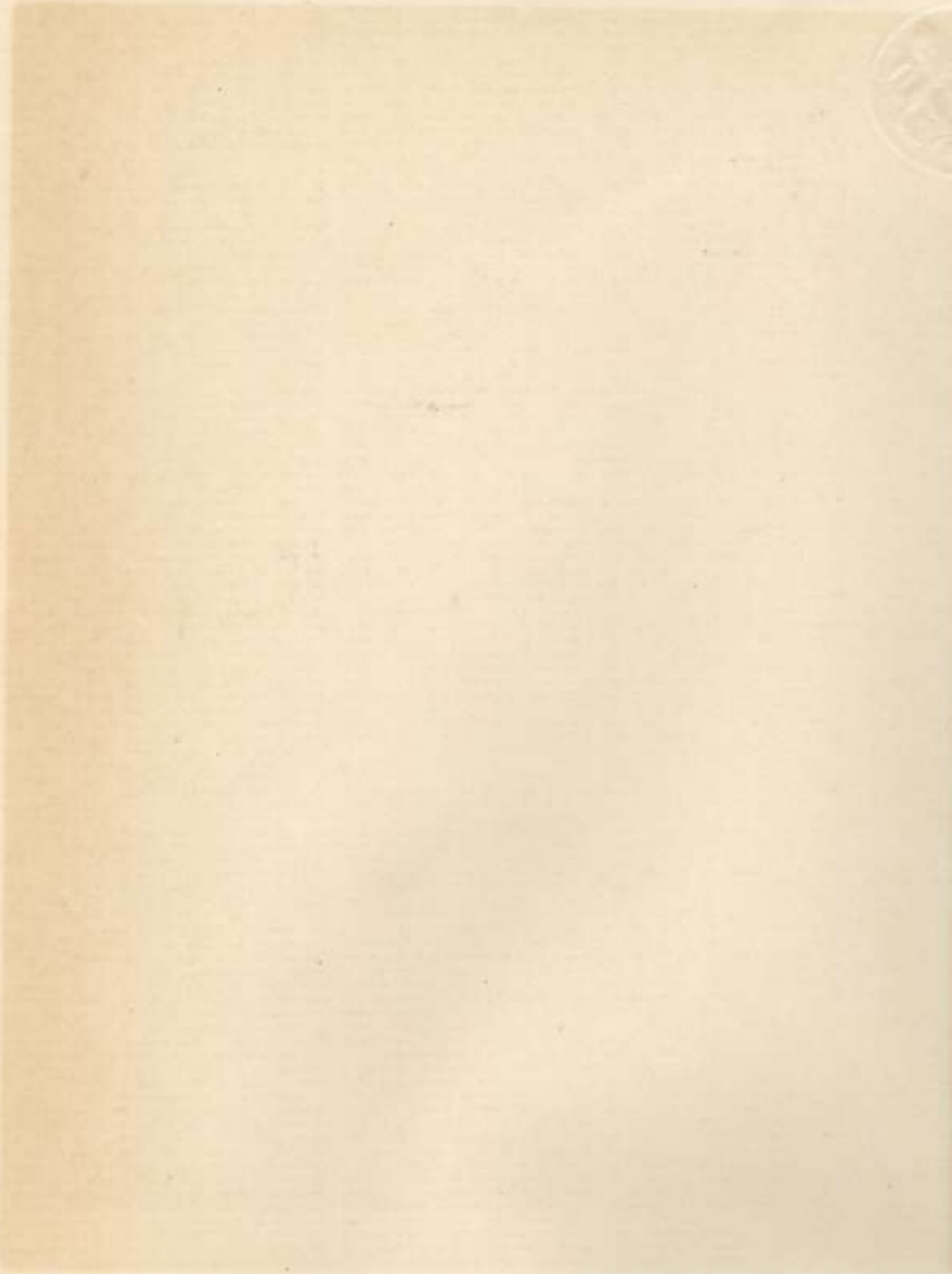
RM

FROM *acw*
 TIME & PLACE

*This line should be erased if not required
 G. & R. 7380. Wt. W14332/M1523 100,000. 3/17. (E990). Forms C/2123

APPENDIX, 32

621

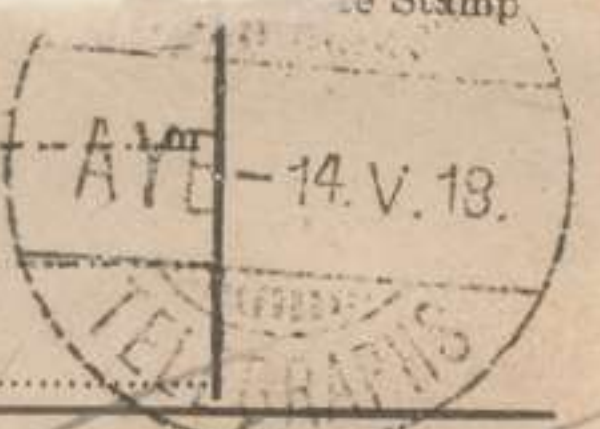


APPENDIX 32

621

233

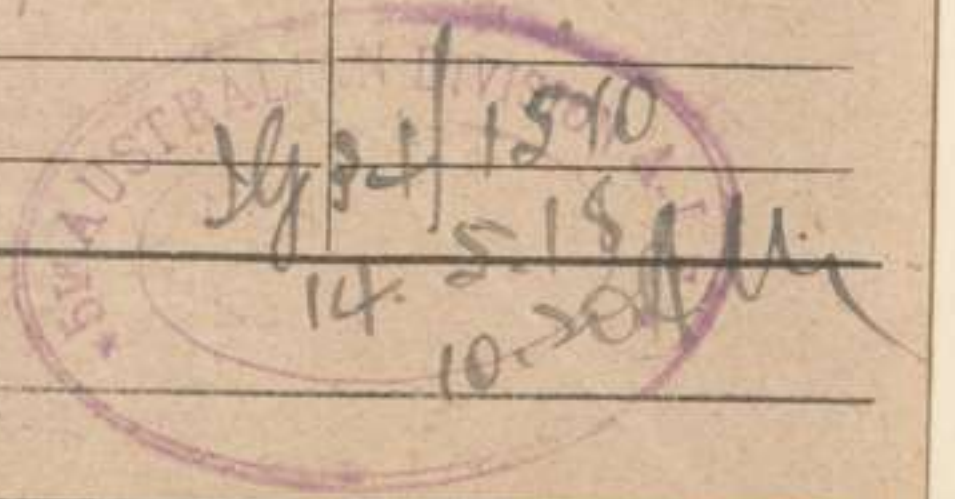
Prefix *AW* Code *14* Words *1* Received *AW* Ser. *AW* Stamp
 From *AW* Ab. *AW* To *AW* By *AW*
 Charges to Collect
 Service Instructions
 Handed in at *AW* Office *AW* m. Received *AW* m.



TO *Tools*

*Sender's Number *10158* Day of Month *14* In reply to Number *AAA*

Following from our left
 Bm 8 aaaa 9.45 pm
 13th large party of
 enemy seen advancing in
 K25VA in artillery formation
 groups of 8 when
 at 50 yard intervals
 about 6 groups engaged
 by our Lewis guns
 and rifles and scattered
 aaaa enemy disappeared
 into trenches in vicinity
 many casualties claimed
 aaaa



FROM *Acid*
 TIME & PLACE

*This line should be erased if not required
 G. & B. 7880. Wt. W14832/M1523 100,000. 8/17. (E980). Forms C/2123.

Prefix *AW* Code *14* Words *1* Received *AW* Sent, or sent out *AW* Office Stamp
 From *AW* Ab. *AW* m. To *AW* By *AW*
 Charges to Collect
 Service Instructions
 Handed in at *AW* Office *AW* m. Received *AW* m.



TO *Tools*

*Sender's Number *10159* Day of Month *14* In reply to Number *AAA*

Situation quiet aaaa enemy
 artillery not very active
 aaaa some shelling on
 J35 with 5.9 and
 J24 with 4.2 and
 J5.9 aaaa very little
 aerial activity aaaa



FROM *Acid*
 TIME & PLACE

*This line should be erased if not required
 G. & B. 7880. Wt. W14832/M1523 100,000. 8/17. (E980). Forms C/2123.

APPENDIX. 32

622



Aust Corps
Flank Divs.
Div Art.
14 and 15 B



WAR NEWS

kl

APPEN

33

Prefix *339* Code *14* Words *14*
 From *AAA* Ab. *AYE-14.V.13.*
 Charges to Collect *1.00* By *1*
 Service Instructions
 Handed in at *AAA* Office *10.15 a.m.* Received *11.50 a.m.*



TO *Tools*

*Sender's Number *Bur 339* Day of Month *14* In reply to Number *AAA*

Report from right Battalion
 1st Brigade on left
 timed 10.15 am
 situation still a little
 obscure but in hand
 several German prisoners
 captured and a number
 killed and ends
 information received here
 would appear enemy raised
 in vicinity of K.19 A7.8
 and effects an entry
 and our troops not
 implicated and situation
 left flank quiet



FROM *Acid*
 TIME & PLACE

*This line should be erased if not required
 G. & B. 7580. Wt. W14832/M1523 100,000. 3/17. (E980). Forms C/2123.

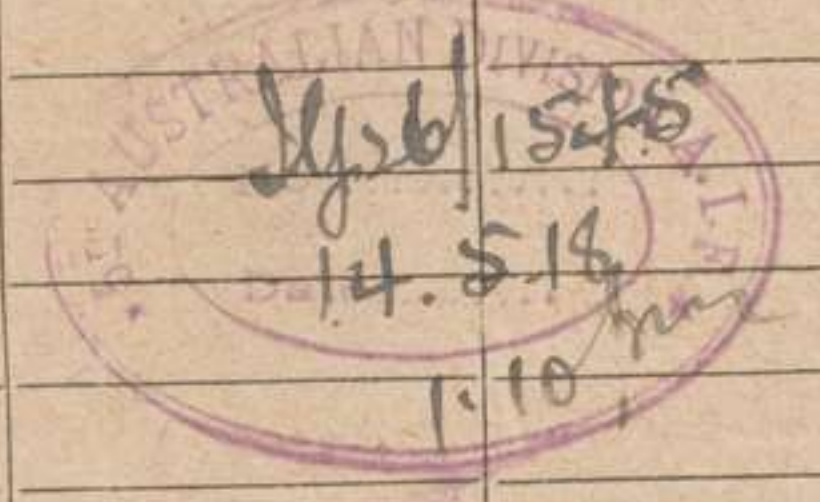
Prefix *339* Code *14* Words *14*
 From *AAA* Ab. *AYE-14.V.18.*
 Charges to Collect *1.00* By *1*
 Service Instructions
 Handed in at *AAA* Office *10.15 a.m.* Received *11.50 a.m.*



TO *Tools*

*Sender's Number *Bur 340* Day of Month *14* In reply to Number *AAA*

JOYFUL reports timed 11.30
 for AM and position appears
 to be restored in our
 casualties about 30 and
 prisoners captured number of 8
 who state their casualties
 heavy and some shelling
 at present fairly heavy
 ends



FROM *Acid*
 TIME & PLACE

*This line should be erased if not required
 G. & B. 7580. Wt. W14832/M1523 100,000. 3/17. (E980). Forms C/2123.

APPENDIX. 32

623

From *WJ* Ab *14-18*
 By *WJ* To *WJ*
 Charges to Collect
 Service Instructions
 Handed in at *230p* Office *WJ* m. Received *230p* m.

TO *Boals*
 *Sender's Number *20043* Day of Month *14* In reply to Number *AAA*

Following from Joyful timed
 2.18 pm begins aaa
 prisoners captured belong to
 31st IR 3 aaa
 4th companies aaa prisoners
 state they were brought
 up specially for the
 attack from behind BRAY
 aaa attack was local
 with the object of
 capturing high ground of K13C
 K19A aaa they know
 nothing of general attack
 aaa Entos

FROM *Acid*
 TIME & PLACE

*This line should be erased if not required
 C. & E. 7880. Wt. W14832/M1523 100,000. 8/17. (E920). Forms C/2123

Prefix *79* Code *79* Words *79*
 Received *WJ* Sent, or sent out
 From *WJ* Ab *14.V.18*
 By *WJ* To *WJ*
 Charges to Collect
 Service Instructions
 Handed in at *WJ* Office *WJ* m. Received *11.25a* m.

TO *Boals*
 *Sender's Number *14* Day of Month *14* In reply to Number *AAA*

The following has been
 received from Joyful aaa
 About 3.30 am enemy
~~was~~ *was* local attack
 on right Bn and
 right Coy left Bn
 front after arty preparation
 aaaa Right Co 17th
 Bn report OK and
 in touch with 8
 A 9 Bn left Coy
 17 report enemy penetrating
 in gap about K19A B1
 in touch with 18
 Bn on left 3
 prisoners 31st IR on
 way down to Bn

FROM
 TIME & PLACE

*This line should be erased if not required
 C. & E. 7880. Wt. W14832/M1523 100,000. 8/17. (E920). Forms C/2123

APPENDIX 32

624

