

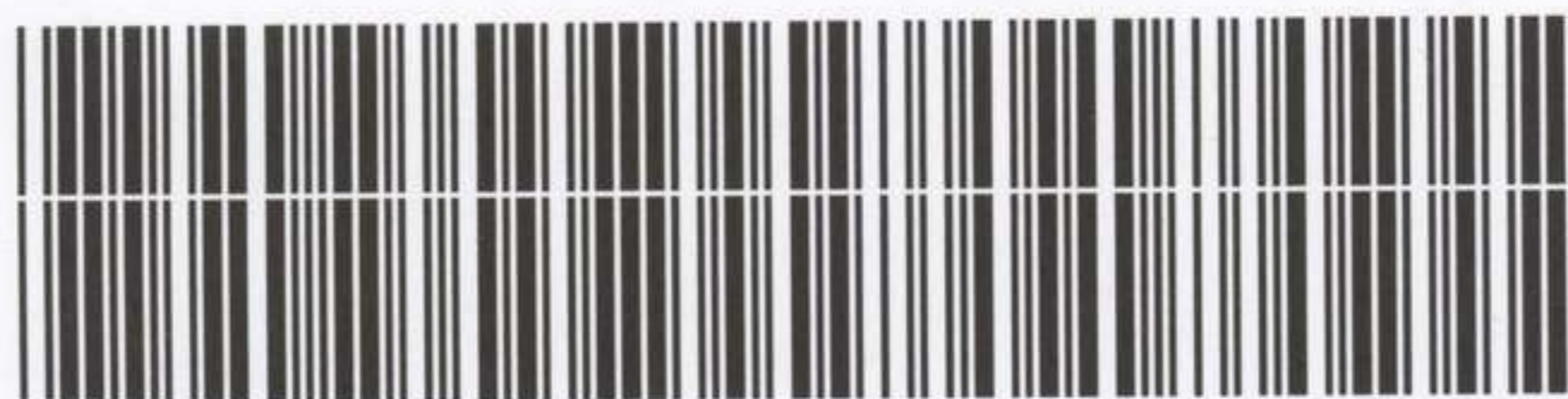
AWM4
Australian Imperial Force unit war diaries,
1914-18 War

Engineers

Item number: 14/26/21

Title: 7th Field Company, Australian
Engineers

September 1917



AWM4-14/26/21

WAR DIARY

or

INTELLIGENCE SUMMARY

(Erase heading not required.)

Army Form C. 2118. 83

ORIGINAL

7TH FIELD COY.
ENGINEERS, A.I.F.

SEPTEMBER 1917.

No.

Instructions regarding War Diaries and Intelligence Summaries are contained in F. S. Regs., Part II and the Staff Manual respectively. Title Pages will be prepared in manuscript.

| Place | Date | Hour | Summary of Events and Information | Remarks and references to Appendices |
|--|----------|-------|---|--------------------------------------|
| RENESCURE- H.Q.T.15.d.1.8. Transport- T.20.c.6.2. | sheet 27 | | STRENGTH. 6 officers 205 other ranks. | |
| | 1st | ----- | Sappers constructing road and erecting 50 yards entanglement 24 feet wide for experimenting with torpedoes; 22 harvesting, washing & overhauling wagons- 12 detached. | |
| | 2nd | ----- | Baths- Church Parade and recreation; various small jobs (10 men)- Experimenting and practising with French Bangalore Torpedoes.- 12 detached. | |
| | 3rd | ----- | Cleaning & overhauling transport, bridging equipment, bicycles etc-Making signboards- experimenting with French Bangalore Torpedo. Completion & demonstration of Hand Rumbler 12 detached. - Carting shingle from ARQUES for horse lines- 4 sappers harvesting. | |
| | 4th | | 1 officer & 100 R. detached to Bridging school AIRE - Gas drill & inspection. Officers & N.C.O's attended lecture on "Wood Fighting". 10 O.R. digging for "DUD" shell. Demonstration by experiment of effectiveness etc of French & ordinary waterpipe Bangalore torpedoes (see attached report) Appendix "A". 12 detached. | Appendix "A" |
| | 5th | | All horses were sent (leaving camp at 9am) to St JAN CAPPEL near BAILLEUL about 20 miles. to be dipped in anti-mange solution. Lt CLOSE was in charge. Drivers & horses bivouacked over night 4th/5th in a field near dipped at 7am on 5th & returned to RENESCURE about 3 pm on 5th. 10 sappers digging for "DUD" shell; party still at bridging school, 12 detached.- overhauling gear, wagons etc- section & company drill. | |
| | 6th | | Same party at Bridging school; overhauling bicycles; 10 men digging for "DUD" shell. Afternoon 60 sappers moved out under O.C. with Lts FERGUSON and CHRISTIAN and FERGUSON to act as defenders in Divisional Battle practice (Appendix) "B". Sappers defended the left half of 3rd objective. Lt FERGUSON detached as G.S.O. 3 trainee. | Appendix "B" |
| T.15.d.1.8 | 7th | 8am | Moved to sheet 28- H.21.0.5.1.- Sappers conveyed by motor lorries arriving about 11am. Transport moved by road CASSEL-STEENVOORDE and resting a night in WIPPENHOEK area. Sappers camped in tents and trench shelters- 2 Nissen Huts- Lt Polson & 10 O.R. returned from Bridging school. | |
| Sheet 28 H.21.0.5.1. | 8th | | Camp improvements and sanitary arrangements.- O.C. & Lt CHRISTIAN reconnoitred forward area to BELLEWARDE RIDGE. Lt CARLETON attached from 6th Field Coy A.E. | |
| | 9th | | Camp improvements - camouflaging tents and placing sand bag walls etc- O.C. & Lts FIDLER and CARLETON reconnoitred forward area to WESTHOEK RIDGE.- Lt POLSON with Capt. WAGSTAFF reconnoitred for company forward billets, road and dump sites.- Various reconnaissances of works. | |
| | 10th | | Nos 1, 3 & 4 sections (less 12 men) prepared 700 yards mud track, & foundations for 12 nissen huts for refilling points about H.22.a.7.7. and H.23.d.3.0. No 2 section commenced preparing forward billets near LILLE GATE about 1.14.c.8.8.-Improvements to camp continued. Lts POLSON and CHRISTIAN reconnoitred forward area to WESTHOEK. | |

VOLUME 21

2449 Wt. W14957/M90 750.000 1/16 J.B.S. & A. Forms/G.2118/12

WAR DIARY

1917

(Please heading not required)

War Diaries and Intelligence
contained in P. S. Keys, Part II
annual respectively. Title pages
in manuscript.

Army Form C 211
VII FIELD COY
ENGINEERS A.I.F.

SEPTEMBER 1917

Summary of Events and Information

Place Date Hour

10th
11th
12th
13th
14th
15th
16th
17th
18th
19th
20th
21st
22nd
23rd
24th
25th
26th
27th
28th
29th
30th

References and
Appendices

Appendix A

Appendix B

VOLUME 2

WAR DIARY

ORIGINAL

Army Form C. 2118

Instructions regarding War Diaries and Intelligence Summaries are contained in F. S. Regs., Part II. and the Staff Manual respectively. Title Pages will be prepared in manuscript.

INTELLIGENCE SUMMARY

SEPTEMBER 1917.

(Erase heading not required.)

7TH FIELD COY.
ENGINEERS, A.I.F.

No. _____

Remarks and references to Appendices

| Place | Date | Hour | Summary of Events and Information | Remarks and references to Appendices |
|-------|------|------|--|--------------------------------------|
| | 11th | | <p>No 1 section. commenced work on shelters at I.14.a.4.4. in rampart wall-excavations for 4 shelters prepared.</p> <p>No 2 Sectn. completed accommodation for 14 men, and erected cookhouse -12.0.R: moved to new billets.</p> <p>No 3 Sectn. Repairing "C" track part plank road.</p> <p>No 4 " 150 yards mud road completed-2 box culverts placed-^{about H²²a 17.} details improving camp.- Camouflaging etc- placing one box drain.</p> | |
| | 12th | | <p>No 1 section. Excavations and frames etc completely prepared. } <i>forward billets I 14 a 44</i></p> <p>No 2 " Two shelters completed and materials prepared. }</p> <p>No 3 " 20 yds plank road relaid, many places repaired; one culvert cleared & repaired- 5 G.S. Loads beech slabs delivered on job.</p> <p>No 4 " One box drain, one crossing of ditch and piles for 12 huts placed- 8 huts unloaded on site.</p> | |
| | 13th | | <p>No 1 section. Two shelters, 5 excavations completed.</p> <p>No 2 " Two shelters, 1 excavation completed-remainder of section moved to new billets.</p> <p>No 3 " 20 yards of planking laid, 1 culvert, 20 yds planking raised, 2 shell holes filled, 5 loads of planking, 8 loads bricks delivered.</p> <p>No 4 " 5 huts complete to floors-1 box drain constructed- parties-d</p> <p>Parties of infantry from 25th, 26th, 27th and 28th Bns Totalling 107 all ranks and including Captain ANDERSON (26th) Lt FAIRLIE (25th) 2/Lt STOCKHAM (27th) reported about 8 pm to be attached . These parties were attached to nos 1.2.3. & 4 sections respectively for general work during operations.</p> | |
| | 14th | | <p>No 1 sectn. 5 shelters completed- 8 in course of erection - 8 men repairing hand trucks at KRUISSTRAAT Dump-Remainder moved into rampart billets.</p> <p>No 2 " 1 shelter completed- 5 excavations.</p> <p>No 3 " 1 box drain- 20 yds plank road completed, 5 loads slabs, 8 loads bricks.</p> <p>No 4 " 1 box drain put in position-1 box drain constructed- 3 huts to floors, and 3 huts completed.</p> | |
| | 15th | | <p>No 1 sectn 2 shelters completed and 4 partly.</p> <p>No 2 " 2 shelters and 1 excavation.</p> <p>No 3 " 20 yards of planking repaired- 1 box drain put in- side drains cleaned.</p> <p>No 4 " 1 box drain constructed- 6 huts and 3 foundations completed- signboards made.</p> | |

WAR DIARY

Army Form C. 2118

Instructions regarding War Diaries and Intelligence Summaries are contained in F. S. Regs., Part II. and the Staff Manual respectively. Title Pages will be prepared in manuscript.

INTELLIGENCE SUMMARY

SEPTEMBER 1917

7TH FIELD COY.
ENGINEERS, A.I.F.

(Erase heading not required.)

| Place | Date | Hour | Summary of Events and Information | Remarks and references to Appendices |
|-------|------|------|---|--------------------------------------|
| | 16th | | <p>No 1 section. 2 shelters completed 4 partially- 5 push trucks repaired.</p> <p>No 2 " 1 shelter, 2 excavations complete - 70 yds of roadway planked complete (BELLEWARDE CIRCUIT)</p> <p>No 3 " 11 yds double width roadway planked complete BELLEWARDE CIRCUIT</p> <p>No 4 " 200 yds formation prepared for planks- 2 shell holes filled.</p> <p>No 4 " 1 1/2 nissen huts completed- signs and stores prepared for 7th A.I.Bde</p> <p>3 excavations for bomb stores.</p> | |
| | 17th | | <p>No 1 section. Repairs to forward dugouts near SIEBEN HOUSE about J.central- Rampart billets . 4 completed 4 under way.</p> <p>No 2 1 shelter completed at LILLE GATE billet - 4 shelters completed at CHINA WALL about I.16.c.6.4. 4pm to 10.30 pm 85yds planking completed on BELLEWARDES CIRCUIT.</p> <p>No 3 100 yards planking, 10 yards revetting completed BELLEWARDE CIRCUIT</p> <p>No 4 1 Nissen Hut erected, foundations for 3 bomb stores put in-preparing signs and stores for 7th A.I.Bde - special party practice wiring.</p> | |
| | 18th | | <p>No 1 section Improving shelters shelters SIEBEN DUGOUT -constructing shelters rampart billets - 2 completed.</p> <p>No 2 " 112 yards planking completed on BELLEWARDE CIRCUIT. 11shelters completed at CHINA WALL.</p> <p>No 3 " 100 yards of planking on BELLEWARDE CIRCUIT.</p> <p>No 4 " 2 huts under way - 3 bomb stores under way- preparing signs and stores for 7th A.I.Bde ., practising wiring.</p> | |
| | 19th | | <p>No 1 section 2 shelters and 2 cookhouses completed at ramparts-improving SIEBEN DUGOUT.</p> <p>No 2 " 75 yards planking completed on BELLEWARDE CIRCUIT. 4 shelters compitd CHINA (WALL)</p> <p>No 3 " 60 " " " " " " " " " " " "</p> <p>No 4 " 3 Nissen Huts erected. Preparation of stores for 7th A.I.Bde (appendix "C") and transported from KRUISSTRAAT dump to "S" dump (I.16.b.2.8.) completed Wiring stores (100 yds wire) and other stores for Strong point prepared and transported to special dump about I.12.b.2.0.</p> <p>Details establishing telephone communication & signal stations-runners reconnoitring.</p> | Appendix "C" |
| | 20th | | <p>----- See appendix "D" Company Operation Order.</p> <p>" " "E" Comments on company operation.</p> <p>" " "F" Divisional Engrs Operation Order</p> <p>" " "G" 7th A.I.Bde Operation Orders.</p> | |

WAR DIARY

or

INTELLIGENCE SUMMARY

(Erase heading not required.)

SEPTEMBER 1917

Army Form C. 2118

7TH FIELD COY
ENGINEERS, A.I.F.

No. _____

Instructions regarding War Diaries and Intelligence Summaries are contained in F. S. Regs., Part II. and the Staff Manual respectively. Title Pages will be prepared in manuscript.

| Place | Date | Hour | Summary of Events and Information | Remarks and references to Appendices |
|-------|------|------|---|--------------------------------------|
| | 21st | | <p>No 1 section. Bunking up SIEBEN DUGOUT. (<i>bunked for 18 men</i>)</p> <p>1 & 3 sectns and 25th and 27th Inf Parties at rampart camp.</p> <p>3 sectn . Constructing bridge across moat at I.14.a.22.17</p> <p>2 " . 12 O.R. at SIEBEN DUGOUT remainder and 20th Party at LILLE GATE camp.</p> <p>4 " Erecting Nissen Huts and odd work.</p> <p>2 " Supervising laying of duckwalk forward of WESTHOEK and digging of communication trench through WESTHOEK RIDGE J.8.c.</p> <p>Details. Surveying road, tracks and trenches and drafting- opening up of well near LILLE GATE- Large proportion resting after operations of 20th.</p> | |
| | 22nd | | <p>No 1 section. Digging shelters in craters near BELLEWARDE FARM I.12.c.7.7. 1 Work stopped at midday and afterwards shelled.</p> <p>No 2 " with 25th and 20th parties carrying and placing duckwalks on communication track and trench forward of WESTHOEK RIDGE -70 yds double duckwalks placed on pickets over marshy place at J.8.b.7.3. Single duckwalk (50 yds) in WESTHOEK RIDGE at J.8.c.1.0.</p> <p>No 3 " 2nd and 27th party marked and formed mule track from J.8.a.6.6. to J.8.b.1.8. <i>(with 100 infantry for 4 hours)</i></p> <p>Details from No 4 etc surveying, making notice boards, reconnoitring etc</p> | |
| | 23rd | | <p>Nos 1 & 2 sectns- carrying and laying 150 yards duckwalk at J.8.c.2.7., J.8.d.2.7. and J.8.b.8.2.</p> <p>3 " Standing by.</p> <p>4 " with 150 infantry located, marked and formed a mule track (to be later a tramway) from J.7.d.2.7. to J.8.d.2.7.</p> <p>Details and officers reconnoitring, surveying, handing over and taking over etc.</p> <p>6pm. Handed over to 4th Field Coy A.E. (Major H.G. Tolley) and took over from 15th Field Coy A.E. (Major GREENWAY).</p> <p>6pm. Company under orders of C.R.E. Corps Troops.</p> | |
| | 24th | | <p>Nos. 1 & 2 sectns- effecting camp improvements- repairing bridge-constructing bathhouse</p> <p>3 & Inf. Moved into camp at H.30.a.0.2.</p> <p>" 3&4 sectns. Erecting Nissen Huts at H.30.a.0.2 near Care BELGE. <i>3 huts completed, 5 huts 20%</i></p> <p>Details drafting etc.</p> | |
| | 25th | | <p>Nos 1 & 2 " Camp improvements, bridge and bathhouse. <i>6 completed, 4 huts 20%</i></p> <p>3 & 4 Erecting Nissen huts at H.30.a.0.2.</p> <p>65 infantry detached to C.R.E. 2nd Aust Div- complete gas inspection- shell gas for 2 hour at H.Q. from 6am to 6.30am-Not heavy.</p> | |

7TH FIELD COY.
ENGINEERS, A.I.F.
Army Form C. 2118.
No. ENGINEERS
7TH FIELD COY.

WAR DIARY

or

INTELLIGENCE SUMMARY.

SEPTEMBER 1917

(Erase heading not required.)

Instructions regarding War Diaries and Intelligence Summaries are contained in F. S. Regs., Part II. and the Staff Manual respectively. Title pages will be prepared in manuscript.

| Place | Date | Hour | Summary of Events and Information | Remarks and references to Appendices |
|-------|------|------|---|--------------------------------------|
| | 26th | | Nos 1 and 2 sections. Making water point for water pint bottles at I.12.c.3.9. Two tanks installed and L.&F. Pump. Repairing tank -erecting baths & generally improving camp. | |
| | | 3pm. | Nos 3 & 4 Sections. Erecting Nissen Bow Huts at H.30.a.0.2, 2 completed- 3 huts 50% 65 attached infantry detached to C.R.E. 2nd Australian Division. Orders received to finishing planking of CHATEAU wood road at about J.13.a.3.9. EXTREMELY URGENT. The gap was 230 yards and the main difficulty was to get material on to the site. Work was started on the job at 7 pm and 195 yards of sleepered track and 20 yards of turning places were laid and spiked, and 35 yards of metalled road made by 8 am on 27th. Material was delivered on morning of 27th, early by motor lorry, and G.S.wagons carted material spasmodically, but on account of extreme congestion most of the material was carried by men some 100's of yards. Casualties-1 wounded, slight. Moderate shelling (but consistent) was experienced. | |
| | 27th | | No 2 section & infantry. CHATEAU wood road -30 yds metalled besides sleeper track- 4 blowouts repaired -250 yards side drains cuts 2' x 2'. Forward area reconnoitred. | |
| | 28th | | No 3 section -23 infantry. Erecting Nissen huts at H.30.a.0.2. 3 huts completed 4 huts, 40%. All available labour put on to earth road formation from BELLEWARDE BEND (I.12.b.35.05) through J.1.c.0.2. to Cross roads at J.2.a.4.0. In all 72 sappers and 110 infantry were employed and constructed 750 yards of 10 ft track with side drain through very rough country. Forward area reconnoitred. | |
| | 29th | | Earth track completed to J.2.a.40.40. Sappers and 40 infantry completed 1100 yards of track 10 ft wide and opened the track to Horsed transport. Guns and ammunition taken over it night 29th/30th. This road is an alternative to SECAUSPION road and, as a road to the left area, was invaluable. 18 sappers 19 infantry improved 200 yards of the track and reclaimed road from Cross Roads east 160 yards, and from X roads south 265 yards. Casualties 2 sappers wounded. | |
| | 30th | | Duckwalk track from J.1.d.7.1. forward- 36 sappers-36 infantry and carrying party of 80 infantry -250 yards laid and set up and duckwalks carried for a further 250 yards. 1500 yards of location taped. Work seriously handicapped by poor supply of duckwalks 17 sappers and 18 infantry reclaimed 400 yards of road to south of X roads at J.2.a.0.4 making it fit for horsed transport. | |

Radabb
Major.
O.C. 7th Field Coy Aust Engrs

(A8004) War 3771/M2 31 750,000 3/17 Sch. 32 Forms/Cent/14

7th Field Company Australian Engrs.

Appendix

"A"

6/9/17

C.R.E.
2nd Australian Division.

Reference your 23/8 of 30th ult, herewith please find report on experiments with French Bangalore Torpedoes and comparisons of its effectiveness as against that of the Pipe Torpedo as used by this company at BULLECCOURT.

| |
|-------------------------------------|
| 7TH FIELD COY. ENGINEERS, A.I.F. |
| No. <i>40/268</i> |

Major.
O.C. 7th Field Coy Aust Engrs.

Attached also is also assessment of the damage done in the way of broken windows. There may have been others but these were the only ones noticed
End.

83

Appendix A

7

REPORT ON DEMOLITION OF ENEMY WIRE ENTANGLEMENTS BY MEANS OF BANGALORE TORPEDOXS .

COMPARATIVE RESULTS OF FRENCH BANGALORE TORPEDO AND RIGID PIPE TORPEDOXS.

7th FIELD COY. ENGINEERS, A.I.F. No.

GENERAL.

Experiments were carried out with both the above type of torpedoes at BALMART on 3rd-4th Sept 1917 on high (3'6") wire entanglements 24 feet wide, similar in construction to the German wire encountered between BEUGNATRE and VAULX and before the HINDENBURG Line, between BULLECOURT and QUEANT, and over typical shell pitted country with long grass and furze undergrowth. The "blows" were tried on two types of wire :- (a) On Forest Pickets 5ft long - 3in in diameter. (b) On long corkscrew pickets.

DESCRIPTION OF CONSTRUCTION OF TORPEDOXS.

(1): TYPE -French Bangalore Torpedo. Description :- See attached file on " Notes on the use of FRENCH Bangalor Torpedoes".

EXPLOSIVE :- Ammonal.- The amount of ammonal required is about 2 1/2 lbs per foot run or about 14 lbs per segment. The explosive accessories necessary with this type of torpedo are:-

- 2 Melinite petards (of 55Gr) per segment. 2 " " " " " tail. 1 - 7' length of "Cordeau Detonant" per segment. 2 - No 8 Mark VII detonators per tail. 2 feet safety fuse per tail. 2 French brass fuze lighters per tail.

Weight. Weight per foot of segments including 2 melinite petards, 6 ft 3 of Cordeau Detonant 1 lb. Weight of ammonal per foot- 2.5 " " Exclusive of head or tail per foot. 3.5 # Total weight of head and tail 6 lbs.

System of Detonation.

See paras 4, 7, and 8 of attached file. on Notes on the use of French Bangalore Torpedoes. The system of preparing of preparing the firing mechanism as described in above notes, proved very unreliable, as the explosion of the two detonators, did not always explode the Cordeau Detonant leading to the Melinite petards. Of five experiments carried out, on the principle described in the notes only two proved successful. The method of firing finally adopted was as follows:- On an 8" length of safety fuze, brass lighter was crimped on at one end, and a No 8 Mark VII detonator, crimped on the other, and the whole length of fuze, including lighter and detonator made thoroughly water tight by means of insulating rubber. The detonator was inserted into the Melinite Petard and the Petard made fast on the male end of the tail. To minimise failure, this means of detonation is laid out in duplicate.

Method of firing.

See para 8 of attached file. The system of ignition (i.e. drawing the pins) is excellent, and in every test worked most satisfactorily.

Results.

Test No 1. The torpedo was made up of 4 segments, head and tail, and in all weighed about 90 lbs, the distance of haulage was about 220 yards over very rough country with furze undergrowth and with numerous pools of water. The torpedo negiea negotiated the rough country and water holes in fine style, for about half the distance to the wire, but on coming through some dense furze, the sharp needles of the scrub cut the whipcord on the pear head, and some small branches became attached the

.....attached between the hauling cable and torpedo body, cutting the whip cord attached to the body as the torpedo was hauled forward, and eventually would have caused a premature blow. After this fault was rectified by means of adding additional whip cord, the torpedo was successfully launched and fired. The anchor had been hooked half way up a 3 inch picket, and the torpedo after passing over the anchor pulley was launched on the central strand of the wire, the leading segment only touching the ground. The blow made a clear roadway through the wire of an average width of 6 yards.

Test No 2 .

Was hauled forward without mishap; on coming to the wire, the pear head engaged the picket and after straining on the cable the rapier blade snapped near the pear head and the torpedo was launched into the wire without further hindrance and fired. The result of the blow was similar to test No 1.

Test No 3.

Was launched over a section of wiring erected on corkscrew pickets : The torpedo was launched along the ground and fired. The result of the blow as against the wire erected on wooden pickets; the wire was blown clear for an average width of 6 yards but only 2 pickets were blown away the others being merely bent over.

Remarks.

The haulage of the torpedo of this weight (90 lbs) over a distance of 120 yards , proved just about the limit of the capacity of the windlass.

No 2.

TYPE. Rigid Pipe Torpedo.

Description.

Torpedo consists of a length of galvanised iron water piping 2" in diameter of any length of from 18 to 24 ft, with wooden plugs in ends, forward plug being rounded.

Explosive. Ammonal - The amount of ammonal required is about 1½ lb per foot run.

- The explosive accessories necessary for this type are
- 1 Wooden plug 6 in long, drilled to receive 1 one oz dry guncotton primer.
 - 1 One ounce Dry guncotton Primer.
 - 1 No 8 Mark VII Detonator.
 - 2 Nobel Lighters.
 - 10 feet safety fuze.

Weight

| | |
|------------------------------------|-----------|
| Weight per foot run of 2 "G.I.W.P. | 2.81 lbs. |
| " " " " " ammonal | 1.5 " |
| Total | 4.31 lbs. |

System of detonation.

Two five foot lengths of safety fuze are spliced together on to one lead about 6 inches long on which is crimped one No 8 Mark VII detonator.

Two Nobel lighters are crimped on to the the two free ends of the fuze.

The detonated end of the fuze is led through the drilled wooden plug and inserted a 1 oz dry guncotton primer, which is made fast in one end of the wooden plug.

The wooden plug is then rammed home into the pipe, guncotton forming contact with the ammonal, and all is then ready for firing.

Method of Firing.

The loaded pipe is carried across No Man's Land by two men and placed over the enemy wire; they then retire; a third man then cuts off the sacking which is wrapped round the firing end and inserts the wooden plug containing , primer, detonator and fuze. On a given signal he then fires the fuze by means of the nobel lighters (2 leads and 2 lighters to minimise failure).

.....failure).

He has then 2½ minutes to retire to a safe distance before the blow takes place.

RESULTS.

Test No 1. On wire erected on wooden pickets.

Cleared a gap of average width of 5 yards.

Test No 2. On wire erected on long corkscrew pickets.

Cleared the wire off pickets making gap of average width of 5 yards but left pickets either twisted or bent.

REMARKS.

To successfully clear a gap through the wire it is necessary that the pipe be 12 inches longer than the width of the wire required to be cut. Placing the pipe on top of the wire, cuts the wire clean and does not cut up the ground under it.

CONCLUSIONS.

FRENCH TORPEDO.

- (a). The torpedo is very complicated in construction and would be very difficult to assemble in trenches except under special conditions, i.e. stationary warfare and fairly quiet. There are too many pieces to get lost under most conditions and this renders the torpedo unreliable.
- (b) The launching did not appear to be too reliable; a hitch occurred on all but one occasions.
- (c) Once launched ~~through~~ through the wire the torpedo is satisfactorily delivered into the wire and the ignition satisfactorily operated.
- (d) The torpedo is effective in clearing a track 18 feet wide as long as the torpedo.
- (e) Provided the firing portion is made watertight with taping the torpedo can pass through water without harm.
- (f) The wire cable is liable to be cut and render the contrivance inoperative.
- (g) The windlass is rather light for rough ground.
- (h) The method of firing described in the pamphlet (i.e. by detonator on detonant fuze) is very unreliable. The best method is to use a longer piece of safety fuze and take it direct to a detonator in the Melinite primer.

PIPE TORPEDO.

- (a). Is extremely simple there being only two parts of which the firing plug is carried in duplicate.
- (b) Under most conditions it can be satisfactorily on to the wire and only means three men going to enemy ~~front~~ ^{wire} in view of one with the French torpedo.
- (c) A 2" pipe is effective in clearing a track 12 to 15 feet wide for the length of the pipe and this with a little more than half the explosive in the French Torpedo.
- (d) The method of firing is sure.

GENERAL.

- (a) All things considered the Pipe torpedo is better than the French torpedo for most conditions.
- (b) There are conditions where the French torpedo would be extremely useful and valuable.
- (c) Torpedoes make greater clearance in wire with wooden or angle iron pickets than in wire with corkscrew pickets.

W. Debb Major.
O.C. 7th Field Coy Australian Engrs.

6/9/17

Appendix A

Estaminet. Or. Lavakette
 Madam Deneyette Roussel
Wordreques

1 Fan light 78 1/2 cm. x 45 cm
 7 frames glass 66 1/2 " x 38 1/2 "

Estaminet. Or. La Belle Vue
 Madam Rosquette Chermant
Wordreques

1 frame glass 37 1/2 cm. x 42 1/2 cm.
 2 " " " 37 1/2 " x 24 1/2 "
 2 " " " 37 " x 23 1/2 "

Appendix "B"

SECOND AUSTRALIAN DIVISIONAL ENGINEER ORDER NO. 15.



Divisional Exercise

Reference Map - Sheet 27 S.W. 1/50,000.

Sept. 5th 1917.

1. Second Australian Division will, on 5th September, attack objectives as follows:-

- 1st Objective - - Blue line 50 yards inside edge of wood
- 2nd Objective - - Yellow " 50 " " " "
- 3rd Objective - - Red " 50 " " " "

These objectives are shown on attached map. Boundaries of each flank are shown in black. Forging up line is shown as blue dotted line.

- 2. 5th Brigade will capture 1st objective. 6th Brigade will follow 5th Brigade and capture 2nd objective. 7th Brigade will follow 6th Brigade and capture 3rd objective.
- 3. Zero hour will be 2 p.m. Watches will be synchronised with Div. Signals at 9 a.m. and 10 a.m. on 5th instant.
- 4. As soon as the 2nd objective has been captured strongpoints are to be put in at T.S.C.S.S., T.S. central and N.S.S.d.S.1. (work to be laid out on the ground and tools to be on position) Communication trenches are also to be commenced, running from each of these strongpoints back to edge of wood (these will be marked out only, no working parties to construct them will be provided.)
- 5. Garrisons of the strongpoints (1 platoon each) will be found by the 6th A.I. Brigade, and will go to the strongpoint to construct and garrison same.
- 6. The 5th Field Company will co-operate with the 6th A.I. Brigade for the purpose of carrying out the above works. C.O. 5th Field Company will arrange direct with the 6th A.I. Brigade for taking over the garrisons of the strongpoints which have to be constructed, and will also keep in touch throughout the operations and to obtain from G.O.C. orders for move forward of parties which are detailed for works on capture of 2nd objective.
- 7. C.O. 5th Field Company will also detail 8 parties of 4 men each for each of the three Brigades. These parties are to operate in conjunction with the moppers-up for the purpose of dealing with parties of enemy holding out in dugouts, strongpoints etc, which require to be destroyed by explosives. Each party will therefore be equipped with the necessary materials. C.O. 5th Field Company will arrange with Brigades as to when and where the parties are to report. (Explosives will not actually be carried).
- 8. C.R.S. will be at D.M.Q. at CARR du RESTAT (N.S.S.a.) and all three Brigade Headquarters 100 yards along road S. of that spot.
- 9. The 7th Field Company will be in reserve in position where they can readily send forward parties if required.
- 10. Acknowledge.

John Corbett

Lt. Colonel,

C.R.S. Second Australian Division.

- Copy to 5th, 6th & 7th Bdes.
- " to 5th & 7th P.Coys. ✓
- " to " 2nd Aust. Div.
- " to File.
- " to War diary.

recd. 6-9-17.

7th Field Company Australian Engineers.

OPERATION ORDERS

by

MAJOR. E.N.WEBB M.C.
Commanding.

SECRET

1. Attack. The 7th Aust Inf Bde in conjunction with the 5th A.I.Bde on the left and 3rd A.I.Bde on the right, will attack enemy trenches at ZERO hour on 20th inst.
ZERO hour will be 5-40 am.
Other troops will be operating further to both flanks.
7th Field Company A.E. will co-operate with 7th A.I.Bde in the attack.

2. Objectives. RED. J.8.b (gun positions) through J.8.b.6.7. along E. edge of ~~XXXXXXXX~~ HANEBEEK WOOD to J.2.b.20.15.
BLUE. Northern edge POLYGONEVELD at J.9.a.7.3., E of ALBERT and IRON CROSS REDOUBTS to J.3.c.5.5 -- J.3.d.2.0. -- East of ANZAC - J.3.a.10.75.
GREEN. Road junction at J.9.b.20.55, J.3.d.2.0. - J.3.d.0.6. - J.3.a.75.20 - J.3.a.5.5. - J.3.a.2.8.

3. Method of Attack. The attack will be carried out "leap frog" fashion. Battalions are allotted objectives as under:-
(a) Red 25th Battalion.
(b) Blue 27th Battalion.
(c) Green 28th Battalion.
26th Battalion in close support.
The 25th Battalion move up to barrage at ZERO, 27th Battalion will move up to position vacated by 25th at ZERO and jump off from this line at ZERO plus 50 minutes, when they will move up to the barrage, passing through 25th Bn and will capture and consolidate the BLUE LINE.
The 28th Bn will keep in touch with the advance and will move forward at ZERO plus 150 minutes, and move close under barrage on BLUE LINE. They will then advance and capture GREEN LINE. 26th Battalion will move from its place of assembly at ZERO plus 140 minutes, in close support of 28th Bn, moving at 500 yards in rear unless otherwise required.
Barrage will remain in front of GREEN LINE until consolidated.
In all stationary barrages a proportion of smoke will be used to indicate.
Finally, on thinning out, the 28th Bn will occupy GREEN and BLUE LINES, 27th Bn RED, and 26th Bn will dig communication trench.
Red ground flares will be lighted in most forward positions when called for.

SUCCESS SIGNALS.
Two RED very lights on quick succession for RED LINE.
One RED and one WHITE very light in quick succession for BLUE.
Two GREEN in quick succession for GREEN.
These only when consolidation ^{actually} in progress.

MARKS.
Helmets of troops detailed for capture of objective will be marked with a diamond between rim and crown in rear:-

| | |
|---------|--------|
| 25th Bn | RED |
| 27th Bn | BLUE |
| 28th Bn | GREEN |
| 26th Bn | GREEN. |

COMMAND POST. ALBERT REDOUBT will be the command post of the 27th Bn and Brigade forward station.
25th Bn command post about J.8.b.7.3.
26th J.3.c.85.40.
28th J.9.a.85.60.

- 83
4. R. A. Posts. R.A.P!S will be established near Battalion H.Q.
5. Headquarters. 7th Brigade H.Qrs will be at MUD LANE dugout at I.12.c.3.5. and Advanced Brigade Hd Qrs at WESTHOEK RIDGE at J.8.c.0.7.
 Lieut CHRISTIAN will be at Brigade Hd Qrs and Major WEBB at Advanced Brigade Hd Qrs.
 The company Headquarters will remain at billets at LILLE GATE.
 C.R.E. and advanced D.H.Q. will be at H.27.b.7.9.
6. Jumping off lines. L/Cpl BULLEN and Sapper PHELPS have been detailed to assist 25th Bn in laying out tapes for Jump off lines in front of WESTHOEK RIDGE.
 Sappers ELTIS and OWEN have been similarly detailed to assist 27th Battalion.
7. WORK.
 On the capture of the GREEN LINE a platoon strong point will be constructed at J.9.a.50.65. under Engineer Supervision.
~~and attached infantry to 25 of 26th Bn~~
 Lieut Polson with 12 sappers of No 4 Section and attached infantry (25 of 28th Bn) will site and wire this strong point and one platoon of 26th Bn under Lt WALKER will dig and garrison the same. The whole of these parties will assemble in the vicinity of CHINA WALL I.12.b.4.3 at ZERO hour. Two pontoon wagons will transport sappers and one platoon of 26th Bn to GORDON HOUSE leaving Transport Lines at 1 1/2 hours before ZERO. 28th Bn infantry party will leave LILLE GATE Billets 3 1/2 hours before ZERO, No 4 Section will provide guide.
 Tools and stores for this party have been collected at *about Indig* I.12.b.9.2 near BELLWARDE LAKE. These will be picked up as party proceeds to the work.
 The whole party will remain at CHINA WALL POSITION position until the situation is clear and the order to move is received from Bde through O.C. 7th Field Coy A.E.
- Lt FIDLER and 10 other ranks from No 1 section will lay out with tapes a communication trench from J.7.d.8.8. to about J.9.a.5.9. selecting the best location to right of Brigade area. After the capture and consolidation of GREEN LINE, if the situation permits the 26th Battalion will dig the communication trench, digging the forward end and most important positions first.
 Lt FIDLER and party will assemble in the concrete dugout at J.7.d.09. and will move on to the work of laying out on receipt of orders from 7th A.I.Bde through O.C. 7th Field Coy A.E. or his representative with Brigade.
- No 2 Section and the remainder of Nos 1 and 4 will stand by in billets at LILLE GATE ready for any emergency work. Remainder of No 4 Section will move up to LILLE GATE billets and camp there for this purpose.
- No 3 Section will carry on any works in hand.
8. RUNNERS. Lt POLSON and Lt FIDLER will each arrange for two sappers to act as runners.
 No 2 section will detail two runners to work between Bde Hd Qrs at MUD LANE and dugouts in Y WOOD, I.12.c.3.5. and CHINA WALL assembly point and LILLE GATE BILLETS.
 No 1 Section will detail two runners to work between advanced Bde Hd Qrs in WESTHOEK RIDGE, SIEBEN HOUSE dugout and Bde Hd Qrs at I.12.c.3.5. (MUD LANE dugouts). No 1 section will collect extra water in tins at SIEBEN HOUSE dugout.
9. Reports. All reports from forward will be sent to O.C. 7th Field Coy A.E. at Advn Bde Hd Qrs WESTHOEK RIDGE.

10. DRESS. Fighting Dress for all ranks .
Iron rations and remainder of days ration to be carried and extra water as possible.
Extra gear can be dumped as feasible while on the job.
11. Signal Communications.
Signal stations will be established by Corporal GUDMUNSON at:-
MUD LANE DUGOUTS I.12.c.05.85.
{ CHINA WALL (I.16.b.4.3.) about I.16.a.6.3. }
and Headquarters on ramparts near LILLE GATE.

12. *Acknowledge.*

Gudmunson Major.
O.C. 7th Field Company Australian Engrs.

Issued by runner at ... *3pm* ... *19/9/17*

DISTRIBUTION :-

1. C.R.E. 2nd Australian Division.
2. Lt Close. 7th Field Company A.E.
3. 7th A.I.Bde.
- 4.) War Diary.
- 5.)
6. File.

R
[Signature]

APPENDIX. F

7TH FIELD COY.
ENGINEERS, A.I.F.
No.

OPERATIONS 20TH. SEPT. 1917.

No. 16176 Sapper G.L. BULLEN and No. 6680 Sapper G.A. PHELPS assisting the 25th. Battn. to mark "jumping off" line with tape behaved very well. The location by accident was not at first correct but was rectified before it had any serious effect.

No. 16195 Sapper R.H.M. ELTIS and No. 8597 Sapper W.F.L. OWEN assisting 27th. Battn to mark "jumping off" line behaved very well indeed and completed their work well and accurately.

Both Battn. Commanders expressed their appreciation of the services rendered by these men.

All arrangements as laid down were completed to time and all were in position well before "zero" hour.

Sappers got into assembly positions without casualty.

The attack went excellently from the start. As the morning was dull and misty with much smoke from barrage fire and the wind light from West, the enemy had no observation on the battle and continued his barrage on his original S.O.S. lines (one original line of posts and top of WESTHOEK RIDGE) well up to 8.30 am., and did not shell the conquered country until after that hour. O.C. reconnoitred situation at intervals from front of WESTHOEK RIDGE between the barrages.

At 7.00 am. O.C. sent to STEVEN DUGOUT for Lt. J.R. FIDLER who arrived about 7.30 am. After viewing situation for some time O.C. instructed Lt. J.R. FIDLER'S party to come up. They arrived at about 8.15 am. and went on to work of marking out communication trench at 8.30. am. Barrage to this time was heavy on original enemy S.O.S. lines and mainly at 5.9 H.E. About this time it began to develop into indiscriminate shelling of conquered line (up to BLUE LINE) and included more shrapnel and instantaneous fuze. Lt. FIDLER'S party had to work through this second phase after passing through the original S.O.S. barrage. The marking of trench was completed and Infantry (26th. Battn.) on job digging at 11 am. In all about 500 yds. of trench in crests was dug and the Strong Point connected to rear.

Casualties in this party were: - (Lt Fidler's) were: -

| | | |
|-------------|--------------|----------------------------------|
| Lieut. | J.R. FIDLER | wounded R. arm and L. side |
| 2780 L/Cpl. | E.A.D. HILL | " mouth |
| 16559 Sap. | R. MCKEW | " face |
| 15239 " | W. CORDEN | " back (severe) |
| 2700 " | L. ALEXANDER | " L. leg |
| 15249 " | A.B. TOWERS | " head (slight, remained at duty |

At 7.15 am. Lt. POLSON was sent for, arriving about 8.45 am. His party was then at once instructed to come up and join him at Brigade Headquarters, collecting stores from the special dump on the way. This party and arrangements were much disconcerted by the fact that the special dump of stores had been removed by unauthorised persons. On receipt of this information from Capt. COGHLAN at Rear Brigade Headquarters, O.C. sent Lt. POLSON to meet his party and pick up wiring stores as possible. Lt. POLSON failed to meet the party as they had come up by a different route.

Meantime, Lt. CHRISTIAN had shepherded the party from ^{Rear} Bde Hq. forward and arranged to pick up such wire as available on the way. thus the party arrived at WESTHOEK RIDGE about 11.15 am. equipped with wiring stores, but in heavy and cumbersome loads. At WESTHOEK RIDGE the stores were rearranged under O.C's. direction, and party reorganised.

Lt. POLSON had meanwhile gone to rear Bge. Hqrs. and waited there for instructions. On Lt. CHRISTIAN arriving with the tail of the party, he was hastily given all information and instructions relative to the Strong Point, and sent off with the party to construct the S.P. at 11.40 am.

Fire all this time was fairly indiscriminate and hot. Lt. CHRISTIAN led the party out, with sappers first. The platoon garrison (26th. Bn. under 2/Lt. WALKER) followed, while the attached Infantry party (mainly 28th. Bn.) followed, with Capt. ANDERSON bringing up the rear. Although loads had been readjusted, they were still heavy and cumbersome and very difficult to handle in crossing two bad swampy patches. O.C. went out about 12 noon to reconnoitre and found many of these men still struggling with their loads but not giving in.

As the strong point was neared, a particularly heavy barrage of instantaneous fuzed shells was laid down immediately in rear of the strong point so that although the men were seen at work, the actual site was not immediately investigated.

In the face of very heavy barrage fire the party worked on, completing construction, and garrisoning with one platoon, two Vickers and two Lewis guns at 3 pm. Casualties incurred were :-

| | | | | |
|-------------|-----------|------|---------|---------------|
| 2796 Sapper | FIRTH | P.E. | KILLED. | |
| 5397 Pte | LINFIELD | E.A. | Wounded | } 28th A.I.Bn |
| 6410 Pte | WRIGHT | C.F. | " | |
| 5402 Pte | MIDDELTON | F. | " | |
| 5821 Pte | CARELESS | P.W. | " | |

During the morning O.C. arranged for duckwalks to be sent up by company transport "urgent", and these were offloaded at BELLEWARDE RIDGE at 3 pm. O.C. also asked at same time for any wiring stores to be forwarded. C.R.E. arranged for several G.S. leads to be sent to BELLEWARDE RIDGE at 3.30pm.

These were the two stores particularly required.

At 12 noon two parties of sappers (each 6 strong) ^{ere} ~~was~~ ordered up to rear Bde H.Q. with tools and guncotton ready to cut ways into any concrete dugouts asked for. These were ~~attached~~ ^{dispatched} to Advanced Bde H.Qrs with tools at 3 pm, but were not called on. This party remained and lived in SIEBEN DUGOUT ready for any work which ~~may~~ ^{might} be required.

Lt POLSON reported back to Bde Advanced H.Q. about 1 pm and about 1.50pm O.C., (being somewhat worn) handed over to Lt POLSON with instructions to push the duckwalking of marshy places in forward communications, and the digging of communication trench down forward slope of WESTHOEK RIDGE. Lt POLSON remained at Adv Bde HdQrs. O.C. returned to company Hd Qrs via Rear Bde H.Q. and proceeded to report personally and make recommendations to C.R.E. at advanced Divn'l Hd Qrs about 6 pm.

At 3 pm Lt CARLETON was instructed to arrange for 60 of attached infantry (under 2/Lt STOCKHAM) to carry wiring stores from BELLEWARDE to WESTHOEK RIDGE. Lt CARLETON went out with this party which worked on the job until 7.30 pm.

Casualties :-

| | | | | |
|------|---------|----------|------|----------|
| 4063 | Private | BENTLEY | T.J. | Killed |
| 2413 | Private | RITCH | T. | Killed |
| 6095 | Private | HERSCHEL | W.H. | Wounded |
| 1725 | Private | HOGARTH | J. | Wounded. |

COMMENTS .

1. The operation was different in many respects from any previous experience. Barrage was heavier, more exact and precise; and counter battery work appeared to be very effective. Weather conditions were very favourable.
2. All arrangements worked out very well, ~~excepting~~ the one hitch, but under the circumstances of little or no shelling of back areas, the whole of the unit, might, with advantage, have been much closer up in readiness for a job. In a successful show, immediately after is the time to do work and to get work done.
3. All sappers worked splendidly and stood up to some very stiff fire magnificently.
4. A large store of duckwalks well forward is an essential in this country.
Company transport should stand by ready to move such stores right forward as soon as situation allows.
5. Communication tracks, trenches and duckwalks, and mule tracks should have maximum amount of labor on them immediately—mark out with tape or pickets.
6. The value was demonstrated of having the digging of the communication trench made part of the Brigade operations. As a result the essential portions of trench were dug by 2 to 3 pm.
7. The advantages accruing ~~of~~ having infantry parties attached to Field Companies during such operations cannot be overestimated.
8. It is essential that the O.C. or other strong executive officer be actually with Advanced Bde Hd Qrs to know the exact situation and deal with things at once.

83

Comments Continued

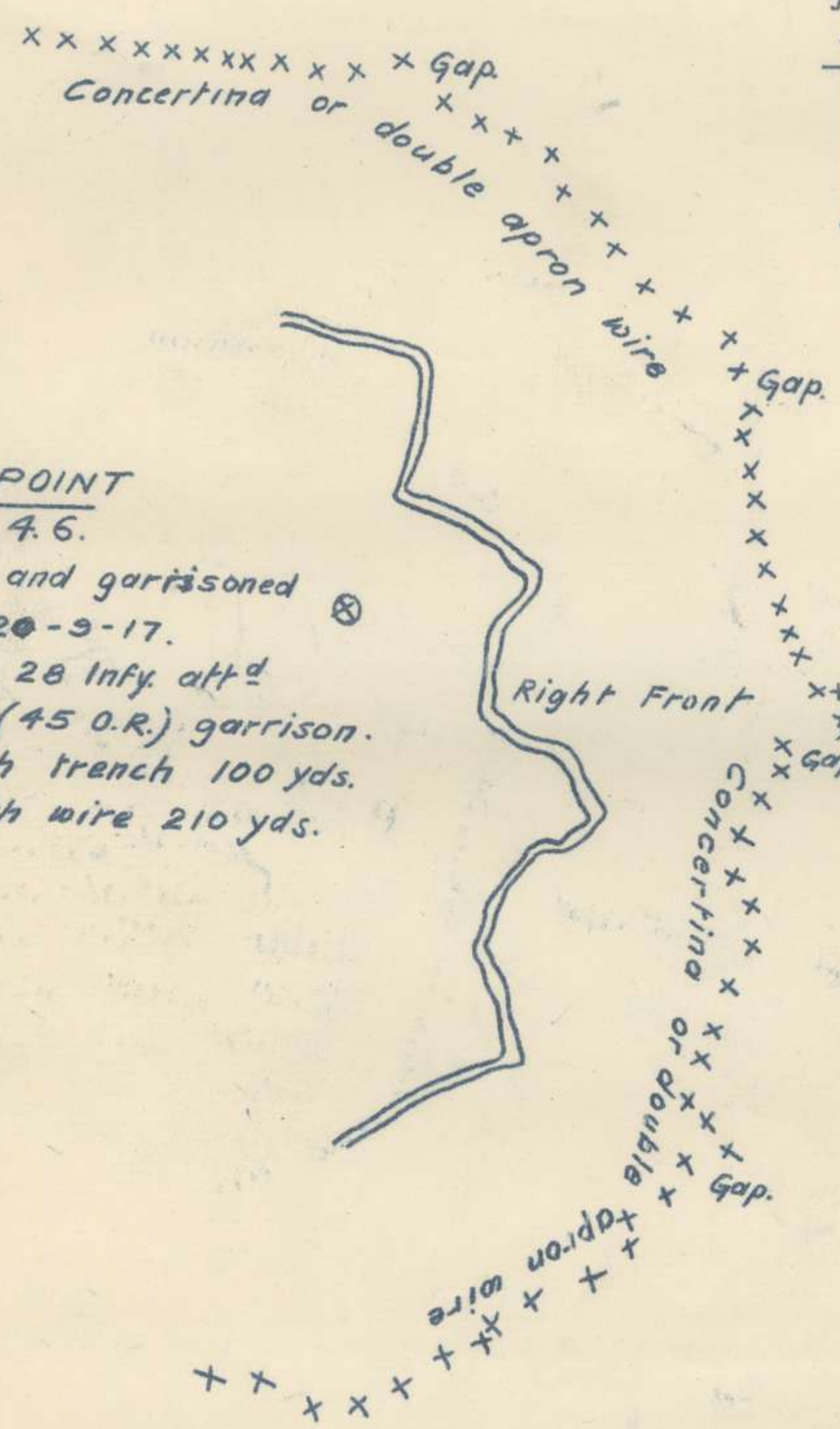
- 9. The arrangement by which Captain COGHLAN was constituted a report and collecting centre ,was an excellent one and he was of the inestimable value.
- 10. The loss of the strong point party's stores stresses the necessity for making arrangements " fool proof".
- 11. The whole show was an excellent one and no practical hitch occurred anywhere.

oooooooooooo0000000000oooooooooooo

25th Sept'ber 1917.

W. Debb Major.
O.C. 7th Field Coy Aust Engrs.

83



STRONG POINT
at J.9.a. 4.6.

Completed and garrisoned ⊗
 3.p.m. on 20-9-17.
 12 Sappers. 28 Infy. att'd
 1 Platoon (45 O.R.) garrison.
 Total length trench 100 yds.
 Total length wire 210 yds.

John Webb
 M.77
 O.C. 7th Coy. 6th Div.
 25-9-17.

SECOND AUSTRALIAN DIVISION.Divisional Engineer Order No. 19.

19th September 1917.

Reference Maps. WEST HOKK Sheet 1/10,000 corrected to
1/9/17.
Sheet 28.H.W. 1/20,000.

1. The 1st ANZAC Corps - in conjunction with the Corps to north and south - will attack the enemy on a date to be notified later.

On the 1st ANZAC Corps front the attack will be carried out by the 1st Aust. Div. on the right and the 2nd Aust. Div. on the left.

The 4th and 5th Aust. Div. will be in Corps reserve.

The 3rd Brigade (1st Aust. Div.) will be on the right and the 27th Brigade (9th Div.) will be on the left of the 2nd Aust. Div.

OBJECTIVES.

2. There will be three stage in the operations - each stage forming one objective. These stages are shown on the attached map:-

The first stage or objective in Red
The second " " " " " blue.
The third " " " " " Green.

The objectives of flank divisions are also shown.

(a) The Red Objective includes the capture of the old gunpit positions in J.3.b. thence through point J.3.b.8.7. along the eastern edge of HANEBEEK WOOD to point J.2.b.20.15.

(b) The Blue Objective includes the capture of the northern edge of POLYGOONVELD at point J.9.a.7.3. - eastwards of ALBERT and IRON CROSS REDOUBTS to points J.3.c.5.5. and 40.85. - east side of ANZAC - point J.3.a.10.75.

(c) The Green Objective includes the capture of the road junction at point J.9.b.20.55. - J.3.d.2.0. - J.3.d.0.6. - J.3.a.75.20. - J.3.a.5.5. to J.3.a.2.8.

Troops will consolidate on the Green line under cover of the barrage. Subsequently the barrage will be moved forward when outposts will be established.

METHOD OF ATTACK.

3. (a) The Divisions will attack on a two brigade frontage - the 7th A. I. Brigade on the right, the 5th A. I. Brigade on the left; the 6th A. I. Brigade will be in Divisional reserve.
(b) The Divisional and inter-brigade boundaries are shown in black and yellow respectively on the map attached.
(c) The jumping off line will be reconnoitred in advance, and tape lines will be laid out on the night preceding the attack, both laterally on which the troops will form up, and forward to give the right direction at the start.

The line on which the leading wave will form up will be J.3.c.85.65. - J.3.a.67.53. for the 7th A. I. Brigade and J.3.a.67.53. - J.2.c.37.65. for the 5th A.I. Brigade.

Dispositions.

4. Fifth Field Company will co-operate with the 5th A.I. Brigade, with headquarters in shelters in YPRES Ramparts at I.14.b.3.5. Seventh Field Company will co-operate with the 7th A.I. Brigade, with headquarters at I.14.a.4.3. near LILLE GATE, YPRES. Sixth Field Company will be in reserve at KRUISSTRAAT, H.Q. at H.18.c.8.2.
2nd Pioneer Battalion will move to YPRES Ramparts quarters vacated by 7th Brigade and will have their headquarters there.

HEADQUARTERS.

5. The Headquarters of Divisions and Brigades are as follows:-
Advanced H.Q. 1st Aust. Div. H.27.b.7.7.
-do- 2nd -do- H.21.d.8.2.
-do- 9th Division I.3.central. (S. side MENIN GATE

5.
(Hdgrs.)

| | | |
|---------------|---------------------|----------------------------|
| Advanced H.Q. | 3rd A.I.Bde. | HOOGE. |
| H.Q. | 5th & 7th A.I.Bdes. | I.12.c.3.5. |
| Advanced H.Q. | 5th A.I.Bde. | J.1.d.75.10. |
| -do- | 7th -do- | J.7.d.9.9. |
| H.Q. | 27th Brigade | I.11.b.5.3. |
| Advanced H.Q. | -do- | KIT & KAT) J.1.d.3.8.) |

LIAISON.

6.

O.C. Fifth and Seventh Field Companies will detail a liaison officer to 5th and 7th Brigades respectively to be located at advanced Brigade headquarters.

O.C. Sixth Field Company will detail an officer (Captain COHLAN) to remain at I.12.c. dugouts (Y Wood) to act as a communication centre and will have runners available, supplied by respective Field Companies who know where the various headquarters are, and the location near CHINA WALL of Engineer parties and garrisons for strong points.

Liaison officers will assist Brigadiers in any way possible. Parties going out and returning from completion of work should be instructed to report to him and he will arrange to pass back information to the Engineer Officer at I.12.c. dugouts. He will arrange with the Brigade Commander for instructions to be sent back for the strong point parties to move forward, and should give the engineer officer with each party any necessary final information and instructions.

WORKS.

7.

The following works have to be put in hand as soon as the situation permits :-

- (a) Strong points near J.9.a.50.55. garrison found by 7th A.I.Bde.
J.3.c.20.55. " " " 5th -do-
J.2.b.95.35. " " " 5th -do-
- (b) Communication trenches as shown on attached plan.
- (c) Construction of fair weather track for men and pack animals from near I.12.b.9.2. to WESTHOEK and as far beyond as possible as shown on map attached. To be converted to tramway and road later.

STRONGPOINTS.

8.

These are to be constructed for garrisons of one platoon each. The garrisons will be detailed by the Brigades in whose sector they lie, and with the Engineer officer and details and attached infantry carrying parties will be stationed at the CHINA WALL until they receive instructions to go forward from their respective Brigade Commanders through the Engineer officer at I.12.c. dugouts.

Fifth and Seventh Field Companies will detail an officer and sufficient other ranks to site, lay-out and supervise and assist in construction of the strong points in their respective Brigade Sectors. The Garrisons will go forward with the Engineer party and do the digging and 25 attached infantry will act as a carrying party for each strong point. Strong points will be wired. On completion Engineer party and attached infantry carrying parties will withdraw and re-join their companies reporting completion to liaison officer and to Engineer officer at I.12.c. dugouts.

O.C. 5th and 7th Field Companies will arrange direct with respective brigades to meet the strong point garrisons and conduct them to their position near CHINA WALL where they are to remain in readiness.

COMMUNICATION TRENCHES.

9.

The communication trenches in the respective brigade sectors will be dug by infantry detailed under brigade arrangements. They will be sited and laid out, and dug under Engineer supervision.

O.C. Field Companies will make necessary arrangements for this with the respective brigades. Engineer details report

9. completion and rejoin their companies.
(C.Ts.)

**FAIR WEATHER TRACK
& TRAMWAY.**

10. This will be constructed by the 2nd Pioneer Battalion as soon as the situation permits. It is to be made 9 feet wide to start with and laid out with a view to widening sufficiently to lay a 10 feet plank road at a later date. Route for this track is shown on attached plan, starting from N.E. corner of BELLEWAARD Circuit road near I.12.b.9.2. and running up to WESTHOEK and beyond as far as possible to connect to formation of old road.

When completed as a fair weather track a light tramway will be laid on the formation as quickly as possible and the formation widened to 20 feet.

C.O. 2nd Pioneer Battalion will also arrange for reconnaissance of best route for extending this track forward where it will be under observation as little as possible and make arrangements to push on immediately.

**DUCKWALK
TRACKS.**

11. Field Companies will assist Brigades in constructing duckwalk tracks forward of WESTHOEK Ridge and will make reconnaissance for best routes. Supplies of duckboards are available on MENIN Road and the old track from CAMBRIDGE Road round north of BELLEWAARD LAKE may be drawn on and used for forward works.

5th Field Company will be responsible for maintenance of northern track between BELLEWAARD RIDGE and WESTHOEK Ridge, and 7th Field Company for the southern track and its continuation to MENIN Road.

ROAD MAINTENANCE.

12. C.O. 2nd Pioneer Battalion will find patrols for maintaining the following roads until they are relieved by similar parties detailed by C.R.E. Corps Troops, which should be when the third objective is gained.

Roads are as follows:-

(a) BELLEWAARD Circuit road from CAMBRIDGE Road to boundary between 1st and 2nd Aust. Divs.

(b) CAMBRIDGE Road from MENIN Road to Corps northern boundary.

(c) Diversion road from MENIN Road to CAMBRIDGE Road.

Roads behind these points back to limit of roads maintained by D.G.T. will be maintained by C.R.E. Corps Troops.

R.E. STORES.

13. Battle dump containing tools, sandbags, and a limited amount of barbed and French wire, screw pickets is located to rear of WESTHOEK Ridge.

Quantities of miscellaneous stores are distributed along the MENIN Road, and at HOOGE

RUNNERS.

14. Each Field Company will detail three runners to be at C.R.E. headquarters, at Advanced D.H.Q.

MESSAGES.

15. Messages to Field Company and Pioneer Battalion C.Os. will be sent to their respective headquarters as detailed in para. 4.

A.D.L.R. TRAMWAYS.

16. A tramway is proposed to be constructed by A.D.L.R. round south end of BELLEWAARD Ridge. Approximate route probably as shown on plan.

17 *Acknowledge*

McCloritte
Lt. Colonel,

C.R.E. Second Australian Division.

Copy No. 1 C.R.E. 1st ANZAC.

" "2, 3 & 4 to 5th, 6th & 7th Brigades.

" "5, 6, & 7 to 5th, 6th & 7th Field Companies. No. 8 to "6" Divn.

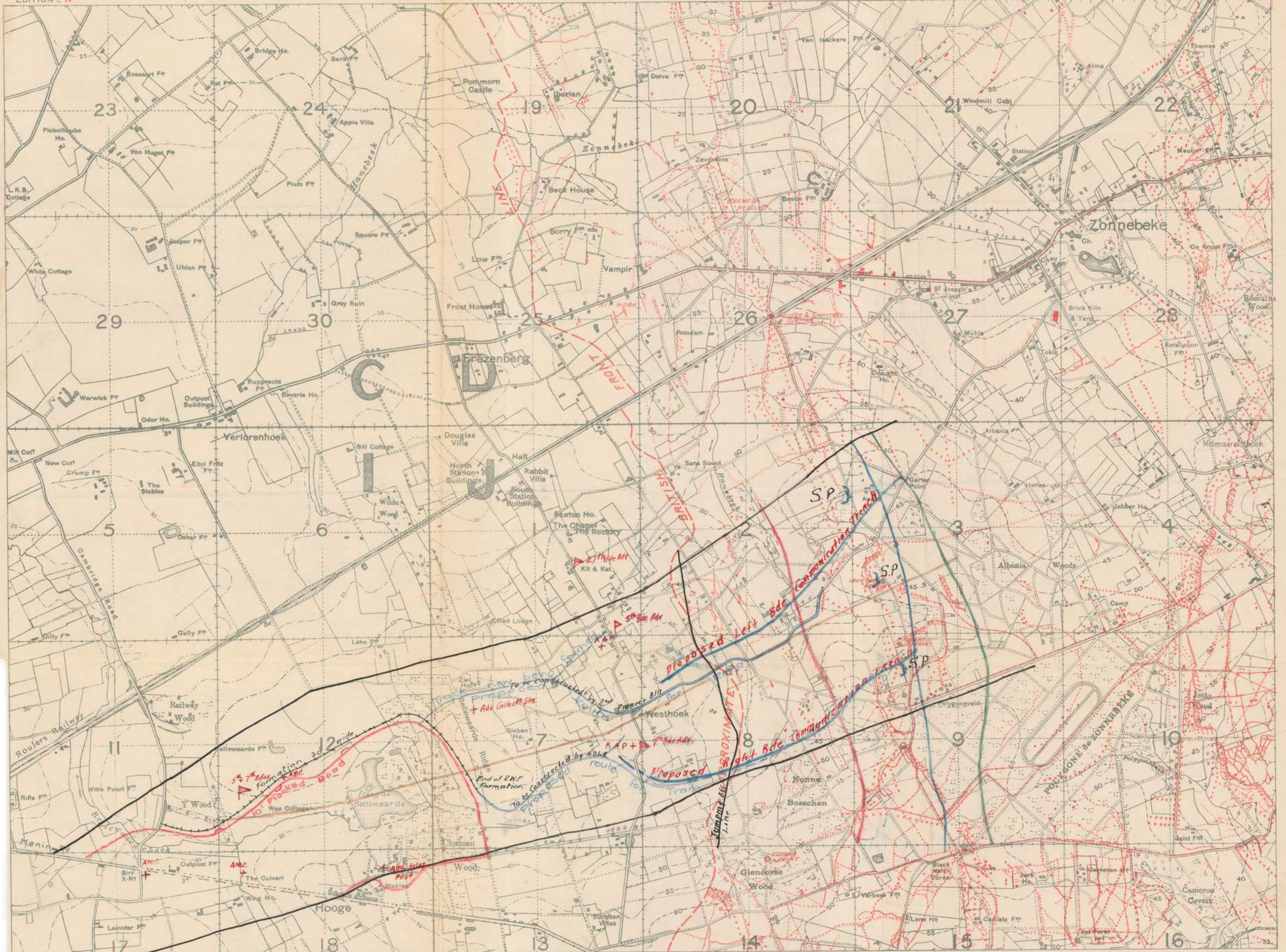
" "9 to A.Q. Divn. Nos. 10, 11 and 12 to 2nd Pioneer Bn., War Diary and File.

WESTHOEK

EDITION I. A

German Trenches corrected to 1-9-17

Part of Sheet 28.



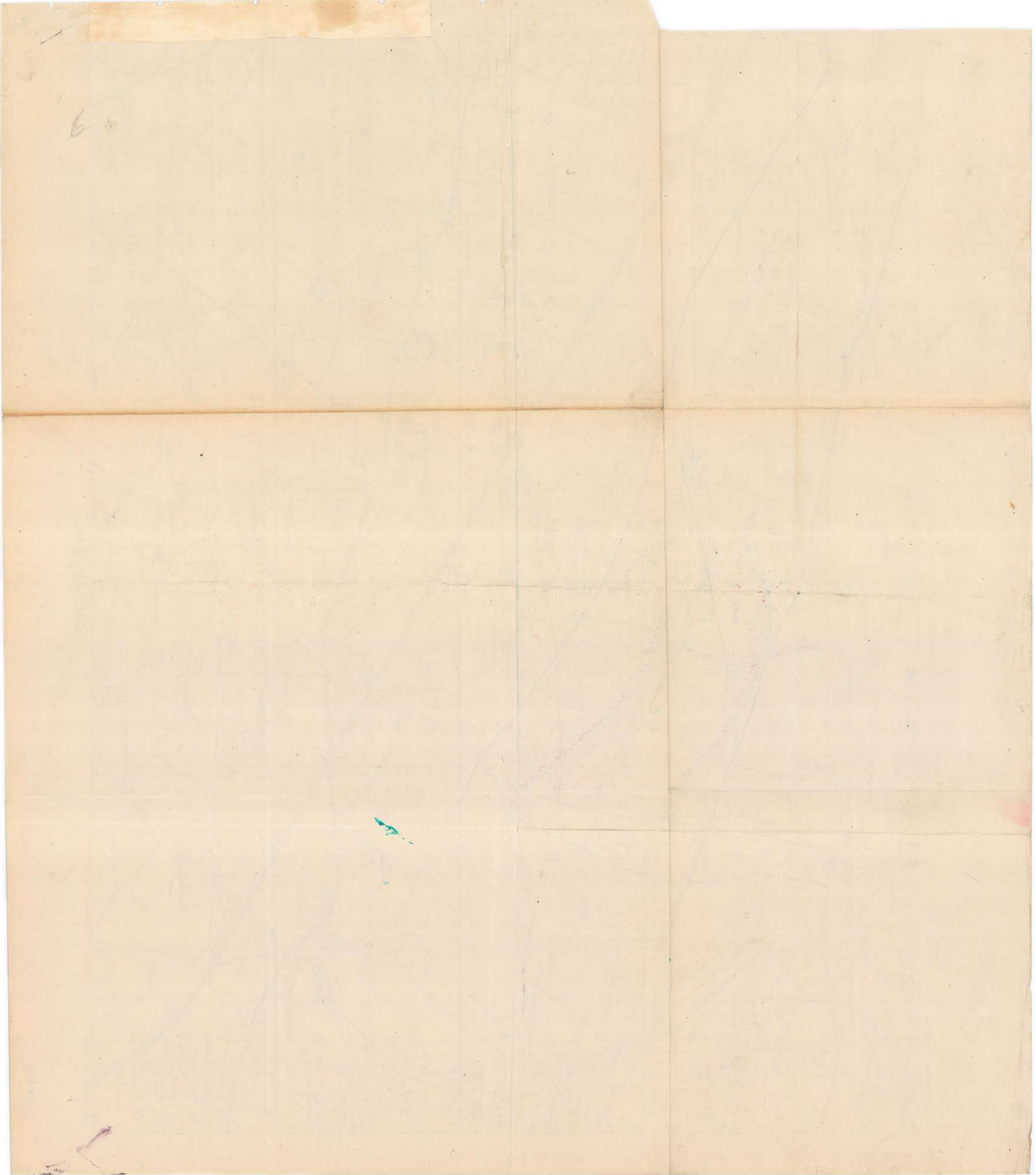
F.S.C. 1007 3087 1013 3-9-17

Scale 1:10,000

Minor corrections to outline made 7.9.17

No 2 Advanced Section, A.P. & S.S.

7th Lully



7th AUSTRALIAN INFANTRY BRIGADE

September 15th 1917.

OPERATIONS - PRELIMINARY INSTRUCTIONS No.1.

Reference Maps : HOOGE 1/10,000.
Sheet 28, 1/40,000.

1. The 1st Anzac Corps in conjunction with the Corps on the North and South will advance their fronts on a date to be notified later.

On the 1st Anzac Corps front the attack will be carried out by the 1st Australian Division on the Right, and the 2nd Australian Division on the Left.

2. BOUNDARIES.

(a) Maps of Divisional and Brigade boundaries and objectives have already been issued to units.

(b) The Right Divisional boundary has since been amended as follows :-

From J.8.c.5.5. boundary now goes to J.7.d.9.2. thence along road to HOOGE, and then as before.

3. The 2nd Australian Division will attack on a two-Brigade frontage. The 7th A.I. Brigade on the Right, and the 5th A.I. Brigade on the Left. The 6th A.I. Brigade will be in reserve.

The 3rd A.I. Brigade is attacking on the Right of the 7th A.I. Brigade.

4. OBJECTIVES.

There will be three stages in the operation, each stage forming one objective, namely :-

(a) RED LINE OBJECTIVE -- capture of the old gunpit positions in J.8.b. - North of NONNE BOSSCHEN - J.8.b.8.7. J.2.d.45.10 - Northward to J.2.central.

(b) BLUE LINE OBJECTIVE. - capture of the line J.9.a.68.00 to J.9.a.68.35 to J.3.c.53.00, East side of ALBERT and IRON CROSS REDOUBTS to J.3.c.42.84. to the East side of ANZAC HOUSE, to J.3.a.10.73.

(c) GREEN LINE OBJECTIVE. Road and edge of wood at J.9.b.2.6. to J.3.d.2.0. to J.3.d.0.6. to J.3.a.75.20 to J.3.a.5.5. to J.3.a.2.8.

(d) Battalions will be allotted to objectives within the limit of the Brigade boundaries as under :-

(i) RED LINE - 25th Battalion.

(ii) BLUE LINE - 27th Battalion.

(iii) GREEN LINE - 28th Battalion.

26th Battalion in close support of 28th Battalion.

- 3 -

(s) Troops will consolidate on the GREEN LINE under cover of the barrage. Subsequently barrage will be moved forward and outposts will be established.

5.

BARRAGES.Artillery.

(1) Barrage will be put down 150 yards in front of the infantry jumping off line at ZERO. Infantry will move up close under barrage at ZERO, and barrage will not move forward until ZERO plus 3 minutes.

At ZERO plus 3 minutes the barrage will advance for 200 yards at the rate of 100 yards in 4 minutes.

(2) Thereafter and up to the RED LINE the barrage will advance at the rate of 100 yards in 6 minutes.

(3) The barrage will halt in front of the RED LINE for three quarters of an hour.

(4) Thereafter and up to the BLUE LINE the barrage will move forward at the rate of 100 yards in 8 minutes.

(5) In front of the BLUE LINE the barrage will halt for 2 hours.

(6) From the BLUE LINE forward the barrage will move at the rate of 100 yards in 8 minutes.

(7) The final protective barrage will be put down 200 yards in advance of the GREEN LINE.

(8) The protective barrages on the RED, BLUE and GREEN LINES respectively will contain a proportion of smoke to indicate to the troops that the several objectives have been reached.

(9) S.O.S. lines for the 3rd objective will be approximately parallel to and 200 yards beyond the GREEN LINE.

Machine Gun.

Machine Gun barrages will be arranged to move forward in conjunction with the artillery barrages and beyond them, and also to form S.O.S. barrages.

7th A.M. Gun Coy will be mobile, and will be under the direct orders of the G.O.C., 7th A.I. Brigade.

Detailed machine gun instructions have been issued separately.

The section of 7th A.M. Gun Coy detailed to supply mobile guns for 6th A.I. Brigade will rejoin their Company on the 7th A.I. Brigade going into the line.

6. ARRANGEMENTS FOR GUIDING TROOPS AND KEEPING DIRECTION.

(a) During the few days prior to the attack, Battalion, Company and Unit guides will be trained to the ground. All officers will reconnoitre the approaches as well as the front.

(b) Routes will be marked by signs, and if possible, arrangements will be made for lamps.

(c) It is suggested that on the afternoon previous to the attack, Battalions should send forward small parties along the tracks which will be used for moving on to the "jumping off" position, so that the ground is trodden down and an unmistakable "pad" formed.

(d) During the attack, direction will be maintained by special parties from each Battalion, each under an officer working by compass bearing.

(e) If sufficient tape is available a line will be laid by a party following the centre of each Battalion.

Routes will be the same for carriers and runners as far as possible, and will be marked by white sign boards.

(f) To avoid loss of touch with the units on the flanks, it has been arranged to meet special parties from the 3rd and 5th A.I. Brigades at the following places :-

(a) On the Right.

- 1. Strong Point at J.8.b.75.00.
- 2. Road Junction at J.9.a.55.30.
- 3. Road Junction at J.9.b.2.5.

(b) On the Left

- 1. J.8.b.4.9. (bend of road)
- 2. J.3.c.4.4. (on road East of IRON CROSS REDOUBT)
- 3. J.3.c,85.55 (North end of JACOBUS REDOUBT)

25th Battalion will arrange to provide parties in (a.1) and (b.1).

27th Battalion will arrange to provide parties in (a.2) and (b.2).

28th Battalion will arrange to provide parties in (a.3) and (b.3)

7. FORMATIONS.

25th, 27th, and 28th Battalions will attack their objectives on a four-company frontage, each company on a one-platoon frontage.

First wave will consist of leading platoons in normal formation for trench to trench attack, with 15 yards distance between lines.

Second wave - in line of section columns in single file, flank sections of each platoon being echeloned to rear.

Third wave (Moppers up) - normal formation for trench to trench attack.

Fourth wave (Carriers) - same formation as second wave.

Distance between waves 30 yards clear.

26th Battalion on a 4-company frontage, each company on a one-platoon frontage. Waves in lines of section columns in single file.

Battalions will at all times be prepared to form a defensive flank on either side, in case of the non-success of units on either right or left.

8. JUMPING OFF POSITION.

It is proposed to assemble the 25th and 27th Battalions on their jumping off lines East of WESTHOEK RIDGE, and the 28th Battalion just West of Ridge. 26th Battalion just W.S.W. of BELLEMAARDE LAKE.

Battalion Commanders will reconnoitre proposed positions and submit report to G.O.C. as soon as possible.

When finally decided upon, each Battalion position will be taped and cross-taped so as to indicate direction of the advance.

Battalions will at once put in hand the matter of training guides to lead their Battalions to the jumping off position or place of assembly.

Battalions will also arrange to peg out routes leading to their positions of assembly.

Great care should be taken to do this as unostentatiously as possible, so as not to give the enemy a hint of what is to happen.

Each Battalion will be in position two hours before ZERO.

9. HEADQUARTERS.

Divisional H.Q. will be at HORSESHOE CAMP G.28.a.

Advanced Divisional H.Q. will be at H.27.b. North of DICKIEBUSCH.

Brigade H.Q. for both 5th and 7th A.I. Brigades will be in dugouts at I.12.c.3.5. with overflow at I.11.d.4.5.

Advanced Brigade H.Q. will be approximately J.7.d.9.8. (CABLE HEAD)

H.Q. of 3rd A.I. Brigade immediately on our Right will be at I.18.b.2.6.

Battle H.Q. of Battalions will be in the vicinity of J.8.c.1.8. As objectives are gained, Battle H.Q. will be as follows :-

| | |
|----------------|-----------------|
| 25th Battalion | J.8.b.70.30. |
| 27th " | ALBERT REDOUET. |
| 26th " | J.3.c.85.40. |
| 28th " | J.9.a.85.60. |

10. COMMUNICATIONS.

Copy of Signal Communications Nos. 1 & 2 issued by General Staff of Division have already been forwarded to Battalions. Brigade Signal Instructions will be issued separately.

11. LIAISON.

Each Battalion will detail two officers for liaison duties - one with each of the cor responding Battalions on its flanks.

Captain A. LENNON, M.C., 25th Battalion, will be Brigade Liaison Officer with the 3rd A.I. Brigade on our Right.

Captain J. ROYDHOUSE, 28th Battalion will be Brigade Liaison Officer with 5th A.I. Brigade on our Left.

All liaison officers will report to units or formations to which they are attached, at least two hours before ZERO.

12. MOPPING UP.

(a) Battalions will be responsible for mopping up areas as under :-

25th Battalion between Jumping Off line and RED LINE within the Brigade boundaries.

27th Battalion between RED LINE and BLUE LINE within Brigade boundaries.

28th Battalion from BLUE LINE to GREEN LINE within Brigade boundaries.

(b) In addition to the general mopping up scheme, special parties are to be detailed to clean up special strong points or any other places which it is expected may prove difficult to clean up.

Special provision should be made to provide "mopping up" parties with prepared Stokes bombs, smoke bombs, or other equipment which may be required to deal with the special positions to be met with.

13. DUMPS. Brigade Main Dump will be at J.7.b.80.30. On gaining first objective it is proposed to establish a dump at J.8.b.80.40 and on gaining second objective, at J.9.a.60.90.

14. MEDICAL.

Evacuation of wounded will be via the MENIN ROAD to Advanced Dressing Station near the School (I.9.c.)

Stretcher Bearers. Battalion quotas will be increased to 48 per Battalion.

15. S.O.S. Each Battalion on gaining its objective will establish an S.O.S. station so that when the final objective is gained, there will be a chain of these posts back from the front line, to repeat any S.O.S. Signals which might otherwise not be seen owing to fog or dust and smoke of barrage.

Appendix G

- 6 -

RED Ground Flares will be used for indicating the positions gained, to contact aeroplanes. These flares will be lighted when called for by KLAXON horn or Very light from the contact aeroplane or at certain fixed hours which may be laid down previously in orders.

It should be impressed on all ranks that it is most important that these flares be lit when called for, so that the exact position of units may be noted; otherwise, in case the operation is not fully successful, and counter-attacks materialize, our artillery may unwittingly put down a barrage on some of our own posts.

16. PRISONERS OF WAR.

Units will arrange to take every precaution to prevent officers or other ranks going into action with letters, documents, or maps which would be of value to the enemy if captured.

All ranks are to be warned that if any man has the misfortune to be taken prisoner, he should give only his number, rank, and name, and no other information.

17. RELIEFS.

The 25th Battalion will probably take over from the two companies of the 6th A.I. Brigade covering the front line in our sector, on the night before ZERO night, so that they may carry out active patrolling and make final arrangements for covering their forming up on the jumping off line.

Distribution :-

| | | |
|-------------|----------------------|---|
| Copy No. 1. | 25th Bn. | |
| 2. | 26th Bn. | |
| 3. | 27th Bn. | A.J. BOASE, Major, |
| 4. | 28th Bn. | Brigade Major, 7th Australian Inf. Brigade. |
| 5. | 7th M. Gun Coy. | |
| 6. | 7th A.L.T.M. Btty. | |
| 7/8 | War Diary. | |
| 9. | File. | |
| 10. | G.O.C. | |
| 11. | Staff Capt. | |
| 12. | B.M. | |
| 13. | Bde. Sig. Officer. | |
| 14. | Bde. I.O. | |
| 15. | Bde. T.O. | |
| 16. | Bde. Bomb Officer. | |
| 17. | 17th A.A.S.C. | |
| 18. | 3rd A.I. Bde. | |
| 19. | 5th A.I. Bde. | |
| 20. | 6th A.I. Bde. | |
| 21. | Capt. LENNON, MC. | |
| 22. | Capt. ROYDHOUSE, MC. | |
| 23. | C.R.A. | |
| 24. | C.P.E. | |
| 25. | A.D.M.S. | |
| 26. | 7th Field Coy A.E. | |
| 27. | 2nd. Aust. Div. "G" | |
| 28. | do "Q" | |
| 29/30. | Spare. | |

SECRET.Copy No. *26*7th AUSTRALIAN INFANTRY BRIGADE.ORDER No. 127.

September 17th 1917.

Reference Maps : WESTHOEK 1/10,000.
Sheets 28 N.W. & N.E. 1/20,000.

1. The 1st Anzac Corps in conjunction with the Corps on the North and South will attack on a date to be notified later.

On the 1st Anzac Corps front the attack will be carried out with the 1st Australian Division on the Right, and the 2nd Australian Division on the Left.

The 4th and 5th Australian Divisions will be in Corps Reserve.

2. The 2nd Australian Division will attack on a two-Brigade frontage. The 7th Australian Infantry Brigade on the Right, and 5th Australian Infantry Brigade on the Left.

The 3rd Australian Infantry Brigade is attacking on the Right of the 7th Australian Infantry Brigade.

3. Boundaries as in Preliminary Instructions No.1.

4. OBJECTIVES.

Para 4 of Preliminary Instructions NO.1. is cancelled, and the following substituted.

There will be three stages in the attack, each stage forming one objective viz.,

(a) RED LINE (First) OBJECTIVE which includes the capture of line of old gun positions in J.8.b. thence through J.8.b.6.7. along Eastern edge of HANEBEEK WOOD to J.2.b.20.15.

(b) BLUE LINE (Second) OBJECTIVE which includes the capture of Northern edge of POLIGONEVELD at point J.9.a.7.3. Eastwards of ALBERT and IRON CROSS REDOUBTS to J.3.c.5.5 - J.3.c.40.85 - East side of ANZAC - J.3.a.10.75.

(c) GREEN LINE (Third) OBJECTIVE, which includes the capture of road junction at point J.9.b.20.55, J.3.d.2.0. - J.3.d.0.6 - J.3.a.75.20 - J.3.a.5.5. - J.3.a.2.8

5. METHOD OF ATTACK.

The attack will be carried out "leap frog" fashion. Battalions are allotted objectives with-in the limits of the Brigade flank boundaries as under:

| | | | |
|----------------|---|---|----------------------------------|
| (a) RED LINE | - | - | 25th Battalion. |
| (b) BLUE LINE | - | - | 27th " |
| (c) GREEN LINE | - | - | 28th " |
| | | | 26th Battalion in close support. |

Appendix G

- 2 -

6. FORMATIONS FOR ATTACK as in para 7 of Preliminary Instructions NO.1.

7. JUMPING OFF POSITIONS.
Battalions will be formed up on their jumping off tapes at least one hour before ZERO as under :-

25th and 27th Battalions East of ESTHOEK RIDGE with 27th Battalion in rear.

28th Battalion on Western slope of ESTHOEK RIDGE

26th Battalion W.S.W. of BELLEVAARDE LAKE.

(vide Preliminary Instructions No.1. para 8)

8. ACTION OF BATTALIONS.

(i) At ZERO, 25th Battalion will close up to barrage opening out to proper distance between waves during the advance. This Battalion will capture and consolidate RED LINE, and co-operate on its Right with 11th Battalion (3rd A.I. Brigade) by detailing a platoon to assist in the capture of enemy post at J.8.d.10.55.

(ii) The 27th Battalion will move up to position vacated by 25th Battalion at ZERO and jump off from this line at ZERO plus 50 minutes. 27th Battalion will then close up to the barrage, and on capture of RED LINE by 25th Battalion, pass through the latter Battalion, and capture and consolidate BLUE LINE.

(iii) 28th Battalion will keep touch with advance and will move forward at ZERO plus 150 minutes until close under the protective barrage beyond BLUE LINE. They will then advance, capture, and consolidate GREEN LINE.

(iv) The 26th Battalion will move off from its position of assembly at ZERO plus 140 minutes in close support of 28th Battalion, keeping a distance of 500 yards in rear if not otherwise required by the situation.

Each Battalion will maintain close liaison with flank Battalions of neighbouring Brigades and will be prepared to form a defensive flank or flanks if necessary.

9. TOUCH WITH FLANK BRIGADES.

Parties as laid down in para 6 (f) of Preliminary Instructions NO.1. will establish connection with 3rd A.I. Brigade and 5th A.I. Brigade respectively as follows :-

(a) With 3rd A.I. Brigade

1. Strong Point J.8.b.75.00.
2. Road Junction J.9.a.55.30.
3. Road Junction J.9.b.2.5.

(b) With 5th A.I. Brigade

1. J.8.b.4.9 (bend of road)
2. J.3.c.4.4. (on road East of IRON CROSS REDOUBT)
3. J.3.c.85.55 (North end of JACOBS TRENCH)

10.

BAR RANGES.

Artillery. (i) Creeping Field Artillery barrage as in Barrage Map issued to units, which will not be taken forward of BELLEWAARDE RIDGE.

(ii) In addition to the above, the following barrages are also being provided :-

(a) A creeping barrage beyond the Field Artillery barrage by heavy artillery, which will not only creep forward, but during the pauses will jump back.

(b) Certain standing barrages on known hostile concentration points and lines of approach..

Also vigorous counter-battery work.

The 5th Army F.A. Brigade is at the disposal of the Divisional Commander to engage any special targets. Battalion Commanders are to apply immediately through this office if they require any special targets engaging.

The final barrage will remain down until consolidation is completed, when it will cease and outposts will be established.

11.

THINNING OUT.

After capture and consolidation of the GREEN LINE, if the situation permits,

(a) The 25th Battalion will occupy the WESTHOEK RIDGE position,

(b) 27th Battalion will occupy the RED LINE

(c) 28th Battalion will dig a communication trench (plans of which will be furnished by the G.R.E.) and on completion will take up position in reserve WEST of BELLEWAARDE LAKE.

(d) 28th Battalion will be responsible for the GREEN and BLUE LINES, and the ground between.

The order for the above moves and action will be given by Brigade H.Q.

On completion of this re-arrangement, all rear Battalions must be prepared to move up at any moment.

Consolidation and improvement of the ground gained and the WESTHOEK RIDGE must be continued without cessation until relief.

12.

MACHINE GUNS.

(Wide para 5 Preliminary Instructions No.1)

The 6th, 22nd, and 5th Divisional A.M. Gun Coys will provide the machine gun barrages on the Divisional front.

The 7th A.M. Gun Coy (less 4 guns detailed for special targets) will support the attack and will detail the guns necessary for the consolidation of each objective.

13.

TRENCH MORTARS.

(i) O.C., 7th A.L.T.M. Battery will detail two guns and crews to each of the 25th, 27th, and 28th Battalions.

(ii) The two remaining guns will be held in Reserve, and will be emplaced at least two hours before ZERO in a position from which they can smother Strong Point at J.S.d.1.4. with smoke if the situation demands it.

Appendix G

- 4 ;

(iii) The section commanders of each of the sections attached to 25th, 27th, and 28th Battalions will report to their respective Battalion Commanders on the day before ZERO to receive instructions.

(iv) Each Battalion to which mortars are attached will detail a carrying party of 1 N.C.O. and 10 men for each gun attached.

COMMUNICATIONS. Signal instructions are issued as an appendix.

15.

STRONG POINTS.

On capture of GREEN LINE a platoon Strong Point will be constructed at J.9.a.50.65 under Engineer supervision.

The working party and garrison of one platoon for this Strong Point will be supplied by 26th Battalion. C.O., 26th Battalion will arrange mutually with O.C., 7th Field Coy A.E. time and place for party to report.

16.

CONTACT PATROL.

RED ground flares will be lighted - several to every 50 yards if possible - by troops in our most advanced positions when called for by contact aeroplane (vide Preliminary Instructions No.1. para 15)

17.

S. O. S. Instructions for establishing S.O.S. Stations have been issued. Units will communicate S.O.S. by wire, rifle grenade, visual signal, or through aeroplane by panel.

18.

HOSTILE AIRCRAFT.

In case of attack by low flying hostile aircraft, the leading wave will not fire at, or allow their attention to be distracted by the aircraft. Supports will deal with the attack by rifle, Lewis gun, or machine gun fire.

19.

SUCCESS SIGNALS.

(i) The following success signals will be used :-

2 RED Very lights in quick succession on gaining RED LINE.
 1 RED and 1 WHITE Very light in quick succession on gaining BLUE LINE.
 2 GREEN Very lights in quick succession on gaining GREEN LINE.

(ii) All signals will be fired from each Company front from Right to Left across the front.

(iii) These signals will not be fired until consolidation is actually in progress on the objective, but a message to the effect that troops have "reached" 1st, 2nd or 3rd objective will be sent on reaching the RED, BLUE, or GREEN LINES respectively.

The success signals will be confirmed by message that the objective has been "captured and consolidation is in progress".

20.

BAYONETS.

Bayonets will not be fixed until ZERO hour, when the barrage opens.

21.

SPECIAL MARKS.

Helmets of troops detailed for capture of objectives will be marked with a diamond between brim and crown in rear as under :-

| | |
|----------------|--------------|
| 25th Battalion | RED diamond. |
| 27th " | BLUE " |
| 28th " | GREEN " |
| 26th " | GREEN " |

22.

DRESS.

Fighting order with 48 hours' rations.

- 220 rounds S.A.A. per man
- 1 Mills No.5. Grenade per man.
- 1 S.O.S. Signal every fourth man.
- 1 RED ground flare every fourth man.
- 2 Sandbags per man.

Rifle grenades will be carried as ordered by C.O's of Battalions.

A proportion of RED, WHITE, and GREEN lights will be carried by each Battalion.

23.

TOOLS.

(i) Tools will be carried in the proportion of 1 pick to 4 shovels.

It is left to Battalion Commanders to decide on the number of tools they will require, but not less than 50 picks and 200 shovels per Battalion should be taken.

(ii) Special arrangements will be made by Engineers to provide extra tools for 26th Battalion for digging communication trench.

24.

PRISONERS OF WAR.

Any prisoners of war will immediately be sent to Advanced Brigade H.Q., where the Divisional Intelligence Officer will select those he requires for interrogation, and send the remainder to the Advanced Corps Cage.

25.

MISCELLANEOUS.

(i) Times at which watches are to be synchronized with Brigade Signals will be notified later.

(ii) Arrangements for Liaison, Mopping up, position of H.Q. Dumps, have been issued in Preliminary Instructions No.1.

26.

Medical arrangements, Dumps, Supplies, Routes, Prisoners of War etc. will be dealt with in a separate Administrative Memorandum.

27.

ACKNOWLEDGE.

A. Roase

Major, Brigade Major,
7th Australian Infantry Brigade.

NOTE: Unit Commanders will submit their plans by 9 a.m. 19th inst.

Issued to Signals at 7PM

Distribution as for Preliminary Instructions NO. 1.

7th AUSTRALIAN INFANTRY BRIGADE.

Signal Arrangements to accompany Bde. Order No. 127.

1. Advanced Brigade H.Q. will be at approx. J.7.d.9.9. (Cable Head).
 Position of Forward Station will be at ALBERT REDOUBT, which is also Command Post of 27th Bn.
 25th Battalion Command Post at approx. J.8.b.7.3.
 26th " " " " " J.3.c.85.40.
 28th " " " " " J.9.a.85.60.
2. Earth induction set will be installed with up and down working from ALBERT REDOUBT to J.7.d.9.9. and thence to Brigade H.Q. at I.12.c.3.5.
3. Communication will be maintained in all cases to the unit on the Right, although if the unit on the Left does not maintain touch, every endeavour should be made to reach them by runner or visual.
4. (a) Secret Code Calls as issued to units will be taken into use as soon as units move from stations at which "Position Calls" are in use. (b) Station Calls for Forward Stations will be the same as Battalion Code Calls prefixed by letter "A".
5. Aeroplane Signal Sheets will be taken forward. Care is to be taken to hide these from sight except when a plane is in position to receive a message. Sheets should not be set out on forward slopes.
6. Pigeons are allotted as follows :-
 Brigade Forward Station 24 birds,
 26th & 28th Bns. 8 birds each.
 Brigade Forward Station will be refilling point for Battalions at a time which will be notified later.
7. The main Brigade Visual Station will be at approx. J.7.d.9.8. and will receive D D - D D messages from the front. Forward Visual Stations will work with Daylight Lamps and folding shutters only.
8. The Brigade Forward Station under 2/Lieut. RUSTON, 27th Battalion, will move forward with third wave of 25th Battalion and subsequently with 3rd wave of 27th Battalion as the latter Battalion moves through 25th Battalion.
9. (a) On account of two circuits only being maintained between Advanced Brigade H.Q. and Forward Battalions, it is absolutely necessary that messages be curtailed both in length and number as far as possible.
 (b) Should it not be possible to obtain an acknowledgment for a message, the message should be sent in duplicate and by alternative methods or routes.
10. Intelligence Officers of 26th and 28th Bns. each accompanied by 2 snipers or observers will accompany the Brigade Forward party Detachment "A". Their duties will be to keep in touch with the situation and keep their Battalions and Bde H.Q. fully informed through the Brigade Forward Station.
 This party will report to Brigade Signal Officer at Advanced Bde H.Q. (J.7.d.9.9) at least 2 hours before ZERO.
 Battalions will detail personnel as under to report to Bde Signal Officer at Bde H.Q. I.12.c.3.5. at 6 p.m. 18th inst.
 4 runners per Bn.
 27th Bn. 3 linesmen, 2 pigeoneers.
 25th Bn. 1 N.C.O. 6 Signallers (Visual)
 26th Bn. 1 N.C.O. 6 men (accumulator carrying party)

Appendix C

7th AUSTRALIAN INFANTRY BRIGADE

September 17th 1917.

ADMINISTRATIVE MEMORANDUM to accompany Brigade Order No. 127.

1. ROUTES. Attention is drawn to Divisional Administrative Memo. No. 174.
2. SUPPLIES. Attention is drawn to the paragraph on Supplies in 2nd Aust. Division Administrative Memo No. 174. Units will arrange carrying parties to take rations forward from BELLEAARDE RIDGE (J.7.c.2.8.) Dump until the route forward is ready for pack transport, or until the tram line is completed, when a dump will be established at head of line.
The 500 emergency rations laid down in Administrative Memorandum No. 174 will be dug in at the Brigade Dump on WESTHOEK RIDGE in vicinity of J.7.d.9.9.
3. WATER. Extra water bottles will be issued to Battalions, which will be filled before going in. Five 100 gallon tanks will be dug in in vicinity of Ammunition Dump at WESTHOEK. These, with 500 petrol tins will form the Brigade Water Reserve. Units will send water forward each day with the rations, drawn at Water Point as per Divisional Administrative Memo. Four extra water carts are available, and will be used to augment Battalion supplies.
4. AMMUNITION. Ammunition to be carried on the man will be drawn at the Advanced Divisional Dump I.11.d.5.4. The Brigade Dump will be at WESTHOEK, dug in and distributed in vicinity of J.7.d.9.9. For approximate amounts in this dump, see Appendix A. All ammunition demands will be sent to the officer in charge, Lieut. BOYLE.
On the capture of the 1st Objective, the Brigade Bomb Officer will arrange to establish a forward Dump at J.8.b.8.4.
On the capture of the 2nd Objective, he will form a dump at J.9.a.6.9.
Units will arrange to form Battalion dumps in suitable places.
8th A.I. Brigade are detailing 100 men, and 26th Bn will detail 2 platoons complete, each of 30 men, as carrying parties, to report to the Brigade Bomb Officer at 11 p.m. on the day before ZERO. Carrying parties will be fully equipped with YUKON Packs.
5. R.E. STORES. R.E. Stores will be obtainable at WESTHOEK Dump. The approximate amount will be as in Appendix B. Tape, noticeboards etc. will be issued from BELLEAARDE Dump.

Appendix G

6. PRISONERS OF WAR. Divisional cage - SHRAPNEL Corner I.20.a.6.7. Attention is drawn to instructions contained in Divisional Administrative Memorandum No. 174.
7. MEDICAL ARRANGEMENTS. The forward area will be cleared by the 5th Australian Field Ambulance with the Bearer Divisions of 6th and 7th Field Ambulances.

The Medical dispositions will be as follows :-

R.A.P. Right Brigade J.7.d.9.9.
 Advanced Collecting Station J.7.a.4.3.
 Simons Relay Post I.12.c.6.7.
 Chateau Wood Relay Post I.18.b.5.8.
 Culvert Amb.Loading Post I.18.a.2.8.
 BIRR Cross Roads loading Post I.17.b.2.8.
 Corps Advanced Dressing Stn. MENIN Road.
 H.Q. 5th Field Amb. Belgian Battery Corner
 Divisional Rest Station G.15.c.2.9.

Dumps of stretchers, blankets and Dressings will be maintained at all stations.

R.M.O's will arrange to establish R.A.P's in vicinity of Battalion H.Q. as the advance progresses, notifying Brigade H.Q. and the Field Ambulance of the location.

Units will place notice boards indicating R.A.P's on the principal routes back. Signboards will be available at the Brigade Dump.

G.H. Harrison

Captain, Staff Captain,
 7th Australian Infantry Brigade.

83

APPENDIX "A"

| | |
|--------------------|-------------------------|
| S.A.A. | 1,000,000 rounds. |
| Mills No.5. | 5,000 |
| " No.23 | 20,000 |
| Blanks | 25,000 |
| Smoke Bombs | 1,000 |
| P. Bombs | 250 |
| Very Lights 1" | 1,000 |
| " " 1 1/2" | 500 |
| Signal Flares RED | 500 |
| " " GREEN | 500 |
| S.O.S. Sets | 300 |
| Ground Flares | 600 |
| Stokes Ammunition | 1,000 |
| " Rings | 2,000 |
| Tracer Ammunition | 1 box |
| Lachrymatory bombs | 300 No 27 th |
| " " | 300 No 28 th |

APPENDIX "B"

The following R.E. Stores will be available in WESTHOLK Dump.

| | |
|--------------|-----------|
| Barbed wire | 150 coils |
| Pickets | 350 long |
| " | 700 short |
| French wire | 100 coils |
| Shovels G.S. | 500 |
| Picks | 200 |
| Camouflage | 30 rolls |
| Sandbags | 20,000 |
| Sign boards | |
| Wire cutters | 150 - 14" |
| Small S.A.A. | |

Appendix 'G'

SECRET

7th AUSTRALIAN INFANTRY BRIGADE

September 19th 1917.

COR RIGENDUM 7th A.I. Brigade Order No. 127.

Para 4. (a) RED LINE - For "J.8.b.6.7" road "J.8.b.8.7"

ADDENDUM.

Para 10. BARRAGES :-

After last sub-para insert :-

"From ZERO to ZERO plus 4 minutes, and also for three minutes before advancing after each pause, the rate of fire for 18-pn dr guns will be 4 rounds per gun per minute. At other times the rate will be two rounds per gun per minute. This is to indicate to troops the time at which the next advance will commence.

A.J. BOASE, Major,
Brigade Major, 7th Australian Infantry Bde.

Distribution as for
Brigade Order No. 127.

Recd. 19-9-17.

SECRET.

Copy No. *23*

7th AUSTRALIAN INFANTRY BRIGADE

ORDER No. 128.

September 17th 17.

Reference Maps : Sheets 28 N.W. & N.E. 1/20,000.
HOOGE 1/10,000.

1. 7th A.I. Brigade will relieve that portion of the 6th A.I. Brigade in the Right Sector of the Divisional front on the night 18/19th September in accordance with attached table of reliefs.
2. The boundary between Right and Left sectors is as under :-
J.8.b.0.8. - J.8.a.00.25. - I.12.c.3.5.
3. All maps and documents concerning the sector, dumps etc. will be taken over and receipts given. Duplicates of receipts to be forwarded to this office within 24 hours of completion of relief.
4. On completion of the relief, the G.O.C. 7th A.I. Brigade will assume command of the Right Sector of 2nd Australian Division.
5. During the relief the following distances will be maintained :-
500 yards between Battalions and other units.
200 yards between transport of units and other units.
100 yards between companies.
6. Completion of reliefs will be notified to this office by code wire.
7. Brigade H.Q. will close at H.19.b.2.2. at 8.30 a.m. and reopen at I.12.c.3.5. on arrival.
8. ACKNOWLEDGE.

AJ Boase

Major, Brigade Major,
7th Australian Infantry Brigade.

Issued to Signals at _____
Copies to.

- | | | |
|-----------------|-------------------|-----------------------|
| 1. 25th Bn. | 11. S.C. | 20. C.R.A. |
| 2. 26th Bn. | 12. B.M. | 21. C.R.E. |
| 3. 27th Bn. | 13. Sig. Off. | 22. A.D.M.S. |
| 4. 28th Bn. | 14. B.T.O. | 23. 7th Field Coy |
| 5. 7th M/G Coy | 15. Bomb Off. | 24. 2nd Aust. Div (G) |
| 6. 7th ALTMB. | 16. 17th A.S.G. | 25. " " " (Q) |
| 7/8. War Diary. | 17. 3rd A.I. Bde. | 26 to 30 Spars. |
| 9. File | 18. 5th " | |
| 10. G.O.C. | 19. 6th " | |

83

7th AUSTRALIAN INFANTRY BRIGADE

RELIEF TABLE To accompany 7th A.I. Brigade Order No. 128.

Sept. 17/1917.

| Date | Unit | From | To | Remarks. |
|------------------------|-------------------|--|---|---|
| 1917. 18/19th Sept. | 25th Bn. | YPRES (Esplanade Sap) and BELLEWAARDE RIDGE | LINE and BELLE- WAARDE RIDGE (Right Sector) | By march route. Details of relief to be arranged mutually by C.O's concerned. Relief to be completed by 6 a.m. 22nd Bn. is at present holding line. |
| 18th Sept. | 28th Bn. | HALIFAX AREA. | CANAL & PIONEER AREA. | By march route. Not to arrive before 6 p.m. Advance party to be sent to 5th A.I. Bde H.Q. BELGIAN CHATEAU by 2 p.m. to take over camp. |
| 18th Sept. | 7th A.M.G. Coy | HALIFAX AREA | YPRES (BARRACKS) | As arranged by O.C., 7th A.M.G. Coy who will notify Brigade H.Q. exact location of his new H.Q. on arrival there. |
| 18th Sept. | 7th A.L.T.M.B. | HALIFAX AREA | YPRES (BARRACKS) | As arranged by O.C., 7th A.L.T.M. Bty, who will notify Brigade H.Q. of exact location of his H.Q. on arrival. |

Appendix G

7th FIELD
ENGINEERS, A.I.F.
LT. FREDERICK FISHER CHRISTIAN

Recommended for BAR & M.C.

Awarded M.C.

(Awarded 9/6/17)

During ~~the~~ operations near WESTHOEK east of YPRES on 20th September 1917 he had to be detailed at the last moment to take charge of a composite party detailed to construct a garrison a show point in the second objective. Under disconcerting shell fire he organised the party, ~~and~~ moved up ~~to~~ site and directed the work in face of exceedingly heavy barrage fire. Largely owing to his splendid example, utter disregard of fire, ~~and~~ energetic direction and excellent show point was dug and wired under exceedingly difficult conditions.

7th FIELD COY.

ENGINEERS, A.I.F.

2nd CORPL NATHAN FLETCHER Reg No 2732.

Recommended for M.M.

During attack operations near WESTHOEK east of YPRES on 20th September 1917 ~~he~~ was in charge of a party detailed to construct a show point in the second objective. ~~He~~ very coolly and efficiently organised the stores of the party under disconcerting shell fire, ~~and~~ subsequently, in face of exceedingly heavy barrage, displayed great coolness and judgment while tapping out the show point. ~~and~~ exercised splendid control of his party during the erection of 200 yards of ~~good~~ wiring about the show point. ~~His~~ behaviour throughout was most gallant and exemplary inspiring to his men in very difficult severe conditions.

7th FIELD COY.

ENGINEERS, A.I.F.

2nd CPL. BERTRAM EDWARD HANCO 3752

Recommended for M.M.

During attack operations near WESTHOEK east of YPRES on 20th Sept 1917 ~~he~~ was senior N.C.O. of a party detailed to mark out a communication trench immediately after the attack. In face of heavy shell-fire and sniping, ~~he~~ very coolly and gallantly ran out the tapes to mark the trench; carrying on and completing the work after the officer in charge was twice wounded. ~~He~~ afterwards inspected the work being done on the trench and directed the infantry working on it. ~~His~~ example & general conduct contributed very largely to the success of this work.

Appendix.

7th FIELD COY.

ENGINEERS, A.I.F.

Sapper JOSEPH EDWARD PEACOCK 6985.

Recommended for M.M.

During attack operations near WESTHOEK east of YPRES on 20th Sept 1917 he was one of a sapper wiring party detailed to construct a strong point in the second objective. Owing to the non arrival of a portion of the wiring stores, the wiring was in danger of not being completed. In face of exceedingly heavy enemy shelling of the area, this sapper showed great coolness, resource, and energy in salvaging wire and pickets from old enemy wiring and carrying them on to the job. This action ~~contributed~~ ^{successfully} enabled the wiring to be completed.

7th FIELD COY.

ENGINEERS, A.I.F.

L/C EDMUND ADRIAN DUHIEU HILL 2780

Recommended for BAR to M.M.

Awarded M.M.

(Awarded end 1916)

During attack operations near WESTHOEK east of YPRES on 20th Sept 1917 he was one of a party detailed to mark out a communication trench immediately after the attack. Although wounded in the mouth by a shell splinter shortly after leaving cover for the job, he only stopped to have the wound bound up, and then proceeded after the party which he rejoined. ~~An~~ An experienced surveyor, he was invaluable in assisting with the location and despite heavy barrage fire, carried on coolly, ^{greatly} assisting towards the successful siting of the trench.