

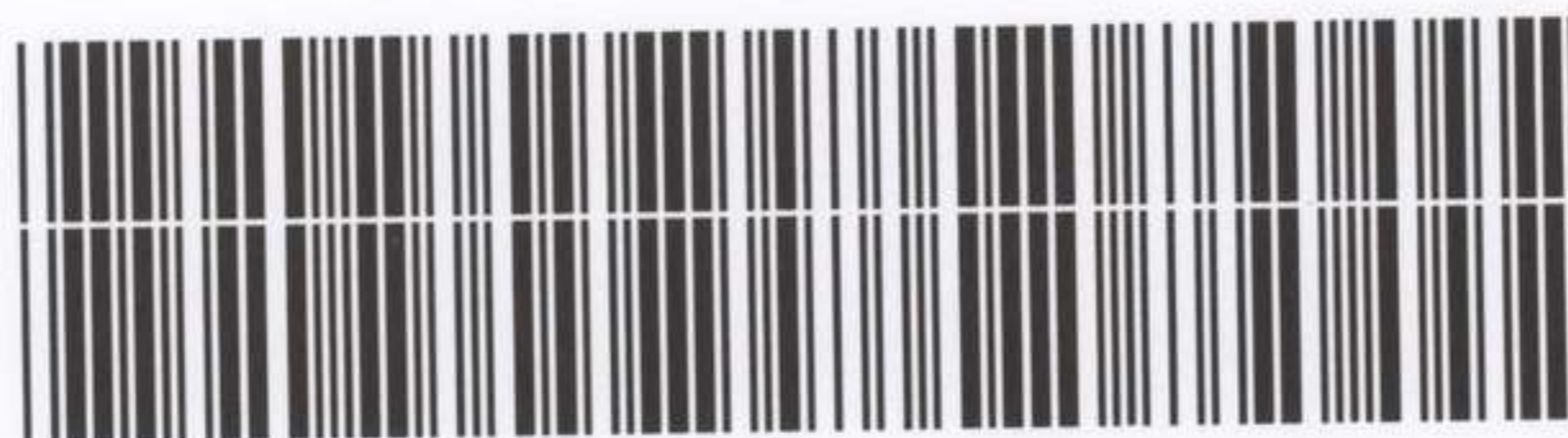
AWM4
Australian Imperial Force unit war diaries,
1914-18 War

Formation Headquarters

Item number: 1/43/32

Title: Administrative Staff, Headquarters
1st Australian Division

September 1917



AWM4-1/43/32

WAR DIARY

Army Form C. 2118.

Instructions regarding War Diaries and Intelligence Summaries are contained in F. S. Regs., Part II and the Staff Manual respectively. Title pages will be prepared in manuscript.

or INTELLIGENCE SUMMARY.

(Erase heading not required.)

Place	Date	Hour	Summary of Events and Information	Remarks and references to Appendices
VIEUX BERQUIN.	1st Sept., 1917.		Strength of Division on 1/9/1917 vide Appendix I.	Appendix I.
	2nd Sept.		A.A. & Q.M.G. reconnoitred Forward Area occupied by 23rd Division East of YPRES in anticipation of future relief of 23rd Division by 1st Aust. Division.	
	4th Sept.		A.A. & Q.M.G. visited 25th Division at SCOTTISH LINES in order to make arrangements to live with them for a few days in order to reconnoitre the Forward Area preparatory to the relief of the 23rd Division by the 1st Australian Division.	
	5th to 6th Sept.		A.A. & Q.M.G. lived at SCOTTISH LINES and reconnoitred Forward Area in anticipation of future operations.	
	7th Sept.		Conference at Divisional Headquarters at 3 p.m. re proposals for the attack. Present - Div'l. and Bde. Commanders, G.S.O.I A.A. & Q.M.G., A.D.M.S., C.R.E. and O.C. Signal Coy.	
	8th Sept.		C.R.E. moved to KRUISSTRAAT.	
	9th Sept.		1st and 2nd Fld. Coys. moved to BELGIAN CHATEAU Area preparatory to undertaking work in forward Area in anticipation of Future operations.	
	10th Sept.		Div'l. Order No. 31 re attack on date to be notified issued. (Appendix 2) 3rd Fld. Coy. moved to CHATEAU SEGARD Area preparatory to work in forward area.	Appendix II
	11th Sept.		Div'l Advanced Headquarters moved to SCOTTISH LINES near OUDERDOM. D.A.A.G. visited Area Commandant RENINGHELST, DICKEBUSCH and CHATEAU SEGARD Area. re accommodation for Division in area South West of YPRES. Also Area Commandant BERTHEN re accommodation in staging areas. BAILIEUL - ST JANS CAPELLE - BERTHEN - STRAZEELE - METEREN.	

*H. G. Tinsley Lieut. Colonel
A.A. + Q.M.G. 1st Aust. Divn.*

WAR DIARY

Army Form C. 2118.

Instructions regarding War Diaries and Intelligence Summaries are contained in F. S. Regs., Part II. and the Staff Manual respectively. Title pages will be prepared in manuscript.

or INTELLIGENCE SUMMARY.

(Erase heading not required.)

Place	Date	Hour	Summary of Events and Information	Remarks and references to Appendices
SCOTTISH LINES	13th	Sept.	Div'l. Headquarters opened at SCOTTISH LINES near OUDERDOM 9 a.m. and closed at VIEUX BERQUIN the same hour. G.S.O. I remained at VIEUX BERQUIN. Bde. Groups moved from respective areas en route for 1st Anzac Area near YPRES in accordance with Div'l Order No. 32 (Appendix 3).	Appendix 3.
	14th	Sept.	Brigade Groups completed march to 1st Anzac Area. (Location report for day attached administrative Instructions for attack on German positions issued. - Appendix IV)	Appendix IV.
	15th	Sept.	(Work on construction of forward ammunition, water and R.E. Dump progressing favourable (Appendix V V))	Appendix V V.
	16th	Sept.	1st Bde. moved in line in relief of 141st Bde. 3rd Bde. moved to OUDERDOM Area.	
WALKER CAMP.	17th	Sept.	2nd Bde. moved to DICKEBUSCH Area (6th Bn. to HALFWAY HOUSE) 11th Bn. moved to ZILLEBEKE BUND. Div'l. Advanced Headquarters moved to WALKER'S CAMP near DICKEBUSCH. A.A. & Q.M.G. and D.A.Q.M.G. at advanced H.Q. D.A.A.G. at Rear Headquarters near SCOTTISH LINES.	
	18th	Sept.	2nd Bde. (less 6th Bnz) and 3rd Bde. (less 11th Bn) moved to CHATEAU SEGARD Area.	
	19th	Sept.	2nd Bde. (less 6th Bn.) moved to ZILLEBEKE BUND during morning preparatory to the assembly march into position that night. A.P.M. posted Police and Traffic guides all along route of Assembly March of Bdes.	
	20th	Sept.	The Division attacked the German positions in GLENCORSE WOOD and POLYGON WOOD at 0540 this morning and carried the various objectives according to schedule time. 2nd and 3rd Bdes. carried out the assault with the 1st Bde. in Div'l. Reserve.	
	21st	Sept.	1st Bde. relieved 2nd and 3rd Bdes in the line during the night 21st/22nd without incident. 2nd and 3rd Bdes moved back to DICKEBUSCH Area, leaving the 5th, 6th and 12th Bns. at HOOGE, ZILLEBEKE BUND and HALFWAY HOUSE respectively.	
	22nd	Sept.	5th Aus. Divn. commenced moving up in relief of 1st Aust. Div. 2 Bns. 2nd Bde. moved to STEENVOORDE Area by Bus. Remainder of Bde. moved by march route to OUDERDOM Area. 3rd Bde. completed move to DICKEBUSCH Area. 1st Bde. was relieved in line during night 22/23rd by 69th Bde.	

A5834 Wt. W4973/M687 750,000 8/16 D. D. & L. Ltd. Forms/C.2118/13

H. G. T. King Lieut Colonel
A.A. & Q.M.G. 1st Aust. Div.

WAR DIARY

Army Form C. 2118.

Instructions regarding War Diaries and Intelligence Summaries are contained in F. S. Regs., Part II. and the Staff Manual respectively. Title pages will be prepared in manuscript.

or
INTELLIGENCE SUMMARY.

(Erase heading not required.)

Place	Date	Hour	Summary of Events and Information	Remarks and references to Appendices
WALKER CAMP.	22nd Sept. (contd.)		on the Right, and the 14th Bde. on the left, and commenced to move to DICKEBUSCH staging through HALFWAY HOUSE, ZILLEBEKE BUND and RAILWAY DUGOUTS. 2nd Aus. M.G. Coy. was relieved during the night and moved to DICKEBUSCH Area.	
RENINGHELST	23rd Sept.		Move of 1st Bde. to DICKEBUSCH Area completed. 3rd Bde. moved by Bus to STEENVOORDE Area. 1st Aus. D.H.Q. moved to RENINGHELST, handing over command to 5th Aus. Div. at 1000. 3rd M.G. Coy. relieved in the line and moved to DICKEBUSCH Area.	
STEENVOORDE	24th Sept.		1st Aus. D.H.Q. moved to STEENVOORDE. 1st Div. Art. H.Q. moved to CLAIRMARIS CHATEAU near St. OMER. 2nd Bde. completed move to STEENVOORDE Area, 2 Bns. and M.G. Coy. moving by march route. 1st Bde. moved to OUDERDOM Area by march route.	
	25th Sept.		1st Bde. and 2nd Fld. Coy. Engrs. completed move to STEENVOORDE Area by Bus. Conference at D.H.Q. reference future operations. Present - Div'l. and Bde. Commanders, G.S.O. I, G.S.O. II, A.A. & Q.M.G., A.D.M.S. and Bde. Majors of 2nd and 3rd Bdes.	
	26th Sept.		3rd M.G. Coy. moved to STEENVOORDE Area by March Route. Units resting in STEENVOORDE Area. Locations vide Appendix V3. Refitting and Bathing progressing well.	Appendix V3,
	28th Sept.		Infantry resting and refitting in STEENVOORDE Area. D.A.D.O.S. went to GALAIS to see Ordnance reference refitting. 2nd Fld. Coy. moved by Bus to BELGIAN CHATEAU Area. 1st and 21st M.G. Coys. withdrawn from the Line and resting in BELGIAN CHATEAU Area in M.G. (Camp.	
	28th Sept.		(Orders issued for move of Division into forward Area. Orders issued for move of 1st Aus. Div. Art. to OUDERZEELE Area on 29th preparatory to moving into line in relief of 3rd, 6th and 12th (Army) F.A. Bdes.	
	29th Sept.		Composite Bde. consisting of 3rd Bde. (less two Bns.), 1 Bn. 1st Bde., 1 Bn. 2nd Bde. moved by Bus to Swan Area (South West of YPRES) near CHATEAU SEGARD. in preparation of going into line.	

A5834 Wt. W4973/M687 750,000 8/16 D. D. & L. Ltd. Forms/C.2118/13

*J. G. Finlay Lieut Colonel
A.A. & M.G. 1st Aust. Div.*

WAR DIARY

Army Form C. 2118.

Instructions regarding War Diaries and Intelligence Summaries are contained in F. S. Regs., Part II. and the Staff Manual respectively. Title pages will be prepared in manuscript.

or
INTELLIGENCE SUMMARY.

(Erase heading not required.)

Place	Date	Hour	Summary of Events and Information	Remarks and references to Appendices
STEENVOORDE	30th	September	<p>1 Bn. from each 1st and 2nd Bde. and remaining 2 Bns. of 3rd Bde. moved by Bus to SWAN AREA. During night 30th Sept./1st Oct. composite Brigade (3rd Bde. less 2 Bns. 1 Bn. of each 1st and 2nd Bdes.) relieved 12th Brigade in the Line.</p> <p><u>APPENDICES.</u> In addition to Appendices mentioned in the text the following is attached:- Strength at end of month. Appendix VI 7.</p>	<p><i>J. G. Tiney</i> Lieut Colonel A.A. & M.G. 1st Aust. Div.</p>

FIRST AUSTRALIAN DIVISION.

Appendix 13
Appendix No. 1

DAILY STRENGTH AS AT NOON, Sept., 1st., 1917.

U N I T S	O N E S T A B L I S H M E N T			A T T A C H E D			R E M A R K S
	Off.	O.R.,	TOTAL	Off.	O.R.	TOTAL	
Div Headquarters	21	70	91	11	276	287	
Div. Artillery	71	2226	2297	3	26	29	
Div. Engineers	29	739	765	-	16	16	
Div. Signal Co.,	11	280	291	-	73	73	
Pioneer Battalion	43	1115	1158	1	10	11	
1st Inf. Bde H.Q.	5	20	25	5	54	59	
1st Battalion	39	892	931	2	1	3	
2nd do.	33	867	900	-	-	-	
3rd do.	42	920	962	-	2	2	
4th do.	34	814	848	-	2	2	
1st A.L.T.M.Bty.	3	49	52	-	4	4	
1st A.M.G.Co.	6	147	153	-	-	-	
2nd Inf. Bde H.Q.,	3	21	24	5	24	29	
5th Battalion	53	1021	1074	2	8	10	
6th do.	45	1225	1270	2	35	37	
7th do	57	1154	1211	2	8	10	
8th do.	47	1223	1270	2	6	8	
2nd A.L.T.M.B.	5	80	85	-	1	1	
2nd A.M.G.Coy.,	13	196	209	1	2	3	
3rd Inf. Bde H.Q.,	3	9	12	3	73	76	
9th Battalion	37	1013	1050	1	7	8	
10th do..	37	915	952	1	6	7	
11th do.	28	922	950	2	10	12	
12th do.	37	937	974	2	11	13	
3rd A.L.T.M.B.	4	67	71	-	-	-	
3rd A.M.G.Coy.,	12	182	194	-	2	2	
Divisional Train	23	408	431	2	51	53	
1st Fld Amb.	10	272	282	1	2	3	
2nd do.	9	222	231	1	39	40	
3rd do.	9	242	251	2	17	19	
Salvage Coy.	1	69	70	-	-	-	
Mob. Vet. Sect.	1	23	24	1	12	13	
21st A.M.G.Co.,	9	184	193	-	3	3	

2
SECRET.

FIRST AUSTRALIAN DIVISION

6
Appendix 2.
Appendix No. II

Divisional Headquarters,
15th Sept., 1917.

ADMINISTRATIVE INSTRUCTIONS ISSUED WITH FIRST
AUSTRALIAN DIVISIONAL ORDER No. 31.

1. ORGANISATION OF AREA. The forward portion of the Corps Area is organised into 2 Divisional Areas, known as the Right and Left Forward Areas. The Right Forward Area is allotted to the First Australian Division and the Left Forward Area to the Second Australian Division.

The boundaries of the First Australian Divisional Area are:-

NORTHERN BOUNDARY. (Sheet 28.)

J.8.c.5.5.- J.7.d.9.2.- North of HOOGE CRATER to I.17.c.7.8.- North of HALF-WAY HOUSE to I.16.d.30.25.- South side of WARRINGTON ROAD to I.20.b.0.9.- SHRAPNEL CORNER - along North side of road through I.19.d.3.3.- I.19.c.6.0.- I.19.c.0.0.- I.19.a.0.0. and thence along co-ordinate lines to H.23.a.0.0.- H.23.c.0.0.- H.21.a.0.0. H.21.a.0.0.- along North side of road to H.23.a.20.85., thence along North side of road to H.19.b.9.0.- G.24.b.0.0.

WESTERN BOUNDARY.

G.24.b.0.0. - along North-west side of road to G.29.b.5.5. - along North-east side of road to G.30.c.20.75. - along North-west side of road to G.29.d.9.5. - along South-west side of road to G.36.d.95.60.

SOUTHERN BOUNDARY.

J.14.a.0.0. to J.13.c.0.6.- I.18.c.6.2.- I.23.a.6.5. - I.22.b.85.00 South of ETANG DE ZILLEBEKE to I.21.b.85.00 North of TRANSPORT FARM and WOODCOTE HOUSE to I.19.d.7.0.- I.19.c.7.0. South-east of road to H.30.d.3.1. South-west of road to CAPE BELGE and South of the road to HALLE-BAST CORNER and South of road to H.31.b.1.5. and South-east of the road to G.36.d.95.60.

2. COMMUNICATIONS.

(A). ROADS AND TRACKS. The roads and tracks available for the use of the Division are shown on the attached map (Appendix 1.)

(B). TRAMWAYS. Appendix 1 shows the Tramways being constructed for the operation and their proposed subsequent extensions.

3. QUARTERING. Appendix 2 (a) gives the scheme for the quartering of the Infantry of the Division from the 18th instant. Separate instructions for the quartering of Engineers, Pioneers, Divisional Train and Field Ambulances will be issued to the units concerned. Appendix 2 (b) gives the quartering of the Infantry 1st Line Transport from the 18th instant.

P.T.O.

4. SUPPLIES.

(A). The system for the supply of rations will be as shown in Appendix 3.

(B). EMERGENCY RATIONS.

(a) On the Man -

- (i) 1 Iron Ration.
- (ii) 1 Emergency Ration.
- (iii) 1 Chocolate Ration.
- (iv) The unexpired portion of the current day's ration.

The Emergency Ration and the Chocolate Ration can be drawn from the Divisional Train on the morning of the 18th instant.

(b) In Dumps.

1,000 Emergency Rations at HALF WAY HOUSE.
 1,000 Emergency Rations at CLAPHAM JUNCTION.
 1,000 Emergency Rations in the vicinity of J.13.b.3.9.

All rations in Dumps will be controlled by the Staff Captain in the Area in which the Dump is situated, and will be issued on demand to any Officer or on the signature of any Officer.

5. WATER SUPPLY. Water for troops will be drawn from Water Points at -

- I.22.b.7.5. (ZILLEBEKE VILLAGE).
- I.17.d.7.7. (ON ZOUAVE TRACK).

Water bottles and Water tins will be taken from these points by pack to J.13.b.2.2. for the Right Brigade and to the vicinity of J.13.b.3.9. for the Left brigade. At these points also 1,000 gallons of water will be stored in 10 one hundred gallon tanks.

A filled water-tin dump will be established in the MENIN ROAD TUNNEL (Eastern end), holding 2,000 gallons for the use of both Forward Brigades. Water supplies for the horses exist in the vicinity of all horse-lines.

6. AMMUNITION SUPPLIES. The general scheme of ammunition supply is given in Appendix 4.

Units will indent at once on 1st Australian Division "Q" for any extra ammunition to be carried by the troops for the operation.

R.E. STORES.

7. An advanced Corps Dump for R.E. Stores is established at BIRR CROSSROADS.

The Divisional Dump is being established at HOGGE and small advanced dumps will be established in the vicinity of CLAPHAM JUNCTION and J.13.b.3.9. All Stores in the small Divisional Dumps likely to be quickly required for consolidation will be made up into suitable men loads beforehand.

Units will indent at once on 1st Australian Division for all R.E. Stores, extra Tools, etc. to be carried by troops in the operation.

-3-

8. ORDNANCE. The normal supply of stores will be continued but an advanced Ordnance Dump will be established at H.28.c.6.5.

9. SALVAGE. Salvage Depots will be established at - ZILLEBEKE VILLAGE, and CAFE BELGE CORNER.

Every empty vehicle, tramway truck, or pack-horse returning from the trenches will bring back a load of derelict arms, stores, etc., and dump them at one of the above depots.

10. TRAFFIC CONTROL.

(A). The Division will be held responsible for the control of all traffic East of the KRUISTRAATHOEK - CAFE BELGE - DEN-GRINEN-JAGER-CAPT ROAD (inclusive).

(B). RESTRICTIONS. By day. Only single lorries may proceed East of the Line HELLFIRE CORNER - ZILLEBEKE.

Infantry moving East of CAFE BELGE will be in small parties at distances of 100 yards. Care must be taken to avoid raising dust which is liable to attract shell-fire.

(C). (1). HEADLIGHTS. (except on motor-cycles), will not be allowed East of the POPERINGHE - RENINGHELST ROAD.

(11). SIDELIGHTS. Sidelights will be allowed as far East as the VLAMERPINGHE - CAFE BELGE ROAD.

(111). TAILLIGHTS. Taillights will be lit except when East of the Canal.

(D). TRAFFIC CIRCUITS. Traffic circuits are as laid down in the SECOND ARMY Traffic Map, except that -

(i) Mechanical transport will not use WARRINGTON ROAD, I.13.c.1.7. to I.16.d.6.5. nor the road from ZILLEBEKE VILLAGE, I.22.d.8.7. to I.16.b.3.2.

(11). WARRINGTON ROAD and the road CAFE BELGE - KRUISTRAATHOEK - SHRAPNEL CORNER - TRANSPORT FARM - I.28.a.15.90. - ZILLEBEKE - I.16.b.3.2. may be used for horse transport both ways.

11. PRISONERS OF WAR.

(A). CAGES.

Divisional Cage - SHRAPNEL CORNER.

Corps advanced Cage - DICKEBUSCH.

Corps Main Cage - RENINGHELST.

(B). The A.P.M. will take over all Prisoners of War at Brigade Headquarters, HOOGE CRATER.

Escorts will be properly instructed in their duties, i.e., to allow no communications between troops and prisoners and to prevent any destruction of documents en route.

Officers and N.C.Os. will be searched as soon as possible and documents sent to the Corps Cage with the escort or as instructed by the Divisional Intelligence Officer. Other Ranks will be searched in the first place for concealed arms only, unless seen to be destroying documents.

12. STRAGGLER POSTS. The A.P.M. will arrange for a line of Straggler Posts along the ZILLEBEKE - HELLFIRE CORNER ROAD from 1200 on the 18th instant until further orders.

P.T.O.

Appendix No:

13. SURPLUS KIT. Infantry Units will dump packs and all surplus kit in the first line transport lines under Brigade arrangements before 1200 on the 19th instant. Each Battalion will leave a Guard of 1 M.C.O. and 3 Other Ranks in charge of such Dumps.

14. COFFEE STALLS, etc. Coffee stalls are being established by the Y.M.C.A. and Australian Comforts Fund as under:-

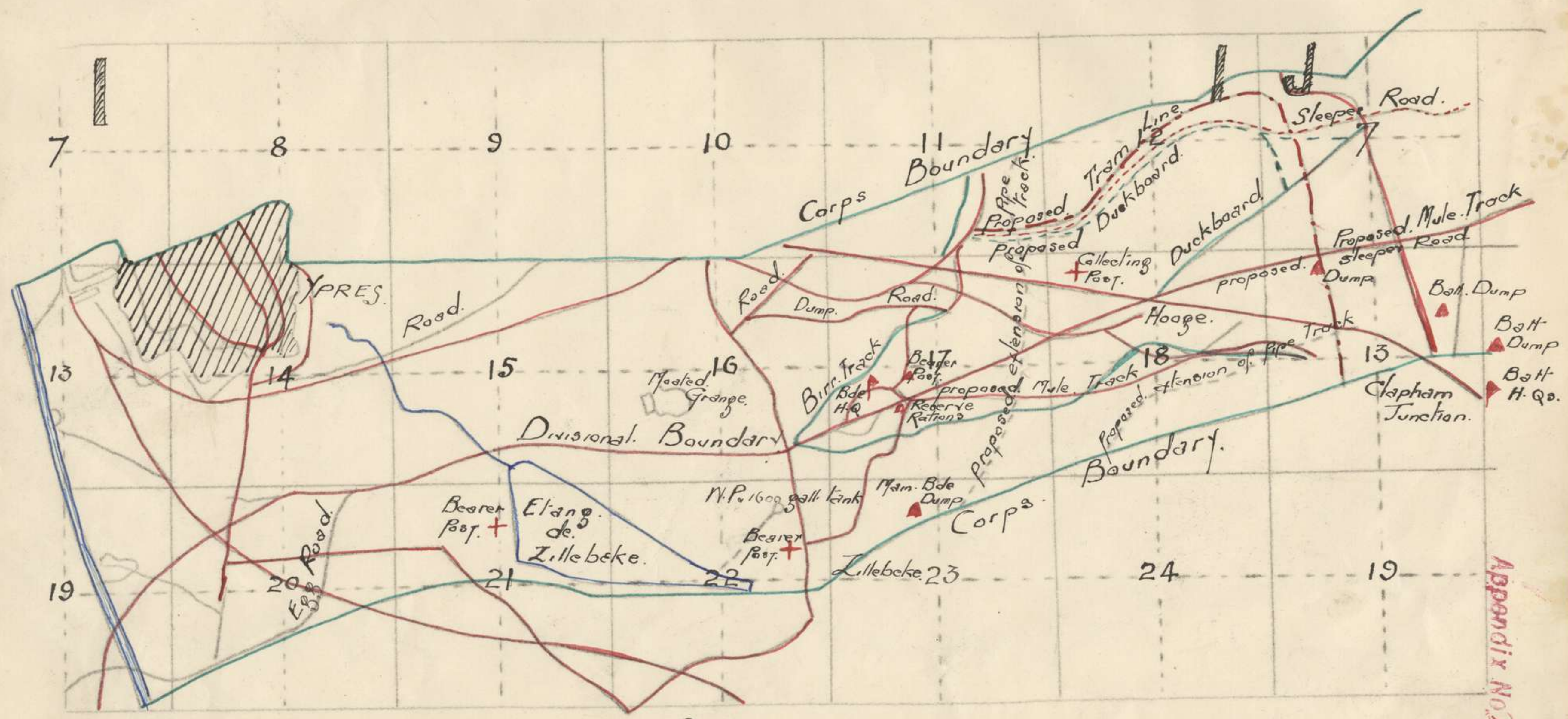
Y.M.C.A.

AUST. COMFORTS FUND.

OLAPHAM JUNCTION.
HALF WAY HOUSE.
ZILLBEKE BUND.

HOOGE.
ADVANCED DRESSING STATION.
TROIIS ROIS.

Lieut.-Colonel,
A. A. & Q. M. G.,
1st Australian Division.



Scale. 1.20,000.

APPENDIX I.

Appendix No. 2

QUARTERING OF INFANTRY PERSONNEL FROM 1200 ON 18/9/1917.

1st Aust. Inf. Brigade.

Brigade Headquarters.	HALF WAY HOUSE.
'A' Battalion.	Front Line Area.
'B' Battalion.	Support Line Area.
'C' Battalion. }	DIOKEBUSCH Area.
'D' Battalion. }	
1st A.M.G. Coy.	Front Line Area.
1st A.L.T.M. Bty.	Front Line Area.

2nd Aust. Inf. Brigade.

Brigade Headquarters.	DIOKEBUSCH Area.
'A' Battalion.	ZILLEBEKE BUND.
'B' Battalion. }	CHATEAU SEGARD Area.
'C' Battalion. }	
'D' Battalion. }	
2nd A.M.G. Coy. }	
2nd A.L.T.M. Bty. }	

3rd Aust. Inf. Brigade.

Brigade Headquarters.	DIOKEBUSCH Area.
'A' Battalion.	HALF WAY HOUSE.
'B' Battalion. }	CHATEAU SEGARD Area.
'C' Battalion. }	
'D' Battalion. }	
3rd A.M.G. Coy. }	
3rd A.L.T.M. Bty. }	

Units will apply to Area Commandant, CHATEAU SEGARD Area, for the locations of their bivouac grounds.

Appendix No. II

APPENDIX B (b).QUARTERING OF 1st LINE INFANTRY TRANSPORT FROM 1200 ON 18/9/17.1st Aust. Inf. Brigado.

West of DENGROENEN JAGER CABT - CAFE BELGE Road in Area

H.29.b.6.8. - H.29.b.5.7. - H.29.b.5.3. - H.29.b.8.4.

2nd Aust. Inf. Brigade.

In Area H.30.c.3.8. - H.30.c.6.5. - H.30.c.8.6. -

H.30.a.6.1.

3rd Aust. Inf. Brigado.

In Area H.30.c.8.6. - H.30.c.6.5. - H.30.c.9.1. -

H.30.d.3.1. - H.30.d.2.5. - H.30.d.0.4.

SYSTEM of RATION SUPPLY FOR INFANTRY UNITS FROM NIGHT 19/20th SEPTEMBER, 1917.

UNIT.b	Railhead and Refilling Point.	How Drawn	Delivered to	Location.	Thence by	To	Thence by	To	Remarks.
1st Aust. Inf. Bde.	DICKEBUSCH	Divl. Train	Q.M. Stores	H.29.b.3.8.	1st Line Transport Limbered Wagons.	(a) Bn.H.Q.	Carrying Parties.	Bn.H.Q.	For 2 Bns.
						(b) HOOGE.			For 2 Bns.
2nd Aust. Inf. Bde.	DICKESBUSCH	Divl. Train.	Q.M. Stores.	H.30.c.& d.	Divl. Train.	Reloading point on BAINBRIDGE	Pack animals of 1st Line Transport.	Vicinity of Bn. H.Q. via ZOUAVE Track & CLAPHAM JUNCTION	<u>ALTERNATIVE SCHEMES.</u> (a) Pack to HOOGE thence by tramway to CLAPHAM JUNCTION. (b) By Pack via HOOGE and DIVERSION TRACK to CLAPHAM JUNCTION.
3rd Aust. Inf. Bde.	DICKEBUSCH	Divl. Train.	Q.M. Stores.	H.30.c.	Div'l. Train.	do.	do.	Vicinity of Bn. H.Q. via HOOGE and CHATEAU WOOD ROAD	

N.B. On the relief of 2nd and 3rd Brigades by 1st Brigade in Front Line the Supplies of 1st Brigade will be delivered by Divisional Train to Reloading Point on BAINBRIDGE ROAD in I.20.c. and thence to Units by Pack Animals of 1st Line Transport.

DIAGRAM SHEWING SYSTEM of SUPPLY of S.A.A. GRENADES etc.

MAIN DIV'L MAGAZINE (BRIDGE HOUSE DUMP - H.23.d.1.0.)

by D.A.C. Wagons to

Advanced Div'L Dump.

STAND BY Dump at I.23.a.4.9.

By Tramway or Pack to

By Pack to

Advanced Divisional Dump, HOOGEN

or

BRIGADE DUMPS.

Right Brigade Dump
CLAPHAM JUNCTION.

Left Brigade Dump
Vicinity Surbiton Villas.

By Carrying Parties to

By Carrying Parties to

Trench Dump
(J.14.a.4.3.)

Trench Dump
(J.14.a.4.8.)

Trench Dump.
(J.8.c.3.2.)

Appendix No.

S E C R E T*Appendix 3*
*Appendix No. III*FIRST AUSTRALIAN DIVISIONAL ORDER No. 32.Divisional Headquarters,
11th September, 1917.

1. The Division (less Artillery, Engineers, Pioneers, and 2 Machine Gun Companies) will march to the WIPPENHOEK, OUDERDOM, RENINGHELST Area on the 13th and 14th inst. in accordance with the attached march table.
2. The following intervals will be maintained :-
 - 200 yards between battalions.
 - 100 yards between companies and other units.
3. Brigade Groups will be composed as follows :-
 - 1st Brigade Group.
 - 1st Aust. Inf. Bde.
 - 1 Sect. 1st. Aus. Fld. Amb.
 - No. 2 Coy. 1st Aus. Div. Train.
 - 2nd Brigade Group.
 - 2nd Aus. Inf. Bde.
 - 2nd Aus. Fld. Amb. (Less 1 Sect.)
 - No. 3 Coy. 1st Aus. Div. Train.
 - 3rd Brigade Group.
 - 3rd Aus. Inf. Bde.
 - 3rd Aus. Fld. Amb.
 - No. 4 Coy. 1st Aus. Div. Train.
4. Headquarters and Details 1st Aus. Div. Train and Mobile Vet. Section will move with 3rd Brigade Group; Os.C. will report to 3rd Aus. Brigade Headquarters E.24.c.6.l. Sheet 36A by 6 p.m. on the 13th inst., for instructions.
5. Rear Divisional Headquarters will close at VIEUX BERQUIN at 9 a.m. on the 13th inst. and will re-open at Advanced Divisional Headquarters, SCOTTISH LINES, at the same hour.
6. Administrative Orders will be issued by "Q" of the Division.

ACKNOWLEDGE.

(Sgd) J. D. LAVARACK, Lt. Col.
General Staff
1st Australian Division.

MARCH TABLE.

To accompany 1st Aus. Div. Order No. 32 dated 11/9/17.

Date.	Group.	From.	To.	Route.	Report for billets to.	Remarks.
13th Sept.	2nd Bde.	DOULIEU area.	BERTHEN area.	BAILLIEUL - St. JANS CAPEEL- BERTHEN.	Area Commandant Berthen area BERTHEN.	
	1st Bde.	SEC BOIS area.	METEREN area.	STRAZEELE-METEREN.	Area Commandant Berthen area BERTHEN.	To be clear of STRAZEELE by 10 a.m.
	3rd Bde.	VIEUX BERQUIN area.	THIEUSHOUK area.	VIEUX BERQUIN-STRAZEELE- FLETRE-	Area Commandant Berthen area BERTHEN	Head of column not to enter STRAZEELE before 10 a.m.
14th Sept.	2nd Bde.	BERTHEN area.	RENINGHELST and RENINGHELST Staging area.	BOESSCHEPE.	Reninghelst and Reninghelst Staging area.	St. JANS CAPPEL-BERTHEN-BOESZCHEPE. Road to be left clear until 2 p.m. before which time the march will not be commenced.
	1st Bde.	METEREN area.	OUDERDOM	SCHAEZKEN R.35.a.50. Sheet 27 - BERTHEN- BOESCHEPE-RENINGHELST.	OUDERDOM	Head of column to enter BOESCHEPE at 1 p.m. tail to clear BERTHEN by 2 p.m.
	3rd Bde.	THIEUSHOEK area.	WIPPENHOEK area.	GODESWAERSVELDE Sq.L.33.c.2.3.Sheet 27. WIPPENHOEK.	Area Commandant WIPPENHOEK.	Head of column not to be east of BOESCHEPE-ABEELE road before 1 p.m.

Appendix No. III

Divisional Headquarters,
12th September, 1917.FIRST AMENDMENT to 1st AUST. DIV. ORDER. No. 32.

1. Reference march table issued with the above mentioned order.

Amend movement orders for 2nd and 1st Aust. Inf. Brigades
on 14th September, to read as follows :-

Group	From	To	Route	Report for billets to	Remarks.
2nd brigade.	NO CHANGE		BOESCHEPE - Cross Roads just N of LAPPE at L.34.d.04. Sheet 27 due East to RENINGHELST	No Change	ST. JANS CAPPEL- BERTHEN - ABEELE Road to be left clear until 3.15 pm. before which time the march will not be commenced.
1st brigade	NO CHANGE		SCHAEZKEN (R.35.a.50. Sheet 27) BERTHEN- BOESCHEPE- Cross Roads Just N of LAPPE at L.34.d.04. (Sheet 27) RENINGHELST	NO Change	Head of column to enter BOESCHEPE at 2.15 p.m. tail to clear BERTHEN by 2 p.m.

ACKNOWLEDGE.

Sgd. J.D. LAVARACK, Lt.Col.
General Staff
1st Australian Division.

Copies to all recipients of 1st Aust.Div.Order 32.

FIRST AUSTRALIAN DIVISION

Appendix H.
Appendix No. IV
SECRET

DISPOSITION REPORT AT 9 a.m. on 14TH SEPTEMBER, 1917.

1st Aus. Div. Headquarters,	SCOTTISH LINES Sh.28	G.23.a.7.7.
1st Aus. Inf. Bde. Headquarters,	"	H.20.c.0.1
1st Battalion,	"	H.30.d.2.9
2nd do.	"	H.27.c.2.6.
3rd do.	"	H.20.c.9.1.
4th do.	"	H.33.a.7.4.
1st Machine Gun Co.,	"	H.30.d.2.9
1st A.L.T.M. Battery,	"	H.30.d.2.9
2nd Aus. Inf. Bde. Headquarters,	On move to RENINGHELST Area.	
5th Battalion	do.	do.
6th do.	do.	do.
7th do.	do.	do.
8th do.	do.	do.
2nd Machine Gun Co.,	do.	do.
2nd A.L.T.M. Battery,	do.	do.
3rd Aus. Inf. Bde Headquarters,	Sh.27	K.35.d.5.5.
9th Battalion,	"	K.30.c.5.0
10th do.	"	L.34.b.5.3.
11th do.	"	L.29.b.1.8.
12th do.	"	L.35.b.2.5.
3rd Machine Gun Co.,	"	L.35.a.9.6.
3rd A.L.T.M. Battery,	"	L.35.a.9.6.
<u>ARTILLERY</u>		
1st D.A. Headquarters,	SCOTTISH LINES,	Sh.28 G.23.b.1.5
1st F.A. Brigade,		ARQUES AREA
2nd F.A. Brigade		" "
1st Div. Amm. Col.		" "
"A" Group Headquarters,	HALFWAY HOUSE,	L.17.c.3.8
"B" Group Headquarters,	LILLE GATE	T.14.a.85.20
21st Aus. Machine Gun Co.,	Sheet 28	H.24.c.2.1
<u>ENGINEERS.</u>		
C.R.E.,	"	H.18.c.9.2.
1st Field Co.,	"	H.24.a.5.9
2nd do.	"	H.24.a.3.2.
3rd do.	"	CHAU SEGARD AREA
1st Aus. Pioneer Bn.,	"	H.23.b.8.7.
<u>FIELD AMBULANCES.</u>		
A.D.M.S.,	SCOTTISH LINES	
1st Field Amb.,	Sheet 28	H.27.c.2.8
2nd Field Amb. (less 1 sect.)		RENINGHELST AREA
1 section D.R.S.,	Sheet 27	L.28.d.5.8
3rd Field Amb.,	"	L.35.a.9.6
<u>DIVISIONAL UNITS.</u>		
1st Mob. Vet. Section,	On move.	
1st Aus. Div. Supply Column,		VIEUX BERQUIN
S.S.O.	SCOTTISH LINES	
D.A.D.O.S.,		RENINGHELST
1st Aus. Div. Salvage Co.,	Sheet 28	H.16.d.2.0
1st Aus. Div. Wing Corps School	"	AVELUY
2nd Sanitary Section		H.24.a.5.9
1st Aus. Div. Paymaster,	SCOTTISH LINES	
1st Aus. Div. Reinf. Camp,	Sheet 27	W.10.c.8.5

Sd. J.F. ROGERS Capt.
for Colonel, General Staff
1st Australian Division.

FIRST AUSTRALIAN DIVISION

SECRET

DISPOSITION REPORT AT 8 a.m. on 26th SEPTEMBER, 1917.

19
Appendix 5
Appendix No V

1st Aus. Div. Headquarters,	Rue CARNOT	STEENVOORDE
1st Aus. Inf. Bde. Headquarters,	Rue CASSEL	STEENVOORDE
1st Battalion		K.25.d.5.6
2nd do.		K.22.b.1.8
3rd do.		K.28.b.0.5
4th do.		K.28.c.0.7
1st A.M.G.Co.,		BELGIAN BATTERY CORNER
1st A.L.T.M.Battery,		K.28.d.5.7.
2nd Aus. Inf. Bde. H.Q.,	Rue POPERINGHE	Q.2.a.9.7
5th Battalion		K.27.a.9.3.
6th do.		K.20.b.4.2.
7th do.		K.31.a.8.4
8th do.		K.31.a.9.9
2nd A.M.G.Co.,		K.26.a.20.15
2nd A.L.T.M.Battery,		K.21.a.8.2.
3rd Aus. Inf. Bde. H.Q.,	SQUARE	STEENVOORDE
9th Battalion		J.22.d.6.8.
10th do.		J.35.d.6.9.
11th do.		J.30.c.6.1.
12th do.		K.25.c.4.2
3rd A.M.G.Co.,		J.24.d.7.9
3rd A.L.T.M.BATTERY,		J.27.d.8.6
<u>G.R.A.</u>	ST. OMER.	ARQUES AREA
1st F. A. Brigade		do.
2nd do.		do.
1st Div. Amm. Col.,		
C.R.E.		H.18.c.9.2.
2nd Field Co.,		OUDELDOM
A.D.M.S.	Rue CARNOT	STEENVOORDE
1st Field Ambulance,		J.29.c.9.1
2nd do.		D.R.S. WIPPENHOEK
3rd do.		Q.2.d.2.8.
Div. Train H.Q.	Rue de NEUVE	STEENVOORDE
S.S.O.		"
1st Co.,		ARQUES
2nd Co.,		K.34.c.3.7.
3rd Co.,		K.32.c.5.0
4th Co.,		P.5.a.7.6.
<u>DIVISIONAL UNITS.</u>		
D.A.D.V.S.	Rue CARNOT	STEENVOORDE
D.A.D.O.S.	"	"
1st Aus. Div. Paymaster	"	"
1st Aus. Mob. Vet. Sect.		K.25.c.8.4
1st Aus. Div. Wing Corps School		AVELUY
1st Aus. Div. Reinf. Camp,	Sheet 27	W.10.c.8.5.
1st Aus. Salvage Co.,	Sheet 28	H.24.a.5.9
FODEN LORRY DISINFECTOR		STEENVOORDE
21st A.M.G.Co.,	Sheet 28	H.24.c.2.1.

(Sd) Malcolm Kennedy, Capt.
for Lt. Colonel,
General Staff
1st Australian Division.

FIRST AUSTRALIAN DIVISION.

20
Appendix 6.
Appendix No. 1

DAILY STRENGTH AS AT NOON, 30th September, 1917.

U N I T S	ON ESTABLISHMENT			ATTACHED			REMARKS
	Off.	O.R.	TOTAL	Off	O.R.	TOTAL	
Div. Headquarters	20	68	88	13	289	302	
Div. Artillery	80	2404	2484	3	25	28	
Div. Engineers	27	673	700	1	310	311	97 Inf.att.
Sig. Signal Co.,	10	297	307	-	74	74	
Pioneer Bn.,	39	936	975	1	11	12	
1st Inf. Bde H.Q.,	8	21	29	6	22	28	
1st Battalion	34	714	751	1	1	2	
2nd do.	26	732	758	-	-	-	
3rd do.	36	809	845	-	2	2	
4th do.	31	819	850	-	1	1	
1st A.L.T.M.B.	3	45	48	-	15	15	
1st A.M.G.Co.,	8	134	142	-	-	-	
2nd Inf. Bde H.Q.	3	21	24	6	52	58	
5th Battalion	44	733	777	2	8	10	
6th do.	43	996	1039	2	5	7	
7th do.	53	954	1007	2	23	25	
8th do.	49	970	1019	2	8	10	
2nd A.L.T.M.B.	5	69	74	-	-	-	
2nd A.M.G.Co.,	12	157	169	-	34	34	
3rd Inf. Bde H.Q.	3	9	12	3	70	73	
9th Battalion	37	790	827	1	7	8	
10th do.	33	624	657	1	6	7	
11th do.	27	700	727	1	10	11	
12th do.	39	772	811	2	7	9	
3rd A.L.T.M.B.	3	47	50	-	-	-	
3rd A.M.G.Coy	10	150	160	-	2	2	
Divnl. Train,	22	396	418	2	55	57	
1st Field Amb.	9	241	250	3	3	6	
2nd do.	8	202	210	1	39	40	
3rd do.	10	225	235	1	18	19	
Div. Salvage Co.	1	63	64	-	63	63	
Mob. Vet. Sect.,	1	22	23	1	19	20	
21st A.M.G.Co.,	12	153	165	-	2	2	
2nd San. Sect.,	-	-	-	-	-	-	