

AWM4
Australian Imperial Force unit war diaries,
1914-18 War

Formation Headquarters

Item number: 1/48/6 Part 2

Title: General Staff, Headquarters 4th
Australian Division

September 1916

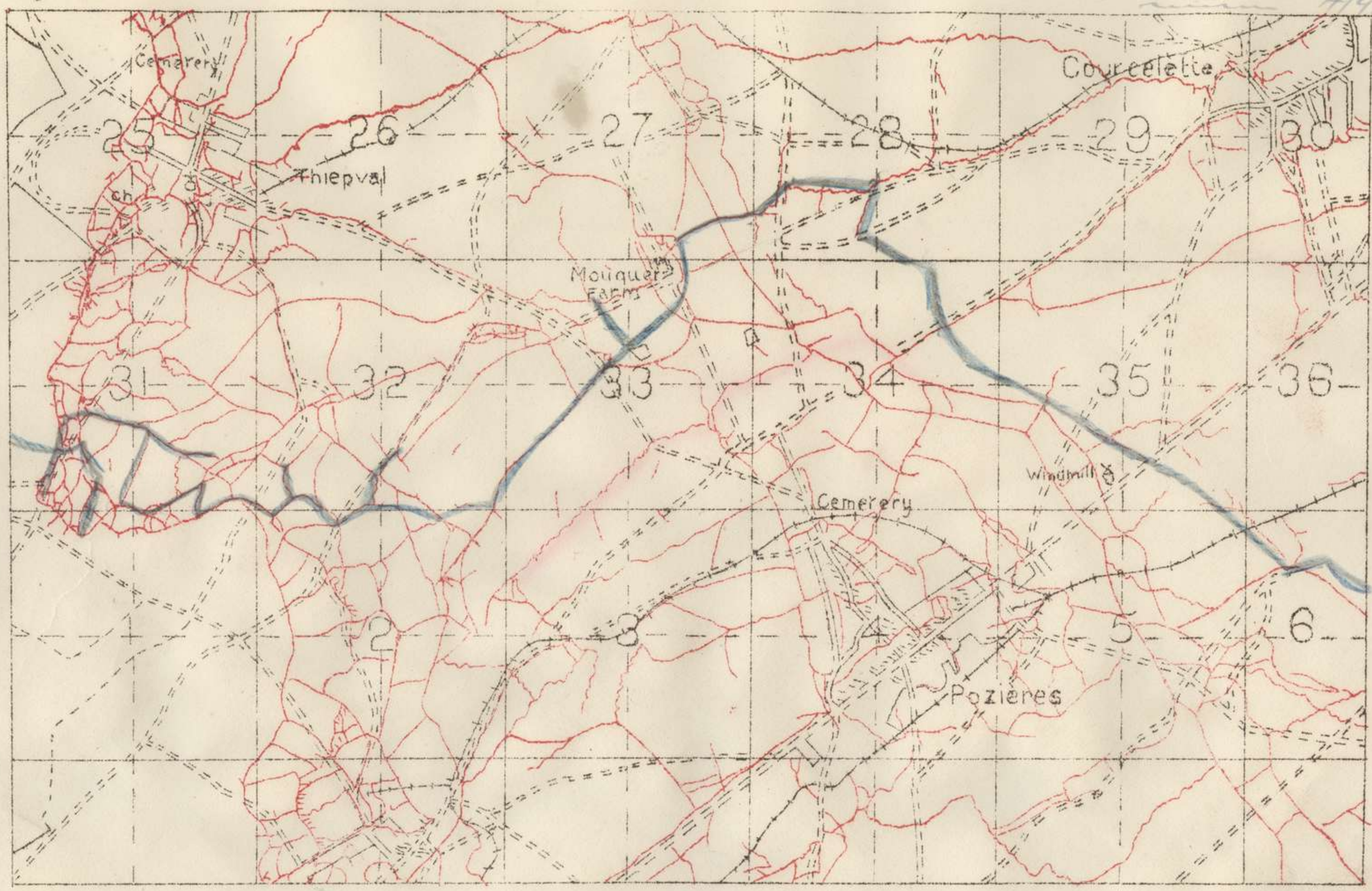


AWM4-1/48/6PART2

182
C.M. XIII

SITUATION MAP

SITUATION. 4/9/16

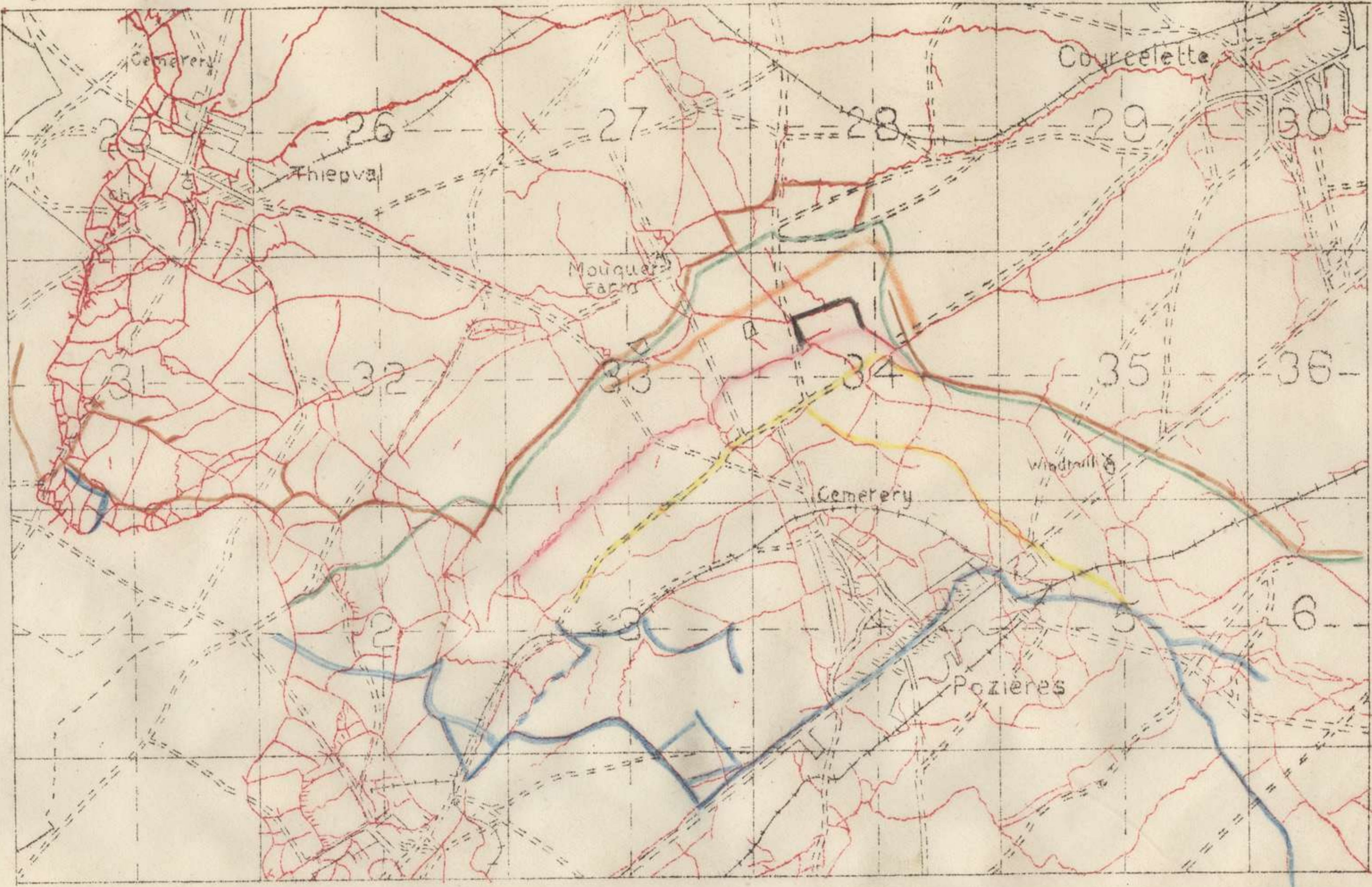


Appendix No. 13

51

182
App XIV

SITUATION MAP



Appendix No. 14

-  Sept 5th
 -  Aug 29th
 -  Aug 12/13
 -  Aug 11/12
 -  Aug 7th
 -  Aug 6th
 -  July 23rd
- 182

SECRET.

4th. AUSTRALIAN DIVISION.

Distribution of Units.

<u>UNIT.</u>	<u>Sheet</u>	<u>Map Square</u> <u>1/40,000</u>	<u>REMARKS.</u>	
Divisional Headquarters	RUBEMPRE			
4th. Aus. Inf. Bde. H.Q.	} BONNEVILLE			
13th. Battalion				
14th. "				
15th. "				
16th. "				
4th. M.G. Company				
4th. Light T.M. Battery				
12th. Aus. Inf. Bde. H.Q.	} RUBEMPRE			
45th. Battalion				
46th. "				
47th. "				
48th. "				
12th. M.G. Company				
12th. Light T.M. Battery				
13th. Aus. Inf. Bde. H.Q.	} X 4 A. 4 B. N. POZIERES	} - SWARLOY. when concentrated.		
49th. Battalion				
50th. "				
51st. "				
52nd. "				
13th. M.G. Company				
13th. Light T.M. Battery				
Lahore Div. Art. H.Q.	X 24. D. 73			
5th. R.F.A. Brigade	X 15. C. 02			
11th. " "	X 14. C. 64			
18th. " "	X 24. D. 89			
Div. Ammn. Column	W 20. A. 21			
4th. Aus. Div. Sub. Park	ST OVEN			
V4A. Heavy T.M. Battery	R. 34. C. 41			
X4A. Medium T.M. Battery	R. 34. A. 04			
Y4A. " " "	ALBERT			
Z4A. " " "	R. 32. B. 23			
Div. Engineers H.Q.	RUBEMPRE			
4th. Field Company	WARLOY VADENCOURT		↳ HERISSART. 25.	
12th. " "	WARLOY		RUBEMPRE	
13th. " "	BECOURT WOOD		↳ BRICKFIELDS. +	
4th. Div. Signal Company	PAPA HILL RUBEMPRE			
4th. Aus. Pioneer Bn.	VADENCOURT			
Div. Train H.Q.	SEN LIS			
14th. Coy. A.A.S.C.	- : -			
7th. " "	BONNEVILLE			
26th. " "	RUBEMPRE			
27th. " "	SEN LIS			
Railhead	ACNEUX			
4th. Aus. Field Ambulance	ALBERT		↳ HERISSART 25.	
12th. " " "	RUBEMPRE			
13th. " " "	BRICKFIELDS		↳ SWARLOY with 13th Bn.	
4th. Aus. Mob. Vet. Section	HARPOVILLE			
4th. Aus. Salvage Comp.ny	RUBEMPRE			

6 pm. 2nd Sept., 1916.

Major-General.
Comdg. 4th. AUSTRALIAN DIVISION.

To :- _____

SECRET.

4th. AUSTRALIAN DIVISION.

Distribution of Units.

<u>UNIT.</u>	<u>Sheet</u>	<u>Map Square</u> <u>1/20,000</u>	<u>REMARKS.</u>
Divisional Headquarters	RUBEMPRE		
4th. Aus. Inf. Bde. H.Q.	}	}	} on 6 th . BONNEVILLE for GEZAINCOURT. + LONGUEVILLE
13th. Battalion			
14th. " "			
15th. " "			
16th. " "			
4th. M.G. Company			
4th. Light T.M. Battery			
12th. Aus. Inf. Bde. H.Q.	}	}	} on 6 th . RUBEMPRE + HERISSART for BEAUVAIL
45th. Battalion			
46th. " "			
47th. " "			
48th. " "			
12th. M.G. Company			
12th. Light T.M. Battery			
13th. Aus. Inf. Bde. H.Q.	}	}	} on 6 th . BRICKFIELDS for WARLOY + AMPLIER on 7 th .
49th. Battalion			
50th. " "			
51st. " "			
52nd. " "			
13th. M.G. Company			
13th. Light T.M. Battery			
Lahore Div. Art. H.Q.	X 24 D. 73		
5th. R.F.A. Brigade	X 15 C. 02		
11th. " "	X 14 C. 64		
18th. " "	X 24 D. 89		
Div. Ammn. Column	W. 20 A 2		
4th. Aus. Div. Sub. Park	ST OVEN		
V4A. Heavy T.M. Battery	R. 34 C. 41		
X4A. Medium T.M. Battery	R 34 A 06		
Y4A. " " " "	ALBERT		
Z4A. " " " "	R. 32 B. 23		
Div. Engineers H.Q.	RUBEMPRE		} on 6 th . for BONNEVILLE on 6 th . + Longueville on 6 th . + BEAUVAIL on 6 th . + WARLOY on 6 th . AMPLIER on 7 th .
4th. Field Company	RUBEMPRE		
12th. " "	BRICKFIELDS		
13th. " "	RUBEMPRE		
4th. Div. Signal Company	RUBEMPRE		
4th. Aus. Pioneer Bn.	VADENCOURT		for BEAUVAIL on 6 th
Div. Train H.Q.	RUBEMPRE		
14th. Coy. A.A.S.C.	SENLIS		
7th. " "	BONNEVILLE		
26th. " "	RUBEMPRE		
27th. " "	SENLIS		
Railhead	ACHEUX		
4th. Aus. Field Ambulance	HERISSART		
12th. " " "	BRICKFIELDS		
13th. " " "	BRICKFIELDS		
4th. Aus. Mob. Vet. Section	RUBEMPRE		
4th. Aus. Salvage Company	RUBEMPRE		

6 pm. 5th Sept. 1916.

M. H. R. Major-General.
Comdg. 4th. AUSTRALIAN DIVISION.

To :- _____

SECRET.
4th. AUSTRALIAN DIVISION.
Distribution of Units.

<u>UNIT.</u>	<u>Sheet</u>	<u>Map Square</u> <u>1/20,000</u>	<u>REMARKS.</u>
Divisional Headquarters	DOULLENS		
4th. Aus. Inf. Bde. H.Q.	GEZAINCOURT + LONGUEVILLE		
13th. Battalion			
14th. "			
15th. "			
16th. "			
4th. M.G. Company			
4th. Light T.M. Battery			
12th. Aus. Inf. Bde. H.Q.	BEAUVAIL		
45th. Battalion			
46th. "			
47th. "			
48th. "			
12th. M.G. Company			
12th. Light T.M. Battery			
13th. Aus. Inf. Bde. H.Q.	WARLOY		In AMPLIER M 7 ^e
49th. Battalion			
50th. "			
51st. "			
52nd. "			
13th. M.G. Company			
13th. Light T.M. Battery			
Lahore Div. Art. H.Q.	X 24. D. 72		
5th. R.F.A. Brigade	X 15. C. 0.2		
11th. " "	X 14. C. 64		
18th. " "	X 24. D. 89		
Div. Ammn. Column	X 20. A. 2		
4th. Aus. Div. Sub. Park	ST OVEN		
V4A. Heavy T.M. Battery	R 34. C. 41		
X4A. Medium T.M. Battery	R 34. A. 06		
Y4A. " " "	ALBERT		
Z4A. " " "	R 32. B. 23		
Div. Engineers H.Q.	DOULLENS		
4th. Field Company	LONGUEVILLE		
12th. " "	BEAUVAIL		
13th. " "	WARLOY		In AMPLIER M 7 ^e
4th. Div. Signal Company	DOULLENS		
4th. Aus. Pioneer Bn.	BEAUVAIL		
Div. Train H.Q.	DOULLENS		In RENINGELST M 2 ^e
14th. Coy. A.A.S.C.	SENLIS		In ORVILLE M 7 ^e
7th. " "	GEZAINCOURT		
26th. " "	BEAUVAIL		
27th. " "	WARLOY		In AMPLIER M 7 ^e
Railhead	ACHEUX		X
4th. Aus. Field Ambulance	LONGUEVILLE		
12th. " " "	BEAUVAIL		
13th. " " "	WARLOY		X WIPPENHOEK M 9 ^e
4th. Aus. Mob. Vet. Section	BRETEL		
4th. Aus. Salvage Comp.ny	DOULLENS		

for information of the Div. Staff

6^e Sept. 1916.

M. M. Craighero
Major-General.
Comdg. 4th. AUSTRALIAN DIVISION.

To :- _____

XVIII

4th. AUSTRALIAN DIVISION.

Distribution of Units.

UNIT.	Sheet	Map Square 1/40,000	REMARKS.
Divisional Headquarters		STEENWOORDE	
4th. Inf. Brigade H.Q.		G.35.c.7.2.	} E. of RENINGHELST. Huts.
13th. Battalion		ONTARIO Camp	
14th. " "		QUEBEC Camp	
15th. " "		ALBERTA "	
16th. " "		near HURON Camp	
4th. Bde. M. G. Company. } 4th. L.I.M. Bty. }		CHIPPAWA Camp	
12th. Inf. Brigade H.Q.		L.24.Central	} 1 Mile S. of POPERINGHE ? PATRICIA Lines Huts.
45th. Battalion	M.3.c.5.7.	VICTORIA Camp	
46th. " "	M.3.Central	KENORA "	
47th. " "	L.29.b.28.	PATRICIA "	
48th. " "	L.34.b.22.	CONNAUGHT "	
12th. Bde. M. G. Company } 12th. L.I.M. Bty. }			
13th. Inf. Brigade H.Q.			}
49th. Battalion			
50th. " "			
51st. " "		STEENWOORDE	
52nd. " "			
13th. Bde. M. G. Company. 13th. L.I.M. Bty.			
Div. Artillery H.Q.		RENINGHELST	} HQ. Right Group HQ. Wagon Lines. HQ. Left Group
10th. F.A. Brigade	H.28.D.77	A.20.	
11th. " "	H.27	In the Line.	
12th. " "	R.4.C.42		
24th. " "	H.28.C.10	B.10.	
Div. Ammn. Column <i>at Sub Park.</i>	H.13.Central	ABEELE	
Div. Engineers H.Q.		STEENWOORDE	(Cheval Noir) beyond Church
4th. Field Company		CHIPPAWA Camp	} near VICTORIA Camp Godevalde.
12th. " "	M.3.b.7.8.	Details Camp	
13th. " "		STEENWOORDE	
4th. Div. Signal Coy.		"	
4th. Pioneer Battalion	M.6.a.	CHIPPAWA Camp	On RENINGHELST-KEMMEL Road.
Div. Train H.Q.		STEENWOORDE	RENINGHELST
14th. Coy. A.A.S.C.	G.32.a.Central	1. RENINGHELST	} (OUDERDOM)
7th. " "		CHIPPAWA Camp	
26th. " "	R.11.b.2.6	STEENWOORDE	
27th. Supply Column Railhead		ABEELE	
4th. Field Ambulance		WIPPENHOEK	
12th. " "		RENINGHELST	
13th. " "	M.3.Central	" Detail Camp near KINORA Camp	
V.4.A.M.T. Mortar Bty.		BOECHEPE	
X.4.A.M.T. " "			} In the Line.
Y.4.A.M.T. " "			
Z.4.A.M.T. " "			
4th. L.I.T. 4th. Mob. Vet. Sec.	Q.32.b.6.2.	near RENINGHELST	
12th. L.I.T. 4th. Aus. Salvage Coy.		STEENWOORDE	
13th. L.I.T. " "			

6 p.m. 9th. Sept., 1916.

H.M. ...
Major-General.
Comd. 4th. AUSTRALIAN DIVISION.

To:-

82

4th. AUSTRALIAN DIVISION.

57

G.S. CIRCULAR No. 44.

Headquarters,
11th. SEPTEMBER, 1916.

T r a i n i n g .

It is very important that full advantage should be taken of the present opportunities for training - both individual and collective.

1. TRAINING AREA.

A tracing, shewing the boundaries of the Corps Training Area (just N.E. of STEENVOORDE) has been sent to each Brigade. This area will be used for general operations by the Brigade billeted at STEENVOORDE. The dates on which it can be used will be notified by Divisional Headquarters. Officers should take every opportunity of making themselves acquainted with this ground beforehand. Advantage should be taken of this area to practice Battalion schemes, Brigade attacks, Night Operations, etc., leaving most of the Specialist training to be carried out when the Brigade is near RENINGHELST, where no other form of training is possible.

2. SPECIALIST TRAINING.

Will be carried on under Brigade arrangements. Every effort will be made to train as large a number of Lewis Gunners and Bombers as possible. Brigades will report on facilities for this training near their billets, so that if necessary further arrangements can be made. There is a range at R.9.b.23 which can be used by the Brigade at RENINGHELST on application to D.H.Q.

3. SCHOOLS.

A list of the dates of G.H.Q. and Army Schools has been forwarded to Brigades. Divisional Headquarters will allot the vacancies to Brigades and will try to so arrange it that Brigades send their candidates to the Schools during the period that they are out of the line.

4. BRIGADE SCHOOLS.

On the lines mentioned in G.S. Circular No. 30 of 14th. JUNE will be started by Brigades not in the line. As all Battalions have numbers of junior officers who have been recently promoted, it is very important that as many as possible should attend these elementary schools. Plenty of work of a practical nature should be done during these courses and full advantage should be taken of the Corps Training Area to carry out simple tactical exercises without troops. Brigade Staffs will apply to the Division for any assistance they may require in the way of arranging schemes or obtaining the services of outside lecturers.

5. BAYONET FIGHTING.

Trained instructors will shortly be available and will be allotted to Brigades as before. Now that a large of Officers and N.C.O's in each Brigade have been through a bayonet fighting course, Battalions and Companies should carry on bayonet fighting on the lines they have been shewn. G.O's.C. Brigades will ensure that this is done and, when they are allotted the services of an Instructor will employ him partly to inspect Battalion and Coy. bayonet fighting practice and see that it is conducted on the proper lines.

6. GAS DRILL.

Will be regularly practised both by day and night and men must be trained to put on their gas helmets and respirators when marching along in the dark fully equipped. Special courses at the Divisional Gas School will be held by the Divisional Gas Officer.

7. Special attention will be given to STEADY DRILL (both by Bns. and Coys.), SALUTING DRILL and MUSKETRY EXERCISES. Practice in rapid loading should be carried out as part of other parades. Ground suitable for drilling small bodies of men is available near all the billets.

8. Brigades not in the line will render weekly training programmes to Div. Headquarters.



J. K. Bernard.
Lieut-Colonel.
G.S. 4th. AUSTRALIAN DIVISION.

SECRET.

APP XX.

4th. AUSTRALIAN DIVISION.

Distribution of of Units.

UNIT.	Sheet	Map Square 1/40,000	REMARKS.
Divisional Headquarters		STEENWOORDE	RENINGHELST.
4th. Inf. Brigade H.Q.		G.35.c.7.2.	} E. of RENINGHELST Huts.
13th. Battalion		ONTARIO Camp	
14th. " "		QUEBEC Camp	
15th. " "		ALBERTA Camp	
16th. " "		Near HURON Camp	
4th. Bde. M.G. Company.) 4th. L.T.M. Battery		CHIPPAWA Camp	
12th. Inf. Brigade H.Q.		L.24. Central	} I Mile S. of POPERINGHE
45th. Battalion	M.3.c.5.7.	VICTORIA Camp	
46th. " "	M.3. Central.	KENORA Camp	
47th. " "	L.29.b.28.	PATRICIA Camp	
48th. " "	L.34.b.22.	CONNAUGHT Camp	
12th. Bde. M.G. Company.) 12th. L.T.M. Battery			? PATRICIA Lines Huts.
13th. Inf. Brigade H.Q.			}
49th. Battalion			
50th. " "		STEENWOORDE	
51st. " "			
52nd. " "			
13th. Bde. M.G. Company.) 13th. L.T.M. Battery			
Div. Artillery H.Q.		RENINGHELST	
10th. F.A. Brigade b	H.28.d.77		
11th. " "	H.27.a.20		
12th. " "	R.4.c.42		
24th. " "	H.28.a.10		
Div. Ammn. Column Ammn. Sub Park	H.18. Central.	Near ABEELE	
Div. Engineers H.Q.	RENINGHELST	STEENWOORDE	(Cheval Noir) N. of Church
4th. Field Company		CHIPPAWA Camp	near VICTORIA Camp GOEDWAERSVELDE
12th. " "	M.3.b.7.8.	Details Camp	
13th. " "		STEENWOORDE	
4th. Div. Signal Coy.	36A 19	RENINGHELST.	
4th. Pioneer Battalion (less 2 Coy)	M.3.a.	CHIPPAWA Camp	On RENINGHELST-KEMMEL Road. 2 Coy at H. 14. C. 43.
Div. Train H.Q.		RENINGHELST	
14th. Coy. A.A.S.C.	G.32.a. Central.		
7th. " "		CHIPPAWA Camp	(OUDERDOM)
26th. " "	R.11.b.4.6		
27th. " "		STEENWOORDE	
Supply Column Railhead		WIPPENHOEK	
4th. Field Ambulance		RENINGHELST	
12th. " "	M.3. Central.	"	Details Camp near KINORA Camp.
13th. " "		BOESCHEPE	
V.4.A.H.T. Mortar Bty.			} In the Line.
X.4.A.M.T. " "			
Y.4.A.M.T. " "			
Z.4.A.M.T. " "			
4th. L.T. 4th. Mob. Vet. Sec.	Q.32.b.6.	2. near RENINGHELST	
12th. L.T. 4th. Aus. Salvage Coy.		STEENWOORDE	
13th. L.T.			

6 p.m. 10th. Sep, 1916.

M. McR... Major-General.
Comdg. 4th. AUSTRALIAN DIVISION.

To:-

M U S I U .

4th. AUSTRALIAN DIVISIONAL ORDER No. 25.

Copy No. 20

Headquarters,
14th. SEPTEMBER, 1916.

Reference map 1/20,000.

1. The 4th. Aus. Infantry Brigade will relieve the 11th. Canadian Infantry Brigade in the front line, as under :-

Right 15/16th. Battalion in Brigade Reserve, and Specialists.
" 17/18th. Remainder of the Brigade.

2. All arrangements will be made by Brigadiers concerned.

3. G.O.C., 4th. Aus. Infantry Brigade will assume Command on completion of relief, which will be notified to Divisional Headquarters.

4. G.O.C. 4th. Australian Division will assume Command of the Line from DIEPENDAAL BEEK to the YPRES COMINES Canal and also of the Southern Divisional Area of the Corps at 9.am. on 18th. instant.

5. The North and South Boundaries of the Divisional Area will be as follows :-

Northern Boundary.

Along Southern Bank of Canal to I. 32.a.66, H.36.a.09, H.29.c.99, 49, 20, H.28.d.47, H.33.a.20, H.32.a.30, H.25.c.20, G.30.c.20, G.29.d.95, G.35.a.20, G.28.a.47, G.32.d.91, G.31.a.08. along Road to L.33.c.32.

Southern Boundary.

From O.7.b.3.9, H.35.d.30, H.22.d.22, N.1.c.05, M.6.d.95, M.3.c.70, M.7.d.00, Q.12.d.30.

6. The 12th. Aus. Infantry Brigade will move into the quarters vacated by 4th. Aus. Infantry Brigade as soon as the latter moves out. All arrangements between Brigadiers direct. 12th. Aus. Infantry Brigade will be Divisional Reserve.

7. The 13th. Aus. Infantry Brigade at STENVOORDE will be Corps Reserve.

OK Bernard

Lieut-Colonel.

G.S. 4th. AUSTRALIAN DIVISION.

Issued at 3 p.m.

Extra Copies to :-

No. 16

22)

23)

24)

25)

26)

27)

A.N.Z.A.C. Heavy Art.

1st. A.N.Z.A.C.

1st. Australian Division.

2nd. Australian Division.

4th. Canadian Division.

4th. AUSTRALIAN DIVISION.

Headquarters,
16th. SEPTEMBER, 1916.

I N T E L L I G E N C E.

The ground close behind our line offers excellent opportunities for observation of enemy front line. The greatest possible use is to be made of the existing O.P's and steps taken to improve them.

Observation is the chief way of gaining information of the enemy's defences and moves in trench warfare, and well trained men should be detailed for this work.

For the present these O.P's will be manned by men detailed from the Battalion Scout Platoons. These men should be allowed to remain in these Posts while their Units are in the line, and relieving Units should send their observers forward at least two days before taking over, so that they may get a good general idea of the line and any special points concerning it.

O.P's should not be visited by persons other than those concerned with them, as movement around them draws the enemy's fire. There will be a Divisional Observation Post. These observers will be under Divisional Headquarters, and may, when necessary, visit any of the O.P's for the purpose of verifying their observations.

Brigade Intelligence Summaries will be compiled as far as possible in accordance with "Instructions for Intelligence Duties - 2nd. Army". Brigade Summaries to reach Divisional Headquarters by 12 Noon daily.

Artillery Summary will be rendered in the usual form and will reach Divisional Headquarters by 12 Noon daily.

Special attention should be paid to the following points :-

When enemy movement, etc., is reported action taken should also be stated. Map reference to any position referred to in the Summary should be given. The enemy's defences want to be closely watched by observers both in the front line and the O.P's, and any changes or new constructions should be specially watched for and fully reported on, also the location of enemy M.G's and Trench Mortars and the effects of their fire, and effect and location of enemy shelling.

Col. H. H. H. H. H.

Lieut-Colonel.
G.S. 4th. AUSTRALIAN DIVISION.

Copies to :- 4th., 18th., 15th. Aus. Inf. Bdes.
C.R.A.

opp XXIII

SECRET.

4th. AUSTRALIAN DIVISION.

Distribution of Units.

UNIT.	Shooting	Map Square 1/40,000	REMARKS.
Divisional Headquarters.		RENINGHELST.	
4th. Aus. Inf. Bde. H.Q.		G. 35. C. 7-2.	E. of RENINGHELST.
13th. Battalion		ONTARIO Camp.	
14th. "	DICKEBUSH	QUEBEC -	
15th. "		ALBERTA.	
16th. "		near HURON Camp.	
4th. Aus. M.G. Company.		CHIPPAWA Camp.	
4th. Aus. L.T.M. Bty.			
12th. Aus. Inf. Bde. H.Q.		L 24 Central.	In the S. of POPERINGHE
45th. Battalion		Victoria. Camp.	
46th. "	M. 3. C. 57.	KENORA -	
47th. "	M. 3. Central.	PATRICIA -	
48th. "	L 29. B. 28		
12th. Aus. M.G. Company	L 34. B. 22	CONNAUGHT -	
12th. Aus. L.T.M. Bty.			
13th. Aus. Inf. Bde. H.Q.			STEENWOORDE
49th. Battalion			
50th. "			
51st. "			
52nd. "			
13th. Aus. M.G. Company			
13th. Aus. L.T.M. Bty.			
Div. Artillery H.Q.		RENINGHELST	
10th. A.F.A. Brigade	H. 20. D. 77.	in the line.	HQ. Right Group.
11th. "	H. 27. A. 20.		HQ. Wagon Lines.
12th. "	R 4. C. 42		HQ. Left Group.
24th. "	H 20. A. 10.		
V. 4. A. H.T.M. Battery	H 13. Central.	W. ABEELE	
X. 4. A. M.T.M. "		in the line.	
Y. 4. A. M.T.M. "			
Z. 4. A. M.T.M. "			
Div. Ammunition Column	H 13. Central.	W. ABEELE.	
Ammunition Sub-Park.			
Div. Engineers H.Q.		RENINGHELST	
1th. Aus. Field Company	M. 6. A.	CHIPPAWA Camp.	Line on 16°
12th. "	M. 3. B. 78.	detents	32nd Spoil Bn 11 - Dickebusch
13th. "		STEENWOORDE	36 A 19
4th. Aus. Signal Company		RENINGHELST.	
4th. Aus. Pioneer Bn.	M. 6. A.	CHIPPAWA Camp.	A RENINGHELST - KEMMEL Road 2 Coy at H. 14. C. 43.
(less 2 Coy)			
Divisional Train H.Q.		RENINGHELST	
14th. Coy. A.A.S.C.	G. 32. A. Central.	CHIPPAWA Camp.	? OUDERDOM.
7th. Coy. A.A.S.C.			
26th. Coy. A.A.S.C.	R. 11. C. Central.	STEENWOORDE	
27th. Coy. A.A.S.C.		ABEELE	
Supply Column.		WIPPENHOEK.	
Railhead		RENINGHELST	
4th. Aus. Field Ambulance	M. 3. Central		Detail Camp near KINORA
12th. (less 2 Coy)		BOESCHÉPE	1 Sect. at STEENWOORDE.
13th. (less 1 Coy)			
4th. Aus. Mob. Vet. Sect.	R. 32. B. 6. 2.	near RENINGHELST	
4th. Aus. Salvage Coy.		STEENWOORDE	

6 p.m. - 12 Sept. 1916.

H.M. Rechner G.S. Major-General,
Comds., 4th. AUSTRALIAN DIVISION.

To :-

2 Sect STEENWOORDE.

182

NOT TO BE TAKEN INTO THE TRENCHES.

4th AUSTRALIAN DIVISION.

STANDING ORDERS FOR DEFENSIVE MEASURES AGAINST GAS.

1. Defence against Gas Cloud.

(1) General Precautions.

(a) Throughout the Divisional Area a chain of gas alarm posts have been established both laterally and from front to rear, so that on the alarm being given in the front trenches, it can be passed rapidly to all Units in the area.

(b) Each Alarm post is equipped with a Strombos Horn Klaxon, or other form of mechanical horn, and also with a non-mechanical signal (e.g. an iron rail or shell case) in case the horn fails to work. The alarm signal, when sounded, will be continued for three minutes, unless discontinuance is ordered by an Officer.

(c) In addition to sounding horns, etc., the alarm will be passed by telephone, buzzer messages, or where lines do not exist, by runners. These messages automatically take "Priority" over all other Signal messages.

Units or formations on whose fronts the gas is detected will pass the alarm to units or formations on their flanks as well as to their own Brigade and Division. Formations receiving the alarm from a flank will not pass it on. Each Signal Office on receiving the warning message addressed to "Gas" will automatically repeat it until every Signal Office in the Corps and the Signal Offices of the nearest Brigade and the nearest Division of the flanking Corps are warned.

O.C. Divisional Signal Company will ensure that a list of Offices to be warned, corrected to date and applicable to the Office concerned, is kept in every Signal Office. The Unit reporting will give its position in the line and the time the attack occurred, thus :-

To :- "GAS"

Gas 9 p.m. trench _____

From :- 2nd. Battalion.

Every Battalion Commander in front line will be responsible for alarming all detached Units, i.e., Artillery O.P.'s, Engineers, Pioneers, Tunnellers and medical personnel in his area. As regards Units in back areas, lists showing which Units are responsible for warning them will be prepared and issued to all concerned by Divisional Headquarters.

(d) In each Infantry Brigade and Battalion in front line, a wind vane will be maintained under Brigade and Battalion arrangements with a special sentry in charge of it. Any change of wind will be at once reported to Divisional Headquarters by the Brigade concerned.

(e) Every Headquarters, down to, and including Company Headquarters, will keep a board hung in a conspicuous position just outside the headquarters, painted to read "wind dangerous" or "wind safe" and the correct notice according to the order in force will be shown constantly.

(f) All ranks East of the POPERINGHE-BOESCHEPE Road will, at all times, carry one P.H. or P.H.G. helmet.

(g) Every Unit down to Companies inclusive must have a copy of these orders and also a copy of the pamphlet "Defensive Measures against Gas attack" (S.S.419) issued by G.H.Q.

(h) Every Company, Battery and Unit of similar size will detail one N.C.O., not below the rank of Corporal, for duty as Company or Battery Gas N.C.O. The M.C.O. after training at the Div. Gas School will perform the following duties under the orders of the O.C. Unit :-

P.T.O.

Appendix No. 24

-2-

- (i) Whilst in billets carry out instructional drill in the use of respirators, goggles, etc.
- (ii) Inspect respirators and see that the instructions concerning their care and use is observed.
- (iii) Inspect Strombos Horns and other appliances and see that they are kept in good order and in their proper positions.
- (iv) Superintend the building (if necessary) and care of gas proof dug-outs.
- (v) Assist Officers to see that all regulations with respect to "Wind Dangerous" orders are enforced.
- (vi) Carry out any instructions that may be issued from time to time by the Divisional Gas Officer.

These Gas N.C.O.'s while subject to the orders of the Divisional Gas Officer, will only be taken away from their regular duties for such time as, in the opinion of their Officers, is necessary to perform the special work allotted to them. They should, if possible, be sent into the trenches with the advance parties of reliefs so as to take over from the outgoing Gas N.C.O. Officers will be responsible that their Gas N.C.O.'s are given every opportunity for the carrying out of their gas duties.

(2) "Wind Dangerous".

As soon as the wind goes into a quarter favourable for a "Gas Attack, no matter what the strength of the wind is, "wind dangerous" will be ordered. This order will emanate normally from Corps or Divisional Headquarters, but Brigade and Battalion Commanders in front line will be responsible for putting the "wind dangerous" order in force without waiting for the order from Divisional Headquarters if they think it necessary. The "wind dangerous" order when once put in force will NOT be cancelled except by order of Corps or Divisional Headquarters. The dangerous quarter depends on the portion of the line held by the Division, any changes required will be notified to all concerned. At present "wind dangerous" order will be enforced when the wind is anywhere East of North and South. Immediately the "wind dangerous" is ordered the following precautions will be taken:-

- (1) By all troops East of DICKERBUSCH *within 2 miles of the front line*
 - (a) A sentry will be posted at each Gas Alarm Post, over the horn, and instructed in its use. The horn itself will be inspected and tested at once, and also daily as long as the "wind dangerous" is in force.
 - (b) A sentry will be posted on each Headquarters, Signal Office or dug-out, advanced Dressing Station, on each dug-out holding 10 or more men, and on each group of three small dug-outs. A sentry will also be posted on each independent body of men or working party.
 - (c) All ranks will wear the small box respirator in the "wind dangerous" position on the chest. The reserve helmet will be hung perpendicularly downwards from the left shoulder and under the belt. The equipment will be adjusted so as not to interfere with the quick adjustment of the respirator and nothing must be slung across the chest.
 - (d) Platoon and Section Officers and N.C.O.'s will be responsible for seeing that the order (c) is strictly carried out, both for troops in front line trenches and for detached bodies of troops (working and carrying parties, etc.).
 - (e) Supplies of oil, etc., for cleaning machine guns and S.A.A. will be brought up and put in convenient positions.
 - (f) Respirators will be carefully inspected daily.
 - (g) Arrangements will be made by the Officer in charge of the trench for warning Listening Posts and Artillery C.P.'s.
 - (h) Gas blankets at entrance to dug-outs etc., will be lowered and tested daily; they will be kept damp by water kept in the sprayer, for the purpose, and not by sprayer solution. Anti-gas fans, etc. will be tested daily.
 - (i) At night, sentries must have at least two men within reach of them so that the alarm can be spread rapidly.

(1)/

(1) When a gas attack is probable, men in front line trenches will sleep on the firestep instead of in dug-outs.

(k) Company Gas N.C.O.'s will report to Company Headquarters in readiness to assist the Company Commander should a gas attack occur.

(2) By all troops more than two miles from the front line.

- (a) Respirators will be inspected daily.
- (b) All ranks will sleep with one respirator attached to them and the reserve helmet immediately accessible.
- (c) Commanders of Units in Billets will organise a system of giving the alarm and rousing all men in houses or cellars.

(3) GAS ALARM

(3) In the event of an enemy gas attack, all horns and signals will be sounded and the alarm passed as directed in Section I. (General precautions) paras. (a) (b) (c).

(b) All ranks in the front area will immediately put on respirators and stand to arms.

(c) All ranks in trenches, dug-outs, cellars, minshafts, Artillery O.P.'s, will be roused.

(d) Troops will man their parapets. All ranks in the front line are forbidden to remain in, or go into, dug-outs or move to a flank or to the rear. There must be as little movement and talking as possible. Men must be made to realise that this is essential with the gas now used.

(e) If troops in support or reserve lines of trenches, remain in, or go into, unprotected dug-outs they must continue to wear their respirators.

(f) All unnecessary movement must cease, and all bodies of troops or transport on the move, will halt, and all working parties, cease work until the gas cloud has passed.

(g) If a relief is going on, Units should stand steady as far as possible, until the gas cloud has passed.

(h) Supports and parties bringing up ammunition and grenades will only be moved if the tactical situation demands.

(j) The blanket doorways of protected dug-outs and cellars will be let down and carefully fixed in position.

(k) Troops in back areas will put on respirators at the first sign of gas.

(l) In the case of a smoke attack, respirators will be put on and worn until the smoke has passed as gas may be at any time introduced into the smoke.

(4) Action during enemy gas attack.

(a) Should the gas cloud be unaccompanied by an Infantry attack, a S.O.S. signal will not be sent but the warning as in para (c) Section I. (General precautions) should however an Infantry attack develop, the normal procedure of S.O.S. will be carried out.

(b) Troops in those parts of the line not affected by gas must be prepared to bring a cross-fire to bear on the enemy attempting to advance against a gassed portion of the line.

(c) Officers and N.C.O.'s must not raise their respirators to give orders.

(d) The telephone should be used as little as possible; all messages should be sent by buzzer. Unless the signal dug-out has been rendered gas-proof, signallers will bring their instruments out of the dug-outs and work on the fire-steps.

(e) Machine guns and S.A.A. not in use will be kept wrapped up in waterproof sheets, treated blankets or thick paper.

Artillery Action.

By day and night Shrapnel barrage Battery fire 1st seconds on flanks and behind trenches gas is coming from, and be ready to quicken up if the S.O.S. comes or attack is made. By day in addition H.E. from 4.5" Hows. and 18" prs. will be fired at trench whence gas is issuing, to try to break or bury the cylinders, from enfilade guns.

(5) Action after enemy gas attack.

(a) Respirators must not be removed after a gas attack until permission has been given by the Company Commander, who will, when possible, ascertain from Officers and N.C.O.'s who have been trained at the Divisional Gas School that it is safe to do so.

P.T.O.

Appendix No. 24

- (b) Men in charge of anti-gas fans will use them as soon as the gas cloud has passed so as to admit of helmets being removed, the trenches being cleared first and then the dug-outs.
- (c) When permission has been given to take off respirators they should be immediately returned to the "wind dangerous" position.
- (d) A sharp look-out must be maintained for a repetition of the gas attacks as long as the wind remains in the dangerous quarter.
- (e) Dug-outs and cellars not protected during an gas attack must not be entered for four hours after the cloud has passed and must be ventilated freely by fires or anti-gas fans to ensure thorough cleaning. If after a gas attack unprotected dug-outs have to be entered owing to heavy shelling, respirators must be worn.
- (f) All rifles and machine guns must be cleaned after a gas attack. Oil cleaning will prevent corrosion for 12 hours, but the first opportunity must be taken to clean all parts in boiling water containing a little soda.
- (g) After a gas attack men suffering from the effects of the gas must not be allowed to walk to a dressing station or assist in the cleaning of trenches and dug-outs.
- (h) After a gas attack troops in the front trenches should be relieved of all fatigue and carrying work for 24 hours, by sending up working parties from Companies in rear. Horses which have been exposed to the gas should not be worked for 24 hours if it can be avoided.

(2) DEFENSE AGAINST GAS OR TEAR SHELLS.

- (a) In the event of a sudden or intense bombardment with gas shells or tear shells, arrangements must be made for giving a local alarm e.g. by blasts from French shunters horns which will be issued for this purpose.
- (b) Entries on battery positions and on Company and Battalion headquarters will be instructed to give the alarm directly gas or tear shells are detected.
- (c) Respirators will be put on immediately the alarm sounds or the action of the shell is noticed whichever is the sooner.
- (d) All dug-outs and shelters in the vicinity will be visited and sleeping men roused.
- (e) Unless dug-outs, etc., are gas-proof they must be vacated and not entered until cleaning from gas by anti-gas fans or other mechanical means.
- (f) Men should be trained in rapidly putting on respirators from the position in which they are slung at the side. O.C.'s will be responsible this is carried out.
- (g) Men should be warned against trying to dig up high explosive shells as the craters formed by them underground contain carbon monoxide gas against which neither the helmet nor the box respirator affords protection.

Civilian inhabitants of areas will be warned by the Area Commandants who will be warned by Divisional Headquarters.

H. S. McRae

Headquarters, 21st. SEPTEMBER, 1916. Major. G.S. 4th. AUSTRALIAN DIVISION.

When a gas attack occurs, the Company Commander, who will be given the order to put on respirators, should see that all men who have been trained in the use of respirators are able to do so.

82

GENERAL.

4th. AUSTRALIAN DIVISION.

Distribution of Units.

UNIT.	Shoot	Map Square 1/40,000	REMARKS.
Divisional Headquarters.		RENINGHELST	
4th. Aus. Inf. Bde. H.Q.		BURGMASTERS FARM DICKEBUSCH	Take over here at 9 a.m. 18 th
13th. Battalion	Trenches 9 - 14 incl.	DEAD DOG FARM	
14th. "		VORMEZEELE DICKEBUSCH	VORMEZEELE
15th. "	Trenches 15 - 21 1 - 22 - 28	VORMEZEELE.	
16th. "		SPOIL BANK	
4th. Aus. M.G. Company.		} in the line	
4th. Aus. L.T.M. Bty.			
12th. Aus. Inf. Bde. H.Q.		L. 24 Central	CHIPPAWA at 11 a.m. 18 th
45th. Battalion	M. 3. C. 5. 7	VICTORIA Camp	ONTARIO. on 19 th
46th. "	M. 3. Central	KENORA.	CHIPPAWA - 18 th
47th. "	L. 29. B. 28	PATRICIA.	ALBERTA. by 9 a.m. 18 th
48th. "	L. 34. B. 22	CONNAUGHT -	QUEBEC. - 11 a.m.
12th. Aus. M.G. Company			remains CONNAUGHT
12th. Aus. L.T.M. Bty.			CHIPPAWA - 18 th
13th. Aus. Inf. Bde. H.Q.		STEENVOORDE	
49th. Battalion		STEENVOORDE	
50th. "		WISQUES.	
51st. "		STEENWOORDE.	
52nd. "			
13th. Aus. M.G. Company			
13th. Aus. L.T.M. Bty.			
Div. Artillery H.Q.		RENINGHELST.	
10th. A.F.A. Brigade		H. 28. D. 77	} HQ. Wagon has R. 4. C. 42 on 18 th H. 27. B. 22 HQ. 4 th Bty HQ. 4 th Bty
11th. "		H. 27. A. 20	
12th. "		R. 4. C. 42	
24th. "		H. 28. A. 50	
V. 4. A. H.T.M. Battery		} in the line HQ H. 34. D. 91	
X. 4. A. M.T.M. "			
Y. 4. A. M.T.M. "			
Z. 4. A. M.T.M. "			
Div. Ammunition Column		H. 13. Central	
Ammunition Sub-Park.		W. ABEELE	
Div. Engineers H.Q.		RENINGHELST.	
4th. Aus. Field Company	(less 3 Sect.)	DICKEBUSCH.	3 Sect. SPOIL BANK.
12th. "	M. 3. B. 78	Detail Camp.	
13th. "		36. A. 19	
4th. Aus. Signal Company		RENINGHELST.	
4th. Aus. Pioneer Bn. (less 2 Coy.)		MICHMAC.	2 Coy. at CHIPPAWA. M. 14. C. 43
Divisional Tr in H.Q.		RENINGHELST.	
14th. Coy. A.A.S.C.		G. 32. A. Central.	
7th. Coy. A.A.S.C.		OUDERDOM.	
26th. Coy. A.A.S.C.		R. 5. C. Central.	
27th. Coy. A.A.S.C.		STEENWOORDE.	
Supply Column.		WIPPENHOEK.	
Railhead			
4th. Aus. Field Ambulance	1 Sect. OUTERDOM	1 Sect. DICKEBUSCH	} 1 Sect. VERMOZEELE. (became details. SPOIL BANK) DE.
12th. "	(less 2 Sects) M. 3. Central.	2 Sects at STEENWOORDE.	
13th. "		BOESCHEPE	
4th. Aus. Mob. Vet. Sect.	G. 32. B. 62.	Near RENINGHELST.	
4th. Aus. Salvage Coy.		RENINGHELST.	

6 a.m. 18th Sept. 1916.
20

M. M. G. Major-General.
Comdg., 4th. AUSTRALIAN DIVISION.

To :-

CONFIDENTIAL.4th. AUSTRALIAN DIVISION - INTELLIGENCE SUMMARY No. 9.From 6 a.m. 18th. Sept. to 6 a.m. 19th. SEPTEMBER, 1918.Not to be taken into the Front Line.OPERATIONS.

Our Artillery was not very active during the day - only a few rounds being expended for registration.

Our patrols were active but did not get in touch with enemy patrols.

Indirect M.G. fire was brought to bear on enemy's tramline at O.9.a.6.9. and on road at O.8.b.6.6.

A little bombing was done by the right Battalion.

Our snipers were active throughout the day, and accounted for a German seen at Ruined Farm (O.5.c.) at 9 a.m.

Enemy's front and support lines.

Enemy has been attempting to repair the damage done to parapet on the night of 16/17th. at O.8.a.9.8.

A new loop hole has been put up at O.8.a.9.9.

The fire at No. 2 Crater was still burning at 10.5 p.m. and at that time was seen to burst into flames, and a few slight explosions were heard. It has now been burning for 27 hours.

At 5 p.m. a party of 15 Germans were seen at O.9.b.2.7. putting up barbed wire. They were fired on and dispersed.

Enemy was seen to roll wire over his parapet at O.2.c.6.5. Movement was observed near here at 11 p.m. and party seen attempting to put the wire up was dispersed with Lewis Gun fire.

Machine Gun Emplacements.

Enemy machine gun suspected in buildings at O.4.d.2.3½. This building is only slightly damaged and there are loop holes in it. A good deal of enemy's indirect fire on Western side of Canal is supposed to come from about this point.

Searchlights.

Two searchlights playing from enemy's lines during the night and M.C.'s worked in conjunction with them. Apparent position of lights O.2.d.2.7. and O.2.c.50. Lewis Guns were turned on to these points, and the lights were not seen again.

Enemy Activity.

Enemy showed little activity along our front during the day. During the night his machine Guns were active.

Enemy Shelling.

Nil.

Robert [unclear]
Major.
for Lieut-Colonel.
G.S. 4th. AUSTRALIAN DIVISION,

182

SECRET

Copy No. 20

4th. AUSTRALIAN DIVISIONAL ORDER No. 26.

Headquarters,
19th. SEPTEMBER, 1916.

Reference Map 1/20,000 .

1. The 12th. Aus. Infantry Brigade will on the night of the 20th./21st. take over the front now held by the 10th. Canadian Infantry Brigade, which extends from the present Southern Boundary of the Divisional area down to and including the VIERSTRAAT Road.
2. All arrangements will be made between the Brigadiers concerned.
3. G.O.C. 12th. Aus. Infantry Brigade will assume command of the new Sector at 9 a.m. on the 21st. instant.
4. Separate orders regarding the Artillery co-operation on the new sector will be issued.
5. The 13th. Aus. Infantry Brigade (less 1 Battalion) will move to RENINGHELST on the 21st. instant and take over the Camps vacated by the 12th. Aus. Infantry Brigade.
The 13th. Aus. Infantry Brigade will remain in Corps Reserve.
6. On completion of relief the Southern Boundary of the Division will be :-
 VIERSTRAAT - WYTSCHAETE Road inclusive as far as N.7.d.58.
 -N.2.b.70 - Fork Roads N.7.d.25 - Cross Roads N.7.c.36 -
 Thence along LA CLYTTÉ - ZEVEGOTEN Road to where it joins present boundary.

E. K. Bernard

Lieut-Colonel.
G.S. 4th. AUSTRALIAN DIVISION.

Issued at 4.30 p.m.

- Extra Copies to :-
- | | |
|--------|------------------------------|
| No. 16 | 6th. Squadron, R.F.C. |
| 22 | } 1st. A.N.Z.A.C. |
| 23 | |
| 24 | |
| 25 | |
| 26 | 1st. ANZAC H.A. |
| 27 | 1st. Aus. Division |
| 28 | 2nd. Aus. Division |
| 29 | 4th. Canadian Division |
| 30 | 10th. Canadian Inf. Brigade. |

182

War Diary

Appendix No 19



4th AUSTRALIAN DIVISION

Headquarters, 20th. SEPTEMBER, 1916.

NOTES ON A CONFERENCE HELD AT DIVISIONAL HEADQUARTERS on THE 19th. SEPTEMBER, 1916.

1. General Policy as to the holding of the defences and the location of the supports and reserves :-

The general principle of holding the front and support line will be to hold the front lightly with Lewis Guns and a few sentries, a thinly held support line with as many dug-outs as possible, and the bulk of the men in the reserve line, i.e. from Strong Point No. 1 to left of FRENCH TRENCH at 20 R.

2. Approximate Garrison. Each Battalion to have about 200 men all told in or near the front and support lines, 200 in reserve line, and the balance at or near Battalion Headquarters. The 4th. Bn. (in Brigade Reserve) would be in VOORNEZEELE defences and G.H.Q. line. By this means the whole Brigade will be East of DICKBUSCH.

3. Owing to the dilapidated state of the trenches between 17 and 24 and owing to these trenches being closely overlooked by the enemy, this part of the line will be held by day by small parties of Lewis Gunners and Bombers well dug in, so that there will be no movement by day. At night this part of the front line will be held by patrolling. To ind this thinly held line a strong re-entrant will be formed bounded by SHELLEY LANE, FRENCH TRENCH and OLD KENT ROAD. These trenches will be improved, fire stops and entanglements placed, so that if the enemy should break through the front line he would come under heavy fire from these three trenches. To further strengthen this re-entrant a new trench will be dug from the FRENCH TRENCH South of ARUNDEL to OLD KENT ROAD near the 'L' of LOWER OOSTHOEK FARM. This will form a strong backing to the pocket thus formed.

4. Reserve Line. From S.P. 1 to 13 R, 14 R, 15 R, to OLD FRENCH TRENCH, should be wired and a fire step built, with emplacements for Machine Guns to give flanking fire. Dug-outs for 200 men are required in or near VICTORIA STREET, and for another 200 men along the line to S.P. 1. Dug-outs for 150 men should be built in FRENCH TRENCH. ARUNDEL FARM has collars for about 70 men.

5. 3rd. Line VOORNEZEELE. The present defences of VOORNEZEELE are too cramped and liable to be a shell trap, so a new line is required on the outskirts of the village. A new trench is required to the S. of the village from about 50 yards up MCGEE TRENCH to V. 5 in VOORNEZEELE SWITCH. ECLUSE TRENCH, which is a continuation of the VOORNEZEELE defences, needs improving and wiring. The whole of this line to be flanked by machine guns from MCGEE'S TRENCH and Look No. 8, and from near V. 5.

EDDLESEX LANE gets flooded in winter, so can only be used for a short distance to refuse the flank of line. A new communication trench from the junction of OLD LEXEX TRENCH and MCGEE'S TRENCH to DEAD DOG FARM, should eventually be made. Deep dug-outs required for Brigade Battle Headquarters, and for the Battalion Headquarters in VOORNEZEELE.

6. 4th. Line. G.H.Q. Line has still to be completed. Dug-outs should be made for 1/2 Battalion.

P.T.O.

Appendix No. 9

7. List of trenches to be maintained and new trenches constructed.

The general principles for working parties are :-

- (1) Trench will be kept up or new trench dug by the troops that are to hold it.
- (2) Communication Trenches will be dug by Pioneers, when available..
- (3) New trenches will be sited by the C.R.E.

Name	Kind	Work required.	Remarks.
ECLUSE	Fire	Fire step - wire - M.G. emplacements	
FRENCH	"	25 R - 15 R, fire step, wire - M.G. emplacements dug-outs for 150 men.	
ESTAMINET LANE	Comn.	Kept up as a Communication trench.	
OLD KENT ROAD	Fire	Fire step to West, wire and M.G. emplacements.	C.R.E. to decide where required.
A new trench.	"	Fire trench - wire to S.W.	From French trench 25 R - S. of ARUNDEL, to near 'L' of LOWER OOSTVELDT FARM in OLD KENT ROAD. To 25 in front line.
OLD KENT ROAD Extension.	"	Fire step and wire to S.W.	
Front line 19-24	"	Only to be kept up to afford posts for Lewis Guns and Bombers.	
" 9-19.	"	Dug-outs in Support line.	
SHELLEY AV.	"	Fire step, wired to East.	C.R.E. to decide limits.
CONVENT LANE	Comn.		
Q. VICTORIA St.	"		
VOORMEZELE Switch.	"		
VOORMEZELE	Fire	V.5 - V.3 fire step, wire, M.G. emplacements.	
GRATER	Comn.		
P. & O.	Fire	Fire step at S.E. end.	C.R.E. to decide limits.
now (McGEE's Extension)	Comn.	From junction McGEE's and MIDDLESEX to DEAD DOG FARM.	
MIDDLESEX	"	Only about 50 yards to be kept in repair rest is untenable in winter.	
ENZENWALLE St.	"		
McGEE	Fire	Southern portion, fire step and wired, M.G. emplacements.	C.R.E. to decide limits.
A new trench.	Fire	From V.3 to the middle of McGEE's trench, fire step and wire.	

Strong Point No. 1 need not be kept up, except as residential and store. A dug-out for an R.A.P. will be built at the junction of CONVENT LANE and FRENCH TRENCH, the present R.A.P. at VOORMEZELE will become an Advanced Dressing Station.

Para 8/

8. Tramways.

A central artery - worked by motor engines will be shortly laid by C.E. - to the neighbourhood of CAFE BELGE, whence horse drawn tramways will work to Battalion Dumps.
The O.C. 4th. Aus. Pioneer Battalion will be in charge of all Divisional tramways.

10 Roads.

The C.R.E. will arrange for a systematic patrolling of roads and repairs after damage from shelling.
The main roads will be repaired under orders of the C.R.E. but Units must repair all local roads.
Bricks may be removed from ruined houses in DICKEBUSCH for repairing the roads.

Drainage

10 The C.E. is responsible for the drainage of the BOOLAARTBEEK subsidiary drains will be under the charge of the C.R.E., who will prepare a scheme for submission to Corps.

11. Signalling.

All cables not already buried to be buried as labour becomes available.
Only Corps and Div. Signal Companies are allowed to "cut in" on cables once laid.
A Battalion Signalling Officer will not be changed without informing the Div. Signal Company and ensuring he is replaced by another trained Officer.

12. Offensive Operations.

The Artillery and Infantry will co-operate to keep the enemy's wire now cut from being repaired.
Alternative sites are required for Trench Mortar Batteries, and G.O.C., R.A. will select these and submit scheme to G.O.C. Division for approval.

13. Screening.

The C.R.E. will prepare a scheme for screening communications after consultation with the 4th. Canadian Division.

D.A. Bernard

Lieut-Colonel.
G.S. 4th. AUSTRALIAN DIVISION.

CONFIDENTIAL.4th. AUSTRALIAN DIVISION - INTELLIGENCE SUMMARY No. 10.from 6 a.m. 19th. September to 6 a.m. 20th. September; 1918.Not to be taken into the front line.PART I. - Information from our own front.OPERATIONS.

Our Artillery expended a few rounds for registration and also a few in retaliation. Our machine guns were active and indirect fire was brought to bear on enemy's trenches from O.2.d.4.2 to O.8.c.8.3, and enemy trenches from O.2.c.6.2 to O.7.b.1.1 were enfiladed with M.G. fire. Several patrols were sent out but no evidence of the presence of enemy patrols was obtained. One patrol went out in front of trenches 11 and 12, and investigated an old sap running in an Easterly direction from Canada Trench. They worked along the trench for 150 yards and found 3 dug-outs which are in fine order, but show no signs of present occupation. Our snipers accounted for several of the enemy throughout the day.

IDENTIFICATIONS.

Two prisoners (1 Officer and 1 O.R.) of the 2nd. Battalion 123rd. Gr. Regiment, 27th. Division, were taken at O.2.d.8.7. this morning. Examination BB prisoners appended.

ENEMY'S FRONT AND SUPPORT LINES.

The fire in No. 2 Crater went on burning until 12 Noon on 19th. having burned for 50 hours. A party of three Germans was seen working on trench about O.2.e.9.4. and were fired on. This part is being strengthened and a good deal of new work has been observed there.

ENEMY'S ACTIVITY.

Enemy very quiet along the whole of our front, but he appears to be jumpy as he used flares continually throughout the night, and at irregular intervals threw a good many bombs into his own wire. At night his snipers were fairly active and appear to work in pairs, one throwing the flares.

ENEMY AIRCRAFT.

Balloons went up well behind the enemy lines on true bearing 115 degrees and 220 degrees from O.2.a.4.7. at 5.30 p.m. and 5.45 p.m.

ENEMY SHELLING.

Enemy shelled TOLUSE TRENCH and ground in vicinity of VOORMEZELE firing in all about 26 rounds.

Edwin Robinson

Major.

for Lieut-Colonel.

G.S. 4th. AUSTRALIAN DIVISION.

INFORMATION FROM OTHER SOURCES.

LIGHT SIGNALS. South East of BOIS GRENIER, the enemy sent up two green lights, whilst opposite PONT-BALLOT two flares were fired which burst into a chain of white stars, also a rocket bursting into green stars. A searchlight was immediately turned on to the sky and anti-aircraft guns opened fire.

During our raid, the enemy sent up rockets which burst into several green lights. Bells were also rung. When our trench mortars opened fire, two red rockets went up. Four spiral white rockets breaking into green stars were followed five minutes afterwards by Artillery fire.

Miscellaneous - Prisoners' observations regarding our raids.

- (i) According to prisoners, the party which raided Crater No. 2 advanced while the Artillery was still dealing with the front line. This resulted in the sentry, who is now a prisoner, being caught unawares.
- (ii) Electric lights fixed on the noscap of the rifle proved another successful surprise.
- (iii) A large majority of the enemy holding the Sector about Crater No. 2 took refuge in a big mined dug-out which exists in the crater itself, the moment our bombardment commenced.

Morale. The prisoners were not up to the standard usually found amongst men of the XIII Corps. The fighting on the SOMME has visibly affected the "morale", and prisoners admitted this. Most of them were genuinely pleased at having fallen safely into our hands.

As for the Battle of the SOMME, they say there is no denying the superiority of the French and English over the Germans in every branch, and particularly in the air. Our aviators are considered splendid, whereas the German flying corps is the subject of much unfavourable criticism. The German Infantry was literally glued to its trenches for fear of being "spotted" by our aviators and immediately fired on by our Artillery. The enormous quantities of ammunition which we seemed ready and able to spend has opened up everyone's eyes to the fact that Germany was now fighting against odds for the first time since the beginning of the War.

General. Prisoners stated that the tail-end of the big relief on the WYTSCHAETE-MESSINES front was caught by our intermittent bombardment of rear lines and communications on the night of the 6th. September, one Company of the 137th. Regiment having suffered considerable losses. The trenches opposite WYTSCHAETE and about ST. ELOI are not nearly as good as those between HODGE and the BLUFF and a lot of repair work will have to be done.

Appendix No. 30

Examination of prisoner of 8th Coy. 2nd Bn. 123rd Grenadiers Regiment, 7th Division, XIII Corps.

Prisoner was captured with his Officer who was wounded opposite 19 at 5.30 a.m. 20/11/16.

He is Batman to the Officer captured. He has been three days in the line, this being his second tour of front line trenches. The usual procedure is, 1 Battalion front line, 1 Battalion in Reserve and 1 Battalion in rest. His Battalion was in reserve at WALSHEM and marched by MESSINES Road and trenches for 1 1/2 hours before reaching front line.

Battle Order from the Canal, South. 124th Regt. on Canal, 123rd (prisoners Regt), 120th, 127th. 27th Div.

His Regiment's line extends from approximately our 20 - 02. North of the Canal prisoner thinks there are Prussian Regts. The battle order of the Coys. of the 2nd Battalion, 123rd Regt. is: 8th. on right (German) area opposite 20. 8th. Coy. (prisoners, occupying Craters. 7th. Coy. partly in craters. 6th. Coy. on German left opposite 02. The line is strongly held and the trenches run round the tops of craters.

Coy's Strength.

8th (prisoners Coy.) about 120 strong excluding details, reinforcements are expected from Depot, but have not yet arrived. They had severe losses on the SOMME but have been reinforced twice since then to the extent of about 30 men per Company. Prisoners' Regt. was near GUILLEMONT on the SOMME front. He was on the sick list at the time. 50% of the men in his Battalion are 1916 Class. There are no 1917 class present. Strength of other Coys. in Prisoners Bn. 150 to 180 strong.

Enemy's position.

Trenches are good, as deep as those prisoner saw of ours, wet and muddy in bad weather. He states the craters are dry. Machine guns are only placed in craters at night time. There are no dug-outs in the craters. They get a good view of our lines. Their line is well wired, waist high and is not damaged much by our Artillery.

DAM STRASSE.

Prisoner spent two days in DAM STRASSE, which is a sunken road, pet. with the parapet banked up and is full of deep concrete dug-outs below para. These dug-outs hold a platoon or two Sections according to size and there are sufficient dug-outs in DAM STRASSE to accommodate two Battalions. - HIELE FARM (0.8.d.9 1/2. 9 1/2.) at the left end of DAM STRASSE is used by the A.M.C. There are no Headquarters here. DOME HOUSE (0.8.d.9 1/2. 7.) is entirely destroyed. In front of the STRASSE is a very strong trench well traversed with numerous emplacements and cupolas, no dug-outs in this trench. Prisoner noticed fire in No. 2 Crater, did not know what it was caused by, saw much smoke. Thought it might be sulphur or gas. GAS Prisoner saw no gas preparation or material in Crater or front line. In supports and reserve dug-outs, also Communication trenches he saw a few round barrel shaped iron cylinders about the height of a stool, these were painted white and when he enquired what they were he was told gas they were gas cylinders. He saw two in a dug-out in DAM STRASSE.

MINING. Prisoner did not hear of any mining operations.

MISCELLANEOUS. Prisoner at first thought they were opposed to Russians, afterwards English troops, but he was ignorant of the fact as to whether they were Australian or Canadian or English. He reports little Artillery activity. He did not contemplate attacking nor do they expect attack from us.

HOW CAPTURED. He and his Officer were crawling from Crater to their own line, missed their way and did not know they were approaching our trenches till fired upon. His Officer is Platoon Leader of No. 1 Platoon 8th. Coy. There are 4 Officers in Coy.

REPORT.

4th. AUSTRALIAN DIVISION.

Distribution of Units.

UNIT.	Sheet	Map Square 1/40,000	REMARKS.	
Divisional Headquarters.		RENINGHELST		
4th. Aus. Inf. Bde. H.Q.		BURGMASTERS FARM.		
15th. Battalion	Thames 9-14	DEAD DOG FARM.		
14th. "		DICKERBUSCH.		
15th. "	15-21	VORMEZEELE		
18th. "	22-28	SPOIL BANK		
4th. Aus. M.G. Company.		} in the line.		
4th. Aus. L.T.M. Bty.				
12th. Aus. Inf. Bde. H.Q.		CHIPPAWA.	LA CLYTTE } 9th A 21	
45th. Battalion		ONTARIO.		Ridge Ward.
46th. "		CHIPPAWA.		N 10. B 19.
47th. "		ALBERTA.		Blasche.
48th. "		QUEBEC.		LA CLYTTE.
12th. Aus. M.G. Company		CONNAUGHT.		
12th. Aus. L.T.M. Bty.		CHIPPAWA.		
13th. Aus. Inf. Bde. H.Q.		STEENWOORDE	RENINGHELST 9th A 21	
49th. Battalion		WISQUES.		
50th. "		} STEENWOORDE.	RENINGHELST 9th A 21	
51st. "				
52nd. "				
13th. Aus. M.G. Company				
13th. Aus. L.T.M. Bty.				
Div. Artillery H.Q.		RENINGHELST.		
10th. A.F.A. Brigade		H. 28. D. 77.		
11th. "		H. 27. A. 20.		
12th. "		R. 4. C. 42.		
24th. "		H. 28. A. 50.		
V.4. A. H.T.M. Battery		} in the line with	HQ H. 34. D. 91.	
X.4. A. M.T.M. "				
Y.4. A. M.T.M. "				
Z.4. A. M.T.M. "				
Div. Ammunition Column		H. 13. Central		
Ammunition Sub-Park.		W. ABEELE.		
Div. Engineers H.Q.		RENINGHELST.		
4th. Aus. Field Company	(less 3 Sect.)	DICKERBUSCH.	3 Sect. SPOIL BANK	
12th. "	M. 3. B. 78.	Batails Comp.		
13th. "		36. A. 19.		
4th. Aus. Signal Company		RENINGHELST		
4th. Aus. Pioneer Bn.	(less 2 Cos)	HICMAC.	2 Cos at CHIPPAWA H 100. 92	
Divisional Tr in H.Q.		RENINGHELST		
14th. Coy. A.A.S.C.		G. 32. A. Central		
7th. Coy. A.A.S.C.		OUDERDOM.		
26th. Coy. A.A.S.C.		R. 5. C. Central		
27th. Coy. A.A.S.C.		STEENWOORDE.		
Supply Column.		ABEELE		
Railhead		WIPPENHOEK.		
4th. Aus. Field Ambulance	1 Sect. OUDERDOM.	1 Sect. DICKERBUSCH.	1 Sect. VERMEZEELE	
12th. "	(less 2 Sects.) M. 3. Central	2 Sects at CLYTE.	Head of SPOIL BANK	
13th. "		BOESCHEPE.		
4th. Aus. Mob. Vet. Sect.	Q. 32. B. 62.	near RENINGHELST.		
4th. Aus. Salvago Coy.		RENINGHELST.		

b.c.m. 19th Sept. 1916.

M. M. R. Major-General.
Comdg., 4th. AUSTRALIAN DIVISION.

To :- 6 am 22nd Sept. 1916

CONFIDENTIAL.4th. AUSTRALIAN DIVISION - INTELLIGENCE SUMMARY No. 11.From 6 a.m. 20th. September to 6 a.m. 21st. September '16.Not to be taken into the front line.OPERATIONS.

Our machine guns expended some 18,000 rounds on indirect fire during the night and in several places enfiladed enemy's trenches.

The Stokes mortars got a good many direct hits on enemy trenches and wire in vicinity of PICCADILLY FARM.

A good deal of damage was done to enemy's front line by our Artillery. Their trenches being blown in, in several places.

One of our patrols observed an enemy wiring party working about 0.2.d.5.7. This party was dispersed by our fire.

ENEMY'S FRONT AND SUPPORT LINE.

Enemy has been repairing his parapet at 0.2.c.8.6. and further work has been done on Sap at about 0.2.c.9.4. Also repairing parapet 0.2.d.2.8.

Our patrols report enemy wire generally good, though out in several places.

Enemy have been heard digging opposite trench 19 for two nights.

Signs of work proceeding were observed at No. 2 Crater.

ENEMY ACTIVITY.

Enemy a little more active than usual. During the night machine gun was heard firing on our back area from No. 2 Crater. Flares were freely used.

ENEMY MOVEMENT.

At 6 a.m. a party of enemy was observed passing along trench at 0.2.d.8.4. Our machine guns opened fire on them with apparently good effect.

ENEMY SHELLING.

The enemy put over about 50 shots during the day, and got a few direct hits along our front line and also in SHELLY LANE. Very slight damage done.

Whitkinson

Major.
for Lieut-Colonel.
G.S. 4th. AUSTRALIAN DIVISION.

182

XXXIII
Lons Diary 77
Appendix No. 35

CONFIDENTIAL,

4th. AUSTRALIAN DIVISION - INTELLIGENCE SUMMARY No. 12.

from 6 a.m. 21st. September to 6 a.m. 22nd. September '16.

Not to be taken into the front line.

OPERATIONS.

Our Artillery was fairly active. They registered on several targets by aeroplane and balloon observation, and retaliated on O.3.d.5.9. for shelling SPOIL BANK. The usual indirect fire was carried out by our Machine guns, and our trench mortars were also active - paying particular attention to the Craters and PICCADILLY FARM. Our snipers accounted for two Germans at about O.3.b.7.1.

ENEMY'S FRONT AND SUPPORT LINE.

Enemy was heard working in No. 5 Crater. New work was observed on enemy's front line trenches (opposite 19 and 21). A party stationed at Sap leading to No. 1 Crater report that at 8.30 p.m. they heard sounds and felt the shock of what appeared to be an underground explosion. A louder explosion was heard at 1.45 a.m. and by the same party, (No Artillery was firing at the time). Section of trench from O.4.d.5.5. to Canal has been closely watched. This is a good trench and is well wired. Suspected that a good deal of enemy sniping is done from this trench. At O.9.a.35, 80, to O.9.a.35.15. there is barbed wire on posts about 10 feet high. In rear of this there is a line of posts with insulators on them and possibly high power cable. The passages cut through enemy's wire are still open.

ENEMY MACHINE GUNS.

A machine gun on the N. bank of the Canal in the ruins of the OLD IRON BRIDGE O.4.b.2.6. was observed firing about 10.10 p.m.

ENEMY ACTIVITY.

Enemy patrols were fairly active. Two patrols each about four strong were fired on by our Lewis Guns.

ENEMY SHELLING.

Enemy shelled SPOIL BANK during the day and fired a few rounds along our front.

ENEMY BALLOONS.

An enemy balloon S.W. of our sector was fired by our aeroplanes at 12.30 p.m. and was seen to drop amidst dense clouds of smoke. At 7.10 p.m. an aeroplane (Nationality unknown) was seen by O.P. at H.36.e.12.70 to fall in flames on a true bearing of 102 degrees.



W. Robinson Major.
for Lieut-Colonel.
C.S. 4th. AUSTRALIAN DIVISION.

SECRET.Copy No. 204th. AUSTRALIAN DIVISIONAL ORDER No. 27.

Headquarters,

23rd. SEPTEMBER, 1916.

Reference map 1/20,000.

1. In continuation of 4th. Australian Divisional Order No. 26 of 19th. instant. A group of the 3rd. Canadian Divisional Artillery will cover the front of the 12th. Aus. Infantry Brigade. This group of the 3rd. Canadian Divisional Artillery will be attached to the 4th. Australian Division for tactical purposes and for administration as regards ammunition supply. The group of 3rd. Canadian Divisional Artillery will be served by the 4th. Australian Divisional Ammunition Column.

*O K Bernard*Lieut-Colonel.
G.S. 4th. AUSTRALIAN DIVISION.Issued at 10.30 p.m.

Extra Copies to :-	No. 16	6th. Squadron R.F.C.
	22)
	23) 1st. A.N.Z.A.C.
	24)
	25	1st. ANZAC H.A.
	26	1st. Australian Division.
	27	2nd. Australian Division.
	28	3rd. Canadian Divisional Artillery.

CONFIDENTIAL.4th. AUSTRALIAN DIVISION - INTELLIGENCE SUMMARY No.13.from 6 a.m. 22nd. September to 6 a.m. 23rd. September '16.Not to be taken into the front line.Operations

Our Artillery was fairly active and expended about 340 rounds in retaliation, registration by aeroplane observation and working parties. Some new works in vicinity of PICCADILLY FARM were also badly damaged.

Our machine guns were active and fire kept up along the tramline running through O.8.a. and c. throughout the night.

Our Stokes guns expended a good many rounds on enemy's front line, and caused a good deal of damage. A suspected M.G. emplacement at O.4.a.2.3. was blown in.

The usual patrols were out. The enemy patrols were active. One of our patrols which went out from O.2.d.16 was examining enemy wire when they were engaged by an enemy patrol in the rear and by rifle fire and bombs from the trenches. Our patrol got back to our line, having suffered one casualty.

Enemy's front and support lines.

The enemy had been doing a good deal of new work in vicinity of O.4.a.2.3. (These works were fired on by our Stokes Guns and much damage done.)

New wire has been put out in front of enemy's trenches at O.2.c.80, 55 - O.2.d.05, 60 and O.2.c.90, 70.

Enemy has been repairing his parapet at O.8.a.15, 85. Fresh earth can be seen for about 20 feet from this point.

Enemy's listening post.

Our patrols discovered a well concealed sally port and Listening Post at O.3.c.44. The opening in the wire is well concealed and a very shallow trench leads back into enemy's line. This post was unoccupied last night.

Enemy's M.G. emplacements.

New emplacements suspected at O.2.c.00, 15; these are made with steel plates with large loop holes. Similar ones can be seen at O.4.a.5.4 and O.4.b.2.4.

Movements behind enemy's line.

Much noise was heard during the night behind enemy's lines, and sounded like heavy vehicles on cobbled road. Sound coming from direction of LENWAEGE FARM(O.70), indicated the unloading and handling of heavy iron girders.

Light Signals.

Heliograph observed working in rear of RED CHATEAU (O.18.b.)

Enemy shelling.

Enemy's Artillery was more active than usual and fired some 250 rounds along our front during the day.

Aircraft.

Enemy's planes were very active. Several succeeded in crossing our line and flying over our back areas. Several were forced back by our anti-aircraft guns, having failed to cross our line.

(Signature)

Major.

for Lieut-Colonel.

G.S. 4th. AUSTRALIAN DIVISION.

XXXVI

CONFIDENTIAL.
4th. AUSTRALIAN DIVISION - INTELLIGENCE SUMMARY No. 14.

From 6 a.m. 23rd. September to 6 a.m. 24th. September '16.

Not to be taken into the front line.

Operations

Our Artillery shelled enemy's lines fairly heavily during the day, in retaliation and also got direct hits on the following targets :- Working party at O.8.a.1.8. Suspected M.G. at O.4.b.2.4., No. 2 Crater and communication trenches, M.G. at O.2.d.00.15.
Our Stokes guns also did some good work, getting direct hits on to M.G. emplacement at O.7.c.4.7 and snipers post at O.7.a.8.1. The usual indirect M.G. fire was carried out during the night on the following points - O.13.a.75, 50, O.14.a.65, 10 and N.18.b.75, 45.
Our patrols were out during the night but did not encounter any enemy patrols.

Enemy Listening Post.

Enemy's listening post was discovered last night about O.4.a.10,45. It was unoccupied and is being carefully watched by our patrols.

Enemy's front and support lines.

New earth was seen at O.7.c.35, 50. appears to be a new trench in progress.
New bags have been put up at N.18.b.4.8. This appears to be a dug-out or O.P.

Screens.

A number of wickerwork screens have been put up near PICCADILLY FARM, some of these on the parapet.

ENEMY'S activity.

Enemy generally quiet along the whole of our front. His mortars fired a few shots during the day, doing no damage.

Routes and tracks used by enemy.

Heavy transport was again heard moving on the HOLLEBEKE DAM STRASSE Road. A M.G. is being put in position to enfilade this road at night.

Enemy shelling.

Enemy's Artillery was fairly active, firing some 250 rounds. They were firing mainly on our back areas and seemed to be searching for our guns.

Miscellaneous.

Four pigeons were seen to fly over our lines. Two at 8.30 a.m. and 2 at 2.30 p.m. These disappeared behind the German lines.

Entin...

Major.
for Lieut-Colonel.
G.S. 4th. AUSTRALIAN DIVISION.

SUMMARY

4th AUSTRALIAN DIVISION

XXXVI a

Distribution of Units.

UNIT.	Sheet	Map Square 1/40,000	REMARKS.
Divisional Headquarters.		RENINGHELST	
4th. Aus. Inf. Bde. H.Q.		BURDOMASTERS FARM	
13th. Battalion	Talnoes 9-14	DEAD DOG FARM	
14th. "	15-21	DICKE BUSCH	2 Coy. VOORMEZELE.
15th. "		VOORMEZELE	
16th. "	22-26	SPOIL BANK.	I. 31. C. 2. 6 1/2
4th. Aus. M.G. Company.		IN THE LINE	BURDOMASTERS FARM
4th. Aus. L.T.M. Bty.		IN THE LINE	
12th. Aus. Inf. Bde. H.Q.		LA CLYTTIE	
45th. Battalion		RIDGE WOOD	N. 5. B. 7. 4
46th. "	Talnoes N1-N20	LA CLYTTIE	N. 4. 7. 3. 0
47th. "	N. 2. 0 - N. 6. 4	BRASSERIE	N. 6. C. 2. 9.
48th. "		LA CLYTTIE	N. 7. 2. 7. 2.
12th. Aus. M.G. Company		IN THE LINE	N. 8. C. 6. 9.
12th. Aus. L.T.M. Bty.			N. 32 B. 4. 9
13th. Aus. Inf. Bde. H.Q.		RENINGHELST	- 9. 35. C. 5. 0.
49th. Battalion		RENINGHELST	M. 5. A. 5. 7.
50th. "		WISBOES	9. 35. C. 3. 0
51st. "		RENINGHELST	M. 6. A. 4. 7
52nd. "		RENINGHELST	M. 6. A. 2. 8.
13th. Aus. M.G. Company		RENINGHELST	M. 6. A. 4. 6.
13th. Aus. L.T.M. Bty.		RENINGHELST	
Div. Artillery H.Q.		RENINGHELST	
10th. A.F.A. Brigade		H. 28. 7. 77.	
11th. "		H. 27. A. 20.	
12th. "		R. 4. C. 42.	
24th. "		H. 28. A. 50.	
V. 4. A. H.T.M. Battery		IN THE LINE	H. 9. H. 34. 7. 91.
X. 4. A. M.T.M. "			
Y. 4. A. M.T.M. "			
Z. 4. A. M.T.M. "			
Div. Ammunition Column		H. 13. CENTRAL	
Ammunition Sub-Park.		W. ABEELE	
Div. Engineers H.Q.		RENINGHELST	
4th. Aus. Field Company	(less 3 sect)	DICKE BOSCH	3 Sect SPOIL BANK
12th. "	M. 3. B. 75.	DETAILS Camp	
13th. "		H. 36. A. 19.	
4th. Aus. Signal Company		RENINGHELST	VANCOUVER H. 34. C. 79
4th. Aus. Pioneer Bn.	(less 2 Coy)	MICMAC	2 COYS AT CAMP
Divisional Tr in H.Q.		RENINGHELST	
14th. Coy. A.A.S.C.		9. 32. A. CENTRAL	
7th. Coy. A.A.S.C.		OUDE DOM	
26th. Coy. A.A.S.C.		R. 5. C. CENTRAL	
27th. Coy. A.A.S.C.		STEEN VOORDE.	
Supply Column.		ABEELE	
Railhead		WIPPENHOEK	
4th. Aus. Field Ambulance	1 Sect OUDERDOM	1 Sect DICKE BOSCH	1 Sect VERMEZELE
12th. "	(less 2 Sects) M. 3. Central	2 Sects AT CLYTE	{ BEARERS - SPOIL BANK
13th. "		BOESCHPE	
4th. Aus. Mob. Vet. Sect.	9. 32. B. 62.	NEAR RENINGHELST	
4th. Aus. Salvage Coy.		RENINGHELST	

From 22 Sept, 1916.

Major-General. Comdg., 4th. AUSTRALIAN DIVISION.

To :- 25 Sept

Disposition Report - 12th Aust. Infantry Brigade.

183

Unit	Right Sub-Sector	Headquarters	N.4.d.2.0	Unit	Left Sub-Sector	Headquarters	N.6.c.2.9
46 th Bn.	Front Line	Support	Reserve	47 th Bn.	Front Line	Support	Reserve
Right Coy. Trenches	4 Platoons 3 Lewis A.R.	} Until accommodation is provided in Support Line and Reserve Line now under construction		Right Coy. N.2.a-N.6 Trenches	2 Platoons 2 Lewis A.R.	1 Platoon N.10 Scouts and Bombers	1 Platoon N.11
Left Coy. N.1-N.2.a Trenches	4 Platoons 3 Lewis A.R.			Left Coy.	2 Platoons 2 Lewis A.R.		2 Platoons N.11
Support Coy.		VIERSTRAAT SWITCH 2 platoons subsidiary 2 platoons 2 Lewis A.R.	In dug-outs about N.10.B.4.7	Support Coy. Mobile Reserve	1 platoon 1 platoon * 1 platoon * 1 platoon *	Dug-outs N. end of BOIS CARRE Dug-outs at N.5.B.6.1 BRASSERIE In SUPPORT LINE N.10	
Reserve Coy.				Reserve Coy.	1 platoon 1 platoon 1 platoon 1 platoon	EASTERN REDOUBT WESTERN REDOUBT SOUTHERN REDOUBT STRONG POINT 7.	
				* Dug-outs for this Company are being constructed in BOIS CARRE			
45 th Bn.	Support Battalion	Headquarters	N.5.a.7.4	48 th Bn.	Reserve Batin.	Headquarters	N.7.a.7.2
3 coys.	Dug-outs in RIDGEWOOD	2 platoons	DICKEBUSCH (temp)	3 coys.	LA CLYTTE		
1/2 coy.	BRASSERIE DEFENCES	in Dug-outs	N.5.B.9.2	1 coy.	P.W.P. DICKEBUSCH		



J. Salei
 Captain,
 Brigade Major,
 12th Aust. Infantry Brigade

Appendix No. 183

12th M.G. Coy.

Headquarters

N.8.C.6.9.

Tr. Mortar Battery Headquarters H.32.b.4.9.

Right Sub-sector

Left Sub-sector

No. 1 Section

- 1 Gun GRANTHAM POST
- 1 Gun FORT TORONTO
- 1 Gun CAPTAIN'S POST
- 1 Gun MAJOR'S COPSE

No. 3 Section

- 1 Gun BEGGAR'S REST
- 1 Gun WESTERN REDOUBT
- 1 Gun STRONG POINT 7

No. 3. Section

1 Gun N.12.a. 2½. 7½

2 Sections in reserve at H.Q.
Machine Gun Scheme in hand to augment defence by one Section

Advanced Battery H.Q. Western Redoubt N.12.a.8.8.
 4 Stokes Guns in each Sub-section.
 New emplacements in course of siting and construction.
 All guns in temp. positions for special operations

D. A. Swinney Lt

J. D. 12 AUG. B. DCE

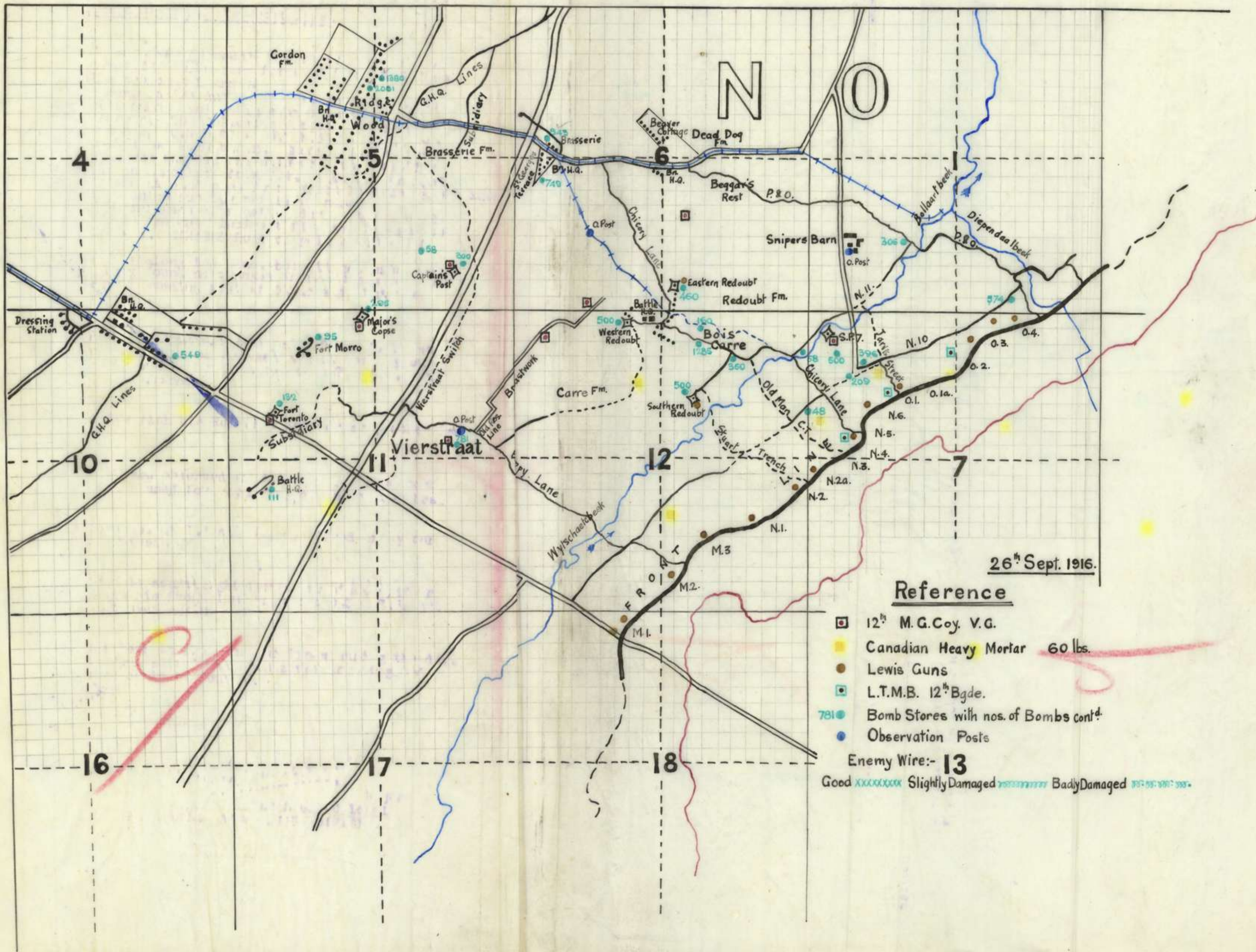
Appendix No.

1036A

83

Secret

12th Aust Infy Bde. Sector



26th Sept. 1916.

Reference

- 12th M.G. Coy. V.G.
 - Canadian Heavy Mortar 60 lbs.
 - Lewis Guns
 - L.T.M.B. 12th Bgde.
 - 781 ● Bomb Stores with nos. of Bombs cont^d.
 - Observation Posts
- Enemy Wire:- 13
 Good XXXXXX Slightly Damaged XXXXXX Badly Damaged XXXXXX

CONFIDENTIAL

4th. AUSTRALIAN DIVISION - INTELLIGENCE SUMMARY No.15.

From 6 a.m. 24th. September to 6 a.m. 25th. September '16.

Not to be taken into the Front Line.

Operations

Our Artillery fired some 200 rounds during the day, mostly in registration - about 60 rounds were fired at DAM STRASSE and 37 at F.L.T. opposite trenches 9 and 10. Our Stokes Mortars were active during the day in retaliation damaging the enemy's trenches and emplacements in front line and supports considerably. The following targets received attention :- The Craters, 0.3.b.71 - 0.7.b.33. - 0.7.a.72 - 0.7.c.5.9 - N.12.d.5.1 + N.18.b.9.2. Enemy's T.M's. observed firing from 0.7.c.2.1. was engaged and silenced and a machine gun located firing at an aeroplane from 0.4.a.4.4. was engaged by Medium Trench Mortars at 5.15 p.m. four direct hits being obtained on this target. The Machine gun has not fired since. Machine Guns. Our Vickers guns were active during the last 24 hours firing about 16000 rounds. Indirect fire was brought to bear on the HOLLEBENE - DAM STRASSE Road on points 0.8.a.8.0 and 0.1.d.9.1 $\frac{1}{2}$. Our patrols were out all along the line, but did not encounter any enemy patrols. They found no changes in enemy's wire. Our patrols occupied enemy listening post at 0.3.c.4.4, but the enemy did not approach it.

Enemy's front and support lines.

The sound of pick working near PICCADILLY FARM was again heard. Enemy's parapet was damaged a good deal by our Artillery fire. Their parapet was breached at 0.7.b.6.5. This was a suspected M.G. emplacement.

Enemy's Activity.

Enemy fairly active with his Rum Jars and Mortars, otherwise quiet.

Dumps.

New pile of timber was observed at N.18.b.3.2., also some sandbags, evidently being used for repairing of their trenches.

Enemy's movements.

Working party observed at 0.7.c.4.8., was fired on by our Lewis Guns and was dispersed.

Light Signals.

Enemy used a portable searchlight for a few minutes shortly after midnight. It appeared in his front line at about 0.3.c.7.5, but disappeared and was not seen again.

Miscellaneous.

Five pigeons were seen to fly over our lines during the day. They appeared to come from BOIS CARRE. This was investigated but no signs of pigeons could be found.

W. Robinson

Major.
for Lieut-Colonel.
G.S. 4th. AUSTRALIAN DIVISION.

SECRET.

4th. AUSTRALIAN DIVISION.

Headquarters,
26th. SEPTEMBER, 1916.

G.S. CIRCULAR No. 45.

Commencing from 1st. October 1916, the front line trenches of the Second Army front will be renumbered on the following system :-

The Square letters and numbers will be used followed by numbers of the trenches running from right to left; to denote the trenches in that square, thus :-
U.21.1, U.21.2, U.21.3.

In cases where a trench runs a short distance into an adjoining square the number of the square to which the bulk of the system belongs should be retained for the sake of convenience.

The C.R.E. will make the necessary alterations on the trench index-boards.

Maps showing new numbers of our trenches are being issued, and Units should make the necessary alterations on the maps at present on issue accordingly. Secret Maps according to new system will be issued in due course.

DK Bernard

Lieut-Colonel.
G.S. 4th. AUSTRALIAN DIVISION.

Copies to :-

- 4th. Aus. Infantry Brigade. (6)
- 12th. " " (6)
- 13th. " " (6)
- C.R.A. (6)
- C.R.E. (4)
- Pioneer Battalion. (1)
- A.D.M.S. (1)

P.T.O.

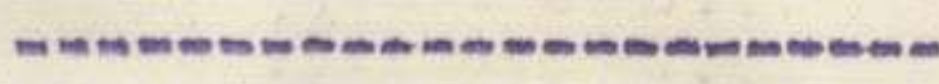
RE-NUMBERING OF FRONT LINE TRENCHES

4th AUSTRALIAN DIVISION.

OLD NUMBER

NEW NUMBER.

M.1	N.12.10
M.2	N.12.1
M.3	N.12.2
N.1	N.12.3
N.2	N.12.4
N.2.A	N.12.5
N.3	0.7.1
N.4	0.7.2
N.5	0.7.3
N.6	0.7.4
0.1	0.7.5
0.1.A	0.7.6
0.2	0.7.7
0.3	0.7.8
0.4	0.7.9
9	0.1.1
10	0.1.2
11	0.2.1
12	0.2.2
13	0.2.3
14	0.2.4
15	0.2.5
16	0.2.6
17	0.2.7
18	0.2.8
19	0.2.9
20	0.3.1
21	0.3.2
22	0.3.3
23	0.3.4
24	0.3.5
25	0.3.6
26	0.3.7
27	0.3.8
28	0.4.1



War Diary

NOT TO BE TAKEN INTO THE TRENCHES.

Opp. XXXIX

4th AUSTRALIAN DIVISION.STANDING ORDERS FOR DEFENSIVE MEASURES AGAINST GAS.1. Defence against Gas Cloud.(1) General Precautions.

- (a) Throughout the Divisional Area a chain of gas alarm posts have been established both laterally and from front to rear, so that on the alarm being given in the front trenches, it can be passed rapidly to all Units in the area.
- (b) Each Alarm post is equipped with a Strombos Horn Klaxon, or other form of mechanical horn, and also with a non-mechanical signal (e.g. an iron rail or shell case) in case the horn fails to work. The alarm signal, when sounded, will be continued for three minutes, unless discontinuance is ordered by an Officer.
- (c) In addition to sounding horns, etc., the alarm will be passed by telephone, buzzer messages, or where lines do not exist, by runners. These messages automatically take "Priority" over all other signal messages.
- Units or formations on whose fronts the gas is detected will pass the alarm to units or formations on their flanks as well as to their own Brigade and Division. Formations receiving the alarm from a flank will not pass it on.
- Each Signal Office on receiving the warning message addressed to "Gas" will automatically repeat it until every Signal Office in the Corps and the Signal Offices of the nearest Brigade and the nearest Division of the flanking Corps are warned.
- O.C. Divisional Signal Company will ensure that a list of Offices to be warned, corrected to date and applicable to the Office concerned, is kept in every Signal Office.
- The Unit reporting will give its position in the line and the time the attack occurred, thus :-

To :- "GAS"

Gas 9 p.m. trench _____.

From :-

2nd. Battalion.

- Every Battalion Commander in front line will be responsible for alarming all detached Units, i.e., Artillery O.P.'s, Engineers, Pioneers, Tunnellers and medical personnel in his area.
- As regards Units in back areas, lists showing which Units are responsible for warning them will be prepared and issued to all concerned by Divisional Headquarters.
- (d) In each Infantry Brigade and Battalion in front line, a wind vane will be maintained under Brigade and Battalion arrangements with a special sentry in charge of it. Any change of wind will be at once reported to Divisional Headquarters by the Brigade concerned.
- (e) Every Headquarters, down to, and including Company Headquarters, will keep a board hung in a conspicuous position just outside the Headquarters, painted to read "Wind dangerous" or "wind safe" and the correct notice according to the order in force will be shown constantly.
- (f) All ranks ~~East of the POPERINGHE BOESCHERPE Road~~ will, at all times, carry one P.H. or P.H.G. helmet.
- (g) Every Unit down to Companies inclusive must have a copy of these orders and also a copy of the pamphlet "Defensive Measures against Gas attack" (S.S.419) issued by G.H.Q.
- (h) Every Company, Battery and Unit of similar size will detail one N.C.O., not below the rank of Corporal, for duty as Company or Battery Gas N.C.O. The F.C.O. after training at the Div. Gas School will perform the following duties under the orders of the O.C. Unit :-

P.T.O.

Appendix No. 39

- (i) Whilst in billets carry out instructional drill in the use of respirators, goggles, etc.
- (ii) Inspect respirators and see that the instructions concerning their care and use is observed.
- (iii) Inspect Strombos Horns and other appliances and see that they are kept in good order and in their proper positions.
- (iv) Superintend the building (if necessary) and care of gas proof dug-outs.
- (v) Assist Officers to see that all regulations with respect to "Wind Dangerous" orders, are enforced.
- (vi) Carry out any instructions that may be issued from time to time by the Divisional Gas Officer.

These Gas N.C.O.'s while subject to the orders of the Divisional Gas Officer, will only be taken away from their regular duties for such time as, in the opinion of their Officers, is necessary to perform the special work allotted to them. They should, if possible, be sent into the trenches with the advance parties of reliefs so as to take over from the outgoing Gas N.C.O. Officers will be responsible that their Gas N.C.O.'s are given every opportunity for the carrying out of their gas duties.

(2) "Wind Dangerous".

As soon as the wind goes into a quarter favourable for a "Gas Attack, no matter what the strength of the wind is, "wind dangerous" will be ordered. This order will emanate normally from Corps or Divisional Headquarters, but Brigade and Battalion Commanders in front line will be responsible for putting the "wind dangerous" order in force without waiting for the order from Divisional Headquarters if they think it necessary. The "wind dangerous" order when once put in force will NOT be cancelled except by order of Corps or Divisional Headquarters. The dangerous quarter depends on the position of the line held by the Division, any changes required will be notified to all concerned. At present "wind dangerous" order will be enforced when the Wind is anywhere East of North and South.

Immediately the "wind dangerous" is ordered the following precautions will be taken:-

- (1) By all troops ~~East of DICKENSON~~ *within 2 miles of the front line*
- (a) A sentry will be posted at each Gas Alarm Post, over the horn, and instructed in its use. The horn itself will be inspected and tested at once, and also daily as long as the "wind dangerous" is in force.
- (b) A sentry will be posted on each Headquarters, Signal Office or dug-out, advanced Dressing Station, on each dug-out holding 10 or more men, and on each group of three small dug-outs. A sentry will also be posted on each independent body of men or working party.
- (c) All ranks will wear the small box respirator in the "wind dangerous" position on the chest. The reserve helmet will be hung perpendicularly downwards from the left shoulder and under the belt. The equipment will be adjusted so as not to interfere with the quick adjustment of the respirator and nothing must be slung across the chest.
- (d) Platoon and Section Officers and N.C.O.'s will be responsible for seeing that the order (c) is strictly carried out, both for troops in front line trenches and for detached bodies of troops (working and carrying parties, etc.)
- (e) Supplies of oil, etc., for cleaning machine guns and S.A.A. will be brought up and put in convenient positions.
- (f) Respirators will be carefully inspected daily.
- (g) Arrangements will be made by the Officer in charge of the trench for warning Listening Posts and Artillery O.P.'s.
- (h) Gas blankets at entrance to dug-outs etc., will be lowered and tested daily; they will be kept damp by water kept in the Sprayer, for the purpose, and not by Sprayer solution. Anti-gas fans, etc. will be tested daily.
- (i) At night, sentries must have at least two men within reach of them so that the alarm can be spread rapidly.

(1)/

-3-

(i) When a gas attack is probable, men in front line trenches will sleep on the firestep instead of in dug-outs.
 (k) Company Gas N.C.O.'s will report to Company Headquarters in readiness to assist the Company Commander should a gas attack occur.

(2) By all troops more than two miles from the front line.
 (a) Respirators will be inspected daily.
 (b) All ranks will sleep with one respirator attached to them and the reserve helmet immediately accessible.
 (c) Commanders of Units in Billets will organise a system of giving the alarm and rousing all men in houses or cellars.

(3) GAS ALARM

(3) In the event of an enemy gas attack, all horns and signals will be sounded and the alarm passed as directed in Section I. (General precautions) paras (a) (b) (c).
 (b) All ranks in the front area will immediately put on respirators and stand to arms.
 (c) All ranks in trenches, dug-outs, cellars, mineshafts, Artillery O.P.'s, will be roused.
 (d) Troops will man their parapets. All ranks in the front line are forbidden to remain in, or go into, dug-outs or move to a flank or to the rear. There must be as little movement and talking as possible. Men must be made to realise that this is essential with the gas as now used.
 (e) If troops in support or reserve lines of trenches, remain in, or go into, unprotected dug-outs they must continue to wear their respirators.
 (f) All unnecessary movement must cease, and all bodies of troops or transport on the move, will halt, and all working parties, cease work until the gas cloud has passed.
 (g) If a relief is going on, Units should stand steady as far as possible, until the gas cloud has passed.
 (h) Supports and parties bringing up ammunition and grenades will only be moved if the tactical situation demands.
 (j) The blanket doorways of protected dug-outs and cellars will be let down and carefully fixed in position.
 (k) Troops in back areas will put on respirators at the first sign of gas.
 (l) In the case of a smoke attack, respirators will be put on and worn until the smoke has passed as gas may be at any time introduced into the smoke.

(4) Action during enemy gas attack.

(a) Should the gas cloud be unaccompanied by an Infantry attack, a S.O.S. signal will not be sent but the warning as in para (c) Section I. (General precautions) should however an Infantry attack develop, the normal procedure of S.O.S. will be carried out.
 (b) Troops in those parts of the line not affected by gas must be prepared to bring a cross-fire to bear on the enemy attempting to advance against a gassed portion of the line.
 (c) Officers and N.C.O.'s must not raise their respirators to give orders.
 (d) The telephone should be used as little as possible; all messages should be sent by buzzer. Unless the signal dug-out has been rendered gas-proof, signallers will bring their instruments out of the dug-outs and work on the fire-steps.
 (e) Machine guns and S.A.A. not in use will be kept wrapped up in waterproof sheets, treated blankets or thick paper.

Artillery Action.

By day and night Shrapnel barrage Battery fire 15 seconds on flanks and behind trenches gas is coming from, and be ready to quicken up if the S.O.S. comes or attack is made.
 By day in addition H.E. from 4.5" Hows. and 18 prs. will be fired at trench whence gas is issuing, to try to break or bury the cylinders, from enfilade guns.

(5) Action after enemy gas attack.

(a) Respirators must not be removed after a gas attack until permission has been given by the Company Commander, who will, when possible, ascertain from Officers and N.C.O.'s who have been trained at the Divisional Gas School that it is safe to do so.

P.T

Appendix No 39

(b) Men in charge of anti-gas fans will use them as soon as the gas cloud has passed so as to admit of helmets being removed, the trenches being cleared first and then the dug-outs.

(c) When permission has been given to take off respirators they should be immediately returned to the "wind dangerous" position.

(d) A sharp look-out must be maintained for a repetition of the gas attacks as long as the wind remains in the dangerous quarter.

(e) Dug-outs and cellars not protected during an gas attack must not be entered for four hours after the cloud has passed and must be ventilated freely by fires or anti-gas fans to ensure thorough cleaning. If after a gas attack unprotected dug-outs have to be entered owing to heavy shelling, respirators must be worn.

(f) All rifles and machine guns must be cleaned after a gas attack. Oil cleaning will prevent corrosion for 12 hours, but but the first opportunity must be taken to clean all parts in boiling water containing a little soda.

(g) After a gas attack men suffering from the effects of the gas must not be allowed to walk to a dressing station or assist in the cleaning of trenches and dug-outs.

(h) After a gas attack troops in the front trenches should be relieved of all fatigue and carrying work for 24 hours, by sending up working parties from Companies in rear. Horses which have been exposed to the gas should not be worked for 24 hours if it can be avoided.

(2) DEFENCE AGAINST GAS OR TEAR SHELLS.

(a) In the event of a sudden or intense bombardment with gas shells or tear shells, arrangements must be made for giving a local alarm e.g. by blasts from French shunters horns which will be issued for this purpose.

(b) Companies on battery positions and on Company and Battalion headquarters will be instructed to give the alarm directly gas or tear shells are detected.

(c) Respirators will be put on immediately the alarm sounds or the action of the shell is noticed whichever is the sooner.

(d) All dug-outs and shelters in the vicinity will be visited and sleeping men roused.

(e) Unless dug-outs, etc., are gas-proof they must be vacated and not entered until cleaning from gas by anti-gas fans or other mechanical means.

(f) Men should be trained in rapidly putting on respirators from the position in which they are slung at the side. O's.C. will be responsible this is carried out.

(g) Men should be warned against trying to dig up high explosive shells as the craters formed by them underground contain carbon monoxide gas against which neither the helmet nor the box respirator affords protection.

Civilian-inhabitants of areas will be warned by the Area Commandants who will be warned by Divisional Headquarters.

H.S. McRae

Headquarters, 21st. SEPTEMBER, 1916.

Major. G.S. 4th. AUSTRALIAN DIVISION.

When an attack is made on a position, the gas attack will be removed after a gas attack until the Company commander, who will, when given by the Company commander and O.S.C. and O.S.C. who have been trained in the use of gas, it is also to do so.

CONFIDENTIAL.

4th. AUSTRALIAN DIVISION - INTELLIGENCE SUMMARY No. 16.From 6 a.m. 25th. September to 6 a.m. 26th. September '16.Not to be taken into the Front Line.Operations.

One of our patrols went out to make a Silent Raid on enemy's trenches at O.4.a.3/4.1 $\frac{1}{2}$, but were unable to cut their way through the wire. They throw many bombs into the enemy's trenches. Enemy casualties unknown. We had one man slightly wounded.

The movements of our patrols were rather hampered by enemy's flares.

Our machine guns and Stokes Mortars were active.

Our Artillery carried out useful registration and effective retaliation. Enemy T.M. firing from N.18.b.7.9. was silenced, and fire was directed on the following points :- DAM STRASSE, O.8.a.2.8, wire and trench near MARTEM'S FARM. Trench about O.3.b.7.1. was heavily shelled by the Artillery in co-operation with the Infantry Bombing raid.

Enemy's front and support lines.

Serious damage done to enemy's wire at O.2.c.5.2 $\frac{1}{2}$ and O.8.a.1.8. New wire has been put out in front of No. 4 Caator. There is new work in progress at O.3.d.5.8 $\frac{1}{2}$. Enemy working party working on parapet at N.12.d.3.1 was stopped by our fire.

Enemy's patrols.

Enemy's patrols were fairly active during the night, several being seen and fired on. They were all very close to their own lines and dispersed quickly when fired on.

Enemy's activity.

There was exceptional activity all along our front yesterday. Enemy's snipers and Machine guns being very active. It is suspected that there are now troops in front of us.

Enemy's shelling.

Enemy shelled our back areas heavily yesterday. Very little damage done. He paid particular attention to VOORMEZELE, VIERSTRAAT and CHATEAU SEGARD.

Enemy movements.

One German was seen moving along trench running from O.2.c.3.1. to main line. There is a barricade at the end of this trench used, possibly, for an O.P.

Continued

Major.
for Lieut-Colonel.
G.S. 4th. AUSTRALIAN DIVISION.

REPORT ON OPERATIONS CARRIED OUT BY "STRONG PATROL" ON NIGHT OF
SEPTEMBER, 25th. 1916.

Our party consisting of 1 Officer, 2 N.C.O's and 10 men left our parapet at 10 p.m. as arranged.

The party duly arrived at enemy's wire at the point selected for entry; the wires were only partly cut and wire cutting instruments we were issued with were not big enough in the cup to deal with the large guage wire found intact. It was found also that additional trestles had been placed in the gap and between the gap and the enemy's parapets. The party was therefore not able to get nearer than about 15 to 20 yards to the hostile trenches, so the Officer in charge decided to bomb the hostile trenches, without effecting an entry and to withdraw. This was done and from the indications in the way of crying out from the garrison, some of the bombs must have been effective.

The task was rendered the more difficult owing to the constant enemy flares and NO MANS LAND being constantly swept with a searchlight.

Early in the proceedings the telephone communication established between NO MANS LAND and Artillery Headquarters failed. The Artillery signal therefore had to be given from the front trenches by a runner sent back for the purpose. This, however, did not hamper the operation because it had been anticipated and the signal for starting bombing by our party was the first shot fired by our Artillery.

The Artillery co-operation was good, and the shooting excellent.

The trenches seem to be more strongly garrisoned at night than was previously thought. This is judged from the large volume of rifle fire brought to bear on NO MANS LAND and the number of bombs thrown into the enemy's wires, especially at the points where wires are known to be damaged.

The enemy machine guns opened fire near vicinity of portion of enemy trench which we bombed, but all turned on to the point where the Artillery diversion took place before swinging on to the locality occupied by our party, and thus enabled our people to get back to previously arranged cover in NO MANS LAND with no further damage than one slight casualty.

(Sgd) E. DRAKE BROCKMAN, Lt-Col.
Commanding, 16th. Battalion, A.I.F.

4th. Brigade
27/9/16.

A.I.F.

app. XLII

REPORT ON OPERATIONS CARRIED OUT BY "STRONG PATROL" ON
OF 26th. SEPTEMBER, 1916 by 15th. BATTALION.

Our raiders left parapet at 10.20 p.m. 26th. instant and Artillery advised at 10.43 p.m. who opened fire at 10.44 p.m.

Lieut. Moore who was in charge reports getting through enemy main wire easily and left party under cover of shell holes while he and Sgt. Farr crawled forward to feel for trip wire and found a seven foot width of ordinary matted barbed wire overgrown with grass. This was between enemy main wire and his parapet. They searched along for a place to get through but were unsuccessful and returning to our trenches at 11.20 p.m. There was no sign of the enemy in his trenches so no bombs were thrown fearing that by so doing the success of a future stunt might be prejudiced.

No man's Land was lit up like day with enemy flares but there was very little Machine Gun fire.

Our party would like to try this operation again without Artillery co-operation which would allow them to work in closer to Crater No. 5, which was not possible to-night on account of our own shell fire. Enemy fired one ordinary flare per minute before Artillery opened, but immediately after, fired sufficient numbers of the larger parachute flares to keep No Man's Land as bright as day.

Our Artillery fire was excellent throughout the operation.

(Sgd) J.H. PECK, Major.
Brigade Major.
4th. AUS. INFANTRY BRIGADE.

182

XLIII

CONFIDENTIAL.

4th. AUSTRALIAN DIVISION - INTELLIGENCE SUMMARY No.17.

From 6 a.m. 26th. September to 6 a.m. 27th. September '16.

Not to be taken into the front line.

Operations

A raiding party left our parapet at 10.20 p.m. They were to enter enemy's trenches at O.2.d.7.7. The party got through enemy's main wire easily, two of the party then pushed forward to try and find a way through. A seven foot width of matted barbed wire, which was found to exist between the main wire and the enemy's trench. This wire was overgrown with grass. Party failed to find an opening and so returned without suffering any casualties.

There was no sign of the enemy in his trenches, and the patrol did not throw any bombs fearing that by so doing the success of a future stunt might be prejudiced.

Our Artillery retaliated on Craters 4 and 5, O.3.c.9.0, O.7.b.8.2, with 18 pdrs. They also got direct hits on Crater No. 3 and S.P.'s in DAM STRASSE, at O.9.a.55, 10, and O.9.c.45.90. A Rum Jar was suspected at O.9.a.90.85 and was fired on.

Our trench Mortars paid particular attention to enemy's wire and front line trenches.

Enemy's front and support lines.

Now work is reported on parapet from O.2.c.55.20 to O.8.a.3.5. New timber is visible in several places between these two points.

A large loop hole has been made at O.3.d.1.6.

Machine Gun emplacements.

Two new M.G.E's are plainly visible at O.2.c.95.60. and seem to be made of concrete.

A M.G. was located at O.3.c.70.55.

Enemy's activity.

Fairly quiet all along our line.

Enemy movement.

Enemy's working parties observed at N.18.b.35.95 and O.14.a.6.3 were dispersed by our Artillery fire.

Several parties trying to repair wire were dispersed by Lewis Gun fire.

Searchlights.

Enemy again used searchlight well in rear of his trenches (about O.4.d.). A second searchlight was being used along trench opposite our trench No. 12 but disappeared very quickly on being fired on and was not soon again.

Enemy shelling.

Enemy's artillery was very quiet throughout the day.

Enemy's aircraft.

Hostile plane flying over our lines dropped a bomb at H.22.a.9.9 and two at N.22.a.7.7. No damage done.

Whitkinson

Major.

for Lieut-Colonel.

G.S. 4th. AUSTRALIAN DIVISION.

SECRET

(COPY)

4th. Brigade A.I.F.
28/9/16.Appendix No 44
War Diary 96App. XLIV

REPORT ON OPERATION CARRIED OUT BY "STRONG PATROL" ON NIGHT
OF 27th. SEPTEMBER, 1916 BY 13th. BATTALION.

The raid was not a success although it came very near to being one. The raiders left our trenches at 12.40 a.m. and at 2.45 a.m. the word "GO" was received. At that time they had passed through a gap in the wire and were on the enemy parapet. As soon as the guns opened fire the whole party found themselves under our own shell fire. Several dropped at once and the order was "Scatter for your lives". I am not certain as to why this unfortunate occurrence came about, for Lieut. Fitzpatrick is not back yet and I think he has been killed, but the available evidence shows that the party was too far to the North of the point of entry, say at O.S.a.2.8 $\frac{1}{2}$ instead of O.S.a.1.7 $\frac{1}{2}$. Some of the party ran forward and some to the right. There is no doubt that the enemy does not hold his front line at this point, where it is only a succession of shell holes. The raid was now spoilt and, at 3 a.m. ^{fire ceased} the signallers were recalled and the raiders commenced to return. There was little retaliation, about 25 whiz-bangs on S.P.1. The enemy did not throw up a great number of flares. Our casualties :- Missing, believed killed Lieut. Fitzpatrick and one man; wounded three men.

Later - After questioning a number of the party I am of the opinion that they crossed the first trench without knowing it and ran into a diagonal trench running from O.S.a.2.8 $\frac{1}{2}$, where they happened to be when the guns opened. The wire was crossed without any trouble. The men saw no Germans and did no fighting; they had a few bombs thrown at them from the diagonal trench spoke of.

(Sgd) J.M. DURANT, Lieut-Col.
Commanding, 13th. Battalion, A.I.F.

182
CONFIDENTIAL.

Appendix No. 1
No. xibnogg

Headquarters,
28th. SEPTEMBER, 1916.



SUMMARY OF OPERATIONS.

4th. AUSTRALIAN DIVISION.

for week ending 6 p.m. - 28th. September, 1916.

- 21st. The 12th. Aus. Infantry Brigade relieved the 12th. Canadian Infantry Brigade on the night 20th/21st.
- 22nd. Our Artillery made several very successful Balloon and Aeroplane Observation shots. Smoke and flames were seen to be issuing from No. 2 Crater. The usual indirect fire was carried out by our guns. Our Mortars were also active, paying particular attention to the Craters and Piccadilly Farm.
- 23rd. Our Artillery fired some 340 rounds at enemy's front line trenches, Crater No. 2, M.G. emplacement at 0.8.a.3.7 $\frac{3}{4}$, various working parties and other targets. Machine gun fire was kept up along the tramline running through 0.8.a.&c. Our Stokes guns expended a good many rounds on enemy's front line and caused a good deal of damage. A suspected M.G.E. at 0.4.a.2.3. was blown in. Enemy patrols were active. One of our patrols which was out examining enemy's wire was engaged in rear by one of enemy's patrols, and from enemy's front line trenches. Our patrol got back to our line safely having suffered one casualty.
- 24th. Our Artillery shelled enemy's line fairly heavily during the day, in retaliation, and got direct hits on M.G.E. at 0.7.c.4.7. and snipers post at 0.7.a.8.1. The usual indirect M.G. fire was carried out during the night. Our patrols were out during the night, but did not encounter any enemy patrols.
- 25th. Our Artillery fired about 200 rounds, chiefly on registration, the DAM STRASSE and enemy front line trenches. Our Stokes Mortars were active during the day, and a good deal of damage was done to enemy's front and support lines. Enemy T.M. observed firing from 0.7.c.2.1 was engaged and silenced. Four direct hits were obtained on Machine gun firing from 0.4.a.4.4. Our patrols were out all along the line. One patrol occupied enemy's listening post at 0.3.c.4.4. but the enemy did not approach it.
- 26th. Our Artillery carried out some useful registration shoots, and shelled enemy's front line fairly heavily. One of our patrols went out to make a silent raid on enemy trenches at 0.4.a.3.1 $\frac{1}{2}$, but were unable to cut their way through the wire. They bombed enemy's trenches with apparently good effect. The patrol returned to our lines safely.
- 27th. A raiding party left our trenches at 10.30 p.m. It was their intention to raid enemy trenches at 0.2.d.7.7. The party got through enemy's main wire easily, two of the party then pushed forward to try and find a way through a seven foot width of ^{mat}barbed wire, which was found to exist, and were unsuccessful. This wire was covered from view by fairly high grass. The patrol returned having suffered no casualties.
- 28th. Our Artillery was active. At 3 p.m. new work on suspension bridge at 0.9.a.9 $\frac{1}{2}$.6. was demolished by our fire. A M.G.E. at 0.2.c.9 $\frac{1}{2}$.8. was damaged. Our machine guns carried out the usual indirect fire during the night. A strong patrol was sent out to enter enemy trenches at 0.8.a.1 $\frac{1}{2}$.7 $\frac{1}{2}$. The objective was gained but trench found to be unoccupied. The patrol got too far North of the point they were to enter at and suffered several casualties from our own Artillery. During the week the enemy has been fairly quiet. During the night he has been jumpy bombing his own wire and doing a lot of erratic indirect fire with his Machine guns. Our working parties have been particularly busy, improving the trenches Ecluse, Old French, reserve lines and the front line. Several new M.G. positions have been occupied from which enemy's trenches are being enfiladed in a good many places.

281

CONFIDENTIAL



Appendix No. 57

Appendix No. 57

many places

OPERATIONS OF SUMMARY

A U S T R A L I A N D I V I S I O N

For week ending 6 p.m. - 28th. September, 1918.

The 13th. Infantry Brigade relieved the 12th. Canadian Infantry Brigade on 28th. September. Commanding 4th. AUSTRALIAN DIVISION.

Our Artillery made several very successful Balloon and Aeroplane observations. Smoke and flames were seen to be issuing from No. 2 Crater. The usual indirect fire was carried out by our guns. Our mortars were also active, paying particular attention to the Craters and Plochally Farm.

Our Artillery fired some 240 rounds at enemy's front line trenches. Crater No. 2, M.G. emplacement at 0.3.2.7, various working parties and other targets.

Machine gun fire was kept up along the trench line running through 0.3.2.0. Our Stokes guns expended a good many rounds on enemy's front line and caused a good deal of damage. A snatched M.G. at 0.4.2.2 was blown in.

Enemy patrols were active. One of our patrols which was out examining enemy's wire was engaged in rear by one of enemy's patrols and from enemy's front line trenches. Our patrol got back to our line safely having suffered one casualty.

Our Artillery shelled enemy's line fairly heavily during the day, in retaliation, and got direct hits on M.G. at 0.7.0.4.7. and snipers post at 0.7.2.1. The usual indirect M.G. fire was carried out during the night.

Our patrols were out during the night, but did not encounter any enemy patrols.

Our Artillery fired about 200 rounds, chiefly on registration, the DAM STRASSE and enemy front line trenches. Our Stokes mortars were active during the day, and a good deal of damage was done to enemy's front and support lines. Enemy T.M. observed firing from 0.7.0.2.1. Four direct hits were obtained on Machine gun firing from 0.4.4.4. Our patrols were out all along the line. One patrol occupied enemy's listening post at 0.3.4.4, but the enemy did not approach it.

Our Artillery carried out some useful registration shoots, and shelled enemy's front line fairly heavily.

One of our patrols went out to make a silent raid on enemy trenches at 0.4.2.2, but were unable to cut their way through the wire. They bombed enemy's trenches with apparently good effect. The patrol returned to our lines safely.

A raiding party left our trenches at 10.30 p.m. It was their intention to raid enemy trenches at 0.2.5.7. The party got through enemy's main wire easily, two of the party then pushed forward to try and find a way through a seven foot wide barbed wire, which was found to exist, and were unsuccessful. This wire was covered from view by fairly high grass. The patrol returned having suffered no casualties.

Our Artillery was active. At 3 p.m. new work on suspension bridge at 0.2.0.6 was demolished by our fire. A M.G. at 0.2.0.9.8 was damaged. Our machine guns carried out the usual indirect fire during the night. A strong patrol was sent out to enter enemy trenches at 0.3.2.7. The objective was gained but trench found to be unoccupied. The patrol got too far North of the point they were to enter at and suffered several casualties from our own Artillery.

During the week the enemy has been fairly quiet. During the night he has been jumpy bombing his own wire and doing a lot of erratic indirect fire with his Machine guns. Our working parties have been particularly busy, improving the trenches Reuse Old French reserve lines and the front line. Several new M.G. positions have been occupied from which enemy's trenches are being enfiladed in a good many places.

182
APP. XLVI
Appendix No 46 99
War Diary

CONFIDENTIAL.

4th. AUSTRALIAN DIVISION - INTELLIGENCE SUMMARY No. 18.

From 6 a.m. 27th. September to 6 a.m. 28th. September '16.

Not to be taken into the front line.

Operations.

Our Artillery was active. At 3 p.m. new work on Suspension Bridge at O.9.a.7 $\frac{1}{2}$.2. was demolished by our fire. A M.G. emplacement at O.2.c.9 $\frac{1}{2}$.6. was damaged. German F.L.T. from O.2.c.7.3 to O.8.a.2.8. were heavily bombarded. A reported sniping position at N.18.b.2.8. was blown in. Our Machine Guns did some good direct and indirect firing during the last 24 hours. Lewis Guns dispersed enemy's working party at O.7.c.4.8. Our patrols were active but did not encounter any enemy patrols. Strong patrol sent out to enter enemy's trenches at O.8.a.7.7 $\frac{1}{2}$. was unsuccessful.

Enemy's front and support lines.

There appears to be a bridge, constructed during the night at O.9.a.60.15. Now bags were seen on enemy's front line trenches O.3.b.7.1. Now earth has been thrown up at this point and at O.7.b.20.25. Parapet and emplacement at O.2.c.95.55. which was damaged by our fire was repaired with sand bags during the night. Two loopholes were located at O.3.c.2.2. Timber was seen being carried along enemy's trench at N.12.d.4.1. At intervals during the day a noise which sounded like the clanging of iron girders was heard opposite trenches M.3 and N.1. Wire netting was seen on enemy's trench about O.7.b.20.25. It stands about 8 feet high and is 10 yards long.

Enemy's activity.

Enemy's trench mortars were fairly active along our front yesterday, otherwise everything was quiet.

Enemy shelling.

Enemy's artillery was not very active.

Snipers Post.

Reported at N.18.b.2.8.

Enemy Aircraft.

A hostile balloon broke away and drifted over our lines at about 5.20 p.m. This balloon was brought down in flames by our aeroplanes in vicinity of KEMMELL HILL.

Miscellaneous.

Last night a board was erected on the Eastern side of No. 5 Crater. The top left hand corner being red and the bottom right hand corner being white.

Whitson

Major.
for Lieut-Colonel.
G.S. 4th. AUSTRALIAN DIVISION.

CONFIDENTIAL.4th. AUSTRALIAN DIVISION - INTELLIGENCE SUMMARY No. 19.From 6 a.m. 28th. September to 6 a.m. 29th. September '16.Not to be taken into the front line.Operations.

Our Artillery and trench mortars were active. During the afternoon 130 rounds were fired at RUINED FARM and region from O.3.c.7.5. to O.3.d.4.8. Machine gun emplacement at O.2.c.8 $\frac{1}{2}$.4 $\frac{1}{2}$. was badly damaged.

Our machine guns carried out usual indirect fire. Our patrols were out during the night. They kept a close watch on wire in front of enemy's trench at O.8.a.2.9. where working party was observed the previous night, but no enemy parties appeared. A small wiring party observed at about O.8.a.1.7 $\frac{1}{2}$. was dispersed. Machine gun emplacements at O.7.c.5 $\frac{1}{2}$.9 $\frac{1}{2}$. were fired on by our Artillery in co-operation with trench mortars. Four direct hits were obtained. The emplacement was made with steel rails and cement and it seemed to be levelled.

Enemy's front and support lines.

Sounds depicting a great deal of activity in enemy's front line in O.2.d. were heard last night. Enemy has done new work on M.G. emplacement at O.2.c.8 $\frac{1}{2}$.4 $\frac{1}{2}$. New dugouts have been observed in the DAM STRASSE about O.9.c.6.1., and a new bridge at O.9.a.6.1 $\frac{1}{2}$.

Enemy's activity.

Enemy was fairly active along our front during the last 24 hours. His artillery and trench mortars being specially active. During the night he again used flares continuously.

Enemy's shelling.

Enemy's artillery was very active yesterday. During the morning he paid particular attention to our front line trenches. He got a good many direct hits and made breaches in our parapet in several places. These were all repaired during the night. DUCKEBUSCH was shelled during the morning with 4.2" and 77 m.m.'s. During the afternoon he was searching for our batteries, but was unsuccessful.

Enemy's movement.

Canadian F.O.O. at N.11.c.9.9 $\frac{1}{2}$. reports having observed one man dressed in the uniform of a British Staff Officer walking between two ~~tree~~ ~~Commans~~ along sap at N.18.b.1 $\frac{1}{2}$.2 $\frac{1}{2}$. He returned shortly afterwards with four Germans. At 1.30 p.m. enemy were observed moving along front line in small groups opposite N.1.

(Sgd)

G. DICKENSON

Major.

for Lieut-Colonel.

G.S. 4th. AUSTRALIAN DIVISION.

War Diary

LVIII

CONFIDENTIAL.4th. AUSTRALIAN DIVISION - INTELLIGENCE SUMMARY No. 20.From 6 a.m. 29th. September to 6 a.m. 30th. September 16.Free Not to be taken into the front line.Operations.

Our Stokes mortars were active, and did a good deal of damage to enemy's front line trenches, communication trench about 0.8.a.45.75 and Ruined Farm. Working party at 0.7.c.4.8. was dispersed.

Indirect fire was carried out by our Machine guns on the following targets 0.14.a.66, 0.13.b.80.65, 0.13.c.25.35 and 0.3.a.15.55.

Our patrols were out during the night, but did not encounter any enemy patrols.

Our artillery fired about 400 rounds during the last 24 hours, the chief targets being enemy's front line between 0.3.c.0.3. and 0.3.c.0.5., 0.3.d.45.85, 0.9.b.10.85, the DAM STRASSE and several working parties. The effect in all cases being good.

Enemy's front and support lines.

Emplacement at 0.8.a.2.8. has been repaired. A good deal of repair work has been done to enemy's front line from 0.8.a.2.8. to 0.8.a.4.9 $\frac{1}{2}$, and in vicinity of No. 2 Crater.

New timber was observed on Communication trench at N.18.b.75.70, and corrugated iron at same point.

Snipers Post.

Snipers Post visible at 0.7.b.25.20. Listening Post located at N.12.d.55.15.

Machine Gun Emplacements.

M.G. emplacement suspected at 0.7.a.8.2., N.18.b.6.9. and 0.8.a.15.75.

Trench Mortar Emplacements.

Trench Mortar observed firing from vicinity of 0.13.a.1.5.

Enemy's activity.

Fairly quiet day all along our front.

Enemy's Batteries.

Enemy gun position located in Wood near 0.8. Central. Located by flash, dust and sound.

W. J. W. W.

Major.

for Lieut-Colonel.

G.S. 4th. AUSTRALIAN DIVISION.

SECRET

4th AUSTRALIAN DIVISION

app XLIX

Distribution of Units.

UNIT.	Shoot	Map Square 1/40,000	REMARKS.
Divisional Headquarters.		RENINGHELST	
4th. Aus. Inf. Bde. H.Q.		BURGOMASTERS FARM	
13th. Battalion		No. 1. DEAD DOG FARM	
14th. " Trenches 9-14 & Crater		DICKEBUSCH 2 Coys. VERMOZEELE	
15th. " H.Q. & 2 Coys.		VERMOZEELE	
16th. " Trenches 15-21		SPOIL BANK	
4th. Aus. M.G. Company.	" 22-28	In the line.	(I.31.c.2.6 1/2. (BURGOMASTERS FARM
4th. Aus. L.T.M. Bty.			
12th. Aus. Inf. Bde. H.Q.		LA CEYTTTE	
45th. Battalion		BOIS CARRE 2 Coys. trenches N.3-0.4.	N.6.c.2.9
46th. " 2 Coys.		LA GLYTTE	N.7.a.7.2
47th. " RIDGEWOOD & BRASSERIE			N.5.a.7.2
48th. " Coys. trenches M.1-N.2.a.		(1 Coy. VIERSTRAAT SWITCH	N.4.d.2.
12th. Aus. M.G. Company		(1 Coy. N.10.b.4.7	
12th. Aus. L.T.M. Bty.		In the line	N.8.c.6.9 H.32.b.4.9
13th. Aus. Inf. Bde. H.Q.		RENINGHELST	G.35.c.5.0
49th. Battalion		"	M.5.a.5.7
50th. " WISQUES		RENINGHELST	G.35.c.3.0
51st. " " "		"	M.6.a.4.7
52nd. " " "		"	M.6.a.2.8
13th. Aus. M.G. Company		"	M.6.a.4.6
13th. Aus. L.T.M. Bty.			
Div. Artillery H.Q.		RENINGHELST	
10th. A.F.A. Brigade		H.28.d.77	
11th. " " "		H.27.a.20	
12th. " " "		R.4.c.42	
24th. " " "		H.28.a.50	
V.4.A. H.T.M. Battery		In the line	H.Q. - H.34.d.91
X.4.A. M.T.M. " "			
Y.4.A. M.T.M. " "			
Z.4.A. M.T.M. " "			
Div. Ammunition Column		H.13. Central	
Ammunition Sub-Park.		W.ABEELE	
Div. Engineers H.Q.		RENINGHELST	
4th. Aus. Field Company		DICKEBUSCH (3 Sect. SPOIL BANK	
12th. " (less 3 Sect)		Details Camp	
13th. " H.3.b.78		G.36.a.19	
4th. Aus. Signal Company		RENINGHELST	
4th. Aus. Pioneer En.		MICMAC (2 Coys. VANCOUVER	H.14.c.7.
(less 2 Coys.)			
Divisional Tr. in H.Q.		RENINGHELST	
14th. Coy. A.A.S.C.		G.32.a. Central	
7th. Coy. A.A.S.C.		OUDERDOM	
26th. Coy. A.A.S.C.		R.5.c. Central	
27th. Coy. A.A.S.C.		STEENVOORDE	
Supply Column.		ABEELE	
Railhead		WIPPENHOEK	
4th. Aus. Field Ambulance		1 Sec. VOORMEZEELE	
12th. " 1 Sec. OUORDERDOM-1 Sec. DICKEBUSCH		Bearers SPOIL BANK.	
13th. " less 2 Sec. M.3. Central 2 Sec. at CLYTE			
4th. Aus. Mob. Vet. Sect.		BOESCHEPE	
4th. Aus. Salvage Coy.		Near-RENINGHELST	
		RENINGHELST	

on Sept 20, 1916.

Major-General.
Comdg., 4th. AUSTRALIAN DIVISION.

To :- _____

CONFIDENTIAL.No. G. 5/118Headquarters
5th October, 1916.SUMMARY OF OPERATIONS4th AUSTRALIAN DIVISION.Sept.
29th.

Our Artillery and trench mortars were active. During the afternoon 130 rounds were fired at RUINED FARM and region from O.3. c.7.5. to O.3. d.4.8. Machine Gun emplacement at O.2. c.8½.4½. was badly damaged. Our machine guns carried out usual indirect fire. Our patrols were out during the night. They kept a close watch on wire in front of enemy's trench at O.8. a.2.9. where working party was observed ~~and~~ the previous night, but no enemy parties appeared. A small wiring party observed at about O.8. a.¼.7½. was dispersed. Machine Gun emplacements at O.7. c.5½.9½. were fired on by our Artillery in co-operation with trench mortars. Four direct hits were obtained. The emplacement was made of steel rails and cement and it seemed to be levelled.

30th.

Our Stokes Mortars were active, and did a good deal of damage to enemy's front line trenches, communication trench about O.8. a.45.75. and Ruined Farm. Working party at O.7. c.4.8. was dispersed. Indirect fire was carried out by our Machine Guns on the following targets: O.14. a.66, O.13. b.80.65, O.13. c.25.35, and O.3. a.15.55. Our patrols were out during the night, but did not encounter any enemy patrols. Our Artillery fired about 400 rounds during the last 24 hours, the chief targets being enemy's front line between O.3. c.0.3. and O.3. c.9.5., O.3. d.45.85., O.9. b.10.85., the DAM STRASSE and several working parties. The effect in all cases being good.

(The original of above will be found with Appendix No.11 of volume for October, 1916.)