

**AWM4**  
**Australian Imperial Force unit war diaries,**  
**1914-18 War**

Formation Headquarters

**Item number:** 1/44/27 Part 3

**Title:** General Staff, Headquarters 2nd  
Australian Division

October 1917



AWM4-1/44/27PART3



SECRET.

SECOND AUSTRALIAN DIVISION.

\*\*\*\*\*

Copy No.

HEADQUARTERS  
2ND  
AUSTRALIAN DIVISION.  
(GENERAL STAFF.)

G. 1/758.

Headquarters,  
7th October, 1917.PRELIMINARY INSTRUCTIONS No. 3.Series No. 3.

References to BECELAEDE and PASSCHENDAELE Sheets 1/10,000.

- 1- Reference to Preliminary Instructions No. 2, series No. 3,  
Para. 2, (b) i:-

For D.18.b.2.0 read D.18.c.2.0.  
For D.18.b.0.3 read D.18.c.0.3.  
For D.17.d.45.35. read D.17.b.45.35.

2. Reference Preliminary Instructions No. 2 - Series No. 3,  
Para. 12:-

The D.I.O. will be at 7th Aust. Inf. Brigade H.Q.  
D.26.c.1.3 and all prisoners will be taken to this place  
and not to KIT and KAT.

3. RESERVE BRIGADE, (5th Aust. Inf. Brigade).  
At zero hour the Reserve Brigade will be disposed as follows:-  
"A" and "B" Battalions - TOKIO Spur, D.27.a-c-d.  
"C" and "D" Battalions - ANZAC Spur, D.26.d.-J.2.b.-J-3.a.

At zero plus 1½ hours:-

"A" Battalion - About the line D.28.b.5.2 to D.22.d.1.2.  
"B" Battalion - About the line D.22.c.6.2 to D.22.a.4.7.  
"C" Battalion - About the line D.28.c.4.6 to D.28.a.0.3.  
"D" Battalion - Between TOKIO and ANZAC.

4. ENGINEERING.

On the BLUE LINE being captured a communication trench will be  
opened up in the left Brigade sector. This will be marked out under  
the orders of the C.R.E. The 5th Aust. Inf. Bde. will find the men  
to dig it.

Strong points will be constructed at the following approximate  
localities:-

Left Brigade Sector.  
D.17.d.4.8. (Astride the  
railway at D.18.a.7.7.

Right Brigade Sector.  
D.23.b.4.2.

A garrison of one platoon for each strong point will be told  
off by the brigade whose sector it is.

The strong points will be constructed under supervision provided  
by the C.R.E.

At zero hour the garrisons and engineer parties will assemble  
in J.1.a and will be ready to move forward when required.

5. ACKNOWLEDGE.

Issued at 6 p.m.

*W. G. G. G.*  
Lieut-Colonel,  
General Staff,  
Second Australian Division.

Distribution same as for Preliminary Instructions No.2, Series 3.

\*\*\*\*\*



63

App XXIV  
91  
9/1/759

# SECOND AUSTRALIAN DIVISION.

\*\*\*\*\*

Headquarters,

7th October, 1917.

First ANZAC Corps.

\*\*\*

Reference your 164/61, dated 22nd September,  
Report No. 4.

Herewith map showing dispositions of units at  
6 a.m. on the 4th October, and the dispositions when  
consolidated on the new line after the attack.

The attack commenced at 6 a.m. and was carried  
out in accordance with programme without a hitch.

The casualties suffered by the Division up to  
12 noon, 6th October, amounted to:-

		<u>Officers.</u>	<u>Other Ranks.</u>	<u>Total.</u>
Killed	- -	23	255	278
Wounded	- -	63	1046	1109
Missing	- -	4	860	864
		<u>90</u>	<u>2161</u>	<u>2251</u>

The prisoners reported are 14 Officers and 314  
Other Ranks.

The material reported captured is:-

26 Machine Guns.  
2 Field Guns (77 mm.).  
5 6" Trench Mortars.  
1 Telephone set.

*Wm Smyth* Major-General,  
Commanding Second Australian Division.



Disposition of Units 6 a.m. 4.10.17 shown in red lettering.  
Disposition of Units 6 p.m. 4.10.17 shown in black lettering.  
Do. S.O.S. & Barrage M.G.s remained unchanged

○ → 1 Machine Gun (Vickers)  
⊙ 1 Stokes Mortar

SECRET

EDITION 1.A

BECELAERE

German Trenches corrected to 21-9-17.

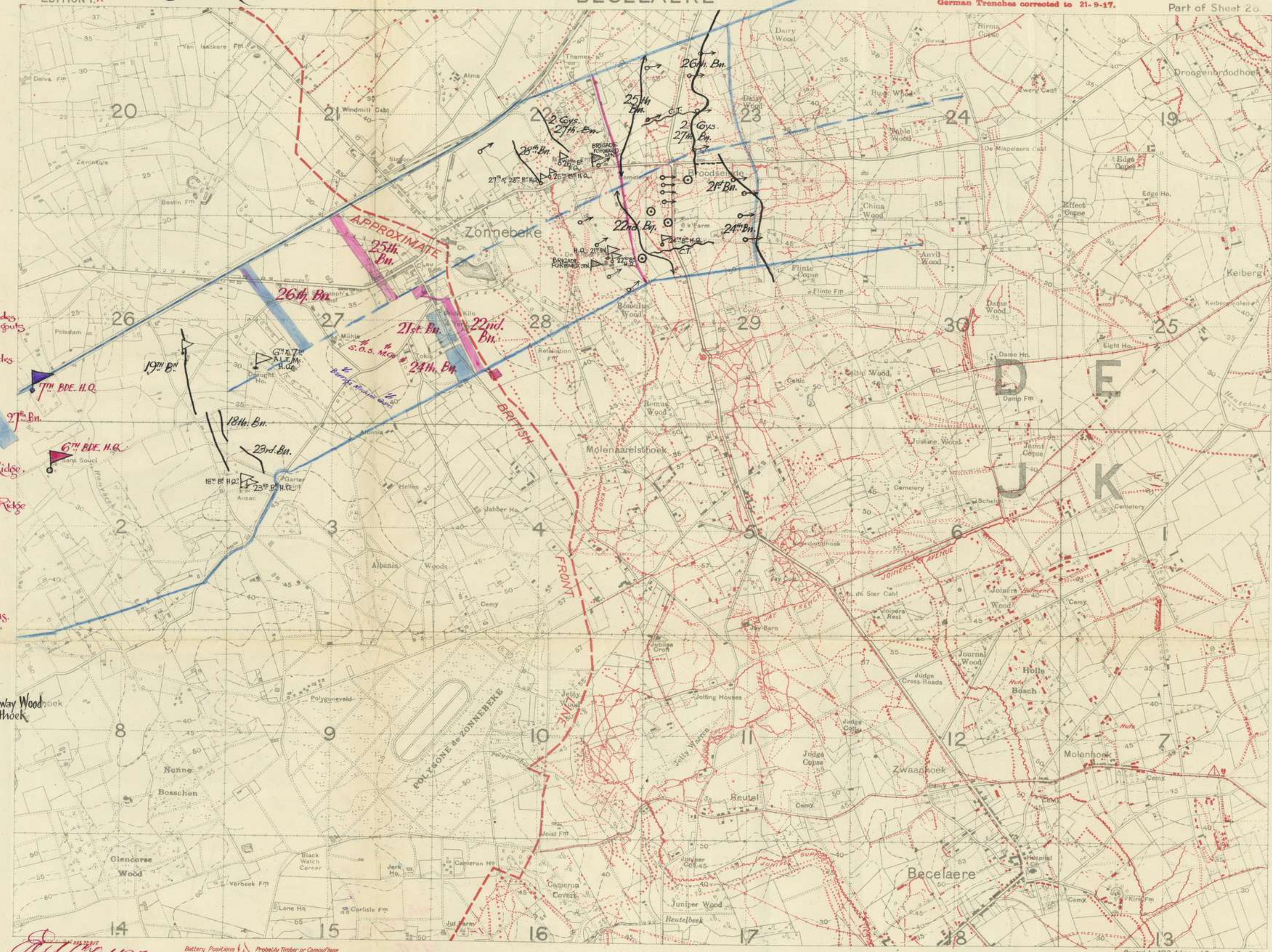
Part of Sheet 26.

ARTILLERY  
C Group.  
10<sup>th</sup> & 11<sup>th</sup> A.F.A. Bds.  
Railway Wood Dugouts  
I. 11 b. 6.2.  
D Group.  
4<sup>th</sup> & 5<sup>th</sup> A.F.A. Bds.  
I. 12 c. 1.9.

22<sup>nd</sup> Bn.  
Westhoek Ridge.  
23<sup>rd</sup> Bn.  
Westhoek Ridge

5<sup>th</sup> A.I. Bde.  
RESERVE.  
H.Q. I. 11 b. 5.2.  
10<sup>th</sup> Bn.  
Railway Wood  
18<sup>th</sup>, 17<sup>th</sup> & 20<sup>th</sup> Bns.  
Gordon Area.

20<sup>th</sup> Bn. - Railway Wood  
17<sup>th</sup> Bn. - Westhoek



4.10.17

Battery Positions  
Probably Timber or Camouflage  
Probably Concrete  
Organised Shell Holes

Scale 1:10,000  
Yards 500 400 300 200 100 0 500 1000 1500 2000

Printed by NP2 Advanced Section, A.P. & S.S.



FOR OFFICIAL USE ONLY

G.132.

## SECOND AUSTRALIAN DIVISION.

## Location of Units at 8 a.m. 8th October 1917.

DIV. H.Q.	Advanced.	-	YPRES.	Ramparts.	I.14.b.1.8.
	Rear.		SMYTH CAMP		H.21.d.6.2.
Div Artillery H.Q.			YPRES.	Ramparts.	I.14.b.1.8.
"C" Group.	10th AFABde.	J.1.d.65.10.			
"D" Group	5th do	J.1.d.35.67.			
4th A.F.A.Bde.	HQ & WL.	H.19.a.7.4.			
11th do	do	G.24.b.6.7.			
2nd Aust D.A.C.		G.18.c.6.8.			
4th do		H.15.a.ixx 8.2.			
2nd Aust D.T.A.O.		H.13.d.0.5.			
4th do		G.28.b.5.5.			
5th Aust Inf Bde H.Q.		D.26.c.1.3.	LINE.	LEFT.	
17th Bn.	-	LINE.			
18th Bn.	-	D.22.c.		Rear Support.	
19th Bn.	-	Reserve.		D.26.b and d.	
20th Bn.	-	D.32.d.		Support.	
5th A.M.G.Coy.	-	LINE.			
5th A.L.T.M.Bty.	-	LINE.			
6th Aust Inf Bde H.Q.		SANS SOUCI.	J.2.a.3.6.	LINE. RIGHT.	
21st Bn.	-	DE KNOET FM.	D.28.b.	Support. Left.	
22nd Bn.	-	D.29.a.15.50.	LINE.	Right.	
23rd Bn.	-	D.28.b.5.9.	LINE.	Left.	
24th Bn.	-	D.28.b.7.5.		Support. Right	
6th A.M.G.Coy.	-	J.2.a.0.3.	LINE.		
6th A.L.T.M.Bty.	-	HANEBECK AREA.	D.23.c.3.0.		
7th Aust Inf Bde H.Q.		D.26.c.1.3.	RESERVE BDE.		
25th Bn.	-	RAILWAY WOOD.	I.11.b.		
26th Bn.	-	BELLEWAARDE RIDGE.			
27th Bn.	-	RAILWAY WOOD.	I.11.b.		
28th Bn.	-	WESTHOEK.	J.7.b.		
7th A.M.G.Coy.	-	WESTHOEK.	J.7.b.		
7th A.L.T.M.Bty.	-	RAILWAY WOOD.	I.11.b.		
G.R.E.	-	YPRES.	Ramparts.	I.14.b.1.8.	
5th A.Field Coy.	-	H.21.b.2.2.			
6th do	-	J.14.b.3.8.			
7th do	-	I.14.a.4.3.			
A.D.M.S.	-	SMYTH CAMP.	-H.21.d.6.2.		
5th A.Field Amb.	-	RENINGHELST.			
6th do	-	I.9.c.9.6.			
7th do	-	WARATAH CAMP.	G.15.c.2.9.	Div Rest Camp.	
Div Train H.Q.	-		G.19.b.7.7		
2nd Aust Div Supply Col.	L.33.c.2.5.	Sheet 27.			
2nd Aust Pioneer Bn	-	SWAN CHATEAU.	I.19.c.3.7.		
D.A.D.O.S.	-	BUSSEBOOM.	G.16.c.5.0		
22nd Aust M.G.Coy.	-	BELGIAN CHATEAU.	H.23.b.3.8.		
D.M.G.O.	-	YPRES.	Ramparts.	at D.H.C.	
Div Reinf Camp.	-	CAESTRE.			

*Ch. Williams*  
 Lieutenant Colonel.  
 General Staff.  
 2nd Australian Division.

TO BE DESTROYED ON RECEIPT  
 OF A LATER ISSUE.



App. XXVI

SECRET.

Copy No. ....

## SECOND AUSTRALIAN DIVISION ORDER No 147.

Headquarters,  
8th October, 1917.Reference Maps: BECCLAEKE and  
PASSCHENDAELE - 1/10,000.

## 1. INTENTION.

The Second and Fifth Armies are to attack on "X" Day.  
Zero hour will be communicated separately.

The objectives of the First and Second ANZAC Corps are shown on the barrage map issued to the Artillery and to each Brigade. They will be captured in two stages:-

- (a) the capture of the RED line
- (b) establishment on the BLUE line.

## 2. FLANKING DIVISION and RESERVES.

The 66th Division is to attack on the left of the Second Australian Division. The 197th Brigade is to be on the right of the 66th Division.

The 13th Aust. Light Horse Regiment and the 4th and 5th Australian Divisions are in Corps Reserve.

The First Aust. Division will not take part in the advance but will take any opportunity to improve its tactical position locally.

## 3. BOUNDARIES.

Between 1st and 2nd Aust. Divisions D.29.a.0.4 - D.29.b.1.6-D.50.a.6.9.

Between 2nd Aust. and 66th Divisions - The IPRES-ROULERS railway inclusive to 2nd Aust. Division.

## 4. OBJECTIVES.

RED Line. D.25.d.1.1 - D.25.b.6.0 - D.24.a.0.3 - D.24.a.3.8-D.18.c.2.0 - D.17.d.7.8 - to the railway inclusive at D.17.b.6.4.

BLUE Line. D.24.a.3.8 - D.18.c.4.4 - D.18.c.8.8 - D.18.a.9.0 - D.18.b.0.8 (railway inclusive).

## 5. PLAN.

(i) The operation will be carried out as follows:-

The 6th and 5th Aust. Infantry Brigades will attack - the 6th on the right and the 5th on the left. Each Brigade will allot not less than one complete battalion to the final objective so that there will be two battalions on this line on the Divisional front.

Assaulting troops are to be in position one hour before zero.

The 7th Aust. Infantry Brigade will be in Divisional Reserve.

(ii) (a) An artillery barrage will be put down at zero on the whole Corps front 150 yards in front of the forming up line.

The forming up line will be D.29.a.95.60 - D.23.c.4.4 - D.17.c.20.85.

Any troops in advance of this line will be withdrawn before zero.

(b) At zero plus four minutes the barrage will move forward at the rate of 100 yards in six minutes to the Red Protective barrage line.

(c)/.....

War Diary



## Appendix No. XXV'

-2-

(c) The barrage will move forward from this Protective line at zero plus 106 minutes.

Four minutes prior to zero plus 106 minutes, the Protective barrage will be intensified; this will be the signal for the assaulting troops destined for the BLUE line to move up close under the barrage.

(d) After arrival at the BLUE line, a Protective barrage will be put down 200 yards in advance of the line gained and a special searching programme will be carried out by the Artillery.

Posts will be pushed out 100 yards ahead of the line which is being consolidated.

(iii) When the final protective barrage dies down, patrols properly supported, will be pushed out and tactical points within 200 - 250 yards found unoccupied will be occupied and consolidated.

Reconnaissances with a view to further operations by the Reserve Division will at once be taken in hand.

Any positions gained or advance made must be reported at the earliest possible moment to Advanced Brigade Headquarters and by them to Divisional Headquarters, in order that the necessary adjustments and test of S.O.S. lines may be made.

(iv) A "back" barrage has been arranged to deal with likely points of assembly, lines of approach of enemy counter-attacking troops, strong points, and machine gun positions, beyond the reach of the creeping barrage.

(v) Machine Gun Barrages.

Orders and maps for the machine gun covering fire and S.O.S. barrages have been issued to all concerned.

Brigade Commanders will see that the Machine Gun Group Commander is promptly warned when an S.O.S. barrage is called for.

(vi) Anti-aircraft Guns.

Brigade Commanders will allot a proportion of guns out of their mobile Vickers guns, or Lewis guns, for flying on low flying hostile aeroplanes.

(vii) Orders regarding the marking of the jumping off line, marking routes to places of assembly, patrolling, and wirecutters, will be as for the two previous attacks.

Brigades will mutually arrange with adjoining Brigades places where their flanks shall meet on each objective as it is gained.

(viii) The G.O's. 5th and 6th A.I. Brigades will arrange to send a special report to reach D.H.Q. by zero plus four hours giving a brief description of the opposition met with, the state of the enemy's organisation and his power of resistance.

R.F.C.

No 4 Squadron R.F.C. will provide a contact aeroplane. It will be in the air approximately at the following hours:-

On the RED line at zero plus 60 minutes.

On the BLUE line at zero plus 160 minutes,

.....\ (c)



-3-

light or sounding a succession of "A's" on the Klaxon horn.

The special arrangements for the co-operation of the R.F.C. will otherwise be as laid down in 2nd Aust. Div. Order No 145 para 6 (iii) (iv) and (v).

The receiving Wireless set will be at the dugout at I.12.c.3.5 and the same officer will be on duty there as during the 4th October operations.

7.

ARTILLERY.

(i) For the day of the attack two brigades of the 1st Aust. Div. Artillery will be grouped temporarily with the 2nd Aust. Div. Artillery group under the orders of the C.R.A. 2nd Aust. Div.

Two 8" Howitzer batteries are also at the disposal of this Division.

Demands for special artillery assistance will be made by Brigade Commanders direct through their Artillery Liaison Officers, reports being sent at the same time to D.H.Q.

(ii) On the evening of "X" day at 9.30 p.m. and at 9.41 p.m., and on "Y" day at 4.45 a.m. barrages will be placed beyond the new front and over areas of probable counter-attack.

8.

ENGINEERS.

Orders for Engineers and Pioneers have been issued in Preliminary Instructions and in Engineer Orders.

9.

COMMUNICATIONS.

Signal Instructions have been issued separately to all concerned.

10.

ADMINISTRATIVE and MEDICAL INSTRUCTIONS have been issued separately.

11.

RESERVE BRIGADE.

The dispositions and movements of the Reserve Brigade are given in Preliminary Instructions No 3, Series 3, dated 7th October.

12.

HEADQUARTERS.

The Headquarters of the formations at zero hour are as follows:-

Advanced H.Q.	2nd Aust. Div.	YPRES, RAMPARTS.
-do-	66th Div.	YPRES, MENIN GATE.
-do-	6th A.I.Bde.	SANS SOUCI.
-do-	5th A.I.Bde.	D.22.d.15.45.
-do-	7th A.I.Bde.	D.26.c. 1. 3.
-do-	197th Bde.	To be notified later.

13.

LIAISON arrangements have been detailed in Preliminary Instructions.

14.

SYNCHRONISATION OF WATCHES will be carried out as laid down in G1/672, dated 18th September.

15.

REPORTS to Adv. D.H.Q. at YPRES RAMPARTS.

16.

ACKNOWLEDGE.

*A. H. Bridges,*

Lieut-Colonel,

General Staff, 2nd Aust. Division.

Issued at 8 a.m.

DISTRIBUTION overleaf.



DISTRIBUTION.

Cop. No	1	C.R.A.
	2	C.R.E.
	3	5th Aust. Inf. Bde.
	4	6th Aust. Inf. Bde.
	5	7th Aust. Inf. Bde.
	6	2nd Aust. Pioneer Bn.
	7	2nd Aust. Div. Sig. Co.
	8	22nd Aust. M.G. Coy.
	9	A.Q.
	10	A.D.M.S.
	11	D.L.G.O.
	12	A.P.M.
	13	D.B.O.
	14	D.G.O.
	15	Camp Commandant.

## For information to:

	16	First Anzac "G"
	17	First Anzac "Q"
	18	66th Division.
	19	1st Aust. Div.
	20	4th Aust. Div.
	21	5th Aust. Div.
	22	2nd Aust. Div. Train.
	23	2nd Aust. Mob. Vet. Sect.
	24	2nd Aust. Div. Rfts, Camp.
	25	4th Sq. R.F.C.
	26	13th A.L.H. Regt.
	27	57th H.A. Group.
	28	G.O.C.
	29	D.A.D.O.S.
	30	D.A.D.V.S.
	31	Capt. ROYDHOUSE, 28th Bn.
	32)	
	33)	File.
	34-36	War Diary.
	37-46	Spare.



PASSCHENDAELE

German Trenches corrected to 27-9-17.

Parts of Sheets 20 & 28

EDITION 1A

SECRET.

ARMY BARRAGE MAP.

October, 1917.

CONVERSION TABLE.

MINUTES	HOURS.
106 mins.	1 hour 46 mins.
114	54
122	2 hours 2 mins.
130	10
138	18
146	26
154	34
162	42
170	50

--- CORPS BOUNDARY.  
..... DIVISIONAL BOUNDARY.

2nd A.

66th DIV.

2nd AUST. DIV.

1st A.

1st AUST. DIV.

SECRET.

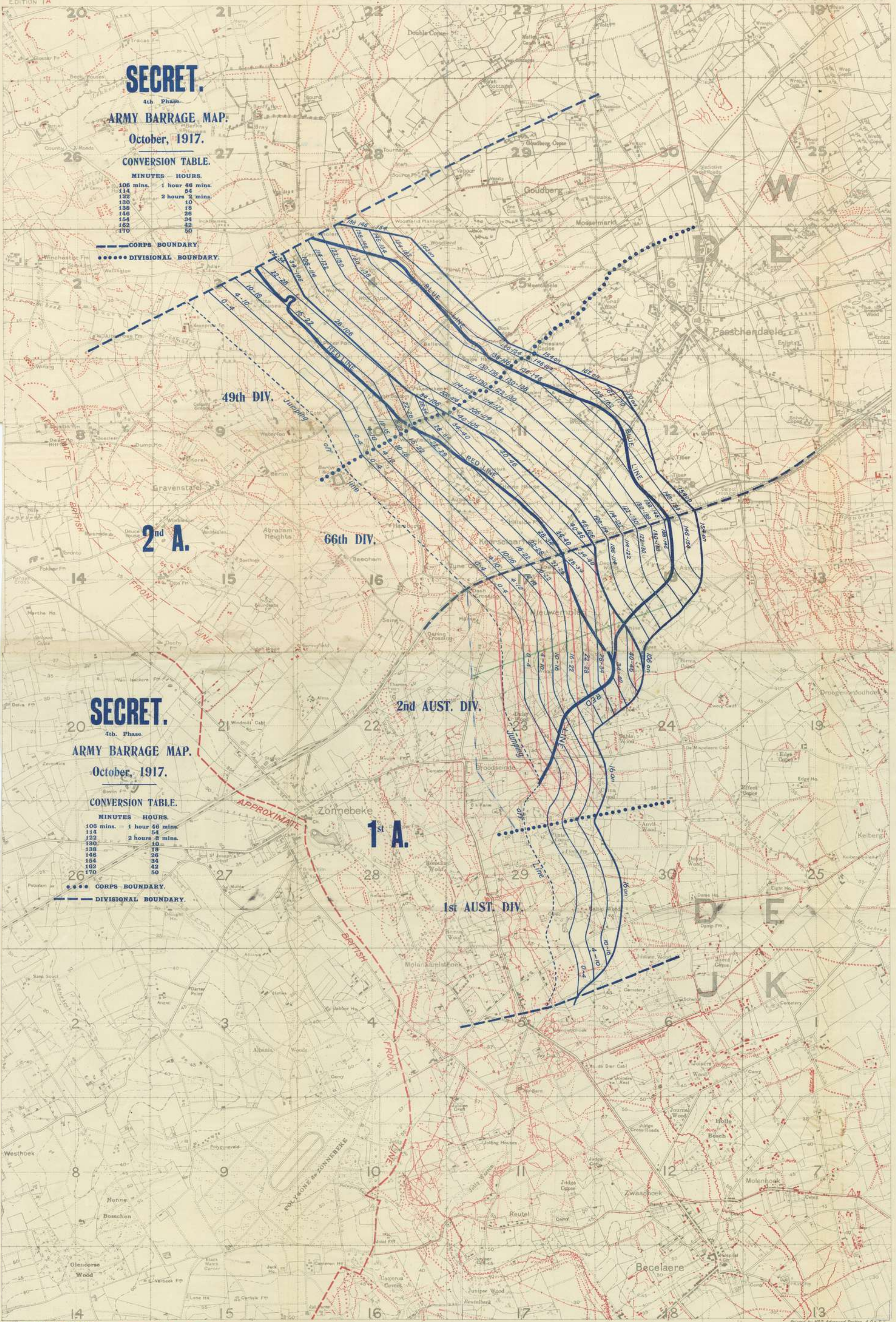
ARMY BARRAGE MAP.

October, 1917.

CONVERSION TABLE.

MINUTES	HOURS.
106 mins.	1 hour 46 mins.
114	54
122	2 hours 2 mins.
130	10
138	18
146	26
154	34
162	42
170	50

..... CORPS BOUNDARY.  
--- DIVISIONAL BOUNDARY.



Battery Positions  
Probably Timber or Concrete  
Probably Concrete  
Orange Shell Holes

Scale 1:10000

Printed by H.M.S. Advanced Section, A.R.S.



63  
 SECOND AUSTRALIAN DIVISION.

App. XXVI 99  
 SECRET.  
 G1/762. 21  
 Copy No.....

Headquarters,  
 8th October, 1917.

OPERATIONS.

Reference Map:  
 ZONNEBEKE Sheet  
 1/10,000.

MACHINE GUN INSTRUCTIONS No 2 - SERIES No 3.

Time Table reference para. 7 M. G. Instructions No 1. 1. Time Table for Batteries MC and MD - Reference Task Map issued with Machine Gun Instructions No 1:-

Time.	Barrage Target Letter.	Instructions.
From zero plus 10 to plus 15	"e"	Pauses of 1 minute for oiling, water supply, changing elevation etc. Rate of fire 50 rounds per minute.
-do- 16 to plus 21	"f"	
-do- 22 to plus 27	"g"	
-do- 28 to plus 33	"h"	
-do- 34 to plus 39	"i"	
-do- 40 to plus 45	"j"	Should an S.O.S. call be made 250 rounds per minute for 10 minutes, then again drop to 50 rounds per minute.
From zero plus 46 to plus 1 hr, 40 minutes both batteries will search this same ladder target, lifting and depressing at irregular intervals.		
From zero plus 1 hr, 40 mins. to zero plus 2 hrs. 15 mins. creep from "o" to "j" at rate of 100 yards in six minutes as above.		
From plus 2 hrs. 15 mins to plus 3 hrs. Battery "MD" will fire on "K" and "MC" on "i" occasionally searching back to full range of guns but not coming below the lines mentioned.		
At zero plus 3 hrs. both batteries will stand by for S.O.S. call when they will fire on "k" and "i" respectively and search back as above.		

S.O.S. BATTERY KB.

2. At zero plus 10 minutes this battery will fire on S.O.S. line, dividing the line with battery provided from 1st Aust. Division. It will search back to its full range and continue firing for two hours. Rate of fire - 50 rounds per minute. Rate of fire for S.O.S. as for Machine Gun Instructions, Series 2.

From zero plus two hours to zero plus 3 hours, occasional bursts will be fired, varying between S.O.S. line and extreme range of guns.

RELIEF OF BATT-ERY GUNS.

3. All guns will remain on their S.O.S. lines until relieved or withdrawn.



AMMUNITION.

4. Ammunition supply must be replenished as used and should not be permitted to fall below 8000 rounds per gun.

SPARE PARTS.

5. Only such spare parts as are absolutely necessary should be with the guns in position, the remainder being at Group or Company Headquarters or other sheltered place. Good barrels only must be used by battery guns.

FIGHTING MAPS.

6. Each Battery Commander will prepare a fighting map in the usual form to enable him to switch his fire if necessary and opportunity offers.

S.O.S. SIGNAL.

7. As for Machine Gun Instructions Series 2.

SYNCHRONISATION OF WATCHES.

8. Watches will be synchronised at nearest Brigade Headquarters at 12 noon and two hours before zero.

COMMUNICATION.

9. Group and Battery Commanders will arrange as in operations Series 2.

10. ACKNOWLEDGE.

*A. H. Bridges*

Lieut-Colonel,  
General Staff, 2nd Aust. Division.

Issued at 8 a.m.

Distribution as for Machine Gun Instructions No 1 Series 3.

\*\*\*\*\*



## SECOND AUSTRALIAN DIVISION ORDER No. 148.

SECRET.

Copy No.....

Headquarters,  
8th October, 1917.Reference Map - Sheets 27 and 28 -  
1/40,000.

1. Provided that the Division effect their action on "X" Day and that no further operation takes place that day, the 2nd Australian Division will be relieved by the 4th Australian Division on the night 10th/11th October.
2. After relief the 2nd Australian Division will be moved, under orders to be issued later by "Q" Branch, to the STEENVOORDE area.
3. HALIFAX and PIONEER areas will be available for staging purposes.
4. Surplus personnel and that referred to in Section 30 of S.S.135 will be moved to the STEENVOORDE area under separate administrative orders.
5. The distribution of the 2nd Australian Divisional Artillery in the line will remain the same as now, but the C. R. A., 2nd Australian Division, will hand over command of the artillery to the C. R. A., 4th Australian Division, at 10 a.m. on the 11th October.
6. Instructions for the relief of Engineer, Medical and Machine Gun units will be issued separately by the C. R. E., A. D. M. S., and D. M. G. O. respectively.
7. During all moves intervals will be as laid down in 2nd Australian Division Order No. 140.
8. Separate administrative instructions will be issued by "Q" Branch.
9. Command will pass from the G.O.C., 2nd Australian Division, to the G.O.C., 4th Australian Division, at 10 a.m. on 11th October, at which hour D. H. Q. will close at IPRES RAMPARTS (and SMITH Camp) and open at STEENVOORDE.
10. ACKNOWLEDGE.

Issued at 12 noon.

Distribution,

Copy No. To.

- |        |                            |
|--------|----------------------------|
| 1.     | C.R.A.                     |
| 2.     | C.R.E.                     |
| 3.     | 5th Aust. Inf. Bde.        |
| 4.     | 6th do.                    |
| 5.     | 7th do.                    |
| 6.     | 2nd Aust. Pioneer Bn.      |
| 7.     | 2nd Aust. Div. Sig. Coy.   |
| 8.     | 22nd Aust. M.G. Coy.       |
| 9.     | 2nd Aust. Div. Train.      |
| 10.    | 2nd Aust. Mob. Vet. Sec.   |
| 11.    | 2nd Aust. Div. Rfts. Camp. |
| 12.    | A.Q.M.                     |
| 13.    | A.                         |
| 14.    | A.D.M.S.                   |
| 15.    | D.M.G.O.                   |
| 34-35. | File.                      |
| 36-38. | War Diary.                 |
| 39-46. | Spare.                     |

Second Australian Division.

- |     |                          |
|-----|--------------------------|
| 16. | A.P.M.                   |
| 17. | D.A.D.V.S.               |
| 18. | D.A.D.O.S.               |
| 19. | D.B.O.                   |
| 20. | D.G.O.                   |
| 21. | Camp Commandant.         |
| 22. | 1st ANZAC "G".           |
| 23. | 1st ANZAC "Q".           |
| 24. | 1st Aust. Div.           |
| 25. | 4th Aust. Div.           |
| 26. | 5th Aust. Div.           |
| 27. | 66th Division.           |
| 28. | 4th Squad. R.F.O.        |
| 29. | 52th H.A.G.              |
| 30. | Area Comdt. HALIFAX.     |
| 31. | do. PIONEER.             |
| 32. | Town Major, STEENVOORDE. |
| 33. | do. IPRES.               |

for information

Ambridge

Lieut-Colonel,  
General Staff,



*War Diary* *App. XXVIII*

FOR OFFICIAL USE ONLY.

No. 11

SECOND AUSTRALIAN DIVISION INTELLIGENCE SUMMARY.

From 6 a.m. 7th to 6 a.m. 8th October 1917.

NOTE. : - Not to be taken into the front line trenches.

OPERATIONS.

Artillery. Harassing fire was carried out on roads and tracks on the Divisional front.

Practice barrages were put down at 6.15.a.m. and 11.30 a.m.

At 5.30.p.m. S.O.S. barrage was put down in response to signals. No hostile infantry counter-attack developed on our front.

The 2/7.7. cm captured by us on the 4th instant have been placed in new position at D.29.a., and have registered.

Patrols. Our patrols were out covering inter-brigade reliefs, and maintaining touch with flank units. No enemy were encountered.

ENEMY ARTILLERY.

Our battery positions in J.7. were shelled intermittently with 10.5 and 15 cm. Battery positions in J.2.a. were shelled at 12.30.p.m., and from 12.30.a.m. to 2 a.m. by 10 cm from WATERDAMHOEK.

In retaliation to our practice barrages enemy shelled neighbourhood of THAMES WOOD with 15 cm from direction of DROOGENBROODHOEK, and barraged BROODSEINDE RIDGE and S.W. corner of ZONNEBEHE for 12 to 15 minutes with 15 cm and 7.7.c

At 5.30.p.m. a very heavy barrage was placed on and in front of our front line; from there it jumped back to our support line, and later took another jump further back again. There appeared to be a considerable increase in number of batteries taking part, especially 7.7.cm, and the main volume of fire was from S.E. The impression conveyed was that it was a more methodical barrage than those he has been recently placing.

ENEMY MOVEMENT.

Much movement was observed on the PASSCHENDALE - DROOGEN BROODHOEK RIDGE, moving both ways.

NEW WORK.

Party of men - approx 14 - seen working at E.25.c.7.8; nature of work could not be discerned.

ENEMY AERIAL ACTIVITY.

E.A. were active. At 10.45.a.m. 14 'planes patrolled our lines; 2 of them fired upon our troops working at D.21.d. 8.2. They were all driven off by our battle 'planes.

Between 6.30.a.m. and 9.30.a.m., 11 'planes flew across J.2. and dropped some bombs. No damage has been reported.

FLARES.

During both our own and enemy shelling of the front area at night YELLOW flares and DOUBLE ORANGE flares were sent up by the enemy freely, but the special reason for same could not be ascertained.

*E. J. Bazely* Capt  
Lieut Colonel.  
for General Staff.  
2nd Australian Division.







- 1a -

## APPENDIX TO SECOND AUSTRALIAN DIVISION INTELLIGENCE SUMMARY No. 11.

TRANSLATION of captured German document.

4th Guard Infantry Division  
Intelligence Office.

2nd/3rd October, 1917.

ENEMY INTELLIGENCE No. 1.For the time from morning 1:10:17 to morning 2:10:17.1. OPERATIONS ON FRONT OF 4th Guard Div.

At 6 a.m. 1:10:17, the 93rd R.I.R. and 210th R.I.R., made an attack in the southern sector and still further left, in order to push forward our front line. Particulars as to the exact course of events are not yet known. The attack could not, however, be carried out in full by reason of heavy enemy fire and counter-attacks.

At 4 p.m. the attack was renewed, and this time the left Coy. of the 93rd R.I.R. advanced about 200 metres. The new line runs east of MANS KATHE - East bank of the brook flowing southwards south of HAUS KATHE - Point 3159 (on German map) - point 3148.

Enemy artillery fire continued with great violence. At 9 a.m.

fire increased on the central and south sectors, also on the left. At 9.30 a.m. it was intensified to heavy bombardment on the whole divisional front. After dying down towards noon, it rose again at 3 p.m. under aeroplane observation. Several times it increased to heavy bombardment. Towards 7 p.m., the enemy attacked the 3rd Coy. sector on the right of the 5th Guard Grenadier Regt. Close lines of skirmishers advanced from the direction of ZONNEBEKE CHURCH. They were thrown back at once by our well laid barrage and M.G. fire. North of ZONNEBEKE and in front of the 93rd R.I.R., the attack was nipped in the bud.

During the night also, enemy artillery continued to be lively, fell from 3 a.m., but rose to a continuous heavy bombardment from 8.20 a.m. till about 7 a.m. on the whole Divisional front back to the line, WATERDAMHOEK - MOONSLEDE, with a plentiful admixture of gas shells.

On 1:10:17, the REISBERG and the hollow ground west of it lay under very heavy fire. Intense harrassing fire was placed on our battery positions, back areas and routes leading forward. Batteries 2 and 9/19 and 2/b.17, were systematically shelled with heaviest calibres.

Our own artillery contributed to the enterprise on the South and with our neighbour on the left with harrassing and barrage fire. On 1:10:17 at 9.50 and 10.20 a.m., and at 10.55 a.m., destructive fire was carried out. Barrage fire was demanded at 7 p.m. 8.40 p.m. and 11.50 p.m. On 2:10:17, the artillery fired combined destructive shoot at 4 a.m. and 4.45 a.m. on our own Divisional front, and at 4.20 a.m. on the front of the Division on our right.

Aeroplanes active on both sides.

2. OPERATIONS ON FRONT of 20th Inf. Division.

On 1:10:17 from 4 till 6 a.m. heavy fire was directed on to the Divisional front, especially on the regiment in the centre. At 9.30 a.m., enemy fire set in intermittently on the whole front line, and was strongest on the southern sector, which was accordingly brought backwards at 10.15 a.m. At 10.45 a.m., bombardment of batteries near PASSCHENDAELE with heaviest calibres. From 11 to 12 noon, there followed several burst of heavy bombardment, concluded by vigorous harrassing fire.

P. T. O.



2a.

3. OPERATIONS on 19th Res Div Front.

Enemy fire continued very vigorously upon the whole Divisional sector. After heavy artillery preparation, the 93rd and 210th Regiments attacked the English line. The attack reached the line mentioned above in para 1. Enemy artillery activity continued the whole day with great intensity, rising at times to drum fire. Our own artillery shelled bodies of enemy troops on the YPRES - MENIN Road, and in HERENTHAGE PARK, and repeatedly gave bursts of destructive fire. In the evening strong English attacks were launched. Accurate details are not yet to hand. Heavy enemy fire the whole night, decreasing somewhat towards 8 a.m.

4. ENEMY DISPOSITIONS.

Prisoner captured on 29-10-17 by the 5th Guard Gren. Regt., belonged to the 3rd English Divn. which came into line before the attack. According to a sketch which has been found, the northern boundary of the 3rd Div. runs approximately opposite to the northern boundary of the 45th Guard Grenadiers, and the southern boundary 750 m South of this.

5. RECONNAISSANCE REPORTS.

An English H.Q. supposed to be at OSTERMORGEN Farm. Vigorous enemy trench activity along whole Divisional front.

6. STATEMENTS OF PRISONERS.

Enemy often deduces by the number of flares sent up by us whether we are expecting or intending an attack; whether relief is in progress, and whether fresh troops are in front of them. The enemy batteries, which are pushed forward, stand mostly in the open and are only hidden from aeroplane observation by screens of wires and tree branches. English letters, which have been found, speak of the great shortage of food in ENGLAND, and express the wish that the war will soon be over.

7. MISCELLANEOUS.

Enemy has repeatedly laid out white cloths on the appearance of our infantry 'planes in order to deceive them.

On 2-10-17 at 5.45 a.m., the enemy sent up two parachute flares which broke into a red, green and yellow ball. Thereupon enemy artillery fire was opened up.

The English carried out the last attacks in the following manner. They did not let an immediate artillery fire preparation precede the attack, but close waves of enemy infantry, armed with machine-guns, left the English trenches simultaneously with the opening up of the most intense drum fire. It is of great importance that every individual man should have this explained to him, in order to prevent a surprise by the enemy.

Certified correct.

(Sgd) Count FINCKENSTEIN.

Von KALCHOERTZ.

Major. G.S.

Distribution.



*Mark Gary*

SECOND AUSTRALIAN DIVISION.

\*\*\*\*

*App XXIX*

SECRET.

Copy No. *6*

Headquarters,  
8th October, 1917.

*G1/764*

ADDENDA TO PRELIMINARY INSTRUCTIONS No. 3.

Series No. 3.

Para 3. Reserve Brigade (7th Aust. Inf. Bde) is amended to read as follows:-

At Zero hour The Reserve Brigade will be disposed as follows:-

"A" Battn. in trench D.29.a.1.6 - D.22.d.7.3.

This Battalion will come under the orders of G.O.C., 6th Aust. Inf. Bde. at Zero.

"B" and "C" Battns. TOKIO Spur D.27.a.c. and d.

"D" Battn. - ANZAC Spur D.26.d. - J.2.b.

At Zero plus 1½ hours:-

"B" and "C" Battalions, about the line D.22.c.9.3 -  
- D 22 c.7.7.

These Battalions will come under the orders of the G.O.C., 5th Aust. Inf. Bde., at Zero plus 1½ hours; each battalion will at that hour send an officer to 5th Aust. Inf. Bde. Advanced H. Q. at D.22.d.15.45 to receive orders.

"D" Battalion - TOKIO Spur D.27.a.c. and d.

This Battalion will keep communication by signal with its own Brigade H.Q., and also with 5th Aust. Inf. Bde. Advanced H. Q.

ACKNOWLEDGE.

Issued at 12.30 p.m.

DISTRIBUTION:-

*Admidge*

Lieut-Colonel,  
General Staff,  
Second Australian Division.

Same as for Preliminary Instructions No. 3 - Series No. 3.

\*\*\*\*\*



## SECOND AUSTRALIAN DIVISION.

SECRET

SECRET.

Headquarters,

8th October, 1917.

First ANZAC Corps.

Reference your 164/61, dated 22nd September, 1917,  
Herswith are forwarded the following:-

1. Order of Battle for operations on 9th instant, showing units and names of Commanding Officers.
2. Map showing disposition of Brigades, etc. at zero hour.
3. The following instructions and orders, which give the plan of operations:-
  - (a). Preliminary Instructions No. 1, Series 3, dated 5th October, 1917.
  - (b). Signal instructions, Part III, dated 8th October, 1917.
  - (c). Machine Gun Instructions No. 1, Series 3, dated 7th October, 1917.
  - (d). Preliminary Instructions No. 2, Series 3, dated 7th October, 1917.
  - (e). Preliminary Instructions No. 3, Series 3, dated 7th October, 1917.
  - (f). Machine Gun Instructions No. 2, Series 3, dated 8th October, 1917.
  - (g). Second Australian Division Order No. 147, dated 8th October, 1917.
  - (h). Addenda to Preliminary Instructions No. 3, Series No. 3, dated 8th October, 1917.

*W. S. Smyth*  
Major-General,  
Commanding Second Australian Division.

*La.*



## SECOND AUSTRALIAN DIVISION.

\*\*\*\*

ORDER OF BATTLE - 9:10:17.SECOND AUSTRALIAN DIVISION - Major-General N. M. SMYTH, V.C., C.B.C.R.A. - Brig-Gen. G. J. JOHNSON, C.B., C.M.G., V.D.C.1 Group (1st & 2nd A.F.A. Bdes.) -  
Lieut-Col. D. H. MOORE.C Group (10th and 11th A.F.A. Bdes.) -  
Lieut-Col. T. I. C. WILLIAMS, D.S.O.D. Group (4th and 5th A.F.A. Bdes.) -  
Lieut-Col. H. W. LLOYD, C.M.G., D.S.O.C.R.E. - Lieut-Col. J. M. G. GORLETTE.5th Field Coy. - Major R. S. REID.  
6th Field Coy. - Major N. C. HARRIS, M.C.  
7th Field Coy. - Major E. N. WEBB, M.C.2nd Aust. Pioneer Bn. -  
Lieut-Col. F.W.G. ANNAND, D.S.O.D.M.G.O. - Major H. ORDISH.6th Aust. M. G. Coy. - Capt. J. M. DRUMMOND.  
7th Aust. M. G. Coy. - Capt. H. BURRELL.  
22nd Aust. M. G. Coy. - Capt. A. N. Mc. LENNAN.RIGHT BRIGADE. -6th Aust. Inf. Brigade -  
Brig-Gen. J. PATON, C.B., V.D.ATTACKING BATTALIONS.Right. - - 22nd. Lt-Col. A.R.L. WILTSHIRE, M.C.  
Right Centre. 24th. Lt-Col. W.E. JAMES.  
Left Centre. 21st. Lt-Col. B.O.G. DUGGAN.  
Left. - - 23rd. Lt-Col. W. BRAZENOR.SUPPORT BATTALION.28th. (Attached from 7th Aust. Inf. Bde.) -  
Lieut-Col. R.J.A. TRAVERS, D.S.O.LEFT BRIGADE.5th Aust. Inf. Brigade. -  
Brig-Gen. R. SMITH, D.S.O.RED LINE. - 20th Bn. Lt-Col. A.W. RALSTON, D.S.O.BLUE LINE. - 17th Bn. Major B. HOLMES.SUPPORT. - 18th Bn. Lt-Col. G. F. MURPHY, D.S.O.  
19th Bn. Major H. M. BEIERS, M.C.

P.T.O.



RESERVE BRIGADE.

7th Aust. Inf. Brigade. - Brig-Gen. E.A. WISDOM, C.B. D.S.O.

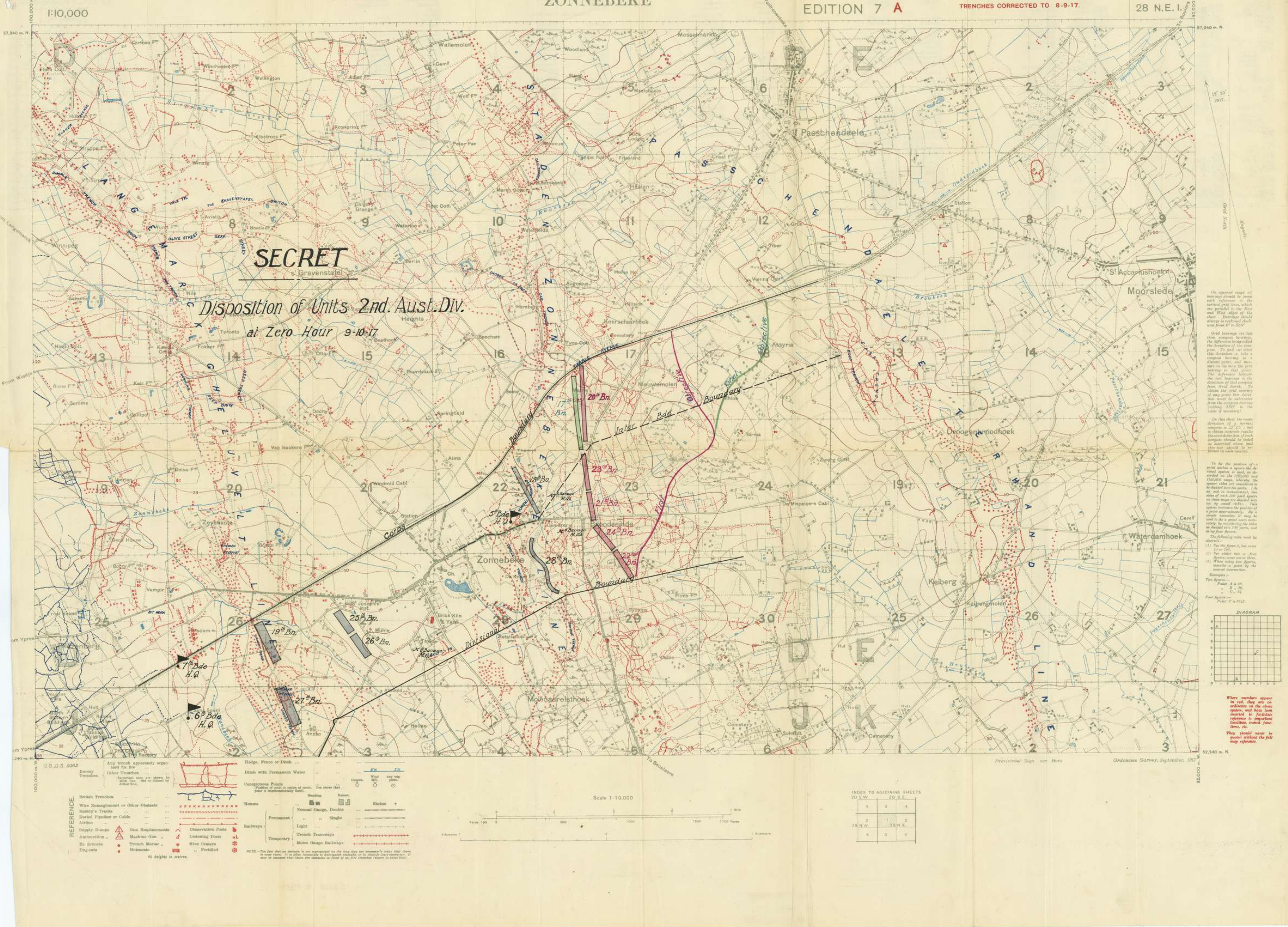
26th Bn. - Major P. CURRIE, D.S.O.

25th Bn. - Lt-Col. E. C. NORRIE.

27th Bn. - Major F. R. CHALMERS.

\*\*\*\*\*







[illegible]

Bassin de radoub	Dry dock.
Plateau phase	Light-skip.
B. P. (horcas millares)	Laundry.
3.32 (Bancos miliare)	Mile stone.
kilométrique)	
Escouffierie	Bolt Factory.
Fabrique de bois	Boiler.
Rozette	Buoy.
Brasserie, Brass'	Brewery.
Briguerie, Brig'	Brickfield.
Brigade	Brigade master.
Bureau de poste	Post office.
Bureau de douane	Custom house.
Bout	Butt, Mound.
Calonne	Butt.
Calonne, Cab'	Can.
Cable sous-marin	Submarine cab.
Calvaire, Calv'	Calvary.
Canal	
Canal de décharge	Drainage canal.
Canal d'irrigation	Irrigation canal.
Fab' de caoutchouc	Rubber factory.
Carrière, Carr'	Quarry.
" " de gravier	Gravelpit.
Caserna	Barracks.
Champ de courses	Race course.
" " " " " " " " " "	Rolling ground.
" " " " " " " " " "	Building yard.
Chantier	Ship yard.
" " " " " " " " " "	Work yard.
Chantier de construction	Ship-yard.
Chapelle, Chap'	Chapell.
Charbonnage	Colliery.
Château d'eau	Water tower.
Chaussée	Highway.
Chemin de fer	Railway.
Chimney, Chim'	Chimney.
Cine	Cinema.
Cimetière, Cimet'	Cemetery.
Clocher	Belfry.
Closerie	Green-house.
Colombier	Dove-cot.

Coran	Workman's dwellings.
Cour des marchands	Goods yard.
Couvert - d'acier	Convent.
Croazier -	Slag heap.
Croix	Cross.
Dano	Inner dock.
Décoll - e	Destroyed.
Débris - e, Débris	Debris.
Dévoir	Duty.
Digue	Dyke, causeway.
Distillerie, Dist.	Distillery.
Distributeur	Custom-house.
Bureau de douane	Custom warehouse.
Entrepôt de douane	Dynamite
Dynamitère, Dynamite	magnetic.
Dynamitisme -	Dynamite factory.
Ecluse	Lock.
Eclumette, Ecl.	Shovel.
Ecole	School.
Ecorce	Stem.
Eglise	Church.
Emballerie	Stable.
Embarcadere, Embar.	Embarkment.
Escamotin, Escant.	Landing-place.
Etang	Pond.
Fabrique, Fab.	Factory.
Fab' de produits chimiques	Chemical works.
Fab' de faïences	Pottery.
Fabrique	Factory.
Ferme, Fos.	Farm.
Filature, Fil.	Spinning mill.
Fondation, Fons.	Foundation.
Fontaine, Fons.	Fountain.
Fort	Fort.
Forme de radieux	Dry dock.
Fors	Sledge.
Fosse	Mine, Pit.
Fossé	Moss, Ditch.
Fours	Furnace.
- à chaux	Lime-kiln.

Four à coke	Coke oven.
Ganterie	Glove factory.
Gare	Station.
Gazomètre	Warren.
Garnison	Garrison.
Gazomètre	Gasometer.
Fab <sup>e</sup> de glaces	Mirror factory.
Glacière	Ice factory.
Grue	Crane.
Gros	Coarse.
Goudrie	Sentry-box, Turret.
à signaux	Signal-box (Ry.)
Halte	Stop.
Hanger	Shed, Hangar.
Hôpital	Hospital.
Hôtel de Ville	Town hall.
Houillère	Colliery.
Huilerie	Oil factory.
Imprimerie, Impr <sup>e</sup>	Printing works.
Jolie	Pier.
Laminaria	Rolling mill.
Ligne à do haute	High water mark.
Laine de basse marque	Low
Maison Furentien M <sup>re</sup> P <sup>re</sup>	Forrester's house.
Maltzén	Malt-house.
Marbrerie	Marble works.
Mars	Mars.
Marais salant	Saltern.
	Salt marsh.
Marché	Market.
Mars	Pool.
Moule	Block.
Musée	Museum.
Muslin, M <sup>re</sup>	Mus.
Muséum	Museum.
Moutin, M <sup>re</sup>	Mitt.
Mur à vapeur	Steam mill.
Mur craquelé	Crack-holed wall.

Nacelle .....	Ferry.
Orme .....	Elm.
Orphelinat .....	Orphanage.
Ouvrier .....	Other-body.
Ouvrage .....	Fort.
.....	hydrauliques Water works.
Papeterie .....	Paper-mill.
Pars .....	Pack, yard.
..... aromatique .....	Aromatic ground.
..... à charbon .....	Coal yard.
..... à pétrole .....	Petrol store.
Pavage à niveau P.N.	Level-crowning.
Pavement, Pavé .....	Trottoir-bridge.
Pépinière .....	Nursery-garden.
Poupier .....	Light house.
Poudre .....	High house.
Puits, Pili .....	Drill column.
Puits de décharge .....	Drill column.
Pompe .....	Pump.
Pompe .....	Pump.
Pont .....	Bridge.
..... levier .....	Dowbridge.
Port .....	Cost-guard.
Port .....	Cost station.
Potauz .....	Post.
Potier .....	Pottery.
Poudre .....	Powder magazine.
Poudrière, Poudr' .....	Water supply.
Près .....	Close, Wall.
..... arisien .....	Arsonian wall.
..... d'étréage .....	Ventilating shaft.
..... ventilateur .....	Boring.
..... de scierie .....	Boring.
Quai .....	Quay, Platform.
..... aux machines .....	Quay platform.
..... aux charbons .....	Quays platform.
..... des .....	Grocery platform.
Raccourcement .....	Junction.
Raffinerie .....	Refinery.
Raffinerie .....	Sugar refinery.
Régime de secours .....	Relief.

Rembli	Embankment.
Rénie	Machines - Engine shed.
Reservoir, Rés	Reservoir.
Route cavalière	Bridle road.
Ruine	Rubble Factory.
Ruines	
Ruine	Ruin.
Ruine - s	
Ruine - s	
Sablier	Sand-pit.
Sablonnière, Sables	
Sapia	Fir tree.
Sau	Willow tree.
Sauze	Saw-works.
Scierie, Scie	Saw-mill.
Soudage	Soldering.
Soufre	Spring.
Sucrerie, Sucr	Sugar factory.
Tannerie	Tannery.
Tapisserie	Rugby.
Tissage	Weaving mill.
Tôlerie	Rolling mill.
Toubeau	Tomb.
Tour	Tower.
Tourbière	Peat-ling, Peat-bed.
Tourelle	Small tower.
Tuilerie	The works.
Usine à gaz	Gas works.
à électrique	Electricity works.
à électrochimique	Electro-chemical works.
à métallurgique	Metal works.
à agglomérés	Brickworks factory.
Verrerie, Verre	Glass works.
Viaduc	Viaduct.
Vieille	Fish Pond.
Voie de chargement -	
à déchargement	
à écartement	Siding.
à formation	
à manœuvre	

## INDEX TO ADJOINING SHEETS

[illegible]

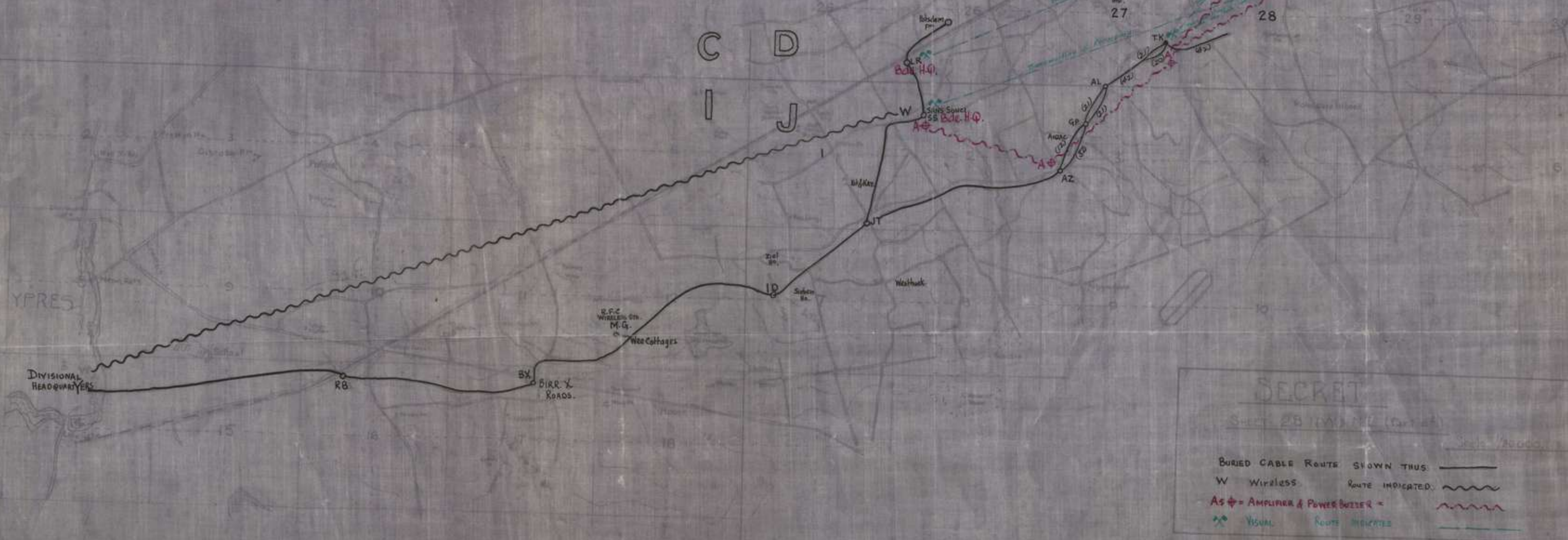


—SECOND AUSTRALIAN DIVISIONAL SIGNAL COMPANY.—

ROUTE DIAGRAM OF INTER-COMMUNICATION

NOTE:-

From Tama (cablehead) to advanced Bde. Hdqrs. ground lines exist and from this point on to left Bde. Forward Station and thence to Battalions.  
From Tama (cablehead) ground lines exist to right Bde. Forward Station and thence on to Battalions.  
Good Visual communication exists for both receiving & transmitting from the PASSENAUDELLE Ridge rearwards  
D.R.L.S. Motor Cycle D.R. from D.H.Q. YPRES REINFORCEMENT to BIRMINGHAM ROAD RELAY STATION  
Runner from BIRMINGHAM ROAD to I.D. RELAY STATION.  
Runner from I.D. RELAY STATION to Brigade Hdqrs. at S.S. and L.R.  
also runner service from Brigade forward to Battalions.



SECRET

Sheet 28 (A) (1) (2) (3) (4)

Scale: 1:100,000

BURIED CABLE ROUTE SHOWN THUS: —  
WIRELESS ROUTE INDICATED: ~  
AS = AMPLIFIER & POWER BOOSTER =  
VISUAL ROUTE INDICATED: - - -



*Handwritten: War Diary*

*App XXXII*

SECRET.

SECOND AUSTRALIAN DIVISION ORDER No 149.

Copy No *39* .....

Headquarters.  
9th October 1917.

Reference Map -  
Sheets 27 and 28. - 1/40,000.

- 1. In continuation of 2nd Aust. Div. Order No 148, the relief will be carried out in accordance with attached march table.
- 2. The 45th Battalion, 12th A.I.Bde, and 49th Battalion, 13th A.I.Bde, are proceeding by bus from STEENVOORDE on the 9th inst, arriving at YPRES at 12 noon. On arrival they will be met by Divisional Staff Officers who will take them to KIF and KAT. The 7th A.I.Bde will arrange for guides to meet them at KIF and KAT and take them up to the Reserve positions. After relieving the 7th A.I.Bde the 45th and 49th Battalions will come under the orders of the G.Os.C., 6th and 5th A.I.Bdes respectively. They will take over the front line on the night 9/10th October under the orders of these Brigadiers.
- 3. Subject to the provisions of this order all reliefs will be carried out under the mutual arrangements of the G.Os.C concerned. Completion of reliefs will be notified to D.H.Q.
- 4. ACKNOWLEDGE.

Issued at 8 a.m.

DISTRIBUTION.

*Handwritten signature*  
Lieut Colonel.  
General Staff.  
2nd Australian Division.

Copy No. To.

1	5th Aust Inf Bde.	22	1st ANZAC "G".
2	6th Aust Inf Bde.	23	1st ANZAC "Q".
3	7th Aust Inf Bde.	24	1st Australian Division.
4	45th A.I.Battalion.	25	4th Australian Division.
5	49th A.I.Battalion.	26	5th Australian Division.
<u>For Information to.</u>		27	66th Division.
6	C.R.A.	28	4th Squadron. R.F.C.
7	C.A.E.	29	57th H.A.Group.
8	O.C.Div Sig Coy.	30	Area Comdt HALIFAX AREA.
9	2nd A.Pioneer Bn.	31	do PIONEER AREA.
10	22nd Aust M.G.Coy.	32	do CANAL AREA.
11	2nd Aust Div Train.	33	Town Major STEENVOORDE.
12.	S.S.O., 2nd Aust Div.	34	do YPRES.
13.	2nd Aust Mob Vet Sect.	35	"A.Q".
14.	2nd Aust Div Reinft Camp	36	"A".
15	A.D.M.S.	37	D.A.D.O.S.
16	D.M.G.O.	38)	G.O.C.
17	A.P.M.	39-41	War Diary.
18	D.A.D.V.S.	42-45	Spare.
19	D.B.O.	46-47	File.
20	D.G.O.		
21	Camp Commandant.		



# RELIEF AND MOVE TABLE.

SECRET.

To accompany 2nd Australian Division Order No. 149

Date.	Unit.	From.	To.	In relief of.	Relieved Unit Moves to.	Remarks.
Oct. 9.	45th Bn. 12th A.I.Bde. 49th Bn. 13th A.I.Bde.)	STEENVOORDE.	Reserve positions.	7th A.I.BDE.	GORDON AREA.	
10.	7th A.I.Bde.	GORDON AREA.	STEENVOORDE.			{ By bus - Time and embussing point will be notified later.
	12th A.I.Bde.	STEENVOORDE.	GORDON AREA.			
	13th A.I.Bde.	STEENVOORDE.	CANAL AREA.			
10/11	12th A.I.Bde.	GORDON AREA.	Right Sector.	6th A.I.Bde.	GORDON-CANAL AREA.	45th Bn will rejoin its Brigade.
	13th A.I.Bde.	CANAL AREA.	Left Sector.	5th A.I.Bde.	GORDON-CANAL AREA.	49th Bn will rejoin its Brigade.
11	4th A.I.Bde.	STEENVOORDE.	HALIFAX AREA.			
12	5th A.I.Bde.	GORDON-CANAL AREA.	STEENVOORDE AREA.			By train from YPRES to ABEELE. Time will be notified.
	6th A.I.Bde.	GORDON-CANAL AREA.	STEENVOORDE AREA.			
						-do- -do-

Distances to be maintained between units on the march.

Between Battalions and other units.	-	800 yards.
Between transport of units, horsed units, and other troops.	:	400 "
Between Companies.	:	200 "



## AMENDMENT TO SECOND AUSTRALIAN DIVISION ORDER No. 149.

\*\*\*\*\*

SECRET.

Copy No. 39...

Headquarters,  
9th October, 1917.

Reference Map - Sheets 27 and 28 - 1/40,000.

1. PARA. 2.

## (a). Line 8 -

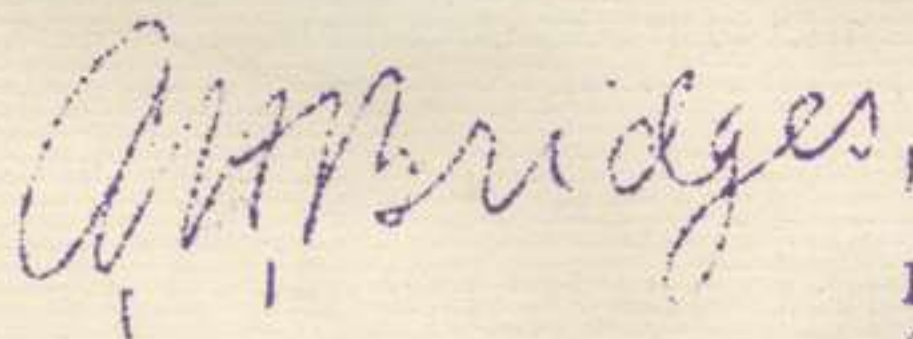
for "6th and 5th Aust. Inf. Brigades."  
read "5th and 6th Aust. Inf. Brigades."

- (b). The 7th Aust. Inf. Brigade having now been absorbed in the front line the 45th and 49th Battalions will come under the orders of the G.O's.C. 5th and 6th Aust. Inf. Brigades respectively. These battalions will be available to relieve the troops in the front line on night 9th/10th October under the orders of the G.O's.C., 5th and 6th Aust. Inf. Brigades. The battalions of the 5th and 6th Aust. Inf. Brigades will remain in support. The 7th Aust. Inf. Brigade will thus be relieved and will, under the orders of the G.O.C., 7th Aust. Inf. Brigade, concentrate in GORDON Area. On the departure of the 7th Aust. Inf. Brigade the 8 Vickers guns now in brigade reserve will be transferred as Brigade reserve of the 6th Aust. Inf. Brigade. All other machine guns will remain in action until relieved by corresponding units of the 4th Australian Division.

2. On the night 10th/11th October the 12th Aust. Inf. Brigade will relieve the 5th Aust. Inf. Brigade in the left sector, and the 13th Aust. Inf. Brigade will relieve the 6th Aust. Inf. Brigade in the right sector, instead of as shown in Order No. 149.

On arrival at XPRES station on the 10th instant the 12th and 13th Aust. Inf. Brigades will move to the left and right sectors respectively, and will not stage in CANAL and GORDON areas.

Relief and Move Table to be amended accordingly.

3. ACKNOWLEDGE.


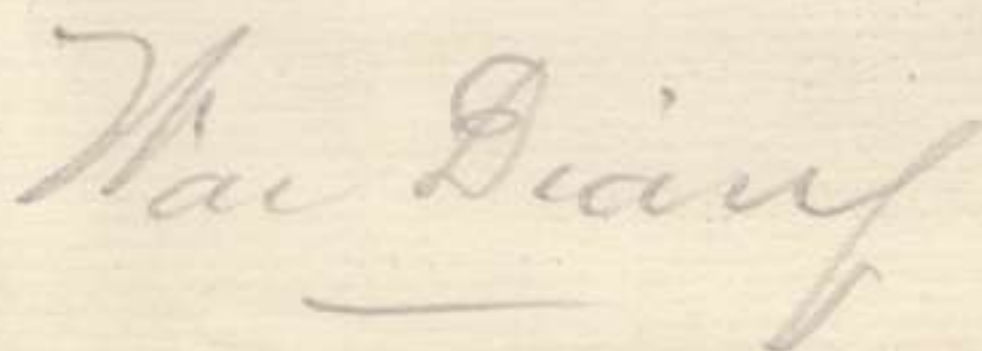
Lieut-Colonel,  
General Staff,  
Second Australian Division.

Issued at 5.0 p.m.

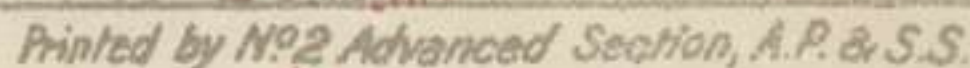
DISTRIBUTION:-

Same as for Second Australian Division Order No. 149.


\*\*\*\*\*







Old Gun Positions

Trenches in good repair 

Do damaged or apparently not used ~~xxxx~~ -----

*Trenches Corrected to 4-10-17.*

## POSTS & TRENCHES



MESSAGE FORM.

To:—

No.

1. I am at..... (Note:—Either give Map Reference or mark your position by a 'X' on the Map on back.)
2. I have reached limits of my Objective.
3. My Platoon is at..... and is consolidating.  
Company
4. My Platoon is at..... and has consolidated.  
Company
5. Am held up by (a) M.G. at..... (Place where you are).  
(b) Wire
6. Enemy holding strong point .....
7. I am in touch with..... on Right at.....  
Left.
8. I am not in touch with..... on Right.  
Left.
9. Am shelled from.....
10. Am in need of:—
11. Counter Attack forming at .....
12. Hostile (a) Battery  
(b) Machine Gun } active at .....  
(c) Trench Mortar
13. Reinforcements wanted at .....
14. I estimate my present strength at ..... rifles.
15. Add any other useful information here:—

Name.....

Platoon.....

Company.....

Battalion.....

Time ..... m.

Date ..... 1917.

(A). Carry no maps or papers which may be of value to the Enemy.

(B). Give no information if captured, except the following, which you are bound to give:—

Name and Rank.

(C). Collect all captured maps and papers and send them in at once.



# D.11 to K.2

Scale 1:10,000

Trenches corrected to 5.10.17

**LEGEND**

DUGOUTS OF STRUCTURES	Verified by Air	TRENCHES in Good Repair
supposed to be CONCRETE	photographs	-Do- damaged or
Do. Do. Not Do.		apparently not used
DUGOUTS not CONCRETE		Huts

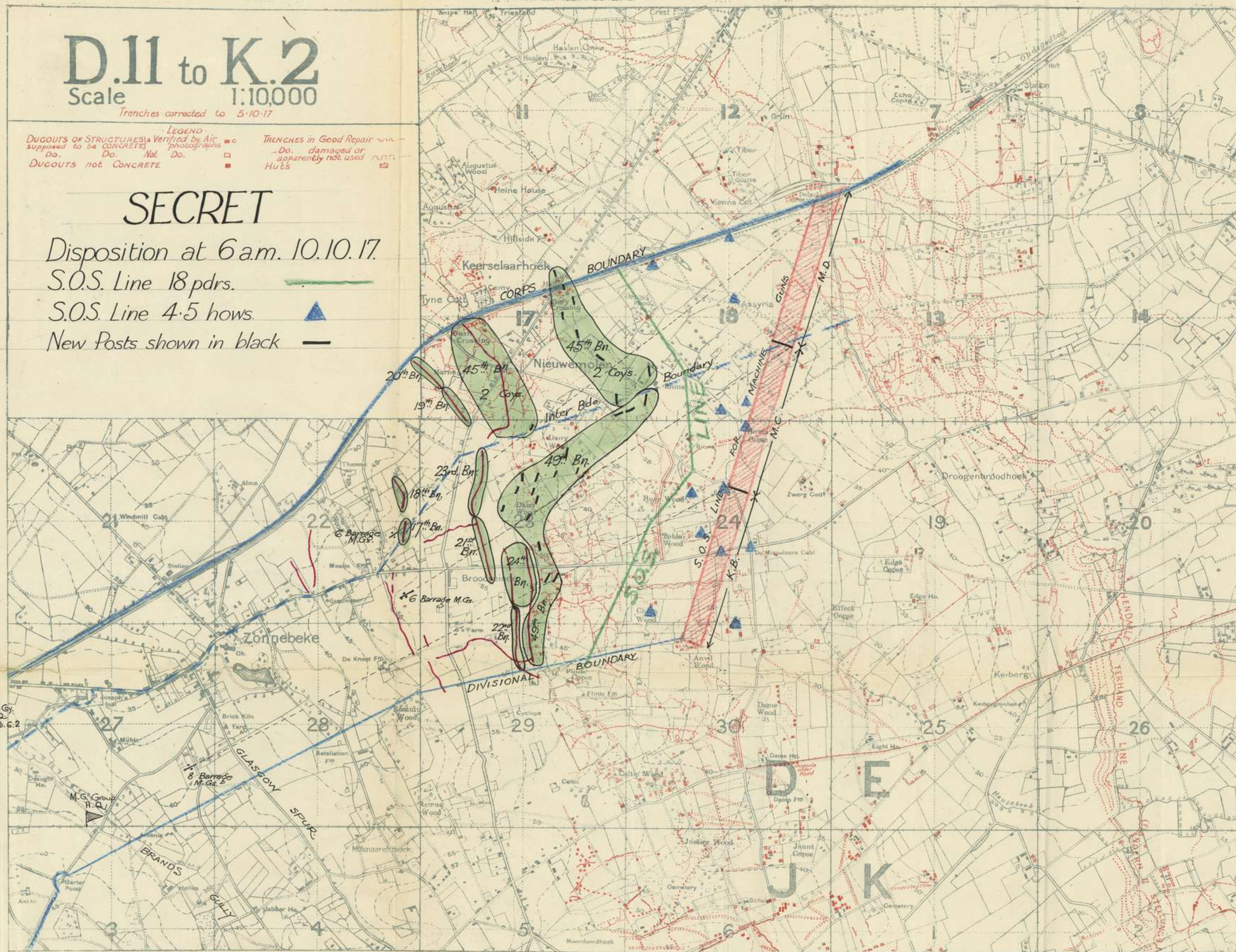
## SECRET

Disposition at 6 a.m. 10.10.17

S.O.S. Line 18 pdrs.

S.O.S. Line 4.5 hows.

New Posts shown in black



M.G. Coy.  
H.Q.  
D. 26.5.6.2

Bde.H.Q.  
D. 26.5.1.3.

Bde.H.Q.  
Sans Souci.



63  
HEADQUARTERS  
2ND AUSTRALIAN DIVISION  
GENERAL STAFF  
App XXXVI  
G.I/771.  
117  
SECRET

SECOND AUSTRALIAN DIVISION.  
\*\*\*\*\*

Copy No.....

Headquarters,  
10 th October, 1917.

MACHINE GUN INSTRUCTIONS No. 3 - Series No. 3.

In accordance with Second Australian Divisional Order No.148, The Machine Gun Companies of the Second Australian Division will be relieved by Companies of the Fourth Australian Division, as under:-

Date.	Location.	Unit.	To be relieved by -
Night 10/11 Octbr.	5th A.I.Bde. Area. do. do.	5th Coy.) 7th " )	12th Aust. M. G. Coy.
	6th Aus. I. Bde.Area. do. do.	6th Coy.) 7th " )	13th Aust. M. G. Coy.
	MC.Bty. D.22.d.95.35.	6th Coy.	(6 guns)
	MD.Bty. D.22.d.75.85.	7th "	(6 guns) 4th & 24th
	KB.Bty. D.27.d.75.60.	22nd "	(8 guns) Companies.

- Details of the relief will be arranged between Company Commanders concerned.  
All maps, charts, etc., in connection with the various positions will be handed over to relieving units and receipts obtained.  
All available information about each gun position to be given to relieving teams.
- On completion of relief, Companies of the Second Australian Division will assemble at their respective Rear Headquarters, where they will at once come under the orders of their own Brigades.
- Completion of reliefs will be notified to Brigades, and to D.M.G.O., by Company Commanders.
- Any equipment, etc., that cannot be brought out of line with the various teams must be put in safe place until sent for next day.
- ACKNOWLEDGE.

*A. W. Bridges*

Lieut-Colonel,  
General Staff,  
Second Australian Division.

Issued at 7 a.m.

DISTRIBUTION.

Same as for Machine Gun Instructions No. 2 - Series No. 3.

\*\*\*\*\*



App XXXVII

## SECOND AUSTRALIAN DIVISION.

G.173.

\*\*\*\*

Location of Batt'ns. at Sam. 10th October, 1917.5th Aust. Inf. Bde. H.Q. D.28.c.1.3. LINE. Left Sector.

45th Battalion. - - Line.

17th Battalion.)	
18th       "       )	- Support and Reserve.
19th       "       )	
20th       "       )	

6th Aust. Inf. Bde. H.Q. SANS SOUCI - J.2.a.3.6. LINE.)  
Right Sector.)

49th Battalion. - LINE.

21st Battalion.)	-
22nd       "       )	
23rd       "       )	- Support and Reserve.
24th       "       )	

7th Aust. Inf. Bde. H.Q. YPRES. Infantry Barracks.

25th Battalion.)	
26th       "       )	- Moving to GORDON AREA.
27th       "       )	
28       "       )	

(Signed) C. G. N. MILES,  
Lieut-Colonel,  
General Staff,  
Second Australian Division.

2nd Aust. Div. H. Q.



63 War Diary

App XXXVIII 119

FOR OFFICIAL USE ONLY.

No.12.

SECOND AUSTRALIAN DIVISION INTELLIGENCE SUMMARY.

From 6 a.m. 9th to 6 a.m.10th October 1917.

NOTE. Not to be taken into the front line trenches.

OPERATIONS.

The 2nd Australian Division attacked at 5.20.a.m. on the 9th. The attack was made on a two-brigade front, and as a result of the operation our line now runs -

D.29.b.2.6., D.23.d.1.3. - D.23.d.3.4. - D.23.d.15.75 -  
D.23.b.05.10. - D.23.b.15.20. - D.23.b.15.40. - D.23.b.30.50-  
D.23.b.40.70. - D.17.d.90.05. - D.18.c.00.05. - D.18.c.20.20-  
D.18.c.20.50. - D.17.d.75.60. - D.17.d.50.65. - D.17.b.35.00-  
D.17.b.45.10. - D.17.b.35.40.

This is a line of posts which are at present being linked up, and have supporting posts in rear

During the attack our troops reached approximately the final objective, but being in advance of the flanking units were forced to withdraw to the better tactical line given above.

Prisoners of War.

Prisoners were secured from the following Regiments -  
449th I.R. 233rd I.R. 8th JAEGER Regt.

ENEMY OPERATIONS.

Strong resistance was offered by the enemy, especially at DAISY and BUSY WOODS, and with machine gun fire from both flanks. Small local counter-attacks were repeatedly launched along the front during the day, but these were beaten off. Larger and more organised attacks were broken by our artillery, i.G.and rifle fire

ENEMY SHELLING.

The reply to our barrage was reported as feeble. A constant barrage was maintained along the BROODSEINDE RIDGE, and along the line ZONNEBEKE - DE KNOET FARM.  
There was little shelling of the support areas.

ENEMY DEFENCES.

Machine guns were located at D.23.d.5-8, in BUSY WOOD, D.18.d 4.8., ASSYRIA and DECLINE COPSE.  
What appears to be a light field gun can be seen hidden in bushes at D.23.d.6.9.

HOSTILE AIRCRAFT.

E.A. were active throughout the day. One E.A. was brought down in flames in D.28.c. by one of our 'planes, and as a result of the fight this 'plane fell at ANZAC but the pilot was not killed.  
E.A. were over our forward sector during the night.

E.I. Bazley Capt  
for Lieut Colonel Beggs  
General Staff  
2nd Australian Division



- 1a -

## PART. II.

INFORMATION FROM OTHER SOURCES.TRANSLATION OF CAPTURED DOCUMENT.Modifications in System of Counter-attack -40th Infantry Brigade (20th Division).SECRET.Brigade Headquarters,  
2nd October, 1917.To the Regiments and Battalions:

In accordance with instructions from above, the infantry needed for holding the positions, must be concentrated in forward positions previous to the enemy's attack, in order that there by the costly passage through the hostile barrage which is inevitable for the counter-attack, may be shortened both in distance and in time, and our counter-attack may be realised more quickly catching the assailants before they are organised for defence.

Every front line Division must clearly understand that in the fight for the position it can only very seldom rely on the support of the counter-attack Divisions.

In order to enable the front line Divisions to hold on to their position by their own strength the fighting force of the Battalions in line is to be reinforced by machine guns. To this end the Machine Gun Companies of the Reserve Battalions are to be sent forward; those latter battalions will still retain their light machine guns for counter-attack purposes.

The depth of the machine gun disposition must be maintained chiefly by the machine gun companies of the support battalions and by the Marksman Detachments (see foot note).

A dense machine gun barrage, leaving no gaps, is to be produced along the whole battle front. For this purpose the grouping together of more than two machine guns under a single command is recommended.

Every means must be employed, rapid fire of machine guns, rifles and trench mortars, to hold up the enemy's assault in the forward battle line. For only in that case can our annihilating fire and barrage, placed as they must be in front of our own lines, catch the enemy with its full force, in the course of his attack and when he is bringing up fresh troops for a further assault. Only in that case can the counter-attack of our support and reserve battalions starting at once and automatically upon the penetration of our line by the enemy, catch the enemy while he is still in motion and not yet organised for defence.

Therefore the Divisions in line must also not hesitate, in the event of large operations to throw in their whole reserves unstintingly and without delay. With the same object further reserves are necessary in rear of these, which, however, must not be engaged in the battle either offensively or defensively unless the enemy has, notwithstanding the strongest defensive efforts of the Divisions in line broken deeply into our positions. These reserves will be taken from the counter-attack Divisions.

(Sgd.). Lieut. and Adjutant,  
for Brigade Commander.

P. T. O.



- 2a -

NOTE: The 20th Division had an average of two light machine guns per Company. Each Regiment had three heavy machine gun Companies of 10 guns.

A Marksman Detachment usually has about 8 heavy M. G's.

The probable total of available M. G's in the Division would therefore be:- Heavy M. G's. - 98; Light M. G's. - 72.

\*\*\*\*\*

EXTRACTS FROM FIRST ANZAC CORPS INTELLIGENCE SUMMARY, 9:10:17.

ENEMY'S DISPOSITIONS.

8.50 a.m. Heavy rifle and machine gun fire was encountered over BUSY WOOD. 4.30 p.m. Machine gun fire was encountered over D.11.c. and d., D.18.central.

MOVEMENT and ORGANISATION in and behind enemy's lines.

FIRES. 7.45 a.m. Large fire N. of PASSCHENDAELE.  
7.50 a.m. Fire and explosion in K.2.a.  
8.45 a.m. Large fire at PASSCHENDAELE.  
8.40 a.m. Large fire in THOUROUT.  
1. 0 p.m. Fire in PASSCHENDAELE.  
1.45 p.m. Fire at D.18.a.3.5.  
4.45 p.m. Large fire in ROULERS.

EXPLOSIONS:

1.50 p.m. Explosion N.E. of PASSCHENDAELE.  
2.10 p.m. Explosion and fire N.E. of PASSCHENDAELE.  
1.35 p.m. Explosion and fire N.E. of PASSCHENDAELE.  
4.16 p.m. Two explosions causing fires at E.3.d.9.9  
and E.3.b.3.9.

\*\*\*\*\*

D. H. Q., 10:10:17.



*W.D. arm*

*App. XXXIX*

FOR OFFICIAL USE ONLY

G.184.

SECOND AUSTRALIAN DIVISION.

Location of Bns at 8 a.m. 11th October 1917.

DIV. H.Q.

Moving from YPRES RAMPARTS to  
STEENVOORDE at 10 a.m.

5th Aust Inf Bde.H.Q.

YPRES. Infantry Barracks.

17th. 18th  
19th & 20th Bns.  
5th A.M.G.Coy.  
5th A.L.T.M.Bty

GORDON AREA.

6th Aust Inf Bde.H.Q.

BELGIAN CHATEAU. H.23.b.

21st. 22nd.  
23rd & 24th Bns  
6th A.M.G.Coy.  
6th A.L.T.M.Bty.

CANAL AREA.

7th Aust Inf Bde.H.Q.

STEENVOORDE.

25th. 26th.  
27th & 28th Bns  
7th A.M.G.Coy.  
7th A.L.T.M.Bty

12th Aust Inf Bde.H.Q.

D.26.c.1.3. LINE. LEFT.

45th Bn. -  
46th Bn. -  
47th Bn. -  
48th Bn. -  
12th A.M.G.Coy.  
12th A.L.T.M.Bty

LINE.  
Support.  
ANZAC. J.3.a.  
WESTHOMER. J.7.b.

Forward Area.

13th Aust Inf Bde.H.Q.

D.26.c.1.3. LINE RIGHT.

49th Bn. -  
50th Bn. -  
  
51st Bn. -  
52nd Bn. -

LINE Right Sector.  
Support. (2 Coys BROODSLENDE RIDGE  
(2 Coys TORIO.  
LINE. Left Sector.  
Reserve (2 Coys ANZAC.  
(2 Coys WESTHOMER.

13th A.M.G.Coy. )  
13th A.L.T.M.Bty)

Forward Area.

*Col. H. H. H. H. H.*  
for Lieut Colonel.  
General Staff.  
2nd Australian Division.