

**AWM4**  
**Australian Imperial Force unit war diaries,**  
**1914-18 War**

Engineers

**Item number:** 14/34/29 Part 2

**Title:** 15th Field Company, Australian  
Engineers

August 1918



AWM4-14/34/29PART2

APP 45 88  
Army Form C. 2123.  
(In books of 100.)

"C" FORM  
MESSAGES AND SIGNALS.      \* No. of Message.....

Prefix <i>AKUP</i>	Code <i>KUP</i>	Words <i>20</i>	Received.	Sent, or sent out.	Office Stamp.
Charges to Collect			From <i>RVZO</i>	At.....m.	<i>GOPE</i> <i>13/8/18</i>
Service Instructions <i>RVZO baddo</i>			By.....	To.....	

Handed in at..... Office.....m. Received.....m.

TO *15<sup>th</sup> Field Coy*

* Sender's Number <i>1246484</i>	Day of Month <i>13<sup>th</sup></i>	In reply to Number —	A A A
-------------------------------------	--	-------------------------	-------

*Brigade Order No 188*  
*issued tonight postpone*  
*Action for 24 hours and*  
*Acknowledge*

FROM *RVZO*

PLACE & TIME *16-45 PM*

\* This line should be erased if not required.

(3557.) Wt. Ws28—M1979. 85m., 100 lbs. 4/19. J. H., Ltd. (E.)

1. CARRYING TANKS.

(a) Five (5) Carrying Tanks of No. 1. G. Coy. will be used for transport of Ammunition and stores. They will be formed up for loading at about Sheet 62D. \*\* on the 15th. instant. Loading to commence at 8 a.m. on that date. The stores and ammunition carried are for the use of 14th. and 15th. Inf. Bde. Groups.

Each Tank will be loaded with the following :-

10 boxes No. 27. Grenades.	)	
120 rounds L.T.M. Ammunition.	)	
30 boxes M.G. ammunition	)	
15 boxes S.A.A.	)	
15 boxes No. 36. Grenades	)	
50 petrol tins filled with water	)	
2 boxes preserved meat	)	
2 " biscuits	)	Tanks will
1 box S.O.S. Signals	)	proceed to
200 shovels	)	the GREEN
100 picks	)	LINE.
54 Pales sandbags.	)	
10 bundles French Wire	)	
150 long screw pickets	)	
150 short screw "	)	
40 coils barbed wire.	)	

(b) The 14th. Brigade will detail 1 Officer and 6 men, the 15th. Brigade 1 Officer and 9 men, & the C.R.E. 5 men to accompany these Tanks, act as unloading parties, and to form Dump.

Personnel accompanying Tanks to carry 24 hours rations in addition to the 2 iron rations already issued.

(c) The 14th. and 15th. Inf. Bdes. will each detail loading parties to load Tanks - to report at Tank loading place at 8 a.m. on the 15th. instant. They should rejoin their units on completion of loading.

2. SUPPLIES.

(a) Railhead will be VILLERS-BRETONEUX from the 14th. instant.

(b) Refilling points for 14th. - 8th. Brigade 0.30.d.8.2.; 14th. Bde. P.31.a.5.5.; 15th. Bde. P.25.c.5.5.; Div. Troops P.32.a.5.5..

Supplies will be delivered by train transport to Q.M. Stores.

(c) The 2 iron rations previously issued, and which should be intact, are to be carried by each man.

(d) Two water bottles filled are to be carried by each man.

3. D.A.D.O.S..

Advanced D.A.D.O.S. is established at W.14.a.5.3.

4. AMMUNITION.

The S.A.A. Section is located at W.21.b.5.8..

Brigades will notify Division of requirements of ammunition, giving location of Brigade refilling points. In case of urgent necessity, Units will draw direct from the Main Divisional Dump at W.16.d.1.3., where Capt. KEEN (Divl. Bombing Officer) is in charge.

\*\* Will be wired to Field Coys. & Pioneers.

253  
5. WATER SUPPLY.

Particulars of water supply additional to that issued under  
C.R.E. No. 12/86 of 15/8/18 :-

- X.14.a.0.4. - Water drawn by rope and bucket.  
 X.14.a.0.6. - " " " "  
 X.13.b.9.6. - " " " "  
 X.15.d.1.9. - Pump, trough attached, 9' x 3' x 2'6".  
 X.14.a.5.7. - Pump,  
 X.14.a.6.6. - Windlass.  
 X.25.b.6.2. - 40' to water. Windlass. Good water.  
 F.3.a.0.8. - Pump.  
 W.18.d.8.7. - Deep bucket pump. Good supply presumably from bore.  
 X.20.b.7.3. - 36' to water. Windlass. Well 3' diameter. Partly  
 bricked.  
 X.21.d.0.4. - 2 Pumps. Presumably bores. One pump in working order,  
 and produces a good supply.

## 6. ACKNOWLEDGE.

C.R.E., 5TH AUSTRALIAN DIVISION.
No. 1/94
Date

*A. E. M.* Lieut - Col. A.E.  
C.R.E.

14th. August 1918.

5th. Australian Division..

DISTRIBUTION : 8th. Field Co.  
 14th. Field Co.  
 15th. Field Co. ✓  
 5th. Aust. Pioneer Bn.  
 War Diary.  
 File.

## Headquarters 5th. Australian Divisional Engineers.

## 5TH. AUSTRALIAN DIVISIONAL ENGINEER INSTRUCTION No. 32.

-----0000000000000000-----

1. In the event of the 8th. Aust. Infantry Brigade being employed in the attack, the instructions laid down in para. 2, of Engineer Instruction No. 31 for the 14th. and 15th. Field Coys. will apply exactly to the 8th. Field Coy. also.

The 8th. Field Coy. Commander will make the necessary preliminary arrangements with the Brigade Commander of his affiliated Brigade.

On Zero Day

2. The Medical Officer will be at the Cemetery at W.12.c.8.2. where water samples will be sent for testing.

Water samples should not be less than one Pint in quantity, and the source of supply, location, means available for drawing the water and location to which result of test is to be sent, clearly marked.

3. Lieut. BURROWS, M.C., 14th. Field Coy. is detailed to superintend the loading of the stores tanks.

Detailed instructions will be issued to him separately.

4. Two Sappers from the 14th. Field Coy., and three from the 15th. Field Coy. will report to Lieut. BURROWS at 8 a.m. on 15th. instant at place to be notified later, to stay with and proceed forward with the stores tanks.

When tanks have dumped stores on GREEN LINE, these Sappers will get in touch with the forward Sections of their companies in order to point out where stores have been off-loaded.

Sappers detailed will report in fighting order with 48 hours rations and two iron rations.

5. At Zero plus two hours on Zero day, a representative of 5th. Aust. Divisional Engineer Headquarters will establish a report centre at Cemetery W.12.c.8.2.. From this place to C.R.E.'s office despatches will be carried by a motor cyclist. Companies will arrange to collect and deliver all messages from this place.

6. C.R.E.'s Office will remain in cutting at O.25.c.5.4. and will not move as verbally stated to-day.

7. ACKNOWLEDGE.

Lieut-Col. A.E.  
C.R.E.

13th. August 1918.

5th. Australian Division..

DISTRIBUTION : Copy No. 1. - 8th. Field Coy.  
2. - 14th. Field Coy.  
3. - 15th. Field Coy.  
4. - 5th. Aust. Pioneer Bn.  
5. - 'G', Branch, 5th. Aust. Division.  
6. - 'Q', Branch, 5th. Aust. Division.  
7. - C.E., Aust. Corps.  
8. - 8. Aust. Inf. Bde.  
9-10. - War Diary.  
11-12. - File.

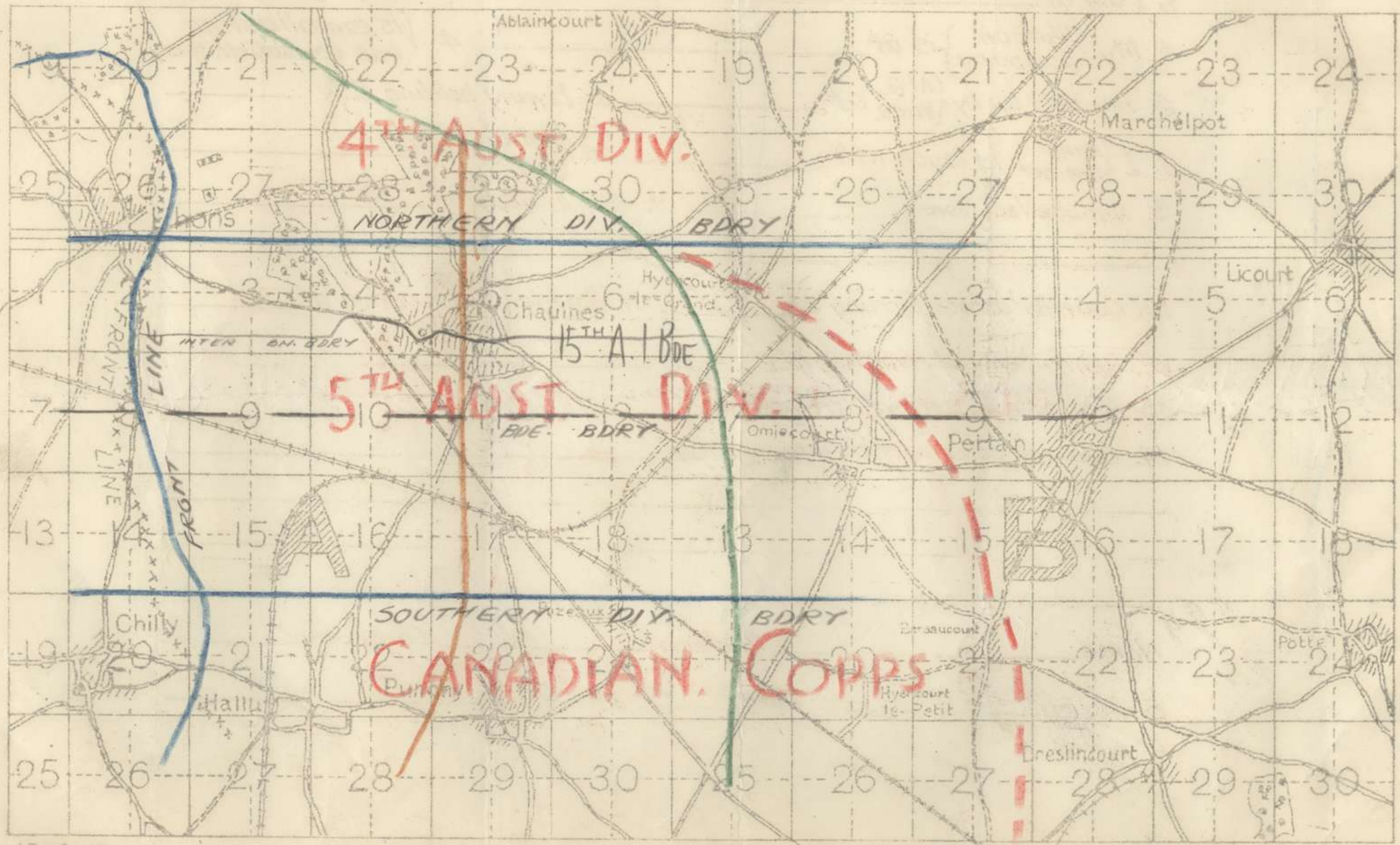
MESSAGE MAP.

1/40,000.

LEGEND

- APPROXIMATE BRITISH FRONT LINE
- APPROXIMATE LINE OF FIRST HALT.
- GENERAL LINE OF FIRST OBJECTIVE
- GENERAL LINE TO BE REACHED BY EXPLOITATION

253



13: 8:18

PRESENT BRITISH FRONT LINE SHOWN \*\*\*\*\*

E.A.V. Topo. Section.

APPENDIX 46

92

To \_\_\_\_\_

1. I am at \_\_\_\_\_ 2. I have reached the limits of my objective \_\_\_\_\_

3. My {Platoon / Company} is at \_\_\_\_\_ 4. {is consolidating / has consolidated} \_\_\_\_\_

5. Am held up by {M.G. / Wire} at \_\_\_\_\_ 6. Enemy holding S.P. \_\_\_\_\_

7. I {am / am not} in touch with \_\_\_\_\_ on {right / left} at \_\_\_\_\_

8. Am shelled from \_\_\_\_\_ 9. Am in need of \_\_\_\_\_

10. Counter attack forming at \_\_\_\_\_ 11. Hostile {Batt. / M.G. / T.M.} active at \_\_\_\_\_

12. Reinforcements wanted at \_\_\_\_\_

13. Estimate my present strength at \_\_\_\_\_ rifles \_\_\_\_\_

14. Add any other useful information \_\_\_\_\_

\_\_\_\_\_  
\_\_\_\_\_  
\_\_\_\_\_

Name \_\_\_\_\_ Platoon \_\_\_\_\_ Company \_\_\_\_\_

Battalion \_\_\_\_\_ Time \_\_\_\_\_ m. Date \_\_\_\_\_

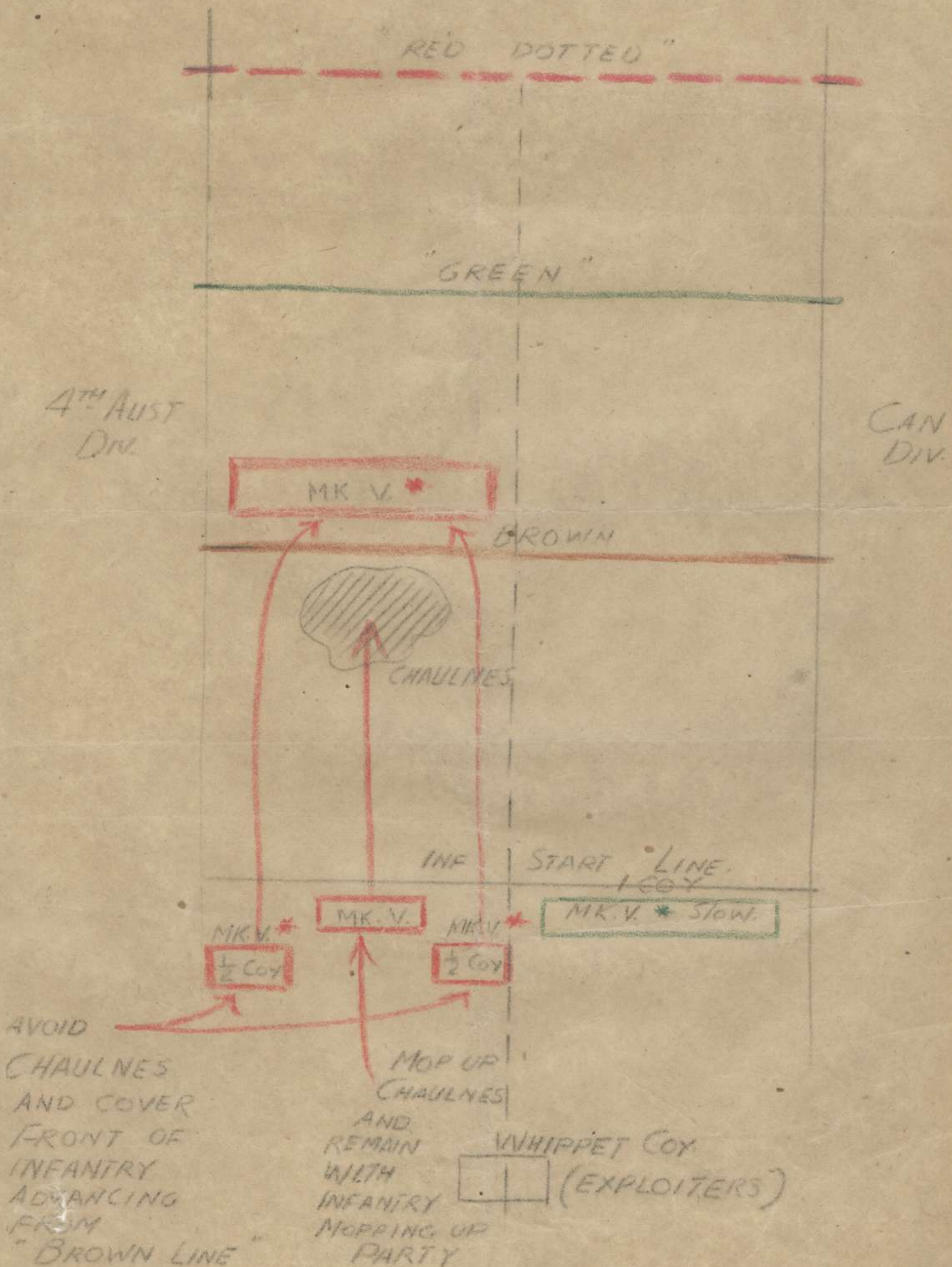
APPENDIX

253

APPENDIX

46:93

# DIAGRAM SHOWING ALLOTMENT OF TANKS TO ACCOMPANY D.B.I. SERIES C. N° 6





ORIGINAL

OPERATION ORDER NO.26

253

by  
Capt. J.P. CADDY

APPENDIX

APP 47

94

1. On "Z" day the 5th Australian Division will attack the enemy's position and exploit the success as far as the line OMICOURT-HIENCOURT-LEGRAND
2. Objectives, Div. Brigade and Battalion Boundaries are shown on map attached.
3. Lt. HARDINGE and Lt. GIBB with Nos. 3 & 2 Sections will be allotted to 58th Battalion and 60th Battalion respectively and will supply any technical assistance required.
4. Arrangements will be made independently between Lt. HARDINGE and Lt. GIBB and the Battalion Commanders.
5. Lt. GIBB and Lt. HARDINGE will also arrange with C.O.'s 59th Battalion and 57th Battalion respectively to assist them if required.
6. Lt. GIBB with 4 O.Re. (2 from each forward section) will report at Brigade H.Q. before 12 noon on 15th Inst. to give technical advice on taping out start line. This party will take up 2000 yards tracing tape. Capt. D.B. DOYLE Bde I.O. will supervise taping of line in consultation with Battalion I.O.'s.
7. Nos. 2 & 3 Sections will report to C.O.'s 60th and 58th Battalions respectively before 4 p.m. on 14th Inst.
8. Sections will move in such a manner as to ensure utmost precaution against casualties from hostile shelling or bombing.
9. Lt. BULLEN with No. 4 Section will:-
  - (a) Search for wells and water points and put them in working order.
  - (b) Reconnoitre and report on condition of roads in Brigade Area. using special road Reconnaissance maps supplied.
  - (c) Reconnoitre report on and if possible exploit any railway and rolling stock which may be met with.
  - (d) Report on any deep dugouts met with giving location and accommodation available on message maps.
10. No. 1 Section will be in reserve to carry out any special work the situation demands; and will report at Coy. Dump F 6. c 5 6 at 8 p.m. on "Y" night.
11. Sections will move up in battle order and carry 24 hours rations plus emergency ration.
12. Reports will be sent to O.C.
  - (a) First will be sent as O.K. Report immediately work is in hand and then every 2 hours until further orders unless anything urgent happens.
  - (b) All reports will be marked with time and map location at which they are written.
  - (c) The importance of getting any information back quickly and the value of sketches will be remembered.
13. O.C. will be at Brigade H.Q. F.6.c.8.4. from 12 noon 15th August until further notice.
14. Coy. Dump will be formed at F.6.c.5.6. and A/C.S.M. HOGG will be in charge
15. Nos. 2 & 3 Sections will move forward after the objectives have been gained at discretion of Section Officers.
16. No. 4 Section will move under orders of Lt. BULLEN when the situation warrants it.
17. Zero hour will be notified later.

(Sgd) J.P. CADDY

Capt

A/O.C. 15th Field Co. A.E.

13-8-18

253

APPENDIX

48 95



253

ORIGINAL

Sent	Service.	Date.....
At.....m.		From.....
To.....		By.....
By.....	(Signature of "Franking Officer.")	

TO

All Battalions 8th Aust. (Army) P.A. Brigade  
 15th A.L.T.M.B. 15th Field Coy. A.F.  
 8th M.G. Company. Staff Captain,

Sender's Number.	Day of Month	In reply to Number.	AAA
* 3m 801	14		

Reference	projected	operations.	Stand	Fast
on	everything	until	further	orders.

From 5 30 PM

Place 15th Australian Infantry Brigade.

Time

The above may be forwarded as now corrected.

(Z)

Censor. Signature of Addressor or person authorised to telegraph in his name.

*G. J. Galle*  
Capt.

253



APPENDIX

489 96

Prefix <i>M</i>	Code <i>47</i>	Words <i>22</i>	Received.	Sent, or sent out.	Office Stamp.
Charges to Collect			From <i>...</i>	At <i>...</i> m	<i>96</i>
Service Instructions			By <i>...</i>	To <i>AZ0 1</i>	VIII. 18
Handed in at <i>...</i>			Office <i>...</i> m		
TO <i>15 Eld boy A...</i>					
* Sender's Number	Day of Month.	In reply to Number		A A A	
<i>RM 495</i>	<i>14</i>				
<i>Further to RM 801 aaa</i>					
<i>Everything is off</i>					
<i>stand fast await</i>					
<i>orders acknowledge</i>					
<i>aaa orders all</i>					
<i>concerned.</i>					
<i>Rec 8/10 14.8.18</i>					
FROM <i>RM 800</i>					

76  
BH

13 Feb 60

T 8

CS

253

97

APPENDIX

150



Charges to Collect		From	At	m
Service Instructions		By	To	
Handed in at		Office	m.	Received
TO				
* Sender's Number	Day of Month	In reply to Number		AAA
<p>everything is off stand          post await order          and act</p>				
<p>Rec. 14/10/18</p>				
FROM	Lulu			
PLACE & TIME	6-30pm			

46

650

ENDIX

15 Feb

T 78

253

APPENDIX

51 98



Prefix <i>AM</i>	Code <i>MCP</i>	Received	Sent	Office Stamp <i>98</i>
Office of Origin and Service Instructions	Words	At <i>1204</i> m.	At <i>1356</i> m.	
<i>23/18</i>	<i>18</i>	From <i>WAR</i>	To <i>70</i>	
		By <i>RLO</i>	By <i>Reg</i>	
TO <i>Gifo</i>				
Sender's Number	Day of Month	In reply to Number		AAA
<i>*1128</i>	<i>15</i>			
<i>Boys are to be ready to move at one hour's notice</i>				
<i>Rec = 5pm 15/8/18</i>				
From	<i>C. G. Faust Div</i>			
Place				

98

51

DIX

T 42

15 Feb

51



## Headquarters 5th. Australian Divisional Engineers.

## 5TH. AUSTRALIAN DIVISIONAL ENGINEER INSTRUCTION No. 54.

----- cccccccccccccc -----

Ref. Map HARBONNIERES 1/40,000.

1. The 5th. Aust. Division will relieve the 17th. Division on the night of 16th/17th. August 1918 in 'C' Divisional Area (Southern boundary East and West Grid Line through R.34. central, Northern boundary SOMME Canal).

Relief to be complete by 10 a.m. 17th. August 1918.

2. The Field Coys. and Pioneers of 5th. Aust. Division will relieve the Field Coys. and Pioneers of 17th. Division in accordance with the table attached hereto.

Relief will be complete by 9 p.m. 16th. August 1918.

3. Advance parties from Field Coys. and Pioneers of 5th. Aust. Division will visit Units to be relieved of 17th. Division early on morning of 16th. August to make detailed arrangements for taking over works and camps.

4. As the camps occupied by the Engineer Units of 17th. Division will not be vacated before 9 p.m. on 16th. August, Field Coys. and Pioneers of 5th. Aust. Division will move after mid-day on that day.

No movement will take place East of a North and South Line through W.22. central in daylight, and Units will move in small parties to avoid casualties from hostile shell-fire or Bombs.

5. Field Coys. will collect all bridging equipment and spare gear from hay-shed N.21.c.8.8., Sheet 62D., as soon as possible, and convey it to their Horse Lines.

6. On completion of relief, locations of Coy. Headquarters and Horse Lines will be wired in code to this Office.

7. C.R.E.'s. office will close at present location and open at P.7.a.1.3. at 10 a.m. 17th. August 1918.

8. Field Coys. and Pioneers to ACKNOWLEDGE.



Lieut-Col. A.E.  
C.R.E.

15th. August 1918.

5th. Australian Division.

DISTRIBUTION : Copy No. 1. - 8th. Field Co.  
2. - 14th. Field Co.  
3. - 15th. Field Co.  
4. - 5th. Aust. Pioneer Bn.  
5. - C.R.E., 17th. Division.  
6. - 'G' Branch, 5th. Aust. Divn.  
7. - 'Q' Branch, 5th. Aust. Divn.  
8. - C.E., Aust. Corps.  
9 - 11. - War Diary.  
12. - File.

M A R C H    T A B L E.

---

Serial No.	Unit.	Date.	From.	To.	In relief of	Remarks.
1.	8th.Fd.Co.AE.	16th.Aug.	Present Location.	P.6.d.9.3. Horse lines at P6d93.	77th.Fd.Co.RE.	Reserve Bde.Area. (8th.Brigade.)
2.	14th.Fd.Co.AE.	16th.Aug.	Present Location.	Q.21.b.2.9. Horse lines at Q.13cent.	93rd.Fd.Co.RE.	Right Bde.Area (14th.Brigade.)
3.	15th.Fd.Co.AE.	16th.Aug.	Present Location.	Q.21.a.9.1. Horse lines at Q.13.a.91.	78th.Fd.Co.RE.	Left Bde.Area. (15th.Brigade.)
4.	5th.Aust. Pioneer Bn.	16th.Aug.	Present location.	Q.23.a.4.3. Horse lines at Q2/a30.	Yorks & Lances. Pioneer Bn.	

253

APPENDIX

52

100

Headquarters 5th. Australian Divisional Engineers.

5TH. AUSTRALIAN DIVISIONAL ENGINEER INSTRUCTION No. 35.

-----oooo0000oooo-----

Ref. Map HARBONNIERES 1/40,000.

1. Under instructions from Aust. Corps the operations prepared under Engineer Instruction No. 30. will be postponed until further orders.

2. PREPARATORY MEASURES.

(1) In order to secure and strengthen the battle front the nibbling tactics which the Division has formerly employed will be continued.

The Line shown in GREEN, (see attached map), represents the first phase of the operations. When these objectives are secured, further objectives are to be considered.

It is desired in this manner to obtain a strong position from which to continue the offensive to secure adequate protection to the flank of the offensive and to continue the pressure which is being exerted on the enemy.

(2) Artillery activity in addition to ordinary protection will embrace the destruction of all wire shown within the limits of the objectives laid down for the battle and subsequent exploitation.

It is considered that the intervals allowed will permit of more complete preparation of counter-battery action.

3. HOSTILE ACTIVITY.

Reports tend to show that the present enemy artillery activity is almost entirely based on the employment of larger calibre guns, such as 5.9 inch guns.

The enemy has however employed heavy gas shoots on the fronts of the French, Canadian and III Corps. It is therefore to be anticipated that these tactics will be pursued and careful arrangements will be made with regard to all places likely to be objectives of artillery action of this nature. Troops should be withdrawn from woods and villages and from any other places which it may be anticipated that the enemy will shell.

Where carrying parties are required to pass through such localities special measures will be prepared to ensure that they are checked and adequate police arrangements made in the event of a gas bombardment.

4. SALVAGE.

The great shortage in signal cable requires that all good cable should be salvaged as far as possible. Divisions in the forward area will salvage as much as possible in their areas. O.C. Signals will arrange for the salvage of cables in back areas and will obtain the necessary assistance for this from Divisions in reserve.

Ammunition left in back dumps and in old battery positions will be collected without delay.

5. ACKNOWLEDGE (Field Companies and Pioneers)

*V. Nathan* Lieut-Col. A.E. C.R.E.

15th August 1918

5th Australian Division...

DISTRIBUTION -	Copy No. 1	8th Field Co.	Copy No. 5	'g'
	2	14th Field Co.	6	'g'
	3	15th Field Co.	7	C.E. Aust Corps
	4	5th Pioneer Bn	8 - 10	War Diary
			11-12	File.

CRE

I

APP 53

2/53

OC 78<sup>th</sup> Fed Coy RE who handed over to me was doing practically no work in the area except improving some old trenches about 2000 yds behind the line. He gave me no information and did not even hand over a map, so anything you can let me know about the sector would be of great assistance. GOC 1st Bde says he does not intend doing any trench work at present as the idea is to gradually move forward.

The most urgent job was to get a foot bridge across the canal at R2a98 to establish quick communication with Liaison Force on our left. Had a look at the spot today from hill about 500 yds South of it. There is already a ~~rather~~ destroyed bridge

which ~~was~~ looks to be capable of taking horse transport. There is also a bridge across a large drain at R2a73. Lt Buller is going out tonight to get a foot bridge across and when he comes back will know what is necessary to repair the bridge when it is required.

There seems to be plenty of accommodation in the area and nothing is required ~~to~~ tell me move forward.

Have started locating wells and will commence improvements tomorrow. The Bde do not require any horse troughs urgently as they have their own canvas trough on the Canal near their horse lines. Roads are in good condition ~~apart~~ from what

APPENDIX

15-2102

103

IV

I have seen, but will  
 make further detailed  
 reconnaissance  
 tomorrow. Most  
 the road being used  
 by Bde is runs from  
 Q8B27 to MORCOURT  
 - MERICOURT through Q6A  
 - RIC and D.

If you could get hold  
 of a small boat it  
 would be handy  
 for communication  
 with the base across  
 the Canal as the  
 front line goes forward.

17/8/18 J. B. G. Capt.  
 Lt. 15th Regt

11  
253 ✓

APPENDIX 54 104

253

C.R.E.

ORIGINAL

APP 54 104

Herewith Report of work done to-day.

BRIDGE at R 2 a 8 9.

Party went off last night and made this bridge available for foot traffic. All material for completion of bridge with exception of 8 lengths 15ft x 9" x 2" ~~xxxxxxxxxxxx~~ decking is on the site of the bridge. One span only requires completion. Bridge is a wooden trestle steel road bearers structure with 2" wood decking. Width 11ft will carry horse transport. May be repaired quickly if necessary

WATER SUPPLY

Attached is list of wells investigated samples have been sent to R.M.O.

ROADS

The following is preliminary reconnaissance of roads. Am preparing map which I will forward as soon as it is completed.

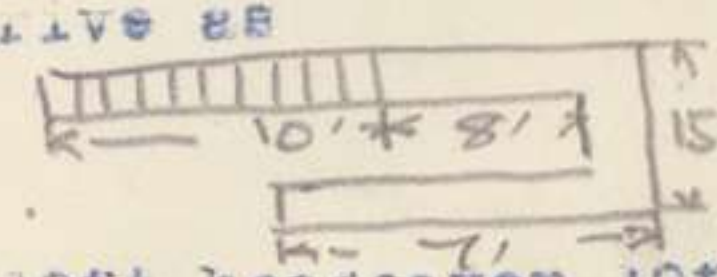
LOCATION		CONDITION	CLASS	REMARKS
from	to			
Q 16 Central	Q 6 a 5 1	Very good	1st	
Q 6 c 1 5	R 1 D 0 4	good	1st	
R 1 c 5 4	R 1 d 5 2	bad	3rd	Dry weather track holes
Q 12 a 5 7	Q 24 b 8 0	good	1st	Small shell holes
Q 24 b 8 0	Q 24 b 8 0	good	2nd	
R 19 d 1 0	R 25 c 0 5	good	1st	
Q 17 c 0 4	Q 30 a 5 5	good	2nd	
Q 23 a 9 5	Q 24 d 2 9	good	2nd	
Q 17 c 0 4	Q 29 c 8 4	bad	2nd	
Q 17 a 0 5	R 19 d 0 6	good	1st	

353

ORIGINAL

APP 54/105

DUGOUTS

R 1 c 3 9-3 shafts 10ft head cover 10ft R 8 a 3 4 ~~to R 8 c 7 6~~ 14 dugouts  
 R 1 c 5 4-2 shafts 10ft-head cover 10ft.to R 8 c 7 6 headcover 12ft, av.  
 also underlay and drive as drive 10ft.  
 DRIVE 4' x 2'-6" NOT timbered.  R 8 c 7 6 to } 20 dugouts, drives  
 R 14 d 8 3 } 10ft, cover 10ft.  
 } 2 dugouts, drives  
 } 6ft, cover 10ft.  
 R 1 c 2 9-4 shafts 10ft, headcover 10ft.  
 R 1 c 2 9-3 " " " 15ft.  
 Q 24 a 9 2-2 shafts 10ft, 12ft headcover. R 7 d 4 3 to } 8 dugouts, drives  
 Q 24 a 9 2-1 shaft 18ft, 14ft headcover. R 7 b 9 2 } 14ft, cover 12ft.  
 Q 22 d 4 4-4 shafts 16ft, 25ft headcover.  
 Q 22 d 7 8-1 shaft 16ft, 18ft headcover. R 7 b 6 5 ~~to~~ } 2 dugouts, drives  
 Q 23 b 7 8-1 shaft left, headcover 16ft. } 8ft, cover 15ft.

R 1 b 5 5 to } 5 dugouts, drives 12'  
 R 1 d 2 6 } cover 12ft.

Will start to-morrow obtaining sketches of all dugouts.

SHELTERS

R 7 b 6 5 accomodation 300 men. R 8 a 3 4 to R 8 c 7 6 accomodati  
 R 1 b accomodation 500 men. -on 1000 men.  
 R 8 c 7 6 to 8 14 d 8 3 R 14 d 9 3 accomodation 70 men.  
 accomodation 800 men.  
 R 7 d 4 3 to 8 7 b 9 2  
 accomodation 1300 men.

STABLES

R 8 a 3 4 to } 230 Horses R 7 d 4 3 to } 64 Horses.  
 R 8 c 7 6 )  
 R 7 b 6 5 32 Horses. R 1 b 100 Horses  
 R.A.P. at R 14 b 3 5.

Extension of present cut and cover shelter about 24ft long by  
 9ft wide now 20% completed.

18-8-18

(Sgd) J.P.CADY Capt. O.C. 15th Fld. Co.

OVER

102

107/10

APPENDIX

253

Have had front line located will send plan to-morrow.

P.J.C.

Faint, mirrored text, likely bleed-through from the reverse side of the paper. The text is illegible due to its orientation and low contrast.



253

### MESSAGES AND SIGNALS

Prefix.....	Code.....	m.	Words.	Charge.	This message is on a/c of:	Recd. at.....
Office of Origin and Service Instructions.						Date..... 106
				Sent		From..... APPSS
				At.....m.		
				To.....		
				By.....		By.....
				(Signature of "Franking Officer.")		

TO { 15<sup>th</sup> Field Coy A.C.

Sender's Number. * N 173	Day of Month. 19	In reply to Number. A A A
-----------------------------	---------------------	------------------------------

In connexion with work on Brown (Reserve) Line in your Bde Area, please arrange to continue the wire down across the river flat from approx R.2.C.2.8. to R.2.a.6.a. and then from R.2.a.6.3 to R.2.a.7.9. This should bring the wiring of the river flat just west of the end of the track over to the bridge over Somme at R.2.a.8.9. a.a. I am asking D.H.Q. to instruct 8<sup>th</sup> Bde to place <sup>300</sup> men at your disposal for Brown Line work. If you ring me during tomorrow morning I will be able to say if they are available, then you must make arrangements with 8<sup>th</sup> Bde re guides etc.

From  
Place  
Time

The above may be forwarded as now corrected. (Z) *Wather Hol*

Censor. Signature of Addressor or person authorised to telegraph in his name.

\* This line should be erased if not required.

(11160.) Wt. W 492/M1647. 65,000 Pads. 5/17. H.W. & V., Ld. (E. 1187.)

253

APPENDIX

56

107

253

ORIGINAL

APP 56<sup>107</sup>

C.R.E.

Herewith report of work done:-

WATER SUPPLY

The following wells have been tested and are being used.

Q 16 b 7 6 - Q 6 c 4 4 - Q 6 c 3 5 - Q 6 c 3 3 - Q 6 a 9 5  
Q 6 d 9 3.

Horse troughs and pumps will be erected in Q 16 a and Q 16 b to-morrow.

RESERVE LINE

Only 200 men available for work to-night. Will start wiring.

FORWARD C.T.

2 Companies Pioneers starting work to-night.

R.A.P. will be made at Q 6 a 9 1.

Plan showing location of front line posts at 6 p.m. 18-8-18 attached.

(sgd) J.P.CADDY

Capt.

19-8-18

O.C.15th Field Co.A.E.

253  
C.R.E.

ORIGINAL

APP 57 108

Following work has been completed to-day:-

WATER SUPPLY

- (i) Horse troughs 36ft long and pump erected at Q 6 a 4 8.
- (ii) Horse trough 76 ft long and pump erected at Q 6 b 3 4.
- (iii) Repaired pump and erected 18ft water trough at R 1 d 3 4.
- (iv) Erected windlass complete with rope and bucket at SR 7 b 5 8

RESERVE LINE

500 yards Double apron erected from R 2 c 3 6 to R 7 b 9 8. 500 yards Double apron erected from R 13 b 1 1 Southwards. Only 180 men were available for this work.

COMMUNICATION TRENCHES.

Lt. GIBB taped out and Pioneers dug.

400 yards 4ft 6in deep by 4ft wide from R 9 b 0 3 to R 9 a 2 7.

380 yards 3ft deep by 3ft 6in wide from R 9 c 5 2 to R 8 d 8 2.

GAS PROOFING

59th Battalion Signal Office gas proof lining complete. Door to be finished.

57Bn. R.A.P.

Porch for gas proof doors completed.

(Sgd) J.P. CADDY

Capt.

20/8/18

SECRET.

APPENDIX 58

5TH. AUSTRALIAN DIVISIONAL ENGINEER INSTRUCTION No. 36.

-----000000000000-----

Ref. Map Sheet 62D. 1/40 000.

1. The 5th. Australian Division (less Artillery) will be relieved in 'C' Divisional Area by 1st. Aust. Division (less Artillery), during the 21st. August and night 21st/22nd. August 1918.

2. The 5th. Aust. Divisional Engineers and 5th. Aust. Pioneer Bn. will be relieved by corresponding Units of 1st. Aust. Division on the 21st. instant, and will take over billets vacated by their opposite numbers as follows :-

8th. Field Co.	relieved by	3rd. Field Co.	situated at	J.32.d.3.9.
14th. Field Co.	do	2nd. Field Co.	do	O.6.c.5.5.
15th. Field Co.	do	1st. Field Co.	do	J.26.a.8.2.
5th. Pioneer Bn.	do	1st. Pioneer Bn.	do	P.10.a.6.8.

3. Advance parties should be sent to take over billets early on morning of 21st. instant.

4. All further details of relief to be mutually arranged between O's.C. Units.

5. Completion of relief to be notified to this office.

6. The usual receipts for all trench and area stores handed over and taken over will be obtained, and copies forwarded to this office.

7. C.R.E's. office will remain at its present location.

8. ACKNOWLEDGE.

*11/20*

*A. E. Matter*. Lieut-Col. A.E.  
C.R.E.

20th. August 1918.

5th. Australian Division..

- DISTRIBUTION : Copy No.
- 1. - 8th. Field Co.
  - 2. - 14th. Field Co.
  - 3. - 15th. Field Co.
  - 4. - 5th. Aust. Pioneer Bn.
  - 5. - C.R.E., 1st. Aust. Division.
  - 6. - C.E., Aust. Corps.
  - 7. - G. Branch, 5th. Aust. Division.
  - 8. - Q. do do
  - 9 - 11. - War Diary.
  - 12. - File.

15th Field Company has been in Area for 4 days and has been engaged on the following work.

- (i) Reconnaissance of roads water supply accomodation front line etc.
- (ii) Erection of pump and windlasses on wells and horse troughs.
- (iii) Foot bridge at R 2 a 8 9.
- (iv) WIRING Reserve Line.
- (v) Marking out forward C.T's.
- (vi) Regimental Aid Poste, Gas proof doors.

ROADS

Communications in the area are good but will require attention after wet weather. Condition of roads is shewn on plan.

WATER SUPPLY

There are adequate wells for drinking water in the area for present requirements. Location and description of wells and horse troughs shewn on attached list. It was proposed to erect horse troughs dumped at Company H.Q. at about Q 11 d central.

BRIDGE

A partly destroyed bridge exists over the canal at R 2 a 8 9. All the material for completion of bridge with exception of 8 lengths 15ft x 9"x2" decking is on the site. 1 span only requires completion. Bridge is wooden trestle structure with steel road bearers and 2" decking, width 11ft. May be repaired quickly if necessary.

A Foot bridge has been put over the canal at this spot to establish communication with poste on our Left.

RESERVE LINE

It was proposed to construct a series of mutually supporting strong points along the line of old trenches shewn on map, and to wire the whole front.

A Double apron fence was completed last night but no work has been done on S.P. as no labour available.

FRONT LINE

Present position has been located and is shewn on attached map. Practically no wire is up.

COMMUNICATION TRENCHES

2 C.T's from R 9 b 0 3 to R 9 a 2 7 and from R 9 c 5 2 to R 8 d 8 2 have been dug.

DUMPS

Corps Dump is situated at Q 27 c 3 3. Material may be drawn from this dump on signature of O.C. Company.

COMPANY DUMP

Situated at R 1 c 3 5 list of stores on hand attached.

2 Sections are camped at R 1 c 9 8 one of which is working on Reserve line and one on forward work.

2 Sections at Headquarters- One on water supply and one on General work. Horse Lines at Q 13 a 9 1.

List of Dugout accomodation and stables in area also reconnaissance of bridges over Somme attached.

(Sgd) J.P. CADDY

Capt.

21-8-18

A/O.C. 15th Field Co. A.E.

253

APPENDIX

60 III

253

"A" Form. MESSAGES AND SIGNALS.

Army Form C. 2121. (In pads of 100.)

No. of Message.....

Prefix.....	Code.....	Words.....	Charge.....	This message is on a/c of: .....	Recd. at..... m.
Office of Origin and Service Instructions.					Service.....
Sent.....				By..... (Signature of "Franking Officer.")	From.....
At..... m.					By.....
To.....					

TO { 15<sup>th</sup> Field Coy G/F/O

Sender's Number. * N 202	Day of Month. 22	In reply to Number.	AAA
-----------------------------	---------------------	---------------------	-----

Detail four carpenters and one plumber to report first SANITARY SECTION base of area commandant HAMLET at 2 PM to-day and Full marching order and 24 hours rations to be carried and

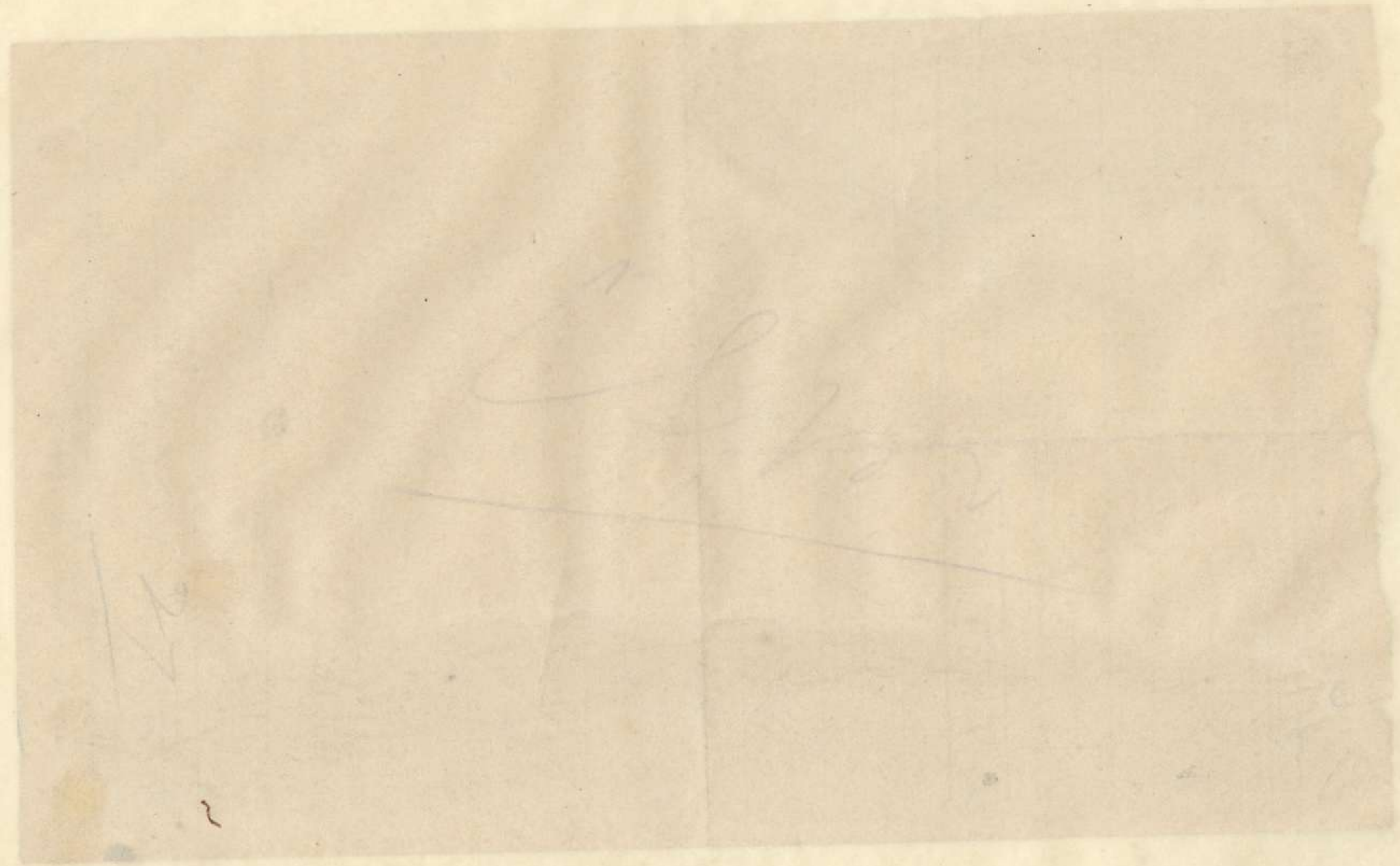
From CRE 5<sup>th</sup> Aust Div  
Place LELU  
Time

The above may be forwarded as now corrected. (Z)  
Censor. Signature of Addressor or person authorised to telegraph in his name.

\* This line should be erased if not required.  
(11160.) Wt. W 492/M1647. 65,000 Pads. 5/17. H. W. & V., Ld. (E. 1187.)

100 III

APPENDIX



100 III

## Headquarters 5th. Australian Divisional Engineers.

## 5TH. AUSTRALIAN DIVISIONAL ENGINEER INSTRUCTION No. 37.

-----oooo0000oooo-----

Ref. Map HARBONNIERES, 1/40,000.

1. INTENTION. On a day and hour to be notified the Division will continue the advance to the River SOMME in co-operation with 32nd. Divn. on Right and 2nd. Aust. Divn. on Left. 5th. Aust. Divisional boundaries are as follows:-

North ~~of~~ the Grid Line E. & W. through Square M.8.c.0.0. from present front to River Somme.

Southern Divisional boundary, Grid Line E. & W. through ~~M.35.c.0.0.~~ <sup>R.35. cent.</sup>

Front Line at noon 25th. August was a N. & S. Line through M.13.b. cent., and M.31.d. cent. approximately.

Objective of attack is practically unlimited, (the SOMME if possible).

2. ENGINEER AND PIONEER PERSONNEL AVAILABLE FOR THE OPERATION.

8th. Field Co., less one Section complete and less all Coy. Bridging equipment will work in affiliation with 8th. Aust. Inf. Bde., and will consult with G.O.C. Bde. as to work to be done, and will be responsible that particular and efficient measures are taken for the following work:-

(a) Provision of Splinter Proof accommodation for H.Qrs. of Bde., Battalions, & Companies, wherever they are established during the operation.

(b) Reconnaissance and exploitation of Wells & other Water Supplies.

14th. Field Co., less one Section complete and less all Coy. Bridging equipment will work as laid down for 8th. Field Coy. but with 14th. Aust. Inf. Bde..

15th. Field Coy., less two Sections complete, and less all Coy. Bridging equipment, will work as laid down for 8th. & 14th. Field Coys. but with 15th. Aust. Inf. Bde..

5th. Aust. Pioneer Bn., less two Companies will work on the clearing & repair of the main E. & W. Road (FOUCAUCOURT - VILLERS CARBONNEL) following up the advance as closely as practicable.

One Coy. will be allotted the task of clearing ways over trenches for the advance of Field Artillery. All details as to the employment of this Coy. will be arranged by 5th. Aust. Pioneer Bn. with C.R.A..

One Company will be held as a Reserve for work which may become necessary, which will be detailed by C.R.E..

3. ROAD MINES.

One Section of 15th. Field Coy. AE. will be attached to 5th. Aust. Pioneer Bn. to search for, & as far as possible, remove or destroy any Road Mines on the Main E. & W. Road, and will work ahead of the Road repair party. Danger notices will be placed at any mine which cannot immediately be removed.

4. BRIDGING DETACHMENT.

In anticipation of Bridging operations being required on arrival at the River SOMME, Capt. J.P. GADDY, 15th. Field Coy. AE. is detailed to take charge of same. He will have at his disposal the following personnel and equipment :- One Section complete with its Officers from each of 8th., 14th. & 15th. Field Coys., & all the pontoon and trestle Bridging Equipment of the three Companies complete on wagons. Capt. GADDY will act under orders of C.R.E. but should arrange liaison with forward Field Coys. in order to be early advised of suitable sites for Bridges. Further details as to assembly and advance of this Bridging Detachment will follow.



5. FRONTAGES.

The 14th. Aust. Inf. Bde. Group will attack on a frontage of three Battalions. The remainder of the Division (less Artillery) will be in Reserve and will be disposed in depth in the order, 8th. Inf. Bde. - 15th. Inf. Bde. Group, with a distance of from two to three thousand yards between all Groups, dependent on circumstances.

6. CHANGES IN DISPOSITION.

The moves and reliefs necessary as a preliminary to the above operations are shown on the attached Table. All moves on 28th. instant to be complete by 6 p.m., and locations of Company Headquarters and Sections to be wired in Code to this Office.

7. ENEMY DUGOUTS & BILLETTS.

These will not be occupied as they are probably mined.

8. ENGINEER ASSISTANCE TO MACHINE GUN BATTALION.

Field Coys. will be responsible for assisting M.G. Companies in their affiliated Brigades, in providing Splinter Proof accommodation for their Headquarters. M.G. Coy. Commanders should arrange this in consultation with Field Companies.

98. C.R.E.'s Office will <sup>remain</sup> ~~close~~ at P.7.a.1.3. ~~and open at 9.30 a.m.~~ at 6.0 p.m. today 28th. August. *LM*

119. Further detailed instructions to follow.

10. ACKNOWLEDGE.

*12 noon  
26/8/18*

28th. August 1918.

*Maxim* Lieut-Col. A.E.  
C.R.E.

DISTRIBUTION:-

5th. Australian Division.

- Copy No. 1.- 8th. Field Co.
- 2.- 14th. Field Co.
- 3.- 15th. Field Co.
- 4.- 5th. Aust. Pioneer Bn.
- 5.- 'G' Branch, 5th. Aust. Divn.
- 6.- 'Q' Branch, 5th. Aust. Divn.
- 7.- C.E., Aust. Corps.
- 8.- 8th. Aust. Inf. Bde.
- 9.- 14th. Aust. Inf. Bde.
- 10.- 15th. Aust. Inf. Bde.
- 11.- C.R.E., 2nd. Aust. Division.
- 12.- C.O., 5th. Aust. M.G. Bn.
- 13-15.- War Diary.
- 16-17.- File.

MOVE TABLE TO ACCOMPANY 5TH.AUST.DIVL.ENGINEER INSTRUCTIONS NO. 37.

Serial No.	Date.	Unit.	From.	To.	In relief of	Remarks.
1.	2.	3.	4.	5.	6.	7.
1.	Night 26/27th. August.	14th.A.I.Bde.	Present location R.19.b.&d. M.25.b.	Line right within the boundaries shewn on revised map issued herewith.	2nd.A.I.Bde. and portion of 1st. A.I. Bde.	Time of move forward to be settled by Brigadiers concerned, having regard for visibility conditions.
2.	Night 26/27th. August.	M.G. Units.	Present locations	do	M.G.Units of 1st. Aust.Div.within new Divl. Boundaries.	do
3.	early morning 26/8/18.	8th.A.I.Bde.	do	Areas within Sqs. Q22, 23, 24, 28, 29.	-	Move about 6 a.m.or as required by B.G.C.
4.	26/8/18. night 26/27th. August.	Div.Units.	do	Positions occupied by opposite numbers.	Opposite numbers.	-
5.	26/8/18.	Adv.D.H.Q.	do	Q.30.c.4.6.	14th.A.I.Bde.HQrs.	Open at 12 noon 26/8/18.
6.	27/8/18.	15th.A.I.Bde.	do	Sq. Q.29.	-	To arrive in time to follow on in Battle Position.

25  
30

APPENDIX 6 / 114

## ORIGINAL

APP 6

15<sup>th</sup> FIELD COMPANY ORDEROPERATIONS ORDER N<sup>o</sup>. 28

1. 5<sup>th</sup> Inf Div will carry out continuation of advance on RIVER SOMME on morning 27<sup>th</sup> inst. Objectives are not limited
2. Divisional boundaries are  
 NORTH M 8 C. 0.0. due E.W through M 9 C. 0.0 M 10 C. 0.0 etc.  
 SOUTH. central E.W guideline M 31 32 33, 34 etc.
3. The attack will be conducted on a Brigade front three battalions in attack are in reserve  
 The 14<sup>th</sup> INF BDE will attack first, on reaching the furthest objective the 8<sup>th</sup> Bde will pass through them and similarly subsequently the 14<sup>th</sup> BDE through them.

115

4. For the purposes of the attack a Divisional Bridging Unit is being temporarily formed under CAPT J. P. CADDY. The following transport & personnel will be disposed  
 No 4 section (L<sup>th</sup> BATTN) 8 F.C. A.E.  
 No 4 section (L<sup>th</sup> MORRISON M.M.) 14 F.C. A.E.  
 No 3 section (BULLOCK) 15 F.C. A.E.  
 all pontons & trustle gears of the 8, 14 & 15 F.C. A.E. 12 spare horses per lot & 1 unit W.C.O.  
 1 tool cart & harness 15 F.C. A.E.  
 1 A.A. Lewis gun 15 F.C. A.E.  
 Separate orders will be issued by CAPT CADDY.
5. No 4 section (SGT A.A. BROOKER) will assist 5<sup>th</sup> PIONEER BATTN. in reconnaissance & examination of mines on the main PERONNE ROAD.
6. No 1, 2 sections 15 F.C. A.E. will be applied with 15 A.1. BDE tank under

115

APPENDIX

62

115

<sup>OC</sup>  
orders ISPC, AE.

253

7. O.C. ISPC, AE + HQ. SGT. + 2 messes will be at 15 P. 1. BOC HQ. etc.

8. <sup>Recon</sup> Company A. Co. will be established at Q 29 C. central.

9. Main roads will be guarded as far as possible by transport.

10. Inhabitants - intact buildings will be regarded with the utmost suspicion & no headless metake taken up in them.

11. Special precautions will be taken against aircraft bombing.

12. The utmost initiative is to be used by sector commanders particularly, the fine field company organisation where sector officers have their own

116

individual command will be required in these operations.

253

13. Reports must be concise and accurate, messes will be organised by section officers & communication with O.C. Co. maintained that way.

14. The particular points to note are splinter proof accommodation down to Coy HQ, ball road reconnaissance light bridges to get information over the SOMME.

Donald Brimmer  
OC ISPC AE.

26. 5. 18.

116

APPENDIX

62 116

253

Headquarters 5th. Australian Divisional Engineers

APPENDIX

5TH. AUSTRALIAN DIVISIONAL ENGINEER INSTRUCTION NO. 38.

-----ooooo0000oooo-----

Ref. Map. HARBONNIERES, 1/40,000.

1. Engineer Instruction No. 37 is cancelled and the following instructions are substituted there-for :-
2. (i) The 8th. Aust. Inf. Bde. will relieve the 1st. Aust. Division units vice 14th. Aust. Inf. Bde.  
 (ii) The 14th. Aust. Inf. Bde. will take over the present position occupied by 8th. Aust. Inf. Bde.  
 (iii) The 15th. Aust. Inf. Bde. will remain in present position.  
 (iiii) Reliefs of Divisional Units of 1st. Aust. Division will be made by Divisional Units of 5th. Aust. Division as already arranged.
3. HEADQUARTERS.  
 (i) Divisional Headquarters (less Artillery) will remain at present location.  
 (ii) Divisional Artillery Headquarters will be opened at Q.30.c.4.6.
4. Special precautions will be taken to prevent casualties from enemy's gas. Valleys, Woods, and Villages will be avoided as much as possible, and Unit Commanders will move troops tactically to avoid gas casualties.
5. The 8th. & 14th. Field Coys. will mutually exchange billets and work taken over by them from Units of the 1st. Aust. Division.
6. The 15th. Field Coy. will remain at its new location in Q.29..
7. The 5th. Aust. Pioneer Bn. will remain at its new location in Q.23.a. and will continue any important work handed over by 1st. Aust. Pioneer Bn.
8. The Bridging Detachment will be disbanded and the personnel and equipment will be returned to their respective Units.
9. Field Coys. will carry out any necessary work to provide splinter Proof Shelter and protection from Gas in the ~~the~~ Areas of their affiliated Brigades.

10. ACKNOWLEDGE.

Rec. 730 pm  
27/8/18

*A. Mathu*

Lieut-Col. A.E.  
C.R.E.

26th. August 1918.

5th. Australian Division..

- DISTRIBUTION: Copy No. 1. - 8th. Field Co.  
 2. - 14th. Field Co.  
 3. - 15th. Field Co.  
 4. - 5th. Aust. Pioneer Bn.  
 5. - 'G' Branch, 5th. Aust. Divn.  
 6. - 'Q' Branch, 5th. Aust. Divn.  
 7. - C.E., Aust. Corps.  
 8. - 8th. Aust. Inf. Bde.  
 9. - 14th. Aust. Inf. Bde.  
 10. - 15th. Aust. Inf. Bde.  
 11. - C.R.E., 2nd. Aust. Division.  
 12. - C.O., 5th. Aust. M.G. Bn.  
 13. - C.R.A., 5th. Aust. Divn.  
 14- 16. - War Diary.  
 17- 18. - File.  
 17 - *OC. Bridging Detachment.*

C.R.E.

ORIGINAL

New Drain

APP 64

253

Reconnaissance by Lt Col BULLOCK  
Crossed the Somme at 0.26 d. 2.4  
an remains timber trestle bridge  
This is down but alongside this  
there has been a small trestle  
bridge, two stringers of timber although  
blown can be crossed by Infantry  
On the E. side of Somme there  
is a timber trestle bridge over  
a mill race about 50 ft span  
0.26 d. 3.4. This bridge  
is blown but infantry can  
cross on debris. E of this again  
are two ~~the~~ bridges wooden trestle  
timber bridge also. All of  
these have been blown but  
can be crossed by infantry  
docking is intact, bridges  
might be unshakable if later

118

transport.  
Bull. Crossed south of point  
went N up the W bank of  
canal. There have been  
several footbridges there  
in a scale bridge at  
0.26 b. 5.6. This bridge is  
about in contact, stream  
and a temporary crossing  
might be constructed over  
this. The footbridges are  
not passable.

Road along Western bank  
is good macadamised  
would carry M.T. have  
been knocked about.

Running pass about  
0.26 b. 2.0. N. there is a  
4 to 6 ft retaining wall  
the other of square form  
N to E is road ~~retaining~~  
retaining wall, railway.

118

253

APPENDIX

64  
118

Toupoint Canal.

Toupoint has been neglected  
to not be worked a best route  
possible.

At O 21. a. 1. 2.  
There has been footbridge  
stumps only of which remain.

All the footbridges are  
apparently piled ripples  
showing the general  
method of demolition has  
been to destroy piles just  
above water level.

Roads are all ok  
except for water reported  
by S.P.E.A.E.

~~Handwritten signature~~  
Major

O.C. S.P.E.A.E.

20. 8. 18

5. 10pm.

N. 30. C. 2. 4.

119

ORIGINAL

Ward diary  
APP 64A

~~CP~~

Engineer Instruction N° 39

covered -

Bank bridge material was

taken down by S. Brigade

G.S. wages. It was taken

down to O 32. a. 8. 4. just  
southside

on HAPPIER COURT ROAD and

dumped about 300' ahead

of any reporting posts. It was

used for putting the material

119

253

in the water as the Infantry  
 were 300' behind and would not  
 provide any covering party  
 unless the bridge head was  
 watched. No doubt it would  
 have been abandoned if it was.

The bridge reported by  
 as being formed by Infantry  
 at 0.26. d. 2. 6. was  
 unimpaired and was quite  
 good for Infantry to pass

This was the bridge Lt Bullen

120

253

paradees yesterday were  
 again the infantry are 300'  
 behind and are  
 not watching the bridge.

LIBRAIN who improved the  
 bridge reported it OK direct  
 to 31<sup>st</sup> Battalion as his was  
 back. The Infantry do  
 not appear to be actually on  
 the River.

30.8.18

~~Handwritten signature~~  
 O.C. 15 P.C. A.E.

120

APPENDIX

64 120



253

~~153~~

La mediana y la moda

1. La mediana es el valor que divide a un conjunto de datos en dos partes iguales.  
 2. La moda es el valor que aparece con mayor frecuencia en un conjunto de datos.  
 3. La media es el promedio aritmético de los datos.  
 4. La desviación estándar mide la dispersión de los datos.  
 5. El coeficiente de variación mide la dispersión relativa de los datos.  
 6. El coeficiente de asimetría mide la simetría de la distribución.  
 7. El coeficiente de curtosis mide la forma de la distribución.  
 8. El coeficiente de sesgo mide la dirección de la asimetría.  
 9. El coeficiente de kurtosis mide la "altura" de la distribución.  
 10. El coeficiente de leptocurtosis mide la "anchura" de la distribución.

La mediana y la moda son medidas de tendencia central. La mediana es el valor que divide a un conjunto de datos en dos partes iguales. La moda es el valor que aparece con mayor frecuencia en un conjunto de datos.

~~64~~ 120

SECRET.

Copy No.

APPENDIX

31 APR 1918  
65

Headquarters 5th. Australian Divisional Engineer

5TH. AUSTRALIAN DIVISIONAL ENGINEER INSTRUCTION No. 39.

-----cccccccccccc-----

1. 5th. Aust. Division is side-stepping to the North. 15th. Brigade is to relieve 7th. Brigade by 9 a.m. on 30th. inst. 15th. Field Coy. take over from 7th. Field Coy. early on 30th. instant, who are at H.4.b.9.8., and report exact new location. Keep in touch with O.C., Bridging Detachment and advise him where and when bridges are wanted.
2. BRIDGING DETACHMENT. move to suitable site near H.55.d.. and report location.
3. 8th. Field Coy. will remain at present location until 8th. Brigade is relieved by Brigade of 32nd. Division on afternoon of 30th. instant. The 8th. Field Coy. will then move to the area to be taken over (in Reserve), by 8th. Brigade.
4. 14th. Field Coy. will move in affiliation with 14th. Brigade to position in rear of 15th. Brigade, i.e. approximately Squares N.8. and N.11..  
Work at D.H.2. Dugouts R.30.c.1.7. will cease, and section will return to Company.
5. 5th. Pioneers will move to suitable location about H.35.a. or H.35.c..  
Work will cease at D.H.2. Dugouts at R.30.c.1.7. and Company will join Battalion.

-----

5th. Aust. Division is attacking at dawn on 30th. instant with view to capturing high ground at I.35. and O.5., so it is impossible to say where line will be.

If M.T. Pontoon gear ('C' Glass) is wanted, this Office will be notified, and gear will be sent from Park at LA PLAQUE.

Arrangements will be made by this Office for light footbridging material to be transported to new Area.

New Divisional Boundaries as per attached map.

ACKNOWLEDGE.

*Handwritten signature*  
for Lieut-Col. A.E.  
C.R.E.

5th. Australian Division.

8.45 a.m.

30th. August 1918.

- DISTRIBUTION: Copy No. 1. - 8th. Field Co. No. 16. - 8th. Brigade.  
 2. - 14th. Field Co. 17. - 14th. Brigade.  
 3. - 15th. Field Co. 18. - 15th. Brigade.  
 4. - 5th. Aust. Pioneer Bn.  
 5. - O.C., Bridging Detachment.  
 6. - 'C' Branch, 5th. Aust. Divn.  
 7. - 'Q' Branch, 5th. Aust. Divn.  
 8. - C.R.E., 5th. Aust. Division.  
 9. - C.R.E., 32nd. Division.  
 10. - C.R.E., Aust. Corps.  
 11-13. - War Diary.  
 14-15. - File.

6-10 a

APPENDIX

O. 253 Fued by Ar.

All available footbridge gear will be sent to Dump at H. 34 a. 1.2. by dusk tonight.

- It will consist of:
  - ① 450 ft. run of Cork float.
  - ② Large quantity of duckboards, and 3" x 3" in long lengths, and ready-cut transoms 6" x 1" x 2'-6" + nails.
  - ③ A few collapsible-boat-pontoons, (Old Field Troop Type). These will be useful for ferrying + pile driving.

Suggested that you make manul-driven-pile duckboard footbridges where possible.

Duckboards also will be pushed thro' by Corps to Beaches. (guide these).

Transport

- 12 G S Waggon from Train
  - 7 " " " " " Pioneers
  - 4 Ponton Waggon from Corps } will be
- at H. 34 a. 1.2 at 8 pm.

Teams for the 4 Ponton Waggon will have to be supplied by yourself + 14<sup>th</sup> Field Coy (Foot-Cut Teams). Arrange direct with 14<sup>th</sup> Coy.

Suggest you have officer i/c Transport. You should concentrate upon exploiting <sup>old</sup> tracks across swamp indicated on map, unless anything better becomes obvious, and aiming at getting 2 or 3 tracks extended. Possibly those at O. 3. b. 3.3 and Lock at O. 3. b. 7.9, + O. 15. a. 4.5.

You are authorised to demand any assistance you require from Pioneers <sup>(to carry)</sup> + 14<sup>th</sup> Field Coy for work. Sorry I cannot get out to see you tonight. Leading Party of 30 Pioneers is to report to an (OVER)

123

APPENDIX

66<sup>53</sup>

Officer from your Unit at H.34.a.1.2 (Dimp)  
 at 8 pm. There will be 2 Motor Lories bringing  
 the 3" x 3" and 6" x 1". Use these afterwards if  
 they are required as you think fit.

Suggest certain of corkfloat bridges could be  
 used in a leapfrog sort of way for crossing the  
 swamps after large no. of Inf have crossed  
 the 1<sup>st</sup> Canal.

Report as soon as you possibly can  
 how things go. Keep our Motor Cyclist  
 with you to send back anything very urgent,  
 or your 1<sup>st</sup> Progress Report.

29/8/18

Platts H W  
 CRE 50th



APPENDIX

67

253/ ORIGINAL 124  
APP 67 30/8/19

Dear Greenway

After orders (my own pencilled ones) had gone out to you by Motor Cyclist, the G.O.C. arrived back and said everything was off so far as a deliberate attack in force is concerned, until further orders.

I got this information at abt 8.30 pm so it was quite impossible to stop waggon, or Pioneer reporting.

However the G.O.C. <sup>Div.</sup> stated however that the Bde. was to carry on with vigorous patrol work & would require footbridges, so perhaps the stuff will get near the river OK.

I am rather anxious though (unless you have been able to stop them) about waggon even in the dark trying to get near river!

Anxious to hear from you.  
1915 pm. Yours W. Mathew

253

APPENDIX

68 125



253

ORIGINAL

W. M. Hain

125

C.R.E.

APP 68

1) In accordance with your instructions I got in touch with O.C. 14<sup>th</sup> Field Coy. who gave me two sections with two officers to assist this Company. And with the Pioneers who supplied 100 men. LT. BURROWS was sent to the Dump H 31 a 12 to supervise the loading and despatch of material. LT GIBB was entrusted with the transporting material by waggons to two dumps & the subsequent delivery from these dumps to the two track sites selected. LT. MIDELTON was to reconnoitre and push a track through O 3. and LT. LITTLE to push a track through within the area bounded by O 9. central + O 15 central.

2) LT. BULLEN + LT. MIDELTON located the best point from O 3. d 3. 2. to O 3. d. 8. 1. LT. LITTLE ~~was~~ accompanied by LT MCGOWAN (7<sup>th</sup> Field Coy) found that our line was saved back.

- 1 -

253

~~From~~ round the small wood  
in O.S.D. ~~7.4~~. And the Infantry  
were not desirous of the development  
of a track from the intact Field  
Artillery Bridge at O.15 a Canal  
they also stated it was out of  
their area and too far south  
consequently, LT. LITTLEER commenced  
to develop a track from O.9. ~~East~~  
where a light pontoon bridge was  
placed on the night 29/30<sup>th</sup> Aug. by  
7<sup>th</sup> Field Coy. A.C.

1) By 1.15 am. LT. GIBB had  
off loaded material off waggons &  
was proceeding with carrying it  
by the aid of the PIONEERS to the  
Eastern side of the Canal feeding  
loop. LT. LITTLEER & LT. MIDELTON. LT.  
MIDELTON found an old tramway  
on piers at O.S.D. 4.2. He prepared  
70 yds. of this to carry duckboards laid  
on rails. Eastwards from this runs  
a path about 100 yds. long  
through an Avenue of trees. ~~the~~  
from there onwards there is a  
gap over water where the enemy  
had had a bridge which  
was destroyed it is intended

127

253

to bridge this with cork piers  
Beyond the water it is thought  
that the ground is firm because  
there is a plantation of birch.  
This track has been used by the  
enemy as it is foot worn.  
Sufficient duckboards & 30%  
Cork piers have been carried  
out to the job.

a cork bridge at O.9. b. 25.65.  
over the Canal gives access to the  
above tracks.

2) LT. LITTLEER laid 120 yds bridging  
duckboards temporarily over  
marshy ground eastward from  
Canal at existing light pontoon  
bridge O.9. c. 80.65. balance  
of bridging stores parked on  
East bank of Canal. Collapsible  
boats parked on West bank  
of Canal.

Lt. Brooks & No 4 Section proceed  
BRASCHES ~~presented~~ to unload  
duckboards from Motor Lorry  
which you advised was arriving  
these did not arrive but while  
this report is being written a  
motor transport cpl has reported  
with 18 cork piers & 24 duckboards

253/ which are being dumped at  
Bridging park at 11.30 a.m. 12

Total Engineer Casualties  
2 Sappers wounded.  
As far as I know no  
PIONEERS were wounded.

I suggest:-

- (a) Capt CADDY'S Pontoon Detachment  
be disbanded to provide  
fresh sappers for work  
which may materialize to-day.
- (b) It is useless to try and get  
a transport bridge across  
the Somme valley in this  
area.
- (c) The sections at present with me  
require a spell to-day.

St. 8 18  
W. 4. 9. 2  
7. 10 am.

~~Handwritten signature~~  
OC. 157E. AB



ORIGINAL

Sent APP 69 12/53  
 Service Date

At ..... m. From .....

To .....

By ..... (Signature of "Franking Officer") By .....

TO { CRE

Sender's Number. Day of Month. In reply to Number. **AAA**

31st

wagon arrived at arranged  
 dump PERSONVE - LTERPIENT  
 ROAD at 12 40 am 1954  
 Reconnaissance officers again  
 report that over 300  
 bridging is required to  
 cross swamp area Trucks  
 indicated on our photos

From  
 Place  
 Time

The above may be forwarded as now corrected (Z)

Censor. Signature of Addressor or person authorised to telegraph in his name 128

Sent ..... Service. Date.....  
 At ..... m. From .....

To .....

By ..... (Signature of "Franking Officer") By .....

TO {

Sender's Number. Day of Month. In reply to Number. **AAA**

and so far estimated  
 appear to be shooting trucks  
 only such as exist are  
 difficult for men loaded with  
 material 4000 lbs had  
~~beginning to~~ commenced  
 carrying float material from  
 dumps by 1 a m ASA Do not

From  
 Place  
 Time

The above may be forwarded as now corrected (Z)

Censor. Signature of Addressor or person authorised to telegraph in his name 128

APPENDIX

69 128

253

APPENDIX

129  
69

253

“ A ” Form  
MESSAGES AND SIGNALS.

Army Form C. 2121  
(In pads of 100.)

No. of Message..... 129

Prefix.....Code.....m.	Words	Charge.	This message is on a/c of : .....Service.	Recd. at.....m.
Office of Origin and Service Instructions	Sent			Date.....
.....	At.....m.	.....	.....	From.....
.....	To.....	.....	.....	By.....
.....	By.....	(Signature of "Franking Officer")	.....	.....

TO	.....	.....	.....
	.....	.....	.....
	.....	.....	.....

Sender's Number.	Day of Month	In reply to Number	AAA
------------------	--------------	--------------------	-----

antenna to much	proper	length
as it was impossible to organise		
well at such short notice		
There are no posts on either of		
courses		
.....		
.....		
.....		
.....		
.....		
.....		
.....		
.....		
.....		
.....		
.....		
.....		
.....		
.....		
.....		
.....		

From	127C		
Place	DIC 27		
Time	3 20 am		

The above may be forwarded as now corrected (Z) *[Signature]*

Censor. Signature of Addressor or person authorised to telegraph in his name

\* This line should be erased if not required.  
Order No. 1625 Wt. W3253/ P 511 27/2 H. & K., Ltd. (E. 2634)

ORIGINAL.

APP 70 ~~253~~

CRE

~~3<sup>rd</sup> Aus Div.~~

Further reconnaissance  
 of N Track which will run  
 across CANAL at CORK PIER  
 BRIDGE O of 25. 65. Hence  
 500' onwards along EAST BANK  
 of CANAL to 500'. From this  
 point Track runs EASTWARDS  
 across SWAMP along old  
 DECAUVILLE BRIDGE now held  
 up to take duckboards

130

~~253~~

Hence it runs through an  
 avenue of trees to pond of  
 swamp which we expect to  
 bridge tonight. Beyond this  
 daylight reconnaissance confirms  
 our opinion of very hope of  
 striking from ground. Daylight  
 reconnaissance today has also  
 revealed several hundred  
 duckboards on our side of  
 stream opposite to where the

130

APPENDIX

70

130

253

Tracks will run EASTWARDS over  
the <sup>2nd</sup> DECAUVILLE BRIDGE.

LIEUT GIBB & MIDDLETON have seen  
CAPT PERCOCK 5<sup>th</sup> BATTN who is  
opposite the <sup>proposed</sup> tracks, LIEUT MIDDLETON  
will endeavour to ferry patrol  
of CAPT PERCOCK'S COMPANY  
across pond while bridging  
with logs, in a collapsible  
boat.

We have supplied 8 collapsible

131

253

boats on this front.

LIEUT BULLON is exploring  
tracks from LIEUT PORTMAN  
BRIDGE at O.G.C. 7 b.

The FA BRIDGE at O 15 a  
central has now been much  
smashed by shell fire.

I do not guarantee LIEUT  
~~PORTMAN~~ BULLON'S TRACK but  
have every expectation of  
success with LIEUT MIDDLETONS.

131

APPENDIX

20

131

253

Parties have now all left here  
and wagon one being loaded  
from Dump.

RE Dump should not be  
formed at FLAUCOURT which  
has been heavily shelled all  
day but should be if we  
wish to form a dump so far  
in rear at Xing of DEBAUVILLE  
& BARLEUX - FLAUCOURT ROAD.

I am keeping two sections left

132

253

1472 1st SFC. in reserve  
for work tomorrow by daylight  
if things go well. I am  
now do with same notice  
boards. Can you make  
arrangements for <sup>water</sup> stables  
if things go out of control S of  
PERINNE.

The boys have suffered  
in horses and men slightly  
today

132

133

~~253~~

8 FC	nil	
14 FC.	4 OR.	(I think).
	12 horses	(I think)
15 FC.	3 OR.	2 gained with
	4 horses	

These are only approximate  
but I am giving you the  
information as it means the  
14" carbines require horses.

~~Handwritten signature~~  
CC. ISFC. A.E.

31. 8. 18.

original  
APP 7  
Was Heavy for Month of August

A.S.C. Supplies. The supplies for the month of August were excellent. Fresh Meat percentage was up to the weight & Fresh Bread percentage was very good. The only issue which was not up to the mark was matches and these have been very scarce.

Fat. Owing to this unit being constantly on the move during the past month only 50 lbs. of fat were returned to the Base.

Jam Cans. The same may be said about the return of these articles to the Supply Dump.

Salvage. All articles drawn from D.A.D.'s were returned one for one and as there are special parties scouring the ground around where this unit has been billeted there was no opportunity of salvaging any stoves etc.

134

Clothing etc.

This unit was inspected by the J.O.C. Division and he was very pleased with the appearance of the men as regards their clothing & equipment.

Boot Repairing

The bootmaker has been kept busy repairing boots and repaired 521 pairs of boots.

Harness Repairs

The saddler has done very satisfactory work during the month and taking into consideration that the amount of new harness drawn from D.A.D.'s has been very small since this unit was formed goes to point out the satisfactory manner in which the harness is repaired.

John Paster  
Sergeant  
15 Field Coy A.F.

134

253

APPENDIX

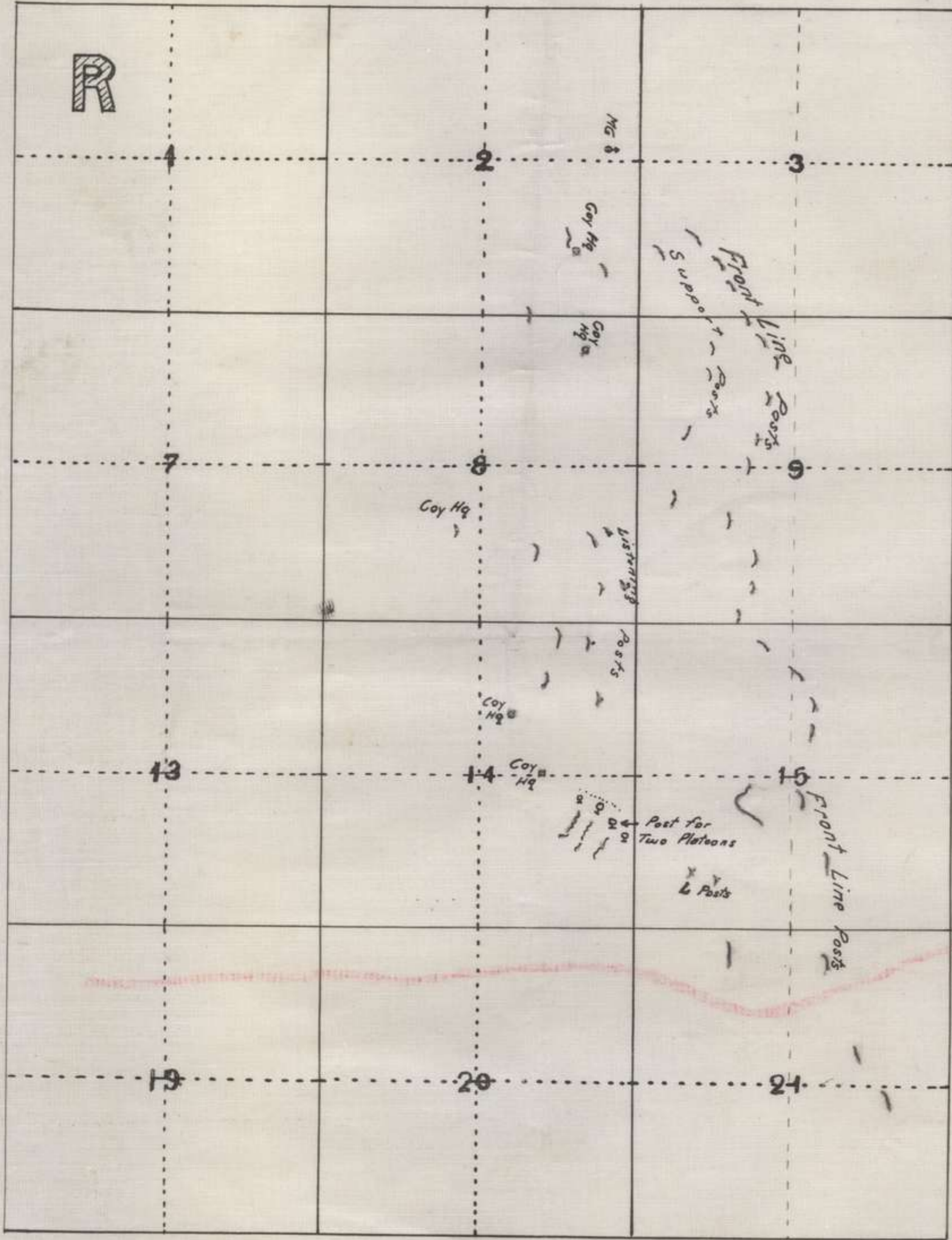
71

134

253

F R O N T L I N E P O S T S

6 P M 135  
18/8/18



SHEET  
FRANCE  
62° 1/49000

APP 72



ORIGINAL

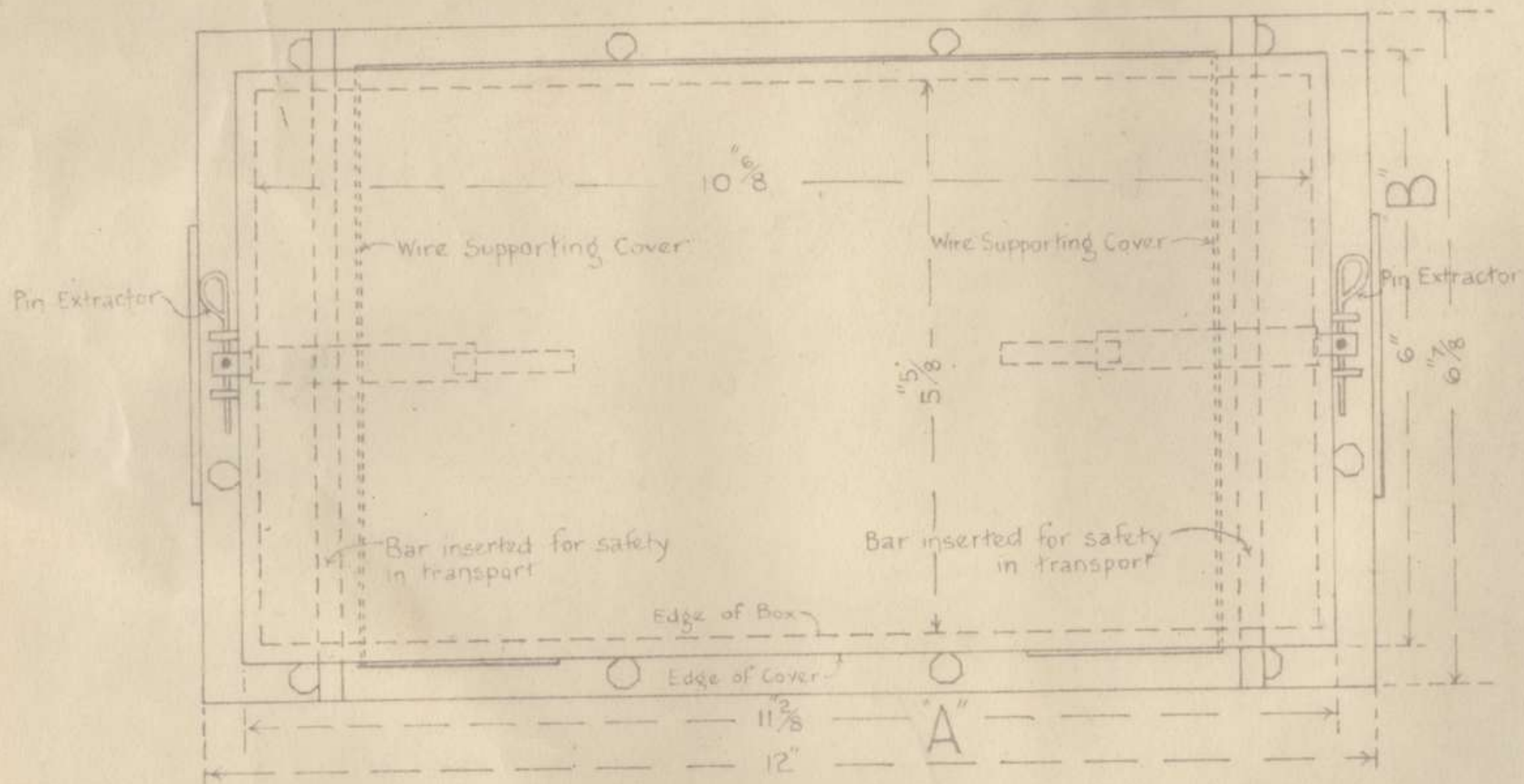
APP 73

Sheet No 1

253

# PLAN OF MINE

Constructed of Sheet Iron &c.  
Scale, 6" = One foot



## Action of Mine

Sufficient pressure on Cover causes wire (supporting  $\uparrow$ ) to give way, thus allowing Cover to drop. This action extracts pins & releases springs which forces striker on to definator.

APPENDIX

*Johnston*  
Capt  
73  
136

253 ✓

APPENDIX

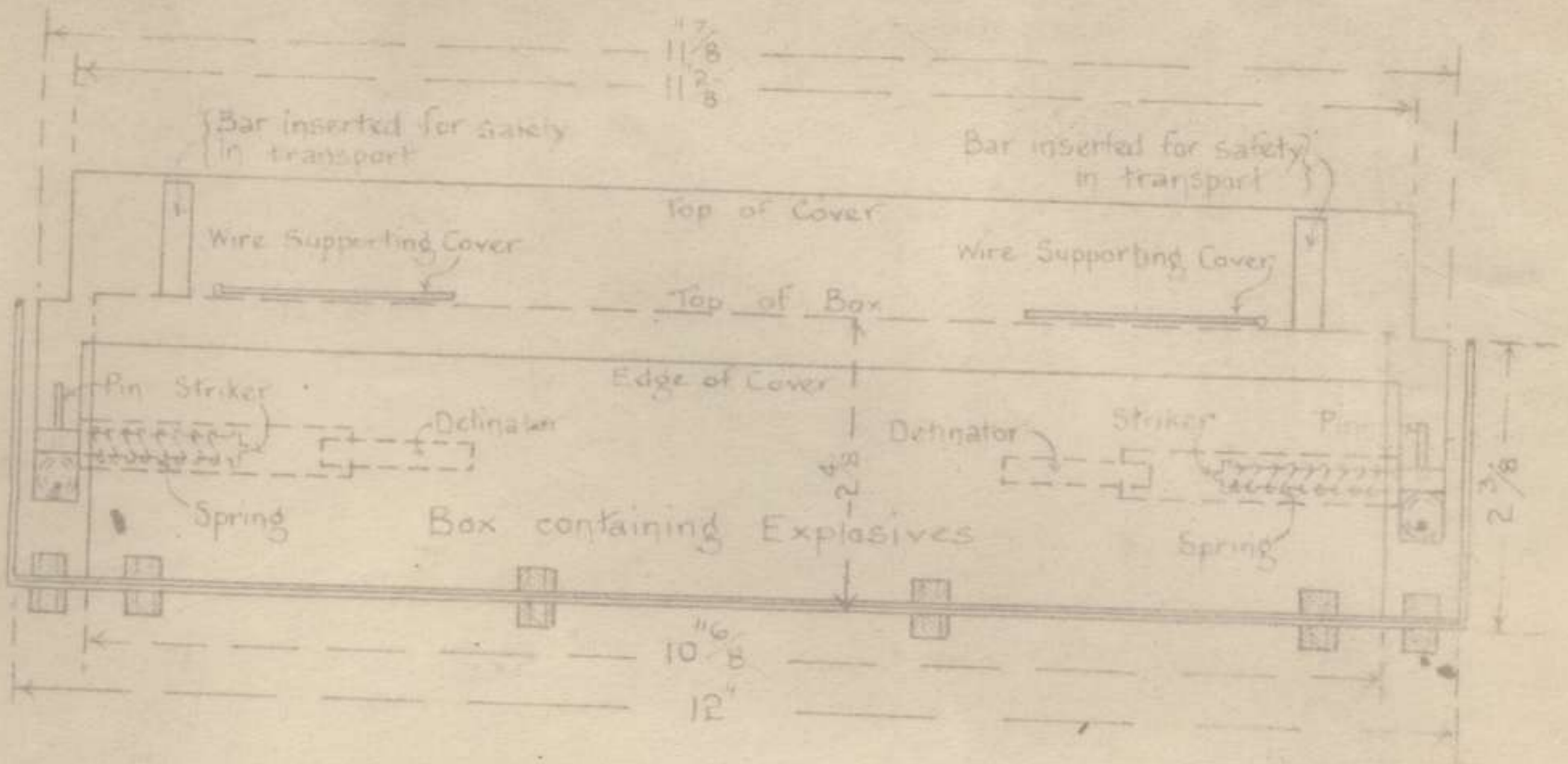
73 137

Sheet No 2

APP 73

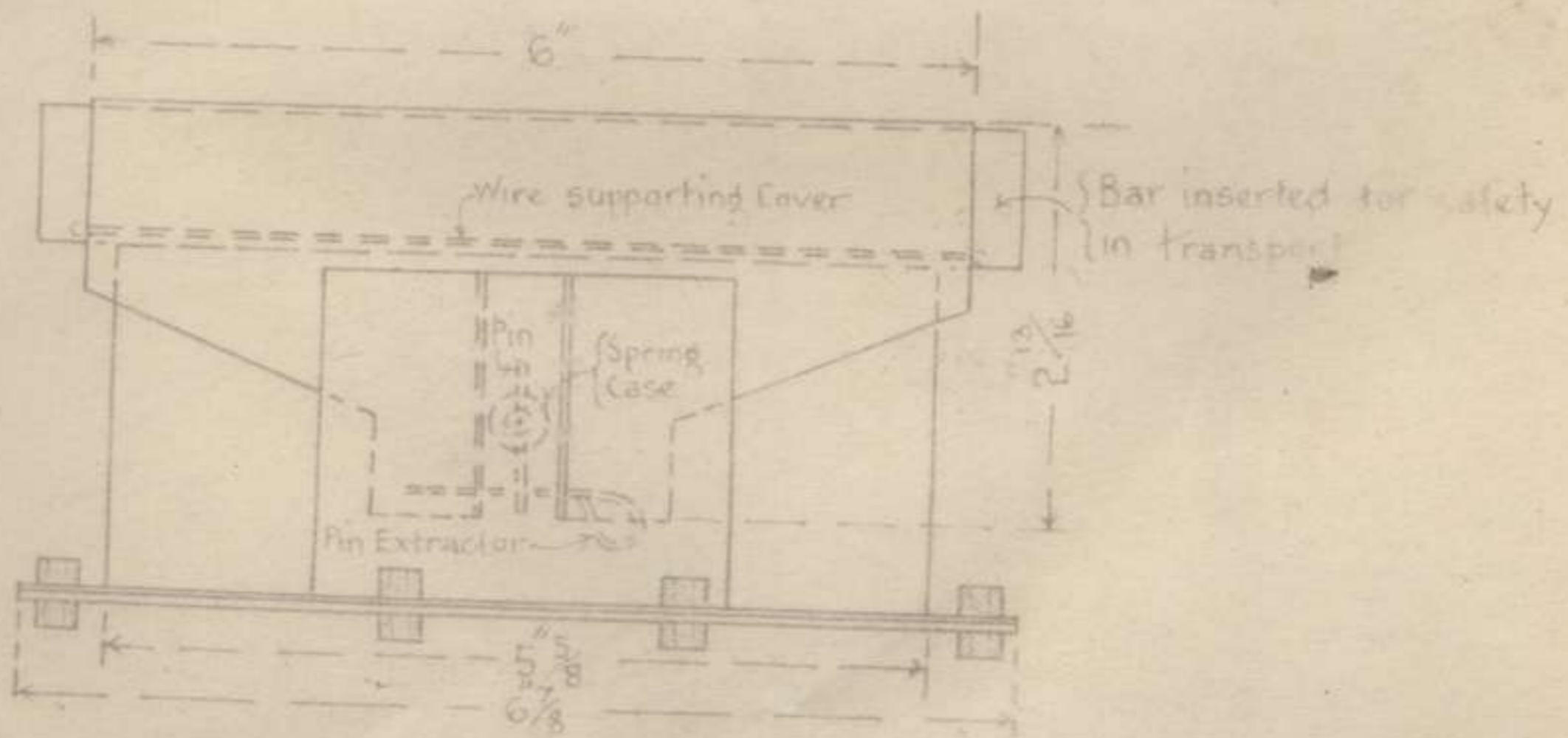
### SECTION A (Vide Sheet No 1)

Scale 6" = One Foot



### SECTION B (Vide Sheet No 1)

Scale 6" = One Foot



*Johnway Curt*

ORIGINAL

APP 74 Sheet No 1

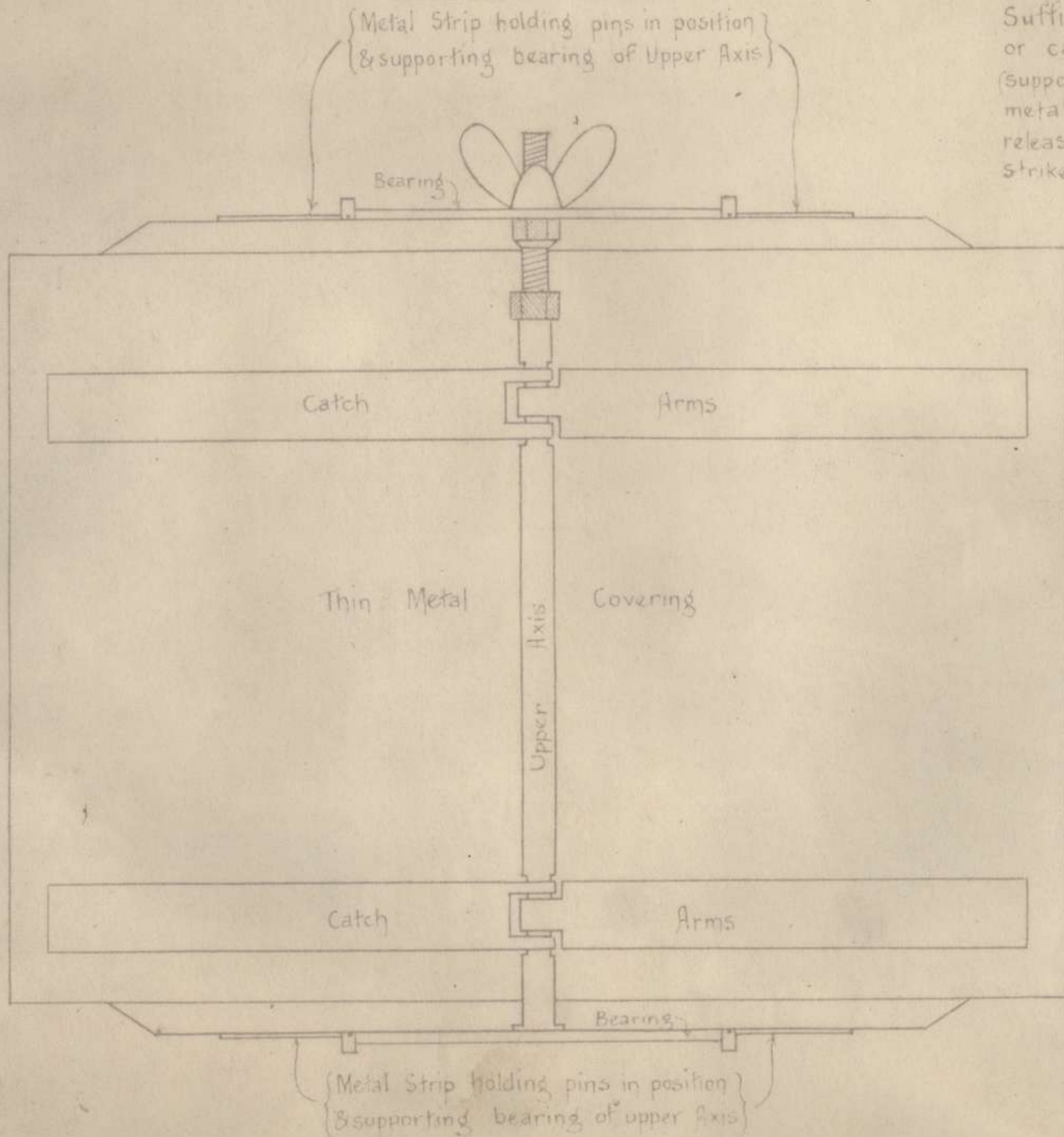
# PLAN OF MINE

Scale, 6" = One Foot

Action of Mine

Sufficient pressure on upper axis or catch arms causes bearing (supporting them) to tear away metal strip & extract pins, thus releasing spring which forces striker on to cap of detonator.

222



APPENDIX

*J. Boardman*  
Capt

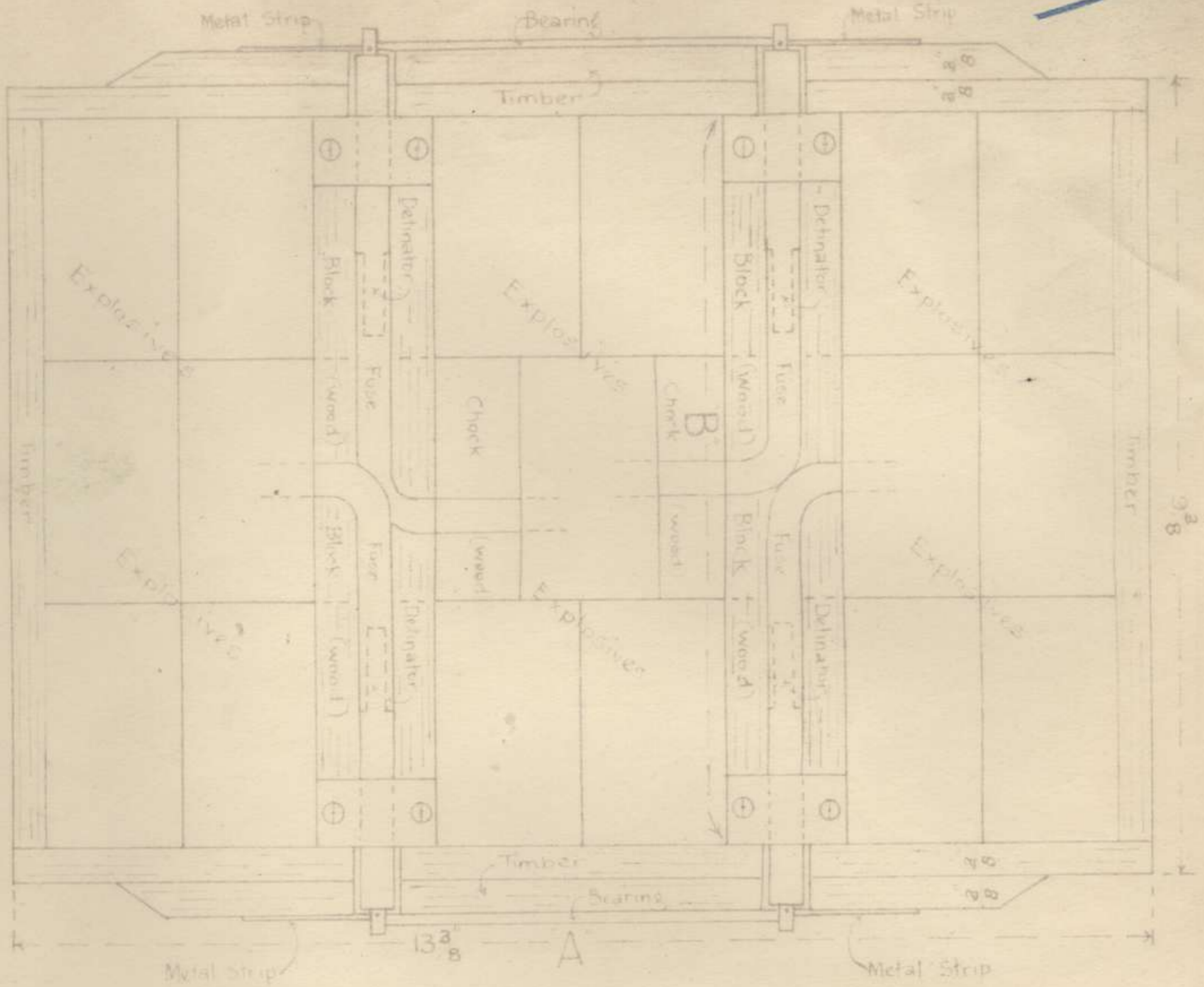
134

# INTERIOR PLAN OF MINE

Scale, 6" = One Foot

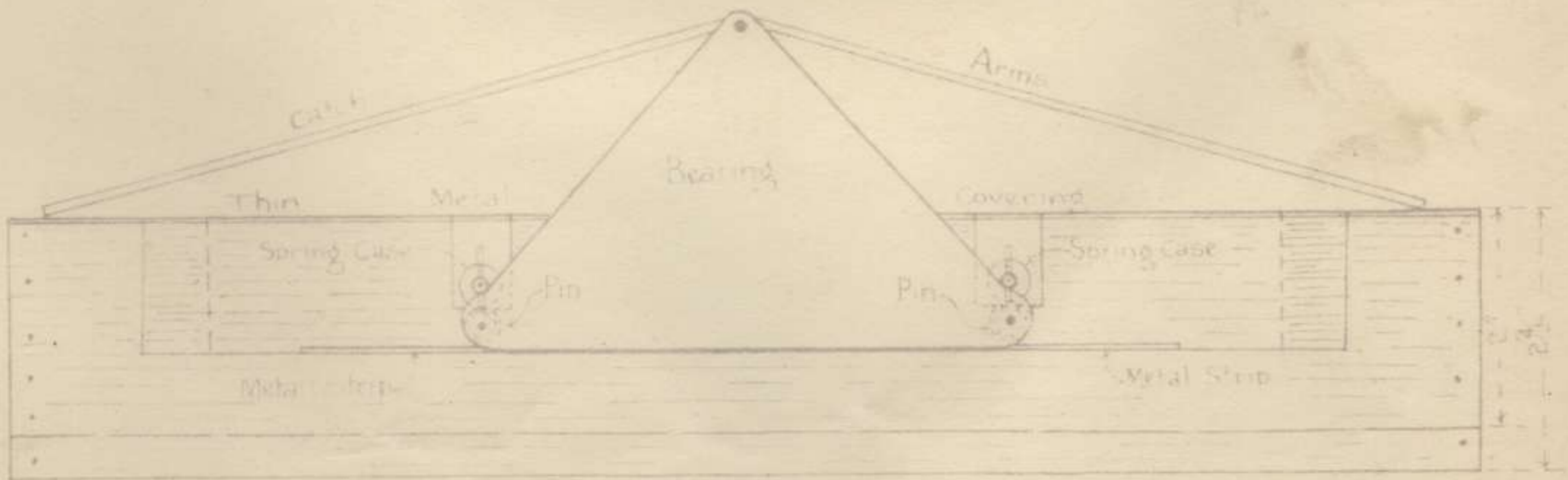
APPENDIX

74



## ELEVATION A

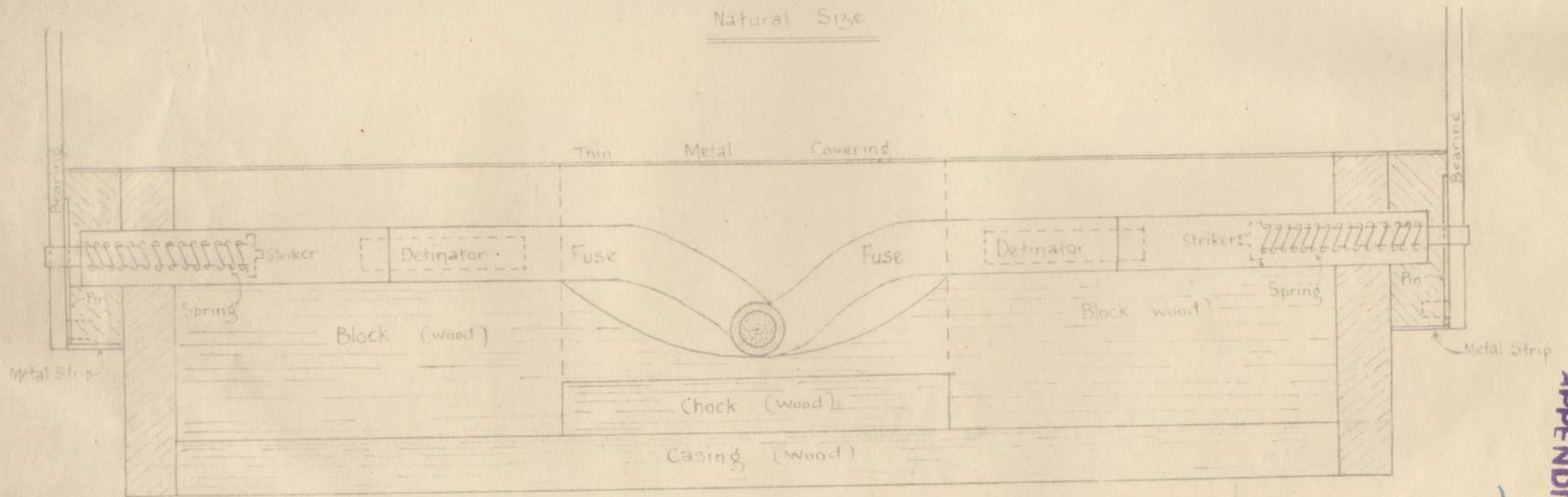
Scale, 6" = One Foot



*Johnson  
Capt.*

2003 ✓

INTERIOR SECTION "B" (vide sheet 2)  
Natural Size



APPENDIX

*J. V. J. J.*  
Capt  
140

... Plan

PART SHEETS - 62.D.N.E  
- 62.D.S.E  
SCALE - 12,000

# MAP OF AREA

## 15<sup>TH</sup> FIELD COMPANY AUST ENGINEERS

PERIOD ENDING AUGUST 1918

APP 77 53



L  
R

R  
14

ORIGINAL

# #MAP OF AREA#

APP 75

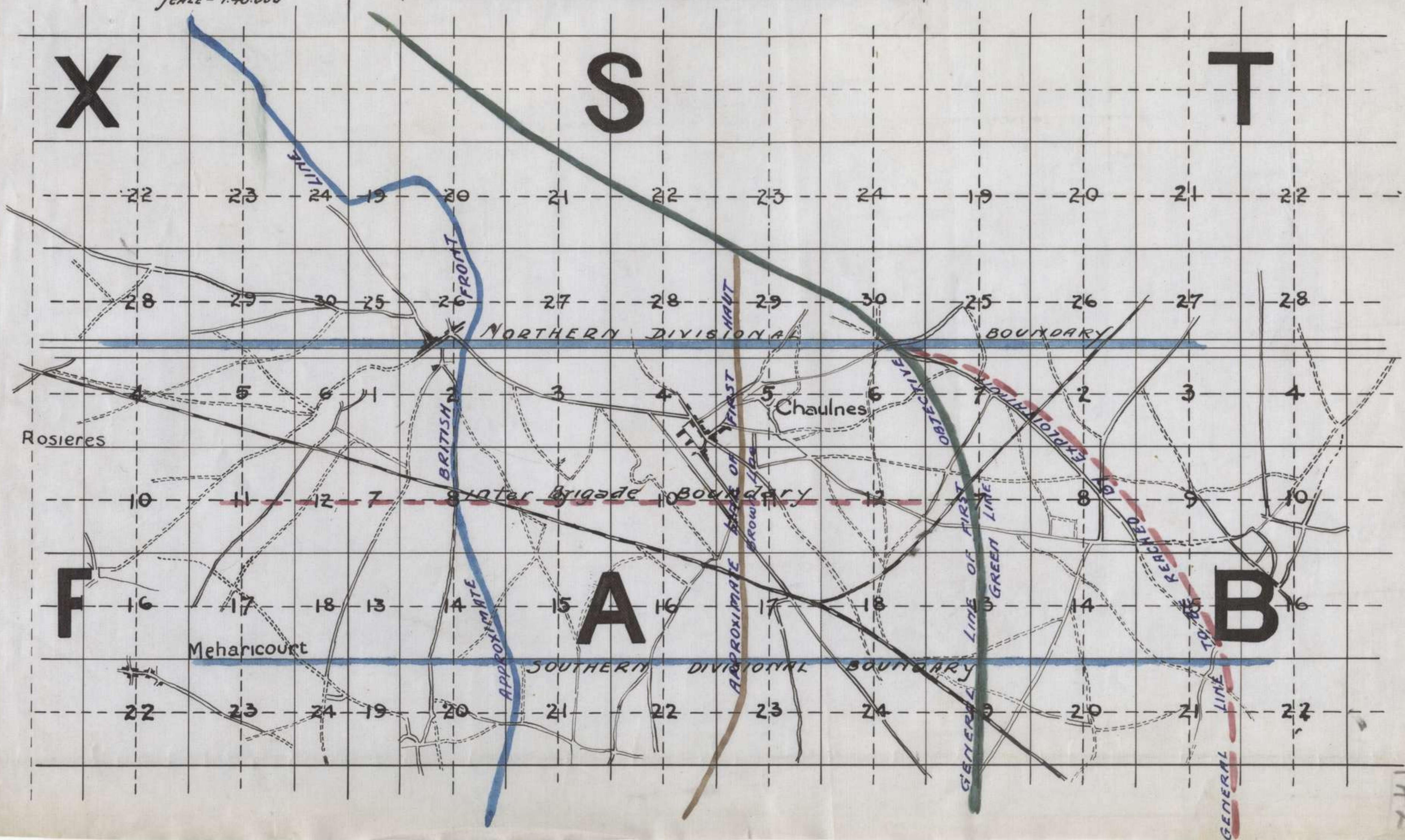
253

PART SHEET -

HARBONIERES

SCALE - 1:40,000

## #15<sup>TH</sup> FIELD COMPANY AUST ENGINEERS#

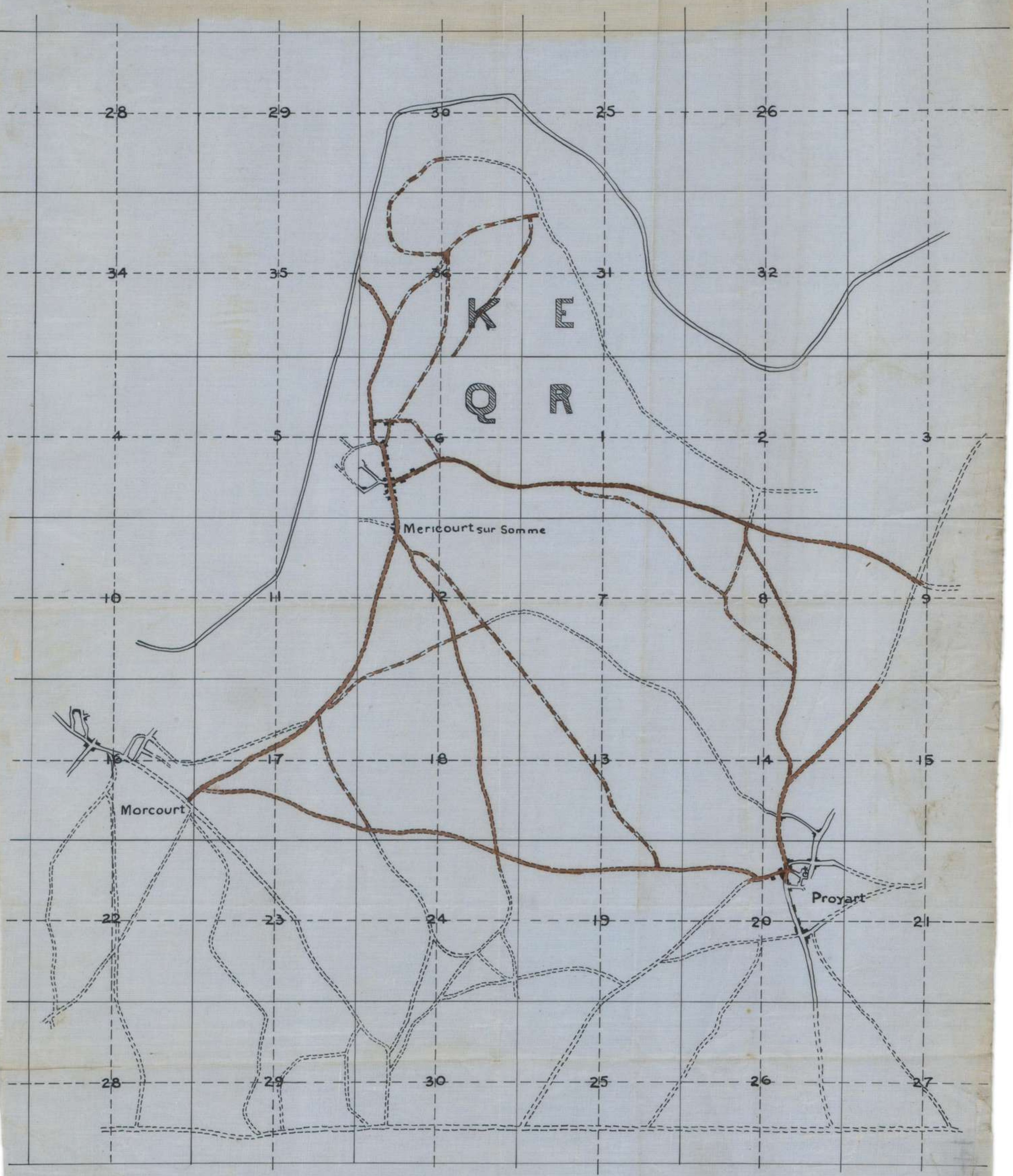


142

253

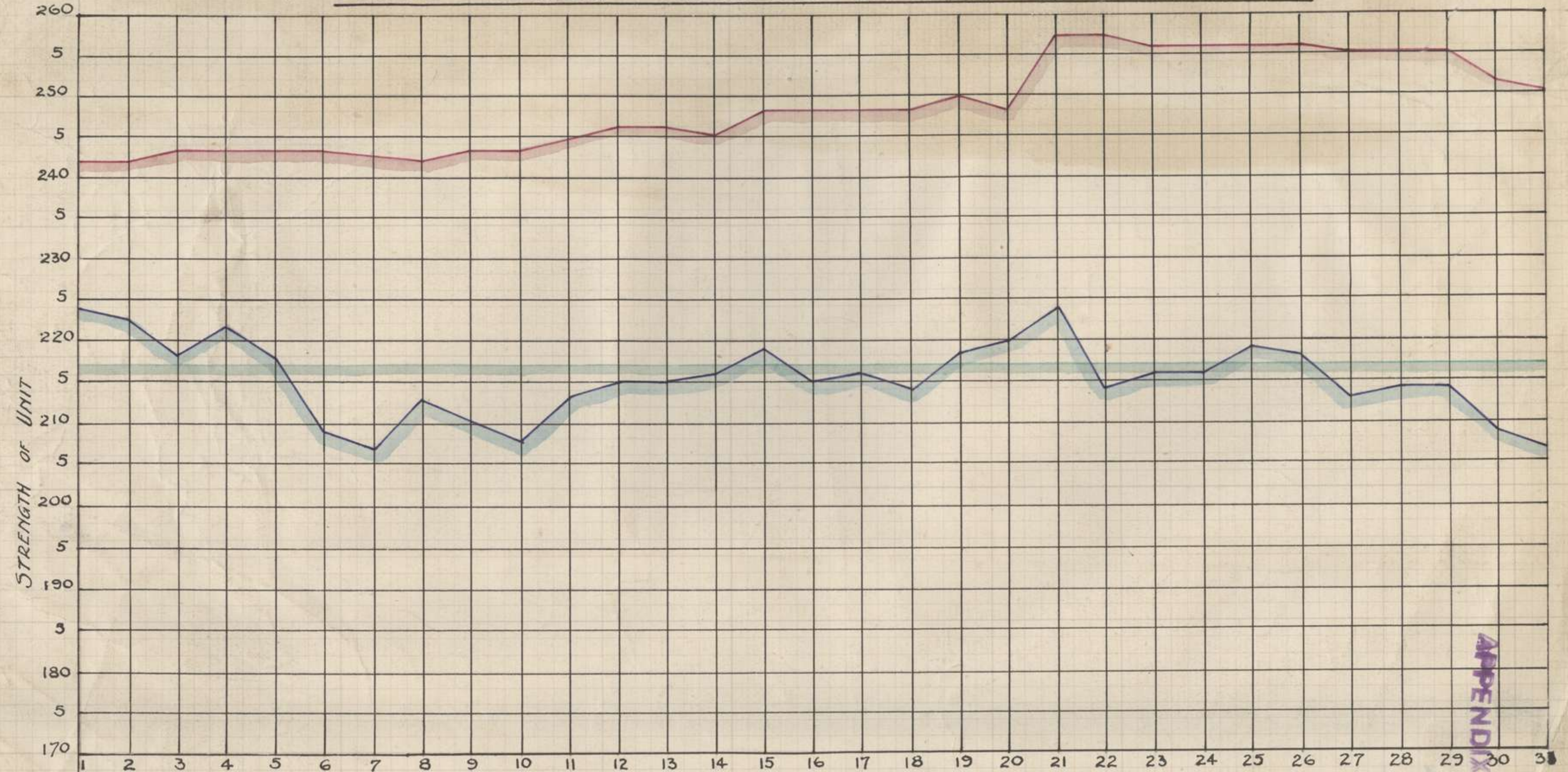
APP 76 143

ORIGINAL





# GRAPH SHEWING STRENGTH OF UNIT AUGUST 31<sup>ST</sup> 1918



THESE FIGURES INCLUDE OFFICERS.

WAR ESTABLISHMENT

TOTAL STRENGTH

ACTUALLY WITH UNIT.



APPENDIX

144

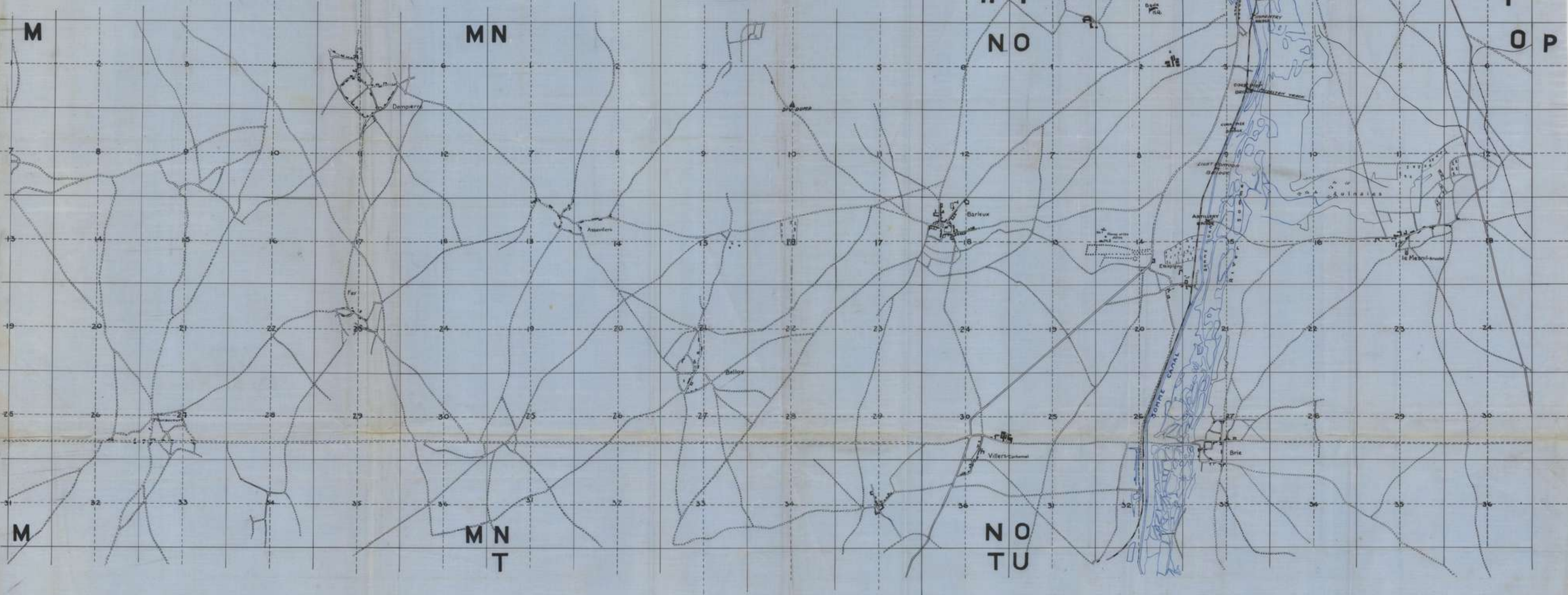
144

253

253

145

MAP OF AREA  
 #15<sup>TH</sup> FIELD COMPANY AUST ENGINEERS#  
 PERIOD ENDING AUGUST 1918  
 SCALE 1:20000



253 145