

AWM4

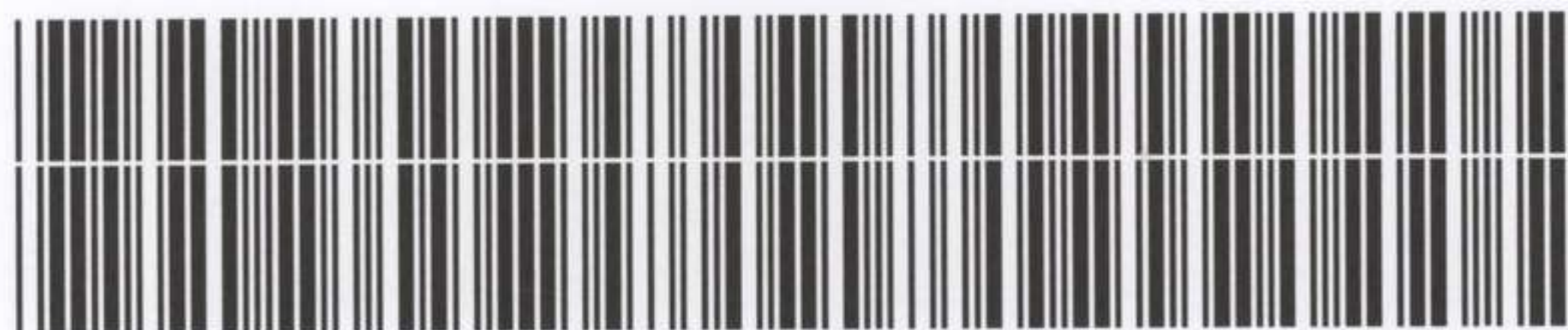
**Australian Imperial Force unit war diaries,
1914-18 War**

Formation Headquarters

Item number: 1/25/9 Part 3

Title: General Staff, Headquarters,
Australian and New Zealand Army
Corps

December 1915



AWM4-1/25/9PART3

AUSTRALIAN AND NEW ZEALAND ARMY CORPS.

LIST OF APPENDICES TO WAR DIARY. *of General Staff.*
HQ. ANZAC. December 1915

Appendix No.	Subject.
1	Intelligence Summaries - 30th Nov. - 20th Dec., 1915.
2 ✓	Strength returns of fighting strength.
3 ✓	Local names and their identification by map squares.
4 ✓	Organisation of staff duties at Corps Hdqrs., November and December.
5	Distribution of trench mortars, periscope rifles, etc., December.
6	List of hostile guns active against ANZAC, December.
7	List of ANZAC guns.
8 ✓	Maps and plans in use at ANZAC.
9	Report as to the possibility of use of gas by the enemy at ANZAC.
10 ✓	Artillery co-operation with IXth Corps.
11 ✓	Standing arrangements for naval Support.
12 ✓	Arrangements for co-operation between infantry and artillery.
13	Miscellaneous correspondence (Secret)
14 ✓	Orders and correspondence in connection with the evacuation of ANZAC.
15	Report on Signal Communications, ANZAC, December.

Note. *The above appendices are incomplete in this duplicate copy.*

Intelligence Summaries

30th Nov. - 20th Dec. '15.

Appendix ①

IG(a)

AUSTRALIAN AND NEW ZEALAND ARMY CORPS.

WAR DIARY (INTELLIGENCE).

10 a.m. 1st December to 4 a.m. 20th December, 1915.

INTELLIGENCE SUMMARY.

From 10 a.m. 30th Nov to 10 a.m. 1st December 1918.

A2

1st Australian Division.

MOVEMENTS - 1st observation post observed a large column of infantry moving in close formation and marching rapidly near WISE 48 N 8, and proceed along road to 48 S 8 where they disappeared from view. The number was estimated at 2000, they were accompanied by a pack train of 100 camels and donkeys and 2 large white tipped wagons.

30 men with arms and equipment were seen going out of communication trench south end PINE RIDGE. 60 soldiers and 4 wounded men and 3 pairs of bullocks passed from 48 N 8 to back of SUN RIDGE. Much smoke visible, especially over SUN RIDGE, N 8 N 8, LEUGH VALLEY and lower slope of KAVALI TREE. During the day a number of mules were seen moving to OLIVE GROVE and one party of 34 men all carrying big tins went to same place.

A considerable body of infantry in full marching order proceeded north, disappearing behind SUN RIDGE. 30 laden mules brought up in rear. Enemy mounted men active all day patrolling plains in rear of OLIVE GROVE.

WORKS - No change noticed in any enemy trenches.

GENERAL - Enemy aeroplanes passed over about 1600, anti-aircraft gun did good shooting.

About 1410 a man left HIND TRENCHES walked along HARRIS RIDGE in direction of about 600 yds from CHAMBER POST. He then walked into the sea and swam about 40 yds being fired on by his own people and finally disappeared.

2nd Australian Division.

WORKS - A Turkish post on SWIPERS RIDGE has been located. It is on the side of the ridge which slopes down into MALONE GULLY and wall down in the valley. It is at the end of the sap leading round MALONE GULLY which joins up SWIPERS RIDGE and the HES. The post is well hidden by green bushes but a water-proof sheet gives the place away. Behind the post is a small hollow capable of concealing about 50 men. This post is too low down for observation or sniping purposes.

GENERAL - Enemy machine gun which fires on to LONG PINE is located at SO 3 4.

At 1200 our artillery engaged in a sap across SUN RIDGE down which some mules and about one bn were moving. The shots appeared to be successful. Enemy machine gun located at SO X 4 and SO X 1

R.E. 2 A. Division.

MOVEMENTS - Opposite the APEX last night the Turks showed dummy figures. Turks seen in scrub on S. slopes of Hill 100 (OS 7 2/3) party disappeared on Mountain Battery opening fire.

WORKS - The Turks have loopholed a small knoll advanced from HULLAR BLUFF (OS 2 2) bearing 70 deg from WARWICK CASTLE. Trenches and communications also appear to have been improved in same locality. That was reported yesterday as a roofed in shelter, now, in a better light appears to be a low roofed embrasure in the fire trench 105 X 8.

No 2 Section. R.E. 2.

MOVEMENTS - Enemy heard cutting brush-wood opposite SHAR KUMU last night. Some broomstick bombs were thrown onto Hill 89.

Appendix No 1
30/11/18

Appendix No.1.

Quayle SS

INTELLIGENCE SUMMARY.

From 10 a.m 30th Nov. to 10 a., 1st Dec, 1918

1st Australian Division.

MOVEMENTS - 3rd Bn Observation post observed a large column of infantry moving in close formation and marching rapidly near RUINS 48 N 6 and proceed along road to 48 S 5 where they disappeared from view. The number was estimated at 6000, they were accompanied by a pack train of 105 camels and donkeys and 2 large white tipped wagons.

80 men with arms and equipment were seen going out of communication trench south end PINK RIDGE. 60 soldiers and 4 wounded men and 5 pairs of bullocks passed from 48 N 6 to back of GUN RIDGE. Much smoke visible, especially over GUN RIDGE, N 8 N 6, LEGGE VALLEY and lower slope of KAYALI TEPE.

During the day a number of mules were seen moving to OLIVE GROVE and one party of 34 men all carrying big tins went to same place. A considerable body of infantry in full marching order proceeded north, disappearing behind GUN RIDGE 30 laden mules brought up in rear. Enemy mounted men active all day patrolling plains in rear of OLIVE GROVE.

WORKS - No change noticed in any enemy trenches.

GENERAL - Enemy aeroplane passed over about 1600, anti-aircraft gun did good shooting.

About 1415 a man left BIRD TRENCHES walked along HARRIS RIDGE in direction of about 600 yds from CHATHAMS POST. He then walked into the sea and swam about 40 yds being fired on by his own people and finally disappeared.

2nd Australian Division.

WORKS - A Turkish post on SNIPERS RIDGE has been located. It is on the side of the ridge which slopes down into MALONE GULLY and well down in the valley. It is at the end of the sap leading round MALONE GULLY which joins up SNIPERS RIDGE and the NAK. The post is well hidden by green bushes but a waterproof sheet gives the place away. Behind the post is a small hollow capable of concealing about 30 men. This post is too low down for observation or sniping purposes.

GENERAL - Enemy Hotchkiss gun which fires on to LONE PINE is located at 80 G 4 at a 52.

At 1500 our artillery engaged in a sap across GUN RIDGE down which some mules and about one Bn were moving. The shots appeared to be successful. Enemy machine guns located at 80 X 4 and 80 X 1

N.Z. & A Division

a 11 c 60

MOVEMENTS - Opposite the APEX last night the Turks showed dummy figures. Turks seen in scrub on E slopes of Hill 100 (92 U 2/3) party disappeared on Mountain Battery opening fire.

WORKS - The Turks have loopholed a small advanced from BULGAR BLUFF (92 Z 2) bearing 70 deg from WARRICK CASTLE. Trenches and communications also appear to have been improved in same locality.

What was reported yesterday as a roofed in shelting, now, in a better light appears to be a low roofed embrasure in the fire trench 105 X 8

No 4 section E.M.B.

MOVEMENTS - Enemy heard cutting brush-wood opposite SUSAK KUYU last night. Some broomstick bombs were thrown on to Hill 60.

INTELLIGENCE SUMMARY.

From 10 a.m. 1st to 10 a.m. 2nd December 1915.

A 3

1st Australian Division report -

MOVEMENTS. - Parties of from 10 to 50 men were observed moving from RUINS 48 N 6 to behind GUN RIDGE from 0930 throughout the day, also numbers of pack animals and a few wagons.

A party of 160 men were seen leaving BOOMERANG TRENCHES (68 R 5) by one sap and a similar party entered by another sap at 1200.

A traction engine was visible moving backwards and forwards on sq 48 S, either hauling or road making, 50 men were working on the spot.

Working party of 30 men in new trench in GUN RIDGE about 300 yds W. of WINEGLASS. They were plain to view so artillery engaged target, causing stoppage of work.

German aeroplane passed over, crosses on lower plane obliterated.

WORKS - On GUN RIDGE enemy has been very active building new earthworks. On GABA TEPE a considerable amount of work is going on. At TWIN TRENCHES about 30 men were seen working in a communication trench.

At BIRD TRENCH further barbed wire placed before this trench. SNIPERS RIDGE - the parapet is much improved and new sand bags placed. At N. end of PINE RIDGE is an observation station which is much used when enemy artillery is firing.

GENERAL - The amount of reconnaissance by Turks has greatly increased. Observation from stations in PINE RIDGE and reconnaissance by 12 mounted men behind GUN RIDGE were very obvious.

2nd Australian Division report -

GENERAL - At 1430 enemy aeroplane circled over LONE PINE but went off in an easterly direction on being fired at. Hostile aeroplane flew over QUINNS at 1225 and opened fire with a machine gun she was carrying but did no damage.. She disappeared in a southerly direction. Stick bombs were again thrown from 80 N 8

N. Z. & A. Division report -

MOVEMENTS - Three of enemy relief to HACKNEY WICK (92 Z 7), between 1700 and 1800, shot by machine gun from BECKS BLUFF (92 Y 2/80 D/F). Considerable movement noticed between BİYUK ANAFARTA and "W" Hills, our artillery opened fire. A small patrol of Turks seen to come down AGHYL DERE from FARM for about 50 yards and then return. Parties seen cutting brushwood in 105 X 8. Patrol into KAJAJIK DERE report having seen no Turks, but much talking and coughing heard in their trenches.

No IV Section, E.M.B. report -

MOVEMENTS - On Hill 60 the enemy showed increased activity with their trench mortars, and broomstick bombs caused us several casualties. The mortar has been located.

GENERAL - About 25 75 mm shells were directed against the Indian lines at SUSAK KUYU, but no casualties or damage are reported. At midday the enemy obtained a direct hit on the H.Q. on Hill 60 with an M.E. shell. The enemy's countermining on Hill 60 was successfully arrested by the explosion of a camouflet and other protective mining work is proceeding.

DOCUMENTS - Pages of a small book, private letters, equipment register etc, belonging to a Corporal of the 1st Bn, 18th Regt, were found on RUSSELLS TOP. These are dated August 1914 and there appears no reason to suppose that this regiment has moved its position from opposite the left of our line.

Appendix ①

Appendix No. 1

1/12/15

1st Australian Division report -

MOVEMENTS - Usual traffic between GUN RIDGE and OLIVE GROVE and RUINS 48 N 6 - twenty seven different small parties being counted - 82 pack animals were noted. A large amount of timber and iron is being carted to 48 N 6. Four laden wagons and several mules being observed with this material. 20 mules and 24 men with sawn timber, about 8 ft long, went to OLIVE GROVE. Party of mounted men moved from sq 48 S eastward. Had the appearance of a staff. Enemy sea plane passed to the south going towards MUDROS at 1500. The black crosses were quite distinct.

WORKS - About 30 men were working in sap leading to GABA TEPE about junction sq 55 and 68. At BALKAN GUN PITS parties of men working in saps near pits all day. About 100 men were working in communication trench leading to TWIN TRENCHES. At GUN RIDGE various parties work all day, and on south end of PINE RIDGE 68 A 1/3 a party has persistently worked despite being heavily shelled by both howitzer and field gun fire, causing several casualties.

GENERAL - The feature of today's observation has been the large amount of work done by the Turks and size of their working parties. The work appears confined to deepening and improving existing trenches, and no new works are observable. Considerable quantities of timber, apparently 8' x 4" x 4" is being carried into 48 N 6 and OLIVE GROVE.

2nd Australian Division report -

WORKS - Enemy have done a lot of digging in their rear trenches opposite QUINNS. Two large mounds of earth have been thrown up at 80 S 2/b 44.

GENERAL - Stick bombs from 80 X 7/e 19 and Hotchkiss from 80 C 4/a 32 fired on to LONE PINE.

Enemy's artillery action along this Divisional front normal.

N. Z. & A. Division report -

MOVEMENTS - ~~Unsteady~~ traffic up and down the ABDEL RAHMAN BAIR noticed at a point where main communication trench is in view. Patrol from BECKS BLUFF (92 Y2/80 D/V) report hearing Turks on opposite side of clearing S. of FRANKLINS POST (92 Z 4) and opened fire on them.

WORKS - New enemy machine gun emplacement reported on Hill 100 at 92 P 7/U 1. Enemy's scrub cutters near 92 P 9 dispersed by machine gun fire. Enemy reported working at 92 Z 2/5.

GENERAL - A number of flares observed in direction of WALKERS RIDGE. A 75 mm gun, believed to be that located at 93 M 4, always now retaliates when section mountain guns at 92 X 1 fires. Today it fired a fuze which has not been seen before - an aluminium time fuze graduated in English numerals from 4 to 60.

No IV Section, E.M.B.

MOVEMENTS - Enemy heard mining at two different points in neighbourhood of Hill 60. When inspecting camouflet explosion yesterday a Turk carrying a torch was seen. Indian Brigade are still of the opinion that some enemy trenches in 92 D 7 locality have been vacated. Broomstick bombs were fired by enemy yesterday.

GENERAL - Camouflets exploded to interrupt enemy mining in NORFOLK STREET. Four star shells with smoke spirals seen towards TABLE TOP HILL.

Appendix ③

2-12-15

56

Appendix No. 1
2/12/15

2/12/15

R.N.A.S. No 2 Wing report - Reconnaissance of Sqs 80, 81, 88 and 89
for gun positions on the 30th November 1915.

Time.	Position of Object.	Report.
1100	68 T 5	4 emplacements occupied.
	S 5	4 " apparently occupied.
	N 9	4 " " "
	F 3	4 " doubtful.
	80 C 6	8 " - These lie at the head of the gully where it runs north east. The interval between each emplacement was the same, so that the eight appeared to form one battery. Could not see guns in the emplacements but their outline was clear and they did not look like deserted emplacements.
	80 K 5	Two emplacements apparently occupied. They lie one on each side of the trench connecting the two redoubts on CHUNUK BARR.
	81 A 6 - 9	4 emplacements occupied.
	3 - 6	2 " apparently occupied.
	B 1 - 2	4 emplacements occupied.
	58 I 2 - 3	SHIPPING. Hospital ship reported 26/11/15 by observer doing reconnaissance of net. Between this ship and the shore was another of the same type slightly larger. Could not see whether it was a hospital ship or not. It lay north and south parallel to the hospital ship but was distant from the shore only slightly more than its own length and might have been aground. A small boat lay alongside on the west side. Visability good.

Seen

R.A.S.

1st Australian Division report -

MOVEMENTS - Large body of enemy infantry, estimated about 400, observed moving through BOOMERANG SAP 68 R7 W1. Artillery engaged target with considerable effect. ~~A large pack train of over 50 horses~~

Men observed carrying off wounded, and confusion plainly visible.

A large pack train of over 50 horses observed halted near RUINS about 48 N 4, our 4.7" gun got in three shots and dispersed the party. After one round from 6" howitzer at guns 56 Q 4 large column of smoke observed apparently from exploded enemy ammunition.

WORKS - A large party of Turks are continuing works near GABA TEPE at junction of squares 68 and 55.

BALKAN GUN PITS - Much work has been done to trenches, and wire entanglements put out. This is practically repairing and extending works destroyed by naval guns. RUINS - 48 N 6 - There appears to be steady work going on in this position. BOOMERANG TRENCHES - Party of about 30 men working in sap going west. BIRD TRENCH and

TURKISH DESPAIR - have both been much improved, especially the latter where parapet is renewed, more entanglements out and good bomb proof shelter provided. KNIFE EDGE has been improved and much work done.

GENERAL - One Turkish officer was very plainly observed at north end of WEIR RIDGE pointing out positions to an officer of undoubted German appearance. Rifle fire shortened inspection.

2nd Australian Division. report -

GENERAL - A quiet day - Enemy continually threw up flares during the night. Our snipers accounted for a man in a trench at 80 X 1/b 18. The man was wearing a blue cap with a glazed peak.

N. Z. & A. Division report -

MOVEMENTS - About 1400 a large party of Turks seen entering trench on BULGAR BLUFF 92 Z 2 and a smaller party at 1430, our machine gun on FRANKLINS POST 92 Z 4 accounted for many of them, of the second party 12 were noticed wearing white bands on their arm, they were interspersed with the others. A patrol from BECKS BLUFF 92 Y 2/80 D/F waited at 80 F 1 for a Turk patrol and bombed them, the Turks numbered 18, a later patrol reported two dead Turks in the same locality. A still later patrol accounted for a Turkish sentry bayoneted by the Corporal in charge (Corporal Townsend, 16th Bn.) Our patrol reports the enemy patrols have dogs for purpose of giving warning. Enemy reported working on HACKNEY WICK 92 Z 7, to confirm a flare was sent up at 2040 and machine gun from BECKS BLUFF opened fire causing enemy to retire, enemy reported to have a machine gun on HACKNEY WICK. Road leading up ABDUL RAHMAN BAIR kept under observation at 95 L 2 during day, and 371 men and 232 mules counted, also some goats. About 1910 there was some heavy rifle fire from Turk lines along KAJAJIK DERE, they sent up a number of rockets and seemed much perturbed.

GENERAL - A patrol from left of N.Z.M.R. Brigade reports bottom of DERE from CULVERS POST rough and broken for 400 yards, another patrol recovered two Turkish rifles from Turks shot during the day. At about noon a Turk gave himself up to N.Z.M.R. Bde., coming up a small gully near GARIBROOK POST 92 O 9. ABDULLA OGLU MAHD (Turk) from CAISERRE (ANATOLA), Sergt, 5th Coy, 2nd Bn, 20th Regt, 7th Div, 3rd A.C.

No IV Section F.M.B. report -

Movements - Enemy heard mining to the right of shaft G 6 on Hill 60. The camouflet exploded yesterday in NORFOLK STREET was examined today. When tamping was removed the Turks could be seen laying a charge, and heard talking. Consequently we fired another camouflet in P. 1. an adjoining shaft. Explosion occurred at 1630 and since two distinct reports were heard, enemy's mine was evidently detonated. This explosion led to a 20 minute fusillade on the part of the enemy. Enemy trench mortar bombs on Hill 60; position of mortar has not yet been located.

A 6

Appendix No. 1
3-12-15
3/12/15
58

1st Australian Division report -

MOVEMENTS - At 1100 one hundred men in marching order disappeared behind GUN RIDGE. A small party was observed in GABA TEPE. At 1155 a relief was observed taking place in WINEGLASS SAP. 30 men moved into trenches, 21 left ~~the~~ trenches. At 1205, 19 men and three mules, and later 9 men and 2 mules left trenches through WINEGLASS. Numerous parties travelled from behind GUN RIDGE to RUINS 48 N 6 and OLIVE GROVE, some of the convoys being large. 100 laden mules, 30 for OLIVE GROVE and 70 for ruins and another of 50 laden mules and numerous bullock wagons being noticed. A large transport was observed moving south in KILID BAIR road, a few wagons but large number of pack animals, the column was about 300 yards long.

WORKS - At 0900 a party of 200 men was reported digging a communication trench from the BOOMERANG TRENCH along GUN RIDGE, though dispersed by artillery and machine gun fire made various efforts to renew work. Communication trenches to PINE RIDGE, DESPAIR WORKS and BIRD TRENCHES were deepened during the day. BALKAN GUN PIT works still going on. Barbed wire entanglements have been placed a considerable distance along the sea side of HARRIS RIDGE.

GENERAL . The activity and work progressing in the south is still noticeable . A new roadway is apparently being constructed from KAYALI TEPE to present great road leading south and the traffic between the two depots, one at 48 I and the other at 48 N 6 is constant.

2nd Australian Division report -

WORKS - The enemy has taken down some of his wire opposite the PINE.

GENERAL (1) Hostile Artillery - Hotchkiss located at 80 X 7/e 58. 6" at or about 80 S 6/8. 6" in 80 O. bearing from BULLY BEEF POST 62 degs. This may be a 4.5. Shells could be seen in the air.

(2) Hostile machine guns - located on 80 S 5/e 45, 80 X 1/e 58, 80 N 4 bearing 49 degs from TURKS HEAD in short sap and fires towards NEK. Enemy machine gun at GERMAN OFFICERS fired single shots and short bursts making a signal S.U. This was repeated from RUSSELLS TOP and elsewhere. May have accidental or intentional.

N.Z. & A. Division report -

MOVEMENTS - A good deal of individual traffic noticed in vicinity of enemy's sap at 81 A 1 and our snipers got good targets, this is an observation post. Enemy were again seen on three occasions moving to BULGAR BLUFF 92 Z 2, and our machine gun accounted for 12. Enemy's red crescent details were seen coming down trench, and as they were alone were not fired on. Point 95 L 2 was carefully observed and a tally is being kept of the traffic. Exact position of Turk machine gun on HACKETT WICK has not yet been located. A patrol on BLACK SWAN GULLY 80 F 1/2 at 0500 reports a Turk patrol coming down gully, but on slight movement by our patrol the enemy retired hastily.

WORKS - During the night the enemy were reported to be hard at work on SNIPERS WEST and ridge, evidently repairing damage done by 17th Siege Battery.

GENERAL - Deserter was taken out yesterday and pointed out the trenches of the Turkish units on the KALAJIK DERE, later he pointed out (1) the position of Turkish guns to the C.R.A. who had the spot shelled, about 95 R 7.

(2) the position of a gun supposed to be on the forward slope of ABDEL RAHMAN BAIR and (3) an observation post on the same ridge.

No IV Section B.M.B.

MOVEMENTS - Shrapnel and H.E. shells fired by Turks on Hill 60. Enemy continue to mine in two places under Hill 60. Enemy heard talking in their mine under NORFOLK STREET, so the interpreter was sent up to listen, but talking had ceased before he arrived.

WORKS - Enemy erected bomb-proof network opposite our IVY LANE bombing station.

Appendix (D)
Appendix No. 1
4/12/15
4/12/15
59

1st Australian Division report

MOVEMENTS - At 1100 one hundred men in marching order, disappeared behind GUN RIDGE. A small party was observed in GABA TRENCH. At 1135 a relief was observed taking place in WINDMILL TRENCH. At 1205, 12 men and three mules, and later 3 men and 2 mules left trenches through WINDMILL TRENCH. Numerous parties travelled from behind GUN RIDGE to MINE 42 N 2 and OLIVE GROVE, some of the convoys being large. 100 laden mules, 50 for OLIVE GROVE and 50 for MINE 42 N 2 and OLIVE GROVE, some of the convoys being large. A large transport was observed moving south in KILL BARR road, a few wagons but large number of pack animals, the column was about 300 yards long.

WORKS - At 0900 a party of 200 men was reported digging a communication trench from the BOONBANG TRENCH along GUN RIDGE, though dispersed by artillery and machine gun fire made various efforts to renew work. Communication trenches to PINE RIDGE, BURNING WORKS and BIRD TRENCH were deepened during the day. BALKAN GUN PIT works still going on. Barbed wire entanglements have been placed a considerable distance along the sea side of BARRIS RIDGE.

GENERAL - The activity and work progressing in the south is still noticeable. A new roadway is apparently being constructed from KAYALI TRENCH to present great road leading south and the traffic between the two depots, one at 45 I and the other at 45 N 2 is constant.

2nd Australian Division report

WORKS - The enemy has taken down some of his wire opposite the TRENCH. (1) Hostile Artillery - Positions located at 29 X 70, 29 X 71, 29 X 72, 29 X 73, 29 X 74, 29 X 75, 29 X 76, 29 X 77, 29 X 78, 29 X 79, 29 X 80, 29 X 81, 29 X 82, 29 X 83, 29 X 84, 29 X 85, 29 X 86, 29 X 87, 29 X 88, 29 X 89, 29 X 90, 29 X 91, 29 X 92, 29 X 93, 29 X 94, 29 X 95, 29 X 96, 29 X 97, 29 X 98, 29 X 99, 29 X 100. (2) Hostile machine guns - located on 29 X 45, 29 X 46, 29 X 47, 29 X 48, 29 X 49, 29 X 50, 29 X 51, 29 X 52, 29 X 53, 29 X 54, 29 X 55, 29 X 56, 29 X 57, 29 X 58, 29 X 59, 29 X 60, 29 X 61, 29 X 62, 29 X 63, 29 X 64, 29 X 65, 29 X 66, 29 X 67, 29 X 68, 29 X 69, 29 X 70, 29 X 71, 29 X 72, 29 X 73, 29 X 74, 29 X 75, 29 X 76, 29 X 77, 29 X 78, 29 X 79, 29 X 80, 29 X 81, 29 X 82, 29 X 83, 29 X 84, 29 X 85, 29 X 86, 29 X 87, 29 X 88, 29 X 89, 29 X 90, 29 X 91, 29 X 92, 29 X 93, 29 X 94, 29 X 95, 29 X 96, 29 X 97, 29 X 98, 29 X 99, 29 X 100. This was reported from MOUNTAIN TOP and elsewhere. May have accidental or intentional.

N.Z. & A. Division report

MOVEMENTS - A good deal of individual traffic noticed in vicinity of enemy's camp at 21 A 1 and our anti-aircraft good targets, this is an observation post. Enemy were again seen on three occasions moving to MOUNTAIN TOP 29 X 2, and our machine gun accounted for 12. Enemy's red cross detail were seen coming down trench, and as they were alone were not fired on. Point 29 X 1 9 was carefully observed and a tally is being kept of the traffic. Exact position of our machine gun on MOUNTAIN TOP has not yet been located. A patrol on BLACK SWAN GULLY 29 X 1 2 at 0200 reports a tank patrol coming down gully, but on slight movement by our patrol the enemy retired hastily. During the night the enemy were reported to be hard at work on SHIPING WEST and RIDGE, evidently repairing damage done by 17th Siege Battery.

GENERAL - Despatch was taken out yesterday and pointed out the trenches of the Turkish units on the KALIAK DEW. Later he pointed out (1) the position of Turkish guns to the G.N.A. who had the spot shelled, about 28 N 7. (2) the position of a gun supposed to be on the forward slope of ANGLE BARRAM BARR and (3) an observation post on the same ridge.

No IV Section N.Z. & A.

MOVEMENTS - Enemy heard talking in their mine under MOUNTAIN TOP, so the interpreter was sent up to listen, but talking had ceased before network opposite our IV mine holding station.

Appendix No. 1
4/12/41

1st Australian Division report -

MOVEMENTS - In the neighbourhood of 48 N 6 much movement was observed. At 0940 at least a battalion appeared to be inspected. At 1050 a small number of men, about 60, doubled across the ground and closed into mass formation. Forty laden pack animals and 200 horses with empty packs were seen near 48 N 6. At 1435 about 50 men were observed at 48 N 8, apparently addressed by a mounted man, they moved off at the double. At 1545 a large body of troops were seen coming down slopes of KAYALI TEPE and forming up on flats. From there they marched to 48 N 6. The numbers were difficult to estimate, but there were over 2000. The first 500 were wearing white trousers and blue coats. Three ambulances and a pack train estimated at 400 animals accompanied troops. At 1600 a party of about 300 men were seen to go south over GUN RIDGE through BOOMERANG TRENCH, after leaving the saps appeared to go in direction of LONE PINE.

WORKS - BALKAN PITS - Parties of men working all day. GABA TEPE - Large parties of men working in communication trench. sq 56 A 1. About 100 men were working in sap leading to CEMENT GUN emplacements. BOOMERANG TRENCH - Sap was continued all day in spite of artillery fire. PINE RIDGE - Some extensive earth mounds are being thrown up and what appears to be a large communication trench up LEGGE VALLEY is under construction.

GENERAL - Enemy appears very active in neighbourhood of the depots at 48 N 6 and works towards GABA TEPE.

2nd Australian Division reports -

MOVEMENTS - (1) Hostile Artillery - Enemy's Hotchkiss at 80 X 7/c 38 again fired on to LONE PINE.

(2) Hostile M.G.'s - Guns were located at 80 X 1/c 29 & 80 X 6/a 44. A machine gun firing on RUSSELLS TOP was silenced by a Garland mortar.

GENERAL - An unusually quiet day.

N. Z. & A. Division reports -

MOVEMENTS - Two Turks accounted for going to BULGAR BLUFF, one an officer dressed in greyish blue with peaked cap seen to fall. A Turkish working party was fired on near the FARM in the afternoon, and 3 of the party wounded.

WORKS - A new work noticed on spur opposite CANTERBURY MTD RIFLES at 92 Z 2. One of our patrols observed indications of an enemy's listening post in BLACK SWAN GULLY 80 F 1/2.

GENERAL - Mountain artillery from 92 X 1 did damage to enemy's trenches on SANDBAG RIDGE 92 U 5, which the enemy attempted to repair, but were stopped by our machine gun fire. A patrol going out later to examine Turk wire entanglements heard the enemy digging. Patrols in north branch of AGHYL and KAJAJIK DERES had nothing to report.

No IV Section F.N.B.

WORKS - Enemy mining on Hill 60 to a greater extent. Picking is heard to the right of and above shaft G 6, also intermittently to the right and above shaft P 10. Picking also heard in shaft P 1 close to an old crater, but mining officer considers this is dummy work. In NORFOLK STREET enemy not heard in spite of extensive protective mining on our post. Enemy's grenade-proof roofings on Hill 60 are intact, yesterday's bombardment not having disturbed them.

Appendix 9

5-12-15-

60

Appendix No. 1

5/12/15

A9

Information obtained from ABDULLA OGLU MAHD, surrendered to N.Z.M.R. Bde.
3rd December 1915.

Rank - Sergeant.

Company -	1st.	Commander -	MAHD SAYED Effendi.
Battalion -	2nd	"	EMIN BEY.
Regiment -	20th	"	ALI BEY.
Division -	7th	"	AZIZ BEY.
Army Corps -	3rd	"	RIZZA PASHA.

Note - HALID BEY late C.O. of Regt has been killed,
ESSAD PASHA who commanded 3rd Army Corps has gone to
CONSTANTINOPLE for rest.

1. PERSONAL HISTORY - A native of CAISSERE in ANATOLA he was called up 5-5 years ago in CONSTANTINOPLE, where he was a cab driver; his first 5 years service were done in 19th Regt at KIRK KILISSE. He was wounded in the BALKAN WAR and sent to CONSTANTINOPLE. After six months rest at KIRK KILISSE he rejoined the Regt at RODOSTO, where it remained with the rest of the Corps for 7 months moving to GALLI POLI and thence after 5 months to SOGHANDERE. He was transferred to the 20th Regt about 12 months ago and was promoted to Sergeant about 5 months after joining. He gives his age as 24 but looks much older.

2. MOVEMENTS OF DIVISION - The Division was at HELLES from April to June and after considerable losses (the 2nd Bn, 19th Regt, was wiped out being all wounded or captured) was withdrawn to BULAIR to refit, but was brought back in a hurry to the ANAFARTA Sector at the beginning of August, and took part in the SUVLA fighting. It has been in this district ever since.

3. STRENGTH & COMPOSITION - The Division consists of 3 Regiments, 19th, 20th, & 21st, there are 5 battalions in each, and the 5 company system prevails. The 6th Coy of Engineers is attached, one platoon being allotted to each regiment. All battalions used to have 4 companies but in July 1914 one company from each was withdrawn to form the 57th regiment. The strength of all Coys in the 20th Regt is about the same and average approximately 300, but the proportion of regular soldiers is small and the remainder are reservists and REDIFS. The last draft joined in August and numbered 250 men who had had very little training. In the 2nd Bn each Coy is officered by 1 Captain who commands the Coy 1 Lieut and 3 Cadet officers (1 per platoon) these last are young officers straight from the military schools and the three in his Coy joined in September last.

4. DISTRIBUTION - The 20th Regt relieved the 21st about 12 days ago. In this Division a whole Regt. (3 Bns) is taken out of the firing line and sent to a rest camp about every month, (the 20th Regt was out for about 25 days); this system also prevails in the 6th Division, but is not universal as some Divisions have a system of withdrawing one Bn from each Regt.

In Regts reliefs are carried out by Battns in the firing line one in reserve about 15 minutes away, each Bn goes into Reserve for 10 days in turn. At night the whole of a Bn is in the firing line, in the day time only half at a time, each half doing 6 hours. One whole Bn comes on duty at 1800, half comes out at 0700 and relieves the other half at 1500. The number of men actually in the trenches depends on their situation. Where the Turkish trenches are close to our own, as on Hill 60, the garrison is doubled. Where a valley separates the lines the trenches are sparsely held.

5. LOCATION - Prisoner was taken up to our trenches on the KAJAJIK DERE and stated that 16th Regt was on KAJAJIK AGHALA (Hill 60) 3rd Bn, 29th Regt in front of WELLINGTON MTD RIFLES, 2nd Bn next on left occupying Hill 100, then the 19th Regt and beyond that on CHEMEN TEPE the 24th. He does not know where the 22nd and 25th Regts are. The 21st went into the Divl Rest camp about 12 days ago and the 18th who were in the plain and are said to have lost two Coys from drowning and exposure were withdrawn to rest about 6 days ago.

The rest camp and H.Q. of his Division is in a valley behind ABDEL RAHMAN BAIR. Possibly the DEUMEN DERE (93 N) as it is reached by a road which runs into the main ANAFARTA Road just west of the village (e.g. road at 93 C 5).

5/12/15

A 10

(2)

6. ARMS - The whole Regt is armed with Mausers, two patterns one with magazines and one without. There are no men specially told off as snipers. There are no trench mortars or catapults and all bombs of the cricket ball pattern are thrown by hand. Five men per Coy are trained as throwers. There are three machine guns in his Battalion worked by Turks. There is also a good supply of S.A.A.

7. GUNS - Prisoner stated he knew of five guns behind ABDEL RAHMAN BAIR and pointed out (1) A small ridge behind which he stated were two howitzers (93 R 7) (This was shelled) (2) position of a gun on forward slope (3) observation station.

8. GENERAL CONDITIONS - (1) Effect of bad weather - Torrents of water come down on the trenches from the direction of ANAFARTA and ABDEL RAHMAN BAIR - the communications were blocked, so the men took to the country leaving the trenches, and then got drowned in the mud.

(ii) Food - In the morning about 8 a.m. they get their porridge made from grains - at midday cheese and on alternate days olives and in evening white beans, sometimes onions with a little meat - and a daily ration of 2 lbs of bread. The beans are cooked with fat. The porridge and beans are not satisfying, but keeps them alive. Since the cold weather they get a ration of raisins and when these are served out they are in lieu of cheese. He has only had coffee once they do not get tea as there is no sugar (he says tea is no use without sugar).

(iii) ~~Medicine~~ - Sanitary - Behind each trench is a small latrine, lime is used. The orders are very strict about keeping trenches clean, so as to keep off sickness - not even cigarette ends are seen in the trenches, which are swept out twice a day.

(iv) Medical - One doctor per Bn - slight cases are not sent to the hospital but looked after by the doctor. Iodine is very short: otherwise the doctors appear to have plenty of medicines - only the very severe cases are sent to CONSTANTINOPLE.

~~XXXXXXXXXXXXXXXXXXXX~~

9. EFFECT OF ARTILLERY FIRE Our artillery causes daily casualties. In the vicinity of where he came from about 10 days ago 2 Sgt Majors and 5 Privates of Divl H.Q. were hit.

10. REASONS FOR DESERTION - In order to find out if there are any troops in our lines his Major (Bn Comdr) ordered him to attack with 50 men a certain portion on the night of 2/3rd - he sent 1 Corporal and 2 men ahead to reconnoitre and these got shot - so he took his party back: in the morning, his Captain told him he must carry out his attack during the day as he had not done it during the night - in the 50 men there are two Sergeants - the second Sgt was told by the Captain that if the job was not carried out the senior Sgt was to be shot - the second Sgt told him so he said he would go out and reconnoitre, and came into the lines instead, as he knew it was impossible to attack with only 50 men.

11. GENERAL - States he has a brother in Egypt, who is a boiler maker in Cairo.

Has heard all our prisoners are well looked after and are sent to Egypt or the islands: he also heard this through a prisoner who also escaped at CAPE HELLES.

He is sure many would surrender if they got the chance but they never talk about such a thing to each other - he knows, though, of two in Coy who want to get away: one a Sgt and the other a Private.

It is very difficult to get away, as there are orders that anyone seen going towards the English lines is to be shot at once.

He is sure that if they had their way they would not be fighting the English, but at present the Germans are managing everything.

1st Australian Division report -

MOVEMENTS - Between 0900 and 1000 the troops on PINE RIDGE which presumably supplies WEIR and SNIPERS RIDGES and KNIFE EDGE moved out, taking all their furniture and equipment, being relieved by new troops, apparently well equipped. About 400 men were counted passing BOOMERANG SAP 68 R 4, but those entering by WINEGLASS Sap were unobserved. At 1035 a body of infantry, estimated at 1500, passed 48 S turning into sunken road leading round KAYALI TEPE to SOGHANLI DERE. Between 200 and 350 pack and saddle horses were grazing in meadow 48 R. About 80 or 90 men were seen marching across SANDY PATCH 48 N 8. A number of pack horses and mules, some evidently carrying ammunition, came down BOOMERANG Sap 68 R 4. Many parties of men and pack animals observed moving towards 48 N 6 and OLIVE GROVE. 80 men and 78 laden mules going to OLIVE GROVE alone.

WORKS - Enemy is still working consistently in communication trenches between GUN and PINE RIDGES, and on DESPAIR, and GEMENT GUN EMPLACEMENTS. Large parties continue to work on sap leading to GABA TEPE and on HARRIS RIDGE, where barbed wire is being put out right along the front.

GENERAL - Report of submarine could not be confirmed. South of GABA TEPE there is a fixed object like a buoy which has been there for some time, yesterday a group of three similar objects further west were kept under observation all day. Enemy aeroplane, with black squares under planes, passed over, dropping several bombs and darts with apparently no effect.

2nd Australian Division reports -

GENERAL - A 75m/m gun shelled Courtneys from 80 S 3/8. POPES Report enemy to be using a new variety of grenade - a specimen of which has been obtained. It is reported that a man wearing a German spiked helmet was seen in GERMAN OFFICERS TRENCH yesterday. At 1530 an enemy aircraft twice crossed our lines at WIRE GULLY and dropped two bombs which failed to explode and also some darts. At 1550 an enemy aeroplane passed over RUSSELLS TOP and dropped two bombs at the top of MONASH GULLY - one bomb only exploded. It also dropped a bomb on to the enemy's trenches at the NEF. This bomb detonated well.

N.Z. & A. Division report -

WORKS - The enemy have done a large amount of building up to their damaged trenches on SNIPERS NEST. The Turks evidently set great store by their position on the PINNACLE 80 K 1/2 judging by the quickness by which they rebuilt it - it was rebuilt by the 6th so the 17th Siege Battery again demolished it yesterday. The Turks have now deepened their communication trench to BULGAR BLUFF 92 Z 2.

GENERAL - One Turk accounted for by our snipers, he is reported to be a German artillery observer - he was first seen during the H.E. bombardment on Sunday 5th inst.

No IV Section. R.M.Bde report -

MOVEMENTS - Enemy sniper crept forward and fired at our party working in KAIJAJIK DERE.

WORKS - Enemy broke into our gallery P 1 in Hill 80 and wounded one man. Enemy heard working on four mines in Hill 80.

A 11

Appendix (11)

6-12-15
Appendix No. 1

6/12/15

1st Australian Division report -

MOVEMENTS - One motor ambulance and five men went south to RUINS 48 N 3. About 40 men came from gully at 48 N 3 moving S.W. Approximately a battalion of infantry on parade at 48 N. Seventy saddle horses were observed being led by dismounted men from 48 N to 48 S. Ten men and one pack mule passed down BOOMERANG communication trench 68 R 4. A party of thirty men observed drilling at 48 S 1. Eleven laden pack horses and about twenty men travelled S. in road through sq 46. Fifteen men from 48 S came about 300 yards into the open and apparently reconnoitred the ground. Some of the men wore white trousers and dark tunics. About 100 men were seen coming into BOOMERANG Trench over GUN RIDGE.

WORKS - Turks are doing much work on HARRIS RIDGE putting out barbed wire and improving trenches generally. A fence of Chevaux-de-frise has been erected from the ridge to the sea. Considerable work going on in sq 56H 7.8.9. Both in ANDERSONS KNOLL and BOOMERANG S&P large parties are busy. Damage done to BIRD TRENCHES by Jap bombs repaired.

GENERAL - Report by 1st Inf Bde that enemy were moving heavy guns from position about 46 X 5, could not be confirmed by artillery. Much traffic to and from the Turkish hospital 48 M 9 has been noticed.

2nd Australian Division report - Nil.

N. Z. & A. Division report -

MOVEMENTS - At dark slight movement reported on HAGENY WICK 92 Z 7, probably manning of posts by Turks for night. SAZLI BRIT DERE, both branches AGHYL and KAJAJIK DERE and Dere 92 U 1/4 patrolled, but no movements of enemy reported.

WORKS - Enemy's communication sap at 81 A 1 has been somewhat concealed with bushes, it was being much used yesterday. At 1750 Turks were noticed working on trenches opposite WARWICK CASTLE 92 Y 6, but compelled to cease work by one of our machine guns. Enemy has covered in a portion of communication trench at BULGAR BLUFF 92 Z 2, and removed barbed wire from in front of his trenches in vicinity of FARM leaving supports standing.

GENERAL - Our miners exploded a mine to damage Turk sap cut in APEX direction. Snipers post located opposite CARISBROOK POST 92 O 9 was successfully broken up by converging rifle fire from our trenches. Patrol up LITTLE DERE 92 Y 9 proceeded as far as GREEN KNOLL, in advance of FRANKLINS POST 92 Z 4. The Corporal in charge states he heard some of the enemy conversing in German, difference from Turkish being easily distinguishable, and is of opinion they were engineers or machine gunners. Turks also heard fixing stakes, apparently wire fixings at TURK TRENCHES 92 Z 9 to 80 F 5.

No IV Section I.M.E.

MOVEMENTS - On Hill 60 enemy attempted to throw grenades at newly placed machine gun by crawling out of their trenches. They were unsuccessful.

WORKS - Enemy mining in five places on Hill 60 in BRACE LANE locality, he is working very deep.

Appendix No. 1

7/12/15

Appendix B 7-12-15 64

1st Australian Division report -

MOVEMENTS - At 0855 a party of nearly 200 men came over GUN RIDGE into BOOMERANG TRENCHES, all carrying picks and shovels. At 1600 about 150 men were seen leaving BOOMERANG TRENCHES returning over GUN RIDGE. Between 1500 and 1615 a number of Turkish troops, estimated at 1000, crossed the ASMAK DERE parade ground 48 N 5 and moved into 48 N 6. 15 pack animals and 15 men moved into trench 68 R 4. Usual traffic between back of GUN RIDGE, OLIVE GROVE and RUINS 48 N 6. At 0155 two men were seen to disappear into a communication trench on GABA TEPE after which a loophole at that point was uncovered and remained so all day.

WORKS - On SNIPERS RIDGE a party actively digging was dispersed by our Jap mortar. A large party has been digging a communication trench on GUN RIDGE. Work going on at ANDERSONS KNOLL and PINE RIDGE.

GENERAL - The retirement of night garrison on SNIPERS RIDGE and KNIFE EDGE was observed at 0720 and reliefs appear to be carried out between 0600 to 0800 and 1800 to 2000. Enemy has a new gun position enfilading SILT SPUR. At 0430, two shots, evidently searching for Jap mortar, being put in between front firing line and second line. A bomb was fired from WEIR RIDGE near a broomstick bomb position which passes over 3rd Bn observation station. In its flight it emptied a liquid on the ground, no odour was discovered and no explosion occurred when bomb dropped. No flash was discerned when bomb dropped but a faint sound of discharge thought to be heard when second bomb fired.

2nd Australian Division report -

MOVEMENTS - Movements of enemy troops were heard at the foot of WIRE GULLY and in the communication trench towards SNIPERS TRENCH.

WORKS - The height of the enemy's trenches on spur running north from QUINNS has been raised.

GENERAL - LONE PINE was shelled by a small gun from SCRUBBY KNOLL (probably one of the guns located 80 Z 5 or 5-8 which has been reported from other sources as being active lately) and also by a 10 pdr from ANDERSONS KNOLL (possibly a moveable gun which has lately fired from 68 O). Heavy shells passed over LONE PINE trenches from a bearing of 80 degrees (this bearing is confirmed by 1st Aust. Div. and the gun may be the 9.2" reported to be in position near TASHLA TEPE (82 P). One of our machine guns silenced an enemy machine gun at 80 X 7 - b 60, three of the enemy were accounted for.

N.Z. & A. Division report -

MOVEMENTS - The Turks were active all day about SAND BAG RIDGE (92 U 5), in the night they cut out French wire entanglement and swung back 12 feet of it - this was repaired, the party not being interfered with. A patrol on KAIJIK DERE reported at 2240 a party of about 50 Turks moving towards Hill 60, it was reported to WELCH Horse, nothing further seen. No movement reported on SNIPERS NEST during the night, but was shelled heavily in the afternoon.

GENERAL - The machine gun fire onto working party on our new trench in front of WARWICK CASTLE appeared to come from enemy's trench in front of BEES BLUFF (92 Y 2/80 D/F). A machine gun reported as located on BULGAR BLUFF (92 Z 2) firing at Mtd Rifles section of line, this is being watched. During the shelling of SNIPERS NEST a Turk telephone wire was cut.

Appendix 15
 8-12-15
 Appendix No. 1
 65

No. IV Section report -

MOVEMENTS - Enemy seen putting up wire and repairing their bomb proof roofings on Hill 60.

WORKS - Enemy mining energetically under Hill 60, but not heard opposite NORFOLK STREET yesterday.

Enemy had evidently laid their charges yesterday near BEACH LANE, as we picked up pieces of their time fuze. This morning further evidence of the enemy's activity is to hand, as in consequence of the explosion of one of our camouflets three of the enemy's charges were exploded.

MISCELLANEOUS -

I. - 9th Corps report - On the 5th inst LALA BABA was subjected to a systematic bombardment which caused few casualties to personnel, but some 55 transport animals were killed, otherwise little material damage was done. The 12th Division (enemy) is said to be commanded by a German officer who relieved the Turkish commander about a month ago.

At least four big guns are reported by a prisoner to be on the way from CONSTANTINOPLE for which concrete emplacements are being made near the windmills at ANAFARTA SAGHIR.

An enemy observation post is reported on Hill 60 and officers have been seen there on two occasions.

II. - C.E.D. Report - It is not thought that railway communication between AUSTRIA and CONSTANTINOPLE via NISH can be established for several weeks.

The Bulgarians do not relish the prospect of fighting the Russians with the Turks as their allies.

Bulgarian desertions on the Anglo-French front are on the increase.

It is officially announced that Roumania has authorized the passage of Russian troops concentrated on her frontier. Count Reventlov in the "Deutsche Tag Zeitung" manifests lively anxiety over the probable passage of Russian troops through Roumanian territory and endeavours to prove to the Roumanians that it is their duty to prevent it.

A14

15

Appendix No. 1
66
S/11/15

1st Australian Division report -

MOVEMENTS - The traffic to the RUINS 48 N 8 and OLIVE GROVE was about, no special features except a number of men each wheeling wheelbarrows passed from OLIVE GROVE to GUN RIDGE. At 0850 about 100 Turks were seen coming over GUN RIDGE into BOOMERANG TRENCH, and at 1515 about 200 men went back, all carried picks and shovels. At 0902 a group of men and horses seen at 48 S 4. One man disappeared in communication trench on GABA TEPE near port hole under observation as a Turkish observation station. Five men moved up communication trench 68 R 4, four of them carrying some heavy object. 106 men and 5 pack animals passed out from trench 68 R 4. A motor car with four persons observed about 48 M 5. 250 troops moved from 48 S in direction of 48 N 6 at 1625.

WORKS - Work is actively going on at GUN RIDGE, CEMENT GUN EMPLACEMENT and BALKAN GUN PITS, ANDERSONS KNOLL and BOOMERANG TRENCH. On south end of SNIPERS RIDGE and south end of KNIFE EDGE new sand bags have been placed and new loop holes constructed and new communication trench in TURKISH DESPAIR north of HOLLY RIDGE from PINE RIDGE has been started.

GENERAL - Fires were lighted in SNIPERS WEIR and PINE RIDGES and WANLISS GULLY and LEGGE VALLEY at 0645. Enemy aeroplane passed over at 1645, dropped several bombs which did not explode, also some darts. All observers report it firing a machine gun, but no aerial target seen.

2nd Australian Division report -

MOVEMENTS - An enemy working party opposite POPES was dispersed by our fire.

WORKS - The enemy opened three holes in line between M 5 crater and their own trenches at 80 N 7; this is probably a gallery and can be easily bombed by us.

GENERAL - An enemy machine gun has been located at 80 X 4. LONE PINE was shelled with 75 m/ms and by a 6" Howr from direction of JOHNSTONES JOLLY. RUSSELLS TOP was shelled by 75 m/ms and by a 6" Howr opened apparently from BATTLESHIP HILL and also from "W" Hills, only slight damage was done. A relief of the enemy's trenches opposite RUSSELLS TOP has apparently taken place, the trenches seem to be more thickly manned and they expose themselves more. Hostile aeroplane appeared during the day but retreated when fired on.

N. Z. & A. Division report -

WORKS - Turks seen working on fire trench 92 Z 8/30 F 2 early yesterday morning, having during the night erected wire in front of it. Two Turks seen inspecting wire entanglement near 80 F 3, one was shot by a machine gun. A new trench was discovered near 80 F 3/3 near road to front of Farm, telephone wires to this trench were cut. Patrol from NEWBERRYS POST heard enemy repairing wire, due east of our line and north of AGHYL DERE, by prearranged signal machine gun of 14th Bn. got onto spot, evidently with good results, from the howling heard.

GENERAL - An officers patrol reconnoitred AGHYL DERE to 500 yds from 80 F 4, thence BLACK SWAN GULLY (at 80 F 5/92 Z 7) 80 D 5 and back to barricade, commander reports that previous surmise that enemy removed wire in this locality incorrect, on contrary wire has been advanced 50 yds, and screened with newly cut bushes. Several Turk patrols met, and could have been surprised, by action would have rendered operations of our patrol nugatory. The Turks met with were dressed in grey with high caps like the French, as far as could be seen four wore sandbags on their feet to deaden their footsteps. Enemy's aeroplane passed over our lines at 1700 and forced to change its course by machine gun fire.

Appendix No. 167
9/12/15

Appendix 17
9-12-15

A16

No IV Section report -

WORKS - Enemy working to the right of shaft G 6 and near shaft B 5 on Hill 60.

GENERAL - Our work of building up a dry trench across the KAJAJIK DERE draws enemy fire.

MISCELLANEOUS - The following reports on bombs recently used against us by the Turks :-

1. The shrapnel bomb which the Turks have lately brought into use is made of a piece of 3" iron drain pipe about 18" long. It is charged on the same principle as our Hand 8 grenade, the charge being gelnite, and the fuze is evidently set in the rear and ignited by the explosion in the mortar on firing. It has a flat nose of wood so that much resistance to the air must be caused. It appears to have a fairly high velocity and a flat trajectory. No damage has been caused in this section (i-e- No 2) although the Turks use this bomb freely during darkness.
2. A bomb fired on examination to contain sulphur and nitric acid well packed in resin. This gives off a strong odour of a sweet nature and is probably the bomb which has been reported previously as having a bad effect on the eyes.
3. From 8th Corps - (a) Brass tube about a foot long, 4" in diameter filled with black powder and detonated with a wooden pin. (b) Iron tube of same dimensions filled with an inflammable substance and evidently meant to be incendiary.
4. A new type of bullet with core partly lead and partly aluminium has been lately used at HELLES. These usually break up on striking a hard substance making much noise.

Appendix No. 1
9/12/15

1st Australian Division report -

MOVEMENTS - At 0815 a party of about 100 men crossed GUN RIDGE into BOOMERANG TRENCH. Sixty horses were turned out from 48 N to graze. About 50 men from extreme south end of KAYALI TEPE relieved a working party in a trench running N. and S. in that locality. Fifty mounted men went east from 48 M 8. Party of twenty unarmed men moved from GUN RIDGE to RUINS 48 N 6. Party of about fifty men crossed 48 N 8 from W. to E. in direction of gully S. of RUINS. Nine camels from MAIDOS ROAD passed over top of TABRE MEYKY on road to SERAFIM. A motor ambulance observed moving into RUINS 48 N 6. The usual daily ~~usual~~ parties of men with laden mules to OLIVE GROVE about 1200 ^{delayed} until 1400, probably owing to warships bombardment.

WORKS - Work is still proceeding in S. slope of GUN RIDGE, BALKAN GUN PITS and GEMENR GUN EMPLACEMENTS, and what appears to be two gun emplacements have been built just south of BALKAN PITS. Considerable work (probably draining) is being done in communication trenches north along MAIDOS ROAD south behind OLIVE GROVE north and from OLIVE GROVE to behind GUN RIDGE.

GENERAL - The bombardment by warships disclosed no special movement except one heavy gun fired towards the ships from about 48 K, and another gun from 55 Z 9. A number of flares were shown from KNIFE EDGE, Lone PINE and GABA TEPE but no action followed to give any significance to signals.

2nd Australian Division report -

WORKS - At 80 X 1 Enemy have erected a sandbag breast work about 2' 6" high.

b 21-27

The Turkish crater at 80 X 1 is only 18" deep.

c 56

Enemy digging in trench 80 S 2
a 10-17

Enemy's entanglements at JOLLY have been strengthened by an additional row of wire slightly west of original entanglements.

GENERAL - At 1550 about fifty Turks were seen to be moving into the trenches in vicinity of the BEEHIVE.

They were evidently reliefs, as about fifty were seen to move out again about half an hour later.

At 1445 enemy shelled RUSSELLS TOP with 75 m/m and 6" guns from direction of BATTLESHIP HILL; also 75 m/m shells fell on LONE PINE from direction of SCRUBBY KNOLL.

N.Z. & A. Division report -

GENERAL - A special patrol sent out by WELLINGTON MTD RIFLES, connected by telephone, signalled back to a machine gun, which opened fire on a party of about 20 Turks passing along KAIJAJIK DERE. So as not to disclose position of telephone buzzer key was not used, but a signal made by pressing the button. Turk machine guns have now been ~~located~~ located at BULGAR BLUFF (92 Z 2), 92 U 9 on WOODHOUSE CLIFF 92 U 6, HACKNEY WICK and GREEN KNOLL.

Patrol from CANTERBURY Bn. out in front of CHESHIRE RIDGE collected some equipment from Dere.

Mountain artillery section at 92 X 1 was shelled from direction of CHUNUK BAIR, a new type of fuze was picked up. Normal shape but much smaller than others seen - figures engraved in Turkish.

No IV Section.

WORKS - In the mines on Hill 60 our sentries exchanged shots with the Turks. The Turks are mining in two places and very probably in other places, positions of which we do not know.

GENERAL - The period was unusually quiet.

Appx 19

Appendix No. 1
10/12/15
69

MISCELLANEOUS - It is reported from 8th Corps that the enemy's artillery shows a marked improvement in accuracy and control of fire.

A deserter belonging to the 78th Regiment who surrendered to 9th Corps states that he has seen two large Austrian guns in cement emplacements on the highest point of the KAVAK TEPE RIDGE (119 C 7-8. I 1-4). They were brought there in parts and a light railway was constructed for their transport. A Battalion of Austrian gunners are with them.

A19

19

16-12-15

Appendix No. 1
10/12/15

70

INTELLIGENCE SUMMARY. A. & N.Z. ARMY C. PS. From 10 a.m. 11th to 10 a.m. 12th December, 1915. No. Ig(a)

1st Australian Division report -

MOVEMENTS - At 0815 and 0900 small parties of equipped men entered and left trenches by WINEGLASS sap. At 0800 a working party of about 20 men were seen in communication trench from BOOMERANG TRENCHES to LEGGE VALLEY, and at 0850 a party of equipped men, about 100, came over GUN RIDGE into BOOMERANG TRENCH. The usual daily traffic to RUINS and OLIVE GROVE of wagons, mules and small parties of men and horses. Eight laden mules went into OLIVE GROVE apparently carrying kerosene tins, 10 pack mules went to RUINS 48 N 6 carrying apparently long bales.

WORKS - Work is being steadily carried on at GUN RIDGE, BIRD TRENCH and BALKAN PITS, and enemy is putting out a large amount of barbed wire. A large amount of earthworks are appearing at lower end of LEGGE VALLEY below BOOMERANG TRENCH sq 68 R 4-5.

2nd Australian Division report -

WORKS - Breastwork reported yesterday has been made one course of sandbags higher. Enemy has dug a new short trench for about 20 yards from 80 S 5/c 8 towards gully between POPES and QUIJNS.

GENERAL - An unusually quiet night. 75 m/m gun from SCRUBBY KNOLL fired on to LONE PINE. 75 m/m gun from "W" Hills fired on RUSSELLS TOP.

N.Z. & A. Division report -

WORKS - Enemy's communication trench to SNIPERS NEST and certain trenches on high ground towards NEK have been improved. After the artillery's fire at 2230 at SNIPERS NEST Turks were very busy digging. An observer located two tents in vicinity of 93 V 7, but light not sufficiently good to see if they were "Red Crescent" or not.

No IV Section report -

MOVEMENTS - Indian Section report vigorous sniping on BEACH LAKE.

WORKS - NORFOLK STREET - Turks digging in trench, probably repairing.

GENERAL - NORFOLK STREET - Prisoner belonging to 3rd Bn. 16th Regt. surrendered at the BARRIER in the KAIJAJIK DERE.

Appendix (21)

Appendix No. 1
11/12/15

A. 20
 INFORMATION obtained from ~~SEBU~~ ALI OGLOU MUSTAFA, who surrendered to the Eastern Mtd Bde. on the night of 11th/12th DECEMBER 1915.

RANK - PRIVATE.

Company 3rd	Commander	FAKRE Effendi.
Battalion 3rd	"	MUSSEIN VETCHI Bey.
Regiment 16th	"	MEHMED EMIN Bey.
Division 6th	"	MIRALAI NASIF Bey.

Personal History - A native of BOZKIR in KONIEH of the peasant farmer class, he was called up from his village in May 1915 to CONSTANTINOPLE having never served before, being exempt as a supporter of his family. (MUIH Siz class). He trained in Barracks in CONSTANTINOPLE for two months and was then sent to the Peninsula but was taken ill at GALLIPOLI and sent to a hospital where he remained for about 15 days joining the 16th Regt, about 3 months ago which was then resting near ANAFARTA SAGHIR. The officers in his Bn. ill-treated the men and he was beaten and decided to desert and entrust himself to the care of the British, as he remembered the preaching of SHEIKL ABEDDIN evdeputy of KONIEH, who praised the qualities of the British. ABEDDIN is now in exile at BRUSA and has written to men of his "set" who are now serving urging them to give themselves to the British - (Prisoners uncle had lately heard from ABEDDIN). There are many from KONIEH in his Regt. followers of this SHEIKL but they are afraid to surrender and doubt the truth of the letters from our prisoners which are thrown into the trenches. He decided to risk the venture and being out on patrol duty he left his rifle behind a bush walked down the DERE, climbed over the KAJAJIK barrier and gave himself up to the sentry with whom he shook hands.

Strength and Composition - According to prisoner there are 4 Coys in each of the 3 Btns of the 16th Regt, they are well up to strength and average 200 per company - frequent drafts arrive and men are taken from transport details to replace casualties. There are also "countless" troops in THRACE. The drafts they receive consist of reliefs up to 48 and untrained men up to 35. There are no Germans in his Regt but there were plenty at CONSTANTINOPLE before he left and he also saw some in KESHAN - UZUN KEUPRU and GALLIPOLI.

Distribution. - The position of this division has not altered, but all 3 Regts are at present in the trenches having one Bn from each in the actual firing line and two in the support trenches. The 18th Regt is still opposite the Indian Bde, although it suffered heavily during the storm and had to be taken out of the trenches for a week, during which time its place was taken by the 21st Regt, which is now in a rest camp. Next the 18th on the left is the 17th who hold the trenches on Hill 60 about up to the big tree where the 16th join them and the 20th continues the line along the banks of the KAJAJIK DERE (the above confirms information obtained from other prisoners).

ARMS - The Regt is armed with three kinds of MAUSERS all with magazine and taking same ammunition. Prisoner thinks there is one machine gun per Coy.

GUNS - Prisoner states that he had heard that some heavy guns had arrived near ANAFARTA with Austrian gunners - he did not know their position but had heard they were to commence firing on the 10th.

Miscellaneous- Prisoner knew nothing about mining and did not know what Coy of sappers are attached to his Regt though he used to see parties of them daily in the trenches. The officers in his Bn have told the men that there is no necessity for them to do much firing, and in consequence our men can expose themselves in this part of the line (this is confirmed by reports from NORFOLK STREET). He could give no reason for this but the men were very glad as they get more rest. Prisoners clothes (drill) were in rags but his boots were serviceable. Warm clothing has been issued to some, but not all.

The morale of his Regt appears good as prisoner stated that the men would like to attack and drive us into the sea.

Prisoner had on him a money order dated 9th Dec on P.O. MAIDOS for two MEDJ.

(12)

INTELLIGENCE SUMMARY.

A. & N. Z. Army Corps.

From 10 a.m. 12th December to 10 a.m. 13th December 1915.

No. 1 Section, 1st Australian Division, reports-

MOVEMENTS. Several parties were observed moving along trench at 68 R 4. One of these consisted of 19 mules and 31 men. Some of the mules were carrying ammunition.

Usual traffic to RUINS including one motor ambulance.

At 1305 about 500 troops moved ~~EZEKX~~ S.W. from 48 N 6 and a motor car was seen going in the same direction.

WORKS. Work continues on BIRD TRENCH otherwise none reported. Probable observation station on GABA TEPE was located.

Near the RUINS (48 N'6) what appears to be a wireless station has been erected.

GENERAL. At 0645 fires were lighted on SNIPERS, WEIR and PINE RIDGES.

No. 2 Section, 2nd Australian Division report-

MOVEMENTS. No enemy movements are reported - our patrols examined OWENS GULLY but neither saw nor heard anything unusual.

GENERAL. At 0100 the enemy threw a red flare towards ~~XZKXKX~~ QUINNS this was followed by three more at half hour intervals until 0300.

No. 3 Section, N.Z. & A. Division report-

MOVEMENTS. The enemy exploded a charge in one of their tunnels in front of APEX hoping to destroy one of our saps - practically no damage was done and there were no casualties.

Two enemy bombs (Broomstick) reached the bivouac area of No. 1 Post - they did no damage.

An enemy machine gun firing from 2nd line trenches (bearing 130° from NEWBERRY'S POST) was silenced by our fire.

An emplacement (machine gun) about 80 xE of 20 F8 was partly demolished by our Hotchkiss gun and machine gun fire which caused an explosion.

No. 4 Section, Eastern Mounted and Indian Brigades.

MOVEMENTS. During the night enemy machine guns were more active than usual.

WORKS. Sounds of continuance of enemy mining is reported from both NORFOLK ST and HILL 60.

Appendix No. 1
12/17/15

INTELLIGENCE SUMMARY A. & N.Z. Army Corps from 10a.m. 13th December 1915 to 10 a.m. 14th December 1915 No Ig(a)... A 22

No 1 Section 1st Australian Division report-

At 0705 six of the enemy passed along communication trench to WEIR RIDGE from SNIPERS RIDGE. 200 infantry were drilling near 48M6. 150 men moved out from the RUINS on to MAIDOS or KOJA DERE ROAD at 1030. 100 pack animals and 200 men came from S.W. into 48S and 60 pack animals moved to 48M6. Between 1117 and 1158 a relief of about 80 men moved to Olive Grove from camp in ASMAK DERE at back of GUN RIDGE. This is the first time this has been observed and suggests another Regiment possibly 26th moving up. At 1530 and 1610 movements were observed in BOOMERANG TRENCH. WORKS. Very strongly wired trestles have been extended along the whole front of KNIFE EDGE. The entanglements on SNIPERS R RIDGE extend along the whole front but in one or two places the trestles are not joined up and these are probably outlets for patrols. The large sap connecting M end of SNIPERS to WEIR RIDGE is now complete and large enough for wheeled traffic. GENERAL. No special movements are apparent in enemy's front line trenches and less work than usual appears to be going on.

No 2 Section 2nd Australian Division.

A period of silence was maintained for a short time in LONE PINE during which enemy sent patrols towards our trenches but we drove them off with grenades.

No 3 Section N.Z. & A. Division.

Work on ridge east of SNIPERS NEST has been observed and additional entanglements on S side of GREEN KNOLL have been put out. A new sap on the N side of GREEN KNOLL has also been observed.

At the FARM a light was seen which came and went intermittently.

A deserter from the 4th Battalion, 16th Regiment surrendered to the Wellington Mounted Rifles.

No.4 Section.

Enemy's Machine Guns and Trench Mortars showed some activity during the night.

Appendix No 1
13/12/15

13/12/15

A 23

Information obtained from HASSAN OGLU HUSSEIM, who deserted to the N. Z. & A. Division on the night of 13-14th December 1915.

- - - - -

Rank - Private
 Company - 3rd
 Battalion - 4th
 Regiment - 16th
 Division - 6th.

1. PERSONAL HISTORY.- A native of AIDEN (peasant Class) was originally in the 42nd Regiment from which he deserted - leaving SOGHAN DERE and finding his way to CONSTANTINOPLE where he was caught and sent to UZUN KEUPRU to the 16th Regiment.
 2. LOCATION OF UNITS.-Confirms last prisoners statement as to distribution and location of units of the 6th Division:- 7th Division is on the left. The 4th and 11th Divisions have left Peninsuls and the units are at UZUN KEUPRU - he heard this recently when he was in hospital with an attack of Dysentery.
 3. MISCELLANEOUS.- Confirms other prisoners statements as to the big gun which has been brought to ANAFARTA - he himself saw part of it on a trolley being drawn by many oxen. It is to be used against the ships and was to have fired before this - other big guns are being brought, one from a sunken ship. He does not think that an attack on our position is contemplated and the opinion of men in his regiment is that it would be impossible to drive us into the sea as we "have taken root" here. He says that S.A.A. is now carefully saved and that for this reason there is very little firing done.
- He deserted because he had been beaten and was sentenced to another beating which ought to have come off to day. Two comrades came out with him on patrol duty intending to come to us but they were too closely watched.

1st Australian Division report -

No 1 Section - The usual movements of troops and transport are reported in and around the RUINS 48 N 6, also on PINE and GUN RIDGES and through BOOMERANG Trench.

Work is proceeding on SNIPERS and KNIFE EDGE and on communication trenches. New sand bags have been put up on WEIR RIDGE. A new gun emplacement is in course of erection at 68 I 9 and the one destroyed by our ships at 68 L 5 has been rebuilt. Enemy aeroplane passed over. There is nothing to indicate anything other than normal movement.

2nd Australian Division report.

No 2 Section - Nothing of importance to report except flight of enemy aeroplane which was turned East by our fire.

N.Z. & A. Division report.

No 3 Section - A small party of enemy on BABY 700 was dispersed by our M.G. fire. The enemy occupied a new trench at 80 P 6. Enemy working parties were dispersed by our fire.

A light was during early evening on HACKNEY WICK and at this place some work was proceeding and a patrol of ours was fired on by a enemy M.G.

No 4 Section report -

Enemy was heard working in their trenches opposite NORFOLK STREET and the INDIAN Bde. A personal reconnaissance by a Sergeant of the WELCH HORSE revealed the fact that the enemy's trenches opposite IVY LANE on HILL 60 was highly manned.

INTELLIGENCE SUMMARY. 4.333 N.Z. Army Corps. From 10 a.m. 15th to 10 a.m. 18th December 1915. No Ig(a) _____

No 1 Section. 1st Australian Division report-

A regular flow of traffic from back of GUN RIDGE to the OLIVE GROVE and 48 N 6 was observed throughout the day and it is evident that an increased number of troops are camped in this neighbourhood. There was also extensive traffic along communication trenches of troops without equipment and transport animals. The mules appear to be laden with ammunition and stores. This traffic probably proceeds up LEGGE VALLEY and feeds enemy's trenches opposite LONE PINE. The surmised moving in of a new regiment to PINE and WEIR RIDGES is not sufficient to account for so much traffic.

The wire entanglements in front of all enemy trenches appear intact. Improvements have been continued to the trenches on SNIPERS RIDGE and TURKISH DESPAIR is in good repair. Repairs have also been done to the trenches in front of BIRD TRENCHES.

A marked feature is the large amount of work which has been done on the seaward side of HARRIS RIDGE which seems as if they expected an attack on this quarter.

No. 2 Section. 2nd Australian Division. - Nothing of importance is reported.

No. 3 Section. N.Z. & A. Division, report-

Two enemy working parties were observed and dispersed by our fire, during the early part of the evening the enemy were active on SNIPERS NEST - Our Artillery opened fire. It was reported by our infantry patrol that some wire was being removed from in front of WALKERS RIDGE.

A Turk belonging to the 3rd Battalion 21st Regt. gave himself up to the 4th A.I. Bde to the left of WARRICK CASTLE-Statement annexed.

Appendix No. 1
15/12/15

A-26

Information obtained from SAYED OGLON MATD, who deserted to the N.Z. & A Division on the night of 15-16th December '15.

- - - - -

Rank	-	Private	Commander	-	RIZZA BEY.
Company	-	3rd	"	-	NIAZA BEY.
Battalion	-	3rd			
Regiment	-	21st			

- - - - -

1. PERSONAL HISTORY. - A barber by trade, he was called up ~~is~~ at KONIED 4 months ago. After one month's training at CONSTANTINOPLE he came via UZUN KENPIN to the Peninsula and was sent straight to the 21st Regiment in the trenches.
 2. LOCATION OF UNITS.- The 21st Regiment after having been in the rest camp came into the trenches 5 days ago, 2 battalions of the 19th took their place in the rest camp, and the remaining battalions of this Division are still in the firing line or in the support trenches. Prisoner was not clear as to the position of units in the firing line but his own Regiment was in trenches on SARI BAIR RIDGE near 971. The 31st Regiment was to have relieved the 21st and the 61st came as far as GALLIPOLI but then went back towards UZUN KENPIN.
 3. STRENGTH. - In his company there are about 180 men; 3 companies in the Battalion and three Battalions in the Regiment. The 19th Regt. has four Battalions. Only one Company is in the trenches by day and two by night.
 - 4- ARMS. 30 or 40 Martinis in his Company with no magazines - the rest are Mausers. There are three Machine Guns in the Battalion; one of which is in the front line trenches and emplacements for the other two are in process of construction.
 5. ARTILLERY. Repeats the rumor of a big gun in position near ANAFARTA and he has himself seen parts of a big gun. More are rumored to be on the way. Of late ammunition has been short and not much artillery fire has been done. When more arrives and the big guns are in position it is said that there will be a seven days bombardment and a general attack.
 6. MORALE. If the statements and general demeanour of the deserter are indicative of the morale of his Regiment, it must be very poor. According to him they are badly fed and half clothed. They are sick of the war and consider themselves victims of the Germans, when asked if they meant to attack he said that it was difficult enough to get men into the trenches let alone get them out again for offensive action.
 7. MISCELLANEOUS. About 6 days ago after the ships bombardment there was a rumor that we were about to attack them.
- There is one German Officer with his Regiment. There are Germans with the artillery. If there were not the Turkish gunners would fire little as they are afraid of our shells.
- No patrols are sent out at night from his Battalion.
- He does not know of any observation stations on the Sari Bair Ridge. They cannot see the beaches from his trenches.
- He left his trenches on Tuesday evening and went out a few yards in front as observer and managed to get down into the valley where he remained hidden the whole of the next day and came into our lines during the night.

Note:- The above prisoner is a man of intelligence but has little or no military knowledge. The information therefore on these matters cannot be relied on.

A 21

INTELLIGENCE SUMMARY A. & N.Z. Army Corps. from 10 a.m. - 16th December 1915 to 10 a.m. 17th Decem. 1915 No 1g(a)...

No 1 Section 1st Australian Division report-

During the day various parties of the enemy were observed moving towards 48N6, the most numerous being about 200 infantry. The exact direction of these movements cannot be observed but apparently after leaving the RUINS the route is to the South towards SOGHAMLI DERE.

Close observation of all movements in communication trench over GUN RIDGE at 68R4 below BOOMERANG trench was kept throughout the day; the traffic was moderate and consisted of small parties of transport animals and men - the largest consisting of about 25 men and 38 mules.

The enemy appear to attach great importance to their works on GUN RIDGE near 68 5-6 where work is proceeding as rapidly as our shell fire permits.

An enemy gun was located by our infantry observers at 68 Q 2/3 the gun was engaged by our artillery and the head cover destroyed when the gun itself became clearly visible - H.E. was then used and both artillery and infantry observers agree that the gun and emplacement were completely wrecked.

No removal of wire from in front of the enemy's trenches is apparent and no unusual movement has been noticed.

No 2 Section 2nd Australian Division, report-

In front of QUINNS and along GERMAN Officers trench the enemy increased the height of his trenches and replaced three panels of bomb netting which had been removed the previous night.

The enemy's artillery was active against RUSSELLS TOP - LONE PINE and COURTNEYS. A short period of silence was maintained by us during which the enemy could be heard working on their front line parapets but they do not appear to have made any attempt to investigate the cause.

No 3 Section N.Z. & A. Division, report-

Enemy working parties were heard working near the farm and on BATTLESHIP HILL also on HACKNEY WICK and on the E slope of ~~KINROSS~~ SNIPERS NEST. Sandbags have been removed from the trenches on BATTLESHIP HILL greatly altering their appearance. One of our aircraft flew low over the FARM and drew the fire of about 40 rifles.

In the portion of the line opposite the WELLINGTON Mounted Rifles considerable talking was heard.

No 4 Section Est. Mtd. Bde - Indian Bde, report-

Enemy trench Mortars were active against the centre of the Indian Bde line.

No sounds of enemy mining was heard in our galleries on HILL 60 where we exploded two camouflats.

Appendix No. 1
16/12/15

INTELLIGENCE SUMMARY.

A. & N. Z. Army Corps.

from 10 a. m. 17th December to 10 a.m. 18th December 1915.

A 24

No. 1 Section, 1st Australian Division report -

During the night the enemy continued to snipe intermittently. The maintenance of absolute silence from 0300 - 0315 did not succeed in drawing more than the average amount of fire from the enemy.

A small enemy patrol was seen moving across HOLLY RIDGE at 2130 and was dispersed by our fire. Fog made observation difficult.

The enemy's artillery was active during the day against our right flank. Trenches and the beaches near WILLIAMS PIER. A hostile aeroplane passed over and altered its course on being fired on.

No. 2 Section, 2nd Australian Division.

Enemy's machine guns fired short bursts at COURTNEYS and QUINNS and opposite POPES did some repairs to wire.

Our snipers accounted for one of the enemy on SNIPERS NEST.

Enemy's guns shelled LONE PINE, COURTNEYS and RUSSELLS TOP but did no damage.

No. 3 Section, N. Z. & A. Division.

There was considerable noise and talking in the enemy's lines at the time that the fire broke out on NORTH BEACH and much digging work was carried on at various points.

No. 4 Section, Eastern Mounted and Indian Brigade.

An enemy mine was exploded under Hill 60 doing slight damage to small portion of our trenches. There were no signs of any preparation for an attack.

Generally the normal amount of enemy activity prevailed throughout this period.

Appendix No. 1
17/12/15

A29

INTELLIGENCE SUMMARY. A. & N. Z. Army Corps. from 10a.m. 18th December to 10 a.m. 19th December 1915.

During this period the 1st stage of the final evacuation of ANZAC was successfully carried out. No important or unusual movements of the enemy were reported but at several points along the line fresh enemy work was observed. During the afternoon a few shells from the OLIVE GROVE guns were directed against the beaches and three fell in Corps headquarters causing 3 casualties.

Appendix No. 1
18/12/15

INTELLIGENCE SUMMARY. A. & N. Z. Army Corps. from 10 a.m. 19th December to 4 a.m. 20th December 1915.

A 30

During this period the 2nd stage of the final evacuation of ANZAC was successfully carried out. During the morning LONE PINE the APEX and HILL 60 were shelled by the enemy by heavy howitzers. Shells also fell in REST and Monash GULLIES - No damage or casualties were reported.

The artillery observer on the right flank reported that a large body of fresh enemy troops was moving from the RUINS towards our lines. Bodies of cavalry were also reported to be seen advancing across the open from the KILID BAAR RIDGE. Both these reports were unconfirmed and it is probable that the enemy movement opposite this flank was no more than normal.

At 1530 a hostile aeroplane flew over our lines but retired on being fired at.

At about 0330 a large mine was exploded by us under the enemy's trenches opposite RUSSELLS TOP and this drew their heavy rifle and machine gun fire against our empty trenches along the whole line.

As far as could be ascertained no attempt was made by the enemy to leave his trenches, and it is evident that our intentions were not known to him.

The evacuation was completed at 0347.

Appendix No. 1
19/12/15

APPENDIX No. 1. 43

INTELLIGENCE SUMMARY. A.&N.Z. ARMY CORPS. From 10 a.m. 19th December to
4 a.m. 20th December 1915.

During the period the 2nd stage of the final evacuation of ANZAC was successfully carried out.

During the morning LONE PINE the APEX and HILL 60 were shelled by the enemy by heavy howitzers. Shells also fell in REST and Monash GULLIES - No damage or casualties were reported.

The artillery observer on the flank right flank reported that large body of fresh enemy troops was moving from the RUINS towards our lines. Bodies of cavalry were also reported to be seen advancing across the open from the KILID BAAR RIDGE. Both these reports were unconfirmed and it is probable that the enemy movement opposite this flank was no more than normal.

At 1530 a hostile aeroplane flew over our lines but retired on being fired at.

At about 0330 a large mine was exploded by us under the enemy's trenches opposite TUSSELLS TOP and this drew their heavy rifle and machine gun fire against our empty trenches along the whole line.

As far as could be ascertained no attempt was made by the enemy to leave his trenches, and it is evident that our intentions were not known to him. The evacuation was completed at 0347.

B. Volume **WAR. DIARY**

Appendix 2.

Army Form A 2007.

CENTRAL REGISTRY.

Central Registry No. and Date.

Attached Files.

Genl Staff ANZAC

Dec 1915

SUBJECT, AND OFFICE OF ORIGIN.

Fighting Strength Returns

Referred to	Date	Referred to	Date	Referred to	Date
				P.A.	Date

Schedule of Correspondence

B1

- Fighting strength of Troops at Amoy

	2nd Dec	1st Approx	2nd Approx	Guns
<u>1st Aust Div</u>	1st Inf Bde		2975	
	3rd " "		2125	
	2nd Lt Inf Bde	5615	950	
	4th Lt Inf Bde		775	
	Unallotted reinforcements		200	
	Artillery			36
<u>2nd Aust Div</u>	5th Inf Bde		2575	
	6th Inf Bde	9025	3175	
	13th Lt Inf Bde		2925	
			350	
<u>Nº 4 Div</u>	1st Lt Inf Bde		850	
	3rd	6875	575	
	7th Lt Inf Bde		1475	
	11th Lt Inf Bde		1900	
	4th " " Maori Contingent		125	
	Artillery			24
<u>Nº 4 Section</u>	1st Lt Inf Bde		825	
	29th Lt Inf Bde	4225	2300	
	10th Lt Inf Bde		1100	
	16th Lt Inf Bde		875	
<u>Corps Troops</u>	1st Garrison Bde		775	
	Ceylon Planters	1800	25	
	69th B Co		125	
	Ind Lt Inf Bde			
Spec, 4", 4.7", 5", 6", 60 pdr, 27 pdr				16
Total				12
				13
				101

B2 - Fighting strength of Troops at Anzac

3rd December 1915

		Approx. Effect	Count	
<u>1st Aust Div</u>	1st Inf Bde	2075		
	2nd " "	2125		
	2nd Lat Bde	5025	950	
	4th Lat Bde		275	
	Unallocated reinforcements		200	
	Artillery			36
<u>2nd Aust Div</u>	5th Inf Bde	2575		
	6th " "	9025	3175	
	10th Lat Bde		2925	
			350	
<u>3rd Aust Div</u>	1st Lat Bde		850	
	2nd " "	6125	575	
	7th Inf Bde		1575	
	4th " "		1900	
			125	
			1950	
	Artillery			24
<u>No 4 Section</u>	2nd Lat Bde		825	
	3rd Lat Bde	4425	2500	
	10th Lat Bde		1100	
	161st Bde		850	
<u>Corps Troops</u>	102nd		775	
	1st Garrison Bde		125	
	Ceylon Planters	1775	25	
	19th C.F.A.			
	Ind. M.F. Bde			16
				12
				13
	Spans, 4", 4.7", 5", 6", 60 pans, 28 guns			
	<u>Total</u>		27,975	101

Appendix (6) 3.12.15

B+ - Fighting strength of Troops at Straya
5th December 1915

		Infantry	Artillery	Guns
<u>1st Aust Div</u>	1st Inf Bde		1950	
	2nd " "		2075	
	2nd Lt Inf Bde	5200	900	
	4th Lt Inf Regt		275	
	Unallocated reinforcements			
	Artillery			36
<u>2nd Aust Div</u>	5th Inf Bde		2550	
	6th " "	8825	3100	
	13th Lt Inf Regt		2850 325	
<u>NZ & A Div</u>	1st Lt Inf Bde		875	
	3rd " "	6975	575	
	7th Lt Inf Bde		1450 1875	
	4th " " Maori Conty		160 2100	
	Artillery			24
<u>Nº 4 Section</u>	28th Inf Bde		800	
	29th Inf Bde	3100	2300	
	10th " "			
<u>Corps Troops</u>	1st Garrison Bde			
	Ceylon Planters	25	25	
	69th S.F.A			16
	Ind Inf Bde			12
3 pdr, 4", 4.7", 5", 6", 60 pdr, AA guns				13
<u>Total</u>			24,125	101

Appendix (10) 5.12.15

12
Appendix No. 2

B5

Fighting strength of Troops at Arras
6th Dec 1915

		Approved Strength	Guards
<u>1st Aust Div</u>	1 st Inf Bde	2050	
	2 nd " "	2050	
	2 nd Lt of Bde	5275	900
	4 th Lt of Regt		275
	Unallocated reinforcements		
	Artillery		36
<u>2nd Aust Div</u>	5 th Inf Bde	2550	
	6 th " "	8825	3100
	13 th Lt of Regt		2850
			325
<u>N^o 7 & 8 Div</u>	1 st Lt of Bde		875
	3 rd " "	6800	550
	7 th Lt of Bde		1450
	4 th " "		1850
			2075
	Artillery		24
<u>N^o 4 Section</u>	28 th Lt of Bde		775
	29 th Lt of Bde	3000	2225
	100 th Lt of Bde		
<u>Corps Troops</u>	1 st Garrison Bde		
	Baylon Planters	25	25
	69 th Lt of Bde		
	Ind. Mtn Bde		
	3 pas, 4", 4.7", 5", 6", 60 pas, AA guns		
	<u>Total</u>	23,925	101

appendix (12) 6-12-15

B6

Fighting Strength of Troops at Arras
7th Dec 1915

		Approved Strength	Actual
<u>1st Aust Div</u>	1st Inf Bde		2050
	3rd " "		2050
	2nd Lt Inf Bde	5275	900
	4th Lt Inf Bde		275
	Unallocated reinforcements		
	<u>Artillery</u>		36
<u>2nd Aust Div</u>	5th Inf Bde		2550
	6th " "	8825	3100
	13th Lt Inf Bde		2850
			325
<u>NZ & A Div</u>	1st N.Z. Lt Inf Bde		875
	3rd " "	6800	550
	7th N.Z. Lt Inf Bde		1450
	4th " "		1850
		<u>Artillery</u>	
<u>Nº 4 Section</u>	28th Inf Bde		775
	29th Inf Bde	3250	2475
	1st Lt Inf Bde		
<u>Corps Troops</u>	1st Garrison Bde		
	Ceylon Planters	25	25
	69th Coy F.A.		
	Ind. Mtn Bde		
	3 pas, 4", 4.7", 5", 6", 60 pas, AA guns		
	<u>Total</u>		24,175

Appendix (14) 7-12-15

C. Volume

Army Form A 2007.

CENTRAL REGISTRY.

Central Registry No. and Date.

Attached Files.

Gen! Staff
ANZAC

December 1915

SUBJECT, AND OFFICE OF ORIGIN.

Local Names

and their Identification by Map Squares

Referred to	Date	Referred to	Date	Referred to	Date
				P.A.	Date

Schedule of Correspondence

General Headquarters,

7th November, 1915.

F O R C E O R D E R No. 28.
-----Reference Map
1:20,000.

With reference to Force Order No. 27 dated 29th October, 1915, the following names of localities are authorised for general use :-

<u>Name of Locality.</u>	<u>Map Square.</u>
✓ Twelve Tree Copse.	22.Z.1.✓
✓ Church Farm.	22.Y.2.✓
✓ Gully Farm.	22.X.4.✓
✓ Shrapnel Point.	22.N.3 - J.7.✓
✓ Geogheghan's Bluff.	22.S.3 - T.1.✓
✓ Trolley Ravine.	22.J.4.✓
✓ Border Ravine.	22.J.7.✓
✓ Essex Ravine.	22.I.9.✓
✓ Bruce's Ravine.	22.N.3.✓
✓ Piccadilly Circus.	17.P.3.✓
✓ Leicester Square.	18.G.3 - H.4.✓
✓ P Point.	22.S.1 - 2.✓
✓ Y. Beach.	22.N.5.✓
✓ N.O.S. Hill.	13.J.9.✓
✓ Clapham Junction.	17.I.6.✓
✓ Grey Tree Farm.	17.I.3 - C.9.✓
✓ Backhouse Post.	17.S.3. - 6.✓
✓ Brown House.	17.P.1.✓
✓ White House.	17.P.1.✓
✓ Sniper's Wood.	17.T.9 - U.4.✓
✓ Trafalgar Square.	17.L.4.✓
✓ Skew Bridge.	17.S.8.✓
✓ Mole Hill.	17.V.6.✓
✓ Y. Ravine.	22.N.5 - 6.✓
✓ Ghurka Bluff.	22.N.2 - 6.✓
✓ Fusilier Bluff.	22.J.2.✓
✓ Harris Ridge.	68.I.5/6 2/3 g 8/9.
✓ Holly Ridge.	68.I.3 g3/h1 a9/b7.
✓ Pine Ridge.	68.M.2 h3/11.
✓ Chatham's Post.	68.G.3 /L. 2/3.
✓ Legge Valley.	68.M.7. o 3.
✓ Shell Green.	68.G.2, 3 to 5.
✓ Tasmania Post.	68.G.6 h 4.
✓ Leane's Trench.	68.G.6 h 4.

Name of locality.

Map Square.

✓ Lone Pine.	68.B.3 6 7/8.
✓ Plateau 400.	68.B.3 6 9 c 7 6 2 1.
✓ Johnstone's Jolly.	80.W.9 x 7.
✓ Wire Gully.	80.W.6 x 4.
✓ German Officer's Trench.	80.X.1 4/5.
✓ Mortar Ridge.	80.X.5/6 - n 9.
✓ Courtney's Post.	80 S. South West corner.
✓ Bridges Road.	80.V.3/6 w 1/4 w 5.
✓ Whites Valley.	80.V.8 9.
✓ Browns Dip.	68.b.1/2.
✓ Artillery Road.	68.G.5/6 - b 2.
✓ Shrapnel Gully.	80.V.7-5 w 2.
✓ Monash Gully.	80.W.2 r 9.
✓ Rest Gully.	80.R.8 - r/w.
✓ Plugge's Plateau.	80.Q.9.
✓ Reserve Gully.	80.Q.3/6 - r 4.
✓ POPE'S Hill.	80.S.4 - 2.
✓ Mule Gully.	80.M.7 r 1/2.
✓ Walker's Ridge.	80.R.2 - n 7.
✓ Turks Point.	80.M.3.
✓ Russell's Top.	80.R.3 - n 7.
✓ Sniper's Nost.	80.I.8.
✓ Nek.	80.n.8.
✓ Camels Hump.	80.I.4/7 - 8.
✓ Baby 700.	80.N.6-9.
✓ Happy Valley.	80.M.1 - 9.
✓ Battleship Hill.	80.O.2,3,6,5.
✓ No.1 Post.	80.H.8.
✓ Rhododendron Spur.	80.I.6 j 2 k 1. ✓
✓ No.2 Post.	80.B.7 H.1.
✓ No.3 Post.	80.A.6 b 4 b 4/7.
✓ Old No.3 Post.	80.B.8 9 o 7.
✓ Table Top.	80.C.9.
✓ Gunners Hill.	80.P.1-4.
✓ Turks Hump.	80.K.4-7.
✓ Sand Pit.	80.P.5-6.
✓ Sandbag Ridge.	92.U.5.
✓ Taylor's Hollow.	92.W.4.
✓ Bauchop Hill.	92.W.5/6 x 8.
✓ Walden Point.	92.Q.6.
✓ Australia Valley.	92.S.4-2-n 9.
✓ Gillespie Hill.	92.N.1-8.
✓ W.Hills.	105.T - U.
✓ Chocolate Hills.	105.I.M.
✓ Hell Spit.	79.Z.
✓ Jophson's Post.	135.T.9.
✓ Bench Mark.	135.U.2-6.
✓ Scimitar Hill.	105.I.9.
✓ Green Hill.	105.M.8.
✓ Hill 10.	117.R.9.
✓ The Pimple.	Knoll just S.of 136.L.7-8.
✓ Green Knoll.	135.P.2-5.
✓ North Redoubt.	136.L.4-5.
✓ Borderer's Knoll. ✓	118.A.1-4.
✓ Blockhouse.	118.M.1.

<u>Name of Locality.</u>	<u>Map Square.</u>
✓ Dublin Castle.	100 yards W. of 118.M.4.
✓ Sulajik Farm.	105.B.3 - C.1.
✓ Tints' Corner.	Junction main and commun- ication trenches, 105.Q.9.
✓ Cater's House.	105.V.2.
✓ White House.	House just N. of line 105.V.6-W.4.
✓ Gloster Post.	Hut on Road N.W. of 105.C.1.
✓ Karakol Gap.	135.X.4-7.
✓ Yeoman's Knoll.	Knoll about 105.R.2.
✓ "The Boot".	Hill feature at 135.P.1 & 2.
✓ Duck's Nest.	Work at 135.O.6.
✓ Lone Tree Gully.	117.D.2-5.
✓ Borderers' Ravine.	117.F.1+4-7.
✓ Gibraltar.	Spur at 117.J.6 - K.4.
✓ Essex Ravine.	117.O.2.
✓ Three Poplars.	Group of trees forming a landmark at 118.M.2.
✓ Highland Barricade.	92.B.1.

R. O. S. Taylor B. G.
for Major-General,
C.G.S.
Medtn. Exped. Force.

Issued to :-

G.O.C. Corps Expeditionnaire de Dardanelles.
G.O.C. A.N.Z.A.C.
G.O.C. 8th Army Corps.
G.O.C. 9th Army Corps.

At 1800,

AUSTRALIAN & NEW ZEALAND ARMY CORPS.

Name.	Square and Number.
<u>1st Aust Division.</u>	
✓ HOSPITAL.	29.B.3.
✓ WILSONS LOOKOUT.	68.G.8.
✓ SANDY CLIMB.	49.A.1-G.4-L.2.
✓ ALMOND PATCH.	
✓ CEMENT GUN PITS.	68.V.9-8.
✓ TWIN TRENCH KNOLL. (Not near Twin Trs)	68.A.7. ^{68.27}
✓ BOOMERANG TRENCH.	68.W.2.
✓ ALMOND GROVE.	56.S.9-X.3.
✓ FLODDEN FIELD.	68.Q.5-6.
✓ DIAMOND PATCH.	47.X.6-Y.4.
✓ THE RUINS.	48.N.5.
✓ WINEGLASS TREE.	68.S.4-7.
✓ BALKAN GUN PITS.	68.Q.2.
✓ Y ROAD JUNCTION.	67.Z.6.
✓ STABLE CLUMP.	48.A.2.
✓ CAMEL HOUSE.	47.Z.2.
✓ TURKISH DESPAIR.	68.G.6-9.
✓ SEMICIRCULAR TRENCH.	68.W.4.
✓ RIGHT ANGLE TRENCH.	68.V.1-2.
✓ ANDERSON KNOLL.	68.O.1-2.
✓ GUN RIDGE.	80.Z.5-68.J.8.
✓ ECHELON TRENCHES.	68.L.8-9.
✓ BIRD TRENCHES.	68.L.5-6.
✓ VALLEY of DESPAIR.	68.H.3-L.3.
✓ RYRIE'S POST.	68.G.9.
✓ POPPY VALLEY.	68.L.3-9.
✓ CLARKE VALLEY.	68.A.7-8.
✓ ALLAH GULLY.	68.B.7.
✓ SILT SPUR.	68.B.7.
✓ SNIPERS RIDGE. (SOUTH)	68.B.5-8.
✓ WEIR RIDGE.	68.B.9-H.2.
✓ WINEGLASS.	68.O.6.

<u>2nd Aust Division.</u>	
✓ DEAD MAN'S HILL.	80.S.5.
✓ THE BLOODY ANGLE.	The angle formed by the gully between POPES and DEAD MAN'S HILL and the gully between DEAD MAN'S HILL and QUINNS.
✓ SCOT'S POINT.	80.W.5. (100 yds East of).
✓ VICTORIA GULLY.	68.A.6-3, 5-2, 4-1.
✓ Mc CAY'S HILL.	68.B.1, 80.V.8-9, 68.A.2-3.
✓ PHILLIP'S TOP.	80.W.7-V.6-8-9.
✓ OWENS GULLY.	68.B.3-C.1-2-3.
✓ SIGNAL POINT.	80.X.6-8.
✓ HOBBS HILL.	68.D.3-80.Y.9-Z.7.
✓ SCRUBBY KNOLL.	80.U.8-Z.2.
✓ BRAUNDS HILL.	80.W.2-5-1.
✓ DEAD MAN'S FIELD.	68.B.2.
✓ CRATER POST.	80.W.3. (140 yds SE of).
✓ THE TAMBOUR.	80.N.6-9.
✓ SNIPERS TRENCH.	80.X.4.
✓ STEELES POST.	80.X.1-W.3.
✓ QUINNS POST.	80.S.7. (NE)
✓ THE SPHINX.	80.R.5-2-4.
✓ CHESSBOARD.	80.S.5-2.
✓ PINE TRENCH.	

<u>NZ&A DIVISION.</u>	
✓ OCEAN BEACH.	80.A.G.L.Q.
✓ OVERTON GULLY.	80.B.1-4, 2-5, 3.
✓ HUGHES GULLY.	80.H.3-1.1-C.8.
✓ NEW ZEALAND GULLY.	80.Q.
✓ MAORI HILL.	80.H.1.2-4.5.
✓ HAY VALLEY.	92.X.2-3.8-9.
✓ APEX.	80.K.1.
✓ CHESHIRE RIDGE.	80.D.9-6.2-3.

(2)

Name.	Square and Number.
NZ & A Division.	
ROSE HILL.	80.D - 92.Y.
MALONE GULLY.	80.N.2-3-8.
DESTROYER HILL.	80.I.1.
LITTLE TABLE TOP.	80.D.1.
SNIPERS RIDGE ^{NORTH}	80.I.2-3 80.N.1-6.
PINNACLE.	80.K.1-2.
CHICKEN COOP.	80.J.9-0.3.
THE FARM.	80.K.2.
THE PASS.	92.W.2-3.
THOMAS GULLY.	92.V.8-9.
CANTERBURY KNOB	80.I.3-8. X
HOTCHKISS GULLY.	92.I.3-8. X
DURRANTS POST.	80.D.6-9.

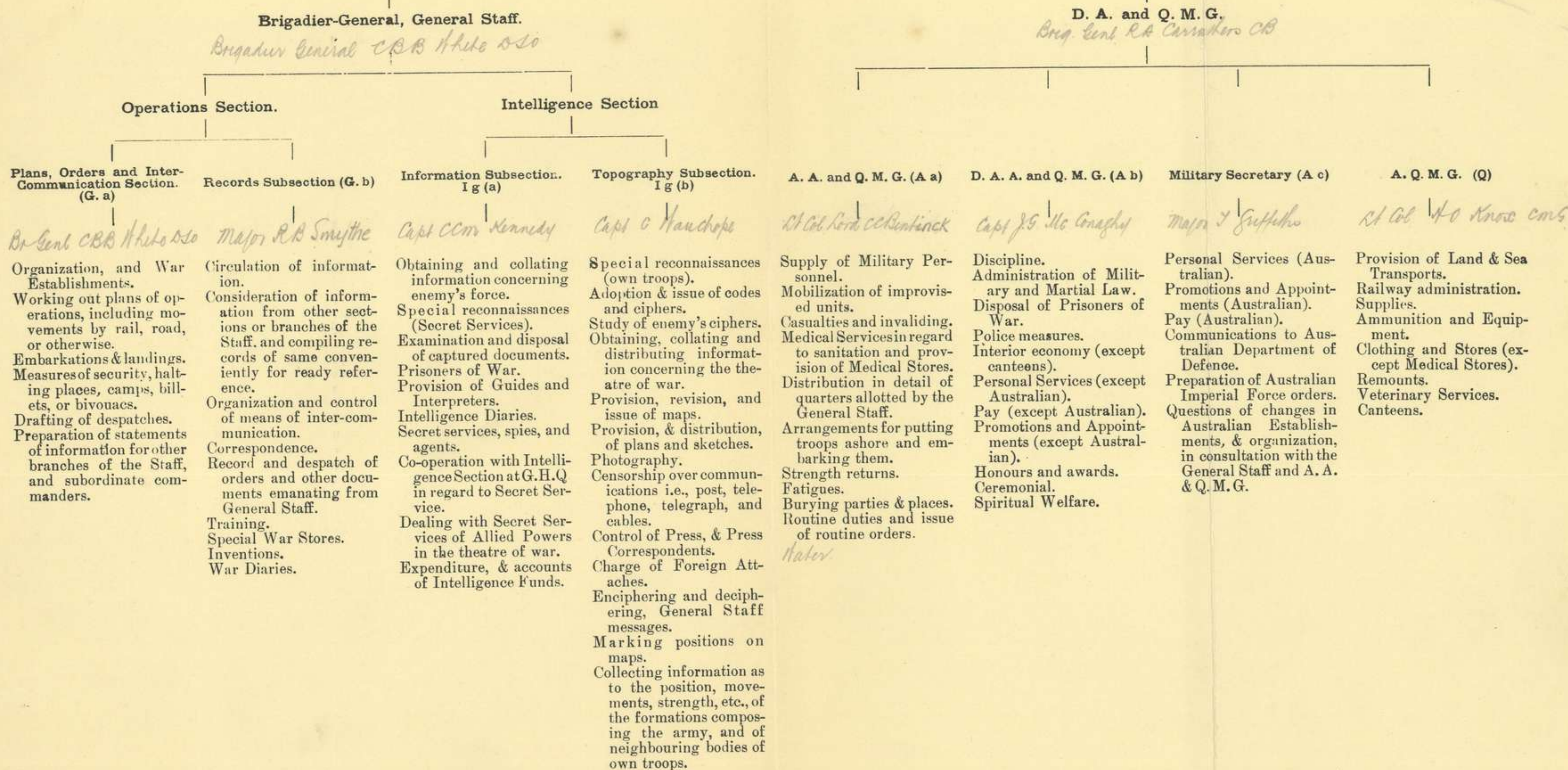
54th Division.	
162nd Bde area.	
BECKS BLUFF.	Junction of sqs at 92.Y.Z and 80.D.F.
BEDFORD RIDGE.	92.Z.4.
BRISHTON ROAD.	92.U.7.
BULGAR BLUFF.	92.Z.2x
CAMEL CUT.	92.U.2.
COOLEY ROAD.	92.Y.8.
FARM GULLY.	92.X.3-Y.9.
FISHERS POST.	92.Y.6.
FRANKLINS POST.	92.Z.4.
HAMPSHIRE LANE.	92.S.9.
HACKNEY WICK.	92.Z.7.
KINSMAN ROAD.	92.Y.9.
KINGS OWN AVENUE.	92.T.8-U.4.
MORSE TUNNEL.	92.Y.9.
NEWEERRYS POST.	Junction of sqs 92.Z.2 & 80.D.F.
SMYTH SPUR.	92.Z.3.
STAFFORD GULLY.	92.Y.1-2-3.
WARWICK CASTLE.	92.Y.6.
WODEHOUSE CLIFF.	92.U.6-Z.2.
161st Bde area.	
CARISBROOK POST.	92.O.9.
CULVER POST.	92.O.5.
HATFIELD PARK.	92.T.1.
HILL 100.	92.P.8.
HOSKINS WALK.	92.N.1-5-6 - 0.4.
INGLEBROOK.	92.S.3.
JAMESONS JOLLY.	Junction of sqs U & O.
LIONS DEN.	" " " " " "
MALDON ROW.	92.U.1.
STRATFORD BROADWAY.	92.O.4-9.
WARLEY GAP.	92.T.6-U.2.
163rd Bde area.	
BOMBAY AVENUE.	92.J.7.
EVANS DILL.	92.S.1.
HILL 60.	92.J.4.
NORFOLK STREET.	92.J.7-0.1-4.
TIPPERARY ROAD.	92.N.4-1 - I.8.
Indian Brigade area.	
19th Avenue.	92.G.6/H from junction with SUTTON LANE.
14th "	92.G.6/S " " " " "
CYPRESS ALLEY.	92.H.9-I.7.
GREEN PATCH.	92.I.4-5.
GREEN LANE.	92.M.5-2 - H.8-6.
PICCADILLY.	92.C.7-I.5.
REGENT STREET.	92.I.7-5.
SECOND LINE.	92.H.7-M.2.
SIKHS WALK.	92.H.5.
SUTTON LANE.	92.G.6-C.1.
THE WARREN.	92.C.1.
Divisional Reserve Area.	
DIXONS GORGE.	92.R.3.
CHARING CROSS.	92.R.5-Q.3.
STODGERS LANE.	92.R.8.

AUSTRALIAN AND NEW ZEALAND ARMY CORPS.

Headquarters :— Organization of Staff Duties in the Field — Provisional.

Commanding :— *Lieut General Sir A. J. Godley KCMG, CB*

Appendix (4)



ATTACHED.

C. R. A. ... *Lt Col. Nichol*
C. E. ... *Br Genl W.B. Rescoe C.M.G.*
Interpreter...

Administrative Services and Appointments.

Officer i/c Army Signals... *Capt Dodd R.B.*
(special) A. D. O. S. ... *Lt Col. J.G. Austin C.M.G.*
(special) D. D. M. S. ... *Launders*
Medical Officer ... *Capt C. J. Tozer*
A. D. Postal Services ... *Lt A.W. Ross*

Special Appointments.

Assistant Provost Marshal ... *Major W. Smith*
Camp Commandant ... *W.F. & Reurs*

Personal Appointments.

A. D. C. to A. Corps Commander ... *Lt J.C. Macaulay*
C.B.A. Jackson

Superintending Clerk and i/c Central Registry.

Lieut Major Mr. G. F. Bell A.S.O.

E. Volume WAR. DIARY

Appendix 5

98

Army Form A 2007.

CENTRAL REGISTRY.

Central Registry No. and Date.

Attached Files.

General Staff
ANZAC

December 1915

SUBJECT, AND OFFICE OF ORIGIN.

Distribution of Trench Mortars

Referred to	Date	Referred to	Date	Referred to	Date
				P.A.	Date

Schedule of Correspondence

BGGG

E1

AUSTRALIAN & NEW ZEALAND ARMY CORPS.

No. 5375 Gb.

Distribution of TRENCH MORTARS, PERISCOPE RIFLES, ETC.

<u>GARLAND.</u>	1st Aust. Divn.	2	
	2nd " "	7	
	NZ & A "	3	
	No. 4. Section.	3	
	Ordnance	4	serviceable, 2 uns'v'le
<hr/>			
<u>JAPANESE.</u>	1st Aust Divn.	3	
	2nd " "	2	
	NZ & A "	1	
	No 4 Section.	0	
	Ordnance.	0	
<hr/>			
<u>3 . 7".</u>	1st Aust Divn.	5	
	2nd " "	6	
	NZ & A "	8	
	No 4 Section.	1	
	Ordnance.	0	
<hr/>			
<u>CATAPULTS.</u>	1st Aust Divn.	7	
	2nd " "	9	
	NZ & A "	15	
	No 4 Section.	7	
	Ordnance.	0	
<hr/>			
<u>RIFLES WITH MAGNIFYING SIGHTS.</u>	1st Aust Divn.	10	
	2nd " "	10	
	NZ & A "	38	
	No 4 Section.	0	
	Ordnance.	0	
<hr/>			
<u>PERISCOPE RIFLE RESTS.</u>	1st Aust Divn.	27	
	2nd " "	73	
	NZ & A "	50	
	No 4 Section	48	(3 unserviceable)
	Ordnance.	76	
<hr/>			
<u>PERISCOPE RIFLES LOCAL PATTERN.</u>	1st Aust Divn.	17	
	2nd " "	97	
	NZ & A "	11	
	No 4 Section.	52	
	Ordnance.	0	
<hr/>			
<u>PERISCOPE RIFLES WAR OFFICE PATTERN.</u>	Ordnance.	67	

Corrected to 8th December, 1915.

R. W. Smythe

Major. G.S.
Australian & New Zealand Army Corps.

WAR DIARY

E. Volume

Appendix 6 100

Army Form A 2007.

CENTRAL REGISTRY.

Central Registry No. and Date.

Attached Files.

General Staff
ANZAC

December 1915

SUBJECT, AND OFFICE OF ORIGIN.

Hostile Guns

Referred to	Date	Referred to	Date	Referred to	Date
				P.A.	Date

Schedule of Correspondence

To..... *Gen. Staff*

No 17/3. *Appendix No. 6*

HOSTILE GUNS ACTIVE AGAINST ANZAC DURING WEEK ENDING 9th December.

F1

Reference 1/20,000 map	Description.	Dates last fired.	Remarks.
47 H 9	4/4.2" Guns facing west	2nd December	From Art. Reports.
N	- - -	7th & 8th "	Reported by R.F.O.O. firing on 'Grafton' & Monitor
55 Z 6	Guns	8 " (fired on ships)	do. do.
56 Q 4	2/4.2" & 4 Field Guns	7th December	do. do.
W 1	2/6" Howitzers	7th "	Reported by C.R.A., N.Z. & A. Div.
68 O 5	75mm Guns	4th December	From Art. Reports.
N 6-9	Field gun (4 Empls)	7th "	Reported by C.R.A., N.Z. & A. Div.
W 1-5	2/6" Howitzers	8th "	Reported by R.F.O.O.
S 3-6	Guns	7th "	do. C.D.A., 1st Aust. Div.
R 7	Gun	7th "	do. do. (Shelled Div.H.Q.)
O 7	Gun (moveable)	8th "	From Art. Reports.
80 Z 3	2 Field Guns	8th December	2nd Aust. Div.
Z 5-8	Gun	8th "	do. do.
S 9	Trench Mortar	3rd "	do. do.
K 7-8	2 Field Guns	8th "	do. do.
82 (R 6) (Y 2-3) P	3.2" Howitzer (Approx.) 9.2" Howitzer	3rd December 8th "	Various sources. Near Boghali. Various sources. Not definitely locat ^{ed} .
93 G 2-3	Field Gun	6th December	From Art. Reports.
R 4-7	2 Mountain Guns	4th "	do. do.

Note;-- The following emplacements have been reported by R.N.A.S.

68 T 5	4 Emplacements	Apparently occupied.
S 5	4 "	do. do.
N 9	4 "	do. do.
F 3	4 "	Doubtful if occupied.
80 O 6	3 "	Apparently occupied.
K 3	2 "	do. do.
81 A 3-9	4 "	do. do.
A 3-6	2 "	do. do.
B 1-2	2 "	do. do.

Clarence Japoh
Brig. General,
General Staff.

Appendix ⑦

5/12 15

LIST OF ANZAC GUNS.

Map Squares.	No. of Guns	Description.	Lines passing through these points & converging at gun position enclose zone of fire of gun.
68 A 7 - G 2	4	5" Howitzers (A/69)	61 A 5
G 5	3	18 Pdrs. 7th Aust. Battery	68 Q 9
A 9 - B 7	1	" " " "	68 C 7
G 2-5	1	6" Howitzer	67 Y 5
A 3 - B 1	4	18 Pdrs. 8th Aust. Battery	57 A 5
A 4-8	1	4.7" Q.F. Gun.	57 A 5
B 1-5	4	18 Pdrs. 6th Aust. Battery	92 Z 5
A 3 - B 1	2	" 4th " "	92 U 6
A 5	4	" 9th " "	57 A 5
80 V 6-9	4	18 Pdrs. 5th Aust. Battery	80 K 7
V 7	1	6" Howitzer	68 W 9
H 7 - S 1	1	3 Pdr.	Line of fire N.E.
Q 3	4	5" Howitzers. 5th Lowland Battery.	81 H 7
Q 5	2	4.5" Howitzers. 4th N.Z. Battery	93 V 2
M 9	1	6" Howitzer	92 I 3
J 3	1	3 Pdr.	Line of fire S.E.
A 2-3	4	5" Howitzers. (D/69)	92 D 2
W 7	1	2.5" A. Gun. 12 Pdr.	93 Q 1
R 3	2	18 Pdrs. 1st N.Z. Battery	80 R 8
Q 9	2	" 1st Aust. Battery	80 K 7
V 2	1	" 1st " "	80 T 9
R 3-5	4	" 3rd " "	Magnetic North 106 V 3
92 W 1	4	5" Howitzers. (E/69)	105 X 2
W 2	4	6" " 17th Siege Battery (2)	93 V 7
S 1-4	4	5" " (B/69)	105 D 1
W 4	2	4.5" " 4th N.Z. Battery	105 N 3
M 5	4	18 Pdrs. 2nd N.Z. Battery	105 O 1



Appendix No. 7

Map Squares.	No. of guns.	Description.	Lines passing through these points & converging at gun position enclose zone of fire of gun.							
92 M 1 R 7	4 4	18 Pdrs. 5th N.Z. Battery 4.5" Howitzers. 6th N.Z. Battery	93 L 6 80 K 1 105 V 1 80 K 6							
91 U 1 U 6-9 O 6	4 4 2	18 Pdrs. 3rd N.Z. Battery 60 " 10th Heavy Battery. IX Corps 4" Naval Guns	105 T 1 93 Q 1 105 H 3 105 Y 3 105 X 1 80 H 5							
Arc of fire (magnetic).										
80 D 9 V 5 B 7	1 Section 1 Gun 1 "	26th I.M. Battery 21st " " 21st " "	358° to 35° 52° " 60° 117° " 143°							
92 N 6-8 N 6 X 1 W 2-3	1 Gun 1 " 1 Section 2 Sections	21st I.M. Battery 21st " " 21st " " 26th " "	30° to 45° 45° " 60° 108° " 142° 352° " 37° *							
	1	18 Pdr. 1st N.Z. Battery	To be placed in position							
Summary of guns)	60 Pdrs.)	6" Howrs.)	5" Howrs.)	4.5" Howrs.)	4.7")	4")	18 Pdrs. Mountain Guns.)	3 Pdrs.)	A.A. Gun, (12 Pdr.))	
	4	7	30	6	1	2	44	12	2	1

TOTAL 101.

* Can fire to 58° by change of Observation station.

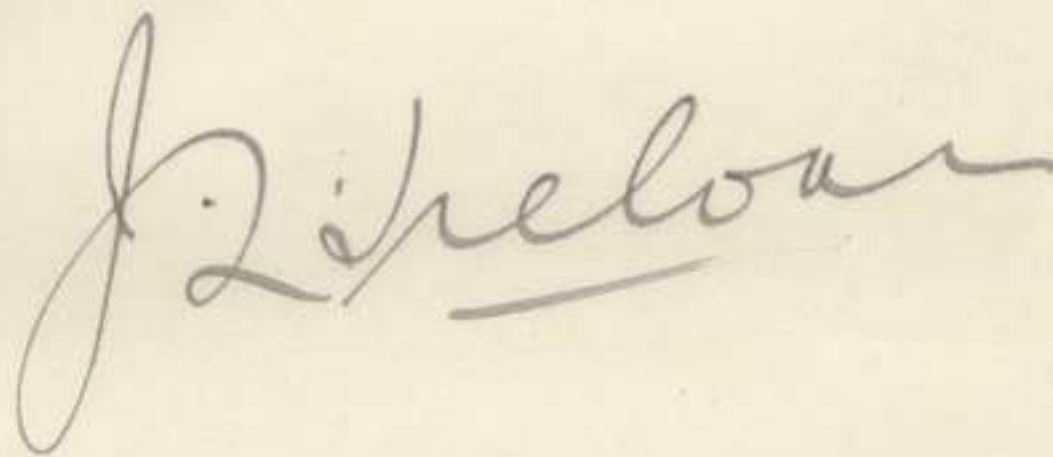


Appendix No. 7

APPENDIX 8.
-----NOTE BY AUSTRALIAN WAR RECORDS SECTION.

(i) Those Maps &c. shown as "attached" or folded inside " are filed herewith.

(ii) The contents of the packet referred to, and those Maps &c. shown as in the "roll", were too bulky to file as appendices to the diary, and have consequently been placed in the Map cabinet.



Capt.

Officer i/c, Aust. War Records Section.

APPENDIX 8

MAPS AND PLANS IN USE AT ANZAC.Contents

attached hereto.	Notes	Explaining production and issues.
parcel	A	Map, Gallipoli, 1/40,000, 3 sheets.
"	B	" " 1/20,000, 8 "
roll.	C	Suvla and Anzac, 1/20,000, showing trenches. ✓
"	D	Anzac, 1/20,000, shewing guns. ✓
"	E	Tracing Anzac, 1/20,000, shewing trenches. ✓
"	F	Koja Chemen Tepe, 1/10,000 ✓
"	G	Trench Diagram No. 6, 1/10,000 ✓
attached hereto.	H	Report on G
packet.	I	Aeroplane photographs
attached folded.	J	Trench diagrams, 1/1800, Chathams Post to Russells Top
roll.	K	" " " " " joined up ✓
attached hereto	L	Report on J and K
roll.	M	Trench diagram, 1/1800 , N. Z. & A. Area. 1/720, 3 sheets, joined ✓
roll.	N	Trench plan, 1/720, Southern No. II Section ✓
"	O	" " " Northern " " ✓
"	P	" " 1/1440, Tasmania Post to Chathams Post ✓
"	Q	" " " " " ✓
"	R	" " 1/360, Silt Spur ✓
"	S	" " 1/720 Lone Pine ✓
"	T	" " Lone Pine ✓
"	U	" " 1/720, Courtneys Post ✓
"	V	" " 1/700, Quinns Post. ✓
"	W	" " 1/360, Popes Hill ✓
"	X	" " " Russells Top ✓
"	Y	" " 1/10,000, Trenches, No. 4 Section ✓
"	Z	" " 1/1200, Hill 60 ✓
"	Za	" " 1/1800, Trenches of 29th Indian Brigade. ✓
"	Z.b.	" " ^{1/600} 1/600 Trench Diagram No 3. ✓
"	Z.c.	" " 1/528 (approx.) " " No 2. & Sketch. ✓

CONTENTS - APPENDIX 8.NOTES

Map s plans and reports are marked for reference.

- A Scale 1/40,000. The first map issued. A set of three.
- B Scale 1/20,000. Reproduced from captured Turkish map, 1/25000. This set is of eight sheets which were issued as produced in the following order, as nearly as can be remembered -

KURIJA DERE, ANAFARTA SAGIR, DAMLER, KRITHIA, BOGHALI, CHANAK, KARNABILI, TAIFUR.

An issue of every one of these sheets was made to all officers and to a percentage of N.C.O's, except that the sheets KARNABILI and TAIFUR were in some cases held by Divisions until required and never issued.

The maps were mostly linen-backed but some were on paper as owing to a shortage of linen-backed paper, a full issue was not available.

The KURIJA DERE sheet was found to be very reliable but the ANAFARTA SAGIR sheet less reliable.

The accuracy of remaining sheets could not be tested as were the two mentioned.

Most of the maps of this series which had not been issued to individuals were burned before the evacuation.

- C Scale 1/20,000. The ANAFARTA SAGIR, KURIJA DERE and DAMLER sheets of the above series joined and marked with our own and enemy trenches.
- D Scale 1/20,000. The KURIJA DERE sheet marked to show position of own and enemy guns.
- E Scale 1/20,000. A tracing on transparent cloth showing ANZAC and enemy trenches. Prepared by Major Smythe, G.S. ANZAC and issued 1st September, 1915 for use with 1/20,000 map.
- F Scale 1/10,000. KOJA CHEMEN TEPE. A very limited issue of a provisional map enlarged by G.H.Q. from above issues were made on a scale of 1 or 2 per division.

In September 1915 it was decided to standardize and regulate the production and issue of trench diagrams in the Corps and instructions were issued to the following effect after consultation with the Mapping Section, G.H.Q., as to reproduction

1. Tactical diagram, scale 1/10,000 to be produced by Army Corps. Scale of issue, 1 to each officer down to Battalion commanders.

2. Trench diagrams, scale 1/1800 of the front held by each division, to be produced by divisions and to show all enemy trenches and our own front line trenches only.

This series was to be produced in sheets of a certain size to fit the printing frames available and to be finished on tracing cloth in black ink so that no alteration should be necessary at G.H.Q. Scale of issue, 1 to each officer of the sheet most concerning him.

- 2 -

H³ Trench plans, scale 30 feet to 1 inch, 1/360. This was to be produced by each division for its own area and was to show our own and enemy trenches, communication trenches and tunnels in detail as far as was possible.

A very limited issue of these was to be made -

1 of each for the Corps, 1 divisional set for each divisional staff and individual sheets to engineer officers employed on mine construction.

These were treated as secret and progress of our own mining was to be marked up regularly on all copies.

Major Smythe, G.S. produced the 1/10,000 diagram. Map and report attached marked. Major Newcombe, R.E. supervised the production of the 1/1800 series in the areas of the 1st and 2nd Australian Divisions. His report and maps are attached marked. Mr. Meldrum of the Survey Section, G.H.Q., did the same in the areas of the New Zealand and Australian Division and 54th Division. Copies of his maps are attached marked

- G Scale, 1/10,000. Trench diagram of our own and enemy trenches compiled from aeroplane photographs and issued 6.10.15.
- H Report by Major Smythe, G.S. on the production of above diagram.
- I Photographs from which the diagram was produced.
- J Scale, 1/1800. Trench diagrams produced by Major Newcombe, R.E. Sheets, CHATHAMS POST to LONE PINE, QUINNS to RUSSELLS TOP.
- K Scale, 1/1800. Trench diagrams produced by Major Newcombe, R.E. Three sheets joined together.
- L Report by Major Newcombe on the production of above diagrams.
- M Scale ~~1/1800~~^{1/720}. Trench diagrams produced by Mr. Meldrum of N. Z. and A. area. Three sheets joined together.
- N Scale, 1/720, 20 yards to 1 inch. Plan of trenches, Southern No. II Section.
- O Scale, 1/720, 20 yards to 1 inch. Plan of trenches, Northern No. II Section.
- P Scale, 1/1440, 40 yards to 1 inch. Plan of trenches, TASMANIA POST to CHATHAMS POST.
- Q Scale, 1/1440, 40 yards to 1 inch. Plan of trenches, TASMANIA POST
- R Scale, 1/360, 10 yards to 1 inch. Plan of trenches, SILT SPUR.
- S Scale, 1/720, 20 yards to 1 inch. Plan of trenches, LONE PINE.
- T Plan of trenches, LONE PINE.
- U Scale, 1/720, 20 yards to 1 inch. Plan of trenches, COURTNEYS POST.
- V Scale, 1/720, 20 yards to 1 inch. Plan of trenches, QUINNS POST.
- W Scale, 1/360, ~~10~~ 10 yards to 1 inch. Plan of trenches, POPES HILL.
- X Scale, 1/360, 10 yards to 1 inch. Plan of trenches, RUSSELLS TOP

- Y Scale, 1/10,000. Plan of trenches, No, 4 Section.
Z Scale, 1/1200. Plan of trenches, Hill 60.
Za Scale, 1/1800. Plan of trenches of 29th Indian Brigade.

*R. A. Smythe Major GS
ANZAC
15.2.16*

- H -

No. 6 Trench, scale 1/10,000

Diagram was prepared as follows -

The photographs were approximately to scale 1/10,000. Each photograph was traced through on to transparent paper and the transparent sheet placed over the 1/10,000 KOJA CHEMEN TEPE map mentioned in E, and adjusted to the ground as represented by this map. The trenches were then traced on to the map with carbon paper.

In many instances this process resulted in trenches known to be on certain spurs, falling into gullies, but by repeated efforts, and visits to the ground and references of sections of the map to divisions in the area represented, a connected diagram of the whole ANZAC area was obtained.

R. B. Smythe Major GS
ANZAC

15.2.16

H.6

The following maps or plans were made by the 2nd Australian Division at Anzac.

- (1) Trench plans 30' to 1" (1/360) to show tunnels and mines, for engineer use only.
- (2) Trench plans 60' to 1" (1/720), reduction of above showing communication trenches in addition, and more comprehensive, for Divisional staff, Brigadiers and for planning accommodation tunnels, etc.
- (3) A general map 150' to 1" (1/1800) to show our firing line with known places marked for reference, and the enemy trenches with the ground to our front contoured with 10' intervals.

No.(1) was made by tape measuring and compass, and (2) was a reduction of (1). No.(3) required a small triangulation survey, but owing to the difficulty of observing from conspicuous points, a tacheometer traverse was carried right through the firing line. This traverse was tied on to the triangulation and the reduction of (1) was then tied on to the fixed tacheometer points. Thus a fairly accurate map of the firing line was obtained.

From this base and using the points fixed by tacheometer conspicuous points in the enemy trenches or enemy country were fixed by plane-table using a periscope. Aeroplane photographs of enemy trenches were enlarged using our firing line as a base, and the points fixed by plane-table for tying in.

Thus an accurate plan was obtained.

For contouring the Turkish 1/25,000 map was enlarged, and where necessary the 10 metre contours slightly shifted to fit the ground as observed from the plane-table or photos. The 10' contours were drawn in by plane tabling, usually by using Abney's level without a periscope; as the latter was found to be too inaccurate. The 10' contours were only used

H-7

for the ground near our trenches, more distant ground being shown by the 10 metre or 30° contours of the enlarged Turkish map. Valleys and other features were put in either by plane-table or from the photographs.

The system of squaring was an exact enlargement of the squares on the 1/20,000 Gallipoli map, the main lines of the squares on the 1/1800 corresponded with those on the 1/20,000 map.

The square say 80 S. had sides of 12". This was subdivided in 9 squares having the figures 1 to 9 in the centre of each, the positions of these figures corresponded to the 9 dots on the 1:20,000 in the same square. Each of these 9 squares was again subdivided into four minor squares a b c d and further sub-divisions of each of these minor squares was obtained by taking a squared paper from any officer's note-book shewing 1/4" squares, these last squares being numbered as indicated on diagram appended at end of this note; thus the point X shewn on the diagram would be described as 80 S 2 C 50.

Thus any point on the map could be accurately described within about 12 yards. Of these 1/1800 maps, two issues were made, one showing all our communication trenches as well as the enemy's and issued only to Staff & Engineers, the other omitting all behind our firing line, issued to every infantry officer. This was to prevent plans of our trenches being captured.

The copy attached was a provisional issue only, a second and improved edition was being prepared when the evacuation took place. The scale of the map was large because enemy trenches were so close that a smaller scale would not have shown the detail so conveniently: it was possible to use it for giving direction for tunnels intended to undermine desirable points beyond enemy trenches.

1/1800 or 50^y to 1" was used because every officer has an inch scale in his note-book, and other maps had

H. 6

already been used on that scale.

It was intended to show :

all conspicuous points in enemy country, such as prominent trees, peculiar piles of sandbags, noticeable overhead cover etc. to enable officers to read the map easily.

Known points in our own trenches require marking to enable the map to be sited.

All names used for our own or enemy trenches are put in.

For Artillery a map on 1/3600 was being produced reducing the 1/1800 and extending its area by fixing points by plane-table and enlarging the photographs. This map was not quite ready but would have included all the area over which artillery fired.

A special officer was detailed to go round artillery observation posts or batteries to mark their positions on the map given them, to see that every one entitled to a map had one, to assist certain officers to read them and to collect and put on the map any fresh names or conspicuous points or pet places which artillerymen made use of, to enable them to pick up objects more rapidly. Battalion Intelligence officers also were asked for names or special objects to be shown in a second edition.

The map was especially useful to new units coming to the trenches, to Intelligence officers and others who were able to describe enemy trenches easily to within 12 yards and to telephone immediately positions of enemy mortars or guns accurately: They were useful also for mining operations and in one case of a captured Turkish tunnel, the officer in charge was enabled to know what direction to take when he got into an enemy trench.

In case of a planned attack, the value for staff operations is obvious.

H.9

It was found possible to enlarge the photographs to 60" to 1" by fixing accurately from a base in our trenches, 2 or more points in enemy trench and enlarging the line between these points. Hence position of our tunnels with reference to enemy line was correct to about 5 or 10 feet.

In addition to this map, it was intended to issue a photograph of the area by adjusting together several aeroplane photographs and making one large photograph. Copies were to be issued to Staff and all battery commanders.

Experience showed, especially in the peculiarly indented country, that the study of the photograph assisted materially the understanding of the country while the map gave distance and direction.

Though the photographs of the enemy's country may be considered particularly secret, there could be no more objection to issuing them than the maps, since the latter gave equal detail of enemy's trenches and probably the enemy have photographs themselves.

The following instruments were used :

3" theodolite, 300' steel tape. Periscope with glasses absolutely parallel ; wooden frame painted black inside. Tacheometer and staff. Small plane-table with telescopic legs, Abney's level. The compass was used for traversing, but owing to steel plates and rifles, was ^{often} found inaccurate.

Sd: *J. Shewcombe*
Major, *Major RE*

H.10

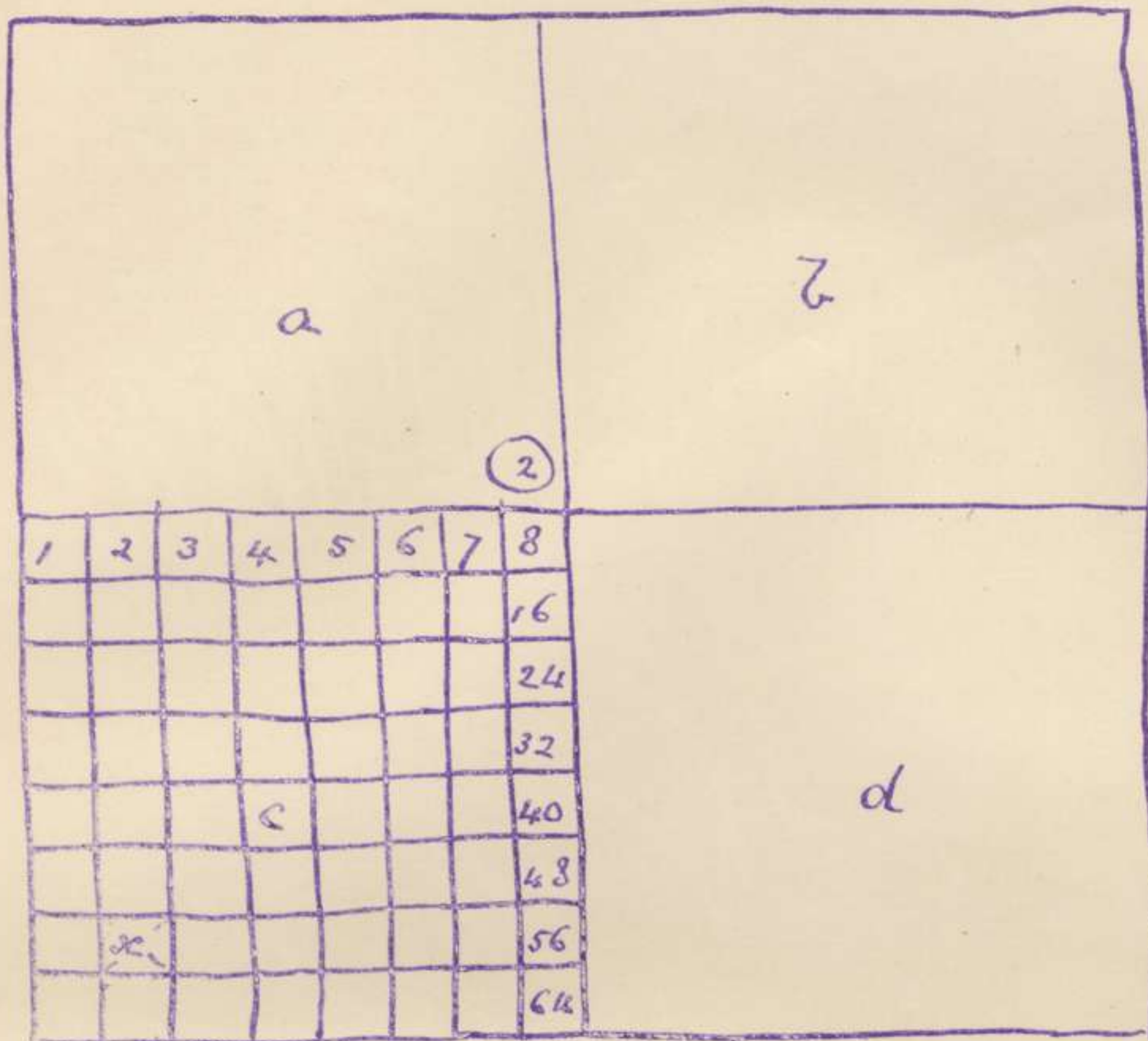


Diagram showing subdivision of square 80×80
 again into squares a, b, c, d & latter again into
 squares 1×64 by $\frac{1}{4}$ " squared paper.

FOLD J.

SECRET

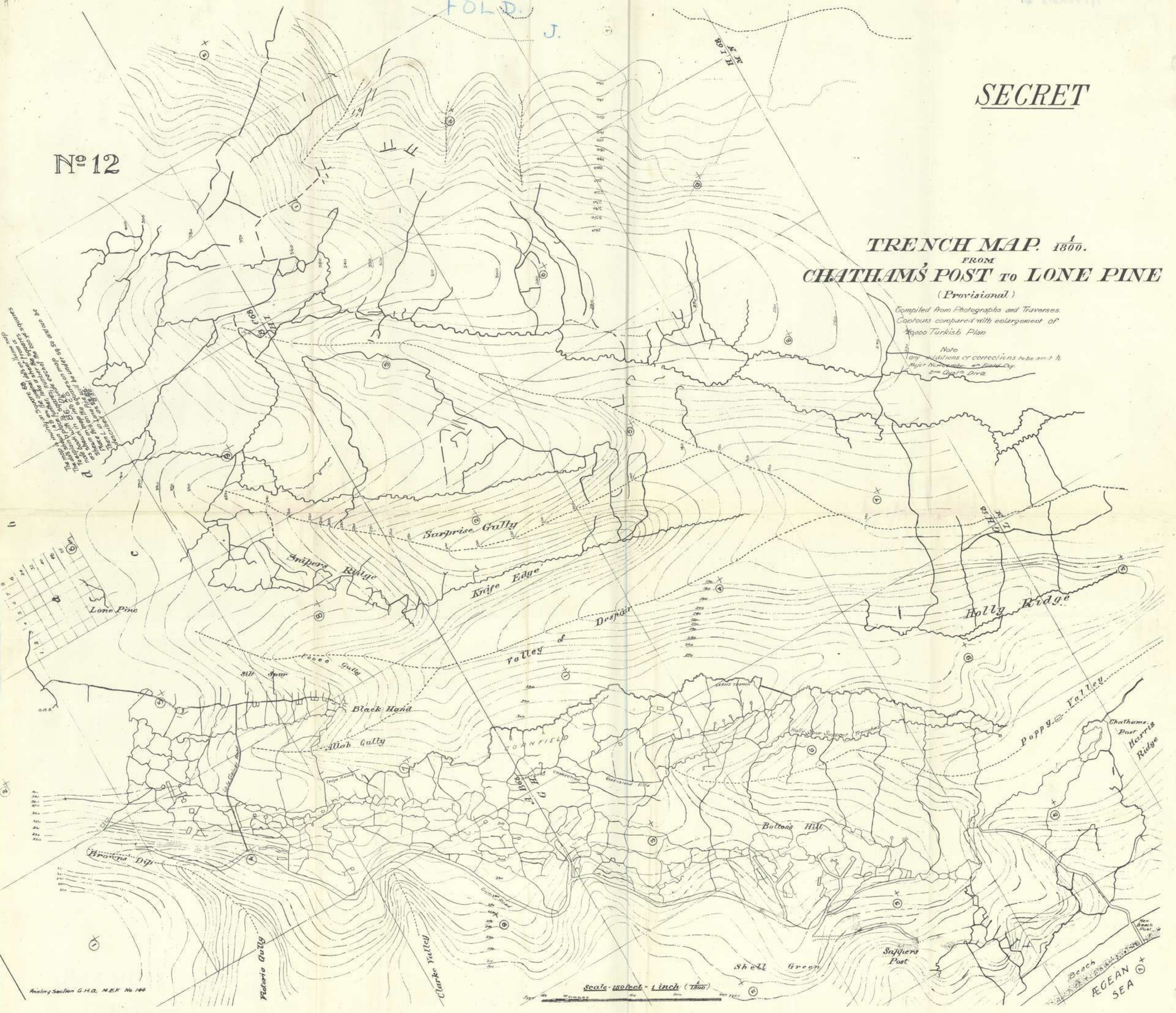
Nº 12

TRENCH MAP. $\frac{1}{1800}$.
FROM
CHATHAM'S POST TO LONE PINE
(Provisional)

Compiled from Photographs and Traverses.
Contours compared with enlargement of
1:5000 Turkish Plan

Note
Any additions or corrections to be sent to
Major H. M. ... in Field Coy.
... 2nd Coy. Div.

It is noted as to be kept in mind that the
contours are not to be taken as a
definite guide to the position of
the ground. The contours are
only a guide to the general
position of the ground. The
actual position of the ground
is shown on the map by the
solid lines. The contours are
only a guide to the general
position of the ground.



Printing Section G.H.Q. M.E.F. No 144

Scale - 180 feet = 1 inch (1:1800)

BEACH
OCEAN SEA

FOLD.

APPENDIX 8 J. & L.

No 15

117

117

Appendix 8

THE AUSTRALIAN WAR MEMORIAL
1914-1918

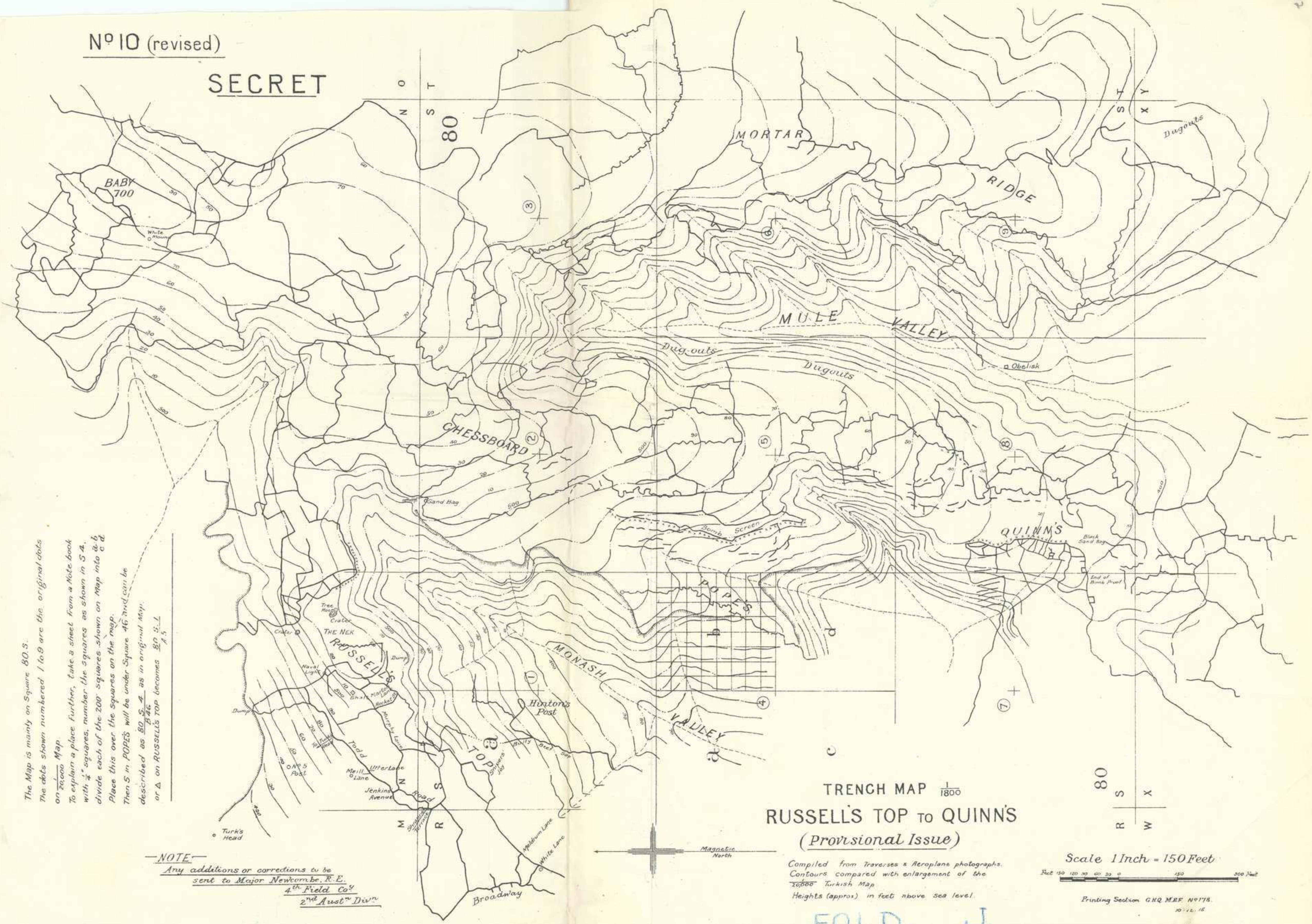
SECRET

Nº 10 (revised)

SECRET

N
O
S
T
80

S
T
X
Y



The Map is mainly on Square 80 S.
 The dots shown numbered 1 to 9 are the original dots
 on 2000 Map.
 To explain a place further, take a sheet from a Note book
 with 4" squares, number the squares as shown in S 4,
 divide each of the 200' squares shown on Map into a, b,
 Place this over the squares on the map.
 Then S in PAPER will be under Square 46 and can be
 described as 80 S 4 4 as in original map.
 or Δ on RUSSSELL'S TOP becomes 80 S 1
 A 5

NOTE
 Any additions or corrections to be
 sent to Major Newcombe, R.E.,
 4th Field Coy,
 2nd Austⁿ Divⁿ.

TRENCH MAP 1/1800
RUSSELL'S TOP TO QUINN'S
(Provisional Issue)

Compiled from Traverses & Aeroplane photographs.
 Contours compared with enlargement of the
 2000 Turkish Map
 Heights (approx) in feet above sea level.

FOLD. J.



80
S
X
R
W

Scale 1 Inch = 150 Feet
 150 120 90 60 30 0 150 300 Feet
 Printing Section GHQ MEF No 178.
 10.12.15