

AWM4

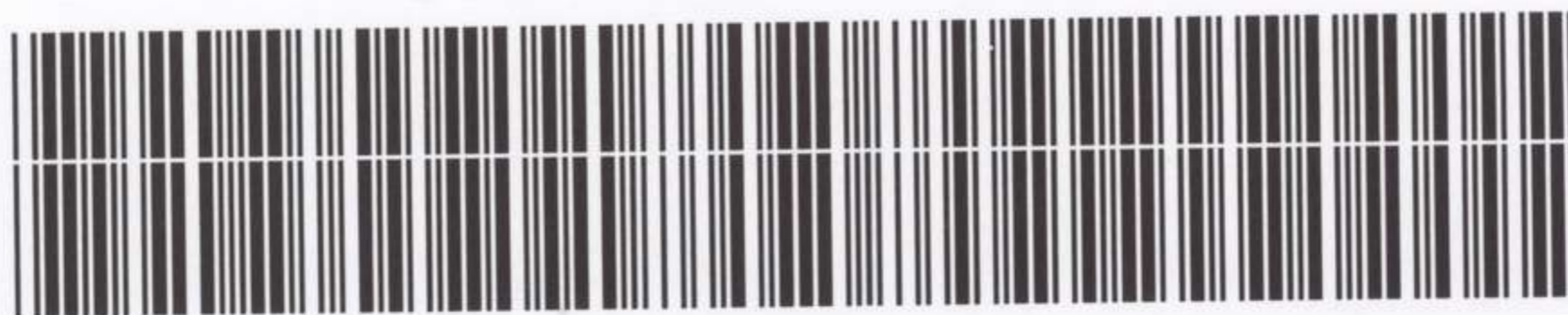
**Australian Imperial Force unit war diaries,
1914-18 War**

Medical, Dental & Nursing

Item number: 26/23/18 Part 2

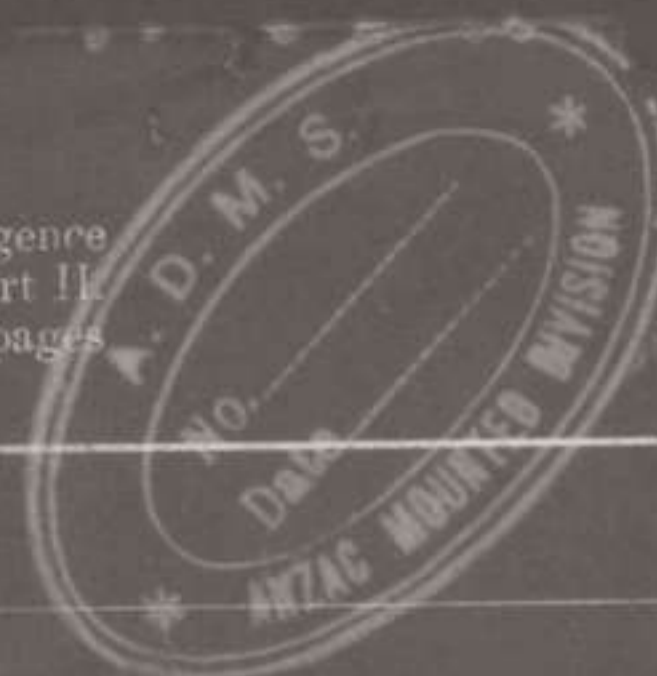
Title: Assistant Director of Medical
Services, ANZAC Mounted Division

August 1917 Duplicate



AWM4-26/23/18PART2

Instructions regarding War Diaries and Intelligence Summaries are contained in F. S. Regs., Part II and the Staff Manual respectively. Title pages will be prepared in manuscript.



WAR DIARY

INTELLIGENCE SUMMARY. VOLUME 1, PAGE 39.

Army Form-C. 2118.

(Erase heading not required.)

Place	Date	Hour	Summary of Events and Information	Remarks and references to Appendices
TEL. Rm. FARA CEM	August			
	1.		Medical Corps Routine Order No. 35 issued and attached.	Appendix 93
	3		D.D.M.S. was applied to for a ruling re establishment re R.H.A. Brigade. Part VII establishment allowing no R.A.M.C. personnel for an R.H.A. Brigade.	
CEM	4		D.D.M.S. Desert Column was asked if hospital train could be brought up to SHELLAL JUNCTION. Suggestions were also made concerning the formation of Advanced Operating Centres at Receiving Stations. Memo attached. One case of Diphtheria. One case Enteric, two cases of Malaria both old infections were reported during the week. 22 cases of Tonsillitis admitted to hospital during the week. 10 cases of Diarrhoea have been admitted of which one case has been diagnosed bacteriologically as Dysentery. Sick admitted 115, Evacuated 105, % of daily admission of sick .25. ½ evacuations .19.	" 93A
CEM	5		Arrangements were made with R.T.O. WELI SHEIKH NURAN for Disinfecting Train to come forward to SHELLAL JUNCTION for Divisional disinfection.	" 94
CEM	6		Time table for disinfection issued. 1000 men disinfected during the afternoon.	
CEM	7		Sanitary inspection Machine Gun Squadron, 2nd. L.H. Brigade. The need for the addition to establishment of a Corporal cook for Machine Gun Squadrons was again emphasised. A N.C.O. is urgently required to control and co-ordinate the work of the section cooks. Major M.W. CAVE reports for duty and is posted as C.O. 1st. L.H.F. Ambulance. Capt THOMAS of Inverness Battery returned from leave to England and is posted to Inverness Battery. Instructions were given him that he is now responsible for the medical control of the 18th. R.M.A. Brigade.	
CEM	8		Disinfection of the Division by Disinfecting Train completed.	
CEM	9		Native Drivers for Riding camels and native Horse Transport Drivers for 1st. and 2nd. L.H.F. Ambs. report for duty. Instructions were received that all natives are now to be taken on the strength of Ambulances and that C.Os. Ambs. will be responsible for their pay and discipline. This departure from the previous arrangement by which C.T.C. natives were borne on the strength of C.T.C. Companies and detached to ambulances for duty is not considered an advantage.	
CEM	10		Colonel R.M. DOWNES relinquishes his appointment as A.D.M.S. Anzac Mounted Division and reports for duty to Desert Mounted Corps as D.D.M.S.	" 95
CEM	11		Infectious Diseases notified during preceeding week Scabies 2 cases, Malaria (old infection) 1 case, Gonorrhoea 2, Tonsillitis 10. Sick admitted 112, Evacuated 109, % daily admissions .52. On the night of Saturday 11th. N.Z.M.R. Bde, were engaged in operations against the XXXXXX SANA redoubt acting as covering troops. Two casualties were admitted, both serious abdominal cases. These cases received immediate operative attention in the recently established Operating Theatre at our Receiving Station, within 4 hours on infliction of wounds.	" 96
CEM	12		Medical Corps Order No. 33 issued and attached.	

A5834 Wt. W4973/M687 750,000 8/16 D. D. & I. Ltd. Forms/C. 2118/13.

Charles E. Hercules Major.

WAR DIARY

or

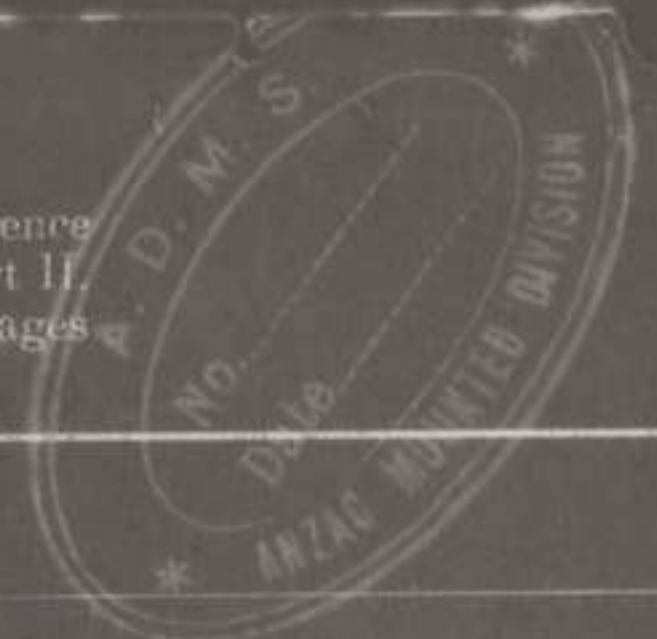
INTELLIGENCE SUMMARY.

(Erase heading not required.)

Army Form C. 2118.

25

Instructions regarding War Diaries and Intelligence Summaries are contained in F. S. Regs., Part II, and the Staff Manual respectively. Title pages will be prepared in manuscript.



Confidential

SECRET

Volume 1 Page 40.

Place	Date	Hour	Summary of Events and Information	Remarks and references to Appendices
	13	1815	D.H.Q. left the rendezvous point.	
		2130	Arrived KARM, established D.H.Q.	
<i>CEX</i>	14	0200	2nd. L.H. Brigade report unable to reach railway and redoubt in time to get clear by daylight. Orders for retirement given. No casualties.	<i>Appendix 97</i>
<i>CEX</i>	15		Medical Corps Order No. 34 issued and attached.	<i>" 98</i>
<i>CEX</i>	15		Medical Corps Order No. 35 issued and attached.	
<i>CEX</i>	16	0130	D.H.Q. move out. The Division plus the 6th. Mounted Bge. were in the field all day engaged in reconnaissance South West of BRERSHERA. Retirement commenced at 1600. Casualties 1 Officer, 2 Other ranks wounded. Reconnaissance of this area with a view to determining roads suitable for motor ambulances was carried out during the day Report attached.	<i>" 99</i>
<i>CEX</i>	17		Sanitary condition of Division at present is good. Incineration of faeces is well established. Lieut-Colonel M.R. WHITE, C.O. 2nd. L.H.F.Amb departs for transport duty to Australia. Major SINGLE assumes command.	
<i>CEX</i>	18		Division moves into reserve on the beach at TEL EL MARAE EB. An inspection of the suitability of the Decaville Line at GAMLI for the transport of wounded was made in company with the D.D.M.S. Three types of trucks were found to exist but all were unsuitable for the carriage of stretchers. Convex iron bar at either end of truck preventing stretchers resting on a horizontal plane. Two sitting up cases could be carried comfortably in each truck. 18 cases of Diarrhoea were admitted during the week of which two were clinically diagnosed Dysentery. 13 cases of Tonsillitis were admitted during the week. Sick admitted 119, Evacuated 117, % daily admission .23.	<i>" 100</i>
TEL EL MARAKEB	19		Representations were made to "G" Branch asking for the postponement of all training for at least a week to enable the men to obtain maximum proportion of rest.	
<i>CEX</i>	20		T. A. B. Vaccine issued to all units, and inoculation is to proceed forthwith.	
<i>CEX</i>	21		Sanitation well established Incineration of faeces and horse manure proceeding satisfactorily.	
<i>CEX</i>	23		Lieut-Colonel D.G.Croll reports for duty as A.D.M.S., Anzac Mounted Division. Medical Corps Routine Order No. 36 issued and attached. 'Pro forma' for AFB 213 issued to all ambulances.	<i>" 101</i>
<i>CEX</i>	24		A reconnaissance was made with D.D.M.S. Desert Mounted Corps in a heavy motor ambulance (2 ton Talbot) of roads East of Wadi GHUZZE suitable for this type of ambulance. It was found that the car could negotiate the roads satisfactorily as far as RASHID BEK The crossing of the Wadi SABA at this point though practicable is not satisfactory for a heavy ambulance. It is recommended that these cars be not allowed to cross the WADI SABA.	

Charles E. Marcus Major

2



Confidential

ORIGINAL
Army Form C. 2118.

245

WAR DIARY

or

INTELLIGENCE SUMMARY.

(Erase heading not required.)

Volume 1

Page 41.

Instructions regarding War Diaries and Intelligence Summaries are contained in F. S. Regs., Part II. and the Staff Manual respectively. Title pages will be prepared in manuscript.

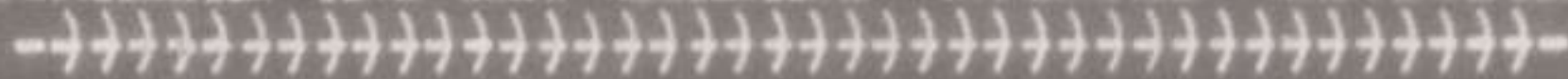
Place	Date	Hour	Summary of Events and Information	Remarks and references to Appendices
TEL EL MARAKEB <i>CEH</i>	25		6 cases of Diarrhoea admitted during the week none presenting clinical features of Dysentery. 10 cases of Tonsillitis admitted to amb. of Division. Sick admitted 109, Evacuated 100, % admissions .20. Evacuations .19.	<i>Appendix 102</i>
<i>CEH</i>	28		Sanitary inspection newly established Anzac Divisional Train. Conditions were found to be very satisfactory.	
<i>CEH</i>	31		Nothing to record.	

Charles E. Marcus Major

745

Appendix 93

AUSTRALIAN AND NEW ZEALAND MOUNTED DIVISION



MEDICAL CORPS ROUTINE ORDER No 35

By

Colonel R. M. DOWNES A.D.M.S.

August 1st 1917

1. POSTINGS

Capt. H. A. L. Lambert	A.A.D.C. to 14th A.G.H.	23-7-17
Capt. T. W. Van Epen	A.A.M.C. to 2nd L.H.F.A.	29-7-17
Capt. C. H. Anderson	A.A.M.C. on leave to England	31-7-17
Capt. A. R. Waterhouse	A.A.M.C. to 7th L.H.Reg't.	31-7-17
Capt. R. A. Baker	A.A.M.C. to 1st L.H.F.A.	1-8-17
Lieut. W. H. Young	N. Z. M. C. to N. Z. M. F. F.	15-6-17

2. PRISONERS AWAITING TRIAL

Prisoners either awaiting trial or under going a sentence by F.G.C.M. are not to leave Field Ambulances for Casualty Clearing Station until provided with the necessary guard from their division.

3. ESTABLISHMENT OF UNITS ON A CAMEL BASIS

All units and formations of the E .E.F. who are at present on Provisional Camel Establishments should observe that such Establishments are purely of a local and temporary nature and do not effect the permanent authorised War Establishments on which such units and formations are maintained. Permanent War Establishments and not establishments on a Camel basis should be shewn on Army Form B213 rendered to A.A.G. 3rd Echelon. In cases where camel establishments demand a temporary additional provision of either British or Native personnel the same should be shewn as required on Army Form B 213 but with a note to the effect that such personnel is required owing to the unit or formation being at present on a Camel basis. Similarly, in cases where camel establishments allow of a temporary decrease in British personnel, the same, if not already with the unit should be shewn as "Wanting to complete" on A.F.B. 213 with a note to the effect that such personnel is not required owing to the unit or formation being at present on a camel basis. (G.O. 2225 25-7-17)

4. SEALING OF NATIVES

O.C. Units which employ natives will send a certificate on the 1st of every month to the A.P.M. Eastern Force through the usual channels to the effect that all natives in their unit are sealed. Should natives of the E.L.C. or C.T.C. require resealing owing to the breaking of the strings or other mishap report should be made at once to the A/A.P.M. DIER EL BELAH who will take the necessary action.

5. C HOLERA INOCULATION

Cholera inoculation must be proceeded forthwith as opportunity offers. One full dose of 1 C.C. is considered sufficient.

6. CIRCULARS TO R.M.O's

Medical Corps Orders, Me mos and circulars sent to R.M.O's must be filed in the medical tent and not destroyed. On arrival of a new Medical Officer attention should be directed to same by the outgoing Medical Officer or the A.M.C .Corporal.

7. SANITATION

Cases have occurred recently of the issue of the wrong pattern latrine equipment, owing to the loose way in which it has been demanded. To obviate this it is essential that the correct nomenclature should be invariably employed when demanding items either on indent or by wire.

Contd.-

745

(2)

7. SANITATION Contd. (1) contd.

The following is a list, with description, of the various equipment for the information of all concerned :-

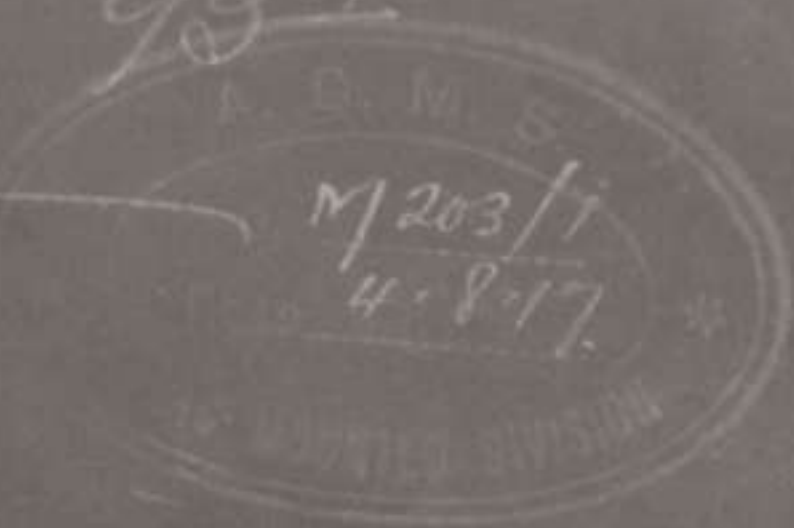
<u>Item</u>	<u>Description</u>
<u>Latrine equipment portable</u>	
Pails	Pails I.G.3-gallons ,with lugs and handles removed.
Seats	Wooden, to fit on top of pail with lift up lid.
Incinerators.	Folding-consisting of 1 sheet corrugated iron, pair legs and two sides of sheet iron.
<u>Latrines dry earth</u>	
Buckets soil	Ordinary service pattern
Seats	Wooden, with back rests and lift up lid to fit on top of bucket.
Lids	For natives only. Flat iron lid with wooden handle.

- (2) The scale of portable sanitary only allows for about 3%, seats and buckets of strength. This is sufficient when troops are on the move or only remaining halted for a few days at a time at the same place. While in standing camps as at present, however it is desirable to bring the number of seats and buckets up to 5% of strength. Units will therefore indent for Latrine Seats and buckets to bring the total number up to 5% of the strength of units in their respective areas. These extra latrines need not necessarily be of the portable type, but they must in all cases be quite fly proof. Any extra seats and buckets drawn to meet these requirements will be treated as Area Stores. Medical Officers should ensure that their Quarter-Masters indent at once for these latrines. (Authority Desert Column Q3700/3 29-7-17).
- (3) Every effort must be made by Medical Officers to ensure that complete incineration of human faeces is carried out in their units. The use of dry horse manure as fuel should be insisted on. Until this method of faecal disposal is firmly established under the heading "Sanitation of our lines" in weekly medical report a statement as to the success or otherwise of this system must be added.

Signed. CHARLES.E.HERCUS MAJOR
for A . D . M . S .
Australian and New Zealand Mounted Division

745

Appendix B4



To
D.D.M.S.
Desert Column

Reference minute 5.

Please see attached remarks of O.C. Anzac Receiving Station. The suggestion that the hospital train might be brought up to SHELLAL JUNCTION if required would certainly save much transport over rough country. The Receiving Station is within 400 yards of this station.

Since the Gaza operations this subject has been receiving earnest consideration as it was considered that the long distances which had to be covered by the motor ambulances over rough country to the C.C.S. Station greatly prejudiced the chances of recovery of abdominal cases. Arrangements have been made by which an E.P. tent with field surgical equipment supplemented by privately owned instruments has been placed at our Receiving Station ready for immediate use. The surgical qualifications of Medical Officers have been investigated and two men with special qualifications have been selected for emergency work. The orderlies for this work have been carefully selected.

It is suggested that present arrangements might be supplemented and that Advanced Operating Centres might be ~~pushaded~~ up to Receiving Stations.

Where time is the all important factor such an arrangement would greatly increase the chances of patients with perforating abdominal wounds.

Charles E. Hercules
Major
for A.D.M.S.
Anzac Mounted Division

Headquarters
August 4th 1917

745

Appendix 94
 AUSTRALIAN AND NEW ZEALAND MOUNTED DIVISION.

Return of regiments of sick ~~and~~ and wounded admitted to and evacuated from Field Amb. of division for week ending August 4th 1917.

UNIT.	Remd.		Admitted To-duty		Evacuated	Remg.	Strength	% admiss	% evac.
	S.	W.	S.	W.					
1st L.H. Rget.	1	4	-	1	2	2	487	.11	.06
2nd. " " "	2	12	-	-	9	5	470	.36	.27
3rd. " " "	-	6	-	1	3	2	497	.17	.08
Sundry	1	10	-	-	8	3	422	.33	.27
	4	32	-	2	22	12	1876	.24	.16

5th L.H. Regt.	1	1	-	-	2	-	540	.02	.04
6th. " " "	4	7	-	1	8	2	496	.20	.23
7th. " " "	3	14	1	1	15	2	422	.47	.50
Sundry	6	5	1 (old)	3	7	2	454	.15	.22
	14	27	2	5	32	6	1912	.20	.23

A.M.R.	9	9	-	5	6	7	459	.28	.18
G.M.R.	4	5	1	1	8	1	458	.15	.24
W.M.R.	5	5	-	-	7	3	469	.15	.23
Sundry	2	5	1	1	6	2	514	.13	.16
	21	24	2	7	27	13	1900	.18	.20

Ayrshire	2	11	-	-	11	2	195	.80	.80
Inverness	1	3	-	2	2	-	211	.20	.13
Somerset	4	5	-	3	1	5	212	.33	.07
Sundry	-	1	-	-	-	1	29	.49	---
	7	20	-	5	14	8	647	.44	.30

D.H.Q. and Sundry.	1	12	-	-	10	3	666	.25	.21

TOTAL DIVISION.	47	115	4	19	105	42	7001	.23	.19

To-- *War Diary*
 For your information.

Headquarters
 August 6th. 1917.

Colonel.
 A. D. M. S.
 Anzac Mounted Division.

745

Appendix 95 8

AUSTRALIAN AND NEW ZEALAND MOUNTED DIVISION.

Return of regiments of sick and wounded admitted to and evacuated to Field Ambulances of division for week ending August 11th 1917.

UNIT	Regt.	Admitted		To-Duty Evacuated		Regt. Strength	% Admiss	% Evacuations	
		S.	W.	S.	W.				
1st. L.H. Regt.	1	14	-	-	15	2	518	.38	.36
2nd. " " "	4	11	-	-	12	3	485	.32	.35
3rd. " " "	2	15	-	-	15	2	488	.45	.43
Sundry	1	23	-	3	18	3	413	.79	.62
)		8	63	-	3	58	1899	.48	.43
5th. L.H. Regt.	-	2	2	-	2	2	562	.05	.05
6th. " " "	2	4	-	-	6	-	486	.11	.17
7th. " " "	2	6	-	1	7	-	482	.17	.21
Sundry	1	7	-	1	5	2	441	.22	.16
)		5	19	2	2	20	1971	.13	.14
A.M.R.	3	4	-	2	3	2	461	.12	.09
C.M.R.	1	6	-	1	6	-	470	.18	.18
W.M.R.	4	4	-	2	5	1	507	.11	.14
Sundry	2	6	-	2	5	1	545	.15	.13
)		10	20	-	7	4	1983	.14	.13
Ayrshire	2	4	-	1	4	1	191	.29	.29
Inverness	-	1	-	-	1	-	217	.06	.06
Somerset	5	1	-	3	3	-	199	.07	.21
Sundry	1	-	-	-	-	1	30	---	---
)		8	6	-	4	2	637	.13	.17
D.H.Q. and Sundry.	2	4	-	1	4	1	617	.09	.09
)		2	4	-	1	1	617	.09	.09
TOTAL DIVISION		33	112	2	17	109	7107	.32	.21

To.

Major Query

For your information please.

Head quarters.
August 13th 1917.D.A.D.M.S.
Anzac Mounted Division

Major.

745
SECRET.

Appendix 96. 9
Copy No.

AUSTRALIAN AND NEW ZEALAND MOUNTED DIVISION.

MEDICAL CORPS ORDER No. 33.

by
Major C.E. HERCUS, for A.D.M.S.

August 12th. 1917.

Reference Map.

BEERSHEBA 1: 125,000.

1. Information. A raid will be carried out on the enemy's post at IRDIEG on the night August 13th/14th. with the object of -
(a) destroying the enemy's post there.
(b) damaging his railway.
2. Troops for enterprise. 2nd. L.H.Bge, 2 troops Field Squadron.
Covering Troops. N.Z.M.B. Bge.
3. Mobile Sections less tent sub divisions will accompany their BGe.
4. Motor ambulances will be parked close to D.H.Q. and will be sent forward to KH IMLEIH if called for. Guides for motor ambulances will be supplied by the C.C. No. 7 Light Car Patrol.
5. Ambulance bearers will be supplemented from the regiments, detailed as follows:-
(a) N.Z. M.B. Bge will detail 24 stretcher Bearers unarmed and 8 horse holders to report to the C.O. 2nd. L.H.F.A. at 1730 at point of assembly of 2nd. L.H.Bge situated $\frac{1}{2}$ mile East of redoubt line at UM URGAN.
(b) 6th. and 7th. L.H.Regts. will detail the xx 12 regimental S.Bs unarmed. (Four horse holders per regiment must accompany these men) to report to the C.O. 2nd. L.H.F.A. at the same time and place. Each man will have a white arm band sewn on right arm.
6. Sand carts of 2nd. L.H.F.A. will halt at KH IMLEIH. 24 stretchers will be taken on by stretcher bearers on horseback to Point 720 where Bge dismounts. An Aid Post will be established by C.O. 2ND. L.H.F.A. on track immediately to the North of this Pt.
7. 24 stretcher squads of three men each will proceed forward from this point immediately in rear of the supporting party; 5 minutes in rear of raiding party.
8. Sand carts with protection and guide provided by 2nd.L.H.Bge will proceed forward along track from KH IMLEIH to Aid Post when called forward by 2nd. L.H.Bge Headquarters. They will on no account move further forward than Aid Post.
9. Casualties will be carried back to and collected at Aid Post.
10. C.O., N.Z.M.F.A. will arrange distribution of sand carts with covering troops.
11. Communication by cable with D.H.Q. at KAMM after 2200.
12. Evacuations to Anzac Receiving Station, SHELLAL Junction.
13. Acknowledge. .

Charles E. Hercus Major.
for A.D. M. S.

Copies to:-

- | | | |
|------------------|--------------------|-------------------------|
| 1. 1st. L.H.F.A. | 2. 2nd LHFA | Anzac Mounted Division. |
| 3. N.Z.M.F.A. | 4. Anzac Rec. Stn. | |
| 5. 2nd.L.H.Bge | 6. NZMB Bge | |
| 7. D.D.M.S. | 8. "C" Branch | |
| 9. File | 10. War Diary. | |

745
SECRET.

Appendix 97 10
9
Copy No.

AUSTRALIAN AND NEW ZEALAND MOUNTED DIVISION.

MEDICAL CORPS ORDER No. 34
by
Major C.E.HERCUS, for A.D.M.S.

August 14th 1917.

Reference Map.

BEERSHEBA 1: 125,000.

1. Information. On August 16th. a reconnaissance will be carried out by the Anzac Mounted Division of the area South West of BEERSHEBA. The 6th. Mounted Brigade have been attached to the Division for the reconnaissance.
2. Mobile Sections will accompany their Brigades.
3. 6th. Mtd Bge Field Ambulance will remain in reserve at RASHIB BEK with it's bge.
4. Motor Ambulances. 2 Motor ambs. will report to 1st. L.H.F.A. 2nd. L.H.F.A., and N.Z.M.F.A. respectively by 0700 on morning of August 16th.
 - (a). C.O. 1st. L.H.F.A. after he has established a Dressing Station will send back a mounted orderly to report to D.H.Q. at HILL 690, RASHIB BEK by 0800. This orderly will guide motor ambs. to Dressing Station.
 - (b). W.O., 2nd. L.H.F.A. will detail a guide to report to the Anzac Receiving Station, SHELLAL JUNCTION by 0500 who will guide motor ambs. to Dressing Station.
 - (c). C.O. N.Z.M.F.A. will detail a guide to report to the Anzac Receiving Station by 0400. This guide will take 2 motor ambs. and report to the No. 12 L.A.M. Battery situated adjacent to Kiosk. These cars will accompany the Battery to N.Z.M R.Bge Headquarters reporting to Dressing Station.
 - (d). 2 reserve motor ambs. will be held in reserve at D.H.Q. All motor ambs. must retire at such an hour on August 16th as to ensure their return to Anzac Receiving Station in daylight.
SHELLAL Crossing should be used.
5. Return of casualties must be wired to D.H.Q. at 1000 and immediately before retirement.
6. Evacuations to the Anzac Receiving Station, SHELLAL JUNCTION.
7. Acknowledge.

Charles E. Hercus Major.
for A. D. M. S.
Anzac Mounted Division.

Copies to :-

- 1 1st. L.H.F.A.
- 2 2nd L.H.F.A.
- 3 N Z M.F.A.
- 4 6th. Mtd Bge F.A.
- 5 No. 12 L.A.M. Battery
- 6 Anzac Receiving Station.
- 7 D.D.M.S.
- 8 "G" Branch
- 9 War Diary ✓
- 10 File

745

Appendix B. 11

Copy No

AUSTRALIAN AND NEW ZEALAND MOUNTED DIVISION.

MEDICAL CORPS ORDER No. 35.

by
Major C. E. HERCUS, for A.D.M.S.
August 15th 1917.

In connection with the move of the Division on the 18th. inst. the following medical arrangements should be noted:

1. Field Ambulances will evacuate from beach area direct to the hospital train at KHAN YUBUS which leaves this station daily at 1315. A small receiving Station will be established near the KHAN YUBUS Station by the 2nd. L.H.F.A. This Receiving Station is for the purpose of treating casual sick of units of Desert Mounted Corps stationed in and around KHAN YUBUS and will only hold cases from Division in the event of a dislocation of hospital train arrangements.

2. N.Z.M.F.A. Inebile Section at Anzac Receiving Station, SHELLAL JUNCTION will hand over to incoming unit of Yeomanry Mounted Division on the morning of the 18th. inst. The section of the Anzac Field Laboratory and the Red Cross Store will be also handed over. Certain special operating equipment now held at Receiving Station, including one tarpaulin for floor of operating tent will be handed over and a receipt for same obtained.

3. N.Z.M.F.A. Automobile Section will then rejoin the N.Z.M.F.A. at the beach area.

4. The minimum of sick should be held by ambulances during beach period so as to enable personnel to obtain the maximum of rest and leave. The Rest Station may be used for holding the lighter cases. To enable this to be done Brigades allotments to Rest Station will be reduced to 50 during this period.

Charles E. Hercus Major.
for A. D. M. S.
Anzac Mounted Division.

War Diary

745

Observation file

Appendix 99

REPORT ON ROADS SUITABLE FOR MOTOR TRAFFIC.

Reference Map. BEERSHEBA 1: 125,000.
RAFA 1: 125,000.

1. CROSSINGS.

- (a) Shellal Crossing. Owing to the good going for motor ambulances on either side of the Wadi at this point, this is considered the most suitable crossing of the Wadi. The middle road on the east bank leading up to the Wadi bed at this crossing is recommended.
- (b) Fara Crossing. There are two crossings at this point. The one marked immediately south of the L of TEL EL FARA is the better.
- (c) The new GAMLI crossing, is an easy one for motor ambulances
- (d) GOZ MABRUK. The crossing here is a good one. Excellent hard track runs down to the Wadi on either side.
- (e) BIR EL ESANI. The crossing here is rough but quite practicable. The road as marked on the map between the two Wadi branches does not exist. The crossing is as marked as far as the B of Broken. The track then follows as marked to 690 then turning at right angles crosses the Wadi as marked on a good crossing. The crossing immediately under the R of R ASHIB BEK is too stony for motor ambulance traffic

2. ROADS.

Roads to RASHIB BEK and KHALLASA. The best road runs from SHELLAL in a south-easterly direction to join main FARA-BEERSHEBA road; thence immediately south of GOZ EL BASAL past KARM to KHASIF (This road continues excellent going to TAWEL EL HABARI and beyond). The marked track immediately beyond KHASIF and at right angles to the previous road bifurcates about 200 yards from main road and runs in a South south-westerly direction direct to join up with marked track running north and south immediately to the west of 690. This track is excellent hard going. The marked track is then followed to it's junction with the ESANI-KHALASZA road as marked. The going is good from here to KHALASZA along this road and from KHALASZA to ASLUJ No. 7 Light Car Patrol report excellent going. An unmarked track runs off this road at junction of track and ESANI-KHALASZA road. This track runs in a south-westerly direction to join up with the KHALASZA-BEERSHEBA road immediately to the west of G of GOZ SHEIHILI ($\frac{1}{2}$ of this track was covered at top gear) The marked road between this point and KHALLASA-A is impassable for motor ambulances. Roads from ESANI in a north-westerly direction. The track through SHANAG and the road through EL GAA as marked are excellent; in addition, a good track runs from the Z of GOZ in GOZ LAKHLEILAT through the A of ABU SOSEIN to the second E of TEL EL FARA. This is the best and most direct track from ESANI to FARA. A good track runs outside the wire on east bank of Wadi from FARA to SHELLAL.

* KHASIF-RASHIB BEK track above mentioned.

745

Appendix 10013

AUSTRALIAN AND NEW ZEALAND MOUNTED DIVISION.

Return of Regiments of sick and wounded admitted to and evacuated to Field Ambulances of Division for week ending August 10th 1917.

UNIT	Regt.	Admitted	W.	Re-Duty.	Evac.	Regt. Strength.	% Admiss.	% Evac.	
1st L.H. Regt	2	8	2	-	9	3	506	.22	.25
2nd. " "	3	5	-	-	7	1	480	.14	.20
3rd. " "	2	9	-	1	10	-	488	.26	.29
Sundry	3	16	-	1	15	3	419	.54	.51
	10	38	2	2	41	7	1693	.28	.30
5th. L.H. Regt	2	1	-	-	3	-	565	.02	.07
6th. " "	-	8	1	-	8	1	517	.22	.22
7th. " "	-	12	-	1	9	2	480	.35	.26
Sundries	2	8	-	-	9	1	417	.27	.30
	4	29	1	1	29	4	1979	.21	.21
A.M.R.	2	12	-	1	10	3	484	.35	.29
C.M.R.	3	7	2	1	2	8	459	.21	.24
W.M.R.	1	8	-	1	5	3	510	.22	.14
Sundries	1	4	2	1	5	1	534	.10	.13
	7	31	4	1	28	8	1987	.22	.20
Ayrshire	1	8	-	2	7	-	222	.51	.45
Inverness	-	5	-	-	5	-	245	.29	.29
Somerset	-	3	-	1	2	-	226	.18	.12
Sundries	1	1	-	-	2	-	34	.42	.84
	2	17	-	3	16	-	727	.33	.31
D.H.Q. and Sundry	1	4	-	1	3	1	665	.08	.06
Total Division	34	119	7-1	12	117	20	7251	.25	.23

To. War Diary

For your information please.

Major.
D.A.D.M.S.
New Zealand Mounted Division.

Headquarters.
21st. August 1917.

745

Appendix 10/14

AUSTRALIAN AND NEW ZEALAND MOUNTED DIVISION.
MEDICAL CORPS ROUTINE ORDER No. 36.

by
Major. C.F. HERCULES, for A.D.M.S.

271. POSTINGS.

Colonel DOWNS, R.M. from A.D.M.S. to D.D.M.S. Desert Mounted Corps, dated 10.8.17
 Lt-Col. WHITE, E.R., 2nd. L.H.F.A. proceeded on transport duty, dated 18.8.17.
 Capt WIEBURD, C.R. posted to Anzac Divisional Train 218.17
 Capt. DOUGLAS, C. Ayrshire R.H.A. on leave to England, dated 3.8.17.
 Capt. THOMAS, J.W. reported from leave 6.8.17.
 Capt. MORRIS WORTH, C.S., rejoined 1st. L.H. Regt from hospital dated 13.8.17
 Major CAVE, M.W. from D.A.D.M.S. Asst. Lt. Div. to temporarily command 1st. L.H.F.A. 7.8.17.
 Lieut. JOHNSON, A.C. A.A.D.C. posted to 2nd. L.H.F.A. DATED 23.8.17.
 W.O. Jackson, 1st. L.H.F.A. proceeded on transport duty dated 17.8.17.
 W.O. Phillips, 2nd. L.H.F.A. commissioned and posted to Camel Field Amb. 22.7.17.
 staff Serpt. Earl, W. 1st. L.H.F.A. to Moascar 12.7.17

272. PROMOTIONS.

Major CAVE, M.W. is granted temporary rank of Lieutenant-Colonel, whilst commanding 1st. L.H.F.A. dated 7.8.17.
 To be Staff Sergeants.
 No. 4 Spt McGillivray, 1st. L.H.F.A. vice Earl transferred 13.7.17
 No. 429 Spt Dunbar, J.J. 2nd. L.H.F.A. dated 20.8.17
 No. 25 Spt. Stanger-Leathes, H.W. 1st. L.H.F.A. dated 22.8.17.
 Spt. Strehan, 2nd. L.H.F.A. vice Groll transferred, dated 11.3.17.

273. SHORT LEAVE RETURN TICKETS ON E.S. RAILWAYS.

Officers commanding Units will bring to the notice of all N.C.Os and men the fact that the Egyptian State Railways have made special arrangements for the issue of third class return tickets, available for 15 days to soldiers going on leave. All soldiers should therefore avail themselves of this privilege and remember to purchase return tickets when going on leave.

274. MOVEMENT ORDERS.

Complaints have been received that large numbers of N.C.Os and men are arriving at KHAN YUNUS station and applying for movement orders from the Administrative Commandant and R.T.O. This practice is quite irregular and must cease. Officers, W.Os., N.C.Os and men are to be provided with movement orders signed by the O.C. of their unit or his representative before they leave their units.

275. NATIVE PERSONNEL FOR FIELD AMBULANCES.

Demands for native personnel allowed by establishment for Mounted Field Ambulances will in future be made on A.A.G., 3rd. Echelon, in the ordinary way.

276. REGISTRATION NUMBERS.

It is directed that medical units should in all cases check the number given by a soldier on admission with that entered in his Army Book 64 and that shown on his identity disc.

277. CASUALTIES REPORTING.

All Staff Officers, Officers in Command or second in Command of Regts. who are evacuated sick will take with them a paper on which is shown the rank, name and appointment of the officer in question, this paper being handed to the Medical Officer of the Field Ambulance or Casualty Clearing Station into which they are admitted. Medical officers in charge of M.D. Tabs. or C.O.S. who receive a paper of this description will as soon as possible despatch a wire direct to the Assistant Military Secretary, G. H. Q. stating the name, rank and appointment of the officers admitted together with an estimate of the probable minimum time that the officer concerned will be detained in hospital. The above instructions do not apply to officers wounded in action.

278. PROVISIONAL ESTABLISHMENT WITH CAM'L TRANSPORT.

The following amendment should be made to the above establishment:

Para 4, Note (e) For 15 read 18.

CHARLES M. MERCUS, Major.

for A.D.M.S.

Australian and New Zealand Mounted Division.

AMM 2353, 1917.

745

Appendix 102

Australian and New Zealand Mounted Division

16

Return of Regiments of sick and wounded admitted to and evacuated from Field Ambulances of Division for week ending August 25th. 1917

Unit	Read. Admitted		To-Duty	Evas.	Reg Strength	% Admiss.	% Evas.
	S	W					
1st L.H. Regt	5	-	-	5	474	.15	.15
2nd LH Regt	9	-	-	9	503	.25	.25
3rd LH "	9	-	-	9	499	.25	.25
Sundries	14	-	-	14	421	.47	.47
	37	-	-	37	1897	.27	.27
5th LH Regt	1	-	-	1	557	.01	.00
6th " "	8	-	-	8	522	.22	.22
7th " "	10	-	-	9	462	.30	.27
Sundries	10	-	1	7	453	.31	.22
	29	-	1	24	1994	.20	.17
A.M.R.	10	-	-	10	560	.25	.25
C.M.R.	5	-	1	4	510	.14	.14
W.M.R.	4	-	-	4	510	.14	.14
Sundries	10	-	-	10	488	.29	.29
	29	-	1	28	2068	.20	.20
Ayrshire	2	-	-	2	215	.13	.13
Inverness	3	-	-	3	247	.17	.17
Somerset	-	-	-	-	239	-	-
Sundries	-	-	-	-	149	-	-
	5	-	-	5	850	.08	.08
D.H.Q. and Sundry	7	-	1	6	694	.14	.12
Total Division	107	-	3	100	7503	.20	.19

To War Diary

For your information please.

Headquarters,
27th. August 1917.

Lieut. Colonel
A.D.M.S.
Anzac Mounted Division.