

AWM4

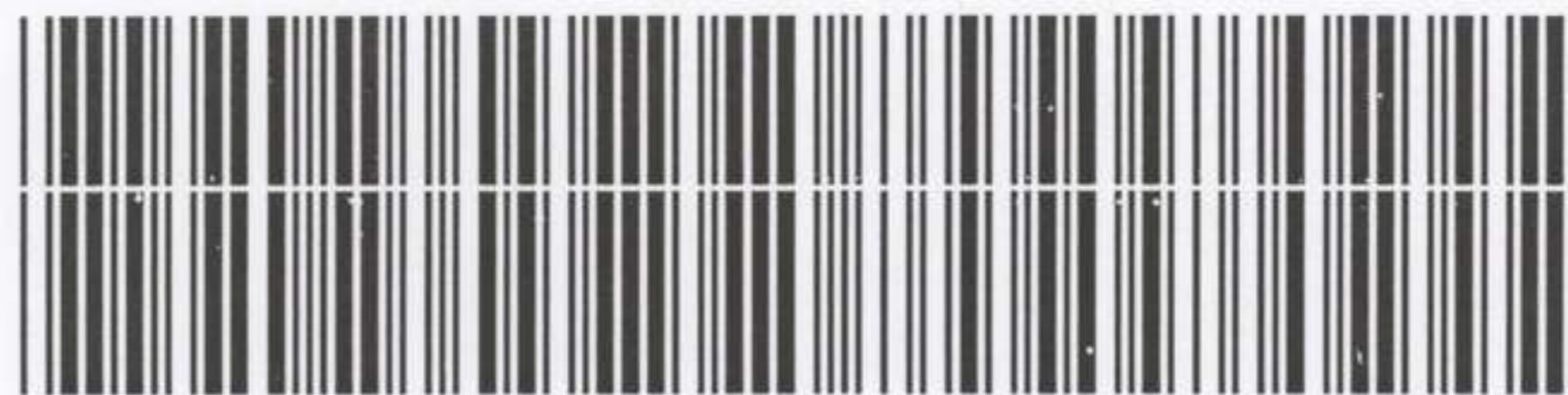
**Australian Imperial Force unit war diaries,
1914-18 War**

Artillery

Item number: 13/12/21

Title: Headquarters, 3rd Australian
Divisional Artillery

January 1918



AWM4-13/12/21

WAR DIARY

or

~~INTELLIGENCE SUMMARY~~

(Erase heading not required.)

Instructions regarding War Diaries and Intelligence Summaries are contained in F. S. Regs., Part II. and the Staff Manual respectively. Title Pages will be prepared in manuscript.

Place	Date	Hour	Summary of Events and Information	Remarks and references to Appendices
	4.1.1918.		<p>STEENWERCK.</p> <p>Weather Dull. Wind N. Visibility poor.</p> <p>Casualties - Nil.</p> <p>Ammunition expended - to noon : 18-Pdrs. 866. 4.5"Hows. 48. T.Ms. 20.</p> <p>Operations as per Intelligence Summary.</p> <p>During the evening 1 Sect. of each battery of this Divl. Artillery was relieved by 1 Section of batteries of the 57th Divisional Artillery, in accordance with O.O.41. DA/24/116 issued, and appended.</p>	<p>OO. 41 DA/24/116</p>
	5.1.1918.		<p>Office of 3rd. D.A.H.Q. closed at STEENWERCK, at 12 noon, and re-opened at 50 Rue de Lille, BAILLEUL, at the same hour.</p> <p>Relief of 3rd Aust. D.A.C. by 57th. D.A.C. was completed by 12 noon. T.Ms. in the Line were taken over by the 57th Divn., and personnel of 3rd Aust. Trench Mortars were relieved by 12 noon.</p> <p>of batteries</p> <p>During the evening the remaining 2 Sections of this Divl. Artillery were relieved by Sections of batteries of the 57th Divl. Artillery, and withdrew to present Wagen Lines for the night. Command of 3rd Australian Artillery Group passed on completion of relief.</p> <p>Command of Artillery in the Line passed from the C.R.A., 3rd. Aust. Divn. to the C.R.A. 57th Divn. at 12 noon.</p> <p>Casualties - Nil.</p> <p>Ammunition expended - to noon : 18-Pdrs. 105. 4.5"Hows. 105.</p> <p>3rd. Aust. D.A.C. moved to Rest Area.</p>	

WAR DIARY

Army Form C. 2118: 32

Instructions regarding War Diaries and Intelligence Summaries are contained in F. S. Regs., Part II. and the Staff Manual respectively. Title Pages will be prepared in manuscript.

=== INTELLIGENCE SUMMARY ===

(Erase heading not required.)

Place	Date	Hour	Summary of Events and Information	Remarks and references to Appendices
			BAILLEUL.	
	6.1.1918.		<p>Weather - fine. Wind N.</p> <p>Divl. Artillery (with the exception of the D.A.C.), moved to METEREN AREA during the morning.</p> <p>Location Statement issued and appended.</p> <p style="text-align: right;"><i>Ahe</i></p>	
	7.1.1918.		<p>Weather - dull. Slight thaw.</p> <p>Staff Captain issued Administrative Circular ; appended.</p> <p style="text-align: right;"><i>Ahe</i></p>	
	8.1.1918.		<p>Weather - Heavy fall of snow during morning; blizzard.</p> <p>Conference of Brigade Commanders at D.A.H.Q. - 11.30 am.</p> <p>Lt-Col. H.D.K. MACARTNEY, D.S.O. who had commanded the 7th. Aust. F.A. Brigade since Sept. 1916, relinquished this command, to go to Australian Corps H.Q. as Staff Officer to XXXXXX G.O.C., R.A.</p> <p>Lt-Col. W. CHURCHUS, C.O., 3rd. Aust. D.A.C. assumed command of 7th. Aust. F.A. Brigade, and Capt. C.G. FOXTON was appointed Acting C.O. of the D.A.C.</p> <p style="text-align: right;"><i>Ahe</i></p>	

WAR DIARY

Army Form C. 2118.

Instructions regarding War Diaries and Intelligence Summaries are contained in F. S. Regs., Part II. and the Staff Manual respectively. Title Pages will be prepared in manuscript.

--INTELLIGENCE SUMMARY--

(Erase heading not required.)

Place	Date	Hour	Summary of Events and Information	Remarks and references to Appendices
			BAILIEUL.	
	9.1.1918.		<p>Weather : Dull morning. Heavy fall of snow during afternoon.</p> <p>BRIG-GENERAL H.W.GRIMWADE C.M.G. left for ENGLAND, on 36 days leave.</p> <p>Lt- Col. W.G ALLSOP, D.S.O. to act as C.R.A., during the absence of BRIG-GEN. H.W.GRIMWADE, C.M.G.</p> <p style="margin-left: 40px;">→ 8th Field Artillery Brigade,</p>	
	10.1.1918.		Weather : Dull - thaw. Wind N. to N.W.	
	11.1.1918.		Weather : Very dull. Wind N.	
	12.1.1918.		Weather : Dull. Wind N.W.	
	13.1.1918.		<p>Weather : Fine & Sunny. Wind N.W.</p> <p>During night 13th/14th there was a heavy fall of snow.</p>	
	14.1.1918.		Weather : Fine all day. Wind N. to N.W.	
	15.1.1918.		Weather : Dull. Wind S.W.	
	16.1.1918.		Weather : Very dull. Slight rain at times. Wind N.W.to W.	
	17.1.1918.		Weather : Sleet, turning into rain, prevailed all day. Wind S. to S.W.	
	18.1.1918.		Weather : Dull. Wind S. Very mild. Location Statement issued and appended.	
	19.1.1918.		Weather : Dull generally, with fair intervals. Very mild. Wind S.	
	20.1.1918.		Weather : Dull. Wind S.W.	
	21.1.1918.		Weather : Very dull. Light rain at times. Wind W.	

WAR DIARY

Army Form J. 2118.

Instructions regarding War Diaries and Intelligence Summaries are contained in F. S. Regs., Part II. and the Staff Manual respectively. Title Pages will be prepared in manuscript.

==INTELLIGENCE SUMMARY==

(Erase heading not required.)

Place	Date	Hour	Summary of Events and Information	Remarks and references to Appendices
<u>BAILLEUL.</u>	22.1.1918.		<p>Weather : Fine during day. Very mild. Drizzling rain during evening. Wind. W.N.W.</p> <p><u>Brigade Major issued Warning Order</u>, stating that this Divl. Artillery will relieve the 2nd. Aust. Divl. Artillery in the Line between the 30th. inst. and 1st. February, 1918. Warning Order. 22.1.1918. appended. Further orders to follow.</p> <p style="text-align: center;">-----</p> <p>While the Divisional Artillery have been out of the Line, training has been going on systematically. Under orders from this Office, Brigades, D.A.C., and Trench Mortar Units have submitted Schemes of Training, embracing all departments of gunnery, care of horses, packing of vehicles, mounted and dismounted drill, saluting, Physical training, work of Specialists, and Lectures. Care has been taken to give special instruction to Reinforcements recently arrived from the Base. There have been several Inspections by the C.R.A. and Staff Officers, and one by General BIRDWOOD, the Corps Commander.</p> <p>On the 16th. and 17th inst., Brig-General COXON, G.O.C., R.A., AUSTRALIAN CORPS, inspected all Wagon Lines of the 7th. & 8th. A.F.A. Bdes., and of 3rd. Aust. D.A.C.</p>	W. Order 22.1.18.
	23.1.1918.		Weather : Dull. Fair Intervals. Wind W.N.W. Very mild day.	
	24.1.1918.		Weather : Fine and sunny. Wind N.W. Mild day. Major T.B.W. JAMES D.S.O., who had been a/Bde. Major, 2nd. Aust. Div. Art., was appointed to command 3rd. Aust. D.A.C., taking over from	
	25.1.1918.		Weather : Fine and sunny. Wind N.W. Very mild day. (Capt. C.G. FOXTON, a/C.O. Locations as per Statement issued 18.1.1918. Memo issued, and appended.	
	26.1.1918.		<p>Weather : Cold. Foggy. Wind N.W.</p> <p><u>Brigade Major issued Operation Order No. 42.</u> - This Divl. Artillery is to relieve the 2nd, Aust. Divl. Artillery on 30.1.18. & 31.1.18.</p> <p><u>Staff Captain issued DA/24/120.</u> 26.1.18., in conjunction with Bde. Major's O.O. 42.</p>	O.O. 42. DA/24/ 120

WAR DIARY

Instructions regarding War Diaries and Intelligence Summaries are contained in F. S. Regs., Part II. and the Staff Manual respectively. Title Pages will be prepared in manuscript.

INTELLIGENCE SUMMARY

(Erase heading not required.)

Place	Date	Hour	Summary of Events and Information	Remarks and references to Appendices									
<u>BAILLEUL.</u>													
	27.1.1918.		Weather : Cold and foggy. Wind SE.										
	28.1.1918.		Weather : Fine and sunny. Wind N.W.										
			D.S.O										
			Lt Col. W.G. ALLISON appointed Acting C.R.M.										
			Amendment No.1. to Operation Order No.42 issued. Appended.										
	29.1.1918.		Weather : Fine. Wind S.E.										
	30.1.1918.		Weather : Fine & sunny. Wind - S.E. One section per battery of 3rd.Aust.Divl.Artillery relieved 1 section per battery of the 2nd.Aust.Divl.Artillery, in the line. Front extends from River DOUVE on the N. to River LYS on the S.	O.O.42.									
	31.1.1918.		Weather : Cold and Misty. Wind S.E. 2 sections per battery of 3rd.Aust.Divl.Artillery relieved 2 sections per battery of the 2nd.Aust.Divl.Artillery.	"									

<table style="width: 100%; border-collapse: collapse;"> <thead> <tr> <th style="width: 60%;"></th> <th style="width: 20%; text-align: center;">Officers.</th> <th style="width: 20%; text-align: center;">Other Ranks.</th> </tr> </thead> <tbody> <tr> <td>Total Strength of this Divl.Artillery on 1.1.1918. -</td> <td style="text-align: center;">92</td> <td style="text-align: center;">2335.</td> </tr> <tr> <td>" " " " " " " 31.1.1918. -</td> <td style="text-align: center;">91</td> <td style="text-align: center;">2319.</td> </tr> </tbody> </table>						Officers.	Other Ranks.	Total Strength of this Divl.Artillery on 1.1.1918. -	92	2335.	" " " " " " " 31.1.1918. -	91	2319.
	Officers.	Other Ranks.											
Total Strength of this Divl.Artillery on 1.1.1918. -	92	2335.											
" " " " " " " 31.1.1918. -	91	2319.											

<p>During the month, 22 Reinforcements have arrived from the Base, and have been distributed as follows :-</p> <table style="width: 100%; border-collapse: collapse;"> <tr> <td style="width: 30%;">7th.A.F.A.Bde. - 9.</td> <td style="width: 30%;">8th.A.F.A.Bde. - 3.</td> </tr> <tr> <td>3rd.Aust.D.A.C.- 9.</td> <td>Trench Mortars.- 1.</td> </tr> </table>					7th.A.F.A.Bde. - 9.	8th.A.F.A.Bde. - 3.	3rd.Aust.D.A.C.- 9.	Trench Mortars.- 1.					
7th.A.F.A.Bde. - 9.	8th.A.F.A.Bde. - 3.												
3rd.Aust.D.A.C.- 9.	Trench Mortars.- 1.												

<p><i>Al Choultz Lieut</i> <i>Staff Lieutenant</i> <i>3rd Aust. Divl Artillery Adqns.</i> <i>31/1/1918.</i></p>													

132

7

18,000-12/17-8723.

WAR DIARY

OF

3rd. AUSTRALIAN DIVISIONAL ARTILLERY HEADQUARTERS.

FOR

JANUARY, 1918.

LIST OF APPENDICES.

No.	Subject.
1.	HONORS DESPATCH - 1st. Jan. 1918.
2.	DA/24/116. - Horse Standings when in rest area. 1.1.18. Tracing shewing Corps Rest Area.
3.	DA/24/116. - Amendment to ditto. 2.1.18.
4.	OPERATION ORDER No. 41. Relief of 3rd. Aust. Div. Arty. 3.1.18. by 57th. Div. Arty.
5.	DA/24/116. - STAFF CAPTAIN'S ADMINISTRATIVE 4.1.18. INSTRUCTIONS re O.O. 41.
6.	ADMINISTRATIVE - Instructions to Units when in CIRCULAR. 7.1.18. Rest Area.
7.	WARNING ORDER. - Preliminary notice of relief of 22.1.18. 2nd. Aust. Div. Arty. in the line, by 3rd. Aust. Div. Arty.
8.	OPERATION ORDER No. 42. Relief of 2nd. Aust. Div. Arty. 26.1.18. by 3rd. Aust. Div. Arty.
9.	D.A./24/120. - STAFF CAPTAIN'S ADMINISTRATIVE 26.1.18. INSTRUCTIONS re O.O. 42.
10.	Amendment to O.O. 42.
11.	Location Statement - 6.1.18.
12.	Amendment to do.
13.	Location Statement - 18.1.18.
14.	do. - 25.1.18.
15.	do. - 31.1.18.

Ah. Chouley.

Headquarters,
4.2.1918.

Lieutenant.
Staff Lieutenant.
for BRIG-GEN. Comdg, 3rd. Aust. Div. Artillery.

132

8

APPENDIX 1

LIST OF OFFICERS, N.C.Os., and MEN OF
3rd. AUSTRALIAN DIVISIONAL ARTILLERY,
INCLUDED IN

Appendix

HONORS DESPATCH - 1st. JANUARY, 1918.

(A.I.F. List No. 279.)

No.	Rank.	Name.	Unit.	Award.
24381	Driver (a/Cpl.)	BERRIMAN V.	D.A.C.	D.C.M.
24448	Majer.	ROWE S.G.	8th. Bde.	D.S.O.
	Q.M.S.	ALLEN T.W.	D.A.C.	Mention.
	Lt-Col.	DERHAM F.P. D.S.O.	D.A.C.	Mention.
	Majer	McPHERSON R.V.S.	8th. Bde.	Mention.
	Capt.	GUNN A.D.	8th. Bde.	Mention.
	Lieut.	O'ROURKE.	D.A.C.	Mention.
	Capt.	HAMMOND G.J.	7th. Bde.	Mention.
	Majer.	IRWIN J.M.	D.A.H.Q.	Mention.
	Lt-Col.	MACARTNEY H.D.K.	7th. Bde.	D.S.O.
	Majer.	TAYLOR H.B.	7th. Bde.	D.S.O.
	Majer.	SANDFORD A.B.	8th. Bde.	Mention.
	Majer.	CHURCHUS W.	8th. Bde.	D.S.O.
	XXXX			
18416	W.O. (I)	SNOWDON G.	7th. Bde.	M. C.
18746	Corpl.	SHIELS A.J.I.	7th. Bde.	Mention.
21941	Sergt.	DUGGAN D.J.	8th. Bde.	M.S.M.
1107	Sergt.	McMAHON L.P.	D.H.Q.	Mention.
	(Gas NCO)		(att. 7th. Bde)	
	Lieut.	RICHARDSON N.D.	8th. Bde.	XX Mention.
	Lieut.	MORTARTY G.V.	7th. Bde.	M.C.

NOTE : The above honors were recommended on 1.10.17. & 4.10.17.

The following is an extract from A.I.F. List No. 279 dated 1.1.1918 :

" To be Brevet Colonel

" Lieut-Col. (Col., temp. Brig-General, A.I.F.)

" GRIMWADE H.W. C.M.G. A.F.A. "

TO BE ADDED TO APPENDIX I.

Lt-Col. W.G. ALLSOP, D.S.O. to be Brevet Lt-Colonel.

Major T.B.W. JAMES, D.S.O. to be Brevet Major.

132

SECRET.



9

THIRD AUSTRALIAN DIVISIONAL ARTILLERY.

Appendix

2

Headquarters,
1st January, 1918.

Reference Maps:- Sheet 27 Edition 3. 1/40,000
Sheet 36a Edition 6. 1/40,000.
Sheet 36.

1. The following is the allotment of horse standings to Units when this Artillery moves into the rest area:-

Unit	Co-ordinate	Accommodation for horses.	Remarks.	
7th F.A.Brde.	A.2.d.8.9.	200	Complete.	
	A.2.c.9.7.	200		
	F.12.a.7.4.	200		
	F.11.c.4.8.	200		
8th F.A.Brde.	E.5.c.3.4.	120	Old Armn. Dump.	
	E.5.c.3.8.	40		do.
	E.11.c.4.6.	50		do.
	E.11.c.2.0.	50		do.
	E.11.c.9.1.	100	Not yet complete	
	E.16.b.4.9.	50		do.
	E.9.d.4.1.	200		do.
	E.9.c.4.3.	50		do.
3rd D.A.C.	F.8.b.8.7.	200	Old Armn. Dump.	
	F.9.a.2.8.	70		do.
	F.9.b.6.6.	200		do.
	E.5.a.3.4.	120		do.
	E.5.a.4.8.	120		do.

- Attached are:-
 - Tracing shewing Corps Rest Area, and the billeting areas allotted to Units. The boundaries of these billeting areas must be adhered to.
 - A list of alternative billets within Unit areas. This list is purely a guide. (Not attached).
- Advance parties should reconnoitre positions forthwith.
- 8th F.A.Brige will arrange for a party of men to be sent to the incomplets standings at E.9.d.4.1. and E.9.c.4.3. forthwith to push on with work.

T. J. ...



Captain,
Staff Captain R.A.,
3rd Australian Division.

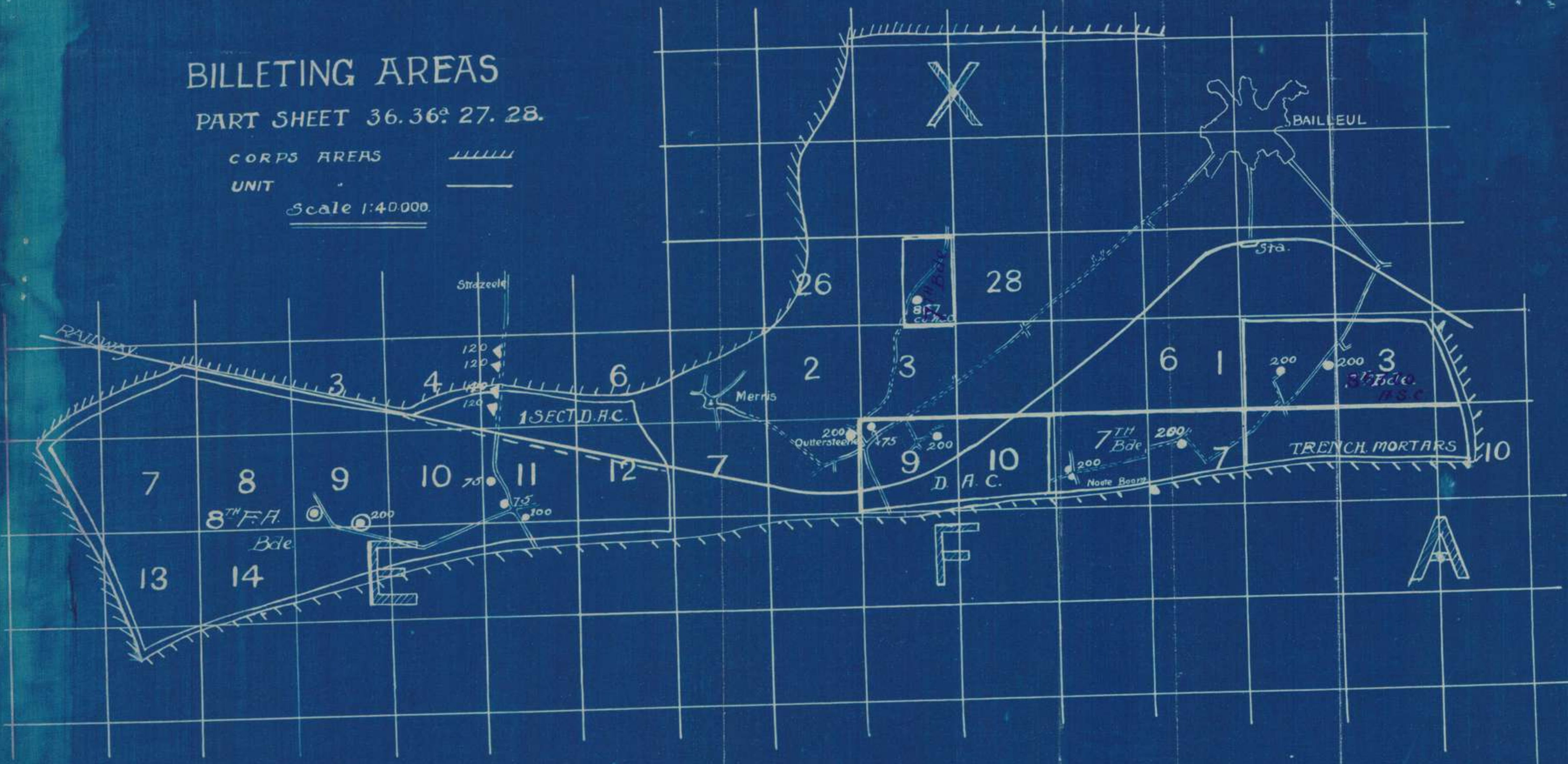
DISTRIBUTION:-

- | | | | |
|-------------|---------------------|-------------|--------------------|
| Copy No. 1. | 3rd Aust.Divsn."Q". | Copy No. 6. | 867th Coy.A.S.C. |
| 2. | 7th F.A.Brige. | 7. | B.M.R.A.3rd A.Divn |
| 3. | 8th F.A.Brige. | 8. | R.O.,3rd A.Divsn. |
| 4. | 3rd D. A. C. | 9. | FILE. |
| 5. | 3rd B.T.M.C. | | |

132

BILLETING AREAS
 PART SHEET 36.36^a 27. 28.

CORPS AREAS 
 UNIT 
 Scale 1:40,000



SECRET.

Copy No:-



THIRD AUSTRALIAN DIVISIONAL ARTILLERY.

Headquarters,
2nd January, 1918.

To
7th Aust. F.A. Brigade,
867th A.S.C. (Attchd. 3rd Divl. Arty).

Reference my D.A./24/116 of 1st January, 1918, para.1.
Please cancel horse standing A.2.d.8.9. for 7th F.A.
Brigade, and substitute standing at X.27.d.3.7., 200 horses. The
billeting area for this standing is all billets in X.27.b.&d.
The horse standing now allotted to 867th Coy. A.S.C. is
A.2.d.8.9., with billets as follows:-

Billet No.	Location	Name	Accommodation		Remarks
			Offs.	Men.	
151	A.3.a.4.4.	Lombart Costonoble	2	-	
153	A.2.d.8.8.	Maniez Delaral		322 70	
155	A.2.d.7.10.	Mme. Bourgeois	2	100	
156	A.2.d.2.4.	Decooh Omond	1	-	

Please amend tracing and billeting lists issued with this
Office D.A./24/116 of 1-1-18.
ACKNOWLEDGE.

Copies to:-
3rd Aust. Divn. "Q".
8th F.A. Brigade. 3rd D.A.C., 3rd Australian Division.
3rd D.T.M.O., B.M.R.A. 3rd Aus. Divn., R.O. 3rd Aus. Divn. FILE.

T. M. Pratt

Captain,
Staff Captain R.A.,

Appendix
3

Appendix 3

THIRD AUSTRALIAN DIVISIONAL ARTILLERY.

SECRET.

APPENDIX **4**

Ref Maps : Sheet 36.) 1
 Sheet 27.) -----
 Sheet 36A.) 40,000.

OPERATION ORDER No. 41.

1.
RELIEF.

The 3rd Aust. Divisional Artillery will be relieved by the 57th Divisional Artillery on nights 4th/5th, 5th/6th Jan'y, 1918.

H.Qrs, 7th A.F.A. Bde will be relieved by H.Qrs, 286th Brigade.
 25th Bty will be relieved by E/286 Bty.
 26th " " " " " A/286 "
 27th " " " " " C/285 "
 29th " " " " " C/286 "
 107th " " " " " D/286 "

A/147 Battery will remain in its present position.

One section of each Battery (personnel only) will be relieved on the evening of the 4th instant, and two sections of each Battery (personnel only) on the evening of the 5th instant.

2.
GUNS.

Guns will be taken over in "Situ". - Aiming Posts and Sights only in addition will be handed over.

3.
T.Ms.

6" and 9.45" T.Ms. now in the line will be taken over by the 57th Division, and the personnel of the 3rd Aust. Division will be withdrawn. - Relief is to be completed by 12 noon on the 5th January, 1918.

4.
PERSONNEL.

Personnel on relief will withdraw to their present Wagon Lines.

5.
D.A.C.

The 57th D.A.C. will relieve the 3rd Aust. D.A.C. on the 5th instant; relief to be completed by 12 noon, at which time the C.O., 57th D.A.C. will assume responsibility for ammunition supply.

6.
MOVE.

On relief, the 3rd Aust. Divs'l Artillery will move to the METEEREN AREA. Move will take place on the morning of the 6th January, 1918, (with the exception of the D.A.C., which moves on the 5th instant). - March Table is attached. - Batteries will move out with full echelons.

7.
COMMAND.

Command of the Artillery in the line will pass from the C.R.A., 3rd Aust. Divsn. to the C.R.A., 57th Divsn, at 12 noon on the 5th instant.

Command of Batteries will pass on completion of relief,
 Command of Group will pass on completion of relief on the 5th January, 1918.

8.
H.Q.

The office of the 3rd Aust. Div. Artly. Headquarters, will close at 12 noon on the 5th January, 1918, at STEINERCK, and re-open at 50 RUE DE LILLE, at the same hour.

9.
ACKNOWLEDGE.

BALLIEU

W. A. Richards

Major, R.A.,
 B.M. 3 R.A., 3rd Aust. Division.

Issued by D.R.L.S. at
 5 p.m.

Headquarters.
 3.1.1918.

Distribution on back.

3rd Australian Divisional Artillery

Operation Order No.41.

DISTRIBUTION :- Copy No.

- 1. 3rd Aust. Div. "G".
- 2. R.A., Aust. Corps.
- 3/20. 3rd Aust. Art. Group.
- 11/15. 8th A.F.A.Bde.
- 16. R.A., 15th Corps.
- 17. R.A., 57th Division.
- 18. R.A., 2nd Aust. Div.
- 19. R.A., 38th Div.
- 20. 3rd Aust. D.A.C.
- 21. 3rd D.T.M.O.
- 22. 3rd Aust. Div. Signals.
- 23. R.A.Sig. Ofer.
- 24. C.R.A. 241-867th Coy
- 25. Bde Mjr. .S.C.
- 26. R. Ofer.
- 27. S.Cptn.
- 28/30. WAR DIARY.
- 31. FILE.

Personnel on relief will withdraw to their present wagon lines.

The 3rd Aust. Div. will relieve the 8th A.F.A. Bde. on the 21st instant; relief to be completed by 12 noon, at which time the 3rd Aust. Div. will assume responsibility for ammunition supply.

On relief, the 3rd Aust. Div. Artillery will move to the position shown on the map and will take place on the morning of the 22nd instant, with the exception of the D.A.C., which moves on the 21st instant. - Batteries will move out with their sections.

Command of the artillery in the line will pass from the 8th A.F.A. Bde. to the C.R.A., 241-867th Coy, at 12 noon on the 21st instant.

Command of batteries will pass on completion of relief.

Command of group will pass on completion of relief on the 21st instant, 1918.

The office of the 3rd Aust. Div. Artillery Headquarters will close at 12 noon on the 21st instant, 1918, at STANBROOK, and reopen at 10 AM on the 22nd instant, at the same hour.

[Handwritten Signature]

Major, R.A.,
 H.Q. 3rd Aust. Division.

Issued by D.R.L.S. at
 5 P.M.

Distribution on page

3rd AUSTRALIAN DIVISIONAL ARTILLERY. - MARCH TABLE (to accompany O.O.41).

DATE.	UNIT	STARTING POINT	PASS AT	DESTINATION	ROUTE.
5.1.18.	No.2 Section. D.A.C.	"T" Roads A.18.d.1.3.	9 a.m.	OUTTERSTERRE. AREA.	Any route, except through BAILLEUL.
"	No.1 Section. D.A.C.	ditto.	10 a.m.	ditto.	ditto.
"	S. A. A. Section.	ditto.	11 a.m.	ditto.	ditto.
6.1.18.	8th Bde.	"X" Roads A.22.a.2.8.	9 a.m.	SEC BOIS Area.	Any route
"	7th Bde.	ditto	10.30 am	STELANTJE Area.	ditto

Order of march of Btys to be under Bde arrangements

28

Appendix

4

132

SECRET.

COPY NO:- 9

THIRD AUSTRALIAN DIVISIONAL ARTILLERY.

Headquarters,
4th January, 1918.



Reference Maps:- Sheet 27.)
Sheet 36a.) 1/40,000.
Sheet 36.)

Appendix (5)

ISSUED IN CONJUNCTION WITH 3rd AUST. DIVL. ARTY. OPERATION ORDER NO.41.

1. ADVANCE PARTIES. Wagon Line advance parties will proceed forthwith to take over standings and billets as in my D.A./24/116 of 1-1-18.

2. REAR PARTIES. Rear parties will be left at present wagon lines to hand over camps, all trench and area stores, to incoming Units. Receipt for same to be forwarded to this Office by 12 noon, 7th instant. Lines to be left in a thoroughly clean state.

3. TRANSPORT. The following Motor transport has been asked for:-

No.	Lorries.	Report.	to Unit.
8	8 a.m.	5th inst.	3rd D.T.M.O.
5	7 a.m.	5th inst.	7th Bde.H.Q. W.L.
5	8 a.m.	5th inst.	8th Bde.H.Q. W.L.

Confirming wires, stating if available, will be sent to Units.

4. ~~RATIONS~~ 867th Coy. A.S.C. will detail baggage wagons to report to D.A.C. Wagon Lines at 6 p.m. 4th inst., Battery wagons at 6 p.m. 5th instant.

4. RATIONS. Refilling Point will be in vicinity of STEENTGE, F.12.a.7.4. Guides and loaders will report at 10.30 a.m. daily, commencing 6th instant. 867th Coy. A.S.C. will deliver daily to 26th, 27th, 107th Batteries, and Trench Mortars.

The 3rd D.A.C. will arrange to deliver rations and fodder from the refilling point to 25th Battery, 8th Aust. F. A. Brigade, and their own Units, commencing at 10.30 a.m. 6th instant.

5. AMMUNITION. 3rd Aust. Divisional Artillery will march out with full echelons. 3rd D.T.M.O. will wire this Office by 12 noon, 5th instant, number of Mortars and amount of ammunition handed over to 57th D.T.M.O.

6. ACKNOWLEDGE.

T. Morrell. Captain,
Staff Captain R.A.,
3rd Australian Division.

- DISTRIBUTION:-
- Copy No. 1. 7th F.A. Bde.
 - 2. 3th F.A. Bde.
 - 3. 3rd D. A. C.
 - 4. 3rd D.T.M.O.
 - 5. 867th A.S.C.
 - 6. S.S.O. 3rd Aust.Divsn.
 - 7. B.M.R.A. 3rd Aust.Divsn.
 - 8. R.O. 3rd Aust. Divsn.
 - 9/11. WAR DIARY.
 - 12. FILE.

32
War Diary

16
2943

Appendix (6)

THIRD AUSTRALIAN DIVISIONAL ARTILLERY.

ADMINISTRATIVE CIRCULAR. - 7.1.1918.

Now that the Divisional Artillery is out of the line, Units should make every effort to provide recreation and comfort for their men, whilst at the same time generally smartening up personnel and squaring up kit and equipment.

"A" -

(1) Clothing and Equipment.

Every effort should be made to smarten up the appearance of the men. Frequent inspections and marching order parades should be held, and indents for deficiencies in kit and equipment submitted at once.

(2) Turn Out.

Units must ensure that all men on leaving parade are cleanly and smartly turned out. Bandoliers and P.H. Helmets should be worn.

(3) Saluting.

Particular stress should be laid on saluting, which has greatly fallen off, and if necessary short lectures and parades held in connection with same.

(4) Wagon Lines.

The Wagon Lines at present occupied are quite new and improvements to same must be pushed on with. Adjutants should get into touch with the Staff Captain regarding same. - A weekly Progress Report of work done at Wagon Lines and work still to be done will be rendered to this office by 12 noon each Saturday.

(5) Gun Equipment.

Deficiencies in gun equipment (gun stores, sights, etc), must be made up at once and fresh indents submitted regarding any deficiencies outstanding.

"B" - Recreation and Amusements.

The following points are suggested :-

The appointment of an Amusement Officer to every Unit. His duties would be :-

- (1) To organise Football Competitions (both Australian and Rugby Rules) between Units and against Infantry Brigades and Battalions.
- (2) To arrange for Boxing Competitions with a view to the arrangement of a Final Boxing Competition for the Championship of the Divisional Artillery - Heavy, Middle and Light Weight.
- (3) To arrange inter-Unit Tug-of-War Teams to precede each Football Match.
- (4) Concerts, Pierrot Troops and Professional Entertainers. Mr Norman, 3rd Aust. Div. Art. Y.M.C.A. representative, will come to the assistance of Units in this matter.
- (5) Bands. - The services of bands are sometimes obtainable on request to Infantry Battalions.

Headquarters.
7.1.1918.

T. Morrell.
Staff Captain, 3rd Aust. Divl. Artillery. Captain.

Distribution :- 7th F.A.Bco (5), 8th F.A.Bco (5), 3rd D.A.C. (4),
3rd D.T.M.O. (4). Spare (3) WAR DIARY (3)

132

132

THIRD AUSTRALIAN DIVISIONAL ARTILLERY.

(SECRET)

--- WARNING ORDER - 21.1.1918. ---

War Diary

The 3rd Australian Divisional Artillery will relieve the 2nd Australian Divisional Artillery, covering the Right Sector of the Corps Front, between the 30th January and the 1st February, 1918. Further orders will be issued.

ACKNOWLEDGE.

L. J. ...

Headquarters.
21.1.1918.

Major, R.A.,
B.M., R.A., 3rd Australian Division.

Distribution:- 7th F.A.Bde. - 8th F.A.Bde. - 3rd Aust. D.A.C. -
3rd Aust. D.T.M.O. - R.A. Sig. Ofcr. - Staff Cptn. -
War Diary (3). - FILE.

Appendix
①

Appendix 7

17

S E C R E T.Copy No. 31THIRD AUSTRALIAN DIVISIONAL ARTILLERY. *Appendix*

⑧

Ref. Maps : Sheet 28 SW) 1
 " 36 NW) 20,000.

----- OPERATION ORDER No.42. -----1.
RELIEF.

The relief of the 2nd Australian Divisional Artillery by the 3rd Australian Divisional Artillery will take place as follows :-

1 Section per Battery on the 30.1.1918.
 2 Sections " " " " 31.1.1918.

Relief in each case to be completed by 2 p.m.

Details of relief are as under :-

RIGHT GROUP.

Headquarters 7th F.A.Bde relieves Headquarters 5th F.A.Bde.

26th Battery relieves 14th Battery.
 107th " " 105th "

LEFT GROUP.

Headquarters 8th F.A.Bde relieves Headquarters 4th F.A.Bde.

25th Battery relieves 13th Battery.
 27th " " 15th "
 29th " " 10th "
 30th " " 11th "
 31st " " 12th "
 108th " " 104th "

Locations of Units are as per Location Statement attached.

2.
GUNS.

Guns will be taken over 'in situ'.

3.
ADVANCE
PARTIES.

Battery Commanders, a portion of signal personnel and one Subaltern Officer will proceed to the line on the 30th instant, and remain until completion of relief.

4.
PERSONNEL.

Personnel on relief will withdraw to their present Wagon Lines.

5.
D.T.K.O.

The 3rd Australian D.T.K.O. will take over from the 2nd Australian D.T.K.O. by 3 p.m. on the 31st instant, at which time command of the Trench Mortars in the line will pass to the D.T.K.O., 3rd Australian Division.

3rd Aust. Div. Art. O.O.+2 (Page 2).

Appendix (8)

5 (contd)

T.Ms.

All 9.45 inch and 6 inch Trench Mortars now in the line will be taken over.

6.

D. A. C.

D. A. C. will be completed by Relief of the . . . by 5 p.m. on the 31st January, at which time the C.O., 3rd Aust. D.A.C. will assume responsibility for the ammunition supply.

7.

REAR PARTY.

Batteries of the 3rd Aust. Div. Artillery will arrange to leave an Officer behind in their present Wagon Line to hand over guns to Batteries of the 2nd Australian Divisional Artillery.

8.

WAGON LINES.

The 3rd Aust. Div. Artillery will occupy the Wagon Lines at present occupied by the 2nd Aust. Divisional Artillery. - Location of same as per Location Statement attached.

Exchange will take place on the 31st instant. March Table is attached.

9.

COMMAND.

Command of Batteries will pass on completion of relief.
Command of Groups will pass at 3 p.m. on the 31.1.1918.
Command of the Artillery covering Right Divisional Sector will pass from C.R.A., 2nd Aust. Division, to C.R.A., 3rd Aust. Division, at 10 a.m. on 1st Febr, 1918.

10.

D.A.H.Q.

The office of the 3rd Australian Divisional Artillery Headquarters will close at BAILLEUL at 10 a.m. on the 1st February, 1918, and re-open at RAVELSBURG at the same hour.

11.

A C K N O W L E D G E.

W. J. Nicholls

Major, R.A.,

B.M., R.A., 3rd Aust. Division.

Headquarters.

Issued at 9 p.m. 26.1.1918, by D.R.L.S.

DISTRIBUTION.

Copy No.

- 1. R.A., Aust. Corps.
- 2. 3rd Aust. Div. "G".
- 3/7. 7th A.F.A.Bde.
- 8/12. 8th A.F.A.Bde.
- 13. R.A., 2nd Aust. Div.
- 14. R.A., 1st Aust. Div.
- 15. R.A., 5th " "
- 16. R.A., 57th Division.
- 17. R.A. Sig. Ofcr. 3rd Aust. Div.
- 18. 3rd Aust. D.A.C.
- 19. 3rd Aust. D.T.M.O.

Copy No.

- 20. 9th Aust. Inf. Bde.
- 21. 10th " " "
- 22. 11th " " "
- 23. 867th Coy, A.S.C.
- 24. S.S.O., 3rd Aust. Div.
- 25. 3rd Aust. Div. Signals.
- 26. C.R.A., 3rd Aust. Div.
- 27. B.M., R.A. " " "
- 28. S.C., R.A. " " "
- 29/30. R.Ofcr, R.A. " " "
- 31/33. War Diary.
- 34. FILE.

(4) 132
MARCH TABLE (to accompany 3rd Aust. Div. Art. Operation Order No.42.)

DATE.	UNIT.	STARTING POINT.	PASS AT.	DESTINATION.	ROUTE.
31.1.18.	3rd Aust. D.A.C.	X ROADS in OUTTERSTELLENE.	9 a.m.	New Wagon Lines as per Location Statement attached.	LE VERRIER. STELNWERCK.
"	7th F.A.B.	X ROADS LE GRAND BEAUMANT. (A.22.a.2.S.)	12 noon.	ditte.	STELNWERCK.
"	8th F.A.B.	T ROADS at Church VIEUX BEAUMANT.	1 p.m.	ditte.	LE VERRIER, STELNWERCK.

NOTE:- The 8th F. A. Bde will not pass the X ROADS at LE GRAND BEAUMANT(A.22.a.2.S.) until the 7th F.A.Bde is clear of STELNWERCK.

Appendix 8.

(COPY)

RIGHT DIVISIONAL ARTILLERY - AUSTRALIAN CORPS.

Appendix 8
I.215.

SECRET.

LOCATION STATEMENT.

Location of Units at 3 a.m. 27.1.16.

Red Maps: 28 S.
30 NW.

UNIT.	LOCATION.	WAGON LINES.
RIGHT DIV ARTY H.QRS. (2nd Aust. D.A.H.Qrs.)	RAVELSBURG.	
RIGHT GROUP. (5th A.F.A.Bde H'qrs).	B.11.d.15.48.	B.11.d.1.3.
14th Battery.	C.2.d.2.1. (2 Guns) C.1.d.8.72. (2 " U.26.c.65.16. (2 "	B.14.c.8.8.
105th How. Battery.	C.7.d.15.20. (2 Hows) C.6.c.20.50. (2 " Q.7.b.75.30. (2 "	B.8.d.00.50.
LEFT GROUP. (4th A.F.A.Bde H'qrs).	T.21.d.2.1.	
13th Battery.	U.26.b.32.72. (4 Guns) U.27.c.3.0. (2 "	B.14.a.3.6.
10th Battery.	U.14.b.50.75. (2 " U.14.b.75.80. (4 "	T.27.b.3.6.
15th Battery.	U.13.c.90.24.	B.14.c.9.6.
11th Battery.	U.1.d.20.00. (3 Guns) U.7.a.95.20. (3 "	T.28.c.2.8.
12th Battery.	U.1.d.90.33. (5 " U.1.d.63.14. (1 "	T.27.a.55.60.
104th How. Battery.	U.14.d.26.80. (1 How) U.14.c.50.10. (5 "	T.27.c.7.2.
2nd Aust. D.A.C. H'qrs.		S.30.c.3.7.
1st Section.		S.30.a.0.0.
2nd Section.		A.12.b.7.6.
S.A.A. Section.		B.8.a.9.7.
Trench Mortars: L.T.M.C.	B.15.d.9.8.	
V.2.A. Bty (In line).	Right & Left Groups.	
X.2.A. " (" ")	Left Group.	
Y.2.A. " (" ")	NIEPPE.	
Z.2.A. " (" ")	Right Group.	
Ammunition Railhead.	CONNAUGHT SIDING.	
30th Mobile Workshop.	T.21.b.3.6.	
2nd Aust. D.A.H.Q.		
24th January, 1916.		



COPY NO:- 12

SECRET.

THIRD AUSTRALIAN DIVISIONAL ARTILLERY.

ISSUED IN CONJUNCTION WITH 3RD. AUST. DIV3L. ARTLY. O.O. NO. 42.

Reference Maps:- Sheet 36 N.W.) 1/20,000. Sheet 20 S.W.)

Appendix 9

- 1. INTELUTION. Third Aust. Divsl. Artillery will take over Wagon Lines at present occupied by 2nd Aust. Divsl. Artillery, in accordance with above order.
- 2. ADVANCE PARTIES. Wagon Line Advance Parties will report at new wagon lines by 8 a.m. 31st inst., and take over Camps, Area Stores, etc.
A statement of all Area Stores taken over will be forwarded to reach this office by 12 noon, 1st February. Units will retain any gun boots now in possession.
- 3. REAR PARTIES. Rear Parties as per 3rd Aust. Divl. Artillery O.O. No. 42. Wagon Lines to be left in a thoroughly clean state, and all Area Stores handed over to incoming Units.
- 4. TRANSPORT. 067th Coy. A.S.C. will detail baggage wagons to report to present Wagon Lines by 6 p.m. 30th instant.

The following Motor Transport has been asked for. Confirming wires, if available, will be sent to Units as early as possible:-

No. Lorries.	Report.	Unit.	Remarks.
4	8 a.m. 31st	3rd D.F.M.O.	2 trips required.
1	9 a.m. 31st	7th FAB.H.Q.	
1	9 a.m. 31st	8th FAB.H.Q.	
8	8 a.m. 30th	Bty.W.Lines)	1 per Bty for
8	8 " 31st	do.)	Bty personnel

- 5. AMMUNITION. 3rd Aust. Divl. Artillery will march out with Echelons full.
Ammunition wires cmd states, as per my D.A./27/76 of 10-11-17, will be rendered by Units to this Office, commencing 12 noon 1st February, 1918. States for this date must be an accurate count of ammunition taken over.
- 6. AMMUNITION SUPPLY. Ammunition supply will be as under my D.A./4/471 of 9-12-17, except for daily bulk allotment, which will be notified later.
- 7. DUMPS. Personnel as under will be relieved under mutual arrangements with 2nd Aust. D.A.C.:-

	Offs.	N.C.Os.	O.Rs.
ROMARIN (To be completed by 12 noon 30th inst.)	1	3	16
DOUDOU (To be completed by 12 noon 31st inst.)	1	1	11 (Including 7 Drivers Also 12 O.S. Libers actually at Dumps)



- 2 -

9. SUPPLIES.Railhead:- STEINWERCK.Refilling Point:- Sheet 36 B.8.a.4.3.

Appendix

9

Units will send guides and loaders to refilling point daily, commencing 9 a.m. 31st instant.

9. MISCELLANEOUS LOCATIONS.

- 867th Coy. 3rd Aust. Div. Train. - "GREEN JACKET LINES" (Sheet 36. B.8.a.4.3.) Move to be completed by 31st inst.
- 3rd Aust. Mob. Vet. Sect. - Will remain as at present at Sheet 36. B.8.d.5.7.
- D.A.D.O.S. STORES. - Will be located at Sheet 36., B.1.d.1.8. Move to be completed by 29th inst.
- 3rd Aust. Divl. Salvage Coy. - Will be located at Sheet 36. B.7.d.7.3.

10.

ACKNOWLEDGE.

Captain,
Staff Captain R.A.,
3rd Australian Division.

Headquarters,
25-1-18.

DISTRIBUTION:-

- Copy No. 1. 3rd Aust. Divsn. "Q".
 2. 7th Aust. F.A. Brigade.
 3. 8th Aust. F.A. Brigade.
 4. 3rd Aust. D. A. C.
 5. 3rd Aust. D.T.M.O.
 6. 2nd Aust. D.A.H.Q.
 7. E.S.O. 3rd Div. Train.
 8. 867th Coy. A.S.C.
 9. 3rd Div. Arty. Sigs.
 10. B.M.R.A. 3rd Aust. Divsn.
 11. R.Q. 3rd Aust. Divsn.
 12/14. WAR DIARY.
 15. FILE.

132
SECRET.

THIRD AUSTRALIAN DIVISIONAL ARTILLERY.

Amendment No.1. to Operation Order No.42.

Ref. para.6 of O.O.42.

The Relief therein mentioned will be completed
by 12 noon, and not 5 p.m., as stated.

W.D. Hills

Headquarters,
28.1.1918.

Major R.A.
B.M., R.A., 3rd. Aust. Divn.

Distribution : 3rd. Aust. Divn, "G". 2nd. Aust. Div. Arty.
3rd. Aust. D.A.C. Staff Captain R.A.
Rec. Offer. R.A. - War Diary (3). FILE.

Appendix

(10)

Appendix 10

THIRD AUSTRALIAN DIVISIONAL ARTILLERY.

SECRET.

Ref. Maps : (Sheet 36
1/40,000. (" 36A
(" 27

LOCATION REPORT.

As at 6 pm. 6.1.18.

Location.

3rd. Aust. Div. Artillery.) Commanded by BRIG-GENERAL H.W. GRIMWALE C.M.G.
HEADQUARTERS,) 50, Rue de LILLE, BAILLEUL.

7th. Aust. F.A. Brigade. - Lt-Col. H.D.K. MACARTNEY, D.S.O.

Headquarters, 28, Rue de LILLE, BAILLEUL.

25th. Battery. X.27.d.3.7.
26th. Battery. A.2.d.8.9.
27th. Battery. F.12.a.7.4.
107th. Battery. F.11.c.4.8.

8th. Aust. F.A. Brigade. - Lt-Col. W.G. ALLSOP, D.S.O.

Headquarters, E.8.d.8.8.

29th. Battery. E.11.c.9.1.

30th. Battery. E.16.b.4.9.

31st. Battery. E.11.c.4.5.

108th. Battery. E.11.c.2.8.

E.9.d.4.1.

E.5.c.3.4.

E.5.c.3.8.

3rd. Aust. D.A.C. - Lt-Col. W. CHURCHUS, D.S.O.

Headquarters, OUTRISTRENE.

No.1. Section. E.5.a.3.4.

No.2. Section. F.9.b.6.6.

'B' Echelon. F.8.b.8.7.

3rd. Aust. D.T.MORTARS. - CAPT. R.S. SCARR, M.C.

Headquarters, A.8.d.60.45.

867th. Coy. 3rd. Aust. Div. Train. A.2.d.8.9.

A. L. Choultz

Headquarters, Lieutenant.
6.1.1918. Reconnaissance Officer,
3rd. Australian Divisional Artillery.

THIRD AUSTRALIAN DIVISIONAL ARTILLERY.

SECRET

Ref Maps (Sheet 36
1/40,000 (" 36A
" 27.

Amendment to 3rd. Australian Divisional Artillery
LOCATION REPORT issued 6th. January 1918.

7th. Aust. P. A. Brigade.

For : Lieut. Col. H.D.M. Macartney D. S. O.
Read : Lieut. Col. W. Churchus. D. S. O.

3rd. Aust. D. R. C.

For : Lieut. Col. W. Churchus. D. S. O.
Head : Captain C.G. Foxton Acting C. O.

Headquarters,
9.1.1918.

W. Churchus

Lieutenant.
Reconnaissance Officer.
3rd. Australian Divsl. Artillery.

Appendix

13

THIRD AUSTRALIAN DIVISIONAL ARTILLERY.SECRET.

at 6 pm. 13.1.18.

	(Sheet 28.
Ref. Maps. (" 36
1/40,000 (" 36A
	" 27

LOCATION REPORT.Location.

3rd. Aust. Div. Artillery.)
HEADQUARTERS.) Commanded by BRIG-GENERAL H.W. GRIMWAD. C.M.G.
50, Rue de Lille, BAILLEUL.

7th. Aust. F.A. Brigade. - Lt-Col. W. CHURCHUS, D.S.O.
Headquarters, - 28, Rue de Lille, BAILLEUL.

25th. Battery. X.27.d.3.7.
26th. Battery. A.2.e.8.80.
27th. Battery. F.12.a.7.4.
107th. Battery. (How.) F.11.e.4.8.

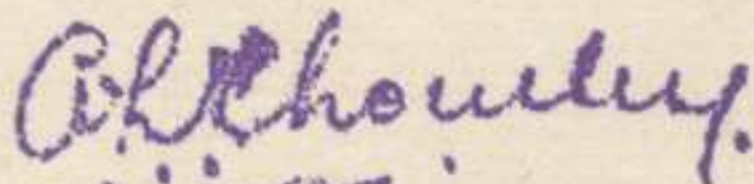
8th. Aust. F.A. Brigade. - Lt-Col. W.G. ALLSOP, D.S.O.
Headquarters, - E.8.d.8.8.

29th. Battery. E.11.s.9.1.
E.16.b.4.9.
30th. Battery. E.11.c.4.5.
E.11.c.2.8.
31st. Battery. E.9.d.4.1.
108th. Battery. (How.) E.5.c.3.4.
E.5.e.3.C.

3rd. Aust. D.A.C. - a/C.O. - Capt. C.G. MCXTON.
Headquarters, - CUTTERSTEENE.
No 1. Section. E.5.a.3.4.
No 2. Section. F.9.b.6.6.
'B' Echelon. F.8.b.8.7.

3rd. Aust. Div. TRENCH MORTARS. - Capt. R.S. SCARR, M.C.
Headquarters, - E.12.a.99.50.
Heavy Battery. E.12.d.25.95.
Medium Batteries. E.12.d.05.90.

3rd. Aust. Div. Train - 867th. Coy. - A.2.d.8.9.


Headquarters,
13.1.1918.Lieutenant.
Reconnaissance Officer,
3rd. Australian Divisional Artillery.

THIRD AUSTRALIAN DIVISIONAL ARTILLERY.

To All Recipients of 3rd Aust.Div.Arty.Location Statement issued
18.1.1918.

Locations of Units of this Divisional Artillery are
as in Location Statement issued 18.1.1918.

Abelhouley.

Headquarters,
25.1.1918.

Lieutenant.
Reconnaissance Officer,
3rd Australian Divisional Artillery.

Appendix

14

Appendix 14

132
THIRD AUSTRALIAN DIVISIONAL ARTILLERY.

Appendix

15

CONFIDENTIAL.

LOCATION ST. TR. ANT.

As at 0 a.m. 1.2.18.

Ref. Maps. Sheet 26.S. . .
1/25,000. " 30.S. . .3rd. AUSTRALIAN DIVISIONAL ARTILLERY. H.Q.Acting C.O. - Lt-C. I. G. A. L. SO. DSO.
M. V. LISBERG. - S. 17. central.RIGHT GROUP ARTILLERY- Acting C.O. - Major T. J. PLAYFAIR DSO.
Mag. n. Lines.

Headquarters.	B. 11. d. 15. 6.	B. 11. d. 1. 3.
26th. Battery.	C. 2. d. 2. 1. (2 guns)	
	C. 1. d. 8. 72. (2 ")	B. 14. c. 8. 8.
	U. 2. c. c. 68. 16. (2 ")	
107th. Battery (H.W.)	C. 7. d. 15. 20. (2 hws)	
	C. 8. c. 20. 50. (2 ")	B. 8. c. 00. 50.
	C. 7. b. 75. 30. (2 ")	

LEFT GROUP ARTILLERY.

- Acting C.O. - Major S. G. ROBE DSO.

Headquarters.	T. 21. d. 2. 1.	
25th. Battery.	U. 26. b. 32. 72. (2 guns)	B. 12. a. 3. 6.
	U. 27. c. 3. 0. (2 ")	
27th. Battery.	U. 13. c. 90. 2. (2 ")	B. 12. c. 9. 6.
29th. Battery.	U. 14. b. 50. 75. (2 ")	T. 27. b. 3. 6.
	U. 12. b. 75. 80. (2 ")	
30th. Battery.	U. 1. d. 20. 00. (3 ")	T. 28. c. 2. 8.
	U. 7. a. 95. 20. (3 ")	
31st. Battery.	U. 1. d. 90. 33. (5 ")	T. 27. a. 55. 60.
	U. 1. d. 63. 12. (1 ")	
208th. Battery (H.W.)	U. 14. d. 26. 60. (1 h.w.)	T. 27. c. 7. 2.
	U. 12. c. 50. 10. (5 h.w.s)	

3rd. AUSTRALIAN D. A. C.

- C.O., MAJOR T. B. JAMES DSO.

Headquarters.	S. 30. c. 3. 7.
N. 1 Section.	S. 30. a. 0. 0.
N. 2 Section.	A. 12. b. 7. 6.
"T" Echelon.	B. 8. a. 9. 7.

3rd. Aust. D.T.M.O. - CAPT. R. S. SCARLE M.C. - B. 15. d. 9. 6.

267th. Coy. 3rd. Aust. Div. Train.	- E. 8. a. 4. 0.
ROPERIN DUMP (18-Pdr. & 4.5" H.W.)	- B. 4. a. 6. 8.
DOUDOU " (S.M.A. & T.P.)	- B. 5. c. 4. 7.
AMBULANCE RAILHEAD - CONNAUGHT SIDING	
30th. M. b. Workshop.	- T. 21. b. 3. 6.
3rd. Aust. Mob. Vet. Section.	- B. 8. d. 5. 7.
D. A. L. O. S.	- B. 1. d. 1. 3.
3rd. Aust. Div. Salvage Coy.	- B. 7. d. 7. 3.

Headquarters,
31.1.1918.

Althouley
 Lieutenant.
 Reconnaissance Officer,
 3rd. Australian Divisional Artillery.

132

Annex

THIRD AUSTRALIAN DIVISIONAL ARTILLERY.

CONFIDENTIAL.

INTELLIGENCE SUMMARY, from 6 am.1.1.18. to 6 am.2.1.17.

OUR FIRE.

During the day, Concentration Tests on enemy front line opposite Localities 9 and 12, and Posts EILEEN and CYNTHIA were carried out by the 18-Pdr. batteries, 84 rounds being fired.

- 18-Pdrs. also carried out the following shoots :-
- 18 rds. on suspected enemy O.P. at C.23.d.20-20.64.
- 15 rds. registration on Zero Point (I.23.a.3.6.).
- 123 rds. on enemy T.P. emplacements at : I.21.b.65.00.
- I.22.a.66.05. I.22.a.40.30. I.22.a.97.36.
- I.22.c.58.95. I.22.c.92.40.

- The following targets were engaged by 4.5" Hows. :-
- 30 rds. on active enemy battery at C.24.a.30.60.
- 11 rds. on house at C.12.d.15.31. where movement was observed. Shoot was affective, no further movement being visible.
- 9 rds. on houses at C.30.a.10.80. where movement was observed. Three direct hits on a house were obtained, and a fire apparently started, as large volumes of smoke were seen to rise from the spot. No further movement was observed.

During the night 18-Pdrs. dispersed a working party at I.16.b.54.14. - 15 rds. fired. 80 rds. 4.5" Hows. were directed against hostile battery at C.24.a.30.60.

TRENCH MORTARS.

19 rds. were directed against suspected Coy.Hqrs. at I.11.b.00.75. Fire appeared to be effective.

HOSTILE FIRE. During the day a slight increase in enemy's Artillery activity was noticeable, but the night was again comparatively quiet. Enemy 77mm guns were inactive during the period.

9 rds. 8" fell in ARMENTIERES. Sound Bearing taken from I.9.c.41.52. read 130 deg.T.

Details of other shelling during the period are as under:

Time	Area shelled.	Rds.	Calre.	Direction.
8.45 - 9.45am.	C.21.a & b.	10	15cm.	85° T.P. from C.27.b.70.91.
10 to 10.30am.	C.17.a. & C.23.a.	50	L.T.M.	
10.30 - 11.30am	C.20.c.	80	10.5 & 15cm.	QUESNOY.
do.	C.23.a.2.6.	100	10.5cm.	do.
10.37 am.	DISTILLERY(I.4.a)	11	15 cm.	(Ranging)
10.42 am.	C.26.a.	12	do.	
10.45 am.	C.28.c.	7	10.5 cm.	64° T.P. from C.27.b.70.91.
12.40 pm.	C.21.c.	5	15cm Gas.	85° T.P. from do.
1.45 pm.	I.1.a.	10	15cm.	
1 to 2 p.m.	C.20.c.	60	15 & 10.5cm.	QUESNOY.

Bearings given above are all Sound.

GENERAL INTELLIGENCE.

AIRCRAFT. - Aeroplanes of both sides were very active all day, and enemy planes penetrated our back areas on many occasions.

VISIBILITY - GOOD.

Headquarters,
2.1.1918.

Alt. Howley.

Lieutenant,
Reconnaissance Officer,
3rd Australian Divisional Artillery.

THIRD AUSTRALIAN DIVISIONAL ARTILLERY.

Ref. Maps : 36.N.W. & N.E. 1/20,000-

CONFIDENTIAL.

INTELLIGENCE SUMMARY from 6 am. 2.1.17. to 6 am. 3.1.17.

OUR FIRE.

18-Pdrs. fired 11 rds. on C.23.b.35.60. where movement was observed, and 12 rds. on Battalion Headquarters and Dump at C.24.a.60.40. 31 rds. were expended whilst carrying out Registrations.

4.5" Hows. fired 160 rds. during a destructive shoot on hostile battery in D.14.a. Visibility was poor, but the line of trees was bracketed, and the rounds appeared to be well on the target. Special attention was paid to billets North of this position, a proportion of Gas Shell being used. Whilst registering CENSOR FARM, Hows. obtained 6 direct hits on this target, and expended 37 rds.

During the night 18-Pdrs. engaged enemy working party at I.16.b.63.08. - firing 15 rds.
TRENCH MORTARS. - Activity Nil.

HOSTILE FIRE.

The enemy's Artillery was comparatively inactive during the period. Shelling during the day was particularly light, but even more so during the hours of darkness.

Detailed account of hostile shelling reported is as under :-

<u>Time.</u>	<u>Area shelled.</u>	<u>Rds.</u>	<u>Calrs.</u>	<u>Direction.</u>
Noon	C.27.c.	2	15 cm.	CENSOR FARM.
12.40 pm.	C.21.b.	3	77 mm.	LA HOULETTE.
2.30 pm.	C.27.b.	50	10.5cm. Gas.	
2.55 pm.	C.21.d.	4	77 mm.	About D.13.b.
2.30 - 4 pm. (desultory)	C.21.		(10.5 cm. 77 mm.)	E. of FRALINGHIER.

GENERAL INTELLIGENCE.

AIRCRAFT. - Activity on both sides was about normal. At 1.45 pm. one large enemy plane flew over HOUPLINES and BROUINGHAM, at a low altitude, and was heavily engaged by our A.A. fire.

VISIBILITY - Low.

Headquarters,
3.1.18.

A. H. Cheney
Lieutenant.
Reconnaissance Officer,
3rd Australian Divisional Artillery.

THIRD AUSTRALIAN DIVISIONAL ARTILLERY.

CONFIDENTIAL.

INTELLIGENCE SUMMARY from 6 am. 3.1.18. to 6 am. 4.1.18.

OUR FIRE. - 18-Pdrs. carried out a series of 10 destructive shoots, between 10.15 am. & 3.25 pm., on targets within the enemy's lines, including hostile batteries, trenches & trench junctions, dumps, and houses, - Single guns were used for this purpose, in advanced positions, and 400 rds. were expended, some incendiary shell being used. Owing to excellent visibility, various 'fleeting opportunity' targets were engaged during the day, 18-Pdrs. firing a further 391 rds. - Results were observed to be very effective. 18-Pdrs. also fired 32 rds. neutralising fire on an active hostile battery in GRAND MARAIS FARE (I.23.c.), and 75 rds. on various registrations.

4.5" Hows. engaged target at D.13.d.06.60. with aeroplane observation, firing 21 rds. 100 yds. bracket was obtained, when plane sent 'O.I.' and came in before shoot was completed. Hows. caused 2 explosions whilst firing 24 rds. on battery at D.5.b.4.2.

TRENCH MORTARS. - 20 rds. Trench mortars directed against hostile M.M. at C.23.d.25.70.

HOSTILE FIRE. - The enemy's Artillery shewed increased activity, and his fire was considerably above normal throughout the day. Heavy shelling of ARMENTIERES (100 rds. 8"), I.15.b., (150 rds. 10.5cm), I.8.b. & I.3.c. (200 rds. 15cm., 10.5cm., & 77mm), and LILLE POST (100 rds. 10.5cm.) was recorded.

With the exception of 30 rds. 15cm. on C.27.a., and light intermittent shelling of areas around ARMENTIERES by 10.5cm. the night was comparatively quiet. Details of other shelling reported are as under :-

<u>Time.</u>	<u>Area shelled.</u>	<u>Rds.</u>	<u>Calre.</u>	<u>Direction.</u>
10.30 - 11.20 am	DESOLANTEUR FM I.14.d. and O.P 50 at I.14.b.48.18	50	10.5cm.	
10.37 am.	DISTILLERY (I.4.a)	10	do.	
10.50 am.	Back areas	12	8"	
10 - 11.15 am.	C.22.b.	10	10.5cm.	
11.5 am.	I.3.c.00.25.	10	do.	
11 - 3 pm.	I.9.a. & b.	50	do.	FRANCHIES.
do.	C.25.d.	50	15 cm.	
12.50 pm.	ST. CHARLES CHURCH) NOUVEL HOUPLINES)	10	do.	127° T.B. from C.26.d.22.62.(S).
12.55 pm	C.26.b.	20	do.	About D.26.a.
1.15 pm.	ARMENTIERES.	5	do.	93°30' T.E. from C.26.d.22.62. (F)
1.25 - 4.15 pm	MOSQUITO PALACE (I.15.b.77.97.)	58	10.5cm.	103° T.B. from I.9.c.4.5.(S).
3.30 pm.	C.27.c.70.87.(fwd position of one 25th.Bty-gun.)	15	15cm.	127deg. T.F. from C.27.b.7.9.(S)
	Sound bg.			of 8" shelling ARMENTIERES 110deg.T.B.from C.26.d.22.62.

GENERAL INTELLIGENCE.

AIRCRAFT. - Several enemy balloons up all day, and aeroplanes of both sides very active.
VISIBILITY. - Excellent.

A. H. Chouley.

Headquarters,
4.1.18.

Lieutenant.
Reconnaisance Officer,
3rd Australian Divisional Artillery.

THIRD AUSTRALIAN DIVISIONAL ARTILLERY.

CONFIDENTIAL.

INTELLIGENCE SUMMARY from 6 am. 4.1.18. to 6 am. 5.1.18.

OUR FIRE.

During the period, 18-Pdrs. carried out the following shoots :-

- 32 rds. on active hostile battery reported firing from I.28.c.56.60.
- 6 rds. on J.2.c.9.5. where movement was observed round a train.
- 10 rds. on M.K. position at CENSOR FARM (C.24.c.).
- 44 (44) rds. were expended by 18-Pdrs. whilst carrying out registrations.

4.5" Hows. fired 10 rds. on movement at J.13.c.2.6., (Zone Call.) , and answered a similar call with 10 rds. on train and movement at J.2.c.9.5.

whilst answering a third Zone Call, Hows. engaged a train at D.13.d.06.60. with 43 rds. and obtained several directs on the train.

Hostile T.Ms. active at C.17.a.75.80. & C.17.d.15.60. were silenced by Hows. 10 rds. being fired on each.

HOSTILE FIRE.

During the period the enemy's artillery shewed normal activity, no heavy shelling being reported. The enemy's 10.5 & 15 cm. Hows. from direction of QUESNOY and PERENCHIES, were active throughout the night. I.8.a., I.2.c., I.10., and C.26.c. received equal attention.

Details of hostile shelling reported are as follow :

<u>Time.</u>	<u>Area Shelled.</u>	<u>Rds.</u>	<u>Calre.</u>	<u>Direction.</u>
10 to 11.	C.21.c.	10	15cm.	85° T.B. from C.27.c.70.91.(S)
10.45 am.	ARMENTIERES.	5	8"	125° " " C.26.d.22.52.(S)
11.45 am.	C.22.d.	4	10.5cm.	64° " " C.27.c.70.91.(S)
12.30 to 1.	C.8.c.	15	15 cm.	
12.45 pm.	C.21.c.	32	do.	85° " " do.
1.35 pm.	I.14.a.	20	10.5cm.	PERENCHIES.
2.30 pm.	C.22.d. & C.28.b.	50	M.T.M.	
3.35 pm.	C.17.c.	15	10.5cm.	
3.40 pm.	C.17.c.	12	H.T.M.	68° T.B. from do.

GENERAL INTELLIGENCE.

AIRCRAFT.

Aeroplanes of both sides active throughout the day.

VISIBILITY - poor.

Chouley

Headquarters,
5.1.18.

Lieutenant.
Reconnaissance Officer,
3rd Aust. Divl. Artillery.

32

Appendix

THIRD AUSTRALIAN DIVISIONAL ARTILLERY.

CONFIDENTIAL.

Ref. Maps : Sheet 28.S.W.
1/20,000 " 36.N.W.

INTELLIGENCE SUMMARY fr m 6 am. 31.1.18. to 6 am. 1.2.1918.

OUR FIRE.

At 7 am. and 9.10 am., 18-Pdrs. fired 25 and 20 rounds respectively on active hostile Minenwerfer.

Between 1.25 p.m. and 2.30 p.m., 18-Pdrs. engaged the following hostile M.Ws. active :-

M.W. at U.12.e.35.52.	-	24	rds.	fired.	at	1.25	pm.
" " "		27	"	"	"	2.25	pm.
" " "		17	"	"	"	2.30	pm.

An enemy working party was engaged at 3 p.m., by 18-Para, and dispersed.

At intervals during the night, harassing fire was carried out as follows :-

20	rds.	on	Bridge	at	U.12.d.70.33.
20	"	"	Grass Roads	at	U.12.b.40.34.
20	"	"	Grass Roads	at	V.1.d.40.41.
10	"	"	M.f. position	at	U.12.e.55.72.
75	"	"	BONDI HOUSE, X Roads	ELS WARMETON,	and POSTE DE DOUARNES.

HOSTILE FIRE. - NIL.

INTELLIGENCE. - NIL. Observation impossible owing to heavy ground mist.

Headquarters,
1.2.1918.

Atkinson

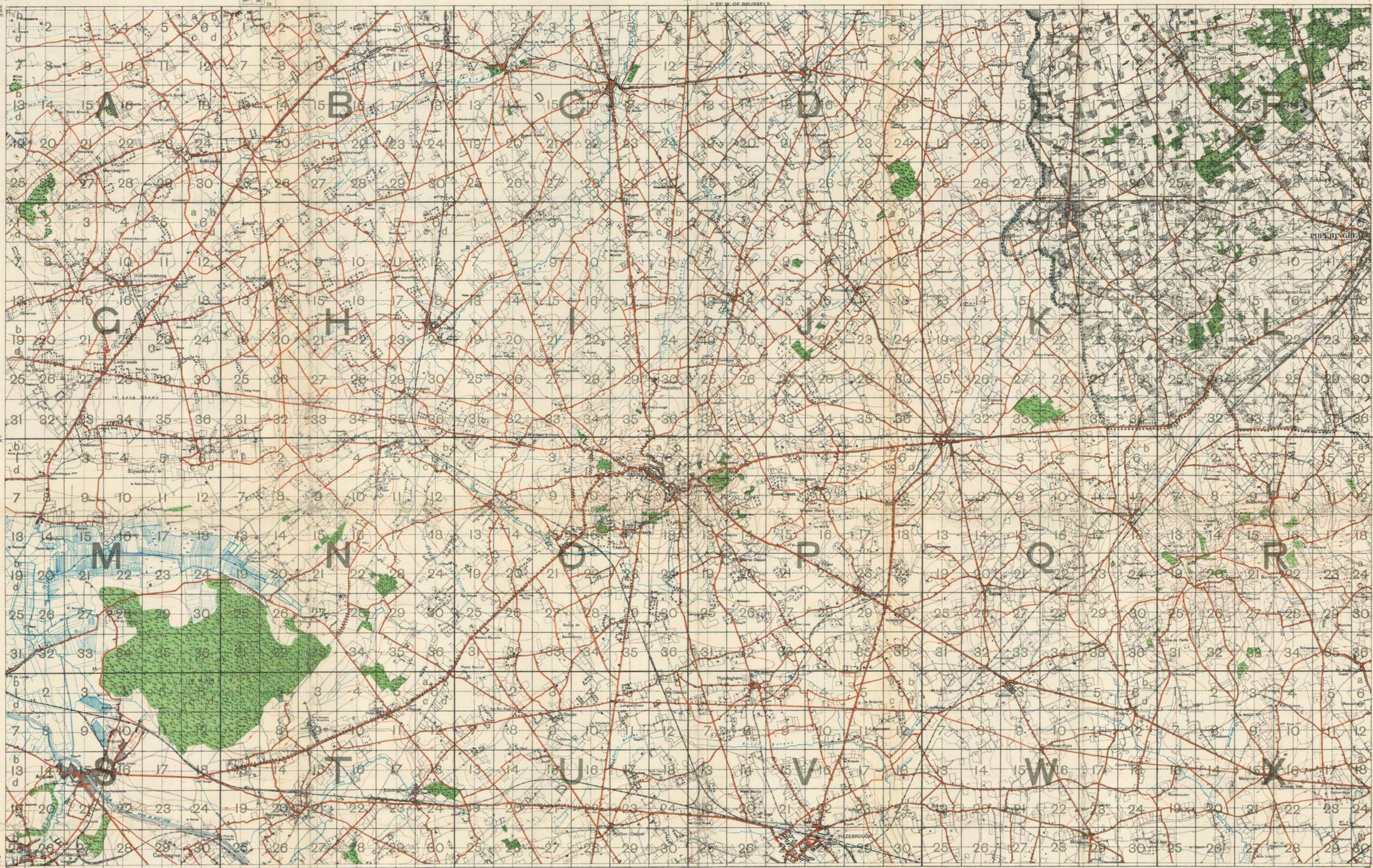
Lieutenant.
Reconnaissance Officer,
3rd. Australian Divisional Artillery.

BELGIUM AND PART OF FRANCE.

1:40,000.

SECOND EDITION.

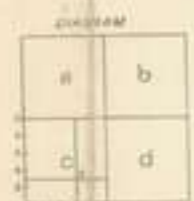
Handwritten: *Alkmaar*
SHEET 27.



NOTE.—If a line be drawn making an angle with any vertical grid line of 10° or less, the error of an individual square will be as much as half a degree East or West. The correct variation of a compass may be found by taking a bearing in a good place and comparing it with the magnetic declination for the year.

INSTRUCTIONS AS TO THE USE OF THE SQUARES.

1. The large rectangles on the map, lettered A, B, C, etc., are divided into squares of 1,000 yards side, which are numbered 1, 2, 3, etc. Each of these squares is subdivided into four minor squares of 500 yards side. These minor squares are considered as lettered a, b, c, d. (See Square No. 6 in each rectangle).
A point may thus be described as lying within Square B.6, M.5.b, etc.
2. To locate a point within a small square, consider the sides divided into tenths, and define the point by taking so many tenths from W. to E. along Southern side, and so many from S. to N. along Western side—the S.W. corner always being taken as origin, and the distance along the Southern side being always given by the first figure. Thus the point Z would be 61, i.e. 6 divisions East and 1 division North from origin.



NOTE.—Roads revised by Maps 3910, 6-1-16.

Belgium. Contour interval 5 Metres
France. Contour interval 20 Metres

GLOSSARI.

Abbaye, Abb ^e	Abbey.	Blanchisserie	Laundry.	Cour des marchands	Goods yard.	Ganterie	Glove factory.	Orme	Elm.	Remise	Machines - Engine shed.
Abreuvoir, Ab ^{is}	Watering place.	B.M. (bornes milliaires)	Mile stone.	aux dires		Gare	Station.	Orphelinat	Orphanage.	Réservoir, Rés ^{er}	Reservoir.
Abri de douanes	Custom-shelter.	B ^e (borne kilométrique)		Convent	Convent.	Gareaux	Warren.	Quarries	Quarries.	Route cavalière	Road.
Acier	Steel works.	Boulonnerie	Bolt factory.	Craaiier	Slag heap.	Garnison	Garrison.	Ouvrage	Fort.	Rubannerie	Ribbon factory.
Aiguilles	Point (Ry.)	Fab ^{ri} de boules	Ball factory.	Croix	Cross.	Gazomètre	Gasometer.	Ouvrages	Water works.	Ruine	Ruin.
Allée	Alley, Narrow road.	Boue	Mud.	Dars	Inner dock.	Glacière	Ice factory.	Papeterie	Paper-mill.	Sablère	Sand-pit.
Ancien - ne, Anc ^{ien}	Old.	Brasserie	Brewery.	Débris	Debris.	Grue	Crane.	Parc	Park, yard.	Sablonsier, Sablon ^{ier}	Silt.
Aqueduc	Aqueduct.	Brique	Brick.	Débris - e, Dé ^{bris}	Debris.	Gut	Gut.	à aérostatique	Aerostat ground.	Sapin	Willow tree.
Arbre	Tree.	Brique	Brick.	Débris - e, Dé ^{bris}	Debris.	Gut	Gut.	à pétrole	Petrol stone.	Sauze	Salt-works.
à éventail	Fan-shaped.	Brique	Brick.	Débris - e, Dé ^{bris}	Debris.	Gut	Gut.	à pierre	Stone.	Sauze	Salt-works.
à échelle	Stair.	Brique	Brick.	Débris - e, Dé ^{bris}	Debris.	Gut	Gut.	à sable	Sand.	Sauze	Salt-works.
à four	Stove.	Brique	Brick.	Débris - e, Dé ^{bris}	Debris.	Gut	Gut.	à terre	Earth.	Sauze	Salt-works.
à isoler	Insulating.	Brique	Brick.	Débris - e, Dé ^{bris}	Debris.	Gut	Gut.	à eau	Water.	Sauze	Salt-works.
à pincer	Pincering.	Brique	Brick.	Débris - e, Dé ^{bris}	Debris.	Gut	Gut.	à feu	Fire.	Sauze	Salt-works.
Arbrisseau	Small tree.	Brique	Brick.	Débris - e, Dé ^{bris}	Debris.	Gut	Gut.	à vent	Wind.	Sauze	Salt-works.
Arce	Arch.	Brique	Brick.	Débris - e, Dé ^{bris}	Debris.	Gut	Gut.	à vapeur	Steam.	Sauze	Salt-works.
Arrière	Rear.	Brique	Brick.	Débris - e, Dé ^{bris}	Debris.	Gut	Gut.	à sucre	Sugar.	Sauze	Salt-works.
Asile	Asylum.	Brique	Brick.	Débris - e, Dé ^{bris}	Debris.	Gut	Gut.	à zinc	Zinc.	Sauze	Salt-works.
à des aliénés	Lunatic asylum.	Brique	Brick.	Débris - e, Dé ^{bris}	Debris.	Gut	Gut.	à plomb	Lead.	Sauze	Salt-works.
à de charité	Charity.	Brique	Brick.	Débris - e, Dé ^{bris}	Debris.	Gut	Gut.	à cuivre	Copper.	Sauze	Salt-works.
à des pauvres	Asylum.	Brique	Brick.	Débris - e, Dé ^{bris}	Debris.	Gut	Gut.	à fer	Iron.	Sauze	Salt-works.
à de refuge	Asylum.	Brique	Brick.	Débris - e, Dé ^{bris}	Debris.	Gut	Gut.	à plomb	Lead.	Sauze	Salt-works.
Auberge, Aub ^e	Inn.	Brique	Brick.	Débris - e, Dé ^{bris}	Debris.	Gut	Gut.	à zinc	Zinc.	Sauze	Salt-works.
Aune	Alder-tree.	Brique	Brick.	Débris - e, Dé ^{bris}	Debris.	Gut	Gut.	à cuivre	Copper.	Sauze	Salt-works.
Bac	Ferry.	Brique	Brick.	Débris - e, Dé ^{bris}	Debris.	Gut	Gut.	à fer	Iron.	Sauze	Salt-works.
à travail	Ferry.	Brique	Brick.	Débris - e, Dé ^{bris}	Debris.	Gut	Gut.	à plomb	Lead.	Sauze	Salt-works.
Bain	Bath.	Brique	Brick.	Débris - e, Dé ^{bris}	Debris.	Gut	Gut.	à zinc	Zinc.	Sauze	Salt-works.
Place aux bains	Bathing place.	Brique	Brick.	Débris - e, Dé ^{bris}	Debris.	Gut	Gut.	à cuivre	Copper.	Sauze	Salt-works.
Baign	Bath.	Brique	Brick.	Débris - e, Dé ^{bris}	Debris.	Gut	Gut.	à fer	Iron.	Sauze	Salt-works.
Banc de sable	Sand-bank.	Brique	Brick.	Débris - e, Dé ^{bris}	Debris.	Gut	Gut.	à plomb	Lead.	Sauze	Salt-works.
à vase	Mud-bank.	Brique	Brick.	Débris - e, Dé ^{bris}	Debris.	Gut	Gut.	à zinc	Zinc.	Sauze	Salt-works.
Baraque	Hut.	Brique	Brick.	Débris - e, Dé ^{bris}	Debris.	Gut	Gut.	à cuivre	Copper.	Sauze	Salt-works.
Barrière	Gate, Stile.	Brique	Brick.	Débris - e, Dé ^{bris}	Debris.	Gut	Gut.	à fer	Iron.	Sauze	Salt-works.
Machines à Bascule	Weight-bridge.	Brique	Brick.	Débris - e, Dé ^{bris}	Debris.	Gut	Gut.	à plomb	Lead.	Sauze	Salt-works.
Dock, Fond	Dock, Pond.	Brique	Brick.	Débris - e, Dé ^{bris}	Debris.	Gut	Gut.	à zinc	Zinc.	Sauze	Salt-works.
à d'échouage	Tidal dock.	Brique	Brick.	Débris - e, Dé ^{bris}	Debris.	Gut	Gut.	à cuivre	Copper.	Sauze	Salt-works.

BELGIUM AND FRANCE

SHEET 27.

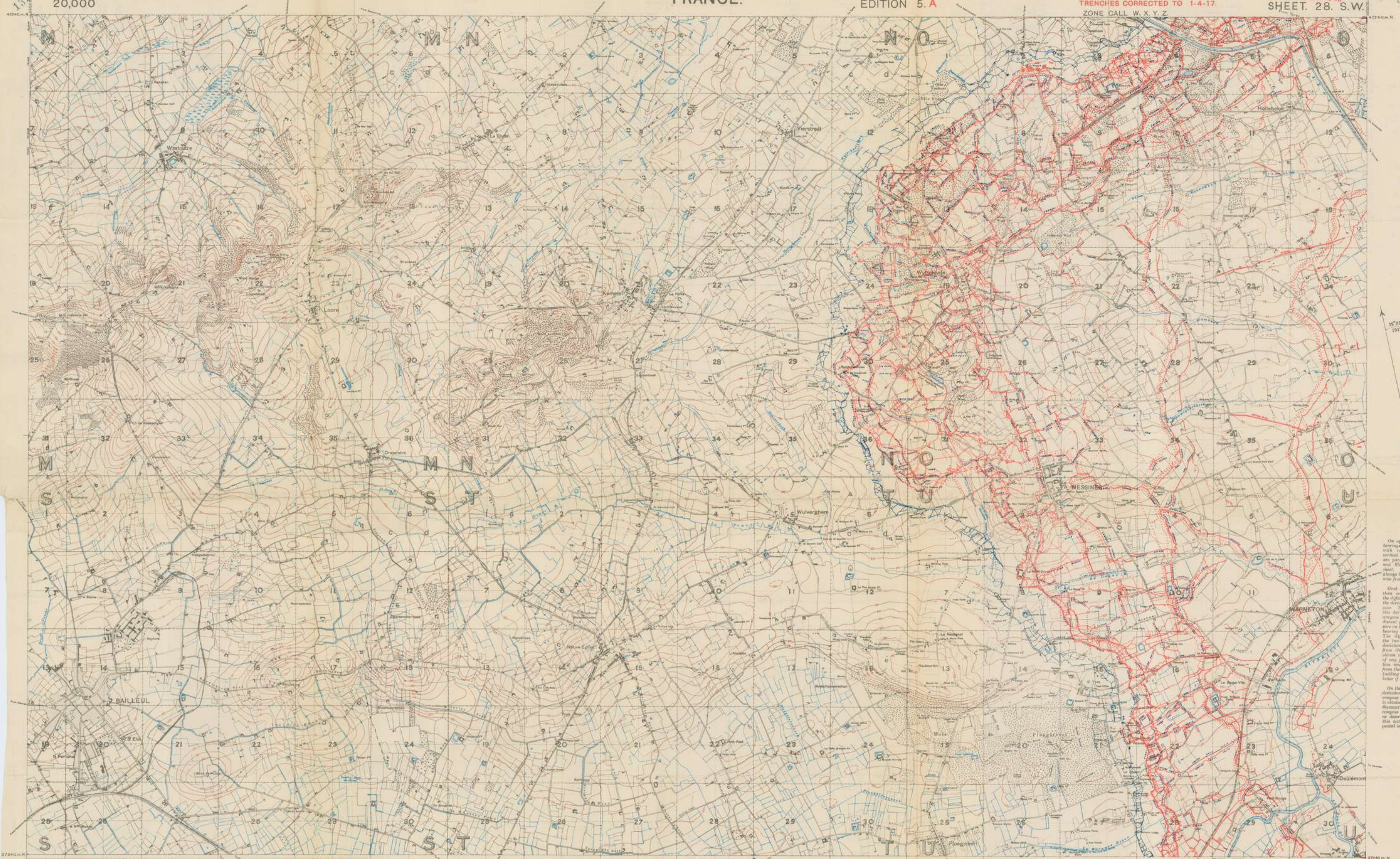
SECOND EDITION.

INDEX TO ADJOINING SHEETS

26	27	28	29	30
31	32	33	34	35
36	37	38	39	40
41	42	43	44	45
46	47	48	49	50

SCALE 40,000.

1
20,000



15° 55' 1917
Magnetic
Grid North

On squared maps all bearings should be given with reference to the vertical grid lines, which are parallel to the East and West edges of the sheet. Bearings should always be reckoned clockwise from 0° to 360°.

Grid bearings are less than compass bearings, the difference being called the declination of the compass. To find out what this declination is, take a compass bearing to a distant point, and measure on the map the grid bearing to that point. The difference between the two bearings is the declination of that compass from Grid North. To obtain the grid bearing of any point this declination must be subtracted from the compass bearing (adding 360° in the latter of necessary).

On this sheet the mean declination of a normal compass is 22° 22', but in other areas the declination of a normal compass should be noted as described above, and the text should be repeated in each locality.

G.S.G.S. 2742. REFERENCE. Contour Interval 5 Metres. Ordnance Survey, April, 1917.

INSTRUCTIONS AS TO THE USE OF THE SQUARES.

- 1. The large rectangles on the map, lettered M, N, O, etc., are divided into squares of 1,000 yards side, which are numbered 1, 2, 3, etc. Each of these squares is subdivided into four minor squares of 500 yards side. These minor squares are considered as lettered a, b, c, d. (See Square No. 8 in each rectangle).
- 2. To locate a point within a small square, consider the sides divided into tenths, and define the point by taking so many tenths from W. to E. along Southern side, and so many from S. to N. along Western side, the S.W. corner always being taken as origin, and the distance along the Southern side tenths given by the first figure. Thus the point Z would be 69, i.e. 3 divisions East and 3 divisions North from origin.
- 3. When more accurate definition is wanted for the 1:20,000 or 1:10,000 scales use exactly the same method, but divide sides into 100 parts and use four figures instead of two. Thus 0847 denotes 88 parts East and 47 parts North of origin (see point X). Point Y is 8028.
- 4. Use 0 but not 10; use either two or four figures; do not use fractions (e.g. 4.5).



- Any trench apparently organized for fire.
- Other trenches. Important ones are shown by thick lines. Old or disused by dotted lines.
- British front line trenches.
- Entanglement or other obstacle.
- Ground set up by Artillery fire.
- Mine craters. Mine craters fortified.
- Hedge, fence or ditch. (Unknown which).
- Ditch with permanent water.
- Conspicuous points. (Position of point is centre of circle. Dot shows that point is trigonometrically fixed).
- 1st Class.
- 2nd Class.
- Roads.
- Footpaths, Cart tracks.
- Doubles.
- Railways - Single.
- Light or Tramway.
- All heights in metres.
- Church.
- Any trig point.
- Fence.
- Unfenced.
- Mill.

TABLE FOR CONVERTING METRES TO FEET.

Metres	0	1	2	3	4	5	6	7	8	9
0	0	3.3	6.6	9.8	13.1	16.4	19.7	23.0	26.3	29.6
10	32.8	36.1	39.4	42.7	45.9	49.2	52.5	55.8	59.0	62.3
20	65.6	68.9	72.2	75.5	78.7	82.0	85.3	88.6	91.9	95.2
30	98.4	101.7	105.0	108.2	111.5	114.8	118.1	121.4	124.7	128.0
40	131.2	134.5	137.8	141.0	144.3	147.6	150.9	154.1	157.4	160.7
50	164.0	167.3	170.6	173.9	177.1	180.4	183.7	187.0	190.3	193.6
60	196.8	200.1	203.4	206.6	209.9	213.2	216.5	219.8	223.0	226.3
70	229.6	232.9	236.2	239.5	242.7	246.0	249.3	252.6	255.9	259.2
80	262.4	265.7	269.0	272.2	275.5	278.8	282.1	285.4	288.7	292.0
90	295.2	298.5	301.8	305.1	308.4	311.7	315.0	318.3	321.6	324.9
100	327.7	331.0	334.3	337.6	340.9	344.2	347.5	350.8	354.1	357.4



GLOSSARY.

Abbeys, Abbé - Abbey.
 Abri de douaniers - Customs-shelter.
 Acierie - Steel works.
 Aiguilles - Points (Ry.)
 Allee - Alley, narrow road.
 Ancien - no. Anc^o - Old.
 Aqueduc - Aqueduct.
 Arbre - Tree.
 " à ventail - fan-shaped.
 " décharné - bare.
 " fourchu - forked.
 " isolé - isolated.
 " peigné - leaning.
 Arbresans - Small tree.
 Arc - Arch.
 Artisans, Art^o - Slate quarry.
 Arrière - Back.
 Aube - Asylum.
 " des alibis - Lonatic seylons.
 " d' -
 " de charité - Asylum.
 " des pauvres -
 " de refuge -
 Auberge, Aub^o - Inn.
 Aune - Alder-tree.
 Bœc - Ferry.
 " à traile -
 Bains - Bains.
 Bâche aux baines - Batching place.
 Balise - Beacon.
 Banc de sable - Sand-bank.
 " vase - Mud-bank.
 Baraque - Hut.
 Barrage - Dam.
 Barrière - Gate, Sill.
 (Machine à) Bascule - Weigh-bridge.
 Bassin - Dock, Pond.
 " d'échouage - Tidal dock.


Bateau phare - Light-ship.
 Blanchisserie - Laundry.
 B.M. (borne milliaire) - Mile stone.
 B^o (borne kilométrique)
 Boulonnerie - Bolt Factory.
 Boule - Ball.
 Boute - Brewery.
 Brique, Bria^o - Brick field.
 Brique, Bria^o - Brickwater.
 Bureau de poste - Post office.
 " de douane - Custom house.
 Butte - But, Mound.
 Cabane - Hut.
 Cabaret, Cab^o - Inn.
 Câble sous-marin - Submarine cable.
 Calvaire, Cal^o - Calvary.
 Canal de dessèchement - Drainage canal.
 Canal d'irrigation - Irrigation canal.
 Fab^o de caoutchouc - Rubber factory.
 Carrière, Car^o - Quarry.
 " de gravier - Gravel-pit.
 Caserne - Barracks.
 Champ de courses - Race-course.
 " manoeuvres - Drill ground.
 " tir - Rifle range.
 Chantier - Building yard.
 " Ship yard.
 " Dock yard.
 Chantier de construction - Ship-way.
 Chapelle, Ch^o - Chapel.
 Charbonnage - Colliery.
 Château d'eau - Water tower.
 Chaussée - Causeway.
 " Highway.
 Chemin de fer - Railway.
 Cheminée, Ch^o - Chimney.
 Château - Oak tree.
 Cimetière, Cim^o - Cemetery.
 Clocher - Belfry.
 Clouterie - Nail factory.
 Columbar - Dove-cot.

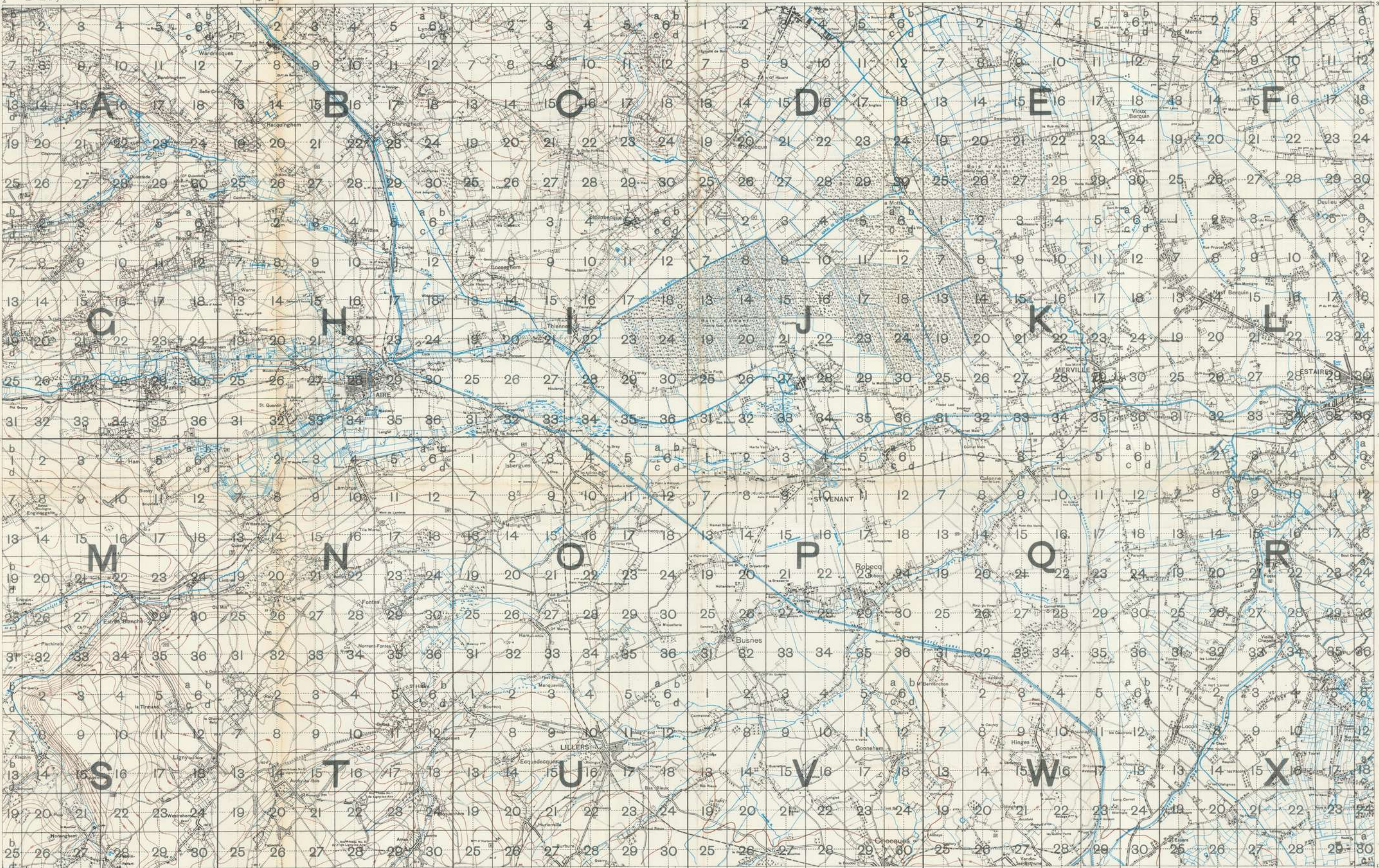
Coussin - dwellings.
 Cours des marchandises - Goods yard.
 Couvent - Convent.
 Crématorium - Slag heap.
 Croix - Cross.
 Dars - Inner dock.
 Dars - Destroyed.
 Déroulé - e, Dé^o -
 Nécessaire - Wain.
 Digue - Dyke, causeway.
 Distillerie, Dist^o - Distillery.
 Douane - Custom-house.
 Bureau de douane - Custom warehouse.
 Dynamitère, Dynam^o - Dynamite magazine.
 Dynamitère - Dynamite factory.
 Ecluse - Sluice, Lock.
 Ecluse, Ecl^o - Sluice.
 Ecole - School.
 Ecurie - Stable.
 Eglise - Church.
 Emballerie - Canned works.
 Embarcadere, Emb^o - Landing-place.
 Estaminet, Estam^o - Inn.
 Etang - Pond.
 Fabrique, Fab^o - Factory.
 Fab^o de produits chimiques - Chemical works.
 Faïence - Pottery.
 Faissonne -
 Ferme, Fer^o - Farm.
 Filature, Fil^o - Spinning mill.
 Fonderie, Fond^o - Foundry.
 Fontaine, Font^o - Spring, fountain.
 Forêt - Forest.
 Forne de radoub - Dry dock.
 Forge - Smithy.
 Fosse - Mine, Pit.
 Fosse - Moat, Ditch.
 Four - Kiln.
 " à chaux - Lime-kiln.

Ganterie - Glove Factory.
 Gare - Station.
 Garnison - Warren.
 Garnison - Garrison.
 Gazomètre - Gasometer.
 Glacière - Mirror Factory.
 Fab^o de glaces - Ice factory.
 Glacière -
 Grue - Crane.
 Gué - Ford.
 Guérite - Sentry-box, Turret.
 " à signaux - Signal-box (Ry.)
 Halle - Hall.
 Hangar - Shed, Hangar.
 Hôpital - Hospital.
 Hôtel-de-Ville - Town hall.
 Houillère - Colliery.
 Huilerie - Oil factory.
 Imprimerie, Impr^o - Printing works.
 Jetée - Pier.
 Laminerie - Rolling mills.
 Ligne de haute laisse - High water mark.
 " marée -
 " de basse marée - Low.
 Maison Forestière - Forester's house.
 " des F^o -
 Malterie - Malt-house.
 Marbrerie - Marble works.
 Mars - Marsh.
 Marais salant - Salt marsh.
 Marché - Market.
 Mare - Pool.
 Meule - Rick.
 Minière - Mine.
 Monastère - Monastery.
 Moulin, M^o - Mill.
 " à vapeur - Steam mill.
 Mur - Wall.
 " crénelé - Loop-holed wall.

Orme - Elm.
 Orphelinat - Orphanage.
 Ossement - Osser-beds.
 Ouvrage - Fort.
 Ouvrages hydrauliques - Water works.
 Papeterie - Paper-mill.
 Parc - Park, yard.
 " aéronautique - Aviation ground.
 " à charbon - Coal yard.
 " à pétrole - Petrol store.
 Passage à niveau P.N. - Level-crossing.
 Passerelle, Pas^o - Foot-bridge.
 Pépinière - Nursery-garden.
 Peuplier - Poplar tree.
 Plage - Light-house.
 Plage, Pl^o - Post.
 Plaine d'exercice - Drill ground.
 Pompe - Pump.
 Pont - Culvert.
 " levé - Bridge.
 " à la garde - Drawbridge.
 Station d' - Coast-guard station.
 Poste - Post.
 Poste d' -
 Poteau P^o -
 Poterie - Pottery.
 Poudrière, Poud^o - Powder magazine.
 Prise d'eau - Water supply.
 Puits - Pit-head, Shaft, Well.
 " artésien - Artesian well.
 " d'aérage - Ventilating shaft.
 " ventilateur -
 " de sondage - Boring.
 Quai - Quay, Platform.
 " aux bestiaux - Cattle platform.
 " des machines - Goods platform.
 Raccordement - Junction.
 Raffinerie - Refinery.
 " de sucre - Sugar refinery.
 Râperie - Best-root factory.

Rennet (des) Machines - Engines shed.
 Réservoir, Rés^o - Reservoir.
 Route cavalière - Bridle road.
 Rubannerie - Ribbon Factory.
 Ruine -
 Ruines -
 En ruine -
 Ruiné - e - Ruin.
 Sablière - Sand-pit.
 Sablonnière, Sablon^o - Fir tree.
 Sapin -
 Saule - Willow tree.
 Saumonerie - Salt-works.
 Scierie, Sc^o - Saw-mill.
 Sondage - Boring.
 Source - Spring.
 Sucrerie, Suc^o - Sugar factory.
 Tannerie - Tannery.
 Tir à la chaine - Hide range.
 Tissage - Weaving mill.
 Tôlerie - Rolling mill.
 Tombou - Tomb.
 Tour - Tower.
 Tourbière - Peat-bog, Peat-bed.
 Tourne - Small tower.
 Tuilerie - Tile works.
 Usine à gaz - Gas works.
 " électrique - Electricity works.
 " métallurgique - Metal works.
 " à agglomérés - Briquette factory.
 Verrerie, Ver^o - Glass works.
 Viaduc - Viaduct.
 Vivier - Fish Pond.
 Voie de chargement -
 " d' -
 " d' -
 " d' -
 " manoeuvres -
 Zinguerie - Zinc works.

TRENCH MAP.
 FRANCE.
 SHEET 28 S.W.
 EDITION 5. A.
 INDEX TO ADJOINING SHEETS.

 SCALE 20,000.
 ZONE CALL W. X. Y. Z.

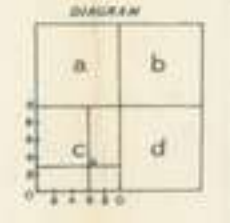


INSTRUCTIONS AS TO THE USE OF THE SQUARES.

1. The large rectangles on the map, lettered A, B, C, etc., are divided into squares of 1,000 yards side, which are numbered 1, 2, 3, etc. Each of these squares is subdivided into four minor squares of 500 yards side. These minor squares are considered as lettered a, b, c, d. (See Square No. 6 in each rectangle.)

A point may thus be described as lying within Square B.6, M.5.b, etc.

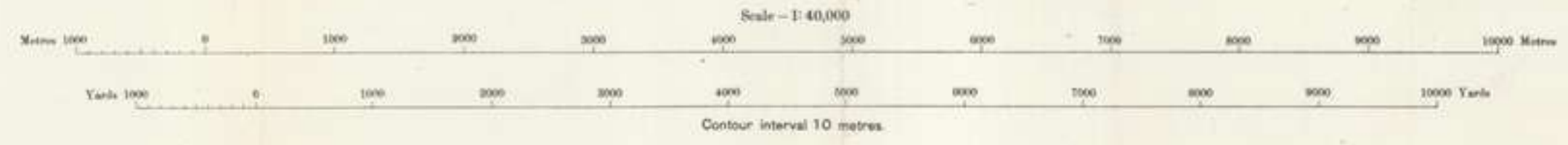
2. To locate a point within a small square, consider the sides divided into tenths, and define the point by taking no more tenths from W. to E. along Southern side, and no more from S. to N. along Western side; the S.W. corner always being taken as origin, and the distance along the Southern side being always given by the first figure. Thus the point Z would be 61, i.e. 6 divisions East and 1 division North from origin.



On general maps all bearings should be given with reference to the vertical grid lines, which are parallel to the East and West edges of the sheet. Bearings should always be reckoned clockwise from 0° to 360°.

Grid bearings are less than compass bearings, the difference being called the difference being called the deviation of that compass from Grid North. To obtain the true bearing of any point this deviation must be subtracted from the compass bearing (adding 360° in the latter if necessary).

On this sheet the mean deviation of a normal compass is 12° 41' and to obtain accurate results the mean deviation of each compass should be noted as described above, and this fact should be printed in each locality.



Surveyed by No. 1 Survey Section R.E. 1915.

Ordnance Survey, May, 1917.

GLOSSARY.

Abbaye, Abbé - Abbey.
Abrevoir, Ab - Watering-place.
Abris de douaniers - Customs-shelter.
Adriens - Steel works.
Aiguilles - Points (Ry.).
Alley - Alley, Narrow road.

Bassin de radoub - Dry dock.
Bateau phare - Light-ship.
Blanchisserie - Laundry.
B.M. (bornes milliaires) - Mile stone.

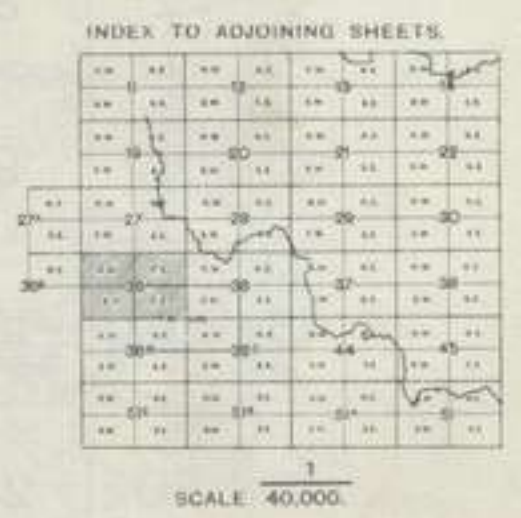
Coron - Workmen's dwellings.
Cour des marchands - Goods yard.
Couvert - Covered.
Crusier - Stag hosp.

Four à coke - Coke oven.
Ganterie - Glove factory.
Gare - Station.
Garems - Warren.

Naevle - Ferry.
Orme - Elm.
Orphelinat - Orphanage.
Ouvrages - Overse-beds.

Remblai - Embankment.
Remise des Machines - Engine shed.
Reservoir, Rés - Reservoir.
Route cavalière - Bridle road.

FRANCE. SHEET 36A EDITION 6.



SCALE 40,000.

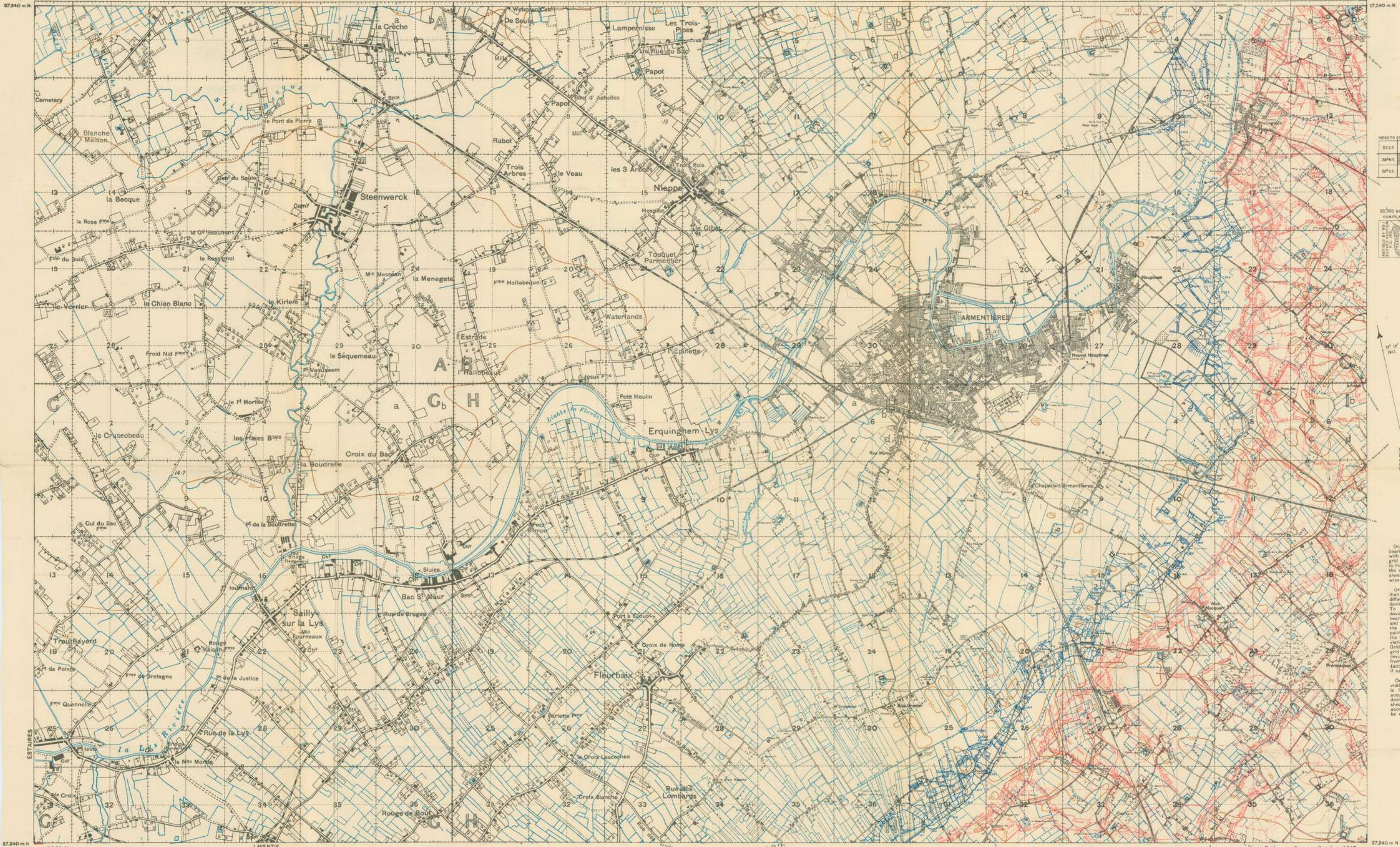
Chantier de construction - Ship-way.
Chapelle, Ch - Chapel.
Charbonnage - Colliery.
Château d'eau - Water tower.

Fab' de produits chimiques - Chemical works.
Fab' de soie - Pottery.
Fermes, Fer - Farm.
Flet, F - Spinning mill.

Maison Forestière - Forester's house.
Maison - Milk-house.
Marbrerie - Marble works.
Mars - Marsh.

Quai - Quay, Platform.
Quai aux bestiaux - Cattle platform.
Quai aux marchandises - Goods platform.

Verrerie, Ver - Glass works.
Viaduc - Viaduct.
Vivier - Fish Pond.
Voie de chargement - Siding.
Voie de déchargement - Siding.



INDEX TO ADJOINING SHEETS

22E	25.S.W	28.S.E
24NE	26.N.W	26.N.E
26SE	26.S.W	26.S.E



On squared map all bearings should be given with reference to the vertical grid lines which are parallel to the East and West sides of the sheet. Bearings should always be reckoned clockwise from 0° to 360°.

Grid bearings are less than compass bearings the difference being called the deviation of the compass. To find out what this deviation is, take a compass bearing to a distant point, and measure on the map the grid bearing to that point. The difference between the two bearings is the deviation of that compass from Grid North. To obtain the grid bearing of any point this deviation must be subtracted from the compass bearing (adding 360° to the latter if necessary).

On this sheet the mean deviation of a normal compass is 12' 10", but to obtain accurate results the exact deviation of each compass should be noted as described above, and this note should be repeated in each locality.

REFERENCE

Any trench apparently organized for fire	Hedge, Fence or Ditch	Conspicuous Points (Position of point is trigonometrically fixed)	Shrine
Other Trenches	Ditch with Permanent Water	Normal Gauge, Double	Single
Trenches (Important ones are shown by thick line. Old or disused by dotted line)		Light	Trench Tramways
British Trenches		Temporary	Metre Gauge Railways
Wire Entanglement or Other Obstacle		Organised Shell Holes	
Enemy's Tracks			
Buried Pipeline or Cable			
Airline			
Supply Dumps			
Ammunition	Gun Emplacements	Observation Posts	Railways
Earthworks	Machine Gun	Listening Posts	Permanent
Dug-outs	Trench Mortar	Mass Craters	Temporary
Huts	A-A Gun	Fortified	
Works reinforced by concrete			

NOTE: The fact that an obstacle is not represented on the map does not necessarily mean that there is none there. It is often impossible to distinguish obstacles or to identify their character. It may be assumed that there are obstacles in front of all low trenches (shown by thick line).

INSTRUCTIONS AS TO THE USE OF THE SQUARES

- The large rectangles on the map, lettered A, B, C, etc., are divided into squares of 1,000 yards side, which are numbered 1, 2, 3, etc. Each of these squares is sub-divided into four minor squares of 500 yards side. These minor squares are considered as lettered a, b, c, d. (See Square No. 6 in each rectangle).
- To locate a point within a small square, consider the sides divided into tenths, and define the point by taking so many tenths from W. to E. along Southern side, and so many from S. to N. along Western side; the S.W. corner always being taken as origin, and the distance along the Southern side being always given by the first figure. Thus the point Z would be 63: i.e. 6 divisions East and 3 divisions North from origin.
- When more accurate definition is wanted (on the 1:20,000 or 1:10,000 scales) use exactly the same method, but divide sides into 100 parts and use four figures instead of two. Thus 0847 denotes 88 parts East and 47 parts North of origin (see point X). Point Y is 6503.
- Use 0 by not 10; use either two or four figures; do not use fractions (0.4, etc.).

Scale 1:20,000

Metres 1000 2000 3000 4000 5000 6000 7000 8000 9000

Yards 1000 2000 3000 4000 5000 6000 7000 8000 9000

ALL HEIGHTS IN METRES

TABLE FOR CONVERTING METRES TO FEET

Metres	0	1	2	3	4	5	6	7	8	9
0	0	33	66	99	131	164	197	230	262	295
10	32.8	65.6	98.4	131.2	164.0	196.8	229.6	262.4	295.2	328.0
20	65.6	98.4	131.2	164.0	196.8	229.6	262.4	295.2	328.0	360.8
30	98.4	131.2	164.0	196.8	229.6	262.4	295.2	328.0	360.8	393.6
40	131.2	164.0	196.8	229.6	262.4	295.2	328.0	360.8	393.6	426.4
50	164.0	196.8	229.6	262.4	295.2	328.0	360.8	393.6	426.4	459.2
60	196.8	229.6	262.4	295.2	328.0	360.8	393.6	426.4	459.2	492.0
70	229.6	262.4	295.2	328.0	360.8	393.6	426.4	459.2	492.0	524.8
80	262.4	295.2	328.0	360.8	393.6	426.4	459.2	492.0	524.8	557.6
90	295.2	328.0	360.8	393.6	426.4	459.2	492.0	524.8	557.6	590.4
100	328.0	360.8	393.6	426.4	459.2	492.0	524.8	557.6	590.4	623.2

GLOSSARY.

Abbey, Abbé Abbey, Watering-place.
 Abrevoir, Ab' Custom-shelter.
 Abri de douanes Shed works.
 Abris (Ry.)
 Alévy, Narrows
 Ancien - an, Anc' Old.
 Aqueduc Aqueduct.
 Athos Tice.
 Avion - av, Avic - av, Avic - av, Avic - av.
 Aube Alder-tree.
 Bac à trailler Ferry.
 Bain Bala.
 Bain aux bains Bathing place.
 Baize Boon, Beacon.
 Baie de sable Sand bank.
 Baraque Barrack.
 Barrière Barricade.
 Machine à bascule Weigh-bridge.
 Bassin Dock, Pond.
 d'échouage Tidal dock.

Bassin de radoub Dry dock.
 Batons phos Light-ship.
 Blanchisserie Laundry.
 B.M. (borne milliare) Mile stone.
 B' (borne kilométrique)
 Boulonnerie Bolt factory.
 Fab' de boutons Button factory.
 Boule Buoy.
 Brasserie, Brass' Brewery.
 Bréquière, Brép' Brickfield.
 Brise-lames Breakwater.
 Bureau de poste Post office.
 Bureau de douane Custom-house.
 Butte Butte, Mound.
 Cylindre Hat.
 Cabaret, Cab' Inn.
 Câble sous-marin Submarine cable.
 Calvaire, Calv' Calvary.
 Canal de drainage canal.
 Canal d'irrigation Irrigation canal.
 Fab' de caoutchouc Rubber factory.
 Carrière, Carr' Quarry.
 de gravier Gravel-pit.
 Caserne Barracks.
 Champ de courses Race-course.
 de manoeuvres Drill-ground.
 de tir Rifle-range.
 Chantier Building yard.
 Ship yard.
 Lock yard.
 Chantier de construction Slipway.
 Chapelle, Ch' Chapel.
 Charbonnage Colliery.
 Château d'eau Water tower.
 Chaussée Highway.
 Cheminée Chimney.
 Chemin de fer Railway.
 Chêne Oak tree.
 Châtellerie, Chât' Chantry.
 Clocher Belfry.
 Clouterie Nail factory.
 Colombier Dove-cot.

Coron Workman's dwellings.
 Cour des (marchés) Goods yard.
 Couvent Convent.
 Crozier Slag heap.
 Croix Cross.
 Dars Inner dock.
 Démoli - destroyed.
 Diapire, Diap' War.
 Digues Dyke, causeway.
 Distillerie, Dist' Distillery.
 Douane Custom-house.
 Bureau de douane Custom warehouse.
 Entrepôt de douane Dynamite (Dynam' Dynamite factory.
 Dynamiterie Dynamite factory.
 Echoue Sluice, Lock.
 Ecluse, Ecl' Sluice.
 Ecole School.
 Ecurie Stable.
 Eglise Church.
 Embarcadere, Emb' Landing-place.
 Esquimes, Esqu' Inn.
 Etang Pond.
 Fabrique, Fab' Factory.
 Fab' de produits chimiques Chemical works.
 Fab' de soie Silk-mill.
 Faïence, Faï' Pottery.
 Ferme, Fer' Farm.
 Filature, Fil' Spinning mill.
 Fonderie, Fond' Foundry.
 Fontaine, Font' Spring, fountain.
 Forêt Forest.
 Forne de radoub Dry dock.
 Chine Smithy.
 Fosse Mine, Pit.
 Fossé Moat, Ditch.
 Four Kiln.
 à chaux Lime-kiln.

Four à coke Coke oven.
 Ganterie Glove factory.
 Gare Station.
 Garçon Warren.
 Garnison Garrison.
 Gasconière Gasometer.
 Glaçerie Ice factory.
 Fab' de glaces Glass factory.
 Glacière Cellar.
 Grotto Grotto.
 Gué Ferry.
 Guérisse Sentry-box, Turret.
 à signaux Signal-box (Hy.)
 Halle Hall.
 Hangar Shed, Hangar.
 Hôpital Hospital.
 Hôtel-de-Ville Town hall.
 Houillère Colliery.
 Huilerie Oil factory.
 Imprimerie, Imp' Printing works.
 Jette Pier.
 Laminerie Rolling mill.
 Ligne de haute High water mark.
 Laine à moule Low water mark.
 Etang de basse mer
 Maison Forestier's house.
 de l'usine
 Malterie Malt-house.
 Marbrerie Marble works.
 Mars Mare.
 Manie salin Saline.
 Marché Market.
 Mare Pond.
 Môle Wharf.
 Miniere Mine.
 Monastère Monastery.
 Moulin, M' Mill.
 à vapeur Steam mill.
 Mur Wall.
 crénelé Loop-holed wall.

Nacelle Ferry.
 Orme Elm.
 Orphelinat Orphanage.
 Ouverture Ouvrier's bed.
 Ouvrage Fort.
 Ouvrages hydrauliques Water works.
 Papeterie Paper-mill.
 Parc Park, yard.
 aéronautique Aviation ground.
 à charbon Coal yard.
 à pétrole Petrol store.
 Passages à niveau P.N. Level-crossing.
 Passerelle, Pass' Foot-bridge.
 Pépinière Nursery-garden.
 Peuplier Poplar tree.
 Plage Light-house.
 Piler, P' Post.
 Plaine d'exercice Drill ground.
 Pompe Pump.
 Poudrière, Poud' Powder magazine.
 Poste Post.
 Poste de garde Coast-guard station.
 Poste l'ôte Post.
 Pâtisserie Pastry.
 Poudrière, Poud' Powder magazine.
 Magasin à poudre Water supply.
 Puits Pit-head, Shaft, Well.
 Puits Artesian well.
 Puits ventilateur Ventilating shaft.
 Puits de sondage Boring.
 Quay, Platform.
 aux bestiaux Cattle platform.
 aux (marchés) Goods platform.
 des (d'usage) Goods platform.
 de sondage Boring.
 Raccordement Junction.
 Raffinerie Refinery.
 de sucre Sugar refinery.
 Bois-croix Bee-cot factory.
 Répertoire - -

Rambai Embankment.
 Rampe (des Machines - Engine shed.
 Réservoir, Rés' Reservoir.
 Route cavalière Hurtle road.
 Rubanerie Ribbon factory.
 Ruine Ruin.
 En ruine Ruin.
 Sablière Sand-pit.
 Sablonnière, Sablon' Fir tree.
 Saule Willow tree.
 Saunerie Salt works.
 Scierie, Sc' Saw-mill.
 Sondage Boring.
 Source Spring.
 Sucrerie, Suc' Sugar factory.
 Tannerie Tannery.
 Tir à la cible Rifle range.
 Tissage Weaving mill.
 Tâcherie Rolling mill.
 Tombeau Tomb.
 Tour Tower.
 Tourbière Peat bog, Peat-bed.
 Tourrelle Small tower.
 Tuilerie Tile works.
 Usine à gaz Gas works.
 électrique Electricity works.
 métallurgique Metal works.
 à agglomérés Briquette factory.
 Varenne, Verr' Glass works.
 Viaduc Viaduct.
 Viver Fish Pond.
 Voie de chargement
 de déchargement
 de déchargement
 de formation
 de manoeuvres
 Zinguerie Zinc works.

TRENCH MAP.
 FRANCE.
 SHEET 36 N.W.
 EDITION B. A

INDEX TO ADJOINING SHEETS

35	36	37	38	39	40
35	36	37	38	39	40
35	36	37	38	39	40
35	36	37	38	39	40
35	36	37	38	39	40
35	36	37	38	39	40
35	36	37	38	39	40
35	36	37	38	39	40
35	36	37	38	39	40
35	36	37	38	39	40

SCALE 50,000