

AWM4
Australian Imperial Force unit war diaries,
1914-18 War

Engineers

Item number: 14/26/24

Title: 7th Field Company, Australian
Engineers

December 1917



AWM4-14/26/24

WAR DIARY

or

INTELLIGENCE SUMMARY. DECEMBER 1917.

(Erase heading not required.)

ORIGINAL

NO. 1. F.

Army Form C. 2118.

No.

Instructions regarding War Diaries and Intelligence Summaries are contained in F. S. Regs., Part II. and the Staff Manual respectively. Title pages will be prepared in manuscript.

Place	Date	Hour	Summary of Events and Information	Remarks and references to Appendices
Sheet. 36 & 28. (H.Q. & sappers. 1st. (36. B.1.d.6.5. (Transport. (36. B.8.a.4.3.			<p>STRENGTH:-7 officers.- 201. O.R. -Detached for duty and on leave etc., 2 offs.17.0.R. Actually With unit:- 5 officers. 173 O.R.</p> <p>No 1 section. Dismantled Stadium, erected with Bridging materials ; and xx re-erected permanent stadium. (20 ft between ropes with 2 ft outside ropes).T.14.d.8.5.</p> <p>No 2 Section. Continued repair of MONASTERY HALL, NEUVE EGLISE, T.14.b.9.2.,</p> <p>No 3 section.(with 11.0.R. of No 1.) Completed re-erecting huts at RAIDERS CAMP and placing duckwalks at BULLET & BAYONET RANGE(T.9.d.5.5.)</p> <p>RAIDERS CAMP(afterwards EMU CAMP T.9.d.5.3.) . Was erected for personnel undergoing training for"raiding". In all 11 Nissen Bow Huts were dismantled at Transport lines at B.8.a.4.3. (sheet 36). and transported to site and erected and shewn in Plan. (Appendix "G" November 1917 War Diary). These were erected hurriedly and were placed on piles up to 18 inches off the ground, and afterwards proved very cold. Nissen Bow Huts should ,whenever possible,(i.e.,where time,labor and drainage permit) be dug 18 inches underground; when protection and warmer conditions are at once obtained.)</p> <p>The Bullet & Bayonet Range (also Appendix "G" November 1917 War Diary) subsequently <i>proved</i> unsafe for use as a "Bullet" course. The rising ground constituting the stop butt was insufficient to prevent ricochets, from flting over and endangering camps etc further forward. It was used as a bayonet course and for specific practices only.</p> <p>No 4 section. Continued repair and reconstruction work at D.R.S.BAILLEUL and erection of bath house and baths at Corps F.P. Compound. BAILLEUL.</p> <p>Work ceased at 12 noon. Football games during the afternoon.</p> <p>In the evening a celebration was arranged in honor of Anniversary of the Unit leaving SYDNEY on 30th November 1915 - 2 years of ACTIVE SERVICE.</p>	
	2nd.		Church parades and recreation. Gas inspection.	
	3rd.		<p>No 1 section . 3 O.R. supervising 45 infantry on drainage of Bombing ground T.9.b.8.2.</p> <p>Remainder - Lecture & wiring & practice of wiring.</p> <p>No 4 & 3 sections. As on 1st. Bicycles and tools overhauled.</p>	
	4th		<p>2 sapps.(25inf) Draining trench ar Bombing ground.</p> <p>12 saps. Repairs to Hall at NEUVE EGLISE.</p> <p>9 * saps Effecting improvements at Transport Lines.</p>	

(A8004) Wt. W1771/M2 31 750,000 5/17 Sch. 52 Forms/C2118/14

WAR DIARY

or

INTELLIGENCE-SUMMARY.

DECEMBER 1917.

(Erase heading not required.)

Instructions regarding War Diaries and Intelligence Summaries are contained in F. S. Regs., Part II. and the Staff Manual respectively. Title pages will be prepared in manuscript.

7TH FIELD COY.
ENGINEERS
Army Form C. 2118.

No.

Place	Date	Hour	Summary of Events and Information	Remarks and references to Appendices
Sheets 36 & 28. H.Q. & sapps. 36.B.1.d.6.5. Transport. 36.B.8.a.4.3.	4th		9. Sappers at D.R.S. Bailleul. and Corps F.P. Compound., Baths . Remainder training in wiring and map reading. O.C. and Orderly Room Sergt (CHATTO) left to visit RECORDS. ROUEN.	
	5th		Details:- erecting screens and bombing ground.; repairs etc at Hall; D.R.S. & Baths BAILLEUL ; Erection of protective walls in camp. Remainder.. Baths and practice wiring and map reading.	
	6th		No 3 section. 12 sappers with 30 inf. Completed 40 ft pug wall for protection of huts against bombs at ALDERSHOT CAMP T.19.d. When shortage of revetting material became acute it was suggested that " Pug" walls might be erected to stand without revetting: T.&G. centring was set up inside angle iron pickets which were wired together at the top. Selected clay and earth mixture was then tamped in, after being wetted and was worked to a puggy consistency & well tamped. An 18 ft length of this was erected at a time and two lots of centring used so that work was continuous. Walls were made 3'6" to 4' high, and 3 ft wide at bottom to 1'6" at top. Some of these have stood for xxxxxx 6 weeks and show no signs of erosion. The outside was rendered with a coat of good clay and the top hippped to turn water. The progress is obviously slow and in any case such walls should be xxx constructed earlier and given the chance to dry out before frost occurs. No 1 section. Training - Wiring and map reading. No 2 " . Repairing and fitting Hall. No 4 " Work at D.R.S. and F.P. Compound BAILLEUL.	
	7th		Details as on 6th. Remainder training- Drill , physical training, rifle exercises, gas drill, wiring . Lt CLOSE attended T.M. Demonstration at LEULINGHAM.	
	8th		Details as on 6th; also erecting pulpiti for church service near TROIS ROIS. HALL Monastery , NEUVE EGLISE T.14/b:9/2/ Completed. Repaired and fitted for use as Concert and Cinema Hall. This was a brick building with a tiled roof, about 90' x 30' and had been considerably knocked about by shell fire. At one end was a stage about 30' x 20' in good state of preservation. Work done consisted in (a) Placing two tarpaulins 30' x 20' on one side of gable roof, and one tarpaulin on ceiling.	

WAR DIARY

or

INTELLIGENCE SUMMARY.

DECEMBER 1917

(Erase heading not required.)

Instructions regarding War Diaries and Intelligence
Summaries are contained in F. S. Regs., Part II.
and the Staff Manual respectively. Title pages
will be prepared in manuscript.

7TH FIELD COY.
ENGINEERS, A.I.F.
No.
Army Form C. 2118.

Place	Date	Hour	Summary of Events and Information	Remarks and references to Appendices
36.B.1.d.6.5.	8th		<p>(b). Covering 6 large and 6 small windows, blocking a large hole in wall and making and fitting 4 doors; (c). Constructing seats to seat 650 men and stage fittings; (d) Erecting ticket and operator's shelters, erecting latrines, and making means of access through brick wall from road. Work was much hindered by difficulty in obtaining materials. The building was afterwards used very successfully both as a Concert Hall and as a Cinema.</p> <p>D.R.S. BAILLEUL. Completed. This work carried out by No 4 section (Lt POBSON consisted of the following:- (a) Installation of 200 gallon tank with supply pipes to boiler, and pump delivering from boiler to 30 gallon cistern (logged) pipes leading from tank and mixer cistern to mix and supply water under head to six showers. (b) Installation of 34 latrine seats and erection of cover etc for same (An old building was demolished and part material used. (c) Erection of incinerator (to burn faeces) with flue arranged to heat drying room (d) Erection of drying room 16' x 8' . (e) Repair of roofs of ward. Work was hampered by difficulty in procuring materials and necessary stocks and dies for pipe work.</p> <p><u>Instruction in Wiring.</u> From 1st to 8th. L.N.C.O per section was engaged instructing respective Battalions of 7th A.I.Bde in wiring wiring , two types (Nos 1 and 4 . S.S. 177) being taught.</p> <p>Major Webb and Sergt Chatto returned from ROUEN.</p>	Appendix "D"
	9th		Gas inspection, church parade. Recreation.	
	10th		<p>Details as on 10th and repairing building at NEUVE EGLISE.</p> <p>Details continuing work on "Pug" walls (No 1 section) ; effecting repairs Palmer Bn s (No 2 section), Effecting improvements at Div Horse Rest Stn etc.</p> <p>Remainder: Physical training, company drill, map reading.</p>	
	11th 412		<p>Details as on 10th and repairing building at NEUVE EGLISE for officer's Club.</p> <p>Reconnaissance of forward area by officers and N.C.Os (4) . Remainder training.</p>	
	12th		<p>Details as on 10th. All sections washed transport and prepared for move. Lecture on Current Field Works by O.C.</p>	

WAR DIARY
or
~~INTELLIGENCE SUMMARY.~~ DECEMBER 1917.
(Erase heading not required.)

Instructions regarding War Diaries and Intelligence
Summaries are contained in F. S. Regs., Part II.
and the Staff Manual respectively. Title pages
will be prepared in manuscript.

Place	Date	Hour	Summary of Events and Information	Remarks and references to Appendices
			<p><u>Insert for 14th December.</u></p> <p>During period 1st to 14th various details were engaged draughting, mounting maps making sample of "ferret" bomb, constructing 3 filing cabinets for Brigade, making stoves and stove pipe, making and painting signboards, making foot bath troughs (6 completed)</p> <p>Also 3 football teams took part in competitions, Rugby, Soccer and Australian games. The soccer team played matches and won every match. Matches were played on Saturday and Wednesday afternoons and arrangements were made for Sappers to take part.</p> <p>During the same period Captain NOEDL supervised the burying to a depth of 3 ft of 20.000 yards of water pipe in the Corps Area.</p> <p>Lt POLSON was attached to act temporarily as C.L.R.O. on 2/12/17.</p> <p>Lt CHRISTIAN returned from detachment as acting Adjutant on 8/12/17</p> <p>From 1st to 12th . Lt LAWRIE with 4 O.R. instructed Battalions of 7th A.I.Bde in map reading and topography. For this work a number of diagrams were made.</p> <p>.....</p> <p>.....</p>	

WAR DIARY

or

INTELLIGENCE SUMMARY DECEMBER 1917.

(Erase heading not required.)

ENGINEERS, A.I.F.
Army Form C. 2118.
No.

Instructions regarding War Diaries and Intelligence
Summaries are contained in F. S. Regs., Part II.
and the Staff Manual respectively. Title pages
will be prepared in manuscript.

Place	Date	Hour	Summary of Events and Information	Remarks and references to Appendices
36.B.1.d.6.5.	14th		<p>Nos 1 & 4 Sections continued with works as on 10th.</p> <p>Lieuts CHRISTIAN and LAWRIE with 2 N.C.Os per each Nos 2 & 3 Sections proceeded to 10th Fld Cpy A.E. lines to take over.</p> <p>Remainder Nos 2 & 3 Sections checking and overhauling gear.</p> <p><u>Pug Walls</u> at ALDERSHOT CAMP total length completed from 6th to 13th. <i>142 ft.</i></p> <p><u>Div Horse Rest Str.</u> Total length 105/ troughing, constructed for feed, and timber work covered with wire netting.</p> <p><u>Foot-bathing troughs.</u> 6 Troughs 5ft long and 14" at bottom and 10" high completed.</p> <p><u>PALMER BATHS.</u> T.26.a.1.9. Showers repaired, sterilising apparatus and roof repaired, 1 Nissen bow hut erected and repairs effected to waiting room, overflow pipe to tanks fitted.</p> <p><u>FIELD PUNISHMENT COMPOUND, BAILLEUL.</u> Work completed. Keys type hut erected, (30' x 15'); all fittings for bath room, waiting room, clean clothes closets etc erected. Showerx baths and arrangements with water-pipe tank and boiler fitted. Much difficulty with water pipe, dies and fittings.</p>	
H.Q. & Saps 28.T.16.a.9.9. Transport. 28.T.15.d.0.2.	15th		<p>Company moved by sections at intervals of about 20 minutes and commencing at 8.30am to vicinity of NEUVE EGLISE.</p> <p>Officers and N.C.Os reconnoitring new forward area. All work handed over to 10th Fld Coy .A.E. and taken over from same unit. Camp well disposed consisting of Nissen Bow Huts and 1 dugout shelters well camouflaged under trees on three sides of large Field. Transport Lines stables good, billets fair.</p> <p>2.C.R. placed about 20 notice-boards on Corps Boundary.</p>	
	16th		<p>Nos 2 and 3 sections proceeded to CATACOMBS dugouts at U.19.b.25.80.</p> <p>101 attached infantry (including 3 officers under Captain SMITH, 26th Bn,) reported and were billeted at CATACOMBS. These were made up of 1. off. 34.C.R. from each 26th, 27th and 28th Bns.</p> <p>No 2 section under Lt CHRISTIAN arranged to direct all work in Right Bn Area and have 1 off and 34 men (27th Bn) attached.</p> <p>No 3 section under 2/Lt LAWRIE with 2 offs and 34 men 26th Bn attached arranged to direct all work in Left Bn area.</p> <p>Sappers reconnoitring and organising.</p>	

WAR DIARY

or

INTELLIGENCE SUMMARY DECEMBER 1918.

(Erase heading not required.)

7TH FIELD COY. Army Form C. 2118.
ENGINEERS, A.I.F.

No.

Instructions regarding War Diaries and Intelligence Summaries are contained in F. S. Regs., Part II. and the Staff Manual respectively. Title pages will be prepared in manuscript.

Place	Date	Hour	Summary of Events and Information	Remarks and references to Appendices
T.16.a.9.9.	16th		<p><u>No. 3 Section.</u> 2 N.C.Os and 4 sappers under Lieut Lawrie marked out and directed digging by 200 all ranks 28th Bn, of well traversed trench from U.11.a.20.15 to U.11.c.6.6. Completed 12 midnight to 4ft deep by average 2ft wide. Darkness extreme, making work difficult.</p> <p><u>No.2 Section.</u> 2 sappers directed 200 all ranks 25th Bn, thickening parapet ULTIMO LANE ABOUT about U.17.a.70.05 to U.17.d.1.9.</p> <p>8 sappers and 33 all ranks, 27th Bn, prepared SUPPORT LINE for revetment from U.17.a.4.4. to U.17.s.35.60.</p> <p>62 all ranks 27th Bn dug drain from U.11.c.40.15 to U.17.a.65.95.</p> <p><u>Nos 1 & 4 Sections.</u> Salvaging near RACINE DUMP and effecting improvements at camp and transport lines.</p> <p>Gas inspection.</p>	
	17th		<p><u>No.3 Section.</u> (a) Revetting WARM LANE.</p> <p>(b) Constructing shelters near Battalion H.Q. at U.9.b.6.3.</p> <p>(c) Digging new portion of SUPPORT line to section and revetting, at U.11.c.6.6.</p> <p>(d) Forwarding Engineer stores</p> <p><u>No.2 Section.</u> (a) Thickening parapet ULTIMO AVENUE at U.17.central</p> <p>(b) Cleaning out and revetting etc SUPPORT LINE at U.17.a.3.5</p> <p>(c) Digging new sap from ULTIMO AVENUE to SUPPORT LINE at U.17.a.3.5</p> <p>(d) Improving drain at U.11.c.40.15.</p> <p><u>Nos 1 & 4 Sections</u> as on 16th and draughting, making signs etc.</p>	
	18th		<p><u>No.3 Section.</u> a,b,c, & d as on 17th, and also:-</p> <p>(e) Wiring SUPPORT LINE.</p> <p><u>No.2 Section.</u> a,b,&c as on 17th and also:-</p> <p>(d) Forwarding Engineer materials.</p> <p>(e) Wiring SUPPORT LINE.</p> <p><u>Nos 1 & 4</u> as on 17th.</p>	
	19th		<p>As on 18th and also Nos 1 & 4 Sections supervising construction of Orderly Room (28th Bn).</p>	

WAR DIARY

or

INTELLIGENCE SUMMARY. DECEMBER 1917.

(Erase heading not required.)

Instructions regarding War Diaries and Intelligence Summaries are contained in F. S. Regs., Part II. and the Staff Manual respectively. Title pages will be prepared in manuscript.

7TH FIELD COY.
ENGINEER
Army Form C. 2118.
No.

Place	Date	Hour	Summary of Events and Information	Remarks and references to Appendices
T.16.a.9.9.	20th & 21st & 22nd		<p>As on 19th and also Captain NOEDL with 1 N.C.O. and 4 sappers from each Nos 1 & 4 Sets working on Defensive Zones - Laying and Siting.</p> <p>To 9am on 22nd, work was completed as shewn in Appendix..... Appendix.....</p> <p>During the period, the following average infantry parties were working with sapper supervision. In Right Bn area, approx 50 garrison and approx 215 of Reserve Bn. In Left area Bn area the Reserve Bn was quartered at RED LODGE. T.18.d.7.3., and arrangements were easily made direct with Battalion. For Right Bn area the Reserve Bn was at ROMARIN and the party was transported to HYDE PARK CORNER each afternoon by Light Railway arriving about 4pm.</p> <p>For work in the Defensive Zone, a party of 40 from Bn at RED LODGE was arranged for. In addition to work under direct supervision, sappers were arranged to advise and assist companies forward of SUPPORT LINE and Engineer personnel organised the forwarding of all stores for front line work, as well as for the jobs which they immediately directed.</p> <p>H.Q., Drivers, Nos 1 & 4 Sections went to PAPOT BATHS.</p>	With January "A" Diary
	23rd & 24th		<p>No.2 Section. (a) Cleaning out the^{to} section, revetting, putting in shelters in SUPPORT LINE. (b) Wiring SUPPORT LINE. (c) Moving Engineer stores forward.</p> <p>No.3 Section. (a) Cleaning out, revetting and putting shelters in NEW SUPPORT TRENCH. (b) Wiring SUPPORT LINE. (c) Moving Engineer stores forward.</p> <p>Nos 1 & 4 Sections (1 N.C.O. and 4 sappers each) directing work on Defensive Zones. Effecting improvements at Transport Lines and camp, making signs, draughting, salvaging etc.</p>	
	25th		<p>Nos 2 & 3 Sections. As on 23rd. 1 Sapper wounded.</p> <p>Nos 1 & 4 Sections. Inspection of arms and gas appliances. Recreation.</p>	
	26th		<p>As on 23rd and 24th.</p> <p>Nos 1 & 4 Sections preparing to change over with Nos 3 & 2 Sections.</p>	
	27th		<p>No.1 Section taking over work from No.3 Section as on 23rd. (C.S.M. Webster.)</p> <p>No.4 " " " " " No.2 " " " " (2/Lt. MOTT.)</p>	

WAR DIARY

or

INTELLIGENCE-SUMMARY.

(Erase heading not required.)

DECEMBER 1917.

Instructions regarding War Diaries and Intelligence Summaries are contained in F. S. Regs., Part II. and the Staff Manual respectively. Title pages will be prepared in manuscript.

7TH FIELD COY.
ENGINEERS Army Form C. 2118.

No. _____

Place	Date	Hour	Summary of Events and Information	Remarks and references to Appendices
T.16.a.9.9.	28th		<p>No 3 section. Baths at PALMER BATHS.</p> <p>No 2 section. Afternoon. Practice map-reading and topography.</p> <p>Nos 1 and 4 sects. Carrying on forward defensive work.</p> <p>1.N.C.O. and 4 saps from each Nos 2 and 3 sectns directing work under Captain NOEDL on Defensive Zones.</p>	
	29th)			
	30th)		<p>Nos 1 and 4 as on 28th. On 30th Lt CLOSE took charge of work on left sector and Lt LAWRIE returned to H.Qrs.</p> <p>No 2 and 3 sectns. Carried out camp improvements, training, salvage and work at RACINE DUMP and and work on defensive zones.</p> <p>Work carried out 22nd to 29th as per appendix.....</p> <p>" " " 29th to 31st " " "</p> <p>On 31st C.S.M. WEBSTER took over administration of Engineers at CATACOMBS and control of RACINE DUMP continuing to live at CATACOMBS.</p> <p>During whole period in line 1 sapper engaged painting signs.</p> <p>From 16th to 26th, 1.N.C.O. and 2 sappers were detached at pontoon sub-park STEENWERCK repairing pontoons.</p>	"C" "B"
	31st)		<p>During the month, 4 N.C.O.s attended Divisional Bomb school and two obtained excellent marks and qualified for bonber's badge. One was named as the best N.C.O. in the class.</p> <p>Also 1 sergeant attended Bridging school at AIRE. This N.C.O. was named as the best in the class and gained very high marks in all branches of the work.</p> <p>2/Lt MOTT and 1 N.C.O. also returned from 2nd Army School (infantry) WISQUES and both received very good reports.</p>	
			<p style="text-align: right;"><i>Webb</i></p> <p style="text-align: right;">Major.</p> <p>O.C. 7th Field Company Australian Engineers.</p>	

WAR DIARY

or

INTELLIGENCE SUMMARY.

(Erase heading not required.)

DECEMBER 1917.

7TH FIELD COY.
ENGINEERS
No.

Army Form C. 2118.

Instructions regarding War Diaries and Intelligence
Summaries are contained in F. S. Regs., Part II.
and the Staff Manual respectively. Title pages
will be prepared in manuscript.

Place	Date	Hour	Summary of Events and Information	Remarks and references to Appendices
			<p>SYNOPSIS:- For the early part of the month at WATTS LINES, the unit was largely engaged on rear works, and only a section at a time was available for training. This period should have been used for intensive training but many factors combined to render this impossible. In addition to the large amount of work demanded; the number of officers active with the unit was small, while a large number of N.C.O's were both detached and extra regimentally employed. In consequence little real training work was effected. This was very unfortunate, particularly because a large percentage of the men and several senior N.C.O's and officers were lately arrived and not known to each other.</p> <p>The area taken over on the 15th was not a going concern and very little work had been in progress for some days. The most useful features were two good approaches (ULTIMO AV. and DOUVE WALK) One for each battalion sector. Also a good tramway ran well into each sector, though both these required extending to provide full facilities. Communication between the two battalion areas practically did not exist. The Defence lines themselves were poor. Trenches were wet and wanting revetment in a very large portion. The front was a series of posts mostly connected on left but unconnected and without communication on the right. There was practically no Support Line except for a shallow and impassable ditch. Fire steps, ammunition shelters and shelters for personnel were poor and very limited in space and number.</p> <p>The equivalent of about one belt of Double Apron Wire existed along a considerable portion of the front line, but on the remainder there was practically none. The support line was practically without wire at all. Complete and accurate maps were taken over from the outgoing Field Company and also lists of dugouts and wells.</p> <p>The Field Company camp being situated over 4 miles from the front line, endeavour was at once made to get accommodation further forward, and two sections were arranged to live at a large dugout (CATACOMBS) at HYDE PARK CORNER. U.19.b.3.8. This brought them within 2½ miles of the extreme front and within 2 miles of most works. One hundred (100) infantry were attached and also lived at CATACOMBS.</p> <p>Two sections of Sappers and about half the attached infantry were used on forward work at one time, and these were changed at intervals. One section was arranged to work the Right sector and one section the Left Sector, a portion of attached Inf being allotted to each. The Engineer Officers lived, one at Right Bn H.Qrs and one at CATACOMBS where they were in close touch with the work & available for consultation.</p>	

WAR DIARY

or

INTELLIGENCE SUMMARY.

DECEMBER 1917

(Erase heading not required.)

7th FIELD COY.
ENGINEERS
Army Form C. 2113.
No. _____

Instructions regarding War Diaries and Intelligence Summaries are contained in F. S. Regs., Part II. and the Staff Manual respectively. Title pages will be prepared in manuscript.

Place	Date	Hour	SYNOPSIS CONTINUE D.	Summary of Events and Information	Remarks and references to Appendices
			<p>The remaining sections and infantry were employed on "Backing up" works at camp and RACINE DUMP, and on extensive Salvage work. About 4 O.R. from each of rear sections were also employed under CAPTAIN NOEDL on Defensive Posts in rear of Support Line. These were organised in the localities U.10.b.0.6., U.10.d.4.3., U.17.a.1.7. arranged as mutually supporting posts and wired between.</p> <p>Supplies of Engineers Stores for the area were forwarded to RACINE DUMP U.20.b.40.65 by Light Railway under Divisional Engineer arrangements. At RACINE dump all stores were classified and stacked under control of 7th Field Company. 1.N.C.O., 1 sapper & 6 infantry being maintained at dump for this purpose. All issues were made by N.C.O. i/c of Dump.</p> <p>Engineer Stores (and ammunition and supplies) were forwarded from RACINE DUMP by 2 trench tramways, WARNETON and VANCOUVER TRACKS. WARNETON track was extended from U.10.d.0.4. to U.10.d.8.4. where the railhead was in dead ground even from WARNETON tower.</p> <p>The whole area was overlooked by WARNETON tower and exceedingly strong ferro-concrete structure, about 14 ft square and 50 to 60ft high U. .c.88.40. This OP. observed practically the whole area, with the exception of a very few "dead" spots, and thus much hampered works insomuch that a large proportion of the work that might otherwise have been by daylight had to be done by night work which is much less effective.</p> <p>About the 18th moderately warm weather which had held with a fair amount of rain, changed for continuous hard frost and by 21st the ground was continuously too hard for production of efficient earth works, and almost too hard for putting in screw pickets.</p> <p>In face of these facts, the erection of 8500 yards of double apron wire, the digging of 1200 yards of trench, and revetting of 600 yards of trench constitute no mean performance.</p> <p>As usual, the heaviest and most laborious part of the works was the getting of materials on to the job. Carrying during the blackness of night, over unknown and unmade tracks is a difficult job. Towards the end of the month, the moon helped very considerably.</p> <p>The general policy for work made Battalion in garrison responsible for all works in the area and especially forward of Supports. Sappers (3) were arranged to direct any works in this area under Infantry Company commanders, the Engineer Officer in the area giving advice asked or deemed necessary, battalions in Support and Reserve were made responsible for special works mainly in and behind Support Lines.</p>		

(A8004) Wt. W1771/M2 31 738,000 5/17 Sch. 52 Forms/Cat18/14

WAR DIARY

or

INTELLIGENCE SUMMARY. DECEMBER 1917.

(Erase heading not required.)

7TH FIELD COY.
ENGINEERS
Army Form C. 2118.
No. _____

Instructions regarding War Diaries and Intelligence Summaries are contained in F. S. Regs., Part II. and the Staff Manual respectively. Title pages will be prepared in manuscript.

Place	Date	Hour	SYNOPSIS. (CONTINUED.) Summary of Events and Information	Remarks and references to Appendices
			<p>Shelling in the area was not general or heavy and not many casualties were suffered by parties working. Only 1 sapper was wounded during the period and only 15 to 20 infantry casualties.</p> <p>A number of original members of the unit rejoined from wounded (Bullecourt and Ypres) and drafts of reinforcements were received, bringing the unit's strength almost up to establishment in accordance with the A.I.F. strength for Field Companies.</p> <p style="text-align: right;"> <i>Swelbb</i> Major, O.C. 7th Field Company Australian Engineers. </p>	

7th Field Company Australian Engineers.

Works Report for Week ending 9am 22nd December 1917.

<p>New Support Trench. U.11.a.20.15 to U.11.c.6.6.</p>	<p>Trench completed through. 170 yards cleaned and firestepped. 90 yds revetted with "A" frames and corr. iron.</p>
<p>Support Line.</p>	<p>Trench prepared for revetting and 350 yds deepened to 6ft, with 18 inch berm cut 3'6" high from U.17.a.70.05 to U.17.d.1.9., parapet and parados battered back. 160 yds deepened and widened ready to receive "A" frames. 116 yds revetted and berm cleared.</p>
<p>Warn Lane.</p>	<p>45 yds revetted.</p>
<p>Ultimo Drive.</p>	<p>Parapet thickened from U.17.a.40.35 to U.17.d.15.90.</p>
<p>New Sap connecting Ultimo to Support Line at U.11.a.3.5. to U.17.a.3.6.</p>	<p>Dug 6ft deep by 6ft wide at top and 2'6" at bottom, and deepened to 7ft and 3'6" wide at bottom. Completely revetted and duckwalked.</p>
<p>Defensive Zone. U.10.a.9.5.</p>	<p>Post sited and 120 yds trench excavated in strong point. M.G. position 50% complete. 100 pickets ready for wire.</p>
<p>Wire.</p>	<p>2700 yds double apron wire erected from U.11.a.3.7. to U.11.c.6.6. to U.17.a.45.30 around trees to U.17.a.8.3. 150 yds double apron wire erected between right post and left post 5th Bde.</p>
<p>Left Bn H.Q.</p>	<p>One dugout completed and one 75% complete.</p>
<p>Salvage.</p>	<p>2000 medium pickets, 300 long pickets, 370 sheets cupola iron, 50 angle iron pickets, and 50 coils of French wire salvaged for Racine Dump. 950 pickets cut from long to medium and short pickets.</p>
<p>28th Bn Orderly Room.</p>	<p>80 % completed.</p>
<p>Improvements to Horse Lines.</p>	<p>Smith's shop erected, harness maker's shop completed and workshop for wheelwright under construction. Other general improvements to huts.</p>
<p>Improvements to Company Camp.</p>	<p>Bootmakers shop erected, cookhouses improved, incinerator installed, and one shelter erected.</p>
<p>Ablution benches for CATACOMBS.</p>	<p>Under construction.</p>
<p>Signs.</p>	<p>Signboards made and painted as required. Stock of blank boards on hand.</p>

Signed L. Koedl Captain,
for O.C. 7th Field Company Australian Engrs.



83

Daily Works report for 24 Hours ending 6 am 30/12/17

Job & particulars.	Number Saps	Employed Inf Battn.	Progress of Works.
Revetting Support Line. 13.	12	25th	38 yds revetted 30%
Trench Digging South from ULTIMO LANE UMPIRE SUPPORT	1	56 27th	230 yds worked on. 50% Trench now connected
Trench Digging M. End Right Bn Support	1	40 27th	89 yds trench dug ready for revetment
Carrying	1	16 27th	
Trucking		13 27th	
Shelters (Aecom) Between Switch Trench and ULTIMO LANE Amm Shelters - Support Line N. of SWITCH	2	15 28th	1 shelter for 2 men 3 amm shelters 5'6" x 2' 6" x 3' 6" 30%
R.A.P. U.16.a.6.3.	2	22 27th	Deepening of trench and clearing front Trench from Avenue 70% complete. 40% material on site Job 30% complete. Carrying.
		11	

2/Lt MOTT i/c above works.

New Support Line. towards Lower End of Forward position	8	14	Revetted 36 tyds and 25 yds duckwalks laid.
	4	26	DAY PARTY 55 yds lower end ready for revetting. 1 shelter put in.
Old Support Line.	6	50	NIGHT PARTY. 60 yds cleared for revetting. Blow outs revetted. 50 yds firestep cut.
Wiring	3	20	150 yds double apron completed to DOUVE 140 yds completed which was left with Fence only.
Carrying	2	40	17 truck loads.
L.T.M.B. Shelters U.10.a.6.5.	1	24	Advising on shelters front & support lines. 3 shelters 50% complete.

2/Lt LAWRIE i/c above works.

DEFENSIVE ZONE.	10	41	Trucked materials for shelters at U.10.a.9.5. Completed 3 shelters and 3 excavations. Salvaged pickets and wire and erected 200 yds double apron from U.10.d.55.25. to U.10.d.6.3
-----------------	----	----	--

Captain NOEDL i/c Works.

(Signed) L. NOEDL Captain
for O.C. 7th Field Company Australian Engineers.

DAILY WORKS REPORT for 24 ending 6am 31st December 1917.

S E R V I C E.	No. of men:		PROGRESS OF WORKS.	% of whole work now complete.
Job. Particulars.	employed.	Engrs. Inf.:		
Old Support Line at U.11.c.6.4.	6	42	50 yds trashh 80% cleaned out. 60 yds parapet thickened. 60 yds of berm completed.	40%
New Support Line N.W. of WARN LANE Junction U.11.c.6.6.	1	14	34 yds cleaned to template.	80%
New Support Line. S.E. of DRAIN. U.11.c.3.8.	1	22	80 yds of parapet complete with arm rest and battered.	
New Support Line. N.W. of DRAIN. U.11.c.25.75.	1	14	30 yds cleaned to template.	
Salvaging Party.	2	16	4 truckloads salvaged.	

Lieut Close i/c whole above works.

Cleaning trench at U.11.c.4.0. (Support.)	1	18	27th. Cleaned out between "A" frames and berm cut. Ext. Extension	30%
Deepening trench from U.17.a.75.00 to U.17.c.60.85. (Support.)	1	39	27th. 90 yds trench deepened.	30%
DRAIN at (Support.) U.17.c.65.75.	10	27th.	40 yds complete. Drain now complete. to 3'6" depth, 3' wide at bottom, and 5' at top.	
Cutting at berm at U.17.c.65.80. (Support.)	8	27th.	30 yds berm cut.	30%
Shelters at U.17.a.75.00.	2	15	28th. Erecting shelters Support Trench to rt. of ULTIMO LANE.	46%
R.A.P. at U.16.a.7.3.	2	22	27th. 9 yds trench 9' deep cut through to ULTIMO AVENUE, and materials carried & trucked from RACINE Dump.	40%
Support Trench at U.11.c.4.0.	13	8	25th. 45 yds trench revetted.	30%
Carrying.	1	16	27th. Disposal of material from day work.	

2/Lieut MOTT i/c whole above works.

Shelters & Machine Gun Emplacement at U.10.b.1.5.	1	Offa	Completed 3 shelters, improved accomodation trench & revetted machine gun emplacement.
Wiring at U.10.d.6.3 to U.16.b.9.9.	50	O.R.	200 yds wire erected.
			Capt NOEDL i/c whole above works.

Signed *L. Noedl* Captain for Major,
O.C. 7th Field Company Australian Engineers.



WEEKLY WORK REPORT to 9am

29th DECEMBER 1917.

New Support Line U.11.c.6.5. to U.11.c.30.75. 270 yds trench deepened and cleared and widened ready to receive revetment. 150 yards revetted. 50 yards duckwalked.

New Support Line (Right of Ultimo Lane) U.17.a.7.1. to U.17.c.60.65. Trench dug 250 yds, 4'6" deep, 4ft at top and 2ft at bottom from Ultimo Lane to U.17.c.60.65 and deepened to 5'6". Trench widened to Take "A" frames and ready for revetting. (400 yds) 36 yds revetted.

Support Line. 115 yds deepened, 140 yds revetted, 115 yds duckwalked. 600 yds 18" berm cut and parapets cleared. 50 yds drain deepened U.11.c.4.0. and berm of 18" cut and cleaned.

U.11.c.4.2. to U.11.c.65.55. 220 yds deepened and cleared and widened ready for revetment.

Defensive Zone. Sited fresh strong points:-
 60 yds trench deepened to 4'6 1/2 ins.
 1500 yds wiring completed double apron U.10.b.2.8. to U.17.a.3.6.
 100 yds double apron from U.10.d.75.60 to U.10.d.65.45.
 100 yds double apron from U.10.d.55.25 to U.10.d.75.15.
 200 yds double apron low wire thickened.
 L.G. position.
 6 two-men shelters completed at U.10.a.5.8.
 2 others excavated.
 Whole scheme 50% complete.

Wiring. 3950 yds double apron wire completed and 1250 yds cross-wiring between 2 belts of double apron.
 2 belts of double apron from U.23.a.2.9. to U.17.a.7.2.
 1 belt " " " U.17.a.7.2. to U.11.c.25.80
 1 belt " " " U.17.a.35.20 to U.17.c.25.80 to U.17.c.55.65

R.A.P. U.16.a.7.3. 6 yds trench dug and site cleared for English cupola. Material carried to site.

Rocket Firing Frames. 4 completed.

Shelters. 25 completed, 6 at U.11.c.50.75
 19 " U.17.a.30.55 to U.11.c.4.0.

Signboards. 23 completed.

Salvage. 184 cupolas, 69 sheets corr.iron, 78 coils French wire, 340 long pickets, 230 medium, and 20 short pickets, 12 sheets expanded metal. 300 short pickets cut from long.

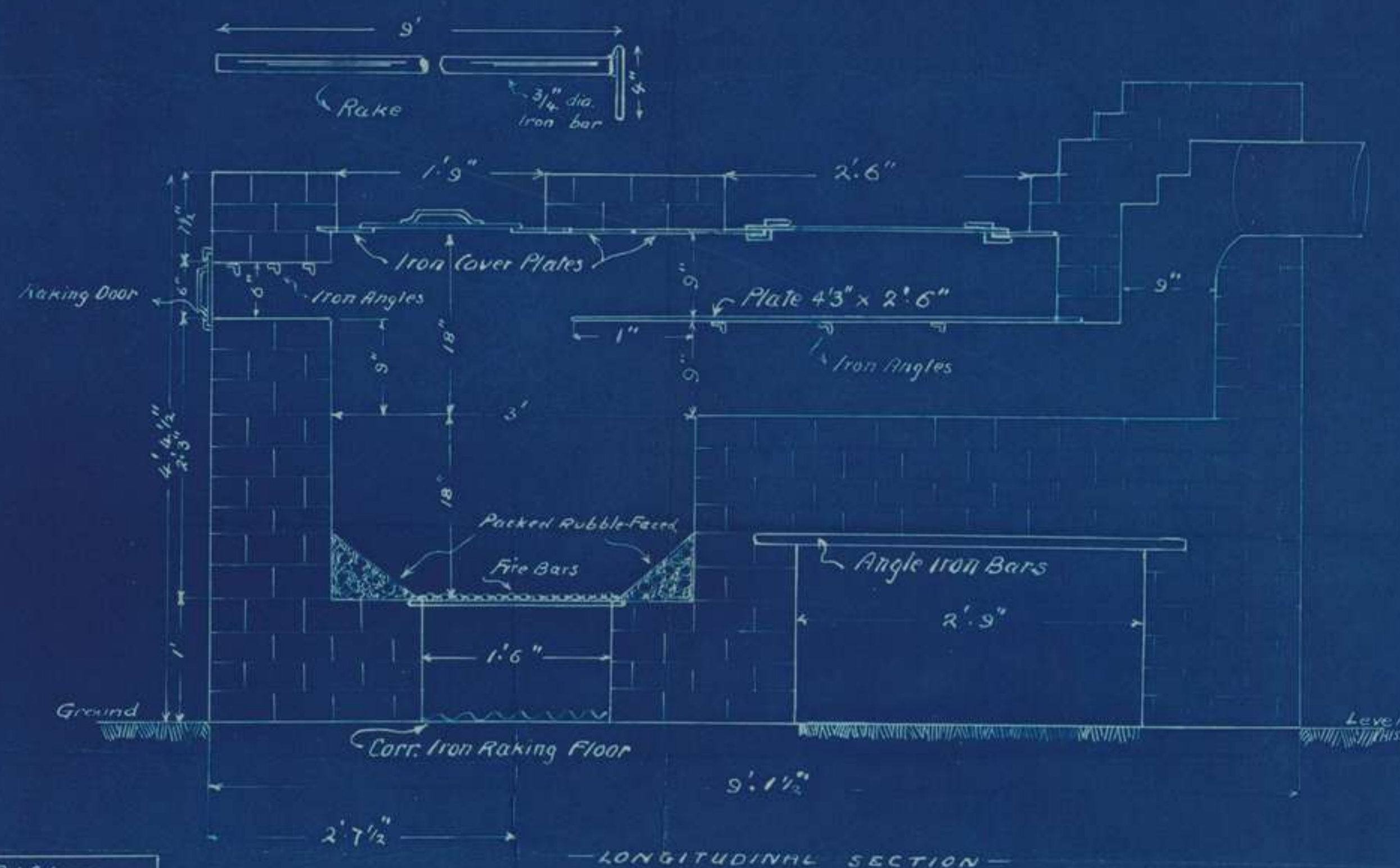
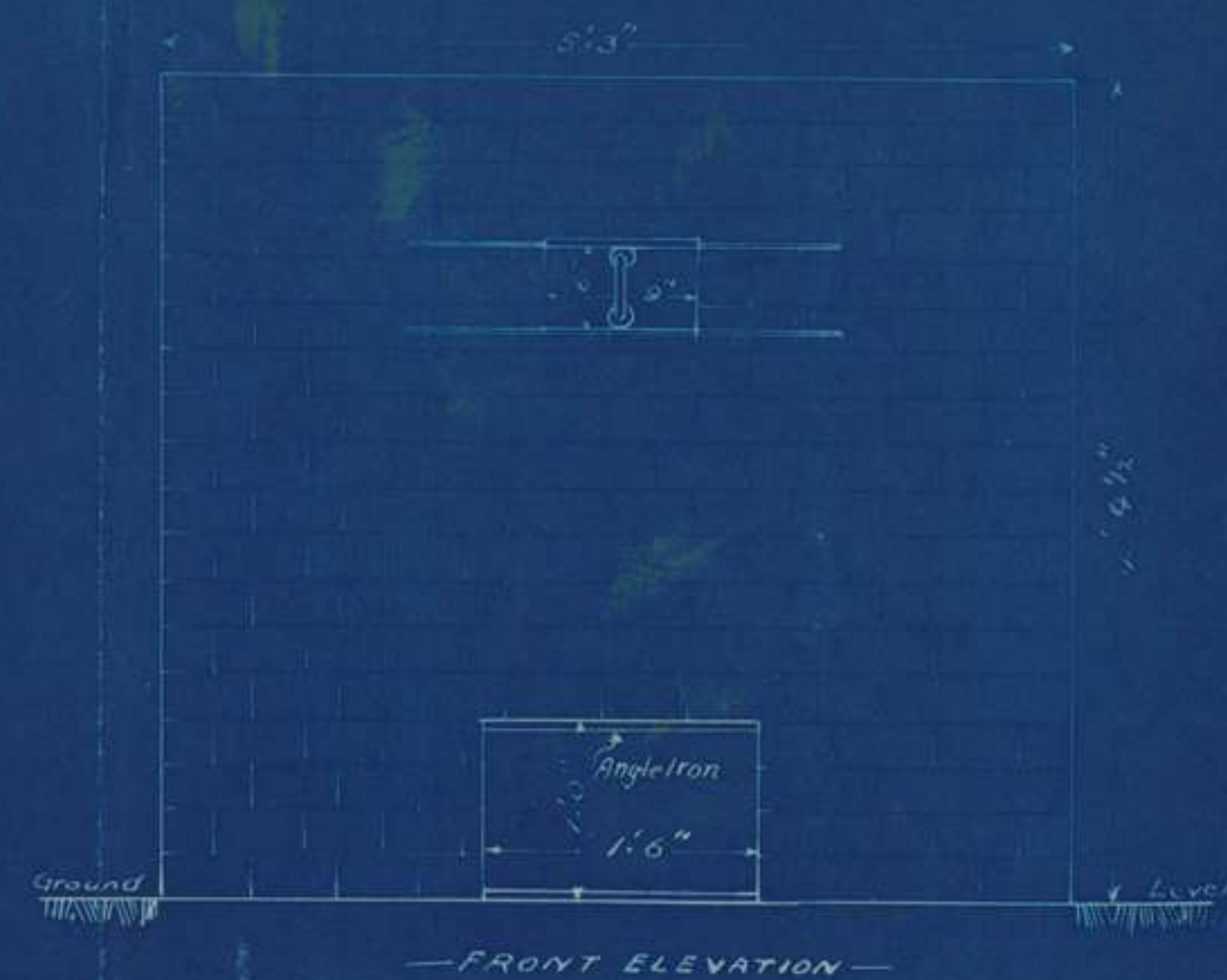
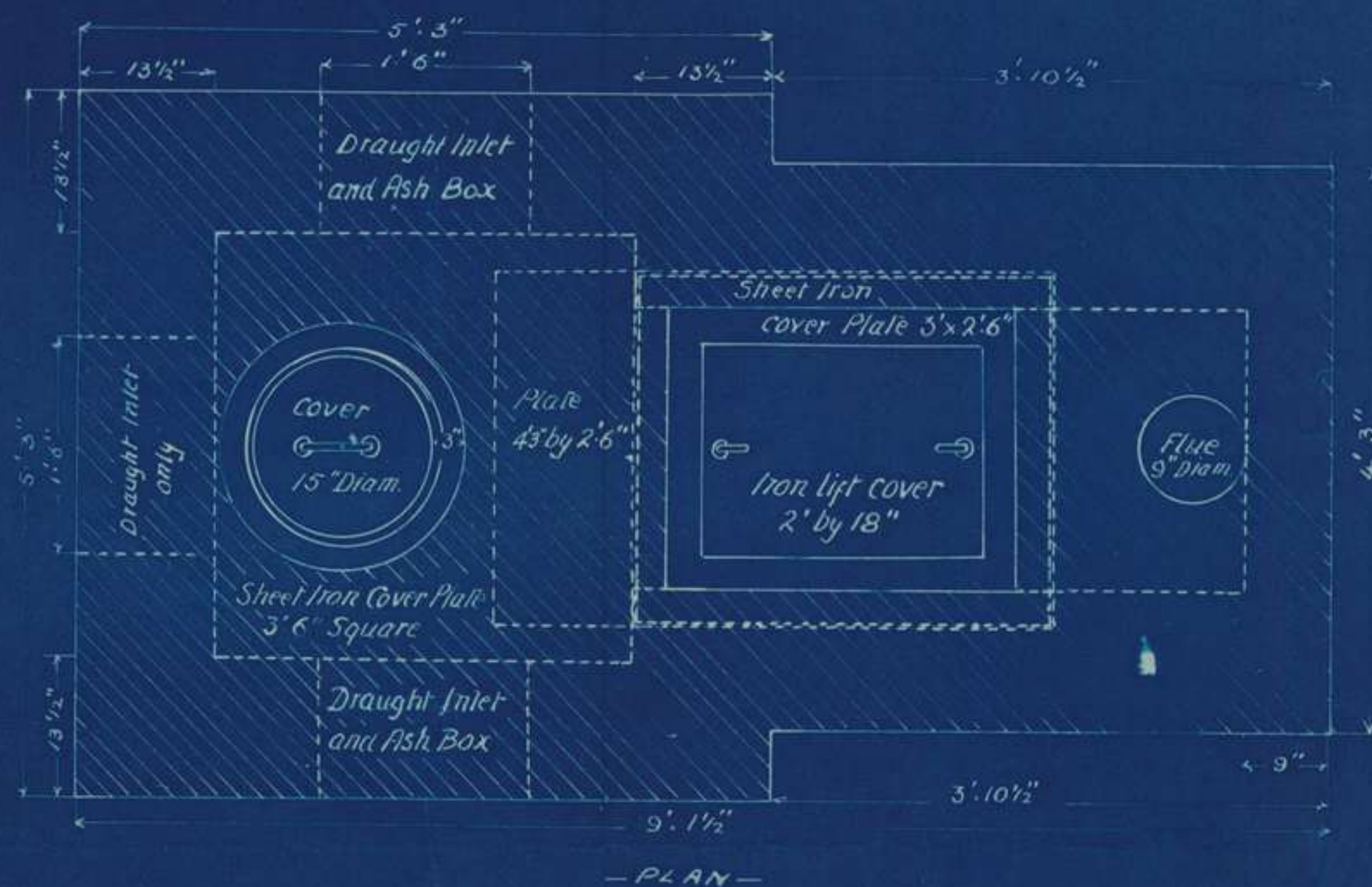
Miscellaneous. Improvements carried out to Company camp, horse lines and repairs effected to pontoons, supervising erection of stage at Concert Hall, supervising issue of stores at Racine Dump.

Captain,
 for O.C. 7th Field Company Australian Engrs.



—INCINERATOR—

Scale 1" = 1'



- MATERIAL.**
 2500 Bricks.
 2 Casks of Lime.
 4 Loads of Sand.
 3/16" Sheet Iron 4'0" x 2'6"
 22 Gauge Sheet Iron 3'3" Square
 21" Diam.
 16" x 2"

Medley, Robert, Lieutenant.
 7th Field Company,
 Australian Engineers.
 A.I.F.

