

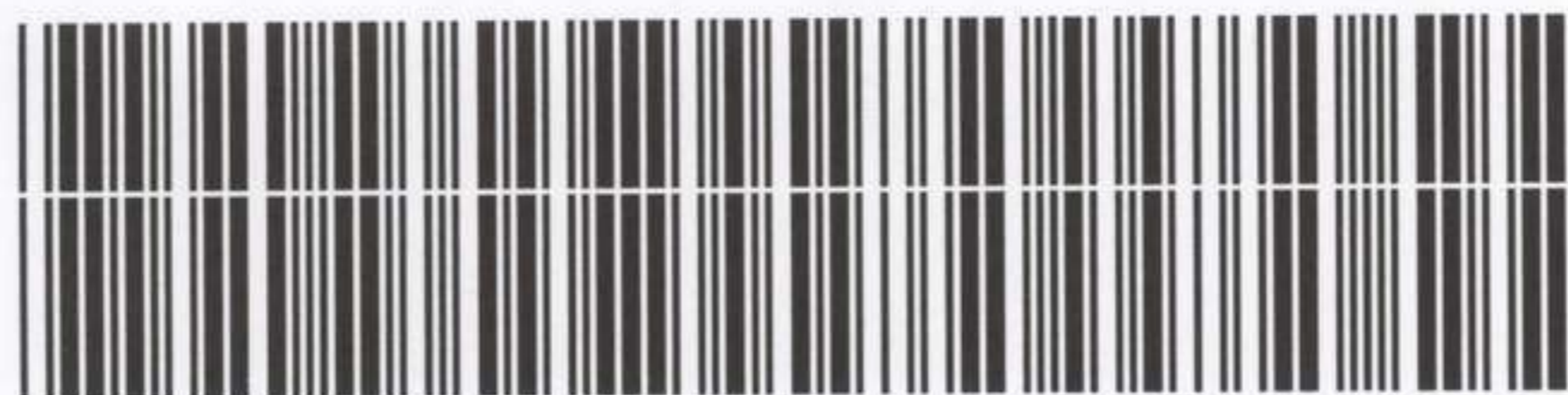
AWM4
**Australian Imperial Force unit war diaries,
1914-18 War**

Engineers

Item number: 14/31/30

Title: 12th Field Company, Australian
Engineers

August 1918



AWM4-14/31/30

WAR DIARY

Army Form C.

Instructions regarding War Diaries and Intelligence Summaries are contained in F. S. Regs., Part II. and the Staff Manual respectively. Title pages will be prepared in manuscript.

or
INTELLIGENCE SUMMARY.

(Erase heading not required.)

Chas. Russell

Place	Date	Hour	Summary of Events and Information
<u>GENTELLES</u>	1-8-18		Coy took over from 14/51 Cie French Engineers at Bois de Gentelles T. 16 b. 7. 7. (Sheet 62°) HQ, 1, 2, 3 and 4 Sections to Bois de Gentelles, mounted Section to Boes T. 7. 6. 9. 4.
<u>LA NEUVILLE</u>	4-8-18		Coy moved to O 3 a central (Sheet 62°) to prepare for attack on enemy positions on August 8th '18.
	8-8-18		Coy moved forward with the attack, with bridging material (see appendix) and returned to Corbie.
<u>MORCOURT</u>	10-8-18		Coy moved to Morcourt Q. 16. C. 15. (Sheet 62°)
	12-8-18		At night and No 4 Section moved out to push footbridge across the Somme at Q 10. d. 0. 5. Bridge complete by 4 pm. 12-8-18.
<u>HARBONNIERES</u>	15-8-18		Coy HQ + Nos 1, 2, 3 and 4 Sections moved to W 24. 6. 8. 4. mounted sections to W 17. 6. 5. 6. No 3 Section on Water Supply. No 2 and 4 working with 46 th and 45 th Batts respectively. No 1 Section in reserve.
<u>LONGEAU</u>	23-8-18		Coy moved to Longeau per buses HQ, No 1, 2, 3 and 4 Sections to M 28 b. 5. 4. mounted Section to M 16 d. 6. 4. (Sheet 62°)
	25-8-18		Coy started training
	30-8-18 31-8-18		Divisional Engineer Spoke worn by 13 th Field Coy, 12 th Field Coy second, 14 th Field Coy 3, Div Signal Coy 4,

WAR DIARY

Army Form C. 211

Instructions regarding War Diaries and Intelligence Summaries are contained in F. S. Regs., Part II. and the Staff Manual respectively. Title pages will be prepared in manuscript.

INTELLIGENCE SUMMARY.

(Erase heading not required.)

Place	Date	Hour	Summary of Events and Information	Remarks refer App
			<p>During the morning of August 8th the following action was performed by no. 6211 Spn. DEAN and no. 5057 Spn. W. CAMPBELL. English troops on the north bank of the SOMME were held up by a mg. nest 500 yards north of CHERRY BRIDGE. These two men rushed the post by themselves and captured 2 machine guns and about 30 Germans thus enabling the English troops to advance about half a mile. For this they were both recommended for the V.C.</p> <p>Lieut HUNT took 5 loaded pontoon wagons through the streets of CERISY and to the waters edge while the opposite bank was still held by the enemy. When Spn. HOOK was wounded he carried him in about 200 yards under intense fire though wounded again while being carried in. For this he was recommended for the V.C.</p> <p style="text-align: right;">Clair Riddell Major Or. 12th Field Coy. A.E.</p>	

195

20,000-5/18-11,069

3

WAR DIARY

OF

12th Field Co., A.E.

FOR

August 1918

LIST OF APPENDICES.

No.	Subject.
1	Operation order No 2.
2	Orders for Chipilly Bridge
3	Orders for Cherry Bridge
4	Details of Bridges

Special 1:20000 Map attached.

During forthcoming operations the 12th Field Coy will be responsible for:-

- (a) Reconnoitering, and repairing if possible, captured bridges over the River SOMME in Q.2.a, Q.2.b, Q.3.a, Q.3.b and Q.3.d
- (b) Constructing Bridges to carry horse transport at:-
 Q.2.b.98 (CHERRY BRIDGE) if suitable track exists on N side of river.
 and Q.3.d.95 (CHIPILLY BRIDGE) existing bridge will be used unless demolished.
- (c) Constructing Bridges to carry Infantry at:-
 Q.3.b. or d (SAPPER BRIDGE)
 and as near Q.10. Central. as possible (MORCOURT BRIDGE)
- (d) Spare boats and pontoons will be converted into ferries.

It is important that these bridges be completed at earliest possible moment in order that reinforcements may be sent from one side of the river to the other if necessary.

Notices

On each bridge and at branch roads leading to bridges, notice boards will be erected to show:-

Name of Bridge	} Lieut WIGHT will arrange for these to be prepared.
Class of Traffic	
Place to which track leads	

Equipment

Equipment will be parked at CORBIE Railway Station by mid-day 7th August.

Every other pontoon will leave a repair kit clearly tacked and tied to the bow end, these will consist of tacks, putty, canvas, and small strips of wood for patching purposes.

The whole bridging equipment of 4th and 5th Australian Divisions and 4 loaded pontoon wagons from pontoon park will be available.

Rolled steel joists, timber, girders and decking will be held ready at VECQUEMONT and CHATEAU dumps.

Responsibility

CHERRY BRIDGE	2/Lieut Hunt with	No 3 Section
CHIPILLY .	Lieut Cooper .	No 2 .
SAPPER .	" .	No 1 .
MORCOURT .	2/Lieut Wright .	No 4 .

Arrangements for parking, checking & dumping stores and Coy equipment and pontoon and light bridging equipment will be under Lieut Cooper.

The collection of material and construction of SAPPER BRIDGE under 2/Lieut Wright, also the training of his men in its use

The reconnoitering of tracks and approaches previous to the attack under 2/Lieut Hunt with Cpt Seddors.

Minor Arrangements

One tank has been detailed to deal with demolitions party on CHIPILLY BRIDGE. Lt Cpt Howarth and Sapper Holland will go in tank and immediately on arrival will cut leads and fuses and otherwise render the demolitions ineffective, during this they will be covered by the fire of the tank.

A Lewis Gun post will be established in a favourable position to cover both approaches to CHIPILLY BRIDGE and will prevent enemy from interfering with working party. This post will consist of one gun and team under Lt Cpt Cushman

All pontoon wagons will be preceded by a mounted driver who will reconnoitre the track for shell-holes etc. They will keep at least 30 yards interval.

Bridge parties will accompany their own bridges and be prepared to fill in shell-holes or otherwise overcome obstacles.

Reports

To Lieut Keesing at Gas Works. CORBIE

C.C. RIDDELL

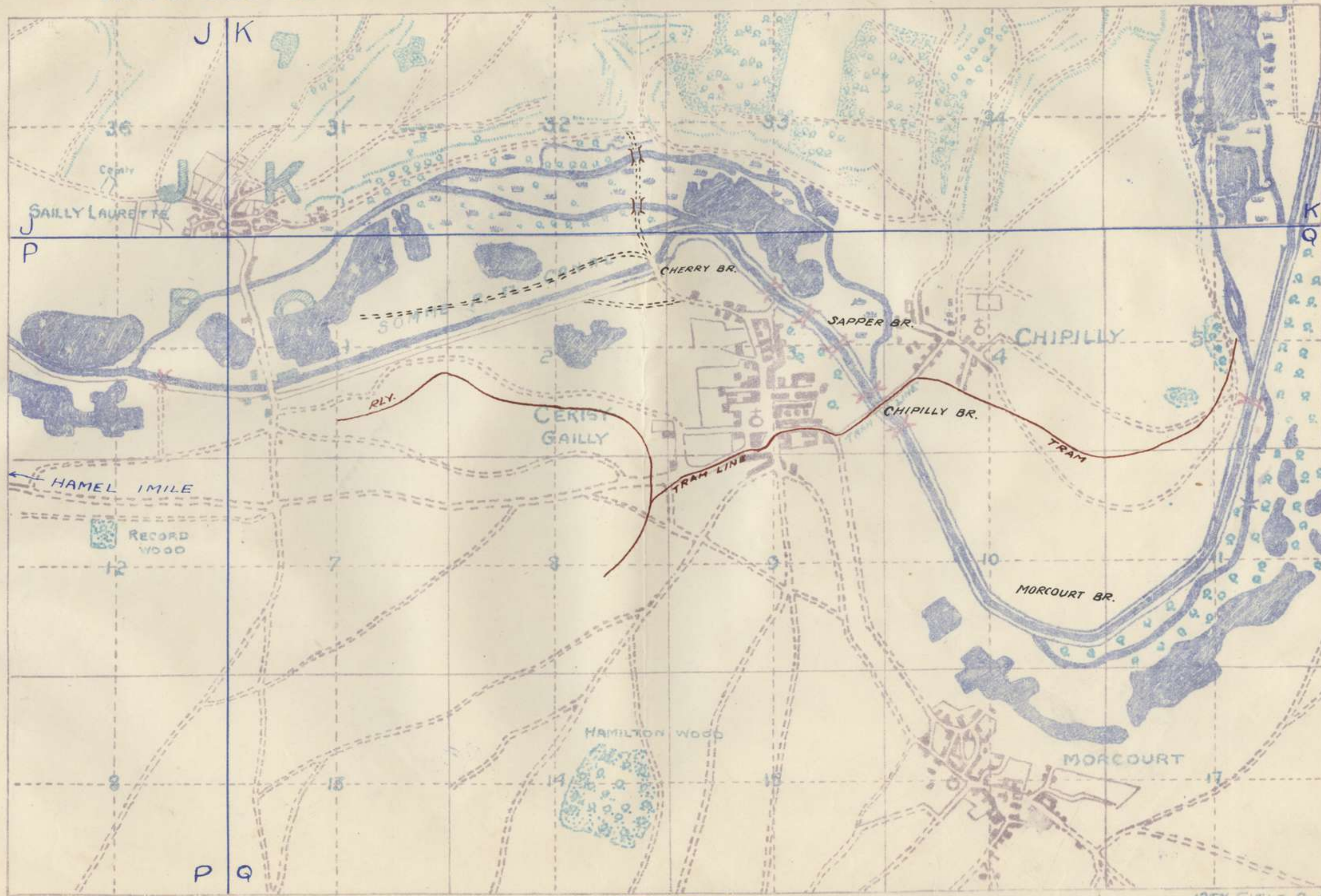
Major

O/C 12TH FIELD COY. A.E.

MAP TO ILLUSTRATE BRIDGING SCHEME

PART of SHEET 62°

SECRET



195 ✓

APPENDIX

6

12TH FIELD Co A.E.

ORDERS FOR CHIPILLY BRIDGE.

Location Q.3.d.95

Pontoon Bridge

Responsible Officer Lieut COOPER.

Notice Board

Time of Starting

CHIPILLY BRIDGE HORSE TRANSPORT ONLY TO CHIPILLY 

Not to be constructed if present bridge remains intact

Probable route CORBIE-HAMEL - N road to CERISY - past
 chunck-bridges. There is a steep drop to
 bridge site from village.

Wagons will not pass road junctions in Q.8.3 till
 route through village has been reconnoitered.

If existing bridge still stands, bridge, will be
 constructed as an alternative at any suitable
 place

Details. 5 complete pontoon wagons and loads
 and all necessary tools.

Officers, 1 A.C.C., and 2 Sappers go ahead on
 bicycles leaving guide at all doubtful points.

Select and mark site and unloading point.
 Construct bridge and send wagons back to
 Coy H.Q.

Erect notice board and send in report.

Post 1 A.C.C. and 6 men as repair party.

Remainder of men will then be utilised in
 repairing bridges as far down as CHERRY BRIDGE.

C.C. RIDDELL

Major

C.C. 12TH FIELD Coy. A.E.

195

ORDERS FOR CHERRY BRIDGE

APPENDIX

3⁸

Location about Q.2.8. 98.

Only to be constructed if tracks on both sides are passable.

Pontoon Bridges. Notice:-
Responsible Officer 2/Lieut HUNT.
Time of starting am.

<p>CHERRY BRIDGE HORSE TRANSPORT ONLY TO CHIPILLY ←</p>

Probable Route CORBIE-HAMEL - ROAD to S of River. Wagons will not pass junctions in Q.1.C till road is reported clear to bridge site

Unloading point at Bridge.

- Details:- 5 complete pontoon wagons and load
10 shovels, picks, planks for road repairs,
2 mauls, stakes etc.
- Officer, 1 NCO and 2 Sappers go ahead on bicycles, leaving guide at all doubtful points
- Select and mark site, and unloading point for wagons.
- Cross river and see tracks on far side
- Construct Bridge and send wagons back to Coy HQ
- Erect notice boards and report to C.R. & ant Coy HQ.
- Post 1 NCO and 6 men as guard and repair party. Remainder of party will then be used to repair German bridges down stream.
- Spare pontoons will be arranged as rafts at suitable points.

C.C. RIDDELL,

MAJOR.

O.C. 12TH FIELD. COY. A.E.

Details of Bridges

see 12th Field Coy Operations
Order No 2.

1) Cherry Bridge

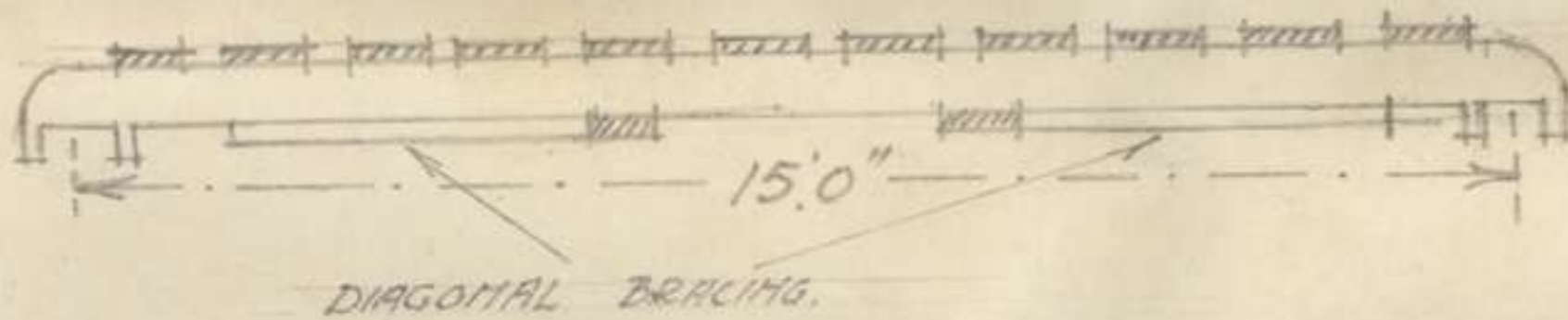
Bridge to be a standard pontoons bridge to carry first line transport (see special Order)

(2) Chipilly Bridge

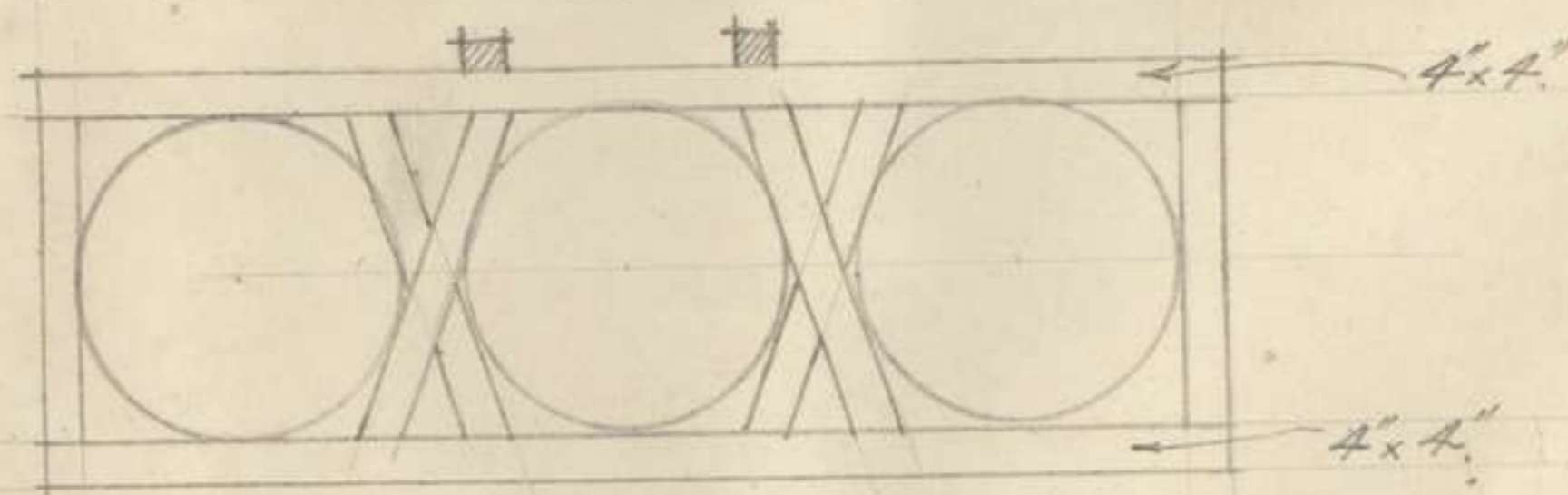
Bridge to be a standard pontoons bridge to carry first line transport (see special Order)

(3) Lapper Bridge

Bridge to take foot-traffic on piers of half pontoons, decking 2 plain baulks with 3'0" x 3" x 5 $\frac{1}{8}$ " slats nailed on to form a large span duckwalk. This method was chosen in preference to diagonal chassing as it took much less time to erect and gave a considerable saving of transport.

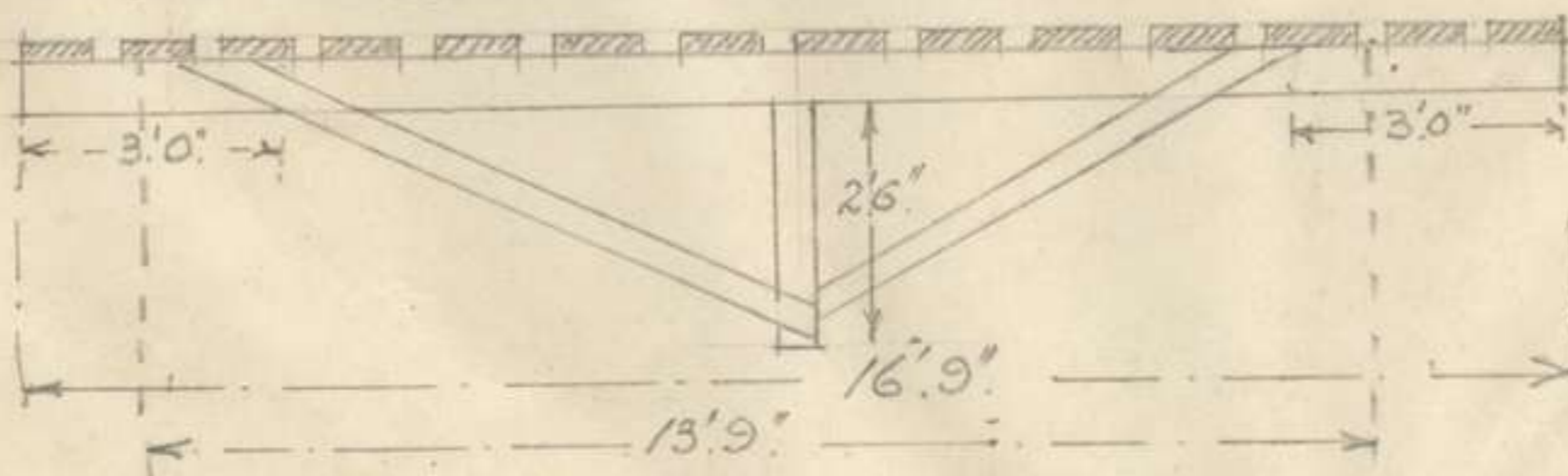
(4) Morcourt Bridge

Bridge to take foot-traffic only. Piers of crated barrels as shown in sketch.



Effective Span 13'9"

Decking 3" x 5 $\frac{1}{8}$ " slats 2' long nailed to trussed beams as shown in sketch.



All timber in truss
3" x 2" pine. Joints
bolted with $\frac{1}{2}$ " bolts