

AWM4
Australian Imperial Force unit war diaries,
1914-18 War

Artillery

Item number: 13/36/27 Part 3

Title: Headquarters, 8th Australian Field
Artillery Brigade

August 1918



AWM4-13/36/27PART3

B.M.7/11/5.

APPENDIX

ARTILLERY INSTRUCTIONS - EXPLOITATION.

1. Cancel paragraph 2 of B.M.7/11/2.
2. The 47th Division propose to exploit the Operations of the 22nd instant by gaining ground to the North of the CHALK PIT in L.3.d. central, beyond the line of their final objective.
3. In the event of the enemy resistance W. of the final objective of the 3rd Aust. Division not being serious, the 9th A.I. Bde will push forward patrols as soon as the protective barrage lifts at 8.5 a.m. on the lines indicated below.
This exploitation will not take place unless the village of BRAY is reported clear of resistance, and the success of the operations on our Left clearly established.
4. The Northern Divisional boundary runs from L.8.central to L.5. central thence grid line to A.27.central.
The future Brigade boundary runs from L.13.central to fork road at L.15.b.50.80., thence via most direct road to cross road L.11.d.central. (the road inclusive to the North Brigade).
5. The 9th A.I. Bde patrols will push forward from the consolidation line at 8.5 a.m. with 1 Battalion North and 1 Battalion South of the Brigade boundary mentioned in para. 4, so as to occupy a series of posts:-
 - (a) In the S. half from L.16.c.60.00. via road forks near L.17.a.10.20. to Copse in L.11.d.00.00.
 - (b) In the N. half from thence inclusive via L.11. central, crest of hill in L.11.b. to centre of cutting in L.5.c.60.00. thence by most direct line to the W. edge of the SCARPE running N. and S. from L.4.central (Right Flank of 47th Division).
6. 11th A.I. Bde with 1 M.G. Coy will form up 300 yards West of our Jumping Off Line near L.13.central by 7.30 a.m., with 2 Battalions in line, remainder in Brigade Reserve in readiness to move forward, and (on receipt of orders) to relieve the Battalion of the 9th A.I. Bde in the South Sector of the zone of exploitation, which will become the line of resistance for the Division as soon as 11th A.I. Bde reaches the line of posts.
These orders will not be issued from Divisional Headquarters until the situation of the forward Battalions of the 9th A.I. Bde is clearly established.
7. "D" Squadron, 13th L.H. Regt., now N.W. of SAILLY LAURETTE, is placed at the disposal of 9th A.I. Bde - O.C. to report at 4.45 a.m. 22nd instant to 9th A.I. Bde H.Q. Squadron to be at K.22.d. Valley ready to move at 7.0 a.m. 22nd instant.
8. The 7th A.F.A. Bde will be in readiness to move as required by G.O.C., 9th A.I. Bde.
9. On 7th A.F.A. Bde moving forward in close support of the Infantry, a new re-grouping of Artillery as below will ~~take place~~ come into effect:-

Defensive Group under Lieut-Col. W.A.F. JONES, D.S.O.

290th Bde, R.F.A.

291st Bde, R.F.A.

the 290th Bde being responsible for the defence of the front from the Northern Divisional boundary on the North, to the Inter-Brigade boundary on the South; - 291st Bde, R.F.A. Inter-Brigade boundary on the North to the River SOMME on the South.

Superimposed /

(P.T.O.)

2.

9 (contd)

Superimposed Brigade under Lt-Col W.G. ALLSOP, D.S.O.

8th A.F.A. Brigade.

Superimposed over the whole Divisional Zone.

10. The C.O., 7th A.F.A. Bde, will inform the C.O., 290th Bde, R.F.A. and C.O., 8th A.F.A. Bde, when he is moving forward.

11. The C.Os. of 290th Bde, R.F.A. and 8th A.F.A. Bde, will, on receipt of this message, each send a Liaison Officer to report to the G.O.C. 9th A.I. Bde.

12. ACKNOWLEDGE by wire. *W*

W.A. Nicholls

Headquarters.
22.8.1918.

Major, R.A.,
B.M., R.A., 3rd Aust. Division.

S. Swan

Distribution:-
7th & 8th A.F.A. Bdes (5 each).
290th & 291st Bdes, R.F.A. (5 each).
9th & 11th A.I. Bdes. - 51st Bde, RGA.

134

THIRD AUSTRALIAN DIVISIONAL ARTILLERY.

(SECRET)

B.M.7/11/8.

To. 8th A.F.A.Bde.

B.M.7/11/7 is cancelled.

Ref. O.O. No.94. - In addition to the smoke screen ordered therein to be put down by C.O., 8th A.F.A.Bde, the following will also be put down under your orders:-

R.4.d.central - four 4.5^m Hews from Zero Hour until Zero plus 60 minutes, lifting at Zero plus 60 minutes and thickening with 18-pdr smoke to a line joining R.34.central and R.5.central, continuing on this line until Zero plus 105 minutes, when all fire will cease. L34

ACKNOWLEDGE by wire.

W. J. ...
Major, R.A.,

Headquarters.
22.8.1918.

~~...~~, R.A., 3rd Aust. Division.

APPENDIX

183

(SECRET)

THIRD AUSTRALIAN DIVISIONAL ARTILLERY.

OPERATION ORDER No. 94.

On 23rd August, 1918, at 4.45 a.m., the 1st Aust. Division, on our Right, intend to attack the enemy positions South of the SOMME.

"D" (3rd Aust) Divisional Artillery will place a smoke screen along the line L.17.c.5.0. to L.24.a.5.0. from Zero to Zero plus 105 mins.

C.O., 8th A.F.A. Bde will arrange for this smoke screen and for this purpose will have a call on the 4.5" How. Batteries of the 290th & 291st R.F.A.; and 7th A.F.A., Brigades.

In addition all Batteries will be ready to answer NF, GF and LL calls during the period Zero to Zero plus 105 minutes. These calls will be answered with 3 minutes "Intense".

An active look-out will be kept from all O.Ps. for opportunity targets both North and South of the River.

From Zero plus 120 minutes onwards, no fire will be placed South of the River SOMME without special orders from this office. This is to allow of exploitation, which may extend 3,000 yards beyond the Final Objective.

Synchronisation of watches has been arranged for.

ACKNOWLEDGE by wire.

Headquarters,
22.8.1918.

G. A. Nichols
B.M., R.A., 3rd Aust. Division.

Major, R.A.,

Issued at 8 p.m.

Distribution:- 3rd Aust Div. G. - 1st Aust. D. Art. - 47th D. Art. -
7th & 8th A.F.A. Bdes (5 copies - 3 Maps) - 9, 10th & 11th A.I. Bdes.
290th & 291st R.F.A. Bdes (" ") - B.M., R.A. (Map) -
S.G., R.A. - R.O., R.A. - R.A. Sig Ofcr - Liaison Ofcr H.A. -
War Diary (5) - File.

152

OPERATION ORDER No.11.

185

134

Issued by Lieut. Col. W.G. ALLSOP, D.S.O. Cndg. 8th ~~APENN~~.

~~See all Batteries/~~
Reference map Sheet 68D.1/40000

22nd. August, 1918.

Reference B.M./7/11/5 issued herewith.

Attention is directed to paras. 4 and 5

Reference para 9. SECTORS for S.O.S. are allotted to Batteries as follows:-

31st. Bty.	L.5.a.0.0. to L.12.a.0.6.
29th. "	L.12.a.0.6. to L.17.b.5.5.
30th. "	L.17.b.5.5. to L.22.a.95.45.
108th. Bty.	As a 'B' BARRAGE along 30th. Bty Sector.

Batteries will reconnoitre more forward positions to cover this line, at once, and forward positions selected to this Office.

No moves will be made without orders from this Office.

Sectors as above will be taken into operation on receipt of the message 'OCHO'.

All shooting west of this line should be observed.

During exploitation, Cavalry and Whippet Tanks will be employed.

G.P Lanes are numbered as follows:

Lane 25 East and West Lines bounding L.30.a.
Lane 18 " " " " " " L.6.c.

Lanes 18 and 19 are allotted to 31st. Bty.
" 20 " 21 " " " 29th. "
30th. and 108th. Batteries superimposed.

Reference para 11 of B.M.7/11/5. On receipt of the message referred to above-'OCHO' the 30th. Battery will supply a Liaison Officer who will report to the G.O.C., 9th. A.I. Bde at X.28.d.4.7.

F. Griffith
Lieutenant.,
Adjutant., 8th. F. A. Brigade

The first line D.W. are attaching south of the SOMME line on the 23rd inst and the following machine screens will be put down by batteries as detailed below.

Zero hour will be 4.45 am 23 8 18.

D.M. 240 R.F.A. L17050 to L23655
107th " H.F.A. L23655 to L24950

4 rows for Battery per row from zero to zero + 105 B.S. only

108th M.G. 4 rows on R. 4 central
3 rows for M.G. per row from zero to zero + 60 then left to line R 5 centre to L34d 75 35 at 2 rows per M.G. per row
Machine fire at zero + 105. B.S. only

30th Battery at zero + 60 on line L34d 75 35 to R5a 45 60.

31st Battery at zero + 60 on line R5a 45 60 to R 5 centre

30th + 31st Batteries will use AS only extending total amount on position at an even rate.

All fire to cease at zero + 105.

Note. From zero + 120 onwards no fire will be placed south of the SOMME.

Issued to officers
at 1.45 am 23 8 18

Staff Lt Gen
Adj 8th Aust FMB

STRICTLY CONFIDENTIAL.APPENDIX.
"Q"89/732.Headquarters,
3rd Aust. Divl. Artillery.

1. The G.O.C. A.I.F. has under consideration the question of utilising the services of a limited number of Officers and men of long service on transports proceeding to Australia, and on their arrival to grant them leave sufficient to enable them to spend two clear months in Australia on full pay. The selection will be limited in the first instance to married men who have their homes in Australia and who left there in 1914, and who have not since returned to Australia for any reason. If there are not sufficient 1914 married men available, single men who left Australia in 1914 and have not since returned, and whose family circumstances justify it may be substituted.

2. The fact that these arrangements are being made is to be kept strictly confidential. Under no circumstances must the idea get abroad that general leave to Australia is being granted. The position really is that an endeavour is being made to grant an opportunity to a very few of the most deserving cases to visit their homes by utilising their services on a transport returning to Australia. It will be realised that the number who can be returned by this procedure is very limited.

3. In accordance with the above, an allotment has been made you as follows:-

3rd Aust. Divl. Artillery - 1 Other Rank

for transport duty on Transport D.22 which will be leaving for Australia at an early date.

4. The selection of the personnel required should be made in accordance with para. 1. above.

5. Names of those selected to be forwarded to reach this Office not later than 24th instant. They will be required to report at A.I.F. Headquarters, LONDON, not later than 30th August. A Movement Order for each Soldier proceeding will be forwarded from this Office on receipt of particulars.

(Sgd) C. A. PYKE, Major.
D.A.A.G., 3rd Australian Division.

21st August, 1918.

- 2 -

To

7th & 8th A.F.A. Brigades (5 copies each).
3rd Aust. D.A.C. (1 copy).

Reference above.

Please submit to this Office not later than 12 noon, 24th instant, the name of 1 Other Rank in accordance with para.1, giving full particulars on which recommendation is made.

Headquarters,
23-8-18.

W. J. ...
Captain,
Staff Captain R.A.
3rd Aust. Division.

134

287

"C" FORM.

Army Form C. 2123.
(In books of 100.)

MESSAGES AND SIGNALS.

No. of Message.....

Prefix.....	Code.....	Words..... l s d	Received. From..... By.....	Sent, or sent out. At.....m. To..... By.....	Office Stamp.
-------------	-----------	---------------------	-----------------------------------	---	---------------

Charges to Collect

Service Instructions

Handed in at..... Office.....m. Received.....m.

TO

Sender's Number. Day of Month. In reply to Number. AAA

Erase target V from bombardment programme, as this is now held by our troops. Acknowledge.

FROM

PLACE & TIME

* This line should be erased if not required.
(366.) Wt. W525/M1970. 100,000 Pads. 5/17. H. W. & V., Ltd. (E. 1213.)

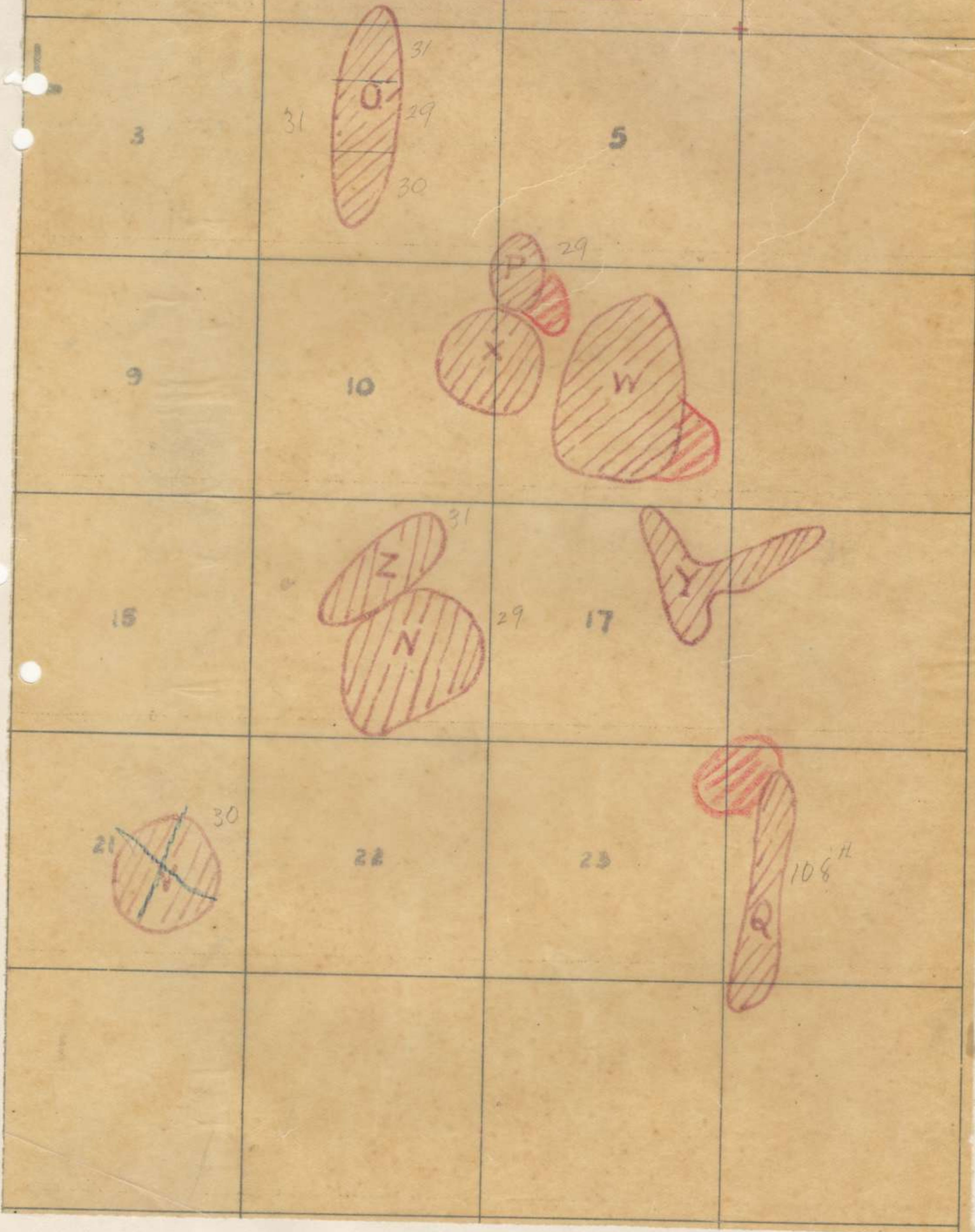
134

SECRET

APPENDIX

189

Bombardment Areas.
Accompanying O.O. No 95
Ref. Map 62nd N.E. 1/20,000



OPERATION ORDER No.13

APPENDIX.

Issued by Lieut.Col. W.G. ALLSOP, D.S.O. Cmdg. 8th.F.A.Bde.

Reference Maps

62 D and E - 1/20,000.

23rd. August, 1918.

Reference 3rd. Aust. D.A. Operation Order No. 95, Barrage Map, and Tracing of Bombardment Areas issued herewith.

Attention is directed to para 2 of Order - sidelined in BLUE.

TASKS as set out on back of order will be carried out by Batteries as follows:-

- (1) Target 'Q' - 108th. Bty.
- (1) " 'O' - 31st., 29th., and 30th. Btys in that order from North to South taking one third of target each.
- (2) " 'P' - 29th. Bty.
- (4) " 'H' & 'Z' - respectively by 29th. and 31st. Btys.
- (5) " 'O' - 30th. Bty.
- (5) " 'Q' - 108th. Bty.

Should an S.O.S. be called for from zero plus 51 onwards, it will be put down by 18-Pdr. Batteries on the final Protective Barrage Line, and in the sectors as set out in attached Barrage Map. 108th. Battery S.O.S. line will be as a B Barrage 200 yards in rear of the final Protective Barrage Line, placing 4 Hows on the 30th. Bty. sector.

Attention is further directed to para 4 of D.A. O.O. No.95.

ACKNOWLEDGE.

E. Griffith

Lieutenant.,
Adjutant., 8th. Aust. F. A. Brigade.

Distribution.

To all Batteries,
8th. F. A. Brigade.

APPENDIX

OPERATION ORDER No. 95.

- 1. At 1 a.m. on 24th August, 1918, the 10th Aust. Infantry Brigade will capture BRAY under a moving barrage.
- 2. Reference Barrage Map attached.
 Artillery Start Line shown in BLUE.
 Final Protective Barrage Line in GREEN.
 Continuation of S.O.S. Line in GREEN DOTTED.

Barrage "A". - 18-pdrs only.
290th & 291st Bde, R.F.A. Batteries. - Superimposed.

Barrage "B". -
7th A.F.A. Bde - 6 guns.

Barrage "C".
7th A.F.A. Bde - 12 guns.

Barrage will open at Zero Hour on the BLUE Line and thereafter advance as follows:-

"A" will remain from Zero to Zero plus 5 mins, then advance to the Protective Barrage Line.

"B" will roll up on to the 14/17 line, and then Cease Fire.

Guns on "C" will remain until arrival of "A" barrage into line, when they pick up "A" and advance to the Final Protective Barrage Line.

Barrage will advance in lifts of 100 yards every 3 minutes.
Ammunition:- 50% A (50% to be on graze).
 50% AX Direct Action.

Rate of Fire. -
 Zero to Zero plus 5 mins - 3 rds p.g. p.m.
 Thereafter - 2 " " "
 Protective Barrage. - 1 " " "

All How Batteries will crash BRAY-sur-SOMME from Zero Hour to Zero plus 2 minutes, keeping 100 yards East and South of the 18-pdr Start Line.

290th Bde, R.F.A. and 7th Bde, A.F.A. taking West of a North and South Line through the Church.

291st Bde, R.F.A. and 8th Bde, A.F.A. taking East of a North and South Line through the church.

Rate of fire - 2 rounds per How per min.
106 Fuze.

After Zero plus 4 mins, Hows will bombard according to bombardment programme on back hereof.

Rate of fire - 2 rds per How per min.
50% 106 Fuze - 50% Delay Action.

- 3. Infantry will keep 300 yards clear of the Artillery Start Line.
- 4. Should the S.O.S. Signal be received during the operation, the 290th Bde, R.F.A. will switch North on to the GREEN DOTTED Line; the remainder will continue with barrage tasks.
- 5. Synchronisation. - Orderly Officer from each Brigade will report at H.Qrs, 7th A.F.A. Bde - K.2C.d.7.5. - at 7.30 p.m. tonight.
- 6. ACKNOWLEDGE BY WIRE.

Headquarters:
23.8.1918.

W.A. Nicholls
Major, R.A.,
B.M., R.A., 3rd Aust. Division.

Issued at 6.30 p.m.

To. - R.A., Aust Corps - H.A. Aust Corps - 3rd Aust Div.G. - 47th D. Art
1st Aust D. Art. - 7th & 8th A.F.A. Bdes - 290th & 291st Bdes RFA -
51st Bde, RGA. - 3rd Aust D.A.C. - 58th D.A.C. - 3rd Aust D.T.M.O.
9th, 10th & 11th A.I. Bdes - 3rd M.G. Btn. - B.M. - S.C. - R.A. Sig C
R.O. - Maison Ofcr H.A. - War Diary - File.

4 Bde maps

5 Bomb Maps

1918

APPENDIX

1504

	<u>Date.</u>	<u>Time.</u>	<u>Target.</u>	<u>Battery.</u>
(1)	23rd. Aug.	10 - 10.2pm.	BRAY	How. batts. 290 & 291 Bdes. RFA. To keep East of a line 100 yards East of the S O.S. Line.
	"	"	Q	How. batts. 7th & 8th. Bdes. AFA.
	"	"	O <i>all</i>	3 batts. 18-pr. 8th. A.F.A. Bde. 106 Fuze.
(2)	"	10.50 - 10.52pm	W	How. bty. 290th Bde. RFA. and 1 Bty. 18-pr. 8th. A.F.A. Bde.
	"	" "	Q	As in (1)
	"	" "	P <i>29</i>	How. Bty. 291st Bde. R.F.A. and 1 Bty. 18-pr. 8th. A.F.A. Bde.
	"	" "	BRAY	As in (1)
(3)	"	11.40 - 11.42pm	Q	As in (1)
	"	" "	O	As in (1)
(4)	24th. Aug.	1.0 - 1.2 am.	N W Z	1 Bty. 18-pr. 8th. A.F.A. Bde. on each.
(5)	"	1.4 am. to 2.4 am.	O <i>30</i> W P & X Q Y	1 Bty. 18-pr. 8th. A.F.A. Bde. 6 Hows. 7th. A.F.A. Bde. 6 Hows. 291st Bde. R.F.A. 6 Hows. 8th. A.F.A. Bde. 6 Hows. 290th Bde. R.F.A. In bursts of fire of 2 mins. every 8 mins.

RATE OF FIRE THROUGHOUT - 2 rds. per gun & how. per min.
106 Fuzes.

Final Protective line 10.40pm 23/8/18

L 10 a 0510 - 10 c 9550 - 16 b 4875 -
16 b 7505 - 16 d 9000 - 22 b 8035 -

134
1918

THIRD AUSTRALIAN DIVISIONAL ARTILLERY.

SECRET.

B.M.7/12.

To: 7th & 8th A.F.A. Bdes.
290th & 291st Bdes. R.F.A.

Ref. O.O.96.

As soon as the Objective has been ~~gained~~ captured, Batteries will establish O.Ps. on the Ridge in L.11. and 17, from where they can get a good view of the Valley of the SOMME between GAPPY and Square G.30.

It is anticipated that several opportunity targets will be seen.

These Observing Officers are to make use of Visual Signalling, should telephonic communications break down.

Headquarters,
24.8.1918.

W. B. Hill
Major R.A.,
B.M., R.A., 3rd Aust. Divn.

24-0

APPENDIX

192

(SECRET)

THIRD AUSTRALIAN DIVISIONAL ARTILLERY.

B.M.7/12/1.

134

Reference barrage map accompanying Operation Order No.96.

In order to conform with the Division on our Left, GREEN Line from point L.6.c.2.0. will run to G.l.b.0.6. and not as shown on map issued.

Maps will be altered accordingly, and the creeping barrage continued to this line.

Acknowledge by wire.

Headquarters.

24.8.1918.

B.M., R.A., 3rd Aust. Division.

Major, R.A.

R.A.Aust Corps H.A. Aust Corps - 3rd Aust Div. G.
1st Aust D.Art. - 47th D.Art. - 7th & 8th A.F.A.Bdes.
290th & 291st Bdes, R.F.A. 51st Bde, R.G.A. 9th, 10th &
11th A.I.Bdes. - 3rd M.G.Etn.

W.D. Hills

193

134

THIRD AUSTRALIAN DIVISIONAL ARTILLERY.

B.M.7/12/2.

To. 7th & 8th A.F.A.Bdes.
290th & 291st Bdes, R.F.A.
1st Aust D.Art.
H.A., Aust Corps.
51st Bde, R.G.A.

Ref. Operation Order No.96.

The attack will be carried out by two Battalions of the 10th A.I.Bde on the Right, and two Battalions of the 11th A.I.Bde on the Left.

290th Bde, R.F.A. will send a Liaison Officer to report to the G.O.C., 11th A.I.Bde (H.Qrs - L.14.b.1.3.) forthwith.

On completion of the barrage, the 7th A.F.A.Bde will be placed at the direct call of the G.O.C., 10th A.I.Bde, and the 290th Bde, R.F.A. at the direct call of the G.O.C., 11th A.I.Bde.

All harassing fire after Zero plus 106 minutes will be placed 500 yards East of the Final Barrage Line.

ACKNOWLEDGE by wire.

Headquarters.

24.8.1918.

B.M., R.A., 3rd Aust. Division.

Major, R.A.,

W.D. Hills

193

"A" Form
MESSAGES AND SIGNALS.

Army Form C. 2121
(In pads of 100.)

No. of Message.....

Prefix.....Code.....m.	Words	Charge.	This message is on file of:	Recd. at.....m.
Office of Origin and Service Instructions	Sent		Service.
	At	m.		From
	To			By.....
	By		(Signature of "Franking Officer")	

TO { ~~7th & 8th A.F.A. Bde.~~
~~290th & 291st Bde, R.F.A.~~

Sender's Number ~~W. 96.~~ Day of Month ~~24th~~ In reply to Number. **AAA**

Ref. **0.0.96. aaa**
 Note that Bombardment Map shows
 times and lifts of "A" barrage
 and not times that the guns lift
 off the objective marked, **aaa**
 Acknowledge. **aaa** Addressed 7th
 & 8th A.F.A. Bdes, 290th & 291st
 Bdes, R.F.A. ~~1st Aust D. Art.~~

From **3rd Aust D.A.H.Q.**
 Place

Time
 The above may be forwarded as now corrected. (Z) *[Signature]*
Major, RA.

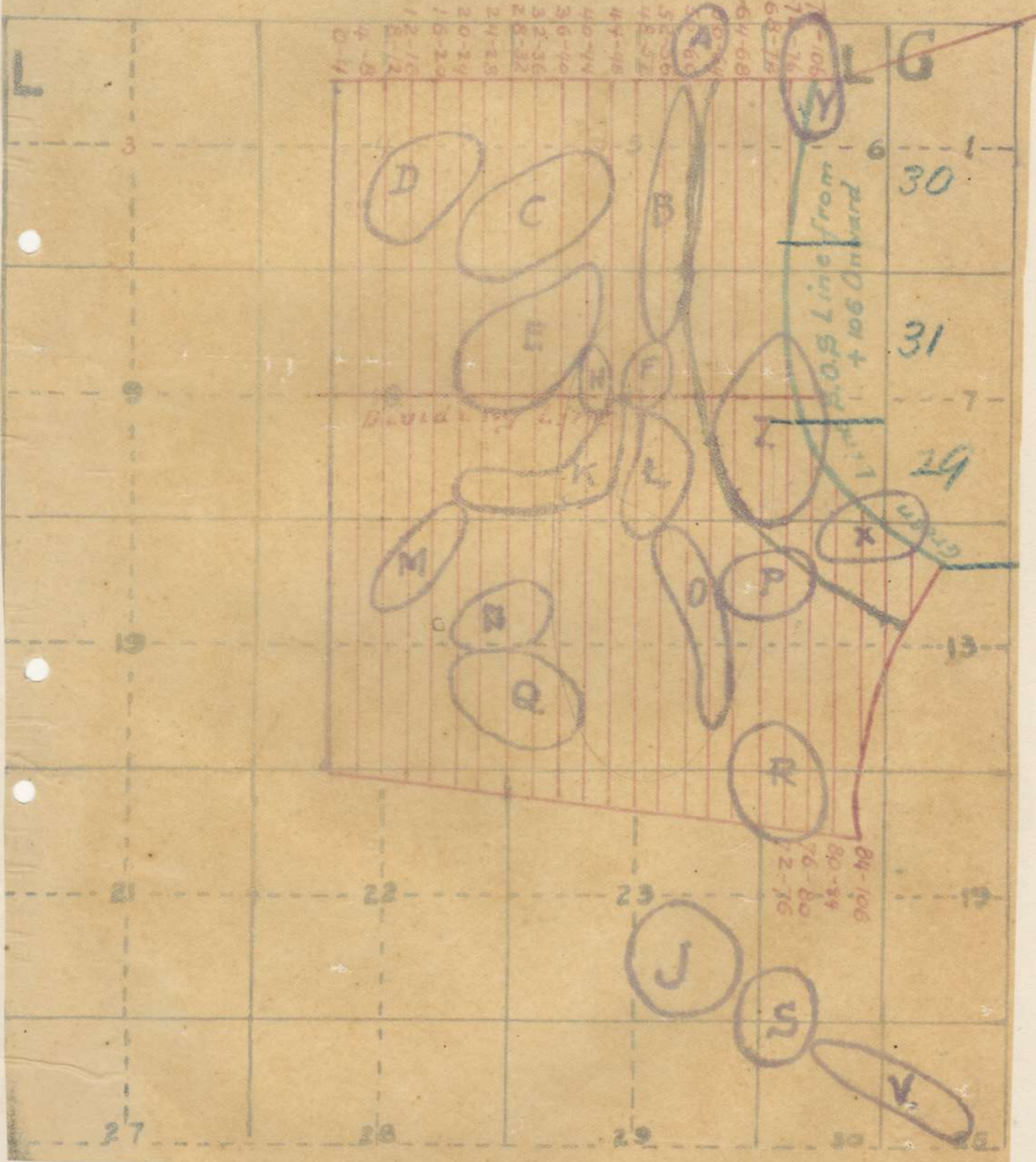
Censor. Signature of Addressor or person authorised to telegraph in his name
 * This line should be erased if not required.

B4 SECRET Bombardment Map

— To Accompany O.O. No 96. —

— Ref. Maps 62^{NE}. 62^{NW}. 1/20,000 —

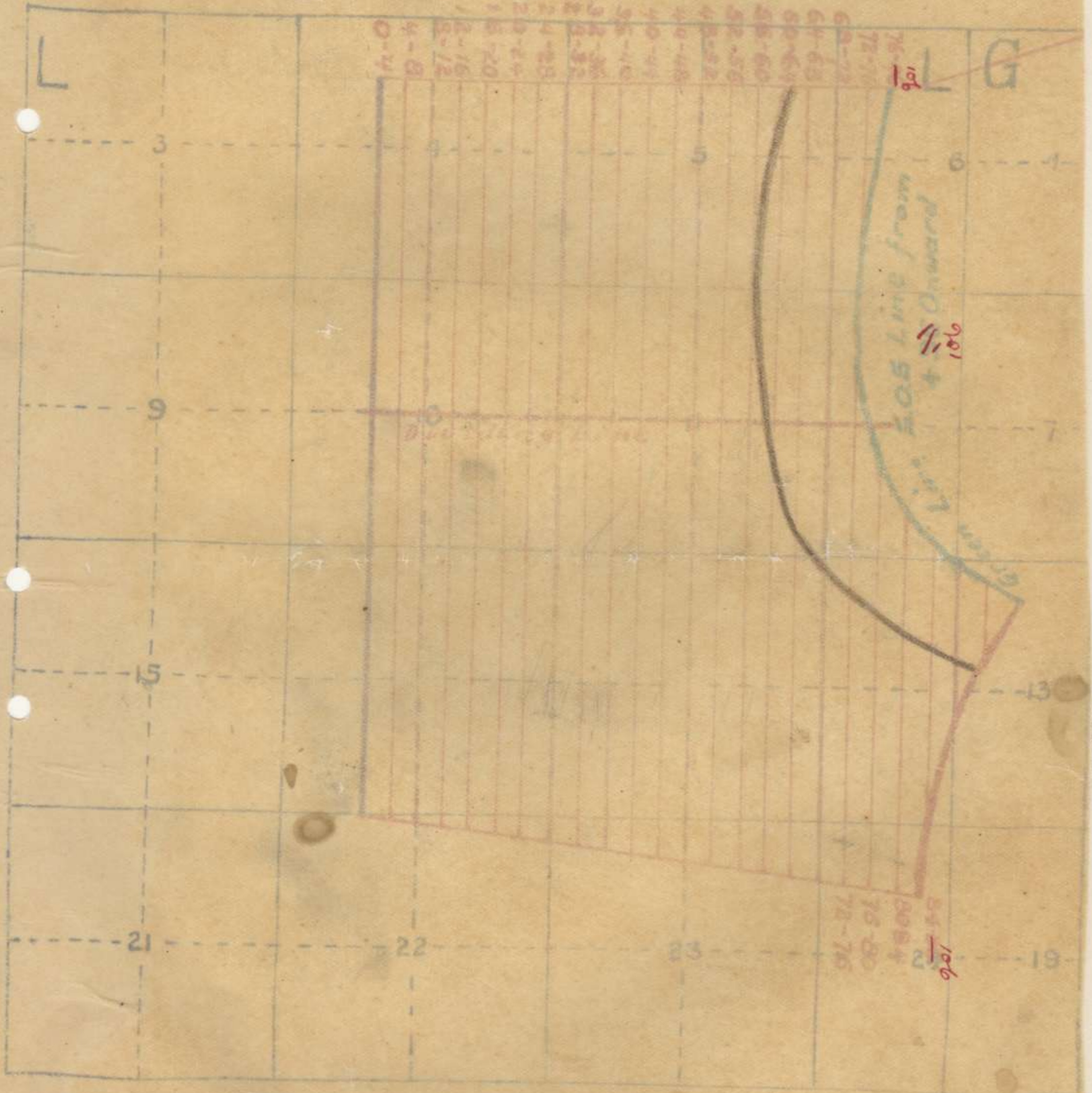
195



SECRET Barrage Map.

To Accompany O.O.N° 96.

Ref. Maps 62° NE 62° NW 1/20,000



OPERATION ORDER No. 14.

1917

Issued by Lieut. Col. W.G. ALLSOP, D.S.O. Cndg. 8th. F.A. Bgde.

Reference Maps 62 D. N.E. 1/40,000

Bombardment Map with D.A. O.O. No.96.

24-8-1918.

Reference 3rd. Aust. D.A. Operation Order No.96 and Barrage Map attached.

1. Batteries will carry out the BOMBARDMENT as laid down in O.O. No.96. TASKS are as follow:-

18-Pounders: 29th., 30th. and 31st. Batteries will open at ZERO on AREA 'D', each Battery taking one-third of the area, 30th. Bty. on the NORTH, 31st. Bty. in the CENTRE and 29th. Bty. on the SOUTH. Each Battery will put down a BARRAGE advancing in conformity with the BARRAGE MAP, but lifting at times eight (8) minutes earlier than those set down thereon.

At ZERO PLUS 12, the 30th. and 31st. Batteries will switch on to AREAS 'C' and 'E' respectively, and continue the advance.

At ZERO PLUS 16, the 29th. Battery will switch on to, and bombard AREA 'H', until ZERO PLUS 32.

At ZERO PLUS 32, the 30th. and 31st. Batteries will lift on to 'B', dividing it equally, the 30th. on the NORTH and 31st. on the SOUTH, and at the same time the 29th. Bty. will lift its fire on to and bombard AREA 'F'.

At ZERO PLUS 48, the 30th. Bty. will lift on to and bombard AREA 'Y', whilst the 31st. and 29th. Btys. lift on to AREA 'E', (31st. on NORTH and 29th. on SOUTH) placing an advancing Barrage down in conformity with Barrage Map, with times of lifts eight (8) minutes earlier.

All fire will cease at ZERO PLUS 106.

4.5" Hows. 108th. Battery will conform to the TASK as laid down in O.O. No.96, creeping EASTWARDS in lifts at times twelve (12) minutes earlier than those as set down on Barrage Map, taking the AREAS 'M' 'K' 'L' 'X' in that order.

Fire will cease at ZERO PLUS 106.

2. S.O.S. On completion of this Operation, the Brigade S.O.S. LINE will be the GREEN LINE Sector as shown on Barrage Map, Hows. 200 yards EAST as a 'B' Barrage.

3. REPLETATION. In anticipation of an exploitation of success gained, Battery Commanders will, tomorrow morning, reconnoitre positions further forward, and send co-ordinate of position selected to this Office as early as possible.

4. EVACUATION OF WOUNDED. A Motor Loading Post for wounded is situated at K.24.c.4.3.

ACKNOWLEDGE by wire.

E. Gifford
Lieutenant.,
Adjutant., 8th. F. A. Brigade.

184

K24c43 198
APPENDIX

OPERATION ORDER No. 96.

1. At 2.30 a.m. on the 25th August, 1918, the 3rd Australian Division will capture the high ground about Squares L.5, 11 and 17, under a moving barrage.

2. Reference Barrage Map, attached.

Artillery Start Line shown in BLUE.
Final Barrage Line " " GREEN & RED.
S.O.S. Line on completion of barrage - GREEN LINE.
Final Objective. ----- BLACK.

3. The front is divided into two Sectors. Northern and Southern dividing line is shown on barrage map.

Northern Sector.

Advancing Barrage - 290th Bde, R.F.A. & 7th A.F.A. Bde, and How. Battery 291st Bde, R.F.A.

Bombardment Brigade.- 8th A.F.A. Bde (18-pdrs only).

Southern Sector.

Advancing Barrage. - 291st Bde, R.F.A. (18-pdrs only).
Flank Advancing Barrage - 7 18-pdr Batteries detailed by C.R.A., 1st Aust. Division.
Bombardment Guns. - 108th How. Battery.
X How. Battery detailed by 1st Aust. Div. Artly.

4. (a) All advancing barrage 18-pdrs (forming A barrage) will open at Zero Hour on the BLUE Line and remain for 4 minutes. 4.5" Hows forming B barrage 300 yards East of the 18-pdr barrage. - The whole will then advance to the Final Barrage Line at the rate of 100 yards in 4 minutes; B barrage finishing 300 yards East of Final Barrage Line.

50% A (50% to be on graze).
50% AX (106 fuzes NOT to be used).

(b) Flank Advancing Barrage will start on a line 200 yards East of the 18-pdr Start Line, remaining there for 4 minutes. It will then switch East conforming to the lines of the barrage map, but 8 minutes of the advancing barrage.

At Zero plus 76 minutes these Batteries will enfilade the valley running from BILLON WOOD in A.25.b. to CHATEAU WOOD in G.7.d. - Duration of fire 30 minutes. These Batteries will then stand by to re-open on this line if required; or engage targets East of it.

50% A (75% to be on graze).
50% AI Direct Action (106 Fuzes will NOT be used).

Rate of Fire (a) and (b).

West of the Final Barrage Line.

Throughout barrage - 3 rds p.g. p.m.
On Final Barrage Line. - 1 " " " "

(c) Bombardment Guns and Hows will open at Zero on objectives shown in Bombardment Map. Allotment of objectives as below:-

8th A.F.A. Bde - All objectives in Northern Sector (H, F and Z inclusive).
108th Battery. M. K. L. X.
X How. Bty. N. Q. O. P. R.

P.T.O.

199
13

1304

Para 4 (c) contd.

Each objective will be cleared as follows:-

18-pdrs. - 8 minutes before arrival of A Barrage.
4.5" Hows. - 12 " " " " A "

Ammunition

H.E. 100% 106 Fuzes.

Rate of Fire.

18-pdrs & 4.5" Hows. - 2 rds p.g. p.m.

NOTE:-

Objectives to be bombarded consecutively.

5. Heavy Artillery are also co-operating for bombardment and Counter Battery work.

6. Infantry will keep 300 yards clear of the Barrage Start Line.

7. All fire will stop at Zero plus 106 minutes.

8. S.O.S. will be inoperative from Zero minus 15 minutes to completion of the barrage.

9. Arrangements for synchronisation will be notified later.

10. ACKNOWLEDGE BY WIRE.

W. A. Nicholls

Headquarters.
21.8.1918.

Major, R.A.,
B.M., R.A., 3rd Aust. Division.

Issued at 6 p.m.

Distribution:-

R.A. Corps	(5)	3rd Aust D.A.C.	(1)
H.A. Corps	(1)	58th D.A.C.	(1)
3rd Aust Div.G.	(1)	3rd Aust D.T.M.O.	(1)
1st Aust D.Art.	(12)	B.M.; R.A.	(1)
47th D.Art.	(1)	S.C.; R.A.	(1)
7th A.F.A.Bde	(5)	R.A. Sig. Ofcr.	(1)
9th A.F.A.Bde	(5)	R.O., R.A.	(1)
290th Bde; R.F.A.	(5)	Liaison Ofcr, H.A.	(1)
291st Bde; R.F.A.	(5)	War Diary.	(3)
51st B.G.A.	(1)	File.	(1)
9th A.I.Bde.	(1)		
10th A.I.Bde.	(1)		
11th A.I.Bde	(1)		
3rd M.G.Btn.	(1)		

134
SECRET.

Fourth Army No. 256(G). 200

APPENDIX

III Corps.
IX Corps.
Australian Corps.

I am directed by the Army Commander to forward the following letter, which has been received from the Commander-in-Chief for the information of all ranks.

H.Q., Fourth Army,
23rd August, 1918.

Adams
Major-General,
General Staff, Fourth Army.

General Sir H.S. RAWLINSON,
Commanding Fourth Army.

O.A.D.911.

" I request that Army Commanders will, without delay, bring to the notice of all subordinate leaders the changed conditions under which operations are now being carried on and the consequent necessity for all ranks to act with the utmost boldness and resolution in order to get full advantage from the present favourable situation.

" The effect of the two very severe defeats and the continuous attacks to which the enemy has been subjected during the past month has been to wear out his troops and disorganise his plans. Our Second and Fifth Armies have taken their share in this effort to destroy the enemy and already have gained considerable ground from him in the LYS Sector of our front. Today the Tenth French Army crossed the AILLETTE and reports that a Bavarian Division fled in panic, carrying back with it another division which was advancing to its support. Tomorrow the attack of the Allied Armies on the whole front from SOISSONS to NEUVILLE-VITASSE (near ARRAS) is to be continued.

" The methods which we have followed hitherto in our battles with limited objectives when the enemy was strong are no longer suited to his present condition. The enemy has not the means to deliver counter-attacks on an extended scale, nor has he the numbers to hold a continuous position against the very extended advance which is now being directed upon him.

" To turn the present situation to account the most resolute offensive is everywhere desirable. Risks which a month ago would have been criminal to incur ought now to be incurred as a duty. It is no longer necessary to advance in regular lines and step by step. On the contrary, each division should be given a distant objective which must be reached independently of its neighbour and even if one's flank is thereby exposed for the time being.

" Reinforcements must be directed on the points where our troops are gaining ground, not where they are checked. A vigorous offensive against the sectors where the enemy is weak will cause hostile strong points to fall, and, in due course, our whole Army will be able to continue its advance. This procedure will result in speedily breaking up the hostile forces and will cost us much less than if we attempted to deal with the present situation in a half hearted manner.

" The situation is most favourable. Let each one of us act energetically and without hesitation push forward to our objective"

(sd) D. HAIG.

22nd August, 1918.

1918
[Faint, mostly illegible typed text, possibly a letter or document header]

War diary
down to War R
Send
26/8/18

[Faint handwritten signature or initials]

Issued by Lieut. Col. W.G. ALLSOP, D.S.O., Cmdg 8th. F.A. Brigade. 201

Reference Maps
Sheet 62 D NE & 62 D NW.

25th. August, 1918.

1. For the exploitation of this morning's success, four lines have been set out, any of which the Brigade may be called upon to protect at anytime.
2. On this Brigade front, these lines are as follows:- and each line is divided into Battery sectors as detailed below.

	18-Pdr.		
'A'	L.6.a.40.85.	G.1.d.60.75	31st. Bty. Sector.
	G.1.d.60.75.	G.8.a.50.45	29th. " "
'B'	A.26.c.10.60.	G.2.a.90.30.	31st. " "
	G.2.a.90.30.	G.6.b.50.65.	29th. " "
'C'	A.26.a.90.00	G.3.a.40.85.	31st. " "
	G.3.a.40.85.	G.3.d.15.25.	29th. " "
'D'	A.27.b.10.00	A.28.c.00.50.	31st. " "
	A.28.c.00.50.	A.28.d.50.00.	29th. " "

In each case, the 30th ~~18-Pdr.~~ Battery will be superimposed over 31st. Battery sector.

All or any 18-Pdr. ~~Shooting~~ Guns for the protection of any of these lines, will be placed 500 yards EAST of the line concerned - i.e. 'A' 'B' 'C' 'D' as the case may be.

3. The fire of the 108th. Battery will be put down as a 'B' Barrage, 200 yards EAST of the 18-Pdr. Line.
4. O.P.s. Batteries must establish O.P.s at once, and every effort must be made to engage opportunity targets.
5. BOUNDARY. The Divisional Boundary is as follows:-
 Northern Boundary: L.5. Central - A.25.c.2.5. - A.26. Central
 A.27. Central - A.28. Central. - A.29. Central.
 Southern Boundary: River SOMME.
 The Divisional front is held by Two Brigades, 11th. A.I. Bde. on the North and the 10th. A.I. Bde. on the South, divided by the line L.11.d.0.4. - L.12. Central - G.3.c.0.0. - G.4.d.0.6.
 The 173rd. Brigade joins up with this Division on the Left flank.
6. AMMUNITION: The D.A.C. are establishing a Dump at K.18.a.3.0. near BRINHAM.

ACKNOWLEDGE by wire.

J Brake
 Lieutenant.,
 for Adjutant., 8th. Aust. F. A. Brigade.

134

202

OPERATION ORDER No.15.

Issued by Lieut. Col. W.G. ALLSOP, D.S.O., Comd 8th. F.A. Brigade.

Reference Maps
Sheet 62 D III & 62 D IV.

25th. August, 1918.

1. For the exploitation of this morning's success, four Lines have been set out, any of which the Brigade may be called upon to protect at anytime.
2. On this Brigade Front, these Lines are as follows:- and each line is divided into Battery Sectors as detailed below.

	18-Pdr.		
'A'	L.6.a.70.85. - G.1.d.60.75	31st. Bty. Sector.	
(G.1.d.60.75. - G.2.a.50.45	29th. " "	
'B'	A.25.c.10.60. - G.2.a.90.50.	31st. " "	
(G.2.a.90.50. - G.3.b.50.65.	29th. " "	
'C'	A.25.a.90.00 - G.3.a.40.85.	31st. " "	
(G.3.a.40.85. - G.3.d.15.25.	29th. " "	
'D'	A.27.b.10.00 - A.25.c.00.50.	31st. " "	
(A.25.c.00.50. - A.28.d.50.00.	29th. " "	

In each case, the 50th. ~~Light~~ Battery will be superimposed over 31st. Battery Sector.
 All or any 18-Pdr. ~~Shooting~~ for the protection of any of these lines, will be placed 500 yards EAST of the Line concerned - i.e. 'A' 'B' 'C' 'D' as the case may be.

3. The fire of the 108th. Battery will be put down as a 'B' Barrage, 200 yards EAST of the 18-Pdr. Line.
4. O.P.s. Batteries must establish O.P.s at once, and every effort must be made to engage opportunity targets.
5. BOUNDARY. The Divisional Boundary is as follows:-
 Northern Boundary: L.5. Central - A.25.c.2.5. - A.26. Central
 A.27. Central - A.28. Central. - A.29. Central.
 Southern Boundary: River SOMME.
 The Divisional Front is held by two Brigades, 11th. A.I. Bde. on the North and the 10th. A.I. Bde. on the South, divided by the line L.11.d.0.4. - L.12. Central - G.3.c.0.0. - G.4.d.0.6.
 The 173rd. Brigade joins up with this Division on the Left Flank.
6. AMMUNITION: The D.A.C. are establishing a Dump at K.18.a.3.0. near BRINKHAM.

ACKNOWLEDGE by wire.

J. Brake
 Lieutenant.,
 for Adjutant., 8th. Aust. F. A. Brigade.

134

SECRET.COPY.

APPENDIX 203

THIRD AUSTRALIAN DIVISION.A.A.M.C. ORDER NO. 63.Map Ref. Sh/62.D. 1/40,000.

1. C.O. 9th Aust. Fld. Ambulance will open a Main Dressing Station in CHIPILLY (Q.4.a.2.3.) at 5 p.m. 25-2-1918.
2. The Main Dressing Station at J.36.d.8.3. SAILLY LAURETTE will close at the same hour and become the D.G.S. and Gas Centre.
3. The C.O. 9th Aust. Fld. Ambulance will send Gas treatment Apparatus to C.O. 11th Aust. Fld. Amb.
The C.O. 11th Aust. Fld. Ambulance will send all M.D.S. stores to C.O. 9th Aust. Fld. Amb. at CHIPILLY on closing of M.D.S. at J.36.d.8.3.
4. The W.W.D.S. records will be kept at K.24.c.4.4.
5. Resuscitation Team will report to C.O. 9th Aust. Fld. Amb. on opening of M.D.S. at CHIPILLY (Q.4.a.2.3.)
6. Completion to be notified to this Office.
7. Field Ambulances acknowledge.

(Sgd) F.S. MAGUIRE, Colonel.
A.D.M.S. Third Australian Division.

Headquarters,
25-8-18.

- 2 -ADDENDUM TO A.A.M.C. ORDER NO. 63.

Walking wounded Dressing Station will be established at CHIPILLY (Q.4.a.2.3.) under orders of Major FITZPATRICK.

All records will be kept by 9th Aust. Field Ambulance.

(Sgd) F.S. MAGUIRE, Colonel.
A.D.M.S. Third Australian Division.

Headquarters,
25th August, 1918.
Time - 2.30 p.m.

- 3 -

To
7th & 8th Aust. F.A. Brigades,
3rd Aust. D.A.C., & 3rd D.T.M.O.

For information.

[Signature]
Captain,
Staff Captain R.A.,
3rd Australian Division.

Headquarters,
25-8-18.

OPERATION ORDER No. 19.

APPENDIX.

Issued by Lieut. Col. W. G. ALLSOP, D.S.O. C.C. 8th. Aust. F.A. Brigade.

Reference Map 62 C H.W.

31st. August, 1918.

1. REFERENCE: 3rd. Aust. Div. Arty. Operation Order No. 99, issued herewith.

2. SECTORS: 18-Pounders: - 'A' BARRAGE.

29th. Bty. START LINE C. 20. d. 87. 00. to C. 26. b. 92. 80.
FINAL LINE C. 22. d. 20. 00. to C. 28. b. 15. 80.

31st. Bty. START LINE C. 26. b. 92. 80. to C. 27. a. 03. 40.
FINAL LINE C. 28. b. 15. 80. to C. 28. b. 40. 40.

30th. Bty. START LINE C. 27. a. 03. 40. to C. 27. a. 10. 00.
FINAL LINE C. 28. b. 40. 40. to ~~C. 28. b. 37. 00.~~
to C. 28. b. 45. 25. to C. 28. b. 37. 00

4.5" Hows. - 'B' BARRAGE.

108th. Battery will be distributed as a 'B' Barrage 200 yards East of 18-Pdr. Line.

3. SYNCHRONIZATION. By Telephone.

4. ACKNOWLEDGE by wire.

J. R. ...
Lieutenant.,
a/Adjutant., 8th. Aust. F.A. Brigade.

Distribution:

All Batteries.
8th. F.A. Brigade.

To all Batteries/

From 3.30 a.m. to 4 a.m. (1st. Sept) each Battery
will fire 30 rounds harrassing as follows:-

29th. Bty.	TRENCH	I.3.a.45.65. to I.3.b.10.00.
30th. "	do.	I.3.b.10.00. to I.4.a.00.25.
31st. "	do.	I.4.a.00.25. to I.4.a.37.60. to I.4.a.20.70. to I.4.a.15.35.

J. Drake

Lieutenant.,
a/Adjutant., 8th. Aust. F. A. Brigade.

31-8-1918.

THIRD AUSTRALIAN DIVISIONAL ARTILLERY.

1206

134

OPERATION ORDER No. 99.

1. The attack will be continued on 1st September, 1918, at 5 a.m.
2. The 11th A.I. Bde will carry out the attack.
3. Objective is trench system from C.22. central to I.4.a. central
4. Artillery support will take the form of an Advancing Barrage ~~and a Standing Barrage "C".~~
5. "A" Barrage.

Start Line C.20.65.00. to I.3.a.45.60.

"B" Barrage 200 yards East of this line.

Northern boundary of barrage - C.20.65.00. to C.15.d.0.6
 Southern " " " " I.3.a.45.60 - I.5.b.0.6
 Final barrage line - C.16.d.0.6. C.22.f.8.0. C.28.b.15.85
 C.28.b.45.25. I.4.b.0.9. I.4.a.75.60.

6. Zones as follow:-

- "A" Barrage } 7th A.F.A. Bde 18-pdrs only North of East and West grid between Squares C.21 and C.27.
- " " } 8th A.F.A. Bde 18-pdrs only Squares C.27.a & b. and C.28.a. & b.
- " " } 3rd Aust. Army F.A. Bde 18-pdrs only South of East and West grid through C.27 & C.28. central.

"B" Barrage. - 4.5" Hows of 7th, 8th & 3rd Bdes, A.F.A.

"C" Barrage - 14th Army Bde, R.F.A. - whole Zone.

7. "A" and "B" barrages open at Zero on their respective start lines; remain 5 minutes, then advance at rate of 100 yards in 5 minutes to Final Barrage Line, and on arrival Cease Fire. *remain for 15 minutes at 1st per gun per piece*
8. "C" Barrage will open at Zero on line North and South Grid through Squares C.27. and C.28. central - jump to KASSA TRENCH - YASSA TRENCH - DELVA TRENCH - jump to Final Objective; jump to Final Barrage Line, remain 5 minutes and Cease Fire. - All jumps to take place 10 mins before the arrival of "A" barrage.

9. Ammunition.

<u>18-pdrs.</u>	<u>4.5" Hows.</u>	<u>Amount.</u>
"A" Bge. 2 rds p.g.p.m.	--	25% A 75% AX.
"B" Bge	2 rds p.h. p.m. on trench systems. 1 rd p.h. p.m. in open.	106 Fuze.
"C" Bge. 2 rds p.g. p.m.	-	106 fuze, if available

10. Harassing fire subsequent to the barrage will be arranged direct with Brigades by G.O.C. Infantry Bde.

11. Heavy Artillery will bombard KASSA TRENCH - DELVA TRENCH from Zero to Zero plus 5 minutes.
 Final Objective - Zero plus 5 mins to Zero plus 15 mins.
 Zero plus 15 mins to Zero plus 60 mins - Trenches, valleys and tracks in C.17.c.2.3. and village of MOISLAINS.

12. ACKNOWLEDGE.

Headquarters.
 31st August, 1918.
 Issued at 8.15 p.m.

W. D. Nicholls
 Major, R.A.,
 B.M., R.A., 3rd Aust. Division

907

134

APPENDIX

APPENDIX Distribution.

	<u>No.</u>
3rd Aust Div. G.	1.
7th A.F.A. Bde.	2/ 6.
8th A.F.A. Bde	7/12.
3rd Army Bde AFA.	13/17.
14th " " RFA	18/22.
50th D. Art.	23.
2nd D. Art.	24.
51st Bde, R.G.A.	25.
137th H. Bty.	26.
9th A. I. Bde.	27.
10th A.I. Bde.	28.
11th A.I. Bde.	29.
B.M. R.A.	30.
S.C. R.A.	31.
R.A. Sig. Ofcr.	32.
R.O., R.A.	33.
Liaison Ofcr, H.A.	34.
War Diary.	35/37.
File.	38.

THIRD AUSTRALIAN DIVISIONAL ARTILLERY.

Extracts from III Corps Summary 29.8.1918.

This morning in conjunction with the Corps on our Left, the advance was continued towards DUILLEMONT and LEUZE WOOD. Owing to the demoralized state of the Germans opposite the Southern portion of the Corps Front the advance was also pushed on here.

The advance has been successful, throughout.

Just before dark a successful operation enabled us to capture the high ground S.E. of LE FOREST with a number of prisoners.

General. A large number of explosions and fires continue in the back areas, notably PERONNE and ROCOUGNY. No very determined opposition was met with to-day.

Last night and to-day all divisions were identified opposite the Corps front, and this evening one new division (232) whose presence in the BOUGHAVESNES area had been suspected. The arrival of this Division which has been in the line near VERDUN until recently does not necessarily mean a strengthening of the front, but rather the relief of very tired troops by an average division capable of continuing the withdrawal but probably not capable of an attack.

It appears from the statements of prisoners taken on the right flank that the enemy has laid plans to place a mine in a pump in a village between NESLE and the front. Other analogous arrangements have been made and precautions should be taken accordingly.

Extracts from III Corps Summary dated 30.8.1918.

OPERATIONS. Considerably more opposition has been met with to-day than during the last few days, due partly no doubt to the new Division 232 opposite us. In places a lot of fighting has taken place and we have taken 150 prisoners and 2 field guns.

On our left FRICOURT has been taken. It is doubtful if MORVAL? is in our hands, and the statement that it had been captured yesterday is incorrect.

Bailleul is reported to have been recaptured.

GENERAL. It seems pretty certain that the opposition met with to-day is due to fresh troops being in the line, and not to any change in policy on the enemy's part.

PRISONERS. The total number of prisoners through Corps Cages or C.C.S. since August 22nd is as follows :-

Unwounded	80	Offs.	3574	O.Rs.
Wounded	10	"	524	"
	90		4098.	

German Traps (From 4th. ARMY Summary 30/8/18.)

The following types of traps have been reported recently

- (a) A large bomb actuated by a trip wire concealed in a wire barricade placed across the road.
- (b) An object resembling a small book lying on a window ledge. When picked up the object exploded, blowing off the hand of the finder.

H5257

31st August

Casualties

Total Casualties for month of August as compiled from
weekly 213.

	OF	O.R.
Killed		6
Wounded	2	27
	<hr/>	<hr/>
	2	33
	<hr/>	<hr/>

Keith Harrison Lt
to 8th of Abde. N.A.

APPENDIX

2001

(878) Wt. W8811/M2754 (E. 1851) 25,000 Pads. 10/17. M. & B., Ltd.

Army Form C348
(Pads)

MEMORANDUM.

From *29th Aust Inf Bde.*

To *Capt S. Smith*

Date *18/7/18* 191

HEADQUARTERS
NINTH INFANTRY BRIGADE
18 JUL 1918
S.M. NO. *18/234*
A.I.F.

*Herewith plans showing
front line of this Brigade.*

[Signature]
map.

Sgt. [Signature]
19.7.18

[Signature]

OPERATION ORDER No. 99.

The attack will be continued on 1st September, 1918, at 5 a.m.

The 11th A.I. Bde will carry out the attack.

Objective is trench system from C.22.central to I.4.a.central

Artillery support will take the form of an Advancing Barrage and ~~Staggering Barrage "C"~~

"A" Barrage.

Start Line C.20.c.65.00. to I.3.a.45.60.

"B" Barrage 200 yards East of this line.

Northern boundary of barrage - C.20.c.65.00. to C.16.d.0.6
Southern " " " " I.3.a.45.60 - I.5.b.0.6
Final barrage line - C.16.d.0.6. C.22.c.8.0. C.28.b.15.85
C.28.b.45.25. I.4.b.0.9. I.4.a.75.60.

Zones as follow:-

- "A" Barrage } 7th A.F.A. Bde 18-pdrs only North of East and West grid between Squares C.21 and C.27.
" " } 8th A.F.A. Bde 18-pdrs only Squares C.27.a & b. and C.28.a. & b.
" " } 3rd Aust. Army F.A. Bde 18-pdrs only South of East and West grid through C.27 & C.28.central.

"B" Barrage. - 4.5" Hows of 7th, 8th & 3rd Bdes, A.F.A.

"C" Barrage - 14th Army Bde, R.F.A. - whole Zone.

"A" and "B" barrages open at Zero on their respective start lines; remain 5 minutes, then advance at rate of 100 yards in 5 minutes to Final Barrage Line, and on arrival Cease Fire.

"C" Barrage will open at Zero on line North and South Grid through Squares C.27. and C.28.central - jump to KASSA TRENCH - YASSA TRENCH - DELVA TRENCH - jump to Final Objective; jump to Final Barrage Line, remain 5 minutes and Cease Fire. - All jumps to take place 10 mins before the arrival of "A" barrage.

Ammunition:

Table with 3 columns: Unit (A, B, C Bge), Ammunition Type (18-pdrs, 4.5" Hows), and Amount (25% A, 75% AX, 106 Fuze, etc).

Harassing fire subsequent to the barrage will be arranged direct with Brigades by G.O.C. Infantry Bde.

Heavy Artillery will bombard KASSA TRENCH - DELVA TRENCH from Zero to Zero plus 5 minutes.

Final Objective - Zero plus 5 mins to Zero plus 15 mins.
Zero plus 15 mins to Zero plus 60 mins - Trenches, valleys and tracks in C.17.c.2.3. and village of MOISLAINS.

ACKNOWLEDGE.

Headquarters:
1st August, 1918.
Signed at 8.15 p.m.

W.D. Neekolls Major, R.A.,
B.M., R.A., 3rd Aust. Division

212
134

134

APPENDIX

Distribution.

	<u>No.</u>
3rd Aust Div. G.	1.
7th A.F.A. Bde.	2/6.
8th A.F.A. Bde.	7/12.
3rd Army Bde AFA.	13/17.
14th " " RFA	18/22.
50th D. Art.	23.
2nd D. Art.	24.
51st Bde, R.G.A.	25.
137th H. Bty.	26.
9th A. I. Bde.	27.
10th A. I. Bde.	28.
11th A. I. Bde.	29.
B.M. R.A.	30.
S.C. R.A.	31.
R.A. Sig. Ofcr.	32.
R.O., R.A.	33.
Liaison Ofcr, H.A.	34.
War Diary.	35/37.
File.	38.

A.H.

S E C R E T.

COPY NO.....

THIRD AUSTRALIAN DIVISION ORDER NO.105.

Ref. Map : 62.D. S.E. 1/20,000.

1. On night 10th/11th August, 1918, Third Australian Division will relieve Fourth Australian Division South of River SOMME, with main VILLERS BRETONNEUX Road as Southern Boundary and the North bank of SOMME Canal as Northern Boundary. The 4th. Aust. Div. are taking over from Div. immediately North of SOMME.

2. (i) The 10th. Aust. Inf. Brigade, plus 2 sections 10th. Aust. M. G. Coy, 2 sections 10th. Field Coy. Engineers and 6 Tanks, will execute an encircling operation, moving East along main VILLERS - BRETONNEUX Road to AVENUE CROSS (R.28.c.central) - thence Northerly, and will occupy and organise defensively, facing both East and West with three Bns. in line and one in reserve in vicinity of LA FLAQUE, the general line from AVENUE CROSS to cross-roads at R.9.a.9.2. and linking at L.33.c.1.9. with 13th. Aust. Inf. Brigade, who are carrying out a similar movement North of the SOMME from L.13.central.

(ii) Head of 10th. Aust. Inf. Bde. will pass LA FLAQUE at 9.30 p.m. night 10th/11th. August.

(iii) The 2nd. Aust. Division is conforming to the movement of 10th. Aust. Inf. Brigade and will link up at AVENUE CROSS.

3. Recognition signal will be two White flares fired in quick succession from the same pistol.

4. Heavy Artillery during the movement will bombard all roads and approaches not less than 1,000 yards East of the line in 2.(i).

5. Relief of Brigades of 4th. Aust. Division on BLUE LINE on night 10th/11th. August will be as follows :-

(i) 9th. A.I. Bde will relieve 12th. A.I. Bde on Right.
11th. -do- will relieve 4th. -do- on Left.

(ii) Inter-Brigade Boundary will be road running East and West through R.19.a.central (approx).

(iii) No troops of 9th. or 11th. Aust. Inf. Bdes. will move forward of Valley running through Q.14.b. & d. before 9.30 p.m.

6. Relief of Artillery covering 4th. Aust. Division present Front by 3rd. Aust. Divisional Artillery will be arranged direct by C.R.A.

ACKNOWLEDGE BY WIRE.

DISTRIBUTION. P.T.O.

W. H. Stammers
for
Lieut.-Colonel.
General Staff.

214

INDEXED

134

Appendix

Distribution.

Copy No. 1	"A.Q"
2	C.R.A.
3	C.R.A.
4	3rd. Aust. Div. Signal Coy.
5	9th. Aust. Inf. Brigade
6	10th do.
7	11th do.
8	A.D.M.S.
9	3rd. Aust. M.G. Bn.
10	3rd. Aust. Pioneer Bn.
11	Troop, Light Horse
12	Platoon, Cyclist Bn.
13-14	AUST. CORPS.
15	1st. Aust. Division
16	2nd do.
17	4th do.
18	5th do.
19	58th. Division
20	5th. Tank Brigade
21	3rd. Squadron, A.F.C.
22-24	War Diary.
25	File.

NARRATIVE of EVENTS.

APPENDIX.

Information having been received that an Offensive was to be carried out on the Corps Front, Battery Positions were selected just in rear of HAMEL, and the carting of ammunition started at once. On the night 6/7th. August, 4 guns per battery were put into position and on the night before ZERO DAY the remaining two guns were sent across. These Battery positions were all in the open but in crop land, and no great difficulty was experienced in camouflaging them.

At 4.20 a.m. on 8th. August the barrage opened and with the exception of one battery away in rear, which was $\frac{1}{2}$ minute early, the opening was excellent.

At that time there was a slight ground mist, and this, when helped by smoke and fumes, soon made laying very difficult, and aiming posts in most cases to be brought close to the guns.

That the positions had not been spotted, or that the attack was quite unexpected now became evident, as there was no retaliatory action on the Hun's part, and not a casualty was experienced by the Brigade during the actual barrage.

Soon after the barrage opened traffic of all sorts began to move up, tanks presenting a weird appearance in the dim light; pontoon wagon, horse transport, stretcher bearers coming back, and at Zero plus 2 hours, when the guns commenced to go forward, the whole area seemed alive, and as the ground mist was then very thick it a sense of distance to picture spread before.

At 8.20 a.m., batteries were due to move forward, and a few minutes before that time, guns teams appeared, hooked in, and the batteries were off.

They advanced along the river road just south of the SOMME and it was not known at the time that the situation then, on the left flank was very obscure, the British Division having been held up and had only advanced a few hundred yards. The road therefore, by which batteries were proceeding was under direct observation on the high ground in the vicinity of MALARD WOOD. The road was subjected to heavy shell fire from enemy batteries in this vicinity, the batteries and in fact all artillery using this road, were very fortunate in sustaining but few casualties.

The Battery Commanders, being well in advance of their Batteries, considerable difficulty was experienced by Battery Leaders in keeping touch, owing to very bad visibility, and the great congestion of traffic.

The Batteries, however, arrived in good time in the area in which they were to occupy positions which were in vicinity of HAMILTON WOOD. The 108th. Battery came in for bad shelling from a battery in enfilade near MALARD WOOD, and sustained three killed and six wounded. 29th. Battery, however, eventually silenced this gun, but owing to communication breaking down between the O.P. and the Battery, the critical moment, the enemy were able to withdraw it. 3

By this time the Infantry had advanced again for the capture of the Second Objective, and as the hostile battery area had been captured, there was no shelling, except of an erratic and scattered nature, and as the further advancing and objectives was safely made, hostile shelling practically ceased.

By putting O.Ps. well forward, Batteries were able to get good shooting, and it is the opinion of all Battery Commanders that too close a touch cannot be maintained with the infantry, as it

apparent that hostile machine guns could only be silenced by artillery fire, tanks of course not being available.

The Battery Commanders, and most of the Batteries while in this approach march, came under hostile machine gun fire, and this would point to the necessity of close liaison work and information being supplied by the Infantry.

News began to filter through at this time that the situation on the left was still obscure, and during the afternoon the batteries co-operated in a shoot on the CHIPILLY POCKET, it being understood at the time that the troops on the North of the River were forcing the enemy remaining there down towards the River, and that Artillery fire directed in the Pocket would overcome further resistance. This stunt evidently had the desired effect as news came through later in the evening that the situation North of the SOMME had been restored and that all objectives there had been gained.

It was predicted that the Batteries during the night would be subjected to very heavy bombing, but the night passed most unevenly, and at 9.15 p.m. on the morning of the 9th. information was received that the Brigade would be relieved by the 12th. Aust. Army Brigade, and would withdraw to P.14. in the vicinity of HAMEL.

The relief was complete by 1 o'clock, and the batteries withdrew to the appointed place.

At noon next day, a warning order was received that batteries would, in all probability be sent into the line again that night. At 3.10 p.m. orders were issued from D.A.H.Q., that we were to relieve the 11th. Brigade, whose batteries were in the SUZANNE WOOD Area, about 2000 yards East of the positions that had been vacated the day before.

The relief was complete by 6.10 p.m., but owing to communication to the rear being very bad, it was impossible to get the information through.

The enemy at this time appeared to be using only one gun on the front. This gun was evidently placed in R.18.b. and confined its activity to the main AMIENS-ST.QUENTIN ROAD and SUZANNE WOOD. This was practically the only form of shelling which batteries were subjected to, while in that area, but the enemy aircraft was exceedingly active during the night, dropping bombs and machine gunning the roads. At the Wagon Lines he was particularly active, the 108th. Battery having 21 horses killed and wounded.

In this area, there were a great number of enemy guns, which were used against him, a total of 655 rounds and 400 5.9" and 400-77mm. being fired at him on the 11th. and 12th. This firing gave everyone the keenest satisfaction, and it is hoped that the 5.9s. especially caused the Hun as much discomfort, as he has frequently caused us. The 11th. and 12th. August, passed most uneventfully, with the exception of a small barrage put down as a covering fire for the Infantry for the capture of GATEAUX WOOD.

Instructions were received on the afternoon of the 12th. that we were to be relieved by the 17th. British Division. This relief progressed very slowly, and the batteries were not clear of the positions until 8.30, when they returned to wagon lines in the vicinity of FOULLOY. On this night and on the two previous ones, there was a considerable amount of hostile bombing, but the batteries reached the wagon lines without further casualties.

At 2.30 a.m. on the morning of the 13th. instant, instructions were received from D.A.H.Q. that Brigade Commanders would be at 5th. Aust. D.A. H.Qrs. at 9.30 a.m., and that the batteries would rendezvous in V.23.d. near CAIX by 2 p.m. that day.

134 On arrival at 5th. D.A.H.Q., information was that the offensive was to be continued South of AMIEN-CHAULNES, its primary objective being the capture of the high ground surrounding CHAULNES. A motor car was made available to take Brigade Commanders to ROSIERES, and instructions were left for batteries en route for Battery Commanders to proceed to the same place. On arrival at the rendezvous, the Battery Commanders pushed on ahead, and batteries having watered and fed, moved on in the same direction.

It was found, on arrival at ROSIERES, that the ground to be reconnoitred was considerably farther on near MEHARICOURT, and so Brigade Commanders went forward leaving instructions for B.Cs. to come on the the Sugar Refinery about 500 yards East of ROSIERES. Three Brigade Commanders having thoroughly reconnoitred the areas allotted to them, sent back for B.Cs. and positions were selected to the North of MEHARICOURT. It was thought at the time, that the attack was to come off on the morning of the 15th., and as 600 rounds per gun 18-pounder, and 500 rounds per 4.5" how. had to be dumped on the position; ammunition carting was started that night. The following day, however, instructions were issued stating that the offensive was delayed one day, and further orders were received that we should stand fast.

This order to stand fast was the only piece of information we received for 24 hours, and on the morning of the 15th. instructions were issued that a guard of one man only would be left on the positions, and the remainder withdrawn to the Wagon Lines.

From this time, until noon on the 16th. no further information was received from any source until the C.R.A. 3rd. Aust Division came down, and ordered the withdrawal of the Brigade to the FOULLOY Area. Batteries immediately withdrew, and were in the Wagon Lines by 7 p.m. on the night of 16th.

About the only hitch in the whole of these operations was the giving of a wrong co-ordinate for a report centre, and this caused considerable delay, and to a great extent was responsible for the non receipt of information.

Owing to the frequency with which Headquarters of all units, and especially battalions are forced to change their locations, and the necessity of having communication between Artillery Brigades and Battalions, the question of where the offensive will be continued over any longer period than the recent ones becomes a very serious one, and as a suggestion, I think that the difficulty of such communication would be greatly lessened by a large supply of signal rockets for the transmission of Liaison messages.

mine

25-8-1918.

- 4.55 a.m. Orders received from B.M., 3rd. Aust. D.A.H.Q. by 'phone that the Brigade would probably have to move forward at any moment to take up positions in the vicinity of L.9. and for the C.O. to get into touch with the 11th. A.I. Brigade. Inf. Bde. was rung up and got into touch with. Batteries were accordingly warned.
- 6.30 a.m. Instructions were received from 3rd. D.A. that the Bde. was to be advanced North of the SOMME, and Batteries were to go into action in the vicinity of BRAY, as soon as possible. Batteries were informed accordingly, and the Battery Commanders were instructed to report to the C.O. at 11th. A.I. Bde. H.Q. at L.14.d.3.7
- 7.15 a.m. 'Phoned B.M. and informed him that Headquarters were leaving and cutting out, and would report on arrival at Inf. Bde. H.Q. Was informed that we were to be in Liaison with 11th. Inf. Bde
- 9.5 a.m. Reported to 11th. Inf. Bde., and received the Tactical Situation from the G.O.C. and was informed that it was intended that the 11th. Bde. advance their line by three successive lines, approximately 1,000 yards apart. The co-ordinates of these lines were obtained.
- 9.50 a.m. Reported arrival to 3rd. D.A. H.Q.
- 10.10 a.m. Instructed Battery Commanders as to the tactical situation as outlined by the G.O.C. Inf. Bde, giving them all available instructions, and instructing them to select and occupy positions in L.10.a or L.16.b. The co-ordinates of the positions occupied, as later on reported by Batteries were as follow:-
- | | |
|------------|---------------|
| 29th. Bty. | L.16.b.20.10. |
| 30th. " | L.16.b.70.80. |
| 31st. " | L.16.b.55.20. |
| 108th. " | L.16.b.50.70. |
- 10.50 a.m. Conferred with G.O.C. Inf. Bde. Was informed that M.G.s were giving trouble from W. edge of VAUX WOOD, and fire was requested to be turned on to this.
- 12 noon. Major S.J. WALKER, D.S.O., O.C. 30th. Battery reported wounded. Subsequently evacuated.
- 12.30 pm. Lieut. Col. JONES, C.O. 290 Bde. R.F.A. reported at Bde. H.Q. In accordance with instructions, he rang up the C.R.A. who informed him that his Brigade was to go into action to cover the same front as the 8th. P.A. Bde.
- 1.5 p.m. O.C. 31st. Battery reported his Battery in action. He was instructed to put over 25 rounds on to the W. edge of VAUX WOOD, where enemy Machine Guns had been active.
- 4.10 pm All Batteries were reported in action.
- During the afternoon, owing to a forced retirement by the Division on our left, no advance was made by us. Batteries selected alternative positions to retire to in case of a retirement, in L.9., 19., and 26.
- O.C. 31st. Bty reported and 108th. Btys reported enemy shelling about 5-6 p.m. - A 20 b. and d, A.26.d. 'J' Copse and re-entrant down G.3.a. There was no shelling of SUZANNE.
- 8 p.m. Infantry attempted to advance their line, but encountered a good deal of resistance. Batteries assisted with

26-8-1918

Advance was very slow during the day, and in the late afternoon, the line ran approximately through MURRAY WOOD, G.9.a. and 'B' Line.

During the day all Batteries carried out harrassing fire on areas and targets as asked for by the 11th. Inf. Bde.

9.35 p.m.
to
11 p.m.

Harrassing fire was put down, creeping east in three phases on area bounded by A.21.d.5.0. - A.27.d.4.8. - G.4.cent. - A.29.d.0.3. - A.23.c.0.0. - under which the Infantry advanced to the line through A.27.c. to G.4.cent.

108th. Battery fired 170 rounds in connection with this operation - in the form of a creeping barrage.

27-8-1918.

All Batteries had forward O.P.s established at dawn to catch opportunity targets and shoot a concentration as required by 11th. Inf. Bde.

10 a.m.

Orders were received from the C.R.A. to move the Brigade forward, Battery positions to be in the vicinity of A.27.c. and d. or G.3.a.

Positions were accordingly reconnoitred by O.s C. Btys. Batteries were ordered forward, one at a time, in the order 31st., 29th., 30th. and 108th.

11.30 a.m.

Situation as follows:- 11th. A.I. Brigade holds from A.29.cent. to A.28.a.65.50. 174th. Bde. hold from A.23.c.0.0. Black and Bridge streets obscure. We hold our old F.L.T. from A.23.cent. to A.16.b.7.9., and probably hold from A.12.c.0.5. to A.11.d.6.4. 12th. Div. claim to hold A.12.c.8.0. to A.6.a.6.9. Light Horse Patrols in FARGHY WOOD, A.29.a.

2 p.m.

31st. Bty moved forward - into action at 3.25 p.m.

to

29th. moved forward at 3.25 p.m. and 30th. and 108th.

4.30 p.m.

at 4.30 p.m.

5.30 pm.

11th. Inf. Bde reported enemy heavy guns in A.29.b and A.23.d., this information being obtained from prisoners. Batteries were instructed to keep these localities under fire.

5.50 pm.

A train was reported to be moving south/^{east} through H.3.d. and H.9.b. Heavies were informed.

8 p.m.

New Brigade Headquarters were established with H.Q. 9th. A.I. Bde. at L.4.d.4.7.

10 p.m.

Enemy were reported to be still in FARGHY WOOD, so G.C.C. 9th. Bde. requested a bombardment of that area and MILL from 3.30 a.m. to 4 a.m. by 7th. and 8th. F.A. Bgdes. 7th. Bde. took from A.29.a.00.65 to A.29.a.50.60. to A.29.a.72.20. to A.29.a.00.20.

8th. Bde. on A.29.a.00.20. - A.29.a.72.20. - A.29.cent. - round S. edge of cemetery to A.29.c.00.75.

Rate of fire - 1 r.p.g.p.m.

No fire to be placed west of Grid Line between A.28. and 29 and no fire west of the eastern edge of bombardment area until after 4 a.m.

11 p.m.

FARGHY WOOD reported to be in our possession, so the bombardment set down for 3.30 - 4 a.m. was cancelled.

28-8-1918.

6.22 a.m.

Supported the advance of 9th. Inf. Bde. to final objective which was duly gained., viz: A.24.c.3.3. - A.30.c.2.9. - A.30.a.5.5. - A.30.a.0.4. - A.29.d.6.5.

- 8.30 a.m. 7th. F.A.Bde. to keep harrassed Chalk Pit and two quarries in H.l.c. and quarry in H.l.d., and 29th. to harrass high ground in H.2.a., 30th. SUMMIT COPSE, and 31st. OBSERVATION WOOD.
- 8 a.m. - Position on left of our front obscure. Orders were received not to shoot west of N. and S. Grid line between B.26 and 27. except in the case of actually observed enemy movement.
- 4.15 p.m. Railway Train reported seen in H.6.a. CLERY sur SMOYNE, travelling south west. Passed on to Heavies.
- 4.30 p.m. Continuous traffic was reported on road in H.4.c. and d. also large bodies of Infantry in I.7.a. and b. Heavies advised.
- 5.35 p.m. Orders received to move to A.27.c.2.4.
- 6 p.m. All Batteries in action in H.l.a. and G.6. and firing. Communications established to all Batteries. O.C. 31st.Bty reported our men in B.29. Enemy engaged in G.25. Wagon teams moving east of BERLIN WOOD. Guns probably in I.2.c.7.c.
- 6.25 p.m. Our troops appear to be going well in H.4. and 5 a, but not yet on Hill 110.
- 6.30 p.m. Infantry Scouts reported to be out at B.28.b.9.5.
- 6.45 p.m. Our men reported to be arriving on crest in H.4.b. and patrols at end of GLAND VALLEY.
- 6.58 p.m. 31st.Battery reported eight prisoners coming down in charge of an Infantryman at Eastern end of GLAND VALLEY.
- 7.15 p.m. No fire to be placed west of N. and S Grid through H.6 and 12 cent. Does not apply along grid between B. and H.
- 7.25 p.m. Enemy seen in B.24. a and b. 28.Cent (In rear of Hill 110 shelled by enemy.

30-8-1918.

- 12.12 a.m. Wire received from 3rd.D.A.H.Q. ordering Batteries to be moved forward into B.28. Batteries were instructed accordingly and told to select positions in B.28 to cover the Infantry who are dribbling out during the night to a line N. and S. through C.25.central. No information at all received of the Div. on our left, but yesterday afternoon, a M.G. Officer (Australian) moved up N. of 62c Map to ascertain the situation up there. He found 2 platoons of men without officers in B.17.d. and a few men in B.17.b., a Coy. H.Q. in B.11.b. and an 18-Pdr. Battery in action about B.9.d.
- 5 a.m. Batteries moved forward to vicinity of B.28.b.
- 7.40 a.m. From 9th. A.I. Bde. - Runner just in with a message timed 6 a.m. Infantry established on Red Line, but if they take the Green Line without Artillery Barrage, it will mean heavy casualties as he is very strongly held with M.G.s
- 8.7 a.m. Machine Gun reported firing from our Final Objective. High ground generally east of of Final Objective, also C.19.cent. to be harrassed. Orders passed to 31st.Bty. by Lamp from Bde. H.Q.
- 9.50 a.m. M.G.s active from C.19.b. and d. Ordered to be harrassed.

APPENDIX.

30-8-1918.

- 1.15 p.m. 4.5" Hows reported to be shooting short in B.29.d.2.3
Located later in day as 'D' Bty., 250Bds.R.F.A.
- During the day, excellent work was done by means of
Visual signalling, and communication was quickly got
with Batteries. Visual work today warrants special
mention.
- 8.15 p.m. Infantry not fully established on line of Final
Objective - N. and S. Line through C.25.
- 1.15 p.m. Lieut. GOODCHILD, with 33rd. Batta. reports our
Infantry approaching crest in C.27.cent., and later at
- 1.22 p.m. reported that 33rd. Btn. had received orders to
take up line C.15.,16.,17. Cent, facing North, and
to hold line 17.Cent to 23.Cent. also.
- 2.5 p.m. Enemy reported to be forming up in C.22.d. Batteries
turned on.
- 5 p.m. Infantry held up by H.G.s. in C.21.
Hows. put on to Trench System in C.15.d. and on
Quarry Farm and Trench Crest. 18-Prs. put on
C.21.a.7.0. N. and S. Line and searching west.
- About 4.30 p.m Batteries commenced to move forward
and occupied positions in vicinity of B.30.d.
- 8.12 p.m. 30th. Battery reported Battery in action, but being
badly strafed.

War Diary file

1914
 1915
 1916
 1917
 1918
 1919
 1920
 1921
 1922
 1923
 1924
 1925
 1926
 1927
 1928
 1929
 1930
 1931
 1932
 1933
 1934
 1935
 1936
 1937
 1938
 1939
 1940
 1941
 1942
 1943
 1944
 1945
 1946
 1947
 1948
 1949
 1950
 1951
 1952
 1953
 1954
 1955
 1956
 1957
 1958
 1959
 1960
 1961
 1962
 1963
 1964
 1965
 1966
 1967
 1968
 1969
 1970
 1971
 1972
 1973
 1974
 1975
 1976
 1977
 1978
 1979
 1980
 1981
 1982
 1983
 1984
 1985
 1986
 1987
 1988
 1989
 1990
 1991
 1992
 1993
 1994
 1995
 1996
 1997
 1998
 1999
 2000
 2001
 2002
 2003
 2004
 2005
 2006
 2007
 2008
 2009
 2010
 2011
 2012
 2013
 2014
 2015
 2016
 2017
 2018
 2019
 2020
 2021
 2022
 2023
 2024
 2025

УБЫИДИУ

101

13 (SECRET)

Copy No. 5

THIRD AUSTRALIAN DIVISIONAL ARTILLERY.

----- OPERATION ORDER NO. 76 -----

C.O.	APL
ADJ.	
O.O.	GR

1. The enemy's position in the valley running NE and SW through WARFUSEE-ABANCOURT will be subjected to a gas bombardment and concentration on a date to be notified later.
2. The 4.5" How. Batteries of Right Group, from forward positions to be occupied on receipt of orders from this Headquarters, will carry out the gas bombardment. The two Northern areas, colored RED, marked B Div. Field Arty on Tracing "A" attached hereto, are allotted to the Right Group.
3. ZERO HOUR will be at 2.30 a.m.
4. Details of bombardment by 4.5" Hows are as follows:-

Starting at Zero Hour.

BCG - 4 rds p.g.p.m. for 2 mins	- 96 rds.	
BCG - 3 " " " 3 "	- 108 " ----	204 rds.
Rest for 10 minutes.		
BNC - 2 " " p.m. " 30 mins	-----	720 "
Rest for 10 minutes.		
BNC - 2 rds p.g.p.m. for 30 mins.	-----	720 "
Rest for 20 mins.		
BNC - 2 rds p.g.p.m. for 20 mins.	-----	480 "
Rest for 20 mins.		
BNC - 2 rds p.g.p.m. for 20 mins.	-----	400 "

<u>TOTAL.</u>		2604 "

5. In conjunction with gas bombardment, all 18 pdrs of the Right and Left Groups, whose arcs of fire and range permit, will harass Area 2 shown on Tracing "B" attached, at the following times:-

Zero to Zero plus 3 mins.	- 4 rds p.g. p.m.
Zero plus 55 mins to Zero plus 58 mins.	- 4 rds p.g. p.m.
Zero plus 135 mins to Zero " 138 "	- 4 " " "
Zero plus 4 hrs 30 ms to Zero plus 4 hrs 34 mins.	--- 4 " " "

Ammunition in usual proportions. - 106 fuze where available.

6. Night of bombardment will be notified by wire from 3rd D.A.H.Q. as follows - "PUSH UP". On receipt of this wire, 4.5" How. Batteries will be immediately advanced into action at forward positions for the purpose of this operation.

7. Hourly wind readings will be sent to Groups from 8 p.m. to 5 a.m., and operation will only take place if wind is between the angle running NE through N and W to S.

P.T.O.

8. Where conditions permit, Howitzer Batteries will be withdrawn to their normal positions immediately on completion of the bombardment. Should this not be possible, Batteries are to be back in action in original positions immediately after the commencement of the hours of darkness on the night following the date of this operation.
9. Heavy Artillery are also taking part in the bombardment.
10. Orders have already been issued regarding the dumping of ammunition.
11. Watches will be synchronised with Groups on the day on which operation is to take place.
12. Acknowledge by wire.

W. A. Nicholls

Headquarters.
26.7.1918.

Major, R.A.,
B.M., R.A., 3rd Aust. Division.

Distribution:-

	<u>Copy No.</u>		<u>Copy No.</u>
3rd Aust. Div. G.	1	3rd Aust D.T.M.O.	12
Right Art. Grp.	2/4	B.M., R.A.	13
Left " "	5/7	S.C., R.A.	14
Reserve Art. Bde.	8	R.A. Sig. Ofcr.	15
Right Inf. Bde.	9	R.O., R.A.	16
Left Inf. Bde	10	War Diary.	17/19
		FILE - 20.	

ADDENDUM No. 1 to OPERATION ORDER No. 76.

4.5" Howitzer Batteries of Right Art. Group at Zero plus 4 hours 30 minutes will concentrate for 4 minutes on Area 2, Tracing "B".
Rate of fire - 2 rds per how per min.
Ammunition - BOG.

W. A. Nicholls

Headquarters.
26.7.1918.

Major, R.A.,
B.M., R.A., 3rd Aust. Division.

Health Report for Month August
1918

Average Sick Parade . . . 3 per Battery
per day.

Prevalent Diseases. Boils + Septic
sores. Occasional cases of
Influenza with rise of temperature
for overnight.

The General Health is excellent.
particularly so amongst the Gunners on
the Battery Positions during the offensive.
The epidemic of Diarrhoea which was
prevalent during the month of July has
ceased in this Brigade.

M. Lawrock
Capt RMD & FAB

For the month of Aug 1918

A. During the month of August, the above brigade has taken part in the general offensive. The R.M.O. attaches himself to whatever battery is most centrally situated and attends to sick and wounded at battery positions.

- B.
1. The men generally are of good physique, and as a rule, experience no difficulty in carrying out the tasks allotted to them.
 2. Diseases most prevalent are boils and septic troubles. On the whole the general health is good.
 3. Rations are of good quality, and allowance is adequate. Improvised cookhouses are constructed, the same admitting of men receiving considerable variety.

When convenient, changes of underclothing can be obtained at baths.

4. When on the march, drivers are always mounted, but amongst the men who have to walk, complaints of sore feet resultant on a hard day's march are conspicuous by their absence.
5. During the month there has been no opportunity for either a medical or dental inspection. These will be undertaken as soon as convenient.

C. Each battery has attached to it a trained sanitary detail, and a water detail man.

The former detail attends to the cleanliness and disinfection of latrines cookhouses etc.

They also attend to the construction of incinerators, urine pits, grease traps, & latrines.

When the source of water supply is other than a military water tank, the water detail make periodical tests, see that the water is properly chlorinated in the water carts.

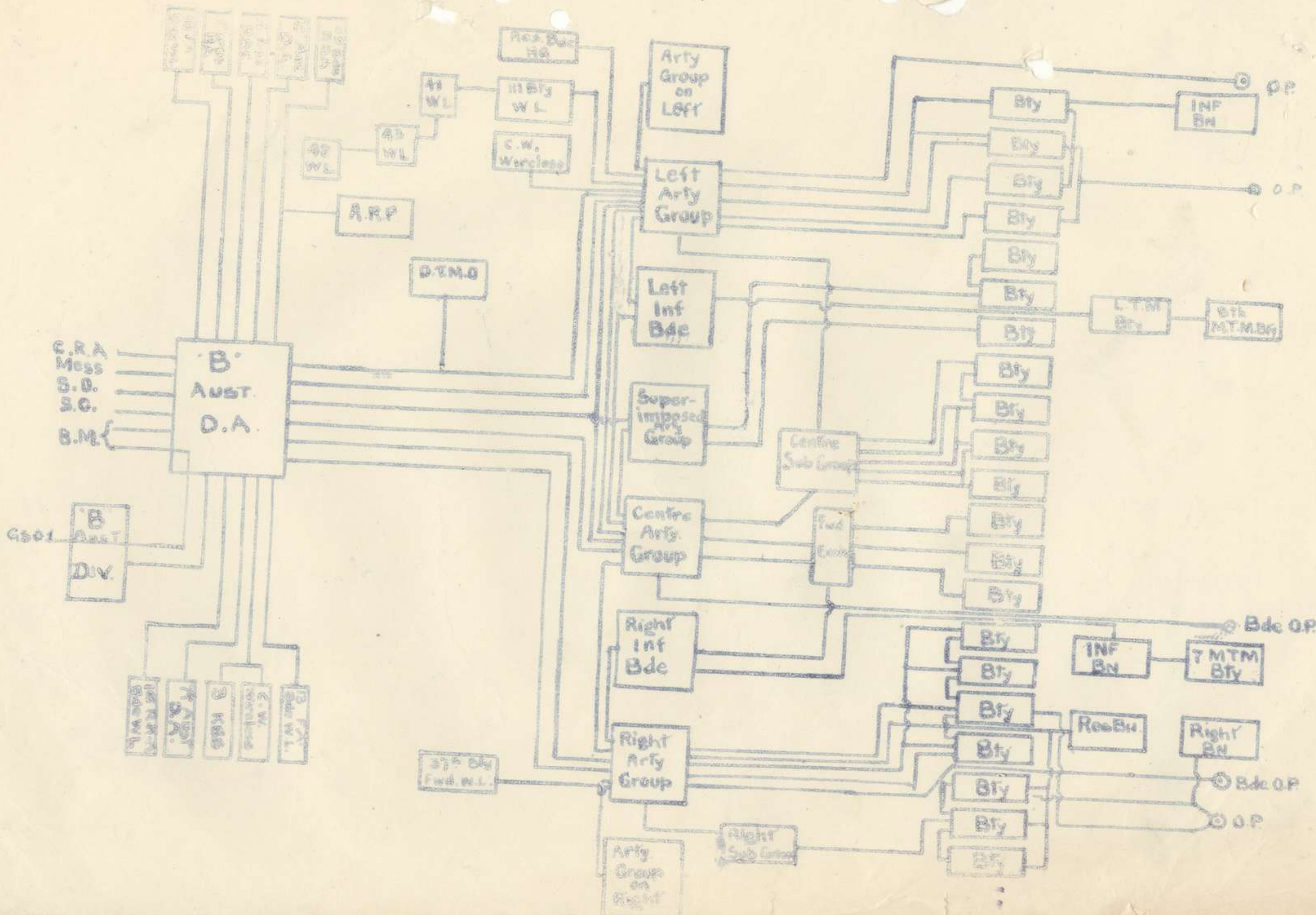
Periodical inspections of the water carts is also part of their work.

They also arrange for men in detached positions to have a constant supply of chlorinated water.

The establishment of a "Rest Post" has been out of the question during the past month.

9/8/18.

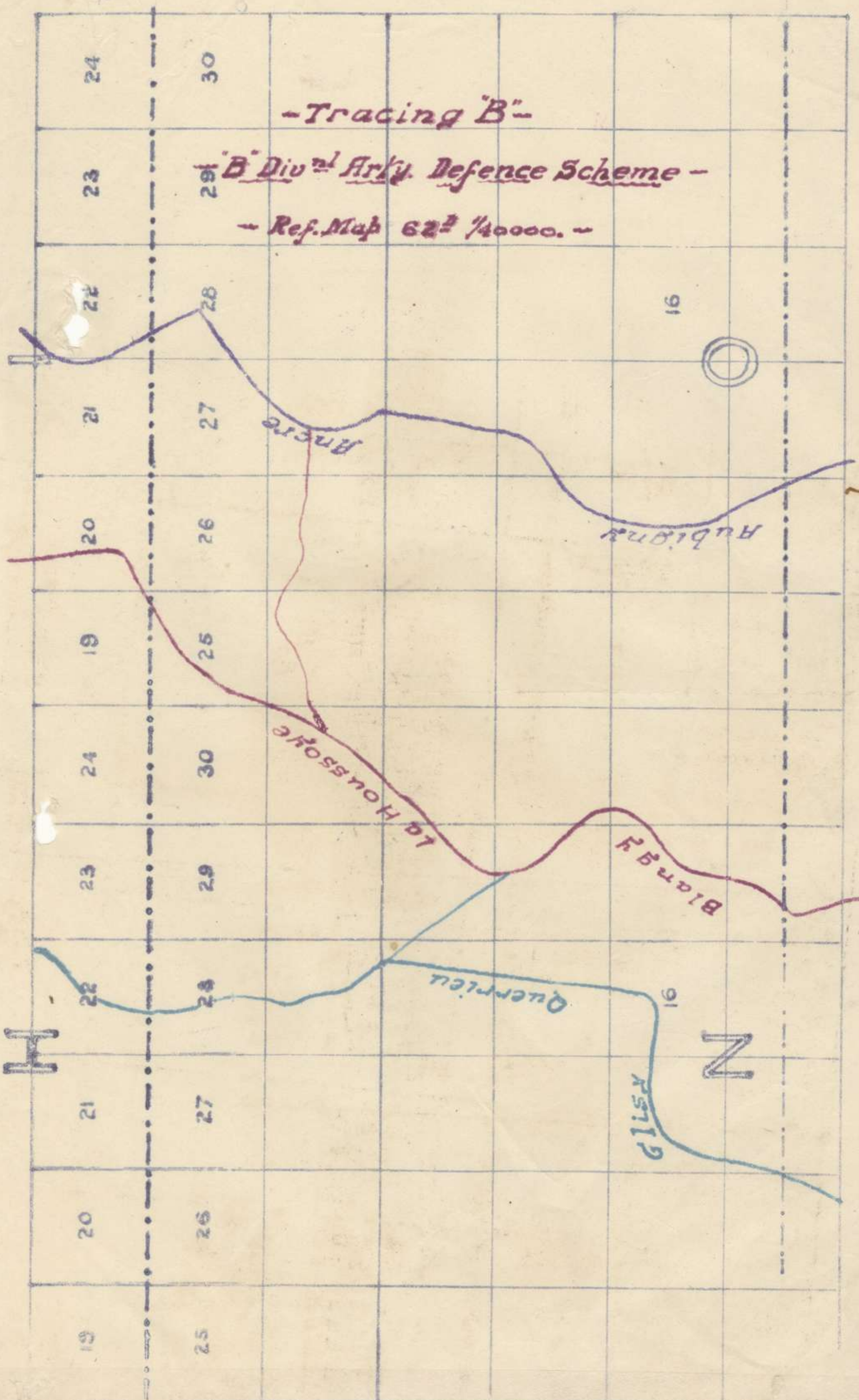
M. Lawrook
Capt
R.M.O. S.P.A.B.



134
 "B" DIVISIONAL ARTILLERY DEFENCE SCHEME.

APPENDIX 15.

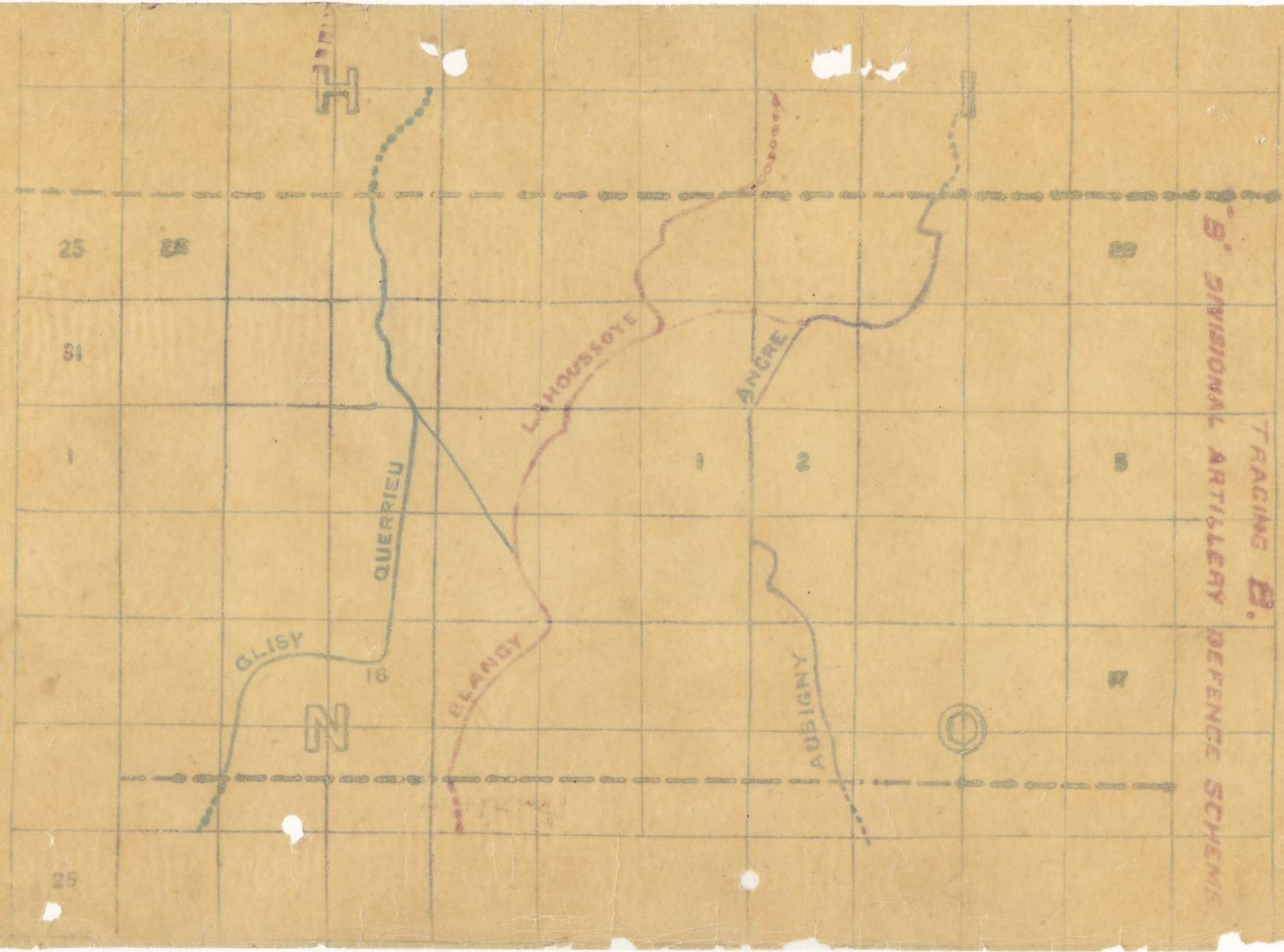
227



APPENDIX 229

134

STAFF OFF. 1-1918



"B' DIVISIONAL ARTILLERY DEFENCE SCHEMES" TRACING B.

229

134

230

134

ATTACHED 230

TRACING A
GAS BOMBARDMENT

Sheet 62^B S.E.
Scale 1/20,000

P

29

30

35

36



134

230

-TRACING B-

-Field Arty Concentration Areas shown Red-

Sheet 62^B S.E.
Scale 1/20,000

P

29

2 30

(B DIV)

35

36



134
13

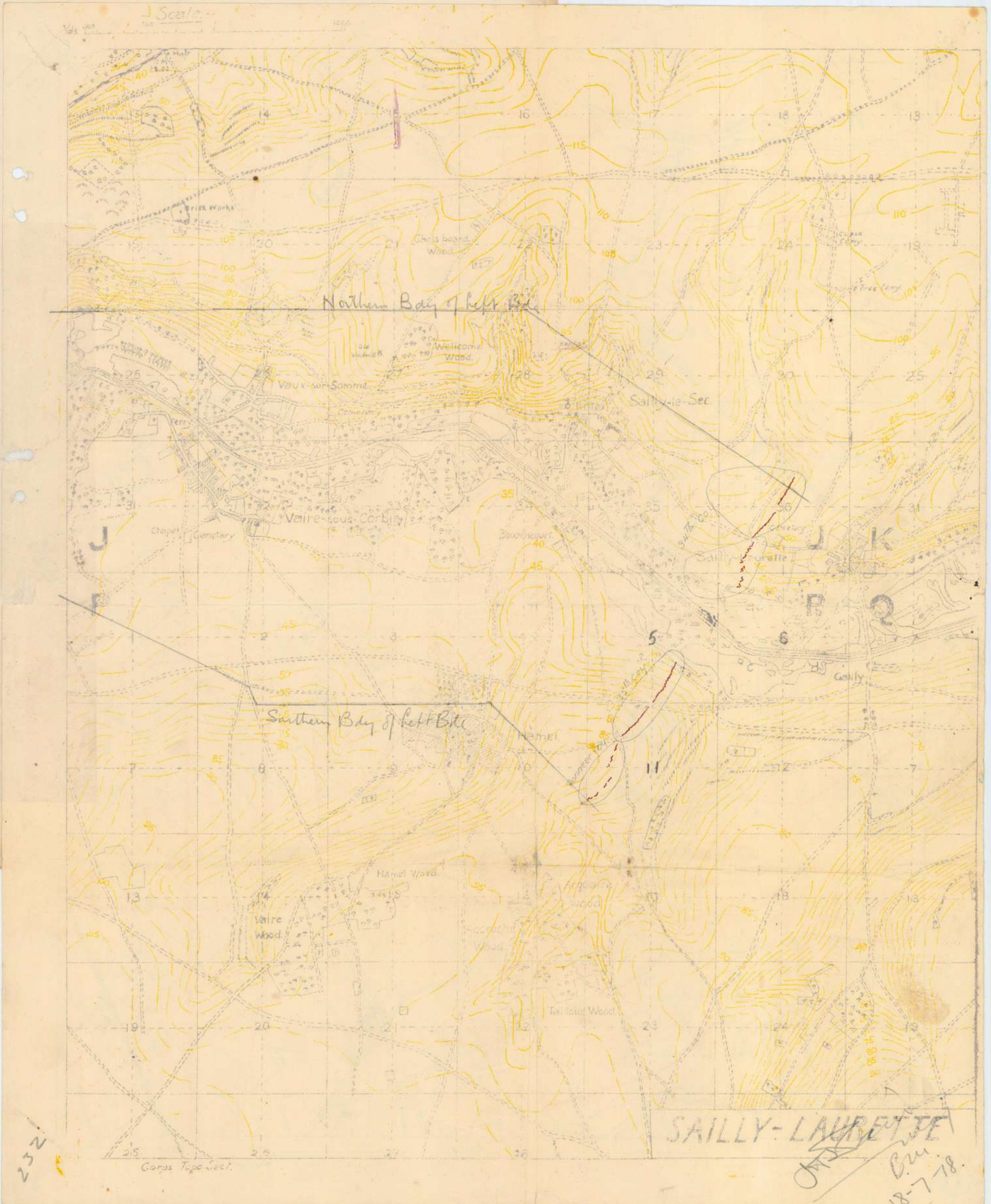
— DIAGRAM "A" —

— "B" DIV. AREA. —

231

Ref. Maps 62^D N.E. and S.E. // 20,000.





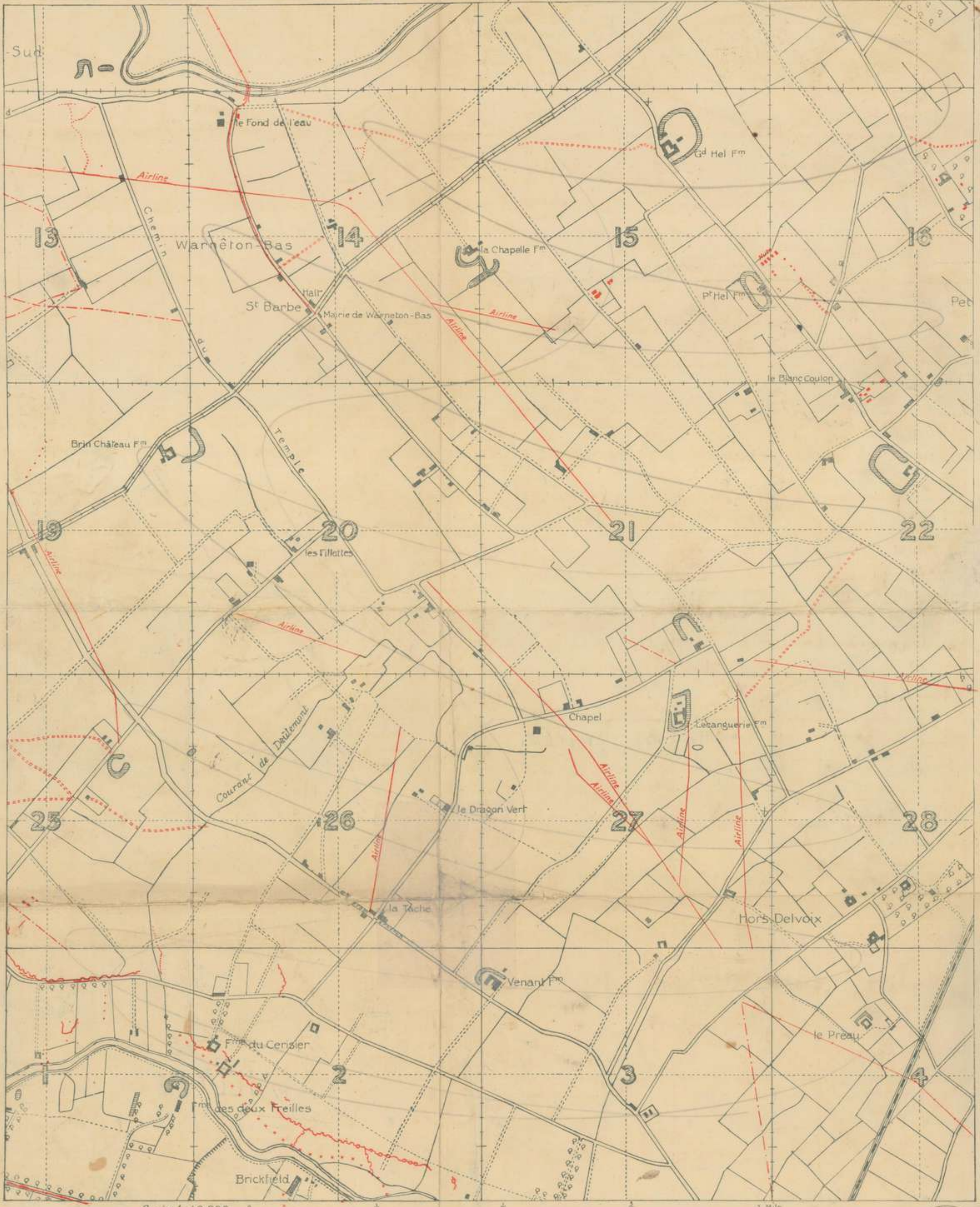
232

Corps Top Sect.

SALLY-LAURETTE

JTS
Cm
18-7-18

SPECIAL MAP "C"



Scale 1:10,000

15-6-17



PRINTED BY THE ADVANCED SECTION, A.P.S.E.

187

134

A. P. Quail

134

1130 27

1
20,000

NOTE. CHANGE OF COLOUR.
Enemy Trenches in Blue.
British Trenches in Red.

FRANCE.

EDITION 4. B

TRENCHES CORRECTED TO 6-3-18

SHEET 62° N.W.



*A-110
B-110
C-110*

Scale 1:20,000
Meters 1000 2000 3000 4000 5000
Yards 1000 2000 3000 4000 5000

Ordnance Survey, (10.B.) August, 1918.

184

64 227 095

FRANCE

7 HC 53

APPENDIX

234

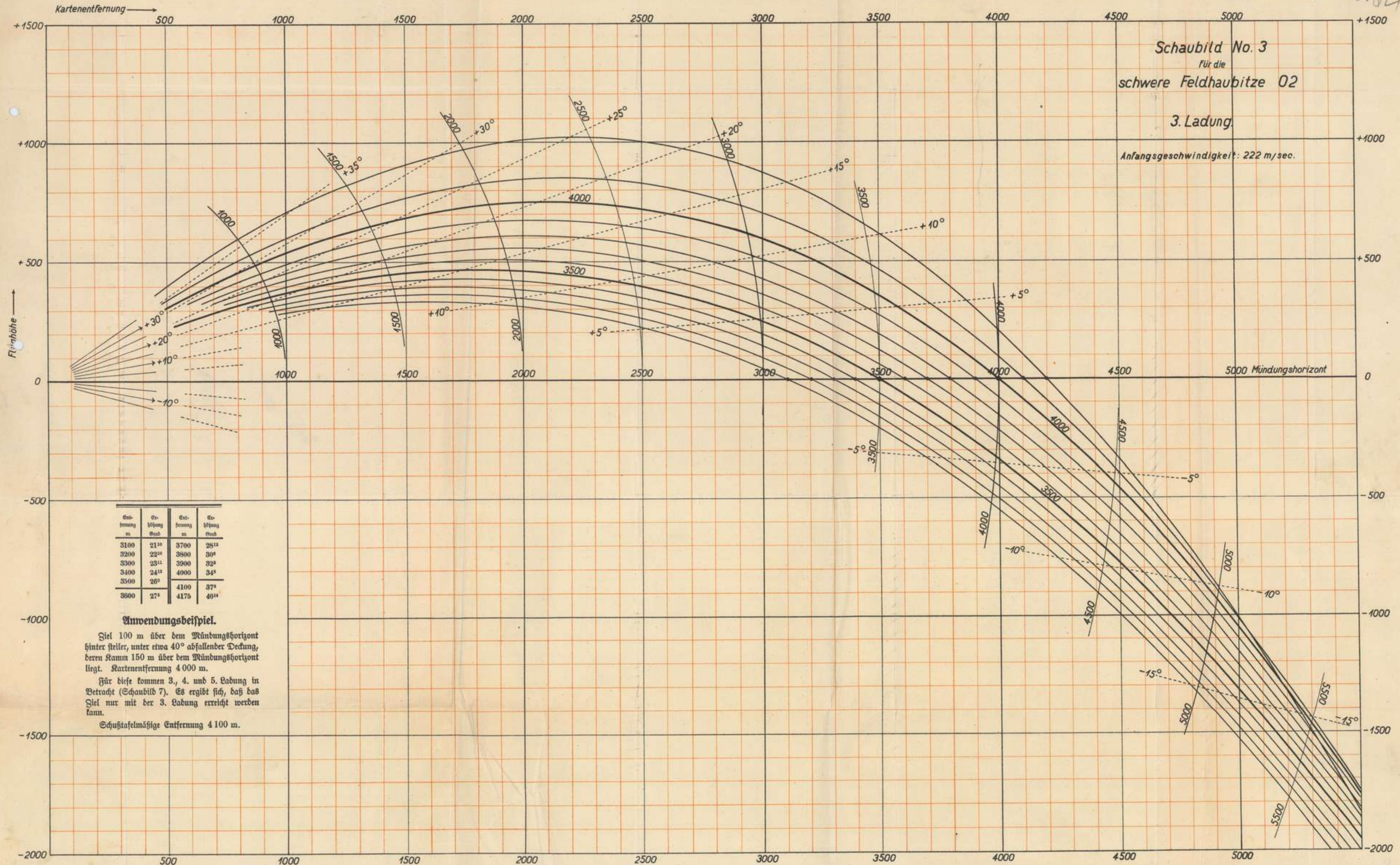


Schaubild No. 3
 für die
 schwere Feldhaubitze 02
 3. Ladung.

Anfangsgeschwindigkeit: 222 m/sec.

Entfernung m	Erhöhung Grad	Entfernung m	Erhöhung Grad
3100	21 ¹⁰	3700	28 ¹³
3200	22 ¹⁰	3800	30 ⁶
3300	23 ¹¹	3900	32 ³
3400	24 ¹³	4000	34 ³
3500	26 ⁰	4100	37 ²
3600	27 ²	4175	40 ¹⁴

Anwendungsbeispiel.

Ziel 100 m über dem Mündungshorizont hinter steiler, unter etwa 40° abfallender Deckung, deren Kamm 150 m über dem Mündungshorizont liegt. Kartentfernung 4000 m.

Für diese kommen 3., 4. und 5. Ladung in Betracht (Schaubild 7). Es ergibt sich, daß das Ziel nur mit der 3. Ladung erreicht werden kann.

Schußtafelmäßige Entfernung 4100 m.

Maßstab: 1:10000.

134

235

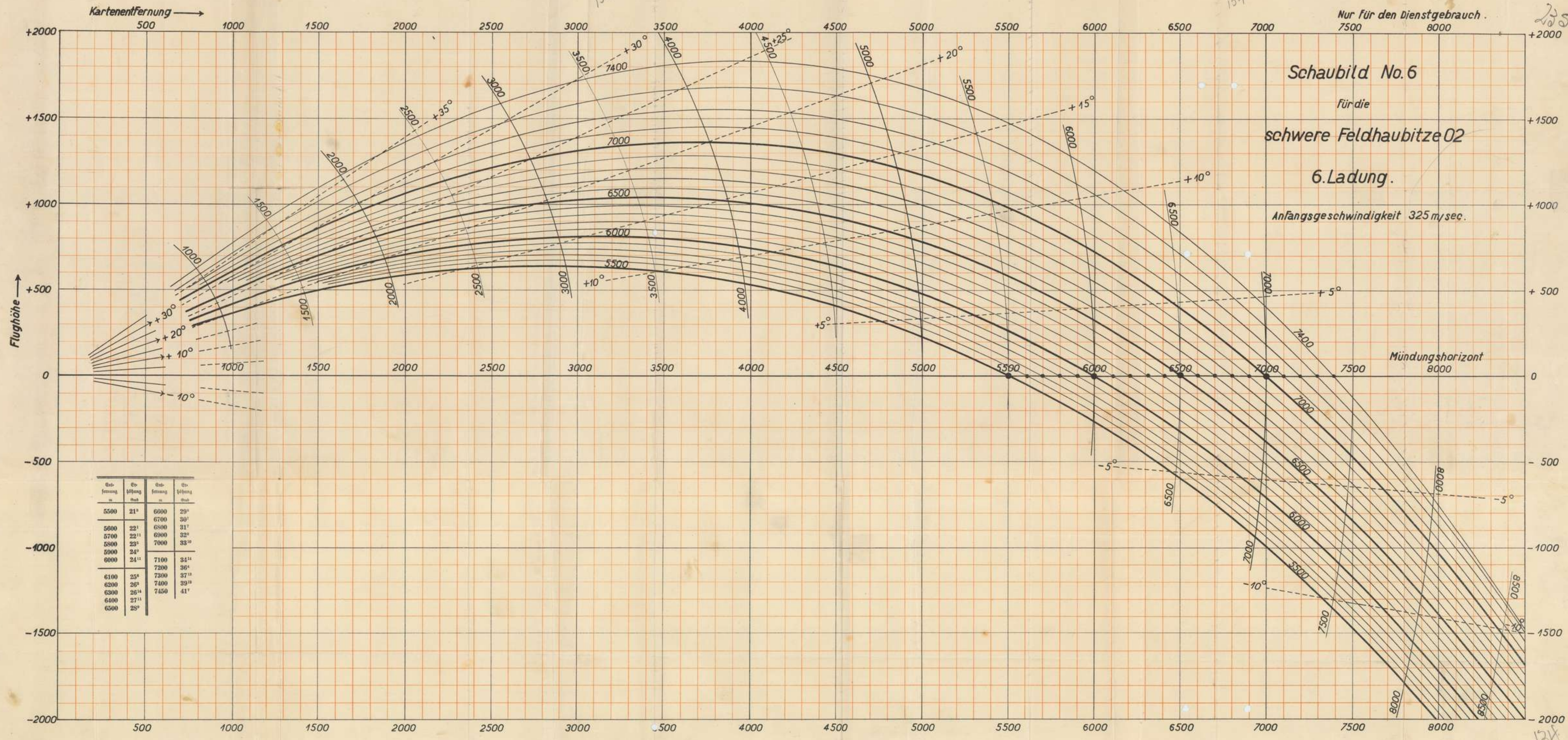


Schaubild No.6
 für die
 schwere Feldhaubitze 02
 6.Ladung.
 Anfangsgeschwindigkeit 325 m/sec.

Entfernung in m	Eröffnung in Grad	Entfernung in m	Eröffnung in Grad
5500	21°	6000	29°
		6700	30°
5600	22°	6800	31°
5700	22°	6900	32°
5800	23°	7000	33°
5900	24°		
6000	24°	7100	34°
		7200	36°
6100	25°	7300	37°
6200	26°	7400	39°
6300	26°	7450	41°
6400	27°		
6500	28°		

Masstab 1:10000

135

134

APPENDIX

3

Schmidt No. 5
Schwartz Feldbaustr. 12
Gladbach

6

11/11/1911
L. J. (London)

11/11/1911

11/11/1911
I have been very
kind to you
I am passing them
on as I think
what to
I have been very
kind to you
I am passing them
on as I think
what to
I have been very
kind to you
I am passing them
on as I think
what to

11/11/1911
L. J. (London)