

AWM4
Australian Imperial Force unit war diaries,
1914-18 War

Infantry

Item number: 23/32/27

Title: 15th Infantry Battalion

June 1917



AWM4-23/32/27

152

or

INTELLIGENCE SUMMARY

(Erase heading not required.)

Instructions regarding War Diaries and Intelligence Summaries are contained in F. S. Regs., Part II. and the Staff Manual respectively. Title Pages will be prepared in manuscript.

Place	Date	Hour	Summary of Events and Information	Remarks and references to Appendices
285 W. S1863.2	1-6-17 to 5-6-17		Battalion in bivouac ground (map reference in margin) carried out bayonet fighting, close order drill, company in attack wave system and organised games. One officer per company visited front line each day. Battalion moved to La Plus Douve & met La Douve River	
Do. La Plus Douve	7-6-17 8-6-17		Moved back at 7 p.m. to old Bivouac ground west of Neuve Eglise (S1863.2) Left for trenches in O324 U2. A & D boys relieved 2 nd Otago Rgt N.3. Forces in trenches from O32.d 1.2 to O32.d 30.95. (A. boy) "D" boy from O32.c 6.0. to O32.c 4.8. "B" boy & "C" boy relieved 1 st Canterbury N.3. Regiment in trenches as follows: "B" boy from U2.b 2.5. to U2.a 9.9. "C" boy from U2.a 8.0. to O32.a 7.0.	
S1863.2	9-6-17		Battalion Headquarters situated at U4.d 5.6. Relieved 46 th Battalion (A.F.F.) in Owl Trench from (285 W.) U4.a 45.70 to O34.d 1.9. "A" boy from O34.c 8.1. to O34.d 1.9. "B" boy from O34.c 8.1 to U4.a 45.70. "C" boy began trench front U4.a 35.80. to O34.c 7.7. "D" boy consolidating "Black dotted line" from U3.b 6.8 to O33.d. 8.8. P.P. U.3.b 20.75.	
U3.b.0.8	10-6-17		Battalion Headquarters U3.b.0.8.	
	11-6-17		Reconnoitering patrols were sent out & found GAPPARD FARM apparently unoccupied but were held up by enemy machine guns & snipers in trees. Machine gun sent out by us of strong point established about O35.c 3.8. Enemy shelled front line & supports intermittently.	
	12-6-17		At 10 p.m. strong points were sent out which occupied Les Quatre Bois Cabaret & formed six strong posts. Enemy shelled front line supports & communication trenches heavily during night but was quiet during day.	

152

WAR DIARY

or

INTELLIGENCE SUMMARY

(Erase heading not required.)

Instructions regarding War Diaries and Intelligence Summaries are contained in F. S. Regs., Part II, and the Staff Manual respectively. Title Pages will be prepared in manuscript.

Place	Date	Hour	Summary of Events and Information	Remarks and references to Appendices
28 S.W. 2			Relieved by 11 th Cheshire Regiment at 3 a.m. Moved to 28 S.W. U13 C 3.2	
13.6.17 U.13c 3.2	13.6.17		A & D companies in underground galleries. B & C companies in tents. b boy left for fatigue at T 5.6 8.7.	
T 10 a 7.2	14.6.17		Moved to bivouac ground in T 10 a 7.2 (shut 28 S.W.)	
"	17.6.17		A & B companies left for different fatigues men from each bay (A & B)	
"	19.6.17		to Aldershot Camp.	
"	27.6.17		Supplying fatigues from remainder of "D" boy at T 10 a 7.2.	
U.13c 3.2	28.6.17		Moved to old camping ground in galleries & shelters U 13 c 3.2.	
U 9 a 7.7	29.6.17		Battalion took over front from 2 nd N. Zealand Brigade. "C" boy from Wellington Battalion D boy from Auckland Battalion A boy from Auckland Battalion support boy in subsidiary line, B boy from Wellington Battalion support boy in subsidiary line.	
			Left Battalion boundary U 17 a 6.0. Right boundary U 11 b 4.4.	
			D boy boundaries U 11 b 4.4 to U 11 c 9.5. b boy U 11 c 9.5 to U 17 a 6.0.	
			A " " U 10 a 1.5 to U 9 d 1.2 B " U 9 d 1.2 to U 16 c 3.3	
			Patrols were sent out to reconnoitre but no enemy were seen	
			Relief complete by 11.30 p.m. Battalion Headquarters U 9 a 7.7.	
"	30.6.17		Working parties improving front line system & communication trenches to supports. In addition supplied working parties to 4 th Field Coy Engrs. for work on supports. Patrols were sent out but did not come in contact with enemy. Enemy shelled subsidiary line from 7 p.m. to 3 a.m., otherwise fairly quiet.	

2449 Wt. W14957/M90 750,000 1/16 J.B.C. & A. Forms/C.2118/12.

B. Satherson, Capt
for CO 15th Bn.

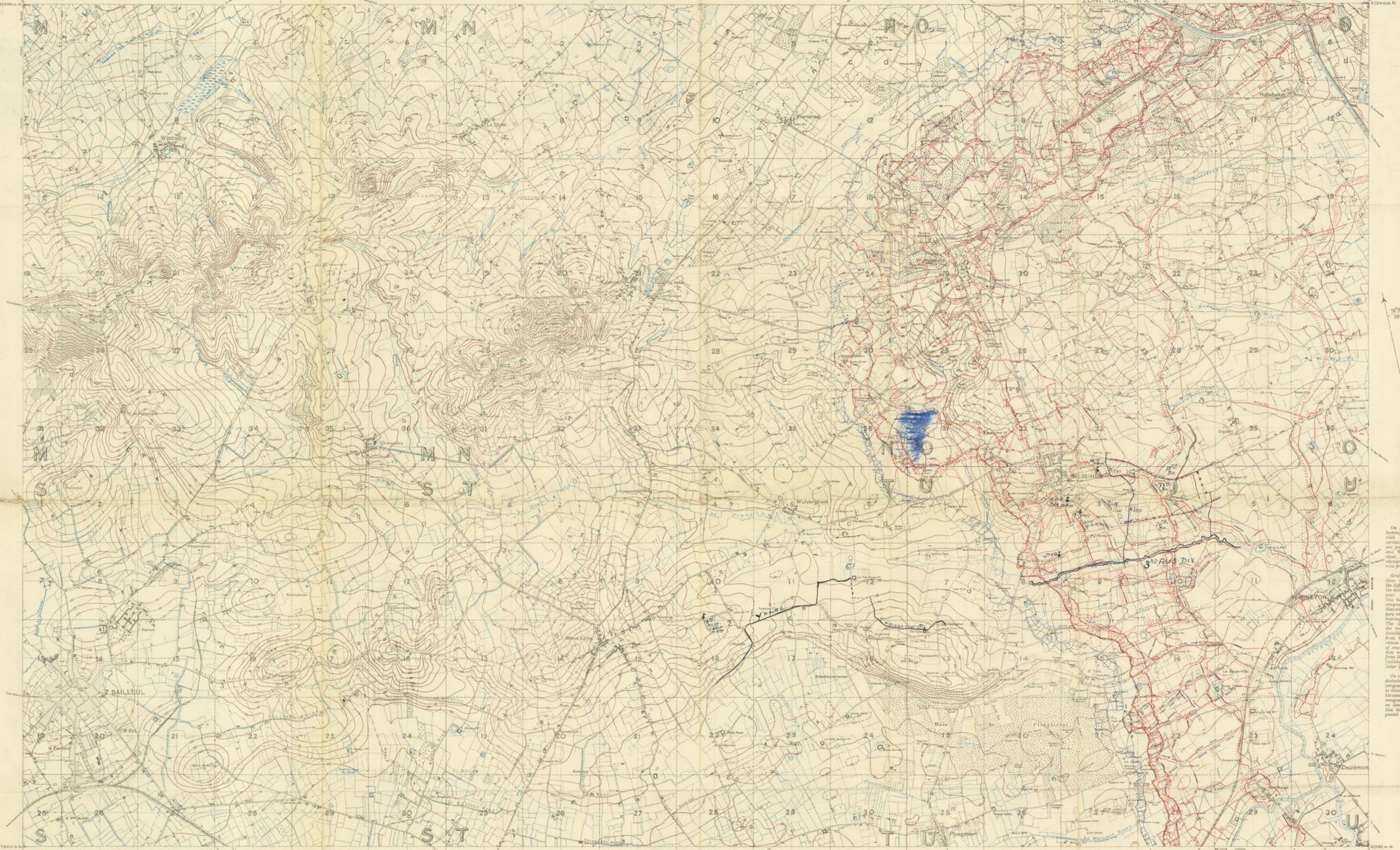
1
20,000

FRANCE.

EDITION 5.A

TRENCHES CORRECTED TO 1-4-17.
ZONE CALL W. X. Y. Z.

SHEET. 28. S.W.



399
3

The opened maps all bearings should be given with reference to the vertical grid lines, which are parallel to the East and West edges of the sheet. Bearings should always be reduced clockwise from 0° to 360°.

Grid bearings are less than compass bearings, the difference being called the declination of the compass. To find out what this declination is, take a compass bearing to a station point, and measure on the map the grid bearing to that point. The difference between the two bearings is the declination of the compass from Grid North. To obtain the grid bearing of any point this declination must be subtracted from the compass bearing (adding 360° to the latter if necessary).

On this sheet the mean declination of a compass is 12° 23', but in some compasses the declination of such compass should be noted as described above, and this fact should be reported in each bearing.

G.S.S. 2742.

INSTRUCTIONS AS TO THE USE OF THE SQUARES.

1. The large rectangles on the map, lettered M, N, O, etc., are divided into squares of 1,000 yards side, which are numbered 1, 2, 3, etc. Each of these squares is subdivided into four minor squares of 500 yards side. These minor squares are numbered as lettered a, b, c, d. (See Square No 6 in south rectangle).
2. A point may thus be described as lying within Square B 6, M.A.S., etc.
3. To locate a point within a small square, subdivide the sides divided into tenths, and define the point by taking so many tenths from W. to E. along Southern side, and so many from S. to N. along Western side, the S.W. corner always being taken as origin, and the distance along the Southern side being always given by the first figure. Thus the point Z would be 63 7/10 divisions East and 2 divisions North from origin.
4. When more accurate definition is wanted for the 1:20,000 or 1:10,000 scales use exactly the same method, but divide sides into 100 parts and use four figures instead of two. Thus 5637 divisions of parts East and 17 parts North of origin, see point X. Four 7 is 5637.
5. Use 0 but not 10 use either two or four figures; do not use fractions (e.g. 41. etc.).



REFERENCE

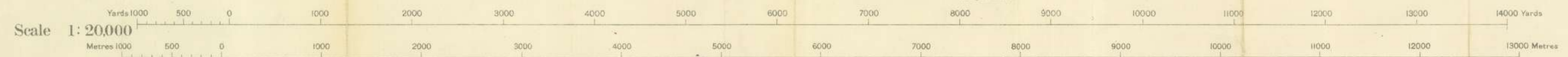
- Any trench apparently repaired for fire.
- Other trenches. Important ones are shown by thick line. Old or disused by dotted line.
- British front line trench.
- Enfilade or other obstacle.
- Ground cut up by Artillery fire.
- Mine craters. Mine craters fortified.
- Hedge, fence or ditch. (Unknown which).
- Ditch with permanent water.
- Church.
- Any trig. post.
- Mill.
- Enamelled.
- Unenamelled.
- Continuous points. (Position of point is centre of circle. Dot shows that point is trigonometrically fixed).
- 1st Class.
- 2nd Class.
- 3rd Class.
- Footpaths, Cart tracks.
- Double.
- Single.
- Light or Tramway.
- All heights in metres.

Contour Interval 5 Metres

Ordnance Survey, April, 1917

TABLE FOR CONVERTING METRES TO FEET.

Metres	0	1	2	3	4	5	6	7	8	9
0	0	3.3	6.6	9.9	13.1	16.4	19.7	23.0	26.2	29.5
10	32.8	36.1	39.4	42.7	45.9	49.2	52.5	55.8	59.1	62.4
20	65.6	68.9	72.2	75.4	78.7	82.0	85.3	88.6	91.8	95.1
30	98.4	101.7	105.0	108.2	111.5	114.8	118.1	121.4	124.7	127.9
40	131.2	134.5	137.8	141.0	144.3	147.6	150.9	154.1	157.4	160.7
50	164.0	167.3	170.6	173.8	177.1	180.4	183.7	186.9	190.2	193.5
60	196.8	200.1	203.4	206.6	209.9	213.2	216.5	219.8	223.0	226.3
70	229.1	232.4	235.7	238.9	242.2	245.5	248.8	252.1	255.4	258.7
80	261.9	265.2	268.5	271.7	275.0	278.3	281.6	284.9	288.2	291.5
90	294.8	298.1	301.4	304.7	307.9	311.2	314.5	317.8	321.1	324.4
100	327.7	331.0	334.3	337.6	340.9	344.1	347.4	350.7	354.0	357.3



399

399
3

Abbaye, Abbe' - Abbey
 Abreuvoir, Abre' - Watering place
 Abri de douaniers - Customs-shelter
 Acier - Steel works
 Aiguille - Point (by)
 Allée - Alley, Narrow road
 Ancien - no. Anc' - Old
 Aqueduc - Aqueduct
 Arbre - Tree
 " éventail - fan-shaped
 " décharné - bare
 " fourchu - forked
 " iaké - isolated
 " penché - leaning
 Arbrisseau - Small tree
 Arc - Arch
 Ardennaise, Ard' - Slate quarry
 Arêt - Halt
 Asile - Asylum
 " des aliénés - Lunatic asylum
 " de charité - Charity
 " des pauvres - Poor
 " de refuge - Refuge
 Auberge, Aub' - Inn
 Aune - Alder-tree
 Bac - Ferry
 " à traille -
 Bains - Baths
 Bassin aux baines - Bathing place
 Bâle -
 Banc de sable - Sand-bank
 " de vase -
 Baraque - Hut
 Barrage - Dam
 Barricade - Gate, Sill
 (Machine à) Bascule - Weigh-bridge
 Bassin - Dock, Pond
 " d'échouage - Tidal dock

Bateau de radoub - Dry dock
 Bateau phare - Light-ship
 Blanchisserie - Laundry
 B.M. (borne milliaire) - Mile stone
 B' (borne kilométrique) -
 Boulonnerie - Bolt Factory
 Fab' de boutons -
 Boue - Sludge
 Brasserie, Brass' - Brewery
 Briqueterie, Briq' - Brickfield
 Brucelonne - Breakwater
 Bureau de poste - Post office
 " de douane - Customs house
 Butte - Butte, Mound
 Cabane - Hut
 Cabaret, Cab' - Inn
 Câble sous-marin - Submarine cable
 Calvaire, Calv' - Calvary
 Canal de dessèchement - Drainage canal
 Canal d'irrigation - Irrigation canal
 Fab' de caoutchouc - Rubber factory
 Carrière, Car' - Quarry
 Canal de gravier - Gravel-pit
 Caserne - Barracks
 Champ de courses - Race course
 " manoeuvres - Drill ground
 " tir - Rifle range
 Chantier - Building yard
 " de construction - Ship yard
 " de produits chimiques - Chemical works
 Fab' de filasse -
 Filature, Fil' - Spinning mill
 Fonderie, Fond' - Foundry
 Fontaine, Font' - Spring, fountain
 Forêt - Forest
 Forne de radoub - Dry dock
 Forge - Smithy
 Fosse - Mine, Pit
 Fosse à vapeur - Mill
 Four - Kiln
 " à chaux - Lime-kiln

Four à coke - Coke oven
 Ganterie - Glove Factory
 Gare - Station
 Garrière - Warren
 Garnison - Garrison
 Gasometer - Gasometer
 Glacière - Ice-warehouse
 Fab' de glaces - Mirror Factory
 Glacière - Ice factory
 Grue - Crane
 " Weir
 Guérite - Sentry-box, Turret
 " à signaux - Signal-box (by)
 Halle - Hall
 Hangar - Shed, Hanger
 Hôpital - Hospital
 Hôtel-de-Ville - Town hall
 Houillères - Colliery
 Hurlerie - Oil factory
 Imprimerie, Impr' - Printing works
 Jolie - Pier
 Laminerie - Rolling mill
 Ligne - de haute - High water mark
 " à marée -
 " de basse marée - Low
 Maison Parentère - Forester's house
 M' -
 Malterie - Malt-house
 Marbrerie - Marble works
 Marais - Marsh
 Marais salant - Salt marsh
 Marché - Market
 Mère - Pool
 Meule - Mill
 Mine -
 Monastère - Monastery
 Moulin, M' - Mill
 " à vapeur - Steam mill
 Mur - Wall
 " crénelé - Loop-holed wall

Nacelle - Ferry
 Orme - Elm
 Orphelinat - Orphanage
 Ouvrière - Quayside
 Ouvrage - Fort
 Ouvrages hydrauliques - Water works
 Papeterie - Paper-mill
 Parc - Park, yard
 " aéronautique - Aviation ground
 " à charbon - Coal yard
 " à poudre - Powder store
 Passage à niveau P.N. - Level-crossing
 Passerelle, Pass' - Foot-bridge
 Pépinière - Nursery garden
 Peuplier - Poplar tree
 Phare - Light-house
 Plage, Pl' - Beach
 Plaine d'exercices - Drill ground
 Pompe - Pump
 Poudrière - Powder magazine
 Poste - Post
 " de garde - Guard station
 " de poste - Post
 Puits - Well
 Puits à eau - Water supply
 Puits à feu - Fire-shaft, Shaft, Well
 Puits - Artesian well
 Puits - Ventilating shaft
 " de sondage - Boring
 Quai - Quay, Platform
 " aux bestiaux - Cattle platform
 " aux marchandises - Goods platform
 " à écluses -
 Raccordement - Junction
 " de sucre - Sugar refinery
 Réfectoire - Refectory
 Réserve - Reserve
 Réserve - Best-rot factory

Remblai - Embankment
 Remise (des) - Engine-shed
 Réservoir, Rése' - Reservoir
 Route cavalière - Bridle road
 Saboterie - Ribbon Factory
 Saine -
 En ruine - Ruin
 Saie -
 Sablière - Sand-pit
 Sabinier, Sablon' - Fir tree
 Sapin - Willow tree
 Saule -
 Saunerie - Salt-works
 Scierie, Scie' - Saw-mill
 Sondage - Boring
 Source - Spring
 Sucrerie, Sucre' - Sugar factory
 Tannerie - Tannery
 Tir à la cible - Rifle range
 Tissage - Weaving mill
 Tôlerie - Rolling mill
 Tombereau - Tomb
 Tour - Tower
 Tourbière - Post-bag, Post-bed
 Tournevis - Small screw
 Tuilerie - Tile works
 Usine à gaz - Gas works
 " électrique - Electricity works
 " métallurgique - Metal works
 " à agglomération - Briquette factory
 Verrerie, Verre' - Glass works
 Viaduc - Viaduct
 Vivier - Fish Pond
 Voie de chargement -
 " de déchargement -
 " d'évacuation - Siding
 " de formation -
 " manoeuvres -
 Zingerie - Zinc works

15

TRENCH MAP.

FRANCE.

SHEET 28 S.W.

EDITION 5. A

INDEX TO ADJOINING SHEETS.

SCALE 20,000.

ZONE CALL W. X. Y. Z.