

AWM4
Australian Imperial Force unit war diaries,
1914-18 War

Infantry

Item number: 23/7/24

Title: 7th Infantry Brigade

August 1917



AWM4-23/7/24

Original

95

WAR DIARY

Army Form C. 2118.

Instructions regarding War Diaries and Intelligence Summaries are contained in F. S. Regs., Part II. and the Staff Manual respectively. Title pages will be prepared in manuscript.

INTELLIGENCE SUMMARY.

AUGUST 1917.

(Erase heading not required.)

Place	Date	Hour	Summary of Events and Information VOLUME 16	Remarks and references to Appendices
	1917		Reference Sheets 1/20,000 - 27.S.W. & 37 ^A N.W.	
RENESCURE	1/9th to 20/9th		7th A.I. Brigade in RENESCURE Area training. Owing to extreme wet weather units were forced to move into billets from the tents. During this period reinforcements arrived, bringing the Brigade back up to well over strength.	
	22nd		Major J.E. LEE, M.C. (Brigade Major) broke his collar bone as the result of a fall from his horse. Captain C.H. HARRISON, Staff Captain, took over as Acting Brigade Major.	
	23rd		2nd Australian Division (less Artillery) inspected by Corps Commander.	Append. 1.
	24th		Major A.J. BOASE (Brigade Major 5th A.I. Brigade) took over duties of Brigade Major (temporarily).	
	29th		2nd Australian Division (less Artillery) inspected by Field Marshal Sir Douglas Haig. Brigades inspected en masse; afterwards one Battalion from each Brigade marched past saluting base.	" 2.
			The training during the month has included Wood Fighting, and a great deal of route marching, the latter with a view to hardening the men.	
			The 7th A.M. Gun Company have made considerable progress with the new barrage work, and a circular was written by the O.C. outlining the principles of this work.	" 3.
			The morale and health of the men are good, except for an increase in Venereal Disease, contracted in a large number of cases in ENGLAND.	
			The absence of establishments for prophylactic treatment in the towns in this neighbourhood is considered to be largely responsible for the cases contracted locally. It should be noted that before this Brigade left the SOMME Area, Venereal disease was reduced to a minimum as the result of the establishment of "Anzac House" in AMIENS.	
			<i>A.J. Boase</i>	
			Major, Brigade Major, 7th Australian Infantry Brigade.	

SECRET.

Copy No 15

7th AUSTRALIAN INFANTRY BRIGADE.

Order No. 119.

Reference Maps. Sheet 27. S.W. 1/20,000.
36.A. N.W. 1/20,000.

1. The 2nd Australian Division (less Div. Artillery and Div. Train) will march past the Corps Commander on THURSDAY the 23rd instant., on the Towpath on the S.W. bank of the Canal from WARDRECQUES Bridge to the CAMPAGNE Bridge.
2. Units of the Division will march past in the following order :-
 - 5th Field Company A.E.
 - 7th -do-
 - 5th Aust. Inf. Bde.
 - 6th - do -
 - 7th - do -
 - 2nd Aust. Pioneer Battalion.
 - 22nd Aust. Machine Gun Coy.
 - 5th Aust. Field Ambulance.
 - 6th - do -
 - 7th - do -
3. The 7th A.I.Bde. will move to position of assembly at B.2.d.4.4. in accordance with march table attached. Units will be at position of assembly by 9.30 a.m.,
4. The 7th A.I.Bde. will pass the saluting base in the following order :-
 - Bde. H.Q.
 - 25th Battalion.
 - 26th -do-
 - 27th -do-
 - 28th -do-
 - 7th Machine Gun Coy.
 - 7th A.L.T.M.Btty.
5. Adjutants from each Battalion and one officer from each other unit accompanied by two markers each will report to the Brigade Major at B.2.b.9.0. at 9 a.m.,
6. Each unit will march complete with its transport, loaded and covered.
7. Intervals of 20 yards between units and 10 yards between Companies will be maintained.

- 3 -

8. DRESS.- Fighting order with hats. Officers will not carry sticks. Officers, except Transport officers, will march past dismounted.
9. Officers horses can be led along the terrace above the towpath and meet units at CAMPAGNE Bridge. C.O's. horses will wait near saluting base.
10. On arrival at position of assembly, Bands will report to Captain HEATH, at the 9.3 Kilometre Post on Towpath.
11. Parade states will be sent to Brigade Headquarters by 8 a.m.,
12. A motor cyclist will report to Battalion at 7 a.m., with Brigade time, so that C.O's. can synchronize their watches.

R. J. Heasch Capt
Major, Brigade Major
7th Australian Infantry Brigade

Issued to Sigs. at 11-30 p.m.

Distribution :-

- | | |
|--------|---------------------------------|
| No. 1. | 25th Bn. |
| 2. | 26th Bn. |
| 3. | 27th Bn. |
| 4. | 28th Bn. |
| 5. | 7th M. Gun Coy. |
| 6. | 7th A.L.T.M. Btty. |
| 7. | B.T.O. |
| 8. | O.C. No 4. Sig. Section. |
| 9. | Bde. Q.M. Sgt. |
| 10. | O.C. Bde. Snipers. |
| 11. | 2nd Aust. Div (for information) |
| 12. | B.M. |
| 13. | Staff Captain. |
| 14. | G.O.C. |
| 15. | War Diary. |
| 16. | File. |
| 17/20 | Spere. |

MARCH TABLE

Issued with 7th A.I.Bde. Order No. 119

Unit.	From.	To.	Route	Remarks.
7th Bde. H.Q.	Billets.	B.2.d.4.4.	T.26.c.- B.2.b.- B.2.d.	To pass X Roads T.21.c.1.7. at 8.15 a.m.,
25th Battalion.	do	do	N.34.c. T.11.a.b.d. T.27.b.c. X Roads -	To Pass X Roads at
27th Battalion	do	do	T.27.b.7.0. T.15.b.c.- 21.a.c.- 26.b.c.d.- B.2.b.d.	T.27.b.7.0. by 8.30 a.m.
28th Battalion	do	do	T.14.c.- 20.b.- and as for Bde H.Q.	To Pass X Roads T.21.c. at 8.35 a.m.
28th Battalion.	do	do	- do -	-do- at 8.35 a.m.
				-do- at 8.45 a.m.
H. Gun Coy.) T.M. Battery.)	do	do	As for Bde. H.Q.	-do- at 8.55 a.m.

Appendix No. 1

SECRET

Copy 16

7th AUSTRALIAN INFANTRY BRIGADE.

Order No 120

25th August 1917.

Reference - Sheet 27 S.W. ('B' Series) 1/20,000

1. The Field Marshal Commanding-in-Chief will inspect the 2nd Australian Division at 10.30 a.m. on WEDNESDAY 29th instant.
2. The Division will be formed up for the inspection near the ARQUES-AIRE Road at S.29.e. in accordance with attached sketch.
A rehearsal will take place on morning of MONDAY the 27th instant at 10.30 a.m.
3. The 7th A.I. Brigade less the transport of 25th, 26th and 27th Battalions, will form up in mass facing north-west, on the ground at 10 a.m.
4. Adjutants of Battalions and one officer from each other unit with two markers from each unit will report to Brigade Major at 9.30 a.m. on ARQUES-AIRE Road opposite the R.F.C. Hangar (approx. S.28.d.9.7.)
5. The 28th Battalion Transport will represent the Brigade at the inspection and also at the rehearsal.
The 28th Battalion will arrange to perform the usual Transport duties carried out by the 28th Battalion, both on the 27th and 29th instants.
6. After the inspection by the Commander-in-Chief, one Battalion from each Brigade will march past in column of Platoons.
The 28th Battalion will represent 7th A.I. Bde. and after passing the saluting base will move off independently to Billets.
At the conclusion of the march past the Brigade (less 28th Battalion and transport of 25th, 26th and 27th Bns.) will move off, and Units will return to Billets independently.
7. DRESS:- Fighting Order, with felt hats. (Mess tins to be carried inside haversacks) Officers will wear 'Sam Browne' belts.
No walking sticks or canes are to be carried.
8. Following will be the order of march to the Ground :-

28th Battalion.	
27th Battalion. (less Transport)	
26th Battalion.	-do-
25th Battalion	-do-
7th Bde H.Q.,	-do-
7th Machine Gun Co	-do-
7th A.L.T.M. Btty.	

PTD

- 2 -

9. (a) Units will move to and from Parade via le PONT de CAMPAGNE (S.30.b.) and S.29.c.9.8.
- (b) Battalions will as far as possible avoid marching through RENESCURE.
10. The last D.R. to Units on TUESDAY 28th instant will carry a watch with Brigade time, so that Units may synchronise.
11. Acknowledge.

A.J. Boase

Major.
T/Brigade Major, 7th Australian Infantry Bde.

Issued to Signals at 9.30 a.m

Distribution :-

- | | |
|--------|----------------------------------|
| No. 1. | 25th Bn. |
| 2. | 26th Bn. |
| 3. | 27th Bn. |
| 4. | 28th Bn. |
| 5. | 7th M. Gun Coy. |
| 6. | 7th A.L.T.M. Btty. |
| 7. | B.T.O. |
| 8. | O.C. No. 4 Sig. Section. |
| 9. | Bde. Q.M. Sgt. |
| 10. | O.C. Bde. Snipers. |
| 11. | 2nd Aust. Div. (for information) |
| 12. | B.M. |
| 13. | Staff Captain. |
| 14. | G.O.C., |
| 15. | War Diary. |
| 16. | File. |
| 17/20. | Spare. |

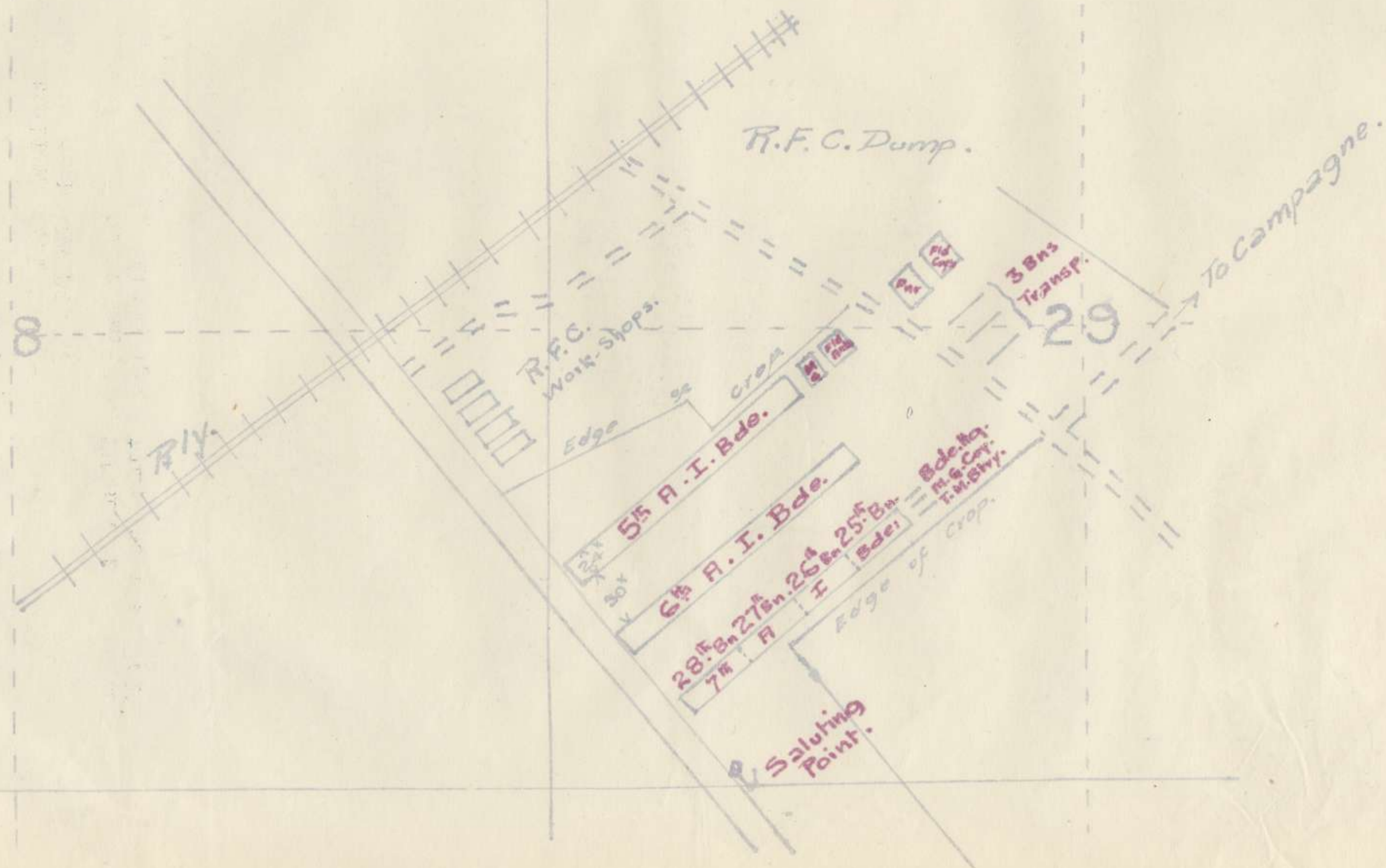
7th Aus: Inf: Brigade.

Ref: Map. 27. S.W scale. 1:5000

S



28



Appendix No 2

Secret.

A U S T R A L I A N M A C H I N E G U N C O R P S .

7th COMPANY.

DEMONSTRATION OF MACHINE GUN BARRAGE WORK (INDIRECT FIRE)

GIVEN TO BRIGADIER GENERAL F. A. WISDOM. C. B. D. S. O.

AND BATTALION COMMANDERS OF THE SEVENTH AUSTRALIAN INFANTRY

BRIGADE.

1. For the purpose of the Demonstration this Company will form a Group, consisting of two 3 gun batteries.
2. These batteries will be lettered off from Right to Left, i. e. "A" and "B".
3. The guns of each Battery will be numbered from Right to Left, i. e. 1 to 3 in each Battery.
4. The Group will be commanded by Capt. Burrell. Each Battery by a senior Lieutenant with two Section Officers assisting him, and -
Each gun by a Lance Corporal, known as the Gun Commander.
5. The Demonstration will be divided into two parts:-
1st. "Elementary Barrage Drill". (See Appendix "A").
2nd. "Barrage Work as carried out in the Field, but without Ball Ammunition". (See Appendix "B" and "C").
6. The Batteries will be placed in position fifty yards apart, and carry out their own respective tasks under their Battery Commanders.
7. All Transport arrangements will be under the Transport Officer of the 7th. Australian Machine Gun Coy. (See Appendix "D").
8. Zero time will be notified on the ground.
9. Visitors are invited to question all concerned about their respective work.
10. This Demonstration will take place on Friday 7th Sept. 1917 at 5. P. M.

J. V. Nicholls
 Capt.

APPENDIX "A".

ELEMENTARY BARRAGE DRILL.

1. Batteries "A" and "B".
 "Stand to".
 "Fall in".
 "Number off by Gun Crews".
 "Number off by Guns".
2. Prepare for Barrage.
3. Lining out Gun Positions.
4. Mounting Guns.
5. Laying out Parallel Lines.
 (A) By Compass.
 (B) By Reference Object (R. O.)
 (Not in prolongation with line of Battery).
 (C) By Reference Object (R. O.)
 (In prolongation with line of Battery).
6. "Stand Clear". "Stand To".
7. Passing of "Distribution" Angles along the Battery Line.
8. Passing of "Concentration" Angles along the Battery Line.
9. "Stand Clear".

APPENDIX "B".

Appendix No 3

"A" BATTERY. (T.O. a. 25.20.)

1. This Battery will consist of 6 guns numbered from 1 to 6, and will be under the command of Lieut. Munetr, who will be assisted by two subalterns.
2. This Battery will be in position and laid out on its Zero lines and First Barrage Lines two hours before Zero.
3. Communication will be by wire laid on direct to Group Headquarters and also by Runner.
4. Battle Dump will be formed near Battery Headquarters. 100,000 rounds in bulk will be at this Dump.
5. No ball ammunition will be carried either on the man or in the belts.
6. No. 6 Gun will direct, and its position will be at T.O. a. 25.20.

TASK.

"A" Barrage - From Zero to Zero plus 6 a Standing Barrage will be placed on Enemy Front line running from T.7. d.9.6. to T.13. b.55.80. Then creep forward at the rate of 100^x a minute to hill running from T.7. c.30 to T.13. a.1.3.

"B" Barrage. - From Zero plus 14 to Zero plus 19 place Standing Barrage on line T.7. c.30 to T.13. a.7.3.

"C" Barrage - From Zero plus 20 to Zero plus 22 barrage lifts on to line S.18. b.65.80 to T.13. a.35.10.

Target 1. From Zero plus 23 to Zero plus 27. All guns concentrate on Strong Point at T.13. a.65.25.

Target 2. Box Barrage:- From Zero plus 28 to Zero plus 33 place Box Barrage round Strong Point at T.13. a.65.25. Four guns will place an intense Standing Barrage from T.13. a.6.7. to S.18. d.65.20. Four Guns concentrate on line from S.18. d.65.20 to T.7. c.65.25.

S. O. S. At Zero plus 34 lay out S. O. S. Line from S.18. b.34 to S.18. d.75.70. - 400^x in front of friendly troops. Friendly Troops, when "A" Barrage commences, will be 1000 yards from the Gun Positions.

APPENDIX "C".

"B" BATTERY. (T.9. c.4.9.)

1. This Battery will consist of 8 Guns numbered from 1 to 8 and will be under the command of Lieut. Hearne, who will be assisted by two subalterns.
2. This Battery will be in position and laid out on its Zero Lines and First Barrage Lines two hours before Zero.
3. Communication will be by wire laid on direct to Group Headquarters and also by Runner.
4. Battle Dump will be formed near Battery Headquarters. 100,000 rounds in bulk will be at this Dump.
5. No ball ammunition will be carried either on the man or in belts.
8. No. 8. Gun will direct, and its position will be at T.9. c.4.9.

TASK.

"A" Barrage - At Zero to Zero plus 8 A Standing Barrage will be placed on enemy front line running from T.13. b.68 to T.13. a.9.2. Then Creep forward at the rate of 100^x a minute to line T.13. a.7.3. to T.13. a.1.6.

"B" Barrage - At Zero plus 14 to Zero plus 19. Standing Barrage on line from T.13. a.73 to T.13. d.16.

"C" Barrage - At Zero plus 20 to Zero plus 22 place standing Barrage from T.13. a.35.10. to T.13. c.75.40.

Target 1. At Zero plus 23 to Zero plus 27 all Guns concentrate on Strong Point at T.13. a.85.95.

Target 2. Box Barrage:- From Zero plus 28 to Zero plus 33 a Box Barrage will be placed round Strong Point at T.13. a.85.95. Four Guns will place an intense Standing Barrage from T.13. a.00.75. to T.13 a. 2.3. Four Guns will concentrate on Line from T.13. a.2.3. to T.13. b. 15.65.

S. O. S. At Zero plus 34 will lay on S. O. S. Lines from S.18. d.70.70. to T.13. c.00 - 400^x in front of friendly troops.

Friendly Troops, when "A" Barrage commences will be 1000 yards from the Gun Positions.

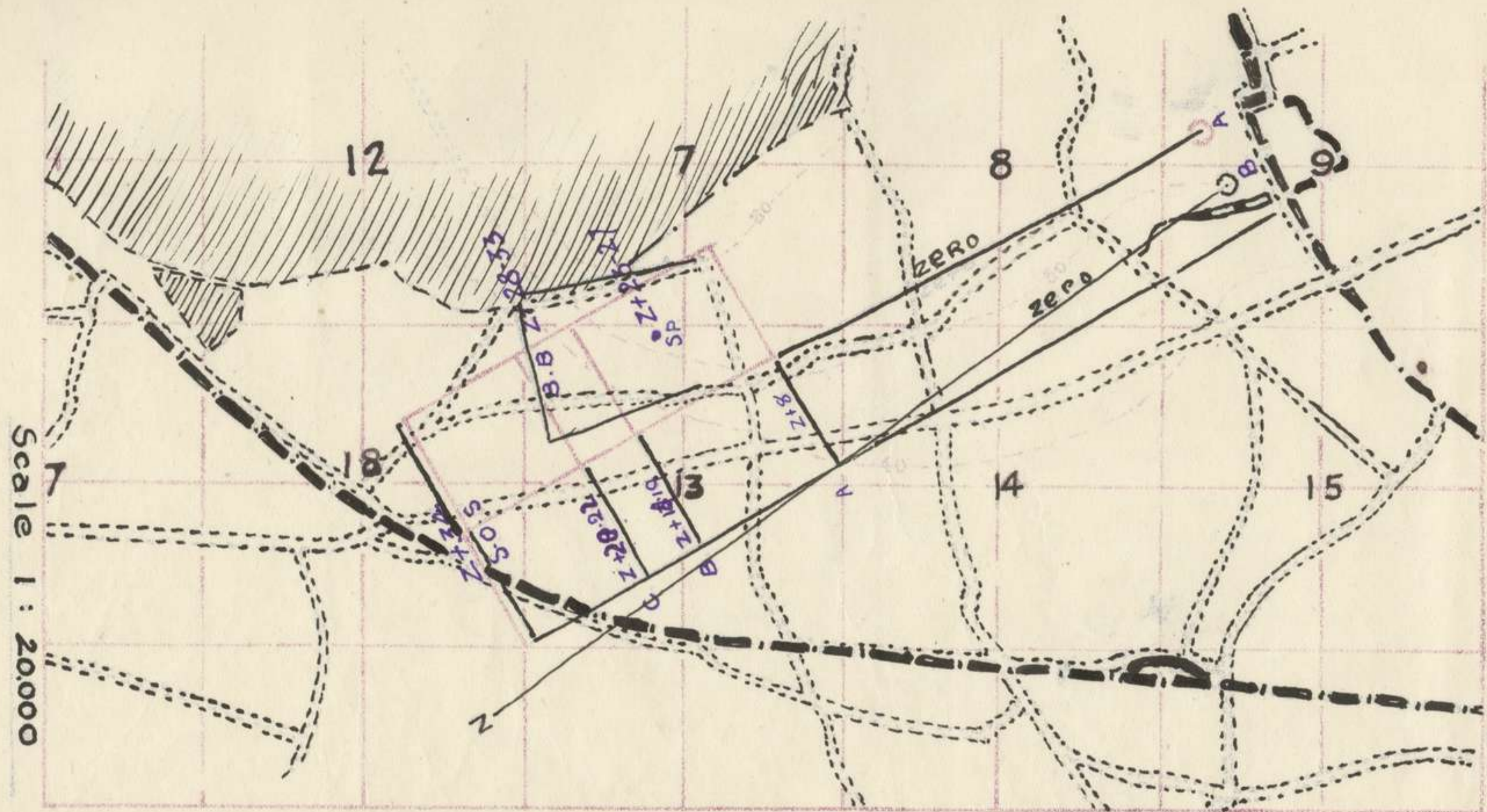
APPENDIX "D".

Appendix No 3

TRANSPORT.

1. Each Battery will have four Gun Limbers and two Ammunition Limbers detailed off to it.
2. 100,000 rounds of bulk S. A. A. will be dumped at each Battery Position on the night of the 6/7th inst.
3. Two Pack Trains of three horses each will be detailed off to each Battery, and in the event of a move forward, if possible, they will assist.
4. These Pack Trains will be kept handy in suitable positions near the Batteries, and for safety sake, can be dug in in mule pits.
5. S. A. A. Refilling Point will be from the Brigade Dump.

9



Scale 1 : 20000

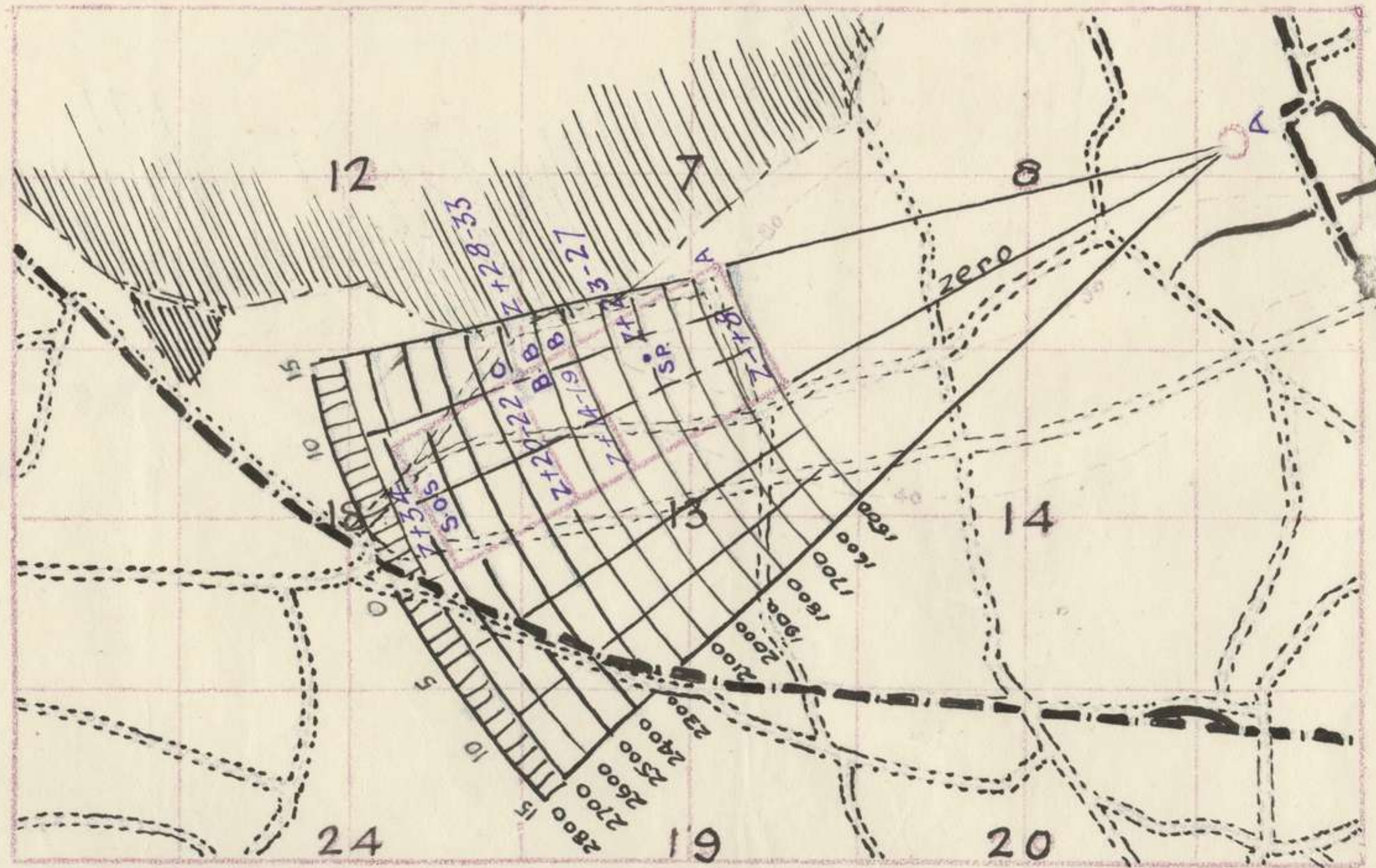
GROUP A BATTERY COMMANDERS MAP

7th COMPANY
M.G. CORPS
A.I.F.

Appendix No. 3

SECTION OFFICERS & GUN COMMANDERS MAP

"A" BATTERY



Scale 1:20000

COMPANY
M.G. COPPS
A.I.F.

Appendix No. 3.

Ref. map 27. S.W. 1/50000

FIRE ORGANIZATION ORDERS.

A Battery

Place RENESCURE
Date 7-9-17

Composition 2 + 11 sections
 Commanded by Lt. MacNair
 Location of Directing Gun 8.799.35.30
 No. of Directing Gun 1
 Frontage of Battery 70x
 Grid Bearing to R.O. 1570
 Zero Line from 799.35.30 through 7136.55.80
 Grid Bearing of Zero line 5430
 Tasks: Staggered Barrage
 creeping in
 Concentration
 Barrage + LOS

No. of Barrage.	No. of guns.	Targets.	Clock time	Zero time.	Deviation from Zero line.	Distribution Angle.	Range	V.I.	Q.E.	Range to F.T. when Barrage lifts.	Clearance when barrage lifts	Rate of Fire
A	8	170 20-50 4 + 136 55 80		Z-8	0	1050'	2500'	11	2°30'	1000'	27°	75
B	8	170 20 4 + 136 35 10		Z+14-19	0	1020'	2000'	-11	4°	1500'	59.5°	75
C	8	184-95-105 + 136 35 10		Z+20-22	0	1020'	2200'	11	5°4'	1700'	73.5°	75
1	8	136 55 95		Z+23-27	80R	Concentrate 20'	1800'		3°31'			300
Box	4	136 0-7 5 S124 9.2		Z+28-33	90R	70'	2250'		5°40'			250
Box	4	S124 9.2 5 170 20 35		Z+28-33	150R	70'	1700'		2°57'			250
S.O.S.	8	S186 3.4 2 S186 7.7			0	10	2600'	-11	9°21'	2200'	111°	300

	8	7	6	5	4	3	2	1	
A.	0	1050'R	3000'R	5300'R	7500'R	9000'R	11000'R	13500'R	This shows angle from zero line for each gun. From this line barrage chart for each gun is compiled and issued to gun commander.
B.	0	1050'R	2000'R	4000'R	5000'R	6000'R	8000'R	10000'R	
C.	0	1020'R	2000'R	4200'R	5000'R	6000'R	8000'R	9000'R	
1	80R	7000'R	7000'R	7000'R	7000'R	6000'R	6000'R	5000'R	
Box	150R	10000'R	10000'R	10000'R	9000'R	10000'R	11000'R	12000'R	
S.O.S.	0	10R	20R	30R	40R	50R	60R	70R	

Remarks: Angle of switch 92°
 Wind 1 M.P.H. (Rear)
 Barometer 29.95"
 Thermometer 65°

Appendix No. 3

95

BARRAGE CHART.

No. 8 Gun: A Battery. Gun Commander.

Grid bearing of Zero line. 243° Sgt. ...

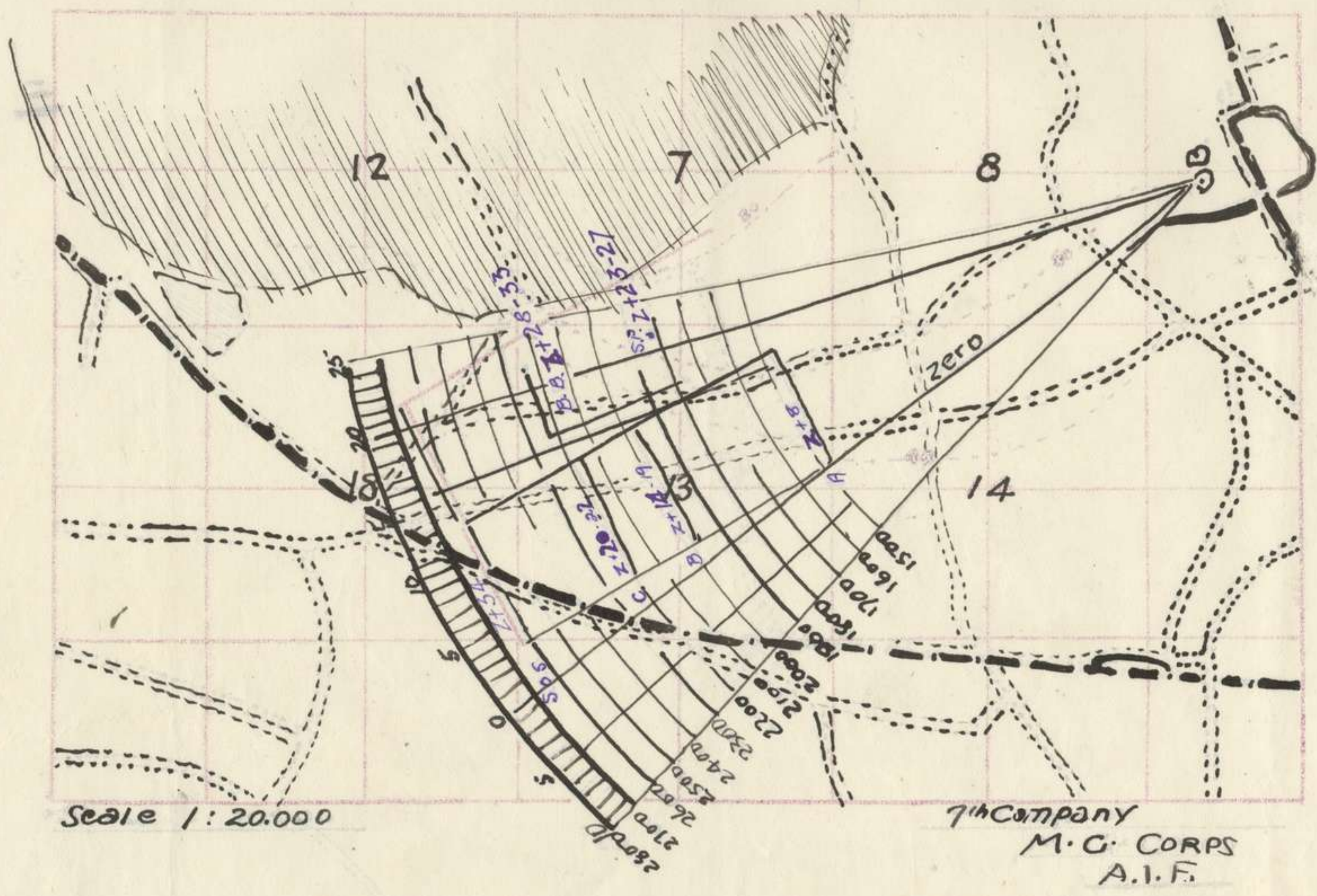
No. of Barrage.	Clock time.	Zero Time.	Angle from Zero line.	Q.E.	Traverse	Rate of fire	E.T.E.
A Capt. B		Z-8	0	2°30'	20	75 R.P.M	
B.		Z+14-19	0	4°	20	75 R.P.M	
C.		Z+20-22	6	5°4'	20	75 R.P.M	
SOS			0	8°2'	20	300 R.P.M	

CHART OF CONCENTRATION POINTS.

No. of Point.	Angle from Zero line.	Q.E.	E.T.E.	REMARKS.
1.	8° R	3°21'		300 RPM
BBX.	15° R	1°57'		250 RPM
3.				

13

Section Officers & Gun Commanders Map "B" BATTERY



Appendix No. 3

Ref. map 27 S.W 1120000

FIRE ORGANIZATION ORDERS.

B Battery

Place RENESCURE 15 25
Date 7.9.17

Composition 12 Sections 4 A.M.G. Coy
Commanded by Lieut C.R. Hearne
Location of Directing Gun T9C49
No. of Directing Gun 8
Frontage of Battery 70
Grid bearing to R.O. 142°
Zero Line from T9C49 through T13699.10
Grid bearing of Zero line 234°
Tasks: Standing barrage, Breaching barrage, Obstruction, Box Barrage

No. of Barrage.	No. of guns.	Targets.	Clock time	Zero time.	Deviation from Zero line.	Distribution Angle.	Range V.I.	Q.E.	Range to F.T. when Barrage lifts.	Clearance when barrage lifts	Rate of Fire	
A	8	T.13b 6.8 to T.13b 99.10		Z-8	NIL	1° 50'	1500 ^x	-5	203'	1000 ^x	21.4 ^x	45
B	8	T.13a 4.3 to T.13d 1.6		Z+14-19	1° R	1° 30'	2000 ^x	-6	410'	1500 ^x	58 ^x	45
C	8	T.13a 35.10 to T.13c 45.40		Z+20-22	2° R	1° 20'	2200 ^x	-15	5°	1700 ^x	52.8	45
1	8	T.13a 85.95		Z+23-24	22° R	Concentrate 20'	1800 ^x	-5	3° 11'			300
Box	4	T.13a 2.3 to T.13b 15.65		Z+28-33	16 R	Concentrate 20'	2300 ^x	-10	3° 55'			250
Box	4	T.13a 00.45 to T.13a 2.3		Z+28-33	16 R	1° 10'	2300 ^x	-10	5° 45'			250
S.O.S	8	S.18a 4.7 to T.13 C.D.0			3° R	1° 15'	2600 ^x	-15	4° 55'	2100 ^x	124 ^x	300

	8	7	6	5	4	3	2	1	This shows angle from Zero line for each gun. From this line barrage chart for each gun is compiled and issued to gun commanders.	Remarks
A.	0	1° 50' R	3° 40' R	5° 30' R	7° 20' R	9° 10' R	11° R	12° 50' R		<p>Angle of Switch 92° R Wind 1 M.P.H. (Rear). Barometer 29.95" Thermometer 65°.</p>
B.	1° R	2° 30' R	4° R	5° 30' R	7° R	8° 30' R	10° R	11° 30' R		
C.	2° R	3° 20' R	4° 40' R	6° R	7° 20' R	8° 40' R	10° R	11° 20' R		
1	22° R	21° 40' R	21° 20' R	21° R	20° 40' R	20° 20' R	20° R	19° 40' R		
Box	16° R	15° 40' R	15° 20' R	15° R	16° R	17° 10' R	18° 20' R	19° 30' R		
S.O.S.	3° R	4° 15' R	5° 30' R	6° 45' R	8° R	9° 15' R	10° 30' R	11° 45' R		

Appendix No. 3

BARRAGE CHART.

No. 8 Gun, B Battery, Gun Commander,

Grid bearing of Zero line 234° Sgt. X.

No. of Barrage.	Clock time.	Zero Time.	Angle from Zero line.	Q.E.	Traverse	Rate of fire	ETE
A Crep 10		Z-8	0	$2^{\circ}3'$	2°	75 RPM	
B.		Z+14-19	$1^{\circ}R$	$4^{\circ}10'$	2°	75 RPM	
C.		Z+20-22	$2^{\circ}R$	5°	2°	75 RPM	
SOS			$3^{\circ}R$	$7^{\circ}6'$	2°	300 RPM	

CHART OF CONCENTRATION POINTS.

No. of Point.	Angle from Zero line.	Q.E.	ETE	REMARKS.
1.	$22^{\circ}R$	$3^{\circ}11'$		300 R.P.M
BOK	$16^{\circ}R$	3°		250 R.P.M
3.				