

AWM4
**Australian Imperial Force unit war diaries,
1914-18 War**

Repatriation & Demobilisation

Item number: 30/1/4 Part 10

Title: Repatriation and Demobilisation, AIF

January 1919 [Duplicate parts 3 - 6]



AWM4-30/1/4PART10

CONFIDENTIAL.

~~ORIGINAL.~~
~~DUPLICATE.~~
~~TRIPLICATE.~~

2.

481

Australian Imperial Force.

WAR DIARY

OF

Branch 2D, Department of Repatriation
and Demobilisation, A.I.F.

FOR

January, 1919.

Signature of Officer compiling

W. A. Kerrin Cap

Signature of Officer Commanding

G. Somerville Llew

WAR DIARY

or

INTELLIGENCE SUMMARY.

(Erase heading not required.)

Army Form C. 2118.

481

Instructions regarding War Diaries and Intelligence Summaries are contained in F. S. Regs., Part II. and the Staff Manual respectively. Title pages will be prepared in manuscript.

Place	Date	Hour	Summary of Events and Information	Remarks and references to Appendices
London.	1919 Jan.			
	1		<p><u>Strength of Branch:</u> 12 Officers, 45 O. Ranks, 11 Civilian personnel (Typists, etc.) ✓</p> <p>Preliminary Medical Inspection "KENILWORTH CASTLE") "BALMORAL CASTLE") at Liverpool, by Col. K. Smith.</p>	See App. /
	2		<p>"KARMALA" sailed from Avonmouth with 53 Officers, 5 Nurses, 63 W.Os. & Sgts. 710 Other (invalid transport) Ranks = Total personnel 1,019. ✓</p> <p>"BERRIMA" (invalid transport) sailed from Devonport with 45 Officers, 6 Nurses, 30 W.Os. & Sgts. 1,036 O.Ranks. = Total personnel 1,167. (in addition 8 Civilians and 1 Repatriated Civilian from Germany also embarked). ✓</p> <p>Medical Insp ection "ULYSSES" by Col. K. Smith, at Liverpool. ✓</p> <p><u>Strength of Branch:</u> 13 Officers, 45 O. Ranks, 11 Civilian personnel. ✓</p>	See App. 2
	3	9 a.m.	<p>2D Branch (Movements, Quartering and Supply) moved from 130 Horseferry Road to premises at 20 Belgrave Square. ✓</p> <p>Lieut. J.T. Toohey taken on strength from 17th Bn., A.I.F. ✓</p>	
		11.30 a.m.	<p>Lieut.-Col. G.C. Somerville and Capt. W.A. Perrin attended a Conference at War Office. ✓</p> <p><u>Strength of Branch:</u> 14 Officers, 46 O. Ranks, 11 Civilian personnel. ✓</p> <p>Medical Inspection of "CITY OF CAIRO") "CITY OF EXETER") at Manchester, by Col. K. Smith. ✓</p>	See App. 3
	4		<p>"MORVADA" (with invalids) sailed from Cardiff with 26 Officers, 8 Nurses, 95 W.Os. and Sgts., 780 O.Rs. = Total personnel 909. (1 Officer, 4 O.Rs. Imperial Details also embarked). ✓</p>	See App. 4

WAR DIARY

or

INTELLIGENCE SUMMARY.

(Erase heading not required.)

Army Form C. 2118.

481

Instructions regarding War Diaries and Intelligence Summaries are contained in F. S. Regs., Part II. and the Staff Manual respectively. Title pages will be prepared in manuscript.

Place	Date	Hour	Summary of Events and Information	Remarks and references to Appendices
London.	1919.			
	Jan.			
	4		Further Inspection "KENILWORTH CASTLE" and "BALMORAL CASTLE" by Col. K. Smith, at Liverpool. Preliminary Inspection "OSTERLEY" by Col. K. Smith, at Liverpool.	See App. 5
			<u>Strength of Branch:</u> 14 Officers, 46 O. Ranks, 11 Civilian Personnel (Typists, etc.)	
	5		"KANOWNA" (with invalids) sailed from Southampton with 31 Officers, 2 Nurses, 27 W.Os. and Sgts. 390 O. Ranks = Total personnel 450. (1 Civilian, ex-Sgt. Canadian Forces, also embarked).	See App.
			Medical Inspection of "CITY OF YORK" by Col. K. Smith, at Liverpool. <u>Strength of Branch:</u> 14 Officers, 46 O. Ranks, 11 Civilian Personnel.	See App. 6
	6	X	Medical Inspection of "ORSOVA" by Col. K. Smith, at Liverpool. 2 Other Ranks taken on strength. <u>Strength of Branch:</u> 14 Officers, 48 O. Ranks, 11 Civilian Personnel.	" " 7
	7		Capt. C.B. Grieve taken on strength from 5th Australian Divisional Train. 10.30 Conference at 2D Offices to arrange a standard for Supplies of Comforts Shipped on Ambulance and other transports. a.m. <i>Medical Inspection "Ascariis" - "Osterley" by Col. K. Smith at Liverpool</i> X Capt. H.B. Taylor, M.C., relinquished duty as E.S.O. (for return to Australia). Lieut. R.A. Ball taken on strength from 21st Bn. A.I.F. 1 Other Rank taken on strength. <u>Strength of Branch:</u> 16 Officers, 49 O. Ranks, 11 Civilian Personnel.	See App. 11 " " 9

WAR DIARY

or

INTELLIGENCE SUMMARY.

(Erase heading not required.)

Army Form C. 2118.

Instructions regarding War Diaries and Intelligence Summaries are contained in F. S. Regs., Part II. and the Staff Manual respectively. Title pages will be prepared in manuscript.

481

Place	Date	Hour	Summary of Events and Information	Remarks and references to Appendices
London	1919.			
	Jan.			
	8		<p>"ORSOVA" sailed from Liverpool with 54 Officers, 10 Nurses, 113 N.C.Os. 1,260 Other Ranks, 21 Women = Total 1,458 personnel. (Also embarked 2 Naval Officers, 92 Ratings, 9 Passengers, 16 men -- crew "Matunga" -- 5 Ratings -- from "Araluen" -- 6 Infants).</p> <p>3 Other Ranks taken on strength.</p> <p>Strength of Branch: 16 Officers, 52 Other Ranks, 11 Civilian Personnel.</p>	
	9		<p>Lieut. E.G. Lloyd taken on strength as E.S.O. learner, Plymouth.</p> <p>Medical Inspection of "THONGWA" by Col. K. Smith, at Avonmouth.</p> <p>1 Other Rank taken on strength.</p> <p>Strength of Branch: 17 Officers, 53 Other Ranks, 11 Civilian Personnel.</p>	See App. 12
	10		<p>Lieut. E. Fleiter, M.C., taken on strength from 39th Bn. as E.S.O. learner.</p> <p>"OSTERLEY" carrying families, sailed from Liverpool with 6 Officers, 6 Nurses, 30 N.C.Os. 116 Other Ranks, 565 Women = Total 723. Also 1 Lady Doctor, 34 children under 12 years, 43 Infants.</p> <p>"THONGWA" sailed from Liverpool with 502 Munition Workers. (399 Australian Munition Workers, 103 Vickers' men).</p> <p>Medical Inspection of "DEMOSTHENESE" at London (Albert Docks) by Colonel K. Smith.</p> <p>1 Other Rank taken on strength.</p> <p>Strength of Branch: 18 Officers, 54 Other Ranks, 11 Civilian personnel.</p>	See App. 13. See App.

WAR DIARY

Army Form C. 2118.

Instructions regarding War Diaries and Intelligence Summaries are contained in F. S. Regs., Part II. and the Staff Manual respectively. Title pages will be prepared in manuscript.

INTELLIGENCE SUMMARY.

(Erase heading not required.)

481

Place	Date	Hour	Summary of Events and Information	Remarks and references to Appendices
London.	1919			
	Jan.			
	11		Section 2D5 (Embarkation of Personnel) taken on strength of 2D from 3D. Officers: Major R.H. Norman, D.S.O., M.C. Capts. W.K. Findlay and C.B. Grieve, Lieuts. B.F. Little, and R.A. Fitzalan. 8 Other Ranks and 6 Civilian personnel. Capts. R.V. Spier and W.A. Perrin proceeded to Havre. Medical Inspection of "DERBYSHIRE" by Colonel K. Smith, at Hull. " " " " "LANCASHIRE" by Major E.W. Humphery, at Purfleet. X Progress Report for week ended 11th January. 4 Other Ranks taken on strength. 1 " " struck off strength. Strength of Branch: 22 Officers, 65 Other Ranks, 17 Civilian personnel.	See App. 14 " " 19 " " 15
	12		Inspection of "DELTA" at Glasgow by Major W.B. Ryan. Strength of Branch: 22 Officers, 65 Other Ranks, 17 Civilian personnel.	See App. 20
	13		Strength of Branch: 22 Officers, 65 Other Ranks, 17 Civilian personnel.	
	14		"CITY OF YORK" with invalids, sailed from Liverpool with 29 Officers, 9 Nurses, 55 W.Os. and Sgts. 938 Other Ranks. Total personnel 1031. X Medical Inspection of "Hargha" at London by Col. K. Smith. X Strength of Branch: 22 Officers, 65 Other Ranks, 17 Civilian personnel.	See App. 22
	15		"CITY OF EXETER" with invalids, sailed from Liverpool with 35 Officers, 9 Nurses, 54 W.Os. and Sgts., 890 Other Ranks. Total personnel 988. Medical Inspection of "BENALLA" by Col. K. Smith, at Albert Docks, London. 3 Other Ranks taken on strength. Strength of Branch: 22 Officers, 65 Other Ranks, 17 Civilian Personnel.	See App. 23

07

481

INTELLIGENCE SUMMARY.

(Erase heading not required.)

will be prepared in manuscript.				Summary of Events and Information	Remarks and references to Appendices
Place	Date	Hour			
London.	1919.				
	Jan.				
	19		<u>Strength of Branch:</u> 23 Officers, 68 Other Ranks, 17 Civilian Personnel.		
	20		1 Other Rank taken on strength. 1 " " struck off strength.		
			<u>Strength of Branch:</u> 23 Officers, 69 Other Ranks, 17 Civilian personnel.		
	21		Medical Inspection of "LANCASHIRE" by Major E.M. Humphery, at Devonport. Capt. R.L. Muppy taken on strength from O.T.B. ✓ 3 Other Ranks taken on strength. ✓ <u>Strength of Branch:</u> 24 Officers, 72 Other Ranks, 17 Civilian personnel. ✓	see App. 28	
	22		Major A.B. Steele taken on strength ✓ Capt. J. Nicholson taken on strength from 2nd Pioneer Bn. ✓ 1 Other Rank taken on strength. ✓ 1 " " struck off strength. ✓ <u>Strength of Branch:</u> 26 Officers, 73 Other Ranks, 17 Civilian personnel. ✓		
	23		4 Other Ranks taken on strength. ✓ <u>Strength of Branch:</u> 26 Officers, 77 Other Ranks, 17 Civilian personnel. ✓		
	24		Medical Inspection of "KASHMIR" by Col. K. Smith at Southampton. ✓ " " " "ARMAGH" " " " " " Tilbury Docks, London. ✓ 1 Other Rank taken on strength. ✓ <u>Strength of Branch:</u> 26 Officers, 78 Other Ranks, 17 Civilian personnel. ✓	see App. 3/ " " 30	

WAR DIARY

Army Form C. 2118.

Instructions regarding War Diaries and Intelligence Summaries are contained in F. S. Regs., Part II. and the Staff Manual respectively. Title pages will be prepared in manuscript.

INTELLIGENCE SUMMARY.

(Erase heading not required.)

481

Place	Date	Hour	Summary of Events and Information	Remarks and references to Appendices
London.	1919. Jan. 29		<p>2 Other Ranks taken on strength. ✓</p> <p>3 " " struck off strength. ✓</p> <p><u>Strength of Branch:</u> 26 Officers, 81 Other Ranks, 17 Civilian personnel. ✓</p>	
	30		<p>2 Other Ranks taken on strength. ✓</p> <p>Major E.J. Munro taken on strength from A.S.C. Training Depot, Park House. ✓</p> <p>Capt. R.L. Murphy struck off strength on proceeding to A.I.F. Depots. ✓</p> <p><u>Strength of Branch:</u> 26 Officers, 83 Other Ranks, 17 Civilian personnel. ✓</p>	
	31	X	<p>"CITY OF CAIRO" embarked at Liverpool with 1 W.O. & Sgt. 7 Other Ranks = Total personnel=338. ✓ (330 Munition and War Workers also embarked). ✓</p> <p>1 Officer and 1 Other Rank taken on strength. ✓</p> <p><u>Strength of Branch:</u> 27 Officers, 84 Other Ranks, 17 Civilian personnel. ✓</p>	

WAR DIARY

OF

BRANCH 2D ~~REPATRIATION AND DEMOBILIZATION DEPARTMENT.~~

FOR

JANUARY

1919

LIST OF APPENDICES.

No.	Subject.
1.	Report on Medical Inspection of H.T. "KENILWORTH CASTLE" & "BALMORAL CASTLE"
2.	do do H.T. "ULYSSES"
3.	Report on Conference held at Director of Movements Office.
4.	Report on Medical Inspection of H.T. "CITY OF CAIRO" & "CITY OF EXETER"
5.	do do H.T. "OSTERLEY"
6.	do do H.T. "CITY OF YORK"
7.	do do H.T. "ORSOVA"
8.	Embarkation of H.T. "ORSOVA" Movement instruction.
9.	Report on Medical Inspection of H.T. "ASCANIUS"
10.	Embarkation of H.T. "OSTERLEY" Movement instruction.
11.	Report on Conference held at Director of Movements' Office re Comforts.
12.	Report on Medical Inspection of H.T. "THONGA"
13.	do do H.T. "DEMOSTHENES"
14.	do do H.T. "DERBYSHIRE"
15.	Progress return for week ending 11th Jan.
16.	Embarkation of H.T. "CITY OF EXETER" Movement instructions.
17.	do H.T. "DEMOSTHENES" do
18.	do H.T. "CITY OF YORK" do
19.	Report on Medical Inspection of H.T. "LANCASHIRE"
20.	do do H.T. "DELTA"
21.	Embarkation of H.T. "ULYSSES" Movement instructions.
22.	Report on Medical Inspection of H.T. "MARGHA"
23.	do do H.T. "BENALLA"
24.	do do H.T. "NEVASSA"
25.	do do H.T. "CERAMIC"
26.	Further report on Medical Inspection of H.T. "NEVASSA"
27.	Progress return for week ending 18th Jan.
28.	Further report on Medical Inspection of H.T. "LANCASHIRE"
29.	Embarkation of H.T. "CERAMIC" Movement instructions.
30.	Report on Medical Inspection of H.T. "ARMAGH"
31.	do do H.T. "KASHMIR"
32.	Progress report for week ending 25th Jan.
33.	Report on Medical Inspection of H.T. "SUFFOLK"
34.	Further Medical report on inspection of H.T. "BALMORAL CASTLE"
35.	do do H.T. "KENILWORTH CASTLE"
36.	Embarkation of H.T. "BERRIMA" Movement instructions.
37.	do H.T. "CITY OF CAIRO" do
38.	do H.T. "KARMALA" do
39.	do H.T. "MORVADA" do
40.	Report on Medical Inspection of H.T. "ANCHISES".

P. Lowe
Lieut-Colonel.

app 1
Report on preliminary inspection of "KENILWORTH CASTLE" &
"BALMORAL CASTLE".

Date: 4. 1. 1919.
Port: Liverpool:

Only two decks are available for all purposes - Hospital, Orderly Room, Dressing Room, Pay Office, Guard Room, etc. and one well deck for deckhouses for latrines and showers. Half of the forward troop deck is occupied by ship's stewards.

The following provisional arrangements were made :-

"A" Deck No. 1 Main: Starboard side - stewards.

<u>Ventilation:</u>	Ports with scoops. Hatchway.	Port side - Sgts Mess, Orderly Room and Pay Office, Hospital Block, including Dressing Room & Dispensary.
<u>SGTS MESS:</u>	<u>Fitted:</u>	<u>Allotted</u>
Mess.....	42	30
Sleep.....	40	30

Wash basins against after bulkhead port side (6).

"B" Deck, No. 2 Lower:

Fitted: Allotted:

Mess 350, Sleep 350. Mess 240, Sleep 240

<u>Ventilation:</u>	<u>Guard Room:</u>	15' x 9', amidships against forward bulkhead.
Ports with scoops. Hatchway at forward end. Blowers, 2 exhaust fans on either side aft.	<u>V.D. WARD:</u>	After end starboard side, Mess 10, sleep 8.
	<u>Wash Basins</u>	Against after bulkhead, amidships, 10 basins.

"C" Deck, No. 2 orlop.

Baggage Room. Medical Stores.
Store Room. Canteen Stores.
Canteen Issue Room (old Magazine).

Latrine: Fore well deck, port side (Sgts, 2 aft
1 deck house (O.Rs 8 mid section
(V.D. 2 forward.

Wash Basins: On troop decks, Sgts. 6, O. Ranks, 10.

Showers: Deck house, fore well deck, starboard,
Sgts, 3, O. Ranks, 9

Hospital: 2 cots, 6 D.T. Berths = 8

Isolation: Deck house on poop, 1 single, 2 D.T.B. = 3, with accessories.

Spray Room: Nil. Disinfecter: Nil

Galley, Bakehouse etc. Ordinary ship's galley, etc.

(Signed) Kenneth Smith, Colonel,
Medical Liaison.

431

App-2

Inspection of "ULYSSES"

Date: 2: 1: 19.
Port: Liverpool

EMBARKING: 50 officers, 100 sergeants, 1000 hammocks
330 D. T. Bs.

HOSPITAL:
General: In 1st class smoking room, bridge deck...12 cots
20 D.T.Bs.

Dressing room and operating theatre amidships.

Pantry, amidships, adjoins Dressing room.

Latrines & Ablution on starboard side.

(2) - 1 bath 2 basins.

T.B. Ward: In forward section 1st class smoking room, 12 cots and
10 D. T. Bs.

Messing & Pantry: Adjoin on port side.

Latrine (2 seats) Bath & 2 basins aft of general hospital
on port side.

Isolation Hospital: Two deckhouses on boat deck above general
hospital, 17 cots (9 & 8) each self contained with latrine
& bath. All fresh water will have to be carried up to
this Hospital.

Dispensary: On promenade deck on starboard side aft; very good
fittings.

Massage Room: On upper deck on port side)

Dressing Room: do. do.) Just abaft amidships.
(Aft of Massage Room).

Inhalation Room: On promenade deck on port side.

Disinfecter: There is an autoclave belonging to the ship on after well
deck.

V.D. Accommodation: On "B" Troop deck, Messing 24. Sleeping 20.

Latrines: Well deck, forward, port side, 2 with irrigator & trough
bulkheaded off with separate entrance.

Basins: 4 well deck, forward, port side, bulkheaded off.

Gymnasium: Promenade deck starboard side, curtained off.

S.M.O.'s OFFICE Cabin 39, promenade deck, aft, almost adjoining
Dispensary.

LATRINES: Deck houses.... forward....32
aft.....21 53.

Soil pipes - 6" square discharge well down ship's side.

Sergeants: In ordinary passenger accommodation.

SHOWERS:

ABLUTION: Deck houses, forward.....40
aft.....40 60.

Sergeants: In ordinary passenger accommodation.

SHOWERS:

GALLEYS: In deck houses - 24.
In deck houses, 1 forward and 1 aft, each capable of
cooking for 1000 men.

BAKEHOUSE:

BREAD ISSUE ROOM

TROOPS DECK See attached sheet.

GENERAL REMARKS: Although "L" & "M" decks are fitted for 140 hammocks
in addition to the D.T.Bs. it is recommended that these
hammocks be left vacant as the messing accommodation on
these decks is only slightly greater than the D. T. Berths

(Signed) Hector J. C. Clayton,
Major, R.S.O.I.

(Signed) Kenneth Smith,
Colonel,
A.A.M.O.

Troop Decks - "ULYSSES"

Deck:	Fitted		Allotted		C. Space per man (allotted)	Accommodation:	Ventilation:	Remarks:
	To Mess	To Sleep	To Mess	To Sleep				
"A" No. 1 Main	116	114	100	100	110 c.ft.	Hammocks	Hatchway, yes. Ports, yes, with scoops. V. Shafts 2 forward (supply) 2 aft (exhaust).	
"B" No. 2 Main	284	268	240	240	100 c.ft.	Hammocks	Hatchway, yes, leading to "C" deck. Ports, yes, with scoops. V. shafts, 2 forward.	
"C" No. 2 Lower	288	224	140	140	170 c.ft.	Hammocks	Hatchway, yes. Ports, no. V. Shafts, 2 forward (supply) 2 aft (exhaust)	Can accommodate 200 men (c.space 120 c.ft.) This is a high deck & altho' a lower deck could take 90%
"D" No. 3 Main	252	179	140	140	160 c.ft.	Hammocks	Hatchway, yes. Ports, no. V. Shafts, 2 forward (supply) 2 aft (exhaust)	The portholes in this Deck are all being closed.
"E" No. 3 Lower	330 ⁶	290	200	200	160 c.ft.	Hammocks	Hatchway, yes. Ports, no. V. Shafts 2 forward (supply) 2 aft (exhaust)	6 V.D. accommodation for messing 24 & sleeping 20 is on this deck extra to these figures.
"F" Upper Deck port.	108	101	90	90	95 c.ft.	Hammocks	Ports, yes with scoops. alleyway, inner side	Sergeants.
"H" Upper deck port	54	30	30	30	75 c.ft.	D.T. Berths	Ports, yes with scoops	Sgts. This section is just aft of "F" Deck
		29	10	10	200 c.ft.	Hammocks	Alleyway on inner side.	
			60	60				
port	150	82	50 ^{p/}			Hammocks	Ports, yes with scoops.	6 Ex "J" deck which is immediately opposite on starboard side on same level with connecting alleyway.
"J" Upper deck starboard	98	100		100		D.T. Berths	As for "H" Deck	50 men from this deck mess on "H" Deck.
		50	80	30		Hammocks		

185

Deck:	Fitted		Allotted		C. Space per man (accommodat	Accommodation:	Ventilation:	Remarks:
	To Mess	To Sleep	To Mess	To Sleep				

481

"L" No. 5 Main	120	112 80	112	112		D.T.Berths Hammocks	<u>Hatchway</u> , yes. <u>Ports</u> , no No. vent. shafts.	No men are allotted to the hammocks of this deck on account of messing diffic- ulties. This is a meat carrying deck and is rather low on account of insulation
"M" No. 6 Main	120	88 60	88 10	88 10		D.T.Berths Hammocks	<u>Hatchway</u> , yes. <u>Ports</u> , no No. vent. shafts.	A meat carrying deck.
"N" No. 7 Main	224	149	100	100	160 c.ft.	Hammocks	<u>Hatchway</u> , yes with messing from poop.deck. <u>Ports</u> yes with scoops.	

	2144	1956	1450	1450				

(Signed) Hector J. C. Clayton, Major.
S.F.O.I.

(Signed) Kenneth Smith, Colonel.
A.A.M.C.

481

481 App-3
DEPARTMENT OF REPATRIATION AND DEMOBILISATION, A.I.F.

Movements and Quartering Branch,
20 Belgrave Square, S.W.1.

4th January, 1919.

A Conference took place at the Director of Movements' Office at the War Office, yesterday, 3rd instant, at which the following were present:-

Brig.-General O.A. Delano Osborne, C.M.G.
Director of Movements.

Lieut.-Colonel B.G.V. Way, M.V.O.,
Assistant Director of Movements.

Canada:
Colonel Folger, D.S.O.

South Africa:
Lieut.-Colonel J. Mitchell Baker, D.S.O.

New Zealand:
Colonel G.T. Hall, C.M.G.

Australia:
Lieut.-Colonel G.C. Somerville, C.M.G., D.S.O.
Capt. W.A. Perrin, M.B.E.

It was requested by the Director of Movements that representatives present should forward to him a return showing the numbers of personnel of each Force returned to their respective Dominions since the signing of the Armistice on 11th November last, stating whether invalids, or fit troops under repatriation.

It was definitely decided that all Dominion personnel proceeding from France to England for embarkation to the respective Dominions should proceed via Havre and disembark in this country at Weymouth.

Each representative present intimated that an Embarkation Staff representing the various Headquarters concerned would be placed at Weymouth, and the Director of Movements ^{stated} intimated that he would instruct the Embarkation Commandant to provide necessary accommodation for the staff. It was agreed that each Dominion would send a representative to discuss the matter with the Embarkation Commandant at Weymouth.

As regards the conveyance from Havre to this country, it was decided that commencing with 14th instant, 1,000 A.I.F. personnel would be conveyed every second day to this country until 20th inst., i.e. 4,000. Thereafter it would be possible to convey 1,000 to 1,200 every Monday, Wednesday and Friday; but this scheme will not come into effect until instructions have been issued by the Director-General of Demobilisation, A.I.F. For New Zealand 1,000 will be conveyed every Sunday, and for Canada 1,000 to 1,200 every Tuesday, Thursday and Saturday.

It was agreed that the Principals should again meet on Tuesday next, 7th instant, at noon, to discuss any matters concerning the transport of personnel from France to this country.

REPORT ON "CITY OF CAIRO".

Date: 3.1.19.
Port: Manchester.

EMBARKING: Munition Workers.

PROVISIONAL
ALLOTMENT.

		To Mess.	To Sleep.	
"A"	Deck No. 1 Main.	..	68	D.T. Berths
"B"	" " 2 Main.	456	..	
"C"	" " 4 & 5 Main.	..	252	do.
"D"	" " 6 Main.	..	72	do.
		456	392	

HOSPITAL:

General: Port Side, No. 1 Upper. (2 cots, 6 D.T.Bs - 8
(Messing for 6.
(Dressing Room. Latrine and
(Bath. Slop Sink.
(Dispensary.

Starboard side, No. 1 Upper. (A.M.C. Orderlies. 6 D.T.Bs.
(and messing. Medical Store.
S.M.O. Cabin, No. 47. (Port side, forward end of
Dispenser's cabin, No. 48. (1st class accommodation.

Isolation: Deck House on Boat Deck aft. 8 D.T.Bs. with all accessories.

Disinfector: Nil. Spray Room: Nil.

GALLEY: (2). Starboard Side. Aft well deck.
Starboard side, Aft well deck.

BAKEHOUSE: In forward galley.

BREAD ROOM: Deckhouse amidships, after port, forward well deck.

BUTCHER'S SHOP: Adjoins after galley.

LATRINES: Deck house, port side, forward well deck 10
" " " " after " " 10
20

ABLUTION: Deck houses, port and starboard, poop. 20 basins.
Starboard side, No. 1 upper. 6 "

? Shower Baths. Forward under forecastle. Starboard.
1 Deck House Poop.

Canvas Baths. Two to be supplied.

STORE ROOM: Canteen: Forward end No. 1 Main.
Bedding: Forward end No. 1 Main.
Medical Stores: Starboard side, No. 1 Upper.
Mess Utensils and Pantry: Forward end No. 2 Main.

CANTEEN ISSUE ROOM: Deck House on Bridge Deck aft, port side.

VENTILATION: 1. 2 Windsails for each Hatch.
2. Every alternate port to be fitted with wind scoop.
3. 2 Fans (both supply and exhaust) to be fitted in
after end of No. 2 Main.
4. 2 Fans (supply and exhaust) in No. 6 Main.

GENERAL
REMARKS.

It is doubtful whether more than 300 D.T. Berths can be fitted. These berths must be fitted with a 9" form clamped to lower berth with a small locker with flap door for each bunk. A 3-ft. passage must be left between tiers of D.T. Berths.

sgd. HECTOR J. CLAYTON, Major.
E.S.O.1.

sgd. KENNETH SMITH, Colonel.
Medical Liaison.

Date: 3.1.19.
Port: Manchester.

Embarking 30 Officers, 10 Nurses, 53 Sergeants, 950 O. Ranks.

<u>HOSPITAL:</u>	S.M.O's Office -- Promenade Deck, starboard side.
<u>General:</u>	On upper deck. Forward end of first-class cabin accommodation, starboard side.
	Cots. 6
	D.T.Bs. 10
Port side cabins.	D.T.Bs. 8
	<u>24</u>

Dressing Room & Operating Theatre. Adjoins Hospital on port side.

Pantry: Amidships in Hospital block. Messing in pantry.

Latrine & Bathing Accommodation: Aft of Hospital block in ordinary passenger accommodation. Very good.

Dispensary: On upper deck at after end of cabin block (old barber's shop). Opens on to after well deck.

ISOLATION: On poop deck amidships. 8 D.T.Bs. with latrine and bathing accommodation. Flap tables for messing.

SPRAY ROOM: Promenade Deck. Starboard side.

DI SINFECTOR: Deckhouse on poop deck on starboard side.

MASSAGE ROOM: Not fixed. fitted.

V.D. ACCOMMODATION: On "A" Troop Deck. Starboard side, forward.
Messing and sleeping for 15. 2 wash basins also on this deck.

Latrine: 2 seats forward and latrine, port side, forward well deck, bulkheaded off.

<u>LATRINES:</u>	Deckhouses.	Well Deck.	forward.	Starboard.	10
		" "	aft.	Port	10
		Poop Deck,	Port and	Starboard.	14
					<u>34</u>

Sergeants: 2nd class passenger accommodation.

<u>ABUTMENT:</u>	<u>Basins:</u>	In "A" Troop Deck amidships	24
		Forward end "E" Deck athwartships.	26
			<u>50</u>

Showers: 16 in Deck Houses.

Sergeants: 2nd class passenger accommodation.

<u>Galleys:</u>	Well Deck, aft, starboard side	500
	" " fwd. port side.	500

Butcher's Shop. Well Deck, forward, port side.

Bakehouse. " " aft, starboard side.

Bread Room: On Bridge Deck, starboard side.

Troop Deck: See attached sheet.

GENERAL REMARKS: "F" Deck is a bad deck for troops, as both the troop store rooms and ship's store rooms are on this deck. It is however, suggested that 30 Sergeants in Hammocks be allotted as the Sergeants' mess in 2nd saloon, which is fitted for 32 hammocks, has no hammock racks or room for them. By this arrangement, the Sergeants' Mess will not be used for sleeping. As "C" Deck runs a long way aft of the Hatch, it was thought advisable to fit artificial ventilation. As allotted, the ship should prove a good and roomy troop ship.

sgd. HECTOR J.R. CLAYTON, Major.
E.S.O.1.
sgd¹ KENNETH SMITH, Colonel.
Medical Liaison.

"CITY OF EXETER".

481

Deck.	Fitted:		Allotted:		C. Space per man (allotted)	Accommodation.	Ventilation.	Remarks
	To Mess	To Sleep	To Mess	To Sleep				
"A" Deck No. 1 Upper	58 15 Guard Room.	78 15	24	24	140 c.ft	Hammocks (Guard) Hammocks V D. Hammocks	<u>Hatch.</u> Yes at after end <u>Ports</u> Yes with scoops.	The forward mid- ship section is filled with wash basins.
"B" Deck No. 1 Main	220	226	180	180	120 c.ft	Hammocks.	<u>Hatch.</u> Yes. <u>Ports</u> with scoops. <u>V. Shafts</u> , 2 forward and x 2 aft.	
"C" Deck No. 2 Main	490	476	406	406	95 c.ft	Hammocks.	<u>Hatch.</u> Yes at forward end (large) <u>Ports</u> with scoops <u>Vent. Shafts</u> . 2 forward & 2 aft. <u>Fans</u> . 2 supply & exhaust in after part of deck.	The deck runs a long way aft from Hatch & the deck needed artificial ventilation with fans.
"D" Deck No. 4 & 5 Main	462	462	350	350	85 c.ft	Hammocks.	<u>Hatches</u> . 2. <u>Ports</u> with scoops. <u>V. Shafts</u> . 2 for- ward and 2 aft.	24 wash basins are fitted against forward Bulkhead
"E" Deck No. 6 Main	112	112	30 ^x	30 ^x	400 c.ft	Hammocks.	<u>Hatch.</u> Yes. <u>Ports</u> . Nil. <u>V. Shafts</u> . Nil. Exhaust ventilation to be fitted	Ships store rooms & Troops store rooms are on this deck. A bad deck for troops.
"E" Deck 2nd Saloon	55	28 32	53	23 30	- -	Cabins Hammocks.	<u>Skylight.</u> <u>Ports</u> and <u>Doorways.</u>	Sergeants Mess in 2nd saloon.
	1412 1327	1422 1414	1042 1013	1042 1013				

^x Suggest using this deck for sergeants in hammocks so that the necessary accommodation can be left free.

Apr 5

Report on "OSTERLEY".

Date: 4.1.19.
Port: Liverpool.

EMBAR KING:

Families only, 3rd Class.

Men:

D.T. Berths on "F" Deck. Ventilation by ports
and artificial system. Very good. 152 berths.

Women:

In ordinary 3rd class accommodation. D.T. Berths
bulkheaded off in blocks 6 to 12.
A Labour Room has been fitted on "F" Deck by taking
out 10 D.T. Berths and fitting it up with 2 D.T.
Berths, 2 maternity beds, table and chairs,
Fyffe's chair and small bath, cupboards, etc.

HOSPITAL ACCOM-
MODATION:

In accordance with Board of Trade.
On "D" Deck (main deck) amidships.
4 D.T. Berths Women.
4 D.T. " Men.

ISOLATION:

Present ship's Hospital on poop.
W.C. to be ventilated with cowl.
D.T. Berths 2, Cot 1, Women.
D.T. " 2, " 1, Men.

sgd. KENNETH SMITH, Colonel.

481
App 6
 Report on preliminary inspection of "CITY OF YORK" on 15: 1: 1919.

EMBARLING: 27 officers, 10 nurses, 53 sergeants, 950 other ranks
 10 do. Staff.

HOSPITAL: 2nd class cabins on starboard side have been gutted forming a ward with 20 D.T.Bs., 1 bath and 1 W.C. at after end. This space is suitable for only 20 D.T.Bs. Extra accommodation can be got by taking 6 cabins on port side where there are 2 baths and 2 W.Cs. The bulkheads between these cabins to be removed, the wash basins taken out and 2 fitted over each bath.

Dressing Room: 2nd saloon under poop, port side. Very good.

Dispensary: Forward end of Dressing Room.

Fans must be fitted in all parts of Hospital, and scoops for portholes.

ISOLATION HOSPITAL: On Poop, port side. 6 D.T.Bs. with bath and W.C. (rather small)

SPRAY ROOM: On boat deck 2

DISINFECTING ROOM On Poop, port side, aft of Isolation Hospital.

MASSAGE ROOM & GYMNASIUM: Not required.

S.M.O. CABIN: No. 2 cabin. Will also serve as office.

V.D. ACCOMMODATION: On "A" Troop deck on port side, forward. Mess 12, sleep 12.

Latrine & Irrigation Trough: Forward end of latrine on starboard side fore well deck.

LATRINES: In deck houses. Fore well, starboard10
 Aft well, port20
 30

Sergeants: Starboard side, under Bridge deck.....8.

ABLUTION: Wash Basins: Deck houses, fore well, port.....21
 aft well, port20
 41

V. D.: Yet to be bulkheaded off.
Showers: In basin houses. Forward.....14
 aft.....10
 24

Sail Baths: 2 to be supplied

GALLEYS: Deck houses. After well, starboard.....500
 fore well, port500

BAKE HOUSE: Aft of galley starboard side, after well...Very good.

BREAD ROOM: Deck house after well, port side...Very good.

BUTCHERS SHOP Under forecastle, port side.

VEGETABLE ROOM Deck houses, port and starboard, after well.

ORDERLY ROOM & PAY OFFICE: 2nd class smoke room & entrance hall on Poop.

CANTEEN ISSUING AND STORE: Deck house, fore well, starboard.

RED CROSS ISSUING: Has yet to be fitted.

STORE ROOMS: Forward end of No. 1 Main.

GENERAL REMARKS: All troop decks are very lofty and well ventilated. The Hatches are large. The ship should prove a very good ambulance Transport.

(Signed) Kenneth Smith, Colonel
 Medical Liaison.

"CITY OF YORK". Preliminary Inspection on 5: 1: 19 by Colonel K. Smith.

Deck:	Fitted		Allotted		C. Space per man (allotted)	Accommodation	Ventilation	Remarks
	To Mess	To Sleep	To Mess	To Sleep				
"A" No. 1 Main	276	170	170	170 ^x	105 c.ft.	Hammocks	Hatchway, yes. Ports, 2 on each side. V. Shafts, 2 forward and 2 aft.	Lofty deck. Bulkhead door leading to No. 2 Main. Troops store rooms against forward bulkhead. V.D. on this deck. Hooks space 18".
"B" No. 2 Main	490	320	300	300	90 c.ft.	Hammocks	Hatchway, very large. Ports 6 a side. V. Shafts, 3 forward and 4 aft.	Lofty deck. Very good deck.
"C" Upper Deck Sgts	173	123	53 ^φ	50 3	280 c.ft.	Hammocks Cabins	Portholes, 10. Doors, 2. Alleyway, fore and aft.	Bgts Mess. Hooks space 18". Rather low deck but very well ventilated. Could accommodate 100 Sgts in hammocks.
"D" No. 4 Main	460	364	340	340	85 c.ft.	Hammocks	Hatchway, large. Ports, 4 each side. V. Shafts, 4 forward and 2 aft.	Lofty deck. Bulkhead door leading to No. 5 Main. Very good deck.
"E" No. 5 Main	288	211	200	200	115 c.ft.	Hammocks	Hatchway, yes. Ports, 3 each side. V. Shafts, 2 forward.	Lofty deck. Ship's stores against after bulkhead.

1687 1188 1063 1063								

^x 5% spare hangings have not been allowed on this deck as the hooks are spaced 18".

^φ Three sergeants are accommodated in cabins.

App-7

481

Report on inspection of "ORSOVA"

Date: 6: 1: 19.
Port: Liverpool.

EMBARKING: 40 officers, 100 sergeants, 1200 other ranks
17 N. O. 119 N. Ratings.

HOSPITAL - General: Upper deck aft, 2nd class cabins gutted
out... 3 cots
32 D. T. Berths. Messing for 20.
35

Dressing Room: In hospital block.

Dispensary: In hospital block.

Latrines: 2 W.Cs. 1 slop sink.

Baths: 2 baths fitted with 4 basins.
There are two supplementary hospitals on promenade
deck with 18 and 28 D. T. Berths.

Isolation: On poop. 10 D.T. Berths with W.C. & Bath.

Spray Room: On poop deck. Satisfactory.

Disinfector: Pressure steam, on poop near Isolation Hosp.

V.D. Accommodation: On "A" Deck, starboard side, forward, with
2 W.C. & 2 baths & Irrigator. To mess 28,
to sleep 28.

Latrines: 61 seats. In permanent passenger accommodation.

Wash Basins: 126 basins. Baths and showers, satisfactory.
All flushes were tested and proved satisfactory.

Galley: Ships 2nd and 3rd class galley. Satisfactory.

Bakehouse: Ships bakehouse.

Troop Decks: See attached sheet.

General Remarks: As allotted the "Orsova" should prove a good
ambulance Transport.

8th January 1919

Hector H. Bagley
1886.

for D.M.S. Demobilisation.
Colonel,
A.T.F.

" O R S O V A "

Deck:	Fitted:		Allotted:		C. Space per man. (allotted)	Accommodation:	Ventilation:	Remarks:
	To Mess	To Sleep	To Mess	To Sleep				
"A" No. 2 Main	186 28	170 28	130	130	80 c.ft.	Hammocks Hammocks, V.D.	Saloon companionway. Very numerous ports. Very good	
"B" No. 2 lower	200	192	130	130	95 c.ft.	Hammocks	Small hatch forward. Ports, 10 each side with scoops. Blower exhaust.	
"C" No. 3 Main	264	237	180	180	120 c.ft.	Hammocks	Staircase. Numerous ports with scoops.	Can accommodate 220. C.Space 90 ft.
"D" No. 4 Main	95	80	65	65	95 c.ft.	Hammocks	Portholes, numerous, scoops Vent. shaft	
"E" No. 5 Main	71	62	40 12	40 12	90 c.ft.	Hammocks O.Ranks do. A.M.C.Staff	Portholes, numerous with scoops	
"F" 2nd Dining Saloon			7 10	7 10	200 c.ft.	C.P.O. in cabins P.O. in Hammocks	Companion way.	Can accommodate 120 in hammocks (C. space 100 c.ft.)
	216	191	46 57	46 57	200 c.ft.	Sgts. in cabins Sgts. in Hammocks	Numerous portholes. Vent. shaft, 1.	
"G" 3rd Dining Saloon	244	244	119 70	119 70	80 c.ft.	106 N. Ratings 13 ex Matunga O.Ranks Hammocks	Alleyways fore and aft numerous Portholes with scoops. Vent. Shafts, 2.	Messing for 120 in hammocks (C.Space 100 c.ft.) Bulk headed off (dwarf) for N. Ratings.
"H" No. 5 Lower	292	290	200	200	100 c.ft.	Hammocks	Hatch, yes but small and at after end. Ports, 7 each side Blowers, exhaust.	The forced ventil- ation in these decks is the orig- inal system fitted for passenger trade. Quite efficient.
"J" No. 6 Main		76	-	-	-	D.T.Bs. in cabins	Hatch, yes, small, forward	
	300	269	215	215	90 c.ft.	Hammocks	Companion way aft. Portholes numerous, with scoops.	
"K" No. 6 Lower	232	228	170	170	85 c.ft.	Hammocks	Hatch, small, forward. Ports, 12 a side. Companion way aft.	
	2128	2067	1451	1451			Blowers, exhaust.	
ALLOTTED:						103 sergeants, 17 N.P.Os.	1200 other ranks, 12 A.M.C. Orderlies, 196 N. ratings, 13 crew ex "Matunga"	

481

Apr 8

"ORSOVA"ADVANCE PARTY.

Report for Instructions 11 am. Monday 6th inst .

PROCEED.

Leave Euston 11-40 pm. Monday 6th inst.
Arrive L'Pool 6-20 am Tuesday 7th inst.

NUMBERS.

4 Officers 20 Others.

O.C. Troops	S.S.M.
Adjutant	S.Q.M.S.
W'Master	O.R.S.
S.M.O.	Pay Sergt.
	Red Cross Rep.
	14 Med. Details.
	1 Col. Knight's Batman.

NURSES.

5 Nurses leave Euston 9-10 am Tuesday 7th inst.
5 " arrive L'pool 2-7 pm.
9-10 a.m. Wednesday 8th

MAIN EMBARKATION.

Report for instructions 3.p.m. Tuesday 7th inst.

Awaiting Train Timings.

STAFF.

2 Med. Officers.	
2 Dental Officers	3 Dental Others.
1 Chaplain	1 Records Clerk
8 Invalid Officers.	

9-10 a.m. 8th. Euston.

Copies to:-

Major Plant.
Lt. Layton Smith.
Capt. Scouler.
Sergt Driscoll.
E.S.O.1

W.O.
5.1 19

App 9

481

Report on "ASCANIUS"

Date: 7/1/19.
Port: Liverpool.

EMBARKING: Troops. 60 officers, 80 sergeants, 1300 other ranks

HOSPITAL:
General: In smoking room block. 6 cots
20 D. T. Berths
625
6 cabins (3 berth) are available as extra accommodation.
Will be used as A.M.C. quarters.
Messing and pantry fittings in Hospital on port side.
Latrine & Ablution: In permanent accommodation. 3 W.Cs. 1 slop
sink, 2 baths fitted with 2 basins each, and 2 basins
(64 basins)
Dressing Room: In Hospital on port side of centre section.
Dispensary: In cabin adjoining hospital on port side.
Medical store: In cabin adjoining Dispensary.
Spray Room: On starboard side hospital verandah.
Dental surgery: Cabin in general hospital block.

Isolation: On poop. 3 cots
6 D. T. Berths
9
Latrine & Ablution: 1 seat, 1 slop sink, 1 bath,
1 sink, 1 basin. Hot water geyser.
Messing table in hospital.
Disinfecter Ship is fitted with autoclave on poop deck. To be
renovated and tested.

LATRINES: In deckhouses - 46. 2 bulkheaded off for V.D. cases.

WASH BASINS: In deckhouses - 86 basins. 2 bulkheaded off for V.D.
cases.

Sergeants: In cabins. Permanent passenger latrines six baths etc.

SHOWER BATHS In deckhouses.

GALLEY: In deckhouse, forward well deck.

BAKEHOUSE: Permanent ship's bakehouse.

LAUNDRY: Ship's laundry will be renovated and will be available
this voyage.

CANTEN ISSUE ROOM: Deckhouse after well deck, port side.

ORDERLY ROOM On promenade deck port side.

PAY & AUDIT OFFICE: Deckhouse. Starboard side, after well deck.

SGTS. MESS: Deckhouses, promenade deck, port and starboard.
Fitted to mess 154. sleep 156. Hooks are only 16"
apart. There are enough cabins to house 80 sergeants.

TROOP DECKS: Approximate fitting, mess 1948, sleep 1600.
The ship was full of cargo and it was thus impossible to
examine the troop decks.

O.C. cabin No. 1. Adjutant No. 2, Q.M. No. 3.
S.M.O. cabin No. 8 (opp. O.C. Troops) Nurses Nos. 5, 6 & 7

(Signed) Kenneth Smith, Colonel.
Medical Liaison.

481 *Apr 10*

"OSTERLEY"

ADVANCE PARTY

Report for instructions. 4pm. Tuesday 7th January.

PROCEED. Leave Euston 11-40 pm. 7th January.
Arr. L'Pool 6-20 am. 8th "

NUMBERS. 4 Officers 6 Others.
O.C. Troops. S.S.M.
S.M.O. S.Q.M.S.
Adjutant O.R.S.
Quartermaster Pay Sergt.
2 Medical N.C.Os

NURSES.

10 Nurses leave Euston 9-10 am. 8th. Arrive Liverpool 2-7 pm.

MAIN EMBARKATION. AF LIVERPOOL 10th Inst.

Staff report for instructions, 4pm. Thursday 9th Jan.

NUMBERS. 4 Officers 144 Others.
1 2nd in Command.
2 Medical Officers.
1 Chaplain.

AWAITING TRAIN TIMINGS.

PROCEED. Leave Euston 0910 10th
Arrive Liverpool 1407

Copies to:-

Major Plant.
Lt. Laird (Accommodation)
Lt. Layton-Smith
Capt Scouler
S/Sgt Driscoll.

W.O.

6-1-19

Conference held at Movements and Quartering Branch,
Department of Repatriation and Demobilisation, 20 Belgrave
Square, 10.30 a.m., 7th January, 1919.

Present:

Lieut.-Col. W.F. Hayward, C.B.E. representing the
Capt. A. Allen) Australian Red Cross.

Lieut.-Col. T.B. Woodburn, C.B.E., representing the Australia-
lian Comforts Fund.

H.A.
Major Wheeler) representing the Australian
Major R.C. Clack) Y.M.C.A.

Lieut.-Col. G.C. Somerville, C.B.E., D.S.O.,
Capt. W.A. Perrin, M.B.E., Major R.C.F. Plant, D.S.O.,
Chaplain W.E. Dexter, D.S.O., M.C., D.C.M., Maj. F.L. Crane,
Sgt. R.B. Driscoll.

Colonel Somerville said that the Conference had been arranged with the view of bringing together representatives of the various Societies who were placing comforts, etc., on board vessels proceeding to Australia. It was recognised that the military have no jurisdiction over these Societies, but in the interests of the comfort of the troops, the meeting was called.

Colonel Woodburn (Australian Comforts Fund) stated that the Comforts Fund placed on board each vessel returning to Australia with troops, approximately

150,000 cigarettes)
200 lbs. tobacco) per 100 men.
100 cases of General Gifts, such as
Foodstuffs.

Major Wheeler of the Y.M.C.A., handed in a list of standard equipment supplied by the Society to each boat. Besides this equipment, returning Secretaries were authorised to augment the equipment placed on board by the Red Cross, with Y.M.C.A. goods which did not overlap. Representatives of the Y.M.C.A. distributed cigarettes on board ship while the vessel was in port. In this connection arrangements were being made with the Customs Department for a rebate of duty.

Major Crane (Canteens) said that the Customs Dept. had arranged that all tobacco and cigarettes put on board by the A.I.F. Canteens, should be duty free.

Capt. Perrin mentioned that the Overseas Club was anxious to distribute cigarettes and tobacco to every man returning to Australia. The value of the package would be approximately 6/- per man.

Colonel Hayward (Red Cross) said that his Society
only

only dealt with Hospital ships and Ambulance Transports. All stores were placed in charge of a Non-Commissioned Officer allotted to Red Cross work under the direction of the Senior Medical Officer. The N.C.O. also acted in charge of games. Goods placed on board by the Red Cross were intended for an eight weeks' voyage, for 1,000 men. If, however, the S.M.O. makes a request for any special article, it will be supplied. Supplies en route to Australia could be obtained at Cape Town or Port Said. Owing to disagreements between men on a "mixed" ship, the Society had found it advisable, where the percentage of sick men was the larger, to treat the boat as a "Hospital Ship", and make provision accordingly, excluding games, etc., undertaken by the Y.M.C.A.

Regarding store-room accommodation for the various Societies' stores, Capt. Perrin suggested that one large store-room should be allotted, and that issue rooms should be distinct therefrom. He stated that a letter had been sent to the Comforts Fund, Y.M.C.A. and Red Cross re the matter, and that the Comforts Fund had replied, agreeing to the proposal.

Colonel Hayward did not see any objection to the suggestion, provided the S.M.O. dealt with Red Cross stores.

Major Wheeler stated that it had been the experience of his Society that a soldier with Y.M.C.A. experience was more successful in dealing with stores than the usual soldier, and that A.I.F. men were now being released for duty as Y.M.C.A. representatives. He would like his Society to be permitted to put a representative on a boat when the greater percentage were well men, and a man and wife on a "family" boat.

Colonel Woodburn said that all goods placed on board by the Comforts Fund were in the control of the O.C. of the ship. Foodstuffs were passed to the Cook-house, and were served as items not provided by the ship's menu. Such foodstuffs were at the call of the O.C. for any particular meal.

It was decided that -

Australian Comforts Fund stores should be under the	control of the O.C. of the Ship;
Red Cross Stores should be under the control of the S.M.O;	
Y.M.C.A. " " " " " " " " " " " "	Y.M.C.A. Representative.

Captain Perrin suggested that the Overseas Club tobacco should be in charge of the O.C. ship, and if the supply was not sufficient, it could be supplemented by the Comforts Fund, A.I.F. Canteens tobacco to be in reserve, and be regulated by what others put on board.

Colonel Somerville said in his opinion the tobacco should be put on board by one Society only.

It was stated by Colonel Somerville that Chaplain Dexter was to act as Liaison, and obtain lists of all stuff put on board by each Society. He would then make out a list of what was sufficient for the voyage, and say which Society should put the goods on board, subject to the concurrence of the Society concerned being obtained.

481 *App-12*

Report on S.S. "THORNS"

Date: 9/1/19.
 Port: Avonmouth

ISOLATION
HOSPITAL

Port side after well deck, troop wash place and isolation contained in house built on deck, separated by galvanised iron bulkhead giving complete isolation. Wooden D.T.Bs. 4. Fitted with lath mattresses. 1 bath, latrine, wash basin, shower in this unit which is self contained.

DISPENSARY

Next hospital amidships. Drugs supplied according to Board of Trade Regs. for 500.

WASH PLACES

Forward, portside, upper m in deck.....17
 Aft, next isolation as above.....17
 Isolation by bulkhead with separate entrance.....4
 38

Drain Pipes, and troughs ample; the troughs are not divided into sections, and slope well down to pipes.

SHOWERS

Next wash places, fore/aft Total 6

LATRINES

Aft on well deck in house.....16 seats
 Forward, starboard side well deck.16 seats
 Isolated by bulkhead with separate entrance....4 seats
 36

Urine troughs 16 ft. long in each latrine. Soil pipes and trough drain pipes 8" and 10" respectively and led well down ship's side. Continual flush of water running.

BAKESHOUSE

Starboard side forward well deck, 1200.

BREAD ISSUE

Room next Bakery; sufficient for 2 days issue for 1200.

GALLERY

Forward under fore-castle-head, 600.

PANTRY

In middle of mess deck, well fitted for serving food.

CANTINE

Middle of forward well deck, 15' x 15'.

REMARKS

The ship is fitted for 408 sleeping in D.T.Bs. and 434 Messing on separate deck from sleeping accommodation.

(Signed) S. M. HUMPHREY, Major.

Deck.	Fitted.		Allotted.		C.Space per man (allotted).	Accommodation.	Ventilation.	Remarks.
	To Mess.	To Sleep.	To Mess.	To Sleep.				
No.1 Main.	..	94	94	94	120 c.ft.	D.T. Berths.	H.P. 5.5 2 ventilators in Hatch cover.	All available space taken up by D.T.Bs. Hatch not available for sleeping. Entrance to baggage room on deck below through this deck
No. 2 Main No. 2	434	...	434	...	60 c.ft.		2 Hatches 18'x16' ea. 9 ports each side all available.	Seats of tables about 20" apart except 2, which are 13" and 15" respectively. Chief Off. states that complaints have been made that 2 stewards cannot go between tables at same time.
No. 4 Main	...	136	...	136	100 c.ft.	D.T. Berths	Hatches 22' x 13'. 6 Ports each side. 2 Ventilators forward end.	Good deck, under-run 15 feet each way from Hatch. Hatch not available for sleeping.
No. 5 Main.	...	178	178	100 c.ft.	D.T. Berths	Match 14' x 17'. 8 Ports each side. Ventilators 2 forward, 2 aft. Tops of all booby hatches have vent. 10" diam.	
	434	408	528	408				

Hospital is in second class saloon on upper deck about amidships on port side. Two 6/berth cabins leading off at ship's side are also included, giving, in saloon, 8 D.T.Bs., 12 cabin berths, 8 swing cots. Hospital is roomy, well ventilated over top of bulkhead all round, and the second-class Bath accommodation is available with latrines and wash basins. 3 W.Cs., 3 Baths, 3 Urinals, 2 Wash Basins.

App 13

481

Report on "DEMOSTHENES".

Date: 10/1/19.
Port: London. Albert Dock.

<u>O.C. Troops Cabin.</u>	2 staterooms forward end starboard alleyway. Bidge deck, door between making combination of cabin and office. Nos. 1 and 2.
<u>S.M.O's. Cabin.</u>	2 similar cabins, port side, same arrangement. Nos. 25-26.
<u>Nurses' Cabins.</u>	After end same alleyway, Nos. 15-17. Lavatory and bath accommodation adjoining.
<u>Troops Wash Places.</u>	Forward port side.....basins 16 After well deck....." 22 After end upper main dk. pt. " 6 " " " " " Stbd " 24 " " " " " " 24 Total...70

Troops Baths & Showers: 6 each upper main deck right in stern of ship.

<u>Troops Latrines:</u>	Forward upper deck, starboard.....11 After end " " ".....12 Upper Main Deck in stern.....12 35
-------------------------	---

Urinals:

Soil pipes 8" led well down ship's side.
Starboard side upper deck aft, 2 troughs 16' x 18' long. After end upper deck near Canteen 10' long.
3 urinals in stern of ship.
Drain pipes from urinals 2" & 2½" leading well out and down ship's side.

HOSPITAL:

Main Hospital on Promenade Deck at after end under Isolation Ward. Entrances from after end by stairway from main upper deck and gangway from forward through alleyway on either side of ship leading from saloon companionway.

Port Section, Iron swing cots.....	10
Stbd. section, D.T.Bs.	18
B.B. Cabins in Stbd alleyway	
Nos. 10 to 14.....	10
	38

Originally the smoke room, bar and cafe.
Middle part bulkheaded off to make dressing station and bar used as hospital pantry.
Ventilation by 13 windows 30" x 18"

7	"	30" x 18"
1	"	22" x 17"

These windows are either at sides or after end and sheltered, and can be kept open constantly.
2 W.Cs. with lift seats in port alleyway adjoining 1 urinal, 1 wash basin, 1 bath.
In addition to these in the Dressing Station which is situated between the two parts of the Hospital, there is wash basin, hot or cold, Sink, Sterilizer for instruments, do. for Dressings, all of which are quite handy for hospital use.

ISOLATION HOSPITAL:

On Boat Deck above Main Hospital. Two entrances, forward from deck and aft by stairway leading up from verandah of Main Hospital. In 2 sections separated by a small alleyway leading from after entrance with air communication between the two wards over the top of trunk of alleyway. The two wards are not completely isolated; could be filled in if necessary, but present arrangement allows of better ventilation of both sides.

Port Section...Wooden D.T.Bs.	10
xxx Iron "	2
Stbd Section...Wooden D.T.Bs.....	20
	32

481

The wooden bunks are fitted with either lath or spring mattresses.

Ventilation, port side 10" diameter intake
8 windows 17" x 22".
starboard side, 1 ventilator,
6 windows 17" x 22".

1 bath, wash basin and W.C. opening off port side.
Gupboard and shelves have been fitted making arrangement for working handy.

VENEREAL
ACCOMMODATION:
Washing:

On "A" Troop Deck forward, separated by 4' bulkhead from rest of deck. 16 hammocks, messing 18.
2 basins bulked off with separate entrance on forward upper deck.
Urinal and W.C. same deck starboard side, bulkheaded off at entrance to Latrine.

TRACHOMA:

Next Venereal Accommodation on port side. Same fitting. Hammocks 15, messing 16. No separate latrines. Wash places 2 on upper deck forward.

GUARD CELLS:

In stern of ship on main upper deck, 3 cells in enclosure with 8" above bulkhead all round. Doors of cells fitted with open bars in upper half; 2 of the cells have ports; one has opening over bulkhead communicating with companion way outside. 3 Ports open from the enclosure, all fitted with bars.

Canteen Issue Room:

Port side aft, opposite Guard Cells.

Dispensary:

On awning deck, port side, well fitted.

Officers' & Sergeants' latrines in ordinary passenger accommodation.

Inhalation Room:

On Poop.

Disinfecter:

Autoclave on Poop.

Galley:

Amidships on main deck, 2000 capacity; gangway track to decks, good and safe for carrying dixies; protected from weather at nearly all the way.

Bakehouse & Bread Issue Room...Main deck, amidships, 2000.

Recommended for....60 officers
70 sergeants
1573 other ranks.

(Sgt.) E.M. Humphrey
Major.

RECOMMENDATIONS: Over and above the numbers allotted to each deck, I consider that the following troops could be embarked without any overcrowding of either troop decks or deck spaces :-

A.....20
B.....37
C.....60
D. O.R....25
Sgts....33
E.....20
F.....45
G.....25
H.....50
I.....45
J.....50
K.....12
L.....22

444 i.e. 33 Sgts. and 411 other ranks.

These numbers in every instance leave 5% spare hangings & 15% spare messing.

(Sgt.) K. Smith
Col.

Deck:	Fitted:		Allotted:		C. Space per man (allotted)	Accommodation:	Ventilation:	Remarks:
	To Mess	To Sleep	To Mess	To Sleep				
A. Upp. Tw.	81	66	40	40	200 c.ft.	Hammocks	Hatch, yes. Ports, 4 each side. Vent. 1 18 x 18, forward intake	V.D. & Trachoma Isolation are on this deck, not included. Separated by bulkhead 4'. V.D. 16 Trachoma 15. Hooks do not project outside boundary
B. Upp. Tw.	232	181	135	135	110 c.ft.	Hammocks	Hatch. Ports, 7 s. & 5 p. Scoops. Vent. 12 x 15, forward intake.	Well ventilated with under-run of 15 ft. Hatch will sleep 22.
C. Upp. Tw.	252	224	150	150	130 c.ft.	Hammocks	Hatch. Ports, 8 each side Scoops. No vents.	Trunk hatch through deck above dired to open air. Hatch will sleep 22. Decks A, B & C communicate by doors, which, with hatches ensure good current of air thro' the three decks
D. Upp. Tw.	Mn. 124 XX 220	104 XX 192 88	65 5	65	100 c.ft.	Hammocks	No hatch. Ports, 9 each side. No vents.	Sgts Mess & sleeping accom. arranged by 4' bulkhead enclosing area 40' x 18'. 1 door fwd. & 2 doors aft lead to decks next on each end; after doors lead thro' alleyways past galley.
Sgts Mess.	96	72	37	37	120 c.ft.	Hammocks	WTs leading forward, 1, & aft 2. Separated from rest of D by 4' bulkhd. on port side.	
E. Upp. Mn.	96	96	60	60	120 c.ft.	Hammocks	Hatch. Ports, 6 each side No vents.	Trunk hatch leads direct to open air Room for xxx sleeping 15 on hatch.
F. Main	210	206	130	130	140 c.ft.	Hammocks	Hatch 5' x 6'. Ports, 9 each side. " 2 Vents. 4' x 2'	Better ventilated than others on same level, & though a lower deck, is suitable for 100%. Hatch, sleep 24.
G. Main	102	102	75	75	130 c.ft.	Hammocks	Hatch. Ports, 3 each side No vents. 2 doors 6' x 3' each end fore and aft.	Well ventilated by 2 doors leading fore and aft. Trunk hatch leads to open air. Sleep 30 on hatch.
H.	184	183	120	120	150 c.ft.	Hammocks	Hatch. Ports, 3 each side No ventilators.	Sleep 30 on hatch.

Deck:	Fitted:		Allotted:		C. Space perman: (allotted)	Accommodation:	Ventilation:	Remarks:
	To Mess	To Sleep	To Mess	To Sleep				
I. Main	172	172	115	115	180 c.ft.	Hammocks	Compan. Hatch 6' x 9' from upper deck. Ports, 8 each side. No ventilators.	Entrance by companion way from Main upper deck through after House. Sleep 36 on hatch.
J. Lw.Mn.	164	160	80	80	160 c.ft.	Hammocks	Hatch from "I". Ports No ventilators.	In after peak of ship, entered by stairway from "I". Not recommended to take more than 150 sleeping
K. Up.Mn. aft, port	42	36	20	20	200 c.ft.	Hammocks	7 windows 18" x 24". No Hatch. Door opening on spar deck by passage, port side.	Would do well for small isolation deck for contacts with infectious diseases if necessary.
L. Up.Mn. aft, stbd.	46	45	20	20	200 c.ft.	Hammocks	Same as K. on starboard side	Same as K. These two rooms are situated on main upper deck aft & have good window ventilation sheltered by overhang of roof.

1052 1052

481

App 114
Preliminary inspection of s.s. "DERBYSHIRE" at Hull, on 11: 1: 1919.

There are two tiers of decks in this ship :-

1. Main deck, fit for accommodation of troops.
2. Orlop (or lower) deck. Ventilation bad. Not recommended for troop accommodation.

The main deck has a height of 7'6" and is well ventilated from the outer air. The accommodation is shown on attached Table.

At present the forward decks, Nos. 1, 2, 3 & 4 are fitted with D. T. cots, accommodating 412 persons. Messing is done on the lower (orlop) deck (No. 2 lower) for all these forward decks. Total messing...396. Nos. 5 & 6 main decks are fitted with hammocks at present. (See table).

This ship is carrying refugees at present, and the D. T. cots are for women and children. Previously these forward decks were fitted with hammocks but the hooks have now been removed. The previous fitting is shown in the Table of Troop Decks attached. The messing and the hooks will of course have to be refitted if the D. T. cots are to be removed. The D. T. cots in any case are too crowded for a long voyage.

The proposed allotment for hammocks for all the troop decks is given in the Table

The cubic space per man is arrived at by deducting the hatchway space from the total cubic space of the deck, and a further 12½% for fittings.

There is no separate accommodation for sergeants. It is suggested that portion of No. 6 main deck "E" be allotted to them. A further reason for keeping the total officers and troops not above 1000 is the fact that refrigeration space on the boat is inadequate for a larger number for the long voyage.

Proposed allotment is.....

Officers and nurses.....	70
Sergeants.....	50
Other ranks.....	845
	<u>965</u>

SUGGESTIONS:

HOSPITAL: General Hospital and Dispensary. No. 6 main deck "E" is very unsatisfactory and is condemned. It is inaccessible to nurses and A.M.C. staff, and is ventilated off the troop deck. No facilities for dressing or for messing. No latrine or other sanitary accommodation.

Suggest: (a) General hospital accommodation in cabins, upper deck, port side, with lavatory adjoining, aft. Cabins 69-96.
(b) Fit up smoke-room, port side, as special hospital with 10 D.T. Berths and messing accommodation. Present bar to be used as hospital pantry. Immediately below smoke-room is a urinal and wash place. Bath could be fitted here.

ISOLATION: 6 D.T. Berths, deckhouse, in after well deck, port side. Inadequate and is condemned.

Suggest: Isolation hospital to be built as deckhouse on platform over poop house. 10 D. T. Berths, lavatory & latrine to be fitted.

DRESSING

STATION: 1st class smoke-room, starboard side, to be fitted.

DISPENSARY: Cabins 50-51, adjoining smoke-room (special hospital)

SPRAY ROOM: Already fitted on promenade deck, port side. Suggest equipping as Disinfecter.

E.D. ACCOMMODATION: No. 1 main deck "A" starboard side. One table to be partitioned off by bulkhead.

Latrine to be bulkheaded off in forward well deck, starboard side.

Washplace do. do. do. do.

GENERAL LATRINEACCOMMODATION:Suggest:

Is insufficient, aft.

Extra latrine (6 seats) on starboard side of after wash house.

PAY OFFICE: ORDERLY ROOM and CANTEEN ISSUE ROOM can all be accommodated in the deckhouse existing on the promenade deck, port side.

Suggest:

AUDIT AND PAY OFFICE on No. 6 main deck "E" where existing general hospital is now located.

Suggest:

Guard room on No. 6 main deck "E" where store room is now located.

The wooden sheathing on the main decks No. 1, 2 & 3 should be taken up when the D. T. cots are removed, as it is very dirty on account of the class of refugees carried.

CABIN ACCOMMODATIONFOR NURSES.

This should be adjacent to the Nursery, which should be used as a sitting room by the nurses. Lavatory accommodation can be fitted up, adjoining the Nursery.

Captain, A.A.M.C.

"DERBYSHIRE".

Preliminary Inspection 11/1/19.

Deck:	Fitted:		Proposed Allotment		C. Space per man (allotted)	Accommodation:	Ventilation:	Remarks:
	To Mess	To Sleep	To Mess	To Sleep				
"A" No. 1 Main	<u>Previous</u> 180	<u>183</u>	120 16	120 16	93 c.ft.	Hammocks do V.D.	Good. Hatchway 12' x 16' Ports, 6 (8") Vents. 2 from upper deck.	Fitted with 92 D.T.cots at present. V.D. accommodation to be bulkheaded off on starboard side.
"B" No. 2 Main	<u>Previous</u> 364	<u>285</u>	220	220	88 c.ft.	Hammocks	Good. Hatchway 22' x 16' Ports 10 (8") Vents. 4. (Good)	Fitted with 168 D.T.cots at present.
"C" Nos. 3 & 4 Main	<u>Previous</u> 280	<u>277</u>	220	220	92 c.ft.	Hammocks	Hatchway forward, 20' x 15'6". Ports 6 (8"). Vents. 2 near hatch.	Fitted with 152 D.T.cots at present. This deck requires forced ventilation (blower fans) as there is a long dead end away from hatch.
"D" No. 5 Main	<u>Present</u> 296	<u>246</u>	185	185	92 c.ft.	Hammocks	Good. Hatchway 17' x 16' Ports 8 (8"). Vents 2 from upper deck.	Fitted with hammocks at present.
"E" No. 6 Main	<u>Present</u> 140	<u>120</u>	100 50	100 50	88 c.ft.	Hammocks Sergeants	Good. Hatchway 15' x 12' Ports 6 (8") Vents, 2.	Fitted with hammocks at present. This deck is split up by (a) Gen. Hospital and Dispensary (condemned). (b) Store Room.

(Signed) M. J. Holmes, Captain. A.A.M.C.

481

At a conference at Australia House on 13/1/19, at which were present, Colonel K. Smith, Commander Parker, and Capt. Holmes, the following alternative suggestions for refitting the "DERBYSHIRE" were brought forward for further consideration.

1. General Hospital to be accommodated entirely in the 1st class ~~xxx~~ smoke-room if possible (18 D.T. Berths). State-room 50-51 on port side to be fitted as hospital latrine and sink. Corresponding space on starboard side as hospital baths. Small dressing room, 14 x 8, to be located in the smoke-room, port side. This releases cabins 69-96 on upper deck which can be used for accommodation for A.M.C. personnel and general Officers' accommodation.
2. Autoclave for use as Disinfector.
3. Dispensary to be fitted in deckhouse on promenade deck, starboard side near Spray Room (present vegetable store room) or in Barber's Shop.
4. Present Isolation Hospital in after well deck to be utilised as vegetable store room.
5. Pay & Audit Office to be fitted in same deckhouse as dispensary.
6. Present general hospital (condemned) to be removed, throwing open this part of "E" Deck for extra troop accommodation.
7. Sergeants (60) to be accommodated in "D" troop deck
8. Alterations in latrine & lavatory accommodation near Nursery, to provide for nursing staff.
9. Suggested amendment of allotment of troop decks, as follows :-

	Fitted:		Proposed Allotment		C. Space per man
	Mess	Sleep	Mess	Sleep	
"A" No. 1 Main deck	180	183	130 16	130 16 V.D.	80cc.ft.
"B" No. 2 Main deck	364	285	230	230	84 c.ft.
"C" No. 3 & 4 do.	280	277	220	220	92 c.ft.
"D" No. 5 Main deck	296	246	240 60	140 60 Sgts.	85 c.ft.
"E" No. 6 Main deck	140	120	210	210	90 c.ft.

If a guard room 20' x 14' is put on No. 6 Main deck, the cubic space of the remainder of the troop deck for troops will be reduced to 88 c.ft. per man.

<u>TOTAL:</u>	Officers.....	60
	Nurses.....	10
	Sergeants.....	60
	Other Ranks.....	930

		1060

(Signed) Kenneth Smith, Colonel

(Signed) M. J. Holmes, Captain.

BRANCH 2D. REPATRIATION AND DEMOBILISATION DEPARTMENT.

PROGRESS REPORT
for Week ending 11th January, 1919.

2D 1. Rail Transport.

Railway Movements and Entrainments of Ship's Staff and other Personnel for "ORSOVA", "THONGWA", and "OSTERLEY", as below:-

	Officers.	Nurses.	W.Os. & Sgts.	O.Ranks.
Orsova	54	10	113	1,260
Thongwa	Ship's Staff.			
Osterley	6	6	30	116

Normal Movements of odd Details on duty to France including arrangement of accommodation on Daily Staff Train.

Movements of Demobilisation Staff on duty.

Movements to U.S.A., France and other Allied and Neutral Countries, on leave, and passport arrangements for same.

Weekly entrainment of Invalid Party (about 20), visiting Windsor.

Issue of Railway Warrants and check of all Railway Warrants issued by A.I.P. in United Kingdom.

2D 2. Sea Transport.

The following transports were cleared from various Embarkation ports, for Australia:-

	Officers.	Nurses.	W.Os. & Sgts.	O.Rs.	Women.	Miscellaneous.
Orsova	54	10	113	1,260	21	130
Thongwa	Ship's Staff.					511 Munition Workers.
Osterley.	6	6	30	116	565	78

Preliminary inspections of transports were carried out as under:-

Ascanius at Liverpool.
Nile at Southampton.

Final inspections of transports were carried out as under:-

Orsova at Liverpool
Osterley at Liverpool.

Fittings of "Kenilworth Castle" and "Balmoral Castle" (at Liverpool) were inspected and approved.

Arrangements were made for alteration of Hospital accom-

modation in "City of York" at Liverpool; also for the structural alterations.

under:- Medical inspections of Transports were carried out as

City of York	at Liverpool
Orsova	" "
Osterley	" "
Ascanius	" "
Demosthenes	" London
Lancashire	" Purfleet.

2D 3. Quartering.

Accommodation has been provided to date, as under:-

Headquarters, Repatriation and Demobilisation,	54 Victoria Street.
Branch 1D.	do.
Branch 2D.	20 Belgrave Square.
Branch 3D.	54 Victoria Street,
Branch 4D.	do.
Branch 5D.	do.
Education Branch	32 Grosvenor Place.
Industry "	6 Eaton Place.
Indents "	38 Eaton Place.

Embarkation Offices have been established at Southampton and Weymouth, and have been arranged for at Havre.

2D 4. Supply and Transport.

a. Medical, Red Cross, Station and Ordnance Stores were forwarded to the following Transports, viz:-

"Ceramic," "Demosthenes", "Osterley", "City of York", "City of Exeter", and "Ulysses."

Y.M.C.A. Stores were also delivered to the "Ceramic".

b. Arrangements were made for the off-loading of 3,197 packages of Ordnance Stores ex H.T. "Paratah", which recently arrived at Liverpool. Arrangements were also made for the shipment of 100 tons dates from Basra to France, on behalf of the Australian Comforts Fund, and necessary export license obtained from the Ministry of Food.

c. 850 cases of Whisky were shipped per s.s. "Merkara" to Egypt on account of the A.I.F. Canteens. Various miscellaneous stores were despatched within the United Kingdom, and to France.

2D 5. Embarkation of Personnel.

This Section was taken over from 3D on 11th January, 1919.

Shipping arrangements for "Orsova" and "Osterley" were carried out by Australia House.

Reorganisation of this Section is in progress.

20 Belgrave Sq.
London 15.1.19

(894) G. B. Somerville

Lieut.-Colonel.

481
Apr 16

"CITY OF EXETER."

ADVANCE PARTY.

Report for instructions 3 pm. Saturday 11th January

PROCEED.

Leave Euston 11-45 p.m. 12th
Arr. M'Chester 6-27 a.m. 13th

NUMBERS.

5 Officers 18 Others.

O.C.	O.R.S.
S.M.O.	S.S.M.
Adjutant	Q.M.S.
Q'Master	12 Medical Details.
Pay Officer	3 Pay Staff

Note :- O.R.S. S.S.M. Q M.S. leave Warminster 4 pm. 12th
arrive Paddington 7.45 pm cross to Euston.
12 Medical Details leave Dinton 5.29 pm. 12th arrive
Waterloo 9 p.m. cross to Euston.

NURSES.

10 Nurses (Staff) leave Euston 9.10 a.m. 14th
arr. Liverpool 2.7 p.m. 14th

RECORDS CLERK.

To report to E.S.O. Liverpool 9.a.m. 15th.

MAIN EMBARKATION LIVERPOOL 15th January.

Report for instructions 4 p.m. Tuesday 14th January.

PROCEED.

AWAITING TRAIN TIMINGS.

from London

12 Officers 6 Others.

1 M.O.	
1 Chaplain	
1 Dental Officer	3 Dental Others
1 Pay Officer	3 Pay Staff
4 Officers (Special Reasons)	
4 Officers (Supplementary - on File)	

From Depots. S. Veny.

25 Officers. 1000 Others.

Copies to :- Major Plant. (Accommodation)
E.S.O.1
Capt. Scouler.
S/Sgt Driscoll.
S.O.11

481 Apt 7

"DEMOSTHENES."

Report for Instructions 11am Saturday 11th January.

PROCEED. Leave Fenchurch Street 2-35 pm Sat. 11th inst.
Arrive Central Stn. R.A. Docks 3.10pm

NUMBERS. 5 Officers 19 Others.

O.C.	O.R.S.
S.M.O.	S.S.M.
Adjutant	S.Q.M.S.
Q'Master	12 Medical Details
Pay Officer	Red Cross Rep
	3 Pay Staff.

Note :- O.R.S. S.S.M. S.Q.M.S. Medical Details leave
Dinton 9-22 am Sat. 11th arrive Waterloo 11-50 am cross
to Fenchurch Street.

NURSES.

7 Nurses (Staff) 3 Invalids leave Paddington 10-15 am
Wednesday 15th inst for Plymouth.

MAIN EMBARKATION PLYMOUTH 16th

Report for instructions 2)30 pm¹/₂ 15th Jan.

PROCEED.

AWAITING TRAIN TIMINGS.

NUMBERS. From London

21 Officers	6 Others.
1 Dental Officer	3 Dental Others
2 Medical Officers	
1 Pay Officer	3 Pay Staff
3 Officers (Other Reasons)	
1 Chaplain	
13 Others from Depots.	
Officers.	1040 Others.

Copies to :-

Major Plant	(Accommodation)
E.S.O.1	
Capt. Scouler.	
S/Sgt Driscoll.	
S.O.II	

App 18

481

"CITY OF YORK"

ADVANCE PARTY.

Report for Instructions 4-30 pm. Saturday 11th January.

PROCEED. Leave Euston 11-45pm. Sunday 12th.
Arr. Liverpool 6.27am. Monday 13th.

NUMBERS. 5 Officers. 19 Others.

O.C. Troops.	O.R.S.
S.M.O.	S.S.M.
Adj.	S.Q.M.S.
Q'master.	12 Medical Staff.
Pay Officer	1 Red Cross Rep.
	3 Pay Staff.

Note:- O.R.S., S.S.M. S.Q.M.S. leave Warminster 4pm. 12th
arr. Paddington 7.45pm.

12 Medical Details leave Dinton 5-29pm.
arr. Waterloo 9pm.

Both Parties cross to Euston.

NURSES. 9

Leave Euston 9.10am. Monday 13th inst.
Arr. Liverpool 2.7pm.

RECORDS CLERK

Instructed to report, with Records Representative, to
A.E.S.O. Liverpool by 9.am. Tuesday, 14th inst.

MAIN EMBARKATION. LIVERPOOL. TUESDAY. 14th JANUARY.

Report for Instructions. 3-30pm. Monday. 13th January.

PROCEED:-

Awaiting Train Timings.
from London.

NUMBERS. 9 Officers. 6 Others.

1. 2nd in Command.	
1. Medical Officer.	
1. Chaplain.	
1. Dental Officer.	3 Dental Others.
1. Pay Officer,	3 Pay Staff.
4. Pther Reasons.	

FROM DEPOT. (Sutton Veny)

25 Officers. 1000 Others.

Copies to:- Major Plant.

E.S.O. 1.
Capt. Scouler.
S.O. 11.
S/Sgt Driscoll.

W.O.
10-1-19.

481
Apr 19

Inspection of LANCASHIRE

Date: 11/1/19.
Port: Purfleet.

First class passenger accommodation for 195.
O.C. Troops cabin 41-2.
S.M.O. cabin 43-5.
Nurses' cabins 4 to 9 & 46 to 51 = 18 nurses, or 9 nurses and Matron with one cabin to herself = 10.
Nurses' lav. & bath, in same block as reserved for ladies.
In another set of cabins, 167 to 201, 35 nurses could be accommodated with separate lav. & bath for ladies

WASH PLACES

Forward, port side...7 wash basins.
Starbd. ...12
A. Deck...27 Inside 4' bulkhead in centre of aft end Deck
B. Deck ...31 Same as A.
77

Basins are all loose in holes over troughs, 3 basins to each compartment in trough. Drain pipes $\frac{3}{4}$ " from each trough and main drains $2\frac{1}{2}$ ".

LATRINES

Forward well deck, port side.....15
After do. do.14
In separate house forward of 29
this is Sgts' latrine.....6
35 excl. V. D.

HOSPITAL

Cabins 202 to 243 State Rooms after end of Saloon Deck making 37 beds available with large pantry, 3 baths, 4 W.Cs. 3 wash basins, all in one block, 1 port to each State Room alternately 3 & 2 berths. Mess Room (Nursery) seats 8. Fans fitted in each room. Although a ship's hospital consisting of cabins is not the best system and not nearly so efficient for supervision as one large ward, in this instance, in view of the large number of nurses allotted to the ship and the compactness of the whole hospital unit, it is recommended that it be retained in its present construction.

ISOLATION HOSPITAL

Cabins 244 to 267. 12 2/berth cabins in block on after end upper promenade deck. Self contained unit, 24 beds. 1 bath, 1 W.C., Dispensary, Office and pantry.

VENEREAL ACCOMMODATION

On B Deck forward and in 4' bulkhead from rest of deck. Mess 11, sleep 11. Hammocks.
Washplaces...2 ford. well deck close to Booby Hatch for Deck B.
Latrines.....2 and urinal trough with douche forward end of troop latrine, port side, completely separated by bulkhead, separate entrance.

DRESSING STATION

On port side of Deck E, enclosed by 4' bulkhead with curtains. Complete sterilising plant, hot water, and operating table, 1 fan, 1 portable and 3 fixed lights, wash basin and sink.

GUARD ROOM....Nil.

DISPENSARY.

In hospital block, cabin 204. Well fitted with shelves and cupboards. Medicines for sick parades can be issued to troops on outside deck through port.

ORDERLY ROOM

) These 3 offices are abaft smoke room on upper promenade S.M.O.'s OFFICE) deck. A small smoke room divided by two bulkheads.

PAY OFFICE

) Good roomy offices, all well furnished with desks, chairs, etc.

481

CANTEN
ISSUE ROOM. On saloon deck, starboard side, amidships.

CANTEN SGT'S
BERTH. In passenger accommodation.

SPRAY ROOM. Port side, amidships, on saloon deck.

DISINFECTOR: NOT FITTED.

STORE ROOMS:
CANTEN ETC All forward of "A" Deck.

BAKEHOUSE: Forward on starboard side well deck, 2000.

BREAD ISSUE: Aft Bakehouse, capacity 2 days issue for 2000.

GALLEY: Middle of forward deck, 1200. Starboard side after well deck, 500.

HOT WATER TROUGHS. For Troops, hot water 18" x 18" x 24" outside each Galley.

GENERAL
REMARKS:

This ship is well suited for the carriage of 200 D.T.B. invalids and hammock cases to Australia, the ventilation of the decks is exceptionally good and the ship is thoroughly clean. The only alteration necessary is the bulkhead recommended to reduce the size of the Sergeants' Mess. Stores for the voyage to Australia are on board and the ship is not suited for cold weather work having been built for the Indian trade. If she is used for the carriage of Prisoners of War the troop decks may quite easily become infected with lice which are difficult to get rid of from a ship and the fittings which are all in good order now are likely to become damaged. It is therefore recommended that if possible this ship be used immediately instead of being allowed to make the projected trip first to Copenhagen.

(Sd) E. W. Humphrey
Major.

"LANCASHIRE", Purfleet. Inspected 11/1/19 by Major Humphery.

Deck:	Fitted:		Allotted:		C. Space per man (allotted)	Accommodation:	Ventilation:	Remarks:
	To Mess	To Sleep	To Mess	To Sleep				
A. Forward Upp. Tw. Dk.	164	74 26 123	150	74 26 100 ^x	110 c.ft.	Wood D.T.Bs. Iron D.T.Bs. Hammocks	Hatch. 8 Ports. Scoops. & 4 Vents. also running to back B. below.	60 men from this deck will have to mess in B. directly below.
B. Under A.	424	334	50 ^ø 300	300	90 c.ft.	Hammocks	Hatch 18' x 24'. Deck fitted 8 fans. No ports.	V.D. accom. on this deck, not included. Separated by 4' bulk. at fwd end with mess table. Mess 11, sleep 11.
C. Main Aft of A.	416	392	350 20 [@]	350	105 c.ft.	Hammocks	Hatch at each end. 5 Ports each side. Scoops.	Excellent ventilation owing to Hatch at each end of deck.
D. Tw. Dk. Sgts. Mess Other ranks	xxx 86 84	xxx 65 65	60 60	60 60	90 c.ft.	Hammocks	Hatch 15' x 16' trunk dir- ect to air. 2 Ports each side. 2 Vents. fwd. 2' x 4". 1 WTD leading to B.	Recommend bulkhead be placed fore & aft to divide deck in middle & and be available to mess & sleep 76 Sgts & 84 O.As. Deck is well ventilated and can take 100%.
E. Tw. Dk. Aft of D.	172	129 100	60 100	80 [@] 100	110 c.ft.	Hammocks Iron D.T.Bs.	Hatch trunk right up. 6 ports each side. Y shaped exhaust vent. with fan making 2 vents. from aft end of deck. 3 circulating fans in deck.	Dressing Station on this deck, port side, 4' bulkhead & curtain
	xxxx 200 171	xxxx 978 200 130	890 200 60	890 200 60		Hammocks D.T.Bs. Sergeants		All Booby hatches have vents., intakes with cowls. Drinking water supplied to each deck.

x 50 mess on B deck
ø 50 ex deck A
@ 20 ex deck E.

481

481 *Apr 20*

Report on inspection of "BELTA".

Date: 18: 1: 19.
 Port: Glasgow.

EMBARKING: 50 officers, 50 sergeants, 1300 other ranks.

HOSPITAL:

General:

On main deck, starboard side of alleyway.

Contains - single cots.....8

D.T. Berths.....24 32.

Latrines &

Permanent fittings in centre of hospital block. 2 W.Cs.,

Ablution

1 bath with 5 wash basins and compactums.

Entry:

With usual fittings.

Dressing Station:

At forward end of hospital, separated by a dwarf bulkhead. Separate entrance from alleyway.

Dispensary:

One small dispensary fitted in hospital block. Another ship's dispensary is available for use if required. There is also a room adjoining this second dispensary which would be excellent for holding sick parades. The ship's officers say they are not carrying a ship's Surgeon, so that these places become available.

Isolation:

(Bed)

Starboard side of 1st class smoking room; has been bulkheaded off and contains 8 D.T.Bs., 1 portable bath, 1 wash basin, 1 W.C.

Veneral

Ward

Hammocks for 20. Messing for 24 on "B" Section.

V.D. Latrines: 2 seats in deckhouse forward well deck.

V.D. Wash basins: 4 basins fitted forward section of wash basins on "A" deck.

SPRAY ROOM.

On upper deck aft, port side.

DISINFECTING ROOM:

Under forecastle head, starboard side.

MASSAGE ROOM:

Part of 1st class smoking room, port side. Fitted simply with massage tables and stools.

TROOP WASH PLACES:

On starboard side of "B" section.....72

Upper poop deck.....9 81

SHOWERS:

In "B" Section.....9

In "B" Section.....19 28

TROOP LATRINE:

In deck houses, fore and aft.....48 (incl. 2 V. D.)

In "A" Section.....6

Under poop.....4 52

GALLEYS:

Two, each capable of cooking for 1000 men, between upper and main decks, but where the sides are open. Sirocco Fans have been fitted to prevent steam spreading through adjacent decks.

ORDERLY ROOM

In poop house aft, starboard side.

CHAND ROOM & CHILLS

No. 1 Main deck.

CANTEN ISSUE ROOM:

Port side, promenade deck. Berth for canteen Sgt.

RED CROSS ISSUE ROOM:

In Poop House, port side.

PAY OFFICE:

Aft end 1st class main smoke room, starboard side.

S.M.O.'s OFFICE.

Adjoining Pay Office.

PAY & AUDIT OFFICE.

Was not fitted when inspection took place. To be fitted up in the remaining portion of the 1st class smoke-room.

BOYS' MESS:

On "A" Section, starboard side.

Messing for 109. Hammocks 80, Berths in cabins, 4.

STORE ROOMS:

In No. 3 orlop deck. There is also Officers Baggage Room, port side "B" Section aft. Mess utensil room, fore end centre of "B" Section.

TROOP DECKS:

As detailed on attached sheet.

(Signed) W. B. RYAN, Major, A.A.M.C.

Detail of Troop Decks on Transport "DELTA".

Deck:	Fitted		Allotted.		C. Space per man (allotted)	Accommodation:	Ventilation:	Remarks:
	To Mess	To Sleep	To Mess	To Sleep				
"A" Section No. 1 Upper	106	123	100	100	160 c.ft.	Hammocks	Hatchway, yes. Ports with scoops V. Shafts, 2 supply, 2 exhaust.	Troops are only on the port side of this deck. Starboard is Sgt's Mess.
"B" Section No. 2 Upper	276	192	175	175	90 c.ft.	Hammocks	Hatchway. Ports with scoops.	Very large hatch.
"C" Section No. 1 Main	341	315	260	260	90 c.ft.	Hammocks	Hatchway, yes. Ports, no. V. Shafts, 2 supply, 2 exhaust.	
"D" Section No. 2 Main	248	233	175	175	90 c.ft.	Hammocks	Hatchway, yes. Ports No. Vent. shafts fore and aft.	
"E" Section No. 3 Main	132	116	110	110	95 c.ft.	Hammocks	Companionways, yes. Ports, no. Vent. shafts, 4.	The starboard side of "E" section contains 72 wash basins; no hammocks.
"F" Section No. 4 Main	434	406	285	285	90 c.ft.	Hammocks	Hatchway, yes. Ports, no. Exhaust fan. Vents, 2 near hatchway only.	The main part of this deck runs a long way from the hatch so a fan was fitted.
"G" Section No. 5 Main	260	510	205	205	90 c.ft.	Hammocks	Hatchway, yes. Ports, no. Vent. shafts, 4.	
	1695		1310					

481

48 App - 21
"ULYSSES"

ADVANCE PARTY

Report for Instructions 2 pm. Tuesday 14th January.

<u>PROCEED.</u>	Leave Euston 11-30 pm. 13th inst.
	Arr Glasgow 9.42 am 14th "
<u>NUMBERS.</u>	5 Officers 30 Others.
	O.C.Troops O.R.S.
	S.M.O. S.S.M.
	Adjutant Q.M.S.
	Q'Master 24 Medical Details
	Pay Officer 3 Pay Staff.

Note :- S.S.M. Q.M.S. O.R.S. 24 Medical Details leave
Weymouth 2-5pm 13th January arrive Waterloo 6-57pm
Cross to Euston.

NURSES.

10 Nurses leave Paddington 10-15 am Friday 17th inst.
arrive Plymouth 3.38pm.

RECORDS CLERK

Instructed to report A.E.S.O. Plymouth with Records
Representative before 9am. Sat. 18th inst.

MAIN EMBARKATION PLYMOUTH SAT.18th January.

Report for instructions 4 pm. Friday 17th inst.

<u>Proceed.</u>	Leave
	Arrive
	(Awaiting Train Timings)
<u>NUMBERS</u>	<u>From London</u>
	Officers 6 Others.
	O.C.Troops
	3 Medical Officers.
	1 Chaplain
	1 Dental Officer 3 Dental Others.
	1 Pay Officer 3 Pay Others
	(Incomplete)

FROM DEPOT.

Officers	1361 Others from Weymouth
	(Including 23 T.Bs Special Accom.)
	60 Southall

Copies to :- Major Plant.
E.S.O.I
Capt.Scouler
S/Sgt Driscoll
S.O.II
Bdr Harris.

W.O. L0.1.19

Apr 22

481

Report on inspection of "MARGHA"

Date: 14: 1: 19.
Port: London.

EMBARKING INVALIDS: 30 officers, 10 nurses, 68 sergeants, 563 O. Ranks
Total...671.

HOSPITAL

General: Port side, 2nd class dining saloon, 8 cots.
cabins 35-41 = 20 D. T. Berths.
Latrine and
Ablution: Adjoins saloon and cabins.
Dressing
Station: Starboard side, 2nd class Dining saloon.
Dispensary: Adjoins hospital.
Massage Room: Starboard side, 2nd class smoking room.
Spray Room: Deckhouse, starboard side, promenade deck.
Disinfectant
Room: Starboard side, promenade deck.
N.M.O.'s Office Deck house, port side, promenade deck.

ISOLATION HOSPITAL Port side, 2nd class smoking room.
Latrine and bath adjoining.

V. D. WARD: On "A" Troop deck, Mess 10, Sleep 10.
V. D. LATRINE: Forward and starboard deckhouse, on forward deck.
WASH BASIN No irrigation trough or urinal fitted.
Forward end, port deck house.

TROOP LATRINES: Deck houses fore and aft, 16 seats.
Sergeants: 3 seats bulkheaded off at after end forward latrine house.

WASH BASINS: Deck houses fore and aft, 36 basins.
Sergeants: In forward deck house, 4 basins.
SHOWERS: 3 sergeants, 15 troops, 1 for V.D.
TROOP GALLEYS: Deck houses fore and aft. Both satisfactory.
BAKE HOUSE: In after galley, capacity 2000.
BREAD ROOM: Deck house, starboard side, aft.
ORDERLY ROOM: Port side, bridge deck.
PAY & AUDIT OFFICE Port side, promenade deck.
CANTEN ISSUE ROOM Starboard side, bridge deck.
RED CROSS CO. Port side, promenade deck.
STORE ROOMS: No. 4 lower deck. All satisfactory.

TROOP DECKS: See attached sheet.

GENERAL REMARKS: A good ship and well fitted. The V. D. Latrine or needs to be fitted with a urine trough and irrigation hangings. Arrangements were made to have this done.

The decks are very high, and the ladders very steep. This should be borne in mind in fitting for D. T. Berth cases for the future.

Hospital latrines were not fitted with any tap for washing bed pans and urinals.

The sergeants' mess could have been lighted better.

15th January 1919.

(Sgd) K Smith

Colonel.
(Medical Liaison)

Sgd. H. R. Clayton
Major

"MARGHA", London. Inspected 14/1/19 by Col. K. Smith

Deck:	Fitted:		Allotted:		C. Space per man: (allotted)	Accommodation	Ventilation:	Remarks:
	To Mess	To Sleep	To Mess	To Sleep				
"A" No. 1 Main	62	44 50	62	44 40	150 c.ft.	D. T. Berths - Hammocks	Hatchway. 8 Ports, 4 Exhaust Ventilators.	Very high deck
"B" No. 2 Main	82	30 78	68	30 23		D. T. Berths - Hammocks	Hatchway. No portholes Booby hatches with vents.	15 sergeants sleep in cabins & mess on this deck
O. Ranks	70	56	56	56		D. T. Berths		
"C" No. 3 Main	156	90 100	156	90 81	100 c.ft.	D. T. Berths - Hammocks	Hatchway. No portholes. 2 Tea ports which can be open during most of voyage.	
"D" No. 4 Main	108	50	40 22 15	40	100 c.ft.	Hammocks	Hatchway, large. No Ports. 3 exhaust ventilators.	This deck messes 22 from "A" deck & 15 from "C" deck
"E" No. 5 Main	128	80 69	120	80 56	100 c.ft.	D. T. Berths - Hammocks	Hatchway. No portholes. 2 Tea ports. 2 Exhaust Vents. aft.	
"F" No. 6 Main	134	93	76 16	76	85 c.ft.	Hammocks	Hatchway. No portholes. 3 ventilators forward.	This deck messes 16 ex "E" deck.

All decks are very high - 11'6" - consequently companionways are steep.

81
Apr. 24

Report on inspection of "HAWASSA"

Date: 16: 1: 19.
Port: London (Tilbury)

EMBARKING: 40 officers, 10 nurses, 65 sergeants, 1410 O. Ranks.

HOSPITAL:
General: On upper deck, port side. cots.....5
D. T. Berths.....30

Latrines. 2. Sink Hopper. 1. Baths. 2. Basins. 2.

Pantry fittings to be installed.
Messing for 16.
Adjoins hospital.

Dispensary
Sick Parade
Dispensary) On promenade deck, adjoining S.M.O. Office. Port side.
Dressing Room. Upper deck, starboard side.
Dental Surgery. After end, dressing room, bulkheaded off.
Isolation
Hospital) Promenade deck. Verandah of smoking room. D.T.Bs. 16.
W.Cs. 2. Bath 1. Basins 2.
Spray Room: Port side, shelter deck aft.
Disinfecter. Autoclave on poop.

V.D. Accommodation. Upper deck, starboard side. Mess & sleep 16.
W.Cs. 2. Urinal and Irrigator hangings.
Wash basins, 2.

LATRINES: Sergeants: Deckhouse, shelter deck, starboard side,
4 seats.
O. Ranks. 49 seats.

WASH BASINS: Sergeants: 4 basins. Other ranks: 71 basins

SHOWERS: Sergeants: 2. Other Ranks: 30.

GALLEY: Just aft of forecastle, for all troops. This will be
a trifle awkward, but workable.

BAKHOUSE &
BREAD ROOM: Satisfactory.

TROOP DECK: See attached sheet.

ORDERLY ROOM: Upper deck, amidships.

PAY AND AUDIT Upper deck, starboard side.

CANTEN ILLUM: Promenade deck, amidships.

RED X ILLUM: Promenade deck, starboard side.

O.C. CABIN & OFFICE: No. 6. S.M.O. CABIN & OFFICE: No. 7.
NURSE CABINS for 9, with lavatory accommodation.

STORE ROOMS: Satisfactory.

GUARD ROOM: No. 1 orlop deck.

GENERAL
REMARKS: No more invalids than the allotted numbers should be
embarked.

17th January 1919.

Major.
S.S.O.I.

Lawrence Smith
Colonel.
A.A.M.C.

Troop Decks of "HNVASSA". Inspected 16: 1: 19 by Col. K. Smith

Deck:	Fitted:		Allotted:		C. Space per man (allotted)	Accommodation:	Ventilation:	Remarks:
	To Mess	To Sleep	To Mess	To Sleep				
"A" No. 1 Main	160	165	125	125	85 c.ft.	Hammocks	Hatchway, yes. <u>Portholes</u> with scoops. <u>V. shafts</u> , Nil.	481
"B" No. 2 Main	484	454	350	350	92 c.ft.	do	<u>Hatch</u> , yes, big. <u>Ports</u> with scoops	
"C" No. 3 Main	116	145	120 ^x	120	90 c.ft.	do	<u>Hatch</u> , no. <u>Portholes</u> with scoops. <u>Alleyways</u> through.	
"D" No. 4 & 5 Upper.	638	516	440	440	95 c.ft.	do	<u>Hatch</u> , yes, after end. <u>Ports</u> with scoops. <u>Companionway</u> , forward and centre.	
"E" No. 5 Main	115	150	110	110	95 c.ft.	do	<u>Hatch</u> , yes. <u>Ports</u> with scoops. <u>V. shaft</u> 1, forward supply blower.	
"F" No. 4 Main	396	313	270	270	100 c.ft.	do	<u>Hatch</u> , small and aft. <u>Ports</u> with scoops. <u>V. shaft</u> , aft supply blower	
Sgts. Mess.	80	9	65	9	95 c.ft.	Cabins Hammocks	Square windows all round.	End class smoking room.
		61		56				
			1480	1480				

^x An extra table to seat 20 is being erected.

LS

App 25

Report on inspection of "CERAMIC".

Date: 16: 1: 19.
Port: London (Fulbury)

EMBARKING: 60 officers, 10 nurses, 125 sergeants, 2010 O. ranks.

HOSPITAL:

No. 1. Promenade deck, amidships, cots.....4
D. T. Berths...24
28

W.C. 2 in deckhouse, port side.
Baths & wash basins: Deck house, port side.

No. 2. Promenade deck, old smoking room, 48 D. T. Berths.

W.C.....1
Bath.....1
Wash basins...2
In permanent accommodation.

The Bar will be available as a pantry.

Dental Surgery: This hospital, until required by S.M.O.

Dressing Station Port side of No. 1 Hospital. Same entrance as hospital. Curtain to be put up so as to shut off Dressing Room.

Dispensary: Deck house port side, promenade deck.

S.M.O. Office: Amidships across top of companion ways leading to No. 2 hospital.

ISOLATION

On promenade deck, amidships. 26 D. T. Berths.

HOSPITAL:

W.C.....2, Bath.....1 Wash basins.....2

Spray Room & Disinfecter. Promenade deck.

V.D. accommodation. On "C" deck, sleep and mess 40.

Latrines & wash places. In separate deck house, starboard side, upper deck. Very good.

LATRINES:

Sergeants.....5
Other Ranks.....67
In deckhouses and in permanent accommodation.

WASH

Sergeants.....4, to be increased to 8.
Other Ranks.....124
In deckhouses & permanent accommodation.

BATHS.

24. In permanent accommodation.

GALLEYS.

Deckhouses, satisfactory.

BAKERY.

Deckhouse, satisfactory.

BREAD ISSUE ROOM.

Satisfactory.

TROOP DECKS.

See attached sheet.

ORDERLY ROOM.

Promenade deck, port side, 14' x 18'.

PAY & AUDIT ROOM.

Promenade deck, port side.

CANTENIN ISSUES.

1 large and 1 small. Promenade deck, starboard side.

COMFORT ISSUES.

Promenade deck, starboard side.

O.C. CABIN & OFFICE.

Satisfactory.

S.M.O. do.

do.

Satisfactory.

NURSES' CABINS.

Satisfactory.

STORE ROOMS.

Satisfactory.

GUARD ROOM.

Main deck, port side.

GENERAL REMARKS.

No more troops than at present allotted should be embarked.

17th January 1919.

Hector R. Bagton
Major
S.S.O.1.

Leunth Smith
Colonel.
A.A.M.C.

Report on Troop Decks of "CERAMIC". Inspected 16/1/19 by Col. K. Smith

Deck:	Fitted:		Allotted		S. Space per man (allotted)	Accommodation:	Ventilation:	Remarks:
	To Mess	To Sleep	To Mess	To Sleep				
"A" No. 1 Main	196	227	170	170	90 c.ft.	Hammocks	Hatch, yes. Ports with scoops to be supplied. V. Shafts, 2.	
"B" No. 1 Lower	176	200	150	150	90 c.ft.	do	Hatch yes. Ports. Scoops wanted. V. Shafts, 2 aft, 1 forward.	
"C" No. 2 Main	193	147	115	115	85 c.ft.	do.	Hatch, large. Ports with scoops	
"D" No. 3 Main	54	35	30	30	95 c.ft.	do.	Hatch, no. Ports, 4 fwd, 7 at side Alleyway to next deck.	
"E" Upper Deck	176	115	90	90	95 c.ft.	do.	Hatch, yes. Ports, 7 each side. V. Shafts, nil.	
"F" Upper Deck	228	228	180	180	100 c.ft.	5/Sgts Cabins 30 D.T. Berths	D.T.Bs. are in small compartments aft of "D" deck. Ports and alleyway. Rest of deck is old dining saloon. Ports, numerous; companionway leading up to 1st class cabins.	These decks are practically continuous along star-board side of ship on upper deck, and depend on ports for ventilation.
	194	194	159	159	100 c.ft.	Hammocks		
"G" Upper Deck	464	456	365	365	90 c.ft.	do.	Hatch, no. Ports, numerous. V. Shafts nil. Alleyway.	
"H" Upper Deck	72	64	46	46	90 c.ft.	do.	Hatch, no. Ports, numerous. V. Shafts nil. Alleyway.	
"I" Upper Deck	84	76	60	60	95 c.ft.	do.	Hatch, no. Ports, numerous. Alleyway.	
"K" Upper Deck	126	109	85	85	95 c.ft.	do.	Hatch, no. Ports, numerous. Alleyway.	
"L" Upper Deck	205	185	130	150	90 c.ft.	do.	Hatch, yes. Ports with scoops. V. Shafts, nil.	
"M" No. 5 Main	152	125	100	100	100 c.ft.	do.	Hatch, yes. Ports with scoops, V. Shaft, 1.	
"N" No. 6 Main	192	174	140	140	95 c.ft.	do.	Hatch, yes. Ports with scoops. V. Shafts, nil.	
"P" No. 7 Main	232	241	190	190	90 c.ft.	do.	Hatch, yes. Ports with scoops. V. Shafts, nil.	
"Q" No. 7 Lower	212	194	150	150	95 c.ft.	do.	Hatch, yes at forward end. Ports, 4 each side. V. Shafts, nil	Cannot be classed as a good deck.
			2146	2146				

[Handwritten signature]

Apr. 26
481

Report on inspection of "HEVASSA" - 18/1/19.

1. Arrangements were made to fit the 1st class smoking room with 24 D. T. Berths for tubercular cases. Messing for 24. The Bar will serve as a Pantry for mess gear etc.

LATRINE: In deckhouse port side, just forward of Isolation Hospital latrine.

WATER BASIN: 2 in smoking room lavatory.

2. DENTAL SURGERY was arranged in forward end of Dressing Station so as to preserve the present large sliding door for the Station.

18th January 1919.

Leuridan Smith
Colonel,
A.A.M.C.

Amended allotment of Troop Decks of "HEVASSA".

Deck:	As Fitted:		Allotted:
	Messing:	Sleeping:	
"A" Troop Deck No. 1 Main	160	133	120
"B" " " No. 2 Main	484	419	360
"C" " " No. 2 Main aft	116	136	100
"D" " " Nos. 3 & 4 Upper	638	475	440
"E" " " No. 5 Main	115	140	110
"F" " " No. 4 Main	596	345	280
	1909	1648	1410
Sergeants in 1st class smoke and music rooms	80	60	
Sergeants in cabins		9	65

481

BRANCH 2D. REPATRIATION AND DEMOBILISATION DEPARTMENT.

PROGRESS REPORT

WEEK ENDING 18th Jan., 1919.

2D1. Rail Transport.

1. Entrainments were supervised of Officers, Nurses and Other Ranks proceeding for embarkation on the following vessels:-

"City of York", "Ulysses", "Margha", "Demosthenes", and "Delta".
2. Weekly entrainments of Invalid Party (17) to Windsor, carried out.
3. Duties in connection with issue of passports were handed over to the D.A.A.G. at Administrative Headquarters.
4. Issue of Railway Warrants was carried out; also check of all Railway Warrants issued by the A.I.F. in the United Kingdom, and returns in connection with same.
5. The usual movements of odd details to the United States of America and other countries were carried out.

2D2. Sea Transport.

1. The following transports were cleared from various embarkation ports, for Australia:-

Ship.	Offi- cers.	Nurses.	W.Os. & Sgts.	O.Rs.	Muntn. Wrkrs.	Total.	Miscel- laneous.
City of York	29	9	55	938	...	1,031	
City of Exeter	35	9	54	890	...	988	
Demosthenes	49	10	51	952	9	1,071	(21 Imperial passengers).
Margha	28	10	56	452	...	546	
Ulysses	55	10	121	1,221	1	1,408	(28 Imperial passengers).

2. Inspections of transports were carried out as under, and reports made accordingly:-

"Derbyshire"	at Hull
"Margha"	" Liverpool
"Benalla"	" London
"Ceramic"	" London
"Nevasa"	" London

3. Embarkation of personnel was supervised at various ports by Embarkation Staffs.

2D3. Quartering.

2D3. Quartering.

Accommodation at Base Depot, Havre, was investigated and reported upon with the object of increasing the capacity.

Site for a Survey School to accommodate 200, was selected at Southampton, and applied for, to the War Office.

The matter of a site for a Hostel for wives and dependents of Australian soldiers about to return to Australia, was investigated at Salisbury, and found impracticable. Recommendation was made for a site at either Bath or Bristol.

2D4. Supply and Transport.

1. Medical, Red Cross, Comforts and Miscellaneous Stores were forwarded to the following transports, viz:-

"City of York," "Ulysses", "Margha", "Demosthenes" and "Delta".

2. Movement of Miscellaneous Stores in United Kingdom, and to France and Egypt, was arranged.

3. General indenting; /arrangements for printing, etc., were carried out.

2D5. Embarkation of Personnel.

1. During the week approximately 150 letters per day have been sent in response to inquiries for passages to Australia, and at least this number have been received daily.

2. An average of 100 personal inquiries were handled daily. Fifty Officers were ordered to report to Depots for inclusion in early boat rolls.

3. Five transports embarked, as under:-

"City of York", "City of Exeter", "Demosthenes", "Ulysses", "Margha".

4. The rolls were checked for the above transports; Medical History Sheets were checked and taken to each ship, and Rolls finalised and returned to Records.

5. In addition, applications have been received and arrangements are practically completed for the embarking on the "Benalla" of 75 men and 280 women (third class), and on the "Balmoral Castle" of 240 men and 270 women (third class).

J. Somerville

Lieut.-Colonel.
Movements and Quartering Branch.
20.1.1919.

4728
481
Report on inspection of S.S. "LANCASHIRE".

Date: 21: 1: 19
Port: Devonport

HOSPITAL

Recommended that the "Nursery" be used as a ward giving accommodation for 12 D.T. Berths as already fixed at present. The Berths are similar to those in double berth railway sleepers, the upper berths folding down when not in use and making the backs of seats. This will therefore if required give either 12 D.T. Berths or 6 single Berths. The room can be left as at present fitted; wash basin and mess table for 8.

DRESSING
STATION.

Remove the bulkheads between cabins 212 to 221 giving a room 16 x 18. This will make a handy Dressing Station and Operating Theatre combined, and so make the hospital section self contained throughout. Dressing Station fittings to be removed from deck "E" and placed in above room.

DISPENSARY.

To be fitted in cabin marked "Chief Steward". Medicines can be issued from this cabin to men on the deck without coming through the hospital by fitting a half door with shelf to the cabin. The cabin already is fitted with cupboards and chests of drawers, and with the fittings already in cabin 206 intended for Dispensary, will make a more convenient and better equipped room.

PANTRY.

Cabin 222 next Dispensary. This has a wash basin which can be converted into a sink and shelves can be fitted with racks etc. The door opens almost directly opposite Dressing Station door and will be handy for getting hot water for washing up etc.

SGTS. MESS.

Present Dressing Station to be dismantled, fittings used as above, and bulkhead placed fore and aft in deck "D" to make Sgts. Mess. Fit three mess tables on site of Dressing Station, 16, 16, 18 = 50. This will make this deck mess 222 and sleep 229; sleeping can be made 222, which will then make messing and sleeping accommodation even throughout the ship according to the present allotment.

GUARD ROOM.

Potato Store on Bridge Deck, starboard, side, can easily be converted into Guard Room and cells with a very little alteration.

SLOP SINKS

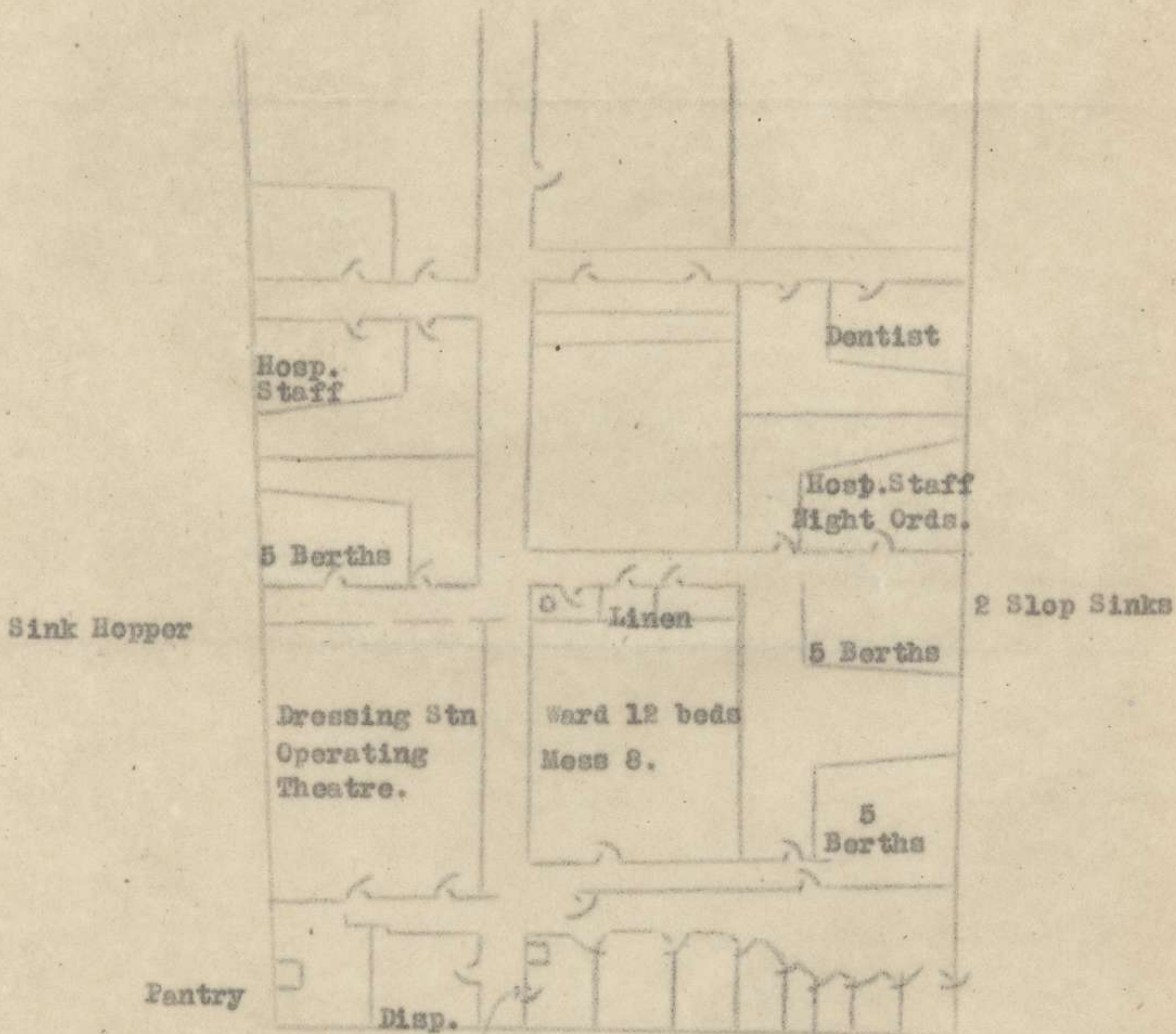
2 each are fitted to Hospital and Isolation as part of ship's fittings; flushing taps provided.

(Signed) E. M. Humphery,
Major, A.A.M.C.

481

S.S. "LANCASHIRE"

Proposed Hospital Accommodation:



Medicine can be issued thro' this door.

481
App. 29

CERAMIC.

ADVANCE PARTY.

Report for Instructions. 10am. Tuesday, 21st January, 1919.

PROCEED. Leave Fenchurch Street. 2-40pm. Tuesday, 21st inst.
Arr. Tilbury Docks 3-35pm.

NUMBERS. 6 Officers. 31 Others.

O.C. Troops.	O.R.S.
M.O.	S.S.M.
Adjutant.	S.Q.M.S.
Asst. Adjutant.	24 Medical Details.
Q'Master.	3 Pay Staff.
Pay Officer.	1 Red Cross Rep.

Note. O.R.S. S.S.M.S.Q.M.S. leave Warminster 8-21am. 21st arrive. Paddington. 11-15am.

24 Medical Details leave Dinton 9-22am. arr. 21st
arr. Waterloo. 11-50am.

Both parties cross to Fenchurch Street. to proceed as above.

RECORDS REPRESENTATIVES.

Records Clerk for Embarkation has been instructed to report to the A.E.S.O. Plymouth with Records Representative by 9-am. ~~25th~~ Saturday, 25th inst.

NURSES. 10

10 Nurses leave Paddington 10-15am. Friday, 24th inst.
arr. Plymouth. 3-38pm.

MAIN EMBARKATION PLYMOUTH. SATURDAY, 25th JANUARY.

Report for Instructions. 2-30pm. Friday, 24th.

PROCEED. LEAVE
ARRIVE.
Awaiting Train Timings.

NUMBERS. FROM LONDON.

Officers.	Others.
S.M.O.	1 Dental N.C.O.
2 M.Os.	3 Pay N.C.Os.
Chaplain.	
Y.M.C.A. Rep.	
Pay Officer.	

Incomplete.

Copies to Major Plant.
Lieut. Laird.
S.O. 11 3 Copies.
E.S.O. 1.
Capt. Scouler. S/Sgt. Driscoll.
Bdr. Harris.

W. O.
W.O.

18-1919.

Report on Inspection of "ARMAGH"

Date: 24 & 27/1/19.
Port: Tilbury Docks

EMBARKING: 40 officers, 6 nurses, 100 sergeants, 1400 other ranks, 28 A.M.C. Staff...Total 1428 other ranks.

HOSPITAL:

General: To be constructed on upper deck just aft of forward well deck. (Plan attached).
Contains, 2 cots, 26 D.T.Berths, 4 D.T.Berths for officers in cabins...Total 32.
Dressing Room & Operating Theatre: Pantry. Messing for 18.
Baths with shower & 2 Basins...2 Cabin Compactum...1
W.C...2 Sink Hopper...1
Linen Cupboard. Lockers for patients' kits.
Dispensary and S.M.C. Office.
Cabin for A.M.C. night orderlies.

ISOLATION: In ship's permanent accommodation. (See sketch).
Contains: Cots 2. D.T.Berths 14. Attendants 2.
Pantry. Messing for 6.
Baths with shower and basins...2
W.C...2. (1 fitted to act also as Sink Hopper)

SPRAY ROOM: Deckhouse on Poop, starboard side.
DISINFECTOR. Autoclave to be fitted.

DENTAL SURGERY: To be built on Bridge Deck.

OFFICERS' ACCOMMODATION The permanent cabins will only house the O.C., S.M.C. and 6 others in addition to 6 nurses. Temporary cabins are to be erected on boat deck for 32 officers.

TROOP DECKS Could not be properly inspected owing to cargo. The ship's sides will have to be pierced. The numbers that can be carried are - 100 sergeants, 1400 other ranks, in addition to 28 A.M.C. Staff and 14 V.D. accommodation. This will give 85 c.ft. per man.

LATRINES: Deckhouses. Other ranks....34 seats.
Sergeants..... 4 seats.
V. D..... 2 seats.

WASH BASINS On Troop Decks. Other ranks.....73 basins.
Sergeants..... 8 basins
V. D..... 3 basins

SHOWERS Deckhouses. Other Ranks....28
Sergeants..... 2
V. D..... 1

ORDERLY ROOM To be built on upper deck, starboard side.

PAY & AUDIT OFFICE. Deckhouse, after well deck, starboard side.

O.C.'s OFFICE In Cabin.

S.M.C.'s OFFICE Adjoins Dispensary.

CANTEN (ISSUE)

Y.M.C.A. (ISSUE)

GALLEY.

BAKERY.

BREAD ROOM.

BUTCHER'S SHOP.

Deckhouse, starboard side, Poop deck.

Aft, under wheel house.

Adjoins Galley.

After well, starboard side.

After well, starboard side.

GENERAL REMARKS. The "ARMAGH" will be a good ship for sergeants and other ranks. The officers' accommodation is only fair. The Board's final allotment is, 40 officers, 6 nurses, 100 sergeants, 1428 other ranks.

30th January 1919.

(Signed) Hector J.C. Clayton,
Major, E.S.C.I.

(Signed) Kenneth Smith,
Colonel, A.A.M.C.

481 *App. 31*

Report on inspection of TAHMIR

Date: 24: 1: 19.
Port: Southampton.

EMBARKING: ⁵ 57 officers, 10 nurses, 120 sergeants, 1450 other ranks.

HOSPITAL.
General: Starboard side, 2nd class cabins and saloon. Berths 33.
W.C. Two. Sink Hopper...1.
Baths. Two. Showers.....4.
Basins. In every cabin...14.
Pantry. 2nd saloon Pantry.
Messing. Starboard side, 2nd saloon.
Dressing Room & Operating Theatre. Midship section of 2nd saloon.
Officers' Accommodation. Forward cabins on starboard side.
Dispensary. 2nd saloon Bar.
Dental Surgery. Port side, 2nd class cabins (140 to 143).

ISOLATION. Port side, 2nd class cabins, aft of saloon. Berths..20.
W.C. Two. Sink Hopper...1. (W.C. converted)
Baths. Two. Showers.....4
Basins. In each cabin.....7
Pantry. Cabin No. 130-131. Attendants cabin No. 132-135.

SPRAY ROOM. 2nd class Smoke-room.

DISINFECTOR: Pressure Steriliser on top of 2nd class smoke-room.

V.D. ACCOMMODATION. On "A" Troop Deck. Mess and Sleep...16.
Latrines. Forward well, starboard side. ~~Seats~~ 4 seats.
Basins. Port galley main deck at after end.

TROOP DECKS. See attached sheet.

GALLEYS. Forward well, amidships...1000.
After well, port side.....750.

BAKEHOUSE. Forward well, starboard side)
BREAD ROOM Promenade Deck, starboard side) 2,000.

LATRINES: In deckhouses, 35 seats.
Sergeants. After of Sgts. Mess deck, 2 seats.
Deckhouse loop, port side. 4 seats.
Urinals. In latrine deckhouses.
WASH BASINS. Port Galley, main deck, 68 basins.
Sergeants. Aft of Mess Deck and over baths, 8 basins.
SHOWERS: Deckhouse, after well, starboard side.....8
Outside latrine deckhouses.....23
Deckhouse, forward (V.D.).....2
Sergeants) Over Baths.....4.
Baths.) Two.
Canvas Baths Two to be supplied.

CANTEN ISSUE ROOM. Promenade deck, port side.
Y.M.C.A. ISSUE ROOM. do. do.
STORE ROOMS. Starboard Galley, main deck & after end port Galley
GUARD ROOM. Starboard side, No. 1 Main deck
ORDERLY ROOM. Port side, 1st class smoke room.
S.M.O. OFFICE. Starboard side, 1st class smoke room
PAY & AUDIT OFFICE. Port side 2nd saloon.
C.O. CABIN & OFFICE No. 71, starboard side, promenade deck.
S.M.O. do. do. No. 74, port side, promenade deck.
TOTAL ACCOMMODATION. 67 1st class. 120 Sgts. in hammocks.
4 Sgts. in cabins.
1450 other ranks in hammocks.

27th January 1919.

Hector H. Dighton
Major,
R.S.O.1

Francis M. Smith
Colonel, A.A.M.C.
Medical Liaison.

Troop Decks of 'KASHMIR'. Inspected 24: 1: 19 by Col. K. Smith.

Deck.	Fitted.		Allotted		C. Space per man (allotted)	Accommodation.	Ventilation.	Remarks
	To Mess	To Sleep	To Mess	To Sleep				
"A" No. 2 Main	364	372	300	300	85 c.ft.	Hammocks	Hatch, large. Ports, no. V.Shaft, 1 ford. 1 aft	Space restricted by mast and deck strengthener. Very good deck
"B" No. 2 Lower	398	329	300	300	90 c.ft.	Hammocks	Hatch, large. Ports, no V.Shifts, 1 ford. 1 aft	Very good deck & altho' a lower deck can take 90%
No. 3 Main "C"	274	275	230	230	85 c.ft.	Hammocks	Hatch, yes. Small at ford. end. Ports, no. V.Shift 1 forward.	Alleyway thro' port side leads to wash basin area.
"D" No. 3 Lower	314	260	200	200	90 c.ft.	Hammocks	Hatch, small at ford. end. Ports, no. V.Shift, 1 ford. 2 small goose necks aft at sides.	An exhaust fan is installed on this deck. This must be converted into a supply fan.
"E" No. 4 Main	332	316	250	250	85 c.ft.	Hammocks	Hatch, yes at after end. Ports, no. V. Shift.	Centre of deck filled with ship's store rooms
"F" No. 4 Lower	318	248	170	170	90 c.ft.	Hammocks	Hatch, yes at after end. Ports, no. V.Shifts, 1 aft, 1 forward.	Centre filled with ship's store room. Supply blower to be installed at each side forward.
"G" No. 5 Main	48 D.T.Bs.) To be fitted for Sgts. Mess.						Hatch, small at ford. end Ports, no.	
"H" No. 6 Main	Hospital) 140 Allotment 120							

All main decks have portholes, but these will never be opened according
to the ship's Officers.
All decks have Drinking Water supply.

481 App. 32

BRANCH 2D. DEPARTMENT OF REPATRIATION AND DEMOBILISATION, A.I.F.

PROGRESS. REPORT.

for week ended 25.1.1919.

1. 2D1. (Rail Transport).

1. Entrainments were supervised of Officers, Nurses and Other Ranks proceeding for embarkation on the following vessels:-

"Delta" and "Ceramic".

2. Weekly entrainments of invalid party (20) to Windsor was carried out.

3. Train arrangements for Officers reporting to No. 2 Command Depot for early repatriation.

4. Issue of Railway Warrants, and check of all Railway Warrants issued by A.I.F. in U.K., and returns in connection with same.

5. Correspondence re claims against Shipping and Railway Companies in respect of goods short-delivered, and pilfered during carriage.

Correspondence in connection with A.I.F. personnel on leave in U.S.A.

2. 2D2. (Sea Transport).

1. The following transport sailed from Devonport for Australia on 25th instant:-

Ship.	Officers.	Nurses.	W.Os. and Sergts.	O. Ranks.	Total.
"Delta"	35	24	52	1,141	1,252

2. Inspections of Transports were carried out as under, and reports made accordingly:-

"Lancashire" at Devonport.

3. Embarkation of personnel was supervised at Embarkation ports by Embarkation Staffs.

3. 2D3. (Quartering).

1. Site for Hostel for wives and dependents of soldiers about to return to Australia, was selected at Bath.

2. Left hand flat of fourth floor of 54 Victoria Street, was taken over and occupied by 1D.

Rooms vacated by 1D on first floor of 54 Victoria Street, were taken over by 3D and 5D.

4. 2D4.

481

4. 2D4. (Supply and Transport).

1. Red Cross, Medical and Miscellaneous Stores were forwarded to the following transports:-

"Nevasa", "Lancashire", "Ascanius".

2. Arrangements were made for movements of miscellaneous stores in U.K., and to France and Egypt.

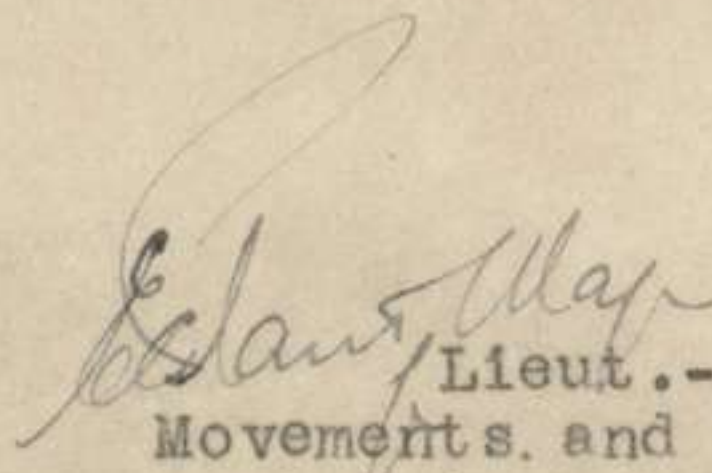
3. General indenting and arrangements for printing, etc., were carried out.

5. 2D5. (Embarkation of Personnel).

1. The usual work of dealing with inquiries for passages to Australia was carried out.

2. Rolls for "Delta" were checked, finalised and returned to Records. Medical History Sheets for "Delta" were checked and taken to the ship.

3. The progress of this Section has been considerably hampered owing to difficulty in obtaining necessary Office requisites such as tables, chairs, etc., which are on indent.



Lieut.-Colonel.
Movements and Quartering Branch.

481 *MA. 33*

Report on Inspection of "SUFFOLK"

Date: 25 & 26/1/19.

Port: Albert Docks.

MANNING: 30 officers, 60 sergeants, 900 other ranks, 18 A.M.C. Staff

HOSPITAL: General: To be built on Boat Deck, starboard side.

To Contain: Cots and D.T.Berths.....20.

Pantry and Messing for...10

Baths with shower and 2 basins....2.

W.C....2. (1 fitted to act also as Sink Hopper)

Linen Cupboard. Pigeon Holes for patients' kits.

Dressing Station & Operating Theatre. To be built on boat deck, port side.

DENTAL SURGERY. Not required.

DISPENSARY. Ship's permanent Dispensary to be renovated.

ISOLATION HOSPITAL.

Present hospital to be renovated. Contains - 6 D.T.Berths
1 Bath, 1 W.C

An additional deckhouse is to be built on port side opposite and will contain...cots 2, D.T.Berths, 4.

Pantry. Cupboard for Linen.

Bath, fitted with shower and 2 basins...1

W.C....2. (1 fitted to act also as Sink Hopper).

SPRAY ROOM: DISINFECTOR.

To be built on deck aft, starboard side.

Ship is fitted with AUTOCLAVE. To be renovated & tested.

OFFICERS' ACCOMMODATION.

Is very limited, and unsuitable for Nurses. Permanent cabins. O.C., S.M.C. & 16 others. 4 temporary cabins are to be erected on boat deck forward of Bridge, Total 16.

TROOP DECKS.

Could not be inspected as the cargo had not been discharged. From information of previous fittings and space available, the following allotment was made -
Sergeants.....60 at 100 c.ft.
Other ranks..900 at 95 c.ft. inclusive of V.B.Accommodation

LATRINES:

Deckhouses. Other ranks.....24 seats.
Sergeants..... 4 seats
V. D..... 2 seats (2)

WASH BASINS.

Deckhouses. Other Ranks.....36 basins
Sergeants..... 4 basins
V. D..... 2 basins

SHOWERS.

Deckhouses. Other ranks.....18.
Sergeants..... 2.

ORDERLY ROOM

To be built on upper deck, starboard side.

PAY & AUDIT

To be built on boat deck, port side.

S.M.C.OFFICE.

To adjoin Orderly Room

O.C. OFFICE

In Cabin.

CANTEN ISSUE

) In permanent 3rd class saloon house, adjoining

Y.M.C.A. ISSUE

) Bread Issue Room.

GALLEY, BAKERY & BREAD ISSUE ROOM.

In 3rd class saloon house on upper deck, forward.

BUTCHER'S SHOP & VEGETABLE ROOM.

To be built on upper deck, port side, near Galley.

GENERAL REMARKS

The "SUFFOLK" has not carried Troops for 18 months. All latrines etc. have to be renovated, and in some cases rebuilt. The total number that can be carried ~~xx~~ is -
30 officers, 60 sergeants, 918 other ranks.

30th January 1919.

(Signed) Hector J.C.Clayton
Major E.S.O.L.

(Signed) Kenneth Smith.
Colonel, A.A.M.C.

481
 Apr. 34

Report on inspection of "BALMORAL CASTLE"

Date: 25: 1: 19.
 Port: Liverpool.

EMBARKING: (a) Troops. Sergeants.... 40
 Other ranks..
 (b) A.M.C. Orderlies.... 6
 (c) Female 3rd class.

HOSPITALS:

MALE: General: "A" Deck, port side, 2 single cots, 6 D.T.Bs. Bath
 Latrine, tap for pans, steriliser, wash basin.
Isolation On poop deck, 4 D.T.Bs. Fyffes Chair, wash basin.

FEMALE: Four D.T.Bs. on starboard side of upper deck, aft.
 Fyffes Chair. wash basin.
Isolation: Four D.T.Bs. on port side, upper deck, aft. Fyffes
 chair. Wash basin.
Maternity Two cabins in cabin block on upper deck. Two beds
 chest of drawers, hooks, Fyffes Chair Baby's bath
 Basin.

DRESSING STATION. Forward of Male General Hospital on "A" Deck.

DISPENSARY. In after end of Male General Hospital.

ORDERLY ROOM. Forward of Dressing Station. "A" Deck.

SERGEANTS MESS. Was allocated in the remaining part of "A" Deck
 which was left between these buildings and the
 stewards quarters on the starboard side, but it is
 rather cramped and unsatisfactory. It is now
 proposed to lessen the numbers allotted to the ship
 and place the Sergeants Mess on starboard side of
 "B" Deck. To sleep and mess 40.

TROOP ACCOMMODATION The remainder of "B" Deck will carry about 150
 O.Rs. Ventilation is good. Ports with scoops.
 4 inlet vents. 2 Fan Exhausts. Hate hway fore end
 A.M.C. Details will sleep and mess on "A" Deck.

<u>WASH PLACES.</u>	Basins.	Showers.
After end of "B" Deck....	28	
" " " " "A" Deck....	8	
	36	
Deckhouse Starboard side of forward well deck.		9
Total.....	36	9

LATRINES: Deckhouse port side for well
 deck 10
 " Starbd " for Sgts 3
 13

(Signed) W. B. Ryan, Major,
 A.A.M.C.

481
App 35

Report on inspection of "KENTWORTH CASTLE"

Date: 25: 1: 19.
Port: Liverpool.

EMBARKING: Munition workers.....170
A.M.C. Orderlies 8. 178.
Female 3rd class passengers.

HOSPITALS:

MALE: General: On "A" Deck, port side, 2 single cots, 6 D.T.Bs.
Bath, W.C. with tap for pans. Hot water from circulator. Instrument steriliser. Wash basin.
Isolation. On "A" Deck forward of General Hospital, 1 single cot, 6 D.T.Bs. Wash Basin. Fyffe Chair. Portable Bath. Completely bulkheaded off from adjoining rooms. Fans installed.
This is the only position which could be agreed upon with the Company's representative as at all suitable. It is not at all ideal but can be regarded as satisfactory.

FEMALE:

General: 3 berths on starboard side, Poop Deck. Fyffes Chair and wash basin.
Isolation 3 berths on port side, Poop Deck. Fyffes Chair. Wash basin.
Maternity Ward. A fairly large cabin in 3rd class accommodation, port side, aft, with one bed, chest of drawers, Fyffes Chair, Light with wandering lead, hooks, basin, Babies bath.

Note. Now that this is fitted it appears rather small and I shall see the Company's representative with regard to taking over an adjoining cabin also.

Dressing Station. On "A" Deck, aft of General Hospital, port side.

SLEEPING ACCOMMODATION

"A" Deck. Forward of hospital block is a cabin with 8 D.T.Bs. allotted to Hospital orderlies. Further forward are two cabins each containing 12 D.T.Bs. for munition workers.
The whole starboard side of "A" Deck is occupied by stewards accommodation.
"B" Deck. Cabins on either side of deck with accommodation ranging from 8 to 12 D.T.Bs. containing total of 156 D.T.Bs.

MESSING ACCOMMODATION

A.M.C. Orderlies. will mess on table in centre of "A" Deck.
Munition workers will mess on table with seating accommodation for 180 on centre of "B" deck.

PANTRY.

A slight alteration was made in the proposed pantry on "B" deck making it to serve at either end instead of from the centre. This allows the stewards greater freedom of action and should make for quicker serving.

(Signed) W. B. Ryan, Major,

A.A.M.C.

481

Apr 36

"BERRIMA"ADVANCE PARTY.

Report for instructions 2-30 pm Monday 30th Decr.

PROCEED. Tuesday 31st December Leave Waterloo 9.35am.
Arr. Southampton 12.55.pm.

NUMBERS. 4 Officers 5 Others.
S.M.O. 3 Pay Sergeants.
Adjutant 1 O.R.S.
Q'Master 1 Red Cross Rep.
Pay Officer.

Note. Weymouth instructed to instruct S.S.M. & S's Q.M. Sergt
to report E.S.O. Southampton by 1pm. on Reus. 31st inst.
also Tidworth wired to instruct Medical Details at
Fovant to report as above.

O.C. TROOPS.

To report for instructions 3p.m. Wednesday 1st January.

Leave Paddington Midnight Wednesday 1st Jan.
Arrive Plymouth 7.20 a, Thursday 2nd Jan.

NURSES.

4 Nurses leave Paddington 10-15 am Wednesday 1st Jany.
arrive Plymouth 3-38 pm " " "

MAIN EMBARKATION THURSDAY 2nd Jany. PLYMOUTH.

(Awaiting Train Timings.)

STAFF. 2 M.Os 4 Pay Sergts.
1 Pay Officer
1 Chaplain

Report. Proceed. Leave Padd.
Arr Plymouth.

W.O.
Sea Transport Section.
20.12.18

481 *Capt. 37*

CITY OF CAIRO.

MUNITION WORKERS TRANSPORT.

EMBARKING LIVERPOOL, 31st JANUARY, 1919.

A.I.F. DETAILS. EMBARK 30th JANUARY, 1919.

Chaplain, Rev. H. Linton.

Canteen Sergt. 344, Sergt. Thompson, R., 2nd Siege Batty.

MEDICAL DETAILS. 10. Located A.A.M.C. Training Depot, FOVARE.

PROCEED.

Chaplain Leave Euston, 9-10am. Thursday, 30th January, 1919.
Arr. L'Pool. 2-7pm. to report to the Australian
Embarkation Staff Officer, Princes Landing Stage.

Canteen Sergeant. Already on Board with Canteen Stores.

Medical Details. 10. Headquarters, A.I.F. Depots in U.K.
requested to arrange for these details
to report to the A.E.S.O. Princes Landing
Stage, Liverpool, by 2pm. 30th January, 1919.

Copies to:-

S.O.S.T.
S.O.II (3 Copies.) ✓
S.O.R.T.
S/Sgt. Driscoll.
Bdr. Harris.

W. O.
W. O.

25-1-19.

481

"KARMALA"

ADVANCE PARTY.

Report for instructions 3 p.m. Tuesday 31st Decr.

PROCEED. Wednesday 1st January Leave Padd. 1 pm.
Arrive Bristol 3-22 pm.
(Change for Avonmouth)

<u>NUMBERS.</u>	5	Officers	5	Nurses	5	Others.
		O.C. Troops			3	Pay Sergeants
		S.M.O.			1	O.R.S.
		Adjutant			1	Red Cross Rep.
		Q' Master				
		Pay Officer.				

Note. Ship's S.M. & Q.M.S. with Medical Details located No.1 Command Depot. Tidworth wired to instruct to report A.E.S.O. Avonmouth by 4 pm. on 1st inst.

O.C. TROOPS.

To report at 3.p.m on Tuesday 31st inst. and proceed with Advance Party on 1st inst.

MAIN EMBARKATION.

AVONMOUTH ON THURSDAY 2nd JANUARY 1919.

(Awaiting Train Timings)

<u>Staff.</u>	2 Medical Officers.	4 Pay Sergeants
	1 Chaplain	3 Dental Details
	1 Pay Officer	
	1 Dental Officer.	

Report for instructions 11 am. Wednesday 1st January.

PROCEED. Leave Padd.
Arr. Avonmouth.

W.O.
Sea Transport Section.
28-12-18

481
App. 40.

Report on inspection of "ANCHISES".

Date: 27: 1: 19.
Port: Liverpool.

EMBARKING: 60 officers, 100 sergeants, 1000 Other Ranks.

HOSPITAL

General:

In smoking room block.....12 cots
18 D.T.Bs.
30

Two cabins near Hospital No. 12 & 13 and starboard side for hospital use.

Latrines & Ablution.

Part of permanent fittings in hospital block for hospital use. 3 W.C. one bath with wash basins and two other wash basins - 4 in all.

Dressing Room.

As fitted on port side of hospital block.

Dispensary.

In cabin adjoining hospital, port side.

Dental Surgery.

Cabin No. 9, forward of Dispensary.

Spray Room.

Starboard side of Hospital. Verandah, after end of promenade deck.

ISOLATION:

On poop deck, 12 D.T.Berths.

Latrine & Ablution.

One W.C., 1 slop sink, 1 bath, 1 sink, 1 wash basin, hot water circulator.

Messing:

Table in hospital.

Disinfecter

Autoclave on poop deck. To be overhauled.

LATRINES:

In deckhouse - approx. 40 - full of stores at present.

WASHPLACES:

In deckhouses - approx. 70. Showers in deckhouses. Unable ascertain number.

GALLEYS

One rebuilding on after well deck. Another on fore well deck.

BAKEHOUSE

Permanent ship's Bakehouse.

ORDERLY ROOM

Promenade deck, port side.

CANTEN ISSUE ROOM.

Port side, fore well deck.

SERGEANTS MESS.

Deckhouses, port & starboard sides. Promenade deck. To mess 164 & sleep 120.

S.M.O's. OFFICE

Cabin No. X 56.

PAY & AUDIT OFFICE.

Deckhouse on after well deck, port side.

CABIN No. 60...

Allotted to...Canteen Sgt.

Pay Sgt.

Dispenser.

Red X Sgt.

TROOP DECKS.

They are at present full of cargo, but details were obtained from plan and ship's purser. The messing figures given appear to be excessive and do not agree with those on the plan

(Signed) W. B. Ryan, Major.

A.A.M.C

Details of Troop Decks on "ANCHI ES".

Figures obtained from Purser and by calculations from plan.

481

Deck.	Fitted.		Allotted.		Cub. ft.	Accommodation.	Ventilation.	Remarks.
	Mess.	Sleep.	Mess.	Sleep.	per man.			
A. No. 1								
Upper.	84	..	70	70	95	Hammocks	Small hatchway. Ports with Scoops. 2 small vents.	
B. No. 2								
Upper.	228	..	186	186	80	do.	Hatchway. Ports with scoops, 2 vents forward, 2 vents aft.	A very good deck.
C. No. 2								
Lower.	256	..	206	206	90	do.	Hatchway. 2 vents forward, 2 vents aft.	
D. No. 3								
Upper.	340	..	174	174	80	do.	Hatchway. Ports with scoops, 2 vents forward, 2 vents aft.	Imperials.
E. No. 3								
Lower.	260	..	227	227	90	do.	Hatchway. 2 vents forward, 2 vents aft.	This deck was formerly fitted as store rooms. Proposed to be used for Imp. details.
F. Dining	338	..	216	216	80	Not to be used.		
Saloon.	?					Hammocks	Trunkway - many large ports.	
G. No. 5								
Upper.	314	..	195	195	90	do.	Hatchway - no ports, 2 small vents in sides.	An insulated deck.
H. No. 6								
Upper.	195	195	90	do.	Hatchway - no ports, 2 small vents in sides.	do.
J. On promen-								
ade.	96	..	55	55				
K. Deck.	68	..	45	45	100	do.	Open on to promenade deck. Many windows.	Sergeants.
Totals.	2084	1831	1569	1569				
	less D. & E.		401	401				
			1168	1168				

sgd. W.B. RYAN, Major, A.A.M.C.

WAR DIARY

or

INTELLIGENCE SUMMARY.

JANUARY 1919.

(Erase heading not required.)

3
Army Form C. 2118.

481

Instructions regarding War Diaries and Intelligence Summaries are contained in F. S. Regs., Part II. and the Staff Manual respectively. Title pages will be prepared in manuscript.

Place	Date	Hour	Summary of Events and Information	Remarks and references to Appendices
LONDON.			<p>During the month the organisation of this Branch has been continued.</p> <p><u>3.D.1.</u> Information on all matters connected with the Repatriation and Demobilisation of the A.I.F. has been collected by this section, recorded, and a series of returns issued, containing figures useful in the work of the Department. A considerable number of main irregularities in connection with Central Registry have been remedied and a closer liaison established with records.</p> <p>The number of A.I.F. Forms 534 received to date is 114152. These have been checked and classified. Forms were also despatched to various transports for the personnel on board.</p> <p><u>3.D.2.</u> The work of transferring troops from France to England for embarkation to Australia commenced during the month. At 31-1-19 104 Officers, 2768 Other Ranks had arrived in England from France.</p> <p>The preparation of Cadre establishments for England has been commenced and practically completed.</p> <p><u>3.D.3.</u> This section have compiled, revised, printed, and distributed G.I.'s. Nos. 6 to 12, Cir.M's. Nos. 15 to 17, D.I.'s. Nos. 1 to 4, pamphlets, "Things which an Australian ought to know" "Australian Repatriation Scheme", all of which are appended under Main War Diary. Special arrangements were made for delivery of Demobilisation Forms to Divisions and Groups in France by Officers returning from leave.</p>	

WAR DIARY

Army Form C. 2118.

Instructions regarding War Diaries and Intelligence Summaries are contained in F. S. Regs., Part II. and the Staff Manual respectively. Title pages will be prepared in manuscript.

or INTELLIGENCE SUMMARY.

JANUARY. 1919.

(Erase heading not required.)

481

Place	Date	Hour	Summary of Events and Information	Remarks and references to Appendices
LONDON.			<p><u>3.D.4.</u> Consolidated returns of Decisions and Rulings Nos. 1 to 9 were compiled and issued by this Section. Legal opinions were furnished on questions arising in the course of the Administration of the Department and other matters. This section was also responsible for the administration of Departmental personnel and supervision of liaison.</p> <p><u>3.D.5.</u> This section carried out inspections at Liverpool, Manchester, Hull and Avonmouth of the internal arrangements of the transports leaving for Australia with troops and was responsible for the alterations made thereto.</p> <p><u>3.D.6.</u> The disposal and demobilisation of A.I.F. horses and mules is being hastened as much as possible. Arrangements are being made for the sale of "Z" Class horses in France, and the shipment of "Y" Class animals to England. Arrangements have also been made whereby A.A.V.C. Officers may attend a course of instruction at the Royal Institute of Veterinary Surgeons while awaiting repatriation. An understanding has been come to with Royal Agricultural Society of England whereby lists and information regarding breeding studs of pure bred British stock to be supplied for A.A.V.C. Officers.</p>	

WAR DIARY

Army Form C. 2118.

Instructions regarding War Diaries and Intelligence Summaries are contained in F. S. Regs., Part II. and the Staff Manual respectively. Title pages will be prepared in manuscript.

~~INTELLIGENCE SUMMARY~~

JANUARY 1919.

(Erase heading not required.)

481

Place	Date	Hour	Summary of Events and Information	Remarks and references to Appendices
LONDON.			<p><u>3.D.7.</u> A summary of General Instructions has been prepared and revised by this Section and forwarded to the Australian Corps also the necessary copies for Press, etc. Arrangements for coordination between this Department and Australia House has been made. Lectures to men of the A.I.F. were arranged both in France and U.K. giving full particulars of the progress of Repatriation and of the privileges granted by the Department, i.e., Non-Military Employment, etc., Pay, Allowances, etc. Close touch was maintained with the Press.</p>	

CONFIDENTIAL.

ORIGINAL.
DUPLICATE.
TRIPLICATE.

4.

481

Australian Imperial Force.

WAR DIARY

OF

REPATRIATION & DEMOBILISATION DEPARTMENT

ORDNANCE & EQUIPMENT BRANCH

FOR

JANUARY 1919.

Signature of Officer compiling

H. Murphy

Capt.
4.D.

Signature of Officer Commanding

Danvers Colson

Brig.Genl.
4.D.

Repatriation & Demobilisation Dept. A.I.F.

WAR DIARY

Army Form C. 2118.

Instructions regarding War Diaries and Intelligence Summaries are contained in F. S. Regs., Part II. and the Staff Manual respectively. Title pages will be prepared in manuscript.

INTELLIGENCE SUMMARY.

JANUARY, 1919.

(Erase heading not required.)

481

Place	Date	Hour	Summary of Events and Information	Remarks and references to Appendices
LONDON	1st.		----- H O L I D A Y -----	
	2nd.		<p>Saw D.G. reference organisation and instruction of Calibration & Sound Ranging Sections, and he proposed to delay action in this matter until arrival of General White, Chief of Staff, A.I.F.</p> <p>Letter was written to S.M.T.O. Australian Corps, France, asking him to submit a recommendation for appointment of an Officer to carry out the despatch of M.T. Equipment to Australia.</p> <p>Went into matters generally with regard to the selection of 6 Officers and 60 Other Ranks for formation of an Ordnance Depot in France with Colonel Leane.</p> <p>The undermentioned Other Rank reported for duty in this Branch:-</p> <p>3566 W. H. BRIDGES, - 5th. Pioneer Battalion.</p>	
	3rd.		<p>Received notification from Commandant, Administrative Headquarters, that suggestion to send 7 Officers to Ordnance Course and 4 Officers to Gunnery Course had been approved by Defence Department, Melbourne.</p> <p>Names of further 5 Officers for Ordnance Course, and 4 for Gunnery Courses were accordingly submitted, and copy of letter is attached as -----APPENDIX</p> <p>Received estimated cost of A.A. & Searchlight, fixed and mounted positions, and Sound Ranging Section, from War Office.</p>	1.

WAR DIARY

Army Form C. 2118.

Instructions regarding War Diaries and Intelligence Summaries are contained in F. S. Regs., Part II. and the Staff Manual respectively. Title pages will be prepared in manuscript.

-INTELLIGENCE-SUMMARY.

JANUARY, 1919.

Page 2. 481

(Erase heading not required.)

Place	Date	Hour	Summary of Events and Information	Remarks and references to Appendices
LONDON	4th.		----- General Routine Work. -----	
	5th.		----- General Routine Work. -----	
	6th.		<p>A hastener was sent for the services of the undermentioned Officers already applied for:-</p> <p style="text-align: center;">T/Capt. W. E. POPE Lieut. S. H. RAINBIRD Lieut. W. H. THOMAS, M.C.</p> <p>Progress Report No. 1 was rendered to 3.D. and copy is attached as -----APPENDIX</p> <p>Instructions were issued to Major D.V.J. Blake, Officer i/c A.F.C. Section, to hand over duties to Major E. C. Brinsmead, and report to Administrative Headquarters for disposal.</p> <p>The undermentioned Officer reported for duty in this Branch as Officer i/c Medical & Dental Section:-</p> <p style="text-align: center;">Capt. J. F. S. MURRAY, M.C.</p>	2.
	7th.		<p>Received information that the replacement of Major D.V.J. Blake was not possible at present, as Major E. C. Brinsmead had applied for his discharge. The matter was held over for the present.</p> <p>Interviewed D.G. with regard to reduction of batteries from six to four guns, and was instructed to formulate a proposal for reduction of batteries and D.A.C., and demobilisation of Trench Mortar Batteries.</p>	

WAR DIARY

Army Form C. 2118.

Instructions regarding War Diaries and Intelligence Summaries are contained in F. S. Regs., Part II. and the Staff Manual respectively. Title pages will be prepared in manuscript.

INTELLIGENCE SUMMARY.

JANUARY, 1919.

Page 3.

481

(Erase heading not required.)

Place	Date	Hour	Summary of Events and Information	Remarks and references to Appendices
LONDON	7th. (ctd.)		<p>Recommendations were submitted to the D.D.G. for promotions of N.C.Os. in accordance with Establishment which is considered necessary to carry out the work of this Branch.</p> <p>The undermentioned N.C.O. reported for duty to this Branch today:-</p> <p>18526 Bdr. E. L. PHILP - 7th. A.F.A. Brigade.</p>	
	8th.		<p><u>11 a.m.</u> Director of Ordnance & Equipment attended Conference with D.G. on questions regarding Office work generally.</p> <p>Submitted to D.D.G. proposals for the reduction of F.A. Battery organisation from 6 to 4 gun Batteries; reduction in vehicles of D.A.C. and B.A.C. and withdrawal of equipment on charge to M.T.M. Batteries, and the transfer of the personnel thus released to the Divisional Artillery concerned. Copy of this letter is attached as -----APPENDIX</p>	3.
	9th.		<p>Saw Commandant, Administrative Headquarters, regarding the War Office declining to take any Stores from Training Depots in U.K. and he stated that a letter had been written to the War Office asking for a reconsideration of that ruling.</p> <p>The undermentioned Officer and N.C.O. reported for duty in this Branch today:-</p> <p>Capt.R. ROSS - A.F.C. 1330 Flight/Sgt. J. L. TIMEWELL - 3rd. Squadron, A.F.C.</p>	
	10th.		<p>Major E. C. Brinsmead called re taking over from Major D.V.J. Blake. On consultation with the D.D.G. it was decided that the Commandant, Administrative Headquarters be asked to instruct Major Brinsmead to take over at once.</p>	

WAR DIARY

Army Form C. 2118.

Instructions regarding War Diaries and Intelligence Summaries are contained in F. S. Regs., Part II. and the Staff Manual respectively. Title pages will be prepared in manuscript.

INTELLIGENCE SUMMARY.

JANUARY, 1919.

Page 4.

481

(Erase heading not required.)

Place	Date	Hour	Summary of Events and Information	Remarks and references to Appendices
LONDON	10th. (ctd.)		<p>Major R. J. Morse, O.C. Australian Elec. Mechanical & Mining Boring Coy. (attached Imperial Army) called with reference to taking Mining and Boring Plant back to Australia. Major Morse was instructed to submit a list of the material proposed for Australia.</p> <p>The following man was taken on strength of this Branch:-</p> <p>163 Pte. G.F. NILE - 1st. Field Ambulance.</p> <p>The undermentioned Officer was evacuated to Hospital today:-</p> <p>Col. E. T. LEANE</p> <p>The undermentioned Other Rank was struck off strength of this Branch today:-</p> <p>3568 Pte. L. J. CHAPMAN.</p>	
	11th.		General Routine Work.	
	12th.		General Routine Work.	
	13th.		<p>Went into details with Col. Whitham regarding the clothing and equipment for men repatriated to Australia, prior to his proceeding to G.H.Q.</p> <p>Letter was written to D.D.G. recommending that authority be cabled for the return to Australia of the 1st. Squadron, A.F.C. less certain personnel who should be instructed to proceed to England with all records and vouchers. Copy of this letter attached as</p> <p>-----APPENDIX</p>	4.

WAR DIARY

Army Form C. 2118.

Instructions regarding War Diaries and Intelligence Summaries are contained in F. S. Regs., Part II. and the Staff Manual respectively. Title pages will be prepared in manuscript.

INTELLIGENCE SUMMARY.

JANUARY, 1919.

Page 5.

(Erase heading not required.)

Place	Date	Hour	Summary of Events and Information	Remarks and references to Appendices								
LONDON	13th. (ctd.)		<p>Capt. W. E. POPE, 1st. Australian D.A.C. reported for duty to this Branch today.</p> <p>The undermentioned Other Ranks reported for duty to this Branch today:-</p> <table><tr><td>11 S/Sgt. H.H.E.SWAN</td><td>- "C" Records, A.I.F. Hdqrs.</td></tr><tr><td>22348 Bdr. M.W.R.METH</td><td>- 8th. A.F.A. Brigade</td></tr><tr><td>34137 Dvr. J.L.MITCHELL</td><td>- 3rd. Army Brigade A.F.A.</td></tr><tr><td>1414 Dvr. R.O'NEIL</td><td>- 4th. A.F.A. Brigade</td></tr></table> <p>Submitted to 3.D. Progress Report No. 2, copy attached as -----APPENDIX</p>	11 S/Sgt. H.H.E.SWAN	- "C" Records, A.I.F. Hdqrs.	22348 Bdr. M.W.R.METH	- 8th. A.F.A. Brigade	34137 Dvr. J.L.MITCHELL	- 3rd. Army Brigade A.F.A.	1414 Dvr. R.O'NEIL	- 4th. A.F.A. Brigade	5.
11 S/Sgt. H.H.E.SWAN	- "C" Records, A.I.F. Hdqrs.											
22348 Bdr. M.W.R.METH	- 8th. A.F.A. Brigade											
34137 Dvr. J.L.MITCHELL	- 3rd. Army Brigade A.F.A.											
1414 Dvr. R.O'NEIL	- 4th. A.F.A. Brigade											
	14th.		<p>Sent instructions to Major Brinsmead S.O. for Aviation, to make out the proposals for demobilisation of A.F.C., attaching copy of cable sent to "STRALIS" Egypt, reference 1st. Squadron, A.F.C. Copy of cable is attached as -----APPENDIX</p>	6.								
	15th.		<p>Went into Major Brinsmead's proposals regarding the policy of Australian Air Force, which has been placed before the D.G.</p> <p>Prepared and submitted list of questions regarding Artillery matters to General White, Chief of Staff, A.I.F. Copy is attached as -----APPENDIX</p> <p>Letter was written to The Secretary, Air Ministry, notifying the replacement of Major D.V.J. Blake by Major C. E. Brinsmead. Copy is attached as -----APPENDIX</p>	7. 8.								
	16th.		<p>Lieut. S. H. Rainbird, Audit Section, Administrative Headquarters, A.I.F. reported for duty to this Branch today.</p>									

D. D. & L., London, E.C.
(1034a) Wt W2300/P713 750,000 3/18 E 2683 Forms C222/14.

WAR DIARY

Army Form C. 2118.

Instructions regarding War Diaries and Intelligence Summaries are contained in F. S. Regs., Part II. and the Staff Manual respectively. Title pages will be prepared in manuscript.

INTELLIGENCE SUMMARY.

(Erase heading not required.)

JANUARY, 1919.

Page 6. 481

Place	Date	Hour	Summary of Events and Information	Remarks and references to Appendices
LONDON	17th.		Interviewed Chief of Staff, A.I.F. with reference to general Artillery Policy. Letter written to Commandant, Administrative Headquarters, re Issues of clothing to members of A.I.F. reporting from France for embarkation to Australia. Copy of letter is attached as -----APPENDIX	9.
	18th.		General Routine Work.	
	19th.		----- N I L -----	
	20th.		Received from Lt. Col. P. F. Borwick (Liaison to Prime Minister) copy of War Office letter No. 57/Woolwich/4798(Q.M.G.10c) of 20.12.18. notifying that all demands for Ammunition and Explosives hitherto addressed to D.D.O.S., Woolwich Arsenal, should in future be addressed to A.D.O.S., (Ammunition) Adastral House, Victoria Embankment. Forwarded to Chief of Staff, A.I.F. copy of proposals for Artillery Equipment, also copy of cable received from Defence Department, Melbourne, re purchase of surplus stores. Progress Report No. 3. 13.1.19 to 20.1.19 was rendered to 3.D. and copy is attached as -----APPENDIX Letter was written to 3.D. asking that action be taken to ensure that Lieut. W. H. Thomas M.C. reports for duty as early as possible, application for his services being long outstanding. Wrote to Commandant, Administrative Headquarters, asking if reply had yet been received from Ordnance College, Woolwich, reference qualifications of Assistant Is.O.M. The undermentioned Other Rank reported for duty to this Branch today:- 61487 Pte. A. K. TUCKFIELD - Guard Coy. Tidworth.	10.

WAR DIARY

or

INTELLIGENCE SUMMARY.

(Erase heading not required.)

Army Form C. 2118.

JANUARY, 1919.

Page 7.81

Instructions regarding War Diaries and Intelligence Summaries are contained in F. S. Regs., Part II. and the Staff Manual respectively. Title pages will be prepared in manuscript.

Place	Date	Hour	Summary of Events and Information	Remarks and references to Appendices
LONDON	21st.		Letter written to Chief of Staff, A.I.F. recommending for consideration the training of Anti-Aircraft personnel during the period of demobilisation. Copy of letter is attached as -----APPENDIX	11.
	22nd.		Suggested by 2.D. that an issue of rope-soled slippers, or canvas shoes be made to all troops proceeding to Australia, and this matter was investigated by this Branch at the request of the Director General. On enquiry it was found that these shoes are unobtainable from Imperial Ordnance in anything approaching the quantities required for fitting out the A.I.F. personnel returning to Australia, nor can they be purchased from outside sources.	
			List of questions requiring ruling and decisions was submitted to Chief of Staff A.I.F. Copy is attached together with answers subsequently received. -----APPENDIX	12.
			The services of Lieut. R. L. Mashford, Australian Corps Signal Coy. were applied for, for supervision of Wireless Equipment.	
			Letter was written to D.D.G. reference A.I.F. Form 500 Q.1. (personal equipment of men returned to Australia) and suggesting that a cable re this matter be sent to Australia. Copy is attached as -----APPENDIX	13.
			No. 2632 Pte. C. G. PATMAN was struck off strength of this Branch today.	
	23rd.		Copies of all General Instructions issued to date were forwarded to Lieut.Colonel Newton, Representative G.O.C., A.I.F. in Egypt, accompanied by a letter embodying the points raised in these Instructions. Copy of letter is attached as -----APPENDIX	14.

WAR DIARY

Army Form C. 2118.

Instructions regarding War Diaries and Intelligence Summaries are contained in F. S. Regs., Part II. and the Staff Manual respectively. Title pages will be prepared in manuscript.

INTELLIGENCE SUMMARY.

(Erase heading not required.)

JANUARY 1919.

481
Page 8.

Place	Date	Hour	Summary of Events and Information	Remarks and references to Appendices
LONDON	24th.		<p>Information received from Woolwich Ordnance College to the effect that Capt. T. Henderson is the only I.O.M. qualified to hold the position of Inspector of Ordnance Machinery.</p> <p>Letter was written to Commandant, Australian Base Depot, Havre, informing him that Lieut. S. H. Rainbird of this Branch would report to him at an early date, for purpose of obtaining full information re system in operation at Le Havre of handing in and accounting for equipment taken over from personnel proceeding to U.K.</p> <p>Hastener was sent to 3.D. for services of an Officer to take charge of Veterinary Equipment Section of this Branch.</p> <p>Interviewed D.G. reference preparation of instructions for the handing in of Equipment in France.</p> <p>Letter was written to Director of Demobilisation, Air Ministry, requesting copy of Minutes and Decisions based on Conference held on December 28th. 1918.</p>	
	25th.		<p>Wrote to Commandant, Administrative Section, A.I.F. Headquarters, asking for information as to the release from his present duties of Major G. S. Down, M.C., A.A.O.C., this Officer being required to proceed to Egypt to carry out duties in connection with this Branch. Copy of letter is attached as ----- APPENDIX</p> <p>Instructions were drafted out relative to the taking in of material into Ordnance Depots in France.</p>	15.
	26th.		----- N I L -----	

WAR DIARY

or

INTELLIGENCE SUMMARY.

(Erase heading not required.)

Army Form C. 2118.

Instructions regarding War Diaries and Intelligence Summaries are contained in F. S. Regs., Part II. and the Staff Manual respectively. Title pages will be prepared in manuscript.

JANUARY, 1919

Page 9.

Place	Date	Hour	Summary of Events and Information	Remarks and references to Appendices
LONDON	27th.		<p>Further instructions drafted out for handing in of material into Ordnance Depots in France.</p> <p>Recommendations were forwarded to D.D.G. reference the disposal of Dental Equipment in U.K., France, and Egypt. Copy is attached as -----APPENDIX</p> <p>Draft of General Instructions in course of preparation reference handing in of stores was received from 3.D. and remarks and suggested amendments were forwarded to D.D.G.</p> <p>Weekly Progress Report, No. 4. for week ending 27.1.19 was rendered to 3.D., and copy is attached as -----APPENDIX</p>	<p>16.</p> <p>17.</p>
	28th.		<p>Correspondence has passed recently between this Branch and 5.D. reference the recredit due to the A.I.F. on return of Stores and Equipment to Imperial Authorities, and the proposal to approach the War Office with a view to cancellation of claims either on behalf of the A.I.F. or War Office, on the ground that returns could be taken as a set-off against issues.</p> <p>This Branch notified 5.D. today, that 66 2/3% of Vocabulary Price is not considered an equitable figure upon which to obtain recredit for equipment returned from A.I.F. to Imperial Authorities, for the following reasons:-</p> <ol style="list-style-type: none"> 1. The Stores issued to A.I.F. in many instances were not new, but were "serviceable", and it is assumed for these the A.I.F. was charged full price. 2. A daily rate for maintenance of these Stores was paid by A.I.F. to keep them up to standard, and to replace those lost or destroyed through the exigencies of the campaign. 	

WAR DIARY

Army Form C. 2118.

Instructions regarding War Diaries and Intelligence Summaries are contained in F. S. Regs., Part II. and the Staff Manual respectively. Title pages will be prepared in manuscript.

INTELLIGENCE SUMMARY.

JANUARY, 1919.

Page 10.

(Erase heading not required.)

Place	Date	Hour	Summary of Events and Information	Remarks and references to Appendices
LONDON	28th. (ctd.)		<p>3. Practically therefore, the Stores were in exactly the same condition when returned as they were when drawn.</p> <p>4. New Stores should therefore be recredited at full value, and as full value was believed to be charged for part worn Stores, this value should be allowed on return of same.</p>	
	29th.		<p>Interviewed Chief of Staff, A.I.F. regarding a reply to Defence, Melbourne, in connection with selection of Is.O.M. and forwarded papers Commandant, A.I.F. Headquarters, recommending that a cable be sent to Australia informing them that Capt. Henderson is the only one qualified for I.O.M. and asking permission to select one other Artificer from A.I.F. for the necessary training. Copy is attached as -----APPENDIX</p> <p>Letter written to A.D.O.S., A.I.F. Headquarters, instructing withdrawal from members of A.I.F. in Unit Depots in U.K. of various articles of equipment, including Binoculars, Telescopes etc. etc.</p> <p>A similar letter was written to A.D.O.S., Australian Corps, France. Copy of same is attached as -----APPENDIX</p>	18.
	30th.		<p>"Instructions for Handling in Stores and Equipment in the A.I.F." were handed to General Foott for inclusion in General Instructions.</p> <p>Director of Ordnance & Equipment visited the War Office with regard to the cost of various materials required by Australia.</p> <p>Wrote to Commandant, A.I.F. Headquarters, requesting that War Office be asked to supply the various Syllabi of the Courses held at the Ordnance College, Woolwich, as these</p>	19.

WAR DIARY

or

INTELLIGENCE SUMMARY.

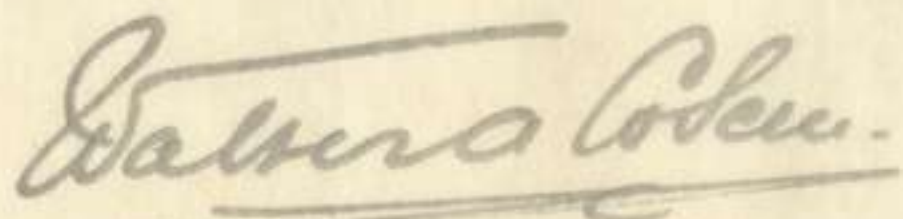
(Erase heading not required.)

Army Form C. 2118.

JANUARY, 1919.

Page 11.

Instructions regarding War Diaries and Intelligence Summaries are contained in F. S. Regs., Part II. and the Staff Manual respectively. Title pages will be prepared in manuscript.

Place	Date	Hour	Summary of Events and Information	Remarks and references to Appendices
LONDON	30th. (ctd.)		<p>would be of great use when selecting men for courses, from time to time.</p> <p>Information having been received that Lt. Col. T. B. W. James may not be available to attend Gunnery Course for which he has been nominated, the names of the under-mentioned Officers were submitted to fill this probable vacancy -</p> <p style="text-align: center;">Lieut.Col. F. THORNTHWAITE, M.C.</p> <p style="text-align: center;">or</p> <p style="text-align: center;">Major R. E. FANNING, D.S.O.</p>	
	31st.		<p>Advice was received that approval has been given to Officers attending the Preliminary Ordnance Course at Woolwich remaining on A.I.F. Rank and Pay during currency of same.</p>	
			<p style="text-align: right;">  BRIGADIER GENERAL, 4.D. Repatriation & Demobilisation Department, A.I.F. </p>	
			<p>5th. February, 1919.</p>	

WAR DIARY

OF

REPATRIATION & DEMOBILISATION DEPARTMENT

~~ORDNANCE & EQUIPMENT BRANCH~~

FOR

~~JANUARY~~

1919.

LIST OF APPENDICES.

No.	Subject.
1.	Letter to Commandant, submitting names of 5 Officers for Ordnance Course, and 4 for Gunnery Course.
2.	Weekly Progress Report No. 1.
3.	Proposals to D.D.G. for reduction of Batteries, Vehicles etc. and transfer of personnel.
4.	Letter to D.D.G. recommending that authority be cabled for the return to Australia of the 1st. Squadron A.F.C.
5.	Weekly Progress Report No. 2.
6.	Instructions to Major Brinsmead, S.O. for Aviation, to make out proposals for demobilisation of A.F.C.
7.	List of questions re Artillery matters, submitted to General White.
8.	Letter to Air Ministry notifying the replacement of Major Blake by Major Brinsmead.
9.	Letter to Commandant, re Issues of clothing to members of A.I.F. reporting from France for embarkation to Australia.
10.	Weekly Progress Report, No. 3.
11.	Letter to Chief of Staff, recommending for consideration the training of anti-aircraft personnel.

WAR DIARY

OF

REPATRIATION & DEMOBILISATION DEPARTMENT

ORDNANCE & EQUIPMENT BRANCH

FOR

JANUARY

1919.

LIST OF APPENDICES.

No.	Subject.
12.	List of questions requiring rulings and decisions submitted to Chief of Staff, with answers thereto.
13.	Letter to D.D.G. re A.I.F. Form 500 Q.1. suggesting cable be sent to Australia.
14.	Letter to Lieut.Col. Newton, Representative G.O.C., A.I.F. in Egypt, enclosing copies of General Instructions.
15.	Letter to Commandant asking for information re release of Major G.S.Down, M.C. for duty in Egypt.
16.	Recommendations to D.D.G. for disposal of Dental Equipment in U.K., France & Egypt.
17.	Weekly Progress Report, No. 4.
18.	Letter to Commandant recommending that cable be sent to Australia informing them that Capt. Henderson is the only qualified I.O.M. and asking permission to select one other Artificer for training.
19.	Letter to A. D.O. S. (France and London) instructing the withdrawal of various articles of equipment including Binoculars, Telescopes etc.

481

APPENDIX 1.

File No. 4330/26/50.

3rd. January, 1919.

Commandant,
Administrative Headquarters, A.I.F.

In reply to your memorandum of the 2nd. inst. (No. C2/4330/26/50) I beg to submit the names of the following Officers for Courses referred to herein:-

ORDNANCE COURSE - Commencing 6th. January, 1919.

Major (A.I.F.) B. M. MORRIS.
Major (A.I.F.) L. E. BEAVIS, D.S.O.
Major (A.I.F.) E. J. MILFORD.
Captain W. W. WHITTLE
Lieutenant C. J. BROOKES, M.C.

GUNNERY COURSE - Date not yet fixed.

Lt.-Col. (A.I.F.) T.B.W. JAMES, D.S.O.)	Field
Major (A.I.F.) A. M. FORBES, M.C.)	Artillery.
Major (A.I.F.) H. C. BUNDOCK, D.S.O.)	Garrison
Major (A.I.F.) E. K. SMART, M.C.)	Artillery.

BRIGADIER GENERAL,
4.D.

PROGRESS REPORT NO. 1.REFERENCE DEPARTMENTAL INSTRUCTIONS NO. 1.

Week ending 4.1.19 was not particularly remarkable.

Progress developed towards the completion of Staff required for carrying out the work allotted to the Section. Certain Officers reported for duties in connection with the various Sub-Sections. Their names have been submitted with diagram forwarded, also as set out in D.I. No. 1.

Colonel E. T. Leane returned from France 30.12.18, where he had made necessary arrangements in connection with Ordnance personnel and reorganisation of A.A.O.C. to carry out return of Unit Stores to Imperial Ordnance Depots.

Office Routine towards the bringing up to date of certain Army Books, Forms, Publications etc. necessary in the work of the Section was carried out.

The organisation of this Branch is now practically complete to carry out duties with which it is considered it will be called on to deal. The framework for necessary Staff is ready; certain minor positions require to be filled in, and further progress on general lines is waiting on definitions of questions of general policy.

(Sgd.) Walter A. COXEN,
Brigadier General,
4.D.

6.1.19.

File No. 6509/1/56.

8th. January, 1919.

Deputy Director-General,
Repatriation & Demobilisation Dept.

Owing to the reduction of the personnel of the Artillery, due to men on leave to Australia, educational reasons and other causes, I make the following recommendations for favourable consideration:-

(a) BATTERIES, F.A.

That the batteries of Australian Field Artillery be reduced from a 6-gun to a 4-gun organisation and that the whole of the equipment, including harness and saddlery, of one section (2 guns) be returned to Ordnance.

(b) D.A.C. & B.A.C.

That the complete equipment of 12 18-pdr and 4 4.5" How. ammunition wagons and limbers of each D.A.C. and 6 18-pdr. and 2 4.5" How. ammunition wagons and limbers of each B.A.C. be returned to Ordnance.

(c) HORSES.

That arrangements be made for the disposal of the teams belonging to the above vehicles in (a) and (b). All demands for horses should be satisfied throughout the Corps before disposing of the surplus horses.

(d) MEDIUM TRENCH MORTARS.

That the equipment of Medium Trench Mortars be returned to Ordnance and the personnel thus released be taken on the strength of the Divisional Artillery and disposed of as required throughout the Batteries and D.A.C.

It is essential that all equipment and stores returned to Ordnance be properly accounted for and necessary receipts obtained.

(Sgd.) Walter A. COXEN
BRIGADIER GENERAL,
4.D.

File No. 4343/54/11.

4.D.

D.D.G.

13th. January, 1919.

Demobilisation of 1st. Squadron, A.F.C.

With reference to the attached cable, I recommend that authority be cabled (through the Air Ministry for their information) for the return of the 1st. Squadron, A.F.C. to Australia, less the following, who should be instructed to proceed to England with all Squadron records and vouchers:-

3 Officers, viz. Equipment Officers (2), Stores and
Wireless Recording Officer.

2 N.C.Os., viz. Stores Sergt. BELL and Transport
Sergt. SLEEMAN.

I understand that material etc. to replace that handed in to the Air Force Stores in Egypt will be drawn in England.

BRIGADIER GENERAL,
4.D.

4.D. PROGRESS REPORT NO. 2. 6.1.19 to 13.1.19.

During past week, work of organising this Section for future duties was continued.

Major D.V.J. Blake, A.F.C. ceased duties as Liaison Officer i/c 4.D.4. His place will be taken by Major Brinsmead, A.F.C.

Captain F. J. S. Murray, M.C., A.A.M.C., reported for duty as Officer i/c 4.D.5. This Section of 4.D. is engaged in collation of data regarding demobilisation of stores of A.A.M.C. Units and remobilisation of stores to be drawn in replacements.

Work of amending and bringing up to date Army Books, Forms etc. which will be required as basis of action by 4.D. was continued.

General questions dealt with were such as the sale of Motor Cycles to Despatch Riders of the A.I.F. and deductively of any Government Stores to A.I.F. personnel, which is not favoured by 4.D., partial demobilisation of stores of F.A. Batteries, D.A.C., B.A.C., M.T.M. Batteries, on which suggestions were put forward, the allocation of detached Units of the A.I.F. to Repatriation Groups and the bearing thereof on the activities of this Branch; financial adjustments on Stores Basis as between A.I.F. and Imperial Government, retention or handing in of personal equipment by members of the A.I.F. leaving France, transfer of Unit Equipment to Australia.

(Sgd.) Walter A. COXEN,

BRIGADIER GENERAL
4.D.

13.1.19.

481
ET/MEA

APPENDIX 6.

4.D.

File No. 4343/17/12.

Major Brinsmead,
S.O. for Aviation.

14th. January, 1919.

Re Demobilisation of 1st. Squadron A.F.C.

I am attaching copy of cable sent to Headquarters, Egypt, with reference to the demobilisation of the 1st. Squadron, A.F.C. Will you please arrange to notify the Air Ministry of the action taken.

(Sgd.) Walter A. Coxen,

BRIGADIER GENERAL,
4.D.

COPY OF CABLE.

From:- Demobaust

To:- Stralis, Egypt.

Your C.A.675 1st. Squadron A.F.C. to hand in Equipment to A.I.F. credit and be demobilised in its turn AAA Send to England with all records and vouchers two Equipment Officers Stores and Wireless Recording Officer, Stores Sergt. Bell and Transport Sergt. Sleeman.

(Sgd.) DEMOBAUST.

13.1.19.

QUESTIONS TO BE DECIDED.ARTILLERY.FIELD ARTILLERY.

Q.

A.

1. The War Office are reorganising on a basis of 3 Brigades of 3 6-gun 18-pdr. batteries and 1 4.5" How. Battery per Bde. cutting out all Army F.A. Brigades.

Is it decided to adopt this organisation?

2. The question of the organisation of the D.A.C. for these Brigades of Divisional Artillery has not been settled by the War Office.

The questions to be considered are-

- (a) Should we return to a B.A.C. organisation for each Brigade?

or

- (b) Should we increase the strength of the D.A.C. as it exists?

If the S.A.A. Section of the D.A.C. was abolished and in its place an Artillery Ammunition Section organised, it would appear to meet the case. But, the question of whether the S.A.A. Section would have to be organised under Supply for Infantry requirements requires consideration.

From talking with those at the War Office I am inclined to think that the organisation of B.A.Cs. will be adopted.

3. Has it been decided to re-equip with articles that can be produced in Australia, such as harness, saddlery etc?
4. The question of type of 18-pdr. is also one of great importance. If we re-equip with the air-recuperator buffer type it will mean at a later date re-arming with the new pattern 18-pdr. At present the War Office say that there are not sufficient of these guns to meet our requirements.
Had we better delay equipment say for Reserve Divisions so as to get the more modern weapon later on?

TRENCH MORTARS.

5. Is it decided to equip with medium Trench Mortars. If so, will it be 2 Batteries of 6 guns each per Division?

HORSE ARTILLERY.

6. Is 13-pdr equipment to be provided for Mounted Divisions. If so, on what organisation?

Q.

A.

No definite organisation appears to be adopted, varying according to the theatre of war.

I recommend organisation of 3 Batteries of 4 guns each to each Mounted Division.

ANTI-AIRCRAFT ARTILLERY.

7. Is it intended to take to Australia any anti-aircraft equipment?

If so, will it be for use -

- (a) With the Corps, or
- (b) For defence of localities, or
- (c) For both?

8. Will search-lights be required in conjunction with the above?

HEAVY ARTILLERY.

9. To what extent is it intended to equip with Heavy Artillery?

(A proposal has been submitted.)

10. Heavy Trench Mortars (Corps). Is it intended to take any Heavies back to Australia?

11. To what extent will Tractors and M.T. for Stores and Ammunition supply be required?

AMMUNITION.

12. Upon what scale is it proposed to equip with ammunition, on the basis of -

- (a) Requirements for 3 months war, or
- (b) Peace practice requirements?

In considering this question the keeping qualities of the ammunition as regards cartridges must be taken into consideration. The propellant manufactured under war conditions will undoubtedly not have the keeping qualities of pre-war manufactured cordite.

13. The question of amount of storage accommodation in Australia will also regulate the rate at which the ammunition is supplied.

SOUND RANGING & SCREEN CALIBRATION.

14. Is it proposed to purchase sets of the above instrument?

The Screen Calibration Set should prove of value for proof work in connection with the Arsenal Work.

Q.

A.

15. UPKEEP OF EQUIPMENT & SPARES.

On what scale should this question be considered -

- (a) Upkeep for war requirements, or
- (b) Upkeep for peace requirements ?

16. Ports to which shipping?

481

APPENDIX 8.

File No. 4330/44/1.

15th. January, 1919.

The Secretary,
Air Ministry,
STRAND, W.C.

Sir,

With reference to my letter of the 17th. December, 1918, (No.1555/2/6) I have the honour to inform you that Major D. V. J. Blake, Australian Flying Corps, A.I.F., has now been relieved for other duties, and Major H. C. Brinsmead, M.C., A.F.C., has been appointed to this Department in his stead in connection with the demobilisation of the Australian Flying Corps.

This Officer, acting under my instructions, will deal with all questions relating to the demobilisation of the Australian Flying Corps.

May he be accredited please to the Officers of your Ministry?

I have the honour to be,

Sir,

Your obedient Servant,

BRIGADIER GENERAL
Deputy Director General.
Repatriation & Demobilisation Dept. A.I.F.

17th. January, 1919.

Commandant,
Administrative Headquarters, A.I.F.

Issues of Clothing to Members of the A.I.F.
reporting from France for embarkation
to Australia.

With reference to the attached communication from you on the above subject, in the view of this Department it is the obligation of the Imperial Government to return our men from France clothed in serviceable uniform and in possession of necessaries set out in Table IV War Clothing Regulations 1918, such table to be amended as necessary to provide for the distinctive Australian pattern uniform. Members of the A.I.F. reporting from France for embarkation to Australia who arrive wearing unsuitable uniform should therefore be considered to come under the same financial arrangement as regards new issues as if they had come on leave from France.

The above interpretation is of course on general lines and is not intended to exclude the possibility of dishonesty on the part of individual members of the A.I.F. nor the fact that members of the A.I.F. reporting to this country in unserviceable clothing may be due to the negligence of the Quartermaster of their Units in France.

As the distribution of clothing is an Ordnance service it would seem that the whole position should be placed before the War Office, and that arrangements might be entered into whereby quotas coming from France could be separately administered as regards clothing by Quartermasters of Depots to which they report, the Quartermaster furnishing certified lists of new clothing issued to such quotas to replace unserviceable or as a first issue where the articles are not in possession, you to charge the War Office periodically for such issues, and the unserviceable clothing withdrawn to be held apart and delivered to the War Office as their property, the procedure being a replica of that which is being worked at the Overseas Clothing Store. There is of course the possibility of the institution of a large Depot at the A.I.F. Camp, Havre, bulk supplies to be made to that Camp from Imperial stocks in France, which if possible, would obviate financial adjustments in the U.K.

It is also proposed to introduce a modified form of A.I.F. form 500 into France, but details in this regard are not yet settled. If introduced it will prevent members of the A.I.F. from obtaining by false representations unauthorised issues in the U.K.

DEPUTY DIRECTOR GENERAL
Repatriation & Demobilisation Dept. A.I.F.

ENCLOSURE:-
File No. 6506/20/41.

4.D. PROGRESS REPORT NO. 3. 13.1.19 to 20.1.19.

Routine work was carried out in General Office and in Sub-Sections.

4.D.1. has been engaged in checking and amending Mobilisation Store Tables.

4.D.4. on the collection of data etc. regarding policy of Australian Air Force.

4.D.5. on questions affecting the demobilisation and disposal of stores of Dental Units of the A.I.F.

General questions dealt with were adjustment for clothing and equipment of Quotas leaving France for repatriation, and financial adjustment for any issues made in U.K. to A.I.F. arriving in this Country with unserviceable clothing, or clothing not up to scale; the disposal of Binoculars, Pistols, Compasses etc. in possession of A.I.F. personnel in Egypt; arrangements through Administrative Headquarters for provision of Colour Patches for A.I.F. returning to Australia, and modification of Q.1. Form to suit circumstances as they are anticipated when A.I.F. leave France.

(Sgd.) Walter A. COXEN,

BRIGADIER GENERAL
4.D.

20.1.19.

4.D.
54, Victoria Street,
21st. January, 1919.

Chief of the Staff, A.I.F.,
130, Horseferry Road, S.W.1.

In view of the probability of the employment of anti-aircraft batteries in Australia in the future, I recommend for favourable consideration the question of the training of anti-aircraft personnel during the period of demobilisation.

Up to the present, with the exception of a few Militia Officers who joined up with the British Artillery, there are neither Officers nor men of our regular service, who, to my knowledge, have had any experience in the handling of this type of battery.

I would suggest that arrangements be made through the War Office for the training of 4 Officers and 40 Other Ranks in anti-aircraft batteries, half of whom should be drawn from the 36th. (Aust.) H. A. Brigade regular personnel or R.A.F.A. personnel with the Divisional Artilleries.

In selecting the personnel, special attention should be directed towards men who are capable of using or handling instruments, as the success of an anti-aircraft battery depends wholly upon a knowledge of the use of the instruments employed.

If it is the intention to train such personnel, the matter should be taken up quickly in order that training may be given with British batteries before these are demobilised.

(Sgd.) Walter A. COXEN,
Brigadier-General,
4.D.
Repatriation & Demobilisation Dept.

4.D. ORDNANCE & EQUIPMENT BRANCH.

Query Sheet No. 2.
22nd. January, 1919.

QUERY

DECISION

1. Has the War Office agreed to us returning Stores into Ordnance? I understand that they refused to accept stores into Ordnance in the U.K. from our Depots on the grounds that the War is not yet over.

We intend to hand in stores and you should proceed on this basis. (Financial consideration delayed U.K. settlement of question.)

2. If we are allowed to hand in stores and demobilise Units I should like the following given early consideration:-

(a) Demobilisation of 36th. (Aust) H.A. Brigade, after the personnel for special instruction in Calibration, Sound Ranging and Anti-Aircraft have been selected.

We have asked for permission to hand in equipment of 36th. Brigade in which case the personnel will come up for demobilisation in its turn. Aust. Corps has been instructed to arrange courses in Calibration and Sound Ranging.

(b) Demobilisation of 3rd. Australian D.U.S.

This is entirely in hands of Director-General of Demobilisation the only condition being that sufficient of these Units must be retained to meet needs of forces.

(c) Demobilisation of 7th. Australian D.U.S.

(d) Demobilisation of 1st. Australian Field Butchery.

(e) Demobilisation of personnel of Mobile Workshops, of which we have three. I understand the stores of these Workshops do not belong to Australia.

Headquarters, A.I.F. detachment at Australian Corps will be instructed by G.O.C., A.I.F., to have this personnel freed.

This also includes the question of training of I.O.M., the Commdt. Ordnance College, Woolwich, having been asked (thru' the Commdt. Adm.H.Q.A.I.F.) to give his opinion as regards the capabilities of the Officers who have passed through his hands at various times, with a view to considering their further training.

Will be considered whenever you refer it.

3. The question of Major Tuckett as A.D.O.S., Australian Corps, has again been referred to the G.O.C. A.I.F., as it is understood that Genl. Hobbs raised objection to his appointment. It is necessary that this position should be definitely filled as early as possible and instructions issued to the effect that this Officer would act in direct liaison with 4D. A letter has already been sub-mitted on these lines. Until

A.M.S. is dealing with this. Upon Genl. Hobbs' arrival the matter will be settled.

QUERY.DECISION.

this Officer is definitely appointed instructions as regards handing in of Stores is delayed.

4. The attached letter infers that only a certificate from the O.C. Units "that all stores in possession have been returned or if any are retained" is all that is required when handing in the stores to Ordnance. This appears merely a suggestion from the Fourth Army D.O.S. A ruling should be obtained from the War Office to ensure that this is all that is required.

Demobilisation should issue instructions that handing in will be done on Mob. Store Table plus a requisitions for deficiency which should be marked "Not to be fulfilled". War Office should be asked by Demob. to concur.

5. Dental Units. These Units have not been equipped on any definite mobilisation store table, as none exists in the British Force. They have merely been equipped on a scale laid down by Australia and paid for by Australia. As these stores are now being shipped with Units on the various transports, it is recommended that approval that all dental stores be brought up to the original scale and these stores taken back to Australia by the Units as they repatriate. It will be seen that having already utilised a certain amount of this equipment on the transports, that a general adjustment of the store account - if these articles are returned into British Medical Stores - will become complicated. On these grounds I recommend that a Unit moves out with its own equipment.

Dental equipment has been purchased by A.I.F. and therefore belongs to Australian Government. Units in France should consequently be instructed upon demobilisation to despatch such stores to a Base (Medical) Depot in England to be notified by D.M.S., A.I.F. Certain of these stores are sent out on transports and should be disposed as laid down in A.I.F. Standing Order No. 126. The D.M.S., A.I.F., should be responsible for final return to Australia or disposal of Dental equipment collected in Base Depots Medical Stores in England.

4.D.
D.D.G.

481

File No. 4308/19/37.

APPENDIX 13.

22nd. January, 1919.

Reference Attached.

The Q.l. form, as proved by its use in the United Kingdom since October, 1917, should meet the case.

It is pointed out, however, that Australia does not favour the Q.l. form, and the cable is, therefore, capable of two interpretations. -

- (a) The obvious one, on the face of the cable, that instances are occurring of members of the A.I.F. returning to Australia without Q.l. forms.
- (b) From knowledge of the standpoint from which Australia regards this form - that it is not satisfactory as a statement certified correct by member concerned of clothing in his possession.

It is suggested that a cable be sent to Australia as follows:-

"Your WQ 434 re certified statement of clothing
AAA Proposed adhere A.I.F. Form 500 Q.l. as
heretofore AAA Does your cable mean men arriv-
ing without this form or that form is in itself
unsatisfactory."

Brigadier-General
4.D.

Repatriation & Demobilisation Dept. A.I.F.

File No. 7041/10/1.

23rd. January, 1919.

Lieut. Colonel Newton,
Representative G.O.C., A.I.F.,
in EGYPT.

With reference to attached instructions from D/Director General, Repatriation and Demobilisation Department, hereunder please find statement embodying as far as possible the points raised in D.D.G's instructions.

(1) Name of Branch and Cipher.

Ordnance Branch, Repatriation and Demobilisation Department, A.I.F. - Cipher 4.D.

(2) Organisation.

Organisation (General Scheme) is set out in diagram forwarded herewith.

(3) Liaison with other Branches.

4.D. is brought into contact mainly with Branch 3.D. Administration, Repatriation and Demobilisation Department. Points of contact are on Routine matters such as correspondence, discipline, employment of personnel etc. Where likely to be brought in contact in future with other Branches, this is shown on diagram referred to in Para. 2.

(4) Matters controlled by Branch and Sections thereof.

The basis of functions of Branch are that the post-bellum Army of Australia shall have complete set of serviceable equipment, plus an estimated reserve based on active service conditions, Artillery, Equipment etc. now held by A.I.F. Units being handed back to R.A.O.D. and new or serviceable equipment being drawn in lieu and shipped to Australia; quantities to be so drawn and shipped depending on constitution of the Australian post-bellum Army. Certain financial adjustments, will, it is anticipated be necessary over such equipment as in some cases, surplus to the quantities now held by A.I.F. as per Mobilisation

Store Tables; in others less than equipment held by such Units. The Branch will also have a generally supervisory control of disposal of surplus stores other than Mobilisation Stores held by A.I.F. whether in U.K., France, or Egypt.

In addition, it is generally responsible for advice on questions of policy connected with A.F.C., Mechanical Transport, Medical and Dental, this through Liaison Officers with existing administration of these services.

(5) Method of dealing with matters and obtaining rulings.

Routine matters are dealt with direct through junior officers. Questions entailing matters of principle are referred by them to Head of Branch, and where deemed necessary, i.e. on matters involving a general commitment of policy, replies are drafted for signature by D.D.G.

Queries on matters where rulings are sought are referred to D/D.G. or to Director General through D/D.G.

(6) Important Rulings given.

Rulings given to 4.D. so far have been few. The important ones - affecting Egypt too - are

- (a) Demobilisation of 1st. Squadron A.F.C. and Squadron Records to come to England with Equipment Officers and N.C.Os. Authority in cable of D.G. (File No. 4343/17/2.)
- (b) Pistols, Binoculars, Compasses which are a free issue to A.I.F. Officers in Egypt are to be withdrawn prior to embarkation and returned separately to R.A.O.D. Ruling conveyed in reply to War Office 23.1.19 (copy of all correspondence attached.)
- (c) General. That A.I.F. should, as regards clothing, return from active service spheres clad by Imperial Government according to scale laid down in War Clothing Regulations for said sphere of operations. This is an enlargement of principle embodied in General Instruction No. 10. applicable in intent to A.I.F. Units in France, but also applicable on same grounds to those spheres of operation where a capitation maintenance rate obtains.

(7) No actual dealings direct with outside Departments as yet, except as regards points which have been referred to War Office through Director General or Deputy Director General.

Anticipated that in the future much contact will be established direct between this Branch and D.D.O.S., Royal Arsenal, Woolwich, A.D.O.S. Ammunition, Adastral House, and similar subordinate departments of Imperial Government.

(8) As regards nexus of this Branch with Demobilisation work in Egypt, the local conditions there are at present very much unknown to us. A general outline of Equipment Demobilisation duties there is given on diagram forwarded herewith. A Staff Officer for 4.D. is to be appointed with a long A.I.F. experience of Ordnance and Equipment matters, who will have to attune these general responsibilities to local conditions in Egypt.

BRIGADIER GENERAL,
4.D.

25th. January, 1919.

The Commandant,
Administrative Section,
A.I.F. Headquarters,
Horseferry Road, S.W.1.

Major G. S. Down, M.C., A.A.O.C.

The services of an Officer with field rank are required in connection with the operations in Egypt of this Branch.

It has been verbally agreed between your A/A.Q.M.G. and the Branch that the above named Officer would, on certain arrangements being made for a successor in his present appointment, be released to carry out the duties of this Branch in Egypt.

It is becoming daily more imperative that an Officer should be selected to proceed to Egypt at the earliest possible date. Can you, therefore, inform me what is the present position in regard to Major Down's release, as it is particularly desired to secure his services.

BRIGADIER GENERAL

4.D.

Repatriation & Demobilisation Dept. A.I.F.

D.D.G.
(Through 5.D.)

27th. January, 1919.

Recommendation re Disposal of
Dental Equipment.

It is recommended that as Dental Units are demobilised, all Dental Equipment on charge be disposed of as follows:-

(a) United Kingdom.

All Stores to "Dental Stores, Sub-Depot, London". They can there be sorted out and Ordnance Stores not required to complete Kits for use of Dental Officers allotted to Transports to be returned to A.I.F. Ordnance on G.1033 as directed by A.D.O.S., London.

Dental Equipment to be made up into Kits for use of Dental Officers, Transports, as required.

(b) France.

Ordnance Stores to be returned to parent Field Ambulance or Hospital Unit (in case of detached Dental Units to nearest Ordnance Depot) receipted G.1033's to be sent to A.D.O.S., A.I.F., France.

Dental Equipment to be sent to Dental Stores, Sub-Depot, London.

(c) Egypt.

Ordnance Stores - as in (b). Receipts to Staff Officer, Demob. Egypt.

Dental Stores to O. C., Australian Base Depot, Medical Stores, Suez.

Reference Paras. 2 and 3 of S.O., A.D.S.' memo of 10.1.19. As Dental Equipment will be needed for use on Transports to Australia, it is recommended that the present practice of embarking Dental Kits on Transports be continued. The Equipment must however be handed over to the Senior Medical Officer in charge of Transports at Final Port, Australia.

The question of disposal of balance of Dental Equipment remaining after Transports have been fitted out could be considered at a later date. It is not considered that any great quantity would remain on hand.

(Sgd.) Walter A. Coxen,
BRIGADIER GENERAL, 4.D.
Repatriation & Demobilisation Dept.

481
4.D. PROGRESS REPORT. 27.1.19. No. 4.

Week 20.1.19 - 27.1.19. General Office of this Branch has been occupied in dealing with General Questions regarding return of Mobilisation Stores held by A.I.F. to Imperial Ordnance Depots, adjustment of matters affecting clothing and personal equipment to be taken from Units by members of A.I.F. on leaving France for repatriation, the adaptation of a Q1 form for use in France (which adapted form is now rejected), consideration of utility of its introduction there, reference to Australia for statement as to whether that form, in opinion of Defence, constitutes the necessary certified statement required of clothing in possession; also the return to A.O.D. Egypt, of Compasses, Binoculars, Pistols from A.I.F. Officers there, conferences with A.Q.M.G., Administrative Section, A.I.F. Headquarters, re scale of clothing with which A.I.F. should return from scene of hostilities, and the incidence of financial charges for making good deficiencies, and consideration of the accounting problems which will arise at Australian Base Depot, Havre, with regard to personal equipment and completion of clothing and necessaries to scale. Another important question dealt with was the basis on which A.I.F. is to secure free reissue of Mobilisation Stores for its Units.

In addition to above, Routine Work necessary to carry on present and prepare for future work of the Section generally was carried out.

Sections of this Branch performed routine duties.

(Sgd.) Walter A. Coxen.
BRIGADIER GENERAL, 4.D.
Repatriation & Demobilisation Dept., A.I.F.

27.1.19.

4.D.

File No. 4327/43/2.

29th. January, 1919.

Commandant,
A.I.F. Headquarters,
130, Horseferry Road, S.W.1.

Reference your memorandum of the 22nd. instant (A.4237/43/2) relative to the qualifications of Assistant Is.O.M., and Artificers of the A.I.F.

In view of the reply received from the Commandant, Ordnance College, I recommend that the following cable be despatched to Australia:-

"Your WR705 of 11th. November 1918. AAA Instructions are being effected AAA Henderson fully qualified but no one available with required qualifications to remain under instruction AAA Are you prepared allow us secure candidate from A.I.F. if so what inducement can be held out AAA In British service requirement for I.O.M. is full Engineering apprenticeship Technical degree and actual experience Mechanical Engineering."

BRIGADIER GENERAL.
4.D.

4.D.

File No. 6509/1/52.

29th. January, 1919.

A.D.O.S.,
Administrative Section,
A.I.F. Headquarters,
130, Horseferry Road, S.W.1.

The following amplification of Para. 47 of General Instructions No. 11 of Repatriation and Demobilisation Department is about to be promulgated:-

"Reference General Instructions No. 11, Para. 47, as therein stated Unit Commanders will at once take steps to return to Ordnance (i.e. Administering D.A.D.O.S.) Binoculars, Telescopes, Range Finders, Compasses, Pistols, and Watches (except Signal Service.)
Compasses, Pistols and Binoculars, and Accoutrements other than Web Equipment, will be withdrawn from Officers, packed and returned separately, and shall not be handed in to R.A.O. Depots as Unit Mobilisation Stores, but held by D.A.Ds.O.S. until such time as instructions for their disposal are communicated.
Officers Commanding Units will be held responsible that all such articles are collected, or that he obtains and hands over to D.A.Ds.O.S. in lieu thereof, a Certificate from each Officer who does not hand in any such article, clearly stating his disposal of same.
In the case of L. of C. Units or other Units not administered by a D.A.D.O.S., the O.C. of the Unit concerned will take charge of all Binoculars, Pistols and Compasses so returned by Officers, or Certificates in lieu thereof, and on completion will notify the A.D.O.S. or S.O. 4.D. Egypt concerned, and will act in accordance with his instructions regarding the final disposal of same."

These instructions were drawn up primarily with intent to apply to France.

Will you be good enough to ensure that if it has not already been done, steps be taken to withdraw from all members of the A.I.F. the Stores referred to, and have them returned to Units' Quartermaster, as regards Units and Depots of the A.I.F. in U.K.

BRIGADIER GENERAL, 4.D.
Repatriation & Demobilisation Dept.A.I.F.

WAR DIARY

or

INTELLIGENCE SUMMARY.

(Erase heading not required.)

Army Form C. 2118.

Instructions regarding War Diaries and Intelligence Summaries are contained in F. S. Regs., Part II. and the Staff Manual respectively. Title pages will be prepared in manuscript.

Place	Date	Hour	Summary of Events and Information	Remarks and references to Appendices
54, Victoria Street, WESTMINSTER.	1.1.19.		At a Staff Conference held at 54, Victoria Street, on the 20th December, 1918, the following arrangements were agreed upon in regard to NOMINAL ROLLS for outgoing transports:- Agreed 2D will ask Depots to send Nominal Rolls in duplicate six (6) days before sailing of Transport. 2D to supply immediately to Records & Pay the original and duplicate respectively. Records to supply Pay with verified Boat roll three (3) days thereafter. Lieut. Hoge, J.K. appointed 1/c 5D.3 (Leave etc). Lieut. Wells, C.V.T. appointed (temporarily) 1/c 5D.2. (Accountancy etc.) Conference 5D. Lt.Col. Evans, Lt.Cocks, Lt. Hoge, Lt. Blackett, Lt. Tunks, Lt. Wells dealt with explanation of procedure and policy of Department and sub-divisions. Lieut. Castle, H.F.B. appointed 1/c 5D5 (Non-Military Employment including Educational) Lt. Love, W.F. Appointed 1/c 5D.2 (Accountancy) in place of Lt.Wells (temporary). First periodical Statement of Expenditure submitted to Director General for transmission to the Prime Minister - thereafter to be submitted weekly. Approval given by C.P.M. for payment of Subsistence allowance for Non-Military Employment, etc. from a Banking Account to be operated from this Branch.	Ref CN 1401/59/6
	2.1. 19.	0900.		
	2.1. 19.	1400.		
	3.1. 19.	1430		
	4.1. 19.	0900.		
	7.1. 19.	1400.		
	8.1. 19.	1600.		
	16. 1. 19.	1000.		
	21. 1. 19.		DEMOBILISATION OF REMOUNTS. Chief Paymaster requests 4D to advise him if the percentage of 66½%, verbally approved by the War Office, upon which to base adjustments by part-worn equipment arms, etc. returned to the Imperial Authorities, in connection with the disbanding of nine(-9) A.I.F. Battalions in France, is an equitable figure.	(Copy-) CR.1464/18/4 (Copy of letter attd)
	23.1.19.	Noon.	Bank Account opened with the Commonwealth Bank of Australia - New Broad Street - "A.I.F. REPATRIATION & DEMOBILISATION ACCOUNT" for payment of periodical cheques to the Bank Accounts of non-military employees.	
	27.1.19.		EDUCATIONAL - Lt.Col.Evans, Chief Paymaster (or in his absence his representatives) appointed member of Finance Committee, of which Col.Bruche is chairman.	
	31. 1.19.		RULING RE ADVANCE OF DEFERRED PAY. Verbally arranged with Director General that all applications for advances of Deferred Pay be considered by 5D before being approved by him.	Gen.Instn. No.10 Par.44
	31.1.19.		Cable 44531 Jan. 24th to Defence, outlining Pay Demobilisation scheme, was submitted to Director General on 30.1.19, who concurred therewith.	1401/1/105

WAR DIARY

or

INTELLIGENCE SUMMARY.

(Erase heading not required.)

Army Form C 2118.

Instructions regarding War Diaries and Intelligence Summaries are contained in F. S. Regs., Part II. and the Staff Manual respectively. Title pages will be prepared in manuscript.

52.
January 1919

Place	Date	Hour	Summary of Events and Information	Remarks and references to Appendices
54, Victoria St. WESTMINSTER. SW.	31.1.19.		<p>(continued. 2.)</p> <p><u>5D.1</u> records that nine (9) ships with a personnel of 10,174 were dealt with during the month.</p> <p><u>5D.2.</u> records the expenditure of £980.18.3 Subsistence and pay to 83 men on account of Non-Military Employment (including Education)</p> <p><u>5D.3</u> granted extended leave in U.K. to 92 men, and leave to return to Australia "at their own expense" to seven men, and "with fifty (50) days pay" to one (1) Officer.</p> <p><u>5D.4</u> effected 89 discharges in U.K.</p> <p><u>5D.5.</u> records that 629 men were recommended for Non-Military Employment, and 151 men were approved through Part II Orders.</p>	

H. Coe
5D.
10. 2. 19