

AWM52
2nd Australian Imperial Force and
Commonwealth Military Forces unit war
diaries, 1939-45 War

Item number: 8/2/17

17 Infantry Brigade

May 1941

May MONTH
1941 YEAR

AUG 8 - 1941

AUG 8 - 1941

A.I.F. FORM C 2118A

WAR DIARY

(RENDER UNDER SECRET COVER)

UNIT H.Q. 17 Aust Inf
Bde.

For material required, see F.S.R. Vol. I, Sec. 174

PLACE	DATE	SUMMARY OF EVENTS Routine training details and information given in Casualty Returns are NOT required	REFERENCES TO APPENDICES	C.O.'s REPORT AND COMMENTS ON MONTH (On Operations, Equipment, Movement, Health, Administration, etc.)
Hill 69	1st	First members of Bde H.Q., 2/5 and 2/6 Bns arrive at Hill 69, Palestine from Egypt at 0330 hours; Bde Comdr, Majors Brock and Bishop arrive by car 1130 hrs. Foster Unit (War Graves and Enquiries Unit) were most helpful, also Corps Engineers, who invited us to Mess with them.		See camp sketches. Appendix I See Appendix I A.
"	2nd	Much mail delights all ranks. Bde Comdr gathers data for his report on operations in GREECE.		
"	3rd	Bde Comdr leaves for Jerusalem. Much letter writing and relaxation is the order of the day for most. Major Brock en route for Cairo for a well earned rest.		
"	4th	A day of relaxation. The men, though tired, are still remarkably fit and will be ready for anything when all have had a few days at beach as planned by Bde Comdr.		
"	5th	Task of rebuilding Bde H.Q., commences with the arrival of selected personnel from the 17 Aust. Inf. Tng. Bn.		
"	6th	Leave commences - 1 day Tel Aviv and Jerusalem. Bde Comdr and A/B.M., Major Bishop, have look at ground for camp perimeter defence scheme.		
"	7th	Major Bishop and Capt Chapman meet representatives from other units in Hill 69 Camp for co-ordination of perimeter defence scheme. 17 Aust. Inf. Bde Op. Inst No 1 issued. Bde Comdr visits Div H.Q., and 2/5 Bn re leave question. Swimming party per transport to Askelon at 1400 hrs. 27 reinforcements arrive for Bde H.Q.		See Appendix II
"	8th	Another swimming party to Askelon.		
"	9th	Bde Canteen opened. Plan of Hill 69 area commenced for defence against land or air attacks.		

A150 Mob Print Sec AIF-25M-4/41-G.

Signature

V. Schepfeld
B.I.O.

May MONTH

1941 YEAR

A.I.F. FORM C 2118A

WAR DIARY

(RENDER UNDER SECRET COVER)

UNIT H.Q. 17 Aust. Inf. Bde.

For material required, see F.S.R. Vol. 1, Sec. 174

PLACE	DATE	SUMMARY OF EVENTS Routine training details and information given in Casualty Returns are NOT required	REFERENCES TO APPENDICES	C.O.'s REPORT AND COMMENTS ON MONTH (On Operations, Equipment, Movement, Health, Administration, etc.)
Hill 69	10th	Recce of Askelon area for bivouac by Bde H.Q. Khamsin reminds us of day of our arrival in Palestine 1940. Tents being camouflaged. Cairo leave commences tomorrow for selected personnel. Bde Tpt to Julis Cinema.		
"	11th	First party of 2/5 Bn returns from a thoroughly enjoyable tour by bus of Northern Palestine - trip was organised to overcome shortcomings of leave roster, and was paid for by the unit, who plan to send every man in the unit on the trip.		
"	12th	Bde Comdr returns from Jerusalem. Units begin training syllabus. A.B.C. Unit records messages of 60 men from 2/5 Bn and 2/6 Bn to their folk at home, later to be broadcast in Australian Session "Voices from Overseas". G.O.C. 6 Aust Div gives all Div Ofrs at Hill 69 an informal talk on discipline, reorganisation, control and leadership. Bde Comdr and A/B.M. lecture Corps A.S.C. on GREECE.		See Appendix <u>III</u>
"	13th	1015 hrs and air raid warning. Bde H.Q. personnel march to Askelon for two day bivouac.		
"	14th	Beach party returns 1620 hrs, tired but fit. Majors Guinn, Smith, and Lieut Lowen visit Jerusalem to arrange more substantial leave for Tps. A scheme of sending a party of tps interested in farming to Jewish settlements discussed. Bde Comdr to conference at Div 1730 hrs, re instructions for recce of frontier area near SAFAD.		
"	15th	Col WOODWARD (A and Q 6 Aust Div) visits the Bde Comdr and discussed (a) Kit store in the area for heavy kits (b) Thanksgiving Service (c) Regulating supplies of beer to tps (d) Honours and awards (e) Missing (f) Reinforcements Officers (g) Hadera Camp. Lieut French leaves for Alexandria to pick up sporting gear.		Appendix <u>V</u>

A150 Mob Print Sec AIF-25M-4/41-G.

Signature

V. Schfield
B.1.0

May MONTH

1941 YEAR

A.I.F. FORM C 2118A

WAR DIARY

(RENDER UNDER SECRET COVER)

UNIT H.Q. 17 Aust. Inf. Bde.

For material required, see F.S.R. Vol. 1, Sec. 174

PLACE	DATE	SUMMARY OF EVENTS Routine training details and information given in Casualty Returns are NOT required	REFERENCES TO APPENDICES	C.O.'s REPORT AND COMMENTS ON MONTH (On Operations, Equipment, Movement, Health, Administration, etc.)
Hill 69	16th	Another party 2/5 Bn personnel, including some Bde H.Q., leaves on tour of Northern Palestine. Captain Oxley, acting S.C., leaves for 9 Div H.Q. 5 Motor cycles arrive for Bde H.Q.		
"	17th	A/S.C. now Capt Chapman. A/B.M. Major Bishop.		
"	18th	Bde Comdr and A/B.M. attend conference at 6 Aust.Div. 1130 hrs. Further details of Northern defence scheme discussed. Recce gp to move 0830 hrs tomorrow. Representatives from Bde H.Q., 2/5 Bn, 2/1 Fd Regt, 2/15 Fd Coy. 2/1 M.G. Bn, 2/1 A/Tk Regt, 2/2 Pioneer Bn. Bde Comdr attends opening of Aust Soldiers Club at Tel Aviv. Bishop Riley conducts combined church parade of 2/5 2/6, 2/7 Bns, and Bde H.Q. Exactly one year since we disembarked.		See Appendix VI
"	19th	Bde Comdr holds conference of recce parties, discusses preliminary recce, to be followed by detailed recce when he allocated areas. Party left camp 0930, arrived Haifa 1230, Safad, 1500 hrs. Party proceeded to Rosh Pinnar camp, where Bde Comdr discusses task with Col Stephenson, C.O., Q.O. Yorkshire Dragoons. All remained at the camp except Bde Comdr, A/B.M., Col King 2/5 Bn and Major Young 2/1 Fd Regt, who moved to CENTRAL hotel, SAFAD. Major Brock returns from leave in Cairo.		
"	20th	Bde Comdr, A/B.M., C.O. Yorkshire Dragoons, C.O. 2/L Fd Regt, make general recce fo area. Remainder of recce gp inspect fixed defences in ROSH PINNAR area. At conference 1430 hrs in Y.D. Mess, 2/5 Gp to concentrate on the western area, 2/2 Pioneer Gp the eastern area; two recce camps to be established. Lieut Lowen returns to Hill 69 for additional personnel and stores. B.I.O. investigates rd blocks and possible crossings of the Jordan.		

A150 Mob Print Sec AIF-25M-4/41-G.

Signature *V. J. Schfield*
B.I.O.

May MONTH

A.I.F. FORM C 2118A

WAR DIARY

(RENDER UNDER SECRET COVER)

UNIT H.Q. 17 Aust. Inf. Bde

1941 YEAR

For material required, see F.S.R. Vol. 1, Sec. 174

PLACE	DATE	SUMMARY OF EVENTS Routine training details and information given in Casualty Returns are NOT required	REFERENCES TO APPENDICES	C.O.'s REPORT AND COMMENTS ON MONTH (On Operations, Equipment, Movement, Health, Administration, etc.)
Hill 69	21st	Col King, 2/5, Major Meyer 2/15 Fd Coy, and B.I.O. make careful recce of track through hills, paying special attention to WADI FARA as an A/Tk obstacle. Water supplies at FARRADIYA and MEIRUN inspected. Bde Comdr, A/B.M. and C.Os. make thorough recce of right and front of ROSH PINNAR area. First party leaves to spend a few days in Jewish settlements.		
"	22nd	Bde Comdr holds conference at SAFAD, discusses whole position. Col King recce of DALLATA area, and Majors Love and Fidock of Jordan river area with particular reference to use of A.F.Vs. 2/5 Bn establish recce camp up new road to JISH. Bde Comdr and Major Bishop visit Force H.Q. and 6 Div H.Q. B.I.O. recce main ROSH PINNAR - METULLA rd.		
"	23rd	B.I.O. on road recce MUGHAR area. Bde Comdr and Major Bishop at Force H.Q., Jeruslame re occupation of defensive position (2 Bdes and 1 Bn necessary) and reduction in width of front. Major Bishop also Major Neoshim re map supplies. Returned to 6 Aust Div 1600 hrs, when position was discussed with G.O.C. and G 1, and accepted in theory. Also Free French General introduced to Hill 69 at 1900 hrs. Bde Comdr rang Col WILMAN, O.C. 6 Aust Div Sigs, re allegation concerning Capt Cox. Col WILMAN arrived here later when the whole matter was discussed.		
"	24th	B.I.O. recce of new track off TIBERIAS-ROSH PINNA road at K193. Khamsin today. Col Wilman and Capt Cox arrive and interviewed by Bde Comdr in the presence of Majors Brock and Bishop. Col Wilman convinced that allegations re Capt Cox were unfounded. Col Wrigley and Major Guinn visit the Bde Comdr to discuss training matters. Col Wrigley to go to SAFAD on Tuesday to assist in layout of defensive scheme. Major Meyer reported on engineer tasks of defensive scheme. At 1600 hrs Bde Comdr and Major Bishop left for SAFAD via Jerusalem, preparing alternative scheme en route.		

A150 Mob Print Sec AIF-25M-4/41-G.

Signature

V. Schfeldt
B.I.O.

May MONTH
1941 YEAR

A.I.F. FORM C 2118A

WAR DIARY

(RENDER UNDER SECRET COVER)

UNIT H.Q. 17 Aust Inf
Bde

For material required, see F.S.R. Vol. 1, Sec. 174

PLACE	DATE	SUMMARY OF EVENTS Routine training details and information given in Casualty Returns are NOT required	REFERENCES TO APPENDICES	C.O.'s REPORT AND COMMENTS ON MONTH (On Operations, Equipment, Movement, Health, Administration, etc.)
Hill 69	25th	All recce parties concentrating on own sectors. Brig and Major Bishop arrived SAFAD 2215 hrs, Party from Jewish Settlements returns after most enjoyable leave; all were reluctant to depart.		
"	26th	Bde Comdr and Major Bishop visit 2/5 Bn and 2/2 Pnr Bn recce camps to give detailed tasks to Colonels King and Wellington respectively. B.I.O. to NAZARETH to obtain Rd reports from 5th Cav. Bde and see C.R.E. re placing wire 70 yds in front of A/Tk Ditch. Maps of area arrive per B.T.O., but most essential ones missing. Bde Comdr commences writing appreciation. B.I.O. and 2 Bde Int. Sect. move to Central Hotel, SAFAD to produce master map of defence scheme.		
"	27th	Bde Comdr, Major Bishop, C.O. 2/5 Bn, also 2/1 M.G. and 2/1 A/Tk reps make detailed study of left Bde dispositions of which right Bn posn slightly altered. B.I.O. selects Bde H.Q. for left Bde in Wadi rear of MEIRUN, also area West of FARRADIYA suitable for Bn of Div Reserve.		
"	28th	Col Wrigley, Lieut Dunkley 2/6 Bn, arrive to assist, particularly the right Bde sector. Careful study of the junction with left Bde round QABBA. Bde Comdr and Major Bishop continue detailed recce on right flank. G.1. 6 Aust Div (Col SUTHERLAND) and his G.3. (Capt BAMFORD) arrive to inspect area. Col KING and Major FIDOCK arrive for dinner and discussion of plans.		
"	29th	Major Bishop checks carefully with Col Wellington dispositions of right Bn of right Bde. Most of area tankproof. M.G. fire plan for right Bde received. Bde Comdr conducts G.1. and G.3. around area, then continues appreciation. Major Young, 2/1 Fd Regt returns to complete Arty plan.		

A150 Mob Print Sec AIF-25M-4/41-G.

Signature

H. Schfield
B-1-0

MAY MONTH

1941 YEAR

A.I.F. FORM C 2118A

WAR DIARY

(RENDER UNDER SECRET COVER)

UNIT HQ.17 Aust Inf
Bde

For material required, see F.S.R. Vol. 1, Sec. 174

PLACE	DATE	SUMMARY OF EVENTS Routine training details and information given in Casualty Returns are NOT required	REFERENCES TO APPENDICES	C.O.'s REPORT AND COMMENTS ON MONTH (On Operations, Equipment, Movement, Health, Administration, etc.)
Hill 69	30th	Major Bishop checks and alters slightly the dispositions of fwd Coys of Bn in ROSH PINNA, fixed defences covering the A/Tk Ditch. Col Wrigley fixes dispositions of left fwd Coy of left Bn, right Bde, and in afternoon two reserve Coys of Reserve Bn with their special counter attack roles in view. Bde Comdr continues appreciation. Brigadier Kerring, C.R.A. 6 Aust Div arrives to discuss arty plan with Bde Comdr and Major Young. Major Bishop leaves for Hill 69, to proceed to "combined operations" school in Alexandria.		
"	3			
"	31st	Co-ordinating conference held at Central Hotel, SAFAD, 1630 hrs to co-ordinate all arms left Bde. Each area discussed in detail and all tasks checked and approved or otherwise. I. Staff worked well into the night, transposing dispositions to Master Map.		Appreciation of the Situation By Bde Comdr see Appendices VII and VIII See Appendix IX for counter attack roles

A150 Mob Print Sec AIF-25M-441-G.

Signature

V. G. Schjeld
B.I.O.

MESSAGE FORM

Serial No.

CALL AND INSTRUCTIONS

IN

OUT

No. of Groups.

GR.

OFFICE DATE STAMP

(ABOVE THIS LINE IS FOR SIGNALS USE ONLY.)

TO

215 Bn 2/6 Bn 2/1 Bn

FROM

17 Aust Inf Bde

Originator's Number

I 3

Date

11

In Reply to Number

aircraft	recognition	signals	10/11 May	0	0300
-0900	GREEN	10900	-1500	GREEN	1500
2100	YELLOW	2100	0300	RED	0
11/12	May	0300	-0900	RED	0900
-1500	GREEN	1500	-2100	RED	2100
-0300	GREEN	0	All	Amms	local
Amms					

THIS MESSAGE MAY BE SENT **AS WRITTEN** BY ANY MEANS.

IF LIABLE TO BE INTERCEPTED OR FALL INTO ENEMY HANDS, THIS MESSAGE MUST BE SENT **IN CIPHER**.

ORIGINATOR'S INSTRUCTIONS
DEGREE OF PRIORITY

TIME OF ORIGIN

1142

SIGNED

SIGNED

(BELOW THIS LINE IS FOR SIGNALS USE ONLY.)

T.H.I.

SYSTEM IN	TIME IN	READER	SENDER	SYSTEM OUT	TIME OUT	READER	SENDER	SYSTEM OUT	TIME OUT	READER	SENDER

T.O.R.

MESSAGE FORM

Serial No.

CALL AND INSTRUCTIONS

IN

OUT

No. of Groups.
GR.

OFFICE DATE STAMP

(ABOVE THIS LINE IS FOR SIGNALS USE ONLY.)

TO

2/5 Bn 2/6 Bn 2/7 Bn

FROM

17 Aust Inf Bde

Originator's Number

I 5

Date

12

In Reply to Number

FROM	TO	Time	System	Priority	Time	System	Priority
Aircraft	Recognition	Signals	12/13	Attny and	13/14		
1 May	0	0300 -	0900	YELLOW	0900		
- 1500	RED	1500 -	2100	RED	2100		
- 0300	RED	0300 -	0900	YELLOW	0900		
1500	RED	1500	2100	GREEN	2100		
0300	RED	0	00	Times	local		
Times							

THIS MESSAGE MAY BE SENT AS WRITTEN BY ANY MEANS.

IF LIABLE TO BE INTERCEPTED OR FALL INTO ENEMY HANDS, THIS MESSAGE MUST BE SENT IN CIPHER.

ORIGINATOR'S INSTRUCTIONS DEGREE OF PRIORITY

TIME OF ORIGIN

1030

SIGNED

SIGNED

(BELOW THIS LINE IS FOR SIGNALS USE ONLY.)

T.H.I.

SYSTEM IN	TIME IN	READER	SENDER	SYSTEM OUT	TIME OUT	READER	SENDER	SYSTEM OUT	TIME OUT	READER	SENDER

T.O.R.

MESSAGE FORM

Serial No.

CALL AND INSTRUCTIONS

IN

OUT

No. of Groups.
GR.

OFFICE DATE STAMP

TO

(ABOVE THIS LINE IS FOR SIGNALS USE ONLY.)

2/5 2/6 2/7 13ms

FROM

13 14ms 1/6 db

Originator's Number

16

Date

12

In Reply to Number

ref	our	25	⊙	challenge letters	
so.	be	used	for	periods	mentioned
D	B	T	F	B	J
O	N	⊙	individuals	on	ports
will	NOT	be	informed	of	the
outcoming	code	more	than	12	hours
ahead.					

THIS MESSAGE MAY BE SENT AS WRITTEN BY ANY MEANS.

IF LIABLE TO BE INTERCEPTED OR FALL INTO ENEMY HANDS, THIS MESSAGE MUST BE SENT IN CIPHER.

ORIGINATOR'S INSTRUCTIONS DEGREE OF PRIORITY

TIME OF ORIGIN

1630hr

SIGNED

[Signature]

SIGNED

(BELOW THIS LINE IS FOR SIGNALS USE ONLY.)

T.H.I.

T.O.R.

SYSTEM IN	TIME IN	READER	SENDER	SYSTEM OUT	TIME OUT	READER	SENDER	SYSTEM OUT	TIME OUT	READER	SENDER

MESSAGE FORM

Serial No.

CALL AND INSTRUCTIONS

IN

OUT

No. of Groups.
GR.

OFFICE DATE STAMP

(ABOVE THIS LINE IS FOR SIGNALS USE ONLY.)

TO

2/5 2/6 2/7 Bms

FROM

17 18th Inf Bde

Originator's Number

I 6

Date

12

In Reply to Number

ref	our	I 5	⊙	challenge	letters
so	be	used	for	periods	mentioned
D	B	T	F	B	J
O	N	⊙	individuals	on	posts
will	NOT	be	informed	of	the
forthcoming	code	more	than	12	hours
ahead.					

THIS MESSAGE MAY BE SENT AS WRITTEN BY ANY MEANS.

IF LIABLE TO BE INTERCEPTED OR FALL INTO ENEMY HANDS, THIS MESSAGE MUST BE SENT IN CIPHER.

ORIGINATOR'S INSTRUCTIONS DEGREE OF PRIORITY

TIME OF ORIGIN

1630h J

SIGNED

[Handwritten Signature]

SIGNED

(BELOW THIS LINE IS FOR SIGNALS USE ONLY.)

T.H.I.

SYSTEM IN	TIME IN	READER	SENDER	SYSTEM OUT	TIME OUT	READER	SENDER	SYSTEM OUT	TIME OUT	READER	SENDER

T.O.R.

MESSAGE FORM

Serial No.

CALL AND INSTRUCTIONS	IN	No. of Groups. GR.	OFFICE DATE STAMP
	OUT		

TO

(ABOVE THIS LINE IS FOR SIGNALS USE ONLY.)

2/5 Bn 2/6 Bn 2/7 Bn

FROM

HQ 17 Aust Coy Bde

Originator's Number

E 7

Date

13

In Reply to Number

Training	areas	⊙	ref map	HAMAME	420,000
⊙	2/6 Bn	VINE	HILL	11661251	
NEW	ROAD	11681263	⊙	2/5 Bn	NEW
ROAD	11681263	- WHADI	WIGGIE	11691267	⊙
2/7 Bn	WHADI	WIGGIE	11691267	WHITE	HOUSE
11761267	⊙				

THIS MESSAGE MAY BE SENT AS WRITTEN BY ANY MEANS.

IF LIABLE TO BE INTERCEPTED OR FALL INTO ENEMY HANDS, THIS MESSAGE MUST BE SENT IN CIPHER.

ORIGINATOR'S INSTRUCTIONS
DEGREE OF PRIORITY

TIME OF ORIGIN

1230

SIGNED

SIGNED

(BELOW THIS LINE IS FOR SIGNALS USE ONLY.)

T.H.I.

T.O.R.

SYSTEM IN	TIME IN	READER	SENDER	SYSTEM OUT	TIME OUT	READER	SENDER	SYSTEM OUT	TIME OUT	READER	SENDER

MESSAGE FORM

Serial No.

CALL AND INSTRUCTIONS	IN	No. of Groups. GR.	OFFICE DATE STAMP
	OUT		

TO (ABOVE THIS LINE IS FOR SIGNALS USE ONLY.)
15 2/6 2/7 1311

FROM	Originator's Number	Date	In Reply to Number
<i>1) Aust Inf Bde</i>	<i>58</i>	<i>15</i>	
<i>microphone recognition signals</i>	<i>14/15</i>	<i>and</i>	<i>15/16</i>
<i>may</i>	<i>red</i>	<i>green</i>	<i>yellow</i>
<i>green</i>	<i>red</i>	<i>0</i>	<i>usual</i>
<i>remain as</i>	<i>in</i>	<i>of</i>	<i>12</i>
<i>may</i>			

THIS MESSAGE MAY BE SENT **AS WRITTEN** BY ANY MEANS.

IF LIABLE TO BE INTERCEPTED OR FALL INTO ENEMY HANDS, THIS MESSAGE MUST BE SENT **IN CIPHER.**

ORIGINATOR'S INSTRUCTIONS
DEGREE OF PRIORITY

TIME OF ORIGIN

0845

SIGNED

SIGNED

(BELOW THIS LINE IS FOR SIGNALS USE ONLY.)

T.H.I.

SYSTEM IN	TIME IN	READER	SENDER	SYSTEM OUT	TIME OUT	READER	SENDER	SYSTEM OUT	TIME OUT	READER	SENDER

T.O.R.

MESSAGE FORM

Serial No.

CALL AND INSTRUCTIONS	IN	No. of Groups. GR.	OFFICE DATE STAMP
	OUT		

(ABOVE THIS LINE IS FOR SIGNALS USE ONLY.)

TO

2/5 2/6 bus

FROM

17 Aust inf bde

Originator's Number

29

Date

16

In Reply to Number

<i>map</i>	<i>recognition</i>	<i>signals</i>	<i>10/17</i>	<i>may</i>	<i>12/18</i>
<i>may</i>	<i>18/19</i>	<i>may</i>	<i>0</i>	<i>red</i>	<i>red</i>
<i>green</i>	<i>green</i>	<i>green</i>	<i>red</i>	<i>red</i>	<i>red</i>
<i>yellow</i>	<i>red</i>	<i>red</i>	<i>green</i>	<i>0</i>	<i>Usual</i>
<i>periods</i>					

THIS MESSAGE MAY BE SENT **AS WRITTEN** BY ANY MEANS.

IF LIABLE TO BE INTERCEPTED OR FALL INTO ENEMY HANDS, THIS MESSAGE MUST BE SENT **IN CIPHER**.

ORIGINATOR'S INSTRUCTIONS
DEGREE OF PRIORITY

TIME OF ORIGIN

0900

SIGNED

SIGNED

(BELOW THIS LINE IS FOR SIGNALS USE ONLY.)

T.H.I.

SYSTEM IN	TIME IN	READER	SENDER	SYSTEM OUT	TIME OUT	READER	SENDER	SYSTEM OUT	TIME OUT	READER	SENDER

T.O.R.

MESSAGE FORM

Serial No.

CALL AND INSTRUCTIONS	IN	No. of Groups. GR.	OFFICE DATE STAMP
	OUT		

TO (ABOVE THIS LINE IS FOR SIGNALS USE ONLY.)
4/5 2/0 bus

FROM *17 amst ref bde.* Originator's Number *E 10* Date *18* In Reply to Number

<i>micro</i>	<i>recognition</i>	<i>signals</i>	<i>19/20</i>	<i>20/21</i>	<i>21/22</i>
<i>may</i>	<i>⊙</i>	<i>red</i>	<i>yellow</i>	<i>red</i>	<i>red</i>
<i>yellow</i>	<i>red</i>	<i>red</i>	<i>red</i>	<i>yellow</i>	<i>red</i>
<i>red</i>	<i>yellow</i>	<i>⊙</i>	<i>usual</i>	<i>prints</i>	

THIS MESSAGE MAY BE SENT **AS WRITTEN** BY ANY MEANS. IF LIABLE TO BE INTERCEPTED OR FALL INTO ENEMY HANDS, THIS MESSAGE MUST BE SENT **IN CIPHER.** ORIGINATOR'S INSTRUCTIONS DEGREE OF PRIORITY TIME OF ORIGIN *1300*

SIGNED (BELOW THIS LINE IS FOR SIGNALS USE ONLY.)

SYSTEM IN	TIME IN	READER	SENDER	SYSTEM OUT	TIME OUT	READER	SENDER	SYSTEM OUT	TIME OUT	READER	SENDER

T.H.I.
T.O.R.

MESSAGE FORM

Serial No.

CALL AND INSTRUCTIONS

IN

OUT

No. of Groups.

GR.

OFFICE DATE STAMP

(ABOVE THIS LINE IS FOR SIGNALS USE ONLY.)

TO

FROM

Originator's Number

Date

In Reply to Number

2/5 2/6

17 ans + inf code

E 11

19

Monday

*17 ans + inf code
LAVAKH*

THIS MESSAGE MAY BE SENT **AS WRITTEN** BY ANY MEANS.

IF LIABLE TO BE INTERCEPTED OR FALL INTO ENEMY HANDS, THIS MESSAGE MUST BE SENT **IN CIPHER**.

ORIGINATOR'S INSTRUCTIONS
DEGREE OF PRIORITY

TIME OF ORIGIN

SIGNED

SIGNED

(BELOW THIS LINE IS FOR SIGNALS USE ONLY.)

T.H.I.

T.O.R.

SYSTEM IN	TIME IN	READER	SENDER	SYSTEM OUT	TIME OUT	READER	SENDER	SYSTEM OUT	TIME OUT	READER	SENDER

MESSAGE FORM

Serial No.

CALL AND INSTRUCTIONS

IN

OUT

No. of Groups.

GR.

OFFICE DATE STAMP

TO

(ABOVE THIS LINE IS FOR SIGNALS USE ONLY.)

2/5 2/6 bns

FROM

17 aust inf bde

Originator's Number

I 12

Date

21

In Reply to Number

password commencing retreat tonight HARDY

THIS MESSAGE MAY BE SENT **AS WRITTEN** BY ANY MEANS.

IF LIABLE TO BE INTERCEPTED OR FALL INTO ENEMY HANDS, THIS MESSAGE MUST BE SENT **IN CIPHER**.

ORIGINATOR'S INSTRUCTIONS
DEGREE OF PRIORITY

TIME OF ORIGIN

0900

SIGNED

unc [signature]

SIGNED

(BELOW THIS LINE IS FOR SIGNALS USE ONLY.)

T.H.I.

SYSTEM IN	TIME IN	READER	SENDER	SYSTEM OUT	TIME OUT	READER	SENDER	SYSTEM OUT	TIME OUT	READER	SENDER

T.O.R.

MESSAGE FORM

Serial No.

CALL AND INSTRUCTIONS	IN	No. of Groups. GR.	OFFICE DATE STAMP
	OUT		

TO

(ABOVE THIS LINE IS FOR SIGNALS USE ONLY.)

2/5. 2/6 bms

FROM

17 ansst inf bde

Originator's Number

I 13

Date

21

In Reply to Number

<i>ref</i>	<i>our</i>	<i>I 10</i>	<i>of</i>	<i>18</i>	<i>may.</i>
<i>①</i>	<i>last</i>	<i>compromised</i>	<i>○</i>	<i>substitute</i>	<i>following</i>
<i>signals</i>	<i>for</i>	<i>21/22</i>	<i>may</i>	<i>red</i>	<i>green</i>
<i>yellow</i>	<i>red</i>	<i>○</i>	<i>signals</i>	<i>for</i>	<i>22/23</i>
<i>23/24</i>	<i>red</i>	<i>green</i>	<i>red</i>	<i>green</i>	<i>red</i>
<i>yellow</i>	<i>green</i>	<i>green</i>	<i>○</i>	<i>usual</i>	<i>periods</i>

THIS MESSAGE MAY BE SENT AS WRITTEN BY ANY MEANS.

IF LIABLE TO BE INTERCEPTED OR FALL INTO ENEMY HANDS, THIS MESSAGE MUST BE SENT IN CIPHER.

ORIGINATOR'S INSTRUCTIONS DEGREE OF PRIORITY

TIME OF ORIGIN

1326

SIGNED

SIGNED

(BELOW THIS LINE IS FOR SIGNALS USE ONLY.)

T.H.I.

T.O.R.

SYSTEM IN	TIME IN	READER	SENDER	SYSTEM OUT	TIME OUT	READER	SENDER	SYSTEM OUT	TIME OUT	READER	SENDER

MESSAGE FORM

Serial No.

No. of Groups. OFFICE DATE STAMP
GR.

CALL AND INSTRUCTIONS

IN

OUT

(ABOVE THIS LINE IS FOR SIGNALS USE ONLY.)

TO

2/5 - 2/6 hrs

FROM

17 ...

Originator's Number

Date

In Reply to Number

14

22

password ... MIKEYMOUSE

THIS MESSAGE MAY BE SENT **AS WRITTEN** BY ANY MEANS.

IF LIABLE TO BE INTERCEPTED OR FALL INTO ENEMY HANDS, THIS MESSAGE MUST BE SENT **IN CIPHER**.

ORIGINATOR'S INSTRUCTIONS
DEGREE OF PRIORITY

TIME OF ORIGIN

SIGNED

SIGNED

(BELOW THIS LINE IS FOR SIGNALS USE ONLY.)

T.H.I.

SYSTEM IN	TIME IN	READER	SENDER	SYSTEM OUT	TIME OUT	READER	SENDER	SYSTEM OUT	TIME OUT	READER	SENDER

T.O.R.

MESSAGE FORM

Serial No.

CALL AND INSTRUCTIONS

IN

OUT

No. of Groups.

GR.

OFFICE DATE STAMP

(ABOVE THIS LINE IS FOR SIGNALS USE ONLY.)

TO

2/5 2/6 Pms

FROM

17 Aust inf bde

Originator's Number

I 15

Date

23

In Reply to Number

password

commencing retreat

to-night

SNOW-WHITE

THIS MESSAGE MAY BE SENT AS WRITTEN BY ANY MEANS.

*A. Chapman
Capt*

SIGNED

IF LIABLE TO BE INTERCEPTED OR FALL INTO ENEMY HANDS, THIS MESSAGE MUST BE SENT IN CIPHER.

SIGNED

ORIGINATOR'S INSTRUCTIONS
DEGREE OF PRIORITY

TIME OF ORIGIN

1100

T.H.I.

(BELOW THIS LINE IS FOR SIGNALS USE ONLY.)

T.O.R.

SYSTEM IN	TIME IN	READER	SENDER	SYSTEM OUT	TIME OUT	READER	SENDER	SYSTEM OUT	TIME OUT	READER	SENDER

MESSAGE FORM

Serial No.

CALL AND INSTRUCTIONS

IN

OUT

No. of Groups.
GR.

OFFICE DATE STAMP

(ABOVE THIS LINE IS FOR SIGNALS USE ONLY.)

TO

2/5 2/6 Paris

FROM

17 Aust inf bde

Originator's Number

I 15

Date

23

In Reply to Number

password commencing retreat

to night

SNOW-WHITE

THIS MESSAGE MAY BE SENT **AS WRITTEN** BY ANY MEANS.

IF LIABLE TO BE INTERCEPTED OR FALL INTO ENEMY HANDS, THIS MESSAGE MUST BE SENT **IN CIPHER**.

ORIGINATOR'S INSTRUCTIONS
DEGREE OF PRIORITY

TIME OF ORIGIN

1100

SIGNED

SIGNED

(BELOW THIS LINE IS FOR SIGNALS USE ONLY.)

T.H.I.

SYSTEM IN	TIME IN	READER	SENDER	SYSTEM OUT	TIME OUT	READER	SENDER	SYSTEM OUT	TIME OUT	READER	SENDER

T.O.R.

MESSAGE FORM

Serial No.

CALL AND INSTRUCTIONS	IN	No. of Groups. GR.	OFFICE DATE STAMP
	OUT		

(ABOVE THIS LINE IS FOR SIGNALS USE ONLY.)

TO

2/5 2/6 Bms

FROM

Originator's Number

Date

In Reply to Number

			I 16	23	
aircraft	recognition	signals	23/24	24/25	25/26
may	⊙	red	yellow	green	green
green	yellow	green	red	green	yellow
red	green	⊙	usual	periods	

THIS MESSAGE MAY BE SENT AS WRITTEN BY ANY MEANS.

IF LIABLE TO BE INTERCEPTED OR FALL INTO ENEMY HANDS, THIS MESSAGE MUST BE SENT IN CIPHER.

ORIGINATOR'S INSTRUCTIONS DEGREE OF PRIORITY

TIME OF ORIGIN

A. Chapman
SIGNED

SIGNED

(BELOW THIS LINE IS FOR SIGNALS USE ONLY.)

1110

T.H.I.

T.O.R.

SYSTEM IN	TIME IN	READER	SENDER	SYSTEM OUT	TIME OUT	READER	SENDER	SYSTEM OUT	TIME OUT	READER	SENDER

MESSAGE FORM

Serial No.

CALL AND INSTRUCTIONS	IN	No. of Groups. GR.	OFFICE DATE STAMP
	OUT		

(ABOVE THIS LINE IS FOR SIGNALS USE ONLY.)

TO 2/5 2/6 *ons*

FROM 17 Aust inf bde	Originator's Number I 10	Date 24	In Reply to Number
-----------------------------	-----------------------------	------------	--------------------

password	commencing retreat	rough	GRETAGARBO

THIS MESSAGE MAY BE SENT AS WRITTEN BY ANY MEANS.	IF LIABLE TO BE INTERCEPTED OR FALL INTO ENEMY HANDS, THIS MESSAGE MUST BE SENT IN CIPHER.	ORIGINATOR'S INSTRUCTIONS DEGREE OF PRIORITY	TIME OF ORIGIN 1110
SIGNED <i>apd g... 10/21</i>	SIGNED	(BELOW THIS LINE IS FOR SIGNALS USE ONLY.)	T.H.I.

SYSTEM IN	TIME IN	READER	SENDER	SYSTEM OUT	TIME OUT	READER	SENDER	SYSTEM OUT	TIME OUT	READER	SENDER

T.O.R.

MESSAGE FORM

Serial No.

CALL AND INSTRUCTIONS

IN

OUT

No. of Groups.
GR.

OFFICE DATE STAMP

TO

(ABOVE THIS LINE IS FOR SIGNALS USE ONLY.)

2/5 2/6 2/7 bno

FROM

17 unit inf bde

Originator's Number

I 17

Date

25

In Reply to Number

password commencing retreat

tonight

MAE WEST

THIS MESSAGE MAY BE SENT AS WRITTEN BY ANY MEANS.

*Wally
Capt*

IF LIABLE TO BE INTERCEPTED OR FALL INTO ENEMY HANDS, THIS MESSAGE MUST BE SENT IN CIPHER.

SIGNED

ORIGINATOR'S INSTRUCTIONS
DEGREE OF PRIORITY

TIME OF ORIGIN

1101

T.H.I.

(BELOW THIS LINE IS FOR SIGNALS USE ONLY.)

SYSTEM IN	TIME IN	READER	SENDER	SYSTEM OUT	TIME OUT	READER	SENDER	SYSTEM OUT	TIME OUT	READER	SENDER

T.O.R.

MESSAGE FORM

Serial No.

CALL AND INSTRUCTIONS

IN

OUT

No. of Groups.
GR.

OFFICE DATE STAMP

TO

(ABOVE THIS LINE IS FOR SIGNALS USE ONLY.)

2/5, 2/6 2/7 bno

FROM

17 ansst inf bde

Originator's Number

I 18

Date

25

In Reply to Number

aircraft	recognition	signals
⊙	green	red
red	red	red

26/27
green
⊙

27/28
red
usual

may
green
period

THIS MESSAGE MAY BE SENT **AS WRITTEN** BY ANY MEANS.

IF LIABLE TO BE INTERCEPTED OR FALL INTO ENEMY HANDS, THIS MESSAGE MUST BE SENT **IN CIPHER**.

ORIGINATOR'S INSTRUCTIONS
DEGREE OF PRIORITY

TIME OF ORIGIN

SIGNED

SIGNED

(BELOW THIS LINE IS FOR SIGNALS USE ONLY.)

T.H.I.

SYSTEM IN	TIME IN	READER	SENDER	SYSTEM OUT	TIME OUT	READER	SENDER	SYSTEM OUT	TIME OUT	READER	SENDER

T.O.R.

MESSAGE FORM

Serial No.

CALL AND INSTRUCTIONS

IN

OUT

No. of Groups.

GR.

OFFICE DATE STAMP

TO

(ABOVE THIS LINE IS FOR SIGNALS USE ONLY.)

2/5 2/6 4/7 lines

FROM

17 and my side

Originator's Number

I 19

Date

26

In Reply to Number

password commencing with

thought

CMBB/46

THIS MESSAGE MAY BE SENT AS WRITTEN BY ANY MEANS.

IF LIABLE TO BE INTERCEPTED OR FALL INTO ENEMY HANDS, THIS MESSAGE MUST BE SENT IN CIPHER.

ORIGINATOR'S INSTRUCTIONS DEGREE OF PRIORITY

TIME OF ORIGIN

SIGNED

SIGNED

(BELOW THIS LINE IS FOR SIGNALS USE ONLY.)

T.H.I.

T.O.R.

SYSTEM IN	TIME IN	READER	SENDER	SYSTEM OUT	TIME OUT	READER	SENDER	SYSTEM OUT	TIME OUT	READER	SENDER

MESSAGE FORM

Serial No.

CALL AND INSTRUCTIONS

IN

OUT

No. of Groups.

GR.

OFFICE DATE STAMP

TO

(ABOVE THIS LINE IS FOR SIGNALS USE ONLY.)

FROM

Originator's Number

Date

In Reply to Number

<i>4/30</i>	<i>2/10</i>	<i>2/10</i>	<i>2/10</i>	<i>2/10</i>	<i>2/10</i>	<i>2/10</i>	<i>2/10</i>
<i>red</i>	<i>yellow</i>	<i>green</i>	<i>red</i>	<i>green</i>	<i>red</i>	<i>green</i>	<i>red</i>
<i>red</i>	<i>yellow</i>	<i>green</i>	<i>red</i>	<i>green</i>	<i>red</i>	<i>green</i>	<i>red</i>

THIS MESSAGE MAY BE SENT **AS WRITTEN** BY ANY MEANS.

IF LIABLE TO BE INTERCEPTED OR FALL INTO ENEMY HANDS, THIS MESSAGE MUST BE SENT **IN CIPHER.**

ORIGINATOR'S INSTRUCTIONS
DEGREE OF PRIORITY

TIME OF ORIGIN

0930

SIGNED

SIGNED

(BELOW THIS LINE IS FOR SIGNALS USE ONLY.)

T.H.I.

SYSTEM IN	TIME IN	READER	SENDER	SYSTEM OUT	TIME OUT	READER	SENDER	SYSTEM OUT	TIME OUT	READER	SENDER

T.O.R.

MESSAGE FORM

Serial No.

CALL AND INSTRUCTIONS

IN

OUT

No. of Groups.
GR.

OFFICE DATE STAMP

TO

(ABOVE THIS LINE IS FOR SIGNALS USE ONLY.)

FROM

Originator's Number

Date

In Reply to Number

THIS MESSAGE MAY BE SENT **AS WRITTEN** BY ANY MEANS.

IF LIABLE TO BE INTERCEPTED OR FALL INTO ENEMY HANDS, THIS MESSAGE MUST BE SENT **IN CIPHER**.

ORIGINATOR'S INSTRUCTIONS
DEGREE OF PRIORITY

TIME OF ORIGIN

SIGNED

SIGNED

(BELOW THIS LINE IS FOR SIGNALS USE ONLY.)

T.H.I.

SYSTEM IN	TIME IN	READER	SENDER	SYSTEM OUT	TIME OUT	READER	SENDER	SYSTEM OUT	TIME OUT	READER	SENDER

T.O.R.

MESSAGE FORM

Serial No.

CALL AND INSTRUCTIONS

IN

OUT

No. of Groups.

GR.

OFFICE DATE STAMP

(ABOVE THIS LINE IS FOR SIGNALS USE ONLY.)

TO

15 2/10 2/13 bus

FROM

17 unit inf 1 de

Originator's Number

23

Date

31

In Reply to Number

THIS MESSAGE MAY BE SENT **AS WRITTEN** BY ANY MEANS.

IF LIABLE TO BE INTERCEPTED OR FALL INTO ENEMY HANDS, THIS MESSAGE MUST BE SENT **IN CIPHER**.

ORIGINATOR'S INSTRUCTIONS DEGREE OF PRIORITY

TIME OF ORIGIN

1530

SIGNED

SIGNED

(BELOW THIS LINE IS FOR SIGNALS USE ONLY.)

T.H.I.

T.O.R.

SYSTEM IN	TIME IN	READER	SENDER	SYSTEM OUT	TIME OUT	READER	SENDER	SYSTEM OUT	TIME OUT	READER	SENDER

MESSAGE FORMALS

Serial No. 11

CALL AND INSTRUCTIONS

IN
OUT

ARMY SIGNALS

26 MAY 1941

No. of Groups.

GR.

35

OFFICE DATE STAMP

(ABOVE THIS LINE IS FOR SIGNALS USE ONLY.)

TO 16 aust inf bde 17 aust inf bde 2/8 Bn RAA RAE Sigs AASC

FROM

6 aust div

Originator's Number

0 261

Date

26

In Reply to Number

ROBOT

effective

0100

hrs

28/5

(.)

under

miscellaneous

page

six

delete

repeat

delete

line

fifteen

THIS MESSAGE MAY BE SENT AS WRITTEN BY ANY MEANS.

IF LIABLE TO BE INTERCEPTED OR FALL INTO ENEMY HANDS, THIS MESSAGE MUST BE SENT IN CIPHER.

ORIGINATOR'S INSTRUCTIONS DEGREE OF PRIORITY

IMPORTANT

DR

TIME OF ORIGIN

1800

SIGNED

Capt

SIGNED

(BELOW THIS LINE IS FOR SIGNALS USE ONLY.)

T.H.I.

1800

SYSTEM IN

TIME IN

READER

SENDER

SYSTEM OUT

TIME OUT

READER

SENDER

SYSTEM OUT

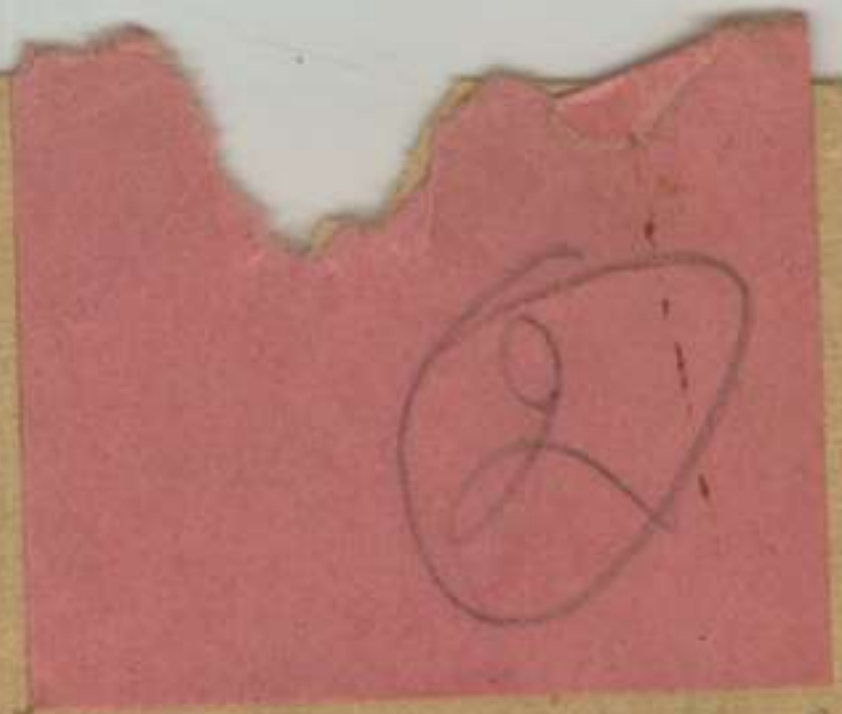
TIME OUT

READER

SENDER

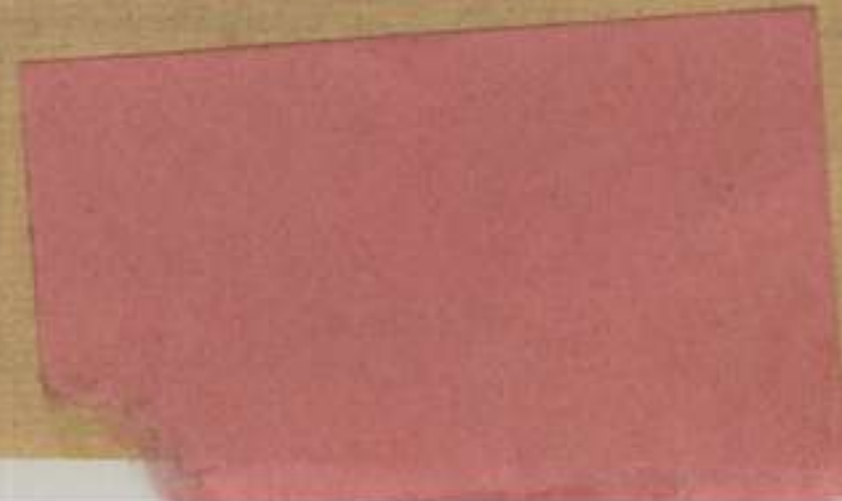
T.O.R.

0900 27/5



17 Aust inf Bde
Hill 69 2

214



MESSAGE FORM

Serial No.

CALL AND INSTRUCTIONS

IN

OUT

No. of Groups.

GR.

OFFICE DATE STAMP

TO

(ABOVE THIS LINE IS FOR SIGNALS USE ONLY.)

17 aust mf bde

FROM

2/6 bn

Originator's Number

I 315

Date

31

In Reply to Number

I 22

ack

THIS MESSAGE MAY BE SENT AS WRITTEN BY ANY MEANS.

IF LIABLE TO BE INTERCEPTED OR FALL INTO ENEMY HANDS, THIS MESSAGE MUST BE SENT IN CIPHER.

ORIGINATOR'S INSTRUCTIONS DEGREE OF PRIORITY

TIME OF ORIGIN

1120

SIGNED

SIGNED

(BELOW THIS LINE IS FOR SIGNALS USE ONLY.)

T.H.I.

T.O.R. 1140

SYSTEM IN	TIME IN	READER	SENDER	SYSTEM OUT	TIME OUT	READER	SENDER	SYSTEM OUT	TIME OUT	READER	SENDER

AIRCRAFT AIRCRAFT AIR

AIRC

NAI.

6-19-14 JF 176 729F2

CIRCUMSTANTIAL EVIDENCE

WARRAGE LOON

MESSAGE FORM

Serial No.

CALL AND INSTRUCTIONS

IN

OUT

No. of Groups.

GR.

44

OFFICE DATE STAMP

AST
31-5-41.

(ABOVE THIS LINE IS FOR SIGNALS USE ONLY.)

TO RAA RAE Sigs 16 aust inf bde 17 aust inf bde 2/8 bn comd
G1 G111 cipher AQ DADOS DAAG ADMS AASC pro coy

FROM 6 aust div

Originator's Number

I 14

Date

31

In Reply to Number

Following

code

names

allotted

list

XVIII

traffic

control

post

ASLUJ

BOXU

⓪

all

unjammed

THIS MESSAGE MAY BE SENT AS WRITTEN BY ANY MEANS.

IF LIABLE TO BE INTERCEPTED OR FALL INTO ENEMY HANDS, THIS MESSAGE MUST BE SENT IN CIPHER.

ORIGINATOR'S INSTRUCTIONS DEGREE OF PRIORITY

TIME OF ORIGIN

1630

SIGNED

Gepp

SIGNED

Derwent capt

(BELOW THIS LINE IS FOR SIGNALS USE ONLY.)

T.H.I.

1825

T.O.R.

1900

SYSTEM IN	TIME IN	READER	SENDER	SYSTEM OUT	TIME OUT	READER	SENDER	SYSTEM OUT	TIME OUT	READER	SENDER

2/19 A Fd Coy
2/14 A Fd Coy
2/13 Fd PK Coy
65 LAD

2/7 Bn
Corps Posch Unit

2/5 Bn

2/6 Bn
2/3 Fd PK Sec

L4
MILLS

L5
BROCKMAN

L3

HUDGSON

L2

ROBERTSON

L8

L1
GLASFORD

BHQ

BHQ

L6

L7

Corps Fd PK
1 M A C
Mob School of Mech

Corps Army PK L4SS
6 7 8 9 Div Sub PK

6 Div Encls
GRANES RISE
2/15 A Fd Coy

HQ 17 Int Bde
46 LAD

Corps Trs Sup Col
LESS one Echelon
A det WKS
2/2 Fd Coy

TO MANSFIELD
JAN 09
500 YARDS

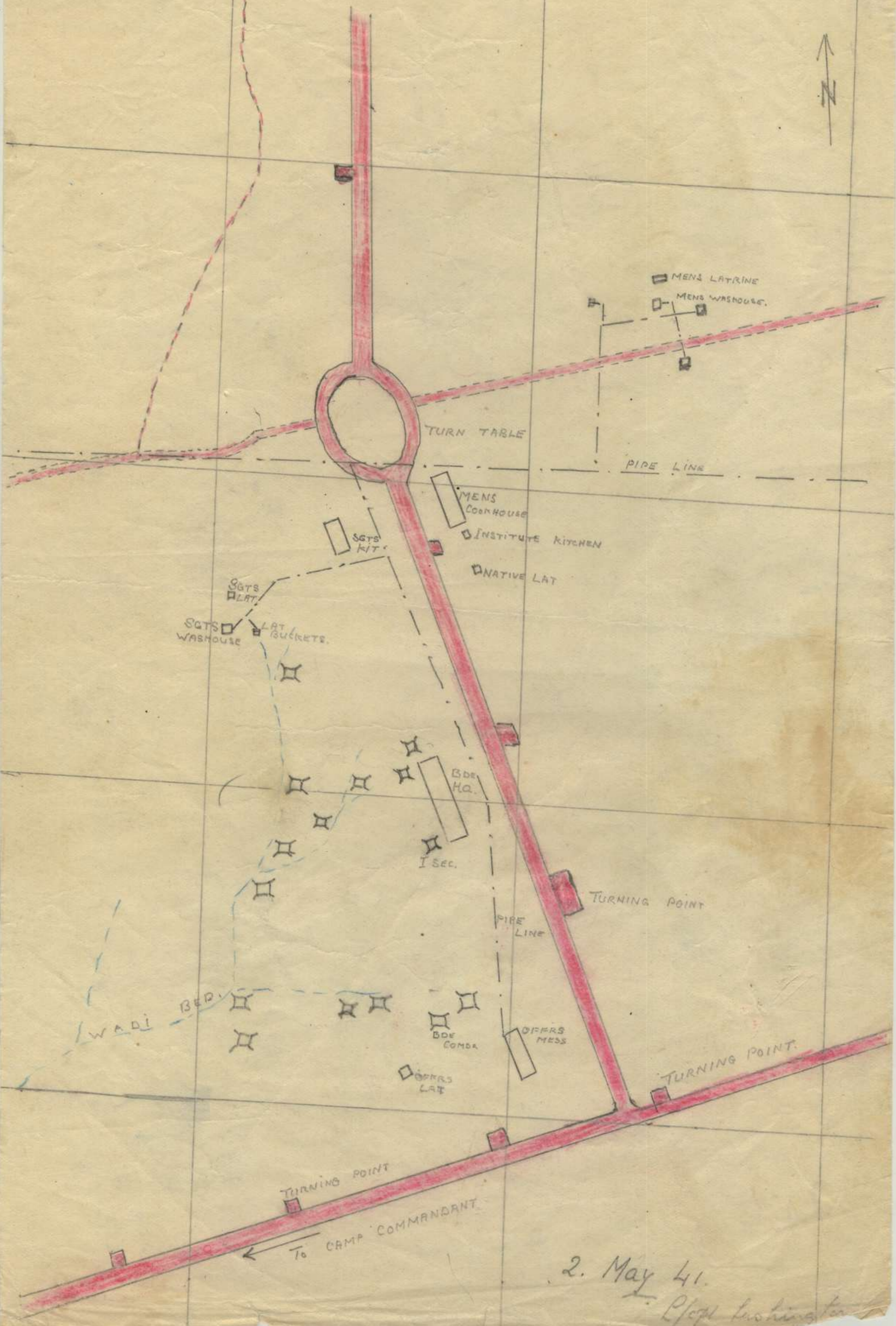
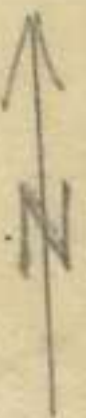
HILL 69

XCBDWJQA

SKETCH 17 BDE H.Q. AREA

HILL 69

Scale 1/1200.



2. May 41.

P/sgt Lushington

SECRET. S. 4314.

H.Q. AIF BASE AREA.ORDER OF BATTLE AND LOCATION STATEMENT - PALESTINE.AS AT 2359 HRS 31 MAY 41.CORPS TROOPS.

<u>HEADQUARTERS UNITS.</u>	<u>CAMP</u>	<u>LINES</u>
H.Q. 1 Aust Corps	Deir Suneid	White
1 Aust Corps Int Sec	" "	"
A. Sec P.S.S.	" "	"
A.I.L. Sec	" "	"
H.Q., A.H.Q. Gd Bn	Kilo 89	Holmes
<u>ARTILLERY.</u>		
H.Q., R.A.A. 1 Aust Corps	Deir Suneid	White
2 A.A. Regt (less H.Q. 4 Bty & two Secs)	Khassa	L.7
H.Q. 4 Bty & two Secs	Haifa	
2/1 Svy Regt	Hill 95	L.3
2/11 A. Fd Regt & 70 L.A.D.	Hill 95	L.2
<u>ENGINEERS.</u>		
H.Q. Corps Tps Engrs	Hill 69	Mills
2/9 A. Fd Coy	"	"
2/14 " "	"	"
2/15 " "	"	"
2/3 Corps Fd Pk Coy	"	"
65 L.A.D.	"	"
2/1 Corps Fd Svy Coy	Sarafand	
1 Boring Sec	Haifa	
<u>SIGNALS.</u>		
1 Aust Corps Sigs	Deir Suneid	Anderson
2 A.A. Regt Sig Sec	Khassa	L.7
2 A. Fd Regt Sig Sec	Hill 95	L.1
1 A. Fd " " "	"	L.2
<u>MACHINE GUNS.</u>		
2/1 M.C. Bn	Deir Suneid	Phillips
48 L.A.D.	" "	"
2/3 M.C. Bn	Hill 95	L.4
60 L.A.D.	"	L.4
<u>PICHLER BNS.</u>		
2/2 Pnr Bn	Hill 95	L.5
<u>SUPPLY & TPT.</u>		
1 Corps Tps Sup Coln	Hill 69	L.6
1 Corps Tps Amn Coy	Beit Jirja	Grinwade
1 Corps Amn Pk (less 3 Sub Pk)	Hill 69	L.8
1 Corps Tps Pet Pk	Hill 69	L.7
2 A.A.S.C. Sec A.A. Regt	Daira	McCay
1 Aust Corps Job School of Tech	Hill 69	L.7
1 Sup Per Sec	Al Hajdal	
4 Sup Per Sec	Al Hajdal	
6 Sup Per Sec	Hill 69	
<u>MEDICAL.</u>		
1 I.A.C.	Hill 69	L.7
2/1 C.C.S.	Hazareth	
2/3 C.C.S.	Kilo 89	Heane
2/3 Fd Hyg Sec	Deir Suneid	Burgess
<u>ORDNANCE.</u>		
2 A.A. Regt Wkshop Sec	Khassa	L.7
5 Rec Sec, 2 A. Fd Wkshop	Barbara	Rosenthal
4 Res Sec 1 Ord Fd Pk	"	
<u>PAY.</u>		
1 Corps Fd Cash Office	Deir Suneid	Bridges
6 Fd Cash Office	Julis	Birdwood

MISCELLANEOUS.

Corps Pro Coy
Corps Postal Unit
Corps Job Laundry
Corps Salvage Unit
Job Printing Sec
1 Graves Reg & Enq Unit

6 AUST DIV.

Dimra
Hill 69
Barbara
Barbara
Caza
Dimra

McCay
Hodgson
Rosenthal
Rosenthal
Tivey

HEADQUARTER UNITS.

H.Q. 6 Aust Div
Int Sec 6 Aust Div
B. Sec F.S.S.

Julis
"
"

Birdwood
"
"

ARTILLERY.

H.Q. A.A.A. 6 Aust Div
2/1 Fd Regt
43 L.A.D.
2/3 Fd Regt
41 L.A.D.
1 A/Tk Regt
49 L.A.D.

Julis
Thassa
Thassa
Thassa
Thassa
Julis
Julis

Birdwood
Onslow
Onslow
L.G.
L.G.
Monash
Monash

ENGINEERS.

H.Q. A.A.E. 6 Div
2/2 Fd Coy

Hill 69
"

Brockman
"

SIGNALS.

6 Div Sigs
42 L.A.D.

Julis
Julis

Leane
Leane

INFANTRY.

H.Q. 16 Inf Bde
2/1 Bn
2/2 Bn
2/3 Bn
45 L.A.D.
H.Q. 17 Inf Bde
2/5 Bn
2/6 Bn
46 L.A.D.
2/8 Bn

Julis
Julis
Julis
Julis
Julis
Hill 69
Hill 69
Hill 69
Hill 69
El Arish

B.H.Q.
Hobbs
Goddard
Cellibrand
B.H.Q.
B.H.Q.
Robertson
Glassford
B.H.Q.

A.S.C.

H.Q. A.A.S.C. 6 Div
6 Div Sup CoIn
6 Div Ann Coy
6 Div Pet Coy

Julis
Julis
Julis
Julis

Browne
Browne
Browne
Browne

MEDICAL.

2/1 Fd Amb
2/2 Fd Amb
2/7 Fd Amb
2/1 Fd Hqs Sec

Julis
Hill 69
Thassa
Julis

Leane
L.G.
Onslow
Monash

MISCELLANEOUS.

6 Div Postal Unit
6 Div Sup Pln
6 Div Pro Coy
6 Div Salvage Unit

Julis
Julis
"
Barbara

Birdwood
Birdwood
"
Rosenthal

7 AUST DIV.

7 Div Pro Coy

Dimra

McCay

9 AUST DIV.

CAVALRY.

9 Div Cav Regt
82 L.A.D.

Beit Jirja
Beit Jirja

Lesge
"

BASE & L. C. C. UNITS.

H.Q. AIF Base Area
" " " " Int Sec
E. Sec F.S.S.

Gaza
"
"

SIGNALS.

Base Area Sigs

Gaza

TRAINING UNITS.

H.Q. AIF Reinft Depot
 Arm'd Tng Regt
 Arty Tng Gp
 Engr Tng B n
 Sig Tng Bn
 H.Q. 6 Inf Tng Bde
 6 Inf Spec Gp
 16 Inf Tng Bn
 17 Inf Tng Bn
 19 Inf Tng Bn
 7 Inf Spec Gp
 18 Inf Tng Bn
 21 Inf Tng Bn (Admin Comd 7 Tng Bde)
 25 Inf Tng Bn
 9 Inf Spec Gp
 20 Inf Tng Bn (Adm Comd 9 Tng Bde)
 24 Inf Tng Bn
 H.G. Tng Bn
 Pnr Tng Bn
 Services Tng Regt
 A.A.C. Tng Wing
 Depot Bn
 1 Aust Corps Sch of Sigs
 1 Aust Corps S.A. School

Beit Jirja
 Museirat
 Museirat
 Lughazi
 Museirat
 Kilo 89
 Kilo 89
 Kilo 89
 Kilo 89
 Kilo 89
 Diara
 Diara
 Diara
 Diara
 Lughazi
 Lughazi
 Lughazi
 Museirat
 Lughazi
 Beit Jirja
 Gaza Ridge
 Beit Jirja
 Diara
 Lughazi

H.Q.
 H.
 D.
 L.7
 C.
 H.Q.
 H.Q.
 Ryrrie
 Herring
 Squires
 H.Q.
 Cox
 Johnson
 Smyth
 L.1
 L.1
 L.2
 H.
 L.7
 Glasgow
 Howse
 Royston
 Walker
 L.7

ORDNANCE.

2 Adv Ord Depot
 2 Adv Ord Wkshop

Barbara
 Barbara

Coxen
 Coxen

MEDICAL.

1 Aust Gen Hosp
 3 Aust Gen Hosp
 5 Aust Gen Hosp
 6 Aust Gen Hosp
 7 Aust Gen Hosp
 8 Aust Spec Hosp
 1 Aust Con Depot
 1 Adv Depot Med Stores
 1 Dental Unit
 2 Dental Unit
 3 Dental Unit
 6 Dental Unit
 7 Dental Unit
 8 Dental Unit
 9 Dental Unit
 10 Dental Unit
 11 Dental Unit
 12 Dental Unit
 15 Dental Unit
 20 Dental Unit
 21 Dental Unit
 26 Dental Unit
 41 Dental Unit

Gaza Ridge
 Kilo 89
 Kilo 89
 Kilo 89
 K'far Bilu
 Gaza Ridge
 K'far Vitkin
 Gaza Ridge
 Deir Suneid
 Kilo 89
 Khassa
 Museirat
 Hill 69
 Kilo 89
 Barbara
 Julis
 Beit Jirja
 K'far Vitkin
 Deir Suneid
 Hill 95
 Gaza Ridge
 Gaza Ridge
 Gaza

Howse
 Heane
 Heane
 Heane
 Barber
 Howse

MISCELLANEOUS.

H.Q. L of C. Pro Coy
 AIF Base Postal Unit
 Aust Det Bks
 H.Q. Corps Reception Camp
 6 Div Reception Camp
 A Sty Depot B. & S.S.

Sarafand
 Gaza
 Jerusalem
 Beit Jirja
 Beit Jirja
 Gaza

Elliot
 Elliot

TRANSPORTATION.

3 Ry Constn Coy

Al Najdal

2 SCHEDULE.

Records
Finance
Historical Records
Medical Records
Audit

Dimra
Deir Suneid
Dimra
Dimra
Deir Suneid

Tivey
Bridges
Tivey
Tivey
Bridges

Major.
CS. AIF Base Area.

DISTRIBUTION.

<u>Serial Nos.</u>		<u>No. of copies.</u>
1-2	Force H.Q.	2
3-4	Rear Ech H.Q. AIF	2
5-29	1 Aust Corps	25
30-59	6 Aust Div	30
60	9 Div Cav	1
61-85	AIF Reinft Depot	25
86	Job Printing Sec	1
87-88	AIF Base Postal Unit	2
89	Comd	1
90-94	G.	5
95-98	A.	4
99-102	C.	4
103	A.D.S.S.	1
104-117	Base Area Sigs	14
118-119	D.A.D.S. & T.	2
120-127	A.D.S.S.	8
128-133	D.A.D.O.S.	6
134	D.A.D.E.	1
135	D.A.D. P & S.S.	1
136	Records	1
137	Finance	1
138	Audit	1
139	D.D.C.S.	1
140	A.C.F. Gaza	1
141	D.A.P.M. Jerusalem	1
142	D.A.P.M. Sarafand	1
143	D.A.P.M. Tel Aviv	1
144	D.A.P.M. Gaza	1
145	AIF Kit Store Gaza	1
146	R.T.C. Gaza	1
147-148	File	2
149-150	War Diary	2
150-159	Spares	10
	TOTAL	159

APPENDIX 'A'.

H.Q. AIF BASE AREA.

LOCATION STATEMENT AS AT 2359 HRS 31 MAY 41.

CORPS TROOPS.

<u>CAMP</u>	<u>LINES</u>	<u>NAMES OF UNITS</u>	
HILL 69	B.H.Q.	H.Q. 17 Inf Bde 46 L.A.D.	
	L.1 Glassfurd	2/6 Bn	
	L.2 Robertson	2/5 Bn	
	L.3 Hodgson	Corps Postal Unit	
	L.4 Mills	HQ Corps Tps Engrs 2/9 A. Pd Coy 2/14 A. Pd Coy 2/15 A. Pd Coy 2/3 Corps Pd Pk 65 L.A.D.	
	L.5 Brockman	H.Q. MAA 6 Div 2/2 Pd Coy	
	L.6	1 Corps Tps Sup Col 2/2 Pd Amb C Sup Per Sec	
	L.7	1 Corps Tps Pet Pk 1 Aust Corps Mob Sch of Tech 1 I.A.C.	
	L.8	1 Corps Tps Ann Pk (less 3 Sub Pk)	
	<hr/>		
	KILASSA	B.H.Q.	
		L.1 Wilson	
		L.2 Martin	
L.3 McHicol			
L.4 Jess			
L.5 C. slow		H.Q. MAA 6 Div 2/1 Pd Regt 43 L.A.D. 2/7 Pd. Amb	
L.6		2/3 Pd Regt 41 L.A.D.	
L.7	2 AA Regt (less HQ 4 Bty & two Secs)		
<hr/>			
JULIS	B.H.Q. Birdwood	H.Q. 6 Aust Div 6 Div Postal Unit C Div mp Pl C Div Pro Coy	
	B.H.Q.	H.Q. 16 Inf Bde 45 L.A.D.	
	L.1 Monash	1 A/Tk Regt 49 L.A.D. 2/1 Pd Hyg Sec	
	L.2 Goddard	2/2 Bn	
	L.3 Gellibrand	2/3 Bn	
	L.4 Hobbs	2/1 Bn	
	L.5 Leane	C Div Sigs 42 L.A.D. 2/1 Pd Amb	
	L.6 Brown	H.Q. AASC 6 Div 6 Div Sup Col 6 Div Ann Coy 6 Div Pet Coy	

BARBARA	L.1 Coken L.2 Wisdom L.3 Rosenthal	2 Aust Adv Ord Depot 2 Aust Adv Ord Workshop 9 Div Mob Bath 6 Div Salvage Unit Corps Salvage Unit Corps Mob Laundry & Decn Unit 5 Rec Sec
<hr/>		
BEIT JIRJA	H.Q. L.1 Glasgow L.2 Legge L.3 Royston L.4 Grimwade L.5 Elliot Elliot Elliot	AIF Reinf't Depot Services Eng Regt 9 Div Cav Regt 82 L.A.D. Depot Bn Corps Tps Amn Coy Corps Reception Camp 6 Div Reception Camp Reserve M.T. Coy
<hr/>		
HILL 95	L.1 L.2 L.3 L.4 L.5	2/11 A. Fd Regt 70 L.A.D. 2/1 Survey Regt 2/3 F.C. Bn 66 L.A.D. 2/2 Pnr Bn
<hr/>		
DINRA	B.M.Q. H.Q. McCay L.1 Walker L.2 Smythe L.3 Johnston L.4 Cox L.5 Tivey	7 Inf Spec Gp 1 Corps Pro Coy 7 Div Pro Coy 3 A.A.S.C. Sec A.A. Regt 1 Aust Corps Sch of Sigs 25 Inf Tng Bn 21 Inf Tng Bn 13 Inf Tng Bn 2 Echelon Records 1 Graves Reg & Eng Unit
<hr/>		
DEIR SUMRID	B.M.Q. White L.1 Bridges L.2 Anderson L.3 Phillips L.4 Burgess	H.Q. 1 Aust Corps RAA 1 Aust Corps Corps Fd Cash Office Finance Audit Corps Sigs 2/1 F.C. Bn 40 L.A.D. 2/3 Fd Hyg Sec
<hr/>		
KILC 89	H.Q. L.1 Squires L.2 Herring L.3 Rylie L.4 Holmes L.5 Meane	H.Q. 6 Inf Tng Bde 6 Inf Spec Gp 19 Inf Tng Bn 17 Inf Tng Bn 16 Inf Tng Bn H.Q. A.E.C. Gd Bn 2/3 G.C.S. 3 A.G.H. 5 A.G.H. 6 A.G.H.
<hr/>		
GAZA RIDGE	Howse Barber	1 A.C.H. A.A.M.C. Tng Wing 8 Spec Hosp

GAZA TOWN

H.Q., AIF Base Area
Base Area Sigs
Job Printing Sec
A Sty Depot P. & S.S.
AIF Base Postal Unit

MUSEIRAT

D.
G.
H.

Arty Tng Gp
Sig Tng Bn
Armd Tng Regt
I.G. Tng Bn

MUHAZI

L.1
L.2
L.3
L.4
L.5
L.6
L.7

9 Inf Spec Gp
20 Inf Tng Bn
24 Inf Tng Bn

Pnr Tng Bn
Engr Tng Bn
1 Aust Corps S.A. School

SECRET

Copy No. 21

7 May 41

17 AUST. INF. BDE. OP. INST. No. 1

Ref. Maps HAMANE 1- 20000
 GAZA 1- 100000
 PALESTINE 1- 250000

1. Information as in Int. Summaries.
2. Units occupying CAMP HILL 69 will prepare and occupy in skeleton form a perimeter defence against parachute attack and bombing and machine gunning attack.
3. Brigadier Commanding 17 Aust. Inf. Bde. will command operations in collaboration with Camp Commandant. The Senior Officer in each set of lines will command troops in his area.
4. **PASSIVE** Units will disperse tents to a minimum distance of 50 yards in irregular lines and discolor them with earth and clay. Iron roofs will be discolored. Slit trenches will be sited and dug adjacent to sleeping tents offices and messes. Vehicles will be parked on selected dispersal area adjacent to or in Unit lines.
5. **ACTIVE** Units will site and prepare pl. defensive positions in depth to cover the perimeter of their lines with these exceptions:-
 - (a) 2/5 Bn will be responsible for WESTERN perimeter of GLASSFORD LINES to inc. MAIN RD. KHASSA-HILL 69.
 - (b) Corps Amn. Pk. will be responsible for SOUTHERN perimeter of GLASSFORD LINES from EXC MAIN ROAD KHASSA - HILL 69.
6. Units will be prepared to mount AA posts at short notice with the weapons at their disposal. One AA team in the vicinity of each fwd pl position will be considered sufficient skeleton, manning of defences and will act as listening post. Their duties will be additional to those of the normal perimeter guards.
7. **MOBILE RESERVE** 2/6 Bn will be maintained as a mobile reserve.
8. Fire tasks will be co-ordinated by A/BM 17 Aust Inf Bde at a conference to be held on WATER TOWER HILL at 1000 hrs on Wed 7 May 41. A/BM will assist units other than those of 17 Aust Inf Bde in siting defensive positions.
9. **ALARM SIGNALS** will be originated on siren from Camp HQ and may be supplemented by line and DR.

AIR RAID RED -	Succession SHORT BLASTS
PARATROOPS	Continuous LONG BLAST
ALL CLEAR	Succession of TWO SHORT BLASTS at 5 seco intervals.
10. **ALARM** When alarm "AIR RAID RED" is received AA positions will be manned and troops will occupy slit trenches. On alarm "PARATROOPS" the defensive positions will be occupied and tents in front of reserve positions will be dropped.

2.

11. Transport of 17 Aust Inf Bde will be brigaded under BTO and will report to 2/6 Bn on receipt of alarm. Corps Tps Sup Colm and Corps Pet Pk will advise HQ 17 Aust Inf Bde and Camp Comdt at 1900 hrs daily the number of vehicles available in their lines. On receipt of alarm they will be held at call of Comd 17 Aust Inf Bde.
12. CO 2/2 Fd Amb will arrange to supplement the staff of CRS on receipt of alarm "PARATROOPS".
13. Intercommunication by line and DR. Operation HQ will remain at HQ 17 Aust Inf Bde GHQ Lines. On receipt of alarm "PARATROOPS" Comd of each lines will send a liason officer to Operations HQ.
14. ACK.

J. J. J. J. Major,
A/BM 17 Aust Inf Bde.

DISTRIBUTION.

2/5 Bn	Copy No	1
2/6 Bn		2
2/7 Bn		3
Comd		4
BM		5)
		6)
SC		6)
		7)
TO		8
IO		9
K Sec Sigs		10
CRE Corps Engrs		11
2/2 Fd Coy		12
Corps Troops Sup Coln		13
Corps Pet Pk		14
Corps Amn Pk		15
Camp Comdt		16)
		17)
6 Aust Div		18
File		19
War Diary		20)
		21)

SECRET

Copy No. 9
7 May 41

17 AUST. INF. BDE. OP. INST. No. 1

Ref. Maps HAMANE 1- 20000
GAZA 1- 100000
PALESTINE 1- 250000

1. Information as in Int. Summaries.
2. Units occupying CAMP HILL 69 will prepare and occupy in skeleton form a perimeter defence against parachute attack and bombing and machine gunning attack.
3. Brigadier Commanding 17 Aust. Inf. Bde. will command operations in collaboration with Camp Commandant. The Senior Officer in each set of lines will command troops in his area.
4. **PASSIVE** Units will disperse tents to a minimum distance of 50 yards in irregular lines and discolor them with earth and clay. Iron roofs will be discolored. Slit trenches will be sited and dug adjacent to sleeping tents offices and messes. Vehicles will be parked on selected dispersal area adjacent to or in Unit lines.
5. **ACTIVE** Units will site and prepare pl. defensive positions in depth to cover the perimeter of their lines with these exceptions:-
 - (a) 2/5 Bn will be responsible for WESTERN perimeter of GLASSFORD LINES to inc. MAIN RD. KHASSA-HILL 69.
 - (b) Corps Amn. Pk. will be responsible for SOUTHERN perimeter of GLASSFORD LINES from EXC MAIN RD KHASSA - HILL 69.
6. Units will be prepared to mount AA posts at short notice with the weapons at their disposal. One AA team in the vicinity of each fwd pl position will be considered sufficient skeleton, manning of defences and will act as listening post. Their duties will be additional to those of the normal perimeter guards.
7. **MOBILE RESERVE** 2/6 Bn will be maintained as a mobile reserve.
8. Fire tasks will be co-ordinated by A/BM 17 Aust Inf Bde at a conference to be held on WATER TOWER HILL at 1000 hrs on Wed 7 May 41. A/BM will assist units other than those of 17 Aust Inf Bde in siting defensive positions.
9. **ALARM SIGNALS** will be originated on siren from Camp HQ and may be supplemented by line and DR.

AIR RAID RED -	Succession SHORT BLASTS
PARATROOPS	Continuous LONG BLAST
ALL CLEAR	Succession of TWO SHORT BLASTS at 5 sec. intervals.
10. **ALARM** When alarm "AIR RAID RED" is received AA positions will be manned and troops will occupy slit trenches. On alarm "PARATROOPS" the defensive positions will be occupied and tents in front of reserve positions will be dropped.

2.

11. Transport of 17 Aust Inf Bde will be brigaded under BTO and will report to 2/6 Bn on receipt of alarm. Corps Tps Sup Colm and Corps Pet Pk will advise HQ 17 Aust Inf Bde and Camp Comdt at 1900 hrs daily the number of vehicles available in their lines. On receipt of alarm they will be held at call of Comd 17 Aust Inf Bde.
12. CO 2/2 Fd Amb will arrange to supplement the staff of CRS on receipt of alarm "PARATROOPS".
13. Intercommunication by line and DR. Operation HQ will remain at HQ 17 Aust Inf Bde GHQ Lines. On receipt of alarm "PARATROOPS" Comd of each lines will send a liason officer to Operations HQ.
14. ACK.

J. B. Bishon

Major,
A/BM 17 Aust Inf Bde.

DISTRIBUTION.

2/5 Bn	Copy No	1
2/6 Bn		2
2/7 Bn		3
Comd		4
BM		5)
		6)
SC		6)
		7)
TO		8
IO		9
K Sec Sigs		10
CRE Corps Engrs		11
2/2 Fd Coy		12
Corps Troops Sup Coln		13
Corps Pet Pk		14
Corps Amn Pk		15
Camp Comdt		16)
		17)
6 Aust Div		18
File		19
War Diary		20)
		21)

1. LOCATION STATEMENTS. It is imperative that any change of location of Bn H Q is reported to Bde H Q at once.

Coy Locations at earliest.

Disposition map showing locations down to platoons as soon as possible.

2. SITUPS. All important information will be sent immediately.

Situps will be also sent at following times F.O.O.
 from Bns. - Dawn Report (All quiet or otherwise)
 0700 hours
 1200 hours
 1600 hours.

3. FIELD WORKS SKETCHES. Showing all works in particular minefields showing number laid and extent of field - Road Blocks - A/Tk. obstacle - Wire etc, will be forwarded when applicable.

4. SHELLING REPORTS. As soon as possible after shelling and a shelling trace for day as at 1300 hrs. Points required :-

1. The direction of flash or sound of gun - This should be by grid bearing wherever possible but a reference to a point on the map or general compass direction will often be of value.
2. The map reference or location of the point from which the direction was obtained.

ALSO WHERE POSSIBLE

3. Area shelled.
4. Nature and calibre of gun.
5. The number of guns firing.
6. The time of the beginning and end of shelling.
7. The damage done.

5. PATROL REPORTS.

1. Message to BDE as soon as patrol returns giving important points.
2. Full report in triplicate as soon as possible.

6. GAS REPORTS. An "E.O." message will be sent direct to FORCE, repeated to BDE and neighboring units when gas is detected.

A full report will be sent to BDE as soon as possible giving :-

1. Type of gas.
2. Areas contaminated.
3. Strength of contamination.
4. Wet or dry.
5. Strength of wind.
6. Time of attack.

7. Method used. If sprayed from aircraft, information should include tactics employed, type of aircraft and nature of spray. A map will be kept showing areas contaminated, date laid down, type of gas and routes around areas.

7. AIR INTELLIGENCE. Particulars of enemy air raids and hostile air activity should be forwarded as soon as possible giving where possible :-

1. Identification.
2. Nos. of planes.
3. Area attacked.
4. Time of attack.
5. Tactics employed.
6. Direction of flight.
7. Numbers and nature of bombs; size of craters; location of any duds.
8. Pyrotechnic and light signals employed.

If enemy aircraft crash within our own lines, the particulars including location, equipment salvaged and action taken with regard to enemy pilots and airmen will be forwarded.

Information giving location of casualties of our own or allied aircraft will be reported immediately.

8. WAR DIARY. General. Reports - a brief statement by the C.O. reviewing unit activities, reports by R.M.O., Q.M. and T.O. on events of special interest in their respective spheres.

Documents. - Items of general historical interest to the unit

1. Every effort should be made to attach a complete set of appendices to the War Diary even if sufficient copies are not available to complete the duplicate.
2. To be kept in duplicate. The original copy for the preceding month is to be forwarded under SECRET cover on the 1st of the succeeding month to BDE HQ for forwarding to the officer-in-charge, Records, 2 Echelon, A.I.F. The duplicate copy (clearly marked as such) of an infantry Bde or higher formation is to be submitted within a period of two months and that of a unit within a period of three months.
3. Entries will be brief daily summaries of important events. Each entry will be initialled by the officer responsible for maintaining the diary. The final entry for the month will be followed by the signature of the officer commanding the unit.
4. Appendices will be numbered and attached to A.F. 2118. They will 666 be forwarded separately if this can possibly be avoided. The appendices required are:-

RETURNS - Copies of field returns (A.F. W.3008
&
A.F. W.3009)

ORDERS - Copies of operation and routine orders.

REPORTS - Operation and patrol reports, intelligence summaries, etc.

(Contd)

Documents

4. MAPS - Marked maps when no longer required for unit use, field sketches, diagrams.

MESSAGES - Signals received or sent dealing with operations or important admin matters.

9. INTERROGATION and IDENTIFICATION OF P.W. Unless a competent linguist or interpreter is at the disposal of Bn. Int. Secs., even then it is undesirable that time be wasted in sending P.W. to rear other than to investigate them regarding:-

1. Identity of their own unit.
2. The spot where they were captured.
3. The units flanking their units.
4. The units in reserve and their locations.
5. The enemy's local intentions and morale.
6. The casualties of their own unit in recent fighting

Information obtained from investigation should be sent back immediately.

If P.W. identified, a message will be sent direct to DIV repeating to BDE.

H.Q. 17 AUST. INF. BDE.

1.0

- SUBJECTS: (1) Inspection Order of Lines.
(2) Fatigues for Batmen.

(1) Parade hours are :- MONDAY - FRIDAY 0830 - 1630 hrs
SATURDAY 0830 - 1200 "

and a general order states that lines will be kept in inspection order during that period. With a view to assisting in this regard, would officers please instruct their batmen not to hang laundry or blankets on guy ropes during parade hours.

(2) The Officers' mess staff is kept at a minimum and batmen are not called upon to assist except in unavoidable circumstances. There is, however, a daily flushing fatigue which entails the carrying of approx 50 gallons of water and in future this duty will be carried out at 0930 hours daily by batmen of the undermentioned officers :-

S.C.(L)
L.O.I.
L.O.2.
L.O.3.
I.O.
T.O.
Amenities Officer.

Distribution.

B.M., B.M.(L), S.C., S.C.(L), L.O.I, L.O.2, L.O.3, I.O.,
T.O., L.A.D., "K" Sec. Sigs, Amenities Officer, Major Palmer
Mr. Brown.

A. Chapman Capt
S/C 17 AUST INF BDE

1/0.

TRAINING SYLLABUS.

1. Experiences in the recent campaign in GREECE indicate the type of enemy action likely to be encountered in future, ie.

- (a) Tank attacks supported by AFU's supported by arty and motorised infantry.
- (b) Concentrated air attacks as a prelude to (a), above, or to the launching of a 'paratroop' attack.
- (c) 'Paratroop' attacks and attacks launched by infantry supported by arty and Light tanks, landed by troop carrying planes.

2. The Bde has experienced (b) and (c). The following lessons appear to be important.

- (a) Attacks by aircraft, while affecting morale in first experience proved to be abortive in material loss.
- (b) The launching of 'paratroop' attacks appear to be made only in favourable conditions when our air defence is weak, and our ground defence inadequate.
- (c) 'Paratroops' are vulnerable whilst in the air, and the launching of 'paratroops' is at low level, ie. 200 to 500 feet.
- (d) Ground contact is obtained by small M.C. units whose action is vigorous in obtaining positions of front and flanks.
- (e) The attack is pressed home vigorously, and constant effort is maintained to turn our flanks. Steadfastness in holding positions and defence in depth is essential. Reserves are of the greatest importance, and must be maintained in all formations down to Pls. Quick counter attacks succeed when delay caused by prepared counter attacks are likely to fail. All reserves no matter how small, must counter attack quickly and vigorously.
- (f) The tank paves the way for the advance of the inf. It is the following inf and not the tanks that carry and hold positions.
- (g) Defence is largely passive whilst allowing full scope for use of weapons in active defence. Slit trenches and camouflage reduce casualties from the air and AFV attacks. The training must inculcate the digging and manning of slit trenches, ~~the~~ the use of natural camouflage, as the best means of defeating enemy initial attacks by air and AFV's.
- (h) Every man who engaged enemy land forces firmly believes we are the better troops. This, together with the proved ineffectiveness of air bombing and machine gunning, must be pressed home in all training. The attitude of mind must be that we can and will withstand enemy attacks and defeat his forces by fire and counter attack. Offensive action and outlook is the most essential requirement in all training.

3. It would appear that the following situation exists :-

- (a) We carry a fairly large proportion of recruits inadequately trained in skill at arms and tactical manoeuvres and deployment.

- (b) We have sufficient leavening in experienced veterans to improve the fighting qualities and efficiency of units.
- (c) Active service tends towards a close familiarity between leaders and troops. Slackness in deportment and command is a natural tendency. CO's will regard their duty in "tightening up" discipline and soldierly bearing as MOST important.
- (d) We carry a number of newly appointed officers and reinforcement officers - the same applies to NCO's. Special officer and NCO classes will be conducted by Bn. and Seconds in command and RSM's. Special instructors as required by CO's will be added.
- (e) Classes of special instruction for 'I' Section, Sigs and Medical Orderlies will be arranged.
- (f) Losses of MT drivers requires special separate attention by CO's. Candidates will be selected and special intensive training will be conducted by TO's.
- (g) A general overhaul of Admin services would appear to be necessary. CO's will, through the Adjts and for QM's examine and improve these departments.
- (a) Training will be based on the attached outline plan, and covers -
- (1) Weapon training
 - (2) Sec, Pl and Coy Training
 - (3) Specialist Training
 - (4) Special classes and lectures for Officers and NCO's
 - (5) Admin overhaul including trng ~~2000~~ HQ Coy.
 - (6) Training of MT drivers (7) Close order drill
- (b) CO's will complete dispersion of tents, slit trenches and layout of dispositions against paratroops.
- (c) CO's will arrange one day per week for route march to beach. Adv ~~gddanda~~ Rear ~~gd~~ tng will be included as well as other phases of tng as desired by CO's. Units will march out at 1600 hrs and return the next afternoon or evening. Patrols will protect swimmers. The order of moves will be :-
- | | |
|-------------|-----------|
| MON-- TUES | Bde HQrs. |
| TUES - WED | 2/5 Bn |
| WED - THURS | 2/6 Bn |
| THURS - FRI | 2/7 Bn |
- Leave rosters will be arranged by Bde HQ to fit in so far as practicable.
- (d) Training will be divided in phases covering -
- (1) PHYSICAL TRAINING :- This will include bayonet fighting. CO's will conduct a bayonet fighting course and every endeavour will be made to inculcate a spirit of determination and ruthlessness towards the common enemy. Physical training is important and CO's will add as

- 3.
- (2) Weapon tng close order work and certain specialist tng will be conducted on the bull ring system when best qualified instructors will be used to cover various subjects.
 - (3) Leave will affect organisation. In all field work normal organisation will be maintained as far as is practicable. Amalgamating sections to maintain Pl organisation is the limit allowed for breach of normal organisation. The aim must be to practice Pl and Sec Cmdrs in the exercise of their own cmd.
 - (4) Night training covering :-
 - (a) Movements directed by compass bearings and stars
 - (b) Organising and launching counter attacks by night
 - (c) Organising and movement of tank hunting units.
 - (d) Patrols : Special attention to tng the greatest possible number will be the aim of CO's. The German rarely operates by night.

Our training and outlook must be to take advantage of this weakness in harrassing the enemy by night in every conceivable way. CO's will so arrange their tng to cover a minimum of two periods of night tng each week. This tng will cover the occupation of position in the perimeter defences and move of reserve Bn to areas as selected by CO on which they will deploy.

5.
5. SPECIALIST TNG. :- Specialist tng including HQ Coy will be arranged to obtain the greatest possible results. Bde I.O. will generally supervise and assist in Intelligence tng. Bde Sig Officer or his rep. will assist unit Sig Offs. Pioneer Pls will pay special attention to rd repairs, the layout of deviations, and handling of land mines, booby traps and demolition. CO's will submit their requirements for instruction by Engineer personnel.

Bde TO will assist Unit TO's in training drivers. In each case the Bde rep will confer with the CO or Adjt before specialist officer concerned.

Unit tng syllabuses covering this section will be arranged by conference between the Bde Staff Officer and Unit Comds, subject to confirmation by CO's. Special steps will be taken by CO's to practice HQ organisation - overhaul Medical Orderly system and tng of orderlies and SB's.

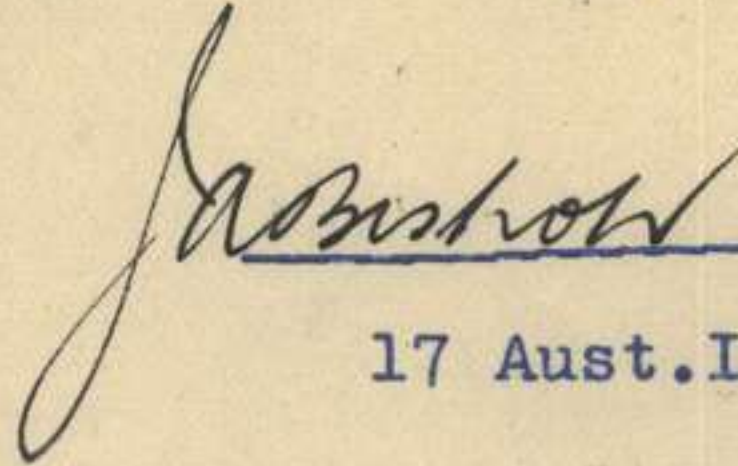
6. Portion of each Saturday morning will be devoted to Unit admin. A regular overhaul of equipment, clothing and stores will be arranged.

7. Duties will be reduced to a minimum in order to obtain greatest results from periods of tng.

8. Officer and NCO classes and parades :-

Effective tng of troops is worthless without preparation by Officers and NCO's. The time factor is so vital that leaders must accept long hours of work and preparation. CO's will consider the plan whereby Officers will be called on unexpectedly to discuss the subject matter under review. This will force reading and preparation for each class and subject. NCO classes will, in the main, be under Bn. control. Bde and staff are at the disposal of CO's to assist.

9. CO's will make 2 i/C responsible for sport and entertainment immediately. As soon as possible Bde HQ will assist.

 Major A/B.M.
17 Aust. Inf. Bde.

17 Aust Inf Bde.

OUTLINE TNG SYLLABUS.

SUBJECTS -

- | | | | |
|--|---|--|--|
| (a) <u>Physical Tng</u> incldg
Bayonet Fighting | (b) <u>Bull Ring</u>
Weapon tng
Close Order Drill
Gas
Use of Compass
Map Reading | (c) <u>Field Exercises</u>
Sec Leading
Pl Exercises
Coy Exercises
Fd Works | (d) <u>Night Exercises.</u>
Movement by Comp and Stars
Patrols
Tank Hunting
Night Counter Attacks. |
| (e) <u>Specialist Tng.</u>
To suit Sub-Units | | | |

DATE	PERIOD	GENERAL SUBJECTS	SPECIALISTS.	NIGHT TNG.
Thurs 8 May	0800 - 1200 1400 - 1630	Preparation of Perimeter defence. 2/6 Bn to practice preparation for rapid movement.		
FRI. 9 May	0800 - 1200 1400 - 1630	Bayonet Fighting - Small Arms Tng. Preparation for Musketry practice. Section Leading	Classes for Specialists and M/T Personnel.	-----
SAT 10 May	0800 - 1200	Physical Tng incldg Bayonet Fighting - Admin Recreational Tng by Organised Sport	do do	-----

DATE	PERIOD	GENERAL SUBJECTS	SPECIALISTS	NIGHT TNG	REMARKS
Mon 12 May	0800 - 1200	Bayonet fighting Bull Ring Subjects - Occupation of positions in perimeter defence	All specialists at work in separate classes		Bde HQ to beach
	1400 - 1630	Section leading and Pl movements		2/5 Bn Fighting Patrols	
Tue 13 May	0800 - 1200	Sec Leading Pl Exercises	do	2/6 Bn Fighting Patrols	2/5 Bn to beach
	1400 - 1630	Bull Ring subjects Musketry - bayonet fighting and Gas Training.			
Wed 14 May	0800 - 1200 1400 - 1630	Fd Works and Pl Exercises	do		2/6 Bn to Beach
Thurs 15 May	0800 - 1200 1400 - 1630	Bull Ring subjects Bayonet Fighting Pl & Coy Exercises	do	2/5 Bn night work	
Fri 16 May	0800 - 1200 1400 - 1630	Field Training Bull Ring subjects	do	2/6 Bn night work	
Sat 17 May	0800 - 1200 1400 -	Musketry Insta Admin Recreational Tng by Organised Sport.			

Note:-

1. Application has been made for use of Rifle Range. In meantime CO's will recce for suitable 30 yard range and submit to Bde HQ locality ref and application for use.
 2. Application has been made for vacancies at schools.
 4. Units will submit tng syllabus in detail for week commencing Monday 12 May 41 by 1600 hrs Friday 9 May 41.
 6. Acting Bde Major will allot training areas in consultation with CO's.
- Units will submit requirements for tng stores at earliest. as shortages may be experienced units will make or improvise until stores are available. Pioneer Pls will be employed on erecting a bayonet course forthwith. The layout will obtain the maximum for hardening troops as well as obtaining maximum efficiency.

Sgt Hutchinson

TRAINING SYLLABUS - H.Q.AUST. INF. BDE.

DAY	PERIOD	SUBJECT	
1		SWIFTING	
2		SWIFTING	
3	0645-0715 0830-0900 0900-0930 0930-1000 1000-1200 1400-1430 1430-1600 1600-1630	PHYSICAL TRAINING Close Order Drill Bayonet Training Gas Drill Weapon Training Bayonet Training Fire Application of Close Order drill	M.P.T. ch.VII. para II et seq. S.A.T. Vol I. para 12, Less. 1. D.A.G. S.A.T. Vol.I. para 2, Less. 1-11. S.A.T. Vol.I. para 12, Less. 2 & 3. I.S.L. ch. VI.
4	0645-0715 0830-0900 0930-1200 1400-1600 1600-1630	PHYSICAL TRAINING Rifle Exercises Sec. Training Weapon Training, Rifle Close Order Drill	Continuation of M.F.T. M.E.D. I.S.L. ch. X & II. S.A.T. Vol I, para 3, Lessons 12-22.
5	0645-0715 0830-1200 1400-1630	PHYSICAL TRAINING Occupation of a Perimeter Defence. Field Formations and platoon Exercises.	Continuation of M.P.T. Lecture & Demonstration, Lieut. V. SCHICFIELD. I.S.L. ch.VII.
6 Sat.	0645-0715 0830-0900 0900-1200	PHYSICAL TRAINING Bayonet Training ADM. & Crg. Sports	Continuation of m.p.t. Recapitulation.

1. Where is the enemy.
2. Who is helping us.
3. WHAT IS MY SECTIONS JOB.
4. How is the job to be done.
5. Where is platoon Headquarters.

TALK BY G.O.C. 6 AUST DIV TO OFFICERS HILL 69 - 12 May 41.

Note.- The following is an extract of the main points of the General's speech and contains the main points he brought out. I cannot guarantee that the phrases are the exact ones used by the General but they are similiar.

W. H. D. L.

1. Commenced by stating that the Div was split one third being in this country & two thirds being in Greece.
2. Then went on to outline the general strategic situation in this area briefly. Remarked that the Germans had overrun Greece & several of the adjacent islands. That the revolt in Iraq may be quelled or only dormant & that the Turkish situation & Syrian one was vague & uncertain - that the German Italian forces in the desert were being held at Tobruk by the 9 Div who were in fine mettle - that 7 Div was also in the desert with an Indian Div and that the S.African Div was coming to the DELTA to take on the defence of that area.
3. Stated that those who had gone through the two campaigns were now veterans of war & had experienced most of the spheres of warfare.
4. He then said that he had two main subjects to discuss & that they were the fundamentals of the army.
 - a. Training.
 - b. Leadership.
5. Training.-In this side he said that he did not want to go into the problem at any length but that the following were the main objects that he wished to be concentrated upon--
 - a. Drill to smarten up & instil control.
 - b. Weapon training to bring about confidence of the men in their arms & in their leaders ability to handle them.
 - c. That with good energetic training the spirit of the men would soon be brought back to normal.
6. Leadership. - He pointed out that the difference between a group of individuals & a military concern was the unit spirit. Many personnel existed who always desired to be different, especially in the wearing of uniform. That these personnel wished to feel independent & not one of the mob. These were the men who

B/M JWB

W

W

would let the unit & sub unit down. The officers must break down their spirit of individualism and make them one of the team. Next the relation between the soldier & his arms was spoken of. If a man retains his arms even in cases of real danger & hardship, then he remains a soldier but if he discards them he is no longer a soldier but just a man with no manner of helping his army.

The General then went on to say that he wished the situation to be clear re officers. If an officer was not suitable for his appointment then he wanted him to be got rid of.

Progress was to be made here with our training so that when the Crete personnel arrive they will be surprised by our new standard. Training was being carried out in Crete the same as here.

Officers were to realise that their responsibility was one that exists at all times. It did not end after parade hours. The object of the officer & the NCO should be to keep ahead of his men.

It is necessary to inculcate into our men a fuller sense of duty. At the moment there is a great deal of going through the motions of a task but not really carrying out the duty in a military manner. This was particularly noticeable in the case of picquets & AA guards. The men seem to put their own interpretation upon the job they have been given & the officers do not seem to correct this attitude. Units would be judged from this aspect. Officers must assert themselves & get things done correctly - no use being kindhearted, show that you have guts & leadership.

One of the weaknesses of our NCO's was the fact that they often became officers before they were able leaders.

The example of the incident on the ship to Greece was then given - where the General had heard an officer being apologetic & showing weakness towards his men & trying to win popularity. Too much talk went on & not enough action.

7. One matter from Greece needs serious attention. The action during air bombing & raids. There was not sufficient guidance

given before hand for the troops as to how to act. This must be done fully now. The worst aspect was the way the men ran as if in flight when an air raid was on. Australians do not run in the face of the enemy. In future there is to be no running. Men must lie down where they are or else walk to their cover. The General stated that he realized that if they do lie down then they will possibly get some splinters.

Next there were the cases of men calling out Air Raid. Planes should be distinguished before an alarm is given. If a reconnaissance plane then lie down. If an attack then make for slit trenches. Next signals. General doubts very much whether they are of use in the field. Alright in a city for civilians. Stated that in the last war soldiers were shelled for long periods & that this was much more dangerous than anything we have been through in this war in the M.E. And in the last war when this shelling started they did not run.

Damage was slight from the air action. But for every vehicle damaged from air bombing etc 2 or 3 were ditched by drivers panicking. It is unlikely that a similar situation will arise again where our air support will be so small. If however we do meet a similar situation then we must meet it more coolly & calmly. Officers were to take these matters up with the men & ensure that a correct attitude was developed in their minds. They must not become a rabble & run when attacked but remember they are soldiers.

8. Summing up it is largely a matter of control. First self-control & secondly control of men. Self-control means behaving in a normal manner in an abnormal situation.

9. Lights at night. General agrees with this if enemy allows us to do it. He also stated that the German bomber was not accurate even in day time. The calling out of people to put out lights showed a lack of control & nervousness.

10. The General then instructed that all officers were to take action to stop the use of the word 'Fuck' which had become very prevalent in the Div & in his opinion showed lack of self control & was not normal.

II. Have spoken informally to you so that we can take advantage of our experiences & so that we can build up a fighting force. Then went on to discuss how in some units he had inspected it was obvious that they had not been inspected before properly. In future when he inspected he wanted to find no errors. Also that any cases of AWL or desertion that commanders know of in the Greek campaign must be dealt with in the correct manner.

Next he mentioned convoys & how all officers were responsible for taking action & trying to assist in every holdup of a convoy. Officers & NCO's were to be distributed along the convoy for this purpose.

I2. Notes from report By Brig Rowell.

a. Comparison of strength of RAF & German air. We had 8 Sqns to his 60. Ours were wiped out. RAF declare that they can beat the German with a strength of $\frac{1}{2}$ the Germans.

b. Small amount of material damage done by air action.

c. Need for each man to develop rigid discipline - no running. Running causes panic.

d. Attitude of troops re lights. Once explained they were happy. Fault of officers for not explaining.

e. Stop criticism of RAF by troops. No fault of RAF who did their utmost with what they had,.

War Diary when furnished with

APPENDIX V

NOTES ON MATTERS MENTIONED BY COL WOODWARD.

Hand to 1.0
15 May 41. JWB

1. HEAVY KITS -- A sub-depot will be established in this area so that as bns leave the area they can leave their offrs kit etc in it for security. Details will follow. (Note. -2/5 Bn have been notified.)
2. ESTIMATE.- An estimate of the tonnage required (stores -WE) to move each bn & estimate of personnel strength. Such camp stores to be a minimum.
3. THANKSGIVING SERVICE.- The General asked Col WOODWARD to raise point of Service. General does not want to wait till CRETE personnel arrive. Wants it held Sunday week, then a Re-union service when others arrive. (Brig states prefers to wait till all arrive.) Div Comd will attend parad & probably Bishop Riley will attend. Col will convey to Div Comd preference of waiting till all arrive. (Brig states does not want service to be an opportunity for strangers to show themselves - such as the Bishop - would prefer General to leave show to the bde.)
Col mentions would be diplomatic if Bishop could be worked in - such as reading passage, as he is senior chaplain.
4. BEER.- General says too much beer being sold in canteens with tops on & too much drunkenness. Suggests methods to counteract are
 - a. Picquets to check such traffic-
 - b. Issue of chits - one chit per man for one bottle.(Brig raises point of tables outside canteen for comfort. States that as there has been no trouble in Bde before he is content to let bns handle the matter with their present systems.)
Col Woodward asks that bns systems be passed to him. (A ranged that Lieut Lowen contact bns & pass on to Col Woodward any ideas)
5. HONOURS & AWARDS.- Query as to action Realizes that cannot be complete until Crete personnel arrive.
6. MISSING.- Courts of Enquiry to be completed as far as possible. As soon as Crete personnel arrive then to be completed as soon as practicable.
7. Capt HOARDER.- Application in Div re his transfer. (Brig discusses Lieut French.) Colonel states that General is against the principle

of the transfer. Stops promotion & weakens case of not wanting
Rnfct officers. (Brig then points out the importance of the job
especially as regards AWL etc. Discusses HOARD's capabilities.
Point of age raised.)

8. RNFCT OFFRS. - Letter from Brig Robertson re 3 offers from
training bn. No approval gained from Rnfct HQ.

9. HADERA CAMP. - General is against policy until all Bde is
together & men are beginning to get a little bored. Then we
will get first preference. (Corps have since given approval,
am drafting letter to Div to try & clarify position)

10. STAFF CAPTAIN. - Other recommendation for staff captain
asked for & given.

AMO

Capt

Acting S.C.

H.Q.
17 Aust Inf Bde
18 MAY 41

RECCE NORTHERN AREA - 17 AUST INF BDE GP

1. The following recce party only will proceed on MONDAY 19 MAY because of the shortage of transport.

H Q 17 Aust Inf Bde	Brigade Commander Brigade Major Staff Captain (L) Intelligence Officer One draughtsman
2/5 Bn	Commanding Officer Intelligence Sergeant Q.M.'s Representative
2/1 Fd Regt	Commanding Officer Adjutant or Intelligence Officer
2/15 A. Fd Coy	Officer Commanding
2/1 Machine Gun Bn	Company Commander
2/1 A.T. Regiment	Battery Commander or Representative
2/2 Pioneer Bn	Q.M. or Representative

2. All personnel will report to H Q 17 Aust Inf Bde, D.H.Q. Lines, Hill 69 at 0830 hrs MONDAY 19 MAY for outline of task before proceeding.
3. Cut lunches will be carried.
4. Bde H Q will be established in the Hotel at SAFAD and the following officers will be accommodated there :-

Brigade Commander
Brigade Major
C.O. 2/5 Bn
C.O. 2/1 Fd Regt

Remaining officers and O/R's will be accommodated at Camp of Yorkshire Dragoons and will require camping gear.

5. The following officers will proceed on Wednesday 21 MAY and report at Hotel at SAFAD :-

2/2 Pnr Bn	Commanding Officer Adjutant or Intelligence Officer
------------	--

6. Representative of Units not provided with transport will be carried in cars provided by H Q 17 Aust Inf Bde. One 1 ton truck will carry all baggage.
7. It is estimated that the recce will not be completed before THURSDAY 22 MAY.
8. All officers and O/R's in recce parties will wear caps, S.D. or F.S. Hats will not be worn.

Distribution.

2/5 Bn, 2/1 Fd Regt, 2/1 A.T. Regt.
2/15 A.Fd Coy, 2/1 M.G. Bn, 2/2 Pnr Bn.
Comd. B.M., S.C., I.O.

Jameson MAJOR
B.M. 17 AUST INF BDE

Not to be published.

AUSTRALIAN INFANTRY FORCE.

ROUTINE ORDERS

by

Brigadier S.G.SAVIGE, D.S.O., M.C., E.D.

Commanding 17 Aust. Inf. Bde.

No. 1.

Hill 69

19 May 41

G.S. Branch.

1. PERSONAL SECURITY MEASURES.

(a). Pistols will be carried at all times in GAZA military area by all ranks to whom they are on issue.

(b). Standing Orders Palestine Pamphlet 1 Para 9 will be amended accordingly.

2. FIELD CENSORSHIP.

Many letters are still being posted in civil post boxes. Letters intercepted by field censorship clearly indicate there is much evasion of regulations by means of letters passed by hand. These practises will cease forthwith.

Arrangements have now been concluded with the civil postal authorities for all service correspondence irregularly posted to be handed over to the Army Postal Service.

Severe disciplinary action will be taken in future against offenders, under the section of Field Censorship Regulations reproduced below:-

(a) Part 1 Para 7 - (i) All letters, from ALL RANKS, to any destination, and with any stamps, MUST BE POSTED IN ARMY BOXES OR AT ARMY POST OFFICES.

(ii) It is forbidden to despatch private correspondence by the hand of an Officer, soldier or civilian FROM any place TO any place, either within or outside the command.

(b) Part 1 Para 3 (b)- The term "all ranks" includes-

(i) Wives and adult relatives and dependents of officers and other ranks,

(ii) Attached allied personnel

(iii) Civilians employed by H.M. Forces

(iv) Civilians visiting the Army

(v) Interpreters.

(c) Individuals described in para (b) above, sub-paras (i) and (iv) do not enjoy the privilege of free postage accorded to troops in certain parts of the command. (To be repeated in all unit orders). (Force G.O. 277)

3. PAINTING OF VEHICLES WITH DETECTOR PAINT.

Many vehicles have not been correctly painted with detector paint in accordance with chemical warfare instruction No. 6.

The paint should be applied to a portion of the vehicle which is clearly visible to both the driver and the passenger; in most cases this will be on the bonnet. To avoid making it conspicuous, the patch of detector paint will not be regular in shape but should correspond as nearly as possible to the existing camouflage scheme. The patch will cover an area equivalent to 10 ins. by 10 ins.

All types of vehicles will be painted in accordance with the above directions (Force G.O. 278)

4. CAMERAS.

Attention is drawn to the following orders:-

(a) An order made by the Military Commander, Haifa District, under the Defence Regulations, dated 24 Jun 40, and published in the "Palestine Gazette" and the local press which prohibits the

making of any photograph, sketch, plan or other representation of any individual or object within an area contained within a radius of ten miles from the District Commissioner's Office, without a written permit from the Military Commander, Haifa Fortress Area.

(b) An order issued under the Trans-Jordan Defence Regulations No. 2 of 1939, prohibiting (i) the carrying of cameras in areas within a radius of ten miles of IRBID and HAFRAQ (ii) the making of any photograph, sketch, plan or other likeness of any Army or Royal Air Force works wherever situated. (Force G.O.280)

5. SEA MINES.

Personnel finding mines washed up on beaches are warned NOT to attempt to secure or explode the mines, but will immediately inform Naval Officer-in-charge, Paléstinian Ports at Haifa. Open danger area of a mine is 1000 yards.

6. SECURITY OF INFORMATION.

It has come to the notice that in certain cafes and other places personnel have written their names and military particulars (such as numbers, Units and ranks) on the walls, furniture or fittings. It has also been reported that similar particulars have been written in Visitors' Books and in autograph books. These practises will cease forthwith. Any contravention of this order will be dealt with severely. (To be repeated in all unit orders).

7. TELEPHONES IN CAMPS.

1. When taking over Camps or premises in which a telephone system is installed or where the wiring of a previous system exists, Units will accommodate themselves to the system as far as possible. Telephones already installed beyond the minimum requirements of the unit will NOT be retained and Signal Officers will take steps to have all such telephones recovered.

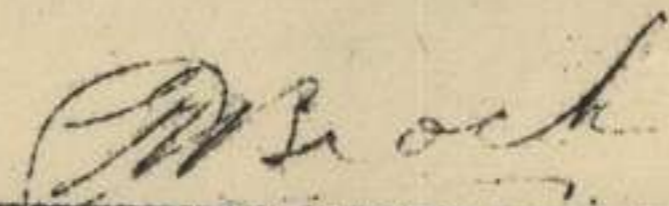
2. Removals of telephones usually necessitates the expenditure of cable and other stores of which, at the moment, there is an acute shortage. Requests for removals will NOT be made unless the removal is definitely necessary.

3. All applications for removals or new installations should be made to C.O. Base Area Signals. Units are NOT permitted to make any alterations to service, or remove instruments when leaving area.

4. Camp Staff Officers will notify Base Area Signals whenever instruments in their camps may be disconnected, thereby saving unnecessary telephone rentals.

8. CENSORSHIP CABLES.

No mention of the Unit or Palestine may be made. Reference to a successful evacuation from Greece is permissible.



Major

B.M. 17 Aust. Inf. Bde.

A. & C. Branch.

9. HYGIENE - PREVENTION OF BILHARZIA.

All troops will be warned that most of the natural sources of fresh water in the Middle East are infested with Bilharzia. Bathing, wading or washing in any such water is prohibited unless it has been declared safe by the medical authorities. (Force GO 284)

10. MARKING OF TINS AND CASES AND CONSERVATION OF TINPLATE.

(a) The embossing of the product name on the side panels of 4-gallon P.O.L. tins will shortly be discontinued and the name or the product contained in the tin will be embossed on the tops of the tins only.

(b) To assist in the sorting and stacking of tins and cases and to indicate the right way up for stacking, a colour "flash" will be put on the tops of the tins and cases. The colour "flash" on cases will take the form of an appeal to return the case. The colours used will be as follows:-

Red for petrol MT
Black for A.G.O.
Yellow for M.B.O.

(c) A special tool designed for opening 4-gallon tins, 4-gallon and 2-gallon returnable containers is being produced. The tool is for piercing holes in 4-gallon tins, and the flat end of the tool is designed to open the slotted screw bungs of 4-gallon returnable containers and the faucet caps of 2-gallon containers. This tool will be added to the standard issue of equipment for all A, B, and AASC vehicles and DIDS. Indents will be submitted through the usual channels.

(d) A sketch with a note on the right and wrong ways to open 4-gallon tins is being printed, and this will be issued to all motor vehicle drivers, posted up at all DIDS, VRDs, HRS, etc. Indents will be submitted through the usual channels. (Force G.O. 290)

11. BREN GUN MAGAZINES (36 ROUNDS) FILLERS - WITHDRAWAL OF.

(a) It has been decided to withdraw all Fillers, Magazine, Bren .303", MG, Mk 1, and ~~xxx~~ in future only Fillers, Magazine, Bren .303", MG, Mk 11, will be held. The scale of Mark 11 Fillers will be 15 per Infantry Battalion.

(b) Officers commanding units who held Bren magazine fillers will return forthwith to the base or advanced ordnance depot by which they are served; all Mark 1 Fillers in possession, and all Mark 11 Fillers in excess of scale. Where deficiencies of Mark 11 Fillers exist, an indent will be submitted to the DADOS of the unit's formation. (Force G.O.294)

12. FLEAS.

For the control of fleas it is necessary for the following measures to be carried out:-

(a) Frequent prolonged exposure of all bedding to bright sunlight.

(b) Treatment of all bedding, floors and corners of tents, boxes, shelves, cracks in floors, etc, with pyrethrum powder applied by means of an ordinary household blower. This should be done as often as any trouble is experienced.

(c) Units requiring pyrethrum powder will indent on AASC for supplies on the scale of 9 lbs per 100 men per month.

13. ALDERSHOT OVENS.

(a) Owing to lack of fuel wood, and consequently improvised oil burning cookers being used, many Aldershot ovens with units are not in use. These will be returned to Adv Ord Depot, BARBARA, forthwith.

14. CURTAINS - SANDFLY.

Curtains sandfly are not at present available for issue to all troops in PALESTINE. For the time being, curtains sandfly will only be issued to troops in malarial areas.

15. DRESS - COLOUR PATCHES.

(a) Unit colour patches are authorised to be worn at the sleeve-head of jackets SD, and greatcoats and on the right hand side of the hat. The wearing of colour patches on jackets, khaki drill officers, and on the cap SD, is forbidden and will cease forthwith.

(b) The colour patch of not more than one unit may be worn. Miniatures are strictly forbidden.

16. CORRECT TITLE - AIF.

It is noted that the wording "Australian Imperial Forces" is being used by a number of units. This is incorrect, the proper designation being "Australian Imperial Force".

17. WITHDRAWAL OF KITS FROM AIF KIT STORE.

Units desiring to make bulk withdrawal of kits from AIF Kit Store will submit in triplicate to AIF Kit Store Detachment, AIF Base Area, a nominal roll of personnel on AIF KS 5 or AIF KS 5A. Separate Nominal Rolls will be made out as under, NOT more than one group will appear on any one page:-

OFFICERS

ORs Group 1 A - H

ORs " 2 I - Q

ORs " 3 R - Z

Unit equipment and Regimental Property.

18. WASTE OF FOOD.

Cases of avoidable waste of food in unit kitchens, both in camps and barracks, continue to be reported. This waste is attributed to the following main causes:-

(a) Lack of supervision by unit officers.

(b) Lack of precautions and supervision necessary to prevent pilfering of food and swill by unauthorised persons and native employees.

(c) Bad cooking.

All bones must be stripped of meat and boiled to obtain stock for gravy, soup, etc, before disposal.

Unit Commanders will give these points their personal attention with a view to eliminating these causes of waste of food.

19. OFFENCE REPORTS.

All units will submit copies of offence reports (B2069), whenever rendered), to H.Q. 6 Aust. Div.

20. PAY - LEAVE PERSONNEL.

Attention is drawn to the fact that no pay is available in Jerusalem for personnel on one day's leave. Pay is only available for those on leave for two or more days.

21. RAILWAY CROSSINGS - DANGER OF.

All unit Comdrs will warn drivers of MT vehicles of the dangerous nature of railway crossings in Palestine and of the necessity for exercising every possible care when negotiating them.

22. RESERVE RATIONS.

All units will draw, and hold in unit store, four days reserve rations.

23. TENTAGE AND ACCOMMODATION STORES.

(a) The following amended tentage scale will operate forthwith:-

6 Officers per EFIP tent or equivalent.

10 WOs or NCOs per EFIP tent or equivalent.

14 Men per EFIP tent or equivalent.

(b) Dining and drying tents are removed from the scale of authorised issues (HP/Q/7149).

(c) All tentage and accommodation stores held surplus to the authorised scale will be returned to Aust Base Ord Depot immediately.

24. ANTI - FLY MEASURES.

Flies play a large part in the spread of dysentery and other bowel diseases. A campaign must therefore be waged unceasingly against these pests especially as in Palestine they are likely to be present most of the year.

The following measures will be undertaken by each unit:-

(a) Destruction of flies by -

- (i) Trapping, swatting, spraying, and tanglefoot. The scale of issue of various anti-fly stores is laid down in Standing Orders, Palestine (Prov); Pamphlet 2.
- (ii) Minimising all breeding places, e.g., manure dumps and refuse of all descriptions. Refuse bins must have well fitting lids which are kept in place and sufficient bins must be provided. The proper disposal of such rubbish and litter is the responsibility of the unit. Latrines must have well fitting lids which will be kept closed. If the bucket system is used, it is the responsibility of the unit that the contractor disposed of the excreta in a proper way.
- (iii) Kitchens and dining halls will be kept scrupulously clean and consequently less likely to attract flies.

(b) Protection of food.

- (i) Fly proof safes for articles of food will be provided and used. Covers for food and liquids will also be provided. Supply or repair of fly-proofing to kitchens and dining halls will be ensured. Fish netting or old mosquito nets may be used to fly-proof such buildings. Wire doors and windows in fly-proofed buildings will be kept closed at all times.
- (ii) All vegetables and fruit consumed uncooked will be thoroughly washed under running water and then soaked for 15 minutes in permanganate solution. Cooked fruit and vegetables are, as a rule, safe, provided they have not been contaminated before cooking. Fruit with thick skins, such as oranges and bananas, are usually safe.

These measures are a unit responsibility but the medical officer will advise as required. Neglect of these precautions will inevitably lead to high sick rates among the troops and impairment of efficiency in the unit.

NOTE. 1. The most efficient method of using tanglefoot is to smear it on a piece of wire about 18 ins long. The wire is bent into a hook at one end so that it can be hung and at the other inserted into a small piece of wood to prevent dripping of the tanglefoot. These wires can be made up by units in large quantities and work very well.

2. If tanglefoot paper is used, it should not be placed flat on a table, etc, but wrapped around a bottle or can which is allowed to stand upright, thus giving a vertical surface for the fly to settle on.

25. BOUNDS.

The "New Palace Hotel", Sharia Sikhet Maghraby, Cairo, is placed "In Bounds" to all ranks with effect from 6 May 41.

26. DRESS.

General Order No. 13 of 1941 is cancelled. Pistols and ammunition will be carried at all times by all officers and WOs Class 1.

27. HEADLIGHTS.

Attention is directed to AIE Base Area GS Instruction No 7 para 7 (b):-

Headlights of MT are to be blacked out as follows:-

Headlamps: Off side - blacked out.

Near side - obscured except for semi-circle of 2 ins.
Inner half of reflector to be blacked out.

Side-lamps, Obscured to opening of $\frac{1}{2}$ in.

Stop & Fog-lamps - Blacked out.

Tail-lamps: Obscured to opening of $\frac{1}{4}$ in.

Unit Comdrs will be responsible for ensuring that the blackout of headlights of all MT on charge is effectively maintained. This instruction must be complied with, failure to do so will result in disciplinary action being taken.

28. DISINFECTANTS.

A perusal of demands for cresoli shows that excessive quantities are being used. Units are reminded that cresoli is normally diluted as follows:-

1 part cresoli	(H2 C16)
10 parts water	(H2 O)

29. TRUCKS, 8cwt and 15cwt MORRIS.

Care should be taken to ensure that the petrol tap, located at the base of the autovac of MORRIS 8cwt and 15cwt is turned off when the engine is stopped. If this is not done, there is liability of petrol overflowing into the air intake pipe from the air cleaner with consequent difficulties in starting and damage to the air pipe. (To be repeated in all unit orders).

30. CAMOUFLAGING OF TENTS.

Camouflage dye for painting of white tentage is held by AOD. Units in Palestine will submit indents forthwith through DADOS. Indents will show the numbers by type of tents for which the dye is required. The "Quantity" column of the indent will be left blank for completion by AOD.

31. BOUNDS GAZA TOWN.

GAZA TOWN is OUT OF BOUNDS to all ranks except personnel from 1 Aust Gen Hoap who must possess special leave passes for the purpose.

Swimming parties proceeding to and from GAZA BEACH are NOT permitted to halt within the town limits nor are they permitted to visit SPINNEY'S CAFE.

32. AUSTRALIAN HEADQUARTERS GUARD BATTALION.

1. Applications will be called forthwith to fill vacancies in the above-unit. Units will submit rolls of suitable personnel to H.Q. 6 Aust Div by categories as shown below as early as practicable. Supplementary returns will not be forwarded when additional personnel have joined their units in PALESTINE.

2. ~~Selection~~ In selecting personnel, who must be over 35 years of age, for transfer to this unit, preference will be given in the following order:-

- (a) Married with families.
- (b) Married.
- (c) Men who have had long service abroad.

33. STORES.

Units will ensure that the correct procedure is observed regarding indents and vouchers.

(a) INDENTS.- To be submitted to DADOS in triplicate. Heading and columns 1 to 7 must be filled in.

Full reason and authority must be entered in Column 1.

(b) VOUCHERS.- Immediately on receipt of vouchers, all copies will be receipted by Officer Commanding Unit. "A" and "B" copies (in the case of RAOC Depots, four copies) will be returned to DADDS.

[Signature] Capt.
S.C. 17 Aust. Inf. Bde.

Not to be published.

AUSTRALIAN INFANTRY FORCEROUTINE ORDERS

by

Brigadier S.G. SAVIGE, D.S.O., M.C., E.D.

Commanding 17 Aust. Inf. Bde.

No. 2.

Hill 69

24 MAY 41

G.S. Branch.34. DISCARDED MILITARY UNIFORMS.

Officers Commanding Units will make arrangements for the collection of all discarded military uniforms and take steps to prevent all such items from falling into unauthorised hands. Native workman employed in military areas have been found wearing odd items of uniform. In view of the possibility of P.C.W. and Internees attempting to escape such articles of clothing would be invaluable to them for carrying out their designs.

35. TROOP MOVEMENTS AND LOCATION OF UNITS.

There have recently been numerous cases of telephone calls from individuals representing themselves as being military organisations, enquiring the locations of various units, and asking for information regarding certain troop movements, etc. All ranks must be on their guard against these activities and on no account should these matters be discussed over the telephone or similar information passed on to any unauthorised person.

36. FIELD CENSORSHIP - PHOTOGRAPHY.

A serious state of insecurity has arisen through the indiscriminate use of cameras, and the following regulations are issued for immediate enforcement by all Units.

1. A register will be kept by each Unit showing rank and name of personnel in possession of cameras. An Officer i/c photography will be appointed within each Unit. He will be responsible for keeping the register up-to-date, and for ensuring each person in possession of a camera is acquainted with the provisions of Field Censorship Regulations, 1940, Part I, para 10.
2. Before proceeding to any zone of active operations all cameras will be withdrawn and forwarded for safe custody to C.'s C. Base Depots or to 2nd Echelon, with the exception of one camera per unit which may be retained for record purposes by the Officer i/c photography. Films exposed by him will be forwarded for development to one of the undermentioned firms, and to no other establishment.

CAIRO. - Kodak (Egypt) Ltd., S.A., 20 Sharia Adly Fasha.
ALEXANDRIA - Kodak (Egypt) Ltd., S.A., 23 Sharia Cherif Fasha.

PORT SAID - Simon Arzt Store.

ISMAILIA - E. GAVALAS, Ismailia Town.

SUEZ - Photo Cleopatra (Prop. N. Nekhitarian)

At the approved establishment, they will be subject to censorship, and photos if it is considered, for security reasons, should not be sent to forward areas, will be sent to 2nd Echelon to be held there until after the war. Films found in any other store will be confiscated and destroyed.

/3. General

3. General Headquarters retain the right to take copies of any photographs and to use such copies for any purpose without payment. Expenses incurred in reproducing such copies will be defrayed by General Headquarters.
4. There have been many cases of interference by the Egyptian Police with Service personnel using cameras in prohibited areas. The Egyptian Police cannot be blamed for these incidents as they are merely carrying out their instructions. For this reason Egyptian Government Proclamation No.60 is quoted at the end of this Order for information and strict compliance by all concerned.
5. To be repeated in all Unit and Formation orders every three months.

Egyptian Government Proclamation No. 60.

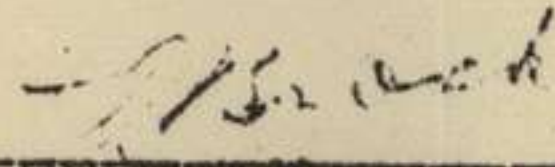
All persons are forbidden, unless in possession of a special permit issued by the Ministry of National Defence, to take photographs, or make sketches or drawings, within or near a prohibited Military Zone.

For the purpose of this Proclamation the following are prohibited Military Zones :-

1. Military works, buildings or fortifications, aerodromes, batteries, searchlights, barracks, camps, bivouacs, cantonment.
2. Arsenals, munitions or supply depots, buildings, establishment or yards performing work of national defence.
3. Telegraph, telephone and wireless stations, water, gas and electricity works or systems, gasometers, petrol and oil installations, tanks and systems.
4. Port areas and everything contained therein, the Suez Canal, installations thereon, boats and ships navigating therein, bridges, locks, and waterways generally in relation thereto.

Photography or sketches of the following are also forbidden :-

1. Naval, Military or Air Force units or formations of the Egyptian or British Forces, their ships, aircraft, tanks, artillery, vehicles, weapons and equipment.
2. Hospital trains, ambulances, casualties.


Major
B.M. 17 Aust. Inf. Bde.

A. & Q. Branch.

37. M.T. SPARE PARTS.

1. Until further notice, spare parts for the repair of M.T. Vehicles will be demanded and issued in accordance with the following :-

- (a) Indents will show type, make and registered number of Vehicle, and will contain a certificate signed by the C.O. that the Vehicle is out of action.
 - (b) Catalogue No. of items where applicable will be entered on the Indent.
 - (c) All demands will be submitted to D.A.D.C.S. for approval.
 - (d) In cases where replacement articles such as tyres, tubes, batteries, armatures, etc. are required, a return Voucher (G.1033) to R.S.D. will be attached to the Indent.
2. At present IT spares will NOT be issued as unit stocks or reserves.

/39. COLOUR

30. COLOUR PATCHES.

Contingent upon changes in organization and the creation of new units, the basis on which colour patches were originally allotted has proved no longer satisfactory.

To enable the whole subject to be reviewed, all units will submit details of the patches now worn.

For reasons of tradition and sentiment, it is desired to preserve the Colours as worn by equivalent units of the A.I.F. 1914-1918 or as originally allotted to the present A.I.F., and it has been suggested that, notwithstanding the changes in basic shape which will necessarily follow inter-formation transfers, this object could be achieved by retention of the original colour patch, in miniature, superimposed on a patch of the basic shape of the new formation.

It is appreciated that this may destroy the sequence of patches within Brigades and that, except for H.Q.'s, the basic colour patch may not apply, but it is considered that a complete re-allotment of patches is undesirable.

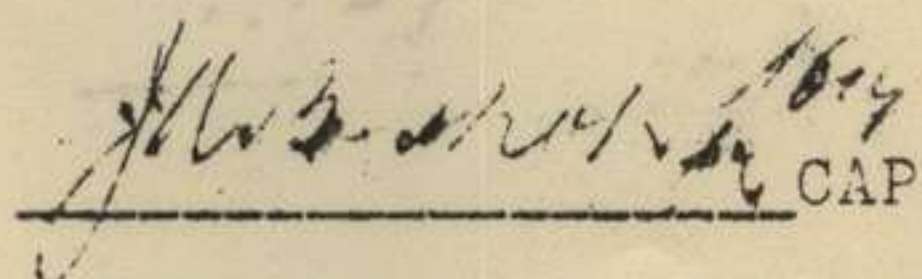
Details of colour patches now worn will be accompanied by any submissions or recommendations it is desired to make, keeping in mind the fundamental object of preserving unit colours already allotted. (Rear Ech. H.Q. A.I.F. 2775 of 8 MAY 41).

39. OBSCENE LANGUAGE.

The loud-voiced repetition of a certain type of filthy language is prevalent in the Division. This is not the normal language of Australians, and the practice is to cease.

40. CONGRATULATORY MESSAGE.

"The Minister for the Army expresses his deep appreciation of, and conveys his congratulations to, the Commander, Staff and all ranks of the A.I.F. who fought in GREECE, on their magnificent conduct of operations and their bearing under the trying circumstances and conditions with which they were confronted.


CAPTAIN
S/C 17 Aust. Inf. Bde.

W/D

Not to be published.

AUSTRALIAN IMPERIAL FORCE

ROUTINE ORDERS

by

Brigadier S.G. SAVIGE, D.S.O., M.C., E.D.

Commanding 17 AUST INF BDE

No. 3.

Hill 69.

30 MAY 41

G.S. Branch.

41. SECURITY - CORRESPONDENCE.

Where portions of units are located in different theatres of operations in the Middle East, correspondence addressed to members of these units must not indicate the particular theatre or camp location in which the member is serving.

All mail will continue to be addressed as follows :-

VX 1234 Ite J. Jones
"A" Coy. 2/5 Inf Bn
A.I.F. ABROAD.

Arrangements are being made to ensure that mail will be delivered as expeditiously as possible.

42. ALLOCATION FOR TRAINING.

Units will submit immediately a statement showing requirements of ammunition for training purposes by types. This will be based on the number required to enable completion of all range practices by those with the unit who have not done so to date.

Major
B.M. 17 Aust Inf Bde

A. & Q. Branch.

43. BOUNDINGS - GAZA TOWN

(a) HQ, AIF BASE AREA ROUTINE ORDER No.298 of 13 MAY 41 is repeated:-

"GAZA TOWN is OUT OF BOUNDINGS to all other ranks except personnel from 1 Aust Gen Hosp who must possess special leave passes for the purpose.

Swimming parties proceeding to and from GAZA BEACH are NOT permitted to halt within the town limits nor are they permitted to visit SHINNEY'S CAFE."

(b) Camp and Unit Comds will ensure that all personnel under their Comd are acquainted with the terms of this order and that officers are instructed NOT to issue passes to allow soldiers to be in GAZA on leave.

44. TREATMENT OF SYPHILLIS.

(a) Recent cases will be admitted to No.8 Special Hospital in the usual way.

(b) Partially treated and incompletely cured cases will be TRANSFERRED to No 8 Special Hospital where a special company of men undergoing treatment has been formed - they are not admitted to hospital in the usual way.

/A casualty

A casualty Return showing the transfer must be made out, and the words "for Syphilitic treatment" entered in the remarks column.
On completion of treatment the soldier is re-transferred to his original Unit.

45. PROPHYLACTIC CENTRES.

Trophylactic Ablution Centres are established in tents adjacent to C.R.S.'s. in JULIS, KHAUSA and HILL 69 camps.

46. TYRE EQUIPMENT.

All units will submit to DADCS, 6 Aust Div, by 3 June 41 a return showing type and make of all lorries having 32' x 6' tyre equipment.
Nil returns will be submitted.

47. ISSUE OF SHORT PUTTEES.

- (a) Supplies of Puttees Short are now coming to hand. Units will submit indents for requirements of Puttees Short and Hose tops to replace Gaiters held.
- (b) Unfulfilled demands for gaiters are being amended by 2 A.C.D., and puttees short and hose tops will be issued in lieu.
- (c) On receipt of puttees short, gaiters will be collected, and returned to 2 A.C.D., Barbara. Copy of completed voucher G1033 will be submitted to DADCS, 6 Aust Div.
- (d) Stockings may continue to be worn with puttees short, pending receipt of hose tops.

48. AMMUNITION.

Indents (G997) for Ammunition will be submitted to DADCS as follows :-

- (i) War Equipment. To complete to full scales as in War Establishments, A.I.F., except that proportion only will be demanded where a reduced establishment of any weapon has been notified. Scale for Thompson Sub Machine Guns is 1150 rounds per gun, and for Pistols Smith & Weston.450 as for Pistols Webley.
- (ii) Security Purposes. Minimum requirements, on scales as may be laid down from time to time, on basis of actual weapons in possession of units.
- (iii) Training. As required on authorized scales.

49. TENTAGE - UNAUTHORIZED USE (C).

The practice of removing tent flies, tent walls and other associated fittings from camp lines to the bathing beaches for use by individuals as sun-shelters is forbidden, and will cease forthwith.

Brookley
CAPTAIN

S/C 17 AUST INF BDE

NOTICES.

LOST.

A steel trunk and valise marked SX 10244 Lieut. P. CROLETON have been lost. Any information regarding these articles should be forwarded to this HQ immediately.

FOUND.

In Officers' Changing Shelter, GAZA BEACH, on 20 MAY 41 - 1 pair Swimming Trunks. Owner may have same on application to Major W.S. Scrivenor, Area Comdt, GAZA.

AUSTRALIAN COMFORTS FUND.

Major A.F. Fenman has been appointed Commissioner in charge of Australian Comforts Fund operations in Palestine.

OFFICERS' SHOP - GAZA.

The AAOC Officers' Shop is now operating at GAZA. Stocks of Camp Kit, clothing and leather goods are carried. Uniforms are tailored to measure. The shop is situated at Billet No.803a, at rear of Spinney's Store.

-----0000000000-----

B.B.C. BROADCAST.

It is notified for information that the Request Programme for British Forces in the Middle East on Saturday will be broadcast at 6.30 p.m. instead of 8.30 p.m.

At 9.00 p.m. on Saturday, there is a feature programme for Empire Day called "Brothers in Arms".

-----0000000000-----

MAPS.

HAIFA & SAFAD : 1/100,000.

MOTOR MAP : 1/500,000.

AFFRECIATION OF THE SITUATION by BRIG. S.G. SAVIGE,
D.S.O., M.C., E.D. - at 1900 hrs, 31 MAY 1941.

OBJECT.

To establish a defensive line, Jct River JORDAN -
LAKE TIBERIAS - ROSH PINNA - KAHR BIRIM - HILL 840 on which
to halt an enemy advance into PALESTINE and defeat him.

FACTORS EFFECTING THE ATTAINMENT OF THE OBJECT.

THE LINE.

The extent of the line, without allowing for
nature of country, turns etc., is 37,500 yards.

DEDUCTION.

This in itself demands a consideration of the
best employment of any force available. It entails
also the question of policy as to whether the line will be
defended by localities, each supporting the other with depth
in defence, or the adoption of a "beach defence system".

DECISION.

Defence in depth is the best counter for
infiltration.

TERRAIN AND ROADS

1. The country between the P. JORDAN and the hill
country to the west of TIBERIAS Rd, is flat to undulating for-
ward of the defended localities at ROSH PINNA; except on the
EAST along the line of R. JORDAN, where it is steeper and rougher.
2. SOUTH of a line running from T.J.F.F. (sq.201262)-
TALL SANJAG - Kh.as.SINNEINA - R.JORDAN, the country rises
and overlooks the plain and lower country to the NORTH.

SOUTH, to LAKE TIBERIAS, it is undulating to flattish in the centre, and steep and rugged in it's SOUTHERN extremity.

Between R. JORDAN and WADI MUSALLAKHA, it is steep and interspersed with WADIS. The whole area is strewn with boulders and is considered to be TANK PROOF. It is, however, passable to infantry; who would find great difficulty in carrying their heavier weapons and ammunition. Pack animals would assist them but progress would be slow. Good fields of fire for M.M.G. are found in a number of places. The Area Kh.al ALYA - Kh KHATI is high and is suitable for a locality for reserves to the right flank. The only road, of sorts, is the unmade road along the NORTH SHORE of the LAKE. Some tracks run N.W. & S.E. & E. through the centre. A Road is being constructed from about a Kilo S. of T.J.F.F. which will swing in a loop, just E. of Kh.al.ALYA, and return to the MAIN ROAD. The country would make a counter attack by our A.F.V's. impossible, and by Infantry extremely difficult.

DEDUCTION.

This area should be held by fire power, and with fewer men than other localities. If the extent of the line, and paucity of Tps, demands a long front for a Bn, this area is considered to be one where the risks attending a long front could be reasonably taken. It would be necessary to have strength on the left, where the line junctions the Tank Ditch, and strength of men could peter out towards the LAKE area. The Unmade Road could be covered by the Carrier Pl. The difficulty to movement and the country lending itself, generally, to good fields of fire, action by fire, rather than by movement of Tps, to counter attack is sounder. An attack by A.F.V's., by either side, leading to success is ruled out. The judicious placing of BDE reserves lends depth to the defence.

3. The area of the valley traversed by the TIBERIAS

Rd, S. from where ROSH FINNA Rd junctions, is narrow. On the W. the country rises steeply towards SAFAD. On the E. it rises slightly above Rd level. NORTH of ROSH FINNA Rd it slopes gently forward, and opens up into the wider flatter country fwd of TANK DITCH. The Rd is first class; as is the Rd via ROSH FINNA leading to HAIFA.

DEDUCTION.

The right Bde is tied to the strong prepared positions in the ROSH FINNA area, which cover the TIBERIAS Rd. This Rd must be protected S. to the LAKE.

DECISION.

To conform with dispositions of units holding the ROSH FINNA defences the line of F.D.L's. for right flank Bn, in linking up with the former, must include (left to right) TALL SANJAG - Kh.as.SINNEINA - Ft 343 - then S. along line of WADI MUSALLAKHA to LAKE TIBERIAS.

4. The high ground rising some 1000 - 1500 yards W. of Tiberias Rd., in ROSH FINNA Area, is based on MT. Sh.BANIT. It's general area extends from Sh.ABDULLAH (sq.200258) - ROSH PINNA - FIR'IM - QABBA'A - the line of WADI SHABABIK - DALLATA - TEITABA - the line of WADI LEINAN. It is rough, steep, and is intersected with WADIS on it's E. & N.E. face. E. - N. of SAFAD, it drops steeply into WADI LEINAN. SAFAD is on a conical hill, rising steeply, and is a separate feature. WADI LEINAN is wide and deep with precipitous sides. It prevents movement of vehicles of any description. The Rd between SAFAD and EIN ZEITIM could be blocked by well prepared demolitions. The foothills between ROSH FINNA - QABBA'A to (and including) line of WADI SHABABIK present difficulties to the defence. When stopped by the defences protected by the Tank Ditch, the enemy is certain to endeavour to infiltrate to the high ground of Sh. BANIT. The general area is close country.

DEDUCTION.

The area from left extremity of Tank Ditch to QABBA'A is essential ground to the prepared defended area. Its defence therefore must be controlled by the Commander of ROSSH FINNA defences. Its difficulties can be overcome by adding fire power (M.M.G's.), and placing the Mortars of the fwd Bn in this area. The area QABBA'A - DALLATA - South to Lt. 816 must be controlled by one Comd. Apart from the foothill area, the WADI, running almost E.W. through its centre, and WADI SHABABIK, present lines of approach for enemy infiltration.

DECISION.

The prepared defences of ROSSH FINNA must include the area TALL SANJAG (exclusive) - QABBA'A (inclusive). Its depth must include pill box area SOUTH to grid 262. The Pill Box defences require 2 Bns, less 2 Coys. Rear bdy. left fwd Bn :- ROSSH FINNA Rd - 408 (within T.J.F.F.) 3 Coys fwd. 1 Coy reserve, (but tied to pill box system). Rear Bn. 2 Coys tied to defences. 1 Coy each pill box defences on Rd area and T.J.F.F. area. 2 Coys in reserve for primary role of Counter Attack.

The right Bn of left Bde, in QABBA'A (exclusive) - DALLATA area, must be disposed to cover the left flank of right Bde to prevent infiltration. The country denies counter attack, other than from Coy localities. Counter attack by fire is the first consideration.

5. The area TEITABA - DALLATA - RAS AL AHMAR - JISH It 19012685 - QADDITA is a high Plateau. To the south it is lower and undulating to close. DALLATA and Pt. 835 are both high points. Generally it offers good fields of fire, and its E. N. & W. edges are protected by WADIS practically impassable to TANKS. It would be a suitable area for landing Paratroops. Through this area the Rd QADAS - RAS AL AHMAR enters. At the latter

point the Rd forks, one leading, via TEITABA - QADDITA, to Main Rd, the other junctions Mains Rd S. of JISH. Another Rd leads from JISH to QADDITA. These Rds are second class. Several lesser tracks bisect the area. Close areas near the Plateau are pts RAS AL AHMAR and JISH. The former is on high ground, extensive in area, and would require 2 Coys to hold the locality. The field of fire from JISH is poor, and the position is not considered to be secure. In both cases, positions to the rear are forced after close recce. The Rd system is better controlled also. JISH, however, offers observations to the enemy, but he should be denied this by Inf and Arty fire. Approaches, less Rds, to the area are rocky, steep and considered to be Tank Proof.

DEDUCTION.

The first consideration is to hold Pts covering or commanding the Rds, Tracks, and WADI approaches. The line of WADI SHABABIK provides an obstacle which covers the Plateau. Positions fwd of this line either lead to enclosed country, or present an awkward obstacle in Rear. Temptation to advance the line further, not only provides generally poorer positions, but lengthens the line. By covering the outer edge of the Plateau localities can be better interlocked in a fire plan. A rear locality is not only required for depth and covering Rd junctions, but can engage enemy Faratroops. The disadvantages caused by not occupying RAS AL AHMAR and JISH are outweighed by advantages of the shorter line, with localities providing a greater degree of mutual support.

DECISION.

Hold the line delineated by outer edge of Plateau.

5. The area JISH (exclusive) - KAHR BIRIM - Pt. 840 - SASA - JISH is generally very close country. From JISH and on a line N. through Ft. 840, numerous WADIS intersect

the country. The high ground is along a line
KAFR BIRIM - SASA - MT. ADATHIR - Pt 840. KAFR BIRIM
is a pill box locality, linking up with another at FASSUTA,
and is to be included in the general line. Our Frontier
Rd. passes through KAFR BIRIM, SASA and leaves our line in
vicinity of P.S. The Syrian Frontier Rd. runs parallel
with ours, just inside the border, and junctions TIBERIAS Rd
near METULLA. From here to BINT JUBEIL (approx N. of
KAFR BIRIM) it is shown as second class. W. to the
coast the road appears to be poor. From BINT JUBEIL
a second class Rd leads to TYRE. From the length of
Rd BULEIDA - RUMEISH numerous tracks cross the frontier into
our area. It can be assumed that the enemy may discard
Rds TIBERIAS and HAIFA and select the Rd TYRE - BINT JUBEIL
and / or METULLA - BINT JUBEIL, or both, and attack from this
area. His objective would be SAFAD - ACRE Rd, which
gives him a line of advance to either NAZARETH or ACRE. The
former gives a good axis of advance on JERUSALEM, via NABLUS;
the latter along the coast via HAIFA. In either case
he avoids the strong defences of ROSH FINNA and EZ ZIB.
This assumption indicates the importance of the area under
discussion.

DECISION.

This area must be held in strength.

7. On the general areas E. of ALMA, and N.E. of
DEISHUM, the country appears suitable for landing parachute
tps. These areas are divided by WADI HINDIJ running
roughly E.W. It is a formidable obstacle.

DEDUCTION.

WADI HINDIJ offers a good Tank obstacle and solid
line of defence, but must be held strongly. As we appear
to be tied to the ROSH FINNA defences, it would mean discarding
them, and also adding the line, for flank protection, R. JORDAN
between LAKES HULA and TIBERIAS. The line of the WADI

is longer than the one outlined and requires more forces. It also presents a salient. The Swamp Area N. of LAKE HULA is a definite obstacle but it is 4000/5000 yds from the line of WADI. This could be shortened, on the right, by taking the line of high ground from DEISHUM - AL ULMANIYA. The left, swinging at almost right angles, presents dangers to a solid attack from KAHR BIRIM on SAFAD area in cutting off right fwd Tps. Given sufficient Tps it can be considered as an outpost line.

DECISION.

It is probably too late to carry out the required work on this line, particularly on the flat areas between the high ground and LAKE HULA. Adequate Tp requirements not being sighted, the dangerous left flank, and difficulties caused by the Salient, force one to discard it in favour of the general line of WADI SHABABIK further SOUTH.

8. The area S.S.W. of ROSH PINNA - SASA Rd is based on MT. JARMAQ. This rises to some 1200 feet and, though steep and rugged, is intersected with WADIS and tracks. Progress of unopposed infantry with pack animals is reckoned at approx 1 mile per hour. It commands a considerable area in every direction. Around it's base the following Rds run. EAST Face :- SAFAD - HAIFA. From sq.188259 a good Rd leads to NAZARETH, from which another leads to MAJDAL, on LAKE TIBERIAS. WEST Face:- A new Rd from SASA skirts the W. and links up with SAFAD - HAIFA Rd at AR RAMA. A road, E. from NAHARIYA, junctions this W. face road E. of TARSHIHA. Between JARMAQ and SAFAD the WADI LEIMAN denies movement, EAST to WEST or VICE VERSA. The Rd junction in sq.191265 is vital ground. All other Rd junctions are vital. Providing the ROSH PINNA defences hold, the vital ground around MEIRUN denies the lateral Rd to ROSH PINNA via SAFAD, covers KAHR BIRIM Rd, and prevents movement of wheeled or tracked vehicles to the SOUTH.

On this area the whole of the fwd defences hang as an arch does on a keystone. The fwd defences decided upon by FORCE H.Q. appear to be designed to cover JARMAQ.

DEDUCTION.

MEIRUN area is vital and must be held in strength. JARMAQ is ground of great importance, and a break through our left enables the enemy to gain it. Faucity of Tps would offer every chance of infiltration from the left. It's value to the enemy is an aid to secure the Rd, without which he cannot force the momentum of his advance. Other Rd junctions mentioned are of great importance and should be defended, as they would be enemy objectives.

DECISION.

MEIRUN area must be held in strength. A Bn, plus M.M.G's. is required. The next consideration is to picquet JARMAQ as a necessary precaution. This will require a Bn. On this area the whole of the fwd defences hang as an arch does on a keystone. The fwd defences decided upon by FORCE H.Q. appear to be designed to cover JARMAQ.

RELATIVE STRENGTHS AND ARMAMENTS.

MEIRUN area is vital and must be held in strength. It is not normal to discuss relative strengths at this stage. The length of line given to a DIV, and the nature of the country, is of such importance that both would offer every chance of infiltration from the left. must be studied at the outset.

Our forces consist of 1 Div, 1 Anti-tank gun Regt, 1 M.G. Bn, 1 Pioneer Bn. Anti-Aircraft protection in Planes and A.A. Arty is anticipated as normal.

The sector to our left is held by CAV.

The enemy strength and type of force is unknown. It can be anticipated to consist of a Force similar in strength and composition to that employed in GREECE.

DEDUCTION.

The enemy is at a disadvantage in that his force must be seaborne, or partly sea and air borne. His ability to concentrate the required force will determine the date of his offensive. He will probably repeat the

tactics of his advance in LIBYA, i.e. the employment of a reconnaissance force, strong in A.F.V's., to test our defences.

In LIBYA, this was sufficient to become a successful advance. The difference in ground should deny it's repetition, providing we have Tps on the ground. With his reconnaissance effort held,

he is then obliged to concentrate sufficient force in an attempt to break through. We can anticipate this

force to consist of strong Air Forces, A.F.V's., Arty and will include Tps trained in mountain warfare. Paratroops and

airborne Tps can be anticipated, and suitable areas for their employment exist in rear. We can anticipate Arab

co-operation with the enemy. The nature of the country and the extent of line given a DIV deny any assurance that a

determined attack in strength will be held or infiltration denied. This applies particularly in the left Bde

sector. The enemy has a choice of communications to concentrate a force in strength at several vital points.

To be at all sanguine, it is essential to shorten the front to a point about JISH, and to add to our forces 2 Army Fd Regts, 1 Med. Arty Regt and 1 M.G. Bn. It is essential to hold

the line in defended localities of not less than 1 Coy supported by M.M.G., Arty and Anti-Tank arty. These must be

deployed to cover Rds and lines of advance open to the enemy, and be in depth. Vital ground must be held. The

alternative is an endeavour to cover the front with Platoon or sec. localities. They will neither add to an effort

to deny infiltration or hold an attack as they lack both strength and depth. In either case, adequate reserves

are not available.. The nature of the country aids defence, and many areas, strewn with boulders (approx 85%),

denies the enemy full use of A.F.V.'s. The same thing presents difficulties to us in that counter attack by movement over some distance is denied in most areas. Defence

therefore relies largely on attack by fire and counter attacks from Coy localities from which they can be launched.

Interlocking a fire plan for mutual support cannot be accomplished in a number of cases as length of line, and paucity of troops, deny it. Weight of arty becomes an essential requirement.

DECISION

Left Bde turn half left from QABBA'A and cover fwd edge of Plateau at Pts. DALLATA - Pt. 885 - JISH (high ground). The enclosed area, further left, hinges on prepared defences at KAHR BIRIM. MEIRUN is vital and must be held and consideration must be given to picqueting JARMAQ. Should DIV accept responsibility for MEIRUN, by providing Tps from their resources, it is still necessary to use 3 Bns fwd and 1 Bn to picquet JARMAQ. Force at MEIRUN should be controlled by Brig Cmdg left sector.

MORALE

Given some degree of Air protection, and a reasonable opportunity to cover their front, our Tps will hold the front against superior enemy forces whose morale must be good on account of many successes. They can be relied upon to fight tenaciously.

ENGINEER REQUIREMENTS

(a) TANK DITCH.

With the exception of a slight extension on the right and the placing of "dragons teeth" covering both flanks, further work is not recommended. The country occupied by right Bn is considered Tank proof by rocky nature of country.

(b) WIRING TANK DITCH.

Work is proceeding on a double apron fence with rear edge 70 x from ditch. It is considered necessary to thicken by completing D.D.A. fence with loose wire between.

(c) CAMOUFLAGE & DUTY WORKS.

The camouflage of pill boxes and work on dummy defences can be done by Infantry, providing Engineer assistance is not available. Engineer assistance will be required for erection of blast walls to Pill Boxes.

PAGE 11.

(d) DEMOLITIONS. General demolition plan is shown on disposition sketch. Recce will disclose further requirements for closer protection.

(e) ANTI-TANK MINES. A plan is evolved for ROSH FINNA area. Forward lanes, behind ditch, outlined by mines (as suggested G.S.O. 1, 6 Aust Div) is worked out. Engineer Advisor recce further requirements.

(f) GENERAL DEFENCES. Supervision of construction of Sec. Posts, inter-connected to Pl. and Coy localities with all round protective wiring, together with minefields on lines of approach. Ground is rocky and difficult to dig. Assistance will be required in places to loosen rock by blasting. Arrangements in hand for hiring additional civil compressors.

(g) HEADQUARTERS. A design has been worked out for construction of "Cut & Cover" type shelters, splinter proof only, for Bn and Coy H.Q.

CLIMATE.

With the advance of Summer, and in the light of his experiences in LIBYA, the enemy is likely to discard operations in TRANSJORDANIA in favour of PALESTINE. It appears that his Tps find difficulty in standing up to desert conditions with attendant hardships, particularly short rations in water. Operations in PALESTINE can be undertaken in any season.

DEDUCTION.

It is unlikely that enemy main advance will be via TRANSJORDANIA.

LOCAL INHABITANTS.

The population within the general defensive area, and NORTH to the border, is alleged to exceed 60,000. They are mainly Arabs who are both Moslem and Christians; the latter is in the minority. Jews would probably number 5/6000.

During the "Troubles" the Arabs of GALILEE are reported to have been determined and troublesome fighters. They more completely controlled GALILEE than ARABS were able to do in districts elsewhere. They are reported to be willing to assist the enemy if rewards for service are apparent. It is reported that certain notables have attended conferences in both IRAK and SYRIA recently, where discussions covered subjects against our interests.

DEDUCTIONS.

If Arab leaders, or firebrands, are in German pay one can expect an attempt to repeat Fifth Columnist activities. Terrorism may easily be directed to turning the population from their Villages, etc. to the road in flight towards the SOUTH. The blocking of Rds by refugees was successful in FRANCE, and would retard, seriously, our road movements here. Sabotage directed to blowing bridges and damaging Rds, together with sniping activities from the hills, are likely and will demand planned security measures.

SUPPLY AND WATER.

RIGHT BDE SECTOR.

Supplies can be delivered to Tps in the ROSH PINNA area without difficulty from TIBERIAS Rd. The left Coy in QABBA'A area will require pack animals. Right flank Bn must have pack animals. Rear Bn and Res. Coys can be manhandled from road.

Water is available at ROSH PINNA and MEIRUN. Water from LAKE TIBERIAS is good if treated.

LEFT BDE SECTOR.

Right Bn and JARMAQ Garrison will require pack animals. Centre, left, and Reserve Bns should be able to deliver from Rds. Reserve Bn may require a few mules.

Water is available at MEIRUN, SAFAD and FARRADIYA. Distribution difficulties will be experienced in this sector. It is proposed to establish refilling pts,

where cover is available, for 1500 gal canvas Tanks from which fwd distribution can be made by pack animal, or carried by Tps.

It will be essential to maintain a reserve of Ammn, Rations and Water in all defended localities.

GENERAL DEDUCTIONS.

The line, much too extensive for a DIV, extends over country of varying types. The right Bde sector is responsible for maintaining flank protection by using a Bn to refuse the right flank. The country on this flank is rugged, fwd to JORDAN, with little opportunity to the enemy to attack with A.F.V's. or organised Inf forces. Infiltration is possible particularly along WADIS towards the S. and to the centre. Good fields of fire for Inf. and M.M.G's. can be found. Arty support, controlled from good points of observation, add to reasonable security. The ROSH PINNA area, defended by PILL BOX system and covered by Anti-Tank ditch, is strong. The fixed defences are well sited, and the ditch and wire can be covered by S.A. and A.T. gun fire. Junction with flank right Bn is reasonably secure. The area covered by left Coy of right flank Bn is on the higher ground, but fwd are re-entrants and some close country which should be covered by observed Arty fire. This sector must be more strongly manned than that towards LAKE TIBERIAS. Both areas can be supported by M.M.G. fire fwd, and on counter penetration tasks. Anti-tank guns on the fwd edge of ditch, except one defiladed on left, are discarded, and other positions, in rear, can enable guns to carry out same role. Anti Tank Rifles are substituted. The Anti-Tank gun plan from front to rear, taken up by field arty, can be well tied up. The left forward Coy, in QABBA'A area, presents difficulties owing to bareness of ground and fwd slopes. Few men and greater fire power, provided by M.M.G's. and arty defensive fire, should secure this essential area. Special treatment by wire is required in the gullies fwd.

Tank and M.T. movement is confined to Main Rds and few other approaches, by the rocky nature of the ground. These can be well covered by fire against Inf. and A.F.V. movement.

Counter attack by Inf. is practically impossible for the same reason, and in view of few Tps available, not desirable. Counter attack by fire, defence in depth, and local counter attacks are the best means of defence. Two Coys are available for C.A. against entry into the ROSH FINNA area.

The Right Bde Sector is reasonably secure.

The Left Bde Sector is too long and ground difficulties create a dangerous situation. The vital ground is MEIRUN area and the essential ground is the fwd edge of TEITABA Plateau, JISH - KAFR BIRIM - SASA - Ft. 340 and JARMAQ. The right sector is rugged and impassable to A.F.V's. Entrance to the Plateau is over difficult country and generally impassable to A.F.V's. The Left Sector is generally close country but there are avenues of advance for tanks. The Frontier Rd enters the position at two points, KAFR BIRIM and near F.S. It is very suitable for attacking Inf. Strength in defence and narrower fronts is demanded by the nature of the country. Depth is essential and can be found. Penetration in rear by A.F.V's. is mainly confined to roads and the rocky country denies an ability to fan out. Infiltration is practicable anywhere and not difficult over JARMAQ. The Left Bde Sector requires additional arty support to meet attack. The front must be shortened to enable some guarantee being given to hold the position. Present expectations cannot provide such a guarantee. Digging is difficult in most localities over the whole front. Bareness of countryside, and rocky ground, facilitates action by dive bombing and effective bomb bursts. The problem of cover is difficult. Assistance from Engineers in loosening rock appears essential.

Some camouflaged Sangars on hill sides, merging into natural rocky outcrops, could be constructed. Wiring of localities is essential and will demand much material and labour. Inf. can construct much of their own requirements. The Right Bde Sector, except on right, can be held strongly as a continually mutually supporting line of localities in depth. The Left Bde area can only be held by localities covering approaches. The few Tps available, and the nature of the ground, force this policy. Further troops can be superimposed without alterations to present localities. In a number of cases the fire plan can be interlocked, but not always. Counter attack, except from within Coy localities, cannot be undertaken as localities from which Tps must be withdrawn cannot be left vacated. A counter attack from general reserves is more than difficult owing to the roughness of the ground. The answer is a strong front covered by localities in depth, each supporting the other. The decision is "Here we are and here we stay".

The arty fire plan is not difficult, but rather big, and numerous O.F.'s. give complete control over the whole front. Weight of Arty is an essential requirement in this type of country.

The policy recommended is based on a realization that vital ground is really the road junctions around MT. JARMAQ and the TIBERIAS RD. The probability of paratroops attempting to seize these vital localities must be kept in mind. Their capture by the enemy is a necessary prelude to his deep advance, and an attempt to drive a wedge between the Forces covering TIBERIAS Rd and the Coastal Plain. This reasoning fixes the fwd positions as essential ground and includes MT. JARMAQ. For instance holding of the MEIRUN area, and the strengthening of fwd areas covering JARMAQ, take priority over the placing of large forces on JARMAQ itself. A scheme for demolitions on Rds and likely avenues of advance etc is necessary.

COURSES OPEN TO THE ENEMY.

The Attacker always has the initiative in that he can select his point of attack and therein concentrate his Force.

Should N. PALESTINE be selected for his advance, in favour of an advance through TRANSJORDANIA, it would appear that the enemy has a choice of three courses, a combination of any two, or the three simultaneously.

COURSE 1.

AN ADVANCE ALONG THE COAST DIRECTED ON HAIFA.

From HAIFA he can exploit either in the direction of TEL AVIV or JERUSALEM. This area, if the line is broken, offers the best facilities for employment of A.F.V's. A great reward is control of oil installations at HAIFA, together with a good Port.

COURSE 2.

AN ADVANCE ALONG THE TIBERIAS RD.

This country, SOUTH from ROSH PINNA, is unsuitable for A.F.V's. Many useful roads, however, serve the country. Success here could cut off our Tps on the Coast, as success there could cut us off. Success by enemy could not be achieved without Inf Battles as TIBERIAS Rd is strongly held at ROSH PINNA. His course of action would probably commence with intense air activity, followed by an advance of mobile Tps on M.C. and M.T., supported by A.F.V's. and Arty. On striking ROSH PINNA defences, he has the choice of attacking them by launching a prepared attack to secure a crossing of the ditch, or infiltration by Inf around the flanks. It may be assumed that he will have a knowledge of the type of country, and in his force, will have Tps trained in mountain warfare. His objectives would probably be road junctions from which he could move laterally. In the event of a prepared attack on the front at ROSH PINNA, it can be expected that Inf supported by dive bombers and arty will be the main force. We cannot

afford to discard the employment of A.F.V's., used fwd to the ditch, to provide close fire support to his Inf.

Infiltration via QABBA'A area, towards the high ground of BABIT, or towards the Plateau, is an almost certainty to be reckoned with. Some similar attempt from direction of R. JORDAN can also be expected. Held here, and possibly concurrently, an attempt to gain the SAFAD - MEIRUN Rd via the Plateau, S. of RAS AL AHMAR, must be expected. The other possibility is an advance along the Frontier Rd, via KAFR BIRIM - SASA, to a Rd junction. Objective, linking up with NAHARIYA, NAZARETH or TIBERIAS Rds. Meeting any difficulties here an attempt at infiltration over Mt. JARINAC can be expected.

COURSE 3.

CENTRAL LINE OF ADVANCE.

Ignore both TIBERIAS and COASTAL routes and select a central line of advance which will separate and cut off our fronts defended by Inf. It is considered that the area BULJIDA - BINT JUBEIL - RUMEISH provides a good starting point. Lines of approach to this area are the FRENCH border Rd from METULLA, on the right; and on the Rd TYRE-BINT JUBEIL on the left. Parallel with this Rd, and swinging from the coast 30 Kilos NORTH, is a first class Rd coming in to the right near METULLA. The likely objectives may be:-

- (1) QADAS - KAFR BIRIM (inclusive left)
- (2) SAFSAF (inclusive right) - SUHATA.
- (3) Rd Jcts. FARADIYA - EL RAMA.

Exploitation :- (i) ACRE - HAIFA - TEL AVIV.
(ii) NAZARETH - NABLUS - JERUSALEM.

DEDUCTION.

The advantages of Course (1) is a greater freedom of action for A.F.V's. and the rich prize of controlling the distillery end of Oil Pipe Line, together with a good Fort. The disadvantages are that he is confined to a front with one line of communications covered by our Forces. He would

probably consider this without great anxiety.

The advantages of course (2) are that it gives a first class Rd to TIBERIAS and, from ROSE PINNA, a first class route to HAIFA.

The chief disadvantage is lack of freedom to use A.F.V's. Aided by strong Air support he may consider himself strong enough to keep to the Rds after smashing our fwd defences.

The advantages of course (3) give him all the objectives of Courses (1) & (2). His Intelligence

Service would inform him of our defence plans, in outline at least.

If he achieves rapid success, through weight of numbers and support, he soon cuts off and surrounds our main forces.

In other words a miniature repeat of his advance in FRANCE via SEDAN, when he ignored the MAGINOT LINE.

The disadvantage is unsuitability of country for full freedom of action for A.F.V's. as for Course (2).

The advantages of Course (1), in this direction, are not overwhelming.

His initial attack would be Inf with possibly an attempt to work light tanks through the area.

The country is close and, towards his right, good for Inf.

It is considered that Tanks could pass through portion of this area.

COURSES OPEN TO US.

Tps and equipment in sight leave but little option than that of a defensive role. It is therefore important that some deduction be made as to ground which is vital and that which is essential.

VITAL GROUND.

- Rd Jct. BEIRUN area
- do SASA "
- do N.W. Corner LAKE TIBERIAS
- do SUHATA (WEST of MT. JARMAQ.)
- do FARRADIYA - EL RAMA area (S. of MT. JARMAQ)
- do MAJDAL (WEST Shore TIBERIAS).

ESSENTIAL GROUND. Right to left & front to rear.

UNWADI Road - N. Shore TIBERIAS.

Line of WADI MUSALLAKHA

AL ALYA

Fts 343, 355

TALL SANJAG

ROSH FINNA defences

T.J.F.F. area

QABBA'A "

AIMUQA "

DALLATA "

RAS AL AHMAR "

JISH "

TEITABA "

KAFR DIRIM "

F.S. & HILL 340 area

MT. JARIAC.

DEDUCTION.

The best policy is to occupy and cover essential ground protecting vital areas. Defended localities, with greatest degree of mutual support and depth, are preferable to "Beach defence idea". They must cover Rds and approaches, and be strong enough to put up an independent resistance. Nothing less than a Coy, with attached arms, will fulfil this requirement. The ground selected must be of such importance that the enemy is forced to fight. Bns, who have up to 6000 yards of front, will have difficulty in closing gaps between Coy localities, and interlocking the fire plan. Carriers can assist in closing gaps where ground is suitable. In areas where ground is suitable for A.F.V's., Anti-tank guns should be within the defended perimeter. Tank proof localities should be selected. Wire, camouflage, dummy works and alternative positions are essential requirements. Arty defensive fire must be

determined, and numbered in order of priority, on each Bn front. Mortars can reduce Arty tasks by accepting suitable targets. Good positions for Arty C.F.'s, exist and practically every approach and re-entrant can be overlooked. Much valuable defensive, and other arty fire, can be controlled by observation. Arty survey will facilitate night shoots. Field arty can be superimposed on Anti-tank guns to give depth and to close rear approaches. A plan for mining and demolitions, for each Bn front, is necessary. Plans for patrolling and local counter attack require careful attention.

DECISION.

The Plan.

THE PLAN.

(1) The DIV front is divided into two sectors.

Inter Bde boundary, inc. right Bde :-

QABBA'A - FIR'IM - ROSH PINNA - Rd loop (sq 200262) -
Pt. 486 (sq 199259) - thence due SOUTH.

(2) RIGHT BDE SECTOR.

TROOPS.

1 Inf Bde

1 Fd Regt Arty (plus superimposing of fire from
left sector Regt and other arty
as available)

1 Regt Anti-Tank guns, less 2 Btys

2 Coys M.M.G. Bn.

1 Fd Coy

1 Fd Amb

BN SECTORS.

Right Bn. Pt. where MUSALLAKHA joins LAKE
TIBERIAS - thence N. along it's course - Pt 343 -
Pt. 355 - TALL SANJAG (incl).

Left Bn. TALL SANJAG (excl) - the line of
Tank Ditch - generally N. to QABBA'A (incl).

PAGE 21.

Rear Bdy. Line of WAR MEMORIAL - ROSH FINNA RD.

Res. Bn. Forward to line of rear bdy Left Bn -
T.J.F.F. (incl).

1 Coy in defences T.J.F.F. area.

1 Coy in HILL BOXES, in depth, covering TIBERIAS Rd.

2 Coys, plus 1 Pl M.M.G's., in areas as shown on
sketch.

ROLE. (a) Counter attack.

(b) Occupation prepared defences in depth.

NOTE. Counter attack plans, supported by Arty,
being worked out.

Bde H.Q. Exact location not selected, Area
sq 200,261 being recce.

(3)

LEFT BDE SECTOR.

TROOPS.

1 Inf Bde plus 1 Bn

1 Fd Regt Arty (as for right)

2 Btys Regt Anti-Tank guns

1 Bn M.M.G's., less 2 Coys

1 Fd Coy

1 Fd Amb.

BN SECTORS.

Right Bn. QABBA'A (excl) - DALLATA - S. to
Pt. 816 - E. to MT. BANIT (incl).

Centre Bn. DALLATA (excl) - Pt. 885 (feature
incl) sq.194270 - Rd jct. area S. of JISH -
KNOLL sq. 190268 (incl) - QADDITA - TEITABA.

Left Bn. KAHR BIRIM - KNOLL 854 sq.186271 -
KNOLL 840 - SASA (incl).

Res. Bn. Area MEIRUN in prepared positions.

NOTE. Should higher authority demand the
occupation of MT. JARMAQ and accept responsibility
for defence of MEIRUN area, this Bn will be
disposed on MT. JARMAQ as shown on sketch.

PAGE 22.

Bde H.Q. Re-entrant S. of MEIRUN and W. of
Rd. Bend in sq. 191264.

FIRE PLAN.

ARTY.

Tasks covering D.F., C.F., Harassing and Counter penetration are shown on sketch; together with Comd Posts, Dty and Tp localities, and Observation Posts.

ANTI-TANK.

The plan is built up on Anti-Tank Rifles, Anti-Tank Gun, Field Gun and Mine Fields. Rear entrances are closed. Dispositions on sketch.

M.M.G.

To principally cover neighboring sectors from a flank, lines of approach, WADIS, the front of the wire, and carry out counter penetration tasks. Dispositions on sketch.

INF. AUTOMATIC WEAPONS.

To cover the wire, the front of Pl. and Sec. localities, and give depth to defence. See sketch.

NOTE. Freedom of action must be given to C.R.A. and C.C., M.M.G. Bn in disposing weapons to fulfil fire support required by Cnd. This will probably entail more than a Unit in one Sector and less in another. Naming Units under heading "Tps" is for guidance only. In the case of Arty it is anticipated that the third Field Regt will be available.

PATROLS.

RIGHT BDE.

Right Bn. (a) Line of R. JORDAN, and beyond, with particular attention to TRACKS & FORDS.

(b) Standing patrol at Jct. R. JORDAN - LAKE TIBERIAS.

PAGE 23.

(c) Watch boat and plane movements on
LAKE TIBERIAS.

Left Bn. (a) DAMASCUS RD to JORDAN, and beyond.
(b) TIBERIAS RD to cover jct.

FRONTIER RD.

(c) Standing patrol, with sigs,
METULLA area.

Special role to give warning of enemy approach
and then fall back.

(d) Patrol WADIS and WOODS fwd.

NOTE. Employ carriers (a) & (c).

LEFT BDE.

Right Bn. Patrol WADIS and tracks leading in
from TIBERIAS RD.

Centre Bn. (a) Rd RAS AL AHMAR - QADAS.
(b) Tracks from WADIS on W. leading
to RAS AL AHMAR - JISH.

Left Bn. (a) FRONTIER Rd ahead of KAHR BIRIM
and P.S.
(b) Tracks and approaches leading
from RUMESH area.

(c) Contact with CAV on left.

NOTE. C.C.'s. will plan fwd patrols, and patrols
to contact flank localities, etc., which will be submitted.

ENGINEER TASKS.

ANTI-TANK DITCH.

Security on flank, particularly right flank.

If "dragon teeth" plan insufficient, report required.

NOTE. It is understood that recommendation to
"Force" will be the construction of a TANK DITCH, in the vicinity
of MIGDA, to cover MIGDA - FARRADIYA (approx) Rd.

ANTI-TANK MINES.

- (a) Along line of ditch as suggested.
- (b) Forward lanes behind ditch.
- (c) Approaches on left Bn front, left Bde, covering "Off the Rd approaches", particularly in vicinity of left Coy, KNCIL 840, and Coy locality W. of SASA.
- (d) Those as shown on sketch.
- (e) Other tasks as disclosed by further recce in vicinity of Coy localities, etc.

DEMOLITIONS.

As per sketch and others resulting from further
recce.

INF. LOCALITIES.

To assist in layout, blasting to loosen rock in
constructing trenches, and direction in erecting wire.
Tasks will be subject to personnel available. If
short, Inf to do first and last.

WIRE.

- (a) Special attention in supervising labour on wiring tank ditch.
- (b) Plan required to cover QABBA'A area, particularly loose wire in re-entrants and dead ground fwd of defended localities.
- (c) A plan to wire Bn jct right of TANK DITCH, covering TALL SANJAG.

COMMAND H.Q.

To construct where required. Liaison
direct with Unit Commanders.

WATER.

- (a) To develop supply.
- (b) Erect refilling pts. in Bn areas as required.

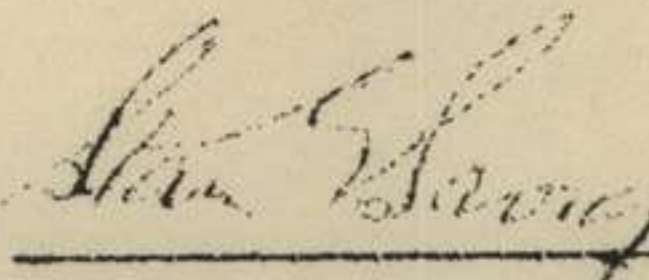
COUNTER ATTACKS.

(a) Locality Cndrs will plan local counter attacks which will be submitted through C.C.'s. Bns.

(b) Plans being worked out for employment 2 MOB. Reserve Coys. Right Bde, Arty and M.H.G. plan included.

CAMOUFLAGE.

In siting section posts and Bn localities, advantage will be taken of cover wherever available. C.C.'s. will ensure that dummy works are made, particularly in areas lacking cover. FILL BOXES, SECTION POSTS, etc will be carefully camouflaged to merge into natural landscape.


BRIGADIER
Comd 17 AUST INF BDE

Appendex VIII

H Q
17 Aust Inf Bde
14 JUN 41

H Q
6 AUST DIV

DEFENCES - NORTH PALESTINE

Further to my "Appreciation " and sketch forwarded you, please note the following addendum resulting from a final check on the ground.

1. ENEMY INFILTRATION.

It was deduced from the appreciation that enemy infiltration was possible in the area RAS AL AHMAR.

It was also considered that the area leading towards the high ground of MT. BANIT from ROSH PINNA - QABBA'A presented a soft spot.

Shortage of Tps placed the former is priority of occupation. The final check still reveals the weakness in the defence of counter penetration measures on the essential ground area of MT. BANIT.

It is resolved to place a Coy, plus 1 Sec. M.M.G's., from the Bn in reserve at MEIRUN in this area.

Localities have been determined for :-

- (1) Central area for Coy from which they can move to threatened Pts, and /or counter attack.
- (2) Detailed Coy defences in each of three important areas covering possible lines of approach.
- (3) The occupation by a Platoon of each of these localities should all areas demand occupation at once.
- (4) A central position as a final means of preventing infiltration to a necessary point, from the enemy point of view, should fwd defences fall on either, or both, left flank right Bde, and right and /or centre of left Bde.

This can also be considered as a rallying Pt or rendezvous for fwd Coys right flank, left Bde, should they be forced back, SAFAD and the lateral Rd remain covered.

2. JUNCTION RIGHT & LEFT BNS. RIGHT BDE. VICINITY.

TALL SANJAG.

A final check left me dissatisfied with the tie-up of defences in this area. This has been remedied and my draftsman will mark altered dispositions. I further examined, with MAJOR MEYER, the requirements for extending the wire on the flanks of the Tank Ditch. My Engineer Advisor has noted these requirements which will be expedited.

3. STANDING PATROLS.

A further examination reveals the necessity to establish a S.P. at river crossing where DAMASCUS RD crosses the JORDAN. Please note ⁱⁿ instructions to RIGHT BDE "C.O. left Bn will establish a standing patrol to cover bridge and road from high ground, right bank R. JORDAN, where DAMASCUS RD crosses R. JORDAN. Carriers should be considered.

4. HARASSING THE ENEMY.

The Co-ordination recce enables the addition of the following principle for patrolling :-

"C.O's. are responsible that Coy Comdrs act energetically in harassing the enemy once he has contacted.

Mortar or M.M.G. detachments, etc., will be "winkled" out of position, particularly at night, by fighting patrols. Small parties, up to 12 men under an officer or N.C.O., will work on the principles of "tank hunting platoons" and they will give the enemy no rest by these energetic actions."

5. COUNTER ATTACKS.

Herewith copies of plans for use of reserve Coys, right Bde, in C.A. for every conceivable situation. Please note, also, the following instructions to C.O's. for local C.A's.

"C.O's. will ensure that Coy Comdrs not only work out C.A. plans but will be prepared to C.A. the enemy immediately he has gained contact with their position.

The country, though it retards C.A. by Bn reserves in a great number of cases, not only forces local C.A's., but greater success will certainly come from an immediate local C.A. than a prepared one delivered later.

6. MEDICAL ARRANGEMENTS.

The plan to cover these requirements has been worked out in "Outline Plan" which will be confirmed by a recce of the people concerned starting on Monday next, 16 JUNE. Details will be passed to you.

Comd 17 AUST INF BDE
Brigadier

AUSTRALIAN IMPERIAL FORCE

H.Q. 2/5 BN

4 JUNE 41

COMMANDER

L7 AUST INF BDE

RE:- ENGINEER TASK. RESERVE BN.

SAFAD AREA

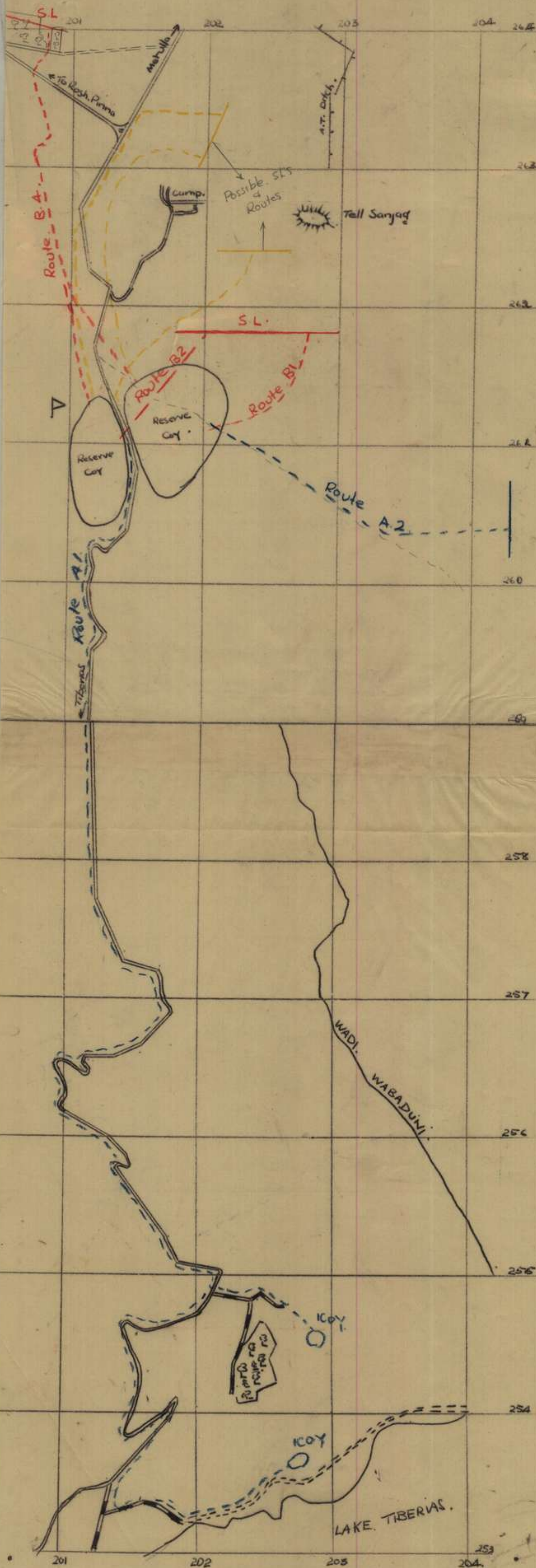
MAP SAFAD 1/20,000

1. Demolitions prepared road at points
1913 - 2674
1917 - 2659
1918 - 2649
2. Mines in front MEIRUN area at
Mines around Platoon at
1917 - 2659
1930 - 2636
3. Road block track junction
1925 - 2639
4. Wire around all Platoon locations but particularly at
1930 - 2636 and positions on left flank where WADIS
should be heavily wired in numerous places which could be
covered by fire and where the WADI sides are more nearly
sheer than elsewhere.

Appendex IX
COUNTER OFFENSIVE.

Very Secret.

ROSH PINNA
ref. Rosh Pinna
1:20,000.



COUNTER ATTACK ROLES(ROSH PINNA AREA)

Ref Map : ROSH PINNA 1/20,000
ET TABIGHA 1/20,000

The Bns of the Bde have been called "A", "B", and "C".
"A"--Right Bn; "B" Left Fwd Bn and "C" Reserve Bn.

COURSES OPEN TO THE ENEMY

From a recce of the more important area, i.e., "B" Bn, there would appear to be 4 areas in which enemy attacks might be anticipated.

B (i) At TALL SANJAG end of A.T. Ditch and EAST thereof
(20282630)

B (ii) At fixed defences between the L-A of MARJ EL ABD
(20282635)

B (iii) TELL EL QASAB (20262643)

B (iv) Area in rear of A.T. Ditch (20222647) to (20172654)
and to the WEST thereof.

CONCLUSIONS TROOPS AVAILABLE FOR C/A.

Of these areas (i) and (iv) are the more likely areas of attack.

As the fwd Coys of "C" Bn are in fixed defences and these are covering the main avenue of approach, only two Coys are considered to be available for C/A roles.

COUNTER ATTACK ROLE B (1)

Assumed that enemy penetration between the left flank of "A" Bn and the right of the A.T. Ditch has occurred and that the feature SANJAG and ridge eastwards has been occupied. Ground unsuitable for A.F.V's.

It is reasonable to assume that the Reserve Pl of Rt. Fwd Coy "B" BN (20232633) and the Rt Pl Fwd Coy "C" BN (20192623) are still in position and can C/A by fire. Two Coys are required for C/A in this area

Distance from Coy Localities to S.L. approx 1700 yds.
Estimated time to cover the distance, 40 minutes.

OUTLINE PLAN.

1. OBJECTIVES : Right Coy - Rocky outcrop at 20362627.
Left Coy - TALL SANJAG.
2. STARTING LINE: Pt 3723 at 202232618 eastwards.
3. DIRECTION OF ATTACK: 31 degrees.
4. DISTANCE OF OBJECTIVE FROM S.L. 900 yards.
5. RATE OF ADVANCE. 100 yards in 3 minutes.
6. ROUTES TO S.L. Direct from Coy Localities.

1 Coy to Rt of Pt 3723 and 1 Coy left.

7. Positions for MMG's Pl and 3" Mortars available on
CAMP HILL 20192623.

NOTE. It is essential that the wire be cut at 20142613 and 20152610. to enable quick passage of left Coy.

COUNTER-ATTACK ROLES

B (ii) and (iii)

Although these areas are possible avenues of attack, it is considered that the enemy will avoid fixed defences and search for weak spots elsewhere.

COUNTER-ATTACK ROLE B (iv)

In the event of the enemy penetrating the A.T. Ditch (20222647 to 20282635) or the area to the WEST thereof his probable route would be along the foothills to avoid the fixed defences of the "B" Bn Reserve Coy to ROSH FINNA.

With mountain troops he may endeavour to infiltrate into the mountains. Ground is unsuitable for A.F.V's.

It is reasonable to assume that fixed defences will hold out and delay enemy advance.

The Reserve Coy "B" Bn defences forcing him to take to higher ground. Owing to the

closeness of the ground the CounterAttack would be carried out by one Coy fwd and one Coy in close support.

Distance from Coy Localities to S.L. approx 3000 yards.

Estimated time to cover the distance - 1½ hours.

The route to be traversed is a narrow wadi, rocky and very rough going, hence the time necessary to cover it.

OUTLINE PLAN.

1. OBJECTIVE:
2. S.L. In area about 20082640--dependent on enemy position or advance.
3. RATE OF ADVANCE. 100 yards in 3 minutes.
4. ROUTE TO S.L. Left Coy leading, followed by Right Coy along WADI ABU MUSSAWWAR thence along foothills WEST of TIBERIAS - METULLA Rd to 20072640.
5. MMG's and Mortars to positions NORTH of ROSH PINNA and WEST of S.L. Area.

In the area held by "A" Bn recce shows that the ground is rough and unsuitable for A.F.V's. attack except along a track from Kh ABU ZEINA (20742558) to area ET TABIGHA (20142534).

In this Bn area there are two areas through which he might attack.

1. Along Track from Kh ABU ZEINA (20742558) to area ET TABIGHA (20142534).
2. Vicinity Kh EL ALYA (20482606).

COUNTER ATTACK ROLE A.1.

The advance of the enemy A.F.V's. and mech. Inf. along the track from Kh ABU ZEINA would be very slow on account of the rocky nature of the track and the impossibility of transport leaving it because of the rocky nature of the surrounding country.

The carrier party detailed to protect this area could best do so by arranging road blocks and ambushes at several points,

- e.g.
- | | | |
|-----|-----------------------|-------------|
| (a) | On WADI EL MUSALBAKHA | at 20642555 |
| (b) | On WADI EL TURKI | at 20562555 |
| (c) | On WADI WABADANI | at 20452547 |
| (d) | | at 20342538 |
| (e) | | at 20282535 |

The first three road blocks should be arranged as soon as contact with enemy reported, the remaining two could be prepared but not actually completed until the Carriers had withdrawn behind

them.

ROLE OF RESERVE COMPANIES

2 Coys of "C" (Res) Bn, plus necessary H Q Coy personnel and MMG Pl., to be embussed and transported to the area.

One Coy to proceed to P.S. at 20272548, debuss and be prepared to destroy any enemy parties who may be attempting to obtain possession of the high ground NORTH of the TRACK. One

Coy to proceed to area in vicinity of ROAD BLOCK (e) and push out enemy advancing along TRACK.

Positions for MMG Pl and 3" Mortars are available throughout the area.

DISTANCES. From Coy Areas (20142610) to P.S.(20272548)
5½ miles.

From Coy Areas (20142610) to ROAD BLOCK (e)
(20282535) 7½ miles.

Owing to the sharp bends in the Road the speed would be slow - probably 10 M.P.H.

Owing to nature of ground, Counter Attack would be a slow process.

COUNTER ATTACK ROLE A.2.

The enemy has penetrated between Centre and Left Coys "A" Bn about square 205261 and advanced to and is occupying Kh EL ALYA.

The country is rocky and rough but somewhat easier than A.1. Two Coys probably required.

DISTANCE. From Coy Localities to S.L. approx 3200 yds.
Estimated time to cover distance - 60 minutes.

OUTLINE PLAN.

1. OBJECTIVE. Kh EL ALYA.
2. S.L. Line running NORTH and SOUTH approx 400 yards WEST of KH EL ALYA.
3. DIRECTION OF ATTACK. 80 degrees.
4. DISTANCE OF OBJECTIVE FROM S.L. 400 yards.
5. RATE OF ADVANCE. 100 yards in 3 minutes.

PAGE 5.

6. ROUTES TO S.L.

From present localities SOUTH of
Kh JEISI (20292607) eastwards along
cultivation ground to Ridge WEST of
Kh EL ALYA (Vicinity 20422605).

7. MMG and Mortars on Knoll at 267 degrees from ALYA
(20422605) at 900 yards from ALYA.

DRESS.

1. Owing to roughness of country and thistles it is recommended that Trousers K.D. be ordered in preference to Shorts.
2. It is anticipated that the support of 1 Arty Regt will be available.

FIELD RETURN OF OFFICERS.

A.B. 17 Aust. Inf. Bde. (Unit.)

PART A.—STRENGTH, SURPLUS OR REINFORCEMENTS REQUIRED.

1	2	3	4
Ranks.	Posted strength counting against authorised establishment (excluding attached).	Surplus to Establishment.	Reinforcements required (i.e., deficits on establishment).
*			
*			
*			
<i>Brigadier</i> *	<i>1</i>		
Lieut.-Colonels ...			
Majors ...	<i>2</i>		
Captains ...	<i>2</i>		
Lieutenants...	<i>3</i>		
2nd Lieutenants ...			
Quartermasters ...			
District Officers ...			
TOTALS ...	<i>8</i>		

* Insert detail of higher ranks as necessary (e.g., Major-General, Brigadier, etc).

PART B.—PARTICULARS OF OFFICERS JOINED OR QUITTED DURING WEEK.

Officers JOINED during week.

Rank.	Name.	Corps.	Date.	Cause.

Officers QUITTED during week.

Rank.	Name.	Corps.	Date.	Cause.
<i>Capt</i>	<i>Osley H.K.</i>	<i>6 Div</i>	<i>18.5.41</i>	<i>Tfd to A.Q. 9 Aust Div</i>

PART C.—DESCRIPTION OF OFFICERS WHOSE RETURN TO THE UNIT IS PARTICULARLY REQUESTED.

Rank.	Name and Initials.	Corps.	Remarks (e.g., present whereabouts, if known).

PART D.—NOMINAL ROLL OF OFFICERS ON STRENGTH.

(i) Officers posted to Unit (Total to agree with column 2 of Part A).

1	2	3	4	5	6
Substantive Rank.	Higher acting or temporary rank, if held.	Name and Initials.	Corps.	Whether present with Unit (Insert Yes or No.)	If not present with Unit, state how employed.
Brig Maj		SAVIGE S.G.	6 Div	YES	
Capt	T/Maj	BROCK G.H.	" "	"	
Lieut	T/Capt	BISHOP J.A.	" "	"	
Capt		CHAPMAN A.P.	" "	"	
Lieut		MCGEECH J.A.H.	" "	"	
Lieut		LOWEN I.H.	" "	"	
Lieut		SCHOFIELD V.J.	" "	"	
Lieut		FRENCH N.M.	" "	"	

(ii) OFFICERS ATTACHED FROM OTHER CORPS.

Substantive Rank.	Higher acting or temporary rank if held.	Name and Initials.	Corps.	Date of attachment.	Nature of attachment.
Maj		PALMER	S. Army		PADRE

H.Q. 17 Aust Inf Bde
(Unit.)
25 May 41
(Date of Despatch.)

John McKeoch Cap
(Signature of Commanding Officer)
6 DIV. A.I.F.
(Bde., Divn., Area, etc., with which Unit is serving)

