

**AWM52**  
**2nd Australian Imperial Force and**  
**Commonwealth Military Forces unit war**  
**diaries, 1939-45 War**

**Item number: 8/2/18**

**18 Infantry Brigade**  
**December 1944**



# WAR DIARY or INTELLIGENCE SUMMARY.

(Erase heading not required.)

Army Form C.2118.  
(Adapted.)

Unit HQ 18 Aust Inf Bde Date and Time.—From 1 Dec 44 To 31 Dec 44

Place.	Date.	Hour.	Summary of Events and Information.	Remarks and references to Appendices, Diaries, &c.
KAIRI ref GORDONVALE 1" 481369	2		18 Aust Inf Bde Training Instruction No 24, covering training for month of December issued.	Att as Appx 'A'
	3		<del>Bde HQ muster parade followed by church service conducted by Padre HOPKINS.</del>	
	4		Comd Brig F O CHILTON DSO and RM Maj I H LOWEN were present at arty demonstration at KILAMO arty range on 4/5 Dec.	
	5		Twenty personnel from each Bn moved to TRINITY BEACH during the afternoon for a period of training 6/10 Dec on LVT (I) and are attached to 1 Aust Beach Gp for that period.	
	7		<del>Personnel from Bde HQ and sub units attended screening of Gas Trg Films in 2/10 Bn area.</del>	
	8		Miniature range practice with rifle was conducted for Bde HQ personnel.	
	9		Miniature range practice with pistol, Owen SMG and rifle was conducted for Bde HQ Officers.	
	10		Bde HQ muster parade followed by church service conducted by Padre WOOTON.	
	12		The Opening Situation and 7 Aust Div Special Int Summary No 4 for Exercise FESTIVE were received from 7 Aust Div.	
EXERCISE AREA ref map BATTLE FRERE 1"			EXERCISE 'FESTIVE'	
	13		General Instrs for 7 Div Exercise FESTIVE issued to units under comd and in sp for duration of exercise. With the General Instrs and to the same addressees, were issued instrs covering supplies of amm, POL and rations to units for the duration of the exercise.	Att as Appx 'B'  Att as Appx 'C'



# WAR DIARY or INTELLIGENCE SUMMARY.

(Erase heading not required.)

Army Form C.2118.  
(Adap'ed.)

Unit..... Date and Time.—From..... To.....

Place.	Date.	Hour.	Summary of Events and Information.	Remarks and references to Appendices, Diaries, &c.
EXERCISE AREA			18 Aust Inf Bde Int Summary No 1, based on infm to 130900K was issued to Bns Comd Brig F O CHILTON DSO attended conference at 7 Aust Div in connection with Exercise.	Att as Appx 'D'
			Warning Order to move from present camp area to biv area issued to Bns. No move before 140300K.	
			18 Bde Mov Order covering move issued.	Att as Appx 'E'
			18 Bde Jnr Leaders Tactical Trg School concluded Course No 1. Bde HQ personnel incl LO (I) Capt S G GRIFFITHS returned to Bde HQ.	
	14		Exercise FESTIVE commenced.	
			18 Bde Op Order No 1 covering first three phases of the exercise issued.	Att as Appx 'F'
	15-18		Exercise FESTIVE.	
KAIRI	18		Comd Brig F O CHILTON DSO, BM Maj I H LOWEN and LO(3) Lt J L CREAVES returned to camp area KAIRI, from Exercise Area. Nucleus Int Office, Orderly Room and Sig Staff returned to KAIRI Camp area. SC(L) Lt J G THOMSON with leave party of Bde Gp personnel returned to KAIRI Camp area, in order that the leave personnel should proceed on leave on 19 Dec.	
	19		Main body Bde HQ and Bn personnel returned to KAIRI Camp area. 1400 hrs. Comd Brig F O CHILTON DSO, BM Maj I H LOWEN attended Combined conference in the KAIRI theatre, on Exercise RAMPANT and FESTIVE. Personnel down to Coy Comds and equivalents attended.	
	20.		Personnel down to coy 2 i/cs attended paratroop demonstration jump by 1 Aust Paratroop Bn at 0615 hrs in area 396318 ref map DIMBULAH 1". Lt C A MARCH appointed acting LO from 2/10 Bn.	



# WAR DIARY or INTELLIGENCE SUMMARY.

(Erase heading not required.)

Army Form C.2118  
(Adap'ed.)

Unit..... Date and Time.—From..... To.....

Place.	Date.	Hour.	Summary of Events and Information.	Remarks and references to Appendices, Diaries, &c.
	22		A conference was held at this HQ at 1400 hrs to consider points arising from Exercise FESTIVE. Bn comds, and comds or representatives from 2/3 Comdo Sqn, 2/4 Fd Regt, 5 Bty 2/2 Tk A Regt, 2/4 Fd Coy, D coy 2/1 MG Bn and 2/5 Fd Amb attended.	Notes on conference attached as Appx 'G'
	23		Aerial Recce Exercise for officers of Bde HQ was carried out during the afternoon. Instructions covering route and tasks attached as Appx 'H'	Appx 'H'
	24		Bde HQ muster parade followed by church service conducted by Padre HOPKINS. Comd 1 Aust Corps, Lt-Gen Sir L MORSEHEAD KCB KBE CMG DSO ED visited this HQ.	
	25		Comd Brig F O CHILTON DSO, BM Maj I H LOWEN visited Bns to express the Seasons greetings. During the afternoon the 2/10 Bn's race meeting was held at KAIRI racecourse.	
	26		2/10 Bn moved to NO CROSSING area, 585103 ref map BATTLE FRIERE 1" for a period of rest and sports.	
	28		Approximately half Bde HQ and sub unit personnel moved to MALANDA FALLS area for a three day period of rest and sport. General Instrs for Bn Two Day exercises to be carried out in January '45 issued.	Att as Appx 'J'.
	29		Comd Brig F O CHILTON DSO visited 2/9 Bn Fd Firing Exercise at TANK ROCK Arty Range.	
	30		A Flame Thrower demonstration was held at DANBULLA Rifle Range, and was attended by a party from the Bde Gp.	
	31		Bde HQ muster parade and church service conducted by Padre HOPKINS.	
			W3008s and W3009s for month of Dec att as Appx 'K'	
			Routine Orders for month of Dec att as Appx 'L'	



# WAR DIARY or INTELLIGENCE SUMMARY.

(Erase heading not required.)

Army Form C.211  
(Adap'ed.)

*Unit* ..... *Date and Time.—From* ..... *To* .....

Place.	Date.	Hour.	Summary of Events and Information.	Remarks and references to Appendices, Diaries, &c.						
			<u>GENERAL</u>							
			<u>Personnel:</u> — In the month of December, unit strengths averaged the following percentages of WE:—							
			<table style="width: 100%; border: none;"> <tr> <td style="text-align: center;"><u>2/9 Bn</u></td> <td style="text-align: center;"><u>2/10 Bn</u></td> <td style="text-align: center;"><u>2/12 Bn</u></td> </tr> <tr> <td style="text-align: center;">99.8%.</td> <td style="text-align: center;">100.5%</td> <td style="text-align: center;">102%</td> </tr> </table>	<u>2/9 Bn</u>	<u>2/10 Bn</u>	<u>2/12 Bn</u>	99.8%.	100.5%	102%	
<u>2/9 Bn</u>	<u>2/10 Bn</u>	<u>2/12 Bn</u>								
99.8%.	100.5%	102%								
			Unit strengths on the 31 Dec were as follows:—							
			<table style="width: 100%; border: none;"> <tr> <td style="text-align: center;"><u>2/9 Bn</u></td> <td style="text-align: center;"><u>2/10 Bn</u></td> <td style="text-align: center;"><u>2/12 Bn</u></td> </tr> <tr> <td style="text-align: center;">53 Offrs 767 ORs</td> <td style="text-align: center;">42 Offrs 788 ORs</td> <td style="text-align: center;">41 Offrs 786 ORs</td> </tr> </table>	<u>2/9 Bn</u>	<u>2/10 Bn</u>	<u>2/12 Bn</u>	53 Offrs 767 ORs	42 Offrs 788 ORs	41 Offrs 786 ORs	
<u>2/9 Bn</u>	<u>2/10 Bn</u>	<u>2/12 Bn</u>								
53 Offrs 767 ORs	42 Offrs 788 ORs	41 Offrs 786 ORs								
			During the month personnel who had not had ARL for nine months previous to 31 Oct 44, were moved out on ARL as the transport facilities were available.							
			<u>Training:</u> Training over the past few months culminated in the 7 Aust Div Exercise FESTIVE, held over the period 14-18 Dec. During the period 19-31 Dec there was a slackening off of training, coupled with an increase of sporting activity, units or parts of units moving for short periods to areas where a complete rest was had as well as an opportunity to indulge in aquatic sports.							
			<u>Health:</u> Bde Hyg Offr's report for month Dec att as Appx 'M'.							
			<u>Amenities:</u> Bde Amenities Offr's report for month Dec att as Appx 'N'.							







WD

APPX 'A'

SECRET

Copy No.....<sup>13</sup>

18 AUST INF BDE TRG INSTR NO 24

1. In addition to training outlined in 18 Aust Inf Bde Training Instruction No 23, the following will be carried out during the period ending 31 Dec 44.

JUNGLE TRAINING

2. As the terrain of our next operation is NOT yet known, and may include enclosed country, a period of revision in Jungle training is necessary.
3. During this training period each unit will therefore carry out not less than 6 days training in the jungle.
4. Training will be at the discretion of COs, but the basis should be Individual, Section, and Pl training. Some suggested subjects are set out in Appx 'A' att.

ATTACKING STRONGPOINTS


5. In addition to training already being carried out by units in this subject, it is hoped to construct a Jap strongpoint, including a concrete pill box, in an area where live amm and charges may be used. When completed, the area will be allotted to units for training.

BN EXERCISES

6. Each unit will be required to carry out a two day bn exercise set by this HQ. Dates of exercises will be advised separately.

SAND TABLE EXERCISE

7. A sand table discussion and exercise, on the cooperation of Tanks and infantry, will be held at this HQ at 0930 hrs Sunday 10 Dec 44. Syndicates will be advised later, but will include officers down to Coy comds, and comds of Specialist Pls.
8. Before attending this discussion and exercise, officers should study MTP No 63 1944.

  
Maj  
BM 18 Aust Inf Bde

2 Dec 44

DISTRIBUTION

	<u>Trg Instr No 24</u> <u>Copy No</u>	<u>Appx 'A'</u> <u>Copy No</u>
2/9 Aust Inf Bn	1	1-6
2/10 Aust Inf Bn	2	7-12
2/12 Aust Inf Bn	3	13-18
Comd	4	19
BM	5	20
SC	6	21
IO	7	22
Sig Offr	8	23
7 Aust Div (for infm)	9	24
File	10-11	25-26
War Diary	12-13	27-28



APPX 'A'

To 18 Aust Inf Bde Trg  
Instr No 24 of 2 Dec 44  
Copy No 28

SUBJECTS TO BE COVERED IN JUNGLE TRAINING

1. INDIVIDUAL TRAINING

- (a) Jungle Craft - movement in jungle and individual stalks.
- (b) Selection of and correct method of adopting fire posns.
- (c) Maintenance of direction and use of direction aids - supplement to MTP 23, part 20, sec 6.
- (d) Jungle assault course - training in quick observation and snap shooting.
- (e) Elementary Fd works.
- (f) Selection of Sniper posns and OPs.
- (g) Booby traps.

2. SECTION TRAINING

- (a) Sec formations - control in the jungle.
- (b) Sec stalks.
- (c) Patrolling - including two man close recee patrols.
- (d) Forward sec in the advance - action on first contact.
- (e) Cutting of tracks and protection of cutters.
- (f) Ambushes - how to set an ambush and immediate action when ambushed - MTP 23 Part 24 Sec 16-17.
- (g) Sec in attack - use of covering fire from the hip.
- (h) Sec in defence - how to site and prepare sec posts in the jungle, with emphasis on concealment and camouflage.  
How to cut fire tunnels and thin out undergrowth.

3. PLATOON TRAINING

- (a) Movement on a broad front i.e. pl in line of secs in single file, or on a two sec front.
- (b) Advance along a track - formations and action on first contact.
- (c) Protection on the move, at short halts, and at rest.
- (d) Pl in the attack.
- (e) Pl in defence.

4. MISCELLANEOUS

The following subjects will be covered by lectures.

- (a) The necessity of having good man management and having good adm down to Sec Comds in Jungle Warfare.



- (b) Care of Amn.
- (c) Jungle Hygiene.

SPECIAL TRAINING

5. SIG PL

- (a) Lecture on maintenance of sig equipment in tropical country.
- (b) Laying and maintenancing cable.
- (c) Wireless exercise using both 108 sets and SCR 536 sets.

6. PIONEER PL

- (a) Construction and improvement of jungle tracks.
- (b) Construction of fd works - e.g. Comd posts, Sig Offices, etc.
- (c) Bridging.

7. MMG and MORTAR PLS

Siting and preparation of fire positions.

8. STRETCHER BEARERS

- (a) Improvising Stretchers.
- (b) Methods used for recovering and carrying wounded in steep ~~jungle~~ country.



APPX 'B'

map

18 AUST INF BDE

GENERAL INSTRUCTIONS

FOR

7 AUST DIV EXERCISE FESTIVE

OBJECT

- 1. To exercise the Div in the advance and attack over open country using the existing scale of tpt.

DURATION

- 2. The exercise will commence on 14 Dec and units will return to camp on 19 Dec 44.

TROOPS TAKING PART

- 3. (a) 18 Aust Inf Bde with under comd from 131600K:-

2/3 Aust Commando Sqn  
 5 Bty 2/2 Aust TK A regt  
 2/4 Aust Pnr Bn  
 'D' Coy 2/1 Aust MG Bn  
 2/7 Aust Tpt Pl  
 one sec 7 Aust Div Pro Coy

and in sp from 131600K

2/4 Aust Fd Regt  
 2/4 Aust Fd Coy  
 2/5 Aust Sup Depot Pl  
 2/5 Aust Fd Amb  
 det 2/125 Aust Bde Ord Fd Pk  
 det 2/125 Aust Bde Wksp

- (b) 25 Aust Inf Bde with under comd:-

2/6 Aust Commando Sqn  
 8 Bty 2/2 Aust TK A Regt  
 'C' Coy 2/1 Aust MG Bn  
 2/9 Aust Tpt Pl  
 one sec 7 Aust Div Pro Coy

and in sp

2/6 Aust Fd Regt  
 2/5 Aust Fd Coy  
 2/9 Aust Sup Depot Pl  
 2/4 Aust Fd Amb  
 det 2/117 Aust Bde Ord Fd Pk  
 det 2/117 Aust Bde Wksp

- (c) Div Tps The following additional Div Tps will also take part in this exercise:-

Adv HQ 7 Aust Div  
 2/9 Aust Armd Regt less one sqn and two tps  
 HQ RAA 7 Aust Div  
 2/5 Aust Fd Regt  
 2/7 Aust Svy Bty  
 HQ RAE 7 Aust Div  
 2/9 Aust Fd Coy



2/25 Aust Fd Pk Coy  
 Sigs 7 Aust Div  
 2/1 Aust MG Bn less two Coys  
 2/6 Aust Gen Tpt Coy  
 Pro 7 Aust Div less three secs

(d) Enemy - 21 Aust Inf Bde with under comd:-

2/5 Aust Commando Sqn  
 Two tps 'A' Sqn 2/9 Aust Armd Regt  
 7 Bty 2/2 Aust TK A Regt  
 2/6 Aust Fd Coy  
 2/7 Aust Sup Depot Pl  
 2/8 Aust Tpt Pl  
 Det 2/6 Aust Fd Amb  
 one sec 7 Aust Div Pro Coy

DIRECTING STAFF

4. GOC 7 Aust Div and Staff

UMPIRES

5. Separate instructions already issued.

NEUTRAL PERS AND VEHICLES

6. (a) Neutral vehs will fly a white flag.  
 (b) Neutral pers will wear a white arm band

REPRESENTATION OF FIRE

7. (a) Tps Taking Part By blank amn and 2" mortar smoke bombs.  
 (b) Enemy Will also fire LMGs and MMGs into safety pits, and flash mirrors to indicate direction of fire.  
 (c) Umpires Will use Aldershot and 69 (Bakelite) grens and arrange for firing of explosives to indicate arty fire tk a mines of both sides in accordance with fire plans and mov over minefields.  
 (d) Allotment of additional trg amn has already been made.

SAFETY PRECAUTIONS

8. (a) No hand to hand fighting will be allowed and umpires will control attacks accordingly, particularly during the final assault.  
 (b) Blank amn will not be fired at pers within 50 yds range.  
 (c) Aldershot grens will not be thrown directly at pers.  
 (d) 2" mortar smoke bombs will be fired to burst at least 100 yds short of the nearest tps.  
 (e) HE will not be fired at a distance from tps of less than 10 yds.  
 (f) Enemy Comd will be responsible for enemy safety precautions particularly in connection with the firing of live amn into pits.  
 (g) Apart from 2" mortar Smoke bombs, live amn will not be carried by other than special enemy dets responsible for firing into safety pits.  
 (h) 69 (Bakelite) Grens will not be exploded within 25 yds of pers.

MAPS REQUIRED

9. GORDONVALE 1" to 1 mile  
 BARTLE FRERE 1" to 1 mile

OPENING SITUATION

10. Opening Situation Exercise 'FESTIVE', and, 7 Aust Div Special 'FESTIVE' Intelligence Summary No 4 are also attached (to inf bns only).



CONFERENCE

11. Final conference on Exercise 'FESTIVE' will be held at No 1 Picture Theatre at 1400 hrs 19 Dec 44. All officers down to and including coy comds will attend.

ADM12. Dress

- (a) Own Tps: Battle Order (Hats Khaki fur felt)  
 (b) Enemy : Battle Order (Hats Khaki fur felt with white hat band)

13. Blankets

- (a) One blanket per man will be carried in bulk under unit arrangements.  
 (b) Extra blankets, if required, will be brought fwd under arrangements Div ASC.

14. Sups

- (a) Rations for consumption during period of exercise will be fresh.  
 (b) Replenishment under arrangements to be advised separately.

15. Amn

- (a) First line amn will NOT be carried.  
 (b) During course of exercise amn expenditure will be calculated by units and replenishment demanded. Detailed arrangements for replenishment will be notified.

16. POL

- (a) Res in vehs

Trucks $\frac{1}{4}$ ton 4 x 4	4 gals
Trucks 15 cwt or equivalent	8 gals
Trucks 3 ton or equivalent	12 gals

- (b) Replenishment arrangements will be notified.

17. Water

- (a) Unit WE water lorries will move with units.  
 (i) For inf units non-operational water lorries may be used.  
 (ii) For units other than inf only WE water vehicles will be used.  
 (b) All water used on exercises will be treated before consumption.  
 (c) Units will ensure that sufficient water tanks are left filled in camp areas to provide water for rear parties.

18. Medical

- (a) Casualties will be evacuated by normal medical channels to MDS thence true casualties to 2/2 Aust CCS by mot amb of 8 Aust MAC.  
 (b) Token casualties will be cleared from MDS to Div Reception Camp at discretion of CO Fd Amb.



19. Hygiene

- (a) Units will construct shallow trench latrines at all halts and biv areas and will ensure such trenches are filled in and suitably marked before leaving the area.
- (b) All refuse will be disposed in pits and covered.
- (c) Full anti-malarial precautions including the use of mosquito nets will be observed by all ranks.
- (d) Strict use and proper application of anti mite fluid will be observed (if supplies of fluid are available).
- (e) Units will ensure that all areas occupied during course of exercise are left clean.

20. Care of Private Property

Units will ensure that every care is taken to avoid damage to private property.

- (a) Farm buildings and immediate surroundings will be out of bounds.
- (b) Fences may be cut, but any gaps will be picketed until repaired. Repairs are a unit responsibility.
- (c) All weapon pits etc will be filled in and turf replaced before leaving areas.
- (d) Before leaving any area it will be the responsibility of units to ensure that all fires are completely extinguished.
- (e) Area NORTH of track 464130 - 480129 up to and incl BROMFIELD SWAMP is out of bounds to all ranks.
- (f) Units will issue definite orders to implement the instrs contained in sub paras (a) to (e) above.

21. Tpt

- (a) Operational vehs only will be used.
- (b) 'B' ech will be brigaded under bde TO.
- (c) Allotment of additional vehs to units will be advised later.

22. Mov

Orders for the move from KAIRI camp to bivouac area on 14 Dec will be issued later.

23. Rear Parties

Minimum security parties will be left in all unit areas.

24. Tools

Units will carry all available tools.

25. Camouflage Nets

Nets will be carried for vehicles, guns, mortars, comd posts etc.



26. Ground Panels

Units will carry ground panels for communication with aircraft.

13 Dec 44

*M. Lowen*  
Maj  
BM 18 Aust Inf Bde

DISTRIBUTION

Unit	General Instructions	Opening Situation	7 Aust Div Int Summary No 4
	Copy No	Copy No	Copy No
2/9 Aust Inf Bn	1	1	132
2/10 Aust Inf Bn	2	2	133
2/12 Aust Inf Bn	3	3	134
Comd	4	-	-
BM	5	-	-
SC	6	-	-
IO	7	-	-
TO	8	-	-
Sig Offr	9	-	-
File	10	4	135
War Diary	11-12	-	-

Copies of General Instructions (for infm) to:-

2/3 Aust Commando Sqn  
2/4 Aust Fd Regt  
5 Bty 2/2 Aust TK A Regt  
2/4 Aust Fd Coy  
2/4 Aust Pnr Bn  
2/1 Aust MG Bn  
2/5 Aust Fd Amb  
2/125 Aust Bde Wksp



26. Ground Panels

Units will carry ground panels for communication with aircraft.

13 Dec 44

*M. Lowery*  
Maj  
BM 18 Aust Inf Bde

DISTRIBUTION

Unit	General Instructions	Opening Situation	7 Aust Div Int Summary No 4
	Copy No	Copy No	Copy No
2/9 Aust Inf Bn	1	1	132
2/10 Aust Inf Bn	2	2	133
2/12 Aust Inf Bn	3	3	134
Comd	4	-	-
BM	5	-	-
SC	6	-	-
IO	7	-	-
TO	8	-	-
Sig Offr	9	-	-
File	10	4	135
War Diary	11-12	-	-

Copies of General Instructions (for infm) to:-

2/3 Aust Commando Sqn  
2/4 Aust Fd Regt  
5 Bty 2/2 Aust TK A Regt  
2/4 Aust Fd Coy  
2/4 Aust Pnr Bn  
2/1 Aust MG Bn  
2/5 Aust Fd Amb  
2/125 Aust Bde Wksp



18 AUST INF BDE

MAINTENANCE - AMN, POL SUPS

14 - 18 DEC 44

GENERAL

1. 18 Aust Inf Bde Group will be maintained by No 1 ASC Composite Detachment during period of exercise.

AMMUNITION

2. (a) A.P. will be established by Bde HQ and units notified by signal of its location. The A.P. will be open 24 hours daily.
- (b) Units will indent through BASCO for ammunition.
- (c) All units except Arty will pick up from A.P., ASC will arrange delivery Arty area as required to Bty Waggon lines, or in exceptional circumstances to the guns.
- (d) Returns showing ammunition expenditure will be submitted daily by 1800 hrs.

POL

3. (a) P.P. will be established and units notified by signal of its location, and the opening and closing times of same.
- (b) Issues of Petrol will be on a drum for drum basis. Units are requested to assist in this matter by returning to DID KAIRI all surplus 4 gall POL containers at present held. DID KAIRI will issue receipt for all containers returned.

SUPS

4. (a) Hard Rations

Units will indent for hard rations, on a basis of 1 hard ration per man. These rations will be carried by units in bulk. They are intended for use by Patrols etc., when it is not practicable to provide fresh rations.

- (b) Fresh Rations

Fresh rations, less ice will be issued throughout the period of the exercise. Tinned milk will be issued in lieu of fresh milk.

INDENTS

5. (a) Indents will be submitted three days in advance of day of consumption to this Hq. Indents will be submitted by 0900 hrs daily.
- (b) AF W3809's and AF W3810 will be submitted to cover all rations drawn from No 1 ASC Composite Detachment during exercise to this Hq.

DELIVERIES

6. ASC will deliver rations to Bde HQ, 2/9, 2/10, 2/12 Aust Inf Bns and 2/4 Aust Pnr Bn. These units will provide one guide each, to report to supply point as required by BASCO. All other units will draw rations from Supply Point as notified per signal.



SALT TABLETS

7. Salt tablets will be consumed by personnel engaged in exercise.

REAR PARTIES

8. Indents for rations and POL to be submitted direct to DID KAIRI.

*P. B. Bates* Capt.  
B.A.S.C.O. 18 Aust Inf Bde.

Date - 12 Dec 44

Distribution:- As for General Instruction.



APPX 'D'

AD

SECRET

EXERCISE 'FESTIVE'

18 AUST INF BDE INT SUMMARY NO 1  
(Based on infm to 130900K)

Further to 7 Aust Div Special FESTIVE Int Summary No 4.

21 Aust Inf Bde have maintained contact with enemy posns during night 12/13 Dec by active patrolling. Patrols by 2/14 Aust Inf Bn on right flank have found enemy withdrawing rapidly from their SOUTHERN posns. Patrols by 2/27 Aust Inf Bn on left flank found that enemy had withdrawn from LAKE EACHAM to high ground to EAST.

Tac/R 130600K shows enemy posns on general line 525115 523121  
526125 529131 535135 533142 532155 527161 540176 540190 548200  
550211 559220 563227 577232 587237 592249.

21 Aust Inf Bde disposns as follows:-

HQ 21 Aust Inf Bde 504197 with CP 528207  
2/14 Aust Inf Bn are holding a line 518115 thence astride the road leading NORTH to 523137 thence NORTH along spur to creek junc at 524157.  
2/16 Aust Inf Bn from rd junc 486150 along rd NE to house 509168 thence to house 514178.  
2/27 Aust Inf Bn from X-rds 524183 thence along rd NE to rd bend at 541203 thence NE to junc rd and telephone line 555234.

*D.M. Scott.*  
Capt  
IO 18 Aust Inf Bde

Distribution

2/9 Aust Inf Bn	5	Copies
2/10 Aust Inf Bn	5	"
2/12 Aust Inf Bn	5	"
File	1	"
War Diary	2	"



wp APPX 'E'

SECRET

EXERCISE 'FESTIVE'

18 AUST INF BDE MOVEMENT ORDER

Ref Map BATTLE FRERE 1 inch to 1 mile  
GORDONVALE 1 inch to 1 mile

1. SP Rd Junc 478334.
2. VTM 20, MIH 15.
3. Route: SP - Rd Junc 464311, 441300, 435253, 467235, 424179.
4. Marshalling Area. KAIRI rd 478344 - 481363.
5. Recovery Post (one Wrecker, 5 ORs) will move in rear of convoy No 1 to rd junc 435253 where it will remain until convoy No 2 is cleared. In addition one fitters vehicle will be moving at the rear of each convoy.
6. Debussing area: 424179. Units move by foot from Debussing Area to Bivouac Area. After debussing, vehicles other than unit vehicles return for next lift.
7. Unit vehicles move direct to Bivouac Area.
8. 2 pr TK A guns WILL be carried portee.
9. Traffic Control
  - (a) DAPM 7 Aust Div is to be responsible for traffic control including WPs and Sup Ps. Units will be responsible for traffic control within their own bivouac areas.
  - (b) When loaded, vehicles will NOT move from unit lines until lead out by a Provost escort.
  - (c) Unit operational vehicles will move in rear of unit tp' carrying vehicles.
10. Water  
Units will move with water carts filled.
11. Medical
  - (a) 2/5 Aust Fd Amb are to provide an Ambulance to follow in rear of No 1 and No 2 Convoys for evacuation of real casualties to 2/2 Aust CCS.
  - (b) Ambulance car post will be established by 2/5 Aust Fd Amb at Debussing Point.
12. Disposal of Tp Carrying Tpt  
Engr and AASC tp carrying vehicles will report to parent units on completion of move.

13 Dec 44

*bbabany* Capt  
SC 18 Aust Inf Bde

Distribution as for General Instruction.



## EXERCISE 'FESTIVE'

SECRETAPPX 'A' TO 18 AUST INF  
BDE MOVEMENT ORDER

Serial	Unit	Pers	Stores	Guns	Unit Vehs	Additional tpt allotted				Convoy No	Leave Unit Lines	Leading Veh passes S.P.	Convoy Clears S.P.	Unit App't O.C. Convoy
						No	Type	Supp liqd by	Report Unit					
1	2/9 Aust Inf Bn	672	9½ tons	2	7	45	3 tonT	RAE & AASC	140330K	1	140450K	140500K	140515K	2/9 Bn
2	5 Bty 2/2 TK A Regt	150	-	8	24	-	2½ ton	"	-	1	140430K	140515K	140520K	"
3	HQ 18 Aust Inf Bde	190	10	-	10	15		"	140330K	1	140510K	140520K	140525K	"
4	2/10 Aust Inf Bn	320	-	2	3	<u>20</u> 80	2½ ton	"	140330K	1	140515K	140525K	140535K	
5	2/10 Aust Inf Bn	384	10	-	4	27	2½ ton	"	140800K	2	140845K	140900K	140910K	2/10 Bn
6	2/12 Aust Inf Bn	740	10	2	8	47	"	"	140800K	2	140850K	140910K	140925K	
7	2/5 Aust Fd Amb	180	14	-	8	16	"	"	140800K	2	140900K	140925K	140937K	
8	2/7 Aust Tpt Pl	-	-	-	3	-	-	-	-	2	140900K	140937K	140940K	
9	2/5 Aust Sup Dep Pl	-	-	-	-	-	-	-	-	2	140915K	140940K	140945K	
10	2/9 Aust Inf Bn	10	¼ ton	-	-	1	-	-	140800K	2	140930K	140945K	140950K	
11	HQ 18 Aust Inf Bde	5	½ ton	-	-	1	-	-	140800K	2	140930K	140950K	140950K	
						<u>92</u>								



APPX 'F'

EXERCISE FESTIVE

SECRET

Copy No. ....

14 Dec 44

*ms*

18 AUST INF BDE OO NO 1

Ref Map: BARTLE FRERE 1 inch to 1 mile.

INFM

1. Enemy

- (a) No change from Sitreps up to 141800K.
- (b) Enemy positions appear to be well sited although the enemy is thin on the ground.

2. Own Tps

No change.

3. Higher Comds Intention

7 Aust Div is to advance on 15 Dec with 18 Aust Inf Bde on right and 25 Aust Inf Bde on left. 21 Aust Inf Bde is to come into res when 18 and 25 bdes have passed through.

4. Air

- (a) Enemy - It is anticipated that light enemy raids will continue on present scale.
- (b) Own - One General Recce Flt ( ANSONS) based on MAREEBA is available to the Div for air sp and Tac R requirements.

INTENTION

- 5. 18 Aust Inf Bde Gp will adv along general axis GLEN ALLYN road on 15 Dec 44 and secure general line of high ground west of, and overlooking NORTH JOHNSTONE river.

METHOD

- 6. Leading elements of 18 Aust Inf Bde Gp will pass through 21 Aust Inf Bde at 150630K, the advance will be conducted in three phases:-

Phase 1 - 2/10 Aust Inf Bn to secure high ground east of JAGGAN 5311.

Phase 2 - 2/4 Aust Pnr Bn, to secure high ground vicinity rd junc 552132.

Phase 3 - Continuation of adv on main axis by 2/9 Aust Inf Bn, to secure high ground on west bank of NORTH JOHNSTONE river and FORD at 595120.

7. Groupings

- (a) Adv Gd - 2/10 Aust Inf Bn, with

under comd - one tp 5 bty 2/2 Aust TK A Regt  
Det 2/7 Aust Tpt Pl (7 Jeeps and trailers)

in sp - 2/4 Aust Fd Regt  
recce party 2/4 Aust Fd Coy



(b) Left Flank - 2/4 Aust Pnr Bn, with

under comd - one tp 5 Bty 2/2 Aust TK A Regt  
det 2/7 Aust Tpt Pl (10 Jeeps and  
trailers)

in sp - 2/4 Aust Fd Regt

(c) Right Flank - 2/3 Aust Commando Sqn(d) Follow Up Tps - 2/9 Aust Inf Bn with

under comd - one tp 5 Bty 2/2 Aust TK A Regt  
det 2/7 Aust Tpt Pl (7 Jeeps and  
trailers)

in sp - 2/4 Aust Fd Regt

(e) Bde Res - 2/12 Aust Inf Bn with

under comd - one tp 5 Bty 2/2 Aust TK A Regt  
det 2/7 Aust Tpt Pl (7 Jeeps & trailers)

D Coy 2/1 Aust MG Bn

8. Tasks(a) Phase 1 - 2/10 Aust Inf Bn will:-

- i. Adv on axis - GLEN ALLYN rd.
- ii. Pass fwd elements through FDLs 21 Aust Inf Bde at 150630K.
- iii. Capture enemy posns at 522108, 527118, and 529127, and secure general line of MILLAA MILLAA-MALANDA rd-Code name "APPLE".
- iv. Capture general area of high feature at 547121, 555115, 545113. - Code name "PEAR".

(b) Phase 2 - 2/4 Aust Pnr Bn will move on orders from this HQ to assembly area in square 5112 - see trace att.  
No move before 150730K.  
On further orders from this HQ 2/4 Aust Pnr Bn will:-

- i. Secure and hold high ground in vicinity rd junc 552132 - Code name "ORANGE".
- ii. Exploit to NE, limit of exploitation rd junc 564156.
- iii. General role, left flank protection for adv of main body on GLEN ALLYN rd.

(c) Phase 3 - 2/9 Aust Inf Bn will move on orders from this HQ to assembly area in square 5111 - see trace att.  
No move before 150730K.  
On further orders from this HQ 2/9 Aust Inf Bn will pass through 2/10 Aust Inf Bn and will:-

- i. Adv on axis GLEN ALLYN rd.
- ii. Secure ridge astride rd at 570121 - Code name "CHERRY".
- iii. Secure high ground astride main axis on west of, and covering NORTH JOHNSTONE river - Code name "PLUM".
- iv. Secure FORD at 595120.



3.

(d) Right Flank - 2/3 Aust Commando Sqn will:-

- i. Clear enemy cav screen from high ground from 549084 to 550100 - Code name "FIG".
- ii. Afford right flank protection to Bde. Left limits to include ring contour 562101, rd at 570110 to river at "NO crossing" 586102. Right limits to include BARTLETS HILL 557074, - 2500 contour 584080. Code name for completion "GRAPE".

(e) Bde Res

- i. 2/12 Aust Inf Bn will move when ordered by this HQ to assembly area vicinity rd junc 480097 - see trace att. No move before 150730K.
- ii. D Coy 2/1 Aust MG Bn will move when ordered by this HQ to assembly area in square 4913 - see trace att. No move before 150730K.

9. Movement

- (a) Units moving to assembly areas will move across country making use of ground to provide cover from view, from enemy positions.
- (b) Unit MT will move by road under strict control.

10. Arty

- (a) 2/4 Aust Fd Regt are to support each phase.
- (b) One Bty cmd and two "O" parties are allotted to each of following:-

2/10 Aust Inf Bn  
2/4 Aust Pnr Bn  
2/9 Aust Inf Bn

11. Engers

Rece party 2/4 Aust Fd Coy will move with 2/10 Aust Inf Bn during phase 1, and will join 2/9 Aust Inf Bn for phase 3. This party will carry out the following tasks:-

Bridge Recce, with particular reference to use of Tanks.  
Water recce  
Recce for minefields  
Other tasks at discretion of bn cmd

12. Air

Requests for air sp or Tac R will be passed through normal army channels.

ADM

13. Sups

Sup Pt established at 463126. Sup Pt opens 1800 hrs closes 1900 hrs daily. 2/3 Aust Commando Sqn, 2/9, 2/10, 2/12 Aust Inf Bns, 2/4 Aust Pnr Bn will arrange for one guide each to report to Sup Pt at 1730 hrs daily to guide ration vehicle to unit location. All other units will draw direct from Sup Pt.



14. Amn

AP established at 463126. AP opens at 1800 hrs 14 Dec 44 and remains open continuously. Units will advise BASCO quantities required and collect at AP.

15. POL

PP established at 463126. PP opens at 1800 hrs and closes at 2000 hrs daily. All units will draw own POL.

16. Water

Water point opens at 458125 at 1430 hrs on 14 Dec 44. Units will draw all water from this point.

17. Medical

2/5 Aust Fd Amb are arranging for:-

- (a) Jeep Ambulances to be attached to 2/9, 2/10 Bns and 2/4 Aust Pnr Bn as from 141700K.
- (b) ADS to be established area square 5211 by 150830K if situation permits.
- (c) Evacuations RAP to ADS to MDS at 458124 by jeep ambulance.

18. B Ech

B Echelons will be brigaded under the Bde TO by 1600 hrs 15 Dec 44. Bde TO to recce and select suitable site.

19. T.C.

4 Provosts from sec 7 Aust Div Provost Coy will report by 142100K and move with 2/10 Aust Inf Bn and be prepared to picquet bridges and rd juncs.

20. PWs

- (a) PW cage has been established in square 4822.
- (b) All PWs will be escorted by units to sec 7 Aust Div Pro Coy at Bde HQ.
- (c) Sec 7 Aust Div Pro Coy will arrange escorts as required to PW cage.

21. Rec

2/47 Aust LAD, situated at Bde B Ech, will evacuate all veh cas. Units will advise this HQ of location of non-runners.

INTERCOMN22. Bde HQ

- (a) Bde HQ will remain present location.
- (b) Bde Comd Post will move to vicinity rd junc 514108 on completion of Phase "APPLE".

23. Wireless

- (a) Wireless silence will be observed until leading elements pass through 21 Aust Inf Bde at 150630K.



(b) On breaking of wireless silence the following links will be opened:-

- i. Div to 18 and 25 Aust Inf Bdes.
- ii. Bde to 2/9, 2/10, 2/12 Aust Inf Bns, 2/4 Aust Pnr Bn, 2/3 Aust Commando Sqn and Bde Comd Post.

24. Line

- (a) B sec Sigs 7 Aust Div will lay twin line from present Bde HQ site behind the leading bn. This line will be used by leading Bn only; unless permission is given by Bde.
- (b) Bde Sig Sec will lay single line behind 2/10 Aust Inf Bn extending present 2/9 - 2/10 Aust Inf Bn line.
- (c) Bde Sig Sec will lay single line from 2/10 Aust Inf Bn to 2/4 Aust Pnr Bn for Phase 2.
- (d) No line will be layed to 2/3 Aust Commando Sqn.

25. Code Signs and Frequencies - have been allotted and are held by operators of Bde - Bn link.

26. R/T Code with key word SOULBREAKING/C will be used.

27. Special Codes

Special code words given in "METHOD" paras will be used to advise completion of Phases.

28. Synchronization of Time

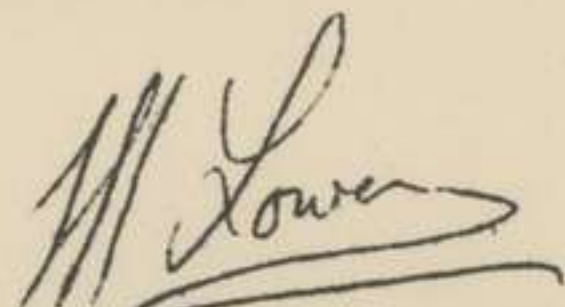
ABC time will be used.

Bde Sigs will synchronize at 0600 and 1600 hrs.

ACK

Time of signature 2200hrs

Issued by LO

  
Maj  
BM 18 Aust Inf Bde

DISTRIBUTION

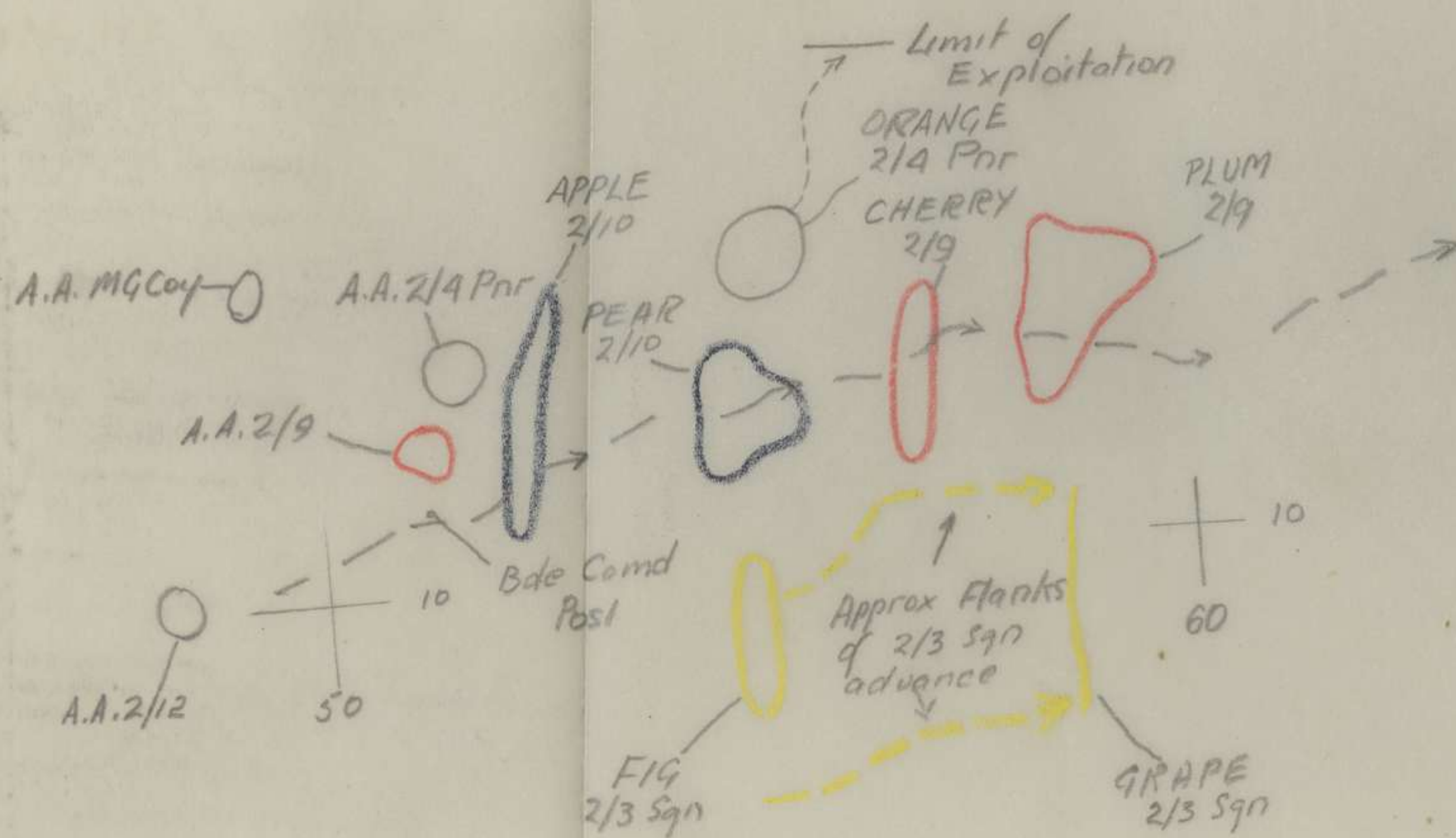
Unit	OO No 1	Trace
	Copy No	Appx 'A' Copy No
2/9 Aust Inf Bn	1	1
2/10 Aust Inf Bn	2	2
2/12 Aust Inf Bn	3	3
2/3 Aust Commando Sqn	4	4
2/4 Aust Fd Regt	5	5
5 Bty 2/2 Aust TK A Regt	6	-
2/4 Aust Fd Coy	7	-
2/4 Aust Pnr Bn	8	6
D Coy 2/1 Aust MG Bn	9	-
2/5 Aust Fd Amb	10	7
25 Aust Inf Bde (for info)	11	8
Comd	12	9
BM	13	10
SC	14	11
IO	15	-
TO	16	-
Sig Offr	17	12
7 Aust Div (for info)	18	13
File	19	14
War Diary	20-21	15-16



# EXERCISE "FESTIVE"

SECRET  
COPY NO 16

APPX A to 18 Bde O.O. N°1





APPX 'G' 150

NOTES FROM BDE COMD'S CONFERENCE ON EXERCISE FESTIVE 221400K

Attended by:- Bde Staff, COs and / or representatives of majority of units of Bde Gp.

Bde Comd outlined the following points arising from Umpires criticism.

1. 18 Bde Ops more cautious than 25 Bde. Umpires of the opinion that bold action was desirable.

Comd's comments: Had full strength of enemy been physically represented, tempo of exercise would have been much slower, and he would have been justified in "feeling his way step by step".

2. Patrolling

- (a) NOT deep enough.

Comd's comments: Orders for deep patrolling was Bde responsibility and this criticism was probably justified.

- (b) Contact lost owing to lack of vigorous patrolling.

Comd's comments: Keeping contact was Bn comd's responsibility.

COs pointed out that they had relied on Coy Comds to patrol their respective areas but agreed that patrolling could have been more vigorous.

- (c) Comms generally not good.

CO 2/10 Bn stated that 536 set was not reliable for deep patrols and that his patrols had mainly relied on verry signals.

It was agreed that line was desirable where possible, and SC was asked to obtain enamel wire for experiment.

3. System of OPs not sufficiently organised.

Comd's comments:

- (a) Situation changed so quickly that it was not possible at all times to organise system of OPs, but country was good for observation and more effective use could have been made of OPs.
- (b) Int Sec not used to best advantage and should be given general tasks in Bn orders.
- (c) Bde IO should co-ordinate Bn OPs on two or more Bn fronts.
- (d) OP reports must be accurate and concise; observers must give accurate bearings and where possible accurate distances taken with range finder.

4. Concealment

- (a) Umpires suggested that best use was not made of lower ground on reverse slopes.  
Bn Comds were not in favour of occupying lower ground on reverse slopes as a general principle.  
Bde Comd suggested a combination of main body of tps on lower ground of reverse slopes with sufficient tps on top of feature to observe and give early warning of approach of enemy. Obviously tops of features must be held in strength by night.

- (b) Weapon pits not well concealed.

Bde comd suggested that Bn Comds prepare demonstrations of good and bad section pits.

5. Transport



GOC criticised lack of flexibility.

Bn Comds had mostly worked with a pool of idle vehs controlled by CoC Hq Coy, TOs and QMs.

Bde Comd thought in view of above this criticism could not have been directed at this bde.

#### 6. Battle Procedure

Bde Comd pointed out following faults noticed by him.

- (a) Time lag during adv of 2/10 Bn on first day.

Comd 2/10 Bn explained that he had been held up by lack of infm from right flank tps (2/3 Comdo Sqn) and had had to make his own recce before pushing fwd.

- (b) The time lag during the relief of the 2/4 Pnr Bn by the 2/10 Bn.

- (c) Time lag during 2/9 Bn adv through jungle after crossing NORTH JOHNSTONE River.

2/9 Bn comd explained that time was lost in getting O Gp fwd for change of orders. Should have had his O Gp moving at head of column.

- (d) Time lag during 2/12 Bn adv through Pnr Bn fwd of JAGGIN area.

Comd 2/12 Bn advised that time was lost in getting MGs from MB Coy fwd.

#### 7. Allotment of objectives to fwd tps and process of consolidation

Bde Comd is of the opinion that comds have been allotting an area to two coys which was really only large enough for one coy, thus causing too much concentration. He suggested that an attack in depth with the rear coys moving through the fwd coys on to final objective.

Detailed organisation of movement and timing of vehs and sp weapons for consolidation should be worked out and carried out as a drill.

Bde Comd then called on representatives of supporting arms for comments on difficulties encountered by them during the exercise.

#### 8. Signals

Bde Sig Offr outlined the following faults noticed in comms and suggestions for improvement:-

- (a) On second day line party could not locate 2/10 Bn for considerable time.

Suggested that line party recce route out to Bn and lay back from Bn to Bde.

- (b) Line party with 2/4 Pnr Bn was instructed on one occasion not to proceed beyond a certain point. Party halted for five hours and omitted to advise Sig Offr of the situation with a result that comms were out during this period.

- (c) Pnr on one occasion could not put a phone on line laid from Bde for a considerable time.

Bde Comd pointed out to units under comd and in sp that they must have a phone immediately available for Bde line.

- (d) 2/3 comdo operators presumably asleep at switchboard on some occasions during nights.



Comd instructed BM to take the matter up with 2/3 Comdo Sqd.

- (e) Line party reaching 2/9 Bn on one occasion were not immediately allowed to connect line to 2/9 Bn switchboard.

Comd 2/9 Bn promised to see this did not occur in future.

- (f) It was suggested that to overcome the problem of batteries not being charged that the sigs contact the CO of bns immediately on daytime halts to ascertain if there was sufficient time to commence charging batteries.
- (g) Following on several breaches of R/T security it was suggested that it could be improved in the future, by those persons who are likely to be using R/T, being instructed in security and procedure by the respective Sig Offrs.
- (h) Regarding the overlap of frequencies between 108 and 22 sets, the Div Sig O advised that this overlap cannot be overcome owing to the overlap of the frequency bands of these sets.
- (j) Regarding the volume of signal traffic it was suggested that on immediate messages with a large number of addressees, only the main addressees should be of immediate priority, also, LOs and visiting offrs to Bde could help by calling at Sig Office and taking signals to appropriate addressees. M/C orderlies with Bns would be a big help in clearing traffic.
- (k) The lack of jeeps and trailers heightened the difficulties of sigs during moves.
- (l) To facilitate smooth working between Bde and Bn sigs it was suggested that the same Bde sigs be allotted to each Bn in future.
- (m) In view of shortages of line experienced by Bn sigs it was suggested that supplies of line needs more careful organisation in future.

Finally the Bn COs considered that coms were 100% improvement on the last exercise.

## 9. Arty

Arty representative, Maj GAUNT, outlined the following points in connection with the smooth liaison between arty and inf.

- (a) The CRA did not like the Bde practice of having the CO of the Fd Regts with Bde.

The Comd wishes always to have a competent arty offr with him should the CO not be available, preferably at the Bde Comd Post.

- (b) It was considered desirable for Bns to feed arty O parties; a subsequent adjustment of rations being made by Arty. Bn COs concurred.
- (c) DF tasks could be better indicated by Bn COs prior to an attack, when the arty had good observation of the area to be registered.

## 10. Engineers

Bde Comd and Engr rep, Maj TAYLOR, agreed that owing to lack of recent experience in cooperation of Inf Bde and Fd Coy both staffs were somewhat "at sea". It was arranged that the OC Fd Coy or a senior officer should at all times be with Bde HQ with his own coms to the Fd Coy.

## 11. Medical

The Fd Amb representative, Lt-Col PETERS, brought forward the following matters:-

- (a) Lack of coms was the main disadvantage encountered in the exercise,



and it was suggested that comms be laid by Div from Div to MDS thus providing line from Bde to Fd Amb.

- (b) Lack of jeep ambulances also caused difficulty in evacuating casualties, and would be overcome by Fd Amb drawing on bde reserve of 8 jeep ambulances..

Bde Comd and SC agreed to this arrangement.

12. MG

Umpires stated that co-operation between Bde and MG units was not as good as could be desired.

The MG rep, Maj AUSTIN, considered that improved comms and tpt internally would improve the situation. Bn COs can arrange line comms from MG Bn HQ to MG pls.

13. TK A - Lt MORROW representing 5 Bty 2/2 TK A regt.

Umpires criticised the fact that 6 pr guns were brought fwd first, rather than 2 pr guns.

The Bde Comd wishes all Tk A guns brought fwd together and the Tk A regt were prepared to do this.

Regarding feeding of Tk A personnel, the Tk A regt are in favour of feeding their own tps.

14. Adm

The SC, Capt C B PARBURY brought forward the following matters:-

- (a) B Echls were considered by him better brigaded for reason of better control although by doing so some congestion is caused. He admitted that B Echls of Bns on the exercise could have been better sited and further fwd.

The Bde Comd thought that B echls should be brigaded during a move, but perhaps could be under Bn control when static. Comms must be good between B Echls and Bde when B echls are brigaded.

Maj FLEMING of 2/9 Bn favoured Bn control mainly because of the distance a brigaded B ech has to be away from some Bns, while the COs of 2/10 and 2/12 Bns favoured the brigading of B echls.

- (b) The time of opening of the PP was unsatisfactory as often at such times of opening it was found that bns were busy with meals. To overcome this it was arranged to have the PP open from midday for two hours or more.
- (c) The delivery of rations was satisfactory.
- (d) The water supply to Bns was satisfactory except that the 2/10 Bn found one water cart not sufficient to cover the needs of the tps.
- (e) Control of traffic was unsatisfactory during exercise, congestion and traffic jams being too prevalent.



APPX 'H' 50

HQ. 18 AUST. INF. BDE.

AERIAL RECCE EXERCISE 23 DEC 44

Ref Map : ATHERTON TABLELANDS (SPECIAL) 4 miles to 1 inch

1. OBJECT To practice officers in map reading from the air and aerial recce.
2. TIME AND DURATION Report ALO MAREEBA 1230 hrs. Take off 1300 hrs.  
Duration of flight approx 1 hr 30 mins.

3. SYNDICATES

	<u>Syndicate No 1</u>	<u>Syndicate No 2</u>
Syndicate Ldr	Maj LOWEN	Capt TILLEMAN
Members	Lt GREAVES	Lt MARCH
"	Lt THOMSON	Lt DONNELLY

4. COURSE:- (a) A circular course will be flown and will include the following points:-  
MAREEBA Air Strip, HQ 18 Aust Inf Bde, LAKE EACHAM, River and Creek junc 373831, GORDONVALE, CAIRNS, KURANDA and MAREEBA.  
  
(b) Syndicate No 2 will fly course as set out above.  
Syndicate No 1 will fly reverse direction.
5. NAVIGATION:- Syndicate Ldrs shown above will be responsible for navigation of the Aircraft. Pilots have been requested to give no assistance in this matter. Remaining members in the syndicate will check leader's navigation.
6. RECCE:- Members of the syndicate will carry out a recce to ascertain answers to the following questions. A typewritten recce report will be submitted by each syndicate to reach this HQ not later than 1200 hrs 24 Dec 44.
7. QUESTIONS:-
  1. Locate 18 Aust Inf Bde HQ and carry out the following:-  
(a) Receive signals from Lucas lamp  
(b) Bomb tennis court.
  2. Report the number of troops and vehicles in LAKE EACHAM area.
  3. Fly to river and creek junc 373831. The following report is required on track running SE from ref 374833:-  
(a) How far does track run (give ref)  
(b) To what distance can jeeps be driven up track.
  4. Flying down the MULGRAVE River to GORDONVALE report the following:-  
(a) How many bridges along river, map ref and estimated classification.  
(b) Are there any fording places, if so where.
  5. Follow railway line to CAIRNS. Report on the suitability of WHITE ROCK railway station and surrounding area as a supply rail head (see PSPB pam 13 Appx 'N')
  6. Report number and estimated tonnage of all crafts within the CAIRNS breakwater.
  7. What is the length, width, height and type of bridge at STRATFORD.
  8. Follow the BARRON River to MAREEBA and report on the following:-  
(a) What sites on the BARRON River would be suitable for a rest camp to accommodate approx 1000 tps.  
(b) What blockages are there to small craft and their location.

*Gausball Capt*  
for Maj.  
BM 18 Aust Inf Bde.



APPX 'J'

BATTALION TWO DAY EXERCISES

GENERAL INSTRUCTIONS

GENERAL

1. Bn two day Exercise set by this HQ will be conducted on the following days.

(a) 3- 4 Jan 45	2/4 Aust Pnr Bn
(b) 8- 9 Jan 45	2/12 Aust Inf Bn
(c) 12-13 Jan 45	2/10 Aust Inf Bn
(d) 17-18 Jan 45	2/9 Aust Inf Bn

TPS TAKING PART

2. Each unit will have under comd for the period of the Exercise:-

One Fd Bty 2/4 Aust Fd Regt  
One Pl 2/1 Aust MG Bn

Units will be notified later of the time and date these tps come under their comd.

OBJECT OF EXERCISE

3. Tp practice Bns and attached tps in offensive action in both open and close country.

ENEMY

4. The following tps will act as enemy:-

(a) For period 3-4 Jan 45 - 2/9 Aust Inf Bn will make available two coys plus one sec MMGs.

(b) For period 8-9 Jan 45 - 2/4 Aust Pnr Bn will make available two coys plus one sec MMGs.

(c) For period 12-13 Jan 45 - 2/12 Aust Inf Bn will make available two coys plus one sec MMGs.

(d) For period 17-18 Jan 45 - 2/10 Aust Inf Bn will make available two coys plus one sec MMGs.

DIRECTING STAFF

5. Director Brig F O CHILTON  
Chief Umpire Capt A MARSHALL

Coy Umpires will be provided as follows:-

- (a) Two Captains or Senior Subalterns from the Bn providing the enemy
- (b) From Bde HQ

Lt J G THOMSON  
Lt V J DONNELLY  
Lt C A MARCH



BRIEFING OF UMPIRES AND ENEMY OFFICERS

6. The following personnel will report to Chief Umpire this HQ 0900 hrs the day prior to commencement of each exercise and will be given the situation on the ground.

- (a) All Umpires
- (b) OC enemy and enemy pl comds.

Enemy will make two jeeps available for their personnel

REPRESENTATION OF FIRE

7. Representation of Fire will be as follows:-

- (a) Enemy
  - i. Brens and MMG firing into safety pits to represent LMG and MMG fire respectively.
  - ii. .303 Blank Amn to simulate rifle fire.
  - iii. 2" Mortar Smoke will only be used as smoke NOT to represent HE.
- (b) Own Tps
  - i. .303 Blank to simulate Small Arms fire.
  - ii. 2" Mortar Smoke will only be used to produce smoke screens NOT as HE.

DRESS

- 8. (a) Own Tps:- Battle Order less steel helmets
- (b) Enemy:- Battle Order incl Steel helmets
- (c) Neutral personnel:- White arm bands

NEUTRAL VEHICLES

9. Neutral vehicles will fly a white flag.

OPENING SITUATION

10. Opening Situation will be delivered to units 48 hrs prior to commencement of each exercise.

MAPS REQUIRED

- 11. GORDONVALE 1" to 1 mile
- BARTLE FRERE 1" to 1 mile

ADM

12. Units will make their own adm arrangements.

13. Tpt

Operational tpt only will be used. Water truck will be made available by Bde for duration of each exercise.

14. Amn for these exercises will be distributed by this HQ.



CARE OF PRIVATE PROPERTY

15. Units will ensure that every care is taken to avoid damage to private property.

- (a) Farm buildings and immediate surroundings will be out of bounds.
- (b) Fences will NOT be cut.
- (c) All weapon pits etc will be filled in and turf replaced prior to leaving areas.
- (d) All fires will be extinguished before leaving areas.

*Lawshall* Capt.  
for Maj  
BM 18 Aust Inf Bde

DISTRIBUTION

2/9 Aust Inf Bn  
 2/10 Aust Inf Bn  
 2/12 Aust Inf Bn  
 2/4 Aust Pnr Bn  
 2/4 Aust Fd Regt  
 2/1 Aust MG Bn  
 Director  
 Umpires (12)  
 OsC Enemy (4)  
 SC  
 War Diary (2)  
 File



# FIELD RETURN OF OFFICERS

Army Form W.3008  
(Adapted) (Page 1)  
(Revised Jan., 1943)  
**49 44** (Serial No.)

AIF At 0600 Hrs. Saturday 2 / 12 / 1944 HQ 18 Aust (Unit)  
W.E. 11 / 2 / 4 OFFRS. 19 O.R.'s. 66 OFFRS. O.R.'s. ATT. BY W.E.

## PART A.—POSTED STRENGTH, SURPLUS OR REINFORCEMENTS REQUIRED.

W.E. EXCLUDING ATTACHED.				DETAIL.	ATTACHED ALLOWED BY W.E.							
1	2	3	4		5	6	7	8	9	10		
Rein'ts Required.	Deficient W.E.	Surplus to W.E.	Posted Strength.		Arm or Corps.	Posted Strength.	Surplus to W.E.	Deficient W.E.	Rein'ts Required.			
Nil	1		1	* * 1 <b>Brigadier</b> Lieut.-Colonels								
Nil	1	1	7	Majors								
Nil	1	1	6	Captains								
			3	Lieutenants								
				Quarter-masters AA Chap Dep A.A.N.S. and A.A.M.W.S. Offrs.								
				Civilians Counting as Offrs.								
	3	2	18									
		DETAIL	A.I.F.	C.M.F.	A.W.A.S.	A.A.N.S.	A.A.M.W.S.	CIVIL.	R.A.N.	R.A.A.F.	**	TOTAL.
		A.	18									18
		E.(1)										
		E.(2)										

Analysis of Part A to be shown here by ALL units. Only units notified in para. 10 of instructions for compilation of form will complete Part E(1) & E(2).

\* Insert detail of higher ranks as necessary.  
\*\* Personnel belonging to a category not provided for in the analysis will be shown in this Col. Particulars will be shown, e.g., 20 U.K. Forces; 10 N.Z. Forces.

## PART B.—PARTICULARS OF OFFICERS JOINED OR QUITTED DURING WEEK.

### OFFICERS JOINED DURING WEEK

Army No.	Rank.	Name and Initials.	Unit From.	Date.	CAUSE.
QX 4398	Capt	MARSHALL A	2/9 Aust Inf Bn	15 Oct 44	Appointed IM(L) to date Authority 7 Div A3046 of 23 Nov 44
NX 197	Capt	GATES R.B.	AASG -	27/11/44	Appointed BASCO vice capt LITTLE - medically down-graded

### OFFICERS QUITTED DURING WEEK.

Army No.	Rank.	Name and Initials.	Unit To.	Date.	CAUSE.

## PART C.—DESCRIPTION OF OFFICERS WHOSE RETURN TO.....(Unit) IS PARTICULARLY REQUESTED. .... / ..... / 194.....

Army No.	Rank.	Name and Initials.	REMARKS (e.g., present whereabouts if known).



PART D.—NOMINAL ROLL OF OFFICERS ON POSTED STRENGTH

At 0600 Hrs. Saturday 2 / 12 / 1944 (Total to agree with Columns 4 and 7 of Part A.)

1	2	3	4	5	6	7	8
Substantive Rank and Higher Temporary Rank if Held.	Army Number.	Surname.	Initials.	Posting.	Whether present with Unit (insert Yes or No)	If not present with Unit, state how employed.	Date of Detachment.
Col T/Brig	NX 231	CHILTON	F.O.	Comd	Yes		
Capt T/Maj	VX 53	LOWEN	L.H.	BM	"		
Capt	QX 4398	MARSHALL	A.	BM(L)	"		
"	QX 1148	PARBURY	C.B.	SC	"		
"	NX 55601	EVANS	J.D.	Leg O	"		
Lt	QX 37666	THOMSON	J.G.	SC(L)	"		
T/Capt	QX 1561	SCOTT	D.M.	I.O.	"		
"	QX 12375	GRIFFITHS	S.C.	LO(1)	No	Junior Leaders Sch	
"	QX 2163	MACINTOSH	V.F.	TO	Yes		
Capt	NX 197	GATES	R.B.	BASCO	"		
Lieut	NX 19329	IRVIN	R.R.	Ed O	"		
"	QX 10382	ANNAND	C.D.	Amen	"		
"	QX 36816	GREAVES	J.L.	LO(3)	No	Compassionate leave	
"	QX 8695	JONES	D.B.	Hyg O	Yes		
A/Lieut	SX 9738	McGEE	A.J.	BOO	"		
Capt	SX 8744	PHILLIPS	R.R.	Chap	No	Det 2/9 Aust Inf Bn	
"	VX 91064	HOPKINS	J.F.	"	"	" 2/10 "	" "
"	NX139919	WOTTON	R.A.W.	"	"	" 2/12 "	" "

PART E.—NOMINAL ROLL OF OFFICERS ATTACHED FROM OTHER UNITS.

Substantive Rank and Higher Temporary Rank if Held.	Army Number.	Name and Initials.	Unit.	Date of Attachment.	Nature of Attachment.
Maj	VB65417	KER J.G.S.	RA		British officer
Maj	SX 3289	PHILLIPSON R.C.	1 Aust Nil Lag Cn		MLO att 18 Bde
Lieut	QX 3610	DONNELLY V.J.	2/9 Bn	30/11/44A/LO(2)	

2 Dec 44  
Date of Despatch

*B. Parbury*  
Signature of Commander







**PART E. Detail of Present Strength and Reinforcements required as shown in Part A of Army Form W.3009 at 0600 Hours Saturday 2 / 12 / 1944 .**

Details of Tradesmen. GROUP I.	W.E.	Posted Strength.	Reints. Required.	Details of Tradesmen. GROUP I. (cont.)	W.E.	Posted Strength.	Reints. Required.	Details of Tradesmen. GROUP II. (cont.)	W.E.	Posted Strength.	Reints. Required.	Details of Tradesmen. GROUP III. (cont.)	W.E.	Posted Strength.	Reints. Required.
Ammunition Examiners				Surveyors, Engineering	2	1	1	Operating Room Assts.	9	11	1	G.P.O. Assistants	13	15	3
Armament Artificer Fitter				Surveyors, B.A.A.				Operator, Keyboard				Hammermen			
Armament Artificer Fitter (Electrical)				Surveyors, Topographical				Operator, Line				Leather Stitchers			
Armament Artificer Fitter (M.V.)				Surveyors, Trigonometrical				Operator, Signal				Orderlies, Nursing			
Armament Artificer Fitter (A.F.V.)				Toolmakers				Operator, Switchboard				Orderlies, Nursing Mental			
Armament Artificer Instrument				Turners				Operator, Wireless				Plate Layers			
Armament Artificer Radio				Watchmakers				Opticians				Rangefinders			
Armament Artificer Signals				Welders				Painters				Riveters			
Armament Artificer Wireless								Panel Beaters				Roughriders			
Artificer, Artillery								Photographer, Dry Plate				Saddlers			
Artificer, Engine								Predictor Numbers				Saddletree makers			
Blacksmiths								Printers				Shoemaker and Boot Repairer			
Bricklayers								Radiographers				Stevedores			
Computers								Riggers				Stokers, Staty. Engine			
Cooks, Hospital				GROUP II				Sawyers				Storemen, Technical			
Coppersmiths				Armourers				Signallers				Tailors			
Dispensers				Axemen				Signwriters				Textile Refitters			
Draughtsmen	Int 2	1	1	Bakers				Telescope Identfn. Numbers				Tinsmiths	Non Specialists		
Draughtsmen (Architectural)				Bty. Comd's. Asst.				Well Borers				Vulcanizers	13	13	
Draughtsmen (Engineering)				Boilermakers				Wheelers				Wagon Erectors	9	15	
Draughtsmen (Mechanical)				Carpenters				Winchman				Whitesmiths	3	14	
Draughtsmen (Topographical)				Carpenters and Joiners				Wireman				Mess Cpl	1	1	
Electricians				Cooks	3	4		Woodturners				Hyg Duty	1	1	
Electricians (M.V.)				Dental Mechanics								Sig Ords	9	9	
Electricians (Signals)				Driver-Mech. (Eng. and Med.)								Storemen	1	1	
Fitters				Driver-Operator								Transport	1	1	
Fitters (Cycle)				Drainers								Water Duty	1	1	
Fitters (Electrical)				Electricians								CSM	1	1	
Fitters (Gun)				Electricians (Engineers)								CONS	1	1	
Fitters (Instrument)				Fire Control Operators				GROUP III				DETAILS OF NON-TRADESMEN.			
Fitters (M.V.)				Gun Operator				Battery Surveyors				SERVICES			
Fitters, Railway Signal				Hatchman				Butchers				AASC-Clerk	1	1	
Fitters, Signals				Height Taker				Clerks	4	3	2	B'nan	1	1	
Grinder, Precision				Helio Operator				Clerks, Supply				AAMC Med Ord	1	1	
Mechanics, Instrument				Instrument Operator				Clerks, Technical				AACB B'man	1	1	
Mechanics, Instrument (Signals)				Intelligence Duties	4	6		Coach Trimmers				Am B'n	1	1	
Mechanics, Instrument (Surgical)				Joiners				Concretors				AACH Dept			
Mechanics, Radio				Lineman				Cooks				B'nan Dvr	3	3	
Mechanics, Typewriter				Lineman, Signals				Dental Clerk Orderlies				ATTACHED BY W.E.			
Mechanics, Wireless				Lithographers				Despatch Riders				AALC Clerk	1	1	
Millwrights				Machinists, Metal				Draughtsmen, Signals				B'man	1	1	
Operators, Excavator				Machinists, Wood				Drivers, H.T.				AAMen S			
Pattern Maker				Masons				Driver Mechanics	1			Clerk	1	1	
Pharmacist				Masseurs				Driver Tptn. Plant				A Ed Ser			
Photographer, Wet Plate				Mechanics, M.T.				Engine Hands, I.C.				Clerk	1	1	
Photowriter				Miners				Equipment Repairers							
Plumber				Moulders				Farriers							
Saw Doctors				Nurses, Trained				Fitters' Mates							
Surveyors				Observation Post Assts.				Gun Layers							
CARRIED FORWARD	2	1	1	CARRIED FORWARD	9	11	1	CARRIED FORWARD	13	15	3	Totals of columns marked * to agree with columns 4 and 7, and 1 and 10 of Part A. respectively.	66	84	4

NOTES.—(a) If rank other than private is involved give details on back.  
 (b) Authorized trades or specialists not included in list will be added as required in spaces provided.  
 (c) Where A.W.A.S. and/or A.A.M.W.S. personnel are desired show details on back.  
 (d) Where replacement not desired note accordingly on return by insertion of N.R. in col. "Reints. Required."  
 (e) Where any request or notation is made on back of form, the words "See Back" should be written in one of the blank spaces on this page.

2 Dec 44  
Date of Despatch

Signature of Commander



UNIT  
**FIELD RETURN OF OTHER RANKS**

**PART E. Detail of Present Strength and Reinforcements required as shown in Part A of Army Form W.3009 at 0600 Hours Saturday 12/19/44**

Details of Positions	Rank	WE	PSV	Surp	Def
<b>DETAILS OF NCOs</b>					
<b>Trade</b>	<b>Rank</b>	<b>WE</b>	<b>PSV</b>	<b>Surp</b>	<b>Def</b>
Draughtsman - Topo Intelligence Duties	Cpl	1			1
"	S/Sjt	1	1		
"	Cpl	1	1		
Cook	"	1	1		
Clerks	WO II	1	1		
"	Cpl	1	1		
"	Sjt		1	1	
Drivers MT Transport	Cpl	1	1		
General Duties	Sjt	1	1		
Mess Cpl	Cpl	1	1		
CSM	Cpl	1	1		
CQMS	WO II	1	1		
"	S/Sjt	1	1		
<b>SERVICES</b>					
AASC - Clerk	Cpl	1	1		
AAMC - Med Ord	Cpl	1	1		
AAOC - Ann Examiner	Sjt	1	1		
AALC - Clerk	Cpl	1	1		
AA Ed Ser - Clerk	Sjt	1	1		
AA Amun Ser - Clerk	Sjt	1	1		
<b>Total</b>		<b>18</b>	<b>18</b>	<b>1</b>	<b>1</b>
<b>SURPLUS NCOs</b>					
<b>No</b>	<b>Rank</b>	<b>Name</b>	<b>Med Class</b>	<b>Trade</b>	<b>Spec Qual</b>
QX 1055	Sjt	BRENCHLEY E.W.	A1	Clerk	Nil

NOTE—(a) If rank code (last figure) is involved give details on back.  
(b) Reinforced troops on operations not included in list will be added as required in notes provided.  
(c) Where A.W.A. and/or A.A.M.W.B. personnel are detailed show details on back.  
(d) Where personnel are detailed note accordingly on return by insertion of 'R' in col. 'Reinforced'.  
(e) Where personnel are detailed note accordingly on return by insertion of 'R' in col. 'Reinforced'.  
(f) Where and request is required to make on back of form, the words 'See Back' should be written in one of the blank spaces on this page.



# FIELD RETURN OF OFFICERS

Army Form W3008  
(Adapted) (Page 1)  
(Revised Jan., 1943)  
50 / 44 (Serial No.)

At 0600 Hrs. Saturday 9 12/194 4. HQ 18 Aust (Unit) Bde

W.E. <sup>AIF</sup> 11/2/4 OFFRS. 19 O.R's. 66+ OFFRS. O.R's. ATT. BY W.E.

## PART A.—POSTED STRENGTH, SURPLUS OR REINFORCEMENTS REQUIRED.

All Medically Fit DP 1

1	2	3	4	5	6	7	8	9	10					
W.E. EXCLUDING ATTACHED.				DETAIL.	ATTACHED ALLOWED BY W.E.									
Rein'ts Required.	Deficient W.E.	Surplus to W.E.	Posted Strength.		Arm or Corps.	Posted Strength.	Surplus to W.E.	Deficient W.E.	Rein'ts Required.					
Nil	1		1	*										
Nil	1		7	Brigadier										
Nil	1	1	6	Lieut.-Colonels										
				Majors										
				Captains										
				Lieutenants										
				Quarter-masters										
			3	A.A.N.S. and A.A.M.W.S. Offrs.										
				Civilians Counting as Offrs.										
	3	2	18											
				DETAIL	A.I.F.	C.M.F.	A.W.A.S.	A.A.N.S.	A.A.M.W.S.	CIVIL.	R.A.N.	R.A.A.F.	**	TOTAL.
				A.	18									18
				E.(1)										
				E.(2)										

Analysis of Part A to be shown here by ALL units. Only units notified in para. 10 of instructions for compilation of form will complete Part E(1) & E(2).

\* Insert detail of higher ranks as necessary.  
\*\* Personnel belonging to a category not provided for in the analysis will be shown in this Col. Particulars will be shown, e.g., 20 U.K. Forces; 10 N.Z. Forces.

## PART B.—PARTICULARS OF OFFICERS JOINED OR QUITTED DURING WEEK.

### OFFICERS JOINED DURING WEEK

Army No.	Rank.	Name and Initials.	Unit From.	Date.	CAUSE.

### OFFICERS QUITTED DURING WEEK.

Army No.	Rank.	Name and Initials.	Unit To.	Date.	CAUSE.

## PART C.—DESCRIPTION OF OFFICERS WHOSE RETURN TO \_\_\_\_\_ (Unit) IS PARTICULARLY REQUESTED. \_\_\_\_\_/\_\_\_\_\_/194\_\_\_\_\_.

Army No.	Rank.	Name and Initials.	REMARKS (e.g., present whereabouts if known).



PART D.—NOMINAL ROLL OF OFFICERS ON POSTED STRENGTH

At 0600 Hrs. Saturday 9/12/1944 (Total to agree with Columns 4 and 7 of Part A.)

1	2	3	4	5	6	7	8
Substantive Rank and Higher Temporary Rank if Held.	Army Number.	Surname.	Initials.	Posting.	Whether present with Unit (insert Yes or No)	If not present with Unit, state how employed.	Date of Detachment.
Col T/Brig	NX231	CHILTON	F O	Comd	Yes		
Capt T/Maj	VX 53	LOWEN	I H	BM	"		
Capt	OX 4398	MARSHALL	A	BM(L)	"		
"	OX 1148	PARBURY	C B	SC	"		
"	NX55601	EVANS	J D	Legu	"		
Lt	OX37666	THOMSON	J G	SC(L)	"		
T/Capt	OX 1561	SCOTT	D H	IO	"		
"	OX12375	GRIFFITHS	S G	LO(I)	No	Det Junior Leaders School	
"	OX2163	HACINTOSH	W F	TU	Yes		
Capt	NX 197	GATES	R B	BASCO	"		
Lt	NX19329	IRVIN	E R	Ed O	"		
"	OX10362	ANNAND	C D	Ameny	"		
"	OX36816	GREAVES	J L	IO(3)	No	Compassionate Leave	
"	OX 8695	JONES	D B	Hys	Yes		
A/Lt	SX 9738	McGEE	A J	BOO	"		
Capt	SX 8744	PHILLIPS	E B	Chap	No	Det 2/9 Aust Inf Bn	
"	VX 91064	HOPKINS	J F	"	"	" 2/10	
"	NX139919	WOTTON	R A W	"	"	" 2/12	

PART E.—NOMINAL ROLL OF OFFICERS ATTACHED FROM OTHER UNITS.

Substantive Rank and Higher Temporary Rank, if Held.	Army Number.	Name and Initials.	Unit.	Date of Attachment.	Nature of Attachment.
Maj	VB65417	KER J G S RA	1 Aust		British Officer
"	SX 3289	PHILLIPSON EC	Mil Ldg Gp		MLO att 18 Bde
Lt	OX 3610	DONNELLY V J	2/9 Bn	30 Nov 44	A/LO(2)

9/12/44  
Date of Despatch

*W. Parbury*  
Signature of Commanding Officer  
Capt  
Hq 18 Aust Inf Bde







**PART E. Detail of Present Strength and Reinforcements required as shown in Part A of Army Form W.3009 at 0600 Hours Saturday 9 / 12 / 1944 .**

Details of Tradesmen. GROUP I.	W.E.	Posted Strength.	Reints. Required.	Details of Tradesmen. GROUP I. (cont.)	W.E.	Posted Strength.	Reints. Required.	Details of Tradesmen. GROUP II. (cont.)	W.E.	Posted Strength.	Reints. Required.	Details of Tradesmen. GROUP III. (cont.)	W.E.	Posted Strength.	Reints. Required.
				B/P	2	1	1	B/P	9	12	1	B/P	13	16	3
Ammunition Examiners				Surveyors, Engineering				Operating Room Assts.				G.P.O. Assistants			
Armament Artificer Fitter				Surveyors, E.A.A.				Operator, Keyboard				Hammermen			
Armament Artificer Fitter (Electrical)				Surveyors, Topographical				Operator, Line				Leather Stitchers			
Armament Artificer Fitter (M.V.)				Surveyors, Trigonometrical				Operator, Signal				Orderlies, Nursing			
Armament Artificer Fitter (A.F.V.)				Toolmakers				Operator, Switchboard				Orderlies, Nursing Mental			
Armament Artificer Instrument				Turners				Operator, Wireless				Plate Layers			
Armament Artificer Radio				Watchmakers				Opticians				Rangetakers			
Armament Artificer Signals				Welders				Painters				Riveters			
Armament Artificer Wireless								Panel Beaters				Roughriders			
Artificer, Artillery								Photographer, Dry Plate				Saddlers			
Artificer, Engine								Predictor Numbers				Saddletree makers			
Blacksmiths								Printers				Shoemaker and Boot Repairer			
Bricklayers								Radlographers				Stevedores			
Computers								Riggers				Stokers, Staty. Engine			
Cooks, Hospital				GROUP II.				Sawyers				Storemen, Technical			
Coppersmiths				Armourers				Signallers				Tailors			
Dispensers				Axemen				Signwriters				Textile Refitters			
Draughtsmen				Bakers				Telescope Identfn. Numbers				Tinsmiths			
Draughtsmen (Architectural)		2	1	Bty. Comd's. Asst.				Well Borers				Vulcanizers			
Draughtsmen (Engineering)				Bollermakers				Wheeler				Wagon Erectors			
Draughtsmen (Mechanical)				Carpenters				Winchman				Whitesmiths	13	14	
Draughtsmen (Topographical)				Carpenters and Joiners				Wireman				Dvr's HT	9	15	
Electricians				Cooks	3	5		Woodturners				Gen Duty	3	13	
Electricians (M.V.)				Dental Mechanics								Mess Cpl	1	1	
Electricians (Signals)				Driver-Mech. (Eng. and Med.)								Hyg Duty	1	1	
Fitters				Driver-Operator								Sig Ords	9	9	
Fitters (Cycle)				Drainers								Storeman	1	1	
Fitters (Electrical)				Electricians								Transport	1	1	
Fitters (Gun)				Electricians (Engineers)								Water Duty	1	1	
Fitters (Instrument)				Fire Control Operators				GROUP III.				Gen	1	1	
Fitters (M.V.)				Gun Operator				Battery Surveyors				DETAILS OF NON-TRADESMEN.			
Fitters, Railway Signal				Hatchman				Butchers				COMS	1	1	
Fitters, Signals				Height Taker				Clerks	4	3	2	SERVICES			
Grinder, Precision				Helio Operator				Clerks, Supply				AASC-Clerk	1	1	
Mechanics, Instrument				Instrument Operator				Clerks, Technical				B'man	1	1	
Mechanics, Instrument (Signals)				Intelligence Duties	4	6		Coach Trimmers				AASC-Medord	1	1	
Mechanics, Instrument (Surgical)				Joiners				Concretors				AASC-B'man	1	1	
Mechanics, Radio				Lineman				Cooks				Ann Bxmr	1	1	
Mechanics, Typewriter				Lineman, Signals				Dental Clerk Orderlies				AACHap D			
Mechanics, Wireless				Lithographers				Despatch Riders				B'men Dvr's	3	3	
Millwrights				Machinists, Metal				Draughtsmen, Signals				ATTACHED BY W.E.			
Operators, Excavator				Machinists, Wood				Drivers, H.T.				AALC-Clerk	1	1	
Pattern Maker				Masons				Driver Mechanics				B'man	1	1	
Pharmacist				Masseurs				Driver Tptn. Plant	1			AAAnon Ser			
Photographer, Wet Plate				Mechanics, M.T.				Engine Hands, I.C.				Clerk	1	1	
Photowriter				Miners				Equipment Repairers				AA Bd Ser			
Plumber				Moulders				Farriers				Clerk	1	1	
Saw Doctors				Nurses, Trained				Fitters' Mates							
Surveyors				Observation Post Assts.				Gun Layers							
CARRIED FORWARD	2	1	1	CARRIED FORWARD	9	12	1	CARRIED FORWARD	13	16	3	Totals of columns marked * to agree with columns 4 and 7, and 1 and 10 of Part A. respectively.	66	85	4

NOTES.—(a) If rank other than private is involved give details on back.  
(b) Authorised trades or specialists not included in list will be added as required in spaces provided.  
(c) Where A.W.A.S. and/or A.A.M.W.S. personnel are desired show details on back.  
(d) Where replacement not desired note accordingly on return by insertion of N.R. in col. "Reints. Required."  
(e) Where any request or notation is made on back of form, the words "See Back" should be written in one of the blank spaces on this page.

9 Dec 44

Date of Despatch

*[Signature]*  
Signature of Commander







# FIELD RETURN OF OFFICERS

Army Form W.3000  
(Adapted) (Page 1)  
(Revised Jan., 1943)

(Serial No.)

At 0600 Hrs. Saturday 16/12 /1944 4912 Aust (Unit)

W.E. 5/24 OFFRS 19 O.R.'s 66 + OFFRS. 19 O.R.'s 66 ATT. BY W.E.

## PART A.—POSTED STRENGTH, SURPLUS OR REINFORCEMENTS REQUIRED.

W.E. EXCLUDING ATTACHED.				DETAIL.	ATTACHED ALLOWED BY W.E.									
Rein'ts Required.	Deficient W.E.	Surplus to W.E.	Posted Strength.		Arm or Corps.	Posted Strength.	Surplus to W.E.	Deficient W.E.	Rein'ts Required.					
			1	* * <i>Brigadier</i> Lieut.-Colonels Majors Captains Lieutenants Quarter-masters A.A.N.S. and A.A.M.W.S. Offrs. Civilians counting as Offrs.										
3	3	3	18											
				DETAIL	A.I.F.	C.M.F.	A.W.A.S.	A.A.N.S.	A.A.M.W.S.	CIVIL.	R.A.N.	R.A.A.F.	**	TOTAL.
				A.										18.
				E.(1)										
				E.(2)										

Analysis of Part A to be shown here by ALL units. Only units notified in part. 10 of instructions for compilation of form will complete Part E(1) & E(2).

\* Insert detail of higher ranks as necessary.  
\* \* Personnel belonging to a category not provided for in the analysis will be shown in this Col. Particulars will be shown, e.g., 20 U.K. Forces; 10 N.Z. Forces.

## PART B.—PARTICULARS OF OFFICERS JOINED OR QUITTED DURING WEEK.

### OFFICERS JOINED DURING WEEK

Army No.	Rank.	Name and Initials.	Unit From.	Date.	CAUSE.

### OFFICERS QUITTED DURING WEEK.

Army No.	Rank.	Name and Initials.	Unit To.	Date.	CAUSE.

## PART C.—DESCRIPTION OF OFFICERS WHOSE RETURN TO..... (Unit) IS PARTICULARLY REQUESTED. .... /..... /194.....

Army No.	Rank.	Name and Initials.	REMARKS (e.g., present whereabouts if known).



18th Aust Inf Bde Unit

**PART D.—NOMINAL ROLL OF OFFICERS ON POSTED STRENGTH**

At 0600 Hrs. Saturday 16/12/1944 (Total to agree with Columns 4 and 7 of Part A.)

1	2	3	4	5	6	7	8
Substantive Rank and Higher Temporary Rank if Held.	Army Number.	Surname.	Initials.	Posting.	Whether present with Unit (insert Yes or No)	If not present with Unit, state how employed.	Date of Detachment.
Col 1/10/44	Nr 231	CHILTON	PC	Command	Yes		
Col 1/10/44	Nr 53	LOWEN	IH	Staff	"		
Col	Nr 4392	MARSHALL	A	Staff	"		
	Nr 1118	FARRORY	CB	Staff	"		
	Nr 35811	EVANS	JD	Staff	"		
	Nr 34886	THOMSON	JG	Staff	"		
1/6/44	Nr 1551	SCOTT	DM	Staff	"		
	Nr 13378	GRIFFITHS	SG	Staff	"		
	Nr 3163	PLACINTOSH	WT	Staff	"		
Col	Nr 197	GATES	RB	Staff	"		
1/6/44	Nr 14329	IRVIN	ER	Staff	"		
	Nr 10323	ANNAND	GD	Staff	"		
	Nr 36810	GROVES	JL	Staff	"		
	Nr 7698	JOUBERT	DB	Staff	"		
1/6/44	Nr 9138	MCGEE	HT	Staff	"		
Col	Nr 27114	PHILLIPS	ED	Staff	No	Det 1/10/44	2/10
	Nr 71064	HOPKINS	JT	Staff	"		2/10
	Nr 137717	WOTTON	RAN	Staff	"		2/12

**PART E.—NOMINAL ROLL OF OFFICERS ATTACHED FROM OTHER UNITS.**

Substantive Rank and Higher Temporary Rank if Held.	Army Number.	Name and Initials.	Unit.	Date of Attachment.	Nature of Attachment.
1/10/44	Nr 6517	KER JGS	RA		British CofA.
	Nr 3329	PHILLIPSON EC	1/10/44		1/10/44 18 Bde
1/10/44	Nr 3610	DONNELLY JT	2/9/44	30/10/44	1/10/44

16 Dec 44.  
Date of Despatch

JG Thomson  
Signature of Commander







**PART E. Detail of Present Strength and Reinforcements required as shown in Part A of Army Form W.3009 at 0600 Hours Saturday 16/12/1944.**

Details of Tradesmen. GROUP I.	W.E.	Posted Strength.	Reints. Required.	Details of Tradesmen. GROUP I. (cont.)	W.E.	Posted Strength.	Reints. Required.	Details of Tradesmen. GROUP II. (cont.)	W.E.	Posted Strength.	Reints. Required.	Details of Tradesmen. GROUP III. (cont.)	W.E.	Posted Strength.	Reints. Required.	
Ammunition Examiners				Surveyors, Engineering				Operating Room Assts.				G.P.O. Assistants				
Armament Artificer Fitter				Surveyors, E.A.A.				Operator, Keyboard				Hammermen				
Armament Artificer Fitter (Electrical)				Surveyors, Topographical				Operator, Line				Leather Stitchers				
Armament Artificer Fitter (M.V.)				Surveyors, Trigonometrical				Operator, Signal				Orderlies, Nursing				
Armament Artificer Fitter (A.F.V.)				Toolmakers				Operator, Switchboard				Orderlies, Nursing Mental				
Armament Artificer Instrument				Turners				Operator, Wireless				Plate Layers				
Armament Artificer Radio				Watchmakers				Opticians				Rangetakers				
Armament Artificer Signals				Welders				Painters				Riveters				
Armament Artificer Wireless								Panel Beaters				Roughriders				
Artificer, Artillery								Photographer, Dry Plate				Saddlers				
Artificer, Engine								Predictor Numbers				Saddletree makers				
Blacksmiths								Printers				Shoemaker and Boot Repairer				
Bricklayers								Radiographers				Stevadores				
Computers								Riggers				Stokers, Staty. Engine				
Cooks, Hospital				GROUP II				Sawyers				Storemen, Technical				
Coppersmiths				Armourers				Signallers				Tailors				
Dispensers				Axemen				Signwriters				Textile Refitters				
Draughtsmen				Bakers				Telescope Identfn. Numbers				Tinsmiths				
Draughtsmen (Architectural)				Bty. Comd's Asst.				Well Borers				Vulcanizers				
Draughtsmen (Engineering)				Bollermakers				Wheelers				Wagon Erectors				
Draughtsmen (Mechanical)				Carpenters				Winchman				Whitesmiths				
Draughtsmen (Topographical)				Carpenters and Joiners				Wireman								
Electricians				Cooks				Woodturners								
Electricians (M.V.)				Dental Mechanics												
Electricians (Signals)				Driver-Mech. (Eng. and Med.)												
Fitters				Driver-Operator												
Fitters (Cycle)				Drainers												
Fitters (Electrical)				Electricians												
Fitters (Gun)				Electricians (Engineers)												
Fitters (Instrument)				Fire Control Operators				GROUP III				DETAILS OF NON-TRADESMEN.				
Fitters (M.V.)				Gun Operator				Battery Surveyors								
Fitters, Railway Signal				Hatchman				Butchers								
Fitters, Signals				Height Taker				Clerks								
Grinder, Precision				Helio Operator				Clerks, Supply								
Mechanics, Instrument				Instrument Operator				Clerks, Technical								
Mechanics, Instrument (Signals)				Intelligence Duties				Coach Trimmers								
Mechanics, Instrument (Surgical)				Joiners				Concretors								
Mechanics, Radio				Lineman				Cooks								
Mechanics, Typewriter				Lineman, Signals				Dental Clerk Orderlies								
Mechanics, Wireless				Lithographers				Despatch Riders								
Millwrights				Machinists, Metal				Draughtsmen, Signals								
Operators, Excavator				Machinists, Wood				Drivers, H.T.								
Pattern Maker				Masons				Driver Mechanics								
Pharmacist				Masseurs				Driver Tptn. Plant								
Photographer, Wet Plate				Mechanics, M.T.				Engine Hands, I.C.								
Photowriter				Miners				Equipment Repairers								
Plumber				Moulders				Farriers								
Saw Doctors				Nurses, Trained				Fitters' Mates								
Surveyors				Observation Post Assts.				Gun Layers								
CARRIED FORWARD		2	1	CARRIED FORWARD		9	12	CARRIED FORWARD		13	16	3	Totals of columns marked * to agree with columns 4 and 7, and 1 and 10 of Part A, respectively.	66	25	5

NOTES.—(a) If rank other than private is involved give details on back.  
(b) Authorised trades or specialists not included in list will be added as required in spaces provided.  
(c) Where A.W.A.S. and/or A.A.M.W.S. personnel are desired show details on back.  
(d) Where replacement not desired note accordingly on return by insertion of N.R. in col. "Reints. Required."  
(e) Where any request or notation is made on back of form, the words "See Back" should be written in one of the blank spaces on this page.

Date of Despatch 16 Dec 44

Signature of Commander J. G. Harrison







# FIELD RETURN OF

Form W.3008  
(Adapted) (Page 1)  
(Revised Jan., 1943)  
(Serial No.)

AIF At 0600 Hrs. Saturday 23 12 4 / 1944

W.E. II 2 4 / OFFRS. 19 O.R's. 66 + OFFRS. O.R's. ATT. BY W.E.

## PART A.—POSTED STRENGTH, SURPLUS OR REINFORCEMENTS REQUIRED.

W.E. EXCLUDING ATTACHED.				DETAIL.	ATTACHED ALLOWED BY W.E.									
Rein'ts Required.	Deficient W.E.	Surplus to W.E.	Posted Strength.		Arm or Corps.	Posted Strength.	Surplus to W.E.	Deficient W.E.	Rein'ts Required.					
NR NR NR	1 1 1	1 1	1 7 6 3	* * 1 Brigadier Lieut.-Colonels Majors Captains Lieutenants Quarter-masters A.A.N.S. and A.A.M.W.S. Offrs. Civilians Counting as Offrs.										
	3	2	18											
				DETAIL	A.I.F.	C.M.F.	A.W.A.S.	A.A.N.S.	A.A.M.W.S.	CIVIL.	R.A.N.	R.A.A.F.	**	TOTAL.
				A.	18									18
				E.(1)										
				E.(2)										

Analysis of Part A to be shown here by ALL units. Only units notified in para. 10 of instructions for completion of form will complete Part E(1) & E(2).

\* Insert detail of higher ranks as necessary.  
\*\* Personnel belonging to a category not provided for in the analysis will be shown in this Col. Particulars will be shown, e.g., 20 U.K. Forces; 10 N.Z. Forces.

## PART B.—PARTICULARS OF OFFICERS JOINED OR QUITTED DURING WEEK.

### OFFICERS JOINED DURING WEEK

Army No.	Rank.	Name and Initials.	Unit From.	Date.	CAUSE.

### OFFICERS QUITTED DURING WEEK.

Army No.	Rank.	Name and Initials.	Unit To.	Date.	CAUSE.

## PART C.—DESCRIPTION OF OFFICERS WHOSE RETURN TO ..... (Unit) IS PARTICULARLY REQUESTED. .... / ..... / 194.....

Army No.	Rank.	Name and Initials.	REMARKS (e.g., present whereabouts if known).



**PART D.—NOMINAL ROLL OF OFFICERS ON POSTED STRENGTH**

At 0600 Hrs. Saturday 23 12 4 / /194. (Total to agree with Columns 4 and 7 of Part A.)

1	2	3	4	5	6	7	8
Substantive Rank and Higher Temporary Rank if Held.	Army Number.	Surname.	Initials.	Posting.	Whether present with Unit (insert Yes or No)	If not present with Unit, state how employed.	Date of Detachment.
Col T/Brig	BX 232	CHILTON	F O	Comd	Yes		
Capt T/Maj	VX 53	LOREN	I H	BM	"		
		MARSHALL					
Capt	QX 4390	MARSHALL	A	BM(L)	"		
Capt	QX 1148	PARBURY	C B	SC	"		
Capt	HX55603	EVANS	J D	Legs	"		
Lt	QX36622	THOMSON	J G	SC(L)	"		
T/Capt	QX 1561	SCOTT	D H	IO	"		
	QX12373	GRIFFITHS	S G	Lo(1)	"		
	QX 2163	MAGINTOSH	W F	TO	"		
Capt	HX197	GATES	R B	Supo	"		
Lt	HX19329	IRVIN	E R	Rd O	"		
"	QX10362	ANNAND	C D	Am O	"		
"	QX36816	GRAVES	J L	Lo (3)	"		
"	QX 8695	JONES	D B	Hys O	"		
A/Lt	BX9738	McGEE	A J	Bog	"		
Capt	SX 8744	PHILLIPS	B B	Chap	No	Det 2/9 Bn	
"	VX91064	HOPKINS	J F	"	"	2/10	
"	HX139919	WOTTON	R A W	"	"	2/12	

**PART E.—NOMINAL ROLL OF OFFICERS ATTACHED FROM OTHER UNITS.**

Substantive Rank and Higher Temporary Rank, if Held.	Army Number.	Name and Initials.	Unit.	Date of Attachment.	Nature of Attachment.
Maj	VB65417	KER J G B RA			British JIF
Lt	QX 3610	DONNELLY V J	2/9 Bn	30 Nov 44	A/Lo(2)
Lt	SX 41	MARCH C A	2/10	20 Dec 44	A/Lo

23 Dec 44  
Date of Despatch

*[Signature]*  
Capt  
SC 18 Aust Inf Bde  
Signature of Commander







**PART E. Detail of Present Strength and Reinforcements required as shown in Part A of Army Form W.3009 at 0600 Hours Saturday 23/ 12/194 4.**

Details of Tradesmen. GROUP I.	W.E.	Posted Strength.	Reints. Required.	Details of Tradesmen. GROUP I. (cont.)	W.E.	Posted Strength.	Reints. Required.	Details of Tradesmen. GROUP II. (cont.)	W.E.	Posted Strength.	Reints. Required.	Details of Tradesmen. GROUP III. (cont.)	W.E.	Posted Strength.	Reints. Required.
Ammunition Examiners				Surveyors, Engineering	2	1	1	Operating Room Assts.	9	11	1	G.P.O. Assistants	13	15	3
Armament Artificer Fitter				Surveyors, E.A.A.				Operator, Keyboard				Hammermen			
Armament Artificer Fitter (Electrical)				Surveyors, Topographical				Operator, Line				Leather Stitchers			
Armament Artificer Fitter (M.V.)				Surveyors, Trigonometrical				Operator, Signal				Orderlies, Nursing			
Armament Artificer Fitter (A.F.V.)				Toolmakers				Operator, Switchboard				Orderlies, Nursing Mental			
Armament Artificer Instrument				Turners				Operator, Wireless				Plate Layers			
Armament Artificer Radio				Watchmakers				Opticians				Rangetakers			
Armament Artificer Signals				Welders				Painters				Riveters			
Armament Artificer Wireless								Panel Beaters				Roughriders			
Artificer, Artillery								Photographer, Dry Plate				Saddlers			
Artificer, Engine								Predictor Numbers				Saddletree makers			
Blacksmiths								Printers				Shoemaker and Boot Repairer			
Bricklayers								Radiographers				Stevadores			
Computers								Riggers				Stokers, Staty. Engine			
Cooks, Hospital				GROUP II				Sawyers				Storemen, Technical			
Coppersmiths				Armourers				Signallers				Tailors			
Dispensers				Axemen				Signwriters				Textile Refitters			
Draughtsmen				Bakers				Telescope Identfn. Numbers				Tinsmiths			
Draughtsmen (Architectural)				Bty. Comd's. Asst.				Well Borers				Vulcanizers	NON-SPECIALISTS		
Draughtsmen (Engineering)				Bollermakers				Wheeler				Wagon Erectors	13	16	
Draughtsmen (Mechanical)				Carpenters				Winchman				Whitesmiths	9	15	
Draughtsmen (Topographical)	(Int 2	1	1	Carpenters and Joiners				Wireman				Gen Duty	3	13	
Electricians				Cooks	3	4	-	Woodturners				Mess Cpl	1		1
Electricians (M.V.)				Dental Mechanics								Hyg Duty	1	1	
Electricians (Signals)				Driver-Mech. (Eng. and Med.)								Sig Ords	9	9	
Fitters				Driver-Operator								Storeman	1	1	
Fitters (Cycle)				Drainers								Tpt	1	1	
Fitters (Electrical)				Electricians								Water Duty	1	1	
Fitters (Gun)				Electricians (Engineers)								CSM	1	1	
Fitters (Instrument)				Fire Control Operators				GROUP III				DETAILS OF NON-TRADESMEN.			
Fitters (M.V.)				Gun Operator				Battery Surveyors				COQS	1		1
Fitters, Railway Signal				Hatchman				Butchers				SERVICES			
Fitters, Signals				Height Taker				Clerks	4	3	2	AASC-Clerk	1	1	
Grinder, Precision				Helio Operator				Clerks, Supply				Batman	1		1
Mechanics, Instrument				Instrument Operator				Clerks, Technical				AASC-Medord	1	1	
Mechanics, Instrument (Signals)				Intelligence Duties	4	6	-	Coach Trimmers				AASC-B'man	1	1	
Mechanics, Instrument (Surgical)				Joiners				Concretors				Ann Exam	1	1	
Mechanics, Radio				Lineman				Cooks				AACHD-B'men	3	3	
Mechanics, Typewriter				Lineman, Signals				Dental Clerk Orderlies				ATTACHED BY W.E.			
Mechanics, Wireless				Lithographers				Despatch Riders				AALC-B'Man	1	1	
Millwrights				Machinists, Metal				Draughtsmen, Signals				Clerk	1	1	
Operators, Excavator				Machinists, Wood				Drivers, H.T.				AAmen Ser			
Pattern Maker				Masons				Driver Mechanics	1			Clerk	1	1	
Pharmacist				Masseurs				Driver Tptn. Plant				AAEdue Ser			
Photographer, Wet Plate				Mechanics, M.T.				Engine Hands, I.C.				Clerk	1	1	
Photowriter				Miners				Equipment Repairers							
Plumber				Moulders				Farriers							
Saw Doctors				Nurses, Trained				Fitters' Mates							
Surveyors				Observation Post Assts.				Gun Layers							
CARRIED FORWARD	2	1	1	CARRIED FORWARD	9	11	1	CARRIED FORWARD	13	15	3	Totals of columns marked * to agree with columns 4 and 7, and 1 and 10 of Part A. respectively.	66	84	6

NOTES.—(a) If rank other than private is involved give details on back.  
(b) Authorised trades or specialists not included in list will be added as required in spaces provided.  
(c) Where A.W.A.S. and/or A.A.M.W.S. personnel are desired show details on back.  
(d) Where replacement not desired note accordingly on return by insertion of N.R. in col. "Reints. Required."  
(e) Where any request or notation is made on back of form, the words "See Back" should be written in one of the blank spaces on this page.

23 Dec 44

Date of Despatch

Capt  
SC 18 Aust Inf Bde

Signature of Commander



UNIT  
**FIELD RETURN OF NCOs**

**PART E. Detail of Present Strength and Reinforcements required as shown in Part A of Army Form W.3009 at 0600 Hours Saturday 12/19/42**

DETAILS OF NCOs				WE	PS	SURP	DEF
Trade	Rank						
Draughtsman-Topo	Cpl			1			1
Int Duties	S/sjt			1	1		
"	Cpl			1	1		
Clerk	WOII			1	1		
"	Cpl			1	1		
"	Sjt				1	1	
Cook	Cpl			1	1		
Driver MT	Cpl			1	1		
Tpt	Sjt			1	1		
Gen Duties	Cpl			1	2	1	
Mess Cpl	Cpl			1			1
CSM	WOII			1	1		
CQMS	S/sjt			1			1
<b>SERVICES</b>							
AASC - Clerk	Cpl			1	1		
AAMC - Med Ord	"			1	1		
AAOC - Ann Exmr	Sjt			1	1		
AALC - Clerk	Cpl			1	1		
AA Educ Ser - Clerk	Sjt			1	1		
AA Amen - Clerk	Sjt			1	1		
				18	17	2	3
<b>SURPLUS NCOs</b>							
NO	RANK	NAME	MED CLASS	TRADE	SPEC QUAL		
QX1055	Sjt	BRENCHLEY E W	A1	Clerk	Nil		
QX4485	Cpl	CONLEY L H	A1	A/CQMS			
<p>(Cpl CONLEY is filling vacancy caused by recent downgrading of CQMS)</p>							
CARRIED FORWARD				CARRIED FORWARD	CARRIED FORWARD	CARRIED FORWARD	CARRIED FORWARD

NOTE: (a) If rank other than private is involved the details on rank...  
(b) Where A.M.W. is indicated the details on rank...  
(c) Where A.M.W. is indicated the details on rank...  
(d) Where A.M.W. is indicated the details on rank...  
(e) Where A.M.W. is indicated the details on rank...

Signature of Commander

Date of Dispatch



# FIELD RETURN OF OFFICERS

Army Form W.3008  
(Adapted) (Page 1)  
(Revised Jan., 1943)

53 74 (Serial No.)

At 0600 Hrs. Saturday 30/12/1944 HQ 18 Aust Inf Bde (Unit)

W.E. 24 OFFRS. 19 O.R's. 66 + OFFRS. O.R's. ATT. BY W.E.

## PART A.—POSTED STRENGTH, SURPLUS OR REINFORCEMENTS REQUIRED.

W.E. EXCLUDING ATTACHED.				DETAIL.	ATTACHED ALLOWED BY W.E.											
Rein'ts Required.	Deficient W.E.	Surplus to W.E.	Posted Strength.		Arm or Corps.	Posted Strength.	Surplus to W.E.	Deficient W.E.	Rein'ts Required.							
NR	1		1	* Brigadier												
NR	1	1	7	* Lieut.-Colonels												
NR	1	1	6	Majors												
				Captains												
				Lieutenants												
				Quarter-masters												
			3	A.A.N.S. and A.A.M.W.S. Offrs.												
				A.A.C. Dept Civilians Counting as Offrs.												
	3	2	18													
				DETAIL	A.I.P.	C.M.P.	A.W.A.S.	A.A.N.S.	A.A.M.W.S.	CIVIL.	R.A.N.	R.A.A.F.	**	TOTAL.		
Analysis of Part A to be shown here by ALL units. Only units notified in para. 10 of instructions for compilation of form will complete Part E(1) & E(2).				A.										18		
				E.(1)												
				E.(2)												

\* Insert detail of higher ranks as necessary.

\*\* Personnel belonging to a category not provided for in the analysis will be shown in this Col. Particulars will be shown, e.g., 20 U.K. Forces; 10 N.Z. Forces.

## PART B.—PARTICULARS OF OFFICERS JOINED OR QUITTED DURING WEEK.

### OFFICERS JOINED DURING WEEK

Army No.	Rank.	Name and Initials.	Unit From.	Date.	CAUSE.

### OFFICERS QUITTED DURING WEEK.

Army No.	Rank.	Name and Initials.	Unit To.	Date.	CAUSE.

## PART C.—DESCRIPTION OF OFFICERS WHOSE RETURN TO ..... (Unit) IS PARTICULARLY REQUESTED. .... / ..... / 194 .....

Army No.	Rank.	Name and Initials.	REMARKS (e.g., present whereabouts if known).



HQ 18 Aust Inf Bde ..... Unit

**PART D.—NOMINAL ROLL OF OFFICERS ON POSTED STRENGTH**

At 0600 Hrs. Saturday 30/12/44. (Total to agree with Columns 4 and 7 of Part A.)

1	2	3	4	5	6	7	8
Substantive Rank and Higher Temporary Rank if Held.	Army Number.	Surname.	Initials.	Posting.	Whether present with Unit (insert Yes or No)	If not present with Unit, state how employed.	Date of Detachment.
Col T/Brig	XX 231	CHILSON	F O	Comd	Yes		
Capt T/Maj	VX 53	LOWEN	I H	IN	"		
Capt	XX 4398	MARSHALL	A	SC(L)	"		
"	XX 1148	PARBURY	C B	SC	"		
"	XX55601	EVANS	J D	Legu	"		
Lt	XX 37666	TELMSON	J O	SC(L)	"		
T/Capt	XX 1561	SCOTT	D M	L	"		
"	XX12375	DELFITHS	S O	LC(L)	No	Det 18 Bde Jnr Ldrs School	
"	XX 2163	MAGINTOSH	W F	SC	Yes		
Capt	XX197	GATES	R B	Supo	"		
Lt	XX 19329	IRVIN	E R	Ed C	"		
"	XX 10362	ANNAND	C D	Asn C	"		
"	XX 36816	BREAVES	J L	LC(3)	"		
"	XX 8695	BATES JONES	B B	Legu	"		
A/Lt	XX 9738	McGEE	A J	SC	"		
Capt	XX 8744	PHILLIPS	E B	Chap	No	Det 2/9 Bn	
"	VX 91064	HOPKINS	J P	"	"	" 2/10 "	
"	XX139919	WOTTON	R A W	"	"	" 2/12 "	

**PART E.—NOMINAL ROLL OF OFFICERS ATTACHED FROM OTHER UNITS.**

Substantive Rank and Higher Temporary Rank, if Held.	Army Number.	Name and Initials.	Unit.	Date of Attachment.	Nature of Attachment.
Maj	VB65417	KER J C S	RA		British offr
Lt	XX 3610	DONNELLY V J	2/9 Bn	30/11/44	A/10 (2)
Lt	XX 41	MARCH C A	2/10 "	20/12/44	A/10

30 Dec 44  
Date of Despatch

*J. G. Thomson*  
Capt  
SC 18 Aust Inf Bde  
Signature of Commander







**PART E. Detail of Present Strength and Reinforcements required as shown in Part A of Army Form W.3009 at 0600 Hours Saturday 30/ 12/194 4.**

Details of Tradesmen. GROUP I.	W.E.	Posted Strength.	Reints. Required.	Details of Tradesmen. GROUP I. (cont.)	W.E.	Posted Strength.	Reints. Required.	Details of Tradesmen. GROUP II. (cont.)	W.E.	Posted Strength.	Reints. Required.	Details of Tradesmen. GROUP III. (cont.)	W.E.	Posted Strength.	Reints. Required.
				B/F	2	1	1	B/F	9	11	1	B/F	13	15	3
Ammunition Examiners				Surveyors, Engineering				Operating Room Assts.				G.P.O. Assistants			
Armament Artificer Fitter				Surveyors, B.A.A.				Operator, Keyboard				Hammermen			
Armament Artificer Fitter (Electrical)				Surveyors, Topographical				Operator, Line				Leather Stitchers			
Armament Artificer Fitter (M.V.)				Surveyors, Trigonometrical				Operator, Signal				Orderlies, Nursing			
Armament Artificer Fitter (A.F.V.)				Toolmakers				Operator, Switchboard				Orderlies, Nursing Mental			
Armament Artificer Instrument				Turners				Operator, Wireless				Plate Layers			
Armament Artificer Radio				Watchmakers				Opticians				Rangetakers			
Armament Artificer Signals				Welders				Painters				Riveters			
Armament Artificer Wireless								Panel Beaters				Roughriders			
Artificer, Artillery								Photographer, Dry Plate				Saddlers			
Artificer, Engine								Predictor Numbers				Saddletree makers			
Blacksmiths								Printers				Shoemaker and Boot Repairer			
Bricklayers								Radiographers				Stevedores			
Computers								Riggers				Stokers, Staty. Engine			
Cooks, Hospital				GROUP II.				Sawyers				Storemen, Technical			
Coppersmiths				Armourers				Signallers				Tailors			
Dispensers				Axemen				Signwriters				Textile Refitters			
Draughtsmen	INT	2	1	1	Bakers			Telescope Identfn. Numbers				Tinsmiths			
Draughtsmen (Architectural)					Bty. Comd's. Asst.			Well Borers				Vulcanizers			
Draughtsmen (Engineering)					Boilermakers			Wheelers				Wagon Erectors	13	16	
Draughtsmen (Mechanical)					Carpenters			Winchman				Whitesmiths	9	15	
Draughtsmen (Topographical)					Carpenters and Joiners			Wireman				Gen Duty	3	13	
Electricians					Cooks	3	4	Woodturners				Mess Cpl	1	-	1
Electricians (M.V.)					Dental Mechanics							Hyg Duty	1	1	
Electricians (Signals)					Driver-Mech. (Eng. and Med.)							Sig ords	9	9	
Fitters					Driver-Operator							Storeman	1	1	
Fitters (Cycle)					Drainers							Tpt	1	1	
Fitters (Electrical)					Electricians							Water Duty	1	1	
Fitters (Gun)					Electricians (Engineers)							CSM	1	1	
Fitters (Instrument)					Fire Control Operators										
Fitters (M.V.)					Gun Operator			GROUP III.				DETAILS OF NON-TRADESMEN.			
Fitters, Railway Signal					Hatchman			Battery Surveyors				CQMS	1	-	1
Fitters, Signals					Height Taker			Butchers				SERVICES			
Grinder, Precision					Helio Operator			Clerks	4	3	2	AASC-Clerk	1	1	
Mechanics, Instrument					Instrument Operator			Clerks, Supply				B'nan	1	-	1
Mechanics, Instrument (Signals)					Intelligence Duties	4	6	Clerks, Technical				AANC-Headqd	1	1	
Mechanics, Instrument (Surgical)					Joiners			Coach Trimmers				AANC-B'nan	1	1	
Mechanics, Radio					Lineman			Concretors				Ann B'nan	1	1	
Mechanics, Typewriter					Lineman, Signals			Cooks				AA Ch Dept B'nan	3	3	
Mechanics, Wireless					Lithographers			Dental Clerk Orderlies				ATTACHED BY W.E.			
Millwrights					Machinists, Metal			Despatch Riders				AALC-B'nan	1	1	
Operators, Excavator					Machinists, Wood			Draughtsmen, Signals				Clerk	1	1	
Pattern Maker					Masons			Drivers, H.T.				AAAnon Ser	1	1	
Pharmacist					Masseurs			Driver Mechanics				Clerk	1	1	
Photographer, Wet Plate					Mechanics, M.T.			Driver Tptn. Plant				AASDuc Ser	1	1	
Photewriter					Miners			Engine Hands, I.C.				Clerk	1	1	
Plumber					Moulders			Equipment Repairers							
Saw Doctors					Nurses, Trained			Farriers							
Surveyors					Observation Post Assts.			Fitters' Mates							
								Gun Layers							
CARRIED FORWARD	2	1	1	CARRIED FORWARD	9	11	1	CARRIED FORWARD	13	15	3	Totals of columns marked * to agree with columns 4 and 7, and 1 and 10 of Part A. respectively.	66	84	6

NOTES.—(a) If rank other than private is involved give details on back.  
(b) Authorised trades or specialists not included in list will be added as required in spaces provided.  
(c) Where A.W.A.S. and/or A.A.M.W.S. personnel are desired show details on back.  
(d) Where replacement not desired note accordingly on return by insertion of N.R. in col. "Reints. Required."  
(e) Where any request or notation is made on back of form, the words "See Back" should be written in one of the blank spaces on this page.

30 Dec 44

Date of Despatch

a.w. 6m bks 3/43

*J. H. ...*  
Signature of Commander  
Capt  
Hq 18 Aust Inf Bde



Form W.3009  
 1944  
 Part A of Army Form W.3009 at 0800 Hours Saturday 12/19/44

**Part A. Details of Present Strength and Reinforcements required as shown in**

Trade	Rank	WE	PS	SURP	DEF
-------	------	----	----	------	-----

**DETAILS OF NCOs**

Trade	Rank	WE	PS	SURP	DEF
Draughtsman - Topo	Cpl	1			1
Int Duties	S/sjt	1	1		
"	Cpl	1	1		
Clerk	WOII	1	1		
"	Cpl	1	1		
"	Sjt		1	1	
Cook	Cpl	1	1		
Driver MT	Cpl	1	1		
Tpt	Sjt	1	1		
Gen Duties	Cpl	1	2	1	
Mess Cpl	Cpl	1			1
GSM	WOII	1	1		
CQMS	S/sjt	1			1

**SERVICES**

AASC - Clerk	Cpl	1	1		
AAMC - Med Ord	"	1	1		
AAOC - Ann Exmr	Sjt	1	1		
AALC - Clerk	Cpl	1	1		
AA Educ Ser - Clerk	Sjt	1	1		
AA Amen Ser - Clerk	Sjt	1	1		
		<b>18</b>	<b>17</b>	<b>2</b>	<b>3</b>

**SURPLUS NCOs**

NO	RANK	NAME	MED CLASS	TRADE	SPEC QUAL
QX1055	Sjt	BRENCHLEY E W	A1	Clerk	Nil
QX4485	Cpl	CONLEY L H	A1	A/CQMS	

(Cpl CONLEY is filling vacancy caused by recent downgrading of CQMS)

Signature of Commanding Officer: \_\_\_\_\_  
 Date of Report: \_\_\_\_\_



APPX 'L'

RESTRICTED

The information given in this document is NOT to be communicated, either directly or indirectly to the Press or to any person NOT authorised to receive it.

AUSTRALIAN IMPERIAL FORCE

ROUTINE ORDERS

BY

MAJOR I.H. LOWEN

COMMANDING HQ 18 AUST INF BDE

HQ 18 Aust Inf Bde  
22 Dec 44

SPEED OF ARMY VEHICLES

1. (a) It has been brought to notice that many convoys and individual vehicles are travelling at a speed much in excess of that allowed by regulations.  
  
(b) This practice is exceedingly dangerous and has been responsible for many fatal accidents and damage to valuable equipment. It will cease forthwith.  
  
(c) The attention of all personnel and in particular drivers MT will be directed to relevant instructions regarding speed limits, and the necessity for careful driving and road courtesy.  
(7 Aust Div R.O. A124)

SALE OF POSTAL NOTES

2. (a) It has been brought to notice that the sale of Postal Notes is excessive, and in many instances has been the means of sending large sums of money from this area.  
  
(b) Considerable difficulty is experienced in replacing the Postal Notes so used, and, in order to alleviate the position it is directed that all personnel be made aware of the following:-
  - (i) Pay facilities exist for the transmission of money either by cash remittance or through the necessary credit accounting in paybooks.
  - (ii) Although letters may be registered the maximum amount payable if loss is incurred does NOT exceed two pounds.
  - (iii) Sale of Postal Notes must be kept to a minimum.(7 Aust Div Routine Order Q.92)

PRIVATE COMMUNICATIONS CONCERNING CASUALTIES

3. (a) Private cables and telegrams recording battle of other casualties are prohibited. In letters, no reference is to be made to any such casualty until after a period of one month from the date of its occurrence.  
  
(b) The prohibition and restriction imposed by para (a) hereof are not applicable to communications sent by a member relative to a casualty sustained by himself.



(c) This order has been dictated by motives of consideration for the feelings of the relatives of members of the forces who, in many instances, have been caused unnecessary suffering and suspense through information contained in private correspondence from operational areas and which, in some cases, has proved to be inaccurate

(GRO A.147/1944)

INCOME TAX - MEMBERS WITH DEPENDANTS RESIDENT OVERSEAS

4. (a) The income tax assessment act provides for rebates of tax in respect of a tax payer's dependants resident in Australia.

(b) Where a member of the AMF has married while serving overseas, rebates may be claimed in respect of his wife, and of any children of the marriage, even if they are residing overseas. Such persons are, for this purpose, deemed to be domiciled in Australia.

(c) No rebate will be allowed of other dependants residing outside Australia.

(d) GRO F.377/1944 is cancelled.

(GRO F.431/1944)

LIFE ASSURANCE POLICIES TAKEN OUT BY MEMBERS OF THE FORCES

5. (a) Life assurance policies taken out by members of the forces on their own lives after September, 1939, usually contain a war clause which imposes upon the member assured, if he wishes to remain covered under his policy for the full sum assured while serving outside the Commonwealth, the obligation of -

(i) Informing the life assurance office concerned of his departure from Australia and of the date thereof; and

(ii) Payment to that office of an extra war loading premium.

(b) Certain life assurance offices regard the Territories of Papua and New Guinea as being, for this purpose, outside the Commonwealth, and there are variations in the rate of war loading premiums charged by different offices, while, in some circumstances, an office may not be prepared to cover the additional risk and may, therefore, refuse to quote any extra premiums. A member who desires to remain covered while serving outside the Commonwealth should ascertain from the office concerned to what areas the existing cover extends and what rates of war loading premiums are required should he serve outside those areas.

(c) If the member subsequently embarks for service outside the Commonwealth, he may arrange through Army channels:-

(i) for payment of the amount of extra war loading premium (as previously ascertained by him) to the office concerned, by means of a remittance of undrawn pay; and

(ii) for notice of the date of embarkation to be given to that office by the DFO when paying the remittance.

The member will attach to the remittance form a letter requesting the giving of the notice in sub-para (ii) of this paragraph.

(d) For security reasons, direct notification by members to life assurance offices of their impending or actual embarkation is strictly prohibited.

(GRO F.412/1944)



6. In compliance with GRO F.319/44, the following financial statements are published:-

18 AUST INF BDE REGIMENTAL TRUST ACCOUNT

STATEMENT OF ASSETS AND LIABILITIES  
as at 30 Nov 44

<u>LIABILITIES</u>		<u>ASSETS</u>	
Sundry Creditors		Trust A/c Balance	103.19. 6
(Band Instruments A/c)	60. 0. 0	Sporting Equipment	49.13. 1
Surplus of Assets over		Band Instruments	13.10. 0
Liabilities	118. 1. 2	Band Music	7. 7. 5
		Cash in hand	3.11. 2
	<u>£178. 1. 2</u>		<u>£178. 1. 2</u>

Audited and found correct, subject to investigation and adjustment of an amount of £10. 0. 0 expended on lighting fittings etc.

*B. J. Thomson* Capt.  
*J. J. Thomson* Lt.  
AUDITORS

18 AUST INF BDE CANTEN FUND

TRADING AND PROFIT AND LOSS ACCOUNT  
for the month ending 30 Nov 44

To Stock on Hand-		By Sales - period 29 Oct	
29 Oct 44	43.18. 6	to 30 Nov 44	734.16. 7
" Purchases- 29 Oct		" Stock on Hand-	
to 30 Nov 44	720.19. 5	30 Nov 44	79.17. 9
" Loss from Breakages	3.14. 0		
" Free Issues to			
kitchens	3. 2. 0		
" Profit for period	43. 0. 5		
	<u>£814.14. 4</u>		<u>£814.14. 4</u>

STATEMENT OF ASSETS AND LIABILITIES  
as at 30 Nov 44

<u>LIABILITIES</u>		<u>ASSETS</u>	
Sundry Creditors	8. 6. 3	Cash on hand	169. 2. 8
Trading and Profit and		Trust A/c Balance	10. 0. 0
Loss c-		Stock on Hand-30 Nov 44	79.17. 9
Profit c/f £207.13. 9			
Profit for			
period 29 Oct-			
30 Nov 43. 0. 5	250.14. 2		
	<u>£259. 0. 5</u>		<u>£259. 0. 5</u>

Audited and found correct.

*B. J. Thomson* Capt.  
*J. J. Thomson* Lt.  
AUDITORS



18 AUST INF BDE OFFICERS' MESS

STATEMENT OF ASSETS AND LIABILITIES  
as at 30 Nov 44

<u>LIABILITIES</u>		<u>ASSETS</u>	
Sundry Creditors	2. 5. 1	Cash in hand	23.10. 4
Unexpended Chit Books	9.12. 9	Trust A/c Balance	18. 7
Joining Fees	20. 6. 0	Sundry Debtors	8.15. 5
Advance- Maj Lowen	10. 0. 0	Stock on hand-30 Nov 44	25. 3. 0
Surplus of Assets over Liabilities	50.14. 2	Fixtures and fittings etc	34.10. 8
	<u>92.18. 0</u>		<u>92.18. 0</u>

Audited and found correct.

*B. Delmann* Capt.  
*J. H. Thomson* Lt.  
AUDITORS

---

18 AUST INF BDE SERJEANTS' MESS

STATEMENT OF ASSETS AND LIABILITIES  
as at 3 Dec 44

<u>LIABILITIES</u>		<u>ASSETS</u>	
Surplus of Assets over Liabilities	44. 3.10	Cash in hand	27 12.11
		Stock on Hand-3 Dec 44	14.10.11
		Crockery	2. 0. 0
	<u>44. 3. 10</u>		<u>44. 3.10</u>

Audited and found correct.

*B. Delmann* Capt.  
*J. H. Thomson* Lt.  
AUDITORS

---



18 AUST INF BDE SIG SEC REGIMENTAL TRUST ACCOUNT

STATEMENT OF ASSETS AND LIABILITIES  
as at 30 Nov 44

<u>LIABILITIES</u>		<u>ASSETS</u>	
Surplus of Assets over Liabilities	43. 2.10	Cash in Hand	3. 0. 0
		Trust A/c Balance	17. 3. 1
		Equity in Band Instruments	9. 0. 0
		Sporting Equipment	13.19. 9
	<u>£ 43. 2.10</u>		<u>£43. 2.10</u>

Audited and found correct.

*J. J. Thomson*  
AUDITOR

2/47 AUST L.A.D.

STATEMENT OF ASSETS AND LIABILITIES  
as at 30 Nov 44

<u>LIABILITIES</u>		<u>ASSETS</u>	
Surplus of Assets over Liabilities	11.14. 7	Cash in Hand	5. 7
		Trust A/c Balance	8. 9. 0
		Equity in Band Instruments	3. 0. 0
	<u>£11.14. 7</u>		<u>£11. 14. 7</u>

Audited and found correct.

*D. Dillmann* Capt.  
*J. J. Thomson* Lt.  
AUDITORS

7. MINUTE OF PUBLICATION

A District Court Martial ordered to assemble by Major-General E J MILFORD, Comd 7 Aust Div, was held in the field on 7 Dec 44 for the trial of VX3441 Sigm Martin Anthony MALONEY, HQ 18 Aust Inf Bde Sig Section, on the charge:-

Army Act  
Sec 15 (1)

WOAS ABSENTING HIMSELF WITHOUT LEAVE  
in that he

in the field absented himself without leave from  
0830 hours 23 Oct 44 until 2230 hours 30 Nov 44.



Plea Guilty

Finding: Guilty of the charge.

Sentence: To suffer Field Punishment for the period of thirty (30) days.

Date of Sentence: 7 Dec 44

Confirmed by Maj-Gen E J MILFORD: 14 Dec 44.

Promulgated: 20 Dec 44.

He was not held in close arrest awaiting trial.

President of the Court: Major E G MILLER, PPCM 11 Aust Div

*B. Barbury* Capt  
SC 18 Aust Inf Bde



HYGIENE REPORT - DECEMBER 1944.

APPX

'M'

1. Hygiene within the Bde was quite satisfactory during the month with the exception of the Divisional Exercise 14 - 19 Dec. The 2/10 Bn on this exercise had a high standard throughout but the 2/9 and 2/12 Bns made little effort to observe even the elementary rules of Hygiene. Much difficulty was experienced with drainage of waste water in 2/12 Bn lines but a new system of pipes has been introduced and it is hoped that this system will prove satisfactory.

Malaria figures rose considerably during the month and the Brigade Comd. had the occasion to talk to all Officers of the Bde on this subject. It is laid down that when a man contracts Malaria it is evident that he has not taken his Atebrin.

2. Sickness figures for the month are as follows:-

Malaria	23 cases
Diarrhoea	129 cases
U R T I	100 cases
Skin complat <sup>es</sup>	156 cases
Total evacuations	136 cases



18 AUST INF BDEAMENITIES REPORT FOR MONTH OF DECEMBER 1945ENTERTAINMENT

Concert Parties 6 Aust Div Concert Party staged three concerts for this Bde, one in No.1 Concert Theatre on 8 Dec. and the others in No.2 Concert Theatre on 10 & 11 Dec. The performance was of a high standard and was attended by large crowds on each occasion.

Mobile Cinemas There were eight showings in the Bde area for the month. Very large crowds attended all screenings. Films generally were of a better standard than previously.

Dances All units of the Bde have organised dances, most of a company nature. The difficulty of arranging the transport of partners to these dances is generally felt. The dance orchestra formed within the Bde had many engagements during the Christmas festivities.

Xmas Celebrations Each Bn and Bde HQ supplemented food rations with additional fare provided by Canteen Service and in all cases provided excellent meals for troops.

18 Aust Inf Bde Band During the month the band fulfilled all engagements at the Keala Club and also played at numerous Xmas celebrations arranged in the area, including 7 Aust Div Sports.

Sporting Activities Great interest was shown in the sports meeting arranged by 7 Aust Div and all Bns were represented in each event.

2/10 Aust Inf Bn & 2/12 Aust Inf Bn were placed 2nd and 4th respectively in the aggregate points score championship.  
2/9 Aust Inf Bn were runners-up in the Platoon Drill Championship. A large crowd attended from the Bde as spectators.

Race Meeting 2/10 Aust Inf Bn on Christmas Day promoted a race meeting which took place on 2/7 Aust Cav.(Commando) Regt Sports ground.

This meeting proved an outstanding success and provided entertainment for a large number of troops.

Field Games All games were played throughout the Bde, mostly on an inter company basis. Swimming was indulged in to a large extent during rest camps established handy to suitable swimming facilities. During the period of Bde HQ rest camp at HALANDA, cricket matches were played and tennis was also very popular.

Supplies of Sporting Material All orders for sporting material have been satisfactorily completed with the exception of sundry articles which will be to hand in the near future.

Supplies of costumes and accessories for Concert Parties formed within the Division.

The need is felt for a greater quantity and selection of fancy costumes that is at present being held at Div. Amenities. It is suggested that an effort be made to implement the present supply as soon as possible. Units also experience great difficulty in procuring grease paint and other necessities for make up and it would be an advantage if Div Amenities could help units in this respect.

Philanthropic Organisations

Report from Salvation Army Rep. attached hereto.

*bx A and.* Lieut.  
Amen offr 18 Aust Inf Bde



REPORT ON CLASS FOR ILLITERATES HELD AT HQ 18 AUST INF BDE  
(Second Period) FROM 18 NOV '44 to 13 DEC '44.

Army Education Service  
HQ 18 Aust Inf Bde  
13 Dec '44.

Comd 18 Aust Inf Bde  
Comd 2/9 Aust Inf Bn  
Comd 2/10 Aust Inf Bn  
Comd 2/12 Aust Inf Bn  
Education Officer 7 Aust Div  
D.A.D. Education HQ 1 Aust Corps

1 This report is to be read in conjunction with report of 1 Nov '44.

2 The class consisted of eight students, all of whom (with one exception) were members of the class previously held from 3 Oct to 21 Oct '44.

3 For purposes of instruction the class was divided into two groups, A and B, four students in each.

<u>Group "A"</u>	Pte PASCOE, W.	2/9 Aust Inf Bn.
	Pte BRAY, J.	2/9 Aust Inf Bn.
	Pte MIHELICIC, M.	2/12 Aust Inf Bn.
	Pte DAVIS, L.	2/10 Aust Inf Bn.

Pte DAVIS withdrew towards the end of the course. He is not unintelligent, but is constitutionally lazy, and all his ambitions are centred on getting out of the Army.

<u>Group "B"</u>	Pte ROBERTSON, N.	2/10 Aust Inf Bn.
	Pte LAMBERT, A.	2/10 Aust Inf Bn.
	Pte McKELVEY, H.	2/12 Aust Inf Bn.
	Pte TOOHEY, R.	2/10 Aust Inf Bn.

Although Pte TOOHEY was a total illiterate when he reported for instruction on 18 Nov '44, and had not attended the previous course of instruction, he very quickly left the other three members of his group far behind.

4 At the conclusion of the course each student was given the NSW Dept of Education Non-Verbal Intelligence Test (Aust. Council for Educational Research). Results of this test are attached hereto.

5 It is not possible to say at this stage when these students will again be available for instruction. So far the work we have put in with them has been amply justified by results.

Ptes BRAY, PASCOE and MIHELICIC now write simple, one-page letters home regularly. The students in Group B have not yet reached this stage, but their work gives every indication that for them to reach it is only a matter of time.

6 As soon as opportunity offers these students will receive further instruction.

Lt.  
E.O. 18 Aust Inf Bde.



STUDENTS IN GROUP "B"

---

QX 36252 Pte LAMBERT, A. - 2/10 Aust Inf Bn.

Date of Birth - 10 Sep 1918.

Test	1	2	3	4	Total
Score	6	2	2	0	10

---

Less than mental age of 9 yrs. This man is to be regarded as a hopeless case as far as future instruction is concerned.

---

VX 22150 Pte ROBERTSON, N. - 2/10 Aust Inf Bn.

Date of Birth - 12 Dec 1921.

Test	1	2	3	4	Total
Score	8	3	4	3	18

---

Mental age of 9 yrs. This man writes very well. Has periods when his intelligence is, in my opinion, above that shown by Test results. Still worth persevering with.

---

QX 38520 Pte McKELVEY, H. - 2/12 Aust Inf Bn.

Date of Birth - 1 July 1923.

Test	1	2	3	4	Total
Score	8	4	9	5	26

---

Mental age of 11 yrs and 10 mths. Good worker, worth persevering with.

---

SX 14441 Pte TOOHEY, R. - 2/10 Aust Inf Bn.

Date of Birth - 9 Nov 1918.

Test	1	2	3	4	Total
Score	9	6	9	5	29

---

Mental age of 12 yrs. Extremely nervous and self-conscious type. Has done good work, but needed careful handling at the start.

---

Lt.  
E.O. 18 Aust Inf Bde.



STUDENTS IN GROUP "A"

---

QX 41109 Pte MIHELICIC, M. - 2/12 Aust Inf Bn.

Date of Birth - 13 July 1921.

Test	1	2	3	4	Total
Score	14	5	7	5	31

---

Mental age of 12 yrs 6 mths.

---

NX 148809 Pte BRAY, J. - 2/9 Aust Inf Bn.

Date of Birth - 9 Nov 1923.

Test	1	2	3	4	Total
Score	13	4	11	4	32

---

Mental age of 12 yrs 11 mths.

---

QX 1450 Pte PASCOE, W. - 2/9 Aust Inf Bn.

Date of Birth - 25 Sep 1910.

Test	1	2	3	4	Total
Score	11	8	10	5	34

---

Mental age of 14 yrs 1 mth.

---

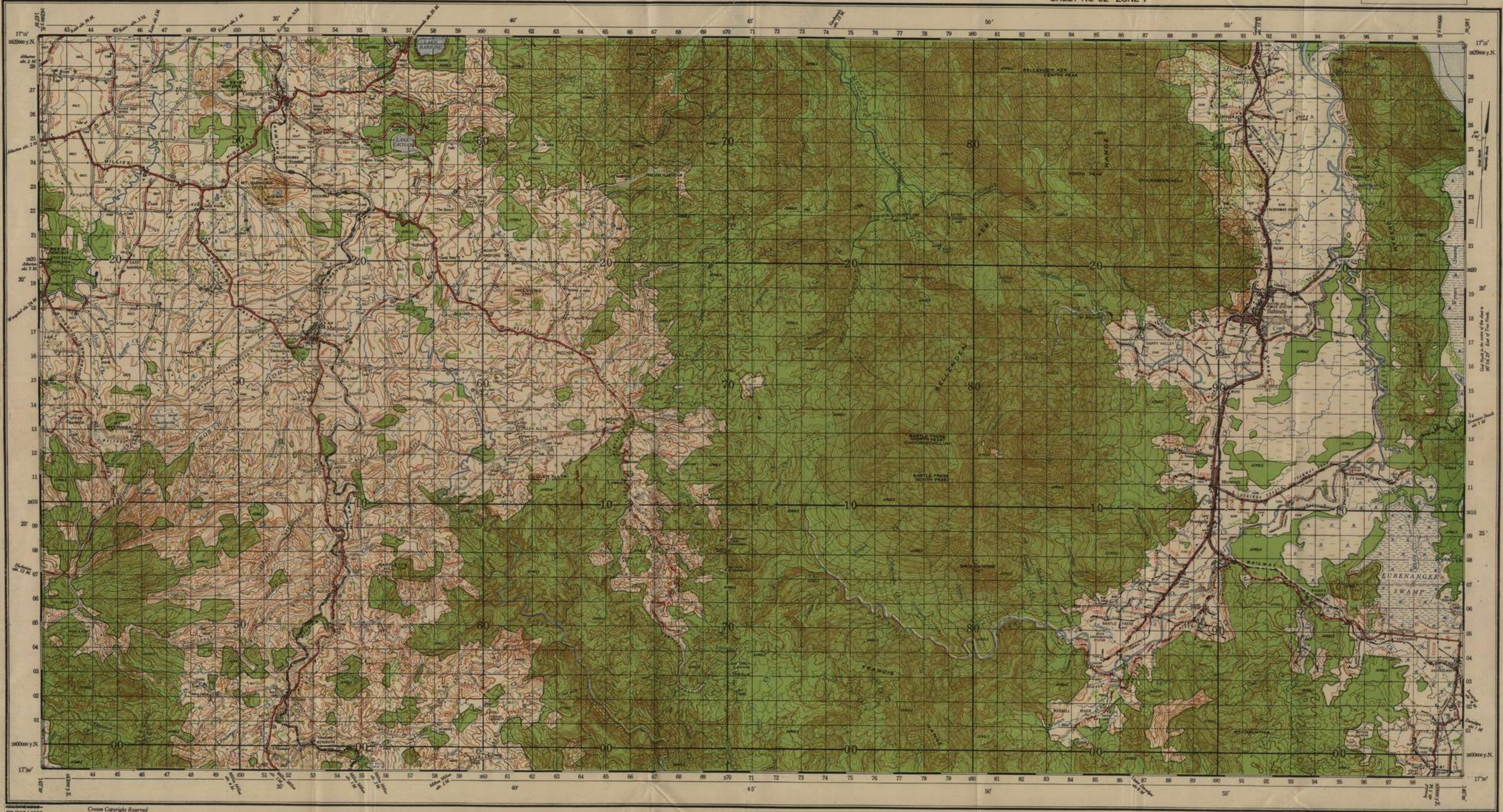
Lt.  
E.O. 18 Aust Inf Bde.



ISSUES AND DEFICIENCIES OF WARLIKE STORES DEC 44

1. Guns machine Bren and Owen guns have been to workshops for repairs, resulting in many of them being condemned. application has been made for replacement, which should come forward in the near future.
2. No issues of any importance have been made during the month.
3. The clothing position improved during the month, 100% issues being made with trousers and shirts. Small size boots are still in short supply, although the position is much easier than last month.



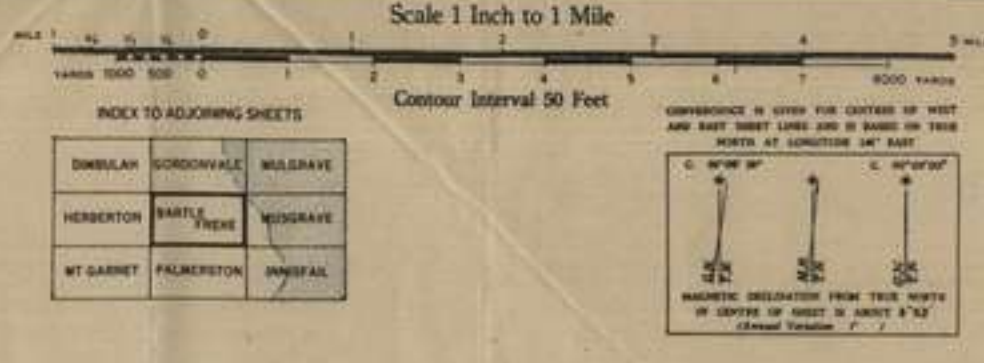


CONTROL: 2nd Order Triangulation by 5 Aust. Fd. Svy. Coy. A.I.F. Sept. 1963.  
Origin: Citrus Astronomical Station  
Longitude 145° 46' 54.60" E.  
Latitude 16° 55' 27.77" S.  
COMPILATION and DETAIL: Surveyed by 5 Aust. Field Svy. Coy. A.I.F. Detail from Aie Photos Sept. '43  
AIR PHOTOGRAPHY: Survey Flight R.A.A.F.  
ELEVATIONS: Feet. Datum Mean Sea Level Brisbane.  
PROJECTION: Transverse Mercator.  
REPRODUCTION: 2/1 Aust. Army Topo Svy. Coy. Nov. '43  
REPRINT: 6 Aust. Army Topo Svy. Coy. (AIF), Aust Svy. Corps, June '44.

Full Cover or Dense Timber  
Camouflage Cover or Medium Timber  
Scattered Timber  
Low Scrub  
Oakland  
Mangroves

Trig. Station and Altitude  
First Class  
Second  
Third  
Fourth  
Amalgam A or All Class  
Amalgam B Class  
Amalgam C Class or Emergency Landing Ground  
Spotting Post  
Spotting Moving Area

Bridge (Width under arches shown in metres)  
Culvert  
Roads Sealed  
Roads Metal or Gravel  
Roads Earth  
Width  
Suitable for  
Note: Brackets denote road surface classification. Roads impassable to M. T. in wet weather.  
Trucks



Fathom Lines  
Contours  
Cliffs & Steep Slopes  
Spring Well or Waterhole  
Swamp or Marsh  
River or Perennial Stream  
Non-perennial Stream  
Water Channel  
Railway Lines  
Railway Station with siding  
Railway Siding  
Railway (single line)  
Light Railway  
Embankment  
Cutting  
Post Office  
Post & Telegraph Office (in villages)

Wind Pump  
Cemetery  
House  
Garage  
School  
Hotel  
Blacksmith's Shop (large)  
Church  
Mill or Factory  
Lighthouse  
Telegraph or Telephone Line  
Electric Transmission Line  
Main  
Electric  
Power Station  
Stone Wall

TO GIVE A GRID REFERENCE ON THIS SHEET  
Pay attention to the number in square spaces at the corners and in margins. They are for finding the co-ordinates of any point on the face of the map. V.G. 300  
PAY ATTENTION TO LARGER MARGINAL FIGURES AND TO THESE PRINTED ON THE FACE OF THE MAP. V.G. 300  
EAST WEST  
NORTH SOUTH  
REFERENCE 801077