

AWM52
2nd Australian Imperial Force and
Commonwealth Military Forces unit war
diaries, 1939-45 War

Item number: 8/2/18

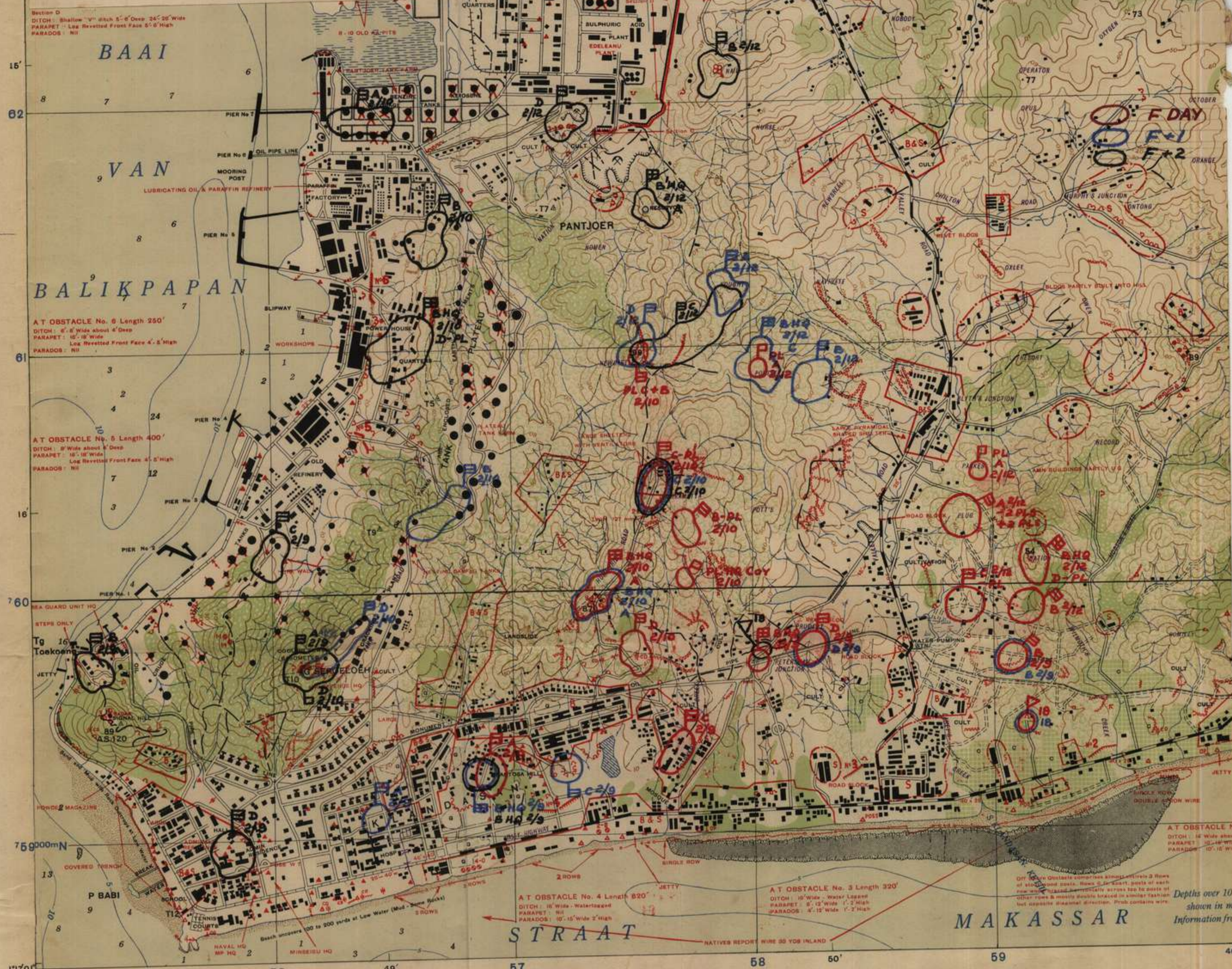
18 Infantry Brigade

Maps 1945

PROGRESSIVE-DISPOSITIONS

F TO F+2

SECRET
APPX 'B' TO 18 BDE
REPORT ON OPERATION
'OBOE TWO'



Scale 1:10,000
1 Mile
2 Kilometres
1000 900 800 700 600 500 400 300 200 100 0 100 200 300 400 500 600 700 800 900 1000

100/MS/7536
CONTROL: Existing map of 1:25,000 Series BALIKPAPAN
AIR PHOTOGRAPHY: 2 Photo Charting Bn, 31 Photo Wing, U.S.A.A.F.; Missions 6MB93-B1 Apr '45, 4 Photo Charting Bn, 31 Photo Wing, U.S.A.A.F.; Missions 5MC126-10V, 11V, 12V May '45, 17 P R Bn, 6 Photo Group, U.S.A.A.F.; Missions 4M47Z (L-V) Oct '44
COMPILED & DRAWING: 21 Aust Army Topo Bvy Coy, Aust Bvy Corps from Air Photos, 1:25,000 maps of BALIKPAPAN prepared by Dutch Topographic Service, Batavia, 1932 & Dutch Hydrographic Chart 130
REPRODUCTION: 21 Aust Army Topo Bvy Coy, Aust Bvy Corps June '45

FIRST EDITION

LEGEND

- Road, hard surfaced
- Road, lightly surfaced
- Road, earth
- Jerry Track
- Trail
- Highway Bridge
- Railway, Narrow Gauge
- Railway in Street
- Embankment
- Outling
- Buildings or Huts
- Telephone Line
- Horizontal Control Point
- Spot Elevation
- Dam
- Oil Tank
- Oil Pipe Line
- Wreck (Partly Submerged)
- Wall, Stone, Masonry
- Wharf, Pier
- Breakwater
- Gardens
- Canal Drain
- Streams
- Mud Flats
- Mangroves
- Nipa Swamp
- Swamp
- Depth line
- Underwater Obstruction
- Rice Fields
- Contours
- Sand
- Earth Revetment
- Forest
- Secondary Growth
- Scattered Trees
- Scrub
- Plantation (General)
- Plantation (Special)

HEIGHTS AND DEPTHS IN METRES

NOTE: Contours are interpolated from 1:25,000 Dutch Maps Nos. 87/XXII and 87/XXIIn

GLOSSARY

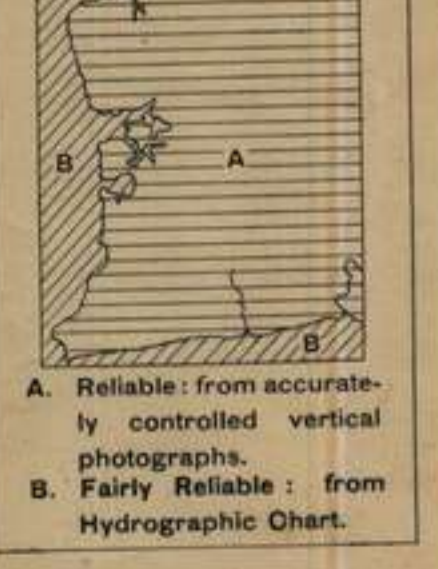
- G GOENONG (MOUNTAIN)
- P POELAU (ISLAND)
- T TANJOENG (CAPE)
- S SOENGAJ (RIVER)
- B BAAI (BAY)

INDEX TO SHEETS



THE LONGITUDES SHOWN IN THE INDEX ARE BASED ON BATAVIA WHICH IS 106°48' 27.79" E OF GREENWICH

RELIABILITY DIAGRAM

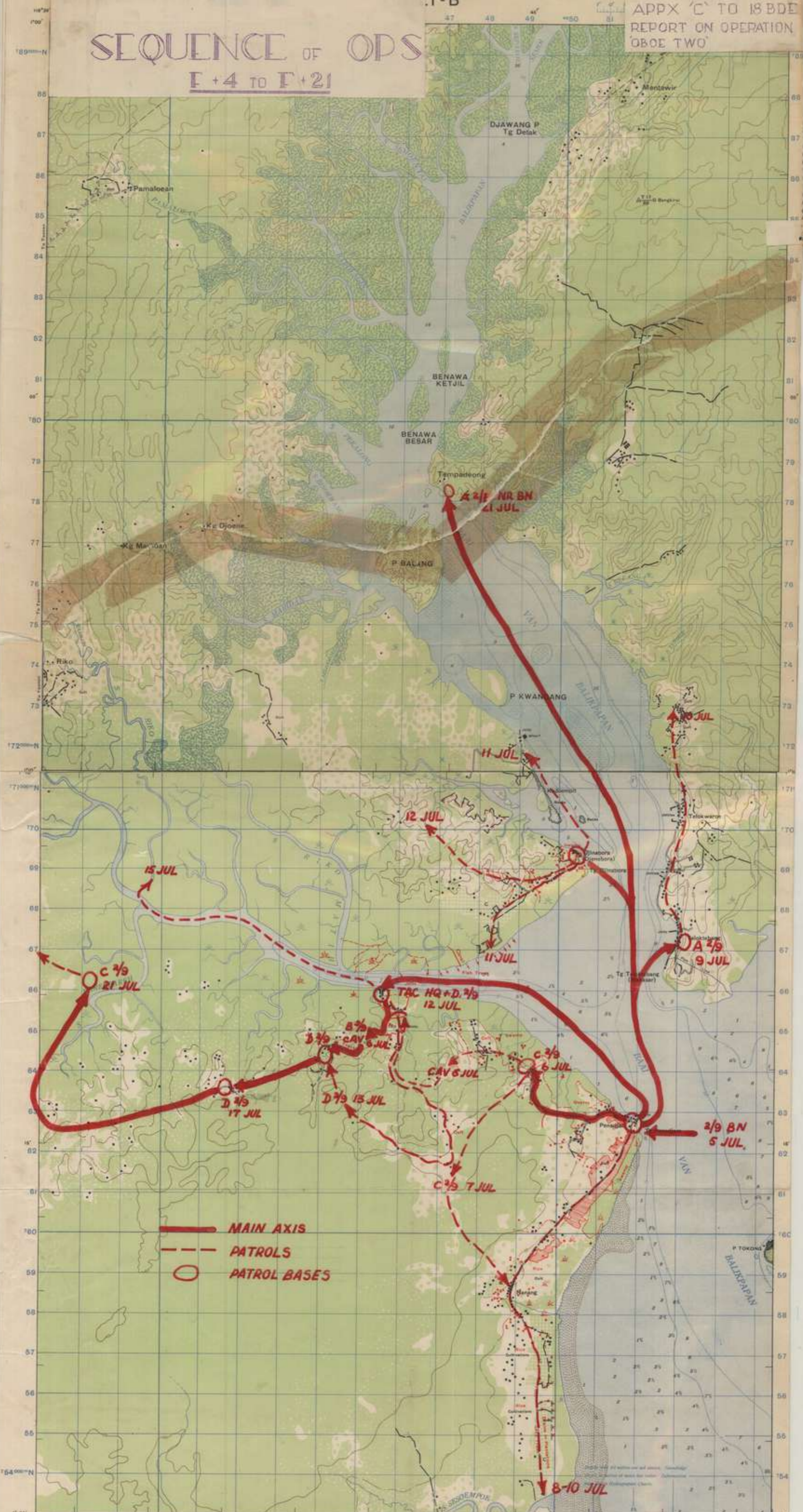


CO T-B

SECRET (T)

APPX 'C' TO 18 BDE
REPORT ON OPERATION
GBOE TWO

SEQUENCE OF OPS E+4 TO E+21



MAIN AXIS
PATROLS
PATROL BASES

ADV/INT/DEE IC/O/032/3774
 CONTROL: Transcription by Dutch Bureau.
 AIR PHOTOGRAPHY: 2 Photo Charting Sqn, 211 Photo Wing, U.S.A.A.F. Mission 5MC99 Apr 45.
 COMPILATION: 2/1 Aust Army Topo Bty Coy, Aust Bty Corps, from Air Photos, British Hydrographic Charts Nos 3037, 3038, Dutch Hydrographic Chart 133, Terrain Handbook 88 by A.G.S. S.W.P.A., and Aust. Aeronautical Chart A 9.
 DRAWING & REPRODUCTION: 2/1 Aust Army Topo Bty Coy, Aust Bty Corps, Apr 45.

ABBREVIATIONS
 P. ISLAND
 T. TANJONG (CAPE)
 S. SCENJAI (RIVER)
 B. BAKI (BAY)

NOTE: OFFICERS USING THIS MAP ARE REQUESTED TO MAKE ANY NECESSARY ADDITIONS AND AMENDMENTS ON THE MAP ITSELF AND FORWARD SAME TO SURVEY DIRECTORATE, H.Q. OF FORCES CONCERNED.

Scale 1: 50,000

CONTOUR INTERVAL 20 METRES EXCEPT FIRST 10 METRES SHOWN IN BROKEN LINE

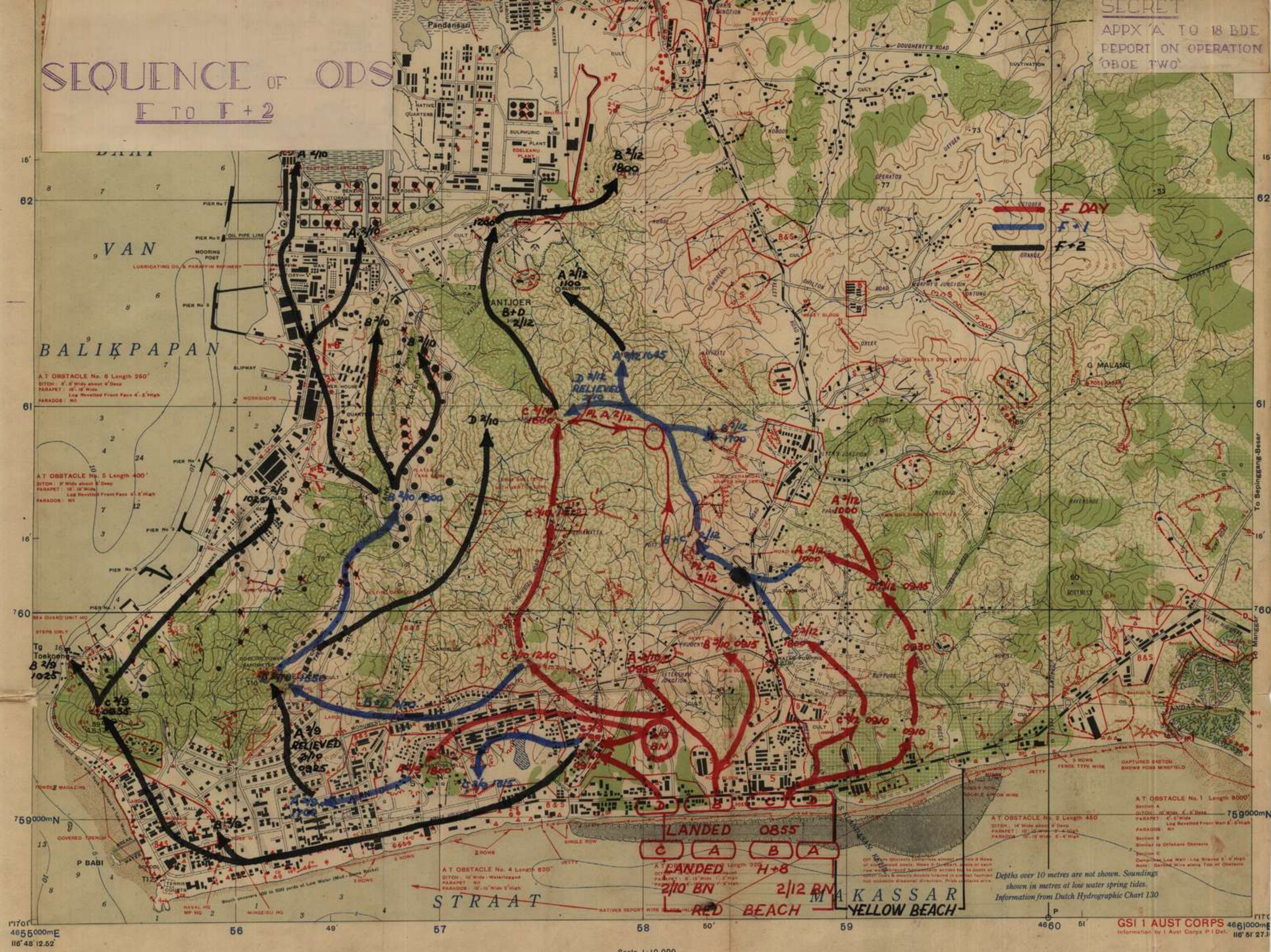
LAMBERT CONICAL ORTHOMORPHIC PROJECTION
 HEIGHTS AND DEPTHS IN METRES

Map Overlain by 25 Aust Army Topo Bty Coy, Aust Bty Corps from Air Photos, Mission 4, Charting Bn, 58178 (18.VI) May 45, 28 Photos, Recon Bn, 58118 (1.VI) 58119 (1.VI), 17 Photo Recon Bn, 58118 (1.VI) 58119 (1.VI) (17 Photo Recon Bn, 58118 (1.VI) 58119 (1.VI) June 45)

TO OBTAIN GRID COORDINATES ON THIS SHEET ALWAYS QUOTE THE SHEET NAME. PAY ATTENTION TO LARGER BRACKETED FIGURES ONLY.

POINT	COORDINATES
1	17 40 00 S 104 40 00 E
2	17 40 00 S 104 40 00 E
3	17 40 00 S 104 40 00 E
4	17 40 00 S 104 40 00 E
5	17 40 00 S 104 40 00 E
6	17 40 00 S 104 40 00 E
7	17 40 00 S 104 40 00 E
8	17 40 00 S 104 40 00 E
9	17 40 00 S 104 40 00 E
10	17 40 00 S 104 40 00 E
11	17 40 00 S 104 40 00 E
12	17 40 00 S 104 40 00 E
13	17 40 00 S 104 40 00 E
14	17 40 00 S 104 40 00 E
15	17 40 00 S 104 40 00 E
16	17 40 00 S 104 40 00 E
17	17 40 00 S 104 40 00 E
18	17 40 00 S 104 40 00 E
19	17 40 00 S 104 40 00 E
20	17 40 00 S 104 40 00 E
21	17 40 00 S 104 40 00 E
22	17 40 00 S 104 40 00 E
23	17 40 00 S 104 40 00 E
24	17 40 00 S 104 40 00 E
25	17 40 00 S 104 40 00 E
26	17 40 00 S 104 40 00 E
27	17 40 00 S 104 40 00 E
28	17 40 00 S 104 40 00 E
29	17 40 00 S 104 40 00 E
30	17 40 00 S 104 40 00 E

SEQUENCE OF OPS
F TO F+2



CONTROL: Existing map of 1:25,000 Series
BALIKPAPAN

AIR PHOTOGRAPHY: 2 Photo Charting Sqn, 311 Photo Wing, U.S.A.A.F. Missions 5MB53-51 Apr 45, 4 Photo Charting Sqn, 311 Photo Wing, U.S.A.A.F. Missions 1M02B-10V, 11V, 12V May 45, 17 P R Sqn, 8 Photo Group, U.S.A.A.F. Missions 4M472 (1V) Oct 44

COMPILATION & DRAWING: 21 Aust Army Topo Svy Coy, Aust Svy Corps from Air Photos; 1:100,000 maps of BALIKPAPAN prepared by Dutch Topographic Service, Batavia, 1932 & Dutch Hydrographic Chart 130

REPRODUCTION: 21 Aust Army Topo Svy Coy, Aust Svy Corps June 44

FIRST EDITION

LEGEND

Road, hard surfaced	—
Road, lightly surfaced	- - -
Road, earth	— · —
Jeep Track	— · · —
Trail	— · · · —
Highway Bridge	—
Railway, Narrow Gauge	—
Railway in Street	—
Embankment	—
Cutting	—
Buildings or Huts	■
Telephone Line	—
Horizontal Control Point	△
Spot Elevation	▲
Dam	—
Oil Tanks	■
Oil Pipe Line	—
Wharf (Partly Submerged)	—
Wall, Stone, Masonry	—
Quarry	—
Wharf, Pier	—

CONTOUR INTERVAL 10 METRES
LAMBERT CONICAL ORTHOGRAPHIC PROJECTION

HEIGHTS AND DEPTHS IN METRES

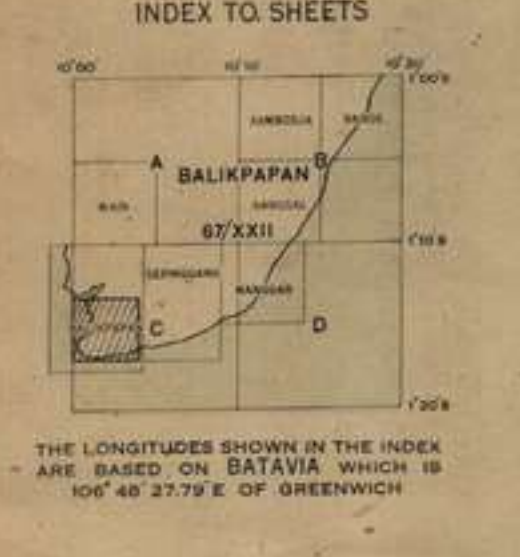
NOTE: Contours are interpolated from 1:25,000 Dutch Maps Nos. 67/XXIII and 67/XXII.

GLOSSARY

G	GOENONG (MOUNTAIN)
P	PUELAU (ISLAND)
T	TANJOENG (CAPE)
S	SOENANG (RIVER)
B	BAAI (BAY)

INDEX TO SHEETS

THE LONGITUDES SHOWN IN THE INDEX ARE BASED ON BATAVIA WHICH IS 106° 46' 27.79" E OF GREENWICH



NETHERLANDS EAST INDIES
EQUATORIAL ZONE GRID

TO GIVE A GRID REFERENCE ON THIS SHEET ALWAYS QUOTE THE SHEET NAME. PAY ATTENTION TO LAMBERT MERIDIAN FRONTS ONLY.

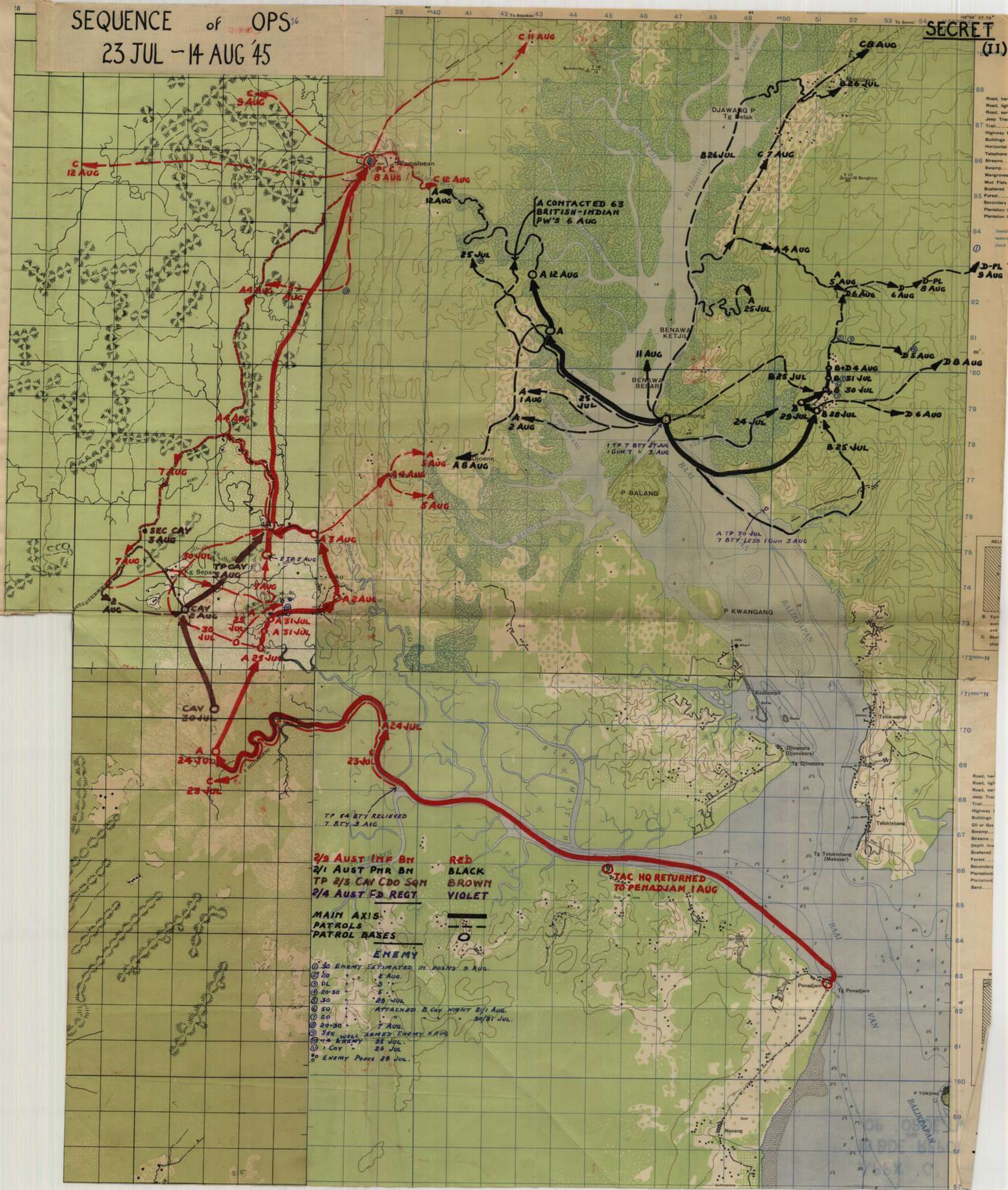
7000	7050	7100	7150
6100	6150	6200	6250

UNIT: SQUARE NEAREST SIMILAR COORDINATE REFERENCE DISTANCE 100 KILOMETRES

BALIKPAPAN BORNEO

SEQUENCE of OPS¹⁶
23 JUL - 14 AUG '45

SECRET (II)



2/3 AUST INF BN
2/1 AUST PHR BN
TP 2/3 CAY CDO SQN
2/4 AUST ED REGT

RED
BLACK
BROWN
VIOLET

MAIN AXIS
PATROLS
PATROL BASES

ENEMY

- ① 30 ENEMY ESTIMATED IN POSNS 3 AUG.
- ② 20 " 2 AUG.
- ③ DL " 3 "
- ④ 20-50 " 5 "
- ⑤ 30 " 25 JUL
- ⑥ 50 " ATTACHED 3 COY NIGHT 21/1 AUG.
- ⑦ 20 " 20/21 JUL.
- ⑧ 20-30 " 7 AUG.
- ⑨ 500 WELL ARMED ENEMY 8 AUG.
- ⑩ 14 ENEMY 25 JUL.
- ⑪ 1 COY 26 JUL.
- ⑫ ENEMY POSNS 28 JUL.

TAC HQ RETURNED TO PENADJIAN 1 AUG

TP 54 BTY RELIEVED 7 BTY 3 AUG

A CONTACTED 63 BRITISH-INDIAN PW'S 6 AUG

- 88 Road, hard
- 88 Road, light
- 88 Road, earth
- 88 Jeep Track
- 87 Trail
- 87 Highway
- 87 Buildings
- 87 Horizontal C
- 86 Telephone
- 86 Stream
- 86 Swamp
- 86 Mangroves
- 86 Mud Flats
- 86 Scattered T.
- 85 Forest
- 85 Secondary
- 85 Plantation
- 85 Sand
- 84
- 83
- 82
- 81
- 80
- 79
- 78
- 77
- 76
- 75
- 74
- 73
- 72000-N
- 71000-N
- 70
- 69
- 68
- 67
- 66
- 65
- 64
- 63
- 62
- 61
- 60
- 59
- 58

