

AWM52
2nd Australian Imperial Force and
Commonwealth Military Forces unit war
diaries, 1939-45 War

Item number: 8/3/23

2/23 Infantry Battalion

August 1942, Maps

MAPS

2/23 Aust Inf Pbn

~~Maps only~~

2 Alamem	1:100,000
2 Alamem	1:500,000
2 Higrij	1:50,000
2 Hazal	1:50,000
2 Wushka	1:25,000
Side abd. El. Rastmat.	1:25,000

SECTION

P.O

BASE

ME. LABOURNE.

overprint

overprint

THE AUSTRALIAN WAR MEMORIAL SERVICE

SECRET

2/23/20

STAFF DUTIES

MILITARY

HISTORY

2

Aust.

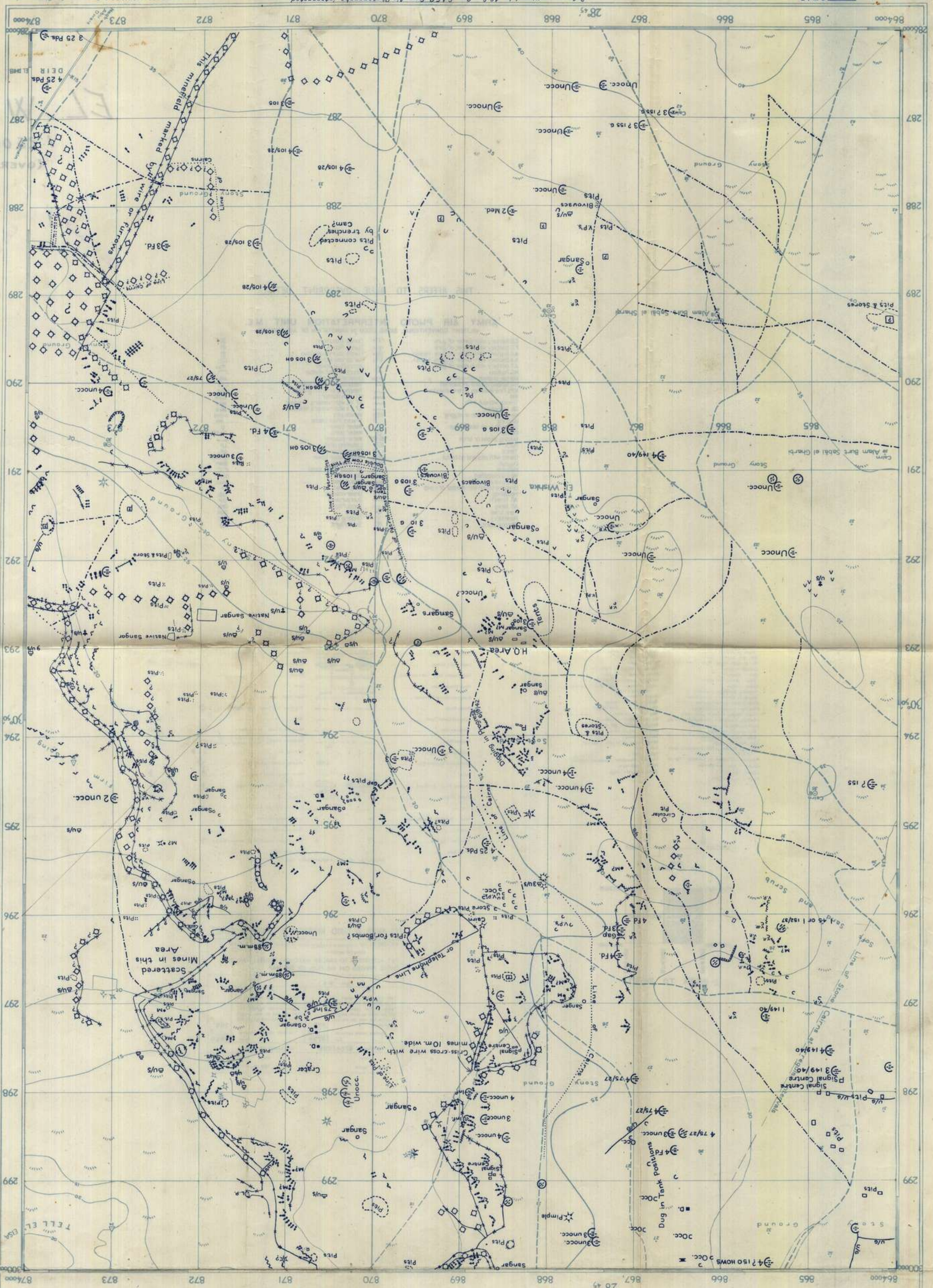
BASE

P.O

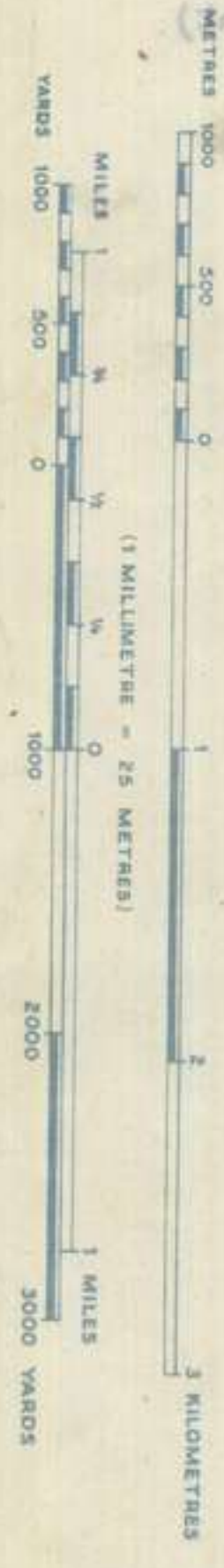
Sound contents of this article without reference to our and undated 9/12

COMMONWEALTH OF AUSTRALIA

returned within 7 days, return to



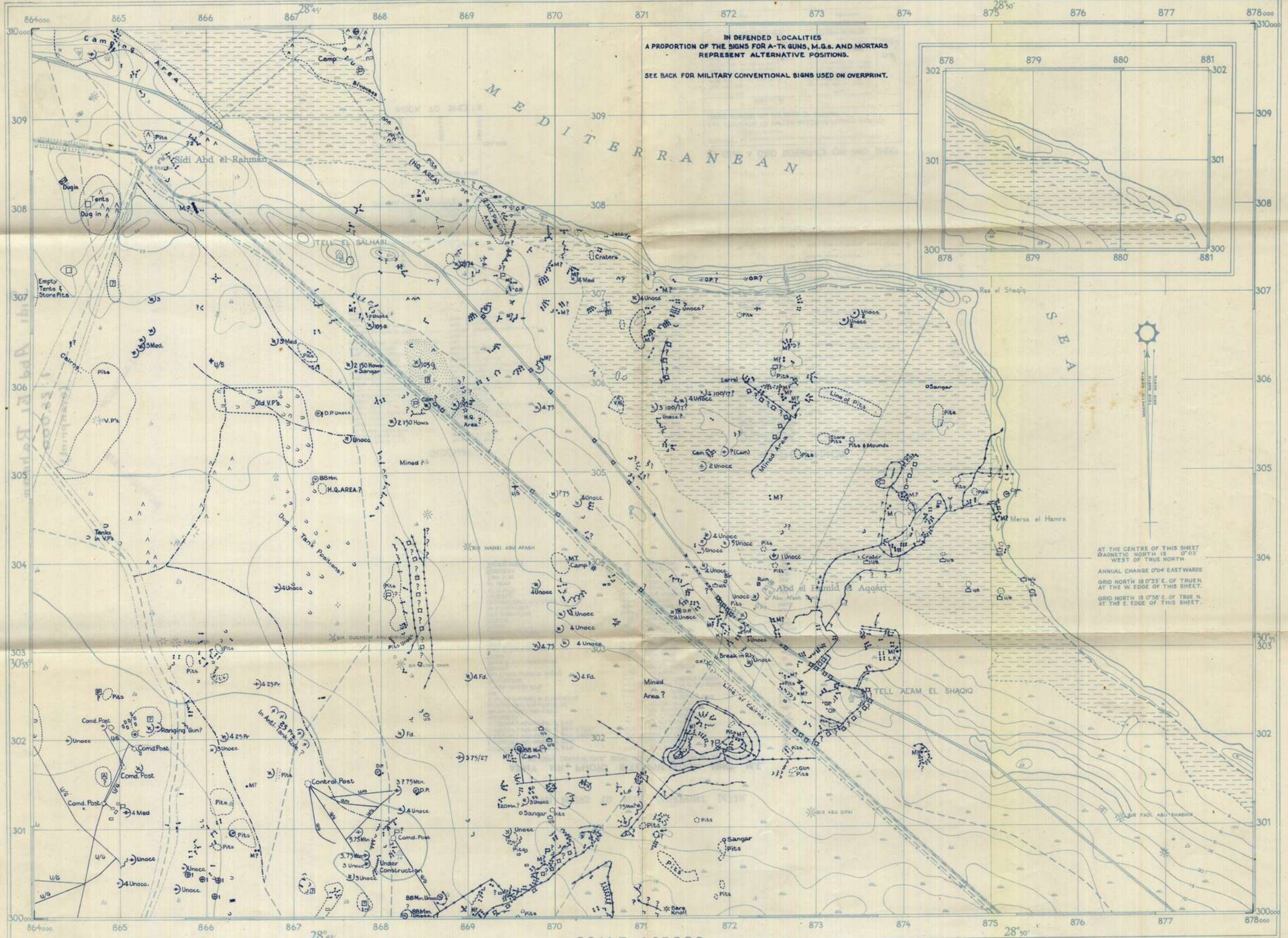
SCALE 1:25000



IN DEFENDED LOCALITIES A PROPORTION OF THE SIGNS FOR A/T GUNS, M/GS AND MORTARS REPRESENTS ALTERNATIVE POSITIONS.

SEE BACK FOR MILITARY CONVENTIONAL SIGNS USED ON OVERPRINT

MAGNETIC NORTH IS 0° 04' WEST OF TRUE NORTH. ANNUAL CHANGE 0° 05' EASTWARD. GRID NORTH IS 0° 53' OF TRUE NORTH AT THE W. EDGE OF THIS SHEET. GRID NORTH IS 0° 56' E. OF TRUE N. AT THE E. EDGE OF THIS SHEET.



IN DEFENDED LOCALITIES
A PROPORTION OF THE SIGNS FOR A-TK GUNS, M.G.s. AND MORTARS
REPRESENT ALTERNATIVE POSITIONS.
SEE BACK FOR MILITARY CONVENTIONAL SIGNS USED ON OVERPRINT.

AT THE CENTRE OF THIS SHEET
MAGNETIC NORTH IS 0°03'
WEST OF TRUE NORTH
ANNUAL CHANGE 0'04" EASTWARDS
GRID NORTH IS 0°53' E. OF TRUE N.
AT THE W. EDGE OF THIS SHEET.
GRID NORTH IS 0°55' E. OF TRUE N.
AT THE E. EDGE OF THIS SHEET.

SCALE 1:25,000



W.D.R. 1011 2741

Defences positioned by 46. Svy. Coy. S.A.E.C. from Air Photographs interpreted by A.A.I.R.U. and Counter-Battery Staff, 8th Army Oct. 1942.

Compiled and drawn from 1:50,000 DABA-ALEXANDRIA Series and Air Photographs by Det. 514 Corps Field Survey Coy. R.E., October 1942. Printed by Litho Sect. M.M.R. & P. Coy. S.A.E.C. Ass. 46 Survey Coy. S.A.E.C. October 1942. Overprinted by Litho Sect. M.M.R. & P. Coy., S.A.E.C. Att. 46 Survey Coy. S.A.E.C. October 1942.

THIS REFERS TO BLUE OVERPRINT DETAIL

ARMY AIR PHOTO INTERPRETATION UNIT M.E.
MILITARY CONVENTIONAL SIGNS USED IN ANNOTATION OF AIR PHOTOS.

CD Battery with number of guns	⊙	Dumps Ammunition	⊙
F D Battery with number of guns	⊙	Dumps Petrol	⊙
AA Battery with number of guns (heavy)	⊙	Dumps Stores unknown	⊙
AA Battery with number of guns (light)	⊙	Aeroplanes with streps	⊙
AT Battery with number of guns	⊙	Aircraft wrecked	⊙
M.G. Position	⊙	Aircraft blast shelter	⊙
Mortar position with calibre	⊙	Under ground cable	⊙
HQ Suspected and unclassified	⊙	Telephone wires on poles	⊙
W.P.s. Fire trenches or breastworks	⊙	Telephone wires on ground	⊙
Well	⊙	MT. with numbers	⊙
Trench without W.P.s.	⊙	A.F.V.s with numbers. Tracked	⊙
Sie. trenches	⊙	A.F.V.s with numbers. Wheeled	⊙
New Construction or digging	⊙	Vehicle pits	⊙
Blasting	⊙	Tracks Foot paths	⊙
Stones or brick blockhouse	⊙	Water tower	⊙
Pill box	⊙	Water point	⊙
Building stone or brick	⊙	Water pipeline	⊙
M.U.S.	⊙	Listening post	⊙
Tents	⊙	Observer vision post	⊙
Camps with pits and no tents	⊙	Observation tower	⊙
Dugout	⊙	W.T. Station	⊙
Hospital	⊙	Wireless tower (pole)	⊙
Wire unclassified	⊙	Occupied	⊙
Wire concertina	⊙	Unoccupied	⊙
Dragons teeth with number of rows	⊙	Suspected	⊙
Hedgehog	⊙	Unsuspected	⊙
AT Erench	⊙	Dual purpose	⊙
AT Mines	⊙	Demouflaged	⊙
Tank trap	⊙	Dummy	⊙
Road Block	⊙	Underground	⊙
Strong point	⊙	Searchlight	⊙

GLOSSARY

'Alam, pl. Alamsat — name	Mahara, dim. Mahayara — road toll
Bah, dim. Baswah — fort	Mallaha — salt marsh
Si, pl. Akhr. Akhr, Akhr — salt cavern	Masra — name
Dawdar — town	Ma'at, pl. Ma'at — water well
Qair — depression	Marra, Marra — anchorage
Silat — dam, inlet section	Masra — depression on land
Ebat — village	Nawa, Nawar — mound of earth produced by retreating of water
Gahhina, Gahhina — cemetery	Nayra — depression
Chara, pl. Charat — mining dam	Gahr, pl. Gahr — canal
Ghat — one coloured after rain	Qarya, Qaryat — named village
Hag'ag — summit of mountain	Qira — fort and dam
Hada, Hada — dam or named cavern	Rai, dim. Baswa — fortified
Hakafa, Hakafat — salt projecting from sea	Raqaba, Raqabat — dry water course
Malya, Malyat — path of earth	Sakaba — dry salt marsh
W — depression	Sakab — dam
Tha, Thaa — rising ground	Saya, Sayat, pl. Sayat — deep well
Kaf, Kafat — village	Tah — name
Kara, pl. Karat — fort surrounded by bank of earth	Thala — salt
Karima, Karimat, pl. Karimat — fig tree	Thamada, Thamadat — temporary water hole
Sham — path, way through	Wadi — water course
Khat — salt flat	Zawa, Zawat — village
Nash — mountain pass	

REFERENCE

Double Track Railway	⊙	Combers (Top of mountain or up side of slope)	⊙
Single Track Railway	⊙	Escarpment	⊙
Main Metalled Road	⊙	Mount	⊙
Minor Metalled Road	⊙	Sand	⊙
Road with Natural Foundation	⊙	Grat. Ghat	⊙
Desert Route	⊙	Trig. Point (with height, Spot Height)	⊙
Pole and Capst. 12000	⊙	Camp	⊙
Telephone Line	⊙	Navigation Beacon (with number)	⊙
Power Wire	⊙	Navigation Beacon (without number, but with figure reference on map)	⊙
International Boundary	⊙	Buildings, Built	⊙
International Boundary Filled	⊙	Wireless Station, Lighthouse	⊙
Wall	⊙	Water Tower, Wind Pump	⊙
Spending Water Salt Marsh	⊙	Church with Tower, with Steeple	⊙
Mark, Marka	⊙	Mosque	⊙
Pipe Line	⊙	Cemetery Christian, Jewish	⊙
Wall, Perennial, Non-Perennial	⊙	Wier, Cemetery or Grave	⊙
Cream	⊙	Muslim Cemetery or Grave	⊙
Palm Tree, Fig Tree	⊙	Sheik's Tomb, with Building, without Building	⊙
Crack Bank	⊙	Cultivated Area	⊙

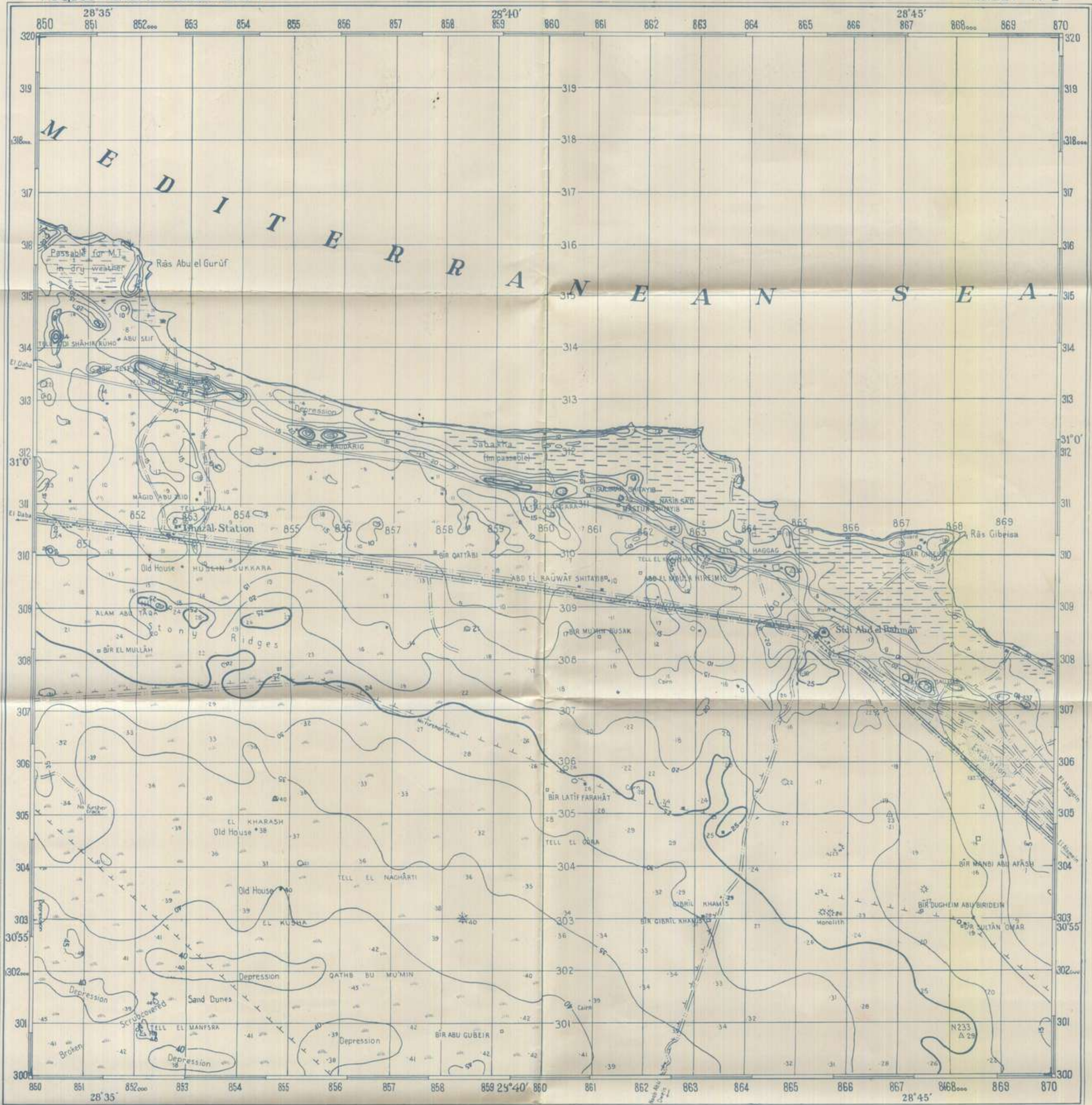


TO GIVE A GRID REFERENCE ON THIS SHEET

FIGURES Pay attention to the position of the figures at the corners. They are for finding full coordinates.

PAY ATTENTION TO LARGER MARGINAL FIGURES AND TO THOSE PRINTED ON THE FACE OF THE MAP

East	North
Take west edge of square in which point lies and read the figure printed opposite this line (on north or south margin) or on the line itself (on the face of the map).	Take north edge of square in which point lies and read the figure printed opposite this line (on east or west margin) or on the line itself (on the face of the map).
873	302
873.4	302.4
REFERENCE 87343024	TO NEAREST 100 METRES
Line	Point
Square	1000 Metres



MDR. 518/156 GLOSSARY

- Alam, pl. Alamāt—name.
- Bāb, dim. Bawāb—door.
- Bīr, pl. Abār. Bīr—rock cistern.
- Damk—house.
- Deir—depression.
- Elīst—family, tribal action.
- Elīst—village.
- Gabbān, Gabbānāt—cemetery.
- Ghard, pl. Ghardāt—many stones.
- Qāh—area cultivated after rain.
- Hagāq—summit of equipment.
- Hagfa, Hagfāt—open or ruined cistern.
- Hawāka, Hawākāt—old projecting tower.
- Hattiyā, Hattiyāt—patch of scrub.
- Hawāqet—
- 10—circular depression.
- Itwa, Itwat—hanging ground.
- Kaf, Kafat—village.
- Karn, pl. Karnāt—field surrounded by banks of earth.
- Karnāsa, Karnāsat, pl. Karnāsāt—fig tree.
- Kūst—little hill.
- Māhwar, dim. Māhwarāt—mud pit.
- Māhārā—mud mortar.
- Mānīl—house.
- Mātan, pl. Mātān—shallow well.
- Māras, Mārasāt—anchorage.
- Mārasāt—promontory or sand.
- Nawā, Nawāt—bank of earth, precast by excavating a cistern.
- Nayra—depression.
- Qāh, pl. Qāhāt—press.
- Qaryā, Qaryāt—ruined village.
- Qāh—fixed sand dune.
- Rā, dim. Rāwāt—heavily.
- Raqab, Raqabat—dry water-course.
- Sabakha—dry salt marsh.
- Sakān—dwelling.
- Sāmyā, Sāmyāt, pl. Sāmyāt—deep well.
- Sūdī—saint.
- Tāst—hill.
- Thamāda, Thamādāt—temporary water-hole.
- Wādī—water course.
- Zāwīyā, Zāwīyāt—village.

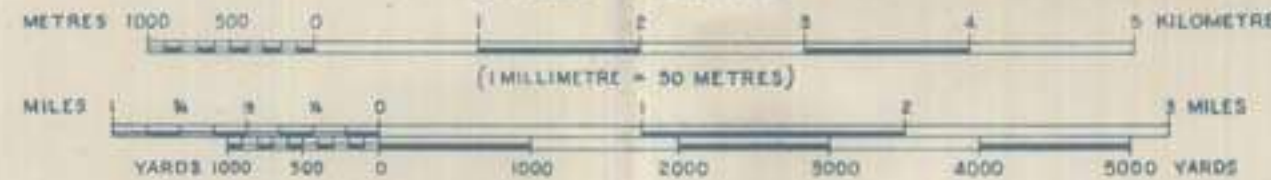
TO GIVE A GRID REFERENCE ON THIS SHEET

FIGURES Pay attention to the smaller coordinate figures at the corners and in the margins. They are for finding full coordinates.

PAY ATTENTION TO LARGER MARGINAL FIGURES AND TO THOSE PRINTED ON THE FACE OF THE MAP

Point - N 233			
East	Take west edge of square in which point lies and read the figures printed opposite this line (on north or south margin) or on the line itself (on the face of the map).	868	300
North	Take south edge of square in which point lies and read the figures printed opposite this line (on east or west margin) or on the line itself (on the face of the map).	2	7
Estimate tenths eastwards	Estimate tenths northwards	8682	3007
REFERENCE 86823007	TO NEAREST 100 METRES		
Unit - 1 Metre	Square = 1000 Metres		

SCALE 1:50,000



INDEX TO ADJOINING SHEETS



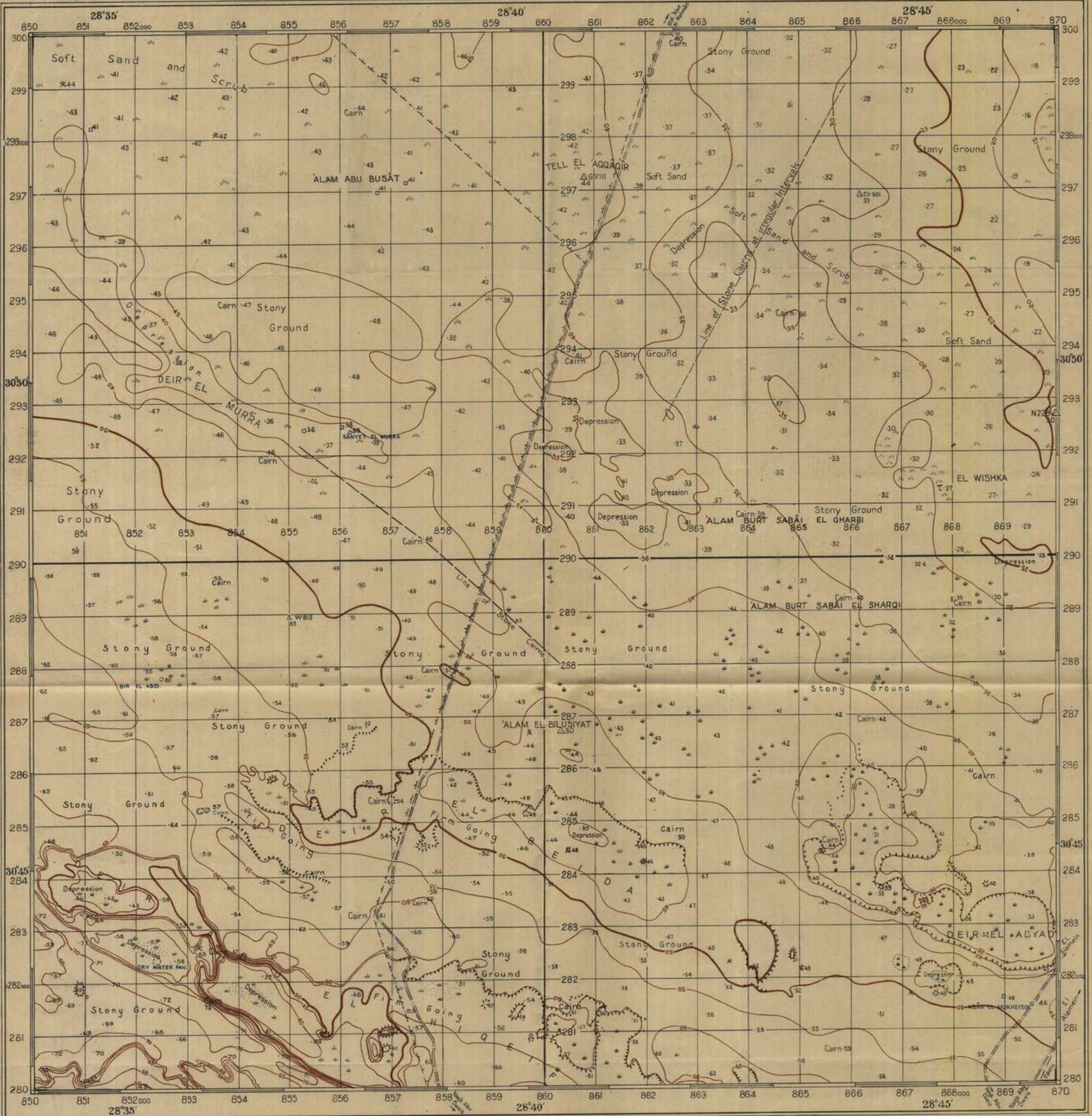
Heights in Metres. VI = 5 Metres

The above area is easily traversable by mechanized vehicles except where marked 'SABAKHA' and 'Depression'.

REFERENCE

- Railways
- Railways with Telephone Lines
- Telephone Lines
- Motorized Road (with Kilo Feet)
- Motor Tracks
- Canal Tracks
- International Boundary Numbered Beacons
- Frontier Wire
- Pipe Line
- Wireless
- Wireless
- Submarine Light Markers
- Marsh
- Sand or Mud Bottoms
- COR. Bank
- Contour (the top of each contour number is the lower figure on the right side of the contour)
- Spot Height
- House
- Well
- Shakā's Tomb
- Graves
- Heard
- Fig Tree
- Camel
- Palms
- Sand
- Cultivated Area
- Encampment
- Map-plot

GHAZĀL 1:50,000



MDR.518/154

GLOSSARY

- | | |
|--|---|
| Alam, pl. Alama--carr. | Wadi, dim. Wadi--ford |
| Bak, dim. Bawab--bar | Mallaha--soil mark |
| Bir, pl. Abir, Bibr--rock cleft | Mansil--house |
| Dawar--house | Ma'yan, pl. Mar'yan--shallow well |
| Deir--depression | Marsa, Mansal--anchorage |
| Eilat--family, tribal section | Minqar--promontory on land |
| Eilat--village | Nizwa, Nizwet--mound of earth produced by eroding a cleft |
| Gabbana, Gabbana--cemetery | Nugra--depression |
| Ghad, pl. Ghad--ravine | Qabr, pl. Qabar--grave |
| Ghat--area cultivated after rain | Qarya, Qaryet--village |
| Hagari--summit of escarpment | Qiz--food sand dune |
| Hafsa, Hafset--open or named cleft | Rik, dim. Ruks--bastion |
| Hafsa, Hafset--rock protruding from sea | Raqbat, Raqbat--dry water-course |
| Hatiya, Hatyot--patch of scrub | Sabakha--dry salt marsh |
| Huweget-- | Sakan--dwelling |
| Ilwa, ilwet--muddy ground | Sanya, Sanyet, pl. Sawani--dry well |
| Katr, Kafret--village | Side--sand |
| Karr, pl. Karr--field surrounded by banks of earth | Taliet--hill |
| Karada, Karadot, pl. Karada--fig tree | Thamda, Thamdat--temporary water-hole |
| Kilat--little hill | Wadi--water course |
| | Zawa, Zawat--village |

TO GIVE A GRID REFERENCE ON THIS SHEET

FIGURES Pay no attention to the smaller coordinate figures at the corners and in the margins. They are for finding full coordinates.

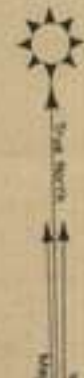
PAY ATTENTION TO LARGER MARGINAL FIGURES AND TO THOSE PRINTED ON THE FACE OF THE MAP.

Point - $\Delta 50$			
East	North	East	North
Take west edge of square in which point lies and read the figures printed opposite this line (on north or south margin) or on the line itself (on the face of the map). Estimate tenths eastwards	Take south edge of square in which point lies and read the figures printed opposite this line (on east or west margin) or on the line itself (on the face of the map). Estimate tenths northwards	8603	2867
REFERENCE 86032867	TO NEAREST 100 METRES		
Unit = 1 Metre	Square = 1000 Metres		

SCALE 1:50,000



Heights in Metres $\times 1.5 =$ Metres



AT THE CENTRE OF THIS SHEET MAGNETIC NORTH IS 1° WEST OF TRUE NORTH AND IS WEST OF GRID NORTH ANNUAL CHANGE 4' EASTWARDS GRID NORTH IS 48' EAST OF TRUE NORTH AT THE CENTRE OF THE WEST EDGE OF THIS SHEET GRID NORTH IS 55' EAST OF TRUE NORTH AT THE CENTRE OF THE EAST EDGE OF THIS SHEET



REFERENCE

- Railways with Telephone Lines
- Telephone Lines
- Macadamized Road (with Kilo Feet)
- Motor Tracks
- Canal Tracks
- International Boundary Humbered Sections
- Frontier Wire
- Pipe Line
- Wells
- Cisterns
- Wadis
- Sabakha (Salt Marsh)
- Marsh
- Contour (The top of each contour number is the lower side)
- Spot Height (The top of each contour number is the lower side)
- House
- Rain
- Shak's Tomb
- Groves
- Mounds
- Cave
- Fig Tree
- Palms
- Scrub
- Cultivated Areas
- Escarpment

Surveyed, drawn and printed by the South African Survey Coy August 1941. Reprinted by Litho. Sec. M.M.P. and P. Coy. S.A.E.C. at 46 Survey Coy. S.A.E.C. June 1942.



MDR. 518/150

GLOSSARY table listing various geographical features and their symbols, such as 'Abbas el Alamein', 'Mediterranean Sea', 'Stony Ground', etc.

SCALE 1:50,000



REFERENCE

REFERENCE table listing symbols for various features like 'Railways with Telephone Lines', 'Telephone Lines', 'Macadamized Road (with Kilo-Pow)', etc.

"PURPLE" GRID

TO GIVE A GRID REFERENCE ON THIS SHEET

FIGURES Pay attention to the graphic coordinate figures at the corners and in the margins. They are for fixing full coordinates.

Pay attention to larger marginal figures and to those printed on the face of the map.

Table for Purple Grid showing East and North coordinates and how to estimate tenths.

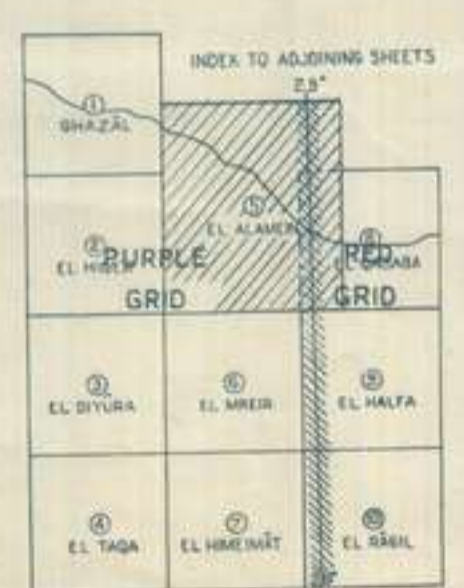
"RED" GRID

TO GIVE A GRID REFERENCE ON THIS SHEET

FIGURES Pay attention to the graphic coordinate figures at the corners and in the margins. They are for fixing full coordinates.

Pay attention to larger marginal figures and to those printed on the face of the map.

Table for Red Grid showing East and North coordinates and how to estimate tenths.



"PURPLE" GRID Grid north is 1° 55' East of True North at the centre of the West edge of this sheet. Grid north is 1° 03' East of True North at the centre of the East edge of this sheet.

"RED" GRID Grid North is 1° 08' West of True North at the centre of the West edge of this sheet. Grid North is 1° 00' West of True North at the centre of the East edge of this sheet.

