

**AWM52**  
**2nd Australian Imperial Force and**  
**Commonwealth Military Forces unit war**  
**diaries, 1939-45 War**

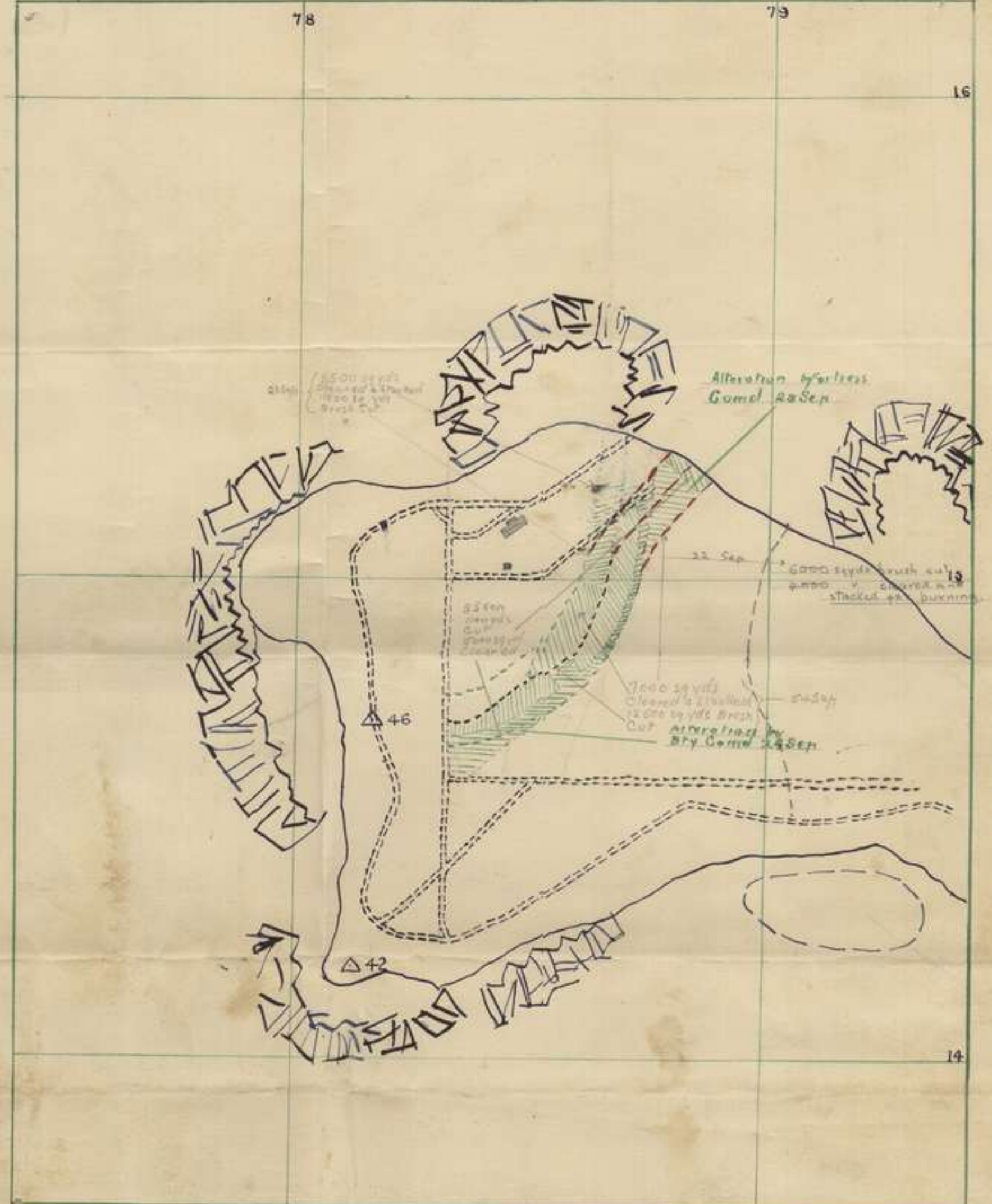
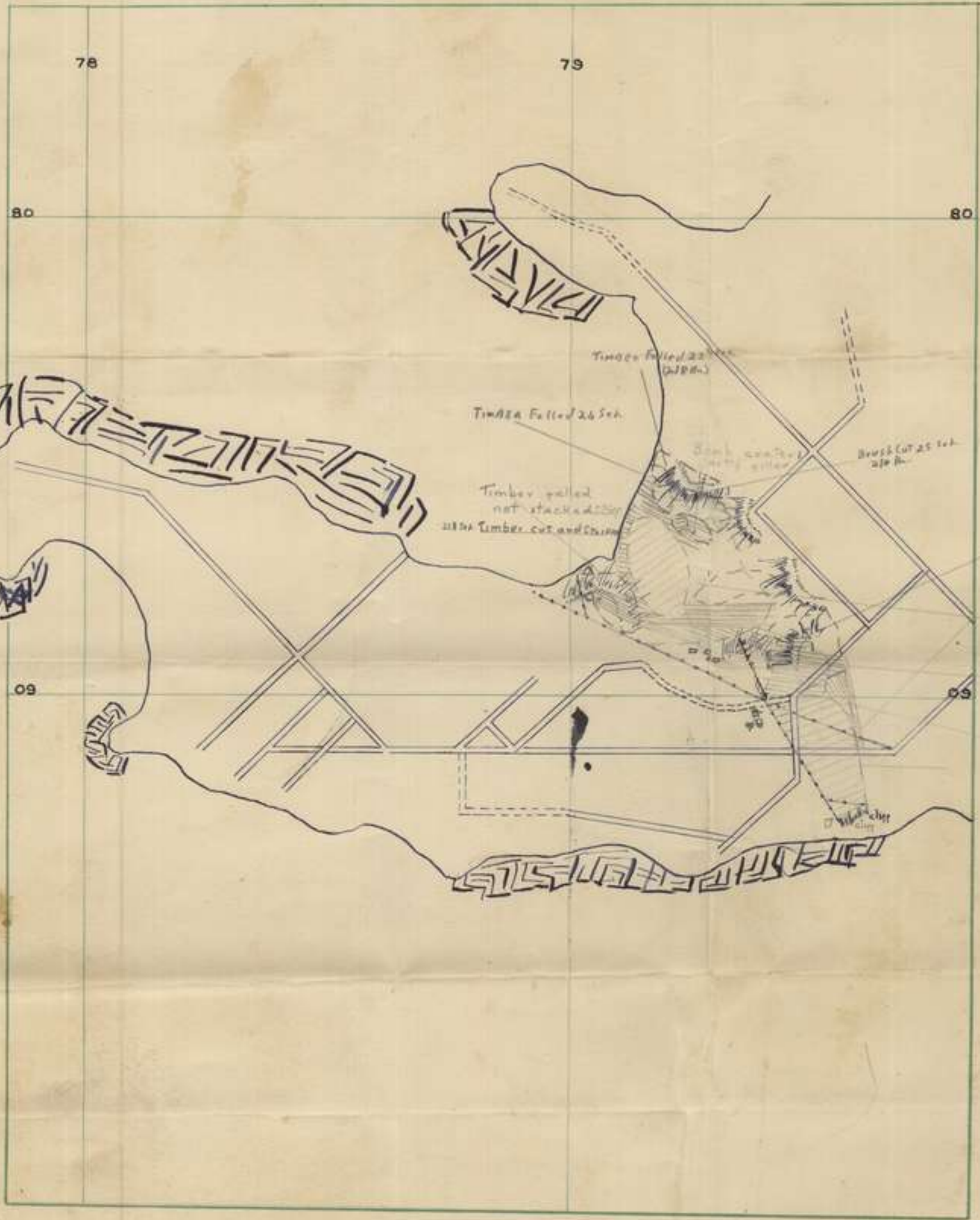
Item number: 8/3/4

2/4 Infantry Battalion

January 1942, Maps

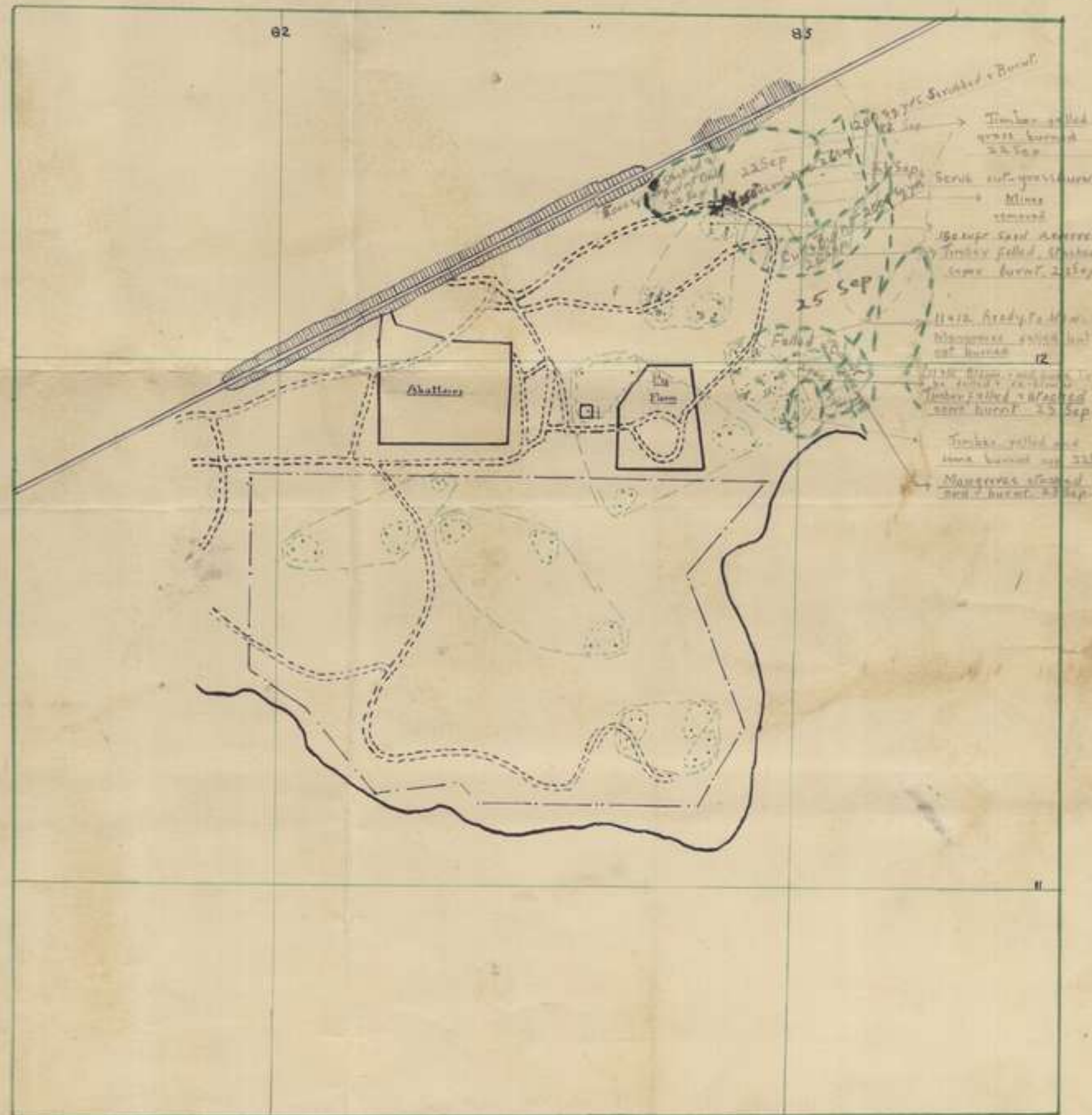
LARRAKEYAH AREA

EAST PT AREA

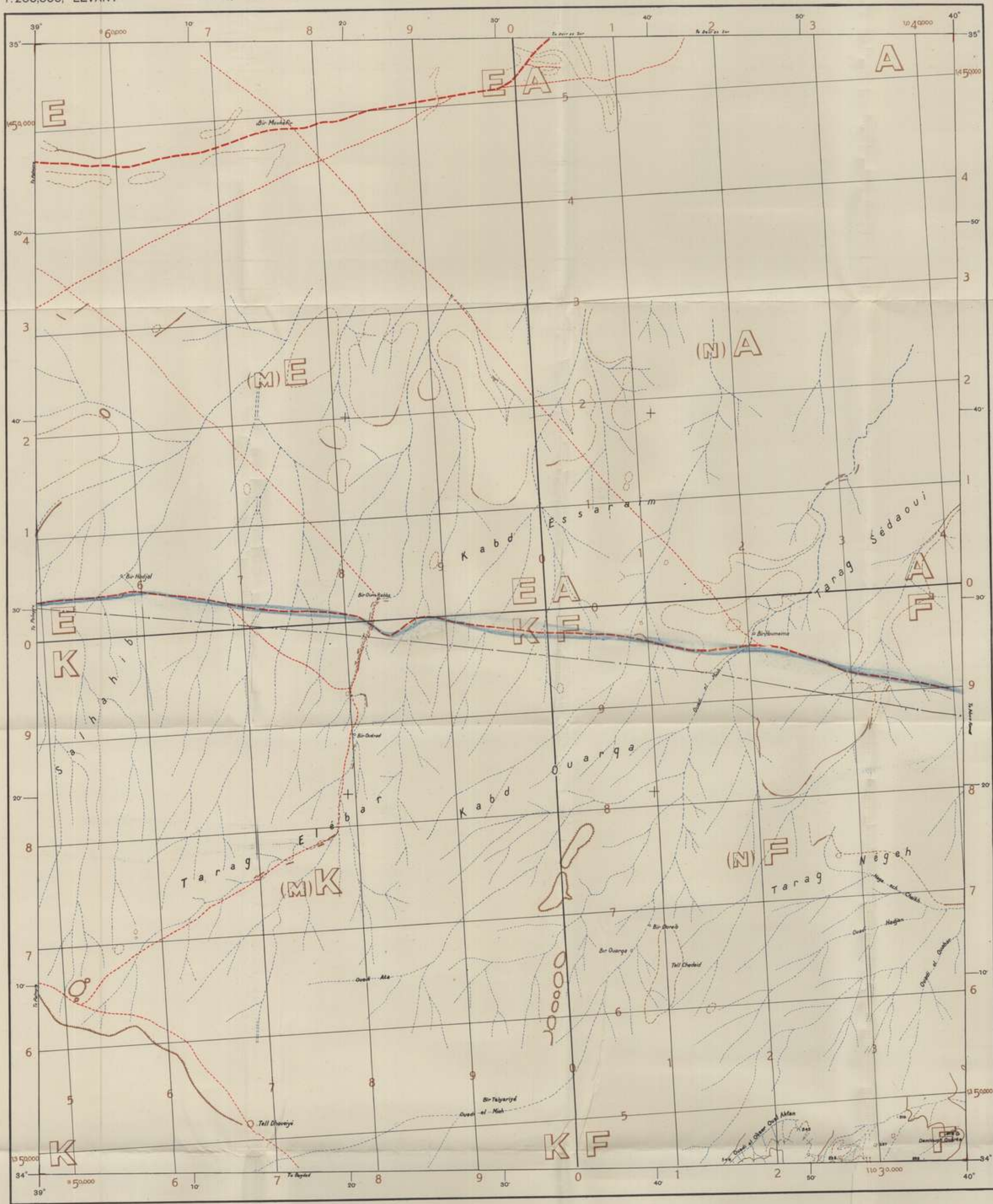


BOOM AREA

MAGAZINE HILL



Prepared by  
1 Sec 4/4 Aust Inf Bn  
22 Sep 42



Bilge Routes thus



MAGNETIC VARIATION  
At the centre of this sheet  
Magnetic North (1933) is  
0° 0' E. of True North.  
Annual Change is 0' East.  
MERIDIAN CONVERGENCE  
Mean True North on this sheet  
is 0' 0" W. of True North.

RELIABILITY DIAGRAM



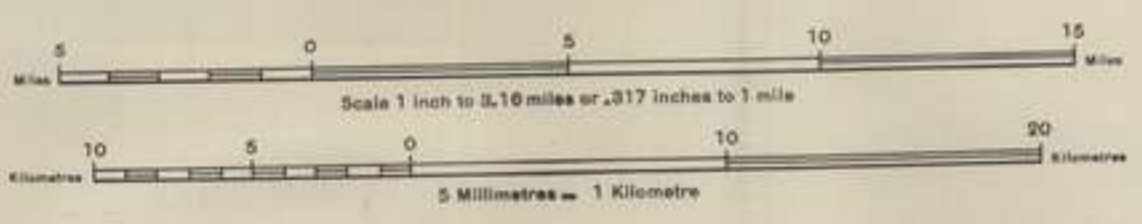
M.D.R. 191/114

Longitudes are given East of Greenwich

Vertical interval 25 metres

SCALE 1:200,000

Reproduced under the direction of the Survey Directorate, G.H.Q., M.E., June, 1941 (from a French map dated 1933).  
Roads revised August, 1941, from Intelligence Reports. Printed by SIZ (A. Fd. Svy) Coy., R.E., August, 1941.



CONVENTIONAL SIGNS.

Railways, standard gauge	
narrow	
1st class road	
2nd	
1st class track (passable at all seasons)	
2nd	
3rd	
4th	
(1/2 for cart traffic only)	
Path	
Roman road, remains of	
Boundaries, State, Provincial, District	
Church, Chapel	
Mosque, tomb	
Tower, fort	
Trigonometrical point, spot height	
Contours (in metres)	
Graticule intersections	

INTRUMENTAL INTERPOLATED DATUMS BELOW SEA LEVEL

TO GIVE A GRID REFERENCE ON THIS SHEET.

LETTERS. Must be used. Obtain from face of map.

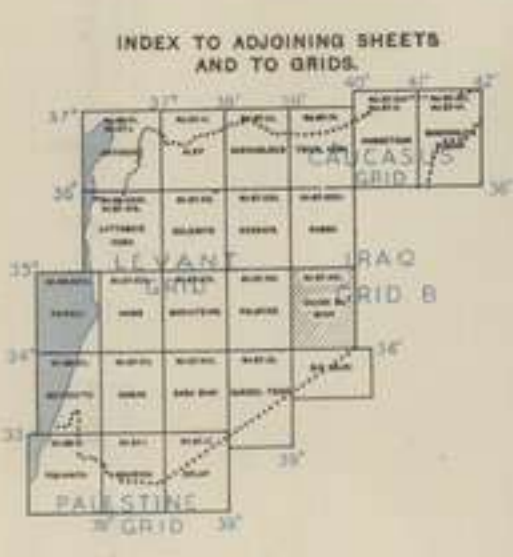
IGNORE THE SMALLER FIGURES PRINTED NEAR THE SHEET MARGINS. These are for finding the full co-ordinates, viz. 134000

USE ONLY THE LARGER FIGURES PRINTED IN THE MARGIN OR ON THE FACE OF THE MAP, viz. 5000

POINT	BIR HADJAL	LETTERS	W/E
EAST	5		
NORTH	0		
EAST	56		06
NORTH		06	

REFERENCE: 5000 TO NEAREST 100 METRES

0411 Square 5000 Metres  
Nearest similar reference with one letter omitted: 500 Km.  
Nearest similar reference with two letters omitted: 3,000 Km.



CONVENTIONAL SIGNS.

Telegraph and telephone post office	
Telegraph office, telegraph station	
Pipe line	
Ruins, Roman ruins	
Streams, perennial, non-perennial	
Salt marsh, salt pan, marsh, extent of marsh	
Foal, depression	
Wells, fountained well, spring, reservoir, water mill	
Ground flooded in winter	
Cultivation	
Sand dunes, slopes	
Volcanic area, stony ground	
Gypsum deposit area	
Permanent camp	
Group of trees, palms, brushwood	
Gardens and orchards, woods	
Aerodrome, landing ground, seaplane base	

OUADI-EL-MIAH

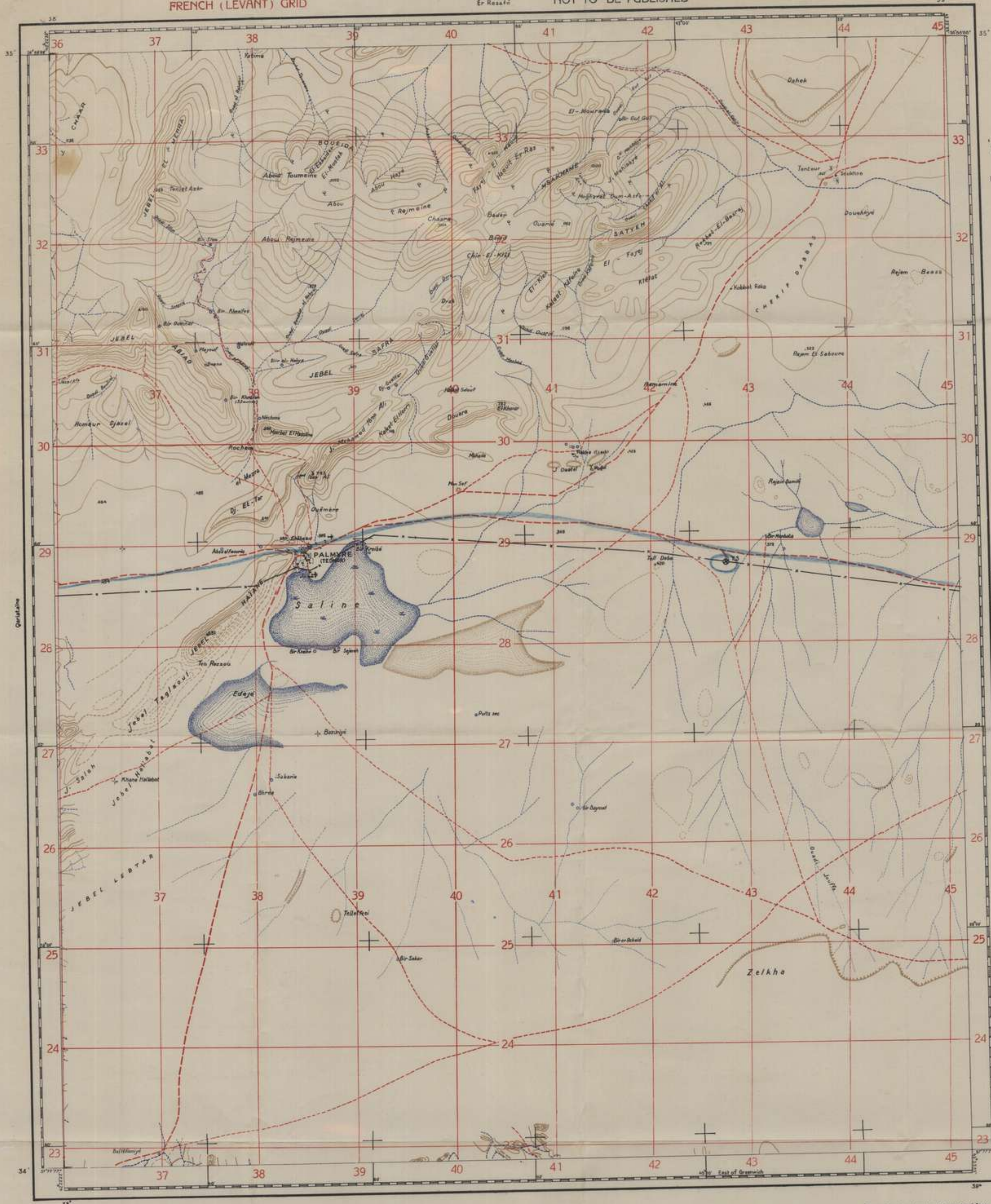
OUADI EL MIAH

PALMYRE

NOT TO BE PUBLISHED

LEVANT 1:200,000. SHEET N137 XV

FRENCH (LEVANT) GRID



"Bilg" Routes thus

MAGNETIC DECLINATION



Magnetic North 2°20' East of True north in the centre of this sheet. Annual change 03' towards the East.

CONVERGENCES

FRENCH (LEVANT) GRID At west edge grid north is 00° 22' 10" East of true north. At east edge grid north is 00° 56' 17" East of true north.

CO.ORDINATES OF SHEET CORNERS

FRENCH (LEVANT) GRID	
N.W. CORNER	359,520 E. 539,000 N.
S.W. "	360,030 E. 450,570 N.
N.E. "	340,040 N. 452,390 E.
S.E. "	229,170 N.

D. R. 191 C. 10

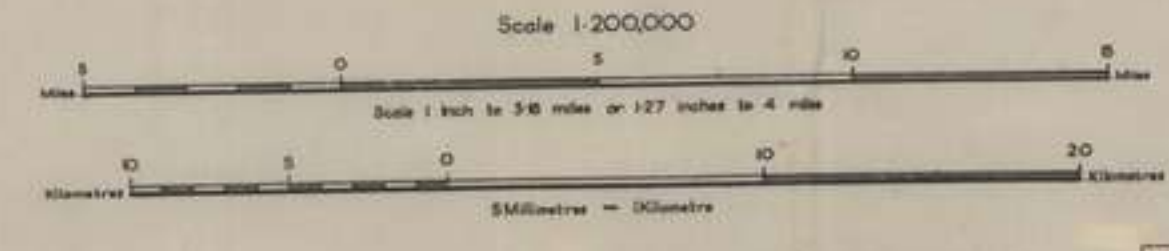
Latitudes and Longitudes are shown in Grades

Vertical Interval 50 metres

Reproduced under the Direction of Survey Directorate G.H.Q.M.E. (From a French map date 033)

Conventional Signs

- Railways, standard gauge, projected.
- 1st. class road
- 2nd. " (passable only in dry seasons)
- 1st. class track (passable at all seasons)
- 2nd. " (passable only in dry seasons)
- 3d. " (fit for cart traffic only)
- 4th. " (fit for cart traffic only)
- Path, path with posts
- Roman road, remains of
- Boundaries, State, Provincial, District.
- Church, Chapel
- Mosque, small mosque, tomb
- Tower, fort
- Trigonometrical point, spot height
- Contours (in metres)



TO GIVE A GRID REFERENCE ON THIS SHEET This sheet is on French (Levant) Grid

POINT BIR SAKAR	
East	North
39	24
394	249
REFERENCE 3942 29 TO NEAREST 1000 METRES	



Conventional Signs

- Telegraph & telephonest office
- Telegraph office, telegraph station
- Pipe line, pipe line with track
- Ruins, Roman ruins
- Streams perennial non perennial
- Salt marsh, salt pan, marsh, extent of marsh
- Pool, depression
- Wells, spring reservoir, water mill
- Ground flooded in water
- Irrigated ground, cultivation
- Sand dunes, slopes
- Volcanic area, Stony ground
- Gypsum deposit area
- Permanent camp
- Group of trees, palms, brushwood
- Gardens & orchards, woods
- Aerodrome, landing ground, seaplane base

PALMYRA.

REFER TO THIS MAP AS—  
1:200,000 LEVANT. Sheet NI-37-XIV, QARIATEINE

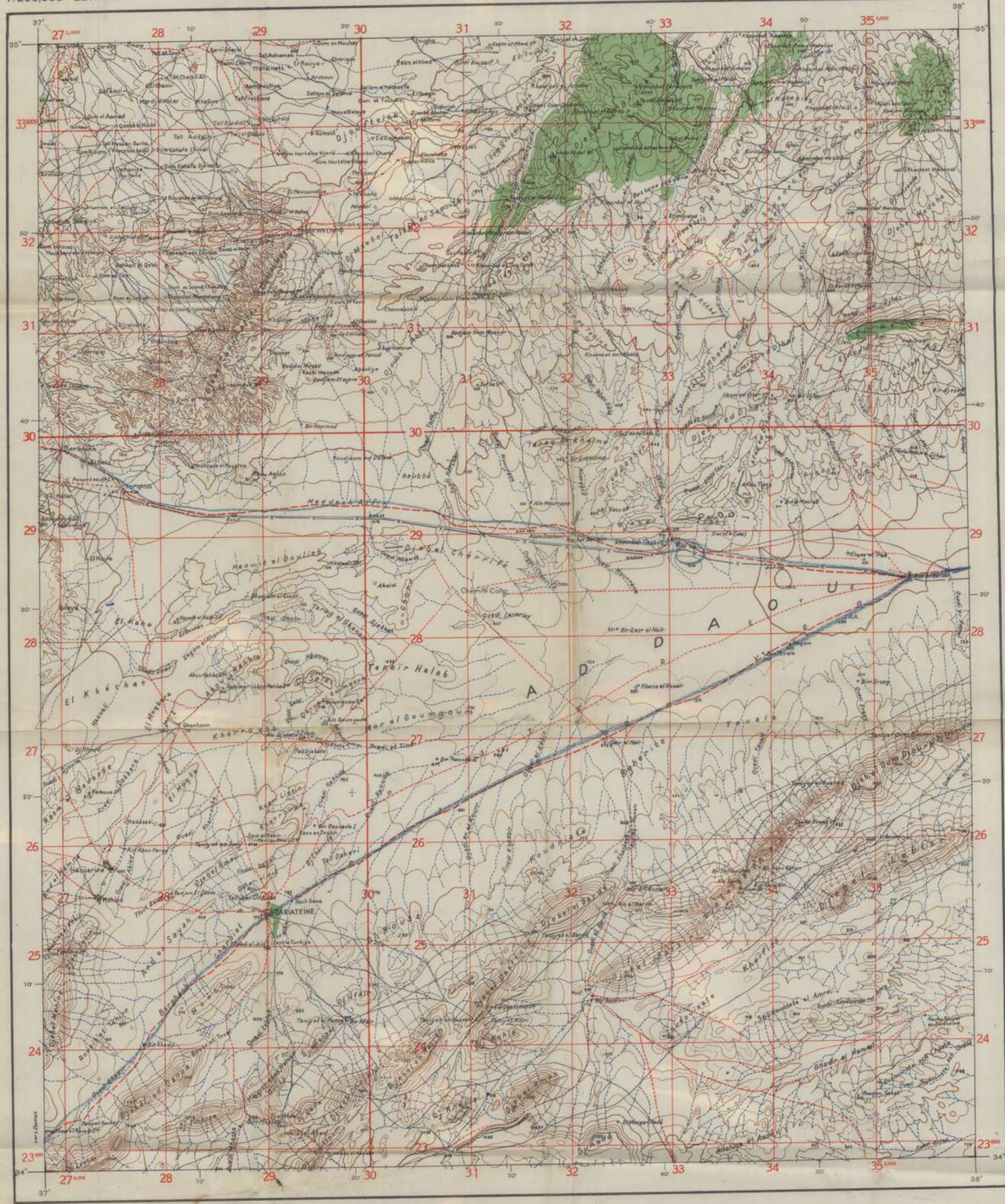
1:200,000 LEVANT.

LEVANT GRID.

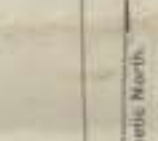
# QARIATEINE

NOT TO BE PUBLISHED

SHEET NI-37-XIV.



"Big e" Routes thus



MAGNETIC VARIATION  
At the centre of this sheet  
Magnetic North (M.N.) is  
2° 15' E. of True North.  
Annual Change is 10' East.  
MERIDIAN CONVERGENCE  
Mean Grid North on this sheet  
is 20' of East of True North.

REVISION JULY, 1941.



RELIABILITY DIAGRAM



Surveyed in 1934 by the Survey Department  
1934 by the K.A.C.L.  
1934 by the K.A.C.L.  
Price 1:200,000 Turkish revised map.

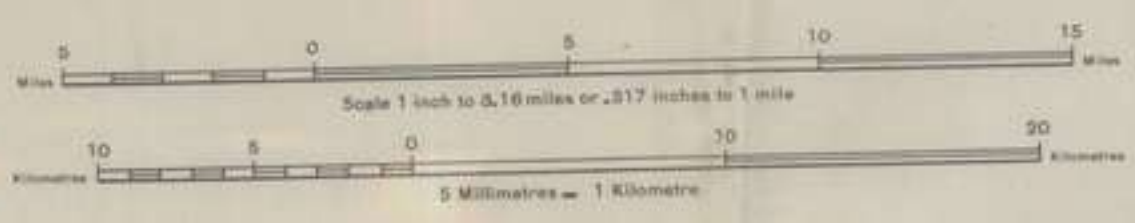
Reproduced under the direction of the Survey Directorate, G.H.Q., A.E., June, 1941 (from a French map dated 1936).  
Revised and printed by SIZ (A. Fd. Svy.) Coy., R.E., August, 1941.

M.D.R. 191/112

Longitudes given East of Greenwich

Vertical interval 50 metres

SCALE 1:200,000



### CONVENTIONAL SIGNS.

- Railways, standard gauge
  - narrow
- 1st class road
- 2nd
- 1st class track (passable at all seasons)
- 2nd (passable only in dry seasons)
- 3rd
- 4th (for cart traffic only)
- Fish
- Russian road, remains of
- Boundaries, State, Provincial, District
- Church, Chapel
- Mosque, tomb
- Tower, fort
- Triangulation point, spot height
- Contours (in metres)
- Geologic Intersections

INSTRUMENTAL INTERPOLATED DITCHES BELOW SEA LEVEL

South of Northing grid line 310,000 metres, prefix reference with letters LL.

TO GIVE A GRID REFERENCE ON THIS SHEET

IGNORE THE SMALLER figures printed over the sheet covers. These are for finding the full coordinates, viz. 500000.

USE ONLY THE LARGER FIGURES PRINTED IN THE MARGIN OR ON THE FACE OF THE MAP, viz. 290000.

POINT		BIR HFAIR	
EAST	NORTH	EAST	NORTH
29	24	298	243
REFERENCE LL 098243 TO NEAREST 100 METRES			
100	100	100	100
Metres	Metres	Metres	Metres

### INDEX TO ADJOINING SHEETS AND TO GRIDS.



### CONVENTIONAL SIGNS.

- Telegraph and telephone post office
- Telegraph office, telegraph station
- Pipe line
- Ruin, Roman ruin
- Stream, perennial, non-perennial
- Salt marsh, salt pan, marsh, extent of marsh
- Pool, depression
- Wells, drilled well, spring, reservoir, water mill
- Ground flooded in winter
- Cultivation
- Sand dunes, slopes
- Volcanic area, stony ground
- Copium deposit area
- Permanent camp
- Group of trees, palms, brushwood
- Gardens and orchards, woods
- Aerodrome, landing ground, seaplane base







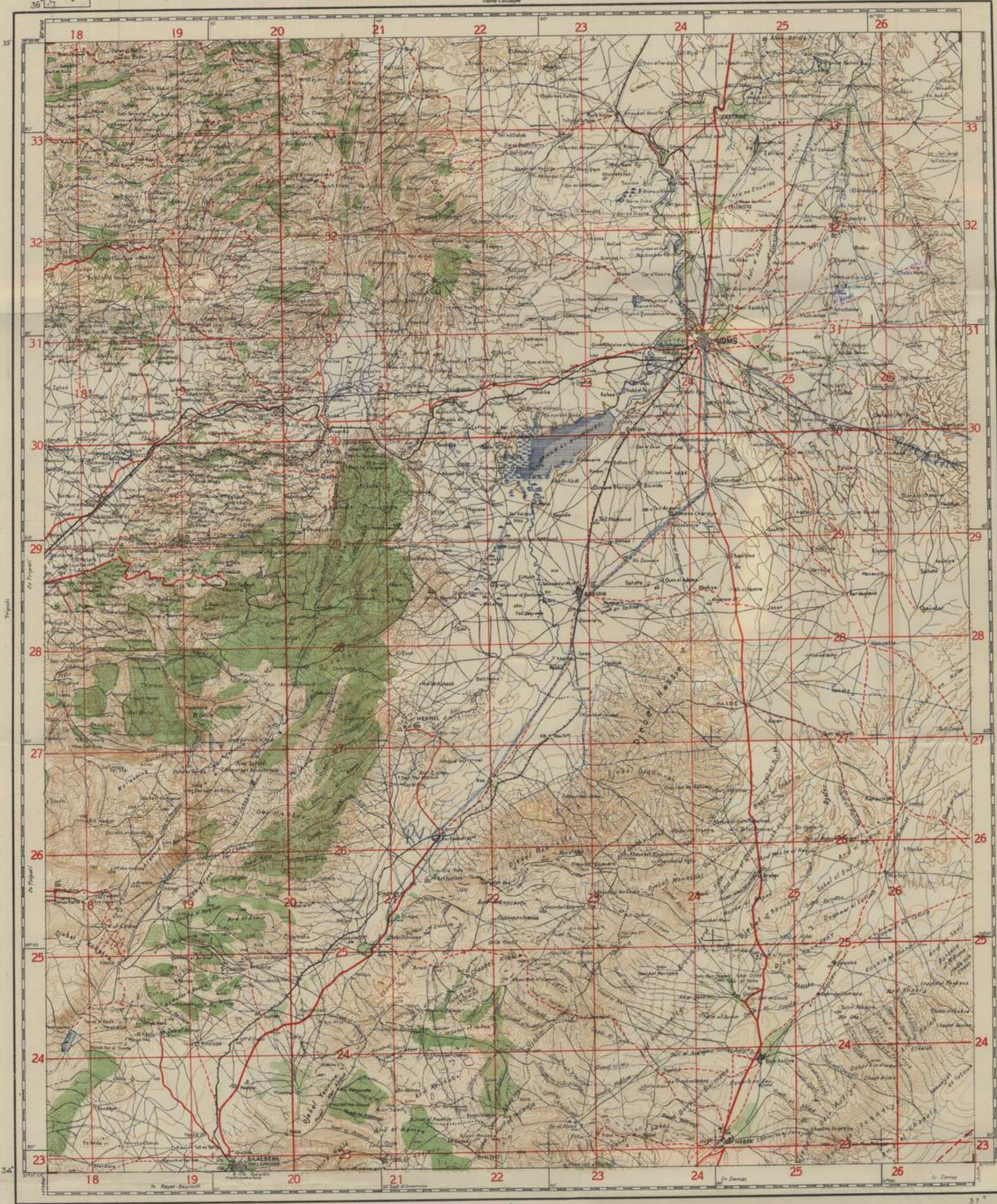
a Survey of 1931-1932 by Bureau Topographique  
 b From Survey to 1900 by S.G.A.  
 c From Turkish Survey to 2000m

FRENCH (LEVANT) GRID

# HOMS

NOT TO BE PUBLISHED

EDITION OF MAY 41.  
 LEVANT 1:200,000 SHEET NI 37-XIII



"Bilge" Routes thus

MAGNETIC DECLINATION



Magnetic North 1° 52' East of True north in the centre of this sheet.  
 Annual change 0.3" towards the East.

CONVERGENCES

FRENCH (LEVANT) GRID  
 At west edge grid north is 00° 46' 03" West of true north.  
 At east edge grid north is 00° 11' 56" West of true north.

CO-ORDINATES OF SHEET CORNERS

FRENCH (LEVANT) GRID	
N.W. CORNER	176 800 E
S.W. "	175 520 E
N.E. "	226 780 E
S.E. "	227 880 E

O. R. 101  
 C. 10  
 Latitudes and Longitudes are shown in Grades

Conventional Signs

- Railway, standard gauge, projected.
- narrow
- 1st. class road
- 2nd. "
- 1st. class track (passable at all seasons)
- 2nd. " (passable only in dry seasons)
- 3rd. "
- 4th. " (fit for cart traffic only)
- Path, path with posts
- Roman road, remains of
- Boundaries, State, Provincial, District.
- Church, Chapel
- Mosque, small mosque, tomb
- Tower, fort
- Trigonometrical point, spot heights
- Contours (in metres)



TO GIVE A GRID REFERENCE ON THIS SHEET  
 This sheet is on French (Levant) Grid

POINT JAZAR	
East	24
North	28
East	247
North	283

REFERENCE 247283 TO NEAREST 1,000 METRES



Vertical Interval 50 metres  
 Reproduced under the Direction of Survey Directorate  
 O.H.Q.M.E. (From a French map dated 1931)

Conventional Signs

- Telegraph & telephone post office
- Telegraph office, telegraph station
- Pipe line, pipe line with track
- Ruins, Roman ruins
- Streams, perennial non perennial
- Salt marsh, salt pan, marsh, extent of marsh
- Pool, depression
- Wells, spring, reservoir, water mill
- Ground flooded in winter
- Irrigated ground, cultivation
- Sand dunes, slopes
- Volcanic area, stony ground
- Opium deposit area
- Permanent camp
- Group of trees, palms, brushwood
- Gardens & orchards, woods
- Aerodrome, landing ground, seaplane base

"BILGE"  
MAPS.

HOMS

a Compiled from the 1:50,000 S.A.S. sheets.  
 b Compiled from the Turkish 1:50,000  
 c Compiled from air photographs.  
 d Compiled from 1:50,000 survey carried out by  
 Dept. of Survey of the S.P.

# DAMAS

NOT TO BE PUBLISHED

EDITION OF 1 JAN 41  
 LEVANT 1:200,000 F. NI 37-VII (C.V.)



Bigé Routes thus

### CO-ORDINATES OF SHEET CORNERS

FRENCH GRID	
N.W. Corner	175,518-70 m. E. 228,762-36 m. N.
S.W. "	178,835-22 m. E. 117,682-78 m. N.
N.E. "	267,675-39 m. E. 227,953-63 m. N.
S.E. "	267,288-25 m. E. 117,094-44 m. N.

PALESTINE GRID	
N.W. Corner	243,045-60 m. E. 378,482-20 m. N.
S.W. "	243,887-55 m. E. 267,518-52 m. N.
N.E. "	335,426-49 m. E. 379,588-63 m. N.
S.E. "	337,337-28 m. E. 268,602-68 m. N.

### GRID CONVERGENCES

**FRENCH GRID**  
 At West Sheet Edge Grid North is 00° 55' 28" W of True North  
 At East Sheet Edge Grid North is 00° 22' 11" W of True North

**PALESTINE GRID**  
 At S.W. Corner Grid North is 00° 25' 45" E of True North  
 At S.E. Corner Grid North is 00° 58' 20" E of True North

D.R. 191

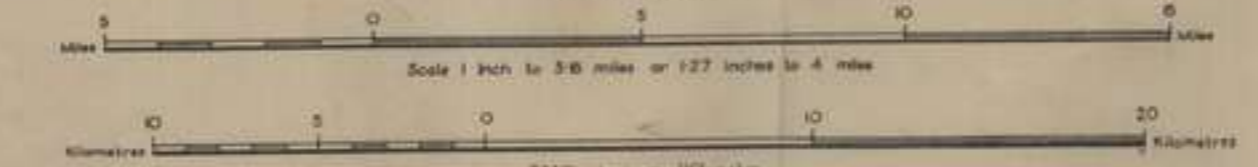
Latitudes and Longitudes are shown in Grades.

Scale 1:200,000

Vertical Interval 25 metres

Reproduced by 512 (A. Fd. Svy.) Coy. R.E. (From a French map dated 1938)

- Conventional Signs**
- Railways, standard gauge, projected.
  - 1st class road
  - 2nd " "
  - 1st class track (passable at all seasons)
  - 2nd " " (passable only in dry seasons)
  - 3rd " " "
  - 4th " " (fit for cart traffic only)
  - Path, path with posts
  - Roman road, remains of
  - Boundaries, State, Provincial, District
  - Church, Chapel
  - Mosque, small mosque, tomb
  - Tower, fort
  - Trigonometrical point, spot height
  - Contours (in metres)



**TO GIVE A GRID REFERENCE ON THIS SHEET:**  
 If on French Grid (Red) prefix with letter F  
 If on Palestine (Black) " " " P

POINT ERKETS			
EAST	26	NORTH	29
Estimated tenth metres	260	Estimated tenth metres	294
REFERENCE P 260294 TO NEAREST 1000 METRES			



- Conventional Signs**
- Telegraph & telephone post office
  - Telegraph office, telegraph station
  - Pipe line, pipe line with track
  - Ruins, Roman ruins
  - Streams, perennial, non perennial
  - Salt marsh, salt pan, marsh, estate of marsh
  - Pool, depression
  - Wells, spring, reservoir, water mill
  - Ground flooded in winter
  - Irrigated ground, cultivation
  - Sand dunes, slopes
  - Volcanic area, stony ground
  - Oryzium deposit area
  - Permanent camp
  - Group of trees, palms, brushwood
  - Gardens & orchards, woods
  - Aerodrome, landing ground, seaplane base

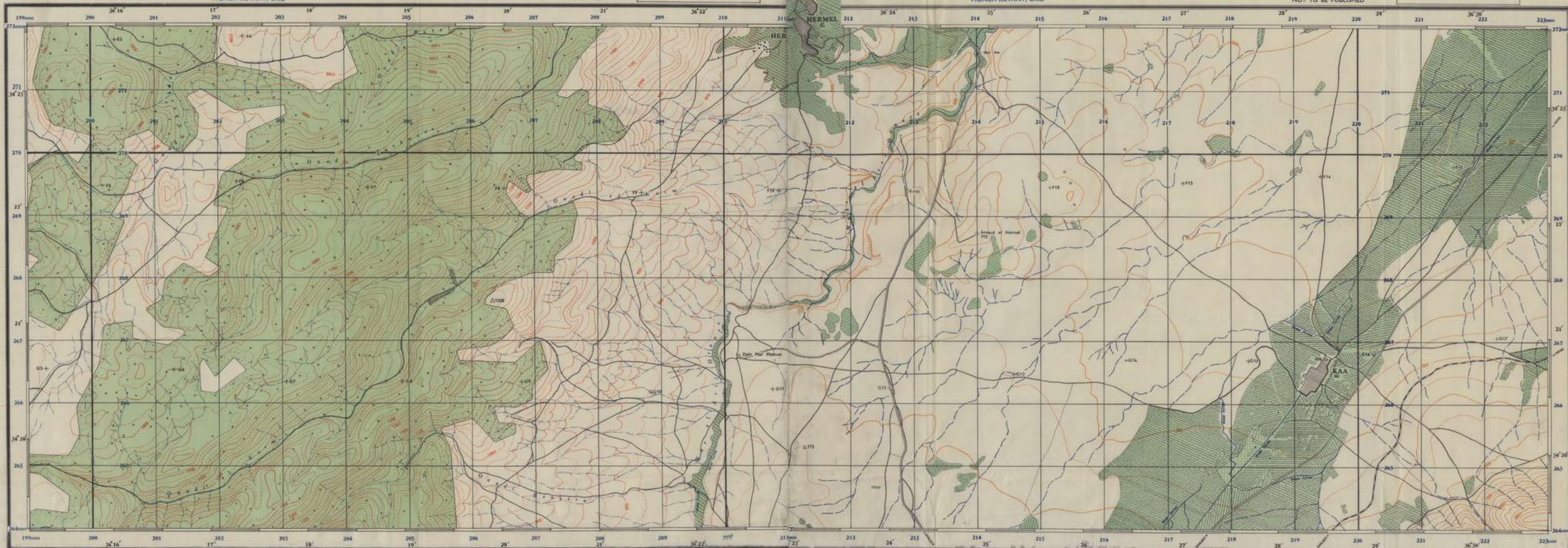
DAMAS

1/200000

190 copies

DAMAS

CENTRE FOR DOCUMENTATION AND INFORMATION



1. This map was compiled from aerial photographs taken by the South African Survey Corps, S.A.F.C. (October 1944) from an altitude of 10,000 feet. It is based on the 1:25,000 scale map of the area, which was compiled from ground surveys and other sources. The map is printed on a scale of 1:25,000. The grid is based on the French (Levant) system. The map is not to be published without the permission of the Director of the South African Survey Corps, S.A.F.C.

MDR 536/429

TO GIVE A GRID REFERENCE ON THIS SHEET THE SHEET IS ON THE FRENCH (LEVANT) GRID. All grid references must be given in the form of a four-figure number. The first two figures are the easting and the last two are the northing. The grid is based on the French (Levant) system. The map is printed on a scale of 1:25,000. The grid is based on the French (Levant) system. The map is not to be published without the permission of the Director of the South African Survey Corps, S.A.F.C.

Scale 1:25,000

Metres 0 100 200 300 400 500

Kilometres 0 1 2 3 4 5

Miles 0 1 2 3 4 5

CONVENTIONAL SIGNS

Water Mill, wind, spring, reservoir	Telegraph office, telephone post office	Wireless telegraph station	Landing ground, ferry	Church, Chapel, Cemetery, Convent	Mosque, Khoulba, Tomb	Rail	High point spot height
Edge of Wood (Cultivation Area)	Isolated Trees (Scrubland, Coniferous, Palm)	Wood	Scrub	Orchard	Barren	Flint	Other Stone

Index to Adjacent Sheets

1	OUADI CHERBINE
2	HALBATA
3	LABOUE
4	RAS BAALBEK
5	ARBAI NORTH
6	RAS EL BAKI
7	ARBAI SOUTH

Centre of Photographs ..... + 014

R 536/430

TO GIVE A GRID REFERENCE ON THIS SHEET THE SHEET IS ON THE FRENCH (LEVANT) GRID. All grid references must be given in the form of a four-figure number. The first two figures are the easting and the last two are the northing. The grid is based on the French (Levant) system. The map is printed on a scale of 1:25,000. The grid is based on the French (Levant) system. The map is not to be published without the permission of the Director of the South African Survey Corps, S.A.F.C.

Scale 1:25,000

Metres 0 100 200 300 400 500

Kilometres 0 1 2 3 4 5

Miles 0 1 2 3 4 5

CONVENTIONAL SIGNS

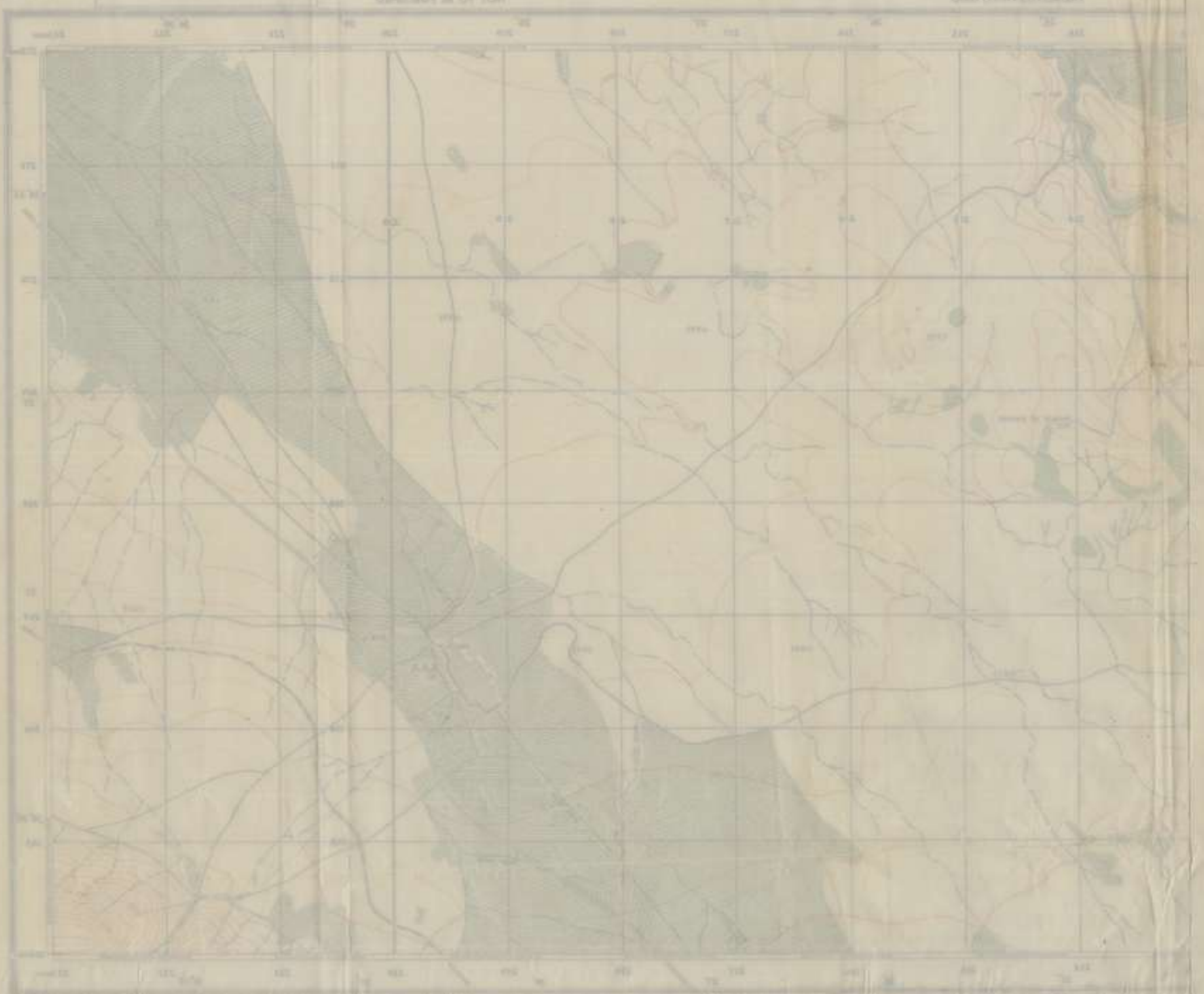
Water Mill, wind, spring, reservoir	Telegraph office, telephone post office	Wireless telegraph station	Landing ground, ferry	Church, Chapel, Cemetery, Convent	Mosque, Khoulba, Tomb	Rail	High point spot height
Edge of Wood (Cultivation Area)	Isolated Trees (Scrubland, Coniferous, Palm)	Wood	Scrub	Orchard	Barren	Flint	Other Stone

Index to Adjacent Sheets

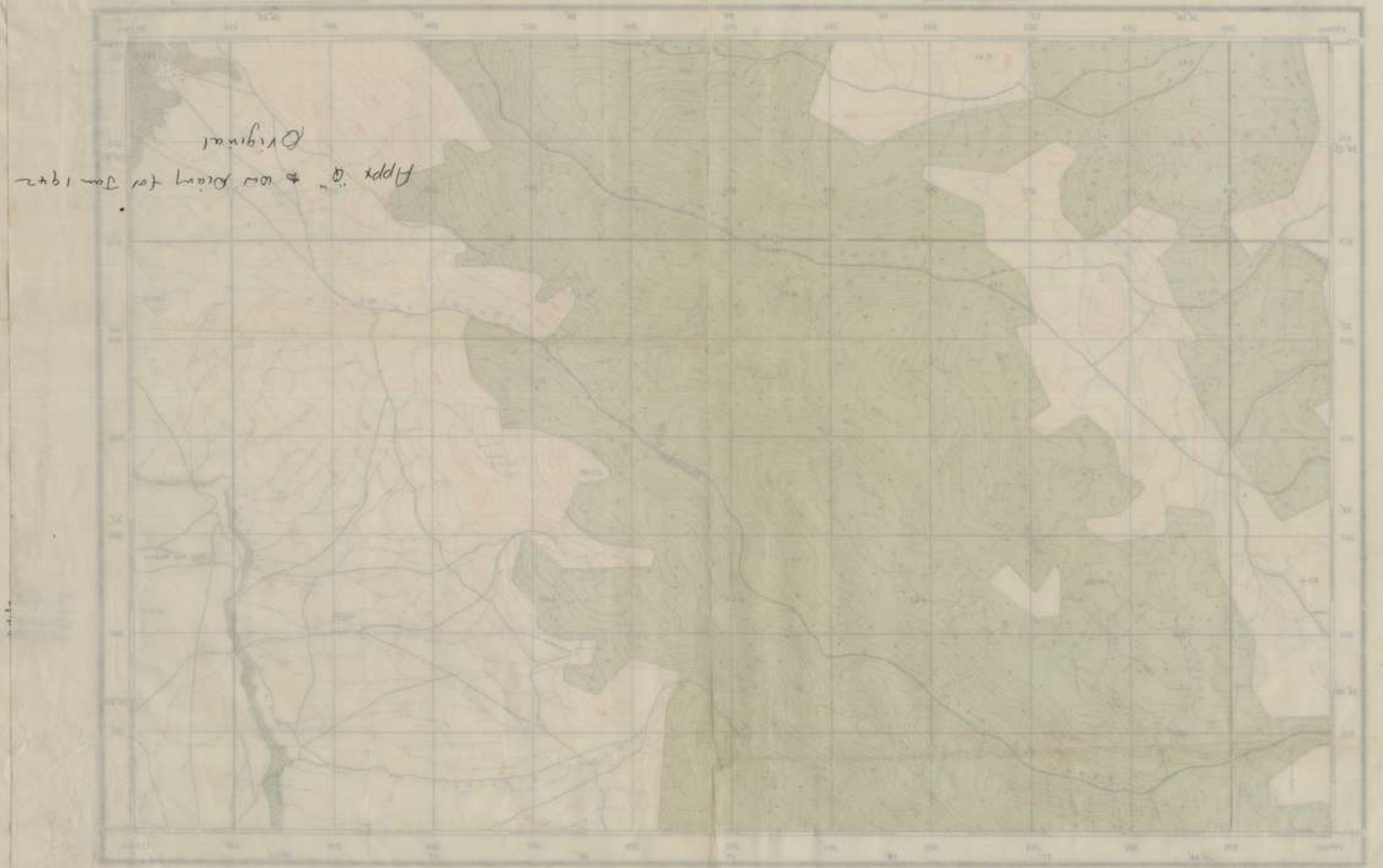
1	OUADI CHERBINE
2	HALBATA
3	LABOUE
4	RAS BAALBEK
5	ARBAI NORTH
6	RAS EL BAKI
7	ARBAI SOUTH

Centre of Photographs ..... + 014

Compiled and drawn by the South African Survey Corps, S.A.F.C. (October 1944) from an altitude of 10,000 feet. It is based on the 1:25,000 scale map of the area, which was compiled from ground surveys and other sources. The map is printed on a scale of 1:25,000. The grid is based on the French (Levant) system. The map is not to be published without the permission of the Director of the South African Survey Corps, S.A.F.C.

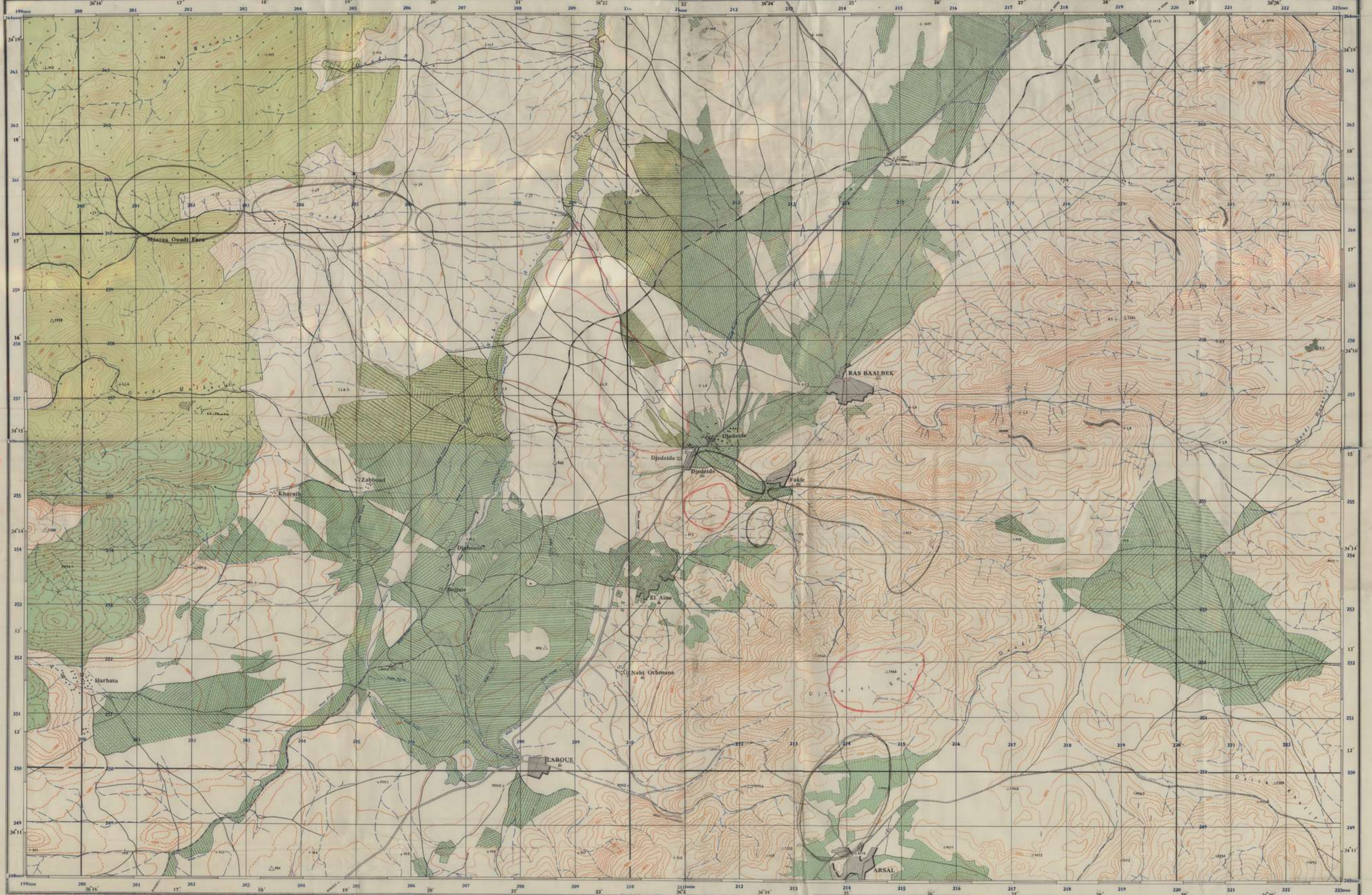


Legend and scale information for the HERMEL map, including a scale bar and a legend table with symbols for terrain, roads, and other features.



Legend and scale information for the OUADI CHERBINE map, including a scale bar and a legend table with symbols for terrain, roads, and other features.

*Appx 10" to 100' diam for Jan 1942  
Original*



Areas under construction by 2/4th at 21 Jan 42  
 Additional areas being reported on by 2/4th at 21 Jan 42  
 Other det posns

MDR 536/433

**CONTOURS**  
 25 M Contour Interval  
 The top of each contour number is on the upper side of the contour.

**CONVENTIONAL SIGNS**

Water MR and spring	Telegraph office, telephone post office	Edge of Road	Isolated Stone (Inclined) (Inclined) (Inclined)
Telegraph office, telephone post office	Wireless telegraph station	Isolated Stone (Inclined) (Inclined) (Inclined)	Isolated Stone (Inclined) (Inclined) (Inclined)
Wireless telegraph station	Leaving ground, Railway	Isolated Stone (Inclined) (Inclined) (Inclined)	Isolated Stone (Inclined) (Inclined) (Inclined)
Leaving ground, Railway	Church, Chapel, Cemetery, Cemetery	Isolated Stone (Inclined) (Inclined) (Inclined)	Isolated Stone (Inclined) (Inclined) (Inclined)
Church, Chapel, Cemetery, Cemetery	Mosque, Minaret, Dome	Isolated Stone (Inclined) (Inclined) (Inclined)	Isolated Stone (Inclined) (Inclined) (Inclined)
Mosque, Minaret, Dome	Rail	Isolated Stone (Inclined) (Inclined) (Inclined)	Isolated Stone (Inclined) (Inclined) (Inclined)
Rail	Top point spot height	Isolated Stone (Inclined) (Inclined) (Inclined)	Isolated Stone (Inclined) (Inclined) (Inclined)
Top point spot height		Isolated Stone (Inclined) (Inclined) (Inclined)	Isolated Stone (Inclined) (Inclined) (Inclined)

**Index to Adjacent Sheets**

1 HALBATA	2 RAS BAALBEK
3 LABOUE	4 ARSAL
5 EL HADI	6 ARSAL NORTH

Scale 1:25,000  
 Metres 0 100 200 300 400 500  
 Kilometres 0 1 2 3 4 5

R 536/434

**CONTOURS**  
 25 M Contour Interval  
 The top of each contour number is on the upper side of the contour.

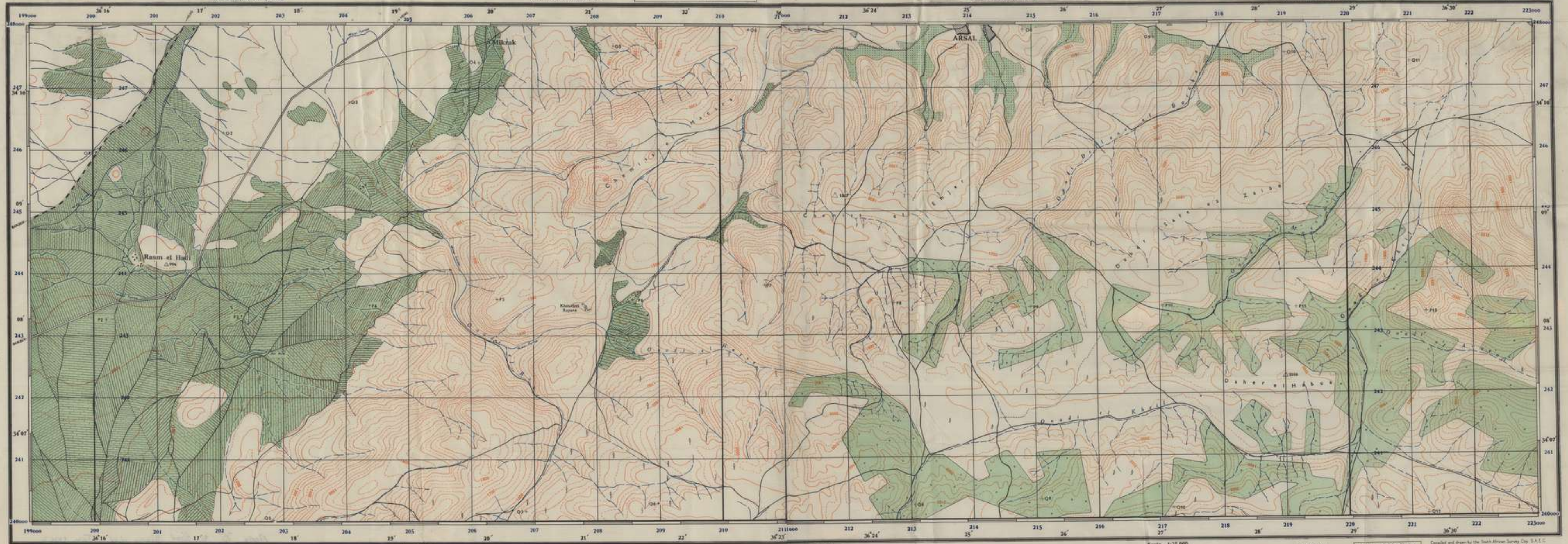
**CONVENTIONAL SIGNS**

Water MR and spring	Telegraph office, telephone post office	Edge of Road	Isolated Stone (Inclined) (Inclined) (Inclined)
Telegraph office, telephone post office	Wireless telegraph station	Isolated Stone (Inclined) (Inclined) (Inclined)	Isolated Stone (Inclined) (Inclined) (Inclined)
Wireless telegraph station	Leaving ground, Railway	Isolated Stone (Inclined) (Inclined) (Inclined)	Isolated Stone (Inclined) (Inclined) (Inclined)
Leaving ground, Railway	Church, Chapel, Cemetery, Cemetery	Isolated Stone (Inclined) (Inclined) (Inclined)	Isolated Stone (Inclined) (Inclined) (Inclined)
Church, Chapel, Cemetery, Cemetery	Mosque, Minaret, Dome	Isolated Stone (Inclined) (Inclined) (Inclined)	Isolated Stone (Inclined) (Inclined) (Inclined)
Mosque, Minaret, Dome	Rail	Isolated Stone (Inclined) (Inclined) (Inclined)	Isolated Stone (Inclined) (Inclined) (Inclined)
Rail	Top point spot height	Isolated Stone (Inclined) (Inclined) (Inclined)	Isolated Stone (Inclined) (Inclined) (Inclined)
Top point spot height		Isolated Stone (Inclined) (Inclined) (Inclined)	Isolated Stone (Inclined) (Inclined) (Inclined)

**Index to Adjacent Sheets**

1 HALBATA	2 RAS BAALBEK
3 LABOUE	4 ARSAL
5 EL HADI	6 ARSAL NORTH

Scale 1:25,000  
 Metres 0 100 200 300 400 500  
 Kilometres 0 1 2 3 4 5



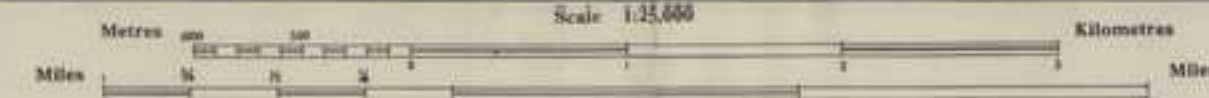
MDR 536/435

**TO GIVE A GRID REFERENCE ON THIS SHEET THE USER IS ON THE PERMANENT GRID**  
 All grid references must be in the 100,000-metre grid and must be preceded by the letters 'L' or 'M' as appropriate.

**FIGURES:** All measurements in the graphic or metric system of the contour and in the region. They are for fixing full coordinates. **Pay attention to leading zeros. Figures 0 and 10 are not used.**

Contour Interval	Contour Interval
5 M. Contours (Blue)	25 M. Contours (Blue)
10 M. Contours (Red)	50 M. Contours (Red)
20 M. Contours (Black)	100 M. Contours (Black)

The top of each contour number is on the right side of the contour.



**CONVENTIONAL SIGNS**

Water Mill, wind spring reservoir	Telegraph office, telephone post office
Wireless telegraph station	Landing ground, ferry
Church, Chapel, Embassy, Consulate	Magasin, Warehouse, Store
Railway, Standard gauge	Try post and light

**Edge of Wood** (Elevation Area)

Wood	Shrub	Orchard
Barren	Flapjack	Wet Grass

**Index to Adjacent Sheets**

1 QIADI CHEBBINE	2 HERMEL
3 HALBATA	4 RAS BAALBEK
5 LABOUE	6 ARSAL NORTH
7 RASM EL HADI	8 ARSAL SOUTH

Compiled and drawn by the South African Survey Coy. S.A.C. October 1944 from air photographs by P.S.U. S.A.F. August 1944 and ground control by S.I. Corps S.A. Coy. S.I. August-September 1944. Printed by S.I. Corps S.A. Coy. S.I. October 1944.

Centre of Photographs = P4

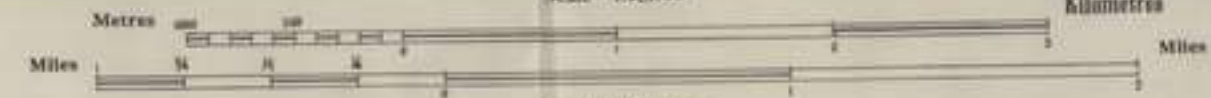
R 536/436

**TO GIVE A GRID REFERENCE ON THIS SHEET THE USER IS ON THE PERMANENT GRID**  
 All grid references must be in the 100,000-metre grid and must be preceded by the letters 'L' or 'M' as appropriate.

**FIGURES:** All measurements in the graphic or metric system of the contour and in the region. They are for fixing full coordinates. **Pay attention to leading zeros. Figures 0 and 10 are not used.**

Contour Interval	Contour Interval
5 M. Contours (Blue)	25 M. Contours (Blue)
10 M. Contours (Red)	50 M. Contours (Red)
20 M. Contours (Black)	100 M. Contours (Black)

The top of each contour number is on the right side of the contour.



**CONVENTIONAL SIGNS**

Water Mill, wind spring reservoir	Telegraph office, telephone post office
Wireless telegraph station	Landing ground, ferry
Church, Chapel, Embassy, Consulate	Magasin, Warehouse, Store
Railway, Standard gauge	Try post and light

**Edge of Wood** (Elevation Area)

Wood	Shrub	Orchard
Barren	Flapjack	Wet Grass

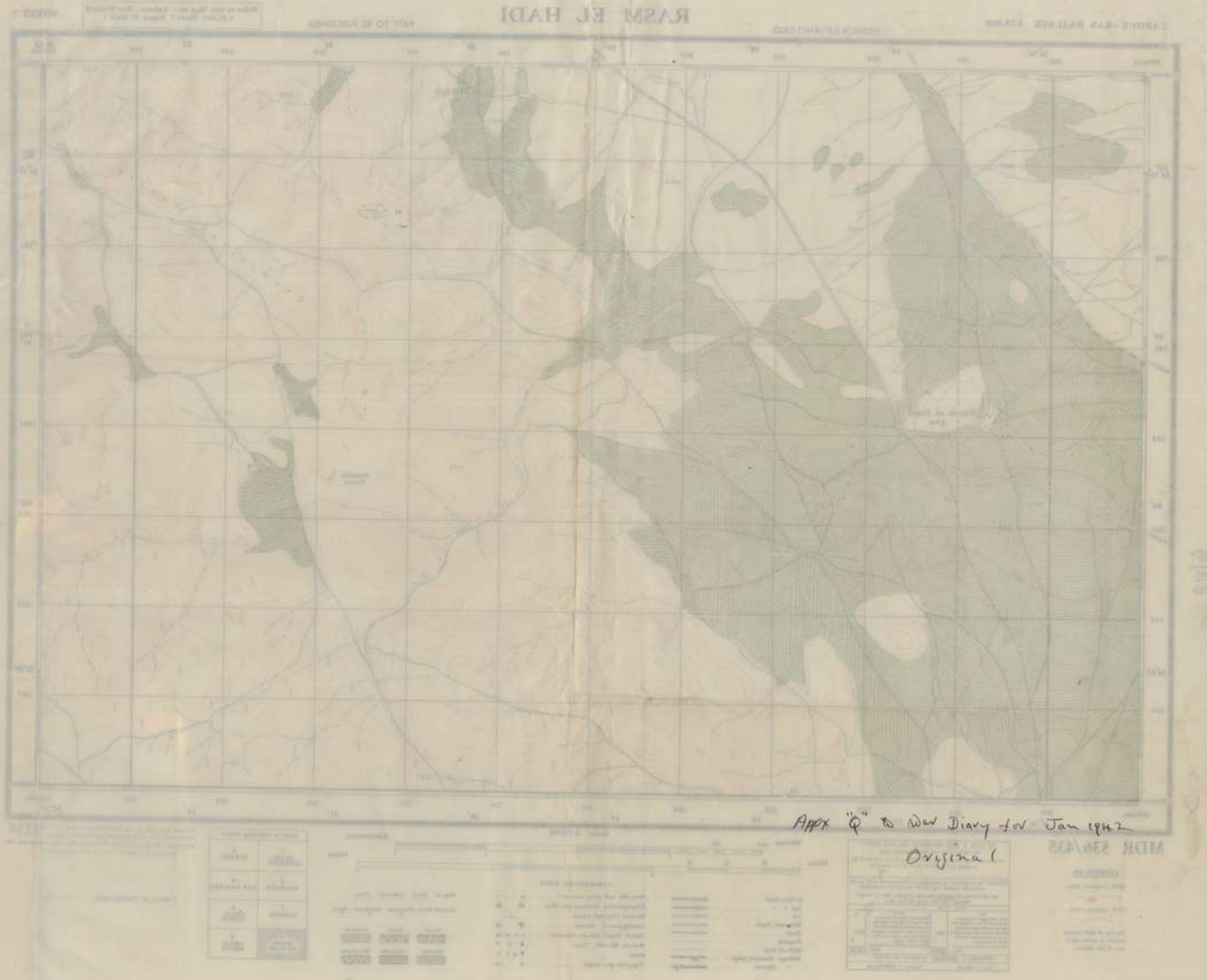
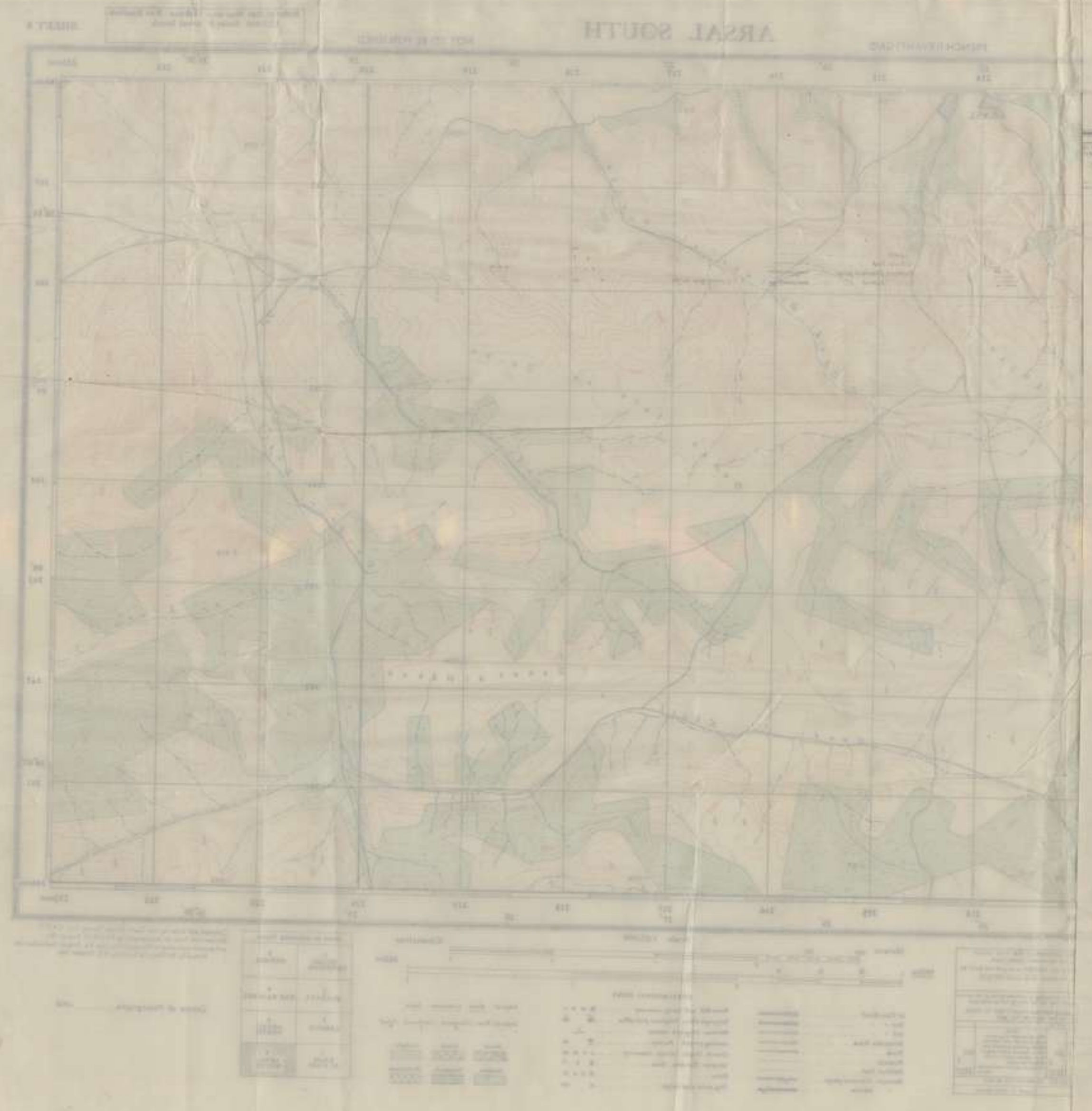
**Index to Adjacent Sheets**

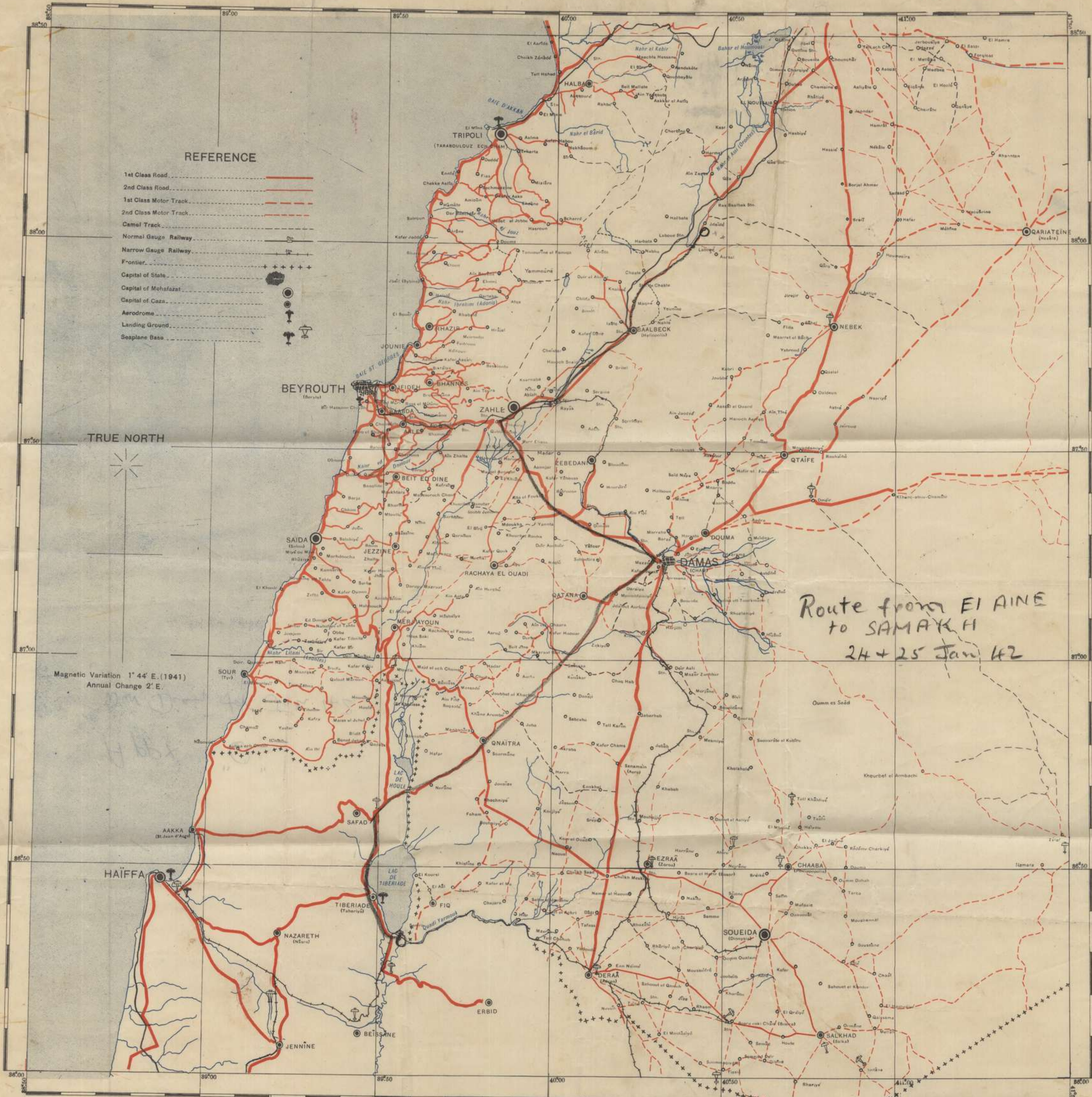
1 QIADI CHEBBINE	2 HERMEL
3 HALBATA	4 RAS BAALBEK
5 LABOUE	6 ARSAL NORTH
7 RASM EL HADI	8 ARSAL SOUTH

Compiled and drawn by the South African Survey Coy. S.A.C. October 1944 from air photographs by P.S.U. S.A.F. August 1944 and ground control by S.I. Corps S.A. Coy. S.I. August-September 1944. Printed by S.I. Corps S.A. Coy. S.I. October 1944.

Centre of Photographs = P10







REFERENCE

- 1st Class Road
- 2nd Class Road
- 1st Class Motor Track
- 2nd Class Motor Track
- Camel Track
- Normal Gauge Railway
- Narrow Gauge Railway
- Frontier
- Capital of State
- Capital of Mohafazat
- Capital of Caza
- Aerodrome
- Landing Ground
- Seaplane Base

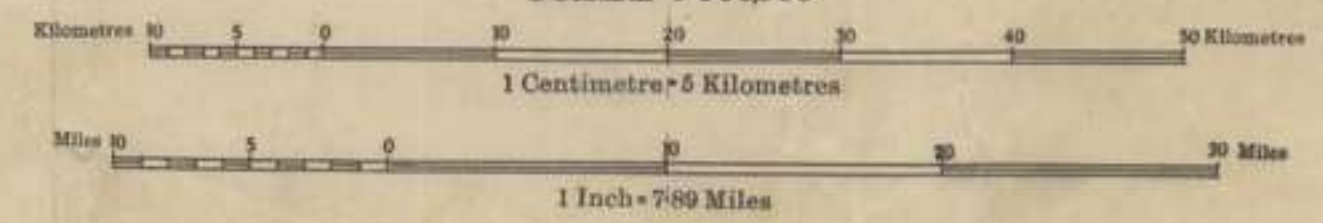
TRUE NORTH

Magnetic Variation 1° 44' E. (1941)  
Annual Change 2' E.

Route from EI AINE  
to SAMAKH  
24 + 25 Jan 42

DR.449

SCALE 1:500,000



Compiled and Reproduced by 512 (A. Fd. Svy.) Coy. R. E. May, 1941.  
From a 1:500,000 French Map dated 1939 and Intelligence Reports



Route from EI ANE  
to SAMAKH  
24-22 Jan 42

Hpx "O"  
War Diary for Jan 42.