

AWM52
2nd Australian Imperial Force and
Commonwealth Military Forces unit war
diaries, 1939-45 War

Item number: 8/2/21

21 Infantry Brigade

October 1943

WAR DIARY or INTELLIGENCE SUMMARY.

(Erase heading not required.)

SHEET 1

Army Form 118.
(adapted)

Unit 21 Aust Inf Bde

Date and Time.—From 1 Oct 43 To 31 Oct 43

Place.	Date.	Hour.	Summary of Events and Information.	Remarks and references to Appendices, Diaries, &c.
	Oct			
ARIFAGAN CREEK. RAMU RIVER AREA	1		<p><u>GENERAL</u></p> <p>Air dropping on 30 Sep considered NOT successful but served its purpose. Planes flew too low, causing many packages to burst and scatter so that recovery was impossible.</p> <p>Bde Comd laid down following priority of stores and equipment for all times:— 1. Communications 2. Health 3. Ammunition 4. Food. Also laid down that in future movement natives would be made available to carry the gear of CO's, Adjts, IO's and Coy Comds.</p> <p>0700 Lieut FRAZIER completed recce for landing strip and work was commenced in the site to WEST of ARIFAGAN CREEK.</p> <p>Orders received that 25 Bde were moving fwd from KAIAPIT. This necessitated rapid clearance of all 21 Bde rear elements from SAGERAK which was carried out by jeep ferrying.</p> <p>1600 General VASEY accompanied by Generals MORESHEAD and HERRING landed on the new strip in Tpt A/C.</p> <p>Bde Comd was given information that 25 Bde would reach this area on 3 Oct and that 21 Bde were to concentrate further WEST in vicinity of GUSAP RIVER.</p> <p><u>OPERATIONS</u></p> <p>0800 2/27 Bn moved to landing strip site and worked in clearing</p> <p>1200 suitable area for transport A/C. Little clearing was found necessary.</p> <p>2/14 Bn and Bde HQ moved down into bivouac areas near 2/16 Bn on RAMU RIVER.</p> <p>1200- 2/16 Bn moved further WEST into bivouac area EAST of GUSAP RIVER 457163. Patrols moved fwd to GUSAP RIVER crossing.</p> <p>1700 2/6 Indep Coy located recently vacated enemy posns at 645065 to NORTH of RAGITSARIA.</p>	<p>Ref Map FINENTEGU 1"</p> <p>Ref Map AMARI 1"</p>

WAR DIARY or INTELLIGENCE SUMMARY. SHEET 2

(Erase heading not required.)

Army Form 2118.
(adapted.)

Unit 2 Aust Inf Bde

Date and Time.—From 1 Oct 43 To 31 Oct 43

Place.	Date.	Hour.	Summary of Events and Information.	Remarks and references to Appendices, Diaries, &c.
JUNCTION RAMU- GUSAP RIVERS AREA	Oct 2		<u>GENERAL</u>	
			Orders issued for Bde to move fwd to concentrate in area of junction of RAMU and GUSAP RIVERS.	
		1000	2/7 Aust Indep Coy arrived in Bde HQ area having moved down from BENA BENA. Capt LOMAS the OC contacted Bde Comd and the Coy was placed under Comd.	
		1400	General VASEY with Brig EATHER visited Bde HQ to discuss the arrival of Div HQ and 25 Bde in the area. It was decided that 21 Bde would have to completely clear the area to allow sufficient space for Div installations.	
		1500	Bde Comd with General VASEY went fwd to the crossing of the GUSAP RIVER 450168 where Engr recce party were at work. Engrs estimated GUSAP could be bridged by 1600 hrs on 3 Oct.	Ref Map FINENTEGU 1"
			<u>OPERATIONS</u>	
			2/16 Bn moved to GUSAP RIVER and two coys crossed to the West bank. A Coy with a sec of 2/7 Indep Coy patrolled to KAIGULIN and encountered small JAP posn at 788389. Enemy withdrew after suffering 8 killed. Our casualties 1 died of wounds. A Coy occupied this posn at 1735 hrs and bivouaced for night.	Ref Map DUMPU 1"
			2/14 Bn and Bde HQ moved up in rear of 2/16 Bn and established in area 458160.	Ref Map FINENTEGU 1"
			2/27 Bn left two coys under Maj JOHNSON to guard the landing strip and remainder together with B Coy PIB and Engrs moved to 465148.	
			2/6 Indep Coy patrolled area to NORTH of RAGITSARIA but made NO contact. Evidence of very recent JAP withdrawal from this area.	Ref Map FINENTEGU 1"

WAR DIARY or INTELLIGENCE SUMMARY. SHEET 3

(Erase heading not required.)

Army Form 2118.
(adapted.)

Unit 21 Aust Inf Bde Date and Time.—From 1 Oct 43 To 31 Oct 43

Place.	Date.	Hour.	Summary of Events and Information.	Remarks and references to Appendices, Diaries, &c.
JUNCTION RAMU- GUSAP RIVER AREA	Oct 3		<p><u>GENERAL</u></p> <p>NO fwd movement up Valley and opportunity afforded for day of rest.</p> <p>Patrol operations only and Engr work proceeded on bridging of GUSAP RIVER.</p> <p>1600 General VASEY visited Bde HQ and conferred with Bde Comd giving his intention to move on and secure DUMPU area by 4 Oct.</p> <p>1900 Orders issued for 21 Bde to move on across GUSAP RIVER as soon as bridge completed on 4 Oct.</p> <p><u>OPERATIONS</u></p> <p>2/16 Bn A Coy with section from 2/7 Indep Coy occupied KAIGULIN 2 787404 and patrolled fwd in direction of KAIGULIN 1, WAMPUN and NAMAPUT. Patrol under Lieut BREMNER moving towards NAMAPUT contacted small enemy party. Casualties were inflicted and we lost 2 killed 1 offr and 1 OR wounded. PIB patrol towards BOPIRUMPU struck enemy party of five in village at 8439 guarding food dump. One was killed, one was wounded and taken prisoner.</p>	Ref Map DUMPU 1"
GUSAP RIVER- KAIGULIN AREA	4		<p><u>GENERAL</u></p> <p>0900 Bridge over GUSAP RIVER completed and 21 Bde continued advance WEST towards SURINAM RIVER.</p> <p>1600 Lt-Col Robertson G 1 visited Bde HQ and introduced Lt-Col BRISCOE from British Military Mission who was attached to Bde to observe operations.</p> <p>2100 Lt-Col HONNER CO 2/14 Bn evacuated, following wound received in WAMPUN action. Capt HAMILTON assumed comd temporarily.</p> <p>Orders received from Div for Bde to prepare to move in strength to KEY POINT 3 a staging point on the JAP L of C in</p>	

WAR DIARY or INTELLIGENCE SUMMARY. SHEET 4

(Erase heading not required.)

Army Form 2118.
(adapted.)

Unit 21 Aust Inf Bde

Date and Time.—From 1 Oct 43 To 31 Oct 43

Place.	Date.	Hour.	Summary of Events and Information.	Remarks and references to Appendices, Diaries, &c.
GUSAP RIVER- KAGULIN AREA	Oct 4		vicinity of MINEEN.	Ref Map DUMPU 1"
			<u>OPERATIONS</u> 2/14 Bn, ordered to occupy WAMPUN, ran into strong enemy posn at 802457. C and D Coys attacked enemy and forced them to withdraw after inflicting 20 killed and 1 PW taken. Our casualties 1 Offr and 5 ORs wounded. 2/14 Bn consolidated at WAMPUN for the night 4/5 Oct. CO. Lt-Col HONNER was wounded and evacuated.	Ref Map DUMPU 1"
			2/16 Bn moved fwd from KAIGULIN area across SURINAM RIVER to old DUMPU L/G at 7149. D Coy pushed on to DUMPU village at 693521 where approx 15 JAPS withdrew as coy approached. One JAP was killed and quantities of equipment and amm were abandoned as the JAPS withdrew.	
			2/27 Bn moved with Engr party and worked in construction of jeep track as far as BIWI RIVER 725568. Bde HQ halted for night at KAIGULIN 1.	
KAGULIN - DUMPU	5		<u>GENERAL</u> Bde concentrated in DUMPU area and prepared to await arrival of maintenance in supplies etc. Maj DUCHATEL with party from 2/16 Bn made recce to locate further landing ground sites in vicinity of DUMPU. Recommendation made that B Coy PIB should have a complete rest. Boys were no longer 100% fit and were suffering foot trouble. Offrs and NCOs were also feeling the strain as the coy had marched from BULLDOG right through to DUMPU.	
			<u>OPERATIONS</u> 2/14 Bn withdrew from WAMPUN and relieved 2/27 Bn from their task of road construction from KAIGULIN to SURINAM RIVER.	

WAR DIARY or INTELLIGENCE SUMMARY.

(Erase heading not required.)

SHEET 6

Army Form C 2118.
(adapted)

Unit 2 Aust Inf Bde

Date and Time.—From 1 Oct 43 To 31 Oct 43

Place.	Date.	Hour.	Summary of Events and Information.	Remarks and references to Appendices, Diaries, &c.
DUMPU	Oct 6		<p><u>OPERATIONS</u></p> <p>Patrols from 2/14 and 2/16 Bns covered area WEST to MOSIA RIVER without contact.</p> <p>2/27 Bn Patrol advances only. Arty OP on KINGS HILL directed 35 rounds onto JAP occupied village GUYS POST in FARIA VALLEY.</p> <p>2/6 Indep Coy and B Coy PIB remained in area SURINAM RIVER crossing and DUMPU village respectively.</p>	
DUMPU	7		<p><u>GENERAL</u></p> <p>To protect the construction of installations etc 2/16 Bn moved to BEBEI area 660553.</p>	
		1400	<p>Bde Comd with Capt GEDDES contacted Lt-Col BISHOP at KINGS HILL and discussed probable move fwd of Bn on 8 Oct to establish base one day's carry distance and patrol fwd to cut JAP L of C. Route chosen was along FARIA VALLEY to GUYS POST</p>	
		1600	<p>685593.</p> <p>Lt-Col ROBERTSON G 1 visited Bde Hq on recce to choose site for Div Hq in DUMPU area.</p> <p>Satisfactory work proceeding in construction of landing strips and satisfactory test landing was made. Heavy rain commenced falling at 1700 hrs and continued throughout night causing rivers to rise.</p>	
			<p><u>OPERATIONS</u></p> <p>2/16 Bn established in BEBEI area with patrols NORTH.</p> <p>2/27 Bn D Coy moved up FARIA VALLEY and halted for night 7/8 Oct at approx 685593.</p>	

WAR DIARY or INTELLIGENCE SUMMARY.

(Erase heading not required.)

SHEET 5

Army Form C. 2118.
(adapted)

Unit 21 Aust Inf Bde

Date and Time.—From 1 Oct 43 To 31 Oct 43

Place.	Date.	Hour.	Summary of Events and Information.	Remarks and references to Appendices, Diaries, &c.
KAI GULIN- DUMPU	Oct 5		Crossing the river by fording was made at 1700 hrs and Bn moved to concentrate in area 594529. 2/16 Bn concentrated in DUMPU village area with patrols fwd. Commenced work on clearing the old landing strip to WEST of SURINAM RIVER. 2/27 Bn When relieved by 2/14 Bn on road construction work 2/27 moved on to DUMPU village. Bn then advanced NORTH up URIA RIVER valley and occupied KING'S HILL 705575, a feature dominating the FARIA and URIA VALLEYS. Well prepared enemy posns were abandoned as the Bn approached. Bn halted for the night deployed on high ground overlooking URIA VALLEY. One JAP suffering from fever was taken prisoner by 2/27 Bn when found in hut to NORTH of DUMPU village. BDE HQ established with 2/16 Bn in area of DUMPU village. 2/6 Indep Coy patrolled the area from WAMPUN to the WEST along the foothills to the SURINAM RIVER. Coy bivouaced for night 5/6 Oct at SURINAM RIVER crossing 7047.	
DUMPU	6		<u>GENERAL</u> Concentration of Bde in DUMPU area continued. General VASEY crossed SURINAM RIVER by jeep and conferred with Bde Comd at Bde HQ regarding limitation of onward movement in strength. 1800 Maj LANDALE arrived to adm comd 2/14 Bn. Recce party landing strips concluded and two sites chosen as follows No.1 at 6652 No.2 at 6354. 2/14 and 2/16 Bns commenced work on clearing strips. Pending arrival of further supplies 2/27 Bn waited in area of KING'S HILL before proceeding on towards KEY POINT 3. Capt G.KING rejoined and resumed comd 2/6 Indep Coy.	

L.

By Authority: L. F. JOHNSTON, Commonwealth Government Printer, Canberra.

WAR DIARY or INTELLIGENCE SUMMARY.

(Erase heading not required.)

Army Form 2118.
(adapted.)

SHEET 7

Unit 21 Aust Inf Bde Date and Time.—From 1 Oct @3 To 31 Oct @3

Place.	Date.	Hour.	Summary of Events and Information.	Remarks and references to Appendices, Diaries, &c.
DUMPU	Oct 8	1000	<p><u>GENERAL</u> Maj OWENS and Capt ROSE contacted rear details of 2/27 Bn at KUMBARUM.</p> <p>Following heavy rain night 7/8 Oct arrival of transport A/C on No.1 strip was postponed.</p>	
		1400	<p>Cpts GORDON and ROSE visited NO.2 strip where construction was still in progress with C Coy 2/14 Bn and Engr party at work.</p>	
			<p><u>OPERATIONS</u> 2/27 Bn D Coy in GUYS POST area was attacked in the early morning by a party of approx 20 JAPS. Two attacks were repulsed and enemy withdrew suffering 3 killed. Own casualties 1 killed 2 wounded.</p> <p>Remainder 2/27 Bn moved NORTH up FARIA VALLEY and halted at GUYS POST at 1200 hrs. Picqueting parties were placed on all dominating features to protect onward move of Bn.</p> <p>2/6 Cav Sqn Moved to KUMBARUM area and occupied KINGS HILL and surrounding features. Patrol under Lieut GRAHAM moved up FARIA RIVER to relieve 2/27 Bn patrol under Lieut JOHNS.</p> <p>Comm with JOHNS patrol was cut and patrol forced to withdraw when fired on. GRAHAM's patrol failed to contact JOHNS patrol returning and was ambushed at approx 717587. GRAHAM and 1 OR were killed and patrol forced to withdraw.</p> <p>2/14 Bn B Coy moved to KUMBARUM to protect L of C to 2/27 Bn at GUYS POST.</p>	
DUMPU	9	0900	<p><u>GENERAL</u> Signal despatched for Maj RHODEN to take over 2/14 Bn from Maj LANSDALE and Maj LEE to go to I.T.B. to replace Maj RHODEN</p>	
		1000	<p>Capt KING OC 2/6 Cav Sqn visited Bde HQ to request replacement of deficiency of 6 Offrs and 70 ORs.</p>	

L.

By Authority: L. F. JOHNSTON, Commonwealth Government Printer, Canberra.

WAR DIARY or INTELLIGENCE SUMMARY.

(Erase heading not required.)

Army Form C 2118.
(adapted.)

SHEET 8

Unit.....HQ 21 Aust Inf Bde..... Date and Time.—From 1 Oct 43..... To 31 Oct 43.....

Place.	Date.	Hour.	Summary of Events and Information.	Remarks and references to Appendices, Diaries, &c.
DUMPU	Oct 9	GENERAL:- 1400	<p>Maj-Gen G.A.VASEY, C6C 7 Aust Div, visited Brig I.N.DOUGHERTY and reiterated present policy, viz:-to remain in present positions and do active patrolling to prevent Jap from interfering with DUMPU-GUSAP area. Two reasons for staying here were - (1) Our role was to secure air strips in RAMU VALLEY (this we have done) (2) The difficulties of maintaining a force in the mountains where the Japs have an easier xx L of C to his motor road x to BOGADJIM. Indications were that our stay in the area would be lengthy.</p> <p>Transport aircraft landed on No.1 Strip bringing in supplies, mail and comforts.</p> <p>7 Aust Div advised that their HQ would be established in area 6651 on 10 Oct and 2/6 Cav Commando Sqn was ordered to move into area to protect 7 Aust Div HQ and installations at No.1 Landing Strip.</p> <p>OPERATIONS:-</p> <p>2/27 Aust Inf Bn moved on from GUY'S POST to establish base at approximately 700606 on high ground overlooking well worn foot track. This position was considered to be a one day carry from KUMBARUM. Apart from patrol x clashes NO contact was made with the enemy in strength and 2/27 Aust Inf Bn occupied ridge dominating track and village. At approximately 1700 hrs Jap party attacked ridge position and were driven off suffering 8 killed and one PW taken. Lieut MARTIN and 1 OR killed 3 wounded.</p> <p>From interrogation of PW it was found that the 2/27 Aust Inf Bn were astride a Jap L of C which appeared to be an alternative to his main L of C to the North.</p> <p>2/14 Aust Inf Bn. Patrol observed Japs on 4100 feature at 7454 in positions overlooking DUMPU area.</p>	

WAR DIARY or INTELLIGENCE SUMMARY.

(Erase heading not required.)

Army Form C. 2118.
(adapted.)

SHEET 9

Unit HQ 21 Aust Inf Bde

Date and Time.—From 1 Oct '43 To 31 Oct '43

Place.	Date.	Hour.	Summary of Events and Information.	Remarks and references to Appendices, Diaries, &c.
DUMPU	Oct 10		<p>GENERAL: It was decided that all Bde rear elements be brought forward from KAIAPIT by the first available planes.</p> <p>No. 2 Landing Strip near the FARIA RIVER now serviceable for Transport Aircraft. Strip 3000 feet long 225 feet wide bearing 295 degrees.</p> <p>OPERATIONS: 2/14 Aust Inf Bn arrived at KUMBARUM at 0915 hrs and relieved 2/6 Cav Commando Sqn. Standing patrol of one platoon strength along URUA RIVER to protect L of C to the 2/27 Aust Inf Bn. O P's established on KING'S HILL and on THREE PIMPLES to the EAST of KUMBARUM. Local patrolling. No contact.</p> <p>2/16 Aust Inf Bn. Patrol from BEBEL fired on at 685650 by one LMG. NO casualties.</p> <p>2/27 Aust Inf Bn. At 0630hrs Japs attacked with much yelling. Three Japs killed.</p> <p>1045 Patrol to 705617 engaged by Japs. Own casualties 1 OR killed 3 wounded.</p> <p>1340 Jap gun from position approximately 713627 shelled Bn area. Own Arty GB fir appeared effective.</p> <p>Japs killed were well equipped with exception of boots. Also appeared to be well fed and were carrying approximately 7 days rations.</p> <p>25 Aust Inf Bde :- Continued patrolling up SURINAM RIVER, investigating report of Japs in area 7554.</p>	
DUMPU	11		<p>GENERAL: Maj-Gen G.A. VASEY GOC 7 Aust Div visited this HQ to confer with Brig I.N. DOUGHERTY.</p> <p>Maj E.S. OWENS went to 2/14 Aust Inf Bn at KUMBARUM to assess tactical situation and convey Bde Comd's for prompt action to clear L of C to 2/27 Aust Inf Bn.</p> <p>1300 Maj A.J. LEE 2 i/c 2/16 Aust Inf Bn instructed by Brig I.N. DOUGHERTY to relieve Maj LANDALE and Admn Comd 2/14 Aust Inf Bn temporarily.</p>	

L.

By Authority: L. F. JOHNSTON, Commonwealth Government Printer, Canberra.

WAR DIARY or INTELLIGENCE SUMMARY

Army Form C.2118
(adapted.)

(Erase heading not required)

Unit HQ 21 Aust Inf Bde

Date and Time.—From 1 Oct 43 To 31 Oct 43

SHEET 10

Place	Date	Hour	Summary of Events and Information	Remarks and references to Appendices, Diaries, &c.
DUMPU	Oct 11		<p>OPERATIONS.</p> <p>2/14 Aust Inf Bn. Approximately 10 Japs occupied feature to NORTH of KING'S HILL at 706582 during darkness and dug in by first light 11 Oct. Ration party moving to 2/27 Bn fired on from this position and natives dispersed.</p> <p>1700 One platoon attack on Jap position with supporting fire from two platoons on KING'S HILL, MMG and 3" Mortar and 25 pounders over open sights. Attack successful and L of C to 2/27 Bn re-opened. Casualties - 30 Japs killed; own - 4 killed 6 wounded.</p> <p>2/16 Aust Inf Bn. Continued patrol operations from BEBET without making contact.</p> <p>2/27 Aust Inf Bn. Bn HQ area shelled by single Jap gun from direction FARIA RIVER to NW of TREVOR'S RIDGE. Fire accurate. Own Arty fired CB and enemy gun ceased firing. Bn generally in contact with small enemy parties in widely dispersed areas. Lt T. MARTIN killed.</p> <p>During night 10/11 Oct 5 Japs attempted to destroy Light Section 25 pounder guns in position SOUTH of KUMBARUM. Attempt failed and Japs fled leaving quantity of explosive material.</p> <p>25 Aust Inf Bde. 2/33 Bn report being in contact with Japs on 4100 feature at 7858.</p> <p>TAC/R reported approximately 400 Japs in area 7554. Tac/R aircraft was fired on and P40 escort called on to strafe posns of enemy.</p>	
	12		<p>GENERAL.</p> <p>Request made for one troop of 8 Bty 2/4 Fd Regt to be flown in to DUMPU in order to give greater support by arty fire. This extra support would save natives from carrying mortar bombs forward.</p> <p>21 Bde's rear elements arrived from KAIAPIT and moved into</p>	

WAR DIARY or INTELLIGENCE SUMMARY.

(Erase heading not required.)

Army Form C 2118.
(adapted.)

Unit.....HQ 21 Aust Inf Bde.....

Date and Time.—From 1 Oct 43.....To 31 Oct 43.....

SHEET 11

Place.	Date.	Hour.	Summary of Events and Information.	Remarks and references to Appendices, Diaries, &c.
DUMPU	Oct 12		<p><u>DUMPU area.</u> Capt HOLLEY (LO) visited 2/27 Bn HQ fwd at TREVOR'S RIDGE.</p> <p><u>OPERATIONS</u> 2/14 Bn. Patrol cleared L of C to GUYS POST. Standing patrol on feature SE of KUMBARUM. 2/27 Bn platoon at GUYS POST relieved by platoon of 2/14 Bn. 2/16 Bn. Patrols from BEBET. No contact.</p> <p>1200 2/27 Bn. In contact with enemy estimated two coys in area 6960. Jap casualties heavy - known dead 50. Enemy pressing hard supported by arty, MMGs and grenade dischargers.</p> <p>1600 Lt-Col BISHOP felt that amn position (due to dislocation of L of C 11 Oct) might necessitate a withdrawal to shorten own L of C. Brig DOUGHERTY left the decision regarding a withdrawal to Lt-Col BISHOP but stated that Bn would fall back to area of GUY'S POST if the position deteriorated. It now appeared certain that 2/27 Bn were astride major Jap foot track which was his L of C from foothills in the EAST to his motor road to the coast. 25 Aust Inf Bde. 2/33 Bn reported in contact with estimated one coy of Japs on precipitous spur at 7556. Own attack unsuccessful.</p>	
	13	2300	<p><u>GENERAL.</u> 2/6 Cav Sqn reverted to Comd 7 Aust Div. Capt HOLLEY, LO, returned from 2/27 Bn.</p> <p><u>OPERATIONS.</u> 2/14 Bn. B Coy reached GUYS POST at 2230/12 with role - one pl patrol high ground EAST of FARIA RIVER, one pl escort 2/27 Bn carrier train, one pl local protection GUYS POST. 2/16 Bn. Warned to prepare to move from BEBET via GUYS POST to relieve 2/27 Bn in TREVOR'S RIDGE area. A recce of route was</p>	

L.

By Authority : L. F. JOHNSTON, Commonwealth Government Printer, Canberra.

WAR DIARY or INTELLIGENCE SUMMARY.

(Erase heading not required.)

Army Form C. 2118.
(adapted.)

Unit HQ 21 Aust Inf Bde

Date and Time.—From 1 Oct 43 To 31 Oct 43...

SHEET 12

Place.	Date.	Hour.	Summary of Events and Information.	Remarks and references to Appendices, Diaries, &c.
DUMPU	OCT 13		made with the additional view to a possible jeep track through to GUYS POST. 2/27 Bn. Bn repelled all Jap attacks and remained in position on TREVOR'S RIDGE. Enemy casualties heavy. Dead 92. Own - 7 killed 28 wounded. Ann held out till arrival of supplies at 0100/13. Posn now secure and Bn warned to hand over to 2/16 Bn on 14 Oct. 25 Aust Inf Bde. Attack by 2/33 Bn on Jap posn at 7556 not successful. 2/31 Bn moving to relieve 2/33 Bn.	
DUMPU - KUMBARUM.	14	0930	GENERAL Bde HQ moved to KUMBARUM area. Orders were received that 21 Bde was responsible for area WEST of URIA RIVER (incl) and 25 Bde for area EAST of URIA RIVER(excl). Lieut SNOOK who had guided 2/27 Bn into posn astride Jap L of C returned from 2/27 Bn. OPERATIONS. 2/14 Bn. Local patrols KUMBARUM area. 2/16 Bn. Moved into position in JOHN'S KNOLL area and relieved 2/27 Bn. Jap gun continued to shell TREVORS RIDGE area. 2/27 Bn. Relieved by 2/16 Bn and moved into area GUY'S POST. 25 Aust Inf Bde. 2/31 Bn occupied Jap posns at 7656 without opposition. Owing to unfavourable weather conditions air strike on KANKIRYO area was postponed.	
KUMBARUM	15		GENERAL. Brig I.N. DOUGHERTY, Bde Comd, with Capt D. GORDON, BM(L), moved via BEBEL to visit 2/27 Bn at GUY'S POST. They remained there during the night 15/16 Oct.	

L.

By Authority: L. F. JOHNSTON, Commonwealth Government Printer, Canberra.

WAR DIARY or INTELLIGENCE SUMMARY.

(Erase heading not required.)

Army Form C. 2118.
(adapted)

Unit HQ 21 Aust Inf Bde

Date and Time.—From 1 Oct 43 To 31 Oct 43

SHEET 13

Place.	Date.	Hour.	Summary of Events and Information.	Remarks and references to Appendices, Diaries, &c.
KUMBARUM	Oct 15		GENERAL (cont) Capt VICKERS, REME Officer, visited 21 Bde area to observe operations and to report on equipment.	
			OPERATIONS 2/14 Bn. A Coy moved out on a three day patrol up WEST bank of URUA RIVER to join up with 2/16 Bn at JOHN'S KNOLL.	
			2/16 Bn. Patrol ops only. No contact.	
			2/27 Bn. In reserve at GUY'S POST.	
			TAC/R Led airstrike on occupied villages in DAUMOINA area.	
	16		GENERAL. Maj-Gen G.A.VASEY visited 2/27 Bn where he met Brig I.N.DOUGHERTY, Comd 21 Bde. He congratulated the Bn on the excellent operation at TREVOR'S RIDGE.	
			Brig I.N.DOUGHERTY moved to 2/16 Bn and then returned to GUY'S POST for the night 16/17 Oct.	
			OPERATIONS. 2/14 Bn. A Coy patrol returned without achieving its object, viz. contact 2/16 Bn at JOHN'S KNOLL.	
			2/16 Bn. Patrol activity only. Jap gun again fired on to TREVOR'S RIDGE on old 2/27 Bn posn.	
			2/27 Bn. Local patrolling. Standing patrols established on feature to WEST of GUY'S POST (named SHAGGY RIDGE).	
			Own arty fired harassing fire on suspected Jap L of C to KANKIRYO SADDLE.	

L.

By Authority: L. F. JOHNSTON, Commonwealth Government Printer, Canberra.

WAR DIARY or INTELLIGENCE SUMMARY.

(Erase heading not required.)

Army Form C. 2118.
(adapted.)

Unit HQ 21 Aust Inf Bde

Date and Time.—From 1 Oct 43

To 31 Oct 43

SHEET 14

Place.	Date.	Hour.	Summary of Events and Information.	Remarks and references to Appendices, Diaries, &c.
KUMBARUM	Oct 17	1000 1200	Bde Comd, Brig I.N.DOUGHERTY, returned to HQ from GUY'S POST. Brig I.N.DOUGHERTY made an aerial recce in a WIRRAWAY, covering the area from KANKIRYO North to approx YAULA and then over own Bde positions.	
			<u>OPERATIONS</u>	
			2/16 Bn. Patrol to NW along FARIA VALLEY located deserted Jap posns. Casualties were inflicted in a clash with small enemy patrol.	
			Local patrols only in other areas.	
	18		<u>GENERAL</u>	
			Maj E.S.OWENS, BM, and Capt R.T.M.ROSE, IO, visited 2/27 Bn at GUY'S POST and then 2/16 Bn at JOHN'S KNOLL.	
			Lieut KELLOG, US Army Engr Recce Ofcr, returned from recce of RAMU VALLEY as far WEST as KESAWAI, and reported area not suitable for landing ground sites.	
			<u>OPERATIONS.</u>	
			2/16 Bn. Patrol located enemy posn covering approach along FARIA VALLEY to NW. Posn estimated strongly held.	
			Tac/R directed arty fire on these posns but results were not observed due to adverse weather conditions.	
			Patrol ops continued in other areas.	
	19		<u>OPERATIONS.</u>	
			2/16 Bn. Continued investigation of enemy posns in FARIA VALLEY to ascertain extent and strength. Arty fire again directed on Jap posns in this area with unobserved results.	

L.

By Authority: L. F. JOHNSTON, Commonwealth Government Printer, Canberra.

WAR DIARY or INTELLIGENCE SUMMARY.

(Erase heading not required.)

Army Form C. 2118.
(adapted.)

Unit HQ 21 Aust Inf Bde

Date and Time.—From 1 Oct 43 To 31 Oct 43

SHEET 15

Place.	Date. Oct	Hour.	Summary of Events and Information.	Remarks and references to Appendices, Diaries, &c.
KUMBARUM	19		<u>OPERATIONS (cont)</u> <u>2/27 Bn.</u> Patrols continued recce of SHAGGY RIDGE area. <u>B Coy PIB.</u> Patrol commenced move from BEBEL, NORTH to gain possible observation of KANKIRYO from high feature to SOUTH (named MT PROTHERO).	
	20		<u>GENERAL.</u> Brig I.N.DOUGHERTY, Bde Comd, visited HQ 7 Aust Div for a conference with Maj-Gen G.A.VASEY, GOC, to discuss possible future move of 21 Bde. Capt P.GEDDES, SC, made a recce for possible jeep track from BEBEL through to GUY'S POST. <u>OPERATIONS.</u> Patrol activity only.	
	21		<u>GENERAL.</u> Maj P.E.RHODEN arrived from I.T.B. and assumed comd 2/14 Bn. BM, Maj E.S.OWENS, and IO, Capt R.ROSE, visited HQ 25 Bde to discuss disposns of 25 Bde in relation to 21 Bde's left flank. <u>OPERATIONS</u> Patrol activity only. No contact.	
	22		<u>GENERAL</u> Brig I.N.DOUGHERTY accompanied by Maj E.S.OWENS visited 2/27 Bn and remained there for the night 22/23 Oct. <u>OPERATIONS.</u> <u>2/16 Bn</u> Patrol in FARIA RIVER area made contact with enemy party, killing 12. Own casualties - 1 OR killed, Lieut ANDERSON and 2 ORs wounded.	

L.

By Authority: L. F. JOHNSTON, Commonwealth Government Printer, Canberra.

WAR DIARY or INTELLIGENCE SUMMARY.

(Erase heading not required.)

Army Form C. 2118.
(adapted.)

Unit..... HQ 21 Aust Inf Bde

Date and Time.—From 1 Oct 43 To 31 Oct 43

SHEET 16

Place.	Date. Oct	Hour.	Summary of Events and Information.	Remarks and references to Appendices, Diaries, &c.
KUMBARUM	23		<p><u>GENERAL</u> Brig I.N.DOUGHERTY, Bde Comd, remained with 2/27 Bn at GUY'S POST where Capt GORDON, BM(L), joined him.</p> <p><u>OPERATIONS.</u> Patrol activity only. Tac/R directed arty fire on suspected enemy gun posn. Results unobserved.</p>	
	24		<p><u>OPERATIONS.</u> Continued patrol activity in all Bn areas. No contact.</p>	
	25		<p><u>OPERATIONS.</u> Following air strike on Jap posns in FARIA VALLEY, patrol from 2/16 Bn moved fwd to investigate. Located enemy posns in strength, estimated two coys.</p>	
	26		<p><u>GENERAL.</u> Maj-Gen G.A.VASEY, GOC 7 Aust Div, accompanied by Maj E.S.OWENS, BM 21 Bde, visited fwd posns of 2/16 Bn in FARIA VALLEY. Orders were received that 2/2 Aust Pnr Bn would come under comd 21 Bde to strengthen right flank and to patrol area EAST of URIA RIVER.</p> <p><u>OPERATIONS.</u> 2/14 Bn. D Coy moved EAST from URIA RIVER along Jap L of C to establish patrol base until relieved by 2/2 Pnr Bn.</p> <p>Patrol activity continued in all Bn areas.</p>	
	27		<p><u>GENERAL</u> Lt-Col LANG, CO 2/2 Pnr Bn, visited Bde HQ to confer with Brig I.N.DOUGHERTY.</p>	

L.

By Authority: L. F. JOHNSTON, Commonwealth Government Printer, Canberra.

WAR DIARY or INTELLIGENCE SUMMARY.

(Erase heading not required.)

Army Form C. 2118.
(adapted.)

Unit HQ 21 Aust Inf Bde

Date and Time.—From 1 Oct 43 To 31 Oct 43

SHEET 17

Place.	Date. Oct	Hour.	Summary of Events and Information.	Remarks and references to Appendices, Diaries, &c.
KUMBARUM	27		<p>OPERATIONS.</p> <p>Advance party from 2/2 Pnr Bn arrived at Bde HQ ready to move to patrol base EAST of URIA RIVER (named LEVETT'S POST).</p> <p>D Coy 2/14 Bn patrolling LEVETT'S POST area. No contact.</p>	
	28		<p>GENERAL.</p> <p>Mr MORRISIN, War Correspondent 'LONDON TIMES', visited Bde HQ and went fwd with Capt V. HOLLEY, LO, to Bn posns.</p> <p>OPERATIONS.</p> <p>2/27 BN. Maintained patrols to recce SHAGGY RIDGE area.</p> <p>2/2 Pnr Bn. Reached KUMBARUM on way to occupy LEVETT'S POST area.</p>	
	29		<p>OPERATIONS</p> <p>2/14 Bn Patrol in LEVETT'S POST area located alternative Jap L of C, marked "KANKIRYO MULE TRACK". Further investigation being made.</p> <p>2/27 Bn. Continued recce of enemy posns on SHAGGY RIDGE.</p> <p>2/2 Pnr Bn Moved to LEVETT'S POST area.</p>	
	30		<p>OPERATIONS</p> <p>2/16 Bn Area shelled by Jap gun causing three casualties.</p> <p>Fourteen day patrol moved out to recce posn for observation of Jap L of C in KANKIRYO area from the NORTH.</p> <p>2/2 Pnr Bn Commenced patrol ops from base at LEVETT'S POST.</p> <p>Tac/R One aircraft missing on recce to locate enemy gun firing on 2/16 Bn posn.</p>	

L.

By Authority : L. F. JOHNSTON, Commonwealth Government Printer, Canberra.

(Erase heading not required.)

(adapted.

Date and Time.—From 1 Oct 43

To 31 Oct 43

SHEET 18

[illegible]

L. By Authority : L. F. JOHNSTON, Commonwealth Government Printer, Canberra.

WAR DIARY or INTELLIGENCE SUMMARY.

(Erase heading not required.)

Army Form C. 2118.
(adapted.)

Unit.....HQ 21 Aust Inf Bde

Date and Time.—From 1 Oct 43.

To 31 Oct 43

SHEET 19

Place.	Date.	Hour.	Summary of Events and Information.	Remarks and references to Appendices, Diaries, &c.
			<u>31 Oct 43.</u> <u>POSTINGS OF OFFRS</u> <u>HQ 21 AUST INF BDE</u>	
			Bde Comd. Brig I.N.DOUGHERTY, D.S.O BM Maj E.S.OWENS	
			SC Capt P.H.GEDDES	
			BM(L) " D.G.GORDON	
			SC(L) Lieut J.G.KEALY	
			IO Capt R.T.M.ROSE	
			LO " V.H.HOLLEY	
			LO Lieut J.GREENWOOD	
			LO " R.R.MOORE	
			T.O Capt J.W.BUNN	
			BASCO " W NORRIE	
			Hygiene Offr Lieut E.F.WILSON	
			Education Offr " B.KITCHEN	
			Amen Offr NOT FILLED	
			Guard Pl Lieut C.M.GIBBS	
			Signals Section - OC Capt F.T.HENDERSON	
			2 i/c Lieut L.P.HOBSON	
			Maj	
			<u>BM 21 Aust Inf Bde</u>	

L.

By Authority: L. F. JOHNSTON, Commonwealth Government Printer, Canberra.

Coch *27 Oct*

MOST SECRET
To be destroyed after perusal

	KIA	MBK	DOW	WIA	MISSING	Acciden- tally Wounded	Suspec- ted Malaria	PUO	TOTAL	Return- ed Ex MDS	Origin- al Streng- th	X List & Reinfts wx MORESBY	TOTAL	Present Strength	
	Off ORs	Off ORs	Off ORs	Offs ORs	Off ORs	Off ORs	Off ORs	Off ORs	Off ORs	Off ORs	Off ORs	Offs ORs	Offs ORs	Offs	ORs
2/14 Bn	- 8	- -	- 3	2 12	- -	- -	- 74	4 107	6 204	1 32	31 660	3 82	35 774	31	597
Percentage Evacuated	.98	- -	.32	1.73	- -	- -	9.14	13.72	25.95						
2/16 Bn	- 2	- 1	- 1	2 7	- -	- 3	2 83	1 69	5 166	- 32	26 676	2 70	28 778	25	659
Percentage Evacuated	.24	.12	.12	1.11	- -	.37	10.54	8.68	21.21						
2/27 Bn	2 17	- -	- 3	- 51	- -	- 2	1 100	1 45	4 218	- 13	30 666	2 70	32 749	29	576
Percentage Evacuated	2.43	- -	.38	6.53	- -	.25	12.93	5.89	28.42						
HQ 21 Bde							- 5	- 8	- 13	- 5	15 82	- 4	15 91	15	77
Percentage Evacuated							5.49	8.79	14.28						
21 Bde Sigs	- 1						- 2	- 3	- 6	- 1	2 54	- -	2 55	2	53
Evacuated Percentage	1.75						3.5	5.26	10.52						
7 Pl Gd Bn							- 4	- 5	- 9	- 1	1 40	- -	1 41	1	35
Percentage Evacuated							9.52	11.9	21.42						
TOTAL	2 28	- 1	- 7	4 70	- -	- 5	3 268	6 237	15 616	1 84	105-2178	7 226	113-2488	103	1997
TOTAL %	.11	.04	.27	2.84	- -	.2	10.41	9.34	24.26						

These are figures for units and total for Brigade as at 0600 hrs 22 Oct 43 and represent evacuations since units arrived at NADZAB.
 Percentages are based on evacuations as against original strength plus reinfts and personnel returned ex MDS.

War Diary
P. J. ...
27/10/43

REPORT ON MEDICAL SERVICES SUPPLIED BY 2/6 FD AMB

DURING ADVANCE FROM KAIAPIT TO DUMPU.

On Sunday 26 Sep, HQ Coy plus a light section from A Coy and Surgical Team began to establish an MDS, having moved in from NADZAB by air. MDS was completed in a coconut plantation near KAIAPIT Mission by 9 a.m. on Monday 27th. An appendicectomy was performed on 26th September within two hours of the unit's arrival. On night 28/29 Sep 21 Bde began the advance from KAIAPIT and Capt WILMER plus 10 ORs advanced with 2/27 Bn.

Liaison was maintained with 21 Bde HQ and light section by CO, using M/C for transport. Patients were evacuated by Jeep to KAIAPIT, the UMI RIVER being crossed by rubber boat after Bde had crossed it. At RAGITSUMIN the CO contacted Bde HQ and, after conferring with Brig DOUGHERTY, decided that it would be advisable to call forward another section with a surgeon to deal with urgent battle casualties, which were expected from then on, in anticipation that a strip would be made at SAGERAK and evacuation could be made by plane to NADZAB instead of the long trip by jeep back to KAIAPIT. The advance continued, a light surgical section of 9 ORs under Maj GOULSTON arriving at WANKON on evening 30 Sep. Capt WILMER'S section moved from WANKON that afternoon and spent night with Bde HQ near ARI FAGAN CK.

Constant demands for A and B Coys to be forwarded were made by CO and also by Brig DOUGHERTY to 7 Aust Div as it was anticipated that casualties might become heavy and flying might not be possible, necessitating holding them until fit to evacuate. Maj GOULSTON was brought forward with his section to GUSAP strip area where Bde HQ was on 1 Oct and set up a holding post to hold patients and Battle Casualties until planes were available to evacuate to NADZAB. CO had given order that MDS at KAIAPIT was to be emptied since it was committed there up to this stage, and it looked as though it would be able to establish at GUSAP, or, even better, at DUMPU when the Bde reached there. He suggested that if one Coy, A or B, now at NADZAB could be forwarded to GUSAP to run an Advanced Dressing Station, HQ Coy's MDS might with advantage be held in readiness and flown direct to DUMPU, thereby avoiding a heavy march and a lot of transport being used in moving the heavy gear from GUSAP to DUMPU. However, by this time Division had started moving the HQ Coy by air to GUSAP, resulting in a lot of unnecessary work and use of MT. The post at GUSAP was manned by Maj GOULSTON'S section at this stage and evacuated the following:-

1 Oct	12 BCs and sick.
2 Oct	17 " " "
3 Oct	27 " " "
4 Oct	50 " " "
5 Oct	40 " " "

a total of 136 in 5 days, which was a very good performance considering the scanty shelter and means available.

On 5 Oct HQ Coy arrived at GUSAP, Bde HQ having arrived at DUMPU that day also. CO proceeded from GUSAP by M/C, calling at Div HQ en route crossed the SURINAM and proceeded towards DUMPU where the Light Section with Capt WILMER had established. Darkness was falling at this stage and since CO could not locate Bde HQ and there was a possibility of his (a) being shot by our own troops or (b) being shot by the Japs, he considered it wise to return to SURINAM RIVER. At GUSAP the Medical Post was being run by Capt HELLESTRAND, Maj GOULSTON having proceeded with his section plus HQ Coy to KAIGULAN No 1, where a small staging post was established and HQ Coy equipment was dumped but not unpacked pending a possible move forward. Protection was supplied here by 25 Aust Inf Bde which had followed behind 21 Bde.

CO proceeded on 6 Oct to DUMPU after crossing SURINAM in early morning and interviewed Brig DOUGHERTY. Capt WILMER'S Light Section was holding 34 patients at this stage and several severe Battle

Casualties so CO decided to bring forward the Surgical team under Maj LOEWENTHAL to deal with these on the spot as they would certainly never have survived the trip back to GUSAP without treatment. A theatre was set up in the patch of scrub at DUMPU by the URIA RIVER and a surgical ward with a thatch roof was erected. This move was not favoured by ADMS but proved to be effective in the long run. On 6 Oct CO returned to KAIGULAN in the afternoon and to GUSAP on the 7th Oct where Capt HELLESTRAND was in charge and had 33 patients awaiting evacuation, and a very efficient Staging Post with Capt SMITH standing by for urgent surgery with two theatre orderlies. The GUSAP RIVER flooded that night and CO was forced to return to the strip instead of going forward, since the bridge was washed away. CO returned to DUMPU the following day and proposed visiting 2/27 Aust Inf Bn which had moved up the URIA RIVER to GUY'S POST but ADMS would not permit this and pressure of work during the days that followed unfortunately prevented CO's forward liaison until much later.

By 11 Oct patients were arriving faster than shelter could be erected for them and no tentage was available. A 20 bed admission ward and 30 bed surgical ward were now in operation at DUMPU. Cooking gear in very short supply at this stage and many strange utensils had to be improvised. Div had established HQ at URIA-RAMU Junction by 12 Oct and A and B Coys were flown in on the same day from NADZAB. 21 Bde HQ moved to KUMBARUM on the 14th Oct, since by passive infiltration had surrounded them and then proceeded to develop into a field hospital. A light sec under Capt CHURCH of B Coy was sent to GUY'S POST on 12 Oct and A Coy was sent back to KAIGULAN to 25 Bde HQ to organise evacuation from upper waters of SURINAM by light section under Capt WILMER, which evacuated to a staging post under Capt SMITH, at 2/31 Bn Report Centre in the foothills where he and Maj STUCKEY were ready for urgent surgery, thence to the MDS by a Medical Staging Post under Lieut FIELD at the SURINAM Crossing.

The MDS at DUMPU was now holding 245 patients. Evacuations by air were being done through No 2 Strip, DUMPU to NADZAB.

Routine work now continued until the end of the month, and the MDS grew in size daily as CO had been instructed to hold as many patients as possible in forward area and RTU them from there. The highest figure reached was 805 patients, a record, considering the limited personnel and equipment at the unit's disposal and the fact that we were short of drugs etc, since we had been supplying two Bde RAPs with only a scanty reserve. The lack of medical supplies was a feature noticed throughout the whole proceedings.

A Coy had been recalled as 25 Bde moved forward so the whole unit less LOB and sick were in KUMBARUM-DUMPU area. On 4 Dec move was commenced to new site on the MENE RIVER. Up to the time of this move the unit had treated or evacuated 2334 cases of which 111 were battle casualties.

Appreciation is here expressed for the great assistance offered to this unit by 21 Aust Inf Bde at all times, and in no matter what circumstances with transport, labour, shelter equipment and good sound advice.

(Signed) R. HUMPHREY, Lt-Col.

Rele Compt JnL 18/10/43
Blm 19/10
IO 18/10

SECRET

NOTES ON PRESENT SITUATION - RAMU AREA
BY G3(I) 7 AUST DIV 16 OCT 1943

Copy No...5.

RELATIVE STRENGTHS

JAP

- 1 The present effective fighting strength of 78 Inf Regt is estimated at 900 - 1000. The Regt has suffered heavily from sickness and malaria and in addition his battle casualties have been approx 500 killed with at least that number wounded.
- 2 The remainder of the original NAKAI FORCE consists mainly of L of C and constructional tps and can NOT be considered in the effective fighting force.
- 3 79 Regt is now fairly accurately placed in the BOGADJIM area and according to a PW is responsible for the defence of that area. In view of the strength of most JAP units in this area being about 70% strong (prior to being engaged) 79 Regt is placed at approx 2,500.
- 4 80 Regt, the other regt of 20 Div, has been committed in other areas and its present fighting strength is estimated at approx 1,000. This Regt is located along the RAI coast.
- 5 Although PW thinks that 79 Regt is the only Regt in the MADANG - BOGADJIM area, there are other indications of some of 41 Div being in MADANG.

OWN STRENGTH

- 6 Our strength is much superior to the present JAP force opposing us, and is stronger than 78 and 79 Regts combined.
- 7 In the air, allies continue to hold complete superiority.

POSSIBLE JAP FUTURE COURSES

COURSE I - TO MOUNT AN OFFENSIVE AND REOCCUPY RAMU VALLEY

FOR

AGAINST

- (a) This would be the desire of any comd.
- (b) JAPS in SWPA have suffered numerous reverses in recent months and a new drive would tend to buck up morale.
- (c) If he has landed 54 Div at WEWAK and if he can land and move more divisions and maintain them then this plan would be possible

- (a) If this were the intention, then it is thought that the 79 Regt or 41 Div would have been committed much earlier to stop 7 Aust Div gaining the present hold on the rd to MADANG.
- (b) If reports of the concentrations of JAP tps in the area MADANG & WEWAK are true it is even more difficult to understand why more resistance has NOT been offered to our advance.
- (c) In view of JAP commitments in other areas, it is hardly thought possible that the JAP can risk commencing a new offensive.
- (d) The JAP shipping problem combined with his lack of air support is not conducive to a successful offensive.

DEDUCTION:- The JAP is NOT at present in a position to commence an offensive in the BOGADJIM - RAMU area.

COURSE 2 - TO HOLD MADANG - BOGADJIM AREA

FOR	AGAINST
<p>(a) If the JAP gathers all his available tps from RAI COAST and BOGADJIM RD and organises his defences in the MADANG - BOGADJIM area he could offer any attacking force (particularly a ground attack) very serious opposition.</p> <p>(b) Once he loses MADANG the allies would have close air bases from which WEWAK - HANSA BAY could be made almost untenable and it would be extremely difficult for him to get any supplies in to NEW GUINEA</p>	<p>(a) MADANG is NOT a very good harbour and is not being used by the JAPS for any large shipping on account of the allied air threat.</p> <p>(b) If the allies were to combine a seaborne attack on this JAP coastal position with an airborne landing, and in view of the supply line to MADANG being on the coastal rd or by barge, the JAP would stand a very good chance of having his forces surrounded and his L of C to WEWAK cut.</p> <p>(c) The MADANG - BOGADJIM area is not a favourable defensive position against a seaborne and airborne attack as movement is very restricted, the narrow coastal plain being surrounded by difficult ranges.</p> <p>(d) If more tps are pushed into the MADANG area, the already strained supply line becomes weaker, and the JAP has all his eggs in one basket, on which allied air, land and sea strength can be concentrated.</p> <p>(e) The strengthening of resistance to 7 Aust Div at this stage would only serve to delay the final blow and would NOT have a very good chance of driving allied tps back from their present posns.</p> <p>(f) Complete allied air superiority.</p>

DEDUCTION:- The JAP'S most probable plan is to delay the allied land threat to MADANG in a place of his own choosing on the BOGADJIM - RAMU rd and either make preparations to hold MADANG - BOGADJIM from a seaborne attack or withdraw his tps in that area and RAI COAST area to HANSA BAY or WEWAK, before an allied attack can be made.

PRESENT JAP INTENTIONS

- 8 A PW captured in FARIA R area 15 Oct, states that 78 Regt is now withdrawing and intends to make a stand in the area of KANKIRYO or NANZANRAI (see interrogation report att Appx 'A').
7 1/2 mls NORTH of YAKOPI
- 9 As own tps have NOT had any serious opposition on the FARIA R since the JAP'S unsuccessful attack on 13 Oct and the fact that 1 Bn 78 Regt has withdrawn from the FARIA R area, it appears that the PW statement is correct and the 78 Regt has withdrawn to at least KANKIRYO leaving a small party behind to keep contact with our fwd tps.
- 10 The fact that on 15 Oct a patrol of 2/2 Sqn attacked a patrol of 30 JAPS on the track KESAWAI No. 3 (543614) to YOKOPI in area 595715 (1 1/2 mls from JAP rd head) indicates to the JAP the possibility of an attempt by our tps to cut his L of C in rear of 78 Regt.
- 11 Therefore, assuming that the JAP comd is aware of his unprotected Western flank it is very probable that 78 Regt will be withdrawn direct to NANZANRAI (approx 572818) where it can cover both routes to BOGADJIM.
- 12 After leaving KANKIRYO which is on the divide between the FARIA and MINDJIM Rivers the next apparent posn to attempt to hold an allied thrust is in the NANZANRAI area where the JAP L of C is short, whilst the allied line of supply increases over difficult country, where we would have to rely on native carriers and/or air dropping.
- 13 In addition the ground in the NANZANRAI - DAUMOINA area appears favourable for defence and one or two JAP Regts should be able to successfully hold a large allied force which would be difficult to maintain over this country.
- 14 Presuming 78 Regt will withdraw to NANZANRAI (providing allied pressure continues) it is probable that at least part of 79 Regt will be moved forward to assist, and stronger opposition and patrols should be encountered in this area.

J. H. Bunnell
Capt
G3(I) 7 AUST DIV

DISTRIBUTION

Unit

18 Aust Inf Bde	1 - 4	NGF	19 - 20
21 Aust Inf Bde	5 - 8	LHQ School	
25 Aust Inf Bde	9 - 12	of MI	21
RAE 7 Aust Div	13	GOC	22
Sigs	14	GI	23
5 Aust Div	15	G	24
9 Aust Div	16	AQ	25
2 Aust Corps	17 - 18	File	26 - 27
		Spare	28 - 31

INTERROGATION - PW 270

NAME : EGASHIRO, Tsutomu
RANK : Pte 1/Class, grenade discharger number.
AS No : 145
UNIT : CHO 2053, 78 Regt, 3 Bn, 9 Coy, 1 Pl.

HOW CAPTURED

PW was wounded when his Bn went into action on 13 Oct at KEY POINT 3 (717612). PW remained to bury dead on his own initiative, and intended to catch up with his unit later. His unit left the area 2 or 3 minutes before PW was taken prisoner.

PWs MOVEMENTS

: PW did not go to KAIAPIT with his unit because he was a malarial patient at No.2 SAIPA. PW contacted his unit at GURUMBU on 24 Sep, and accompanied it to KANKIRYO on 8 Oct to take up defence positions. They advanced the same day to IERE? village (5 miles south of KANKIRYO). On 10 Oct they went to KEY POINT 3 and encountered our tps. They retreated to a high hill behind KEY POINT 3 on 11 Oct, returning to KEY POINT 3 on 12 Oct.

STATEMENTS

ORGANISATIONS :

(i) For the attack on our tps in the FARIA RIVER the 2 and 3 Bns were organised as follows:-

2 Bn

3 Bn

6 Coy 7 Coy 5 Coy 9 Coy 3 MG Coy

PW knew nothing of 2 MG Coy.

(ii) The other Coys of 2 and 3 Bns were accounted for as follows:-

8 Coy 2 Bn : PW had no idea of its location.

10 Coy 3 Bn : Very weak in numbers because of sickness. Located somewhere in rear.

11 Coy 3 Bn : PW had NOT heard of this Coy since it left for KAIAPIT.

12 Coy 3 Bn : Moved about a month ago from this area to BOGADJIM. Present whereabouts NOT known - this Coy was almost at full strength.

(iii) 1 Bn was in adv area in the direction of WAMPUN.

(iv) 1 Bn 26 Arty Regt had been withdrawn to KANKIRYO. PW knew nothing of other Bns of this Regt.

Now
reported annihilated at KAIAPIT

LOCATION OF HQ : On 13 Aug locations were:-

- 2 Bn HQ : Above KEY POINT 3.
- 3 Bn HQ : In jungle alongside river near KEY POINT 3. PW believes it has since moved 400 metres towards GURUMBU.
- Regt HQ : OHATA village. (SOUTH of KANKIRYO).

STRENGTHS

- 1 3 Bn returned from KAIAPIT 200 strong. Before they moved from KANKIRYO for the last attack strength was 200 with 300 sick in hospital.
- 2 Strength of PW's pl before the action on 13 Oct was 16 with another 14 sick at No. 1 SAIPA.
- 3 Strength of 9 Coy after the action was less than 50.
- 4 1 Bn 26 Arty Regt had only one gun, the rest being left at HANSA BAY. No guards were left with these guns.
- 5 PW thought 78 Regt had 4 bn guns.

INTENTIONS

- 78 Regt is to make its next stand at KANKIRYO (on watershed approx 682662) or NANZANREI (7 1/2 mls North of YOKOPI. There are no prepared posns at either of these places.

PERSONALITIES

- Comd 3 bn Capt KOIKE (Maj YONEKURA killed at KAIAPIT)
- Comd 9 Coy Capt YAGUWA
- Comd 1 pl 9 Coy 2/Lieut YOHITAKE was killed at KAIAPIT. Pl now has no officer in comd.

OTHER TPS

- (i) 79 Regt: PW heard about 13 Oct that it was in BOGADJIM area but believed that it was moving forward to support 78 Regt. PW based this belief mainly on hearing arty fire from direction BOGADJIM.
- (ii) PW thinks 79 Regt is only fighting formation in BOGADJIM - MADANG area, but is not very clear on this.
- (iii) PW saw 80 Regt somewhere between HANSA BAY and ALEXISHAPEN in May. Later 80 Regt was intended to make a landing somewhere down the coast from BOGADJIM.

SUPPLY

- By barge to ALEXISHAPEN and ERIMA. By MT from ERIMA to YOKOPI. About 20 MT used.
- By packhorse from YOKOPI to KANKIRYO.
- From KANKIRYO fwd dumps are established at each Key Point.
- Provisions : are drawn from KANKIRYO twice a week and each man carries ten days rations. Ration is just enough to eat.
- Amn : Each man carried 200 rounds or 8 grenades.
- Amn secs replenish from Key Points.

DUMPS

- No dumps between KANKIRYO and YOKOPI. Main dump is at YOKOPI. There is another dump at NANZANREI but PW knows of no others between ERIMA and YOKOPI.

ROADS

- : (i) HANSA BAY to BILL BILL (BOGADJIM area) rd is passable to MT in dry weather, but in wet weather is too boggy and is impassible even to marching tps owing to numerous flooded creeks. BILL BILL to YOKOPI - All weather rd well bridged.
YOKOPI to KANKIRYO : Track 6 ft wide, but very soft - foot bridges only.
- (ii) Marching times: PW took 5 days from ERIMA to No. 1 SAIPA pulling a handcart. He believes the ordinary marching time is 2 - 3 days. No. 1 SAIPA to KANKIRYO is 1 day's march.

KNOWLEDGE OF OUR TPS : PW knew only that he was facing AUSTRALIANS. He was NOT told anything concerning strengths or units.

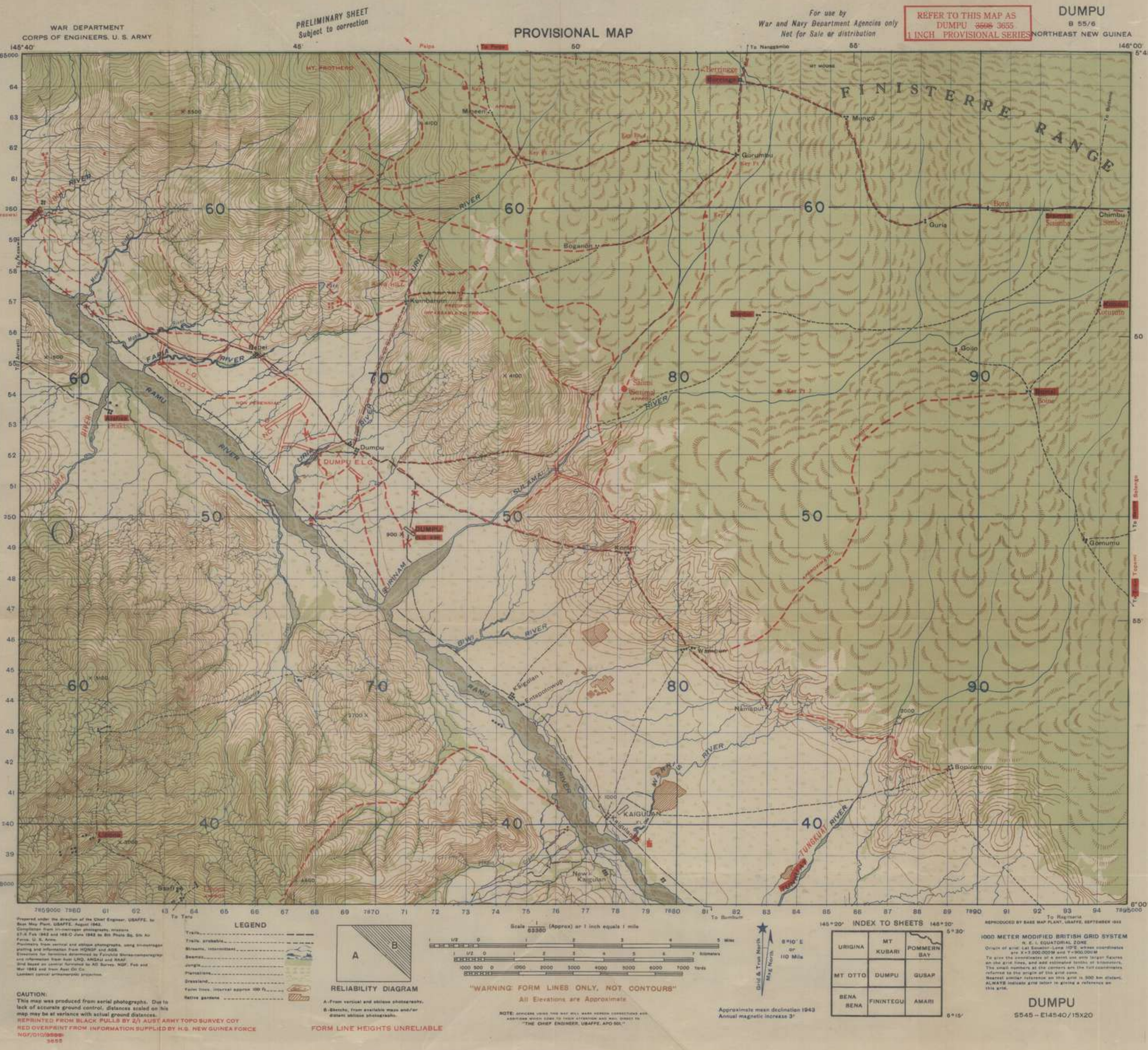
MALE

: PW had been told that 20 Div was to be relieved and sent to MANILA and expressed disappointment that this had not been done.

GENERAL

: PW is a middle school graduate, intelligent and readily answers questions. He will apparently give any information he has.

Interrogators EKV
and G K.



DUMPU

WAR DEPARTMENT
CORPS OF ENGINEERS, U. S. ARMY

PRELIMINARY SHEET
Subject to correction

PROVISIONAL MAP

For use by
War and Navy Department Agencies only
Not for Sale or distribution

REFER TO THIS MAP AS
MT KUBARI 5530 3658
1 INCH PROVISIONAL SERIES

MT KUBARI
B 55/6
NORTHEAST NEW GUINEA



Prepared under the direction of the Chief Engineer, USAFFE, by
Staff Map Plots, USAFFE, Aug 1945.
Compilation from reconnaissance photographs, missions
55-11 Feb 1945, 10-12 Apr 1945 and 13-22, 14-23 and 19-27 May 1945
by 8th Photo Sq, 5th Air Force, U. S. Army, and information from
ANZAC, ADV HQ, Property and Survey Branch Dept of Interior
ACT, Aust LHO and AGS.
Topography from vertical and oblique photographs using
in-mission plotting and Fairchild stereo comparison.
Grid based on control furnished by AD Survey, HQ, Feb and
Mar 1945 and from Aust LHO.
Reprinted from BLACK PULP by 2d AUST ARMY TOPO SURVEY COX
REDUCED FROM INFORMATION SUPPLIED BY H.Q. NEW GUINEA FORCE
This map was produced from aerial photographs. Due to
lack of accurate ground control, distances scaled on this
map may be at variance with actual ground distances.
5530 3658
3658

LEGEND
Trails, probable
Streams, intermittent
Swamps, intermittent
Ditches
Highways
Form Lines, interval approx 100 ft.
Native gardens
FORM LINE HEIGHTS UNRELIABLE

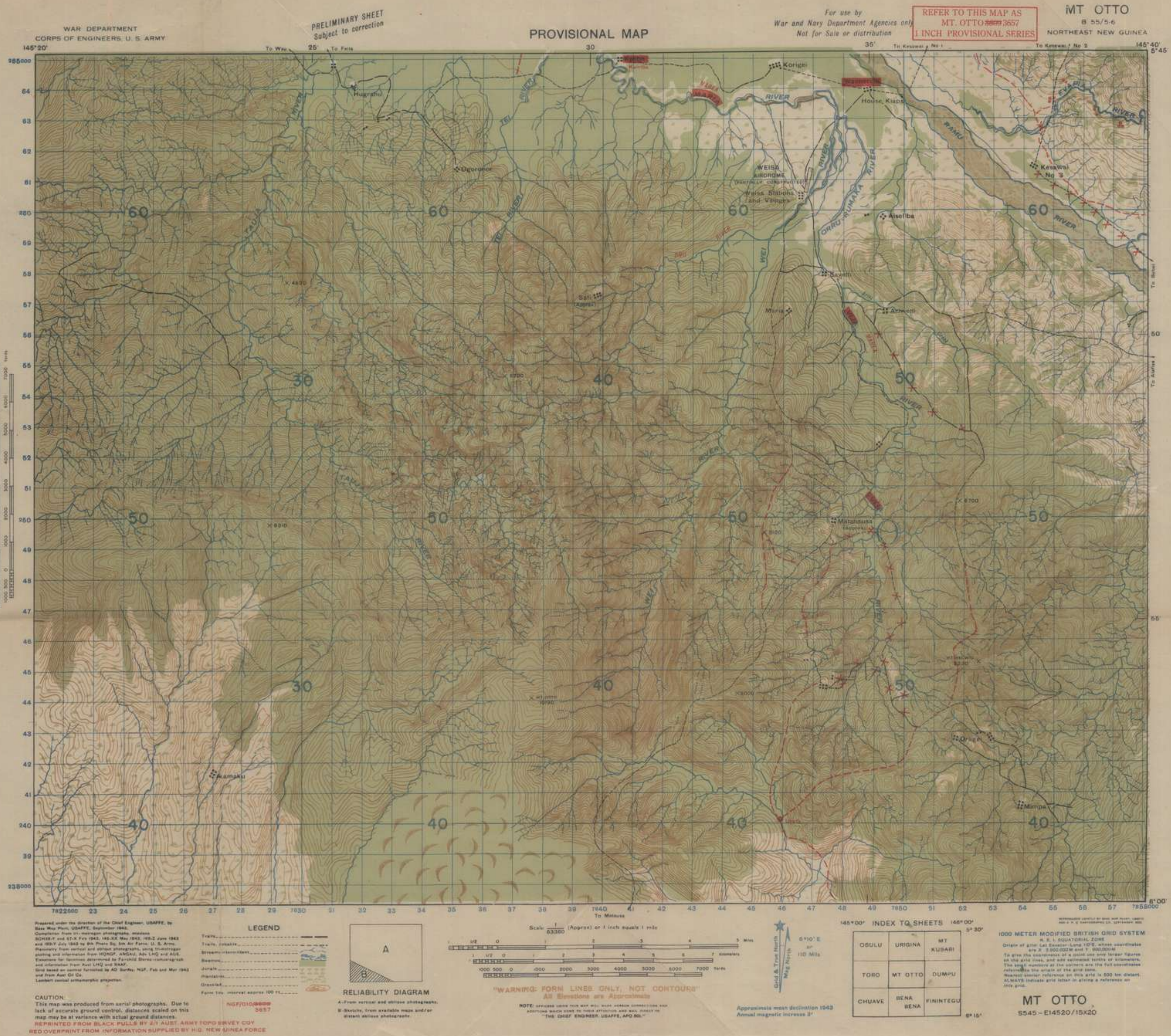
Scale (Approx) or 1 inch equals 1 mile
1 1/2 0 1 2 3 4 5 6 7 8 9 10
1000 2000 3000 4000 5000 6000 7000 Yards
"WARNING: FORM LINES ONLY, NOT CONTOURS"
NOTE: DISTANCES ON THIS MAP WILL HAVE VARIOUS CORRECTIONS AND
ADJUSTMENTS MADE TO THEM AT THE DISCRETION OF THE
CHIEF ENGINEER, USAFFE, APO SO.

Approximate mean declination 1945
Annual magnetic increase 3'

BAGASIN	BOGADJIM
URIGINA	MT KUBARI
MT OTTO	DUMPU
GURAP	POMMERH BAY

1000 METER MODIFIED BRITISH GRID SYSTEM
M. S. L. EQUATORIAL ZONE
Origin of grid: Lat Equator-Long 100°E, whose coordinates
are 2° 52' 00" S and 7° 30' 00" E.
To give the coordinates of a point use only larger figures
on the grid lines, and add estimated tenths of tenths.
The small numbers at the corners are the full coordinates
referred to the origin of the grid zone.
Nearest similar reference on this grid is 500 km distant.
ALWAYS indicate grid letter in giving a reference on
this grid.
MT KUBARI
5530 - E14540/15x20

MT OTTO



WAR DEPARTMENT
CORPS OF ENGINEERS, U. S. ARMY
145°20'

PRELIMINARY SHEET
Subject to correction
To Sepu

PROVISIONAL MAP

For use by
War and Navy Department Agencies only
Not for Sale or distribution

REFER TO THIS MAP AS
URIGINA 5530 3556 1 INCH
PROVISIONAL SERIES

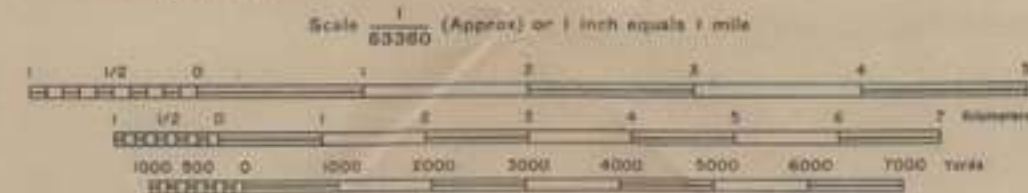
URIGINA
B 55/5-6
NORTHEAST NEW GUINEA
145°40' 5'30"



Prepared under the direction of the Chief Engineer, USAFFE, by
Base Map Plot, USAFFE, September 1943.
Compilation from intelligence photographs, missions
55-A and 57-A Feb 1943, 76-A Mar 1943, 102-2 and
102-3 June 1943, and 102-7 July 1943.
By Ben Price Co., Inc. Air Force, U. S. Army.
Photometry from vertical and oblique photographs, using micro-
photometer and information from ANNAU, Awa LHO, Ada LHO and AOB.
Elevations for features determined by Parachute Survey-comparative
and information from Awa LHO.
Grid based on system furnished by AII Survey, NGF, Feb and Mar 1943
and from Awa LHO Co.
London: Central Ordnance Survey.
CAUTION:
This map was produced from aerial photographs. Due to
lack of accurate ground control, distances scaled on this
map may be at variance with actual ground distances.
NGP 010 2404 3054

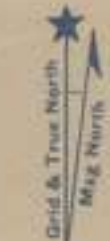
LEGEND

Trails
Trails, probable
Streams, intermittent
Swamps
Jungles
Plantations
Grasslands
Farm lines, interval approx 100 ft.



"WARNING: FORM LINES ONLY, NOT CONTOURS"
All Elevations are Approximate

NOTE: SERVICES USING THIS MAP WILL HAVE TO MAKE CORRECTIONS FOR
ADDITIONS WHICH DUE TO THEIR ATTENTION AND MAY BE MADE TO
THE CHIEF ENGINEER, USAFFE, AND SO.



Approximate mean declination 1943
Annual magnetic increase 3'

MUSAK	BAGASIN	BOGADJIM
OBULU	URIGINA	MT. KUBARI
TORO	MT OTTO	DUMPU

1000 METER MODIFIED BRITISH GRID SYSTEM
N. G. L. EQUATORIAL ZONE
Origin of grid Lat. Equator-Lake Urie, whose coordinates
are X 3,500,000M and Y 300,000M
To give the coordinates of a point and only larger figures
on the grid lines, and also estimated tenths of kilometers.
The small numbers at the corners are the full coordinates
referred to the origin of the grid zone.
Relevant similar reference on this grid is 300 km distant.
ALWAYS indicate grid and refer to giving a reference on
this grid.

URIGINA
5530 - E14520/15x20

WAR DEPARTMENT
CORPS OF ENGINEERS, U. S. ARMY

PRELIMINARY SHEET
Subject to correction

PROVISIONAL MAP

For use by
War and Navy Department Agencies only
Not for Sale or distribution

REFER TO THIS MAP AS
TORO 3615 1 INCH
PROVISIONAL SERIES

TORO
B 55/5
NORTHEAST NEW GUINEA
145°20' 5'45"

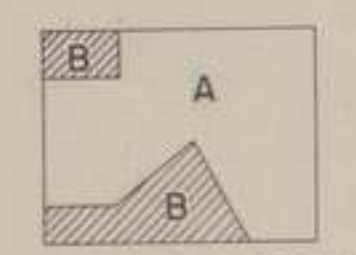


Prepared under the direction of the Chief Engineer, USAFFE, by
Base Map Plant, USAFFE, Sept 1943.
Compilation from 1:125,000 photographs, available
1942-2 June 1943, 1943-3 and 1943-4 July 1943 to
the Photo Sq. 5th Air Force, U. S. Army.
Platitudes from vertical and oblique photographs, using trigonometric
plotting and information from ANGAS, Aust LHQ, Adv LHQ and AGS.
Elevations for features determined by Fairchild Stereo-comparators
and information from Aust LHQ.
Grid based on control furnished by AD Survey, NMF, Feb and Mar 1943
and from Aust QG Co.
Lambert conical orthographic projection.
NG 7810/3615

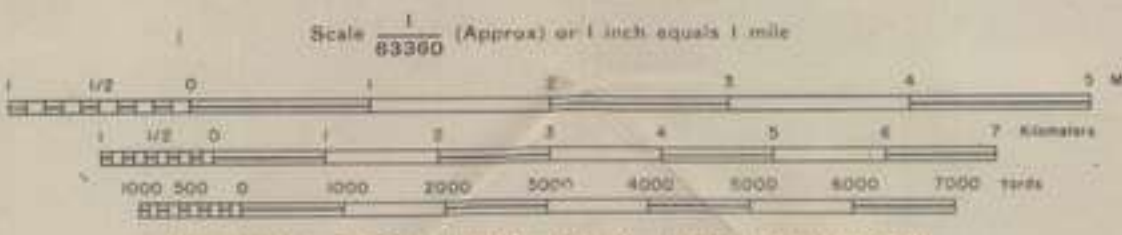
CAUTION:
This map was produced from aerial photographs. Due to
lack of accurate ground control, distances scaled on this
map may be at variance with actual ground distances.

LEGEND
Trails, probable
Streams, intermittent
Swamps, intermittent
Jungle
Plantations
Grassland
Farm lands, interval approx 100 ft.
Native gardens

RED OVERPRINT BY
21 AUST. ARMY TOPO SURVEY COY.
FROM INFORMATION SUPPLIED BY H.Q. NEW GUINEA FORCE



RELIABILITY DIAGRAM
A-From vertical and oblique photography
B-From available maps and/or
plotted oblique photographs.



"WARNING: FORM LINES ONLY, NOT CONTOURS"
All Elevations are Approximate

NOTE: Contours shown on this map were derived from the
best available data and are not necessarily accurate.
THE CHIEF ENGINEER, USAFFE, APO IDL.

Gold & True North
Magnetic North
Approximate mean declination 1943
Annual magnetic increase 3'

INDEX TO SHEETS		
BISMARCK	OBULU	URIGINA
KEROWAGI	TORO	MT OTTO
CHIMBU	CHUAVE	BENA

1000 METER MODIFIED BRITISH GRID SYSTEM
N. E. 1. EQUATORIAL ZONE
Origin of grid Lat Equator-Long 107°E, whose coordinates
are X=3,800,000M and Y=100,000M
To give the coordinates of a point use the larger figures
on the grid lines, and add estimated tenths of kilometers.
The small numbers at the corners are the full coordinates
referred to the origin of the grid zone.
Nearest similar reference on this grid is 500 km distant.
ALWAYS indicate grid letter in giving a reference on
this grid.

TORO
5545-E14500/15X20



ASTROLABE BAY

145° 20' INDEX TO SHEETS 146° 20' 5" 0'

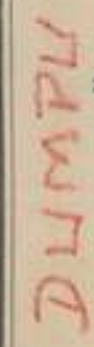
AMAIMON	MADANG	
BAGASIN	BOGADJIM	
URIGINA	MT KUBARI	POMMERN BAY

BOGADJIM
5515 - E14540/15x20



1000 METER MODIFIED BRITISH GRID SYSTEM
N. E. 1. EQUATORIAL ZONE
Origin of grid: Lat Equator-Long 110°E, whose coordinates
are X-3,900,000 M and Y-900,000 M.
To give the coordinates of a point use only larger figures
on the grid lines, and add estimated tenths of kilometers.
The small numbers at the corners are the full coordinates
referred to the origin of the grid zone.
Nearest similar reference on this grid is 500 km distant.
ALWAYS indicate grid letter in giving a reference on

Approximate mean declination 194
Annual magnetic increase 3'



Savannas (subject to invasions)
 or
 (occasionally bareland)
 Spring Well, Waterhole,
 Mangroves
 Dense Jungle Forest
 Forest
 Scattered Timber
 Plantation (rare, common)
 Secondary Growth
 Contours - Farm Lines (occasionally road during night)
 Ridges
 Cliffs

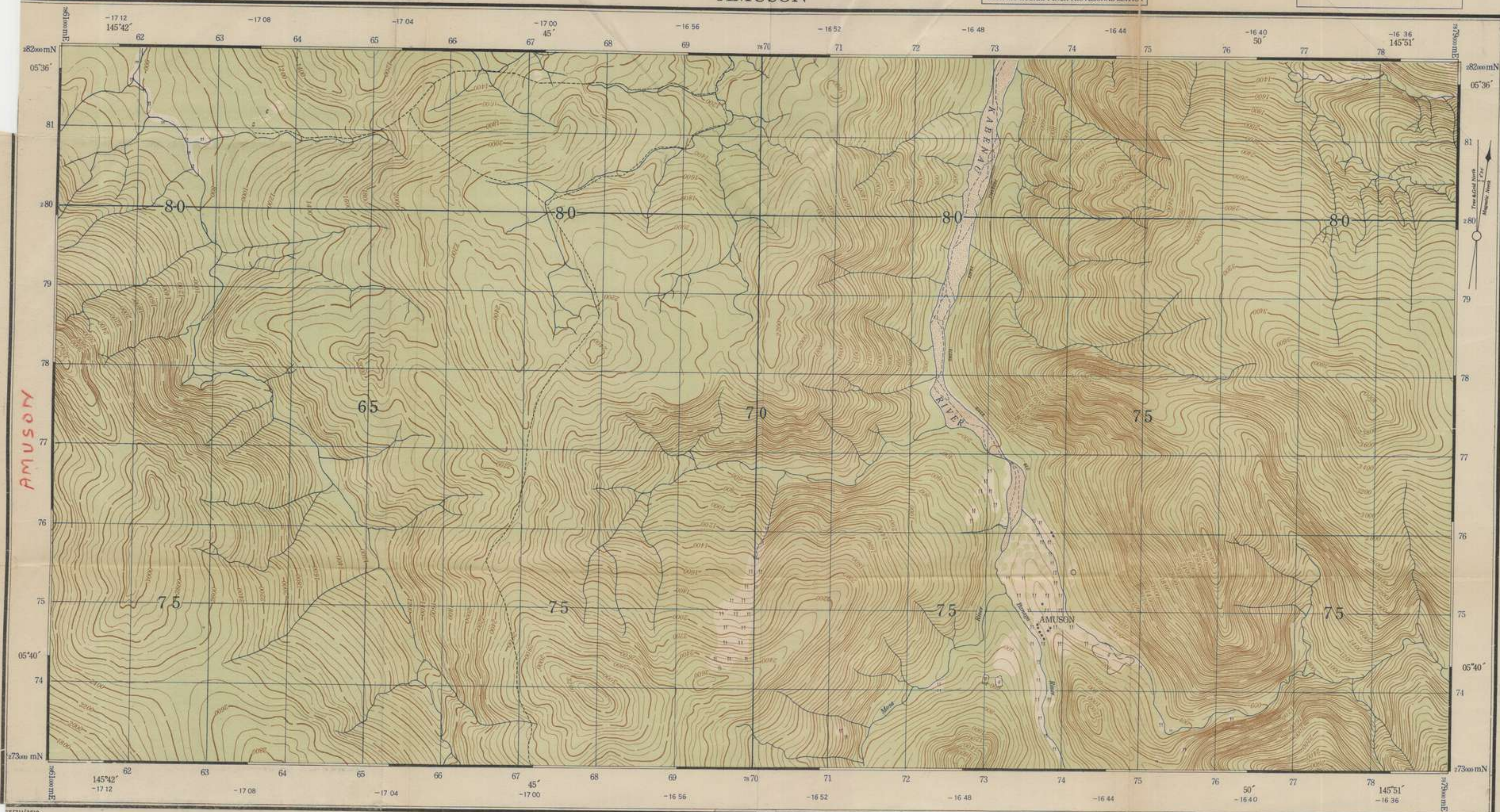
The blue figures within the borders of this map are for artillery purposes and denote corrections in minutes and seconds of mean time. There is no convergence correction in this zone.

NETHERLANDS EAST INDIES GRID
EQUATORIAL ZONE

NEW GUINEA AMUSON

NOTE: GRID ON THIS MAP DOES NOT AGREE
WITH MT KUBARI 1 INCH PROVISIONAL EDITION 4

REFER TO THIS MAP AS
AMUSON 3618 1:25,000 SERIES



Drainage (most maps show drainage)
Motor Road
Foot Track
Reported Track
Telegraph Line
Airfield
Soo Plane Base
Cemetery
Mission Station
Spot Height
Grasslands

CONTROL: Taken from Mt. Kubari 1 Inch
Provisional Edition
Lambert Conical Orthomorphic
PROJECTION: 8th. Photo. Squadron 5th. Air Force
AIR PHOTOGRAPHY: 142z, 101z
MISSIONS: 2/1 Aust Army Topo Survey Coy.
COMPILATION: 2/1 Aust Army Topo Survey Coy.
DRAWING: 2/1 Aust Army Topo Survey Coy.
REPRODUCTION: 2/1 Aust Army Topo Survey Coy.

LOCALITY DIAGRAM			
ORIGINA	MT KUBARI	POMMERN BAY	
	PAIPA		
	KUMBARUM		
MT OTTO	DUMPU	GUSAP	
	DUMPU		
BENA BENA	FININTEGU	AMARI	



The blue figures within the borders of this map are for artillery purposes and denote corrections in minutes and seconds of mean time. There is no convergence correction in this zone.

Officers using this map are requested to make any necessary additions or amendments on the map itself and forward to A.D. Survey H.Q. NGF

NOTE: Form Lines are intended to indicate shape of hill features and should not be taken as contours. Heights are only approximate.

TO GIVE A GRID REFERENCE ON THIS SHEET	
PUT AN ATTENTION TO THE NUMBER OF DECIMAL FIGURES AT THE	
CORNER AND IN SQUARES. THEY ARE FOR FORMS ONLY BY INDICATED	
PAY ATTENTION TO LARGER NUMBERS, FIGURES AND TO	
THOSE PRINTED ON FACE OF THE MAP	
POINT HOUSE	
East	North
1 2 3 4 5 6 7 8 9 10 11 12 13 14 15 16 17 18 19 20 21 22 23 24 25 26 27 28 29 30 31 32 33 34 35 36 37 38 39 40 41 42 43 44 45 46 47 48 49 50 51 52 53 54 55 56 57 58 59 60 61 62 63 64 65 66 67 68 69 70 71 72 73 74 75 76 77 78 79 80 81 82 83 84 85 86 87 88 89 90 91 92 93 94 95 96 97 98 99 100	1 2 3 4 5 6 7 8 9 10 11 12 13 14 15 16 17 18 19 20 21 22 23 24 25 26 27 28 29 30 31 32 33 34 35 36 37 38 39 40 41 42 43 44 45 46 47 48 49 50 51 52 53 54 55 56 57 58 59 60 61 62 63 64 65 66 67 68 69 70 71 72 73 74 75 76 77 78 79 80 81 82 83 84 85 86 87 88 89 90 91 92 93 94 95 96 97 98 99 100

Ref.	First Class	Second	Third	Fourth
Trig. Stations and altitude	▲ 300'	▲ 450'	▲ 600'	▲ 750'
Astronomical Station	○	○	○	○
Native Village	●	●	●	●
Unidentified Native Village	○	○	○	○
Buildings	■	■	■	■
River or perennial Stream	—	—	—	—
Non perennial Stream	—	—	—	—
Fathom Line	—	—	—	—

Swamp (color in illustration)	—
Spring Well, Waterhole	—
Mangroves	—
Dense Jungle Forest	—
Forest	—
Scattered Timber	—
Plantation (color in illustration)	—
Secondary Growth	—
Contours - Form Lines (usually not being used)	—
Ridges	—
Cliffs	—

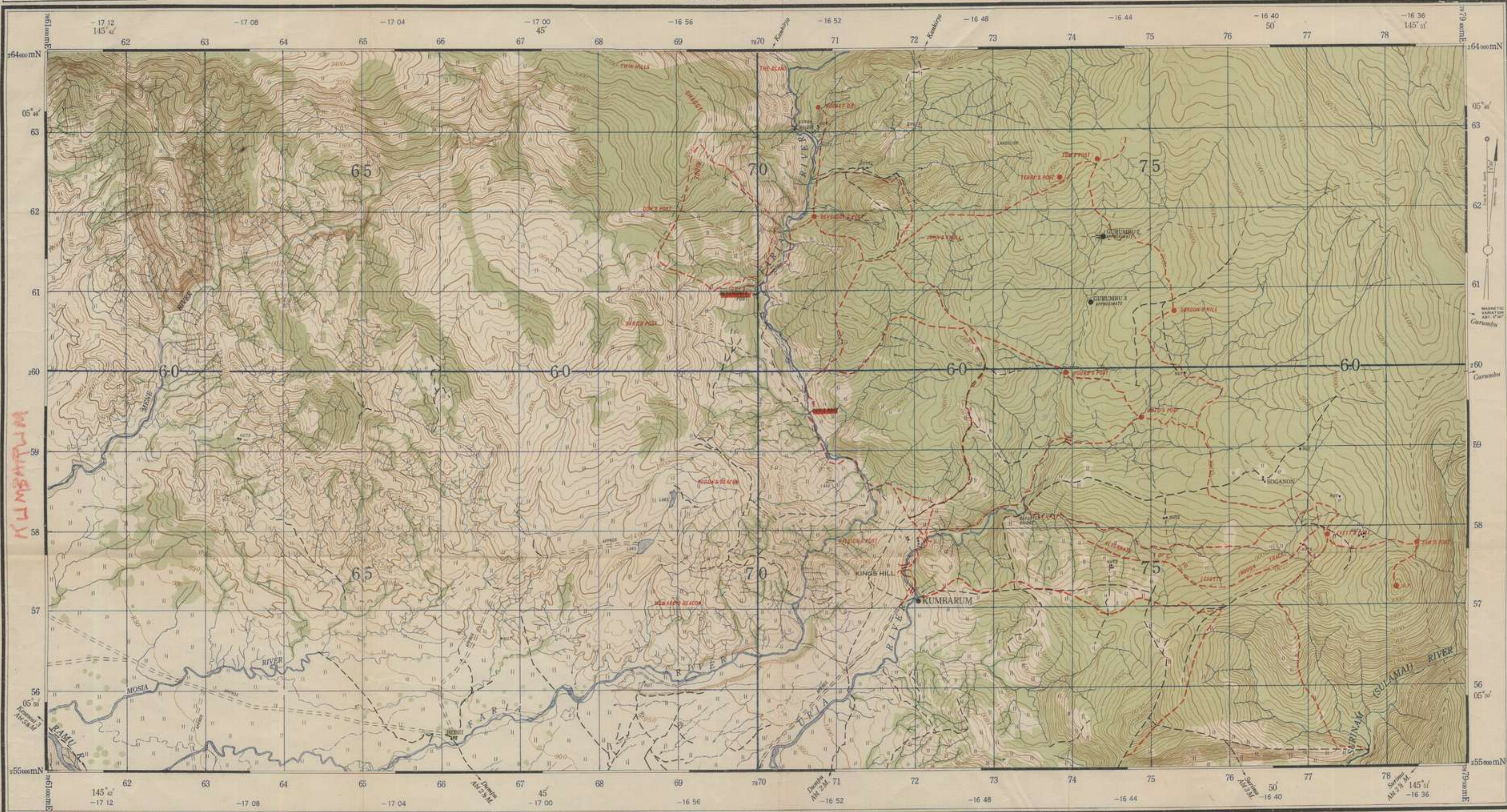
OCT 43

NETHERLANDS EAST INDIES GRID
EQUATORIAL ZONE

NEW GUINEA KUMBARUM

NOTE: GRID ON THIS MAP DOES NOT AGREE
WITH DUMPU 1 INCH PROVISIONAL EDITION

REFER TO THIS MAP AS
KUMBARUM 1:25000 SERIES
3670



Bridge (road, water, other, etc.)
Motor Road
Jeep Track
Foot Track
Reported Track
Telegraph Line
Airfield
Sea Plane Base
Cemetery
Mission Station
Spot Height
Grasslands

CONTROL: Taken from Mt. Kubari and
Dumpu 1 inch Provisional Editions
Lambert Conical Orthomorphic
PROJECTION: 8th. Photo Squadron 5th. Air Force
MISSIONS: 245y 264w 273x 277z 293y
COMPILATION and 3 Aust. Field Survey Coy. A.I.F.
DRAWING: 2/1 Aust. Army Topo. Survey Coy.
REPRODUCTION:

RED OVERPRINT BY 2/1 AUST. ARMY TOPO. SURVEY COY. DEC. 1943
FROM INFORMATION SUPPLIED BY NEW GUINEA FORCE



NEW GUINEA

AMUBA

SECOND EDITION

NETHERLANDS EAST INDIES GRID
EQUATORIAL ZONE

REFER TO THIS MAP AS
AMUBA 3617 1:25,000 SERIES
3637

CONTROL: Astronomical Fixation at Dumpu
Lat. 05° 50' 34.4" Long. 145° 44' 29.55"
by 3 Aust. Field Survey Coy. A.I.F.

PROJECTION: Lambert Conical Orthomorphic
AIR PHOTOGRAPHY: 8th Photo Squadron,
5th Air Force

MISSIONS: 57x 101z 142z 148z 192y 214x

COMPILATION
and DRAWING: 3 Aust. Fd. Svy. Coy. A.I.F.

REPRODUCTION: 2/1 Aust. Army Topo
Survey Coy

WARNING: GRID ON THIS MAP DOES
NOT AGREE WITH THE GRID SHOWN
ON AMUBA 3617 1:25,000 SERIES
WHICH IS SUPERSEDED.



LOCALITY DIAGRAM



NOTE:
This map was produced from Aerial Photographs. Due to
lack of accurate ground control, distances and heights on
this map may be at variance with actual ground distances.
The figures within the borders of this map are for artillery
purposes. The brown figures denote convergence and
the blue figures denote corrections in minutes and
seconds of mean time.

Officers using this map are requested to make
any necessary additions or amendments on the
map itself and forward to A. D. Survey H. Q. N. G. F.

NGF/711/664-2
3637

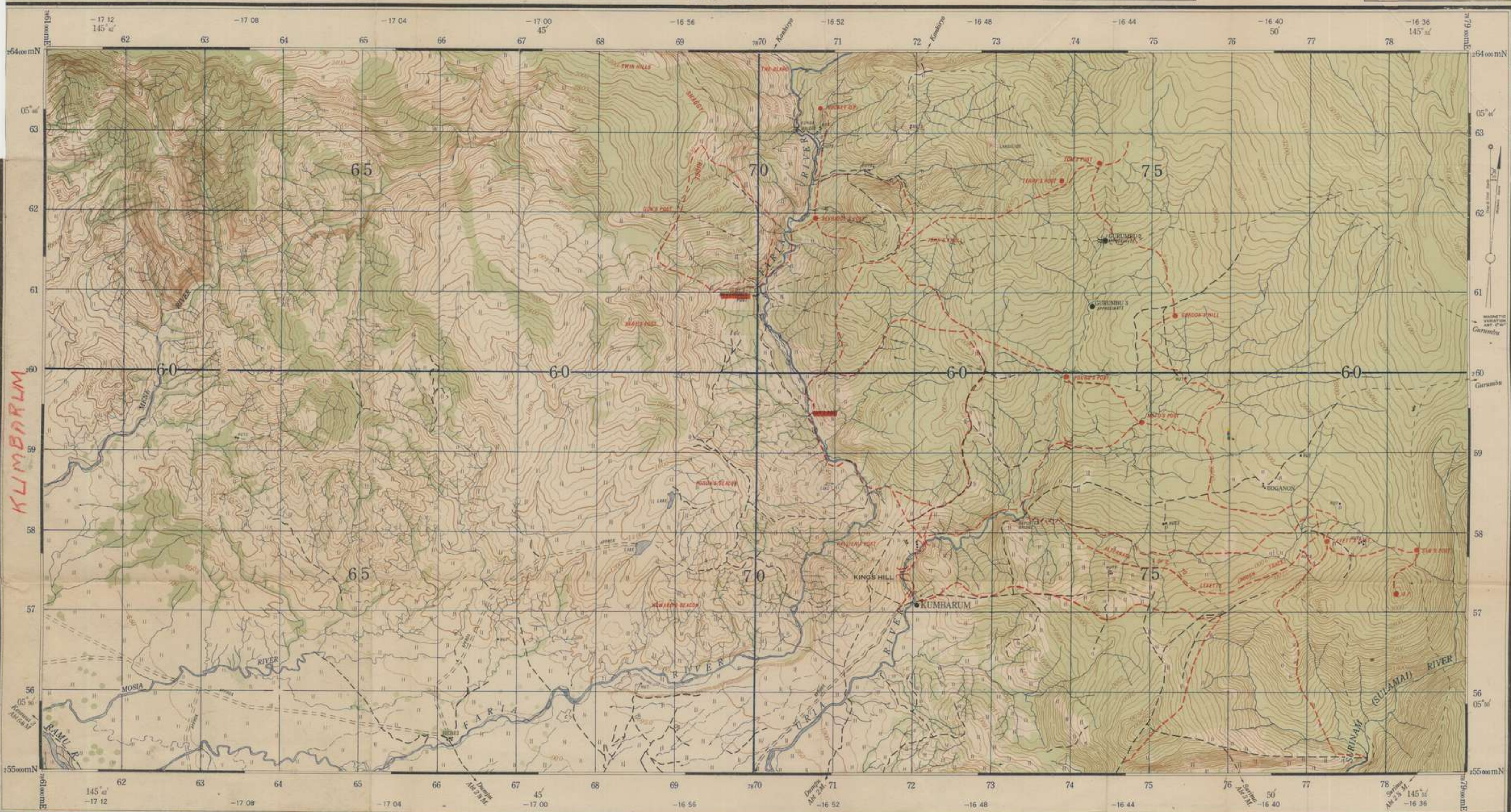
3 JAN 1944

NETHERLANDS EAST INDIES GRID
EQUATORIAL ZONE

NEW GUINEA KUMBARUM

NOTE: GRID ON THIS MAP DOES NOT AGREE
WITH DUMPU 1 INCH PROVISIONAL EDITION

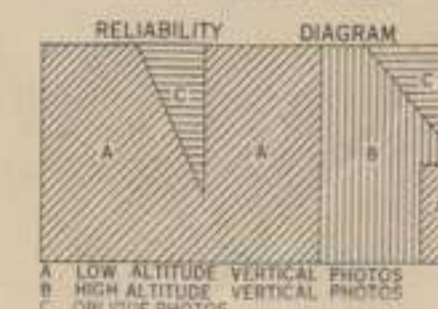
REFER TO THIS MAP AS
KUMBARUM 1:25000 SERIES
3870



Bridge (solid line with cross-ticks)
Motor Road (solid line with cross-ticks)
Foot Track (dashed line with cross-ticks)
Reported Track (dotted line with cross-ticks)
Telegraph Line (solid line with cross-ticks)
Airfield (solid line with cross-ticks)
Sea Plane Base (solid line with cross-ticks)
Cemetery (solid line with cross-ticks)
Mission Station (solid line with cross-ticks)
Spot Height (solid line with cross-ticks)
Grasslands (solid line with cross-ticks)

CONTROL: Taken from Mt. Kubari and
Dumpu 1 Inch Provisional Editions
Lambert Conical Orthomorphic
8th. Photo. Squadron 5th. Air Force
245y 264w 273x 277z 293y
3 Aust. Field Survey Coy. A.I.F.
DRAWING: 2/1 Aust. Army Topo. Survey Coy.
REPRODUCTION: 2/1 Aust. Army Topo. Survey Coy.

RED OVERPRINT BY 2/1 AUST. ARMY TOPO. SURVEY COY. DEC. 1943
FROM INFORMATION SUPPLIED BY NEW GUINEA FORCE



TO GIVE A GRID REFERENCE ON THIS SHEET
FOR AN OBJECT IN THE MAP, THE OBJECT MUST BE
LOCATED BY THE FOLLOWING METHOD:
1. PAY ATTENTION TO THE MAP'S GRID REFERENCE AND TO
THE OBJECT'S POSITION ON THE MAP.
2. NOTE THE OBJECT'S GRID REFERENCE AND TO
THE OBJECT'S POSITION ON THE MAP.
3. NOTE THE OBJECT'S GRID REFERENCE AND TO
THE OBJECT'S POSITION ON THE MAP.

Officers using this map are requested to make any necessary additions or
amendments on the map itself and forward to A.D. Survey H.Q. NGF

NOTE Form Lines are intended to indicate shape of hill features and
should not be taken as contours. Heights are only approximate.

Ref. Trig. Stations and altitude
First Class
Second
Third
Fourth
Astronomical Station
Native Village
Unidentified Native Village
Building
River or perennial Stream
Non perennial Stream
Fathom Line

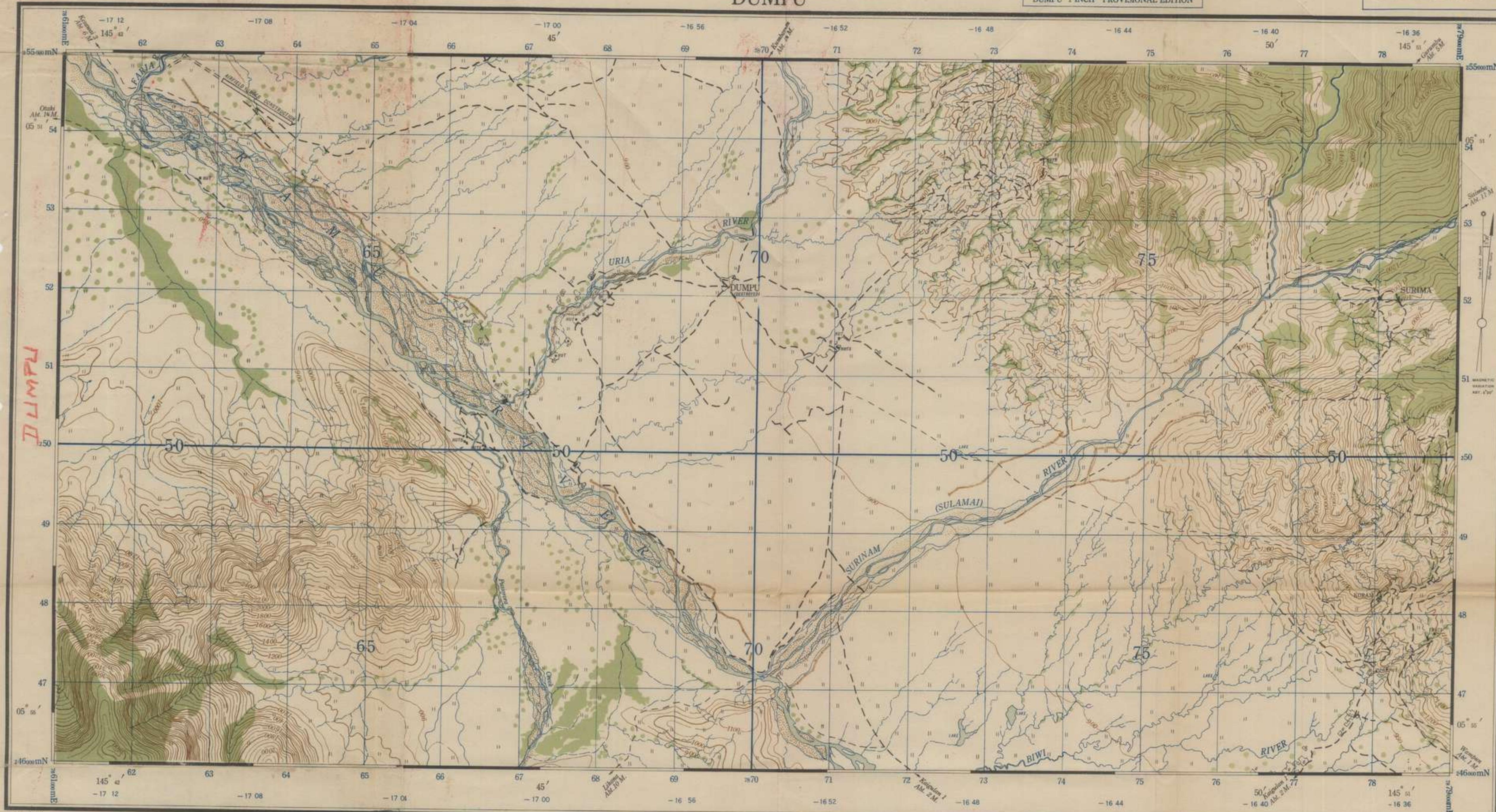
Swamp (solid line with cross-ticks)
Spring/Well/Waterhole
Mangroves
Dense Jungle Forest
Scattered Timber
Plantation (solid line with cross-ticks)
Secondary Growth
Contours - Form Lines (solid line with cross-ticks)
Ridges
Cliffs

NETHERLANDS EAST INDIES GRID
EQUATORIAL ZONE

NEW GUINEA DUMPU

NOTE: GRID ON THIS MAP AGREES WITH
DUMPU 1 INCH PROVISIONAL EDITION

REFER TO THIS MAP AS
DUMPU 3621 1:25000 SERIES



Bridge (solid line where shown otherwise)
Motor Road
Jeep Track
Foot Track
Reported Track
Telegraph Line
Airfield
Sea Plane Base
Cemetery
Mission Station
Spot Height
Grasslands

CONTROL:
PROJECTION: Taken from Dumpu 1 Inch
Provisional Edition
Lambert Conical Orthomorphic
AIR PHOTOGRAPHY: 8th. Photo. Squadron 5th. Air Force
MISSIONS: 264 w 167z 78x 277z 285x
COMPILATION: 3 Aust. Field Survey Coy. A.I.F.
DRAWING: 3 Aust. Field Survey Coy. A.I.F.
REPRODUCTION: 2/1 Aust. Army Topo. Survey Coy.

LOCALITY DIAGRAM		
URIGINA	MT KUBARI	POMMERN BAY
AMUSON	PAIPA	
KUMBARUM		
MT OTTO	DUMPU	GUSAP
BENA BENA	FININTEGU	AMARI



Officers using this map are requested to make any necessary additions or amendments on the map itself and forward to A.D. Survey H.Q. NGF

NOTE Form Lines are intended to indicate shape of hill features and should not be taken as contours. Heights are only approximate.

The blue figures within the borders of this map are for artillery purposes and denote corrections in minutes and seconds of mean time. There is no convergence correction in this zone.

TO GIVE A GRID REFERENCE ON THIS SHEET
PAY ATTENTION TO THE SMALLER TO LARGER FIGURES IN THE
MARGINS AND IN THE GRID. THEY ARE THE CORRECT FIGURES TO
BE USED IN THE GRID.

GRID REFERENCE: 17 00 45 50 51 52 53 54

Red
Trig. Stations
and altitude
First Class
Second
Third
Fourth
Astronomical Station
Native Village
Unidentified Native Village
Buildings
River or perennial Stream
Non perennial Stream
Fathom Line

Swamp (outlet in mountain)
Spring Well, Waterhole
Mangroves
Dense Jungle Forest
Forest
Plantation
Secondary Growth
Contours - Form Lines (numbers and living up to)
Ridges
Cliffs

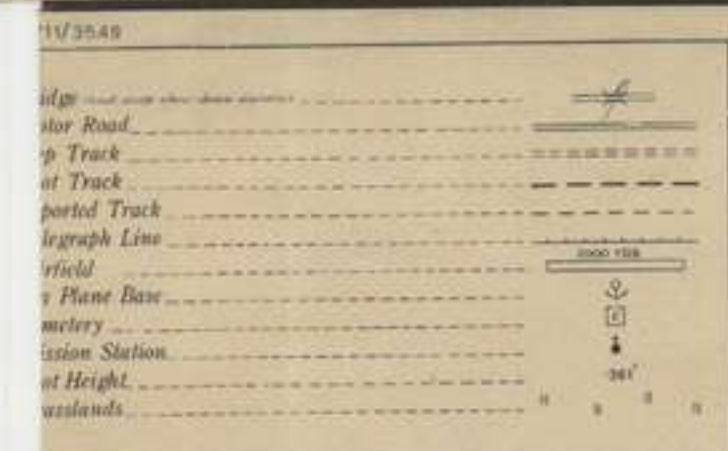
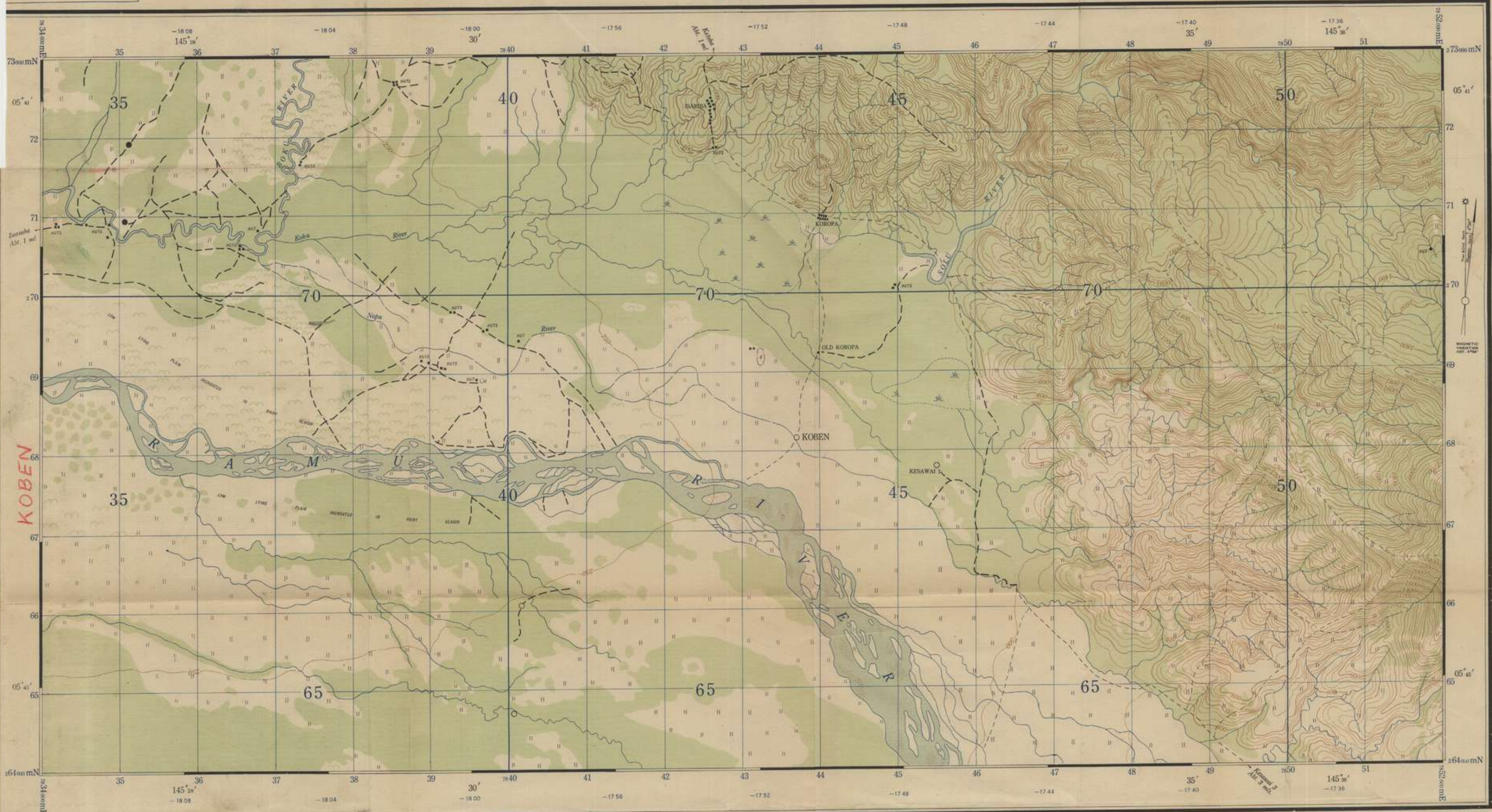
OCT. 1943

ETHERLANDS EAST INDIES GRID
EQUATORIAL ZONE

NEW GUINEA KOBEN

WARNING: GRID ON THIS MAP DOES NOT AGREE WITH
THAT SHOWN ON URIGINA 3656 AND MT. OTTO 3657
1 INCH TO 1 MILE PROVISIONAL SERIES

REFER TO THIS MAP AS
KOBEN 3549 1:25000 SERIES



CONTROL: Astronomical Fixation at Dumpu
Lat. 05°50'34.4" Long. 145°44'29.55"
Triangulation and Traverse
by 3 Aust Field Survey Coy AIF

PROJECTION: Lambert Conical Orthomorphic

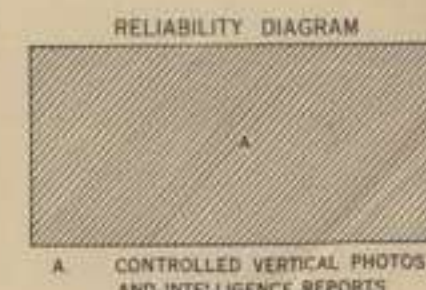
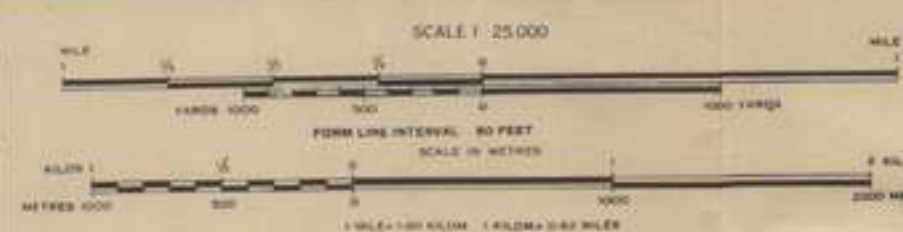
AIR PHOTOGRAPHY: 8th Photo Squadron, 5th Air Force

MISSIONS: 82x 142x 148x

COMPILATION and 3 Aust Field Survey Coy AIF

DRAWING:

REPRODUCTION: 2/1 Aust Army Topo Survey Coy



TO GIVE A GRID REFERENCE ON THIS SHEET
PAY ATTENTION TO THE SMALLER FIGURES AT THE
CORNER AND IN MARGINS THEY ARE THE SAME FOR ALL SHEETS
PAY ATTENTION TO LARGER MARGINAL FIGURES AND TO
THOSE PRINTED ON FACE OF THE MAP

POINT KOBEN (VILLAGE)

NOTE: METRE SQUARE - 1000 METRES TO NEAREST - 100
NEAREST SQUARE REFERENCE DISTANT 100 KILOMETRES

Officers using this map are requested to make any necessary additions or
amendments on the map itself and forward to A.D. Survey H.Q. NGF

NOTE Form Lines are intended to indicate shape of hill features and
should not be taken as contours. Heights are only approximate.

Reef
Trig. Stations
and altitude
First Class
Second
Third
Fourth
Astronomical Station
Native Garden
Native Village
Undertaken Native Village
Buildings
River or perennial Stream
Non perennial Stream
Fathom Line

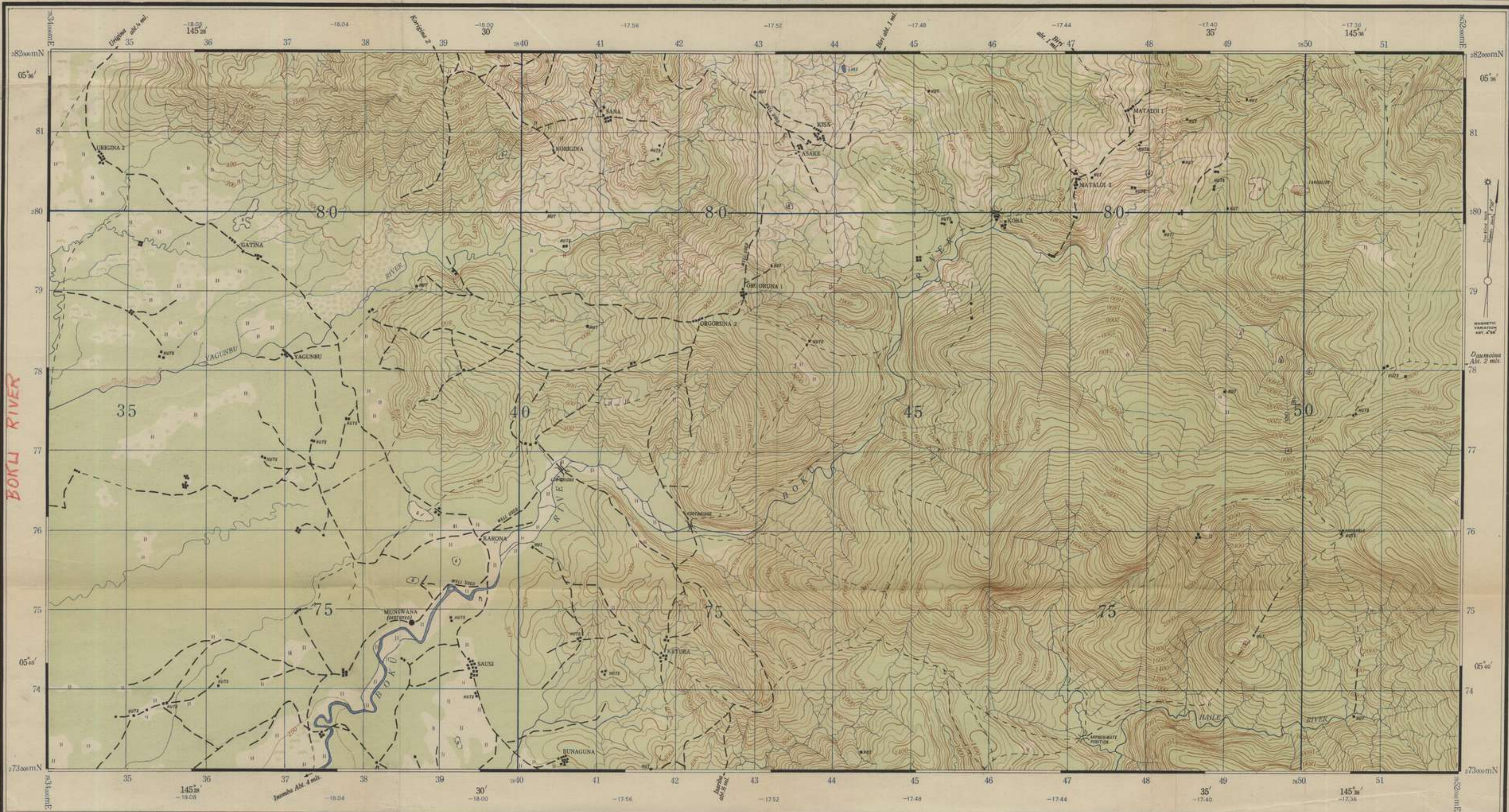
Swamp
Spring Well, Waterhole
Mangroves
Dense Jungle Forest
Forest
Scattered Timber
Plantation
Secondary Growth
Contours - Form Lines
Ridges
Cliffs

NETHERLANDS EAST INDIES GRID
EQUATORIAL ZONE

NEW GUINEA BOKU RIVER

WARNING: GRID ON THIS MAP DOES NOT AGREE
WITH THAT SHOWN ON URIGINA, 3556
1 INCH TO 1 MILE PROVISIONAL SERIES

REFER TO THIS MAP AS
BOKU RIVER 3547 1:25,000 SERIES

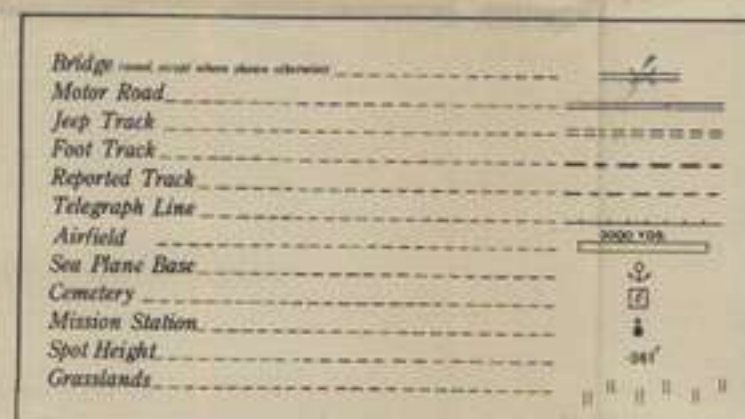


NGI/711/3547
CONTROL:

Astronomical Fixation at Dumpu
Lat. 05°50'34.4" Long. 145°44'29.55"
by 3 Aust. Field Survey Coy. A.I.F.
Extended from Koben 3549
1:25,000 series.

PROJECTION:
Lambert Conical Orthomorphic
AIR PHOTOGRAPHY: 8th Photo Squadron, 5th Air Force
MISSIONS:
101x 105xx 148x 192y 262y
COMPILATION &
3 Aust. Field Survey Coy. A.I.F.
DRAWING:
with the aid of Air Photographs
and Intelligence Reports.

REPRODUCTION:
2/1 Aust Army Topo Survey Coy



LOCALITY DIAGRAM			
MUSAK	BAGASIN	BOGADJIM	
	URIGINA	MT. KUBARI	
OBULU		AMUNDON	
		PAIRA	
TORO	MT. OTTO	DUMPU	



Note: This map was produced from Aerial Photographs. Due to lack of accurate ground control, distances and heights on this map may be at variance with actual ground distances.

The figures within the borders of this map are for artillery purposes. The brown figures denote convergence and the blue figures denote corrections in minutes and seconds of mean time.

Officers using this map are requested to make any necessary additions or amendments on the map itself and forward to A.D. Survey H.Q. N.G.F.

TO GIVE A GRID REFERENCE ON THIS SHEET			
PAY ATTENTION TO THE SMALLER OR ORIGINALLY PRINTED AT THE			
DRAWING AND IN WHICH THEY ARE FOR THE FIRST TIME TO BE			
PAY ATTENTION TO THE LARGER FIGURES AND TO			
THOSE PRINTED ON FACE OF THE MAP			
POINT MUNGWANA (VILLAGE)			
EAST			
Take each step of 1000m in which			
you are and read the figure			
printed opposite this line in			
or read straight on the line			
and on the face of the map			
you will find the			
distance in meters			
DISTANCE 387 748			
UNIT: METRE SQUARE 1000 REFERENCE TO NEAREST 100			
NEAREST CIRCULAR REFERENCE DISTANCE 100 KILOMETRES			

Ref.	First Class	▲ 905'
Trig. Stations	Second	▲ 852'
and altitude	Third	○ 529'
	Fourth	● 202'
Astronomical Station		+
Native Garden		□
Native Village		○
Unidentified Native Village		●
Buildings		■
River or perennial Stream		—
Non perennial Stream		- - -
Fathom Line		—

Swamp	(not in contour)	—
Spring Well, Waterhole		—
Mangroves		—
Dense Jungle Forest		—
Forest		—
Scattered Timber		—
Plantation (not in contour)		—
Secondary Growth		—
Contours - Form Lines (not in contour)		—
Ridges		—
Cliffs		—

JAN. 1944

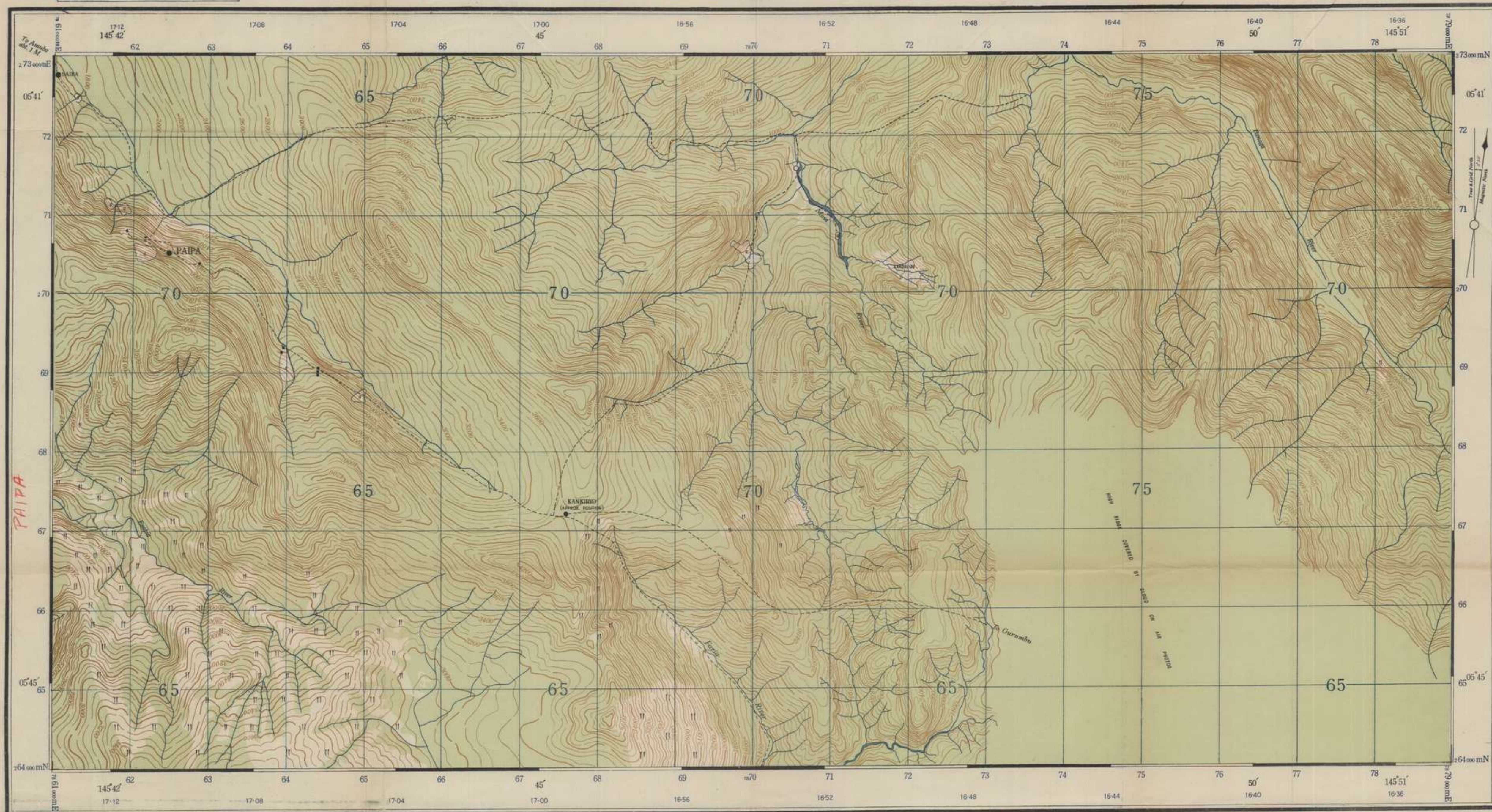


NETHERLANDS EAST INDIES GRID
EQUATORIAL ZONE

NEW GUINEA PAIPA

NOTE: GRID ON THIS MAP DOES NOT AGREE
WITH MT KUBARI 1 INCH PROVISIONAL EDITION

REFER TO THIS MAP AS
PAIPA 8619 1:25,000 SERIES

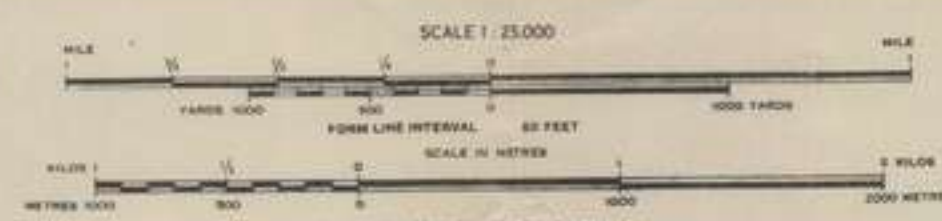


NGP/711/3610

Bridge (road, except where shown otherwise)
Motor Road
Foot Track
Reported Track
Telegraph Line
Airfield
Sea Plane Base
Cemetery
Mission Station
Spot Height
Grasslands

CONTROL: Taken from Mt. Kubari 1 Inch
Provisional Edition
PROJECTION: Lambert Conical Orthomorphic
AIR PHOTOGRAPHY: 8th. Photo. Squadron 5th. Air Force
MISSIONS: 142x, 233y
COMPILATION: 2/1 Aust Army Topo Survey Coy.
REPRODUCTION: 2/1 Aust Army Topo Survey Coy.

LOCALITY DIAGRAM			
URIGINA	MT KUBARI	POMMERN BAY	
AMUSON			
KUMBARUM			
MT OTTO	DUMPU	GUSAP	
	DUMPU		
BENA BENA	FINNTEGU	AMARI	



The blue figures within the borders of this map are for artillery purposes and denote corrections in minutes and seconds of mean time. There is no convergence correction in this zone.

Officers using this map are requested to make any necessary additions or amendments on the map itself and forward to A.D. Survey H.Q. NGF

NOTE Form Lines are intended to indicate shape of hill features and should not be taken as contours. Heights are only approximate.

TO GIVE A GRID REFERENCE ON THIS SHEET
PAY ATTENTION TO THE FOLLOWING: 1. THE FORM OF THE SHEET
2. THE POSITION OF THE SHEET
3. THE POSITION OF THE SHEET
4. THE POSITION OF THE SHEET
5. THE POSITION OF THE SHEET
6. THE POSITION OF THE SHEET
7. THE POSITION OF THE SHEET
8. THE POSITION OF THE SHEET
9. THE POSITION OF THE SHEET
10. THE POSITION OF THE SHEET
11. THE POSITION OF THE SHEET
12. THE POSITION OF THE SHEET
13. THE POSITION OF THE SHEET
14. THE POSITION OF THE SHEET
15. THE POSITION OF THE SHEET
16. THE POSITION OF THE SHEET
17. THE POSITION OF THE SHEET
18. THE POSITION OF THE SHEET
19. THE POSITION OF THE SHEET
20. THE POSITION OF THE SHEET
21. THE POSITION OF THE SHEET
22. THE POSITION OF THE SHEET
23. THE POSITION OF THE SHEET
24. THE POSITION OF THE SHEET
25. THE POSITION OF THE SHEET
26. THE POSITION OF THE SHEET
27. THE POSITION OF THE SHEET
28. THE POSITION OF THE SHEET
29. THE POSITION OF THE SHEET
30. THE POSITION OF THE SHEET
31. THE POSITION OF THE SHEET
32. THE POSITION OF THE SHEET
33. THE POSITION OF THE SHEET
34. THE POSITION OF THE SHEET
35. THE POSITION OF THE SHEET
36. THE POSITION OF THE SHEET
37. THE POSITION OF THE SHEET
38. THE POSITION OF THE SHEET
39. THE POSITION OF THE SHEET
40. THE POSITION OF THE SHEET
41. THE POSITION OF THE SHEET
42. THE POSITION OF THE SHEET
43. THE POSITION OF THE SHEET
44. THE POSITION OF THE SHEET
45. THE POSITION OF THE SHEET
46. THE POSITION OF THE SHEET
47. THE POSITION OF THE SHEET
48. THE POSITION OF THE SHEET
49. THE POSITION OF THE SHEET
50. THE POSITION OF THE SHEET
51. THE POSITION OF THE SHEET
52. THE POSITION OF THE SHEET
53. THE POSITION OF THE SHEET
54. THE POSITION OF THE SHEET
55. THE POSITION OF THE SHEET
56. THE POSITION OF THE SHEET
57. THE POSITION OF THE SHEET
58. THE POSITION OF THE SHEET
59. THE POSITION OF THE SHEET
60. THE POSITION OF THE SHEET
61. THE POSITION OF THE SHEET
62. THE POSITION OF THE SHEET
63. THE POSITION OF THE SHEET
64. THE POSITION OF THE SHEET
65. THE POSITION OF THE SHEET
66. THE POSITION OF THE SHEET
67. THE POSITION OF THE SHEET
68. THE POSITION OF THE SHEET
69. THE POSITION OF THE SHEET
70. THE POSITION OF THE SHEET
71. THE POSITION OF THE SHEET
72. THE POSITION OF THE SHEET
73. THE POSITION OF THE SHEET
74. THE POSITION OF THE SHEET
75. THE POSITION OF THE SHEET
76. THE POSITION OF THE SHEET
77. THE POSITION OF THE SHEET
78. THE POSITION OF THE SHEET
79. THE POSITION OF THE SHEET
80. THE POSITION OF THE SHEET
81. THE POSITION OF THE SHEET
82. THE POSITION OF THE SHEET
83. THE POSITION OF THE SHEET
84. THE POSITION OF THE SHEET
85. THE POSITION OF THE SHEET
86. THE POSITION OF THE SHEET
87. THE POSITION OF THE SHEET
88. THE POSITION OF THE SHEET
89. THE POSITION OF THE SHEET
90. THE POSITION OF THE SHEET
91. THE POSITION OF THE SHEET
92. THE POSITION OF THE SHEET
93. THE POSITION OF THE SHEET
94. THE POSITION OF THE SHEET
95. THE POSITION OF THE SHEET
96. THE POSITION OF THE SHEET
97. THE POSITION OF THE SHEET
98. THE POSITION OF THE SHEET
99. THE POSITION OF THE SHEET
100. THE POSITION OF THE SHEET

Reef
Trig. Stations and altitude
Astronomical Station
Native Garden
Native Village
Unidentified Native Village
Buildings
River or perennial Stream
Non perennial Stream
Fathom Line

Swamp (subject to inundation)
Spring Well, Waterhole
Mangroves
Dense Jungle Forest
Forest
Scattered Timber
Plantation (subject to inundation)
Secondary Growth
Contours Form Lines (subject to inundation)
Ridges
Cliffs

OCT 43