

AWM52
2nd Australian Imperial Force and
Commonwealth Military Forces unit war
diaries, 1939-45 War

Item number: 8/2/26

26 Infantry Brigade
January 1943, Maps

THIS REFERS TO (BLUE) OVERPRINT DETAIL
 (GREEN)

THIS REFERS TO (BLUE) OVERPRINT DETAIL
 (GREEN)

ARMY AIR PHOTO INTERPRETATION UNIT M.E.
 MILITARY CONVENTIONAL SIGNS USED IN ANNOTATION OF AIR PHOTOS.

C.D. Position with number of guns	☉	Dunco Ammunition	⊙
H.Q. Position with number of guns	⊙	Dunco Petrol	⊙
A.A. Position with number of guns (Heavy)	⊙	Dunco Stores unknown	⊙
A.A. Position with number of guns (Light)	⊙	Amalgam with shape	⊙
A.T. Position with number of guns	⊙	Aircraft wreckage	⊙
M.G. Position	⊙	Aircraft blast shelter	⊙
Mortar position with calibre	⊙	Underground cable	⊙
Infantry Position probably containing AT guns and M.G.s	⊙	Telephone wires on poles	⊙
W.P.s. Fire trenches or breastworks	⊙	Telephone wires on ground	⊙
H.Q.	⊙	MT. with numbers	⊙
Trench without W.P.s.	⊙	AT V's with numbers. Tracked	⊙
DE trenches	⊙	AT V's with numbers. Wheeled	⊙
New construction or digging	⊙	Tracks. Foot paths	⊙
Beating	⊙	Water tower	⊙
Stone or brick blockhouse	⊙	Water point	⊙
RF box	⊙	Water panicle	⊙
Building stone or brick	⊙	Listening post	⊙
H.A.s.	⊙	Observation post	⊙
Tents	⊙	Close-vision tower	⊙
Camp with pits and no tents	⊙	WT. Station	⊙
Digout	⊙	Wireless tower pole	⊙
Relief	⊙	Occupied	⊙
Wire unclassified	⊙	Unoccupied	⊙
Wire concertina	⊙	Supposed	⊙
Dragon's teeth with number of rows	⊙	Under vehicle	⊙
Headlog	⊙	Dunco barrel	⊙
AT trench	⊙	Dunco fuel	⊙
AT Mines	⊙	Dunco fuel	⊙
Light trail	⊙	Dunco fuel	⊙
Road block	⊙	Underground	⊙
Strong point	⊙	Searchlight	⊙
H.Q. Suspected and unclassified	⊙		

THIS REFERS TO ORANGE
 OVERPRINT DETAIL

LEGEND

Confirmed Minefield, Long	⊙
Confirmed Minefield, Short	⊙
Unconfirmed Minefield, Long	⊙
Unconfirmed Minefield, Short	⊙

Produced by G.S.I. (4) Eighth Army.

135280



AT THE CENTRE OF THIS SHEET
MAGNETIC NORTH IS 0° 07' WEST OF TRUE NORTH
ANNUAL CHANGE 0° 04' EASTWARDS
GRID NORTH IS 0° 58' E. OF TRUE N. AT THE W. EDGE OF THIS SHEET.
GRID NORTH IS 0° 59' E. OF TRUE N. AT THE E. EDGE OF THIS SHEET.

SEE BACK FOR MILITARY CONVENTIONAL SIGNS USED ON OVERPRINT.

IN DEFENDED LOCALITIES A PROPORTION OF THE SIGNS FOR A/T GUNS, M/GS AND MORTARS REPRESENTS ALTERNATIVE POSITIONS.





AT THE CENTRE OF THIS SHEET
MAGNETIC NORTH IS 0° 04'
WEST OF TRUE NORTH
ANNUAL CHANGE 0° 04' EASTWARDS
GRID NORTH IS 0° 33' E. OF TRUE N.
AT THE W. EDGE OF THIS SHEET.
GRID NORTH IS 0° 56' E. OF TRUE N.
AT THE E. EDGE OF THIS SHEET.

SEE BACK FOR MILITARY
CONVENTIONAL SIGNS
USED ON OVERPRINT

IN
DEFENDED LOCALITIES
A PROPORTION OF THE
SIGNS FOR A/T GUNS,
M/Gs AND MORTARS
REPRESENTS ALTERNATIVE
POSITIONS.



SCALE 1:25,000

THIS REFERS TO (BLUE) OVERPRINT DETAIL
(GREEN)

ARMY AIR PHOTO INTERPRETATION UNIT M.E.
MILITARY CONVENTIONAL SIGNS USED IN ANNOTATION OF AIR PHOTOS

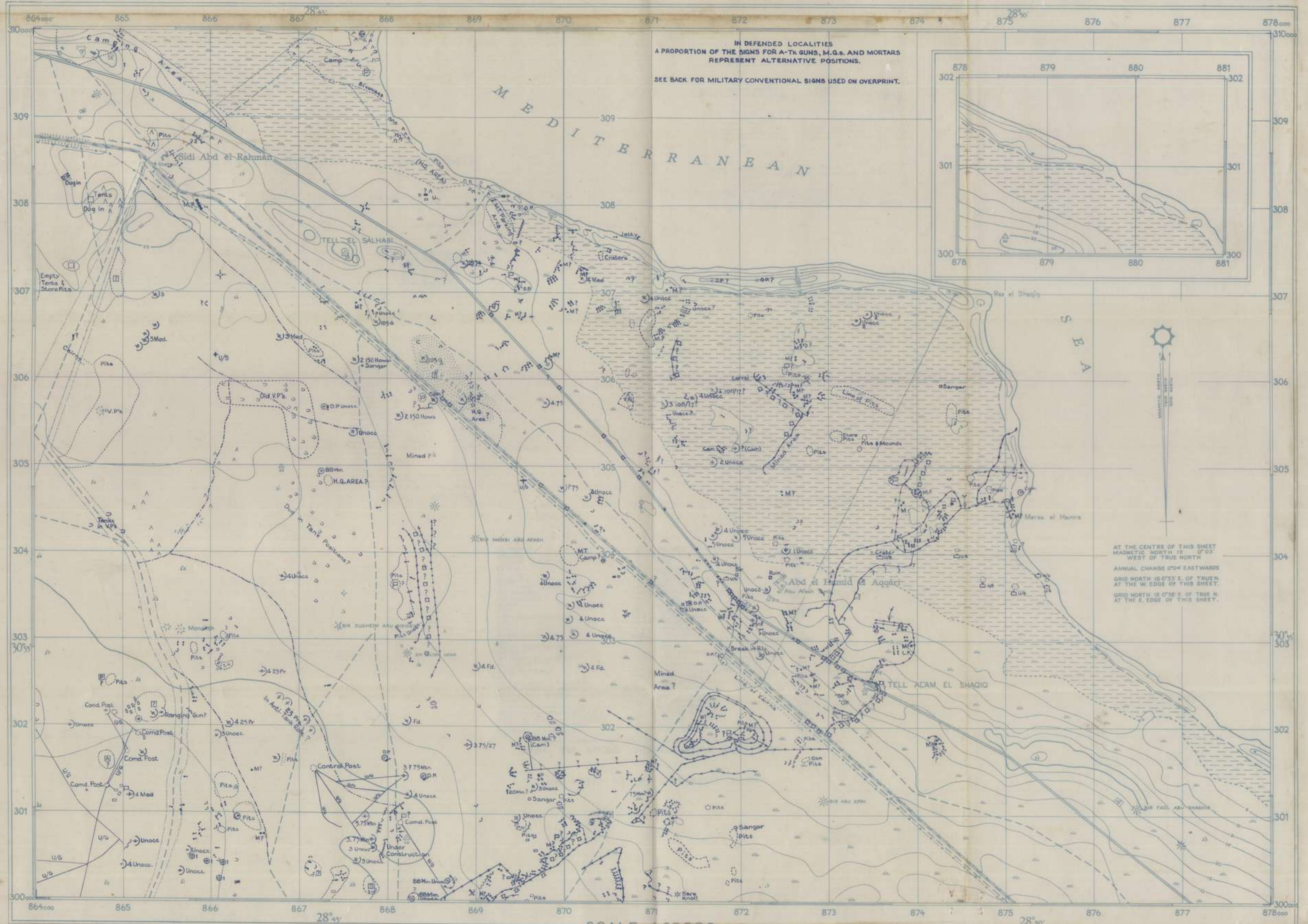
CD Position with number of guns	☉	Dumps - Ammunition	⊙
FD Gun Position with number of guns	☉	Dumps - Fuel	⊙
AA Position with number of guns - Heavy	☉	Dumps - Stores unknown	⊙
AA Position with number of guns - Light	☉	Airplane with shape	☉
AT Position with number of guns	☉	Airplane, wrecked	☉
MG Position	☉	Aircraft's head, shelter	☉
Mortar position with calibre	☉	Under ground cable	☉
Infantry Position (usually containing AT guns and MGs)	☉	Telephone wires on poles	☉
WPs (Wire trenches or chestworks)	☉	Telephone wires on ground	☉
Wall	☉	WT with number's	☉
Trench without WPs	☉	AT V's with number's - Tracked	☉
DE trenches	☉	AT V's with number's - Wheeled	☉
New construction or digging	☉	Vehicle pits	☉
Blasting	☉	Tracks - Foot paths	☉
Stone or brick backhouse	☉	Water tower	☉
RE box	☉	Water point	☉
Building, stone or brick	☉	Water dam	☉
Rubbish	☉	Warning post	☉
Tanks	☉	Observation post	☉
Caecis with pits and no tanks	☉	Observation tower	☉
Dugout	☉	WT Station	☉
Hospital	☉	Wireless tower code	☉
Wire unclassified	☉	Occupied	☉
Wire concealed	☉	Unoccupied	☉
Diggins (teeth with number of rows)	☉	Suspected	☉
Hedging	☉	Under cables	☉
AT trench	☉	Dust mounds	☉
AT mine	☉	Camouflaged	☉
Tank trap	☉	Dummy	☉
Road block	☉	Under ground	☉
Strong point	☉	Searlight	☉
HQ suspected and unclassified	☉		

THIS REFERS TO ORANGE
OVERPRINT DETAIL

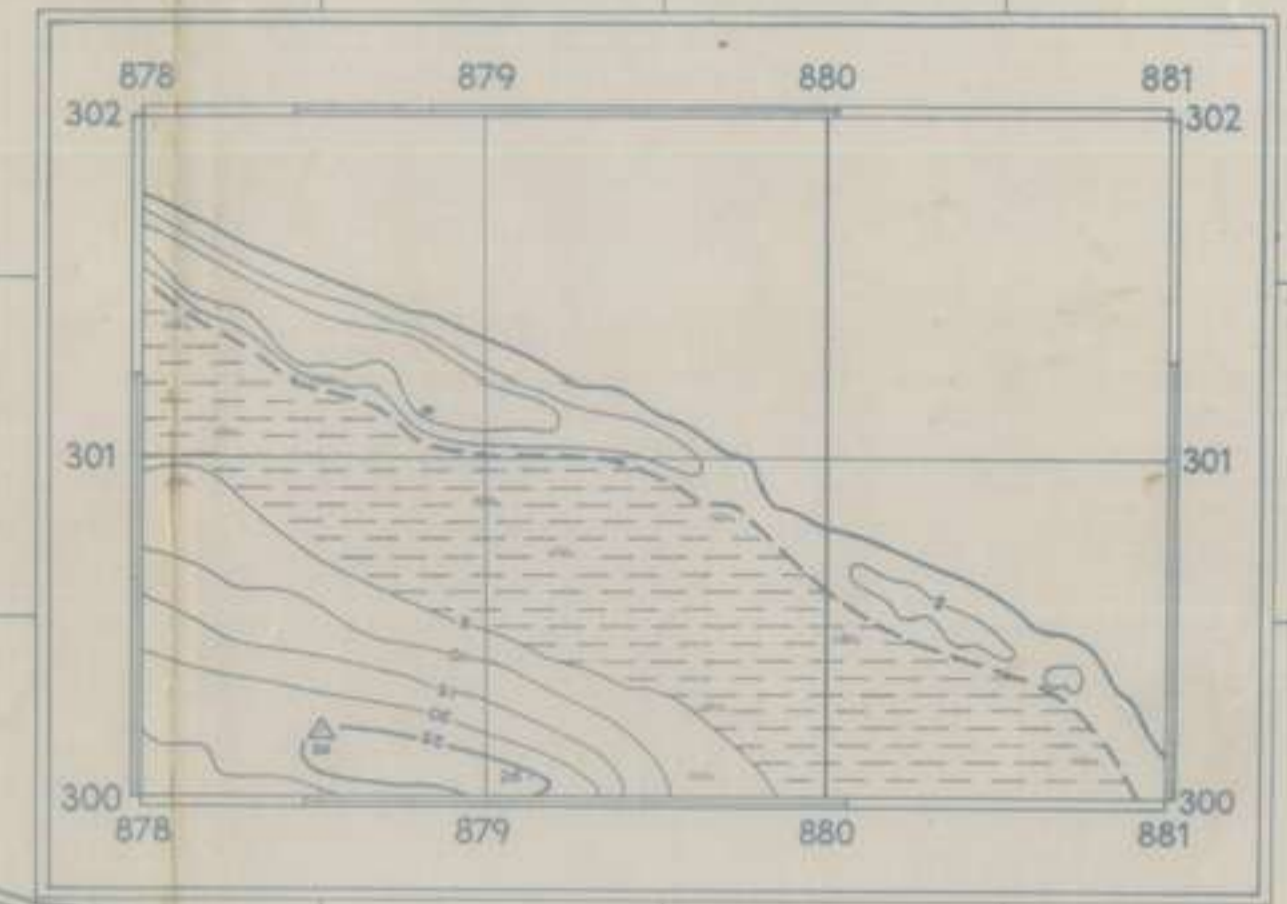
LEGEND

Confirmed Minefield - Long ☉
Confirmed Minefield - Short ☉
Unconfirmed Minefield - Long ☉
Unconfirmed Minefield - Short ☉

Produced by 6516 Eighth Army.



IN DEFENDED LOCALITIES
A PROPORTION OF THE SIGNS FOR A-TX GUNS, M.G.s. AND MORTARS
REPRESENT ALTERNATIVE POSITIONS.
SEE BACK FOR MILITARY CONVENTIONAL SIGNS USED ON OVERPRINT.



AT THE CENTRE OF THIS SHEET
MAGNETIC NORTH IS 0°03'
WEST OF TRUE NORTH
ANNUAL CHANGE 0'04" EASTWARDS
GRID NORTH IS 0'53" E. OF TRUE N.
AT THE W. EDGE OF THIS SHEET.
GRID NORTH IS 0'56" E. OF TRUE N.
AT THE E. EDGE OF THIS SHEET.

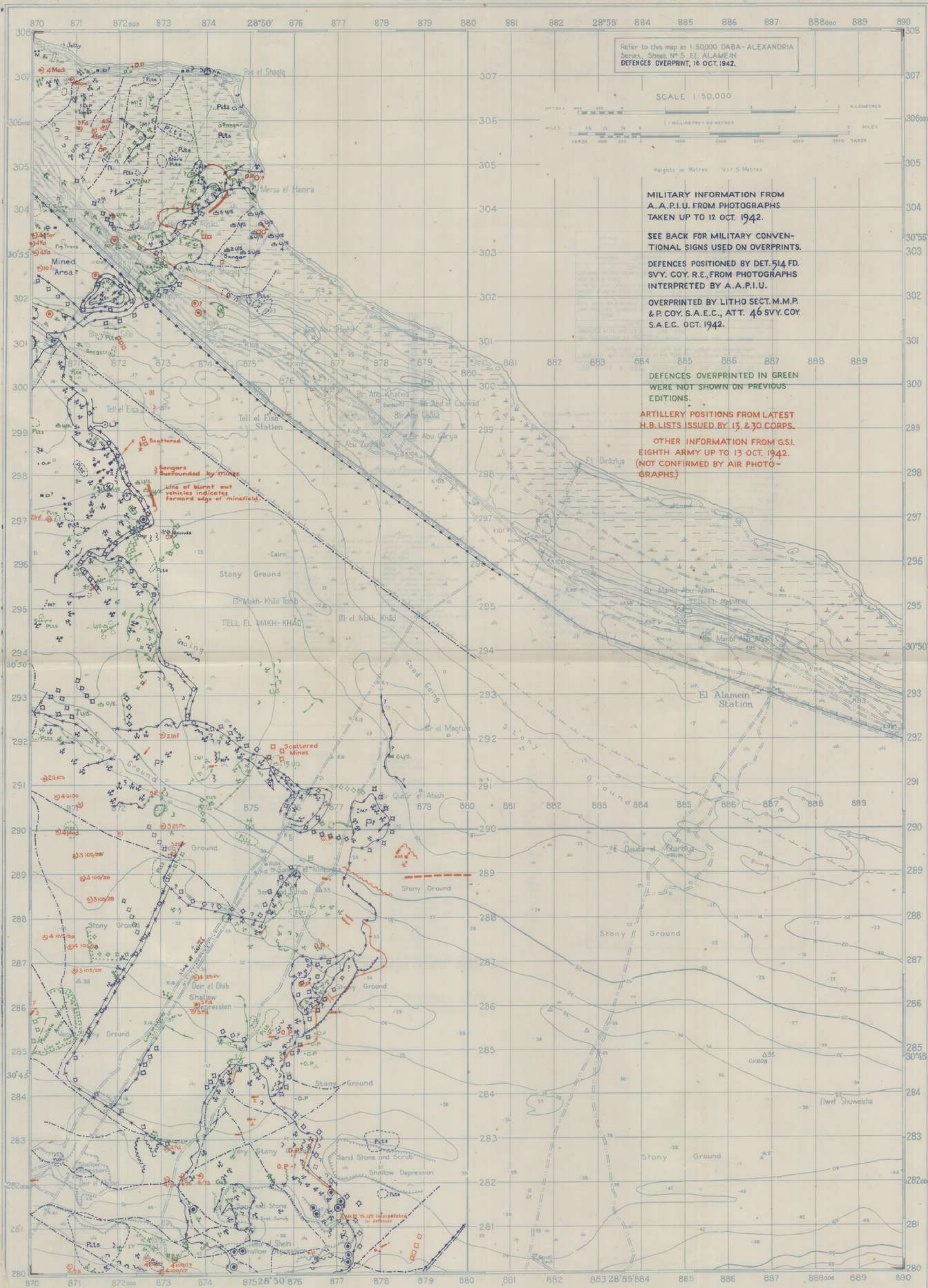
W.D.R. 1011/2741

Defences positioned by 46. Svy. Coy. S.A.E.C. from Air Photographs interpreted by A.A.I.R.U. and Counter-Battery Staff, 8th Army Oct. 1942.

SCALE 1:25,000



Compiled and drawn from 1:50,000 DABA-ALEXANDRIA Series and Air Photographs by Det. 594 Corps Field Survey Coy., R.E., October 1942.
Printed by Litho Sect. M.M.P. at Col. S.A.E.C., At. 46 Survey Coy., S.A.E.C., October 1942.
Overprinted by Litho Sect. M.M.P. & P. Coy., S.A.E.C., At. 46 Survey Coy., S.A.E.C., October 1942.



Refer to this map as 1:50,000 DABA-ALEXANDRIA
Series, Sheet No 5, EL ALAMEIN
DEFENCES OVERPRINT, 16 OCT. 1942.

SCALE 1:50,000



Heights in Metres 1:1.5 Metres

MILITARY INFORMATION FROM
A. A. P. I. U. FROM PHOTOGRAPHS
TAKEN UP TO 12 OCT. 1942.

SEE BACK FOR MILITARY CONVENTIONAL
SIGNS USED ON OVERPRINTS.

DEFENCES POSITIONED BY DET. 514 FD.
SVY. COY. R.E., FROM PHOTOGRAPHS
INTERPRETED BY A. A. P. I. U.

OVERPRINTED BY LITHO SECT. M.M.P.
& P. COY. S.A.E.C., ATT. 46 SVY. COY.
S.A.E.C. OCT. 1942.

DEFENCES OVERPRINTED IN GREEN
WERE NOT SHOWN ON PREVIOUS
EDITIONS.

ARTILLERY POSITIONS FROM LATEST
H.B. LISTS ISSUED BY 13 & 30 CORPS.

OTHER INFORMATION FROM G.S.I.
EIGHTH ARMY UP TO 13 OCT. 1942.
(NOT CONFIRMED BY AIR PHOTO-
GRAPHS)

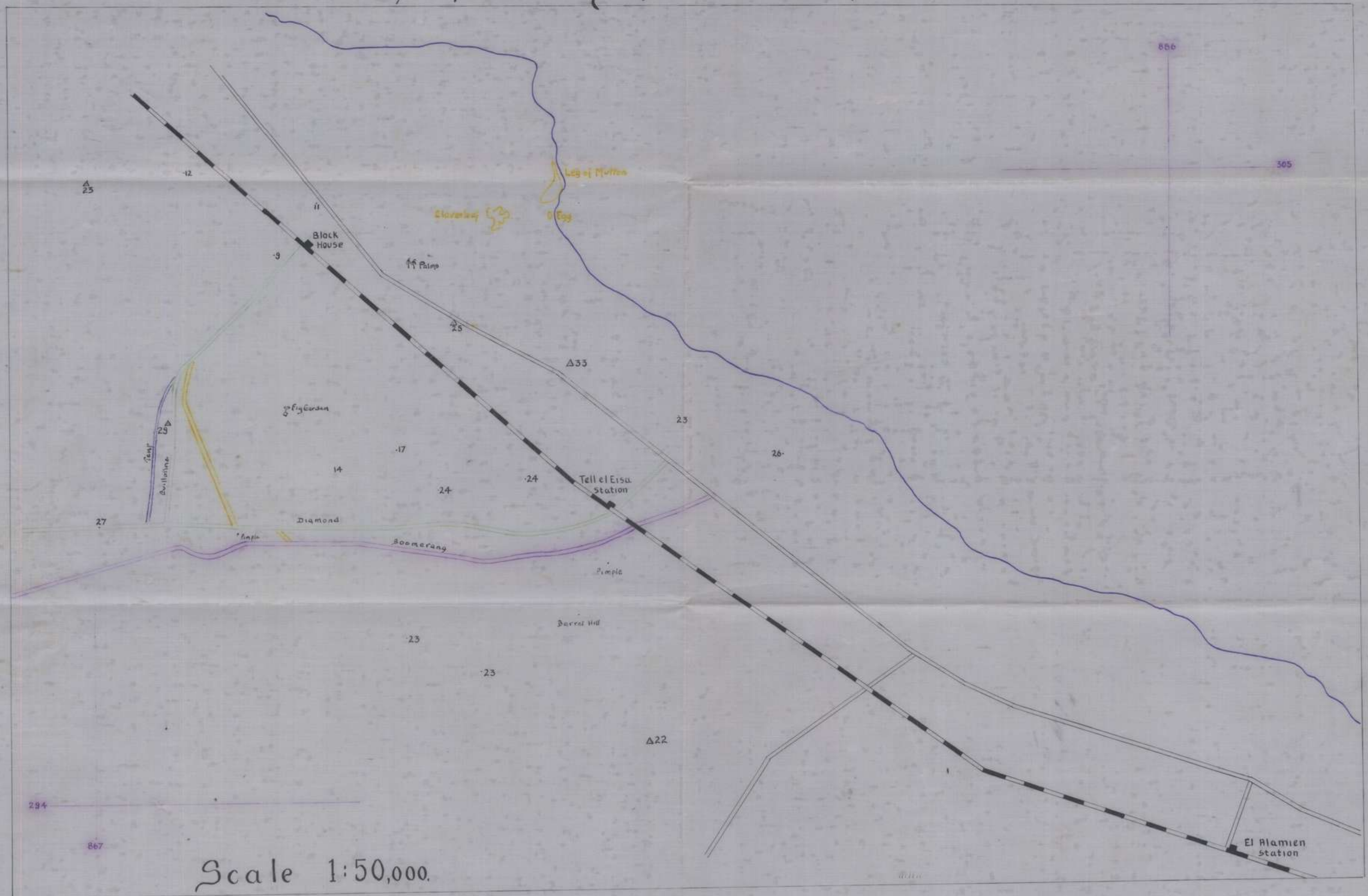


AT THE CENTRE OF THIS SHEET
MAGNETIC NORTH IS 0° 00' EAST
OF TRUE NORTH.
ANNUAL CHANGE 4' EASTWARDS.

Grid North is 55' East of True North
at the centre of the West edge
of this sheet.

Grid North is 1' 0" East of True North
at the centre of the East edge
of this sheet.

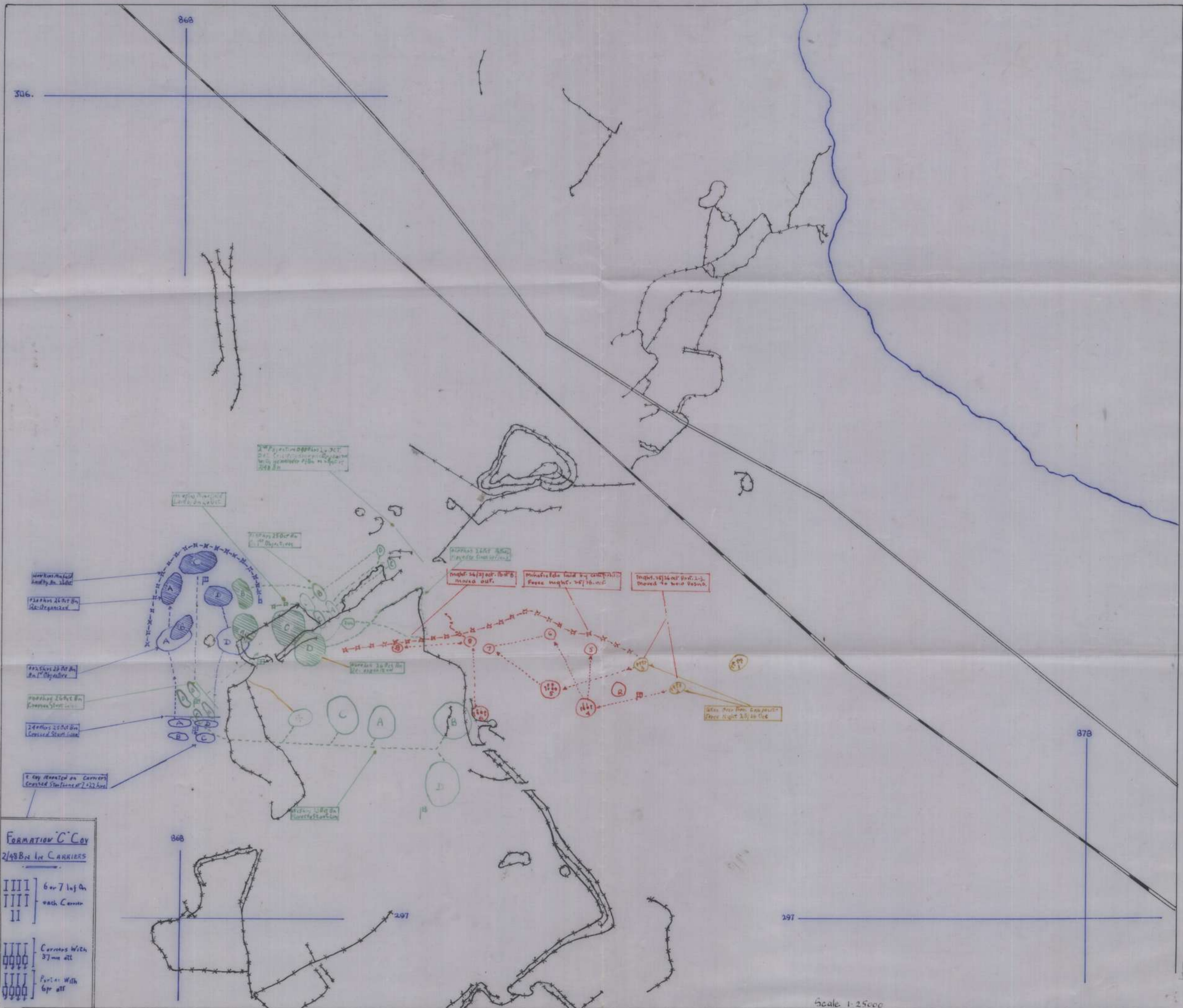
Trace of Key Pts Geographical names Special Routes & Tracks



Scale 1:50,000.

PHASE II

Annexure B 2 to Appx B



FORMATION 'C' COY
2/48 BN IN CARRIERS

- IIII } 6 or 7 Inf An
- IIII } each Carrier
- II }
- IIII } Carriers with
- IIII } 37mm att
- IIII } 6pr att

Scale 1:25000