

**AWM52**  
**2nd Australian Imperial Force and Citizen  
Military Forces unit war diaries, 1939-45 War**

Item number: 8/2/29

29 Infantry Brigade

August 1943

8 OCT 1943

## WAR DIARY or INTELLIGENCE SUMMARY

(Erase heading not required).

Form C2118

Unit..... HQ 29 AUST INF BDE

Date and Time.—From..... 1 Aug 43..... To..... 31 Aug 43.....

Place	Date	Hour	Summary of Events and Information	Remarks and references to Appendices, Diaries, &c.
FIELD	1 Aug	0805	Staff Conference	
		0830	Maj Watch (Actg CO 47 Bn) discussed details of the move with Bde Comd	
		1515	Div advised that the Observation Team for 3 Div is to depart 1200K/2 from ORO BAY. Advice received during the day that one coy of 15 Bn is to move from MOROBE to TAMBU for unloading duties.	
	2 Aug	0805	Staff Conference	
		1000	CO 42 Bn called on Bde Comd to discuss general matters affecting 42 Bn which will take over a fairly large area consequent upon Bde HQ and two Bns moving out.	
		1500	Col Maitland, ADMS 11 Aust Div called on Bde Comd to discuss medical plans for this area and the MOROBE area.	
	3 Aug	0805	Staff Conference.	
		0830	Lt-Col Mears to see Bde Comd	
		0900	Bde Comd to ORO BAY	
		1445	Lt-Col Milner ADME 11 Div (formerly ADME 5 Aust Div) called on Bde Comd. 10 drivers MT from 42 Bn will be loaned to ADME to assist in the taking over of vehicles from US Forces.	
		1450	Div advised that high grade cipher cannot be released to us for the deciphering of sitreps from 3 Div (by the time copies of these sitreps get to us from 11 Div they are anything up to 24 hours late.) Div also was unable to tee up an air raid warning system for 15 Bn at MOROBE.	
	4 Aug	1920	Lt-Col Mears, Maj Connors (7 Fd Amb) called on Bde Comd	
		0805	Staff Conference	
		1245	Bde HQ Observer Party left with 42 and 47 Bn parties to proceed by sea to NASSAU BAY to observe the action in the KOMIATUM - SALAMAUA area. 15 Bn party <del>xxxxxx</del> has already left from MOROBE. The parties comprise -	
			Bde HQ - Maj Ross, (BM) Lieut Taylor and Lieut Baker.	

# WAR DIARY or INTELLIGENCE SUMMARY

(Erase heading not required).

Ar. Form C.2118  
(adapted.)

Unit..... HQ 29 AUST INF BDE

Date and Time.—From..... 1 Aug 43 To..... 31 Aug 43

Place	Date	Hour	Summary of Events and Information	Remarks and references to Appendices, Diaries, &c.
			15 Bn - Capt Provan Maj Jenyns, Maj Lack Capt Leu, Sgt Carroll WO II Soury, Sgt Pearen, Sgt Tomkinson.	
			42 Bn - Maj Reynolds, Capts Patingale, Greer, and Jenks, Lieuts Edwards, Taylor and Anderson, Sgts Steinheur, Mortensen and Pte Bourke.	
			47 Bn - Maj Leach and Capt Yates, McWatters, King, Muston, Lieuts Sharpley and Werder, Sgts Kackenzie and Shannahan.	
			Note - Due to late developments, the 42 Bn members of the team were held at NASSAU to wait for the Bn.	
		1500	Bde Comd to Div to see GOC	
		1625	Information received that another coy of 15 Bn is to be moved from MOROBE - this time for NASSAU BAY to assist in unloading of stores.	
		1626	Warning Order for the move of 47 Bn to TAMBU BAY received.	
		1700	Lt-Col Irwin to see Bde Comd re the bn for TAMBU BAY. Div's action in selecting a bn without reference to the Bde Comd was NOT what might have been expected and for several reasons including the present lack of senior officers (the new CO has not yet arrived) and the fact that 47 Bn has had much less jungle training than the other units, the Bde Comd directed that the 42 Bn should be the unit to go. This was arranged. Although 47 Bn, Bde HQ Reconnaissance Pl and a small party of 15 Bn have already had a ction experience in the very D successful clearing out of GOODENOUGH IS, the TROBRIANS and WOODLARK ISLANDS resulting in an MM to Cpl COOKE of 47 Bn it seems likely that 42 Bn will be the first unit of the Bde to be included in a major action.	
		1715	Lt-Col Davidson (CO 42 Bn) and Maj Watch (Adm Comd 47 Bn) arrived for a conference with the Bde Comd. Capt Cole LO, on the request of the CO returned to 42 Bn as OC C Coy.	
	5 Aug		11 Aust Div Movement Order for 42 Bn received during the night	See Appx

# WAR DIARY or INTELLIGENCE SUMMARY

(Erase heading not required).

Army Form C.2118  
(adapted.)

Unit..... HQ 29 AUST INF BDE.....

Date and Time.—From..... 1 Aug 43..... To..... 31 Aug 43.....

Place	Date	Hour	Summary of Events and Information	Remarks and references to Appendices, Diaries, &c.
	5 Aug	0650	Maj Connors to see Bde Comd re the Lt Sec of 7 Fd Amb to move with 42 Bn. This will be under comd Maj Hill and will probably move with the second flight.	
		1030	Bde Comd to BUNA to view the embarkation of the first flight of 42 Bn (Bn HQ, B, C and part D Coy Gps). The two vessels "Tungsong" and "Wombat" were due at BUNA wharf at 1300 hrs but did not arrive till 1600 hrs, although Div had expressly laid down that the ETD should be not later than 1500 hrs to allow the latter portion of the trip to be done under cover of darkness.	
		2045	Bn HQ, B Coy C Coy and part D Coy 42 Bn departed BUNA for MOROBE to tranship for TAMBU BAY, a total of 13 officers 301 ORs plus two L Sec Sigs.	
		2215	Lt-Col Norris (Comd MOROBE Sub Base) and Lt-Col Morris called on Bde Comd. Lt Col Norris gave what information he had of affairs at MOROBE and the situation further up.	
	6 Aug	0805	Staff Conference.	
		1000	Warning Order for the move of the remainder of the Bde Gp to NASSAU BAY received and No movement of personnel before 0800 hrs 9 Aug. Though not entirely unexpected, this is a very decided improvement on the plan to move us to MOROBE. With our arrival the whole of the Bde Gp less 15 Bn HQ and two coys (at MOROBE) will be in the area of operations, with one Bn committed.	
		1630	Bde Comd to Div to confer with the GOC. The GOC was able to give the Bde Comd details of 42 Bn's task. Later we received a copy of the Op Instruction for 42 Bn which places the Bn temporarily under command COANE FORCE but lays down very specifically its task (see Appendix) For a first time up this is a very fine one.	Note: 42 Bn actually came up 17 Bde.
		1635	Bde Comd's conference with BM(L) SC, IO and Maj Watch	AW

# WAR DIARY or INTELLIGENCE SUMMARY

(Erase heading not required).

Army Form C.2118  
(adapted.)

Unit..... HQ 29 AUST INF BDE.....

Date and Time.—From..... 1 Aug 43..... To..... 31 Aug 43.....

Place	Date	Hour	Summary of Events and Information	Remarks and references to Appendices, Diaries, &c.
			Arrangements made for the handover to 6 Bde HQ and 14/32 Bn to begin with a conference at 1030 hrs tomorrow at this HQ. For the move to NASSAU BAY the Bde Gp is getting 6 LCI's and one LCT. The LCI's are to be allotted 4 to 47 Bn and the other 2 to accomodate Bde HQ and the remainder of the Bde Gp. Stores will be loaded Sunday and embarkation will take place Monday. The move will be direct to NASSAU instead of the usual transshipment to barges at MOROBE.	
	7 Aug	2000	Second flight of 42 Bn departed in the "Hokitiki" and "Haere", a total of 6 and 176	
		0805 0930	Staff Conference. Sitrep from 15 Bn advising that the first flight of 42 Bn was due to leave MOROBE at 1900/6 for TAMBU. B Coy of 15 Bn was also leaving for NASSAU. Both flights should by now have reached their destination.	
		1030	Brig Sandover (comd 6 Bde) with members of his staff and of 14/32 Bn arrived for the handover of maps, documents and other data relating to this area.	
		1330	Bde Comd with Lt Fletcher to 42 Bn's rear party (under command Maj Crosswell). Lieut Fletcher is to remain in charge of stores we cannot take and will forward them as possible. Arrangements for our own move are being pushed ahead as much as possible but information re the move is proving very difficult to get.	
		1830	Information received that the first flight of 42 Bn had arrived at NASSAU night 6/7 and the second flight and B Coy 15 Bn were due to leave MOROBE for NASSAU tonight.	
	8 Aug	0805	Staff Conference	
		1330	Bde Comd to BUNA wharf and STRIP POINT (embarkation point) to inspect preparations for the move and the loading of stores.	JW

# WAR DIARY or INTELLIGENCE SUMMARY

(Erase heading not required).

Army Form C.2118  
(adapted.)

Unit HQ 29 AUST INF BDE

Date and Time.—From 1 Aug To 31 Aug 43

Place	Date	Hour	Summary of Events and Information	Remarks and references to Appendices, Diaries, &c.
		1530	Lt-Col Irwin (G 1 11 Div) to see Bde Comd to discuss details of the move	
	9 Aug	0615	Bde Comd to Div to see the GOC. As a result of the Comd's representations, the GOC has sent urgent message to the GOC in C NGF, Lt-Gen Sir Edmund Herring, requesting that recently commissioned officers be allowed to stay in the Bde to fill our vacancies. To take them from us at this time seems rather ridiculous. Meanwhile these officers will move with us pending further instructions.	
		0815	Bde HQ moved embussed to the loading point at STRIP POINT. Embarkation was completed in excellent time. The LCIs had on board a large quantity of mail for 15 and 42 Bns which they had been asked to bring as far as BUNA. It was only after much argument that the Comd could persuade the Flotilla Comd to bring it on.	
		1200	The convoy of LCIs departed BUNA, weather calm and overcast. The convoy was well escorted by two destroyers and later a number of PT boats also. The behaviour of the troops during one air alarm was excellent.	
		2300	Convoy arrived NASSAU BAY. A hazy half moon was showing and surf was light so conditions were ideal for landing. This again was done in excellent time and the flotilla was away by 2330. Provost provided guides for all units to dispersal areas and troops were bedded down before the moon disappeared. As a piece of very good luck this was the first fine night for a week in this area.	
			The Bde Comd, BL(L) and SC went on to Det 3 Div HQ and there received instructions for (a) The future movement and role of the Bde Gp (see Appx) (b) The Comd to report to 3 Div HQ	
	10 Aug	0030	The Gp by now had been guided to bivouac areas and bedded down for the night.	RCD

# WAR DIARY or INTELLIGENCE SUMMARY

(Erase heading not required).

Army Form C.2118  
(adapted.)

Unit HQ 29 AUST INF BDE

Date and Time.—From 1 Aug 43 To 31 Aug 43

Place	Date	Hour	Summary of Events and Information	Remarks and references to Appendices, Diaries, &c.
		0730	Bde Comd, Capt Strom and a sub sec of Recce Pl left for GUADALCASCAL for Adv 3 Div HQ. There the Comd is to receive detailed instructions from the GOC Maj-Gen Savage for impending operations. Maj Watch 47 Bn will administer comd of the group during the probable four days the Comd will be away. Movement of least HQ and 47 Bn is to be arranged by Q 3 Div during the next few days to an area SW of BOISI at TAMBU BAY. At present it seems that the move will be by land with only absolutely essential stores going by sea. Stores will be in priority, - weapons, ammunition, rations and most essential office gear. Accomodation stores and other gear will be dumped until it can be brought up later by barge.	
		0845	Conference of Staff and COs of units and sub-units. Maj Watch gave what information he could and what administration instructions were necessary. The day was spent mainly in the shifting of ammunition and rations to dumps in own areas and clearing up and improving areas.	
		2000	The LCTs with our stores arrived and working parties had them unloaded by 0500/11. Rain and surf made conditions difficult and some stores got wet but on the whole the unloading was done well.	
	11 Aug	0600	The remainder of 42 Bn and Lt Sec of 7 Fd Amb passed through on the way to TAMBU. It was learned also that C Coy 15 Bn had relieved L Coy 162 US Regt thus becoming the first coy of the Bde, <sup>other than coys of 42 Bn</sup> to have an active role in this area.	
		0800	Work was commenced dividing stores into priority lots.	
		1000	Welfare Officer Archbold had the misfortune to receive first degree burns on the face and was evacuated to MOROBE.	
		1200	Advice was received indirectly that Bde HQ was to move to TAMBU BAY by foot, essential stores by barge at night. Preparations were immediately made for the move and Capt McKenzie (Staff Capt) left for TAMBU to contact the Staff Capt	HW

# WAR DIARY or INTELLIGENCE SUMMARY

(Erase heading not required).

Army Form C.2118  
(adapted.)

Unit HQ 29 AUST INF BDE

Date and Time.—From 1 Aug To 31 Aug 43

Place	Date	Hour	Summary of Events and Information	Remarks and references to Appendices, Diaries, &c.
		1730	of 17 Bde thence to move to 17 Bde to get into the picture. Confirmation was later received by signal and Bde HQ left at 1600. Bivouac was made for the night at BOISI. Orders received to date (see Appx "A") gave the Bde task for the present as : (a) Divisional Reserve (b) Protection of artillery areas With the completion of the impending attacks this Bde will relieve 17 Bde and take over future action.	
	12 Aug	2300 0730	Stores were taken to TAMBU by barge. Bde HQ moved on from DUALI. The going was not easy but the "soft" personnel (clerks, cooks etc.) stood up to the journey well.	
		1400	At this time HQ was about 3/4 mile past 218 Fd Arty Bn (US) when a runner and phone arrived for OC Troops to phone Maj Baldwin (OC 218 Arty) Maj Baldwin advised that a party of estimated 150 Japs was moving down on the area from MT TAMBU area apparently with the intention of attacking the arty areas. Maj Hughes (LO NGF with COANE FORCE) ordered Bde HQ to return to BALDWIN and be disposed for the defence of the area.	
	13 Aug	0800	NOTE : For all reference from now on to the operations in destroying this raiding force see History of Events attached. Bde HQ moved in gps as the outlying defences could be called in. One group passed through TAMBU as the areas were being shelled.	
		1500	By this time all troops had reached Bde HQ area at 733918 and were kept very busy carrying stores (which had come up by barge last night and had been brought here by jeep and tractor) up a steep bank to out position on a ledge. The amazing feature of the TAMBU area is that it has been developed under the very noses of the Japs who only today have been pushed by 162 US Regt	

201—N.G.F.P.S.—5/43/10m.



# WAR DIARY or INTELLIGENCE SUMMARY

(Erase heading not required).

Army Form C.2118  
(adapted.)

Unit..... HQ 29 AUSTRALIAN INF BDE Date and Time.—From..... 1 Aug To..... 31 Aug 43

Place	Date	Hour	Summary of Events and Information	Remarks and references to Appendices, Diaries, &c.
			<p>Off ROOSEVELT RIDGE. To see a tractor and a jeep pulled up in the open in plain view of the enemy only 1000 yds away, the drivers monochalantly talking, was only one of many incredible things. The enemy at this time however, were more than fully occupied by our artillery and an attack by 2 and 3 Bns 162 US Regt.</p>	
		2000	<p>Fortunately the night remained fine as there had been no time to build shelters.</p>	
	14 Aug	0800	<p>All personnel fully occupied shifting stores, clearing debris, building shelters etc. A large amount of the usual paper has also by some means accumulated, and will take some wading through.</p>	
		1330	<p>Bde Comd, Capt Strom, Lieuts Taylor and Baker and Maj Jenyns (1st Bn Observer Party) arrived from 17 Bde HQ, a fast trip. Bde Comd had of course the plan of future operations which are most interesting.</p>	
			<p>Heavy rain fell during the night and the improvised shelters did not stand up too well. However in this climate one does not suffer much from being wet.</p>	
			<p>Our present location is an excellent one, mosquitoes being few and rats practically non-existent.</p>	
	15 Aug	0800	<p>From now on a steadily growing stream of visitors began pouring in on us. This site apparently will be the future 4th 3 Div HQ and our present preparation of the site will have to be much more extensive than is usual. The whole of TAMBU BAY area will become a Supply and Transit Area when the Japs are driven back and various officers from 3 Div - Q, Sigs etc are working from here and making arrangements for this.</p>	KW

# WAR DIARY or INTELLIGENCE SUMMARY

(Erase heading not required).

Army Form C.2118  
(adapted.)

Unit HQ 29 AUST INF BDE

Date and Time.—From 1 Aug To 31 Aug 43

Place	Date	Hour	Summary of Events and Information	Remarks and references to Appendices, Diaries, &c.
			Lieuts Mulcahy and Grieve arrived from BUNA last night. Lieut Mulcahy returned from FAA Staff School. His arrival is most welcome as Capt McKenzie is at 17 Bde, rather ill, and is likely to be kept there for some days.	
	16 Aug		Operations, particularly in 17 Bde area, have now become most interesting. Today 2/6 Bn cut the remaining Jap L of C to MT TAMBU and GOODVIEW JUNG by getting two coys astride the track at KOMIATUM. 42 Bn has been holding the other along DAVIDSON SPUR for a week and the result is that the Japs will either have to get out or be starved out. 42 Bn MMG Pl and with it the MG pl from 2/5 Bn has been able to get in some excellent work firing from DAVIDSON RIDGE on to KOMIATUM ridge. During bombing raids the Japs scuttle into dugouts in the side of the ridge and those opening towards DAVIDSON present a machine gunners dream. During the night 16/17 the Japs made 8 attacks on the 2/6 positions but the CDF was answered each time by 42 Bn and the fire laid down had much to do with breaking up these attacks.	
	17 Aug	0950	Maj Clouston, DAD Hygiene 3 Div reported in and saw the Comd.	
		1130	Capt Hitchcock (comd A Coy FIB) reported in. The FIB Coy is now under comd and will remain so during the operations in cleaning up the Arty Raiding Party.	
		1410	Col McKecknie (comd 162 US Regt) phoned the Comd re the Arty Raiding Party.	
		1420	Cpts McKinnon and Melksham reported in from 17 Bde, having been there for some days observing and gaining knowledge of the working of Supply and Signal Systems in this area.	
			Supply and communications are the limiting factors in this	<i>AW</i>

# WAR DIARY or INTELLIGENCE SUMMARY

(Erase heading not required).

Unit..... HQ 29 AUST INF BDE ..... Date and Time.—From..... 1 Aug ..... To..... 31 Aug 43 .....

Place	Date	Hour	Summary of Events and Information	Remarks and references to Appendices, Diaries, &c.
		1500	fighting and the success of operations depends largely on the efficiency of these services. IO despatched to interview the Sgt of portion of TAYLOR patrol which had been chasing the Arty Raiding Party (see complete notes attached)	
	18 Aug	0845	Maj Watch (Adm Comd 47 Bn) called on Bde Comd and was instructed to recce arty areas himself.	
		0850	Lt-Col Mears discussed medical matters with the Comd including the use of the "Surgical Team" which is set up across the creek from Bde HQ.	
		0900	Maj Brainey (DAQMG 3 Div) discussed the supply set up with the Comd	
		1200	Comd instructed that Lieut Baker who has been LO for 47Bn return and take over 16 pl (vice Lieut Hoffman wounded) and that Lieut J. Stewart become 47 Bn LO.	
		1515	War Correspondents Hal O'Flaherty (Chicago Daily News) - Bill Carty, Official War Photographer - Bill Warren, ABC, BBC, called for news items.	
		1540	Lieut Stewart reported for duty as LO.	
		1645	47 Bn Observer party returned from 2/5 Bn having gained some valuable knowledge and experience.	
		2300	Lt-Col Montgomery (to be CO 47 Bn) and Lt-Col Horne (CO HQ Guard Bn) arrived.	
	19 Aug	0632	Maj Watch and Capt Yates were briefed by Bde Comd regarding the operations of D Coy 47 Bn plus dets in accordance with Bde OP Instruction No.27 It was made quite clear to Capt Yates that the action of D Coy in its contacts with the	MW

# WAR DIARY or INTELLIGENCE SUMMARY

(Erase heading not required).

Army Form C.2118  
(Adapted.)

Unit..... HQ 29 AUST INF BDE

Date and Time.—From..... 1 Aug ..... To..... 31 Aug .....

Place	Date	Hour	Summary of Events and Information	Remarks and references to Appendices, Diaries, &c.
			enemy and particularly with regard to the surprising of Lieut Hoffman's pl (16) reflects the training of the Coy Comd. The comd considers this reflection is NOT creditable and so informed Capt Yates.	
		0700	Lt-Col Montgomery and Lt-Col Horne saw the Comd who gave comments and instructions re 47 Bn to the New CO.	
		0825	From a phone conversation by the Comd with Maj Gen Berryman and Brig Moten, the Comd instructed 47 Bn to prepare to move. It will take at least a day to get D Coy together and to move it up the coast so that any quick move will have to be without that coy. Also any immediate move will have to be with personal weapons only - 17 Bde amn scale - 29 Bde ration scale. Surplus stores will remain in a dump in the bn area.	
		1020	Maj Colebatch, CO 11 Pd Coy, saw the Comd re track improvement to 42 Bn and to 15 pl of C Coy 15 Bn which is guarding a TRACK JUNC on SCOUT RIDGE.	
		1025	Lieut Fletcher phoned from our Coffee Stall which he is putting in half way up the MT TAREU TRACK with regard to our engagement with 11 Japs (See notes Arty Raiding Party.)	
		1130	Lt-Col POINIER (CO 205 FA Bn) and Majs Martin and Helmer (Bty Comds) called on Comd to discuss arty areas.	
		1415	15 Bn Observer Party reported in from 2/6 Bn/	
		1740	Comd phoned Col MacKecknie and arranged to loan him 100 natives for a day and for the return of a Sgt and 15 PIB at present with MacKecknie Force. These PIB are the best of the Coy and we need them for our raiding party operations.	
		1745	Comd discussed possible future operations with Lt-Col Montgomery.	
	20 Aug	0100	Brig Sewell, CCRA NGF arrived and was accomodated.	
		0430	Lt Col Amies, CO 15 Bn arrived from MORCBE. There is yet NO advice of the concentrating of 15 Bn in this area but it is to be hoped that it will not be too long before this is done	HNL

# WAR DIARY or INTELLIGENCE SUMMARY

(Erase heading not required).

Army Form C.2118  
(adapted.)

Unit..... HQ 29 AUST INF BDE.. Date and Time.—From..... 1 Aug..... To..... 31 Aug 43.....

Place	Date	Hour	Summary of Events and Information	Remarks and references to Appendices, Diaries, &c.
		1200	Preparations are now being made for the move of Bde HQ Recce Party tomorrow to 17 Bde HQ, thence to our new HQ. "C" Gp and 47 Bn will move the following day. On establishment of the new HQ 29 Bde will take over operational responsibility and 42 Bn will revert to comd/	
		1230	Maj Gen Savige comd 3 Aust Div, accompanied by Maj Gen Berryman and an advance party of 3 Div staff arrived from 17 Bde HQ. Adv Div is now to operate from this location. Rear Div will operate from NASSAU.	
		1930	Maj Gen Milford accompanied by Lt-Col McLean, AA & QMG 5 Div arrived from DUMA. 5 Div after waiting so long for an operational job, is to take over command this area as soon as sufficient staff has arrived and the GOC has made his recce. Lt-Col Daly, who has been acting G1 3 Div, will again take over G1 5 Div. The Comds conferred during the evening on future operations.	
	21 Aug	1015	Bde "R" party departed for 17 Bde HQ on BURO CREEK via MT TAMBU. Travelling light, this is ordinarily a 6 hour trip but with full packs it should prove a severe test of stamina, as indeed did happen. The Comd and a few of the party arrived 1500 hrs and the remainder came in in groups up to 1815 hrs. All but 2 sigs, however, did get there. 17 Bde looked after the party very well and no complaint can be made about their fostering during the taking over.	
	22 Aug	0630	Bde Comd and IC and a small det left 17 Bde HQ and proceeded to 215 Bn HQ. The BM and Lt-Col Montgomery will join the Comd there later in the day. 47 Bn is to take over tomorrow the areas at present occupied by 215 Bn. The remainder of Bde HQ carrier train and 47 Bn left TAMBU during the morning and will move to the top of MT TAMBU and	MW

# WAR DIARY or INTELLIGENCE SUMMARY

(Erase heading not required).

Unit..... HQ 29 AUST INF BDE.....

Date and Time.—From..... 1 Aug 43..... To..... 31 Aug 43.....

Place	Date	Hour	Summary of Events and Information	Remarks and references to Appendices, Diaries, &c.
			bivouac there for the night, proceeding from there tomorrow down the KOMIATUM S UR. The remainder of the "R" Group will move early tomorrow from 17 Bde HQ.	
		1630	The BM and CO 47 Bn arrived at 2/5 Bn HQ and plans were made for the taking over from 2/5 Bn on the 23rd.	
	23 Aug	0830	Comd and party left 2/5 Bn HQ and proceeded to LAVERS KNOLL where the GOC 5 Div Maj Gen E.J. Milford arrived at 0930 with Brig Moten. From the KNOLL most of the country to SALAMAU Peninsula can be seen and the Comds discussed the general picture.	
		1100	The remainder of the "R" Group under Capt Strom left 17 Bde 0800 and joined Bde HQ O Group at the track junction 717919. The O Group had moved direct over MT TAMBU, followed by 47 Bn. The Comds reached Bde HQ site (708948) and the GOC then moved on to 15 Bde HQ. Some work in the laying out of the area and the erection of huts has already been done by 17 Bde D and R Platoon and ANGAU.	
		1130	Bde HQ personnel began moving in. A hot meal was very kindly provided by the D & R Pl and Engrs of 15 Bde and was most welcome. The march over the mountains with full packs is a severe test for the toughest of troops and the majority of ours stood the test well. Quite a number of cases of blistered feet resulted from jolting down steep slopes. Much work has to be done in making the area habitable for tonight, getting HQ into operation and setting up defences and the lads set to work with a will.	
		1500	A recce patrol under Capt Strom returned from up the creek bringing a Jap prisoner. The Jap was in rather poor shape and was <del>known</del> identified as belonging to 102 Regt and as	<i>and</i>

# WAR DIARY or INTELLIGENCE SUMMARY

(Erase heading not required).

Army Form C.2118  
(adapted)

Unit HQ 29 Aust Inf Bde Date and Time.—From 1 Aug To 31 Aug 43

Place	Date	Hour	Summary of Events and Information	Remarks and references to Appendices, Diaries, &c.
			being a member of the Arty Raiding Party.	<i>See Notes on Arty Raiding Party</i>
		1700	Another recon patrol which moved up the creek to locate a reported track to 42 Bn killed a Jap in the same area.	
		2300	3 Div signal received ordering pressure to be put on enemy as quickly as possible without jeopardising the security of the force (see O.412 attached) Comd immediately began making plans for this week with the BM, BM(L) and IO.	
		2330	Two batmen (Russell and Newson) on guard across the creek 30 yards away spotted a Jap moving across the creek towards the Comd's hut and put a couple of rounds into him. It was good shooting as the night was almost pitch dark. Later examination showed the Jap to be in good condition, rifle charged and bayonet fixed and his effects in good order. Two Japs killed today and 1 captured is not bad going for HQ. This last one will have the salutary effect of putting the lads well on the qui vive.	
	24 Aug	0830	The Comd left for 42 Bn, proceeding south up the creek thence west up a KUNAI SPUR.	
		0900	During the morning A and B Coys 47 Bn moved down from KOMIATUM SPUR and occupied a STAGING CAMP about 400 yards in advance of Bde HQ. BN HQ was also set up here later in the day.	
		1400	Lt-Col Montgomery and Bde IO proceeded to 58/59 Bn to get the picture of the action there from Maj Warfe, CO 58/59 Bn 47 Bn collected a Jap prisoner vicinity STAGING CAMP, once again a member of the Arty Raiding Party.	
		1530	Bde Comd returned from 42 Bn. There has been a lot of doubt regarding the correct location of 42 Bn HQ and Coys due to the foreshortening of the map by 1000 yards but the positions can now be fairly accurately fixed by an estimation of the	<i>MW</i>

# WAR DIARY or INTELLIGENCE SUMMARY

(Erase heading not required).

Army Form C.2118  
(adapted.)

Unit HQ 29 AUST INF BDE

Date and Time.—From 1 Aug 43 To 31 Aug 43

Place	Date	Hour	Summary of Events and Information	Remarks and references to Appendices, Diaries, &c.
		1530	<p>of the distance travelled up the creek to the turn off up the spur.</p> <p>29 AUST INF BDE TOOK OVER OPERATIONAL RESPONSIBILITIES FOR THE AREA AS DEFINED IN 5 AUST DIV OP INSTN NO.10 ATTACHED</p> <p>The taking of SALAMUA is not going to be easy. The enemy has already shown his perimeter on the high ground south of the FRANCISCO and though 15 Bde reports would indicate that he is on the run north of the RIVER it is inconceivable that he will yield vital ground in that area. Actually later checks showed that the advance troops of our flanking Brigade were not nearly so far forward as they had thought and the action of Jap raiding parties on various L of Cs to the widely scattered forces caused a considerable re-grouping of units of that Bde.</p>	
	25 Aug	0840	<p>Bde Comd and IO moved forward to 47 Bn at STAGING CAMP where the Comd outlined his plans for 47 Bn. D Coy is the only Coy not to be moved forward and will remain on EDGARS KNOLL for the protection of the DROPPING GROUND and L of C. The Coy will also establish a Coffee Post.</p> <p>The Comd Lt-Col Montgomery and IO then proceeded to 58/59 Bn HQ where a meeting had been arranged with CO 58/59 Bn, Maj Warfe and with the BM 15 Bde, Maj Travers.</p> <p>During the morning WARFE FORCE (HQ, A and B Coys 58/59 Bn A Coy 2/7 Bn and 2/3 Ind Coy) put in an attack on the Jap position at 712966 but the only ground gained was a few yards by A Coy 2/7 Bn</p> <p>As a result of the conference the following reliefs will take place today - A Coy 47 Bn will relieve A and B Coys 58/59 Bn at 712963 and B Coy 47 Bn will relieve A Coy 2/7 Bn at 708967</p>	AW



# WAR DIARY or INTELLIGENCE SUMMARY

(Erase heading not required).

Army Form C.2118  
(adapted.)

Unit HQ 29 AUST INF BDE

Date and Time.—From 1 Aug To 31 Aug 43

Place	Date	Hour	Summary of Events and Information	Remarks and references to Appendices, Diaries, &c.
			C Coy 47 Bn will relieve 2/3 Ind Coy tomorrow morning at 714966	
		0930	Maj J.A. Ross, EM left for 42 Bn to resume regimental duties as comd A Coy. 42 Bn has been very short of senior officers.	
		1100	Bde Comd communicated the above arrangements to the G1 (Lt-Col Daly) by phone and also discussed the situation with regard to 42 Bn which has D Coy held up by a strongly held Jap position at 725957.	
		1200	Arrangements were also made with BM 15 Bde that after the clearing of the Jap position contact would be made with 15 Bde troops at 717973 and at KENNEDY'S CROSSING.	
		1445	Comd and IC returned to HQ.	
			Comd discussed with Lt-Col DAVIDSON future movement of coys of 42 Bn. A Coy is at present on the move and will join D Coy to increase the pressure on the Japs at 725957. C Coy will move tomorrow to a position at 72 6955 to patrol East and North. B Coy remaining as Div Res. D Coy's patrols today have discovered extensive Jap positions in the area and also observed MGs sited to cover the Western end of	
		1500	ROGSEVELT RIDGE.	
			Capt Morling (Field Offr RAE HQ) saw Comd to discuss the new L of C which is to be developed to us from TAMEU BAY. This track will run direct and will ease the supply problem as it will cut out the tortuous crawl over MT TAMEU. At present we are being supplied mainly by air dropping on KOMIATUM SPUR but this is to cease on the 28th. Practically the whole of our movement is governed by supply. At present the new route cannot be fully opened as the Japs still hold SCOUT CAMP in 162 Regt sector but it is to be hoped that this area will soon be cleared out. The Comd, to speed on work	

# WAR DIARY or INTELLIGENCE SUMMARY

(Erase heading not required).

Army Form C.2118  
(adapted.)

Unit HQ 29 AUST INF BDE

Date and Time.—From 1 Aug To 31 Aug 43

Place	Date	Hour	Summary of Events and Information	Remarks and references to Appendices, Diaries, &c.
			on the TRACK, made available 47 Bn Pioneers to work from this end, with the stipulation that they cease work at 1530 hrs daily so that the pl can return to Bn HQ for local protection of the HQ area during the night.	
		1630	The Comd gave instructions to the CO 47 Bn for pressure on the Jap position from West and South on 26 Aug.	
		1645	The Comd phoned the G1 giving details of the take over from 58/59 Bn which is proceeding smoothly. Actually 47 Bn assumed responsibility for the area as from 1030 hrs.	
			Lt-Col Mears (CO 7 Fd Amb) and Lt Mulcahy (SC(L)) arrived from 17 Bde during the morning, having been side tracked the previous day and spending the night on BOBDUBI SPUR. BASCO also arrived from TAMBU. The Fd Amb was immediately to set up an ADS to clear wounded, and the SC(L) and BASCO have a large job in getting up supplies. The work being done by native carriers and especially a carrying party from 47 Bn is amazing. Some of the 47 Bn party have made 3 trips to TAMBU returning each with 6 - 3" mortar bombs (84 lbs)	
		1845	2 ORs of A Coy 47 Bn were killed by a direct hit from a Jap Type 89 Grenade.	
		2000	Tonight sees two of our Bns committed and the Jap line has by now been established and will be hard to crack. 162 Regt has been able to make NO progress on our right for a fortnight on our left 15 Bde has its forces well scattered over the country North and North East of the FRANCISCO RIVER. 15 Bn is still being held by Div in the TAMBU area.	
			Lieut Eady returned to HQ for duty as LC today to replace Lieut Stewart. During the night the Jap positions were harassed with mortar fire.	KCN

# WAR DIARY or INTELLIGENCE SUMMARY

(Erase heading not required).

Army Form C.2118  
(adapted.)

Unit..... HQ 29 AUST INF BDE

Date and Time.—From..... 1 Aug 43 To..... 31 Aug 43

Place	Date	Hour	Summary of Events and Information	Remarks and references to Appendices, Diaries, &c.
	26 Aug	0001	5 Aust Div took over command of this area from 3 Aust Div.	
		0235	1 OR A Coy 47 Bn killed by MG fire.	
		0800	A and B Coys 47 Bn sent out patrols at first light and made contact with the Jap positions. B Coy killed 1 Jap and wounded 1 close to the Jap perimeter and located various LMGs and HMGs in depth.	
		1025	The Comd phoned the G1 giving details of the activities of 42 and 47 Bns.	
		1035	CO 42 Bn contacted the Comd and reported the progress of the action, and received instructions for the location and role of C Coy to the East of A and D Coys.	
		1500	The ADS site was chosen at 711955.	
		1720	Comd discussed with the G1 today's operations, especially with regard to 42 Bn, and the provision of arty support. As yet NO arty LO has been allotted to this HQ, nor have we an ANGAU rep or an ATIS representative.	
		1730	Capt Cole reported in from 42 Bn for duty as LO 1.	
		1740	Lt Col Amies (CO 15 Bn) reported in. 15 Bn is being held as Div reserve which is not quite fair to us, as the two units committed are up against the usual type of Jap defence on razor back crests and at least two more coys are needed for outflanking and cutting of supply routes. This has been found the only way of dealing with these positions without losing heavily in men.	
		1745	CO 42 Bn phoned the Comd with the information that C Coy had been out of communication since 1300 but when last reported were close to their objective which is the Track to the East of the Jap positions. A patrol will be sent out to contact this coy at first light and restore line communication.	
		2100	Bde Comd discussed with the GOC by phone the present situation and future plans.	Hul

# WAR DIARY or INTELLIGENCE SUMMARY

(Erase heading not required).

Army Form C.2118  
(adapted.)

Unit Hq 29 AUST INF BDE

Date and Time.—From 1 Aug To 31 Aug 43

Place	Date	Hour	Summary of Events and Information	Remarks and references to Appendices, Diaries, &c.
		2200	Today's operations have disclosed the Jap positions to be held in strength with a great proportion of automatic fire. 47 Bn had a good win when a section of A Coy knocked out the occupants of a Jap pill box with grenades, killing 3 and wounding others with NO losses on our side. Tonight harassing mortar fire will be put in on the Jap positions.	
	27 Aug	0600	All quiet during the night.	
		0630	Staff conference. In addition to the summary of operations, other staff officers give figures and comments of their own branches thus keeping all in the picture.	
		0820	The Comd and Lt Col Amies left for 47 Bn where the Jap positions will be inspected and plans made for future operations.	
			This morning's operations include the cutting of a Jap L of C by C Coy 42 Bn and patrols from D Coy round his position on HILL 1; from 47 Bn strong fighting patrols will probe his defences and a recce made by C Coy to cut the L of C.	
		1100	Lieut Sully arrived from TAMBU with more stores. The Pioneer Pl of 15 Bn also arrived this morning and will be used for work on the new L of C.	
			D Coy 47 Bn moved from EDGARS KNOLL to STAGING CAMP during the morning and will be used (a) for protection of the new L of C (b) carrying ammunition and rations to forward toys. The coy is still less 16 pl which has been resting and refitting in the TAMBU BAY area.	
		1300	Capt McKenzie (3C) arrived from 17 Bde, accompanied by Capt Aitchison (ANGAU rep.) and Capt Brown (218 FA Bn) who will be ANGAU and Arty representatives on this Hq. Also with	Kul

# WAR DIARY or INTELLIGENCE SUMMARY

(Erase heading not required).

Army Form C.2118  
(adapted.)

Unit..... HQ 29 AUST INF BDE ..... Date and Time.—From..... 1 Aug ..... To..... 31 Aug 43 .....

Place	Date	Hour	Summary of Events and Information	Remarks and references to Appendices, Diaries, &c.
			the party was Lieut Bowers (USA) Jap interpreter, who was able to give us some very interesting documents, the result of interrogation of the two prisoners we sent back. One prisoner, very intelligent and very communicative, was a member of the Arty Raiding Unit and a copy of the interrogation is attached to the notes of that operation. The PW's statements corroborate much of what is already there and throws further light on some other points.	
		2000	During operations today A and C Coys 42 Bn cut the track East of CHARLIE HILL (HILL 1 724957) and established a firm base there preparatory to exploiting to cut further Jap Ls of C. Liaison was made with coys A and B of 162 Regt vicinity SCOUT RIDGE and L/T comn established 47 Bn activities consisted mainly of offensive and recce patrols to fix Jap positions .	
	28 Aug	0815	Bde Comd with Lt-Col Amies, left for 42 Bn to meet the GOC Maj-Gen E.J. Milford, and discuss plans for future operations in both 42 and 47 Bn sections. Lt-Col Amies will return to 15 Aust Inf Bn at TAMEU. Capt Cunningham, RAA rep, arrived from TAMEU during the morning to replace Capt Brown who is being recalled to 218 FA Bn (US)	
		0900	Capt Strom left for 47 Bn to check the plans for C Coy to move down to cut the SALAMAUA TRACK vicinity GOOD CORSSING. These arrangements must be well made as this coy, which is to cut the Jap supply line, will itself be well away from the Bn firm bases.	mu

# WAR DIARY or INTELLIGENCE SUMMARY

(Erase heading not required).

Army Form C.2118  
(adapted.)

Unit HQ 29 AUST INF BDE Date and Time.—From 1 Aug To 31 Aug 43

Place	Date	Hour	Summary of Events and Information	Remarks and references to Appendices, Diaries, &c.
		1530	Comd returned from 42 Bn, having arranged for an assault by A Coy 47 Bn on Jap pillbox area and a battering of CHARLIES KNOLL by arty, mortar and MMG tomorrow, attack being made in stages by D Coy and one pl A Coy 42 Bn.	
		1630	A Coy 47 Bn assault on Jap pill box area commenced. The attack was made by 7 and 9 pls. 9 Pl attacking on the left flank found itself confronted by a precipitous bracken covered slope swept by enemy fire and was unable to advance. 7 Pl however, on the right flank got in amongst enemy pillboxes out of which swarmed yelling Japs. In the hand to hand encounter that ensued, the pl comd, Lieut Barnet, particularly distinguished himself and was an inspiration to his men. After throwing five grenades he called for another but the pin was too widely splayed for withdrawl so he used the grenade as a club to kill two Japs. As the second Jap fell his rifle exploded and Lieut Barnet had one finger badly shot about. The pl eventually withdrew after clearing out three pillboxes, killing 30 Japs and wounding many more. The whole action was a very spirited and gallant one.	
		1700	Lt-Col A McLean (AA & QMG 5 Div), Lt-Col McLean (CASC 5 Div) accompanied by Maj Carson (ADCS) and Maj Anderson (Senior Supply Officer) arrived from Div and conferred with the Comd on A & Q matters. Majs Carson and Anderson will remain here for some days.	
	29 Aug	0530	Lieut Baty and Lieut Banner (Engrs) left to complete the blazing of the new L of C to TAKEU BAY. This new L of C with its short carry will be vital to us now that air dropping has been suspended. The task is a dangerous one as the area is not yet cleared of Japs, but it is a job that must be	

# WAR DIARY or INTELLIGENCE SUMMARY

(Erase heading not required).

Army Form C.2118  
(adapted.)

Unit HQ 29 AUST INF BDE Date and Time.—From 1 Aug To 31 Aug 43

Place	Date	Hour	Summary of Events and Information	Remarks and references to Appendices, Diaries, &c.
			done quickly.	
		0530	Lieut St Ellen (LC) left for B Coy 42 Bn to observe and report on the arty, mortar and LMG concentration on CHARLIES HILL (see programme attached)	
		0600	SITCOR from units during the night.	
		0800	Lt-Col McLean (AA & QMG 5 Div) and Lt-Col McLean (ADOS 5 Div) left for Div.	
			C Coy 47 Bn is today moving to try and occupy the TRACK JUNCTION at 716971. If successful this will cut the Jap L of C to the position holding up 47 Bn.	
			Preceded by a heavy arty, mortar and LMG preparation, D Coy 42 Bn is to attack the Jap position on CHARLIES HILL. If successful this will open the way for an advance on NUK NUK and will give the much desired direct observation of SALAMAUA.	
		1130	By this time C Coy had reached a position at 715963 and had sent our patrols to reconnoitre the area of the TRACK JUNCTION.	
			The arty, mortar and LMG shoot on CHARLIE HILL commenced and was fairly accurate.	
			During the morning a patrol from B Coy 47 Bn under Lieut Chapman crawled up the side of the Jap held ridge and reconnoitred one of the tracks used by the Japs. The patrol brought back a Jap Type 89 Grenade Discharger and 20 rounds for it.	
		1400	The Comd and CO 47 Bn discussed plans for an attack with arty preparation on the Ridge holding up 47 Bn. The 25 pdrs will begin registration this afternoon.	
		1520	D Coy moved over the Start Line for the attack on CHARLIE HILL.	
			The Coy moved up a spur which gradually narrowed to the usual razor back near the top and eventually were confined to a 30 yard front with a precipitous slope on either side. Confronting the <i>new</i>	

# WAR DIARY or INTELLIGENCE SUMMARY

(Erase heading not required).

Army Form C.2118  
(adapted.)

Unit..... HQ 29 AUST INF BDE.....

Date and Time.—From..... 1 Aug..... To..... 31 Aug 43..

Place	Date	Hour	Summary of Events and Information	Remarks and references to Appendices, Diaries, &c.
			coy was a nest of pillboxes untouched by the arty and mortar fire. An attempt to work round to the left front met with no success as the side of the ravine was too steep. Finally the coy had to withdraw to its original perimeter.	
		1930	C Coy 47 Bn had meanwhile investigated the area vicinity TRACK JUNCTION and discovered a large system of defences. The coy formed a perimeter for the night at 715963 with the intention of pushing on at first light towards its objective. The Comd discussed with CO 47 Bn tomorrow's operations. C Coys operations today have NOT been at all satisfactory and tomorrow Maj Leach will take over command from Capt King and push on to the objective.	
		2030	The Comd phoned the GI and requested that Div arrange for a fighting patrol from 162 Regt to occupy the position marked as SCOUT CAMP and test out the KNOLL 733956. If this is done the new L of C will be secured and A and C Coys 42 Bn will be able to push forward to cut the Jap L of C to CHARLIES HILL. 42 Bn was then advised of this and instructed to liaise with 1 Bn 162 Regt. The days operations disclose that the Jap is hanging to his outer defence line grimly and dislodging him from his commanding positions will be no easy job. Japs encountered lately in all sections have been well fed with new equipment and it is apparent that he is reinforcing.	
	30 Aug	0630	C Coy 47 Bn pushed on. The leading pl was almost immediately engaged, suffering some casualties.	
		0830	Staff Conference.	
		0900	Bde Comd left for 47 Bn to plan out future operations with	<i>ML</i>



# WAR DIARY or INTELLIGENCE SUMMARY

(Erase heading not required).

Army Form C.2118  
(adapted.)

Unit HQ 29 AUST INF BDE

Date and Time.—From 1 AUG To 31 AUG 43

Place	Date	Hour	Summary of Events and Information	Remarks and references to Appendices, Diaries, &c.
			Lt-Col Montgomery, after seeing Maj Colebatch, CO 11 Fd Coy re the construction of the new L of C. It was arranged that the Pioneer Pls of both 47 Bn and 15 Bn be employed to assist the engineers in the speeding of this job.	
		0910	Information from 42 Bn that A and C Coys had sent out patrols to reconnoitre tracks to the North preparatory to moving on themselves and that D Coy had sent out patrols to recce round the North of CHARLIE HILL and to maintain contact with the enemy.	
		0930	Lt-Col Mears and the ADMS Col Green arrived from TAMEU BAY. Our ADS is now in operation at a very pleasant spot at 710956	
		1120	Lt-Col Mears will remain on Bde Staff as Senior Medical Officer. The G1 (Lt-Col Daly) rang informing us that NO interpreter is available for this Bde as there are only three in the area, two of them American Japs with 162 Regt and Div and Lieut Dowers with 15 Bde. The American Japs would hardly be safe in a combat area.	
		1215	A and C Coys 42 Bn moved out with the object of securing commanding positions on TRACKS NE of CHARLIE HILL. Coy C 1 Bn 162 US Regt occupied the area vacated by our coys. The coys endeavoured to strike SW across country from the TRACK JUNCTION 731956 but after proceeding 500 yards over very rough country struck opposition and were held up. The coys eventually formed a perimeter at 728957 for the night. Capt Cole was released from duties at Bde today and is now again commanding C Coy.	
			C Coy 47 Bn struck stiff opposition in its task today and was unable to proceed further, losing very unfortunately Maj Leach killed when on a reconnaissance.	
		1735	Bde Comd phoned the G1 Staff, giving details for the GOC of today's operations.	<i>AW</i>

# WAR DIARY or INTELLIGENCE SUMMARY

(Erase heading not required).

Army Form C.2118  
(adapted.)

Unit..... HQ 29 AUST INF BDE.....

Date and Time.—From..... 1 Aug..... To..... 31 Aug 43.....

Place	Date	Hour	Summary of Events and Information	Remarks and references to Appendices, Diaries, &c.
		2130	Signal received from 5 Div placing 10 Bn under direct command of 5 Div. This handicaps the brigade as we now have no reserve, except that which can be made from the two units which are each up against positions which will take their full strength to crack.	
	31 Aug	0630	Lieut St Ellen left to walk along the new L of C to TAMBU BAY. His journey was completed in 5 1/2 hours and this time should be considerably lessened when our pioneer platoons and the engineers complete the grading and improvement at present being pushed ahead by the Comd.	
		0830	Staff Conference.	
		0900	The IO proceeded to the Arty OP vicinity OLD VICKERS position to watch the arty shoot on the Jap positions on the KUNAI SPUR (711963) and to plot Jap positions on obliques flown on the 29th and dropped to us yesterday. Tomorrow a coy will put in an attack on the KUNAI SPUR, preceded by another arty shoot and information that can be obtained from the OP of the location of pillboxes etc will greatly assist the coy comd. As it happened, arty fire during the day uncovered a number of defences, which were spotted and compared well with those spotted on recce by A Coy.	
			Yesterday a det of PIB arrived to come under comd Bde and the Comd allotted tasks as follows:	
			(a) Sgt Leyland and 4 boys to report to and come under command 42 Bn and be used for recce of enemy positions N and NE of CHARLIE HILL.	
			(b) One NCO and sec to 47 Bn to recce enemy positions vicinity	<i>HW</i>

# WAR DIARY or INTELLIGENCE SUMMARY

(Erase heading not required).

Army Form C.2118  
(am. ed.)

Unit..... HQ 2<sup>nd</sup> AUSTRALIAN INF BDE

Date and Time.—From..... 1 Aug To..... 31 Aug 43

Place	Date	Hour	Summary of Events and Information	Remarks and references to Appendices, Diaries, &c.
		0900	719971. A fire base to be maintained, possibly at old AMBUSH POST 715964 and kept rationed and relieved by the remainder of the det. Reports to be made daily to Bde. Capt Cunningham, arty LC, discussed with Comd the proposed arty shoot on KUNAI SPUR, 1 Sep. and a programme of 500 rounds was arranged.	
		0905	The Comd saw Capt Didden, OC C Coy 2/5 Bn which is today moving to rejoin its unit at NASSAU. This coy has been spread over coys of 47 Bn since the relief of 17 Bde and from their battle experience have been of great assistance to our own troops.	
		0910	The GI phoned the Comd to discuss details of movement of C Coy 47 Bn.	
		1000	47 Bn instructed to make contact with patrol from 58/59 Bn at approx 715973 with a view to securing the TRACK JUNCTION 716973 by sending a coy along the North bank of the river.	
		1050	CO 47 Bn instructed to report to Comd with all orders and messages issued to C Coy during its recent efforts to secure the TRACK JUNCTION 716973.	
		1145	Lieut Caldwell OC 13 Pl C Coy 2/5 Bn which had been attached to C Coy 47 Bn, was interviewed by the Comd before he rejoined his unit.	
		1205	Lt Col Montgomery called on the Comd and discussed Bn activities today and proposed activities, including an attack on the KUNAI SPUR by A Coy.	
		1630	Lieut St Ellen rang from Div HQ after completing the trip across the new L of C with the information that the engineers consider they can finish the track in 24 hours.	
		1900	The GI rang the Comd who gave him details of the days events in the Bde as follows :	AW

# WAR DIARY or INTELLIGENCE SUMMARY

(Erase heading not required).

Army Form C.2118  
(ada, 1943)

Unit..... HQ 29 AUST INT BDE .....

Date and Time.—From..... 1 Aug ..... To..... 31 Aug 43

Place	Date	Hour	Summary of Events and Information	Remarks and references to Appendices, Diaries, &c.
			<p>Good reces have disclosed a great deal of the line of the Jap perimeter and two tracks that run NW from CHARLIE HILL. A patrol has also cut the track SE of the same feature. As A and C Coys are still held up by the lateral line of defences East of the feature these patrols have opened up a route to the West on to the Jap L of C. Patrols from C Coy 47 Bn with a small det of PIB have also established Jap interlocking posts guarding the SALAMUA TRACK., at one spot killing another 5 Japs. A small patrol from A Coy 47 Bn also did an excellent job, creeping up on a pill box and tossing in grenades which killed 3. The Comd also gave details of tomorrow's activities which include the moving forward of B Coy 42 Bn by the route discovered by D Coy patrol and the attack by A Coy 47 Bn on the KUNAI SPUR. Arrangements were also made for the CRE to meet Maj Colebatch, CO 11 Fd Coy at 733948 on the new L of C.</p>	
		2200	<p>BM 15 Bde rang to arrange for Brig Hammer Comd 15 Bde to visit the Comd tomorrow. This was not possible as the Comd is going to 42 Bn, owing to the illness of the CO Lt-Col Davidson. However the meeting was arranged for 2 Sep.</p>	
		2220	<p>The Comd rang the AA &amp; QMG re Div relieving us temporarily of ration responsibilities and the stocking of a DID on the new L of C, as all our natives will be required for the clearing of dumps at GOODVIEW and KOMIATUM. The AQ promised to give all possible assistance and will arrange for a recce to be made for a site for the DID tomorrow and for dumping to start 2 Sep.</p> <p>GENERAL : Since going into action casualties have been inflicted on the enemy as attached. These are known casualties only and do not include the very considerable number inflicted by 42 Bn prior to the Bns reversion to command a week ago. It is interesting to note that Bde HQ heads the list of PW with 2</p>	KW

## WAR DIARY or INTELLIGENCE SUMMARY

(Erase heading not required).

Unit..... HQ 29 AUST INF BDE ..... Date and Time.—From..... 1 Aug ..... To..... 31 Aug 43 .....

Place	Date	Hour	Summary of Events and Information	Remarks and references to Appendices, Diaries, &c.
			of whom one Sgt gave information of great value (see copies of interrogations attached) The total for the Bde to 2359K/31 of certified enemy casualties is 104 killed, 26 wounded, 4 captured. As against this our own casualties for the month including 42 Bn were 4 officers, 39 ORs killed and 4 officers and 64 ORs wounded.	

*R. P. Dough*  
Comd 29 Aust Inf Bde Brig

KNOWN ENEMY CASUALTIES

INFLECTED BY 29 AUST INF BDE

Date	Time	Unit Responsible	Place	Killed	Wounded	Capt'd	Remarks
Aug 14		47 Bn		2			
Aug 16	0400	D 47 Bn	793893				Casualties unknown
16	1330		773896	3			
16			778908	2			
19	1230	B 42 Bn	722922	2			
19	0915	C 15 Bn	728907	7			
20	1243	A 42 Bn			2		
23	1400	Bde HQ	707947			1	
23	1530	Bde HQ	711941	1			
23	2345	Bde HQ	708943	1			
25	1800	42 Bn	720942			1	
26		D 42 Bn		4			
26		42 Bn	725957	2	1		
26	1230	A 47 Bn	710964	3			
26		47 Bn	710964	4	3		
27		B 47 Bn		3			
27		D 42 Bn	Vicinity HILL 1	1			
28		A & C 42 Bn		5			
28		A 47 Bn		31	20		
28		Mortar					
		47 Bn	710962	4			
29		C 42 Bn	731955	1			
29		C 42 Bn	731955	6			
29		C 42 Bn		8			
30	0745	A 42 Bn	730953			1	
30		B 47 Bn	710967	5			
30	1630	Bde HQ	708943			1	
31	0530	47 Bn	708962	1			
31		47 Bn	718965	5			
31		B 47 Bn	710967	3			
Sep 1		A 47 Bn	711963	65			Some of these cas. caused by arty.
1		A & C 42 Bn		4			

# MESSAGE FORM

**CALL  
AND  
INSTRUC-  
TIONS.**

IN  
  
OUT

No. of Groups  
**GR.**

Serial No.  
OFFICE DATE STAMP

(ABOVE THIS LINE IS FOR SIGNALS USE ONLY.)

TO 29 Aust Inf Bde: Sigs: 'Q' Branch: Rptd ADOS:

FROM 11 Aust Div.

Originator's Number  
0. 21

Date  
31

In Reply to Number

(Write horizontally)					5
MOST	SECRET	(.)	WARNING	ORDER	
(.)	HQ	29	aust	inf	10
bde	plus	one	inf	bn	15
is	placed	on	24	hrs	20
notice	as	from	0900K	31	25
Jul	to	move	from	BUNA	30
area	to	MOROBE	(.)	no	35
move	until	ordered	by	this	40
HQ	(.)	advise	immediately	bn	45
selected	ACK				50
					55
					60
					65
					70
					75
					80
					85
					90
					95
					100
					105
					110
					115
					120
					125
					130

*ack. 08/11/42  
By Liaison Offr. 0900K/31*

THIS MESSAGE MAY BE SENT AS WRITTEN BY ANY MEANS: (EXCEPT) WIRELESS

THIS MESSAGE MUST BE SENT IN CYPHER IF LIABLE TO INTERCEPTION OR TO FALL INTO ENEMY HANDS.

ORIGINATOR'S INSTRUCTIONS DEGREE OF PRIORITY

TIME OF ORIGIN

SIGNATURE \* ORIGINATOR MAY DELETE "EXCEPT" AND INSERT "INCLUDING."

SIGNATURE

By Liaison Offr.

T.H.I.

(BELOW THIS LINE IS FOR SIGNALS USE ONLY.)

T.O.R.

SYSTEM IN	TIME IN	READER	SENDER	SYSTEM OUT	TIME OUT	READER	SENDER	SYSTEM OUT	TIME OUT	READER	SENDER

# MESSAGE FORM

CALL AND INSTRUCTIONS.

IN  
OUT

No. of Groups  
GR.

Serial No.  
OFFICE DATE STAMP

(ABOVE THIS LINE IS FOR SIGNALS USE ONLY.)

TO 15 Aust Inf Bn: 'Q' BRANCH: Rptd 3 Aust Div: 29 Aust Inf Bde: Sigs: ADOS:

FROM 11 Aust Div.

Originator's Number  
0. 23

Date  
31

In Reply to Number

(Write horizontally) SECRET	(.)	one	inf	coy	5
15	aust	inf	bn	will	10
move	from	MOROBE	to	NASSAU	15
BAY	(.)	move	as	soon	20
as	tpt	to	be	arranged	25
by	'Q'	11	aust	div	30
is	available	(.)	on	arrival	35
NASSAU	BAY	coy	comes	under	40
cmd	3	aust	div	Ack	45
					50
					55
					60
					65
					70
					75
					80
					85
					90
					95
					100
					105
					110
					115
					120
					125
					130

*ack 0866  
0955/1/52*

*[Signature]*

THIS MESSAGE MAY BE SENT AS WRITTEN BY ANY MEANS: (EXCEPT) WIRELESS

THIS MESSAGE MUST BE SENT IN CYPHER IF LIABLE TO INTERCEPTION OR TO FALL INTO ENEMY HANDS.

ORIGINATOR'S INSTRUCTIONS DEGREE OF PRIORITY

TIME OF ORIGIN

SIGNATURE \*ORIGINATOR MAY DELETE 'EXCEPT' AND INSERT 'INCLUDING.'

SIGNATURE *King Me; by liaison off*

(BELOW THIS LINE IS FOR SIGNALS USE ONLY.)

*0955h*

SYSTEM IN	TIME IN	READER	SENDER	SYSTEM OUT	TIME OUT	READER	SENDER	SYSTEM OUT	TIME OUT	READER	SENDER

T.H.I.  
T.O.R.



# MESSAGE FORM

Serial No. 42  
OFFICE DATE STAMP  
15/8/43

CALL AND INSTRUCTIONS.

IN Z O P  
OUT 25

No. of Groups  
GR. 73

(ABOVE THIS LINE IS FOR SIGNALS USE ONLY.)

TO ADV 3 AUST DIV RPTD 29 AUST INF BDE  
FROM NASSAU DEFS      Originator's Number 04      Date 15      In Reply to Number

(Write horizontally)				
From	HODGMAN	OC D Coy	47 Bn	5
reports	fighting patrol	16 Pl	surprise	10
by	Japs	NINE END Lake	SALUS	15
Believed	bathing		19	20
Returned	79888	with	out	25
arms	PI	comd	NOT	30
yet	returned	Enemy	patrol	35
estimated	30	D Coy		40
less	16	now	de	45
798887	PIB	pl	patrol	50
north	and	west LAKE	SALUS	55
				60
			1155 K/15	65
			1156	70
			1758	75
				80
				85
				90
				95
				100
				105
				110
				115
				120
				125
				130

THIS MESSAGE MAY BE SENT AS WRITTEN BY ANY MEANS: (*EXCEPT) WIRELESS				THIS MESSAGE MUST BE SENT IN CYPHER IF LIABLE TO INTERCEPTION OR TO FALL INTO ENEMY HANDS.				ORIGINATOR'S INSTRUCTIONS DEGREE OF PRIORITY				TIME OF ORIGIN			
SIGNATURE.....				SIGNATURE.....								T.H.I.			
(BELOW THIS LINE IS FOR SIGNALS USE ONLY.)												T.O.R.			
SYSTEM IN	TIME IN	READER	SENDER	SYSTEM OUT	TIME OUT	READER	SENDER	SYSTEM OUT	TIME OUT	READER	SENDER				

War Diary

SECRET

Copy No. //

15 Aug 43

29 AUST INF BDE OPERATION INSTRUCTION NO. 26  
(No change from verbal and signalled orders)

Ref Map : KOMIATUM 1/25000

INFORMATION

1. Enemy  
Enemy have known positions areas LOKANU RIDGE, SCOUT HILL, BOBDUBI, ORODUBI, GOODVIEW JUNC, MT TAMBU, KOMIATUM.
2. Own Tps
  - (a) As a result of attacks by 162 US Regt less one Battalion on 13 and 14 Aug 43 ROOSEVELT RIDGE is now in our hands from 755943 to 736947.
  - (b) TAYLOR FORCE (1 Bn 162 US Regt) is disposed SOUTH of MT TAMBU
  - (c) 17 Aust Inf Bde is disposed in the area GOODVIEW JUNC - ORODUBI  
42 Aust Inf Bn under command 17 Aust Inf Bde astride the TRACKS N.E. of MT TAMBU.
  - (d) 15 Aust Inf Bde is disposed in the area ORODUBI - BOBDUBI.
  - (e) 29 Aust Inf Bde is disposed as follows :
    - (i) Bde HQ - 734918
    - (ii) 47 Aust Inf Bn - Bn HQ 736919, A Coy 734917, B Coy 735917  
C Coy less 15 Pl 736918, 15 Pl disposed for defence of gun positions vicinity POINIER, D Coy less one pl, disposed for defence of gun positions LAKE SALUS to BALDWIN 784906.
    - (iii) C Coy 15 Aust Inf Bn less 15 Pl and one sec 13 Pl 733916, 15 Pl and one sec TRACK JUNC 728938.
    - (iv) 15 Aust Inf Bn less B and C Coy Cps at present at MOROBE under command 11 Aust Div.
    - (v) B Coy 15 Aust Inf Bn at NASSAU BAY under command 3 Aust Div.
  - (f) 11 Aust Fd Coy (less dets) under command 3 Aust Div are
    - (i) Improving and extending JEEP TRACK on MT TAMBU L OF C
    - (ii) Improving tracks to 42 Aust Inf Bn area.
  - (g) 7 Aust Fd Amb (less one Lt Sec and one surgical team) is at NASSAU under command 3 Aust Div.  
Lt Sec has established ADS at BOISI and Surgical Team will operate with 42 Aust Inf Bn.
  - (h) 18 and 19 Aust Sup Depot Platoons, B Platoon 154 Aust Gen Tpt Coy, 312 Aust LAD are under command 3 Aust Div.

ROLE OF 29 AUST INF BDE

3. 29 Aust Inf Bde (less dets) is Divisional Reserve located in the area S.W. of BOISI as per para 2(e) above and is responsible for defence of artillery areas SOUTH of TAMBU BAY.

TASKS

4. C Coy 15 Aust Inf Bn will dispose one platoon and one section for the defence of TRACK JUNC 728938 and will arrange to relieve daily one section of this force until further advised. Both relieving and relieved sections will use and patrol the route C Coy HQ, JEEP TRACK to TRACK JUNC 738925 thence to TRACK JUNC 728938

UNCLASSIFIED COPY - NEW GUINEA FORCE

5. 47 Aust Inf Bn
- (a) One coy 47 Aust Inf Bn with under command one sec IMG one Tk/A Pl (with guns from 42 Aust Inf Bn) will defend gun areas SOUTH of TAMBU BAY
  - (b) Limits of responsibility will be incl BALDWIN 784904 to excl BOISI
  - (c) Separate instructions will be issued for this force.
  - (d) 47 Aust Inf Bn will retain one coy at 1 hours notice to move until further orders.

ADMINISTRATION

6. Will be issued separately.

ACKNOWLEDGE

Signed at 1415 hrs  
Issued - through Sigs

*J. Ross.* Maj  
BM 29 Aust Inf Bde

DISTRIBUTION

47 Aust Inf Bn  
 C Coy 15 Aust Inf Bn  
 Sigs  
 Comd  
 BM  
 SC  
 BASCO  
 17 Aust Inf Bde (for infm)  
 Col MACKECHNIE (for infm)  
 File  
 War Diary

1  
 2  
 3  
 4  
 5  
 6  
 7  
 8  
 9  
 10  
 11 - 12

24 Aug 43

POST CARD

To Sgt TAKAHASHI from everyone.

Our troops are straight down this valley. At any rate we are going ahead until we reach the camp. If there is any food, we'll come meet you. Keep your pecker up.

UNDER STONE.

To Sgt from everyone.

We think the place where we bivouacked is not far. Keep your chin up. We waited  $1\frac{1}{2}$  hrs. Left at 1000.

17 Bde HQ  
25 Aug 43

PW Interrogation Report No.5  
PW No 5 interrogated by F. Bowers Lieut U.S.A. 25 Aug 43

Name : Takahashi, Tadao  
Rank : Sergeant  
Unit : ARAI coy, OBA Bn. 102 inf Regt

Circumstances of Capture : Captured 23 Aug at creek 707945, near 29 Bde HQ by recce patrol at 1400 hrs. Hip was injured and walked with difficulty.

Documents and identifications found on PW : (1) Sergeants insignia; (2) Identification disc (102 Inf Regt) MOTO 2803; (3) Notebook (containing notes and names corroborated by PWs statements re units and duties in HQ sec; (4) Post card folded in pocket -- "To Sgt Takahashi from everyone. Our troops are straight down this valley. At any rate we will go ahead until we reach the camp. If there is any food we will come and meet you. Keep your pecker up" (5) Piece of paper found under rock near capture posn. "To Sgt from everyone. We thing the place where we bivouacked is not very far. Keep yr chin up. We waited 1 and a half hours. Left at 1000 hrs." NB PW's statements correspond to the above and agreed with all information previously known at this HQ. PW has not seen any of the above since capture.

#### Organisation of Raiding and Demolition Unit.

Maj OBA (Bn Comd)  
Lieut TAKASAKI (Adjt  
WO HASEGAWA (Adjt)

III Attack Unit  
(?)

II Attack Unit  
(1st Lt GAMO comd)  
a new officer.

II Attack Unit  
(1st Lt OHASHI comd)

Engrs for demolition  
(?)

10 Engrs for demolition 10 Engrs for  
demolition  
1st Lt Sunaoshi 1st Lt HIROSE 2nd Lt NAKAJIMA  
WO SEMBA  
(Pl Comd) (Pl Comd) (Pl Comd)  
"

Sec sec

sec sec sec  
Reserve Unit Comd  
Capt ARAI  
Pl Comd  
SM OKADA

sec sec sec

MO : Capt HANAWA and 1st Lieut YOSHOGA (11 Officers altogether)

#### Arms etc :

12 automatic rifles; 1 LMG to each sec; 1 grenade discharger to each Attack Unit; each man carried a rifle; officers carried pistol and sword. PW ordinarily would carry a pistol as he belongs to HMG coy, but this time carried a rifle.

#### Organisation of OBA BN

9 coy 10 coy 11 coy 12 coy MG coy ( )  
Usual organisation of MG coy (104 men)  
HQ sec (12 men)

P1

P1

P1

P1

Sec  
HMG

sec sec  
HMG HMG

sec sec  
HMG HMG

Sec sec  
HMG HMG

Sec 1 dr with 9 men work HMG. The rest carry amn. No LMG is MG coy. The other 4 coys of the bn are rifle coys with 3 secs to the pl, each sec having 1 LMG. 12 automatic rifles in rifle coy.

PW arrived Lae 26 Feb. Arrived Salamaua 29 April with the ARAI unit (only 69 men in 9 MLCs, but a large quantity of provisions). PW was "remaining personnel" (Rear Party) of the Bn. Stayed short time in Salamaua, then

direct to NASSAU BAY by MLC to catch up with his unit. He was part of NASSAU Defence Force under Maj TAKARURA. In Aug officers were relieved and Maj OBA came to take his place from MANCHURIA Col MARUOKA likewise returned to Japan at this time. All bn comds were changed. When the Americans landed at NASSAU BAY Maj OBA issued orders to retreat, and the entire bn returned to SALAMAUA. It took 11 days for them to walk back. On "flat land" the natives gave them food (bananas and paw-paws) They had no other food than this. Leaving the MG coy at SALAMAUA the main force of the OBA Bn went to KUSA mtn. When orders came to form the Raiding and Demolition Unit, the OBA bn (except 11 coy) returned to SALAMAUA. 30 independent engrs (to serve as the demolition unit) were added. Took one week to organise the Raiding and Demolition Unit. They took food sufficient for 9 days: 9 days "A" Rations (rice), and 3 days "B" rations (dry bread made of vegetables etc.) Food shortage was felt acutely by time objective reached. The Raiding and Demolition Unit left SALAMAUA August 7. 180 men strong. The bridge across mouth of Frisco River was repaired at this time. Took one week to get from SALAMAUA to LAKE SALUS by way of KOMIATUM (HQ of 66 inf Regt and 115 inf regt. Maj Gen MUROYA was in KOMIATUM AT this time) Bivouacked one night at KOMIATUM, one night at TAMBU. They took track to left of TAMBU. There were 2 navy mtn guns and 1 army mtn gun on ROOSEVELT RIDGE referred to by PW as KIMURA Bn area. They spent one night unknown to our troops west of suspected gun area. They estimated (according to Prob Off TAKAHASHI's recce. Prob Off was recently promoted to 2nd Lieut) 8 of our guns at 764919, two at 7635-9210 and two at 7645-9180. PW stated recce had been insufficient. The assembly area was at 760916. The unit divided into 3 groups. PW was Reserve Unit, being a MG gunner and duty was to cover and protect other tps. The bn as a whole had been ordered to go, not volunteer. PW did not want to go, but resolved to die but hoped to get back safely. They attacked the guns, but on returning they found 30 or 40 Americans waiting at their assembly area. 1 Attack Unit and the Reserve Unit fought ~~well~~ while Maj OBA and the main force went forwards SALUS LAKE. 16 Japs were killed, including Capt ARAI and Lieut NAKAJIMA. On way back, this group encountered the enemy on a mtn which had bamboo forest on it. Apparently Americans carrying provisions. Japs had 3 or 4 men killed in this encounter. No officers killed. They made only one attack on guns. Did not know what damage had been done as it was too hard to recce later on. They intended for the "support units" to make a bayonet charge killing men around the guns and thereby clearing the way for the Engrs to place explosives under the guns. Food run completely out half way back. By this time the force was broken up and scattered, that only PW and Sup Pte were left together when they reached BOISI creek. PW fell from a cliff at BUIANBI Creek and injured his hip. The Sup Pte decided to go ahead and would come back for him. Sup Pte apparently contacted friendly tps and intended to return to pick him up. PW merely stated that no-one returned for him. PW was not told that his friends had waited for him and went ahead in search of food. PW had not eaten for one week before his capture.

Locations given by PW.

The 155 Naval gun in SALAMAUA is common gossip among the troops. Its location is towards the sea from the drome and is in the jungle, Not coconuts. PW pointed out approximately on the map SALAMAUA. Locality revised 171187. Only one such gun at the time PW was in SALAMAUA. Rumour was that another had been landed to Lae. The gun was disassembled and flown from ROBAUL in a heavy bomber which crashed when it landed in LAE owing to the weight. From LAE it was brought in MLC. The gun is on two wheels and is tractor drawn.

One Arty Mtn SAL Loc Rev 720240 there are 3 or 4 10 cm long range guns. 2 groups of 6 pom poms each.

6 AA guns on side towards the sea of KILA HILL.

Another crossing of FRANCISCO RIVER is SW from drome 737987 ref SALAMAUA 1/25000) The crossing is made in boats maintained by engrs.

3 Navy AA guns from MACDONALDS Junction towards LOGUI No.1

1 Navy AA highest point on the peninsula.

On road to CHINATOWN two AA guns not damaged by bombing.

2 mm guns in MALOLO

4 houses near former native hospital are provision dumps (134244)  
Amm dump (large amount 128223)

Army MLC land at night on beach SAMOA Hbr. Navy MLC at 1st or 2nd inlet north on the Peninsula.

300 men living in scrub west of Power Line, 6 Pompoms also in area.

There is nothing in or around the aerodrome. Supplies were formerly brought in by plane.

At first there were few Marines in SALAMAUA, but by time PW started out for SALUS with OBA Raiding and Demolition Unit, there were about a thousand. Navy personnel (Marines) are well equipped and fed and freely enter SALAMAUA to get vegetables etc. Army personnel is forbidden on the peninsula. Native nicer to the Navy than the Army. The natives are friendly to all, and live somewhere in KILA. There are quite a few. The bombing scares them away during day time but at night they come and work with the soldiers unloading barges. They transport as far as a provisions dump near where the PW was captured and only the soldiers carry any further towards KOMIATUM. Natives are well treated by Japs.

The entire 41 Div was scheduled to arrive this month at SALAMAUA, but bombing apparently prevented it. 20 Div now in MADANG was also to come.

The SALAMAUA hospital was moved to MALOLO. Natives are employed in the hospital and are very kind. MLC also land at MALOLO where the 102 Inf Regt HQ are. When 66 inf Regt came to KOMIATUM, the 102 was relieved and went to MALOLO. Soldiers are happy when they are wounded as they if seriously wounded, are evacuated to Lae and then to Finchaven. There are not many guns in Lae, but plenty of AA and Pompom.

PW's background : From IBARACI pref. Rice Planter. 25 years old. Not married. Left Japan Aug 41. Trained one month in Manchuria and from there to CANTON where he spent a year (no combat) One month in RABAUL.

Attitude : PW enquired if Lae had fallen, to which the interrogator replied not yet, but SALAMAUA had. The PW was talkative and communicative and the bulk of information contained in this report was volunteered without being asked leading questions. The interrogation lasting for two hours, cannot be considered an interrogation, as it consisted of the PW talking of his own experiences and the general situation leading to the "fall of SALAMAUA" security consciousness. PW is amenable and amiable and said "As I no longer carry a rifle I am no longer an enemy. I want to comply with any orders I may be given. As soon as my hip is better, I want to work, any kind of work that I am told to. I am extremely sorry to have caused so much trouble by having to be carried etc. "

Lieut USA.

25 Aug 43

INTERROGATION REPORT No.4.

PW No.4 interrogated by F. BOWERS Lieut U.S.A.

Name : TASHIRO, HIROSHI

Rank : Lance Cpl Medical Orderly (Promoted May 1943)

Unit : MATSUMOTO Pl, NAKAJIMA Coy, JINNO (not KANNO or KAMINO) Bn,  
MIYAKE Regt (80 Inf Regt) 20 Div (ACKI)

Circumstances of Capture.

No details were sent with PW by whom captured, where or how unknown.  
Identity disc was taken from him and lost.

BACKGROUND AND ATTITUDE.

23 years old. 3 years ago worked as machinist on a ship. Twice in New York, visited PANAMA and SAN FRANCISCO. Knows little English. Familiar with Americans. Unafraid, but surprised at kind treatment. Talkative, co-operative and statements are considered reliable.  
Only 1 Bn of the MIYAKE Regt (Col MIYAKE still in MADANG) came to SALAMAUA (5 MG coys, approx 540 men.) Arrived SALAMAUA in MLC from MADANG on 23 July. Usually 4 medical orderlies to a coy. (also two interpreters to a coy) He was employed as infantry soldier. Seriously wounded patients at the front are cursorily treated and usually die. Walking patients are sent to an aid station. Food, tobacco and supplies nil for some time. PW went to TAMEU (BUYUSAN) on 23 July for one day. (Approx 50 ~~so~~ tps there, just beginning to dig in holes very shallow) Was one day on TAMEU and went to position half way down western part of ROOSEVELT RIDGE. On day at TAMEU, shelling caused 3 killed 16 wounded. The shelling of TAMEU was ineffective. Few casualties. Was attached to a coy not his own. Does not know name. 2Aug heard of the OBA Bn forming a raiding and Demolition unit. Estimated strength at 104 men. OBA Bn left on 8 Aug. Did not know of retreat of Jap army. NASSAU BAY refugees came and mortars began coming closer. Fled and by 17 Aug could go no further as leg was hurt (slightly) and no food in 8 days. PW ate grass He laid down and when awoke was surrounded by american (?) soldiers. PW states all units strengths half or below.

Lieut

Adv Ech ATIS.



PROGRAMME FOR ATTACK ON CHARLIES KNOLL 29 AUG 43

HQ 29 Aust Inf Bde (AIF)  
28 Aug 43

Copy No.....

Serial No.	Time From To	Objective or Target	Unit or Weapons	Number of Rounds	Remarks
1.	1130 - 1135	CHARLIES KNOLL	Arty	360	1. No troops NORTH of a line East West through highest point CHARLIES KNOLL  2. Serial 8 ceases at exactly 5 minutes after commencement.  3. Synchronisation at 1100 hrs.  4. During period 1330 - 1443 the following troops will move by limited objectives as under : D Coy to approximately 724957 One pl from C or A Coys to 725957 Both to assault with rifle grenade, LMG and hand grenade at 1520 hrs.  5. One pl B Coy will occupy firm base evacuated by D Coy not after 1400 hrs.
2.	1140 - 1210	"	MMG	2000	
	1140 - 1210	"	Mortars	150	
3.	1220 - 1224	"	Arty	288	
	1226 - 1228	"	"	144	
4.	1235 - 1300	"	MMG	2000	
	1235 - 1300	"	Mortars	150	
5.	1345 - 1350	"	Arty	360	
6.	1400 - 1420	"	MMG	2000	
	1400 - 1420	"	Mortars	150	
7.	1435 - 1439	"	Arty	288	
	1441 - 1443	"	Arty	144	
8.	1515 - 1520	"	Arty	360	

DISTRIBUTION

42 Aust Inf Bn	1 - 3	LO
Arty LO (Capt Cunningham)	4	Hand
Comd	5	"
LO	6	"
5 Aust Div (for infm)	7	Safe Hand by Lt-Col McLean
File	8	
War Diary	9 - 10	

*[Signature]*  
Capt  
BM 29 Aust Inf Bde

AUSTRALIAN MILITARY FORCES - NEW GUINEA FORCE

PROGRAMME FOR ATTACK ON KUNAI SPUR 1 SEP 43

HQ 29 Aust Inf Bde (AIF)  
31 Aug 43

Copy No. *9*.....

Serial No.	Time From To	Objective or Target	Unit or Weapon	Number of Rounds
1.	1130 - 1143	KUNAI SPUR <i>712966</i>	25 pr	117
2.	1148 - 1200	"	"	108
3.	1220 - 1222	"	"	18
4.	1235 - 1240	"	"	45
5.	1243 - 1250	"	"	63
6.	1300 - 1320	"	Mortar	85
	1300 - 1320	"	MMG	2000
7.	1330 - 1342	"	25 pr	108
8.	1345 - 1400	"	"	144
9.	1405 - 1420	"	MMG	2000
	1400 - 1430	"	Mortar	85

*[Signature]*  
Capt  
HQ 29 Aust Inf Bde

DISTRIBUTION

- 47 Aust Inf Bn 1 - 3
- Arty LO (Capt Cunningham) 4
- Comd 5
- 5 Aust Div (for infm) 6
- File 7
- War Diary 8 - 9

--	--	--

Please quote this number when replying.

Date  
Address

Australian Military Forces—Northern Command

TELEPHONE

31 Aug 43

Interrogation Report No.1

PW No.1 Interrogated by F BOWERS, Lieut USA.

Name : TAKAYAMA, JIRO  
 Rank : Sup Pte  
 Occupation : Rice Planter, neat OSAKA  
 Unit : KAWA 150 Regt. Comd formerly URASHIMA (now somewhere on road construction) SUZUKI Bn Comd.  
 Age : 21

Attitude : On arrival dejected, but gained confidence after finding treatment not severe. PW grew more and more talkative and towards end of interrogation garrulous. PW is uneducated and not unintelligent. Statements concerning units are to be considered unreliable until further presence of his unit in area is verified.

NOTE : No possessions or marking on PW when captured.

PW's sense (and knowledge) of geography were so poor that efforts were made to trace his movements point by point from WEWAK to patrol organisation location. PW's confusion and erroneous statements regarding locations may be interpreted as growing security consciousness on part of Jap officers and efforts to conceal locations from ORs. This is further substantiated by the collection of paybooks etc. PW's route of march appears to be a new one. PW's knowledge of LAE is unquestionable and his presence at DAVIDSON'S RIDGE highly probable as PW saw Maj OBA at time of OBA's retreat from NASSAU.

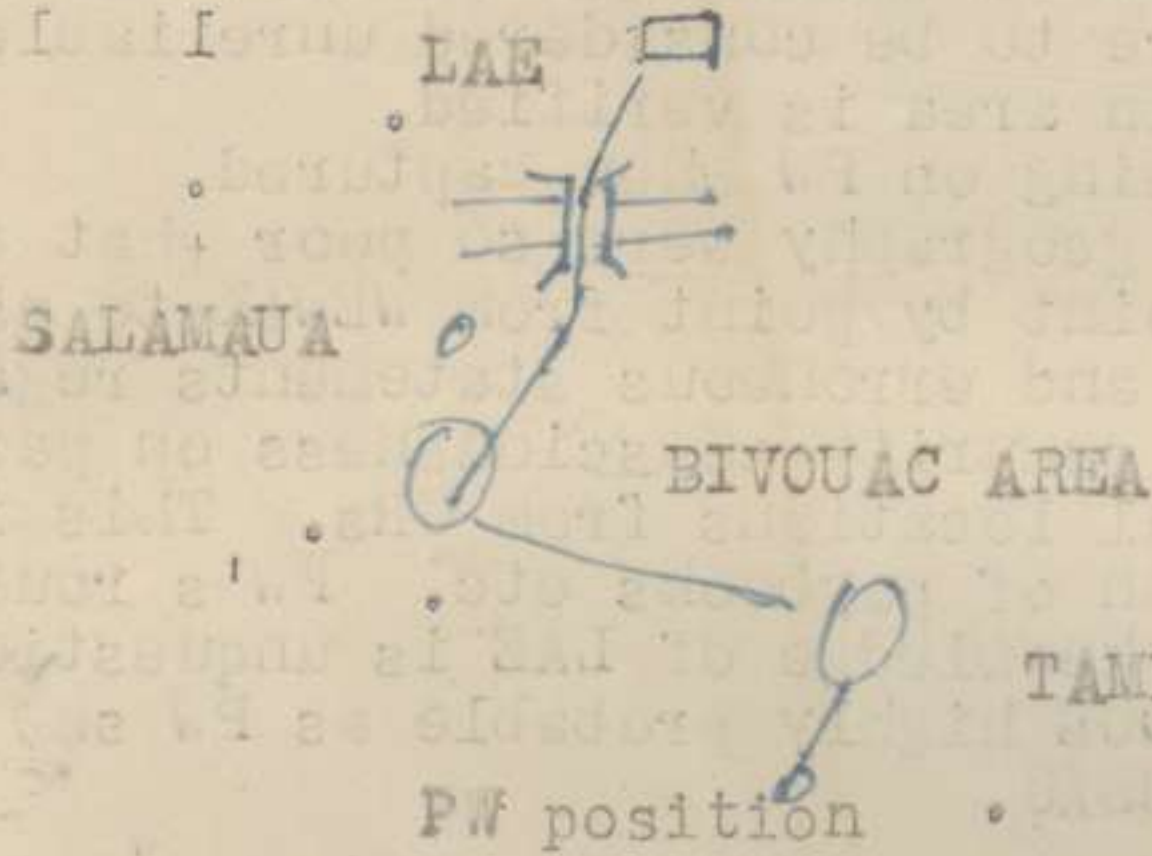
Itinerary and chronology : Inducted in army a year and a half ago. Took 15 days to get from JAPAN to WEWAK (via PALAU). Arrived WEWAK on May 10 (later PW said June) there were six transports carrying 10000 troops landing over a period of 3 - 6 days. 5000 landed at time PW did. KAWA 150 Regt landed in toto. Spent one month in WEWAK. Army Comd Lt Gen ABE in WEWAK. As A.A. all along beach (from government wharf to cemetery) the navy is in control of the beach. Army personnel is 200 or 300 metres back. Swimming is forbidden due to air raids. Mission sisters now living in former govt offices (bungalows) make and sell soap to Jap officers. Only officers allowed to enter that area and ORs with KOYO (official business arm band). Established that SISTER LIEKA is one of sisters in area. Money from sale of soap and toilet articles goes to comd of Jap troops. Assumed that these monies used to pay for sustenance stores. Bivouac area situated between WEWAK aerodrome and former mission beach store. No chinese in WEWAK 50% of soldiers after landing at WEWAK go into hospital for 16 days treatment for malaria. Personnel numbering 1000 improving aerodrome at BUT. 80 Inf Regt and Comd MIYAKE there.

Many cattle at BOIKEN plantation between BUT and WEWAK. Jap soldiers are not allowed to interfere with these animals. Disciplinary action is taken against soldiers attempting to aid them. PW was emphatic about officers dividing all food equally between men and officers. Rice is not needed if Paw-paws or bananas are obtainable. Did not call at ALEXIS not at BOGIA.

5 or 6 days in MADANG. Few natives in MADANG. Natives appear to be gaining confidence in Japs. Formerly both were afraid of each other. Nothing in MADANG due to Jap bombing or recent American bombing. Heard transports would bring more troops to MADANG - not MLC. Bivouacked between MADANG outskirts and aerodrome.

From MADANG to LAE six or seven times stopped and was ordered into jungle where they slept until night. Officers remained together on MLCs as well as on land and did not inform men of their whereabouts. Orders issued to men by section leaders. Supplies (native goods) were plentiful here (MADANG) Arrived LAE first part of July. 340 strong. remained two or three days. Landed at GUINEA AIRWAYS pier. Heard that OBA Bn of 1000 men had been sunk on way to LAE sometime before, and only 300 reached LAE. 51 Div comd NAKANO died in August of malaria, and Col MATSUI now acting Div Comd - soon to be promoted. Saw about 300 sailors in LAE assumes there are about 1000. Saw the Naval Comd who is an old brass hat in LAE, but has forgotten his name. Navy bivouac area near beach. Navy HQ is 100 yards turn left then another 100 yards from pier where PW landed. Troops lined up on pier side of aerodrome and marched in columns of three along vehicle road across aerodrome as far as river.

Two or three planes burned on aerodrome. PW referred to aerodrome as "old"  
 Heard 20 Div was soon going to land at LAE. Reinforcements landing in  
 numbers at LAE. July 1 - Two coys (Lieut TAKAGI and Lieut NAKAJIMA)  
 323 men walked from LAE to SALAMAUA overnight. Followed along beach  
 About 12 hours before reaching a big river. Another bridge is across  
 this river. After crossing bridge entered jungle and started climbing.  
 After 2 1/2 hours was told SALAMAUA was "over there" PW could see nothing  
 from jungle. 5 or 6 hours from bridge is a flat part which was bivouac  
 area. At bivouac area all paybooks etc collected. Discs were not.  
 From bivouac area 3 or 400 metres "down", the sea would be visible.  
 (The bivouac area may be on DAVIDSON'S RIDGE) Arrived summit of TAMBU  
 around July 6, only engineers there. Saw Maj OBA there who had retreated  
 from NASSAU. OBA Bn originally 600 men in NASSAU but only 300 left who  
 were returning to SALAMAUA. PW's position was "down" TAMBU: 16 men there  
 (1 sec) commanded by L/Cpl ARIGAWA. Sketch drawn by PW.



A patrol of 100 men was organised in SALAMAUA composed of 3 officers,  
 Lieut MATSUMOTO, Hidel (not certain of christian name), WO HASHIMOTO,  
 and YAKAMOTO (These names are probably false) and seven NCOs. Their  
 mission was to recce locations of our forces. They brought 5 days  
 rations 2 to go and two for the return. PW was not informed of  
 objective or destination. The patrol walked single file 3 steps  
 distance between men. Was ambushed on 17 July (two days after starting  
 off) by our troops on "small creek coming down from the hill" "This creek  
 runs into a big river" PW was wounded in leg (MO states wound is over  
 3 weeks old) PW lost his patrol and was entirely alone. Tried to catch  
 up with them but could not find them. Was without food for 12 or 13  
 days. Had only water to drink. On mountain near 29 Bde area saw  
 natives carrying provisions near a small fall. PW entered Bde area and  
 found (stole) food day before yesterday (Saturday) Sunday saw two  
 carriers, called to them to help him. They notified others at 29 Bde  
 ANGAU who surrounded and captured him.

Future Movement: PW will leave Sept 1 for BOISI via TAMBU.

Sgd. F. BOWERS

Lieut  
 A.T.I.S.

MOST SECRET

HQ 29 Aust Inf Bde (AIF)

7 Aug 43

Copy No. 5

29 AUST INF BDE ADMINISTRATIVE INSTRUCTION NO. 7

GENERAL

1. This instruction covers the movement of the following units :

HQ 29 Aust Inf Bde  
Provost Section  
"L" Sec Sigs  
47 Aust Inf Bn  
18 Aust Supply Depot Pl  
19 Aust Supply Depot Pl  
B Pl 154 Aust Gen Tpt Coy  
7 Aust Fd Amb  
312 Aust LAD

EQUIPMENT

2. All WET will be taken.

ACCOMMODATION STORES

3. Units will move with Scale "A" tentage and accommodation stores.

SURPLUS STORES

4. Non-essential accommodation stores will be listed and delivered to Lieut C.D. FLETCHER at HQ 29 Aust Inf Bde by 1200 hrs 8 Aug 43. These stores will be shipped forward as required.

AMMUNITION

5. Double Scale "A".

RATIONS

6. 5 days normal - carried in bulk  
1 day Fd Operation - carried on the man  
1 day Emergency Dehydrated Ration - carried on the man

WATER

7. One 2 gall water container per Section will be carried with personnel.

MT

8. No MT will be taken.

ALLOTMENT OF PERSONNEL AND STORES TO VESSELS

9. Will be advised later.

LOADING POINTS

10. Will be advised later.

TRANSPORT LOADING OFFICERS

11. (a) LCTs will be loaded under the direction and control of the following Transport Loading Officers :

- LCT No.1 - Capt D.J. SCOTT HQ 29 Aust Inf Bde
- LCT No.2 - Lieut A. COOKE 47 Aust Inf Bn
- LCT No.3 - Lieut P.C. SCHOLEY 7 Aust Fd Amb

- (b) Transport Loading Officers will travel on LCTs and will supervise discharge of stores.
- (c) Units having stores on LCTs will contact Transport Loading Officers regarding details for assembly of stores and order of loading.

TRANSPORT FOR MOVEMENT OF STORES AND PERSONNEL

12. Units will advise this HQ by 1100 hrs 7 Aug 43 of transport required to move stores and personnel to loading points.

DOCUMENTATION

- 13. (a) As per 11 Aust Div Adm Instn No.18. In addition one copy of nominal roll and T51 will be submitted to this HQ.
- (b) OC Troops will be responsible for collection of nominal rolls of all personnel travelling under his control.
- (c) All nominal rolls will reach this HQ as early as possible after allotment of troops to vessels is notified.

ACKNOWLEDGE

Signed at 1900 hrs

Method of Issue - through Sigs

*[Signature]*  
 Maj  
 BM 29 Aust Inf Bde

DISTRIBUTION

Copy No.

Copy No.

47 Aust Inf Bn	1	BM	9
18 Aust Sup Depot Pl	2	SC	10
19 Aust Sup Depot Pl	3	TO	11
B Pl 154 Aust Gen Tpt Coy	4	BASCO	12
7 Aust Fd Amb	5	11 Aust Div (for infm)	13
"L" Sec Sigs	6	File	14
312 Aust LAD	7	War Diary	15-16
Provost Section	8		

War diary

MOST SECRET

29 AUST INF BDE LOADING TABLE - (Issued in conjunction with 29 Aust Inf Bde Adm Instn No.7. of 7 Aug 43)

Serial	Vessel	Vessels Regd No.	Unit	Personnel			Stores	Loading Point	Time Stores to be dumped Loadg. Pt	Time Tps to be at Loadg Pt.	Tpt Loadg. Offr	OC Tps	Loadg commences.
				Offrs	ORs	Total							
1	LCI(x)	71	47 Aust Inf Bn	5	173	178	5	No.1 Strip Pt	1800K/8	0900K/9	Lt. LOVELY Capt PASCOE		1000K/9
2	LCI	72	47 Aust Inf Bn	5	158	163	5	No.2 "	1800K/8	0900K/9	Lt BATY Capt HARPER		1000K/9
3	LCI	73	47 Aust Inf Bn	7	173	180	5	No.3 "	1800K/8	0900K/9	Lt. BARNETT Lt. GRIFFITH		1000K/9
4	LCI	74	47 Aust Inf Bn	5	174	179	5	No.4 "	1800K/8	0900K/9	Dt. HOFFMAN Capt STEWART		1000K/9
5	LCI	31	HQ 29 Aust Inf Bde "L" Sec Sigs Provost Section	9 2	98 35 16	107 37 16	5	No.5 "	1800K/8	0900K/9	Lt. J.D. MABBETT 29 Aust Inf Bde Lt D. WARMAN L Sec Sigs		1000K/9
				<u>11</u>	<u>149</u>	<u>160</u>							
6	LCI	34	7 Aust Fd Amb 154 Aust Gen Tpt Pl 312 Aust LAD	6 1 1	85 58 14	91 59 15	3 2	No.6 "	1800K/8	0900K/9	Lt. DURNFORD 154 Gen Tpt Pl To be notified by 7 Fd Amb.		1000K/9
				<u>8</u>	<u>157</u>	<u>165</u>	<u>5</u>						
7	LCI(x)	339	7 Aust Fd Amb 18 Aust Sup Depot 19 " " "	6 2 2	84 27 28	90 29 30	3 1 1	No.7 "	1800K/8	0900K/9	To be notified Capt ANDERSON by 7 Fd Amb 18 Sup Dep		1000K/9
				<u>10</u>	<u>139</u>	<u>149</u>	<u>5</u>						

(x) Has no officer accommodation.

*[Signature]*  
Maj  
BM 29 Aust Inf Bde

MOST SECRET

Copy No. **12**

**1** AUG 43

29 AUST INF BDE ADMINISTRATIVE INSTRUCTION NO. 6

GENERAL

1. This Instruction covers the movement of the following Units:-

HQ 29 Aust Inf Bde  
'L' Sec Sigs  
312 Aust LAD  
47 Aust Inf Bn

EQUIPMENT

2. All WET will be taken.

ACCOMMODATION STORES

3. Units will move with Scale 'A' Tentage and accommodation stores.

AMMUNITION

4. Scale 'A' plus two days Scale 'B' will be taken

RATIONS

5. 1 day's SWPA - in bulk  
1 day's Dehydrated - on the man  
2 days' Emergency - on the man  
1 Sandwich meal - on the man

BLANKETS

6. One carried on the man  
One in bulk

MEDICAL

7. (a) Carried on the man:  
Atebrin - 14 tablets  
Nets Mosquito - 1  
Current issue mosquito repellent
- (b) All malarial control equipment will be taken.
- (c) Units will ensure that sufficient medical stores for use if required during the voyage are available at all times.

MT

8. (a) The following MT will be taken



Type of vehicle	HQ 29 Aust Inf Bde	'L' Sec Sigs	Prov- ost	312 Aust LAD	15 Aust Inf Bn	47 Aust Inf Bn	TOTAL
M/C	2	5	3	-	-	5	15
Trucks 1/2 ton 4x4	5	1	1	-	-	4	11
Trucks 15cwt 4x4	3	2	1	1	2	3	12
Trucks 3 ton 4x4	2	-	-	-	-	1	3
Trucks 3 ton Recovery	-	-	-	1	-	-	1
Trucks 3 ton Stores	-	-	-	1	-	-	1
Trucks 3 ton Garage	-	-	-	1	-	-	1
Trailers Jeep	5	2	-	-	-	4	11
Trailers Water 150 gals	-	-	-	-	-	1	1

(b) The following transfers of vehicles will be made forthwith to bring units up to this strength:

<u>Transferee</u>	<u>Transferror</u>	<u>Type of vehicle</u>
'L' Sec Sigs	42 Aust Inf Bn	1 Jeep
47 Aust Inf Bn	42 Aust Inf Bn	2 Jeep Trailers
47 Aust Inf Bn	7 Aust Fd Amb	1 Trailer Water 150 gals
15 Aust Inf Bn	42 Aust Inf Bn	2 Trucks 15cwt 4x4

Transfer of additional Jeep trailers will be advised later.

(c) Disposal of surplus transport

- (i) 47 Aust Inf Bn will prepare G 52s for transfer of all surplus vehicles to 42 Aust Inf Bn.
- (ii) Surplus transport will remain with units pending further instructions.
- (iii) All carriers at present held by 47 Aust Inf Bn will be handed over to 42 Aust Inf Bn

9. Movement of Carrier Pl personnel will be advised later.

POL

10. All vehicles will move with full tanks and POL for 200 miles.

STORES AND PERSONNEL

11. Allotment of stores and personnel to vessels will be advised later.

DOCUMENTATION

- 12. (a) Seven copies of Nominal Rolls will be required in accordance with Appendix 'A' attached, and forwarded to this HQ when called for
- (b) All vehicles transporting stores to ship's side will be accompanied by loading lists in accordance with NGF O 134/43. Supplies of these forms will be forwarded as soon as available.

ACKNOWLEDGE

Signed at 2300 hrs.

Method of Issue - *Through Sigs.*

*J.A. Ross*  
BM 29 Aust Inf Bde Maj

DISTRIBUTION

	<u>Copy No.</u>		<u>Copy No.</u>
42 Aust Inf Bn	1	SC	7
47 Aust Inf Bn	2	TO	8
7 Aust Fd Amb	3	BASCO	9
'L' Sec Sigs	4	11 Aust Div (for infm)	10
312 Aust LAD	5	File	11
BM	6	War Diary	12-13

APPENDIX 'A'

1. EMBARKATION - DOCUMENTATION

(a) Nominal rolls will be prepared by units, groups, detachments and/or individual persons on draft by headings shown hereunder:-

(b) Nominal rolls will be clearly headed with name of unit of personnel on draft and are to be signed by an officer authorised to despatch the personnel. The date and authority for movement will be included and shown on the top right hand corner of Nominal Roll, e.g. HQ 11 Aust Div AQ/206/26 Dec '42

(c) The following are the headings:-

Serial No, Army No, Rank and Surname (blocks) and full Christian names. Personnel will be so loaded in vehicles at unit camp sites so that on arrival at wharf it is a simple matter to arrange pers in their correct positions.

(d) Movement to ship's side will be in order of Nominal Roll. Officers will accompany their respective troops.

(e) Officers will be shown in order of Army Nos at the head of the Nominal Roll. Other ranks will be shown in order of Army Nos by Platoons or equivalent sub-units. Officers and other ranks will be given a serial number commencing with one and continuing through to the last name on the roll.

(f) Personnel will insert cards showing serial number in hatbands.

PRO FORMA

HEADINGS (see paras (a) and (b) above)

Serial	Army No.	Rank	NAME (IN FULL)	Remarks

Signature

Brig R.F. Monaghan

Comd 29 Aust Inf Bde

6 AUG 43

No 18

105. USE OF AN FPO OR APO AS POSTAL ADDRESS

1. The use of an FPO as an address for private correspondence is forbidden.
2. The use of an APO address may be permitted as an accommodation address in special circumstances, but only by express authority of ADAPS or DADAPS.
3. To be repeated in Unit Routine Orders.

106. USE OF TYRE CHAINS ON ROADS

NEW GUINEA Force order 514/42 is cancelled and the following order substituted:

Chains will only be used on wheeled transport when conditions demand their use. The use of Chains on roads during dry weather is forbidden. Disciplinary action will be taken against drivers of vehicles for any breach of this order.

To be repeated in Unit Routine Orders.

107. ENEMY GRAVES - DESECRATION

1. Disinterment of buried Japanese by unauthorised persons or other desecration of Japanese graves is forbidden. Severe disciplinary action will be taken against offenders.
2. This order will be repeated in all Unit Routine Orders.

*John Callaghan*  
Comd 29 Aust Inf Bde

DISTRIBUTION

15 Aust Inf Bn (for info)	1
42 Aust Inf Bn	2
47 Aust Inf Bn	3
11 Aust Pd Coy	4
12 Aust Pd Coy	5
7 Aust Pd Amb	6
104 Aust Bde Workshop	7
104 Aust Bde Ord Pd Park	8
312 Aust LAD	9
No.1 Aust Base Sub Area	11
A Sec 2/7 Aust Dental Unit	10
File	12
Notice Board	13
- War Diary	14-15

INTERROGATION REPORT NO. 3

PW No 3

Name TAKAYAMA, Jiro, Superior Pvt.

Unit Pl Comd 2nd Lieut SUZUKI  
No 4 Coy - Coy Comd 1st Lieut TAKAKI, Yoshio  
No.1 Bn - Bn Comd Maj YOSHIMURA, Sedahika  
KAWA, 150 Regt - URASHIMA  
19 Div.

Circumstances of Capture. Found by natives and taken to HQ 29 Aust Inf Bde at 707919 (Ref map KOMIATUM 1/25000) on 30 Aug 43

Personal Particulars Born 1923. Graduated Primary School. Employed as an Office Boy in the tax office in KOREA.

Details of Unit No.2 Bn 150 Regt was commanded by URMURA, Masaaki, Capt  
No.1 Coy 1 Bn Comdr Capt YAMAGUCHI  
No.2 " " 1st Lieut NAKAJIMA  
No.3 " " " HOMIKAMA  
When asked who the Divisional comdr was, PW mentioned MATSUI but was not sure. Stated that his Regt was the only one of 19 Div to come to NEW GUINEA.

Movement of Unit. Whole Regt of 3 Bns totalling about 5,000 left FUSAN, KOREA, early in Mar 43 and arrived PALAU about 7 Mar. Left PALAU beginning of May and arrived WEWAK about 10 May. His Bn - No.1 Bn - left in middle of June and travelled to LAE by DAYHATSU (large MLC's) taking 6 days for the journey. Regtl Comd and other two Bns remained at WEWAK.  
They were only in LAE half a day and he did not see any other units there but saw about 100 sailors.  
Bn comdr and Nos. 1 and 3 coys remained at LAE.  
Nos 2 and 4 coys totalling 380 men, left LAE one evening and marched to SALAMAU taking 12 hours and arriving at SALAMAU the next morning which was at the beginning of July. The road LAE-SALAMAU was good and passable for motor vehicles. They did not go to SALAMAU but he was told that they had arrived. His coy left and climbed Mt BUYU (TN ? MT TAMBUI) and from there scouted around and took up positions on the mountains. About 15 July 1st Lieut MATSUNOTO commanding 100 men came to his position, took his Sec of 13 men and they all left on a patrol. They carried provisions for 5 days intending to go out for two days, stay a day and return. On the second day out (17 Jul) they were ambushed and he was wounded in the leg. He lay down while his Coy went away. He wandered around for 20 days living on the 3 day's rations he was carrying, and drinking water. He was hiding in a trench when some natives saw him. He did not have a grenade otherwise he would have killed himself. About 28 natives took him off to some allied soldiers. His pl contained 4 sections, 3 each with and LMG and 1 sec with grenade dischargers.

Attitude PW spoke freely and appeared to be quite truthful. I consider him fairly reliable. He did not know a great deal. Stated he wished he was an NCO so he could tell more.

K. YAMASHINO

S/Sgt Adv Bn ATIS

HQ 29 Aust Inf Bde (AIF)  
31 Aug 43

HISTORY OF OPERATIONSJAPANESE ARTILLERY RAIDING PARTY

Ref Maps : KOMIATUM, MUBO 1:25000

PART I - PRELIMINARY ACTION

Up to 2359K/11 Aug, 42 Bn had been in action for a week on what is now known as DAVIDSON RIDGE. C Coy 15 Bn had been holding the TRACK JUNG 727936. B Coy 15 Bn had been at NASSAU BAY and the remainder of 15 Bn at MOROBE. HQ 29 Aust Inf Bde and attached, with 47 Bn arrived NASSAU BAY night 10/11 Aug. The enemy at this time still held the ROOSEVELT RIDGE - MT TAMEU - GOODVIEW JUNG - ORODUBI - OLD BOBDUBI line.

PART II - NARRATIVE OF OPERATIONS

1400K/12. At this time HQ was moving on foot from NASSAU to TAMEU and was vicinity BALDWIN HQ when a phone call was received from Maj Hughes, NGF Liaison Officer at COANE FORCE, stating that a party of approximately 150 Japs was moving down on the gun positions in that area, and ordering Bde HQ personnel to be disposed for the defence of the area. This order was carried out, and platoons of Aust and a few US personnel were stationed to cover tracks in the area.

0100K/13 NO enemy activity was experienced during the night, but unfortunately one post acted in a suspicious manner while changing over and was fired on by another post, resulting in two Provost being wounded. These personnel were treated at 10 Port Hospital and were later evacuated to MOROBE.

0800K/13 Bde HQ moved to TAMEU BAY area, instructions from the Comd through<sup>under</sup> the BM, who was at TAMEU BAY.

0800K/13 Acting under instructions GII 3 Aust Div 16 Pl 47 Bn left NASSAU to patrol the TRACK to the west of LAKE SALUS.

1400 K/13 C Coy 15 Bn which had been holding the TRACK JUNG 727936 and had been under command 42 Aust Inf Bn returned to a location vicinity 732918 and came under comd Bde. 15 Pl was left to hold the TRACK JUNG with one extra section, which will be relieved daily.

1700K/13 47 Bn less D Coy, moving by foot from NASSAU, bivouacked for the night vicinity POINIER BTY 763922.

0900K/14 47 Bn less D Coy moved to vicinity CREEK JUNG 737921 737921 and occupied areas south and west of here.

1000K/14 15 Pl C Coy 47 Bn under Lieut Grove moved out to take up positions to defend "B" Tp 2/6 Fd Regt guns at 778908. One sec was left to guard guns in bivouac at TAMEU BAY

1000K/15 Report from Capt Parson from BALDWIN that 16 pl had been ambushed NW of LAKE SALUS just before dusk and a number of men including the pl comd had reached the coast vicinity MARTIN 798888. The pl comd was wounded in the forearm and was suffering from loss of blood, necessitating a transfusion.

Reports of the number of men who returned placed them as many as 25 but the final figures were 1 and 14 with 15 still missing.

Reports of enemy strengths were very vague but Lieut Hoffman (pl comd) later placed the enemy as being in two parties each approximately 50 strong.

0430K/16 Japs estimated 50 strong attacked B Tp area from S. amp Part of the area was over run but our force drove the Japs off before they could fire demolition charges which they had placed under the guns. Lieut Groves was killed during the action and 3 ORs wounded. The Japs left behind 1 2nd Lieut and 1 Sgt killed and a trail of blood and discarded equipment along the line of retreat. Some of the CP equipment was damaged and the map reference code compromised. All lines South from the area were cut. Some of the Japs were using American M1 rifles.

0620K/16 Capt Strom left Bde HQ with 14 pl of C Coy to re-establish communications beyond a point 778908 and to re-organise and to re-inforce where necessary.

0800K/16 C Coy less 14 and 15 pls moved out to establish HQ vicinity POINIER and a firm base at 757915. Communication with D Coy at BALDWIN was by now established and Capt Strom had arrived with 15 pl and organised the defences.

0915K/16 Signal received placing A Coy PIB under command this Bde.

1025K/16 The PIB coy was placed under command D Coy 47Bn to be used to locate and destroy the enemy. Orders given for all positions to patrol West and 18 pl to patrol South to contact NASSAU FORCE.

1230K/16 The force from the mbush position at 775896 moved to BALDWIN to replenish food and ammunition. On the way in they encountered a party of Japs killing 3 and 1 native guide.

1300K/16 Capt Strom reinforced this force with two secs of 14pl and immediately returned them to their position.

1347K/16 Capt Stewart (OC D Coy) advised that strength of force under comd Lieut Green (Ambush position) is  
2 Secs C Coy 47 Bn -17  
3 Secs PIB -44  
Total 61

1400K/16 Identification of Jap officers breast patch placed him as belonging to 102 Inf Regt 51 Div. The other Jap was a Sgt. No other documents were found.

1500K/16 47 Bn advised location of forces under C Coy. This Coy is under command 47 Bn while D Coy force is under direct command Bde.

0650K/17 Report from DCoy - movement vicinity 18 pl during night. we threw grenades. Investigation this morning shows signs of wounds being dressed. Four shells landed BALDWIN area - NO damage or casualties.

0700K/17 Bde Comd's orders to Capt Stewart included the seeking out and destroying of the enemy by the ambush party (which includes 2 secs C Coy and 1 Sec PIB) in square 7789.

0800K/17 Instructions to CCoy for 13 pl to send out patrols south and to contact 14 and 15 pls at B Tp.

0900K/17 Bde Comd's report on ambushing of 16 pl - see attached.

0930K/17 Information obtained that guns of 218 Fd Arty Bn are to be shifted to TAMBU BAY by barge tonight. This will relieve us of certain responsibilities in that area and will in effect release troops for offensive patrolling.

0945K/17 POINIER area shelled. NO damage or casualties  
- 1045K/17

1130K/17 POINIER reported Japs approached. On investigation this proved to be 1 possible Jap seen.

1200K/17 Report from NASSAU that 3 men from 16 pl and 16 men from the TAYLOR FORCE patrol (which had apparently been lost for four days) had arrived there. Bde Comd's instructions were for the combined force to rest today and to move up by 16 pl track to the west of SALUS tomorrow.

1500K/17 Part of TAYLOR patrol returned to TAMEU. See attached interrogation of Sgt. Amongst other things it was revealed that 5 of our men had been killed in the ambush and two Japs.

Note: The remaining missing personnel have reported in.

1800K/17 PIB reported NO enemy in square 7790 but sighted 9 Japs 784903 and killed one.

Orders for tomorrow are for this patrol to seek and destroy Japs vicinity feature 1500 in square 7789. 18 pl plus one sec PIB is to patrol west and NW with same task.

0700K/18 Line communication to D Coy ~~xxxxxxxxxxxx~~ - has been out since early morning. C Coy 47 Bn has nothing to report.

0800K/18 Capt Yates OC D Coy just returned with Observer Party from 17 Bde arrived D Coy and took over command from Capt Stewart. For detailed instructions see Op Order 27 attached.

0845K/18 Communication to D Coy re-established - no trouble during the night. 2 ORs<sup>of a</sup> Tp of 2/1 Tk A Regt accidentally killed.

1000K/18 Patrol clash at Coffee Post 728907 with Japs returning from raiding group. For further details see Lt Fletcher's report attached. see also report by OC 13 pl - Lieut Matthews.

1015K/18 PIB patrol west of Feature 1500 contacted 20 Japs. Engagement proceeding.

1030K/18 Line communication to D Coy again out.

1245K/18 Col Firtig, 162 Regt rang Bde Comd and reported strong Jap force moving on BULO. Later this report proved to be false.

1246K/18 Bde Comd rang C Coy (Capt Pascoe) and ordered fighting patrol from 12 pl to move round LAGOON to contact enemy.

1645K/18 Capt Stewart rang Bde Comd with information that 18 pl had reached a point 773882 and was establishing a firm base from which it would patrol offensively in the morning.

PIB patrol from 779904 reports Japs at 770895.

Bde Comd ordered Capt Stewart to instruct Lieut Gore to take over from Lieut Green (PIB) and

- (i) To investigate feature 1500 in square 7789 with natives.
- (ii) To ambush tracks leading West.

2100K/18 Op order No.27 issued (see attached)

2200K/18 Op order issued to D Coy by LO involving a trip by Jeep to the Bay thence by barge or by foot

1130K/ Instructions to Lieut Matthews (13 pl) were to patrol with two secs to South and SW and lay ambushes on TRACKS likely to be used by Japs.

1600K/ Report from D Coy that 18 pl was pushing north with all speed to contact PIB force. At 1300 Capt Yates had reported.

- (a) a patrol to feature 1500 reported NO enemy on this feature.
- (b) One man 17 pl wounded by lone sniper.

Bde Comd ordered Capt Yates to go in right away with PIB party without waiting for US patrol to join up as Japs are apparently moving out of area. NOT to pass North South grid line 75.

NOTE - The fact that the Japs killed at Coffee Post were in poor condition with NO food points very strongly to the raiding party evacuating. An Aust paybook taken from one Jap belonged to one of the men of 16 pl.

0900K/19 SITNOR all areas.

0800K/20 Both D and C Coys are now concentrating preparatory to moving back to 47 Bn. MARTIN Bty moved out from SALUS last night which frees D Coy and in any case it looks as though the remaining Japs have pulled out, due to the success of our operations in the GOODVIEW - TAMBU - KOMIATUM area.

1600K/20 Report from D Coy that 18 pl had returned and had NOT contacted PIB force but had found plenty of Jap equipment ammunition, explosives etc.  
Bde Comd ordered D Coy to remain area 1 day to rest men of 18 pl.

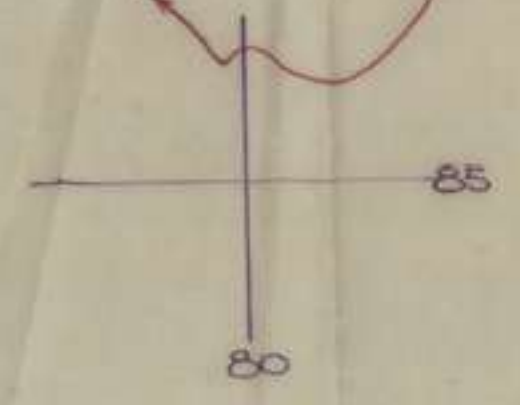
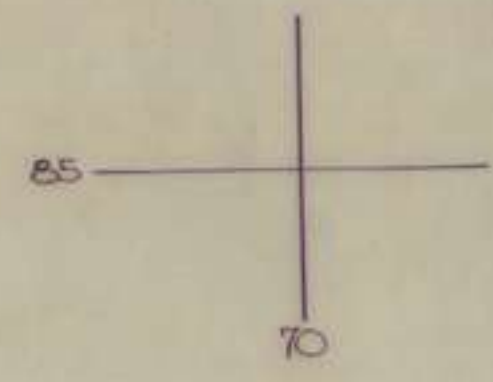
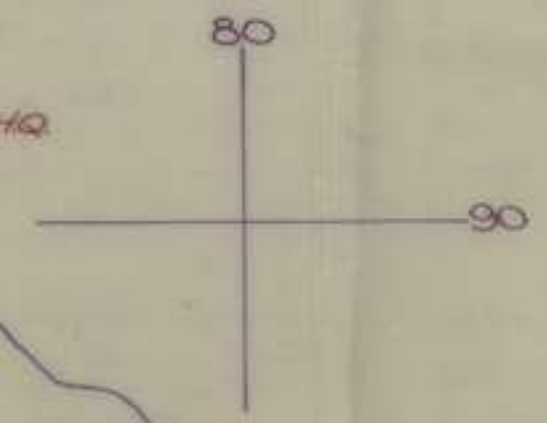
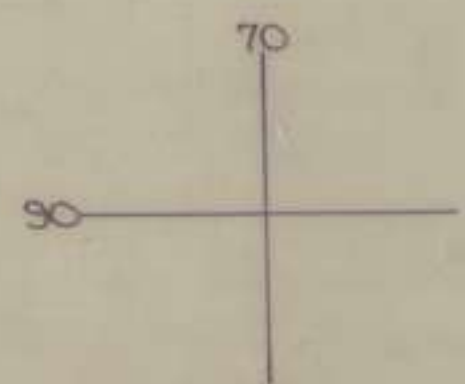
### PART III - SUMMARY OF EVENTS.

As shown by captured documents and interrogation the raiding party consisted of approximately 11 officers (2 medical) and 180 ORs under Maj OBA. The men were nearly all from the old NASSAU force and knew the country. As evidence of the morale of the enemy at this time the force was mainly conscripted and was not the usual "Do or Die for the Emperor" show. However, the force was well armed and equipped and of such a size that it should have been able to inflict considerable damage. That NO damage was done to any of the guns is evidence of the skilful handling of our forces over country unknown to us at that time and the determined efforts of our patrols to contact and engage the enemy at all times. Initially we suffered a set back with the surprising of 16 pl at LAKE SALUS but that taught our forces a salutary lesson. From then on our constant probing and harassing so confused the enemy that the only determined attack he made was on "B" Tp. 2/6 Fd Regt. His original plan included a three pronged attack on POINIER and MARTIN BTYS as well as on "B" Tp. His failure was perhaps due in some small measure to bad reconnaissance but once again it must be stressed that he had the initial advantage of knowing the country but was prevented from taking advantage of it by the determined and untiring harrying by our fighting patrols. The full story of his losses can never be told but it is estimated from the stories of captured remnants that at least two thirds of the party was exterminated and that the remainder would be of little use for active duties for some considerable time. From our own side the training provided during the operation is invaluable and for that thanks are due to Master Oba and his unfortunate cohorts.



**OVERLAY**  
 Ref. Maps KOMIATUNG - MUBO 1:25000  
 APPENDIX 'A' to HISTORY  
 JAPANESE RAIDING PARTY

Aust. Patrols ———→  
 American ———→  
 Jap ———→  
 Jap plan of attack - - - - -



52MWA  
 PSL8  
 8152  
 Capt BUDA  
 882 on 24M

15 Aug 43

29 AUST INF BDE OPERATION INSTRUCTION NO. 26  
(No change from verbal and signalled orders)

Ref Map : KOMIATUM 1/25000

INFORMATION

1. Enemy

Enemy have known positions areas LOKANU RIDGE, SCOUT HILL, BOBDUBI, ORODUBI, GOODVIEW JUNC, MT TAMBU, KOMIATUM.

2. Own Tps

- (a) As a result of attacks by 162 US Regt less one Battalion on 13 and 14 Aug 43 ROOSEVELT RIDGE is now in our hands from 755943 to 736947.
- (b) TAYLOR FORCE (1 Bn 162 US Regt) is disposed SOUTH of MT TAMBU
- (c) 17 Aust Inf Bde is disposed in the area GOODVIEW JUNC - ORODUBI  
42 Aust Inf Bn under command 17 Aust Inf Bde astride the TRACKS N.E. of MT TAMBU.
- (d) 15 Aust Inf Bde is disposed in the area ORODUBI - BOBDUBI.
- (e) 29 Aust Inf Bde is disposed as follows :
- (i) Bde HQ - 734918
  - (ii) 47 Aust Inf Bn - Bn HQ 736919, A Coy 734917, B Coy 735917  
C Coy less 15 Pl 736918, 15 Pl disposed for defence of gun positions vicinity POINIER, D Coy less one pl, disposed for defence of gun positions LAKE SALUS to BALDWIN 784906.
  - (iii) C Coy 15 Aust Inf Bn less 15 Pl and one sec 13 Pl 733916, 15 Pl and one sec TRACK JUNC 728938.
  - (iv) 15 Aust Inf Bn less B and C Coy Gps at present at MOROBE under command 11 Aust Div.
  - (v) B Coy 15 Aust Inf Bn at NASSAU BAY under command 3 Aust Div.
- (f) 11 Aust Fd Coy (less dets) under command 3 Aust Div are
- (i) Improving and extending JEEP TRACK on MT TAMBU L OF C
  - (ii) Improving tracks to 42 Aust Inf Bn area.
- (g) 7 Aust Fd Amb (less one Lt Sec and one surgical team) is at NASSAU under command 3 Aust Div.  
Lt Sec has established <sup>BEACH</sup> ADS at BOISI and Surgical Team will operate with 42 Aust Inf Bn.
- (h) 18 and 19 Aust Sup Depot Platoons, B Platoon 154 Aust Gen Tpt Coy, 312 Aust LAD are under command 3 Aust Div.

ROLE OF 29 AUST INF BDE

3. 29 Aust Inf Bde (less dets) is Divisional Reserve located in the area S.W. of BOISI as per para 2(e) above and is responsible for defence of artillery areas SOUTH of TAMBU BAY.

TASKS

4. C Coy 15 Aust Inf Bn will dispose one platoon and one section for the defence of TRACK JUNC 728938 and will arrange to relieve daily one section of this force until further advised. Both relieving and relieved sections will use and patrol the route - C Coy HQ, JEEP TRACK to TRACK JUNC 738925 thence to TRACK JUNC 728938

AUSTRALIAN MILITARY FORCES - NEW GUINEA FORCES

5. 47 Aust Inf Bn

- (a) One coy 47 Aust Inf Bn with under command one sec MMG one Tk/A Pl (with guns from 42 Aust Inf Bn) will defend gun areas SOUTH of TAMBU BAY
- (b) Limits of responsibility will be incl BALDWIN 784904 to excl BOISI
- (c) Separate instructions will be issued for this force.
- (d) 47 Aust Inf Bn will retain one coy at 1 hours notice to move until further orders.

ADMINISTRATION

6. Will be issued separately.

ACKNOWLEDGE

Signed at 1415 hrs

Issued - through Sigs

*[Signature]* Maj  
 BM 29 Aust Inf Bde

DISTRIBUTION

47 Aust Inf Bn	1
C Coy 15 Aust Inf Bn	2
Sigs	3
Comd	4
BM	5
SC	6
BASCO	7
17 Aust Inf Bde (for infm)	8
Col MACKECHNIE (for infm)	9
File	10
War Diary	11 - 12

# MESSAGE FORM

Serial No. 24  
OFFICE DATE STAMP

CALL AND INSTRUCTIONS.

IN

OUT

X 0 110 1 P 8  
21

No. of Groups  
GR. 76

~~020113173~~

TO *Opdv 3 Aust Div Rptd 29 Aust Inf Bde*

FROM *Nassau bde*

Originator's Number  
*05*

Date  
*15*

In Reply to Number

(Write horizontally) From	HODGMAN	O	Pile	report	5
JAP	party		estimated 100	at	10
774895	stationary	O	Party	unknown	15
strength	785876	O	Moneys	TAYLORS	20
PATROL	O		Comd	pl	25
returned	798877		wounded	6 ORS	30
still	missing		this	pl.	35
No	further		details	O	40
reports	received		by	me.	45
PIB	appr		at 798887	where	50
is	in		contact	with	55
D	coy		47 Bw.		60
					65
					70
					75
					80
					85
					90
					95
					100
					105
					110
					115
					120
					125
					130

THIS MESSAGE MAY BE SENT AS WRITTEN BY ANY MEANS: ( \* (EXCEPT) ) WIRELESS

THIS MESSAGE MUST BE SENT IN CYPHER IF LIABLE TO INTERCEPTION OR TO FALL INTO ENEMY HANDS.

ORIGINATOR'S INSTRUCTIONS DEGREE OF PRIORITY

TIME OF ORIGIN

*1515*

SIGNATURE  
\* ORIGINATOR MAY DELETE "EXCEPT" AND INSERT "INCLUDING."

SIGNATURE

(BELOW THIS LINE IS FOR SIGNALS USE ONLY.)

T.H.I. *1516*

SYSTEM IN	TIME IN	READER	SENDER	SYSTEM OUT	TIME OUT	READER	SENDER	SYSTEM OUT	TIME OUT	READER	SENDER
<i>W</i>		<i>C</i>									

T.O.R. *1655*

REPORT ON AN INTERVIEW WITH SGT R. E. SIEVERT, COY B 1 BN  
162 US REGT BY CAPT H. E. DEXTER, IO 29 AUST INF BDE

HQ 29 Aust Inf Bde (AIF)  
17 Aug 43.

1. At 1500 hrs 17 Aug I interviewed Sgt SIEVERT who was then at the SURGICAL TEAM STATION at 734918. The Sgt had had a rest and food and gave his information mostly from notes which he had made during his patrol.

2. The following is a connected account of the patrol from 13 Aug to 17 Aug.

13 Aug - The patrol under Lieut MASSEY contacted 4 Japs where the track used by the Japs crosses the TAMBU TRACK in square 7290. These Japs hurriedly withdrew towards TAMBU. The Jap track from here followed a very tortuous course towards Feature 2200 in square 7289. This track appeared to follow an old native pad and connected a few old villages. There were also indications that a native guide or guides was with the Japs. The patrol bivouacked for the night off the track vicinity 723892. Jap bivouac areas discovered during the patrol revealed as many as 85 sleeping places in tight perimeters.

14 Aug - The track ran SE to the main BITOI RIDGE then East to Feature 2900 in square 7488 thence SE down down a SPUR to a SADDLE, across the SADDLE past Feature 1800 and 1500 and finally reached LAKE SALUS at approximately 781870. Four Japs were encountered here and these fled. The party bivouacked for the night here.

15 Aug - During early daylight much firing was heard toward the NW end of the LAKE.

The party now split and the A & P det with a wire carrying party totalling 16 men headed for NASSAU. The actual patrol, consisting of Lieut MASSEY and 28 ORs headed North keeping well in from the TRACK. At approximately 774877 the patrol came on the scene of the ambush of 16 pl. This was between the TRACK and the LAKE. The only fresh water in the vicinity was in a water hole on the other side of the TRACK. Six Aust bodies were found and two Jap. The following points are partly statement, partly elicited by questioning.

- (a) The six bodies had been mostly both shot and bayoneted. Several had their faces bashed in, apparently with rifle butts. Two men had apparently been under or near mosquito nets and a reconstruction was that one man, whose body was riddled by automatic fire, had disposed of a Jap nearby with a grenade. There was ample evidence of strong resistance having been offered.
- (b) A Japanese LMG in good working order was found.
- (c) An Owen Gun in working order was found with filled magazines. This was later used with good effect by the patrol.
- (d) No Australian rifles were found.
- (e) Clothing of own troops killed was not disturbed, nor were their boots taken.
- (f) Jap equipment was fairly plentifully scattered around and included a large heap of rice and a number of Jap biscuits. Tins of Aust Fd Operational Ration and Bully Beef were still unopened.

The patrol spent the night in the vicinity.

16 Aug - Moving to CK 773880 the patrol found a Jap sniper's rifle in good order. 3 Aust packs and several basic pouches were also discovered empty. About 300 yards further North a Jap was found asleep, and despatched. The trail from here to Feature 1700 in square 7789 was strewn with Jap and Aust equipment. Sounds of firing were intermittently heard from marshy ground on the North shores of LAKE SALUS. Throughout the trip many signs of dysentery were evident but otherwise the Japs seemed well fed and in good condition.

At approximately 778897 the patrol encountered about 20 Japs in apparently prepared position who produced a large volume of fire. The patrol withdrew to 775896 and formed a perimeter. About 100 Japs then came down the track, chattering loudly, split and encircled the patrol. A considerable number of Japs was put out of action by fire from the Owen Gun, Browning Automatic Rifles and Rifles. It was now decided to split the patrol, make a getaway and rejoin vicinity LAKE SALUS. Sgt STEWERT and 13 ORs broke away using rifle grenades and after travelling 3 hours by moonlight bivouacked vicinity 755894. One man was wounded in the forearm.

17 Aug - The party made its way back to the TAMBU TRACK thence to TAMBU BAY. The patrol existed on little more than half rations but generally came through in fine shape. A number of cans of Jap "canned heat" were found and used.

3. I consider the Sgt's observations reliable. This story was given calmly and fairly methodically.

*H. H. H.*  
 Capt  
 10 29 Aug 42 Inf 88

14 Aug - The track ran SE to the main BITOI RIDGE then East to Feature 2000 in square 7488 thence SE down a spur to a SADDLE, across the SADDLE past Feature 1800 and 1500 and finally reached LAKE SALUS at approximately 781870. Four Japs were encountered here and these fled. The party bivouacked for the night here.

15 Aug - During early daylight much firing was heard toward the NW end of the LAKE. The party now split and the A & P Det with a wire carrying party totaling 16 men headed for WASSAU. The actual patrol, consisting of Lieut MASSEY and 28 ORs headed North keeping well in from the TRACK. At approximately 778877 the patrol came on the scene of the ambush of 16 pl. This was between the TRACK and the LAKE. The only fresh water in the vicinity was in a water hole on the other side of the TRACK. Six Aust bodies were found and two Japs. The following points are partly stated, partly elicited by questioning.

(a) The six bodies had been mostly shot and bayoneted. Several had their faces bashed in, apparently with rifle butts. Two had apparently been under or near mosquito nets and a reconstruction was that one man, whose body was riddled by automatic fire, had disposed of a Jap nearby with a grenade. There was ample evidence of strong resistance having been offered.

- (b) 2 Japanese LMG in good working order was found.
- (c) An Owen Gun in working order was found with filled magazines. This was later used with good effect by the patrol.
- (d) No Australian rifles were found.
- (e) Clothing of our troops killed was not disturbed, nor were their boots taken.
- (f) Jap equipment was fairly plentifully scattered around and included a large heap of rice and a number of Jap biscuits. This of Aust 1st Operational Battalion and Bully Beef were still unopened.

The patrol spent the night in the vicinity. 16 Aug - Morning to 08 773880 the patrol found a Jap sniper's rifle in good order. 3 Aust packs and several basic supplies were also discovered empty. About 300 yards further North a Jap was found asleep, and despatched. The trail from here to Feature 1700 in square 7789 was strewn with Jap and Aust equipment. Sounds of firing were intermittently heard from nearby round on the North shores of LAKE SALUS. Throughout the trip many signs of dysentery were evident but otherwise the Japs seemed well fed and in good condition.

NOTES ON JAP RAIDING PARTY  
(For Gt S Div and N&F - 12 1200K/11)

HQ 29 Aust Inf Bde (AIF)  
17 Aug 43

Ref Maps : MUBO, KOMIATUM 1/25000

FIRST REPORT

1400K/12 At this time Bde HQ and att personnel, 130 in all was moving on foot NASSAU to TAMBU and was half a mile past BALDWIN (218 F.A. Bn) HQ at 784905. The Bde Comd was at 3 Div with BM(L) and the BM at TAMBU BAY making a recce of sites for Bde and 47 Bn. A phone message was received by Maj BALDWIN from Maj HUGHES NGF 10 with COANE FORCE stating that

- (a) A force of Japs estimated at 130 had crossed the MT TAMBU L of C at approximately 726907 and was proceeding generally SE
- (b) A patrol from TAYLOR FORCE was following this party and endeavouring to establish contact. There was a vague report of contact having already been made. Maj HUGHES ordered Bde HQ to return to BALDWIN and dispose of tps available to protect guns in the vicinity.

No contact was made during the night and at 0800K/13 Bde HQ moved to TAMBU BAY on orders from BM at TAMBU BAY.

SUBSEQUENT REPORTS AND CONTACTS

0800K/13 Strength of Jap party now reported to be about 50 by TAYLOR patrol which still had line contact. This report probably based on examination bivouac area (later examinations placed Jap strength much higher) Party following very tortuous course to BITOI RIDGE but direction still generally SE.

14 AUG - NO reports of any nature were received today from any of TAYLOR patrol, 16 Pl 47 Bn (moving from NASSAU west of LAKE SALUS), or from PIB vicinity BALDWIN.  
PM 14 AUG An <sup>interrogation</sup> investigation TAYLOR patrol conducted 17 Aug reveals that 21 Japs were sighted at 781870.

1100K/15 Report from MARTIN Bty 791897 that 16 pl had been ambushed NW of LAKE SALUS at approximately 1730 K/14. Enemy estimated at 100 strong

1000-1400K/15 Various reports by phone came in based on stories by men of 16 Pl but at 1400K/15 Lieut HOFFMAN who had been wounded gave the following details.

- (a) Ambush position approximately 773875. Ambush party about 50
- (b) Jap party approx 50 strong encountered on SPUR in square 7788 morning 15 Aug.

0400K/16 Jap party estimated 50 attacked B Tp 2/6 Regt area at 778907. Party carried gelignite demolition bombs. Attack beaten off before guns could be damaged.

0400K/16 Small Jap attack 793893 Beaten off.

0930K/16 Another skirmish same position. No casualties.

1015K/16 Small attack 786904 No casualties.

1230K/16 PIB contacted small party Japs 773896 killed 3 and one native guide.

am/16 TAYLOR patrol contacted and killed one Jap 778883 and also heard sound of Jap rifles from north shores LAKE SALUS.

pm/16 TAYLOR patrol was attacked by estimated 100 Japs 775896 For further details of above see reports of interrogation Sgt SIEWERT attached.

1800K/16 Three Japs seen at two places vicinity 812827 SOUTH ARM BITOI RIVER. Japs disappeared into bush.

0200K/17 Movement heard vicinity 792891. Grenades thrown. Investigation first light showed signs wounds having been dressed.

BY 22 August 1945 (AIF)  
17 Aug 45

1100K/17 Nine Japs sighted 784903 by PIB 1 killed.  
1130K/17 One possible Jap seen POINNIER area 760920

FIRST REPORT

NOTE - Owing to the ruggedness of the terrain, the dense vegetation and inaccuracies in maps, some of the above map references can be only approximate. Similarly Jap killed and wounded are greatly in excess of known figures given.

(a) A force of Japs estimated at 180 had crossed the LAKE SALUS at approximately 0700 hours and was proceeding generally S.W. A patrol from TAYLOR FORCE was following this party and endeavouring to establish contact. There was a very short contact having already been made. M. J. THOMAS ordered the patrol to return to BILBO and dispose of the available protection in the vicinity.

SUBSEQUENT REPORTS AND CONTACTS

0800HRS Strength of Jap party now reported to be about 50 by TAYLOR patrol which still had line contact. This report probably based on examination of various areas (later examination placed strength much higher). Party following very tortuous course to BILBO RIDGE but direction still generally S.W.

14 AUG - No reports of any nature were received today from any of TAYLOR patrol. In P.M. an (moving from MASSAU west of LAKE SALUS) or from PIB vicinity BILBO.

1100HRS Report from MARTIN that PIB had been ambushed by LAKE SALUS at approximately 1730 HRS. Party estimated at 100 strong.

1000-1100HRS Various reports by phone came in based on stories by man of PIB but at LAKE SALUS who had been wounded even the following details:  
(a) Ambush position approximately 77800. Ambush party about 50  
(b) Jap party about 20 strong encountered on PIB in square 77800 morning 15 Aug.

0400HRS Jap party estimated 50 at 0400 B to 200 East area at 77800. Party carried primitive demolition bombs. Attack beaten off before Japs could be damaged.

0400HRS Small Jap attack 77800 beaten off.  
0300HRS Another attack same position. No casualties.  
1010HRS Small attack 78000. No casualties.  
1130HRS PIB contacted small party Japs 77800 killed 3 and one native guide.

0400HRS TAYLOR patrol contacted and killed one Jap 77800 and also heard sound of Jap rifles from north shore LAKE SALUS.

0400HRS TAYLOR patrol was attacked by estimated 100 Japs 77800. For further details of above see reports of interrogation. Set statement attached.

1200HRS Three Japs seen at two places vicinity 81200 SOUTH ARM BILBO RIVER. Japs disappeared into bush.  
0200HRS Movement heard vicinity 78200. Grenades thrown. Investigation first light showed signs wounds having been dressed.



SECRET

Copy No...9...

18 Aug 43

29 AUST INF BDE OPERATION INSTRUCTION NO 27

To: CAPT W.H. YATES 47 Aust Inf Bn

Ref Maps: KOMIATUM Arty series 1/25000

INFORMATION

1. Enemy

(a) Force reported as 20-30 (strong known to) be on 1300 feature 770896

(b) Suspected small enemy force including OP on 1500 knoll 780898

2. Own Troops

(a) D Coy 47 Aust Inf Bn plus dets is disposed as follows :

Coy HQ - 797888

17 Pl - 797889

18 Pl plus one section A Coy PIB at 773882

~~19 Pl - 785903~~

Two sections 14 Pl C Coy plus PIB (Comd Lieut GREEN - PIB) 775903

(b) C Coy 47 Aust Inf Bn is disposed as follows

Coy HQ - 762922

13 Pl - 757913

14 Pl less two sections and 15 Pl less one section at 778909

One section 15 Pl at 742929

TASKS

3. (a) Protection of guns in coastal area from inclusive 787904 to inclusive 801887

(b) Seek out and destroy all enemy in area north of LAKE SALUS

INSTRUCTION AS TO TASKS

4. Troops allotted

D Coy 47 Aust Inf Bn

Two sections 14 Pl C Coy 47 Aust Inf Bn

Two dets 3-in mortar from 3 Pl 47 Aust Inf Bn

One det A Coy PIB (3 offrs 70 native ORs) approx.

5. Command

(a) On arrival HQ D Coy 47 Aust Inf Bn <sup>CAPT</sup> ~~MAJ~~ W.H. YATES will command troops at present under command Capt W.D.P. STEWART HTA 0830K/19

(b) Capt A.E. LEWIS 47 Aust Inf Bn will move to 18 Pl and complete action ordered in para 6 of this instruction. He will co-ordinate movement of PIB, 18 Pl and US patrol in accordance with para 7 of this instruction.

(c) Lieut GORE (PIB) will command PIB det and two infantry sections of 14 Pl C Coy at present commanded by Lieut GREEN (PIB) as from receipt of this order.

PREPARATORY MOVEMENT

6. By 1700K/19 the following movement will be completed -

(a) PIB det and two sections 14 Pl C Coy under command Lieut GORE (PIB) will move to a position astride Jap track leading west at 764896.

(b) 18 Pl 47 Aust Inf Bn at 773882 will remain in that area until arrival of Capt LEWIS (see para 5(b) above)

but will aggressively patrol all tracks in square 7788 leading north from LAKE SALUS up to ETA Capt LEWIS - 1100K/19 (c) 47 Aust Inf Bn will move two detachments 3 in mortar to 779909 by 0900K/19. These will be made available if and when required by Capt LEWIS.

ACTION ON 20 AUG

7. Co-ordinated by Capt A.E. LEWIS 47 Aust Inf Bn, PIB plus two sections 14 Pl C Coy (Comd Lieut GORE) - 18 Pl 47 Aust Inf Bn - and US patrol will attack and destroy Jap forces mentioned in para 1 of this instruction. Should contact with US patrol be NOT made by 0800K/20 the attack will proceed without them but no attack will be made until 18 Pl 47 Aust Inf Bn and PIB force (Comd Lieut GORE) have established contact.

CONTACT

8. (a) PIB force (Comd Lieut GORE) will contact 18 Pl 47 Aust Inf Bn at 773882 and 13 Pl 47 Aust Inf Bn at 755907 by 1600K/19. (b) 18 Pl 47 Aust Inf Bn at 773882 will contact US patrol which left NASSAU BAY at 0800K/18 - ETA 18 Pl area 1600K/19. (c) The greatest care will be exercised that contact between patrols is NOT productive of accidental casualties, particularly with US patrols.

COMMUNICATIONS

9. (a) C Coy 47 Aust Inf Bn will maintain L/T to 13 Pl at 755907 (b) D Coy will maintain native runner and/or L/T as required to Capt LEWIS from 773882.

REPORTS

10. (a) SITREPS will reach this HQ at 1200 - 1400 - 1600 - 1800 hrs daily during period 19 - 20 AUG both inclusive. (b) SITNORS will be forwarded where necessary and special events will be reported immediately. (c) Contacts will be reported as established.

SECURITY

11. (a) Special arrangements will be made for rapid destruction of documents likely to fall into enemy hands. (b) Comds will ensure that no addressed correspondence diaries or notebooks likely to be of any value to the enemy are carried. (c) Necessary portions of maps only will be carried and dispositions or routes will not be shown thereon.

ADMINISTRATION

12. Sups - White troops will carry one days field operational rations and one emergency dehydrated ration. Native troops will carry rations as ordered by Lieut GORE. Ann - As ordered by Maj YATES.

ACKNOWLEDGE

Signed at 2145 hrs.

Issued - LO and Sigs

DISTRIBUTION

	Copy No	By
<u>CAPT</u> W.H. YATES	1	LO
47 Aust Inf Bn	2	LO
D Coy 47 Aust Inf Bn	3	LO
162 US Regt	4	Sigs
Comd NASSAU Defences	5	Sigs
3 Aust Div	6	Sigs
17 Aust Inf Bde	7	Sigs
File	8	Hand
War Diary	9 - 10	Hand

6 Coy 47 Aust Inf Bn

Spare

*[Signature]* Maj BM 29 Aust Inf Bde

NOTESHQ 29 Aust Inf Bde (AIF)  
18 Aug 43

Ref Maps : KOMIATUM, MUBO 1/25000

1. Following is a synopsis of events for the 48 hrs to 2100K/18.

2. The situation at 2000K/16 was :-

Enemy - The Japs had made one serious attack on B Tp at 0400K/16 This had been repulsed and the Japs lost 1 offr and 1 sgt killed. Prior to this we had suffered the loss of 6 men killed and one offr wounded in the ambush of 16 Pl. Three very minor attacks had also been made

0400K/16 at 793893

0930K/16 at 793893

1030K/16 at 786904

1230K/16 3 Japs one native guide killed at 882902

Own Troops - Dispositions at this time were -

HQ D Coy - BALDWIN 784905

17 Pl on high ground above BALDWIN

PIB (44) and 2 secs 14 Pl vicinity feature 1500 in square 7789

18 Pl at 798888

3. 17 Aug - During night 16/17 Aug movement heard vicinity 18 Pl which threw grenades. In morning signs of wounds having been dressed. 0700K/17 Bde Comd ordered Capt STEWART to order the PIB force to seek out and destroy the enemy in square 7789.

1200K/17 16 men from TAYLOR patrol and 3 from 16 Pl got in to NASSAU. These were later ordered to rest and move 18 Aug via WEST side LAKE SALUS thence north.

1800K/17 PIB reported NO Japs in square 7790 but sighted 9 Japs 784903 area and killed 1.

During the day Coy HQ moved to 798888.

1800K/17 Orders by Bde Comd to Capt STEWART for 18 Aug were-

(a) 18 Pl to move with one sec PIB to 16 Pl ambush position and keep contact by line.

(b) PIB patrol to seek out and destroy Japs vicinity feature 1500 in square 7789

During the night BALDWIN HQ and two Btys moved out of area and a Tp of 2/1 Tk/A Regt moved in there relieving 17 Pl from guard on the area. Tp 2/1 Tk/A were placed in defence perimeter and 2 ORs were accidentally shot and killed.

0845K/18 Line communication to D Coy which had been out since early morning was re-established

1015K/18 PIB to west of feature 1500 contacted 20 Japs.

1030K/18 Line again out and remained out till 1600 hrs. The Tk A Pl moved to TAMBU during the morning and 17 Pl moved to 798888.

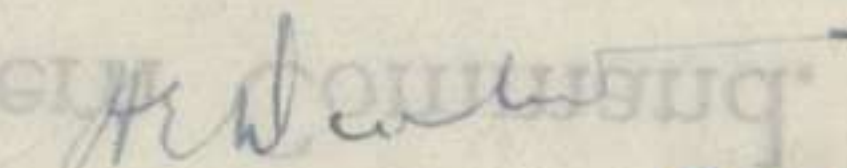
1645K/18 - 18 Pl reached 773882 and established a firm base from which to patrol offensively in the morning. PIB reported many Japs at 770895.

Bde Comd ordered Capt STEWART to instruct Lieut GORE to take over from Lieut GREEN (PIB) and

(i) To investigate feature 1500 in square 7789 with natives.

(ii) To ambush tracks leading West.

For above see OP INSTN 27

  
 Capt  
 IO 29 Aust Inf Bde

PATROL ACTION

Hq 29 Aust Inf Bde (AIF)  
19 Aug 43

At 0910 hrs on 19 Aug a party of TAYLOR FORCE USA troops were proceeding towards the Coffee Stall post (Lieut MATTHEWS C Coy 15 Aust Inf Bn) as a ration relief party, accompanied by 3 men 13 Pl C Coy 15 Aust Inf Bn returning from patrol to TAYLOR FORCE ambush.

At approximately 100 yards from C Coy post a party of Japs was encountered crossing the track proceeding in a westerly direction. Number reported about 8 - 12. They were fired on and hand grenades thrown by US and C Coy troops. One US soldier was wounded and has been evacuated.

The Japs scattered and we have located five of their bodies. Some papers had been removed by the Yanks and taken to TAYLOR FORCE. Herewith is what we found.

In nearly all cases US and Aust packs were carried by the Japs and they were without food except a few ounces of rice and scraps. Their general condition suggested they were suffering from lack of food and generally were in poor shape. The only weapons found were rifles with a good stock of ammunition. The US Sgt reported that about four Japs escaped in a westerly direction and the US patrol followed and found traces of fresh blood. This was on the old Jap track. Two sections have now reported from HQ C Coy and the position is normal.

Sgd C.D. FLETCHER Lieut



From: C. Coy.  
15 Aust. Inf. Bn  
19. Aug. 43.

To: H.Q. 29. AUST. INF BDE.

Ref. Contact with Taps at Coffee Post.  
728907.

1. Attached herewith is report of contact with Taps by patrol of 13 P.C. approx time 0910 HRS.
2. Lieut Woodman has interviewed P.C. Combs, and obtained Tap equipment & clothing.
- 3 Tap Equipment & Clothing accompanying this report.

R. S. Lee. Capt

O.C. Coy.

15 Aust. Inf Bn

1530 hrs

O.C.

6 Day.

0910. 19.8.43. U.S.F.

Detail and 13 Pl. Patrol returning from  
Taylor's ambush. Intercepted 8-12 Japs  
crossing track 100 yds from Coffee  
Hall position.

Having only one section in  
posn. decided to remain on ridge.

In the action five Japs were  
killed one American wounded.

Japs have been searched and  
information forwarded to the A.C.

Condition of Japs very poor, only  
two ounces of rice being carried.

Two sections have since  
arrived and posns are being prepared.

Patrolling being carried on.

Rations and Yankee phones  
have arrived.

Quite happy about food.

W. H. H. H. H. H.  
103 P.

HQ 29 Aust Inf Bde (AIF)  
17 Aug 43  
MI 5

3 Aust Div

1. In reply to your No.C.261 progress report as follows :
2. The patrol was instructed by the Coy Comd in the terms of your QX282 of 13 Aug and left at 0800K/13. It was not possible to provide this Pl with 108 sets due to no dry sets being available. The patrol halted at approximately 1700K/14 in the vicinity of 773883 and the Pl Comd issued orders for the preparation of a firm base. Some of the Pl were detailed to cut fire lanes, some were employed in covering this party and the remainder went to the creek to wash, leaving their weapons behind. The cutting party had just laid down their weapons and commenced preparation of fields of fire when the enemy opened up from approximately 25 yards range on the left flank with at least two automatics and considerable rifle fire. The protective party returned the fire although three men were immediately wounded. As far as can be gathered the cutting party had moved some short distance from their weapons and did not regain them. All personnel without weapons broke and fled, the officer and the armed personnel fought.
3. From the further report of the Pl Comd confused fighting continued until dark and at least six enemy were killed, our own losses at this time being unknown beyond the first three wounded. The Pl Comd remained in the area all that night endeavouring to collect his scattered pl without success and on the morning of 15 Aug moved on towards his original objective alone. He walked into a Japanese patrol at approximately 772887 and states that he believes he killed some of the patrol. He was in this episode wounded in the right forearm and eventually reported in to the BALDWIN area at approximately 1000K/15. On arrival there his condition was such that a blood transfusion was immediately required and this was effected by 10 US Portable Hospital. Up to this time fourteen of the personnel who fled had reported into BALDWIN (sq.7989)
4. On 17 Aug Rear HQ 3 Aust Div reported that some additional men (3-7) had arrived practically naked and very fatigued at NASSAU BAY.
5. From present information some lack of normal precautions is apparent, probably due to overconfidence and lack of experience on the part of the Pl Comd, consequent on an uneventful though arduous move to the area of ambush.
6. There are indications that the position at which the patrol halted was the exact site selected and prepared by the enemy as an ambush. Further investigation is proceeding.

 Brig  
Comd 29 Aust Inf Bde

Copy to 47 Aust Inf Bn



17 Bde HQ  
25 Aug 43

PW Interrogation Report No.5  
PW No 5 interrogated by F. Bowers Lieut U.S.A. 25 Aug 43

Name : Takahashi, Tadao  
Rank : Sergeant  
Unit : ARAI coy, OBA Bn. 102 inf Regt

Circumstances of Capture : Captured 23 Aug at creek 707945, near 29 Bde HQ by recce patrol at 1400 hrs. Hip was injured and walked with difficulty.

Documents and identifications found on PW : (1) Sergeants insignia; (2) Identification disc (102 Inf Regt) MOTO 2803; (3) Notebook (containing not and names corroborated by PWs statements re units and duties in HQ sec; (4) Post card folded in pocket -- "To Sgt Takahashi from everyone. Our troops are straight down this valley. At any rate we will go ahead until we reach the camp. If there is any food we will come and meet you. Keep your pecker up" (5) Piece of paper found under rock near capture posn. "To Sgt from everyone. We thing the place where we bivouacked is not very far. Keep yr chin up. We waited 1 and a half hours. Left at 1000 hrs NB PW's statements correspond to the above and agreed with all information previously known at this HQ. PW has not seen any of the above since capture.

#### Organisation of Raiding and Demolition Unit.

Maj OBA (Bn Comd)  
Lieut TAKASAKI (Adjt)  
WO HASEGAWA (Adjt)

III Attack Unit (?)	II Attack Unit (1st Lt GAMO comd) a new officer.	II Attack Unit (1st Lt OHASHI comd)
Engrs for demolition (?)	10 Engrs for demolition 1st Lt Sunaoshi (Pl Comd)	10 Engrs for demolition 2nd Lt NAKAJIMA WO SEMBA (Pl Comd) "
Sec sec	sec sec sec Reserve Unit Comd Capt ARAI Pl Comd SM OKADA	sec sec sec
MO : Capt HANAWA and 1st Lieut YOSHOGA		(11 Officers altogether)

#### Arms etc :

12 automatic rifles; 1 LMG to each sec; 1 grenade discharger to each Attack Unit; each man carried a rifle; officers carried pistol and sword. PW ordinarily would carry a pistol as he belongs to HMG coy, but this time carried a rifle.

#### Organisation of OBA BN

9 coy 10 coy 11 coy 12 coy MG coy ( )  
Usual organisation of MG coy (104 men)  
HQ sec (12 men)

P1	P1	P1	P1
Sec	sec sec	sec sec	Sec sec
HMG	HMG HMG	HMG HMG	HMG HMG

Sec 1 dr with 9 men work HMG. The rest carry amm. No LMG is MG coy. The other 4 coys of the bn are rifle coys with 3 secs to the pl, each sec having 1 LMG. 12 automatic rifles in rifle coy.

PW arrived Lae 26 Feb. Arrived Salamaua 29 April with the ARAI unit (only 69 men in 9 MLCs, but a large quantity of provisions). PW was "remaining personnel" (Rear Party) of the Bn. Stayed short time in Salamaua, then

24 Aug 43

POST CARD

To Sgt TAKAHASHI from everyone.

Our troops are straight down this valley. At any rate we are going ahead until we reach the camp. If there is any food, we'll come meet you. Keep your pecker up.

UNDER STONE.

To Sgt from everyone.

We think the place where we bivouacked is not far. Keep your chin up. We waited  $1\frac{1}{2}$  hrs. Left at 1000.

Note:- Sgt Takahashi was captured in Buirali CK by a patrol from Bde H.Q. 24 Aug/43.

direct to NASSAU BAY by MLC to catch up with his unit. He was part of NASSAU Defence Force under Maj TAKAMURA. In Aug officers were relieved and Maj OBA came to take his place from MANCHURIA Col MAHUKA likewise returned to Japan at this time. All bn comds were changed. When the Americans landed at NASSAU BAY Maj OBA issued orders to retreat, and the entire bn returned to SALAMAUA. It took 11 days for them to walk back. On "flat land" the natives gave them food (bananas and paw-paws) They had no other food than this. Leaving the MG coy at SALAMAUA the main force of the OBA Bn went to KUSA mtn. When orders came to form the Raiding and Demolition Unit, the OBA bn (except 11 coy) returned to SALAMAUA. 30 independent engrs (to serve as the demolition unit) were added. Took one week to organise the Raiding and Demolition Unit. They took food sufficient for 9 days: 9 days "A" Rations (rice), and 3 days "B" rations (dry bread made of vegetables etc.) Food shortage was felt acutely by time objective reached. The Raiding and Demolition Unit left SALAMAUA August 7. 180 men strong. The bridge across mouth of Frisco River was repaired at this time. Took one week to get from SALAMAUA to LAKE SALUS by way of KOMIATUM (HQ of 66 inf Regt and 115 inf regt. Maj Gen MUROYA was in KOMIATUM AT this time) bivouacked one night at KOMIATUM, one night at TAMBU. They took track to left of TAMBU. There were 2 navy mtn guns and 1 army mtn gun on ROOSEVELT RIDGE referred to by PW as KIMURA Bn area. They spent one night unknown to our troops west of suspected gun area. They estimated (according to Prob Off TAKAHASHI's recce. Prob Off was recently promoted to 2nd Lieut) 8 of our guns at 764919, two at 7635-9210 and two at 7645-9180. PW stated recce had been insufficient. The assembly area was at 760916. The unit divided into 3 groups. PW was Reserve Unit, being a MG gunner and duty was to cover and protect other tps. The bn as a whole had been ordered to go, not volunteer. PW did not want to go, but resolved to die but hoped to get back safely. They attacked the guns, but on returning they found 30 or 40 Americans waiting at their assembly area. 1 Attack Unit and the Reserve Unit fought ~~well~~ while Maj OBA and the main force went forwards SALUS LAKE. 16 Japs were killed, including Capt ARAI and Lieut NAKAJIMA. On way back, this group encountered the enemy on a mtn which had bamboo forest on it. Apparently Americans carrying provisions. Japs had 3 or 4 men killed in this encounter. No officers killed. They made only one attack on guns. Did not know what damage had been done as it was too hard to recce later on. They intended for the "support units" to make a bayonet charge killing men around the guns and thereby clearing the way for the Engrs to place explosives under the guns. Food run completely out half way back. By this time the force was broken up and scattered, that only PW and Sup Pte were left together when they reached BOISI creek. PW fell from a cliff at BUIANBI Creek and injured his hip. The Sup Pte decided to go ahead and would come back for him. Sup Pte apparently contacted friendly tps and intended to return to pick him up. PW merely stated that no-one returned for him. PW was not told that his friends had waited for him and went ahead in search of food. PW had not eaten for one week before his capture.

#### Locations given by PW.

The 155 Naval gun in SALAMAUA is common gossip among the troops. Its location is towards the sea from the drome and is in the jungle, Not coconuts. PW pointed out approximately on the map SALAMAUA. Locality revised 171187. Only one such gun at the time PW was in SALAMAUA. Rumour was that another had been landed to Lae. The gun was disassembled and flown from ROBAUL in a heavy bomber which crashed when it landed in LAE owing to the weight. From LAE it was brought in MLC. The gun is on two wheels and is tractor drawn.

One Arty Mtn SAL Loc Rev 720240 there are 3 or 4 10 cm long range guns. 2 groups of 6 pom poms each.

6 AA guns on side towards the sea of KILA HILL.

Another crossing of FRANCISCO RIVER is SW from drome 737987 fef SALAMAUA 1/25000) The crossing is made in boats maintained by engrs.

3 Navy AA guns from MACDONALDS Junction towards LOGUI No.1

1 Navy AA highest point on the peninsula.

On road to CHINATOWN two AA guns not damaged by bombing.

2 mtn runs in MALOLO

4 houses near former native hospital are provision dumps (134244)  
Ann dump (large amount 128223)

Army MLC land at night on beach SAMOA Hbr. Navy MLC at 1st or 2nd inlet north on the Peninsula.

300 men living in scrub west of Power Line, 6 Pompoms also in area.

There is nothing in or around the aerodrome. Supplies were formerly brought in by plane.

At first there were few Marines in SALAMAUA, but by time PW started out for SALUS with OBA Raiding and Demolition Unit, there were about a thousand. Navy personnel (Marines) are well equipped and fed and freely enter SALAMAUA to get vegetables etc. Army personnel is forbidden on the peninsula. Native nicer to the Navy than the Army. The natives are friendly to all, and live somewhere in KILA. There are quite a few. The bombing scares them away during day time but at night they come and work with the soldiers unloading barges. They transport as far as a provisions dump near where the PW was captured and only the soldiers carry any further towards KOMIATUM. Natives are well treated by Japs.

The entire 41 Div was scheduled to arrive this month at SALAMAUA. but bombing apparently prevented it. 20 Div now in MADANG was also to come.

The SALAMAUA hospital was moved to MALOLO. Natives are employed in the hospital and are very kind. MLC also land at MALOLO where the 102 Inf Regt HQ are. When 66 inf Regt came to KOMIATUM, the 102 was relieved and went to MALOLO. Soldiers are happy when they are wounded as they if seriously wounded, are evacuated to Lae and then to Finchaven. There are not many guns in Lae, but plenty of AA and Pompom.

PW's background : From IBARACI pref. Rice Planter. 25 years old. Not married. Left Japan Aug 41. Trained one month in Manchuria and from there to CANTON where he spent a year (no combat) One month in RABAUL.

Attitude : PW enquired if Lae had fallen, to which the interrogator replied not yet, but SALAMAUA had. The PW was talkative and communicative and the bulk of information contained in this report was volunteered without being asked leading questions. The interrogation lasting for two hours, cannot be considered an interrogation, as it consisted of the PW talking of his own experiences and the general situation leading to the "fall of SALAMAUA" security consciousness. PW is amenable and amiable and said "As I no longer carry a rifle I am no longer an enemy. I want to comply with any orders I may be given. As soon as my hip is better, I want to work, any kind of work that I am told to. I am extremely sorry to have caused so much trouble by having to be carried etc."

Lieut USA.

25 Aug 43

INTERROGATION REPORT No.4.

PW No.4 interrogated by F. BOWERS Lieut U.S.A.

Name : TASHIRO, HIROSHI

Rank : Lance Cpl Medical Orderly (Promoted May 1943)

Unit : MATSUMOTO Pl, NAKAJIMA Coy, JINNO (not KANNO or KAMINO) Bn,  
MIYAKE Regt (80 Inf Regt) 20 Div (AOKI)

Circumstances of Capture.

No details were sent with PW by whom captured, where or how unknown.  
Identity disc was taken from him and lost.

BACKGROUND AND ATTITUDE.

23 years old. 3 years ago worked as machinist on a ship. Twice in New York, visited PANAMA and SAN FRANCISCO. Knows little English. Familiar with Americans. Unafraid, but surprised at kind treatment. Talkative, co-operative and statements are considered reliable.  
Only 1 Bn of the MIYAKE Regt (Col MIYAKE still in MADANG) came to SALAMAUA (5 MG coys, approx 540 men.) Arrived SALAMAUA in MLC from MADANG on 23 July. Usually 4 medical orderlies to a coy. (also two interpreters to a coy) He was employed as infantry soldier. Seriously wounded patients at the front are cursorily treated and usually die. Walking patients are sent to an aid station. Food, tobacco and supplies nil for some time. PW went to TAMBU (BUYUSAN) on 23 July for one day. (Approx 50 ~~50~~ tps there, just beginning to dig in holes very shallow) Was one day on TAMBU and went to position half way down western part of ROOSEVELT RIDGE. On day at TAMBU, shelling caused 3 killed 16 wounded. The shelling of TAMBU was ineffective. Few casualties. Was attached to a coy not his own. Does not know name. 2Aug heard of the OBA Bn forming a raiding and Demolition unit. Estimated strength at 104 men. OBA Bn left on 8 Aug. Did not know of retreat of Jap army. NASSAU BAY refugees came and mortars began coming closer. Fled and by 17 Aug could go no further as leg was hurt (slightly) and no food in 8 days. PW ate grass He laid down and when awoke was surrounded by american (?) soldiers. PW states all units strengths half or below.

Lieut

Adv Ech ATIS.

Aug 2, 1943

MOTO STAFF OFFICE

Copy for : No.4 Coy 80 Inf Regt

Re Raiding and Demolition of Enemy Guns

Methods and means of destroying enemy arty (mortars included) is changed due to the situation at the present time.

Herewith are several suggestions designed to this end within a short time by a raiding party of a few men.

1. Organisation Groups of a Raiding and Demolition Unit.

Aside from a comd, a demolition squad, a support squad and a protection (covering) squad are required for such a unit which will always attack quickly. For this quick attack and demolition of 4 guns the following strengths are standard :

Demolition Squad - From 15 to 30 men divided into 5 groups, each group assigned on objective, one group as reserve.

Support Squad - About one rifle sec. If required reserve for Demolition Squad.

Protection Squad - about one rifle sec. For covering flanks, etc.

About one rifle sec is sufficient for the 3 duties at the present time

Line of Battle

1. 1st Lieut HIRAYAMA of the 3 Bn 66 Inf Regt and 4 men skillfully utilising the negligence of the enemy captured 2 light mortars.
2. In the beginning of the Buna front, a demolition squad alone was enough for success, but now the enemy keeps strict watch and the 3 squads are needed.

II. Selection of Personnel of the Raiding and Demolition Squad.

Of course the comd and subordinates must be resolved to die as a martyr for the country, and must burn with sincerity. Especially brave and calm men who must see an opportunity and act quickly and passionately. For this, the comd need not of necessity be an officer, and NCO or in extreme cases a private will do.

Line of Battle (as in original)

1. At the Buna front selection of men for the Raiding units was by volunteers stepping forward and the comd choosing on the basis of the aforementioned qualities.
2. Comds of raiding units at Buna were a 1st Lieut, Prob Officer, Cpl and representative of the coy comd of the FORMOSA Volunteer Unit (a policeman in FORMOSA and reserve soldier). Such was the variety, but each achieved the mission.
3. At Buna the men were so earnest that after completing their mission and having some explosives left, they sought out another mission.

III. Preparations of the Raiding and Demolition Squad before departure.

1. Equipment

- (a) Provisions are according to distance. One weeks supply is usual. B rations and compressed emergency rations for the most part.
- (b) Amn as prescribed. As light as possible.

- (c) Each man must have 3 or more grenades.
- (d) Materials for destroying enemy arty (for 1 gun).
  - 3 grenades (preferably grenades tied in bunch)
  - 2 armour piercing mines.
  - 2 or 3 packs explosives (ignition fuze cords)
  - Matches 2-3 or a lighter (waterproof).
  - 1 Pick
  - Smoke candle.

2. Study of Movement

- (a) Study in detail the map and intelligence of the position which is the objective.
- (b) Study road approach to the enemy.

3. Posts and Irg

- (a) Enemy approach post
- (b) Demolition post
- (c) Train in method of demolition
- (d) Comd will appoint a substitute for him, and each to the last man will be thoroughly drilled as to the object and procedure.

Line of Battle

All future Raiding and Demolition squads will prepare in this manner and success will be assured.

IV. Approach to Enemy

1. The aim is to draw near secretly and attack the objective. For this while on the way, begin to flank the place where the enemy is, and to this end resign yourself to the difficulty of the terrain.
2. Gather enemy intelligence constantly and aggressively, regulate your movements in accordance with it. It will be necessary to make certain of the direction of the objective by climbing tall trees while on the way.
3. If discovered by the enemy, it is advisable to proceed in another direction for a day.

Line of Battle

1. When a Raiding and Demolition Unit is despatched to a distance, detouring movement within the jungle will be by compass. The daytime will be used for intelligence and ambush. Succeeding route of advance will be recced and marked and approaches will be made at night.
2. When discovered by the enemy, the detour movement takes much time and must be forced.

V. Essentials of Attacking Enemy Arty.

1. When drawing near with the object of attacking, ascertain well the situation and await the opportunity and make the attack at all costs a surprise.

Line of Battle

1st Lieut HIRAYAMA of 3 Bn 66 Inf Regt had success by waiting till the enemy left his guns to go to eat.

Determine the location while the guns are firing, and attack when the guns are silent. As all the gunners are on line while firing an assault attack would be necessary.

When an assault attack is unavoidable, the support squad will fire upon and force gunners back; each group of the Demolition Squad will close upon the guns and destroy them; at this time the Protection Squad cover flanks and also by means of the smoke candle will cover the work of the Demolition Squad.

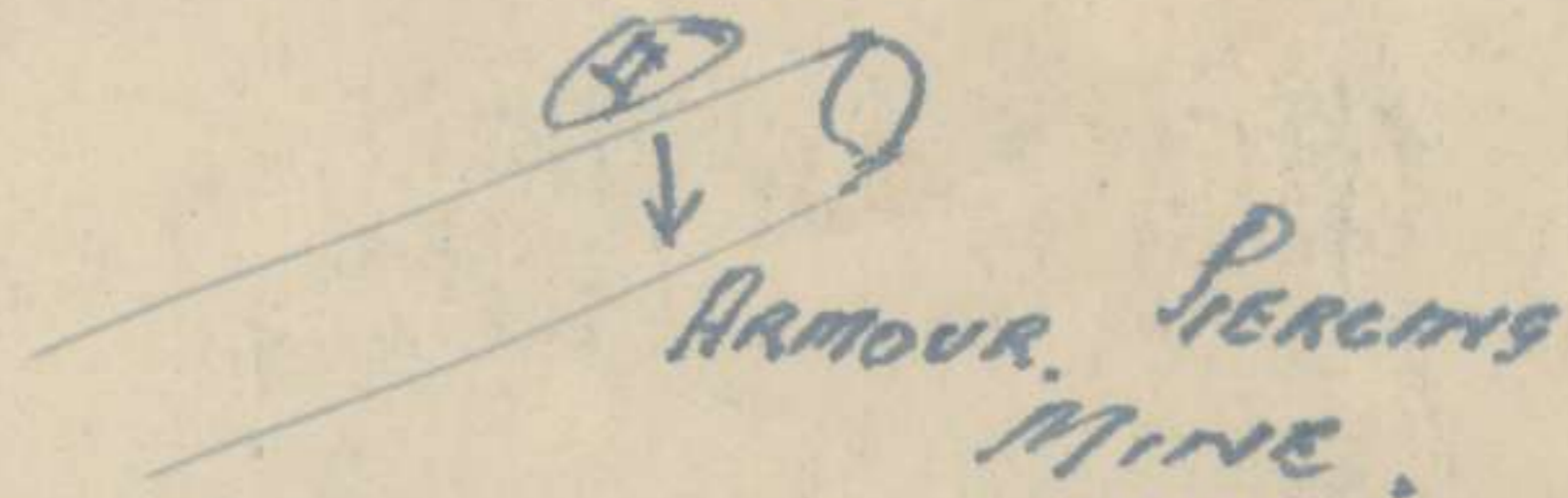
When this is done at night, throw hand grenades at the enemy main force thereby causing confusion.

According to situation, all personnel will attack and annihilate the gunners first, after which guns will be destroyed.

This is because gunners are weak in hand to hand combat.  
Before the attack destroy the sig wires near the gun line.

#### VI Essentials of enemy Gun Demolition

1. For mortars it is sufficient to throw an ignition grenade (TENKA) down the barrel.
2. For large guns, aside from throwing a bundle of grenades down the barrel for perfect results destroy the barrel (near the muzzle) with explosives or armour piercing mine.



3. If possible destroy the gun cradle also. Compared with the barrel the strength of the cradle is slight.
4. Destroy sights with the pick.
5. If there is a surplus of time, throw the gun in the sea or river or bury it. Render all parts useless.

#### VII Miscellaneous

1. Amn near the gun should be thrown into the sea.
2. To be certain that the gun sights are demolished take them away with you.
3. If you attack the arty OP bring back as much of the OP materials as possible.

