

AWM52
2nd Australian Imperial Force and
Commonwealth Military Forces unit war
diaries, 1939-45 War

Item number: 8/2/24

24 Infantry Brigade

July - August 1943

14 AUG. '943

WAR DIARY

Army Form C. 2118.

Instructions regarding War Diaries and Intelligence Summaries are contained in F.S. Regs., Part II. and the Staff Manual respectively. Title pages will be prepared in manuscript.

JULY 43

~~INTELLIGENCE SUMMARY~~

HQ 24 AUST INF BDE

(Erase heading not required).

Place	Date	Hour	Summary of Events and Information	Remarks and references to Appendices
	1	1445	Conference at Bde HQ of all comds in Bde Gp for issue of verbal orders for exercise set by 9 Aust Div. Col Steiner (CO 532 ES & Bt Regt) and staff also present. Orders issued by Brig Evans and conference finished at 1530. Special Map for exercise issued Admn instruction No.3 issued (Appx 2)	Appx 1 Appx 2
	2	1000	Conference of all comds in Bde Gp, for confirmation of verbal orders for exercise set by Div. Col Steiner (Comd 532 E.S. & Bt Regt) was present also Comd Lockwood (US Navy) and staff. The conference was conducted by Brig Evans. Screed on Landing Gp Ex No.4 issued. (Appx 3) Movement Order No 5 issued (with amendment) (Appx 4)	Appx 3 Appx 4
	3		Bde HQ moved out from camp at 0215 hrs for Land/Gp exercise No.4 Loaded on the barges by 0330 hrs. The exercise was deemed concluded at 1100 hrs by the Director (Maj Gen WOOTTEN) and tps were back in camp at 1300 hrs. Further details of this exercise are contained in Appx 3.	
	4	1100 1330	20 Aust Inf Bde arrived to take over the area, the hand over was completed by 1200 hrs. Commenced journey back to Kairi camp 486382 (Gordonvale 1" : 1 mile) arrived 1730 hrs. Loading table Bde HQ personnel issued. (appx 5)	Appx 5
	5	0900 1730	Conference at Div Trg HQ for discussion on Landing Gp exercise No.4 attended by Brig Evans and B.M. (Major White) Brig Evans and B.M. (Maj White) arrived from Cairns area.	
	6		Sketch of Bde HQ area is attached as Appx 6. 24 Aust Inf Bde Trg Instn No.6 issued. Appx 7.	Appx 6 Appx 7
	7	1000	Lecture on meteorology by Flight Lieut Gardner, attended by officers from Bde HQ and Bns.	
	8		Conference on Future Trg attended by Brig B Evans, B.M. Maj White, Lt-Col Scott(2/32Bn) Lt-Col Loughrey (2/28 Bn) Lt-Col Wain (2/43 Bn).	
	9		Race meeting held at KULARA under control of 9 Aust Div.	

[Handwritten signature]

WAR DIARY

Army Form C. 2118.

Instructions regarding War Diaries and Intelligence Summaries are contained in F.S. Regs., Part II. and the Staff Manual respectively. Title pages will be prepared in manuscript.

JULY 43

~~INTELLIGENCE SUMMARY~~
(Erase heading not required).

HQ 24 AUST INF BDE

Place	Date	Hour	Summary of Events and Information	Remarks and references to Appendices
	9		Instructions for Church Parade 10 Jul issued. (appx 8)	Appx 8
	10	0830	Church Service for Bde held on Bde Sports Ground. The address was delivered by Chaplain General (Rev. A. Irving Davidson E.D. M.A.) assisted by Chap. R.E. Williamson (2/32 Bn) and Chap. N.W.S. Chambers (2/28 Bn). After the church service tps marched past in the following order - HQ 24 Aust Inf Bde, 2/28 Bn, 2/32 Bn, 2/43 Bn. The salute was taken by Brig. Evans attended by B.M. (Maj. White) S.C. (Capt. Sangster).	
	12		B.M. (Major White) and S.C. (Capt Sangster) visited Cairns area to observe 20 Aust Inf Bde training.	
	13		B.M. (Maj White) and S.C. (Capt Sangster) returned. B.M.L. (Capt Wilton) Supply offr (Lieut Birch) Sig Officer (Capt Smith) visited 503 Para Regt U.S. Forces to arrange details of apply dropping from the air, for exercises in the near future.	
	15		Brig Evans and B.M. (Maj White) visited Cairns area to observe exercise carried out by 20 Aust Inf Bde. Capt Sangster and Adjts of Bns attended conference at Div HQ. Capt Wilton (B.M.L.) again visited 503 Para Regt U.S. Forces to complete arrangements for supply dropping.	
	16		Brig Evans and Maj White returned from Cairns.	
	17		2/28 Bn conducted a sports day to commemorate their third anniversary as a unit. The proceedings finished with a barbecue in the evening.	
	18	1000	Church Parade.	
	19		Bde HQ less essential duties marched out to exercise area, Tac Bde leaving at 0820 hrs and Main at 0930 hrs. Halt for lunch hr at approx 510421 (Gordonvale 1" : 1 mile) and arrived at bivouac area 1750 hrs (509451 Gordonvale 1" : 1 mile). Exercise commenced on reaching Bn Area and patrols sent out by 2/28 Bn in direction of Mt Hagg and standing patrols were supplied by 2/43 Bn. Instructions for Tactical Exercise No.2 issued (appx 9)	Appx 9

P. J. M.

WAR DIARY

Army Form C. 2118.

Instructions regarding War Diaries and Intelligence Summaries are contained in F.S. Regs., Part II. and the Staff Manual respectively. Title pages will be prepared in manuscript.

JULY 43

~~INTELLIGENCE SUMMARY~~

HQ 24 AUST INF BDE

(Erase heading not required).

Place	Date	Hour	Summary of Events and Information	Remarks and references to Appendices
	20		Op instruction No.2 arrived Bn area at 1040 hrs (appx 10) Moved off at 1120 hrs in following order 2/28 Bn, Tac Bde, 2/43 Bn and Main Bde. Tac Bde arrived in bivouac area at 1700 hrs 2/32 Bn arrived in area at 1800 hrs. Verbal orders for attack issued by Brig Evans at 1700 hrs 2/28 Bn attack completed at 1750 hrs and patrols from 2/32, 2/43 and 2/28 Bns went out.	Appx 10
	21		0930 hrs supply dropping commenced from two planes in area 536432 1130 hrs. Verbal orders for attack issued.	
		1430	Tac Bde moved to 534432 arrived at 1530 hrs.	
		1510	O.O. No.3 issued with Intelligence Summary attached.	
		1800	Main Bde closed and reopened at 533432 at 2135 hrs .	
		2135	2/32 objective captured.	
	22		2/43 Bn objective captured.	
		0640	2/28 Bn xxx moved forward.	
		0750	2/28 Bn Objective captured.	
		0910	Tac Bde closed down and reopened at 1030 hrs 548418 (Gordonvale 1" : 1 mile)	
		0950	Main Bde closed and joined Tac Bde.	
		1200	COs report to Bde HQ and order of march for return to camp issued 2/43Bn, Bde HQ,	
		1430	2/28 Bn, 2/32 Bn and 2/2 MG. No move before 1300 hrs.	
		1500	March commenced and tps were back in camp area at 1645 hrs.	
	23		During morning conference held at Bde HQ for umpires, attended by B.M. Maj White, to discuss recent Bde exercise.	
		1400	Conference of Coy comds and equivalent to receive reports and criticisms of umpires on exercise just completed. Addressed by Brig Evans, Bm Maj White, Maj Brown (OC 2/2 MG Bn) and Capt Seikman (OC Enemy).	
			Notification received from Aust Div of change in comd of 2/28 and 2/43 Bns. Maj H.B. Norman (2/28 bn) to be CO of 2/28 Bn replacing Lt-col Loughrey and Maj Joshua (2/32 Bn) to be C.O. 2/43 Bn in place of Lt-Col Wain. Maj C.C. Brown to be 2 i/c 2/28 Bn and Maj K.F. Mollard to be 2 i/c 2/32 Bn.	
	24		Conference of IOs at Bde HQ attended by Capt Pittman (Bde HQ) Lieut Davis (2/43 Bn) Lieut Gardner (2/32 Bn) and Lieut Lushington (2/28 Bn)	

WAR DIARY

Army Form C. 2118.

Instructions regarding War Diaries and Intelligence Summaries are contained in F.S. Regs., Part II. and the Staff Manual respectively. Title pages will be prepared in manuscript.

JULY 43

~~INTELLIGENCE SUMMARY~~

HQ 24 AUST INF BDE

(Erase heading not required).

Place	Date	Hour	Summary of Events and Information	Remarks and references to Appendices
	25	0930	Church Parade	
	26	1000	Conference at Bde HQ attended by Brig Evans BM (Maj White) S.C. (Capt Sangster) Lt Col Scott (2/32 Bn) Lt Col Joshua (2/43 Bn) Lt Col Norman (2/28 Bn). Lt Col Wain and Lt Col Loughrey left for 9 Div Reception Camp.	
		1430	Conference at Bde HQ of Adjutants and Quarter Masters of 2/28 Bn, 2/32 Bn, and 2/43 Bn called by Capt Sangster (S.C.). Danbulla Rifle range was allocated to 24 Aust Inf Bde for ensuing week.	
	27		2/28 Bn on rifle range.	
	28		2/32 Bn on rifle range.	
	29		2/43 Bn on Rifle range.	
	30		Bde HQ personnel less essential duties marched to Danbulla rifle range to fire rifle and Bren practices. Practices were completed and majority of HQ personnel were back in camp at 1500 hrs.	
	31		Skill at Arms day was held and was opened by a March past with tps in the following Order Bde HQ, 2/28 Bn, 2/32 Bn, 2/43 Bn, the salute was taken by Brig B Evans. Details of events are attached as appx 12. Lt Gen Morshed (Comd 2 Aust Corps) and Lt Col Searle (HQ 9 Aust Div) were amongst the visitors during the day.	Appx 12

P. J. ...

30 Jun 43.

EXERCISE L.1

JOINT INTELLIGENCE SUMMARY

Based on information up to 1400 hrs 30 Jun 43.

Ref Maps CAIRNS 1/4" E55/2
SPECIAL 1/63360 - Appx "A" attached.

Chart: Admiralty 2924.

1. ENEMY DISPOSITIONS AND ORDER OF BATTLE

(a) General:

The enemy has been based on CAIRNS JAN POINT HI 099 560 for the past four weeks, since he withdrew from the area INNISFAIL (some 60 miles south of CAIRNS). Forward troops of 12 Aust Div are in contact with the enemy in the area GORDON V. LE (25 miles south of CAIRNS).

(b) Infantry: The following have been identified -

- (i) Area CAIRNS, 20 Div. This Div is probably reduced by casualties to strength of two regts. The main force is engaged with 12 Aust Div in the south but one bn is stationed north of CAIRNS and maintains a coastal patrol northwards as far as RED CLIFF POINT JAN POINT HI 088 574. This bn also mans some static beach defences north of CAIRNS.
- (ii) MOSSMAN (Some 60 miles north of CAIRNS) remnants of an unidentified SMLP, one bn 78 Inf Regt with labour dets.
- (iii) One bn (unidentified - thought to be of 51 Div) probably between KURUNDA JAN POINT HI 091 565 and MAREEBA.

(c) AFVs:

None reported at CAIRNS or MOSSMAN. It is unlikely that any AFV can be moved along coast track south of MOSSMAN. They may however have some available in the MAREEBA area. The track between MAREEBA and CAIRNS is also considered impassable for AFVs

(d) Artillery:

Normal with Div as far as is known. Since end of May the following guns have been captured -

Two 70mm guns
Twelve 75mm fd guns
Two 105mm Hows

(e) AA defences are good at CAIRNS and MOSSMAN.

(f) Maintenance:

Our move forward has deprived the enemy of his main base of supplies at INNISFAIL. He is probably now existing on his reserves and on such supplies as he is able to -

- (i) filter through by sea, landing at CAIRNS;
- (ii) transport from inland on narrow cart track MAREEBA - CAIRNS.
- (iii) land north of CAIRNS and transport south on coastal track.

2. BEACH DEFENCES

- (a) Only slight activity on beach defences has been apparent recently and air photographs do not show defence works except some wire on beaches running from the water to the jungle edge. There are however reports of wire at jungle edges along good beaches, and small strong points have been constructed inside the jungle. The strong points are reported to be manned continuously.
- (b) Beaches are reported to be mined but no details are available.
- (c) No artificial underwater obstacles have been reported or spotted.
- (d) Air recce reports (no photographs available) indicate that there is a circular concrete construction on the SE extremity of DOUBLE ISLAND JAN POINT HI 092 571. Unconfirmed reports from native sources indicate that the enemy has been installing coast defence guns in places along the coast.

3. BEACH REPORT: - See Special map 1/63360 Appx "A" attached.

- (a) Beach from SIMPSONS POINT JAN POINT HI 0905 5718 south for $1\frac{1}{4}$ miles is rocky with shoals off shore and unfit for landing craft.
- (b) South from southern boundary of (a) for $1\frac{1}{2}$ miles the beach is reasonably good though sand banks offshore render a successful landing unlikely without careful and detailed sounding recce.
- (c) SE from southern boundary of (b) for $\frac{1}{4}$ mile is clear open beach suitable for landing. Approach should be made in a SW direction during the last 500 yards. It is bounded on the southern end by BUCHAN POINT which is rocky and an impossible landing :-
 - (i) length of usable portion shown on sketch 400 yards
 - (ii) width of beach 50 feet
 - (iii) gradient 1 in 8
 - (iv) nature of beach. Soft sandy beach with abrupt bluff rising immediately off beach proper.
 - (v) hinterland, mountainous and densely wooded.
- (d) Beach from incl BUCHAN POINT south for 1 mile to native hut on shore is extremely rocky and unsuitable for landing. There is a reef extending from DOUBLE ISLAND to BUCHAN POINT which prevents the passage of craft through this strait (NOTE: Any craft passing between these points during the exercise will be considered casualties immediately).
- (e) Beach south from southern boundary of (d) for $1\frac{1}{4}$ miles is good open beach suitable for landing -
 - (i) length of usable portion shown on sketch 2,000 yds
 - (ii) width of beach 60 ft
 - (iii) gradient 1 in 5
 - (iv) nature of beach, fine sandy beach
 - (v) hinterland - flat, scrub covered sparsely wooded country inland from beach for about 800 - 1,000 yds then rising steeply to coastal range.
 - (vi) Panoramic sketch of beach attached as Appx "B".

- (f) Beach south from southern boundary of (e) is unsuitable for use due to uncharted shoals off shore and scattered rocky outcrops at high tide level.

4. TOPOGRAPHY

- (a) Country inland is mountainous, rocky and with heavy timber for the most part.
- (b) It is known that a track runs from the beach at the southern extremity of beach 4(e) and crosses the coastal range to FORGAN SMITH LOOKOUT JAN POINT HI-091 568 thence west and south to KURUNDI. From the foot of the range to FORGAN SMITH LOOKOUT the track is extremely steep and usable at the most by pack transport after some improvement. From FORGAN SMITH LOOKOUT the track becomes a cart track usable by Jeeps and light MT.
- (c) Rivers and creeks are running and infested with crocodiles.

5. NAVIGATION DATA - Appx "C" - Special distribution.

6. NAVAL

- (a) Jap submarines have been reported off GREEN ISLAND JAN POINT HI 110 569.
- (b) Inshore patrols work north up coast from CAPE GRAFTON JAN POINT HI 106 563 to an indefinite limit north of SIMPSON POINT and by night seaward from CAPE GRAFTON to ARLINGTON REEF JAN POINT HI 112 571.
- (c) No minefields have been reported.

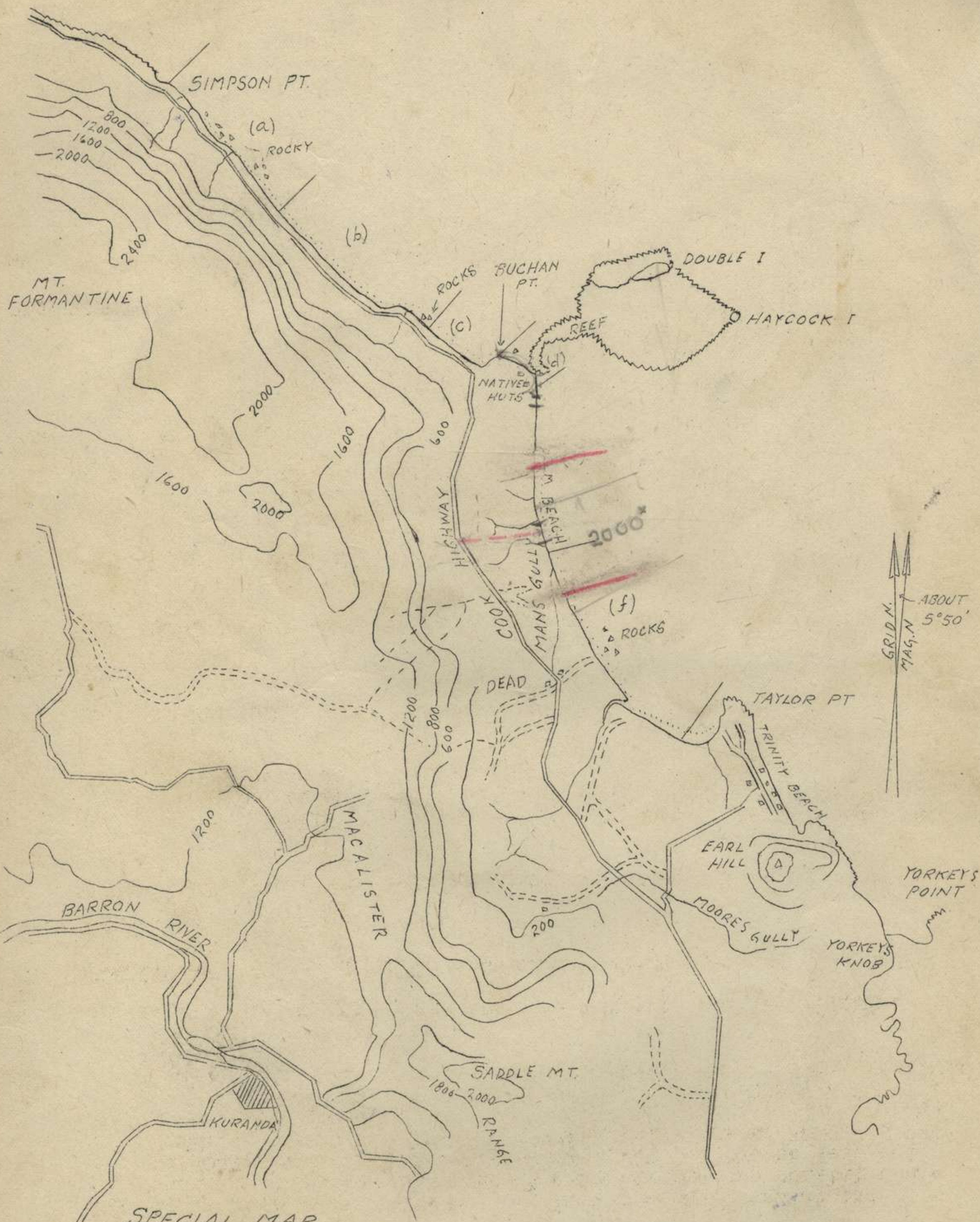
7. AIR

- (a) There is a landing strip at MAREEBA in use by enemy fighter bombers.
- (b) It is expected that we shall have air superiority over the area of landing from incl D day but strafing by enemy fighters and high or low level bombing attacks on the beachhead area must be expected. If surprise is lost, night bombing with the aid of flares is possible while troops are still on the water.

DISTRIBUTION:

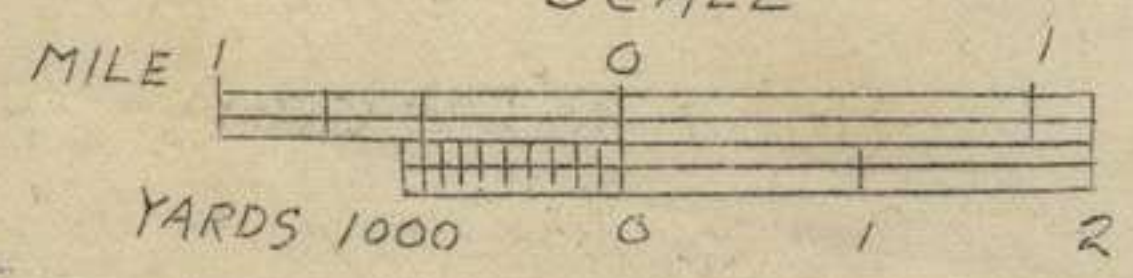
As for General Instruction No 1.

J. B. Quinn
Lt Col
GS



GRID N. ABOUT 5°50'
 MAG. N.

SPECIAL MAP
 1:63,360
 SCALE



APPENDIX A

War Diary

Appx 2.

MOST SECRET

1 Jul 43.

Copy No >>

24 Aust Inf Bde Adm Instrn No. 3.

1. GENERAL

- (a) 20 Aust Inf Bde Gp will move to CAIRNS area for trg.
- (b) 24 Aust Inf Bde Gp, less details, will return to camp area on Tableland.
- (c) Dates and times of move will be advised later.

2. TROOPS

- (a) The following units will return to the Tableland from trg area.

H.Q. 24 Aust Inf Bde
 A Sec SigS
 2/76 L.A.D.
 2 Pl 2/1 Aust Lq Gd Bn
 2/28 Bn
 2/32 Bn
 2/43 Bn
 23 Bty 2/12 Md Regt
 2 Pl 2/9 Aust Div Carrier Coy
 C Coy 2/2 MG Bn
 C Coy 2/3 Pnr Bn
 2/3 Aust Fd Amb
 2 Sec 2/9 Aust Div Pro Coy
 Fd P.O. 35

- (b) 2/4 Aust Lt A.A. Regt, less 12 Bty, remains in trg area.
- (c) 2/13 Aust Fd Coy move to location as advised by FQ RAE 9 Aust Div.
- (d) Movement of AASC det will be arranged separately.

3. ADVANCE PARTY

- (a) Advance parties from 24 Aust Inf Bde Gp will not be sent to the Tableland.
- (b) Small advance parties from 20 Aust Inf Bde Gp will be sent to take over tentage and stores.

4. REAR PARTY

Rear parties of not more than 1 offr and 6 ORs for Inf Bns and 1 offr and 3 ORs for supporting arms will be left in trg camp for the handing over of tentage and stores.

5. MOVEMENT

Movement will be by M.T. Details will be issued later.

6. ACCOMMODATION STORES AND EQUIPMENT

- (a) Tentage
 - (b) Bedboards and Bearers
 - (c) Camp cooking equipment
- } see sub-para (d)
- (d) A mutual arrangement for the handing over of an equivalent number of the abovementioned stores that will be left in the Tableland Camp, will be made with the incoming units of 20 Aust Inf Bde Gp.
 - (e) Tentage etc for H.Q. 24 Aust Inf Bde and att tps, 2/28 Bn, 2/32 Bn and 2/43 Bn will be transported to 24 Bde Camp under arrangements made by H.Q. 9 Aust Div, prior to the return of those units.

7. SUPS

(a) Units of the Gp will move with one days emergency ration on the man.

(b) All emergency and operational rations surplus to the above will be returned to the AASC det before movement.

8. POL

Full tanks plus 100 miles for all vehs.

9. AMN

W.E. first line and W.U.R. amn will be handed over to incoming units.

10. ORD STORES

(a) Any surplus stocks of dubbin, flanelette, oil M80, oil C70, grease graphite, or mineral jelly red will be handed over.

(b) Boots A.B. in excess of normal res will be returned to ADOS dump on return.

11. MNGR STORES

Will be handed over.

12. UNIT STORES AND EQUIPMENT

(a) W.E. stores and equipment with the exception of the undermentioned will be carried by units.

(b) Guns 25 pr, 6 pr, 2 pr, and Bofors with tractors will remain in trg area.

(c) Inf Bn 2 prs may be exchanged after main move is completed. Bns will be advised further in this matter.

(d) Other guns and tractors may be moved after main move by arrangement between RAA and 20 Aust Inf Bde.

(e) Carriers remain in trg area.

13. DRESS

For the move will be shirts, slacks, gaiters, boots, hats, web equipment.

14. TRANSPORT

(a) Number of MT available for the move will be advised later.

(b) Jeeps on loan to Inf Bns will be returned to Bde H.Q., when advised, for checking and handing over.

(c) Owing to the limited tpt available for the move, it will be necessary to carry 20 men in LWB lorries 3 ton.

15. MEDICAL

Ambulances to move with each convoy will be advised later.

16. TRAFFIC CONTROL

Pro will be attached to each convoy to assist convoy comd in traffic control.

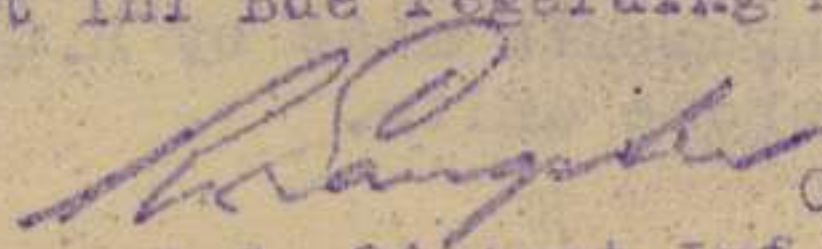
17. PRIORITY OF UNITS FOR MOVE

Priority of units for movement will be advised when advice is received from 20 Aust Inf Bde regarding move of relieving units.

18. ACK

Distribution

List 'A' less Serial 15
plus 20 Aust Inf Bde
Sup C.

 Capt.
S.C. 24 Aust Inf Bde.

24 Aust Inf Bde

Copy No. 32
1 July 43.

Landing Group Exercise No.4

GENERAL INSTRUCTIONS

Ref Map : CAIRNS sheet E55/2 4 miles to 1 inch.

1. Operations prior to 30 Jun 43

(a) Allied forces have been operating up the EAST coast of AUSTRALIA against the Japanese who have been in occupation of NORTH QUEENSLAND since Jun 42. The Allies are in occupation of the area GORDONVALE (Some 25 miles to the south of CAIRNS)

(b) 9 Aust Div, after a period of training in amphibious operations has recently moved into the area INNISFAIL (some 80 miles south of CAIRNS).

2. Topography

The country is as shown on the map except that the railway CAIRNS - MAREEBA will be considered as cart tracks.

All villages and towns will be considered to be native villages.

3. Object of Exercise

To exercise a Task Force, of strength one bde landing gp in an opposed landing.

4. Aircraft

Each aircraft operating over the exercise area represents one sqn (friendly or enemy). Enemy aircraft will have a yellow band round the belly.

5. Ammunition

(a) Blank ammunition will be used only by the enemy force.

(b) Task force weapons will not be loaded even with dummy ammunition.

(c) Umpires will issue ammunition expenditure 'chits' during the exercise.

6. Representation of fire

(a) Firing of enemy guns is being represented by lucas lamps and or hand mirrors:-

Arty - Steady light

MGs - Flashing light

Thunder flashes will be used at the gun positions as well as at the target engaged to represent artillery firing.

(b) Land mines - Dummy mines may be used during the exercise - small explosive charges will be set off if troops enter a mined area.

7. Demolitions

(a) Demolitions will not be carried out unless written permission is first obtained from a RAE or Sh Bn umpire.

(b) The following system of notifying imaginary demolition work will be adopted:-

(i) By Task Force - The method of carrying out or repairing the demolition, and the stores required together with an estimate of labour and time required, will be handed in writing to a RAE or Sh Bn umpire. The stores and labour must actually be brought up to the spot. Sites will be marked by tapes.

(ii) By the enemy - Sites of demolitions will be clearly marked by white paint a board showing full details of the demolition and damage done, with its extent, will be available on the spot and will be handed to Task force troops on arrival.

8. MT

- (a) Captured MT will be marked by the umpires with the letter "C" in chalk. MT and motorcycles captured will not be used by the captors. They will be driven under the instructions of the umpires only and will be handled by their own drivers.
- (b) Umpires vehicles will be flying signal flags.

9. Casualties

The following system of awarding casualties is being adopted:-

Medical services will prepare casualty forms prior to the exercise and will issue these to the senior umpires. Umpires will attach tags to casualties stating the type of injury.

10. Civilians

As little inconvenience as possible is to be caused to civilians in the exercise area.

11. Other Troops in Exercise Area

Tps not taking part but living in the exercise area will not be interfered with and their tent lines will be avoided as far as possible.

12. Jan Grid

The Jan Grid will be employed during the exercise.

13. Dress

The following distinguishing marks will be worn by

- (a) Enemy Troops - white band on hat
- (b) Umpires and spectators - two white arm bands

14. Security

- (a) During this exercise all ranks are to be impressed with the necessity to preserve the degree of secrecy which is essential in all phases of an amphibious operation if success is to be ensured.
- (b) The numbers of persons to whom the details of the operation are to be made known will be kept to a minimum. Orders and instructions which would divulge the objective, date of sailing or any details of the Force, will be issued under "EXERCISE MOST SECRET" (British) and "EXERCISE SECRET" (American) classification.

15. Fire

If fires are lit at conclusion of exercise, all comds will ensure before leaving the area that such fires are thoroughly put out.

P. J. B. Mille
Maj.
B.M. 24 Aust Inf Bde.

Distribution
as per 24 Aust Inf Bde O.O. No. 2.

1 Jul 43
Copy No. 22.

O.O. No. 2

(Issued in confirmation and amplification of verbal orders)

Ref Maps CAIRNS 4 miles to one inch E55/2
INNISFAIL " " " " "

Air Photos (to be issued to Bns and Sp arms)

Special map attached to JOINT INTELLIGENCE Summary Exercise
L 1 dated 30 Jun 43.

INFORMATION

1. Enemy

- (a) General Instructions issued separately.
- (b) See Joint Intelligence Summary Exercise L 1 dated 30 Jun 43 (with special map attached) issued separately.

2. Topography

See Joint Intelligence Summary Exercise L 1.

3. Own Tps

- (a) An amphibious force consisting of Naval units, 9 Aust Div, 2 ESB and Air Force units is at present located in INNISFAIL and is about to carry out a landing on PALM BEACH (JAN POINTS HI 0933 5691 to HI 0934 5685) with three Bde gps landing on successive nights. The second and third Bde gps will pass through initial Bde gp beachhead.

- (b) Objects of landing :-

- (i) Cut coastal track
- (ii) Capture KURANDA JAN POINT HI 091 565.

thus isolating JAP forces in CAIRNS area.

- (c) 12 Aust Bn, now at GORDONVALE, are commencing land ops against the enemy on 1 Jul 43. This force is expected to fully occupy the JAP and reach the outskirts of CAIRNS by 3 Jul 43.

- (d) Composition of 24 Aust Inf Bde Gp.

HQ 24 Aust Inf Bde
K Sec Sigs
2 Pl 2/1 Aust HQ Gd Bn
2/76 Aust LAD
2/28 Aust Inf Bn)
2/32 Aust Inf Bn) less Tk A Pls.
2/43 Aust Inf Bn)
One tp 23 Bty 2/12 Aust Fd Regt incl skeleton Bty HQ
and in sp det 2 pl 2/9 Aust Div Carr Coy.
2/13 Aust Fd Coy
C Coy 2/3 Aust Pnr Bn
2/3 Aust Fd Amb
Sec 2/9 Aust Div Pro Coy.

4. Supporting Tps

532 EB & SR is to support 24 Aust Inf Bde and has 4 support craft from 2 ESB allotted to assist the operation.

5. Naval

Naval units are to support the operation by protecting convoy and providing gunfire support during and after landing.

6. Air

- (a) Two fighter sqns and three fighter bomber (MOSQUITO) sqns have been allotted to assist this initial operation
- (b) GHQ Air plan is in operation to assist general ops. Details of this are NOT known.

7. The force to carry out this initial landing op is composed of:-

- (a) 24 Aust Inf Bde Gp - Brig B. EVANS
- (b) 532 EB & SR - Col J.J. STEINER
- (c) Naval units - Commander LOCKWOOD
- (d) Air Force Units - Flight Lieut BELL

8. Comd

The force will be known as "TASK FORCE EVANS" and is under supreme comd of Commander LOCKWOOD U.S. Navy.

INTENTION

- 9. 24 Aust Inf Bde Gp will establish beachhead and Maintenance Area at PALM BEACH preparatory to arrival of remainder of 9 Aust Div.

METHOD

10. Landing Beach

- (a) To be known as PALM BEACH.
- (b) Dimensions & posn of beach as given in amended Joint Intelligence Summary and marked on all Comd's Special maps.
- (c) PALM BEACH will be divided into two separate beaches.
 - (i) Northern 800 yds PALM RED BEACH
 - (ii) Southern 800 yds PALM GREEN BEACH.

11. D Day D Day will be 3 Jul 43.

12. H Hour H Hour will be 0545 hrs

13. Assault Landing

- (a) Right on PALM RED BEACH 2/43 Aust Inf Bn with under comd as from 1100 hrs D minus 1.

Pl 2/13 Aust Fd Coy
 Sec 2/3 Aust Fd Amb.

and in support for landing

Boat Coy)
 Shore Coy) from 532 EB & SR.

- (b) Left on PALM GREEN BEACH 2/32 Aust Inf Bn with under comd as from 1100 hrs D minus 1.

Pl 2/13 Aust Fd Coy
 Sec 2/3 Aust Fd Amb

and in support for landing

Boat Coy)
 Shore Coy) from 532 EB & SR.

(c) Landing Times

First wave	H hour
Second "	H plus 3
Third "	H plus 10
Fourth "	H plus 18
Fifth "	H plus 30
Sixth "	H plus 45

(d) Inter Bn Boundary

As marked on special map issued.

(e) Limits of initial penetration

For each Bn landing gp on front of approx 800 yds to a depth of 600 yds - 800 yds approx.

14. Reserve

24 Aust Inf Bde Gp and supporting tps 532 EB & SR less 2/43 & 2/32 Bn landing gps will constitute floating reserve.

15. Probable Tasks

Movement to assembly area approx centre of beachhead preparatory to 2/28 Aust Inf Bn occupation of commanding posns at:-

- (a) BUCHAN POINT JAN POINT HI 093 570.
- (b) TAYLOR POINT JAN POINT HI 094567.
- (c) Track junc area on high ground west of beachhead (marked on special map).
- (d) Patrolling from track junc posn north and south along high ground to prevent enemy arty observation.

C.O. 2/28 Aust Inf Bn will report to Bde HQ on completion of arrival in assembly area to receive orders.

(e) The composition of 2/28 Aust Inf Bn landing Gp will be:-

- 2/28 Aust Inf Bn with under comd
- Pl 2/13 Aust Fd Coy
- Sec 2/3 Aust Fd Amb
- and in support for landing
- Boat Coy)
- Shore Coy) from 532 EB & SR.

16. Arty

- (a) Probable gun area - centrally placed in beachhead if ground permits.
- (b) Probable tasks.
 - (i) Neutralization of enemy posns affecting beachhead.
 - (ii) Assist 2/28 Aust Inf Bn in its probable roles.
 - (iii) Normal defensive shoots.

(c) F.O.O. will travel with each Bn.

17. Support for landing

Naval (a) Targets - Observed concentrations on:-

- (a) DOUBLE ISLAND JAN POINT HI 092571.
- (b) BUCHAN POINT
- (c) TAYLOR POINT

These concentrations to be fired if enemy interference from these areas is observed or on receipt of request from Bde HQ of codeword "BASH".

(b) Probable times of support. From H to H plus 130.

18. Air

Tasks

- (a) Last light Tac R D minus 1 day.
- (b) Air cover for preloading of stores, time (0915 hrs to 1200 hrs D minus 1 day theoretical) 1500 hrs to 1800 hrs D minus 1 day actual.
- (c) Bomber and fighter cover is being provided continuously over landing area until H plus 360.
These to be at call by direct speech to bomb and straff indicated areas.
- (d) Two flights to smoke foothills immediately west of beachhead area at H plus 45
- (e) Tac R of beachhead surroundings at first light on D day.

19. 532 EB & SR Fire Support

represented by

532 EB & SR have 4 ICS (DUCKS) to support the landing. These craft are equipped with 2 x .30 and 2 x .50 MG and a 12 barrelled rocket projector.

- Tasks (a) Two craft on each flank of landing to engage enemy targets by observed fire.
 later (b) Two craft on each flank to assist adv of 2/28 Bn Gp in their advance north and south along coast.

In order to carry out the latter task, 2/28 Bn Gp will detail at least one man to travel in each ICS to ensure coordination of fire with advancing forces. Details of WT sets will be advised when known.

20. Engrs

- (a) Tasks (i) Clearance of obstacles encountered in area.
 (ii) Improvisation and repair of bridges.
 (iii) Passage of obstacles
 (iv) Marking of assault bns centre lines
 2/43 Bn - RED square
 2/32 Bn - YELLOW diamond.
 (v) Road making in conjunction with Shore Bn.
 (vi) Repair of demolitions.
- (b) On landing engrs under comd 2/43 & 2/32 Aust Inf Bn Gps revert to comd own unit but remain in support of bns.
- (c) One pl C Coy 2/3 Aust Pnr Bn comes under comd 2/13 Aust Hd Coy as from 1100 hrs D minus 1 day but moves in craft as directed by Bde.

21. Pioneers

- (a) One pl under comd 2/13 Aust Hd Coy as from 1100 hrs D minus 1 day except for movement in crafts.
- (b) Tasks.
 (i) Loading and unloading of stores etc and assisting Shore Bn until all stores are sorted and dumped in areas.
 (ii) Pioneer tasks within beachhead.

22. Landing of Reserve

Reserve will land on orders, intervals between waves as for assaulting missions and in addition the Bde Tps waves (i.e. 7, 8 & 9 of res mission) will commence landing 15 mins after last wave of reserve mission and there after at 15 minute intervals.

23. Details of Craft allotment, loading times and beaches and allotment of stores, personnel etc: See Appx "A"

24. C & C Craft

5 Craft acting as C & C boats are allotted:
 Brig 1 Bde HQ 1 each Bn 1.

ADM

25. See Appx "A" attached.

INTERCOMN

26. See Appx B.

ACKNOWLEDGE

Issued by hand and through Sigs
 Time of Signaturehrs

P. J. White
 Maj:
 B.M. 24 Aust Inf Bde:

<u>Distribution</u>	<u>Copy No.</u>
2/28 Aust Inf Bn Gp	1
2/32 Aust Inf Bn Gp	2
2/43 Aust Inf Bn Gp	3
23 Bty 2/12 Aust Fd Regt	4
2/13 Aust Fd Coy	5
G Coy 2/3 Aust Pnr Bn	6
K Sec Sigs	7
2 Pl 2/9 Aust Div Carr Coy	8
2 Pl 2/1 Aust HQ Gd Bn	9
2/3 Aust Fd Amb	10
2/76 Aust L.A.D.	11
9 Aust Div	12 - 13
Navy	14
592 Bt & SR U.S. Forces	15 - 18
R.A.A.F.	19
Cond	20
B.M.	21
S.C.	22
L.Os.	23 - 26
T.O.	27
I.O.	28
File	29 - 30
War Diary	31 - 32

Appx "A" to 24 Aust Inf Bde O.O. No.2

1. ALLOTMENT OF CRAFT)
2. LOADING TIMES) as per appx A 1 attached.
3. EMBARKATION POINTS)
4. STAFF TABLE - BDE LANDING GP - as per Appx "A" 2 attached.
5. SUPS
 - (a) 3 days emergency and 2 days field operation ration carried on the man.
 - (b) 5 days field operation ration carried in res mission under Bde control.
6. P.O.L.

Full tanks plus res for 200 miles per vehicle.
7. WATER
 - (a) Full waterbottles with the man.
 - (b) 532 EB & SR are carrying 2 days supply of water in all boats in quantity of half a gallon per man.
8. AMN
 - (a) W.E. first line and 1 days W.U.R. amn will be carried by units.
 - (b) 1 days W.U.R. amn carried in res mission under Bde control.
9. WATERPROOFING

All vehs, guns and automatic weapons will be waterproofed prior to loading.
10. MEDICAL
 - (a) Sec 2/3 Aust Fd Amb with each Bn landing gp.
 - (b) MDS will be established by 2/3 Aust Fd Amb after res mission lands. Location to be advised.
 - (c) Evacuation of casualties from beachhead will be the responsibility of 532 EB & SR medical det.
11. P.W.
 - (a) Units will be responsible for escorting and handing over P.W. to Sh Bn of 532 ES & ER at collection points 100 yds NORTH and SOUTH of centre of RED and GREEN beaches respectively.
 - (b) Bde P.W. collecting point will be established and all P.W. will be escorted by units to this point. Time of opening and location to be advised.
12. DRESS

Slacks, shirts, pullovers, boots, gaiters, helmets steel, drill order.
Waterproof sheet and tents mosquito carried on the man.
13. ENGR STORES

2 Sandbags per man will be carried.

LOADING SCHEDULE OF PERSONNEL AND STORES

SERIAL	UNIT	DETAIL	BEACH	LOADING TIMES		NO. OF CRAFT	REMARKS
				EXERCISE	INNISFAIL		
1.	2/28 Bn	Stores	YORKEY	1600	1000	8 LCV	
2.	2/32 Bn	"	NORTH TRINITY	1600	1000	8 LCV	
3.	2/43 Bn	"	SOUTH TRINITY	1600	1000	11 LCV	
4.	Bde Tps	"	SOUTH TRINITY	1600	1000	27 LCV	C Coy 2/3 Pnr Bn to assist 5th Bn to load Bde stores.
5.	"	"	CENTRE TRINITY	1545	1000	1 LCM	
6.	"	Stores & personnel	"	1600	1000	1/2 ICT	
7.	2/28 Bn	Personnel	YORKEY	0300	1830	21 LCV	Units to load by waves with 4 min between waves
8.	2/32 Bn	"	NORTH TRINITY	0300	1830	21 LCV	do
9.	2/43 Bn	"	SOUTH TRINITY	0300	1830	21 LCV	do
10.	Bde HQ & Bde Tps	"	Var.	0324	1900	27 LCV	
11.	"	"	CENTRE TRINITY	0328	1910	1 LCM	
12.							

NOTE :- Bde HQ and Bde Tps load one wave of 9 craft from each beach and move as wave 8 in each mission. These waves return to Bde HQ mission when assaulting missions move in to land.

TABLE OF WEIGHTS - LBS

Craft no.	personnel	Guns	Amn on Gun	Other Amn	Stores	Vehicles	Rations	POL	Total
71	4000			1000		2400		On	7400
72	4250			1500		1800		veh	7550
73	3000			310		1800	2000		7110
74	6250			850	500				7600
75	7000				1000				8000
76	3250			2000		2400		on	7650
77	3750			1500		2400		veh	7650
78	1750			3500		2400		on	7650
79	3500			2000		2400		veh	7900
82	2000			3000		2400		"	7400
83	2000			3000		2400		"	7400
84	2000			2000	1000		2400		7400
85	2000			2000			3300		7300
86	2000			3000		2400		"	7400
87	2000			3000		2400		"	7400
88	2250			3000		2400		"	7650
102	1750			3000			3000		7750
103	2000			3000			3000		8000 0
104	2000			3000			3000		8000
105	2000			3000			3000		8000
107	1750			3000			3000		7750
106	2000			3000			3000		8000
LCM									
115	15250	13500	3300	20600	3000	30600	16500		102750
LCM									
116	4250	4500	1100	2050	1000	9000	4500		26350
TTL			4400	72260	6500		46700		

STAFF TABLE - BDE LANDING GROUP

UNIT	PERSONNEL	WEAPONS	VEHICLES	W.E.T. AMN (NOT ON MAN)	1 DAY W.U.R.	5 DAYS FD OF	STORES	
				Lbs.	Lbs.	Lbs.	Lbs.	
Bde H.Q.	51	-	Jeeps 4 Trailers 2					
Attached	5	-	-					
'K' Sec Sigs	31	-	Jeep 1	1000	300	2350	1500	
Def Pl	43	-	-					
LAD	14	-	Jeep 1					
Tp Fd Arty	44	4x25 Pr	Jeeps 2	26100	9000	815	-	
Div Carrier Coy	12	-	Carriers 4					
Pr Coy	98	-	-	800	220	1600	1000	
Fd Coy	20	-	Jeeps 2	80	30	325	4000	
Fd Amb	70	-	Jeeps 3	-	-	1070	12000	
Provost Sec	16	-	Jeeps 1 M/C 3	20	-	250	-	
TOTALS	404	-	-	28000	9550	3410	18500	
Carried as Bde								
Reserve for Bns.					37500	34000	-	
TOTAL carried by Bde					28000	47050	40410	18500
Bn Gps (3) each	702	All except 2 Pr Tk.A Guns	Jeep 1 (Fd Amb)	30000	12500	-	2650	
Bn Less								
Tk A Pl	596							
Bt & Sh Coy	2							
Bde HQ	5							
Fd Coy	50							
Fd Amb	37							
Fd Arty	12							
(Two Bns only)								
TOTAL 3 BN GROUPS	2094		Jeeps 3	90000	37500		7950	
GRAND TOTALS	2498			118000	84550	40410	26450	

WAVE 7 - BDE H.Q. GROUP. 9 L.C.V.'s.

79	78	77	76	75	74	73	72	71
LAD 8 Sigs 6 14	Bde H.Q. 1 LAD 6 7	Bde H.Q. 1 Def Pl 14 15	Bde H.Q. 7 Sigs 6 13	Bde H.Q. 19 Fd Arty 3 Sigs 6 28	Bde H.Q. 19 Sigs 6 25	Bde H.Q. 6 Sigs 6 12	Bde H.Q. 2 Def Pl 15 17	Bde H.Q. 1 Sigs 1 Def Pl 14 16
Jeep (LAD) 1 Amn (Lbs) 2000	Jeep-Sigs 1 Amn -Lbs 3500	Jeep-HQ 1 Amn-Lbs 1500	Jeep-HQ 1 Amn-Lbs 2000	Sig Stores Lbs 1000	Amn-Lbs 850 Sig Stores Lbs 500	Trailer 1 Rations Lbs 2000 Amn-Lbs 310	Trailer 1 Amn-Lbs 1500	Jeep-HQ 1 Amn-Lbs 1000
TOTAL LBS. 7900	7650	7650	7650	8000	7600	7110	7550	7400

WAVE 8 - BDE H.Q. GROUP. 9 L.C.V.

87	86	85	84	83
See next page	A l l o t t e d t o F d . A m b u l a n c e			See next page

WAVE 9 - BDE H.Q. GROUP. 9 L.C.V.

98	97	96	95	94	93	92
Pnr Coy 8 Fd Arty 1 (Dr) 9	Pnr Coy 7 Fd Arty 1 (Dr) 8	Pnr Coy 7 Fd Coy 1 (Dr) 8	Pnr Coy 8	Pnr Coy 8	Pnr Coy 7 Fd Coy 1 (Dr) 8	Pnr Coy 7 Bde HQ 1 (Dr) 8
Jeep (Fd Arty) 1 Amn-Lbs 3000	Jeep (Fd Arty) 1 Amn-Lbs 3000	Jeep (Fd Coy) 1 Amn-Lbs 3000	Amn-Lbs 2000 Rations-Lbs 3300	Amn - Lbs 2000 Rations-Lbs 2400 Stores-Lbs (Pnr) 1000	Jeep (Fd Coy) 1 Amn-Lbs 3000	Jeep (Bde HQ) 1 Amn) Lbs 3000
TOTAL LBS 7650	7400	7400	7300	7400	7400	7400

WAVE 889 BDE HQ GROUP

88	88	82	81	89	91
Pnr Coy 7	Pnr Coy 8	Pnr Coy 8	Pnr Coy 8	Pnr Coy 8	Pnr Coy 7
Rations Lbs 3000 Amn - Lbs 3000	Rations - Lbs 3000 Amn - Lbs 3000	Rations) Lbs 3000 Amn - Lbs 3000	Rations - Lbs 3000 Amn - Lbs 3000	Rations - Lbs 3000 Amn - Lbs 3000	Rations - Lbs 3000 Amn - Lbs 3000
<u>TOTAL LBS.</u> 7750	8000	8000	8000	8000	7750

WAVE 1 BDE HQ GROUP 1 L.C.M. and 1 L.C.T.

116 (L.C.M.)		115 (L.C.T.)	
Fd Arty 11		Fd Arty 33	
Sec Div Pro Coy 6		Fd Coy 18	
<u>17</u>		Sec Div Pro Coy 10	
Div Carrier Coy 3		<u>61</u>	
<u>20</u>		9 - 70	
25 Pr Gun 1		25 Pr Guns 3	
Carrier 1		Carriers 3	
(30 Rds Amn - Lbs) 1100		(90 Rds Amn - Lbs) 3300	
Amn - Lbs 2000		Jeep 1	
Rations - Lbs 4500		M/C 3	
Stores - Lbs 1000		Amn - Lbs 20600	
<u>TOTAL LBS.</u> 26350		Rations - Lbs 16500	
		Stores - Lbs 3000	
		<u>TOTAL LBS.</u> 102750	

APPX "B"

INTERCOMMUNICATION

Issued in conjunction with 24 Aust Inf Bde O.O. No.2

1. Wireless

- (a) A wireless silence will be observed from commencement of embarkation of personnel until H hour. All sets will remain on listening watch for first 2 min of every 20 minute period commencing 0300 hrs D day.

(e.g. 0300 hrs to 0302 hrs - 0320 - 0322 hrs - 0340 - 0342 hrs etc)

This special precaution is imposed to conserve batteries.

- (b) Call signs and Frequencies for army sets.

As issued.

- (c) Tac R Frequency and Times

1st Tac R broadcast at 1830 hrs D minus 1 day frequency to be advised.

2nd Tac R broadcast at 0700 hrs D day frequency to be advised.

- (d) Air Sp Frequency.

(i) FASL and Tentacle not available
Walkie Talkie will be used Frequency 5500 Kcs for direct speech from ground to air.

(ii) Call signs and code name will be advised.

- (e) Naval comn to be advised.

2. Signal diagrams showing:-

(a) Bde Gp afloat

(b) Bde Gp before landing of res

(c) Bde Gp on completion of landing are attached to this appx.

3. Fire Support (ICS)

Walkie Talkie WT sets are being provided by 532 EB & SR for comn between ICS and dets 2/28 Aust Inf Bn Gp.

4. Signal Security

As speed is vital in initial stages plain speech will be used on WT channels where this does NOT endanger the operation. Code words will be used as laid down.

5. Map References

JAN GRID system will be used.

"JAN POINT" need NOT be used before reference.

6. Code Words & Pyrotechnics

- (a) 2/43 Bn Gp initial objective RED LADDIE (Three Reds)
(b) 2/32 " " " " GREEN GRASS (Three Greens)
(c) 2/28 " " possible objectives:-

- (i) BUCHAN pt HUGHIE - 3 white star - parachutes.
(ii) TAYLOR pt FRANK - 3 amber star - parachutes.
(iii) EARL hill CHRISTMAS - nil
(iv) Track junc area DONKEY - nil.

24 Aust Inf Bde Movement Order No. 5.

Ref maps - GORDONVALE }
 DIMBULLAH } 1/63360
 CAIRNS }

24 Aust Inf Bde Adm Instrn No. 3 refers.

GENERAL

1. Movement of 24 Aust Inf Bde Gp to Tableland camp will commence on 4 Jul 43, and will occupy 3 days.
2. Movement of units will be in accordance with Appx 'A' (Movement Table) attached.

TRANSPORT

3. (a) Vehicles available for the move are allotted to units as follows:-

<u>Unit</u>	<u>Vehs</u>
H.Q. 24 Aust Inf Bde	10
2/28 Bn	55 (incl 1x15 cwt)
2/32 Bn	51 (" " ")
2/43 Bn	52 (" " ")
23 Bty 2/12 Fd Regt	16
2 Pl 2/9 Div Carrier Coy	3
C Coy 2/2/ MG Bn	10
C Coy 2/3 Pnr Bn	10
Det AASC	2
2/3 Fd Amb	18

- (b) Separate arrangements are being made for 2/13 Fd Coy.

4. Vehs will report to units as soon as possible after unloading 20 Aust Inf Bde Gp units.
5. On arrival in Tableland Camp, all vehs will be unloaded immediately and will report to the O.C. Gen Tpt Coy for further orders.

6. ORDER OF MOVE
 7. S.P.
 8. TIMINGS
 9. ROUTE
 10. SPEED & DENSITY
 11. HALTS
- } As per Appx 'A'

12. GROUPS
Vehs will move in gps of 25 with 2 miles between gps.

13. MEDICAL
(a) Two ambulances from 2/3 Fd Amb will move at the rear of each convoy.

(b) O.C. convoy will arrange with 2/3 Fd Amb times these ambulances are required to report.

14. ANTI-MALARIA
Mosquito repellants and containers will be handed over.

15. REAR PARTIES

Rear parties will move on 6 Jul 43.

16. REAR BDE H.Q.

Lieut C.L.W.PARRY, H.Q. 24 Aust Inf Bde will remain at trg camp H.Q. until 0700 hrs 6 Jul 43.

17. ACCOMMODATION STORES & ECPT

Arrangements have been made with 20 Aust Inf Bde for units to leave the following accommodation stores in this area:-

Tentage	Stands Cookers
Bedboards & Bearers	Stoves Fowlers
Tables	Stoves Soyor
Cookers Insulating	

18. INFANTRY 2 pr GUNS

2 pr Tk A guns, loaded on lorries 3 ton, will be moved on 6 Jul 43.


 Capt.
 S.C. 24 Aust Inf Bde.

Distribution

List 'A' less Serial 15
 plus 20 Aust Inf Bde
 Sup O.
 Spares 8.

ORDER OF MOVE
 6
 7
 8
 9
 10
 11

MOVEMENT TABLE

Appx 'A' to 24 Aust Inf Bde
Movement Order No. 5.

1. S.P. - br 625851
2. Route - rd junc 645788 - KURANDA - MAREEBA - ROCKY CREEK - TOLGA - KAIRI
3. Speed - 15 m.i.h.
4. Density - 17 v.t.m.
5. Halts - 10 mins at 10 mins to each hour.

Serial	Unit	Vehs	Date of move	T.P.S.P.		Arr Tableland		Remarks
				Head	Tail	Head	Tail	
1	<u>CONVOY 'A'</u> 2/28 Bn	46	4 Jul	1000	1022	1400	1422	<u>Convoy Comd</u> - Lt. Col. J. LOUGHREY, 2/28 Bn
2	<u>CONVOY 'B'</u> H.Q. 24 Aust Inf Bde	34	"	1330	1340	1730	1740	<u>Convoy Comd</u> - Lt. Col. T. H. SCOTT, 2/32 Bn
3	2/28 Bn	10		1348	1352	1748	1752	
4	2/32 Bn	51		1400	1423	1800	1823	
5	2/3 Fd Amb	12		1431		1831		
6	23 Bty 2/12 Fd Regt	16			1440		1840	
7	<u>CONVOY 'C'</u> 2/43 Bn	46	5 Jul	0700	0722	1100	1122	
8	<u>CONVOY 'D'</u> 2/43 Bn	7	"	1330		1730		<u>Convoy Comd</u> - Major C. C. BROWN, 2/2 MG Bn
9	2/3 Fd Amb	8						
10	2 Pl 2/9 Div Carrier Coy	3						
11	AASC 9 Aust Div	2			1336		1736	
12	C Coy 2/2 MG Bn	10		1344		1744		
13	C Coy 2/3 Pnr Bn	11			1351		1751	
14	<u>CONVOY 'E'</u> Inf Bn 2 pr Guns	6	6 Jul	0700		1100		<u>Convoy Comd</u> - Senior Offr Rear Party.
15	Rear Parties	3			0703		1103	
16	<u>CONVOY 'F'</u> 2/13 Fd Coy	25	"	0700				Move to location as advised by HQ RAE 9 Aust Div. <u>Convoy Comd</u> - Capt R. O. K. T. MOODIE, 2/13 Fd Coy
<p>Note: Allowance has been made in the above timings for an interval of 2 miles between groups of approx 25 vehs</p>								

MOVEMENT

AMENDED Appx "A" to 24 Aust Inf Bde
Movement Order No.5

1. S.P. - br 625851
2. Route - Rd Juno 645788 - KURANDA - MAREEBA - ROCKY CREEK - TOLGA - KAIRI
3. Speed - 15 m.i.h.
4. Density - 17 v.t.m.
5. Halts - 10 min at 10 min to each hour.

Serial	Unit	Vehs	Date of move	T.P.S.P.		Arr Tableland		Remarks
				Head	Tail	Head	Tail	
1	<u>CONVOY "A"</u> 2/28 Bn	45	4 Jul	1000	1022	1400	1422	<u>CONVOY COMD</u> 2/28 Bn to supply
2	<u>CONVOY "B"</u> HQ 24 Aust Inf Bde & att tps	34	"	1330	1340	1730	1740	<u>CONVOY COMD</u> 2/32 Bn to supply
3	2/28 Bn	10	"	1348	1352	1748	1752	
4	2/32 Bn	51	"	1400	1423	1800	1823	
5	C Coy 2/2 MG Bn	10	"	1431		1831		
6	C Coy 2/3 Pnr Bn	11	"		1438		1838	
7	<u>CONVOY "C"</u> 2/43 Bn	45	5 Jul	0700	0722	1100	1122	<u>CONVOY COMD</u> 2/43 Bn to supply
8	<u>CONVOY "D"</u> 2/43 Bn	7	"	1330		1730		
9	2/3 Fd Amb	20	"		1338		1738	<u>CONVOY COMD</u> Major A.W. ROBERTSON 2/3 Fd Amb
10	2 Pl 2/9 Div Carr Coy	3	"	1346		1746		
11	AASC 9 Aust Div	2	"					
12	Inf Bn 2pr Guns (3ea Bn)	9	"		1350		1750	
13	<u>CONVOY "E"</u> Rear Parties	4	6 Jul	0700		1100		
14	23 Bty 2/12 Fd Regt	16	"		0707		1107	<u>CONVOY COMD</u> O.C. 23 Bty 2/12 Fd Regt
15	<u>CONVOY "F"</u> 2/13 Fd Coy	25	"	0700				<u>CONVOY COMD</u> Capt R.O.K.T. MOODIE 2/13 Fd Coy

I.O.

Appx 5

HQ 24 Aust Inf Bde Loading Table

4 Jul 43

TYPE	NO.	LOAD	PERSONNEL ABOARD (Approx)
Jeep	1	Offrs	Dvr Slater T.O.
1 x 15	2	1 Office Gear	Dvr REID LSO, 3 1 Personnel
1 x 15	3	Offrs Gear & Observers	Dvr ?
1 ton chv	4	Office Van	Dvr TRAINOR ORSM & 2 ORs
1 x 3	5	Office gear	Dvr ? 3 orderly Room ORs
1 x 3	6	Amen gear, RAP, Canteen	Dvr ? AO, Sgt, E/Sgt, Arm Sgt, & 2 ORs
1 x 3	7	Personnel	Dvr ?
1 x 3	8	Personnel	Dvr ?
1 x 3	9	WE	Dvr ? CGMS 2 ORs
1 x 3	10	G. Store & Ann	Dvr ? CSM 2 Cooks
1 x 3	11	Offrs Mess gear	Dvr ? 3 cooks
1 x 3	12	Sgts & Mens Mess gear	Dvr ? 5 cooks
1 x 3	13	Water Tanks & Postal	Dvr ? 4 Postal ORs
1 x 3	14	Salvation Army Gear	Dvr ? 1 Salv/A OR
1 x 3	15	Pro personnel	Dvr ? 2 8 pro 4 Bde HQ personnel
1 x 3	16	Fitters Gear & Tpt Office	
1 x 15	17	P.O.L.	Dvr ELLIS
1 x 3	18	2/1 Cd Pl	Dvr } " } 1 Offr & 44 ORs " }
1 x 3	19	"	
1 x 3	20	"	
2 x 3		K Sec Sigs	
1 x 3		2/76 LAD	Dvr BUTTNER

Appx 6



LEGEND

- | | |
|-----------------|-------------------|
| 1 Sig Office | 8 T.O. |
| 2 Ord. Room | 9 Mens Mess |
| 3 Staff Capt. | 10 L.A.D. |
| 4 Sup. Office | 11 Latrine |
| 5 I Office | 12 " |
| 6 L.Os. | 13 " |
| 7 B.M.& B.M.L. | 14 " |
| 8 Bde. Comd. | 15 " |
| 1 Cookhouse | 16 Salvation Army |
| 2 Officers Mess | 17 Y.M.C.A. |
| 3 Cookhouse | 18 R.A.P. |
| 4 Sgts Mess | 19 Sigs. |
| 5 Q.M. Store | 20 Ablution |
| 6 Meathouse | 21 " |
| 7 Cookhouse | 22 " |

COMPASS SKETCH

24 BDE H.Q. CAMP

Scale 1 inch = 40 yards

6 Jul 43

24 Aust Inf Bde Trg Instn No6.

Ref Map GORDONVALE 1:63360

1. Weapons and Equipment

The necessity for extreme attention and care of weapons and eqpt cannot be overstressed. To ensure that these items are in good condition all units will conduct detailed inspections and Cos or OSC will submit a report to this HQ before 12 Jul 43.

2. Combined Trg

In order that complete lessons of and recommendations for, combined trg can be submitted, COs will fwd to this HQ as soon as possible a report setting out main lessons and recommendations which have been disclosed during recent trg period. These may be in note form but should include reasons where applicable.

3. Hardening in Jungle Conditions

In order to make up for time lost during combined trg, units will immediately continue with the policy in force before 16 Jun 43 and "live out" as much as possible.

4. Jungle Combat Courses

Units will ensure that before 26 Jul 43 all personnel have been put through jungle Combat Course at least once. Mutual arrangements may be made for interchange of courses between Bns.

5. Trg in use of Engr Assault and Recce Boats

(a) Trg in the use and maintenance of this engr eqpt has been arranged and will take place on the following dates :-

7 Jul - 2/32 Aust Inf Bn
8 Jul - 2/43 Aust Inf Bn
9 Jul - 2/28 Aust Inf Bn.

(b) The trg will take place at LAKE EURAMOO (5740) from 0900 hrs to 1300 hrs each day.

(c) Units will make arrangements to move to a suitable bivouac site in the vicinity on the day prior to their trg and ensure that area is left in good condition on leaving.

6. Cooking Eqpt

Mugs and billycans are still being carried loosely attached to equipment this causing unnecessary noise. All Comds will ensure that steps are taken to stop this practice.

7. Bn exercises

(a) Each Bn will conduct a full scale Bn exercise lasting 3 to 5 days to be completed before 26 Jul 43. Umpires to the scale of one per pl will be arranged between units.

(b) Outline plan and proposed dates will be submitted to this HQ as soon as possible.

8. Bde exercises The necessity for exercise attention and exercises are in the nature of a course that these items are in and it is intended that two Bde exercises will be carried out after 27 Jul 43.

P. J. White

Maj.
B.M. 24 Aust Inf Bde.

<u>Distribution</u>	<u>Copy No.</u>
2/28 Aust Inf Bn	1
2/32 Aust Inf Bn	2
2/43 Aust Inf Bn	3
K Sec Sigs	4
Gd Pl	5
2/76 Aust L.A.D.	6
Comd	7
B.M.	8
S.C.	9
LOS	10-12
T.O.	13
File	14-15
War Diary	16-17

7 Jul - 2/32 Aust Inf Bn
 8 Jul - 2/43 Aust Inf Bn
 9 Jul - 2/28 Aust Inf Bn

(b) The try will take place at LAKE KURAMOO (2740) from 0900 hrs to 1300 hrs each day.

(c) Units will make arrangements to move to a suitable bivouac site in the vicinity on the day prior to their try and ensure that area is left in good condition on leaving.

Cooking Party

Units and bivouacs are still being carried forward to bivouac sites. All Comds will ensure that equipment this evening unnecessary noise. All Comds will ensure that steps are taken to stop this practice.

Bde Exercises

(a) Each Bn will conduct a full scale Bn exercise lasting 3 to 5 days to be completed before 26 Jul 43. Units to the scale of one Bn will be arranged between units.

(b) Outline plan and proposed dates will be submitted to this HQ as soon as possible.

Appx 8

HQ 24 Aust Inf Bde.,
Ref No. 144/71/796
9 Jul 43

2/28 Aust Inf Bn
2/32 Aust Inf Bn
2/43 Aust Inf Bn

BDE CHURCH PARADE

1. A Bde Church Parade for Church of England and other protestant Denominations personnel will be held at 0830 hrs 11 Jul 43 on the Bde Sports Ground.
2. The service will be conducted by Chap N.W.S. CHAMBERS 2/28 Aust Inf Bn and Chap R.E. WILLIAMSON 2/32 Aust Inf Bn and the address delivered by the Chaplain General (Presbyterian) Rev A. IRVING DAVIDSON E.D., M.A.
3. 2/28 Bn Band will attend.
4. Dress will be hats (turned down), slacks, shirts, gaiters, boots and web belt.
5. Unit markers will report, with parade states to Lieut G.W. PARRY at the Sports Ground at 0800 hrs.
6. Units will be formed up on a frontage of 40 yds each, as per the attached sketch before 0820 hrs. Officers will be in review order. Unit areas will be flagged as follows:-

HQ 24 Aust Inf Bde	Red
2/28 Aust Inf Bn	Black
2/32 Aust Inf Bn	Red
2/43 Aust Inf Bn	Green

7. The parade will be handed over by Lt-Col W.J. WAIN 2/43 Bn to the Bde Comd on his arrival.
8. After the service units will march past in the following order:-
 1. HQ 24 Aust Inf Bde
 2. 2/28 Aust Inf Bn
 3. 2/32 Aust Inf Bn
 4. 2/43 Aust Inf Bn

The

The salute will be taken by the Bde Comd.

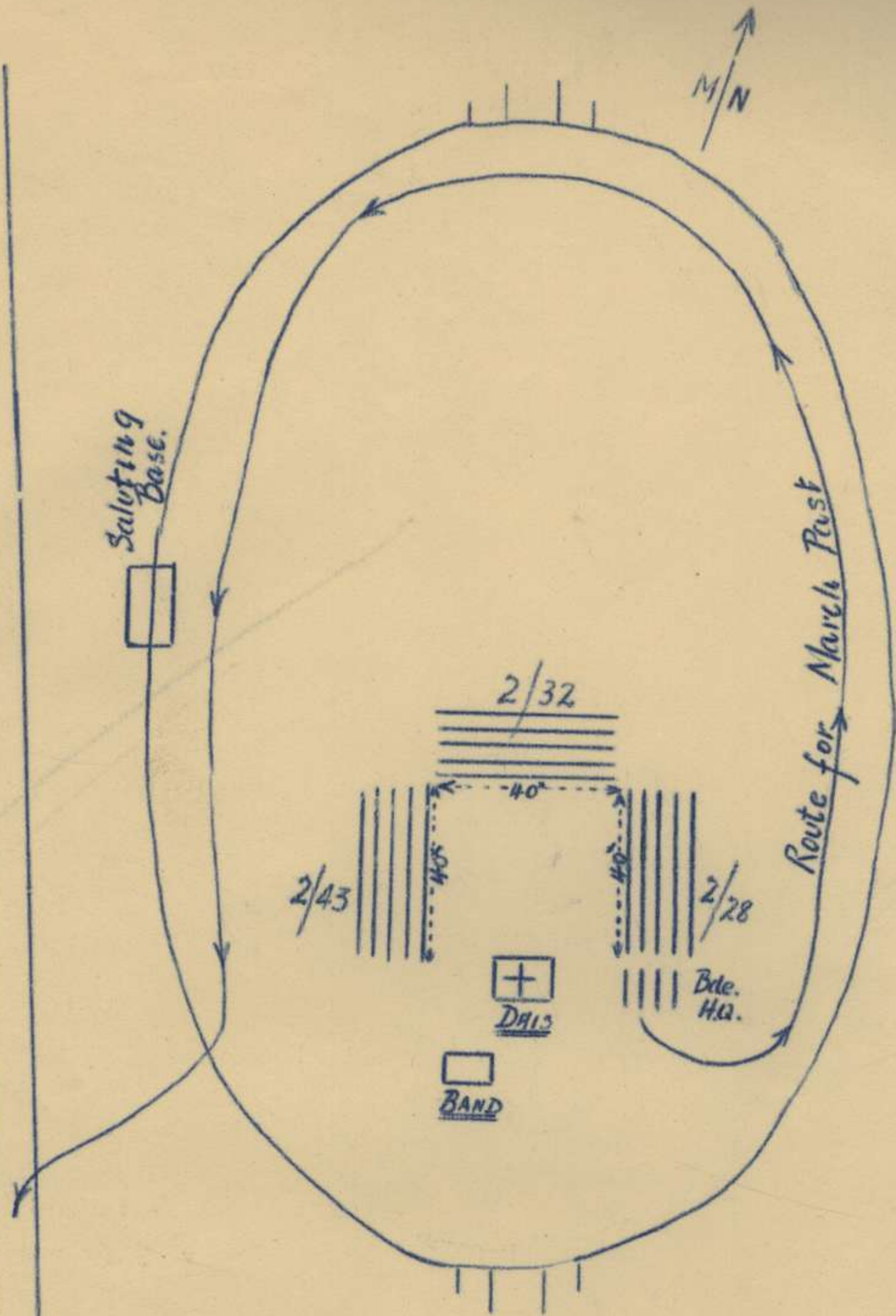
9. Route for the march past will be as shown in the attached sketch.
10. The order 'eyes right' will be given by Pl Comds on reaching the GREEN flag and 'eyes front' on reaching the RED flag.

Capt.,
S.C. 24 Aust Inf Bde.

CHURCH PARADE

1. Bde Church parade for all of Church of England and other Protestant Denominations will be held on Bde Sports Ground at 0830 hrs 11 Jul 43.
2. Dress - slacks, shirts, gaiters, boots, hats turned down and web belts.
3. Personnel will parade at 0800 hrs ready to move.
4. After the service the Bde will march past and the salute will be taken by the Bde Comd.

Capt.,
S.C. 24 Aust Inf Bde.



Approx Map Ref Centre Sports Ground

488386

Ref Map Gordonvale Sheet 1" to 1 Mile

Appx 9

EXERCISE SECRET

Copy No. 25
19 Jul 43

24 Aust Inf Bde

Tactical Exercise No.2 With Tps

Ref Maps GORDONVALE - 1 inch to 1 mile

Special enlargement area DANBULLA - 8 inches to 1 mile

1. Appendices to the above exercise are issued in accordance with the scale shown on the distribution list. Recipients will ensure that the information contained therein is conveyed to only such personnel as is necessary for the conduct of the exercise.

2. List of Appendices

- Appx 'A' - General
- " 'B' - Adm Instructions
- " 'C' - Instructions to umpires
- " 'D' - Instructions to enemy.
- " 'E' - Movement order covering move of allied force to initial assembly area.

J. Wilson Capt
Maj.
B.M. 24 Aust Inf Bde.

Distribution

	Exercise Copy No.	Appx "A" Copy No.	Appx "B" Copy No.	Appx "C" Copy No.	Appx "D" Copy No.	Appx "E" Copy No.
2/28 Aust Inf Bn	1	1	1			1
2/32 Aust Inf Bn	2	2	2			2
2/43 Aust Inf Bn	3	3	3			3
C Coy 2/2 Aust MG Bn	4	4	4			4
K Sec Sig	5	5	5			5
2 Pl HQ Gd Bn	6	6	6			6
Det AASC 9 Aust Div	7	7	7			7
9 Aust Div	8-9	8-9	8-9	1-2	1-2	8-9
Umpires	10-12	10-12	10-12	3-17	3-5	10-12
Enemy	13-14	13-14	13-14	18-19	6-7	
Comd	15	15	15	20	8	13
B.M.	16	16	16	21	9	14
S.C.	17	17	17			15
L.Os.	18-20	18-20	18-20			16-18
B.A.S.C.O.	21	21	21			19
File	22-23	22-23	22-23	22-23	10-11	20-21
War Diary	24-25	24-25	24-25	24-25	12-13	22-23

19 Jun 43

24 Aust Inf BdeTactical Exercise No. 2 with TpsGENERAL

Ref maps : GORDONVALE - 1 inch to 1 mile
Special enlargement area DANBULLA : 8 inches to 1 mile

1. OBJECT

- (a) To test physical fitness of the Bde.
- (b) To exercise the Bde in the following phases of jungle training:
- (i) Movement for a long period over difficult country.
 - (ii) The attack on and subsequent consolidation in a clearing.
 - (iii) The dropping from the air of supplies ammunition and heavy weapons.

2. LESSONS

- (a) ATM (war) No. 20 Part 1.3.
"Men must acquire NOW the physical stamina and determination which will enable them to continue to fight intelligently and correctly no matter how tired they may be."
- (b) 9 Aust Div Trg Instn No. 8 para 3.
"No major conclusive action seems to have been fought out on a Jungle track"
"A striking feature is the effect of clearings on the battles?"

3. DURATION

⁴ to ⁵ days dependent upon development of situations
Exercise commences 19 Jul 43.

4. OPENING SITUATION

Halting the enemy advance on the outskirts of MAREEBA, an important industrial town, our forces have pushed the enemy back over the EMERALD range and are now in contact by means of patrols in the CONEY range. Available information as to enemy strength indicates that approx one battalion plus one MG Coy is all that remains of the original regiment. Neither our own or the enemy air force has gained definite air superiority although the lack of sufficient air fields is causing him grave concern. He is at present making use of an air strip in the area 5541 in addition to various airfields on the coastal plains.

5. NARRATIVE I

- (a) At 1730 hrs ¹⁹ Jul our forces were disposed in protected localities as follows with patrols endeavouring to locate enemy positions.

- | | | | |
|----|--------------------------------------|---|--------|
| 1. | 2/28 Aust Inf Bn | - | 515450 |
| 2. | 2/43 Aust Inf Bn & Tac Bde HQ | - | 508452 |
| 3. | 2/32 Aust Inf Bn & Main Bde & MG Coy | - | 509446 |

(b) Patrol clashes have occurred and the following information gained.

- (i) Light rifle fire from knoll at 447439.
- (ii) Enemy patrol ambushed one of our patrols on track at 530434 causing 5 casualties.

(c) Information gained from aerial recon reveals that in the general area cross rds 5541, there are definite signs that the enemy is digging in extensively.

Special engagement area DABULLA : 8 inches to 1 mile
GORDONVALE - 1 inch to 1 mile
Ref maps :

(a) Arrangements have been made to drop one days ration by parachute in the area 537435 on 21 Jul.

(b) On 20 Jul the following will be transported by truck to the area, simulating a drop a parachute.

- (i) Movement for a long period over a long period over a long period
 - (ii) The attack on and subsequent withdrawal of the enemy
 - (iii) The dropping from the air of weapons and heavy weapons.
- 10 "C" Coy 2/2 Aust MG Bn
Signal Equipment - "X" Sec Sigs.

(c) Units will have the above, excluding rations, available for collection at 1200 hrs 19 Jul.

When must acquire now the physical stamina and determination which will enable them to continue to fight intelligently and correctly no matter how tired they may be.

(d) 2 Aust Div Tpt Insn No. 8 para 3.
No major conclusive action seems to have been fought out on a track.
A striking feature is the effect of clearings on the battle track.

DURATION

5 to 7 days dependent upon development of situations
Exercise commences 19 Jul 43.

OPENING SITUATION

Having the enemy advance on the outskirts of MAHERRA, an important industrial town, our forces have pushed the enemy back over the EMERALD range and are now in contact by means of patrols in the CONNY range. Available information as to enemy strength indicates that approx one battalion plus one MG Coy is all that remains of the original regiment. Neither our own or the enemy air force has gained definite air superiority although the lack of sufficient air fields is causing him grave concern. He is at present making use of an air strip in the area 5541 in addition to various airfields on the coastal plains.

NARRATIVE I

(a) At 1730 hrs 21 Jul our forces were disposed in protected localities as follows with patrols endeavoring to locate enemy positions.

- 1. 2/28 Aust Inf Bn - 515450
- 2. 2/43 Aust Inf Bn & 2nd Bde HQ - 508452
- 3. 2/35 Aust Inf Bn & Main Bde & MG Coy - 508446

Loc. Cont.

24 Aust Inf BdeTactical Exercise No. 2 with TpsADM INSTRUCTIONS1. Directing Staff

Director - Brigadier B. EVANS
 Chief Umpire - Maj P.F.B. WHITE
 Umpire 2/28 Bn - to be notified
 " 2/32 Bn - Maj M.R. JEANES
 " 2/43 Bn - Maj H.E. NORMAN

Bn umpires will draw on their respective units on the scale of one umpire per rifle coy HQ and one per rifle pl, at least 5 of which to be officers.

2. Troops taking part

(a) Allied Force - HQ 24 Aust Inf Bde
 2/28 Aust Inf Bn
 2/32 Aust Inf Bn
 2/43 Aust Inf Bn
 K Sec Sigs
 2 Pl 2/1 Aust HQ Gd Bn.
 all less essential camp duties

'C' Coy 2/2 Aust MG Bn
 Det 9 Aust Div AASC.

(b) Enemy Force - O.C. - Capt P.E. SEIKMANN 2/3 Aust Pnr Bn
 Tps - "C" Coy 2/3 Aust Pnr Bn
 Coy 2/2 Aust MG Bn
 "B" Class personnel - all Bns.

3. Conferences

- (a) Bn HQ umpires will RV this HQ 1100 hrs 17 Jul 43.
 (b) Bn HQ umpires and O.C. enemy will RV for conference after exercise at 1000 hrs 23 Jul. Before attending this conference Bn HQ umpires will collate reports of other umpires.
 (c) Final conference this HQ - all offrs - 1400 hrs 23 Jul.

4. Dress

- (a) Allied Force - battle order. Tps will carry equivalent weight of arm allotment.
 (b) Enemy Force - distinguished by hats, fur felt.
 (c) Umpires and D.S. - Hats fur felt and white arm band on each arm.

5. Rations

Unexpended portion of days ration plus ^{one} two days F.O.R. (if available) to be carried on the man.

6. Casualties

- (a) Umpires will create casualties by handing personnel casualty cards with the nature of the casualty written thereon.
- (b) All ranks will be careful, if made casualty, to simulate actual and battle conditions, moving to the rear, in the case of walking wounded, only when the opportunity offers.
- (c) After passing through unit RAPs, casualties may be returned to their respective sub-units as re-inforcements.

7. Safety precautions

- (a) All comds will ensure that at no portion of the exercise live ammunition is loaded into any weapon.
- (b) If blank ammunition becomes available for the exercise, it will not be fired at a range less than 20 yds.

Troops taking part

(a) Allied Forces

HQ 24 Aust Inf Bde
 S/28 Aust Inf Bn
 S/32 Aust Inf Bn
 S/47 Aust Inf Bn
 A Coy Sigs
 S Pl S/1 Aust HG Gd Bn
 All less essential camp duties

(b) Enemy Forces

101 Coy S/2 Aust MG Bn
 Det 9 Aust Div AABG
 O.C. - Capt P.R. BRINKMAN S/3 Aust PRT Bn
 Sigs - 101 Coy S/3 Aust PRT Bn
 Coy S/2 Aust MG Bn
 B Class personnel - all Bns

Conferences

- (a) Bn HQ umpires will HV this HQ 1100 hrs 19 Jul 43
- (b) Bn HQ umpires and O.C. enemy will HV for conference after exercise at 1000 hrs 23 Jul. Before attending this conference Bn HQ umpires will collate reports of other umpires.
- (c) Final conference this HQ - all other - 1400 hrs 23 Jul.

Press

- (a) Allied forces - battle order. They will carry equivalent weight of arm allotment.
- (b) Enemy forces - distinguished by hats, etc.
- (c) Umpires and D.E. - Hats for left and white arm band on each arm.

Rations

Unpacked portion of days ration plus 2 days V.O.R. (if available) to be carried on the man.

24 Aust Inf BdeTactical Exercise No.2 with TpsINSTRUCTIONS TO UMPIRES

1. As this exercise involves a considerable amount of patrolling, and subsequent action dependent on information gained from these patrols, it will be necessary for an umpire to accompany each patrol. In all cases umpires will en effect, act as one of the patrol and NOT give the presence of the patrol away to the enemy.

2. The following is a proforma to be filled in as the exercise progresses. Any additional points not covered in the pro-forma will be noted down under the heading MISCELLANEOUS.

- (1) Battle procedure
- (2) Composition of 'R' & 'O' gps.
- (3) March discipline
- (4) Control
- (5) Protection at rest
- (6) Protection on the move
- (7) Initiative of all comds.
- (8) Composition of advance guard.
- (9) Composition of patrols
- (10) Patrol reports
- (11) Conduct of patrols
- (12) Orders - sequence etc.
- (13) Mopping up
- (14) Re-organisation
- (15) Employment of specialist tps
- (16) Siting of weapons
- (17) HQ organisation
- (18) Arrangements for feeding
- (19) Water discipline
- (20) Miscellaneous

24 Aust Inf BdeTactical Exercise No.2 with TpsINSTRUCTIONS TO ENEMY1. Assembly and Dispersal

- (a) Enemy tps will assemble on orders of OC enemy, Capt P.E. Seikmann, and will be in position by 1730 hrs 19 Jul 43.
- (b) Movement back to bivouac areas will take place on afternoon of 23 Jul 43, or earlier as exercise demands.

2. Operational roles

- (a) Patrolling ²⁰
 - (i) On 21 Jul - harassing patrol along track from 525444 to 535435. Leading unit must be allowed to reach clearing by 1015 hrs.
 - (ii) Night patrols (fighting and recon) to operate on nights ^{20/21} 21/22 22/23.
 - (iii) Standing patrols on high ground at 537439, 535433, 535427 to be withdrawn as initial attack develops by fwd bn.
- (b) Defence
 - (i) High ground at 543426 with points of resistance in the jungle at both flanks.
 - (ii) Final defensive position - all round defence in area 549425, 554418, 548420.

3. Umpires will accompany all patrols and must be decisive but reasonable in judging the results of all encounters.

4. Rations

Enemy personnel will be rationed by their parent units and a truck will be provided by this HQ for carriage of same, reporting to OC enemy 1200 hrs 19 Jul.

SECRET

24 Aust Inf Bde

Tactical Exercise No.2 with Tps

24 Aust Inf Bde O.O. No.1

Ref Maps.: GORDONVALE 1 inch to 1 mile

INFORMATION

1. This move is not to be considered as tactical until assembly areas are reached.

INTENTION

2. 24 Aust Inf Bde will move from present location to assembly areas as designated.

METHOD

3. Order of march

- 2/28 Aust Inf Bn
- 24 Aust Inf Bde Tac HQ
- 2/43 Aust Inf Bn
- 24 Aust Inf Bde Main HQ
- 6 Coy 2/2 Aust MG Bn
- 2/32 Aust Inf Bn

4. Timings
5. Route
6. Halts
7. Assembly areas
8. Start Point
9. Control point

See Trace to be issued

ADME

10. Supps

- (a) One days F.O.R. plus unexpended portion of days ration to be carried on the man.
- (b) Subsequent rations will be collected from supply point to be notified later.

11. Water

- (a) Full water bottles to be carried on the man.
- (b) Final re-filling of water bottles may be carried out from stream crossing SAWMILL rd at 517407.
- (c) It is not expected that a further supply of water can be expected until approx 1200 hrs 20 Jul.

12. Amn

No amn will be carried on the exercise, although its equivalent weight will be carried. As a guide, it can be presumed that further supplies of amn would be dropped on morning of 20 Jul.

13. Dress

Slacks, shirts, boots, gaiters, helmets steel, drill order, waterproof sheet, one blanket, and pullover carried in the man.

INTERCOMM

Tactical Exercises No 5 with Top

14. Bde HQ will move as shown in para 3.

15. On arrival K Sec Sigs will establish I/T comm with all units.

16. Watches will be synchronised at 0700 hrs by K Sec Sigs.

INFORMATION

ACK

Issued through Sigs
T.O.S. 0000 hrs

B.M. 24 Aust Inf Bde.

Distribution

METHOD

Order of march

24 Aust Inf Bde Movement Table No. 1

Issued in conjunction with 24 Aust Inf Bde O.O. No. 1

1. Route } see Trace "A"
2. Start Pt } see Trace "A"
3. Control Pt : Bde T.O. will establish a control pt at start pt. All units will report head and tail of column passing this pt.
4. Halts : Normal halts - 10 min to each hr.
Luncheon halt - 1 hr commencing 1230 hrs.

Serial No	Unit	Time past start Pt		Assembly Area	Remarks
		Head	Tail by		
1	2/28 Aust Inf Bn	0730	0815	Shown under	X To move into column
2	Bde Tac Hq	0820	0830	NARRATIVE 1	
3	2/43 Aust Inf Bn	0835	0920	Appx A to	at start point
4	Bde Main Hq	0925	0945	exercise	shown on
5	"C" Coy 2/2 MG Bn	X		screen	(at trace)
6	2/32 Aust Inf Bn	1010	1055		Rece par-

No man will be carried on the exercise. As a guide, it can be presumed that supplies of man would be dropped on morning of 20 Jul.

War Diary

EXERCISE SECRET

APPX "F"
Copy No.....19

Supply by Air

Issued in conjunction with 24 Aust Inf Bde Tactical Exercise No.2.

1. The following instns and procedure will apply for all supply by air during the exercise.

2. General

(a) Fwd supply dump from which aircraft will operate MAREEBA.

(b) Adv supply dump will be established along Bde axis of adv as the situation permits.

3. Supply & Recovery

(a) AASC 9 Aust Div is to supply personnel at both Fwd and Adv supply dump areas.

(b) Adv supply dump personnel will be responsible for recovery and issue of sups.

(c) Both parties will move to their respective areas on 20 Jul 43.

4. Request for Sups

(a) All comm from Bde area to Fwd Supply dump will be from Bde HQ.

(b) Units will advise Bde HQ before 1200 hrs daily of their ration strength for the next day. First return to be submitted on 20 Jul 43 and will be prefixed with the codeword SAGO.

5. Delivery of Airborne Sups

Bde HQ will advise times and places for units to collect sups dropped by air. Units will provide their own carrying parties from delivery area to unit area.

6. Intercommunication

Dropping area will be indicated by Bde HQ ground strip used in conjunction with a smoke generator at time of arrival of supply aircraft. This area will be controlled by the S.C.

7. K Sec Sigs will provide one No.11 set with operators and one cipher personnel at MAREEBA & Bde Adv supply dump. These sets will come on the air commencing 0600 hrs 21 Jul until notified to close down.

8. Call Signs

Fwd Supply dump MAREEBA	-	IQ 14
24 Aust Inf Bde Area	-	YQ 19
Aircraft	-	Air to Ground which ever sta is calling.

9. Frequencies 4210 Kcs

P. J. White
Maj:
B.M. 24 Aust Inf Bde.

Distribution

Copy No.

2/28 Aust Inf Bn	1
2/32 Aust Inf Bn	2
2/43 Aust Inf Bn	3
C Coy 2/2 MG Bn	4
K Sec Sigs	5
2 Pl 2/1 Gd Bn	6
Det AASC 9 Aust Div	7
9 Aust Div	8
Comd	9
B.M.	10
S.C.	11
L.Os.	12-14
B.A.S.C.O.	15
File	16-17
War Diary	18-19

Swampy by Air

Issued in conjunction with the following instructions and exercises.

General

(a) Two supply dumps from the situation permits.
(b) Adv supply dump will be established.

Supply & Recovery

(a) AASC 9 Aust Div is to supply personnel at both dump areas.
(b) Adv supply dump personnel will be supplied from the dump.

Recovery for Base

(a) All supply from the dump will be recovered.
(b) Base will be supplied from the dump.

Delivery of Airborne Base

Base will be delivered by air. Units will provide transport to the base.

Inter-communication

Inter-communication will be maintained between the base and the dump.

Call Signs

Call signs will be as follows: Base - 100, Dump - 200.

Procedures

Procedures will be as follows: Base to Dump - 100-200, Dump to Base - 200-100.

Appx 10.

EXERCISE SECRET

24 Aust Inf Bde Tactical Exercise No. 2.

24 Aust Inf Bde Op Instn No. 2 (VERBAL)

19 Jul 43.
Copy No.

Ref map GORDONVALE: 1:63360

Special enlargement as issued DANBULLA.

INFM

1. Tac R and aerial photos reveal extensive enemy posns in areas 540436, 539435, 542432. (taken from 1:63360) and some opposition may be expected before this cleared area is reached. The enemy defensive posn and air strip are vital to him and a stubborn defence may be expected.
2. Our own supply posn will be improved when we can gain a good foothold in cleared area 5443 and form a firm base preparatory to detailed recce of enemy posns and final assault.
3. The task of 2/28 Bn will be to act as adv gd for the Bde and establish a firm base covering the sup dropping area. (see special map). *Assembly area 533437 before attack*
Limited exploitation.
4. The earlier this posn is occupied the better for our sups and water; therefore make best speed possible by 1500 hrs.
5. Order of march same (2/28 Tac, 2/43 Main, 2/2 MG, 2/32). Det K Sec Sigs moves in adv 2/28 Bn HQ and lays line.
6. Probable task 2/43 Bn.
Cover left flank 2/28 Bn to stop enemy infiltration from North and NW.
Assembly area 5344.
Do NOT disclose posn
7. Probable task 2/32 Bn.
Cover right flank 2/28 Bn to stop enemy infiltration from South and SW.
8. Weapons, sups and amn will be dropped as soon as practical after est of firm base.
9. Water should be available at foot of hills and units will replenish but must provide protection to cover this.
10. Bde H.Q. moves same posn as before and will est a combined Bde H.Q. within 2/28 Bn firm base.

C.O. 2/28 Bn to submit outline plan for op? *after conference*

NOTES

Bde L of C simulating and stopping will be along SAWMILL track.

*Ref para 3.
Bde Command will hold conference 1000 hrs
at Tac Bde HQ immediately in rear of 3/28 Bn
when Bns are in assembly areas.*

Appx 11

EXERCISE SECRET
Copy No 6
21 Jul 43

24 AUST INF BDE O.O. NO 3

"CHANGE FROM VERBAL ORDERS"

Ref Maps GORDONVALE 1" = 1 mile
Special enlargement DANBULLA area 8" = 1 mile

INFORMATION

- 1. Enemy Special Intelligence Summary issued separately
- 2. Own Tps C Coy 2/2 MG Bn less ~~one pl~~ one pl will be in area 533436 at approx 1700 hrs 21 Jul 43.

INTENTION

- 3. 24 Aust Inf Bde will attack and destroy the enemy in the DANBULLA airstrip defence area.

METHOD

- 4. Forward Bn
 - (a) The assault will be carried out by 2/43 Aust Inf Bn.
 - (i) Objectives; Enemy posns at 54654235 and 54854215.
 - (ii) Limit of exploitation - creek from 54804164 to bridge at 55324245.
 - (iii) Route - to be reconnoitred and established during daylight hours by patrols from 2/43 Aust Inf Bn.
 - (iv) Assembly area - forward edge of left hand jungle patch and area of houses at 552428.
 - (v) Zero - 0615 hrs 22 Jul 43
- 5. Diversionary plan
 - (a) 2/32 Aust Inf Bn with under comd as from 1630 hrs 21 Jul one pl 2/2 Aust MG Bn now supporting 2/28 and 2/32 Aust Inf Bns will move from present posns at 1800 hrs 21 Jul to area of spur at 543416.
 - (b) Tasks:
 - (i) Engage enemy posn at 547421 together with any further enemy posns, if located, to EAST and SOUTH by fire.
 - (ii) Actively patrol against enemy posns as above.
 - (iii) At 0600 hrs 22 Jul cease fire on above tasks and switch fire to protect SOUTHEAST flank.
 - (iv) As soon as visibility permits assist assault of 2/43 Aust Inf Bn by observed fire.
- 6. Reserve
 - (a) 2/28 Aust Inf Bn and C Coy 2/2 Aust MG Bn less one pl will remain in present locations until further orders.
 - (b) Reserve will be at one hour's notice to move as from 0600 hrs 22 Jul.
 - (c) C Coy 2/2 Aust MG Bn will recce posns at present occupied by pl in support of 2/28 and 2/32 Aust Inf Bns with a view to their occupation should this be ordered.

ADM

- 7. Weapons Bn Tk A Guns are at present being assembled and will be all available for purposes of consolidation.

INTERCOMM

- 8. MAIN Bde HQ will move from present location to area of 2/28 Aust Inf Bn ~~on receipt of success signal.~~
at 1900 hrs 21 Jul

SECRET

9. K Sec Sigs will lay line with adv of 2/32 and 2/43 Aust Inf Bns.

10. Code Word 2/43 Aust Inf Bn will signal success by reporting codeword "KAIRI"

11. Watches will be synchronised through Sigs at 0400 hrs 22 Jul

Special enlargement DAWBULLA area 3" = 1 mile

ACK

P. J. White

Maj. Bde. 24 Aust Inf Bde. B.M. 21 Jul 43

T.O.S. 1510 hrs

Issued by L.O. *shana*

DISTRIBUTION

Copy No

- 2/28 Aust Inf Bn 1
- 2/32 Aust Inf Bn 2
- 2/43 Aust Inf Bn 3
- C Coy 2/2 Aust MG Bn 4
- 9 Aust Div 5
- Cond 6
- B.M. 7
- S.C. 8
- L.Os. 9-11
- War Diary 12-13
- File 14

2/32 Aust Inf Bn with under command as from 1800 hrs 21 Jul
one pl 2/32 Aust MG Bn now supporting 2/32 and 2/43 Aust
Inf Bns will move from present position at 1800 hrs 21 Jul
to area of spur at 244416.

- (a) Engage enemy position at 244421 together with any further enemy positions, if located, to EAST and SOUTH by fire.
- (ii) Actively patrol against enemy positions as above.
- (iii) At 0800 hrs 22 Jul cease fire on above tasks and switch fire to protect SOUTHWEST flank.
- (iv) As soon as visibility permits assist assault of 2/43 Aust Inf Bn by observed fire.

- (a) 2/32 Aust Inf Bn and C Coy 2/2 Aust MG Bn less one pl will remain in present locations until further orders.
- (b) Reserve will be at one hour's notice to move as from 0600 hrs 22 Jul.
- (c) C Coy 2/2 Aust MG Bn will receive orders at present occupied by pl in support of 2/32 and 2/43 Aust Inf Bns with a view to their occupation should this be ordered.

7. Reserve In the A Gns are at present being assembled and will be all available for purposes of consolidation.

8. MAIN BDE will move from present location to area of 2/32 Aust Inf Bn as directed by message signal.

HQ 24 Aust Inf Bde
In the Field,
21 Jul 45

INTELLIGENCE SUMMARY No 1

Up to and including 1400 hrs 21 Jul 45

TOPOGRAPHICAL

1. Between two large patches of jungle area 5442 is cleared gap 200x wide overgrown with 8 ft high tobacco plant. Only easy central comm except for flanks.
2. Enemy posns occupy reverse slope and dominating feature at 548421 with flank protection on sides of feature. Further SOUTH creek constitutes slight obstacle, but is not more than waist deep and there are stepping stones at 547418, which facilitate crossings. SOUTH of creek cleared hill 553418 is dominant feature.
3. Rd B1 runs EAST WEST and air strip is cleared SOUTH of this rd

GENERAL

4. Enemy very active and obviously determined to defend his air strip in sq 5541.
5. Casualties (4 PW & HQ Coy 2/2 MG Bn wiped out) have been inflicted on the enemy, but these are expected to be made good by reinfts.

ENEMY DISPOSITIONS

6. Enemy Coy Area - 54854215
Enemy Pl - 54704195
Enemy Pl - 54654220
Enemy Camp - 555425
7. 0800-0815 Enemy recce party observed on knoll 549426.
8. Latest reports from 2/28 and 2/32 Bns indicate considerable movement on enemy front.
1000 hrs 16 men moved across between jungle patches.
1015 hrs 2 pls of enemy moved into western jungle from gap
1055 hrs Sec of enemy moving NORTH along edge of jungle 543428.
Enemy digging 54604235.
9. Aerial photos show enemy digging at 552419. These posns must still be presumed to be occupied.

WEATHER FORECAST 22 JUL

10. First light 0615 hrs
Fine day but light showers on hills in early morning.
Visibility good, winds light SOUTHEAST.

ENEMY ORDER OF BATTLE

11. 2 Coy 2 Bn 5 Inf Regt 21 Div.

LATER INFORMATION

12. 1327 hrs 2 parties 12 to 15 strong moved behind ~~XXXX~~ BARE hill 548422 in the direction of mount HAIG rd. These may be patrols.
13. 1430 hrs 2/32 OP reports enemy occupy areas as stated above in strength.

Whitman Capt.
I.O. 24 Aust Inf Bde

DISTRIBUTION As per O.O. No 3

Event	General Conditions	No in team, Press
9. Vickers	Crew 6ft in rear of gun - gun mounted and stripped and lock stripped. 1 belt box to be carried. Spare parts laid out in sequence. Barrel casing to be filled. Order "Action" - assemble and bring into action 30 yds forward - fire 50 rounds in bursts of 10 tapping left to right, dismount gun & return to S/Line. <u>Judging</u> : Speed 10, drill 10, 1 point per shot up to 10 per sq. <u>Organizers</u> : Lieut E.D. RULE, Lieut C.E.E. IVEY, Lieut A. KENNEDY	1,2,3. Battle Order less respirator
10. Obstacle Race	Pf moves over log obstacle, vault, trip wire, vine bridge, under tunnel and fence. <u>Judging</u> : First team wins. <u>Organizers</u> Lieut BURTON ; Lieut K. GARNESEY Lieut A.V. CLIFFORD	Pf Comd Pf Sgt 3 secs of 7. Battle Order less respirator
11. M.T.	Vehs change one front wheel then weave through line of posts. <u>Judging</u> : Speed and skill in driving <u>Organizer</u> : Bde T.O.	Driver & Spare driver
12. T.A. Gun	Towed by Jeep 100x, manhandle 25x, fire 3 rds, return 100x towed by Jeep. <u>Judging</u> : Speed and Gundrill. <u>Organizers</u> : Lieut M. WASSER, Lieut J.C. CLARKE, Lieut H.R. MOKER	Gun crew. Pde dr in Jeep. Battle order less respirator
13. Stretcher Bearers	Improvise a stretcher. Apply a dressing to a haemorrhage. Short carry. Answer questions on treatment of case. Materials prepared in advance. <u>Judging</u> : Speed and skill <u>Organizers</u> Capt E.R. BARDER Capt P. RAYE, Sgt HARRISON	Battle order less respirator
14. Sigs	To pass a given message (a) 2 R/E Sets No 108 netted to a given frequency and placed 300 yds apart; sets switched off, thence (b) 2 lamps Lucas with stands placed 200 yds apart dismounted - to erect and pass message by S.R. method, thence (c) 200 yds of fd cable to be run out with a DV on each end and message passed on a phonogram. 20 group message. <u>Judging</u> : Speed and accuracy. <u>Organizers</u> : Lieut P.M. JAMESON, Lieut D.K. LAING, Lieut O'DEA	12 men 2 each No 108 2 each lamp 2 linesmen 2 telephonists. Battle Order less respirator.
15. Pug-of-war.	Teams to comprise 10, and 1 coach (not to pull), no limit to total weight of team. Dress - football jerseys, shorts Army boots. Two out of three pulls with 3 min rest between 1st and 2nd pull, and 5 min rest between 2nd and 3rd pull. Three feet pulls each side of centre line or if no decision time limit 2 mins. No digging in permitted. Anchor man may place rope over shoulder or around waist - rope NOT to be tied but may be looped ONCE. <u>Organizers</u> : Lieut R. BONKEMAN, Lieut A.P.A. DENNESS, Capt E.G. GRANT.	2/28 v 2/31 24 Bde Bn v 2/43
16. Tunnel Ball	Distance front man to rear man to be maintained at 25 yds and even spacing of men to be maintained : once "under" throughout team : once "over" throughout team. <u>Judging</u> : Fastest team as long as spacing and passing are correct. <u>Organizers</u> : Lieut BURTON Lieut A.P.A. DENNESS, Lieut W. LONNIE	12 men

Marshals : Lieut M. HALL, Lieut M. KELLY, Lieut O. BURING.
Points Allotted : 3, 2, 1 except for Events. 11, 15 & 16.

24. 1943

DRILL AT 4.30 PM

31 JUL 43

Bde March Past 100hrs - First event 100hrs

Event	General Conditions	No in team, Dress
1. Respirator Race	Relay race ; each man from "alert" to "gas" runs 50 yds; loads ; fires 5 rds ; returns ; succeeding by others of team ; (probably run through smoke) <u>Judging</u> : 10 Respirator drill, 10 Fire discipline, 1 point per hit. <u>Organizers</u> : Lieut E.E. CRABBE, Lieut A.P.A. DENNESS, Lieut RICHARDSON	5 Battle Order
2. Wire Crushing	(a) Standard DA Fence) After 1 sec has cut DA Fence (b) " Concertina Fence) 2 sec goes through and crushes (c) High " ") Standard Concertina when 3 sec goes through & crushes High Concertina. <u>Judging</u> : First Pl through wins. <u>Organizers</u> : Lieut R. BOEKEMAN, Lieut M.J. KELLY, Lieut R.E. QUINN	Pl Comd Pl Sgt 3 secs of 7. Battle Order
3. Ceremonial Drill	March on in coln of route; form close coln of pla on flag; order arms; stand at ease; attention; fix bayonets; slope arms; present arms; slope arms; quick march; right turn; right wheel; at the halt on the left form line; move to the right in coln of route; left wheel. <u>Judging</u> : Dress & Turnout 20, Orders 20, Marching 20, Drill 20, Formation 20. <u>Organizers</u> : Capt L.H. LYONS, Lieut J.N. LIDDELL, Capt K.G. GRANT.	90 ; Coy Comd 2 Pls, CSM 3 Pls of 29 incl offr & Sgt. Dress : SP Drill order & gaiters, hats turned up.
Bren Gun	(a) Stand on left of gun blindfolded. Strip butt, barrel, body and piston groups, remove bipod. Reassemble, cock gun, fire, stand up. <u>Judging</u> Fastest wins. (b) Prepare for action, action run 50x, fire 2 rounds, stoppage occurs, I.A., continue firing, clear gun, return to start line. Fire 1 mag 20 rds. <u>Judging</u> : Speed 10, Correct drill 10, 1 point per hit. <u>Organizers</u> : Lieut J.B. Van PRAAG, Lieut W.M. BUCKLEY, Lieut G. LUSH.	(a) 1 man (b) 2 man Battle order less respirator
2" Mortar	To go into action and cover a defined area or feature with smoke. <u>Judging</u> : Accuracy and speed <u>Organizers</u> : Lieut H.C. GILES, Lieut G.A. SCOTT, Lieut G. LUSH	2 men. Battle Order less respirator
Section Stalk	Section to approach judge from a given S.P. When judge sees movement he will stop the sec (whistle and flag). <u>Judging</u> : Ground covered, formation etc. <u>Organizers</u> : Lieut P.F. HOOKE, Lieut R.T. LEWIS, Lieut G.D. COMBE	1 NCO & 6 Pls Battle Order less respirator
Section Direction Finding	From given S.P. secs will be given a bearing and distance which will bring them to finishing point on Bde Sports Ground area. It will entail a river crossing. Secs start 10 mins apart. <u>Judging</u> : Nearest to finishing point wins. <u>Organizers</u> : Lieut A.H. LUSHINGTON, Lieut J. GARDNER, Lieut R.B. DAVIS.	1 NCO & 6 Pls Battle Order less respirator
3" Mortar	Manhandle mortars for 100x, come into action, engage target, 9 rds, practice bombs, indirect fire. <u>Judging</u> : Accuracy 40, orders 20, fire discipline 20, speed 20. <u>Organizers</u> : Lieut C.H. GILL, Lieut J.N. LIDDELL, Lieut E.C. AMERSON.	Det Comd 4 men. Battle Order less respirator

BDE HQ ROUTINE ORDERS

BY

BRIGADIER B. EVANS D.S.O.

COMMANDING 24 AUST INF BDE

No. 10.

IN THE FIELD

8 JUL 43

53. LEAVE - TRANSFERS - DISCHARGES

- (a) Attention is drawn to HQ 9 Aust Div memo A33/2/1786 of 20 Jun 43.
- (b) Applications are still being forwarded by units contrary to instructions issued in the above mentioned memo.
- (c) Applications on any grounds for leave transfer or discharge, will be treated as though this formation were in a distant operational area such as the MIDDLE EAST.

54. MOBILE EDUCATION UNIT - A.E.S.

Applications are required for the position of Sgt in charge, Mobile Education Unit, A.E.S. 9 Aust Div.

Applicants must possess the following qualifications:

- (a) Ability to lecture
- (b) Academic and travel experience
- (c) Knowledge of office procedure

Applications must be in applicant's own handwriting, stating qualifications, and will be submitted to this HQ by 15 Jul 43.

55. DRESS

- (i) Attention is drawn to 9 Aust Div Q35/1/25 of 18 May 43 regarding dress.
- (ii) It is noticed that orders are NOT completely being carried out. This refers particularly to the manner in which hats are worn.
- (iii) COs and OSC personally are held responsible that all the provisions of the above mentioned instruction are carried out. Any breach by the individual will be considered a severe breach of discipline and dealt with accordingly.

56. PROCEEDINGS OF DISTRICT COURTS MARTIAL

- (a) SX 11357 Gnr GREEN W.C. 2/7 Aust Fd Regt was found guilty of conduct to the prejudice of good order and military discipline, in writing a letter, containing statements calculated to bring into disrepute his unit. AA40

Sentence : Field punishment for 28 days and forfeiture of pay for 28 days and fined £5.

Date of sentence 21 Jun 43.

- (b) NX 40424 Pte DREW A.F.C. 2/3 Aust Pnr Bn was found guilty of two charges of conduct to the prejudice of good order and military discipline in writing a letter containing statements calculated to bring into disrepute the military forces of the Commonwealth of AUSTRALIA. AA40.

Sentence : Field punishment for 60 days and forfeiture of pay for 60 days.

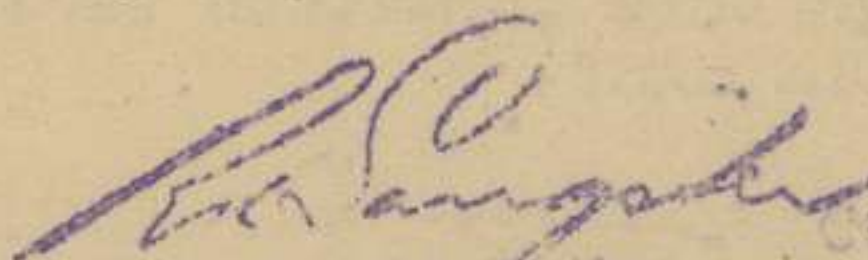
Date of sentence : 23 Jun 43.

- (c) VX 19234 Gnr JARVIE J.B.B. 2/3 Aust 25 A Regt, was found guilty of -
(i) While on active service was absent without leave from 2200 hrs
11 Apr 43 to 1200 hrs 3 May 43. AA 15 (1)
(ii) Conduct to the prejudice of good order and military discipline
in writing a letter in which he suggested that false evidence be
obtained in respect of a charge against him of being absent
without leave AA 40.

sentence : To undergo detention for nine (9) months.
Date of sentence 22 Jun 43.

57. SALVAGE

Small tins and other suitable containers (2 oz) are required for use
in distribution of anti mosquito cream.
Units will collect all such containers and forward to salvage depot,
where they will be held until required.


Capt.
S.C. 24 Aust Inf Bde.

CONGRATULATORY MESSAGE

To Lieut General Sir Leslie Morshead from Field Marshal Lord Birdwood

My Dear Morshead,

It is only now that I have heard of the safe
return of you and your ever very gallant division, to Australia,
and I feel I must tell you once more how very sincerely and
heartily I do congratulate you and everyone of you on the very
great and brave work you have done and all carried out through
all your very strenuous M.E. fighting. After all this it is
only right you should all have a spell in your own beloved home-
land, get I hope some very happy days with your families, get
well re-equipped before once more having to take on and let us
hope, finally knock out those bestial but brave and cruel
Japanese. That must yet take time, but every ship sunk is a
nail in their coffin and we don't seem to be doing too badly in
that respect. More very heavy fleet action must be before us.
My kindest remembrances and good wishes please, to all old friends
and comrades. Excuse note as I write from bed but only temporarily
laid up.

Yours as ever,

(Sgd) BIRDWOOD OF NZAC

A.C.F. DISTRIBUTION

Receipt is gratefully acknowledged of 25 prs of pyjamas for distribut-
ion within the Bde.

DISTRIBUTION

As per R.O. No.1

BDE HQ ROUTINE ORDERS

BY

BRIGADIER E. EVANS D.S.O.

COMMANDING 24 AUST INF BDE

No. 10.

IN THE FIELD

8 JUL 43

53. LEAVE - TRANSFERS - DISCHARGES

- (a) Attention is drawn to HQ 9 Aust Div memo A33/2/1786 of 20 Jun 43.
- (b) Applications are still being forwarded by units contrary to instructions issued in the above mentioned memo.
- (c) Applications on any grounds for leave transfer or discharge, will be treated as though this formation were in a distant operational area such as the MIDDLE EAST.

54. MOBILE EDUCATION UNIT - A.E.S.

Applications are required for the position of Sgt in charge, Mobile Education Unit, A.E.S. 9 Aust Div.
Applicants must possess the following qualifications:

- (a) Ability to lecture
- (b) Academic and travel experience
- (c) Knowledge of office procedure

Applications must be in applicant's own handwriting, stating qualifications, and will be submitted to this HQ by 15 Jul 43.

55. DRESS

- (i) Attention is drawn to 9 Aust Div Q35/1/25 of 18 May 43 regarding dress.
- (ii) It is noticed that orders are NOT completely being carried out. This refers particularly to the manner in which hats are worn.
- (iii) COs and QsC personally are held responsible that all the provisions of the above mentioned instruction are carried out. Any breach by the individual will be considered a severe breach of discipline and dealt with accordingly.

56. PROCEEDINGS OF DISTRICT COURTS MARTIAL

- (a) SX 11357 Gnr GREEN W.C. 2/7 Aust Fd Regt was found guilty of conduct to the prejudice of good order and military discipline, in writing a letter, containing statements calculated to bring into disrepute his unit. AA40
Sentence : Field punishment for 28 days and forfeiture of pay for 28 days and fined £5.
Date of sentence 21 Jun 43.
- (b) NX 40424 Pte DREW A.F.C. 2/3 Aust Pnr Bn was found guilty of two charges of conduct to the prejudice of good order and military discipline in writing a letter containing statements calculated to bring into disrepute the military forces of the Commonwealth of AUSTRALIA. AA40.
Sentence : Field punishment for 60 days and forfeiture of pay for 60 days.
Date of sentence : 23 Jun 43.

- (c) VX 19834 Gr. JARVIE J.B.B. 2/3 Aust. Inf. Regt, was found guilty of -
(i) While on active service was absent without leave from 2200 hrs
11 Apr 43 to 1900 hrs 3 May 43. AA 15 (1)
(ii) Conduct to the prejudice of good order and military discipline
in writing a letter in which he suggested that false evidence be
obtained in respect of a charge against him of being absent
without leave AA 40.

Sentence : To undergo detention for nine (9) months.
Date of sentence 22 Jun 43.

57. SALVAGE

Small tins and other suitable containers (8 Oz) are required for use
in distribution of anti mosquito cream.
Units will collect all such containers and forward to salvage depot,
where they will be held until required.


Capt.
S.O. 24 Aust Inf Bde.

CONGRATULATORY MESSAGE

To Lieut General Sir Leslie Morshead from Field Marshal Lord Birdwood

My Dear Morshead,

It is only now that I have heard of the safe
return of you and your ever very gallant division, to Australia,
and I feel I must tell you once more how very sincerely and
heartily I do congratulate you and everyone of you on the very
great and brave work you have done and all carried out through
all your very strenuous M.E. fighting. After all this it is
only right you should all have a spell in your own beloved home-
land, get I hope some very happy days with your families, get
well re-equipped before once more having to take on and let us
hope, finally knock out those bestial but brave and cruel
Japanese. That must yet take time, but every ship sunk is a
nail in their coffin and we don't seem to be doing too badly in
that respect. More very heavy fleet action must be before us.
My kindest remembrances and good wishes please, to all old friends
and comrades. Excuse note as I write from bed but only tempora-
rily laid up.

Yours as ever,

(SGD) BIRDWOOD OF NZAC

A.C.F. DISTRIBUTION

Receipt is gratefully acknowledged of 25 prs of pyjamas for distribut-
ion within the Bde.

DISTRIBUTION

As per R.O. No.1

FIELD RETURN OF OFFICERS

(Serial No.)

At 0600 Hrs. Saturday 3/7/1943 HQ 2nd Inf Bn (Unit)

W.E. II/2/3 OFFRS. 17 O.R's. 68 + OFFRS. O.R's. ATT. BY W.E.

PART A.—POSTED STRENGTH, SURPLUS OR REINFORCEMENTS REQUIRED.

W.E. EXCLUDING ATTACHED.				DETAIL.	ATTACHED ALLOWED BY W.E.									
Rein'ts Required.	Deficient W.E.	Surplus to W.E.	Posted Strength.		Arm or Corps.	Posted Strength.	Surplus to W.E.	Deficient W.E.	Rein'ts Required.					
N.R.	1		1	1										
N.R.	3		6	6										
N.R.	2		3	3										
N.R.	6		11	11										
				DETAIL	A.I.F.	C.M.F.	A.W.A.S.	A.A.N.S.	A.A.M.W.S.	CIVIL.	R.A.N.	R.A.A.F.	**	TOTAL.
				A.	11									
				E.(1)										
				E.(2)										

Analysis of Part A to be shown here by ALL units. Only units notified in para. 10 of instructions for compilation of form will complete Part E(1) & E(2).

* Insert detail of higher ranks as necessary.
* * Personnel belonging to a category not provided for in the analysis will be shown in this Col. Particulars will be shown, e.g., 20 U.K. Forces; 10 N.Z. Forces.

PART B.—PARTICULARS OF OFFICERS JOINED OR QUITTED DURING WEEK.

OFFICERS JOINED DURING WEEK

Army No.	Rank.	Name and Initials.	Unit From.	Date.	CAUSE.

OFFICERS QUITTED DURING WEEK.

Army No.	Rank.	Name and Initials.	Unit To.	Date.	CAUSE.

PART C.—DESCRIPTION OF OFFICERS WHOSE RETURN TO _____ (Unit) IS PARTICULARLY REQUESTED. _____/194_____.

Army No.	Rank.	Name and Initials.	REMARKS (e.g., present whereabouts if known).

HQ 24 Aust Inf Bde Unit

10/43 (Serial No.)

PART D.—NOMINAL ROLL OF OFFICERS ON POSTED STRENGTH

At 0600 Hrs. Saturday 3/7/1943 (Total to agree with Columns 4 and 7 of Part A.)

1	2	3	4	5	6	7	8
Substantive Rank and Higher Temporary Rank if Held.	Army Number.	Surname.	Initials.	Posting.	Whether present with Unit (insert Yes or No)	If not present with Unit, state how employed.	Date of Detachment.
Col (T/Brig)	VX 48819	EVANS	B	COMD	yes		
T/Maj	VX 19444	WHITE	P.F.B.	B.M.	✓		
Capt	SX 9479	WILTON	J.H.	B.M(L)	✓		
Capt	SX 8893	SANGSTER	R.N.	S.C.	✓		
Lieut	WX 6387	PARRY	G.L.W.	L.O.	✓		
Lieut	WX 213	WORNER	J.F.	L.O.	✓		
Lieut	VX 50529	BIRCH	S.B.	BASECO.	✓		
T/Capt	WX 3719	PITTMAN	G.A.	L.O.	No	(LHQ Mail Int source No 10 Photo Interpretation)	1.7.43
1 Chap	QX 6436	GARD	T	Chap	✓	Chap 8/43 Bn	
Chap	NX 77397	WILLIAMSON	R.F.	✓	✓	8/34 Bn	
Chap	VX 90914	CHAMBERS	n.w.s.	✓	✓	8/28 Bn	

PART E.—NOMINAL ROLL OF OFFICERS ATTACHED FROM OTHER UNITS.

Substantive Rank and Higher Temporary Rank, if Held.	Army Number.	Name and Initials.	Unit.	Date of Attachment.	Nature of Attachment.
Lieut	WX 5268	NORRIS H.J.C.	8/28 Bn	29.4.43	S.C.(L)
✓	TX 2771	CLEAVE G.R.	8/43 Bn	11.4.43	L.O.
✓	WX 11800	AMBROSE W.R.	8/37 Bn	30.4.43	Amembree off
✓	VX 43089	FERGUSON J.L.O.	9 Div Bn	9.6.43	T.O.
✓	NX 12099	KINGSBURY W.J.	8/28 Bn	15.6.43	L.O.
✓	WX 38663	PHILPOT W.E.	1 -	15.6.43	for duty with 8/76 CAD
Capt	NX 60279	THROSBY G.F.O.	HQ 9 Div	11.6.43	L.S.G.

5/10/43
Date of Despatch

[Signature]
Signature of Commander

FIELD RETURN OF OTHER RANKS

At 0600 Hrs. Saturday 3/7/1943 HQ 2nd Aust Inf Bde (Unit)

W.E. II/2/3. OFFRS. 17 O.R.'s. 68+ OFFRS. - O.R.'s. - ATT. BY W.E.

Part A. Posted Strength, Surplus or Reinforcements Required.

Table with 10 columns: W.E. EXCLUDING ATTACHED, ATTACHED ALLOWED BY W.E., REINTS. REQUIRED, DEFICIENT W.E., SURPLUS TO W.E., POSTED STRENGTH, DETAIL, ARM OR CORPS, POSTED STRENGTH, SURPLUS TO W.E., DEFICIENT W.E., REINTS. REQUIRED. Rows include W.Os. Class I, II, Squadron or Company Quartermaster Sgts, Staff Sergeants, Sergeants, Corporals, Troopers, Privates, etc., and Totals of cols. marked *.

Analysis of Part A to be shown here by ALL units. Only units notified in para. 7 of instructions for completion of this return will complete analysis of Part B(1) and B(2).

** Personnel belonging to a category not provided for in the analysis will be shown in this Col. Particulars will be shown, e.g., 20 U.K. Forces, 10 N.Z. Forces.

Summary table with columns: Detail, A.I.P., C.M.F. (Under 19 Years, 19 Years and over), A.W.A.S., A.A.M.W.S., CIVIL, R.A.N., R.A.A.F., **, TOTAL. Row A shows 62 total.

Part B. Other Ranks Attached from Other Units.

Part C. Other Ranks Included in Part A Detached to Other Units.

Table with 8 columns: Number of O.Rs., Unit to which they belong, Number of O.Rs., Unit to which they belong, Number of O.Rs., Unit to which detached, Number of O.Rs., Unit to which detached. Handwritten entries include units like AAASC, Fed Hyg, and various other ranks.

Part D. Description of Other Ranks Whose Return To (Unit) is Particularly Requested. / / 194

Table with 4 columns: Army No, Rank, Name and Initials, REMARKS (e.g., present whereabouts if known). This section is currently empty.

HQ 4th Ann Inf Bde Unit

1/7 Serial No.

PART E. Detail of Present Strength and Reinforcements required as shown in Part A of Army Form W.3009 at 0600 Hours Saturday 3/7/1943.

Details of Tradesmen. GROUP I.	W.E.	Posted Strength.	Reints. Required.	Details of Tradesmen. GROUP I. (cont.)	W.E.	Posted Strength.	Reints. Required.	Details of Tradesmen. GROUP II. (cont.)	W.E.	Posted Strength.	Reints. Required.	Details of Tradesmen. GROUP III. (cont.)	W.E.	Posted Strength.	Reints. Required.
Ammunition Examiners				Surveyors, Engineering	3	3	-	Operating Room Assts.	18	18	-	G.P.O. Assistants	16	16	-
Armament Artificer Fitter				Surveyors, R.A.A.				Operator, Keyboard				Hammermen			
Armament Artificer Fitter (Electrical)				Surveyors, Topographical				Operator, Line				Leather Stitchers			
Armament Artificer Fitter (M.V.)				Surveyors, Trigonometrical				Operator, Signal				Orderlies, Nursing			
Armament Artificer Fitter (A.F.V.)				Toolmakers				Operator, Switchboard				Orderlies, Nursing Mental			
Armament Artificer Instrument				Turners				Operator, Wireless				Plate Layers			
Armament Artificer Radio				Watchmakers				Opticians				Rangetakers			
Armament Artificer Signals				Welders				Painters				Rivetters			
Armament Artificer Wireless								Panel Beaters				Roughriders			
Artificer, Artillery								Photographer, Dry Plate				Saddlers			
Artificer, Engine								Predictor Numbers				Saddletree makers			
Blacksmiths								Printers				Shoemaker and Boot Repairer			
Bricklayers								Radiographers				Stevadores			
Computers								Riggers				Stokers, Staty. Engine			
Cooks, Hospital				GROUP II.				Sawyers				Storemen, Technical			
Coppersmiths				Armourers <i>Sgt (AEME)</i>	1	1	-	Signallers				Tailors			
Dispensers				Axemen				Signwriters				Textile Refitters			
Draughtsmen				Bakers				Telescope Identfn. Numbers				Tinsmiths			
Draughtsmen (Architectural)				Bty. Comd's Asst.				Well Borers				Vulcanizers			
Draughtsmen (Engineering)				Bollermakers				Wheelers				Wagon Erectors			
Draughtsmen (Mechanical)				Carpenters				Winchman				Whitesmiths			
Draughtsmen (Topographical) <i>(INF)</i>	2	2	-	Carpenters and Joiners				Wireman							
Electricians				Cooks <i>(INF)</i>	3	3	-	Woodturners							
Electricians (M.V.)				Dental Mechanics											
Electricians (Signals)				Driver-Mech. (Eng. and Med.)											
Fitters				Driver-Operator											
Fitters (Cycle)				Drainers											
Fitters (Electrical)				Electricians											
Fitters (Gun)				Electricians (Engineers)											
Fitters (Instrument)				Fire Control Operators											
Fitters (M.V.) <i>(AEME)</i>	1	1	-	Gun Operator											
Fitters, Railway Signal				Hatchman											
Fitters, Signals				Height Taker											
Grinder, Precision				Helio Operator											
Mechanics, Instrument				Instrument Operator											
Mechanics, Instrument (Signals)				Intelligence Duties <i>(INF)</i>	4	4	-								
Mechanics, Instrument (Surgical)				Joiners											
Mechanics, Radio				Lineman											
Mechanics, Typewriter				Lineman, Signals											
Mechanics, Wireless				Lithographers											
Millwrights				Machinists, Metal											
Operators, Excavator				Machinists, Wood											
Pattern Maker				Masons											
Pharmacist				Masseurs											
Photographer, Wet Plate				Mechanics, M.T. <i>(AEME)</i>	1	1	-								
Photewriter				Miners											
Plumber				Moulders											
Saw Doctors				Nurses, Trained											
Surveyors				Observation Post Assts.											
CARRIED FORWARD	3	3	-	CARRIED FORWARD	18	18	-	CARRIED FORWARD	16	16	-	Totals of columns marked * to agree with columns 4 and 7, and 1 and 10 of Part A, respectively.	68	68	* N.R.

NOTES.—(a) If rank other than private is involved give details on back.
(b) Authorised trades or specialists not included in list will be added as required in spaces provided.
(c) Where A.W.A.S. and/or A.A.M.W.S. personnel are desired show details on back.
(d) Where replacement not desired note accordingly on return by insertion of N.R. in col. "Reints. Required."
(e) Where any request or notation is made on back of form, the words "See Back" should be written in one of the blank spaces on this page.

5/7/43
Date of Despatch

[Signature]
Signature of Commander

FIELD RETURN OF OFFICERS

11143 (Serial No.)

At 0600 Hrs. Saturday 10 / 7 / 1943. HQ 24 Aust Inf. Bde (Unit)

W.E. 11 / 2 / 3. OFFRS. 17 O.R's. 68 + OFFRS. - O.R's. - ATT. BY W.E.

PART A.—POSTED STRENGTH, SURPLUS OR REINFORCEMENTS REQUIRED.

1	2	3	4	5	6	7	8	9	10			
W.E. EXCLUDING ATTACHED.				DETAIL.	ATTACHED ALLOWED BY W.E.							
Rein'ts Required.	Deficient W.E.	Surplus to W.E.	Posted Strength.		Arm or Corps.	Posted Strength.	Surplus to W.E.	Deficient W.E.	Rein'ts Required.			
NR	1		1	COL (J/BRIG) Lieut.-Colonels								
NR	3		6	Majors								
NR	2		3	Captains								
				Lieutenants								
				Quarter-masters								
				A.A.N.S. and A.A.M.W.S. Offrs.								
				Civilians Counting as Offrs.								
NR.	6		11									
		DETAIL	A.I.F.	C.M.F.	A.W.A.S.	A.A.N.S.	A.A.M.W.S.	CIVIL.	R.A.N.	R.A.A.P.	**	TOTAL.
		A.	11									
		E.(1)										
		E.(2)										

Analysis of Part A to be shown here by ALL units. Only units notified in para. 10 of instructions for compilation of form will complete Part E(1) & E(2).

* Inact detail of higher ranks as necessary.
* * Personnel belonging to a category not provided for in the analysis will be shown in this Col. Particulars will be shown, e.g., 20 U.K. Forces; 10 N.Z. Forces.

PART B.—PARTICULARS OF OFFICERS JOINED OR QUITTED DURING WEEK.

OFFICERS JOINED DURING WEEK

Army No.	Rank.	Name and Initials.	Unit From.	Date.	CAUSE.
VX 7619	CAPT	RANSOM NF	HQ 1 Aust MILITARY LANDING GROUP	5-7-43	Att. for Duty
VP 3754	LIEUT	STREITBERG, OCR	HQ 1 Aust Military Landing Gp.	5-7-43	✓ ✓ ✓

OFFICERS QUITTED DURING WEEK.

Army No.	Rank.	Name and Initials.	Unit To.	Date.	CAUSE.
WX 12099	LIEUT	KINGSBURY WJ	2/28 Bn	5-7-43	be asked to be Att. Rejoined Unit.

PART C.—DESCRIPTION OF OFFICERS WHOSE RETURN TO (Unit) IS PARTICULARLY REQUESTED. / / 194

Army No.	Rank.	Name and Initials.	REMARKS (e.g., present whereabouts if known).

HQ 24 Aust Inf. Bde Unit

11/53 (Serial No.)

PART D.—NOMINAL ROLL OF OFFICERS ON POSTED STRENGTH

At 0600 Hrs. Saturday/...../194. (Total to agree with Columns 4 and 7 of Part A.)

1	2	3	4	5	6	7	8
Substantive Rank and Higher Temporary Rank if Held.	Army Number.	Surname.	Initials.	Posting.	Whether present with Unit (insert Yes or No)	If not present with Unit, state how employed.	Date of Detachment.
COL (T/BRIG)	VX 47819	EVANS	B	COMD	YES		
T/MAJ	VX 19444	WHITE	P.E.B.	BM	✓		
CAPT	SX 9479	WILTON	JH	BML	✓		
CAPT	SX 8893	SANGSTER	RW	SC	✓		
LIEUT	WX 6387	PARRY	GLW	LO	✓		
LIEUT	WX 213	WORNER	JF	LO	✓		
LIEUT	VX 50529	BIRCH	SB	BASCO	✓		
T/CAPT	WX 3719	PITTMAN	G.H.	IO	NO	LHQ MIL. INT. COURSE NO 1-7-43 AIR PHOTO. INTERPRETATION	
CHAP	QX 6436	GARD	T	CHAP	NO	CHAP. TO. 2/43 Bn	
CHAP	NX 77397	WILLIAMSON	RE	CHAP	NO	CHAP TO 3/32 Bn	
CHAP	VX 90914	CHAMBERS	NWS	✓	NO	CHAP TO 3/28 Bn	

PART E.—NOMINAL ROLL OF OFFICERS ATTACHED FROM OTHER UNITS.

Substantive Rank and Higher Temporary Rank, if Held.	Army Number.	Name and Initials.	Unit.	Date of Attachment.	Nature of Attachment.
LIEUT	WX 5268	NORRIS H.J.C.	2/28 Bn	29-4-43	SC (L)
"	TX 2771	CLERKE GR	2/43 Bn	11-4-43	LO
"	WX 11000	AMBROSE WR	2/32 Bn	30-4-43	AMEN. OFFR.
"	VX 43089	FERGUSON-J.L.O.	9 DIV CAV	9-6-43	TO
"	VX 38663	PHILPOT, W.E.	2/28 BN	15-6-43	FOR DUTY 2/96 LAD.
CAPT	NX 60279	THROSBY C.F.O.	HQ 9 DIV	11-6-43	L.S.O.
"	VX 7619	RANSOM N.F.	HQ MIL 2 DGP	5-7-43	For Liaison Duty
LIEUT	VP 3754	STREITBERG O.C.R.	✓✓✓✓	5-7-43	✓

[Signature]
Signature of Commander
S.O. 24 Aust Inf Bde

Date of Despatch

FIELD RETURN OF OTHER RANKS

At 0600 Hrs. Saturday 10 / 7 / 1943 HQ 24 Aust Inf Bn (Unit)

W.E. 11 / 2 / 3 OFFRS. 17 O.R's. 68 + OFFRS. - O.R's. BY W.E.
Reinforcements Required.

Part A. Posted Strength, Surplus, Deficient

				5	6	7	8	9	10	
1		2		DETAIL.		ATTACHED ALLOWED BY W.E.				
W.E.	Deficient W.E.	Surplus to W.E.	Posted Strength.	Arm or Corps.	Posted Strength.	Surplus to W.E.	Deficient W.E.	Reinfts. Required.		
			1	W.Os. Class I.						
			2	W.Os. Class II.						
			1	Squadron or Company Quartermaster Sgts.						
			1	Staff Sergeants						
			4	Sergeants						
		1	7	Corporals						
NR	9		44	Troopers, Privates, etc.						
			4	Civilians counting as O.R.						
NR *	9	1	60 *	Totals of cols. marked * should agree with details shown in Part E on Page 2.		*			*	

Analysis of Part A to be shown here by ALL units. Only units notified in para. 7 of instructions for compilation of this return will complete analysis of Part B(1) and B(2).

Detail	A.I.F.	C.M.F.		A.W.A.S.	A.A.M.W.S.	CIVIL	R.A.N.	R.A.A.F.	**	TOTAL
		Under 19 Years.	19 Years and over.							
A		62								62
B(1)										
B(2)										

** Personnel belonging to a category not provided for in the analysis will be shown in this Col. Particulars will be shown, e.g., 30 U.K. Forces, 10 N.Z. Forces.

Part B. Other Ranks Attached from Other Units. Part C. Other Ranks Included in Part A Detached to Other Units.

Number of O.Rs.	Unit to which they belong	Number of O.Rs.	Unit to which they belong	Number of O.Rs.	Unit to which detached.	Number of O.Rs.	Unit to which detached.
4 Ptes	9 Div. AAFC			1 Pte	2/43 Bn		
1 WO I	2/4 Fd Coy						
2 Ptes	2/28 Bn			1 CPL	LHQ MIL. INT COURSE N° 10 AIRPHOTO INTERPRET		
3 Ptes	2/32 Bn						
1 Pte	2/43 Bn						
1 Pte	HQ 9 Div						
1 Sgt							
1 CPL	9 Div Postal						
1 Pte							
1 Sgt							
1 PL	HQ Aust Military Landing Gp.						
1 Pte							

Part D. Description of Other Ranks Whose Return To (Unit) is Particularly Requested. / / 194

Army No	Rank.	Name and Initials.	REMARKS (e.g., present whereabouts if known).

PART E. Detail of Present Strength and Reinforcements required as shown in Part A of Army Form W.3009 at 0600 Hours Saturday 10/7/1943.

Details of Tradesmen. GROUP I.	W.E.	Posted Strength.	Reints. Required.	Details of Tradesmen. GROUP I. (cont.)	W.E.	Posted Strength.	Reints. Required.	Details of Tradesmen. GROUP II. (cont.)	W.E.	Posted Strength.	Reints. Required.	Details of Tradesmen. GROUP III. (cont.)	W.E.	Posted Strength.	Reints. Required.
Ammunition Examiners				Surveyors, Engineering				Operating Room Assts.				G.P.O. Assistants			
Armament Artificer Fitter				Surveyors, E.A.A.				Operator, Keyboard				Hammermen			
Armament Artificer Fitter (Electrical)				Surveyors, Topographical				Operator, Line				Leather Stitchers			
Armament Artificer Fitter (M.V.)				Surveyors, Trigonometrical				Operator, Signal				Orderlies, Nursing			
Armament Artificer Fitter (A.F.V.)				Toolmakers				Operator, Switchboard				Orderlies, Nursing Mental			
Armament Artificer Instrument				Turners				Operator, Wireless				Plate Layers			
Armament Artificer Radio				Watchmakers				Opticians				Rangetakers			
Armament Artificer Signals				Welders				Painters				Riveters			
Armament Artificer Wireless								Panel Beaters				Roughriders			
Artificer, Artillery								Photographer, Dry Plate				Saddlers			
Artificer, Engine								Predictor Numbers				Saddletree makers			
Blacksmiths								Printers				Shoemaker and Boot Repairer			
Bricklayers								Radiographers				Stevedores			
Computers								Riggers				Stokers, Staty. Engine			
Cooks, Hospital				GROUP II.				Sawyers				Storemen, Technical			
Coppersmiths				Armourers SGT (AEME) 1 1				Signallers				Tailors			
Dispensers				Axemen				Signwriters				Textile Refitters			
Draughtsmen				Bakers				Telescope Identfn. Numbers				Tinsmiths			
Draughtsmen (Architectural)				Bty. Comd's. Asst.				Well Borers				Vulcanizers			
Draughtsmen (Engineering)				Bollermakers				Wheelers				Wagon Erectors			
Draughtsmen (Mechanical)				Carpenters				Winchman				Whitesmiths			
Draughtsmen (Topographical) INF 2 2				Carpenters and Joiners				Wireman							
Electricians				Cooks INF 3 2 NR				Woodturners							
Electricians (M.V.)				Dental Mechanics											
Electricians (Signals)				Driver-Mech. (Eng. and Med.)											
Fitters				Driver-Operator											
Fitters (Cycle)				Drainers											
Fitters (Electrical)				Electricians											
Fitters (Gun)				Electricians (Engineers)											
Fitters (Instrument)				Fire Control Operators				GROUP III.				DETAILS OF NON-TRADESMEN.			
Fitters (M.V.) AEME 1 1				Gun Operator				Battery Surveyors				COMS (INF) 1 1			
Fitters, Railway Signal				Hatchman				Butchers				GSM (✓) 1 1			
Fitters, Signals				Height Taker				Clerks (INF) 4 4				TPT SGT (✓) 1 1			
Grinder, Precision				Hello Operator				Clerks, Supply				BATMEN (✓) 14 10 NR			
Mechanics, Instrument				Instrument Operator				Clerks, Technical				DRS. MT (✓) 5 5			
Mechanics, Instrument (Signals)				Intelligence Duties (INF) 4 4				Coach Trimmers				GEN DUTIES (✓) 3 3			
Mechanics, Instrument (Surgical)				Joiners				Concretors				HYG. ✓ (✓) 1 1			
Mechanics, Radio				Lineman				Cooks				SIG ORDERLY (✓) 6 5 NR			
Mechanics, Typewriter				Lineman, Signals				Dental Clerk Orderlies				ORDERLIES MT (✓) 9 9			
Mechanics, Wireless				Lithographers				Despatch Riders				ATTACHED BY W.E.			
Millwrights				Machinists, Metal				Draughtsmen, Signals				WATER DUTIES (✓) 1 1			
Operators, Excavator				Machinists, Wood				Drivers, H.T.				BATMEN DRS (✓) 3 1			
Pattern Maker				Masons				Driver Mechanics				CLERK (AASC) 1 1			
Pharmacist				Masseurs				Driver Tpin. Plant				" (AMENITIES) 1 1			
Photographer, Wet Plate				Mechanics, M.T. AEME 1 1				Engine Hands, I.C.				" (EDUCATION) 1 1			
Photewriter				Miners				Equipment Repairers				MC ORDERLY (AASC) 1 1			
Plumber				Moulders				Farriers				DRS MT. (✓) 1 1			
Saw Doctors				Nurses, Trained				Fitters' Mates				ME ORDERLY (ARMG) 1 1			
Surveyors				Observation Post Assts.				Gun Layers				BOWO. (AASC) 1 1			
CARRIED FORWARD	3	3		CARRIED FORWARD	12	11	-	CARRIED FORWARD	16	15		Totals of columns marked * to agree with columns 4 and 7, and 1 and 10 of Part A. respectively.	68	60	*

NOTES.—(a) If rank other than private is involved give details on back.
(b) Authorised trades or specialists not included in list will be added as required in spaces provided.
(c) Where A.W.A.S. and/or A.A.M.W.S. personnel are desired show details on back.
(d) Where replacement not desired note accordingly on return by insertion of N.R. in col. "Reints. Required."
(e) Where any request or notation is made on back of form, the words "See Back" should be written in one of the blank spaces on this page.

11-6-43
Date of Despatch

[Signature]
Signature of Commandant,
S.O. 24 Aust Inf Bde

FIELD RETURN OF OFFICERS

Army Form W.3008
(Adapted) (Page 1)
(Revised Jan., 1943)

12143 (Serial No.)

At 0600 Hrs. Saturday 17/7/1943 HQ 2nd Aust Inf ^{Regt} (Unit)

W.E. 17/2/3 OFFRS. 18 O.R's. 69 + OFFRS. - O.R's. - ATT. BY W.E.

PART A.—POSTED STRENGTH, SURPLUS OR REINFORCEMENTS REQUIRED.

W.E. EXCLUDING ATTACHED.				DETAIL.	ATTACHED ALLOWED BY W.E.									
1	2	3	4		5	6	7	8	9	10				
Rein'ts Required.	Deficient W.E.	Surplus to W.E.	Posted Strength.		Arm or Corps.	Posted Strength.	Surplus to W.E.	Deficient W.E.	Rein'ts Required.					
-	1		1		1 <i>col (T/Bny)*</i>									
-	4		1	Lieut.-Colonels										
-	2		6	Majors										
			3	Captains										
				Lieutenants										
				Quarter-masters										
				A.A.N.S. and A.A.M.W.S. Offrs.										
				Civilians Counting as Offrs.										
*	7		11											
				DETAIL	A.I.P.	C.M.F.	A.W.A.S.	A.A.N.S.	A.A.M.W.S.	CIVIL.	R.A.N.	R.A.A.F.	**	TOTAL.
				A.	11									11
				E.(1)										
				E.(2)										

Analysis of Part A to be shown here by ALL units. Only units notified in para. 10 of instructions for compilation of form will complete Part E(1) & E(2).

* Insert detail of higher ranks as necessary.
** Personnel belonging to a category not provided for in the analysis will be shown in this Col. Particulars will be shown, e.g., 20 U.K. Forces; 10 N.Z. Forces.

PART B.—PARTICULARS OF OFFICERS JOINED OR QUITTED DURING WEEK.

OFFICERS JOINED DURING WEEK

Army No.	Rank.	Name and Initials.	Unit From.	Date.	CAUSE.	
*	bfff	Reinfs are <u>not</u> required.			Pending	Reinforcements and promotions to commissioned rank will fill existing vacancies.

OFFICERS QUITTED DURING WEEK.

Army No.	Rank.	Name and Initials.	Unit To.	Date.	CAUSE.
Vx 7619	Capt	RANSOM N.F.	HQ 1st Aust Mil	13.7.43	leaves to be attached for attachment to 9 Aust Div Inf HQ
Vp 3754	Lieut	STREITBERG O.C.R.	Pending 4p	✓	✓

PART C.—DESCRIPTION OF OFFICERS WHOSE RETURN TO _____ (Unit) IS PARTICULARLY REQUESTED. _____/_____/194_____.

Army No.	Rank.	Name and Initials.	REMARKS (e.g., present whereabouts if known).

S. 24 Aust Inf Bde Unit

PART D.—NOMINAL ROLL OF OFFICERS ON POSTED STRENGTH

At 0600 Hrs. Saturday *17/7/1943* (Total to agree with Columns 4 and 7 of Part A.)

1	2	3	4	5	6	7	8
Substantive Rank and Higher Temporary Rank if Held.	Army Number.	Surname.	Initials.	Posting.	Whether present with Unit (insert Yes or No)	If not present with Unit, state how employed.	Date of Detachment.
<i>Col (M/long)</i>	<i>VX 47819</i>	<i>EVANS</i>	<i>B</i>	<i>band</i>	<i>Yes</i>		
<i>T/Maj</i>	<i>VX 19444</i>	<i>WHITE</i>	<i>P.F.B.</i>	<i>B.M.</i>	<i>✓</i>		
<i>Capt</i>	<i>SX 9479</i>	<i>WILTON</i>	<i>J.H.</i>	<i>B.M.(L)</i>	<i>✓</i>		
	<i>SX 8893</i>	<i>SANGSTER</i>	<i>R.V.</i>	<i>S.C.</i>	<i>✓</i>		
<i>Supt</i>	<i>WX 6387</i>	<i>PARRY</i>	<i>G.L.W.</i>	<i>L.O.</i>	<i>✓</i>		
	<i>WX 213</i>	<i>WORNER</i>	<i>J.F.</i>	<i>L.O.</i>	<i>✓</i>		
	<i>VX 50529</i>	<i>BIRCH</i>	<i>S.B.</i>	<i>BASCO</i>	<i>✓</i>		
<i>T/Capt</i>	<i>WX 3719</i>	<i>PITTMAN</i>	<i>G.A.</i>	<i>L.O.</i>	<i>✓</i>		
<i>Capt</i>	<i>QX 6436</i>	<i>GARD</i>	<i>T.</i>	<i>band</i>	<i>No</i>	<i>band 2/43 B</i>	
	<i>VX 77397</i>	<i>WILLIAMSON</i>	<i>R.E.</i>		<i>✓</i>	<i>band 5/31 B</i>	
	<i>VX 90914</i>	<i>CHAMBERS</i>	<i>K.W.S.</i>		<i>✓</i>	<i>band 8/28 B</i>	

PART E.—NOMINAL ROLL OF OFFICERS ATTACHED FROM OTHER UNITS.

Substantive Rank and Higher Temporary Rank, if Held.	Army Number.	Name and Initials.	Unit.	Date of Attachment.	Nature of Attachment.
<i>Supt</i>	<i>WX 5268</i>	<i>NORRIS H.J.C.</i>	<i>8/5 B</i>	<i>29.4.43</i>	<i>S.C.(L)</i>
	<i>TX 2771</i>	<i>CLERKE R.M.</i>	<i>8/43 B</i>	<i>11.4.43</i>	<i>L.O.</i>
	<i>WX 11600</i>	<i>AMBROSE W.R.</i>	<i>8/31 B</i>	<i>30.4.43</i>	<i>Amn 6th</i>
	<i>VX 43089</i>	<i>FERGUSON J.L.D.</i>	<i>9/12 B</i>	<i>9.6.43</i>	<i>T.O.</i>
	<i>VX 38663</i>	<i>PHILPOT W.E.</i>	<i>7/8 B</i>	<i>15.6.43</i>	<i>for duty with 2/16 VAD</i>
<i>Capt</i>	<i>NX 60279</i>	<i>THROSBY G.F.O.</i>	<i>HT 9 Div</i>	<i>11.6.43</i>	<i>L.S.O.</i>
<i>Supt</i>	<i>WX 12099</i>	<i>KINGS BURY W.J.</i>	<i>2/28 B</i>	<i>15.7.43</i>	<i>L.O.</i>

18/7/43
Date of Despatch

S. Sangster
Signature of Commander
S.C. 24 Aust Inf Bde

FIELD RETURN OF OTHER RANKS

At 0600 Hrs. Saturday 17 / 7 / 1943. HQ 2nd Cavalry Div (Unit)

W.E. II / 2 / 3 OFFRS. 18 O.R's. 69 + OFFRS. - O.R's. - ATT. BY W.E.

Part A. Posted Strength, Surplus or Reinforcements Required.

1				2		3		4		5		6		7		8		9		10	
W.E. EXCLUDING ATTACHED.				DETAIL.						ATTACHED ALLOWED BY W.E.											
Reinfts. Required.	Deficient W.E.	Surplus to W.E.	Posted Strength.					Arm or Corps.	Posted Strength.	Surplus to W.E.	Deficient W.E.	Reinfts. Required.									
			1	W.Os. Class I.																	
			2	W.Os. Class II.																	
			1	Squadron or Company Quartermaster Sgts.																	
			1	Staff Sergeants																	
			4	Sergeants																	
		1	9	Corporals																	
N.R.	3		49	Troopers, Privates, etc.																	
				Civilians counting as O.R.																	
N.R. *	3	1	67*	Totals of cols. marked * should agree with details shown in Part E on Page 2.					*											*	

Analysis of Part A to be shown here by ALL units. Only units notified in para. 7 of instructions for completion of this return will complete analysis of Part B(1) and B(2).

** Personnel belonging to a category not provided for in the analysis will be shown in this Col. Particulars will be shown, e.g., 20 U.K. Forces, 10 N.Z. Forces.

Detail	A.I.F.	C.M.F.		A.W.A.S.	A.A.M.W.S.	CIVIL	R.A.N.	R.A.A.F.	**	TOTAL
		Under 19 Years.	19 Years and over.							
A	67						[]	[]		67
B(1)										
B(2)							[]			

Part B. Other Ranks Attached from Other Units.

Part C. Other Ranks Included in Part A Detached to Other Units.

Number of O.Rs.	Unit to which they belong	Number of O.Rs.	Unit to which they belong	Number of O.Rs.	Unit to which detached.	Number of O.Rs.	Unit to which detached.
4 Ptes	9 Div AASC			1 Pte	2/43 Bn		
1 Sgt							
1 Pte	9 Div Postal						
1 Pte							
1 Pte	HQ 9 Amab Div						
1 Pte							
2 Pte	2/28 Bn						
1 Pte	2/37 Bn						
1 Pte							
1 WO1	2/4 Fed Hyg Sec						

Part D. Description of Other Ranks Whose Return To.....(Unit) is Particularly Requested. / / 194.....

Army No	Rank.	Name and Initials.	REMARKS (e.g., present whereabouts if known).

PART E. Detail of Present Strength and Reinforcements required as shown in Part A of Army Form W.3009 at 0600 Hours Saturday 17/7/1943.

Details of Tradesmen. GROUP I.	W.E.	Posted Strength.	Reints. Required.	Details of Tradesmen. GROUP I. (cont.)	W.E.	Posted Strength.	Reints. Required.	Details of Tradesmen. GROUP II. (cont.)	W.E.	Posted Strength.	Reints. Required.	Details of Tradesmen. GROUP III. (cont.)	W.E.	Posted Strength.	Reints. Required.
Ammunition Examiners				Surveyors, Engineering	3	3		Operating Room Assts.	12	11		G.P.O. Assistants	19	18	
Armament Artificer Fitter				Surveyors, R.A.A.				Operator, Keyboard				Hammermen			
Armament Artificer Fitter (Electrical)				Surveyors, Topographical				Operator, Line				Leather Stitchers			
Armament Artificer Fitter (M.V.)				Surveyors, Trigonometrical				Operator, Signal				Orderlies, Nursing			
Armament Artificer Fitter (A.F.V.)				Toolmakers				Operator, Switchboard				Orderlies, Nursing Mental			
Armament Artificer Instrument				Turners				Operator, Wireless				Plate Layers			
Armament Artificer Radio				Watchmakers				Opticians				Rangefinders			
Armament Artificer Signals				Welders				Painters				Riveters			
Armament Artificer Wireless								Panel Beaters				Roughriders			
Artificer, Artillery								Photographer, Dry Plate				Saddlers			
Artificer, Engine								Predictor Numbers				Saddletree makers			
Blacksmiths								Printers				Shoemaker and Boot Repairer			
Bricklayers								Radiographers				Stevedores			
Computers								Riggers				Stokers, Staty. Engine			
Cooks, Hospital				GROUP II.				Sawyers				Storemen, Technical			
Coppersmiths				Armourers (AEME)	1	1		Signallers				Tailors			
Dispensers				Axemen				Signwriters				Textile Refitters			
Draughtsmen				Bakers				Telescope Identfn. Numbers				Tinsmiths			
Draughtsmen (Architectural)				Bty. Comd's. Asst.				Well Borers				Vulcanizers			
Draughtsmen (Engineering)				Boilermakers				Wheelers				Wagon Erectors			
Draughtsmen (Mechanical)				Carpenters				Winchman				Whitesmiths			
Draughtsmen (Topographical)	(INF)	2	2	Carpenters and Joiners				Wireman							
Electricians				Cooks (INF)	3	2	NR	Woodturners							
Electricians (M.V.)				Dental Mechanics											
Electricians (Signals)				Driver-Mech. (Eng. and Med.)											
Fitters				Driver-Operator											
Fitters (Cycle)				Drainers											
Fitters (Electrical)				Electricians											
Fitters (Gun)				Electricians (Engineers)											
Fitters (Instrument)				Fire Control Operators											
Fitters (M.V.) (AEME)	1	1		Gun Operator				GROUP III.				DETAILS OF NON-TRADESMEN.			
Fitters, Railway Signal				Hatchman				Battery Surveyors				Gen Duties (INF)	5	5	
Fitters, Signals				Height Taker				Butchers				Dress MT (✓)	16	16	
Grinder, Precision				Hello Operator				Clerks (INF)	7	7		Batmen (✓)	15	14	NR
Mechanics, Instrument				Instrument Operator				Clerks, Supply				Batmen Dress (AEME)	3	1	NR
Mechanics, Instrument (Signals)				Intelligence Duties (INF)	4	4		Clerks, Technical				Htg Duty (INF)	1	1	
Mechanics, Instrument (Surgical)				Joiners				Coach Trimmers				Htg Orderlies (✓)	6	6	
Mechanics, Radio				Lineman				Concretors				Htg Duty (✓)	1	1	
Mechanics, Typewriter				Lineman, Signals				Cooks				M/C Orderlies (AEME)	1	1	
Mechanics, Wireless				Lithographers				Dental Clerk Orderlies				Med Orderlies (AEME)	1	1	
Millwrights				Machinists, Metal				Despatch Riders							
Operators, Excavator				Machinists, Wood				Draughtsmen, Signals							
Pattern Maker				Masons				Drivers, H.T.				B.O.W.O. (AEME)	1	1	
Pharmacist				Masseurs				Driver Mechanics				Supernumerary			
Photographer, Wet Plate				Mechanics, M.T. (AEME)	1	1		Driver Tptn. Plant				YMCA Duties		1	
Photewriter				Miners				Engine Hands, I.C.				Sally Army		1	
Plumber				Moulders				Equipment Repairers							
Saw Doctors				Nurses, Trained				Farriers							
Surveyors				Observation Post Assts.				Fitters' Mates							
								Gun Layers							
CARRIED FORWARD	3	3	-	CARRIED FORWARD	12	11	NR	CARRIED FORWARD	19	18	-	Totals of columns marked * to agree with columns 4 and 7, and 1 and 10 of Part A. respectively.	69	67	* NR

NOTES.—(a) If rank other than private is involved give details on back.
(b) Authorised trades or specialists not included in list will be added as required in spaces provided.
(c) Where A.W.A.S. and/or A.A.M.W.S. personnel are desired show details on back.
(d) Where replacement not desired note accordingly on return by insertion of N.R. in col. "Reints. Required."
(e) Where any request or notation is made on back of form, the words "See Back" should be written in one of the blank spaces on this page.

18/7/43
Date of Despatch

[Signature]
Signature of Commander

a.w. 6m bks 3/43

Vacancies can be filled within Bde and outside Reints are NOT required.

FIELD RETURN OF OFFICERS

Army Form W.3008
(Adapted) (Page 1)
(Revised Jan., 1943)

13 / 43 (Serial No.)

At 0600 Hrs. Saturday 24 / 7 / 1943. HQ 24th PWT INF BDE (Unit)

W.E. II / 2 / 3. OFFRS. 18 O.R's. 69 + OFFRS. - O.R's. - ATT. BY W.E.

PART A.—POSTED STRENGTH, SURPLUS OR REINFORCEMENTS REQUIRED.

1	2	3	4	5	6	7	8	9	10				
W.E. EXCLUDING ATTACHED.				DETAIL.	ATTACHED ALLOWED BY W.E.								
Rein'fts Required.	Deficient W.E.	Surplus to W.E.	Posted Strength.		Arm or Corps.	Posted Strength.	Surplus to W.E.	Deficient W.E.	Rein'fts Required.				
	1 4	1	1 1 3 6	* COL (7/BRIG)* Lieut.-Colonels Majors Captains Lieutenants Quarter-masters A.A.N.S. and A.A.M.W.S. Offrs. Civilians Counting as Offrs. 3 CHAPLAINS									
*	5	1	14										
		DETAIL		A.I.F.	C.M.F.	A.W.A.S.	A.A.N.S.	A.A.M.W.S.	CIVIL.	R.A.N.	R.A.A.F.	**	TOTAL.
		A.		14									14
		E.(1)											
		E.(2)											

Analysis of Part A to be shown here by ALL units. Only units notified in para. 10 of instructions for compilation of form will complete Part E(1) & E(2).

* Insert detail of higher ranks as necessary.

** Personnel belonging to a category not provided for in the analysis will be shown in this Col. Particulars will be shown, e.g., 20 U.K. Forces; 10 N.Z. Forces.

PART B.—PARTICULARS OF OFFICERS JOINED OR QUITTED DURING WEEK.

OFFICERS JOINED DURING WEEK

Army No.	Rank.	Name and Initials.	Unit From.	Date.	CAUSE.
*		Offrs	Reinfts not required. Pending secondments and OR promotions to commissioned rank will fill existing vacancies		

OFFICERS QUITTED DURING WEEK.

Army No.	Rank.	Name and Initials.	Unit To.	Date.	CAUSE.

PART C.—DESCRIPTION OF OFFICERS WHOSE RETURN TO _____ (Unit) IS PARTICULARLY REQUESTED. _____ / _____ / 194 _____.

Army No.	Rank.	Name and Initials.	REMARKS (e.g., present whereabouts if known).

PART D.—NOMINAL ROLL OF OFFICERS ON POSTED STRENGTH

At 0600 Hrs. Saturday 24/7/1943 (Total to agree with Columns 4 and 7 of Part A.)

1	2	3	4	5	6	7	8
Substantive Rank and Higher Temporary Rank if Held.	Army Number.	Surname.	Initials.	Posting.	Whether present with Unit (insert Yes or No)	If not present with Unit, state how employed.	Date of Detachment.
COL/T/BRIG	VX47819	EVANS	B	COMD	YES		
T/MAJ	VX19444	WHITE	P.F.B.	B.M.	✓		
CAPT	SX9479	WILTON	J.H.	B.M.(L)	✓		
CAPT	SX8897	SANGSTER	R.W.	S.C.	✓		
LIEUT	WX5268	NORRIS	H.J.C.	S.C.(L)	✓		
T/CAPT	WX3719	PITTMAN	G.A.	T.O.	✓		
LIEUT	WX6387	PARRY	G.L.W.	L.O.T	✓		
LIEUT	WA213	WORNER	J.F.	L.O.TI	✓		
LIEUT	TX2771	CLERKE	R.M.	L.O.TI	✓		
LIEUT	VX43089	FERGUSON	J.L.D.	T.O.	✓		
LIEUT	VX50529	BIRCH	S.B.	BASCO	✓		
CHAP	GN6136	GARD	T.	CHAP	NO	CHAP TO 2/143 BN	
CHAP	NX77397	WILLIAMSON	R.E.	CHAP	NO	CHAP TO 2/32 BN	
CHAP	VX90914	CHAMBERS	N.W.S	CHAP	NO	CHAP TO 2/28 BN	

PART E.—NOMINAL ROLL OF OFFICERS ATTACHED FROM OTHER UNITS.

Substantive Rank and Higher Temporary Rank, if Held.	Army Number.	Name and Initials.	Unit.	Date of Attachment.	Nature of Attachment.
LIEUT	WX11000	AMBROSE W.R.	2/32	30.4.43	AMEN OFFER
LIEUT	VX38663	PHILPOT W.E.	2/28	15.6.43	L.O.
CAPT	NX60279	THROSBY G.E.O.	HQ 9 DIV	11.6.43	L.S.O
LIEUT	WX12099	KINGSBURY W.J.	2/28	15.7.43	L.O.

25-7-43
Date of Despatch

[Signature]
Signature of Commander

FIELD RETURN OF OTHER RANKS

419 (Serial No.)

At 0600 Hrs. Saturday 24/7/1943 HQ *2nd Div* (Unit)

W.E. 11/2/3 OFFRS. 18 O.R's. 69+ OFFRS. - O.R's. - ATT. BY W.E.

Part A. Posted Strength, Surplus or Reinforcements Required.

W.E. EXCLUDING ATTACHED.				DETAIL.	ATTACHED ALLOWED BY W.E.				
Reinfts. Required.	Deficient W.E.	Surplus to W.E.	Posted Strength.		Arm or Corps.	Posted Strength.	Surplus to W.E.	Deficient W.E.	Reinfts. Required.
			1	W.Os. Class I.					
			2	W.Os. Class II.					
			1	Squadron or Company Quartermaster Sgts.					
			1	Staff Sergeants					
			4	Sergeants					
NR	1		1	Corporals					
NR	1		51	Troopers, Privates, etc.					
				Civilians counting as O.R.					
*	2		67*	Totals of cols. marked * should agree with details shown in Part E on Page 2.		*			*

Analysis of Part A to be shown here by ALL units. Only units notified in para. 7 of instructions for compilation of this return will complete analysis of Part B(1) and B(2).

** Personnel belonging to a category not provided for in the analysis will be shown in this Col. Particulars will be shown, e.g., 20 U.K. Forces, 10 N.Z. Forces.

Detail	A.I.F.	C.M.F.		A.W.A.S.	A.A.M.W.S.	CIVIL	R.A.N.	R.A.A.F.	**	TOTAL
		Under 19 Years.	19 Years and over.							
A										
B(1)										
B(2)										

Part B. Other Ranks Attached from Other Units.

Part C. Other Ranks Included in Part A Detached to Other Units.

Number of O.Rs.	Unit to which they belong	Number of O.Rs.	Unit to which they belong	Number of O.Rs.	Unit to which detached.	Number of O.Rs.	Unit to which detached.
1 Plt	2/32 Bn			1 Plt	2/43 Bn		
2 Plts	2/28 Bn			2 Plts	Special Duty		
1 Plt	HQ 9 Aust Div						
1 WOJ	2/4 Fed Hqg						
1 Sgt							
1 Capt	9 Div Postal						
2 Plts							
1 aspl	YMCA Duties						
1 aspl	Sal Army						

Part D. Description of Other Ranks Whose Return To.....(Unit) is Particularly Requested. / / 194.....

Army No	Rank.	Name and Initials.	REMARKS (e.g., present whereabouts if known).

PART E. Detail of Present Strength and Reinforcements required as shown in Part A of Army Form W.3009 at 0600 Hours Saturday 24/7 /1943 .

Details of Tradesmen. GROUP I.	W.E.	Posted Strength.	Reints. Required.	Details of Tradesmen. GROUP I. (cont.)	W.E.	Posted Strength.	Reints. Required.	Details of Tradesmen. GROUP II. (cont.)	W.E.	Posted Strength.	Reints. Required.	Details of Tradesmen. GROUP III. (cont.)	W.E.	Posted Strength.	Reints. Required.
Ammunition Examiners				Surveyors, Engineering				Operating Room Assts.				G.F.O. Assistants			
Armament Artificer Fitter				Surveyors, R.A.A.				Operator, Keyboard				Hammermen			
Armament Artificer Fitter (Electrical)				Surveyors, Topographical				Operator, Line				Leather Stitchers			
Armament Artificer Fitter (M.V.)				Surveyors, Trigonometrical				Operator, Signal				Orderlies, Nursing			
Armament Artificer Fitter (A.F.V.)				Toolmakers				Operator, Switchboard				Orderlies, Nursing Mental			
Armament Artificer Instrument				Turners				Operator, Wireless				Plate Layers			
Armament Artificer Radio				Watchmakers				Opticians				Rangefinders			
Armament Artificer Signals				Welders				Painters				Rivetters			
Armament Artificer Wireless								Panel Beaters				Roughriders			
Artificer, Artillery								Photographer, Dry Plate				Saddlers			
Artificer, Engine								Predictor Numbers				Saddletree makers			
Blacksmiths								Printers				Shoemaker and Boot Repairer			
Bricklayers								Radlographers				Stevedores			
Computers								Riggers				Stokers, Staty. Engine			
Cooks, Hospital				GROUP II.				Sawyers				Storemen, Technical			
Coppersmiths				Armourers (AEME) 1 1				Signallers				Tailors			
Dispensers				Axemen				Signwriters				Textile Refitters			
Draughtsmen				Bakers				Telescope Identfn. Numbers				Tinsmiths			
Draughtsmen (Architectural)				By. Comd's. Asst.				Well Borers				Vulcanizers			
Draughtsmen (Engineering)				Boilermakers				Wheelers				Wagon Erectors			
Draughtsmen (Mechanical)				Carpenters				Winchman				Whitesmiths			
Draughtsmen (Topographical) (INF) 2 2				Carpenters and Joiners				Wireman							
Electricians				Cooks (INF) 3 2 NR				Woodturners							
Electricians (M.V.)				Dental Mechanics											
Electricians (Signals)				Driver-Mech. (Eng. and Med.)											
Fitters				Driver-Operator											
Fitters (Cycle)				Drainers											
Fitters (Electrical)				Electricians											
Fitters (Gun)				Electricians (Engineers)											
Fitters (Instrument)				Fire Control Operators				GROUP III.				DETAILS OF NON-TRADESMEN.			
Fitters (M.V.) (AEME) 1 1				Gun Operator				Battery Surveyors				Water Duties (INF) 1 1			
Fitters, Railway Signal				Hatchman				Butchers				Down MT (✓) 16 16			
Fitters, Signals				Height Taker				Clerks (INF) 7 7				Batman-Down (AEME) 3 2 NR			
Grinder, Precision				Helio Operator				Clerks, Supply				Batman (INF) 15 15			
Mechanics, Instrument				Instrument Operator				Clerks, Technical				Big Orderlies (✓) 6 6			
Mechanics, Instrument (Signals)				Intelligence Duties (INF) 4 4				Coach Trimmers				Big Duties (✓) 1 1			
Mechanics, Instrument (Surgical)				Joiners				Concretors				Gen Duties (✓) 5 5			
Mechanics, Radio				Lineman				Cooks				m/c Orderlies (AEME) 1 1			
Mechanics, Typewriter				Lineman, Signals				Dental Clerk Orderlies				Med Orderlies (AEME) 1 1			
Mechanics, Wireless				Lithographers				Despatch Riders				ATTACHED BY W.E.			
Millwrights				Machinists, Metal				Draughtsmen, Signals				Bowen (AAOC) 1 1			
Operators, Excavator				Machinists, Wood				Drivers, H.T.							
Pattern Maker				Masons				Driver Mechanics							
Pharmacist				Masseurs				Driver Tptn. Plant							
Photographer, Wet Plate				Mechanics, M.T. (AEME) 1 1				Engine Hands, I.C.							
Photowriter				Miners				Equipment Repairers							
Plumber				Moulders				Farriers							
Saw Doctors				Nurses, Trained				Fitters' Mates							
Surveyors				Observation Post Assts.				Gun Layers							
CARRIED FORWARD 3 3				CARRIED FORWARD 12 11				CARRIED FORWARD 19 18				Totals of columns marked * to agree with columns 4 and 7, and 1 and 10 of Part A. respectively.	69	67	NR

NOTES.—(a) If rank other than private is involved give details on back.
(b) Authorised trades or specialists not included in list will be added as required in spaces provided.
(c) Where A.W.A.S. and/or A.A.M.W.S. personnel are desired show details on back.
(d) Where replacement not desired note accordingly on return by insertion of N.R. in col. "Reints. Required."
(e) Where any request or notation is made on back of form, the words "See Back" should be written in one of the blank spaces on this page.

24/7/43
Date of Despatch

a.w. 6m bks 3/43

Signature of Commander
S.C. 24 Aust Inf Bde

* Vacancies can be filled within Bde and outside Reints NOT required

FIELD RETURN OF OFFICERS

Army Form W.3008

(Adapted) (Page 1)
Revised Jan., 1943

At 0600 Hrs. Saturday 31 / 7 / 1943

HQ 24 Aust Inf Bde

14 / 43 (Serial No.)
(Unit)

W.E. 11 / 2 / 3 OFFRS. 19 O.R's. 69 plus OFFRS. O.R's. ATT. BY W.E.

PART A.—POSTED STRENGTH, SURPLUS OR REINFORCEMENTS REQUIRED

1 2 3 4				5	6 7 8 9 10									
W.E. EXCLUDING ATTACHED.				DETAIL.	ATTACHED ALLOWED BY W.E.									
Rein'ts Required.	Deficient W.E.	Surplus to W.E.	Posted Strength.	DETAIL.	Arm or Corps.	Posted Strength.	Surplus to W.E.	Deficient W.E.	Rein'ts Required.					
	1 3 1		1 4 5	COLLECT/BRIG. Lieut.-Colonels Majors Captains Lieutenants Quarter-masters A.A.N.S. and A.A.M.W.S. Offrs. Civilians Counting as Offrs. 3 <i>bls/plains</i>										
*	5		14											
				DETAIL	A.I.F.	C.M.F.	A.W.A.S.	A.A.N.S.	A.A.M.W.S.	CIVIL.	R.A.N.	R.A.A.F.	**	TOTAL.
				A.	14									14
				E.[1]										
				E.[2]										

Analysis of Part A to be shown here by ALL units. Only units notified in para 10 of instructions for compilation of form will complete Part E[1] & E[2].

* Insert detail of higher ranks as necessary.

** Personnel belonging to a category not provided for in the analysis will be shown in this Col. Particulars will be shown, e.g., 20 U.K. Forces; 10 N.Z. Forces

PART B.—PARTICULARS OF OFFICERS JOINED OR QUITTED DURING WEEK.

OFFICERS JOINED DURING WEEK.

Army No.	Rank.	Name and Initials.	Unit From.	Date.	CAUSE.
*		<i>Offr Reinfts NOT required. Pending Secondments and O.R. promotions to commissioned rank will fill existing vacancies.</i>			

OFFICERS QUITTED DURING WEEK.

Army No.	Rank.	Name and Initials.	Unit To.	Date.	CAUSE.

PART C.—DESCRIPTION OF OFFICERS WHOSE RETURN TO _____ (Unit) IS PARTICULARLY REQUESTED _____ / _____ / 194_____.

Army No.	Rank	Name and Initials	REMARKS [e.g. present whereabouts if known].

HQ 24 Aust Inf Bde. Unit

PART D.—NOMINAL ROLL OF OFFICERS ON POSTED STRENGTH

At 0600 Hrs. Saturday 31/7/1943. (Total to Agree with Columns 4 and 7 of Part A).

1	2	3	4	5	6	7	8
Substantive Rank and Higher Temporary Rank if Held.	Army Number	Surname.	Initials.	Posting.	Whether present with Unit [insert Yes or No]	If not present with Unit, state how employed.	Date of Detachment.
Col LT/BRIG	VX47819	EVANS	B	Comd	YES		
Capt LT/MAJ	VX19444	WHITE	P.F.B	BM	✓		
Capt	SX9479	WILTON	J.H.	BM(CL)	✓		
Capt	SX8893	SANGSTER	RW	SC	✓		
T/Capt	WX3719	PITTMAN	GA.	I.O.	✓		
T/Capt	VX50529	BIRCH	SR	BASCO	✓		
Lieut	WX6387	PARRY	GLW	LOT	✓		
Lieut	WX213	WORNER	JF	LOT	✓		
Lieut	TX2771	CLERKE	RM	LOT	✓		
Lieut	WX5268	NORRIS	H.F.C.	S.C(L)	✓		
Lieut	VX43089	FERGUSON	J.L.D	T.O.	✓		
Col							
Capt	QX6436	GARD	T	CHAP	NO	Relap to 2/43 Bn	
Capt	NX77397	WILLIAMSON	R.E	✓	✓	✓ 2/32 Bn	
Capt	VX90914	CHAMBERS	N.W.S	✓	✓	✓ 2/28 Bn	

PART E.—NOMINAL ROLL OF OFFICERS ATTACHED FROM OTHER UNITS.

Substantive Rank and Higher Temporary Rank, if Held.	Army Number.	Name and Initials.	Unit.	Date of Attachment.	Nature of Attachment.
Capt	NX60279	THROSBY G.F.D.	9 Div HQ	11-6-43	L.S.O.
Lieut	WX11000	AMBROSE WR	2/32 Bn	30-4-43	Amen. Offr.
Lieut	VX38663	PHILPOT WE	2/28 Bn	15-6-43	LO
Lieut	WX12099	KINGSBURY W.P	2/28 Bn	15-7-43	LO

31/7/43
Date of Despatch

S. Sangster
S. Signature of Commander

FIELD RETURN OF OTHER RANKS

(Serial No.) **517**

At 0600 Hrs. Saturday 31/7/1943 HQ 9 Aust Inf Bde (Unit)

W.E. 11/2/3 OFFRS. 19 O.R's. 69 + OFFRS. O.R's. ATT. BY W.E.

Part A. Posted Strength, Surplus or Reinforcements Required.

W.E. EXCLUDING ATTACHED.				DETAIL.	ATTACHED ALLOWED BY W.E.				
Reinfts. Required.	Deficient W.E.	Surplus to W.E.	Posted Strength.		Arm or Corps.	Posted Strength.	Surplus to W.E.	Deficient W.E.	Reinfts. Required.
		1	1	W.Os. Class I.					
	1		1	W.Os. Class II.					
			1	Squadron or Company Quartermaster Sgts.					
			1	Staff Sergeants					
			5	Sergeants					
	1		7	Corporals					
	1		51	Troopers, Privates, etc.					
				Civilians counting as O.R.					
N.R.*	3	1	67*	Totals of cols. marked * should agree with details shown in Part E on Page 2.		*			*

Analysis of Part A to be shown here by ALL units. Only units notified in para. 7 of instructions for compilation of this return will complete analysis of Part B(1) and B(2).

** Personnel belonging to a category not provided for in the analysis will be shown in this Col. Particulars will be shown, e.g., 20 U.K. Forces, 10 N.Z. Forces.

Detail	A.I.F.	C.M.F.		A.W.A.S.	A.A.M.W.S.	CIVIL	R.A.N.	R.A.A.F.	**	TOTAL
		Under 19 Years.	19 Years and over.							
A	67									67
B(1)										
B(2)										

Part B. Other Ranks Attached from Other Units.

Part C. Other Ranks Included in Part A Detached to Other Units.

Number of O.Rs.	Unit to which they belong	Number of O.Rs.	Unit to which they belong	Number of O.Rs.	Unit to which detached.	Number of O.Rs.	Unit to which detached.
1 Pte	2/32 Bn	1 Sgt	2/9 Div	1 Pte	2/43 Bn		
1 Pte		14 Ptes	Pro Coy	1 Pte	2/28 Bn		
3 Ptes	2/28 Bn			2 Ptes	Special Duty		
1 Pte	2/43 Bn						
1 Pte	HQ 9 Aust Div						
1 Pte							
1 WO I	2/4 3d Regt						
1 Pte	B In FSN Int Corps						
1 Pte							
1 Pte	9 Gen Postal						
2 Ptes							
1 Pte	Sal Army Duties						
1 Pte							
1 Pte	YMCA Duties						

Part D. Description of Other Ranks Whose Return To.....(Unit) is Particularly Requested. / .. / 194.....

Army No	Rank.	Name and Initials.	REMARKS (e.g., present whereabouts if known).

HQ 24 Aust Inf Bde Unit

PART E. Detail of Present Strength and Reinforcements required as shown in Part A of Army Form W.3009 at 0600 Hours Saturday 31/7/1943.

Details of Tradesmen. GROUP I.	W.E.	Posted Strength.	Reints. Required.	Details of Tradesmen. GROUP I. (cont.)	W.E.	Posted Strength.	Reints. Required.	Details of Tradesmen. GROUP II. (cont.)	W.E.	Posted Strength.	Reints. Required.	Details of Tradesmen. GROUP III. (cont.)	W.E.	Posted Strength.	Reints. Required.
Ammunition Examiners	1	-	NR	Surveyors, Engineering				Operating Room Assts.				G.P.O. Assistants			
Armament Artificer Fitter				Surveyors, R.A.A.				Operator, Keyboard				Hammermen			
Armament Artificer Fitter (Electrical)				Surveyors, Topographical				Operator, Line				Leather Stitchers			
Armament Artificer Fitter (M.V.)				Surveyors, Trigonometrical				Operator, Signal				Orderlies, Nursing			
Armament Artificer Fitter (A.F.V.)				Toolmakers				Operator, Switchboard				Orderlies, Nursing Mental			
Armament Artificer Instrument				Turners				Operator, Wireless				Plate Layers			
Armament Artificer Radio				Watchmakers				Opticians				Rangetakers			
Armament Artificer Signals				Welders				Painters				Riveters			
Armament Artificer Wireless								Panel Beaters				Roughriders			
Artificer, Artillery								Photographer, Dry Plate				Saddlers			
Artificer, Engine								Predictor Numbers				Saddletree makers			
Blacksmiths								Printers				Shoemaker and Boot Repairer			
Bricklayers								Radiographers				Stevadores			
Computers								Riggers				Stokers, Staty. Engine			
Cooks, Hospital				GROUP II.				Sawyers				Storemen, Technical			
Coppersmiths				Armourers (AEME) 1 1				Signallers				Tailors			
Dispensers				Axemen				Signwriters				Textile Refitters			
Draughtsmen				Bakers				Telescope Identfn. Numbers				Tinsmiths			
Draughtsmen (Architectural)				Bty. Comd's Asst.				Well Borers				Vulcanizers			
Draughtsmen (Engineering)				Boilermakers				Wheelers				Wagon Erectors			
Draughtsmen (Mechanical)				Carpenters				Winchman				Whitesmiths			
Draughtsmen (Topographical) (INF) 2 2				Carpenters and Joiners				Wireman							
Electricians				Cooks (INF) 3 2 NR				Woodturners							
Electricians (M.V.)				Dental Mechanics											
Electricians (Signals)				Driver-Mech. (Eng. and Med.)											
Fitters				Driver-Operator											
Fitters (Cycle)				Drainers											
Fitters (Electrical)				Electricians											
Fitters (Gun)				Electricians (Engineers)											
Fitters (Instrument)				Fire Control Operators											
Fitters (M.V.) (AEME) 1 1				Gun Operator				GROUP III.				DETAILS OF NON-TRADESMEN.			
Fitters, Railway Signal				Hatchman				Battery Surveyors				Water Party (INF) 1 1			
Fitters, Signals				Height Taker				Butchers				Dress MT (✓) 16 16			
Grinder, Precision				Helio Operator				Clerks (INF) 7 7				Bateria. Dress (AEME) 3 2 NR			
Mechanics, Instrument				Instrument Operator				Clerks, Supply				Bateria (INF) 15 15			
Mechanics, Instrument (Signals)				Intelligence Duties (INF) 4 4				Clerks, Technical				Sig Orderlies (✓) 6 6			
Mechanics, Instrument (Surgical)				Joiners				Coach Trimmers				Hyg Duty (✓) 1 1			
Mechanics, Radio				Lineman				Concretors				Law Duty (✓) 5 6			
Mechanics, Typewriter				Lineman, Signals				Cooks				Med Orderlies (AEME) 1 1			
Mechanics, Wireless				Lithographers				Dental Clerk Orderlies				M/ty clerk (AEME) 1 1			
Millwrights				Machinists, Metal				Despatch Riders				ATTACHED BY W.E.			
Operators, Excavator				Machinists, Wood				Draughtsmen, Signals							
Pattern Maker				Masons				Drivers, H.T.							
Pharmacist				Masseurs				Driver Mechanics							
Photographer, Wet Plate				Mechanics, M.T. (AEME) 1 1				Driver Tptn. Plant							
Photewriter				Miners				Engine Hands, I.C.							
Plumber				Moulders				Equipment Repairers							
Saw Doctors				Nurses, Trained				Farriers							
Surveyors				Observation Post Assts.				Fitters' Mates							
								Gun Layers							
CARRIED FORWARD	4	3	-	CARRIED FORWARD	13	11	-	CARRIED FORWARD	20	18	-	Totals of columns marked * to agree with columns 4 and 7, and 1 and 10 of Part A. respectively.	69	67	NR

NOTES.—(a) If rank other than private is involved give details on back.
(b) Authorised trades or specialists not included in list will be added as required in spaces provided.
(c) Where A.W.A.S. and/or A.A.M.W.S. personnel are desired show details on back.
(d) Where replacement not desired note accordingly on return by insertion of N.R. in col. "Reints. Required."
(e) Where any request or notation is made on back of form, the words "See Back" should be written in one of the blank spaces on this page.

31/7/43
Date of Despatch

a.w. 5m bks 3/43

[Signature]
Signature of Commander
S.C. 24 Aust Inf Bde

Outside Reints NOT Required

AUG MONTH
1943 YEAR

A.I.F. FORM C 2118A

WAR DIARY

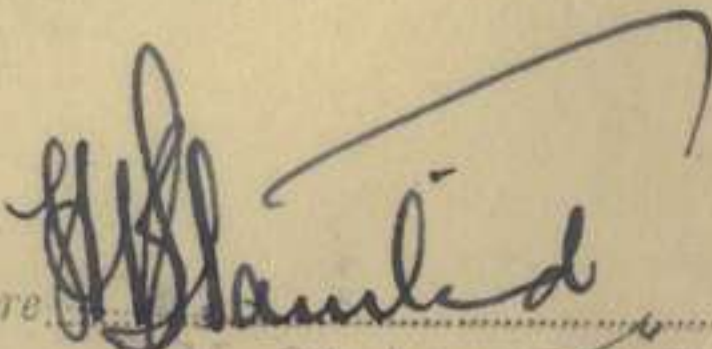
(RENDER UNDER SECRET COVER)

For material required, see F.S.R. Vol. 1, Sec. 174

UNIT HQ 24 AUST INF

BDE
A854—Aust Mob Print Unit—5M/743—G

PLACE	DATE	SUMMARY OF EVENTS <small>Routine training details and information given in Casualty Returns are NOT required</small>	REFERENCES TO APPENDICES	C.O.'s REPORT AND COMMENTS ON MONTH <small>(On Operations, Equipment, Movement, Health, Administration, etc.)</small>
KAIRI	1-3	Preparations were in progress for move to CAIRNS Area prior to embarkation.		
	4	0700 The Bde moved off from camp area at KAIRI and moved by MT via TOLGA, MAREEBA and KURANDA to DEADMANS GULLY arriving there at approx 1400 hrs. Bde HQ was established at 621862 ref map CAIRNS 1 inch series. 2130 hrs Adv Bde HQ consisting of BM(L) IO & LO(I) and approx 10 ORs moved with 2/28 Aust Inf Bn to CAIRNS wharf.		
CAIRNS	5	0300 hrs Adv pty embarked on M/S VAN der LYJN 1800 hrs M/S VAN der LYJN moved into mid stream off CAIRNS wharf.		
	7	0900 hrs Adv Pty aboard VAN der LYJN moved out through boom and took up position in convoy.		
	8	0800 hrs Main body moved to CAIRNS wharf and embarked on Aust Tp Ship MANOORA and left CAIRNS in convoy the same day.		
MILNE BAY	10	1730 hrs Main Bde arrived MILNE BAY and stx bivouaced the night with 2/43 Bn in area near uncompleted Air Strip.		
"	11	0700 hrs Adv Pty arrived MILNE BAY and moved to Camp Area at Western end of route 12 and were later joined by Main Bde.		
"	14	0800 hrs Adv Bde embarked on LCI's and left MILNE BAY.		
"	16	Adv Bde disembarked at BUNA and moved to established camp in vicinity of Cape ENDAIADERE.		
	12-19	Main Bde spent the week in jungle training and practice in laying out of Bde HQ for all round defence.		
	20	1100 hrs Main Bde and Bns embarked on board LST's and left MILNE BAY same day.		
BUNA	22	0700 hrs Main Bde and Bns disembarked at BUNA and moved to camp areas established by Adv Pty.		
	23-31	The week was spent in jungle training including lecturettes.		

Signature  Major
B.M. 24 Aust Inf Bde.