

AWM52
2nd Australian Imperial Force and
Commonwealth Military Forces unit war
diaries, 1939-45 War

Item number: 8/2/24

24 Infantry Brigade

March 1945

WAR DIARY MAR 45

1. The trg for the month consisted of minor tactics and weapon trg. Route marches over varying distances were carried out by all bns and Bde HQ. Inclement weather caused exercise BEETLE scheduled for March to be postponed and finally cancelled. FSW personnel from Security and Enemy Rqpt Sections gave a series of lectures to the tps.
2. The following schools were conducted during the month :-
 - (a) Offrs Tactical School
 - (b) NCO Cadre
 - (c) Snipers School
3. Special feature of the month were the march past of the Bde Gp HERBERTON RACE COURSE. GOC 9 Aust Div Maj Gen WOOTTEN took the Salute. Although carried out during a heavy rainstorm, the tps gave a splendid display of steadiness and marching.
4. Tps were warned by BM Maj STANILAND for service overseas and planning HQ left the area.
5. The following offrs returned to the HQ from ARL and schools :-

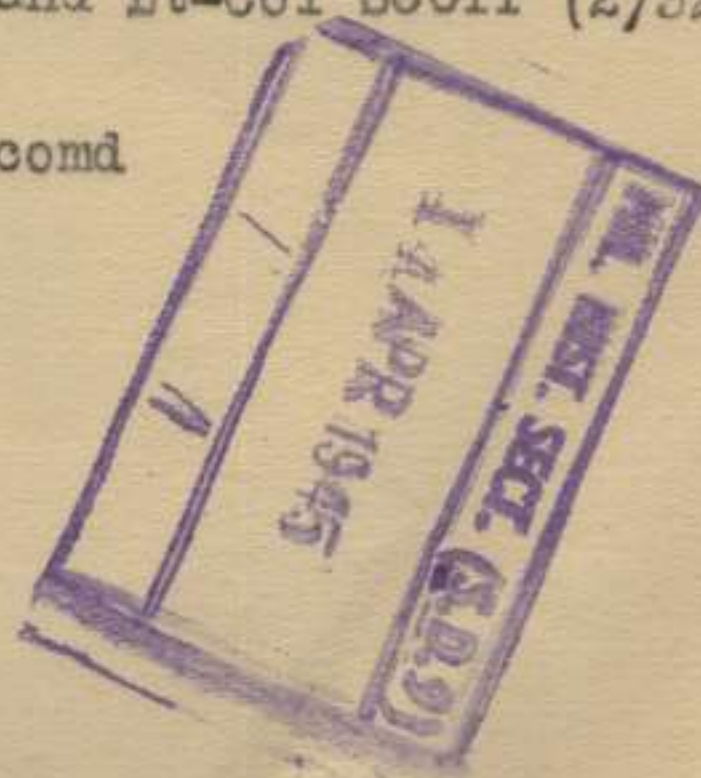
Capt REID (BASCO)
Lt BACON (ED Offr)
Lt GIBBONS (LO11)

The following offrs marched out on duty :-

Lt SNOCK (Transferred to RAE)
Lt GIBBONS (Marched out to 2/32 Aust Inf Bn to act as IO)

6. MARCH 45

- 3 March Past on HERBERTON RACE COURSE
- 6 Bde HQ ferried back to camp from WONDECLA
- 12 Bde HQ on muster pde were warned for overseas service by BM
- 13 Fwd Bde moved out from camp area 0730K to vicinity ARCHER CK in preparation for exercise BEETLE. Owing to heavy rain exercise was postponed, and tps moved back to camp area.
- 15 Bde Planning HQ consisting of Capt LIRMAN (SC(L)) Lt TALBOT (A/IO) and 3 ORs moved out.
- 21 Brig PORTER moved out to join Planning HQ and Lt Col SIMPSON (2/43 Aust Inf Bn) took over as Adm Comd.
- 22 BM (Maj STANILAND) moved out to join Planning HQ
- 23 Lt-Col SIMPSON promoted to rank of Col T/Brig and Lt-Col SCOTT (2/32 Aust Inf Bn) assumed Adm Comd of the Bde.
- 25 Brig SIMPSON marched out to take over his new comd



7. The following appendices herewith :-

24 Aust Inf Bde Trg Instr No 25 (3 Mar)	1
24 Aust Inf Bde Trg Notes(4 Mar)	2
24 Aust Inf Bde Exercise BEETLE Gen Instrs (6 Mar)	3
24 Aust Inf Bde Exercise BEETLE Forecast of Events (7 Mar)	4
24 Aust Inf Bde Exercise BEETLE Gen Instrs (12 Mar)	5
Security of Telegrams & Cables (14 Mar)	6
24 Aust Inf Bde Exercise BEETLE Amendments (16 Mar)	7
HQ 24 Aust Inf Bde Routine Orders Serial 6 (26 Mar)	8
24 Aust Inf Bde Trg Instr No 26 (27 Mar)	9
24 Aust Inf Bde Trg Notes (27 Mar)	10
Field Returns for Mar 45	11
HQ 24 Aust Inf Bde Standing Orders	12


Maj
BM 24 Aust Inf Bde

FIELD RETURN OF OFFICERS

Army Form W.3008
(Adapted) (Page 1)
(Revised Jan., 1943)
9 / 45 (Serial No.)

Wan Suany

At 0600 Hrs. Saturday 3 / 3 / 1945 Hq 24 Aust Inf (Unit)
Bde

W.E. II / 2 / 4. OFFRS. 19 O.R's. 66 + OFFRS. O.R's. ATT. BY W.E.

PART A.—POSTED STRENGTH, SURPLUS OR REINFORCEMENTS REQUIRED.

W.E. EXCLUDING ATTACHED.				DETAIL.	ATTACHED ALLOWED BY W.E.											
1	2	3	4	5	6	7	8	9	10							
Rein'ts Required.	Deficient W.E.	Surplus to W.E.	Posted Strength.	Arm or Corps.	Posted Strength.	Surplus to W.E.	Deficient W.E.	Rein'ts Required.								
			1	* Brigadier * Lieut.-Colonels Majors Captains Lieutenants Quarter-masters Chaplains A.A.N.S. and A.A.M.W.S. Offrs. Civilians Counting as Offrs.												
	1 1 1		1 6 5 3													
	3		16													
				DETAIL	A.I.F.	C.M.F.	A.W.A.S.	A.A.N.S.	A.A.M.W.S.	CIVIL.	R.A.N.	R.A.A.F.	* *	TOTAL.		
Analysis of Part A to be shown here by ALL units. Only units notified in para. 10 of instructions for compilation of form will complete Part E(1) & E(2).				A.										16		
				E.(1)												
				E.(2)												

* Insert detail of higher ranks as necessary.
* * Personnel belonging to a category not provided for in the analysis will be shown in this Col. Particulars will be shown, e.g., 20 U.K. Forces; 10 N.Z. Forces.

PART B.—PARTICULARS OF OFFICERS JOINED OR QUITTED DURING WEEK.

OFFICERS JOINED DURING WEEK

Army No.	Rank.	Name and Initials.	Unit From.	Date.	CAUSE.

OFFICERS QUITTED DURING WEEK.

Army No.	Rank.	Name and Initials.	Unit To.	Date.	CAUSE.
Wk 3592	Maj	MASEL P	Admitted 116 AGH		Exact date not known but Maj MASEL is believed to have been admitted early in Feb 45.

PART C.—DESCRIPTION OF OFFICERS WHOSE RETURN TO..... (Unit) IS PARTICULARLY REQUESTED. / / 194.....

Army No.	Rank.	Name and Initials.	REMARKS (e.g., present whereabouts if known).

PART D.—NOMINAL ROLL OF OFFICERS ON POSTED STRENGTH

At 0600 Hrs. Saturday 5 / 3 / 1945 (Total to agree with Columns 4 and 7 of Part A.)

1	2	3	4	5	6	7	8
Substantive Rank and Higher Temporary Rank if Held.	Army Number.	Surname.	Initials.	Posting.	Whether present with Unit (insert Yes or No)	If not present with Unit, state how employed.	Date of Detachment.
T/Brig	VX133	PORTER	SHWC	Comd	Yes		
Maj	NX12355	STANILAND	HB	BM	Yes		
Capt	NX15834	NEWTON	AJC	SG	Yes		
Capt	VX69765	LIPMAN	RJ	SG(L)	Yes		
Capt	NX34685	GIOVANELLI	WNL	Legal	No	Det Hq 9 Aust Div	25.2.45
Capt	VX39292	REID	FH	BASCO	No	ARL	11.2.45
T/Capt	WX12543	KENNEDY	RR	TO	Yes		
T/Capt	QX22429	ROSE	JJ	LO I	Yes		
Lt	NX65877	SNOOK	ER	LO II	No	Det 2/43 Aust Inf Bn	15.12.44
Lt	NX133152	YEATES	JD	Amn O	Yes		
Lt	QX26189	PASCOE	A	Hyg O	Yes		
Lt	QX34663	RACON	EA	Ednc O	No	ARL	13.2.45
Lt	NX115160	DURKIN	SMcG	BOO	Yes		
Capt	VX60789	HOLT	WF	Chap	No	Det 2/28 Aust Inf Bn	19.2.45
Capt	NX166497	HEMANUS	P	Chap	No	Det 2/32 Aust Inf Bn	7.2.45
Capt	VX33459	MACLIVER	A	Chap	No	Det 2/43 Aust Inf Bn	

PART E.—NOMINAL ROLL OF OFFICERS ATTACHED FROM OTHER UNITS.

Substantive Rank and Higher Temporary Rank, if Held.	Army Number.	Name and Initials.	Unit.	Date of Attachment.	Nature of Attachment.
Capt	QX19051	SHEA R E	2/28 Bn	24.1.45	MLO(L)
Capt	VX29036	BISHOP PA	2 Aust Beach Gp	16.1.45	MLO
Lt	WX11235	DEVLIN N P	2/28 Bn	11.2.45	Act LO II

3 Mar 45

Date of Despatch

SC Signature of Commander

Capt

low copy

FIELD RETURN OF OFFICERS

Army Form W.3008
(Adapted) (Page 1)
(Revised Jan., 1943)

10 / 45 (Serial No.)

At 0600 Hrs. Saturday 10 3 / 194 5 H. 24 Aust Inf Bde (Unit)

W.E. 11 2 4 / 19 66 OFFRS. O.R's + OFFRS. O.R's ATT. BY W.E.

PART A.—POSTED STRENGTH, SURPLUS OR REINFORCEMENTS REQUIRED.

W.E. EXCLUDING ATTACHED.				DETAIL.	ATTACHED ALLOWED BY W.E.							
Rein'fts Required.	Deficient W.E.	Surplus to W.E.	Posted Strength.		Arm or Corps.	Posted Strength.	Surplus to W.E.	Deficient W.E.	Rein'fts Required.			
			1	Brigadier *								
	1		1	Lieut.-Colonels								
	1		6	Majors								
	1		5	Captains								
			5	Lieutenants								
			3	Quarter-masters								
				Chaplain								
				A.A.N.S. and								
				A.A.M.W.S. Offrs.								
				Civilians Counting as Offrs.								
	3		16									
		DETAIL	A.I.F.	C.M.F.	A.W.A.S.	A.A.N.S.	A.A.M.W.S.	CIVIL.	R.A.N.	R.A.A.F.	**	TOTAL.
Analysis of Part A to be shown here by ALL units. Only units notified in para. 10 of instructions for compilation of form will complete Part E(1) & E(2).		A.	16									16
		E.(1)										
		E.(2)										

* Insert detail of higher ranks as necessary.

** Personnel belonging to a category not provided for in the analysis will be shown in this Col. Particulars will be shown, e.g., 20 U.K. Forces; 10 N.Z. Forces.

PART B.—PARTICULARS OF OFFICERS JOINED OR QUITTED DURING WEEK.

OFFICERS JOINED DURING WEEK

Army No.	Rank.	Name and Initials.	Unit From.	Date.	CAUSE.

OFFICERS QUITTED DURING WEEK.

Army No.	Rank.	Name and Initials.	Unit To.	Date.	CAUSE.

PART C.—DESCRIPTION OF OFFICERS WHOSE RETURN TO (Unit) IS PARTICULARLY REQUESTED. / / 194 .

Army No.	Rank.	Name and Initials.	REMARKS (e.g., present whereabouts if known).

PART D.—NOMINAL ROLL OF OFFICERS ON POSTED STRENGTH

At 0600 Hrs. Saturday 10/3/1945 (Total to agree with Columns 4 and 7 of Part A.)

1	2	3	4	5	6	7	8
Substantive Rank and Higher Temporary Rank if Held.	Army Number.	Surname.	Initials.	Posting.	Whether present with Unit (insert Yes or No)	If not present with Unit, state how employed.	Date of Detachment.
T/Brig	VX133	PORTER	SHOC	Cond	Yes		
Maj	NX12355	STANLAND	HB	BM	Yes		
Capt	NX15834	NEWTON	AJO	SC	Yes		
Capt	VX69765	LIPMAN	RJ	SC(L)	Yes		
Capt	NX34685	GIOVANELLI	WHL	Legal	No	Det HQ 9 Aust Div	25.2.45
Capt	VX29292	REID	PH	BASCO	No	ABL	11.2.45
T/Capt	NX12543	KENNEDY	RR	FO	Yes		
T/Capt	OX2429	ROSE	JJ	LO I	Yes		
Lt	NX65877	SNOOK	ER	LO II	No	Det 2/43 Aust Inf Bn	15.12.44
Lt	NX133152	YEATES	JD	Ameco	Yes		
Lt	OX26189	PASCOE	A	Hyg O	Yes		
Lt	OX34663	BACON	EA	Edmc O	No	ABL	13.2.45
Lt	NX115160	DURKIN	SMcC	BOO	Yes		
Capt	VX60789	HOLT	WF	Chap	No	Det 2/28 Aust Inf Bn	19.2.45
Capt	NX166497	McMANUS	P	Chap	No	Det 2/32 Aust Inf Bn	7.2.45
Capt	NX32459	MACLIVER	A	Chap	No	Det 2/43 Aust Inf Bn	

PART E.—NOMINAL ROLL OF OFFICERS ATTACHED FROM OTHER UNITS.

Substantive Rank and Higher Temporary Rank if Held.	Army Number.	Name and Initials.	Unit.	Date of Attachment.	Nature of Attachment.
Capt	OX19051	SHEA R E	2/28 Bn	24.1.45	NLO(L)
Capt	VX29036	BISHOP P A	2 Beach		
Lt	NX11835	DEVLIN E F	Op	16.1.45	NLO
Lt	VX12317	TALBOT S J	2/32 Bn	11.2.45	Act LO II
				7.3.45	Duty as IO

10 Mar 45

Date of Despatch

A. Weston

Capt

Signature of Commander

War Mary

FIELD RETURN OF OFFICERS

Army Form W.3008
(Adapted) (Page 1)
(Revised Jan., 1943)
11 / 45 (Serial No.)

At 0600 Hrs. Saturday 17 / 3 / 1945 HQ 24 Aust Inf Bde (Unit)

W.E. 11 / 2 / 4 OFFRS. 19 O.R.'s. 66 + OFFRS. O.R.'s. ATT. BY W.E.

PART A.—POSTED STRENGTH, SURPLUS OR REINFORCEMENTS REQUIRED.

1 2 3 4				5	6 7 8 9 10								
W.E. EXCLUDING ATTACHED.				DETAIL.	ATTACHED ALLOWED BY W.E.								
Rein'ts Required.	Deficient W.E.	Surplus to W.E.	Posted Strength.		Arm or Corps.	Posted Strength.	Surplus to W.E.	Deficient W.E.	Rein'ts Required.				
			1	Brigadier *									
				Lieut.-Colonels									
	1		2	Majors									
	1		6	Captains									
	1		5	Lieutenants									
			3	Quarter-masters Chaplains A.A.N.S. and A.A.M.W.S. Offrs.									
				Civilians Counting as Offrs.									
	3		16										
		DETAIL		A.I.F.	C.M.F.	A.W.A.S.	A.A.N.S.	A.A.M.W.S.	CIVIL.	R.A.N.	R.A.A.F.	**	TOTAL.
		A.		16									16
		E.(1)											
		E.(2)											

Analysis of Part A to be shown here by ALL units. Only units notified in para. 10 of instructions for compilation of form will complete Part E(1) & E(2).

* Insert detail of higher ranks as necessary.
** Personnel belonging to a category not provided for in the analysis will be shown in this Col. Particulars will be shown, e.g., 20 U.K. Forces; 10 N.Z. Forces.

PART B.—PARTICULARS OF OFFICERS JOINED OR QUITTED DURING WEEK.

OFFICERS JOINED DURING WEEK

Army No.	Rank.	Name and Initials.	Unit From.	Date.	CAUSE.

OFFICERS QUITTED DURING WEEK.

Army No.	Rank.	Name and Initials.	Unit To.	Date.	CAUSE.

PART C.—DESCRIPTION OF OFFICERS WHOSE RETURN TO..... (Unit) IS PARTICULARLY REQUESTED. / / 194.....

Army No.	Rank.	Name and Initials.	REMARKS (e.g., present whereabouts if known).

PART D.—NOMINAL ROLL OF OFFICERS ON POSTED STRENGTH

At 0600 Hrs. Saturday 17 / 3 / 1945 (Total to agree with Columns 4 and 7 of Part A.)

1	2	3	4	5	6	7	8
Substantive Rank and Higher Temporary Rank if Held.	Army Number.	Surname.	Initials.	Posting.	Whether present with Unit (insert Yes or No)	If not present with Unit, state how employed.	Date of Detachment.
T/Brig	VX133	PORTER	SHWC	Comd	Yes		
Maj	NX12355	STANILAND	HB	BM	Yes		
Capt	NX15834	NESTON	AJC	SC	Yes		
Capt	VX69765	LIPMAN	HJ	SO(L)	No	Det HQ 9 Aust Div	15.3.45
Capt	NX34885	GIUVANELLI	EL	Legal	No	" "	25.2.45
Capt	VX39292	REDD	HR	BASCO	No	ARL	11.2.45
T/Capt	NX12543	KENNEDY	HR	TO	Yes		
T/Capt	OX22429	ROSE	JJ	LO	Yes		
Lt	NX65877	SNCK	ER	LO	Yes		
Lt	NX133152	YEATES	JB	Amcn	Yes		
Lt	OX26189	PASCOE	A	Hyg O	Yes		
Lt	OX34663	BACON	EA	Educ O	No	ARL	13.2.45
Lt	NX115160	DURKIN	SMcG	BOO	Yes		
Capt.	VX60789	HOLT	WF	Chap	No	Det 2/28 Aust Inf Bn	19.2.45
Capt	NX166497	McMANUS	P	Chap	No	Det 2/32 Aust Inf Bn	7.2.45
Capt	NX33459	MACLIVER	A	Chap	No	Det 2/43 Aust Inf Bn	

PART E.—NOMINAL ROLL OF OFFICERS ATTACHED FROM OTHER UNITS.

Substantive Rank and Higher Temporary Rank if Held.	Army Number.	Name and Initials.	Unit.	Date of Attachment.	Nature of Attachment.
Capt	OX19051	SHRA R.B	2/28 Bn	24.1.45	A/MLO
Lt	NX85718	WHITMAN C.A	2/28 Bn	16.3.45	A/LO
Lt	NX10752	NORTH S.F	2/32 Bn	16.3.45	A/LO

17 Mar 45

Date of Despatch

A. Weston Capt

Signature of Commander

has been

FIELD RETURN OF OFFICERS

Army Form W.3008
(Adapted) (Page 1)
(Revised Jan., 1943)
12 / 45 (Serial No.)

At 0600 Hrs. Saturday 24 / 3 / 1945 H. 24 Aust Inf Bde (Unit)

W.E. 11 / 2 / 4 OFFRS. 19 O.R's. 66 + OFFRS. O.R's. ATT. BY W.E.

PART A.—POSTED STRENGTH, SURPLUS OR REINFORCEMENTS REQUIRED.

W.E. EXCLUDING ATTACHED.				DETAIL.	ATTACHED ALLOWED BY W.E.									
Rein'ts Required.	Deficient W.E.	Surplus to W.E.	Posted Strength.		Arm or Corps.	Posted Strength.	Surplus to W.E.	Deficient W.E.	Rein'ts Required.					
			1	Brigadier *										
				Lieut.-Colonels										
	1		1	Majors										
	1		6	Captains										
	1		5	Lieutenants										
			3	Quarter-masters Chaplains A.A.N.S. and A.A.M.W.S. Offrs.										
			3	Civilians Counting as Offrs.										
	3		16											
				DETAIL	A.I.F.	C.M.F.	A.W.A.S.	A.A.N.S.	A.A.M.W.S.	CIVIL.	R.A.N.	R.A.A.F.	**	TOTAL.
				A.	16									16
				E.(1)										
				E.(2)										

Analysis of Part A to be shown here by ALL units. Only units notified in para. 10 of instructions for compilation of form will complete Part E(1) & E(2).

* Insert detail of higher ranks as necessary.
** Personnel belonging to a category not provided for in the analysis will be shown in this Col. Particulars will be shown, e.g., 20 U.K. Forces; 10 N.Z. Forces.

PART B.—PARTICULARS OF OFFICERS JOINED OR QUITTED DURING WEEK.

OFFICERS JOINED DURING WEEK

Army No.	Rank.	Name and Initials.	Unit From.	Date.	CAUSE.

OFFICERS QUITTED DURING WEEK.

Army No.	Rank.	Name and Initials.	Unit To.	Date.	CAUSE.
HX65877	Lt	SHOCK E R	RAE 1 Aust Corps	21.3.45	Secondment ceases returns to regtl duties

PART C.—DESCRIPTION OF OFFICERS WHOSE RETURN TO.....(Unit) IS PARTICULARLY REQUESTED. / / 194.....

Army No.	Rank.	Name and Initials.	REMARKS (e.g., present whereabouts if known).

PART D.—NOMINAL ROLL OF OFFICERS ON POSTED STRENGTH

At 0600 Hrs. Saturday 24 / 5 / 1945 (Total to agree with Columns 4 and 7 of Part A.)

1	2	3	4	5	6	7	8
Substantive Rank and Higher Temporary Rank if Held.	Army Number.	Surname.	Initials.	Posting.	Whether present with Unit (insert Yes or No)	If not present with Unit, state how employed.	Date of Detachment.
T/Brig	VX1885	PORTER	SHGC	Cond	No	Adv H. 9 Aust Div	21.3.45
Maj	VX12355	STANILAND	HB	MI	No	Adv H. 9 Aust Div	22.3.45
Capt	VX15834	NEWTON	AJO	SG	Yes		
Capt	VX69765	LIPMAN	EF	SG(L)	No	Adv H. 9 Aust Div	15.3.45
Capt	VX34685	GIOVANELLI	ENL	Legal	Yes		
Capt	VX39292	REID	EH	BASCO	No	SRL	11.2.45
2/Capt	VX12543	KENNEDY	ER	TO	Yes		
T/Capt	VX22429		JJ	LO	Yes		
Lt	VX133152	YEATES	JB	Amn O	Yes		
Lt	VX26189	PASCOE	A	Hys O	Yes		
Lt	VX34663	BACON	EA	Ednc O	Yes		
Lt	VX115160	MURKIE	SMGC	BOO	Yes		
Lt	VX101130	GIBBONS	A	LO	No	2/32 Aust Inf Bn	20.3.45
Capt	VX60789	HOLT	WF	Chap	No	Det 2/28 Aust Inf Bn	19.2.45
Capt	VX166497	ROMANUS	P	Chap	No	Det 2/32 Aust Inf Bn	7.2.45
Capt	VX33459	MACLIVER	A	Chap	No		

PART E.—NOMINAL ROLL OF OFFICERS ATTACHED FROM OTHER UNITS.

Substantive Rank and Higher Temporary Rank if Held.	Army Number.	Name and Initials.	Unit.	Date of Attachment.	Nature of Attachment.
Capt	VX19051	SHEA B E	2/28 Bn	24.1.45	A/M/O
Lt	VX63713	WHITMAN C A	2/28 Bn	16.3.45	A/LO
Lt	VX10752	NORTH S F	2/32 Bn	16.3.45	A/LO

24 Mar 45

Date of Despatch

24 26 Aust Inf Bde

Signature of Commander

A. Lenton Capt

File

FIELD RETURN OF OFFICERS

Army Form W.3008
(Adapted) (Page 1)
(Revised Jan., 1943)

13 / 45 (Serial No.)

At 0600 Hrs. Saturday 31 / 3 / 1945 HQ 24 Aust Inf Bde (Unit)

W.E. 11 / 2 / 4 OFFRS. 19 O.R's. 66 + OFFRS. O.R's. ATT. BY W.E.

PART A.—POSTED STRENGTH, SURPLUS OR REINFORCEMENTS REQUIRED.

W.E. EXCLUDING ATTACHED.				DETAIL.	ATTACHED ALLOWED BY W.E.											
1	2	3	4		6	7	8	9	10							
Rein'ts Required.	Deficient W.E.	Surplus to W.E.	Posted Strength.		Arm or Corps.	Posted Strength.	Surplus to W.E.	Deficient W.E.	Rein'ts Required.							
	1		1	1	1											
	1		6	6												
	1		5	5												
			3	3												
	3		16													
				DETAIL	A.I.P.	C.M.F.	A.W.A.S.	A.A.N.S.	A.A.M.W.S.	CIVIL.	R.A.N.	R.A.A.F.	**	TOTAL.		
Analysis of Part A to be shown here by ALL units. Only units notified in para. 10 of instructions for compilation of form will complete Part E(1) & E(2).				A.										16		
				E.(1)												
				E.(2)												

* Insert detail of higher ranks as necessary.
** Personnel belonging to a category not provided for in the analysis will be shown in this Col. Particulars will be shown, e.g., 20 U.K. Forces; 10 N.Z. Forces.

PART B.—PARTICULARS OF OFFICERS JOINED OR QUITTED DURING WEEK.

OFFICERS JOINED DURING WEEK

Army No.	Rank.	Name and Initials.	Unit From.	Date.	CAUSE.

OFFICERS QUITTED DURING WEEK.

Army No.	Rank.	Name and Initials.	Unit To.	Date.	CAUSE.

PART C.—DESCRIPTION OF OFFICERS WHOSE RETURN TO..... (Unit) IS PARTICULARLY REQUESTED. / / 194.....

Army No.	Rank.	Name and Initials.	REMARKS (e.g., present whereabouts if known).

PART D.—NOMINAL ROLL OF OFFICERS ON POSTED STRENGTH

At 0600 Hrs. Saturday 31 / 3 / 1945 (Total to agree with Columns 4 and 7 of Part A.)

1	2	3	4	5	6	7	8
Substantive Rank and Higher Temporary Rank if Held.	Army Number.	Surname.	Initials.	Posting.	Whether present with Unit (insert Yes or No)	If not present with Unit, state how employed.	Date of Detachment.
T/Brig	VX133	MURPHY	SMC	Cond	No	Adv Hq 9 Aust Div	21.3.45
Maj	EX12355	STANILAND	HB	MI	No	Adv Hq 9 Aust Div	22.3.45
Capt	EX15634	NEWTON	AJO	SC	Yes		
Capt	VX69765	LISHAN	IS	SC(L)	No	Adv Hq 9 Aust Div	15.3.45
Capt	EX34685	GIOVANELLI	WHL	Legal	Yes		
Capt	VX39292	REID	PH	MASCO	Yes		
T/Capt	EX12543	KENNEDY	KE	TO	Yes		
T/Capt	EX22429	ROSE	JJ	LO	Yes		
Lt	EX135152	YEATES	JB	Amen O	Yes		
Lt	EX26189	PASCOE	A	Hyg O	Yes		
Lt	EX34683	BACON	EA	Educ O	Yes		
Lt	EX115160	DURKIN	SMC	BOO	Yes		
Lt	EX101130	GIBBONS	A	LO	No	Det 2/32 Aust Inf Bn	20.3.45
Capt	VX60769	HOLT	WF	Chap	No	Det 2/28 Aust Inf Bn	19.2.45
Capt	EX166497	HONANUS	F	Chap	No	Det 2/32 Aust Inf Bn	7.2.45
Capt	EX33459	MACLIVER	A	Chap	No	Det 2/43 Aust Inf Bn	

PART E.—NOMINAL ROLL OF OFFICERS ATTACHED FROM OTHER UNITS.

Substantive Rank and Higher Temporary Rank if Held.	Army Number.	Name and Initials.	Unit.	Date of Attachment.	Nature of Attachment.
Capt	EX19051	SHEA R E	2/28 Bn	24.1.45	A/MLO
Lt	EX22718	SHIRAZI C A	2/28 Bn	16.3.45	A/LO
Lt	EX10752	NORTH S F	2/32 Bn	16.3.45	A/LO

31.3.45
Date of Despatch

A. Keaton
Signature of Commander

War Diary

FIELD RETURN OF OFFICERS

Army Form W.3008
(Adapted) (Page 1)
(Revised Jan., 1943)

15 / 45 (Serial No.)

At 0600 Hrs. Saturday 31 / 5 / 1945 H. 24 Aust Inf Bde (Unit)

W.E. 11 / 2 / 4 OFFRS. 19 O.R's. 66 + OFFRS. O.R's. ATT. BY W.E.

PART A.—POSTED STRENGTH, SURPLUS OR REINFORCEMENTS REQUIRED.

1				2				3				4				5				6				7				8				9				10			
W.E. EXCLUDING ATTACHED.				DETAIL.				ATTACHED ALLOWED BY W.E.																															
Rein'ts Required.	Deficient W.E.	Surplus to W.E.	Posted Strength.													Arm or Corps.	Posted Strength.	Surplus to W.E.	Deficient W.E.	Rein'ts Required.																			
			1	Brigadier *																																			
				Lieut.-Colonels																																			
	1		1	Majors																																			
	1		6	Captains																																			
	1		5	Lieutenants																																			
			3	Quarter-masters																																			
				Chaplains																																			
				A.A.N.S. and A.A.M.W.S. Offrs.																																			
				Civilians Counting as Offrs.																																			
	3		16																																				
				DETAIL	A.I.P.	C.M.F.	A.W.A.S.	A.A.N.S.	A.A.M.W.S.	CIVIL.	R.A.N.	R.A.A.F.	**	TOTAL.																									
				A.	16									16																									
				E.(1)																																			
				E.(2)																																			

Analysis of Part A to be shown here by ALL units. Only units notified in para. 10 of instructions for compilation of form will complete Part E(1) & E(2).

* Insert detail of higher ranks as necessary.
** Personnel belonging to a category not provided for in the analysis will be shown in this Col. Particulars will be shown, e.g., 20 U.K. Forces; 10 N.Z. Forces.

PART B.—PARTICULARS OF OFFICERS JOINED OR QUITTED DURING WEEK.

OFFICERS JOINED DURING WEEK

Army No.	Rank.	Name and Initials.	Unit From.	Date.	CAUSE.

OFFICERS QUITTED DURING WEEK.

Army No.	Rank.	Name and Initials.	Unit To.	Date.	CAUSE.

PART C.—DESCRIPTION OF OFFICERS WHOSE RETURN TO (Unit) IS PARTICULARLY REQUESTED. / / 194

Army No.	Rank.	Name and Initials.	REMARKS (e.g., present whereabouts if known).

HQ 24 Aust Inf Bde

Unit

Army Form W3008
(Adapted) (Page 2)
(Revised Jan., 1943)

13 45
/ (Serial No.)

PART D.—NOMINAL ROLL OF OFFICERS ON POSTED STRENGTH

At 0600 Hrs. Saturday 31 / 3 / 1945 (Total to agree with Columns 4 and 7 of Part A.)

1	2	3	4	5	6	7	8
Substantive Rank and Higher Temporary Rank if Held.	Army Number.	Surname.	Initials.	Posting.	Whether present with Unit (insert Yes or No)	If not present with Unit, state how employed.	Date of Detachment.
T/Brig	VX133	PORTER	SRIC	Cond	No	Adv HQ 9 Aust Div	21.3.45
Maj	EX12355	STANILAND	HB	BE	No	Adv HQ 9 Aust Div	22.3.45
Capt	EX15634	NEWTON	AJC	SC	Yes		
Capt	VX69765	LIPMAN	NJ	SC(L)	No	Adv HQ 9 Aust Div	15.3.45
Capt	EX34665	GIOVANELLI	WNL	Legal	Yes		
Capt	VX39292	REID	IH	MASCO	Yes		
T/Capt	EX12543	KENNEDY	RE	TO	Yes		
T/Capt	EX22429	ROSE	JJ	LO	Yes		
Lt	EX133152	YATES	JB	Amen O	Yes		
Lt	EX26189	PASCOE	A	Hyg O	Yes		
Lt	EX34665	BACON	EA	Educ O	Yes		
Lt	EX115160	DURKIN	SMcC	BOO	Yes		
Lt	EX101130	GIBSONS	A	LO	No	Det 2/32 Aust Inf Bn	20.3.45
Capt	VX60769	HOLT	WF	Chap	No	Det 2/28 Aust Inf Bn	19.2.45
Capt	EX166497	ROMANUS	F	Chap	No	Det 2/32 Aust Inf Bn	7.2.45
Capt	EX33459	MACLIVER	A	Chap	No	Det 2/43 Aust Inf Bn	

PART E.—NOMINAL ROLL OF OFFICERS ATTACHED FROM OTHER UNITS.

Substantive Rank and Higher Temporary Rank if Held.	Army Number.	Name and Initials.	Unit.	Date of Attachment.	Nature of Attachment.
Capt	EX19051	SHEA R E	2/28 Bn	24.1.45	A/M/O
Lt	EX35713	WHITMAN G A	2/28 Bn	16.3.45	A/O
Lt	EX10752	NORTH S F	2/32 Bn	16.3.45	A/O

31.3.45

Date of Despatch

30 24 Aust Inf Bde

Signature of Commander

PART E. Detail of Present Strength and Reinforcements required as shown in Part A of Army Form W.3009 at 0600 Hours Saturday / / 194 .

Details of Tradesmen. GROUP I.	W.E.	Posted Strength.	Reints. Required.	Details of Tradesmen. GROUP I. (cont.)	W.E.	Posted Strength.	Reints. Required.	Details of Tradesmen. GROUP II. (cont.)	W.E.	Posted Strength.	Reints. Required.	Details of Tradesmen. GROUP III. (cont.)	W.E.	Posted Strength.	Reints. Required.
Ammunition Examiners				Surveyors, Engineering				Operating Room Assts.				G.P.O. Assistants			
Armament Artificer Fitter				Surveyors, R.A.A.				Operator, Keyboard				Hammermen			
Armament Artificer Fitter (Electrical)				Surveyors, Topographical				Operator, Line				Leather Stitchers			
Armament Artificer Fitter (M.V.)				Surveyors, Trigonometrical				Operator, Signal				Orderlies, Nursing			
Armament Artificer Fitter (A.F.V.)				Toolmakers				Operator, Switchboard				Orderlies, Nursing Mental			
Armament Artificer Instrument				Turners				Operator, Wireless				Plate Layers			
Armament Artificer Radio				Watchmakers				Opticians				Rangetakers			
Armament Artificer Signals				Welders				Painters				Riveters			
Armament Artificer Wireless								Panel Beaters				Roughriders			
Artificer, Artillery								Photographer, Dry Plate				Saddlers			
Artificer, Engine								Predictor Numbers				Saddletree makers			
Blacksmiths								Printers				Shoemaker and Boot Repairer			
Bricklayers								Radiographers				Stevadores			
Computers								Riggers				Stokers, Staty. Engine			
Cooks, Hospital				GROUP II.				Sawyers				Storemen, Technical			
Coppersmiths				Armourers				Signallers				Tailors			
Dispensers				Axemen				Signwriters				Textile Refitters			
Draughtsmen				Bakers				Telescope Identfn. Numbers				Tinsmiths			
Draughtsmen (Architectural)				Bty. Comd's. Asst.				Well Borers				Vulcanizers			
Draughtsmen (Engineering)				Bollermakers				Wheelers				Wagon Erectors			
Draughtsmen (Mechanical)				Carpenters				Winchman				Whitesmiths			
Draughtsmen (Topographical)				Carpenters and Joiners				Wireman							
Electricians				Cooks				Woodturners							
Electricians (M.V.)				Dental Mechanics											
Electricians (Signals)				Driver-Mech. (Eng. and Med.)											
Fitters				Driver-Operator											
Fitters (Cycle)				Drainers											
Fitters (Electrical)				Electricians											
Fitters (Gun)				Electricians (Engineers)											
Fitters (Instrument)				Fire Control Operators											
Fitters (M.V.)				Gun Operator				GROUP III.				DETAILS OF NON-TRADESMEN.			
Fitters, Railway Signal				Hatchman				Battery Surveyors							
Fitters, Signals				Height Taker				Butchers							
Grinder, Precision				Helio Operator				Clerks							
Mechanics, Instrument				Instrument Operator				Clerks, Supply							
Mechanics, Instrument (Signals)				Intelligence Duties				Clerks, Technical							
Mechanics, Instrument (Surgical)				Joiners				Coach Trimmers							
Mechanics, Radio				Joiners				Concretors							
Mechanics, Typewriter				Lineman				Cooks							
Mechanics, Wireless				Lineman, Signals				Dental Clerk Orderlies							
Millwrights				Lithographers				Despatch Riders							
Operators, Excavator				Machinists, Metal				Draughtsmen, Signals							
Pattern Maker				Machinists, Wood				Drivers, H.T.							
Pharmacist				Masons				Driver Mechanics							
Photographer, Wet Plate				Masseurs				Driver Tptn. Plant							
Photowriter				Mechanics, M.T.				Engine Hands, I.C.							
Plumber				Miners				Equipment Repairers							
Saw Doctors				Moulders				Farriers							
Surveyors				Nurses, Trained				Fitters' Mates							
				Observation Post Assts.				Gun Layers							
CARRIED FORWARD				CARRIED FORWARD				CARRIED FORWARD				Totals of columns marked * to agree with columns 4 and 7, and 1 and 10 of Part A. respectively.			*

NOTES.—(a) If rank other than private is involved give details on back.
 (b) Authorised trades or specialists not included in list will be added as required in spaces provided.
 (c) Where A.W.A.S. and/or A.A.M.W.S. personnel are desired show details on back.
 (d) Where replacement not desired note accordingly on return by insertion of N.R. in col. "Reints. Required."
 (e) Where any request or notation is made on back of form, the words "See Back" should be written in one of the blank spaces on this page.

3 Mar 45

Date of Despatch

3024 Just Inf Bde

Signature of Commander

DETAILS OF SERVICES PERSONNEL

SERVICE	TRADE OR DUTY	RANK	NO	POSTED STR	DEF	SURPLUS
AACHD	BATMAN/DVRS	PTE	3	3		
AASC	CLERKS	CPL	1	1		
	BATMAN/DVRS	PTE	1	1		
AAMC	MEDICAL ORDERLY	CPL	1	1		
AAGC	ARMY EXAMINERS	SOT	1	1 (Ssjt)		
	BATMAN/DVRS	Cpl PTE	1	1 1		1 XXX
AALC	CLERK	CPL	1	1 (Pte)		
	BATMEN	PTE	1	1		
XXXX SALVATION ARMY	REP	4/ Cpl	-	1		1
AAGS	SOT CLERK INCLUDED IN PREVIOUS PART AS SOT CLERK (TG 3)					
AAMens	SOT CLERK INCLUDED IN PREVIOUS PART AS SOT CLERK (TG3)					
<u>TOTAL</u>				12	-	2
ADD TOTAL FROM PAGE 1				63	2	9
GRAND TOTAL			66	75	2	11

XXX This Cpl will be transferred to 2 Aust Beach Gp immediately on his return from ARL.

XXXX Arrangements are being made with Salvation Army Rep 9 Aust Div to have this Cpl struck off strength of this HQ and reposted. Cpl is at present detached to 2/32 Aust Inf Bn.

Despatched 3 Mar 45

A. Hewton Capt
 SC 24 Aust Inf Bde
 Signed

WE II/2/4

Serial - 9/45

DETAILS OF OTHER RANKS BY RANKS AND TRADES AND DUTIES

Trade Gp	Trade or Duty	Rank	WE	Posted Str	Def	Surplus	
1.	DRAUGHTSMEN (INF)	CPL	1	1			
		PTE	1	1			
2.	COOKS (AACC)	CPL	1	1			
		PTE	2	2			
		INTELLIGENCE DUTIES	S/SJT	1	1		
		CPL	1	1			
		PTE	2	3		1	
3.	CLERKS (INF)	WO II	1	1			
		SJT	2	2			
		CPL	1	2		1	
		PTE	2	2			
<u>Non-Specialists</u>	BATMEN	PTE	13	12	1		
	TPT SJT	SJT	1	1			
	DRIVERS MT	CPL	1	1			
		PTE	8	12		5	
	HYGIENE DUTIES	PTE	1	1			
	ORDERLIES	PTE	9	10		1	
	WATER DUTIES	PTE	1	1			
	GEN DUTIES	CPL	1	1			
		PTE	2	4		2	
		(OFFERS MESS) CPL	1	1			
	STOREMAN	PTE	1	1			
	CSM	WO II	1	-		1	
	CAMS	S/SJT	1	1			
	TOTAL		65	65	2	9	

SERVICES

SEE OVERLEAF

PART E. Detail of Present Strength and Reinforcements required as shown in Part A of Army Form W.3009 at 0600 Hours Saturday / /194 .

Details of Tradesmen. GROUP I.	W.E.	Posted Strength.	Reints. Required.	Details of Tradesmen. GROUP I. (cont.)	W.E.	Posted Strength.	Reints. Required.	Details of Tradesmen. GROUP II. (cont.)	W.E.	Posted Strength.	Reints. Required.	Details of Tradesmen. GROUP III. (cont.)	W.E.	Posted Strength.	Reints. Required.
Ammunition Examiners				Surveyors, Engineering				Operating Room Aasts.				G.P.O. Assistants			
Armament Artificer Fitter				Surveyors, B.A.A.				Operator, Keyboard				Hammersmen			
Armament Artificer Fitter (Electrical)				Surveyors, Topographical				Operator, Line				Leather Stitchers			
Armament Artificer Fitter (M.V.)				Surveyors, Trigonometrical				Operator, Signal				Orderlies, Nursing			
Armament Artificer Fitter (A.F.V.)				Toolmakers				Operator, Switchboard				Orderlies, Nursing Mental			
Armament Artificer Instrument				Turners				Operator, Wireless				Plate Layers			
Armament Artificer Radio				Watchmakers				Opticians				Rangetakers			
Armament Artificer Signals				Weiders				Painters				Rivettors			
Armament Artificer Wireless								Panel Beaters				Roughriders			
Artificer, Artillery								Photographer, Dry Plate				Saddlers			
Artificer, Engine								Predictor Numbers				Saddletree makers			
Blacksmiths								Printers				Shoemaker and Boot Repairer			
Bricklayers								Radfographers				Stevadores			
Computers								Riggers				Stokers, Staty. Engine			
Cooks, Hospital				GROUP II				Sawyers				Storemen, Technical			
Coppersmiths				Armourers				Signallers				Tailors			
Dispensers				Axemen				Signwriters				Textile Refitters			
Draughtsmen				Bakers				Telescope Identin. Numbers				Tinsmiths			
Draughtsmen (Architectural)				Bty. Comd's. Asst.				Well Borers				Vulcanizers			
Draughtsmen (Engineering)				Bollermakers				Whealers				Wagon Erectors			
Draughtsmen (Mechanical)				Carpenters				Winchman				Whitesmiths			
Draughtsmen (Topographical)				Carpenters and Joiners				Wireman							
Electricians				Cooks				Woodturners							
Electricians (M.V.)				Dental Mechanics											
Electricians (Signals)				Driver-Mech. (Eng. and Med.)											
Fitters				Driver-Operator											
Fitters (Cycle)				Drainers											
Fitters (Electrical)				Electricians											
Fitters (Gun)				Electricians (Engineers)											
Fitters (Instrument)				Fire Control Operators				GROUP III.				DETAILS OF NON-TRADESMEN.			
Fitters (M.V.)				Gun Operator				Battery Surveyors							
Fitters, Railway Signal				Hatchman				Butchers							
Fitters, Signals				Height Taker				Clerks							
Grinder, Precision				Helio Operator				Clerks, Supply							
Mechanics, Instrument				Instrument Operator				Clerks, Technical							
Mechanics, Instrument (Signals)				Intelligence Duties				Coach Trimmers							
Mechanics, Instrument (Surgical)				Joiners				Concretors							
Mechanics, Radio				Lineman				Cooks							
Mechanics, Typewriter				Lineman, Signals				Dental Clerk Orderlies							
Mechanics, Wireless				Lithographers				Despatch Riders				ATTACHED BY W.E.			
Millwrights				Machinists, Metal				Draughtsmen, Signals							
Operators, Excavator				Machinists, Wood				Drivers, H.T.							
Pattern Maker				Masons				Driver Mechanics							
Pharmacist				Masseurs				Driver Tptn. Plant							
Photographer, Wet Plate				Mechanics, M.T.				Engine Hands, L.C.							
Photowriter				Miners				Equipment Repairers							
Plumber				Moulders				Farriers							
Saw Doctors				Nurses, Trained				Fitters' Mates							
Surveyors				Observation Post Aasts.				Gun Layers							
CARRIED FORWARD				CARRIED FORWARD				CARRIED FORWARD				Totals of columns marked * to agree with columns 4 and 7, and 1 and 10 of Part A. respectively.	*	*	

NOTES.—(a) If rank other than private is involved give details on back.
(b) Authorised trades or specialists not included in list will be added as required in spaces provided.
(c) Where A.W.A.S. and/or A.A.M.W.S. personnel are desired show details on back.
(d) Where replacement not desired note accordingly on return by insertion of N.R. in col. "Reints. Required."
(e) Where any request or notation is made on back of form, the words "See Back" should be written in one of the blank spaces on this page.

10 Mar 45

Date of Despatch

A. Heston Capt

Signature of Commander

UNIT. HQ 24 Aust Inf Bde

Week Ending Saturday 10 Mar 45

WE II/2/4

Serial - 10/45

DETAILS OF OTHER RANKS BY RANKS AND TRADES AND DUTIES

Trade Gp	Trade or Duty	Rank	WE	Posted Str	Def	Surplus	
1.	DRAFTSMEN (INF)	CPL	1	1			
		PTE	1	1			
2.	COOKS (AACC)	CPL	1	1			
		PTE	2	2			
		INTELLIGENCE DUTIES	S/SJT	1	1		
			CPL	1	1		
		PTE	2	3		1 1	
3.	CLERKS (INF)	WO II	1	1			
		SJT	2	2			
		CPL	1	2		1	
		PTE	2	2			
<u>Non-Specialists</u>	BATMEN	PTE	13	12	1		
	TPT SJT	SJT	1	1			
	DRIVERS MT	CPL	1	1			
		PTE	8	13		5	
	HYGIENE DUTIES	PTE	1	1			
	ORDERLIES	PTE	9	10		1	
	WATER DUTIES	PTE	1	1			
	GEN DUTIES	CPL	1	1			
		PTE	2	4		2	
		(OFFRS MESS)CPL	1	1			
	STOREMAN	PTE	1	1			
	CSM	WO II	1	-	1		
	CQMS	S/SJT	1	1			
TOTAL			64		2	10	

SERVICES

SEE OVERLEAF

/x/ 2 Personnel NOT trade grouped

DETAILS OF SERVICES PERSONNEL

SERVICE	TRADE OR DUTY	RANK	WE	POSTED STR	DEF	SURPLUS
AAChD	BATMAN/DVRS	PTE	3	8		
AAAC	CLERKS	CPL	1	1		
	BATMAN/DVRS	PTE	1	1		
AAAC	MEDICAL ORDERLY	CPL	1	1		
AAOC	ARMY EXAMINERS	SPT	1	1 (s sjt)		
	AAOC Rep/DVRS	ACP PTE	1	1		1 XX
AAAC	CLERK	CPL	1	1 (pte)		
	BATMEN	PTE	1	1		
SALVATION ARMY	SPT CLERK INCLUDED IN PREVIOUS PART AS SPT CLERK (TG 3)	Cpl		1		1 XXX
ARMENIA	SPT CLERK INCLUDED IN PREVIOUS PART AS SPT CLERK (TG3)					
<u>TOTAL</u>				12		2
ADD TOTAL FROM PAGE 1				64		10
GRAND TOTAL				76	2	12

XX This Cpl will be transferred to 2 Aust Mil Ldg Gp on return from ARL

XXX Arrangements are being made with Subgion Army Rep 9 Aust Div for this Cpl to be transferred from this HQ and reposted.

WE II/2/4

Serial - 11/45

DETAILS OF OTHER RANKS BY RANKS AND TRADES AND DUTIES

Trade Gp	Trade or Duty	Rank	WE	Posted Str	Def	Surplus	
1.	DRAUGHTSMEN (INF)	CPL	1	1			
		PTE	1	1			
2.	COOKS (AACC)	CPL	1	1			
		PTE	2	2			
		INTELLIGENCE DUTIES	S/SJT	1	1		
			CPL	1	1		
			PTE	2	3		1 (Two pers NOT trade grouped)
3.	CLERKS (INF)	WO II	1	1			
		SJT	2	2			
		CPL	1	2		1	
		PTE	2	2			
<u>Non-Specialists</u>	BATMEN	PTE	13	12	1		
	TPT SJT	SJT	1	1			
	DRIVERS MP	CPL	1	1			
		PTE	8	13		5	
	HYGIENE DUTIES	PTE	1	1			
	ORDERLIES	PTE	9	10		1	
	WATER DUTIES	PTE	1	1			
	GEN DUTIES	CPL	1	1			
		PTE	2	4		2	
	(OFFRS MESS)	CPL	1	1			
	STOREMAN	PTE	1	1			
	CSM	WO II	1	1(T/WO I)			
	COMS	S/SJT	1	1			
	TOTAL		65		1	10	

SERVICES

SEE OVERLEAF

DETAILS OF SERVICES PERSONNEL

SERVICE	TRADE OR DUTY	RANK	WE	POSTED STR	DEF	SURELUS
AACHD	BATMAN/DVRS	PTE	3	3		
AASC	CLERKS	CPL	1	1		
	BATMAN/DVRS	PTE	1	1		
AAMC	MEDICAL ORDERLY	CPL	1	1		
AEOC	ARMY EXAMINERS	SPT	1	1(Ssjt)		
	BATMAN/DVRS	PTE	1	1		
AALC	CLERK	CPL	1	1(Pte)		
SALVATION ARMY	BATMEN	PTE	1	1		
		A/Cpl		1		1
AACCS	SPT CLERK INCLUDED IN PREVIOUS PART AS SPT CLERK (TG 3)					
AAMENS	SPT CLERK INCLUDED IN PREVIOUS PART AS SPT CLERK (TG3)					
	<u>TOTAL</u>			11		1
	ADD TOTAL FROM PAGE 1			65	1	10
	GRAND TOTAL			76	1	11

A. Hunter Capt.
S.G. 24 Aust Inf Bde

UNIT. HQ 24 Aust Inf Bde

Week Ending Saturday 24. 3. 45

WE II/2/4

Serial - 12 /45

DETAILS OF OTHER RANKS BY RANKS AND TRADES AND DUTIES

Trade Gp	Trade or Duty	Rank	WE	Posted Str	Def	Surplus	
1.	DRAUGHTSMEN (INF)	CPL	1	1			
		PTE	1	1			
2.	COOKS (AACC)	CPL	1	1			
		PTE	2	2			
		INTELLIGENCE DUTIES	S/SJT	1	1		
			CPL	1	1		
		PTE	2	3		(NOT trade 1 (grouped))	
3.	CLERKS (INF)	WO II	1	1			
		SJT	2	2			
		CPL	1	2		1	
		PTE	2	2			
<u>Non-spec- ialists</u>	BATHMEN	PTE	13	13			
	TFT SJT	SJT	1	1			
	DRIVERS MT	CPL	1	1			
		PTE	8	13		5	
	HYGIENE DUTIES	PTE	1	1			
	ORDERLIES	PTE	9	9			
	WATER DUTIES	PTE	1	1			
	GEN DUTIES	CPL	1	1			
		PTE	2	4		2	
		(OFFRS MESS) CPL	1	1			
	STOREMAN	PTE	1	1			
	CSM	WO II	1	1			
	CAMS	S/SJT	1	1			
	TOTAL			65		9	

SERVICES

SEE OVERLEAF

MAR 24 1945

J 770/22

DETAILS OF SERVICES PERSONNEL

SERVICE	TRADE OR DUTY	RANK	NO	POSTED STR	DEF	SURPLUS
AAChD	BATMAN/DVRS	PTE	3	3		
AASC	CLERKS	CPL	1	2		1 (B2)
	BATMAN/DVRS	PTE	1	1		
AAMC	MEDICAL ORDERLY	CPL	1	1		
AAOC	ARM EXAMINERS	SPT	1	1 (Ssjt)		
	BATMAN/DVRS	PTE	1	1		
AALC	CLERK	CPL	1	1 (pte)		
	BATMEN	PTE	1	1		
SALVATION ARMY AACS		A/Cpl		1		1
	SPT CLERK INCLUDED IN PREVIOUS PART AS SPT CLERK (TG 3)					
Aamens	SPT CLERK INCLUDED IN PREVIOUS PART AS SPT CLERK (TG3)					
	<u>TOTAL</u>			12		2
	ADD TOTAL FROM PAGE 1			65		9
	GRAND TOTAL			77		11

A. Y. Hester Capt.
S.O. 24 Aust Inf Bde
24 MAR 1945

UNIT. HQ 24 Aust Inf Bde

Week Ending Saturday 31. 5. 45

WE II/2/4

Serial -25 /45

DETAILS OF OTHER RANKS BY RANKS AND TRADES AND DUTIES

Trade Gp	Trade or Duty	Rank	WE	Posted Str	Def	Surplus	
1.	DRAUGHTSMEN (INF)	CPL	1	1			
		PTE	1	1			
2.	COOKS (AACC)	CPL	1	1			
		PTE	2	2			
		INTELLIGENCE DUTIES	S/SJT	1	1		
			CPL	1	1		
			PTE	2	3		1
3.	CLERKS (INF)	WO II	1	1			
		SJT	2	2			
		CPL	1	2		1	
		PTE	2	2			
<u>Non-Specialists</u>	BATMEN	PTE	13	12	1		
	TPT SJT	SJT	1	1			
	DRIVERS MT	CPL	1	1			
		PTE	8	13		5	
	HYGIENE DUTIES	PTE	1	1			
	ORDERLIES	PTE	9	9			
	WATER DUTIES	PTE	1	1			
	GEN DUTIES	CPL	1	1			
		PTE	2	5		3	
		(OFFRS MESS)CPL	1	1			
	STOREMAN	PTE	1	1			
	CSM	WO II	1	1			
	CQMS	S/SJT	1	1			
TOTAL				65	1	10	

SERVICES

SEE OVERLEAF

DETAILS OF SERVICES PERSONNEL

SERVICE	TRADE OR DUTY	RANK	WE	POSTED STR	DEF	SURRELUS
AAChD	BATMAN/DVRS	PTE	3	2	1	
AAAC	CLERKS	CPL	1	2		1 (B2)
	BATMAN/DVRS	PTE	1	1		
AAAC	MEDICAL ORDERLY	CPL	1	1		
AAOC	ARM EXAMINERS	SPT	1	1(Ssjt)		
	BATMAN/DVRS	PTE	1	1		
AAAC	CLERK	CPL	1	1(Pte)		
	BATMEN	PTE	1	1		
SALVATION ARMY RAACS	SPT CLERK INCLUDED IN PREVIOUS PART AS SPT CLERK (TG 3)	A/Cpl		1		1
AAAC	SPT CLERK INCLUDED IN PREVIOUS PART AS SPT CLERK (TG3)					
<u>TOTAL</u>				11	1	2
ADD TOTAL FROM PAGE 1				65	1	10
GRAND TOTAL				76	2	12

Date of despatch 31 Mar 45

A. Hunter Capt
SG 24 Aust Inf Bde

UNIT. HQ 24 Aust Inf Bde

Week Ending Saturday 31. 3. 45

WE II/2/4

Serial -13 /45

DETAILS OF OTHER RANKS BY RANKS AND TRADES AND DUTIES

Trade Gp	Trade or Duty	Rank	WE	Posted Str	Def	Surplus	
1.	DRAUGHTSMEN (INF)	CPL	1	1			
		PTE	1	1			
	2.	COOKS (AACC)	CPL	1	1		
			PTE	2	2		
		INTELLIGENCE DUTIES	S/SJT	1	1		
			CPL	1	1		
		PTE	2	3		1	
3.	CLERKS (INF)	WO II	1	1			
		SJT	2	2			
		CPL	1	2		1	
		PTE	2	2			
<u>Non-Specialists</u>	BATMEN	PTE	13	12	1		
	TPT SJT	SJT	1	1			
	DRIVERS MT	CPL	1	1			
		PTE	8	13		5	
	HYGIENE DUTIES	PTE	1	1			
	ORDERLIES	PTE	9	9			
	WATER DUTIES	PTE	1	1			
	GEN DUTIES	CPL	1	1			
		PTE	2	5		3	
	(OFFRS MESS)	CPL	1	1			
	STOREMAN	PTE	1	1			
	CSM	WO II	1	1			
	Comd	S/SJT	1	1			
TOTAL				65	1	10	

SERVICES

SEE OVERLEAF

SI
 DETAILS OF SERVICES PERSONNEL

SERVICE	TRADE OR DUTY	RANK	WE	POSTED STR	DEF	SURPLUS
AACHD	BATMAN/DVRS	PTE	3	2	1	
AASC	CLERKS	CPL	1	2		1 (B2)
	BATMAN/DVRS	PTE	1	1		
AAMC	MEDICAL ORDERLY	CPL	1	1		
AADC	ARM EXAMINERS	SPT	1	1 (Ssjt)		
	BATMAN/DVRS	PTE	1	1		
AALC	CLERK	CPL	1	1 (Pte)		
	BATMEN	PTE	1	1		
SALVATION ARMY AACS		A/Cpl		1		1
	SPT CLERK INCLUDED IN PREVIOUS PART AS SPT CLERK (TG 3)					
Aammens	SPT CLERK INCLUDED IN PREVIOUS PART AS SPT CLERK (TG3)					
	<u>TOTAL</u>			11	1	2
	ADD TOTAL FROM PAGE 1			65	1	10
	GRAND TOTAL			76	2	12

Date of despatch 131 Mar 45

A. L. ... Capt
 SC 24 Aust Inf Bde

01 I 08

War Diary ①
UNCLASSIFIED

Copy No. 34

3 Mar 45

24 APRIL 1945 TO 25

PERIOD 7 APR - 31 APR 45

GEN:

1. Trg during the forthcoming period will be carried out despite any adverse weather conditions, except of an extreme nature.

MARCHING

2. Two essentials are exercises involving:-

- (a) Route marching
- (b) The overcoming of tropical rain conditions.

3. Route Marching

- (a) The standard to be obtained in (a) above is one whereby tps are able to march 20 miles per day without distress, on successive days, and be fit for battle at the end of each day.
- (b) Particular attention will be paid to the following:-
 - (i) Variation of length of pace and speed in accordance with the terrain.
 - (ii) Subunits will remain intact, without stragglers, and march with a common pace. Variations in distance between files will only occur for tactical reasons. Otherwise, the necessary elasticity of distance will occur only as between subunits. The necessity for such elasticity should only occur when traversing hilly terrain.
 - (iii) On rds and tracks men will march in step; and, the step will be set by an overage man.
 - (iv) March discipline, incl water discipline and points to be attended to at halts, will be strictly adhered to.
 - (v) Men will be correctly equipped. Weight will be evenly distributed on the shoulders. Footwear will be correctly maintained; and, the condition of feet will be studied.
 - (vi) Men carrying pl weapons or wireless sets will be relieved of their loads regularly. It is particularly necessary to assist wireless and tele operators who have to set up coms during halts. It is no relief for the latter if they are relieved of a heavy set only to be loaded with another man's rifle and eqpt which is heavier than the set. Means must be devised of sharing the weight of sig and other eqpt over a whole coy etc. This involves special organisation.

(vii) It is a point of honour to finish a march with the "team".

4. Bivouadding

- (a) The routine to be adopted at the end of a day's adm march is:-
- (i) Build a waterproof shelter
 - (ii) Make a bed, off the ground.
 - (iii) Wash and change into dry clothes. Carry out anti-disease precautions.
 - (iv) Attend to messing.
- (b) Experience has provided us with quick and simple methods of executing (i) and (ii) above; and, such must be taught and insisted upon as routine, in all adm moves.
- (c) Always call a halt so that sufficient time is available for the above routine, before dark.
- (d) Always give consideration to halting in places where natural vegetation provides the necessary materials for shelter building.
- (e) Men should carry among other things, a dry change of clothes, a ground sheet and a gas cape. These are necessary for bivouadding. Do not encourage wearing the dry change of clothes for marching in, simply because the other set is wet. This will result in two wet sets.
- (f) It is better to commence the day's march in wet clothes than commence a night's rest in the same.

GEN TRG

5. The trg detailed in paras 5 to 12 of Trg Instr 24 will be continued.

COOPERATION WITH ARTY

6. During the period an exercise incl cooperation with Arty will be conducted. The exercise will take the form of a Bde in def with Arty in sp. The Bde will "dig in" and requests for DF and SOS tasks will be made. Five rounds will be fired in response to these calls.

7. Details will be issued separately.

SCHOOLS

8. (a) 100 School

- (i) No 15 Course 100 Wing Bde Trg School will commence on the 15 Mar 45.
- (ii) 10 vacancies are allotted to each Bn and one to Bde HQ.
- (iii) Students will report to the CI at 1500H 14 Mar 45.
- (iv) Nominal rolls of students, with copy to Bde Trg School, are required NOT later than 12 Mar 45.

(b) Snipers' School

- (i) No 2 Course Snipers' Wing Bde Trg School will commence on Mon 12 Mar 45.
- (ii) 4 vacancies are allotted to each Bn.
- (iii) Students will report to the CI at 1500K 11 Mar 45.
- (iv) Nominal rolls of students, with copy to Bde Trg School are required NOT later than 9 Mar 45.
- (v) Units will commence their own Snipers' Schools with personnel who have qualified at the Bde School acting as instrs.

(c) Flame Warfare School

- (i) The policy regarding the Flame Warfare Wing Bde Trg School will be issued separately.
- (ii) Instrs will remain with their units until further advice.

(d) MG School

- (i) A 2 weeks MG School on Technical machine gunnery, theory of indirect fire, etc. will be conducted in 2/32 Aust Inf Bn lines
- (ii) Lt D. BIRNBY, 2/32 Aust Inf Bn, No CI. 2/43 Aust Inf Bn will sp one NCO as assistant Instr.
- (iii) Students will consist of all gunners who did NOT attend the advanced wing of the MG school conducted in 2/28 Aust Inf Bn lines in Feb.
- (iv) Units will arrange details direct with 2/52 Aust Inf Bn.

(e) Sig School

The 2/28 Aust Inf Bn Sig School will continue.

W. J. Anderson Maj.
 BI 24 Aust Inf Bde

DISTRIBUTION

Copy No

2/28 Aust Inf Bn	1-7
2/32 Aust Inf Bn	8-14
2/43 Aust Inf Bn	15-21
Bde Trg School	22
2/12 Aust Pd Regt	23
9 Aust Div	24
Comd	25
BI	26
SC	27
LC I	28
Bde Sup Offr	29
Bde Sig Offr	30
Camp	31
File	32-33
War Diary	34-35

War Diary

2

HQ 24 Aust Inf Bde
Mar 45

24 AUST INF BDE TRG NOTES

These Notes re issued from time to time, as distinct from Trg Instrs, for circulation to all offrs.

EXTRACT FROM 1 AUST CORPS WEEKLY INTELLIGENCE SUMMARY NO 25

- 1. "For the first time in the SWPA counter-offensive, the enemy has employed artillery in mass. Prior to the LUZON campaign, even a battery concentration was exceptional; the enemy's usual practice was to use single guns. However, it is now reported that guns have not only been used for concentrations of fire; but, that they have been skilfully placed."

Note:- It would appear that digging is important when consolidating.

MARCH DISCIPLINE

- 2. Att as Appx "A" are some notes on March Discipline prepared by 2/43 Aust Inf Bn.

[Signature]
 BM 24 Aust Inf Bde.

DISTRIBUTION

2/28 Aust Inf Bn	7
2/32 Aust Inf Bn	7
2/43 Aust Inf Bn	7
Bde Trg School	3
9 Aust Div	1
Comd	1
BM	1
BM(L)	1
SS	1
SO(I)	1
IOs	1
IO	3
Camp	1
Sigs	1
GA Pl	1
LAD	1
File	1
War Diary	2
	2

MARCH DISCIPLINE

The following points on March Discipline are forwarded in order that the standard be improved, throughout the Bn, forthwith. They will be observed by all ranks.

BEFORE MARCHING OFF - Check the following :-

1. Clothing worn is as ordered, is clean and in repair. When ordered, that the soldier has a complete change, incl socks.
2. Egpt is as ordered, and well fitting. Special attention is necessary in this regard.
3. Boots are in repair, dry, cleaned or dubbined and laces are in good order.
4. Socks are worn and in good repair. A worn sock or a badly mended sock will almost always result in foot trouble. Few tps can normally work and train without socks. Some do not wear them either because they are not in possession of them, or have not washed them at the proper time.
5. Inspect the feet. Ensure that they are clean, foot powder applied liberally to the feet, socks and insides of boots. Ensure that abrasions are treated by the SB and that plaster, where necessary, has been carefully applied.
6. Ensure men are in possession of foot powder contained in a tobacco tin to ensure protection from moisture.
7. Make certain your SB is equipped to give adequate attention to minor foot ailments and is able to treat insect and snake bites. The RMO is not the br-chiropridist. First aid of all kinds must be given by the SB.
8. Check water bottles. Make certain they are filled to the amount ordered and the water is sterilized and detasted.
9. If tea is not being made from the water bottle add one or two salt tablets, or their equivalent in cooking salt.
10. A small proportion of fruit juice - 1 tablespoon full - in the water bottle is a good thirst quencher.
11. Inform tps how long the contents of the water bottle must last them.
12. Inform them that all water is out of bounds unless orders to the contrary are given.
13. Do not give permission to fill water bottles from streams unless tps are in possession of sterilizing and detasting tablets.
14. Police crossing places at streams to prevent tps drinking stream water.
15. If water bottles are to be filled at a stream, the unused contents must first be emptied. Fill some of the water bottles of the sec with this sterilized water to ensure a sup of pure water.

16. There must be a lapse of an hour after adding the sterilizing tablet before the detasting tablet is added. This needs supervision.
17. Make certain your start time allows for 15/20 minutes marching at least before the first halt.
18. Synchronise your watches with Bn HQ.

ON THE MARCH

19. March clear of bn HQ and when returning to camp on approaching Bn HQ and on passing Bdc HQ at ATTENTION. Marching at ATTENTION does NOT mean carrying the weapon on one or other of the shoulders.
20. Decide the marching formation you propose to adopt and alter it as seldom as possible.
21. Whatever formation you use, make the files COVER OFF. Coln of route, file or single files means that each man must cover off the man in front. This includes officers.
22. ALWAYS MARCH IN STEP. No matter how tired tps are they will be less fatigued if they keep step. Offrs must constantly supervise this aspect of march discipline. It is of little use if offrs march at 120 paces to the minute at the head if the remnants of their subunit is strung out for hundreds of yds.
23. Set an even, steady pace and enquire from time to time whether the pace is suitable.
24. Place the man carrying heavy eqpt towards the front of your pl etc. He will help to set the pace. Through no fault of his own he may be the weakest link. You cannot do without that piece of eqpt he is carrying, otherwise he would not be carrying it.
25. Put the fainthearted and G.W's well to the fore. For the sake of peace and quietness they will keep going and in step.
26. Forbid any man to fall out of the march without permission of an offr. Otherwise you will find many individuals taking unto themselves wide powers of authority only too readily obeyed by those referred to in point 25.
27. If a man is ill, he must be encouraged to march until the next halt where he can rest and receive MEDICAL ATTENTION from the SB who must always remain with the coln. By no means are all men who report ill on the march on the verge of collapse.
28. Ensure that tps carrying heavy eqpt are provided with reliefs. This is often forgotten when at short notice tps from sp arms are att.
29. Forbid smoking on the march.
30. Make tps carry their weapons correctly.
31. Subunit comds should watch their coln march by at frequent intervals, particularly towards the end of the march, regaining their correct posn by the quickest means.
32. Keep well to side of rd. It is easier going and does not impede ML.
33. Send a man well fwd on dangerous parts of the route to slow down traffic. Protect the rear of the coln by the same means.

AT HALTS

34. Halt at the exact time wherever possible.
35. Give the order 'prepare to move' in sufficient time for all ranks to adjust their eqpt.
36. Make men sit or lie down at halts, loosen eqpt and rest. Placing the feet higher than the rest of the body is of value.
37. Stop men gulping quantities of water.
38. Select shade wherever possible.
39. Get all men off the road. Men sitting anywhere on the road are a menace to themselves.
40. Stop bad language, moans and groans. Deal quickly with the fellow who thinks it an ideal time for a wrestle. He's a bore.
41. Form your column up, standing at ease, before you move off. Give the comd "At ease, quick march". The order "Follow me", ideal when assaulting a strong post, is entirely inadequate on a route march.
42. If you are marching in column of route, change the centre file to one of the flanks. It's cooler on a hot day. If you are marching in file see that each file in turn gets its share of the good going.
43. Take the pace slowly for a start.

ON RETURN TO CAMP

44. A smart dismissal.
45. Footbaths and foot inspection.
46. A good meal.
47. Produce the sporting gear.

You may think of a few more points.
Put this in your pocket and check up on it at halts.
If you have missed any, watch them during the next period.
If you observe them your march discipline will greatly improve.

.....oo.....

was diary

SECRET

3

24 AUST INF BDE EXERCISE BEETLE

Copy No. 18.

GEN INSTRS

6 Mar 45.

Ref map 1 in to 1 mile IT GARNET

GEN

- 1. In this exercise, it has been necessary to sacrifice the tactical aspect in order that all tps may be exercised and also to ensure that the necessary safety precautions may be observed.

OBJECT

- 2. To exercise tps in the occupation and preparation of a def posn and to practice co-ordination and application of def fire tasks of arty and inf weapons using live arm.

TPS TAKING PART

- 3.
 - HQ 24 Aust Inf Bde
 - 24 Aust Inf Bde Sig Sec
 - 2/28 Aust Inf Bn
 - 2/32 Aust Inf Bn
 - 2/43 Aust Inf Bn
 - 2/12 Aust Fd Regt
 - C Coy 2/2 Aust IG Bn

AREA OF EXERCISE

- 4. IT ARCHER arty range

DATE AND DURATION

- 5. 13-15 Mar incl

CONTROL

- 6.

Director	-	Brig S.H. PORTER
Assistant	-	Maj H.B. STANILAND
Arty Advisor	-	Lt-Col G. HOUSTON
ITG Advisor	-	Capt R. CAMERON

CONDUCT OF EXERCISE

- 7.
 - (a) The Bde will move to the exercise area tactically and ROFT system will be used for the occupation of the def posn
 - (b) All coy areas will be dug as far as is possible in the time allowed. Weapon pits must be complete.
 - (c) Unit Comds will allot SOS and DF tasks for arty, ITG and mortars 3 in as considered necessary.
 - (d) Situations will be created by the director which will necessitate the calling for fire by coy and/or bn comds.

8. It is appreciated that much of the value of the exercise will be lost if fictitious safety arrangements are made. Unit comds will request fire from arty and IIG comds in the normal way and safety precautions to be observed are shown below.
9. On the morning of 15 Mar 2/12 Aust Fd Regt in conjunc with 2/3 Aust Tk A Regt will give a demonstration of bunker destruction using 25 pr, 75 IIG and 6 pr guns. 2/3 Aust Tk A Regt will also give a demonstration of the 4.2 in mortar.

SAFETY PRECAUTIONS

10. Following oftrs are responsible for safety :-

Inf Weapons	-	Bn Comd
IIG	-	Capt R. CAMERON
Arty	-	Lt-Col G. HOUSTON

11. The following safety limits will apply :-

- (a) Arty and Mortars 3 in - No rounds to fall closer to our tps than 250 yds.
- (b) IIG - 6°

12. In addition to those oftrs mentioned in para 10 above, all fire unit comds will act as safety oftrs.

13. (a) During the hrs of darkness the following weapons only will fire :-

Mortars 3 in
IIG
Arty

- (b) IIG on fixed lines may be fired during daylight.

- (c) No mortars 2 in, sub-machine guns, pistols or rifles will be fired during the exercise.

DRESS

14. Normal with helmets steel.

AD

15. Normal.

TIETABLE

16. Att as Appx A

CONFERENCE

17. Bde "O" gp incl comds 2/12 Aust Fd Regt and C Coy 2/2 Aust IIG Bn will RV at Bde H^q at 0900K 13 Mar 45.

W. J. ... Maj:
B 24 Aust Inf Bde.

DISTRIBUTION

Copy No

2/28 Aust Inf Bn	1
2/32 Aust Inf Bn	2
2/43 Aust Inf Bn	3
2/12 Aust Fd Regt	4
C Coy 2/2 Aust IG Bn	5
Cond	6
H	7
SC	8
LO(1)	9 - 10
Bde TO	11
Bde Sup Offr	12
Bde Sig Offr	13
2 Pl 2/1 Aust Gd Regt	14
2/76 Aust LAD	15
File	16 - 17
War Diary	18 - 19

TIMETABLE

Copy No. 18.....

(Issued with GEN INSTRS 24 Aust Inf Bde Exercise Beetle)

Serial No	Date	Event	Remarks
1	6 Mar 45	Gen instrs issued	
2	7 Mar 45	Opening narrative and Forecast of Events issued	
3	12 Mar 45	Issue of Warning Order for mov	
4	13 Mar 45	Conference Bde "O" Gp. Bde moves out to exercise area	
5	14 Mar 45	Occupation def posn	
6	15 Mar 45	Demonstration by 2/12 Aust Pd Regt and 2/3 Aust Tk A Regt	
7	16 Mar 45	Conference Bde "O" Gp	Time to be advised later

War Diary

④

24 AUSTRALIAN INFANTRY EXERCISE "BATTLE"

SECRET

Copy No. 18.

FORECAST OF EVENTS

7 Mar 45

Serial	Date	Time	Place	Unit	Event	Probable Action	Remarks
1	11 Mar	0900K	Bde HQ	Bde	Issue of Warning Order	Preparation for mov	
2	13 Mar	0900K	Bde HQ	Bde "O" Gp	Issue of outline plan	Bde F & T gps moving. CO's issue further warning orders and start recce	
3	14 Mar	0800K	DELAN 217825	Bde "O" Gp	Issue of final orders for def	CO's further recce and issue of orders to Bn "O" gps. F and T gps move to assembly areas	Guides meet "O" Gp at 215815
4	14 Mar			Bn "O" Gps	Issue of orders	Bn F Gps deploy	
5	14 Mar		Def posn	Bn "Y" Gps	Tps in posn	Gps will occupy main line of def and will not man outpost line until ordered by Bde HQ. All tps will continue digging main posn. DP tasks will be registered. One SOS task per bn will be allowed.	B echs will be sited:- 2/28 Aust Inf Bn - WEST of track 215815 2/32 Aust Inf Bn - EAST of track 215815 2/43 Aust Inf Bn - at 190840 (weather permitting or off PALMERSTON HIGHWAY).
6	14 Mar		Bn fronts	Each Bn	Call for SOS tasks and DP tasks	One bty will fire on each bn front. Units will incorporate firing of HMG and 3 in mortar DP tasks. HMGs may only fire by day. See Gen Instrs, Safety Precautions	Each bn will be advised by Bde HQ as to when it will call for its SOS. Bde Comd will choose own times for calling for DP tasks and record time interval between call for fire and fall of fire
7	night 14/15 Mar		"	"			

Serial	Date	Time	Place	Unit	Event	Probable Action	Remarks
8	15 Mar	0500K	Bn fronts	2/28 Bn	Call for one DF task	Call to be provided by fire of whole regt	Subject to limitations of amm
9		0520K	" "	2/32 Bn	" " " " "	ditto	ditto
10		0540K	" "	2/43 Bn	" " " " "	ditto	ditto
11		0600K	" "	Bde	Withdrawal starts	Each bn will withdraw as a bn exercise to assembly areas as follows:- 2/28 Aust Inf Bn - 1881 2/32 Aust Inf Bn - 1981 2/43 Aust Inf Bn - 2081	On completion of withdrawal, units will move to area of demonstration. Move to start NOT later than 0800K. Order of march:- 2/32 Aust Inf Bn Bde HQ 2/28 Aust Inf Bn 2/43 Aust Inf Bn
12		1130K	Tr A Range	Bde	Demonstration	Demonstration of various fuzes with 25 pr gun. Demonstration firing:- 6 pr 155 amm 4-2 in mortars 75 mm guns	Guides will meet units at entrance to Div Tr A range and conduct to stands. Lunch will be provided by units prior to move back to camp. Order of march for return to camp as for serial 11 above.

24 AUST INF BDE EXERCISE "BEETLE"

Copy No

GEN INSTRS

12 Mar 45

Ref Map : MT GARNET 1 in to 1 mile

GEN

1. 24 Aust Inf Bde Exercise "BEETLE" Gen Instrs of 6 Mar 45 are cancelled.
2. In this exercise, it has been necessary to sacrifice the tactical aspect in order that all tps may be exercised and also to ensure that the necessary safety precautions may be observed.

OBJECT

3. To exercise tps in the occupation and preparation of a def posn and to practice co-ordination and application of def fire tanks of arty and inf weapons using live amm.

TPS TAKING PART

4. Det HQ 24 Aust Inf Bde
24 Aust Inf Bde Sig Sec
2 Pl A Coy 2/1 Aust Gd Regt
2/28 Aust Inf Bn
2/32 Aust Inf Bn
2/43 Aust Inf Bn
2/12 Aust Fd Regt
C Coy 2/2 Aust MG Bn
Det 2/3 Aust Fd Amb.

AREA OF EXERCISE

5. MT ARCHER arty range

DATE AND DURATION

6. 13-15 Mar incl

CONTROL

7. Director - Brig S.H. PORTER
Assistant - Maj H.B. STANLAND
Arty Advisor - Lt-Col G. HOUSTON
MMG Advisor - Capt R. CAMERON

MOVE TO EXERCISE AREA

8. The Bde will move to bivouac areas in accordance with the following:-

(a) Areas - 2/28 Aust Inf Bn - square 1881
2/32 Aust Inf Bn - square 1981
2/43 Aust Inf Bn and C Coy
2/2 Aust MG Bn - Square 2081
Bde HQ and det 2/3 Aust Fd Amb -
Square 2480

(b) Route - PALMERSTON HIGHWAY

(c) SP - Camp Theatre 372827

(d) ST - 130700K

Boo hi

(c) Order of March

- 2/28 Aust Inf Bn
- 2/32 Aust Inf Bn
- 2/43 Aust Inf Bn
- Bde HQ.

(f) C Coy 2/2 Aust MG Bn and det 2/3 Aust Fd Amb may move under own arrangements.

(g) The move will be an adm move without protection.

CONDUCT OF EXERCISE

- 9. (a) All Coy areas will be dug as far as is possible in the time allowed. Weapon pits must be complete.
- (b) Unit Comds will allot SOS and DF tasks for arty, MMG and Mortars 3" as considered necessary.
- (c) Situations will be created by the Director which will necessitate the calling for fire by coy and/or bn comds.

10. It is appreciated that much of the value of the exercise will be lost if fictitious safety arrangements are made. Unit comds will request fire from arty and MMG comds in the normal way and safety precautions to be observed are shown below.

11. On the afternoon of 15 Mar 2/12 Aust Fd Regt in conjunc with 2/3 Aust Tk A Regt will give a demonstration of bunker destruction using 25 pdr, 75 MM and 6 pr guns. 2/3 Aust Tk A Regt will also give a demonstration of the 4.2 in mortar.

SAFETY PRECAUTIONS

12. Following offrs are responsible for safety :-

- | | | |
|-------------|---|-------------------|
| Inf Weapons | - | Bn Comd |
| MMG | - | Capt R. CAMERON |
| Arty | - | Lt-Col G. HOUSTON |

13. The following safety limits will apply :-

- (a) Arty and Mortars 3 in - No rounds to fall closer to our tps than 250 yds
- (b) MMG 6°

14. In addition to those offrs mentioned in para 12 above, all fire unit comds will act as safety offrs.

15. (a) During the hrs of darkness the following weapons only will fire:-

- Mortars 3 in
- MMG
- Arty

(b) ~~MMG~~ LMGs on fixed lines may be fired during daylight.

(c) No mortars 2 in, sub-machine guns, pistols or rifles will be fired during the exercise.

TIME TABLE

16. Att as Appx A.

OPENING NARRATIVE

17. Att as Appx B.

DRESS

18. Normal with helmets steel.

ADM

19. Med - 2/3 Aust Fd Amb will est :-

(a) ADS at 228852.

(b) Amb Car Post at Bde HQ "B" Ech area square 2480 until mov to Tk A range commences. Amb Car Post will then move to 257809.

20. Amn

(a) All amn will be carried from the bivouac areas fwd.

(b) 3 in Mortar bombs - 30 bombs per mortar (4 mortars per bn).

(c) Bns will provide carrying parties to assist in the carrying of MMG Amn for dets of C Coy 2/2 Aust MG Bn under their respective comds.

21. Tpt

(a) Non-operational tpt may be used as far as bivouac areas.

(b) Tpt will NOT be used fwd of bivouac areas.

(c) Operational tpt will NOT be used.

22. Rations - To be advised.

INTERCOMN

23. Bde Sig Sec will lay line from present camp area to 184814 on 13 Mar. Bns will tee in on arrival at bivouac areas.

CONFERENCE

24. Bde "O" Gp incl comds 2/12 Aust Fd Regt and C Coy 2/2 Aust MG Bn will RV at Bde HQ at 0900K 13 Mar 45.

[Handwritten Signature]
Maj.
BM 24 Aust Inf Bde.

DISTRIBUTION

Copy No

- 2/28 Aust Inf Bn 1
- 2/32 Aust Inf Bn 2
- 2/43 Aust Inf Bn 3
- 2/12 Aust Fd Regt 4
- C Coy 2/2 Aust MG Bn 5
- 2/3 Aust Fd Amb 6
- Comd 7
- BM 8
- SC 9
- LC(1) 10-11
- Bde TO 12
- Bde Sup Offr 13
- Bde Sig Offr 14
- 2 Pl 2/1 Aust Gd Regt 15
- 2/76 Aust LAD 16
- File 17-18
- War Diary 19-20

[Handwritten signature]
 Lt Col
 2/28 Aust Inf Bn

SECRET

Copy No.....

Mar 45

24 AUST INF DIV EXERCISE "BIGHTS"

FORECAST OF EVENTS

Serial	Date	Time	Place	Unit	Event	Probable Action	Remarks
1	11 Mar	0900K	Bde HQ	Bde	Issue of Warning Order	Preparation for mov	
2	13 Mar	0900K	Bde HQ	Bde "O" Gp	Issue of outline plan	Bde F & T gps moving. CO's issue further warning orders and start recee.	Nov fwd of bivouac area will take place only after 131600K
3	14 Mar	0800K	234857	Bde "O" Gp	Issue of final orders for def	CO's further recee and issue of orders to Bn "O" Gps. F & T gps move to assembly areas	Guides meet "O" Gp at Creek 232854
4	14 Mar			Bn "O" Gps	Issue of orders	Bn F Gps deploy	
5	14 Mar		Def Posn	Bn "F" Gps	Tps in posn	Gps ^{Tps} will occupy main line of def and will NOT man outpost line until ordered by Bde HQ. All tps will continue digging main posn. DF tasks will be registered. One SOS task per bn will be allowed.	B echs will be sited:- 2/28 Aust Inf Bn - 1831 2/32 Aust Inf Bn - 1981 2/43 Aust Inf Bn - 2081 Bde HQ - 2480
6	14 Mar night 14/15		Bn fronts " "	Each Bn " "	Call for SOS tasks and DF tasks	One bty will fire on each bn front. Units will incorporate firing of LMG and 3in mortar DF tasks. LMGs may only fire by day. See Gen Instrs, Safety Precautions	Each bn will be advised by Bde HQ as to when it will call for its SOS. Bde ^{Bde} Comd will choose own times for calling for DF tasks & record time interval between call for fire and fall of fire.

Serial	Date	Time	Place	Unit	Event	Probable Action	Remarks
⑥ 8	15 Mar	0500K	Bn Fronts	2/28 Bn	Call for one D3 Task	Call to be provided by fire of whole Regt	Subject to limitations of am
9		0520K	" "	2/32 Bn	" " " " "	ditto	ditto
10		0540K	" "	2/43 Bn	" " " " "	ditto	ditto
11		0600K	" "	Bde	Withdrawal starts	Each bn will withdraw as a bn exercise to assembly areas as follows:- 2/28 Aust Inf Bn - 1881 2/32 Aust Inf Bn - 1981 2/43 Aust Inf Bn - 2081 Bde HQ - 2480	Commencing 1130K, units will move to area of demonstration. Order of march:- Bde HQ 2/28 Aust Inf Bn 2/32 Aust Inf Bn 2/43 Aust Inf Bn
12		1400K	Tk A Range	Bde	Demonstration	Demonstration of various fuses with 25 pr gun. Demonstration firing:- 6 pr 141 am 4.2 in mortars 75 MM guns	One guide per bn will report to Capt ROSE of Bde HQ at entrance to Tk A Range at 151300K. Lunch will be provided by units in area 2580-2681 Order of march for return to camp as for serial 11 above.

APPX A

SECRET

Copy No....

TIME TABLE

(Issued with GCM INSTRUCTIONS 24 Aust Int Bde Exercise BUNNELL)

Serial No	Date	Event	Remarks
1	13 Mar 45	Conference Bde "O" Gp. Bde moves out to exercise area.	
2	14 Mar 45	Occupation def post.	
3	15 Mar 45	Demonstration by 2/12 Aust Pa Regt and 2/3 Aust Tk A Regt	
4	16 Mar 45	Conference Bde "O" Gp	Time to be advised later.

APPX B

SECRET

Copy No.....

12 Mar 45

24 AUST INF BDE MEMOISE "BIBBER"

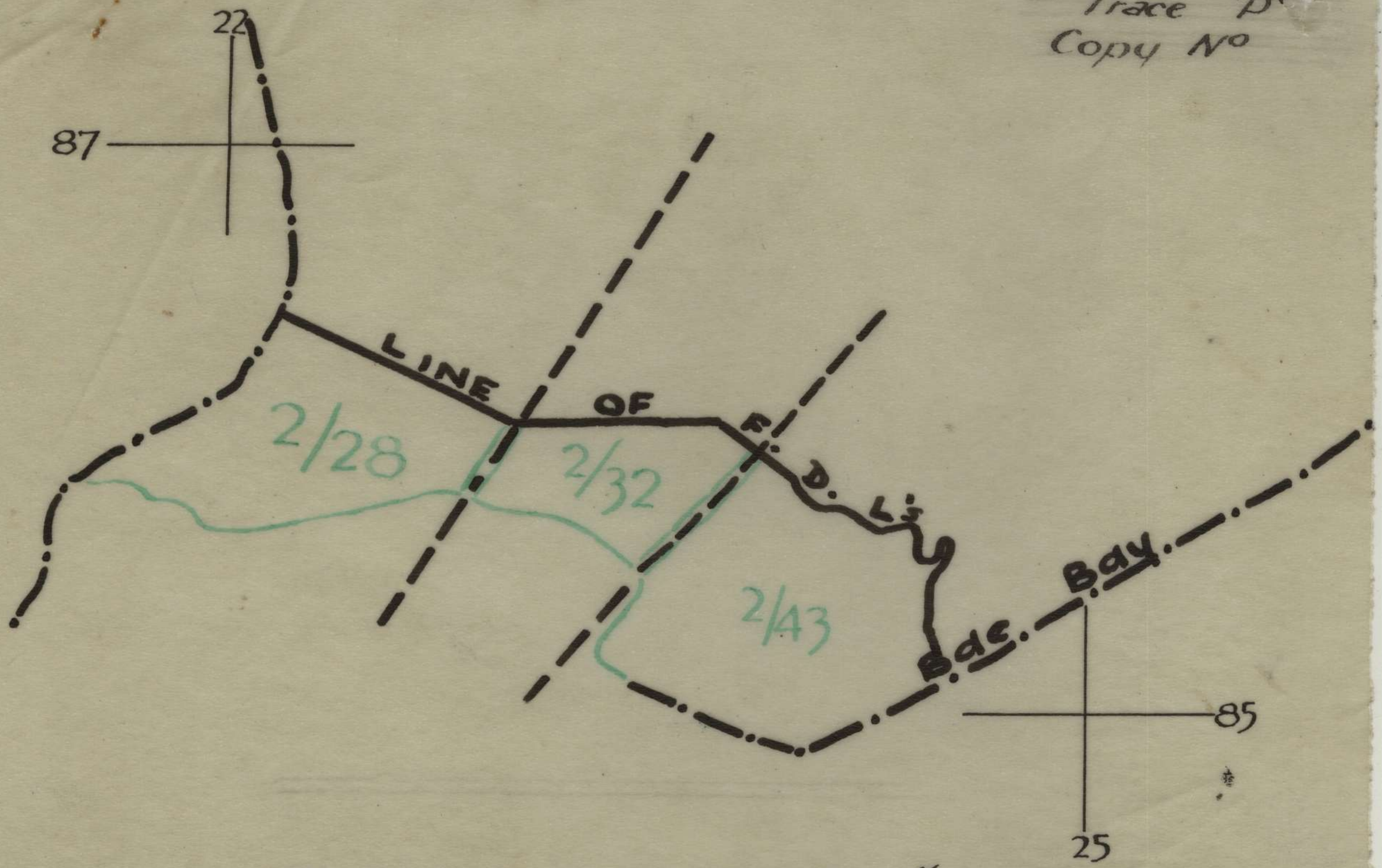
OPERATING NARRATIVE

Ref Map: MT GARRET 1 in to 1 mile
ATTENTION TABLETS (SPECIAL) 4 miles to 1 in

1. An enemy force which landed at CAIRNS in February has pushed South via HERBERT and, on night 11/12 Mar, captured HERBERTON.
2. Tac R reports on 12 Mar indicate that an Enemy Force of approx 2 Regts has commenced moving from HERBERTON along the HERBERTON - MT GARRET Rd in the direction of LANCELOT.
3. 9 Aust Div is deployed along the line of PALMERSTON HIGHWAY from MT ARCHER to INCL HOT SPRINGS, and has been given the task of preventing enemy penetration to the PALMERSTON HIGHWAY along the general axis of the HERBERTON-MT GARRET Rd.
4. GOC 9 Aust Div has decided to defend the general line MT ARCHER, FORD 219861, DEADMAN'S ROAD.
5. 24 Aust Inf Bde has been given the task of holding the general line of the track from incl SPUR in square 2385 to incl FORD 219861.
6. 20 Aust Inf Bde is on the right defending MT ARCHER and 26 Aust Inf Bde is West of WILD RIVER defending DEADMAN'S ROAD.

LOCALITIES & BDYS
Issued with 24 Aust Inf Bde O.O.1

SECRET
Exercise "Beetle"
Trace 'P'
Copy No



Superimpose on map WILD RIVER 1/25000

12

SECRET
Copy No. 38

STANDING ORDERS

—*for*—

HQ 24 AUST INF BDE

1945

SECRET

- 1. The information given in this document is NOT to be communicated either directly or indirectly to any person not holding an official position in His Majesty's Forces.*
- 2. The officer or official in possession of this document is responsible for its safe custody.*
- 3. The document will be kept under lock and key when not in actual use.*
- 4. The document will be destroyed if in danger of falling into enemy hands.*

C O N T E N T S

	Page
INTRODUCTION	(1)
DISTRIBUTION	(11)
CHAPTER I - ORGANIZATION - COMMAND - DUTIES OF OFFICERS	
Section	
1. Organization for Operations	1
2. Duties of Officers	2
CHAPTER II - OPERATION AND FUNCTIONS OF BDE HQ	
3. Organization for movement	6
4. Movement	7
5. Establishment of HQ	8
6. Defence and Protection of HQ	8
7. Duty Rosters	9
8. Distribution Lists	10
9. Traffic Control	10
CHAPTER III - INTELLIGENCE AND INFORMATION	
10. Duties of the Intelligence Staff	12
11. PW, Captured Documents and Eqpt	13
12. Int Returns	13
CHAPTER IV - SECURITY	
13. Responsibility within Bde HQ	14
14. Security of information, documents and personnel	14
CHAPTER V - COMMUNICATIONS	
15. Line	18
16. Wireless	18
17. Messages	18
CHAPTER VI - ADMINISTRATION	
18. Dress and Equipment	20
19. Medical - Hygiene - Anti-disease	21
20. Organization of Bde HQ transport	24

HQ 24 AUST INF BDE

STANDING ORDERS

INTRODUCTION

These Standing Orders have been reduced to a minimum size, consistent with the normal functioning of Bde HQ.

The matter contained herein is considered essential; and, in consequence, a thorough knowledge is required:

- (a) of the entire contents, by all officers of the HQ;
- (b) of relevant portions dealing with his own particular function, by all ranks.

All ranks will also be familiar with relevant portions of the Standing Orders of higher formations and of "Standing Orders for an Inf Bn, 24 Aust Inf Bde."



Brig.
Comd 24 Aust Inf Bde.

DISTRIBUTION

							<u>Copy No</u>
Comd	1
BM	2
SC	3
IO	4
LO (1)	5
Bde TO	6
Bde Sup Offr		7
Bde Sig Sec		8-9
2 Pl A Coy 2/1 Aust Gd Regt	10
2/76 Aust LAD	11
Camp	12
Bde SM	13
2/28 Aust Inf Bn	14
2/32 Aust Inf Bn	15
2/43 Aust Inf Bn	16
Units under comd or in sp	17-27
Bde HQ personnel	28-35
File	36-37
War Diary	38-39

STANDING ORDERS

HQ 24 Aust Inf Bde

Chap I - ORG - COMD - ALLOTMENT OF DUTIES

Section 1 - Org for Ops

1. Bde R Gp

Comd
BM or BM(L)
IO
Bde Sig Offr
CO Fd Regt
OC Fd Coy
OC MMG Coy
Sigs and protective tps as required
Pro as required

2. Bde O Gp

Comd
BM or BM(L)
SC
IO
LO(I)
Bde Sig Offr
OC Cav Sqn
CO Fd Regt
OC Tk A Bty
OC Fd Coy
OC MMG Coy
CO Fd Amb
Bn Comds and one SO
Sigs and protective tps as required

3. Bde HQ O Gp

BM
BM(L)
SC
SC(L)
LOs
IO
Bde Sig Offr
Gd Pl Comd
CSM

4. Assembly of Gps

- (a) IO will be responsible for the assembly of gps for recce or for orders. He will also co-ord the protection of the area and mount ground and air sentries as required.
- (b) To assist him he will have members of the pro sec. The number required will depend on time and place of RV.
- (c) NO vehs will be allowed near the RV. They will be parked under instrs from Pro Sec, issued by the BM.
- (d) Only those offrs immediately concerned will move to the place where orders are to be issued.
- (e) Unit comds will be accompanied by one SO only when receiving orders.
- (f) Protective deta, sigs, orderlies, etc., will remain out of hearing of orders in areas allotted by Pro Sec.

- (g) Constitution of gps will be altered as required by use of "plus" or "less".

5. Issue of Orders

- (a) Prior to issue of orders Bde IO will give details of topography and orientation, all latest infm and mark comds maps as necessary.
- (b) BM will arrange the gp as required by the Bde Comd prior to the issue of orders.

Section 2 - Duties of Bde HQ Staff

6. BM

(a) In trg areas

- (i) Implementing the gen trg and adm policy laid down by the Bde Comd.
- (ii) Co-ordination and supervision of the Bde HQ Staff.
- (iii) Preparation of staff tables for operational and tactical moves.
- (iv) Trg and supervision of LOs.
- (v) Comds Bde HQ details.
- (vi) Supervision of trials of new eqpt.

(b) In ops

- (i) Preparation of plans, orders and instrs subject to Bde Comds decisions.
- (ii) Preparation of all necessary orders and instrs required by Comds plan.
- (iii) Supervision of all staff work at the HQ.
- (iv) Def of Bde HQ through BM(L).
- (v) Transmission of infm to Div HQ in conjunc with Bde IO.

7. BM(L)

(a) In trg areas

- (i) Gen assistance to BM.
- (ii) Trg of Bde HQ personnel.
- (iii) Security offr Bde HQ
- (iv) Control and allotment of trg amm and ranges.
- (v) Arrange the duty offr roster.

(b) In ops

- (1) Assists the BM.
- (ii) Security Offr Bde HQ.
- (iii) Recce of sites for Bde HQ.
- (iv) Duty Offrs roster

8. SC

(a) In trg areas

- (i) General supervision of the following :-

Personnel
Pay
Discipline
Spiritual welfare
Leave
Hyg and Sanitation
Pro
Ceremonials
Adm mov
Sups
Tpt
POL
Water
Sup of clothing and eqpt

- (ii) Collation and rendering of all A and Q returns.
- (iii) Production of Bde ROs.
- (iv) Supervision of Bde HQ Orderly Room Staff.
- (v) Reports on offrs.

(b) In ops

- (i) Org and control of adm and B ech areas through Bde TO.
- (ii) Adm para of OOs.
- (iii) Replacement of cas.
- (iv) Issue of instrs and control of matters in 8 (a) (1) above.
- (v) Disposal of effects of dead.
- (vi) Burials
- (vii) PW.
- (viii) Sal.
- (ix) Control of natives.
- (x) Honours and awards.

9. SC(L)

Assist the SC

Offr IC photography Bde HQ.

10. Bde IO(a) In trg areas

- (1) Co-ordination of int within bde.
- (ii) Upkeep of trg maps as required.
- (iii) Distribution of maps, sketches etc.
- (iv) Keep SECRET files.
- (v) Keep War Diary.
- (vi) Security and Censorship with BM(L).
- (vii) Bde Gas Offr.

(b) In ops

- (1) Collection, collation and dissemination of infm, with deductions therefrom.
- (ii) Situation maps.
- (iii) Battle message board.
- (iv) Codes and ciphers with Bde Sig Offr.
- (v) Sup of maps, air phs, etc.
- (vi) Int summaries.
- (vii) Daily sitreps.
- (viii) Disposal of PW and captured documents.
- (ix) Org of Bde O Gp RV.
- (x) Collation of Hostile Shelling Reports.
- (xi) Prepare enemy's appreciation of the sit.
- (xii) Enemy airops.
- (xiii) Bde Gas Offr.

11. Bde Sig Offr and 2IC

- (a) Comds, administers and is responsible for tech efficiency of Bde Sig Sec.
- (b) Liaison with BM and IO for infm on which to base plans.
- (c) Supervises comms within the bde.
- (d) Responsible for first line maint of bde sig eqpt.
- (e) Assists in recce for HQ areas.
- (f) Prepares intercomm para of OOs.
- (g) Synchronisation of time at 0800 hrs and 1800 hrs daily.

12. Bde TO

- (a) Responsible for adm and maint of Bde HQ tpt.
- (b) Comds Bde B Ech when brigaded.

- (c) Responsible for def of B Ech.
- (d) Supervision and co-ordination of all tpt matters incl trg within the Bde.
- (e) Camp Commandant.

13. LOs

(a) In Trg Areas

- (i) Liaison between Bde Comd and staff and unit comds and staff.
- (ii) Responsible for visiting each bn at least once per day.
- (iii) Schools and Courses.

(b) In ops

Liaison as required by Bde Comd.

14. Bde AASC Offr

- (a) Advisor to Bde Comd and SC on all AASC matters.
- (b) Liaison between SC and HQ AASC etc.

15. Hyg Offr

- (a) Advisor to the Comd on all matters of hyg within the Bde.
- (b) Supervises the work of the Bde hyg personnel.
- (c) Liaison with units on all hyg matters.

16. Ord Offr

- (a) Represents the ord services on Bde HQ.
- (b) Assists SC on all ord matters.
- (c) Liaison with units on ord matters.

17. Legal Offr

Amenities Offr

Education Offr

The above offrs all have specialised duties during periods in trg areas, but during ops are usually available for duties as LOs.

18. Gd Pl Comd

- (a) Comds Bde HQ Gd Pl.
- (b) Responsible with BM(L) for the def of Bde HQ.
- (c) Bde HQ gas officer.
- (d) Responsible for cam of Bde HQ.

Chap II - OPERATION AND FUNCTIONS OF BDE HQSection 3 - Org for Mov19. Grouping

The Bde HQ will normally be divided into three gps for mov.

- (a) Fwd HQ
- (b) Main HQ
- (c) Rear HQ

20. Fwd HQ

Comd
 BM
 BM(L)
 IO
 LO(1) and LO(2)
 Bde Sig Offr and 2IC
 Batmen (8)
 G Clerk
 Sig Orderlies (4)
 Cpl Cook
 Bde Int Sec (5)
 Drivers (2)
 Sig Det
 One Sec Gd Pl
 Det Pro Sec

21. Main HQ

SC
 LO (3)
 Education Offr (as LO)
 Bde AASC Offr
 Hygiene Offr
 Batmen (5)
 Bde Int Sec (1)
 WO Clerk
 Education Sjt
 Cpl Clerk
 AASC Cpl
 Drivers (1)
 AAMC Cpl
 CSM
 CQMS
 Cook
 Gen Duties Cpl
 Gen Duties (1)
 Hyg (1)
 Sig Orderlies (2)
 Gd Pl less one sec
 Sig Det
 Pro Sec less det
 Det 2/76 Aust LAD

22. Rear HQ

SC(L)
 Tpt Offr
 Amenities Offr (as LO)
 Ord Offr
 Legal Offr
 Batmen (5)
 Amenities Sjt
 Clerk
 AAOC Sjt
 AEME Sjt

22. Rear HQ (contd)

AEME Cfn
 AEME Cfn
 Tpt Sjt
 Tpt Cpl
 Drivers (5)
 Cook (1)
 Gen Duties (1)
 Storeman (1)
 Sig Det
 2/76 Aust LAD less det.

23. It will be normal for Main HQ to join Fwd HQ each night where circumstances permit.

Section 4 - Mov24. Issue of Orders

- (a) BM will issue order for mov giving time of mov or, if NOT known, a time before which no move will take place.
- (b) Order will be issued as follows :-
- (1) BM informs BM(L), SC, Bde Sig Offr.
- (ii) BM(L) will advise IO and LOs, Supporting Arms, Gd Pl Comd, and CSM.
- (iii) SC will advise SC(L), TO, Bde AASC Offr and all other offrs concerned.
- (iv) IO will advise Div units and flanking fms.
- (c) Orders for mov of Rear HQ will be issued by SC after consultation with BM.

25. Mov

- (a) Mov will be divided into two distinct types.
- (1) When the HQ moves as part of the adv of the Bde.
- (ii) When the HQ is moving for a limited distance only.
- (b) In (1), on the order to move, Fwd HQ will move as directed by Bde Comd under control of BM(L). Main HQ will move under control of SC and will maintain such speed that the line from Div is always at the HQ.
- (c) In (ii), Fwd HQ will move under direction of Bde Comd while Main HQ will remain in old location until ordered fwd by BM. Comm with Div must always be maintained, and if it is necessary for Main HQ to mov before the new HQ is est then a sig centre must remain in the old location until such time as the new HQ is ready to function.
- (d) In certain cases it will be necessary for a recce party to move fwd to recce a site for the HQ. The party will consist of :-
- BM(L)
 Bde Sig Offr
 Gd Pl Comd or rep.
- A gen area will be indicated by the BM and the detailed recce will be carried out by the above offrs.

Section 5 - Est of HQ26. Layout of HQ

Diagrammatic layout of Fwd and Main HQ in the field is shown in Appx A.

27. Action on Halting

- (a) Bde Int Sec will lay tapes at rt angles to the axis of adv as per Appx A.
- (b) Int Sec will sign post area immediately.
- (c) Pro Sec will est control post under instrs from BM(L) at the entrance to the HQ area.
- (d) If no prior recce has been possible all ranks will move to their approx areas and take up fire posns for protection.
- (e) BM(L) and Gd Pl Comd will recce the area and decide on tentative def layout.
- (f) On being given areas tps will dig in and cam their posns.
- (g) Two men from each sec of Gd Pl will start digging the Comd Post and Sig Office.
- (h) Bde IO will notify Div of new location repeating to all units and Rear HQ.

Section 6 - Def and Protection of Bde HQ28. Responsibility

- (a) Def of Bde HQ is the responsibility of BM(L) in accordance with general policy laid down by BM.
- (b) BM(L) will co-ord the def of all personnel within the HQ area incl supporting arms and services.
- (c) Comd Gd Pl will be responsible to BM(L) for the outer def of the HQ area as per diagram Appx A.

29. Sentries(a) By day

- (i) One sentry post in each def area on the outer def to be provided from personnel of the post.
- (ii) Two sentries at the comd post as per diagram Appx A to be found from Bde HQ details.

(b) By night

- (i) Two sentry posts in each def area on the outer def.
- (ii) One sentry in each def area on the inner def to be provided from personnel of that particular area.
- (iii) As for (a) (ii) above.

30. Stand To

- (a) There will be a "Stand To" night and morning at times notified by BM.
- (b) ALL ranks in the Bde HQ area will "Stand To" in full eqpt at their allotted def posns unless exempted by the BM.
- (c) "Stand Down" will only take place on orders from BM.
- (d) The warning to "Stand To" will be issued by word of mouth.

31. AA Def

- (a) The def of Bde HQ will be passive.
- (b) On arrival at a new HQ site def posns will be prepared so that in case of either ground or air attack all personnel have an allotted area to occupy.
- (c) Greatest possible care and attention will be paid to cam both natural and artificial. Bde HQ cam offr will be responsible that this is observed at all times.
- (d) Track discipline will be enforced as laid down in Sec 9 para 39.

32. Erection of Living Quarters

- (a) NO living quarters of any kind will be erected in the proximity of a def posn.
- (b) Concealment of the posn of LMGs is of paramount importance. Mov around such posts will be strictly limited and no smoking will be permitted in any such post.

Section 7 - Duty Rosters33. Gen

Rosters will allow adequate rest for both offr and other ranks.
When resting, offr will NOT be disturbed except in cases of emergency.

34. Rosters

The following rosters will be maintained in the HQ.

- | | | |
|-------|--------------|---|
| (i) | BM(L) | Duty Offr Roster |
| (ii) | IO | Duty Int Roster |
| (iii) | Chief Clerk | Duty Clerk Roster |
| (iv) | TO | Duty Dvr Roster |
| (v) | CSM | Duty Roster of Bde HQ personnel as necessary. |
| (vi) | Bde Sig Offr | Duty Sig Roster. |

35. Duty Offr

- (a) A duty offr will be maintained from 2100K to Stand Down in the morning.
- (b) All offrns except BM, SC and Bde Sig Offrns will be available for duty.
- (c) The duty offr will be stationed in the Int Office.

36. Duties of the Duty Offr

- (a) Maintain the Ops Diary and Sitmap.
- (b) Ensure that sitreps are received from fwd units as ordered.
- (c) Deal with all matters throughout his tour of duty. He will only awaken the Comd, BM or SC in case of emergency.
- (d) Wake Gd Pl Comd 1/2 hr before time for "Stand To".
- (e) Duties during trg will be laid down by BM.

Section 8 - Distribution Lists

37. Distribution lists for 24 Aust Inf Bde Gp are att as Appx B.

- (a) List A Down to unit and/or det comds.
- (b) List B Down to coy and/or sub-unit comds.
- (c) List C Down to pl and/or equivalent comds.

Section 9 - Traffic Control

38. Duties of Pro at Bde HQ

- (a) Two TCPs will be established at Bde HQ as per Appx A.
- (b) Duty Provost at No 1 Post will :-
 - (i) Check identity of all personnel entering the HQ area.
 - (ii) Prevent unnecessary mov of vehs into the HQ area.
 - (iii) Disperse vehs in the area and ensure that cam nets are used.
 - (iv) Enforce track discipline within the HQ.
- (c) Duty Provost at No 2 Post will :-
 - (i) Stop all vehs approaching the HQ and check the identity of dvr and passengers.
 - (ii) Detain or turn back any vehs whose duty does NOT warrant their mov into the HQ area.
 - (iii) Ensure that there is no traffic block on the rd through the HQ at any time.

39. Track Discipline

- (a) On arrival at the HQ site, SC with Provost Sjt will make a recce of the area and lay down where the permanent tracks in the HQ area are to be run.

(11)

(b) Tracks will be marked by the following sign



- (i) Black arrow on white background "IN"
 - (ii) Red arrow on white background "OUT"
- (c) Provost Sjt will detail a duty NCO to police the track discipline within the HQ.
- (d) Tracks will be used by personnel on foot as well as by vehs.

Chap III - INTELLIGENCE AND INFORMATIONSection 10 - Duties of Int Staff

40. The IO will be responsible for handling of infm and Int as laid down in these orders (Chap I. Sec 2 para 10) and will be assisted in these duties as indicated in sub-paras 41, 42 and 43 below.

41. S/Sjt.

- (a) Org and supervision of Bde Int Office.
- (b) Maintenance of sufficient stocks of maps and distribution of maps within Bde HQ and to units under comd.
- (c) Collation of infm with special ref to :-
 - Enemy dispositions and strcs
 - Enemy cas
 - Matters relating to Enemy OOB
 - Details of Enemy bombing and shelling
 - Details of other enemy action
 - Dispositions of own tps
 - Own cas
 - Infm required for War Diary
 - Topographical Infm.
- (d) Custody and registration of secret documents.

Subject to the approval of the IO the S/Sjt may sub-allot duties enumerated in (b) and (c) above as circumstances may require.

42. Cpl and two Ptes

- (a) Maintenance of action logs and Battle Message Board.
- (b) Filing and registration of non Secret Documents.
- (c) Ensuring that infm received is passed to the BM for circulation.
- (d) Ensuring that tactical and topographical infm is passed to Draughtsmen for recording on maps.
- (e) Passing of tactical and topographical infm to units and sp arms.
- (f) Performance of such other duties as may be allotted to them by IO or S/Sjt.

43. Cpl and Pte (Draughtsmen)

- (a) Maintenance of up to date situation map.
- (b) Maintenance of infm Comds and BM's maps.
- (c) Recording of topographical amendments and additions on existing maps.
- (d) Maintenance of such patrol, shelling, bombing and gas maps as may be required.
- (e) Drawing such maps and diagrams as may be required within the HQ.

Section 11 - PW Captured Documents and Eqpt

44. IO will be responsible for speedy collection and return to Div HQ of captured documents and original examples of captured eqpt.
45. SC will arrange sal of captured eqpt NOT of interest to GSI.
46. PW cage will be erected under instrs from SC. IO will be advised immediately a PW arrives.
47. The appropriate labels will be att to documents, eqpt, and PW.

Section 12 - Int Returns

48. Monthly Returns

- (a) War Diary for each month together with duplicate copy for the previous month will be despatched by the 7th day of the following month to:-

Military History Section
No 2 Base Post Office, Melbourne.

- (b) Returns of Offrs, S/Sjts and Sjts engaged upon Int duties within the Bde.

49. Special Returns

- (a) Location Statements on dates required by Div HQ.
- (b) Sitreps at times notified by Div HQ.
- (c) Patrol plans and reports and shelling, bombing and gas reports at times notified by Div HQ. Brief summaries will be sent to Div HQ by Sig or tele as such infm becomes available.

50. War Diary and Sitreps will be submitted to the Bde Comd before they are forwarded. In his absence they will be submitted to the BM.

Chap IV - SECURITY

Section 13 - Responsibility within Bde HQ

51. Bde HQ Security Offr

- (a) EM(L) will be Bde HQ Security Offr.
- (b) Responsibilities
 - (i) That all ranks adhere to the security measures included in these orders.
 - (ii) Security education of all ranks.
 - (iii) Instr of Censors in their duties.
 - (iv) That the HQ area is at all times secure from intrusion of unauthorised persons and from subversive propaganda.
 - (v) Investigation of harmful or otherwise undesirable rumours.
 - (vi) All matters affecting security as may arise from time to time.

Section 14 - Security of Infm, Documents and Personnel

52. Security of Personnel

- (a) Personnel who may become PW will:-
 - (i) Supply ONLY NUMBER RANK and NAME when interrogated.
 - (ii) Dispose of all papers carried on the person.
 - (iii) Make every effort to escape and return with infm.
 - (iv) On NO account discuss matters of a mil nature whilst still a PW.
 - (v) Decline to transmit messages over enemy wireless installations.
- (b) Checking of Identity of persons within the vicinity of the HQ area.
 - (i) All ranks will be responsible for the checking of the identity of persons who are not recognised irrespective of rank or uniform.
 - (ii) The means of identification are:-
 - Paybook with photograph
 - Identity card with photograph
 - (iii) A person unable to establish his or her identity will be detained immediately and the matter reported to EM(L) and IO.
 - (iv) Civilians or natives employed in the vicinity of the Bde HQ will be issued with an identity card by EM(L).

53. Classification of Documents

- (a) Classification of Documents - Documents originated within the HQ will be classified in accordance with LHC SM 4239 of 27 Apr 44 as follows:-
- (i) TOP SECRET - certain secret documents, infm and material, the security aspect of which is paramount, and whose unauthorised disclosure would cause grave damage to the nation.
 - (ii) SECRET - Documents, infm, or material the unauthorised disclosure of which would endanger national security, cause serious injury to the interests or prestige of the nation, or any governmental activity thereof, or would be of great advantage to a foreign nation.
 - (iii) CONFIDENTIAL - Documents, infm, or material the unauthorised disclosure of which, while not endangering the national security will be prejudicial to the interests or the prestige of the nation, any governmental activity, an individual, or would cause administrative embarrassment, or difficulty, or be of advantage to a foreign nation.
 - (iv) RESTRICTED - Documents, infm or material (otherwise than TOP SECRET, SECRET or CONFIDENTIAL) which should not be published or communicated to anyone except for official purposes.
- (b) Marking of Documents - The appropriate classification of all documents will be marked in block capitals in the top right hand corner and all messages will be similarly marked at the beginning of the text.
- (c) Custody of Documents - TOP SECRET and SECRET documents, whether originated within the HQ or not, will be filed and kept in a strong-box by the IO.
- (d) Grading of Documents - The grading of documents within the classifications enumerated in (a) above will be the responsibility of the EM except where the EM shall delegate this responsibility to another offr.
- (e) Re-grading of Documents - It will be the responsibility of the IO to bring such documents, the classification of which has become inappropriate by reason of changed conditions, to the attention of the EM who will make such alterations to the classification as he thinks fit.
- (f) Additional safeguards to be observed in operations:-
- (i) Documents which may be of value to the enemy will be destroyed by the most expeditious means available in the event of the imminent possibility of their falling into enemy hands.
 - (ii) Marked maps or protected documents will not be retained in battle areas unless they are necessary in immediate operations.
 - (iii) Personal Diaries, notebooks etc will not be taken into battle areas.
 - (iv) Markings indicating unit designations on all mail matter for delivery in battle areas will be removed prior to delivery.

54. Security of Infm

- (a) Every precaution will be taken to ensure that infm of value to the enemy does NOT fall into his hands in any form whatever. Particular regard will be paid to the following:
- (i) Our intentions and plans on land sea or air.
 - (ii) Strs, locations, and movs of units and sub-units.
 - (iii) Names, characteristics and particulars of comds and staffs.
 - (iv) Morale.
 - (v) Developments of arms, amm, eqpt and trg.
 - (vi) Results of enemy offensive action.
- (b) All ranks will refrain from discussion of any matters pertaining to the Navy, Army, Air Force or War Production in any public place, club or canteen or with any person otherwise than in the course of official duties.
- (c) NO member of the HQ will be permitted to give infm to the press either verbally or in writing or take part in any radio programmes without having first obtained the authority of the Bde Comd.
- (d) Unit designations will NOT be written on telegrams, hotel registers, autograph books, visitors books, clothing, eqpt, etc.

55. Security of Comms(a) Gen

The originator of any written or verbal message is at all times responsible for the security of such message. When passed by tele by the originator such measures as considered necessary to ensure security must be taken by him. When the message is to be passed through sig channels the originators instrs must be such that full security is ensured.

(b) Written messages

- (i) Written messages will be passed to the Sig Office for transmission when it will become the responsibility of the Sig Office to ensure that security is observed during transmission in accordance with the originators instrs.

(c) LT

- (i) Infm which may be of use to the enemy will NOT be passed over lines which pass through civil exchanges.
- (ii) Infm as described in (i) above will be passed only over those mil circuits as are considered by the Bde Comd to be secure.
- (iii) Conversations over circuits passing within 3000 yds of a known or suspected enemy posn will be conducted in RT code.

(d) RT

- (1) All conversations over RT will be conducted in RT Code No 2 except where the offr concerned considers that the use of code will prejudice ops in progress. Such offr may be called upon to substantiate his action.
- (ii) The responsibility of encoding and decoding comms in RT code rests with the originator and addressee respectively. It is NOT the responsibility of sigs.

56. Censorship

Detailed censorship regulations in accordance with GRO 371/44 will be observed in their entirety.

57. Cameras and Photography

- (a) SC(L) will be offr in charge of photography within the HQ and will keep a register showing number, name make, and description of each camera.
- (b) BM may at any time order cameras to be withdrawn for security reasons. SC(L) will then forward cameras withdrawn by registered post to :-
 - (i) Any address named by owner.
 - (ii) HQ L of C Area
 - (iii) Offr i/c Base Depotand will issue to owners a receipt showing addressee and method of despatch.
- (c) In the event of the order (b) above being given, BM may authorise the retention of four cameras to be used under direction of the offr in charge of photography. Cameras will be retained at owner's risk.
- (d) Films and photographs taken for official purposes will be forwarded to M H & I Sec, Base P O MELBOURNE. They will be labelled with unit name and accompanied by a memo signed by an offr of fd rank stating :-
 - (i) Number of films enclosed
 - (ii) The purpose to which they will be put
- (e) Films taken for other than official purposes will be developed and printed in accordance with orders and regulations prevailing in the area in which the HQ is stationed.

Chap V - COMMUNICATIONSSection 15 - Line58. Responsibility

- (a) It is the responsibility of 9 Aust Div Sigs to maintain a line to Bde HQ.
- (b) 24 Aust Inf Bde Sig Sec will be responsible for laying line to bns.
- (c) The Bde Sig Sec is responsible for comms with all sp arms.

59. Laying

All lines will be laid on the left of axis of adv and will be tied back to a minimum height of 14 ft.

60. Security

It must be remembered that line traffic is NOT secure when within 3000 yds of the enemy. Normal WT security must be used under these circumstances.

Section 16 - Wireless61. Allotment

- (a) Normal allotment of WT sets No 22 within the Bde will be as follows :-

(i) Comd Gp

Bde Comd	1 x 22 set
Each Bn Comd	1 x 22 set
Main Bde HQ	1 x 22 set

(ii) Rear Link

Main Bde	1 x 22 set to 9 Aust Div
----------	--------------------------

- (b) The Comd Gp may be increased or new gps formed as required.

62. Security

RT Code No 2 will be used at all times except in exceptional circumstances when the demand for speed is such that use of code would prejudice ops.

63. Code Names - Code Signs - Frequencies

Code names, code signs and frequencies will be allotted by Bde Sig Offr.

Section 17 - Messages64. Priority

Messages originated within the Bde for transmission through sig channels may be franked with a degree of priority by the following offrs :-

(a) Emergency Ops

IO reporting first identification to higher fmn.

(b) Immediate

Bde Comd
BM
COs NOT below the rank of Lt-Col

(c) Important

As above
Head of services
Unit Comds below the rank of Lt-Col
Adjts

(d) Deferred

All offr

(e) In case of emergency any offr may frank a message with priority of IMPORTANT or above but must be prepared to substantiate his action.

65. Delays in Priority Messages

Sigs will advise originators of messages of following delays in the clearance of priority messages.

IMMEDIATE - after 15 mins from THI
IMPORTANT - after 30 mins from THI

66. Delivery of Messages

(a) In static areas

- (i) All correspondence and signed messages will be delivered to the orderly room for distribution except those in sub para (ii) below.
- (ii) Any despatch bearing a security classification above CONFIDENTIAL will be delivered to the IO or BM.

(b) In ops

- (i) All sigs prefixed "O" and "I" will be passed direct to Int Sec where they will be recorded in the message log. A separate copy will be made out for distribution as required whilst the original will be held in the Int office for recording on Sit Maps etc.
- (ii) All sigs prefix "A" and "Q" will be passed direct to SC.

67. Recording of messages

- (a) All written messages received in the HQ will be noted in the "IN" Message Log and Action Diary.
- (b) Any offr or other rank receiving a LT or WT message will ensure that the context of such message is recorded in both message Log and Action Diary immediately after the conversation has ceased.

+

Chap VI - ADMINISTRATION

Section 18 - Dress and Eqpt

68. Battle order

(a) Worn by the man

Hat KFF or helmet steel
Shirt JG
Trousers JG
Singlet (optional)
Drawers (optional)
Anklets web or gaiters
Socks
Boots

(b) Carried on the person

Discs identity 2
First Fd Dressing 1
Mosquito repellent lotion 1
Paybook, AB 83 and private papers (in
waterproof cover)
Tobacco, matches, Jack knife

(c) Eqpt

Full eqpt (less pack), haversack on back,
water bottle, Amn in basic pouches.

(d) Contents of haversack

Shirt JG 1
Trousers JG 1
Towel 1
Socks prs 1
Drawers prs 1
First aid kit 1
Water sterilizing outfit 1
Mess tin 1
Emergency ration 1 (or as ordered)
Shaving gear, soap, razor, in holdall
Knife, fork, spoon
Mug
Spare bootlaces
Boot polish or dubbin
Gas cape carried in rolled posn above
haversack.

(e) Carried in roll (att to back of waistbelt)

Blanket
Mosquito net
Ground sheet
Spare clothing may be carried in roll instead
of haversack.

69. Full Marching Order

As for para 68 with the following additions and changes.

(a) Pack on back

(b) Haversack worn on the side

(c) Steel helmet secured on outside of pack

(d) Contents of Pack

Boots prs	1
Towel	1
Socks prs	2
Spare bootlaces	
Shirts JG	1
Trousers JG prs	1
Drawers prs	1
Singlets	1
Jersey Pullover	1

70. Embarkation

As for para 69 above but in addition a kit bag and/or sea kit bag may be ordered.

Weights approx are :	Worn & carried in clothing	8 lbs
	Pack	20 lbs
	Eqpt	15 1/2 lbs
	Haversack	11 lbs
	Roll	11 lbs

71. Dress in Camp

At all times all personnel will be correctly dressed and smart and soldierly in bearing.

Section 19 - Medical - Hyg - Anti Disease72. Anti Malarial precautions(a) Personal

- (i) All personnel will take 1 tab atebrin per day or any additional dosage as may be laid down. Personnel will parade and be supervised by an offr.
- (ii) All personnel will carry at all times on the person a container of mosquito repellent lotion. Lotion will be applied to the exposed skin surface at two hourly intervals at all times except when beneath a mosquito net.
- (iii) Each soldier will be in possession of a mosquito net and will be personally responsible for keeping it in good repair. Regular inspection by the duty offr will be carried out.
- (iv) NO soldier will rest or sleep unless under cover of a mosquito net.
- (v) Mosquito nets will be tucked in by dusk each night.
- (vi) Bathing between dusk and sunrise is forbidden.
- (vii) Spraying of tents, huts and shelters will be carried out regularly at times which will be laid down.

(b) Dress

All personnel will wear trousers, boots, anklets web or gaiters, and long sleeved shirt or jacket buttoned except at the neck with sleeves rolled down and buttoned at the wrists from dusk until sunrise except when under a net.

(c) Gen

- (i) Known or suspected malarial infested areas will be completely avoided unless operationally necessary.
- (ii) In cases where these areas are used, the following will be immediate combat measures. Action will be taken to drain the area. All stagnant pools, marsh ground etc remaining will be sprayed with malarial at regular intervals under direction of the Hyg Offr. Small depressions where water may lodge will be filled in. All tins, boxes, bottles, and other containers likely to hold water and will become a breeding ground, are to be turned over and collected for burning and burying.

(d) Responsibility

It will be the responsibility of the BM, Bde HQ Camp Commandant and the Hyg Offr to select non-malarial areas and to ensure the carrying out of all personal and gen precautions.

73. Anti Mite Precautions

(a) Personal

- (i) All clothes will be treated with anti-mite fluid.
- (ii) Treatment will be maintained regularly - as a gen rule under fd conditions treatment should be done every fortnight.
- (iii) Anti-mite fluid will be applied to the clothing by smearing with the hands and the complete surface of the clothing fully covered. 1 fluid oz (two table-spoonsful) will do one set of clothes - shirt, trousers, socks.
- (iv) Personnel must sleep in mite treated clothes.
- (v) Personnel rejoining the HQ will report immediately to the CQMS for an issue of anti-mite fluid.

(b) Gen

It will be the duty of the Bde HQ Camp Commandant to arrange regular parades for the issue of anti-mite fluid and the treatment of clothes.

74. Camp Hyg

- (a) The Bde Hyg Offr will be responsible for all hyg within the HQ and will have one OR specifically for hyg work.
- (b) All ranks will co-operate in carrying out normal hyg. Duty offrs will adjust breaches.
- (c) The following will be carried out on setting up camp:-
 - (i) Co-operation with Hyg Offr in selection of camp site.

- (ii) Laying of drainage pipes and construction of drains and runways.
 - (iii) Installation of Cess Pits, Grease Traps and facilities for destroying and burning kitchen refuse.
 - (iv) Fly proof deep trench latrines, in suitable areas, on scale of 2 per 100 men and 1 per 10 offrs.
 - (v) Showers, troughs, and tubs for all ranks with necessary soakage or drains.
 - (vi) Fly proof kitchens, meat houses, and, where possible, mess huts, and all other food containers.
 - (vii) Malarial precautions as in para 72.
 - (viii) Dust, rain, and heat precautions where possible.
- (d) Daily duties will incl :-
- (i) Washing of latrine seats, urinals with phenyle and application of lime where necessary.
 - (ii) Cleaning of grease traps and renewal of straw.
 - (iii) Sluicing of drains and application of lime.
 - (iv) Collection, burning and burying of kitchen and other refuse.
 - (v) Scrubbing of all kitchen utensils, tables and forms which have any relation with food, the sweeping of kitchens and mess huts and spraying with Fly Tox or other preparation.
 - (vi) All ranks will keep mess tins washed and dry after use, in a suitably fly proof bag or placed on rack in sun as specified.
 - (vii) Hyg Offr will at all times ensure that sufficient quantities of Phenyle, Lime, Fly Tox, Sanitary Paper, Sand Soap, Common Soap, Brooms and brushes are available to Hyg and Kitchen Staff.

(e) Water

- (i) Water will NOT be used before being tested and treated.
- (ii) Streams will NOT be used for bathing until tested and permission granted.
- (iii) When streams are accessible and classified suitable for use, they will be marked as follows :-

Reserved for drawing water (upstream) - Two red flags or red signs marked "WP"

Bathing (downstream) - Two white flags

Animal watering place (further downstream) two blue flags.

(e) (iii) (contd)

The Bde Hyg Offr will be responsible for marking streams and issuing instructions in connection with their usage.

- (iv) MT will NOT be washed upstream of any of the areas as laid down in sub para 74 (e) (iii); nor will any cleansing be carried out on banks or in areas where the refuse water is likely to form pools or drain into the above areas.

75. R A P

- (a) An RAP will be established in Bde HQ for light treatment only.
- (b) An AAMC Cpl will be in charge.
- (c) All personnel requiring medical treatment will report to RAP at prescribed parade hours and be sent on to a unit RMO if the Cpl sees fit.
- (d) All evacuations will be through RAP, where necessary sick report will be made out.
- (e) RAP Cpl will advise the Bde HQ Orderly Room of all evacuations.

Section 20 - Org of Bde HQ Tpt76. Allotment of Vehs

Primary allotment is as follows :-

- | | | |
|-----|------------|--------------------|
| (a) | Bde Comd | 1 Jeep and trailer |
| (b) | "G" Office | 1 Jeep and trailer |
| (c) | AQ Office | 1 Jeep and trailer |

Because of limited tpt, vehs will be used in many instances to ferry rations water and stores.

77. Loading(a) Comd

(i)	Jeep 1	Comds personal baggage	60 lbs
		IO 3 cans water filled	66 lbs
			<u>126 lbs</u>
(ii)	Trailer Operator,	Wireless set No 22	100 lbs
	(Sig) &	Tent fly or cover	20 lbs
	Int Clerk	Folding table and stool	30 lbs
		Shovel, axes, pick	11 lbs
		3 cans water empty	9 lbs
		4 galls POL	32 lbs
		2 Boxes 303 Bdr	168 lbs
			<u>360 lbs</u>

(b) G Office

(i)	Jeep 2	HM	2 Cans water filled)	48 lbs
			2 cans water empty)	20 lbs
			1 Tent fly or cover	102 lbs
			1 Box 9 mm Amn	60 lbs
			Personal gear	
				<u>230 lbs</u>

(ii)	Trailer 2	G Office gear	200 lbs
		Int Office gear	200 lbs
		Tent fly or cover	30 lbs
		1 Axes pick)	
		1 shovel)	
		1 axe)	18 lbs
		2 cans water filled)	
		2 cans water empty)	48 lbs
		1 Drum Kerosene	32 lbs
		1 Drum POL	32 lbs
		Lanterns	20 lbs
		2 Boxes 303 bdr	168 lbs
		1 Box .38 Pistol	9 lbs
			<hr/>
			757 lbs

(c) AQ Office

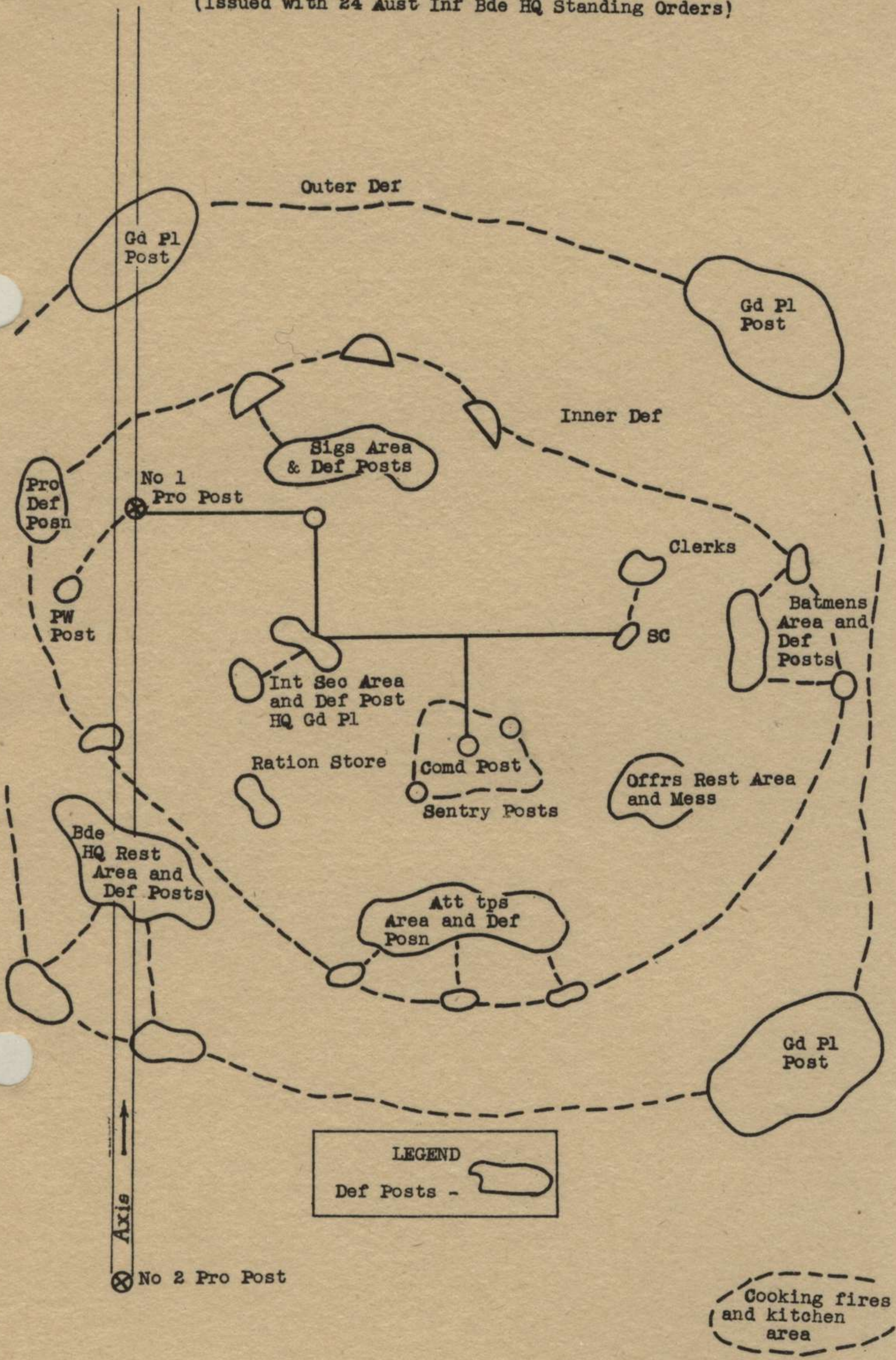
(i)	Jeep 3 SC Clerk	3 cans water filled	66 lbs
		1 box 9 mm Amn	102 lbs
		2 boxes Grenades	56 lbs
			<hr/>
			224 lbs

(ii)	Trailer 3	AQ & Orderly Room gear	300 lbs
		1 Box lanterns	30 lbs
		2 axes pick)	
		1 axe)	
		2 shovels)	29 lbs
		Tent fly or cover	30 lbs
		Anti-malarial gear	40 lbs
		2 Boxes bdr or ctn	168 lbs
		Kitchen gear	150 lbs
			<hr/>
			747 lbs

LAYOUT OF BDE HQ

APPX A

(Issued with 24 Aust Inf Bde HQ Standing Orders)



DISTRIBUTION LISTS

(Issued with 24 Aust Inf Bde HQ Standing Orders)

Serial	Unit	Number of Copies		
		List "A"	List "B"	List "C"
1	2/28 Aust Inf Bn	1	7	20
2	2/32 Aust Inf Bn	1	7	20
3	2/43 Aust Inf Bn	1	7	20
4	2/11 Aust Cav (Commando) Sqn	1	1	4
5	2/12 Aust Fd Regt	1	4	8
6	11 Bty 2/3 Aust Tk A Regt	1	1	8
7	2/7 Aust Fd Coy	1	1	4
8	C Coy 2/2 Aust MG Bn	1	1	4
9	HQ 2/156 Aust Gen Tpt Coy	1	4	4
10	2/3 Aust Fd Amb	1	4	4
11	2/122 Aust Bde Ord Fd Pk	1	1	1
12	2/122 Aust Bde Wksp	1	1	2
13	Comd	1	1	1
14	BM	1	1	1
15	EM(L)	1	1	1
16	SC	1	1	1
17	SC(L)	1	1	1
18	IO	1	1	1
19	LOs	3	3	3
20	Bde TO	1	1	1
21	Bde Sig Offr	1	2	2
22	Bde Sup Offr	1	1	1
23	2 Fl A Coy 2/1 Aust Gd Regt	1	4	4
24	2/76 Aust LAD	1	1	1
25	Camp	1	1	1
26	9 Aust Div	1	1	1
27	File	2	2	2
28	War Diary	2	2	2

ICQ/MISC/7457

REPRODUCED BY 2/I AUST ARMY TOPO SVY COY MAR 45

14 Mar 45

TELEGRAMS AND CABLES

Procedure under Special Security Instr

1. All telegrams and cables from this HQ, will be franked by Lt A. PASCOE until 16 Mar 45 and thereafter by Capt R.R. KENNEDY until further notice.
2. Telegrams and cables will first be taken to the postal orderly, priced, and paid for.
3. The originator will then personally deliver his telegram or cable to the franking offr in Camp Orderly Room.
4. The franking offr will draw the attention of the originator to GRO 371/44 para 6, and will require him to complete and sign a form of declaration.
5. The franking offr will retain the signed declaration and pass the telegram or cable back to the postal orderly.
6. Franking offr will be available in LO's tent to receive telegrams and cables at the following times :-

Morning 0900K to 0915K
 Afternoon 1330K to 1345K

W.B. Anderson
 Maj.
 BM 24 Aust Inf Bde.

DISTRIBUTION

Comd
 BM
 SC
 LO(1)
 Camp
 2 Pl "A" Coy 2/1 Aust Gd Regt
 HQ 24 Aust Inf Bde Sig Sec
 2/76 Aust IAD
 2/8 Aust Dental Unit
 YMCA Tent
 Lt A. PASCOE
 File
 War Diary (2) ✓

WTD

SECRET

7

24 AUST INF BDE EXERCISE "MUSTIE"

Copy No. 20

16 Mar 45

AMENDMENTS

GEN

1. Owing to inclement weather, certain alterations and Amendments to the instrs and orders already issued have been necessary. These are as follows:-

(a) Gen Instrs

Para 6 Delete "15-15 Mar" Substitute "19-21 Mar"

Para 8 Delete "150700K" Substitute "190800K"

Para 24 Delete whole para and substitute new para as follows :-

ARTY DEMO STRATION

24 (a) 2/12 Aust PD Regt and 2/3 Aust Tk A Regt are to conduct a demonstration of 25 pr using various types of fuze, 75 MM mountain gun, 6 pr Tk A gun firing HE and the 4.2 in mortar at 1400K 19 Mar.

(b) Units will move out to Tk A range as laid down in para 8 and remain in the area until conclusion of demonstration

TIME TABLE Appx A is cancelled and new Appx A att.

(b) Forecast of Events

Forecast of Events is cancelled and new forecast att hereto.

(c) 24 Aust Inf Bde 001 (not to all addressees)

Para 12 Delete "14 Mar" Substitute 20 Mar

13(c) Delete "14 Mar" Substitute 20 Mar.

H. Stankard
Maj.
BM 24 Aust Inf Bde.

DISTRIBUTION

Copy No

Copy No

2/28 Aust Inf Bde	1	IO(1)	10-11
2/32 Aust Inf Bde	2	Bde TO	12
2/43 Aust Inf Bde	3	Bde Sup Offr	13
2/12 Aust PD Regt	4	Bde Sig Offr	14
C Coy 2/2 Aust LG Bde	5	2 Pl 2/1 Aust Gd Regt	15
2/3 Aust PD Amb	6	2/76 Aust IAD	16
Comd	7	File	17-18
BM	8	War Diary	19-20
SC	9		

SECRET

2d AUST INF BDE EXERCISE "BEETLE"

Copy No.....

FORECAST OF EVENTS

16 Mar 45

Serial	Date	Time	Place	Unit	Event	Probable Action	Remarks
1	11Mar	0900K	Bde HQ	Bde	Issue of Warning Order	Preparation for mov	
2	13Mar	0900K	Bde HQ	Bde "O" Gp	Issue of outline plan		
3	19Mar	0800K		Bde		Bde moves to Div Tk A range thence to bivouac areas after demonstration	
4	19Mar	1400K	Tk A Range	Bde	Demonstration	Demonstration of various fuzes with 25 pr gun Demonstration firing:- 6 pr HE amm 4.2 in mortars 75 MM guns	One guide per bn will report to Capt ROSE of Bde HQ at entrance to Tk A Range at 191300K. Lunch will be provided by units in area 2580-2681
5	20Mar	0800K	234857	Bde "O" Gp	Issue of final orders for def	CO's further recce and issue of orders to Bn "O" Gps. F & T gps move to assembly areas	Guides meet "O" Gp at Creek 232854
6	20Mar			Bn "O" Gps	Issue of orders	Bn F Gps deploy	
7	20Mar		Def Posn	Bn "F" Gps	Tps in posn	Tps will occupy main line of def and will NOT man outpost line until ordered by Bde HQ. All tps will continue digging main posn	B echs will be sited:- 2/28 Aust Inf Bn-1881 2/32 Aust Inf Bn-1981

Serial	Date	Time	Place	Unit	Event	Probable Action	Remarks
Contd 7						DF tasks will be registered. One SOS task per bn will be allowed.	2/43 Aust Inf Bn-2081 Bde HQ - 2480
8	20 Mar night 20/21		Bn fronts " "	Each Bn " "	Call for SOS tasks and DF tasks	One bty will fire on each bn front. Units will incorporate firing of MMG and 3 in mortar DF tasks. LMGs may only fire by day. See Gen Instrs, Safety Precautions	Each bn will be advised by Bde HQ as to when it will call for its SOS. Bn Comd will choose own times for calling for DF tasks & record time interval between call for fire and fall of fire.
9	21 Mar	0500K	Bn fronts	2/28 Bn	Call for one DF task	Call to be provided by fire of one bty	Subject to limitations of amm
10		0520K	" "	2/32 Bn	" " " " "	ditto	ditto
11		0540K	" "	2/43 Bn	" " " " "	ditto	ditto
12		0600K	" "	Bde	Withdrawal starts	Each bn will withdraw as a Bn exercise to assembly areas as follows:- 2/28 Aust Inf Bn - 1881 2/32 Aust Inf Bn - 1981 2/43 Aust Inf Bn - 2081 Bde HQ - 2480	Commencing 1030K, units will return to camp Order of march:- Bde HQ 2/28 Aust Inf Bn 2/32 Aust Inf Bn 2/43 Aust Inf Bn

APPX A

SECRET

TIME TABLE

Copy No.

(Issued with GEN INSTRS 24 Aust Inf Bde Exercise BEETLE)

Serial No	Date	Event	Remarks
1	19 Mar 45	Bde moves out to exercise area stopping at Div Tk A Range 'en route' for arty demonstration	
2	19 Mar 45	Demonstration by 2/12 Aust Fd Regt and 2/3 Aust Tk A Regt	
3	20 Mar 45	Occupation of def posn	
4	22 Mar 45	Conference Bde "O" Gp	Times later

RESTRICTED

The information given in this document is not to be communicated, either directly or indirectly, to the Press or to any person not authorized to receive it.

Serial No. 6
Nos. 24 - 76

AUSTRALIAN MILITARY FORCES

ROUTINE ORDERS PART 1

BY

BRIG S H W C PORTER DSO ED

GOLD

HQ 24 AUST INF BDE

26 MAR 45.

24. complaints by members of the forces

24. COMPLAINTS BY MEMBERS OF THE FORCES

(a) Subtended is a copy of GPO A108/42

1. The attention of all ranks will be directed to AMR & O 293(1), which provides as follows :-

"Officers and soldiers are forbidden to use any method of obtaining redress of real or supposed grievances other than those prescribed by the AMR or authorized by these orders. Anonymous complaints and complaints through the press are forbidden."

2. The use of outside influence is forbidden by AMR & O 307(1) which provides :-

"The use of outside influence to support complaints or applications for personal advantages, or in any matter affecting the position of an officer or soldier, is contrary to discipline. The only proper course for an officer or soldier is to apply through his CO or to complain in accordance with the AMR and these orders. Any attempt to obtain favourable consideration of requests or grievances by other means is forbidden."

3. The provisions of Division 4 of Part IV of the AMR & O will be explained to all formed units on parade at least once in every three months, and to all members in training depots once every month. The consequences of failing to observe the provisions of that Division will be made clear.

4. All complaints or applications of the nature described in para 2 above received at any HQ through unauthorized channels will be forwarded to the unit concerned, with a direction that the member will be paraded and informed of the Unit Order on this matter and that any further failure to observe its provisions will be dealt with as an offence.

25. DRESS

1. The following dress will be worn by all members of 9 Aust Div:--
 - (a) Trousers and shirts KD or JG
 - (b) Hats, Khaki fur, with puggaree.
Chin straps if issued will be worn neatly adjusted over the brim of the back of the hat.
Dvrs ME may wear caps SD in lieu of hats.
 - (c) Belts Web
 - (d) Boots with anklets web, or gaiters SD or American Pattern, or puttees short.
2. Between the hours of sunset and sunrise shirt will be worn with long sleeves buttoned at the wrists and buttoned in all respects except at the collar where the button may be left undone.
3. In respect of the period between the hours of sunrise and sunset (which hours will be taken until further orders as 0600 hrs and 1900 hrs respectively). Comd Offrs may at their discretion, permit members of authorised working parties, whilst actually engaged in strenuous work, to work with the upper portion of the body bare.

Members permitted to work with the upper portion of the body bare will wear shirts when proceeding to and returning from the actual place of work.
No general permission will be given by COs pursuant to the above orders. A specific direction must be given by COs on each occasion.
4. Cooks may wear singlets in lieu of shirt KD or JG whilst working in the immediate vicinity of the kitchen.
5. Whilst participating in organised sport the appropriate uniform will be worn, which will include a covering for the upper portion of the body except when swimming.
6. COs may authorise sunbaking in the vicinity of tents or quarters during specified hours.
7. Special provisions regarding offrs
 - (a) Offrs (and warrant offrs) when not on parade with other ranks may wear, in lieu of hats, caps, offr pattern.
 - (b) Safari jackets may be worn.
 - (c) Anklets web or gaiters SD need not be worn by offrs when wearing offrs' pattern uniform.
 - (d) CRA 9 Aust Div, Inf Bde Comds, Comd 2 Aust Beach Gp and COs of Div Tp Units may permit the wearing of Sam Browne belts with or without shoulder strap by offrs (and Warrant Offrs Class I) in lieu of belts web, with the proviso that uniformity within each unit must be maintained.
 - (e) After 1700 hrs daily offrs may wear shoes.
8. Attention is drawn to the Rules for Dress of the Offrs' Club RAVENS-NOE in which it is laid down that after 1830 hrs daily offrs wearing Shirts KD will wear ties.

26. TRAFFIC ACCIDENTS

1. The number of Traffic accidents in which MF vehs of this fm are involved is excessive. It is considered that most of these accidents could be avoided if dvr's exercised more care when driving. In all future cases in which a dvr, whilst driving a veh, is involved in an accident that dvr's driving license will be suspended automatically for a period of one month whether a charge is laid against the individual or not. This suspension of the dvr's driving license will be quite apart from any punishment which he may receive as a result of any charge laid against him in connection with such accident.

A. L. H. H. Capt.
SC 24 Aust Inf Bde.

NOTICES

Pictures - At Bde Amphitheatre Tuesday 27 Mar 1915 hrs -

"VALLEY OF THE SUN" - Lucille Ball & James Craig

"UNUSUAL HUNTING"

"NEWS FROM HOME"

DISTRIBUTION:

2/28 Aust Inf Bn
2/32 Aust Inf Bn
2/43 Aust Inf Bn
24 Aust Inf Bde Sig Sec
2 Pl 2/1 Aust Gd Regt
Comd
BM
SC
TO
BSM
File

WA

RESTRICTED

(10)

24 AUST INF BDE TRG INSTR NO 26

Copy No. 34....

PERIOD 1 APR - 14 APR 1945

27 Mar 45

HARDENING

1. It is still NOT fully realized that a very important aspect of hardening marches is the development of the morale. Many men are capable of greater physical effort if they develop determination not to fall out as a result of an early impulse.
2. Hardening marches must involve the carrying of weight equivalent to full weapons, amm., rations, and eqpt.
3. Hill climbing, maintaining complete tactical org on routes which are off tracks or rds, must be incl.
4. Future marches must be under conditions as above.

WEAPON TRG

5. Every opportunity must be taken to complete zeroing and firing all weapons while amm is available for trg.

TACTICAL TRG

6. Simple tactical exercises at Pl and Coy level, of one or two days duration, will be carried out with the object of a final revision of battle drill.
7. These exercises will be carried out in both open and close country.

COMBINED PANEL CODE

8. Trg of Coy HQs and all offrs in the use of CCBP 8 (Air/ground panel code) will be carried out.

GEN TRG

9. Gen trg, as outlined in recent Trg Instrs will continue.

[Signature]
Maj
BM 24 Aust Inf Bde

DISTRIBUTION

2/28 Aust Inf Bn	1 - 7
2/32 Aust Inf Bn	8 - 14
2/43 Aust Inf Bn	15 - 21
Bde Trg School	22
2/12 Aust Fd Regt	23
9 Aust Div	24
Comd	25
BM	26
SC	27
LO I	28
Bde Sup Offr	29
Bde Sig Offr	30
Camp	31
File	32 - 33
War Diary	34 - 35

HQ 24 Aust Inf Bde,

3/ Mar 45

24 AUST INF BDE TRG NOTES

These notes are issued from time to time, as distinct from Trg Instrs, for circulation to all offrs.

.....

BOOBY TRAPS

(Extract from Enemy Information Supplement, 1 Aust Corps Weekly Intelligence Summary No 26)

1. Recent reports from LUZON stress the extent to which the Japanese have employed booby traps in operations there. Allied troops have paid for their carelessness or inquisitiveness, and continual reminders must be given to all troops not to pick up or handle suspicious objects. Qualified bomb disposal personnel should be informed of their presence without delay.

2. A list of DOs and DON'Ts which might well be circulated is as follows:

(a) What to do

- (i) Look where you're going.
- (ii) Look at both ends of a wire before you touch it.
- (iii) When you find a mine or booby trap, mark it and report it to an offr or NCO
- (iv) Sandbag the driver's compartment of all vehs.
- (v) Be careful in buildings and at road junctions, parking areas, defiles, water points and by-passes around road blocks, and blown bridges.

(b) What NOT to do

- (i) Don't cut a taut wire; don't pull a slack one.
- (ii) Don't attempt to disarm or remove a mine or booby trap unless you have been trained to do so.
- (iii) Don't move or touch abandoned vehicles, supplies and equipment.
- (iv) Don't stand on running boards of vehicles.
- (v) Don't open doors or windows without first examining both sides.

SWINGING BRIDGE

(Forwarded by 2/43 Aust Inf Bn)

3. To transport stores or personnel across a deep or fairly shallow river that has a fairly strong current (5 to 12 knots) the swinging bridge has proved most successful.

4. Materials can almost invariably be obtained on the spot, but if two-gal containers or such similar articles are obtainable, so much the better. Bamboo is excellent due to its compartment structure.

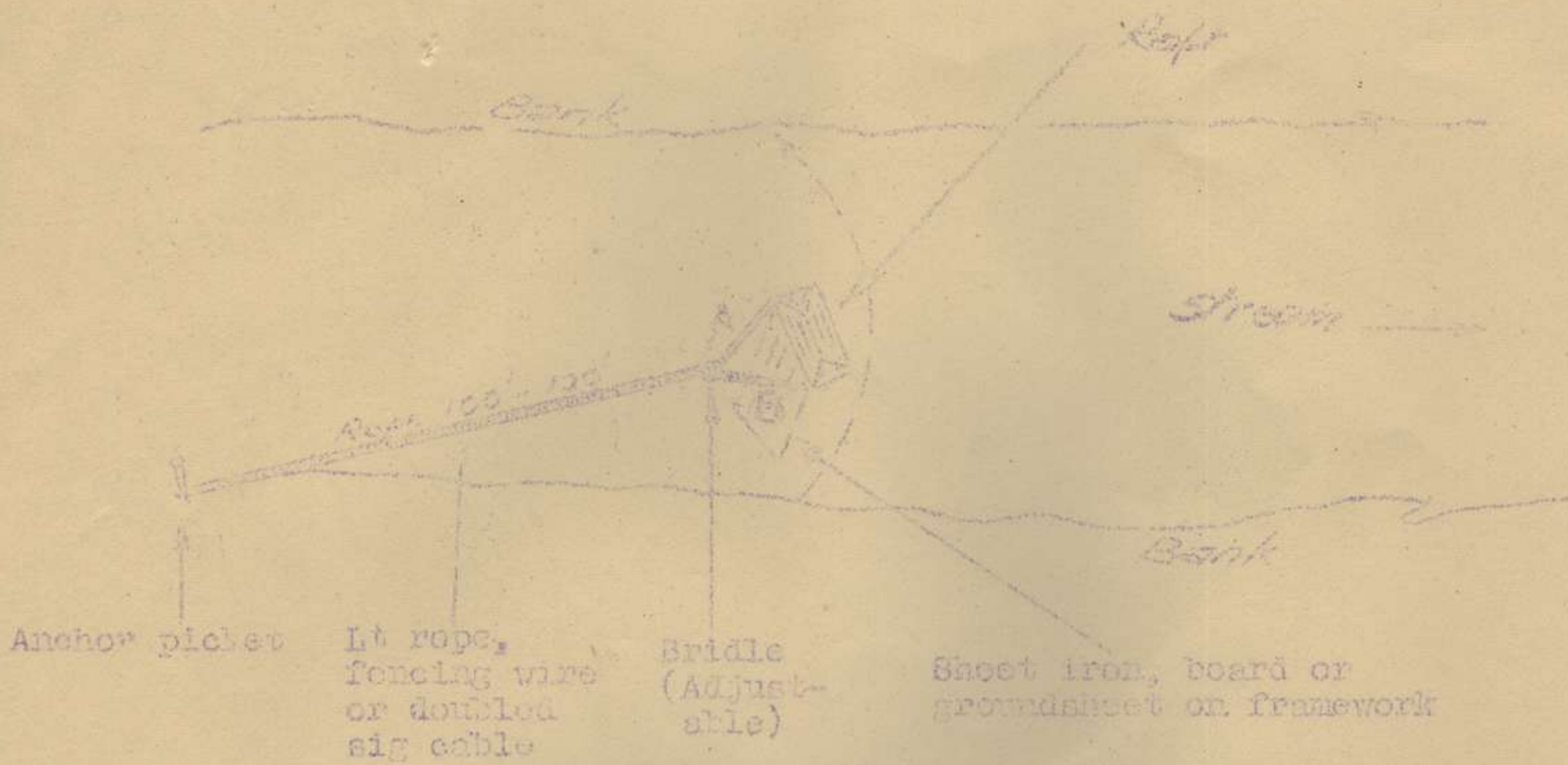
5. The principle is similar to that of a yacht sailing into the wind, the difference being the means of power. With the yacht, wind is the power, with the swinging bridge, the current supplies the power.

6. Diagram (NOT to scale) is att.

Maj
BM 24 Aust Inf Bde

DISTRIBUTION

2/28 Aust Inf Bn	7
2/32 Aust Inf Bn	7
2/43 Aust Inf Bn	7
Bde Trg School	3
9 Aust Div	1
Comd	1
BM	1
RM(L)	1
SC	1
SC(L)	1
LOe	3
IO	1
Comp	1
Sigs	1
Gd Pl	1
LAD	1
File	2
War Diary	2



Anchor picket

Lt rope,
fencing wire
or doubled
sig cable

Bridle
(Adjust-
able)

Sheet iron, board or
groundsheet on framework

To send raft across to far bank adjust bridle so that raft is at approx 40° as in above diagram. To bring raft back to near bank shorten B and lengthen A so that 40° angle is obtained.