

**AWM52**  
**2nd Australian Imperial Force and**  
**Commonwealth Military Forces unit war**  
**diaries, 1939-45 War**

**Item number: 8/2/25**

**25 Infantry Brigade**  
**September - October 1941**



OCT 15 1944

ack

## WAR DIARY

or

## INTELLIGENCE-SUMMARY-

(Erase heading not required).

Army Form C. 2 18.

Instructions regarding War Diaries and Intelligence Summaries are contained in F.S. Regs., Part II. and the Staff Manual respectively. Title pages will be prepared in manuscript.

Place	Date	Hour	Summary of Events and Information	Remarks and references to Appendices
Vic AAMCHITE	1 Sep		Bde TO Lieut A.S. GEE carried out series of experiments with mules with the view of using them as Front Line Tpt, where vehs cannot be used.	
	2	1500	GOC 1 Aust Corps, Maj-Gen LAVARACK, J.D., C.B., C.M.G., D.S.O., visited Bde HQ.	
		1700	The new G1, Col H.F.H. DURANT, visited Bde HQ.	
	5		Bde Comd, Brig E.C.P. PLANT, D.S.O., O.B.E., A.D.C. attended a conference at HQ 7 Aust Div.	
	6	1030	7 Aust Div CO No 3 received.	
	7		Bde Comd, Brig E.C.P. PLANT, D.S.O., O.B.E., A.D.C., attended the Bde inter unit Swimming Competitions held at BEYROUTH during the afternoon.	
	8		Bde Comd, Brig E.C.P. PLANT, D.S.O., O.B.E., A.D.C. inspected Barracks at TRIPOLI, and later in the day was instructed by Telephone Message from 7 Aust Div to move the Bde to a new location in the TRIPOLI area on 11, 12, 13, 14 Sep.	
	9		Bde Comd, Brig. E.C.P. PLANT, D.S.O., O.B.E., A.D.C. and C.R.E. Col R.J.H. RISSON made an inspection of the TRIPOLI Area.	
			7 Aust Div Adm <del>ins</del> Order No 21 received, ordering the move of 25 Aust Inf Bde to new location in TRIPOLI Area.	
			25 Aust Inf Bde Adm Instn No 6 issued ..	
	10	1000	Adv Party 25 Aust Inf Bde HQ moved to TRIPOLI Area.	Appx A
	11		GOC 7 Aust Div, Maj-Gen A.S. ALLEN, C.B.E., D.S.O., V.D. visited Bde HQ	
TRIPOLI Area 16312774	12	0800	HQ 25 Aust Inf Bde closed previous location and re-opened at pt 16312774 in TRIPOLI Area at 0945 hrs	
		0955	2/6 Fd Regt R.A.A Co Instn No 3 received.	
	15		Bde Comd, Brig E.C.P. PLANT, D.S.O., O.B.E., A.D.C. contacted Comd 21 Aust Inf Bde, Brig J.E. STEVENS, E.D. and the inter Bde boundary in TRIPOLI Fortress Area was defined. Bde Comd, Brig E.C.P. PLANT, D.S.O., O.B.E., A.D.C. also visited left Bn Sector.	
	16		GSO 1 Col DURANT H.F.H. visited 25 Aust Inf Bde HQ.	
	17		Bde Comd (Brig E.C.P. PLANT D.S.O. O.B.E. A.D.C.) C.R.E. (Col R.J.H. RISSON) and Bde IO (Lieut W. GRIGG) marked out the Eastern Atk Ditch in the Bde area and the Bde Comd (Brig E.C.P. PLANT, D.S.O. O.B.E. A.D.C.) pointed out to C.R.E. (Col R.J.H. RISSON) actual posns for MMG Pill Boxes in 2/25 Aust Bn Area.	
	18		Malaria Fever and Sand Fly Fever is becoming prevalent among tps of Bde HQ. Several offrs of 25 Aust Inf Bde HQ are down today with either of the two, incl the Bde Comd (Brig. E.C.P. PLANT D.S.O. O.B.E. A.D.C.) and the B.M. (Maj G.A. BERTRAM). An increasing number of NCOs and ORs are contracting Fever day by day.	

Lab B



WAR DIARY

Army Form C. 2118.

Instructions regarding War Diaries and Intelligence Summaries are contained in F.S. Regs., Part II. and the Staff Manual respectively. Title pages will be prepared in manuscript.

~~INTELLIGENCE SUMMARY~~

(Erase heading not required).

Place	Date	Hour	Summary of Events and Information	Remarks and references to Appendices
	21		Maj-Gen A.S. ALLEN C.B.E. D.S.O. V.D., GOC 7 Aust Div visited Bde HQ	
	23		25 Aust Inf Bde Tng Instn No 8 issued setting out the Policy to be followed in tng	APPX B
	25		25 Aust Inf Bde Op Instn No 17 issued	" C
	26		Routine Orders, by Brig E.C.P. PLANT D.S.O. O.B.E. A.D.C., comd 25 Aust Inf Bde published.	" D
	27		25 Aust Inf Bde AD and PAD Scheme issued	" E
	28		2/33 Aust Bn moved out from LEGOULT BARRACKS to their allotted area on right of the Bde defence area.	
	29		Bde Comd Brig E.C.P. PLANT D.S.O. O.B.E. A.D.C. visited 2/33 Bns area and inspected the defence works.	
	30		Bde Comd Brig E.C.P. PLANT D.S.O. O.B.E. A.D.C. spent most of the day discussing the defence scheme of TRIPOLI Fortress with the C.R.E. (Col R.JH. RISSON).	

*G. A. Burt*

Maj.  
31 25 Aust Inf Bde.



# FIELD RETURN OF OFFICERS

HQ 25 AUST INF BDE.

(Unit)

## PART A.—STRENGTH, SURPLUS OR REINFORCEMENTS REQUIRED.

1 Ranks.	2 Posted strength counting against authorized establishment (excluding attached).	3 Surplus to Establishment.	4 Reinforcements required (i.e. deficits on establishment).
* .. .. .			
* .. .. .			
<i>Brig</i>			
Lieut.-Colonels .. .. .	1		
Majors .. .. .			1
Captains .. .. .	4		
Lieutenants .. .. .	6		
2nd Lieutenants .. .. .			
Quartermasters <i>Chaplains</i> .. .. .	2		1
<b>TOTALS</b> .. .. .	<b>13</b>	<b>0</b>	<b>2</b>

\* Insert detail of higher ranks as necessary.

## PART B.—PARTICULARS OF OFFICERS JOINED OR QUITTED DURING WEEK.

### Officers JOINED during week.

Rank.	Name.	Corps.	Date.	Cause.
<i>1/Maj</i>	<i>G.A. BERTRAM</i>	<i>HQ 25 Bde</i>	<i>2 Sep 41</i>	<i>Discharged from Hosp.</i>

### Officers QUITTED during week.

Rank.	Name.	Corps.	Date.	Cause.

## PART C.—DESCRIPTION OF OFFICERS WHOSE RETURN TO THE UNIT IS PARTICULARLY REQUESTED.

Rank.	Name and Initials.	Corps.	Remarks (e.g., present whereabouts, if known).



**PART D.—NOMINAL ROLL OF OFFICERS ON STRENGTH.**

(i) Officers posted to Unit (Total to agree with column 2 of Part A).

1	2	3	4	5	6
Substantive Rank, and higher temporary rank, if held.	Acting higher Personal Number. OT Temp RANK	Name and Initials.	Corps.	Whether present with Unit (Insert Yes or No).	If not present with Unit, state how employed.
Brig		E.C.P. PLANT	HQ 25 Bde	Yes	Bde Comd
Capt	Maj	G.H. BERTRAM	" " "	"	B.M.
Capt		I.M. HUNTER	" " "	No	M.E. Staff College
Capt		R. VINCENT	" " "	"	TO. CC 1 AUST CORPS
Capt		R.H.C. MUIR	" " "	"	M.E. Staff College
Lieut	Capt	P.L. BRINKLEY	" " "	Yes	IO (Senior)
Lieut		E.S. OWENS	" " "	"	SE (L)
Lieut		L.E. WALCOTT	" " "	No	IO, A/Adj 2/31 BN
Lieut		C.L. WATERMAN	" " "	Yes	IO
Lieut		H.M. RANKINE	" " "	"	Amen O.
Lieut		F.W. GRIGG	" " "	"	IO
Chap		D. REDDING	" " "	No	CIE Chap Att 2/31 BN
Chap		R. SCARFE	" " "	"	RC " " 2/35 "

(ii) OFFICERS ATTACHED FROM OTHER CORPS.

Substantive Rank, and higher temporary rank, if held.	Personal Number.	Name and Initials.	Corps.	Date of attachment.	Nature of attachment.
Capt		G.B. KHATER	44 LAD		LAD
Capt		D. VINCENT	1 DIV SIGS		L Sec
Lieut		H.W. CHUCK	124 HQ AUST 90 BN		Provisional PI.
Lieut		H.W. BUSWELL	2/31 BN		A/TO
Lieut		H.S. GEE	1 BN MISC		A/TO
Lieut		R.G. FALKINDER			Brig.

HQ 25 AUST INF BDE,

COMD 25 Aust Inf Bde,

(Unit.)

(Signature of Commander.)

6 SEP 44

(Date of Despatch.)

7 AUST DIV

(Bde., Divn., Area, etc., with which Unit is serving.)



**FIELD RETURN OF OTHER RANKS.**

H Q 25 AUST INF BDE (Unit). 6 Sep 19 41 (Date).

be furnished by all units of Cavalry, Infantry, Royal Tank Corps, Royal Army Veterinary Corps, Royal Army Pay Corps, Army Educational Corps, Corps of Military Police, and all Headquarter units).

**Part A. Strength, Surplus or Reinforcements required.**

1 Detail.	2 Posted strength counting against authorized establishment (excluding attached).	3 Surplus to Establishment.	4 Reinforcements required (i.e. deficits on establishments).
W.Os. Class I.	1		
W.Os. Class II.			1
Squadron or Company Quartermaster-Serjeants OR Colour-Serjeants			
Staff Serjeants	2		
Serjeants	3		
Buglers, Trumpeters, etc.			
Corporals	4		1
Troopers, Privates, Guardsmen, Fusiliers, etc.	52		3
<b>TOTALS</b>	<b>62</b>	*	* <b>5</b>

\* These totals should agree with the details shown in Part D on page 2 of Army Form W.3009.

**Part B. Other Ranks attached from other Corps.**

Detail.	Unit and Corps to which they belong.	Detail.	Units and Corps to which they belong.
2 Sjt	L Sec 7 DIV Sigs.	1 Cpl. 1 L/cpl.	Cipher Unit
3 Cpls		1 WOII 1 Sjt	44 LAD
25 Sigin		1 Cpl. 9 ORS	
1 Sjt	12 Pl. HQ AUST Cd Bn Protective Pl.	1 Cpl 2 ORS	29 POSTAL UNIT
2 Cpls		1 L/cpl.	7 DIV INT Sec.
33 ORS	AACCS.		
1 Sjt			

**Part C. Description of other ranks whose return to the unit is particularly requested.**

Army No.	Rank.	Name and Initials.	Corps.	Remarks (e.g. present whereabouts if known).
QX 1494	Pte	JEWELL G.C.	HQ 25 Bde	HOSP.
NX 10137	WOII	SEYMOUR E.R.	" " "	"



**Part D. Detail of Surplus or Reinforcements required as shown in Part A of Army Form W. 3009.**

DETAIL OF SPECIALISTS, TRADESMEN, ETC.	SURPLUS TO ESTABLISHMENT.							REINFORCEMENTS REQUIRED.							REMARKS.			
	W. Os. Class I.	W. Os. Class II.	S. Q. M. S.; C. Q. M. S., or Colour Sergeants.	Staff Sergeants.	Serjeants.	Buglers, Trumpeters, &c.	Corporals.	Troopers, Privates, Guardsmen, Fusiliers, &c.	TOTAL.	W. Os. Class I.	W. Os. Class II.	S. Q. M. S.; C. Q. M. S., or Colour-Sergeants.	Serjeants.	Buglers, Trumpeters, &c.		Corporals.	Troopers, Privates, Guardsmen, Fusiliers, &c.	TOTAL.
Bricklayers																		
Butchers																		
Carpenters and Joiners																		
„ (trained in wheeling duties).																		
Clerks																		
Despatch Riders																		
Draughtsmen (topo)																		
Drivers H.T. and/or I.C. <i>MT.</i>																		
Electricians																		
Farriers																		
Fitters																		
Masons																		
Painters and Decorators																		
Plumbers and Gasfitters																		
Saddlers and Harness Makers																		
Saddle Tree Makers																		
Signallers																		
Storemen technical																		
Vickers Machine Gunners																		
Wheelers																		
<i>Intelligence</i>																		
<i>C.S.M.</i>																		
<i>General Duties</i>																		
General duty personnel																		
TOTALS (to agree with Columns 3 and 4 of Part A).																		

*1 1 3 5*

*QX1494 PFC JEWELL  
NK101ST WO1 SEYMOUR*



# FIELD RETURN OF OFFICERS

H.Q. 25<sup>th</sup> AUST INF BDE (Unit)

## PART A.—STRENGTH, SURPLUS OR REINFORCEMENTS REQUIRED.

1 Ranks.	2 Posted strength counting against authorized establishment (excluding attached).	3 Surplus to Establishment.	4 Reinforcements required (i.e. deficits on establishment).
<i>Brig</i>	1		
Lieut.-Colonels .. .. .			
Majors .. .. .			
Captains .. .. .	2		2
Lieutenants .. .. .	6		1
2nd Lieutenants .. .. .			
Quartermasters <i>Chaplains</i>	2		1
TOTALS .. .. .	11		4

\* Insert detail of higher ranks as necessary.

## PART B.—PARTICULARS OF OFFICERS JOINED OR QUITTED DURING WEEK.

### Officers JOINED during week.

Rank.	Name.	Corps.	Date.	Cause.
Capt	G.J. CULLEN	HQ 25 Bde	13 Sep 41.	From Hosp.
Chap.	J.B. LYNCH	HQ 25 Bde	12 Sep 41.	RC Chap. vice Chap R. SCARFE
Capt	G.F. LARKIN	7th Aust Div Cav Regt.	8 Sep 41.	Attached as BM(L)

### Officers QUITTED during week.

Rank.	Name.	Corps.	Date.	Cause.
Lieut	H.W. BUSWELL	12 Pl. HQ Aust Gd Bn.	11 Sep 41	HOSP.
Chap.	R. SCARFE.	HQ 25 Bde	12 Sep 41.	Transferred IAGH.
Capt	R. VINCENT	HQ 25 Bde	30 Aug 41	Transferred 2/3 Fd Regt. (H/F ORDERS (ME) 6 Sep 41)

## PART C.—DESCRIPTION OF OFFICERS WHOSE RETURN TO THE UNIT IS PARTICULARLY REQUESTED.

Rank.	Name and Initials.	Corps.	Remarks (e.g., present whereabouts, if known).



**PART D.—NOMINAL ROLL OF OFFICERS ON STRENGTH.**

(i) Officers posted to Unit (Total to agree with column 2 of Part A).

1	2	3	4	5	6
Substantive Rank, and higher temporary rank, if held.	Personal Number. <i>Higher or Temp Rank</i>	Name and Initials.	Corps.	Whether present with Unit (Insert Yes or No).	If not present with Unit, state how employed.
Brig		E. C. P. PLANT	HQ 25 Bde	Yes	Bde Comd
Capt	Maj	C. A. BERTRAM	" " "	"	BM
Capt		T. M. HUNTER	" " "	No	Seconded ME Staff College
Capt		RAC MUIR	" " "	"	" " " "
Capt		G. J. CULLEN	" " "	Yes	Sub. O
Lieut	Capt	P. L. BRINKLEY	" " "	"	L.O.
Lieut		E. S. OWENS	" " "	"	SC (L)
Lieut		L. E. WILCOTT	" " "	No	10, 11th 2/33 Bn.
Lieut		C. L. WATERMAN	" " "	"	Motor Contact Ours School.
Lieut		H. B. RANKINE	" " "	Yes	Hmen Off.
Lieut		E. W. GRIGG	" " "	"	10
Chap		D. REDDING	" " "	No	CJE. Chap at 2/31 Bn.
Chap		J. B. LYNCH	" " "	"	RC " " 2/33 Bn

(ii) OFFICERS ATTACHED FROM OTHER CORPS.

Substantive Rank, and higher temporary rank, if held.	Personal Number.	Name and Initials.	Corps.	Date of attachment.	Nature of attachment.
Capt		G. B. KATER	44 LAD		LAD
Capt		G. F. LARKIN	7th Div Cav Regt		H/BM (L)
Capt		D. VINCENT	7 DIV SIG		1 SEC
Lieut		H. A. CHUCK	7 DIV SIGS		2 SEC
Lieut		H. S. GEE	2/31 Bn.		M/TO
Lieut		R. G. FALKINDER	7 DIV MASC		M/TO

H Q 25 AUST INF BDE.

Brig  
COMD 25 Aust Inf Bde

(Unit.)

(Signature of Commander.)

13 Sept 44.

7 Aust Div

(Date of Despatch.)

(Bde., Divn., Area, etc., with which Unit is serving.)



**FIELD RETURN OF OTHER RANKS.**

H Q 25 AUST INF BDE. (Unit) 13 Sep 1941. (Date)

(To be furnished by all units of Cavalry, Infantry, Royal Tank Corps, Royal Army Veterinary Corps, Royal Army Pay Corps, Army Educational Corps, Corps of Military Police, and all Headquarter units).

**Part A. Strength, Surplus or Reinforcements required.**

1 Detail.	2 Posted strength counting against authorized establishment (excluding attached).	3 Surplus to Establishment.	4 Reinforcements required (i.e. deficits on establishments).
W.Os. Class I.	1		
W.Os. Class II.			1
Squadron or Company Quartermaster-Serjeants OR Colour-Serjeants	1		
Staff Serjeants	21		1
Serjeants			
Buglers, Trumpeters, etc.	5		
Corporals			
Troopers, Privates, Guardsmen, Fusiliers, etc.	48		8
<b>TOTALS</b>	<b>58</b>	*	<b>10</b>

\* These totals should agree with the details shown in Part D on page 2 of Army Form W.3009.

**Part B. Other Ranks attached from other Corps.**

Detail.	Unit and Corps to which they belong.	Detail.	Units and Corps to which they belong.
2 Sjt	L Sec 7 DIV SIGS.	1 cpl. 1 L/cpl	Cipher UNIT. 44 LAD
3 Cpls		1 WOII 1 Sjt	
25 Sigmn		1 cpl 9 ORs	
1 Sjt	12. A. HQ AUST Gd BN.	1 Cpl. 3 ORs	29 Postal UNIT
2 Cpls		<del>1 cpl.</del>	
33 ORs			
1 Sjt	AHCS.		

**Part C. Description of other ranks whose return to the unit is particularly requested.**

Army No.	Rank.	Name and Initials.	Corps.	Remarks (e.g. present whereabouts if known).
QX 1494	Pte	JEWELL GC	HQ 25 Bde	25 I.T.B
NX 10137	WOII	SEYMOUR ER	" " "	HOSP.
QX 2149	Pte	NEWITT R.L	" " "	25 I.T.B



Part D. Detail of Surplus or Reinforcements required as shown in Part A of Army Form W. 3009.

DETAIL OF SPECIALISTS, TRADESMEN, ETC.	SURPLUS TO ESTABLISHMENT.							REINFORCEMENTS REQUIRED.							REMARKS.		
	W.Os. Class I.	W.Os. Class II.	S.Q.M.S.; C.Q.M.S., or Colour Sergeants.	Staff Sergeants.	Sergeants.	Buglers, Trumpeters, &c.	Corporals.	Troopers, Privates, Guardsmen, Fusiliers, &c.	TOTAL.	W.Os. Class I.	W.Os. Class II.	S.Q.M.S.; C.Q.M.S., or Colour-Sergeants.	Sergeants.	Buglers, Trumpeters, &c.		Corporals.	Troopers, Privates, Guardsmen, Fusiliers, &c.
Bricklayers																	
Butchers																	
Carpenters and Joiners																	
„ (trained in wheeling duties).																	
Clerks																	
Despatch Riders																	
Draughtsmen (topo)																	
Drivers H.T. and/or I.C. MT.																4	4
Electricians																	
Farriers																	
Fitters																	
Masons																	
Painters and Decorators																	
Plumbers and Gasfitters																	
Saddlers and Harness Makers																	
Saddle Tree Makers																	
Signallers																	
Storemen technical																	
Vickers Machine Gunners																	
Wheelers																	
CSM. INTELLIGENCE Batmen. General Duties										1		1				2	2
																2	2
General duty personnel																	
TOTALS (to agree with Columns 3 and 4 of Part A).										1	1	8	10				

MX101ST WOTI SEYMOUR  
CPL MORAY G.

H Q 25 AUST INF BDE.

Unit.

Date of Despatch 13 SEP 41

Brig.  
COMD 25 Aust Inf Bde.

Signature of Commander.

7 AUST DIV

Bde., Divn., Area, etc., with which unit is serving.



# FIELD RETURN OF OFFICERS

**H Q 25 AUSTR INF BDE.**

(Unit) *20 Sep 41*

**PART A.—STRENGTH, SURPLUS OR REINFORCEMENTS REQUIRED.**

1 Ranks.	2 Posted strength counting against authorized establishment (excluding attached).	3 Surplus to Establishment.	4 Reinforcements required (i.e. deficits on establishment).
* * <i>Brig</i>			
Lieut.-Colonels .. .. .	<i>1</i>		
Majors .. .. .			
Captains .. .. .	<i>2</i>		<i>2</i>
Lieutenants .. .. .	<i>6</i>		<i>1</i>
2nd Lieutenants .. .. .			
Quartermasters <i>Chaplains</i> .. .. .	<i>2</i>		<i>1</i>
<b>TOTALS</b> .. .. .	<i>11</i>		<i>4</i>

\* Insert detail of higher ranks as necessary.

**PART B.—PARTICULARS OF OFFICERS JOINED OR QUITTED DURING WEEK.**

**Officers JOINED during week.**

Rank.	Name.	Corps.	Date.	Cause.

**Officers QUITTED during week.**

Rank.	Name.	Corps.	Date.	Cause.
<i>Lieut</i>	<i>R.G. FALKINDER</i>	<i>HQ AACSC 7 Div.</i>	<i>16 Sep.</i>	<i>Rejoined UNIT.</i>
<i>Lieut</i>	<i>A.S. GEE</i>	<i>2/31 Aust Inf Bn</i>	<i>18 Sep.</i>	<i>HOSPITAL.</i>

**PART C.—DESCRIPTION OF OFFICERS WHOSE RETURN TO THE UNIT IS PARTICULARLY REQUESTED.**

Rank.	Name and Initials.	Corps.	Remarks (e.g., present whereabouts, if known).



**PART D.—NOMINAL ROLL OF OFFICERS ON STRENGTH.**

(i) Officers posted to Unit (Total to agree with column 2 of Part A).

1	2	3	4	5	6
Substantive Rank, and higher temporary rank, if held.	Acting higher or Personal Number. Temp. RANK.	Name and Initials.	Corps.	Whether present with Unit (Insert Yes or No).	If not present with Unit, state how employed.
Brig		E.C.P. PLANT	HQ 25 Bde	Yes	Bde Comd.
Capt	Maj	G.H. BERTRAM	" " "	"	BM
Capt		G.J. CULLEN	" " "	"	Sub O
Lieut	Capt	P.L. BRINKLEY	" " "	"	LO
Lieut		E.S. OWENS	" " "	"	SC (L)
Lieut		L.E. WALCOTT	" " "	No	Adit. 2/31 Aust Inf
Lieut		C.L. WATERMAN	" " "	"	Motor Contact Offs S
Lieut		H.H. RANKINE	" " "	Yes	Amen O
Lieut		F.W. GRIGG	" " "	"	IO
Cmp		D. REDDING	" " "	No	Of Cmp at 2/31 Bn.
Cmp		J.B. LYNCH	" " "	"	RC " 2/38 "
<u>SECONDED TO ME STAFF COLLEGE</u>					
Capt	I.M.	HUNTER			
Capt	RAC	MUIR			

(ii) OFFICERS ATTACHED FROM OTHER CORPS.

Substantive Rank, and higher temporary rank, if held.	Personal Number.	Name and Initials.	Corps.	Date of attachment.	Nature of attachment.
Capt		G.B. KATER	44 LAD		LAD.
Capt		G.F. LARKIN	7 Aust Div Cav Regt		A/BM (L)
Capt		D. VINCENT	7 Div Sigs		L Sec.
Lieut		H.N. CHUCK	" " "		"

H Q 25 AUST INF BDE.

(Unit.)

20 Sep 41.

(Date of Despatch.)

Brig.  
COMD 25 Aust Inf Bde.

(Signature of Commander.)

7 AUST DIV

(Bde., Divn., Area, etc., with which Unit is serving.)



**FIELD RETURN OF OTHER RANKS.**

H'Q 25 AUST INF BDE. (Unit). 20 Sep 1941 (Date).

(To be furnished by all units of Cavalry, Infantry, Royal Tank Corps, Royal Army Veterinary Corps, Royal Army Pay Corps, Army Educational Corps, Corps of Military Police, and all Headquarter units).

**Part A. Strength, Surplus or Reinforcements required.**

1 Detail.	2 Posted strength counting against authorized establishment (excluding attached).	3 Surplus to Establishment.	4 Reinforcements required (i.e. deficits on establishments).
W.Os. Class I.	1		
W.Os. Class II.			
Squadron or Company Quartermaster-Serjeants OR Colour-Serjeants	1		
Staff Serjeants			
Serjeants			3
Buglers, Trumpeters, etc.			
Corporals	5		
Troopers, Privates, Guardsmen, Fusiliers, etc.	40		16
<b>TOTALS</b>	<b>49</b>	*	* <b>19</b>

\* These totals should agree with the details shown in Part D on page 2 of Army Form W.3009.

**Part B. Other Ranks attached from other Corps.**

Detail.	Unit and Corps to which they belong.	Detail.	Units and Corps to which they belong.
1 Sjt	L Sec 7 DIV SIGS.	1 Cpl. 14 Cpl.	Cipher Unit.
3 Cpls		1 WO 1 Sjt.	44 LAD
23 Sigmn		7 ORs	
1 Sjt	12 Pl. HQ AUST Gd. Bn.	1 Cpl. 2 ORs	29 Postal Unit
2 Cpls			
25 ORs			

**Part C. Description of other ranks whose return to the unit is particularly requested.**

Army No.	Rank.	Name and Initials.	Corps.	Remarks (e.g. present whereabouts if known).
QX 2149	Pte	NEWITT. R.L.	HQ 25 Bde	25 ITB [URGENT]



**Part D. Detail of Surplus or Reinforcements required as shown in Part A of Army Form W. 3009.**

DETAIL OF SPECIALISTS, TRADESMEN, ETC.	SURPLUS TO ESTABLISHMENT.							REINFORCEMENTS REQUIRED.							REMARKS.			
	W.Os. Class I.	W.Os. Class II.	S.Q.M.S.; C.Q.M.S., or Colour Sergeants.	Staff Sergeants.	Sergeants.	Buglers, Trumpeters, &c.	Corporals.	Troopers, Privates, Guardsmen, Fusiliers, &c.	TOTAL.	W.Os. Class I.	W.Os. Class II.	S.Q.M.S.; C.Q.M.S., or Colour Sergeants.	Sergeants.	Buglers, Trumpeters, &c.		Corporals.	Troopers, Privates, Guardsmen, Fusiliers, &c.	TOTAL.
Bricklayers																		
Butchers																		
Carpenters and Joiners																		
„ (trained in wheeling duties).																		
Clerks																		
Despatch Riders																		
Draughtsmen (topo)																		
Drivers H.T. and/or I.C.																		
Electricians																		
Farriers																		
Fitters																		
Masons																		
Painters and Decorators																		
Plumbers and Gasfitters																		
Saddlers and Harness Makers																		
Saddle Tree Makers																		
Signallers																		
Storemen technical																		
Vickers Machine Gunners																		
Wheelers																		
<i>Awaiting details of Personnel in Hosp. N.Y.D. probably Sand-fly Fever.</i>																		
General duty personnel																		
TOTALS (to agree with Columns 3 and 4 of Part A).																		

H Q 25 AUST INF BDE.

Unit.

Date of Despatch

20 Sep 41

Brig.  
COMD 25 Aust Inf Bde.

Signature of Commander.

7 AUST DIV

Bde., Divn., Area, etc., with which unit is serving.



H Q 25 AUST INF BDE.

# FIELD RETURN OF OFFICERS

H Q 25 AUST INF BDE. (Unit)

## PART A.—STRENGTH, SURPLUS OR REINFORCEMENTS REQUIRED.

1	2	3	4
Ranks.	Posted strength counting against authorized establishment (excluding attached).	Surplus to Establishment.	Reinforcements required (i.e. deficits on establishment).
*			
<i>BRIG</i>	<i>1</i>		
Lieut.-Colonels .. .. .			
Majors .. .. .	<i>1</i>		
Captains .. .. .	<i>3</i>		<i>1</i>
Lieutenants .. .. .	<i>4</i>		<i>2</i>
2nd Lieutenants .. .. .			
Quartermasters <i>Chapo</i> .. .. .	<i>2</i>		<i>1</i>
TOTALS .. .. .	<i>11</i>		<i>4</i>

\* Insert detail of higher ranks as necessary.

## PART B.—PARTICULARS OF OFFICERS JOINED OR QUITTED DURING WEEK.

### Officers JOINED during week.

Rank.	Name.	Corps.	Date.	Cause.
<i>LIEUT</i>	<i>H.W. BUSWELL</i>	<i>12 PL Gd BN</i>		<i>discharged FROM HOSP</i>
<i>L.</i>	<i>E DWYER</i>	<i>7 DIV ARSE</i>		<i>ATI as <del>S.P.</del> (L)</i> <i>S.C.</i>

### Officers QUITTED during week.

Rank.	Name.	Corps.	Date.	Cause.
<i>CAPT</i>	<i>G.F. LARKIN</i>	<i>7 AUST DIV</i> <i>C AV REGT</i>		<i>HOSP</i>

## PART C.—DESCRIPTION OF OFFICERS WHOSE RETURN TO THE UNIT IS PARTICULARLY REQUESTED.

Rank.	Name and Initials.	Corps.	Remarks (e.g., present whereabouts, if known).



**PART D.—NOMINAL ROLL OF OFFICERS ON STRENGTH.**

(i) Officers posted to Unit (Total to agree with column 2 of Part A).

1	2	3	4	5	6
Substantive Rank, and higher temporary rank, if held.	ACTING HIGHER OR Personal Number. TEMP RANK	Name and Initials.	Corps.	Whether present with Unit (Insert Yes or No).	If not present with Unit, state how employed.
BRIG		E.C.P. PLANT	HQ 25 Bde	YES	Bde Comd
MAJ	MAJ	G.H. BERTRAM	" "	"	B.M.
CAPT	CAPT	E.S. OWENS	" "	"	S.C.
CAPT		G.J. CULLEN	" "	"	Sup. O.
CAPT	CAPT	P.L. BRINKLEY	" "	"	L.O.
LIEUT		L.E. WALCOTT	" "	NO	A/ADJT 2/31 AUST BN
LIEUT		C.L. WATERMAN	" "	NO	M/C OFFERS SCHOOL
LIEUT		E.W. GRIGG	" "	YES	L.O.
LIEUT		M.H. RANKINE	" "	"	ARMEN O.
CHAP		J.B. LYNCH	" "	NO	RC 2/32 BN ATT
"		D. READING	" "	NO	CE ATT 2/31 AUST BN

(ii) OFFICERS ATTACHED FROM OTHER CORPS.

Substantive Rank, and higher temporary rank, if held.	Personal Number.	Name and Initials.	Corps.	Date of attachment.	Nature of attachment.
CAPT		G.B. KATER	64 LAD		LAD
CAPT		D. VINCENT	7 DIV SIGS		O.C. 2 SEC SIGS
LIEUT		N.N. CHUCK	" "		L SEC SIGS
LIEUT		M.S. GLE	2/31 AUST BN		A/T.O.
LIEUT		E. DWYER	7 DIV AASC		S.O. 6 (L)
LIEUT		H.W. BUSWELL	HQ 64 BN		OC 12 PL 64 BN

HQ 25 AUST INF BDE. (Unit.)

(Signature of Commander.)

7 AUST DIV (Bde., Divn., Area, etc., with which Unit is serving.)

27 SEP 41 (Date of Despatch.)



**FIELD RETURN OF OTHER RANKS.**

**H Q 25 AUST INF BDE.** (Unit). 27 Sep 1941 (Date).

(To be furnished by all units of Cavalry, Infantry, Royal Tank Corps, Royal Army Veterinary Corps, Royal Army Pay Corps, Army Educational Corps, Corps of Military Police, and all Headquarter units).

**Part A. Strength, Surplus or Reinforcements required.**

1 Detail.	2 Posted strength counting against authorized establishment (excluding attached).	3 Surplus to Establishment.	4 Reinforcements required (i.e. deficits on establishments).
W.Os. Class I.	1		
W.Os. Class II.	1		
Squadron or Company Quartermaster-Serjeants OR Colour-Serjeants	1		
Staff Serjeants	1		
Serjeants	81		1
Buglers, Trumpeters, etc.			
Corporals	4		
Troopers, Privates, Guardsmen, Fusiliers, etc.	50		8
<b>TOTALS</b>	<b>59</b>	*	* <b>9</b>

\* These totals should agree with the details shown in Part D on page 2 of Army Form W.3009.

**Part B. Other Ranks attached from other Corps.**

Detail.	Unit and Corps to which they belong.	Detail.	Units and Corps to which they belong.
2 Sjt	L'Sec 7 DIV Sigs	1 CPL 1L/CPL	CIPHER UNIT
2 CPL		1 WO 1 Sjt	
26 Sigs		17 ORs	
1 Sjt	12 PL Gd BN	1 CPL 3 ORs	29 Postal Unit
2 CPLs			
23 ORs			

**Part C. Description of other ranks whose return to the unit is particularly requested.**

Army No.	Rank.	Name and Initials.	Corps.	Remarks (e.g. present whereabouts if known).
QX2149	PTE	NEWITT R.L	HQ 25 BDE	25 I.T.B (Urgent)



Part D. Detail of Surplus or Reinforcements required as shown in Part A of Army Form W. 3009.

DETAIL OF SPECIALISTS, TRADESMEN, ETC.	SURPLUS TO ESTABLISHMENT.							REINFORCEMENTS REQUIRED.						REMARKS.			
	W.Os. Class I.	W.Os. Class II.	S.Q.M.S.; C.Q.M.S., or Colour Sergeants.	Staff Sergeants.	Sergeants.	Buglers, Trumpeters, &c.	Corporals.	Troopers, Privates, Guardsmen, Fusiliers, &c.	TOTAL.	W.Os. Class I.	W.Os. Class II.	S.Q.M.S.; C.Q.M.S., or Colour-Sergeants.	Sergeants.		Buglers, Trumpeters, &c.	Corporals.	Troopers, Privates, Guardsmen, Fusiliers, &c.
Bricklayers <b>GEN DUTIES</b>												1				2	3
Butchers																	
Carpenters and Joiners																	
" (trained in wheeling duties).																	
Clerks <b>ORDERLIES</b>																2	2
Despatch Riders																	
Draughtsmen (topo)																	
Drivers H.P. and/or I.Q. <b>MT</b>																4	4
Electricians																	
Farriers																	
Fitters																	
Masons																	
Painters and Decorators																	
Plumbers and Gasfitters																	
Saddlers and Harness Makers																	
Saddle Tree Makers																	
Signallers																	
Storemen technical																	
Vickers Machine Gunners																	
Whealers																	
General duty personnel																	
TOTALS (to agree with Columns 3 and 4 of Part A).												1				89	

H Q 25 AUST INF BDE.

Unit.

Date of Despatch **27 Sep 41**

*[Signature]* Brig.  
COMD 25 Aust Inf Bde.  
Signature of Commander.

**7 AUST DIV**

Bde., Divn., Area, etc., with which unit is serving.



Appendix A

Appendix B

AUSTRALIAN IMPERIAL FORCE

SECRET

25 AUST INF BDE ADM INSTN No 6

Ref Map: TRIPOLI 1 : 50000

9 Sep 41

1. MOVE

2/31 Bn will move at 0800 hrs 11 Sep to bivouac area already notified.  
 2/25 Bn " " " 0800 hrs 13 Sep to barrack area as per red shaded sketch att  
 2/33 Bn " " " 0800 hrs 14 Sep to barrack area as per red shaded sketch att

Additional accommodation for last two Bns may be available later.  
 14th Lt Fd Amb will move at time notified in 7 Aust Div Movement Table att.

NO tents will be erected unless completely camouflaged.

Full scale tentage required for personnel in the open.

2/25 and 2/33 Bns will recce to ensure barracks ready occupation. If not ready they will bivouac in areas to be arranged.

2. TPT

5	3-ton trucks	from	2/25 Bn	will report	2/31 Bn	0745 hrs	11 Sep
5	"	"	2/33 Bn	"	"	"	11 Sep
20	"	"	AASC	"	"	2/25 Bn 1700	12 Sep
20	"	"	AASC	"	"	2/33 Bn 1700	13 Sep

Rations will be provided for two drivers each AASC veh.

3. VEH LINES

Will be in Bn areas. Stands will be made if in soft ground in event of rains.

4. WATER PT

In rd SOUTH of EAST end LEGOULT BARRACKS. All other water except in barracks will be thoroughly tested.

5. SUP

AASC will deliver to units as at present.

6. ADV PARTIES

Plumbers and electricians essential for repairs.

7. MEDICAL

MDS will be functioning to some degree immediately in barracks hospital.

Malaria precautions will be strictly observed during this worst month.

Dysentery must be controlled by fly traps (being made by Fd Pk Coy) on latrines - fine or even wide mesh nets over kitchen & mess doors.

Disinfectant will be required in large quantities.

Obtain all material possible before the move.

8. ACCOMMODATION

Attention is drawn to 7 Aust Div Admin Order No 21 (para 6). Also see Appx A 'Movement Table'.

*Heenan Capt*  
 SC 25 Aust Inf Bde



Appendix A

Appendix "B"  
Appendix "C"

S E C R E T.

25 AUST INF BDE:

Copy No. <sup>!!</sup>....  
23 Sep 41.

TNG INSTN No 8  
-----

1. The Tng Policy of 25 Aust Inf Bde is laid out hereunder :-

The time available for tng is NOT definite and objects must be achieved as quickly as possible.

2. During the period prior to Mar 42 the Bde has been ordered to train in :-

- (a) Undertaking the protracted defence of a fortress.
- (b) Operating in counter-attack incl the immediate counter-attack by all reserves.
- (c) Operating in a mob force (with strength up to a Bde Gp) in delaying action or in offensive action against the enemy flanks or L of C.

3. The time has been sub-allotted as under :-

(a) To end of 41.

Refresher and Individual Tng  
Minor collective Tng  
TEWTS (incl Sig Exercises)

(b) Jan-Feb 42.

Collective Tng  
Tng as laid down in para 2 (b) and (c).

(c) Mar 42

Collective Tng  
Tng as laid down in para 2 (a)

4. It is essential however that the work on the TRIPOLI Defences continue during this Tng period and that work reaches an advanced stage before the winter sets in.

5. Units will base their future Tng Syllabus on this circ and on 7 Aust Div Tng Policy, Part 2.

*Gat Burton*  
Maj.  
B.M. 25 Aust Inf Bde.

DISTRIBUTION

Copy No.

2/25 Aust Bn	1
2/31 " "	2
2/33 " "	3
L Sec Sigs	4
44 LAD	5
Prot Pl HQ Gd Bn	6
Comd	7
S.C.	8
File	9 - 10
War Diary	11 - 12



Appendix "C"

S E C R E T.

Copy No 13..  
25 Sep 41.

25 AUST INF BDE.

OP INSTN NO 17.

Ref Map TRIPOLI : 1/50,000  
HAMIDIEH

1. 25 Aust Inf Bde has been detailed the responsibility for coast watching and for defeating any small enemy landing parties in the area excl EL MINA to incl the NW end of the zone of observation and delaying action (TEL HAHED 17652914).
2. 25 Aust Inf Bn will be responsible for carrying out this task.
3. 25 Aust Inf Bn will commence recce immediately and report on :-
  - (a) the localities in which enemy landings are possible
  - (b) the localities at which small watching dets should be stationed in order to keep the whole of allotted portion of coastline under observation.
  - (c) a plan for countering any small enemy landings.
4. The following points are suggested as a basis for the plan.
  - (a) The establishment of small watching posts at selected pts. Posts to be in comn with a central control pt.
  - (b) The introduction of a system of patrols on all beaches by night.
  - (c) The provision of a fairly strong mobile det capable of being despatched to a danger area without loss of time.
  - (d) The provision of an effecient sig plan which would enable infm to be sent back from watching posts or patrols without loss of time.
5. The infm required in para 3 is to reach this HQ by 1800 hrs 28 Sep 41.

ACK

*Gat Burton*  
Maj.  
B.M. 25 Aust Inf Bde.

DISTRIBUTION.

Copy No.

2/25 Aust Bn	1
2/31 " "	2
2/33 " "	3
Sigs, L Sec	4
44 LAD	5
12 Pl Aust HQ Gd Bn	6
7 Aust Div	7 - 8
Comd	9
S.C.	10
File	11 - 12
War Diary	13 - 14



*War Diary*

*Appendix D*

25 AUST INF BDE.

AD and PAD SCHEME.

Copy No. *24*  
27 Sep 41

Object

1. To provide protection for Army personnel in the event of enemy air attack.

Nature of Attack.

2. The possible forms of enemy air attack are :-

HE Bombing  
Incendiary Agents  
Low Flying MG Attack  
Gas Spray or bomb  
Any combination of the above.

Action to be Taken.

3. Each unit will select a PAD Offr and submit his name to Bde HQ forthwith.  
The PAD Offr for 25 Aust Inf Bde is Capt G.E. LARKIN.  
The CO 2/33 Aust Bn will be responsible for PAD measures being taken by all units in LEGOULT Barracks.

4. Each Bn will establish the following immediately.

- (a) Two air sentries by day.
- (b) M/G Posts on the basis of one per coy by day.
- (c) An alarm system (siren) to be mounted outside unit Sig Office.

The installation of the civilian warning siren in TRIPOLI does NOT absolve units from sounding the local alarms.  
It will be noted that the civilian ALL CLEAR is one long continuous note on the siren.

5. Where possible sufficient slit trenches to provide for the whole of the unit will be dug.  
Slit trenches must NOT be closer to a building than 50% of its height.
6. Where slit trenches are NOT practicable, the protection afforded by buildings will be improved as far as possible.
7. There will be a strict blackout at all times.
8. Headlights on vehs will be treated to conform with regulations.
9. During a raid the main TRIPOLI Electric Light sup is cut off. Arrangements will be made to have emergency lighting available at HQs and RAPs.
10. Windows in rooms constantly in use will be treated to provide protection against glass splinters, when climatic conditions permit windows in billets will be fastened open after lights are extinguished. This will greatly minimise the risk of splintering.
11. Each Bn will have a fire party on duty at all times. Fire parties are to be instructed in the method of extinguishing incendiary bombs.  
An adequate number of petrol tins (half to be filled with earth or sand and half with water) will be provided near all buildings and tents.

*GAB*



12. Stretcher parties will be detailed.  
RAPs will be protected against the effects of blast and splinter.
13. Rescue parties will be detailed and trained.
14. A squad, preferably pioneers, will be organized and trained to carry out bomb and or gas recce.
15. MT will always be dispersed.

Action on Warning.

16. The warning will be notified by the civilian warning and by telephonic advice from Bde HQ.  
Only the Alarm will be notified.
17. The local air raid siren will be sounded.
18. All personnel will wear steel helmets and respirators.
19. Personnel except those detailed to PAD duties will take cover.
20. Rescue squads, fire parties, stretcher parties and recce parties will report to previously detailed alarm posts.  
Stretcher parties will report to the RAP.
21. Aircraft will NOT be engaged by small arms fire unless -
  - (a) They are below 2000ft
  - (b) They are definitely recognized as hostile
  - (c) If of unknown identity they commit a hostile act.

Action to be taken after Attack.

22. The civil siren will sound "ALL CLEAR". This will NOT be taken as the local all clear but will be regarded as the "RAIDERS PASSED" signal. Bde HQ will notify units by phone "Raiders Passed".
23. Rescue work will be carried out.  
Bomb and/or gas recce will be carried out. The presence and location of unexploded bombs will be notified to Bde HQ at once and the area evacuated and guarded.
24. When recce reveals that the area is safe the local "ALL CLEAR" will be sounded.  
Signal two long blasts on siren rptd at 5 sec intervals for 2 mins.

*G. Bertman*  
Maj.  
B.M. 25 Aust Inf Bde.

<u>DISTRIBUTION.</u>	<u>Copy No.</u>
2/25 Aust Bn	1 - 5
2/31 " "	6 - 10
2/33 " "	11 - 15
L Sec Sigs	16
44 LAD	17
12 Pl Aust HQ Gds Bn	18
Comd	19
S.C.	20
T.O.	21
File	22 - 23
War Diary	24 - 25



app. E.

AUSTRALIAN IMPERIAL FORCE

ROUTINE ORDERS

By

BRIG. E.C.P. PLANT DSO. OBE. ADC.

COMD 25 AUST INF BDE

Part 1

No 149

26. Sep 41

1. PREVENTION OF RABIES.

Attention has been directed to a case in which 20 men of a unit were evacuated from SYRIA for anti-rabic treatment - a lengthy and very painful treatment. These men had been licked by a dog kept as the unit mascot which was found to be rabid.

2. WEARING OF IDENTITY DISCS

It is necessary for tps to wear identity discs at all times. They should be hung round the neck and not carried in pockets as is frequently done. Inspection of identity discs should be regular and form part of parade and field routine.

3. DISCIPLINE

The undermentioned sentences by Court Martial are published for information:

- (1) A private soldier charged under Section 18 (4) Army Act, with stealing public property - i.e. 4 gal tins of petrol, was convicted and sentenced to 112 days' detention.
- (2) Two private soldiers charged under Section 18 (4) Army Act, with being improperly in possession of public property - 32 blankets, were convicted and sentenced to one year detention each.
- (3) A private soldier charged under Section 41 Army Act, with stealing cash £E 1 and property of a soldier including his AB 64 and other similar charges, was convicted and sentenced to six months' I.H.L.
- (4) A private soldier charged under Section 41 Army Act, with two instances of corruption and under Section 15 (1) Army Act, with absence without leave, was convicted and sentenced to 1 year I.H.L.
- (5) A private soldier charged under Section 9 (2) Army Act, with disobeying a lawful command, and under Section 8 (2) Army Act, with using threatening language to a superior officer, was convicted and sentenced to 1 year I.H.L.
- (6) A sergeant charged under Section 19 Army Act, with drunkenness was convicted and sentenced to be reduced to the ranks.

4. LEADED PETROL CONTAINERS

A warning to all ranks has been issued against the use of leaded petrol containers as water cans for either drinking or washing purposes. A large number of these 4 gallon square cans and round drums have been put into circulation in the Middle East.



4. LEADED PETROL (Contd)

These containers are being filled with a petrol containing tetra-ethyl-lead, a highly dangerous poison which may tend to remain in the inside seams of the can.

Arrangements have been made for all future issues of such containers to be stencilled:

PETROL  
LEADED  
POISON

5. SELLING OF ARMS AND AMN

Clear evidence of the activities of native buyers of arms and ammunition has been discovered in this area. It has been established that rifles reported lost by units within this Bde have been sold to arms traffickers who are also buying ammunition from tps.

All ranks are warned of the seriousness of this offence and the heavy penalties involved. It is the duty of every soldier to report any theft of rifles and amn and attempted arms buying by native agents.

6. HYGIENE

Sanitary systems in barrack areas have caused trouble through improper use. It is essential that toilet paper be destroyed in pedestals before flushing or burned in a tin provided for the purpose. French systems do not permit the use of paper which will cause blockage.

*B. Stevens* Capt  
SC 25 Aust Inf Bde

NOTICES

CHURCH SERVICES

2/25 Aust Inf Bn

0630 Church of England - Holy Communion.  
0800 General Church Parade.  
0800 R.C. Mass

2/31 Aust Inf Bn

0700 Church of England - Holy Communion.  
0900 General Church Parade.  
0915 R.C. Mass.

2/33 Aust Inf Bn

0630 R.C. Mass - HQ Rec Room.  
0900 General Church Parade.  
0930 Church of England - Holy Communion.

DAILY ENGLISH NEWSPAPER

A daily newspaper in English - the "Eastern Times" - will commence publication on Friday 26 Sep. Units are requested to contribute items for publication to "Eastern Times" Le Jour Place des Canons, BEIRUT.

DISTRIBUTION

As for RO 148



Ref A/34/

Subject : DAILY STRENGTH STATE as at 0600 hrs 1 Sep 41

To : 7 Aust Div.  
From : 25 Aust Inf Bde

1 Sep 41.

UNIT	WE	Battle Casualties	Sick	Transfers etc.	Reinfts	Standing Strength
		AX	AY	AZ	B	C
Bde HQ.	15 67					12 63
att					1	8 8
L Sec Sigs	2 36					2 31
att						11 11
12 Pl Gd Bn	1 42					1 36
44 LAD	1 15					1 15
29 FPO	4					8
31 Bn.	34 760		9	8	2	19 330
att						
33 Bn.	34 760		1		1	25 401
att						
25 Bn.	34 760		1		5	24 400
att						
16 Ld Pl Bde	10 127		1		7	8 123
att						
att						
att						
att						
att						
TOTAL			1 13	8	10	65 1072

Note : For details of battle casualties see reverse side.

Copies : 0 2E AIF.  
File  
War Diary (2)

*Robert*  
Brig.  
Comd 25 Aust Inf Bde.



Ref A/34/

Subject : DAILY STRENGTH STATE as at 0600 hrs 2 000 41  
 To : 7 Aust Div.  
 From : 25 Aust Inf Bde 2 000 41.

UNIT	WE	Battle Casualties	Sick	Transfers etc.	Reinfts	Standing Strength
		AX	AY	AZ	B	C
Dde HQ. att	15 67					
L Sec Sigs att	2 36					
12 Pl Gd Bn	1 42					
44 LAD	1 15					
29 FPO	4					
31 Bn. att	34 760					
33 Bn. att	34 760					
25 Bn. att	34 760					
24 Pl Gd Bn att	20 207					
att						
att						
att						
att						
TOTAL			2	6	1	20 00

Note : For details of battle casualties see reverse side.

Copies : 0 2E AIF.

File  
 War Diary (2)

Brig.  
 Comd 25 Aust Inf Bde.



10  
Ref A/34/ 70

Subject : DAILY STRENGTH STATE as at 0600 hrs 3007 41

To : 7 Aust Div.  
From : 25 Aust Inf Bde

3 507 41.

UNIT	WE	Battle Casualties	Sick	Transfers etc.	Reinfts	Standing Strength	
		AX	AY	AZ	B	C	
Bde HQ.	15 67					12	63
att						3	9
L Sec Sigs	2 36					2	31
att							11
12 Pl Gd Bn	1 42					1	30
44 LAD	1 15					1	15
29 FPO	4						5
31 Bn.	34 760					10	372
att							
33 Bn.	34 760					25	401
att							
25 Bn.	34 760					25	407
att							
14 Lt Pl Amb	10 137					6	124
att							
att							
att							
att							
TOTAL						20	2000

Note : For details of battle casualties see reverse side.

Copies : 0 2E AIF.  
File  
War Diary (2)

Brig.  
Comd 25 Aust Inf Bde.



19  
Ref A/34/ 71

Subject : DAILY STRENGTH STATE as at 0600 hrs 4 Sep 41

To : 7 Aust Div.

From : 25 Aust Inf Bde

4 Sep 41.

UNIT	WE		Battle Casualties	Sick	Transfers etc.	Reinfts	Standing Strength	
			AX	AY	AZ	B	C	
Bde HQ.	15	67				1	15	67
att							3	0
L Sec Sigs	2	36		1			2	39
att							8	18
12 Pl Gd Bn	1	42					1	50
44 LAD	1	15		1			1	17
29 FPO		4						5
31 Bn.	34	760		0			19	300
att								
33 Bn.	34	760		2			25	478
att								
25 Bn.	34	760		4			8	408
att								
14 Lt Pl Asst	10	157		1			1	168
att								
att								
att								
att								
att								
TOTAL				10		1	0	1020

Note : For details of battle casualties see reverse side.

Copies : 0 2E AIF.

File

War Diary (2)

Brig.  
Comd 25 Aust Inf Bde.



Ref A/34/12

Subject : DAILY STRENGTH STATE as at 0600 hrs 5 Sep 41  
 To : 7 Aust Div.  
 From : 25 Aust Inf Bde 5 Sep 41.

UNIT	WE	Battle Casualties	Sick	Transfers etc.	Reinfts	Standing Strength	
		AX	AY	AZ	B	C	
Bde HQ.	15 67					15	65
att						5	8
L Sec Sigs	2 36					2	30
att							18
12 Pl Gd Bn	1 42					1	36
44 LAD	1 15					1	13
29 FPO	4						3
31 Bn.	34 760		1 11			17 10	372
att							
33 Bn.	34 760		1			9 25	435
att							
25 Bn.	34 760		3	1		7 25	430
att							
14 Lt Fd Amb	10 137			2		1 6	125
att							
att							
att							
att							
TOTAL			1 15	3		34 04	1044

Note : For details of battle casualties see reverse side.

Copies : 0 2E AIF.  
 File  
 War Diary (2)

Brig.  
 Comd 25 Aust Inf Bde.



Ref A/34/

Subject : DAILY STRENGTH STATE as at 0600 hrs 6 SEP 41  
 To : 7 Aust Div.  
 From : 25 Aust Inf Bde 41.

UNIT	WE		Battle Casualties	Sick	Transfers etc.	Reinfts	Standing Strength		
			AX	AY	AZ	B	C		
Bde HQ.	15	67			2		12	65	
att							3	3	
L Sec Sigs	2	36		1			2	29	
att								16	
12 Pl Gd Bn	1	42					1	36	
44 LAD	1	15					1	12	
29 FPO		4						3	
31 Bn.	34	760		3	1	5	18	571	
att									
33 Bn.	34	760		1		3	25	465	
att									
25 Bn.	34	760		1		3	25	500	
att									
14 Lt Field AMB				1			6	122	
att									
att									
att									
att									
att									
TOTAL				9	2	1	11	92	1645

Note : For details of battle casualties see reverse side.

Copies : 0 2E AIF.  
 File  
 War Diary (2)

*[Signature]*  
 Brig.  
 Comd 25 Aust Inf Bde.



Ref A734/ 74

Subject : DAILY STRENGTH STATE as at 0600 hrs 7 Sep 41

To : 7 Aust Div.  
From : 25 Aust Inf Bde

7 Sep 41.

UNIT	WE	Battle Casualties	Sick	Transfers etc.	Reinfts	Standing Strength	
		AX	AY	AZ	B	C	
Bde HQ.	. 15 67					11	65
att						3	3
L Sec Sigs	2 36					2	29
att						-	16
12 Pl Gd Bn	1 42					1	50
44 LAD	1 15					1	12
29 FPO	4						3
31 Bn.	34 760					18	370
att							
33 Bn.	34 760					26	431
att							
25 Bn.	34 760					25	492
att							
14 Lt Amb	10 187					5	122
att							
att							
att							
att							
TOTAL				51	1	8	1 26 92 1632

Note : For details of battle casualties see reverse side.

Copies : 0 2E AIF.  
File  
War Diary (2)

*[Signature]*  
Brig.  
Comd 25 Aust Inf Bde.



Ref A/34/ 75

Subject : DAILY STRENGTH STATE as at 0600 hrs 8 Sep 41  
 To : 7 Aust Div.  
 From : 25 Aust Inf Bde 8 Sep 41.

UNIT	WE		Battle Casualties	Sick	Transfers etc.	Reinfts	Standing Strength		
			AX	AY	AZ	B	C		
Dde HQ.	15	67				1	1	12	64
att				1				3	7
L Sec Sigs	2	36						8	29
att				1					15
12 Pl Gd Bn	1	42						1	30
44 LAD	1	15						1	13
29 FPO		4					1		4
31 Bn.	34	760		4	5		1	13	364
att									
33 Bn.	34	760		1	1			26	479
att									
25 Bn.	34	760		4			8	25	400
att									
14 LA Field Bde.						1	4	8	126
att									
att									
att									
att									
att									
TOTAL				11	4	2	15	94	1038

Note : For details of battle casualties see reverse side.

Copies : 0 2E AIF.  
 File  
 War Diary (2)

*[Signature]* Brig.  
 Comd 25 Aust Inf Bde.



Ref A734/ 73

Subject : DAILY STRENGTH STATE as at 0600 hrs 9 SEP 41

To : 7 Aust Div.  
From : 25 Aust Inf Bde

9 SEP 41.

UNIT	WE	Battle Casualties	Sick	Transfers etc.	Reinfts	Standing Strength	
		AX	AY	AZ	B	C	
Bde HQ.	15 67					18	64
att						5	7
L Sec Sigs	2 36					2	35
att			1				14
12 Pl Gd Bn	1 42					1	41
44 LAD	1 15					1	14
29 FPO	4						4
31 Bn.	34 760		2	1	2	19	363
att							
33 Bn.	34 760		2			1 25	477
att							
25 Bn.	34 760		0	1	1	25	487
att							
14 Lt Field			1			6	133
att							
att							
att							
att							
att							
TOTAL			13	2	4	98	1018

Note : For details of battle casualties see reverse side.

Copies : 0 2E AIF.  
File  
War Diary (2)

*[Signature]*  
Brig.  
Comd 25 Aust Inf Bde.



Ref A/34/77

Subject : DAILY STRENGTH STATE as at 0600 hrs 20 Sep 41

To : 7 Aust Div.  
From : 25 Aust Inf Bde

20 Sep 41.

UNIT	WE	Battle Casualties	Sick	Transfers etc.	Reinfts	Standing Strength
		AX	AY	AZ	B	C
Dde HQ.	15 67					
att						
L Sec Sigs	2 36					
att						
12 Pl Gd Bn	1 42					
44 LAD	1 15					
29 FPO	4					
31 Bn.	34 760		5	4	4	30
att						
33 Bn.	34 760		0	2	2	60
att						
25 Bn.	34 760		5		7	60
att						
14 Ld Bde	20 107		2	2	2	120
att						
att						
att						
att						
att						
TOTAL			20	0 2	13 05	1000

Note : For details of battle casualties see reverse side.

Copies : 0 2E AIF.  
File  
War Diary (2)

*Relant* Brig.  
Comd 25 Aust Inf Bde.



Ref A/34/70

Subject : DAILY STRENGTH STATE as at 0600 hrs 11 Sep 41

To : 7 Aust Div.  
From : 25 Aust Inf Bde

11 Sep 41.

UNIT	WE		Battle Casualties	Sick		Transfers etc.	Reinfts	Standing Strength	
			AX	AY	AZ	B	C		
Bde HQ.	15	67		1	1	1	1	11	68
att									
L Sec Sigs	2	36				1	1	2	39
att									
12 Pl Gd Bn	1	42		1					43
44 LAD	1	15						1	16
29 FPO		4							4
31 Bn.	34	760			8		8	19	307
att									
33 Bn.	34	760			4		8	28	407
att									
25 Bn.	34	760			8		11	25	400
att									
24 Lt Pl Amb	10	107				4	8	6	122
att									
att									
att									
att									
att									
TOTAL				1	11	6	23	96	1000

Note : For details of battle casualties see reverse side.

Copies : 0 2E AIF.

File  
War Diary (2)

*[Signature]*  
Brig.  
Comd 25 Aust Inf Bde.



Ref A/34/79.

Subject : DAILY STRENGTH STATE as at 0600 hrs 12 Sep 41  
 To : 7 Aust Div.  
 From : 25 Aust Inf Bde 12 Sep 41.

UNIT	WE		Battle Casualties	Sick		Transfers etc.		Reinfts	Standing Strength		
			AX	AY	AZ	B	C				
Bde HQ.	15	67			1			10	62		
att								4	8		
L Sec Sigs	2	36						2	29		
att									16		
12 Pl Gd Bn	1	42							36		
44 LAD	1	15						1	12		
29 FPO		4							4		
31 Bn.	34	760			3			5	19	359	
att											
33 Bn.	34	760		1	1	1	1	4	25	469	
att											
25 Bn.	34	760			3			4	25	493	
att											
14 Lt Field Amb								1	6	123	
att											
att											
att											
att											
TOTAL				1	7	2	1	1	14	92	1611

Note : For details of battle casualties see reverse side.

Copies : 0 2E AIF.  
 File  
 War Diary (2)

Brig.  
 Comd 25 Aust Inf Bde.



10  
Ref A/34/80

Subject : DAILY STRENGTH STATE as at 0600 hrs

15 Sep 41

To : 7 Aust Div.

From : 25 Aust Inf Bde

15 Sep 41.

UNIT	WE	Battle Casualties	Sick	Transfers etc.	Reinfts	Standing Strength	
		AX	AY	AZ	B	C	
Bde HQ.	15 67			1 1 3 2		11	58
att						2	3
L Sec Sigs	2 36				1	2	59
att				5			11
12 Pl Gd Bn	1 42						38
44 LAD	1 15					1	15
29 FPO	4						4
31 Bn.	34 760				3	19	360
att							
33 Bn.	34 760				1	25	467
att							
25 Bn.	34 760				1 41	26	528
att							
16 lb field amb					4	6	187
att							
att							
att							
att							
att							
TOTAL				15 1 5 5	50 94		1640

Note : For details of battle casualties see reverse side.

Copies : 0 2E AIF.

File

War Diary (2)

*James J. Jones*  
Brig.  
Comd 25 Aust Inf Bde.



Ref A/34/ 31

Subject : DAILY STRENGTH STATE as at 0600 hrs 14 Sep 41

To : 7 Aust Div.  
From : 25 Aust Inf Bde

14 Sep 41.

UNIT	WE	Battle Casualties	Sick	Transfers etc.	Reinfts	Standing Strength	
		AX	AY	AZ	B	C	
Dde HQ.	15 67					11	58
att						4	8
L Sec Sigs	2 36					8	29
att							11
12 Pl Gd Bn	1 42						30
44 LAD	1 15				1	1	28 13
29 FPO	4						4
31 Bn.	34 760		8	2	2	19	300
att							
33 Bn.	34 760		8	2	1	3	23 438
att							
25 Bn.	34 760		4	2	3	20	323
att							
14 LG Pk Amb	10 187					6	187
att							
att							
att							
att							
att							
TOTAL			8 8	4	9	98	1639

Note : For details of battle casualties see reverse side.

Copies : 0 2E AIF.  
File  
War Diary (2)

Brig.  
Comd 25 Aust Inf Bde.



50  
 \* Ref A/34/ 82

Subject : DAILY STRENGTH STATE as at 0600 hrs 15 Sep 41

To : 7 Aust Div.  
 From : 25 Aust Inf Bde

15 Sep 41.

UNIT	WE		Battle Casualties	Sick	Transfers etc.		Reinfts	Standing Strength	
			AX	AY	AZ	B	C		
Bde HQ.	15	67					2	11	60
att								4	8
L Sec Sigs	2	36					3	2	32
att									11
12 Pl Gd Bn	1	42							56
44 LAD	1	15						1	13
29 FPO		4							4
31 Bn.	34	760		1	3			2	18
att									359
33 Bn.	34	760			7		2	1	1
att									64
25 Bn.	34	760			6			5	26
att									524
14 Lt Fd Amb	10	187				2	1	1	
att									5
att									
att									
att									
att									
TOTAL				1	16	2	3	2	13
									91
									1633

Note : For details of battle casualties see reverse side.

Copies : 0 2E AIF.  
 File  
 War Diary (2)

*[Signature]*  
 Brig.  
 Comd 25 Aust Inf Bde.



Ref A/34/83

Subject : DAILY STRENGTH STATE as at 0600 hrs **16 SEP 41**  
 To : 7 Aust Div.  
 From : 25 Aust Inf Bde **16 SEP 41.**

UNIT	WE	Battle Casualties	Sick	Transfers etc.	Reinfts	Standing Strength	
		AX	AY	AZ	B	C	
Bde HQ.	15 67				1	11	61
att						4	9
L Sec Sigs	2 36					2	38
att							11
12 Pl Gd Bn	1 42						36
44 LAD	1 15					1	13
29 FPO	4						4
31 Bn.	34 760		5	1		18	353
att							
33 Bn.	34 760		5		2	24	457
att							
25 Bn.	34 760		1 7	1	4	25	520
att							
14 Lt Fd Amb	10 187				3	5	129
att							
att							
att							
att							
att							
TOTAL			1 17	2	10	90	1624

Note : For details of battle casualties see reverse side.

Copies : 0 2E AIF.  
 File  
 War Diary (2)

Brig.  
 Comd 25 Aust Inf Bde.



Ref A/34/ 84

Subject : DAILY STRENGTH STATE as at 0600 hrs 17 sep 41

To : 7 Aust Div.  
From : 25 Aust Inf Bde

17 sep 41.

UNIT	WE		Battle Casualties	Sick	Transfers etc.	Reinfts	Standing Strength	
			AX	AY	AZ	B	C	
Bde HQ.	15	67		1			11	66
att								
L Sec Sigs	2	36		2			2	34
att								
12 Pl Gd Bn	1	42						41
44 LAD	1	15					1	14
29 FPO		4						4
31 Bn.	34	760		5		9	10	557
att								
33 Bn.	34	760		4		1	5	459
att								
25 Bn.	34	760		4	1	1	25	516
att								
14 Ls Pl Amb	10	137			1	2	5	130
att								
att								
att								
att								
att								
TOTAL				10	2	1	17	1023

Note : For details of battle casualties see reverse side.

Copies : 0 2E AIF.  
File  
War Diary (2)

Brig.  
Comd 25 Aust Inf Bde.



10  
Ref A/34/ 35

Subject : DAILY STRENGTH STATE as at 0600 hrs 18 Sep 41

To : 7 Aust Div.  
From : 25 Aust Inf Bde

18 Sep 41.

UNIT	WE	Battle Casualties	Sick	Transfers etc.	Reinfts	Standing Strength		
		AX	AY	AZ	B	C		
Bde HQ.	15 67		0			11	54	
att			1	11	2	2	5	
L Sec Sigs	2 36					2	38	
att							11	
12 Pl Gd Bn	1 42		0				30	
44 LAD	1 15		2			1	11	
29 FPO	4				1		5	
31 Bn.	34 760		5		1	4	18	
att							357	
33 Bn.	34 760		5			6	25	
att							450	
25 Bn.	34 760		10		5	0	25	
att							512	
14 Lt Pl Amb	10 127					5	130	
att								
att								
att								
att								
att								
TOTAL			1	35	1	7	19	39
								1800

Note : For details of battle casualties see reverse side.

Copies : 0 2E AIF.  
File  
War Diary (2)

*[Signature]*  
Brig.  
Comd 25 Aust Inf Bde.



Ref A/34/00

Subject : DAILY STRENGTH STATE as at 0600 hrs 19 Sep 41

To : 7 Aust Div.  
From : 25 Aust Inf Bde

19 Sep 41.

UNIT	WE	Battle Casualties	Sick	Transfers etc.	Reinfts	Standing Strength	
		AX	AY	AZ	B	C	
Bde HQ.	15 67					22	54
att						2	9
L Sec Sigs	2 36					2	37
att							10
12 Pl Gd Bn	1 42						20
44 LAD	1 15					1	9
29 FPO	4						3
31 Bn.	34 760					10	300
att							
33 Bn.	34 760					20	400
att							
25 Bn.	34 760					7	300
att							
4 Ld Pl Amb	20 97					5	100
att							
att							
att							
att							
att							
TOTAL			50	4	10	39	1076

Note : For details of battle casualties see reverse side.

Copies : 0 2E AIF.  
File  
War Diary (2)

Brig.  
Comd 25 Aust Inf Bde.



Ref A/34/ 07

Subject : DAILY STRENGTH STATE as at 0600 hrs 20 Sep 41  
 To : 7 Aust Div.  
 From : 25 Aust Inf Bde 20 Sep 41.

UNIT	WE	Battle Casualties	Sick	Transfers etc.	Reinfts	Standing Strength	
		AX	AY	AZ	B	C	
Bde HQ.	15 67		4	1	3	11	83
att						3	3
L Sec Sigs	2 36					3	37
att							10
12 Pl Gd Bn	1 42						43
44 LAD	1 15		2			1	17
29 FPO	4						4
31 Bn.	34 760		3		3	257	823
att						3	3
33 Bn.	34 760		1 14		1 3	160	877
att							
25 Bn.	34 760		2			3	85
att							
14 Ld Pl Amb	10 97					3	100
att							
att							
att							
att							
att							
TOTAL			1 23		2 3	300	97 1057

Note : For details of battle casualties see reverse side.

Copies : 0 2E AIF.  
 File  
 War Diary (2)

Brig.  
 Comd 25 Aust Inf Bde.



10  
Ref A/34/ 00

Subject : DAILY STRENGTH STATE as at 0600 hrs 21 Sep 41

To : 7 Aust Div.  
From : 25 Aust Inf Bde

21 Sep 41.

UNIT	WE		Battle Casualties	Sick	Transfers etc.	Reinfts	Standing Strength	
			AX	AY	AZ	B	C	
Dde HQ.	15	67		1			11	81
att						1	1	8
L Sec Sigs	2	36					2	39
att								20
12 Pl Gd Bn	1	42						43
44 LAD	1	15					3	16
29 FPO		4						4
31 Bn.	34	760		2			4	766
att								
33 Bn.	34	760		14			3	807
att								
25 Bn.	34	760		1	2		2	803
att								
14 Lb FC Amb	20	87					5	133
att								
att								
att								
att								
att								
TOTAL				1	19		1	85 97 1001

Note : For details of battle casualties see reverse side.

Copies : 0 2E AIF.  
File  
War Diary (2)

Brig.  
Comd 25 Aust Inf Bde.







Ref A/34/ 90

Subject : DAILY STRENGTH STATE as at 0600 hrs 23 Sep 41

To : 7 Aust Div.

From : 25 Aust Inf Bde

23 Sep 41.

UNIT	WE	Battle Casualties	Sick	Transfers etc.	Reinfts	Standing Strength
		AX	AY	AZ	B	C
Dde HQ.	15 67					56
att					1	4
L Sec Sigs	2 36					23
att						9
12 Pl Gd Bn	1 42				1	23
44 LAD	1 15					9
29 FPO	4					3
31 Bn.	34 760		2			500
att						
33 Bn.	34 760		0		1	502
att						
25 Bn.	34 760		2	1	10	510
att						
14 Ld Pl Amb	10 97		1			132
att						
att						
att						
att						
att						
TOTAL			14	12	24	108 1000

Note : For details of battle casualties see reverse side.

Copies : 0 2E AIF.

File

War Diary (2)

Brig.  
Comd 25 Aust Inf Bde.



Ref A/34/ 01

Subject : DAILY STRENGTH STATE as at 0600 hrs 24 Sep 41  
 To : 7 Aust Div.  
 From : 25 Aust Inf Bde 24 Sep 41.

UNIT	WE	Battle Casualties	Sick	Transfers etc.	Reinfts	Standing Strength	
		AX	AY	AZ	B	C	
Bde HQ.	15 67				1	11	57
att			1			3	5
L Sec Sigs	2 36					2	33
att					1		10
12 Pl Gd Bn	1 42		2		1		27
44 LAD	1 15				1	1	10
29 FPO	4						3
31 Bn.	34 760		1 4		1	1 24	497
att							
33 Bn.	34 760		4			7 13	535
att							
25 Bn.	34 760		2			6 24	520
att							
14 L.S. PG Amb	10 57		1 1			7	151
att							
att							
att							
att							
att							
TOTAL			5 15		1	19 100	1374

Note : For details of battle casualties see reverse side.

Copies : 0 2E AIF.  
 File  
 War Diary (2)

*[Signature]*  
 Brig.  
 Comd 25 Aust Inf Bde.



Ref A/34/01

Subject. : DAILY STRENGTH STATE as at 0600 hrs 25 Sep 41

To : 7 Aust Div.  
From : 25 Aust Inf Bde

25 Sep 41.

UNIT	WE	Battle Casualties	Sick	Transfers etc.	Reinfts	Standing Strength
		AX	AY	AZ	B	C
Bde HQ.	15 67		1		2	11 89
att						3 6
L Sec Sigs	2 36				1	2 29
att					1	11
12 Pl Gd Bn	1 42					27
44 LAD	1 15				3	1 13
29 FPO	4					5
31 Bn.	34 760		3		3	25 497
att						
33 Bn.	34 760		1 7	2	13	27 599
att						
25 Bn.	34 760		15		3	24 508
att						
14 Lt Pl Amb	10 137		1			7 130
att						
att						
att						
att						
att						
TOTAL			1 27	2	26	100 - 1971

Note : For details of battle casualties see reverse side.

Copies : 0 2E AIF.  
File  
War Diary (2)

*[Signature]*  
Brig.  
Comd 25 Aust Inf Bde.



Ref A/34/ 33

Subject : DAILY STRENGTH STATE as at 0600 hrs 26 Sep 41

To : 7 Aust Div.

From : 25 Aust Inf Bde

26 Sep 41.

UNIT	WE	Battle Casualties	Sick	Transfers etc.	Reinfts	Standing Strength		
		AX	AY	AZ	B	C		
Dde HQ.	15 67					1	11	59
att						-	3	6
L Sec Sigs	2 36					1	2	30
att			2		1	2	-	10
12 Pl Gd Bn	1 42		2			1	1	26
44 LAD	1 15						1	15
29 FPO	4					1		4
31 Bn.	34 760		5			6	25	493
att								
33 Bn.	34 760		5			1	8	593
att								
25 Bn.	34 760		13			6	24	501
att								
14 Lt Pl Amb	10 87						7	130
att								
att								
att								
att								
att								
TOTAL			27		12	26	102	1669

Note : For details of battle casualties see reverse side.

Copies : 0 2E AIF.

File

War Diary (2)

Brig.  
Comd 25 Aust Inf Bde.



Ref A/34/ 06

Subject : DAILY STRENGTH STATE as at 0600 hrs 27 Sep 41  
 To : 7 Aust Div.  
 From : 25 Aust Inf Bde 27 Sep 41.

UNIT	WE	Battle Casualties	Sick	Transfers etc.	Reinfts	Standing Strength
		AX	AY	AZ	B	C
Bde HQ.	15 67					11 59
att						0 0
L Sec Sigs	2 36		1		2	35 35
att						0 0
12 Pl Gd Bn	1 42				1	41 41
44 LAD	1 15				1	14 14
29 FPO	4					4 4
31 Bn.	34 760		4	1	4 25	407 407
att						
33 Bn.	34 760		16		3 23	577 577
att						
25 Bn.	34 760		14	2	6 26	490 490
att						
14 Lt Pl Amb	10 87		1		1 7	150 150
att						
att						
att						
att						
att						
TOTAL			30	3	10 102	1003 1003

Note : For details of battle casualties see reverse side.

Copies : 0 2E AIF.  
 File  
 War Diary (2)

*lasty, lasty*  
 Brig.  
 Comd 25 Aust Inf Bde.



Ref A/34/35

Subject : DAILY STRENGTH STATE as at 0600 hrs 23 Sep 41

To : 7 Aust Div.

From : 25 Aust Inf Bde

23 Sep 41.

UNIT	WE	Battle Casualties	Sick	Transfers etc.	Reinfts	Standing Strength
		AX	AY	AZ	B	C
Dde HQ.	15 67		2		1 11	58
att					3	8
L Sec Sigs	2 36				2	30
att						10
12 Pl Gd Bn	1 42				2 1	31
44 LAD	1 15				1	15
29 FPO	4					4
31 Bn.	34 760		5		5 25	490
att						
33 Bn.	34 760		9	4	5 23	560
att						
25 Bn.	34 760		12		9 24	497
att						
14 Lt Amb	10 187				7	130
att						
att						
att						
att						
att						
TOTAL			28	4	22 108	1357

Note : For details of battle casualties see reverse side.

Copies : 0 2E AIF.

File

War Diary (2)

Brig.  
Comd 25 Aust Inf Bde.



Ref A/34/00

Subject : DAILY STRENGTH STATE as at 0600 hrs 29 Sep 41

To : 7 Aust Div.  
From : 25 Aust Inf Bde

29 Sep 41.

UNIT	WE	Battle Casualties	Sick	Transfers etc.	Reinfts	Standing Strength	
		AX	AY	AZ	B	C	
Dde HQ.	15 67		2			11	56
att			1		1	2	6
L Sec Sigs	2 36				1	2	51
att							10
12 Pl Gd Bn	1 42					1	51
44 LAD	1 15					1	13
29 FPO	4						4
31 Bn.	34 760		5	1	3	25	496
att							
33 Bn.	34 760		1	1	12	23	579
att							
25 Bn.	34 760		10		2	16	493
att							
14 Lt Fl Amb	10 187				5	7	135
att							
att							
att							
att							
att							
TOTAL			1 18	2	2	37	103 1854

Note : For details of battle casualties see reverse side.

Copies : 0 2E AIF.  
File  
War Diary (2)

Brig.  
Comd 25 Aust Inf Bde.



Ref A/34/37

Subject : DAILY STRENGTH STATE as at 0600 hrs **30 Sep 41**

To : 7 Aust Div.  
From : 25 Aust Inf Bde

**30 Sep 41.**

UNIT	WE	Battle Casualties	Sick	Transfers etc.	Reinfts	Standing Strength
		AX	AY	AZ	B	C
Dde HQ.	15 67				1 11	59
att						0
L Sec Sigs	2 36					31
att						10
12 Pl Gd Bn	1 42					31
44 LAD	1 15					13
29 FPO	4					4
31 Bn.	34 760		4	1	3 25	494
att						
33 Bn.	34 760		6	1 2 1	9 23	530
att						
25 Bn.	34 760		7	3	13 26	496
att						
14 Lt Pz Amb	10 107			2	1 7	134
att						
att						
att						
att						
att						
TOTAL			17	1 0 1	27 103	1886

Note : For details of battle casualties see reverse side.

Copies : 0 2E AIF.

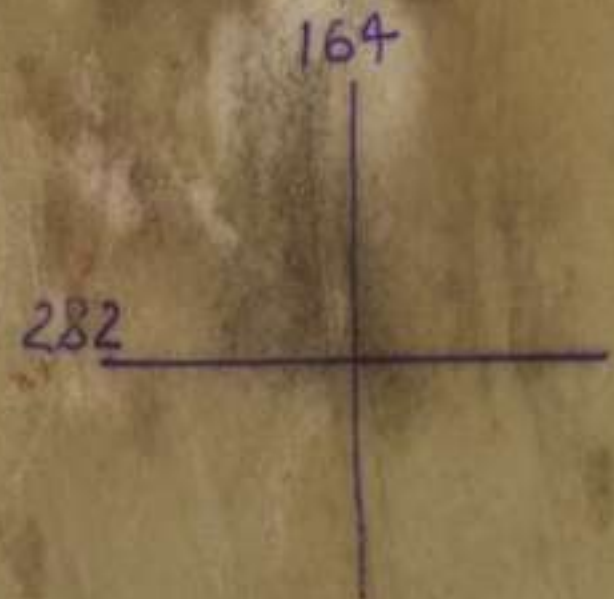
File  
War Diary (2)

*Belant*  
Brig.  
Comd 25 Aust Inf Bde.



TRIPOLI  
1:50,000.

Most SECRET



Proposed dispositions

25 Aust Inf Bde

Infm as at 0900hrs 26 Sep 41

Amended 30 Sep 41

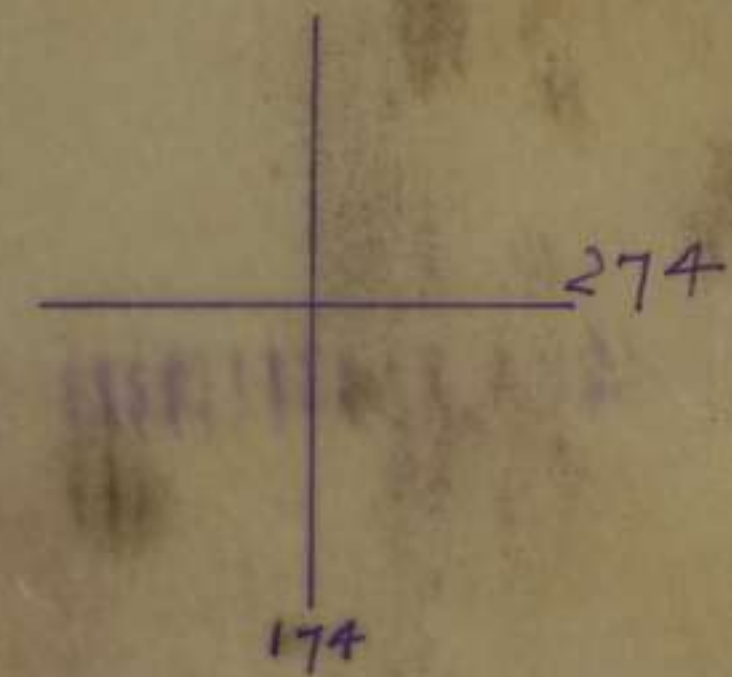
Traced by

C/L

25 Aust Inf Bde

27 Sep 41

--- B3 track improved by Engineers





NOV 1 1941

WAR DIARY of INTELLIGENCE SUMMARY

(Erase heading not required)

Unit 25 AUST INF BDE

Date and Time.—From 1 Oct To 31 Oct 41

Place	Date	Hour	Summary of Events and Information	Remarks and references to Appendices, Diaries, &c.
TRIPOLI	1 Oct	1730	CRA (Brig H.G. ROUKE, M.C.) visited this HQ interviewed Capt BRINKLEY in the absence of Brig E.C.P. PLANT, D.S.O., O.B.E., A.D.C.	
	2	1000	7 Aust Div Instn to destroy map ref code. (CARRIED OUT 19 SEPT)	
		1100	ATK Guns dispositions for Bde area received from 2Aust ATK Regt. B.M. (Maj G.A. BERTRAM) evacuated to CCS TRIPOLI.	Appx A
	3		25 Aust Inf Bde Rcs No 150 by Brig E.C.P. PLANT issued	Appx E
	4	1215	<del>1215</del> CRA (Brig H.G. ROUKE, M.C.) visited this HQ	
		1230	Lt-Gen J.D. LAVARACK, C.B., C.M.G., D.S.O. called on Brig E.C.P. PLANT in his absence Capt P.W. BRINKLEY accompanied Lt-Gen J.D. LAVARACK to 2/25 and 2/33 Aust Inf Bns.	
		1500	Col V.C. SECOMBE (AA 7 QMG 7 Aust Div) visited this HQ re visit of C in C	
		1600	Col DOWN, J.E., O.B.E., E.D. (A.D.M.S. Dental) visited this HQ	
SIDON	6	0930	Brig E.C.P. PLANT met C in C (Gen AUCHINLECH) at SIDON - visited battlefields at MERDJAYOUN and DJEZZINE	Appx B
	7	1030	C in C (Gen AUCHINLECH) inspected 25 Aust Inf Bn and met the offr of Bde HQ at morning tea in 2/25 Aust Inf Bn Mess.	
		2030	Col B.T.R. CHADD E.D. (7 Aust Div Sigs) lectured Bde offr, Cos, Adjts and Regtl Sig Offrs, on new Sig procedure.	
	8	0900	Brig E.C.P. PLANT on recce with Maj-Gen A.S. ALLEN C.B., C.B.E., D.S.O. One MMG section on right flank moved back. Decided that positions of coys of reserve Bn would be prepared but not occupied.	
	9		Bde Comd (Brig E.C.P. PLANT D.S.O., O.B.E., A.D.C.) with Col S.H.W.C. PORTER (CO 2/31 Aust Inf Bn) made a recce of 2/31 Aust Inf Bn Area.	
	10		Bde Comd (Brig E.C.P. PLANT) visited HQ 7 Aust Div.	
	11		25 Aust Inf Bde Rcs No 151 by Brig E.C.P. PLANT issued.	Appx C
			Bde Comd (Brig E.C.P. PLANT) and IO (Lieut W GRIGG) made a recce in the vicinity of Trig Pt 605 and SW slopes of Mt JABAL TOURBOL with the object of picking out a Battle HQ for 25 Aust Inf Bde HQ. Not finalised as yet. Further decisions as to the location of it will be influenced by the suitability of rd and track constn.	



WAR DIARY of ~~INTELLIGENCE SUMMARY~~

(Erase heading not required)

Unit HQ 25 AUST INF BDE

Date and Time.—From Page 2.

To

Place	Date	Hour	Summary of Events and Information	Remarks and references to Appendices, Diaries, &c.
	11 Oct	NIGHT.	7 Aust Div HQ received setting out the transfer of the 2/33 Aust Inf Bn area to the 21 Aust Inf Bde. Comd 21 Aust Inf Bde (Brig J.E.S., STEVENS, E.D.) contacted 25 Aust Inf Bde Comd (Brig E.C.P. PLANT) regarding the taking over of 2/33 Aust Inf Bn area by 21 Aust Inf Bde. It was agreed that the CO 27 Aust Inf Bn should meet CO 2/33 Aust Inf Bn (Col J.A. CORBY) on 13 Oct to look over the area. The 20 Oct was selected as tentative date for the handover of the 2/33 Aust Inf Bn area.	
TRIPOLI FORTRESS AREA	12 Oct	0900	Bde Comd (Brig E.C.P. PLANT) paid a visit to HQ 7 Aust Div to discuss the Div HQ which was received on the night 11 Oct.	
	13 "	0900	B.M. (Maj G.A. BERTRAM) and CRE (Lt-Col R.J.H. RISSON) paid a visit to the 2/25 Aust Inf Bn area and checked posns for LMGs in that area. Concreting of 9 LMG posns by civilian contractor to commence on 14 Oct.	
			Maj-Gen A.S. ALLEN C.B., C.B.E., D.S.O., V.D. (GOC 7 Aust Div) visited 25 Aust Inf Bde HQ and with the Bde Comd (Brig E.C.P. PLANT) and Bde IC (Lieut W GRIGG) made a recce of the Bde Area. Recce made up West slopes of JABAL TOURBOL, along the top and down the east slopes. The new Bde boundary was defined as excluding KIDNEY HILL (17262784) and escarpment on its left, thence a line to point 433 (Ref Map TRIPOLI 1:50000) thence to BETT ACUKAR (16832768). Maj-Gen A.S. ALLEN and Brig E.C.P. PLANT agreed that a force should be kept on top of TOURBOL to resist infiltration up north slopes, and attack up east slopes.	
			On this recce, one of the new bantam cars (JEEPS) which are proving very useful in this mountainous type of country, was used, and proved very successful. Its movement was restricted by escarpments/terraces, steep hills only. Cars ability to climb steep rough ground was marked. Practically the whole of the Bde area could be covered by this new car, except north slopes of TOURBOL.	/perpendicular



(Erase heading not required)

Unit HQ 25 AUST INF BDE.

Date and Time.—From Page 3. To

Place	Date	Hour	Summary of Events and Information	Remarks and references to Appendices, Diaries, &c.
	14 Oct	0900	Bde Comd (Brig E.C.P. PLANT) paid a visit to 2/25 Aust Inf Bn, and with the CO (Lt-Col G.B. WITHY M.C.) made an inspection of that Bns Area.	
		1400	The B.M. (Maj G.A. BERTRAM) attended a demonstration of the Flame Fougasse.	
	15 "		Bde Comd (Brig E.C.P. PLANT) and Col A.S. BLACKBURN (CO 2/3 Aust MG BN) made a recce of 2/25 and 2/31 Aust Inf Bn areas for the purpose of sighting MG Posts.	
			As a result of a 25 Aust Inf Bde order issued on 9 Oct 1941, all ranks wore their Respirator from 1000 hrs until 1030 hrs. Respirators are to continue to be worn for half hour each Wed. Normal duties to be carried on with in order to become accustomed to working with facepiece adjusted. All ranks to undergo TOET in CW Tng every 3 months.	
	16--11 16 "		As-a-result-of-a Bde Comd and Col J.A. CORBY (CO 2/33 Aust Inf Bn) recce 2/33 Aust Inf Bn area and settled certain local problems. B.M..(Maj G.A. BERTRAM) and Bde IO (Lieut GRIGG) made a recce of the forward lines of observation area and looked over the position for the new Bde HQ.	
	17 "		Bde Comd (Brig E.C.P. PLANT) and CO 2/31 Aust Inf Bn (Lt-Col SHWC PORTER) recce and checked MG posns in 2/31 Aust Inf Bn area. Capt GRYNER Coy Comd of 2/3 Aust MG Bn went with CRE (Col RISSON) over bde area and discussed concreting of MG Posts.	
	18 "		25 Aust Inf Bde ROS No 152 by Brig E.C.P. PLANT issued B.M. (Maj G.A. BERTRAM) and Maj A.H. BREWER (OC 2/5 Fd Coy) made an inspection of the Rifle Ranges in the Bde Area.	Appx D
	20 "		Bde Comd (Brig E.C.P. PLANT) and IO (Lieut GRIGG) made a recce of the 2/31 Aust Inf Bn area with Col PORTER S.H.W.C. (CO 2/31 Aust Inf Bn). It was decided in view of the large frontage of the Bn, the dispositions would have to be brought back up JABAL TOURBOL this shortening the front. Doing this also put the section posts in comparatively tank proof areas.	



WAR DIARY or ~~INTELLIGENCE SUMMARY~~

(Erase heading not required)

Unit HQ 25 AUST INF BDE

Date and Time.—From Page 4.

To

Place	Date	Hour	Summary of Events and Information	Remarks and references to Appendices, Diaries, &c.
	21 Oct		2/33 Aust Inf Bn completed the handing over of their area to 21 Aust Inf Bde and have now taken up a posn as reserve bn and are quartered in LEGOULT BARRACKS, TRIPOLI	Appx F
	22 Oct		Bde Comd (Brig E.C.P. PLANT) made a recce of 2/33 Aust Inf Bn area with Col J.A. CORBY (CO 2/33 Aust Inf Bn) Brig E.C.P. PLANT made a recce of 2/25 Aust Inf Bn area with Lt-Col C.B. WITHY M.C. checking Reserve posns.	
	23 "		<del>During</del> During the afternoon Bde comd interviewed the Comd 1 Aust Corps (Gen LAVARACK J.D., C.B., C.M.G., D.S.C.,). Bde Comd (Brig E.C.P. PLANT) and GOC 1 Aust Corps (Gen J.D. LAVARACK) proceeded on a recce of the LATTAGUIE (160400) ALEPPO Areas (253475). Lt-Col C.B. WITHY (CO 2/25 Aust Inf Bn) is now temporary Comd of 25 Aust Inf Bde during the absence of Brig E.C.P. PLANT.	
	25 "		25 Aust Inf Bde ROS No 153, by Brig E.C.P. PLANT issued B.M. 25 Aust Inf Bde (Maj G.A. BERTRAM) and Col BLACKBURN A.S. went over the 2/25 and 2/31 Aust Inf Bn areas and pin-pointed certain MG Posns.	Appx C
	28		Bde Comd (Brig E.C.P. PLANT) the B.M. (Maj G.A. BERTRAM) and Lt-Col C.B. WITHY (CO 2/25 Aust Inf Bn) and Capt GREINER (2/3 Aust MG Bn) visited 2/25 Aust Inf Bn.	
			Word was received on evening of 28 Oct at HQ 25 Aust Inf Bde that WX2437 Pte James Heather GORDON of the 2/31 Aust Inf Bn, AIF, had been awarded the V.C. for most conspicuous Gallantry in the SYRIAN CAMPAIGN (For details of his exploit see "HISTORY OF OPS IN SYRIAN CAMPAIGN OF 25 AUST INF BDE-WD July)	?
	30 "		Bde Comd (Brig E.C.P. PLANT) paid a visit to 2/31 Aust Inf Bn.	
	31 "		25 Aust Inf Bde ROS No 154 by Brig E.C.P. PLANT issued Brig E.C.P. PLANT went on an inspection of the Bde Area and met Maj-General A.S. ALLEN, Lt-Col CORBY J.A., Lt-Col C.B. WITHY and the CRA (Brig H.G. ROURKE) and discussed the <del>are</del> defensive scheme in General.	Appx H







# FIELD RETURN OF OFFICERS

H Q 25 AUST INF BDE. (Unit)

## PART A.—STRENGTH, SURPLUS OR REINFORCEMENTS REQUIRED.

1 Ranks.	2 Posted strength counting against authorized establishment (excluding attached).	3 Surplus to Establishment.	4 Reinforcements required (i.e. deficits on establishment).
	*		
<i>Brig</i>	1		
Lieut.-Colonels .. .. .			
Majors .. .. .			1
Captains .. .. .	3		1
Lieutenants .. .. .	3		3
2nd Lieutenants .. .. .			
Quartermasters <i>Chaplains</i> .. .. .	2		1
TOTALS .. .. .	9		6

\* Insert detail of higher ranks as necessary.

## PART B.—PARTICULARS OF OFFICERS JOINED OR QUITTED DURING WEEK.

### Officers JOINED during week.

Rank.	Name.	Corps.	Date.	Cause.

### Officers QUITTED during week.

Rank.	Name.	Corps.	Date.	Cause.
<i>Maj</i>	<i>G. A. BERTRAM.</i>	<i>HQ 25 Bde.</i>	<i>2 Oct 41.</i>	<i>HOSP.</i>
<i>Lieut.</i>	<i>L. E. WALCOTT.</i>	<i>HQ 25 Bde</i>	<i>1 Oct 41</i>	<i>Transferred to 2/31 AUST INF BN.</i>
<i>Capt.</i>	<i>D. VINCENT.</i>	<i>L. Sec. 7 DIV SIGS.</i>	<i>20 Oct 41.</i>	<i>HOSP.</i>

## PART C.—DESCRIPTION OF OFFICERS WHOSE RETURN TO THE UNIT IS PARTICULARLY REQUESTED.

Rank.	Name and Initials.	Corps.	Remarks (e.g., present whereabouts, if known).



**PART D.—NOMINAL ROLL OF OFFICERS ON STRENGTH.**

(i) Officers posted to Unit (Total to agree with column 2 of Part A).

1	2	3	4	5	6
Substantive Rank, and higher temporary rank, if held.	Acting Higher Personal Number or Temp Rank.	Name and Initials.	Corps.	Whether present with Unit (Insert Yes or No).	If not present with Unit, state how employed.
Brig		E.C.P. PLANT	HQ 25 Bde	Yes	Bde Comd.
Capt.		G.J. CULLEN	" " "	"	Sub O.
Lieut	Capt.	E.S. OWENS	" " "	"	S.E.
Lieut	Capt.	P.L. BRINKLEY	" " "	"	L.O.
Lieut		C.L. WATERMAN	" " "	No	Motor Contract Offrs' School.
Lieut		E.W. GRIGG	" " "	Yes	IO.
Lieut		H.H. RANKINE	" " "	"	Wmen. O.
Chap.		J.B. LYNCH	" " "	No	RC. Club. Att. 2/33 BN.
Chap.		D. REDDING	" " "	"	C/E " " 2/31 "

(ii) OFFICERS ATTACHED FROM OTHER CORPS.

Substantive Rank, and higher temporary rank, if held.	Personal Number.	Name and Initials.	Corps.	Date of attachment.	Nature of attachment.
Capt.		G. B. KATER	44 LAD		LAD
Lieut		N.H. CHUCK	7 DIV SIGS		L. Sec.
Lieut		H.S. GEE	2/31. HUST INF BN		H/T.O.
Lieut		E. DWYER	7 DIV HASC		H/SC (L)
Lieut		H.W. BUSWELL	2 Pl. HQ AUST 9th BN.		Protective Pl.

H Q 25 AUST INF BDE.

(Unit.)

4 Oct 41.

(Date of Despatch.)

Brig.  
COMD 25 Aust Inf Bde

(Signature of Commander.)

7 AUST DIV.

(Bde., Divn., Area, etc., with which Unit is serving.)







**Part D. Detail of Surplus or Reinforcements required as shown in Part A of Army Form W. 3009.**

DETAIL OF SPECIALISTS, TRADESMEN, ETC.	SURPLUS TO ESTABLISHMENT.							REINFORCEMENTS REQUIRED.							REMARKS.			
	W.Os. Class I.	W.Os. Class II.	S.Q.M.S.; C.Q.M.S., or Colour Sergeants.	Staff Sergeants.	Sergeants.	Buglers, Trumpeters, &c.	Corporals.	Troopers, Privates, Guardsmen, Fusiliers, &c.	TOTAL.	W.Os. Class I.	W.Os. Class II.	S.Q.M.S.; C.Q.M.S., or Colour-Sergeants.	Sergeants.	Buglers, Trumpeters, &c.		Corporals.	Troopers, Privates, Guardsmen, Fusiliers, &c.	TOTAL.
Bricklayers <i>Gen. Duties</i>																1	1	
Butchers																		
Carpenters and Joiners																		
„ (trained in wheeling duties).																		
Clerks <i>and Orderlies.</i>																2	2	
Despatch Riders																		
Draughtsmen (topo)																		
Drivers <del>ET.</del> and/or I.C. <i>MT.</i>																3	3	
Electricians																		
Farriers																		
Fitters																		
Masons																		
Painters and Decorators																		
Plumbers and Gasfitters																		
Saddlers and Harness Makers																		
Saddle Tree Makers																		
Signallers																		
Storemen technical																		
Vickers Machine Gunners																		
Wheelers																		
<i>CQMS.</i>												1					1	<i>S/Sjt. Redding R.J.</i>
General duty personnel																		
TOTALS (to agree with Columns 3 and 4 of Part A).																		<i>1 6 7</i>

H Q 25 AUST INF BDE.

Unit.

Date of Despatch *4 Oct 41.*

*[Signature]*  
Brig.  
COMD 25 Aust Inf Bde.

Signature of Commander.

*7 AUST DIV.*

Bde., Divn., Area, etc., with which unit is serving.



## FIELD RETURN OF OFFICERS

SERIAL. No 2

H Q 25 AUST INF BDE.

(Unit) 11 Oct 41.

### PART A.—STRENGTH, SURPLUS OR REINFORCEMENTS REQUIRED.

1 Ranks.	2 Posted strength counting against authorized establishment (excluding attached).	3 Surplus to Establishment.	4 Reinforcements required (i.e. deficits on establishment).
*			
*			
<i>Brig</i>	1		
Lieut.-Colonels .. .. .			
Majors .. .. .	1		
Captains .. .. .	3		1
Lieutenants .. .. .	3		3
2nd Lieutenants .. .. .			
Quartermasters <i>Chaplains</i>	2		1
TOTALS .. .. .	10		5

\* Insert detail of higher ranks as necessary.

### PART B.—PARTICULARS OF OFFICERS JOINED OR QUITTED DURING WEEK.

#### Officers JOINED during week.

Rank.	Name.	Corps.	Date.	Cause.
<i>Maj</i>	<i>G.A. BERTRAM.</i>	<i>HQ 25 Bde.</i>	<i>6 Oct 41.</i>	<i>Returned from Hosp.</i>
<i>Capt.</i>	<i>G.F. LARKIN.</i>	<i>7 Aust Div Cav.</i>	<i>8 Oct 41.</i>	<i>" " "</i>
<i>Capt.</i>	<i>D. VINCENT.</i>	<i>L Sec. 7 Div</i>	<i>7 Oct 41</i>	<i>" " "</i>
		<i>Sig.</i>		

#### Officers QUITTED during week.

Rank.	Name.	Corps.	Date.	Cause.

### PART C.—DESCRIPTION OF OFFICERS WHOSE RETURN TO THE UNIT IS PARTICULARLY REQUESTED.

Rank.	Name and Initials.	Corps.	Remarks (e.g., present whereabouts, if known).



**PART D.—NOMINAL ROLL OF OFFICERS ON STRENGTH.**

(i) Officers posted to Unit (Total to agree with column 2 of Part A).

1	2	3	4	5	6
Substantive Rank, and higher temporary rank, if held.	Acting higher Personal Number or Temp Rank	Name and Initials.	Corps.	Whether present with Unit (Insert Yes or No).	If not present with Unit, state how employed.
Brig		E.C.P. PLANT DSO, OBE, ADC.	HQ 25 Bde	Yes	Bde Comd
Capt.	Maj	G.H. BERTRAM	" " "	"	B.M.
Capt.		G.J. CULLEN	" " "	"	Sub O.
Lieut	Capt.	E.S. OWENS	" " "	"	Sc
Lieut	Capt	P.L. BRINKLEY	" " "	"	LO,
Lieut		C.L. WATERMAN	" " "	No	MOTOR CONTACT OFFERS SCH.
Lieut		E.W. CRIGG	" " "	Yes	IO
Lieut		H.H. RANKINE	" " "	"	Amen. O.
Chap.		J.B. LYNCH	" " "	No	BC Chp AH 2/33 BN.
Chap		D. REDDING	" " "	"	C/E " " 2/31 "
Lieut	CAPT	A.S. GEE	" " "	YES	T.O.

(ii) OFFICERS ATTACHED FROM OTHER CORPS.

Substantive Rank, and higher temporary rank, if held.	Personal Number.	Name and Initials.	Corps.	Date of attachment.	Nature of attachment.
Capt		G.B. KATER	44 LAD		LAD
Capt		G.F. LARKIN	7th Aust Div Coy		A/BM (L)
Capt		D. VINCENT	L Sec 7 DIV SIGS		L Sec
Lieut		N.H. CHUCK			
Lieut		<del>A.P. GEE</del>	<del>2/41 Aust Inf Bn</del>		<del>A/TO</del>
Lieut		E.W. DWYER	7 DIV AMSC		
Lieut		H.W. BUSWELL	10 Pl HQ Aust Gun		Protective A.

H Q 25 AUST INF BDE.

(Unit.)

11 Oct 41.

(Date of Despatch.)

Brig.  
COMD 25 Aust Inf Bde.

(Signature of Commander.)

7 AUST DIV.

(Bde., Divn., Area, etc., with which Unit is serving.)



**FIELD RETURN OF OTHER RANKS.**

SERIAL No. 2. H.Q. 25 AUST INF BDE. (Unit). 11 Oct. 1941 (Date).

(To be furnished by all units of Cavalry, Infantry, Royal Tank Corps, Royal Army Veterinary Corps, Royal Army Pay Corps, Army Educational Corps, Corps of Military Police, and all Headquarter units).

**Part A. Strength, Surplus or Reinforcements required.**

1	2	3	4
Detail.	Posted strength counting against authorized establishment (excluding attached).	Surplus to Establishment.	Reinforcements required (i.e. deficits on establishments).
W.Os. Class I.	1		
W.Os. Class II.			
<del>Squadron or Company Quartermaster-Serjeants</del> <del>Colour-Serjeants</del>	1		
Staff Serjeants	1		
Serjeants	3		
Buglers, Trumpeters, etc.			
Corporals	6		
Troopers, Privates, Guardsmen, Fusiliers, etc.	51		4
TOTALS	64	*	4

\* These totals should agree with the details shown in Part D on page 2 of Army Form W.3009.

**Part B. Other Ranks attached from other Corps.**

Detail.	Unit and Corps to which they belong.	Detail.	Units and Corps to which they belong.
1 Sjt.	L SEC 7 DIV SIGS.	1 Cpl. 1 L/cpl.	Cipher UNIT.
2 Cpls		1 WOII 1 Sjt	44 LAD.
31 Sigmn.		1 Cpl. 11 ORs	
1 Sjt	12 Pl. HQ AUST GD BN.	1 Cpl. 2 ORs	29. F.P.O.
2 Cpls		1 Interpreter.	
28 ORs			

**Part C. Description of other ranks whose return to the unit is particularly requested.**

Army No.	Rank.	Name and Initials.	Corps.	Remarks (e.g. present whereabouts if known).
WX 3284	Pte.	WILLIAMS A.W.	HQ 25 Bde.	25 I.T.B.



**Part D. Detail of Surplus or Reinforcements required as shown in Part A of Army Form W. 3009.**

DETAIL OF SPECIALISTS, TRADESMEN, ETC.	SURPLUS TO ESTABLISHMENT.							REINFORCEMENTS REQUIRED.							REMARKS.		
	W.Os. Class I.	W.Os. Class II.	S.Q.M.S.; C.Q.M.S., or Colour Sergeants.	Staff Sergeants.	Sergeants.	Buglers, Trumpeters, &c.	Corporals.	Troopers, Privates, Guardsmen, Fusillers, &c.	TOTAL.	W.Os. Class I.	W.Os. Class II.	S.Q.M.S.; C.Q.M.S., or Colour-Sergeants.	Sergeants.	Buglers, Trumpeters, &c.		Corporals.	Troopers, Privates, Guardsmen, Fusillers, &c.
Bricklayers																	
Butchers																	
Carpenters and Joiners																	
„ (trained in wheeling duties).																	
Clerks <i>or Orderlies</i>																2	2
Despatch Riders																	
Draughtsmen (topo)																	
Drivers H.T. and/or I.C.																	
Electricians																	
Farriers																	
Fitters																	
Masons																	
Painters and Decorators																	
Plumbers and Gasfitters																	
Saddlers and Harness Makers																	
Saddle Tree Makers																	
Signallers																	
Storemen technical																	
Vickers Machine Gunners																	
Wheelers <i>Gen. Duties</i>																2	2
General duty personnel																	
TOTALS (to agree with Columns 3 and 4 of Part A).																	4 4

H Q 25 AUST INF BDE.

Unit.

Date of Despatch *11 Oct 41*

*Resistant*  
COMD 25 AUST INF BDE

Signature of Commander.

*7 AUST DIV*

Bde., Divn., Area, etc., with which unit is serving.



SERIAL  
No 3.

# FIELD RETURN OF OFFICERS

H Q 25 AUST INF BDE. (Unit)

## PART A.—STRENGTH, SURPLUS OR REINFORCEMENTS REQUIRED.

1 Ranks.	2 Posted strength counting against authorized establishment (excluding attached).	3 Surplus to Establishment.	4 Reinforcements required (i.e. deficits on establishment).
	*		
	*		
Brig	1		
Lieut.-Colonels .. .. .			
Majors .. .. .	1		
Captains .. .. .	4		1
Lieutenants .. .. .	3		2
2nd Lieutenants .. .. .			
Quartermasters <i>Chaps.</i> .. .. .	2		1
TOTALS .. .. .	11		4

\* Insert detail of higher ranks as necessary.

## PART B.—PARTICULARS OF OFFICERS JOINED OR QUITTED DURING WEEK.

### Officers JOINED during week.

Rank.	Name.	Corps.	Date.	Cause.

### Officers QUITTED during week.

Rank.	Name.	Corps.	Date.	Cause.

## PART C.—DESCRIPTION OF OFFICERS WHOSE RETURN TO THE UNIT IS PARTICULARLY REQUESTED.

Rank.	Name and Initials.	Corps.	Remarks (e.g., present whereabouts, if known).



**PART D.—NOMINAL ROLL OF OFFICERS ON STRENGTH.**

(i) Officers posted to Unit (Total to agree with column 2 of Part A).

1	2	3	4	5	6
Substantive Rank, and higher temporary rank, if held.	Acting higher or Personal Number. Temp's Rank.	Name and Initials.	Corps.	Whether present with Unit (Insert Yes or No).	If not present with Unit, state how employed.
Brig		ECP PLANT DSO	HQ 25 Bde	Yes	Bde Comd.
		OBE ADC			
Capt	Maj	C. H. BERTRAM	" " "	"	B.M.
Capt.		C. J. CULLEN	" " "	"	Sub O
Lieut	Capt	E. S. OWENS	" " "	"	S/c.
Lieut	Capt	P. L. BRINKLEY	" " "	"	LO.
Lieut	Capt	H. S. GEE	" " "	"	TO
Lieut		C. L. WATERMAN	" " "	No	MOTOR CONTACT OFFICER SEN.
Lieut		E. W. GRIGG	" " "	Yes	I.O.
Lieut		H. H. RANKINE	" " "	"	Hmen O
Chap.		D. REDDING	" " "	No	C/E Chap att. 2/31. BN.
Chap.		J. B. LYNCH	" " "	"	RC " " 3/33 "

(ii) OFFICERS ATTACHED FROM OTHER CORPS.

Substantive Rank, and higher temporary rank, if held.	Personal Number.	Name and Initials.	Corps.	Date of attachment.	Nature of attachment.
Capt.		G. B. KATER	HQ LAD		LAD
Capt.		C. F. LARKIN	7 DIV COY		A/1319 (L)
Capt.		D. VINCENT	L Sec 7 DIV SIG S.		L Sec.
Lieut		H. H. CHUCK	" " "		" "
Lieut		E. W. DWYER	7 DIV HSE		
Lieut		H. W. BISHWELL	12th HQ AUST GDB		Protective M.

H Q 25 AUST INF BDE.

(Unit.)

18 Oct 44

(Date of Despatch.)

Brig.  
COMD 25 Aust Inf Bde

(Signature of Commander.)

7 AUST DIV.

(Bde., Divn., Area, etc., with which Unit is serving.)



SERIAL  
No 3.

**FIELD RETURN OF OTHER RANKS.**

H Q 25 AUST INF BDE (Unit). 18 Oct 1941 (Date).

(To be furnished by all units of Cavalry, Infantry, Royal Tank Corps, Royal Army Veterinary Corps, Royal Army Pay Corps, Army Educational Corps, Corps of Military Police, and all Headquarter units).

**Part A. Strength, Surplus or Reinforcements required.**

1 Detail.	2 Posted strength counting against authorized establishment (excluding attached).	3 Surplus to Establishment.	4 Reinforcements required (i.e. deficits on establishments).
W.Os. Class I.	1		
W.Os. Class II.			
Squadron or Company Quartermaster-Serjeants OR Colour-Serjeants	1		
Staff Serjeants	1		
Serjeants	3		
Buglers, Trumpeters, etc.	6		
Corporals			
Troopers, Privates, Guardsmen, Fusiliers, etc.	49		6
TOTALS	62	*	6

\* These totals should agree with the details shown in Part D on page 2 of Army Form W.3009.

**Part B. Other Ranks attached from other Corps.**

Detail.	Unit and Corps to which they belong.	Detail.	Units and Corps to which they belong.
2 Sjt's.	L Sec 7 DIV SIGS.	1 Cpl. 1 L/Cpl.	Cipher UNIT 44 LAD.
3 Cpls		1 WOII 1 Cpl.	
36 Sigin		10 ORs	
1 Sjt	12 Pl. HQ AUST GD. BN.	1 Cpl. 2 ORs	29 FPO Civilian
2 Cpls		1 Interpreter	
27 ORs			

**Part C. Description of other ranks whose return to the unit is particularly requested.**

Army No.	Rank.	Name and Initials.	Corps.	Remarks (e.g. present whereabouts if known).
WX 3284	Pte.	WILLIAMS A.W	HQ 25 Bde	25 I.T.B.



**Part D. Detail of Surplus or Reinforcements required as shown in Part A of Army Form W. 3009.**

DETAIL OF SPECIALISTS, TRADESMEN, ETC.	SURPLUS TO ESTABLISHMENT.							REINFORCEMENTS REQUIRED.							REMARKS.		
	W.Os. Class I.	W.Os. Class II.	S.Q.M.S.; C.Q.M.S., or Colour Sergeants.	Staff Sergeants.	Sergeants.	Buglers, Trumpeters, &c.	Corporals.	Troopers, Privates, Guardsmen, Fusiliers, &c.	TOTAL.	W.Os. Class I.	W.Os. Class II.	S.Q.M.S.; C.Q.M.S., or Colour Sergeants.	Sergeants.	Buglers, Trumpeters, &c.		Corporals.	Troopers, Privates, Guardsmen, Fusiliers, &c.
Bricklayers																	
Butchers																	
Carpenters and Joiners																	
„ (trained in wheeling duties).																	
Clerks <i>or Orderlies</i>																1	1
Despatch Riders																	
Draughtsmen (topo)																	
Drivers H.T. and/or I.C.																	
Electricians																	
Farriers																	
Fitters																	
Masons																	
Painters and Decorators																	
Plumbers and Gasfitters																	
Saddlers and Harness Makers																	
Saddle Tree Makers																	
Signallers																	
Storemen technical																	
Vickers Machine Gunners																	
Wheelers																	
<i>General Duties.</i>																4	4
<i>Batmen.</i>																1	1
General duty personnel																	
TOTALS (to agree with Columns 3 and 4 of Part A).																	6.6

H Q 25 AUST INF BDE.

Unit.

Date of Despatch 18 OCT 44.

*[Signature]*  
Brig.  
COMD 25 Aust Inf Bde.

Signature of Commander.

7 AUST. DIV.

Bde., Divn., Area, etc., with which unit is serving.



## FIELD RETURN OF OFFICERS

SERIAL. No:-  
4

H Q 25 AUST INF BDE.

(Unit)

### PART A.—STRENGTH, SURPLUS OR REINFORCEMENTS REQUIRED.

1 Ranks.	2 Posted strength counting against authorized establishment (excluding attached).	3 Surplus to Establishment.	4 Reinforcements required (i.e. deficits on establishment).
* * <i>Brig</i>	1		
Lieut.-Colonels .. .. .			
Majors .. .. .	1		
Captains .. .. .	4		1
Lieutenants .. .. .	3		2
2nd Lieutenants .. .. .			
Quartermasters <i>Chaplains</i>	2		1
TOTALS .. .. .	11		4

\* Insert detail of higher ranks as necessary.

### PART B.—PARTICULARS OF OFFICERS JOINED OR QUITTED DURING WEEK.

#### Officers JOINED during week.

Rank.	Name.	Corps.	Date.	Cause.

#### Officers QUITTED during week.

Rank.	Name.	Corps.	Date.	Cause.
Lieut	H.N. CHUCK.	L Sec 7 Div Sigs	24 Oct 41	

### PART C.—DESCRIPTION OF OFFICERS WHOSE RETURN TO THE UNIT IS PARTICULARLY REQUESTED.

Rank.	Name and Initials.	Corps.	Remarks (e.g., present whereabouts, if known).



**PART D.—NOMINAL ROLL OF OFFICERS ON STRENGTH.**

(i) Officers posted to Unit (Total to agree with column 2 of Part A).

1	2	3	4	5	6
Substantive Rank, and higher temporary rank, if held.	Acting Higher or Personal Number. Temp Rank.	Name and Initials.	Corps.	Whether present with Unit (Insert Yes or No).	If not present with Unit, state how employed.
Brig		E.C.P. PLANT. DSO	HQ 25 Bde	Yes	Bde Comd
		OBE. ADC.			
Capt	Maj	G.A. BERTRAM	" " "	"	B.M.
Capt		G.J. CULLEN	" " "	"	Sup O
Lieut	Capt	E.S. OWENS	" " "	"	S.C.
Lieut	Capt	P.L. BRINKLEY	" " "	"	L.O.
Lieut	Capt.	H.S. GEE	" " "	"	T.O.
Lieut		C.L. WATERMAN	" " "	No	Motor Contract Offrs Sch.
Lieut		E.W. GRIGG	" " "	Yes	IO
Lieut		H.H. RANKINE	" " "	"	Amen. O
Chap.		D. REDDING	" " "	No	C/E Chap off 2/31 Bn.
Chap		J.B. LYNCH	" " "	"	RC " " 2/33 "

(ii) OFFICERS ATTACHED FROM OTHER CORPS.

Substantive Rank, and higher temporary rank, if held.	Personal Number.	Name and Initials.	Corps.	Date of attachment.	Nature of attachment.
Capt		G.B. KATER.	44 LAD		LAD
Capt		G.F. LARKIN	7 BN Cav		A/BM(L).
Capt		D. VINCENT	L Sec 7 DIV Sigs		L Sec
Lieut		E.W. DWYER	7 DIV ASC		
Lieut		H.W. BUSWELL	12 Pl HQ AUST Gd Bn		Protective Pl.

H Q 25 AUST INF BDE.

(Unit.)

25 Oct 41.

(Date of Despatch.)

C.B. Withers  
COMD 25 Aust Inf Bde  
Brig. AOD

(Signature of Commander.)

7 AUST DIV

(Bde., Divn., Area, etc., with which Unit is serving.)







Part D. Detail of Surplus or Reinforcements required as shown in Part A of Army Form W. 3009.

DETAIL OF SPECIALISTS, TRADESMEN, ETC.	SURPLUS TO ESTABLISHMENT.							REINFORCEMENTS REQUIRED.							REMARKS.			
	W.Os. Class I.	W.Os. Class II.	S.Q.M.S.; C.Q.M.S., or Colour Sergeants.	Staff Sergeants.	Sergeants.	Buglers, Trumpeters, &c.	Corporals.	Troopers, Privates, Guardsmen, Fusillers, &c.	TOTAL.	W.Os. Class I.	W.Os. Class II.	S.Q.M.S.; C.Q.M.S., or Colour Sergeants.	Sergeants.	Buglers, Trumpeters, &c.		Corporals.	Troopers, Privates, Guardsmen, Fusillers, &c.	TOTAL.
Bricklayers <i>Batman</i>																	1 1	
Butchers																		
Carpenters and Joiners																		
„ (trained in wheeling duties).																		
Clerks																		
Despatch Riders																		
Draughtsmen (topo)																		
Drivers H.T. and/or I.C.																		
Electricians																		
Farriers																		
Fitters																		
Masons																		
Painters and Decorators																		
Plumbers and Gasfitters																		
Saddlers and Harness Makers																		
Saddle Tree Makers																		
Signallers																		
Storemen technical																		
Vickers Machine Gunners																		
Wheelers																		
<i>ASC (Clerk)</i>																	1	<i>(HOSP)</i> <i>USJ. BLACKLOCK. HV</i> <i>Pte TAYLOR JL</i> <i>(HOSP)</i>
<i>Armour</i>																	1	
General duty personnel																		
TOTALS (to agree with Columns 3 and 4 of Part A).																	1 1 3	

H Q 25 AUST INF BDE.

Unit.

Date of Despatch *25 OCT 41*

*1 1 3*  
*Brig. R.O.D*  
*COMD 25 Aust Inf Bde*  
Signature of Commander.

*7 AUST DIV*

Bde., Divn., Area, etc., with which unit is serving.



Appendix E

Ref.

H Q 25 AUST INF BDE.

AUSTRALIAN IMPERIAL FORCE.

ROUTINE ORDERS.

By

BRIG. E. C. P. PLANT DSO. OBE. ADC.

COMD 25 AUST INF BDE.

Part 1.

No 150

3 Oct 41.

I. SECURITY : ARMS.

All ranks and personnel are responsible for securing against loss any Government or private arms in their charge or owned by them. Immediately the loss of any weapon is discovered must be reported to CO of unit concerned. Unless special circumstances exist, loss of weapons will be treated as a Court Martial offence.

Officers must impress on all ranks, that every round of amm lost or stolen may be used against us. Whether a rifle is stolen or lost it is almost certain to mean one Aust soldier killed or wounded unnecessarily.

2. SECURITY : TELEPHONES.

The importance of telephone security is still not realised. It must be remembered that telephone lines in SYRIA and LEBANON are former civil lines.

Sig wire is repeatedly being cut along the SIR rd in an area of approx 1 mile east of this HQ. It is the duty of all ranks to prevent and report any person seen interfering in any way with Sig wires.

3. WASTE.

This subject has been brought forcibly to the notice of all personnel by means of the Anti-Waste Campaign. Every endeavour will be made to keep waste of all kinds to an absolute minimum.

4. CLEANLINESS.

Units in barracks in particular must take special care to keep barracks and surrounding area clean. Everyone must be made to realize that each article dropped or strewn about will have to be ultimately picked up by that person, or someone else.

5. BLACKOUT.

The Blackout has improved considerably, but is not yet good enough. Doors at the end of passage ways are the main cause of the trouble and must at all times be kept shut whenever lights are burning.

*[Signature]* Capt  
SC 25 AUST INF BDE



ROUTINE ORDERS

NOTICES.

CHURCH PARADES.

BRIG. E.C.P. PLANT DSO. OBE. ADC.

COMD 25 AUST INF BDE

2/31 Aust Inf Bn.

- 0700 hrs R.C. Mass.
- 0700 hrs Church of England - Holy Communion.
- 0900 hrs General Church Parade.

2/33 Aust Inf Bn.

- 0900 hrs R.C. Mass.
- 0900 hrs General Church Parade.
- 0930 hrs Holy Communion.

2/25 Aust Inf Bn.

- 0800 hrs R.C. Mass.
- 0630 hrs Church of England - Holy Communion.
- 0800 hrs General Church Parade.

DISTRIBUTION.

As for RO 149.

SECURITY TELEPHONES.

The importance of telephone security is still not realized. It must be remembered that telephone lines in SYRIA and IRAN are former civil lines. Six wire is repeatedly being cut along the STR rd in an area of approx 1 mile east of this HQ. It is the duty of all ranks to prevent and report any person seen interfering in any way with six wires.

WASTE.

This subject has been brought forcibly to the notice of all personnel by means of the Anti-Waste Campaign. Every endeavour will be made to keep waste of all kinds to an absolute minimum.

CLEANLINESS.

Units in barracks in particular must take special care to keep barracks and surrounding area clean. Everyone must be made to realize that such articles dropped or strewn about will have to be ultimately picked up by that person, or someone else.

BLACKOUT.

The Blackout has improved considerably, but is not yet good enough. Doors at the end of passage ways are the main cause of the trouble and must at all times be kept shut whenever lights are burning.

Capl  
 25 AUST INF BDE



AUSTRALIAN IMPERIAL FORCE.

ROUTINE ORDERS.

By

BRIG E.C.P. PLANT. DSO.OBE.ADC.

COMD 25 AUST INF BDE.

-----  
Part I.

No 151.

10 Oct 41.  
-----

I. MESSING STORES.

It is advised that all messing stores will be closed on Sundays.

2. SUNDAY- BREAKFAST AT BDE HQ-

Breakfast on Sundays will be at 0800 hrs in lieu of 0730 hrs from and including 12 Oct 41.

3. PHOTOGRAPHS IN PAYBOOKS.

Photographs of all members will be pasted in back of the pay books.

Pay books will be inspected and the number of photographs required will be advised by 0900 hrs 15 Oct 41.

4. SPECIAL LEAVE TO PICTURES.

Special leave to attend pictures, in addition to 25 per Bn each third day, may be allowed to parties not exceeding 25 in charge of an offr at each cinema in TRIPOLI.

*W. J. Quinn* Capt.  
SC 25 AUST INF BDE.

NOTICES.

CHURCH PARADES .

2/31 Aust Inf Bn.

0700 hrs R.C. Mass.

0700 hrs Church of England - Holy Communion-

0900 hrs General Church Parade.

2/33 Aust Inf Bn.

0900 hrs R.C. Mass.

0900 hrs General Church Parade.

0930 hrs Holy Communion.

2/25 Aust Inf Bn.

0630 hrs Church of England- Holy Communion.

0800 hrs R.C. Mass.

0800 hrs General Church Parade.

-----  
DISTRIBUTION.

As for RO 150.



APPD

War Diary

AUSTRALIAN IMPERIAL FORCE.

ROUTINE ORDERS.

By

BRIG E.C.P. PLANT. DSO.OBE.ADC.

COMD 25 AUST INF BDE.

Part I.

No 152.

16 Oct 41.

I. LOOT AND TRAFFIC IN ARMS.

It has been definitely established that members of H.M. Forces have been selling captured arms and ammunition.

Any captured war material in the possession of army personnel will be surrendered immediately.

2. DISCIPLINE- RIDING IN GHARRIES-

It has come to notice that large numbers of military personnel are in the habit of riding in any one gharry. The authorised number is 5 persons only. Disciplinary action will be taken against all personnel found in an over-crowded gharry.

3. DRIVERS LICENCES.

Attention is drawn to appx C GS Instn No 30 to the effect that licences will be issued and carried by all drivers and a register kept of all issues.

-----  
Capt  
SC 25 AUST INF BDE

NOTICES.

CHURCH PARADES.

2/31 Aust Inf Bn.

0700 hrs R.C.Mass.  
0700 hrs Church of England-Holy Communion  
0900 hrs General Church Parade.

2/33 Aust Inf Bn.

0900 hrs R.C.Mass.  
0900 hrs General Church Parade.  
0930 hrs Holy Communion.

2/25 Aust Inf Bn.

0630 hrs Church of England.  
0800 hrs R.C.Mass.  
0800 hrs General Church Parade.

DISTRIBUTION.

As for RO 151.



WD

Appendix G

H Q 25 AUST INF BDE.

AUSTRALIAN IMPERIAL FORCE.

ROUTINE ORDERS

By

BRIG E.C.P. PLANT. DSO. OBE. ADC.

COMD 25 AUST INF BDE.

Part I.

No 153

24 Oct 41.

I. RECORD OF CAMERAS.

Any offr or OR in possession of, or acquiring a camera will report the fact to the Unit or HQ IO immediately and supply the following particulars :-

- (i) Regtl No.
- (ii) Rank
- (iii) Name
- (iv) Unit
- (v) Make of camera
- (vi) Maker's No (if any)
- (vii) Description (i.e. type, film size)

Any offr or OR disposing of a camera subsequent to the publication of this instn will forthwith inform the IO of the name and address of the person acquiring the camera.

2. RIFLES -ETC- Nos-

It is essential that all personnel know the Nos of the rifle, pistol, binoculars and all other similar types of eqpt on issue to them.

3. PERSONNEL RIDING IN WD VEHs.

It is again stressed that no more than 2 persons may occupy the frontseat of vehs with floor type gear change lever.

*E. J. Owens* Capt  
SC 25 AUST INF BDE

NOTICE.

CHURCH PARADES.

2/31 Aust Inf Bn.

0700 hrs Church of England - Holy Communion.  
0900 hrs General Church Parade.  
0930 hrs R.C.Mass.

2/33 Aust Inf Bn.

0800 hrs R.C.Mass (HQ Rec. Room)  
0900 hrs General Church Parade.  
0930 hrs Holy Communion.

2/25 Aust Inf Bn.

0630 hrs Church of England  
0800 hrs R.C.Mass.  
0800 hrs General Church Parade.



*Omer Oracy*

*Appendix H*

H Q 25 AUST INF BDE.

AUSTRALIAN IMPERIAL FORCE.

ROUTINE ORDERS.

By

BRIG E.C.P. PLANT. DSO. OBE. ADC.

COMD 25 AUST INF BDE.

Part I.

No 154

31 Oct 41.

I. PHOTOGRAPHY.

The following photographers ONLY are approved in TRIPOLI area :-

Proprietor.	Name of Shop.	Address.
A.K.ANOUCHIAN	PHOTO ANOUCHIAN	EL MINA Rd TRIPOLI
M. MAYZOUBH	" LUNA	TELL ST TRIPOLI
G. SAYEGH	BAR JALLAD	" " "
H.D.BERNANDIAN	PHOTO HERMAND	" " "
K.A.TOTONGYAN	" SPORT	EL MINA Rd TRIPOLI
K.T.GHACHRIAN	" GHACHRIAN	

All films for developing will be deposited at either A or B ECH orderly rooms and units will then fwd them to any of the a/m photographers. After being developed units will collect the films, censor them and then return to the owners.

2. IDENTITY DISCS.

Identity Discs will be worn by all ranks at all times. A report has been received that 2 lives have been lost through the blood gp of accident casualties not being known in time for a blood transfusion to be carried out successfully

3. PAYBOOKS.

The falsification of Paybooks is an offence which will be tried by Court Martial.

4. CLOTHING & EQPT.

Clothing & eqpt will be put away neatly in billets and NOT left lying about.

*[Signature]*  
CAPT  
SC 25 AUST INF BDE

NO TICE.

CHURCH PARADES.

2/31 Aust Inf Bn.

- 0700 hrs Church of England - Holy Communion -
- 0900 hrs General Church Parade.
- 1000 hrs R.C.Mass.

2/33 Aust Inf Bn.

- 0800 hrs R.C.Mass (HQ Rec Room)
- 0900 hrs General Church Parade.
- 0945 hrs Holy Communion.

2/25 Aust Inf Bn.

- 0645 hrs Church of England.
- 0800 hrs R.C.Mass.
- 0800 hrs General Church Parade.

OVER.



SPORTING.

CRICKET.

Sunday 2 Nov 41 at 0930 hrs 25 AUST INF BDE - versus-  
21 AUST INF BDE, to take place at PLANT OVAL.

HOCKEY.

HQ 25 AUST INF BDE - versus- 2/33 AUST INF BN, Starting  
time - 1000 hrs - IPC Grounds -

Results of previous matches :-

Cricket. HQ 25 Bde 185 runs defeated 2/5 Fd Coy 65 runs.

2/25 Bn 396 runs defeated 2/33 Bn 118 runs.

(21 Bde) 2/27 Bn 190 runs defeated 2/31 Bn 110 runs.

Hockey. HQ 25 Bde 2 goals defeated 2/25 Bn 1 goal.

Table Tennis.

HQ 25 Bde 13 sets defeated 2/25 Bn 5 Sets.

Soccer. 14 Lt Fd Amb 3 goals defeated 2/25 Bn Nil.

Tennis. 25 Bde 3 sets 2/25 Bn 5 sets.





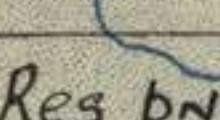


TRIPOLI 1/50000

162 164 166 168 170 172 174

H.Q. 25 AUST INF BDE.

25 Aust Inf. Bde disposn as at 15 Oct 41

 Coy  
 PL.  
 Sec.  
 BN Area  
 Bde Area

Res. bn - 2/33

162 164 166 168 170 172 174

284.187m

34°

284

Upto

15 Oct 41

Bde's posn

13 Oct.

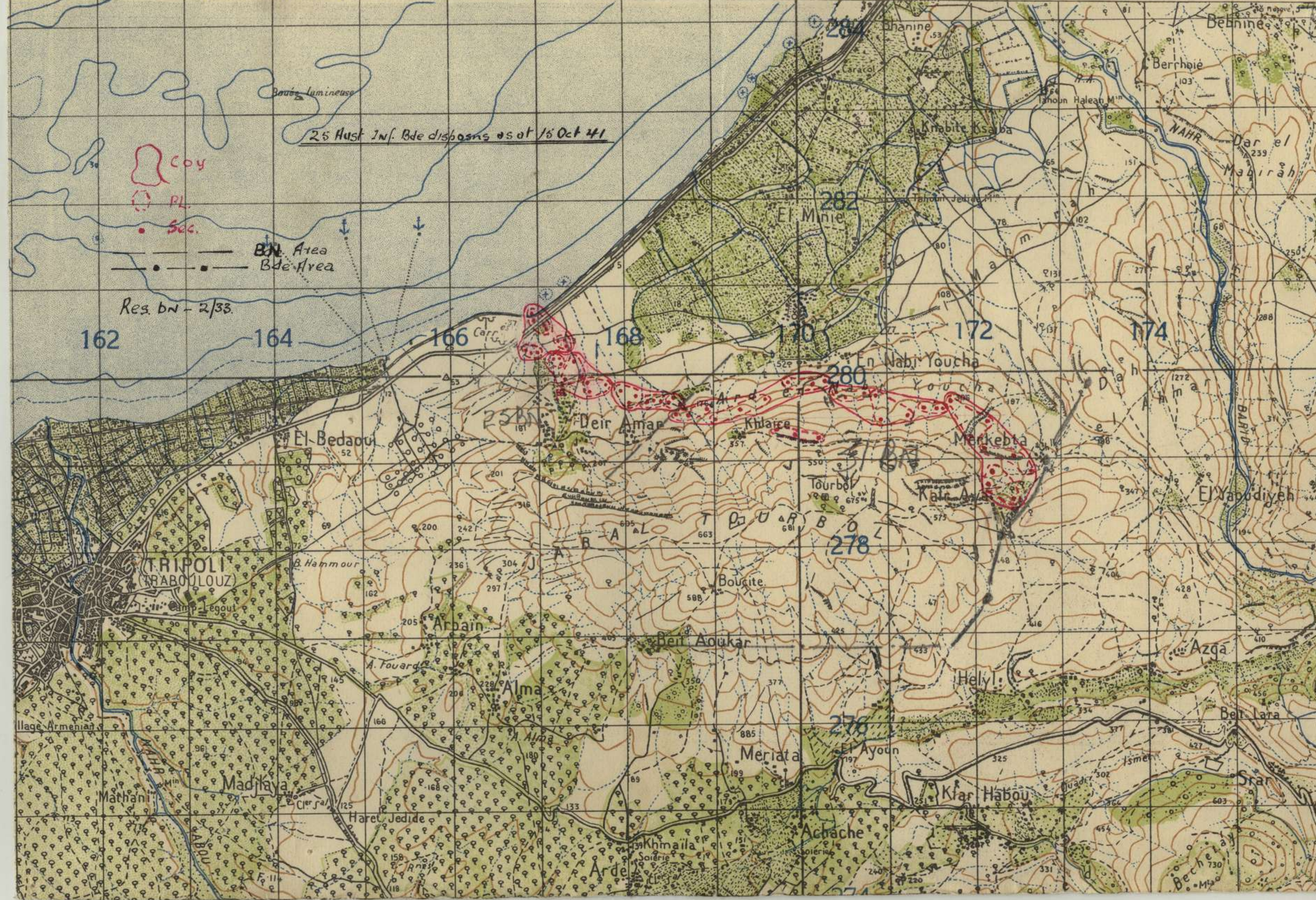
282

280

278

276

25'





APPR. B.

Spare copy

WD

MOST SECRETAUSTRALIAN IMPERIAL FORCE

A61/2/555

HQ 7 AUST DIV  
IN THE FIELD  
5 Oct 41C-in-C's TOUR - 7 AUST DIV AREA - 7 OCT 41

Tues. 1 The C-in-C will carry out a tour of inspection of tps and area of 7 Aust Div on 7 Oct 41 in accordance with itinerary outlined on att schedule.

2 PARADES

(a) The procedure for those tps parading will be:-

Parade

To be formed up in close column of btys, coys, or secs as the case may be, where ground permits.

Bands will parade where possible.

General salute will be given to C-in-C.

Inspection by C-in-C.

(b) Dress

Summer dress. Drill order.

Arty will parade without rifles.

Those units still deficient of hats will wear steel helmets.

3 CONDUCT OF TPS NOT ON PARADE

All sentries and all tps NOT on parade are to be warned to pay the necessary compliment as the C-in-C passes.

Ample warning of approach of C-in-C will be given by Provost out-riders.

All vehs will halt and pull into the side of the rd to give the party right of way.

All bivouac areas are to be in inspection order.

4 TRAFFIC CONTROL

DAPM will establish TCPs as have already been indicated, and will provide pilot car and out-riders.

5 ORDER OF MARCH

Pilot car  
Provost out-riders  
C-in-C and GOC 7 Aust Div  
ADCs  
Staff C-in-C  
Staff GOC 7 Aust Div

To be marshalled by DAPM between 1010 and 1020 hrs.

PTO



2.

6 GUARD NIGHT 7/8 OCT

The C-in-C and staff will spend the night 7/8 Oct at COL DES CEDRES.

2/5 Aust Inf Bn will mount an offrs gd, and will ensure that there are sufficient posts and prowlers to adequately protect the C-in-C.

*W. Beacombe* Col  
MA & QMG 7 AUST DIV

Distribution

All units

SNO

AADC

*1 Austb Corps*



H.Q. 25 AUST INF BDE.

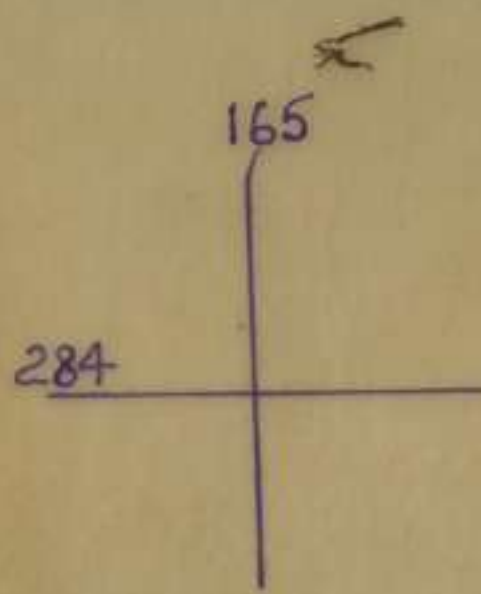
ITINERARY C-in-C - 7 OCT 41

- 0930 hrs - Met by out-riders 7 Aust Div Provost at EL, KALMOUNE
- 0940 hrs - MG Bn line rd - one rank either side - tps at attention and offrs salute as party passes through.
- 1000 hrs - Arrive HQ 7 Aust Div. Met by GOC 7 Aust Div and staff. Gd provided by "C" Coy HQ Gd Bn.
- 1003 - 1020 hrs. Interview with GOC 7 Aust Div.
- 1022 hrs - Depart 7 Aust Div HQ.
- 1030 hrs - Arrive 25 Aust Inf Bde Area. Met by Comd 25 Aust Inf Bde at BHETAT GHANIM BARRACKS. Inspect 2/25 Aust Inf Bn.
- 1100 hrs - Depart BHETAT GHANIM BARRACKS.
- 1110 hrs - Inspect 2/6 Aust Fd Coy RAE, vicinity RAMLEH. CRE to be present.
- 1125 hrs - Comd 21 Aust Inf Bde reports to GOC 7 Aust Div. *at RAMLEH*  
Depart RAMLEH.
- 1145 hrs - Arrive knoll 17592747 - "B" Ech area 2/27 Aust Inf Bn.
- 1200 hrs - Depart knoll 17592747.
- 1240 hrs - Arrive EL MINA Port, inspect harbour. Met by SNO and AADC.
- 1300 hrs - Depart EL MINA.
- 1315 hrs - Lunch "A" Mess.
- 1415 hrs - Depart TRIPOLI.
- 1435 hrs - Arrive BSARMA. Met by CRA and staff. Inspect 2 Aust A Tk Regt.
- 1447 hrs - Depart BSARMA.
- 1452 hrs - Inspect 2/5 Aust Fd Regt.
- 1505 hrs - Depart
- 1510 hrs - Arrive 17 Aust Inf Bde area. Met by A/Comd at rd junc KFAR AKKA. Inspect 2/3 Aust Inf Bn.
- 1530 hrs - Depart KFAR AKKA.
- 1645 hrs - Arrive COL DES CEDRES. Met by A/CO 2/5 Aust Inf Bn, and gd of 3 offrs and 50 ORs.
-



N. Diaryakpi A

Secret

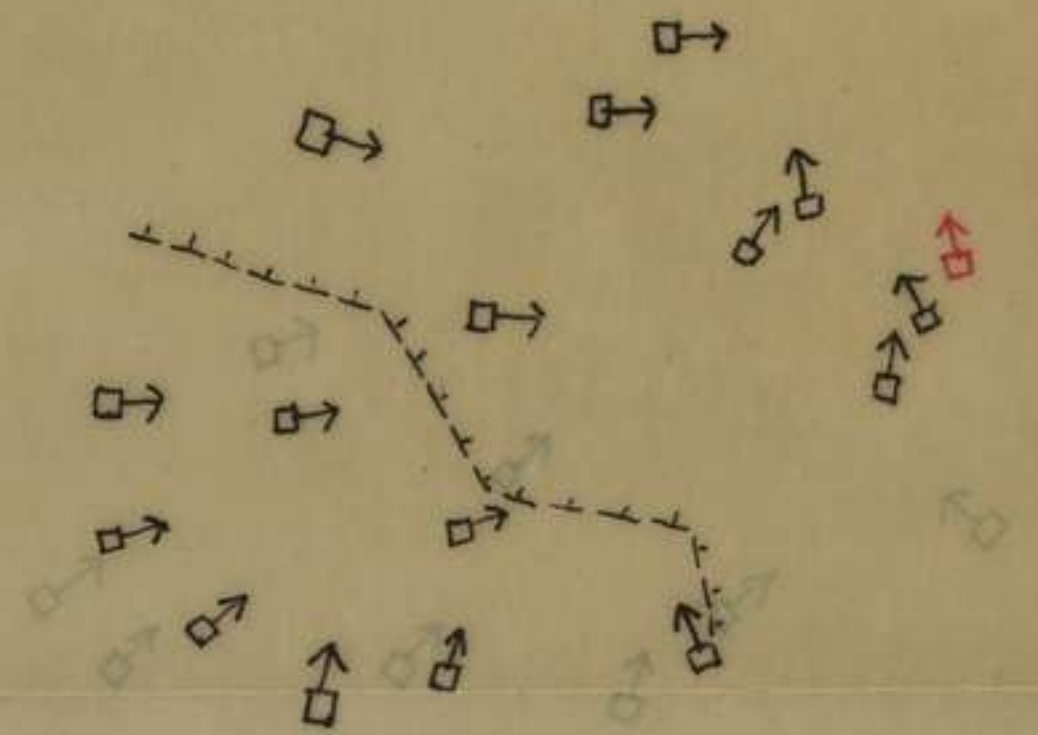
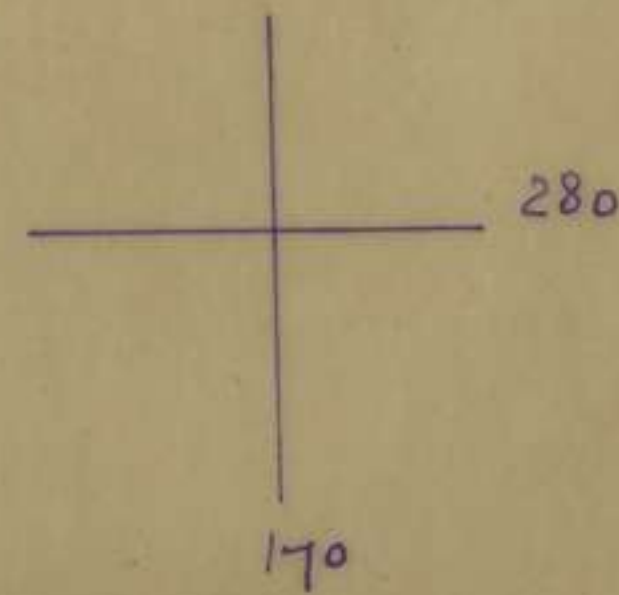


Trace of TRIPOLI 1 : 50,000.

Trace showing dispositions of  
A. TK Guns in  
TRIPOLI FORTRESS AREA

Infm as at 1 OCT 41.

H Q 52 ANST INF BDE



Traced by

*J.S. Boothman*  
Cpl

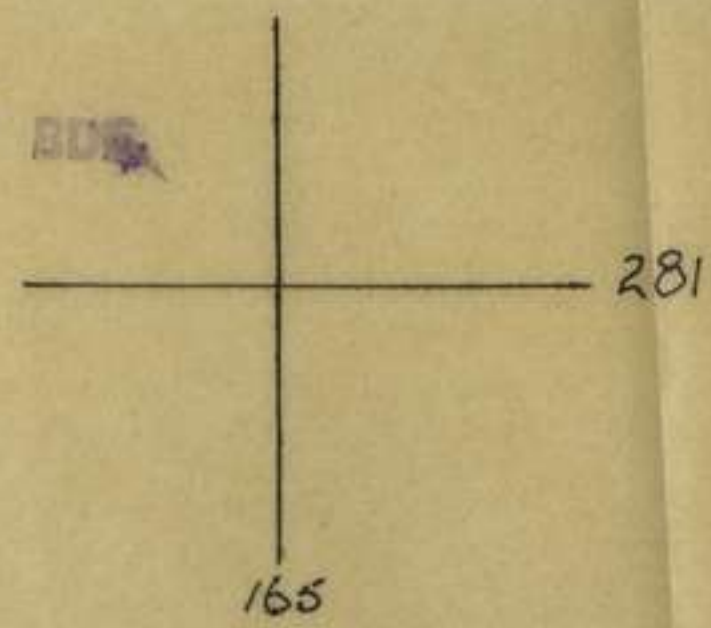
25 Aust Inf Bde

2 Oct 41.

2 Pdr	-	<u>Black</u>
18 "	-	<u>Green</u>
75 MM	-	<u>Red</u>



HQ 25 AUST INF BDE

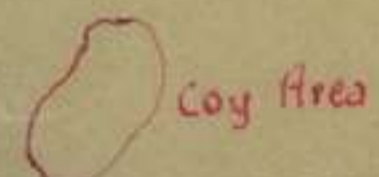
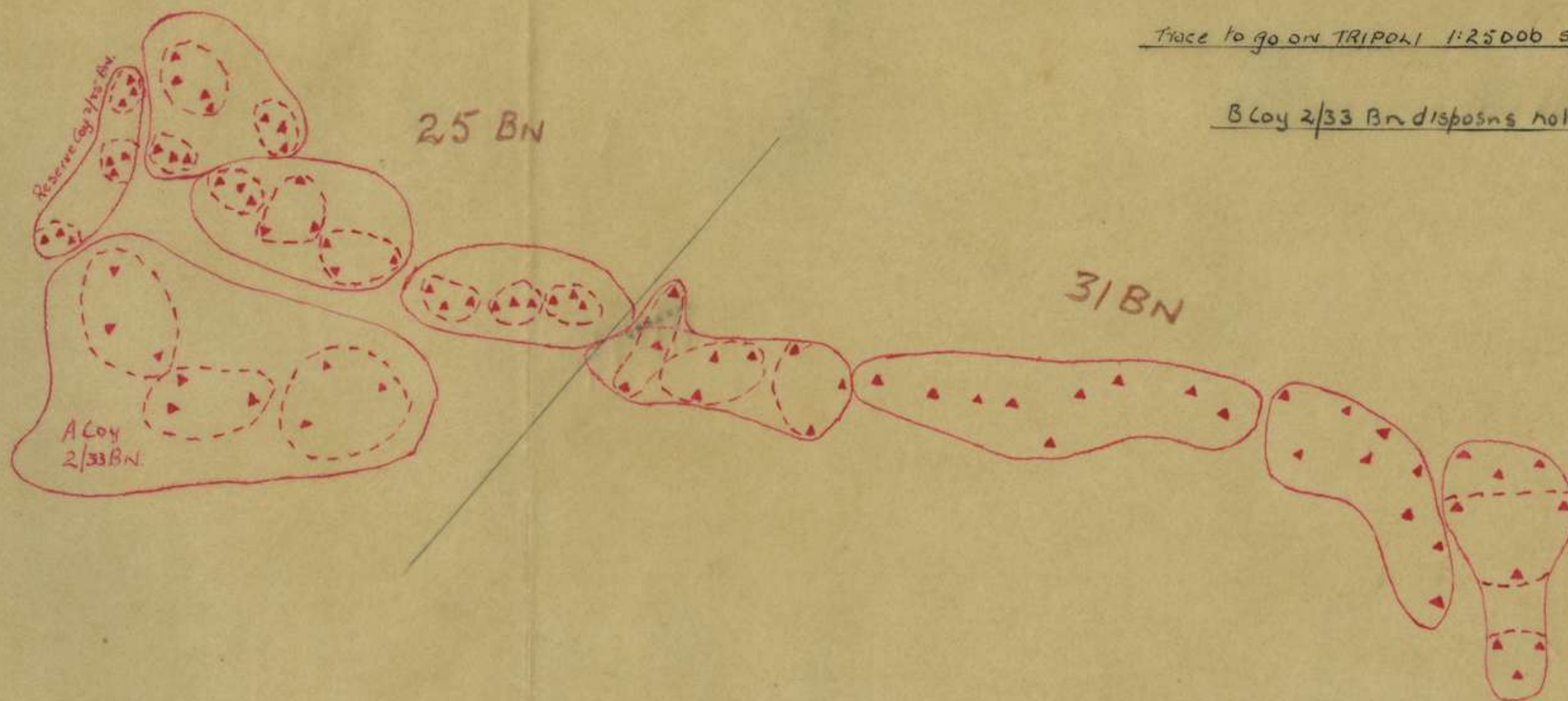
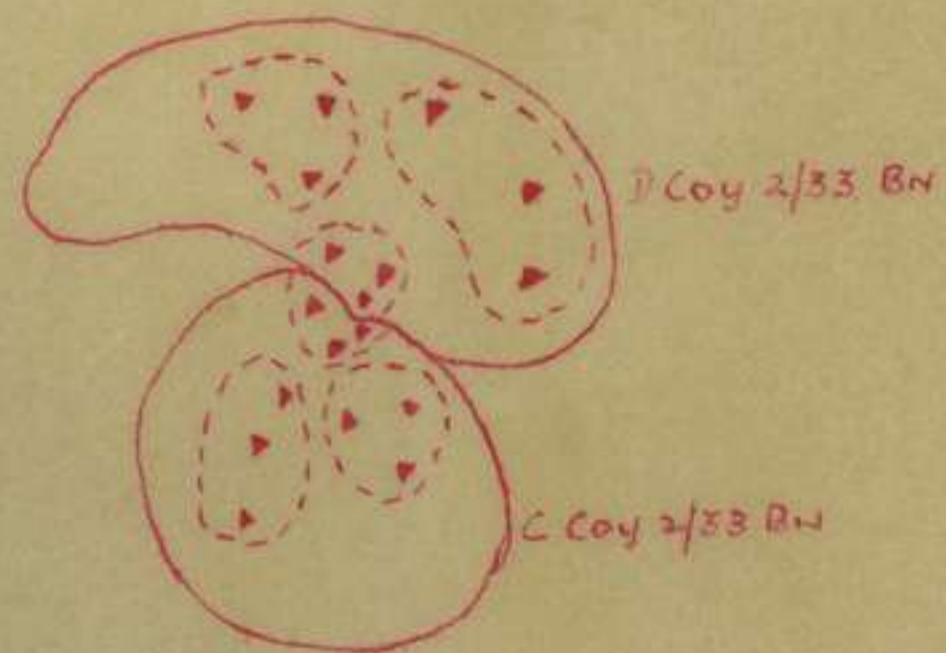


War Diary HQ 25 AUST INF BDE.

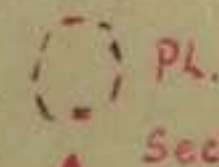
Trace showing disposn of 25 Aust Inf Bde as at 27 Oct 41

Trace to go on TRIPOLI 1:25000 sheet.

B Coy 2/33 Bn disposn not to hand.

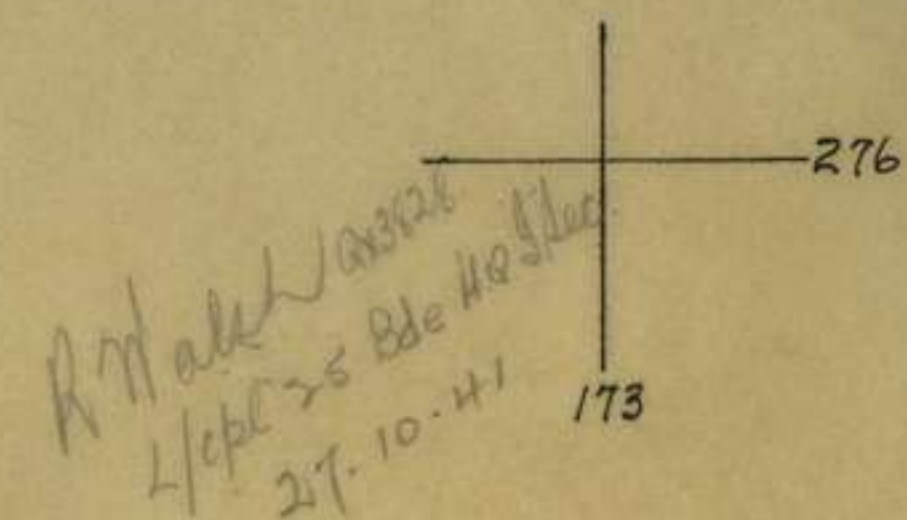


Coy Area



Pl.

Sec.



R. M. Allen  
4/pt 25 Bde HQ  
27.10.41



APPENDIX 'F'

War Diary

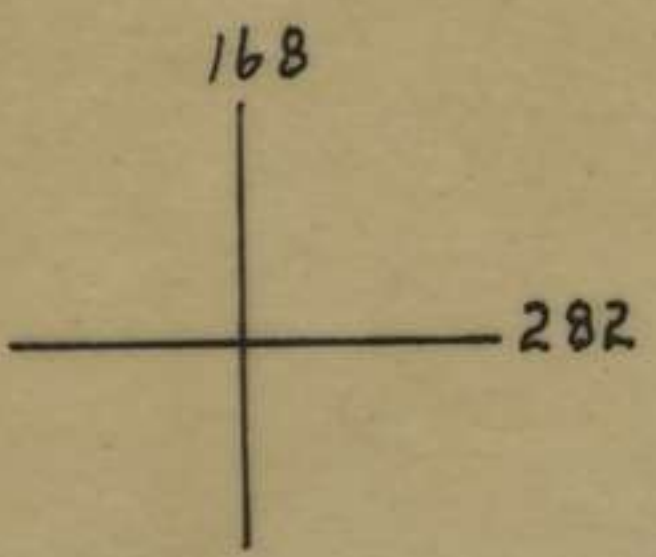
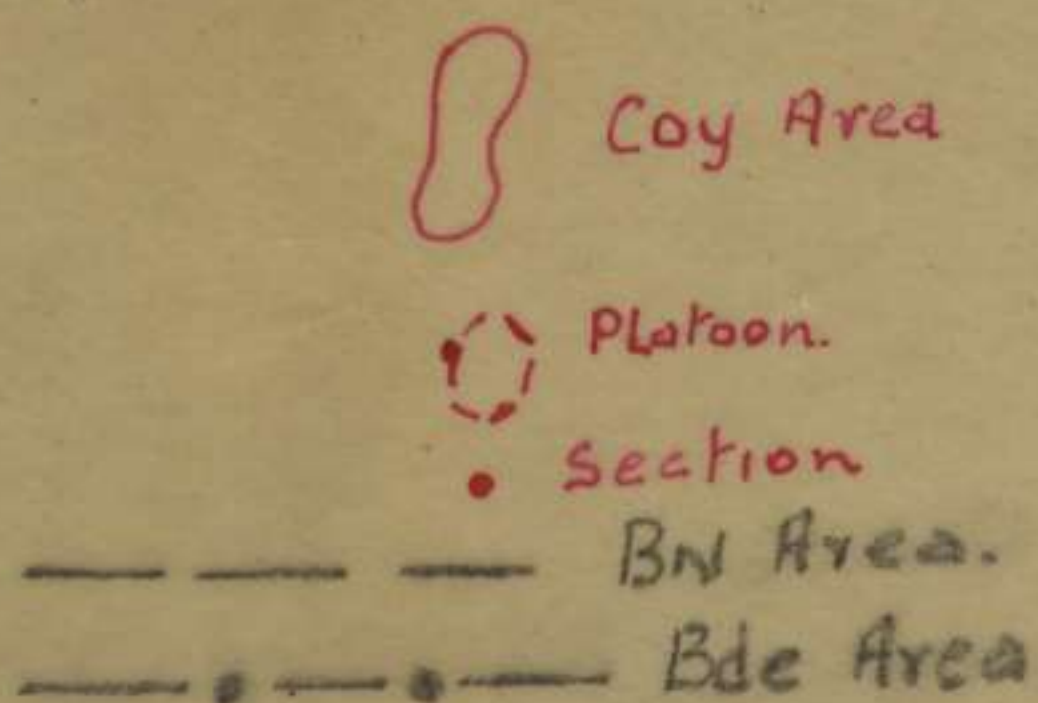
H Q 25 AUG 1941

25 Aust Inf. Bde disposns as at 20 Oct. 1941

Trace to go on TRIPOLI 1:50000 sheet

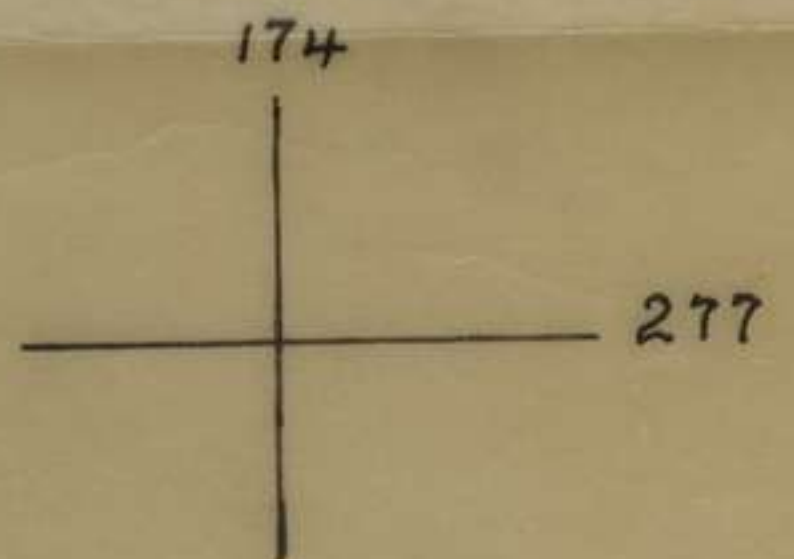
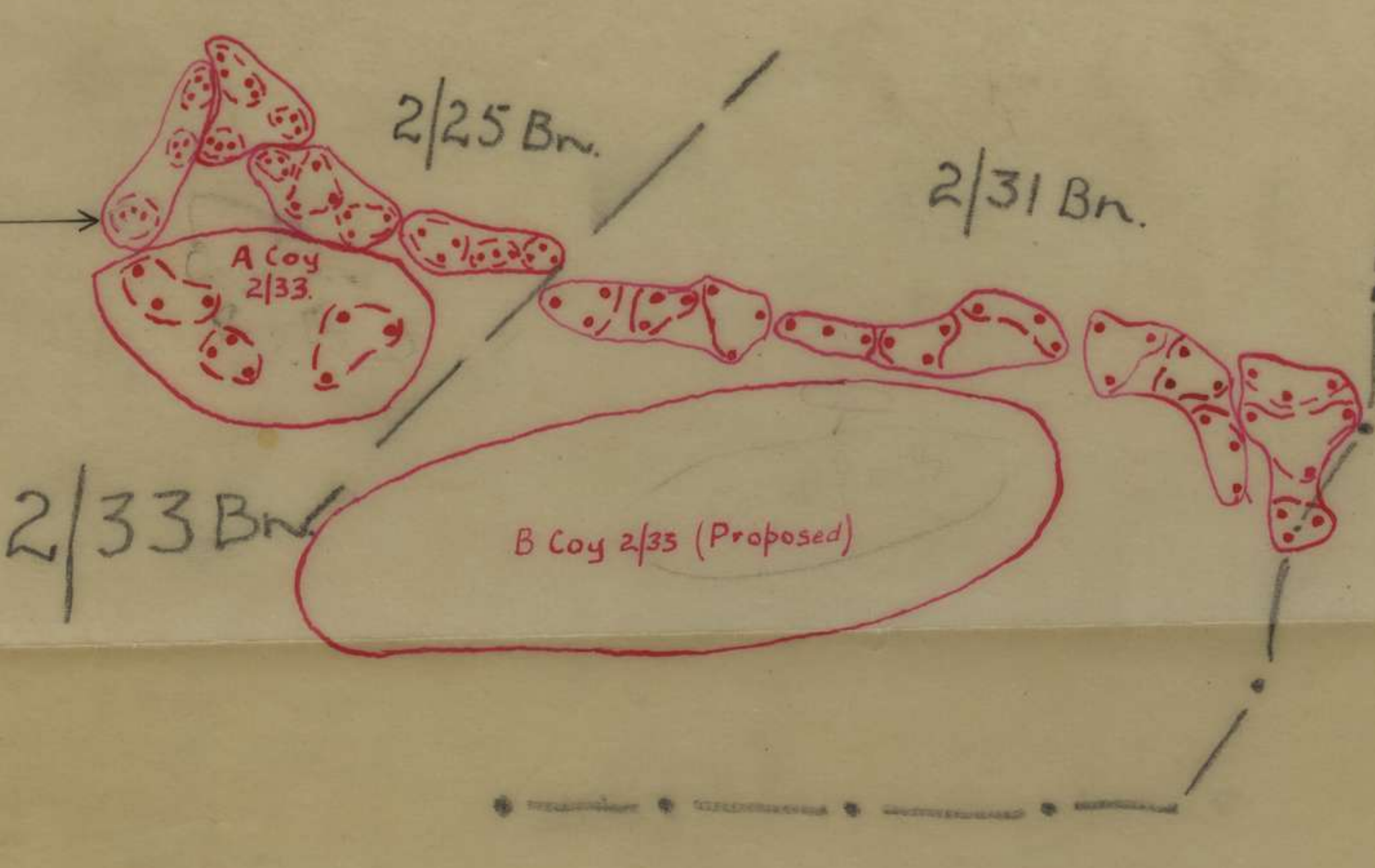
Showing disposns 2/25, 2/31 bns., A Coy 2/33 and

proposed disposns B, C & D Coys 2/33 bn.



Note.  
This shows  
disposn of  
Reserve Coy 25 bn.

C Coy 2/33 Proposed  
D Coy 2/33 Proposed.



MOST SECRET

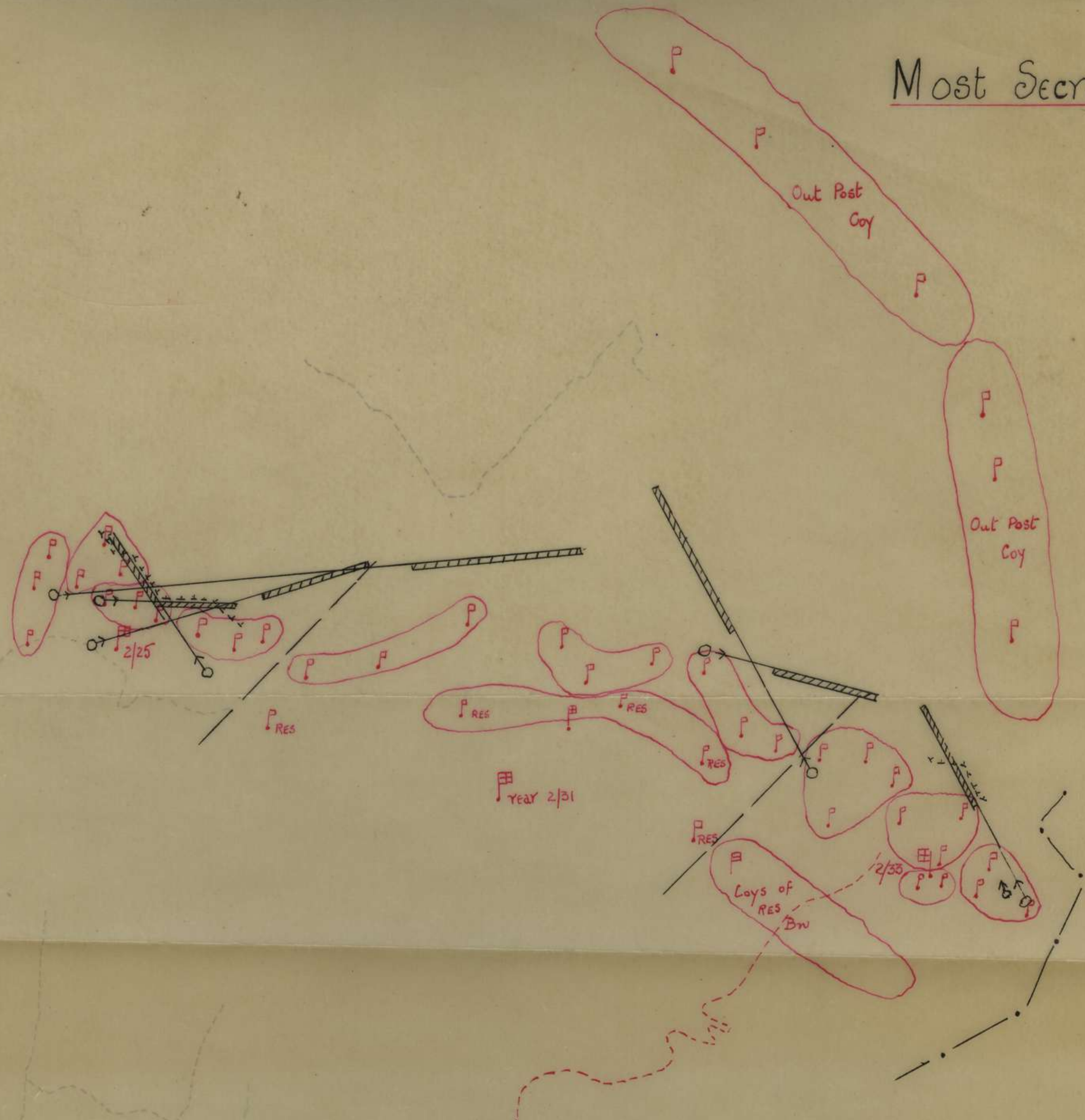
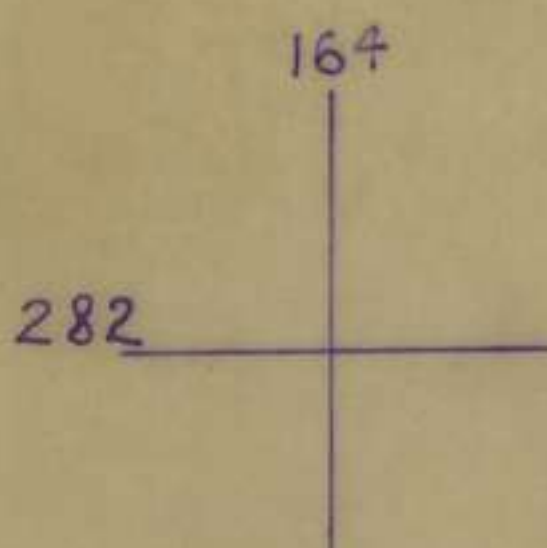
R. Walsh QX3828  
 4/cpl. 9 Dec 25 Bde HQ.  
 21-10-41



# TRIPOLI

1: 50,000.

Most Secret.



## Proposed dispositions

25 Aust Inf Bde

Infm as at 26 Sep 41

Amended 30 Sep 41  
" 2 Oct 41

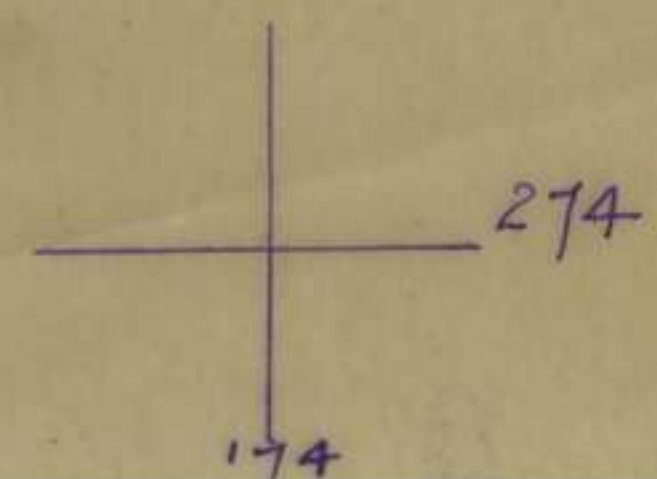
Traced by

J. Boothroyd  
Cpl.

25 Aust Inf Bde

3 OCT 41

B 3 tracks improved by Engrs.









H Q 25 AUST INF BDE.

Ref A/34/00

Subject : DAILY STRENGTH STATE as at 0600 hrs **I Oct** 41

To : 7 Aust Div.

From : 25 Aust Inf Bde

**I Oct** 41.

UNIT	WE	Battle Casualties	Sick	Transfers etc.	Reinfts	Standing Strength
		AX	AY	AZ	B	C
Bde HQ.	15 67					11 57
att					I	3 8
L Sec Sigs	2 36					I 2 32
att						10
12 Pl Gd Bn	1 42					I 31
44 LAD	1 15					I 15
29 FPO	4					4
31 Bn.	34 760		I		I	5 26 498
att						
33 Bn.	34 760		10			8 28 578
att						
25 Bn.	34 760		4			5 26 497
att						
14 LT AMB	10 197		I		I	2 8 135
att						
att						
att						
att						
att						
TOTAL			16		3	28 100 1861

Note : For details of battle casualties see reverse side.

Copies : 0 2E AIF.

File

War Diary (2)

*W. Dwyer, Unit* for Brig. *Adm.*  
Comd 25 Aust Inf Bde.



H Q 25 AUST INF BDE.

Ref A/34/ 99

Subject : DAILY STRENGTH STATE as at 0600 hrs 2  
5 Oct 41

To : 7 Aust Div.  
From : 25 Aust Inf Bde 2  
5 Oct 41.

UNIT	WE	Battle Casualties	Sick	Transfers etc.	Reinfts	Standing Strength	
		AX	AY	AZ	B	C	
Dde HQ.	15 67				1	11	50
att						5	6
L Sec Sigs	2 36		2		2	2	32
att							10
12 Pl Gd Bn	1 42					1	31
44 LAD	1 15					1	13
29 FPO	4						4
31 Bn.	34 760		2	1		28	496
att							
33 Bn.	34 760		3	4	7	28	578
att							
25 Bn.	34 760		8		10	26	499
att							
16 Lt Pl Amb	10 107				4	8	139
att							
att							
att							
att							
TOTAL			15	5	24	106	1065

Note : For details of battle casualties see reverse side.

Copies : 0 2E AIF.  
File  
War Diary (2)

*[Signature]*  
Brig.  
Comd 25 Aust Inf Bde.



H Q 25 AUST INF BDE.

Ref A734/ 100

Subject : DAILY STRENGTH STATE as at 0600 hrs 5 Oct 41

To : 7 Aust Div.  
From : 25 Aust Inf Bde

5 Oct 41.

UNIT	WE	Battle Casualties	Sick	Transfers etc.	Reinfts	Standing Strength
		AX	AY	AZ	B	C
Bde HQ.	15 67		1		2	10 60
att			1		1	3 7
L Sec Sigs	2 36		1			1 33
att						10
12 Pl Gd Bn	1 42			1	1	1 31
44 LAD	1 15					1 13
29 FPO	4					4
31 Bn.	34 760		1 1		3	25 497
att						
33 Bn.	34 760			10	7	25 575
att						
25 Bn.	34 760			14	6	25 491
att						
34 Ld Pl Amb	10 137			1		6 133
att						
att						
att						
att						
att						
TOTAL			3 27		20	105 1050

Note : For details of battle casualties see reverse side.

Copies : 0 2E AIF.  
File  
War Diary (2)

*L. Owens*  
Brig.  
Comd 25 Aust Inf Bde.



H Q 25 AUST INF BDE.

Ref A/34/ 102

Subject : DAILY STRENGTH STATE as at 0600 hrs 4 Oct 41

To : 7 Aust Div.

From : 25 Aust Inf Bde

4 Oct 41.

UNIT	WE	Battle Casualties	Sick	Transfers etc.	Reinfts	Standing Strength
		AX	AY	AZ	B	C
Bde HQ.	15 67		1			1 10 60
att						2 7
L Sec Sigs	2 36					1 2 33
att						10
12 Pl Gd Bn	1 42					1 1 38
44 LAD	1 15					1 1 14
29 FPO	4					1 3
31 Bn.	34 760		1	10		25 486
att						
33 Bn.	34 760		1	8		7 28 373
att						
25 Bn.	34 760		1 10	1		2 25 482
att						
14 Lt Fd Amb	10 187					8 180
att						
att						
att						
att						
att						
TOTAL			1 15	19		21 102 1845

Note : For details of battle casualties see reverse side.

Copies : 0 2E AIF.

File

War Diary (2)

*[Signature]*  
Brig.  
Comd 25 Aust Inf Bde.



H Q 25 AUST INF BDE.

Ref A/34/ 102

Subject : DAILY STRENGTH STATE as at 0600 hrs 5 Oct 41  
 To : 7 Aust Div.  
 From : 25 Aust Inf Bde 5 Oct 41.

UNIT	WE	Battle Casualties	Sick	Transfers etc.	Reinfts	Standing Strength
		AX	AY	AZ	B	C
Dde HQ.	15 67			1		10 59
att						3 7
L Sec Sigs	2 36					1 33
att						10
12 Pl Gd Bn	1 42					1 33
44 LAD	1 15		1			1 13
29 FPO	4					3
31 Bn.	34 760		2		1 25	485
att						
33 Bn.	34 760		8		4 25	569
att						
25 Bn.	34 760		6		12 25	495
att						
14 LT FD AMB	10 1 187		1		1 0	130
att						
att						
att						
att						
att						
TOTAL			18	1	18	103 1044

Note : For details of battle casualties see reverse side.

Copies : 0 2E AIF.  
 File  
 War Diary (2)

*[Signature]*  
 Brig.  
 Comd 25 Aust Inf Bde.



H.Q. 25 AUST INF BDE.

Ref A734/103

Subject : DAILY STRENGTH STATE as at 0600 hrs 0 Oct 41  
 To : 7 Aust Div.  
 From : 25 Aust Inf Bde 0 Oct 41.

UNIT	WE	Battle Casualties	Sick	Transfers etc.	Reinfts	Standing Strength
		AX	AY	AZ	B	C
Dde HQ.	15 67					67
att						
L Sec Sigs	2 36		1			35
att						
12 Pl Gd Bn	1 42					41
44 LAD	1 15					14
29 FPO	4					4
31 Bn.	34 760		8	1	5	756
att						
33 Bn.	34 760		8		2	750
att						
25 Bn.	34 760		4		15	751
att						
14 Lt PG Amb	10 187				1	186
att						
att						
att						
att						
att						
TOTAL			13	1	25	1000

Note : For details of battle casualties see reverse side.

Copies : 0 2E AIF.  
 File  
 War Diary (2)

*Andrews, Lieut Col*  
 Brig.  
 Comd 25 Aust Inf Bde. AOS.



H Q. 25 AUST INF BDE.

Ref A/34/ 104

Subject : DAILY STRENGTH STATE as at 0600 hrs 7 Oct 41

To : 7 Aust Div.  
From : 25 Aust Inf Bde

7 Oct 41.

UNIT	WE	Battle Casualties	Sick	Transfers etc.	Reinfts	Standing Strength
		AX	AY	AZ	B	C
Dde HQ.	15 67		2	1	1	11 58
att				1		2 7
L Sec Sigs	2 36					2 1 37
att						11
12 Pl Gd Bn	1 42		2			1 50
44 LAD	1 15					1 13
29 FPO	4					3
31 Bn.	34 760		1 1			2 24 487
att						
33 Bn.	34 760		4			2 20 866
att						
25 Bn.	34 760		11			4 25 499
att						
14 Lt Pk Amb	10 187			1		7 139
att						
att						
att						
att						
att						
TOTAL			1 20 2		1 12 100	1850

Note : For details of battle casualties see reverse side.

Copies : 0 2E AIF.  
File  
War Diary (2)

*James Capt*  
Brig.  
Comd 25 Aust Inf Bde.



H Q. 25 AUST INF BDE.

Ref A734/100

Subject : DAILY STRENGTH STATE as at 0600 hrs 8 Oct 41  
 To : 7 Aust Div. 8 Oct 41.  
 From : 25 Aust Inf Bde

UNIT	WE	Battle Casualties	Sick	Transfers etc.	Reinfts	Standing Strength	
		AX	AY	AZ	B	C	
Dde HQ.	15 67		1		5	11	60
att							7
L Sec Sigs	2 36		1		1	2	38
att							11
12 Pl Gd Bn	1 42				2	1	38
44 LAD	1 15					1	13
29 FPO	4						4
31 Bn.	34 760		8		1	74	85
att							661
33 Bn.	34 760		1 7		2 6	46	51
att							601
25 Bn.	34 760		10		1 3	89	88
att							577
14 16 38 Amb	10 187					1 7	160
att							
att							
att							
att							
att							
TOTAL			3 19		3 9	215	108 2063

Note : For details of battle casualties see reverse side.

Copies : 0 2E AIF.  
 File  
 War Diary (2)

*James Callaghan*  
 Brig.  
 Comd 25 Aust Inf Bde.



H Q 25 AUST INF BDE

Ref A/34/ 106

Subject : DAILY STRENGTH STATE as at 0600 hrs 9 Oct 41

To : 7 Aust Div.  
From : 25 Aust Inf Bde

9 Oct 41.

UNIT	WE	Battle Casualties	Sick	Transfers etc.	Reinfts	Standing Strength	
		AX	AY	AZ	B	C	
Bde HQ.	15 67					11	60
att							
L Sec Sigs	2 36				1	2	7
att			2			2	36
12 Pl Gd Bn	1 42						11
44 LAD	1 15		1			1	31
29 FPO	4				1	1	14
31 Bn.	34 760						3
att			3			2	560
33 Bn.	34 760						
att			1 1			4	50 604
25 Bn.	34 760						
att			1 0	1		9	37 579
14 Lt Fd Amb.	10 187						
att			2 1	1		1	6 140
att							
att							
att							
att							
TOTAL			2 15 1		2 1	17	104 2045

Note : For details of battle casualties see reverse side.

Copies : 0 2E AIF.  
File  
War Diary (2)

*Alvin Saffers*  
Brig.  
Comd 25 Aust Inf Bde.



H Q 25 AUST INF BDE.

Ref A/34/107.

Subject : DAILY STRENGTH STATE as at 0600 hrs to cut 41  
 To : 7 Aust Div.  
 From : 25 Aust Inf Bde to cut 41.

UNIT	WE	Battle Casualties	Sick	Transfers etc.	Reinfts	Standing Strength
		AX	AY	AZ	B	C
Bde HQ.	15 67					11 60
att						3 7
L Sec Sigs	2 36				1	3 47
att						11 11
12 Pl Gd Bn	1 42		1		1	1 51
44 LAD	1 15					1 16
29 FPO	4					4 8
31 Bn.	34 760				2	33 880
att						
33 Bn.	34 760		1 6		10	33 888
att						
25 Bn.	34 760		8		8	37 930
att						
24 Lt Sig Amb	10 107					3 130
att						
att						
att						
att						
att						
TOTAL			1 14	1	20	133 900

Note : For details of battle casualties see reverse side.

Copies : 0 2E AIF.  
 File  
 War Diary (2)

*[Signature]*  
 Brig.  
 Comd 25 Aust Inf Bde.



H Q 25 AUST INF BDE.

Ref A/34/100

Subject : DAILY STRENGTH STATE as at 0600 hrs 11 Oct 41

To : 7 Aust Div.  
From : 25 Aust Inf Bde

11 Oct 41.

UNIT	WE		Battle Casualties	Sick	Transfers etc.	Reinfts	Standing Strength		
			AX	AY	AZ	B	C		
Bde HQ.	15	67					3	11	63
att					1			3	6
L Sec Sigs	2	36		1				2	36
att									11
12 Pl Gd Bn	1	42						1	41
44 LAD	1	15						1	14
29 FPO		4							3
31 Bn.	34	760		4			2	23	659
att									
33 Bn.	34	760		1	1		6	29	612
att									
25 Bn.	34	760		4			8	27	664
att									
14 Lt Fd Amb	10	187					1	5	139
att									
att									
att									
att									
TOTAL				10	2		20	105	2057

Note : For details of battle casualties see reverse side.

Copies : 0 2E AIF.  
File  
War Diary (2)

*[Signature]*  
Brig.  
Comd 25 Aust Inf Bde.



H Q 25 AUST INF BDE.

Ref A/34/ 109

Subject : DAILY STRENGTH STATE as at 0600 hrs 12 Oct 41

To : 7 Aust Div.  
From : 25 Aust Inf Bde

12 Oct 41.

UNIT	WE	Battle Casualties	Sick	Transfers etc.	Reinfts	Standing Strength
		AX	AY	AZ	B	C
Bde HQ. att	15 67		1	1	1	11 68
L Sec Sigs att	2 36				2	2 38
12 Pl Gd Bn	1 42					1 43
44 LAD	1 15					1 16
29 FPO	4					4
31 Bn. att	34 760		1		1	23 763
33 Bn. att	34 760		7		3	29 768
25 Bn. att	34 760		0	1	136	27 699
14 Lt Pl Amb att	10 187					6 193
att						
att						
att						
att						
TOTAL			10	2	138	103 2169

Note : For details of battle casualties see reverse side.

Copies : 0 2E AIF.  
File  
War Diary (2)

*Gal Burton Hai*  
Comd 25 Aust Inf Bde.



Subject : DAILY STRENGTH STATE as at 0600 hrs 41.

To : 7 Aust Div.  
From : 25 Aust Inf Bde.

13 Oct 41.

UNIT	WE	13 Oct					Standing Strength
		Battle Casualties	Sick	Transfers etc.	Reinfts		
		AX	AY	AZ	B	C	
Bde HQ.	15 68						
att							
L Sec Sigs	2 36						
att						11	68
12 Pl Gd Bn	1 42					3	6
44 LAD	1 15					3	41
29 FPO	4				1		10
31 Bn.	34 760						51
att							14
							3
33 Bn.	34 760			5	1	2	24
att							557
25 Bn.	34 760			1	1	4	29
att							610
				5		6	27
att							700
14 Lt Pd Amb	10 137			1			6
att							138
att							
att							
att							
att							
TOTAL							

Note : For details of battle casualties see reverse side.

Copies : C2E AIF  
File  
War Diary (2)

10 2 1 15 104 2172

*R. Quinn-Capt* Brig.  
Comd 25 Aust Inf Bde.



H.Q. 25 AUST INF BDE.

Ref A/34/ 111

Subject : DAILY STRENGTH STATE as at 0600 hrs 14 Oct 41  
 To : 7 Aust Div. 14 Oct 41.  
 From : 25 Aust Inf Bde

UNIT	WE	Battle Casualties	Sick	Transfers etc.	Reinfts	Standing Strength	
		AX	AY	AZ	B	C	
Bde HQ.	15 67		1			11	61
att						3	0
L Sec Sigs	2 36				1	2	42
att							10
12 Pl Gd Bn	1 42		1			1	42
44 LAD	1 15		1			1	15
29 FPO	4			1	1		5
31 Bn.	34 760		3			1 00	755
att							
33 Bn.	34 760		5			6 00	811
att							
25 Bn.	34 760		14	1 1	5 00		690
att							
<del>24 10 201 Amb</del>	<del>20 127</del>					6	127
att							
att							
att							
att							
att							
TOTAL			24	2 1	14 100		2160

Note : For details of battle casualties see reverse side.

Copies : 0 2E AIF.  
 File  
 War Diary (2)

*[Signature]*  
 Brig.  
 Comd 25 Aust Inf Bde.



H Q 25 AUST INF BDE.

Ref A/34/113

Subject : DAILY STRENGTH STATE as at 0600 hrs 15 Oct 41

To : 7 Aust Div.  
From : 25 Aust Inf Bde

15 Oct 41.

UNIT	WE	Battle Casualties	Sick	Transfers etc.	Reinfts	Standing Strength	
		AX	AY	AZ	B	C	
Bde HQ.	15 67					11	61
att						3	6
L Sec Sigs	2 36			1		2	41
att							10
12 Pl Gd Bn	1 42					1	51
44 LAD	1 15					1	15
29 FPO	4						3
31 Bn.	34 760		1 11			8 28	550
att							
33 Bn.	34 760		1 6			1 28	608
att							
25 Bn.	34 760		10		1	7 28	687
att							
14 LT FD AMB	10 187					2 6	140
att							
att							
att							
att							
TOTAL			8 17 1	1 1	1 12	103	2154

Note : For details of battle casualties see reverse side.

Copies : 0 2E AIF.  
File  
War Diary (2)

*Alvin C. Latta*  
Brig.  
Comd 25 Aust Inf Bde.



H Q 25 AUST INF BDE.

Ref A/34/113

Subject : DAILY STRENGTH STATE as at 0600 hrs **16 Oct** 41.  
 To : 7 Aust Div. **16 Oct**  
 From : 25 Aust Inf Bde. 41.

UNIT	WE	Battle Casualties	Sick	Transfers etc.	Reinfts	Standing Strength
		AX	AY	AZ	B	C
B Bde HQ.	15 68					11 61
att						3 0
L Sec Sigs	2 36					2 41
att						1 10
12 Pl Gd Bn	1 42					1 11
44 LAD	1 15					1 5
29 FPO						
31 Bn.	34 760					3 557
att						
33 Bn.	34 760					2 685
att						
25 Bn.	34 760					13 678
att						
14 Lt Fd Amb	10 187					6 140
att						
att						
att						
att						
att						
att						
att						
TOTAL				80	1	9 103 2143

Note : For details of battle casualties see reverse side.

Copies : 02E AIF  
 File  
 War Diary (2)

*Quinn* Capt  
 Comd 25 Aust Inf Bde.



H Q 25 AUST INF BDE.

Ref A/34/ 114.

Subject : DAILY STRENGTH STATE as at 0600 hrs 17 Oct 41

To : 7 Aust Div.  
From : 25 Aust Inf Bde

17 Oct 41.

UNIT	WE	Battle Casualties	Sick	Transfers etc.	Reinfts	Standing Strength	
		AX	AY	AZ	B	C	
Bde HQ.	15 67		2	1	1	11	59
att						5	5
L Sec Sigs	2 36			1	1	8	41
att							10
12 Pl Gd Bn	1 42		1			1	30
44 LAD	1 15					1	11
29 FPO	4						3
31 Bn.	34 760		4			22	552
att							
33 Bn.	34 760		3	1	1	9	27 609
att							
25 Bn.	34 760		8			8	39 678
att							
14 Lt Bn AMB	10 187					1	6 141
att							
att							
att							
att							
att							
TOTAL			18	1	3	20	168 2141

Note : For details of battle casualties see reverse side.

Copies : 0 2E AIF.  
File  
War Diary (2)

*W. H. ...*  
Comd 25 Aust Inf Bde. *AMB*



H.Q. 25 AUST INF BDE.

Ref A/54/ 118

Subject : DAILY STRENGTH STATE as at 0600 hrs 18 Oct 41.

To : 7 Aust Div.

From : 25 Aust Inf Bde.

18 Oct. 41.

UNIT	WE		Battle Casualties	Sick	Transfers etc.	Reinfts	Standing Strength	
			AX	AY	AZ	B	C	
Bde HQ.	15	68	Nil	1		4	11	63
att								
L Sec Sigs	2	36						
att								
12 Pl Gd Bn	1	42						
44 LAD	1	15		1				
29 FPO		4						
31 Bn.	34	760	2	3		5	23	555
att								
53 Bn.	34	760				1	4	28
att								
25 Bn.	34	760		6		6	29	680
att								
14 Lt Pd Amb. 10 137					2		6	150
att								
att								
att								
att								
att								
att								
TOTAL				11	2	1	21	103
								2149

Note : For details of battle casualties see reverse side.

Copies : 02E AIF  
File  
War Diary (2)

*W. Hunt*  
for Brig. *Ad.*  
Comd 25 Aust Inf Bde.







H Q. 25 AUST INF BDE.

Ref A/34/

Subject : <sup>117</sup> DAILY STRENGTH STATE as at 0600 hrs 41.  
 To : 7 Aust Div. 20 Oct.  
 From : 25 Aust Inf Bde. 41.

20 Oct.

UNIT	WE	Battle Casualties	Sick	Transfers etc.	Reinfts	Standing Strength
		AX	AY	AZ	B	C
Bde HQ.	15 68					
att						
L Sec Sigs	2 36				1	11
att						
12 Pl Gd Bn	1 42					2
44 LAD	1 15					1
29 FPO	4				5	1
31 Bn.	34 760					1
att				1		22 554
33 Bn.	34 760					
att			5	5	1	28 600
25 Bn.	34 760					
att			1	1	9	29 601
att						
14 Lt Pl Amb 10 107					1	16 7 156
att						
att						
att						
att						
att						
att						
TOTAL						32 104 2168

Note : For details of battle casualties see reverse side.

Copies : C2E AIF  
 File  
 War Diary (2)

*James C. Bragg*  
 Comd 25 Aust Inf Bde.



H Q 25 AUST INF BDE.

Ref A/34/ 110

Subject : DAILY STRENGTH STATE as at 0600 hrs

21 Oct 41.

To : 7 Aust Div.

From : 25 Aust Inf Bde.

21 Oct 41.

UNIT	WE		Battle Casualties	Sick	Transfers etc.	Reinfts		Standing Strength	
			AX	AY	AZ	B		C	
B Bde HQ.	15	68		2				11	60
att									
L Sec Sigs	2	36						2	41
att									
12 Pl Gd Bn	1	42				1		1	38
44 LAD	1	15						1	10
29 FPO		4							3
31 Bn.	34	760		5		1	1	23	550
att									
33 Bn.	34	760		1	1	1	2	28	601
att									
25 Bn.	34	760		5			6	29	692
att									
14 Lt Pa Asp 10 18V								7	156
att									
att									
att									
att									
att									
att									
att									
TOTAL				15	1	2	10	105	2165

Note : For details of battle casualties see reverse side.

Copies : C2E AIF

File

War Diary (2)

*Edmund* Brig.  
Comd 25 Aust Inf Bde.



HQ 25 AUST INF BDE.

Ref A/34/119

Subject : DAILY STRENGTH STATE as at 0600 hrs 22 Oct. 41.

To : 7 Aust Div.

From : 25 Aust Inf Bde.

22 Oct. 41.

UNIT	WE	Battle Casualties	Sick	Transfers etc.	Reinfts	Standing Strength		
		AX	AY	AZ	B	C		
B Bde HQ.	15	68			2	11	62	
att								
L Sec Sigs	2	36		1	1	2	40	
att							10	
12 Pl Gd Bn	1	42			5	1	39	
44 LAD	1	15				1	10	
29 FPO		4					3	
51 Bn.	34	760	3	2	1	23	546	
att								
37 Bn.	34	760	2	1	3	28	601	
att								
25 Bn.	34	760	4	2	10	29	696	
att								
14 Lt <del>att</del>					1	14	8	170
att								
att								
att								
att								
att								
att								
TOTAL			9	3	1	34	106	2182

Note : For details of battle casualties see reverse side.

Copies : O2E AIF

File

War Diary (2)

*L. J. ...*  
 Capt. for  
 Brig.  
 Comd 25 Aust Inf Bde.



Subject : DAILY STRENGTH STATE as at 0600 hrs 41.  
 To : 7 Aust Div. 23 Oct  
 From : 25 Aust Inf Bde. 23 Oct 41.

UNIT	WE	Battle Casualties	Sick	Transfers etc.	Reinfts	Standing Strength
		AX	AY	AZ	B	C
Bde HQ.	15 68					
att					1	11 63
L Sec Sigs	2 36					3 5
att						3 40
12 Pl Gd Bn	1 42					10
44 LAD	1 15					1 39
29 FPO	4		1		1	1 10
31 Bn.	34 760		3	1		22 543
att						
33 Bn.	34 760		3			22 600
att						
25 Bn.	34 760		2	1	2	29 325
att						
14 Lt Pa Amb	10 107					6 170
att						
att						
att						
att						
att						
att						
TOTAL			9	1	1	6 103 1178

Note : For details of battle casualties see reverse side.

Copies : C2E AIF  
 File  
 War Diary (2)

*W.D. Hunt*  
 for Brig. *Ad*  
 Comd 25 Aust Inf Bde.



Subject : DAILY STRENGTH STATE as at 0600 hrs 24 Oct 41.  
 To : 7 Aust Div.  
 From : 25 Aust Inf Bde. 24 Oct 41.

UNIT	WE		Battle Casualties	Sick	Transfers etc.	Reinfts		Standing Strength	
			AX	AY	AZ	B	C		
B Bde HQ.	15	68		1				11	62
att								3	5
L Sec Sigs	2	36				1		2	41
att									10
12 Pl Gd Bn	1	42		1				1	39
44 LAD	1	15		1				1	9
29 FPO		4							5
31 Bn.	34	760		2		1	3	25	544
att									
33 Bn.	34	760		2			6	28	604
att									
25 Bn.	34	760		6	1		5	29	693
att									
14 Lt Pl Asst	10	107				1		9	170
att									
att									
att									
att									
att									
att									
TOTAL				13	1	2	15	107	2179

Note : For details of battle casualties see reverse side.

Copies : C2E AIF  
 File  
 War Diary (2)

*Act, Lieut*  
 Brig. *AD*  
 Comd 25 Aust Inf Bde.



Ref A/34/ 122

**H.Q. 25 AUST INF BDE.**

Subject : DAILY STRENGTH STATE as at 0600 hrs **25 Oct 41.**  
 To : 7 Aust Div.  
 From : 25 Aust Inf Bde. **25 Oct 41.**

UNIT	WE	Battle Casualties	Sick	Transfers etc.	Reinfts	Standing Strength
		AX	AY	AZ	B	C
Bde HQ.	15 68					
att					5	11 65
L Sec Sigs	2 36					5
att				1 1		1 40
12 Pl Gd Bn	1 42					1 10
44 LAD	1 15				5	1 45
29 FPO	4		1			1 8
31 Bn.	34 760					3
att		1	2	10	67	82 599
33 Bn.	34 760					
att			5		2 62	30 661
25 Bn.	34 760					
att			2		1 42	30 733
<b>14 Lt FA and 10</b>	<b>187</b>					9 170
att						
att						
att						
att						
att						
att						
att						
TOTAL			1 10 1	11 3	172 108	2537

Note : For details of battle casualties see reverse side.

Copies : C2E AIF  
 File  
 War Diary (2)

*[Signature]*  
 Brig.  
 Comd 25 Aust Inf Bde.



Subject : DAILY STRENGTH STATE as at 0600 hrs

26 Oct. 41.

To : 7 Aust Div.

From : 25 Aust Inf Bde.

26 Oct. 41.

UNIT	WE	Battle Casualties	Sick	Transfers etc.		Reinfts	Standing Strength		
		AX	AY	AZ		B	C		
Bde HQ.	15 68				3	1	11	63	
att					1		2	4	
L Sec Sigs	2 36					3	1	43	
att								10	
12 Pl Gd Bn	1 42						1	43	
44 LAD	1 15						1	8	
29 FPO	4							3	
31 Bn.	34 760		3	2		2	20	598	
att									
33 Bn.	34 760		5			1	4	31	
att								660	
25 Bn.	34 760		5			2	50	730	
att									
14 Lt F4 Amb 10 137							9	170	
att									
att									
att									
att									
att									
att									
att									
TOTAL			13	3	4	1	12	106	2332

Note : For details of battle casualties see reverse side.

Copies : C2E AIF

File

War Diary (2)

*Lt, Lieut*  
 Comd 25 Aust Inf Bde. *Brig. ACK*



Ref A/54/124

Subject : DAILY STRENGTH STATE as at 0600 hrs 27 Oct 41.  
 To : 7 Aust Div.  
 From : 25 Aust Inf Bde. 27 Oct 41.

UNIT	WE	Battle Casualties	Sick	Transfers etc.	Reinfts	Standing Strength
		AX	AY	AZ	B	C
B Bde HQ.	15 68					11 63
att						
L Sec Sigs	2 56					1 53
att				1		
12 Pl Gd Bn	1 42		1			1 42
44 LAD	1 15					1 15
29 FPO	4					4
31 Bn.	34 760		4		2	20 596
att						
57 Bn.	34 760		3		4	51 661
att						
25 Bn.	34 760		2		6	30 734
att						
14 Lt Fd Amb	10 187			1		8 170
att						
att						
att						
att						
att						
att						
TOTAL			10	1	1	12 105 2333

Note : For details of battle casualties see reverse side.

Copies : 02E AIF  
 File  
 War Diary (2)

*Ed Lamb*  
 Brig.  
 Comd 25 Aust Inf Bde.



H.Q. 25 AUST INF BDE.

Ref A/34/125.

Subject : DAILY STRENGTH STATE as at 0600 hrs 23 Oct 41.  
 To : 7 Aust Div.  
 From : 25 Aust Inf Bde. 23 Oct 41.

UNIT	WE		Battle Casualties	Sick	Transfers etc.	Reinfts	Standing Strength	
			AX	AY	AZ	B	C	
Bde HQ.	15	68			1		11	62
att							2	4
L Sec Sigs	2	30					1	43
att								9
12 Pl Gd Bn	1	42				2	1	44
44 LAD	1	15				2	1	10
29 FPO		4						3
31 Bn.	34	750		2		1	30	595
att								
32 Bn.	34	760		4		2	31	659
att								
25 Bn.	34	760		2		3	30	735
att								
14 Lt Fd Amb	10	167					8	170
att								
att								
att								
att								
att								
att								
TOTAL				8	1	10	105	2334

Note : For details of battle casualties see reverse side.

Copies : C2E AIF  
 File  
 War Diary (2)

*[Signature]*  
 Brig.  
 Comd 25 Aust Inf Bde.



Ref A/34/

**25 AUST INF BDE.**

Subject : DAILY STRENGTH STATE as at 0600 hrs **29 Oct 41.**  
 To : 7 Aust Div.  
 From : 25 Aust Inf Bde. **29 Oct 41.**

UNIT	WE		Battle Casualties	Sick	Transfers etc.	Reinfts	Standing Strength	
			AX	AY	AZ	B	C	
Bde HQ.	15	68					11	68
att							2	4
L Sec Sigs	2	36		1			1	48
att								0
12 Pl Gd Bn	1	42					1	44
44 LAD	1	15					1	16
29 FPO		4						4
31 Bn.	34	760		5	1	3	30	807
att								
32 Bn.	34	760		5		3	31	807
att								
25 Bn.	34	760		2		4	30	797
att								
14 Lt Pq Amb	10	187					3	170
att								
att								
att								
att								
att								
att								
TOTAL				13	1	13	105	2555

Note : For details of battle casualties see reverse side.

Copies : CSE AIF  
 File  
 War Diary (2)

*W. Dwyer*  
 Comd 25 Aust Inf Bde. *for* Brig. *Adt.*



Subject : DAILY STRENGTH STATE as at 0600 hrs 30 October 41.  
 To : 7 Aust Div.  
 From : 25 Aust Inf Bde. 30 October 41.

UNIT	WE		Battle Casualties	Sick	Transfers etc.	Reinfts	Standing Strength	
			AX	AY	AZ	B	C	
3 Bde HQ.	15	68		1			11	61
att							2	4
L Sec Sigs	2	36				1	2	42
att								9
12 Pl Gd Bn	1	42					1	44
44 LAD	1	15					1	10
29 FPO		4						3
31 Bn.	34	760		2	2	9	20	602
att								
33 Bn.	34	760		10		1	3	650
att								
25 Bn.	34	760			1	1	30	737
att								
14 LT PD AMB 10 187				1	2		8	167
att								
att								
att								
att								
att								
att								
att								
TOTAL				14	5	2	15	107 2329

Note : For details of battle casualties see reverse side.  
 Copies : C2E AIF  
 File  
 War Diary (2)

*[Signature]*  
 Brig.  
 Comd 25 Aust Inf Bde.



1.0

H.Q. 25 AUST INF BDE.

Ref A/34/ 123.

Subject : DAILY STRENGTH STATE as at 0600 hrs 31 Oct. 41.  
 To : 7 Aust Div.  
 From : 25 Aust Inf Bde. 31 Oct. 41.

UNIT	WE	Battle Casualties	Sick	Transfers etc.	Reinfts	Standing Strength
		AX	AY	AZ	B	C
3 Bde HQ.	15 68		1	1		1148
att						
L Sec Sigs	2 36					1148
att						
12 Pl Gd Bn	1 42					1148
44 LAD	1 15					1148
29 FPO	4					1148
31 Bn.	34 760				15	627
att						
37 Bn.	34 760		2	1	1	643
att						
25 Bn.	34 760		1	1	1	736
att						
14 Lt Pl Amb 10 107						107
att						
att						
att						
att						
att						
att						
TOTAL			4	3	17	107 2350

Note : For details of battle casualties see reverse side.

Copies : C2E AIF  
 File  
 War Diary (2)

*Act, Lieut for Brig. Act.*  
 Comd 25 Aust Inf Bde.