

AWM52
2nd Australian Imperial Force and
Commonwealth Military Forces unit war
diaries, 1939-45 War

Item number: 8/2/25

25 Infantry Brigade

June 1942

13 JUL. 1942

131
This is original sketch

WAR DIARY ~~or INTELLIGENCE SUMMARY~~

Army Form C.2118
(adapted.)

(Erase heading not required)

Unit HQ 25 Aust Inf Bde.

Date and Time.—From 1 June 42

To 30 June 42.

Place	Date	Hour	Summary of Events and Information	Remarks and references to Appendices, Diaries, &c.
CABOOLTURE (Q' Lnd) 112385 (CAB 1" to 1 mile)	1 June		General Lavarack (GOC 1 Aust Army) visited 25 Aust Inf Bde HQ. He met All Offrs of the Bde and stayed for lunch.	
	3 "		Conference held at 25 Bde HQ, between Unit Comds. The Bde Comd, Brig EATHER, gave an outline of the role of 25 Aust Inf Bde.	
	4 "		Memo issued setting out the objectives of 25 Bde Gp to 31 Jul 42. Routine Orders No 177 issued.	APPX "A" APPX "B"
			25 Aust Inf Bde Op Instn No 22 Issued.	APPX "C"
	9 "		Maj Gen ALLEN (GOC 7 Aust Div) visited Bde HQ. 2/31 and 2/33 Bns moved to BEERBURRUM (12755180 LANDSBOROUGH sheet 1" to 1 mile) and PETRIE (145142 SAMFORD sheet 1" to 1 mile) areas respectively.	
	10 "		Bde Comd, Brig Eather, made a recce of 2/31 Bn area. Maj Gen ALLEN, in company with a U.S. Army Liaison Offr visited Bde HQ.	

131

[Handwritten mark]

*Checked by
+ SM in Aust Inf Bde*

WAR DIARY or ~~INTELLIGENCE SUMMARY~~

Army Form C.2118
(adapted.)

(Erase heading, not required)

Unit HQ 25 Aust Inf Bde

Date and Time.—From 1 June 42 To 30 June 42

Place	Date	Hour	Summary of Events and Information	Remarks and references to Appendices, Diaries, &c.
CABOOLTURE	12 Jun		25 Bde Routine Orders No 178 issued	APPX "E"
	13 "		25 Bde Op Instn No 23 Issued	APPX "D"
	14 "		Conference held at Bde HQ between Offrs of the Bde Gp pertaining to the Bn exercise to be held.	
	15 "		2/31 Aust Inf Bn carrying out exercise as per "TACTICAL EXERCISE WITH TROOPS No 4" issued by 25 Aust Inf Bde	APPX "F"
			Gen ALLEN attended 2/31 Bn exercise in BEACHMERE area.	
	16 "		Bde Comd and BM attended 2/31 Bn exercise.	
	17 "		Gen LAVARACK attended 2/31 Bn exercise in "CABOOLTURE" area.	
	18 "		Routine Orders No 179 issued.	APPX "G"
			25 Aust Inf Bde "TACTICAL EXERCISE WITH TPS" No 5 issued.	APPX "H"
	19 "		Gen ROWELL (GOC 1 Aust Corps) attended 2/25 Bn exercise.	
	20 "	0500	2/33 Aust Inf Bn started on their three day exercise as per "APPX H". Gen ROWELL attended exercise.	

Govt. Printer, Brisbane

*Jackie
Call
for 25 Aust Inf Bde*

WAR DIARY ~~INTELLIGENCE SUMMARY~~

Army Form C.2118
(adapted.)

(Erase heading not required)

Unit HQ 25 Aust Inf Bde

Date and Time.—From 1 Jun 42 To 30 Jun 42

Place	Date	Hour	Summary of Events and Information	Remarks and references to Appendices, Diaries, &c.
CABOOLTURE	21 Jun		Bde Comd attended 2/33 Bn exercise. 25 Bde "EXPERIMENTS IN JUNGLE WARFARE" issued.	APPX "I"
	22 "		Gen ROWELL attended 2/31 Aust Inf Bn exercise (AIR CO-OPERATION) in CABOOLTURE area. 25 Aust Inf Bde Tng Instn No 16 issued.	APPX "FA"
	23 "		25 Aust Inf Bde "TACTICAL EXERCISE WITH TPS No 6" issued. Bde Comd held conference of Umpires to discuss 2/33 Bn exercise.	APPX "J"
	24 "		Col Ferguson (Comd VDC NO1 Gp) visited the Bde Comd and discussed VDC Policy.	
	25 "		2/25 Bn commenced exercise as per APPX "J". Instns issued to 2/25, 2/31, 2/33 Bns to recce their respective areas for collecting points for all surface craft in their areas, with the view of destroying them in case of an emergency.	

[Handwritten signature]
App -
for 25 Aust Inf Bde

WAR DIARY ~~OF INTELLIGENCE SUMMARY~~

Army Form C.2118
(adapted.)

(Erase heading not required)

Unit HQ 25 Aust Inf Bde

Date and Time.—From 1 Jun 42 To 30 Jun 42

Place	Date	Hour	Summary of Events and Information	Remarks and references to Appendices, Diaries, &c.
CABOOLTURE	26 Jun		2/25 Aust Inf Bn continued with their 3 day exercise.	
	27 "		2/25 Aust Inf Bn Exercise terminated in a conference of all Offrs at Bde HQ.	
	28 "		2/25 Bn warned for Rd Work in the area, commencing 29 June, for a period of 14 days.	
	29 "		<p>MAT GEN. BERRYMAN (GS 1 Aust Army) visited Bde HQ</p> <p>25 Bde Tng Instn No 17 issued</p>	APPX 'HB'
	30 "		25 Bde Tng Instn No 18 issued	APPX 'JC'
	25-30 Jun		<p>1 Aust Div Concert Party stationed in Bde Area. Entertainments for various units held in CABOOLTURE HALL.</p>	

[Handwritten signature]
to be 25 and 26 Jun

FIELD RETURN OF OFFICERS

HQ 25 AUST INF BDE (Unit)

Serial A I5

PART A.—STRENGTH, SURPLUS OR REINFORCEMENTS REQUIRED.

1 Ranks.	2 Posted strength counting against authorized establishment (excluding attached).	3 Surplus to Establishment.	4 Reinforcements required (i.e. deficits on establishment).
*			
*	I		
BRIG			
Lieut.-Colonels			
Majors			I
Captains	6	I	
Lieutenants	3		2
2nd Lieutenants			
Quartermasters Chaps	2		I
Totals	I2		4

*Insert detail of higher ranks as necessary.

PART B.—PARTICULARS OF OFFICERS JOINED OR QUITTED DURING WEEK.

Officers JOINED during week.

Rank.	Name.	Corps.	Date.	Cause.
Capt	Jackson	O.D. HQ 25 Bde	3I/5/42	From 2/25 Aust Inf Bn

Officers QUITTED during week.

Rank.	Name.	Corps.	Date.	Cause.
Chap	Redding	D. HQ 25 Bde	I/6/42	Trans to 2 Aust Corps

PART C.—DESCRIPTION OF OFFICERS WHOSE RETURN TO THE UNIT IS PARTICULARLY REQUESTED.

Rank.	Name and Initials.	Corps.	Remarks (e.g., present whereabouts, if known).

~~FILE~~ *Mar Diaz*

PART D.—NOMINAL ROLL OF OFFICERS ON STRENGTH.

(i) Officers posted to Unit (Total to agree with column 2 of Part A).

1	2	3		4	5	6
Substantive Rank and higher temporary rank, if held.	Personal Number.	Name and Initials.		Corps.	Whether present with Unit (insert Yes or No).	If not present with Unit, state how employed.
Lt Col	Brig	Rather	K.W.	HQ 25 Bde	Yes	Bde Comd
Capt		Cullen	G.J.		"	Sup Offr
Lieut	Capt	Owens	E.S.		"	S.C.
Lieut	Capt	Larkin	G.F.		"	A/B.M.
Capt		Jackson	O.D.		"	B.M.L.
Lieut	Capt	Brinkley	P.L.		"	L.O.
Lieut	Eapt	Gee	A.S.		"	T.O.
Lieut		Grigg	E.W.		"	I.O.
Lieut		Rankine	H.H.		No	Hosp
Lieut		Dent	J.		Yes	L.O. 2
Chap		Lynch	J.B.		No	RC 2/33 Bn
Chap		Park	R. McC.		No	Pres 2/25 Bn

(ii) OFFICERS ATTACHED FROM OTHER CORPS.

Substantive Rank and higher temporary rank, if held.	Personal Number.	Name and Initials.	Corps.	Date of attachment.	Nature of attachment.
Capt		Vincent	D. 7 Div Sigs		"L" Sec Sigs (Sch)
Lieut		Manley	J.R.	"	" "
Lieut		Nolan	F. 12 Pl Gd Bn		Prot Pl
Lieut		Hayne	H.R. 44 LAD		LAD

HQ 25 AUST INF BDE

(Unit.)

Richard C. [Signature]
Brig.
COMD 25 Aust Inf Bde 409

(Signature of Commander.)

6 JUNE 42

(Date of Despatch.)

7 AUST DIV.

(Bde., Divn., Area, etc., with which Unit is serving.)

FIELD RETURN OF OTHER RANKS.

Serial No A I5 HQ 25 AUST INF BDE (Unit) **6 June 42** 19 (Date).

(To be furnished by all units of Cavalry, Royal Armoured Corps, Infantry, Royal Army Veterinary Corps, Royal Army Pay Corps, Army Educational Corps, Corps of Military Police, and all Headquarters units).

Part A. Strength, Surplus or Reinforcements required.

1 Detail.	2 Posted strength counting against authorised establishment (excluding attached).	3 Surplus to Establishment.	4 Reinforcements required (i.e. deficits on establishments).
W.Os. Class I.	1		
W.Os. Class II.	2		
W.Os. Class III.			
Squadron or Company Quartermaster-Serjeants OR Colour-Serjeants	1		
Staff Serjeants			
Serjeants	3		
Buglers, Trumpeters, etc.	7		
Corporals			
Troopers, Privates, Guardsmen, Fusiliers, etc.	57	3	
TOTALS	71	3	

*These Totals should agree with the details shown in Part D on page 2 of Army Form W.3009.

Part B. Other Ranks attached from other Corps.

Detail	Unit and Corps to which they belong.	Detail.	Unit and Corps to which they belong.
2 SJTS) 3 CPLS) 11 O/RS)	L SEC SIGS	I WOII, I SJT,) I CPL, 12 O/RS)	44 L.A.D.
	7 AUST DIV		
		I SJT, I CPL)	7 AUST DIV
1 SJT) 2 CPLS) 1 O/RS)	12 PL HQ GDS	2 O/RS)	POSTAL UNIT.
	BN		

Part C. Description of other ranks whose return to the unit is particularly requested.

Army No.	Rank.	Name and Initials.	Corps.	Remarks (e.g. present whereabouts if known)

FIELD RETURN OF OFFICERS

HQ 25 AUST INF BDE (Unit)

PART A.—STRENGTH, SURPLUS OR REINFORCEMENTS REQUIRED.

1 Ranks.	2 Posted strength counting against authorized establishment (excluding attached).	3 Surplus to Establishment.	4 Reinforcements required (i.e. deficits on establishment).
* Brig	I		
Lieut.-Colonels			I
Majors		I	
Captains	6		2
Lieutenants	3		
2nd Lieutenants			I
XXXXXXXXXX Chaps Quartermasters	2		
Totals	12	I	4

*Insert detail of higher ranks as necessary.

PART B.—PARTICULARS OF OFFICERS JOINED OR QUITTED DURING WEEK.

Officers JOINED during week.

Rank.	Name.	Corps.	Date.	Cause.

Officers QUITTED during week.

Rank.	Name.	Corps.	Date.	Cause.

PART C.—DESCRIPTION OF OFFICERS WHOSE RETURN TO THE UNIT IS PARTICULARLY REQUESTED.

Rank.	Name and Initials.	Corps.	Remarks (e.g., present whereabouts, if known).

Serial No A 16

PART D.—NOMINAL ROLL OF OFFICERS ON STRENGTH.

(i) Officers posted to Unit (Total to agree with column 2 of Part A).

1	2	3	4	5	6
Substantive Rank and higher temporary rank, if held.	Personal Number.	Name and Initials.	Corps.	Whether present with Unit (insert Yes or No).	If not present with Unit, state how employed.
Lt-Col	Brig	Eather K.W.	Hq 25 Bde	Yes	Bde Comd
Capt		Cullen G.J.	"	"	Sup Offr
Lieut	T/Capt	Owens E.S.	"	"	S.O.
Lieut	"	Larkin G.F.	"	"	A/B.M.
Capt		Jackson C.D.	"	"	B.M.L.
Lieut	T/Capt	Brinkley P.L.	"	"	L.O.
Lieut	"	Gee A.S.	"	"	T.O.
Lieut		Grigg E.W.	"	"	I.O.
Lieut		Rankine H.H.	"	No	Hosp.
Lieut		Dent J.	"	Yes	L.O. 2
Chap		Lynch J.B.	"	No	R.C. 2/33 Bn
Chap		Park R.Mc.	"	No	Pres 2/25 Bn

(ii) OFFICERS ATTACHED FROM OTHER CORPS.

Substantive Rank and higher temporary rank, if held.	Personal Number.	Name and Initials.	Corps.	Date of attachment.	Nature of attachment.
Lieut		Nolan F.	12 Pl Gd Bn		Prot Pl.
Lieut		Griffen W.S.	7 Div Sigs		"I" Sec Sigs
Lieut		Manley J.R.	"		"
Lieut		Hayne H.E.	44 L.A.D.		L.A.D.

HQ 25 AUST INF BDE (Unit.)

15 JUNE 43 (Date of Despatch.)

[Signature]
Comd 25 Aust Inf Bde.
(Signature of Commanding Officer)

(Bde., Divn., Area, etc., with which Unit is serving.)

Part D. Detail of Surplus or Reinforcements required as shown in Part A of Army Form W.3009.

DETAIL OF SPECIALISTS, TRADESMEN, ETC.	SURPLUS TO ESTABLISHMENT.								REINFORCEMENTS REQUIRED.								REMARKS.			
	W.Os. Class I.	W.Os. Class II.	W.Os. Class III.	S.Q.M.S.; C.Q.M.S., or Colour-Serjeants.	Staff-Serjeants.	Serjeants.	Buglers, Trumpeters, &c.	Corporals.	Troopers, Privates, Guardsmen, Fusiliers, &c.	TOTAL	W.Os. Class I.	W.Os. Class II.	W.Os. Class III.	S.Q.M.S.; C.Q.M.S., or Colour-Serjeants.	Serjeants.	Buglers, Trumpeters, &c.		Corporals.	Troopers, Privates, Guardsmen, Fusiliers, &c.	TOTAL.
Bricklayers																				
Butchers																				
Carpenters and Joiners ...																				
Clerks																				
Cooks																				
Despatch Riders																				
Drivers I.C. (Tracked) ...																				
„ „ (Wheeled)																				
Drivers-Mechanics																				
Drivers-Operators																				
Electricians																				
Equipment Repairers ...																				
Farriers																				
Fitters																				
Machine Gunners																				
Masons																				
Motor Mechanics																				
Pioneers, Infantry (other than tradesmen)																				
Plumbers and Pipefitters ...																				
Range Takers																				
Saddlers & Harness Makers																				
Saddle Tree Makers																				
Sanitary and Water Duties																				
Signallers																				
Storemen technical																				
Tailors																				
Wheelers																				
General Duties						I										I				
General duty personnel ...																				
TOTALS (to agree with Col- umns 3 and 4 of Part A).						I										I				

HQ 25 AUST INF BDE Unit.

Date of Despatch 15 JUNE 42

P. Quinn, Capt. HQ
Comd 25 Aust Inf Bde, 7 Aust Div
Signature of Commander.

7 AUST DIV
Bde., Divn., Area, etc., with which unit is serving.

SERIAL No A 17

FIELD RETURN OF OFFICERS

HQ 25 AUST INF BDE

(Unit)

PART A.—STRENGTH, SURPLUS OR REINFORCEMENTS REQUIRED.

1 Ranks.	2 Posted strength counting against authorized establishment (excluding attached).	3 Surplus to Establishment.	4 Reinforcements required (i.e. deficits on establishment).
Brig *	1		
Capts *	6	1	
Lieut.-Colonels			
Majors			1
Captains	3		
Lieutenants			2
2nd Lieutenants Chapns	2		
Quartermasters			1
Totals	12	1	4

*Insert detail of higher ranks as necessary.

PART B.—PARTICULARS OF OFFICERS JOINED OR QUITTED DURING WEEK.

Officers JOINED during week.

Rank.	Name.	Corps.	Date.	Cause.

Officers QUITTED during week.

Rank.	Name.	Corps.	Date.	Cause.

PART C.—DESCRIPTION OF OFFICERS WHOSE RETURN TO THE UNIT IS PARTICULARLY REQUESTED.

Rank.	Name and Initials.	Corps.	Remarks (e.g., present whereabouts, if known).

Ward

PART D.—NOMINAL ROLL OF OFFICERS ON STRENGTH.

(i) Officers posted to Unit (Total to agree with column 2 of Part A).

1	2	3		4	5	6
Substantive Rank and higher temporary rank, if held.	Personal Number.	Name and Initials.		Corps.	Whether present with Unit (Insert Yes or No).	If not present with Unit, state how employed.
Col	Brig	Kather	K.W.	Hq 25 Bde	Yes	Bde Comd
Capt		Cullen	G.J.	"	"	Sup Officer
Lieut	T/Capt	Owens	E.S.	"	"	S.O.
Lieut	T/Capt	Larkin	G.F.	"	"	A/B.M.
Capt		Jackson	O.D.	"	"	B.M.L.
Lieut	T/Capt	Brinkley	P.L.	"	"	L.O.
Lieut	T/Capt	Gee	A.S.	"	"	F.O.
Lieut		Grigg	E.W.	"	"	I.O.
Lieut		Rankine	H.H.	"	"	S.C.L.
Lieut		Dent	J.	"	"	L.O. 2
Chap		Lynch	J.B.	"	NO	R.C. 2/33 Bn
Chap		Park	R. Mc.	"	NO	Pres 2/25 Bn

(ii) OFFICERS ATTACHED FROM OTHER CORPS.

Substantive Rank and higher temporary rank, if held.	Personal Number.	Name and Initials.	Corps.	Date of attachment.	Nature of attachment.
Lieut		Nolan	P. 12 Pl Cd Bn		Prot Pl
Lieut		Griffen	W.S. 7 Div Sigs		"L" SecSigs
Lieut		Manley	J.R.		"
Lieut		Hayn	H.E. 44 L.A.D.		L.A.D.

H.Q. 25 AUST INF BDE

(Unit.)

20 June 42

(Date of Despatch.)

Robert C. ...
Comd 25 Aust

(Signature of Commander.)

7 Aust Div

(Bde., Divn., Area, etc., with which Unit is serving.)

SERIAL No A 17

FIELD RETURN OF OFFICERS

HQ 25 AUST INF BDE (Unit)

PART A.—STRENGTH, SURPLUS OR REINFORCEMENTS REQUIRED.

1	2	3	4
Ranks.	Posted strength counting against authorized establishment (excluding attached).	Surplus to Establishment.	Reinforcements required (i.e. deficits on establishment).
Brig *			
Lieut.-Colonels ^{Cpts} *	I		
Majors	6	I	
Captains			I
Lieutenants	3		2
2nd Lieutenants			
XXXXXXXXXX Chaps	2		I
Quartermasters			
Totals	12	I	4

*Insert detail of higher ranks as necessary.

PART B.—PARTICULARS OF OFFICERS JOINED OR QUITTED DURING WEEK.

Officers JOINED during week.

Rank.	Name.	Corps.	Date.	Cause.

Officers QUITTED during week.

Rank.	Name.	Corps.	Date.	Cause.

PART C.—DESCRIPTION OF OFFICERS WHOSE RETURN TO THE UNIT IS PARTICULARLY REQUESTED.

Rank.	Name and Initials.	Corps.	Remarks (e.g., present whereabouts, if known).

Serial A 18

FIELD RETURN OF OFFICERS

H.Q. 25 AUST INF BDE (Unit)

PART A.—STRENGTH, SURPLUS OR REINFORCEMENTS REQUIRED.

1	2	3	4
Ranks.	Posted strength counting against authorized establishment (excluding attached).	Surplus to Establishment.	Reinforcements required (i.e. deficits on establishment).
*			
Brig *	I		
Lieut.-Colonels			
Majors			I
Captains	6	I	
Lieutenants	3		2
2nd Lieutenants			
Quartermasters Chaps.	2		I
Totals	12	I	4

*Insert detail of higher ranks as necessary.

PART B.—PARTICULARS OF OFFICERS JOINED OR QUITTED DURING WEEK.

Officers JOINED during week.

Rank.	Name.	Corps.	Date.	Cause.

Officers QUITTED during week.

Rank.	Name.	Corps.	Date.	Cause.

PART C.—DESCRIPTION OF OFFICERS WHOSE RETURN TO THE UNIT IS PARTICULARLY REQUESTED.

Rank.	Name and Initials.	Corps.	Remarks (e.g., present whereabouts, if known).

PART D.—NOMINAL ROLL OF OFFICERS ON STRENGTH.

(i) Officers posted to Unit (Total to agree with column 2 of Part A).

1	2	3		4	5	6
Substantive Rank and higher temporary rank, if held.	Personal Number.	Name and Initials.		Corps.	Whether present with Unit (Insert Yes or No).	If not present with Unit, state how employed.
<u>1</u>						
<u>lig</u>	NX 3	Eather	K.W.	Hq 25 Bde	Yes	Bde Comd
<u>pt</u>	NX 12334	Cullen	G.J.	"	"	" "
<u>out</u>						
<u>Capt</u>	NX 53592	Owens	E.S.	"	"	S.C.
<u>out</u>						
<u>Capt</u>	NX 456	Larkin	G.F.	"	"	A/B.M.
<u>pt</u>	NX 12242	Jackson	C.D.	"	"	B.M.L.
<u>out</u>						
<u>Capt</u>	WX 402	Brinkley	P.L.	"	"	L.O.
<u>out</u>						
<u>Capt</u>	TX2006	GEE	A.S.	"	"	T.O.
<u>out</u>	WX 2725	Grigg	E.W.	"	"	I.O.
<u>out</u>	VX 12705	Rankine	H.H.	"	"	S.C.L.
<u>out</u>	NX 192	Dent	J.	"	"	L.O. 2
<u>ap</u>		Lynch	J.B.	"	No	R.C. 2/33 Bn
<u>ap</u>		Park	R.McC.	"	No	Pres 2/25 Bn

(ii) OFFICERS ATTACHED FROM OTHER CORPS.

Substantive Rank and higher temporary rank, if held.	Personal Number.	Name and Initials.		Corps.	Date of attachment.	Nature of attachment.
<u>it</u>		Hayne	H.E.	44 LAD		HEAD L.A.D.
<u>t</u>		Nolan	F.	12 Pl Cd Bn		Prot Pl
<u>it</u>		Griffen	W.S.	7 Div Sigs		"L" Sec Sigs
<u>it</u>		Manley	J.R.	"		"

15 Aust Inf Bde

(Unit.)

June 42

(Date of Despatch.)

[Signature]
Comd 25 Aust (Signature of Commander.)

7 Aust Div

(Bde., Divn., Area, etc., with which Unit is serving.)

Unit.

PART D. Detail of Surplus or Reinforcements required as shown in Part A of Army Form W. 3009.

Detail of Specialists, Tradesmen, etc.	Surplus (a)	Reinfts. Required (a)	Detail of Specialists, Tradesmen, etc.	Surplus (a)	Reinfts. Required (a)	Detail of Specialists, Tradesmen, etc.	Surplus (a)	Reinfts. Required (a)
Ammunition Examiners			Fire Control Operators			Panel Beaters		
Armament Artificers			Fitters			Pattern Makers		
Armourers			Fitters and Turners			Pharmacists		
Artificers, Artillery			Fitters, Cycle			Photographers, dry plate		
Axemen			Fitters, Drivers			Photographers, wet plate		
Bakers			Fitter's Mates			Photo-Writers		
Battery Surveyors			Fitters, M.V.			Plate Layers		
Battery Comdrs. Asst.			Fitters, Railway Signal			Plumbers		
Blacksmiths			Fitters, Signal			Predictor Numbers		
Boilermakers			Grinders			Printers		
Bricklayers			Gun Layers			Radiator Mechanics		
Butchers			G.P.O. Assistants			Radiographers		
Camouflage Modeller			Gun Operators			Range Takers		
Carpenter and Joiner			Hammermen			Riggers		
Clerks			Height Takers			Riveters		
Clerks, Engineering			Hello Operators			Saddlers		
Clerks, Supply			Instrument Mechanics			Saddle Tree Makers		
Clerks, Technical			Instrument Mechanics, Surgical			Saw Doctors		
Coachmakers			Instrument Operators			Sawyers		
Computers			Intelligence Duties			Shoemakers		
Concretors			Joiners			Signallers		
Cooks			Leather Stitchers			Signwriters		
Cooks, Hospital			Linesmen			Stokers, Stationary Engine		
Coppersmiths			Linesmen, Signals			Storemen, Technical		
Dental Clerk Orderlies			Lithographers			Surveyors		
Despatch Riders			Machinists			Surveyors, Engineering		
Dispensers			Masons			Tailors		
Draughtsmen			Masseurs			Telescope Identification Numbers		
Draughtsmen, Architectural			Mechanics, Dental			Textile Refitters		
Draughtsmen, Mechanical			Mechanics, M.T.			Tinsmiths		
Draughtsmen, Signal			Mechanics, Typewriter			Toolmakers		
Draughtsmen, Topographical			Mechanics, Wireless			Turners		
Driver Mechanics			Millwrights			Vulcanizers		
Driver Operators			Miners			Wagon Erectors		
Drivers, Transportation Plant			Moulders			Watchmakers		
Electrical Fitters			Nursing Orderlies			Watermen		
Electricians			Nursing Orderlies (Mental)			Welders		
Electricians, Eng. Units			Nurses, Trained			Well Borers		
Electricians, Signal			Observation Post Assistants			Wheelers		
Engine Artificers			Operating Room Assistants			Whitesmiths		
Engine Hands I/C			Operators, Signal			Wiremen		
Equipment Repairers			Opticians			Woodturners		
Farriers			Painters					
General Duties	I	4						
Totals (to agree with Columns 3 and 4 of Part A.)	I	4						

Notes—(a) If rank other than Private is involved give details on back.
 (b) Authorised Trades or Specialists not included in list above will be added as required in spaces provided.

H.Q. 25 AUST INF BDE

Comd 25 Aust Inf Bde.

Unit.

7 Aust Div Signature of Commander.

27 June 42

Date of Despatch.....

Bde., Divn., Area, etc., with which unit is serving.

WMD
FILE

DAILY STRENGTH STATE AS AT 0630 hrs. 27 Jun.....1942.

HQ 25 Aust Inf Bde
A34/237 42
1942

Lieut
for Brig. AOD
COMD 25 Aust Inf Bde.

HQ 7 AUST DIV.

COMD 25 Aust Inf Bde.

UNIT	WE	AX	AY	AZ	B	C	F	C + F
HQ 25 BDE	15- 68					12 57	7 12	64
Att.			1		1	23	1	23
L Sec Sigs	2- 36					2 35	5 2	40
Att.						7		7
12 Pl Gd Bn	1- 43					1 39	5 1	44
44 LAD	1- 15					1 14	1 1	15
F.P.O.						4		4
7 Aust Cav Regt						7 100 1	19 8	127
						3		3
2/6 Fd Regt	39-672			11	2	41 623 2	111 43	734
Att.	3- 48					4 8	4	8
53 LAD	1- 15					1 14	1 1	15
6 Sec Sigs Att 2/6 Regt						1 29	1 1	30
2/5 Fd Coy	7-241			2	3	4 160 1	43 5	203
Att.						1		1
7 Aust Div Provost Coy						16		16
2/31 Inf Bn	33-813		9	5	2	32 703 1	147 33	855
Att.	2- 12					1 20	1	20
2/25 Inf Bn	33-812			21	1 17	25 842 3	75 23	917
Att.	2- 12					2 11	2	11
2/33 Inf Bn	33-813		19	15	5	30 632 4	122 34	624
Att.	2- 12			1		3 9	3	9
2/4 Fd Amb	12-228	(AMB Coys)	3	3	1	3 81	6 3	87
Att						1 18	1	18
8 Aust Rec Sec						1 67	7 1	74
Att.						1		1
25 Bde Sec Ord Pl Bk						14		14
Att.								
6 Bty 2/2 Aust A/Tk Regt					1 2	6 144 1	33 7	176
Att.						3		3
TOTALS			51	59	2- 33	178-369	13-643	191- 4333

ATTACHED PERSONNEL

Unit	W.E.	ATTACHED		Excess	Totals	
		Off	O/R		Off	O/R
HQ 25 Aust Inf Bde				Cipher 2/29 Bn FSS ASG	5 1 2 1	
					7	7
"L" Sec Sigs				"A" Sec Sigs	7	7
2/6 Fd Regt	AAMC AAPC P.O. Padre Batman	I I	4 1 1 1	Sal Army 2/9 Fd R I	I I	
		2	7		2	4 8
2/8 Fd Coy	AAMC		1			1
2/31 Bn	AAMC AAPC P.O. AAGC	I	4 1 1 6	Sigs RAE	7 1	
		1	12		8	1 20
2/25 Bn	AAGC AAMC AAPC P.O. Padre Batman	I	4 1 1 1			
		2	11			2 11
2/33 Bn	AAMC AAPC P.O. Padre Batman	I	4 1 1 1	Sal Army	I 2	
		2	7		1 2	3 9
A & B Coys	AASG		14	2/2 Fd Hygiene Dental	2 2	
			14		1 4	1 18
A Son Cav	AAMC		1			1
6 Bty 2 A/Tk Regt	AAMC Sigs		1 2			
			3			3
B Rec Sec	AAMC Sigs		1 2			
			3			3

Detached 25 Aust Inf Bde

(DATE 7/6/42)

Unit	AWL	Detn	Fd Pun	Det for Duty	LEAVE					Totals	
					General	Home	Compass	Season.	Hosp.		School
HQ 25 Bde Attached	-	I			- I				- 5	- 7	
L Sec Sigs			- I		- I				- 2	- I	
12 Pl GdBn	- 3								- 2	- 5	
44 LAD									- 2	- 5	
2/6 Fd Regt Attached	- 18		- 9	- 2	- 10		- 10	- 18	2- 42	2- III	
2/5 Fd Coy Attached	- I	- I	- 2	- 16	- 3		- 4	- 3	I- II	I- 43	
2/31 Bn Attached	- 21		- 18	- 37		I- 15	- 4	- 47		- 8	
2/25 Bn Attached	- 17			I- 9	- II	- 3	- I	- 8	I- 22	I- 4	
2/33 Bn Attached	- 100			- 5	3- 44		- 5	- 10	- 12	I- 6	
53 Coy AASC Attached								- I		- I	
2/4 Fd Amb Attached		- I					- 2	- I	- 2	- 6	
A Sqn Cav Attached				I- 4	- I			- I	- 12	- I	
8 Rec Sec Attached	- I				- I				- 5	- 7	
6 Bty 2 A/Tk Attached	- 0		- I	- 2	- 0		- I	- 6	- 9	I- I	
6 Sec Sigs Attached										I- 32	
Totals									- I	- I	
Totals	- 168	- 2	- 31	2 - 75	3 - 78	I- 20	- 26	- 96	4- 124	3 - 23	13 - 643

WD

AUSTRALIAN IMPERIAL FORCE.

HQ 25 AUST INF BDE.

A/34/280

24 JUNE 42

Subject : DAILY STRENGTH STATE AS AT 0630 hrs 24 JUNE 42.

HQ 7 AUST DIV.

UNIT	WE	BATTLE CASUALTIES	SICK		TRANS-FERS ETC		REINFTS		EFFECTIVE STRENGTH		DET		STRENGTH PLUS DET	
			AX	AY	AZ	B	C	F						
HQ 25 BDE	15 68								12	59	9	12	68	
ATT										23			23	
L SEC SIGS	2 36				2				2	36	4	2	40	
ATT										7			7	
12 PL GD BN	1 43				I				I	38	5	I	43	
44 LAD	1 15								I	14	I	I	15	
FPO										4			4	
C Div Ord										14			14	
Fd Pk ATT														
2/6 FD REGT	39 672				14			3	39	604	4 139	43	743	
ATT	3 48								7	100		7	100	
2/5 FD COY	7 241							I	3	151	2 51	5	202	
ATT				2						I			I	
2/31 BN	33 813													
ATT	2 12			I 7	2	I 8		32	717	I 150	33	867		
2/25 BN	33 813				I	3		I	20			I	20	
ATT	2 12			I	2	20		24	825	3 96	27	921		
2/33 BN	33 813							2	11		2	11		
ATT	2 12			I	7	11		32	662	2 181	34	843		
									3	9		3	9	
5 COY ASC	11 392													
ATT														
2/4 FD AMB	12 228							3	3	82	10	3	92	
ATT		A & B COY		2	2	4				27	XXXX	2	27	
A Sqn 7 Aust Cav.									7	102	I 25	8	127	
ATT										I			I	
8 AUST REC SEC									I	61	13	I	74	
ATT									I	I		I	I	
6 Bty 2/2 A Tk.								5	5	145	2 31	7	176	
ATT				3						3			3	
TOTAL				2 15	2 33	I 54		178	3717	15 715	193	4432		

NOTE : For details of BATTLE CASUALTIES see reverse side .

COPIES : 02E AIF.

FILE

WAR DIARY (2)

James Callaghan
Brig.
Comd 25 Aust Inf Bde. *Ad*

Detached 25 Aust Inf Bde

(DATE 10/1/42)

Unit	AWL	Detn	Fd Pun	Det for Duty	LEAVE					Hosp.	School	Totals		
					General	Home	Compass	Season.						
HQ 25 Bde Attached	3									5	1	6		
L Sec Sigs						1						1		
18 Pl GdBn	2											2		
44 LAD	2											2		
2/6 Fd Regt Attached	21			4	1	43		0	17	2	35	1	6	130
2/5 Fd Coy Attached	3	22		2		0		1	21	11	1	2	2	61
2/31 Bn Attached	13		13			40	22	12	4	57		1	3	130
2/25 Bn Attached	17			1	13	31		3	1	41	23	1	4	98
2/33 Bn Attached	22				2	49		6	10	1	14	1	0	121
Coy AASC Attached														
2/4 Fd Amb Attached	3	1				2		2	2					10
A Sqn Cav Attached	1			1	5	0				0			2	8
8 Rec Sec Attached	1					5		7						13
6 Bty 2 A/Tk Attached	6			1		7		1	0	0	2		2	31
Totals	100	23		27	2	24	1	125	23	22	23	5	11	715

Unit	U.S.	Excess		Totals			
		off	O/ps	off	O/ps	off	O/ps
HQ 25 Bde				Provost		16	
				Cipher		3	
				2/29 Bn		1	
				FSS		2	
				ASC		1	
						<u>23</u>	23
"I" Sec Sigs				"A" Sec Sigs		7	7
2/6 Rd Regt	AASC	1	4	Sal Army	1	1	
	AAPC		1	3 Aust Div		23	
	P.O.		1	2/9 Regt	1	1	
	Padre	1		Sur Regt	1	19	
	Batman		1	Rd Amb		1	
	LAD	1	14	"B" Sec Sigs		3	
	"G" Sigs	1	23				
		<u>4</u>	<u>49</u>			<u>3</u>	<u>51</u>
							7 100
2/5 Rd Coy	AASC		1				1
2/31 Bn	AASC	1	4	Sigs		7	
	AAPC		1	RAB		1	
	P.O.		1				
	AACC		6				
		<u>1</u>	<u>12</u>			<u>8</u>	1 20
2/25 Bn	AASC	1	4				
	AAPC		1				
	P.O.		1				
	Padre	1					
	Batman		1				
	AACC		4				
		<u>2</u>	<u>11</u>				2 11
2/33 Bn	AASC	1	4	Sal Army	1	2	
	AAPC		1				
	P.O.		1				
	Padre	1					
	Batn		1				
		<u>2</u>	<u>7</u>			<u>1</u>	<u>2</u>
							3 9
A&B Coys 2/4 Rd Amb	AASC		23	2/2 Hygiene		2	
				Dental	2	3	
			<u>23</u>		<u>2</u>	<u>5</u>	2 27
A Bqn Cav	AASC		1				1
6 Bty A/Tk	AASC		1				
	Sigs		2				
			<u>3</u>				3

AUSTRALIAN IMPERIAL FORCE.

HQ 25 AUST INF BDE.

A/34/270

42

20 Jun

Subject : DAILY STRENGTH STATE AS AT 0630 hrs 20 Jun 42.

HQ 7 AUST DIV.

UNIT	WE	BATTLE CASUALTIES	SICK		TRANS-FERS ETC		REINFTS		EFFECTIVE STRENGTH		DET		STRENGTH PLUS DET	
			AX	AY	AZ	B	C	F						
HQ 25 BDE	15 68			1	1		3	10	61	2	2	12	69	
ATT									23				23	
L SEC SIGS	2 36							1	39	1	3	2	42	
ATT									7				7	
12 PL GD BN	1 43							1	59		5	1	44	
44 LAD	1 15							1	14		1	1	15	
FPO									4				4	
C Div Sec									14				14	
ATT														
2/6 FD REGT	39 672							4	36	592	7	162	43	754
ATT	3 48						1	15	7	92		7	92	
2/5 FD COY	7 241			5				2	3	123	2	75	5	203
ATT										1			1	
2/31 BN	33 813		1	60				5	53	713		150	33	863
ATT	2 12							1	20			1	20	
2/25 BN	33 813			3	4			9	25	750	3	140	20	902
ATT	2 12							2	11			2	11	
2/33 BN	33 813			8				6	30	639	4	202	34	841
ATT	2 12							3	9			3	9	
5 COY ASC	11 392													
ATT														
2/4 FD AMB	12 228	A & B Coys	3					5	84		35	5	97	
ATT			1					2	30			2	30	
A Sqn 7 Aust Cav.								8	93		29	8	127	
ATT									1				1	
B Aust Rec Sec								2	1	61		13	1	74
ATT								1	1				1	
C Bty 2 A/Tk Regt							1	1	5	145	2	27	7	172
ATT										3			3	
TOTAL			1	81		6	1	47	175	3590	21	834	196	4424

NOTE : For details of BATTLE CASUALTIES see reverse side .

COPIES : 02E AIF.

FILE

WAR DIARY (2)

R. Dunslop
Brig. AIF
Comd 25 Aust Inf Bde.

25 AUST INF IDE GROUP.

ATTACHED PERSONNEL.

as at 30 Jun 42.

UNIT	W.R.		EXCHGS		TOTALS		
HQ 25 Aust Inf Bde			Provost	16	0/rs	offs	0/rs
			Cipher	3	"		
			2/29 Bn	1	"		
			FSS	2	"		
			ASC	1	"		
				23	0/rs		23
"L" Sec Sigs			"A" SecSigs	7	"		7
2/6 Rd Regt	AANC	1 off	4	0/r	Sal A.	1 off	
	AAPC		1	"	"		1
	P.O.		1	"	3 Aust Div	26	"
	Padre	1	"		2/9 Regt	1	"
	Batn		1	"	Batn	1	"
	LAD	1	"		Sus Regt	1	"
	"G" Sg		1	"	Amb	1	"
	Sigs	1	"				
		4 off	44	0/r		3 off	48
							92
							76
2/5 Rd Coy	AANC		1	0/r			1
2/31 Bn	AANC	1 off	4	0/r	Sigs	7	0/rs
	AAPC		1	0/r	RAE	1	"
	P.O.		1	"			
	AACC		6	"			
		1 off	12	"		3	"
							1
							20
2/25 Bn	AANC	1 off	4	0/rs			
	AAPC		1	"			
	P.O.		1	"			
	Padre	1	"				
	Batn		1	"			
	AACC		4	"			
		2 off	11	0/rs			2
							11
2/33 Bn	AANC	1 off	4	0/rs	Sal A.	1 off	1
	AAPC		1	"			1
	P.O.		1	"			
	Padre	1	"				
	Batn		1	"			
		2 off	7	0/rs		1 off	1
							3
							9
5 Coy AASC	AAPC		1	0/r			
	P.O.		1	"			
	AANC		1	"			
			3	0/rs			3
A&B Coys 3/4 Rd Amb.	AASC		22	0/rs	2/2 Hygiene	2	0/rs
					Rd Coy	4	0/rs
					Dental	2 off	3
			23	0/rs		2 off	9
							2 off
							31
A Sqn 7 Cav	AANC		1	0/r			1
6 Bty A/Tk	AANC		1	0/r			
	Sigs		2	0/rs			
			3	0/rs			3

Detached 25 Aust Inf Bde

(DATE 10/14/20)

Unit	AWL	Detn	Fd Pun	Det for Duty	LEAVE					Totals	
					General	Home	Compass	Season.	Hosp.		School
HQ 25 Bde	- 0			0 - 0	- 0				- 0	- 0	
Attached											
1 Sec Sigs	- 1		- 1		- 1					1 - 0	
12 Pl GdBn	- 0								- 0	- 0	
44 LAD								- 1		- 1	
2/6 Fd Regt	- 00		- 0	- 11	0 - 01		- 0	- 10	0 - 00	- 0	7 - 100
Attached											
2/5 Fd Coy	- 0		- 0	- 00	- 10		- 0	- 0	1 - 0	1 - 0	0 - 70
Attached											
2/31 Bn	- 00	- 7	- 10		- 10	- 00		- 00		- 0	- 100
Attached											
2/25 Bn	- 14		- 0	1 - 01	0 - 01	- 0	- 0	- 0	- 10	1 - 0	0 - 100
Attached											
2/33 Bn	- 00			1 - 7	- 70		- 11	- 7	1 - 10	0 - 7	0 - 100
Attached											
Coy AASC											
Attached											
2/4 Fd Amb	- 0			- 0			- 1	- 0	- 0	- 0	- 10
Attached											
1 Sqn Cav	- 0			- 0	- 10		- 1	- 0	- 0	- 0	- 20
Attached											
8 Rec Sec	- 1				- 0	- 1			- 7		- 10
Attached											
6 Bty 2 A/Tk	- 0	- 1			- 7	- 1		- 0	- 0	0 - 0	0 - 07
Attached											
Totals	- 100	- 0	- 10	0 - 00	7 - 100	- 00	1 - 01	- 01	4 - 100	0 - 00	01 - 100

AUSTRALIAN IMPERIAL FORCE.

HQ 25 AUST INF BDE.

A/34/42
30 June 42

Subject : DAILY STRENGTH STATE AS AT 0630 hrs 30 June 42 42.

HQ 7 AUST DIV.

UNIT	WE	BATTLE CASUALTIES	SICK	TRANS-FERS ETC	REINFTS	DEFECTIVE STRENGTH	DET	STRENGTH PLUS DET
		AX	AY	AZ	B	C	F	
HQ 25 BDE	15 68					10- 01		10- 01
ATT								
L SEC SIGS	2 36					2- 36		2- 36
ATT								
12 PL GD BN	1 43					1- 43		1- 43
44 LAD	1 15			- 0		1- 15		1- 15
FPO								
ATT								
2/6 FD REGT	39 672					39- 672		39- 672
ATT	3 48					3- 48		3- 48
2/5 FD COY	7 241			- 1		7- 241		7- 241
ATT								
2/31 BN	53 813			- 1		53- 813		53- 813
ATT	2 12					2- 12		2- 12
2/25 BN	33 813			1- 0		33- 813		33- 813
ATT	2 12					2- 12		2- 12
2/33 BN	33 813			- 1		33- 813		33- 813
ATT	2 12					2- 12		2- 12
5 COY ASC	11 392			- 1		11- 392		11- 392
ATT								
2/4 FD AMB	12 228			- 0		12- 228		12- 228
ATT				XI - 0				
A Sqn 7 Aust Cav								
ATT								
6 Coy 8 A/R				1- 1				
ATT								
8 Aust Rec Sec						1- 0		1- 0
ATT				1- 0		1- 0		1- 0
TOTAL						178- 000		178- 000

NOTE : For details of BATTLE CASUALTIES see reverse side .

COPIES : 02E AIF.

FILE

WAR DIARY (2)

James Campbell
Brig
Comd 25 Aust Inf Bde.

ATTACHED PERSONNEL.

HQ 25 AUST INF BDE
and 25 AUST INF BDE GP.

Unit	W.E.		Excess	Totals
HQ 25 Aust Inf Bde			Provosts 16 Cipher 3 2/29 Bn 1 FSS 3 ASC 1 <hr/> = 23	23 O/I
"L" Sec Sigs			"A" Sec Sigs 7	7 "
2/6 Aust Fd Regt	AAMC I OFF 4 O/Rs AAPC I " Postal I " Padre I " Batman I " LAD I " 14 " G Sec) I " 27 " Sigs)		Sal Army I 3 Aust Div 26 O/Rs 2/9 Regt I Batman I O/R S.A. DVR I "	4 Off 48 O/Rs 2 Off 25 O/Rs 6 Off 73
2/5 Fd Coy	AAMC I O/R			I
2/31 Aust Inf Bn	AAMC I Off 4 O/Rs AAPC I " P.O. I " AACC 6 "		Sigs 7 O/Rs 7 Div RAN I "	I Off 12 O/Rs 8 O/Rs I Off 20
2/25 Aust Inf Bn	AAMC I Off 4 O/Rs AAPC I " P.O. I " Padre I Off Batman I " AACC 4 "			2 Off 11 O/Rs 2 Off 11 O/R
2/32 Aust Inf Bn	AAMC I Off 4 O/Rs AAPC I O/Rs P.O. I O/Rs Padre I " Batman I "		Sal Army I Off I O/R	2 Off 7 O/Rs I Off I O/R 3 Off 9 O/R
3 Coy AACC	AAPC I O/R P.O. I " AAMC I "			3 O/R 3 O/R
A & B Coys 2/4 Fd Amb	AACC 22 O/R		2/2 Hygiene 2 O/Rs Hq Coy 4 O/Rs Dental I Off 3 O/Rs	22 O/Rs I Off 9 O/Rs I Off 27 1/2

Attached Personnel Page No 2

<u>Unit</u>	<u>F.R.</u>	<u>Access</u>	<u>Totals</u>
7 Aust Cav A Sqd	AMC	1 O/R	1 O/R
6 Coy 2 A/Tk Regt.	AMC Sigs	1 O/R 2 O/Rs	3 O/Rs

Detached 25 Aust Inf Bde

(DATE 20/6/42)

Unit	AWL	Detn	Fd Pun	Det for Duty	LEAVE				Hosp.	School	Totals
					General	Home	Compass	Season.			
HQ, 25 Bde Attached	- 8			2 - 2					- 2		2 - 7
L Sec Sigs	- 1		- 1	- 5	- 4		1 -		- 3		1 - 14
12 Pl GdBn	- 3				- 2						- 5
44 LAD	- 1								- 1		- 2
2/6 Fd Regt Attached	- 28		- 8	- 11	1 - 23		- 5	- 10	3 - 37	- 2	4 - 136
2/5 Fd Coy Attached	- 7		- 2	1 - 53	- 9	- 1	- 1	- 1	1 - 9	1 - 4	2 - 70
2/31 Bn Attached	- 32		- 16		1 - 22	- 30	- 12	- 17	- 68	- 2	1 - 216
2/25 Bn Attached	- 22			4 - 19	1 - 156		- 2	- 9	- 7	1 - 6	6 - 231
2/33 Bn Attached	- 30			1 - 7	- 53		- 9	- 7	1 - 18	2 - 7	4 - 122
5 Coy AASC Attached	- 12			1 - 4			- 1	- 1	- 1	- 4	1 - 23
2/4 Fd Amb Attached Coys	- 5			- 1				- 2	- 2	1 - 2	1 - 10
A Sqn Cav Attached	- 22			- 2	- 8			- 8	- 5	- 3	- 23
8 Reg Sec Attached	- 1				- 8			- 1	- 3		- 12
6 Bty 2 A/Tk Attached	- 5				- 10		- 2		- 5	2 - 2	2 - 24
Totals	206		- 24	9 - 87	3 - 312	- 31	1 - 20	- 66	5 - 132	7 - 40	24 - 363

AUSTRALIAN IMPERIAL FORCE.

HQ 25 AUST INF BDE.

A/34/277

13 Jun 42

Subject : DAILY STRENGTH STATE AS AT 0630 hrs 13 Jun 42.

HQ 7 AUST DIV.

UNIT	WE	BATTLE CASUALTIES	SICK	TRANS-FERS ETC	REINETS	PRESENT STRENGTH	DET	STRENGTH PLUS DET	
		AX	AY	AZ	B	C	F		
HQ 25 BDE	15 68								
ATT				2		9	59	5	9 12 68
L SEC SIGS	2 36								
ATT				1	2	22		1	23
12 PL GD BN	1 43								
ATT						2	26	14	2 40
44 LAD	1 15								
FPO									
C DIV SEC	ORD FD PK		I	I	I				
ATT									
2/6 FD REGT	39 672								
ATT	3 48					5 38	593	5 154 43	747
2/5 FD COY	7 241								
ATT						6	74	3 6	77
2/31 BN	33 813								
ATT	2 12					2 4	140	1 65 5	205
2/25 BN	33 813								
ATT	2 12								
2/33 BN	33 813								
ATT	2 12								
5 COY ASC	11 392								
ATT									
2/4 FD AMB	12 228								
ATT									
A SQN 7 AUST CAV									
ATT									
6 Bty 2 A/Tk									
ATT									
8 AUST REC SEC									
ATT									
TOTAL			I 33	I 18	2 33	I 69	3973	31 667	200 4840

NOTE : For details of BATTLE CASUALTIES see reverse side .

COPIES : 02E AIF.

FILE

WAR DIARY (2)

James Callaghan
Brig.
Comd 25 Aust Inf Bde. *AD*

Detached 25 Aust Inf Bde

(DATE 13/6/42)

Unit	AWL	Detn	Fd Pun	Det For Duty	LEAVE					Totals	
					General	Home	Compass	Season.	Hosp.		School
HQ, 25 Bde Attached	-3			2 - 2	- 2				1 - 2	- 1	3 - 9
L Sec Sigs	-1		-1	- 5	- 5				- 2		- 14
12 Pl GdBn	-4		-	-	- 4				- 2		- 10
44 LAD									- 1		- 1
2/6 Fd Regt Attached	-29		-5	-12	2 - 57		-5	- 7	3 - 33	- 6	5 - 154
2/5 Fd Coy Attached	-5		-2	-25	- 12	- 1	-6	- 4	- 8	1 - 2	1 - 65
2/31 Bn Attached	-32	- 2	-9		1 - 43	-29	-1	-47	- 49	- 2	5 - 214
2/25 Bn Attached	-24			1 - 5	4 - 97		-2	-10	1 - 25	2 -	8 - 163
2/33 Bn Attached	-88		-7	1 - 7	- 14		-7	- 4	- 13	3 - 1	4 - 141
5 Coy AASC Attached	-11			1 - 4			-1	- 1		- 1	1 - 18
2/4 Fd Amb Attached	-3			1 -				- 2	- 1	1 -	2 - 6
A Sqn Cav Attached	-2			-3	- 7			- 8	- 5	- 1	- 26
8 Reg Sec Attached	-1				- 5		-1	- 2	- 8	1 -	1 - 17
6 Bty 2 A/Tk Attached	-7				- 9	- 1	-1	- 2	1 - 6		1 - 25
Totals	-211	- 2	- 24	6 - 63	7 - 257	- 31	-25	- 85	6 - 155	8 - 14	31 - 867

ATTACHED PERSONNEL

Hq 25 Aust Inf
and 25 Aust Inf Bde

Unit	W.E.	Excess	Totals
Hq 25 Aust Inf Bde		Provosts 16 Cipher 3 2/29 Bn 1 F.S.S. 2 AGC 1 <u>23</u>	23
2 L " sec sigs		A sec sigs 7	7
2/6 Fd Regt	AAMC 1 - 4 AAPC 1 Postal 1 Padre 1 - Batman 1 LAD 1 -14 J Sec 1 -27 <u>4 -48</u>	Salvation 1 3 Aust Div 26 26 2/9 Regt 1 Batman 1 S.A. Dr 1 <u>2-28</u>	6-77
2/5 Fd Coy	AAMC 1	AAMC 1	1
2/31 Bn	AAMC 1 - 4 AAPC 1 PO 1 AAOC 6 <u>1 - 12</u>	Sigs 7 7 Div RAB 1 <u>8</u>	1 - 20
2/25 Bn	AAMC 1 - 4 AAPC 1 Postal 1 Padre 1 Batman 1 AAOC 4 <u>2 - 11</u>		2 - 11
2/33 Bn	AAMC 1 & 4 AAPC 1 Postal 1 Padre 1 Bat 1 <u>2 - 7</u>	Sal Army 1 - 2 <u>1 - 2</u>	3 - 9
5 Coy AASG	AASG 1 Postal 1 <u>2</u>		2
A & B Coys 2/4 Fd Amb	AASG 22 <u>22</u>	2/2 Fd Hygiene Dental 1 - 3 <u>1 - 3</u>	1 - 28
7 Aust Cav A Sqn	AAMC 1		1
6 Bty 2 A/Tk	AAMC 1 AAPC 1 Postal 1 <u>-3</u>		-3

War Diary

AUSTRALIAN IMPERIAL FORCE.

HQ 25 AUST INF BDE.

A/34/42

30 Jun

Subject : DAILY STRENGTH STATE AS AT 0630 hrs 30 Jun 42.

HQ 7 AUST DIV.

UNIT	WE	BATTLE CASUALTIES	SICK	TRANS-FERS ETC	REINFTS	STRENGTH		DET	STRENGTH PLUS DET
						AX	AY		
HQ 25 BDN ATT	15 68						0 02	5 0	30 70
L SEC SIGS ATT	2 36						0 02	5 0	30 70
12 PL GD BN	1 43						2 30	0 1	64 65
44 LAD FPO	1 15						2 30	0 1	64 65
C Div Sec Coy ATT							1 30		1 30
2/6 FD REGT ATT	39 572						30 054	4 00	65 760
2/5 FD COY ATT	7 241						0 77		0 77
2/31 BN ATT	33 813						30 070	3 030	33 080
2/25 BN ATT	33 813						30 700	7 300	33 001
2/33 BN ATT	33 815						30 700	8 350	33 005
5 COY ASC ATT	11 392						30 300	1 30	7 500
2/4 FD AMB ATT	12 228						7 350	1 0	0 301
C Coy 8 A/Tk Regt ATT							0 03	4 0	0 07
A Sqn 7 Div Coy ATT							0 00	4 50	0 305
3 Aust Rec Coy ATT							50 1	20 1	70 1
TOTAL							377 4000	34 000	811 8000

NOTE : For details of BATTLE CASUALTIES see reverse side .

COPIES : 02E AIF.
FILE
WAR DIARY (2)

James Campbell
Brig.
Comd 25 Aust Inf Bde. *AD*

Unit	AWL	Detn	Fd Pun	Det for Duty	LEAVE				Hospital	School	Totals
					General	Home	Compass.	Seasonal			
Hq 25 Bde Attached	-4			2-2	-2				I - I		3 - 9
L Sec Sigs	4I					- I			- I		- 3
12 Pl Gd Bn	-4				-2	- I			- 2		- 9
44 LAD	-I								- I		- 2
2/6 Fd Regt Attached	-28			-10	-12		- 2	- 2	3 - 28	I - 6	4 - 28
2/5 Fd Coy Attached	-10			-24	-15	- 7	- 4	- 4	- 4	I - 2	I - 70
2/31 Bn Attached	-36	-5	-2	I-32	I-37	-35	- I	-38	- 45	I - 3	3 -235
2/25 Bn Attached	-36			- 3	2-77	I-30	- 2	- 9	I - II	3 - I	7 -169 - 2
2/33 Bn xxxxxx	-96			I-14	I-21	- 4	- 4	- 3	- 13	3 - I	5 -158
5 Coy AASC Attached	-12			I- 3			- I	- I		- I	I - 18
2/4 Fd Amb Attached	- 3 - 2			- I - I	- I			- 2		I -	I - 6 - 4
A Sqn Cav Attached				3-34	- 8		- I	- 8	- 7	I - I	4 - 59
B Rec Sec Attached	- I				- 6	- 2	- I		- 9	I - I	I - 20
6 Bty 2 A/Tk Attached	- 8			3-87	- 9	- I	- 2		I- 6		4 -113
TOTALS	242	-5	-2	II-2II	4-190	I-83	-18	-68	6-128	12 -16	34 -963

'P' IN DETAIL.

Unit	AWL	Detn.	Pd	Pun.	Gen. Leave	Comp Leave	Seasonal Leave	Hose Leave	Other Causes	Totals
Hq 25 Bde	1	-	-	-	-	-	1	4)	8
	2 Padres & 1 offr AY shown as Det.									3-
Att. L Sec Sigs	1						1	1 hosp))	3
	1 offr detached School									1
13 Pl Cd Bn	4						4	2 hosp))	10
64 LAD	1							1 ")	2

2/6 Pl Regt 24	-	-	-	-	-	-	2			
	Hospital Schools Det Duty AWL									2-26 1-2 7 24
Att 2/6 Regt							2			3

2/5 Pl Coy.	AWL 23, Leave 14, Schools 2, Det Duty 13									52

2/31 Bn.	Detn 31 - AWL 45 - Leave Gen 35 - Com Leave 2 Seasonal leave 16 - Schools 1 & 4 Home " 50 Coast Guard 31 - Hosp 43 -									2 - 266

2/25 Bn.	AWL 19 - Leave 1 & 130 - Hosp 24 - Duty 3 - Schools 3 & 1 -									4 - 227

2/33 Bn.	AWL 104 - 2 Offrs det to Bde - 13 Hosp - 19 Leave - 1 & 19 Hear Party - 3 & 1 School - 7 Offrs comp leave -									5 - 165

3 Coy AASC.	AWL 15 - det duty 5 -									20

2/4 Pl Amb.	AWL 3 - Schools 1 offr - Leave (sanding) 1									1 - 4

A Sqn Cav.	Det for duty 5 & 30 - Hosp 7 Offrs - Comp leave 1 Offr - Seasonal leave 7 Offrs General leave 7 Offrs									3 - 52

3 Rec Sec.	AWL 3 Offrs - det other causes 20 Offrs -) " Duty 1 offr									1 - 23

6 Stry 2 A/Tr.	Det duty 5 offr & 33 Offrs - AWL 7 Offrs - 14 leave - 1 offr 1 Offr schools									4 - 110

										<u>27 - 1005</u>

AUSTRALIAN IMPERIAL FORCE.

HQ 25 AUST INF BDE.

A/34/ 274

3 Jun 42

Subject : DAILY STRENGTH STATE AS AT 0630 hrs 3 Jun 42.

HQ 7 AUST DIV.

UNIT	WE	BATTLE CASUALTIES	SICK	TRANS-FERS ETC	REINFTS		EFFECTIVE STRENGTH		DET	STRENGTH PLUS DET			
		AX	AY	AZ	B	C	F						
HQ 25 BDE	15 68			1	1	1		9	60	3	8	12	68
ATT									20				20
L SEC SIGS	2 36		1				1	1	37		3	1	40
ATT									3				3
12 PL GD BN	1 43							1	34		10	1	44
44 LAD	1 15							1	15		3	1	15
FPO									4				4
C Div Sec ord Pd Mx								1	16			1	16
ATT													
2/6 FD REGT	39 672			1			1	42	630	1	61	43	741
ATT	3 48						28	6	90		2	6	92
2/5 FD COY	7 241							5	164		22	5	203
ATT									6				6
2/31 BN	33 813		4	29	1	5	30	700	4	207	34	907	
ATT	2 12			1			1	27	2		2	40	
2/25 BN	33 813		2	5			26	703	5	247	31	930	
ATT	2 12						1	33	3	33	7	3	45
2/33 BN	33 813		1	14			35	33	824	5	115	37	939
ATT	2 12						2	33	4	41		4	41
5 COY ASC	11 392		7	10			4	7	346		20	7	366
ATT									3				3
2/4 FD AMB	12 228		3	1	1	1	7	159	1	8	8	167	
ATT								2	60			2	60
B Rec Sec									57	1	17	1	74
ATT									1			1	
C Bty 2 A/Tk								2	54	4	109	6	163
ATT									3				3
A Sqn 7 Div Cav								6	97	2	24	8	121
ATT									7				7
TOTAL			13	6	61	7	171	193	4343	26	330	214	5123

NOTE : For details of BATTLE CASUALTIES see reverse side .

COPIES : 02E AIF.

FILE

WAR DIARY (2)

David Campbell
Brig.
Comd 25 Aust Inf Bde. *day*

W.D

APPXC

SECRET.
COPY No.
4 Jun 42.

25 AUST INF BDE OP INSTN No 22.

Ref Maps:- 1" to 1 mile - sheets LANDSBOROUGH, REDCLIFFE, BRISBANE.

INFM

1. The enemy will probably try first to capture an area north of BRISBANE and move quickly south by stages, but, the possibility of direct attack from the sea on the BRISBANE area cannot be dismissed.

RESPONSIBILITY

2. 25 Aust Inf Bde is responsible for the coast from excl COOCHIN CK to excl the mouth of the BRISBANE R.

3. 25 Aust Inf Bde will implement immediately a coast watching plan to report and give early warning of any enemy activities along the length of the coast for which 25 Aust Inf Bde is responsible.

- 4. Units are responsible for coast watching in the following sectors - (a) 2/31 Aust Inf Bn - excl COOCHIN CK to incl NINGI CK 2839
- (b) 2/25 Aust Inf Bn - excl NINGI CK to incl DECEPTION BAY - 2023
- (c) 2/33 Aust Inf Bn - excl DECEPTION BAY to excl BRISBANE R

5. Following coast watching posts will be manned in the sectors.

POST NO	LOCATION	STRENGTH	MANNED BY	REMARKS
1	249498	One Sec	2/31 Bn	
2	280427	"	"	
3	TOORBUL PT 326375	"	2/25 Bn	
4	TRIG PT 311361	"	"	
5	REDCLIFFE Water Tower 274169	"	2/33 Bn	
6	SCHORNCLIFFE 262070	"	"	

6. Posts 5 & 6 are at present manned by VDC dets but these will be supplemented by 2/33 Bn.

7. Posts will be manned by 1700 hrs 4 Jun 42.

8. Each coast watching post will maintain a log book and report any incidents to HQ 25 Aust Inf Bde immediately. Posts will be manned for 24 hours each day.

9. Inf Secs posted to coast watching duties will carry all their weapons.

RATIONS

10. Each point will maintain 5 days reserve rations at all times. Daily rations will be supplied by unit maintaining the post.

AMN

11. First Line amn will be carried for all weapons in each post.

ep

POL

12. Issued by Unit maintaining the post.

INTERCOMN

13. Civil telephone lines are NOT to be relied upon. Alternate means must be available.

POST NO	MEANS OF COMMUNICATION	TO	FROM	PERSONNEL SUPPLIED BY	EQUIPMENT SUPPLIED BY
1.	W/T No 11 set 1 V/S Sta	25 Bde Post 2	Post No 1 "	7 Aust Cav 2/31 Bn	7 Aust Cav 2/31 Bn
2.	W/T No 101 set 2 V/S Stas	25 Bde Post 1 Post 3	Post No 2 " "	L Sec Sigs 2/31 Bn "	L Sec Sigs 2/31 Bn "
3	W/T No 101 set 2 V/S Stas 1 L/T Sta	25 Bde Post 2 Post 4 Post 4	Post No 3 " " "	L Sec Sigs 2/25 Bn " "	L Sec Sigs 2/25 Bn " " 1 DV
4.	1 V/S Sta 1 W/T Sta	Post 3 Post 3	Post No 4 Post No 4	2/25 Bn 2/25 Bn	2/25 Bn(4miles cable) " 1 DV
5.	W/T No 101 set 1 V/S Sta	25 Bde Post 6	Post No 5 Post No 5	L Sec Sigs 2/33 Bn	L Sec Sigs 2/33 Bn
6.	W/T No 11 set 1 V/S sta	25 Bde Post 5	Post No 6 Post No 6	7 Aust Cav 2/33 Bn	7 Aust Cav 2/33 Bn
25 Bde HQ	W/T No 101 set	Posts 1,2,3, 5,6.	Bde HQ	L Sec Sigs	L Sec Sigs
	W/T No 101 set (spare)			L Sec Sigs	L Sec Sigs

14. See Appx "A" for sigs diagram.

15. See Appx "B" for frequencies and call signs.

16. ACK.

Time of signature...1000.....hrs

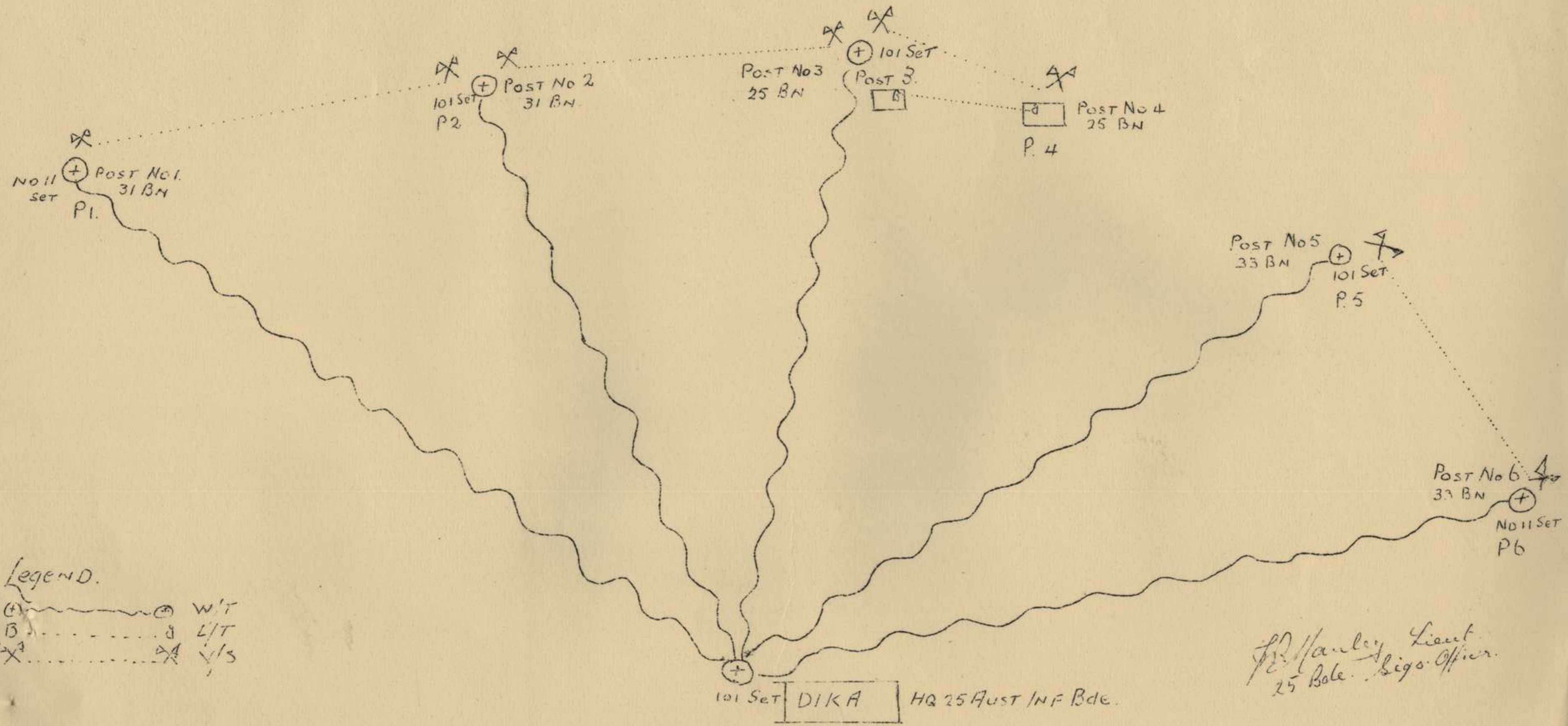
G. H. Lark
Capt.
A/BM 25 Aust Inf Bde.

Issued through sigs.

DISTRIBUTION.

COPY No

2/31 Aust Inf Bn	1
2/25 Aust Inf Bn	2
2/33 Aust Inf Bn	3
2/6 Aust Fd Regt	4
A Sqn 7 Aust Cav	5
7 Aust Div	6
Cond	7
BM	8
L Sec Sigs	9
War Diary	10 - 11
File	12 - 13



Legend.

- ⊕ W/T
- ⊙ L/T
- ✕ V/S

P. Hanley Lieut.
25 Bde. Sigs. Officer.

APPX "B" to 25 AUST INF BDE OP INSTN No 22 of 4 May 42.

Date.	Freq.	<u>Call Signs</u>					
		Post 1.	Post 2.	Post 3.	Post 4.	Post 5.	Post 6. Bde HQ.
4 Jun	4585	P1	P2	P3	P4	P5	P6 DIKA
5 Jun	4790						
6 Jun	4365						
7 Jun	4770						
8 Jun	4585						

W/T sets will maintain hourly calls until further orders. Calls will be at 10 mins to each hour.

ROUTINE ORDERS

By

BRIG K.W. EATHER.DSO. COMD 25 AUST INF BDE -

Part 1.

177

4 Jun 42.

1. DUTIES. - The following units will mount Bde duties at 0900 hrs daily :-

6	Jun 42	2/6 Aust Fd Regt.
7	" "	2/33 Aust Inf Bn.
8	" "	2/25 Aust Inf Bn.
9	" "	2/31 Aust Inf Bn.
10	" "	2/6 Aust Fd Regt.
11	" "	2/33 Aust Inf Bn.
12	" "	2/25 Aust Inf Bn.
13	" "	2/31 Aust Inf Bn.

2. POSTING OF MAIL - Cases have been reported of personnel posting mail in civilian letter boxes. All ranks will be informed that this practice is contrary to Security Regulations and must cease.
3. LEAVE. - Arrangements are being made for accommodation on trains to carry personnel to Brisbane on 2 day leave. Until this occurs leave should only be granted locally or to personnel who have independant means of tpt. It is anticipated that the first trains will commence on 8 Jun 42.

A. Eather CAPT
SC 25 AUST INF BDE

NOTICES.

Lost. - QX17932 S.R.VOGET has reported the loss of the following articles while in transit from Ascot Race Course to Reception Camp and it would be appreciated if any information can be obtained about these articles:-

1 Wallet (AIF) conatining three £5 and two £1 notes. Cheque Book - Queensland National Bank CLONCURRY - also bank pay book in same bank. Photo and papers etc.

CHURCH PARADES - Under unit arrangements.

APPX A

TNG OBJECTIVES TO 31 JUL 42.

HQ 25 Aust Inf Bde.
GT9/4/6
6 Jun 42.

1. The following tng objectives supplement 25 Aust Inf Bde Tng Instrn No 15 of 29 May 42.

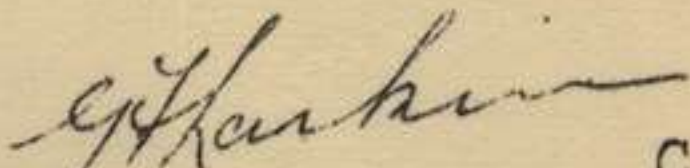
2. Tng objectives will be completed by 31 Jul 42 and the programme to achieve them will begin as soon as possible after 1 Jun. The more elementary forms of tng are to proceed concurrently with the more advanced exercises which affect mainly comds and HQs.

(a) Complete or revise as necessary individual weapon tng: sound weapon tng is the basis of a good unit; and, if a satisfactory standard is to be maintained, all junior leaders and other ranks should repeat tests of elementary tng and range practices approximately once every three months. It is desired to reach a uniformly high standard of individual and weapon tng by 31 Jul.

(b) Train sub-units to act independently for periods under their own leaders: in order to achieve this, pls and similar units should be detached from their parent units for periods of not less than 7 days. They should be set definite tasks entailing movement through close country away from normal coms with minimum tpt and stores, finding directions etc, and should arrange all the adm details for themselves. Men must learn to cross streams etc with improvised rafts, with all their eqpt. Non swimmers must cross with help from swimmers. These periods of detached tng must have a definite tng object and the task set out must be carefully considered by unit comds if the best results are to be achieved.

(c) All inf units will complete a short period of tng on an assault course and fd firing range. Fd firing range is being prepared in the Bde area and will be allotted to units in turn. (See 1 Aust Corps G 00351 of 25 May 42, att)

3. The tng of arms other than inf will conform in principle with the objectives stated above.


Capt.
A/BM 25 Aust Inf Bde

DISTRIBUTION.

A Sqn 7 Aust Cav
2/6 Aust Fd Regt
6 Bty 2 A Tk Regt
2/5 Aust Fd Coy
2/31 Aust Inf Bn + 1 Aust Corps G00351
2/25 Aust Inf Bn + 1 Aust Corps G00351
2/33 Aust Inf Bn + 1 Aust Corps G00351
5 Coy AASC
2/4 Aust Fd Amb
7 Aust Div
✓ War Diary (2)
File

APPX E

FOR OFFICIAL USE ONLY

A.M.R. & O.1587.

- ROUTINE ORDERS -

By

- BRIG K.W. EATHER.DSO. COMD 25 AUST INF BDE -

Part 1.

178.

12 Jun 42

1. DUTIES - The following units will mount Bde Duties at 0900 hrs daily :-

13 Jun 42	2/6 Aust Fd Regt
14 " "	2/25 Aust Inf Bn.
15 " "	2/31 " " "
16 " "	2/5 Aust Fd Coy.
17 " "	5 Coy AASC.
18 " "	2/6 Aust Fd Regt.
19 " "	2/25 Aust Inf Bn.

2. SWIMMING - A lookout must always be posted at swimming parades to guard against drowning and sharks.

SPEED LIMITS - Some vehs of this Bde Gp are exceeding the speed limits laid down. All offrs will impress on tps under their comd the need for care in handling vehs in view of the difficulty of replacement.

USE OF TPT - Units must notify this HQ when vehs are required to move out of area so that tpt can be consolidated.

3. MAIL - To alleviate delay occurring in the delivery of mail to soldiers who have been transferred or evacuated to hospitals etc, they are advised to fwd their new addresses to unit postal orderlies and Advanced Aust Base PO Brisbane.

W. Eather CAPT
SC 25 AUST INF BDE

- NOTICES -

Leave Sunday 14 Jun 42 - 10% of unit strength may be granted leave from 1300 hrs to attend picture show and concert combined to be held in Rex Theatre followed by afternoon tea- total cost 1/- per head. 80% of proceeds towards buying of wireless sets for Bde Gp and 20% for prizes and running cost.

The 10% to whom this special leave is granted will NOT forfeit their half day leave for the week. Leave passes will be endorsed "concert pass".

WEEKLY DANCES - The C of E Womens Guild hold a dance every Wed night at Soldiers Memorial Hall Caboolture. Admission 1/6 incl supper. Proceeds to various War Charities.

Next Mon night the above organisation are holding a bridge & euchre evening from 2000 hrs to 2300 hrs with community singing & supper from 2300 til 2359 hrs. Admission 1/6

FOUND - Small sum of money in Empire Theatre apparently lost night 11 Jun. Owner may have same by applying to manager of theatre.

CHURCH SERVICES - 0900 hrs General church parade - Held in large Theatre -
1100 hrs C of E - Town church - communion -
1100 hrs Presbyterian - Held in Town Presbyterian Church -

All the above times are for units close handy. Other units under own arrangements.

N.D.

APPX D

SECRET

Copy No. 19...

13 Jun 42.

25 AUST INF BDE OP INSTN No 23.

Ref maps - LANDSBOROUGH, CABOOLTURE, REDCLIFFE, SAIFORD, BRISBANE.

1" to one mile

INFL.

- 1. See Div Op Order No 1 att.

INTENTION.

- 2. 25 Bde Gp will prepare and occupy posns to carry out role allotted by 7 Aust Div.

METHOD.

- 3. Bn areas, limits of responsibility and roles.

- (a) 2/31 Aust Inf Bn area North of BEERBURRUM
1352

Roles.

- (i) Implement coast watching scheme as allotted in Bde Op Instn No 22.
- (ii) Attack any enemy landing on coast between excl mouth of COOCHIN CK. (2557) - incl mouth of NINGI CK. (2939).
- (iii) Delay any enemy move south astride main road and tracks to the east of it, before withdrawing south of CABOOLTURE into Bde res about BURPENGARY (1227).
- (iv) To be prepared to move under orders from Bde HQ and assist against landings in 2/25 and 2/33 Bn areas, and to launch counter attacks against enemy right & left flanks NW-NE of CABOOLTURE area S of CABOOLTURE
- (b) 2/25 Aust Inf Bn area

Roles.

- (i) Implement coast watching scheme as allotted in Bde Op Instn No 22.
- (ii) Attack any enemy landing on coast between excl NINGI CK. (2939) - incl DECEPTION BAY (2023).
- (iii) To prepare right bn sector of Bde defensive posn on S bank of CABOOLTURE R.
- (iv) To be prepared to move under orders from Bde HQ and assist against landings in 2/31 and 2/33 Bn areas.
- (c) 2/33 Aust Inf Bn area PETRIE (1514)

Roles.

- (i) Implement coast watching scheme as allotted in Bde Op Instn No 22.
- (ii) Attack any enemy landings on coast between excl DECEPTION BAY (2023) excl mouth of BRISBANE R. (3398).
- (iii) To prepare left bn sector of Bde defensive posn on south bank of CABOOLTURE R.
- (iv) To be prepared to move under orders Bde HQ to assist against enemy in 2/25 and 2/31 Bn areas.

Handwritten signature

A SQN 7 AUST CAV.

4. One tp to each bn for recce and delaying action Sqn
less three tps in Bde reserve.

2/6 Aust Fd Regt.

5. A bty under comd each bn.

A/Tk Bty.

6. A tp allotted under comd each bn with one tp in Bde reserve.

Engrs.

7. Bns to ask for advice on:- (a) demolitions in area
(b) improved communications

Field Amb.

8. WOODFORD area.

VDC.

9. In an emergency the following VDC units will come under comd 25 Aust Inf Bde. These units will be used in roles as set out below and will come under comd bn in that sector.

Serial No	Unit	Sub-unit	Concentration Area	Role	Unit under comd
1.	6 Bn	Two pls F Coy	WOODFORD	Move to Beerburrum and act under orders 2/31 Bn	2/31 Bn
2.	6 Bn	One Pl F Coy Two pls F Coy	WAMURAN CABOOLTURE	Move to & hold fords at 031395 030377, 075350	Bde
3.	2 Bn	A Coy B Coy C Coy	ASCOT ASCOT ASCOT	Patrol the coast line from 227212 to CABOOLTURE R.	2/25 Bn
4.	2 Bn	E Coy	REDCLIFFE SANDGATE	do	2/25 Bn
5.	2 Bn	D Coy	NUNDAH	Move to and hold crossings at 031395-030377-075350	Bde
6.	2 Bn	dets	DAYBORO-9723 MORAYFIELD-1133 MT MEE-9237 KALANGUR 154163	come under comd D Coy and assist in role given D Coy	Bde

Bde defensive posn - CABOOLTURE - area:-

10. (a) FDL's - general line of the CABOOLTURE R.
(NOTE) The line of the river will NOT be defended as for beach defence.
- (b) Fwd Bns
(1) Right - 2/25 Bn
(2) Left - 2/33 Bn

Bde defensive posn - CABOOLTURE - area contd

(c) Boundaries

- (1) Inter Bn boundary incl 2/25 Bn main ry line CABOOLTURE-MORAYFIELD.
- (11) Right boundary 2/25 Bn - incl line from 133358 to creek and track junc - 133336.
- (111) Left boundary 2/33 Bn - incl line from house 102365 - House - 101358 to track junc 101340.

(d) Bn posns will be prepared for all round defence.

(e) Arty

(1) Bty posns will be prepared in BURPENGARY (1227) - OAKLEY FLATS (0928) area.

(1) Bns will receive following arty support.

By day - defensive fire by a bty on each bn front. The third bty will be superimposed when an attack is put in.

By night - if an attack develops on a particular front the three btys will be used on that target.

(f) A/Tk Bty

A tp under comd each bn with one tp in Bde reserve.

(g) Reserve

2/31 Bn will move to a reserve posn in BURPENGARY area to protect the Fd Regt and remain mobile to enable counter-attack to be carried out round the flanks.

ADM

Separate order will be issued later.

INTERCOMM.

11. Bde HQ -

- (i) Remains in present posns
- (ii) On reports of imminence of landings moves to BELLMERE (0736) area.
- (iii) On advice of enemy moves by land from north moves to MORAYFIELD area.

ACK.

Signed at..15.00..hrs

Issued through Sigs

G. H. Larkins Capt.
A/BM 25 Aust Inf Bde.

DISTRIBUTION NO ATTACHMENT.

Unit	No	Unit	No
2/31 Aust Inf Bn	1	8 Aust Recovery Sec	9
2/25 Aust Inf Bn	2	2/4 Aust Fd Amb	10
2/33 Aust Inf Bn	3	7 Aust Div	11-12
A Sqn 7 Aust Cav	4	Comd	13
2/6 Aust Fd Regt	5	BM	14
6 Bty 2 A/Tk Regt	6	SC	15
2/5 Aust Fd Coy	7	Sig Offr	16
5 Coy AASC	8	File	17
		War Diary	18-19

- ROUTINE ORDERS -

By

- BRIG K.W. EATHER.DSO. COMD 25 AUST INF BDE -

Part 1.

179

18 Jun 42.

1. DUTIES -

19	Jun	42	2/25 Aust Inf Bn.
20	"	"	2/6 Aust Fd Regt.
21	"	"	2/33 Aust Inf Bn.
22	"	"	2/25 Aust Inf Bn.
23	"	"	2/6 Aust Fd Regt.
24	"	"	2/25 Aust Inf Bn.
25	"	"	2/33 Aust Inf Bn.
26	"	"	2/25 Aust Inf Bn.

2. ORDERS OF HIGHER FORMATIONS - Returns required by ROs of higher Formations will be prepared and forwarded through this HQ unless instns are received to the contrary.

3. REPATRIATION OF WIVES FROM ME - Repatriation Forms are now available at this HQ for the repatriation of wives of personnel married in the ME.

K. W. Eather CAPT
SC 25 AUST INF BDE

- NOTICES -

SUNDAY AFTERNOON CONCERT - REX THEATRE - Leave may be granted each Sunday afternoon in the terms of ERO 178 of 12 Jun 42. Last Sunday's Concert provided sufficient funds to buy one wireless set which will be presented at the next concert - Sunday 21 Jun 42 -

CRICKET GROUND - Arrangements have been made for the use of Newman's Cricket Ground on Sat afternoon's and Sundays. Applications for its use to be made to the CSM this HQ.

LEAVE FACILITIES BRISBANE - The following is a list of hostels etc in Brisbane open to AIF Tps :-

T.H. Adelaide St - CUSA (Saint Michaels) Adelaide St -
RSSAILA City Hall - Union Hall (Methodist) Turbot St -
At all of the above meals are available at 7d and 9d.
At the Union Jack Club Wickham Terrace (behind Trades Hall) tps can have accommodation for the sum of 2/- which includes supper, bed and breakfast -

At all of these hostels arrangements have been made for sewing to be done, laundry, reading, writing and games. At the Station there is a Y.A.L. Buffet where meals for tps are provided free.

CHURCH PARADES -

2/31 Aust Inf Bn - 0715 Holy Communion C of E -
" " " " - 0900 General Church Parade -

(2/25 Aust Inf Bn - 2/6 Aust Fd Regt - General Church Pde 0915 hrs
(To be held in 2/25 Aust Inf Bn Area -

2/33 Aust Inf Bn -

Holy Communion C of E 0700
Gen Parade 0900

Gen Church Parades other units to be held in Rex Theatre at 1000 hrs
C of E Holy Communion other units to be held in Caboolture C church at 1100 hrs

LOST - One swagger cane with initials J.D.L. engraved was lost during 2/31 Aust Inf Bn exercises. If found please return to this HQ.

ND.

APPX I

EXPERIMENTS IN JUNGLE WARFARE.

HQ 25 Aust Inf Bde
21 Jun 42.
GT/J/21.

HQ 7 Aust Div:

Progress in the above is reported as follows.

1. BREN GUN MOUNTING FOR QUICK ATTACHMENT TO TREES.

- (a) An attachment for clamping onto trees, and on which a bren gun could be rested for firing was developed by this HQ.
- (b) Mk I proved too heavy so a Mk II of lighter weight and incorporating various improvements was constructed.
- (c) A sketch of the finished article is att as appx "A"
- (d) While the attachment has many good points it is considered too heavy and unweildy to carry.
- (e) An alternative suggestion is to use the present sling on the bren, fastened round the tree, with an "S" hook on the end for easy fastening and unfastening. With one or two minor modifications, it would appear that this will serve the purpose admirably.
- (f) Experiments on these lines are continuing.

2. NEW PATTERN UNIFORM.

- (a) A new pattern uniform was designed and constructed. Its object was to eliminate all web equipment, and at the same time be lighter and cooler than the present uniform and equipment.
- (b) A sketch is att as appx "B"
- (c) This has not yet been properly tested, but appears to be unsuitable in its present form as it "drags" too much from the weight in the various pockets.
- (d) This uniform is being altered and further tested.

3. CLOTHING.

- (a) Numerous exercises have been carried out by this bde, the personnel wearing shorts and shirts, KD trousers and shirts and other combinations of clothing.
- (b) Shorts and stockings have proved most unsuitable in close country, the men getting considerably scratched and were very worried by mosquitoes and other pests.
- (c) Long sleeved shirts and KD trousers, with gaiters, proved the most satisfactory and it is considered that a loose fitting, long sleeved shirt with loose fitting KD trousers with wide bottoms for felling up and built more on the lines of the British battle dress would prove suitable.
- (d) Experiments on these lines are continuing.

4. MT.

- (a) Exercises incorporating the use of reduced MT are continuing.
- (b) The scale suggested by this HQ in our G05/31/5 has so far proved satisfactory.

5. HORSES.

- (a) These have just become available and are in poor condition.
- (b) It is estimated that it will be a fortnight before these will be ready for experiments on a large scale.

6. The following additional items will be experimented with as equipment becomes available.

- (a) Sandshoes
- (b) Rope soled shoes
- (c) Climbing equipment similar to PMG.
- (d) Unscoured wool socks
- (e) Improved pattern KD trousers.
- (f) Retaining belts for gunners in trees
- (g) "Bush knives for cutting scrub etc.
- (h) Suitability of present issue boots.
- (i) Salt tablets.
- (j) Protection from attack by ticks and other insects.

7. Suggestions being followed up include the following:

(a) Movement by Night.

Provision of luminous disc approx 2" in diameter, slung round neck on a cord and hung down each man's back during night movement.

(b) Crossing Water Obstacles.

That the present ground sheet should have a selvedge 6" wide cemented round the edge and a valve inserted. This would enable the owner to blow up the selvedge, making a kind of raft, on which to ferry across his clothing and eqpt.

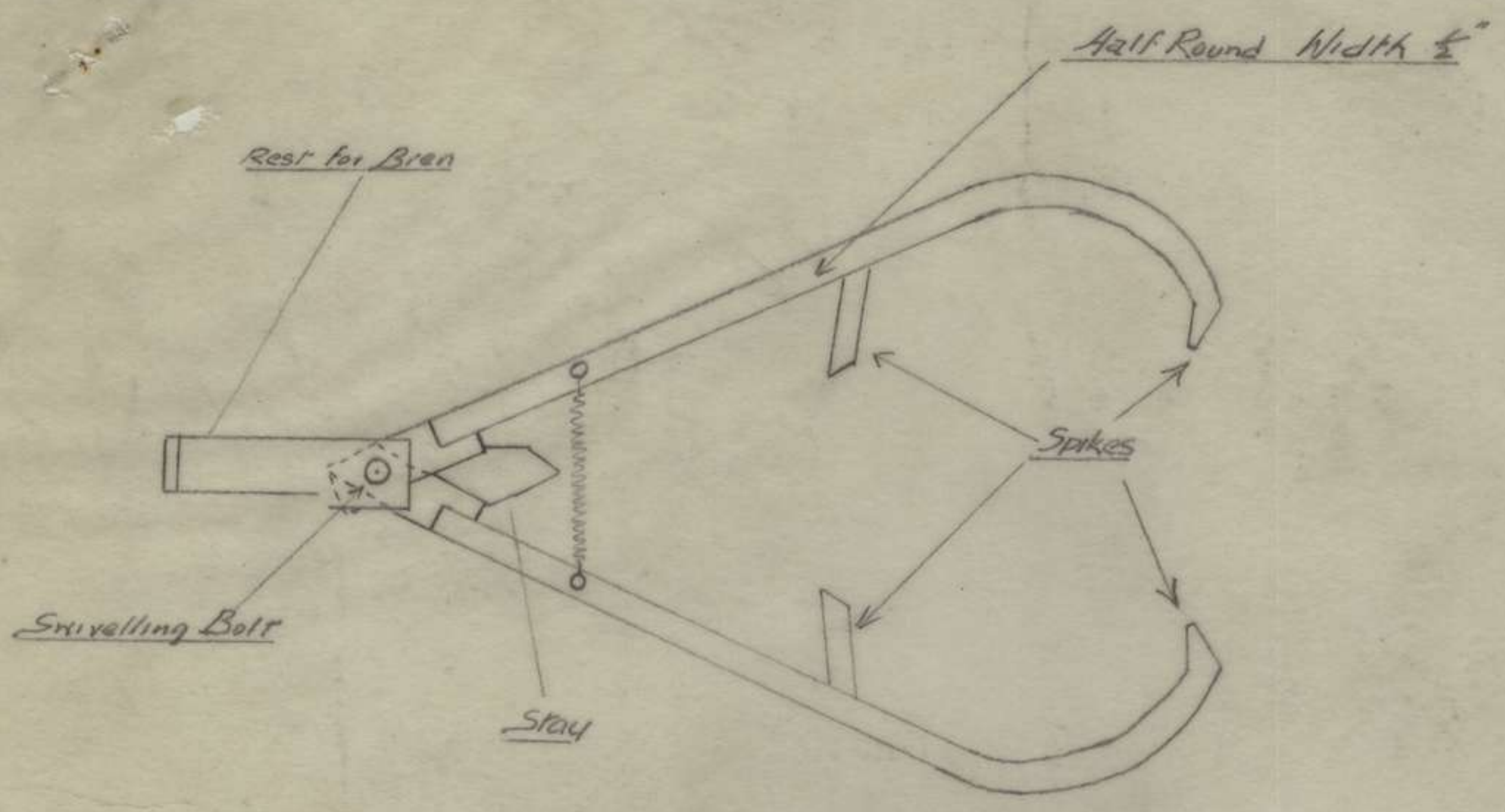
(c) Compasses.

(i) The present scale of issue of one per pl is considered inadequate.

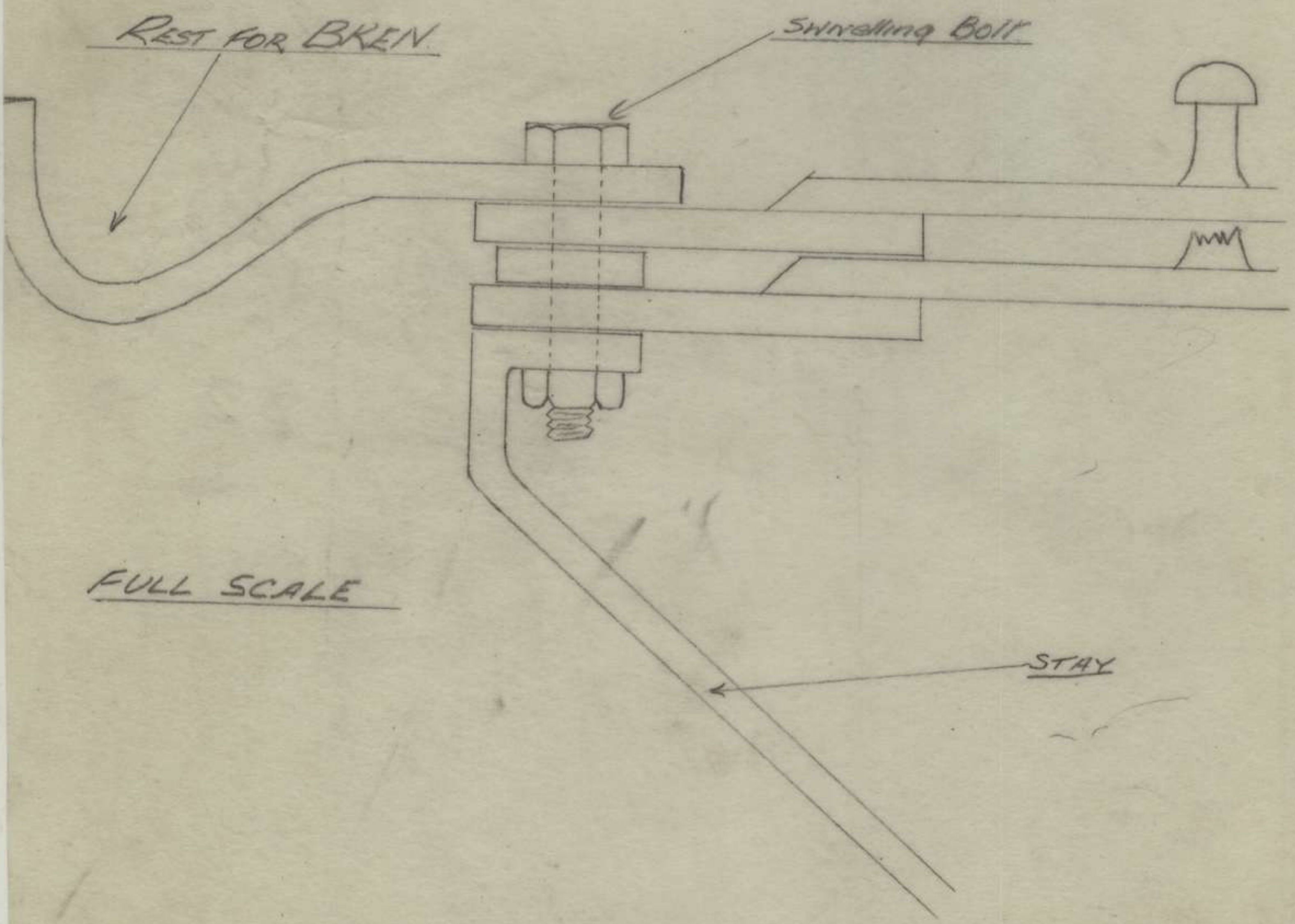
(ii) It is considered that the scale of issue should be one per sec.

Brig.
Comd 25 Aust Inf Bde.

APPENDIX (A)



SCALE = 1:4



LESSONS DRAWN FROM BDE EXERCISE No 5.

1. CONTACT IN CLOSE COUNTRY.

The fwd tps must use speed and determination when they contact the enemy. If the leading tps are NOT aggressive a couple of men can slow up the move of a complete bn. Control is essential and if secs or pls are too widely dispersed control cannot be maintained.

2. MOVEMENT ON TRACKS AND ROADS.

It was noted that some tps still move on tracks blocking freedom of movement of MT. If enemy air craft are active MT may need to move in short bounds from cover to cover - when halted all vehs must park clear of the track and be concealed from air. Drivers should dismount and be on the alert for signals to move out.

3. POSN OF BHQ IN ATTACK.

Bn comd should lay down a line of advance for BHQ including intermediate report centres. Certainly a report centre should be selected so that when bn objective is reached the coy comds know where to find the CO.

4. OCCUPATION OF DEFENSIVE POSN.

Many pls and coys were found to be too widely dispersed and NOT prepared for "all round" defence. Sub-units must be in mutual support.

5. "STAND TO"

It was found that tps lit fires and got under shelter from rain. It is better to get a wetting than have your throat slit! It is essential that pl comds insist on a strict "stand to".

6. RIVER CROSSING.

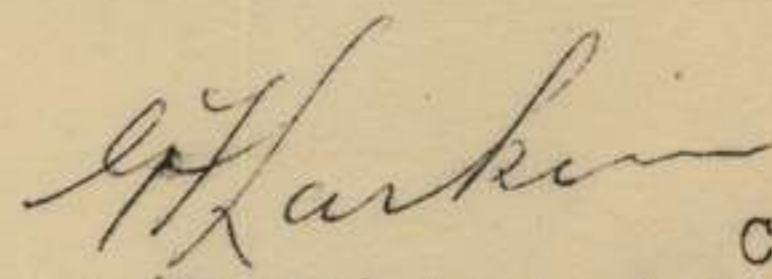
(i) Pls sat in groups on grassy slopes removing boots etc., dispersion must be used to its utmost, and covered routes used to the crossing.

(ii) It is essential to gain a "bridgehead" to protect a river crossing.

(iii) Surprise is essential and extremely effective - no chattering, laughing, etc.

7. COUNTER-ATTACK.

Orders given for occupation of a defensive posn must contain instns regarding counter attack.


Capt.
A/BM 25 Aust Inf Bde.

DISTRIBUTION:-

As for TNG INSTN No 16.

PART I. OBJECT AND LESSONS

25 AUST INF BDE

TACTICAL EXERCISE WITH TROOPS No 45

OBJECT.

To exercise Bn and Coy comds in recce, orders and procedure of:-

- (a) attack
- (b) outpost posn
- (c) movement in dense country

LESSONS TO BE TAUGHT

1. Time is a vital factor in battle. To achieve this object the essentials are:-

- (a) intelligent anticipation by all ranks
- (b) issue of warning orders
- (c) an organised system that avoids unnecessary delays

(I.T 1937/37 (1)

2. the plan should be simple and the recce and preparation should be thorough.

I.T 1937 81 (2)

3. In attacks in heavily timbered country the following are essential:-

- (a) flank or rear gives best chance of success
- (b) small dets have an effect out of proportion
- (c) our patrols must dominate those of the enemy
- (d) clothing and eqpt will be reduced to a minimum

TACTICAL METHODS
Part B para 3
"The Attack" - 1942

PRACTICAL EXERCISE WITH TROOPS No 5

- A. OPENING SITUATION - issued at 1800 hrs D-1.
- (1) The Japanese have opened their offensive against the east coast of QUEENSLAND.
 - (ii) An enemy force has landed at WIDE BAY and is moving SOUTH along the main GYMPIE - BRISBANE RD.
 - (iii) A Tac R states that an enemy fleet of tpts (approx 15 tpts) is moving south towards BRISBANE.
 - (iv) 18 and 21 Aust Inf Bdes have taken up a posn astride the main rd at COOROY.
 - (v) 25 Aust Inf Bde Gp will take up its battle stations immediately.

Reports when coys in posn:-

Bde HQ	-	MORAYFIELD
2/31 Aust Inf Bn	-	BEERBURRUM Area.
2/25 Aust Inf Bn	-	CABOOLTURE "
2/33 Aust Inf Bn	-	PETRIE "

- (vi) "B" Ech brigaded at WAMURAN 0242
At 2300 hrs D-1 a Bde L.O contacts CO 2/33 Aust Inf Bn and gives him the following infm.

- B. OPENING SITUATION - issued at 1800 hrs D-1.
1. (1) Forts at BRIBIE and MORETON IS have been put out of action by enemy air attacks.
 2. (ii) The enemy invasion fleet is approaching the north passage.
 3. (iii) Bde Comd wants you to attack any enemy landings which may take place in your area.

Further infm is given 2/33 Aust Inf Bn comd at 0400 hrs D1.

- C. 1. (v) The enemy have landed approx a Bde Gp at the following points:-

TOORBUL PT	-	3237
BEACHMERE	-	2230
DECEPTION BAY	-	2023
REDCLIFFE	-	2918

2. The main landing appears to be at DECEPTION BAY.

3. The Bde Comd wants you to:-

- (i) Stop any enemy movement from the REDCLIFFE area with the coy at present in posn at 225204. The HORNIBROOK HIGHWAY has been blown.
- (ii) Move the remainder of your bn to the DECEPTION BAY AREA and defeat the enemy in that area. Your objective is the ROAD from 189244 to 200242. ROUTE:- PETRIE - RD JUNC 152162 - X rds 154210 - 184219 thence to objective.
- (iii) You will move immediately.

- D. Strong enemy patrols harass the bn advance from X rds 154210 to 184219.
- E. Forward tps of 2/33 Aust Inf Bn Gp contact enemy forces on BRUCE HIGHWAY and are held up.
- F. When a Bn attack is launched the enemy withdraws to a posn on road between 189244 to 200242.
- G. 2/33 Aust Inf Bn is allowed to gain objective. At approx 1600 hrs D1 a Bde LO contacts 2/33 Aust Inf Bn comd and gives the following infm.
- H. (i) The enemy are landing strong forces at LAGUNA BAY and have forced 18 and 21 Aust Inf Bde to withdraw to the west leaving the main GYMPIE - BRISBANE Rd open.
- (ii) 2/31 Aust Inf Bn is holding a delaying posn astride the main rd at BEERBURRUM.
- (iii) 2/25 Aust Inf Bn is holding the enemy in the BEACHMERE - TOORBUL PT area.
- (iv) You will move immediately to prepared Bde defensive posn and occupy the left sector.
- (v) B Ech will move to SAMSONVALE - 088126.
- I. 2/33 Aust Inf Bn arrives in posn at approx 2000 hrs D1.
- J. At approx 0600 hrs D2 2/33 Aust Inf Bn receives the following orders:-
1. Tac R report states enemy of approx Bde strength advancing down main rd at LANDSBOROUGH towards BEERBURRUM.
 2. 2/25 Aust Inf Bn will withdraw into right sector of Bde defensive posn south of CABOOLTURE R.
 3. 2/33 Aust Inf Bn will remain in left sector of Bde defensive posn.
 4. V.D.C dets are patrolling the right flank.
 5. Cav and V.D.C dets are holding the crossings at 030395 - 030377 - 075350
- K. (i) At approx 0900 hrs a Bde LO gives the following infm to 2/33 Aust Inf Bn comd.
- (i) The enemy are pressing 2/31 Bn and have forced it to withdraw.
- (ii) 2/25 Bn is in posn in right sector of Bde defensive posn.
- (iii) 2/31 Bn broke off contact at ELIMBAH and is withdrawing to BURPENGARY.
- (iv) You will send out strong patrols to contact the enemy's tps and delay his advance.
- (v) B Ech will move to SAMSONVALE - 088126.
- L. At approx 1000 hrs a Bde LO will infm 2/33 Bn that 2/31 Bn has passed through the area on its way to BURPENGARY.
- M. At approx 1100 hrs D2 2/33 Bn patrols contacts enemy patrols and are forced to withdraw south of the CABOOLTURE R.

Part 11 (a) Contd.

SECRET.

- M (contd) At approx 1100 hrs D2 a bde L0 gives comd 2/33 bn the following infm:-
1. An enemy of approx bn strength appears to be in CABOOLTURE area.
 2. 2/31 bn is putting in an attack from the west.
 3. 2/31 bn objective is track from 135379 to 132363.
 4. 2/31 bn is moving immediately and should reach objective by 1400 hrs D2.
 4. 2/25 and 2/33 bns will be prepared to attack in a north-erly direction.
- N. At approx 1415 hrs D2 a bde L0 gives the following infm to comd 2/33 bn.
1. 2/31 bn has reached its objective but the enemy have withdrawn to the north.
 2. The br at 115358 has been destroyed, also ry br at 120362.
 3. Bde Comd wants 2/25 and 2/33 bns to attack.
 - (a) Objective
Line from tr junc 102406 to creek and ry junc 113406 - creek and tr junc 130403.
 - (b) Boundary
Inter bn boundary incl 2/25 bn - CABOOLTURE - ELIMBAH ry line.
 - (c) Start Line
Rd - 100368 - 116365 - 132361.
 - (d) Start Time
1630 hrs D2.
 - (e) Direction of attack.
Grid north.
 - (f) Arty
A bty in support of each bn.
- O. Light enemy patrols forced to withdraw north of KING JOHN'S Creek by attacking force.
- P. At 1830 hrs D2 a bde L0 gives 2/33 bn comd the following infm:-
1. Tac R timed 1730 hrs D2 reports enemy inf column, approx bde strength advancing south down main rd at BEERBURRUM.
 2. Bde Comd intends to withdraw south of CABOOLTURE R into prepared bde defensive posns.
 3. 2/33 bn and 2/25 bn will withdraw forthwith to left and right sectors of defensive posn.
 4. 2/31 bn will commence withdrawal at 1930 hrs D2 and move into res at BURPENGARY.
Route.
West through CABOOLTURE then via rd junc 058369 - rd junc 076338 - MORAYFIELD - BURPENGARY.
- Q. Enemy patrols will be active along north bank of CABOOLTURE R throughout night D2/D3.
- R. At 0500 hrs D3 enemy attacks with a coy the left flank of 2/33 bn. Enemy will withdraw when a counter attack is launched by 2/33 bn.
- S. Enemy patrols will harass the rear of 2/33 bn until 1300 hrs D3, when the exercise ends.
- T. 1400 hrs D3, exercise ends.

Day	Time	Location	Event
D-1	0830	Bde HQ	Umpires and OC enemy conference.
D-1	1800	PETRIE	Opening situation issued - 2/33 Bn moves to battle stations.
D-1	2300	"	Narrative I issued
D1	0400	"	Narrative II issued - Bn ordered to move to DECEPTION BAY.
D1	0800	154210-184219	Enemy patrols harass bn.
D1	1000	BRUCE HIGHWAY 187237-197232	Leading tps held up - Bn forced to attack.
D1	1300	DECEPTION BAY	Bn gains objective - rd from 189244 - 200242.
D1	1600	DECEPTION BAY	Narrative III issued - Bn ordered to CABOOLTURE.
D1	2000	South of CABOOLTURE	Bn arrives in posn and occupies defensive posn.
Night D1/D2		"	Spent in defensive posn.
D2	0600	"	Narrative IV issued
D2	0900	"	Narrative V issued
D2	1000	"	Narrative VI issued
D2	1100	North of CABOOLTURE	Enemy patrols become active
D2	1100	"	Narrative VII issued - 2/33 bn warned may have to attack.
D2	1415	South of CABOOLTURE	2/33 bn ordered to attack - Narrative VIII issued
D2	1630	CABOOLTURE	2/33 bn attack commences
D2	1800	"	Objective reached
D2	1830	"	Narrative IX issued - 2/33 bn ordered to withdraw to defensive posn.
D2	2030	"	2/33 bn arrives in defensive posn
Night D2/D3		"	Enemy patrols active north of river.
D3	0500	"	Enemy attack on left flank of 2/33 bn.
D3	0800- 1300	"	Enemy patrols active against rear of 2/33 bn.
D3	1400	"	Exercise ends.

SEE ALSO GENERAL INSTNS AND FORECAST OF EVENTS.

Umpires are allotted as under:-

- | | | | |
|-----|-----------------------------|-----|-------------|
| (a) | Director and Chief Umpire | | Bde Comd. |
| | Assistant Chief Umpires (2) | | BM & LO. |
| | <u>Rifle Coy Umpires.</u> | | |
| | A Coy (2) | and | 2/25 Bn |
| | B Coy (2) | and | 2/25 Bn |
| | C Coy (2) | and | 2/31 Bn |
| | D Coy (2) | and | 2/31 Bn |
| | Cav Tp Umpire | | 7 Aust Cav |
| | A Tk Tp Umpire | | 2 A Tk Regt |
| | Carrier Umpire | | 2/25 Bn |
| | Mortar Umpire | | 2/31 Bn |
| | Sig Umpire | | Bde HQ |
| | B Ech Umpire | | Bde HQ |
| | Enemy Umpire | | Bde HQ |

(b) Umpires will report to their respective sub-units at 1800 hrs D-1 and move with those units subject to instns issued in PART III (c).

PART III (b)

INSTNS TO UNPIRES - GENERAL.

1. Umpires selected for the exercise will report to Bde HQ at 0830 hrs D-1 for conference.
2. Umpires will be required for an initial conference one hour prior to any conference ordered by Director (see GENERAL INSTNS) in addition to those laid down in INSTNS TO UNPIRES - DETAILED.
3. In addition to detailed instns given in the following paras, umpires will note exact time of all moves, orders, messages etc.
4. The Director's car will be marked with a large Sigs flag.

<u>Serial</u>	<u>Approx Time</u>	<u>Remarks</u>
1.	2300 D-1	Narrative I issued
2.	0400 D1	Narrative II issued - Bn ordered to DECEPTION BAY. Note orders given and action by sub-units.
3.	0800 D1	At 154210 to 184219 enemy patrols harass the bn advance but are forced to withdraw. Note action by sub-units.
4.	1000 D1	Strong enemy force encountered on BRUCE HIGHWAY - 187237 - 197232. Leading tps held up, bn forced to develop an attack. Enemy withdraw when attack develops. Note movement of R & O Gps, any orders etc.
5.	1300 D1	Bn allowed to gain objective - RD from 189244 to 200242. Note method of consolidation, patrols etc.
6.	1600 D1	Narrative III issued - bn ordered to CABOOLTURE. Note orders, movement by sub-units etc.
7.	2000 D1	Bn arrives in defensive posn - note method of occupying posn by sub-units.
8.	Night D1/D2	Note any orders for patrols, sentries etc.
9.	0600 D2	Narrative IV issued
10.	0900 D2	Narrative V issued
11.	1000 D2	Narrative VI issued
12.	1100 D2	Enemy patrols become active and force bn patrols to withdraw south of CABOOLTURE R.
13.	1100 D2	Narrative VII issued - 2/33 Bn warned may have to attack in northerly direction - note orders.
14.	1415 D2	Narrative VIII issued - 2/33 Bn ordered to attack. Note orders, movement etc. Enemy will be forced to withdraw as bn advances.
15.	1630 D2	2/33 Bn attack commences - note formations
16.	1800 D2	2/33 Bn reaches objective.
17.	1830 D2	Narrative IX issued - Bn ordered to withdraw - note orders, method of withdrawal etc.
18.	2030 D2	2/33 Bn arrives in defensive posn.
19.	Night D2/D3	Enemy patrols active on north bank of river. Note bn orders for patrols, stand to, etc.
20.	0500 D3	Enemy attacks left flank of 2/33 Bn. Attack will be driven off when 2/33 Bn puts in a counter-attack. Note method of counter-attack.
21.	0800-1300 D3.	Enemy patrols active against left flank and rear of 2/33 Bn. Patrols will be driven off. Note counter measures taken by 2/33 Bn.
22.	1400 D3	Exercise ends.

A. ADM

1. You have the following tps under comd:-
Two rifle coys (Motorised).
2. You will carry cooking gear.
3. Rations and water for the complete period will be carried by you, no additional rations will be carried.
4. You will be in posn 1 at 0600 hrs D1.
5. Your tps will wear red hat bands and each sec will carry a mirror and fireworks.
6. In all posns, you will use mirrors and blanks to indicate your posn.
7. Senior Coy Comd will be OC Enemy.

B. TACTICAL

1. Posn 1 - (RD - 154210 to 184219)
 - (a) You will send out three patrols to operate against the Bn as it advances along the road. Patrols will harass the bn's advance.
 - (b) You will indicate your posns by firing blanks and flashing mirrors.
 - (c) When bn reaches the point 184219 the patrols will move back to BRUCE HIGHWAY - 187237 - 197232.
2. Posn 2 - BRUCE HIGHWAY 187237 - 197232.
 - (a) You will take ^{up} posns and hold up the bn fwd tps on the line of BRUCE HIGHWAY.
 - (b) You will indicate your posns by firing blanks and flashing mirrors.
 - (c) When a bn attack is launched you will withdraw to next posn.
3. Posn 3 - DECEPTION BAY.
 - (a) You will take up a posn at DECEPTION BAY and hold up the leading tps.
 - (b) When bn outflanks you, you will withdraw to posn 4.
 - (c) Bivouac night D1/D2 at ELIMBAH - 1145
4. Posn 4 - CABOOLTURE
 - (a) You will send out patrols at 1030 hrs D2 to force all 2/33 bn patrols which are north of CABOOLTURE R to withdraw south of the river.
 - (b) Your patrols will be active along the north bank of the river until 1300 hrs D2, when they will withdraw to a posn along line 098390 - 110386 facing south.
 - (c) As 2/33 bn attack advances, the enemy will withdraw gradually and RV at ELIMBAH.
 - (d) Enemy patrols will be active during night D2/D3 along north bank of CABOOLTURE R.
5. Posn 5 - South of CABOOLTURE.
 - (a) You will put in a coy attack at 0500 hrs D3 against the left flank of 2/33 bn from the SW.
 - (b) You will withdraw when 2/33 bn counter-attacks.
 - (c) You will use your remaining coy to send out patrols from 0800 to 1300 hrs D3 against the left flank and rear of 33 bn. At 1300 hrs D3 you will RV your coys and return to your unit.

Ref maps LANDEBOROUGH - CABOOLTURE - REDCLIFFE - SAMFORD1" to 1 mile

1. A tactical exercise with troops designed to test 2/33 Bn in movement in dense country, attack and defence, held from 20/22 Jun 42. The exercise is based on the operational roles of 2/33 Bn.
2. UMPIRES
 - (a) Units will supply umpires as under. Umpires are to be supplied with tpt by units as shown below:-

Bn to supply umpires	Umpires required	Tpt required	Remarks
2/25 Bn	5	2 vans	One to be carrier umpire
2/31 Bn	5	2 vans	" " " mortar "
A Sqn 7 Aust Cav	1	1 van	To be Cav tp umpire
6 Bty 2 A/Tk Regt	1	1 van	" " A/Tk " "

 - (b) Umpires are to be Capts or senior subalterns except in the case of mortar and carrier umpires, where Offrs who have some experience with mortars and carriers will be selected.
 - (c) Names of umpires are to be fwded to HQ 25 Aust Inf Bde as soon as possible.
 - (d) Umpires will take camp kit. White armbands are to be worn on each arm and vans are to carry a white flag 1 ft square.
 - (e) Umpires will carry three days rations and will have meals with sub units.
 - (f) Umpires will report in tpt at HQ 25 Aust Inf Bde at 0830 hrs D-1 for conference.
3. ENEMY

Enemy will be represented by a rifle coy from ^{and 2/31 Bn)} 2/25 Bn. Enemy will be motorised by unit supplying them and will take camp gear and cooking gear (notents). Supplies and water will be carried by enemy under directions from Bde HQ to be issued later. Enemy truck will carry a red flag 1 ft square. OC Enemy will report to Bde HQ at 0830 hrs D-1 for conference.
4. REPRESENTATION OF FIRE

Each Bren gunner will be supplied with a mirror to represent LMG fire. This will apply to both enemy and attackers. One man in each sec of bn being exercised will carry one red and one blue flag in lieu of rifle.
5. BALL AMN

No ball amn will be carried by any individual personnel.
6. DRESS

Own troops - Battle order incl steel helmets.
Enemy troops - Battle order with felt hats, wearing red hat bands to be supplied by units.
7. SUPPORTING ARMS

Fd Regt represented by BC and staff, Cav tp and A/Tk tp allotted to 2/33 Bn represented on ground.

8. CONFERENCES In order to get the best value from the exercise, conferences will be held as under for units being exercised.

Date	Time	Location	Held by	Remarks
D-1	As arranged by unit		Unit being exercised.	All ranks - general discussion by CO to explain opening situation.
Day after completion of exercise	1500	Bde HQ	do	All offrs - lessons arising from exercise.

NOTE - UMPIRES and OC ENEMY will attend all conferences.

9. BOUNDS - All towns are out of bounds to all ranks throughout the exercise.
10. FENCES - (a) NO fences will be cut during the exercise if there are gates in the vicinity through which access to area can be obtained.
 (b) If as a last resort the fence is cut, it will be repaired immediately the tps have passed through.
 (c) NO fence with sheep or rabbit wire attached will be cut in any circumstances.
11. DIGGING- (Policy) - Digging may be carried out where required. holes will be filled in on final day by unit being exercised.
12. SIGNALS- (a) Bde sig offr will establish a Bde Sig Office and provide W/T comn between the Director and Bn HQ. Bns will despatch all messages to Bde and other units through this Sig Office.
 (b) Bde sig offr will allot frequencies on D-1.

TACTICAL EXERCISE WITH TROOPS No 4

OBJECT.

To exercise Bn and Coy comds in recce, orders and procedure of:-

- (a) attack
- (b) outpost posn
- (c) movement in dense country

LESSONS TO BE TAUGHT

1. Time is a vital factor in battle. To achieve this object the essentials are:-

- (a) intelligent anticipation by all ranks
- (b) issue of warning orders
- (c) an organised system that avoids unnecessary delays

(I.T 1937/37 (1)

2. the plan should be simple and the recce and preparation should be thorough.

I.T 1937 81 (2)

3. In attacks in heavily timbered country the following are essential:-

- (a) flank or rear gives best chance of success
- (b) small dets have an effect out of proportion
- (c) our patrols must dominate those of the enemy
- (d) clothing and eqpt will be reduced to a minimum

TACTICAL METHODS
Part B para 3
"The Attack" - 1942

TACTICAL EXERCISE WITH TROOPS No 4

- A. Opening situation - issued at 1800 hrs D-1
- (i) The Japanese have opened their offensive against the east coast of QUEENSLAND.
 - (ii) A bridgehead has been captured at TOWNSVILLE but the Japanese progress is being held up by 5 Div.
 - (iii) At 1800 hrs D-1 25 Aust Inf Bde is situated as follows:-

Bde HQ	- MORAYFIELD
2/31 Aust Inf Bn Gp	- BEERBURRUM
2/25 Aust Inf Bn Gp	- CABOOLTURE
2/33 Aust Inf Bn Gp	- PETRIE
 - (iv) Bns will "Stand To" until further notice.

At 0400 hrs D1 Comd 25 Aust Inf Bde issues orders which incl the following infm:-

B. INFM

1. Enemy are landing at following points :-

TOORBUL PT	3237
BEACHMERE	2330
DECEPTION BAY	2023
REDCLIFFE	2938

The main enemy landing appears to be at BEACHMERE of approx a bn strength.

- 2. Enemy have also landed in strength at HERVEY BAY and are advancing south down main GYMPIE - BRISBANE RD.
- 3. 18 & 21 Aust Inf Bdes are holding a posn astride main rd in COOROY area.
- 4. 2/25 Aust Inf Bn is holding a posn with two coys astride BEACHMERE - CABOOLTURE RD at 207325.

INTENTION

5. 25 Aust Inf Bde Gp will defeat the enemy forces landed in 25 Bn area.

METHOD

- 6. 2/25 Bn will stop the enemy advance along the BEACHMERE - CABOOLTURE RD with the two coys in posn at 207325. One coy will be sent to TOORBUL PT to hold enemy there. Remaining coy will delay any enemy advance from DECEPTION BAY towards CABOOLTURE.
- 7. 2/33 Bn will hold the enemy with one coy astride rd at 228203. Remainder of 2/33 Bn will move to DECEPTION BAY area and defeat the enemy in that area.
- 8. 2/31 Bn will concentrate at BEERBURRUM and move in MT to tr junc 176398. Debuss and move to attack the enemy at BEACHMERE from the north:-

- (a) Objective - Line through 220314 - 231320.
- (b) Route - BEERBURRUM - ELIMBAH 1145 - Rd and Tr Junc 114442 - RD JUNC - 132405 - TR JUNC - 176398 - TR JUNC 214374 - HOUSE - 224355 to objective.
- (c) START POINT RD JUNC - 123515
- (d) START TIME - 0500 hrs
- (e) Speed and Density - at discretion of Bn Comd.
- (f) LIGHTS - no lights to be used.

TPT

9. A sec from tp carrying coy AASC will report to 2/31 Bn at BEERBURRUM at 0430 hrs D1. On tps debussing at TR JUNC 176398 the sec will return to CABOOLTURE and revert to AASC comd.

ADM

10. Bn "B" Ech's will be brigaded at WAMURAN - 026421.

11. No blankets - G.S and (G.C on coy truck)

12. Other adm details by signal.

INTERCOMN

13. Bde HQ at MORAYFIELD.

- C. 2/31 Bn Comd issues his orders at approx 0415 hrs and unit prepares to move at 0500 hrs D1.
- D. At approx 0545 hrs D1 Bn debusses at TR JUNC 176398, and moves towards BEACHMERE. At 0545 hrs approx the Bde LO contacts the Bn comd and gives him the following infm:-
- E. (i) 2/25 Bn is successfully holding the enemy advance along the BEACHMERE RD at 207325.
(ii) 2/25 Bn has contacted the enemy at 308362 and is holding up their advance to the west.
- F. 2/31 Bn contacts small enemy patrols at 211374 and forces them to withdraw towards BEACHMERE.
- G. Stronger enemy patrols are contacted throughout the move from 211374 to bn objective but are beaten off.
- H. At approx 1045 hrs D1 the bn reaches the objective, and consolidates.
- I. At approx 1300 hrs D1 the enemy attacks 2/31 Bn from its most open flank. The attacker is driven off.
- J. During the afternoon the enemy will harrass the bn with strong patrols.
At approx 1700 hrs a Bde LO will contact the Bn Comd and give the following infm:-
- K. 1. The 2/25 Bn has mopped up the enemy on TOORBUL PT.
2. The 2/33 Bn is holding the enemy at DECEPTION BAY.
3. 18 and 21 Bdes are being hard pressed by strong enemy force at COOROY.
4. Bde Comd wants you to move forthwith and re-occupy your original delaying posn at BEERBURRUM.
- L. At 1900 hrs D1 a Bde LO gives the following infm to the Bn Comd.
1. Enemy activity has ceased in BEACHMERE- DECEPTION BAY and REDCLIFFE areas.
 2. 18 and 21 Aust Inf Bdes have been forced to withdraw to the west.
 3. 25 Aust Inf Bde Gp will prevent any further enemy advance down main GYMPIE - BRISBANE RD at CABOOLTURE.
 4. 2/25 Bn will occupy right sector and 2/33 Bn left sector of Bde defensive area south of CABOOLTURE R.
 5. 2/31 Bn will move to BEERBURRUM immediately and take up a delaying posn to delay the enemy as long as possible at BEERBURRUM then withdraw into Bde Res at BURPENGARY.
 6. A tp carrying sec AASC will meet 2/33 Bn at DECEPTION BAY at 1930 hrs D1. 2/33 Bn will move in MT from there to MORAYFIELD via main rd, debuss and move up to defensive posn
 7. "B" Ech will be moved to SAMSONVALE - 014139.

PART II (a) contd:

- M. Bn arrives in posn at approx 2300 hrs D1.
- N. At 1100 hrs D2 enemy patrols will make contact with 2/31 Bn and force patrols from the bn back.
- O. At 1230 hrs D2 2/31 Bn will be forced to withdraw because of a strong enemy attack on left flank and rear.
- P. Enemy will keep pressing the bn until it passes through ELIMBAH.
- Q. At approx 1500 hrs D2 a Bde LO will give the following infm to bn comd.
- R. 1. 2/25 and 2/33 Bns are now in Bde defensive posn.
2. You will move back to BURPENGARY passing through CABOOLTURE. Bridge at 116359 has been destroyed.
- S. Bn spends night D2/D3 in outpost posn in BURPENGARY area.
- T. At approx 0400 hrs D3 bn comd receives the following orders:

INFM

1. 18 and 21 Bdes are attacking the enemy supply lines in the NAMBOUR - YANDINA area.
2. 2/25 and 2/33 Bns are holding the enemy on the line of CABOOLTURE R.
3. Dets VDC and Cav Sqn are holding the crossings at 030377 and 030395 and have driven off small enemy patrols.
4. VDC on right flank are patrolling from DECEPTION BAY to CABOOLTURE R.

INTENTION

5. 2/31 Bn will counter attack on west flank

METHOD

6. ROUTE - MORAYFIELD - RD JUNC 077339 - BELLMERE - RD JUNC - 025365 - WAMURAN - 0212 - MOODLU 0739 - CABOOLTURE.

OBJECTIVE

7. TR-135379 to 132362.

TPT

8. A tp carrying sec AASC will report to you at 0500 hrs D3 at BURPENGARY. You will embuss immediately and debuss at RD JUNC 025365.

START LINE

9. For attack:- TR - from 098391 to 095373

START TIME

10. For attack:- 1100 hrs (zero)

ARTY

11. (i) Arty btys will revert to Comd 2/6 Fd Regt.
(ii) Arty will fire by observation on CABOOLTURE AREA to assist the attack.

ADM

12. Details by signal.

INTERCOMIN

13. Bde HQ as at present.

ACK.

- U. The enemy withdraws gradually in the face of the attack towards BEACHMERE.
- V. Bn gains objective at approx 1300 hrs D3. When bn has consolidated its posn the exercise will end.

PART II (b)

FORECAST OF EVENTS

DAY	TIME	LOCATION	EVENT
D-1	0830	BDE HQ	Umpires and OC Enemy - view of gd
D-1	1800	BEERBURRUM	Opening situation issued
D1	0400	"	Narrative No 1 issued - orders to move to BEACHMERE.
D1	0500	"	Bn embusses
D1	0545	TR JUNC 176398	Bn debusses; Narrative No 2 issued
D1	0630	211374	Enemy patrols contacted
D1	1045	BEACHMERE	Bn reaches objective
D1	1300	"	Enemy attack driven off
D1	1700	"	Narrative No 3 issued
D1	1900	"	Narrative No 4 issued - Bn ordered to BEERBURRUM.
D1	2300	BEERBURRUM	Bn arrives in posn
D2	1100	"	Enemy patrols contacted
D2	1230	"	Bn forced to withdraw
D2	1500	ELIMBAH	Narrative No 5 issued - Bn moves to BURPENGARY
Night D2/D3		BURPENGARY	Bn in outpost posn
D3	0400	"	Narrative No 6 issued - Bn ordered to attack
D3	0500	"	Bn embusses
D3	0630	RD JUNC - 025365	Bn debusses
D3	1100	098391- 095373	Bn crosses Start Line
D3	1300	135379- 132362	Bn reaches objective and consolidates
D3	1500	CABOOLTURE	Exercise ends

.....

See also GENERAL INSTNS AND SEQUENCE OF EVENTS

Umpires are allotted as under :-

- (a) Director and Chief Umpire Bde Comd
- Assistant Chief Umpires (2) BM & LO

Rifle Coy Umpires.

- | | | |
|-----------------|-----|-------------|
| A Coy (2) | and | 2/25 Bn |
| B Coy (2) | and | 2/25 Bn |
| C Coy (2) | and | 2/33 Bn |
| D Coy (2) | and | 2/33 Bn |
| Cav Tp Umpire | | 7 Aust Cav |
| A T/K Tp Umpire | | 2 A/Tk Regt |
| Carrier Umpire | | 2/25 Bn |
| Mortar Umpire | | 2/33 Bn |
| Sig Umpire | | Bde HQ |
| B Ech Umpire | | Bde HQ |
| Enemy Umpire | | Bde HQ |

(b) Umpires will be taken over the ground prior to the commencement of the exercise.

(c) Umpires will report to their respective sub-units at 1800 hrs D-1 and move with those units subject to instns issued in PART III (c).

PART III (b)

INSTNS TO UMPIRES - GENERAL

1. Umpires selected for the exercise will report to Bde HQ at 0830 hrs D-1 for conference and view of ground.
2. Umpires will be required for an initial conference one hour prior to any conference ordered by Director (See GENERAL INSTNS) in addition to those laid down in INSTNS TO UMPIRES - DETAILED.
3. In addition to detailed instns given in following paras, umpires will note exact time of all moves, orders, messages etc.
4. The Director's car will be marked with a large Sigs flag.
5. The DS Camp for each situation will be indicated to umpires on the ground.

INSTNS TO UMPIRES - DETAILED

Serial	Approx time	Remarks
1	0400 hrs D1	Narrative No 1 issued
2	0500 hrs D1	Bn Gp crosses Start Line - note method of embussing and order of march
3	0545 hrs D1	Narrative No 2 issued Bn debusses - note method of dispersion - order of march
4	0630 hrs D1	At 211374 Bn fwd tps contact enemy patrols - note action by fwd tps Enemy patrols will be forced to withdraw. Enemy patrols will be met during Bn advance from 211374 to BEACHMERE. Note action by sub-units etc as each enemy patrol is contacted.
5	1045 hrs D1	Bn allowed to reach BEACHMERE. Note means of consolidation and patrols sent out by units. Note any orders given and movement of R & O Gps
6	1400 hrs D1	Umpires conference at RD and TR JUNC 211322
7	Afternoon D1 to 1700 hrs	Enemy patrols active - note action by sub-units - patrols
8	1700 hrs D1	Narrative No 3 issued - note orders and movement
9	1900 hrs D1	Narrative No 4 issued.
10	2300 hrs D1	Bn arrives in posn - note orders and method of taking up posns.
11	1100 hrs D2	Enemy patrols active - note method of passing infm back and any action by sub-units.
12	1230 hrs D2	Enemy attacks from west - Bn will be forced to withdraw. Enemy patrols will keep contact with Bn until Bn has passed through ELIMBAH. Note method of withdrawal orders etc.
13	1500 hrs D2	Narrative No 5 issued
14	1900 hrs D2	Umpires conference Bde HQ - 112386
15	Night D2/D3	Bn in posn at BURPENGARY - note method of taking up posn - patrols etc.
16	0400 hrs D3	Narrative No 6 issued - orders to attack from west flank, through CABOOLTURE - note orders etc.
17	0500 hrs D3	Tp carrying sec reports to Bn Comd - note method of embussing, dispersion, rd discipline and debussing.
18	1100 hrs D3	Attack crosses Start Line - note method of approaching Start Line and all orders.
19	1300 hrs D3	Bn allowed to gain objective - note method of consolidation.
20	1500 hrs D3	Exercise ends.
21	1400 hrs day after completion of exercise	Umpires conference at Bde HQ

A. ADM

1. You have the following tps under comd - one rifle coy (motorised).
2. You will carry cooking gear.
3. Rations and water for the complete period will be carried.
4. You will be in posn I by 0600 hrs DI. Your tpt will be left at 201330.
5. Your tps will wear red hatbands and each sec will carry a mirror and fireworks.

B. TACTICAL1. Posn 1 - BEACHMERE.

- (a) You will send out patrols to operate against 2/31 Bn as it advances. You will first contact the bn at 211374 and maintain contact until 2/31 Bn reaches BEACHMERE.
- (b) You will indicate your posns by firing blanks and flashing mirrors.
- (c) When 2/31 Bn has reached BEACHMERE you will maintain patrols to locate the 2/31 Bn dispositions.
- (d) At 1300 hrs you will attack 2/31 Bn with two pls from its most open flank. The attackers will be driven off.
- (e) At 1700 hrs you will cease patrolling and move in MT to a posn 5 miles north of BEERBURRUM.

2. Posn 2 - BEERBURRUM.

- (a) At 1100 hrs D2 you will send out light patrols down the Main Rd - GYMPIE - BRISBANE to contact 2/31 Bn.
- (b) At 1230 hrs D2 you will put in two pl attacks from a westerly direction. You will keep pressing 2/31 Bn until it commences to withdraw then maintain contact until 2/31 Bn reaches ELIMBAH - 1115 when you will withdraw and pick up your tpt in preparation to move to posn 3.

3. Posn 3 - CABOOLTURE.

- (a) You will be in posn on the west of CABOOLTURE along line 100383 - 100376 by 1000 hrs D3.
- (b) You will withdraw gradually under pressure from the attackers to 148366.
- (c) You will indicate your posns by firing blanks and flashing mirrors. At 1400 hrs D3 you will return to your unit.

.....

Ref maps LANDSBOROUGH- CABOOLTURE- REDCLIFFE- SAMFORD1" to 1 mile

1. A tactical exercise with troops designed to test 2/31 Bn in movement in dense country and attack will be held from 15/18 Jun 42.

2. UMPIRES

(a) Units will supply umpires as under. Umpires are to be supplied with tpt by units as shown below:-

Bn to supply umpires	Umpires required	Tpt required	Remarks
2/25 Bn	5	2 vans	One to be carrier umpire
2/33 Bn	5	2 vans	" " " mortar "
A Sqn 7 Aust Cav	1	1 van	To be Cav tp umpire
6 Bty 2 A/Tk Regt	1	1 van	" " A/Tk " "

(b) Umpires are to be Capts or senior subalterns except in the case of mortar and carrier umpires, where offrs who have some experience with mortars and carriers will be selected.

(c) Names of umpires are to be fwded to HQ 25 Aust Inf Bde as soon as possible.

(d) Umpires will take camp kit. White armbands are to be worn on each arm and vans are to carry a white flag 1 ft square.

(e) Umpires will carry three days rations and will have meals with sub units.

(f) Umpires will report in tpt at HQ 25 Aust Inf Bde at 0830 hrs D-1 for view of ground. Umpires will carry a cut lunch.

3. ENEMY

Enemy will be represented by a rifle coy from 2/33 Bn. Enemy will be motorised by unit supplying them and will take camp gear and cooking gear (no tents). Supplies and water will be carried by enemy under directions from Bde HQ to be issued later. Enemy truck will carry a red flag 1 ft square.

OC Enemy will report to Bde HQ at 0830 hrs D-1 for view of ground and will carry a cut lunch.

4. REPRESENTATION OF FIRE

Each Bren gunner will be supplied with a mirror to represent LMG fire. This will apply to both enemy and attackers. One man in each sec of bn being exercised will carry one red and one blue flag in lieu of rifle.

5. BALL AMN

No ball amn will be carried by any individual personnel.

6. DRESS

Own troops - Battle order incl steel helmets

Enemy troops - Battle order with felt hats, wearing red hat bands to be supplied by units.

7. SUPPORTING ARMS

Fd Regt represented by BC and staff, Cav tps and A/Tk tps represented on ground, AASC tp carrying sdc will be supplied by 5 Coy AASC.

PART III (d) contd

8. CONFERENCES - In order to get the best value from the exercise, conferences will be held as under for units being exercised.

<u>Date</u>	<u>Time</u>	<u>Location</u>	<u>Held by</u>	<u>Remarks</u>
D-1	As arranged by unit		Unit being exercised	All ranks - general discussion by CO to explain the opening situation.
D1	1500	Bn HQ	do	All Offrs - lessons arising from exercise.
Day after completion of exercise	1500	Bde HQ	do	All Offrs - lessons arising from exercise.

NOTE UMPIRES and OC ENEMY will attend all conferences.

9. BOUNDS - All towns are out of bounds to all ranks throughout the exercise.
10. FENCES - (a) NO fences will be cut during the exercise if there are gates in the vicinity through which access to area can be obtained.
(b) If as a last resort a fence is cut, it will be repaired immediately the troops have passed through.
(c) NO fence with sheep or rabbit wire attached will be cut in any circumstances.
11. DIGGING- (Policy) - Digging may be carried out where required. Holes will be filled in on final day by unit being exercised.
12. SIGNALS - (a) Bde Sig Offr will establish a Bde Sig Office and provide W/T comn between the Director and Bn HQ. Bns will despatch all messages to Bde and other units to this Sig Office.
(b) A W/T van will also move with the OC enemy and a rear link W/T van with the Director.
(c) Bde Sig Offr will allot frequencies on D-1.

NOTES ON LESSONS FROM TACTICAL EXERCISE WITH TROOPS No 4.1. MOVEMENT BY TP CARRYING MT.

(i) When tp carrying tpt is allotted to a bn for a bus move there must be early liaison between the bn and the AASC, so as to avoid confusion when MT arrives in the bn area.

(ii) MT moves, especially by night, require detailed organisation and supervision. Some points requiring consideration are -

(a) Bn comd's plan. Meeting point, guide for vehs to coy areas.

(b) Detailed instns re concentration of loaded vehs.

(c) Disposal of "A" Ech tpt.

(iii) In night moves all vehs must have convoy lights.

(iv) Canopies of tp carrying vehs should either be taken off or lowered for moves in dense country.

(v) A drill for debussing of tps should be laid down and practiced by each unit. It is necessary for an offr to go fwd to recce for turning point or dispersal area near debussing point. Tps are very slow in getting in and out of vehs, they require more practice.

2. USE OF CARRIERS.

In close country the advisability of using carriers is doubtful. They are noisy, easily stalked and destroyed.

3. TP MOVEMENT ON RDS AND TRACKS.

Throughout the exercise it was noted that tps moved mainly on rds and tracks. These must be kept clear if any cover from view from air is to be obtained, also to allow MT movement.

4. CONTROL IN CLOSE COUNTRY.

Control is essential. CO must be well fwd to control the movement of fwd coys. It is suggested that he move with the fwd coy comd or close enough to observe progress.

5. ACTION OF TPS IN CLOSE COUNTRY.

The action by tps when the enemy is contacted in close country must be immediate - it will all be close quarter work - shooting from the hip - bayonet.

6. FORMATION OF UNITS IN CLOSE COUNTRY.

Conditions in close country are similar to night conditions. Therefore use formations giving greatest degree of control.

7. CONSOLIDATION ON OBJECTIVE.

Must be rapid and in depth to meet attack from ANY direction. A counter-attack is almost certain to be made within an hour.

Bn comd must work quickly and establish report centres on objective as well as successive ones en route to objective to enable quick contact with all coys. Bn comd or his representative must always be found there.

8. DISPERSAL AND CONCEALMENT OF MT.

Is still very poor. Drivers are NOT yet up to high standard of tactical driving - concealment - clearing road or track on stopping.

9. ISSUE OF ORDERS.

(i) If orders issued at night use a house, bn office van or large truck. Coy comds must have light to make notes and read maps. The IO should be responsible for providing necessary concealed spot for issue of orders.

(ii) Orders must be clear, concise, detailed and sequence of issue is essential.

10. DAYLIGHT WITHDRAWAL.

(i) Should be carried out on a broad front.

(ii) Posns in rear MUST be recced by coys and guides used to guide withdrawing tps into posn.

(iii) Complete control is essential. Coys should NOT be given general directions. Each move should be co-ordinated and made on orders by bn cmd.

(iv) In close country enemy can be delayed by comparatively few tps with aggressive outlook - ambush.

(v) If enemy presses too hard a quickly organised counter-attack works wonders.

11. INFM TO ALL RANKS.

To enable all ranks to gain the maximum value from an exercise they must "be in the picture". Tps must be given an outline of the scheme beforehand and kept informed of subsequent action. Umpires and pl comds can assist in maintaining interest of men in the scheme by giving a "running commentary" during short halts etc.

E. J. Parker
Capt.
A/BM 25 Aust Inf Bde.

DISTRIBUTION.

- 2/31 Aust Inf Bn.
- 2/25 Aust Inf Bn.
- 2/33 Aust Inf Bn.
- A Sqn 7 Aust Cav.
- 2/6 Aust Fd Regt.
- 6 Bty 2 A Tk Regt.
- 2/5 Aust Fd Coy.
- 8 Aust Rec Sec.
- C Div Sec 1 Aust Ord Fd Pk.
- 2/4 Aust Fd Amb.
- 7 Aust Div.
- Comd.
- BM.
- SC.
- IO.
- TO.
- Sup O.
- Sig Offr.
- OC 12 Pl Aust HQ Gd Bn.
- OC LAD.
- File.
- War Diary.

M.D.

War Diary

APPX J

PART I. OBJECT AND LESSONS

25 AUST INF BDE

TACTICAL EXERCISE WITH TROOPS No 6

OBJECT.

To exercise Bn and Coy comds in recce, orders and procedure of:-

- (a) attack
- (b) outpost posn
- (c) movement in dense country

LESSONS TO BE TAUGHT

1. Time is a vital factor in battle. To achieve this object the essentials are:-

- (a) intelligent anticipation by all ranks
- (b) issue of warning orders
- (c) an organised system that avoids unnecessary delays

(I.T 1937/37 (1)

2. the plan should be simple and the recce and preparation should be thorough.

I.T 1937 81 (2)

3. In attacks in heavily timbered country the following are essential:-

- (a) flank or rear gives best chance of success
- (b) small dets have an effect out of proportion
- (c) our patrols must dominate those of the enemy
- (d) clothing and eqpt will be reduced to a minimum

TACTICAL METHODS
Part B para 3
"The Attack" - 1942

TACTICAL EXERCISE WITH TROOPS No. 6.

A. Opening situation - issued at 1800 hrs D-1.

(i) The Japanese have opened their offensive against the east coast of QUEENSLAND.

(ii) A bridgehead has been captured at TOWNSVILLE but the Japanese advance is being held up by 5 Div.

(iii) At 1800 hrs D-1, 25 Aust Inf Bde Gp is situated as follows:-

Bde HQ	BELLMERE
2/31 Aust Inf Bn Gp	BEERBURRUM
2/25 Aust Inf Bn Gp	CABOOLTURE
2/33 Aust Inf Bn Gp	PETRIE

(iv) Bns will stand by at their battle stations till further notice.

B. At 0400 hrs D1, comd 25 Aust Inf Bde issues orders which include the following:-

INFM.

1. Enemy are landing at the following points:-

BEACHMERE	2330
DECEPTION BAY	2023

The main enemy landing appears to be at BEACHMERE of approx a bn strength.

2. Enemy have landed in strength at HERVEY BAY and are advancing down main GYMPIE - BRISBANE RD.

3. The forts at BRIBIE and COWAN COWAN have been disabled by enemy air attack.

4. 18 and 21 Aust Inf Bdes are holding a posn astride main rd in COOROY AREA.

INTENTION.

5. 25 Aust Inf Bde Gp will defeat the enemy forces landed in 2/25 Aust Inf Bn area.

METHOD.

6. 2/31 Aust Inf Bn will remain in present posn and be prepared to delay any enemy advance from the north and defeat any enemy landing in 2/31 Aust Inf Bn area.

7. 2/25 Aust Inf Bn will prevent the enemy advancing along the rd BEACHMERE - CABOOLTURE. Remaining coys of 2/25 Aust Inf Bn will immediately attack the enemy tps in BEACHMERE area.

8. 2/33 Aust Inf Bn will move to DECEPTION BAY area and defeat the enemy in that area.

ADM

9. Bn "B" Ech brigaded at WAMURAN - 026421.

10. NO blankets - Ground sheets carried and great coats on coy trucks.

11. Other adm details by signal.

INTERCOMN

12. Bde HQ at BELLMERE - 0736

C. At approx 0630 hrs D1 2/25 Bn is concentrated and moves.

- D. 2/25 Bn meets light enemy opposition at HOUSE 223354. Enemy patrols are driven off but continue to harass 2/25 Bn advance until bn reaches a posn approx 3 miles north of BEACHMERE. Enemy patrols then break away and move to TOORBUL PT (3237)
- E. At approx 0730 hrs D1 enemy launches a light attack against any 2/25 Bn coy posn astride BEACHMERE RD.
- F. At approx 1030 hrs D1 2/25 Bn arrives in BEACHMERE area and after attacking enemy in area consolidates.
- G. At approx 1300 hrs D1 a bde L0 gives 2/25 Bn comd the following infm.
1. Tac R reports that enemy are landing a force (approx a bn) at TOORBUL PT.
 2. You will move immediately to TOORBUL PT and defeat the enemy in that area.
- H. 2/25 Bn contacts enemy patrols, they are forced to withdraw but harass Bn's advance. Enemy are to withdraw to north and move to ELIMBAH
- I. At approx 1900 hrs D1 2/25 Bn reaches its objective and consolidates.
- J. At approx 2000 hrs D1 a bde L0 gives bn comd the following infm.
1. The enemy are landing strong forces at LAGUNA BAY and have forced 18 and 21 Aust Inf Bdes to withdraw to the west leaving the main GYMPIE - BRISBANE RD open.
 2. 2/31 Bn is holding a delaying posn astride the main rd at BEERBURRUM.
 3. Enemy activity has ceased in the DECEPTION BAY - REDCLIFFE area.
 4. 25 Aust Inf Bde Gp will prevent any further advance down main GYMPIE - BRISBANE RD at CABOOLTURE.
 5. 2/25 Bn will occupy right and 2/33 Bn the left sector of Bde prepared defensive posn south of CABOOLTURE R. Bns will move immediately.
 6. 2/31 Bn will delay the enemy as long as possible and then withdraw into bde reserve at BURPENGARY 120270.
 7. "B" Ech will move to SAMSONVALE RD 088126.
- K. At approx 0300 hrs D2, 2/25 Bn arrives in bde defensive posn.
- L. At approx 0900 hrs a bde L0 gives the following infm to 2/25 Bn comd.
1. The enemy attacked 2/31 Bn and forced it to withdraw. The bn broke off contact at ELIMBAH and are withdrawing to BURPENGARY. via left flank 2/33 Bn.
 2. 2/33 Bn is in ' posn in left sector of bde defensive posn.
 3. VDC dets are patrolling the right flank, east to coast.
 4. Cav and VDC dets are holding the crossings at 030395 - 030377 - 075350.
- M. At approx 1000 hrs D2 a bde L0 will inform 2/25 Bn that 2/31 Bn has passed through.
- N. At approx 1100 hrs D2 a bde L0 gives 2/25 Bn comd the following infm.

N contd.

1. 2/33 Bn patrols have contacted the enemy and are being forced to withdraw south of CABOOLTURE R.
 2. Enemy forces of approx bn strength appear to be in CABOOLTURE area.
 3. 2/31 Bn is putting in an attack from the west, objective is track from 135379 to 132363. The bn is moving immediately and should reach the objective by 1400 hrs D2.
Start Line - Track 098390 - 095373
Start Time - 1230 hrs D2.
 4. 2/25 and 2/33 Bns will be prepared to attack in a northerly direction after 2/31 Bn attack.
- O. At approx 1415 hrs D2 a bde L0 gives 2/25 Bn comd the following infm.
1. 2/31 Bn has reached its objective, part of enemy force withdrawn to the north.
 2. The br at 115358 has been destroyed, also ry br at 120362.
 3. Bde comd wants 2/25 and 2/33 Bns to attack.
 - (a) Objective - Line from tr junc 102406 to ry br 113406 - Ck and tr junc 130403.
 - (b) Boundary - Inter bn boundary incl 2/25 Bn - CABOOLTURE - ELIMBAH ry line.
 - (c) Start Line - rd 100368 - 116365 - 132361
 - (d) Start Time - 1630 hrs D2.
 - (e) Direction of attack - Grid north
 - (f) Arty - 4 bty in support of each bn
 - (g) Engrs - Will put a pontoon br in at 123362 which will be available for use at 1700 hrs D2.
 (For purpose of exercise br at 115358 will be available for use at 1700 hrs D2)

P. Light enemy patrols forced to withdraw north of KING JOHNS CK by attacking force. 2/25 Bn reaches its objective at approx 1800 hrs D2 and is informed that 2/33 Bn reaches its objective at approx same time.

- 1830
- Q. At ~~1800~~ hrs D2 a bde L0 gives 2/25 Bn comd the following infm.
1. A Tac R timed 1730 hrs D2 reports enemy inf coln, approx bde strength advancing south down main rd at BEERBURRUM.
 2. Bde comd intends to withdraw south of CABOOLTURE R into prepared defensive posns.
 3. 2/25 and 2/33 Bns will withdraw forthwith to right and left sectors of bde defensive posn, bns will be in posn by 1930 hrs.
 4. 2/31 Bn will commence withdrawal at 1800 hrs D2 to move into res at BURPENGARY. ROUTE - west through CABOOLTURE then via rd junc 073357 - rd junc 076338 - MORAYFIELD - BURPENGARY.
 5. Br built by engrs at 123362 will be closed at 1930 hrs D2 (for purpose of exercise br at 115358 will be closed at 1930 hrs D2)
- R. Enemy patrols will be active throughout night D2/D3.
- S. At 0500 hrs D3 enemy attacks with a coy the right rear coy of 2/25 Bn. Enemy will withdraw when a counter-attack is launched by 2/25 Bn.
- T. Enemy will harass the rear of 2/25 Bn until 1300 hrs D3.
- U. 1400 hrs D3 - exercise ends.

DAY	TIME	LOCATION	EVENT
D-1	1030	Bde HQ	Umpires and OC enemy conference.
D-1	1800	CABOOLTURE	Opening situation issued - 2/25 Bn moves to battle stations.
D1	0400	"	Narrative I issued - Bn moves to BEACHMERE area.
D1	0630	BEACHMERE	Bn is concentrated and moves toward objective.
D1	0730	"	Enemy patrols harass bn at HOUSE 223354
D1	0730	"	Enemy pl attacks any 2/25 coy posn on BEACHMERE RD.
D1	1030	"	Bn reaches objective
D1	1300	"	Narrative II issued - Bn ordered to TOORBUL PT.
D1	1600	TOORBUL POINT	Enemy patrols contact bn
D1	1900	"	Bn reaches objective.
D1	2000	"	Narrative III issued - Bn ordered to CABOOLTURE.
D2	0300	South of CABOOLTURE	Bn arrives in right sector of bde defensive posn south of CABOOLTURE R.
Remainder night D1/D2.		"	Spent in defensive posn
D2	0900	"	Narrative IV issued
D2	1000	"	Narrative V issued - enemy patrols become active north of CABOOLTURE R.
D2	1100	"	Narrative VI issued - Bn warned it may have to attack.
D2	1415	"	Narrative VII issued - 2/25 Bn ordered to attack.
D2	1630	CABOOLTURE	2/25 Bn attack commences
D2	1800	"	Bn reaches objective 113406 - 130403
D2	1830	"	Narrative VIII issued - 2/25 Bn ordered to withdraw to right sector of bde defensive posn.
D2	2030	"	2/25 Bn arrives at defensive posn
Night D2/D3		"	Enemy patrols active north of CABOOLTURE R.
D3	0500	South of CABOOLTURE	Enemy attacks 2/25 Bn right rear coy.
D3	0800 - 1300	"	Enemy patrols active against rear of 2/25 Bn
D3	1400	"	Exercise ends.

SEE ALSO GENERAL INSTNS AND FORECAST OF EVENTS.

Umpires are allotted as under:-

- | | | | |
|-----|-----------------------------|-----|-------------|
| (a) | Director and Chief Umpire | | Bde Comd. |
| | Assistant Chief Umpires (2) | | BM & LO. |
| | <u>Rifle Coy Umpires.</u> | | |
| | A Coy (2) | and | 2/33 Bn |
| | B Coy (2) | and | 2/33 Bn |
| | C Coy (2) | and | 2/31 Bn |
| | D Coy (2) | and | 2/31 Bn |
| | Cav Tp Umpire | | 7 Aust Cav |
| | A Tk Tp Umpire | | 2 A Tk Regt |
| | Carrier Umpire | | 2/33 Bn |
| | Mortar Umpire | | 2/31 Bn |
| | Sig Umpire | | Bde HQ |
| | B Ech Umpire | | Bde HQ |
| | Enemy Umpire | | Bde HQ |

(b) Umpires will report to their respective sub-units at 1800 hrs D-1 and move with those units subject to instns issued in PART III (c).

PART III (b)

INSTNS TO UNPIRES - GENERAL.

1. Umpires selected for the exercise will report to Bde HQ at 1030 hrs D-1 for conference.
2. Umpires will be required for an initial conference one hour prior to any conference ordered by Director (see GENERAL INSTNS) in addition to those laid down in INSTNS TO UMPIRES - DETAILED.
3. In addition to detailed instns given in the following paras, umpires will note exact time of all moves, orders, messages etc.
4. The Director's car will be marked with a large Sigs flag.

INSTNS TO UMPIRES - DETAILED.

Serial	Approx Time	Remarks
1.	0400 D1	Narrative I issued - Bn ordered to BEACHIERE. Note orders given and action taken by sub-units.
2.	0730 D1	Enemy patrols harass the 2/25 bn at HOUSE 223354 but are forced to withdraw. Note action by sub-units.
3.	0730 D1	Enemy attack any 2/25 Bn coy posn on BEACHIERE RD. Attack is driven off. Note counter-attack measures.
4.	1030 D1	2/25 Bn reaches objective - note method of consolidation.
5.	1300 D1	Bn ordered to TOORBUL PT. - Narrative II. Note orders, route, method of giving orders.
6.	1600 D1	Enemy patrols contact 2/25 Bn and forced to withdraw.
7.	1900 D1	2/25 Bn reaches objective - Note consolidation.
8.	2000 D1	Narrative III issued - Bn ordered to CABOOLTURE. - right sector of bde defensive posn. Note orders for move.
9.	0300 D2	Bn arrives in defensive posn - note method of occupation of posn.
10.	0900 D2	Narrative IV issued.
11.	1000 D2	Narrative V issued - enemy patrols become active.
12.	1100 D2	Narrative VI issued - bn warned may have to attack.
13.	1415 D2	Narrative VII issued - Bn ordered to attack - Note orders etc.
14.	1630 D2	Bn crosses start line.
15.	1800 D2	Bn reaches objective - note method of consolidation.
16.	1830 D2	Narrative VIII issued - Bn ordered to withdraw into bde defensive posn - Note orders, method etc.
17.	2030 D2	Bn arrives defensive posn - note patrols etc.
18.	Night D1/D2	- Enemy patrols active.
19.	0500 D3	Enemy attack on right rear coy of 2/25 Bn - enemy over-run a coy posn and withdraw when bn counter-attack.
20.	0800-1300 D3	Enemy patrols active against 2/25 Bn rear.
21.	1400 D3	Exercise ends.

A.ADM

1. You have the following tps under comd:-
Two rifle coys (motorised)
2. You will carry cooking gear.
3. Rations and water for the complete period will be carried by you. No additional rations will be carried.
4. You will be in posn I at 0500 hrs D1.
5. Your tps will wear red hat bands and each sec will carry a mirror and fireworks.
6. In all posns, you will use mirrors and blanks to indicate your posn.
7. Senior coy comd will be OC enemy.

B.TACTICAL

1. Posn 1 - HOUSE 223354 to BEACHMERE.
 - (a) You will send out patrols with one coy in vicinity of HOUSE 223354 to operate against the bn as it advances toward BEACHMERE.
 - (b) You will continue to harass the bn's advance until you are driven back to a posn approx 3 miles north of BEACHMERE.
 - (c) You will then break contact and out-flank the bn and move to TOORBUL POINT.
 - (d) At 0730 hrs you will put in a pl attack against any coy of 2/25 Bn on the BEACHMERE RD from the direction of BEACHMERE. The attack will be driven off.
 - (e) The attacking pl and remainder of the coy will carry out active patrolling as the bn consolidates in BEACHMERE area.
 - (f) At 1130 D1 the coy will move to TOORBUL POINT and link up with the coy already there.
2. Posn 2 - TOORBUL POINT
 - (a) You will harass the bn's advance from a posn 4 miles north of BEACHMERE to TOORBUL POINT.
 - (b) As bn advances you will withdraw in a northerly direction and move to ELIMBAH.
 - (c) Bivouac night D1/D2 at ELIMBAH
3. Posn 3 - CABOOLTURE.
 - (a) You will send out patrols at 1030 hrs D2 to force any 2/25 Bn patrols which are north of CABOOLTURE R to withdraw south of the river.
 - (b) Your patrols will be active along the north bank of the river till 1300 hrs D2, when they will withdraw to a posn along line 114390 - 119390 facing south.
 - (c) As 2/25 Bn attack advances the enemy will withdraw gradually and RV at ELIMBAH.
 - (d) Enemy patrols will be active during the night D2/D3 along north bank of CABOOLTURE R.
4. Posn 4 - South of CABOOLTURE.
 - (a) You will put in a coy attack at 0500 D3 against the right rear coy of 2/25 Bn from the SW.
 - (b) You will withdraw when 2/25 Bn counter-attacks.
 - (c) You will use your remaining coy to send out patrols from 0800 to 1300 hrs D3 against the left flank at rear of 2/25 Bn. At 1300 hrs D3 you will RV your coys and return to your unit.

Ref maps LANDSBOROUGH - CABOOLTURE - REDCLIFFE - SAMFORD

1" to 1 mile

1. A tactical exercise with troops designed to test 2/25 Bn in movement in dense country, attack and defence, held from 25/27 Jun 42. The exercise is based on the operational roles of 2/25 Bn.

2. UMPIRES

(a) Units will supply umpires as under. Umpires are to be supplied with tpt by units as shown below:-

Bn to supply umpires	Umpires required	Tpt required	Remarks
2/33 Bn	5	2 vans	One to be carrier umpire
2/31 Bn	5	2 vans	" " " mortar "
A Sqn 7 Aust Cav	1	1 van	To be Cav tp umpire
6 Bty 2 A/Tk Regt	1	1 van	" " A/Tk " "

(b) Umpires are to be Capts or senior subalterns except in the case of mortar and carrier umpires, where Offrs who have some experience with mortars and carriers will be selected.

(c) Names of umpires are to be fwded to HQ 25 Aust Inf Bde as soon as possible.

(d) Umpires will take camp kit. White armbands are to be worn on each arm and vans are to carry a white flag 1 ft square.

(e) Umpires will carry three days rations and will have meals with sub units.

(f) Umpires will report in tpt at HQ 25 Aust Inf Bde at 1030 hrs D-1 for conference.

3. ENEMY

Enemy will be represented by a rifle coy from 2/33 Bn (and 2/31 Bn) Enemy will be motorised by unit supplying them and will take camp gear and cooking gear (notents). Supplies and water will be carried by enemy under directions from Bde HQ to be issued later. Enemy truck will carry a red flag 1 ft square. OC Enemy will report to Bde HQ at 1030 hrs D-1 for conference.

4. REPRESENTATION OF FIRE

Each Bren gunner will be supplied with a mirror to represent LMG fire. This will apply to both enemy and attackers. One man in each sec of bn being exercised will carry one red and one blue flag in lieu of rifle.

5. BALL AMN

No ball amn will be carried by any individual personnel.

6. DRESS

Own troops - Battle order incl steel helmets.

Enemy troops - Battle order with felt hats, wearing red hat bands to be supplied by units.

7. SUPPORTING ARMS Bty 2/6 Aust Fd Regt

~~Fd Regt represented by BC and staff~~, Cav tp and A/Tk tp allotted to 2/33 Bn represented on ground.

8. CONFERENCES In order to get the best value from the exercise, conferences will be held as under for units being exercised.

<u>Date</u>	<u>Time</u>	<u>Location</u>	<u>Held by</u>	<u>Remarks</u>
D-1	As arranged by unit		Unit being exercised.	All ranks - general discussion by CO to explain opening situation.
Day after completion of exercise	1500	Bde HQ	do	All offrs - lessons arising from exercise.

NOTE - UMPIRES and OC ENEMY will attend all conferences.

9. BOUNDS - All towns are out of bounds to all ranks throughout the exercise.
10. FENCES - (a) NO fences will be cut during the exercise if there are gates in the vicinity through which access to area can be obtained.
(b) If as a last resort the fence is cut, it will be repaired immediately the tps have passed through.
(c) NO fence with sheep or rabbit wire attached will be cut in any circumstances.
11. DIGGING- (Policy) - Digging may be carried out where required. holes will be filled in on final day by unit being exercised.
12. SIGNALS- (a) Bde sig offr will establish a Bde Sig Office and provide W/T comn between the Director and Bn HQ. Bns will despatch all messages to Bde and other units through this Sig Office.
(b) Bde sig offr will allot frequencies on D-1.

25 AUST INF BDE.

SECRET.

TNG INSTN No 18.

30 Jun 42.

LESSONS DRAWN FROM BDE EXERCISE No 6.

1. DISPERSION OF MT.

MT MUST be hidden from ground and air, or if no cover is available, must be widely dispersed - 200 yds between vehs.

2. "STAND TO"

The standard of "stand to" is still very poor and it is the responsibility of comds to see that the standard is improved.

3. OCCUPATION OF DEFENSIVE POSN.

- (i) Some pls were NOT sited for all round defence which is essential at all times.
- (ii) Entry into a defensive posn should be from a direction least likely to enemy attack.
- (iii) Plans for counter-attack must always be prepared and ready to be put into action at short notice.

4. ZERO HOUR.

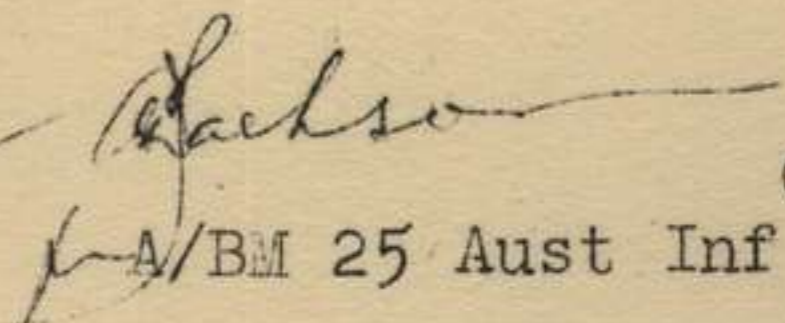
If zero hour is laid down by a higher formation it cannot be altered by subordinate comd without first obtaining approval from the comd who laid the zero down.

5. FORMATIONS.

Sub-units still bunch when forming up for an attack or passing through a village. Sub-unit comds must NOT allow their personnel to bunch together at any time.

6. CONTACT WITH ENEMY IN CLOSE COUNTRY.

Each unit should evolve a method to deal quickly with enemy contact in close country. This will enable the enemy to be dealt with speedily and prevent a handful of men holding up the advance of a bn.


Capt.
A/BM 25 Aust Inf Bde.

DISTRIBUTION -

As for TNG INSTN No 17.