

AWM52
2nd Australian Imperial Force and
Commonwealth Military Forces unit war
diaries, 1939-45 War

Item number: 8/3/13

2/13 Infantry Battalion

April - May 1941

W.F.

WAR DIARY or INTELLIGENCE SUMMARY

Army Form C.2118
(adapted.)

(Erase heading not required)

Unit 2/13 Bn

Date and Time.—From 3 April 41 To 4 April 41

Place	Date	Hour	Summary of Events and Information	Remarks and references to Appendices, Diaries, &c.
REGIMA	Thursday 3 Apr (cont)	1300	Pass and rly mined. Rly exploded by sappers. Third blast stg of part of main mine field by sympathetic detonations. Extra mines for flanks used to re lay main field - Demolitions BENINASI area continue all day	
		1400	BENINA aerodrome demolished together with water point	
		1500	Bn receives orders to stand and defend pass while rest of Div withdraws - And Div passes through all night	W.F.
	4 Apr	0500	Stand to. MT in large numbers heard passing along foot of escarpment. daylight showed them to be more and Div got passing back - Had to send 25 trucks to lift 15 Bn	
		0700	Top arrives back from 15 Bn not needed	
		0730	Bde advises that top is on its way to extricate 13 Bn - No orders to withdraw. Convoys still forming up pass.	
		1100	Last of convoy climbs pass Engineers engineers stand by to Div if should enemy threaten!	
		1200	Bde advises top for lifting top will not be available until at least 1900 hrs. Pass must be denied to enemy till top arrives to extricate Bn. Unessential stores loaded ready to move out at moments notice. Ho C Coy had not rejoined unit sufficient. Top held in readiness to order A Coy whenever required.	
		1330	D Coy reports enemy approaching along rd BENINA - REGIMA, A/Cs tanks and top transports. During of pass A/Cs guns blowing to 2000 by withdraws to top of escarpment behind A/Cs ditch and took no part in the engagement their guns were abandoned	
		1540	Pass blown. Kotar det on rd flank using Italian 3" Mortars opens fire with good effect on MT. halted on rd in vicinity BENINA Arome	

WAR DIARY or INTELLIGENCE SUMMARY

Army Form C.2118
(adapted.)

(Erase heading not required)

Unit 2/13 Bn

Date and Time.—From 4 April 41 To 4 April 41

Place	Date	Hour	Summary of Events and Information	Remarks and references to Appendices, Diaries, &c.
REGIMA	4 Apr 41	(cont.) 1545	Enemy launches attacks on garr with with est 3000 inf 13 tanks and 4 AF's fire from our garrs & 5 hours in support was brought down on advancing AF's when they were within 100 yds of foot of escarpment. AF's guided by nature round minefield into far right waddi tanks go straight up escarpment. Four tanks succeed in climbing escarpment and driving up and down engaging tpt and arty. AF's not seen again.	
		1600	Now essential tpt and one cavalry (unserviceable) withdraws. - A Coy ordered to stand by to re-enforce D Coy.	
		1615	D Coy reports inf infiltrating on both flanks.	
		1630	One of A Coy ordered to take up garr at head of waddi north of rly line to prevent further penetration along waddi. Carrlin pl given same task to hold waddi until A Coy can get into garr.	
		1700	A Coy's other two pls moving fwd to support D Coy some of whose fwd elements forced to withdraw - 18 gndrs arrive and engage tanks.	
		1715	Major Turner sent fwd to coordinate actions of both fwd coys. B Coy ordered to send one pl to take up garr fwd slopes of FORT REGIMA to cover rd and rly station. Bde advises tpt will not be available until after dark also that one regt 25 gndrs two coys AF's and one of 24 AF's Coy will arrive as reinforcements.	
		1800	Fighting continues with tanks continuing to ground attacking inf though under fire from tanks and enemy arty or mortars - Phone communications with coys working well and growing invaluable to the carrying on of the operation.	
		1900	Garr somewhat confused over fwd tpt fighting their way back to FORT REGIMA. Two pls A Coy about further fwd to help retrace D Coy. Enemy have advanced on both flanks and set up 0100's which considerably harassed our lighter armed sections. During this period of the engagement VC A Coy lost Lt Fraser and O.C. Howse.	

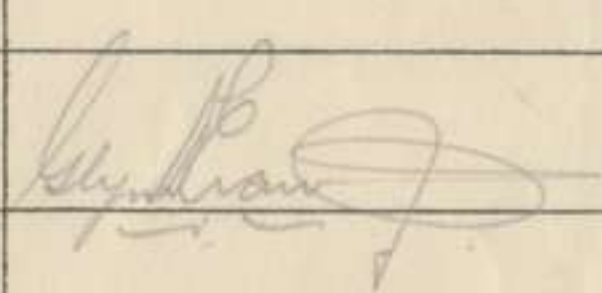
WAR DIARY or INTELLIGENCE SUMMARY

Army Form C.2118
(adapted.)

(Erase heading not required)

Unit R/13 Bn

Date and Time.—From 4 April 41 To 5 Apr 41

Place	Date	Hour	Summary of Events and Information	Remarks and references to Appendices, Diaries, &c.
REGIMA	4 Apr 41 (cont)	1900	Lieut L. Ross were seen to be surrounded and captured together with some of their men	
		1930	R of B Coy sent fwd to take up position at 1700 now finds darkness falling one see only attaining correct posn clearing enemy from ply str.	
		2000	As promised reinforcements had not arrived and fwd lps had guessed Bn being almost encircled the CO decided to withdraw Bn to posn behind 1/4th ditch east of REGIMA and HQ along rd REGIMA EL-HBIAR so that incoming tpt can be contacted easily in the path of withdrawal	
		2015	Message sent to remainder of B Coy under 2 lps to move across country and RY fwd lps 1/4th ditch east FORT REGIMA taking up extricating posn - Remaining tpt withdraws	
		2045	Phone communication with D Coy and Bde no longer possible Bn HQ moves to posn at rd REGIMA - EL-HBIAR	
		2100	Lps falling back along rd to 1/4th ditch east REGIMA ordered to take up posn in extended line astride rd approx 400 yds in front of ditch to allow B Coy to get into posn	
		2200	Two long NFs and 165 2nd 1/4th Coy arrive no sign of 259nd. NFs explain their MGs are useless in the dark without daylight piece and fixed lines. One long NF sent back to take up posn approx 500 yds in own rear in case enemy should overrun withdrawal line of NF to cover embussing of lps.	
		2215	B Coy having taken up posn fwd elements pass through along rd.	
		2240	Tpt arrives at point approx 1 kilo from 1/4th ditch lps embuss	
		2300	Convoy moves off followed by pl NF. Withdraws through EL-HBIAR - BARCE	
WADI KUFF	5 Apr	0700	Convoy in scattered state stops at head of BARCE pass for meal	

WAR DIARY or INTELLIGENCE SUMMARY

(Erase heading not required)

Unit 2/13 Bn

Date and Time.—From 5 April 41 To _____

Place	Date	Hour	Summary of Events and Information	Remarks and references to Appendices, Diaries, &c.
WADI KUFF	5 Apr. 1500	1500	Bn ordered to take up reserve positions at WADI KUFF (Pine Forest) approx 11 Kilos BARCE side of SLONTA. Bn moves to this position and is joined by C Coy who had left BARCE the day before and spent the night at DENUNCIO	See Maps. Annex 1.
		1700	Bn takes up defensive positions two loops from C on rd. A rd. use B left foot. Boys immediately begin preparing positions.	See
	6 Apr.	0700	Boys continue to prepare defenses. Engineers laying minefields and running cutting B by tracking wire in front of positions.	
		1030	padre holds service for those who are able to attend.	
		1700	Orders received to withdraw to positions 1000 south MARTUBA.	See order att.
		1710	CO leave to receive.	
		1720	Advance party leaves	
MARTUBA		1745	Bn on its way to new positions	
		2145	Adv party arrives - no sign of CO - MARTUBA deserted from appearances top had been shelled there and had left in a hurry	See Maps. Annex 2.
		2215	Bn arrives and placed in defensive positions by 2 i/c C Coy rd. A center and D reserve - Reconvoys very mixed pass through all night - Flares seen and MG fire heard at intervals through the night on our rd flank. Bn ordered to remain until all left has passed through promise of Pty support but Pty cannot be found.	
	7 Apr.	0615	CO arrives. He had been earlier in the night but found the place being evacuated with the enemy in close proximity.	
		0645	Party of 9 Div engineers arrives and reported ambushed together with part of Div HQ. on the rd MECHELI - DERNA	

WAR DIARY or INTELLIGENCE SUMMARY

Army Form C.2118
(adapted.)

(Erase heading not required)

Unit 2/13 Bn Date and Time.—From 7 April 41 To 8 April 41

Place	Date	Hour	Summary of Events and Information	Remarks and references to Appendices, Diaries, &c.
MARTUBA	7 Apr		approx 6 kilos from our T.D.Ls. They had two wounded and one dead. He tended them wounded and buried them dead.	
		0700	Orders received to withdraw and attack on to 26 Bde taking up position on rd of 48 Bns. Recce party sets out to contact 26 Bde.	
		0915	26 Bde found and Bn takes up position on edge of small encampment near the sea. One Coy 25 pndrs arrives in support together with 12 H/A guns from various sources - Bn ready for anything.	See Map. Annex 3. (Missing)
			It appeared from reports of the previous night that the enemy advancing on DERNIA from EL MECHELE had crossed the rd DERNIA - MARTUBA at approx 1800hrs on the 6 Apr. They halted astride the rd EL MECHELE - DERNIA and missed the main convoys that were taking the MARTUBA rd.	
		1700	Orders received to withdraw to AIN EL GAZALA area. Raided by four EA machinegunned vehicles but no damage or casualties.	
		1830	Convoys halted by rd side and recce party goes fwd to new position.	
	2000	Bn in position three Coy fwd Det C continue H res. 4 H/A 25 pndrs 1 H/A H/A guns 19th NF in support still att to 26 Bde.	See Map. Annex 4.	
AIN EL GAZALA	8 Apr	0700 Coy prepare defenses by building stone bangars for their sections.		
		0900	Motorcyclist seen on front.	
		1350	Motorcyclist captured. Proved to be two natives with British papers. Searched and sent back to Bde for interrogations.	

WAR DIARY or INTELLIGENCE SUMMARY

Army Form C.2118
(adapted.)

(Erase heading not required)

Unit 2/13 Bn Date and Time.—From 8 April 41 To 10 April 41

Place	Date	Hour	Summary of Events and Information	Remarks and references to Appendices, Diaries, &c.
GAZALA	8 Apr (cont.)	1530	Units that are to be relieved by 22 Bn and we fall back to take up reserve positions with our own Bde.	
		1700	Bn relieved and moves to new posns at foot of slight escarpment approx 22 Kilos from TOBRUK.	See Maps Annex 5.
		1900	Bn settled in for night land sighted for all round defense.	C.B.
TOBRUK	9 April	1000	padre manages to get to TOBRUK and send re-assuring cables on behalf of the unit.	
		1430	sum of 3 MPA Det begins to arrive one damaged by thermo bomb. Large number of thermo bombs found on investigation. Honar officer advised and arrangements made to explode them.	
		1740	CO commences to explode bombs.	
		1800	La Coy moves fwd to take up posn on left of left fwd Bn 15 Bns.	
		1910	Orders to move immediately. La Coy recalled and Bns move within TOBRUK defenses - 2000 Reqmt on minefield (Thermo bomb) killed	See Maps Annex 5
		2200	Bn settled for night (by explosion of bomb)	
TOBRUK	10 April	1030	Col's conference at Bde.	
		1400	Bn moves fwd to take over section of perimeter defenses from 2/9 Bn (then La Coy fwd) at C. Centre H reserve.	See Maps Annex 5
		1900	La Coy fit in posns and detail patrols for minefield and wire - quiet night.	C.B.

WAR DIARY or INTELLIGENCE SUMMARY

Army Form C.2118
(adapted.)

(Erase heading not required)

Unit 2/13 Br

Date and Time.—From 11 April 41 To 13 April 41

Place	Date	Hour	Summary of Events and Information	Remarks and references to Appendices, Diaries, &c.	
TOBRUK	Friday 11 April	0500	Hand to. fwd lines are in concrete Italian post on outer perimeter behind wire with minefields or other ditches. Lines repair wire and generally set about preparing and improving their positions for the defense of the area - Phone communication with all fwd lines and in some cases pls. Patrols ordered each night to guard wire and minefields also to obtain information		
		1045	Enemy vehicles appear opposite rd flank. Fired on by arty and dispersed.		
		1115	Truck leaves our line along EL ADEM rd. Stopped by enemy fire after proceeding approx 2 miles. Occupants presumed killed.		
		1200	Shells land in rear of B line HQ odd shelling only no effect		
		1900	Patrols prepare to go out	L/S	
	12 April	0425	Enemy MT active on front		
		0500	Spahato.		
		0900	Enemy recce plane active otherwise quiet day with some enemy AFV activity mainly for observation on all fronts. Our arty very active on any targets.	L/S	
	13 April	Easter Day	0500	Hand to. Patrols report all clear - Some enemy activity on rd front	
		1500	Enemy activity intensifies on rd flank looks as though there may be something doing		
		1900	Enemy still active on rd much MT movement - engaged by arty.		

WAR DIARY or INTELLIGENCE SUMMARY

Army Form C.2118
(adapted.)

(Erase heading not required)

Unit 2/13 Bn Date and Time.—From 14 April 41 To 15 April 41

Place	Date	Hour	Summary of Events and Information	Remarks and references to Appendices, Diaries, &c.		
TOBRUK	Monday 14 April	0100	B. C & D Patrols report all clear on our front - still activity on rt.			
		0255	Bde advise tanks and some inf have broken through 17 Bn area - All boys stand to			
		0355	E tanks approach along EL ADEM rd engaged by arty. one tank stopped by C Coy with Bren and rifle fire, light 3 man tank. <u>No attack on 13 Bn front.</u>			
		0700	E tanks seen in rear area being engaged by own arty and cruiser tanks approx one kilo at Bn HQ			
		0730	E tanks withdraw through one H Coy. H Coy bags one tank and one prisoner, no casualties on H Coy.			
		0830	E tanks withdraw past D Coy, through wire and back to their own lines. Inf being dealt with by 17 and 15 Bns.			
		0905	Orders from Bde to send out "mopping up" parties			
		1700	B Coy reports less digging in on their front - engaged by arty.	L.H.P.		
		2000	Patrols on all fronts			
		15 April		0300	Patrols report all clear on our front	
				0500	Stand to	
				0700	All patrols back report all clear	
				0900	Mopping up parties still recovering wounded dead and equipment from 17th ditch on extreme right. Quiet day no activity.	
				2000	Patrols on all fronts	L.H.P.
2400	Patrols report - no activity					

WAR DIARY or INTELLIGENCE SUMMARY

(Erase heading not required)

Unit 2/13 Bn Date and Time.—From 16 April 41 To 19 April 41

Place	Date	Hour	Summary of Events and Information	Remarks and references to Appendices, Diaries, &c.
TOBRUK	Wednesday 16 Apr.	0500	Stand to.	
		0700	All patrols in - all clear	
		1035	# Coy sends out patrol of one pl to investigate over wire front	
		1115	the prisoners sent back by patrol, captured in abandoned tank	
		1230	Patrol chased home by E tanks no casualties	
		2000	Patrols as usual - C Coy investigate bullock truck on Bde request.	C.P.
	2100	Patrols report all clear		
	17 Apr.	0500	Stand to	
		0700	Patrols report all clear	
		1000	Bde request salvaging bullock truck and body, hit on 11 Apr arrangements made for patrol to bring it in	
		1900	Night activity on front reported from Div salvage patrol cancelled.	
		2000	Reg patrols as usual - 2300 shells on Brits at 1/2 hr intervals.	C.P.
	2100	Patrols report all quiet		
	18 Apr	0500	Stand to.	
		0700	Patrols report all clear. No activity all day	
		2000	Patrols as usual	
		2100	Salvage patrol of 1 sec and 1 carrier sets out for trucks	
		2200	Patrol back with trucks - No enemy activity	C.P.
	2300	Shelling of An 40 commences at 2 hour intervals		
	19 Apr	0500	Stand to	
		0525	Shelling ceases. No damage or casualties	
		0700	Patrol report all clear	

WAR DIARY or INTELLIGENCE SUMMARY

Army Form C.2118
(adapted.)

(Erase heading not required)

Unit 2/13 Bn Date and Time.—From 19 April 41 To 22 April 41

Place	Date	Hour	Summary of Events and Information	Remarks and references to Appendices, Diaries, &c.
TOBRUK	Sat. 19 Apr.	1400	Quiet day no activity.	JLB
		2000	Patrols as usual.	
		2210	E bring AA guns in pairs and fire approx 30 rounds over bn HQ. bursting well behind bn area. No damage or casualties. bursts of quick firing action. Shelling lasted for 5 minutes.	
	20 Apr	0500	Stand to.	JLB
		0700	Patrols report all clear	
		1030	Padre holds communion service at bn HQ. — Quiet day no activity	
	21 Apr	2000	Patrols as usual	JLB
		0500	Stand to	
		0700	Patrols report all clear No activity on bn front	
	21 Apr	2100	Patrol A Coy pl moves out to investigate E tanks abandoned on bn front.	JLB
		2210	Patrol reports back, at least one tank able to be salvaged. Two enemy seen retreating	
		2220	Patrols as usual.	
	22 Apr.	2358	Shelling of fwd areas	JLB
		0500	Stand to	
		0700	Patrols report all clear Quiet day begins commence to lift H/H mines and relay in wire fwd of posts supervised by WCOs from Engineers	

Annex B. Army Form 3008
2009

WAR DIARY or INTELLIGENCE SUMMARY

(Erase heading not required)

2/13 Br.

Unit *22nd April 41*

Date and Time.—From *22nd April 41* To *25 April 41*

Place	Date	Hour	Summary of Events and Information	Remarks and references to Appendices, Diaries, &c.
TOBRUK	<i>Tues</i> <i>22 Apr.</i>	<i>1400</i>	<i>The Coy from UGAS comes under command and occupies reserve position. 1st Coy moves fwd to occupy position between B&C Coys. on perimeter. 2nd Coy moves to the right. outside EL ADEEM rd.</i>	
		<i>1930</i>	<i>Patrol from C Coy of one Lt. 3 carriers and one AT gun goes out to determine if any enemy at rear of B&C EL AZAZIS.</i>	<i>Patrol</i>
		<i>2030</i>	<i>Patrol returns intact.</i>	
		<i>2100</i>	<i>Coy patrols as usual.</i>	
	<i>23 Apr.</i>	<i>0730</i>	<i>Stand to</i>	
		<i>0700</i>	<i>Patrols report all clear.</i>	
		<i>0840</i>	<i>Intermittent shelling of fwd areas.</i>	
		<i>Quiet day - working parties continue transplanting mines.</i>		
		<i>2000</i>	<i>Patrols as usual.</i>	
		<i>2315</i>	<i>B Coy reports E patrol approached their wire were fired on and withdrew.</i>	<i>Patrol</i>
	<i>24 Apr</i>	<i>1500</i>	<i>Stand to</i>	
		<i>0700</i>	<i>Patrols report all clear.</i>	
		<i>1000</i>	<i>B Coy captures German prisoners wandering in front of their wire. This man an engineer.</i>	
		<i>Quiet day. Spasmodic shelling of fwd areas about EL ADEEM rd. - Reserve of UGAS retained by Gdsm.</i>		
		<i>2130</i>	<i>Patrol from E Coy (Gdsm) one Lt. to try and locate E tanks seen by patrol of previous night.</i>	<i>Patrol</i>
	<i>Friday</i> <i>25 Apr</i>	<i>0320</i>	<i>Patrol from E returns after having been fired on by MGs.</i>	
		<i>no</i>	<i>casualties.</i>	
		<i>0800</i>	<i>Stand to</i>	
		<i>0630</i>	<i>Patrols report all clear.</i>	
		<i>Quiet morning Coy continues transplanting mines.</i>		

WAR DIARY or INTELLIGENCE SUMMARY

Army Form (2118
(adapted.)

(Erase heading not required)

Unit 2/13 Bn

Date and Time.—From 25 April 41 To 28 April 41

Place	Date	Hour	Summary of Events and Information	Remarks and references to Appendices, Diaries, &c.
TOBRUK	Friday 25 April 41	1200	Two tanks approach C Coy and fire at 4th mine - No damage.	
		1330	Six EA drop 6 bombs in Bn area - heavy bombs - No casualties or damage. Otherwise quiet on all front	
	26 Apr	2000	Patrol as usual - E Coy patrol dug cannot find MG of last night.	S/Lt
2230		R Coy patrol strikes enemy patrol fwd of mine - A Coy patrol report - Patrols driven off.		
	26 Apr	1500	Stand to	See Annex 4 Army Forms 308, 309
0700		Patrols report all clear - Patrol at 1400 from D lanes 1st and 102 sporadic shelling of fwd areas but otherwise quiet day		
	27 Apr	2000	Patrols as usual	
0600		Stand to		
	27 Apr	0700	Patrols report all clear.	
1030		Adm holds commissions service in HQ Coy orderly room Quiet day - intermittent shelling fwd areas.		
	28 Apr	2000	E Coy patrol limited to 200 yds to give dug patrol scope for action.	S/Lt
2230		Dug patrol from E Coy with task of laying mines on track thought to be used by AFVs and cutting off possible enemy patrols		
	28 Apr	0500	Stand to	
0530		Dug patrol returns nothing to report except laying of mines. Quiet day boys continue improving defenses with digging and extra wire - Enemy arty active from time to time.		
	28 Apr	1700	60 gndr field gun takes up gun immediate left rear Bn to shell EL WIDEM and rearguard rd.	
1950		60 gndr commences to range and fire at irregular intervals all night		
	28 Apr	2000	E Coy patrol limited to 200 yds as dug patrol has interception tasks.	

WAR DIARY or INTELLIGENCE SUMMARY

(Erase heading not required)

Unit 2/13 Bn Date and Time.—From 28 April 41 To 30 April 41

Place	Date	Hour	Summary of Events and Information	Remarks and references to Appendices, Diaries, &c.
TOBRUK	Monday 28 April	2230	E bay provides deep patrol with same tasks as last night. During the night reports were received from a flanking unit that on their front there was occasional MT movement and infantry massing - All direct our bay patrols to move deeper than 500 yds and investigate - nothing can be found - the main unit to Bde as guide for tanks to move up in support should attacks eventuate. - All active shelling (and logs regularly all night)	
		0500	Stand to	
	29 Apr	0530	Deep patrol returns - nothing to report.	
		0700	All quiet on all bay fronts.	
		0845	Swimming party of 10pm and 7th etc leave by MT for beach. This arrangement for morning and afternoon seems to carry on each day situation permitting.	
			Enemy shells land on left EL ADEEM rd at irregular intervals all morning with mixture of shrapnel and HE of little effect other than nuisance value.	
		1345	Swimming party leaves - two swimming parties per day to be general practice in so far as situation allows.	
		2000	Deep patrol to 500 yds on all fronts. Occasional shelling of rd block area but accurate flash bangs from flanks and counter battery work by supporting arty caused enemy arty to cease firing.	
	30 Apr	0500	Stand to	
		0700	Patrols report all clear.	
1000		Capt F Hurley visits unit with camera.		
1400		Capt Hurley, Tomo lays and takes photographs of activities of the unit.		



WAR DIARY or INTELLIGENCE SUMMARY

Army Form C.2118
(adapted.)

(Erase heading not required)

Unit 2/13 Bn Date and Time.—From 30 April To 30 April

Place	Date	Hour	Summary of Events and Information	Remarks and references to Appendices, Diaries, &c.
TOBRUK	Wednesday 30 Apr.	2100 2200	Activity in at flanking side. News that enemy have penetrated defenses and set up MG posts supported by tanks. — Our patrols to see on all front	<i>[Signature]</i>

FIELD RETURN OF OFFICERS.

2/13 Bn A92 (Unit.)

PART A.—STRENGTH, SURPLUS OR REINFORCEMENTS REQUIRED.

1	2	3	4
Ranks.	Posted strength counting against authorised establishment (excluding attached).	Surplus to Establishment.	Reinforcements required (i.e., deficits on establishment).
*			
*			
*			
*			
Lieut.-Colonels			
Majors			
Captains			
Lieutenants			
2nd Lieutenants			
Quartermasters			
District Officers			
TOTALS	<i>30</i>		<i>2</i>

* Insert detail of higher ranks as necessary (e.g., Major-General, Brigadier, etc).

PART B.—PARTICULARS OF OFFICERS JOINED OR QUITTED DURING WEEK.

Officers JOINED during week.

Rank.	Name.	Corps.	Date.	Cause.
	<i>Capt F. J. Walsh</i>	<i>2/13 Bn</i>	<i>16.4.41</i>	<i>Ex 20th Bde and ceases to be recorded</i>

Officers QUITTED during week.

Rank.	Name.	Corps.	Date.	Cause.

PART C.—DESCRIPTION OF OFFICERS WHOSE RETURN TO THE UNIT IS PARTICULARLY REQUESTED.

Rank.	Name and Initials.	Corps.	Remarks (e.g., present whereabouts, if known).

Annex. 6.

Wai Serry

PART D.—NOMINAL ROLL OF OFFICERS ON STRENGTH.

(i) Officers posted to Unit (Total to agree with column 2 of Part A).

1	2	3	4	5	6
Substantive Rank.	Higher acting or temporary rank, if held.	Name and Initials.	Corps.	Whether present with Unit (Insert Yes or No).	If not present with Unit, state how employed.
Lt Col	11X383	J.A. Bunnings	2/13 Bn	Yes	Comd Offr
Maj	12152	J.D. Braag	"	No	DET DUTY 2/13 Bn.
"	12213	R.W.N. Turner	"	Yes	OC HQ Coy
"	15218	R.H. Chilton	"	"	OC C Coy
Capt	12214	J.L.A. Kelly	"	"	Adjt
"	380	A.J. Hill	"	"	OC B Coy
"	12222	C.A. Vanaley	"	"	OC D Coy
"	12336	H.G. Gillan	"	"	OC A Coy
"	VX16965	J.S. Walsh	"	"	2/c B Coy
"	12383	H.J. Basset	"	"	2/c A Coy
"	12335	R.G. Spinderson	"	"	2/c C Coy
"	70221	O.H. Walsley	"	"	2/c D Coy
T/Capt	12373	J.J. Bennett	"	"	Q.M.
Lieut	12352	C.H. Rogers	"	"	7 Pl Comd
"	34981	G.D. Evans	"	"	10
"	14772	R.L. Semmerville	"	"	1 Pl Comd
"	12223	P. Sutchamb	"	"	3 Pl Comd
"	12452	H.G. Walker	"	"	5 Pl Comd
"	12394	J.R. Watch	"	"	9 Pl Comd
"	70203	H.G. Woods	"	"	13 Pl Comd
"	12375	A.J. Gralans	"	"	14 Pl Comd
"	12374	A.O. Pruece	"	"	11 Pl Comd
"	34860	J.G. Faulkner	"	"	12 Pl Comd
"	15031	T.G. Wilson	"	"	16 Pl Comd
"	15678	J.R. Burrell	"	"	17 Pl Comd
"	12478	J.H. Atkinson	"	"	10 Pl Comd
"	12486	H.G. Bentley	"	"	T.O.
"	34714	E.R. Buckbee	"	"	Pl Comd
"	34786	G.B. Clarke	"	"	15 Pl Comd
"	13867	H.D. Vincent	"	"	18 Pl Comd

(ii) OFFICERS ATTACHED FROM OTHER CORPS.

Substantive Rank.	Higher acting or temporary rank if held.	Name and Initials.	Corps.	Date of attachment.	Nature of attachment.
Capt	SX9183	P.B.R. Goode	AA M C	27.2.41	M.O.
Chaplain	11X35079	G. Francis	AA CLD	30.7.40	PAOKE

2/13 Bn A.I.F.

(Unit.)

20 April 1941

(Date of Despatch.)

J. Kelly Lt. Col.
 Comd. 2/13 Bn
 Signature of Commander.
 20th Aust Inf Bde
 (Bde., Divn., Area, etc., with which Unit is serving.)

FIELD RETURN OF OTHER RANKS. incl 1 Reinf.

2/13 Bn AIF (Unit). 19 April 1941 (Date)

(To be furnished by all Units of the Royal Army Ordnance Corps.)

Part A. Strength, Surplus or Reinforcements required.

1	2	3	4
Appointment.	Posted strength counting against authorised establishment (excluding attached).	Surplus to Establishment.	Reinforcements required (i.e., deficits on establishment).
W.Os. Class I.	1		
W.Os. Class II.	4		2
W.Os. Class III.			
Staff Serjeants	5		2
Serjeants	31		3
Corporals	65		12
Buglers			
Privates, etc.	538		248
TOTALS	644	*	* 267

*These totals should agree with the details shown in Part D on page 2 of Army Form W.3009C.

Part B. Other Ranks attached from other Corps.

Appointment.	Unit and Corps to which they belong.	Appointment.	Unit and Corps to which they belong.
VX 10533 Sgt Sadgett L.	AAPC	NX 36693 Sgt Atwood L.W.	AAOC
NX 16475 Sgt Crowley C.V.	AAAC	59502 Wood Aly	"
17278 Sgt McMechan A	"	16001 Lpl Brown R.	AA Postal C
17476 " Gorrick L	"	16794 Sgt Stevenson R	20 Bde
SX 6406 " Baxter R	"		
NX 60042 Lpl Garkin A	AAOC		
16660 Sgt Evans J	"		

Part C. Description of other Ranks whose return to the Unit is particularly requested.

Army No.	Rank.	Name and Initials.	Corps.	Remarks (e.g., present whereabouts if known).

2/13 Bn AIF

Unit.

Army Form W. 3009 C
(page 2).

Part D. Detail by Trades of Surplus or Reinforcements required as shown in Part A of Army Form W.3009C.

DETAIL OF SPECIALISTS, TRADESMEN, ETC.	SURPLUS TO ESTABLISHMENT.							REINFORCEMENTS REQUIRED.							REMARKS.			
	W.Os. Class I.	W.Os. Class II.	W.Os. Class III.	Staff Serjeants.	Serjeants.	Corporals.	Buglers.	Privates, etc.	TOTAL.	W.Os. Class I.	W.Os. Class II.	W.Os. Class III.	Staff Serjeants.	Serjeants.		Corporals.	Buglers.	privates, etc.
Armament Artificers Fitters																		
Armament Artificers—Instruments																		
Armament Artificers—Instruments —Wireless																		
Ammunition Examiners																		
Armourers																		
Blacksmiths																		
Carpenters and Joiners																	3	3
Clerks																	1	1
Coppersmiths																	5	5
Driver Mechanics																		
Draughtsmen (Mech.)																		
Electricians																		
Fitters																		
Fitters (Motor Vehicle)																		
Grinders (Precision)																		
Hammermen																		
Instrument Mechanics																		
Machinists (Metal)																		
Moulders																		
Motor Mechanics																		
Motor Assemblers																		
Painters and Decorators																		
Pattern Makers																		
Posh Cycle Repairers																		
Riveters																		
Saddlers and Harness Makers																		
Saw Doctors																		
Sawyers																		
Shoemakers																		
Storemen																		
Textile Refitters																		
Tinsmiths and Whitesmiths																		
Toolmakers																		
Turners																		
Vulcanizers																		
Watch Makers																		
Welders (Acetylene or Electric)																		
Wheelers																		
Wireless Mechanics																		
Wood Turners and Machinists																		
Non-Tradesmen										2		2	3	12				239 258
TOTALS (to agree with Columns 3 and 4 of Part A).										2		2	3	12				248 267

2/13 Bn AIF

Unit

Date of Despatch 19 April 1941

J. Kelly Capt for
Lt. Col.
 Signature of Commander.
 Comd. 2/13 Bn., A.I.F.
 20 Street Ent Bde
 Bde., Divn., Area, etc., with which unit is serving.

FIELD RETURN OF OFFICERS.

2/13 Bn A 23 (Unit.)

PART A.—STRENGTH, SURPLUS OR REINFORCEMENTS REQUIRED.

1 Ranks.	2 Posted strength counting against authorised establishment (excluding attached).	3 Surplus to Establishment.	4 Reinforcements required (i.e., deficits on establishment).
.....*			
.....*			
.....*			
.....*			
Lieut.-Colonels	<i>1</i>		
Majors.....	<i>3</i>		
Captains	<i>9</i>		
Lieutenants	<i>16</i>		<i>3</i>
2nd Lieutenants			
Quartermasters			
District Officers			
TOTALS	<i>29</i>		<i>3</i>

* Insert detail of higher ranks as necessary (e.g., Major-General, Brigadier, etc).

PART B.—PARTICULARS OF OFFICERS JOINED OR QUITTED DURING WEEK.

Officers JOINED during week.

Rank.	Name.	Corps.	Date.	Cause.
.....				
.....				
.....				
.....				
.....				

Officers QUITTED during week.

Rank.	Name.	Corps.	Date.	Cause.
<i>Lieut</i>	<i>J. Maloney</i>	<i>2/13 Bn.</i>	<i>21.4.41</i>	<i>trans AIF Singing Camp Sabuck</i>
.....				
.....				
.....				

PART C.—DESCRIPTION OF OFFICERS WHOSE RETURN TO THE UNIT IS PARTICULARLY REQUESTED.

Rank.	Name and Initials.	Corps.	Remarks (e.g., present whereabouts, if known).
.....			
.....			
.....			
.....			

PART D.—NOMINAL ROLL OF OFFICERS ON STRENGTH.

(i) Officers posted to Unit (Total to agree with column 2 of Part A).

1	2	3	4	5	6
Substantive Rank.	Higher acting or temporary rank, if held.	Name and Initials.	Corps.	Whether present with Unit (Insert Yes or No).	If not present with Unit, state how employed.
Lt Col	Nx 393	A.A. Burrows	2/13 Bn	Yes	Comd. 2/13 Bn
Lt Col	12152	L.A. Gragg	"	No	MC DUTY 2/13 Bn
"	12213	R.W.N. Turner	"	Yes	OC HQ Coy
"	15218	A.M. Hilton	"	"	OC C Coy
Capt.	12214	J.A. Kelly	"	"	Sgt
"	380	A. Hill	"	"	OC B Coy
"	12222	G.A. Handley	"	"	OC D Coy
"	12336	H.G. Gillen	"	"	OC A Coy
"	Nx 16965	J.D. Walsh	"	"	2/13 B Coy
"	Nx 12383	H.H. Cooper	"	"	2/13 A Coy
"	12335	R.G. Sanderson	"	"	2/13 C Coy
"	70221	D.M. Walcott	"	"	2/13 D Coy
T/Capt	12373	J.J. Couch	"	"	Q.M.
Lieut	12352	G.M. Rogan	"	"	Pl Comd
"	34981	G.L. Evans	"	"	Pl Comd
"	14772	R.J. Semmerville	"	"	Pl Comd.
"	12223	P. Deschamps	"	"	Pl Comd.
"	12452	H.P. Walker	"	"	Pl Comd.
"	70203	H.B. Wood	"	"	Pl Comd
"	12394	J.R. Watch	"	"	Pl Comd
"	12375	H.J. Graham	"	"	Pl Comd
"	12374	A.O. Powell	"	"	Pl Comd
"	34860	S.F. Faulkner	"	"	Pl Comd
"	15031	R.B. Wilson	"	"	Pl Comd
"	13678	J.R. Bunell	"	"	Pl Comd
"	12486	H.B. Bentley	"	"	TO
"	13867	H.D. Vincent	"	"	Pl Comd
"	34714	G.R. Bucknell	"	"	Pl Comd
"	34786	G.B. Clarke	"	"	Pl Comd

(ii) OFFICERS ATTACHED FROM OTHER CORPS.

Substantive Rank.	Higher acting or temporary rank if held.	Name and Initials.	Corps.	Date of attachment.	Nature of attachment.
Capt.	5x9183	H.B. Goode	AA MC	21.2.41	M/O
Chaplain	Nx 35079	G. Francis	ARCD	30.7.40	PADKE.

2/13 Bn. A.I.F.

(Unit.)

26 April 1941

(Date of Despatch.)

J. Kelly Capt. Comd. 2/13 Bn. A.I.F.

(Signature of Commander.)

20 Aust Inf Bde.

(Bde., Divn., Area, etc., with which Unit is serving.)

Was Done

TO BE MADE UP TO AND FOR SATURDAY IN EACH WEEK.

Army Form W. 309C

(page 1)

FIELD RETURN OF OTHER RANKS.

2/13 Bn A.I. Sq 1st Reinf (Unit). 26 April 1941. (Date)

(To be furnished by all Units of the Royal Army Ordnance Corps.)

Part A. Strength, Surplus or Reinforcements required.

1	2	3	4
Appointment.	Posted strength counting against authorised establishment (excluding attached).	Surplus to Establishment.	Reinforcements required (i.e., deficits on establishment).
W.Os. Class I.	1		
W.Os. Class II.	4		2
W.Os. Class III.			
Staff Serjeants	5		2
Serjeants	33		1
Corporals	67		10
Buglers			
Privates, etc.	530		256
TOTALS	640	*	* 271

*These totals should agree with the details shown in Part D on page 2 of Army Form W.309C.

Part B. Other Ranks attached from other Corps.

Appointment.	Unit and Corps to which they belong.	Appointment.	Unit and Corps to which they belong.
VX10533 Sgt Padgett	A.A.P.C.	Nx36693 Pte. Atwood	A.A.O.C.
Nx16815 " Crawley	A.A.M.C.	59592 " Wood	A.G.
1/2178 Pte McMechan	"	16001 Cpl. Beaton	A.A. Post C.
17476 " Cornick	"	16794 Pte. Stevenson	R. 20 Bde
Sx6406 " Baxter	"		
Nx60042 Cpl Larkin	A.A.O.C.		
16660 Pte Evans	"		

Part C. Description of other Ranks whose return to the Unit is particularly requested.

Army No.	Rank.	Name and Initials.	Corps.	Remarks (e.g., present whereabouts if known).

C.E.A. 7/40 200 pads.

Part D. Detail by Trades of Surplus or Reinforcements required as shown in Part A of Army Form W.3009C.

DETAIL OF SPECIALISTS, TRADESMEN, ETC.	SURPLUS TO ESTABLISHMENT.								REINFORCEMENTS REQUIRED.							REMARKS.			
	W.Os. Class I.	W.Os. Class II.	W.Os. Class III.	Staff Sergeants.	Sergeants.	Corporals.	Buglers.	Privates, etc.	TOTAL.	W.Os. Class I.	W.Os. Class II.	W.Os. Class III.	Staff Sergeants.	Sergeants.	Corporals.		Buglers.	privates, etc.	TOTAL.
Armament Artificers Fitters																			
Armament Artificers—Instruments																			
Armament Artificers—Instruments —Wireless																			
Ammunition Examiners																			
Armourers																			
Blacksmiths																			
Carpenters and Joiners																			
Clerks																			
Coppersmiths																			
Driver Mechanics																			
Draughtsmen (Mech.)																			
Electricians																			
Fitters																			
Fitters (Motor Vehicle)																			
Grinders (Precision)																			
Hammermen																			
Instrument Mechanics																			
Machinists (Metal)																			
Moulders																			
Motor Mechanics																			
Motor Assemblers																			
Painters and Decorators																			
Pattern Makers																			
Push Cycle Repairers																			
Riveters																			
Saddlers and Harness Makers																			
Saw Doctors																			
Sawyers																			
Shoemakers																			
Storemen																			
Textile Refitters																			
Tinsmiths and Whitesmiths																			
Toolmakers																			
Turners																			
Vulcanizers																			
Watch Makers																			
Welders (Acetylene or Electric)																			
Wheelers																			
Wireless Mechanics																			
Wood Turners and Machinists																			
<i>MASON</i> <i>on duty personnel</i>										2			2	1	10			1 1	255270
Non-Tradesmen																			
TOTALS (to agree with Columns 3 and 4 of Part A).										2			2	1	10			256270	

2/13 Bn A.I.B. Unit

Date of Despatch 26 April 1941

J. Kelly *Cap*
Signature of Commander.
Comd. 2/13 Bn., A.I.F.
20 Aust Inf Bde
Bde., Divn, Area, etc., with which unit is serving.

This sheet is gridded with the
LIBYAN GRID based on Long. 18° E.

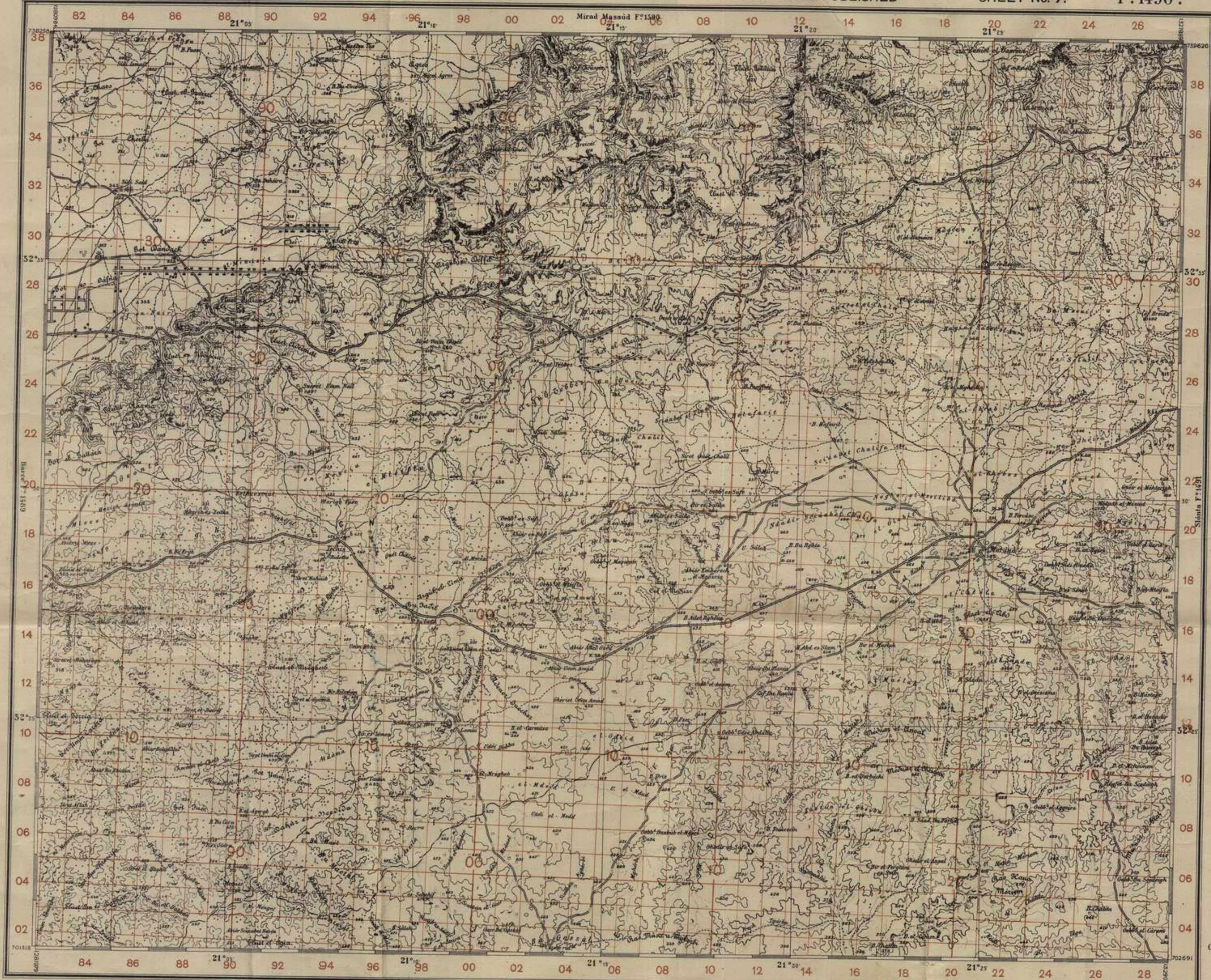
TECNIS

NOT TO BE PUBLISHED

EDITION OF 28 NOV 40
SHEET No. 7. F:1490.

1:100,000

Tecnis CYRENAICA 1:100,000



Grid North is
01°32'35" East
of True North at
this sheet edge

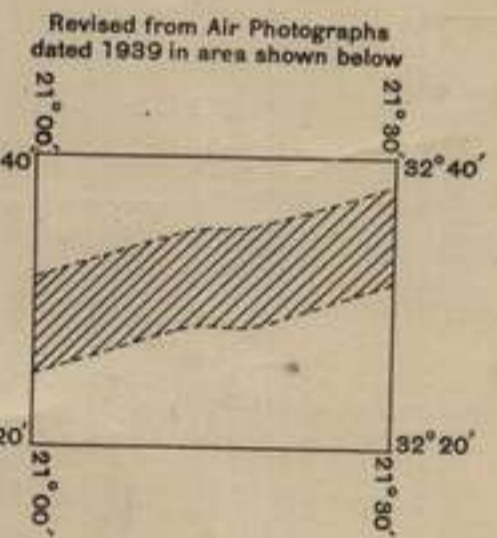
Magnetic
North

LAT. 32° 30' N.

LONG. 21° 15' E.

Grid North is
01°46'02" East
of True North at
this sheet edge

Magnetic Variation
8° 09' W. (1940)
Annual decrease about 2"



CORRECTIONS TO LATITUDE AND LONGITUDE

To bring the values for LATITUDE and LONGITUDE
given on this map into sympathy with Survey of Egypt,
deduct 13.6 secs. from LONGITUDES and 7.7 secs. from
LATITUDES taken from this map.

D.R. 44 P.52

Vertical Interval : 25 metres

Accuracy of contours shown thus, ----- is only approximate.

Scale 1:100,000

Reproduced by 512 (A. Fd. Svy) Coy. R.E.,
(From an Italian Map dated 1934).

TO GIVE A GRID REFERENCE ON THIS SHEET.
LETTER Generally necessary when giving a reference on this scale
if required see Diagram

POINT - GR. EL-ANSEL LETTER O

East 16 North 28

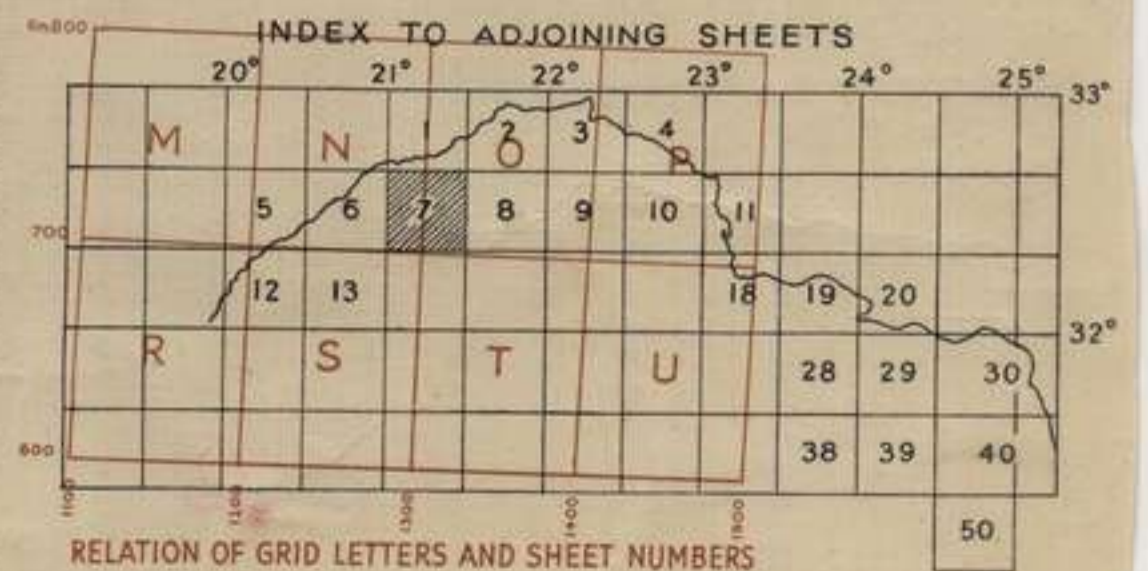
Estimate yards eastward 8 Estimate yards northward 8

REFERENCE 168288 TO NEAREST 100 METRES

Scale
1000 metres
500 metres
100 metres
Nearest similar reference with five extra digits 500 metres

<p>Bridge over</p> <p>Level Crossing Halt</p> <p>Road under construction</p> <p>Road for wheeled traffic over 6 m.</p> <p>Road for wheeled traffic between 3 m. and 6 m.</p> <p>Road, carriage</p> <p>Motor track</p> <p>Bridges for railway</p> <p>Bridges for ordinary roads</p>	<p>Railway, ordinary gauge</p> <p>narrow</p> <p>Footpath</p> <p>Line, telegraph and telephone</p> <p>Boundary, district, province, arrondissement</p> <p>Aqueduct</p> <p>Walk, Lime, Masonry</p> <p>Supporting wall, hedge, reticulated</p> <p>Limit of wood, pasture</p>	<p>Communications non portable</p> <p>Country Road</p> <p>Occasional camping ground</p> <p>Mosque</p> <p>Sheik's Tomb with building</p> <p>Sheik's Tomb without building</p> <p>Synagogue</p> <p>Cemetery, Christian</p> <p>Jewish</p> <p>Churches Large, Small, Oratories</p>	<p>Houses, Masonry, Wooden, Hut, Cabin</p> <p>Noted Rain</p> <p>Rem of Ancient Castle</p> <p>Troglodyte Dwelling</p> <p>Depository cereals</p> <p>Tank or Cistern</p> <p>Well - Perennial</p> <p>Well - Non-Perennial</p> <p>Well</p> <p>Depth of water and of well</p>	<p>Noted Rain</p> <p>Rem of Ancient Castle</p> <p>Troglodyte Dwelling</p> <p>Depository cereals</p> <p>Tank or Cistern</p> <p>Well - Perennial</p> <p>Well - Non-Perennial</p> <p>Well</p> <p>Depth of water and of well</p>	<p>Springs, Perennial & Non-perennial</p> <p>Well, with windmill, noria</p> <p>Well - Artesian</p> <p>Electric Power Sta., Factory electric</p> <p>Radio Station</p> <p>Air Port</p> <p>Lighthouse, Beacon, Monument</p> <p>Geodetic and Topographic point</p> <p>Battlefield</p>	<p>WOODS AND VINEYARDS</p> <p>Copse</p> <p>Palms</p> <p>Olive</p> <p>Acid Fruit</p> <p>Eucalyptus</p> <p>Vines</p> <p>Beaches</p> <p>Downs with difficult thorny bush</p>
------------------------------------------------------------------------------------------------------------------------------------------------------------------------------------------------------------------------------------------------------------------------------------	---------------------------------------------------------------------------------------------------------------------------------------------------------------------------------------------------------------------------------------------------------------------------	--------------------------------------------------------------------------------------------------------------------------------------------------------------------------------------------------------------------------------------------------------------------------------	-------------------------------------------------------------------------------------------------------------------------------------------------------------------------------------------------------------------------------------------------------------------------	------------------------------------------------------------------------------------------------------------------------------------------------------------------------------------------------------------------------------	---------------------------------------------------------------------------------------------------------------------------------------------------------------------------------------------------------------------------------------------------------------------------------------	---------------------------------------------------------------------------------------------------------------------------------------------------------------------------

ABBREVIATIONS: -B, Rock Cliffs. CA, District. CA, Banked Fields. Fond, Caravanserai. G, Ruined Village. G, Hillcock. G, Hill. G, Gob's Cemetery. G, Gb. Depression. G, M, Shallow Well. M, Moh. Mohammed. R, Headland. S, Salt. S, Deep Well. S, Deep Wells pl. S, Artificial Landmark. T, Temporary Water. U, Dry Water-course. U, Tribe of. Z, Village. Z, Village.



RELATION OF GRID LETTERS AND SHEET NUMBERS

Ames 17

This sheet is gridded with the
PURPLE GRID based on Long 27°E
and the LIBYAN GRID based on
Long 18°E.

Ain-el-Gazala
CYRENAICA 1:100,000.

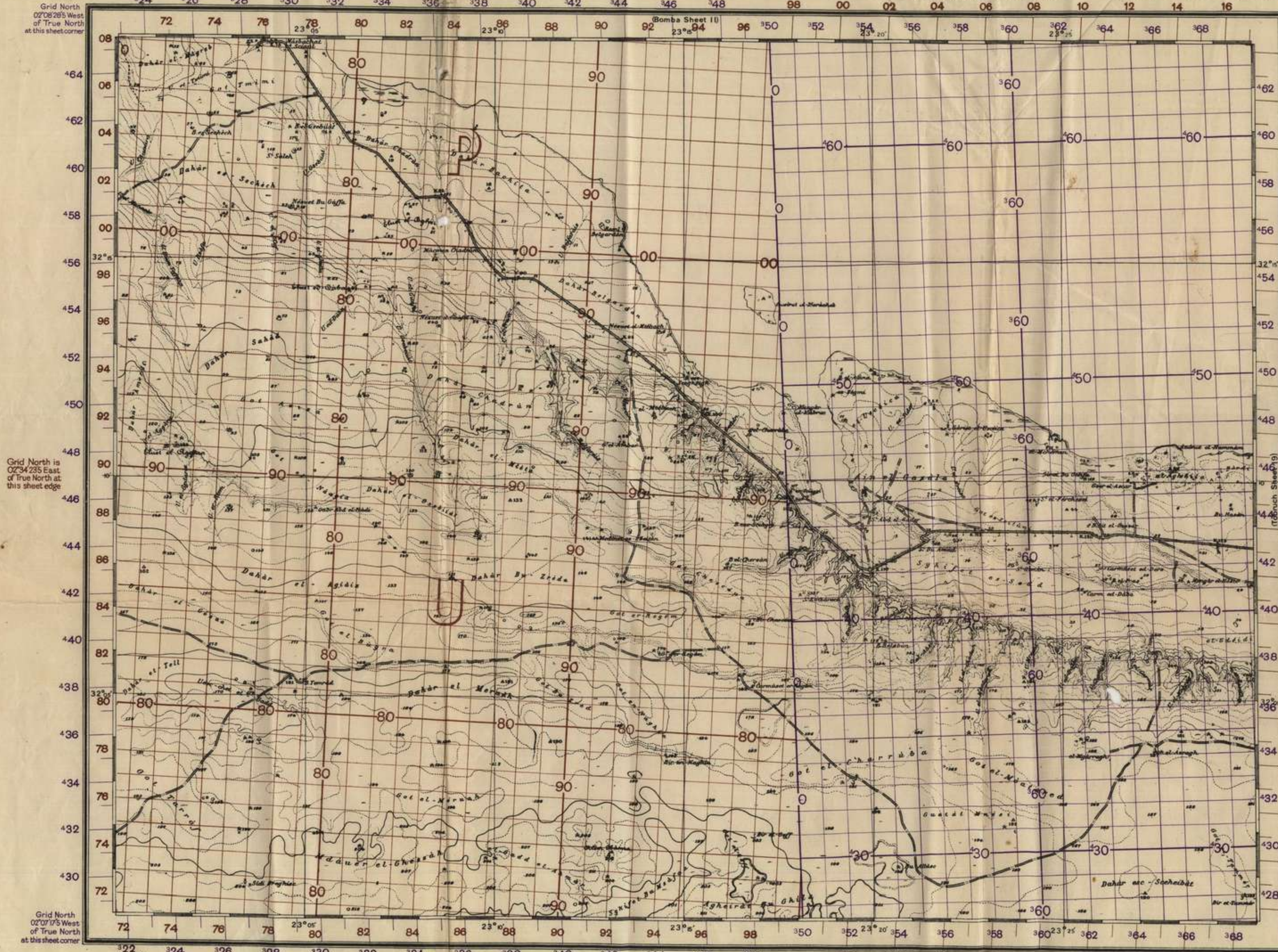
AIN EL-GAZALA

NOT TO BE PUBLISHED

EDITION OF 9 DEC 40
SHEET 18 F°1504

Grid North
02°08'28" West
of True North
at this sheet corner

Grid North
01°52'28" West
of True North
at this sheet corner



Grid North is
02°34'25" East
of True North
at this sheet edge

Grid North
02°49'50" East
of True North
at this sheet edge

Magnetic Variation
(1937) 1°34'W
Annual Decrease
about 5"

CO-ORDINATES OF SHEET CORNERS

Libyan Grid	Purple Grid
S.W. Corner 1791750 - E	331523 - E
071168 - N	1428520 - N
S.E. 1518935 - E	368818 - E
1073308 - N	1450675 - N
N.W. 1147010 - E	322004 - E
1708076 - N	1445524 - N
N.E. 1151710 - E	370024 - E
1710297 - N	1446886 - N

CORRECTIONS TO LATITUDE AND LONGITUDE.

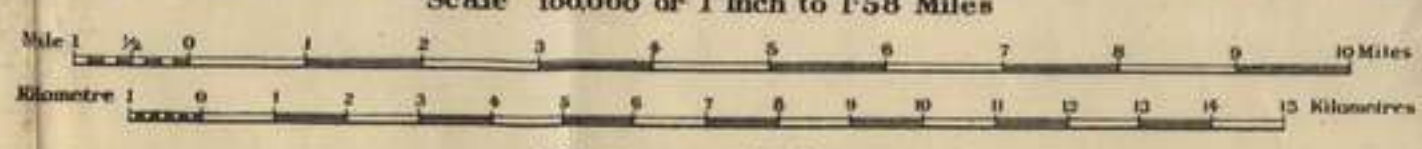
To bring the values for LATITUDE and LONGITUDE given on this map into sympathy with Survey of Egypt, deduct 13.6 secs. from LONGITUDES and 7.7 secs. from LATITUDES taken from this map.

Grid North
01°51'24" West
of True North
at this sheet corner

TO GIVE A GRID REFERENCE ON THE PORTION OF THIS SHEET COVERED BY THE LIBYAN GRID. POINT - B TEMRAD LETTER U

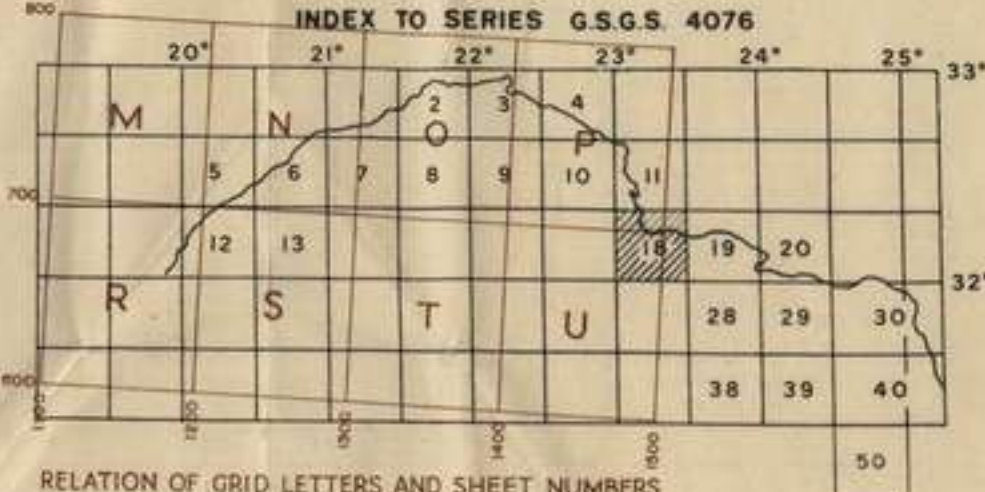
East	North
Take west edge of square in which point lies and read the figure printed opposite the line (on north or east margin or on the line itself) for the face of the map.	Take south edge of square in which point lies and read the figure printed opposite the line (on east or south margin or on the line itself) for the face of the map.
Estimate tenths eastwards	Estimate tenths northwards
791	814
REFERENCE 791814 TO NEAREST 100 METRES.	North 814

Geographical Section, General Staff No. 4076.
Published at the War Office, 1938.



1 Centimetre to 1 Kilometre

Standard gauge railway	Walls - lime, dry or rubble	Grain store
Under construction	Palisade, hedge, wire	Water tank
Road fit for wheeled traffic, wider than 6m.	Limits of wood, cultivation	Well - perennial
" " " " 3 m.	House, shanty, hut	" " non-perennial
Road for wheeled traffic, natural foundation	Occasional camping ground	" " perennial and brackish
Motor track	Mosque	Depth of water and of well
Railway bridges	Shakhs tomb with building	Spring, perennial, non-perennial
Road bridges	" " without "	Well with wind pump, water wheel
Track unfit for wheeled traffic	Synagogue	Well - dry
Rural road	Cemetery - Christian, Jewish	Electric power station, factory
Path	" " Moslem	Wireless telegraph station
Permanent telephone or telegraph lines	Church or chapel	Air port
Boundary of State, Commissariat, District (Circondario)	Notable ruin	Beacon, lighthouse, monument
Underground	Ruin of ancient castle	Trig. point spot height
Aqueducts	Troglydite dwelling	Battlefield



TO GIVE A GRID REFERENCE ON THE PORTION OF THIS SHEET COVERED BY THE PURPLE GRID. POINT - B EL-FRAS

East	North
Take west edge of square in which point lies and read the figure printed opposite the line (on north or east margin or on the line itself) for the face of the map.	Take south edge of square in which point lies and read the figure printed opposite the line (on east or south margin or on the line itself) for the face of the map.
Estimate tenths eastwards	Estimate tenths northwards
363	441
REFERENCE 363441 TO NEAREST 100 METRES.	North 441

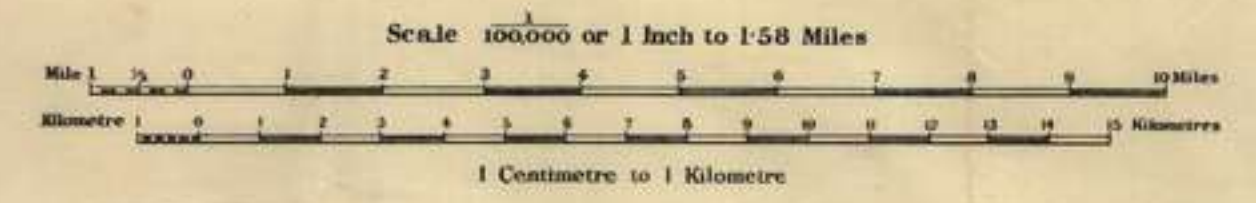
ANNEX 5

Camp of 8/9 Mar 3905 L345
Camp of 9/10 Mar 4050 W300
POSITION of 10 Mar / 10 May 4126 4227

CYRENAICA 1:100,000.

COMPOSITE TOBRUCH SHEET

EDITION OF 5 JAN. 41.



This sheet is gridded with 'PURPLE' GRID based on Long. 27°E.

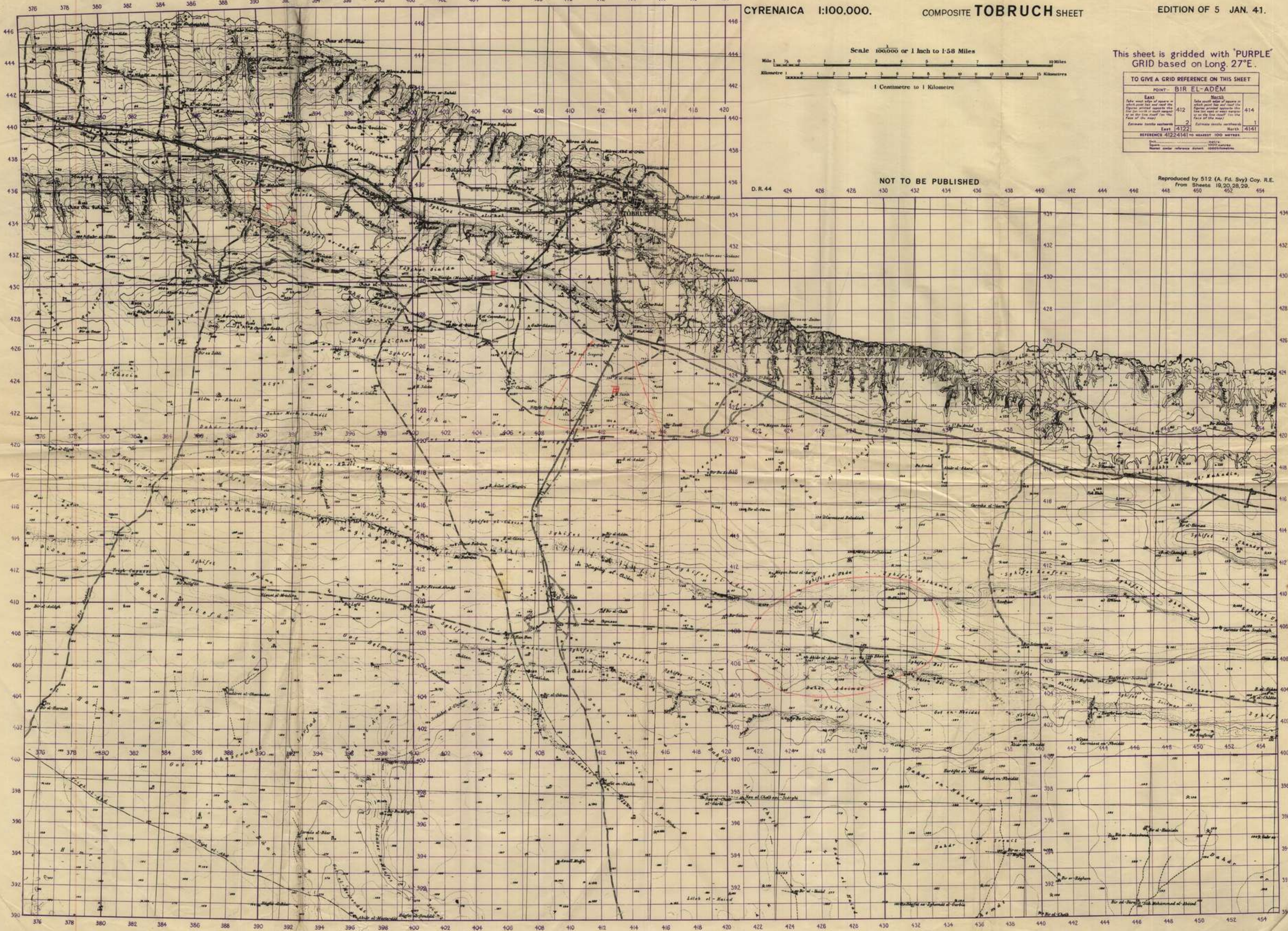
TO GIVE A GRID REFERENCE ON THIS SHEET

POINT - BIR EL-ADÈM			
EAST	NORTH	EAST	NORTH
412	414	412	414
4122	4141	4122	4141

REFERENCE 41224141 TO NEAREST 100 METRES.

NOT TO BE PUBLISHED

Reproduced by 512 (A. Fd. Svy) Coy. R.E.
From Sheets 18,20,28,29, 450, 452, 454



2/13 BN

3-30 APR 41

MOVEMENTS B LIBYA

WITHDRAWAL
TO TOBRUK

BENGHASI	3	Apr	41
FORT REGIMA	4	"	
EL AHLAR-BARCE		"	
SLONTA	5	"	
MARTUBA	6	"	
AIN EL GAZALA	7	"	
TOBRUK	9	"	

2/13 BN

5-30 APR 41

MAPS - LIBYA

MAPS APPENDED

TECNIS
SLONTA
MARTUBA
AIN EL GAZALA
TOBRUK

2/13 BN

3-30 APR 41

2/13 BN

3-30 APR 41

OPERATIONS - LIBYA

3 APR -
DEMOLITIONS at BENGHASI and BENINA aerodrome. Bn to defend pass while rest of Div withdraws.

4 APR -
GUNS ABANDONED Owing to demolition of pass A/Tk guns belonging to 20 A/Tk Regt withdrawn to top of escarpment behind ditch; took no part in engagement and were abandoned.

ENEMY ATTACK on pass with estimated 3000 infantry and 13 tanks also 4 armoured cars, 1545 hrs. Tps fight way back to FORT REGIMA, occupying new defensive positions in darkness.

OFFICERS CAPTURED Capt TK Fraser, Lieut R Ross seen to be surrounded and captured with some of their men.

TRANSPORT ARRIVES 2240 hrs and troops are taken back through EL ABIAR and BARCE.

5 APR -
NEW STAND in defensive positions made at WADI KUFF, approximately 11 kilos BARCE side of SLONTA.

6 APR -
TO MARTUBA by stages, ending at 2215 hrs.

7 Apr -
ENGR PARTY
AMBUSHED. 9 Div Engineer party arrives. Had been ambushed MECHI LI-DERNA. One killed and two wounded.

JOIN 26 BDE Under orders, 0915 hrs; withdraw to AIN EL GAZALA.

8 APR -
MOTOR CYCLISTS
CAPTURED Two natives, carrying British passes, taken. Sent to Bde for interrogation.

BN RELIEVED by 2/24 Bn, goes to new position 22 kilos from TOBRUK.

9 APR - Enter TOBRUK defences, occupying position allotted. Patrol duties to end of month.

JUN 19 1941

12/3 WAR DIARY or INTELLIGENCE SUMMARY

Army Form C.2118
(adapted.)

(Erase heading not required)

Unit *2/13 Bn A.I.F.* Date and Time.—From *1 May 41* To *2 May 41*

Place	Date	Hour	Summary of Events and Information	Remarks and references to Appendices, Diaries, &c.
<i>TOBRUK</i>	<i>Thursday 1 May 41</i>	<i>1500</i>	<i>Enemy patrol approaches wire on to bay front fired on and withdraws only to be intercepted by a dog patrol from 6 bay. Enemy strength estimated 40/50, captured 6 (2 wounded) one killed. One casualty self - Strength of our dog patrol 1 lie under a cpl.</i>	
		<i>0700</i>	<i>Other patrols report all clear - Smoke screens laid down by enemy over rd blocks. Five tanks approach possible to attack as it had been established enemy patrol near carrying explosives to 6th wire. Tanks could find no gap and were fired on by our arty. They then withdrew.</i>	
		<i>1100</i>	<i>Fighting continues on rd side area. Enemy have succeeded in penetrating with some infantry and estimated 40 tanks.</i>	
		<i>0900</i>	<i>Patrol moves out from 6 bay to pick up enemy wounded and dropped explosives.</i>	
			<i>By in a state of readiness all day, very little news of the battle comes in but the noise of gun and m/c fire can be faintly heard. There is no activity on our front.</i>	
		<i>1500</i>	<i>Patrols from B and C bays push to depth of approx 1000/1500 yds on bay front. - M/T seen at foot of escarpment but no unusual enemy movement.</i>	
		<i>1700</i>	<i>News of counter attack to reform front line on rd side front</i>	
		<i>2000</i>	<i>Loop patrol as usual.</i>	
		<i>2115</i>	<i>News of partial success of counter attack</i>	
		<i>2230</i>	<i>Heavy shelling of this H.Q. commences. First shell scores direct hit on Ambulance wagon of casualties, wagon destroyed</i>	<i>2/13</i>
	<i>2 May 41</i>	<i>0500</i>	<i>Stand to</i>	
		<i>0700</i>	<i>Patrols report all clear - M/T movement heard well out but no activity on our front.</i>	

WAR DIARY or INTELLIGENCE SUMMARY

(Erase heading not required)

Unit 2/13 Bn

Date and Time.—From 2 May 41 To 5 May 41

Place	Date	Hour	Summary of Events and Information	Remarks and references to Appendices, Diaries, &c.
TOBRUK	Friday 2 May 41		Quiet day occasional shelling of MT mine near front line but shelling ineffective.	Gib
	3 May	2000	Patrols as usual	
		0500	Stand to	
		0700	Patrols report all clear broken quiet day - uneventful	Gib
4 May	2000	Patrols as usual		
		0500	Stand to	
		0700	Patrols report all clear - MTs fire on fixed line some 500 yds out from our mine.	
		1030	Patrol holds parade service in Bn orderly room.	
		1045	Relief party from 17 Bn who are to take over from us tonight	
		1100	4 M16 machine guns HQ area. No no good	
		1400	Relief party consisting of 2 Lk 10 and long bands leave for GEM (17 Bn) area.	
		2000	Patrols as usual 13 Bn responsible for patrols until dark.	
		2030	Quiet elements leave for sub area. Quiet elements consist of kitchens and food party from 17 Bn.	
			Relief goes on as relieving troops arrive from 17 Bn. Relief on basis of walk in and walk out, emergency rations reserve water and reserve ammunition left in pots.	Gib
5 May		0130	Patrols relieved by 17 Bn	
		1600	All our food up in their new forms after some slight confusion in darkness.	
			Day spent in sorting and settling. Adjustments of rations and water necessary owing to shortage left by 17 Bn. New form in Graham's battery form trench system with concrete shelters.	Gib

WAR DIARY or INTELLIGENCE SUMMARY

Army Form C.2118
(adapted.)

(Erase heading not required)

Unit 2/13 Bn

Date and Time.—From 6 May 41 To 8 May 41

Place	Date	Hour	Summary of Events and Information	Remarks and references to Appendices, Diaries, &c.
TOBRUK	Tuesday 6 May	0500	Stand to Day spent in misery. Severe dust storm making movement impossible. Patrol trucks and trucks for swimming parties lost. Dust renders enemy inactive also though careful watch was kept in case of infiltration under cover of dust.	L/S
	7 May	0500	Stand to Dust clears and troops continue to clean up and settle in. I Coy is mobile reserve for side area and has six 3-ton trucks standing by at night. I further six 3-tonners stand by for a general call. Enemy has remained fairly quiet having his MGs well forward to shoulder over gattos. Constant gattal pressure is maintained by the fwd units. Enemy air activity is still extensive but our HARRICANE continues successful T&R work. So far lack of information has been the chief worry of the unit.	L/S
	8 May	0500	Stand to. Quiet night - some gattal activity by fwd units. Coy spends day sorting out positions. I Coy concerned with recce of routes to fwd units in case of relief. Quiet day no developments - swimming parties all Coy	L/S

WAR DIARY or INTELLIGENCE SUMMARY

(Erase heading not required)

Unit 2/13 Bn Date and Time.—From 9 May 41 To 10 May 41

Place	Date	Hour	Summary of Events and Information	Remarks and references to Appendices, Diaries, &c.
TOBRUK	Friday 9 May	0500	Stand to. — Top/R of morning 8 May to hand gives first indication of our / troop movement in SOLLUM area. Our forces reported moving in westerly direction.	
		0930	Advice that 13th to take over 2/1 Pioneer Bn's area in following evening. 2/1 Pns opposite SW corner of salient in close contact with the enemy. Brig directs that all personnel shall have had a swim by time of change over.	
		1200	Take over postponed until night 11/12	
		1400	Swimming party increased in accordance with Brig's direction.	
		1430	Rece party from 2/1 Pns.	
		1700	Key Comds of B&C Coy, who are to take over first zone now prep for rece. Owing to proximity rece can only be done in first areas at night.	G.P.
	10 May	0500	Stand to	
		0900	Swimming parties continue on comparatively large scale. General admin arrangements for shift are conducted during the day. C Coy will be on left in Posts R10, 9 & 8. B Coy on right in an entrenched zone joining with the left Coy 2/4 Bn. A Coy behind B Coy in line support with D Coy further back as a mobile reserve. The newly formed Tank-hunting pl to be with A Coy.	
		1700	C Coy sends first one HCO from each pl to spend night in posts to become familiar with the situation	G.P.

WAR DIARY or INTELLIGENCE SUMMARY

Army Form C.2118
(adapted.)

(Erase heading not required)

Unit 2/13 Br Date and Time.—From 11 May 41 To 13 May 41

Place	Date	Hour	Summary of Events and Information	Remarks and references to Appendices, Diaries, &c.
TOBRUK	Sunday 11 May 41	0500	Stand to - 0830 D Coy commences to move	
		1000	Padre holds service	
		1315	A Coy commences move	
		1430	D Coy complete	Att copy of movement orders
		1600	B Coy commences move	
		1930	A Coy complete	
		2030	B Coy commences move Take over of two fwd bazs done in small parties and takes	GAB
		0230	B Coy complete	
	Monday 12	0830	C Coy complete. B Coy loses one man by MG fire when manning fwd post. Bazs spend day settling in. Tools and wire being sent up for erection in darkness. Inf elements compelled to lie low during daylight activity being limited to sniping and opportunist shots by arty and supportingickers MMGs manned by INF. Enemy fwd MG posts very active and mortar ops established with fwd bazs to locate and knock them out.	
		2030	CO. moves up to H Coy to have a look at posn. Pos rear posn but too dark for full view.	GAB
		13 May	0500	Stand to. - Quiet night. Party of enemy seen by F Coy but dispersed by fire and no further movement seen. Day spent improving posns as much as possible. fwd bazs movement very limited owing to enemy sniping but counter sniping carried out at each opportunity with fair success. D Coy in rear posn as BLUE LINE has many improvements to

WAR DIARY or INTELLIGENCE SUMMARY

Army Form C.2118
(adapted.)

(Erase heading not required)

Unit 2/13 Br Date and Time.—From 13 May 41 To 15 May 41

Place	Date	Hour	Summary of Events and Information	Remarks and references to Appendices, Diaries, &c.
TOBRUK	Tuesday 13 May 41	2200	make to posn. Patrols find enemy very touchy and open on fixed lines with MGs at slightest sound. Quiet night. Fwd Coy were posn.	Gibb
	14 May	0500	Stand to Quiet day. Our snipers and harassing fire having effect of keeping enemy's head down and our fwd elements able to move about with greater freedom.	
		2200	Patrols find enemy still firing MGs at slightest provocation. It is thought MGs brought fwd at night for further effect. — Today we came under land 15 Aust Inf Bde — B Coy to push rd Pl fwd 350 yds under cover of protective patrol. 10 Pl move fwd and dig new posn successfully. One man missing during operation. Intermittent shelling of fwd HQ posn.	Gibb
	15 May	0500	Stand to. Fwd Coy gained control of front enemy very quiet. Art and mortars active on enemy posns with good observed results. Rifles and LMGs fire on opportunity with good effect. Quiet day from point of view of enemy activity.	
		2200	Patrols go out on all fronts. Enemy appears to be digging and improving his posns. Digging parties fwd on.	Gibb

WAR DIARY or INTELLIGENCE SUMMARY

Army Form C.2118
(adapted.)

(Erase heading not required)

Unit 2/13 Bn

Date and Time.—From 16 May 41 To 18 May 41

Place	Date	Hour	Summary of Events and Information	Remarks and references to Appendices, Diaries, &c.
TOBRUK	Friday 16 May	0100	B Coy takes prisoner who walked into their line	
		0200	Party of infantry, engineers and 2 tanks attacks R8. Attack beaten off with VSA fire and 4 1/2 rifles. No casualties but enemy casualties 6 killed and 3 wounded	
		0300	B Coy at pl. assisted by 3" mortar engages digging party in front of it pl. digging ceases.	
		0500	Stand to.	
		0630	Some shelling of B and C Coy's HQ.	
		2200	Quiet day with occasional sniping. Patrols to cover improvements of digging and wiring of new posns. Patrols fire on enemy working parties with good effect	
17 May		1500	Stand to - Quiet day but troops continue to keep enemy's head down - Mortars shoot at opportunity targets.	
		2200	Patrols to harass enemy working parties - to Coy dig and occupy intermediate posn between left B Coy and post R10. Two Coy still improve posns. with digging and wire.	
18 May		0500	Stand to	
		0830	Half an hour's shelling of Bn HQ area. No damage or casualties.	
		1600	Padre holds short service in mess. Generally quiet day with a decrease in enemy sniping.	

WAR DIARY or INTELLIGENCE SUMMARY

Army Form C.2118
(adapted.)

(Erase heading not required)

Unit 2/13 Bn

Date and Time.—From 18 May 41 To 20 May 41

Place	Date	Hour	Summary of Events and Information	Remarks and references to Appendices, Diaries, &c.
TOBRUK	Sunday. 18 May 41	1950	Report of enemy inf moving from outside perimeter toward R7 (occupied by enemy).	
		2200	B Coy relieved by A - B moves into reserve securing perimeters for protection. Relief carried out without incident. Believe that enemy conducting relief also. very quiet night.	
	19 May	0500	Stand to.	
		1700	Quiet day no enemy activity. D Coy moves fwd to occupy junction between 2/9 Bn on our right.	
		2200	D Coy advances rd. flank 300 yds to bring it within 400 yds of enemy. A Coy goes fwd 200 yds digs posns but does not occupy them due to insufficient depth. Patrols find nothing doing enemy very quiet.	JLB
	20 May	0600	Stand to	
		2200	Quiet day. D reports no offensive action by enemy against new posns. B Coy sees that all men have had a swim. Patrols as usual recce and to cover working parties. Patrol from D Coy suffers two casualties 1 off and 1 OK wounded.	
		2300	B Coy capture two GERMAN prisoners fwd of post.	

WAR DIARY or INTELLIGENCE SUMMARY

(Erase heading not required)

Unit 2/13 Bn

Date and Time.—From 20 May 41 To 23 May 41

Place	Date	Hour	Summary of Events and Information	Remarks and references to Appendices, Diaries, &c.
TOBRUK	Tuesday		R8 - None to be members of 606 AA bn indicating relief of top on our front. - Otherwise quiet night. Artillery established R/10	G.P.
	20 May 41			
	21 May	0500	Stand to	
		0700	Two casualties in D Coy. two men sniped when moving about in their positions - Brought out by SB's	
			Quiet day on front but increased air activity over TOBRUK. There had been a lull in FA for several days.	
		2200	Patrols and working parties active	
		2230	Two gun crews from 3A/TA Regt. Strike omnibus when bringing guns fwd several casualties 3 fatal.	
			Patrols report enemy still digging and improving his posn. Fires many flares.	
			No offensive action on either side during night	G.P.
	22 May	0500	Stand to	
	0530	Harassing fire from arty brought down on posts R6 and R7.		
		Quiet day very little enemy activity		
	2200	Patrols out to cover working parties improving posn. A Coy moves its third pl onto left flank now has 3 pls fwd. Tanks hunting pl moves into A reserve pl area.		
23 May	0500	Stand to		
		Bad dust storm. visibility extremely poor. very quiet day. Nothing to report		
	2130	D Coy relieves to Coy on R8.9.10. Relief conducted without incident. Particularly quiet night - other Coy working posn.	G.P.	

WAR DIARY or INTELLIGENCE SUMMARY

Army Form C.2118
(adapted.)

(Erase heading not required)

Unit 2/13 Bn Date and Time.—From 24 May 41 To 26 May 41

Place	Date	Hour	Summary of Events and Information	Remarks and references to Appendices, Diaries, &c.	
TOBRUCH	Saturday 24 May	0500	Stand to - Quiet day. Little shelling of fwd posns especially posts R 8, 9 & 10. Nothing unusual to report.		
		2200	Patrols on all fronts as usual. Enemy digging and harassed by fire from LMGs and rifles.	L/S	
	25 May	0500	Stand to. Quiet day nothing unusual to report. occasional shelling by fwd posns no damage.		
		2200	Patrols on all fronts as usual. Digging and improving posns on both sides.	L/S	
	26 May		0500	Stand to	
			0600	A Coy patrol of 4 men go fwd to within 150 yds of enemy in west. When spot lifted they opened fire causing casualties. They returned safely.	
0730			Consistent shelling of H & B bays.		
1015			Direct hit on post R9 Lt Powell killed. Brought out immediately.		
		2130	Intermittent shelling all day with no further damage done. Patrols from left and right bays. A Coy moves fwd 50 yds on right, 150 yds centre and 300 yds left. Commence digging new posns. Direct night fire bursts of E MG fire.	L/S	

WAR DIARY or INTELLIGENCE SUMMARY

Army Form C.2118
(adapted.)

(Erase heading not required)

Unit 2/13 Bn

Date and Time.—From 27 May 41 To 28 May 41

Place	Date	Hour	Summary of Events and Information	Remarks and references to Appendices, Diaries, &c.
TOBRUCH	Tuesday 27 May	0500	Stand to - A Coy had been unable to dig to sufficient depth in mine fwd well continue digging tonight.	
		0600	A Coy patrol (Lt Bucknell again) of 3 men move out under cover of mist and repeat yesterday's performance of shooting up enemy gun definitely causing casualties and returning safely. - Quiet day otherwise nothing unusual to report.	
		1400	Bn HQ moves fwd to point 1000 yds from reserve Coy. Moves into old Graham battery position. This move puts us in closer touch with the fwd Coy. But under direct observation from PAs MEDAWR held by enemy necessitating improved control of vehicle movement. PAs and general concealment measures.	Jf 2/13
		2200	Patrols from fwd Coy. A moves fwd to deepen and occupy new positions.	
	28 May	0200	A Coy fully occupies new pits. to continue field works until dawn.	
0400		Enemy attempts to occupy fwd positions may be on the assumption that they are unoccupied. If under fire by fire from LMG's and mortars. Enemy casualties.		
		0500	Patrol A Coy (Lieut Bucknell) moves fwd to enemy position and from 15 yds open fire with Bren and scatter with hand grenades. Patrol returned without casualties.	

WAR DIARY or INTELLIGENCE SUMMARY

Army Form C.2118
(adapted.)

(Erase heading not required)

Unit 2/13 Bn A.I.F.

Date and Time.—From 28 May 41 To 29 May 41

Place	Date	Hour	Summary of Events and Information	Remarks and references to Appendices, Diaries, &c.
TOBRUCH	Wednesday 28 May	1100	5 Ambulances leave from behind E. posn. Our stretcher bearers go out to look for enemy wounded. E stretcher bearers work in cover of RED CROSS flag. Our bears go within 50 yds of E posn. also report enemy in 2 man weapon pits. Trip mine of single strand barb in front. Then posn. Enemy stretcher bearers out looking for wounded.	
		0900	Things return to normal. Quiet day nothing to report.	
		2100 2330	Two pls of C Coy return centre and left pls of A Coy. C Coy capture GERMAN prisoner - Patrol as usual.	
			Patrol get within 30 yds enemy posn and engage him with fire and hand grenades - casualties caused - Patrol returns safely.	JLB
	29 May	1500	Standstill. Quiet day some shelling and occasional sniping very hot but no dust.	
		2100	Patrols again creep close to enemy posns and engage him with GAA and hand grenades - return safely. Pl C returns pl D - Relieved pls of A go for a swim.	JLB

WAR DIARY or INTELLIGENCE SUMMARY

Army Form C.2118
(adapted.)

(Erase heading not required)

Unit 2/13 Bn

Date and Time.—From 30 May 41 To 31 May 41

Place	Date	Hour	Summary of Events and Information	Remarks and references to Appendices, Diaries, &c.
TOBRUCH	Friday 30 May	0500	Stand to.	
		2700	Hot still day. Some shelling of working parties in rear Bn area supplied by 2/17 Bn and working on YELLOW line defenses. Some shelling of forward areas during afternoon. Patrols as usual. A takes back two of areas from C Coy without incident. Hint of relief on Sunday by 2/15 Bn. Very quiet night no enemy activity.	G.P.
	31 May	0500	Stand to. Quiet morning some shelling of forward Coy areas.	
		1200	Shelling becoming more accurate on Centre of A Coy.	
		1700	Shell hits sec post. A Coy 5 wounded.	
		1930	Shell hits H/H2 gun A Coy area 6 wounded — none of the eleven were seriously. Our arty engages enemy guns and shelling finally ceases after dark.	
		2200	Patrols find nothing unusual to report. Quiet night.	G.P.

Relief of PAKA by ISOL night of 11/12 May 41.

Reliev- ing Coy ISOL.	Relief of Coy PAKA	Time.	Date.	Guides and Recce Party for relief of PAKA.	METHOD.
C Coy	A Coy	After last light.	Night 11/12 May.	Pl Comds RV at post 12 at 2000 hrs on 9 May when guides from PAKA will take them over route to posts 8-9 10 after last light.	Relief will commence in small parties from post 12 on night 11/12 May. 6 personnel carrying vehicles will be allotted. Will report at time to be notified. O.C "C" Coy will arrange with OC "A" PAKA plan for relief.
B Coy	B Coy	do	do	Pl Comds RV at HQ "C" Coy PAKA at 1900 hrs on 9 May. Guides will show them route to fwd posns after last light.	2 personnel carrying vehicles will be allotted and will report ISOL "B" HQ at 1600 hours, 11 May. Personnel will be moved in stages in rear of ISOL "A" before last light. Relief will take place after last light by movement through D Coy. OC ISOL "B" will arrange with OC ISOL "A" and OC PAKA "B".
A Coy	C Coy	Comm- ence 1400 hrs.	11 May	Pl Comd RV at HQ "D" Coy PAKA at 1900 hrs 9 May- guides will show them routes and location of posns. Coy Comd may make recce on afternoon of 9 May (I Sec guide).	2 personnel carrying vehicles will report to Coy HQ at 1300 hrs 11 May. Relief will be carried out in easy stages and to be complete by 1800 hrs. OC A Coy will arrange plan for relief with OC PAKA "C".
D Coy	D Coy	Comm- ence 0900 hrs.	11 May	Pl Comds RV at HQ "C" Coy PAKA at 1900 hours 9 May. Guides will show them route to fwd posns after last light. Coy Comd may make recce on afternoon 9 May (I Sec guide)	2 personnel carrying vehicles will report to Coy HQ at 0830 hrs 11 May. Relief will be carried out in easy stages and to be complete by 1300 hrs. OC "D" Coy will arrange plan with OC PAKA "D".
Q Coy	HQ Coy	To be arranged.			

- (a) Recce party from PAKA will report to HQ ISOL at 1500 hours on 9 May. I.O. will arrange guides to take reps, to Coy Areas.
- (b) Rations- Water- Amn. Reserve will be left in posts. Coy Comds will ensure that reserve is complete before move.
- (c) Messing arrangements for fwd positions will be notified.

W. J. D. D. D.

SECRET

Copy No. 16

10 Apr 41.

2/13 BN OO NO 5

REF MAP: CYRENAICA 1 : 100,000 TOBRUK SHEET.

INFORMATION:

1. ENEMY. Tac R 0800 10 Apr - 10 miles east of AIN GAZALA 3 dispersed gps of MT approx 100 each gp stationary. Force at GADO^{EL} AHMAR and to south no movement seen. BIR MACHEM 10 to 20 MT dispersed stationary.
Increased air activity and attacks on fwd tps 9 Apr.
2. OWN TPS.
 - (a) 9 Aust Div are holding perimeter defences at TOBRUK.
 - (b) 26 Aust Inf Bde are holding left sector of perimeter.
 - (c) 24 Aust Inf Bde are holding right sector of perimeter.
 - (d) 20 Aust Inf Bde with under comd 1 RHA/107 RHA, 2/7 Pd Coy, 1 NF (less one coy) will hold the perimeter all incl posts R11 to R53.
 - (e) 2/17 Bn are holding perimeter on right all incl R11 to R36.
 - (f) 2/¹⁵ Bn in reserve vicinity 410425.

INTENTION.

~~2/13~~ 2/13 Bn with under comd 1 Pl A Tk Coy will hold perimeter all incl posts R₃₆ to R₅₃.

METHOD.

3. FDLs will include tank ditch (att sketch).
4. Allocation of fwd coys:-

(a)	Right	D Coy	Posts all incl	36 - 41
(b)	Centre	C Coy	" " "	42 - 47
(c)	Right ^{Left}	B Coy	" " "	48 - 53
5. PATROLLING: Active patrolling will be carried out by all coys.
6. RESERVES.
 - (a) A Coy
 - (b) 1 Pl A Tk Coy vicinity Bn HQ.
7. MMGs NF - covering ^{and} penetration tas ks.
 - Pl Areas - 41404220
 - 40624240
 - 40224278
8. MORTARS. In reserve Bn HQ.
9. CARRIERS. 4 men to each fwd coy to man A Tk guns remainder in ret. Bn HQ.

10. AAK AA PL:

1 Sec at Bn HQ
1 Sec at B Ech.

ADM.

11. AP at Bn HQ.

12. RAP. At Bn HQ.

13. EE. - 407434.

14. FL. CP at Bn HQ - suitable escorts to be provided by coys.

15. Further admn arrangements will be notified.

INTERCOMM.

16. (a) Bn HQ at 41154218.

(b) Sig ^{Artery} ~~Wiring~~: Direct lines to all coys.

(c) Alternate: W/T.

17. SDF: Green over white over green.

18. RELIEF WORD: "WHACKO".

ACK.

Issued to Runners-----hrs

Time of signature-----hrs

Adjnt 2/13 Bn AIF. ^{Capt}

DISTRIBUTION Copy No

NOWA-A	1
NOWA-B	2
NOWA-C	3
NOWA-D	4
NOWA-Q	5
RIDO	6
SELO	7
UGLY	8
SEAR	9
COMD NOWA	10
DESMOND	11
TONY	12
DEREK	13
IVOR	14
VINCENT	15
War Diary	16-17
File	18
Spare	19-20

S E C R E T

Copy No 17

10 Apr 41.

2/13 BN 00 NO 5

REF MAP: CYRENAICA 1 : 100,000 TOBRUK SHEET.

INFORMATION:

1. ENEMY. Tac R 0800 10 Apr - 10 miles east of AIN GAZALA 3 dispersed gps of MT approx 100 each gp stationary. Force at GADO^{EL}AHMAR and to south no movement seen. BIR MACHEIM 10 to 20 MT dispersed stationary.
Increased air activity and attacks on fwd tps 9 Apr.
2. OWN TPS.
 - (a) 9 Aust Div are holding perimeter defences at TOBRUK.
 - (b) 26 Aust Inf Bde are holding left sector of perimeter.
 - (c) 24 Aust Inf Bde are holding right sector of perimeter.
 - (d) 20 Aust Inf Bde with under comd 1 RHA/107 RHA, 2/7 Fd Coy, 1 NF (less one coy) will hold the perimeter all incl posts R11 to R53.
 - (e) 2/17 Bn are holding perimeter on right all incl R11 to R36.
 - (f) 2/~~14~~¹⁵ Bn in reserve vicinity 410425.

INTENTION.

~~2/13~~ 2/13 Bn with under comd 1 Pl A Tk Coy will hold perimeter all incl posts R~~37~~₃₆ to R~~57~~₅₃.

METHOD.

3. FDLs will include tank ditch (att sketch).
4. Allocation of fwd coys:-

(a)	Right	D Coy	Posts all incl	36 - 41
(b)	Centre	C Coy	" " "	42 - 47
(c)	Right Left	B Coy	" " "	48 - 53
5. PATROLLING: Active patrolling will be carried out by all coys.
6. RESERVES.
 - (a) A Coy
 - (b) 1 Pl A Tk Coy vicinity Bn HQ.
7. MMGs NF - covering a_nd penetration tas ks.
Pl Areas - 41404220
 - 40624240
 - 40224278
8. MORTARS. In reserve Bn HQ.
9. CARRIERS. 4 men to each fwd coy to man A Tk guns remainder in reserve Bn HQ.

10. ADJUTANT GENERAL:

- 1 Sec at Bn HQ
- 1 Sec at B Ech.

ADM.

- 11. AP at Bn HQ.
- 12. RAP. At Bn HQ.
- 13. WE. - 407434.
- 14. FL. CP at Bn HQ - suitable escorts to be provided by coys.
- 15. Further admn arrangements will be notified.

INTERCOMM.

- 16. (a) Bn HQ at 41154218.
- (b) Sig ^{Artery} ~~Wiring~~: Direct lines to all coys.
- (c) Alternates: W/T.
- 17. SDF: Green over white over green.
- 18. BELIEF WORD: "WHACKO".

ACK.

Issued to Runners-----hrs

Time of signature-----hrs

Adjnt 2/13 Bn AIF. ^{Capt}

DISTRIBUTION Copy No.

NOWA-A	1
NOWA-B	2
NOWA-C	3
NOWA-D	4
NOWA-Q	5
RIDO	6
SELO	7
UGLY	8
BEAR	9
COMD NOWA	10
DESMOND	11
TONY	12
DEREK	13
IVOR	14
VINCENT	15
War Diary	16-17
File	18
para	19-20

Wm Dixon

10 Apr 41.

2/13 BN OPERATION INSTRUCTION NO 1

1. ~~The following Operation Instruction is to be read in conjunction with GC No 5 issued 10 Apr 41.~~
2. CYRENAICA Force is holding enemy advance at TOBRUK in order to give time for assembly of reinfts.
3. 18 Aust Inf Bde and 1 RTR (cruiser and Inf tanks) are in force res.
4. Support gp now based on SOLLUM is operating against approaching enemy columns.
5. Res Line
 - (a) 2/15 Bn will be held in res posn vicinity 410425 with FDLs on general line of inner perimeter.
 - (b) Switch lines are prepared from inner perimeter BIR EL GHEMARI and GIAIDA to outer perimeter.
 - (c) Mobile res A Coy 2/13 Bn vicinity 41054225 will reconnoitre routes to fwd coys.
6. Defence against tanks.
All posns are to be prepared for all round defence to counter AFV penetration and are to be stocked with three days rations, water and res amn.
7. In the event of penetration posns are to hold out and engage enemy in flank and rear.
8. Active patrolling will be carried out with utmost vigour to determine nature and extent of enemy's posns.
9. Priority of work.
Simple field works on outer perimeter.
Definite localities inner perimeter - proof against tanks.
Improvement of wire and A Tk defence of outer perimeter.
10. Water. WPs at 39924347, 40324363, 40974344, 41004363, 40724307, 41284362, 41334338, 41324282.
11. Sup and POL from DIDs at:-
 - (a) 8 kilos west of TOBRUK on DERNA Rd.
 - (b) 5 " " " " " " " "
 - (c) 5 " south of TOBRUK on BARDIA Rd/
12. Amn:- APs at (a) 7 kilos west of TOBRUK on DERNA Rd.
(b) Rd junc 8 kilos SW of TOBRUK (PILASTRINO)
(c) Rd junc 8 kilos south of TOBRUK on BARDIA Rd.
13. Med. (a) Mobile sec with each bn
(b) MDS at 3 1/2 kilos west of TOBRUK on DERNA Rd
(c) One kilo east of PILASTRINO Rd 6 kilos from TOBRUK.
East of BARDIA Rd 6 kilos from TOBRUK.
14. Recognition signals. Returning MT patrols will display two pennants and will fire light signals to be advised separately.
15. Tank hunting patrols will be organised immediately in coy areas. Their task will be to deal with tanks or AFVs that have crossed the A Tk Ditch.

16. The Bde policy is that the enemy will not pass. No withdrawal from present posns is to be contemplated.

17. ACK.

Method of issue: Runners

Time of issue: 1445 hrs.

J. Kelly
Capt
ADFC 2/13 Bn AIF.

DISTRIBUTION Copy No

NOWA-A	1
NOWA-B	2
NOWA-C	3
NOWA-D	4
NOWA-Q	5
RIDO	6
SELO	7
UGLY	8
SEAR	9
COMD NOWA	10
DESMOND	11
TONY	12
DEREK	13
IVOR	14
VINCENT	15
War Diary	16-17
File	18
Spare	19

SECRET

COPY NO 6

27 Mar 41.

2/13 BN 00 NO 4

REF MAPS: CYRENAICA 1 : 100000
Sheets Nos 5, 6, 7, 12 and 13.

INFORMATION:

1. ENEMY. As per 20 Aust Inf Bde Int Summary No 5.

IN TFS.

2. (a) 2 Armd Div is now operating from the general line AGHEILA - WADI FARECH with instns to deny by active patrolling the area between the TRIPOLITANIA frontier and our foremost tps to the enemy - should the enemy adv in force 2 Armd Div is instructed to:-

- i. Deny their adv and take every opportunity of striking them in flank or rear.
- ii. Manoeuvre in general on the EASTERN flank of the enemy with the object of shepherding him into the plain between the Escarpment at ANTELAT SX 47 - SCELEIDINA S 341 and the sea.
- iii. Retard his adv northwards and in particular prevent his support tps and maintenance echs joining his adv arm'd force.
- iv. If the enemy continues his adv northwards to shepherd him into the plain between the Escarpment ER REGINA - TOCRA (held by 9 Aust Div) and the sea.
- v. Protect the left flank of 9 Aust Div and prevent the enemy moving out of the coastal plain across country to BARCE or DERIA.

(b) 20 Aust Inf Bde and att tps will deny enemy access to Escarpment from line of ~~WADI~~ BU ZUEFINA (3508) - ~~WADI~~ GATTARA (2063).

(c) Tps on right flank. 26 Aust Inf Bde (less one bn) with under comd one bty 51 Fd Regt, 2/13 Fd Coy RAE (less one sec) to deny to the enemy from TOLMUDA to excl inter bde boundary line WADI from BU ZUEFINA (3508) - 3706 - HILL 323 (4004) - HILL 360 (4103)

(d) Tps under comd. The following tps are under comd 20 Aust Inf Bde:-

51 Fd Regt RA (less one bty)
2/7 Fd Coy RAE (less one sec)

(e) Allotment of Units.

i. 2/17 Bn - (all incl) line of the WADI from BU ZUEFINA 3508 3706 - HILL 323 4004 - HILL 360 4103 to (all excl) HILL 237 1974 - RY and rd crossing 2775.

ii. Reserves. 2/15 Bn from rear bdy to WADI GATTARA 3167 - WADI BIR-MUSEF 5074.

INTENTION:

3. 2/13 Bn (less one coy) will deny enemy access to Escarpment all incl HILL 337 (1974) - RY and RD CROSSING 2775 to all incl WADI GATTARA from 2063 to 3167.

2/13 BN CO No 4 (cont)

METHOD

4. FDLs - Line of Escarpment from all incl HILL 237 - 1974 to WADI GATTARA 2063.
5. FWD TFS. B and D Coys - D on right.
6. BN BOUNDARY - all incl TRACK JUNC 137739 - HILL 237 - 1974-RY and RD CROSSING 2775.
7. REAR BOUNDARY. RY and RD CROSSING 2775 - HILL 271 - 2973 - WADI GATTARA 3167.
8. INNER-COY. All incl to D Coy HILL 237 - 1974 - FORK WADI 1969.
9. TIME OF OCCUPATION. Coys will commence occupation of defensive posn at 0600 hrs on 27 Mar 41 and will be in occupation of posn by 1300 hrs on 27 Mar 41.
10. DISPOSITIONS.
 - (a) The maximum number of tps will be retained in reserve with the greatest possible degree of mobility.
 - (b) Observation Posts will be manned along the whole front.
 - (c) Mine Fields and Rd Blocks will be covered by fire.
11. PATROLLING. Fwd Coys will carry out continuous patrolling during the hours of darkness.

FIRE SUPPORT

12. ARTY.
 - (a) One Tp will provide defensive fire astride RD and RY 189722
 - (b) OPs and Bty posns will be prepared to fire on likely enemy approaches.
13. A TK ARTY. One pl 20 A Tk Coy will cover A Tk Mine Field astride RD and RY 189722
14. RAE.
 - (a) Will mine 600x astride RD and RY fwd of A TK DITCH 199722
 - (b) Will prepare demolition of RD and RY at three pts WEST of ER REGINA.
15. MORTARS. One det under comd D Coy as from 1200 hrs 27 Mar 41.
16. CARRIERS. No 4 Pl.
 - Tasks: (a) Left flank protection
 - (b) To patrol WADI GATTARA 2063.
17. AA PL.
 - (a) One sec will provide protection for Bn HQ 207699.
 - (b) One sec will provide protection for B Ech 214695.

2/13 BV 00 No 4 (Cont)

18. "I" Sec will receive suitable posns for RD BLOCKS and A TK OBST-
ACLES.

19. RESERVES.

(a) A Coy vicinity HILL 288 - 2469 - HILL 262 - 2367 - HILL
273 - 2768 in support of BCoy.

(b) No 3 Pl (less 3rd det)

(c) No 5 Pl

i. In rear of Bn HQ pending orders for the erection
of A Tk obstacles and rd blocks.

ii. Will prepare Molotov Cocktails.

20. ADM.

(a) SUP, AMN, POL - in accordance with previous instns - when
operationally necessary sup, amn, pol will be drawn
from dumps being est at TECNIS (9318).

(b) Amn Reserve for each sec located in Sec Posts to be
drawn from Pl Reserve.

(c) WF in accordance with instns issued by QM.

21. TPT.

(a) MF will be dispersed with at least 200x interval between
vehicles and will be dug in and camouflaged.

(b) Maximum of tpt from B Ech to be available rapidly for
movement of tps to fwd area in the event of a break
through on any sector of the front.

22. Traffic Circuits. One-way traffic routes to be est. All routes
or tracks to be continued where possible to another track or
400x beyond any HQ or dugouts.

23. Traffic Control.

(a) RP will control traffic and all movement at Bn HQ and
B Ech.

(b) PW - CP at Bn HQ - Coys will provide suitable escorts
for prisoners.

24. Recovery.

(a) Tpt for first line repair to 58 LAD.

(b) Tpt for other than first line repair to No 2 Recovery
Sec BENJASI.

25. Medical/

(a) RAP 200x left of Bn HQ.

(b) Allotment of SBs:- 4 each to A, B and D Coys - remainder
in reserve at RAP.

(c) ALL casualties to be evacuated to 4 AGH BARGE.

(d) ADS will be notified later.

2/13 BN CO No 4 (Cont)

RESTRICTION ON LIGHTS

26. No lights will be used during hours of darkness.

INTER COMM.

27. Bn HQ will close down at present location at 1400 hrs on 27 Mar 41 and re-open at 207699 at 1400 hrs 27 Mar 41.

SIG ARTERY

- 28. (a) Direct lines all coys.
- (b) DRLS
- (c) Alternative -- wireless comm.

SDF

29. GREEN over RED over GREEN.

ACK.

Richard [Signature]
 Adj 2/13 Bn ATF Capt

TIME OF ISSUE: 1130 hrs

METHOD OF ISSUE: DR.

<u>DISTRIBUTION</u>	<u>Copy No</u>
NOWA-A	1
NOWA-B	2
NOWA-C	3
NOWA-D	4
NOWA-Q	5
COMD NOWA	6
DESMOND	7
TONY	8
DEREK	9
VINCENT	10
IFJON	11
SEAR	12
GUMS	13
PIPO	14
BEAK	15
CHFU	16
CELA	17
ENGA	18
FILE	19
WAR DIARY	20-21 "
SPARE	22-23-24.

Rpts. N+S roads to Giovanni Bertha
thence track to Martuba
thence main rd Gazala area

✓ 13 Bn with 104 RHA less 1 bty - 24 A/TK Coy
to move forthwith to area 1000 yds south
of Martuba to cover route Mackilli - Martuba

48 Bn RV 1000⁺ west. Jimimi ~~area~~

13 Bn gp to move to Jimimi area & gain
contact 48 Bn from west & gain contact
with 48 Bn gp.

2 Platoons
under
Command
Howell
Report 5.30

504

20

48

48

Area out of road near road

ANZ 101

28 48 48

SP WP AP
104 RHA

Regs now list to 104 RHA

WP - Technis.

AP - Kilo 14 from Rance.

SP -

104

104 RHA

WP - Technis.
AP - Kilo 14 from Rance.
SP -

104 RHA

WP - Technis.
AP - Kilo 14 from Rance.
SP -

104 RHA

WP - Technis.
AP - Kilo 14 from Rance.
SP -

104 RHA

WD

SECRET.

COPY...16.....

20 May 41.

2/13 BN 00 NO 6.

REF MAP: TOBRUK 1: 50,000

INFORMATION.

1. ENEMY.

(a) as per Int Summaries.

(b) Enemy are holding posn in front of "D" and "A" Coys along general line of SANGARS- 40164287- 4012481.

2. OWN TFS.

(a) 2/9 Bn on right are holding general line 40204290- 40144302.

(b) "C" Coy on left holding posts R8, R9, R10.

(c) "D" Coy and "A" Coy holding line 40194288- 40154280.

INTENTION.

3. "B" Coy 2/13 Bn will capture and hold enemy sangars and establish line 300 yds south west from 40124281 on general line 401644287- 40124281, with under comd 1 det 2/13 Fd Coy.

METHOD.

4. IN SUPPORT. One battery 1 RHA
 One Bty & 2 Tps 107 RHA.
 One Tp 104 RHA.
 One Tp 3 A Tk Regt.
 One Sec 1 NF
 Two Tanks.

5. OBJECTIVE. Enemy line of SANGARS 40164287- 40144286.

6. DIRECTION OF ATTACK.

7. STARTING LINE. Taped line 40174286- 40164285 parallel to line of SANGARS.
 ("I" Sec to tape).

8. ZERO.

9. ASSEMBLY AREA. 40294281.

10. FIRE PLAN.

(a) ARTY. Bty 1 RHA, Bty 107 RHA supporting with barrage opening 50x fwd of general line of enemy sangers 40164287 to 40144281.

<u>TIMINGS.</u>	<u>RPG DM</u>	
Z to Z+3	: 2 rpg pm	50x in front of general line.
Z+3 to Z+12	: 4 " "	General line of enemy Sangers.
	Last rd 1 smoke each gun.	Z+12 : 2 signal rockets RED will be fired from post R12 to indicate barrage is lifting
Z+12 to Z+15	: 4 rpg pm	Lift 200x.
Z+15 to Z+33	: 2 " "	Creeping barrage to 800x- Rate 100x per 3 minutes.
Z+33 to Z+39	: 2 " "	Drop to 400x.

(b) CONCENTRATIONS. Two tps 107 RHA.

	<u>Timings.</u>	<u>RPGDM.</u>
One tp 40144281 (left of Sangers)	Z to Z+12 : 2 rpgpm	
	Z+12 to Z+22 : 2 " "	Lift 200x
	Z+22 to Z+39 : 2 " "	Drop 200x
One tp right (of Sangers)	Z to Z+12 : 2 " "	
	Z+12 to Z+39 : 2 " "	Lift 200x
One tp 104 RHA R6- R7	Z to Z+39 : 2 " "	

(c) DEFENSIVE FIRE.

On SDF fire will be brought down on line 400x in rear of general line of enemy SANGERS.

11. A TK GUNS. 2 guns to move into posn vicinity 40214285 to oppose tk action principally probable counter attack at dawn.

12. MORTARS.

Tasks. Engage enemy MG and A Tk posn vicinity 40114283 - Z to Z+39.

13. TANKS. Two tanks to move to rear of fwd Bn HQ, vicinity 40284278, and be prepared to counter any enemy tank action.

14. ENGRS. Demolitions as required by OC "B" Coy on capture of objective.

15. FLANKS. "C" Coy on left flank to engage enemy posns from front- Z to Z+39.

(b) 2/9 Bn to co-operate on right flank.

16. RESERVES. One Coy from ROLO at 40294282.

17. CONSOLIDATION.

- (a) On reaching objective "B" Coy will immediately consolidate posn gained and exploit to flanks.

Flanks of fwd coy to be indicated by night by one WHITE fired horizontally every 30 minutes- by day white falgs or white markings behind SANGERS.

- (b) On capture of objectives 1 Pl, "D" Coy, and one Pl "A" Coy will move out and consolidate intermediate posns on right and left respectively. Intermediate posns to be 150x from front and 100x from flanks of fwd Coy.

ADM.

18. MEDICAL.

- (a) RAP will remain in present posn.

- (b) WWCP situated at 40294281- 2 Med orderlies will be in attendance.

- (c) Two 15 cwt trucks will be in attendance at WWCP.

19. RATIONS. 2 days reserve rations to be carried by each man. Water bottles to be filled.

20. AMN.

- (a) Each man to carry 150 rds and 2 Grenades.

- (b) Bren LMG- 12 mags per gun.

- (c) Carrying parties will be supplied from reserve Coy for SAA reserve, grenades, water and Engr stores on capture of objective. Coy Comds to advise Bn HQ parties required.

21. ENGR STORES.

Dump for Engr Stores will be situated at fwd Bn HQ.

22. POW.

- (a) "D" Coy will take prisoners over from "B" Coy and deliver them to CP situated at 40304283.

- (b) Reserve Coy will arrange escorts to Bn HQ.

23. INTERCOM.

- (a) Bn HQ will be at the present posn-Fwd Bn HQ at 40294282

- (b) Line Comn to Bn HQ.

- (c) Sig Offr to ensure line Comns to fwd Pl on Capture of objective.

- (d) Alternate- W/T Sets.

- 24. SUCCESS SIG. On capture of objective- 2 WHITE (Rapid).
- 25. SDF. GREEN-WHITE-GREEN (quick succession)
- 26. TANKS. Presence of enemy tks in vicinity of area
RED-WHITE (in quick succession)

Adjnt 2/13 Bn. A.I.F. ^{Capt.}

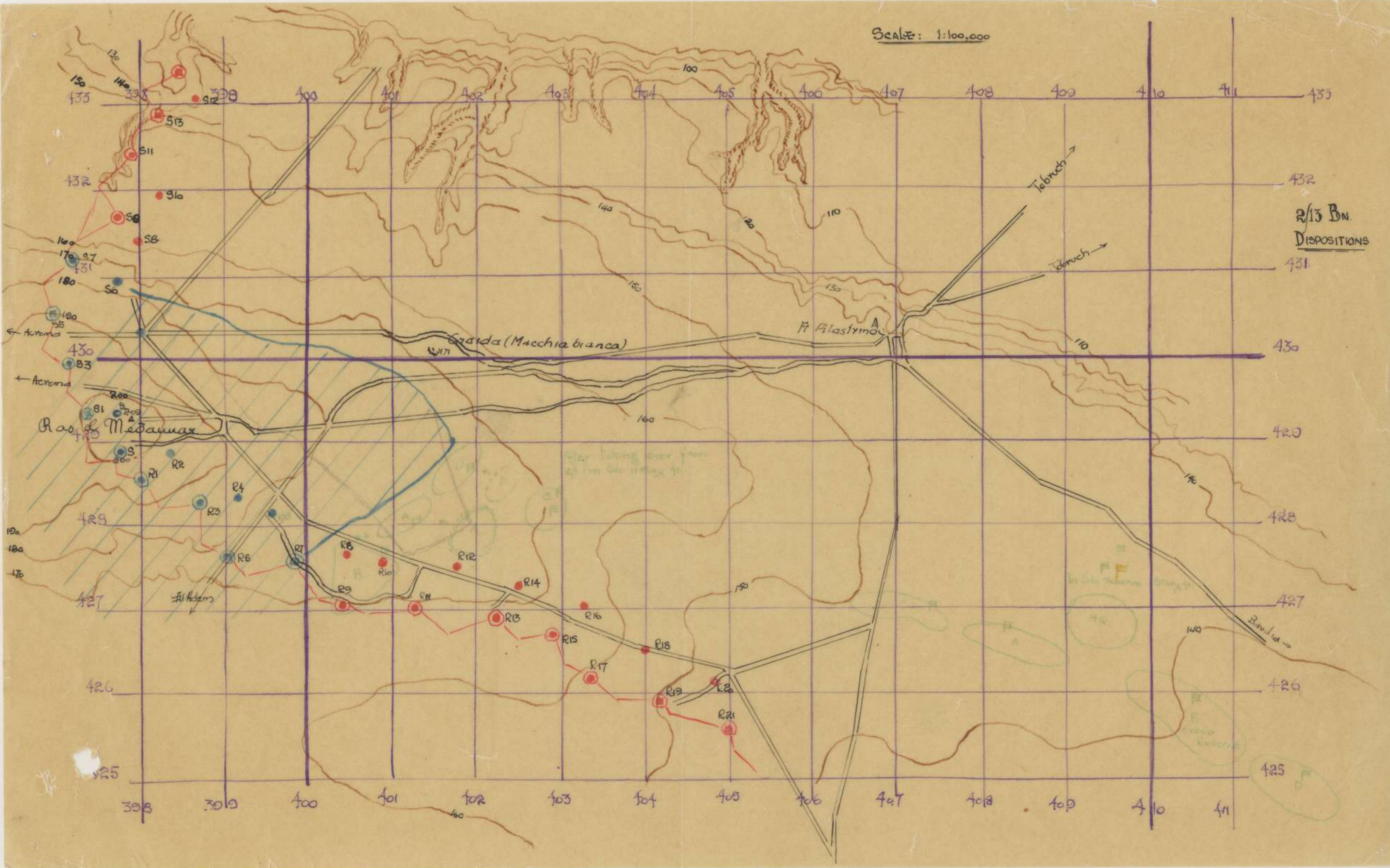
Method of issue.....

Time of signature.....

DISTRIBUTION.

Copy 1	Bate A
2	" B
3	" C
4	" D
5	" Q
6	Comd.
7	ARGT.
8	ROLO
9	GANA
10	2/13 th Coy
11	1 RHA.
12	104 RHA
13	107 RHA.
14	3 Armd Tk Corps.
15	File.
16	War Diary.
17-18	Spare.

SCALE: 1:100,000



2/13 Bn
DISPOSITIONS

FIELD RETURN OF OFFICERS.

2/13 Bn. A.I. Co. (Unit.)

PART A.—STRENGTH, SURPLUS OR REINFORCEMENTS REQUIRED.

1 Ranks.	2 Posted strength counting against authorised establishment (excluding attached).	3 Surplus to Establishment.	4 Reinforcements required (i.e., deficits on establishment).
.....*
.....*
.....*
.....*
Lieut.-Colonels	1
Majors.....	3
Captains	8	3
Lieutenants	16
2nd Lieutenants
Quartermasters
District Officers
TOTALS	28	4

* Insert detail of higher ranks as necessary (e.g., Major-General, Brigadier, etc).

PART B.—PARTICULARS OF OFFICERS JOINED OR QUITTED DURING WEEK.

Officers JOINED during week.

Rank.	Name.	Corps.	Date.	Cause.
.....
.....
.....
.....
.....

Officers QUITTED during week.

Rank.	Name.	Corps.	Date.	Cause.
T/Capt.	J. J. Couch	2/13 Bn	29.11.01	Penal basis incarcerated 2/8 1st Amb
.....
.....
.....
.....

PART C.—DESCRIPTION OF OFFICERS WHOSE RETURN TO THE UNIT IS PARTICULARLY REQUESTED.

Rank.	Name and Initials.	Corps.	Remarks (e.g., present whereabouts, if known).
.....
.....
.....
.....
.....

PART D.—NOMINAL ROLL OF OFFICERS ON STRENGTH.

(i) Officers posted to Unit (Total to agree with column 2 of Part A).

1	2	3	4	5	6
Substantive Rank.	Higher acting or temporary rank, if held.	Name and Initials.	Corps.	Whether present with Unit (Insert Yes or No).	If not present with Unit, state how employed.
Lt Col	NX 383	J.A. Burrows	2/13 Bn	Yes	Comd. off.
Major	12122	J.F. Bragg	"	No	Det. Duty, 2/15 Bn.
"	12213	R.W.N. Turner	"	Yes	OC HQ Coy
"	15218	J.M. Chilton	"	"	OC. C Coy
Capt	12214	J.L.A. Kelly	"	"	Adj. G.
"	380	J.H. Hill	"	"	OC. B Coy
"	12222	C.A. Danaley	"	"	OC. D Coy
"	12336	H.G. Giccard	"	"	OC A Coy
"	VX 16965	M.J. Walsh	"	"	2/c B Coy
"	NX 12383	H.H. Cooper	"	"	2/c A Coy
"	12335	R.G. Sanderson	"	"	2/c C Coy
"	70221	O.M. Walsoe	"	"	2/c D Coy
Lieut	12352	G.M. Rogers	"	"	Pl Comd
"	34981	G.L. Evans	"	"	Pl Comd 10
"	14772	R.L. Semmerville	"	"	Pl Comd
"	12223	R. Schamps	"	"	Pl Comd
"	12452	M.J. Walker	"	"	Pl Comd
"	70203	M.B. Woods	"	"	Pl Comd
"	12394	J.R. Watch	"	"	Pl Comd
"	12375	H.D. Graham	"	"	Pl Comd
"	12374	H.O. Powell	"	"	Pl Comd
"	34860	L.J. Paulkner	"	"	Pl Comd
"	15031	H.B. Wilson	"	"	Pl Comd
"	15678	J.R. Burrell	"	"	Pl Comd
"	12486	L.B. Bentley	"	"	Pl Comd T.O
"	13867	M.C. Vincent	"	"	Pl Comd
"	34714	C.R. Bicknell	"	"	Pl Comd
"	34786	G.B. Clarke	"	"	Pl Comd

(ii) OFFICERS ATTACHED FROM OTHER CORPS.

Substantive Rank.	Higher acting or temporary rank if held.	Name and Initials.	Corps.	Date of attachment.	Nature of attachment.
Capt.	SX 9133	P.R. Gooch	RAME	21.2.41	MO
Chaplain	NX 35079	C. Branco	MACTD	30.7.40	PADRE

2/13 Bn A.I.F.
(Unit.)
3 May 1941
(Date of Despatch.)

J.A. Burrows Lt Col.
Comd. 2/13 Bn A.I.F.
(Signature of Commander.)
20 [unclear] [unclear]
(Bde., Divn., Area, etc., with which Unit is serving.)

War Diary

FIELD RETURN OF OFFICERS.

2/13 Br. A.L.H.

(Unit.)

PART A.—STRENGTH, SURPLUS OR REINFORCEMENTS REQUIRED.

1	2	3	4
Ranks.	Posted strength counting against authorised establishment (excluding attached).	Surplus to Establishment.	Reinforcements required (i.e., deficits on establishment).
*			
*			
*			
*			
Lieut.-Colonels	1		
Majors....	3		
Captains	8		1
Lieutenants	16		3
2nd Lieutenants			
Quartermasters			
District Officers			
TOTALS	28		4

* Insert detail of higher ranks as necessary (e.g., Major-General, Brigadier, etc).

PART B.—PARTICULARS OF OFFICERS JOINED OR QUITTED DURING WEEK.

Officers JOINED during week.

Rank.	Name.	Corps.	Date.	Cause.

Officers QUITTED during week.

Rank.	Name.	Corps.	Date.	Cause.

PART C.—DESCRIPTION OF OFFICERS WHOSE RETURN TO THE UNIT IS PARTICULARLY REQUESTED.

Rank.	Name and Initials.	Corps.	Remarks (e.g., present whereabouts, if known).

PART D.—NOMINAL ROLL OF OFFICERS ON STRENGTH.

(i) Officers posted to Unit (Total to agree with column 2 of Part A).

1	2	3	4	5	6
Substantive Rank.	Higher acting or temporary rank, if held.	Name and Initials.	Corps.	Whether present with Unit (Insert Yes or No).	If not present with Unit, state how employed.
Lt. Col.	Ax383	H.A. Bunaw	2/13 Bn.	Yes.	Comd. Off.
Maj.	12152	J.J. Cragg.	" "	No	Det. duty 2/15 Bn.
"	12213	L.W.H. Turner	" "	Yes.	OC HQ Coy
"	15218	H.M. Chilton	" "	"	OC C Coy
Capt.	12214	J.L.W. Kelly	" "	"	Adj.
"	380	A.J. Hill	" "	"	OC B Coy
"	12222	G.A. Handley	" "	"	OC D Coy
"	12336	A.G. Gillan	" "	"	OC A Coy
"	VX16965	J.S. Walsh	" "	"	2/c B Coy
"	AX12383	H.H. Cooper	" "	"	2/c A Coy
"	70221	O.H. Watson	" "	"	2/c D Coy
"	12335	R.G. Sanderson	" "	"	2/c C Coy
Lieut	12352	J.M. Rogers	" "	"	PL Comd
"	34981	J.L. Evans.	" "	"	IO
"	14772	L.G. Lomerville	" "	"	Ph Comd
"	12223	R. Deschamps.	" "	"	Ph Comd.
"	12452	M.J. Walker	" "	"	PL Comd
"	70203	M.C. Wood	" "	"	Ph Comd.
"	12394	J.R. Watch	" "	"	PL Comd.
"	12375	H.J. Graham	" "	"	PL Comd.
"	12374	A.O. Powell	" "	"	Ph Comd.
"	34860	G.A. Faulkner	" "	"	Ph Comd.
"	15031	L.C. Wilson	" "	"	PL Comd.
"	15678	J.R. Dunell	" "	"	PL Comd
"	12486	L.C. Bentley	" "	"	TO
"	13867	M.S. Vincent	" "	"	PL Comd
"	34714	G.L. Suckell	" "	"	PL Comd
"	34786	J.C. Clarke	" "	"	PL Comd.

(ii) OFFICERS ATTACHED FROM OTHER CORPS.

Substantive Rank.	Higher acting or temporary rank if held.	Name and Initials.	Corps.	Date of attachment.	Nature of attachment.
Capt	5x9183	R.G. Good	NAME	27.2.41	MO
Chaplain	535074	G. Francis	NAME	30.7.41	PAVRE.

2/13 Bn 2/13

(Unit.)

10 May 1941

(Date of Despatch.)

[Signature]
Comd. 2/13 Bn. Signature of Commander.)

(Bde., Divn., Area, etc., with which Unit is serving.)

War Summary

FIELD RETURN OF OFFICERS.

2/13 Bn A.I.F. (Unit.)
exclud 1st Reinf

PART A.—STRENGTH, SURPLUS OR REINFORCEMENTS REQUIRED.

1	2	3	4
Ranks.	Posted strength counting against authorised establishment (excluding attached).	Surplus to Establishment.	Reinforcements required (i.e., deficits on establishment).
*			
*			
*			
*			
Lieut.-Colonels	1		
Majors....	3		
Captains	5		4
Lieutenants	20	1	
2nd Lieutenants			
Quartermasters			
District Officers			
TOTALS	29	1	4

* Insert detail of higher ranks as necessary (e.g., Major-General, Brigadier, etc).

PART B.—PARTICULARS OF OFFICERS JOINED OR QUITTED DURING WEEK.

Officers JOINED during week.

Rank.	Name.	Corps.	Date.	Cause.
Lieut	<i>E. B. Bucknill</i>	<i>2/13 Bn</i>	<i>11.4.41</i>	<i>to A.I.F. Reinf Depot.</i>
"	<i>G. B. Clarke</i>	"	<i>11.4.41</i>	"
"	<i>H. D. Vincent</i>	"	<i>11.4.41</i>	<i>PIE OCTU</i>

Officers QUITTED during week.

Rank.	Name.	Corps.	Date.	Cause.
Lieut	<i>A. A. McPhail</i>	<i>2/13 Bn</i>	<i>11.4.31</i>	<i>to vac 2/8 46 Amb.</i>

PART C.—DESCRIPTION OF OFFICERS WHOSE RETURN TO THE UNIT IS PARTICULARLY REQUESTED.

Rank.	Name and Initials.	Corps.	Remarks (e.g., present whereabouts, if known).

PART D.—NOMINAL ROLL OF OFFICERS ON STRENGTH.

(i) Officers posted to Unit (Total to agree with column 2 of Part A).

1	2	3	4	5	6
Substantive Rank.	Higher acting or temporary rank, if held.	Name and Initials.	Corps.	Whether present with Unit (Insert Yes or No).	If not present with Unit, state how employed.
Lt Col.	NK383	J.A. Burrows	2/13 Bn	Yes	Comd. Off.
Maj	NK12152	J.H. Bragg	"	NO	DET. DUTY 2/15 Bn
"	12213	R.W.N. Turner	"	Yes	OC A2 Coy
"	15218	A.M. Hilton	"	"	OC C Coy
Capt	12214	J.L. Kelly	"	"	OC B Coy
"	380	A.J. Hill	"	"	OC D Coy
"	12222	C.A. Hamblin	"	"	2/c D Coy
"	12336	A.G. Gillan	"	"	Q.M.
T/	12373	J.J. Couch	"	"	2/c A Coy
Leut	12383	C.H. Cooper	"	"	2/c C Coy
"	12335	R.G. Sanderson	"	"	2/c B Coy
"	70221	R.W. Wallace	"	"	1 Pl Comd
"	12352	G.W. Rogers	"	"	10
"	34891	G.D. Evans	"	"	1 Pl Comd
"	14772	R.J. Somerville	"	"	3 Pl Comd
"	12223	P. Deschamps	"	"	5 Pl Comd
"	12452	M.J. Walker	"	"	9 Pl Comd
"	12394	J.R. Watch	"	"	13 Pl Comd
"	70203	M.B. Woods	"	"	14 Pl Comd
"	12375	H.J. Graham	"	"	11 Pl Comd
"	12374	H.O. Powell	"	"	12 Pl Comd
"	34860	D.G. Faulkner	"	"	16 Pl Comd
"	15031	K.G. Wilson	"	"	17 Pl Comd
"	15678	J.R. Burrell	"	"	10 Pl Comd
"	12478	J. Maloney	"	"	TO
"	12486	J.B. Bentley	"	"	Pl Comd
"	34714	E.R. Bucknell	"	"	15 Pl Comd
"	34786	G.B. Clarke	"	"	8 Pl Comd
"	13867	H.D. Vincent	"	"	

(ii) OFFICERS ATTACHED FROM OTHER CORPS.

Substantive Rank.	Higher acting or temporary rank if held.	Name and Initials.	Corps.	Date of attachment.	Nature of attachment.
Capt	Sx9183	D.B.R. Goode	2/13 Bn	27.2.41	M.O.
Chaplain	NK35097	G. Francis	A.A.C.D.	36.7.40	PADRE.

2/13 Bn A.I.F.
(Unit.)
13 April 1941
(Date of Despatch.)

J. Kelly Captain Lt. Col.
Comd. 2/13 Bn, A.I.F. Commander.
20th Aust Inf Bde.
(Bde., Divn., Area, etc., with which Unit is serving.)

FIELD RETURN OF OFFICERS.

2/13 Bn A.I. Co (Unit.)

PART A.—STRENGTH, SURPLUS OR REINFORCEMENTS REQUIRED.

1	2	3	4
Ranks.	Posted strength counting against authorised establishment (excluding attached).	Surplus to Establishment.	Reinforcements required (i.e., deficits on establishment).
*			
*			
*			
*			
Lieut.-Colonels	1		
Majors....	3		
Captains	8		1
Lieutenants	15		4
2nd Lieutenants			
Quartermasters			
District Officers			
TOTALS	27		5

* Insert detail of higher ranks as necessary (e.g., Major-General, Brigadier, etc).

PART B.—PARTICULARS OF OFFICERS JOINED OR QUITTED DURING WEEK.

Officers JOINED during week.

Rank.	Name.	Corps.	Date.	Cause.

Officers QUITTED during week.

Rank.	Name.	Corps.	Date.	Cause.
Lieut	W. J. Walker	2/13 Bn	12.5.41	Comm 2/8 Bn Amb 85th L. H. Co

PART C.—DESCRIPTION OF OFFICERS WHOSE RETURN TO THE UNIT IS PARTICULARLY REQUESTED.

Rank.	Name and Initials.	Corps.	Remarks (e.g., present whereabouts, if known).

PART D.—NOMINAL ROLL OF OFFICERS ON STRENGTH.

(i) Officers posted to Unit (Total to agree with column 2 of Part A).

1	2	3	4	5	6
Substantive Rank.	Higher acting or temporary rank, if held.	Name and Initials.	Corps.	Whether present with Unit (Insert Yes or No).	If not present with Unit, state how employed.
Lt Col	Nx 383	J.A. Burness	2/13 Bn	Yes	Comd. Co
Lt Col	12152	L. D. Bragg	"	No	1st Div/ 2/13 Bn
"	12213	R. W. N. Turner	"	Yes	OC HQ Coy
"	15218	A. M. Chilton	"	"	OC C Coy
Capt	12214	J. L. A. Kelly	"	"	Adj
"	380	A. J. Hill	"	"	OC B Coy
"	12222	G. A. Hanley	"	"	OC D Coy
"	12336	A. G. Gillan	"	"	OC A Coy
"	Nx 16965	L. S. Walsh	"	"	2/c B Coy
"	Nx 13383	A. H. Cooper	"	"	2/c A Coy
"	12335	R. G. Sanlancan	"	"	2/c C Coy
"	10221	O. M. Walsh	"	"	5/c D Coy
Lieut	12352	G. M. Rogers	"	"	Pl Comd
"	34981	G. D. Evans	"	"	IO
"	12772	L. G. Summerville	"	"	Pl Comd
"	12223	R. J. Schamps	"	"	Pl Comd
"	10202	L. B. G. Wood	"	"	Pl Comd
"	12394	L. K. Water	"	"	Pl Comd
"	12345	A. J. Graham	"	"	Pl Comd
"	12344	A. O. Powell	"	"	Pl Comd
"	34860	D. J. Saulkner	"	"	Pl Comd
"	15031	L. G. Wilson	"	"	Pl Comd
"	15618	L. K. Bunell	"	"	Pl Comd
"	12486	L. B. Bentley	"	"	TO
"	13867	M. D. Vincent	"	"	
"	34744	G. K. Bucknell	"	"	Pl Comd
"	34786	G. B. Clark	"	"	Pl Comd

(ii) OFFICERS ATTACHED FROM OTHER CORPS.

Substantive Rank.	Higher acting or temporary rank, if held.	Name and Initials.	Corps.	Date of attachment.	Nature of attachment.
Capt	Sx 9183	R. G. R. Goodie	WAMC	2/2/41	MO
Chaplain	Nx 35079	G. Francis	ANCLD	3/7/40	PAOKB

2/13 Bn A.I.F.

(Unit.)

17 May 1941

(Date of Despatch.)

J. Kelly Lt. Col.

Comd. 2/13 B (Signature of Commander.)

20 East Inf Bde (Bde., Divn., Area, etc., with which Unit is serving.)

FIELD RETURN OF OFFICERS.

2/13 Bn A.I.I. (Unit.)

PART A.—STRENGTH, SURPLUS OR REINFORCEMENTS REQUIRED.

1 Ranks.	2 Posted strength counting against authorised establishment (excluding attached).	3 Surplus to Establishment.	4 Reinforcements required (i.e., deficits on establishment).
.....*			
.....*			
.....*			
.....*			
Lieut.-Colonels	1		
Majors....	3		
Captains	8		1
Lieutenants	15		4
2nd Lieutenants			
Quartermasters			
District Officers			
TOTALS	27		5

* Insert detail of higher ranks as necessary (e.g., Major-General, Brigadier, etc).

PART B.—PARTICULARS OF OFFICERS JOINED OR QUITTED DURING WEEK.

Officers JOINED during week.

Rank.	Name.	Corps.	Date.	Cause.
Lieut.	J. J. Spence	2/13 Bn	30.3.41	Ex 20 A/TK Coy

Officers QUITTED during week.

Rank.	Name.	Corps.	Date.	Cause.
Lieut.	R. B. Wilson	2/13 Bn	21.5.41	Ex 20 A/TK Coy

PART C.—DESCRIPTION OF OFFICERS WHOSE RETURN TO THE UNIT IS PARTICULARLY REQUESTED.

Rank.	Name and Initials.	Corps.	Remarks (e.g., present whereabouts, if known).

PART D.—NOMINAL ROLL OF OFFICERS ON STRENGTH.

(i) Officers posted to Unit (Total to agree with column 2 of Part A).

1	2	3	4	5	6
Substantive Rank.	Higher acting or temporary rank, if held.	Name and Initials.	Corps.	Whether present with Unit (Insert Yes or No).	If not present with Unit, state how employed.
It Col	M 383	F. A. Burrows	2/13 Bn	Yes	Comd. Offr.
Major	12152	J. F. Bragg	"	No	Det. Duty 2/13 Bn
"	12213	R. W. Turner	"	Yes	OC HQ Coy
"	12218	H. M. Chilton	"	"	OC C Coy
Capt.	12214	J. L. A. Kelly	"	"	Adj. Gen.
"	380	A. J. Hill	"	"	OC B Coy
"	12222	E. A. Handley	"	"	OC D Coy
"	12336	H. G. Gillan	"	"	OC A Coy
"	VX16965	H. A. Walsh	"	"	2/c B Coy
"	M 12383	H. S. Cooper	"	"	2/c A Coy
"	12335	R. G. Sanderson	"	"	2/c C Coy
"	70221	R. M. Walsh	"	"	2/c D Coy
Lieut.	12352	G. M. Rogers	"	"	Pl. Comd.
"	34981	G. R. Evans	"	"	IO
"	14772	R. J. Somerville	"	"	Pl. Comd.
"	12323	P. Deschamps	"	"	Pl. Comd.
"	70203	M. G. Wood	"	"	Pl. Comd.
"	12394	J. R. Watts	"	"	Pl. Comd.
"	12375	H. J. Graham	"	"	Pl. Comd.
"	12374	A. D. Powell	"	"	Pl. Comd.
"	34860	D. J. Hankins	"	"	Pl. Comd.
"	15678	J. R. Bunell	"	"	Pl. Comd.
"	12486	A. B. Bentley	"	"	TO
"	13867	M. D. Vincent	"	No	Det. 20 Bn
"	34714	E. R. Bucknell	"	Yes	Pl. Comd.
"	34786	E. C. Clark	"	"	Pl. Comd.
"	56181	J. S. Jewkes	"	No	Det. 20 A/Pk Coy

(ii) OFFICERS ATTACHED FROM OTHER CORPS.

Substantive Rank.	Higher acting or temporary rank if held.	Name and Initials.	Corps.	Date of attachment.	Nature of attachment.
Capt.	529183	P. B. R. Gooden	A 9 MC	27.2.41	MO
Captain	M 35097	R. Francis	AC 4 D	3.7.40	PROCE

2/13 Bn A.I.F.
(Unit.)

20 Aug 1941
(Date of Despatch.)

F. A. Burrows
Lt. Col.
Comd. 2/13 Bn., A.I.F.
(Signature of Commander.)
20 Aug 1941
(Bde., Divn., Area, etc., with which Unit is serving.)

FIELD RETURN OF OFFICERS.

..... 2/13 Bn. A.I.F. (Unit.)

PART A.—STRENGTH, SURPLUS OR REINFORCEMENTS REQUIRED.

1 Ranks,	2 Posted strength counting against authorised establishment (excluding attached).	3 Surplus to Establishment.	4 Reinforcements required (i.e., deficits on establishment).
..... *			
..... *			
..... *			
..... *			
Lieut.-Colonels	1		
Majors....	2		1
Captains	8		1
Lieutenants	12		7
2nd Lieutenants			
Quartermasters			
District Officers			
TOTALS	23		9

* Insert detail of higher ranks as necessary (e.g., Major-General, Brigadier, etc).

PART B.—PARTICULARS OF OFFICERS JOINED OR QUITTED DURING WEEK.

Officers JOINED during week.

Rank.	Name.	Corps.	Date.	Cause.
Major	T.F. Cragg	2/13 Bn	20.4.41	Transferred 2/15 Bn
Lieut	M.D. Vincent	"	12.5.41	Seconded 20 Aust Inf Bde
Lieut	F.S. Treweeke	"	12.5.41	Seconded 20 Aust Inf Bde
Lieut	A.O. Powell	"	26.5.41	Killed in action.
Lieut	C.S. Taylor	"	30.5.41	Ex Comp. Tng Regt. ♀

Reason to be supplied

Officers QUITTED during week.

Rank.	Name.	Corps.	Date.	Cause.
Major	T.F. Cragg	2/13 Bn	20.4.41	Transferred to 2/15 Bn.
Lieut	M.D. Vincent	"	12.5.41	Seconded 20 Aust Inf Bde
Lieut	F.S. Treweeke	"	12.5.41	do do
Lieut	A.O. Powell	"	26.5.41	Killed in action.
Lieut	G.M. Rogers	"	23.5.41	Evac. 2/8 Fd Amb.

PART C.—DESCRIPTION OF OFFICERS WHOSE RETURN TO THE UNIT IS PARTICULARLY REQUESTED.

Rank.	Name and Initials.	Corps.	Remarks (e.g., present whereabouts, if known).
.....			
.....			
.....			
.....			
.....			

PART D.—NOMINAL ROLL OF OFFICERS ON STRENGTH.

(i) Officers posted to Unit (Total to agree with column 2 of Part A).

1	2	3	4	5	6
Substantive Rank.	Higher acting or temporary rank, if held.	Name and Initials.	Corps.	Whether present with Unit (Insert Yes or No).	If not present with Unit, state how employed.
Lt Col	NX 383	F.A. Burrows	2/13 Bn	Yes	Comd Officer.
Major	NX 12213	R.W.N. Turner	"	"	O.C. HQ Coy.
"	NX 12218	H.M. Chilton	"	"	O.C. C Coy.
Capt.	NX 380	A.J. Hill	"	"	O.C. B Coy.
"	NX 12214	J.L.A. Kelly	"	"	A djutant.
"	NX 12222	E.A. Handley	"	"	O.C. D Coy.
"	NX 12336	H.G. Gillan	"	"	O.C. A Coy.
"	VX 16965	F.S. Walsh	"	"	2 i/c B Coy.
"	NX 12383	H.H. Cooper	"	"	2 i/c A Coy.
"	NX 12335	R.G. Sanderson	"	"	2 i/c C Coy.
"	NX 70221	O.M. Walsce	"	"	2 i/c D Coy.
Lieut.	NX 34860	D.F. Faulkner	"	"	P1 Comd.
"	NX 12375	H.T. Graham	"	"	P1 Comd.
"	NX 12394	J.R. Watch	"	"	P1 Comd.
"	NX 12486	S.C. Bentley	"	"	
"	NX 70203	M.C. Wood	"	"	P1 Comd.
"	NX 12223	P. Deschamps	"	"	P1 Comd.
"	NX 34981	G.D. Evans	"	"	P1 Comd. I.O.
"	NX 2191	C.S. Taylor	"	"	T.O.
"	NX 14772	R.J. Somerville	"	"	P1 Comd.
"	NX 15678	J.R. Burrell	"	"	P1 Comd.
"	NX 34714	E.R. Bucknell	"	"	P1 Comd.
"	NX 34781	G.D. Clarke	"	"	P1 Comd.

(ii) OFFICERS ATTACHED FROM OTHER CORPS.

Substantive Rank.	Higher acting or temporary rank if held.	Name and Initials.	Corps.	Date of attachment.	Nature of attachment.
Capt	S X 9183	P.C.R. Goode	A.A.M.C.	27.2.41	M.O.
Chaplain	NX 35097	C. Francis	A.A. Cl.D	30.7.40	Padre.

2/13 Bn. A.I.F. (Unit.)

31 May 41. (Date of Despatch.)

F.A. Burrows Lt Col (Signature of Commander.)

Comd. 2/13 Bn., A.I.F.

20 Aust Inf Bde, A.I.F. (Bde., Divn., Area, etc., with which Unit is serving.)

Wet Duvy

TO BE MADE UP TO AND FOR SATURDAY IN EACH WEEK.

Army Form W. 3009C

(page 1)

FIELD RETURN OF OTHER RANKS.

2/3 Bn A.S.S. 1st Regiment (Unit). 3 May 1941 (Date)

(To be furnished by all Units of the Royal Army Ordnance Corps.)

Part A. Strength, Surplus or Reinforcements required.

Table with 4 columns: 1 Appointment, 2 Posted strength counting against authorised establishment (excluding attached), 3 Surplus to Establishment, 4 Reinforcements required (i.e., deficits on establishment). Rows include W.Os. Class I-III, Staff Serjeants, Serjeants, Corporals, Buglers, Privates, etc., and a TOTALS row.

*These totals should agree with the details shown in Part D on page 2 of Army Form W.3009C.

Part B. Other Ranks attached from other Corps.

Table with 4 columns: Appointment, Unit and Corps to which they belong, Appointment, Unit and Corps to which they belong. Contains handwritten entries for various personnel with their ranks and units.

Part C. Description of other Ranks whose return to the Unit is particularly requested.

Table with 5 columns: Army No., Rank, Name and Initials, Corps, Remarks (e.g., present whereabouts if known). The table is mostly empty.

Part D. Detail by Trades of Surplus or Reinforcements required as shown in Part A of Army Form W.3009C.

DETAIL OF SPECIALISTS, TRADESMEN, ETC.	SURPLUS TO ESTABLISHMENT.								REINFORCEMENTS REQUIRED.							REMARKS.			
	W.Os. Class I.	W.Os. Class II.	W.Os. Class III.	Staff Sergeants.	Sergeants.	Corporals.	Buglers.	Privates, etc.	TOTAL.	W.Os. Class I.	W.Os. Class II.	W.Os. Class III.	Staff Sergeants.	Sergeants.	Corporals.		Buglers.	privates, etc.	TOTAL.
Armament Artificers Fitters																			
Armament Artificers—Instruments																			
Armament Artificers—Instruments —Wireless																			
Ammunition Examiners																			
Armourers																			
Blacksmiths																			
Carpenters and Joiners																			
Clerks																			
Coppersmiths																			
Driver Mechanics																			
Draughtsmen (Mech.)																			
Electricians																			
Fitters																			
Fitters (Motor Vehicle)																			
Grinders (Precision)																			
Hammermen																			
Instrument Mechanics																			
Machinists (Metal)																			
Moulders																			
Motor Mechanics																			
Motor Assemblers																			
Painters and Decorators																			
Pattern Makers																			
Posh Cycle Repairers																			
Riveters																			
Saddlers and Harness Makers																			
Saw Doctors																			
Sawyers																			
Shoemakers																			
Storemen																			
Textile Refitters																			
Tinsmiths and Whitesmiths																			
Toolmakers																			
Turners																			
Vulcanizers																			
Watch Makers																			
Welders (Acetylene or Electric)																			
Wheelers																			
Wireless Mechanics																			
Wood Turners and Machinists																			
MASON Gen. Duty Personnel										2	2		11				1 1 26 21		
Non-Tradesmen																			
TOTALS (to agree with Columns 3 and 4 of Part A).										2	2		11				26 21		

2/13 Bn A.I.D.

Unit

Date of Despatch 3 May 1941

J.A. Burrows LE COL

Comd. 2/13 Bn., Signature of Commander.

20th Aust. Inf Bde.

Bde., Divn, Area, etc., with which unit is serving.

FIELD RETURN OF OTHER RANKS.

2/13 Btd 229 1st Rnfts (Unit). 10 May 1941. (Date)

(To be furnished by all Units of the Royal Army Ordnance Corps.)

Part A. Strength, Surplus or Reinforcements required.

1	2	3	4
Appointment.	Posted strength counting against authorised establishment (excluding attached).	Surplus to Establishment.	Reinforcements required (i.e., deficits on establishment).
W.Os. Class I.	1		
W.Os. Class II.	6		
W.Os. Class III.			
Staff Serjeants	5		2
Serjeants	31		3
Corporals	66		11
Buglers			
Privates, etc.	509		277
TOTALS	618	*	* 293

*These totals should agree with the details shown in Part D on page 2 of Army Form W.3009C.

Part B. Other Ranks attached from other Corps.

Appointment.	Unit and Corps to which they belong.	Appointment.	Unit and Corps to which they belong.
VX 10533 Spt. Dudgeon	AAPC	NX 36693 Col. Atwood	AAC
NX 16875	Crawley	59572	Pt. Wood
17278	Pt. McKeown	36646	Brazier
17476	Genick	16001	Col. Saunders
Sx 6406	Baxter	16794	Pt. Stevenson
NX 60042	Col. Larkin		
16660	Pt. Evans		

Part C. Description of other Ranks whose return to the Unit is particularly requested.

Army No.	Rank.	Name and Initials.	Corps.	Remarks (e.g., present whereabouts if known).

Part D. Detail by Trades of Surplus or Reinforcements required as shown in Part A of Army Form W.3009C.

DETAIL OF SPECIALISTS, TRADESMEN, ETC.	SURPLUS TO ESTABLISHMENT.							REINFORCEMENTS REQUIRED.							REMARKS.				
	W.Os. Class I.	W.Os. Class II.	W.Os. Class III.	Staff Sergeants.	Sergeants.	Corporals.	Buglers.	Privates, etc.	TOTAL.	W.Os. Class I.	W.Os. Class II.	W.Os. Class III.	Staff Sergeants.	Sergeants.		Corporals.	Buglers.	privates, etc.	TOTAL.
Armament Artificers Fitters																			
Armament Artificers—Instruments																			
Armament Artificers—Instruments—Wireless																			
Ammunition Examiners																			
Armourers																			
Blacksmiths																			
Carpenters and Joiners																			
Clerks																			
Coppersmiths																			
Driver Mechanics																			
Draughtsmen (Mech.)																			
Electricians																			
Fitters																			
Fitters (Motor Vehicle)																			
Grinders (Precision)																			
Hammermen																			
Instrument Mechanics																			
Machinists (Metal)																			
Moulders																			
Motor Mechanics																			
Motor Assemblers																			
Painters and Decorators																			
Pattern Makers																			
Posh Cycle Repairers																			
Riveters																			
Saddlers and Harness Makers																			
Saw Doctors																			
Sawyers																			
Shoemakers																			
Storemen																			
Textile Refitters																			
Tinsmiths and Whitesmiths																			
Toolmakers																			
Turners																			
Vulcanizers																			
Watch Makers																			
Welders (Acetylene or Electric)																			
Wheelers																			
Wireless Mechanics																			
Wood Turners and Machinists																			
MASON. Gen Duty Personnel.													2	3	11		1	1	27/292
Non-Tradesmen																			
TOTALS (to agree with Columns 3 and 4 of Part A).													2	3	11		2	1	27/293

2/13 Bn. A.I.F.

Unit

Date of Despatch 10 May 1941

[Signature]
Command. 2/13 Bn., A.I.F.

20th Aust. Inf. Bde.
Bde., Divn., Area, etc., with which unit is serving.

FIELD RETURN OF OTHER RANKS.

2/13 Bn A.I.F. (Unit). 13 April 1941 (Date)
incl. 1st Reinf

(To be furnished by all Units of the Royal Army Ordnance Corps.)

Part A. Strength, Surplus or Reinforcements required.

1	2	3	4
Appointment.	Posted strength counting against authorised establishment (excluding attached).	Surplus to Establishment.	Reinforcements required (i.e., deficits on establishment).
W.Os. Class I.	1		
W.Os. Class II.	4		2
W.Os. Class III.			
Staff Serjeants	5		2
Serjeants	29		5
Corporals	55		22
Buglers			
Privates, etc.	562		224
TOTALS	656	*	* 255

*These totals should agree with the details shown in Part D on page 2 of Army Form W.3009C.

Part B. Other Ranks attached from other Corps.

Appointment.	Unit and Corps to which they belong.	Appointment.	Unit and Corps to which they belong.
VX.10533 Sgt. Dudgeon G.	A.A.P.C.	W.36693 Pte Attwood (H.W.)	A.A.O.C.
NX.16873 " Crawley G.V.	A.A.M.C.	16660 " Evans J.	"
17278 Pte McMechan A.	"	59592 " Wood A.G.	"
17476 " Gorrick G.	"	16001 Ppl. Bownds R.	A.A.P.O.S.T.C.
SX.6406 " Baxter G.	"	16794 Pte Stevenson R.	20th BAC.
NX.60042 Ppl. Larkin D.	A.A.O.C.		

Part C. Description of other Ranks whose return to the Unit is particularly requested.

Army No.	Rank.	Name and Initials.	Corps.	Remarks (e.g., present whereabouts if known).

2/13 Bn A 9 91

Unit.

Part D. Detail by Trades of Surplus or Reinforcements required as shown in Part A of Army Form W.3009C.

DETAIL OF SPECIALISTS, TRADESMEN, ETC.	SURPLUS TO ESTABLISHMENT.							REINFORCEMENTS REQUIRED.							REMARKS.				
	W.Os. Class I.	W.Os. Class II.	W.Os. Class III.	Staff Serjeants.	Serjeants.	Corporals.	Buglers.	Privates, etc.	TOTAL.	W.Os. Class I.	W.Os. Class II.	W.Os. Class III.	Staff Serjeants.	Serjeants.		Corporals.	Buglers.	privates, etc.	TOTAL.
Armament Artificers Fitters																			
Armament Artificers—Instruments																			
Armament Artificers—Instruments —Wireless																			
Ammunition Examiners																			
Armourers																			
Blacksmiths																			
Carpenters and Joiners																			
Clerks																			
Coppersmiths																			
Driver Mechanics																	3		
Draughtsmen (Mech.)																			
Electricians																			
Fitters																			
Fitters (Motor Vehicle)																			
Grinders (Precision)																			
Hammermen																			
Instrument Mechanics																			
Machinists (Metal)																			
Moulders																			
Motor Mechanics																			
Motor Assemblers																			
Painters and Decorators																			
Pattern Makers																			
Posh Cycle Repairers																			
Riveters																			
Saddlers and Harness Makers																			
Saw Doctors																			
Sawyers																			
Shoemakers																			
Storemen																			
Textile Refitters																			
Tinsmiths and Whitesmiths																			
Toolmakers																			
Turners																			
Vulcanizers																			
Watch Makers																			
Welders (Acetylene or Electric)																			
Wheelers																			
Wireless Mechanics																			
Wood Turners and Machinists																			
<i>Gun Duty Personnel</i>										2		2	5	22			22	25	
Non-Tradesmen																			
TOTALS (to agree with Columns 3 and 4 of Part A).										2		2	5	22			22	25	

2/13 Bn A 9 91

Unit

Date of Despatch 13 April 1941

Kelly Capt for Lt. Col.

Comd. 2/13 Signal Bde. of Commander.

20th Aust Inf Bde

Bde., Divn, Area, etc., with which unit is serving.

FIELD RETURN OF OTHER RANKS.

2/13 Bn A 93rd Pk Coy (Unit). 17 May 1941 . (Date)

(To be furnished by all Units of the Royal Army Ordnance Corps.)

Part A. Strength, Surplus or Reinforcements required.

1	2	3	4
Appointment.	Posted strength counting against authorised establishment (excluding attached).	Surplus to Establishment.	Reinforcements required (i.e., deficits on establishment).
W.Os. Class I.	1		
W.Os. Class II.	6		
W.Os. Class III.			
Staff Serjeants	5		2
Serjeants	31		3
Corporals	69		8
Buglers			
Privates, etc.	498		288
TOTALS	610	*	* 301

*These totals should agree with the details shown in Part D on page 2 of Army Form W.3009C.

Part B. Other Ranks attached from other Corps.

Appointment.	Unit and Corps to which they belong.	Appointment.	Unit and Corps to which they belong.
VX10533 Sgt. Duggan. G	AAPC	VX36693 Cpl. Acton. H.W.	HAOC
NX16875 - Brawley E	AAMC	59592 Pte. Warral. A.G.	"
17308 Pte. McMechan. A	"	36606 " Brazier. A.G.	"
Sx6106 Pte. Baxter. R	"	16001 Cpl. Rawns. R.E.	HAPOSTC
NX60047 Cpl. Larkin. A	HAOC	16794 Pte. Stevenson. R	20 P.W.
16660 Pte. Evans. G	"		

Part C. Description of other Ranks whose return to the Unit is particularly requested.

Army No.	Rank.	Name and Initials.	Corps.	Remarks (e.g., present whereabouts if known).

2/13 Bn AIF 4.1st Reinfpts.

Unit.

Was Dining

Army Form W. 3009 C
(page 2).

Part D. Detail by Trades of Surplus or Reinforcements required as shown in Part A of Army Form W.3009C.

DETAIL OF SPECIALISTS, TRADESMEN, ETC.	SURPLUS TO ESTABLISHMENT.								REINFORCEMENTS REQUIRED:								REMARKS.		
	W.Os. Class I.	W.Os. Class II.	W.Os. Class III.	Staff Sergeants.	Sergeants.	Corporals.	Buglers.	Privates, etc.	TOTAL.	W.Os. Class I.	W.Os. Class II.	W.Os. Class III.	Staff Sergeants.	Sergeants.	Corporals.	Buglers.		privates, etc.	TOTAL.
Armament Artificers Fitters																			
Armament Artificers—Instruments																			
Armament Artificers—Instruments —Wireless																			
Ammunition Examiners																			
Armourers																			
Blacksmiths																			
Carpenters and Joiners																			
Clerks																			
Coppersmiths																			
Driver Mechanics																			
Draughtsmen (Mech.)																			
Electricians																			
Fitters																			
Fitters (Motor Vehicle)																			
Grinders (Precision)																			
Hammermen																			
Instrument Mechanics																			
Machinists (Metal)																			
Moulders																			
Motor Mechanics																			
Motor Assemblers																			
Painters and Decorators																			
Pattern Makers																			
Posh Cycle Repairers																			
Riveters																			
Saddlers and Harness Makers																			
Saw Doctors																			
Sawyers																			
Shoemakers																			
Storemen																			
Textile Refitters																			
Tinsmiths and Whitesmiths																			
Toolmakers																			
Turners																			
Vulcanizers																			
Watch Makers																			
Welders (Acetylene or Electric)																			
Wheelers																			
Wireless Mechanics																			
Wood Turners and Machinists																			
MASON OPN DUTY PERSONNEL													2	3	8		1	1	289/300
Non-Tradesmen																			
TOTALS (to agree with Columns 3 and 4 of Part A).													2	3	8				288/301

2/13 Bn AIF

Unit

Date of Despatch 17 May 1941

J. Kelly Capt

Signature of Commander.
Comd. 2/13 Bn., A.I.F.

Bde., Divn, Area, etc., with which unit is serving.

FIELD RETURN OF OTHER RANKS.

2/13 Bn. A.I.D. + 1st REMFTC (Unit). 24 May 1941 . (Date)

(To be furnished by all Units of the Royal Army Ordnance Corps.)

Part A. Strength, Surplus or Reinforcements required.

1	2	3	4
Appointment.	Posted strength counting against authorised establishment (excluding attached).	Surplus to Establishment.	Reinforcements required (i.e., deficits on establishment).
W.Os. Class I.	1		
W.Os. Class II.	6		
W.Os. Class III.			
Staff Serjeants	5		2
Serjeants	31		3
Corporals	69		8
Buglers			
Privates, etc.	491		295
TOTALS	603	*	* 308

*These totals should agree with the details shown in Part D on page 2 of Army Form W.3009C.

Part B. Other Ranks attached from other Corps.

Appointment.	Unit and Corps to which they belong.	Appointment.	Unit and Corps to which they belong.
VX10533 Sgt Praggitt G.	AAPC	36693 Cpl Atwood J.W.	AAOC
NX16875 " Crawley E.V.	AAFC	59592 Pte Wood A.D.	"
17278 Pte McMechan A.	"	36646 " Brazier A.J.	"
SX6406 " Baxter R.	"	16001 Cpl Bowen A.R.	AAPOST C
NX60045 Cpl Larkin D.	AAOC	16794 Pte Stevenson R.	20 Bn
16660 Pte Evans J.	"		

Part C. Description of other Ranks whose return to the Unit is particularly requested.

Army No.	Rank.	Name and Initials.	Corps.	Remarks (e.g., present whereabouts if known).

2/13 Bn A.I.D. + 1st Reinf

Unit.

W. M. Denny

Army Form W. 3009 C
(page 2).

Part D. Detail by Trades of Surplus or Reinforcements required as shown in Part A of Army Form W.3009C.

DETAIL OF SPECIALISTS, TRADESMEN, ETC.	SURPLUS TO ESTABLISHMENT.								REINFORCEMENTS REQUIRED.							REMARKS.			
	W.Os. Class I.	W.Os. Class II.	W.Os. Class III.	Staff Sergeants.	Sergeants.	Corporals.	Buglers.	Privates, etc.	TOTAL.	W.Os. Class I.	W.Os. Class II.	W.Os. Class III.	Staff Sergeants.	Sergeants.	Corporals.		Buglers.	privates, etc.	TOTAL.
Armament Artificers Fitters																			
Armament Artificers—Instruments																			
Armament Artificers—Instruments —Wireless																			
Ammunition Examiners																			
Armourers																			
Blacksmiths																			
Carpenters and Joiners																			
Clerks																			
Coppersmiths																			
Driver Mechanics																			
Draughtsmen (Mech.)																			
Electricians																			
Fitters																			
Fitters (Motor Vehicle)																			
Grinders (Precision)																			
Hammermen																			
Instrument Mechanics																			
Machinists (Metal)																			
Moulders																			
Motor Mechanics																			
Motor Assemblers																			
Painters and Decorators																			
Pattern Makers																			
Posh Cycle Repairers																			
Riveters																			
Saddlers and Harness Makers																			
Saw Doctors																			
Sawyers																			
Shoemakers																			
Storemen																			
Textile Refitters																			
Tinsmiths and Whitesmiths																			
Toolmakers																			
Turners																			
Vulcanizers																			
Watch Makers																			
Welders (Acetylene or Electric)																			
Wheelers																			
Wireless Mechanics																			
Wood Turners and Machinists																			
MASON																			
GEN DUTY PERSONNEL													2	3	8		1	1	294309
Non-Tradesmen																			
TOTALS (to agree with Columns 3 and 4 of Part A).													2	3	8				295308

2/13 Bn A.I.D.

Unit

Date of Despatch 24 May 1941

H. Bivacovs Lt. Col.

Comd. 2/13 Bn Signal Co of Commander.

20 Aust Inf Bde
Bde., Divn., Area, etc., with which unit is serving.

FIELD RETURN OF OTHER RANKS.

2/13 Bn AIF plus (Unit) 31 May 41. 19 (Date)
1st Reinforcements.

(To be furnished by all Units of the Royal Army Ordnance Corps.)

Part A. Strength, Surplus or Reinforcements required.

Table with 4 columns: 1 Appointment, 2 Posted strength counting against authorised establishment (excluding attached), 3 Surplus to Establishment, 4 Reinforcements required (i.e., deficits on establishment). Rows include W.Os. Class I-III, Staff Serjeants, Serjeants, Corporals, Buglers, Privates, etc., and a TOTALS row.

*These totals should agree with the details shown in Part D on page 2 of Army Form W.3009C.

Part B. Other Ranks attached from other Corps.

Table with 4 columns: Appointment, Unit and Corps to which they belong, Appointment, Unit and Corps to which they belong. Rows list individuals such as VX 10533 Sgt Padgett C A.A.PC, NX 17278 Pte McMechan A A.A.M.C., etc.

Part C. Description of other Ranks whose return to the Unit is particularly requested.

Table with 5 columns: Army No., Rank, Name and Initials, Corps, Remarks (e.g., present whereabouts if known). The table is mostly empty.

Wm Smith

Part D. Detail by Trades of Surplus or Reinforcements required as shown in Part A of Army Form W.3009C.

DETAIL OF SPECIALISTS, TRADESMEN, ETC.	SURPLUS TO ESTABLISHMENT.							REINFORCEMENTS REQUIRED.							REMARKS.			
	W.Os. Class I.	W.Os. Class II.	W.Os. Class III.	Staff Sergeants.	Sergeants.	Corporals.	Buglers.	Privates, etc.	TOTAL.	W.Os. Class I.	W.Os. Class II.	W.Os. Class III.	Staff Sergeants.	Sergeants.		Corporals.	Buglers.	privates, etc.
Armament Artificers Fitters																		
Armament Artificers—Instruments																		
Armament Artificers—Instruments —Wireless																		
Ammunition Examiners																		
Armourers																		
Blacksmiths																		
Carpenters and Joiners																		
Clerks																		
Coppersmiths																		
Driver Mechanics																		
Draughtsmen (Mech.)																		
Electricians																		
Fitters																		
Fitters (Motor Vehicle)																		
Grinders (Precision)																		
Hammermen																		
Instrument Mechanics																		
Machinists (Metal)																		
Moulders																		
Motor Mechanics																		
Motor Assemblers																		
Painters and Decorators																		
Pattern Makers																		
Posh Cycle Repairers																		
Riveters																		
Saddlers and Harness Makers																		
Saw Doctors																		
Sawyers																		
Shoemakers																		
Storemen																		
Textile Refitters																		
Tinsmiths and Whitesmiths																		
Toolmakers																		
Turners																		
Vulcanizers																		
Watch Makers																		
Welders (Acetylene or Electric)																		
Wheelers																		
Wireless Mechanics																		
Wood Turners and Machinists																		
Mason General duty Personnel.																	1 1	
																	2 4 8 296 310	
Non-Tradesmen																		
TOTALS (to agree with Columns 3 and 4 of Part A).																	2 4 8 296 311	

2/13 Bn A.I.F. Unit

Date of Despatch 31 May 41.

H. J. ...
Comd. 2/13 Bn, A.I.F. Signature of Commander.

20 Aust Inf Bde
Bde., Divn, Area, etc., with which unit is serving.