

AWM52
2nd Australian Imperial Force and
Commonwealth Military Forces unit war
diaries, 1939-45 War

Item number: 8/2/16

16 Infantry Brigade

December 1942

14 Dec 42

The evening, which had been extremely muggy and overcast, brought with it an extremely heavy rain storm which caused a certain amount of inconvenience to those who had not built sleeping berths off the ground. The rain was accompanied by vivid lightning and thunders and an interrupted night's sleep was the main lot of all.

15 Aust Inf Bde - New Guinea.

December 1.

The morning of Dec. 1 brought further news of "I" Coy of the 126 US Regt. and Col. TOMLINSON estimated their posn. to be approx. 1900 yds NORTH of LLOYD HQ and astride the main tk. Thus there was ^{remnants of} ~~now~~ in addition to ^{remnants of two} ~~two~~ coys of EDGAR ~~it~~ and left of the tk, ^{remnants of} two coys of STEVENSON close to tk. on left and a third composite coy astride tk in rear, this cutting of the tk by portion of 126 US Regt formed an extensive four-sided area with the JAP. force, still of unknown strength somewhere contained therein. (SEE TRACE 1 attached)

Owing to the thickness of the undergrowth and flatness of the area of operations, plus the attendant difficulty of inaccurate maps, it was extremely difficult to define either the enemy posns or gain observation for our own artillery shoots. In addition, at this stage the tenacity of the JAP combined with ^{his} evident decision to stay and fight it out in this particular area rather than fall back to what was considered his main base and dump area near the coast, had already utilised the greater portion of the Australian troops available.

However, harassing tactics were the order of the day and at every opportunity, dependent of course upon the limited ammunition supply, mortar and artillery shoots were directed onto the known enemy posns.

At 0640 hrs. the normal fire test disclosed the enemy to be still in posn on the FIRE BROTHER front, and a 3" mortar shoot was tied up onto this left fwd area, commencing at 0812 hrs, lasting for some thirty minutes during which 80 rds were fired. A further shoot was carried out by 126 US Regt directed by Capt. Ferguson of EDGAR. during which 100 rds. 81 mm were fired with considered good results on enemy posns. in vicinity of BIG TREE area.

At 1300 hrs. Col TOMLINSON signified his intention of clearing up the enemy posns. in this area known as BIG TREE. Several enemy snipers and two L.M.G.s were known to be located there and it was thought that by a slight rearrangement in the tps. on the ground necessitating relief of one US Pi. by ~~an~~ STEVENSON PI from the composite coy, sufficient force would be available to complete the task. Arrangements were completed and assurance was given that before any movement was to take place LLOYD HQ would be notified.

Further news of Tac/R having located ground traps placed out by "I" Coy on tk. definitely pin-pointed

the posn at 204244 (Bura 1st to mile). At this juncture the previously arranged plan was temporarily postponed.

At 1505 hrs. Comd, Brig LLOYD left Bde HQ to attend conference at 7th Aust Inf Div HQ with G.O.C. Maj/Gen Vacey.

A second motor shoot arranged to take place in the afternoon was cancelled owing to the fact that a patrol from BRETCKE FORCE on the left could not be located accurately on the ground.

At 1930 hrs Col. TOMLINSON gave fuller details of attacks made by his "I" Coy on the supposed JAP bivouac area the night previously in which some fourteen (14) of enemy were bayoneted whilst remainder escaped into the surrounding jungle. During this attack Lieut Daniels of 2/1 Aust Fd Regt acting as F.O.O with this divd coy. was killed. He in company with Capt Shibley of 116 US Regt ~~also~~ wounded fatally led the attack. Major BRETCKE in reporting the incident said that Lieut Daniels had carried out excellent work.

During the evening several parachute flares were seen over the coastal area and sounds of planes could be heard overhead. These facts were reported immediately to Div. HQ.

December 2.

This morning owing to the fact that the American patrol of the "K" Coy on left of th was still not accurately pin-pointed on the ground no fire test was carried out.

However a 3rd motor subject to later confirmation from Col. TOMLINSON was arranged for 1000 hrs on the known enemy posns fronting FIREBROTHER.

Further arrangements were made to move the remainder CULLEN to a defensive perimeter posn. around the 75. par. ~~battery~~ battery area for protection of the guns and by 1115 hrs information was received that the move had been completed.

During the morning Col. TOMLINSON made certain changes in troop disposition. One force under Capt Zieff was ordered to move and join "I" Coy. A patrol under Capt Boyce was sent out to make contact BRETCKE and it was hoped that by these new moves more definite information as to the events of last few days, strength and location would be obtained.

STEVENSON was requested at 1315 hrs to provide every assistance to EDGAR in regard to ration carrying parties as at this time every available man from EDGAR was at the front line coys. Thirty men were allotted for this duty.

2 Dec 42 (contd)

At 1140 hrs. G1. Cpl. Pallard & Cpl. Schofield GIII 'I' visited Bldg HQ, later visiting Col TOMLINSON at 1246 US CP. The mortar shoot postponed from 1000 hrs and which was to have taken place at 1500 hrs/L. was cancelled for day owing to fact that the posn. of US patrols were still considered obscure and the ZEEFE posn had not yet been plotted. Arrangements were made for the same teams to fire on 3 Dec.

At 2300 hrs. a report was received from 32 US Div that the JAPS had counter attacked strongly against the two US Bns. which were astride the th. approx. 200 yds west of BONA. The attacks had been successfully repulsed but strong JAP parties had infiltrated SOUTH EDGAR was immediately warned. However twenty minutes later a further message indicated that these parties had been largely accounted for.

During the day Capt Williams of 3 Bn L.O. was evacuated with suspected appendicitis, and his leaving brought the remaining officer figures on Bde HQ down to seven.

31 Dec 42

The fire test was again cancelled this morning and at 0800 hrs Col TOMLINSON informed the Comd that the Zeeff patrol which had reported back to the BOREM posn was to move out again. The ration and amm. party had successfully contacted BRITCKE force but the supplies had not yet reached the coy astride the th. The ration party returning from BRITCKE had struck enemy opposition and sixteen ORs were missing. Zeeff was able to clear up certain doubts in relation to th and V. Scay areas but the general and complete picture in relation to the OS force as a whole was not very clearly defined.

During this period the 16th and 17th Bde had purely a static role, well suited at the time to these dwindling numbers and were obliged to await upon the activities of the Americans before any harassing shoots either with mortar or arty. could be carried out. The slowness of their progress, if at anytime criticised, could only be attributed to the new tactics the US tps were obliged to adopt and secondly to the difficulty of the country through which they were working. The old failing in regard to inaccuracy of maps was gradually being corrected by aerial photographs although the fact that scarcely any map was reliable did not assist things in general.

3 Dec 42 (contd)

At 0930 Zief force returned to 126 US CP. with information that Major BAETCKE had now two strong patrols of unknown strength in area BIG TREE north of our left fwd Coy and dependent upon reports from this patrol Col TOMLINSON intends that BAETCKE force moves due EAST to main the three NORTH to join SHIRLEY astride the th.

After fire was carried out at 1100 hrs after information had been received that no US Tps were in area under fire the enemy replied with SAA and mortars. and at 1200 hrs TOMLINSON HQ reported that it was "OK" to go ahead with our mortar shoot on enemy posns fwd of left fwd Coys.

At 1335. G1 and Col TOMLINSON reported in at Bde HQ the Col. had been to a conf. at 7th Div HQ and Brig LLOYD received the later information on probable future activities

The mortar shoot in which 60 rds were used was considered satisfactory and a further 40 rds were promised for an afternoon shoot commencing at 1500 hrs/L.

Col Norris TDMS 7th Div visited Bde HQ

At 1521 hrs/L a report was received that 26 enemy bombers had dropped approx. 120 parachutes over BONA was received but as to whether they paratroops or stores only could not be ascertained.

During the night further parachute flares over coastal area were observed & reported. This was now reported to be our own a/c recce. beach area for possible enemy landing attempts.

The night was uneventful - quiet except for occasional arty. shots throughout the night a further precautionary measure to prevent uninterrupted use of beaches.

4 Dec 42.

At 0930 hrs. this morning Col. TOMLINSON with his complete HQ staff moved to take over new duty in the BUNA area under 32 US Div. At the same time the American tps in the area came under command of Brig J.E. LLOYD.

At 0920 hrs. the GOC Brig/Gen VASEY arrived at the HQ's and passed on the latest information and proposed plans for future operations and at 1100 hrs Brig LLOYD held a conference at which Major BAETCKE BOREM, Capt Wyde & JOHNSON of 126 US Regt discussed plans for the immediate future.

Dec 42 (Contd)

A plan of attack directed against enemy posns. on rt. of the was worked out for morning 5 Dec. Briefly one force under Major BOREM would attack along axis of track under an artillery and mortar barrage and endeavor to clear the area rt. of the and in front of our rt food coy of the enemy.

At the same time Major BAETCKE from the left would attack through the BIG TREE area endeavor to gain the main rd then swing north and join the coy astride the road.

If successful it was hoped that the attack would give us possession of the Cape KILLERTON - SANANANDA Trunc. an advance of some 2000 yds.

At 1445 hrs. a second conference with the US officer to complete final plans was held. It was arranged that Capt BURRELL of 21st Inf Bn and Lieut MacDougal of 2/3 Avn Bn would accompany Major BAETCKE and Major BOREM respectively in an L.O. capacity.

At 1300 hrs General ENGELBERGER accompanied by COL. BYERS, Chief of Staff, BRIG-Gen. WELLBYE, of the US Army and Maj/Gen VASEY, LT/Gen HERRING BRIG HOPKINS of NGF visited Bde HQ and conferred with the Comd Brig J.E. LLOYD.

During afternoon the arty. and mortar shoots for purposes of registering targets were completed and permission was asked by arty. OP officer for two shots to be fired at 0700 hrs 5 Dec for further checking of netos.

At 1610 hrs. Jap 75 mm gun which had been silent for three days commenced further shelling of what was quipped to be our rt food coy posn. However it was later reported that he was shelling the JAP posn. opposite MOORE. No actual damage to our tps ^{was} ~~were~~ reported.

The evening 4 Dec 42 was rather a disturbed one. Heavy shelling in Buna area could be heard throughout the night and our own guns kept up intermittent fire on the SANANANDA BEACH area.

Arrangements were made by Comd Brig LLOYD for an instruction ration of 3 days hard and two days emergency to be issued to the American tps, as their system of daily issue was not considered possible in their ^{possible} ~~possible~~ role.

5 Dec 42.

The day was opened by the artillery laying down an accurate barrage at 0715 hrs, later increased by 3 mortars. In addition instrs were issued for 50 rds per 2 mortars to be fired on the left of the rd from FAREBROTHERS posn. However reports of progress as far as the tps. were concerned were totally absent and it was not until 0940 that Major BOREM's first report came

5 Dec 45

to hand with the information that his force was at that time held up by LMG fire and had gone to ground roughly along rear line of arty. concentration. He was endeavouring to reorganise his force and make a second attempt at reaching his objective.

An earlier report indicated that the left force under Major BAETCKE had reached the point where he was to swing eastwards on a bearing 110° and move in towards the th.

At 1130 hrs/L Major BOREM expressed the opinion that his tps were somewhat disorganised. They had evidently become scattered in the thick undergrowth and it was taking sometime to get them reorganised. They had passed through only one vacated enemy pos. a L.M.G pit with timber overhead-cover but were now held up by a gun approx 50 yds to his front whilst there was one LMG slightly further back and one on his rt. flank.

Meanwhile BAETCKE had been held up approx 200 yds along his EASTERN bearing by LMG fire and attempts to knock this out with mortars were being made.

At 1030 hrs/L Brig Porter, comd 30 Aus Inf Bde accompanied by his I.O., Lieut Guthrie visited Bde HQ and whilst comd. gave Brig Porter the latest information the I.O.'s collected any available information of tracks, patrols, type of country and enemy ^{groups} forms.

At 1200 hrs/L Gen Willabye, US Army, arrived at the HQ and after a long talk with comd. regarding the morning's attack went out to endeavour contact Major BAETCKE.

At 1600 hrs/L Maj/Gen Vesey visited the Comd. and a discussion took place during which the day's events were reviewed.

Shortly after Maj/Gen Vesey left the HQ, the comd. advised Bde HQ staff and later CO's units that the Bde would be relieved by 30 Aus Inf Bde consisting of 39, 49, 55/53 Bns on Nov 6. At this time only two Bns were to be used on SANANANDA front ^{the 39 Bn being at GONDA} X
The general plan was that all tps South of RUNDLE (see sketch attached) would be relieved by 1700 hrs 6 Dec and dependent upon success of attack by 30 Aus Inf Bde remainder of front tps would be relieved within 72 hours.

5 Dec 42

As regards the attack by US tps no appreciable change took place and that evening the attack was listed as "unsuccessful". The tps on the right of the road had only advanced 100 yds fwd. of their original pos whilst BRETCKE force had been pinned down 300 yds ~~from~~ along the eastern arm of his attack. Known casualties for the day were two dead and 55 wounded.

The evening of 5 Dec passed very quietly.

6 Dec 42

At 0730 hrs Lieut Gordon Bde I.O., accompanied by Lieut McLannan $\frac{1}{2}$ Bn, Lieut Silk $\frac{2}{3}$ Bn left to carry out recon of bivouac area along the SOPUTA JIMBURA th.

At 0935 GOC accompanied by Brig PORTER arrived at Bde HQ to finalise arrangements for the relief and unit comds were given orders at Bde HQ as follows

- ① $\frac{1}{2}$ Bn would remain in present location protecting guns
 $\frac{1}{2}$ Bn. elements SOUTH of RONDLE pos would move
- ② back at 1400 hrs.
 $\frac{1}{2}$ Bn HQ and tps NORTH of Rundle would remain in present pos. and would pass to under comd Brig PORTER as from 1700 hrs / 6 Dec.
- ③ $\frac{2}{3}$ Bn would move to bivouac area 1430 hrs. and any tps remaining in fwd area after 1700 hrs / 6 Dec would come under comd PORTER
- ④ V.S. tps now under comd LLOYD would come under comd PORTER from 1700 hrs / 6 Dec.

Throughout the day the relief was carried out and $\frac{2}{3}$ Bn were on their way to bivouac area by the appointed time. However a slight rearrangement postponed all but a small party of EDGAR moving out and by 1700 hrs / 6 Dec Bde HQ, $\frac{2}{3}$ Bn and this small adv. party were located in area 81709167 close to 1st Div HQ (ref map BUNA I).

The Comd, Brig J.E. LLOYD spent the night at 1st Div HQ

To-day the locally published "GUINEA GOLD" published a notice in relation to the late Capt Jack Blaney $\frac{2}{2}$ Bn ^{Inf Bn} in which news to the effect that he had been ^{posthumously} awarded the

LATE CAPTAIN
BLAMEY, D.S.C.

BY direction of President Roosevelt General Douglas MacArthur has awarded the distinguished Service Cross posthumously to Capt. Jack Murray Blamey, A.I.F.

The late Capt. Blamey won the Cross for "extraordinary heroism in the Buna-Gona area in Northern Papua."

He was a nephew of General Sir Thomas Blamey, and lived at Manly, N.S.W.

a Service Cross. (See attached cutting)

Late Capt. Blamey won the Cross for "extraordinary heroism in the BUNA-GONA area in NORTHERN PAPUA."

As regards the actual location of Bde units there was no change. Those troops already relieved commenced preparing the bivouac area for a possible lengthy stay. The natives normally used in carrying duties were utilised in building R.A.P. office Huts, Troop Shelters, Kitchens and in a short period most people possessed a reasonably comfortable shelter. Up to this period there had been no indication of the length of time the Bde would remain in the area. As it was the Bde still had two-thirds of the personnel in an operational role and no guarantee that these troops would be relieved immediately could be given.

The majority of troops had been in the front line for period of fourteen days and took advantage of this opportunity to wash clothing, swim and generally "rest-up".

The Comd. paid a short visit to the area this afternoon and then made a short inspection of the area, returning to spend a second night at D's HQ. Lt Col Bertram NGF and Major Wilson accompanied the Comd. on his inspection.

At 1700hrs. Major Wilson who had taken Major Dawson's place as BOM when the latter had been evacuated, received orders from Aust Div to move up and take a similar post with 30 Aust Inf Bde as Major Beresford had become a casualty. On leaving he thanked officers of the Bde staff for their co-operation and expressed a hope of returning to the Bde in the near future.

As regards news of other fronts Bde activities information was received that the 30 Aust Inf Bde had achieved limited successes but the units had made a very fine performance in their first attack in the SANANANDA area.

The death is announced in Sydney of Mr. John Gartick, formerly Sydney Chief City Commissioner, aged 66. He was connected with the N.S.W. Public Service for many years.

to pay £42,245 Indemnity.
*
*
*
Dec 42.

Distinguished Service Cross. (See attached cutting)

The late Capt. Blaney won the Cross for "extraordinary heroism in the Buna-Gona area in NORTHERN PAPUA."

7 Dec 42.

As regards the actual location of Bde units there was no change. Those troops already relieved commenced preparing the bivouac area for a possible lengthy stay. The natives normally used in carrying duties were utilised in building R.A.P. office Huts, Troop Shelters, Kitchens and in a short period most people possessed a reasonably comfortable shelter. Up to this period there had been no indication of the length of time the Bde would remain in the area. As it was the Bde still had two-thirds of the personnel in an operational role and no guarantee that their ops would be relieved immediately could be given.

The majority of troops had been in the front line for period of fourteen days and took advantage of this opportunity to wash clothing, swim and generally "rest-up".

The Comd. paid a short visit to the area this afternoon and then made a short inspection of the area, returning to spend a second night at Div HQ. Lt Col Bertram NGF and Major Wilson accompanied the Comd. on his inspection.

At 1700hrs. Major Wilson who had taken Major Dawson's place as BM when the latter had been evacuated, received orders from Maj Gen Dwyer to move up and take a similar post with 30 Aust Inf Bde as Major Beresford had become a casualty. On leaving he thanked officers of the Bde staff for their co-operation and expressed a hope of returning to the Bde in the near future.

As regards news of other fronts Bde activities information was received that the 30 Aust Inf Bde had achieved limited successes but the units had made a very fine performance in their first attacks in the SANANDA area.

8 Dec 42.

The Comd returned from Div. HQ this morning.

The work on huts had progressed favourably and it was felt that the troops would soon show some improvement from the change.

No further news of future possible movement has been received although numerous rumours are ~~still~~ circulating the majority are quite content to live in the present.

It is hoped that the rest will cut the evacuation figures from fever considerably as this has caused great loss to units up to date.

What with battle casualties and evacuations through sickness the actual fighting strength of the Bde to-day is 50 offrs. 488 ORs.

There was no other change in the locations of personnel under comd 30 Aust Inf Bde.

9 Dec 42.

This morning the Comd. accompanied by Lieut D McNeil, LO 21st Aust Inf Bn visited the fwd area calling at CULLEN & EDGAR HQ and arrangements were made for certain reliefs to be carried out in regard to those units still under comd 30 Aust Inf Bde. Owing to the situation the complete relief of the Bde could not be, at this period, carried out.

The arrangements allowed for

Ⓐ One pl CULLEN to relieve the 21st Aust Inf Bn pl. from the 1st fwd area by P.M. to-day

Ⓑ Complete relief of EDGAR by STEVENSON not before 1100hrs 10/Dec.

This necessitated the Protective Pt. attached to Bde HQ moving to STEVENSON

The remainder of the day was spent in clearing up administrative problems.

9 Dec 42

At 1700 hrs. news was received from 7th Div that GONA had been captured, thus giving a further indication of possibly slow but definitely sure progress of the troops on the left.

10 Dec 42

This morning the 2/3 Bn. moved up and carried out relief of 2/4th Aust Inf Bn as per arrangements made yesterday. The relief was carried out without incident and completed by 1730 hrs.

Personnel of 2/4th Aust Inf Bn immediately moved back to bivouac area taking over some of the huts built for 2/3 Bn. By 1700 hrs. all the relieved tps, looking very tired but still smiling, were settled in the new location where hot tea was waiting for them. Many of these tps had been nearly three weeks in the front line under very trying and arduous conditions and deserved the opportunity of a spell in more comfortable surroundings.

The night was fine though muggy and passed without incident.

11 Dec 42

The Comd. moved round the 2/4th Aust Inf Bn area this morning and expressed the opinion that the tps should soon be feeling well again after a short rest. The evacuation figures ~~but~~ were definitely lower although this was mainly attributable to the fact that all P.V.O. cases were to be held in unit lines rather than evacuate them to M.D.S.

Many troops were suffering from fever, apparently contracted whilst in fwd areas and arrangements were made for these people to be now held and treated by unit RMOs.

The troops in the area availed themselves of opportunity to enjoy a swim in the GIRUA RIVER. No program of training had been ~~found~~ as yet as the period was considered purely one of relaxation.

4-257
8-184
2-157

CASUALTIES SUFFERED by UNITS PERIOD 3 Oct. 42 - 6 Dec 42

	BDE HQ		2/1 BN		2/2 BN		2/3 BN		TOTAL	
	OFFRS.	ORs	OFFRS.	ORs	OFFRS.	ORs	OFFRS.	ORs	OFFRS.	ORs
Killed in Action.	-	3	6	69	4	48	-	35	10	155
Missing Believed Killed.	-	-	-	-	-	1	-	1	-	2
Died of Wounds	-	-	2	11	1	4	-	200	3	35
Drowned in Action.	-	-	-	1	-	-	-	-	-	1
Missing	-	-	-	2	-	-	-	-	-	2
Wounded in Action.	3	5	8	164	3	111	2	101	16	381
Missing Believed Illegally	-	-	-	3	-	-	-	-	-	3
Accidentally Killed.	-	-	-	-	-	-	-	1	-	1
" Wounded	-	-	-	-	-	-	-	3	-	3
Deserters.	-	-	-	4	-	8	-	8	-	20
A.M.L.	-	-	-	-	-	-	-	2	-	2
Transferred to Other Units.	-	-	-	-	-	-	-	6	-	6
Attending Schools	-	-	-	-	-	-	1	1	1	1
Detached to Other Units.	-	5	-	-	-	-	1	1	1	6
Marched Out to L.O.B.	-	-	-	-	-	-	-	2	-	2
Evacuated Sick	3	46	15	282	18	290	20	304	56	922
Marched Out Other Causes	-	3	-	-	-	-	-	-	-	3
	6	62	31	536	26	462	24	485	87	1545

SB off: 480 ORs
18

(357)

9. Supporting fire

2 mortars new under command 2/2 Pz will be prepared to fire concentration 100 yds on target FAIRBROTHER first at call from 0700 hrs
Mortar Pz will move with BAETKE and have call on 2 mortars 100 yds from 0830 hrs.

COMMS

- 10. Line to BAETKE and BOEREM also W/T or R/T from BAETKE and message from BOEREM
- 11. Bde HQ remains present - present

Distribution

TO	Copy No.	REMARKS
BOEREM	1	
BAETKE	2	
	3	16 Bde units by HQ of file copy
	4	2/1 Fed Regt of file copy

W.D. Lewis May

W.D. Lewis

J.R. [Signature] W/Lt 2/3 Pz

1950 1/4 b.1. Capt. [Signature]

MESSAGE FORM

Serial No. 92
 OFFICE DATE STAMP

CALL AND INSTRUCTIONS.

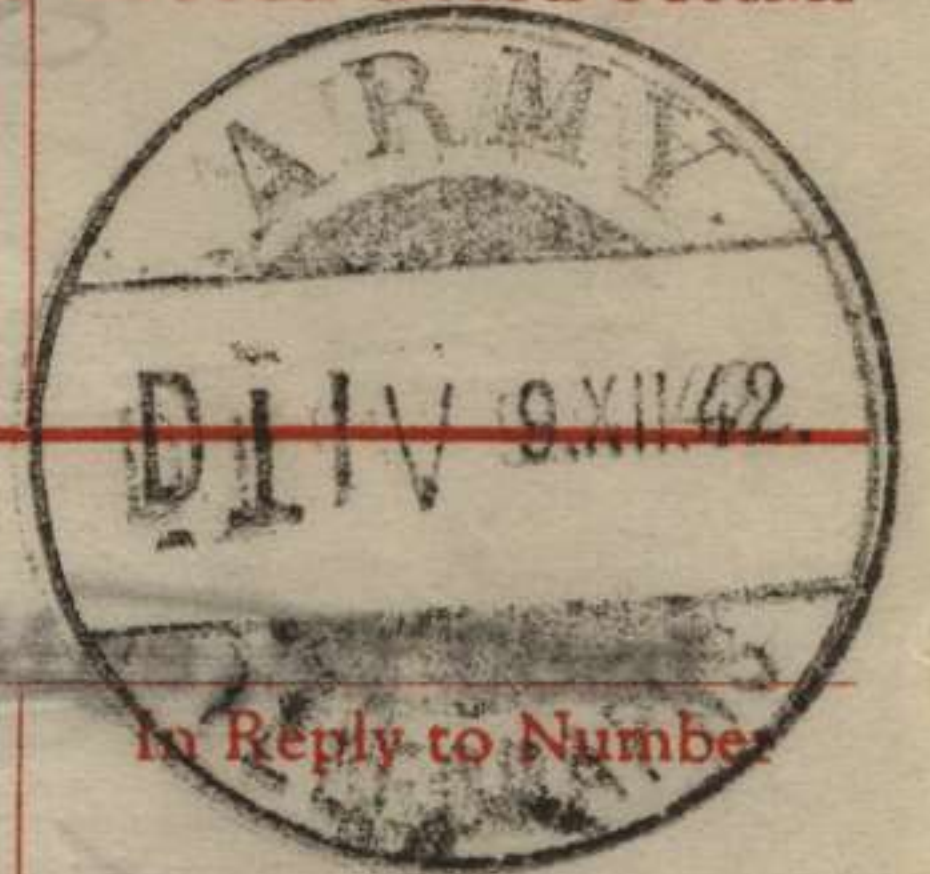
IN

OUT

VIVA

77

No. of Groups
 GR.



(ABOVE THIS LINE IS FOR SIGNALS USE ONLY.)

TO

FROM

Originator's Number

Date

In Reply to Number

[Faint, mostly illegible text in the TO and FROM fields]

01003

DATA COME @ All informed

an historic great good thing 11/9/42

THIS MESSAGE MAY BE SENT AS WRITTEN BY ANY MEANS:

IF LIABLE TO BE INTERCEPTED OR FALL INTO ENEMY HANDS, THIS MESSAGE MUST BE SENT IN CYPHER

ORIGINATOR'S INSTRUCTIONS
 DEGREE OF PRIORITY

TIME OF ORIGIN

SIGNED

(BELOW THIS LINE IS FOR SIGNALS USE ONLY.)

T.H.I.

1645

T.O.R.

SYSTEM IN	TIME IN	READER	SENDER	SYSTEM OUT	TIME OUT	READER	SENDER	SYSTEM OUT	TIME OUT	READER	SENDER
				SD/R							

IN SENDER'S TIME IN RECEIVER'S TIME SENDER RECEIVER SENDER'S TIME IN RECEIVER'S TIME SENDER RECEIVER SENDER'S TIME IN RECEIVER'S TIME SENDER RECEIVER

T.O.P.
T.H.I.

(BELOW THIS LINE IS FOR SIGNALS USE ONLY)

SIGNED: _____
 BE SENT IN CARE OF: _____
 THIS MESSAGE MAY BE SENT AS MUTILATED: _____
 BE SENT IN CARE OF: _____
 THIS MESSAGE MUST BE TRANSMITTED ON _____
 DEGREE OF ANCHOR: _____
 ORIGINATOR'S INSTRUCTIONS: _____
 TIME OF ORIGIN: _____

Handwritten scribbles and vertical lines

Large red handwritten scribbles

FROM
TO

(ABOVE THIS LINE IS FOR SIGNALS USE ONLY)

INSTRUCTIONS AND CALL

Handwritten signature in a circle

Handwritten signature in a circle

Handwritten initials

Large circular stamp with text

OFFICE DATE STAMP
Handwritten initials and text

MESSAGE FORM

Copyright 1945-1950
 (Page of 100)
 Form 3120

CONFIRMATION OF VERBAL ORDERS BY COMD 11 AUST

1713DE 1600 hrs 4 Dec

Copy No 3

DESTROY AFTER READING

4 Dec 42

INFORMATION

(ABOVE THIS LINE IS FOR SIGNALS USE ONLY.)

1. Enemy positions located on BOEREM front and between

BAEKTRE (less HUGGINS) and main track.

2. Own dispositions no change from previous steps

INTENTION

3. BOEREM will attack ^{destroy} enemy known positions thought to be 4 or 5 MG positions on his front.

5. BAEKTRE will attack and destroy any enemy forces west of main track as detailed in METHOD para below.

METHOD

PHASE I

6. Objective - enemy forces BOEREM front west of main track.

Tps - BOEREM force (includes ZEFF)

Zero - 0730 hrs

Start line - as indicated by BOEREM

Exploitation - not beyond HUGGINS position

Supporting Fire -

- 6. Artillery = one tp 25 pdrs ~~2-15 to 2-7~~ t.c. 4 guns
- 2-15 to 2-7 rate 4 target - as registered 4 Dec.
- 2-7 to 2 rate 4 left 50° from present position
- 2 to 2+5 rate 1 left 50° " "
- 2+5 to 2+10 rate 1 left 150° " "

6 Mortars - 4 81 mm US mortars

2-15 to 2 rate 5 rnds per min. target - as registered 4 Dec.

PHASE II

7. BAEKTRE (less HUGGINS) will move ^{300' approx} south from present position to area ~~approx~~ on supply track as previously indicated on map. Time of start 0730 hrs.

From position on supply track BAEKTRE (less HUGGINS) will move on a bearing of 110° to contact and destroy any ~~positions~~ force west of main track. This effort ^{300' approx} consolidating on the general line of grid line 25 from ~~exclusive~~ track to 300' north on completion consolidation ^{300' approx} point north to ~~contact~~ HUGGINS and south to contact D.Y.E.R.

8. Small force will be left as garrison on BAEKTRE position to safeguard supply route to HUGGINS.

AUSTRALIAN IMPERIAL FORCE

1

To 16 Aust Inf Bde Rear Details from 7 Aust Div 0562 31

Sitrep 128 to 0700 hrs : MAROUBRA : 16 Bde : by 1800 hrs 16 Bde having occupied ALOLA had forward elements moving on to ISURAVA village : On right flank elements were astride track just fwd of ALOLA on ABUARI TRACK : On capture ALOLA early today fwd troops found Japs camp fires still hot : adv continues first light 31 Oct : meanwhile fwd elements 25 Bde have reached high ground SW of ALOLA on 30 Oct : moving ALOLA 31 Oct : 16 and 25 Bdes then assume responsibility for advance on right and left resp : 3 Bn : location TRIPLETONS CROSSING moving on 31 Oct to ALOLA to assume responsibility defence ALOLA and collecting saps : Adv HQ 7 Aust Div opened TRIPLETONS CROSSING 1500 hrs 30 Oct : moving ALOLA to open 0700 hrs 31 Oct :
BUNA AREA : ref BUNA strat : Patrol reports Jap patrol 10 strong visited vicinity ENORO 13498 26 Oct returning towards BUNA same day :
KANGA AREA : Special patrol reports Japs consolidating def perimeter around LAB extending up MARKHAM to HEATHS and along coast to SINGAUA : no Jap patrols past NABAWAMPUM : All informed :

To 16 Aust Inf Bde Rear Details from 7 Aust Div 0570 31

Sitrep No. 129 to 1600 hrs : MAROUBRA : 16 Bde : HQ 16 Bde moved to ALOLA 0800 L/31 : 2/2 Bn patrols on high ground overlooking ISURAVA : Two Coys 2/1 Bn bivouaced night 30/31 ISURAVA REST HOUSE : and moved fwd first light to join fwd patrols : remainder 2/1 Bn ALOLA dropping area : Coy 2/2 Bn holding br head ABUARAI CREEK patrolling fwd 1500 yds : no contact enemy or any sign track being used recently : 2/2 Bn supported by 2/3 Bn commenced moving fwd first light ABUARAI mission : 2/33 Bn moving fwd to take over from 2/1 Bn at ALOLA and ISURAVA : 25 Bde : no report
AIR OPS : 3 A20's dropped 120 bombs from 1200 feet in area N of NARO : 2 strafing runs made along track 2100 rounds expended : results unobserved :
BUN FAISI TONOKEI : 7 B17's over target 0315-0435 L31 : 56 x 500 lbs bombs dropped : 2 direct hits, 2 very near misses on monitor which exploded : 2 bombs 12-15 feet from light cruiser probably severely damaged : no other results observed : RABAUL : 9 B17's over target 0230-0215 L/31 : 21 x 1000 lb 43 x 500 lb and 8 x 250 lb bombs from 2000-13000 feet : one 500 lb demo bomb exploded on solid bomb believed vessel and started fierce fire : 3 x 1000 lb 1 x 150 lb and 5 incendiaries dropped from 2000 feet amongst five large vessels : large column smoke seen rising from vicinity vessels : other bombs fell in target area but no results observed : All informed :

784. Dec 42

AUSTRALIAN IMPERIAL FORCE

Sitrep No. 315 to 2000 L/3 : MILNE FORCE : no change : 32 US DIV to
0800 L/3 : 128 Combat team in posn from point 400 yds SOUTH CAPE
ENDADAIKRE to NE corner new strip : Coy 3 Bn 128th Regt US and coy
1 Bn 128 US Regt in posn area track junction WEST end new strip :
2 Bn 126 Regt US and 2 Bn 126 Regt no change : Arty/Recco reports
target snipers in trees 261269 reports our troops occupied BUNA 1100 L/3 :
NOT yet reported by 32nd US DIV :
7 AUST DIV : to 0800 L/3 : 16 Bde 126 Regt 25 Bde no change : 21 Bde
HQ 167287 : 30 Bde elements 49 Bn moving GONA 3 Dec : enemy area on GONA
beach reduced frontally by 75 yds by capture of two posts : estimated
400 enemy killed our casualties 100 here to date :

KANGA FORCE

Native reports 3 vessels with plane escort off MOROBE AM 3 Dec :
Came from SE left westerly : exactly similar convoy reported 1/2 Dec night
AIR OPS : Coastal area BUNA old strip to SANANANDA old point continually
bombed and strafed during the day : large fires started : heavy and light
A/A encountered incl from GONA wreck some posts silenced one A/A gun blown :
from pit : barges SANANANDA POINT strafed four times : bridge 283253
bombed unobserved results : see Recco 1100 L/3 8 boats similar to 25 feet
whalers 263271 observed : ALL INFORMED :

bold

MESSAGE FORM

CALL AND INSTRUCTIONS.

IN
OUT

No. of Groups
GR.

Serial No.
OFFICE DATE STAMP

(ABOVE THIS LINE IS FOR SIGNALS USE ONLY.)

TO

FROM **16 Aust Inf Bde Rear Details**

Originator's Number

Date

In Reply to Number

(Write horizontally)

16 Aust Div

Sitrep No. 310 to 1000 L/1 Dec : **MILNE FORCE** : Sitrep : 32 US DIV : no report
at 1700 L/30 w/1 A/C strafed ship in **ONO BAY** : photo taken 30 Nov shows
enemy main enemy line from North and eastern strip westward along road **NORTH**
main road strip than along South coconut plantation to A/A posn 1000 yds SE
BUNA MISSION : strong MG posn at West and main strip at point road enters plant
plantation : **7 Aust Div** : 16 Bde : disposition no change : supported attack
126 US Regt with 3rd mortar fire : 126 US Regt main thrust east towards track
unsuccessful and three trucks captured : now pushing forward to clear immediate
enemy posn west of main track and advance continuing north towards **SANANANDA**
21 Bde at 1800 hrs L/30 within 100 yds **GONA** village and pushing fwd :
2/14 Bn successfully cleared 6 enemy MG posns and captured 30 Japs : At 1752
enemy with lifbelts attempting to swim from beach : 25 Bde : 3 Bn right flank
contacted left flank 2/27 Bn : At 1530 L/30 one enemy A/C made careful recce
of **GONA** area from 600 yds : 3 barges 600 yds off shore east of **GONA** village at
1015 L/1 : landing attempted but was driven off : **KANGA FORCE** : enemy thought
to be using **HOPDI** for night dispersal of A/C from **LAE** ; **AIR OPS** : single
planes dropped bombs **BUNA** area 2310 L/30 and 0030 L/1 : first planes saw 4
lights off **BUNA** two extinguished when plane over : second planes dropped flares
night sightings : 1000 L/1 4 destroyers sighted 50 miles SOUTH of **HYDE BAY** on
SE coast of **NEW BRITAIN** course 250 degrees 35 knots : all informed.

5
10
15
20
25
30
35
40
45
50
55
60
65
70
75
80
85
90
95
100
105
110
115
120
125
130

THIS MESSAGE MAY BE SENT **AS WRITTEN**
BY ANY MEANS: (* (EXCEPT)) WIRELESS

THIS MESSAGE MUST BE SENT **IN CYPHER**
IF LIABLE TO INTERCEPTION OR TO FALL
INTO ENEMY HANDS.

ORIGINATOR'S INSTRUCTIONS
DEGREE OF PRIORITY

TIME OF ORIGIN

SIGNATURE
* ORIGINATOR MAY DELETE "EXCEPT" AND
INSERT "INCLUDING."

SIGNATURE

(BELOW THIS LINE IS FOR SIGNALS USE ONLY.)

T.H.I.

SYSTEM IN	TIME IN	READER	SENDER	SYSTEM OUT	TIME OUT	READER	SENDER	SYSTEM OUT	TIME OUT	READER	SENDER

T.O.R.

Sitrep No. 303 to 1000 hrs 1/27 from 7 Aust Div

MILNE FORCE - SITREP - 32 US DIV - PRECEDED BY HEAVY AIR AND ARTY BOMB
AMMUNITION 3 BN 128 REGT LESS 1 COY 1 BN 128 REGT AND 6 AUST IND COY ATTACKED
0930 L/26 FROM START LINE EXTENDING FROM EAST END NEW STRIP TO POINT ON
COAST 400 YDS SE CAPE ENDAIADERE - 1 COY 3 BN 128 REGT ALSO ATTACKED FROM
WEST END NEW STRIP - 1 BN 128 REGT IN RESERVE - 3 BN 128 REGT HELD UP BY
MG FIRE FROM CAPE ENDAIADERE MADE SLIGHT PROGRESS - 1 BN 126 REGT ADV 300
YDS INTO COCONUT GROVES WHERE SNIPERS NOW LESS ACTIVE - NO REPORT OTHER
ATTACKING ELEMENTS + 2 BN 126 and 2 BN 128 REGTS PUSHING ON TO EXPLOIT
SUCCESS ON LEFT SIPUTA-BUNA TRACK - 6 ZEKES 1 BOMBER ATTACKED VICINITY
CAPE ENDAIADERE 1730 L/26 DESTROYED BRIDGE ACROSS MOUTH SANBUCA RIVER BOMBER
DROPPED 7 PARACHUTES SIMEMI BELIEVED SUPS - INVESTIGATING -

7 AUST DIV - 16 BDE - 3 BN 126 REGT ATTACKING BOTH FLANKS ENEMY OPPOSING
16 BDE DROVE HIM BACK ON RIGHT FLANK 350 YDS ON LEFT 160 YDS - FIGHTING
PATROL OPERATING ON LEFT FLANK CROSSED TRACK SOPUTA-KILLBENTON PUSHING ON
TO ENDEAVOUR CUT TRACK SOPUTA-SANANANDA -

21 BDE - AIR MOVE CONTINUING
25 BDE - ENEMY COUNTER ATTACKED TWICE ON OUR LEFT FLANK PM 23 NOV - BOTH
ATTACKS REPULSED ENEMY CASUALTIES ESTIMATED 23 KILLED - ENEMY PATROL
AMBUSHED GONA EAST AND 10 KILLED

KANGA FORCE - FWD PATROLS REPORT IMPOSSIBLE PENETRATE TO JAP L OF C KOMIATI
AREA BUT FLOODED RIVERS AND INCREASED JAPANESE ACTIVITIES BETWEEN MUBO AND
SEA - MARKHAM RIVER NOW NORMAL BUT WAMPIT IN FLOOD -

AIR OPS - LIGHT FORCE MED BOMBERS ATTACKED LAB 0500 L/27 RESULTS UNOBSERVED
WEATHER PREVENTED FURTHER ATTACKS - 2230 L/25 RED FLARE OBSERVED OFF GONA -
ANSWERED BY ROCKET FROM BEACH - CATALINA REPORTED ENEMY VESSEL POSSIBLY SUB
20 MILES OFF CAPE WARDHUNT 2239 L/26 - FURTHER SEARCH IN POOR VISIBILITY
PROVED FRUITLESS - SEARCH FOR 4 DESTROYERS REPORTED VITIAZ STRAIT 2300 L/26
COURSE 90 degrees - RAID 90 MONESBY 3 OR 4 PROBABLY BETTYS DROPPED 20 BOMBS
VICINITY 7 MILE DRONE - A/A ENGAGED AT 15 TO 19000 FEET 0256 L/27 SCORING
TWO PROBABLE HITS - TOTAL 309 ROUNDS FIRED NO DAMAGE NO CAS -

SITREP NO. 303 TO ~~SECRETARY~~

MILNE FORCE - SITREP - 32 US DIV TO 0800 L/27 REF MAP BUNA 1 " TO MILE
1 BN 126 REGT LESS DETACHMENT 3 BN 128 REGT LESS ONE COY ATTACKING IN
DIRECTION MAIN STRIP-CAPE ENDAIADERE - 6 AUST IND COY SUPPORTING ATTACK BY
MOVING WEST ALONG SOUTH EDGE NEW STRIP - 1 BN 128 REGT REMAINING IN COCONUTS
300 YDS NORTH OF NEW STRIP - BY 1800 L/26 2 BN 127 REGT AND 2 BN 128 REGT
HAD TWO COYS FWD AND ONE COY IN SUPPORT HOLDING LINE FROM CHECK 250259 to
BRIDGE 254260 AND TWO COYS IN RESERVE VICINITY 255255 - 0800 L/27 ONE COY
REPORTED APPROX 254267 with another coy on right flank and coy in right
rear in support

7 AUST DIV - 3 BN 126 REGT - ATTACK ON 16 BDE FRONT WAS HELD UP BY
ORGANISED MG FIRE - GROUND GAINED NOW CONSOLIDATED - TWO COYS MAKING ONE
PLANKING MOVE ON LEFT ARE NOW NORTH AND WEST OF MAIN TRACK SOPUTA-SANANANDA
16 BDE - NOTHING TO REPORT -

21 BDE - 2/14 BN MOVING TO GONA AREA -
25 BDE & TWO BARGES ON BEACH NIGHT 26/27 NOV PURPOSE NOT KNOWN - PATROL FROM
DIV HQ DISPERSED PATROL OF 40 ENEMY HEAR OMBIA 083175 - RAIN ON POPONDITTA
LANDING STRIP MAY HANPER FURTHER LANDINGS - PIB PATROL REPORTS JAPS LEAVING
MOUTH KUMUSI BY CANOE AND RAFTS FROM GONA AREA - NO FURTHER PATRIES CONTACTED
ALONG KUMUSI - AIR OPS - ENEMY POSHS BUNA AREA AGAIN BOMBED AT INTERVALS
0800 to 1500 L/27 - EXPLOSIONS AND LARGE FIRES CAUSED BY PROBABLE PETROL D
DUMPS - 4 ZEKES ATTEMPTED TO INTERCEPT 1215 L/27 NIL DAMAGE A/A ACTIVE -
0830 L/27 sighted 3 subs 20 miles south of GASMATA - INTERPRETATION AIR
PHOTOS DISCLOSES NO INDICATION USE HOIPOI LANDING GROUND BUT POSSIBLE
RECENT CLEARING - ALL INFORMED -

RECENT CLEARING - ALL INFORMED -

Form with fields for T.H.I., T.O.R., and various communication details.

H. Q. 16 AUST. INF. BDE.
 RECEIVED.
 Date 31.12.44 Hrs 1000.
 No L4 JH

MESSAGE FORM

TO: 14 aust inf bde 16 aust inf bde rear 21 aust inf bde 25 aust inf bde
 rear 30 aust inf bde rear 2/7 aust cav regt 2/6 aust armd regt RAA 6
 aust div RAE 6 aust div sigs 6 aust div 7 aust MG bn 2/6 aust indep
 coy 16 aust inf bde reinft gp AQ

FROM: 6 aust div 2 30

SITREP 112 to 2400L/29 (.) 11 aust div to 1200L/29 (.) situation normal (.)
 52 US DIV to 1320L/29 (.) STRIP AREA (.) enemy posns dispersal bays area.
 279254 still strongly held (.) 2/12 bn moving NORTH from ORD BAY (.) 2/10
 bn attacking with 4 tks 1700L/29 objective coconut grove 274260 and beach
 to NE (.) latest report attack going well and at least 2 posts knocked out
 all 11 tks now in fwd area (.) eqpt captured between old and new strips
 incl two 3 inch naval guns one 37 mm gun two 13 mm AA three LMGs two HMGs
 (.) one ZERO in fair condition on old strip (.) GOVT STA AREA (.) own tps
 attempting to clear GOVT GARDENS to SE of track (.) 7 AUST DIV to 1240L/29
 (.) PW stated 300 japs YAZAWA KUSUNOSE REGTS located 196270 near hospital
 (.) ~~no~~ in rear mixed engrs (.) food and amm low and NO reinfts lately or
 expected (.) shellfire observed on rd block posn 0730L/29 (.) KUMUSI
 MAMBARE AREA to 1200L/29 (.) some japs moved up DUNVIRA CK night 28/29
 dec to old village (.) KANGA FORCE to 1500L/29 (.) 3 enemy bombers left
 LAE 1021L/29 headed EAST (.) 8 fighters patrolling over LAE 4 bombers
 landed 1215L/29 and left 1230L/29 headed EAST (.) MADANG (.) our patrol
 reports occupation on 18 dec carried out by 3 warships and two cargo or
 tpts (.) tps also landed at mouth of GUM R (.) br under construction over
 GOGOL R (.) GOGOL R possibly corrupt for WAGOL R (.) AIR OPS (.) BOSTONS
 on recce coast line report increased canoe activity between HERCULES BAY
 and SALAMAUA 13 concentrated at AMOA 6/7 mls NW MOROSE (.) AMBOGA R mouth
 strafed 1033L (.) Nil results observed (.) LAE (.) town area SOUTH of
 terrace bombed 0805L (.) 1 building destroyed (.) ARAWA (.) drome still
 appears u/s (.) no activity seen all informed NGF I 2000L/29

If liable to interception
 or to fall into enemy hands
 this message must be sent in
 CIPHER

Originators Instns
 Degree of Priority
 T00 1015
 THI
 TOR

Heinrich Major

Immediate

6 Div

MESSAGE FORM

Serial No. 133

CALL AND INSTRUCTIONS.

IN

Z3 T3 X00 BWC

No. of Groups GR.

71

OFFICE DATE STAMP



TO 16 AUST INF BDE (ABOVE THIS LINE IS FOR SIGNALS USE ONLY.)
~~25 AUST INF BDE N C GEN REINFT, No 1 Coy~~
~~NO 1 GEN REINFT CO 2 COY NGP 7 AUST DIV~~

FROM 6 AUST DIV

Originator's Number 5

Date 27

In Reply to Number

(Write horizontally)

Ref	map	KOIKAKI	2	inch	5
0	following	additions	to	this	10
HQ	64524	27	dec	42	15
0	HQ	and	A	coy	20
2/6	Aust	for	amb	at	25
346053	DONADATSU	no	2	0	30
2/6	Aust	ind	coy	at	35
346053	DONADATSU	no	2	all	40
informed					45
					50
					55
					60
					65
					70
					75
					80
					85
					90
					95
					100
					105
					110
					115
					120
					125
					130

H. Q. 16 AUST. INF. BDE.
RECEIVED.
Date 28.11.42
No J. Y. [Signature]

THIS MESSAGE MAY BE SENT AS WRITTEN BY ANY MEANS: (EXCEPT) WIRELESS

THIS MESSAGE MUST BE SENT IN CYPHER IF LIABLE TO INTERCEPTION OR TO FALL INTO ENEMY HANDS.

ORIGINATOR'S INSTRUCTIONS DEGREE OF PRIORITY

TIME OF ORIGIN

1230

SIGNATURE * ORIGINATOR MAY DELETE "EXCEPT" AND INSERT "INCLUDING."

SIGNATURE

(BELOW THIS LINE IS FOR SIGNALS USE ONLY.)

T.H.I.
1242
T.O.R.

SYSTEM IN	TIME IN	READER	SENDER	SYSTEM OUT	TIME OUT	READER	SENDER	SYSTEM OUT	TIME OUT	READER	SENDER



T.O.T
T.H.T
1530

DATE OF ORIGIN

130

132

130

132

110

102

100

82

70

82

80

42

40

62

60

22

20

42

40

32

20

32

30

12

10

2

16

Bde

DRLS

182

257

137

RECEIVED
11.11.42
1000

Example

UNKNOWNS

know

know

know

PH

PH

PH

pass

pass

pass

pass

pass

pass

VIG T20A

Date

Originator's Number

No Reply to Number

NOT TO BE USED FOR THIS LINE IS FOR SIGNALS USE ONLY

INSTRUCTIONS

TWO

IN

17

3 W B

MESSAGE FORM

CR

OFFICE DATE

PRINTED IN GREAT BRITAIN

MESSAGE FORM

Serial No. **5**

CALL AND INSTRUCTIONS.

IN

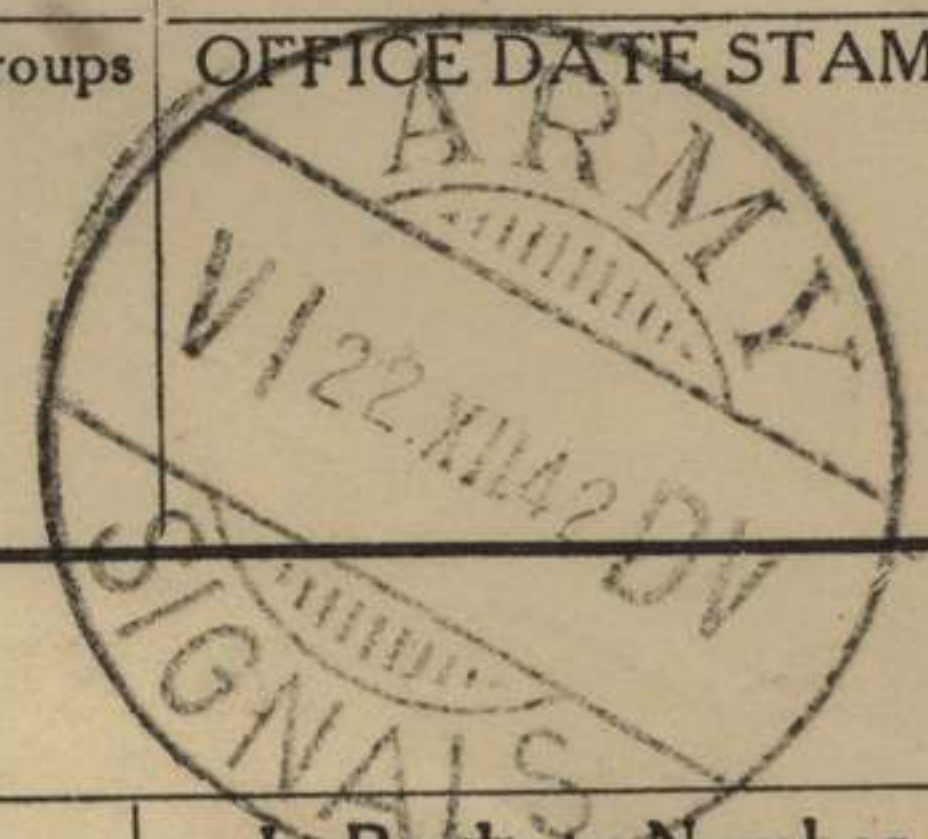
OUT

*Lt Col Gordon
see me please*

No. of Groups

GR.

OFFICE DATE STAMP



(ABOVE THIS LINE IS FOR SIGNALS USE ONLY.)

TO

16 AUST INF BDE 25 AUST INF BDE

FROM

6 AUST DIV

Originator's Number

5

Date

22

In Reply to Number

reports

by

bdes

on

recent

ops

will

be

submitted

this

HQ

as

soon

as

possible

H. Q. 16 AUST. INF. BDE.

RECEIVED

Date *23/12/42* Hrs *1100*

No *8*

THIS MESSAGE MAY BE SENT AS WRITTEN BY ANY MEANS:

IF LIABLE TO BE INTERCEPTED OR FALL INTO ENEMY HANDS, THIS MESSAGE MUST BE SENT IN CYPHER.

ORIGINATOR'S INSTRUCTIONS DEGREE OF PRIORITY

TIME OF ORIGIN

1030

SIGNED

SIGNED

(BELOW THIS LINE IS FOR SIGNALS USE ONLY.)

T.H.I.

1030

T.O.R.

SYSTEM IN	TIME IN	READER	SENDER	SYSTEM OUT	TIME OUT	READER	SENDER	SYSTEM OUT	TIME OUT	READER	SENDER

MESSAGE FORM

Form No. 1
1917

CALL AND
STATIONS

IN
OUT

(ABOVE THIS LINE IS FOR SIGNALS USE ONLY.)

TO

TO ADJUTANT GENERAL

FROM

ADJUTANT DIV

Originator's Number

Date

In Reply to Number

PROPERTY OF

BY

CLASS

ON

RECEIVED

DATE

ALL

BE

EXCLUDED

FILE

IN

AS

16 AUST INF BDE.

276

38

105



5

H. O. 16 AUST INF BDE
RECEIVED
Date
No.

(BELOW THIS LINE IS FOR SIGNALS USE ONLY.)

T.H.I.

T.O.R.



MESSAGE FORM

TO : 14 AUST INF BDE 16 AUST INF BDE REAR 21 AUST INF BDE 25 AUST INF BDE REAR 30 AUST INF BDE RAA 6 AUST DIV RAE 6 AUST DIV SIGS 6 AUST DIV NGF MG BN 2/7 AUST CAV REGT 2/6 AUST ARMD REGT AQ 16 AUST INF BDE REINFT GP

FROM : 6 AUST DIV

3

20

SITREP NO 102 to 2400L/19 (.) MILNE FORCE (.) w/1 number planes circled WANIGELA area and dropped bombs to North direction TUPI 2255L/18 (.) 18 bde (.) no report (.) 32 US DIV to 0400L/19 (.) new strip area (.) disposns unchanged (.) GUNA GOVT STA area (.) ref sitrep 101 our tps patrolling ENTRANCE CK IS (.) arty engaged 20 enemy trucks sighted by recce a/c destroying 5 trucks and 2 huts (.) 2120L/18 w/1 a/c dropped 5 bombs 300 yds off PONGANI strip (.) no damage or cas (.) 7 AUST DIV to 1400L/19 (.) 49 bn attacked jap posn 1000 yds south of ck junc at 185255 ref BUNA loc 4 in from east knocking out 2 MG posts (.) before reaching track bn changed direction and now pushing north toward rd block reaching 185260 at 1400L (.) 55/53 bn attacked from west of track and now held up at 179252 (.) 2/7 aust cav (.) no report owing breakdown w/t comms (.) 21 bde (.) relief of 39 bn by composite^{bn} 2/16 ~~mm~~ and 2/27 now in progress (.) patrol reports 2 japs killed near GIRA R ~~mouth~~ mouth and doubts any japs left this area (.) regtl flag and rank badge captured (.) infm from reliable source indicates japs concentrating MAMBA village strength now considered less than 250 (.) few japs between MAMBARE and OPI rivers (.) none up GIRA or MAMBARE rivers or rd GIRA MANAU (.) KANGA FORCE to 0800L/19 (.) nothing further to report (.) AIR OPS (.) ref sitrep 101 4 destroyers 2 tpts reported NE MADANG and course NE early 19 dec (.) shadowed and bombed three times from 0930L (.) several near misses on destroyers (.) ref sitrep 101 four hits were on one cruiser and from later observations now considered sunk (.) covering ZEKES intercepted each time 3 destroyed 2 others possibly (.) our losses one a/c (.) further attacks made NE MARKAR IS results NOT received (.) BUNA GOVT STA bombed 0705L and area between govt sta and GIROPA PT bombed and strafed 0745L (.) targets well covered and fires observed (.) 0500L LAE drone bombed with unobserved results all informed NGF I 2000L/19

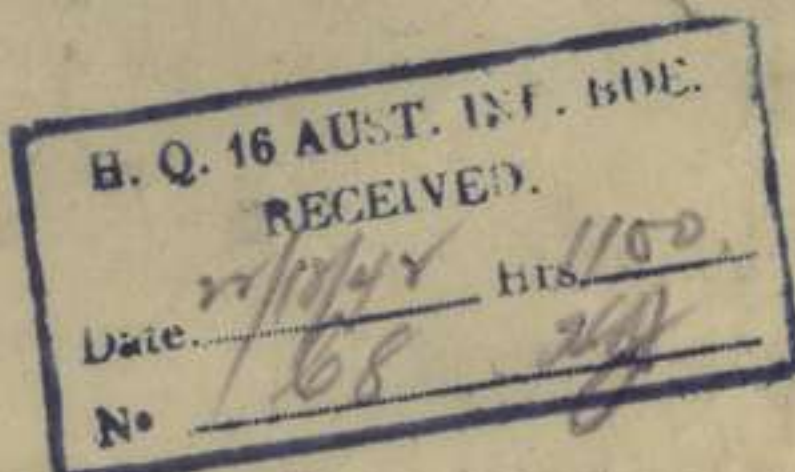
If liable to interception or to fall into enemy hands this message must be sent in CIPHER

Originators Instns
Degree of Priority

TOO 1145

THI

TCR



TO : 14 AUST INF BDE 16 AUST INF BDE REAR 21 AUST INF BDE 25 AUST INF BDE REAR 30 AUST INF BDE 2/7 AUST CAV REGT 2/6 AUST ARMD REGT RAA 6 AUST DIV RAE 6 AUST DIV SIGS 6 AUST DIV 16 AUST INF BDE REINFT GP M&K 7 DIV MG BN AQ

FROM : 6 AUST DIV 1 21

~~SITREP 103 to 2400L/20 (.)~~
 SITREP 103 to 2400L/20 (.) MILNE FORCE (.) to 1430L (.) sitnor (.) 18 bde (.) no report (.) 32 US DIV (.) our tps now control all new strip and SINEMI CK between old and new strips (.) crossings being constructed (.) all coconut plantation in our hands and tps pressing fwd (.) disposes right to left (.) 2/9 bn from coast 400 yds west strip pt south to SINEMI CK (.) 3 bn 128 regt along line of SINEMI CK facing SW (.) 1 bn 128 regt from 293248 along line of rd to br between strips (.) 1 bn 126 regt from br SW to jungle at 293242 clearing bunkers and ambushes east and west of track south of br (.) 7 AUST DIV to 1400L (.) 21 bde (.) enemy observed carrying stores east to west along beach from NW AMBOGA R (.) 30 bde (.) det 36 bn now in contact with jap pocket 181252 ref map BUNA locality 4 in (.) elements 36 bn endeavouring clear pocket 185253 (.) 2/7 aust cav (.) no change (.) patrols report definitely no japs between KUMUSI and MAMBARE R (.) source stated to be **reliable** reports jap submarine and launch sunk close to shore two ships sunk outside MAMBARE BAY (.) all landing strips unservicable (.) KANGA FORCE (.) to 0800L (.) nothing to report (.) AIR OPS (.) BUNA AREA (.) rd ck junc GIROPA PT bombed 0710L and 1300L (.) possible fuel dump left burning (.) intense AA MG from STRIP PT during first attack (.) one 15 ft and several smaller cone shaped constructions of 1 ft diameter logs seen in target ~~over WEWAK met area~~ area (.) 0950L recce a/c at 1500 ft over WEWAK met approx 20 bursts 40 mm type AA fire fairly accurate from 2 guns (.) distract offr at WEWAK did not report japs in message timed 1410L/20 (.) 40 ft boat anchored NAGABA HBR north MADANG 1230L (.) single enemy plane SALLY type reced WAU 1025L/20 (.) NGF I 2000L

If liable to interception or to fall into enemy hands this message must be sent IN CIPHER

Originators
 Instns.
 Degree of
 Priority

TOO 1020
 THI
 TOR

Major
Immediate
Leut Gordon

H. Q. 16 AUST. INF. BDE.
 RECEIVED.
 Date 21/10/41 hrs 1100
 No 66

MESSAGE FORM

TO: 14 AUST INF BDE ~~REAR 21~~ 16 AUST INF BDE REAR 21 AUST INF BDE
 25 AUST INF BDE REAR 30 AUST INF BDE REAR 2/7 AUST CAV REGT
 2/6 AUST ARMD REGT RAA 6 AUST DIV RAE 6 AUST DIV SIGS 6 AUST DIV
 7 AUST MG BN 16 AUST INF BDE REINFTS GP AQ

FROM: 6 AUST DIV 2 22

SITREP 104 to 2400L/21 (.) MILNE FORCE to 1430L/21 (.) situation normal (.) 32 US DIV to 0400L/21 (.) strip area (.) disposns unchanged (.) enemy AA slight throughout 20 dec (.) 100 enemy dead visible area of 200 yds square CAPE ENDAIADERE vicinity 304246 ref BUNA locality 4 inch (.) govt sta area (.) patrol pushing along SIWORI CK encountered enemy NOT aggressive and in very poor condition (.) 7 AUST DIV to 0800L/21 (.) after fierce patrol clashes night 20/21 dec 2/7 cav fwd of rd block captured two lorries loaded with amm and are in close proximity probable important sup dump (.) 39 bn concentrated in this area (.) 2/7 cav and 39 bn to exploit posn (.) 21 bde (.) captured RABAUL boys state still about 200 japs AMBOGA R (.) MAMBARE AREA (.) patrol reports some japs living on six launches hidden DUVIRA CK during day and moving off NW at night (.) small party japs at GAURORA (.) ~~KANGA~~ FORCE to 0800L (.) enemy filling in bomb craters on LAE DROME (.) MADANG (.) inf from reliable source indicates enemy after landing night 18/19 dec occupied three posns within radius approx 10 miles from MADANG (.) AIR OPS (.) BUNA govt sta bombed 0515L causing large explosion (.) nil AA (.) 0753L 30 foot barge loaded with crates and boxes close inshore between CAPE WARD HUNT and MAMBARE mouth strafed (.) 1445L still in vicinity loaded but beached (.) no movement seen (.) FINSCHAFEN (.) 0700L sighted two cargo ships 500 tons and 750 tons extensively camouflaged with foliage (.) bombed without hits and strafed (.) 1335L again bombed scoring hits on each (.) 500 tonner left burning and 750 tonner severely damaged (.) (NGF I to 2000L/21)

If liable to interception or to fall into enemy hands this message must be sent IN CIPHER	Originators Instns Degree of Priority	T00 0930 THI TOR
--	--	--------------------------------

Michael John Major *mediate*

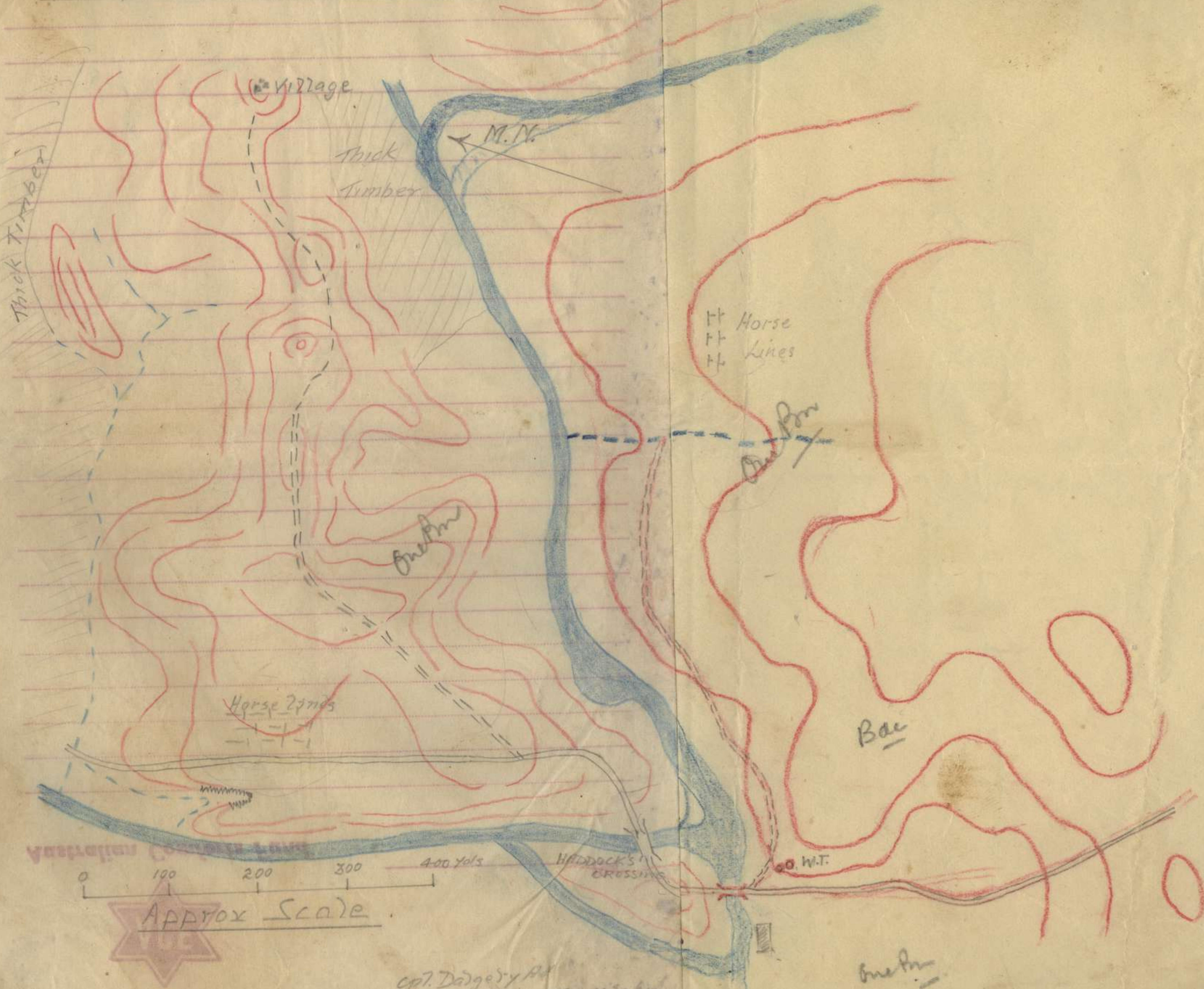
H. Q. 16 AUST INF BDE
 RECEIVED
 Date: 23.12.44
 No: 103

11/11

16 Beds

1. ? Water Sources
2. Swimming Points - avoid 1 Br swimming just above another intake
? one swimming area for entire Beds.
3. ? Company Orgs within Bns - quartering & messing +
4. Cookhouses - pref lower flat country level NOT within 50 yds river
or creeks. Grease traps & rubble drains. NOT discharging
above water intake
5. Latrines & Urinals
NOT within 50 yds watercourses & pref. considerably further
Could well be on hills
Watch Relation Cookhouse - ? Breeze
Avoid close proximity to tents.
Urinals - 1 near ea. block latrines. 1 to every 7-8 tents.
Latrines - 9 ~~3~~ 3-seaters to Br; 1 office.
6. Mosquitoes Burn off as far as possible before occupying sites (ideal 800 yds)

Field Sk. of Proposed Bde Area



Cpt. Dalgey
22 Dec 23 - 1130 hrs

Date _____
 Available _____
 WILLIAM MILLER FORCES

REPRODUCTION

TELEPHONES—

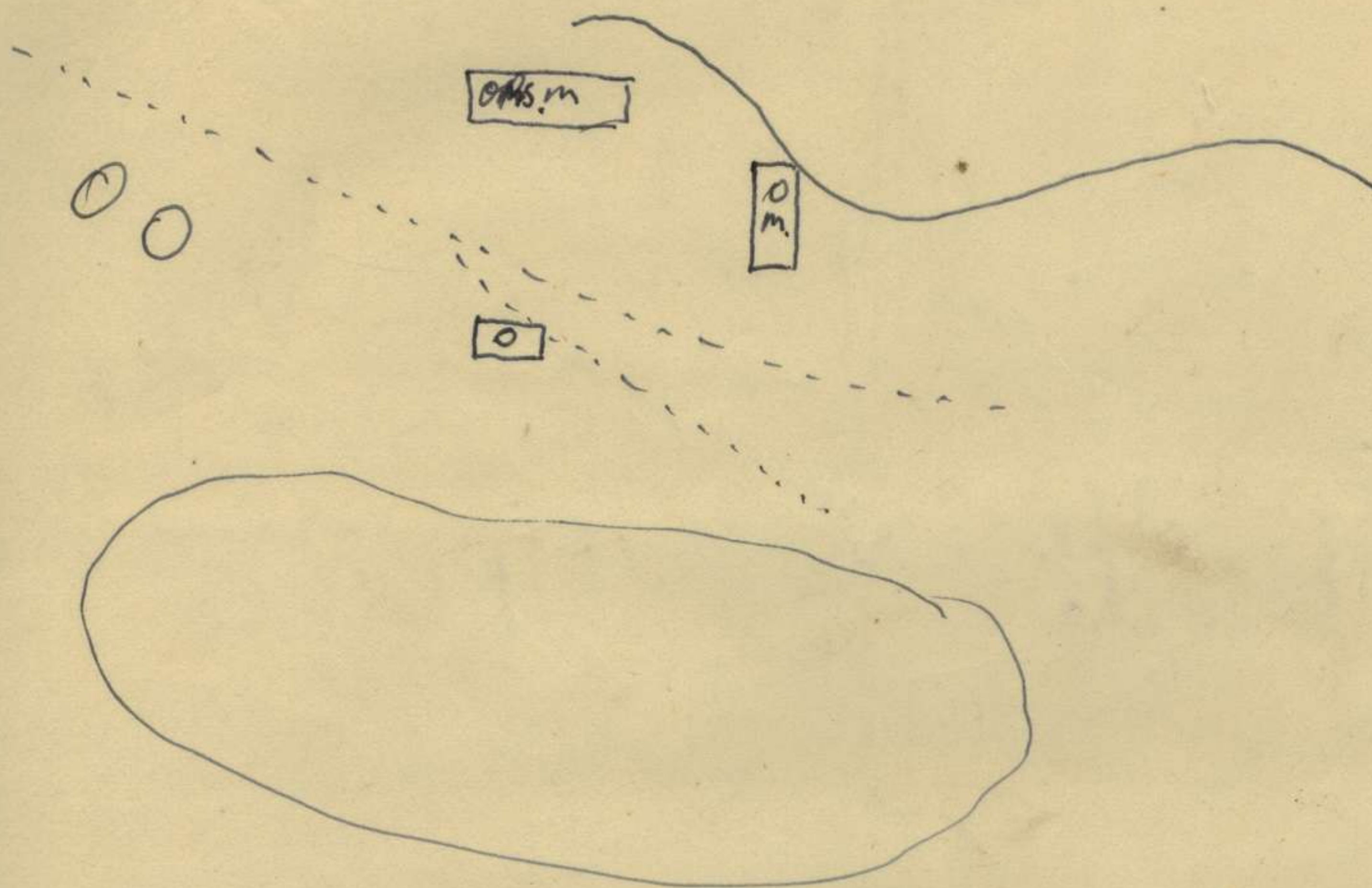
Australian Military Forces

Please quote this number when replying.

--	--	--

Address

Date



MESSAGE FORM

Serial 17

H. Q. 16 AUST. INF. BDE.
 RECEIVED.
 Date 27.12.48 hrs 1100.
 No 263



IN

OUT

TO: 14 AUST INF BDE 16 AUST INF BDE REAR 21 AUST INF BDE
 25 AUST INF BDE REAR 30 AUST INF BDE REAR DETAILS 2/7 AUST
 CAV REGT 2/6 AUST ARMD REGT RAA 6 AUST DIV RAE 6 AUST DIV
 SIGS 6 AUST DIV 7 AUST MG BN NGF GEN REINFT NO.1 COY
 NGF GEN REINFT NO.2 COY NGE 7 AUST DIV AQ 6 AUST DIV FD
 CASH OFFICE 6 AUST DIV POSTAL UNIT

FROM: 6 AUST DIV 5 26

ref	map	PORT	MORESBY	SPECIAL	one
inch	(.)	ref	this	HQ	G4524
24	dec	42	(.)	first	36
aust	inf	bn	moved	to	893375
(.)	second	3	aust	inf	bn
B	echelon	moved	to	152431	(.)
third	delete	L	sec	sigs	6
aust	div	insert	L	sec	sigs
7	aust	div	(.)	fourth	36
aust	inf	bn	carrier	pl	891373
under	comd	14	aust	inf	bde
(.)	fifth	ref	map	KOITAKI	2
inch	2/2	aust	fd	hyg	sec
347051	all	informed			

If liable to interception
 or to fall into enemy hands
 this message must be sent
 IN CIPHER

Originators
 Instns
 Degree of
 Priority

TOO 1145
 THI 1200
 TOR

*W. D. Cunningham
 Capt.*

L. Let is G4524?

1" Office

RECEIVED

11 AUG 1918

TO THE COMMANDER
16th Australian Infantry Battalion
PO BOX 100
MELBOURNE

one	SPROCAL	WOBSEBY	PORT	SEP	SEP
passed	NO	thls	SEP	(.)	thch
SE	threp	(.)	SEP	SEP	SE
eggs	to	roved	th	th	eggs
th	th	ant	8	second	(.)
(.)	th	to	roved	reheled	D
e	size	seco	J	delate	thrd
size	see	I see	th	div	ant
SE	fourth	(.)	th	th	V
eggs	th	(.)	th	th	ant
th	th	th	th	th	th
8	th	th	th	th	(.)
see	th	th	th	th	th
			th	th	th
			th	th	th

TOO LIES
THI
TOP

Optimizers
thch
thrd
th

16 AUG INF Bde.

C. L. 24 Aug 1918



148

091

17

AUSTRALIAN IMPERIAL FORCE.

Headquarters,
2/3 Aust Inf Bn.

28 Dec 42.

16 Aust Inf Bde.

ORDER OF BATTLE AND LOCATION STATEMENT

Reference 6 Aust Div G 4524 of 24 Dec 42.

H. Q. 16 AUST. INF. BDE.	
RECEIVED.	
Date. <u>28/12/42</u>	Hrs. <u>1600</u>
No. <u>15</u>	<u>GA</u>

2. All previous ORDER OF BATTLE and LOCATION STATEMENTS issued, have been destroyed.

R. Stevenson
..... Lt-Col.
C.O. 2/3 Aust Inf Bn.

Dustin
7/1 Bn
7/3 Bn

> 225 LAD
with 6 Aust Div
Know nothing
of them

H. Q. 16 AUST. INF. BDE.
 RECEIVED.
 Date 25/12/42 Hrs 1500
 No F10-888

16 Bde

~~SECRET~~

6 AUST DIV

HQ 6 Aust Div

ORDER OF BATTLE AND LOCATION STATEMENT

24 Dec 42

(as at 2359 hrs 23 Dec 42)

Copy No *7*

ALL previous ORDER OF BATTLE and LOCATION STATEMENTS issued by this HQ will be destroyed. Destruction Certificate will be rendered to this HQ by 1200 hrs 26 Dec 42.

Ref No: G4524

Ref Maps: MORESBY (SPECIAL) 1 inch to 1 mile.
 KOITAKI 2 inches to 1 mile (where specified).

<u>HQ</u>	<u>UNIT</u>	<u>MAP REF</u>	<u>REMARKS</u>
	HQ 6 Aust Div	904367	MURRAY BARRACKS
	6 Aust Div Int Sec	904367	" "
	6 Aust Div Pro Coy	904367	" "
<hr/>			
<u>INF</u>			
	HQ 14 Aust Inf Bde	887369	
	Rear HQ and "B" Echelon	893376	
	36 Aust Inf Bn "B" Echelon	891379	
	3 Aust Inf Bn "B" Echelon	893375	
	55/53 Aust Inf Bn "B" Echelon	891380	
	HQ 16 Aust Inf Bde (ref map KOITAKI 2")	346053	DONADABU No 2
	2/1 Aust Inf Bn	" "	" "
	2/2 Aust Inf Bn	" "	" "
	2/3 Aust Inf Bn	" "	" "
	Rear HQ 21 Aust Inf Bde & "B" Echelon	946359	
	HQ 25 Aust Inf Bde (ref map KOITAKI 2")	349049	DONADABU No 1
	2/25 Aust Inf Bn	" "	" "
	2/31 Aust Inf Bn	" "	" "
	2/33 Aust Inf Bn	" "	" "
	3 Aust Inf Bn	" "	" "
	Rear HQ 30 Aust Inf Bde & "B" Echelon	037438	
	39 Aust Inf Bn "B" Echelon	035442	
	49 Aust Inf Bn "B" Echelon	035442	
	7 Aust MG Bn	959404	
	NGF Gen Reinfts (ref map KOITAKI 2 inch)		
	No 1 Coy	328074	
	No 2 Coy	313085	
<hr/>			
<u>CAV</u>			
	Rear Details 2/7 Aust Cav Regt	884431	
<hr/>			
<u>ARMD TPS</u>			
	2/6 Aust Armd Regt	908432	
	HQ Sqn 2/6 Aust Armd Regt	908432	
	A Sqn 2/6 Aust Armd Regt	910430	
<hr/>			
<u>RAA</u>			
	HQ RAA 6 Aust Div	897367	
	2/6 Aust Fd Regt	976438	
	11 Bty 2/6 Aust Fd Regt	021447	
	12 Bty 2/6 Aust Fd Regt	008419	
	56 Bty 2/6 Aust Fd Regt	975448	

<u>HQ</u>	<u>UNIT</u>	<u>MAP REF</u>	<u>REMARKS</u>
<u>RAA (contd)</u>			
13	Aust Fd Regt	906370	
	49 Bty 13 Aust Fd Regt	908369	
	50 Bty 13 Aust Fd Regt (less one tp)	910365	
14	Aust Fd Regt -	921407	
	53 Bty 14 Aust Fd Regt	918408	
	54 Bty 14 Aust Fd Regt	920414	
	55 Bty 14 Aust Fd Regt	925392	
2/1	Aust A Tk Regt	968416	
	1 Bty 2/1 Aust A Tk Regt (less one sub-sec)	972412	
	8 Bty 2/2 Aust A Tk Regt (less one tp)	962409	
	NGF Indep A Tk Tp	910428	under comd 2/6 Aust Armd Regt
<u>RAE</u>			
HQ	RAE 6 Aust Div	898375	
	2/1 Aust Fd Coy	984443	adm comd only
	dot 2/22 Aust Fd Pk Coy	901355	
<u>SIGS</u>			
HQ	Sigs 6 Aust Div	904365	
	HQ Coy Sigs 6 Aust Div	890370	
	1 Coy Sigs 6 Aust Div	890370	
	HQ 2 Coy Sigs 6 Aust Div	890370	
	HQ 3 Coy Sigs 6 Aust Div	890370	
	C Sec Sigs 7 Aust Div	884431	att Rear Details 2/7 Aust Cav Regt
	O Tp Sigs 1 Aust Armd Div	908432	att 2/6 Aust Armd Regt
	G Sec Sigs 7 Aust Div	976439	att 2/6 Aust Fd Regt
	13 Aust Fd Regt Sig Sec	906370	
	14 Aust Fd Regt Sig Sec	921407	
	H Sec Sigs 6 Aust Div	968416	att 2/1 Aust A Tk Regt
	H Sec Sigs 7 Aust Div	936324	att 2/2 Aust A Tk Regt
	14 Aust Inf Bde Sig Sec	887369	
	J Sec Sigs 6 Aust Div (ref map KOITAKI 2")	346053	att 16 Aust Inf Bde
	L Sec Sigs 6 Aust Div (ref map KOITAKI 2")	349049	att 25 Aust Inf Bde
<u>AASC</u>			
HQ	AASC 6 Aust Div	905372	
<u>AEME</u>			
2/42	Aust LAD	890370	att HQ Coy Sigs 6 Aust Div
2/92	Aust LAD	910428	att 2/6 Aust Armd Regt
2/50	Aust LAD	884431	att 2/7 Aust Cav Regt
217	Aust LAD	921407	att 14 Aust Fd Regt
2/53	Aust LAD	976439	att 2/6 Aust Fd Regt
2/89	Aust LAD	960480	att 25 Bde Carr Gp
219	Aust LAD	911372	att 13 Aust Fd Regt
306	Aust LAD	037438	att 30 Aust Inf Bde

HQ	UNIT	MAP REF	REMARKS
<u>AEME (contd)</u>			
	255 Aust LAD	895376	att 16 Aust Inf Bde
	Indep Armd Wkshop	910428	under comd 2/6 Aust Armd Regt
	16 Aust Inf Bde Gp Wkshops	886425	
<u>AAMC</u>			
	2/1 Aust Fd Amb (less two Coys)	155411	MDS
	"A" Coy 2/1 Aust Fd Amb	951323	ADS
	"B" Coy 2/1 Aust Fd Amb	895383	ADS
<u>MISCELLANEOUS</u>			
	30 Aust Inf Bde Carr Gp	969307)	under comd 14 Aust Inf Bde
	39 Aust Inf Bn Carr Pl (YULE 4 mls to 1 inch)	G 6686)	
	49 Aust Inf Bn Carr Pl	969307)	
	16 Aust Inf Bde Carr Gp	042318)	under comd 14 Aust Inf Bde
	2/1 Aust Inf Bn Carr Pl	043319)	
	2/2 Aust Inf Bn Carr Pl	043319)	
	2/3 Aust Inf Bn Carr Pl	043319)	
	25 Aust Inf Bde Carr Gp	960480)	under comd 14 Aust Inf Bde
	2/25 Aust Inf Bn Carr Pl	893448)	
	2/31 Aust Inf Bn Carr Pl	961463)	
	2/33 Aust Inf Bn Carr Pl	970480)	
	3 Aust Inf Bn Carr Pl	891373)	under comd 14 Aust Inf Bde
	55/53 Aust Inf Bn Carr Pl	891373)	
	2/14 Aust Inf Bn Carr Pl	943357)	
	2/16 Aust Inf Bn Carr Pl	951347)	
	2/27 Aust Inf Bn Carr Pl	747418	under comd 14 Aust Inf Bde
	6 Aust Div Fd Cash Office	905366	
	6 Aust Div Postal Unit	907364	

Alan Dickenson
Col
General Staff

DISTRIBUTION

	COPY NO	DISTRIBUTION	COPY NO
14 Aust Inf Bde	1 - 6	NGF	42 - 43
16 Aust Inf Bde	7 - 10	7 Aust Div	44
Rear 21 Aust Inf Bde	11	Comd	45
25 Aust Inf Bde	12 - 17	G	46
Rear 30 Aust Inf Bde	18	AQ	47 - 53
Rear Details 2/7 Aust Cav Regt	19	(AQ 2; CASC, ADOS, ADME, ADMS, PRO)	
2/6 Aust Armd Regt	20		
RAA 6 Aust Div	21 - 28	6 Aust Div Fd	
RAE 6 Aust Div	29 - 30	Cash Office	54
Sigs 6 Aust Div	31 - 34	6 Aust Div Postal Unit	55
3 Aust MG Bn	35 - 39		
NGF Gen Reinft No 1 Coy	40	War Diary	56 - 57
NGF Gen Reinft No 2 Coy	41	Spares	58 - 59
		File	60

PROVISION OF A.E.M.E. WORKSHOP FACILITIES1. GENERAL

Owing to changes in command and the arrival of additional units in NEW GUINEA, the previous allocation of L.A.D's and Workshop Units as detailed in NGF Adm Instn No 23 of 5 Oct 42 is cancelled and the following substituted.

2. COMMAND & ALLOTMENT OF UNITS

(a) Command and allotment of L.A.D's and Workshop Units is in accordance with APPX 'A' att.

3. TECHNICAL CONTROL

Technical control of units is being exercised as follows:-

- | | |
|--|---|
| (a) L.A.D's and Workshops under direct Comd HQ NGF | by A.D.M.E. PORT
MORESBY BASE SUB-AREA |
| (b) L.A.D's and Workshops under Comd 6 Aust Div and 7 Aust Div | By A.D.M.E. 6 Aust &
A.D.M.E. 7 Aust Div
respectively |

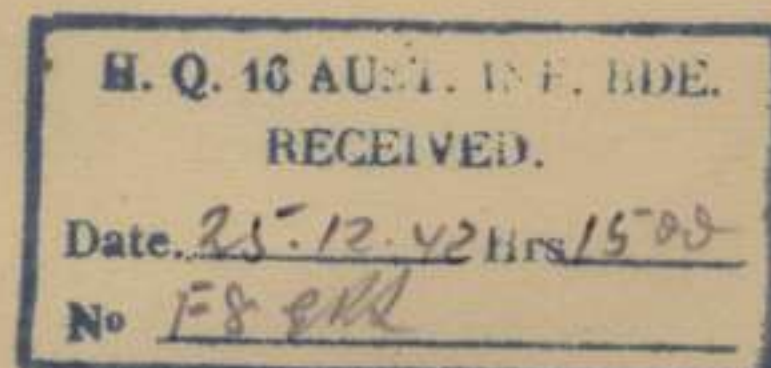
A.D's M.E. are responsible to A.D.M.E. NGF for the efficient functioning of respective Workshop services.

4. ALLOCATION OF WORK

(a) Available L.A.D. and Workshop facilities are classified as follows:-

<u>1st ECHELON</u>	L.A.D's Unit Wkshop Secs
<u>2nd ECHELON</u>	Ind Bde Gp Wkshops Div Wkshops (incl Bde Secs)
<u>3rd ECHELON)</u>	L of C Wkshops
<u>4th ECHELON)</u>	

- (b) Units will take all work to L.A.D's first, and will NOT take work to any 2nd Echelon or 3rd Echelon Workshop except as authorised and arranged by the appropriate L.A.D.
- (c) O.C's L.A.D's and O.C, R.V.S. may authorise work beyond 1st Echelon capacity to be taken to any 2nd Echelon or 3rd Echelon Wkshop; and C.O's 2nd Echelon Wkshops may authorise work beyond their capacity to be taken to 3rd Echelon Wkshop.
- (d) Subject to para 4(e) below units will at all times use the nearest L.A.D., or if work is beyond L.A.D. capacity - the nearest 2nd Echelon Wkshop nominated by O.C. L.A.D. This principle will continue to apply when units or L.A.D's move.
- (e) Wherever possible, units under Comd 6 Aust Div and 7 Aust Div will use L.A.D's under command of those Formations, but should units be temporarily located in another area L.A.D's will be availed of as in para 4 (d) above.



(f) The above arrangements will be relaxed only in cases of emergency.

5. MOVEMENTS OF L.A.D.'s

L.A.D.'s attached to units will at all times move with those units, but will accept work from other units in the areas in which located.

6. PORT WORKSHOP FACILITIES

109 Aust Ind Bde Gp Wkshop will provide a detachment for purpose of servicing M.T. in the PORT area.

M. G. Webster, Lt Col.

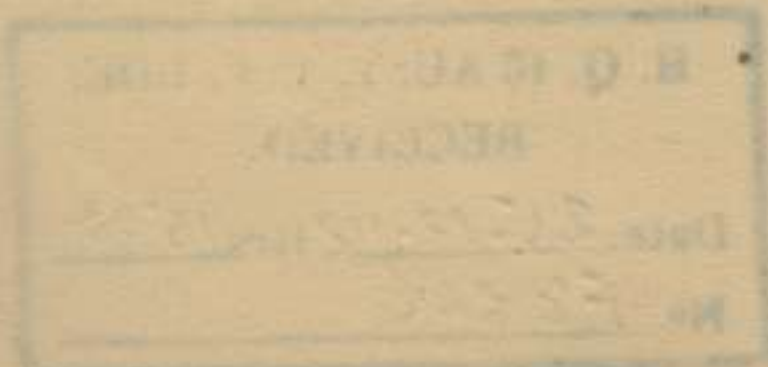
DA&QMG BRIG
NEW GUINEA FORCE

DISTRIBUTION

COPY	METHOD	COPY	METHOD
1 - 30	6 Aust Div	99 -I04	CCRA
31 - 50	7 Aust Div	I05 -I07	CE
51 - 70	COSC	I08 -II3	CRE C Tps
71	ANGAU	II4	DSO in C
72	Sigs NG Force	II5 -I29	Gr & T
73	Sigs I Aust Corps	I30 -I44	ORD
74	2 Aust AS Control	I45 - I64	DDME
75	55 Aust Spec W/T Sec	I65 -I79	MEDICAL
76	9 Aust Fd Censor. Sec	I80	CANTEENS
77	Det 2/I Aust AIL Sec	I81 -I82	WAR DIARY
78	9 Aust AIL Sec	I83 -I84	File
79	I AUST CORPS FD CASH OFFICE		
80	NGF Pro Coy		
81	I Aust Corps Pro Coy		
82	I Aust Corps Fd Pun Centre		
83	NGF Postal Unit		
84	I Aust Corps Postal Unit		
85	I Aust Corps Salvage Unit		
86	8 Aust G R & E Unit		
87	NGF Education & Welfare Unit		
88	I Aust Mob Cinema Unit		
89	4 " " " " " "		
90	7 " " " " " "		
91	I Aust Corps Reception Camp		
92	I Aust Corps Mob Bath Unit		
93	NGF Org Centre		
94	G O D		
95	G		
96	DA & QMG		
97	A		
98	Q		

COPIES FOR INFORMATION TO:-

I85	8 Aust Mov Control Gp	DRLS
I86	NOIC	"
I87	Salvation Army Commr.	"
I88	Red Cross Commr.	"
I89	ACF Commr.	"



ALLOTMENT & LOCATION OF L.A.D.'s & WORKSHOP
UNITS IN PORT MORESBY AREA

REF MAP - MORESBY (SPECIAL) 1" to 1 mile

Serial No	Unit	Location at 20 DEC 42	Unit to which attached	Under Comd of
1	NG L of C Area Ord Wkshop	061428	Unattached	HQ NG Force
2	113 Aust Ind Bde Gp Wkshop	972455	Unattached	"
3	23 Aust Hy AA Regt Wkshop Sec	943432	A.A. Gp	"
4	NG Lt AA Regt Wkshop	949417	A.A. Gp	"
5	109 Aust Ind Bde Gp Wkshop	912368	Unattached	"
6	2/55 Aust LAD	965432	2/25 Aust Fd Pk Coy	"
7	212 Aust LAD	924379	Sigs NG L of C	"
8	239 Aust LAD	999442 (Dicksons Dump)	59 Corps Fd Pk Coy	"
9	319 Aust LAD (see note (a))	17 Mile	Sigs 1 Aust Corpsl	"
10	16 Bde Sec 6 Aust Div Wkshop	to be determined later (see note (b))	Unattached	6 AUST DIV
11	2/6 Aust Armd Regt Wkshop Sec	910428	2/6 Aust Armd Regt	"
12	2/42 Aust LAD	904365	Sigs 6 Aust Div	"
13	2/43 Aust LAD	962400	2/1 Aust Fd Regt	HQ NGF
14	2/50 Aust LAD	884432	7 Aust Cav Regt	6 AUST DIV
15	2/53 Aust LAD	976439	2/6 Aust Fd Regt	"
16	2/59 Aust LAD	960480	25 Bde Carr Gp	"
17	217 Aust LAD	921007	14 Aust Fd Regt	"
18	219 Aust LAD	911372	13 Aust Fd Regt	"
19	255 Aust LAD	887369	14 Aust Inf Bde	"
20	306 Aust LAD	037438	30 Aust Inf Bde	"

Serial No	Unit	Location at 20 DEC 42	Unit to which attached	Under Comd of
21	HQ 7 Aust Div Wkshop	310080	7 Aust Div	7 AUST DIV
22	21 Bde Sec 7 Aust Div Wkshop	310080	7 Aust Div	"
23	25 Bde Sec 7 Aust Div Wkshop	099422	7 Aust Div	"
24	2/44 Aust LAD	330075	HQ 25 Aust Inf Bde	"

NOTES

(a) Unit being formed

(b) At present at MURRAY BARRACKS

NEW GUINEA FORCE ADMINISTRATIVE INSTN NO 50

SECRET

22

COPY NO.....

DATE 22 DEC 42

PROVISION OF A.E.M.E. WORKSHOP FACILITIES

1. GENERAL

Owing to changes in command and the arrival of additional units in NEW GUINEA, the previous allocation of L.A.D's and Workshop Units as detailed in NGF Adm Instn No 23 of 5 Oct 42 is cancelled and the following substituted.

2. COMMAND & ALLOTMENT OF UNITS

(a) Command and allotment of L.A.D's and Workshop Units is in accordance with APPX 'A' att.

3. TECHNICAL CONTROL

Technical control of units is being exercised as follows:-

- (a) L.A.D's and Workshops under direct Comd HQ NGF by A.D.M.E. PORT MORESBY BASE SUB-AREA
- (b) L.A.D's and Workshops under Comd 6 Aust Div and 7 Aust Div By A.D.M.E. 6 Aust & A.D.M.E. 7 Aust Div respectively

A.D.M.E. are responsible to A.D.M.E. NGF for the efficient functioning of respective Workshop services.

4. ALLOCATION OF WORK

(a) Available L.A.D. and Workshop facilities are classified as follows:-

- 1st ECHELON L.A.D's
Unit Wkshop Secs
- 2nd ECHELON Ind Bde Gp Wkshops
Div Wkshops (incl Bde Secs)
- 3rd ECHELON L of C Wkshops
- 4th ECHELON

(b) Units will take all work to L.A.D's first, and will NOT take work to any 2nd Echelon or 3rd Echelon Workshop except as authorised and arranged by the appropriate L.A.D.

(c) O.C's L.A.D's and O.C, R.V.S. may authorise work beyond 1st Echelon capacity to be taken to any 2nd Echelon or 3rd Echelon Wkshop; and C.O's 2nd Echelon Wkshops may authorise work beyond their capacity to be taken to 3rd Echelon Wkshop.

(d) Subject to para 4(e) below units will at all times use the nearest L.A.D., or if work is beyond L.A.D. capacity - the nearest 2nd Echelon Wkshop nominated by O.C. L.A.D. This principle will continue to apply when units or L.A.D's move.

(e) Wherever possible, units under Comd 6 Aust Div and 7 Aust Div will use L.A.D's under command of those Formations, but should units be temporarily located in another area L.A.D's

(f) will be availed of as in para 4 (d) above.

(f) The above arrangements will be relaxed only in cases of emergency.

5. MOVEMENTS OF L.A.D.'s

L.A.D.'s attached to units will at all times move with those units, but will accept work from other units in the areas in which located.

6. PORT WORKSHOP FACILITIES

10th Aust Ind Bde Gp Wkshop will provide a detachment for purpose of servicing M.T. in the PORT area.

W. J. Webster, Lt Col.
 DA&QMG NEW GUINEA FORCE BRIG

DISTRIBUTION

COPY	METHOD	COPY	METHOD
1 - 30	6 Aust Div	99 - I04	CCRA
31 - 50	7 Aust Div	I05 - I07	CE
51 - 70	COSC	I08 - I13	CRE C Tps
71	ANGAU	I14	DSO in C
72	Sigs NG Force	Hand	Dr & T
73	Sigs I Aust Corps	I15 - I29	ORD
74	2 Aust AS Control	I30 - I44	DDME
75	55 Aust Spec W/T Sec	I45 - I64	MEDICAL
76	9 Aust Fd Censor. Sec	I65 - I79	CANTEENS
77	Det 2/I Aust AIL Sec	I80	WAR DIARY
78	9 Aust AIL Sec	I81 - I82	File
79	I AUSTRALIAN CORPS FD CASH OFFICE	I83 - I84	
80	NGF Pro Coy		
81	I Aust Corps Pro Coy		
82	I Aust Corps Fd Pun Centre		
83	NGF Postal Unit		
84	I Aust Corps Postal Unit		
85	I Aust Corps Salvage Unit		
86	8 Aust G R & E Unit		
87	NGF Education & Welfare Unit		
88	I Aust Mob Cinema Unit		
89	4 " " " "		
90	7 " " " "		
91	I Aust Corps Reception Camp		
92	I Aust Corps Mob Bath Unit		
93	NGF Org Centre		
94	G O O		
95	G		
96	DA & QMG		
97	A		
98	Q		

COPIES FOR INFORMATION TO:-

I85	8 Aust Mov Control Gp	DRLS
I86	NOIC	"
I87	Salvation Army Commr.	"
I88	Red Cross Commr.	"
I89	ACF Commr.	"

ALLOTMENT & LOCATION OF L.A.D.'s & WORKSHOP
UNITS IN PORT MORESBY AREA

REF MAP - MORESBY (SPECIAL) 1" to 1 mile

Serial No	Unit	Location at 20 DEC 42	Unit to which attached	Under Comd of
1	NG L of C Area Ord Wkshop	061428	Unattached	HQ NG Force
2	113 Aust Ind Bde Gp Wkshop	972455	Unattached	"
3	23 Aust Hy AA Regt Wkshop Sec	943432	A.A. Gp	"
4	NG Lt AA Regt Wkshop	949417	A.A. Gp	"
5	109 Aust Ind Bde Gp Wkshop	912368	Unattached	"
6	2/55 Aust LAD	965432	2/25 Aust Fd Pk Coy	"
7	212 Aust LAD	924379	Sigs NG L of C	"
8	239 Aust LAD	999442 (Dicksons Dump)	59 Corps Fd Pk Coy	"
9	319 Aust LAD (see note (a))	17 Mile	Sigs 1 Aust Corpsl	"
10	16 Bde Sec 6 Aust Div Wkshop	to be determined later (see note (b))	Unattached	6 AUSTR DIV
11	2/6 Aust Armd Regt Wkshop Sec	910428	2/6 Aust Armd Regt	"
12	2/42 Aust LAD	904365	Sigs 6 Aust Div	"
13	2/43 Aust LAD	962400	2/1 Aust Fd Regt	HQ NGF
14	2/50 Aust LAD	884432	7 Aust Cav Regt	6 AUSTR DIV
15	2/53 Aust LAD	976439	2/6 Aust Fd Regt	"
16	2/59 Aust LAD	960480	25 Bde Carr Gp	"
17	217 Aust LAD	921407	14 Aust Fd Regt	"
18	219 Aust LAD	911372	13 Aust Fd Regt	"
19	255 Aust LAD	887369	14 Aust Inf Bde	"
20	306 Aust LAD	037438	30 Aust Inf Bde	"

Serial No	Unit	Location at 20 DEC 42	Unit to which attached	Under Comd of
21	HQ 7 Aust Div Wkshop	310080	7 Aust Div	7 AUST DIV
22	21 Bde Sec 7 Aust Div Wkshop	310080	7 Aust Div	"
23	25 Bde Sec 7 Aust Div Wkshop	099422	7 Aust Div	"
24	2/44 Aust LAD	330075	HQ 25 Aust Inf Bde	"

NOTES

(a) Unit being formed.

(b) At present at **MURRAY BARRACKS**

MESSAGE FORM

TO: 14 AUST INF BDE 16 AUST INF BDE REAR 21 AUST INF BDE
 25 AUST INF BDE REAR 30 AUST INF BDE REAR DETAILS 2/7 AUST CAV
 REGT 2/6 AUST ARMD REGT RAA 6 AUST DIV RAE 6 AUST DIV
 SIGS 6 AUST DIV 7 AUST MG BN 16 AUST INF BDE REINFT GP AQ
 2/6 AUST IND COY

FROM: 6 AUST DIV 3 29

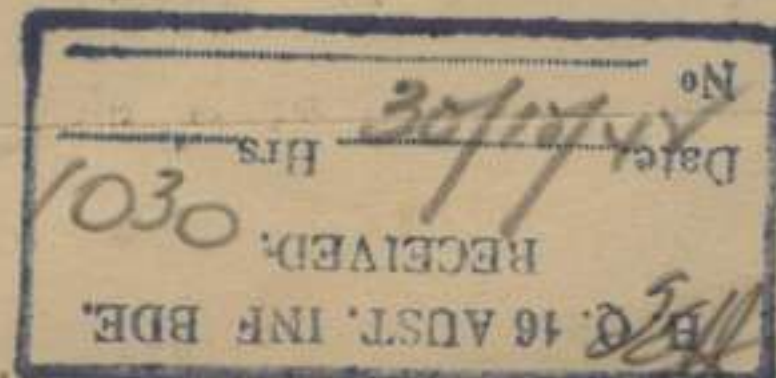
SITREP 111 to 2400L/28 (.) 11 AUST DIV to 1200L/28 (.) jap recce
 plane shot down by P39 north of GOODENOUGH (.) endeavouring to rescue
 crew of 7 observed in water (.) 32 US DIV (.) strip area to 1250L/28(.)
 continuing adv our fwd tps swung right (.) by 1130L/28 held line
 facing coast from NW end of dispersal bays 278255 along general line
 coconuts and track to 200 yds SE GIROPA PT at approx 274259 (.) japs
 still in area to SW but being contained and mopping up proceeding (.)
 GOVT STA area (.) no change (.) tac/r reports 2 L/T lines or ropes
 across ck GIROPA also fresh tracks but no movements seen (.) 7 AUST
 DIV to 1800L/28 (.) 21 bde (.) 3 japs killed two wounded by our patrols
 AMBOGA R area (.) 30 bde (.) 36 bn attacks against enemy pockets 200
 yds north of track ~~fine~~ vicinity 184254 unsuccessful (.) no reports
 from patrols operating fwd CAV area (.) MAMBARE- KUMUSI area (.) tac/r
 reports number of grass roofed huts at BAKUMBARI 200 yds from coast on
 north slope of inlet (.) armed recce 1000L reports several freshly
 constructed gunyahs south of DONA between SILA and CIA (.) about 20
 planks on beach near MO (.) MOROBE area (.) native MOROBE area reported
 almost pro jap (.) KANGA FORCE to 1010L/28 (.) 1 bomber 4 fighters
 observed leaving LAE drome (.) barges operating MARKHAM mouth am 28 dec
 (.) SEPIK R area (.) enemy reported patrolling river thought to be
 heading for BURUI (.) AIR OPS (.) GASMATA drome bombed 0435L with
 unobserved results (.) again bombed 1004L hits on runway slight med
 AA (.) RABAUL harbour and LAKUNAI drome bombed 0500/0700L (.) direct
 hits on large vessel and several near misses on others (.) AA and SLs
 operated (.) ALEXISHAFEN (.) 0900L 100 ton vessel by wharf (.) LAE
 drome bombed 1800L causing fires slight med AA (.) NGF I 2000L/28

If liable to interception
 or to fall into enemy hands
 this message must be sent
 IN CIPHER

Originators TOO 0930
 Instns
 Degree of THI
 Priority TCR

Whean Smith Meyer

Immediate



Handwritten scribbles and initials at top left.

H. Q. 16 AUST INF BDE
RECEIVED.
Date 29.12.42 Hrs 1400
No 2192

MESSAGE FORM

TO : 14 AUST INF BDE 16 AUST INF BDE REAR 21 AUST INF BDE 25 AUST
INF BDE REAR 30 AUST INF BDE REAR 2/7 AUST CAV REGT 2/6 AUST
ARMED REGT RAA 6 AUST DIV RAE 6 AUST DIV SIGS 6 AUST DIV
7 AUST MG BN 2/6 AUST IND COY 16 AUST INF BDE REINFT GP AQ

from : 6 AUST DIV 5 28

SITREP NO 110 to 2400L/27 (.) 11 AUST DIV to 1230L/27 (.) B coy 25 bn
arrived GOODENOUGH IS (.) took over VIVIGANI 26 dec (.) otherwise nothing
to report (.) 32 US DIV to 1800L/27 (.) STRIP area (.) line 2/10 bn now
runs from 285253 to 285247 (.) pocket of resistance at 284249 cleared by
2/10 bn (.) pressure being maintained with arty sp (.) GOVT STA area (.)
US tps vic BUNA village and island shelled intermittently from seaward
by unlocated guns estimated cal 3 ins 0100L to 0500L approx 27 dec (.)
no further infm posn own tps (.) 7 AUST DIV to 1455L/27 (.) US tps contin-
ued adv and joined up with 36 bn (.) area east of rd to approx northing
grid line 25 now cleared of enemy (.) mopping up continues (.) many japs
killed weapons captured (.) 55/53 bn failed to make progress west of rd (.)
7 aust cav wiped out jap listening post previously located fwd of rd block
(.) four enemy snipers killed rd block area (.) deep fighting patrols oper-
ating against located enemy posns (.) arty maintained harassing fire throu-
ghout night 26/27 (.) AMBOGA R area (.) several clearings approx 1/3 mls
west and SW SAKUMBARI each containing 12/15 wigwam shaped structures ob-
served by tac/R (.) tr on north bank of ck in vic well worn (.) KANGA FORCE
to 1010L/27 (.) nothing to report (.) FINSCHHAFEN area (.) SATELBERG and
HELDSBACH NOT occupied by enemy 25 dec (.) AIR OPS (.) 0905L GONA wreck
bombed by B26s (.) three direct hits several near misses caused further
listing and fires (.) 1005L enemy locs west bank AMBOGA mouth bombed and
strafed (.) NIL observations (.) RABAUL 1030L a/c observation reveals 61
vessels in hbr and vic (.) one med vessel lying on side two burning (.)
bomb craters in MALAGUNA runway (.) enemy attacking force comprising at
least 25 zekes 7 vals and unknown number oscars over BUNA area 1200L/27
(.) 12 P38s intercepted shooting down 7 zekes 2 vals 2 oscars and probably
destroying further 3 zekes 1 oscar (.) our cas 1 a/c crash landed pilot
safe (.) before and during encounter bombs dropped or jettisoned near
grounded enemy fighter a/c in fair order at 288249 287251 coconut plantat-
ion 277257 GIROPA PT CAPE ENDALADERE and HARIKO some jettisoned on enemy
locs all informed NCF I 2000L/27

If liable to interception or to fall into enemy hands this message must be sent in
Originators Instns T00 1000
Degree of Priority
CIPHER Immediate T01 T02

Handwritten signature: Mean Orisk Mayer

Handwritten signature: Immediate

AUSTRALIAN IMPERIAL FORCE

To 16 Aust Inf Bde Rear Details from 7 Aust Div 0539 28

Sitrep No. 122 to 0700 hrs: MAROUBRA: no further report; MILNE FORCE: 26 Oct / PW number
16 captured vicinity ASIOMA: companion fled shot by natives: Native report
FERGUSON IS indicates Japs GOODENOUGH originally from BUNA and intend move TO RV
with rescuing warships 26 or 27 Oct: Japs have W/T set, rifles, MGs:
BUNA AREA: Information from secret sources confirms Japs using MT at night ON ROAD
SANANANDA AMBOGO: No signs Japs at ORO BAY 1200 L/27: KANGA: Observations FROM LAF
OP during our raid 26 Oct reveals A/A Bty located in bush south of EMERY'S
Plantation:
AIR OPS: KAVIENG night 24/25 Oct four Catalinas secured direct hits on fuel dumps
causing fires visible 90 miles gaining intensity: Jap 4 engined bomber destroyed
on ground:

All informed

Bale

TOO 0824
TOR 1445