

AWM52
2nd Australian Imperial Force and
Commonwealth Military Forces unit war
diaries, 1939-45 War

Item number: 8/2/25

25 Infantry Brigade

May - July 1944

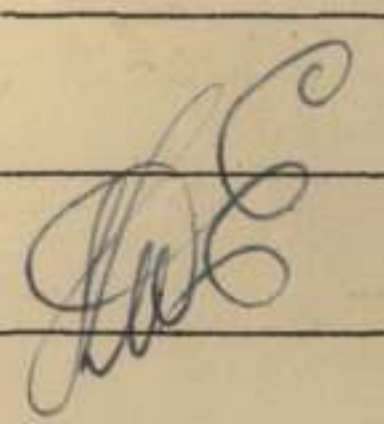
16 JUN 1944

WAR DIARY ~~or INTELLIGENCE SUMMARY.~~

(Erase heading not required.)

Army Form 118.
(adapted.)

Unit.....25 AUST INF BDE..... Date and Time.—From 1 May 1944.....To 31 May 1944.....

Place.	Date.	Hour.	Summary of Events and Information.	Remarks and references to Appendices, Diaries, &c.
CAMP STRATHPINE	1 May	1500	Rest Camp at Showgrounds REDCLIFFE in operation from today. During afternoon Brig EATHER met Bn COs and discussed with them tactics for future training.	
	2 May	1000	Brig EATHER visited CO 2/31 Aust Inf Bn. BM and IO inspected an area of which a cloth model is to be made for use in conjunction with future training.	
	4 May		All personnel upon discharge from 105 CCS and also complete Units are to spend three clear days at Rest Camp REDCLIFFE.	
	6 May		Maj Gen VASEY returned from leave and resumed command of 7 Aust Div from Brig EATHER who had been acting as Adm Comd.	
	7 May		A cloth model was constructed today of an area approximately 135157 SAMFORD 1", which is to be used for training purposes	
	8 May		Bde and Bn IOs inspected an area which is to be used as a training area. The area is bounded by the following Map	

L.

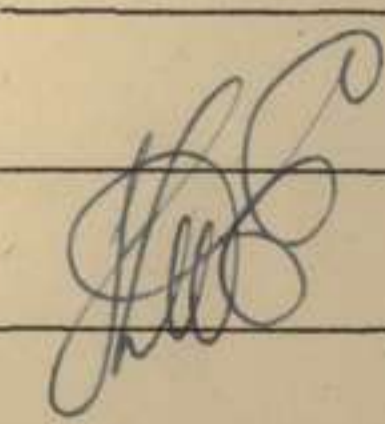
By Authority: L. F. JOHNSTON, Commonwealth Government Printer, Canberra.

WAR DIARY ~~or INTELLIGENCE SUMMARY.~~

(Erase heading not required.)

Army Form 2118.
(adapted.)

Unit.....25 AUST INF BDE..... Date and Time.—From 1 May 1944..... To 31 May 1944.....

Place.	Date.	Hour.	Summary of Events and Information.	Remarks and references to Appendices, Diaries, &c.
CAMP STRATHPINE	8 May	(contd)	Refs :- 020120 - 060120 - 060090 - 020090 SAMFORD 1". Area consists of three ranges - (1) Infantry Weapon Range (2) Miniature (1000") Range (3) Grenade and Mopping-up Range and one Jungle Trail. NO instructions have been issued about date when training will commence in this area.	
	9 May		54 Bty 2/4 Aust Fd Regt NO longer under comd 25 Bde but reverts to comd 2/4 Aust Fd Regt. 6 & 10 Pls 2/2 Aust Sup Depot Coy and B Pl 2 2/153 Gen Tpt Coy to revert to comd HQ AASC and to move from present area. Move to ^{be} completed by 14 May.	
		1030	General Parade of Bde HQ personnel held ^{held} by BM.	
			2/6 Aust Fd Coy NO longer under comd 25 Bde - moved to WAGGA for training.	
	10 May		B Pl 2/153 Gen Tpt Coy and 6 & 10 Pls 2/2 ASD Coy moved to new area today.	

WAR DIARY ~~or INTELLIGENCE SUMMARY.~~
(Erase heading not required.)

Army Form C 2118.
(adapted.)

Unit 25 AUST INF BDE Date and Time.—From 1 May 1944 To 31 May 1944.

Place.	Date.	Hour.	Summary of Events and Information.	Remarks and references to Appendices, Diaries, &c.
CAMP STRATHPINE	11 May		Bde Comd and BM attended LHQ Tactical School Demonstrations of (1) Fd & Med Arty (2) Tanks and Armd Bde Gp Eqpt (3) Formations of Infantry supported by tanks during advance along a track (4) Infantry in attack supported by Tank Bn with Arty concentrations. Demonstration was held at WASP CREEK Range. Ref Map TAMBOURINE 1".	
	14 May		Training Film of Camouflage, Unarmed Combat, and "Battle of Britain" will be shown each day in PETRIE Hall from 15-20 May inclusive. 2/25, 2/31, and 2/33 Aust Inf Bns will attend in that order for two days each.	
	22 May		2 Offrs and 2 NCOs from each Bn reported to 4 Aust Armd Bde PT School BURLEIGH HEADS to undergo one week's course of instruction. It is intended that all personnel of the Bde will pass through a PT course of 7 days at this school,	

L.

By Authority: L. F. JOHNSTON, Commonwealth Government Printer, Canberra.

WAR DIARY ~~or INTELLIGENCE SUMMARY.~~
(Erase heading not required.)

Army Form (2118.
(adapted.)

Unit 25 AUST INF BDE Date and Time.—From 1 May 1944 To 31 May 1944.

Place.	Date.	Hour.	Summary of Events and Information.	Remarks and references to Appendices, Diaries, &c.
CAMP STRATHPINE	22 May	(contd)	commencing NOT before 29 May.	
			2/25 Aust Inf Bn marched out to SAMSONVILLE SAMSONVALE Range for 3 days training.	
	23 May		Information received that 2/5 Aust Fd Regt will move into this area and come under comd RAA 7 Aust Div.	
	24 May		2/25 Aust Inf Bn returned to camp during afternoon. Rear parties of 18 Bde Units ex NEW GUINEA ARE are accommodated with Bns of this Bde.	
	25 May		Ref PT School - attached as Appendix "A" is 7 Aust Div Adm Instn No.Q22. Bde party will consist of following personnel: Bde HQ 40, 2/31 Bn 530, 7 Div Carrier Coy 80, 2/4 Fd Amb 100. A working party of 1 Offr, 2 NCOs and 28 ORs from 2/31 Bn allotment will move to PT Camp on 26 May.	Appendix "A"
			1 OFFER & 1 OR of 2/5 Fd Regt made recce of area into which	

WAR DIARY ~~or INTELLIGENCE SUMMARY.~~
 (Erase heading not required.)

Army Form C 118.
 (adapted.)

Unit 25 AUST INF BDE Date and Time.—From 1 May 1944 To 31 May 1944.

Place.	Date.	Hour.	Summary of Events and Information.	Remarks and references to Appendices, Diaries, &c.
CAMP STRATHPINE	25 May	(contd)	Regt will move.	
	26 May		54 Bty 2/4 Aust Fd Regt moved to area 1216 (STRATHPINE 1"=800)	
	28 May		Advance Party of 6 Offrs & 60 ORs from 2/5 Fd Regt arrived in area.	
			Attached as Appendix "B" is trace showing dispositions of Units.	Appendix "B"
	29 May		2/33 Aust Inf Bn began 3 days training at SAMSONVALE Range. Bde party left for PT School.	
			Conference of COs held by Bde Comd to discuss new pamphlet on Tropical Warfare.	
	30 May		Main body of 2/5 Fd Regt arrived in Bde area.	
	31 May		Offrs of 2/31 Aust Inf Bn and other Senior Offrs of Bde, NOT on duty, attended lecture by the DMT in the PINE Shire Hall.	

Leah E. Smith
MS

APR 'A'
HQ 7 Aust Div
24 May 44

7 AUST DIV ADM INST NO Q22

GENERAL

1. (a) 4 Aust Armd Bde PT Camp BURLEIGH HEADS has been loaned to 7 Aust Div for use by 7 Aust Div troops.
- (b) The object of the camp is to give personnel PT and hardening exercises and a change from their present surroundings.
- (c) It is intended, wherever possible, that complete units move to BURLEIGH HEADS and to be accommodated at the camp for one week.

ORGANIZATION

2. The camp will be organized on the following basis:-

(a) ADM STAFF

OC	Capt R CAMERON	2/14 Aust Inf Bn
QM	Lt SUTTON	2/27 Aust Inf Bn
CQMS	Sgt PULLEN	2/27 Aust Inf Bn

General Duties

To be supplied by 21 Aust Inf Bde	3 Cooks
	1 Ord Room Sgt
	1 Clerk
	1 Butcher
	3 General Duties

To be supplied by 25 Aust Inf Bde	3 Cooks
	1 Cpl (Canteen)
	1 Clerk
	1 OR Hygiene
	1 Carpenter (with kit)
	3 General Duties

(b) PT STAFF

OC Instructors	Capt BROWN	4 Aust Armd Bde Supplied by 4 Aust Armd Bde plus personnel from 21 and 25 Aust Inf Bdes now undergoing training.
-------------------	------------	---

ADM

3. Capt R CAMERON will be responsible for complete adm of 7 Aust Div troops while in camp area, except that when a complete unit, coy etc moves in he will NOT be responsible for local unit, coy etc adm.

ORDERS

4. Camp Standing Orders have already been issued by 4 Aust Armd Bde and these will be observed by all 7 Aust Div troops.

TRAINING

5. (a) Capt BROWN 4 Aust Armd Bde is responsible for all training matters.
- (b) PT will be carried out during morning period only except that each Wednesday will be devoted to an inspection of eqpt etc of 4 Aust Armd Bde.

- (c) Period of training will be 9 days incl 2 days travelling time.

ALLOCATION OF TROOPS

6. Troops will be allocated as follows:-

Bdes	650
Div Troops	100

MOVEMENT

7. (a) Arrangements for movement are:-

25 Aust Inf Bde	650 personnel
Div Troops	100 personnel

move to camp area 29 May, return to STRATHPINE 6 Jun.

21 Aust Inf Bde	650 personnel
Div Troops	100 personnel

move to camp area 7 Jun, return to STRATHPINE 15 Jun - and so on.

- (b) Detailed programme for units will be advised later.

- (c) Movement to and from BURLEIGH HEADS will be under arrangements this HQ in conjunction with 4 Aust Armd Bde.

ACCOMMODATION

8. (a) Accommodation will be six men to one tent.

- (b) Kitchen facilities will be provided by 3 Trailers Cooker WILES type.

- (c) 21 and 25 Aust Inf Bdes will supply tentage and accommodation stores as under:-

21 Aust Inf Bde	Tents complete with poles	75
	Accommodation stores sufficient for 400 personnel	

25 Aust Inf Bde	Tents complete with poles	75
	Accommodation stores sufficient for 400 personnel.	

- (d) Details of accommodation stores required will be arranged between Capt R CAMERON and SCs Bdes.

MESSING

9. All troops will move to camp area complete with messing gear.

BEDDING

10. Troops will move with four blankets and mosquito nets.

DRESS

11. (a) If possible dress for PT will be bathing trunks or shorts. Efforts are being made to obtain an issue of shorts through Ord.

- (b) Dress for leave will be SD uniform, gaiters, belt web.

SUPS

12. (a) Indents will be submitted 72 hrs in advance through Capt R CAMERON to BASCO 4 Aust Armd Bde.
(b) Sups are to be delivered to camp by 4 Aust Armd Bde.

POL

13. Drawn through arrangements 4 Aust Armd Bde.

WATER

14. Under arrangements 4 Aust Armd Bde.

CANTEEN

15. A Wet and Dry Canteen will be established at the camp.

MEDICAL

16. (a) A Med Offr and RAP staff will be provided under arrangements ADMS 7 Aust Div.
(b) Evacuations under arrangements ADMS 7 Aust Div, details later.

PAY

17. 7 Aust Div Fd Cash Office will arrange for pay to be drawn at PT Camp each Thursday.

POSTAL

18. (a) Incoming mail for troops will be delivered to FPO HQ 7 Aust Div by 0900 hrs daily.
(b) HQ Comd AASC will arrange for this mail to be delivered to BURLEIGH HEADS daily.
(c) Units will, under arrangements with HQ Comd AASC, use this transport for other matter requiring delivery to BURLEIGH HEADS.

AMENITIES

19. (a) A recreational marquee will be established at the camp.
(b) Pictures are shown regularly at
(i) BURLEIGH HEADS (one theatre)
(ii) SURFERS PARADISE (one theatre)
(iii) SOUTHPORT (two theatres)
(c) Dances are held regularly at BURLEIGH HEADS and SOUTHPORT.
(d) Bathing facilities are available. Troops must wear bathing trunks.
(e) A surf patrol will be in attendance during bathing parades.

TRANSPORT ALLOTMENT

20. (a) HQ Comd AASC will allot 1 x 3 ton veh for camp duties.
- (b) 25 Aust Inf Bde will allot 1 x 1 ton van (at present at PT camp) for camp duties.

LEAVE

21. (a) As much leave as possible will be granted at discretion of Capt R CAMERON in conjunction with 4 Aust Armd Bde.
- (b) Under arrangements 4 Aust Armd Bde and USA Forces SOUTHPORT has been reserved for leave for Aust troops and COOLANGATTA for USA troops; therefor COOLANGATTA is out of bounds to all 7 Aust Div troops.

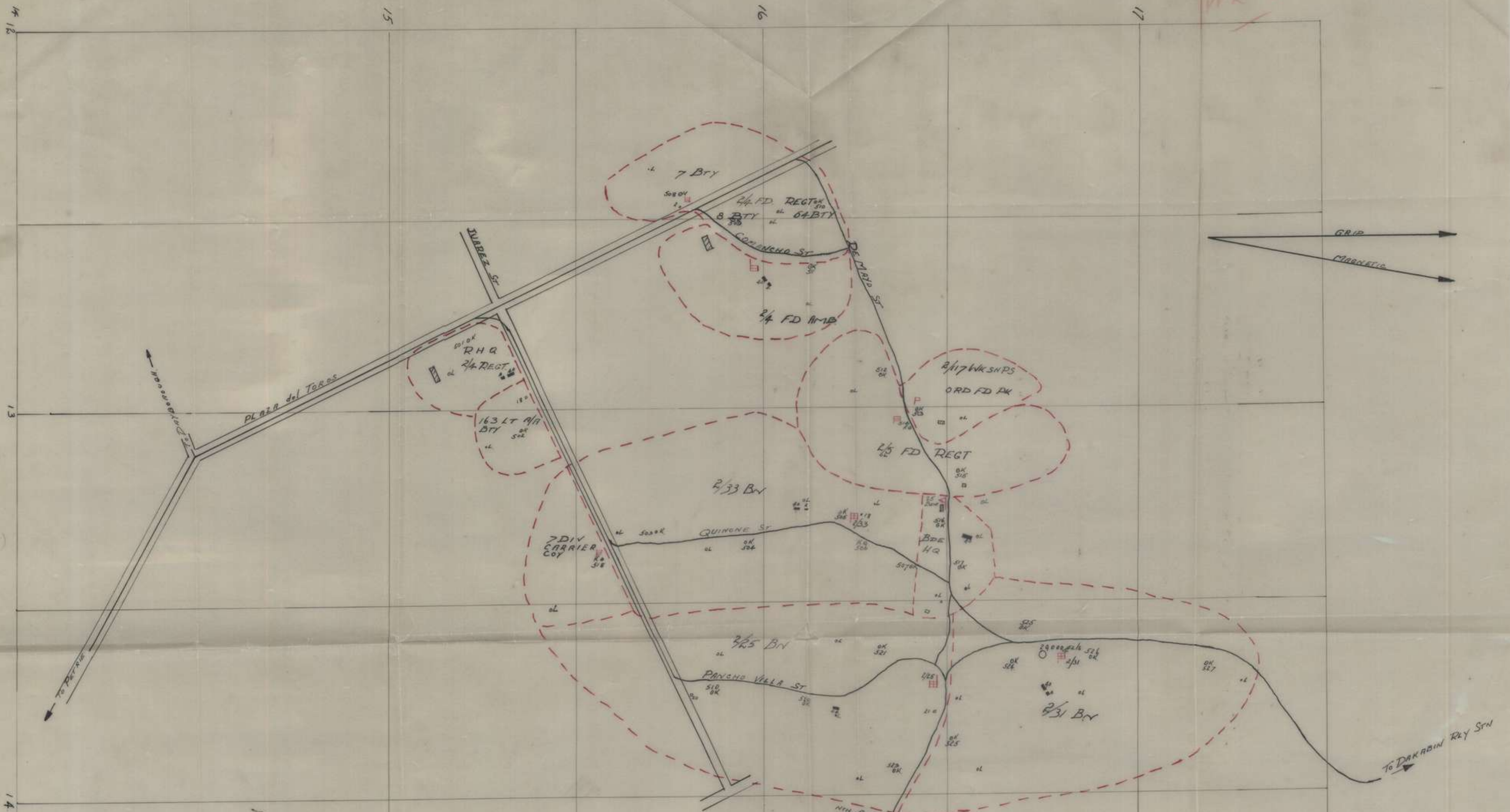
RETURNS

22. (a) AAF W3006 will be submitted daily to this HQ by OC Adm Staff showing strengths as at 0600 hrs daily.
- (b) Units, Coys etc will also fwd AAF W3006 direct to parent unit.

Geo. G. ...
for Lt-Col
AA & QMG 7 Aust Div

DISTRIBUTION: ALL UNITS 7 AUST DIV
4 AUST ARMD BDE
105 AUST CCS
CAMP SO STRATHPINE
WAR DIARY (2)
FILE

APP 'B'



25 BDE AREA
 CAMP
 STRATHPINE
 DAKABIN AREA
 SCALE 1"=400'

- ROADS
 = GRAYEL
 WATER STORAGE
 SHOWERS
 KITCHENS
 LATRINES
 UNIT BOUNDARIES
- (BITUMEN)
 ○ 20000 gals
 = 10
 ○ 50
 ○ 100

ANTI - MALARIAL TRAINING

HQ 25 Aust Inf Bde
A11/1/5.
1 May 44.

ALL UNITS AS PER DISTRIBUTION LIST

1. Units will include 3 (three) hours per week anti-malarial training in future programmes.
2. The development of anti-malarial "drill" will be investigated.
3. Attention is drawn to ATE No 31 and its supplement.

G. G. G.

Maj.
BM 25 Aust Inf Bde.

DISTRIBUTION

2/25 Aust Inf Bn
2/31 Aust Inf Bn
2/33 Aust Inf Bn
2/117 Bde Wksheps
2/117 Ord Fd Park
2/153 Aust Gen Tpt Coy
Det 2/2 Aust Sup Dep Coy
2/4 Aust Fd Amb
163 Lt AA Bty
7 Aust Div Carrier Coy
25 Aust Bde Sig Sec
BM
SC
File
War Diary ✓

AUSTRALIAN IMPERIAL FORCE

ROUTINE ORDERS

BY

BRIGADIER K.W. EATHER.CBE DSO

COMMANDING

25 AUSTRALIAN INFANTRY BRIGADE

25 Aust Inf Bde.
19 May 44.

Part 1

(Nos 4-7)

War Diary

4. AUDIT BOARD.

The following officers are appointed HQ 25 Aust Inf Bde unit audit board:-

- Lt S. MILLAR
- Lt B. LOW
- Lt A. GUILLAN

They will audit and report on books kept by the Officers' Mess-Serjeants' Mess-Unit Canteen. Such report to reach S.C. 2nd day of each month. Report to deal with previous months transactions. (GRO F819/43.

5. AMENDMENT TO GRO 598/43.

It will be brought to the notice of all ranks that " Periods of absence without leave will be debited against authorised recreation leave, provided that the maximum debit in respect of any ^{one} period of absence without leave will not exceed 24 days. Such debit is not part of the penalty imposed for absence without leave; but is an adm act and is made on the basis that the member, by absenting himself without leave, has to the extent of his absence used up his eligibility for leave. (Para IOI (a).)

6. TREATMENT OF DISCHARGED MEMBERS SUFFERING FROM MALARIA.

It is possible that malaria may manifest itself for the first time after a member has been discharged.

By arrangement with the Repatriation Commission, in such cases, provided a member establishes his identity e.g. by production of a discharge certificate, medical treatment will be made available forthwith at the expense of the Repatriation Department, pending determination of whether the malaria is attributable to the member's war service.

- To obtain such treatment, the ex member -
- (a) if he resides in the Metropolitan area of a capital city, should contact the local ~~post~~ office of the Repatriation General Hospital; or
 - (b) if he resides outside the metropolitan area of a capital city, should apply to the nearest local Repatriation Medical Officer.GRO AII7/44.

7.

SHAVING AND HAIR CUTTING.

Subject to the provisions of para (D) of this order, a male member will keep his hair tidy and short, and will shave his chin; under lip and cheeks of the face. He may wear a moustache, but will not wear side-whiskers. (GRO AII8/44- para 1).

[Handwritten signature]
A/S.C. 25 AUST INF BDE. CAPT.

DISTRIBUTION.

2/31 Aust Inf Bn. (6)
2/25 Aust Inf Bn. (6)
2/33 Aust Inf Bn. (6)
2/117 Bde Workshops
2/117 Ord Fd Park
163 Aust Lt AA Bty
7 Aust Div Carrier Coy
2/4 Aust Fd Amb.
25 Bde Signals Section.
8 Pl 2/1 Aust Guard Regt
315 Aust LAD
Bde Comd
Bde CSM
War Diary
✓ Spares (2)
File

A

*was diary*AUSTRALIAN IMPERIAL FORCEROUTINE ORDERS

BY

BRIGADIER K.W. EATHER, CBE, DSO, ED.COMMANDING25 AUSTRALIAN INFANTRY BRIGADE(Nos 5-8)25 AUST INF BDE
2 JUNE 44.8. DRESS FOR LEAVE.

It is again brought to notice that dress for leave whether by day or night is SD, WEB BELT, GAITERS, HAT KFF TURNED UP.

9. PRE-SELECTION OF OFFICERS. (GRO AI78/44).

In order to ensure the exploitation of the best material available to provide officers for the Australian Military Forces; the establishment of Officers Pre-selection Boards has been approved to conduct psychological and other tests of personnel recommended or desirous of appointment to commissioned rank. As it is a fundamental principle of the scheme that every soldier who considers himself suitable for commissioned rank shall be interviewed by the Pre-selection Board, units will promulgate this privilege.

Applications will be submitted this HQ as they are made. Applications will be accompanied by a statement of service and confidential report by Comd.

10. RECORD OF SERVICE BOOK AAB 83. (GRO A759/43)

All personnel should be in possession of an AAB 83. The loss, destruction or defacement of an AAB 83 by a wilful act or by negligence or the unauthorised alteration of any information contained therein is an offence in respect of which a charge will lie under AA Sec 40.

The attention of all personnel will be drawn to the instructions printed on the inside front cover of the AAB 83.

Distribution.

All units under Command
Bde Comd War Diary
Offrs' Mess File
Sjts' Mess
Mens' Mess

[Signature]
CAPT.
A/S.C. 25 AUST INF BDE.

NOTICES

HQ 25 AUST INF BDE REGTL FUND. Account No FI35.

Amount in regimental trust fund April 27.
Canteen profit Mar 44 AACB

£ 96- 2-
£ 5-17- 1
101-19- 1

		From Page I	£101-10-1
LESS	Half cost XMAS telegrams	£3-10-9	
	Cost wiring lighting plant	£6- - -	9-10-9

£ 92- 8- 4

STATEMENT OF ACCOUNTS-HQ 25 AUST INF BDE CANTEEN

RECEIPTS

PAYMENTS

Adv by Regt Funds Apl 24	£ 75	Purchases stocks	
Receipts from canteen sales	£571-18-	for canteen	£702- 6- 9
Credits on returns	£144- 5- 5	Sdy purchases	£ 8-16- 6
Stock on hand 28 May 44	£ 21- 6-	Balance	£119-13- 8
Kegs to be returned	£ 18- 7- 6		
	<hr/>		<hr/>
	£830-16-11		£830-16-11
	<hr/>		<hr/>

Balance	£ 119-13- 8
Less advance	£ 75
	<hr/>
Net profit	£ 44-13-
	<hr/>

BALANCE REPRESENTS:-

Cash on hand 28 May 44	£ 80- - 2
Stock on hand " " "	£ 21- 6-
Kegs etc on hand to be returned	£ 18- 7- 6
	<hr/>
	£119 -13- 8
	<hr/>

Certified net profit for period ending 28 May 44 as £44-13-8

WAR DIARY or ~~INTELLIGENCE SUMMARY~~
(Erase heading not required.)

Army Form C. 2118.
(adapted.)

Unit H.Q. 25 AUST INF BDE Date and Time.—From 1 June 1944 To 30 June 1944

Place.	Date.	Hour.	Summary of Events and Information.	Remarks and references to Appendices, Diaries, &c.
<u>Camp STRATHPINE</u>	1 Jun		Nil report	
	2 Jun		Bde Comd visited PT camp BURLEIGH HEADS and inspected	
			2/31 Bn training. (See Appx "D" for detail)	
	3 "		Capt. R.J. SOMERVILLE arrived at Bde. H.Q. to take up duties as Staff Capt. (previous S.C. Capt. W.T. PRENTICE left on 26 May to attend a Junior Staff School at DUNTROON)	Capt R.J. SOMERVILLE was previously Adj of 2/13 Aust Inf Bn.
	4 "		Nil report.	
	5 "		2/25 Bn began three day training on SAMSONVALE range	
			163 Lt. A.A. Bty reverted to ,comd R.A.A 7 Aust Div.	
	6 "		Bde Party returned from P.T. camp.	
	7 "		2/25 Bn returned to camp.	
	8 "		2/31 Bn began three day training on SAMSONVALE range.	
			Bde. Comd., B.M. , S.C. , and L.O.II, (Lt. A. GUILLIAN)	
			attended 2/33 Bn SYRIAN anniversary dinner.	

WAR DIARY or ~~INTELLIGENCE SUMMARY~~

(Erase heading not required.)

Army Form C. 2118.
(adapted)

Unit H.Q. 25 AUST INF BDE

Date and Time.—From To

Place.	Date.	Hour.	Summary of Events and Information.	Remarks and references to Appendices, Diaries, &c.
	9 June		Nil report.	
	10 "		7 Div Carr. Coy u/c this Bde as from 1500 hrs today. The Coy is to be disbanded in the near future and personnel absorbed as far as possible within units of 7 Aust Div.	
	11 "		Bde Comd accompanied Maj. Gen G.A. VASEY and other senior officers of the Div to ATHERTON TABLELANDS to attend a Malarial conference. Lt. Col R.H. MARSON 2/25 Bn now A/Bde Comd.	
	12 "		B.M evacuated to Hospital. S.L.O. (Capt. J.H. MULES) now A/B.M. Offrs. Trg Cadre (see appx "A") postponed owing to Bde Comds absence.	
	13 "		Nil report.	
	14 "		Bde party comprised of 600 from 2/33 Bn , 50 2/31 Bn, and 50 from 2/4 Fd Amb. left for P.T. Camp	

WAR DIARY ~~or INTELLIGENCE SUMMARY~~
 (Erase heading not required.)

Army Form C. 2118.
 (adapted)

Unit H.Q. 25 AUST INF BDE Date and Time.—From 1 June 1944 To 30 June 1944

Place.	Date.	Hour.	Summary of Events and Information.	Remarks and references to Appendices, Diaries, &c.
Camp STRATHPINE.	15 Jun		7 Div Carr. Coy disbanded.	
	16 "		Bde. Comd. returned from ATHERTON TABLELAND .	
	17 "		S.C. and Unit Q.M's attended a Q conference at H.Q. 7 Aust Div.	
			Bde. Comd. now Adm. comd. 7 Aust Div during Maj. Gen. G.A. VASEY'S	
			absence in hospital , and Lt. Col. MARSON is now Adm Comd. 25 BDE	
			during Bde. Comd absence.	
	18 "		Bde. Comd. gave a lecture on Malarial discipline to ^{offrs} 2/25 Bn.	
	19 "		Brig. EASTICK(C.R.A) visited Bde. Comd	
	20 "		Nil report.	
	21 "		Nil report.	
	22 "		A/Bde. Comd. inspected tng. of 2/25 Bn M.G. pls at CALOUNDRA Ra.	
			Bde party returned from P.F. camp.	
	23 "		2/25 Bn personnel returned from the REDCLIFFE Rest Camp.	
			As from today NO more Unit parties from this Bde will be	

L.

By Authority : L. F. JOHNSTON, Commonwealth Government Printer, Canberra.

M/S

WAR DIARY ~~or INTELLIGENCE SUMMARY.~~

(Erase heading not required.)

Army Form C. 2118.
(adapted.)

Unit H.Q. 25 AUST INF BDE

Date and Time.—From To

Place.	Date.	Hour.	Summary of Events and Information.	Remarks and references to Appendices, Diaries, &c.
			sent to the camp, owing to trg commencing on 24 June.	
	24 Jun	0900	Bde Offrs attended a lecture on Malarial control by Brig. FAIRLIE at PERTH ^{STRATHPINE} Shire Hall.	
	26 "		B.M returned from hospital.	
		0930	A/Bde. Comd. , B.M, and I.O., inspected an area to be used for tng. area. (25 Aust Inf Bde. Trg Instn No 35 att as Appx "B")	
			A trace of trg areas is att. as Appx "C".	
	27 "	0900	Offrs Trg Cadre began at Bde. H.Q. (See Appx "A")	
		1930	A/Bde. Comd. , B.M , and S.C attended 2/31 Bn anniversary dinner.	
	28 "		Tng Cadre continued today and was attended by Brig. K.W. EATHER (Adm Comd 7 Aust Div.) and ^{Lt.} Col. FLETCHER (G.I 7 Aust Div.).	
		1600	Offrs. Trg Cadre completed.	
			A Comd and Staff course in Amphibious Trg for Offrs. of 7 & 9 Divs will be held at TRINITY BEACH , CAIRNS from 20 July to	

L.

By Authority : L. F. JOHNSTON, Commonwealth Government Printer, Canberra.

Handwritten initials

WAR DIARY or ~~INTELLIGENCE SUMMARY~~
(Erase heading not required.)

Army Form C. 2118.
(adapted.)

Unit H.Q. 25 AUST INF BDE Date and Time.—From To

Place.	Date.	Hour.	Summary of Events and Information.	Remarks and references to Appendices, Diaries, &c.
			30 July 1944. The course will consist of the study and discussion of Amphibious Ops. in order to arrive at a common policy in regard to planning, followed by the planning of an Op. by a Div Task force. Offrs of this Bde to attend are:- Bde. Comd., B.M, S.C (L), I.O. , B.A.S.C.O., from Bde. H.Q., Bn C.Os and Adjts of 2/25 Bn. Adjts will attend the latter end of the course only.	
			As from Monday 3rd July a period of trg commences for pers of Bde. H.Q. The first stage consists of range practice.	
		1330	A conference of Bde. H.Q. Sec. Sgts was held to discuss the trg programme.	
	29 Jun		Nil report.	
	30 "	1330	Bde. Party consisting of 2/25 Bn and 50 , 2/33 Bn pers and 2 Offrs and 11 Ors from Bde. H.Q left for P.T camp.	

[Handwritten signature]

Apex 'A'

OFFICER'S TRAINING CADRE

25 Aust Inf Bde
 OT6/6
6 June 44

1. The cadre will take place 12 - 14 June inclusive.

2. Officers to attend

COs
 Adjts
 Coy Comds
 2 other officers per battalion as
 nominated by COs.
 Bde LOs

3. Syllabus

(a)	Monday 12 Jun	0900	Opening remarks	Bde Comd
		0915	Lecture - Patrols	Bde Comd
		0945	Discussion on cloth model patrols	
		1400	Lecture - Ambush	Lt-col COTTON
		1430	Discussion cloth model ambushes.	
(b)	Tuesday 13 June		Section attack	BM
			Platoon attack	Lt-col ROBSON
(c)	Wednesday 14 June		Coy attack	Lt-col MARSON
			Bn attack	Bde Comd

4. Dress - As ordered by bns

5. A further cadre may take place 26 - 30 June.

[Signature]

Maj
 BM 25 Aust Inf Bde

DISTRIBUTION

2/25 Aust Inf Bn
 2/31 Aust Inf Bn
 2/33 Aust Inf Bn

Copies to

BM
 Capt MOLES
 War Diary ✓
 File

*Postponed owing to
 Bde Comd's absence.
 Will now take place?
 27-28 June.*

Appx B.

H.Q. 2 AUST INF BDE

25 AUST INF BDE TRG INSTR No 35

SECRET.

25 Aust Inf Bde
27 June 44
Copy No 11

1. GENERAL POLICY

The policy for period ending 22 Jul 44 is as follows:-

- (a) Platoon training will be completed by 22 Jul 44, to include patrolling and ambush by the section and jungle-craft
- (b) Hardening marches
- (c) Close order drill and marching in sixes.
- (d) Considerable time will be devoted, both by lecture and practice, to malaria control and hygiene.
- (e) Specialist training

2. ADM ARRANGEMENTS

To implement the above the following variations to existing orders will apply:-

- (a) Leave
 - (i) Day leave will NOT be granted after 28 June 44
 - (ii) Night leave, exclusive of training hours, may be granted to the limit of hostel accommodation allotted, plus those having private arrangements.
 - (iii) Week end leave from 1600 hrs Friday to 0830 hrs Monday may be granted to the limit of hostel accommodation allotted, plus those having private arrangements. The total NOT to exceed 50% of unit strength in camp.
- (b) REDCLIFFE Rest Camp
No further personnel will be sent to the Rest Camp until further notice
- (c) 2/25 Aust Inf Bn will proceed to BURLEIGH HEADS as previously arranged.

3. SCHOOLS AND COURSES

Full advantage will continue to be taken of schools and courses

4. UNIT CADRES

Arrangements will proceed for unit cadres for Officers and NCOs.

5. PROFICIENCY PAY

Attention is drawn to GRC G769/43. Arrangements will be made to include the prescribed examination within training programmes. Recent practices at Field Firing Range may be acceptable to COs if records were kept.

Myer

Maj
BM 25 Aust Inf Bde

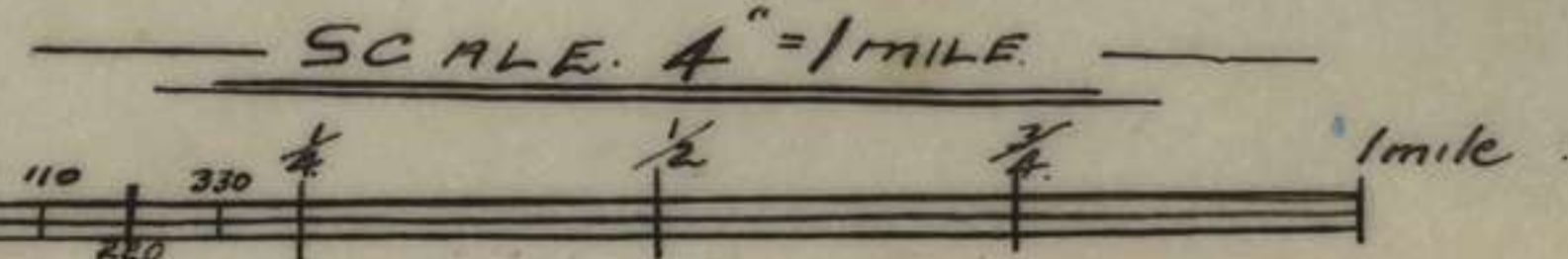
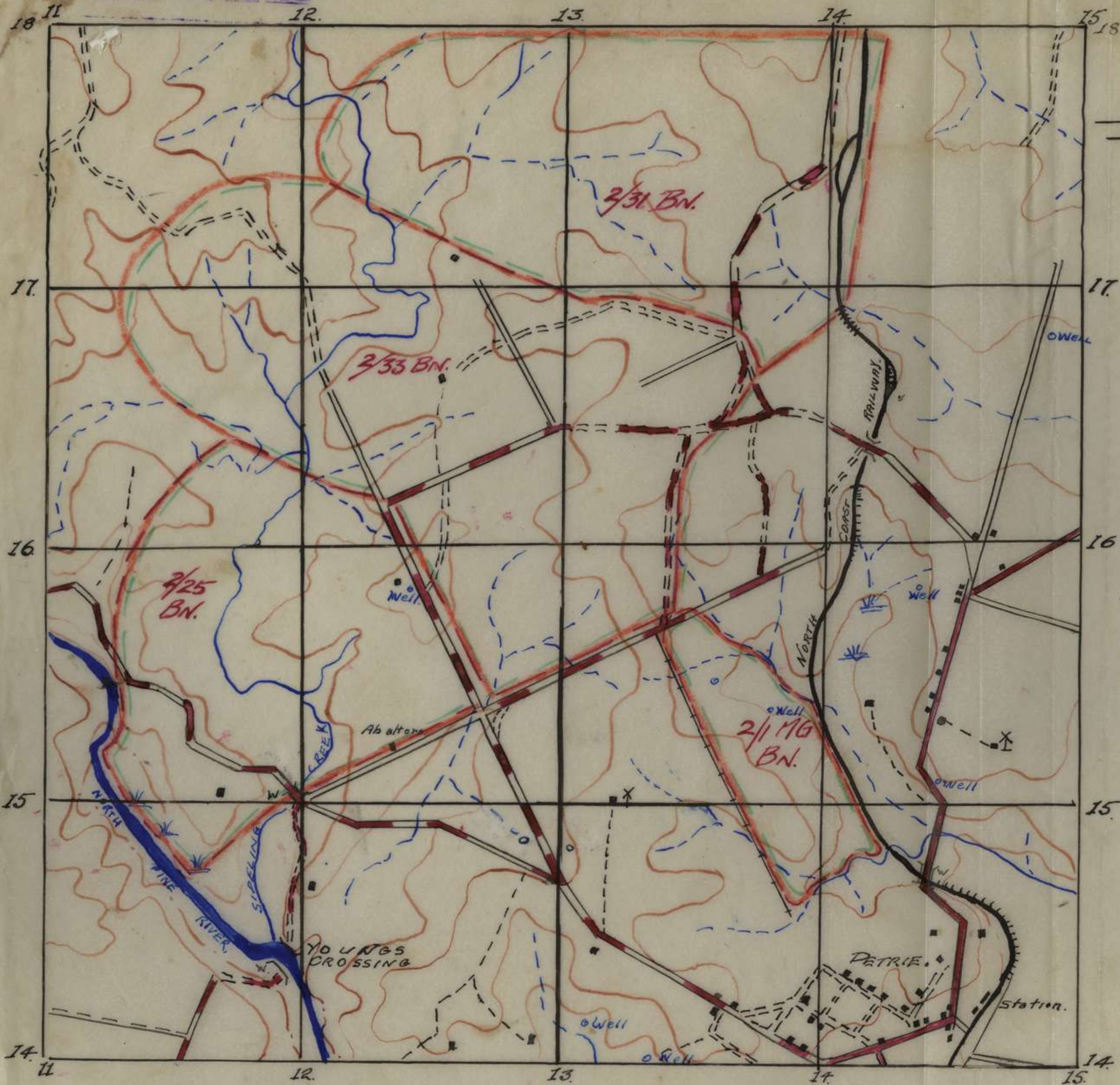
<u>DISTRIBUTION</u>	<u>Copy No</u>
2/25 Aust Inf Bn	1
2/31 Aust Inf Bn	2
2/33 Aust Inf Bn	3
2/117 Aust Bde Wksps	4
2/4 Aust Fd Amb	5
Comd	6
BM	7
SC	8
LO	9
7 Aust Div	10
War Diary	11 - 12
File	13 - 14

H.Q. 25 AUST INF BDE

Appx "C" to Training
W.D.

25 AUST INF BDE. TRAINING AREA.

— Enlargement from —
— CABOOLTURE and —
— SAMFORD 1" to mile maps. —



TRAINING AREA BOUNDARIES

PHYSICAL TRAINING CAMP BURLEIGH HEADS, Q'LAND.

This school was formed for the purpose of hardening personnel and teaching them the rudimentary principals of unarmed combat etc.

Seven days actual training is done by units at the school, and an additional two days travelling time allowed from unit to school and return.

Reveille is at 0630 hrs, breakfast 0730 hrs and first parade in shorts and bathing trunks held at 0830 hrs.

Actual training period is between 0900 and 1130 hrs daily. This period is broken into five half-hourly periods with ten minutes rest between periods. The personnel at the school are split up into a number of sections, each of approximately fifty.

Training starts with a brisk run for about five to ten minutes, then the first instructor takes over for the first period, which consists of medicine ball throwing, tunnallball, and relay races.

Next comes a period of unarmed combat practise, which teaches various knife thrusts, breaking ones fall, etc.

Period three consists of parallel bars and gymnasium work, then then on to a pendulam and slippery-slide, where knowledge of break-fall is exercised.

The last period is the assault course---climbing up and down a rope ladder 20 feet high, jumping off a 15 feet high Hen's Roost, and up and over a 30 foot cargo net.

A swimparade is then held until 1215 hrs, lunch at 1230 hrs, and the remainder of the day spent as pleased--resting, swimming, etc.

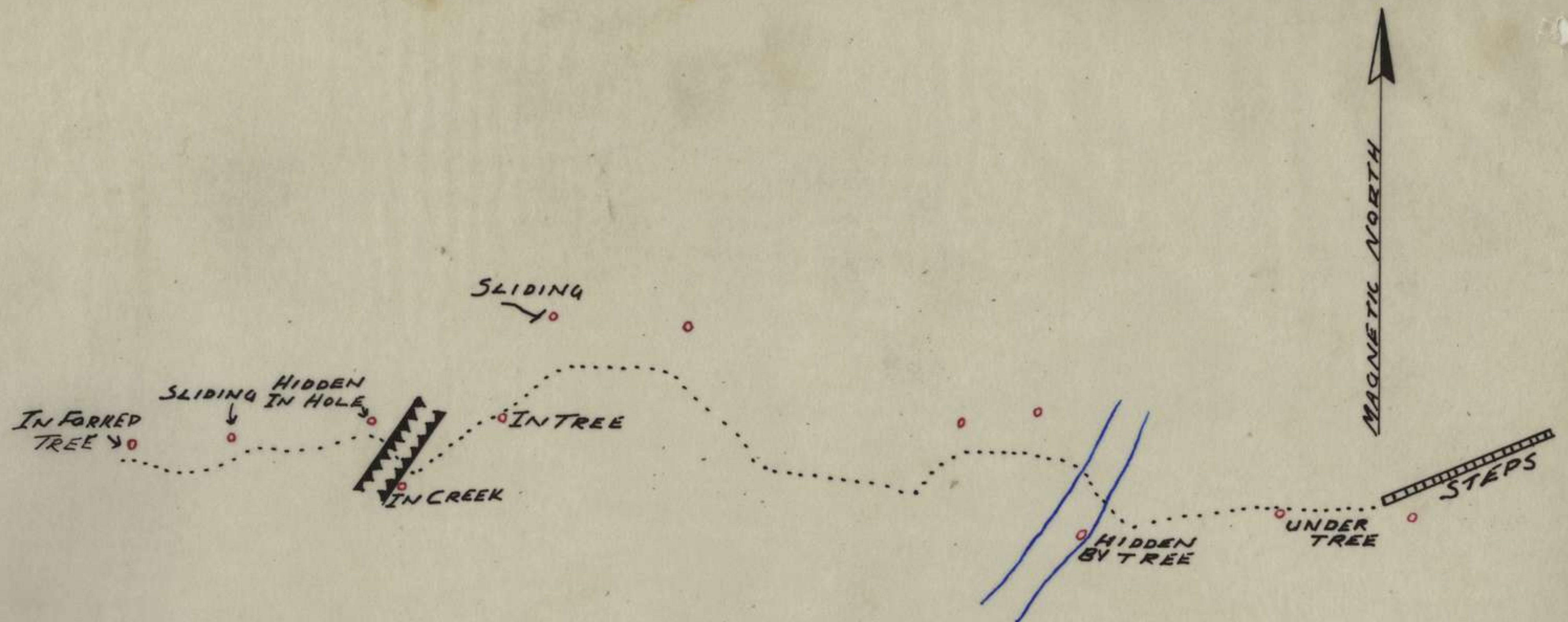
Fifty percent of all personnel are granted local leave only, into Southport and Burleigh-Heads, and in addition, week-end leave is granted from 1230 hrs Saturday.

SAMSONVALE RANGE & JUNGLE TRAIL
(ref map SAMFORD 1 inch area 020120, 060120, 060090, 020090.)

Area comprises three ranges and jungle trail.

- (1) Infantry Firing Range suitable for Mortar, Vickers, Bren and Rifle practices.
- (2) Miniature (1000") Range of 20 targets with sandbags at mound.
- (3) Grenade or Grenade and Mopping Up Range in four phases. Details of 8 men to go through at a time:-
Posn 1:- Consists of 4 pits (2 men in each) with controller in fifth pit. Each man has one throw from this posn and they then advance to bays cut in bank at Posn 2. From here men throw grenades at 8 dummies (4 lying and 4 standing) and may be given orders to fire rifles at targets on fwd slope of hill in front. Men then charge dummies with fixed bayonets and advance up hill to charge further dummies behind targets.
- (4) Jungle Trail of approx 100yds overall length consisting of 12 controlled targets. One man at a time goes through with offr or NCO following to control movement of the targets by means of wires. Units make own arrangements about number of targets to be presented at one time to each man. (see sketch attached)

Approx D to June 1952



JUNGLE TRAINING COURSE

MAP REF APPROX: -048122' SAMFORD 1 1/2 mile

SCALE 1" = 15 YDS

NOTE: DUMMIES WORKED BY WIRES AND CONTROLLED BY OFFR OR NCO WALKING BEHIND MAN DOING THE COURSE.

FIELD RETURN OF OFFICERS

Army Form W.3008
(Adapted) (Page 1)
(Revised Jan., 1943)

044

Serial No.)

At 0600 Hrs. Saturday 8 / 7 / 1944 4 HQ 25 Aust Inf Bde (Unit)

W.E. 11 / 7 / 3 OFFRS. 19 O.R's. 67 + OFFRS. O.R's. ATT. BY W.E.

PART A.—POSTED STRENGTH, SURPLUS OR REINFORCEMENTS REQUIRED.

1	2	3	4	5	6	7	8	9	10							
W.E. EXCLUDING ATTACHED.				DETAIL.	ATTACHED ALLOWED BY W.E.											
Rein'ts Required.	Deficient W.E.	Surplus to W.E.	Posted Strength.		Arm or Corps.	Posted Strength.	Surplus to W.E.	Deficient W.E.	Rein'ts Required.							
NR	-		1	* BRIGADIER * Lieut.-Colonels												
	1		1	Majors												
			7	Captains												
			6	Lieutenants												
			3	Quarter-masters A.A.N.S. and A.A.M.W.S. Offrs.												
			3	CHAPLAINS Civilians Counting as Offrs.												
	1		18													
				DETAIL	A.I.F.	C.M.F.	A.W.A.S.	A.A.N.S.	A.A.M.W.S.	CIVIL.	R.A.N.	R.A.A.P.	**	TOTAL.		
Analysis of Part A to be shown here by ALL units. Only units notified in pars. 10 of instructions for compilation of form will complete Part E(1) & E(2).				A.										18		
				E.(1)												
				E.(2)												

* Insert detail of higher ranks as necessary.

** Personnel belonging to a category not provided for in the analysis will be shown in this Col. Particulars will be shown, e.g., 20 U.K. Forces; 10 N.Z. Forces.

PART B.—PARTICULARS OF OFFICERS JOINED OR QUITTED DURING WEEK.

OFFICERS JOINED DURING WEEK

Army No.	Rank.	Name and Initials.	Unit From.	Date.	CAUSE.

OFFICERS QUITTED DURING WEEK.

Army No.	Rank.	Name and Initials.	Unit To.	Date.	CAUSE.
WX16246	CAPT	TIMBURY F.A.	Temp Attached 5 "A" (PS) Branch HQ NSW L of C Area - Auth HQ 93082	5 Jun 44	Medical Reclassification

PART C.—DESCRIPTION OF OFFICERS WHOSE RETURN TO (Unit) IS PARTICULARLY REQUESTED. / / 1944.

Army No.	Rank.	Name and Initials.	REMARKS (e.g., present whereabouts if known).

PART D.—NOMINAL ROLL OF OFFICERS ON POSTED STRENGTH

At 0600 Hrs. Saturday/...../194. (Total to agree with Columns 4 and 7 of Part A.)

1	2	3	4	5	6	7	8
Substantive Rank and Higher Temporary Rank if Held.	Army Number.	Surname.	Initials.	Posting.	Whether present with Unit (insert Yes or No)	If not present with Unit, state how employed.	Date of Detachment.
Col T/Brig	NX 3	EATHER	K.W.	Comd	Yes		
Capt T/Maj	VX43185	LYON	G.E.	BM	YES		
CAPT	NX14772	SOMERVILLE	R.J.	SC	YES		
Lt T/Capt	NX56495	PRIGL	R.A.	SC(L)	YES		
Capt	TX2006	GEE	A.S.	T.O.	YES		
Lt T/Capt	TX2541	DWYER	E.W.	BASCO	NO	Det AASC School	3 Jul 44
Lt T/Capt	QX4201	MULES	J.H.	LOI	YES		
LT	NX150342	GULLAN	A.W.A.	LOI	YES		
LT	NX28463	LOW	B.	HYG.O.	YES		
LT	NGX 67	MILLAR	S.D.	EducO	YES		
LT	NX10137	SEYMOUR	E.R.	Amenc	YES		
Lt T/Capt	QX22508	CREED	M.	I.O.	YES		
CAPT	NX114300	HARRISON	P.N.	L.O.	YES		
LT	QX14949	HOWES	J.P.	LOI	YES		
LT	NX2788	QUINAN	H.K.	B.O.O.	YES		
CHAP	QX43807	SHEHAN	C.S.	R.C.	YES	2/31 Aust Inf Bn	
CHAP	QX54941	ROBINSON	C.P.	METH	YES	2/25 Aust Inf Bn	
CHAP	NX34412	THOMAS	K.	Cof E	YES	2/33 Aust Inf Bn	

PART E.—NOMINAL ROLL OF OFFICERS ATTACHED FROM OTHER UNITS.

Substantive Rank and Higher Temporary Rank if Held.	Army Number.	Name and Initials.	Unit.	Date of Attachment.	Nature of Attachment.
Lt	QX993	THORN R.W.	2/1 Aust Gd Regt		OC 8 Pl B Coy 2/1 Aust Gd Regt

8 July 44

Date of Despatch

[Signature]
Comd 25 AUST INF BDE

Signature of Commander

FIELD RETURN OF OTHER RANKS

44 11 / (Serial No.)

At 0600 Hrs. Saturday 8 / 7 / 1944 1 HQ 25 Aust Inf Bde (Unit)

WE 7 / 3 OFFRS. O.R.'s 77 + OFFRS. O.R.'s ATT. BY W.E.

Part A. Posted Strength, Surplus or Reinforcements Required.

1	2	3	4	5	6	7	8	9	10
W.E. EXCLUDING ATTACHED.				DETAIL.	ATTACHED ALLOWED BY W.E.				
Reinfts. Required.	Deficient W.E.	Surplus to W.E.	Posted Strength.		Arm or Corps.	Posted Strength.	Surplus to W.E.	Deficient W.E.	Reinfts. Required.
				W.Os. Class I.					
NR	1		1	W.Os. Class II.					
		1	2	Squadron or Company Quartermaster Sgts.					
			1	Staff Sergeants					
NR	1		4	Sergeants					
NR		1	10	Corporals					
NR	4	8	53	Troopers, Privates, etc.					
				Civilians counting as O.R.					
*	6	10	71	Totals of cols. marked * should agree with details shown in Part E on Page 2.		*			*

Analysis of Part A to be shown here by ALL units. Only units notified in para. 7 of instructions for compilation of this return will complete analysis of Part B(1) and B(2).

** Personnel belonging to a category not provided for in the analysis will be shown in this Col. Particulars will be shown, e.g., 20 U.K. Forces, 10 N.Z. Forces.

Detail	A.I.F.	C.M.F.		A.W.A.S.	A.A.M.W.S.	CIVIL	R.A.N	R.A.A.F	**	TOTAL
		Under 19 Years.	19 Years and over.							
A	71									71
B(1)										
B(2)										

Part B. Other Ranks Attached from Other Units.

Part C. Other Ranks Included in Part A Detached to Other Units.

Number of O.Rs.	Unit to which they belong	Number of O.Rs.	Unit to which they belong	Number of O.Rs.	Unit to which detached.	Number of O.Rs.	Unit to which detached

Part D. Description of Other Ranks Whose Return To (Unit) is Particularly Requested. / / 194

Army No	Rank.	Name and Initials.	REMARKS (e.g., present whereabouts if known).

PART E. Detail of Present Strength and Reinforcements required as shown in Part A of Army Form W.3009 at 0600 Hours Saturday / / 194 .

Details of Tradesmen. GROUP I.	W.E.	Posted Strength.	Reints. Required.	Details of Tradesmen. GROUP I. (cont.)	W.E.	Posted Strength.	Reints. Required.	Details of Tradesmen. GROUP II. (cont.)	W.E.	Posted Strength.	Reints. Required.	Details of Tradesmen. GROUP III. (cont.)	W.E.	Posted Strength.	Reints. Required.
Ammunition Examiners				Surveyors, Engineering				Operating Room Assis.				G.P.O. Assistants			
Armament Artificer Fitter				Surveyors, R.A.A.				Operator, Keyboard				Hammermen			
Armament Artificer Fitter (Electrical)				Surveyors, Topographical				Operator, Line				Leather Stitchers			
Armament Artificer Fitter (M.V.)				Surveyors, Trigonometrical				Operator, Signal				Orderlies, Nursing			
Armament Artificer Fitter (A.F.V.)				Toolmakers				Operator, Switchboard				Orderlies, Nursing Mental			
Armament Artificer Instrument				Turners				Operator, Wireless				Plate Layers			
Armament Artificer Radio				Watchmakers				Opticians				Rangefakers			
Armament Artificer Signals				Welders				Painters				Riveters			
Armament Artificer Wireless								Panel Beaters				Roughriders			
Artificer, Artillery								Photographer, Dry Plate				Saddlers			
Artificer, Engine								Predictor Numbers				Saddletree makers			
Blacksmiths								Printers				Shoemaker and Boot Repairer			
Bricklayers								Radlographers				Stevedores			
Computers								Riggers				Stokers, Staty. Engine			
Cooks, Hospital				GROUP II.				Sawyers				Storemen, Technical			
Coppersmiths				Armourers				Signallers				Tailors			
Dispensers				Axemen				Signwriters				Textile Beaters			
Draughtsmen				Bakers				Telescope Identn. Numbers				Tinsmiths			
Draughtsmen (Architectural)	2	2		Bty. Comd's. Asst.				Well Borers				Vulcanizers			
Draughtsmen (Engineering)				Boilermakers				Wheelers				Wagon Erectors			
Draughtsmen (Mechanical)				Carpenters				Winchman				Whitesmiths			
Draughtsmen (Topographical)				Carpenters and Joiners				Wireman							
Electricians				Cooks				Woodturners							
Electricians (M.V.)				Dental Mechanics	3	5									
Electricians (Signals)				Driver-Mech. (Eng. and Med.)											
Fitters				Driver-Operator											
Fitters (Cycle)				Drainers											
Fitters (Electrical)				Electricians											
Fitters (Gun)				Electricians (Engineers)											
Fitters (Instrument)				Fire Control Operators				GROUP III.				DETAILS OF NON-TRADESMEN.			
Fitters (M.V.)				Gun Operator				Battery Surveyors							
Fitters, Railway Signal				Hatchman				Butchers				COQS	1	2	
Fitters, Signals				Height Taker				Clerks				Batman	13	11	
Grinder, Precision				Hello Operator				Clerks, Supply	6	5	NR	Dvrs MT	3	3	
Mechanics, Instrument				Instrument Operator				Clerks, Technical				" Ords	9	9	
Mechanics, Instrument (Signals)				Intelligence Duties				Coach Trimmers				Hyg Duty	1	1	
Mechanics, Instrument (Surgical)				Joiners	4	5		Concretors				Water Duty	1	1	
Mechanics, Radio				Lineman				Cooks				Sig Ord	6	6	
Mechanics, Typewriter				Lineman, Signals				Denial Clerk Orderlies				Transport	1	1	
Mechanics, Wireless				Lithographers				Despatch Riders				ATTACHED BY W.E.	3	6	
Millwrights				Machinists, Metal				Draughtsmen, Signals				CSM	1		
Operators, Excavator				Machinists, Wood				Drivers, H.T.							
Pattern Maker				Masons				Driver Mechanics							
Pharmacist				Masseurs				Driver Tptn. Plant							
Photographer, Wet Plate				Mechanics, M.T.				Engine Hands, L.C.							
Photewriter				Miners				Equipment Repairers							
Plumber				Moulders				Farriers							
Saw Doctors				Nurses, Trained				Fitters' Mates							
Surveyors				Observation Post Assis.				Gun Layers							
CARRIED FORWARD	2	2		CARRIED FORWARD	9	12		CARRIED FORWARD	15	18		Totals of columns marked * to agree with columns 4 and 7, and 1 and 10 of Part A, respectively.	54	58	

NOTES.—(a) If rank other than private is involved give details on back.
 (b) Authorised trades or specialists not included in list will be added as required in spaces provided.
 (c) Where A.W.A.S. and/or A.A.M.W.S. personnel are desired show details on back.
 (d) Where replacement not desired note accordingly on return by insertion of "N.R." in col. "Reints. Required."
 (e) Where any request or notation is made on back of form, the words "See Back" should be written in one of the blank spaces on this page.

8 Daily Despatch

Leith
Signature of Commander

DETAILS OF SERVICES

TRADE	WE	PS	SURPLUS	DEFICIENCIES
AASC				
Cpl Clerk	1	1		
Batman	1	1		
Driver MT		1	1	
AANC				
Cpl	1	1		
AOC				
Arm Examiner Sjt	1	1		
Bat Driver	1	1		
AEME				
Armourer Sjt	1	1		
" TG 11		1	1	
Fitter MV TG1	1			1 NR
Mechanic TG11	1			1 NR
AACHD				
Batman Drivers	3	3		
AAIC				
Cpl Clerk	1	1		
Batman	1	1		
Total Services	13	13	2	2
Total Carrier Fwd	54	58		
	67	71		

NCOS

TRADE	RANK	WE	PS	SURPLUS	DEFICIENCIES
Draughtsman	Cpl	1	1		
Cook	Cpl	1	1		
Intelligence	s/sjt	1	1		
"	Cpl	1	2	1	
Clerks	Woll	1	1		
	Sjts	2	3		1 NR
Driver MT	Cpl	1	1		
Transport v	Cpl	1	1		
on Duties	Sjt	1	1		
SM	Cpl	1	1		1 NR
MS	Woll	1	1		
	s/sjt	1	2	1	
SERVICES					
erks AASC	Cpl	1	1		
d Ord AANC	Cpl	1	1		
n Examiner AACC	Sjt	1	1		
ourer AEME	Sjt	1	1		
erks AALC	Cpl	1	1		

18

18

2

2

23 AUG 1944

WAR DIARY ~~or INTELLIGENCE SUMMARY~~

(Erase heading not required.)

Army Form C. 2118.
(adapted.)

Unit.....HQ 25 Aust Inf Bde..... Date and Time.—From.....1 July.....To.....31 July 1944.

Place.	Date.	Hour.	Summary of Events and Information.	Remarks and references to Appendices, Diaries, &c.
CAMP STRATHPINE	1 Jul		NIL report.	
	2		NIL report.	
	3		Bde HQ training began on 2/25 Aust Inf Bn miniature range.	
		1400	Lt F G ANDERSON AASC now acting BASCO in place of Capt DWYER who is attending 7 Aust Div Amn School at 12 FAD ENOGERA.	
	4	0930	A/Bde Comd, BM and IO made a further recce of Bde Trg Area.	
			Bde HQ Range practice continued today.	
		1400	Brig JERVOIS, British Mil Int, visited Bde HQ and discussed with Bde IO Int procedure and operations in Jungle Warfare.	
		1730	Brig K W EATHER ceased to adm comd 7 Aust Div and returned to resume comd 25 Aust Inf Bde. Lt-col MARSON who had been adm comd of Bde returned to comd 2/25 Aust Inf Bn. This change was caused by the appointment of Maj Gen MILFORD to ^{adm} command ^{change} 7 Aust Div in place of Maj Gen VASEY.	

L.

By Authority: L. F. JOHNSTON, Commonwealth Government Printer, Canberra.

M.S.B.

WAR DIARY ~~or INTELLIGENCE SUMMARY~~

(Erase heading not required.)

Army Form C. 2118.
(adapted.)Unit HQ. 25 Aust. Inf. Bde Date and Time.—From 1 July To 31 July 1944

Place.	Date.	Hour.	Summary of Events and Information.	Remarks and references to Appendices, Diaries, &c.
CAMP STRATHPINE	5 Jul		Bde HQ Range practice continued today - Rifle and OWEN Gun. Much rain during last few days.	
		1600	Maj Gen MILFORD, Adm. Comd 7 Aust Div, visited Brig EATHER at Bde HQ and then visited 2/31 Aust Inf Bn.	
	6	0900	Range practice continued again today - BREN Gun firing. Weather still inclement.	
			Brig EATHER, SC(L) and LO III attended an Arty shoot by LHQ Tactical School at WASP CREEK Range - area Squares 5544 and 5545 ref map TAMBOURINE 1".	
	7		Range practice (BREN - Grouping & application, repetition and automatic fire) carried out again today by further personnel of Bde HQ. Good results achieved.	
	8		Range practice ceased for the week end and will be continued on Monday.	

L.

By Authority: L. F. JOHNSTON, Commonwealth Government Printer, Canberra.

WAR DIARY ~~or INTELLIGENCE SUMMARY.~~

(Erase heading not required.)

Army Form. C. 2118.
(adapted.)Unit HQ 25 Aust Inf Bde Date and Time.—From 1 July To 31 July 1944.

Place.	Date.	Hour.	Summary of Events and Information.	Remarks and references to Appendices, Diaries, &c.
CAMP STRATHPINE	8 Jul	(contd)	Information received that on or about 7 Aug 7 Aust Div March of Honour will take place in BRISBANE.	
		1200	2/4 Aust Fd Amb reverted to comd HQ 7 Aust Div per instructions contained in 7 Div message 0151. Only Units other than the three Bns now under comd are 2/117 Aust Bde Workshops and 2/117 Bde Ord Fd Pk.	
		p.m.	2/25 Aust Inf Bn personnel and Bde HQ personnel returned from PT School BURLEIGH HEADS.	
			Rain again all day.	
	9	1200	2/117 Bde Workshops & 2/117 Bde Ord Fd Pk reverted to comd HQ 7 Aust Div.	
		1500	Conference held by Brig EATHER at Bde HQ to discuss trg and extension of Pl trg period with Bn COs (Lt-col MARSON 2/25 Bn, Lt-col ROBSON 2/31 Bn, Maj GRAHAM SUTTON 2 i/c 2/33 Bn, CO 2/33 Bn in hospital).	

L.

By Authority: L. F. JOHNSTON, Commonwealth Government Printer, Canberra.

WAR DIARY ~~OF INTELLIGENCE SUMMARY~~

(Erase heading not required.)

Army Form C. 2118.
(adapted.)Unit HQ 25 Aust Inf Bde Date and Time.—From 1 July To 31 July 1944.

Place.	Date.	Hour.	Summary of Events and Information.	Remarks and references to Appendices, Diaries, &c.
CAMP STRATHPINE	10 Jul	0900	Range practice (BREN) continued today.	
		0930	Leave grants (night & week end) to 2/4 Aust Fd Amb, 2/117 Bde Workshops, & 2/117. Bde Ord Fd Pk still administered by 25 Bde HQ, although these Units are no longer under comd.	
			Routine Orders issued.	Appendix "A"
		1000	Message received from 7 Div that date for completion of Sec & Pl Trg. is now set at 5 Aug 1944.	
		1100	25 Bde Trg Instn No.35 (Amendment) issued.	Appendix "B"
			SC. Capt R N Somerville, now transferred from this HQ to take position as G2 Combined Ops. ^{Sec.} Capt R PRIOL now A/SC.	
			As from 0900 hrs today Capt F MILFORD 2 i/c B Coy 2/25 Aust Inf Bn appointed A/BM(L) and marched into this HQ.	
	11		Very heavy rain all last night and today.	
		1800	Formal Mess held for men - Bde Comd and all Offrs attended	

L.

By Authority: L. F. JOHNSON, Commonwealth Government Printer, Canberra.

WAR DIARY ~~or INTELLIGENCE SUMMARY~~

(Erase heading not required.)

Army Form C. 2118.
(adapted.)Unit HQ 25 Aust Inf Bde Date and Time.—From 1 July To 31 July 1944.

Place.	Date.	Hour.	Summary of Events and Information.	Remarks and references to Appendices, Diaries, &c.
CAMP STRATHPINE	11 Jul	0900	Lt-col COTTON, CO 2/33 Aust Inf Bn, visited Bde Comd at Bde HQ.	
		1400	7 Aust Div Adm Circular No. Q60 received.	Appendix "C"
			Enclosed as Appendix "D" are Trg Syllabuses of 2/31, 2/25, & 2/33 Aust Inf Bns and 2/4 Aust Fd Amb for week ending 16 Jul.	Appendix "D"
	1800	Formal Mess held for men on Bde HQ. Brig EATHER and all Offrs attended for about an hour and Brig gave short personal talk.		
	12	0930	An Official Photographer from MH Sec visited this HQ and a photograph was taken of the Bde Comd (Brig K W EATHER). A photograph was also taken of a portrait of the Bde Comd (The portrait in oils had been painted by Cpl FRAWLEY of 4 Armd Bde.)	
		1000	Bde Comd and BM (Maj LYON) visited 2/33 Aust Inf Bn and inspected Pl trg in Bn Trg Area.	
		1400	Bde Comd and BM visited 2/31 Aust Inf Bn and inspected Pl trg in Bn Trg Area.	

L.

By Authority: L. F. JOHNSTON, Commonwealth Government Printer, Canberra.

WAR DIARY ~~or INTELLIGENCE SUMMARY~~

(Erase heading not required.)

Army Form C. 2118.
(adapted.)

Unit.....HQ 25 Aust Inf Bde..... Date and Time.—From.....1 July.....To.....31 July 1944.

Place.	Date.	Hour.	Summary of Events and Information.	Remarks and references to Appendices, Diaries, &c.
CAMP STRATHPINE	12 Jul		Bde HQ trg continued.	
	13	0900	Trg Syllabus Bde HQ continued again today - Discussion on Rifle, BREN, OWEN, Aiming, Loading, Firing etc and short marches.	
		1030	Bde Comd and BM visited 2/25 Aust Inf Bn and inspected Pl Trg in Bn Trg Area.	
		1500	Capt A S GEE (Bde Tpt Offr) paraded by Bde Comd to Div Comd re his application to attend Junior Staff School at DUNTROON.	
	14	0930	Brig EATHER attended a conference at HQ 7 Aust Div on Amphibious Warfare Trg.	
			Ref entry 1600 hrs 28 Jun in War Diary for June 1944:- Offrs mentioned therein have all been warned that they will be transported by plane to CAIRNS on Tuesday 18 Jul. ORs mentioned will proceed by train leaving 1100 hrs Sunday 16 Jul.	

L.

By Authority: L. F. JOHNSTON, Commonwealth Government Printer, Canberra.

WAR DIARY ~~OR INTELLIGENCE SUMMARY~~

(Erase heading not required.)

Army Form C. 2118.
(adapted.)Unit HQ 25 Aust Inf Bde Date and Time.—From 1 July To 31 July 1944.

Place.	Date.	Hour.	Summary of Events and Information.	Remarks and references to Appendices, Diaries, &c.
CAMP STRATHPINE	15 Jul		Bde HQ trg Syllabus ceased for week end. Continued Monday. Rain ceased, weather fine. See Appendix "E" for Trg Syllabus Summary of 25 Bde up to 22 Jul 44.	Appendix "E"
	16	0930	Two ORs (1 Sjt Draughtsman, 1 Sjt Clerk) departed from Bde HQ en route for CAIRNS to be available for Staff Planning Exercises in Amphibious Trg at 1 Aust Corps Comd & Staff Course. 7 Aust Div Adm Circular No. Q62 issued. Football matches between 2/33 Aust Inf Bn 1sts & 2nds and 2/5 Aust Fd Regt 1sts & 2nds. Both 2/33 Bn teams won.	Appendix "F"
	17	0900	See Appendix "E" for Bde HQ trg today. Lt-col COTTON (CO 2/33 Aust Inf Bn) visited Bde HQ. 25 Bde Trg Instn No. 36 issued.	Appendix "H"
	18	0600	Bde Comd (Brig EATHER), BM (Maj LYON), SC, TO, and BASCO from	

L.

By Authority: L. F. JOHNSTON, Commonwealth Government Printer, Canberra.

WAR DIARY ~~OR INTELLIGENCE SUMMARY.~~

(Erase heading not required.)

Army Form C. 2118.
(adapted.)Unit HQ 25 Aust Inf Bde Date and Time.—From 1 July To 31 July 1944.

Place.	Date.	Hour.	Summary of Events and Information.	Remarks and references to Appendices, Diaries, &c.
CAMP STRATHPINE	18 Jul	0600	(contd) Bde HQ and Bn Comds 2/31, 2/25, 2/33 Aust Inf Bns and Adjut 2/33 Aust Inf Bn departed by Flying Boat for CAIRNS to attend Amphibious Trg 1 Aust Corps Comd & Staff Course. Bde Trg per Appendix "E" carried out today. Weather fine all day.	
		1500	Maj J H BYRNE (2 i/c 2/31 Aust Inf Bn) now Adm Comd 25 Bde during absence of Brig EATHER and Bn Comds.	
	19		Bde Trg per Appendix "E" continued today. Celebrations held by 2/25 Aust Inf Bn throughout day to mark the fourth anniversary of the forming of the Bn. A programme of sports was held and wives and families of men of the Bn and ex members of the Bn attended. At night a selection of Band Music was rendered by 2/33 Aust Inf Bn Brass Band and a Concert staged by the ABC Camp Concert Party, one half hour.	

L.

By Authority: L. F. JOHNSTON, Commonwealth Government Printer, Canberra.

WAR DIARY ~~or INTELLIGENCE SUMMARY~~
(Erase heading not required.)

Army Form C. 2118.
(adapted.)

Unit.....HQ 25 Aust Inf Bde..... Date and Time.—From.....1 July.....To.....31 July 1944.....

Place.	Date.	Hour.	Summary of Events and Information.	Remarks and references to Appendices, Diaries, &c.
CAMP STRATHPINE	19 Jul	(contd)	of which was broadcasted over the National Network.	
			A satisfactory audition was given by 2/33 Bn Band to an ABC representative and arrangements made for them to broadcast from 4 QG BRISBANE in approximately 3 weeks time.	
	20		Trg as usual. Weather fine.	
	21		Trg as usual. Weather fine.	
			Farewell message received from Maj Gen G A VASEY, a copy of which was issued to every member of the Bde.	Appendix "J"
	22		See Appendix "O" for Trg Syllabus 17-22 Jul.	Appendix "O"
	23		NO trg. Weather fine but windy.	
	24		Trg resumed. Weather dull.	
			Preliminary information for 7 Div March through BRISBANE received from Div. March to be on 8 Aug. Full details to date	
			Contained in Appendix "K". Infm fwded to all Units under comd.	Appendix "K" <i>Hub</i>

L.

By Authority: L. F. JOHNSTON, Commonwealth Government Printer, Canberra.

WAR DIARY ~~or INTELLIGENCE SUMMARY~~
(Erase heading not required.)

Army Form C. 2118.
(adapted.)

Unit HQ 25 Aust Inf Bde Date and Time.—From 1 July To 31 July 1944.

Place.	Date.	Hour.	Summary of Events and Information.	Remarks and references to Appendices, Diaries, &c.
CAMP STRATHPINE	25 Jul		NIL report. Trg as per Appendices.	
	26 Jul		For Bde HQ Trg Syllabus to 1 Aug see Appendix "L". Weather - rain all day.	Appendix "L"
	27		Usual trg and practice for forthcoming march of 7 Aust Div through BRISBANE on 8 Aug. Weather inclement.	
	28	1800	Trg Syllabus Summary 25 Bde Gp to 5 Aug issued. Weather fine - otherwise NIL report.	Appendix "M"
			See Appendix "P" for Trg Syllabus 24-29 Jul.	Appendix "P"
	29		Trg until 1630 hrs.	
	30		Sports and leave, otherwise NIL report.	
	31		See Appendices for trg today. Lectures by Int Sec on Map Reading etc, A/C Recognition. Practice for 7 Aust Div march through BRISBANE on Tuesday 8 Aug continued.	

L.

By Authority: L. F. JOHNSTON, Commonwealth Government Printer, Canberra.

HCB

WAR DIARY ~~or INTELLIGENCE SUMMARY~~
 (Erase heading not required.)

Army Form C. 2118.
 (adapted.)

Unit HQ 25 Aust Inf Bde Date and Time.—From 1 July To 31 July 1944.

Place.	Date.	Hour.	Summary of Events and Information.	Remarks and references to Appendices, Diaries, &c.
CAMP STRATHPINE	31 Jul		Weather fine and clear.	
			See Appendix "N" for additional information on 7 Aust Div	
			march through BRISBANE on 8 Aug 1944.	Appendix "N"
		1600	Capt MILFORD BM(L) proceeded to BRISBANE and made a recce of	
			the Bde Assembly Area Victoria Park, for 7 Aust Div March	
			through BRISBANE on 8 Aug. Also selected Bn assembly areas.	
			For report on Educational activities see Appendix "Q"	Appendix "Q"
			For report on Amenities see Appendix "R"	Appendix "R"

Handwritten signature: L. F. Johnston

Appx A

AUSTRALIAN IMPERIAL FORCE

ROUTINE ORDERS

BY

BRIGADIER K.W. ELLIOT, CBE, DSO, ED.

COMMANDING

25 AUSTRALIAN INFANTRY BRIGADE

25 AUST INF BDE
10 JULY 44

(Nos 11 - 13)

11. INCOME TAX (CXC 4233/44)

(a) The attention of all ranks is directed to the recently issued instructions regarding INCOME TAX returns for the year ended 30 June 44.

(b) In all cases where a member's pay together with any private income, exceeds £250 during the year, a return must be completed and forwarded to the Deputy Commissioner of Taxation in the capital city of the member's State of enlistment, so as to reach that address by 31 July 44.

(c) The pay earned by a member outside Australia and during the period of NINETEEN DAYS following his resumption of duty in AUSTRALIA is exempt from taxation and need NOT be taken into account. "Resumption of duty" has been defined as meaning "disembarkation" except in cases where members are returned on account of sickness and are admitted to hospital.

(d) Income Tax ~~XXXX~~ return forms may be obtained from the Brigade Education Officer and members may consult this officer when in doubt about any matter concerning taxation.

(e) It is emphasised that the liability to render returns is also a civil responsibility and that failure to do so will result in ~~prosecutions~~ prosecutions in the civil courts.

(f) Members are also informed that deductions must be made from the pay of members of specified ranks to assist in meeting any future liability to taxation. The appropriate debits will accordingly be entered in paybooks by reductions in drawing rates. The reductions will apply from varying dates according to the date of resumption of duty.

12. MEMORIALS - VETERANS (This order Bde HQ personnel only)

Members are reminded that they must report to Bde Orderly Room Sjt all variations in the designation of their Next of Kin; e.g. marriage or death of a parent. This action will enable the necessary casualty returns to be submitted to Records Office and alterations made in the member's paybook.

13.

ABSENCE WITHOUT LEAVE - SUSPENSION OF ALLOTMENTS AND DEPENDANTS ALLOWANCES

(a) Where a member has been declared an illegal absentee the District Finance Officer will, under the regulations as now amended, take the action outlined in paras (sub) (b) and (c) of this order.

(b) Where a member has made an allotment in respect of which dependants allowance is payable, the District Finance Officer will at once forward a notice to the member's allottee. This notice will inform the allottee that the allotment and dependants allowance will be suspended after payment of two more fortnightly instalments, including any instalment which may be payable on the date of the notice.

(c) Where no dependants allowance is payable in respect of the member's ~~allotment~~ allotment, the District Finance Officer will suspend payment of the allotment as from the earliest possible date.

Distribution.

All units under Command
Bde Comd
Officers' Mess
Sjts' Mess
ORL Mess
War Diary
File.

[Signature]
Capt.
A/S.C. 25 Aust Inf Bde.

Notices.

HQ 25 AUSTRALIAN INF BDE REGTL FUND Account No F135

Amount Regtl Trust Fund 30 May 44	£ 92.8.4
Canteen profit Jan 44	£ 4.13.7
Canteen profit April 44	£ 5.18.5

Balance as at 30 June 44	£103.--.4
--------------------------	-----------

STATEMENT OF ACCOUNTS - HQ 25 AUSTRALIAN INF BDE CANTEN

Receipts

Bal cash 29/5/44	£ 80	2
Canteen sales for month to 28/6/44	£621	2 7
Credit allowed on returns	£176	4 2
Stock on hand 28.6.44	£ 84	3 2
Regs etc. Returnable at Net canteen prices	£ 27	8
Loss on stock stolen 24.6.44	£ 11	19 11

Payments

Purchases to 28/6/44	£825.16.4
Sdy purchases	£ 6.5.3
Balance	£168.16.5

£1000 18

£1000.18.-

Balance £ 168.16.5

Less advance £75

Less stolen stock £11.19.11 £ 86.19.11

£ 81.16.6

Less profit to 29/5/44 £ 44.13.38

Nett profit for month to 28.6.44 £ 37. 3.10

Balance Represents

Cash on hand 28.6.44 £ 45. 5. 4.
Stock on hand " £ 84. 3. 2.
Kegs to be returned £ 27. 8.
Less stolen stock £ 11.19.11.

£168.16.5.

CERTIFIED NET PROFIT MONTH ENDING 28.6.44 £ 37.3.10

Appx B

SECRET.

25 AUST INF BDE TRG INSTR No 35
AMENDMENT No 1

25 Aust Inf Bde
10 July 44
Copy No 9

1. PLATOON TRAINING

Date of completion is now 5 Aug 44

2. TRAINING HOURS

25 Aust Inf Bde Trg Instr No 34 calls for 6 days each of 6 hours training per week.

3. LEAVE

The following policy takes effect from 10 July 44.

- (a) Day leave will NOT be granted.
- (b) Night leave commencing NOT before 1630 hrs may be granted at CO's discretion.
- (c) Week-end leave commencing 1630 hrs Friday may be granted up to 7 Aust Div allotment ONLY. All other week-end leave will cover the period 1630 hrs Saturday to 0830 hrs Monday.

4. ACKNOWLEDGE

Maj.
BM 25 Aust Inf Bde.

DISTRIBUTION

Copy No

2/25 Aust Inf Bn	1
2/31 Aust Inf Bn	2
2/33 Aust Inf Bn	3
Comd	4
BM	5
SC	6
LO	7
7 Aust Div	8
War Diary	9-10 ✓
File	11-12

War Diary
SUBJECT:

FERRY SERVICE - STRATHPINE CAMP

Appx C.

HQ 7 Aust Div
16 Jul 44

7 AUST DIV ADM CIRC NO Q 60

1. In order to make the best possible use of transport and to minimise use of vehicles by individual officers, this HQ will run a Ferry Service for officers within the divisional area.
2. The service will commence on 12 Jul 44. Time table, route and stopping places are detailed in Appx "A" attached. Ferry Service vehicles will be clearly marked "7 AUST DIV FERRY CAR".
3. This service will be used as far as possible by all staff and regimental officers instead of unit transport. Unit transport will be used by individual officers only when warranted by the nature of the duty being performed.
4. The success or otherwise of this expedient will depend upon the extent to which Bdes etc utilize the service.

W. J. ...
Lt-Col
AA & QMG 7 Aust Div

DISTRIBUTION:

18 Aust Inf Bde	23
21 Aust Inf Bde	23
25 Aust Inf Bde	23
HQ "B" Coy 2/1 Aust Gd Regt	2
2/1 Aust MG Bn	6
HQ RAA 7 Aust Div	12
HQ RAE 7 Aust Div	8
Sigs 7 Aust Div	3
HQ Comd AASC 7 Aust Div	3
ADMS 7 Aust Div	5
ADOS 7 Aust Div	4
CEME 7 Aust Div	4
DAPM 7 Aust Div	1
7 Aust Div Pro Coy	1
7 Aust Div Reception Camp	1
7 Aust Div Sal Unit	1
CAMP HQ 7 Aust Div	2
7 Aust Div Fd Cash Office	1
7 Aust Div Postal Unit	1
"C" Sec FSW	1
Legal Offr	1
Canteens Offr	1
Amenities Offr	1
Education Offr	1
Catering Adviser	1
Comd	1
G	1
AQ	1
A	1
War Diary	2
File	2
Spares	10
29 Aust Inf Bde	(For infm)
Camp SO STRATHPINE	(do)
RTO STRATHPINE	(do)

1. STOPPING PLACES

HQ 7 Aust Div - HQ Comd AASC 7 Aust Div - HQ RAA 7 Aust Div - 29 Aust Inf Bde ^φ - HQ 25 Aust Inf Bde - PETRIE RAILWAY STATION ^φ - STRATHPINE RAILWAY STATION ^φ - HQ 21 Aust Inf Bde - HQ 18 Aust Inf Bde - HQ RAE 7 Aust Div - HQ 7 Aust Div.

2. ROUTE (Ref Map: CAMP STRATHPINE MILITARY AREA 1:9600)

PERSHING DRIVE - EL PASO AVENUE - SANTA FE STREET - JUAREZ STREET - PLAZA DEL TOROS - COMANCHO STREET - MAYO STREET - BRISBANE ROAD - PETRIE RAILWAY STATION - STRATHPINE RAILWAY STATION - FORREST ROAD - WILSON ROAD - KILPATRICK ROAD - SHERIDAN ROAD - FARNSWORTH ROAD - HOWZE ROAD - SWIFT DRIVE - PERSHING DRIVE.

3. TIME TABLE

DAILY TRIP NUMBER	HQ 7 AUST DIV	HQ COMD AASC 7 AUST DIV	HQ RAA 7 AUST DIV	HQ 29 AUST INF BDE ^φ	HQ 25 AUST INF BDE	PETRIE RAILWAY STATION ^φ	STRATHPINE RAILWAY STATION ^φ	HQ 21 AUST INF BDE	HQ 18 AUST INF BDE	HQ RAE 7 AUST DIV	HQ 7 AUST DIV
1	0830	0831	0835	0837	0848	0855	0904	0915	0920	0923	0933
2	0930	0931	0935	0937	0948	0955	1004	1015	1020	1023	1033
3	1030	1031	1035	1037	1048	1055	1104	1115	1120	1123	1133
4	1130	1131	1135	1137	1148	1155	1204	1215	1220	1223	1233
5	1330	1331	1335	1337	1348	1355	1404	1415	1420	1423	1433
6	1430	1431	1435	1437	1448	1455	1504	1515	1520	1523	1533
7	1530	1531	1535	1537	1548	1555	1604	1615	1620	1623	1633

^φ If required.

TRAINING SYLLABUS

Appx D

HQ 2/25 AUST INF BN
422/436
6 Jul 44.

HQ 25 AUST INF BDE.

1. Ref Syllabus of Training attached to out 422/400 of 29 June 1944.
2. HQ Company will carry out

Day 1 on	Monday	10 July 1944.
" 2 "	Tuesday	11 " "
" 3 "	Wednesday	12 " "
Range Practice on	Thursday	13 " "
Day 4 on	Friday	14 " "
" 5 "	Saturday	15 " "

3. Amended Rifle Coys Syllabus for the week 10 - 15 July 1944 is attached.

W. H. Hogg Lt-Col. and
 Comd 2/25 Aust Inf Bn.

War diary

2/25 AUST INF BN
RIFLE COMPANY SYLLABUS

DAY	0830 - 0900	0900 - 0945	0945 - 1030	1040 - 1125	1125 - 1215	1345 - 1425	1425 - 1505	1505-1545 hrs.
MON 10	Admin Pde.	Squad & Rifle Drill	Rifle. Pam 3 Les. 1 to 4	Bayonet Pam. 12 - Les. 1	Bren. Pam. 4 Les. 1	Grenade. Pam 13 - Les. 1	Owen. Pam. 15 Les. 1	Grenade Discharge. er. Les. 3 & 4.
TUE 11	Admin Pde.	Lecture - Malaria	Bayonet	Rifle. Pam. 3 Les. 6	Squad & Rifle Drill	Bren. Pam. 4 Les. 2	Owen. Lesson 2	Grenade. Les. 2
WED 12	Admin Pde.	Rifle. Pam. 3 Les. 6	Bren. Pam. 4 Les. 3 & 4	Grenade. Pam. 13 - Les. 4	Owen. Les. 3	Squad and Rifle Drill	Lecture	Bayonet
THU 13	Admin Pde	Owen	F.O. Trg Drill	Field Formations	Bren. L.5	Grenade L.5	Bayonet	
FRI 14	Admin Pde.	R A N G E			P R A C T I C E			
SAT 15	Admin Pde.	Bren. L.6	Rifle. Les. 8 & 9.	Individual stalk ✓	Grenade. Les. 6 & 7.	2" Mortar Les. 1	Lecture	

0830 to 1215 3 3/4 hrs
1345 to 1545 2

5 3/4 hrs?

4 1/2 hrs

3
+
1505-1545 hrs.

X
X
X
3
X
3
1

2/31 AUST INF BN

TRAINING SYLLABUS FOR WEEK ENDING -- 16 JUL 44

DATE	0815 0830	0830 0930	0930	-----	1230	1330	-----	1600
MON 10 JUL	Coy Parades		Organisation of the Platoon ?			Organised Platoon in the Approach		
TUE 11 JUL	" "	Bn Parade Ceremonial	Platoon	in	the	encounter		attack
WED 12 JUL	" "				ROUTE	MARCH		X
THU 13 JUL	" "	Bn Parade Ceremonial	Platoon		Ambush	Organised Sport ?		
FRI 14 JUL	" "	Bn Parade Ceremonial		Platoon	in			defense
SAT 15 JUL	" "	Pl Comds Malarial Discipline	NCOs: Coy Administration	recapitulation of Week's Training		FREE ?		
SUN 16 JUL	" "		CHURCH		PARADES	FREE		

Remarks:-

- (1) HQ Coy Specialist Trg. Pl Comds to submit detailed syllabus to BHQ by 1200 hrs 7 Jul 44.
- (2) TUE and THU: for each Coy --- (a) Two Pls - compass night march. 1800 to 2000 hrs. (b) one Pl - two secs in defensive position with other sec on bayonet stalk (without bayonet).
- (3) T.E.W.T.S for Cffrs and NCOs detailed will be held on Tue, Thu and Fri mornings.
- (4) Pl in approach, attack and defense will be demonstrated in Coys on Sand Table and Blackboard, and then practise drill in Coy lines: then practise drill on the ground in Coy trg areas.
- (5) Pl Comds will take opportunity throughout the week during trg periods to commence informal discussions on Malaria based on A.T.M 31 Supplement.

IN THE FIELD

B. H. Mansfield
A/ADJT ----- 2/31 AUST INF BN
for CAPT

FROM 10 JUL 42		TO 16 JUL 42					
TIME	D 1	D 2	D 3	D 4	D 5	D 6	D 7
0830	Coy Pde and Inspection	Battalion Parade	Coy Pde and Inspection	Battalion Parade	Battalion Parade	Coy Pde and Inspection	
0900	COMPANY ROUTE MARCH LUNCH	Rifle Exercises	Squad Drill	Marching in sizes	Squad drill	Recapit	R
0945		Recapit: Bren	Lecture: Current Affrs	Recapit: Mortar 2"	Cloth Model Pl in attack	Make & Mend	E
1030		Break	Break	Break	Break		S
1045		Bayonet Trg Assault Cse	Joy Drill	Practise Platoon	Bayonet Trg Assault Cse		T
1055			Lecture: Discipline	Recapit: Owen	Verbal Orders L & Pract	Mapping & Compass	
1130			LUNCH	LUNCH	LUNCH	LUNCH	
1130			Miniature Range Practise	Sport Organised Games	COMPANY ROUTE MARCH	Exercise: Platoon in Attack	ADM
1415			Rifle Cwen Bren				SPORT
1415			T-OBT				
1500				Lecture for Offrs	Discussion Offrs	P.T.	
1545							
1545							
1630							
1630							
1730							

A Written exercise to be handed to adjutant by 131630K

[Signature]
Adj 2/33 Aust Inf Bn

Subject: Lecture by adpt to all affrs.

2/33 AUST INF BN

Precis 1 SUB UNIT ADM
JULY 1944

POINTS FOR COY COMDS

1. GEN:

- (a) Men cannot get the best results from trg, however good, unless they are healthy, comfortable and happy; and NO amount of trg will fit a unit or sub-unit for battle unless it has good discipline and a high esprit de corps.
- (b) None of those things are possible without good unit and sub-unit adm.
- (c) A Coy Comd has a 2IC, CSM, CQMS, and other staff to carry out the details of adm, but the ultimate responsibility is his alone; "That which is not inspected is not done" - a Coy Comd must be constantly inspecting and checking the adm side of his comd, and thinking of possible improvements.
- (d) The following points are suggested for thought and discussion and Coy Comds future reference.

2. IMPROVEMENT OF STANDARD AND PRESTIGE OF SUBORDINATES

(a) Pl Comds:

- (1) Very few are naturally good administrators, its your job to help and train them.
- (11) Do they always behave in front of their tps as offrs should; if not, what do you do about it?
- (111) Should pl comds attend orderly rooms when one of their men is being charged.

(b) NCO's

- (i) Who runs the early morning pde and is it well run?
- (ii) Where do the sgts sleep?
- (iii) What privileges do your Cpls enjoy?
- (iv) Junior NCO's need help and trg; do you hold conferences with them, go into their problems, get to know them?
- (v) Is any encouragement given to senior ptes to become NCO's?

3. DISCIPLINE & SMARTNESS:

- (a) Is coy drill of any value?
- (b) Do you insist on a standard of dress for all coy pde
- (c) What assistance do you give the men to enable them to turn out smartly and properly dressed.
- (d) What do you do about saluting? Do your offrs return salutes in the proper manner.

3. DISCIPLINE & SMARTNESS (continued)

- (e) If yours isnt recognised as the best Coy in the bn, whose fault is it and why?
- (f) What should leave personnel be told before going on leave? Who inspects them?
- (g) Are any of your offrs called by their christian names by the men?

4. MESSING

- (a) Which offrs attend meal pdes?
- (b) When cooking is on a coy basis, is the coy getting its share of the services of the WO Caterer, and the Sgt Cook?
- (c) Are your cooks really first class and clean?
- (d) Where do your men keep their mess tins?
- (e) Is sufficient hot water put out before and after meals.

5. CQMS & STOREMAN

- (a) How often is the coy Q store inspected and by whom?
- (b) Are the records accurate and complete?
- (c) How are the stores packed for a long move by sea or rail?
- (d) What happens to the gear of the man who goes to hospital?

6. WEAPONS

- (a) How long since the armourer inspected your coy weapons? Did he look at the weapons in the Q store? How often do you yourself examine them?
- (b) Should a Coy cmd personally inspect rifles now and then?

7. COY HQ

- (a) Is the CSM a good fellow or a Sgt Major?
- (b) Does the P & O Col forget returns?
- (c) Does he keep statistical records and manning chart up to date?
- (d) How do documents of general interest get distributed?
- (e) Dont forget the att pers, the best sigs like to go to the coy that treats them best.

8. AMENITIES

- (a) Where is the nearest rec room?
- (b) Is there any inter-pl or inter coy sport Comp.
- (c) Is your sports afternoon organised or is it simply a rest period for half your coy?

9. MEDICAL ETC

- (a) When did the unit chiropidist last inspect the Coy?
- (b) When did you as Coy Comd last inspect your mens feet?
- (c) Do you see that foot baths are provided after route marches. If not why not?
- (d) How often are blankets aired?

In conclusion: It will be noticed that the abovementioned points are all nominal drill, however many escape the attention of the Comd and it is felt that a glance at these points now and then will help the coy comd in maintaining the efficiency of his coy

E. MacLellan Capt
Adj. 2/33 Aust Inf Bn

Distribution:-
One each offr
One coy files
Two file
Two War diary

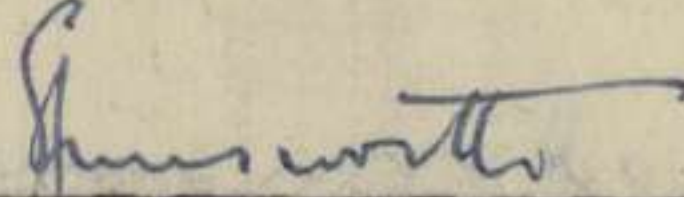
25. B. 112

2/4 AUST FD AMB - TRAINING SYLLABUS

For Week Ending 15 Jul 44.

PERIOD	Monday	Tuesday	Wednesday	Thursday	Friday	Sat.	Sun.
0830 to 0920	Squad Drill	Route March	Squad Drill	Route March	Stretcher Drill	Camp Maintenance	
0930 to 1020	Lecture - Water (3 ATM 33)	Do	Lecture - Epidemic Disease	Do	Lecture - Malarial Control	Do	CHURCH
1030 to 1115	Squad Drill	Lecture - Malaria (ATM 31)	Stretcher Drill	Do	Squad Drill	Do	REST DAY
1125 to 1200	Lecture - Malaria (ATM 31)	Squad Drill	Lecture - Malarial Control	Do	Lecture - Insect Borne Disease (ATM 33)	Do	
1200	LUNCH	LUNCH	LUNCH	LUNCH	LUNCH	LUNCH	
1330 to 1520	Organised Sport	Organised Sport	Organised Sport	Organised Sport	Organised Sport	Organised Sport	
1530 to 1630	PT	PT	PT	PT	PT	RX Do	
1700	Evening Meal	Evening Meal	Evening Meal	Evening Meal	Evening Meal	Evening Meal	
2215		L I G H T S	O U T				

3/4 1000 LD 1000


Major,
Adm Comd 2/4 AUST FD AMB.

2/31 AUST INF BN

TRAINING SYLLABUS FOR WEEK ENDING ----- 16 JUL 44

DATE	0815 0830	0830 0930	0930	1600
MON 10 JUL	Coy Parades	Organisation of the Pl: its tactical grouping & Eqpt.	Pl under Pl Comds in the approach with contact imminent	Coy Comds preparation of T.E.W.T for Tues and Wed.
TUE 11 JUL	Coy Parades	T.E.W.T under Coy Comds with D.S:	Pl in the encounter attack	
WED 12 JUL	Coy Parades	Cross country move by Coys:	T.E.W.T on the approach and encounter	
THU 13 JUL	Coy Parades	Practise Pl Ambush as a Drill Coy Comds preparation of T.E.W.T for Fri:	Pl Ambush with Tactical setting	All Offrs at 1545 hrs with CO at Sand Table
FRI 14 JUL	Coy Parades	T.E.W.T under Coy Comds with D.S:	Pl in defense	
SAT 15 JUL	Coy Parades	Bn ceremonial Parade	Pl Comds Malaria Discipline. NCOs Recapitulation. Coy Comds prepare TEWT for Sat afternoon	T.E.W.T Pl as the Protective Recce patrol
SUN 16 JUL	Coy Parades	CHURCH	PARADES	FREE

Exercise With Troop. NOT TEWTS!

Remarks:-

- (1) HQ Coy - Specialist Trg. Pl Comds to submit detailed syllabus to BHQ by 1600 hrs 10 Jul 44.
- (2) TUE and THU: for each Coy --- (a) Two Pls - Compass night march. *1800-2000hrs.*
(b) One Pl - two Secs in defensive position with other Sec on bayonet stalk (without bayonet)
- (3) Pl Comds will take opportunity throughout the week during trg periods to commence informal discussions on Malaria, based on A.T.M 31 Supplement.
- (4) All mid-day meals will be delivered in Trg areas.
- (5) Coys will move to Trg areas at 1100 hrs on Sat - meal at 1200 hrs.
- (6) Normal overnight Leave on MON, WED and FRI nights: no weekend leave other than Bde allotment before 1630 hrs Sat.

IN THE FIELD
10 Jul 44.

Big War diary

B. S. ...
CAPT.
A/ADJT --- 2/31 AUST INF BN.

[Handwritten signature]

2/33 AUST INF BN - SYLLABUS

FROM 10 JUL 44

TO 16 JUL 44

TIME	D 1	D 2	D 3	D 4	D 5	D 6	D 7
0830	Coy Pde and Inspection	Bn Pde	Coy Pde and Inspection.	Coy Pde and Inspection	Bn Pde	Coy Pde and Inspection.	
0900	TACTICAL MARCH: COMPANY IN THE ADVANCE LUNCH	FD Fmns Practical	Sandtable: Platoon in Attack.	Section in Defence: Discuss & Prac	Sandtable: Platoon in Defence	Verbal Orders L & Practice	R E S T D A Y
0945		Bayonet Training					
1030		BREAK	BREAK	BREAK	BREAK	BREAK	
1045		Lecture: Current Affrs	PLATOON IN	Lecture by Pioneer Offr: Fd Engineering Bayonet assault Course	PLATOON IN	Mapping & Compass Practical	
1130		Cam & Conceal Practical					
1130			ATTACK		DEFENCE		
1330			LUNCH	BN TRG AREA	LUNCH	BN TRG AREA	
1415	Sandtable & discussion.	Miniature Rge Completion of Practices: Rifle Owen Bren TsOET (Pers, not firing)	Written exerc -ise to be handed to Adj by 120830K	Ambushes Practical (Setting & Springing)		Protection on the move Coy Cross Country March	
1415	The Advance						
1500	Fieldcraft: Sec Stalk Practical			PT and organised Sport.		Sub unit Adm	
1545							
1630	Lec & Discuss Offrs only		Lecture: IO Offrs only	Lecture: Offrs only			
1730							

SEQUENCE OF TRG:

A	D ₂	D ₃	D ₄	D ₅	D ₆	D ₁	D ₇
B	D ₁	D ₂	D ₃	D ₄	D ₅	D ₆	D ₇
C	D ₁	D ₆	D ₂	D ₃	D ₄	D ₅	D ₇
D	D ₁	D ₄	D ₅	D ₂	D ₃	D ₆	D ₇
HQ	Spec Trg			D ₂	Spec Trg		

Shaw
Adj 2/33 Aust Inf Bn ^{Capt}

Handwritten signature

TRAINING DIRECTIONS

NOTE

1. Although all country is fairly open, Jungle formations and training only will be carried out.
2. Coys will make tactical training as realistic as possible. A short talk will be given, then a demonstration, then all sub-units will carry out the exercise. A criticism will be given in every instance.
3. Training stores and blank ammunition will be requisitioned for where required.
4. Where possible movement to and from area will be in sixes.

W. J. ... Capt.
Adj. 2/25 Aust. Inf. Bn.

2/25 AUST INF BN

RIFLE COMPANY SYLLABUS

DAY & DATE	0830-0900	0900 - 0945	0945 - 1030	1040-1125	1125 - 1215	1330 - 1415	1415 - 1500	1500- 1600 HRS
MON 10 JUL	Adm Parade Drill & Marching B	Bren- Loading: unloading & sight sett- ing, Accuracy of aim Pam 4 Less 1	FC- Collect- ion of infm IMT Sec 57	FC- Sec For- mation gps within the sec (Demon- stration) TW Pam 2 Chap 5	Owen - Change lever posn, load, unload, change magaz- ines Pam 15 Page 8-10	Bren - Hold- ing, aiming & firing. Accuracy of aim Pam 4 Less 2	FC - Verbal messages & reports IMT Sec 61	FC - Patrols, Recce patrols with report. TW Pam 2 Chap 10 Sec 70
TUE 11 JUL	Battalion Parade	Rifle Range - Rifle Shooting. Recapitulation of weapon training when not on mound						
WED 12 JUL	Adm Parade Drill & Marching	March to Bn Trg Area incorporating the advance and first contact by sections and subsequent action. TW Pam 2 Chap 7			Section attack TW Pam 2 Chap 8	Sec Def posn Consolidat- ion with siting of individual weapons TW Pam 2 Chap 9 Sec 51-61	Patrolling- General, Recce, Patrol Leaders Orders TW Pam 2 Sec 69-70, 73	Section with- drawal and ambush, Prep etc. TW Pam 2 Chap 11
THU 13 JUL	Adm Parade Drill & Marching	Bren- Recap Piston & Barrel gps Pam 4 Less 3	Rifle - Recap Firing Instn Pam 3 Less 13 - 16	Owen Recap Firing gun, Standing & Hip posns Pam 15 Page 2 - 5 10 - 11	Appln of fire Recap JD Range Cards Pam 2 Less 2 - 5	2" Mortar Recap Instn of mortar & bombs, strip- ping & clean- ing. Pam 8 Less 1-2	Bren Recap Loading, unloading & sight set- ting, Accur- acy of aim Pam 4 Les 1	FC Recap Verbal messages & reports. IMT Sec 61 Intercommunication drill

1030

2/25 AUST INF BN

RIFLE COMPANY SYLLABUS

DAY & DATE	0830-0900	0900-0945	0945-1030	1040-1125	1125 - 1215	1330 - 1415	1415 - 1500	1500 - 1600 HRS
FRI 14 JUL	Adm Parade Drill & Marching	Bren - Butt, Body & Bipod Gps Pam 4 Less 4	Lecture Jungle Hygiene & Sanitation TW Pam 2 Chap 3	FC - Fd Signals IMT Sec 52	Owen - Firing: gun, standing: & hip posns. Pam 15 Pages 10-11	Bren - Immed- iate action, stoppages Pam 4 Less 8-9	FC Indiv- idual stalk: Sectional stalk. IMT Sec 44	FC Fighting patrol with report TW Pam 2 Chap 10 Sec 70
SAT 15 JUL	Battalion Parade	FC. Sec in ; advance & first contact TW Pam 2 Chap 9-10 Sec 7	FC - Fighting patrols TW Pam 2 Chap 11	Appln of fire - Fire Control orders Pam 2 Less 6-7	Bren - Sec handling, use of cover Pam 4 Less 10, 11, 15, & 16	FC - Sec in: attack TW Pam 2 Chap 8	FC - Protective patrolling. TW Pam 2 Chap 10 Sec 72	

2/25 AUST INF BN

NCO CADRE CLASS

LOCATION: Ref Map SAMFORD 1"-1 mile 118147.

DURATION: It is intended to put all NCOs and prospective NCOs through in two cadres each of 12 working days. Strength of cadres 48 - 60.

STAFF:

CI	Capt ANDREW
Instrs	Lt AKED
	Lt ORTON
	Lt ROBINSON
	Lt CALCINO
	Lt McKEWEN
	Lt LONG
	Lt RODGERS (Reserve)

ADM: Completely self-contained.

INTERCOMN: DR Twice daily

SYLLABUS: Attached.

R. H. Itan-wood
Lt-Col
Comd 2/25 Aust Inf Bn

N.C.O. CADRE CLASS SYLLABUS

DAY	PERIOD	SUBJECT	DETAIL	REFERENCE
1	1 - 4	Adm.	Settling in camp. Erection of tents etc.	
	5	Adn.	Opening address - requirements of students.	
	6	F.I. & I.	Method of Falling In. Correct Inspection.	Adm of pl.
	7	Instr.	Method of instructing and demonstration.	
	8	Drill	Drill, Marching, Saluting.	
2	1	F.I. & I.	Drill, marching, saluting. Intercomm drill.	
	2	Bren	Loading, unloading, sight setting.	
	3	Rifle	Gen. Mechanism, cleaning, loading, unloading.	Pam 4 Les. 1.
	4	2" mortar	Introduction of mortar and bombs. Stripping and cleaning.	Pam 3 Les. 1 - 2.
	5	Grenade	Description and mechanism.	Pam 8 Les. 1 - 2.
	6	App. Fire	Searching of ground, location of enemy targets.	Pam 13 Les. 1.
	7	Owen	Introduction, load, unload, change lever positions.	Pam 2 Les. 1.
	8	PT	General.	Pam 15 Page 5 - 8.
	9	Lecture	Tropical sanitation and hyg.	TW Pam 2 Chap 3.
3	1	F.I. & I.	Drill. Gd procedure	
	2	Bren	Holding, aiming, firing, Accuracy of aim.	
	3	M.P.	Conventional signs, Topographical features.	Pam 4 Les. 2.
	4	Rifle	Aiming instr. Accuracy of aim.	ATM 13.
	5	Grenade	Throwing No.36 Grenade (dummy).	Pam 3 Les. 6.
	6	F.C.	Collection of infm.	Pam 13 Les. 2.
	7	Owen	Load, unload, change magazines.	IMP Sec 57.
	8	PT	General.	Pam 15 Page 8 - 10.
4	1	F.I. & I.	Drill, marching, orderly room procedure.	
	2	Bren	Piston, barrel groups.	
	3	F.J.	Sec formations	Pam 4 Les. 3.
	4	2" Mortar	Loading, unloading, aiming, firing, action on misfire.	IMP Sec 50.
	5	Rifle	Aiming at targets (Service distance), aiming at ground.	Pam 8 Les. 3.
	6	Appl. Fire	Judging distance	Pam 3 Les. 7 - 8.
	7	F.C.	Verbal messages and reports.	Pam 2 Chap 2.
	8	PT	General.	IMP Sec 61.
	9	Night trg.	Cloth model. Demonstration of sec fms and gps within the sec.	

DAY	PERIOD	SUBJECT	DETAILS	REFERENCE
5	1	F.I. & I.	Drill, Bayonet trg, On guard and point.	Pam 12. Pam 4 Les. 4. IMT Sec 52. Pam 3 Les. 9 and 10. MRR Pam 13 Les. 3. Pam 15 page 10, 11.
	2	Bren	Butt body and bipod groups.	
	3	F.C.	Field signals	
	4	Rifle	Aiming off for wind. Elevation, aiming up or down.	
	5	M.R.	Compass. Description and use of.	
	6	Grenade	Discharger cup.	
	7	Owen	Sighting, firing gun from standing and hip positions.	
	8	PT	General.	
6	1	F.I. & I.	Drill. Compliments.	Pam 4 Les. 5. TW Pam 2 Chap 5. Pam 8 Les. 4. Pam 2 Les. 5. IMT Sec 62. Pam 3 Les. 11, 12.
	2	Bren	Additional stripping.	
	3	F.C.	Organization of sec and sec formations.	
	4	2' Mortar	Handling.	
	5	Appl. Fire	Range cards.	
	6	F.C.	Written messages and reports.	
	7	Rifle	Aiming off for wind. Aiming off for movement (ground)	
	8	PT	General.	
	9	Night trg.	Compass march.	
7	1	F.I. & I.	Drill, bayonet trg. recapitulation.	Pam 4 Les. 6. ATM 13. Pam 13 Les. 4, 5. Pam 15 Page 13 - 16. Pam 2 Les. 7. IMT Sec 44.
	2	Bren	Care and maintenance.	
	3	M.R.	Scales and contours.	
	4	Grenade	No. 68 and No. 69. Description, mechanism, and use of.	
	5	Owen	Stripping, reassembling, cleaning and oiling.	
	6	Appl. Fire	Indication of targets. Recognition of targets.	
	7	F.C.	Individual stalk.	
	8	PT	Rifle range coaching (demonstration)	
8	1	F.I. & I.	Drill, marching, recapitulation guard procedure.	Pam 4 Les. 7. Pam 3 Les. 13 - 16. ATM 13. Pam 13 Les. 3. Pam 15 Page 10, 11. IMT Sec 44. TW Pam 2 Sec 70.
	2	Bren	Mechanism.	
	3	Rifle	Firing instruction.	
	4	M.R.	System of reference.	
	5	Grenade	Discharger cup (Recapitulation)	
	6	Owen	Firing, standing and hip positions.	
	7	F.C.	Sec stalk. Recce patrol.	
	8	PT	General.	
	9	Night trg.	Cloth model. Sec patrolling.	

DAY	PERIOD	SUBJECT	DETAILS	REFERENCE
9	1	F.I. & I.	Drill. Compliments.	
	2	Bren	Immediate action. stoppages.	Pam 4 Les. 8, 9.
	3	Appl. Fire	Fire orders.	Pam 2 Les. 7, 8.
	4	2" Mortar	Smoke and HE	Pam 8 Les. 5, 6.
	5	F.C.	Sec in defence. Siteing of individual weapons	TW Pam 2 Chap 9.
	6	M.R.	Interpretation of photo maps.	
	7	Rifle	Snapshotting and rapid fire.	
	8	PT	General.	Pam 3 Les. 17 - 19.
10	1	F.I. & I.	Drill, Recapitulation bayonet trg.	
	2	Bren	Use of cover.	Pam 4 Les. 20.
	3	Rifle	Fire discipline training	Pam 3 Les. 22.
	4	Grenade	Firing, dummy grenades.	Pam 13 Les. 10.
	5	F.C.	Sec in attack.	TW Pam 2 Chap 8.
	6	Owen	Stoppages.	Pam 15 Page 27.
	7	F.C.	Sec and pl in advance and first contact.	TW Pam 2 Chap 7.
	8		Demonstration range coaching.	
	9	Night trg.	Cloth model. Demonstration sec and pl in advance and first contact.	
11	1	F.I. & I.	Drill, marching, saluting, parade ground orders.	
	2	Bren	Sec handling.	Pam 4 Chap 4.
	3	F.C.	Pl in defence.	TW Pam 2 Chap 9.
	4	Appl. Fire	Fire control	Pam 2 Les. 6, 7.
	5	M.R.	Navigation by stars.	ATM 13 Page 18.
	6 - 7	F.C.	Pl advance, first contact, attack.	TW Pam 2 Chap 7, 8.
	8	PT	General.	
	12	1 - 8	Exam.	Practical and theory.

N.B. - Pam. 15 means the Owen Gun instr book published by the maker.

25 AUST INF BDE GROUP

TRAINING SYLLABUS SUMMARY.

Appx E

Day	2/25 Aust Inf Bn	2/31 Aust Inf Bn	2/33 Aust Inf Bn	HQ 25 Aust Inf Bde and attached troops
17 Jul	Bn Parade. Drill and marching in Sixes. Rifle Range Practices and Weapon training recapitulation	Demolition:-The Section in the wrong and in the right way. Exercises:-Formations and deployment of point sections.	Range Practices - Rifle, OSMG. T'sOET all small arms weapons.	Drill, marching in sixes. Weapon training T'sOET rifle
18 Jul	Section exercises - advance and first contact, with subsequent action. Sections in defence, patrolling, withdrawal and ambush.	Section exercises :- Recce and standing patrols.	Bn parade. Drill and marching in sixes. Signal training, weapon training. Demolition - Camouflage and concealment. Tropical hygiene.	Weapon training T'sOET LMG.
19 Jul	Bn Parade Fourth Anniversary Celebrations.	Bn cross-country move (1/2 day) Platoon exercises. Platoon in encounter attack.	Sandtable Exercise - Platoon in deliberate attack Exercise Bn training area - Platoon in deliberate attack.	Drill, marching in sixes. Ceremonial route march. Weapon training
20 Jul	Weapon training Message writing	Platoon exercises - Platoon in deliberate attack.	Signal training Lecture: Current affairs Section exercises - Cross-country formations, control, compass, concealment.	Weapon training marching in sixes
21 Jul	Recapitulation all weapon training	Platoon exercises - Fighting patrol and ambush	Sandtable and exercise - Platoon forming firm base on encounter	Weapon training marching in sixes
22 Jul	Section exercises - Individual and Section stalk, first contact, attack, patrolling Weapon training	Bn parade. Drill and marching in sixes. Malarial discipline Recapitulation weapon training Platoon exercises - Quick occupation of defensive position	Weapon training Clearing of woods and villages. Lectures:Malarial control.	Weapon training
NCO Cadre continues.			Officers lectures, Monday, Wednesday, Thursday	

War Diary

SUBJECT:

LOCAL LEAVE TO BRISBANE

CONFIDENTIAL

HQ 7 AUST DIV
15 Jul 44

7 AUST DIV ADM CIRC NO Q 62

1. (a) Following on recent over-crowding of civilian trains and difficulty in moving large numbers of troops ex BRISBANE leave, the following instructions will operate as from 16 Jul 44.
- (b) The allotment of leave quotas to brigades etc and train schedules will be STRICTLY ENFORCED by all concerned. Units exceeding leave quotas or whose personnel travel by trains otherwise than in accordance with this instruction are liable to have all leave cancelled.
- (c) It will be noted that there will be no leave to BRISBANE on Sundays.

HOSTEL ACCOMMODATION

2. Allotment to brigades etc will continue to be issued daily, except Sundays, by this HQ. Total allotment for units of 7 Aust Div will be 250 until further notice. Troops will travel by special train leaving PETRIE 0945K and return by special train leaving ROMA ST 0850K.

OVERNIGHT LEAVE

3. (a) Units of 7 Aust Div may send daily, except Sundays, a total of 300 who have homes to go to in BRISBANE. Allotment to brigades etc will be made weekly by this HQ; the allotment for the week commencing Mon 17 Jul is att as Appx "A".
- (b) Troops will travel by train leaving PETRIE 1647K and return by train leaving CENTRAL 0626K, except on Sundays when the train departs ROMA ST 0850K.
- (c) QLD L of C Area has directed that leave personnel from the STRATHPINE area will travel only on trains mentioned in this instruction. However, in the case of individuals or small parties the nature of whose duties does NOT permit of travel on normal trains, suitable arrangements can be made with this HQ.

WEEK-END LEAVE

4. The present arrangements for week-end leave from Friday afternoon to Monday morning will continue. The quota will in future be 550.

DISTRIBUTION

(See back of page)

E. H. H. H.
Lt-Col
AA & QMG 7 AUST DIV

DISTRIBUTION:

18 Aust Inf Bde	23
21 Aust Inf Bde	23
25 Aust Inf Bde	23
HQ "B" Coy 2/1 Aust Gd Regt	2
2/1 Aust MG Bn	6
HQ RAA 7 Aust Div	12
HQ RAE 7 Aust Div	8
Sigs 7 Aust Div	3
HQ Comd AASC 7 Aust Div	3
ADMS 7 Aust Div	5
ADOS 7 Aust Div	4
CEME 7 Aust Div	4
DAPM 7 Aust Div	1
7 Aust Div Pro Coy	1
7 Aust Div Reception Camp	1
7 Aust Div Sal Unit	1
CAMP HQ 7 Aust Div	2
7 Aust Div Fd Cash Office	1
7 Aust Div Postal Unit	1
"C" Sec FSW	1
Legal Offr	1
Canteens Officer	1
Amenities Officer	1
Education Officer	1
Catering Adviser	1
Comd	1
G	1
AQ	1
A	1
War Diary	2
File	2
Spares	10
29 Aust Inf Bde (For infm)	
Camp SO STRATHPINE (")	
RTO STRATHPINE (")	

Following on receipt of the above information and diff. by in div. in Brisbane 5 days from 18.1.44.

The allocation of leave to personnel in the 7 Aust Div Pro Coy will be by all concerned. This instruction is to be issued daily except Sundays.

Allocation to brigades except Sundays by HQ. Div will be 850 until further notice. The special train leaving ROMA ST 0850K.

Arrangements can be made with this HQ.

The present arrangements for week-end leave from Friday afternoon to Monday morning will continue. The quota will in future be 850.

AA & QMG 7 AUST DIV
Lt-Col

DISTRIBUTION

(See back of page)

APPX "A" TO 7 AUST DIV ADM CIRC NO Q62

ALLOTMENT OF OVERNIGHT LEAVE FOR PERIOD 17 - 22 JUL 44

<u>SERIAL</u>	<u>UNIT</u>	<u>NUMBER</u>
1.	HQ 7 Aust Div	6
2.	RAA 7 Aust Div	34
3.	RAE 7 Aust Div	16
4.	Sigs 7 Aust Div	2
5.	18 Aust Inf Bde	35
6.	21 Aust Inf Bde	90
7.	25 Aust Inf Bde	90
8.	2/1 Aust MG Bn	17
9.	AASC 7 Aust Div	10
		<u>300</u>

- NOTES:
1. Trains depart PETRIE 1647K and CENTRAL 0626K.
(Sunday only, train departs ROMA ST 0850K).
~~Other trains will not be used.~~
 2. Fd Ambs, Bde Wksps and Bde Ord Fd Pks are included in the allotment of Inf Bdes.

1. TRAINING OBJECTIVE

- (a) Company training will be completed by 31 Aug 44
- (b) Battalion training will be completed by 30 Sep 44
- (c) Allowance must be made in this period for a change of location involving 2 weeks.

2. GENERAL

- (a) Training in open and semi-open country will be carried out in accordance with tactics applicable to that country.
- (b) Trained umpires, careful preparation of exercises and representation of enemy are essential to effectiveness of collective training.
- (c) TEWTS - Sandtable exercises should be conducted prior to exercises.

3. SPECIAL TRAINING * The following will be included in training:-

- (a) Local defence, all round defence and the ability of HQs and sub units to defend themselves will be frequently practised.
- (b) Opposed River Crossings

(i) The following is a relevant extract from 2 Aust Corps Report on Operations 8 Oct to 1 May 44.

"If future operations are to be fought in country comparable with the East Coast of HUON PENINSULA, it will be found that opposed river crossings in jungle are numerous. To cover such a crossing with small arms fire from a flank requires a very high standard of musketry and fire control. It is recommended that particular attention be paid to the training and practice of these and similar types of operations. The assaulting troops in an attack of this nature would benefit also by becoming accustomed to the sound of friendly fire from the flank."

(ii) See also ATM (Aust) No 25, Part I, Sec 2, which contains a lesson from Soviet experience and ATM (Aust) dealing with assault crossings and rafting expedients. (No 27)

(c) Beachhead Defence.

1 Aust Corps Trg Instr No 4 refers to Japanese methods of attack by Raiding Tai. The co-ordination of artillery and of infantry Tk A guns, mortars, MMGs and other small arms weapons will be studied and practised in defence of a beachhead against land and sea attack. Measures for defeating any hostile penetration will be included.

(d) Night Operations

To include advance, forming up and attack on a prepared defensive position and consolidation to meet a dawn counter attack; defence of a locality against night attack.

4. TRAINING IN BATTLE CONDITIONS

Tactical exercises will be made as realistic as requirements of safety and availability of ammunition and training expedients permit. The SAMSONVALE Range, and the CALOUNDRA artillery range when available should be used to stage a proportion of exercises on the lines described in ATM (Aust) No 30, Part II, Sec 5.

5. INDIVIDUAL TRAINING

This will continue throughout the collective training period; classification and field firing practices will be carried out.

To page 2.

25 AUST INF BDE TRG INSTR No 36 (Continued)

6. HYGIENE, MALARIA AND EPIDEMIC CONTROL.

Throughout all training away from standing camps, units will consider themselves operating in tropical areas. Personal and unit hygiene, anti-malaria and anti-epidemic measures will be taught and carried out. See Supplement to ATM (Aust) No 33; also Lectures and Notes on Malaria Control, issued with 7 Aust Div G14/1/331 of 15 Jul 44.

7. ACKNOWLEDGE.

Glyson

Maj.
BM 25 Aust Inf Bde.

<u>DISTRIBUTION</u>	<u>Copy No</u>
2/25 Aust Inf Bn	1
2/31 Aust Inf Bn	2
2/33 Aust Inf Bn	3
Comd	4
BM	5
SC	6
Sig Offr	7
LO	8
7 Aust Div	9
War Diary	10-11
File	12-13

Appx J

112 (Bris) Mil Hosp.
Brisbane
6-7-44

TO ALL OFFICERS, WARRANT OFFICERS, N.C.O.'s, AND MEN
OF 7th AUSTRALIAN DIVISION

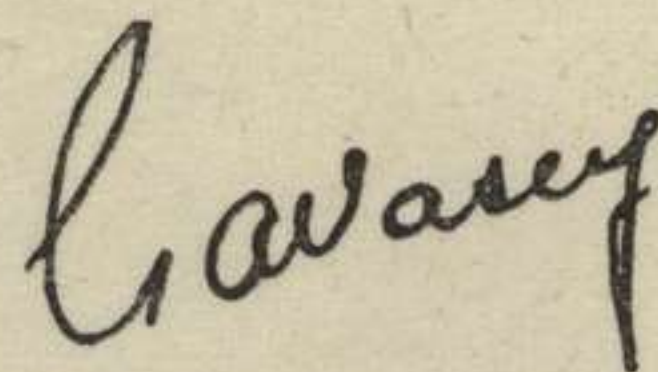
For nearly two years it has been my privilege and pleasure to say 'Good day' to you when I have met you during operations, training and on leave. Unfortunately, now I am compelled by ill health to say 'Good-bye' and my illness prevents me from seeing you personally.

I have shared with you the trials of part of the Kokoda Trail and of Gona and Sanananda. I was with you during our successes at Lae and in the Markham and Ramu Valleys. The memory of your wonderful spirit, loyalty, co-operation and help will always be a cause of great pleasure and satisfaction to me. I am sure that you will display those same qualities to my successor, Maj.-Gen. E. J. Milford.

To each of you individually and to the Division as a whole, I wish the best of good fortune in what now appears to be the closing phase of the War, though, I fear, this phase will still last some time. I trust my present indisposition will not be lengthy, and it is my earnest wish, that when I am again fit to command and lead you fellows, I shall be permitted to do so.

I look forward to seeing you during the forthcoming divisional march through Brisbane.

Good-bye and good luck.



MAJ.-GEN.

RESTRICTED

Appx. "K"

PRELIMINARY INFORMATION ON MARCH THROUGH
BRISBANE BY 7 AUST DIV

25 Aust Inf Bde
24 July 1944.

TO ALL UNITS UNDER COMMAND

- 1. Date of March 8 August 1944
- 2. Order of March
 - HQ 7 Aust Div
 - RAA and Btys
 - R.E and Ed Coys
 - Sigs 7 Aust Div (Excl Bde Sig Secs)
 - 18 Aust Inf Bde
 - 21 Aust Inf Bde
 - 25 Aust Inf Bde
 - AASC 7 Aust Div
 - AAMC 7 Aust Div
 - Ordnance

Bde HQ will include

LAD)	Maximum
Sig Sec)	Strength
Guard Pl)	150
Postal Personnel)	

Maximum Bn Strength 650

Total Bde Strength 2100

- 3. ROUTE - Victoria Park - Gilchrist Ave - Countess St -
Roma St - King George Sq - Adelaide St -
George St - Queen St - Wickham St - Brunswick St -
Victoria Park.

SALUTING BASE - CITY HALL

- 4. DRESS
 - SD
 - Web Belts
 - Anklets Web
 - Hats, Turned up.

- 5. WEAPONS
Rifles & SMGs
NCOs including and below the rank of WO11 will carry arms.
SMGs will be in the rear of each block. Attention is
directed to Pam 18 regarding the carrying of these weapons.
No pistols will be worn, either by Officers or ORs. Any
unit with rifles in workshops for inspection will make own
arrangements about the return of same for the march.

- 6. BANDS
11 bands will march with the Div, including 7 from Div units.
 - 3 from 25 Aust Inf Bde
 - 3 from 21 Aust Inf Bde
 - 1 from 18 Aust Inf Bde

Bands will concentrate at LTD on day prior to the march and
will be moved back to Units on completion of the march.

(2)

7. TRANSPORT All personnel will be moved to BRISBANE on the morning of the march by MT. Detailed arrangements will follow.
8. FEEDING Cut lunches will be provided by units. For this purpose paper bags will be obtainable from FSD.
Hot tea will be served by welfare organisations at assembly area VICTORIA PARK - personnel will take their pannikins. Corn sacks will be available on the scale of one per troop carrying vehicle. When troops have had their tea, the pannikins will be placed in the cornsack, which will be labelled with the serial number of the relative troop carrying vehicle. A L of C vehicle will then collect the cornsacks and take them to the respective MT.
9. MEDICAL ARRANGEMENTS RAP will be located at Municipal Golf Links.
Any evacuations during the march will be under the arrangements of ADIS 7 Aust Div.
10. RECCE OF ASSEMBLY AREA
Brigade representatives will recce the Assembly Area prior to the march and erect unit signs.
11. REHEARSALS Units will carry out as many rehearsals as possible. Attention will be paid to the following points.
- (a) It is anticipated that Inf Bdes will have an assembly area of approximately 150 yds square. In view of this confined space; units will have to practice "falling in" and "sizing" in a proportion of this area.
 - (b) Changing Arms - There will be definite points en route where arms will be changed (these will be notified later) but rifles will be carried on the left shoulder through QUEEN STREET - arms will NOT be changed in that street.
 - (c) Marching will be 110 paces to the minute.
 - (d) Marching six abreast.
 - (e) Marching Past - The following procedure will be observed.
 - (i) The Brigade Commander and Staff will salute on arrival at the saluting base without any word of command.
 - (ii) Unit commanders will give the command ?? Bn - in succession - Eyes Right! Necessary orders will be given by sub-unit commanders, as their coys approach the saluting base.
 - (iii) All officers will salute.
 - (iv) Sub-unit commanders will give the order Eyes Front!
 - (v) In practising march past, flags should be used.

Wiley
Cap
for SC 25 Aust Inf Bde

W.D.

Appx "L"

TRAINING SYLLABUS - HQ 25 AUST INF BDE

<u>WED - 26 JUL 44</u>	<u>THURS - 27 JUL</u>	<u>FRI - 28 JUL</u>	<u>SAT - 29 JUL</u>	<u>MON - 31 JUL</u>	<u>TUES - 1 AUG</u>
<u>SQUAD 1</u>	<u>SQUAD 3</u>	<u>SQUAD 5</u>	<u>SQUAD 1</u>	<u>SQUAD 3</u>	<u>SQUAD 5</u>
0900 Parade & Inspection	AS FOR SQUAD 1	AS FOR SQUAD 1	0900 Parade & Inspection	AS FOR SQUAD 1	AS FOR SQUAD 1
0920 Squad drill			0920 Squad drill		
1000 Bren I.A.'s			1000 Bren recapitulation		
1100 Map Reading Compass			1100 Map Reading Compass		

<u>SQUAD 2</u>	<u>SQUAD 4</u>	<u>SQUAD 6</u>	<u>SQUAD 2</u>	<u>SQUAD 4</u>	<u>SQUAD 6</u>
1330 Parade & Inspection	AS FOR SQUAD 2	AS FOR SQUAD 2	1330 Parade & Inspection	AS FOR SQUAD 2	AS FOR SQUAD 2
1345 Squad Drill			1345 Squad drill		
1415 Bren I.A.'s			1415 Bren recapitulation		
1500 Map Reading Compass			1500 Map Reading Compass		

.....
O.C. TRAINING

25 AUST INF BDE GROUP

Appx M

TRAINING SYLLABUS SUMMARY.

Day	2/25 Aust Inf Bn	2/31 Aust Inf Bn	2/33 Aust Inf Bn	HQ 25 Aust Inf Bde and attached troops	
31 Jul	Weapon training Exercises:-(1) Section in deliberate attack (2) Fighting patrols - contact and withdrawal	Weapon training Coy exercise :- Advance	Miniature rifle range - Small arms		
1 Aug	Recapitulation all weapons training Marching in sixes	Weapon training Coy exercise :- Attack Night exercise	Coys marching in sixes Sandtable and exercise :- Platoon as vanguard clearing aside minor opposition	DRILL WITH ARMS, ROUTE MARCHING	WEAPON TRAINING, MARCHING IN SIXES
2 Aug	Bn parade, marching in sixes Miniature range practices	Weapon training Coy exercise :- Defence	Coys marching in sixes Weapon training Sandtable and exercise :- Platoon in ambush		
3 Aug	Exercises Bn training area (1) Platoon in deliberate attack (2) Platoon fighting patrol - contact & withdrawal	Bn parade, marching in sixes Coy exercise :- patrolling Night exercise	Coys marching in sixes Map reading & compass Sandtable & exercise:- Platoon in attack		
4 Aug	Weapon training Coys marching in sixes	Bn parade, marching in sixes Coy exercise:- Ambush	Bn parade, marching in sixes Weapon training Sandtable & exercise:- Clearing woods & villages		
5 Aug	Bn parade, marching in sixes Weapon training	Bn parade, marching in sixes Coy exercise :- withdrawals	Bn parade Coys marching in sixes Sandtable & exercise:- Patrols		
	NGO Cadre class continues HQ Coy on specialist training	Platoon Officers prepare TEWTS for all exercises HQ Coy on specialist training	Platoon Officers prepare all exercises Tactical training of Officers during week		

ADDITIONAL INFORMATION ON MARCH THROUGH
BRISBANE BY 7 AUST DIV

Appx N

25 Aust Inf Bde
31 Jul 44.

TO ALL UNITS UNDER COMMAND

1. No chin straps will be worn. (subject to confirmation) ^{1 AUG. CHIN STRAPS WILL BE WORN}
2. Officers and WO1 will carry pistols - slung on right side and lanyards over right shoulder - no amn pouches.
3. All ranks to wear colour patches on hats and tunics - no miniatures on hats.
4. SALUTING Bde and Bn Comds and staff independently. Only orders to be given by Coy Comds.
5. BANDS There will be 13 Bands; NOT 11 as previously notified. Two of these will be at the Saluting base.
6. CHANGING ARMS will be done in three movements. There will be signs erected en route notifying Units to change arms.
7. LATRINES There will be latrines erected in assembly areas.
8. PARADE STATE States showing marching strength of Officers and ORs will be despatched to reach this HQ before 15.00K 7 August.
9. BLANK FILES There will be NO blank files.
10. SPECIALIST PERSONNEL 25 Aust Inf Bde Sig Sec will march with 7 Aust Div Sigs and 315 IAD will now march with AEME personnel - NOT 25 Aust Inf Bde HQ as previously notified.
11. LIAISON An L.O. will contact control staff of assembly area regarding times for Units to march off.
12. DISTANCE BETWEEN UNITS No information has come to hand yet, but whatever the interval is the spacing out will commence at ROMA ST. Station.
13. POLISHING RAGS Troops should carry a duster, to give a final polish to their boots before marching off.
14. ISSUE OF BEER Beer on the scale of 20 ozs per man will be issued to Units on Monday 7 Aug, to be paid for from G.O.C's Battle Fund. Times at which Units will draw their beer will be notified later.
15. RETURNS OF KEGS The Canteen Services will credit the equivalent number of kegs returned first after the issue, against the kegs issued to Units for this special issue. That is to say, if a Unit draws, six kegs of beer for consumption after the march - the first six kegs returned by that Unit will be credited to them as kegs in which the special issue was made. After that, returns of kegs will be credited in the normal way.

DISTRIBUTION

2/25 Aust Inf Bn
2/31 Aust t Inf Bn
2/33 Aust Inf Bn
25 Bde Sig Sec
8 Pl 2/1 Gd Regt
315 Aust IAD
Tpt Officer
File

Atlee
Capt
For SC 25 Aust Inf Bde

TRAINING SYLLABUS

Appx "0"

HQ 2/25 AUST INF BN
422/467
12 Jul 44.

HQ 25 AUST INF BDE.

1. Ref. syllabus of Training attached to our 422/400 of 29 June 1944.
2. HQ Coy. will carry out.

Day 6	on	Monday 17 July 1944.
Day 7	on	Tuesday 18 July 1944.
Anniversary celebration on Wednesday 19 July 1944,		
Day 9	on	Thursday 20 July 1944.
Day 8	on	Friday 21 July 1944.
Day 10	on	Saturday 22 July 1944.
3. Amended Rifle Coys Syllabus for the week 17 - 22 July 1944 is attached.

R. H. Stanton Lt-Col.
Comd 2/25 Aust Inf Bn.

Ward

DAY & DATE	:0830-0900	: 0900-0945	: 0945 - 1030	: 1040 - 1125	: 1125 - 1215	: 1330-1415	: 1415 - 1500	: 1500 - 1600
MON 17 JUL	: FI & I : Drill & : Marching	: <u>R I F L E</u> : Range Practice and Recapitulation of Weapon Training : when NOT on mound	: <u>R A N G E</u>	:	:	: <u>B A T A L I O N. P A R A D E</u> : Drill and Marching in Sixes	:	:
TUE 18 JUL	: F I & I : Drill & : Marching	: March to Bn Training Area incorporating : the advance and first contact by sections; : and subsequent action. TW Pam 2 Chap 7	: Section : Attack : TW Pam 2 Chap 8	: Sec Def Posn : Consolidation: : with siting : of individual : weapons TW Pam : 2 Chap 9 Secs : 5-61	: Patrolling. : General, Recce: : Patrol Leaders: : Orders. TW Pam : 69-70, : 73	: Section : withdrawal and : ambush. Preparation : etc : TW Pam 2 Chap 11	:	:
WED 19 JUL	:	: <u>F O U R T H</u> : BATTALION	: <u>A N N I V E R S A R Y</u> : PARADE	:	:	: <u>C E L E B R A T I O N S</u> : SPORTS	:	:
THU 20 JUL	: F I & I : Drill & : Marching	: Bren - Holding; Owen - Firing; : Aiming & Firing : Accuracy of : Aim : Pam 4 Less 2	: Standing & hip : positions : Pam 15 Pages : 10 - 11	: Lecture - The : Jungle Bn & : its support- : ing arms	: Bren - Butt, : Body & Bipod : Gps. Pam 4 : Less 4	: FC Verbal : messages & : reports : IMT Sec 61	: FC Patrols. : Recce patrols : with report : TW Pam 2 Chap : 10 Sec 70	: FC Fighting : patrol with : report. TW Pam 2 : Chap 10 Sec 70
FRI 21 JUL	: F I & I : Drill & : Marching	:	: <u>D U T Y</u> : Recapitulation all weapons for backward	: <u>C O Y</u> : personnel	:	:	:	:
SAT 22 JUL	: AdmParade : Drill & : Marching	: FC Individual : Stalk. Section : Stalk. : IMT Sec 44	: Sec In Advance : & first : contact. TW : Pam 2 Chap : 9-10 Sec 7	: FC Sec in : Attack : TW Pam 2 : Chap 8	: FC Protective : Patrolling : TW Pam 2 : Chap 10 Sec 72	: Bren IA : Stoppages : Pam 4 : Less 8-9	: Appn of Fire : Fire Control : Orders. Pam 2 : Less 6-7	: Bren Sec Handling : Use of Cover : Pam 4 Less 10 : 11, 15, 16

1. Although all country is fairly open, Jungle formations and training only will be carried out.
2. Recce of ground and the thorough preparation of all exercises in Field Craft Trg is essential.
3. Training stores and blank ammunition will be requisitioned for where required.
4. Where possible movement to and from area will be in sixes.
5. Transport requisitions to TO giving 24 hours notice

TRAINING SYLLABUS FOR WEEK ENDING ----- 23 JUL 44

<u>DATE</u>	<u>0815</u> <u>0830</u>	<u>0830</u> <u>0930</u>	<u>0930</u>	<u>1600</u>
MON 17 JUL	Joy Parades	Demonstration to Rifle Coys: "The Sec in the Wrong and in the Right Way"		Within Pls - The point Sec: form- ations and deployment. Secs 33 & 36 Tropical Warfare Pamphlet ii.
TUE 18 JUL	Coy Parades	The Sec:	As Recce Patrol:	As Standing Patrol
WED 19 JUL	Coy Parades	Cross Country Move (Half-Day)		TEWT under Coy Comds with DS - Pl in the encounter attack - Pamphlet ii Chapter vii
THU 20 JUL	Coy Parades	TEWT under Coy Comds with DS: Pl in the deliberate attack - Pamphlet ii		Chapter viii
FRI 21 JUL	Coy Parades	Pl	as fighting patrol:	and ambush
SAT 22 JUL	Coy Parades	Bn Parade Ceremonial	Pl Comds Malarial Discipline: NCOs recapitulation:	Pl - quick occupation of defen- sive position
SUN 23 JUL	Coy Parades	CHURCH	PARADES	FREE

REMARKS:-

- (1) Hq Coy - Specialist Trg. Pl Comds to submit detailed syllabus to BHQ (per OC Hq Coy) by 0830
hrs 15 Jul.
- (2) TUE and THU: for all Coys --- (a) Two Pls - Compass night march.
1800 hrs to 2000 hrs. (b) One Pl - Sec stalk.
- (3) Pl Comds during trg periods will commence informal discussions on Malaria.
- (4) All mid-day meals will be delivered in trg areas.
- (5) For exercises in pl as standing patrols, in ambush and in defense, exercise will NOT be regard-
ed as complete until weapon pits have been dug.
- (6) Coy Comds will submit to BHQ written TEWTS as follows:-
(a) for WED afternoon - by 2030 hrs MON: (b) for THU afternoon - by 2030 hrs TUE.
- (7) SAND TABLE for all Offrs 1545 hrs MON - "The Pl in the deliberate attack".
- (8) Coy Trg Areas will be changed for the week as follows:-
Present A Coy area to D Coy.
" B Coy area to A Coy.
" C Coy area to B Coy.
" D Coy area to C Coy.

IN THE FIELD
2 Jul 44.

Wm. H. King
for LT-COL
COMD ----- 2/31 AUST INF BN.

2/33 AUST INF BN - SYLLABUS

FROM 17 JUL 44

TO 23 JUL 44

TIME	D 1	D 2	D 3	D 4	D 5	D 6	D 7
0830	Coy Pde and Inspection.	Bn Pde	Coy Pde and Inspection.	Coy Pde and Inspection	Bn Pde	Coy Pde and Inspection	
0900 0945	MIN RANGE PRACTISE:-	Semaphore Signalling (under sig pl instructor)	Sandtable: Platoon in Attack (Deliberate)	Semaphore Signalling (under sig pl instructor)	Sandtable:- Discussion on Day's Exercise.	Judging Distances	
0945 1030	GROUPING	Bayonet Training		Lecture:- Current Affrs		Clearing of wds & villages - L	R
1030 1045	FIGURE II SILHOUETTE	BREAK	BREAK	BREAK	BREAK	BREAK	E
1045 1130	RIFLE & OSMG	Indication & Recognition	EXERCISE:-	EXERCISE:-		Range cards	S
1130 1215	2" Groupnto qualify bef -ore firing second prac -tice.	Compass	PLATOON IN DELIBERATE ATTACK.	SECTION CONT- ROLZ OVER VAR -IED CROSS COUNTRY ROUTE Including- COMPASS FD FMNS CONCEALMENT LINES OF APPROACH PROTECTION	EXERCISE:- PLATOON FORMING	Weekly War Summary: IO	T
1330 1415		LUNCH				LUNCH	
1415 1500	TsOET - ALL Weapons for personnel not firing.	Cam & Con. Practical	BN TRG AREA		FIRM BASE	Bayonet Asslt Course	D
1500 1545		Vbl Messages- Practise	Written exer -cise to be handed to Adj by 180830K		ON	Unarmed Combat. Malaria Control - L	A
1545 1630	Coys to march to min range by road with band.	Tropical Hygiene - L			ENCOUNTER	Sub unit Adm	Y
1630 1730	Tactical Trg Officers	P.T.	Tactical Trg Officers	Lecture Officers			

SEQUENCE OF TRAINING AS PER APPX A ATTACHED.

Shankar
..... Capt
Adjnt 2/33 Aust Inf Bn

2/33 AUST INF BN - APPENDIX A

To be issued with training syllabus covering period 17 Jul - 23 Jul 44

SEQUENCE OF TRG:

HQ	As per own syllabus					
HQ	----- D 1 -----					
A	D 1	D 3	D 2	D 5	D 4	D 6
B	D 6	D 1	D 3	D 2	D 5	D 4
C	D 6	D 5	D 1	D 3	D 2	D 4
D	D 2	D 4	D 5	D 1	D 3	D 6

OFFICERS' LECTURES:

Mon 17 Jul 44

SANDTABLE DISCUSSION -
PROBLEM SET ON 13 Jul 44
"SOMERSET DAM EXERCISE."

Wed 19 Jul 44

FURTHER DISCUSSION -
"SOMERSET DAM EXERCISE."

Thur 20 Jul 44

LECTURE; 1
THE WITHDRAWAL - Major H. Graham-Sutton

HQ 25 AUST INF BDE - TRAINING SYLLABUS

Tuesday 18 Jul 44 -
Monday 24 Jul 44

TUES 18 JUL 44	WEDNESDAY 19 JUL	THURSDAY 20 JUL	FRIDAY 21 JUL	SATURDAY 22 JUL	MONDAY 24 JUL
0900 SQUAD 1 Parade - Inspection ½ hour Squad Drill Bren - Stripping Mechanism TOET - Loading & Unloading	0900 SQUAD 3 As for SQUAD 1	0900 SQUAD 5 As for SQUAD 1	0900 SQUAD 1 Parade - Inspection Route march (include marching in sixes)	0900 SQUAD 3 As for SQUAD 1	0900 SQUAD 5 As for SQUAD 1
1330 SQUAD 2 Parade - Inspection ½ hour Squad Drill Bren - Stripping Mechanism TOET - Loading & Unloading	1330 SQUAD 4 As for SQUAD 2	1330 SQUAD 6 As for SQUAD 2	1330 SQUAD 2 Parade - Inspection Route march (include marching in sixes)	1330 SQUAD 4 As for SQUAD 2	1330 SQUAD 6 As for SQUAD 2

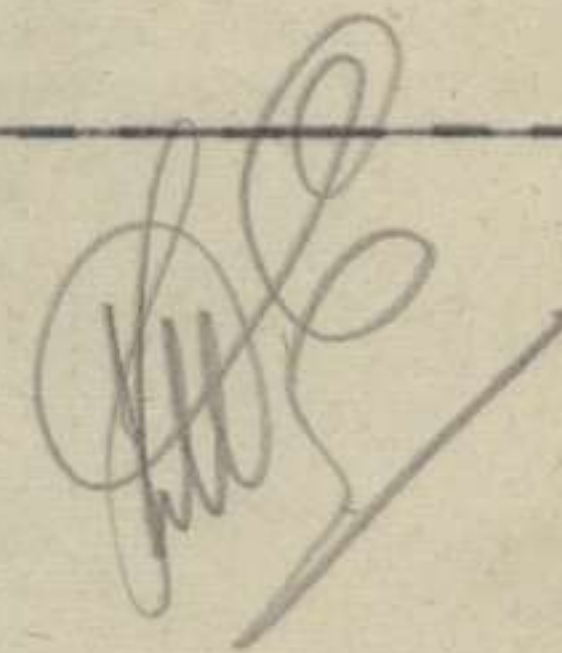
.....
John H. ... Capt
 O.C. Training

TRAINING SYLLABUS for 25 AUST INF BDE SIG SEC.

17 Jul 44.

	17 Jul	18 Jul	19 Jul	20 Jul	21 Jul
0900 - 1030	Group Working W/T with Set 208	Group working W/T with Set 208	Practical working of V/S on ground.	Practical working of V/S on ground	Signal securityn
1040 - 1200	Group working R/T with remote control hook-up	Group working R/T with remote control hook-up	L/T Group working	L/T Group working	Practical V/S working.
1330 - 1500	Instn. on Chap 2 of Part 11 Pam 5	Instn. on Chap 4 of Part 11 Pam 5	Recapitulation on Chapters of Part 1 already covered.	Recapitul- ation on Chapters of Part 1 already covered	Line Telephony and switch- board op - practical
1510 - 1630	Instn. on Chap 4 of Part 11 pam 5	Instn. on Chap 2 of Part 11 Pam 5	Test paper on Part 1 Pam 5	Test paper on part 1 Pam 5	Test paper on Chap 1 of part 11 Pam 5

~~Does~~ this in addition to my try
with HQ. *lho*



*MacKenzie Lt Capt
OC 25 Aust Inf Bde Sig Sec*

HQ 25 AUST INF BDE - TRAINING SYLLABUS

Tuesday 18 Jul 44 -
Monday 24 Jul 44

TUES 18 JUL 44	WEDNESDAY 19 JUL	THURSDAY 20 JUL	FRIDAY 21 JUL	SATURDAY 22 JUL	MONDAY 24 JUL
<p>0900 SQUAD 1 Parade - Inspection ½ hour Squad Drill Bren - Stripping Mechanism TOET - Loading & Unloading</p>	<p>0900 SQUAD 3 As for SQUAD 1</p>	<p>0900 SQUAD 5 As for SQUAD 1</p>	<p>0900 SQUAD 1 Parade - Inspection Route march (include marching in sixes)</p>	<p>0900 SQUAD 3 As for SQUAD 1</p>	<p>0900 SQUAD 5 As for SQUAD 1</p>
<p>1330 SQUAD 2 Parade - Inspection ½ hour Squad Drill Bren - Stripping Mechanism TOET - Loading & Unloading</p>	<p>1330 SQUAD 4 As for SQUAD 2</p>	<p>1330 SQUAD 6 As for SQUAD 2</p>	<p>1330 SQUAD 2 Parade - Inspection Route march (include marching in sixes)</p>	<p>1330 SQUAD 4 As for SQUAD 2</p>	<p>1330 SQUAD 6 As for SQUAD 2</p>

... *John Hill* Capt
O.C. Training


Appx P

TRAINING SYLLABUS

HQ 2/25 Aust Inf Bn
422/484
19 Jul 44

HQ 25 AUST INF BDE (2)

1. Syllabus of training for week 24-29 July 1944 is attached.

 Maj
for
Lt-Col
Comd 2/25 Aust Inf Bn
(Absent on Duty)

Ward

DAY
& : 0830 - 0900 : 0905 - 1215 : 1330 - 1430 : 1430 - 1530 : 1530 - 1600 :
DATE

MON : Fall In and : Procedure W/T : Procedure W/T : Lecture : Message :
24 JUL : Inspection : Message : : (Security) : Sending :
: Coy Drill : Sending : : Morse : :
: : Practice as : : : : :
: : with W/T on : : : : :
: : line : : : : :

TUE
25 JUL : D U T Y C O Y

WED : Fall In and : Procedure W/T : Procedure : Map Reading : Lecture - Sig :
26 JUL : Inspection : V/S Message : Miscellaneous : : Office Routine :
: Coy drill : Sending : Signals : : :

THU : Fall In and : Procedure W/T : Procedure : Message Sending and Receiving :
27 JUL : Inspection : Procedure : Recapitulation : L/T :
: Coy drill : Practical : : : :
: : Working L/T : : : :

FRI : Fall In and : One to One : Procedure : Group Working W/T :
28 JUL : Inspection : Working W/T : W/T : :
: Coy Drill : Revision Code : : : :
: : Signs & Q : : : :
: : Signals L/T : : : :

SAT :
29 JUL : M I N I A T U R E R A N G E

2/25 AUST INF BN

HQ COY SYLLABUS NO 2 (MMG) PL

FOR WEEK 24-29 JUL (INCL)

DAY & DATE	0830 - 0900	0905 - 0955	1010 - 1100	1110 - 1200	1330 - 1410	1415 - 1455	1500 - 1540	1545 - 1600
MON 24 JUL	Coy Inspection: Rifle Exercises	EGD Lesson 65 : Sec Drill	OSMG	EGD Vis Trg : Lessons 62-3	Mech Less 24	Grenade	Mech Recap- : itulation : Less 13,16	Cleaning & : Returning : stores
TUE 25 JUL	D U T Y		C O Y					
WED 26 JUL	Coy Inspection: Rifle Exercises	EGD : Lessons 57-59	Bren	EGD Vis Trg : Lessons 62-64	Map Reading	Bren	Mech : Lessons 21/24	Cleaning & : Returning : Stores
THU 27 JUL	"	EGD Sec Drill : Lesson 60	Mech Lesson : 25	Mech Lesson : 26	Platoon : Rifle Drill	Mech : Lesson 27	EGD : Lesson 69	"
FRI 28 JUL	"	EGD : Lesson 70	Field Signals : Less 13	Lecture : Lesson 99	Mech Sec 9	Pistol	Mech Recapn : Lesson 15	"
SAT 20 JUL	M I N I A T U R E R A N G E							

DAY & DATE	0830 - 0930	0930 - 1030	1040 - 1200	1330 - 1430	1435 - 1530	1535 - 1600
MON 24 JUL	: Fall In and : Inspection : Marching and : Arms drill. : Lesson 8 : Laying for : Elevation	: Lesson 13 : Fall In and : Take Post : : : :	: Lesson 14 : Mount Mortar : Flat Ground : : : :	: Lesson 15 : Dismount : Mortar Flat : Ground : : : :	: Lesson 9 : Elevation : and : Direction : : : :	: Recapitulation : : : : : : :
TUE 25 JUL	:	D	U	T	Y	C O Y
WED 26 JUL	: Fall In and : Inspection : Marching. EMD	: Lesson 16 : Mount Rough : Ground	: Lesson 17 : Dismount : Rough Ground	: Map Reading : :	: Lesson 18 : Charge : Ordered	: Lesson 19 : To lay Mortar : :
THU 27 JUL	: Fall In and : Inspection : Marching. Less : To lay on posts	: Lecture : "Malaria : Suppression"	: Practical : Mortar Work : :	: Lesson 21 : Auxiliary : Aiming Mark : : :	: Application of: : Fire. : Measurement of: : degrees etc & : J D	: E M D : : : : :
FRI 28 JUL	: Fall in and : Inspection. : EMD	: Lesson 22 : To Fire :	: Competitive : drill :	: Lesson 23 : Action and : Cease Fire	: Recapitulation of work : for week : :	: : : :
SAT 29 JUL	:	M	I	N	I	A T U R E R A N G E

2/25 AUST INF BN

HQ COY AMENDED SYLLABUS

NO 4 (TK A) PL

FOR WEEK 24-29 JUL (INCL)

DAY & DATE	0830 - 0900	0900 - 1000	1000 - 1100	1100 - 1215	1330 - 1430	1430 - 1600
MON 24 JUL	Fall In and Inspection Rifle Drill	Gun Drill	Gun Drill	Gun Drill	Sight Testing	Maintenance
TUE 25 JUL	D U T Y C O Y					
WED 26 JUL	Fall In and Inspection Rifle Drill	Gun Drill	Gun Drill	Gun Drill	Sight Testing	Maintenance
THU 27 JUL	Fall In and Inspection Rifle Drill	Mechanism	Mechanism	Mechanism	Lecture "Concealment & Camouflage"	Maintenance
FRI 28 JUL	Fall In and Inspection Rifle Drill	Mechanism	Mechanism	Mechanism	Lecture "Gun Sights"	Maintenance
SAT 29 JUL	M I N I A T U R E R A N G E					

DAY & DATE	0830-0900	0900 - 0945	0945 - 1030	1040 - 1125	1125 - 1215	1330 - 1415	1415 - 1500	1500 - 1600
MON 24 JUL	Fall In and Inspection : Drill, : Marching	Bren - Use of : over : Pam 4 Les 10	Sec Recce : Patrol : TW Pam 2 : Chap 10	Prismatic : Compass	Lecture : Education : Offr : "Income Tax"	OSMG : Recapitulation : & instinctive : pointing : sense	Questionnaire : 36 Grenade : & : Throwing : Dummies	Lecture - : "Aerial : Photos"
TUE 25 JUL	"	March to Bn Trg Area incorporating : Scouting and Patrolling		Sec Attack : TW Pam 2 : Chap 8	Pl Def Posn : Siting of : weapons	Pl withdrawal and ambush followed : by discussion		
WED 26 JUL	"	Marching in : Sixes	Pl in Attack : Les 8	TW Pam 2 : Compass : March by Secs	Lecture : "Gas"	Bren : Recapitulation : IA Stoppages : Pam 4 Les 8-9	Lecture : "Malaria : Suppression"	
THU 27 JUL	"	"	Lecture - QM : "Q in the : Field"	Pl First : Contact and : Subsequent : action : TW Pam 2 : Les 7	Pl in Def : TW Pam 2 : Les 9	Pl Fighting : Patrols : TW Pam 2 : Les 10	Bren : Preparation : before firing : Pam 4 Les 6	Bren. Attention : during and after : firing : Pam 4 Less 6
FRI 28 JUL	"							<u>D</u> <u>U</u> <u>T</u> <u>Y</u> <u>C</u> <u>O</u> <u>Y</u> (Recapitulation all weapons balance of coy)
SAT 29 JUL	"	Bn Parade		<u>R</u> <u>I</u> <u>F</u> <u>L</u> <u>E</u>	<u>R</u> <u>A</u> <u>N</u> <u>G</u> <u>E</u>			

1. Recce of ground and the thorough preparation of all exercises in Field Craft is essential.
2. Training stores and blank ammunition will be requisitioned for where required.
3. Where possible movement to and from area will be in sixes.
4. Transport requisitions to TO giving 24 hours notice.

TRAINING SYLLABUS for Week Ending 30 Jul 44

DATE	0815 0830	0830 - 1230	1330 - 1600	1800 - 2000
MON 24 Jul	Coy Parades	A Coy Advance and First Contact B Coy Miniature Range C Coy Pl in deliberate attack D Coy Pl fighting patrol (competitive)	Recce Patrol Miniature Range Pl in defence Pl Ambush	Offrs Lecture on Sig Procedure (LT. DE DAUNTON)
TUE 25 Jul	"	B Coy Advance and first Contact C Coy Miniature Range D Coy Pl in deliberate attack A Coy Pl fighting patrol (competitive)	Recce Patrol Miniature Range Pl in defence Pl Ambush	Night Exercise - Pl Stalks
WED 26 Jul	"	C Coy Advance and First Contact D Coy Miniature Range A Coy Pl in deliberate attack B Coy Pl fighting patrol (competitive)	Recce Patrol Miniature Range Pl in defence Pl Ambush	
THU 27 Jul	"	D Coy Advance and First Contact A Coy Miniature Range B Coy Pl in deliberate attack C Coy Pl fighting patrol (competitive)	Recce Patrol Miniature Range Pl in defence Pl Ambush	Night Exercise - Pl compass march
FRI 28 Jul	"	A, B, C, D Coys - Pl in withdrawal	HQ Coy - Miniature Range	
SAT 29 Jul	"	Bn Ceremonial Pde	Lecture by RMO Booby Traps (ATM 34: Trop Warfare Pam II Sec 87)	
SUN 30 Jul	"	CHURCH	PARADES	FREE

REMARKS -

- (1) HQ Coy - Specialist Trg. Pl Comds to submit detailed syllabus to BHQ (per OC HQ Coy) by 0830 hrs
- (2) PL COMDS DURING TRG PERIODS WILL COMMENCE INFORMAL DISCUSSIONS ON MALARIA. 22 Jul.
- (3) Mid-dry meals to be delivered to trg areas.
- (4) For exercises in Pl in deliberate attack and in defence exercises will not be regarded as complete until weapon pits have been dug and range cards etc completed.
- (5) Sand Table for Offrs - Subject "Withdrawal" - 1030 hrs 23 Jul 44.
- (6) Coy Comds TWTS on

(1) Advance and first contact	(2) Pl in deliberate attack
(3) Pl in fighting patrol (comp)	(4) Pl in defence
(5) Pl in ambush	

to be handed in to ADJT by 1600 hrs Sun 23 Jul 44.

IN THE FIELD
19 Jul 44

A. J. Hovell for MAJ
ADM COMD ----- 2/31 AUST INF BN

2/33 AUST INF BN - SYLLABUS

FROM 24 JUL 44

TO 30 JUL 44

TIME	D 1	D 2	D 3	D 4	D 5	D 6	D 7
0830	Coy Pde and Inspection	Battalion Parade	Coy Pde and Inspection	Coy Pde and Inspection	Battalion Parade	Coy Pde and Inspection	
0900	MIN RANGE PRACTISE:- COMPLETION OF OSMG & BREN GROUPING FIGURE II SILHOUETTE TsoET - ALL WEAPONS FOR PERSONNEL NOT FIRING Coys to march to Min Range by rd w. ch band	Semaphore Sigs (under Sig Pl Instructor)	CLEARING OF WOODS AND VILLAGES (EXERCISE)	Semaphore Sigs	Recapit:	Sandtable: Platoon in Defence, Const	R
0945		Lecture: Malaria & Epidemic control (7 Aust D G/14/1/331)	Written exercise to be handed to Adjnt by 251800K	Lecture: Tropical Hygiene ATM 33.	Tactical Training for platoons	-ruction of Pill boxes, bunkers with existing avail. material	E
1030		BREAK	BREAK	BREAK	BREAK	BREAK	S
1045		Sandtable: Disc sec contr, fmns & deploy. against minor oppositn	pl	Sandtable: Disc mopping up after desperate atk	Bayonet Asslt Course.	EXERCISE: PLATOON IN DEFENCE - Construction of Pillboxes, Bunkers with existing, availabl material.	T
1130		LUNCH	LUNCH	LUNCH	LUNCH	Weekly War Summary - IO	D
1215		Exercise:-	Bayonet Asslt Course	Exercise:	Indication & Recognition & JD		A
1330		SECTION PATROL CROSS COUNTRY AGAINST MINOR OPPOSITION (eg snipers)	Lecture: Current Affairs	PLS MOPPING UP AFTER DELIBERATE ATTACK	Lecture: Use of smoke		Y
1415		Map Reading		Written exercise to be handed into adjt 241800K	Compass Practical		
1500		PT			Discussion on night exercise		
1545				Tactical Trg Officers	Lecture Trg Officers		
1630	Tactical Trg Officers	-	-	-	-		
1730	-	-	-	-	-		
1900	-	-	-	-	-		
2100	-	-	-	-	Pl advance by night across country		

SEQUENCE OF TRAINING AS PER APPX ATTACHED.

Adjnt 2/33 Aust Inf Bn

2/33 AUST INF BN - APPENDIX "A"

To be issued with Training Syllabus covering period 24 Jul - 30 Jul

SEQUENCE OF TRAINING:

HQ COY	As per own syllabus					
	D 1	D 2	D 3	D 4	D 5	D 6
A	D 1	D 2	D 3	D 4	D 5	D 6
B	D 6	D 1	D 2	D 3	D 4	D 5
C	D 6	D 5	D 1	D 2	D 3	D 4
D	D 4	D 5	D 6	D 1	D 2	D 3

OFFICERS' LECTURES:

- MON 24 Jul: Lecture - "OPPOSED RIVER CROSSINGS"
- Major H. Graham-Sutton
- WED 26 Jul: Lecture - "TREN-CODE" - Lt G. Hewitt
- THUR 27 Jul: Lecture and Discussion - TREN CODE.

UMPIRES' CADRE:

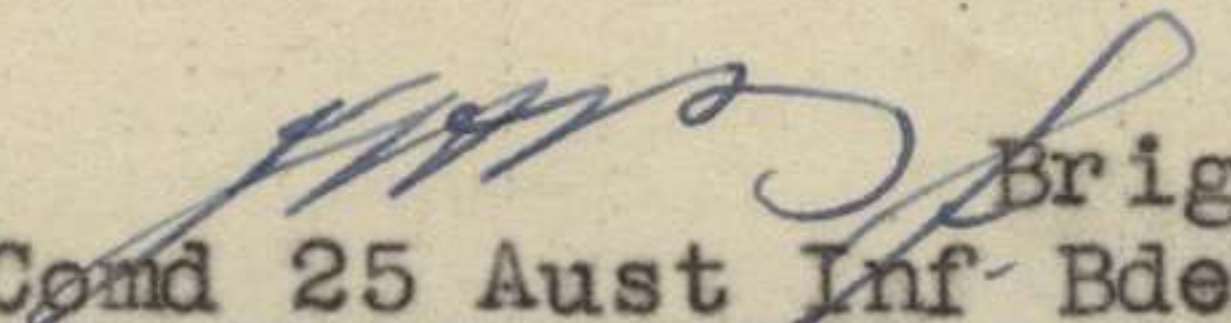
Each company will nominate 2 sergeants to report to Adjutant at 240900K for lecture and instructions regarding umpiring.

TRAINING SYLLABUS

25 Aust Inf Bde
GT6/21/7
21 Jul 44

7 Aust Div

1. Attached is summary of training for week ending
29 Jul 44.


Brig
Comd 25 Aust Inf Bde

25 AUST INF BDE GROUP

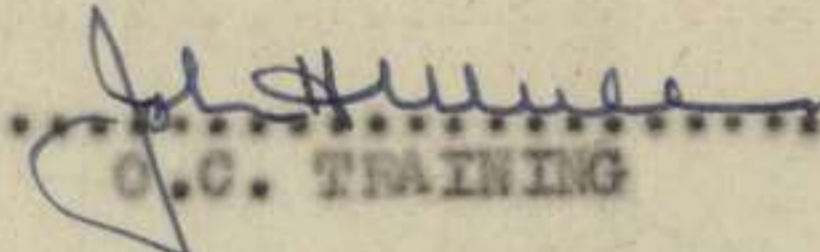
TRAINING SYLLABUS SUMMARY.

Day	2/25 Aust Inf Bn	2/31 Aust Inf Bn	2/33 Aust Inf Bn	HQ 25 Aust Inf Bde and attached troops
24 Jul	Marching in sixes Weapon training Section exercise:-Recce patrol	Marching in sixes Platoon exercises:- Advance & first contact Recce Patrol	Marching in sixes Miniature range:-OSMG, and Bren T'sOET small arms	Marching in sixes Weapon training - Rifle, bayonet
25 Jul	Section exercises:-Scouting, patrolling, Section attack Platoon exercises:-Defence withdrawal, ambush	Miniature range practice - LMG	Bn parade Sandtable exercise:-Section control, formations, deployment Section exercise:-Patrol cross-country against minor opposition	Tactical route march Weapon training
26 Jul	Marching in sixes Platoon exercise:-Attack Section exercises:-Compass march, Weapon training Lecture-Malaria suppression	Marching in sixes Platoon exercises:-Deliberate attack Defence Night exercise:-Platoon stalks	Platoon exercises:-Clearing of woods and villages Bayonet assault course	T'sOET all small arms Marching in sixes
27 Jul	Weapon training Platoon exercises:-First contact and subsequent action Defence Fighting patrols	Platoon exercises:-Fighting patrol Ambush Discussions on malaria suppression	Sandtable Exercise:-Discussion mopping up after deliberate attack Platoon exercise:- Mopping up after deliberate attack Lecture:-Tropical hygiene	Marching in sixes Route marching
28 Jul	Recapitulation weapon training all weapons Marching in sixes	Platoon exercises:-Platoon in withdrawal Weapon training Night exercise:Platoon compass march	Sandtable:-Platoon in defence - construction of pill-boxes, bunkers Exercise:Platoon in defence as above	Weapon training T'sOET - LMG
29 Jul	Bn ceremonial parade Miniature range - LMG	Bn ceremonial parade Marching in sixes Weapon training	Bn ceremonial parade Bayonet assault course Compass marching Night exercise:Platoon advance cross-country	Bayonet assault course Lecture - malaria suppression
	NCO cadre continues	Coy Comds TEWT's each day	Officers Lectures:Mon,Wed, Thursday	

TRAINING SYLLABUS - HQ 25 AUST INF BDE

<u>WED - 26 JUL 44</u>	<u>THURS - 27 JUL</u>	<u>FRI - 28 JUL</u>	<u>SAT - 29 JUL</u>	<u>MON - 31 JUL</u>	<u>TUES - 1 AUG</u>
<u>SQUAD 1</u>	<u>SQUAD 5</u>	<u>SQUAD 5</u>	<u>SQUAD 1</u>	<u>SQUAD 3</u>	<u>SQUAD 5</u>
0900 Parade & Inspection	AS FOR SQUAD 1	AS FOR SQUAD 1	0900 Parade & Inspection	AS FOR SQUAD 1	AS FOR SQUAD 1
0920 Squad drill			0920 Squad drill		
1000 Bren I.A's			1000 Bren recapitulation		
1100 Map Reading Compass			1100 Map Reading Compass		

<u>SQUAD 2</u>	<u>SQUAD 4</u>	<u>SQUAD 6</u>	<u>SQUAD 2</u>	<u>SQUAD 4</u>	<u>SQUAD 6</u>
1330 Parade & Inspection	AS FOR SQUAD 2	AS FOR SQUAD 2	1330 Parade & Inspection	AS FOR SQUAD 2	AS FOR SQUAD 2
1345 Squad Drill			1345 Squad drill		
1415 Bren I.A's			1415 Bren recapitulation		
1500 Map Reading Compass			1500 Map Reading Compass		


Capt
 C.C. TRAINING

Appx Q

REPORT ON EDUCATIONAL ACTIVITIES.

Confidential

Formation or Area..... /25 Aust. Inf. Bde.

Month July, 1944.

Personnel	Offrs	CRs	Total
1. AAES personnel on strength at end of month	-	1	1.
NEOs effective during month	2	1	3.

COURSES : GENERAL		Gen	Hosp	Total
2. Lectures : Location in which given during month	: Number given	15		15
Illustrated lectures (included in above)				
Lectures given by AAES personnel		10		10
"	" " other Army personnel	5		5
"	" " other Service "			
Newstalks Given				
Total attendance at lectures		1045		1045

3. Film Programmes: Location in which given during mth				
"	" : Number screened			
"	" : Without commentary or discussion			
"	" : With " " "			
Total attendance at film shows				

4. Classes: Active at end of last month				
Formed during month				
Lapsed " "				
Active at end of month				
Total number of men taught in class during month				
"	" " " given individual tuition			
"	" " hours spent in " "			

5. Discussion Groups:

J. H. Hain
Edward G. ...
 25 Aust Inf Bde.

AMENITIES REPORT MONTH OF JULY 1944.

1. SPORTING ACTIVITIES.

During the month of July all units of 25 Aust Inf Bde took part in organised sport, by far the most popular of which was Rugby League Football. Each of 2/25, 2/31 and 2/33 Aust Inf Bns fielding a first and second grade team. Each Bn first and second grade team played at least one match during the week against unit teams from the STRATHPINE and surrounding areas. The football played being of an exceptionally high standard, the 2/25 and 2/33 Aust Inf Bn teams not suffering defeat. The 2/31 Aust Inf Bn team was defeated twice - once by 2/25 Aust Inf Bn and by the 2/5 Aust Fd Regt teams.

The playing of other sports was somewhat limited owing to the lack of playing areas, but each Bn has a tennis team and inter unit matches have been played as often as the shortage of courts would permit.

In each Bn area basketball Courts have been laid out and this game has been played on an inter platoon and inter-company basis. Circlos courts and deck tennis courts have been laid down in each company area and are fully utilised. A basketball court has been laid down in 25 Aust Inf Bde Area and is fully utilised.

2. ENTERTAINMENT - Mobile Cinema. The mobile cinema unit visits this area once weekly and shows one feature and two or three shorts. The showing of the mobile cinema is greatly appreciated by troops and efforts have been made for a second showing to be made each week, but owing to lack of equipment no second screening has yet been arranged.

Concert Parties. During the month a stage was erected in the Bde area and three concert parties showed at the site. The concert parties were two civilian and the 6 Div Concert party. The entertainment being of a high standard and greatly appreciated by troops of the Bde and adjoining units. One of the Concert parties being that of the Australian Broadcasting Commission, half an hour of the performance being broadcast through the National Network.

3. PHILANTHROPIC BODIES. Each Bn has a member of the YMCA or Red Shield Organisations attached and marquees have been erected. Plentiful supplies of reading and writing materials are at all times available at these organisations in addition to all classes of indoor games, such as draughts, quids, checkers, playing cards etc. Coffee and biscuits are made available to the troops each evening by the Cpl's of the YMCA and Red Shield bodies. At the 2/25 and 2/31 Aust Inf Bns the philanthropic bodies have a public address system, through which records are played each evening.

Lt.

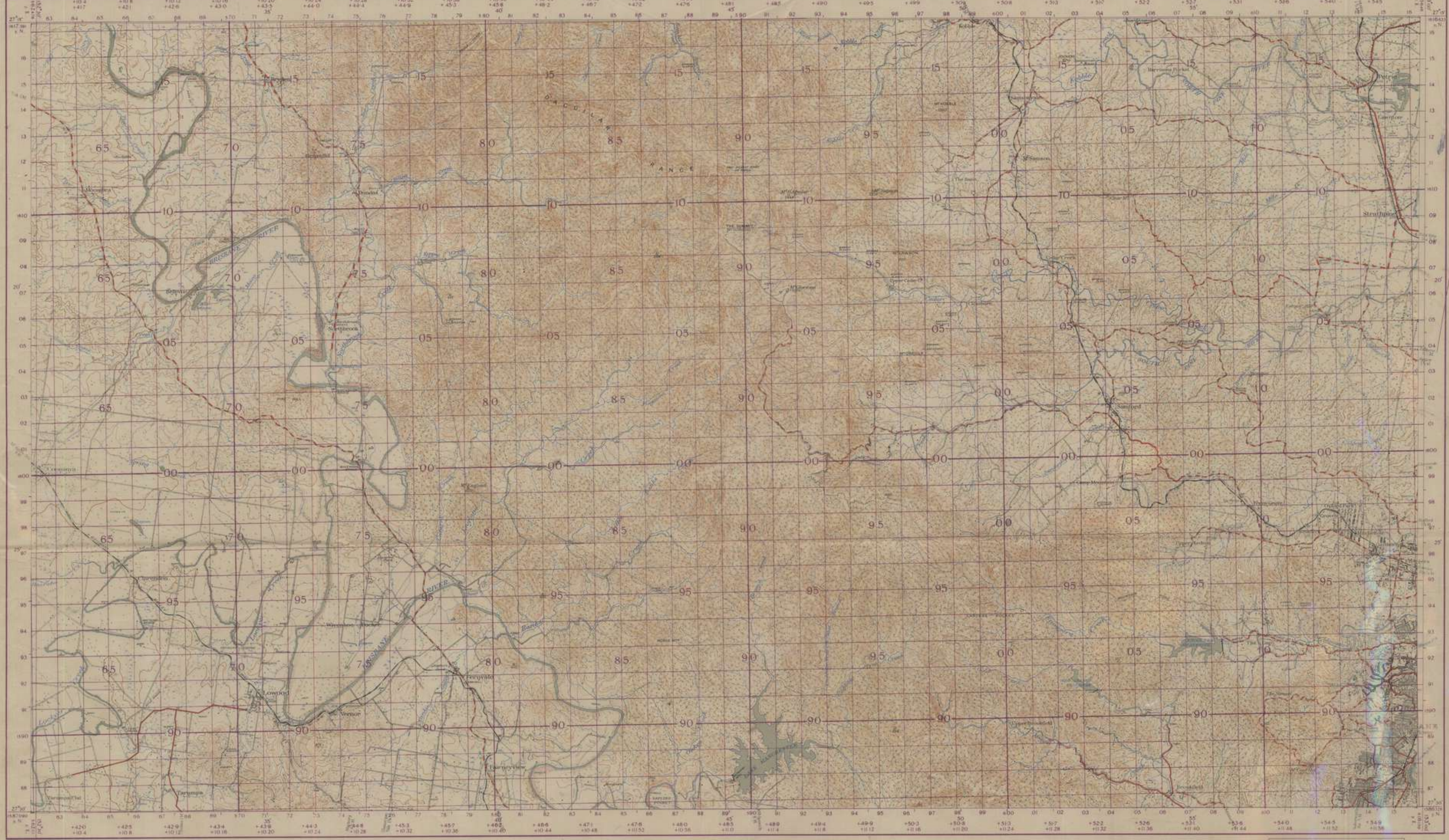
Amen Offr 25 Aust Inf Bde.

QUEENSLAND
SAMFORD

THIS MAP IS AN OFFICIAL DOCUMENT. IF FOUND, IT MUST BE HANDED
IN TO THE NEAREST MILITARY HEADQUARTERS OR POLICE STATION

No 182 ZONE 8
SHEET SOUTH G 96
(P.S.S.A.S.W.)

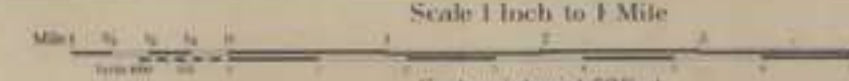
AUSTRALIA EG3360



Prepared by Australian Section Imperial General Staff

The material of this map is derived from the Blue Prints of the Imperial War Department, and is published by the Imperial War Department. The map is published by the Imperial War Department, and is published by the Imperial War Department. The map is published by the Imperial War Department, and is published by the Imperial War Department.

Light railways	—
Canals	—
Ditching	—
Post Office	P
Post & Telegraph Office (in villages)	P
Telegraph or Telephone line	—
Road metalled	—
Road unmetalled	—



NOTES - Grid lines on this map have been moved in an easterly direction to co-ordinate the map with the latest Longitude of Sydney Observatory 151° 12' 17.85". The blue figures in the margins, e.g. +50.00 refer to convergence. The black meridian lines on borders are not in their correct position. Convergence based on Longitude 150° E.

INDEX TO ADJOINING SHEETS			
EAST	WEST	SOUTH	NORTH
151 12	151 11	95	96
151 13	151 14	97	98

Track	—
Sign Post	—
Road	—
Road	—
Road	—
Road	—
Road	—
Road	—
Road	—

Point	—
Point	—
Point	—
Point	—
Point	—
Point	—
Point	—
Point	—

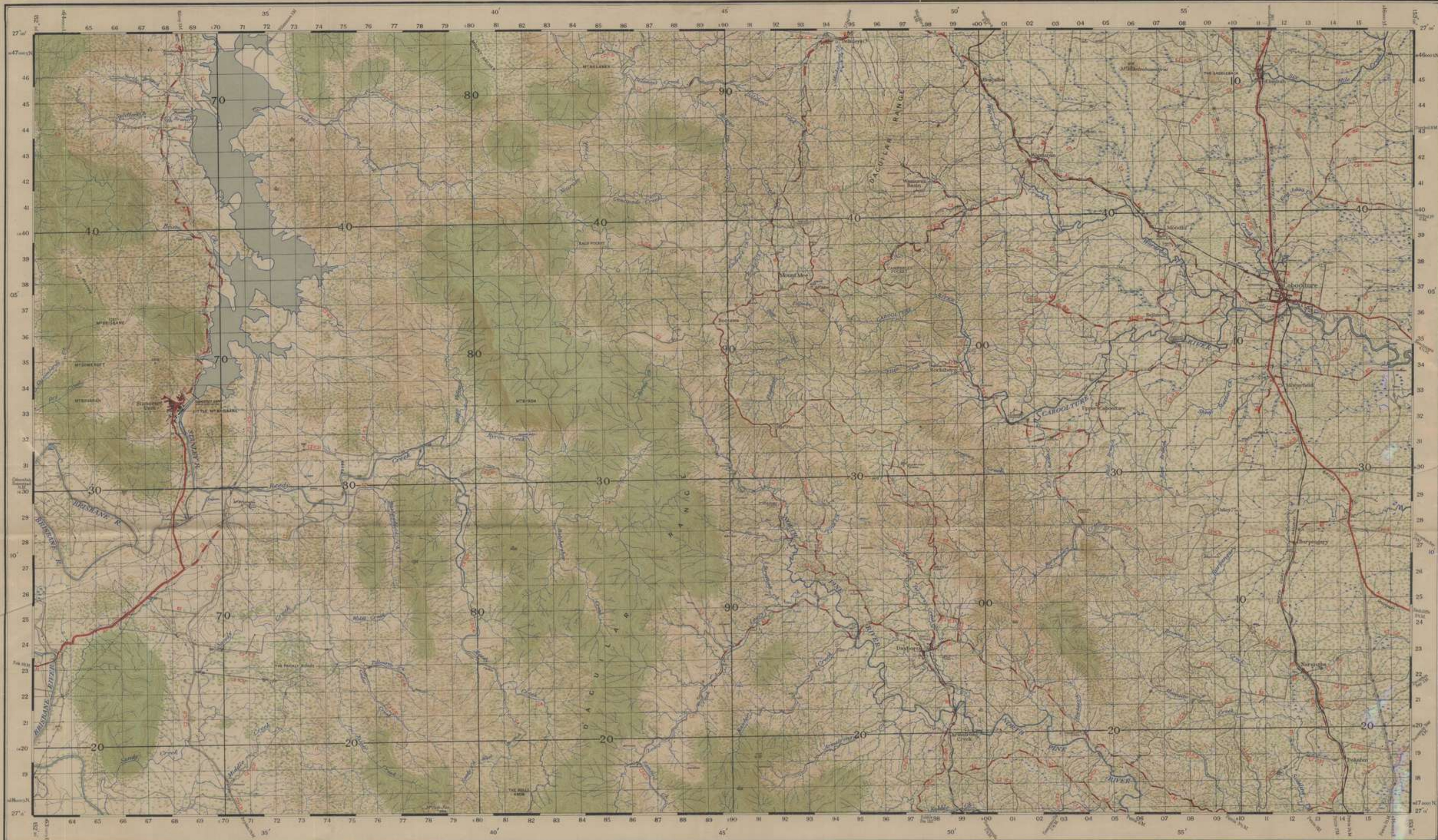
POINT AT ENGLAND	—
POINT AT ENGLAND	—
POINT AT ENGLAND	—
POINT AT ENGLAND	—
POINT AT ENGLAND	—
POINT AT ENGLAND	—
POINT AT ENGLAND	—
POINT AT ENGLAND	—

QUEENSLAND CABOOLTURE

AUSTRALIA I:63,360

SHEET No 172 ZONE 8

Handwritten notes:
24/10
1941
1/1



Prepared by Australian Section Imperial General Staff

CONTROL: The framework of this map depends entirely upon the Main Gridline Triangulation of Queensland by the Australian Survey Corps, Origin of Longitude Sydney Observatory, 157 12 17.85.

SURVEY & COMPILATION: Surveyed in 1929 by the Australian Survey Corps with aid of Air Photos by Royal Australian Air Force.

DRAWING & REPRODUCTION: L.H.D'Arson Cartographic Coy. 1943.

PROJECTION: Transverse Mercator.

ELEVATION: In feet. High Water Mark Bushes.

Revised Edition - 1943.

Crown Copyright Reserved.

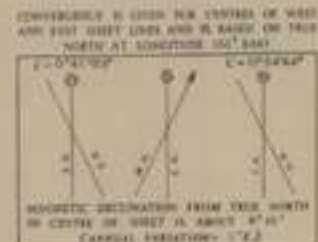
Contour: Unsettled or walled	2
Herded or gassolled	3
Barren	4
Sufficient width for run traffic streams	A
occasional passing	B
Sufficient width for one traffic stream only	C
Suitable for heavy M.T.	D
light (up to 3 ton lorries)	E
Heavy transport only	F
Pack	G
Track: Brackets show wet weather classification	1, 2, 3, 4
Roads: Roads impassible to M.T. in bad weather	5
Contours	6-10

Bridge with load capacity in tons	1
River or Creek	2
Watercourse (non perennial)	3
Water Channel	4
Wind Pump	5
Concretory	6
Embankment	7
Cutting	8
Railway (double line)	9
Railway (single line)	10
Light Railway	11

Scale 1 Inch to 1 Mile
Contour interval 50 Feet

INDEX TO ADJOINING SHEETS

BLACKBURN	GLADEBORO	MALDEN
QUEENSLAND	CABOOLTURE	PERSEUS
DEWESBURY	MINNERS	MALDEN



Wave	1
Garage	2
School	3
Hotel	4
Blacksmith Shop (Forge)	5
Church	6
Mill or Factory	7
Lighthouse	8
Post Office	9
Post & Telegraph Office (in villages)	10
Telegraph or Telephone Line	11
Electric Transmission Line	12
Electric Power Main	13
Station: Terminal out-station	14
Municipal	15

Full Cover or Dense Timber	1
Clearing or Medium Timber	2
Scattered Timber	3
Low brush	4
Stone wall	5
High Water Mark	6
Low Water Mark	7
Tripping Station	8
4 Altitude	9
Vertical	10
A or B Class	11
Airfield: B Class	12
C - 1st Emergency Landing Ground	13
Explosion Risk	14
Explosion Warning Area	15

TO GET A GRID REFERENCE IN THIS SHEET

Point	Mt. New	7906
Grid Easting	93	74
Grid Northing	53	74
Reference	93 53 74	

QUEENSLAND
TAMBOURINE

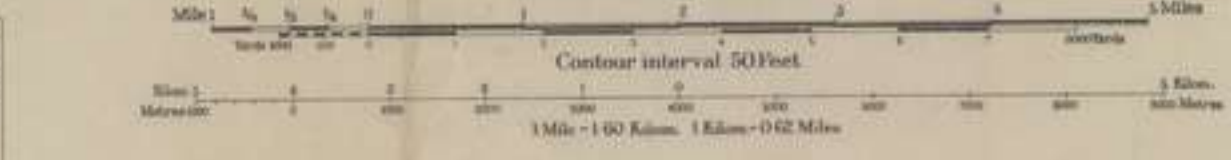
No 203 ZONE 8
SHEET SOUTH WEST

AUSTRALIA 163360



Prepared by Australian Section Imperial General Staff

The contours of this map are based upon the data furnished by the Department of Public Works and are not necessarily correct. The map is not to be used for navigation. It is for reference only. It is not to be used for any purpose other than that for which it was prepared. It is not to be used for any purpose other than that for which it was prepared. It is not to be used for any purpose other than that for which it was prepared.



NOTES - Grid lines on this map have been moved in an Easterly direction to co-ordinate the map with the latest Longitude of Sydney Observatory 151° 12' 17.8". The blue figures in the margins, e.g. +13.0, refer to convergence. The black meridian lines on borders are not in their correct position. Convergence based on Longitude 151° E.

INDEX TO ADJOINING SHEETS

TO GIVE A BREVITARY REFERENCE IN THIS SHEET
 As an attention to the position of contours. Figures at the corners are the contour interval. They are the height of the contour interval of 50 ft.
 PAY ATTENTION TO THESE MARGINAL FIGURES AND TO THOSE PRINTED ON THE FACE OF THE MAP IN 1922.
 POINT MONICA WALKER (1922)

Sheet	42	Sheet	41
Sheet	41	Sheet	42

REFERENCES: 192411

Copyright Reserved