

**Series: AWM95**  
**Australian Army commanders' diaries**  
**[Vietnam]**

**Artillery units**

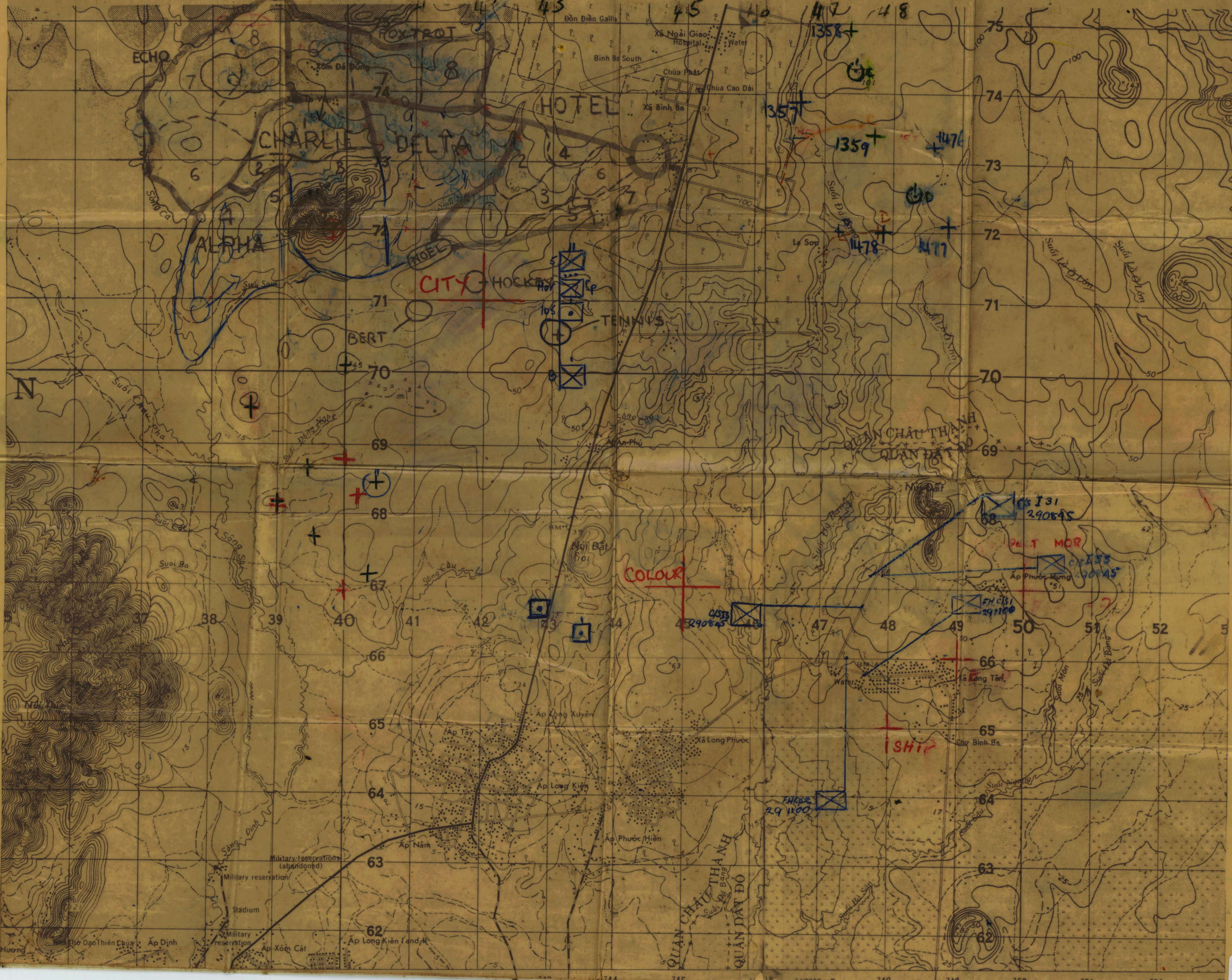
**Item number: 3/5/41**

**Item: 105 Field Battery [105 Fd Bty]**

**Maps**

**[1-31 Jul 1966]**







SCALE 1:10,000

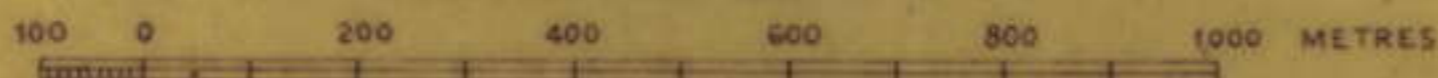
# Núi Nghe

SOUTH VIETNAM



Enlarged from 1:50,000 Sheet 6442 IV  
 L 701 series Additional detail from  
 recent 9" x 18" split vertical aerial  
 photography

SCALE 1:10,000



CONTOUR INTERVAL 10 METRES

**WARNING** Creek detail should be treated as representative  
 Most non-perennial creeks obscured by canopy

### LEGEND

- Timber: (Scattered) (20%-70%) (70%-100%)
- Swamp Paddy: Scrub
- Timber boundary
- Creek: Perennial, Non-Perennial
- Track
- Clearing
- Probable route of track or creek  
(not discernable on air photo)
- Dwelling
- Rubber

221

AWM95  
 Class 3/5/41  
 Oversize Map  
 Number 17



SCALE 1:10,000

# Núi Nghe

SOUTH VIETNAM



Enlarged from 1:50,000 Sheet 6442 IV L 701 series. Additional detail from recent 9" x 18" split vertical aerial photography.



**WARNING** Creek detail should be treated as representative. Most non-perennial creeks obscured by canopy.

**LEGEND**

- Timber: (Scattered) (70%-70%) (70%-100%)
- Swamp Paddy Scrub
- Timber boundary
- Creek: Perennial, Non-Perennial
- Track
- Clearing
- Probable route of track or creek (not discernible on air photo)
- Dwelling
- Rubber

*ANNEXIN*  
*April 18*

AWM95  
Class 3/5/41  
Oversize Map  
Number 18



1:5000

CONFIDENTIAL

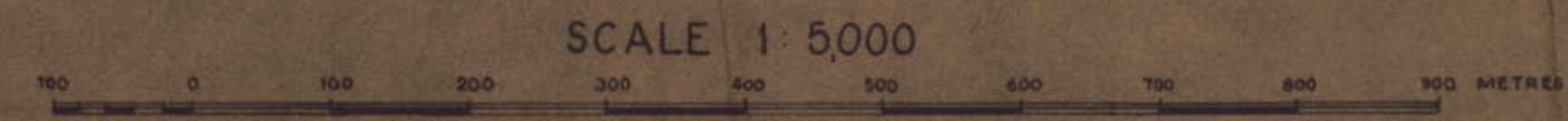
# BINH BA SOUTH

ASSEMBLY AREAS ROUTES CORDON AND HARBOUR POSITIONS

ANNEX P TO  
5 RAR OPORD 8-66  
OP SYDNEY TWO  
PHASE ONE  
DATED 15 JUL 66  
"74



Compilation - Enlarged from Xã Binh Ba  
1:10,000 photo plot with no additional  
information.



CONFIDENTIAL

**LEGEND**

Roads (gravel, formed)	====
Tracks Minor	----
Streams	~~~~
Plantations general	
Rubber plantations	
Timber boundaries	
Buildings	■