

**Series: AWM95**  
Australian Army commanders' diaries  
[Vietnam]

Headquarters units

**Item number: 1/4/75**

**Item: Headquarters, 1 Australian  
Task Force**

Maps

[1-31 Dec 1967]

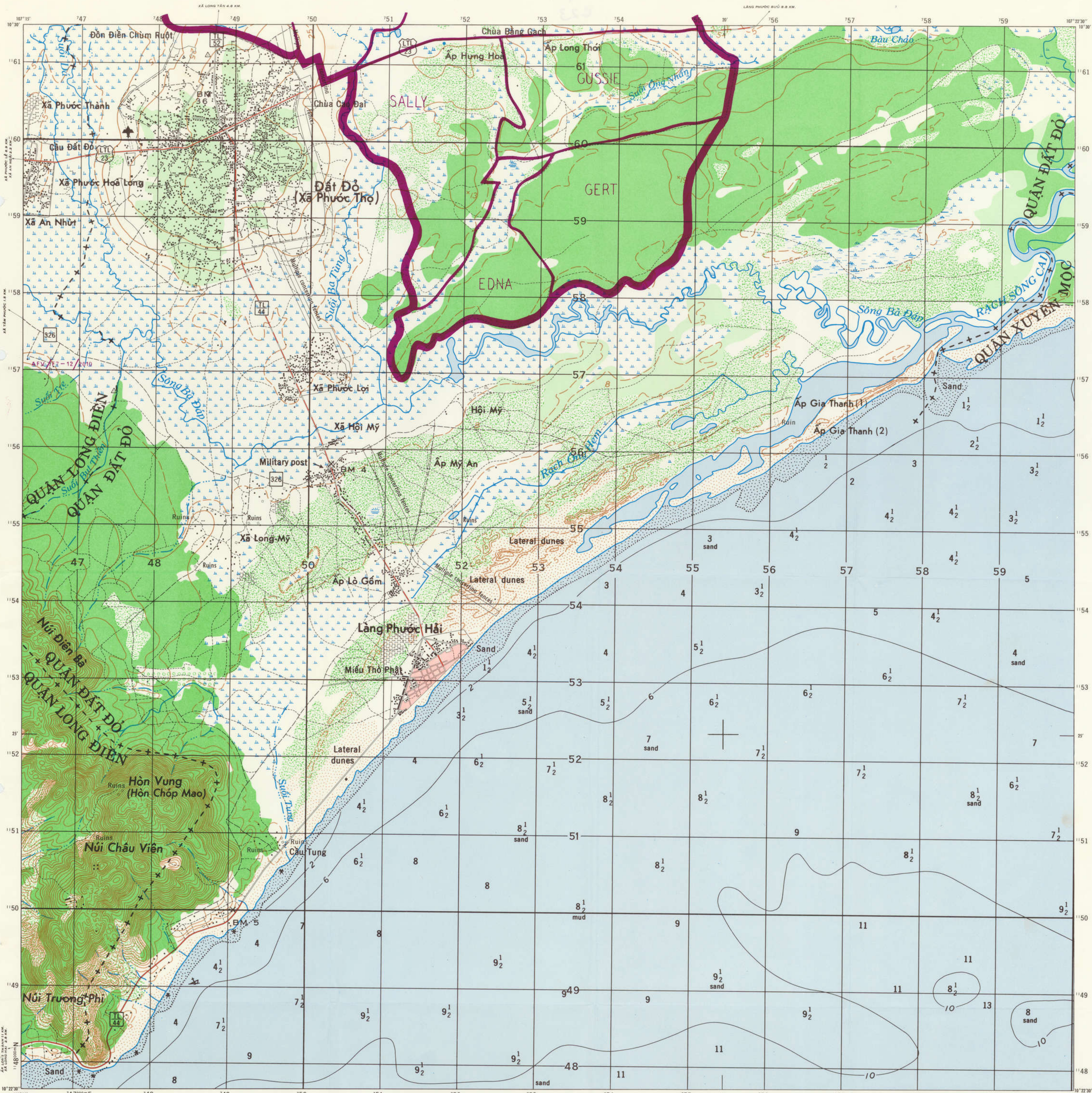












EDITION 2-AAS  
SERIES L 8015

LEGEND - CHỮ TỶ  
MAP INFORMATION AS OF 1965  
BẢN ĐỒ TIN-TỨC NĂM 1965

Scale Tỷ-lệ 1:25,000  
Scale 1:25,000  
Scale 1:25,000

CONTOUR INTERVAL - 10 METERS  
SUPPLEMENTARY CONTOURS - 5 METERS

SPHEROID - EVEREST  
PROJECTION - 1,000 METER UTM; ZONE 48 (BLACK NUMBERED LINES)  
GRID - TRANSVERSE MERCATOR  
VERTICAL DATUM - MEAN SEA LEVEL AT HÀ TIÊN  
HORIZONTAL DATUM - INDIAN DATUM 1960  
HYDROGRAPHIC DATUM - APPROXIMATE LEVEL OF LOWEST LOW WATER

PREPARED AT 1:50,000 SCALE BY... AMS (PV), U.S. ARMY 1966  
NAMES DATA BY... NGS, VIETNAM  
CONTROL BY... USAMSG, NGS, VIETNAM  
COASTAL HYDROGRAPHY FROM... NAVOCSAND CHARTS  
ENLARGED AND PRINTED BY... ROYAL AUSTRALIAN SURVEY CORPS 1967  
REVISED BY... ROYAL AUSTRALIAN SURVEY CORPS 1967

DELINEATION OF INTERNAL ADMINISTRATIVE BOUNDARIES IS APPROXIMATE  
RANH GIỚI HÀNH CHÍNH TRONG BẢN ĐỒ NÀY CHỈ THẠCH-NHỮA TỚI TÍNH CÁCH ĐẠI-CƯƠNG

GRID CONVERGENCE  
FOR CENTER OF SHEET  
HỘI-TỬ ĐƯƠNG-KẾ-Ở-VÙNG  
TỈNH-Ở-TRUNG-TÂM-BẢN-ĐỒ  
02°28' (8 MILES/MIU)

GLOSSARY - CỜ TỶ

Ấp	village
Bãi	swamp, pond, lake
Chợ	market
Đồn Điện	plantation
Làng	village
Miếu	temple
Núi	hill, mountain
Nhưýng-Dĩa	land grant
Rạch	stream
Sông, Suối	stream
Xã, Xóm	village

ROADS - ĐƯỜNG-SÁ

1	Salt evaporator
2	Ruộng muối
3	Limeston mountain
4	Núi đá vôi
5	Sand - Cát
6	Lagoon
7	Clear forest
8	Rừng rậm hay rừng già
9	Plantation: Tea
10	Rừng thưa
11	Rice Swamp
12	Rừng ngập nước
13	Land subject to inundation
14	Đất ngập nước
15	High Mangrove
16	Cây nước
17	Plantation
18	Rice
19	Field
20	Palm
21	Plantation
22	Field
23	Plantation
24	Field
25	Plantation
26	Field
27	Plantation
28	Field
29	Plantation
30	Field

KHOẢNG CÁCH ĐỀU VÒNG CAO-ĐỘ 10-20 MÉT  
CÁC VÒNG CAO-ĐỘ PHỤ-TÙNG 5-10 MÉT

KHOẢNG CÁCH ĐỀU VÒNG CAO-ĐỘ 10-20 MÉT  
CÁC VÒNG CAO-ĐỘ PHỤ-TÙNG 5-10 MÉT

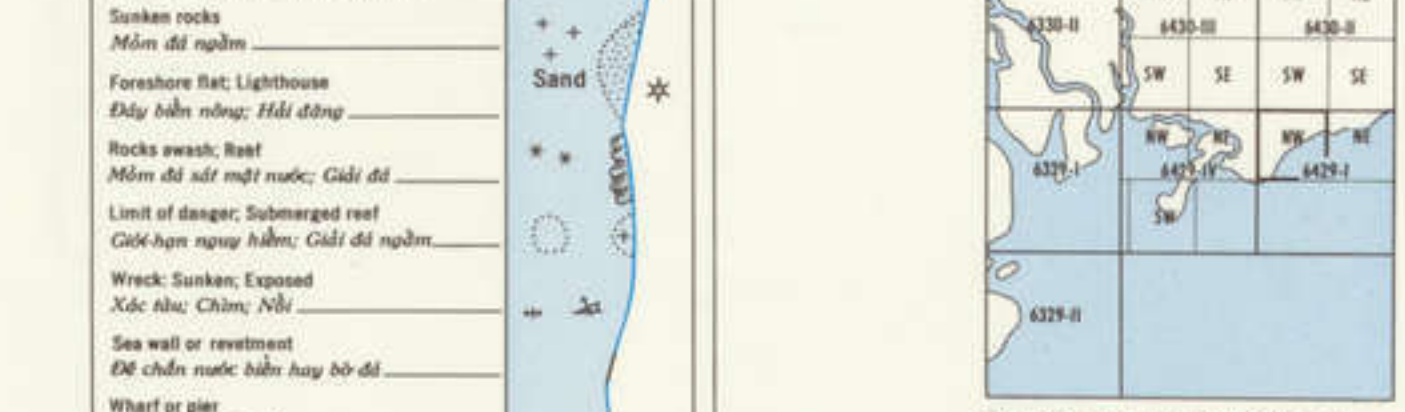
EVEREST  
UTM TUNG 1000 MÉT KINH ĐINH THỜI 48  
ĐƯỜNG ĐƯƠNG-CỘ CHỈ-0 ĐƯỜNG

HE THỐNG CHIỀU  
ĐƯỜNG ĐƯƠNG-CỘ CHỈ-0 ĐƯỜNG

HE THỐNG TRẠC CẦU CÁN-0 ĐƯỜNG  
HE THỐNG TRẠC CẦU CÁN-0 ĐƯỜNG

EVEREST  
UTM TUNG 1000 MÉT KINH ĐINH THỜI 48  
ĐƯỜNG ĐƯƠNG-CỘ CHỈ-0 ĐƯỜNG

ADJOINING SHEETS  
BẢNG BẮP ĐỀ-ĐỒ



DEPTH CURVES, SOUNDINGS IN METERS  
VÒNG ĐỘ SÂU, ĐỒ SÂU ĐINH MÉT

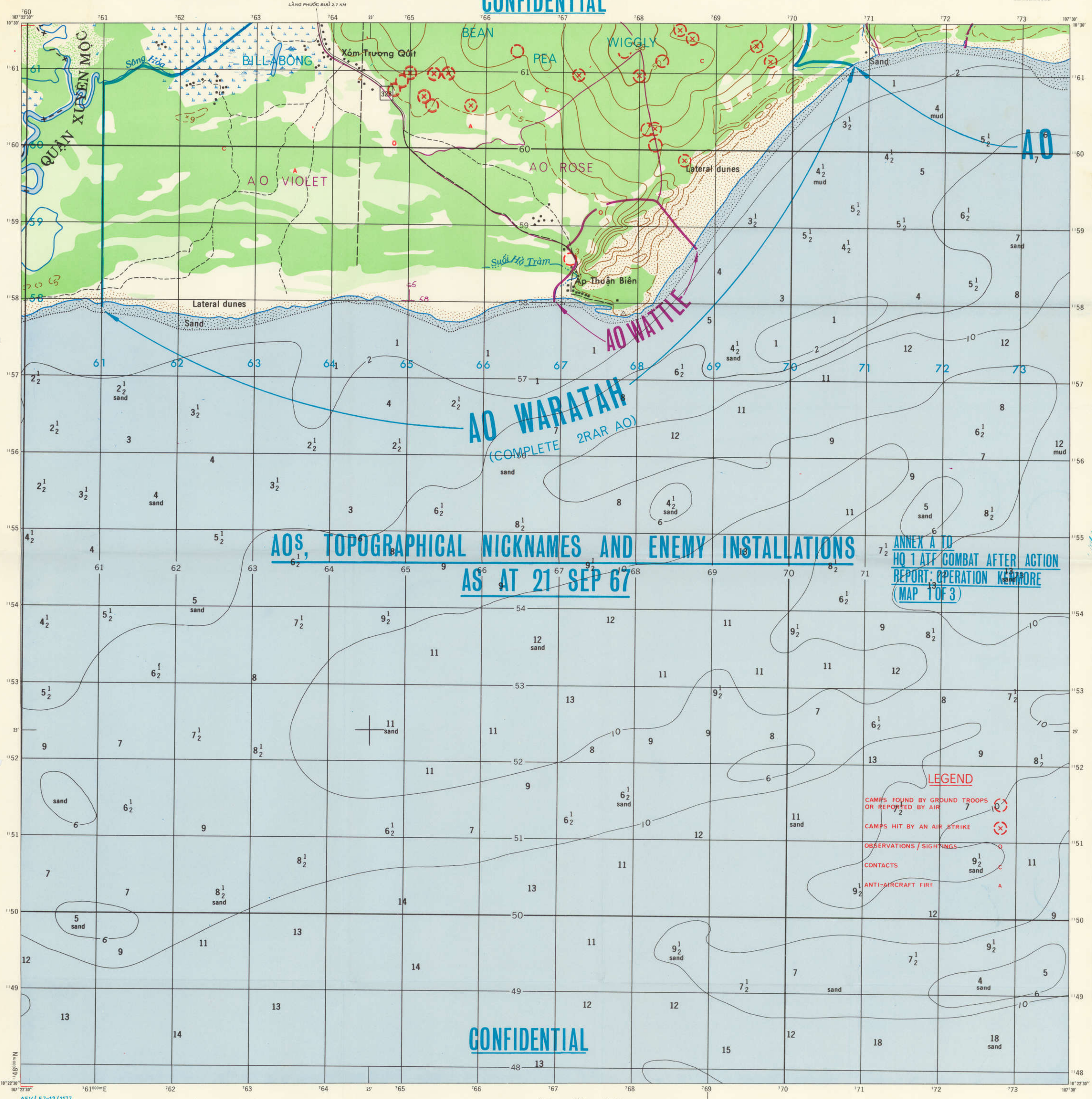
DEPTH CURVES, SOUNDINGS IN METERS  
VÒNG ĐỘ SÂU, ĐỒ SÂU ĐINH MÉT

DEPTH CURVES, SOUNDINGS IN METERS  
VÒNG ĐỘ SÂU, ĐỒ SÂU ĐINH MÉT

DEPTH CURVES, SOUNDINGS IN METERS  
VÒNG ĐỘ SÂU, ĐỒ SÂU ĐINH MÉT

ĐẤT ĐỎ (NW) (XÃ PHƯỚC THỌ), VIETNAM





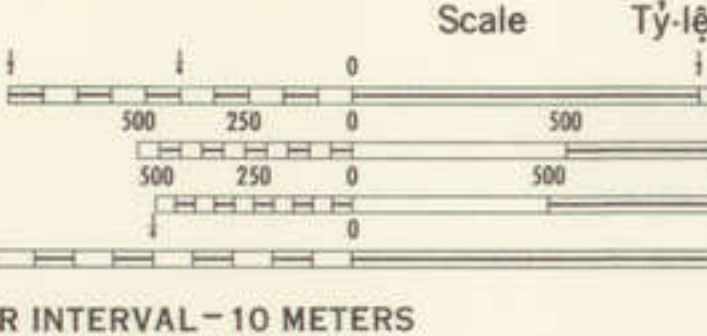
**AOS, TOPOGRAPHICAL NICKNAMES AND ENEMY INSTALLATIONS AS AT 21 SEP 67**

ANNEX A TO  
HQ 1 ATF COMBAT AFTER ACTION  
REPORT: OPERATION KEMPORE  
(MAP 1 OF 3)

**CONFIDENTIAL**

**LEGEND**

- CAMPS FOUND BY GROUND TROOPS OR REPORTED BY AIR
- CAMPS HIT BY AN AIR STRIKE
- OBSERVATIONS / SIGHTINGS
- CONTACTS
- ANTI-AIRCRAFT FIRE



CONTOUR INTERVAL - 10 METERS  
SUPPLEMENTARY CONTOURS - 5 METERS

KHOẢNG CÁCH ĐỀU VÒNG CAO-ĐỘ 10 MÉT  
CÁC VÒNG CAO-ĐỘ PHỤ TÙNG 5 MÉT

SPHEROID: EVEREST  
GRID: 1,000 METER UTM; ZONE 48 (BLACK NUMBERED LINES)  
PROJECTION: TRANSVERSE MERCATOR  
VERTICAL DATUM: MEAN SEA LEVEL AT HÀ TIÊN  
HORIZONTAL DATUM: INDIAN DATUM 1960

CREDITS  
PREPARED AT 1:50,000 SCALE BY: AMS (P.V.) U.S. ARMY 1966  
NAMES DATA BY: RGS, VIETNAM  
CONTROL BY: USAMF, RGS, VIETNAM  
ENLARGED AND PRINTED BY: ROYAL AUSTRALIAN SURVEY CORPS 1966  
AMU/774/2188

DELINEATION OF INTERNAL ADMINISTRATIVE BOUNDARIES IS APPROXIMATE  
RANH GIỚI HÀNH CHÁNH TRÊN BẢN ĐỒ NÀY CHỈ PHẠCH-HOÀ VỚI THỰC-TÌNH ĐẤT ĐỎ

**GLOSSARY - CỜ-TỬ**

Áp	village
Bùn	swamp, pond, lake
Cầu	bridge
Đài	pagoda
Đồn	plantation
Đồn	village
Miền	pagoda
Núi	hill, mountain
Rạch	stream
Sông	stream
Xã	village

**HYDROGRAPHIC DATUM**  
APPROXIMATE LEVEL OF LOWEST LOW WATER  
MẶT BIỂN THẤP NHẤT

**DEPTH CURVES**  
Contours in meters  
Vòng độ sâu: độ sâu tính về mét

**LEGEND**

- Shoals
- Reefs
- Rocky shoals
- Shoals with coral
- Shoals with sand
- Shoals with mud
- Shoals with shells
- Shoals with seaweed
- Shoals with other

**GRID CONVERGENCE**

GRID NORTH	MAGNETIC NORTH
0° 00' 00"	0° 00' 00"

**ADJOINING SHEETS**

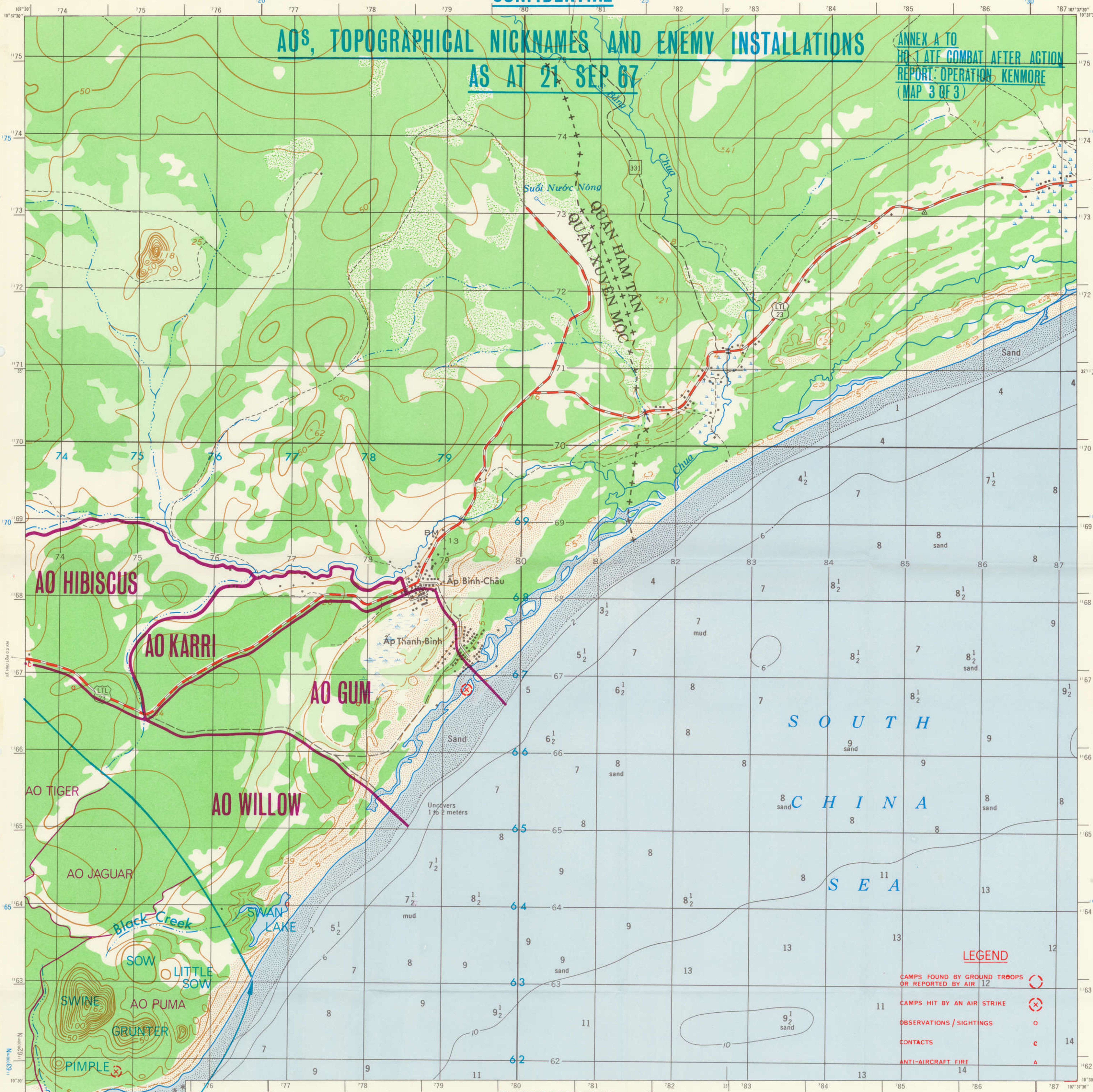
6429-1-NE	6429-1-NE
6429-1-NE	6429-1-NE
6429-1-NE	6429-1-NE
6429-1-NE	6429-1-NE



**CONFIDENTIAL**

# AOS, TOPOGRAPHICAL NICKNAMES AND ENEMY INSTALLATIONS AS AT 21 SEP 67

ANNEX A TO  
HQ 1 ATF COMBAT AFTER ACTION  
REPORT: OPERATION KENMORE  
(MAP 3 OF 3)



**CONFIDENTIAL**



CONTOUR INTERVAL - 10 METERS  
SUPPLEMENTARY CONTOURS - 5 METERS

SPHEROID: EVEREST  
GRID: 1,000 METER UTM-ZONE 48 (BLACK NUMBERED LINES);  
ZONE 49 (BLUE NUMBERED TICKS)  
PROJECTION: TRANSVERSE MERCATOR  
VERTICAL DATUM: MEAN SEA LEVEL AT HÀ TIÊN  
HORIZONTAL DATUM: INDIAN DATUM 1960

CREDITS  
PREPARED AT 1:50,000 SCALE BY: AMS (PW), U.S. ARMY 1966  
NAMES DATA BY: NSG, VIETNAM  
CONTROL BY: USMARB, NSG, VIETNAM  
COASTAL HYDROGRAPHY FROM: NAVICHO charts  
ENLARGED AND PRINTED BY: ROYAL AUSTRALIAN SURVEY CORPS 1967  
ANG/FT-8/3009

DELINEATION OF INTERNAL ADMINISTRATIVE BOUNDARIES IS APPROXIMATE  
RANH GIỚI HÀNH CHÁNH TRÊN BẢN ĐỒ NÀY CHỈ PHẠCH HÓA VỚI TÍNH CHẤT DẠI CƯƠNG

GLOSSARY - CỘ TỬ

Ấp	village
Núi	mountain
Suối	stream
Suối Nước	village
Xã	village

**LEGEND**

- CAMPS FOUND BY GROUND TROOPS OR REPORTED BY AIR
- CAMPS HIT BY AN AIR STRIKE
- OBSERVATIONS / SIGHTINGS
- CONTACTS
- ANTI-AIRCRAFT FIRE

**ADJOINING SHEETS**  
BẢNG RÁP BẢN ĐỒ

**HYDROGRAPHIC DATUM**  
APPROXIMATE LEVEL OF LOWEST LOW WATER  
MẶT THUY BIỂN CHẤM

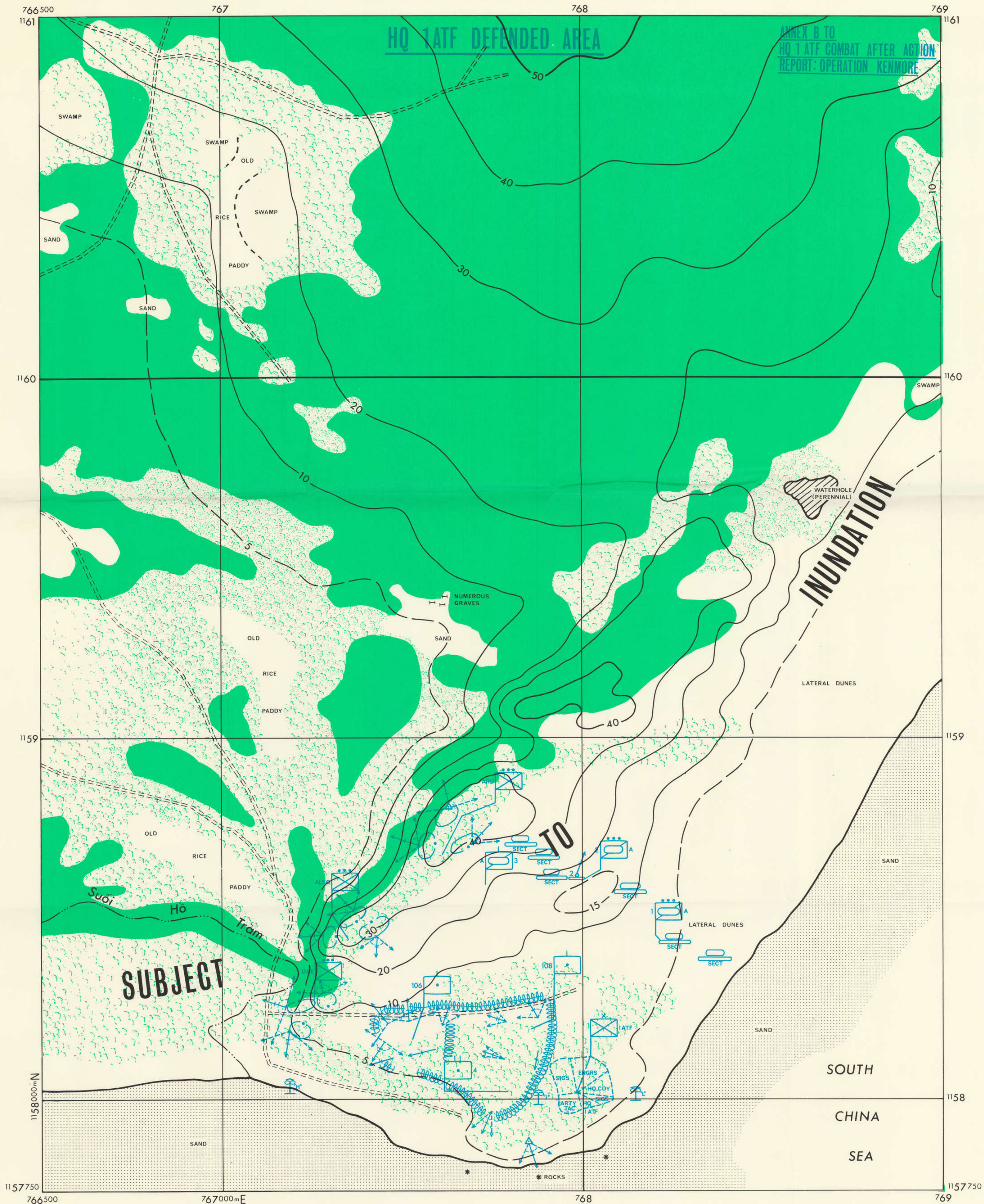
**TO CONVERT A MAGNETIC AZIMUTH TO A GRID AZIMUTH**  
MAGNETIC AZIMUTH  
MINUS  
MAGNETIC DECLINATION  
EQUALS  
GRID AZIMUTH

**TO CONVERT A GRID AZIMUTH TO A MAGNETIC AZIMUTH**  
GRID AZIMUTH  
PLUS  
MAGNETIC DECLINATION  
EQUALS  
MAGNETIC AZIMUTH

ẤP BÌNH CHÂU (SW), VIETNAM



# HỒ TRÀM (ENLARGEMENT)



AFV/F7-12/1173  
AFV/F7-12/1185



GRID CONVERGENCE  
FOR CENTRE OF SHEET  
0' 25" (7 MILLS)

**CONFIDENTIAL**



