

**Series: AWM95**  
Australian Army commanders' diaries  
[Vietnam]

Headquarters units

**Item number: 1/4/79**

**Item: Headquarters, 1 Australian  
Task Force**

Annex C (cont)

[1-31 Jan 1968]

C14

CONFIDENTIAL

Copy No 79 of 95

HQ 1 ATF  
NUI DAT

130800H Jan 68

Op Instr 3/68 (OP SCHEYVILLE)

To: Lt Col J. J. SHELTON MG, CO 3 RAR

References: A. VIETNAM series L7014, sheets 6429-1, 6430-11 Edition 1, 1:50,000.  
B. Annex P to 1 ATF Op O 36/67 dated 181000 Nov 67.  
C. SONG RAI OUTPOSTS, Special, 1:10,000.

Time Zone used throughout this order: HOTEL.

1. Situation

a. Enemy Forces

- (1) See Annex A.
- (2) Enemy installations 1 Jun 67 - 11 Jan 68 - Annex P.

b. Friendly Forces

- (1) 2 RAR and 7 RAR will continue to patrol Unit Patrol AOs and will be allotted patrol zones in the 1 ATF Patrol AO during 20 - 25 Jan.
- (2) W Coy 2 RAR will patrol in depth to patrol zones SALLY, GUSSIE, EDNA and GERT due to increased artillery support available during the operation.
- (3) Sector will be requested to assist by securing an LZ for the fly in of the FSPB coy.
- (4) Civilians are allowed in the farming areas shown on the current 1 ATF TAOR maps between 0600H - 1900H daily.
- (5) The SONG RAI RF OUTPOSTS AO (vic YS5963) is to be noted. (Sector authority is being obtained to operate in this AO. Note also the XUYEN MOC AO.
- (6) CS gas has been dropped regularly WEST and EAST of the SONG RAI, from YS61 Northing to the mouth of the river since Jun 67.
- (7) ARVN/RF/PF are located as follows:
  - (a) YS583638  
YS601638) Two RF Coys  
YS608640)
  - (b) XUYEN MOC YS6668 one RF coy plus two 105 mm Hows and RF personnel.
- (8) Known minefields exist at YS573639, YS602638 plus the registered (1 Fd Sqn) minefields YS598637 (E6) and YS608640 (E7). Further details are available from HQ 1 ATF and 1 Fd Sqn.

c. Attachments and Detachments

- (1) Under comd from 191800H Jan 68  
one combat engr team 1 Fd Sqn  
one mini team 1 Fd Sqn  
(for ops with one tp A Sqn  
3 Cav Regt)

/ -2-

CONFIDENTIAL

CONFIDENTIAL

- 2 -

- (2) Op con from 200630H - one tp A Sqn 3 Cav Regt plus two mor APCs
- (3) Remaining in DS - 161 Fd Bty 4 Fd Regt
- (4) In DS from 200630H - one H13 161 (Indep) Recce Flt
- (5) In sp from 200700H - two AHC (or equivalent)  
until released FAC
- (6) In sp of FSPB - one fd bty 4 Fd Regt  
HERRING YS5762 from  
HORSESHOE HILL
- (7) On standby at 1 Fd - one combat engr team 1 Fd Sqn  
Sqn base location  
on 30 minutes  
notice to move

2. Mission. You are to search and destroy in AO AMBLESIDE from 20 Jan to 25 Jan 68.

3. Execution.

a. General Outline. You are to develop your own concept of operations in AO AMBLESIDE and complete the tasks stated. Once the FSPB (FSPB HERRING), is established your force is to be inserted by AHC.

b. Tasks

- (1) Establish FSPB HERRING in vic YS5762 and deploy one coy for close protection. Coy Comd is to be nominated as FSPB Comd.
- (2) The rice staging area, centre of mass YS6661 is to be searched (see reference B).
- (3) Locate and destroy the enemy and his camps astride and SOUTH of the SONG HOA vic YS6161, YS6160 and YS6260.

c. Restrictions. One mor sect Mor Fl 3 RAR is to remain in base location NUI DAT.

d. Coordinating Instructions

- (1) AO and FSPB - Annex Q
- (2) (a) LC teams are to be deployed at XUYEN MOC and SONG RAI OUTPOSTS throughout the operation.  
  
(b) Teams are to consist of Officer/Senior NCO, radio operator and radio plus an interpreter where necessary.  
  
(c) Request for additional interpreter through GS02 (Ops).
- (3) Fire Plan. Requests for preplanned air strikes are to be forwarded to GS02 (Ops).
- (4) Extraction. Plan to be based on air and APC.

4. Administration and Logistics

a. 3 RAR is responsible for administration.

/ -3-

CONFIDENTIAL

CONFIDENTIAL

- 3 -

- b. Be prepared to backload rice if found in large quantities. ADE and cornsacks are to be on standby.
- c. Bids for additional support to DAQMG by 141000H.
- d. Respirators (gas masks) are to be held on standby at 3 RAR base location.

5. Command and Signal

- a. HQ 1 ATF remains present location.
- b. Retransmission station is to be established at HORSESHOE HILL if required.

Ack Instructions: Ack by telephone to EBONY 50.

(R.L. HUGHES)  
Brig  
Comd

Authentication:



(D.V. SMITH)  
Maj  
GS02 (Ops)

Annexes: A. Enemy Forces.  
P. Enemy Installations 1 Jun 67 - 11 Jan 68.  
Q. AO - Op SCHEYVILLE.

Distribution:

List Z less serials 4, 7, 8 and 49

CONFIDENTIAL

CONFIDENTIAL

ANNEX A TO  
1 ATF OP INSTR 3/68  
DATED 130800H JAN 68

ENEMY FORCES

1. The area SOUTH of XUYEN MOC to the coast is used by the VC in several ways. These include:
  - a. Infrequent over the beach resupply.
  - b. Fostering of small domestic crafts, farming and fishing to support the VC cause.
  - c. Camps and staging areas for liaison teams who come down from VC BA BIEN Province HQ, either to work around the XUYEN MOC area or en route to the SONG RAI crossings and the villages on Route 44.
  - d. Base camps for guerilla and district troops and cache areas.
2. Op KENMORE (Oct 67) disrupted VC activity and destroyed many installations. Documents captured during this operation indicated that the VC were planning to expand guerilla forces and production support activities throughout the area. There have been recent signs of a slight overall increase in VC movement and possible rehabilitation around some of the base camps. Annex P indicates VC activity reported since 1 Jun 67 and from it the following points should be noted:
  - a. The area SOUTH and EAST of the NUI KHO Hills remains the main centre of activity and should be carefully searched.
  - b. The area between Route 398 and the SONG RAI is used by small groups of VC in transit and there are suspected base camps in the jungle edge from YS617609 to YS625606.
  - c. An aircraft on a CS mission received ground fire from the area YS6161 on 12 Jan 68.
  - d. Base camps and cache areas may be discovered throughout the AO.
3. Known enemy units that live in or near the AO and which may be encountered are:
  - a. G57, a coastal reconnaissance and liaison unit controlled by Group 84. It is up to 100 strong and generally lives further EAST around the coast. It is generally dispersed in weak platoon positions around the area YS7462. Small parties of it have been found as far to the WEST as the LONG GREEN.
  - b. XUYEN MOC District Unit, a district platoon about 20 strong.
  - c. PHUOC BUU Guerilla Squad, the local guerillas who have base camps in and around the NUI KHO Hills and operate throughout the AO. Strength 10 or 12.
4. Since Op KENMORE short, one-day ops by Sector units have been conducted in the AO and it is likely that booby-traps may be more numerous in and around the VC base camps.

CONFIDENTIAL

DIARY

C15

MESSAGE FORM

PRIORITY

150630Z Jan 68

FROM 1 ATF

CONFIDENTIAL

TO: 3 RAR

INFO: LIST Z LESS SERIALS 2, 4, 8 and 49

G084

OP SCHEYVILLE (.) REF 1 ATF OP INSTR 3/68 OF 130800H JAN 68 (.) DATES  
OF OP NOW 22 JAN TO 27 JAN INCLUSIVE (.) ACK

Page 1 of 1 pages

Classified YES

Drafter's Name Office Tele

WILKINSON OPS EBONY 34

Releasing Officer's Signature & Rank

J Wilkinson Capt


/5 Jan 68

See Distribution List

GS INSTRUCTION 5/68  
TEST FIRING OF WEAPONS IN 1 ATF BASE

General

1. This instruction covers the test firing of weapons within the 1 ATF base area. It is not intended to curtail in any way the activities of qualified RAEME armourers.
2. Test firing consists of two tests:
  - a. Accuracy test.
  - b. Function test.
3. Test firing is not designed for the following:
  - a. Expending surplus or old ammunition.
  - b. Familiarisation. (Range practices should be conducted for this purpose.)
4. Generally, it is not necessary to fire more than a few rounds to check accuracy and function. Suggested test firing sequences are attached:
  - Annex A - Pistol Calibre 9mm, Auto, L9A1.
  - Annex B - Sub Machine Gun, 9mm, F1.
  - Annex C - Rifle 7.62mm, L1A1.
  - Annex D - Machine Gun, 7.62mm, M60.
  - Annex E - Rifle, 5.56mm, M16 and XM16E1.
  - Annex F - Machine Gun, calibre .50 inch.
5. If a weapon fails to meet specifications of either accuracy or function, it should be taken to the first line RAEME support allocated to the unit in accordance with Q Instruction 5/67. Test firings may be repeated ONLY when there is reasonable doubt about the following points:
  - a. Faulty ammunition.
  - b. Competence of the firer.
  - c. After one, but NOT more than one, stoppage that cannot be remedied by Immediate Action Drills.
  - d. After failing to meet the accuracy test. (Unless under the supervision of a RAEME armourer, test firings will NOT be repeated more than once before the weapon is checked by an armourer.)

  
(D.V. SMITH)  
Maj  
GS02 (Ops)

Distribution:

List B less Serials 20 - 26  
List C

PISTOL, CALIBRE 9MM, AUTO, L9A1

1. Function Test.

- a. Full magazine.
- b. Range: 10 yards.
- c. Target: Any suitable object.
- d. Rounds Fired: 13. Check safety catch during firing.
- e. Frequency: Whenever in doubt as to serviceability of the pistol.
- f. Should operate smoothly and must feed, extract and eject without fault.

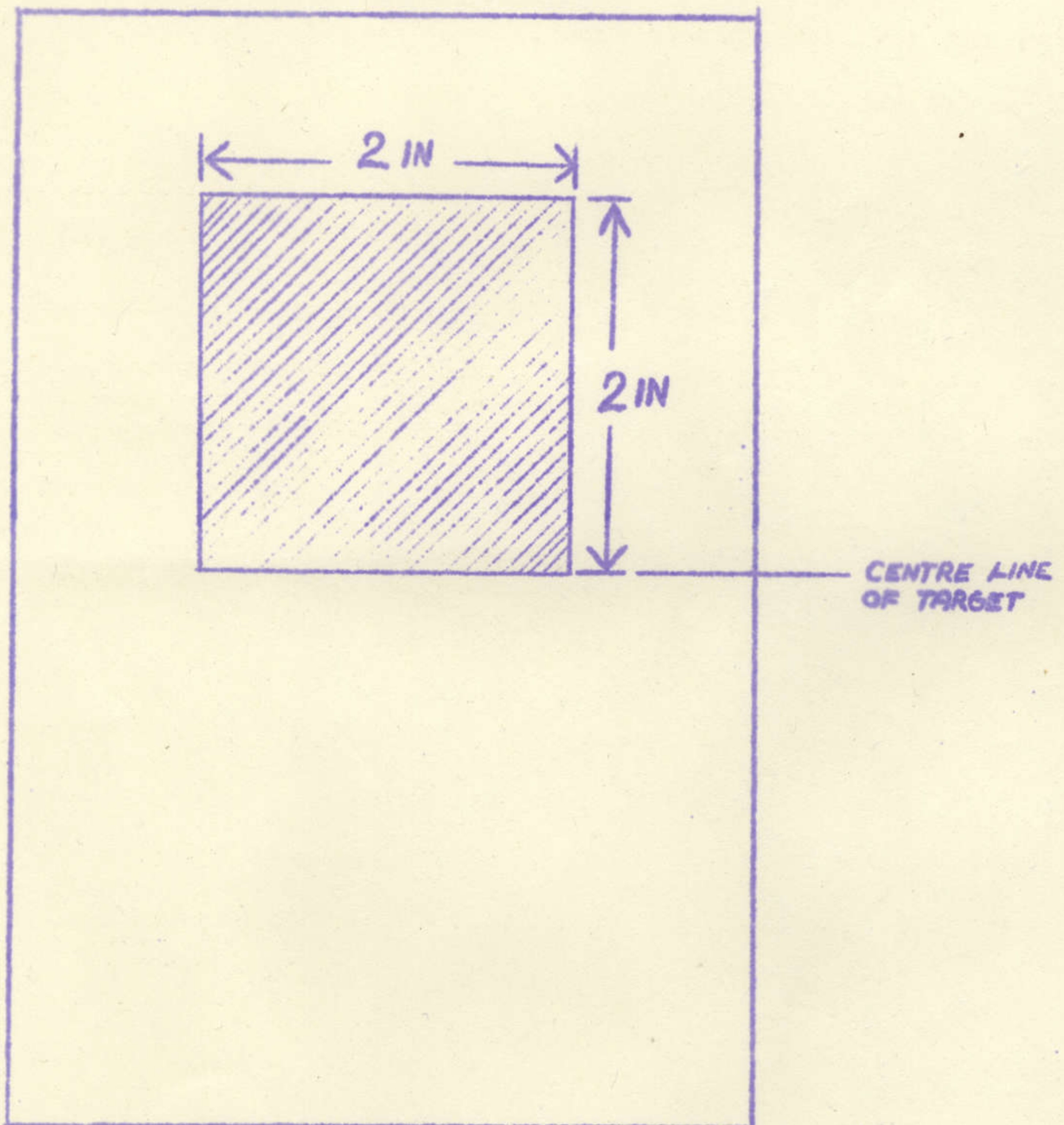
2. Accuracy Test.

- a. Full magazine.
- b. Range: 10 yards.
- c. **Target:** Any light coloured plain target with inscribed rectangle, six inch vertical by four inch horizontal. A black aiming mark two inches square will be inscribed. The centre of the bottom edge of the aiming mark will be at the middle of the rectangle (sample attached - Appendix 1).
- d. Rounds fired. Six rounds from a fully loaded magazine. Five out of six shots must fall within the rectangle of the target.



APPENDIX 1 TO  
ANNEX A TO  
1 ATF CS INSTR 5/68  
DATED 15 JAN 68

TARGET FOR 9mm PISTOL



SUB MACHINE GUN, 9MM, F1

1. Function Test.

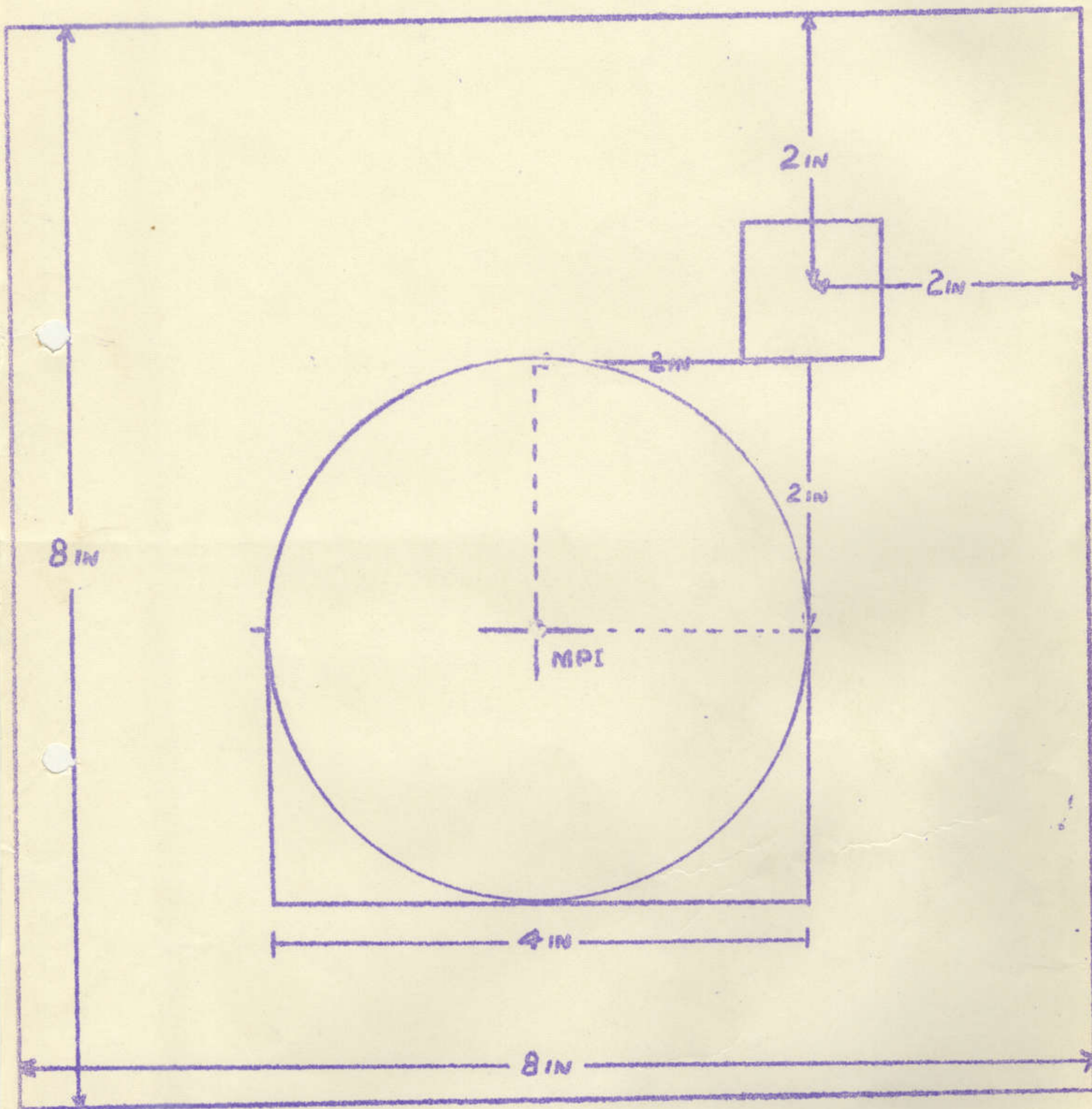
- a. Full magazine (recommend 30 rounds only).
- b. Range: 10 yards.
- c. Target: Any suitable object.
- d. Rounds fired: 5 single rounds with safety catch on fire. 25 rounds in short bursts. Check safety catch during firing.
- e. Frequency. Whenever in doubt as to serviceability and before each operation or patrol. Function testing is NOT required after operations or patrols.
- f. Weapon should operate smoothly and must feed, extract and eject without fault.

2. Accuracy Test.

- a. Full magazine (recommended 30 rounds only).
- b. Range: 25 yards.
- c. Target: Any light coloured plain target eight inches square, with enscribed a black one inch square aiming mark, positioned 2 inches down and 2 inches in from the right hand side. With an MPI cross enscribed 2 inches down and 2 inches left, about which a circle of 2 inch radius is scribed. (See Appendix 1.)
- d. Position. Lying position with forearm rested.
- e. Rounds fired. Two warming shots into butt, followed by five aimed single shots, maintaining the same point of aim. Five shots should fall within 4 inch diameter circle.
- f. Adjustments. Where inaccuracy exists, assistance from a RAEME armourer should be sought. Under NO circumstances will metal be removed from the blade foresight to correct the fall of shot.

APPENDIX 1 TO  
ANNEX B TO  
7 ATF GS INSTR 5/68  
DATED 19 JAN 68

TARGET FOR SMG 9mm F1



RIFLE 7.62MM L1A1

1. Function Test.

- a. Full magazine (20 rounds).
- b. Range: Any authorised test fire pit.
- c. Target: Any suitable object.
- d. Rounds fired. 10 deliberate (slowly), 10 rapid. Check safety catch during firing.
- e. Frequency. Whenever in doubt as to serviceability and before each operation or patrol.
- f. Weapon should operate smoothly with a minimum recoil, with the gas regulator set NOT lower than 4.
- g. During the function testing of the rifle, all components should be checked for operation; the main points to inspect are:
  - (1) Cocking handle.
  - (2) Rear sights.
  - (3) Safety catch.
  - (4) Gas regulator.
  - (5) Trigger mechanism.
  - (6) Body catch.

2. Accuracy Test.

- a. Full magazine (20 rounds).
- b. Range: 25 yards. Sights set at 200 yards.
- c. Target: Any light coloured plain target six inches square, with enscribed a black one inch square aiming mark, positioned two inches down and central. With an MPI cross enscribed a quarter of an inch below and central of the point of aim. About the cross enscribed a circle of 2 inch diameter. (See Appendix 1.)
- d. Position: Lying position with forearm rested.
- e. Rounds Fired: Two warming shots into butt, followed by four aimed shots at the target maintaining the same point of aim. Four shots should fall within the 2 inch circle with the MPI at the cross.
- f. Adjustments. Firing from the 25 yards range, one complete turn of either the foresight blade or the back sight zeroing screw, will alter the MPI one inch.
- g. Caution.
  - (1) Before adjusting the foresight blade, loosen off the fore-sight securing screw.
  - (2) Before attempting to force the rear sight across, slacken off the opposite zeroing screw.

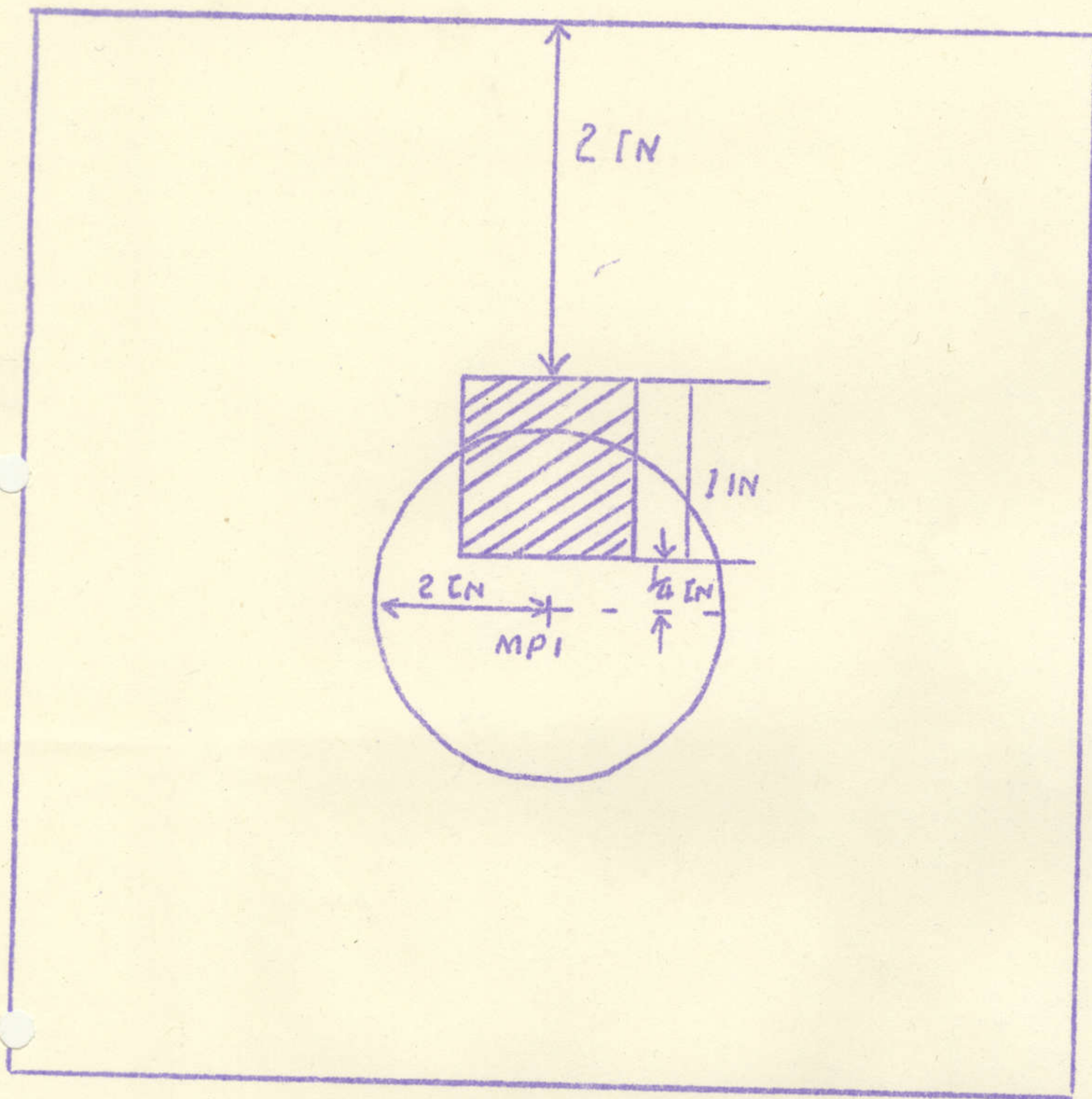
2.

(3) Tighten all screws before further firing.

h. In the case of weapons failing to meet the requirements of the accuracy test, the weapon should be taken to a RAEME armourer for inspection.

APPENDIX 1 TO  
ANNEX C TO  
1 ATF 68 LISTR 5/68  
DATED 15 JAN 68

TARGET FOR RIFLE 7.62MM L1A1



MACHINE GUN, 7.62MM, M60

1. Function Test.

- a. Two 20 round belts.
- b. Range: Any authorised test pit.
- c. Target: Any suitable object.
- d. Rounds fired: Gun barrel, twenty rounds in bursts of four to five rounds. Spare barrel, twenty rounds in one burst.
- e. Prior to firing, weapon must be thoroughly cleaned and adequately lubricated, as detailed below using Semi-Fluid Lubricating Oil (LSA):
  - (1) Barrel assembly. On bolt locking lug camming surfaces.
  - (2) Operating rod assembly. On roller and those surfaces immediately below the yoke, which slide within the receiver rails.
  - (3) Cover assembly. In groove wherein the bolt actuator slides.
  - (4) Breech bolt assembly. On the bolt locking lugs, actuator roller and in the camming recess (for the operating rod).
  - (5) Receiver group. On the receiver rails; NOTE: Apply the lubricant sparingly to the above areas by squeezing a small amount of lubricant from the tube. After lubricating, the components should be cycled by hand as in functioning, to allow the oil to spread.

2. Accuracy Test.

- a. The first essential factor necessary to produce accurate fire from the machine gun is that both the gun barrel and the spare barrel be aligned with the body of the weapon. This is done by using the mean of the two sight alignments. It is achieved by bore sighting. Further zeroing is carried out once correct lateral alignment is established. As each individual barrel differs slightly, it may be found that minor adjustments are necessary. This may be done by the use of the windage knob (for lateral adjustment) and the backsight slide (for vertical adjustment).
- b. Boresighting will be carried out only by qualified RAEME armourers.
- c. Range: 50 ft.
- d. Target: Any light coloured plain target with enscribed upon it, a 1/8 inch wide black vertical line twelve to eighteen inches long.
- e. Method:
  - (1) The weapon is to be mounted upon the tripod mount, M122, ensuring that the tripod mount is firmly positioned and held steady with sand bags.
  - (2) Align the centre of the bore of the barrel onto the vertical line of the target.

2.

(3) Set the rear sight at zero windage and move the rear sight assembly left or right in the dovetail slot on the receiver until the line of sight (as viewed through the rear sight aperture across the top of the front sight) coincides with the view through the bore. Scribe an index line on the rear sight base and receiver with a suitable fine scribe.

(4) Repeat both (a) and (b) with the spare barrel.

(5) Position the rear sight assembly midway between the two scribed lines on the receiver and stake in four places to retain the assembly securely in place on the receiver.

(6) Caution. Barrels which have been boresighted should both bear the same serial number of the gun. It is essential for both accuracy and functional ability that barrels are not allowed to be interchanged.



RIFLE, 5.56MM, M16 AND XM16E1

1. Function Test.

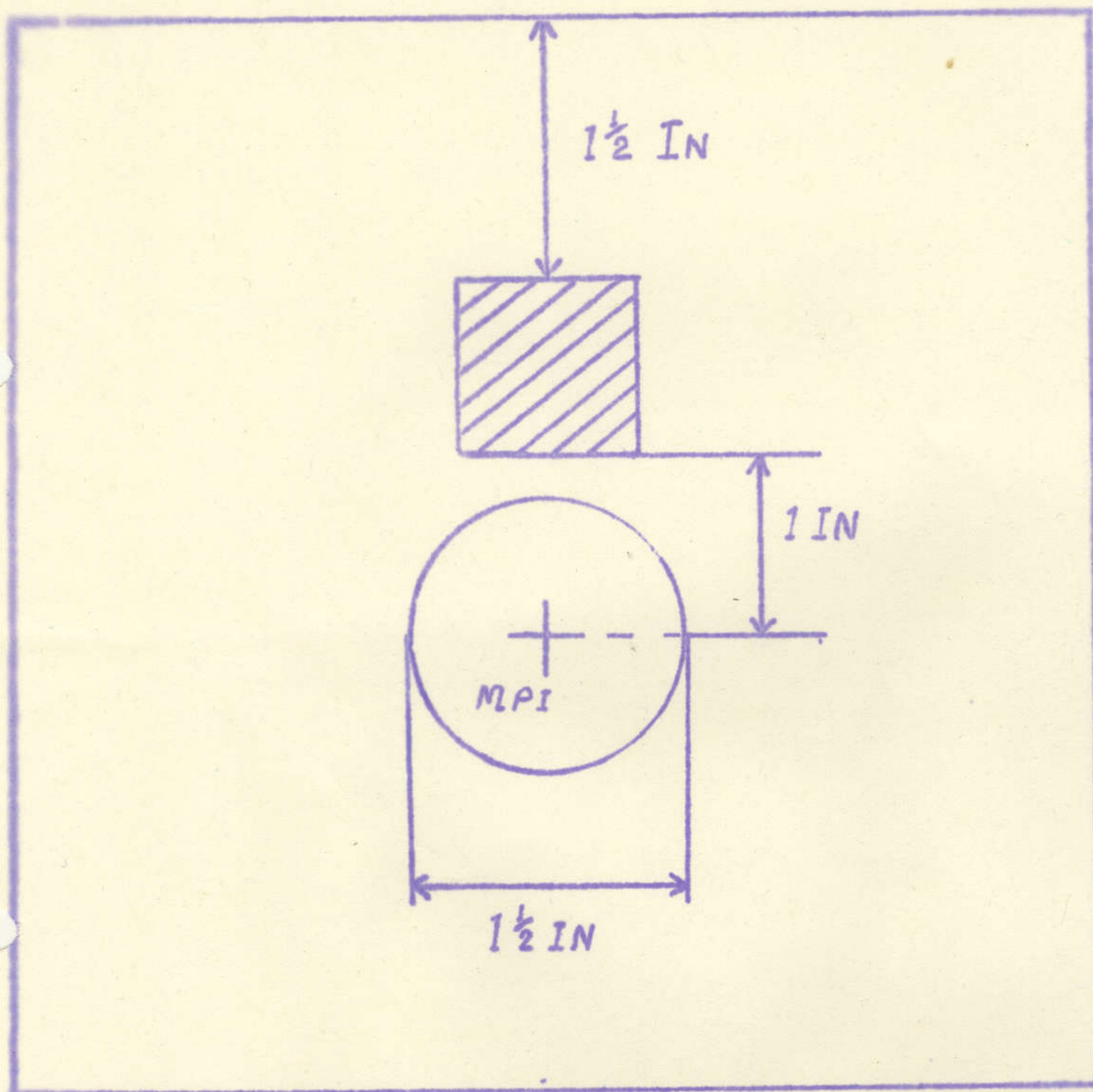
- a. One 20 round magazine plus one 5 round magazine.
- b. Range: Any authorised test firing pit.
- c. Target: Any suitable object.
- d. Rounds fired:
  - (1) Selector lever set at "AUTOMATIC", fire one burst of 10 rounds.
  - (2) Selector lever set at "AUTOMATIC", fire two bursts of five rounds.
  - (3) Selector lever set at "SEMI", fire five rounds in quick succession.
- e. Prior to firing, weapon must be thoroughly cleaned, and adequately lubricated with Semi Fluid Lubricating Oil (LSA), as detailed below:
  - (1) After thorough cleaning apply a light coat of LSA to the locking lug area of the chamber, magazine spring, interior of lower receiver extension, action spring, buffer and all external metal surfaces. The receiver extension is to be lubricated using flannelette dampened with lubricant.
  - (2) The interior of the upper and lower receivers, the bolt carrier group and the front sight post screw, detent and spring are to receive a generous application.

2. Accuracy Test.

- a. Full magazine (recommended 18 rounds).
- b. Range: 25 yards. Sights set at LOW range aperture.
- c. Target: Any light coloured plain target six inches square, with enscribed a black one inch square aiming mark, positioned one and a half inches down and central. With an MPI cross enscribed one inch below the point of aim. About the cross enscribed a circle of one and a half inch diameter. (See Appendix 1.)
- d. Position: The rifle is fired from the lying position using the bipod.
- e. Rounds fired: Two warming shots into the butt, followed by four aimed shots at the target, maintaining the same point of aim. Four shots should fall within the circle with the MPI at the cross.
- f. Adjustments. Variation of position of MPI is obtained by adjusting the foresight up or down for vertical adjustment and by rotating the sight drum for lateral adjustment. Each click on both sights is equivalent to one quarter inch of movement on the target at 25 yards.

APPENDIX 1 TO  
LAW OF LIST 5/60  
DATED 15 JAN 60

TARGET FOR RIFLE 5.56 M16 AND XM16E1



MACHINE GUN, CALIBRE .50 INCH

1. Function Test.

a. Because of the absence of a mechanical cooling medium and the presence of such a high degree of friction, the temperature of the barrel rises rapidly during firing. The longer the burst, the higher the temperature attained. The progressive heating of the barrel gives rise to several effects some of which are as follows:

- (1) Accelerated wear of bore.
- (2) Expansion of the barrel leading to loss of bullet velocity and finally to tumbling of the projectile.
- (3) Stoppage of gun, caused by the expanded barrel seizing in the trunnion block or front barrel bearing.
- (4) Ignition (cook-off) of the propelling charge by the heat of the barrel.

b. The following table indicates maximum bursts which may be fired and not contribute to the above failures:

Initial or Primary Burst (Rounds)	Secondary Burst (Rounds)	Cooling Interval between Bursts (Seconds)	Maximum Number of Secondary Bursts which may be fired without danger of cook-off
(a)	(b)	(c)	(d)
10	10	30	21
15	15	30	10
15	15	60	14
25	25	60	6
50	50	60	2
50	50	60	2
25	20	60	5
75	15	60	10
75	10	60	40
100*	..	..	None
150*	..	..	None

The maximum single burst which may be fired without danger of cook-off is 150 rounds. Therefore, if firing 100 round bursts, only one such burst may be fired without danger of cook-off. Before firing another 100 or 150 round burst, the gun should be allowed to cool completely.

c. Caution. If an over heating burst is fired, the gun should be cleared within 10 seconds after completion of the burst. If the gun cannot be cleared within 10 seconds, the round should be allowed to remain in the chamber a minimum of 5 minutes, making sure the gun is aimed in the opposite direction from personnel and equipment. If an attempt is made to clear the gun between the 10 seconds and the 5 minutes period, the extracted cartridge may explode outside the weapon causing serious injury to personnel or the weapon.

d. Precautions in Firing.

- (1) Ammunition which is seriously corroded should not be fired.

2.

(2) Do NOT fire cartridges having non permissible dents or scratches, cartridges with loose bullets, or otherwise defective rounds.

(3) Do NOT fire cartridges with oil or grease on them without first removing the oil or grease with a clean, dry wiping cloth, nor those which have become over-heated due to exposure to the direct rays of the sun or other sources of high temperature. Such cartridges, if fired, may develop hazardous chamber pressures.

CONFIDENTIAL

C17  
000083

HQ 1 ATF  
NUI DAT

R617-1-4

17 Jan 68

See Distribution List

1 ATF PATROL PROGRAMME 140800H TO 210800H JAN 68  
AMENDMENT NO 1

1. Attached is Amendment No 1 to 1 ATF Patrol Programme for the above dates.

a. 2 RAR

- (1) Delete serials 2143/68 and 2144/68.
- (2) Insert new serials 2143/68 and 2144/68.

b. 3 RAR

- (1) Delete serials 382/68 - 387/68.
- (2) Insert new serials 382/68 - 387/68.

c. 7 RAR

- (1) Delete serials 727/68 - 732/68.
- (2) Insert new serials 727/68 - 732/68.

*D. V. Smith*  
for (D. V. SMITH)  
Maj  
GSO2 (Ops)

Distribution.

C Sqn 1 Armd Regt	1
A Sqn 3 Cav Regt	2
4 Fd Regt	3-7
1/83 Arty	8
1 Fd Sqn	9
2 RAR	10-35
3 RAR	36-46
7 RAR	47-57
1 SAS Sqn	58
HORSESHOE Coy	59-63
161 (Indep) Recce Flt	64
1 ARU	65-74
HQ Coy	75-77
Arty Tac	78
CP	79
FATOC	80
GSO2 (Ops)	81
Diary	82-83
File	84

CONFIDENTIAL

CONFIDENTIAL

AMENDMENT NO 1 TO 1 ATF PATROL PROGRAMME FOR PERIOD 140800H JAN TO 210800H JAN 68

Page 1 of 5 pages

A.	2143/68	2144/68
B.	2 RAR Rear Details	2 RAR Rear Details
C.	95E 49.10	95E 49.10
D.	2 RAR Rear CP	2 RAR Rear CP
E.	Recce in areas MAGGIE, LINDA, JUNE, NAN, PAT.	Recce in areas PAT, NAN.
F.	5	5
G.	191400H	201500H
H.	201200H	211000H
J.	DIRECT	DIRECT
K.	-	-
L.	-	-
M.	1. Tpt arranged by CP. 2. Starlight scope to be carried.	1. Tpt arranged by CP. 2. Starlight scope to be carried.

CONFIDENTIAL

CONFIDENTIAL

AMENDMENT NO 1 TO 1 ATF PATROL PROGRAMME FOR PERIOD 140800H JAN TO 210800H JAN 68

Page 2 of 5 pages

A.	3 RAR 382/68	383/68	384/68	385/68	386/68
B.	D Coy	D Coy	B Coy	B Coy	A Coy
C.	41A 43.05	41B 43.05	21A 43.05	21B 43.05	11A 43.05
D.	3 RAR CP	3 RAR CP	3 RAR CP	3 RAR CP	3 RAR CP
E.	Ambush in ptl zone COLIN vic YS485639.	Ambush in ptl zone CLAUDE vic track junc YS504660.	Ambush in ptl zone COLIN vic track YS480653.	Ambush in ptl zone CLAUDE vic track YS485663.	Ambush in ptl zone SEAN track junc vic YS454633.
F.	1 : 15	1 : 15	1 : 15	1 : 15	1 : 15
G.	181530H	181430H	191600H	191630H	201600H
H.	190830H	190900H	200830H	200900H	210830H
J.	DIRECT	DIRECT	DIRECT	DIRECT	DIRECT
K.	-	-	-	-	-
L.	-	-	-	-	-
M.	Night ambush ptls to carry one starlight scope				

CONFIDENTIAL

CONFIDENTIAL

Page 3 of 5 pages

A.	387/68
B.	A Coy
C.	11B 43.05
D.	3 RAR CP
E.	Ambush in ptl zone PAUL track/rd junc vic YS442642.
F.	1 : 15
G.	201630H
H.	210900H
J.	DIRECT
K.	-
L.	-
M.	Ni ambush ptls are to carry one starlight scope

CONFIDENTIAL



CONFIDENTIAL

AMENDMENT NO 1 TO 1 ATF PATROL PROGRAMME FOR PERIOD 140800H JAN TO 210800H JAN 68

Page 4 of 5 pages

A.	727/68	728/68	729/68	730/68	731/68
B.	Rear Details	Rear Details	Rear Details	Rear Details	Rear Details
C.	43.20	43.20	43.20	43.20	43.20
D.	Admin CP	Admin CP	Admin CP	Admin CP	Admin CP
E.	Recce in IRENE SOUTH of 702 Northing.	Recce in JOHN.	Recce in JAN.	Recce in ROD.	Recce in PERCY.
F.	1 NCO and 3	1 NCO and 3	1 NCO and 3	1 NCO and 3	1 NCO and 3
G.	181730H	181700H	191800H	191730H	201730H
H.	190800H	190830H	200730H	200800H	210800H
J.	DIRECT	DIRECT	DIRECT	DIRECT	DIRECT
K.	-	-	-	-	-
L.	-	-	-	-	-
M.					To be coordinated with 3 RAR.

CONFIDENTIAL

CONFIDENTIAL

Page 5 of 5 pages

A.	732/68
B.	Rear Details
C.	43.20
D.	Admin CP
E.	Recce in SOUTHERN half of IRENE.
F.	1 NCO and 3
G.	201800H
H.	210730H
J.	DIRECT
K.	-
L.	-
M.	

CONFIDENTIAL

CONFIDENTIAL

83.  
CS  
HQ 1 ATF  
NUI DAT

17 Jan 68

R617-1-4

1 ATF PATROL PROGRAMME 210800H TO 280800H JAN 68

1. Attached is the 1 ATF Patrol Programme for the above dates.
2. 2 RAR Programme will be issued separately.

*D. V. Smith*  
for  
(D. V. SMITH)  
Maj  
GS02 (Ops)

Distribution:

C Sqn 1 Armd Regt	1
A. Sqn 3 Cav Regt	2
4 Fd Regt	3 - 7
1/83 Arty	8
1 Fd Sqn	9
2 RAR	10 - 35
3 RAR	36 - 46
7 RAR	47 - 57
1 SAS Sqn	58
HORSESHOE Coy	59 - 63
161 (Indep) Recce Flt	64
1 ARU	65 - 74
HQ Coy	75 - 77
Arty Tac	78
CP	79
FATOC	80
GS02 (Ops)	81
Diary	82 - 83
File	84

CONFIDENTIAL

CONFIDENTIAL1 ATF PATROL PROGRAMME FOR PERIOD 210800H TO 280800H JAN 68

Page 1 of 9 pages

A.	Patrol Serial No	3 RAR 387/68	388/68	389/68
B.	Sub Unit to provide	A Coy	D Coy	D Coy
C.	Callsign and Frequency	11B 43.05	41A 43.05	41B 43.05
D.	Controlled by	3 RAR CP	3 RAR CP	3 RAR CP
E.	Task	Ambush in ptl zone PAUL track/rd junc vic YS442642.	Ambush in ptl zone CLAUDE track junc vic YS489672.	Ambush in ptl zone COLIN track junc vic YS472655.
F.	Strength	1 : 15	1 : 15	1 : 15
G.	Date/Time out	201630H	211500H	211600H
H.	Date/Time in	210900H	220800H	220830H
J.	Route	DIRECT	DIRECT	DIRECT
K.	LZ (If required)	-	-	-
L.	PZ (If required)	-	-	-
M.	Remarks	Ni Ambush ptls are to carry one starlight scope		

CONFIDENTIAL

CONFIDENTIAL

A.	3 RAR 390/68	391/68	392/68	393/68	394/68
B.	3 RAR Rear	3 RAR Rear	3 RAR Rear	3 RAR Rear	3 RAR Rear
C.	10C 33.60	20C 33.60	30C 33.60	40C 33.60	10C 33.60
D.	3 RAR Rear CP	3 RAR Rear CP	3 RAR Rear CP	3 RAR Rear CP	3 RAR Rear CP
E.	Obsn of NORTH EASTERN approaches to 3 RAR Base vic YS453666 in JACK.	Obsn of SOUTH EASTERN approaches to 3 RAR Base vic YS458653 in SEAN.	Obsn of EASTERN approaches to 3 RAR Base vic YS458658 in JACK.	Obsn of SOUTHERN approaches to 3 RAR Base vic YS447650 in PAUL.	Obsn of EASTERN approaches to 3 RAR Base vic YS457661 in JACK.
F.	1 : 3	1 : 3	1 : 3	1 : 3	1 : 3
G.	211630H	211700H	221630H	221700H	231630H
H.	220730H	220800H	230800H	230800H	240800H
J.	Direct	Direct	Direct	Direct	Direct
K.	-	-	-	-	-
L.	-	-	-	-	-
M.					

CONFIDENTIAL

CONFIDENTIAL

A.	3 RAR 390/68	391/68	392/68	393/68	394/68
B.	3 RAR Rear	3 RAR Rear	3 RAR Rear	3 RAR Rear	3 RAR Rear
C.	10C 33.60	20C 33.60	30C 33.60	40C 33.60	10C 33.60
D.	3 RAR Rear CP	3 RAR Rear CP	3 RAR Rear CP	3 RAR Rear CP	3 RAR Rear CP
E.	Obsn of NORTH EASTERN approaches to 3 RAR Base vic YS453666 in JACK.	Obsn of SOUTH EASTERN approaches to 3 RAR Base vic YS458653 in SEAN.	Obsn of EASTERN approaches to 3 RAR Base vic YS458658 in JACK.	Obsn of SOUTHERN approaches to 3 RAR Base vic YS447650 in PAUL.	Obsn of EASTERN approaches to 3 RAR Base vic YS457661 in JACK.
F.	1 : 3	1 : 3	1 : 3	1 : 3	1 : 3
G.	211630H	211700H	221630H	221700H	231630H
H.	220730H	220800H	230800H	230800H	240800H
J.	Direct	Direct	Direct	Direct	Direct
K.	-	-	-	-	-
L.	-	-	-	-	-
M.					

CONFIDENTIAL

CONFIDENTIAL

Page 3 of 9 pages

A.	395/68	396/68	397/68	398/68	399/68
B.	3 RAR Rear	3 RAR Rear	3 RAR Rear	3 RAR Rear	3 RAR Rear
C.	20C 33.60	30C 33.60	40C 33.60	10C 33.60	20C 33.60
D.	3 RAR Rear CP	3 RAR Rear CP	3 RAR Rear CP	3 RAR Rear CP	3 RAR Rear CP
E.	Obsn of SOUTH EASTERN approaches to 3 RAR Base vic YS453649 in SEAN.	Obsn of NORTH EASTERN approaches from vic YS451668 in JACK.	Obsn of SOUTH EASTERN approaches to 3 RAR Base from vic YS457650 in SEAN.	Obsn of EASTERN approaches to 3 RAR Base from vic YS456663 in JACK.	Obsn of SOUTHERN approaches to 3 RAR Base from vic YS450650 in PAUL.
F.	1 : 3	1 : 3	1 : 3	1 : 3	1 : 3
G.	231700H	241730H	241730H	251700H	251715H
H.	240830H	250800H	250830H	260800H	260730H
J.	Direct	Direct	Direct	Direct	Direct
K.	-	-	-	-	-
L.	-	-	-	-	-
M.					

CONFIDENTIAL

CONFIDENTIAL

Page 4 of 9 pages

A.	3100/68	3101/68	3102/68	3103/68
B.	3 RAR Rear	3 RAR Rear	3 RAR Rear	3 RAR Rear
C.	30C 33.60	40C 33.60	10C 33.60	20C 33.60
D.	3 RAR Rear CP	3 RAR Rear CP	3 RAR Rear CP	3 RAR Rear CP
E.	Obsn of EASTERN approaches to 3 RAR Base from vic YS458656 in JACK.	Obsn of SOUTH WESTERN approaches to 3 RAR Base from vic YS44648 in PAUL.	Obsn of EASTERN approaches to 3 RAR Base from vic YS459663 in JACK.	Obsn of SOUTHERN approaches to 3 RAR Base from vic YS449648 in PAUL.
F.	1 : 3	1 : 3	1 : 3	1 : 3
G.	261730H	261700H	271715H	271730H
H.	270815H	270800H	280800H	280815H
J.	Direct	Direct	Direct	Direct
K.	-	-	-	-
L.	-	-	-	-
M.				

CONFIDENTIAL



CONFIDENTIAL

Page 5 of 9 pages

A.	7, RAR 733/68	734/68	735/68	736/68	737/68
B.	C Coy	C Coy	D Coy	D Coy	D Coy
C.	55.10	55.10	55.10	55.10	55.10
D.	7 RAR CP	7 RAR CP	7 RAR CP	7 RAR CP	7 RAR CP
E.	Recce in KEITH.	Recce in JAN.	Ambush in JOHN at YS458715	Recce and ambush in ROD.	Recce and ambush in ADAM SOUTH of 73 Northing.
F.	1 NCO and 3	1 NCO and 3	Offr/Sgt and 15	Offr/Sgt and 15	Offr/Sgt and 15
G.	211800H	211800H	221730H	221630H	231000H
H.	220730H	220800H	230800H	230700H	241030H
J.	Direct	Direct	Direct	Direct	Direct
K.	-	-	-	-	PORKY 7
L.	-	-	-	-	YS486730
M.		Coord with 2 RAR.			1. Ptl comd to recce and secure an LZ in vic YS486730 for fly in of Ptl 739/68. Backload on same hel. 2. Infil by veh as arranged by coy.

CONFIDENTIAL

CONFIDENTIAL

Page 6 of 9 pages

A.	738/68	739/68	740/68	741/68	742/68
B.	D Coy	D Coy	D Coy	A Coy	A Coy
C.	55.10	55.10	55.10	55.10	55.10
D.	7 RAR CP	7 RAR CP	7 RAR CP	7 RAR CP	7 RAR CP
E.	Recce and ambush in KEN.	Recce and ambush in ADAM NORTH of 73 Northing.	Ambush in IRENE vic YS420705.	Ambush in JOHN at YS470715.	Recce and ambush in JAN.
F.	Offr/Sgt and 15	Offr/Sgt and 15	Offr/Sgt and 15	Offr/Sgt and 15	Offr/Sgt and 15
G.	231650H	241000H	241730H	251700H	251800H
H.	240830H	251700H	250800H	260800H	260800H
J.	Direct	Direct	Direct	Direct	Direct
K.	-	YS486730	-	-	-
L.	-	PORKY 7	-	-	-
M.		1. LZ secured by Ptl 737/68. 2. Return by veh as arranged by coy.			

CONFIDENTIAL

CONFIDENTIAL

Page 7 of 9 pages

A.	743/68	744/68	745/68	746/68
B.	A Coy	A Coy	A Coy	A Coy
C.	55.10	55.10	55.10	55.10
D.	7 RAR CP	7 RAR CP	7 RAR CP	7 RAR CP
E.	Recce and ambush in BERT NORTH of 71 Northing.	Ambush in BARRY vic YS480686.	Recce and ambush in ADAM.	Recce and ambush in IRENE.
F.	Offr/Sgt and 15	Offr/Sgt and 15	Offr/Sgt and 15	Offr/Sgt and 15
G.	260730H	261430H	271800H	271800H
H.	271630H	271000H	281500H	280730H
J.	Direct	Direct	Direct	Direct
K.	-	-	-	-
L.	-	-	-	-
M.	Infil/exfil by veh as arranged by coy.	To be coordinated with 3 RAR.		

CONFIDENTIAL

CONFIDENTIAL

Page 8 of 9 pages

A.	W Coy, 2 RAR 39/68	W 40/68	W 41/68	W 42/68	W 43/68
B.	W Coy	W Coy	W Coy	W Coy	W Coy
C.	71 57.10	73 57.10	72A 57.10	71 57.10	71 57.10
D.	1 ATF	1 ATF	1 ATF	1 ATF	1 ATF
E.	Recce ptl JEAN.	Search and ambush GUSSIE (WEST).	Recce ptl JEAN and MAY.	Ambush track Western bdry MAY.	Recce ptl WENDY.
F.	Sect	Pl	Sect	$\frac{1}{2}$ Pl	Sect
G.	210800H	212000H	220630H	231845H	240900H
H.	211900H	241100H	221730H	240830H	241815H
J.	Direct	Direct	Direct	Direct	Direct
K.	-	-	-	-	-
L.	-	-	-	-	-
M.	Limit to mor range if arty sp not available.	Limit to mor range if arty sp not available.	Limit to mor range if arty sp not available.	Check ID Cards on Route 23 on return. Ambush loc to be advised.	Limit to mor range if arty sp not available.

CONFIDENTIAL

CONFIDENTIAL

A.	W 44/68	W 45/68	W 46/68	W 47/68
B.	W Coy	W Coy	W Coy	W Coy
C.	72 57.10	73B 57.10	73A 57.10	71 57.10
D.	1 ATF	1 ATF	1 ATF	1 ATF
E.	Search and ambush SALLY.	Recce MAY.	Ambush VERONICA and ID check.	Ambush SALLY.
F.	Pl	Sect	$\frac{1}{2}$ Pl	Pl
G.	242200H	250700H	261700H	271630H
H.	270800H	251630H	270530H	280800H
J.	Direct	Direct	Direct	Direct
K.	-	-	-	-
L.	-	-	-	-
M.	Limit to mor range if arty sp not available. Tpt to uplift from Eastern checkpoint.	Limit to mor range. Check point 3 Pl	Check point 1 Pl	Tpt to uplift from Eastern checkpoint. Check point 3 Pl

CONFIDENTIAL

DIARY

C19

MESSAGE FORM

R569/2/68

PRIORITY

180100Z Jan 68

FROM: 1 ATF

TO: 3 RAR

CONFIDENTIAL

INFO: LIST Z LESS SERIALS 2, 4, 8, 29, 37

G105

OP SCHEYVILLE (.) REFS (.) ALPHA (.) 1 ATF OP INSTR 3/68 OF 130800H  
JAN 68 (.) BRAVO (.) 1 ATF G084 OF 150630Z JAN 68 (.) DATES OF OP NOW  
23 JAN TO 28 JAN 68 INCLUSIVE

Page 1 of 1 pages Classified YES

Drafter's Name	Office	Tele
WILKINSON	OPS	EBONY 34

Releasing Officer's Signature & Rank

*Wilkinson* Capt

MESSAGE FORM

C20

ROUTINE

180800Z JAN 68

From 1 ATF

To C SQN 1 ARMD REGT, ASQN 3 CAV REGT, 4 FD REGT, CONFIDENTIAL  
1/83 ARTY, 1 FD SQN, 2 RAR, 3 RAR, 7 RAR, 1 SAS SQN,  
HORSESHOE COY, 161 RECCE FLT, 1 ARU, HQ COY 1 ATF,  
ARTY TAG, CP, FATOC, GSO2 (OPS), DIARY FILE  
G109

ONE (.) 1 ATF PATROL PROGRAMME 140800H TO 210800H JAN 68 (.) AMENIMENT NO 2  
(.) SERIAL W37/68 (.) PARA ECHO (.) DELETE DETAIL INSERT RECCE PTL IN JEAN (.)  
PARA FOXTROT (.) DELETE DETAIL INSERT SECT AND MFC (.) PARA GOLF (.) DELETE  
DETAIL INSERT 190830H (.) PARA HOTEL (.) DELETE DETAIL INSERT 191700H (.)  
TWO (.) 1 ATF PATROL PROGRAMME 210800H TO 280800H JAN 68 (.) AMENIMENT NO 1  
(.) CANCEL 3 RAR PTL'S SERIALS 390/68 AND 391/68

Page 1 of 1 pages

CLASSIFIED YES

WILKINSON

OPS

EBONY 34

*J. Wilkinson*  
Capt

DIARY

C24

CONFIDENTIAL

Copy No 87 of 105

HQ 1 ATF  
NUI DAT

182200H Jan 68

OPS110

FragO 1 (Op DUNTROON)

Reference: A. 1 ATF OPS41 dated 070800H Jan 68.

Time zone used throughout this order: HOTEL

1. Mission. To extract 1 ATF (-) to base and conclude Op DUNTROON.
2. Grouping. Annex A.
3. Sequence of Events. Annex A.
4. Liaison. Direct liaison is authorised.

Ack Instructions: Ack by telephone to EBONY 50 by 191600H



(R.L. HUGHES)  
Brig  
Comd

Annex: A. Sequence of Events.

Distribution:

List Z less Serial 8 plus  
1st Brigade 9 Div (5)

CONFIDENTIAL



CONFIDENTIAL

ANNEX A TO  
1 ATF FRAGO 1  
DATED 182200H JAN 68

SEQUENCE OF EVENTS OP DUNTROON  
(AKRON V) 19 - 20 JAN 68

Serial	Date/Time	Event	Grouping	Remarks
(a)	(b)	(c)	(d)	(e)
1	201300H	Advanced TFMA extracts to NUI DAT by CH47. (1) Engr WP party, mobile shower unit, surplus def stores and ammo extracted to NUI DAT by CH47. (2) Surplus pers and eqpt in FSPB are also to be moved.	In sp from 1300H one CH47	
2	210700H	One tp A Sqn 3 Cav Regt moves from NUI DAT and escorts: (1) Retransmission det vehs to XA BANG. (2) Tilt bed trailer for size 2 dozer to XA BANG. Trailer can be moved to FSPB BERRYMAN if ordered by OC A Sqn 3 Cav Regt.		Collect Maj P. HEALD US Advisor at RF post BINH GIA for movement to XA BANG.
3	210730H	Radar det 131 Div Loc Bty extracts by CH47 to NUI DAT.		
4	To be advised	A Sqn (-) escorts B Bty 2/35 US Arty to BLACKHORSE or temporary gun position vic YS4489 to cover FSPB extraction.		4 Fd Regt to advise details of move to BLACKHORSE.
5	211100H	Two sects Mor Pl 7 RAR moved by RAAF aircraft to FSPB BERRYMAN. Load into mor APCs.	Under comd OC A Sqn 3 Cav Regt on arrival FSPB.	Three RAAF aircraft required.
6	211200H	One sect Mor Pl 2 RAR moved by RAAF aircraft to A Coy 2 RAR locality vic YS430857.		Three RAAF aircraft required.

CONFIDENTIAL

/2.

CONFIDENTIAL

2.

(a)	(b)	(c)	(d)	(e)
7	211200H	161 Fd Bty extracts by air to NUI DAT.	In sp from 211200H five CH47s.	Bty out of action 1100H approx.
8	211300H	7 RAR less one coy and two sects Mor Pl extracts to NUI DAT by AHC. Bn HQ ) D Coy ) from LZ DAMPIER. A Coy ) C Coy ) from vic YS4488.	In sp from 211300H two AHC.	
9	211400H approx	Regt HQ 4 Fd Regt extracts by air to NUI DAT.	In sp (continuing) five CH47s.	
10	211400H	2 RAR less G Coy FSPB, extracts to NUI DAT by AHC. Bn HQ ) V Coy ) from LZ COOK. B Coy ) D Coy ) from CU BI YS4282. A Coy ) One mor sect ) from YS430857.		
11	Approx 201500H	108 Fd Bty extracts by air to NUI DAT.	In sp (continuing) five CH47s.	Bty out of action 1400H approx.
12	Approx 201700H	A Sqn plus one coy 2 RAR one coy 7 RAR two sects Mor Pl 7 RAR FO 4 Fd Regt size 2 dozer plus tilt bed trailer move by road to NUI DAT. a. Move covered by B Bty 2/35 (US) Arty, LFT and mor sects moving with column. b. Retransmission vehicles join convoy at XA BANG.	All elements under comd OC A Sqn for movement to NUI DAT.	Move (less security elms for Serial 11) may commence on orders OC A Sqn.

CONFIDENTIAL

CONFIDENTIAL

DIARY

1 ATF PATROL PROGRAMME FOR PERIOD 210800H TO 280800H JAN 68

000082

Page 1 of 2 pages

A. Patrol Serial No	2 RAR 2144/68	2145/68	2146/68	2147/68
B. Sub Unit to provide	2 RAR Rear details	2 RAR Rear details	C Coy	C Coy
C. Callsign and Frequency	95E 49.10	95E 49:10	To be advised 59.40	To be advised 59.40
D. Controlled by	2 RAR Rear CP	2 RAR Rear CP	2 RAR CP	2 RAR CP
E. Task	Recce in areas PAT, NAN	Recce in areas PAT, NAN, JUNE, LINDA, MAGGIE	Search, destroy and ambush in JOYCE, HEDY and WILMA	Search, destroy and ambush in JUNE, KAREN and GAYE
F. Strength	5	5	½ Pl	½ Pl
G. Date/Time out	201500H	211300H	221500H	221500H
H. Date/Time in	211000H	220900H	251100H	251200H
J. Route	Direct	Direct	Direct	Direct
K. LZ (if required)	-	-	-	-
L. PZ (if required)	-	-	-	-
M. Remarks (to incl any bids for hel or APC lift)	1. Tpt arranged by CP 2. Starlight scope to be carried	1. Tpt to be arranged by 2 RAR Rear CP 2. Starlight scope to be carried	1. To enter TAOR through 108 Fd Bty gap and return through same area 2. Starlight scopes to be carried	1. To enter TAOR through 108 Fd Bty gap and return through same area 2. Starlight scopes to be carried

CONFIDENTIAL

C22

CONFIDENTIAL

Page 2 of 2 pages

A.	2148/68	2149/68
B.	B Coy	B Coy
C.	To be advised 59.40	To be advised 59.40
D.	2 RAR Rear CP	2 RAR Rear CP
E.	To ambush track vic YS384647 (GAYE/PENNY)	To ambush track vic YS404647
F.	$\frac{1}{2}$ Pl	$\frac{1}{2}$ Pl
G.	251530H	251530H
H.	280900H	280900H
J.	Direct	Direct
K.	-	-
L.	-	-
M.	1. Ambush by ni, lay up suitable area vic knolls YS3865 2. To be dropped off and picked up by veh at YS421665. Action to be as concealed as possible and to be in conjunction with Ptl Serial 2149/68 3. Starlight scopes to be carried	1. Ambush by ni, lay up suitable area YS4066 2. Dropped off and picked up in conjunction with Ptl Serial 2148/68 3. Starlight scopes to be carried

Distribution:

C Sqn 1 Armd Regt	1
A Sqn 3 Cav Regt	2
4 Fd Regt	3-7
1/83 Arty	8
1 Fd Sqn	9
2 RAR	10-35
3 RAR	36-46
7 RAR	47-57
1 SAS Sqn	58
HORSESHOE Coy	59-63
161 (Indep) Recce Flt	64
1 ARU	65-74
HQ Coy	75-77
Arty Tac	78
CP	79
FATOC	80
GS02 (Ops)	81
Diary	82-83
File	84

*D.V. SMITH*  
fo  
(D.V. SMITH)  
Maj  
GS02 (Ops)  
18 JAN 68

*Capt*

CONFIDENTIAL

C23

CONFIDENTIAL

Copy No *88* of 105

HQ 1 ATF  
NUI DAT

200900H Jan 68

OPS117

Frag 02 (Op DUNTROON)

Reference: A. 1 ATF OPS41 dated 070800H Jan 68.  
B. 1 ATF OPS110 dated 182200H Jan 68.

Time zone used throughout this order: HOTEL

1. Cancellation. Reference B. is CANCELLED.
2. Mission. To extract 1 ATF (-) to base and conclude Op DUNTROON.
3. Grouping. Annex A.
4. Sequence of Events. Annex A.
5. Liaison. Direct liaison is authorised.

Ack Instructions: Ack by telephone to EBONY 50 by 201600H

*R.L. Hughes*  
*may 1968*  
(R.L. HUGHES)  
Brig  
Comd

Annex: A. Sequence of Events.

Distribution:

List Z less Serial 8 plus  
1st Brigade 9 Div (5)

CONFIDENTIAL

CONFIDENTIAL

ANNEX A TO  
1 ATF FRAGO 2  
DATED 200900H JAN 68

SEQUENCE OF EVENTS OF DUNTROON  
(AKRON V) 21 JAN 68

Serial	Date/Time	Event	Grouping	Remarks
(a)	(b)	(c)	(d)	(e)
1	210730H	Radar det 131 Div Loc Bty extracts by CH47 to NUI DAT.		
2	211000H	One tp A Sqn 3 Cav Regt moves from NUI DAT and escorts: (1) Retransmission det vehs to XA BANG. (2) 24 x 5 ton vehicles and tilt bed trailer for size 2 dozer to FSPB BERRYMAN.		(1) RV WEST end of LUSCOMBE; vehicles line up facing NORTH on Route 2. (2) Collect Maj P. HEALD US Advisor at RF post BINH GIA for movement to XA BANG.
3	To be advised	(1) B Bty 2/35 US Arty moves to temporary gun position vic YS4489 to cover FSPB extraction. (2) Road from FSPB BERRYMAN to be cleared by A Sqn assisted by mini teams.		Escort elements from BLACKHORSE responsible for protection from time of arrival at temporary gun position
4.	211100H	Two sects Mor Pl 7 RAR moved by RAAF aircraft to FSPB BERRYMAN. Load into mor APCs.	Under comd OC A Sqn 3 Cav Regt on arrival FSPB.	Three RAAF aircraft required.
5	211200H	One sect Mor Pl 2 RAR moved by RAAF aircraft to A Coy 2 RAR locality vic YS430857.		Three RAAF aircraft required.
6	211200H	(1) Regt HQ 4 Fd Regt and 161 Fd Bty moves by road to XA BANG. (2) Escort is to be two tps A Sqn 3 Cav Regt. (3) One tp A Sqn to remain as protection element at XA BANG. (4) One tp A Sqn returns to FSPB BERRYMAN.		

CONFIDENTIAL

(a)	(b)	(c)	(d)	(e)
7	211300H	7 RAR less one coy and two sects Mor Pl extracts to NUI DAT by AHC. Bn HQ ) D Coy ) from LZ DAMPIER. A Coy ) C Coy ) from vic YS4488.	In sp from 211300H two AHC	
8	211400H	2 RAR less C Coy FSPB, extracts to NUI DAT by AHC. Bn HQ ) V Coy ) from LZ COOK. B Coy ) D Coy ) from CU BI YS4282. A Coy ) One mor sect ) from YS430857.		
9	211500H	(1) 108 Fd Bty moves by road to XA BANG thence NUI DAT escorted by A Sqn 3 Cav Regt (+). (2) Regt HQ 4 Fd Regt, 161 Fd Bty and Retransmission det joins convoy at XA BANG. (3) Convoy organization and grouping A Sqn 3 Cav Regt: (a) Op con from 211200H one coy 2 RAR one coy 7 RAR FO 4 Fd Regt (b) Op con from time of arrival FSPB BERRYMAN two sects Mor Pl 7 RAR tilt bed trail- er for movement of size 2 dozer		Serial 9 can commence as soon as Bn HQ and V Coy 2 RAR extracted from LZ COOK.

CONFIDENTIAL

3.

(a)	(b)	(c)	(d)	(e)
9 cont		(c) Under command for movement  (d) In sp reinforcing  (e) In sp from 211500H (LFT is to be released by 211630)	4 Fd Regt (-)  B Bty 2/35 Arty (US)  LFT	LFT on call from 211415H but to remain at KANGAROO EAST until ordered forward.
10	211630H	B Bty 2/35 Arty (US) moves to BLACKHORSE escorted by elements from BLACKHORSE.		
11	211730H approx	(1) All elements in NUI DAT.  (2) Op DUNTROON (AKRON V) concludes.		

CONFIDENTIAL



DIARY

C24

MESSAGE FORM

PRIORITY

220100Z Jan 68

R617-1-4 (S)

FROM: 1 ATF

CONFIDENTIAL

TO: G SQN 1 ARMD REGT A SQN 3 CAV REGT  
4 FD REGT 1/83 ARTY 1 FD SQN  
2 RAR 3 RAR 7 RAR 1 SAS SQN  
HORSESHOE COY 161 (INDEP) RECCE FILE  
1 ARU HQ COY ARTY TAG GP  
FAZOC GS02 (OPS) DIARY FILE

OPS124

PATROL PROGRAMME (.) ALLOTMENT OF PATROL ZONES OF THE 1 ATF PATROL AO  
FOR THE PERIOD 240800H JAN TO 040800H FEB 68 ARE CLN

ONE (.) 2 RAR CLN CLARE GMM DORIS GMM DENISE (.)

TWO (.) 7 RAR CLN ANNE (.) PERMISSION TO MOVE INTO BERYL FOR FOLLOW UP  
CAN BE OBTAINED FROM 1 ATF GP IF NECESSARY (.)

1 ARU IS TO REPORT ON COVERAGE OF 1 ARU PATROL ZONE DURING TRAINING OPERATIONS

(.) 2 RAR AND 7 RAR ARE TO SUBMIT PATROL TASK TABLES BY 231800H JAN

Page 1 of 1 pages

Classified Yes

Drafter's Name

Office

Tel No

D V SMITH

GS02 OPS

EBONY

Releasing Officer's Signature and Rank

Maj

C25

CONFIDENTIAL

000074

AUSTRALIAN MILITARY FORCES

HQ 1 ATF  
NUI DAT

22 Jan 68

R617-1-4

Distribution below

AMENDMENT NO 1 TO 1 ATF PATROL PROGRAMME  
FOR PERIOD 210800H TO 280800H JAN 68

1. Attached is the above amendment.
2. Previous Patrol Serials 2146/68, 2147/68, 2148/68 and 2149/68 are cancelled.

*D.V. Smith Capt*  
*for*  
 (D.V. SMITH)  
 Maj  
 GS02 (Ops)

Distribution:

C Sqn 1 Armd Regt	1
A Sqn 3 Cav Regt	2
4 Fd Regt	3-7
1/83 Arty	8
1 Fd Sqn	9
2 RAR	10-35
3 RAR	36-46
7 RAR	47-57
1 SAS Sqn	58
HORSESHOE Coy	59-63
161 (Indep) Recce Flt	64
1 ARU	65-66
HQ Coy	67-69
Arty Tac	70
CP	71
FATOC	72
GS02 (Ops)	73
Diary	74-75
File	76

CONFIDENTIAL

CONFIDENTIAL

AMENDMENT NO 1 TO 1 ATF PATROL PROGRAMME FOR PERIOD 210800H TO 280800H JAN 68

Page 1 of 2 pages

A.	Patrol Serial No	2 RAR 2146/68	2147/68	2148/68	2149/68
B.	Sub Unit to Provide	C Coy	C Coy	C Coy	C Coy
C.	Callsign and Frequency	To be advised 59.40	To be advised 59.40	To be advised 59.40	To be advised 59.40
D.	Controlled by	2 RAR CP	2 RAR CP	2 RAR CP	2 RAR CP
E.	Task	Search and destroy in HEDY WILMA and LINDA.	To ambush track vic YS384647 (GAYE/PENNY).	To ambush track vic YS404647 in PAT.	To ambush track vic YS410656 in PAT.
F.	Strength	$\frac{1}{2}$ Pl	$\frac{1}{2}$ Pl	$\frac{1}{2}$ Pl	$\frac{1}{2}$ Pl
G.	Date/Time Out	221500H	221500H	221500H	221500H
H.	Date/Time In	251000H	251000H	251000H	251000H
J.	Route	Direct	Direct	Direct	Direct
K.	LZ (if required)	-	-	-	-
L.	PZ (if required)	-	-	-	-
M.	Remarks	1. To be dropped off and picked up with ptls 2147/68, 2148/68 and 2149/68 by veh at YS421665. Action to be as concealed as possible. Coy to arrange tpt. 2. Starlight scope to be carried. 3. Ptl to note lay-up posns ptls 2148/68 and 2149/68.	1. See Note 1 Ptl Serial 2146/68. 2. Ambush by ni, lay-up suitable area vic knolls YS3865. 3. Starlight scope to be carried.	1. See Note 1 Ptl Serial 2146/68. 2. Ambush by ni, lay-up suitable area YS4066 with ptl 2149/68. Ensure ptl 2146/68 is info. 3. Starlight scopes to be carried.	1. See Note 1 Ptl Serial 2146/68. 2. See Note 2 Ptl Serial 2148/68. 3. Starlight scopes to be carried.

CONFIDENTIAL

CONFIDENTIAL

A.	2150/68	2151/68	2152/68	2153/68
B.	B Coy	B Coy	B Coy	B Coy
C.	To be advised 59.40	To be advised 59.40	To be advised 59.40	To be advised 59.40
D.	2 RAR CP	2 RAR CP	2 RAR CP	2 RAR CP
E.	Search and destroy in HFDY, WILLA and LINDA.	To ambush track vic YS384647 (GAYE/PENNY).	To ambush track vic YS404647 in PAT.	To ambush track vic YS410656 in PAT.
F.	$\frac{1}{2}$ Pl	$\frac{1}{2}$ Pl	$\frac{1}{2}$ Pl	$\frac{1}{2}$ Pl
G.	251500H	251500H	251500H	251500H
H.	281000H	281000H	281000H	281000H
J.	Direct	Direct	Direct	Direct
K.	-	-	-	-
L.	-	-	-	-
M.	<ol style="list-style-type: none"><li>1. To enter TAOR through 108 Fd Bty gap with ptls 2151/68, 2152/68 and 2153/68. Return independently same gap.</li><li>2. Starlight scopes to be carried.</li><li>3. Ptl to note layup posn ptls 2152/68 and 2153/68.</li></ol>	<ol style="list-style-type: none"><li>1. See note 1, Ptl Serial 2150/68.</li><li>2. Ambush by ni, layup suitable area vic knolls YS3865.</li><li>3. Starlight scopes to be carried.</li></ol>	<ol style="list-style-type: none"><li>1. See note 1 Ptl Serial 2150/68.</li><li>2. Ambush by ni, layup suitable area YS4066 with ptl 2153/68. Ensure Ptl Serial 2150/68 is info.</li><li>3. Starlight scopes to be carried.</li></ol>	<ol style="list-style-type: none"><li>1. See note 1 Ptl Serial 2150/68.</li><li>2. See note 2 Ptl Serial 2152/68.</li><li>3. Starlight scopes to be carried.</li></ol>

CONFIDENTIAL

000075

CONFIDENTIAL

*C26*

AUSTRALIAN MILITARY FORCES

HQ 1 ATF  
NUI DAT

*22* Jan 68

R617-1-4

Distribution below

AMENDMENT NO 1 TO 1 ATF PATROL PROGRAMME  
FOR PERIOD 210800H TO 280800H JAN 68

1. Attached is the above amendment.
2. Previous Patrol Serials 2146/68, 2147/68, 2148/68 and 2149/68 are cancelled.

*D.V. Smith* Capt  
*for*  
(D.V. SMITH)  
Maj  
GS02 (Ops)

Distribution:

C Sqn 1 Armd Regt	1
A Sqn 3 Cav Regt	2
4 Fd Regt	3-7
1/83 Arty	8
1 Fd Sqn	9
2 RAR	10-35
3 RAR	36-46
7 RAR	47-57
1 SAS Sqn	58
HORSESHOE Coy	59-63
161 (Indep) Recce Flt	64
1 ARU	65-66
HQ Coy	67-69
Arty Tac	70
CP	71
FATOC	72
GS02 (Ops)	73
Diary	74-75
File	76

CONFIDENTIAL

CONFIDENTIAL

AMENDMENT NO 1 TO 1 ATF PATROL PROGRAMME FOR PERIOD 210800H TO 280800H JAN 68

Page 1 of 2 pages

A.	Patrol Serial No	2 RAR 2146/68	2147/68	2148/68	2149/68
B.	Sub Unit to Provide	C Coy	C Coy	C Coy	C Coy
C.	Callsign and Frequency	To be advised 59.40	To be advised 59.40	To be advised 59.40	To be advised 59.40
D.	Controlled by	2 RAR CP	2 RAR CP	2 RAR CP	2 RAR CP
E.	Task	Search and destroy in HEDY WILMA and LINDA.	To ambush track vic YS384647 (GAYE/PENNY).	To ambush track vic YS404647 in PAT.	To ambush track vic YS410656 in PAT.
F.	Strength	$\frac{1}{2}$ Pl	$\frac{1}{2}$ Pl	$\frac{1}{2}$ Pl	$\frac{1}{2}$ Pl
G.	Date/Time Out	221500H	221500H	221500H	221500H
H.	Date/Time In	251000H	251000H	251000H	251000H
J.	Route	Direct	Direct	Direct	Direct
K.	LZ (if required)	-	-	-	-
L.	PZ (if required)	-	-	-	-
M.	Remarks	1. To be dropped off and picked up with ptls 2147/68, 2148/68 and 2149/68 by veh at YS421665. Action to be as concealed as possible. Coy to arrange tpt. 2. Starlight scope to be carried. 3. Ptl to note lay-up posns ptls 2148/68 and 2149/68.	1. See Note 1 Ptl Serial 2146/68. 2. Ambush by ni, lay-up suitable area vic knolls YS3865. 3. Starlight scope to be carried.	1. See Note 1 Ptl Serial 2146/68. 2. Ambush by ni, lay-up suitable area YS4066 with ptl 2149/68. Ensure ptl 2146/68 is info. 3. Starlight scopes to be carried.	1. See Note 1 Ptl Serial 2146/68. 2. See Note 2 Ptl Serial 2148/68. 3. Starlight scopes to be carried.

CONFIDENTIAL

CONFIDENTIAL

Page 2 of 2 pages

A.	2150/68	2151/68	2152/68	2153/68
B.	B Coy	B Coy	B Coy	B Coy
C.	To be advised 59.40	To be advised 59.40	To be advised 59.40	To be advised 59.40
D.	2 RAR CP	2 RAR CP	2 RAR CP	2 RAR CP
E.	Search and destroy in HFDY, WILMA and LINDA.	To ambush track vic YS384647 (GAYE/PENNY).	To ambush track vic YS404647 in PAT.	To ambush track vic YS410656 in PAT.
F.	$\frac{1}{2}$ Pl	$\frac{1}{2}$ Pl	$\frac{1}{2}$ Pl	$\frac{1}{2}$ Pl
G.	251500H	251500H	251500H	251500H
H.	281000H	281000H	281000H	281000H
J.	Direct	Direct	Direct	Direct
K.	-	-	-	-
L.	-	-	-	-
M.	1. To enter TAOR through 108 Fd Bty gap with ptls 2151/68, 2152/68 and 2153/68. Return independently same gap. 2. Starlight scopes to be carried. 3. Ptl to note layup posn ptls 2152/68 and 2153/68.	1. See note 1, Ptl Serial 2150/68. 2. Ambush by ni, layup suitable area vic knolls YS3865. 3. Starlight scopes to be carried.	1. See note 1 Ptl Serial 2150/68. 2. Ambush by ni, layup suitable area YS4066 with ptl 2153/68. Ensure Ptl Serial 2150/68 is info. 3. Starlight scopes to be carried.	1. See note 1 Ptl Serial 2150/68. 2. See note 2 Ptl Serial 2152/68. 3. Starlight scopes to be carried.

CONFIDENTIAL

DIARY

C27

MESSAGE FORM

000089

IMMEDIATE

221200Z JAN 68

FROM 1 ATF

CONFIDENTIAL

TO LIST Z LESS SERIALS 4, 8, and 49

OPS130

1 ATF OP INSTR 3/68 OF 130800H JAN 68 (OP SCHEYVILLE) IS CANCELLED (.) ACK  
BY PHONE TO EBONY 50

Page 1 of 1 pages

MARTIN

OPS

EBONY 50

*J. Wilkinson* Capt  
for Maj



DIARY  
C28

MESSAGE FORM

IMMEDIATE

22 1315Z Jan 68

000037

FROM 1 ATF

SECRET

TO LIST Z LESS SERIALS 8, 28, 29 and 37

OPS131

WNG 0 (.) OP COBURG (.) 1 ATF (-) IS TO OP IN AO COLOMBUS CMM CENTRE OF MASS  
YT1920 (.) NO MOVE BEFORE 240700H JAN 68 EXCEPT RECCE PARTIES (.) ORDERS GP  
HQ 1 ATF CONFERENCE ROOM 231400H JAN 68 (.) ORBAT (.) TAC HQ 1 ATF CMM  
2 RAR CMM 7 RAR CMM A SQN 3 CAV REGT (-) CMM 4 FD REGT (-) CMM 1 FD SQN (-) CMM  
AC 161 (INDEP) RECCE FLT CMM ADV TFMA CMM HQ COY 1ATF (-) CMM DET PRO CMM ELMS DET  
8 FD AMB (.)

RECCES (.) COs 2 RAR CMM 7 RAR CMM 4 FD REGT AND OC 104 SIG SQN TO MOVE WITH  
COMD 1 ATF ON RECCE 23 JAN 68 (.) RV HQ 1 ATF AT 230830H JAN 68 (.) NO  
MAPS REQUIRED (.) GSO2 (OPS) CMM GSO2 (INT) CMM OC A SQN CMM OC HQ COY 1 ATF  
RV HQ 1 ATF 230945H (.)

BASE DEFENCE (.) 3 RAR IS TO REMAIN IN DEF AT NUI DAT (.) ORDERS ISSUED  
SEPARATELY (.) 2 RAR AND 7 RAR ARE TO REDUCE PATROLLING TO OUT OF BASE STRENGTHS  
BY 231200H JAN 68 (.)

ADMIN (.) UNITS TO MOVE WITH THREE DAYS RAT CMM TWO FIRST LINES SA AMMO AND  
100 ROUNDS PER MORTAR CMM 250 ROUNDS PER GUN (.)

ACK BY PHONE TO EBONY 50

Page 1 of 1 pages

Classified YES

Drafter's Name

Office

Tele

SMITH

OPS

EBONY 33

Releasing Officer's Signature & Rank

Wilkinson Capt for Maj

SECRET

000088

Copy No of

HQ 1 ATF  
NUI DAT

231200H Jan 68

OPS133

OpO 4/68 (Op COBURG)

Reference: A. Series L7014, Sheet 6431.

Time zone used throughout this order: HOTEL

1. Situation

a. Enemy Forces. Annex A.

b. Friendly Forces.

(1) Task Organization

1 ATF Tac HQ  
2 RAR less one mor sect  
7 RAR  
A Sqn 3 Cav Regt (-)  
4 Fd Regt (-)  
1 Fd Sqn (-)  
161 (Indep) Recce Flt (-)  
Three MP Det AFV Pro Unit  
Adv TFMA  
Op con from 24 Jan tp 3/17 ACS  
In sp reinforcing B Bty 1/84 Arty (US)  
(loc YT2810 FSPB APPLE)

(2) 199th Bde

(a) Relieved responsibility for AO COLOMBUS from 24 Jan.

(b) Reinforce security operations in AO UNIONTOWN NLT

25 Jan 68.

(c) Protect PW compound vic XT055130.

2. Mission. To destroy the VC/NVA elements in AO COLOMBUS from 24 Jan 68 to 3 Feb 68.

3. Execution.

a. General Outline.

(1) 1 ATF (-) is to deploy to AO COLOMBUS centre of mass YT1920 to destroy VC/NVA elements operating in the AO.

(2) The background to this operation is based on the likely threat of a rocket attack on the BIEN HOA/LONG BINH complexes before or during the TET period and possible en action against XUAN LOC.

SECRET

/2.

SECRET

2.

(3) The lodgement of 1 ATF (-) is to be carried out by road and air on 24/25 Jan 68.

(4) The lodgement and the commencement of operations is to be in three phases:

(a) Phase 1.

- i. 2 RAR Deploy to FSPB ANDERSEN  
Tac HQ 1 ATF by air
- ii. A Sqn 3 Cav Regt Deploy by road via Routes  
4 Fd Regt (-) 15 and 1 to FSPB ANDERSEN  
Two coys and two  
mor sects 7 RAR  
TFMA vehicles incl  
bn echs etc
- iii. Ac in sp 1 ATF deploy to BEARCAT.

(b) Phase 2. 7 RAR (-) deploys to FSPB ANDERSEN and then assault lands FSPB HARRISON.

(c) Phase 3. 2 RAR and 7 RAR commence operations in bn AOs.

(5) Grouping. Annex B.

b. 2 RAR. Tasks:

(1) Phase 1.

(a) At 240730 H commence move by air to FSPB ANDERSEN.

(b) On arrival FSPB ANDERSEN deploy one coy and one mor sect for protection of the FSPB.

(c) On arrival FSPB ANDERSEN, bn less one coy is to secure areas as ordered by Comd.

(2) Phase 2. Continue protection of FSPB ANDERSEN.

(3) Phase 3. Commence operations in AO.

c. 3 RAR. Tasks:

(1) Remain in defence at NUI DAT.

(2) Orders issued separately by D Comd.

(3) Place one sect Mor Pl under comd 7 RAR Rear Details for base defence.

/3.

SECRET

SECRET

3.

d. 7 RAR.

(1) Phase 1.

(a) At 240730H move two coys and two mor sects Mor Pl by APC to FSPB ANDERSEN.

(b) At H move bn less two coys and two mor sects by air to FSPB ANDERSEN and complete bn concentration that loc.

(2) Phase 2. At H move to FSPB HARRISON, assault landing if LZ not secured. Deploy one coy to protect FSPB.

(3) Phase 3. Commence operations in AO.

e. A Sqn 3 Cav Regt.

(1) Phase 1.

(a) Commencing at 240730 H escort road convoy from NUI DAT via Route 15 and 1 to FSPB ANDERSEN (all three tps are to be used). Move two coys plus two mor sects 7 RAR with two tps and allot one tp for mov of stores CP (3 APCs), Arty Tac (AWCC) (1 APC), Sigs (3 APCs), Ops, Int, AQ, Clerks (3 APCs).

(b) On arrival FSPB ANDERSEN:

i. Release one tp to escort vehicles returning to NUI DAT.

ii. A Sqn (-) is to take up def posn in FSPB perimeter.

iii. Allot one APC for AWCC duties.

(2) Phase 2. Be prepared to conduct clearing operations around FSPB ANDERSEN, NORTH of Route 1. Move one tp to FSPB HARRISON.

(3) Phase 3. Orders later.

f. Artillery.

(1) 4 Fd Regt.

(a) Remains in DS. Provide one bty for close def of 1 ATF base.

(b) Gun areas.

i. Temp posn at ANDERSEN YT2012.

ii. Main posn at HARRISON YT1518.

SECRET

./4.

SECRET

4.

- (2) B Bty 2/35 Arty.
  - (a) Gun area YT2810 from 24 Jan.
  - (b) In GS and at pri call to 1 ATF.
- (3) C Bty 1/27 Arty. Provide DF for FSPB HARRISON on call from 4 Fd Regt.
- (4) One sect A Bty 2/40 Arty. Provide DF for FSPB HARRISON on call from 4 Fd Regt.
- (5) A Bty 1/83 Arty. Remains in GS reinforcing.
- (6) 1 ATF Det 131 Div Loc Bty.
  - (a) Continue present msn.
  - (b) Deploy one radar det and one LP to FSPB HARRISON.
- (7) AWCC.
  - (a) NUI DAT Arty remains open throughout.
  - (b) Det 161 Recce Flt to move with Tac HQ 4 Fd Regt to FSPB ANDERSEN.
  - (c) Bdy of BIEN HOA Arty has been extended to EAST bdy of AO COLUMBUS. 4 Fd Regt to arrange for transmission of warnings to BIEN HOA Arty.

SECRET

SECRET

5.

g. 1 Fd Sqn.

- (1) Deploy sqn (-).
- (2) Provide two combat engr teams to each 2 RAR, 7 RAR and three mini teams to A Sqn 3 Cav Regt (one team will return to base PM 24 Jan 68).
- (3) Remainder engr tps to remain in FSPB ANDERSEN.
- (4) Be prepared to estb WP in FSPB ANDERSEN (and possibly FSPB HARRISON).
- (5) Provide one size 2 dozer and one size 4 dozer to be moved by road to FSPB ANDERSEN.
- (6) Provide engr stores sp as required.

h. 1 SAS Sqn.

- (1) Withdraw patrols.
- (2) Be prepared to assist in base def NUI DAT.
- (3) Provide one offr for LO duties 18 (ARVN) Div from 24 Jan - 4 Feb 68.

i. 161 (Indep) Recce Flt.

- (1) Provide one H13 in DS 2 RAR, 7 RAR and HQ 1 ATF.
- (2) Provide 1 FW for VR in op area.
- (3) Ac to be deployed to BEARCAT area.
- (4) Provide sigs and sig equipment as necessary for AWCC.
- (5) Continue TAOR/PHUOC TUY province area VR.
- (6) Provide one H13 for OC A Sqn for convoy control from 240700H.

j. HQ Coy 1 ATF.

- (1) Responsible for the layout Tac HQ 1 ATF area including helicopter pads.
- (2) Command and organize the local defence of FSPB ANDERSEN including Tac HQ 1 ATF.
- (3) Def Fl is to be on standby for protection of a retransmission station if deployed.

k. Psy Ops. Be prepared to use ralliers for quick reaction broadcasts, to prepare special leaflets and tapes against enemy elements found in AO.

SECRET

SECRET

6.3

1. Det 1 Div Int Unit.

(1) Redeploy interpreters to 2 RAR and 7 RAR as necessary.

(2) Provide one interpreter to HQ Coy for Tac HQ 1 ATF.

m. Coord Instructions.

(1) AOs and boundaries - Annex P.

(2) Base Defence.

(a) D Comd is to assume comd of 1 ATF Rear when 1 ATF Tac HQ is deployed to FSPB ANDERSEN.

(b) 2 RAR and 7 RAR rear details and 3 RAR are to submit new patrol task tables ASP.

(c) 2 RAR is to leave one mor sect in base. 3 RAR is to deploy one sect under comd 7 RAR rear details. 7 RAR are not required to leave any mor sects in base.

(3) FSPB ANDERSEN.

(a) Def layout - Annex Q.

(b) Comd - OC HQ Coy assumes comd of all troops in the FSPB for local defence.

(4) FSPB HARRISON. Coy comd 7 RAR is FSPB Comd.

(5) Air.

(a) No 9 Sqn RAAF.

i. Deploy 4 Iroquois to BEARCAT/FSPB ANDERSEN.

ii. Provide tac and log sp as required for Op COBURG and for NUI DAT.

iii. Provide one Iroquois for Comd 1 ATF 24 Jan.

iv. Be prepared to provide DUSTOFF back up.

(b) Army Aviation.

i. Air coord conference 231600 hrs in 1 ATF Conference Room.

ii. Air task table is to be issued immediately afterwards as Annex E.

iii. Provide DUSTOFF with winch daily from LONG BINH.

iv. Provide LFT daily. Hold on standby at BEARCAT.

SECRET

SECRET

7.

(c) USAF.

- i. Deploy elements to BEARCAT as required.
- ii. Maintain VR and air support as required.
- iii. ALO or rep is required with Tac HQ.

(6) Liaison.

(a) SAS is to provide one officer to move with det 104 Sig Sqn to 18 (ARVN) Div XUAN LOC at 240700H.

(b) Report to GS02 (Ops) 231530H for briefing.

(7) Road Movement. Annex F.

4. Administration and Logistics.

a. General Outline.

(1) A Fwd TFMA is to be estb at FSPB ANDERSEN on 24 Jan 68.

The Fwd TFMA will coord provision of daily maint requirements except JP4. The Fwd TFMA will draw requirements from US sources.

(2) Units are to estb echs in FSPB ANDERSEN. These echs are to take from NUI DAT sufficient maint scales for duration of op.

b. Materiel and Service.

(1) Gun Ammo. 250 rds per gun incl first line with unit.

Thereafter daily maintdems to SCQ Tac HQ 1 ATF by 0900 hrs the preceding day.

(2) Mor Ammo. 100 rds per tube with unit. Thereafter demands to SCQ Tac HQ 1 ATF by 0900 hrs the preceding day.

(3) Small Arms. One first line to be held in unit ech.

Additional requirements to be demanded on Fwd TFMA.

(4) Explosives. Unit demands on Fwd TFMA.

(5) POL. Fwd TFMA is to establish DIESO, MOGAS and AVGAS pt. Timings to be advised.

(6) Water.

(a) WP is to be estb in Fwd TFMA by 1 Fd Sqn. Unit echs to draw direct from the WP. Timings to be advised.

(b) 1400 gals to be taken in on day 1 by Fwd TFMA.

SECRET



SECRET

8.

(7) Rations.

(a) 3 days' ration to be carried on the man.

(b) C Ration Supply Point to be estb by Fwd TFMA. Units may commence drawing 1600 hrs Day 2.

(8) Defence Stores.

(a) ALL initial requirements to move forward by road.

Unit bids to DAQMG by 1600 hrs 23 Jan 68.

(b) Subsequent requirements to SCQ Tac HQ 1 ATF by 0900 hrs the preceding day.

(9) Tpt. Unit bids to DAQMG by 1600 hrs 23 Jan 68. Details to be advised.

(10) Repair and Rec.

(a) On fwd journey recover to Long Binh and backload on return.

(b) Radios and small arms for inf bns to be replaced from unit echs. Unserviceable items to be backloaded to NUI DAT through Fwd TFMA.

(c) Vehs excl ST vehs in FSPB ANDERSEN to be repaired by Det 4 Fd Regt LAD.

(d) ST vehs are to be repaired using ST resources.

(e) Veh mech from HQ 1 ATF LAD is under comd 4 Fd Regt LAD from 1700 hrs 23 Jan 68.

(f) Wrecker to be provided for FSPB ANDERSEN by 102 Fd Wksp. To move with convoy from 1 ALSG.

(11) Showers. Details to be advised.

(12) ADE. Priority must be given to backloading. If required aircraft to be tasked for this purpose.

(13) Postal.

(a) Outgoing mail back to unit echs which deliver to Fwd TFMA for return to NUI DAT.

(b) Incoming Mail. NUI DAT to Fwd TFMA for distr to unit echs. Unit echs resp for fwd deliveries.

SECRET

A

SECRET

9.

(14) Medical.

(a) 4 Fd Regt is to establish an RAP for FSPB ANDERSEN on day 1.

(b) If 4 Fd Regt required to deploy two btys fwd and therefore require RAP fwd, 8 Fd Amb is to sup RAP facilities at FSPB ANDERSEN.

(c) 8 Fd Amb is to have RMO, 2 OR, pannier and 11 ft x 11 ft tent ready to move from 0800 hrs Day 2.

(d) Casevac. To 24 Evac Hosp at LONG BINH.

(15) Other Items. Unit ech responsibility. As maint scales are depleted and replacements required units are to demand on Fwd TFMA.

5. Command and Signal.

a. Command. Tac HQ 1 ATF closes NUI DAT and opens at FSPB ANDERSEN at H.

b. Signal Instructions. 1 ATF Sig Instr for op issued separately.

c. Points of Origin. Annex D.

d. Code word for the Operation: COBURG.

Ack Instructions: Ack by telephone to EBONY 50.

(R.L. HUGHES)  
Brig  
Comd

Authentication:

*D. V. Smith*  
for  
(D.V. SMITH)  
Maj  
GS02 (Ops)

- Annexes:
- A. Enemy Forces.
  - B. Grouping.
  - C. Sequence of Events.
  - D. Points of Origin.
  - E. Air Task Table.
  - F. Rd Mov Table.
  - P. AOs and Boundaries.
  - Q. Defence Layout FSPB ANDERSEN.

Distribution:

List Z less Serials 8, 28, 29, 37.  
plus B Bty 2/35 Arty (US), 199 Airborne Bde, 3/17 ACS (5)

SECRET

SECRET

ANNEX A TO  
1 ATF OPO 4/68  
DATED 231200H JAN 68

ENEMY SITUATION AO COLUMBUS

1. In addition to the enemy situation as given during 1 ATF O Group the following information has been gathered from 199 Lt Inf Bde and is based on their current operations in AO COLUMBUS.
2. The recent history of enemy activity in the area of interest associated with AO COLUMBUS can be divided into two periods: pre-Christmas and post-Christmas. In the first period the enemy situation was relatively stable; while in the second period it has been characterised by indications of a significant build up of enemy main force elements towards the area and particularly the enemy rocket threat against the LONG BINH/BIEN HOA complex has increased with the movement of elements of the 84A Rocket Regiment into the area.
3. The general area of interest divides itself into three areas:
  - a. TAN UYEN and WEST of the DONG NAI.
  - b. NORTH of the DONG NAI in SW War Zone D.
  - c. AO COLUMBUS and the EAST approach to LONG BINH.
4. Pre-Christmas Period. Enemy units in the general area consisted of:
  - a. TAN UYEN Area (WEST of DONG NAI River). About a battalion strength unit, possibly the PHU LOI I Battalion but not firmly identified.
  - b. NORTH of DONG NAI. Elements of D800 (the 1st Bn DONG NAI Regt) and elements of the PHU LOI LF unit.
  - c. AO COLUMBUS.
    - (1) Very little VC activity in the actual AO with the exception of a unit called the U1 "battalion" which is a LF unit of about 150 men whose task is to provide security for the U1 "Special Zone" HQ and food gathering and production activities.
    - (2) SOUTH of AO COLUMBUS the 3/274 has been held for some time ready for use against targets of opportunity along Highway 1.
5. Post-Christmas Buildup.
  - a. On 6 Jan 68 the DONG NAI Regt attacked the TAN UYEN town area. From this date there has been a significant and constant buildup throughout the general area.
  - b. TAN UYEN Area.
    - (1) VC forces in this area have built up with elements of the DONG NAI Regt and PHU LOI I Bn being identified in the area and agent reports indicating some elements of 273 Regt.
  - c. NORTH of DONG NAI. Agent reports indicate VC forces have built up in this area to at least two battalion strength made up of the bulk of the DONG NAI Regt and possibly a battalion group of 273 Regt with 273 Arty elements.
  - d. AO COLUMBUS.
    - (1) The buildup in this area has taken the form of heightened harassment of posts and hamlets along Highway 1 and small scale

/2.

SECRET

SECRET

2.

ambushes. The infiltration of a battalion of the 84A Rocket Regiment from the NNE into the GANG TOI area (YT1722) and with it elements of 273 Regt from the NORTH to give it security and screen forces reported on 5,6 and 7 Jan 68 and again on 10 Jan 68 by usually reliable agents.

(2) The local forces have provided screen and guide elements for this force.

(3) 274 Regt's 3rd Battalion remains dispersed SOUTH of Highway 1 and elements of 274 have possibly crossed Highway 1 heading NORTH. This is based on a rallier report.

(4) An element of 5 Div HQ is also held in the COLUMBUS area and arrived in the area recently with the possibility of it assuming control of VC mainforce elements in the area.

6. 199 Bde operations in the AO have not made any substantial contact and no firm identifications have been made of main force elements. The local forces in the area are probably responsible for the heightened activity on Highway 1 and the bulk of the small contacts and harassments that 199 Bde has had. It is possible that these activities have been designed to cover the main force movement and deployment into the area.

7. Enemy elements that are possibly in the area are summarised as follows:

a. Main Force.

273 Regt 9 VC Div (element of)  
274 Regt 5 VC Div (up to a battalion group)  
84A Rocket Regiment (up to a battalion)  
DONG NAI Regiment (small element only)

b. Local Force.

U1 "Battalion"  
C238 LF Coy (vic YT1523)  
C270 VINH CUU Platoon (vic YT1218)  
Assorted district and village guerilla bands

SECRET

SECRET

ANNEX B TO  
1 ATF OPO 4/68  
DATED 231200H JAN 68

GROUPING - OP COBURG

Status of Comd	HQ 1 ATF	2 RAR	3 RAR	7 RAR	1 Sqn 3 Cav Regt	4 Fd Regt	1 Fd Sqn	161 (Indep) Recce Flt
(a)	(b)	(c)	(d)	(e)	(f)	(g)	(h)	(i)
OPCON	Tp 3/17 ACS (less maintenance)				Two coys 7 RAR, two sects mor pl 7 RAR from 240700H for move to FSPB ANDERSEN			
Under Comd	Remainder engr from arrival FSPB ANDERSEN	Two combat enr teams from 231800H		Two combat enr teams from 231800H, one sect mor pl 3 RAR from 240800H for defence of 1 ATF Base	Three mini teams from 231800H			
Under Comd for mov					4 Fd Regt (-) TFMA vehs Engr vehs Three MP, Det AFV Pro Unit			
In DS	One H13 from 240700H	108 Fd Bty One H13 from 240700H	106 Fd Bty One H13 from 240700H					
In Sp	CH47 effort	CH47 and AHC effort	CH47 and AHC effort					

SECRET

/2.

(a)	(b)	(c)	(d)	(e)	(f)	(g)	(h)	(i)
In general sp reinforcing						B Bty 1/84 Arty (US)		
Detached	TFMA vehs under comd A Sqn 3 Cav Regt for mov Three Mp, Det AFV Pro Unit under comd A Sqn 3 Cav Regt for mov		One sect mor pl under comd of 7 RAR for defence of 1 ATF Base from 240800H	Two coys and two sects of mor pl 7 RAR from 240700H for mov to FSPB ANDERSLN		4 Fd Regt (-) under comd for mov A Sqn 3 Cav Regt	Two combat engr teams under comd each 2 RAR and 7 RAR from 231800H Three mini teams under comd A Sqn 3 Cav Regt from 231800H Engr vehs under comd A Sqn 3 Cav Regt for mov	One H13 in DS each Tac HQ 1 ATF, 2 RAR and 7 RAR

SECRET

SEQUENCE OF EVENTS - OP COBURG

ANNEX C TO  
1 ATF OPO 4/68  
DATED 231200H JAN 68

Serial	Date/Time	(b) Event	Remarks
(a)	(b)	(c)	(d)
1.	231600H	Advance/recce parties move to FSPB ANDERSEN vic YT2012. Parties from: Tac HQ 1 ATF, 2 RAR, 4 Fd Regt, 104 Sig Sqn, HQ Coy 1 ATF, TFMA.	
2.	240730H	a. Road convoy departs NUI DAT via Routes 15 and 1 for FSPB ANDERSEN. Consists of A Sqn 3 Cav Regt 4 Fd Regt (-) Two coys 7 RAR Two Mor Sects 7 RAR TFMA vehs Engr vehs and stores (2 tippers 2x 1/4 ton) Three MP Det AFV Pro Unit JADE ALPHA (1/4 ton) b. Deploy LO team to 18 ARVN Div. c. Deploy LO team to 199th Bde.	See road mov table Annex F
3.	240730H	2 RAR commences mov to FSPB ANDERSEN by air. 7 RAR tac HQ moves with this serial from LUSCOMBE.	Incls two mor sects
3A.	240730H	Aircraft and crews of 161 (Indep) Recce Flt } No 9 Sqn RAAF } deploy to BEARCAT TACP (USAF) } and LONG THANH NORTH	(1) DUSTOFF on call from LONG BINH. (2) No 9 Sqn not to move forward until called.
4.	240945H	Tac HQ 1 ATF commences move to FSPB ANDERSEN from LUSCOMBE	100 pers (space only)
5.	240730H	Elements TFMA and 1 Fd Sqn move to FSPB ANDERSEN	

SECRET

...../ 6.

ANNEX C TO  
 1 AIR ORO  
 DATED 23/10/68

SECRET

SEQUENCE OF EVENTS - 02

(a)	(b)	(c)	(d)
6.	241115H	7 RAR less two coys and two mor sects moves by air to FSPB ANDERSEN from LUSCOMBE.	
7.	On completion of Task	One Tp A Sqn escorts returning vehicles to NUI DAT.	

SECRET



SECRET

ANNEX D TO  
1 ATF OPO 4/68  
DATED 231200H JAN 68

POINTS OF ORIGIN AND Q HOUR  
OPERATION COBURG

Q HOUR

<u>Date</u>	<u>Q Hour</u>	<u>Date</u>	<u>Q Hour</u>
1 Feb 68	0700H	6 Feb 68	0200H
2 Feb 68	1200H	7 Feb 68	0600H
3 Feb 68	1000H	8 Feb 68	1300H
4 Feb 68	0800H	9 Feb 68	0400H
5 Feb 68	0900H	10 Feb 68	1100H

POINTS OF ORIGIN  
230001H JAN - 312400H JAN 68

<u>Serial</u>	<u>Point of Origin</u>	<u>Coordinate</u>	<u>Serial</u>	<u>Point of Origin</u>	<u>Coordinate</u>
1	181 - 190	YT3212	14	151 - 160	YT3225
2	81 - 90	2712	15	191 - 200	3626
3	161 - 170	2914	16	231 - 240	2314
4	131 - 140	3414	17	211 - 220	1814
5	171 - 180	3216	18	341 - 350	2016
6	61 - 70	2617	19	311 - 320	1718
7	21 - 30	2918	20	351 - 360	2319
8	91 - 100	3718	21	281 - 290	2021
9	51 - 60	3319	22	251 - 260	1522
10	31 - 40	2821	23	321 - 330	2523
11	01 - 10	3621	24	241 - 250	1824
12	121 - 130	3222	25	261 - 270	1525
13	71 - 80	3523	26	201 - 210	2225

SECRET

/2.

SECRET

2.

POINTS OF ORIGIN  
010001H FEB - 102400H FEB 68

Serial	Point of Origin	Coordinate	Serial	Point of Origin	Coordinate
1	301 - 310	YT1523	14	211 - 220	YT2715
2	331 - 340	1526	15	231 - 240	2826
3	391 - 400	1720	16	191 - 200	2820
4	201 - 210	1715	17	151 - 160	2912
5	371 - 380	1924	18	71 - 80	3023
6	261 - 270	2018	19	121 - 130	3118
7	241 - 250	2122	20	01 - 10	3114
8	321 - 330	2114	21	31 - 40	3311
9	251 - 260	2226	22	171 - 180	3426
10	281 - 290	2421	23	51 - 60	3423
11	351 - 360	2417	24	91 - 100	3415
12	311 - 320	2524	25	21 - 30	3520
13	341 - 350	2612	26	61 - 70	3517

SECRET

SECRET

*Dearj*  
*88*

ANNEX E TO  
1 ATF OPO 4/68  
DATED 231200 H JAN 68

AIR TASK TABLE  
24 JAN 68

Serial	Aircraft	Unit	PZ Time	LZ Time	Load	Remarks
(a)	(b)	(c)	(d)	(e)	(f)	(g)
1.	20 UH-I	2 RAR	0800H	0830H	108 Troops 2000 lb ammo	2 flts of 10, 1 minute apart, LZ YT205130, C/S 92C, 49.10 C and C arrive E/F 0745H
	20 UH-I		0900H	0930H	120 Troops	
2.	6 CH-47	2 RAR	0915H	0945H	210 Troops	2 aircraft loading every 2 minutes LZ YT205130 C/S 92C, 49.10
	6 CH-47		1015H	1045H	210 Troops	
3.	6 CH-47	1 ATF HQ elements	1145H	1215H	180 Troops	LZ YT205130 C/S 16, 46.35
4.	20 UH-I	7 RAR	1400H	1430H	120 Troops	LZ YT155183 C/S 4, 43.20 C and C arrive TIGER 5 1300H
	6 CH-47		1410H	1440H	180 Troops	
5.	20 UH-I	7 RAR	1435H	1440H	120 Troops	PZ YT205130 C/S 92, 43.20
	20 UH-I	7 RAR	1445H	1450H	120 Troops	
	12 UH-I	7 RAR	1455H	1500H	60 Troops plus ammo	
6.	2 CH-47	4 Fd Regt	1510H	1540H	2 sorties radar	LZ KOALA C/S KOALA, 34.30 PZ YT205130 C/S 90, 34.30

SECRET

SECRET

ANNEX F TO  
1 ATF OPO 4/68  
DATED 231200H JAN 68

MOVEMENT TABLE

1. Average Speed. 20 MPH.
2. Density: 40 metres between vehicles.
3. Halts. Nil.
4. Route.
  - a. Engr Bypass Rd to LTL2 SOUTH of HOA LONG.
  - b. LTL2 to BARIA.
  - c. QL 15.
  - d. QL 1.
5. Route to SP. NORTH along LTL2.
6. Critical Pts.
  - a. SP Junction LTL2 and Engr Bypass Rd YS438698.
  - b. Rel Pt. YT198111.
7. Timings.
  - a. Groups formed up in order of serials by ~~240715H~~ <sup>240845H</sup>.
  - b. Group A passes SP at ~~240730H~~ <sup>240900H</sup>, other groups on order passed via APC escort.

*Amthol  
23 Jan 68  
MB*

*8. Return Convoy  
a. Separate details will be promulgated.  
b. Start time 241600H approx.  
c. Convoy on return will bivouac overnight in Long Binh area.*

Serial	Group	Unit	No of Vehs			FUP	Coord Instrs	Remarks
			Landrovers	Larger Vehs	Total			
(a)	(b)	(c)	(d)	(e)	(f)	(g)	(h)	(i)
1.	A	1 Tp A Sqn 3 Cav Regt	-	10	10	Route TL2 SOUTH from gate in 7 RAR lines YS435687		One coy 7 RAR carried Troop dispersed through Group A An adv guard travels 2 miles in lead.
2.	A	108 Fd Bty	2	9	11	Route TL2 SOUTH from gate in 7 RAR lines YS435687		
3.	B	SHQ A Sqn 3 Cav Regt	-	4	4	Route TL2 - A Sqn lines YS431670		Includes callsigns 9,9E, 98A and OC.

SECRET

SECRET

2.

(a)	(b)	(c)	(d)	(e)	(f)	(g)	(h)	(i)
4.	C	2 Tp A Sqn 3 Cav Regt	-	10	10	Route TL2 and CANBERRA Ave SOUTH, extending SOUTH from 108 Fd Bty lines YS430667		Stores for HQ 1 ATF carried Troop dispersed through Group C
5.	C	Two mor carrier sects A Sqn 3 Cav Regt	-	4	4	Route TL2 and CANBERRA Ave SOUTH, extending SOUTH from 108 Fd Bty lines YS430667		2 X mor sects 7 RAR carried
6.	C	HQ 1 ATF	4	2	6			Includes 2 X $\frac{3}{4}$ ton RA Sigs
7.	C	RHQ 4 Fd Regt	73	3	106			Note: 2 X $\frac{3}{4}$ ton RMO <del>4 X <math>\frac{3}{4}</math> ton Radar</del> 1 X $\frac{3}{4}$ ton Survey
8.	C	Arty Stores	-	11	11			Includes ammo and def stores
9.	C	Inf Bn Stores	-	6	6			
10.	C	Misc Vehs	1	-	1			Details to follow 1 X $\frac{3}{4}$ ton USAF
11.	D	3 Tp A Sqn 3 Cav Regt	-	11	11	CANBERRA Ave NORTH, extending EAST from Route TL2 YS434683	Tail of Group C must be clear of FUP before movement	One coy 7 RAR carried Troop dispersed through Group D Callsign 98 attached
12.	D	106 Fd Bty	2	9	11	CANBERRA Ave NORTH, extending EAST from Route TL2 YS434683		

*Amulthol*  
*23 Jan 68*  
*M/S*

/3.

SECRET

SECRET

3.

(a)	(b)	(c)	(d)	(e)	(f)	(g)	(h)	(i)
13.	D	Engr Vehs	<del>2</del> 4	4	<del>6</del> 8	CANBERRA Ave NORTH, extending EAST from Route TL2 YS434683		Includes two low loaders
14.	D	Adv TFMA	<del>1</del> 2	<del>5</del> 6	<del>6</del> 8	CANBERRA Ave NORTH, extending EAST from Route TL2 YS434683	Tail of Group C must be clear of FUP before movement	
15.	D	RAEME Recovery Element	-	<del>2</del> 3	<del>2</del> 3	CANBERRA Ave NORTH, extending EAST from Route TL2 YS434683		

*Amtho 1  
23 Jan 68  
M/S.*

SECRET

SECRET

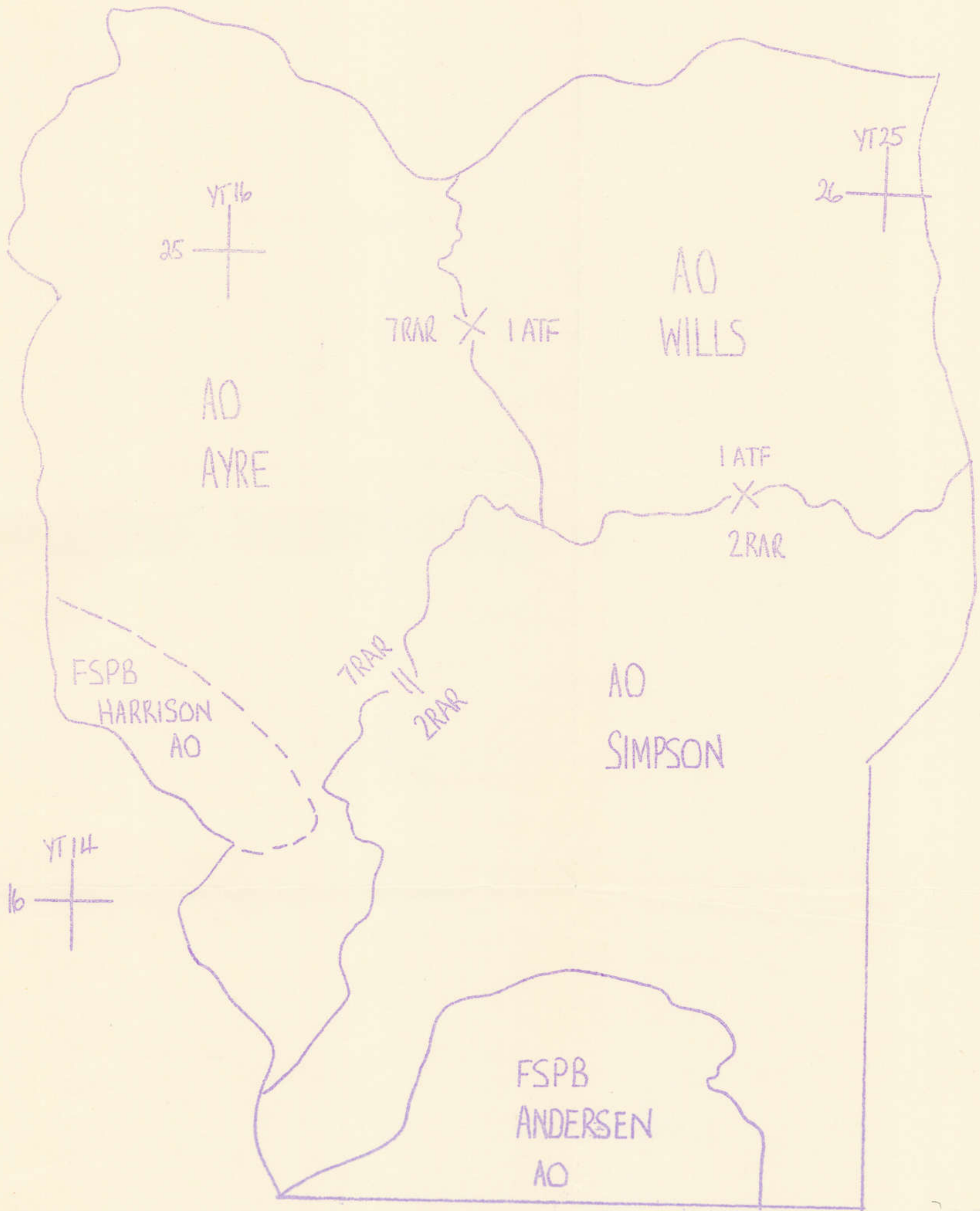
AOs AND BOUNDARIES

AO COLOMBUS

ANNEX P TO

I ATF OP O 4/68

DATED 231200H JAN 68.



SECRET

231200H  
141  
822 01404

C30

CONFIDENTIAL

Copy No .....  
1 ATF  
NUI DAT  
231200H Jan 68  
SIGS 054

88

SIG INSTR 2/68 (OP COBURG)

Time Zone used throughout this instr: HOTEL

General

- 1. All communication facilities currently provided in the NUI DAT base area will continue unchanged. This instruction details additional facilities to be provided for the op.
- 2. 1 ATF SOIs for Jan 68 apply except when noted. SOIs for Feb become effective 010800 Feb 68.

*except for RR Telephone channels (DANSAE)*

Radio

3. TF Comd Net

- a. As units and sub-units depart NUI DAT D-1 and D Day their rear elms are to use the unit callsign with an 'A' suffix.
- b. With the arrival of the Fwd HQ recce party at the new loc, a HQ step-up sta will join the net using control's callsign with an 'A' suffix.
- c. When Comd 1 ATF arrives at the Fwd HQ, con will change from NUI DAT to Fwd HQ. At this time, the sta at HQ 1 ATF Rear will use the 'A' suffix while the new con sta uses the callsign for 1 ATF.
- d. At 1700H D Day the TF Comd Net Rear is to open and all stas not concerned with ops in the fwd area will leave the TF Comd Net and join the TF Comd Net Rear. (See para 4).
- e. Stas op on the TF Comd Net from 1700H D Day are shown in Annex A. The LO at XUAN LOC will join the net on arrival in loc.
- f. Rear area sub stas of the TF Comd Net are to minimise tfc from 0600H to 1700H D Day.

*Amulhol  
23 Jan 68  
M/S*

*and at 199 Bde*

4. TF Comd Net Rear

- a. This net is to open at 1700H D Day. Stas to op on this net are given in Annex B.
- b. This net is to be effective for the duration of OP COBURG only. Arrangements for closing down will be advised later.

5. Fwd HQ Def Net A Fwd HQ def net is to be estb at 1700H D Day. Note that all units and sub-units op on this net are to provide their own radios and ops. See Annex C.

6. Air Task Net Two stas will be provided for comms to ac. One will be loc at the Fwd HQ and one at the Rear HQs. See Annex D.

CONFIDENTIAL



CONFIDENTIAL

- 2 -

7. Arty Rear Comd Net See Annex D for call words and freqs. Fixed callsigns are to be used. This net is effective only for the duration of the op. Opening and closing times are the responsibility of 4 Fd Regt.
8. HF Link. A HF link will be estb between fwd and rear HQs. This will op as a radio teletype circuit in the event of failure of the RR bearer (see para 13). This link is also aval as an altn voice link between fwd and rear HQs. See Annex D.
9. VHF Monitor. A VHF monitor radio will be provided at the Fwd HQ.
10. VHF Retransmission
- a. A ground VHF retransmission sta will be positioned at the Fwd HQ. It will be aval from that site to assist units with their internal comms if requested.
  - b. Eqpt for aerial VHF retransmission will be held at Nui Dat. It will be aval to units.

RR

11. RR tele and tg circuits will be provided between HQ 1 ATF Fwd and HQ 1 ATF Rear. See Annex E for channel allocations.
12. This facility will enable all subscribers to Ebony Fwd swbd to comm by tele to any subscriber, local swbd or trunk circuits connected to Ebony at Nui Dat.
13. The four exclusive circuits do not go through any swbd and so provide direct tele comms between the two parties on each circuit.
14. All RR tele circuits are unclassified.

Swbd and Line

15. Exts of the Ebony Fwd swbs are given in Annex F. Additional copies of this annex are issued as the Ebony Fwd tele directory.
16. TF Sigs will lay lines from Ebony Fwd to other swbds in the area of the Fwd HQ.

Sigcen

17. A small sigcen will be estb at the Fwd HQs. It will incl a teletype terminal with on-line encryption to provide quick and secure formal comms between Fwd and Rear HQ.
18. TF time may be obtained by tele from the fwd sigcen or by radio on the TF Comd Net. The master clock will be loc in the rear sigcen.

DR

19. Starting "Commencing D+1 an ADS will operate between Fwd and Rear HQs. Timings as follows:

19.

<u>DEPART</u>		<u>ARRIVE</u>	
Kangaroo Pad East	0635	FSPB Anderson	0700
Kangaroo Pad East	1230	FSPB Anderson	1305
FSPB Anderson	1300	Kangaroo Pad East	1320
FSPB Anderson	1830	Kangaroo Pad East	1850

Operational commitments may necessitate variations to this schedule."

*Amtho/*  
*23/Jan/68*  
*WJG*

CONFIDENTIAL

- 2 -

7. Arty Rear Comd Net See Annex D for call words and freqs. Fixed callsigns are to be used. This net is effective only for the duration of the op. Opening and closing times are the responsibility of 4 Fd Regt.
8. HF Link. A HF link will be estb between fwd and rear HQs. This will op as a radio teletype circuit in the event of failure of the RR bearer (see para 13). This link is also aval as an altn voice link between fwd and rear HQs. See Annex D.
9. VHF Monitor. A VHF monitor radio will be provided at the Fwd HQ.
10. VHF Retransmission
  - a. A ground VHF retransmission sta will be positioned at the Fwd HQ. It will be aval from that site to assist units with their internal comms if requested.
  - b. Eqpt for aerial VHF retransmission will be held at Nui Dat. It will be aval to units.

RR

11. RR tele and tg circuits will be provided between HQ 1 ATF Fwd and HQ 1 ATF Rear. See Annex E for channel allocations.
12. This facility will enable all subscribers to Ebony Fwd swbd to comm by tele to any subscriber, local swbd or trunk circuits connected to Ebony at Nui Dat.
13. The four exclusive circuits do not go through any swbd and so provide direct tele comms between the two parties on each circuit.
14. All RR tele circuits are unclassified.

Swbd and Line

15. Exts of the Ebony Fwd swbs are given in Annex F. Additional copies of this annex are issued as the Ebony Fwd tele directory.
16. TF Sigs will lay lines from Ebony Fwd to other swbds in the

~~19. Starting D+1 there will be a daily aerial SDS between Fwd and Rear HQs. It will depart Kangaroo Pad at 1000H. Closing times for despatches are:~~

~~a. At HQ 1 ATF Rear - 0940H.~~

~~b. At HQ 1 ATF Fwd - 1015H.~~

CONFIDENTIAL

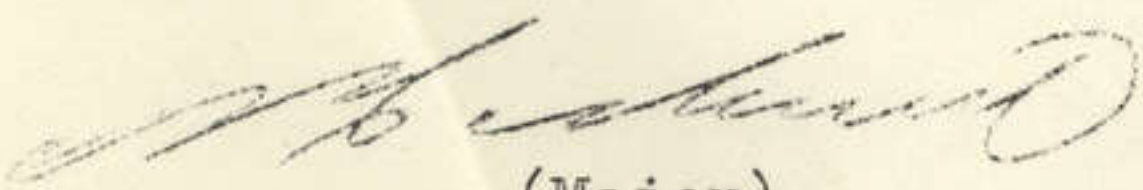
CONFIDENTIAL

-3-

20. At the Fwd HQ there will be three DR deliveries a day from incl D+1. All unit and sub-unit HQs in the area of the Fwd HQs, the CP and Arty Tac will be visited. Timings are for the DR to depart the sigcen at 1030, 1300, and 1600 hrs.

21. All LOs and visitors going from and to any fm, unit or sub-unit HQs are reminded of their responsibilities to visit sigcens or orderly rooms and collect any despatches addressed to the destination of their journey.

22. Q hour and Points of Origin Codes will be issued as an Annex to Op Order.

  
(Major)  
1ATF Sig O

Annexes.    A.    TF Comd Net.  
             B.    TF Comd Net Rear.  
             C.    Fwd HQ Def Net.  
             D.    Misc Radio Facilities.  
             E.    RR Channel Allocations.  
             F.    Ebony Fwd Swbd Exts.

Distribution

List Z (-)(+)

CONFIDENTIAL

CONFIDENTIAL

ANNEX A TO

1 ATF SIG INSTR 2/68

TF COMD NET

The net shows those stas op after 1700H D Day.

CALLWORD

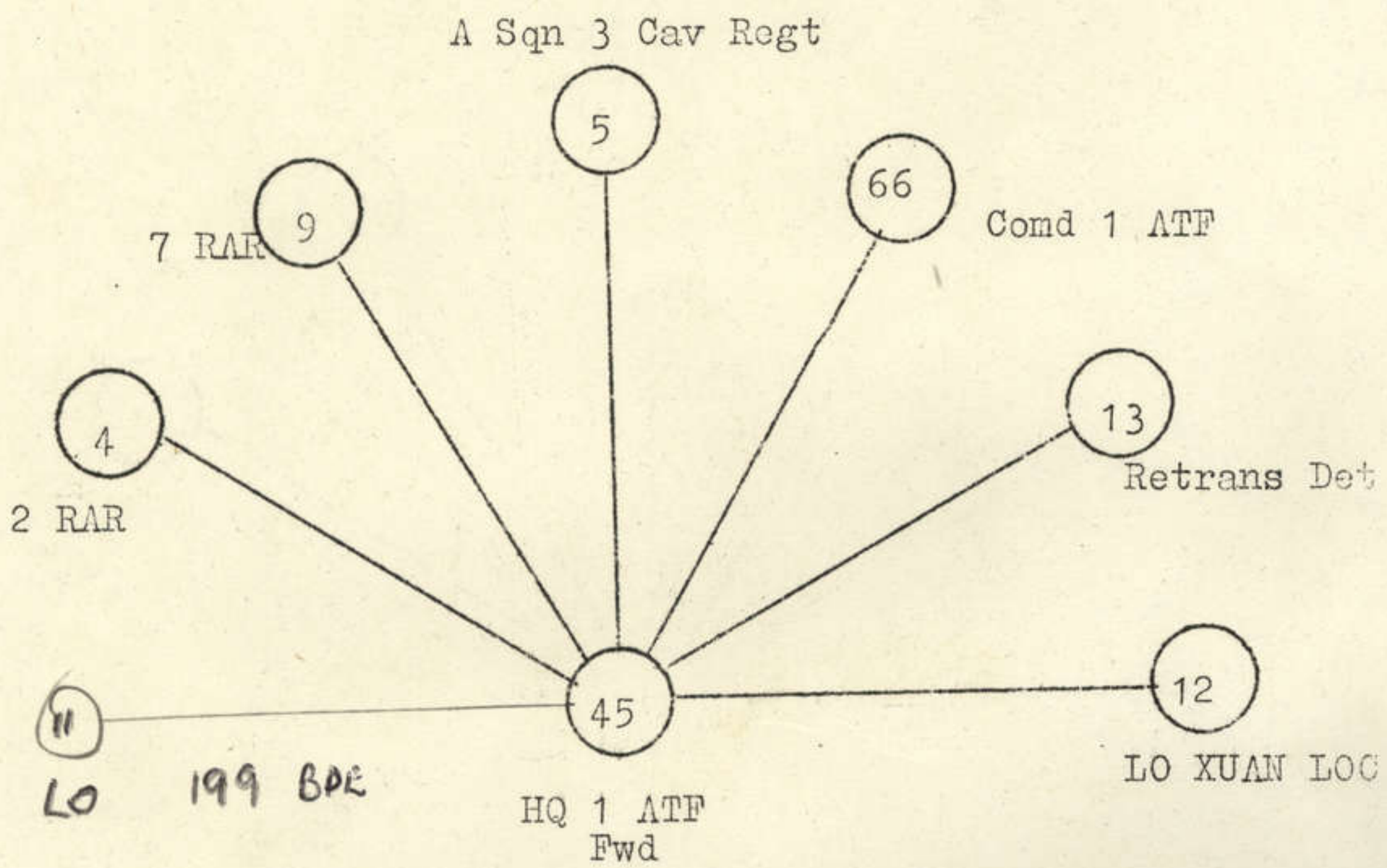
AP

FREQ

56.35

KA

61.40



SPARE CALLSIGNS

SPARE 1 11  
SPARE 2 8

Retrans

CALLWORD

CP

FREQ

75.95

CONFIDENTIAL

CONFIDENTIAL

ANNEX B TO

1 ATF SIG INSTR 2/68

TF COMD NET REAR

This net opens on freq PW at 1700H D Day and is effective only for the duration of the op.

<u>CALLWORD</u>	<u>FREQ</u>
PW	74.95
YC	43.00
<u>STA</u>	<u>CALLSIGN</u>
HQ 1 ATF Rear	81
2 RAR Rear	55
7 RAR Rear	87
A Sqn 3 Cav Regt Rear	51
1 Fd Sqn	78
161 Recce Flt	41
D Comd's Rover	66A
1 ARU	15
1 SAS Sqn	39
Standby Coy	21
Horseshoe Coy	16
HQ Coy 1 ATF Rear	14
MILO	10
Spare No 1	6

CONFIDENTIAL

CONFIDENTIAL

ANNEX C TO  
1 ATF SIG INSTR 2/6

FWD HQ DEF NET

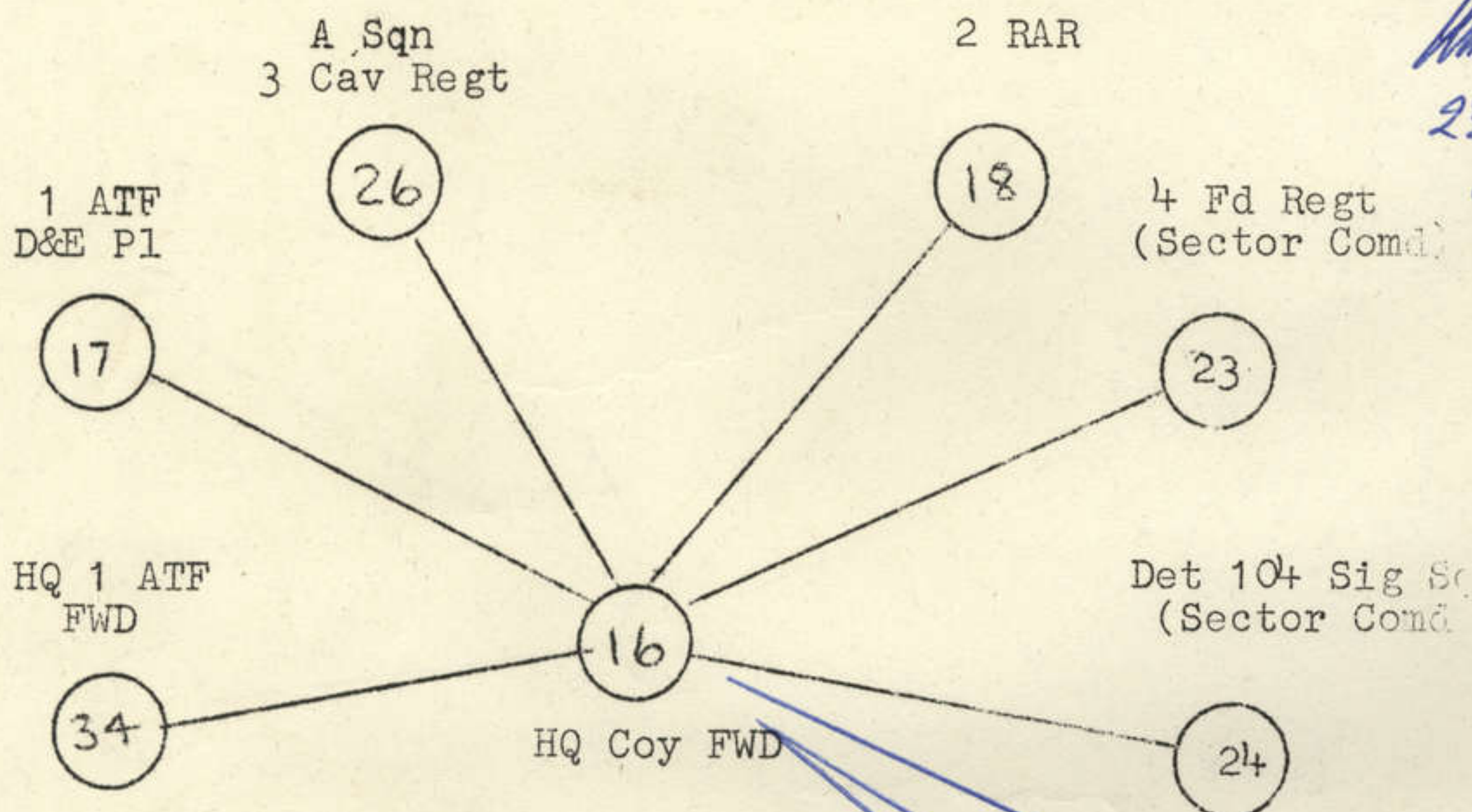
This net opens on freq UX at 1700H D Day and is effective only for the duration of the op. Units and sub-units on the net are to provide their own radios and ops except HQ 1 ATF Fwd sta.

CALLWORD

UX  
UG

FREQ

46.35  
60.90



SPARE CALLSIGNS

SPARE 1 35  
SPARE 2 37

- NOTES:
1. Only the short whip antenna is to be used with radios on this net.
  2. AN/VRC-46 radios are to op on LOW POWER on this net.

CONFIDENTIAL

CONFIDENTIAL

ANNEX D TO

1 ATF SIG INSTR 2/68

MISC RADIO FREQUENCIES

General

1. All facilities given below are effective for Op COBURG only.

TF Comd Net Altn (Voice/Tg)

2. This net will be activated only if VHF comms to one or both inf bns are unsatisfactory.

3. Frequencies, callwords and callsigns are:

<u>CALLWORD</u>	<u>FREQ</u>
CD	3288 (opening freq)
KA	2452
<u>STA</u>	<u>CALLSIGN</u>
1 ATF	87
2 RAR	55
7 RAR	26

Air Task Net (Voice)

4. Frequency, callwords and callsigns are:

<u>CALLWORD</u>	<u>FREQ</u>
Eagle Heights	32.30
<u>STA</u>	<u>CALLSIGN</u>
HQ 1 ATF Fwd	Eagle Heights 23
HQ 1 ATF Rear	Eagle Heights

Arty Rear Comd Net (Voice)

5. Frequencies and callwords are:

<u>CALLWORD</u>	<u>FREQ</u>
PR	36.10
RV	37.30

6. Fixed callsigns are to be assigned by 4 Fd Regt.

HF Link (Voice/Tg)

7. Frequencies, callwords and callsigns are:

<u>CALLWORD</u>	<u>FREQ</u>	<u>STA</u>	<u>CALLSIGN</u>
WZ	4137 (opening freq)	HQ 1 ATF Fwd	6
UL	5215	HQ 1 ATF Rear	12

CONFIDENTIAL

Replacement Page  
Amtd to  
23 Jan 68  
W/S

CONFIDENTIAL

ANNEX E TO

1 ATF SIG INSTR 2/68

RR CHANNEL ALLOCATION

1. The following allocation will exist for the duration of Op COBURG.

<u>CHANNEL No</u>	<u>CIRCUIT</u>	
1.	EBONY FWD	to EBONY
2.	EBONY FWD	to PLANTATION
3.	EBONY FWD	to HURRICANE TOC SWBD
4.	EBONY FWD	to HURRICANE TOC SWBD
5.	FWD HQ CP	to REAR HQ CP
6.	FWD HQ Q REP	to DAQMG (Rear)
7.	FWD HQ GS02 (Int)	to HURRICANE TOC SWBD
8.	ARTY TAC	to HURRICANE TOC SWBD
9.	FWD HQ SIG CEN	to REAR HQ SIG CEN
10.	FWD HQ GS02 (Ops)	to HURRICANE TOC SWBD (Secure)
11.	HURRICANE TOC SWBD	to EBONY SWBD
12.	HURRICANE TOC SWBD	to EBONY CP (Rear)
13.	PLANTATION	to EBONY
14.	IIFV FSCC	to 1 ATF ARTY (Rear)
15.	IIFV SIG CEN	to 1 ATF (Rear) SIG CEN

CONFIDENTIAL



CONFIDENTIAL

ANNEX F TO  
1 ATF SIG INSTR 2/68

EBONY FWD SWBD EXTS

<u>MAIN SWBD</u>		<u>EMERGENCY SWBD</u>	
<u>Ext No</u>	<u>Subscriber</u>	<u>Ext No</u>	<u>Subscriber</u>
1.	Spare	1.	Spare
2.	ENTERPRISE Fwd	2.	ENTERPRISE Fwd
3.	Arty Tac	3.	Arty Tac
4.	CP	4.	CP
5.	GS02 Air	5.	GS02 Air
6.	HQ Coy	6.	HQ Coy
7.	ATF D&E Pl	7.	ATF D&E Pl
8.	Fwd TFMA	8.	Fwd TFMA
9.	Sigcen	9.	Sigcen
10.	Sigs Sector	10.	Sigs Sector
11.	Radio Ops	11.	Radio Ops
12.	EBONY	12.	EBONY
13.	EBONY		
14.	EBONY		
15.	Int Cel		
16.	Q Rep		
17.	Sig O/OC Segs Det		
18.	RR Det		
19.	OC A Sqn 3 Cav Regt		
20.	EVERGREEN Fwd		
21.	Fwd HQ Clerks		
22.	Public Telephone (Sigcen Area)		
23.	GS02 Ops		
24.	)		
25.	)		
26.	)		
27.	) SPARE		
28.	)		
29.	)		
30.	)		

CONFIDENTIAL

75  
e31

CONFIDENTIAL  
AUSTRALIAN MILITARY FORCES

R617/1/4

HQ 1 ATF  
NUI DAT

24 Jan 68

Distribution below

1 ATF PATROL PROGRAMME  
FOR PERIOD 240800H JAN TO 050800H FEB 68

1. Attached is the patrol programme for the period specified above.
2. 1 ATF Patrol Programme for period 210800H to 280800H Jan 68 is cancelled.
3. Programme for W Coy 2 RAR patrols for period 291800H to 310600H are to be advised.

*D. V. Smith*  
for (D.V. SMITH)  
Maj  
GS02 (Ops)

Distribution:

C Sqn 1 Armd Regt	1
A Sqn 3 Cav Regt	2
4 Fd Regt	3-7
1/83 Arty	8
1 Fd Sqn	9
2 RAR	10 - 35
3 RAR	36 - 46
7 RAR	47 - 57
1 SAS Sqn	58
HORSESHOE Coy	59 - 63
161 (Indep) Recce Flt	64
1 ARU	65 - 66
HQ Coy	67 - 69
Arty Tac	70
CP	71
FATOC	72
GS02 (Ops)	73
Diary	74 - 75
File	76

CONFIDENTIAL

CONFIDENTIAL

1 ATF PATROL PROGRAMME FOR PERIOD 240800H JAN TO 050800H FEB 68

Page 1 of 23 pages

A.	Patrol Serial No	2 RAR 2150/68	2151/68	2152/68	2153/68
B.	Sub Unit to Provide	2 RAR Rear	2 RAR Rear	2 RAR Rear	2 RAR Rear
C.	Callsign and Frequency	95E 49.10	95F 49.10	95E 49.10	95F 49.10
D.	Controlled by	2 RAR Rear CP	2 RAR Rear CP	2 RAR Rear CP	2 RAR Rear CP
E.	Task	Patrol in PAT and NAN. Establish night CP at YS404647 to observe track.	Patrol in PENNY and establish night OP at YS401638.	Patrol in MAGGIE, LINDA, JUNE, NAN, PAT and establish night OP at YS403659.	Patrol in NAN and PAT. Establish night OP at YS395655.
F.	Strength	5	5	5	5
G.	Date/Time Out	241600H	241730H	251300H	251700H
H.	Date/Time In	250800H	250800H	260730H	260730H
J.	Route	Direct	Direct	Direct	Direct
K.	LZ (if required)	-	-	-	-
L.	PZ (if required)	-	-	-	-
M.	Remarks	1. Tpt to be arranged by CP. 2. Starlight scope to be carried.	As for 2150/68.	As for 2150/68.	As for 2150/68.

CONFIDENTIAL

CONFIDENTIAL

A.	2154/68	2155/68	2156/68	2157/68	2158/68
B.	2 RAR Rear	2 RAR Rear	2 RAR Rear	2 RAR Rear	2 RAR Rear
C.	95E 49.10	95F 49.10	95E 49.10	95F 49.10	95E 49.10
D.	2 RAR Rear	2 RAR Rear	2 RAR Rear	2 RAR Rear	2 RAR Rear
E.	Patrol in MAGGIE, LINDA, JUNE, NAN. Establish night OP at YS397667.	Patrol in PAT and NAN GAYE. Establish night OP at YS396656.	Patrol in PAT, NAN, JUNE. Establish night OP at YS398669.	Patrol PAT, NAN. Establish night OP at YS404647.	Patrol in PENNY, GAYE. Establish night OP at YS398639.
F.	5	5	5	5	5
G.	261200H	261700H	271400H	271730H	281500H
H.	270800H	270800H	280900H	280800H	290730H
J.	Direct	Direct	Direct	Direct	Direct
K.	-	-	-	-	-
L.	-	-	-	-	-
M.	1. As for 2150/68. 2. Final coord with 3 RAR 25 Jan.	As for 2150/68.	As for 2150/68.	As for 2150/68.	As for 2150/68.

CONFIDENTIAL

CONFIDENTIAL

Page 3 of 23 pages

A.	2159/68	2160/68	2161/68	2162/68	2163/68
B.	2 RAR Rear	2 RAR Rear	2 RAR Rear	2 RAR Rear	2 RAR Rear
C.	95F 49.10	95E 49.10	95F 49.10	95G 49.10	95E 49.10
D.	2 RAR Rear	2 RAR Rear	2 RAR Rear	2 RAR Rear	2 RAR Rear
E.	Patrol in MAGGIE, MAY and LINDA. Establish night OP at YS398669.	Patrol in MAGGIE, MAY and LINDA. Establish night OP at YS398669.	Patrol in PAT, JAN, JUNE. Establish night OP at YS395655.	Patrol in PENNY and GAYE. Establish night OP at YS398638.	Patrol in MAGGIE, MAY and LINDA. Establish night OP at YS398669.
F.	5	7	7	7	7
G.	281500H	291400H	291400H	291400H	301200H
H.	290730H	300830H	300830H	300830H	310900H
J.	Direct	Direct	Direct	Direct	Direct
K.	-	-	-	-	-
L.	-	-	-	-	-
M.	1. As for 2150/68. 2. Final coord with 3 RAR 27 Jan.	1. As for 2150/68. 2. Final coord with 3 RAR 27 Jan.	As for 2150/68.	As for 2150/68.	1. As for 2150/68. 2. Final coord with 3 RAR 29 Jan.

CONFIDENTIAL

CONFIDENTIAL

Page 4 of 23 pages

A.	2164/68	2165/68	2166/68	2167/68	2168/68
B.	2 RAR Rear	2 RAR Rear	2 RAR Rear	2 RAR Rear	2 RAR Rear
C.	95F 49.10	95G 49.10	95E 49.10	95F 49.10	95E 49.10
D.	2 RAR Rear	2 RAR Rear	2 RAR Rear	2 RAR Rear	2 RAR Rear
E.	Patrol in PAT, NAN, JUNE. Establish night OP at YS395655.	Patrol in PENNY and GAYE. Establish night OP at YS398638.	Patrol in VICKI, MAY MAGGIE, PAT. Establish night CP at YS409657.	Patrol in PENNY and PAT. Establish night CP at YS410645.	Patrol LINDA and JUNE. Establish night OP at YS398667.
F.	7	7	5	5	5
G.	301200H	301400H	311400H	311730H	011200H
H.	310900H	310830H	010830H	010830H	020730H
J.	Direct	Direct	Direct	Direct	Direct
K.	-	-	-	-	-
L.	-	-	-	-	-
M.	As for 2150/68.	As for 2150/68.	As for 2150/68.	As for 2150/68.	1. As for 2150/68. 2. Final coord with 3 RAR.

CONFIDENTIAL

A.	2169/68	2170/68	2171/68	2172/68	2173/68
B.	2 RAR Rear	2 RAR Rear	2 RAR Rear	2 RAR Rear	2 RAR Rear
C.	95F 49.10	95E 49.10	95F 49.10	95E 49.10	95F 49.10
D.	2 RAR Rear	2 RAR Rear	2 RAR Rear	2 RAR Rear	2 RAR Rear
E.	Patrol PAT. Establish night OP at YS415655 and observe Route 2.	Patrol NAN, GAYE, JUNE. Establish night OP at YS392673.	Patrol PAT. Establish night OP at YS415655. Watch Route 2.	Patrol KAREN, GAYE. Establish night OP at YS393659.	Patrol PAT, MAGGIE. Establish night OP at YS419678. Watch Route 2.
F.	5	5	5	5	
G.	011730H	021400H	021700H	031300H	031730H
H.	020730H	030800H	030800H	040900H	040900H
J.	Direct	Direct	Direct	Direct	Direct
K.	-	-	-	-	-
L.	-	-	-	-	-
M.	As for 2150/68.	As for 2150/68.	As for 2150/68.	As for 2150/68.	As for 2150/68.

CONFIDENTIAL

Page 6 of 23 pages

A.	2174/68	2175/68
B.	2 RAR Rear	2 RAR Rear
C.	95E 49.10	95F 49.10
D.	2 RAR Rear	2 RAR Rear
E.	Patrol PENNY and GAYE. Establish night OP at YS392639.	Patrol MAGGIE. Establish night OP at YS408667. Cover track and watch Route 2.
F.	5	5
G.	041500H	041700H
H.	050900H	050900H
J.	Direct	Direct
K.	-	-
L.	-	-
M.	As for 2150/68.	As for 2150/68.

CONFIDENTIAL



CONFIDENTIAL

Page 7 of 23 pages

A.	W Coy 2 RAR 48/68	W 49/68	W 50/68	W 51/68	W 52/68
B.	W Coy	W Coy	W Coy	W Coy	W Coy
C.	70A 57.10	71A 57.10	73 57.10	72A 57.10	71 57.10
D.	1 ATF	1 ATF	1 ATF	1 ATF	1 ATF
E.	Recce ptl JEAN.	Ambush area MAY.	Ambush SALLY.	Recce ptl WENDY.	Search and ambush SALLY and GUSSIE WEST.
F.	Sect	$\frac{1}{2}$ Pl	Pl	Sect	Pl
G.	280900H	281800H	281900H	291000H	310600H
H.	281710H	290645H	290845H	291800H	031100H
J.	Direct	Direct	Direct	Direct	Direct
K.	-	-	-	-	-
L.	-	-	-	-	-
M.			ID Card check on Route 53 on return.		

NOTE: All patrols limited to mortar range if arty sp not available.

CONFIDENTIAL

CONFIDENTIAL

Page 8 of 23 pages

A.	W 53/68	W 54/68	W 55/68	W 56/68
B.	W Coy	W Coy	W Coy	W Coy
C.	73A 57.10	72A To be advised	73A To be advised	70A & 73 To be advised
D.	1 ATF	1 ATF	1 ATF	1 ATF
E.	Recce ptl MAY.	Recce ptl WENDY.	Recce ptl JEAN.	Search and ambush MAY.
F.	Sect	Sect	Sect	Pl (+)
G.	311100H	010500H	020830H	031300H
H.	311900H	011500H	021745H	041500H
J.	Direct	Direct	Direct	Direct
K.	-	-	-	-
L.	-	-	-	-
M.				

CONFIDENTIAL

CONFIDENTIAL

A.	3 RAR 3104/68	3105/68	3106/68	3107/68
B.	A Coy	B Coy	B Coy	D Coy
C.	1 43.05	21A 43.05	21B 43.05	4 43.05
D.	3 RAR CP	3 RAR CP	3 RAR CP	3 RAR CP
E.	Ptl in ptl zones BETTY, BERYL, ANN, JOYCE and HEDY.	Ambush in ptl zone MIKE vic track YS478666.	Ambush in ptl zone PAUL vic track junc YS436635.	Ptl in ptl zones PETER, CLAUDE, BOB and BILL.
F.	Coy	1 : 15	1 : 15	Coy
G.	240830H	241700H	241715H	250800H
H.	291000H	250800H	250800H	271600H
J.	Direct	Direct	Direct	Direct
K.	-	-	-	-
L.	To be advised	-	-	-
M.	To move through 7 RAR sectors IRENE and JUDY. Clearance obtained 23 Jan.			

CONFIDENTIAL

CONFIDENTIAL

Page 10 of 23 pages

A.	3108/68	3109/68	3110/68
B.	A Tk Pl	A Tk Pl	B Coy
C.	61A 43.05	61A 43.05	21A 43.05
D.	3 RAR CP	3 RAR CP	3 RAR CP
E.	Ambush in PAUL vic track YS436645.	Ambush in PAUL vic track YS436645.	Ambush in PAUL vic track YS436645.
F.	1 : 15	1 : 15	1 : 15
G.	251630H	261645H	271600H
H.	260800H	270745H	280830H
J.	Direct	Direct	Direct
K.	-	-	-
L.	-	-	-
M.			

CONFIDENTIAL

CONFIDENTIAL

A.	3111/68	3112/68	3113/68	3114/68	3115/68
B.	B Coy	B Coy	B Coy	B Coy	D Coy
C.	21B 43.05	21C 43.05	21A 43.05	21B 43.05	4 43.05
D.	3 RAR CP	3 RAR CP	3 RAR CP	3 RAR CP	3 RAR CP
E.	Ambush in ptl zone DON vic track YS479642.	Search in ptl zone DON YS4763.	Ambush in ptl zone P.LUL vic track YS436645.	Ambush in ptl zone CECIL vic track/rd junc YS488658.	Ptl in ptl zones BETTY, BERYL, ANN, JOYCE and HEDY.
F.	1 : 15	1 : 15	1 : 15	1 : 15	Coy
G.	271630H	280830H	281600H	281630H	291000H Jan
H.	280900H	281600H	290800H	290900H	031000H Feb
J.	Direct	Direct	Direct	Direct	Direct
K.	-	-	-	-	To be advised
L.	-	-	-	-	To be advised
M.					

CONFIDENTIAL

CONFIDENTIAL

A.	3116/68	3117/68	3118/68	3119/68	3120/68
B.	B Coy	B Coy	B Coy	B Coy	B Coy
C.	21C 43.05	21A 43.05	21B 43.05	21C 43.05	21A 43.05
D.	3 RAR CP	3 RAR CP	3 RAR CP	3 RAR CP	3 RAR CP
E.	Search in ptl zone COLIN YS4864.	Ambush in ptl zone SEAN vic YS458647.	Ambush in ptl zone MIKE vic track YS473666.	Search in ptl zone MIKE YS4767.	Ambush in ptl zone BASIL vic track YS440634.
F.	1 : 15	1 : 15	1 : 15	1 : 15	1 : 15
G.	290800H	291700H	291715H	300830H	301600H
H.	291700H	300800H	300815H	301700H	310730H
J.	Direct	Direct	Direct	Direct	Direct
K.	-	-	-	-	-
L.	-	-	-	-	-
M.					

CONFIDENTIAL

Page / 3 of 23 pages

A.	3121/68	3122/68	3123/68	3124/68	3125/68
B.	B Coy	C Coy	A Coy	A Coy	B Coy
C.	21B 43.05	3 43.05	11A 43.05	11B 43.05	2 43.05
D.	3 RAR CP	3 RAR CP	3 RAR CP	3 RAR CP	3 RAR CP
E.	Ambush in ptl zone JACK vic YS461668.	Coy ptl in ptl zones PETER, CLAUDE and BILL.	Ambush in ptl zone PAUL track/rd junc YS433643.	Ambush in ptl zone JACK track junc YS459655.	Ptl in ptl zones BETTY, BERYL, ANN, JOYCE and HEDY.
F.	1 : 15	Coy	1 : 15	1 : 15	Coy
G.	301630H	310900H	021630H	021700H	031000H
H.	310800H	021600H	030900H	030830H	050800H
J.	Direct	Direct	Direct	Direct	Direct
K.	-	-	-	-	To be advised
L.	-	-	-	-	To be advised
M.					

CONFIDENTIAL

CONFIDENTIAL

A.	3126/68	3127 '68	3128/68	3129/68	3130/68
B.	A Coy	A Coy	A Coy	A Coy	A Coy
C.	11C 43.05	11A 43.05	11B 43.05	11C 43.05	11A 43.05
D.	3 RAR CP	3 RAR CP	3 RAR CP	3 RAR CP	3 RAR CP
E.	Search in ptl zone CECIL.	Ambush in ptl zone COLIN vic YS485640.	Ambush in ptl zone MIKE vic track YS477643.	Search in ptl zone DON YS4663.	Ambush in ptl zone MIKE vic track YS480676.
F.	1 : 15	1 : 15	1 : 15	1 : 15	1 : 15
G.	030800H	031530H	031600H	040900H	041600H
H.	031630H	040830H	040800H	041600H	050800H
J.	Direct	Direct	Direct	Direct	Direct
K.	-	-	-	-	-
L.	-	-	-	-	-
M.					

CONFIDENTIAL



CONFIDENTIAL

Page /5 of 23 pages

A.	,3131/68
B.	A Coy
C.	11B 43.05
D.	3 RAR CP
E.	Ambush in ptl zone COLIN vic track junc YS472654.
F.	1 : 15
G.	041630H
H.	050730H
J.	Direct
K.	-
L.	-
M.	

CONFIDENTIAL

CONFIDENTIAL

Page 16 of 23 pages

A.	7 RAR 737/68	738/68	739/68	740/68	741/68
B.	7 RAR Rear Details	Rear Details	Rear Details	Rear Details	Rear Details
C.	55.80	55.80	43.20	43.20	43.20
D.	7 RAR CP	7 RAR CP	Admin CP	Admin CP	Admin CP
E.	Recce in KEITH.	Recce in JAN with emphasis on engr Rd.	Recce in KEN.	Recce in JOHN.	Recce in IRENE.
F.	1 NCO and 3	1 NCO and 3	1 NCO and 3	1 NCO and 3	1 NCO and 3
G.	231730H	231800H	241700H	241730H	251700H
H.	240730H	240700H	250800H	250830H	260800H
J.	Direct	Direct	Direct	Direct	Direct
K.	-	-	-	-	-
L.	-	-	-	-	-
M.	To be coordinated with 1 SAS.		To be coordinated with 1 SAS.	To be coordinated with 1 SAS.	

CONFIDENTIAL

CONFIDENTIAL

Page 17 of 23 pages

A.	742/68	743/68	744/68	745/68	746/68
B.	Rear Details	Rear Details	Rear Details	Rear Details	Rear Details
C.	43.20	43.20	43.20	43.20	43.20
D.	Admin CP	Admin CP	Admin CP	Admin CP	Admin CP
E.	Recce in ROD.	Recce in JOHN.	Recce in PERCY.	Recce in BARRY.	Recce in KEITH.
F.	1 NCO and 3	1 NCO and 3	1 NCO and 3	1 NCO and 3	1 NCO and 3
G.	251700H	261700H	261730H	271630H	271800H
H.	260830H	270800H	270900H	280930H	280800H
J.	Direct	Direct	Direct	Direct	Direct
K.	-	-	-	-	-
L.	-	-	-	-	-
M.	To be coordinated with 1 SAS.		To be coordinated with 3 RAR.		

CONFIDENTIAL

CONFIDENTIAL

A.	747/68	748/68	749/68	750/68	751/68
B.	Rear Details	Rear Details	Rear Details	Rear Details	Rear Details
C.	43.20	43.20	43.20	43.20	43.20
D.	Admin CP	Admin CP	Admin CP	Admin CP	Admin CP
E.	Recce in KEITH.	Recce in PERCY.	Recce in JOHN.	Recce in BARRY.	Recce in KEN.
F.	1 NCO and 3	1 NCO and 3	1 NCO and 3	1 NCO and 3	1 NCO and 3
G.	281730H	281700H	291700H	291600H	301630H
H.	290730H	290700H	300800H	300830H	310900H
J.	Direct	Direct	Direct	Direct	Direct
K.	-	-	-	-	-
L.	-	-	-	-	-
M.	All ptls to be coordinated with 1 SAS Sqn				

CONFIDENTIAL

CONFIDENTIAL

Page 19 of 23 pages

A.	752/68	753/68	754/68	755/68	756/68
B.	Rear Details	Rear Details	Rear Details	Rear Details	Rear Details
C.	43.20	43.20	43.20	43.20	43.20
D.	Admin CP	Admin CP	Admin CP	Admin CP	Admin CP
E.	Recce in IRENE.	Recce in ROD.	Recce in JOHN.	Recce in JAN.	Recce in KEN.
F.	1 NCO and 3	1 NCO and 3	1 NCO and 3	1 NCO and 3	1 NCO and 3
G.	301800H	311700H	311730H	011730H	011700H
H.	310800H	010800H	010830H	020730H	020900H
J.	Direct	Direct	Direct	Direct	Direct
K.	-	-	-	-	-
L.	-	-	-	-	-
M.	All ptls to be coordinated with 1 SAS Sqn				

CONFIDENTIAL

CONFIDENTIAL

Page 20 of 23 pages

A.	757/68	758/68	759/68	760/68	761/68
B.	Rear Details	Rear Details	Rear Details	Rear Details	D Coy
C.	43.20	43.20	43.20	43.20	55.10
D.	Admin CP	Admin CP	Admin CP	Admin CP	7 RAR CP
E.	Recce in KEITH.	Recce in BARRY.	Recce in ROD.	Recce in JOHN.	Recce and ambush in KEN.
F.	1 NCO and 3	1 NCO and 3	1 NCO and 3	1 NCO and 3	Offr/Sgt and 15
G.	021730H	021600H	031700H	031730H	041630H
H.	030730H	030900H	040800H	040900H	050900H
J.	Direct	Direct	Direct	Direct	Direct
K.	-	-	-	-	-
L.	-	-	-	-	-
M.	All ptls to be coordinated with 1 SAS Sqn				

CONFIDENTIAL

CONFIDENTIAL

Page 21 of 23 pages

A.	762/68
B.	D Coy
C.	55.10
D.	7 RAR CP
E.	Recce and ambush in JAN.
F.	Offr/Sgt and 15
G.	041730H
H.	050730H
J.	Direct
K.	-
L.	-
M.	Ambush to be loc along Engr Rd.

CONFIDENTIAL

CONFIDENTIAL

Page 22 of 23 pages

A.	1 SAS 25/68	26/68	27/68	28/68	29/68
B.	Ptl 11	Ptl 32	Ptl 14	Ptl 24	Ptl 23
C.	PV 12 55.30	PV 14 55.30	PV 16 55.30	PV 13 55.30	PV 14 55.30
D.	1 SAS Sqn	1 SAS Sqn	1 SAS Sqn	1 SAS Sqn	1 SAS Sqn
E.	Recce in area ADAM.	Recce in area BERT.	Recce in area ADAM.	Recce in area BERT.	Recce in area ADAM.
F.	8	8	10	10	10
G.	240800H	240800H	280800H	280800H	010800H
H.	281200H	281200H	011200H	011200H	050800H
J.	From YS44216859 direct to YS484709; then to ADAM.	From YS44216859 direct to YS484709; then to BERT.	Infil by hel.	Infil by hel.	Infil by hel.
K.	-	-	-	-	-
L.	-	-	-	-	-
M.	Route in to be advised.	Route in to be advised.			

NOTE: 1. Panel marker RED, smoke RED and YELLOW.

CONFIDENTIAL



CONFIDENTIAL

Page 23 of 23 pages

A.	30/68
B.	Ptl 31
C.	PV 12 55.30
D.	1 SAS Sqn
E.	Recce in area BERT.
F.	10
G.	010800H
H.	050800H
J.	Infil by hel
K.	-
L.	-
M.	

CONFIDENTIAL

DIARY

C32

MESSAGE FORM

PRIORITY

250330Z

Jan 68

CONFIDENTIAL

FROM: 1 ATF

G AIR 150

TO: LIST Z LESS SERIALS 23 - 30

OP COBURG (.) PASSENGER BOOKINGS ON COURIER SERVICE TO FSPB ANDERSEN (.)  
ONE (.) ALL BOOKINGS TO BE MADE THROUGH GSO2 (AIR) (.) TWO (.) ALL  
INTENDING PASSENGERS ARE TO REPORT TO ATOC 15 MINS PRIOR TO SCHEDULED  
DEPARTURE TIMES

Page 1 of 1 pages

Classified YES

Drafter's Name

Office

Tele

FULLER

G AIR

EBONY 42

Releasing Officer's Signature & Rank

Fuller Maj

MESSAGE FORM

*Drain*  
*C33*

ROUTINE

240700Z Jan 68

FROM: 1 ATF

UNCLAS

TO: LIST A AND C

G142

CHANGE IN TERMINOLOGY (.) EFFECTIVE IMMEDIATELY THE TERM  
"RECONNAISSANCE IN FORCE" WILL BE USED IN LIEU OF "SEARCH AND  
DESTROY"

Page 1 of 1 pages    Classified No    Drafter's Name    Office    Tel No

WILKINSON    OPS    EBONY 34

Releasing Offr's Signature and Rank

*G. Payne*

Capt

MESSAGE FORM

Deary

C34

IMMEDIATE

230325Z Jan 68

FROM: 1 ATF

CONFIDENTIAL

TO: LIST Z LESS SERIALS 8, 23-30, 37

G134

BASE AREA DEFENCE 24 JAN - 5 FEB 68 (.)

ONE (.) PATROLLING (.) PERIOD 240800H JAN - 050800H FEB 68 (.)

ALPHA (.) 2 RAR RESPONSIBLE FOR PROVIDING TWO RECCE PTLS IN 2 RAR  
AO LESS ZONES BETTY CMM JOYCE AND HEDY (.)

BRAVO (.) 3 RAR RESPONSIBLE FOR PROVIDING NORMAL PATROLS IN 3 RAR  
AO AND PROVIDING ONE COY TO PATROL IN ZONES BERYL CMM ANNE CMM BETTY  
CMM JOYCE AND HEDY (.)

CHARLIE (.) 7 RAR RESPONSIBLE FOR PROVIDING TWO RECCE PTLS IN  
7 RAR AO LESS ZONES ADAM AND BERT (.) EMPHASIS IS TO BE PLACED ON  
PATROLLING TO EAST OF ROUTE 2 (.)

DELTA (.) 1 SAS SQN RESPONSIBLE FOR TWO PATROLS IN ZONES ADAM AND  
BERT (.)

ECHO (.) PATROL PROGRAMME FOR PERIOD 240800H JAN TO 050800H FEB 68  
IS TO BE DELIVERED TO GSO3 (OPS) 1 ATF NOT LATER THAN 240800H JAN  
68 (.)

TWO (.) REACTION COY (.) 3 RAR IS TO PROVIDE REACTION COY ON 30 MINS NOTICE  
TO MOVE FROM 240800H JAN TO 050800H FEB 68 FOR FOLLOWING POSSIBLE TASKS CLN

ALPHA (.) 1 ATF FWD REACTION FORCE (.)

BRAVO (.) 1 ATF REAR REACTION FORCE (.)

THREE (.) COORD CONFERENCE WILL BE HELD IN 1 ATF CONFERENCE ROOM AT  
241530H JAN 68 (.) ALL REAR PARTY COMMANDERS TO ATTEND (.)

FOUR (.) ACK BY PHONE TO EBONY 50

Page 1 of 1 pages Classified Yes

Drafter's Name	Office	Tel No
WILKINSON	OPS	EBONY 34

Releasing Officer's Signature and Rank

Wilkinson Capt