

Series: AWM95
Australian Army commanders' diaries
[Vietnam]

Signals units

Item number: 6/3/12

Item: 110 Signal Squadron

Narrative

Annexes

[1-30 Apr 1968]

COVERING LETTER

Reference No. R707-4-4

To: OIC, Military History Section, AHQ.

1. I enclose Commanders Diary (AF C 2118) (Adapted) as indicated at Part 2.

2. Please return receipt below.

(Signature) [Signature] Maj

Appointment OC 110 SIG SQN (OC Unit or senior staff officer)

Receipt forwarded 28/5/68

SECRET

ORIGINAL }
DUPLICATE }

Strike out where not applicable

COMMANDERS DIARY

OF

Unit or Formation 110 SIG SQN

From 1 APR 68 To 30 APR 68

INDEX

Narrative (AF C 2118)

ANNEXES

- * A Duty officer's log
* B Messages connected with log
C Operation orders and instructions issued
D Operation orders and instructions received
* E Sitreps issued
F Orders of battle and location reports issued
G Intelligence reports and summaries issued; appreciations made
H Administrative orders and instructions issued
I Administrative orders and instructions received
J Administrative reports and bulletins; ammunition returns; field strength returns
* K Standing orders issued
L Commander's policy and demi-official letters
M Action reports (if required)
N Other papers, eg, maps and diagrams, air photos, reports from sub units
O Periodical summaries of operations
Z Top Secret Supplementary Diary

Enclosure Numbers

- to
to
to
to
to
to
to
to
to
to
to
to
to
to
to
to
to
to
to
to

* Only to be included during operations.
† Cross out whichever is not applicable.

† NIL
† RETAINED
† Despatched to

on.....

PART 3

COMMANDERS DIARIES
INSTRUCTIONS

AIM

1. The aim of a Commanders Diary is to provide data on which to base future improvements in Army training, equipment, organization and administration, and to furnish historians with a record of the activities of units and formations in operational and non-operational periods in peace and in war.

GENERAL

2. Entries are to be made daily on AF C 2118 (Adapted) each entry being initialled by the officer detailed to keep it.
3. Commanders Diaries will conform with the rules for drafting orders given in "Staff Duties (Australia)" Chapter 2, Section 12.

RESPONSIBILITY

During Non-operational Periods

4. A Commanders Diary is to be compiled by commanders of all formations.

During Operational Periods (1)

5. A Commanders Diary is to be compiled in duplicate by:
 - a. Commanders of all formations.
 - b. Each branch of the staff at formation headquarters commanded by a brigadier or above.
 - c. Heads of services not below the rank of lieutenant colonel.
 - d. Personal staffs and officers holding special appointments.
 - e. Unit commanders.
 - f. Commanders of a detachment of a unit when so ordered.

COMPILATION

6. Both original and duplicate copies are to consist of:
 - a. Cover (AF C 2119) (Adapted).
 - b. Index as printed on cover.
 - c. Narrative (AF C 2118) (Adapted).
 - d. Annexes as shown in the Index.
7. All details of the unit or formation (if a detachment is concerned, the name of the parent unit), period covered and enclosure numbers of the annexes are to be shown on the cover. If there has been a change of command since the last report, the date of assumption by the new commanding officer is to be included.
8. The annexes are to be assembled in the groups shown on the cover. If there are no enclosures for an annex NIL will be entered on the cover. If additional annexes are convenient for a particular headquarters, starting at B.

for operations form Annex "Z", "TOP SECRET the document. It is to be prepared and disposed of as

CONTENTS

as well as map references), establishment, equipment
orders given.
the day's fighting, including company movements.
commander with regard to equipment, tactics, organization

tential importance.
officers, men and equipment.
ment captured.
employed in the time not accounted for. The type of

and to save work as much information as possible is to
ments issued and received, routine returns, etc. All
and the time of receipt or despatch is to be given.

the annexes, but need not give a precis of any of them.

(continued on back cover)

1 BP Coy—274/65—55m

AWM 95
[6/3/Apr 68]

VE C 3110 (Vigil)

SECRET

BOOK 5

COVERING FILES

BOOK 1

CD 88

PART 3

DISPOSAL

13. **Original Commander's Diary.** This is to be forwarded monthly, unless otherwise ordered, by the seventh day of the succeeding month direct to AHQ.

14. **Duplicate Commander's Diary.** This must be clearly marked as a duplicate. It is to be sent separately from the original to AHQ one month after the original has been despatched but not before the former has been acknowledged.

15. When overseas, both copies of diaries are to be sent through the Army Records organization in the overseas theatre but at different times.

16. **TOP SECRET Supplementary Diaries.**

a. The documents referred to in Paragraph 9 together with a list of them made out on AF C 2118 (Adapted) must be placed in separate cover (AF C 2119) (Adapted). All details must be filled in and the cover clearly marked in red: "ANNEX Z — OFFICER ONLY". It may be convenient to group the papers by appendices.

b. Supplementary diaries must be forwarded under the normal rules for TOP SECRET correspondence, to AHQ. The inner envelope must be plainly marked:

TOP SECRET
ANNEX Z to

Commanders Diary of.....(Formation or Unit)

From.....to..... (Dates)

c. The duplicate supplementary diaries must be despatched as shown in Paragraph 14 as soon as receipt of the original has been acknowledged.

1 BP Coy—274/65—55m

AWM 95

[6/3/Apr 68]

CONFIDENTIAL

HQ 110th Signal Squadron
PHU THO

17 May 68

See Distribution List

MONTHLY REPORT - APRIL 1968

INTRODUCTION

1. April was a busy month in both the Saigon and Vung Tau Detachments. Apart from the normal communication requirements, trials were conducted on the Siemens Radio Equipment, extensive defence works were undertaken in the Phu Tho area and planning took place for the communication requirement for the deployment of the advanced ALSG and LATF forward.

2. The latter was no sooner planned in outline when a requirement arose to implement it. At this time, 23 Apr 68, the alert status in Saigon was also raised to Amber and the requirement for guards in all areas commenced again. In fact at the end of the month the Squadron was further extended than it has previously been, with members operating from eight different locations.

COMMUNICATIONS

Saigon Sigcen/MRS

3. The traffic volume handled by the Sigcen and the MRS is shown in Annex A. There was in fact a notable decrease in traffic handled, 83,538 versus 87,139 for Mar 68. Some of this decrease is attributed to the number of public holidays in Australia during April. The quality of the traffic is improving but there is still room for improvement.

Vung Tau Sigcen/MRS

4. Traffic figures remained at much the same level as in March. Plans for the re-design of the Sigcen are in hand but have now been delayed due to higher priority tasks.

Saigon/Melbourne Circuit

5. Availability on this circuit has decreased this month. Average availability has been 15.1 hours per day versus 18.2 hours per day in Mar 68. The main causes of the outages have been due to QRM, QRN combined with severe fading. With the increased storm activity, and the lack of suitable receive antennas it is expected that availability may decrease further on this circuit.

Trunk Availability

6. Trunk availability remains high as can be seen from Annex A.

HF Radio Detachment

7. The HF detachment moved into their new building on the NE corner of LOGAN HILL on 11 Apr 68. The new building is to be known as HF HOUSE. Conditions in this building are a vast improvement on those in the old building in 17 Const Sqn area.

8. All equipment is now installed and working. Facilities are also available to key one HF RTT circuit from the MRS. This mode has been tested and works satisfactorily.

/9. An aerial farm...

CONFIDENTIAL

CONFIDENTIAL

9. An aerial farm has been erected and contains three multi-band dipoles giving a 360 degree coverage, a V antenna directed towards Melbourne, a rod and an RC-292 VHF ground plane antenna.

Telephone System Vung Tau

10. Line System. The permanent line system continues to function well and the fault rate has dropped to almost nil. Approval was obtained during the month for the supply of 10,000ft of 2pr cable. The latter is for replacement of D10 cable used with unit switchboards.

11. Telephones - EMU. EMU continues to function satisfactorily. Some trouble was experienced during the month but was mainly attributable to new operators learning the board. The high call rate being experienced at the moment has necessitated the switchboard supervisor assisting to man the board during the busy hours.

12. Telephones. With the arrival of 200 cradle type telephones, Kphones are being replaced on all EMU extensions. The changeover should be complete by 10 May 68.

TECHNICAL ASPECTS

Long Binh

13. Antennas. Little progress was achieved during April. This was due primarily to the employment of the Rigger Detachment on the erection of feeders and antennas at Saigon and Nui Dat for the Siemens trunk relay equipment. However, stay plates and rods have now been installed for both Rhombic and a trench has been dug to gain access to an underground pipe which carries co-axial cables from the receiver building perimeter to the receiver building. A requirement exists for the use of a trench digger so that the co-axial cable and power cable can be completed before the wet season gets worse. Stocks of the co-axial UR57 cable and power cable are expected shortly.

14. VHF Bearer System. Further frequency interference has been experienced on this link. As it appeared on the link towards the end of the month it has not been possible to identify. The interference is similar to a carrier signal generated by a "press to talk" switch. Unfortunately, a power transformer burnt out on 30 Apr 68 in the VHF terminal at Saigon, and further attempts at identification have been temporarily halted.

15. Melbourne Receive Signal. Long Binh is now in use for approximately 85% of the time to receive the Melbourne tones. The American channels to Phu Lam and the spiral four cable run to the FWIAO are used to transfer the tones to the MRS.

PHU THO

16. New Building. The building has not been commenced and it is apparent that the completion date of 31 May 68, provided by the Force Engineer and mentioned in the last report, will not be met.

17. Power Supplies. The 62.5 KVA Caterpillar generator has now been installed and was brought into operation on 7 Apr 68. A new power board was also provided to enable switching of any generator to any load to be carried. During the installation the transmitting station was closed for a period of 4 hours, alternate communications being provided from Vung Tau.

Fre World Building Area

18. MRS Local Page Copy. A page printer and reperforator with keyboard, provided for local page copies was removed to a different location in the MRS on 28 Apr 68. This was done to provide space for operators cross checking and is now operating satisfactorily.

19. Phu Lam Alternate. During the month an installation was completed in the Signal Centre which enables that area to work a protected duplex circuit to Phu Lam as an alternate position to the MRS. This circuit was successfully tested on 30 Apr 68.

Vung Tau

20. The stores for the internal portion of the new Austcan Tx/Rx installation were received on JEPARIT/14. Also included in this consignment were the stores for the rotatable horizontal log periodic antenna. Three boxes of stores are still missing and are being traced.

21. Planning for the internal installation is well under way and all major equipments have been plinth mounted. Inter cabinet and power wiring has commenced but progress at present is slow due to the commitment on Operation TOAN THANG./

22. Detailed planning is yet to commence for the aerial feeder routes. Information is now to hand for the mast base and anchor requirements for the transmit antenna and a P26 will be submitted shortly. Further information is required however to allow the individual element anchor blocks to be positioned.

23. Installation of a temporary feeder route to the Melbourne V is at present under investigation.

24. Siemens Trials. Trials on this equipment were completed on 23 Apr 68, and since the equipment performed satisfactorily on the path Saigon - Nui Dat, it will now be permanently installed in these areas. A detailed report on this equipment has been forwarded separately to HQ AFV, (110 Sig Sqn R193-24-1 of 13 May 68 refers).

Deployment of LATF

25. The three AN/MRC-69 shelters destined to provide communications from ATF forward to AEF rear arrived from Australia on 16 Apr 68.

26. The arrival coincided with a study that was being conducted to establish how telephone communications and secure RTT could be provided for advanced ALSG. It was concluded, that if the terrain was suitable the necessary radio relay trunk communications could be provided by installing the three deployment shelters. This plan necessitated the repeater AN/MRC-69 being located at either Advanced ALSG or ATF forward. (110 Sig Sqn R193/15/1 of 22 Apr 68 refers).

27. It was intended to commence a training programme of one month on 1 May 68 to familiarize the deployment detachment with the equipment and LATF SOPs. However, events prevented this plan occurring and the three shelters were deployed in Operation TOAN THANG on 24 Apr 68.

28. Radio Sigcen Facilities.

a. A spare American shelter was converted for use as a Radio/Sigcen shelter for advanced ALSG. This shelter contains :

- 2 x AN/GRC-106
- 1 x AN/PRC-47
- 2 x TT-4ATG
- 2 x KW7
- 2 x TH-5/TG
- 1 x TT76
- 1 x SB-22/PT
- 2 x KL7.

CONFIDENTIAL

-4-

b. The shelter thus can provide either two simplex secure telegraph circuits or one duplex secure circuit. These can work either over an R R bearer or over HF radio. A switchboard facility is also available.

c. HF back up facilities were also planned for ATF forward.

Operation TOAN THANG

29. A detachment of 23 men was deployed in support of this Operation as follows :

- a. Radio Relay.
Terminal Det Nui Dat Hill - 4
Repeater Det Bearcat - 4
Terminal Det Long Binh - 4
- b. HF Radio.
An/GRC-106 Det Bearcat - 4
An/GRC-106 Det Long Binh - 4
- c. Swbd/Line.
Long Binh - 3

30. For the first three days communications were spasmodic particularly with regard to secure telegraph. Since then the system has settled down and on ly minor outages have been experienced. Problems experienced initially were :

- a. Lack of familiarity with equipment.
- b. Over-heating in radio and radio relay shelters.
- c. Adaption to field conditions of some of the operators.
- d. Lack of Sqn deployment SOPs and vehicle load lists.

OTHER ASPECTS

Personnel

- 31 a. March Ins .
Arrivals in theatre 29 ORs
- b. March Outs .
RTA 29 ORs
Medivac 1 OR
- c. Deficiencies as at 30 Apr 68 .
WO1 1
Cpls 8
Sigs 12
- d. Surplus as at 30 Apr 68 .
Sgt 1
Sigs 4

Subject A and C

32. Courses for Subjects A and C for promotion to Cpl and Sgt were conducted at Vung Tau from 15 - 24 Apr 68. Overall results are shown below :

CONFIDENTIAL

.../ -5-

	Cpl		Sgt	
	Sat/Passed		Sat/Passed	
Subject A	14	8	4	4
Subject C	16	14	5	5

COs Parade

33. During the month Three COs parades were held, two at Saigon and one at Vung Tau.

34. Members at Saigon were briefed on Customs Regulations on 5 Apr 68. A similar briefing was conducted independently by OC Vung Tau detachment. On 19 Apr 68, HQ AFV staff provided an int briefing to the Saigon detachment.

Minor Works35. Saigon.

a. Det Admin Building. Internal construction work on a hut containing office accommodation and a small orderly room has now been completed. Its close proximity to the free world heli pad is a problem, but the occupation of this hut by the administration and command elements of the detachment has provided more space for technicians and equipment.

b. Blast Walls. P26s were submitted during the month for blast walls around the MRS, System Control and Tech maint buildings.

36. Vung Tau.

a. A further accommodation building was completed.

b. Work has almost been completed on lining the new Tech Maint building prior to air conditioning. New work benches and storage racks have also been completed. All electrical wiring is still to be carried out. It is estimated at this stage, that occupation is approximately one month away.

c. Work has started on the new American standard kitchen and should be complete within 4 to 6 weeks.

Civic Action

37. During the month the normal weekly supply of food to the orphanage continued. At the request of National Civic Council, who have been providing the majority of the aid for the orphanage, a number of photographs were taken and forwarded to this organisation. With the approach of the wet season the orphanage requested the cementing of the small front yard. This was completed during the month by a number of members of the Sqn.

Security Pho Tho .

38. During the month of Apr there was increasing evidence of a further enemy offensive and as indicated in the monthly report for March, the area at PHU THO was not considered secure.

39. A series of work parties was started to construct initially a defensive wire fence across the WEST side of the 110 Sig Sqn area (ie, side nearest village).

40. The security situation of the PHU THO area came to the notice of Comd AFV and he visited the site on 22 Apr 68, where he was briefed on the role of the Sqn and in particular the PHU THO area. This was followed by a more detailed briefing on the defensive planning for the area, followed by a tour to observe the area and the work completed at that stage. Comd AFV informed the OC during the tour of the area that a major enemy attack was expected sooner than originally thought and that the unit was to triple its defences within the following week.

CONFIDENTIAL

-6-

41. In obedience of Comd AFV's orders, all members of the Sqn in the Saigon area, not required for essential shift, or day work, or needing essential stand down time for rest after night shifts, were moved, during the day, to the PHU THO area. During the week the following was completed :

- a. The area was completely enclosed by defensive wiring, co-ordinating with the US 1st Div APO to the NORTH. The present tower was also strengthened by removing the old decaying sandbags and replacing them with corrugated iron and timber blast walls filled with sand.
- b. Two bunker locations were planned and built giving complete bunker fire coverage around the area.
- c. Flood lights on the WEST perimeter were re-arranged to give a greater illuminated area.
- d. A disused search light from one of the other towers in the surrounding compound was moved to the 110 Sig Sqn tower and made operational.
- e. Defensive field telephone communications within the area were extended and dual line routes were run.
- f. The PHU THO area became a station on the HQ AFV Defence Radio Net.
- g. The scrub in the area surrounding the perimeter was burnt-out to provide clear arcs of fire.

42. The task of further improving the defences is continuing.

Tape Library

43. On 30 Apr 68 the AFV Amenities Committee approved the Squadron submission for a Force Tape Library. A sum of \$1500 has been made available for this purpose. It is anticipated that it will take two months to get the system operative, although the availability of the correct equipment from the PX could extend this period.

Visitors

44. Visitors to the squadron during the month were :

- a. 12 Apr 68 - Vung Tau - Mr P. Lynch MP, Minister for Army.
- b. 22 Apr 68 - Phu Tho - Maj Gen A.L. MacDonald, Comd AFV.
- c. Maj G. McIntyre a CMF officer from 8 Sig Regt visited both detachments during the month.
- d. Several Officers from units in 1 ALSG were shown over the Vung Tau Facilities during the month.

R & R

45. The following numbers proceeded on R & R during April :

Australia	-	9
Philippines	-	2
Hong Kong	-	1
Singapore	-	1
Taipei	-	1
Kuala Lumpur	-	1

CONFIDENTIAL

.../-7-

CONFIDENTIAL

-7-

C.R. Hook

(C.R. HOOK)
Maj
OC

Annexes : A. Monthly Statistical Information.

Distribution

Saigon Det 110 Sig Sqn	(2)
Vung Tau Det 110 Sig Sqn	(2)
HQ AFV	(2)
D Sigs	(2)
SO Sigs	(1)
War Diary	(3)
File	(1)
OC	(1)
2IC	(1)

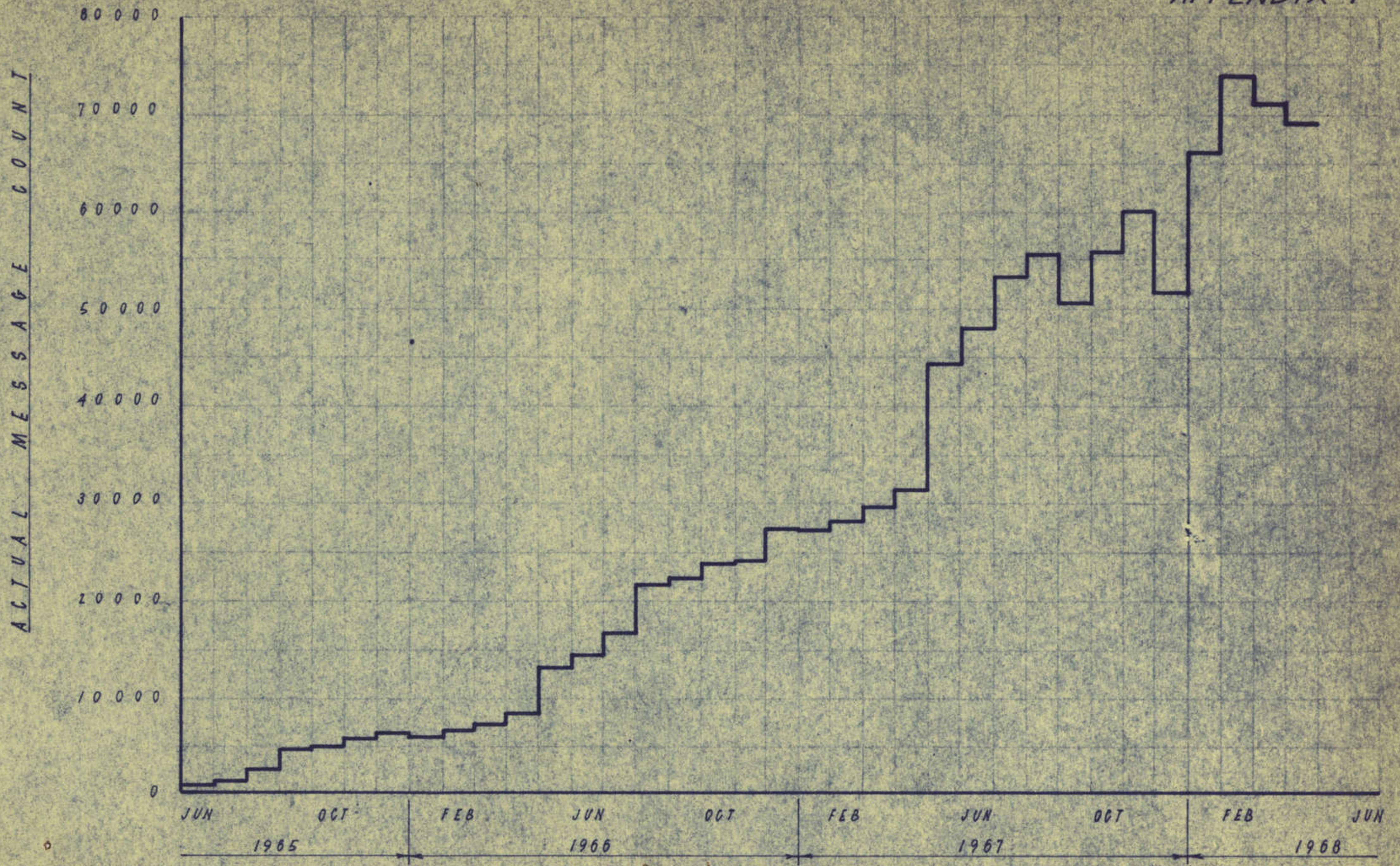
MONTHLY STATISTICAL INFORMATION

CONTENTS

- APP 1 Traffic Volume - Major Relay Station
- APP 2 Traffic Volume - Signal Centre Saigon
- APP 3 Monthly Circuit Data Summary - Saigon
- APP 4 Daily Availability - Watsonia/Saigon
- APP 5 Traffic Volume - Vung Tau MRS/Sigcen
- APP 6 Monthly Circuit Data Summary - Vung Tau

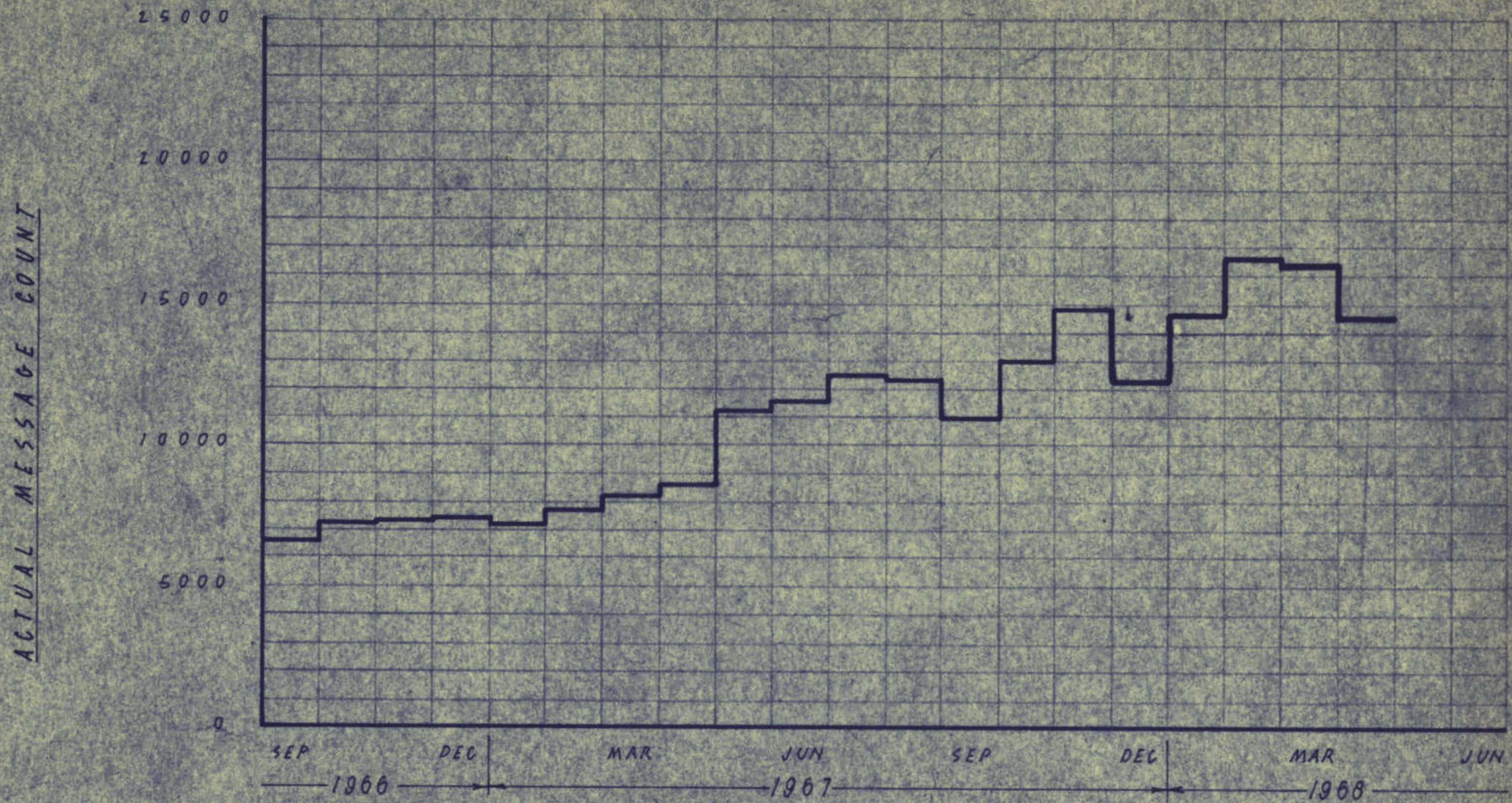
TRAFFIC VOLUME — MAJOR RELAY STATION SAIGON

APPENDIX I



TRAFFIC VOLUME — SIGNAL CENTRE SAIGON

APPENDIX 2



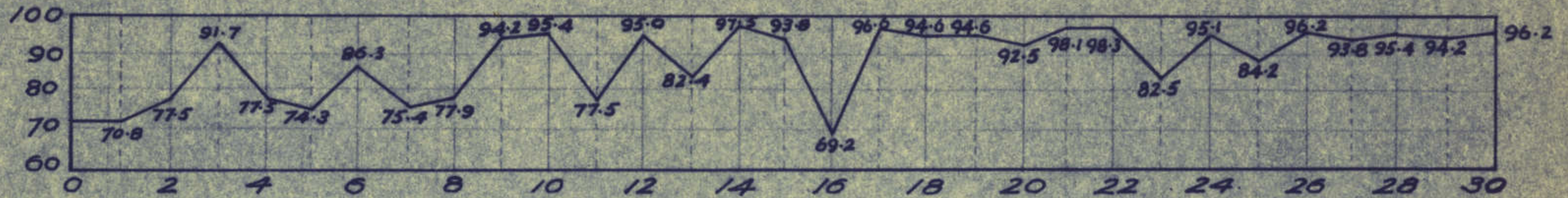
MONTHLY CIRCUIT DATA SUMMARY

SAIGON DET

APPX 3 TO
ANNEX "A" TO
110 SIG SQN
APR REPORT

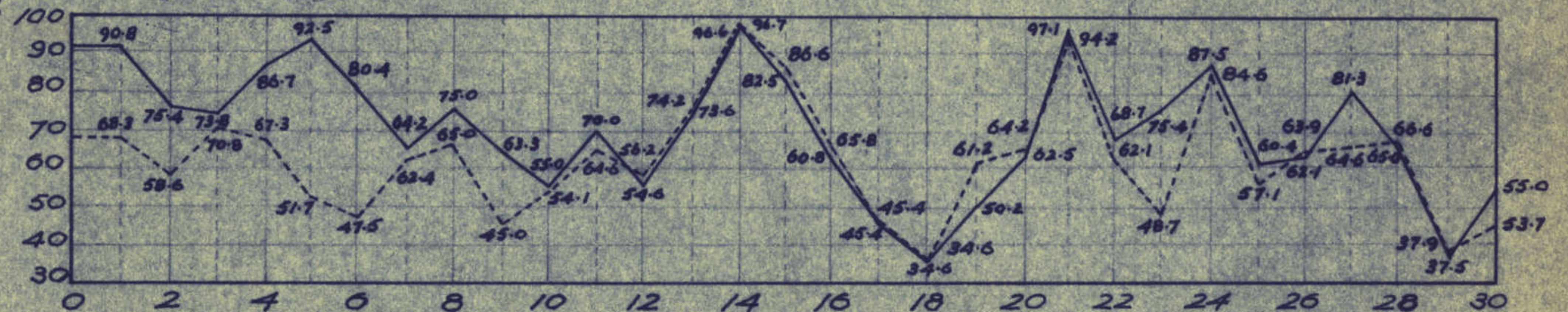
CIRCUIT	BEARER	AVAILABILITY		FLASH	IMMEDIATE	PRIORITY	ROUTINE	TOTAL	ZFX	ZIG
		Hrs/Day	%						ZFR	ZFR
Nui-Dat	US Hired Microwave AN/TRC-24 Channel	21.2	88.3	5	794	2901	4168	7868		153
HQ AFV Sigcen	Aust Line	22.7	94.6	-	1380	4294	8844	14518		16
2 Sqn RAAF (Phan Rang)	US Hired Circuit (Microwave)	20.1	83.7	-	248	2217	1144	3609		103
Melbourne	Aust HF Radio	15.1	62.9	A -	4119	6119	10348	20586		479
				B -	1057	861	2355	4273		137
Phu-Lan	US Hired Circuit (Land-Line)	23.1	96.2	7	1175	1115	204	2501		90
Vung-Tau	US Hired Circuit AN/TRC-24 Channel	21.1	87.9	-	724	3603	6403	10730		168
Services Position	-	-	-	-	1143	2759	890	4792		
Totals	-	-	-	12	10640	23869	34356	68877		1146
										69023

AVAILABILITY %



DAILY AVAILABILITY TELEGRAPH CIRCUIT AUSTCAN SAIGON ~ AUSTCAN NUI-DAT

% TIME

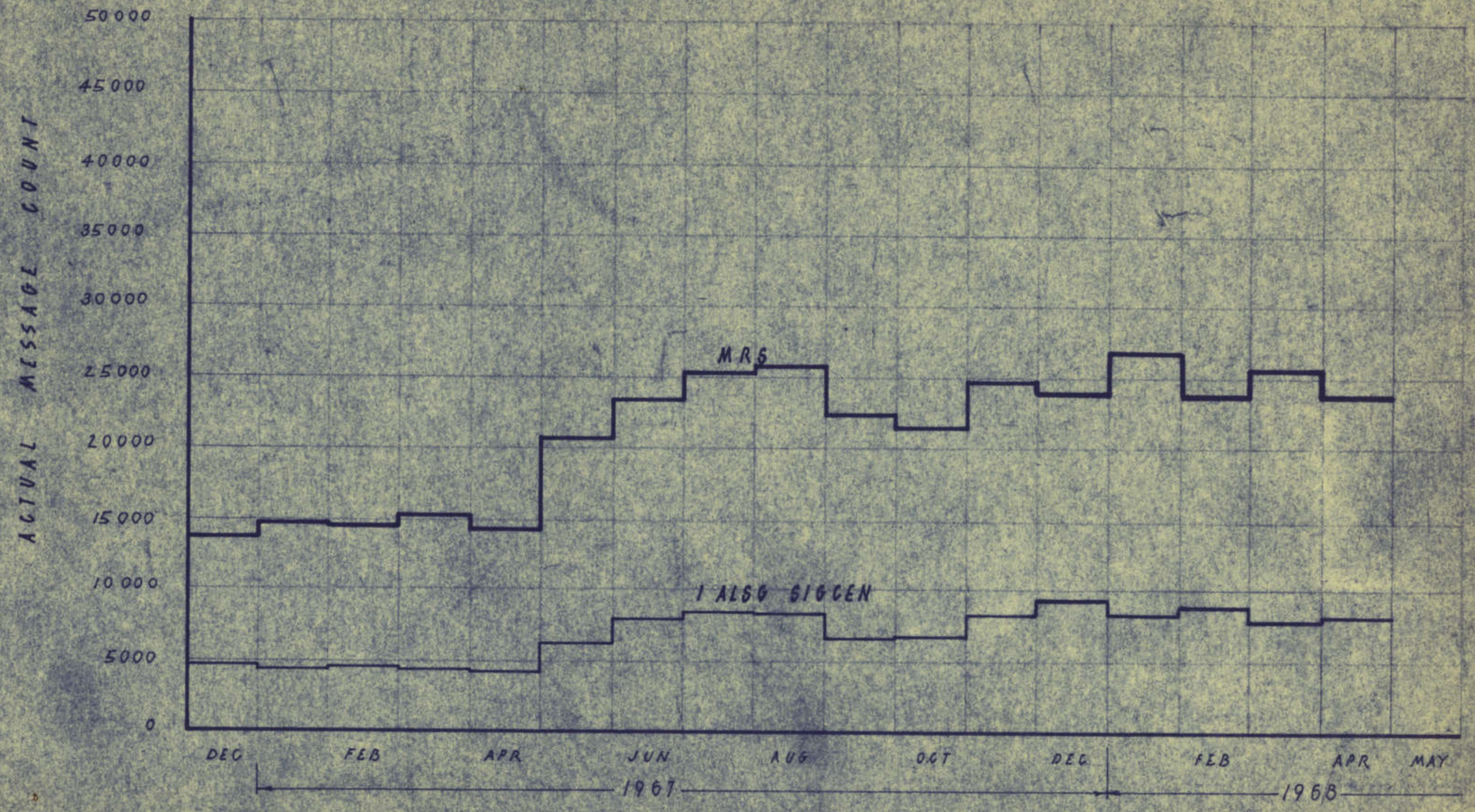


DAILY AVAILABILITY TELEGRAPH CIRCUIT AUSTCAN SAIGON ~ AUSTCAN WATSONIA

————— SAIGON SEND
 - - - - - MELBOURNE SEND
 ———— DAYS 1 TO 30 ————

MONTHLY TRAFFIC
VUNG TAU MRS/SIGCEN

APPENDIX 5 TO
ANNEX 'A' TO
MONTHLY REPORT



CONFIDENTIAL

APP 6 TO
ANNEX A TO
VUNG TAU DETACHMENT
110 SIG SQN
R723/4/1
DATED 4 MAY 68

MONTHLY CIRCUIT DATA SUMMARY
1 - 30 APR 68

SERIAL	INFORMATION	NUI DAT/MRS	RAAF/MRS	1 ALSG/MRS	MRS VTU/MRS SGN
1.	Circuit Details	P, D, AS/US	P, D, AS/US	P, D, AS/US	P, D, AS/US
2.	Percentage Schedule	92.3%	93.5%	90.6%	89.1%
3.	Traffic breakdown by precedence:				
3 a.	FLASH	NIL	NIL	NIL	NIL
3 b.	IMMEDIATE	345	211	481	700
3 c.	PRIORITY	1501	1353	2250	3509
3 d.	ROUTINE	758	1036	5269	6437
4.	Total Messages In/Out	2604	2600	8000	10646
5.	Numbers of ZFX	15	2	2	302

Notes: P - Protected
D - Duplex
AS - Australia
US - United States

CONFIDENTIAL

In reply please quote: R1-3-3

Annex D to
 AFV Administrative Instruction 19/
 (Revised Dec 67)
 Dated 31 Dec 67

HQ AUSTRALIAN MILITARY FORCES VIETNAM
RETURNS (SPECIAL) - WEEKLY STRENGTH RETURN

0800 Wed 3 APR 68

UNIT...110.SIG.SQN.....
 PROFORMA No 2

As at ~~2359 Hrs Tues~~.....
 (This return to be lodged to reach DAAG HQ AFV by 100 hrs Thurs of each week)

OFFICERS							WO's			RANK AND FILE						TOTAL ALL RANKS	DETAIL
Maj Gen	Brig	Lt Col	Maj	Capt	Lt	Total	WO1	WO2	Total	SSgt	Sgt	Cpl	Lop1	Ptes	Total		
			1	4	3	8	4	4	8	4	23	60	20	129	235	252	ES/TA
			1	4	3	8	2	2	4	7	21	37	24	133	222	234	POSTED STD
										3			4	4	11	11	SURPLUS
							2	2	4		2	23			25	29	DEFICIENCIES

Sqn Breakup

SAIGON
 VUNG TAU

1 2 1
 2 2

2 2

2 14 15 8 70
 5 7 22 16 63

115
 119

ARA 149
 NS 85

Phillips
Maj
 OC 110 Sig Sqn

SURPLUS

ECN	ARMY No	RANK	NAME	REMARKS
917	58619	Sgt	PENNINGS H.	Surplus
284	43035	Sig	DOUDNEY J.	Rep in Theatre
NT	2786630	Sig	FRANCIS J.	Surplus
620	37969	Cpl	CUSTANCE M.S.	Rep in Theatre

DEFICIENCIES

APPT/POSTING	ECN	RANK	REMARKS
Sigcen Supvr	863	WO1	
Foreman of Sigs	368	WO2	
Clerk (Sigs)	241	Cpl	
Tech Elec (C)	918	Cpl	
Clerk (Sigs)	241	Sig	
Lmn Fd	528	Sig	
Op (Kbd)	619	Sig	2
Op (Kbd and C)	620	Sig	3
Op (Swbd)	624	Sig	2
Stmn Tech Sig	836	Sig	
Tech Elec	917	Sig	2
Tech Elec (C)	918	Sig	
Tech Sigs	916	Sig	2
Elec Mech (RAE)	321	Cpl	2
Elec Mech (RAE)	321	Spr	

ATTACHMENTS

LOCAL

ARMY No	RANK	NAME	PARENT UNIT
38548	Sgt	EARSMAN P.	HQNZAF
100374	Cpl	GARWOOD K.	"
36311	SSgt	BARNES F.	HQAFV

AHQ

ARMY No	RANK	NAME	PARENT UNIT

In reply please quote: R1-3-3

Annex D to
AFV Administrative Instruction 19/66
(Revised Dec 67)
Dated 31 Dec 67

HO AUSTRALIAN MILITARY FORCES VIETNAM
RETURNS(SPECIAL) - WEEKLY STRENGTH RETURN

0830 WED

UNIT...110.SIG.SQN.....
PROFORMA No 2

As at 2359 Hrs Tues..... 10 Apr 68
(This return to be lodged to reach DAAG HQ AFV by 100 hrs Thurs of each week)

OFFICERS							WO's			RANK AND FILE						TOTAL ALL RANKS	DETAIL
Maj Gen	Brig	Lt Col	Maj	Capt	Lt	Total	WO1	WO2	Total	SSgt	Sgt	Cpl	Lopl	Ptes	Total		
			1	4	3	8	4	4	8	4	23	60	20	129	236	252	NSMTR
			1	4	3	8	2	2	4	6	21	36	32	124	219	231	POSITIVE STG
										2			12		14	14	SURPLUS
							2	2	4		2	24		5	31	35	DEFICIENCIES
SQD B/Up											13						
SAIGON			1	2	1	4	2	-	2	2	12	9	15	60	99	105	
NG TAU			-	2	2	4	-	2	2	4	8	27	17	64	120	126	

Shilling Maj
OC 110 Sig Sqn

ARA 144
NS 87

SURPLUS

ECN	ARMY No	RANK	NAME	REMARKS
917	58619	Sgt	PENNINGS H	SURPLUS
NT	2786630	Sig	FRANCIS J	SURPLUS

DEFICIENCIES

APPT/POSTING	ECN	RANK	REMARKS	
SIGGEN SUPVR	863	WO1	All Vacancies have members posted to them	
F of S	368	WO2		
OKC	620	CPL		
TECH ELEC (C)	918	CPL		
CLERK Sigs	241	Sig		
LMN Fd	528	Sig		
Op (KBD)	619	Sig		(2)
OKC	620	Sig		(2)
Op SWBD	624	Sig		(2)
STMN TECH(Sig)	836	Sig		(2)
Tech ELEC	917	Sig		
Tech ELEC (C)	918	Sig		
Tech Sigs	916	Sig		
ELEC MECH(RAE)	321	Cpl	No member posted to these vacancies	
" " "	321	Spr		

ATTACHMENTS

LOCAL

ARMY No	RANK	NAME	PARENT UNIT
38548	Sgt	EARSMAN P	HQNZAF
7100374	Cpl	GARWOOD K	"
36311	Ssgt	BARNES F	HQAFV

AHQ

ARMY No	RANK	NAME	PARENT UNIT

In reply please quote: R1-3-3

Annex D to
AFV Administrative Instruction 19/
(Revised Dec 67)
Dated 31 Dec 67

HQ AUSTRALIAN MILITARY FORCES VIETNAM
RETURNS(SPECIAL) - WEEKLY STRENGTH RETURN

0800 Wed

UNIT...110.SIG.SQN.....
PROFORMA No 2

As at ~~2359~~ Hrs ~~Tues~~ 17 APR 68

(This return to be lodged to reach DAAG HQ AFV by 100 hrs Thurs of each week)

OFFICERS			WO's			RANK AND FILE										TOTAL ALL RANKS	DETAIL
Maj Gen	Brig	Lt Col	Maj	Capt	Lt	Total	WO1	WO2	Total	SSgt	Sgt	Cpl	Lopl	Ptes	Total		
			1	4	3	8	4	4	8	4	23	60	20	129	236	252	ESTD
			1	4	3	8	2	2	4	6	21	36	32	124	219	231	POSTED STD
										2			12		14	14	SURPLUS
							2	2	4		2	24		5	31	35	DEFICIENCIES

SN Breakup

SAIGON
VUNG TAU

1	2	1	2	2	2	13	15	12	58	106
	2	2		2	4	8	21	20	66	125

ARA 145
NS 86

Phillip J. ...
OC 110 Sig Sqn

SURPLUS

ECN	ARMY No	RANK	NAME	REMARKS
917	58619	Sgt	H. PENNINGS	SURPLUS
NT	2786630	Sig	J. FRANCIS	"

DEFICIENCIES

APPT/POSTING	ECN	RANK	REMARKS
			SEE ATTACHED MANNING SUMMARY

ATTACHMENTS

LOCAL

ARMY No	RANK	NAME	PARENT UNIT
38548	Sgt	P. EARSMAN	HQNZAF
7100374	Cpl	K. GARWOOD	"

AHQ

ARMY No	RANK	NAME	PARENT UNIT

ESTB No IV/73/1(TW)
110 SIGNAL SQUADRON

Serial	Member filling Vacancy			Replacement/or Member Posted to Vacancy
1	330564	Maj	C.R. HOOK	
2	235206	Capt	I.R. WILLOUGHBY	
3	13909	Capt	R.F. EATHER	
4	35836	Capt	D.J. SLADE	
5	235186	Capt	J.C. GORDON	
6	214807	Lt	J.F. EKE	
7	214975	2Lt	D.R. MERRETT	
8	2783742	2Lt	J.E. MADDEN	
9	21025	WO1	D. MILES	
10	23329	WO2	K.P. PEARSON	
11				SSgt LYONS 902/67
12	1565	WO1M.D.	IRVINE	
13	37063	WO2	A.J. WILLIAMS	
14				WO1 DICKINSON 210/68
15	28500	SSgt	J. CIZZIO	
16	54816	SSgt	W.R. SHAW	
17	36544	SSgt	D.S. SADLER	SSgt MACLACHLAN 276/68
18	53868	SSgt	J. McEWAN	
19				SSgt ORCHARD 82/68
20	36018	SSgt	S.W. CHAPMAN	
21	53551	Sgt	R.L. AUBURN	
22	53610	Sgt	E.W. MILLINGTON	
23	24172	SSgt	W.M. DUGUID	
24	24341	Sgt	W.J. WATTS	
25	214848	Sgt	D.B. LAMBLEY	
26	53293	Sgt	W.M. KETT	
27	38548	Sgt	P. BARSMAN (HQNZAF)	
28	42360	Sgt	J.N. DART	
29	35916	Sgt	M.K. LINDSAY	Cpl McPHERSON 208/68
30	21534	Sgt	D.G. TAYLOR	
31	1200736	Cpl	D.L. KIRKPATRICK	Sgt STEVENS 81/68
32	36059	Sgt	L.W. PORTER	
33	43109	Sgt	J.D. EDDLESTON	Sgt BELLETTE 83/68
34	41866	Sgt	N.W. AHRENS	
35	587219	Sgt	U.F. PIERUCCI	
36	38533	Cpl	W.L. KENNEDY	Sig JOYCE 83/68
37	37180	Sgt	D.P. MEANEY	
38	58724	Sgt	R.W. WHITEHURST	
39	18795	Sgt	R.J. McINTOSH	
40	58723	Sgt	B.J. WILSON	Cpl WILSON 212/68
40	58723	Sgt	B.J. WILSON	Cpl WILSON 212/68
41	38457	Cpl	D.V. LEWIS	
42	3789108	Cpl	G. CHAPMAN	Sig BRODIE 273/68
43	2784473	LCpl	J.L. CARSON	Sig WOODCOCK 275/68
44	341973	Sig	P.N. ANSETT	
44	341973	Sig	P.N. ANSETT	
45	213932	Cpl	B.A. ATTRIDGE	
46	3781275	Sig	J.H. HYLAND	
47	216544	Cpl	M.A. SCRASE	
48	23582	Cpl	E.J. AXFORD	
49	38177	Cpl	G.R. TAYLOR	Sig HOWE 221/68
50	5714971	LCpl	T.K. WALSH	Sig ANSTEE 250/68
51	2412315	Cpl	P.C. YOUNG	
52	43846	Cpl	N.M. CHPLIN	Cpl WOODFORD 81/68
53	215207	Cpl	M.P. WOODS	Sig BROOKMAN 259/68
53	215207	Cpl	M.P. WOODS	Sig BROOKMAN 259/68
54	4718372	LCpl	R.H. HANLON	No rep named (RTA Jun 68)
55	37114	Cpl	D.A. HAMMOND	
56	3790062	LCpl	D.J. O'CONNOR	
57	100374	Cpl	K.A. GARWOOD (HQNZAF)	
58	2784713	LCpl	G.C. BRIGDEN	Sig LORD 213/68
59	5714797	LCpl	R.L. WELLS	

60	216525	Sig	D.C.	LUFF	
61					Sig CONSTABLE 249/68
62	2781498	Cpl	B.V.	HUTCHINSON	
63	34020	Sgt	R.J.	CONNOR	
64	1200800	LCpl	J.T.	MASSAM	
65	38464	Cpl	R.J.	HEWITT	
66	216589	Cpl	R.D.	JEFFREY	Sig SEATHER 259/68
67	44058	Cpl	G.P.	CHRISTIE	Sig LOFDAHL 259/68
68	213951	Cpl	T.G.	CHELL	
69	2785647	Sig	J.C.	WALTERS	
70	61486	Cpl	P.R.	WILCOX	Sig STOKER 211/68
71	43545	LCpl	B.W.	HARRIS	
72	37879	Cpl	G.C.	BROWN	
73	54647	Cpl	K.J.	LEONARD	
74	58746	Cpl	B.J.	HUMPHREYS	
75	3790218	LCpl	R.N.	SHUEY	
76	39005	LCpl	H.J.	SUTTON	
77	1200736	Sig	J.W.	COLE	Sig THOMAS 227/68
78	58766	Cpl	G.V.	NORTHOVER	Sig DADDOW 82/68
79	27185	Cpl	B.A.	BICKET	Cpl NICHOLSON 277/68
80	2785928	LCpl	S.C.	MOORE	
81	15731	Cpl	L.R.	JOHNSTONE	
82	1200609	Cpl	E.J.	SHIELD	
83	2785926	Cpl	I.J.	MUNRO	
84	36493	Cpl	M.J.	STEVENS	
85	216760	Cpl	P.J.	DUFF	LCpl MORRIS 286/68
86	48646	Cpl	D.J.	SHALES	Sig BOXSHALL 81/68
87	48650	Sig	T.J.	ALLEN	
88	43107	Cpl	R.M.	SNOWDEN	
89	54744	Sig	R.W.	PARLOR	
90	48666	Sig	B.	PODNEY	
91	58830	Sig	G.J.	OLD	
92					Cpl EVENS 80/68
93	215580	Cpl	P.J.	BROWN	
94	18645	Cpl	D.R.	BALLMENT	
95	1200183	Cpl	D.R.	HAWTIN	Sig RUDDLE 213/68
96	38014	Cpl	J.L.	BARFOOT	Sig MUGGLETON 81/68
97	61653	Cpl	R.P.	BUTLER	
98					Sig SMYTHE 259/68
99					Sig BANKS 260/68
100	1200656	Sig	D.W.	KIRKMAN	
101	3780890	Sig	F.E.	PAGE	
102	215236	Sig	B.W.	SWAMPSON	
103	3791089	Sig	R.H.	CLARKE	
104	2784923	Sig	R.J.	PLATT	LCpl SULLIVAN 209/68
105	6708714	Sig	P.O.	TUBB	No rep named (TRA Jun 68)
106	44073	LCpl	G.P.	COLBERT	
107	1732447	Sig	B.E.	GILL	
108	61726	Sig	G.B.	KRUSHKA	
109	43767	Sig	R.	TAPE	
110	3789034	Sig	I.R.	BADENOCH	Sig FARNSWORTH 274/68
111	3791087	Sig	R.J.	TYRELL	
112	3789920	Sig	C.W.	JONES	Sig LAPHAM 274/68
113	3789074	Sig	W.A.	BUTTERWORTH	Sig McKINNON 275/68
114	2786847	Sig	R.	BULLOCK	
115	3791232	Sig	W.C.	JEFFERY	
116	38944	Sig	G.A.	COOPER	Sig DANIEL 85/68
117	3791454	Sig	T.E.	DONOGHUE	
118	3790695	LCpl	G.W.	McDONALD	
119	216953	LCpl	L.	WARING	Sig KAY 262/67
120	3791482	Sig	L.	TAYLOR	
121	1200704	Sig	P.J.	ROBERTSON	
122	3788376	Sig.	G.J.	CHARLESTON	Sig SIZER 273/68
123					Sig DANIELS 263/68
124					Sig MINES 164/68
125	4718578	Sig	D.J.	HARDY	
126	3791172	Sig	T.	HOLT	
127	55210	Sig	D.J.	HEATH	
128	1200815	Sig	G.J.	SMITH	

129	2786448	Sig	P.F.	WELBOURNE	
130	1732170	Sig	B.J.	LASSEN	Sig TEGAN 213/68
131	379174	Sig	G.W.	DAWSON	
132.	2784306	Sig	R.A.	BROWN	
133	3790492	Sig	G.	READ	
134	2786248	Sig	F.W.	RITCHIE	
135	3789979	LCpl	P.F.	McMILLAN	
136	3791029	Sig	T.P.	O'BRIEN	
137	4718883	Sig	J.J.	RONAN	
138	5715034	Sig	D.J.	WILLIAMS	
139	3791029	Sig	G.H.	McCARTHY	
140	5715165	Sig	S.	STACEY	
141	3791818	Sig	P.J.	POLA	
142	1732608	Sig	H.J.	MORGAN	
143	3789181	LCpl	J.R.	FOX	Sig RAMSEY 82/68
144	5715167	Sig	R.T.	STOCK	
145	6708762	Sig	E.J.	GEORGE	
146	3789009	Sig	M.D.	ANDERSON	Sig WICKS 82/68
147	44115	LCpl	J.A.	BALL	
148	38872	Sig	A.B.	PEARCE	
149	3791013	Sig	W.R.	PADDLE	
150	4718441	Sig	G.M.	PHILLIPS	Sig JONES 208/68
151					Sig PETERS 266/68
152	6708770	Sig	M.L.	HASSETT	
153	44002	Sig	J.L.	VEALL	
154	5714679	Sig	J.J.	FLEWERS	
155					Sig ARCHER 163/68
156	4718957	LCpl	G.K.	McDONALD	
157	39022	Sig	D.A.	COCHRANE	
158	3791043	Sig	P.M.	KENT	
159					Sig BISHOP 261/68
160	3791157	Sig	K.O.	HEMBURROW	
161	43953	LCpl	R.I.	DAWSON	
162	2785725	Sig	R.W.	BURCHER	
163.	44335	Sig	B.K.	ANSEBURY	
164					Sig SINGLETON 259/68
165	2785818	Sig	I.S.	HARRIS	
166	38646	LCpl	G.P.	McKINNON	
167	1732604	Sig	E.D.	McINTYRE	
168	38414	(Sig	D.S.	ANDERSON - Due RTA Apr 68)	
	38150	(Sig	I.D.	KING	
169	1732448	Sig	J.D.	GILTROW	
170	2786004	Sig	A.J.	SHEPHERD	
171	1200946	Sig	L.J.	GREAVES	Sig EVANS 82/68
172	1200894	Sig	K.J.	SHORT	
173	3789078	Sig	D.R.	BARDWELL	Sig MORRIS 277/68
174	4718736	Sig	B.W.	BUBNER	
175	39043	Sig	L.D.	BARTLETT	
176	6708793	Sig	B.A.	MISSON	
177	2185185	Sig	R.J.	BARLOW	
178	216595	Sig	G.A.	CRICHTON	
179	1732114	LCpl	G.A.	TELFORD	Sig PARKES 277/68
180	2785687	Sig	J.G.	BAKER	
181	2786240	Sig	G.W.	COMER	
182	5714819	Sig	R.E.	DIXON	
183	55225	Sig	K.L.	FOWLER	
184	6708069	Lcpl	J.A.	McDUFF	Sig CROWE 284/68
185	2787256	Sig	G.T.	FROST	
186	216430	Sig	I.D.	ROWLING	Sig DUNGY 84/68
187	5715204	Sig	R.J.	BANKS	
188					Sig CREAMER 151/68
189					Sig HENDERSON 264/68
190	3411628	Sig	B.J.	WATT	Sig KELLY 208/68
191	3411634	Sig	A.F.	CRYNES	Cpl LEANE 208/68
192	37474	Sig	J.R.	BUTCHER	
193	43774	Sig	A.C.	PETERSON	
194	1200598	Cpl	J.E.	LAWRENCE	
195					LCpl HOGAN 298/68

196

1732746

196	1732746	Sig	R.C.	MADDOCK	
197	3789980	Sig	R.	McGEOCH	
198	44094	Sig	R.D.	PIERSSENE	
199	1732392	Sig	D.L.	SKED	
200	43971	Sig	M.J.	MULDOON	
201	4410889	Sig	T.	BINYON	
202	1200758	LCpl	J.H.	McEVOY	
203	18886	Sig	G.R.	CRAYSON	
204	38918	Sig	R.D.	DRIVER	
205	216786	Sig	J.A.	McDONALD	Sig SHUTTLEWOOD 294/68
206	1732311	Sig	R.G.	FRYER	
207	243345	Sig	C.J.	STRAHAN	Sig HARRIS 83/68
208					Sig ROBERTS 259/68
209	1732674	Sig	J.D.	CAMPBELL	
210	2786035	Sig	M.B.	TAYLOR	
211	2786075	Sig	P.R.	WILSHIRE	
212	2785070	LCpl	T.J.	BRENNAN	
213	64360	LCpl	P.W.	BELL	Sig HYLAND 81/68
214	1200897	Sig	B.A.	O'BRIEN	
215	173229	Sig	P.R.	BOLT	
216	243322	LCpl	D.R.	PRICE	Sig ATKIN 82/68
217	216772	Sig	E.R.	HOLDSWORTH	
218	38690	Sig	D.F.	MUNDY	
219	2783846	Sig	B.J.	SULLIVAN	
220	39101	Sig	C.A.	JOHNSTONE	
221	1732328	Sig	E.	HOLMES	
222	64364	Sig	M.E.	HELESSEY	
223	18865	Sig	R.C.	STOCKWELL	
224	342953	Sig	T.J.	SCOTT	
225					Sig CLYDE 272/68
226					Sig EACOTT 54/68
227	61717	LCpl	J.N.	ROBY	Sig SAUNDERS 208/68
228	215261	Sig	D.D.	THORNTON	Sig KRAFT 82/68
229	216639	Sig	P.E.	REYNOLDS	Sig MUBNANE 208/68
230	38769	LCpl	R.B.	CECCHINI	Sig FENTON 213/68
231	44069	Sig	J.C.	KNIGHT	Sig PALMER 277/68
232					Sig WHEELER 299/68
233	2786389	Sig	J.F.	LORRAINE	
234	1732615	Sig	D.J.	O'MOORE	
235	216378	Sig	G.B.	HIGGINS	
236	3789982	Sig	P.	McHUGH	
237	3411311	Sig	W.R.	PARKIN	Sig HOOPER 153/68
238	2784275	Sig	J.R.	MALIPHANT	
239	214431	LCpl	C.J.	JONES	
240	4718745	Sig	P.J.	CHILES	
<u>ATTACHED</u>					
241	55271	Cpl	P.A.	PERRY	
242	VACANT				
243	VACANT				
244	3789054	Spr	L.	BUTERA	Spr DOUGLAS 537/68 (ENGRS)
245	2786158	Spr	J.R.	DOWLER	
246	VACANT				
247	53752	Sgt	E.K.	PALMER	
248	3792107	Pte	G.D.	MICHELL	
249	31183	Sgt	G.	FITZGERALD	Sgt O'DONNELL 193/68(CAT)
250	216449	Cpl	R.W.	LEBE	
251	38271	Pte	M.C.	MITCHELL	
252	3791377	Pte	D.N.	PARROTT	
<u>SURPLUS</u>					
	2786630	Sig	J.	FRANCIS (posted as Hygiene Dutyman)	

In reply please quote: RL-3-3

Annex D to
AFV Administrative Instruction 19/
(Revised Dec 67)
Dated 31 Dec 67

HQ AUSTRALIAN MILITARY FORCES VIETNAM
RETURNS(SPECIAL) - WEEKLY STRENGTH RETURN

UNIT...110.SIG.SQN.....
PROFORMA No 2

0800
As at ~~2359~~ Hrs ~~TUE~~ WED...24.APR.68.....
(This return to be lodged to reach DAAG HQ AFV by 100 hrs Thurs of each week)

OFFICERS						WO's			RANK AND FILE							TOTAL ALL RANKS	DETAIL
Maj Gen	Brig	Lt Col	Maj	Capt	Lt	Total	WO1	WO2	Total	SSgt	Sgt	Cpl	Lopl	Ptes	Total		
			11	4	3	8	4	4	8	4	23	60	20	129	236	252	ESTD
			1	4	3	8	2	2	4	7	22	34	32	130 128 XX	223	237	POSTED SQD
							XXX	XXX	XXX	3			12	1	16	16	SURPLUS
							2	2	4		1	26			27	31	DEFICIENCIES

SQN BREAKUP

Saigon Det
Vung Tau Det

1	2	1	2	2	2	12	14	12	66
	2	2		2		10	20	20	64

ARA 150
NS 87

R. H. Long Cpl
Maj
00 110 Sig Sqn

SURPLUS

ECN	ARMY No	RANK	NAME	REMARKS
836	43109	Sgt	Eddleston J.D.	Surplus
917	58766	Cpl	Northover G.U.	Surplus
917	38533	Cpl	Kennedy W.L.	Surplus
917	243322	Lcpl	Price D.R.	Surplus
916	215261	Sig	Thornton S.D.	Surplus
618	1200946	Sig	Greaves I.J.	Surplus
917	64360	Lcpl	Bell P.W.	Surplus
NT	2786630	Sig	Francis J.	Surplus

DEFICIENCIES

APPT/POSTING	ECN	RANK	REMARKS
SEE ATTACHED LIST			

ATTACHMENTS

LOCAL

ARMY No	RANK	NAME	PARENT UNIT
38548	Sgt	Earsman P.	HQNZAF
7100374	Cpl	Garwood K.	HQNZAF

AHQ

ARMY No	RANK	NAME	PARENT UNIT

<u>APPT/POSTING</u>	<u>ECN</u>	<u>RANK</u>	<u>REMARKS</u>
Sigcen Supvr	863	WO1	Member has been Named
F of S	368	WO1	" "
OKC	620	Cpl	" "
OKC	620	Cpl	" "
Tech(Elec) C	918	Cpl	" "
Tech (Sigs)	916	Cpl	" "
Clerk (Sigs)	241	Sig	" "
Clerk (Sigs)	241	Sig	" "
Lineman (Fd)	528	Sig	" "
Op (KBD)	619	Sig	" "
OKC	620	Sig	" "
OKC	620	Sig	" "
OKC	620	Sig	" "
Op (SWBD)	624	Sig	" "
Op (SWBD)	624	Sig	" "
Stmn Tech (Sigs)	836	Sig	" "
Tech (Elec)	917	Sig	" "
Tech (Elec)	917	Sig	" "
Tech(Elec) C	918	Sig	" "
Tech (Sigs)	916	Sig	" "
Elec Mech (RAE)	321	Cpl	No Member Named
Elec Mech (RAE)	321	Spr	" " "