

Annual Compliance Report Carmichael Coal Mine and Rail Project, EPBC 2010/5736

13 October 2024 to 12 October 2025

Report 8

Reference:	A01265-01
Organisation:	Adani Mining Pty Ltd t/a Bravus Mining and Resources
Author:	Grant Brown, The APP Group
Date of Report:	01 December 2025
Draft Report Submitted:	12 December 2025
Final Report Submitted:	15 December 2025

Declaration of Accuracy

In making this declaration, I am aware that sections 490 and 491 of the Environment Protection and Biodiversity Conservation Act 1999 (Cth) (EPBC Act) make it an offence in certain circumstances to knowingly provide false or misleading information or documents. The offence is punishable on conviction by imprisonment or a fine, or both. I declare that all the information and documentation supporting this compliance report is true and correct in every particular. I am authorised to bind the approval holder to this declaration and that I have no knowledge of that authorisation being revoked at the time of making this declaration.

Signed: _____

Full name: Mick Crowe

Position: Chief Operating Officer

Organisation: Adani Mining Pty Ltd

Date: _____

Distribution and Authorisation Record

Revision No.	Date	Issued to	Comments
Draft 1	12 December 2025	Joshua Moore	Initial draft for review
Final V0	15 December 2025	Joshua Moore	Final report

This report has been prepared and reviewed in accordance with our quality control system.

This report has been prepared by:

Grant Brown

Date: 15 December 2025

© Copyright APP Corporation Pty Ltd
ABN: 29 003 764 770

All rights reserved. No material may be reproduced without prior permission.

While we have tried to ensure the accuracy of the information in this publication, the Publisher accepts no responsibility or liability for any errors, omissions or resultant consequences including any loss or damage arising from reliance in information in this publication.

APP Corporation Pty Ltd
www.app.com.au

Contents

1	Executive Summary	5
2	Introduction	5
3	Description of Activities	6
3.1	Project Overview	6
3.2	Details of activities	6
4	Compliance with Conditions	7
4.1	Compliance Status Descriptors	7
5	Conclusion	7
	Appendix A – Compliance Table	8
	Appendix B – Disturbance Footprint	31

1 Executive Summary

The APP Group (**APP**) were engaged by Adani Mining Pty Ltd (**Adani**) (trading as Bravus Mining and Resources (**Bravus**)) to complete the Annual Compliance Report for the Carmichael Coal Mine and Rail Project, EPBC 2010/5736.

Bravus holds Environment Protection and Biodiversity Conservation Act 1999 controlled action approval number 2010/5736 (EPBC Act Approval, Variation approved 19 April 2022) to deliver the Carmichael Coal Mine and Rail Project. The EPBC Act Approval scope covers that part of the rail line connecting the coal mine to port that is not the Carmichael Line (Separable Portion 1).

Condition 18 of the EPBC Act Approval states:

“Within three months of every 12 month anniversary of the commencement of the action, the approval holder must publish a report on its website addressing compliance with each of the conditions of this approval, including implementation of any management plans, reports or strategies as specified in the conditions. The report must remain on the website for three years. Documentary evidence providing proof of the date of publication must be provided to the Department at the same time as the compliance report is published. Likely (as defined by relevant triggers incorporated in the MNESMP as required by Condition 5f) or actual non-compliance with any of the conditions of this approval must be reported to the Department in writing within 2 business days of the approval holder becoming aware of the likely or actual non-compliance.”

The purpose of this compliance report is to meet the requirements of Condition 18 for the period 13 October 2024 to 12 October 2025. This is the eighth compliance report for the EPBC Act Approval. For the purposes of this report the proponent is referred to as ‘Bravus’ however it is acknowledged that the approval holder remains as ‘Adani Mining Pty Ltd’.

The compliance report was developed by Grant Brown of APP on 12 December 2025. Grant holds a Master of Environmental Engineering and is an Exemplar Global accredited lead auditor, with over 20 years’ experience in construction & mining.

2 Introduction

Bravus has approval to develop a 60 million tonne per annum (Mtpa) thermal coal mine in the northern Galilee Basin, approximately 160km north-west of Clermont in Queensland. The initial stage of mining will be a 10 Mtpa open-cut mine adopting a narrow-gauge rail solution.

The project comprises of the following:

- The Carmichael Coal Mine, including supporting off lease infrastructure;
- A rail line connecting the coal mine to port - including the Carmichael Line (Separable Portion 1) and the North Galilee Basin Rail (CCMR) Projects; and
- The Abbot Point Coal Terminal.

The Carmichael Coal Mine (CCM) consists of a coal mine with both open cut and underground mining, on mine infrastructure and associated mine processing facilities. Bravus has developed the Carmichael Rail Network

(CRN) to transport coal from the Galilee Basin to the Port of Abbot Point via a multi-user, greenfield, standard gauge rail line.

3 Description of Activities

3.1 Project Overview

EPBC Number	2010/5736
Project Name	Carmichael Coal Mine and Rail Project
Approval holder ACN/ABN	Adani Mining Pty Ltd ACN 145 455 205
Approved action	To develop an open cut and underground coal mine, 189km rail link and associated infrastructure approximately 160km north west of Clermont in central Queensland [see EPBC Act referral 2010/5736 and approved variations dated 19 April 2012, 9 October 2012 and 24 July 2013]
Location of Project	From approximately 70 km east of the Carmichael Mine to the Port of Abbot Point, Queensland
Person accepting responsibility for the report	Mick Crowe, Chief Operating Officer
Dates for the reporting period of the report	13 October 2024 to 12 October 2025
Date of preparation of the report	This compliance report was prepared in December 2025

3.2 Details of activities

Activities undertaken from 13 October 2024 to 12 October 2025 in accordance with the conditions of the EPBC Act Approval, and other relevant approvals were:

- Mine and rail operations;
- railway line and track maintenance;
- weed treatments;
- environmental monitoring;
- ecological, cadastral and cultural heritage surveys; and
- temporary rail accommodation camp operation.

4 Compliance with Conditions

4.1 Compliance Status Descriptors

The following criteria were used for the compliance rating of each condition.

Table 2 - Compliance Criteria

Rating	Description
Compliant	'Compliance' is achieved when all the requirements of a condition have been met, including the implementation of management plans or other measures required by those conditions.
Non-Compliant	A designation of 'non-compliant' must be given where the requirements of a condition or elements of a condition, including the implementation of management plans and other measures, have not been met.
Not Applicable	A designation of 'not applicable' must be given where the requirements of a condition or elements of a condition fall outside of the scope of the current reporting period. For example, a condition that applies to an activity that has not yet commenced.

5 Conclusion

A review of the conditions of controlled action approval number 2010/5736 (EPBC Act Approval, Variation approved 19 April 2022) to deliver the Carmichael Coal Mine and Rail Project was undertaken for the period 13 October 2024 to 12 October 2025.

This review has determined that there were no non-compliances identified with the conditions of the approval. Please refer to Appendix A – Compliance Table.

Appendix A – Compliance Table

Condition Number	Condition	Compliance	Evidence / Comments
1	<p>Conditions attached to the approval</p> <p>The Minister may determine that a plan, strategy or program approved by the Queensland Government satisfies a plan, strategy or program required under these conditions.</p>	Compliant	Note
2	<p>Project area</p> <p>For the purpose of the action, the approval holder must not clear vegetation outside the Project Area shown at Appendix A unless targeted surveys have demonstrated that Matters of National Environmental Significance are unlikely to be impacted.</p>	Compliant	<p>Vegetation has been cleared during the reporting period. A total of 82.92ha was disturbed during the period October 2024 to October 2025.</p> <p>No clearing outside the approved EPBC footprint was identified over the reporting period. Refer to Appendix B.</p>
3	<p>Groundwater management and monitoring plan</p> <p>At least three months prior to commencing excavation of the first box cut, the approval holder must submit to the Minister for approval a Groundwater Management and Monitoring Plan (GMMP). The GMMP must be informed by the results of the groundwater flow model re-run (condition 23) and contain the following:</p> <p>a) details of a groundwater monitoring network that includes:</p> <ul style="list-style-type: none"> (i) control monitoring sites (ii) sufficient bores to monitor potential impacts on the Great Artesian Basin (GAB) aquifers (whether inside or outside the Project Area) (iii) a rationale for the design of the monitoring network with respect to the nature of potential impacts and the location and occurrence of Matters of National Environmental Significance (whether inside or outside the Project Area) <p>b) baseline monitoring data</p> <p>c) details of proposed trigger values for detecting impacts on groundwater levels and a description of how and when they will be finalised and subsequently reviewed in accordance with state approvals.</p> <p>d) details of groundwater level early warning triggers and impact thresholds for the Doongmabulla Springs Complex, informed by</p>	Compliant	<p>Excavation of the first box cut commenced on 10 July 2020.</p> <p>The Groundwater Management and Monitoring Plan (GMMP) was first submitted to the Department on 1 August 2017. The GMMP was first approved by the Minister as meeting the requirements of condition 3 on 9 April 2019. The GMMP was further revised in 2021 and approved on 25 June 2021 (Version 11.a). The GMMP was again updated to Version 12 (07/06/2024) to incorporate GMMP review report recommendations and commitment for short-term groundwater model re-run.</p> <p>With respect to condition 3(e)(ii), the Office of the Coordinator-General confirmed in correspondence dated 22 July 2016, that the baseline research has satisfied conditions regarding Mellaluka Springs Complex. The Department corresponded agreement with that position.</p> <p>With respect to condition 3(f), the 6 monthly groundwater monitoring data report for the Carmichael Coal Mine and Rail Project (2010/5736) required under Section 4.8 of the Groundwater Monitoring and Management Plan (GMMP) was provided to the Department on 10/12/2024.</p> <p>With respect to condition 3(g), groundwater monitoring data is publicly available on the Bravus website which can be accessed via the following link:</p>

Condition Number	Condition	Compliance	Evidence / Comments
	<p>groundwater modelling and corrective actions and/or mitigation measures to be taken if the triggers are exceeded where caused by mining operations, to ensure that groundwater drawdown as a result of the project does not exceed an interim threshold of 0.2 metres at the Doongmabulla Springs Complex</p> <p>(i) the early warning triggers and impact thresholds must be informed by groundwater modelling in accordance with Conditions 3e)i, 22, 23 and 24 and the relevant requirements of the environmental authority held under the Environmental Protection Act 1994 (in particular requirements arising in response to the conditions at Appendix 1, Section 1, Schedule E of the Coordinator- General's Assessment Report)</p> <p>(ii) the interim drawdown threshold required under condition 3d) may be replaced with a new drawdown threshold, if the approval holder applies to the Minister for approval to change it, and submits further evidence supported by further groundwater modelling and other scientific investigations (such as those required in conditions 25 and 27), that a new drawdown threshold will ensure the protection and long-term viability of the Doongmabulla Springs Complex.</p> <p>e) details of the timeframe for a regular review of the GMMP in accordance with the requirements of the environmental authority issued under the Environmental Protection Act 1994, and subsequent updates of the GMMP, including how each of the outcomes of the following will be incorporated:</p> <p>(i) independent review and update of the groundwater conceptual model, as well as the numerical groundwater model and water balance calculations as necessary, to incorporate monitoring data</p> <p>(ii) future baseline research required by the Queensland Coordinator-General into the Mellaluka Springs Complex (Appendix 1, Section 3, Condition 1 of the Coordinator-General's Assessment Report)</p> <p>(iii) the GAB Springs Research Plan (Conditions 25 and 26)</p> <p>(iv) the Rewan Formation Connectivity Research Plan (Conditions 27 and 28).</p> <p>f) provisions to make monitoring data available to the Department and Queensland Government authorities (if requested) on a six monthly basis for inclusion in any cumulative impact assessment, regional water balance model, bioregional assessment or relevant research required by</p>		<p>https://www.bravusmining.com.au/sustainability/environment/environmental-reporting-and-approvals/</p>

Condition Number	Condition	Compliance	Evidence / Comments
	<p>the Bioregional Assessment of the Galilee sub-region and the Lake Eyre Basin and any subsequent iterations.</p> <p>g)provisions to make monitoring results publicly available on the approval holder's website for the life of the project</p> <p>h)a peer review by a suitably qualified independent expert and a table of changes made in response to the peer review.</p>		
4	<p>The approval holder must not commence excavation of the first box cut until the GMMP has been approved by the Minister in writing. The approved GMMP must be implemented.</p> <p><i>Note: Many elements of the GMMP are also required under the state approval for the project. Where possible, a combined document should be prepared that addresses both state government and EPBC Act approval conditions</i></p>	Compliant	The GMMP was approved on 9 April 2019 and the first box cut excavation did not commence until 10 July 2020.
5	<p>Matters of National Environmental Significance management plan/s</p> <p>At least three months prior to commencement of mining operations, the approval holder must submit to the Minister for approval Matters of National Environmental Significance plan/s for the management of direct and indirect impacts of mining operations on MNES.</p> <p><i>Note: If the MNESMP does not address any specific future activities (eg possible additional seismic surveys or specific mining stages) it should be updated in accordance with Condition 33.</i></p>	Compliant	<p>The applicable Matters of National Environmental Significance Management Plans (MNESMPs), first submission dates were:</p> <ul style="list-style-type: none"> • <i>Species Management Plan – Carmichael Coal Mine and Offsite Infrastructure – 1 June 2015;</i> • <i>Species Management Plan – Carmichael Rail Network – SP1 – 1 June 2015;</i> • <i>Black-throated Finch Management Plan – Carmichael Coal Mine and Offsite Infrastructure – 11 May 2017; and</i> • <i>Groundwater Dependent Ecosystem Management Plan – Carmichael Coal Mine Project – 7 November 2016.</i> <p>The submission dates are all three months prior to commencement of mining operations, which commenced on 15 June 2019.</p>
6	<p>The MNESMP must incorporate the results of the groundwater flow model re-run (condition 23) where relevant, and be consistent with relevant recovery plans, threat abatement plans and approved conservation advices and must include:</p>	Compliant	The requirements of condition 6(a) to 6(l) have been incorporated into the relevant parts of the following management plans:

Condition Number	Condition	Compliance	Evidence / Comments
	<p>a) a description of environmental values for each of the Matters of National Environmental Significance addressed in the plan</p> <p>b) details of baseline and impact monitoring measures to be implemented for each of the Matters of National Environmental Significance including control and impact sites to be monitored throughout the life of the project. The monitoring must provide sufficient data to quantify likely impacts resulting from mining operations, including subsidence and changes in groundwater levels, to set habitat management goals (Conditions 6e) and 6f))</p> <p>c) details of potential impacts, including area of impact, on each of the Matters of National Environmental Significance from mining operations, including impacts from:</p> <ul style="list-style-type: none"> (i) vegetation clearing (ii) subsidence from underground mining, including subsidence induced fracturing and any changes to groundwater or surface water flow (iii) mine dewatering (iv) earthworks (v) noise and vibration (vi) emissions (including dust) (vii) light spill and other visual impacts (viii) stream diversion and flood levees (ix) weeds and pests. <p>d) measures that will be undertaken to mitigate and manage impacts on Matters of National Environmental Significance resulting from mining operations. These measures must include but not be limited to:</p> <ul style="list-style-type: none"> (i) the use of fauna spotters prior to and during all vegetation clearing activities to ensure impacts on Matters of National Environmental Significance are minimised (ii) measures to avoid impacts on Matters of National Environmental Significance and their habitat located in the Project Area, but outside areas (iii) measures to rehabilitate all areas of Matters of National Environmental Significance habitat (iv) habitat management measures including but not limited to management of subsidence and groundwater impacts of the project 		<ul style="list-style-type: none"> • Species Management Plan – Carmichael Coal Mine and Offsite Infrastructure; • Black-throated Finch Management Plan – Carmichael Coal Mine and Offsite Infrastructure; and • Groundwater Dependent Ecosystem Management Plan – Carmichael Coal Mine.

Condition Number	Condition	Compliance	Evidence / Comments
	<p>e) goals for habitat management for each relevant Matters of National Environmental Significance</p> <p>f) a table of specific criteria for assessing the success of management measures against goals, and triggers for implementing corrective measures if criteria are not met within specified timeframes. This table must include but not be limited to measures relating to subsidence and groundwater impacts, including early warning triggers for impacts on groundwater at the Doongmabulla Springs Complex and the Carmichael River. Goals and triggers must be based on the baseline conditions the relevant Matters of National Environmental Significance as determined through baseline monitoring (see Conditions 3b) and 6b)). Corrective measures must include provision of offsets where it is determined that corrective management measures have not achieved goals within specified timeframes (see Conditions 11m) and 11o))</p> <p>g) an ongoing monitoring program to determine the success of mitigation and management measures against the stated criteria in Condition 6f), including monitoring locations, parameters and timing. Monitoring for water resource Matters of National Environmental Significance must include hydrogeological, hydrological and ecological parameters</p> <p>h) details of how compliance will be reported</p> <p>i) details of how the MNESMP will be updated to incorporate and address outcomes from research undertaken for Matters of National Environmental Significance under this and any state approvals, including updating of goals, criteria and triggers (as required under Conditions 3c), 3d) 6e) and 6f))</p> <p>j) provisions to ensure that suitably qualified and experienced persons are responsible for undertaking monitoring, review and implementation of the MNESMP</p> <p>k) in the event that future baseline research required by the Queensland Coordinator-General (Appendix 1, Section 3, Condition 1 of the Coordinator-General’s Assessment Report) identifies that the Mellaluka Springs Complex provides high value habitat for the black throated finch, the approval holder must include management measures to address impacts resulting from drawdown at the Mellaluka Springs Complex in the MNESMP</p>		

Condition Number	Condition	Compliance	Evidence / Comments
	<p>l) details of how, where habitat for an EPBC Act listed threatened species or community not previously identified and reported to the Department is found in the Project Area, the approval holder will notify the Department in writing within five business days of finding this habitat, and within 20 business days of finding this habitat will outline in writing how the conditions of the is approval will still be met (refer Condition 11h))</p>		
7	<p>Mining operations must not commence until the required MNESMP have been approved by the Minister in writing.</p> <p>The approved plan/s must be implemented.</p> <p><i>Note: Management plans (such as the Black Throated Finch Management Plan and the Groundwater Dependent Ecosystems Management Plan) may also be required under state approvals. Whenever possible a combined document should be prepared to address both state government and EPBC Act approval conditions.</i></p> <p><i>Note: Impacts of the action other than mining operations will be offset as required in accordance with Conditions 8 to 11, but will be otherwise managed in accordance with state approvals – this is of particular relevance when impacts may occur prior to approval of the MNESMP</i></p>	Compliant	<p>Mining operations commenced on 15 June 2019, after the following MNESMP's were approved:</p> <ul style="list-style-type: none"> • <i>Species Management Plan – Carmichael Coal Mine and Offsite Infrastructure – 1 June 2015;</i> • <i>Species Management Plan – Carmichael Rail Network – SP1 – 1 June 2015;</i> • <i>Black-throated Finch Management Plan – Carmichael Coal Mine and Offsite Infrastructure – 11 May 2017; and</i> • <i>Groundwater Dependent Ecosystem Management Plan – Carmichael Coal Mine Project – 7 November 2016.</i>
7A	<p>The approval holder must:</p> <p>a. Ensure that a qualified fauna spotter catcher is present during all clearing activities and is given sufficient authority to instruct clearing operations, including the authority to instruct clearing activities to cease if an individual of a fauna species listed as a Matter of National Environmental Significance under this approval is observed in the area being cleared.</p> <p>b. Ensure that a qualified fauna spotter catcher undertakes all daily pre-clearance surveys in accordance with approved plans.</p> <p>c. Ensure that all contractors, workers, and authorised persons who are tasked with conducting clearing activities are aware of the environmental requirements of this approval.</p>	Compliant	<p>A qualified and experienced fauna spotter catcher is in attendance during all clearing activities. Pre-clearance surveys are undertaken as per the <i>Species Management Plan – Mine and Offsite Infrastructure</i> prior to clearing.</p> <p>Relevant records, including fauna interaction registers, for the reporting period were reviewed.</p>
8	<p>Offset requirements</p>	Compliant	<p>On 21 April 2020, the Queensland Government declared the Moray Downs West as a Voluntary Declaration Area under the Vegetation Management Act 1999, legally</p>

Condition Number	Condition	Compliance	Evidence / Comments																																																	
	<p>The approval holder must legally secure the minimum offset areas detailed in Table 1 for the rail (west) component within four years of commencement of the specified component to the action. The approval holder must legally secure the minimum offset areas for the other specified components detailed in Table 1 within two years of commencement of those specified components of the action.</p> <p>Table 1. Minimum offset areas required for impacts on EPBC Act listed threatened species and communities and initial contribution to offsets for subsidence impacts from underground mining.</p> <table border="1" data-bbox="268 502 1019 997"> <thead> <tr> <th>Environmental value</th> <th>Offset for mining operations north of Carmichael River (hectares)</th> <th>Offset for mining operations south of Carmichael River (hectares)</th> <th>Initial offset for underground mining component (hectares)</th> <th>Offset for off-lease infrastructure (hectares)</th> <th>Offset for rail east component (hectares)</th> <th>Offset for rail west component (hectares)</th> </tr> </thead> <tbody> <tr> <td>Black throated finch (southern)</td> <td>18 204.06</td> <td>10 739.39</td> <td>2,000.00</td> <td>7.62</td> <td>2.44</td> <td>46.48</td> </tr> <tr> <td>Brigalow ecological community</td> <td>15.12</td> <td>721.11</td> <td></td> <td>0.00</td> <td>6.26</td> <td>72.50</td> </tr> <tr> <td>Ornamental snake*</td> <td>96.39</td> <td>38.61</td> <td></td> <td>0.00</td> <td>0.00</td> <td>0.00</td> </tr> <tr> <td>Squatter pigeon (southern)*</td> <td>1598.00</td> <td>902.00</td> <td></td> <td>0.00</td> <td>0.00</td> <td>0.00</td> </tr> <tr> <td>Waxy cabbage palm</td> <td>90.00</td> <td>0.00</td> <td></td> <td>0.00</td> <td>0.00</td> <td>0.00</td> </tr> <tr> <td>Yakka skink*</td> <td>3770.48</td> <td>1815.42</td> <td></td> <td>1.87</td> <td>0.60</td> <td>11.63</td> </tr> </tbody> </table> <p><i>Note: Offsets for different species may overlap where they share the same habitat requirements.</i></p>	Environmental value	Offset for mining operations north of Carmichael River (hectares)	Offset for mining operations south of Carmichael River (hectares)	Initial offset for underground mining component (hectares)	Offset for off-lease infrastructure (hectares)	Offset for rail east component (hectares)	Offset for rail west component (hectares)	Black throated finch (southern)	18 204.06	10 739.39	2,000.00	7.62	2.44	46.48	Brigalow ecological community	15.12	721.11		0.00	6.26	72.50	Ornamental snake*	96.39	38.61		0.00	0.00	0.00	Squatter pigeon (southern)*	1598.00	902.00		0.00	0.00	0.00	Waxy cabbage palm	90.00	0.00		0.00	0.00	0.00	Yakka skink*	3770.48	1815.42		1.87	0.60	11.63		<p>securing this offset area in accordance with this condition. This area covers the requirements for all offsets required for mining operations north of the Carmichael River, rail west and off-lease infrastructure.</p>
Environmental value	Offset for mining operations north of Carmichael River (hectares)	Offset for mining operations south of Carmichael River (hectares)	Initial offset for underground mining component (hectares)	Offset for off-lease infrastructure (hectares)	Offset for rail east component (hectares)	Offset for rail west component (hectares)																																														
Black throated finch (southern)	18 204.06	10 739.39	2,000.00	7.62	2.44	46.48																																														
Brigalow ecological community	15.12	721.11		0.00	6.26	72.50																																														
Ornamental snake*	96.39	38.61		0.00	0.00	0.00																																														
Squatter pigeon (southern)*	1598.00	902.00		0.00	0.00	0.00																																														
Waxy cabbage palm	90.00	0.00		0.00	0.00	0.00																																														
Yakka skink*	3770.48	1815.42		1.87	0.60	11.63																																														
9	<p>Biodiversity Offset Strategy and biodiversity funding</p> <p>To compensate for authorised unavoidable impacts on Matters of National Environmental Significance, the approval holder must submit a Biodiversity Offset Strategy (BOS) and a GAB Offset Strategy to the Minister for approval at least three months prior to commencement of mining operations.</p>	Compliant	<p>The Biodiversity Offset Strategy – Carmichael Coal Mine and Rail Project (BOS) was first submitted to the delegate of the Minister on 16 January 2015.</p> <p>The Proposed Great Artesian Basin Offset Strategy; Adani - Carmichael Coal Project; Final Report V2.2 (GAB Offset Strategy) was first submitted to the delegate of the Minister on 20 January 2016.</p> <p>Mining operations commenced 15 June 2019.</p>																																																	

Condition Number	Condition	Compliance	Evidence / Comments
10	Offsets for authorised unavoidable impacts (defined in Table 1), and water resource impacts must be managed in accordance with the BOS and the GAB Offset Strategy.	Compliant	Offsets are being managed in accordance with the Biodiversity Offset Strategy and the Great Artesian Basin Offset Strategy as per annual compliance and monitoring.
11	<p>The BOS must be consistent with the Galilee Basin Offset Strategy, where relevant, relevant recovery plans, threat abatement plans, conservation advices and MNESMP (see Condition 6), including the Black Throated Finch Management Plan (appendix 1, Section 1, Schedule I, condition I6 of the Coordinator General’s Assessment Report). The BOS must include the following (except for the matters at 11k) and 11l), which apply to the Great Artesian Basin (GAB) Offset Strategy):</p> <ul style="list-style-type: none"> a) location of species and communities habitat offset areas including maps in electronic Geographic Information System (GIS) format b) details of how offset sites have been or will be legally secured within required timeframes to ensure their long-term protection c) a monitoring program for the offset site/s suitable to measure the success of the management measures against state performance criteria including monitoring locations, parameters and timing d) a description of the potential risks to the successful implementation of the BOS, and details of contingency measures that will be implemented to mitigate these risk e) details of how the BOS will be updated to incorporate outcomes form research undertaken for Matters of National Environmental Significance under this and any state approvals, including updating of goals, criteria and triggers (as outlined at Conditions 3c), 3d), 6e) and 6f)). This must include outcomes of baseline research required by the Queensland Coordinator-General to identify whether the Mellaluka Springs Complex provides high value habitat for the black throated finch (Appendix 1, Section 3, Condition 1 of the Coordinator-General’s Assessment Report) f) an outline of how compliance will be reported g) provisions to ensure that suitably qualified and experienced persons are responsible for undertaking monitoring, review and implementation of the BOS h) detailed processes for any residual impacts on Matters of National Environmental Significance, (see Condition 6f)) to be offset in accordance 	Compliant	<p>The GAB Offset Strategy was approved by the delegate of the Minister as being consistent with the requirements of conditions 9, 11 (k) and 11 (l) 18 August 2016.</p> <p>The BOS was approved by the delegate of the Minister as being consistent with the requirements of conditions 9, 11 (a) to (j) and 11 (m) to (p) on 7 October 2016. The GAB Offset Strategy was approved by the delegate of the Minister as being consistent with the requirements of conditions 9, 11 (k) and 11 (l) 18 August 2016.</p> <p>The BOS was approved by the delegate of the Minister as being consistent with the requirements of conditions 9, 11 (a) to (j) and 11 (m) to (p) on 7 October 2016.</p> <p>The document meets the requirements of items (a) to (p).</p>

Condition Number	Condition	Compliance	Evidence / Comments
	<p>with the EPBC Act Offsets Policy including a process for offset requirement to be developed in consultation with the Department and relevant Queensland Government agencies</p> <p>i) a detailed process for any significant residual impact on any EPBC listed threatened species or ecological community not identified in Table 1 to be offset in accordance with the EPBC Act Offsets Policy (refer Condition 6l))</p> <p>j) in the event that future baseline research required by the Queensland coordinator-General (Appendix 1, Section 3, Condition 1 of the Coordinator-General’s Assessment Report) identifies that the Mellaluka Springs Complex provides high value habitat for the black throated finch, the approval holder must:</p> <p>(i) revise black throated finch offset requirement in the BOS in accordance with the EPBC Act Offsets Policy and submit the revised BOS to the Minister for approval</p> <p>(ii) management of any additional black throated finch offsets in accordance with Conditions 13 and 14 must commence prior to hydrological impacts on the Mellaluka Springs Complex, with sites being legally secured within two years of that time.</p> <p><i>Requirements for GAB Offsets Strategy</i></p> <p>k) implementation of an annual GAB offset measure, of returning at least 730 megalitres per annum to the GAB for a minimum five year period from commencement of excavation of the first box cut, to offset the predicted annual water take associated with the action. This offset measure is to achieve a measurable outcome in accordance with one or more of the following principles:</p> <p>(i) reduce current extraction rates from the GAB to increase hydraulic pressure</p> <p>(ii) increase pressure in the GAB</p> <p>(iii) protect and rehabilitate the GAB springs</p> <p>(iv) other measures consistent with government policies and strategies to protect and manage the GAB.</p> <p>l) the offset measure described in Condition 11k) is to be developed and delivered in consultation with the Queensland Government department administering the authorisation of the water take</p>		

Condition Number	Condition	Compliance	Evidence / Comments
	<p><i>Requirements for offsets for potential subsidence, groundwater and water resource impacts</i></p> <p>m) details of how staged subsidence, groundwater and water resource impacts in the Project Area will be addressed in the BOS, including:</p> <ul style="list-style-type: none"> (i) description and map of the proposed stages of underground mining. The approval holder must advise the Minister of any changes to these staging details. Underground mining Stage 1 must be consistent with the corresponding definition in these conditions (ii) description of how actual subsidence, groundwater and water resource impacts for all completed stages (as defined through Condition 11m)(i)) will be assessed at each stage (iii) description of the extent, magnitude and timing of actual subsidence impacts observed in completed stages (as defined through Condition 11m)(i)) (iv) description of how actual subsidence and groundwater impacts from completed stages (as defined through Condition 11m)(i)) will be used to revise and update predicted impact areas for future stages (v) table of predicted impact areas for each EPBC Act listed threatened species and community in Table 1 within the underground mining area (consistent with Condition 6c)) that allows comparison of actual impact areas with initial impact area predictions and updated impact area predictions. If additional impacted areas are identified as a result of the predictions, additional offsets must be implemented in line with Condition 11h) (vi) written commitments from the approval holder that the balance of offset requirement at each stage (as defined through Condition 11m)(i)) will be implemented prior to commencement of that stage. <p>n) rationale for the balance of offset required for underground mining impacts to be updated at each underground mining stage (as defined through Condition 11m)(i)) that includes detailed comparison of the ecological status of EPBC Act listed threatened species and communities within the subsidence impact area between baseline conditions and the end of the most recent underground mining stage</p> <p>o) details of how groundwater and water resource impacts on the Matters of National Environmental Significance will be addressed in the BOS</p>		

Condition Number	Condition	Compliance	Evidence / Comments
	<p>including identification of additional potential offsets (see Condition 6f)) for the Carmichael River and Doongmabulla Springs Complex, to be developed in consultation with the Department and relevant Queensland Government agencies</p> <p>p) detail of how the BOS will be revised and provided to the Minister for approval prior to commencement of each underground mining stage (as defined through Condition 11(m)(i)) including timeframes for revision that allow three months for review and approval of the plan.</p>		
12	<p>Mining operations must not commence until the BOS and the GAB Offset Strategy is approved by the Minister in writing. The approved BOS and the GAB Offset Strategy must be implemented.</p> <p><i>Note: A Biodiversity Offset Strategy is also required under the State Government approval for the project. A combined document should be prepared to address both State Government and EPBC Act approval conditions where possible.</i></p>	Compliant	<p>The GAB Offset Strategy was approved by the delegate of the Minister as being consistent with the requirements of conditions 9, 11 (k) and 11 (l) 18 August 2016.</p> <p>The BOS was approved by the delegate of the Minister as being consistent with the requirements of conditions 9, 11 (a) to (j) and 11 (m) to (p) on 7 October 2016.</p> <p>Mining operations commenced 15 June 2019.</p>
13	<p>Offset area management plans</p> <p>Within four months of approval of the BOS, and thereafter within four months of the approval of a revised BOS in accordance with Conditions 6, 8, 11 or 20, the approval holder must submit to the Minister for approval a management plan for that offset area. Each offset area management plan must address the relevant requirements of the BOS, and contain:</p> <p>a) detailed baseline description of offset areas, including surveys undertaken, condition of existing Matters of National Environmental Significance and their habitats, relevant environmental values, area of primary habitat for each EPBC Act listed threatened species and community, connectivity with other habitat areas and biodiversity corridors</p> <p>b) management measures and offset plans for each offset area to improve the habitats of Matters of National Environmental Significance</p> <p>c) a table of specific goals and associated timeframes for habitat management measures for each offset area with criteria for assessing</p>	Compliant	<p>The Moray Downs West Offset Area Management Plan was submitted on 6 February 2017.</p> <p>The plan was approved as meeting condition 13(a) to 13(c) on 19 September 2019. An updated BOS was submitted and approved on December 14 2021.</p> <p>A revised Moray Downs West Offset Area Management Plan was submitted on December 17 2021.</p> <p>The document meets the requirements of items (a) to (c).</p>

Condition Number	Condition	Compliance	Evidence / Comments
	the success of habitat management measures and corrective measures to be implemented if criteria are not met		
14	Once approved, offset area management plans must be implemented.	Compliant	On 21 April 2020 the Queensland Government declared the Moray Downs West as a Voluntary Declaration Area under the Vegetation Management Act 1999, legally securing this offset area. The approval holder has taken steps to implement the offset area management plan during the reporting period as evidenced by the <i>2024 Annual Report for the CCMR Offset Area Management Plan (30 June 2024)</i> .
15	<p><i>Biodiversity Funding</i></p> <p>The approval holder must establish and/or contribute to a pool of funds established for the better protection and long term conservation of EPBC Act listed threatened species and communities listed in Table 1.</p>	Compliant	Bravus established a pool of funds in the form of a trust fund, called the Galilee Basin Conservation and Research Fund, for the better protection and long-term conservation of EPBC Act listed threatened species and communities listed in Table 1 on 10 May 2019.
16	The mechanism to establish and/or contribute to a pool of funds, including terms of reference to support a regional approach, funding mechanisms and an initial work plan, must be provided to the Minister for approval three months prior to commencement of mining operations. The mechanism may be in the form of a trust fund, or other mechanism/s as agreed by the Minister in writing	Compliant	<p>The Carmichael Conservation and Research Program was first provided to the delegate of the Minister on 5 July 2017. The Carmichael Conservation and Research Program was approved by the delegate of the Minister as meeting the requirements of conditions 15, 16 and 18 on 8 April 2019.</p> <p>Mining operations commenced 15 June 2019.</p>
17	The approval holder must contribute \$100 000 (GST exclusive) per annum for 10 consecutive years to the pool of funds beginning from commencement of mining operations. The approval holder must provide notice of the establishment of and/or contribution to the pool of funds to the Department in writing prior to commencement of mining operations. Documentary evidence must be provided to the Department showing that the annual financial contributions to the pool of funds have been provided within 30 calendar days of each payment.	Compliant	<p>Bravus contributed its seventh \$100,000 (GST exclusive) to the pool of funds on 4 April 2024.</p> <p>A notice containing documentary evidence of the contribution was sent to the delegate of the Minister on 7 April 2024, which is within the 30 calendar days required by the condition.</p>
18	These funds must facilitate the development and implementation of research programs consistent with priorities to manage development impacts on EPBC Act listed threatened species and communities listed in Table 1 which are consistent with, and take into consideration, any	Compliant	The Galilee Basin Conservation and Research Fund 2024-25 Annual Report 30 June 2025. The report covers the period 15 June 2024 to 14 June 2025.

Condition Number	Condition	Compliance	Evidence / Comments
	<p>relevant recovery plans, threat abatement plans and/or conservation advices. Research programs should identify measures to mitigate and manage the impacts on EPBC Act listed threatened species and communities listed in Table 1 and should address where relevant:</p> <p>a) methodologies for a baseline survey that will report on each species' life history, movement patterns, habitat requirements and population dynamics. Survey methodologies must be in accordance with the Department's survey guidelines or alternative best practice methodologies that are agreed to in writing by the Minister prior to commencement and endorsed by a suitably qualified independent expert. The baseline survey must begin with the first year of the date of this approval.</p> <p>b) an ongoing monitoring program (developed from the baseline monitoring) for each species, to continue for the duration of the research programs, with annual reporting to the Department.</p> <p>c) commitments, including financial commitments and associated timeframes, that will be implemented by the approval holder to support the undertaking of research.</p> <p>d) the time frames for undertaking each research component.</p> <p>e) timing and methods of reporting research outcomes to the Minister, the scientific community and the public.</p> <p>f) outcomes of consultation with the Department on how the proposed Research Programs align with other studies for EPBC Act listed threatened species and communities listed in Table 1.</p> <p>g) identification of priority actions for funding must be decided in consultation with the Queensland Department of Environment and Heritage Protection and members of relevant Recovery Teams.</p>		<p>The Galilee Basin Conservation and Research Trust Fund (the Trust Fund) was established in 2019 for the better protection and long-term conservation of the EPBC Act listed threatened species and communities listed in Table 1.</p> <p>The research paper <i>"Monitoring and management of Yakka Skinks and Squatter Pigeons in the Galilee Basin - Galilee Basin Conservation & Research Fund 30 June 2025"</i> was presented as the culmination of the research trust fund.</p> <p>The document meets the requirements of items (a) to (g).</p>
19	<p>A review of funding must be undertaken five years after the establishment of the pool of funds and/or the commencement of the action or as otherwise agreed by the Minister in writing. This review must take into account progress of the research programs and any subsequent on ground actions, as well as the involvement of other holders of approvals under the EPBC Act in funding and administrative arrangements. The review must be provided to the Department within six months after the five year period.</p>	Compliant	<p>A review of the funding arrangement was undertaken in April 2024.</p>

Condition Number	Condition	Compliance	Evidence / Comments
20	<p>3D Seismic Survey Management Plan</p> <p>The approval holder must submit a 3D Seismic Survey Management Plan to the Minister for approval, allowing at least one month for approval. The Seismic Survey Management Plan must include the following information in relation to the seismic survey activities:</p> <ul style="list-style-type: none"> a) a description of seismic survey activities b) a description of impacts of seismic survey activities on Matters of National Environmental Significance c) mitigation measures for seismic survey activities d) identification of offsets for residual impacts on at least 115 ha of black throated finch habitat, to be legally secured within two years of commencement of seismic survey activities and managed in accordance with the Biodiversity Offset Strategy under Condition 12. <p><i>Note: Offset areas identified are not intended to duplicate offset areas identified in accordance with Condition 11 j)</i></p>	Compliant	<p>The 3D Seismic Survey Management Plan was submitted to the Department on 14 October 2015 and approved on 14/06/2015.</p> <p>The document meets the requirements of items (a) to (d).</p>
21	<p>Seismic survey activities must not commence until the 3D Seismic Survey Management Plan has been approved by the Minister in writing. The approved 3D Seismic Survey Management Plan must be implemented.</p>	Compliant	<p>No 3D seismic survey activities were carried out in the reporting period and as such the implementation of the plan cannot be assessed.</p>
22	<p>Groundwater Flow Model Review</p> <p>The approval holder must undertake a peer review of the adequacy of the current groundwater flow model to characterise groundwater impacts. This review must consider the parameters used into the groundwater flow model, the required additional modelling information and the model re-runs outlined in Condition 23. The peer review must be undertaken by a suitably qualified independent expert, approved by the Minister in writing. The peer review report must be submitted to the Minister within seven months of this approval should identify any additional information requirements.</p>	Compliant	<p>The EPBC Act Approval is dated 14 October 2015. A peer review of the adequacy of the groundwater flow model to characterise groundwater impacts was submitted to the delegate of the Minister on 10 November 2015. The review and accompanying report were accepted as meeting condition 22 on 14 March 2016.</p>

<i>Condition Number</i>	<i>Condition</i>	<i>Compliance</i>	<i>Evidence / Comments</i>
23	<p>The approval holder must provide a report to the Minister for the re-run of the groundwater flow model. The model revisions and re-runs must incorporate the following parameters in the scenarios and address the following additional information requirements:</p> <ul style="list-style-type: none"> a) re-define the current General Head Boundary (GHB) arrangement, as agreed by the Department in writing, including the following: <ul style="list-style-type: none"> (i) remove the GHB from its current location in all layers to the western edge of the model domain (ii) review and justify the GHB conductance values used in the model to reflect the differences between aquifers and aquitards and also between aquifers (e.g. Clematis and Colinlea Sandstones), and modify if required (iii) GHB cell elevations to be re-set using data as agreed by the Department in writing (iv) report on the impacts on groundwater levels and net flows between the model domain for the revised GHB boundaries and compare with previous modelling results b) review and justify the recharge parameters for the Clematis Sandstone to represent the flux into the recharge beds of the GAB, and modify if required c) document outflow mechanisms used in the model for the Doongmabulla Springs Complex and individual model layers, using maps to show the spatial distribution of model discharges d) document and incorporate known licensed groundwater extractions within the model domain e) document and justify any other changes made as part of the model re-runs that are not outlined above f) as per the IESC information guidelines provide an assessment of the quality of, and risks and uncertainty inherent in, the data used in the background data and modelling, particularly with respect to predicted potential scenarios g) provide adequate data (spatially and geographically representative) to justify the conceptualisation of topographically driven flow from south to north (and west to east) in both shallow and deeper aquifers. 	Compliant	<p>The EPBC Act Approval is dated 14 October 2015. A peer review of the adequacy of the groundwater flow model to characterise groundwater impacts was submitted to the delegate of the Minister on 10 November 2015. The review and accompanying report were accepted as meeting condition 22 on 14 March 2016.</p> <p>The document meets the requirements of items (a) to (g).</p>

Condition Number	Condition	Compliance	Evidence / Comments
24	<p>The outcomes of the model re-runs are to be reviewed in order to inform the development of the GMMP and the Rewan Formation Connectivity Research Plan, and to correct any subsequent inaccuracies in the Matters of National Environmental Significance management plan/s, prior to submitting to the Minister for approval.</p>	Compliant	<p>The EPBC Act Approval is dated 14 October 2015. A peer review of the adequacy of the groundwater flow model to characterise groundwater impacts was undertaken and the outcomes of the model reruns were used where relevant. The peer review was submitted to the delegate of the Minister on 10 November 2015. The review and accompanying report were accepted as meeting condition 22 on 14 March 2016.</p>
25	<p>Research and management requirements</p> <p><i>GAB springs research plan</i></p> <p>At least three months prior to commencing excavation of the first box cut, the approval holder must submit for the approval of the Minister a GAB Springs Research Plan that investigates, identifies and evaluates methods to prevent, mitigate and remediate ecological impacts on the EPBC listed community of native species dependent on natural discharge of groundwater from the Great Artesian Basin (GAB Springs community), including the Doongmabulla Springs Complex, in the Galilee Basin. The GAB Springs Research Plan must include but is not limited to the following:</p> <ul style="list-style-type: none"> a) research aims and rationale with reference to existing scientific research on GAB spring hydrogeology and ecology b) identify priority actions for potential offsets to protect and manage the GAB springs c) personnel responsible for conducting research and their qualifications d) timeframes for research and reporting e) methods, including but not limited to, conceptualisation of the hydrogeology of the springs, geological and geochemical surveys to inform the source aquifer/s for the Doongmabulla Springs Complex, ecological surveys to determine the composition of the GAB springs community, an assessment of transferability of approaches to prevent and mitigate hydrological impacts on springs in the Surat Basin, determination of water requirements (including ecological response thresholds) of the GAB springs community, and development and 	Compliant	<p>The Carmichael Coal Mine Project - Great Artesian Basin Springs Research Plan (the GAB Springs Research Plan) was first submitted on 25 July 2018.</p> <p>It was approved by the delegate of the Minister as meeting condition 25 on 20 September 2019.</p> <p>Excavation of the first box cut commenced on 10 July 2020.</p> <p>A Great Artesian Basin Offset Strategy Report has been prepared annually for each year since implementation, with the latest Annual Report being completed July 2024.</p> <p>The GAB Springs Research Plan was published on the Bravus website in October 2019 which can be accessed via the following link: https://www.bravusmining.com.au/sustainability/environment/environmental-reporting-and-approvals/</p> <p>The document meets the requirements of items (a) to (i)</p>

Condition Number	Condition	Compliance	Evidence / Comments
	<p>evaluation of methods to prevent, remediate and mitigate ecological impacts</p> <p>f) an analysis of potential mitigation activities, such as but not limited to, re-injection to the groundwater source aquifer to maintain pressure head, flows and ecological habitat at the Doongmabulla Springs Complex</p> <p>g) an explanation of how research outcomes will directly inform the monitoring, management, prevention, mitigation and remediation of impacts on the Doongmabulla Springs Complex</p> <p>h) a peer review of the draft GAB Springs Research Plan, by a suitably qualified independent expert and a table of changes made in response to the peer review</p> <p>i) The GAB Springs Research Plan must be published on the proponent's website for the life of the project. Research outputs must be submitted to the Minister within ten business days of completion, and be made available for the Bioregional Assessment of the Galilee Basin subregion and the Lake Eyre Basin and any subsequent iterations.</p>		
26	<p>The approval holder must not commence excavation of the first box cut until the GAB Springs Research Plan has been approved by the Minister in writing. The approved GAB Springs Research Plan must be implemented</p>	Compliant	<p>It was approved by the delegate of the Minister as meeting condition 25 on 20 September 2019.</p> <p>Excavation of the first box cut commenced on 10 July 2020.</p>
27	<p><i>Rewan Formation Connectivity Research Plan</i></p> <p>At least three months prior to commencing excavation of the first box cut, the approval holder must submit for the approval of the Minister a Rewan Formation Connectivity Research Plan ('Rewan Research Plan') that characterises the Rewan Formation within the area impacted by the mine. The Research Plan must be informed by the results of the groundwater flow model re-run (condition 23) and include but not be limited to the following:</p> <p>a) research aims</p> <p>b) personnel responsible for conducting research and their qualifications</p> <p>c) timeframes for research and reporting</p> <p>d) methods, including, but not limited to, seismic surveys to determine the type, extent and location of fracturing, faulting and preferential pathways</p>	Compliant	<p>Bravus first submitted the Rewan Formation Connectivity Research Plan to the delegate of the Minister for approval on 4 December 2018.</p> <p>The Rewan Formation Connectivity Research Plan was approved as meeting condition 27 by the delegate of the Minister on 13 December 2019.</p> <p>Excavation of the first box cut commenced on 10 July 2020.</p> <p>The document meets the requirements of items (a) to (f).</p>

Condition Number	Condition	Compliance	Evidence / Comments
	<p>(including any fracturing induced by longwall mining subsidence, including any fracturing impacting on the Doongmabulla Springs Complex) and an examination of the hydraulic properties (including but not limited to petrophysical analysis and facies mapping) of the Rewan Formation, to better characterise the Rewan Formation and the contribution of fracturing, faulting and preferential pathways to connectivity, including a description of how research will be undertaken in a manner that does not cause impacts on Matters of National Environmental Significance (unless the activities will be undertaken in accordance with a plan approved pursuant to conditions of this approval)</p> <p>e) an explanation of how research will inform the GMMP, any regional groundwater and surface water monitoring and assessment program, or Bioregional Assessment for the Galilee Basin sub-region and the Lake Eyre Basin and any subsequent iterations</p> <p>f) a peer review of the Rewan Research Plan, by a suitably qualified independent expert, approved by the Minister in writing, and a table of changes made in response to the peer review</p>		
28	<p>The approval holder must not commence excavation of the first box cut until the Rewan Research Plan has been approved by the Minister in writing. The approved Rewan Formation Connectivity Research Plan must be implemented.</p>	Compliant	<p>Bravus first submitted the Rewan Formation Connectivity Research Plan to the delegate of the Minister for approval on 4 December 2018.</p> <p>The Rewan Formation Connectivity Research Plan was approved as meeting condition 27 by the delegate of the Minister on 13 December 2019.</p> <p>Excavation of the first box cut commenced on 10 July 2020.</p>
29	<p>Standard conditions Within 30 days of the commencement of the action, the approval holder must advise the Department in writing of the actual date of commencement.</p>	Compliant	<p>The rail component of the action commenced on 13 October 2017. The Department was notified of the commencement on 5 and 13 October 2017.</p>
30	<p>The approval holder must maintain accurate records substantiating all activities associated with or relevant to the conditions of approval, including measures taken to implement the management plans, reports, and programs required by this approval, and make them available upon request to the Department. Such records may be subject to audit by the</p>	Compliant	<p>Bravus has maintained records substantiating all activities associated with or relevant to the conditions of approval and has made them available upon request to Department.</p>

Condition Number	Condition	Compliance	Evidence / Comments
	<p>Department or an independent auditor in accordance with section 458 of the EPBC Act, or used to verify compliance with the conditions of approval. Summaries of audits will be posted on the Department’s website. The results of audits may also be publicised through the general media.</p>		
31	<p>Within three months of every 12 month anniversary of the commencement of the action, the approval holder must publish a report on their website addressing compliance with each of the conditions of this approval, including implementation of any management plans as specified in the conditions.</p> <p>Documentary evidence providing proof of the date of publication and non-compliance with any of the conditions of this approval must be provided to the Department at the same time as the compliance report is published.</p>	Compliant	<p>The <i>Compliance Report Carmichael Coal Mine and Rail Project EPBC 2010/5736 13 October 2023 to 12 October 2024 Report 7</i> was published on the Bravus website on 13 January 2025 and can be accessed via the following link: https://www.bravusmining.com.au/sustainability/environment/environmental-reporting-and-approvals/</p> <p>Correspondence notifying the Department of report publication on 13 January 2025, with an acknowledgement from the Department received on 15 January 2025.</p>
31A	<p>The approval holder must notify the Department in writing of any: incident; noncompliance with the conditions; or non-compliance with commitments made in plans. The notification must be provided to the Department as soon as practicable and no later than 10 business days after the approval holder becoming aware of the incident or non-compliance. The notification must specify:</p> <ol style="list-style-type: none"> the condition which is or may be in breach; and a short description of the incident and/or non-compliance. 	Compliant	<p>The following interactions were notified to the Department as required under the Species Management Plan:</p> <ul style="list-style-type: none"> One Ornamental Snake injury occurred during clearing and grubbing activities on the 24/10/24 and reported to the Department via email on 25/10/25. One Ornamental Snake mortality occurred during snake and frog surveys at night on the 03/03/25 and reported to the Department via email on 04/03/25. One Ornamental Snake mortality occurred during clearing and grubbing activities in the Borefields Phase 4 (Part 2) area on 13/08/25 and reported to the Department via email on 14/08/25. <p>Both incidents were reported and notified to the Department via separate notifications within 24 hours of the respective incident.</p> <p>Note that these incidents are not considered to be non-compliances with the management plan. There were no non-compliances with the conditions or commitments made in plans reported during the period.</p>

Condition Number	Condition	Compliance	Evidence / Comments
32	Upon the direction of the Minister, the approval holder must ensure that an independent audit of compliance with the conditions of approval is conducted and a report submitted to the Minister. The independent auditor must be approved by the Minister prior to the commencement of the audit. Audit criteria must be agreed to by the Minister and the audit report must address the criteria to the satisfaction of the Minister.	Not Applicable	No independent audit has been requested by the Minister in the reporting period.
33	<p>The approval holder may choose to revise a plan or strategy approved by the Minister under conditions 3, 5, 9, 20, 25 and 27 without submitting it for approval under section 143A of the EPBC Act, if the taking of the action in accordance with the revised plan or strategy would not be likely to have a new or increased impact. If the approval holder makes this choice they must:</p> <ul style="list-style-type: none"> a) notify the Department in writing that the approved plan or strategy has been revised and provide the Department with an electronic copy of the revised plan or strategy; b) implement the revised plan or strategy from the date that the plan or strategy is submitted to the Department; and c) for the life of this approval, maintain a record of the reasons the approval holder considers that taking the action in accordance with the revised plan or strategy would not be likely to have a new or increased impact. 	Compliant	A revision of the Black Throated Finch Management Plan was submitted to the Department in June 2023. The Department responded 23 February 2024 with further comments. These comments were addressed by Bravus in their response to the Department dated 22 May 2024. No further response has been received from the Department.
33A	The approval holder may revoke their choice under condition 33 at any time by notice to the Department. If the approval holder revokes the choice to implement a revised plan or strategy, without approval under section 143A of the Act, the plan or strategy approved by the Minister must be implemented.	Not Applicable	
33B	Condition 33 does not apply if the revisions to the approved plan or strategy include changes to environmental offsets provided under the plan or strategy in relation to the matter, unless otherwise agreed in writing by the Minister. This does not otherwise limit the circumstances in which the taking of the action in accordance with a revised plan or strategy would, or would not, be likely to have new or increased impacts.	Not Applicable	

Carmichael Coal Mine and Rail (CCMR) EPBC 2010/5736 – Compliance Table

Condition Number	Condition	Compliance	Evidence / Comments
33C	If the Minister gives a notice to the approval holder that the Minister is satisfied that the taking of the action in accordance with the revised plan or strategy would be likely to have a new or increased impact, then: a) Condition 33 does not apply, or ceases to apply, in relation to the revised plan or strategy; and b) The approval holder must implement the plan or strategy approved by the Minister.	Not Applicable	
33D	Conditions 33, 33A, 33B and 33C are not intended to limit the operation of section 143A of the EPBC Act which allows the approval holder to submit a revised plan or strategy to the Minister for approval.	Compliant	Note
34	If the Minister believes that it is necessary or convenient for the better protection of World Heritage properties, National Heritage places, Wetlands of international importance, listed threatened species and communities, listed migratory species, the Great Barrier Reef Marine Park or a water resource, in relation to coal seam gas development and large coal mining development to do so, the Minister may request that the approval holder make specified revisions to the management plans, reports, and programs specified in the conditions and submit the revised management plans, reports, and programs for the Minister's written approval. The approval holder must comply with any such request. The revised approved management plans, reports, and programs must be implemented. Unless the Minister has approved the revised management plans, reports, and programs, then the approval holder must continue to implement the management plans, reports, and programs originally approved, as specified in the conditions.	Not Applicable	The Minister has not made any requests pursuant to this condition.
35	If, at any time after 10 years from the date of this approval, the approval holder has not substantially commenced the action, then the approval holder must not substantially commence the action without the written agreement of the Minister.	Not Applicable	The action has commenced.
36	Unless otherwise agreed to in writing by the Minister, the approval holder must publish all management plans, reports, and programs referred to in these conditions of approval on their website. Each management plan,	Compliant	The following management plans, reports and programs is published on the Bravus website and can be accessed via the following link:

<i>Condition Number</i>	<i>Condition</i>	<i>Compliance</i>	<i>Evidence / Comments</i>
	report, and program must be published on the website within one month of being approved.		https://www.bravusmining.com.au/sustainability/environment/environmental-reporting-and-approvals/

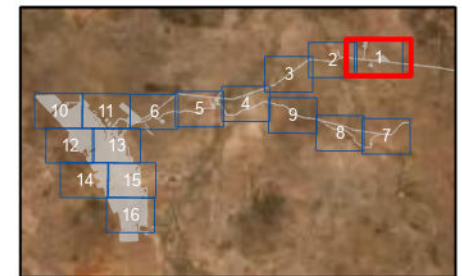
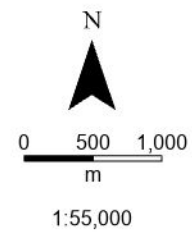
Appendix B – Disturbance Footprint



Legend

-  Disturbance Footprint (14 October 2024 - 13 October 2025)
-  EPBC CCMR Approval Boundary

Date: 1/12/2025

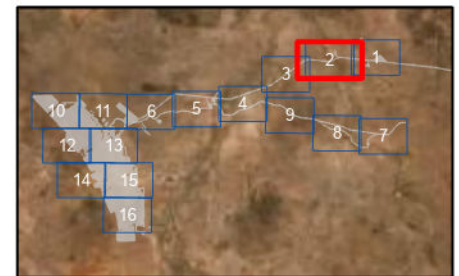
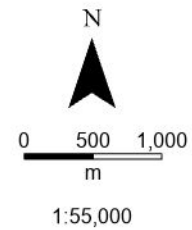




Legend

-  Disturbance Footprint (14 October 2024 - 13 October 2025)
-  EPBC CCMR Approval Boundary

Date: 1/12/2025

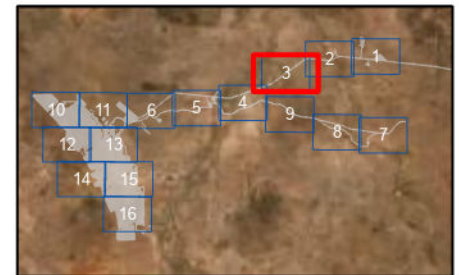
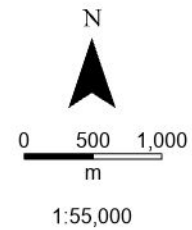


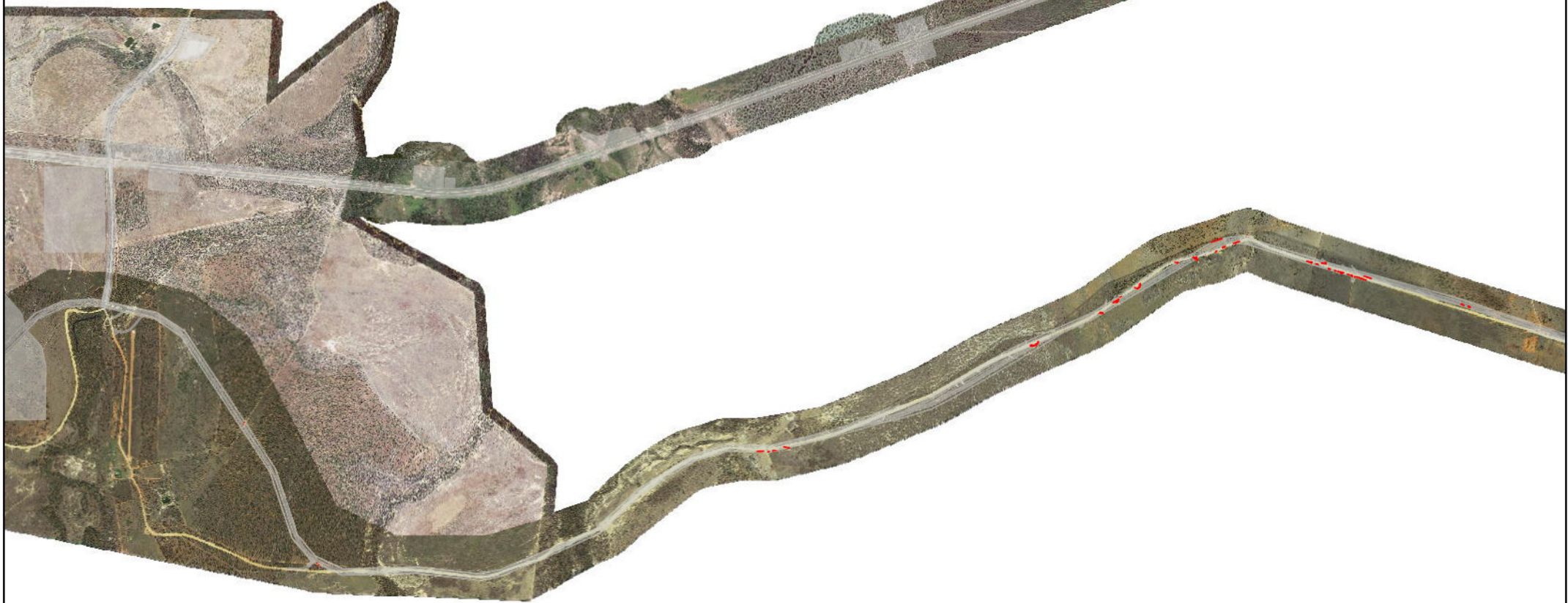


Legend

-  Disturbance Footprint (14 October 2024 - 13 October 2025)
-  EPBC CCMR Approval Boundary

Date: 1/12/2025

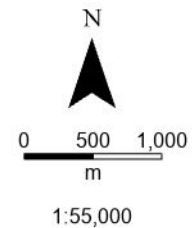




Legend

-  Disturbance Footprint (14 October 2024 - 13 October 2025)
-  EPBC CCMR Approval Boundary

Date: 1/12/2025

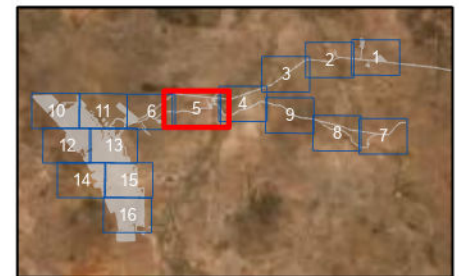
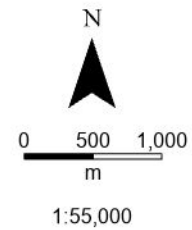




Legend

-  Disturbance Footprint (14 October 2024 - 13 October 2025)
-  EPBC CCMR Approval Boundary

Date: 1/12/2025

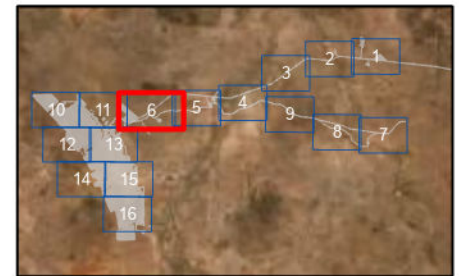
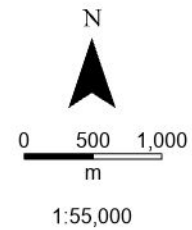


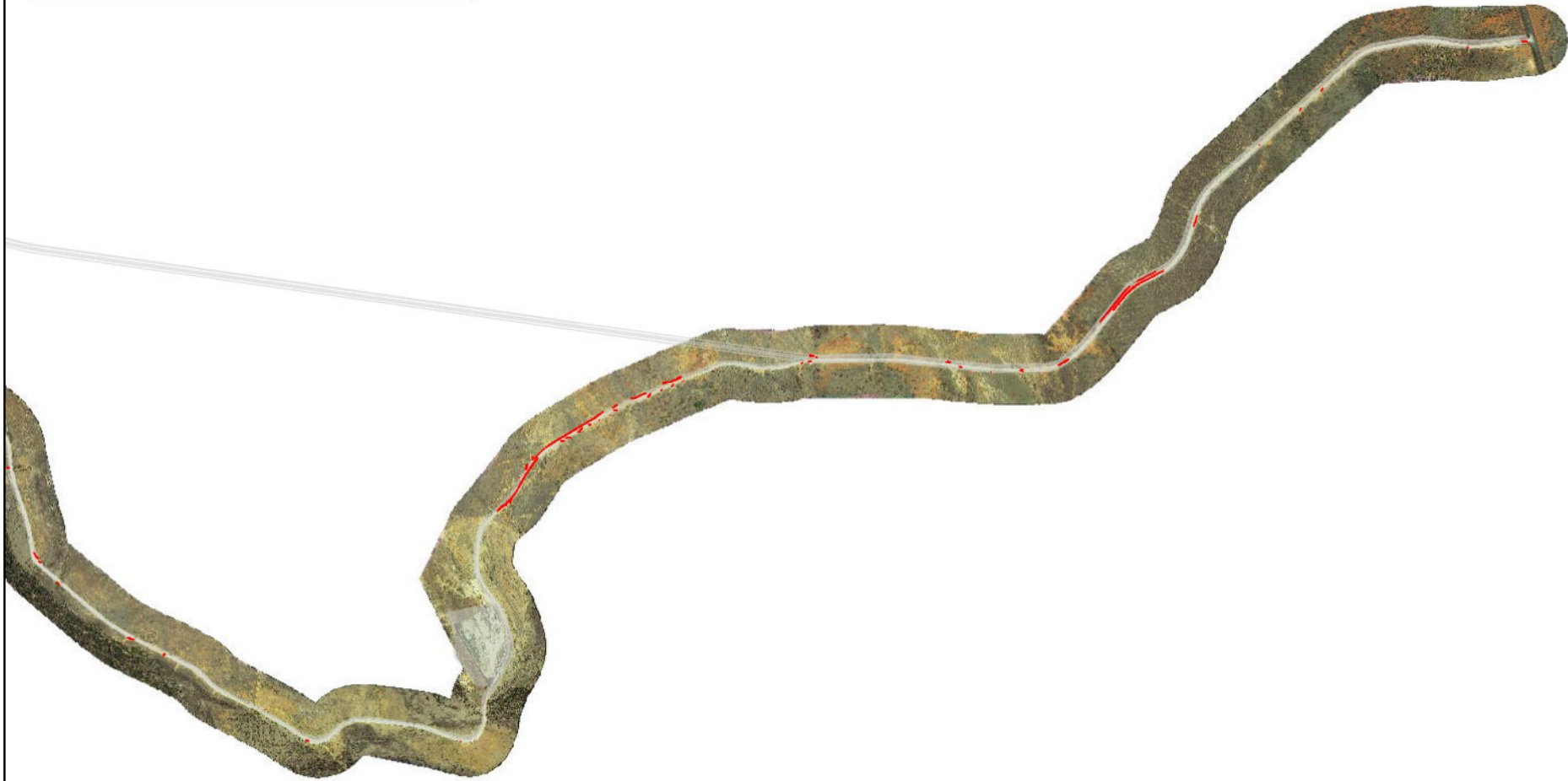


Legend

-  Disturbance Footprint (14 October 2024 - 13 October 2025)
-  EPBC CCMR Approval Boundary

Date: 1/12/2025

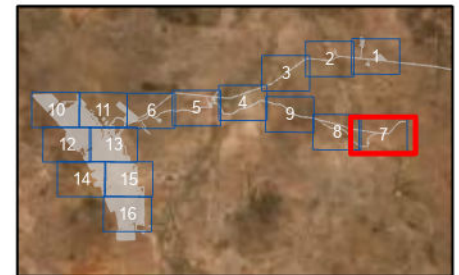
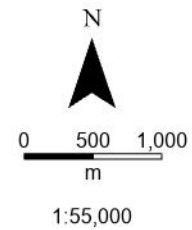




Legend

-  Disturbance Footprint (14 October 2024 - 13 October 2025)
-  EPBC CCMR Approval Boundary

Date: 1/12/2025

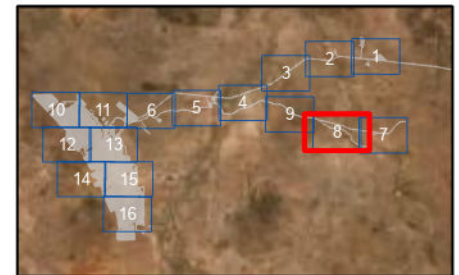
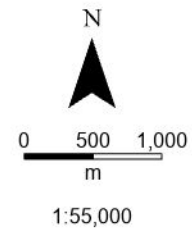


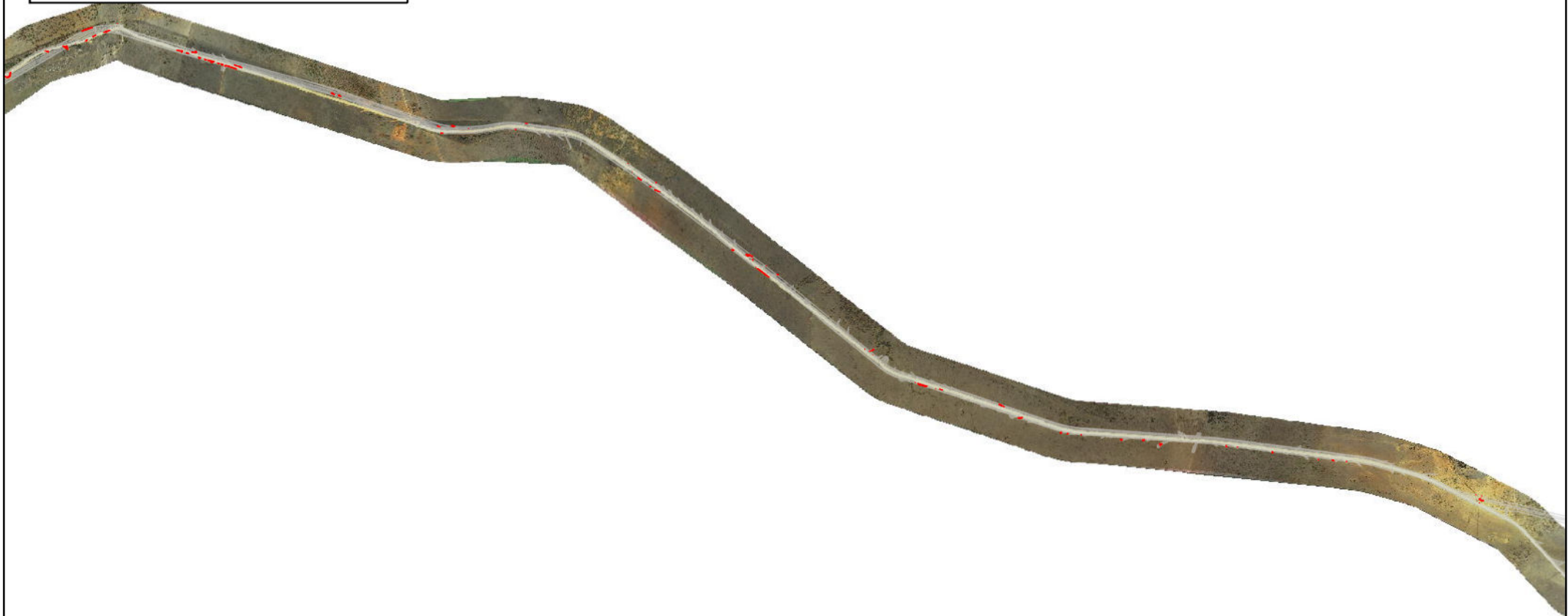


Legend

-  Disturbance Footprint (14 October 2024 - 13 October 2025)
-  EPBC CCMR Approval Boundary

Date: 1/12/2025

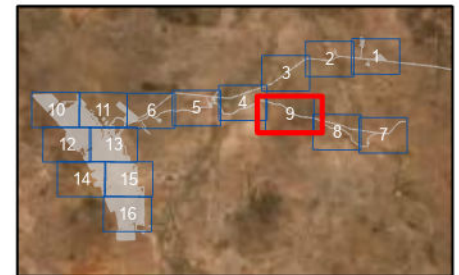
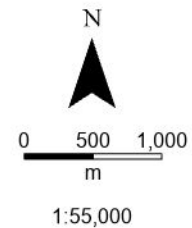




Legend

-  Disturbance Footprint (14 October 2024 - 13 October 2025)
-  EPBC CCMR Approval Boundary

Date: 1/12/2025

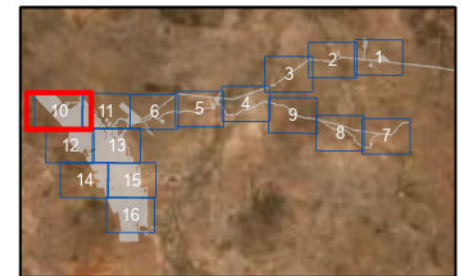
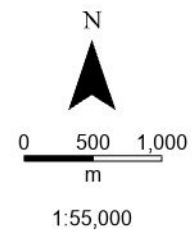




Legend

-  Disturbance Footprint (14 October 2024 - 13 October 2025)
-  EPBC CCMR Approval Boundary

Date: 1/12/2025

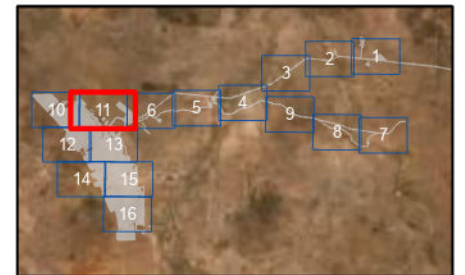
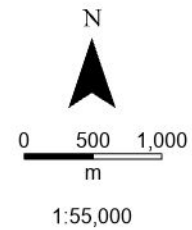




Legend

-  Disturbance Footprint (14 October 2024 - 13 October 2025)
-  EPBC CCMR Approval Boundary

Date: 1/12/2025

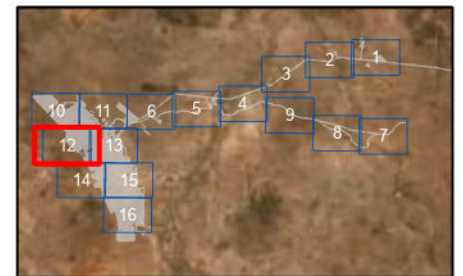
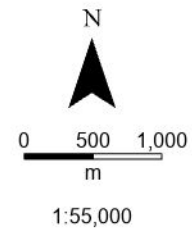




Legend

-  Disturbance Footprint (14 October 2024 - 13 October 2025)
-  EPBC CCMR Approval Boundary

Date: 1/12/2025

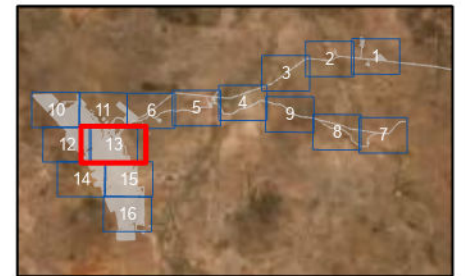
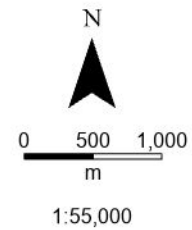




Legend

-  Disturbance Footprint (14 October 2024 - 13 October 2025)
-  EPBC CCMR Approval Boundary

Date: 1/12/2025

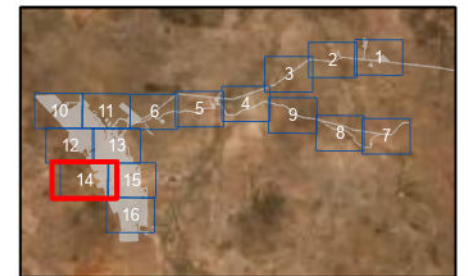
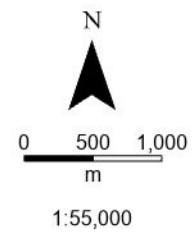




Legend

-  Disturbance Footprint (14 October 2024 - 13 October 2025)
-  EPBC CCMR Approval Boundary

Date: 1/12/2025

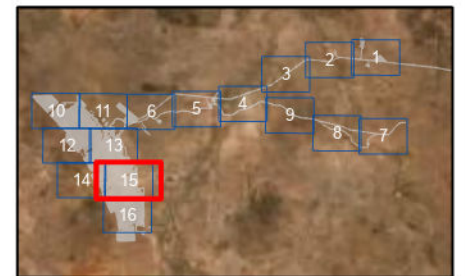
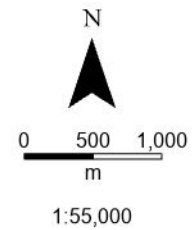




Legend

-  Disturbance Footprint (14 October 2024 - 13 October 2025)
-  EPBC CCMR Approval Boundary

Date: 1/12/2025

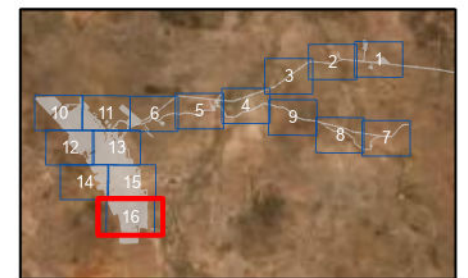
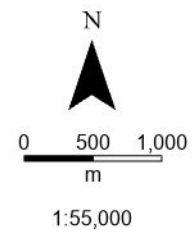




Legend

-  Disturbance Footprint (14 October 2024 - 13 October 2025)
-  EPBC CCMR Approval Boundary

Date: 1/12/2025





The APP Group

app.com.au