



Bluescope Steel Pty Ltd
ABN 16 000 11 058
Templar Road
PO Box 1854
Erskine Park NSW 2759

BLUESCOPE STEEL LIMITED.
Western Sydney Service Centre
Licence 12495

[Link to Environment Protection Licence 12495](#)

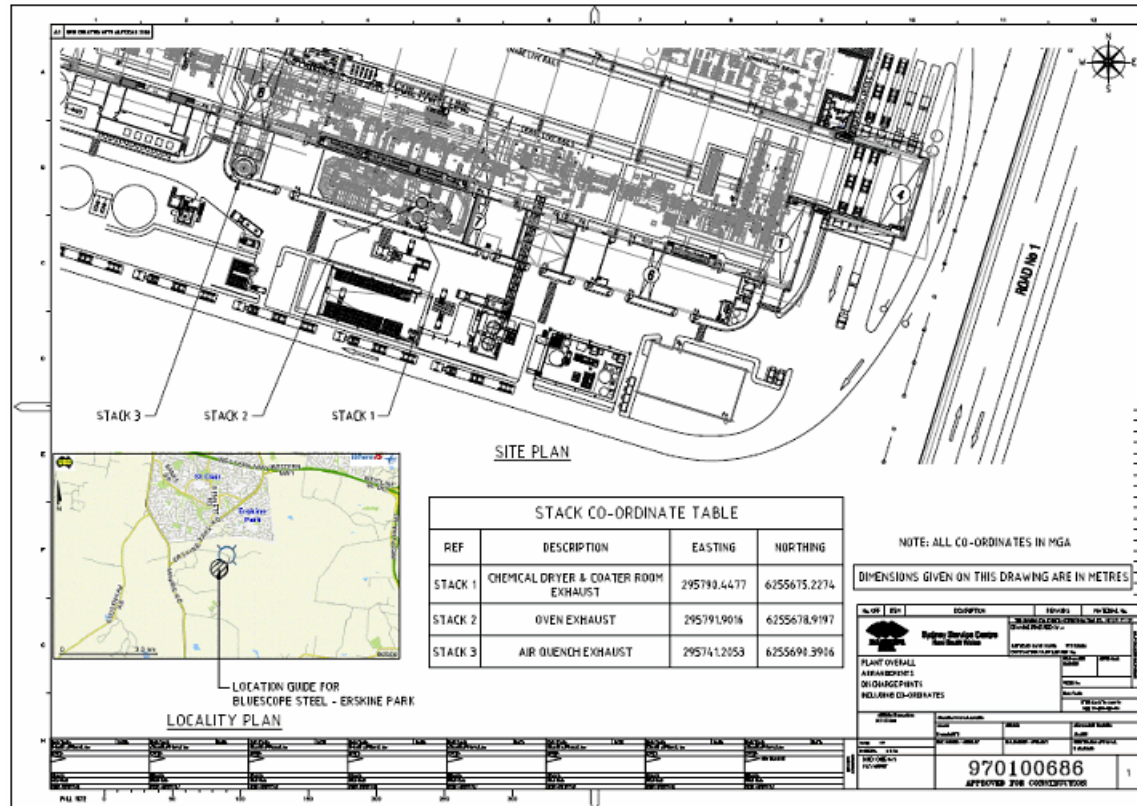
LICENCE MONITORING DATA
ANNUAL SUMMARY REPORT

Period

9 Jun 2012 to 8 Jun 2013

Location of monitoring/discharge points and areas.

EPL12495 Conditions P1





Stack Air Monitoring Requirements

EPL12495 Conditions L 2.4, M 2.1.

Point 1:

Pollutant	Units of Measure	Monitoring frequency required by licence	No. of times measured during the year	Min. Value	Max. Value	100 percentile concentration limit	Exceedance (yes / no) *
Volatile Organic Compounds	milligrams per cubic metre	Annually	6*	6.10	19.00	20	no

Comment:* New report version. Data from additional samples taken later in the licence period are included.

No Pollutant Limit Exists:

Pollutant	Units of Measure	Monitoring frequency required by licence	No. of times measured during the year	Min. Value	Mean Value	Medium Value	Max. Value
Dry Gas Density	kilograms per cubic metre	Annually	16*	1.29	1.29	1.29	1.29
Moisture	percent	Annually	16*	1.10	1.28	1.10	2.00
Molecular Weight of stack gases	grams per gram mole	Annually	16*	28.90	28.90	28.90	28.90
Oxygen (O ₂)	percent	Annually	4	21.00	21.00	21.00	21.00
Temperature	degrees Celcius	Annually	16*	32.00	37.94	37.00	43.00
Velocity	metres per second	Annually	16*	9.60	11.13	9.60	15.00
Volumetric flowrate	m ³ /s (0°C,101.3,dry)	Annually	16*	16.00	18.63	16.00	25.00



Bluescope Steel Pty Ltd
 ABN 16 000 11 058
 Templar Road
 PO Box 1854
 Erskine Park NSW 2759

Point 2:

Pollutant	Units of Measure	Monitoring frequency required by licence	No. of times measured during the year	Min. Value	Max. Value	100 percentile concentration limit	Exceedance (yes / no) *
Nitrogen Oxides	milligrams per cubic metre	Annually	4	16.00	25.00	100	no
Type 1 and Type 2 substances in aggregate	milligrams per cubic metre	Annually	2	0.0087	0.0130	1	no
Volatile Organic Compounds	milligrams per cubic metre	Annually	2	4.30	6.60	20	no

Comment:* New report version. Data from additional samples taken later in the licence period are included.



Bluescope Steel Pty Ltd
 ABN 16 000 11 058
 Templar Road
 PO Box 1854
 Erskine Park NSW 2759

No Pollutant Limit Exists:

Pollutant	Units of Measure	Monitoring frequency required by licence	No. of times measured during the year	Min. Value	Mean Value	Medium Value	Max. Value
Carbon Monoxide	milligrams per cubic metre	Annually	4	<3.00	1.50	1.50	<3.00
Dry Gas Density	kilograms per cubic metre	Annually	13*	1.29	1.30	1.29	1.31
Moisture	percent	Annually	13*	2.10	2.23	2.10	3.40
Molecular Weight of stack gases	grams per gram mole	Annually	13*	28.90	29.12	29.00	29.50
Oxygen (O ₂)	percent	Annually	4	19.00	19.00	19.00	19.00
Temperature	degrees Celcius	Annually	13*	224.00	231.69	230.00	242.00
Velocity	metres per second	Annually	13*	11.00	11.00	11.00	11.00
Volumetric flowrate	m ³ /s (0°C,101.3,dry)	Annually	13*	20.00	20.92	21.00	21.00



Point 3:

Pollutant	Units of Measure	Monitoring frequency required by licence	No. of times measured during the year	Min. Value	Max. Value	100 percentile concentration limit	Exceedance (yes / no) *
Volatile Organic Compounds	milligrams per cubic metre	Annually	2	5.60	6.40	20	no

Comment:* New report version. Data from additional samples taken later in the licence period are included.

No Pollutant Limit Exists:

Pollutant	Units of Measure	Monitoring frequency required by licence	No. of times measured during the year	Min. Value	Mean Value	Medium Value	Max. Value
Dry Gas Density	kilograms per cubic metre	Annually	12*	1.29	1.29	1.29	1.31
Moisture	percent	Annually	12*	1.30	2.75	3.00	3.30
Molecular Weight of stack gases	grams per gram mole	Annually	12*	28.90	28.95	28.90	29.30
Oxygen (O2)	percent	Annually	4	21.00	21.00	21.00	21.00
Temperature	degrees Celcius	Annually	12*	25.00	28.50	27.00	36.00
Velocity	metres per second	Annually	12*	5.90	8.27	8.30	13.00
Volumetric flowrate	m3/s (0°C,101.3,dry)	Annually	12*	16.00	23.00	23.00	37.00



Noise Monitoring Requirements

EPL12495 Conditions L4

Location 1 - Nearest Residential Receiver Location 2 - Northern Site Boundary

Measurements undertaken in accordance with NSW Industrial Noise Policy and Australian Standard AS 1055.1-1997									
Location	Date	Start Time	Period	Measured Levels		Limits	Weather	Observations	Potential Non-Compliance
				L _{Amax}	L _{Aeq}				
1	17/09/2012	21:50:15	15 min	56	44	LAeq(15 min): 35 dBA LA1(1 min): 47 dBA	Cloud: 5/8 Wind: Ave=0.0 Gust=0.0 Dir=N/A Pressure: 1006 Hum: 83% Temp: 13.8	Distant Traffic (39-51) Air Traffic (49-56) Distant Crashing NNW (48-51) Noise From Residences (<35 -53)	WSSC inaudible at measurement location.
1	17/09/2012	22:10:20	15 min	58	42	LAeq(15 min): 35 dBA LA1(1 min): 47 dBA	Cloud: 4/8 Wind: Ave=0.0 Gust=0.0 Dir=N/A Pressure: 1007 Hum: 84% Temp: 13.8	Distant Traffic (41-57) Air Traffic (47-53) Nearby Pneumatics SW (44 L _{Amax}) Distant Dog Bark (<40-42)	WSSC inaudible at measurement location.



Noise Monitoring Requirements

EPL12495 Conditions L4

Location 1 - Nearest Residential Receiver Location 2 - Northern Site Boundary

Measurements undertaken in accordance with NSW Industrial Noise Policy and Australian Standard AS 1055.1-1997									
Location	Date	Start Time	Period	Measured Levels		Limits	Weather	Observations	Potential Non-Compliance
				L _{Amax}	L _{Aeq}				
2	18/09/2012	00:20:57	15 min	57	43	L _{Aeq} (15 min): 35 dBA L _{A1} (1 min): 47 dBA	Cloud: 6/8 Wind: Ave=1.4 Gust=3.0 Dir= WNW Pressure: 1007 Hum: 91% Temp: 13.2	WSSC Drop of Coils (57 L _{Amax}) WSSC Servo/Pneumatic Motor (47 L _{Amax}) Distant Alarm (<40 L _{Amax})	Measurement at site boundary. Noise limits not applicable to measured levels at this location.
2	18/09/2012	00:48:52	15 min	56	43	L _{Aeq} (15 min): 35 dBA L _{A1} (1 min): 47 dBA	Cloud: 4/8 Wind: Ave=1.0 Gust=1.6 Dir= NW Pressure: 1006 Hum: 93% Temp: 12.9	WSSC Drop of Coils (56 L _{Amax}) WSSC Servo/Pneumatic Motor (47max)	Measurement at site boundary. Noise limits not applicable to measured levels at this location.