



Bluescope Steel Pty Ltd  
ABN 16 000 11 058  
Templar Road  
PO Box 3003  
St Marys South NSW 2760

**BLUESCOPE STEEL LIMITED.**  
**Western Sydney Service Centre**  
**Licence 12495**

[Link to Environment Protection Licence 12495](#)

**LICENCE MONITORING DATA**  
**ANNUAL SUMMARY REPORT**

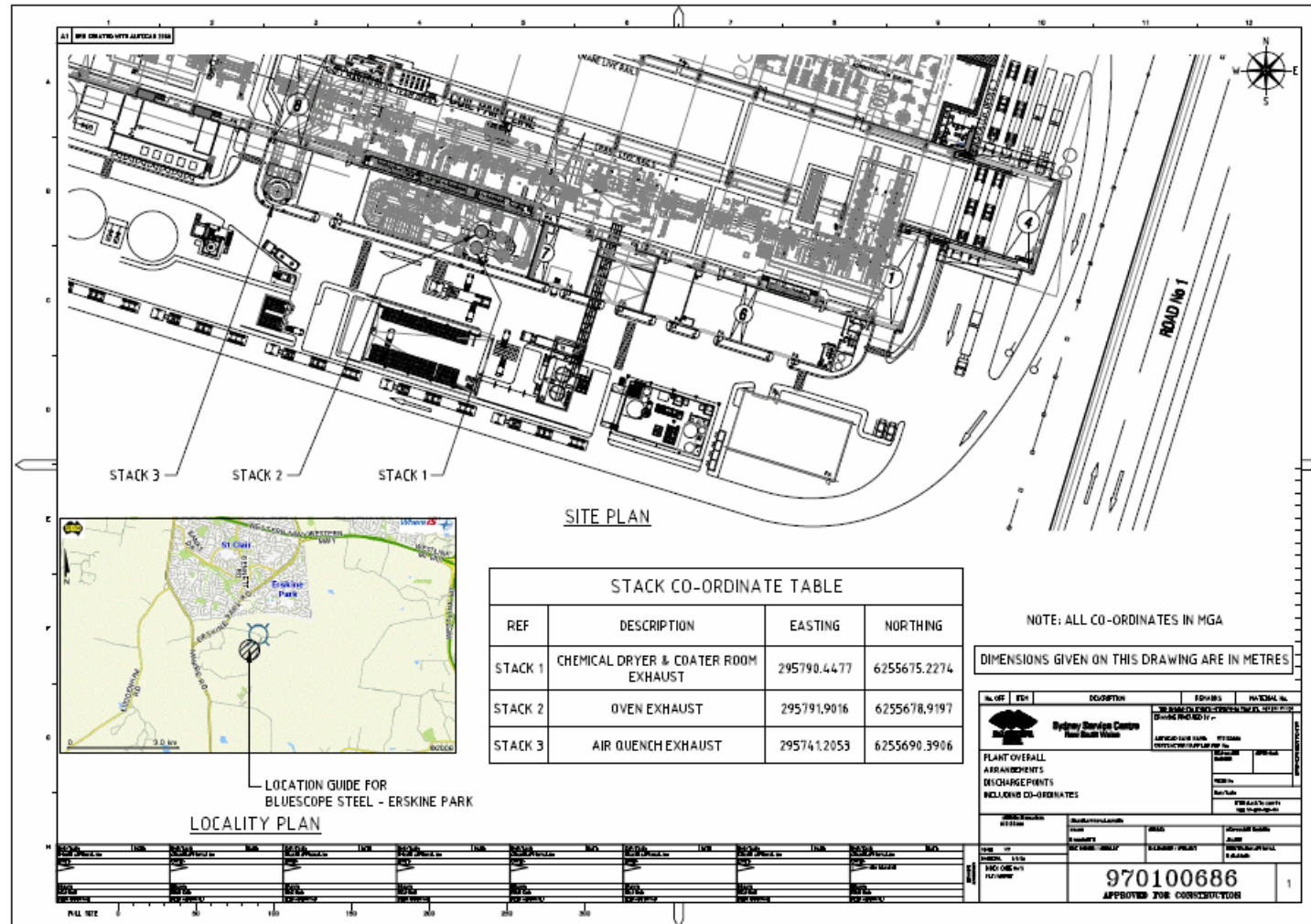
Period

**9 Jun 2018 to 9 Jun 2019**

Annual (Jun 2018 - Jun 2019) Report Published: 17, April, 2019

## Location of monitoring/discharge points and areas.

### EPL12495 Conditions P1





## Stack Air Monitoring Requirements

EPL12495 Conditions L 2.4, M 2.1.

### Point 1:

Pollutant	Units of Measure	Monitoring frequency required by licence	No. of times measured during the year	Min. Value	Max. Value	100 percentile concentration limit	Exceedance (yes / no) *
Volatile Organic Compounds	milligrams per cubic metre	Annually	2	2.10	4.30	20	no

**Comment:**

### No Pollutant Limit Exists:

Pollutant	Units of Measure	Monitoring frequency required by licence	No. of times measured during the year	Min. Value	Mean Value	Medium Value	Max. Value
Velocity	metres per second	Annually	2	13.00	13.00	13.00	13.00
Volumetric flowrate	m <sup>3</sup> /s (0°C,101.3,dry)	Annually	2	21.00	21.00	21.00	21.00



**Point 2:**

Pollutant	Units of Measure	Monitoring frequency required by licence	No. of times measured during the year	Min. Value	Max. Value	100 percentile concentration limit	Exceedance (yes / no) *
Nitrogen Oxides	milligrams per cubic metre	Annually	2	19.00	24.00	100	no
Volatile Organic Compounds	milligrams per cubic metre	Annually	2	2.20	2.90	20	no
<b>Comment:</b>							

**No Pollutant Limit Exists:**

Pollutant	Units of Measure	Monitoring frequency required by licence	No. of times measured during the year	Min. Value	Mean Value	Medium Value	Max. Value
Velocity	metres per second	Annually	4	11.00	11.00	11.00	11.00
Volumetric flowrate	m3/s (0°C,101.3,dry)	Annually	4	19.00	19.00	19.00	19.00



**Point 3:**

Pollutant	Units of Measure	Monitoring frequency required by licence	No. of times measured during the year	Min. Value	Max. Value	100 percentile concentration limit	Exceedance (yes / no) *
Volatile Organic Compounds	milligrams per cubic metre	Annually	2	4.00	4.20	20	no

**Comment:**

**No Pollutant Limit Exists:**

Pollutant	Units of Measure	Monitoring frequency required by licence	No. of times measured during the year	Min. Value	Mean Value	Medium Value	Max. Value
Velocity	metres per second	Annually	2	13.00	13.00	13.00	13.00
Volumetric flowrate	m3/s (0°C,101.3,dry)	Annually	2	35.00	35.00	35.00	35.00

## Noise Monitoring Locations







**Published:** 10/09/2018

**Licensee:** BlueScope Steel Ltd

**EPL No:** 12495

**Table 2 Summary of LA1(1minute) Attended Noise Measurement Results**

Description	Start Time Start Date Duration	Distance to Source	Noise Descriptor (dBA)		Description of Noise Emission
			L <sub>Amax</sub>	L <sub>A1</sub>	
Delivery truck horn	00:49:30 24/08/2018 1 minute	200 m	63	61	Horn at entry – short duration
Facility Crane & Dropping of Materials	00:51:31 24/08/2018 1 minute	145 m	52	51	Dropping of coils/Impacts within Plant
Facility Crane & Dropping of Materials	00:52:44 24/08/2018 1 minute	145 m	52	52	Dropping of coils/Impacts within Plant
Facility Crane & Dropping of Materials	00:54:22 24/08/2018 1 minute	145 m	62	61	Dropping of coils/Impacts within Plant
Facility Crane & Dropping of Materials	01:22:20 24/08/2018 1 minute	145 m	52	52	Dropping of coils/Impacts within Plant
Facility Crane & Dropping of Materials	01:23:00 24/08/2018 1 minute	145 m	60	59	Dropping of coils/Impacts within Plant
Facility Crane & Dropping of Materials	01:47:35 24/08/2018 1 minute	145 m	60	59	Dropping of coils/Impacts within Plant
Facility Truck Loading & Preparation	01:57:23 24/08/2018 1 minute	170 m	50	50	Rigging of truck load with metal chains
Facility Truck Loading & Preparation	02:02:48 24/08/2018 1 minute	170 m	54	53	Rigging of truck load with metal chains
Facility Truck Loading & Preparation	02:04:43 24/08/2018 1 minute	170 m	54	53	Rigging of truck load with metal chains
Delivery truck horn	02:14:09 24/08/2018 1 minute	150 m	70	67	Horn at dispatch – moderate duration
Delivery truck Passby	02:15:12 24/08/2018 1 minute	7 m	82	80	Engine/exhaust noise
Truck Exit	02:16:03 24/08/2018 1 minute	135 m	57	56	Engine/exhaust noise Includes Exit Gate Siren



**Table 3 Predicted Noise Levels - Nearest Sensitive Receivers**

Noise Descriptor <sup>1</sup>	Criterion Level	Predicted Noise Level	Compliance
LAeq(15minute) - Daytime	35 dBA	30 dBA	Yes
LAeq(15minute) - Evening	35 dBA	30 dBA	Yes
LAeq(15minute) - Night-time	35 dBA	30 dBA	Yes
LA1(1minute) - Sleep Disturbance	54 dBA	52 dBA (truck horn)	Yes
- Standard Operation		45 dBA (no horns)	Yes

Note 1: Daytime refers to 7.00 am to 6.00 pm Monday to Saturday and 8.00 am to 6.00 pm on Sundays and Public Holidays. Evening refers to 6.00 pm to 10.00 pm. Night-time refers to 10.00 pm to 7.00 am Monday to Saturday and 10.00 pm to 8.00 am on Sundays and Public Holidays.

The results provided in **Table 3** show that the noise emissions resulting from the operation of the WSSC paint line comply with the intrusive LAeq(15minute) criterion for each assessment period.

The results provided in **Table 3** indicate that the WSSC paint line complies with the sleep disturbance criterion for all noise events outlined in **Table 2**.